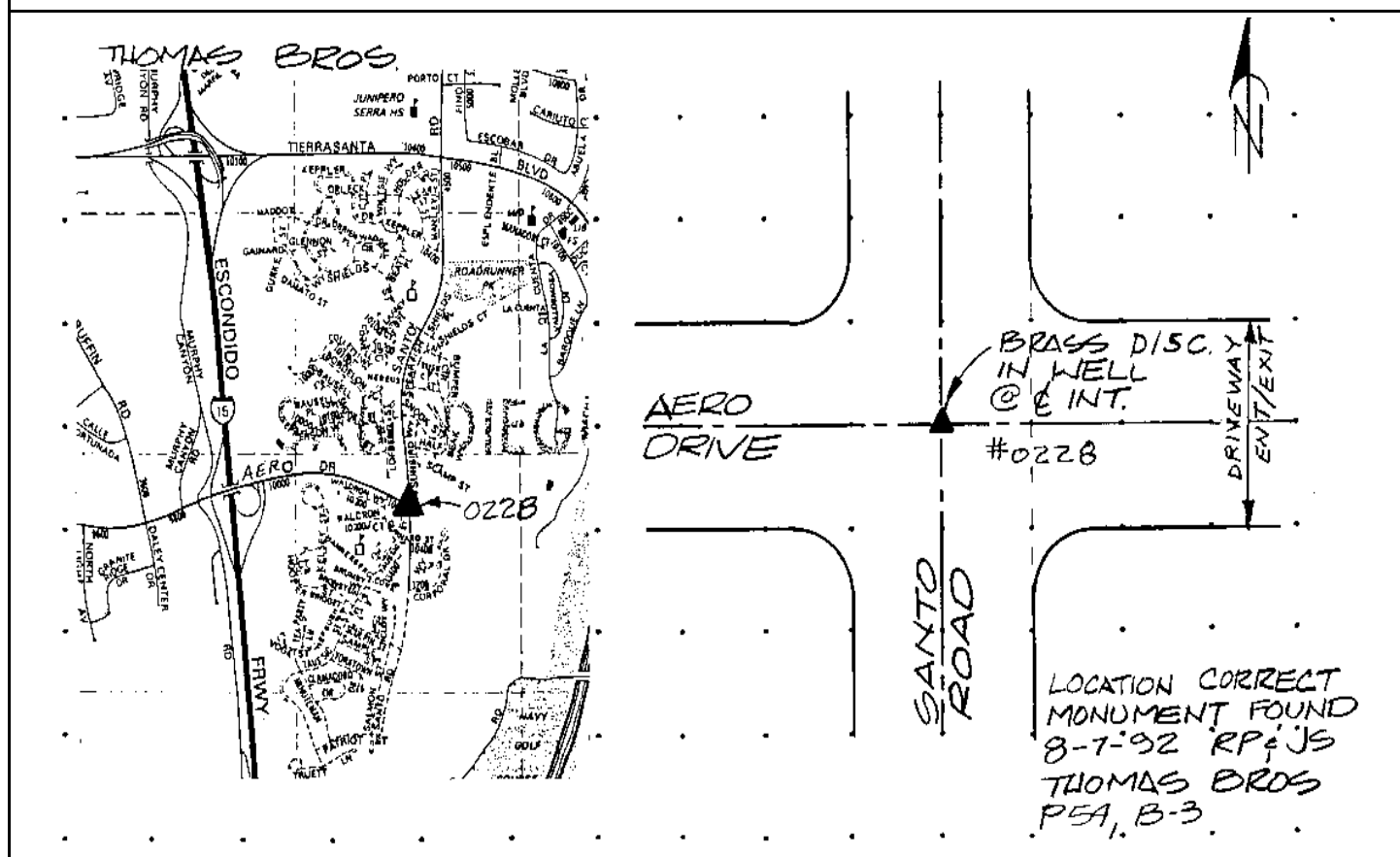


# CITY OF SAN DIEGO

# GPS CONTROL MONUMENT DATA SHEET

Point No./Name: 228		Date: AUG 1992	See Sheet 2 for Visibility Diagram <input type="checkbox"/>
Station/Mon. Name: SANTO & AERO		Year: UNKNOW	Agency Set By: CITY SD
Type of Monument: FOUND 2.5" BRASS DISK IN MON WELL Stamped: 0228		Latitude: 32-48-35.05381 NAD 83 Longitude: 117-06-19.10770 (91.35)	
Elevation 119.279 * NAVD 88 (meters) Elevation 389.20 * NGVD 29 (feet) * Note: Not to be used as a City benchmark		Acc.Horiz.: 1 Order	
Acc. Vert.: NAVD88: GPS 2-II NGVD29: GPS 3-I		<b>CCS Zone 6 Grid Coordinates</b> <b>NAD 83 (U.S. Feet)      NAD 83 (Meters)</b> N= 1875478.22      N= 571646.906 E= 6298868.22      E= 1919898.872	
ROS: <input type="checkbox"/> ROS Number:		Combined Factor at Station: 0.9999823	
To Station	Grid Distance	Bearing or Azimuth	G.S.F. of Line

Monument Description: CENTER OF AERO DR & SANTO RD



Reproduced with permission granted by THOMAS BROS. MAPS. This map is copyrighted by THOMAS BROS. MAPS. It is unlawful to copy or reproduce all or any part thereof, whether for personal use or resale, without permission.