

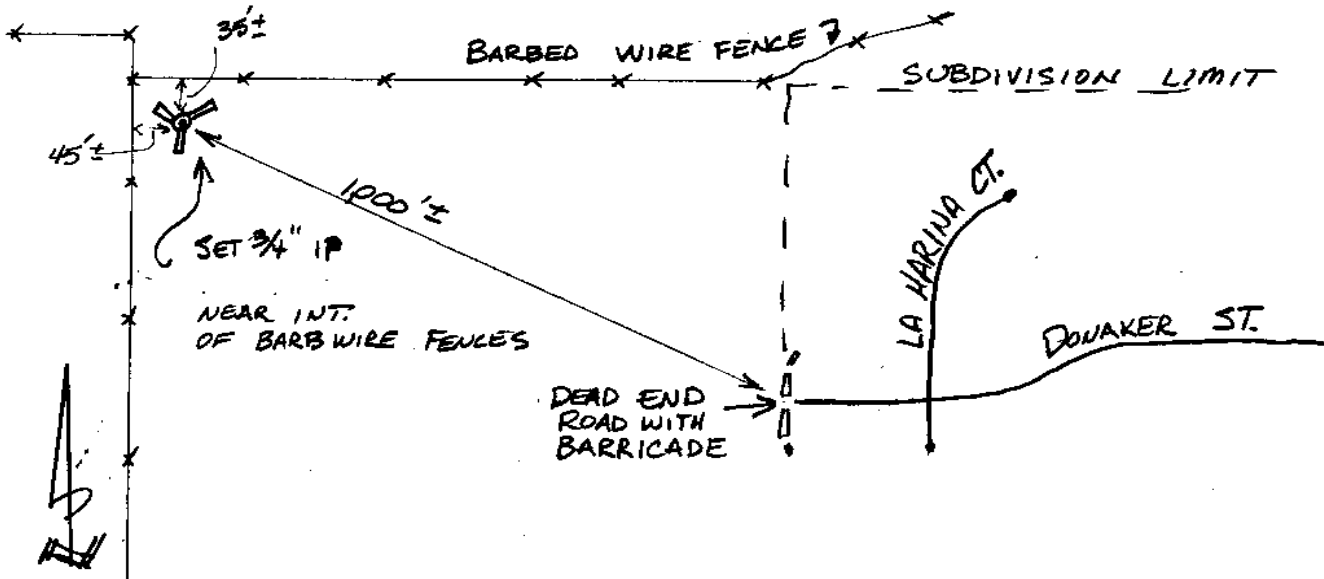
Point No./Name: 466		Date: AUG 1992	See Sheet 2 for Visibility Diagram <input type="checkbox"/>
Station/Mon. Name: DONAKER @ LA ZANJA		Year: AUG 1992	Agency Set By: RBF
Type of Monument: SET 0.75" IP & BRASS DISK IN AC Stamped: SD CITY ENG		Latitude: 32-58-40.56167 Longitude: 117-08-37.71105	NAD 83 (91.35)
Elevation 142.981 * NAVD 88 (meters) Elevation 466.96 * NGVD 29 (feet) * Note: Not to be used as a City benchmark		Acc.Horiz.: 2-1 Order	
Acc. Vert.: NAVD88: GPS 2-II NGVD29: GPS 3-I		CCS Zone 6 Grid Coordinates NAD 83 (U.S. Feet) NAD 83 (Meters) N= 1936773.03 N= 590329.600 E= 6287563.46 E= 1916453.176	
ROS: <input type="checkbox"/>	ROS Number:	Combined Factor at Station: 0.999956201	
To Station	Grid Distance	Bearing or Azimuth	G.S.F. of Line

Monument Description: 0.2 MI NW PAST END DONAKER ST @ LA HARINA CT

Description, sketch, and/or references, access problems, ect.:

3 LEG PANEL
WHITE RIBBON
OPEN VISIBILITY

WALKING ACCESS
NOTE: PARK @ DEAD END DONAKER



A. GIFFIN, O. RINNER Pg 31