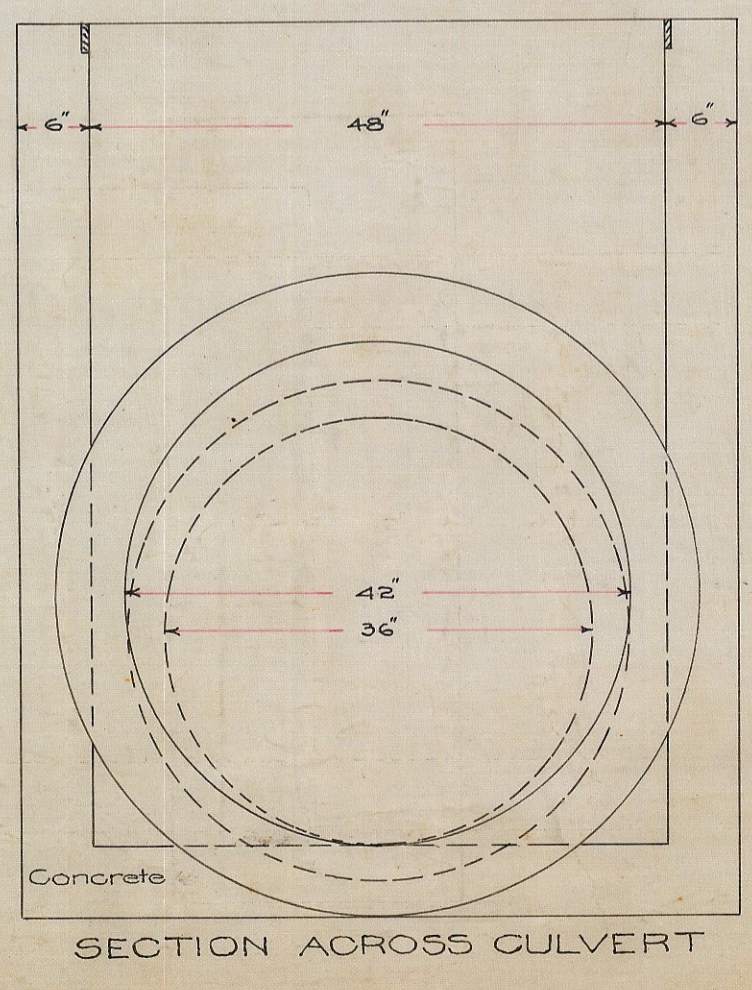
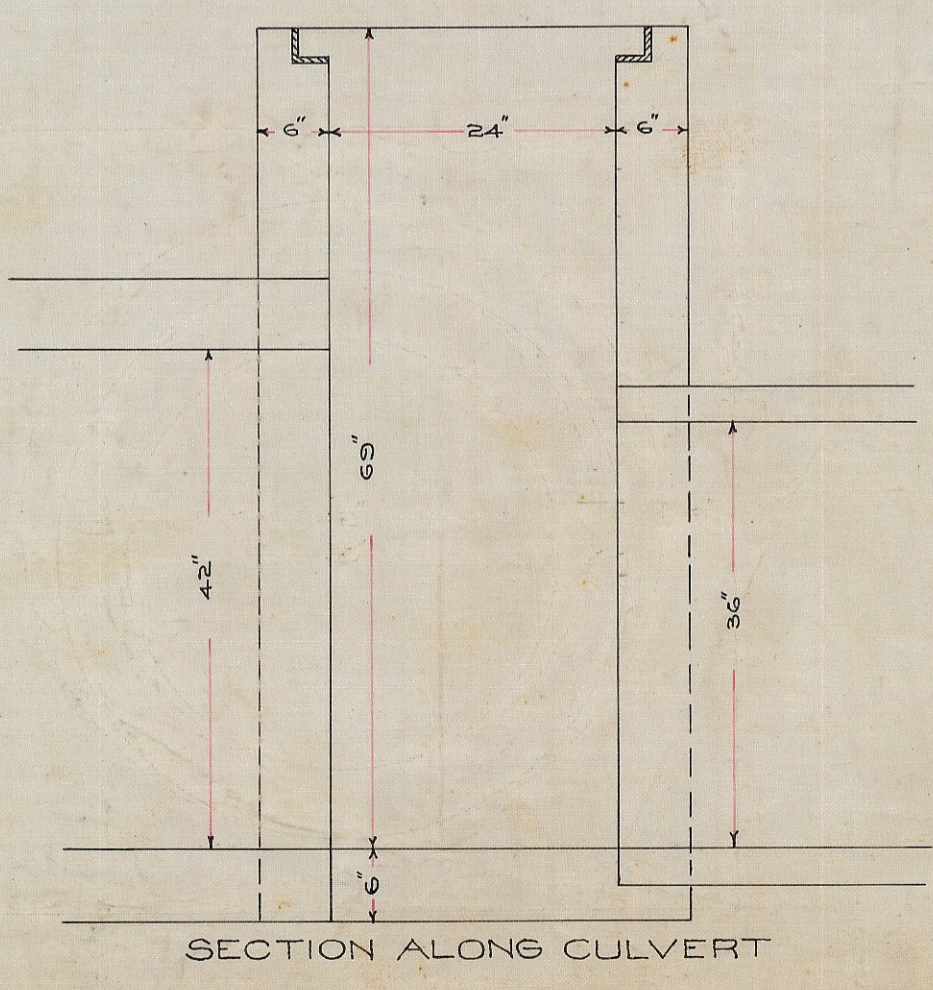
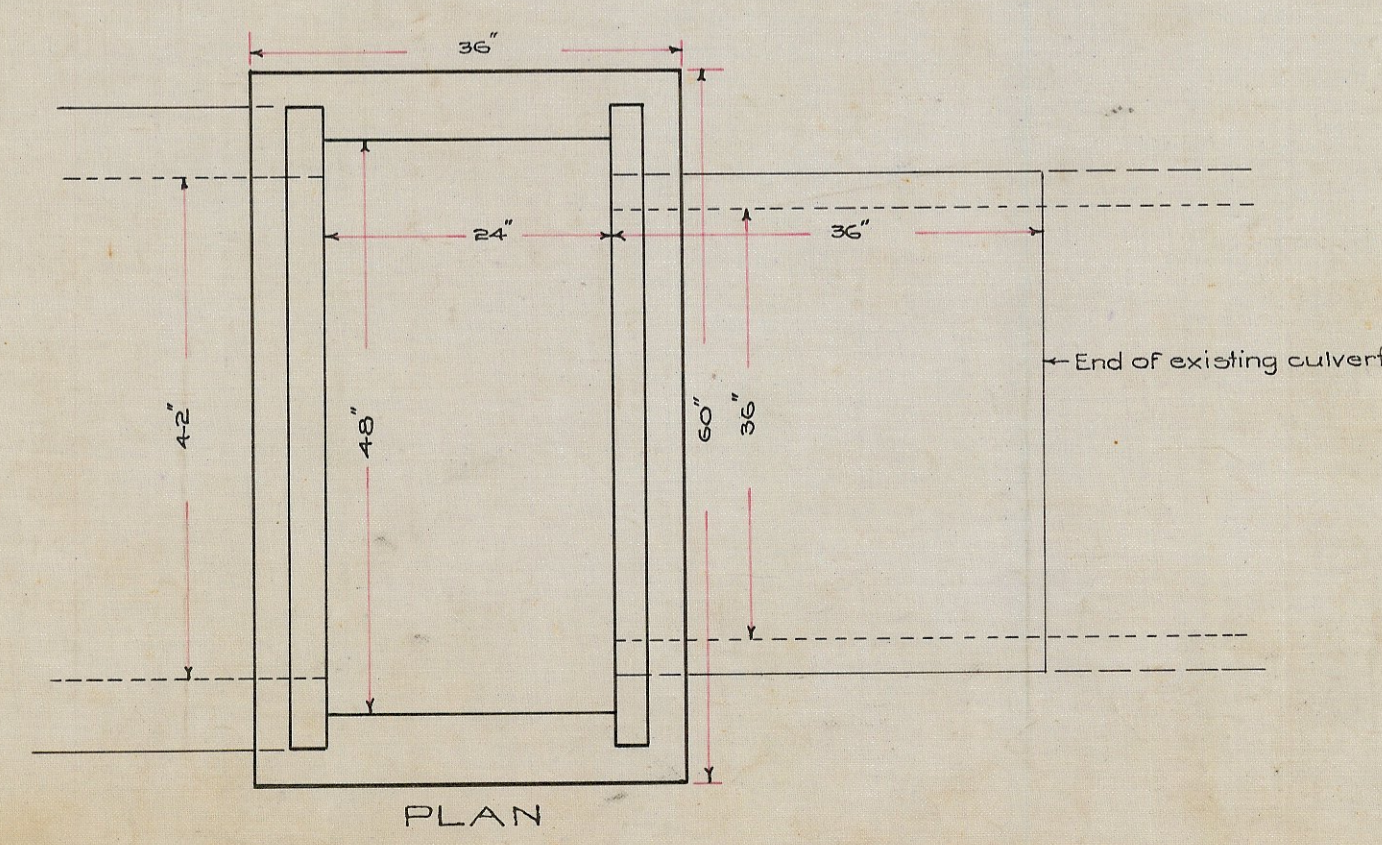
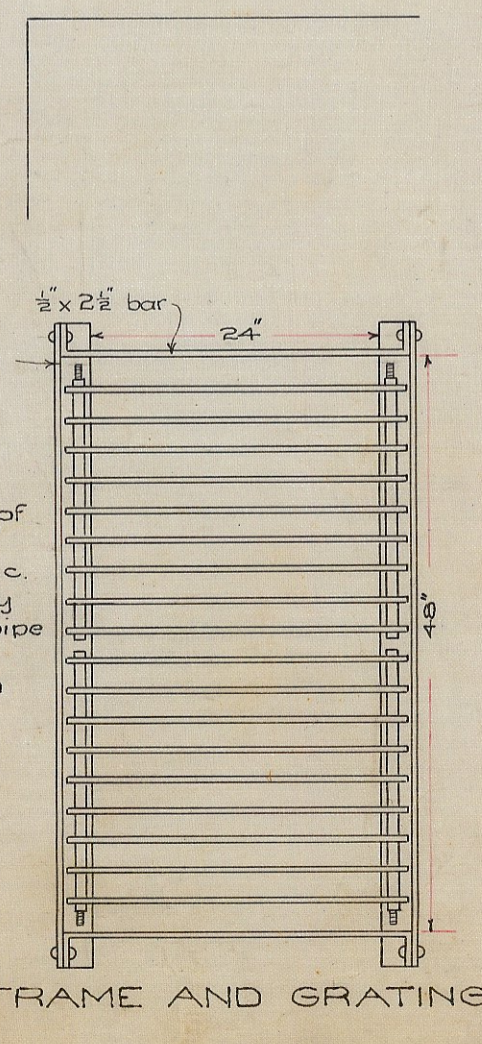


MANHOLE NO. 2

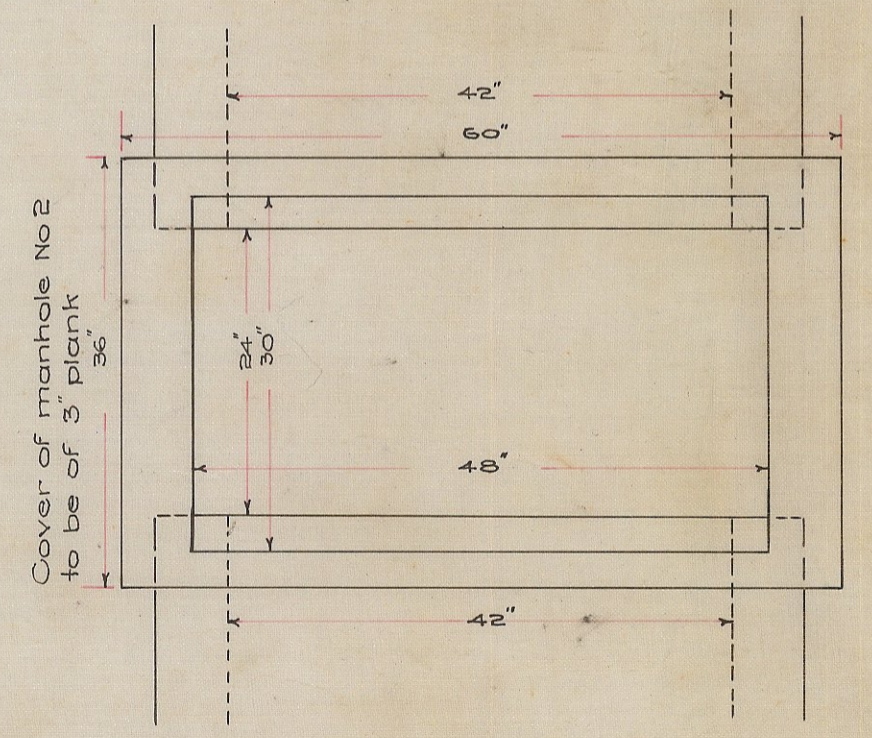


MANHOLE NO. 1

Pacific Highway
ATLANTIC



Grating formed of bars 1/2 x 2 1/2 x 28 3/8 spaced 2 1/2 c. to c. held together by 1/2 bolts through pipe separators. Grating made in two parts.



CITY OF SAN DIEGO OPERATING DEPARTMENT	
CULVERT TO BE CONSTRUCTED NORTH OF JUNIPER ST. FROM OUTLET OF EXISTING CULVERT TO TEMPORARY BULKHEAD	
APPROVED <i>George Cornwall</i> CITY ENGINEER	DATE July 1915
DRAWN BY H.W.J. TRACED BY H.W.J. CHECKED BY FIELD BOOKS 845	SCALE 1" = 50' 2 1/2" = 1'
CHANGED DATE C.K. MAY 3 x 1963	DRAWING NUMBER 380 L

Note See Drawing No 15 B for details of Foundation.