



BASE MAP	
DATE DRAWN: 2-28-61	
REVISED:	
BY: [Signature]	

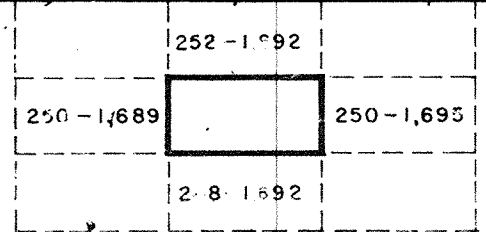
CITY OF SAN DIEGO, CALIFORNIA

SCALE: 1 INCH = 100 FEET
 DATUM IS MEAN SEA LEVEL

NEW TORREY PINES ROAD

HATCH
 NEWBERN-
 THOMPSON
 LAMIE

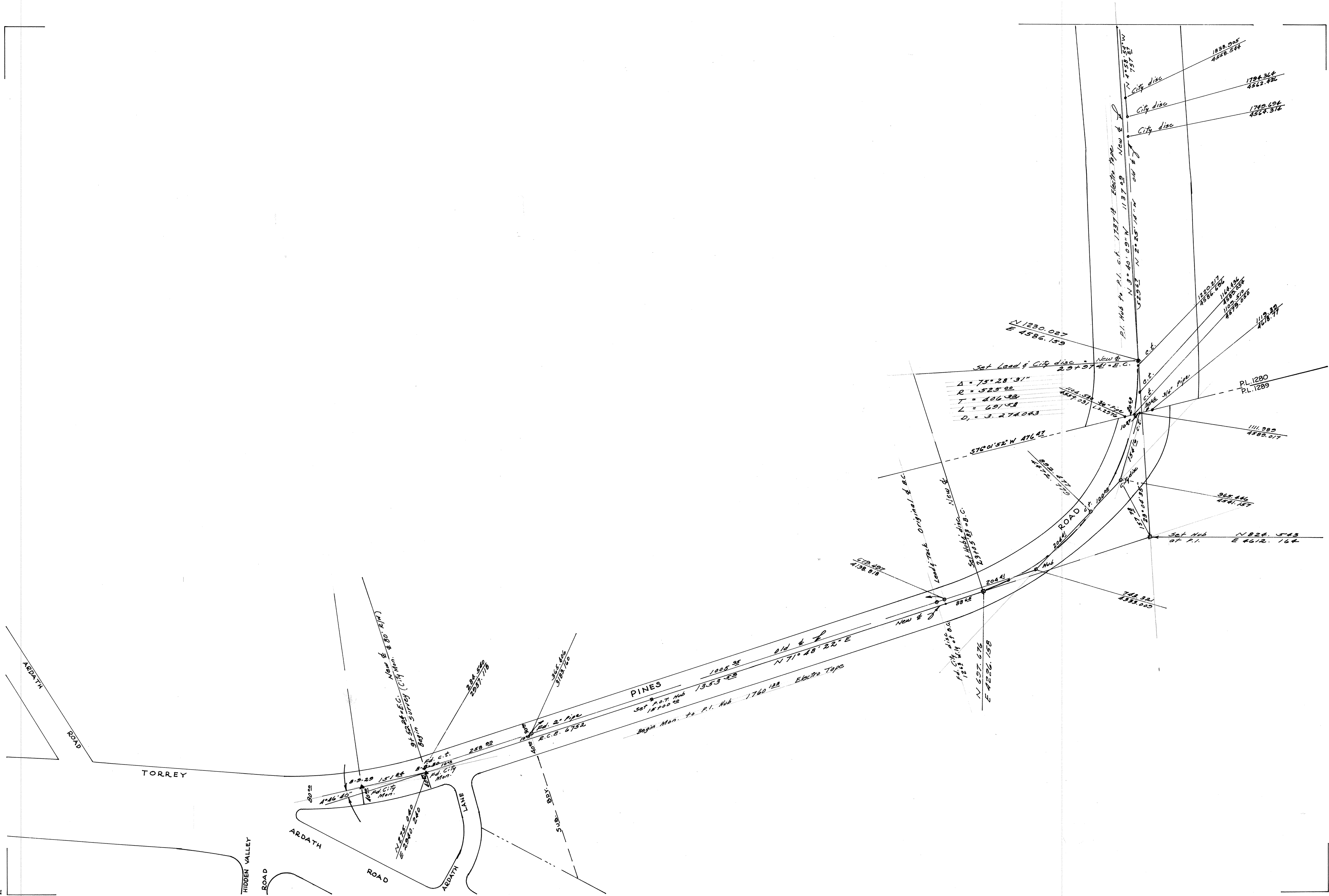
JUNE 1965
 W.O. 90025



250-1,692

252N

250N



SCALE - 1 INCH = 100 FEET

NEW &
 TORREY PINES ROAD 250-1,692

HATCH	JUNE 1965
NEWBERN	W. O. 90025
THOMPSON	
LAMIE	