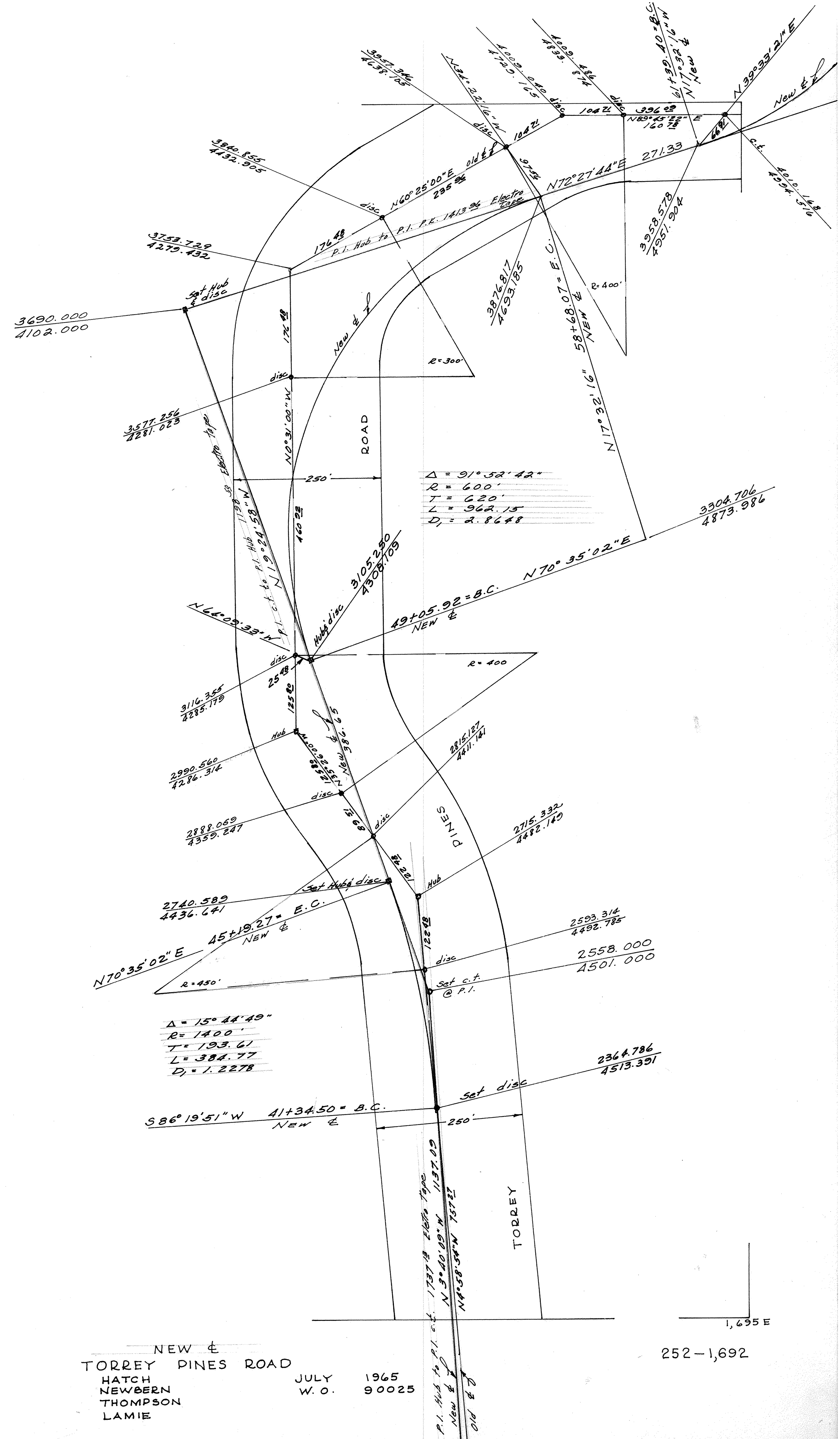


254N

252N
1,692E



$\Delta = 91^{\circ} 52' 42''$
 $R = 600'$
 $T = 620'$
 $L = 962.15'$
 $D = 2.8648$

$\Delta = 15^{\circ} 44' 49''$
 $R = 1400'$
 $T = 193.61'$
 $L = 384.77'$
 $D = 1.2278$

SCALE - 1 INCH = 100 FEET

NEW E
 TORREY PINES ROAD
 HATCH
 NEWBERN
 THOMPSON
 LAMIE

JULY 1965
 W. O. 90025

252-1,692



CITY OF SAN DIEGO, CALIFORNIA

SCALE 1 INCH = 100 FEET
 DATUM IS MEAN SEA LEVEL

BASE MAP	DATE DRAWN	REVISION
NOT A PART OF THIS SUBD.	8/77	2305
NOT A PART OF THIS SUBD.	2/11	2311
NOT A PART OF THIS SUBD.	2/10	2310
NOT A PART OF THIS SUBD.	2/10	2310
NOT A PART OF THIS SUBD.	2/10	2310
NOT A PART OF THIS SUBD.	2/10	2310
NOT A PART OF THIS SUBD.	2/10	2310
NOT A PART OF THIS SUBD.	2/10	2310
NOT A PART OF THIS SUBD.	2/10	2310

OVERLAYS AVAILABLE	
TOPO	
SEWER	
WATER	
SCULPTURE	
POSTING	

254 1692	252-1689	252-1690	254 1692
250-1692			

252-1692