

MICROFILMED
APR 4 1963

ST

68'

203.19'

50'

ST

214.33'

314.17'

660'

214.29'

MARKET

Closing. Res 15461. 10-27-1913

1	2	3	4
8	7	6	5
18			
9	10	11	12
16	15	14	13

A	L
B	K
C	J
D	I
E	H
F	G

L	L
K	K
J	J
I	I
H	H
G	G

AVE.

702'

202.68'

50'

ST

214.36'

314.51'

660'

214.29'

ISLAND

1	2	3	4
8	7	6	5
19			
9	10	11	12
16	15	14	13

SHERMAN'S

A	L
B	K
C	J
D	I
E	H
F	G

L	L
K	K
J	J
I	I
H	H
G	G

ST

1976'

205.22'

50'

ST

214.40'

314.50'

660'

214.29'

J

1	2	3	4
8	7	6	5
36			
9	10	11	12
16	15	14	13

A	L
B	K
C	J
D	I
E	H
F	G

L	L
K	K
J	J
I	I
H	H
G	G

ST

1590'

205.83'

50'

ST

214.51'

314.52'

660'

214.18'

K

1	2	3	4
8	7	6	5
36			
9	10	11	12
16	15	14	13

A	L
B	K
C	J
D	I
E	H
F	G

L	L
K	K
J	J
I	I
H	H
G	G

ST

1590'

204.18'

50'

ST

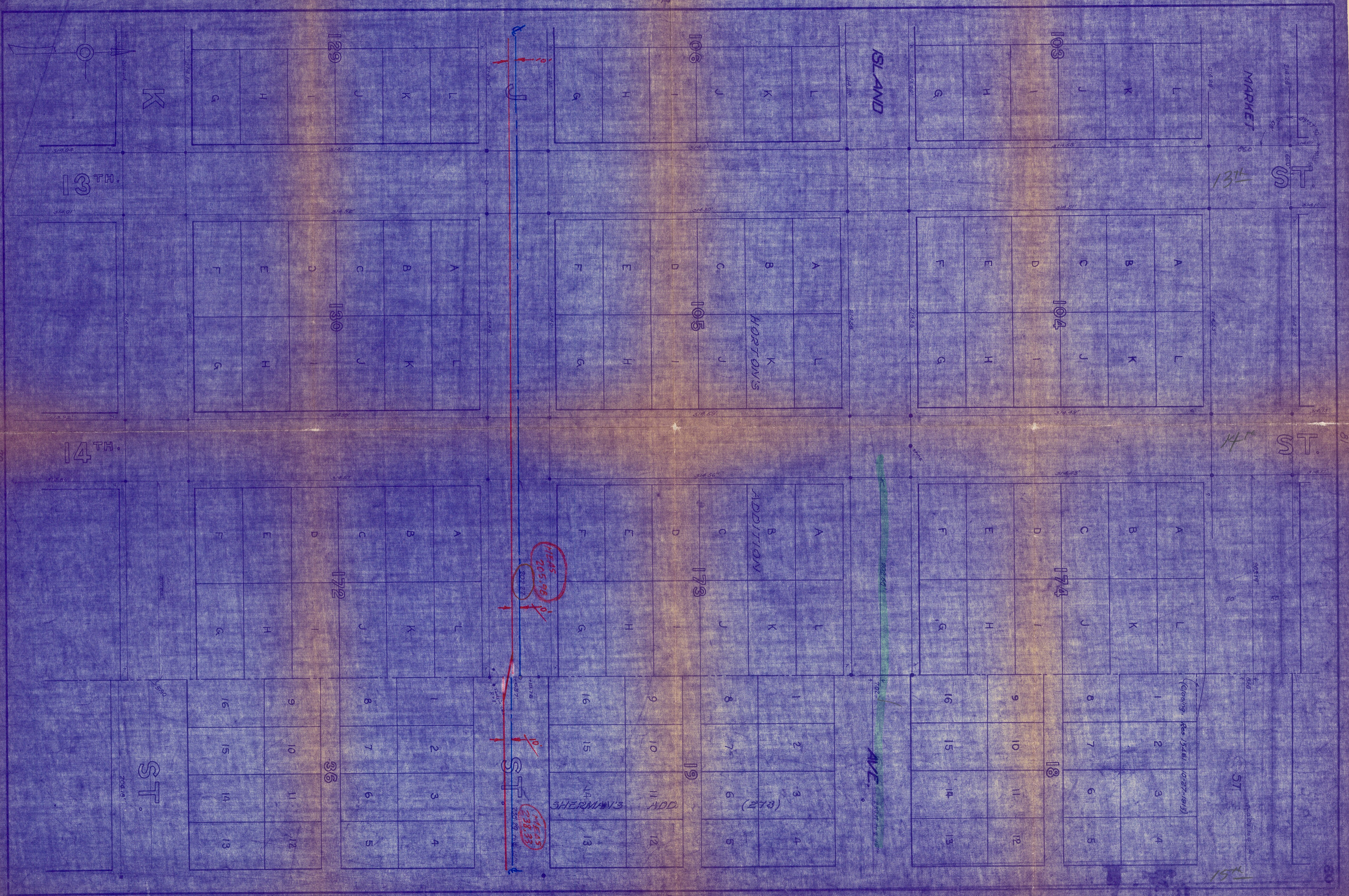
214.51'

314.52'

660'

214.01'

13TH



MARKET ST

13th ST

14th ST

ST

15th

ISLAND

HORTON'S

ADDITION

SHERMAN'S ADD

AVE

ST

HEADS
205.98
201.27

HEADS
238.33
230.19

(Closing Fee 15461 1027-815)

124 - 238.98

238.27