

2/3.98

ST.

2/4.51

ST.

2/4.26

ST.

2/4.06

JAN 24 1963

E

2/4.03

2/4.45

2/4.16

ST.

2/4.08

JAN 24 1963

2/3.86

F

2/3.85

2/4.33

2/4.04

2/4.03

ST.

2/4.07

JAN 24 1963

2/3.85

G

2/3.85

2/4.03

2/3.96

2/4.02

ST.

2/4.04

JAN 24 1963

2/4.35

MARKET

3/5.63

18TH.

3/5.89

3/6.52

19TH.

3/6.85

3/7.40

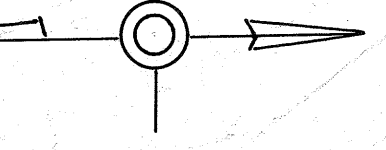
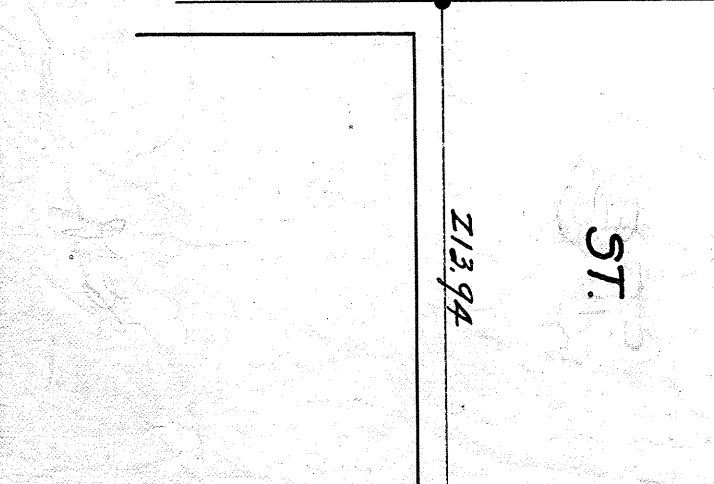
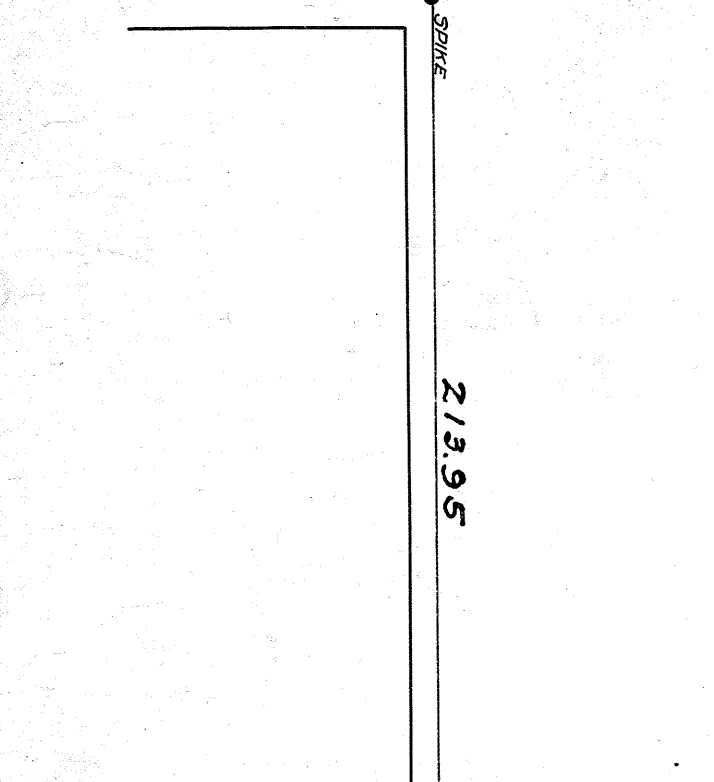
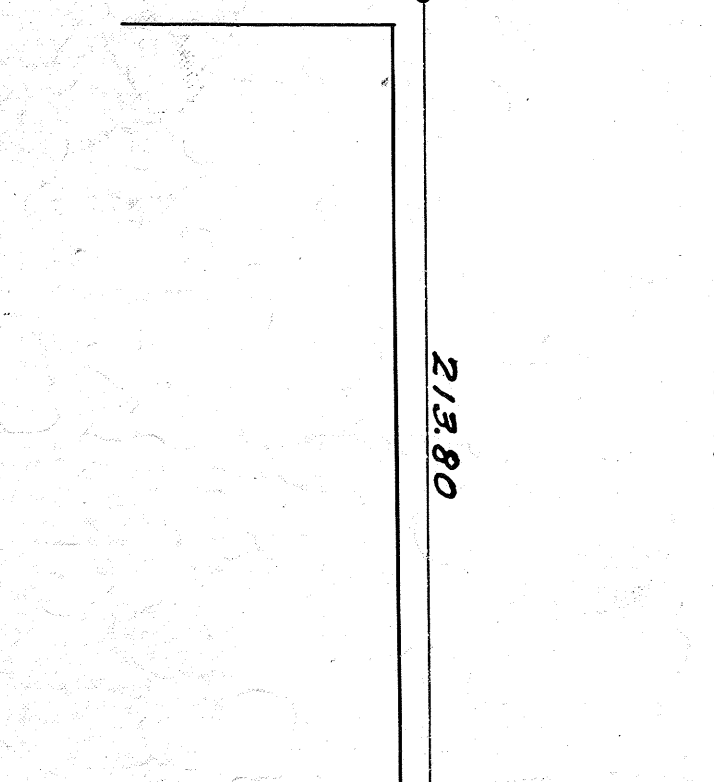
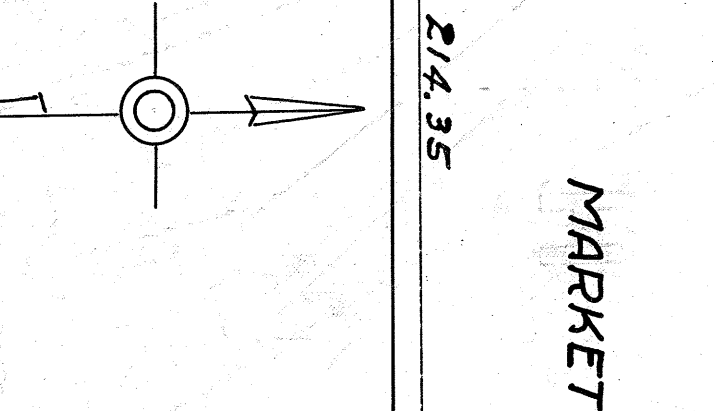
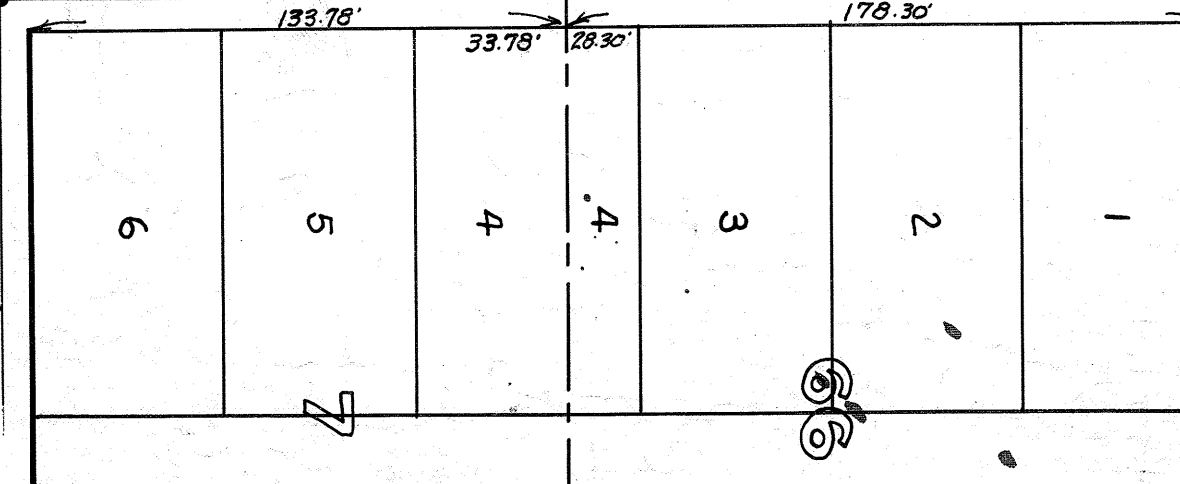
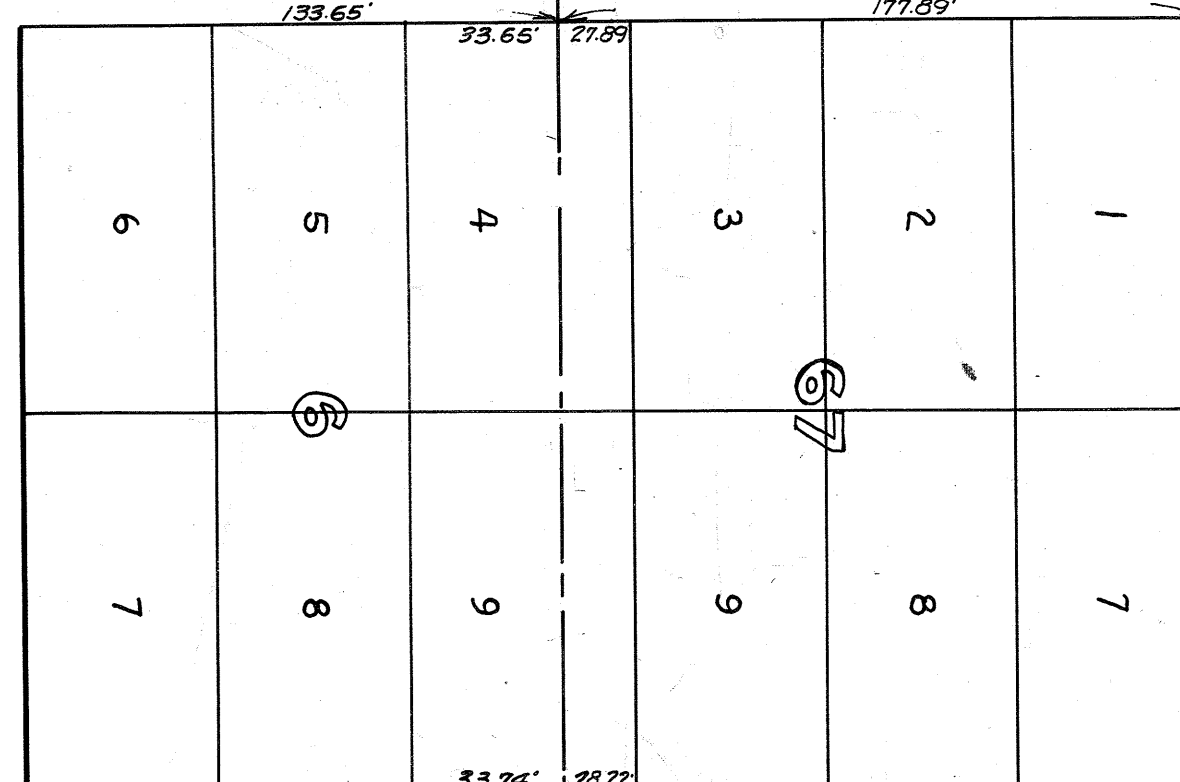
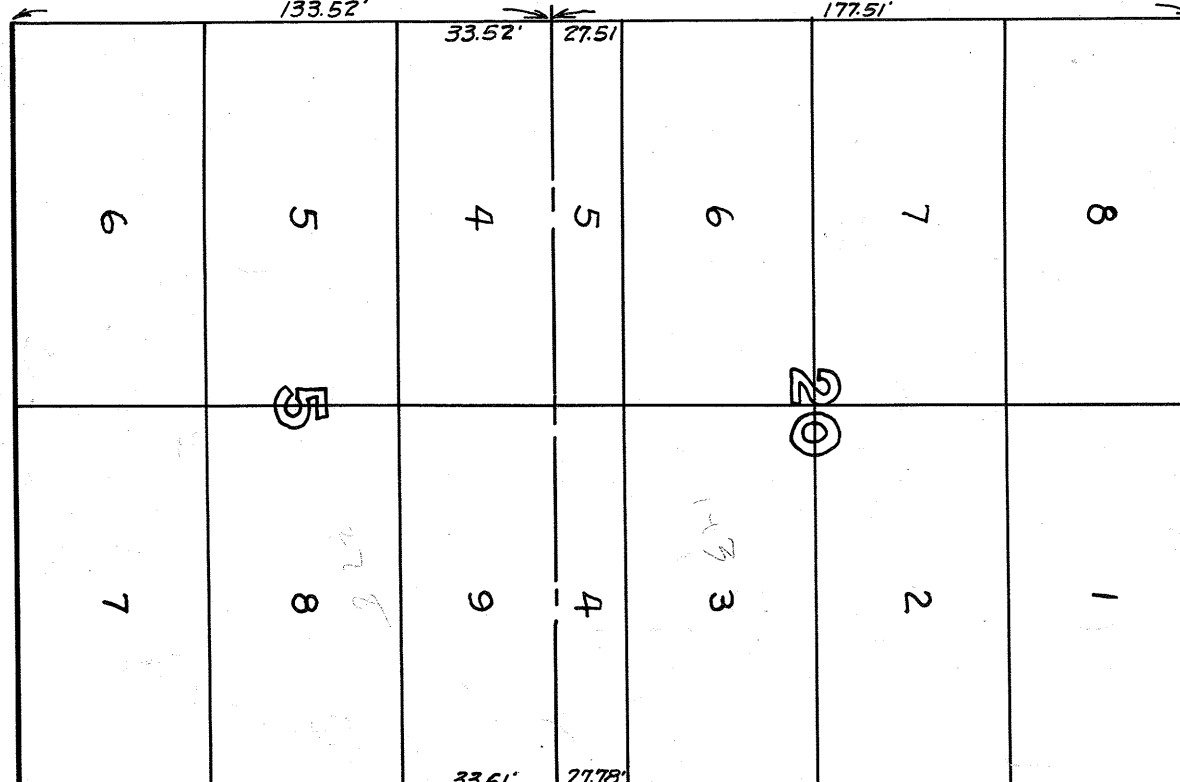
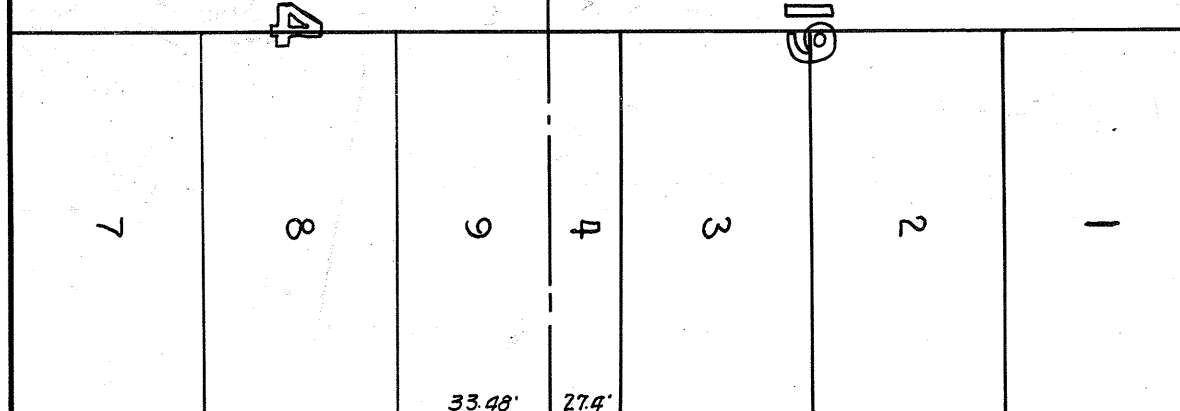
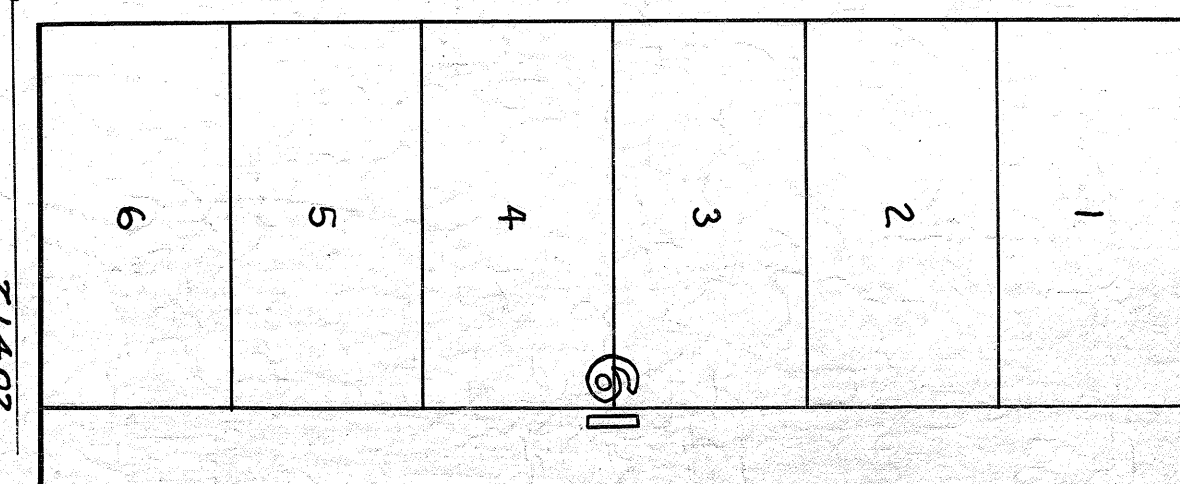
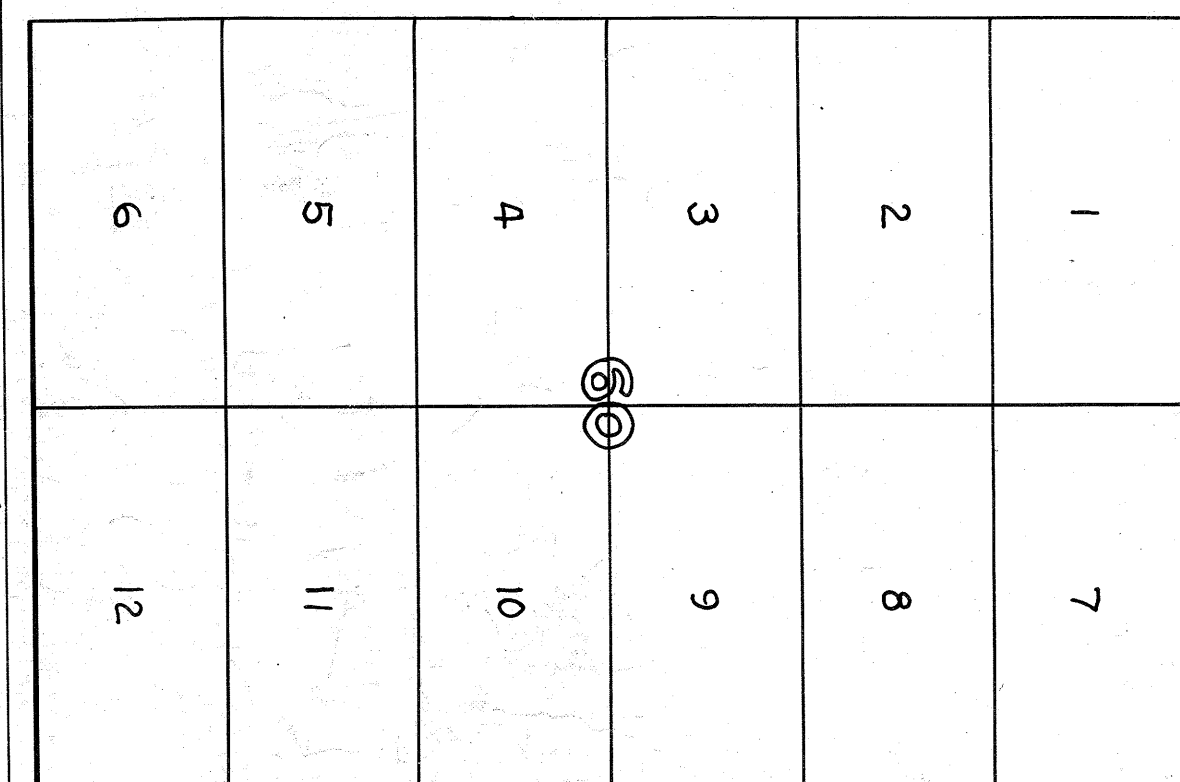
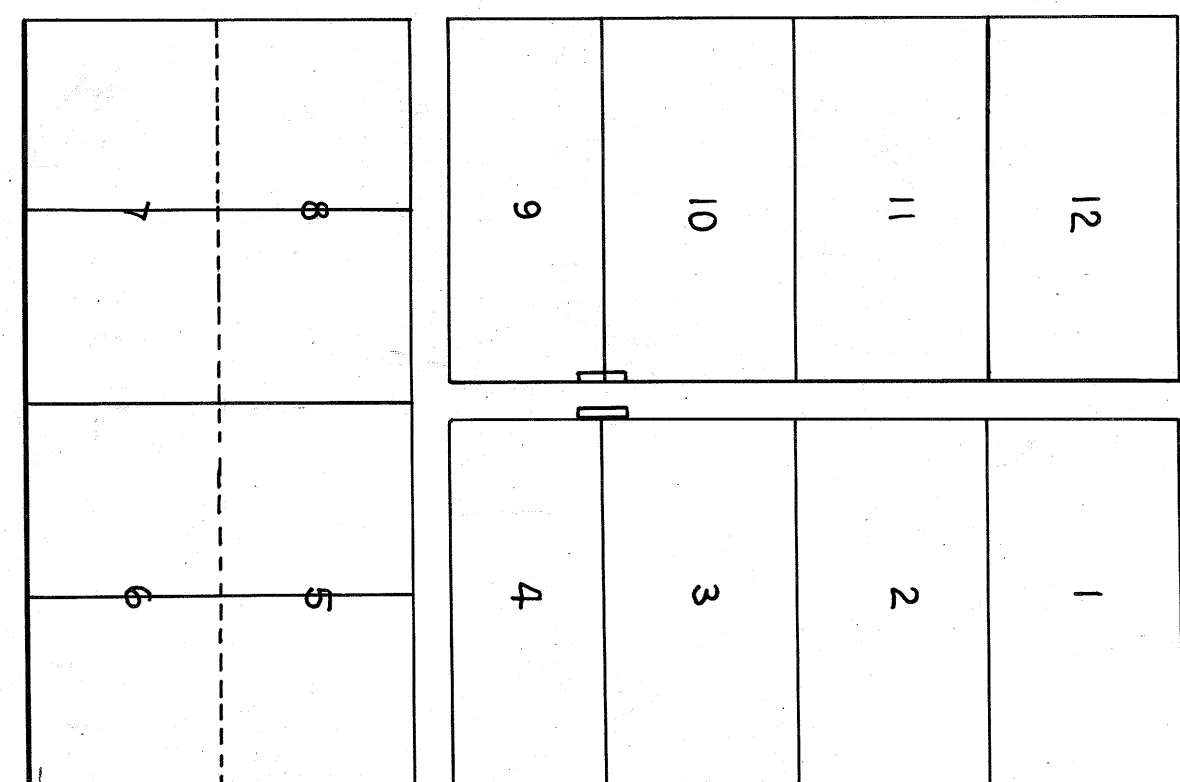
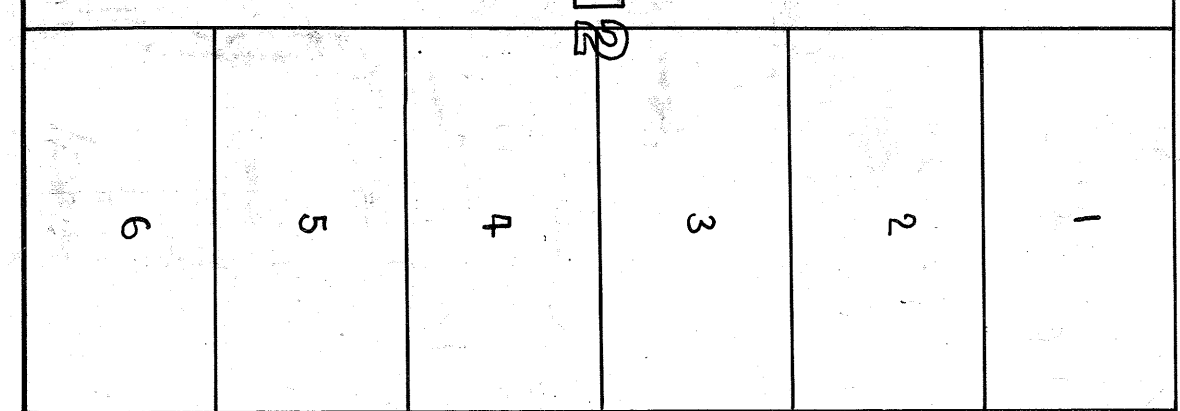
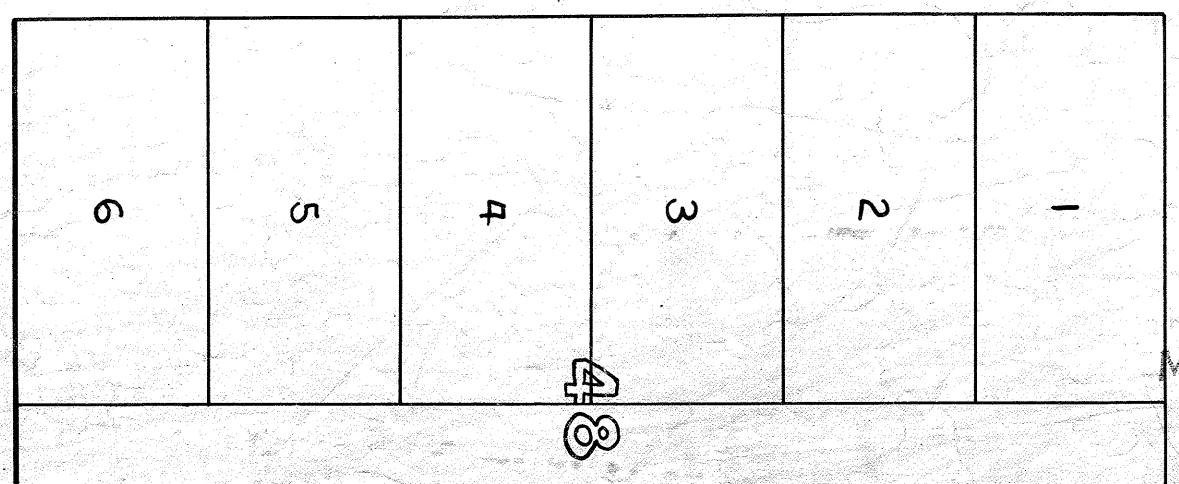
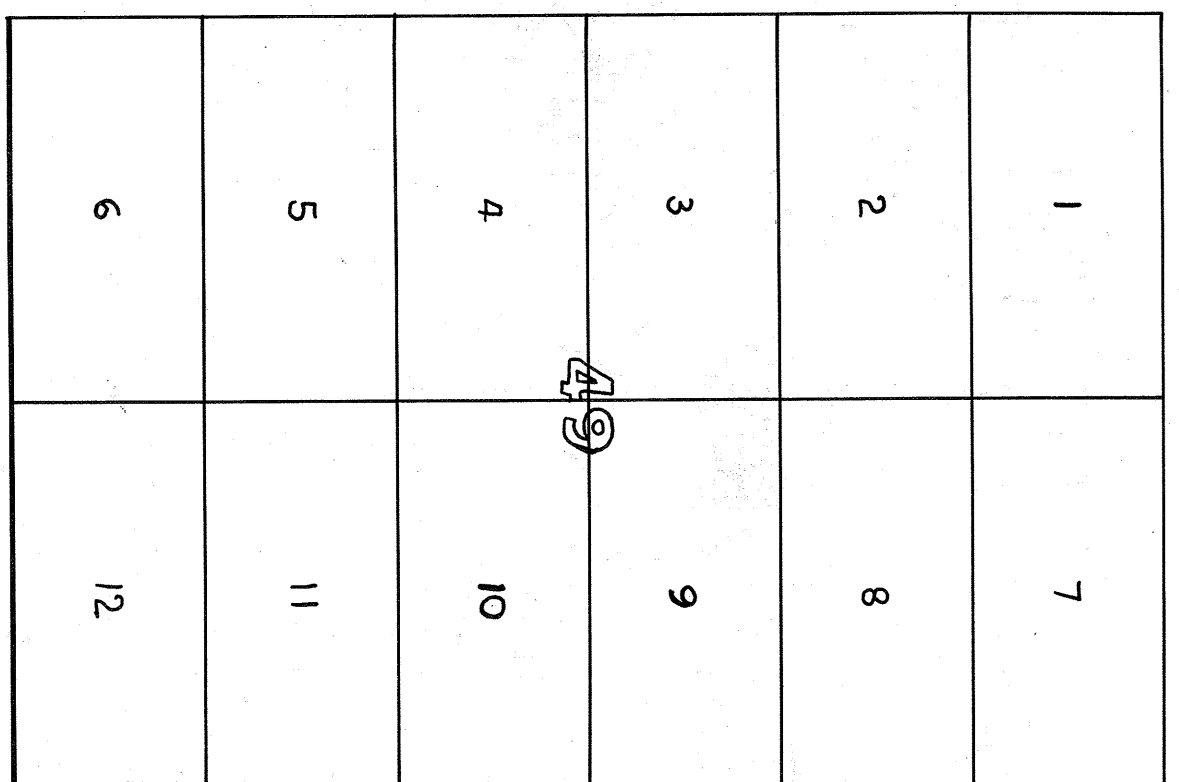
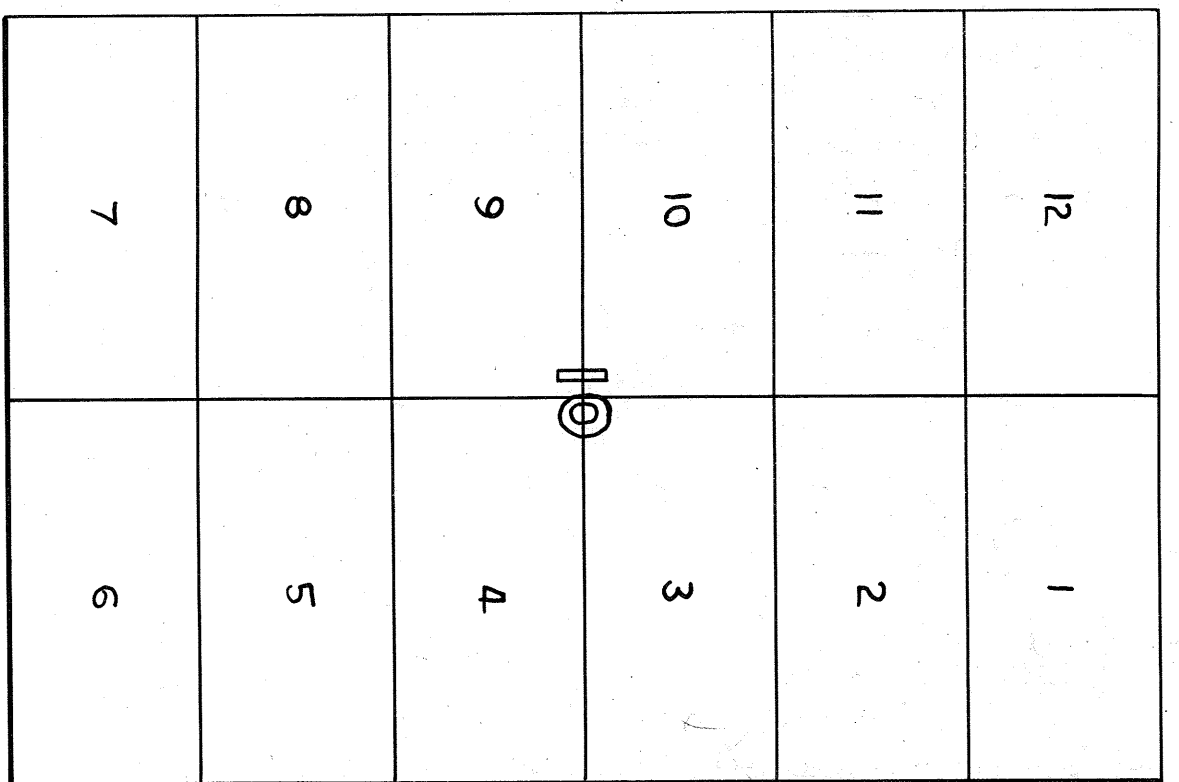
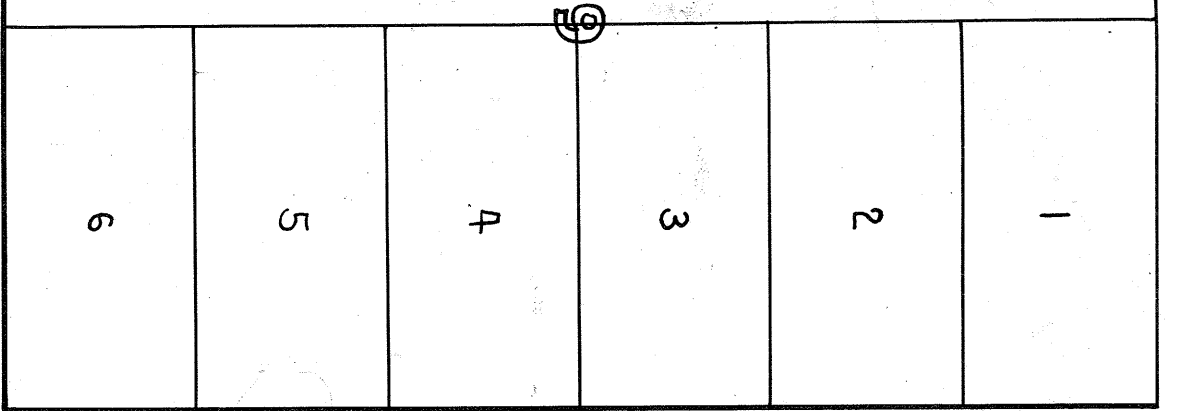
20TH.

3/7.68

2/3.94

ST.

2/3.94



90

91