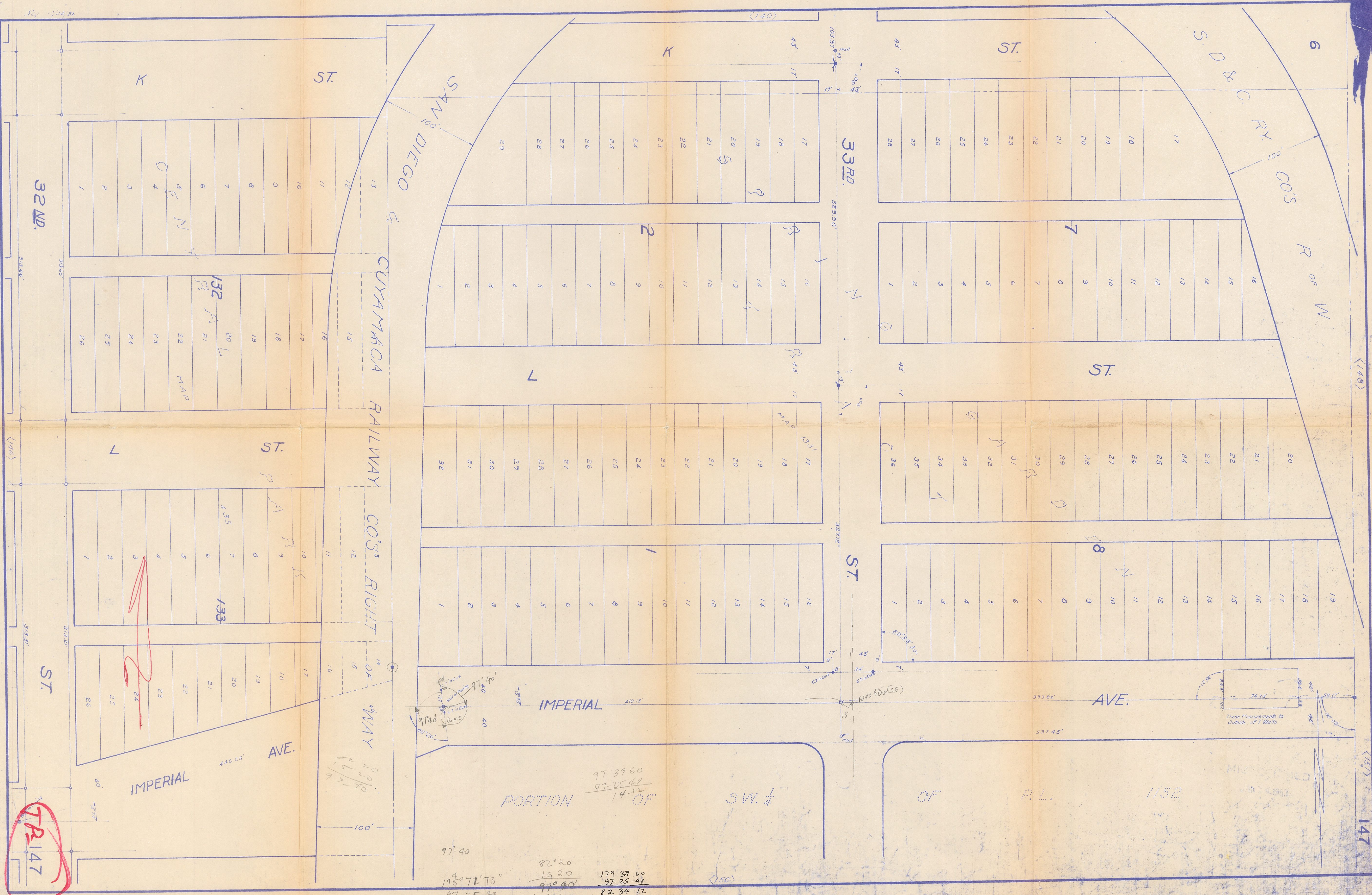


MICROFILMED
 JAN 24 1963
 393.82
 76.73
 58.17
 528.72

450
 35.30
 43
 528.30

These Measurements to Outside of Walls.



32 WD.

ST.

TR 147

IMPERIAL AVE.

AVE.

OF WAY

CO'S RIGHT

CUYAMACA RAILWAY

SAN DIEGO

PORTION

OF

SW 1/4

OF

P.L.

1152

97-40'
 195° 71' 73"
 97-25-40
 97-46-25

82° 20'
 1520
 97° 40'
 179° 60'
 82° 34' 12"

97-39-60
 97-25-42
 14-12

179° 59' 60"
 97-25-42
 82° 34' 12"

IMPERIAL 410.13'

AVE. 393.82'

ST.

ST.

ST.

33 RD.

147

148

149

147A