

29th STREET

THORN

STREET

30TH

28TH

GRANADA

DALE

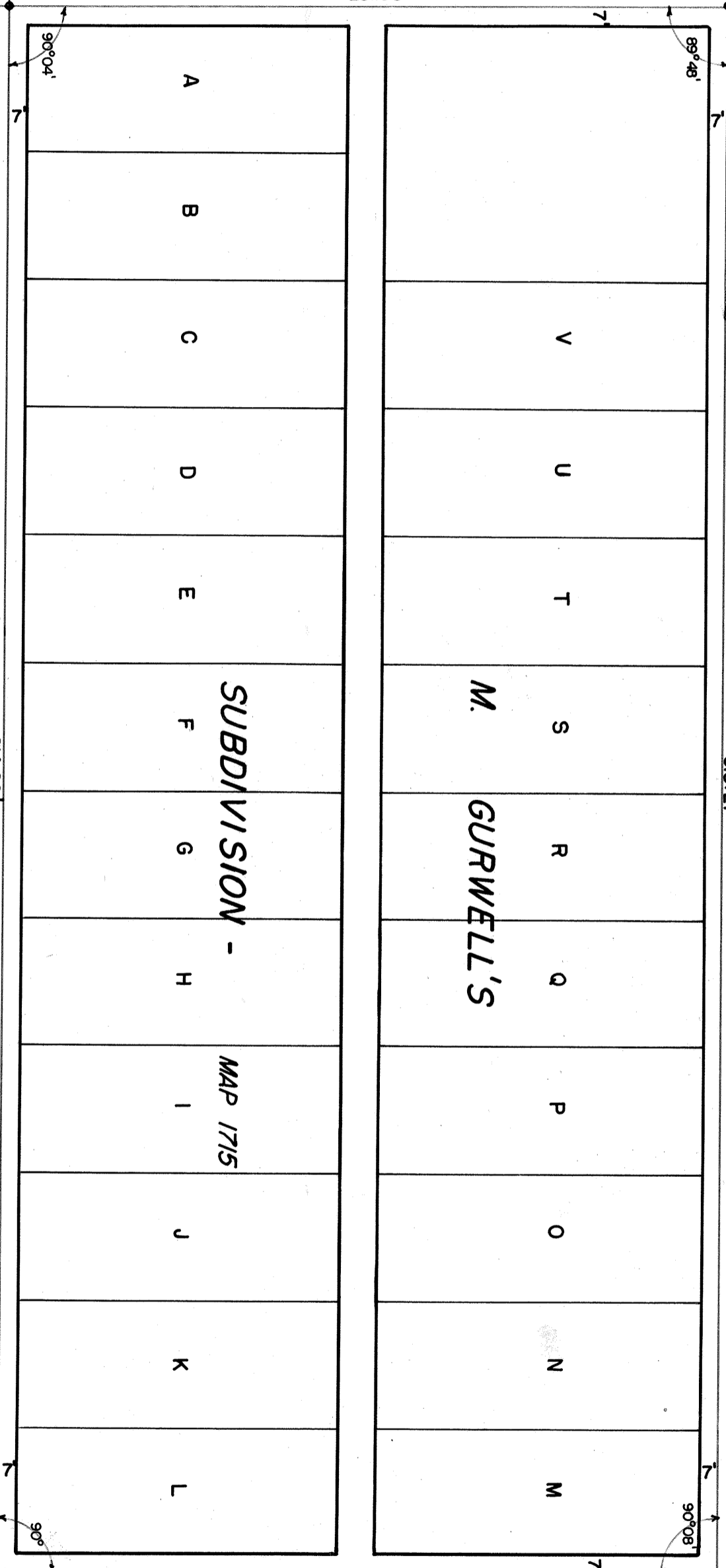
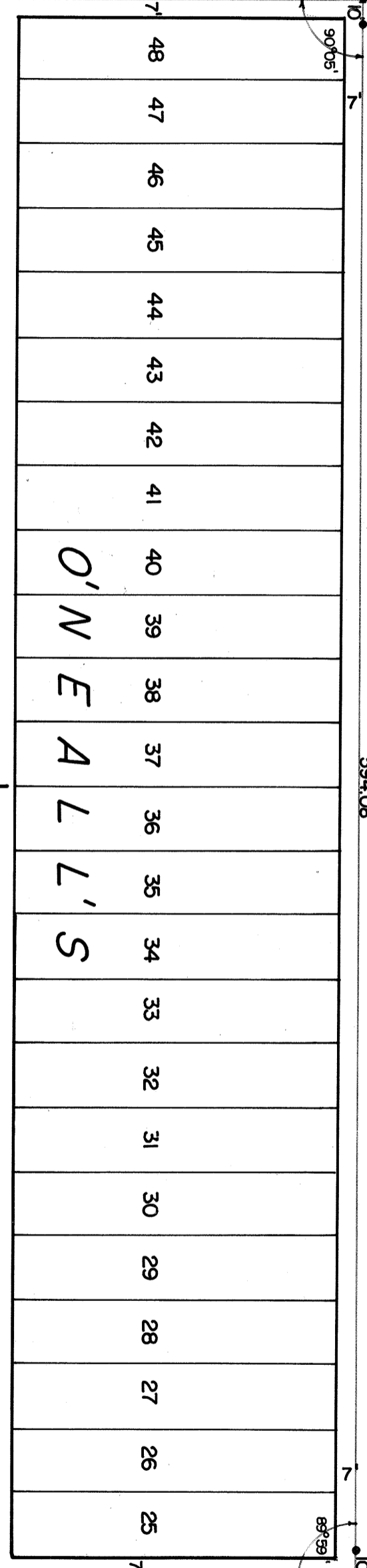
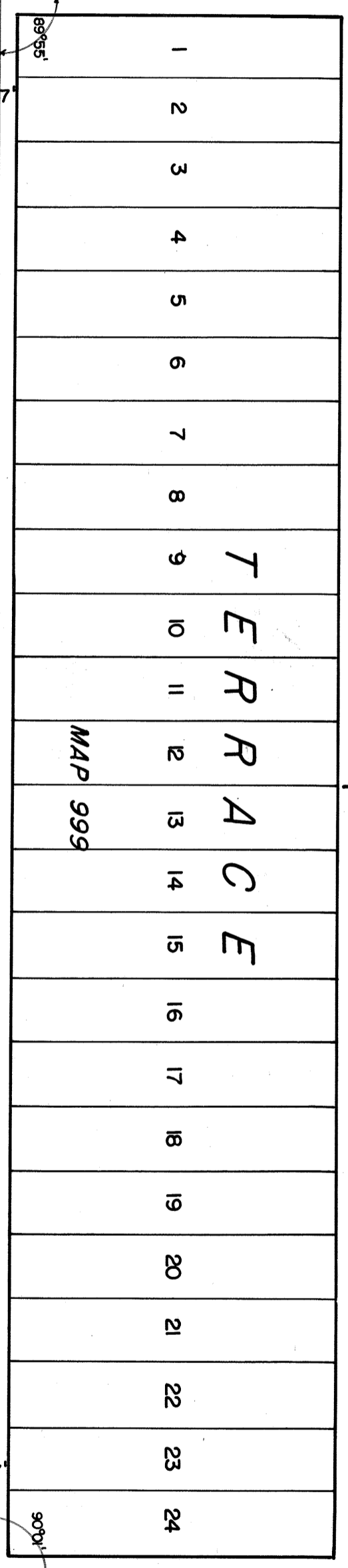
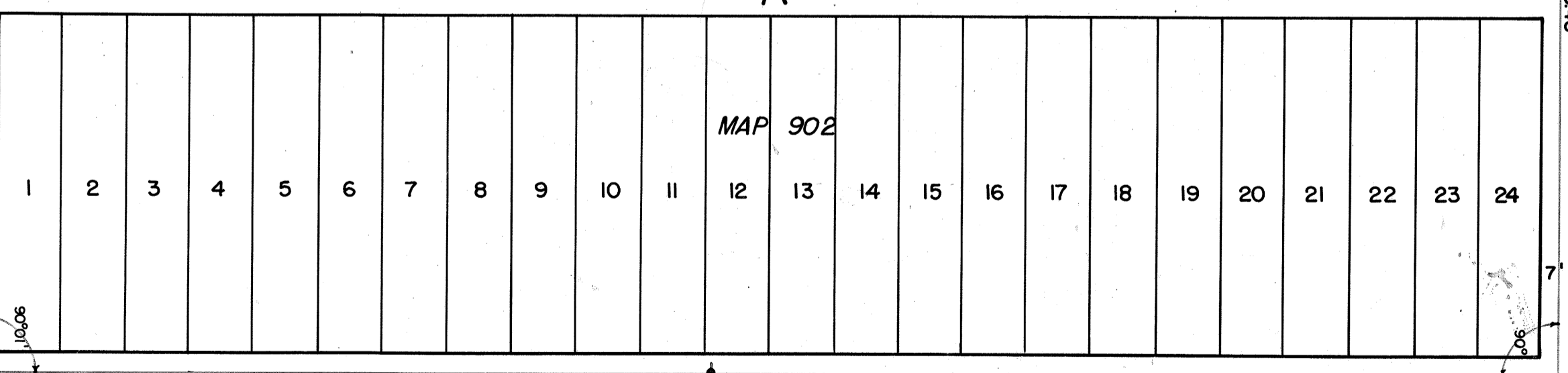
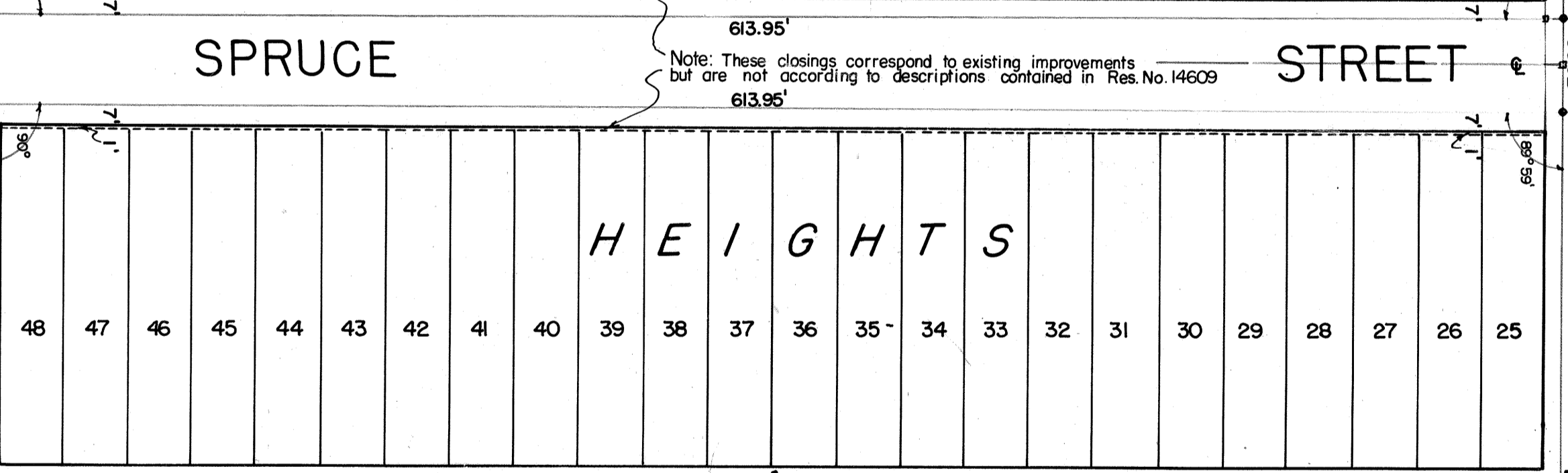
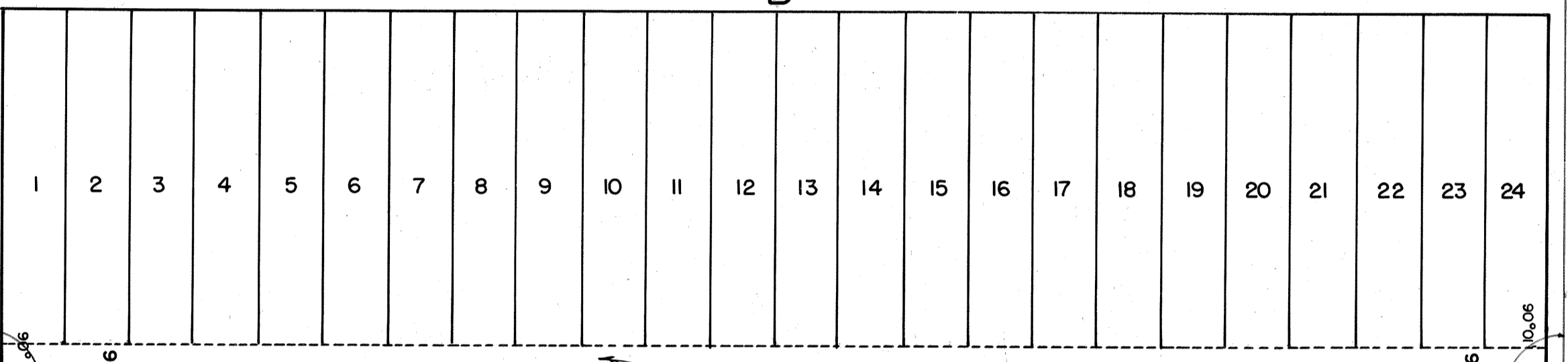
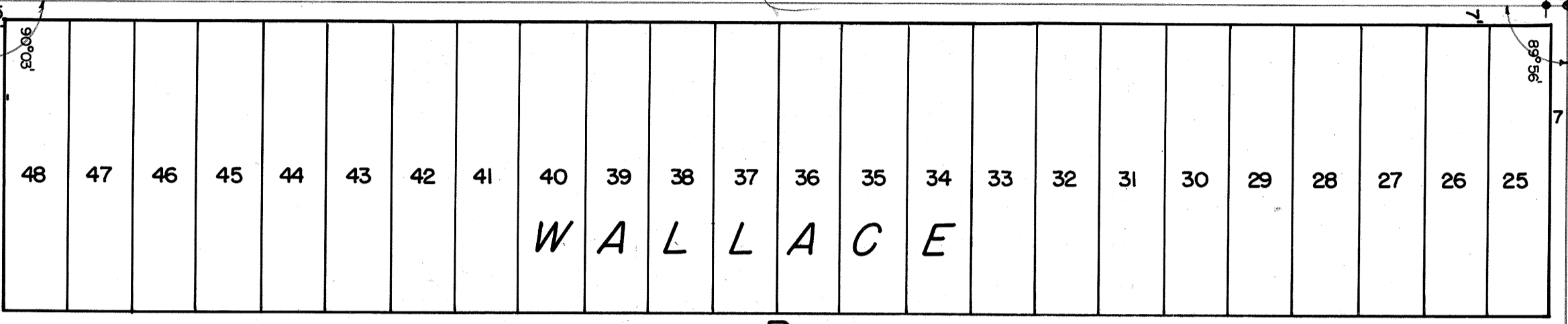
STREET

STREET

AVENUE

STREET

171



MICROFILMED
JAN 24 1963

Note: These closings correspond to existing improvements but are not according to descriptions contained in Res. No. 14609

29th STREET

REDWOOD

STREET

Mon. 24.35'

30'

30'03'

30'03'

30'03'

30'03'

30'03'

30'03'

30'03'

30'03'

30'03'

30'03'

30'03'

30'03'

30'03'

30'03'

30'03'

30'03'

30'03'

30'03'

30'03'

30'03'

30'03'

30'03'

30'03'

30'03'

30'03'

30'03'

30'03'

30'03'

30'03'

30'03'

30'03'

30'03'

30'03'

30'03'

30'03'

30'03'

30'03'

30'03'

30'03'

30'03'

30'03'

30'03'

30'03'

30'03'

30'03'

30'03'

30'03'

30'03'

30'03'

30'03'

30'03'

30'03'

30'03'

30'03'

30'03'

30'03'

30'03'

30'03'

30'03'

30'03'

30'03'

30'03'

30'03'

30'03'

30'03'

30'03'

30'03'

30'03'

30'03'

30'03'

30'03'

30'03'

30'03'

30'03'

30'03'

30'03'

30'03'

30'03'

30'03'

30'03'

30'03'

30'03'

30'03'

30'03'

30'03'

30'03'

30'03'

30'03'

30'03'

30'03'

30'03'

30'03'

30'03'

30'03'

30'03'

30'03'

30'03'

30'03'

30'03'

30'03'

30'03'

30'03'

30'03'

30'03'

30'03'

30'03'

30'03'

30'03'

30'03'

30'03'

30'03'

30'03'

30'03'

30'03'

30'03'

30'03'

30'03'

30'03'

30'03'

30'03'

30'03'

30'03'

30'03'

30'03'

30'03'

30'03'

30'03'

30'03'

30'03'

30'03'

30'03'

30'03'

30'03'

30'03'

30'03'

30'03'

30'03'

30'03'

30'03'

30'03'

30'03'

30'03'

30'03'

30'03'

30'03'

30'03'

30'03'

30'03'

30'03'

30'03'

30'03'

30'03'

30'03'

30'03'

30'03'

30'03'

30'03'

30'03'

30'03'

30'03'

30'03'

30'03'

30'03'

30'03'

30'03'

30'03'

30'03'

30'03'

30'03'

30'03'

30'03'

30'03'

30'03'

30'03'

30'03'

30'03'

30'03'

30'03'

30'03'

30'03'

30'03'

30'03'

30'03'

30'03'

30'03'

30'03'

30'03'

30'03'

30'03'

30'03'

30'03'

30'03'

30'03'

30'03'

30'03'

30'03'

30'03'

30'03'

30'03'

30'03'

30'03'

30'03'

30'03'

30'03'

30'03'

30'03'

30'03'

30'03'

30'03'

30'03'

30'03'

30'03'

30'03'

30'03'

30'03'

30'03'

30'03'

30'03'

30'03'

30'03'

30'03'

30'03'

30'03'

30'03'

30'03'

30'03'

30'03'

30'03'

30'03'

30'03'

30'03'

30'03'

30'03'

30'03'

30'03'

30'03'

30'03'

30'03'

30'03'

30'03'

30'03'

30'03'

30'03'

30'03'

30'03'

30'03'

30'03'

30'03'

30'03'

30'03'

30'03'

30'03'

30'03'

30'03'

30'03'

30'03'

30'03'

30'03'

30'03'

30'03'

30'03'

30'03'

30'03'

30'03'

30'03'

30'03'

30'03'

30'03'

30'03'

30'03'

30'03'

30'03'

30'03'

30'03'

30'03'

30'03'

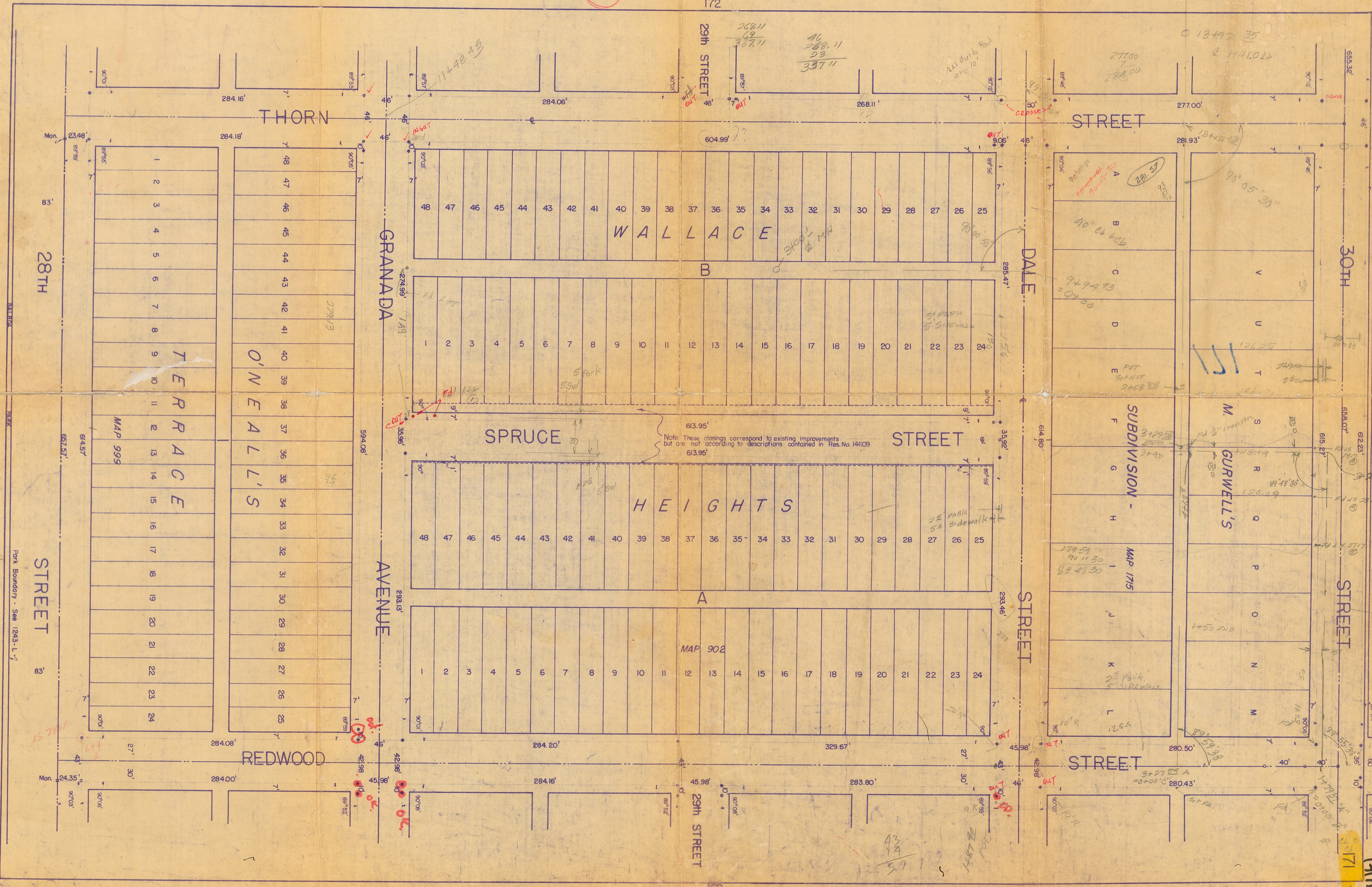
30'03'

30'

F.B.
1676

89-49-29

172



268.11
62
337.11

46
288.11
53
337.11

27100
7
29A.00

13492 35
2 211,024

W A L L A C E

H E I G H T S

S P R U C E

T H O R N

S T R E E T

S T R E E T

G R A N A D A

D A L E

A V E N U E

S T R E E T

28TH

30TH

S T R E E T

S T R E E T

S U B D I V I S I O N -
M A P 1 7 1 5

M. GURWELL'S

Note: These closings correspond to existing improvements but are not according to descriptions contained in Res. No. 14609

M A P 9 0 2

M A P 9 9 9

Park Boundary - See 1243-L-1

191A

43
34
37

3477.54 A
= 87'00" C

171