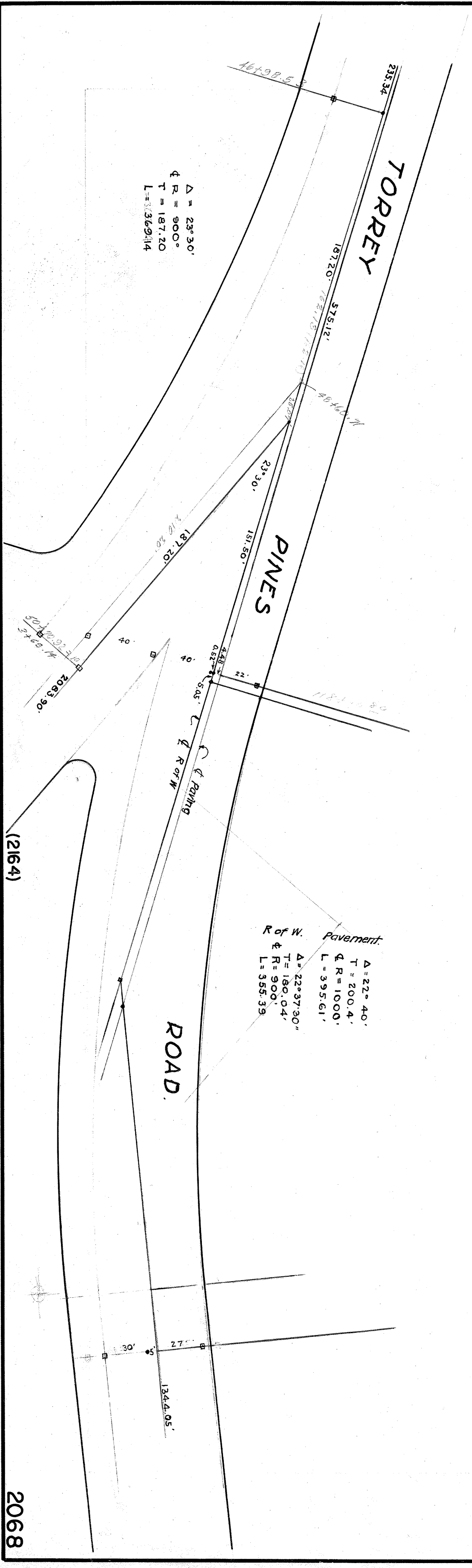


(2177)



$\Delta = 23^{\circ}30'$   
 $T = 200.4'$   
 $L = 187.20'$

*R of W. Pavement:*  
 $\Delta = 22^{\circ}37'30''$   
 $T = 186.04'$   
 $L = 588.38'$

(2164)

2068

(2069)

2068

(2067)

MICROFILMED  
 JAN 28 1963