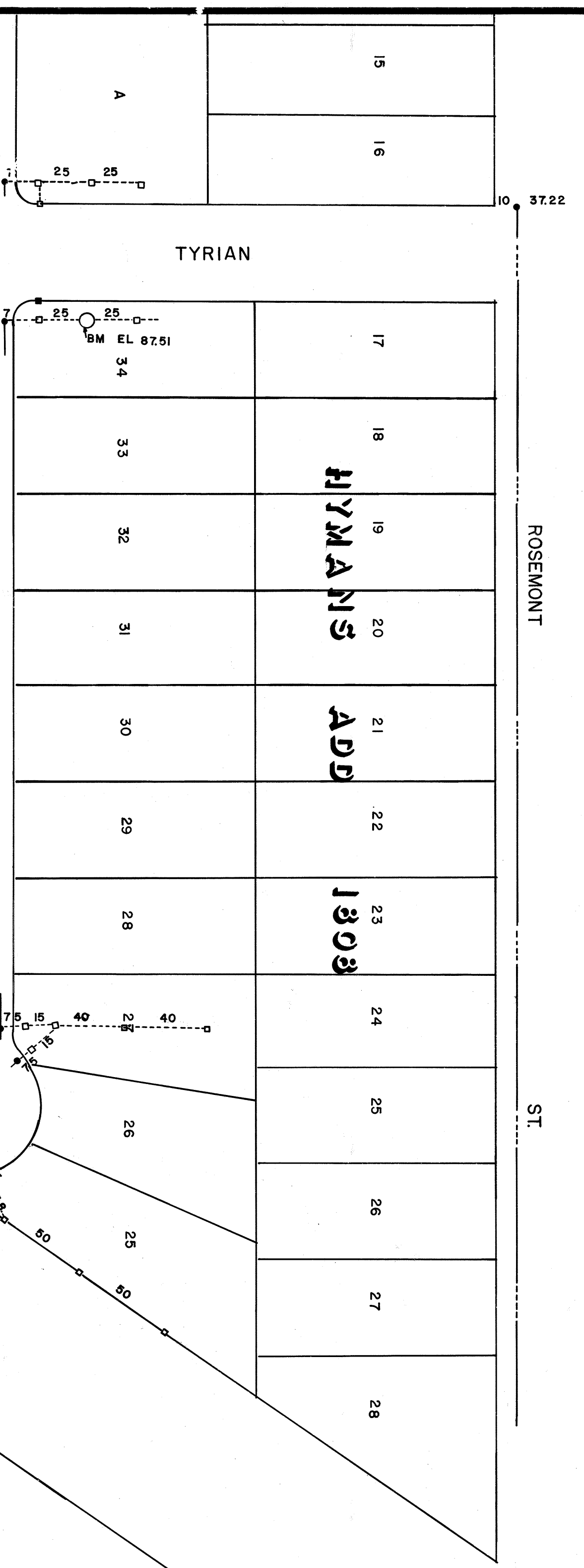


STARKKEYS

PROSPECT PARK 1729

2125



HYMAN'S

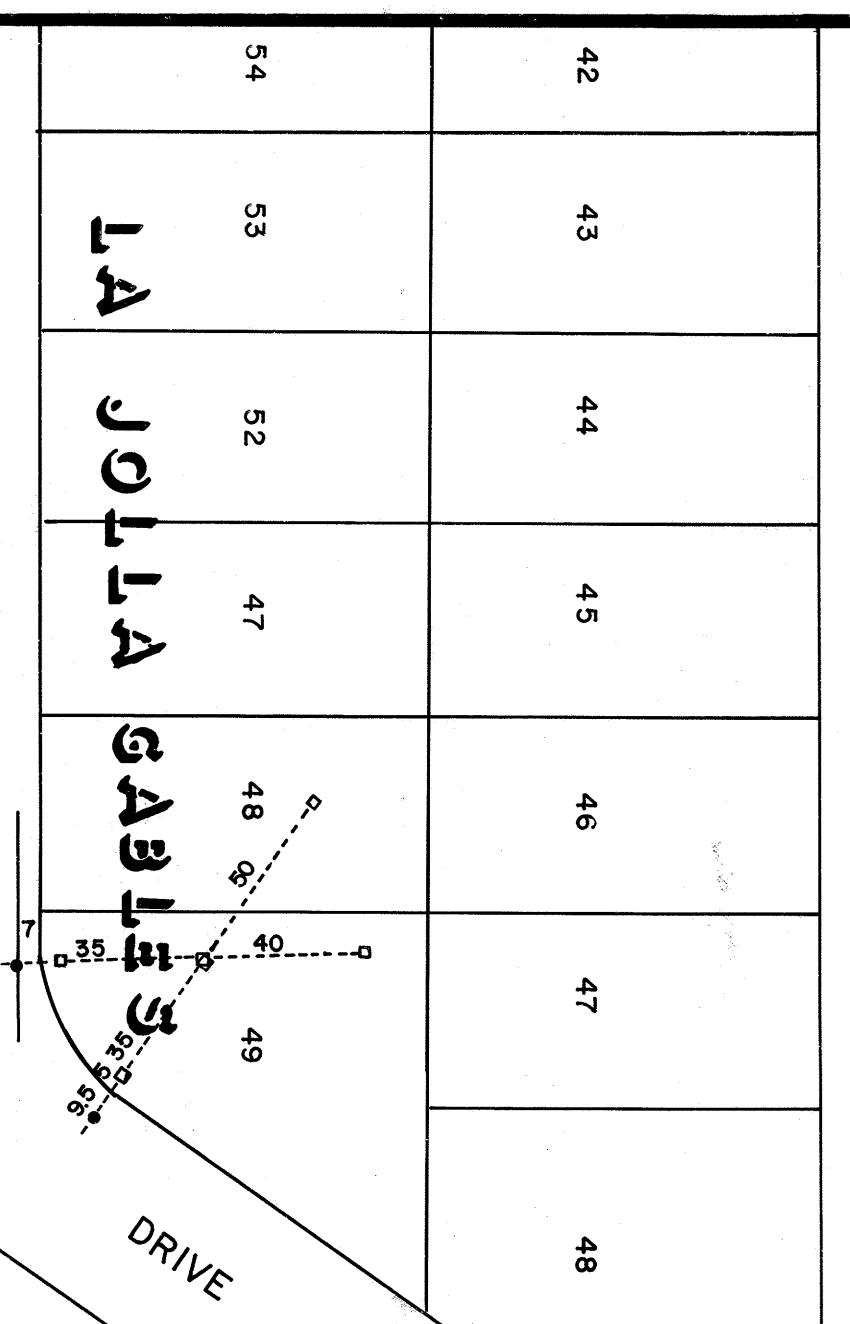
ADD

1808

TYRIAN

PALOMAR AVE.

ROSEMONT ST.



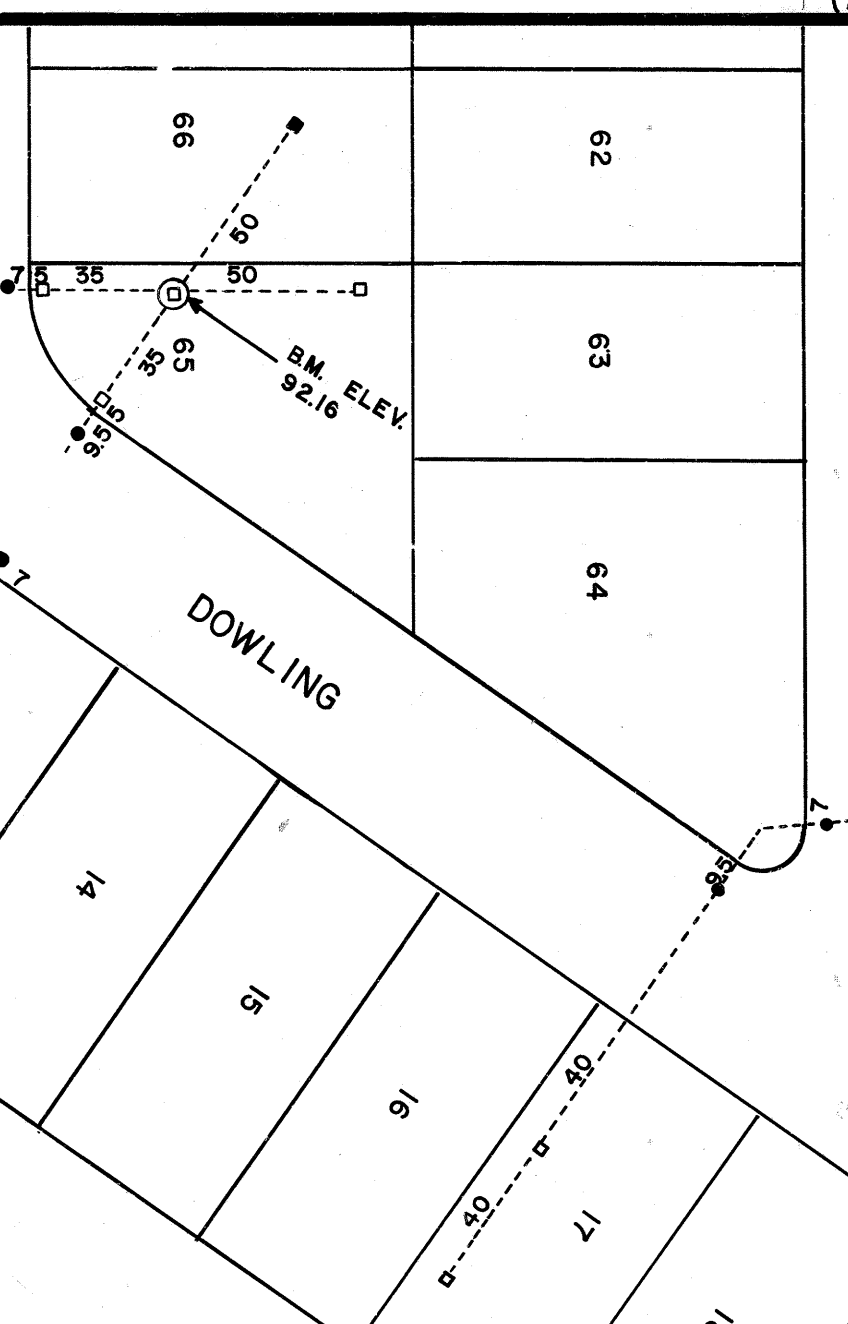
LA JOLLA GABLES

1993

21

RIGHT OF WAY

RETAHEM WAY

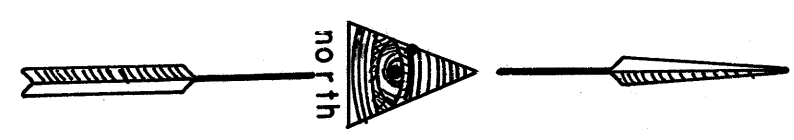


VINCENTE

DOWLING

SAN DIEGO

ELECTRIC RAILWAY



DRAWN BY M. STILLWELL ON 10-29-70
 CHECKED BY W.R. [Signature] ON 11-6-70

PORTION OF P.L. 1258

SEE GRADE BOOK 123, PAGE 11

2125

(2121)

(6012)

(2124)