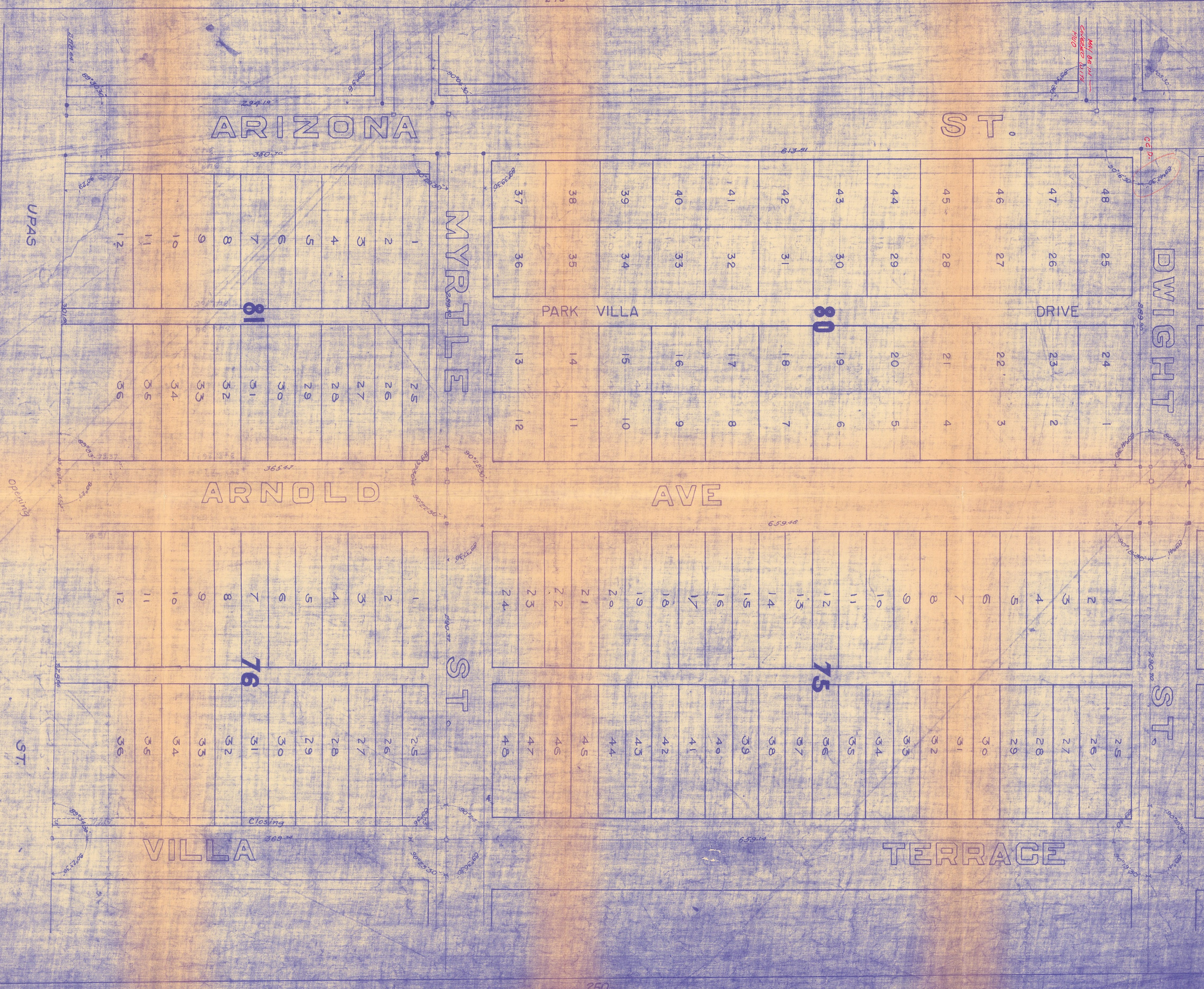


MICROFILMED
 JAN 24 1963



ARIZONA ST.

ST.

DWIGHT ST.

MYRTLE ST.

ARNOLD ST.

AVE

ST.

ST.

VILLA TERRACE

TERRACE

PARK VILLA DRIVE

UPAS BALBOA PARK

BALBOA PARK

PARK

ST.

MAY BE BUILT
CONCRETE DRIVE
7/10/0

Opening

Opening

Closing

81

80

75

76

48	25
47	26
46	27
45	28
44	29
43	30
42	31
41	32
40	33
39	34
38	35
37	36

24	1
23	2
22	3
21	4
20	5
19	6
18	7
17	8
16	9
15	10
14	11
13	12

1	2
3	4
5	6
7	8
9	10
11	12
13	14
15	15
16	16
17	17
18	18
19	19
20	20
21	21
22	22
23	23
24	24

25	25
26	26
27	27
28	28
29	29
30	30
31	31
32	32
33	33
34	34
35	35
36	36
37	37
38	38
39	39
40	40
41	41
42	42
43	43
44	44
45	45
46	46
47	47
48	48

1	2
3	3
4	4
5	5
6	6
7	7
8	8
9	9
10	10
11	11
12	12

25	25
26	26
27	27
28	28
29	29
30	30
31	31
32	32
33	33
34	34
35	35
36	36

1	2
3	3
4	4
5	5
6	6
7	7
8	8
9	9
10	10
11	11
12	12

25	25
26	26
27	27
28	28
29	29
30	30
31	31
32	32
33	33
34	34
35	35
36	36



ARIZONA

ST.
356 92

MYRTLE

DWIGHT

ARNOLD

AVE

VILLA

TERRACE

CLOSING 11-5 PER RESOL. 10468 (1912)

CLOSING 11-5 PER. RESOL. 10464 (3-25-1911)

613 87

613 65