

DWIGHT ST.

ST.

TERRACE

VILLA

MYRTLE ST

ST

Ave

AVE.

70

65

71

66

PERSHING

28TH.

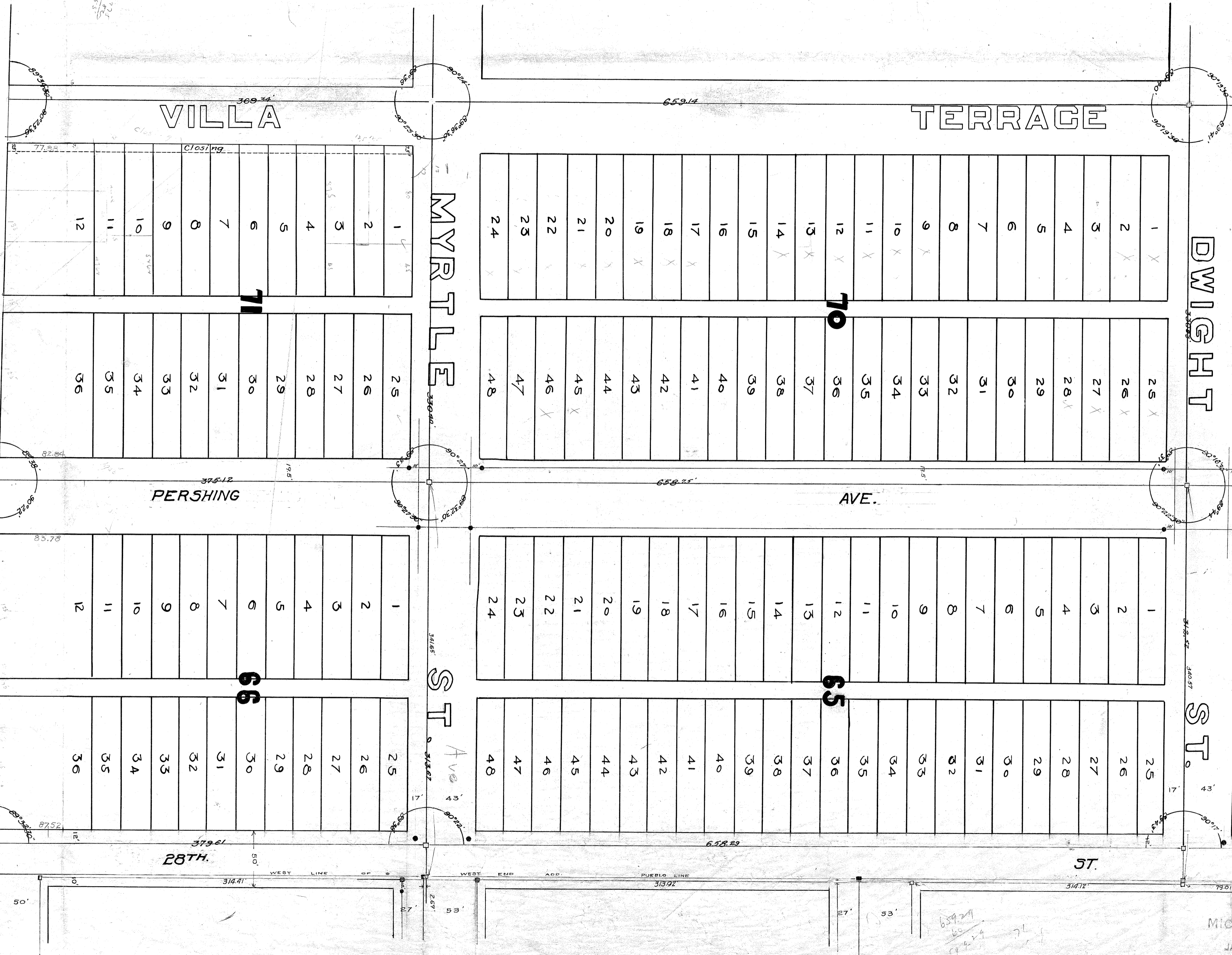
ST.

UPAS

BALBOA

PARRY

ST.



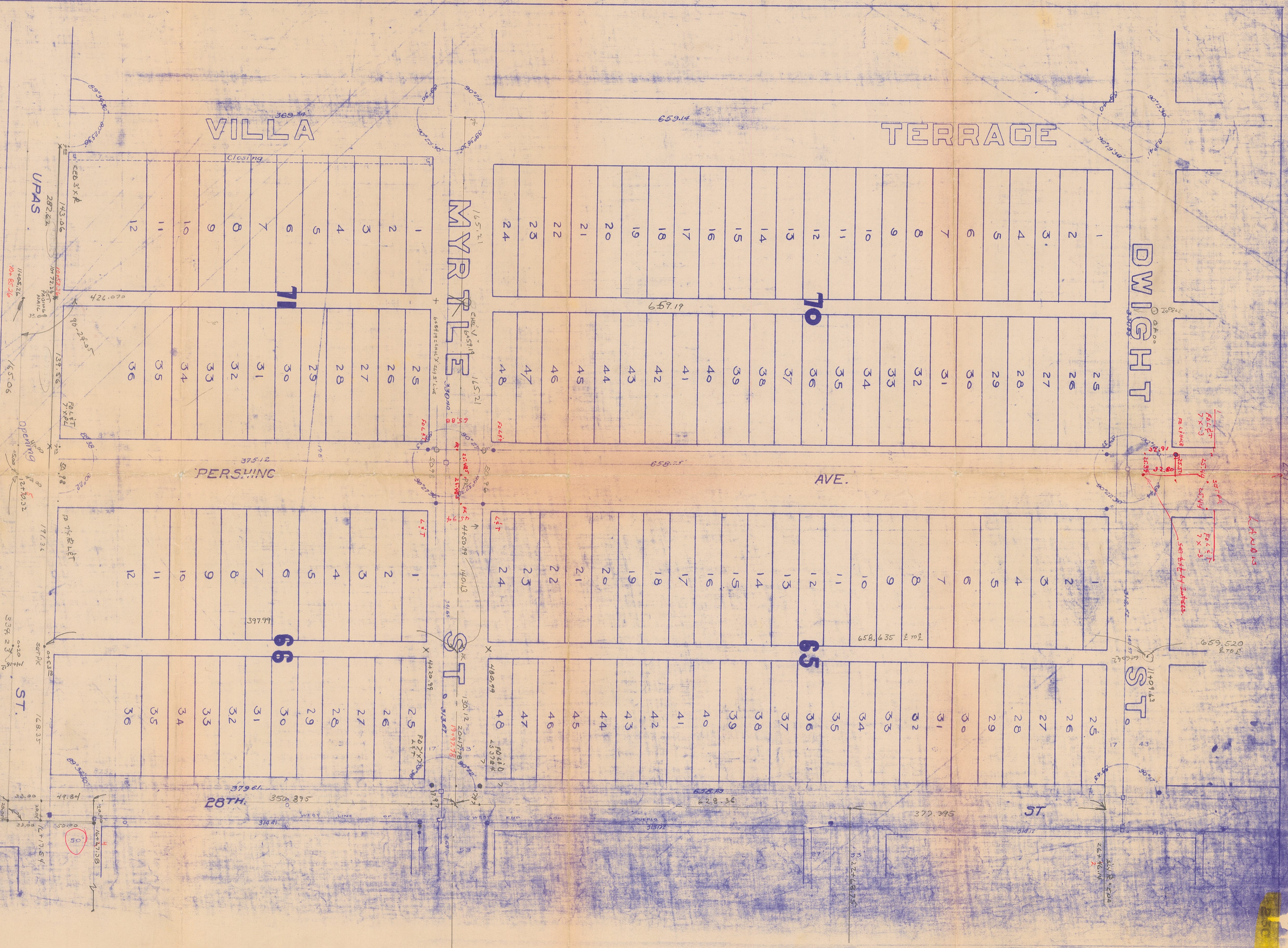
MICROFILMED
JAN 24 1963

659 24
60
1963

825.20
1.11
31.23

825.20
1.11
10.97
8.22

4-22
36.5



6+59.19
 426.02
 10+85.26

10+85.26
 10+52.26

10+85.26
 10+52.26
 12+60.32

1250.33
 314.22
 1564.34
 82.84
 1647.38
 350.18
 1997.78