

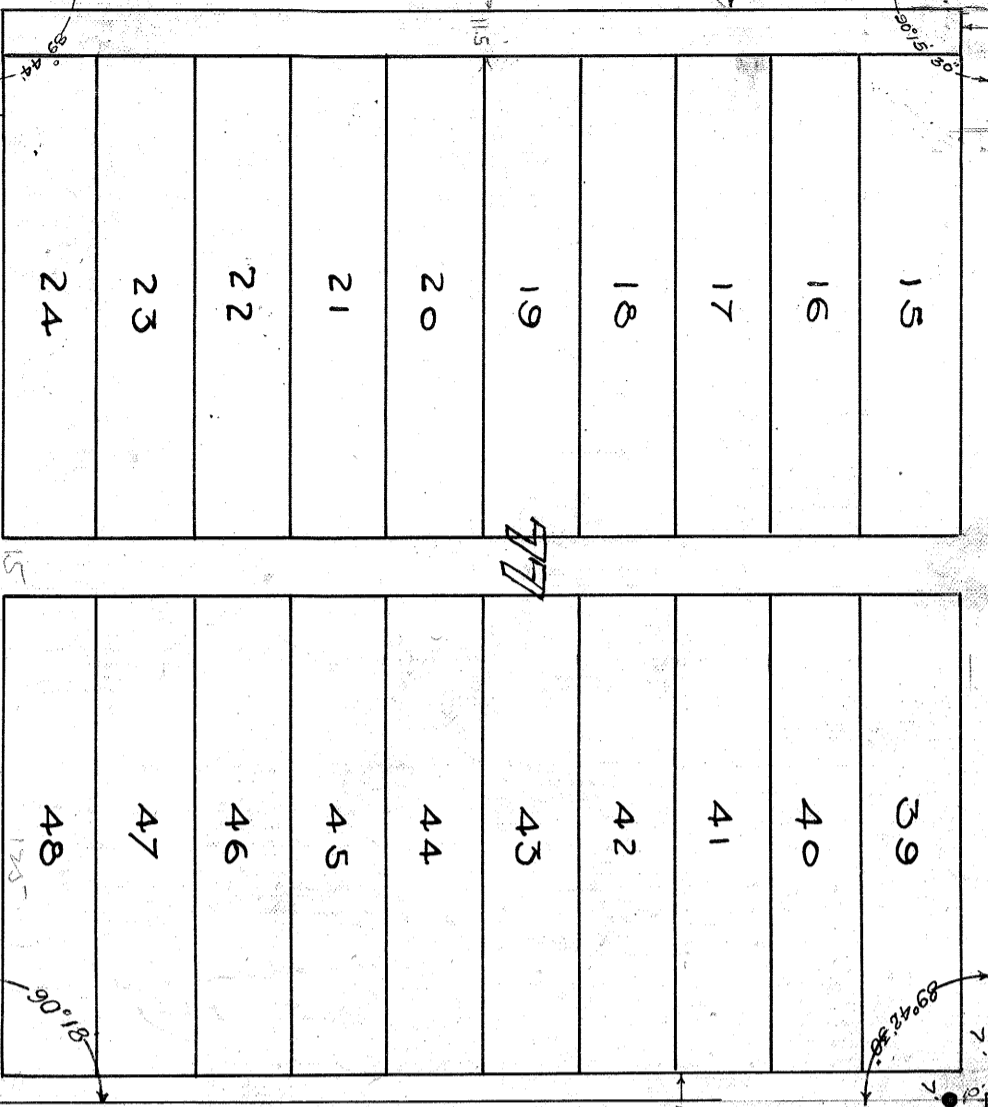
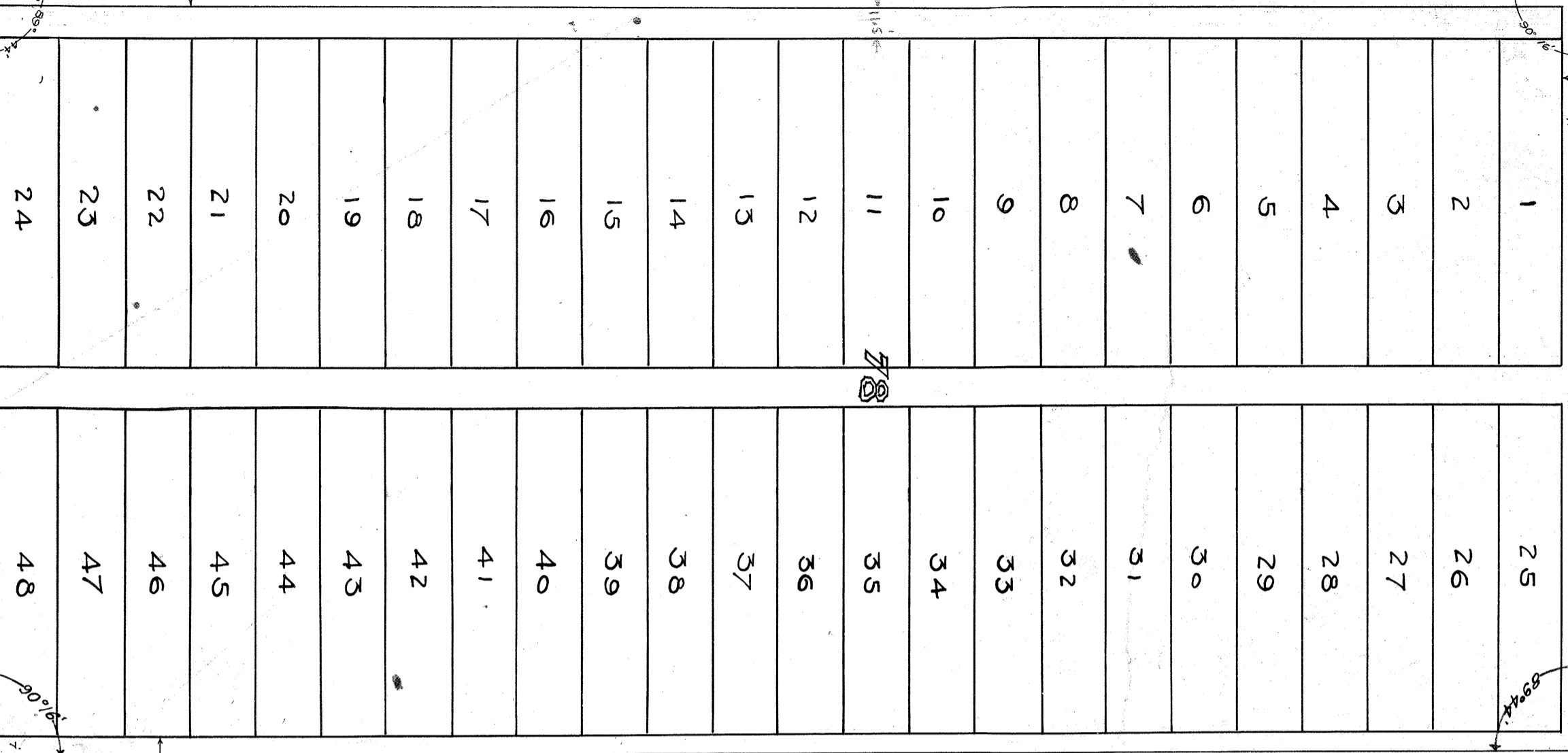
ARIZONA

ST.

UNIVERSITY

WIGHTMAN

LANDIS

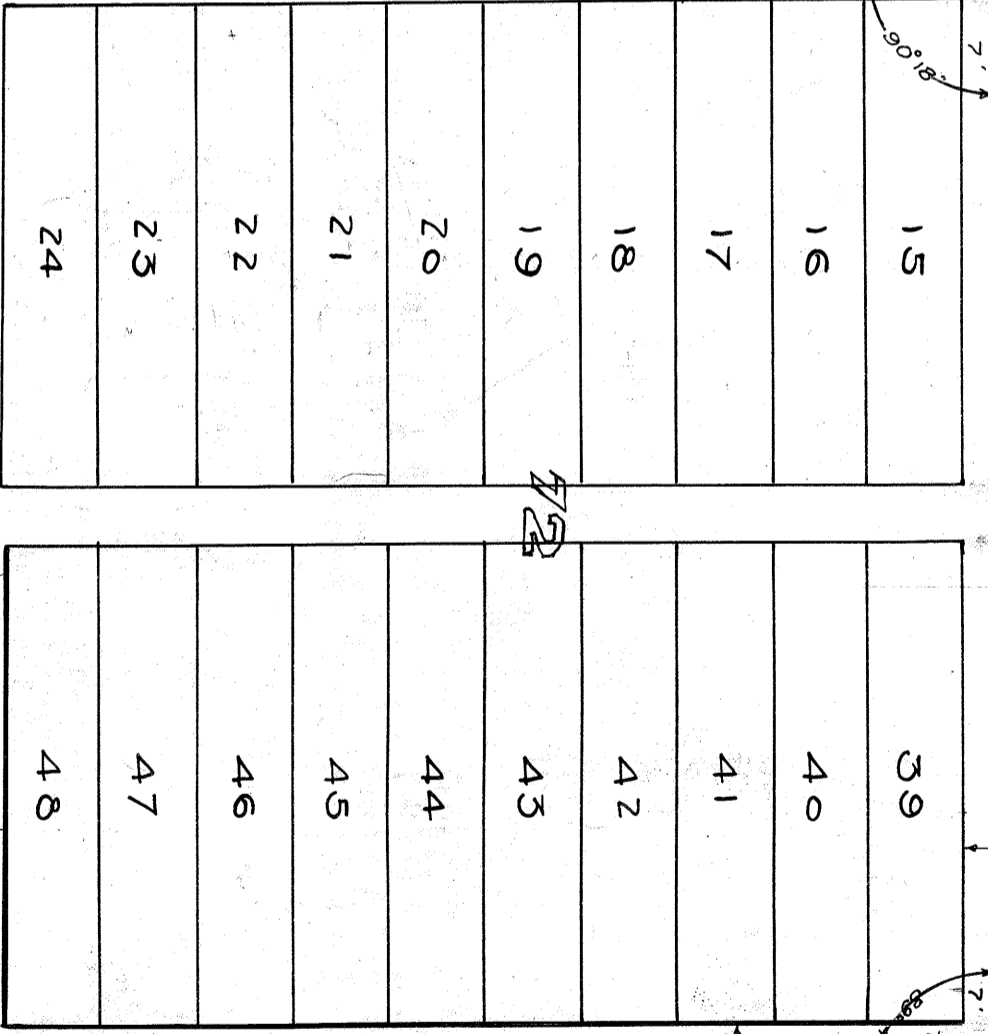
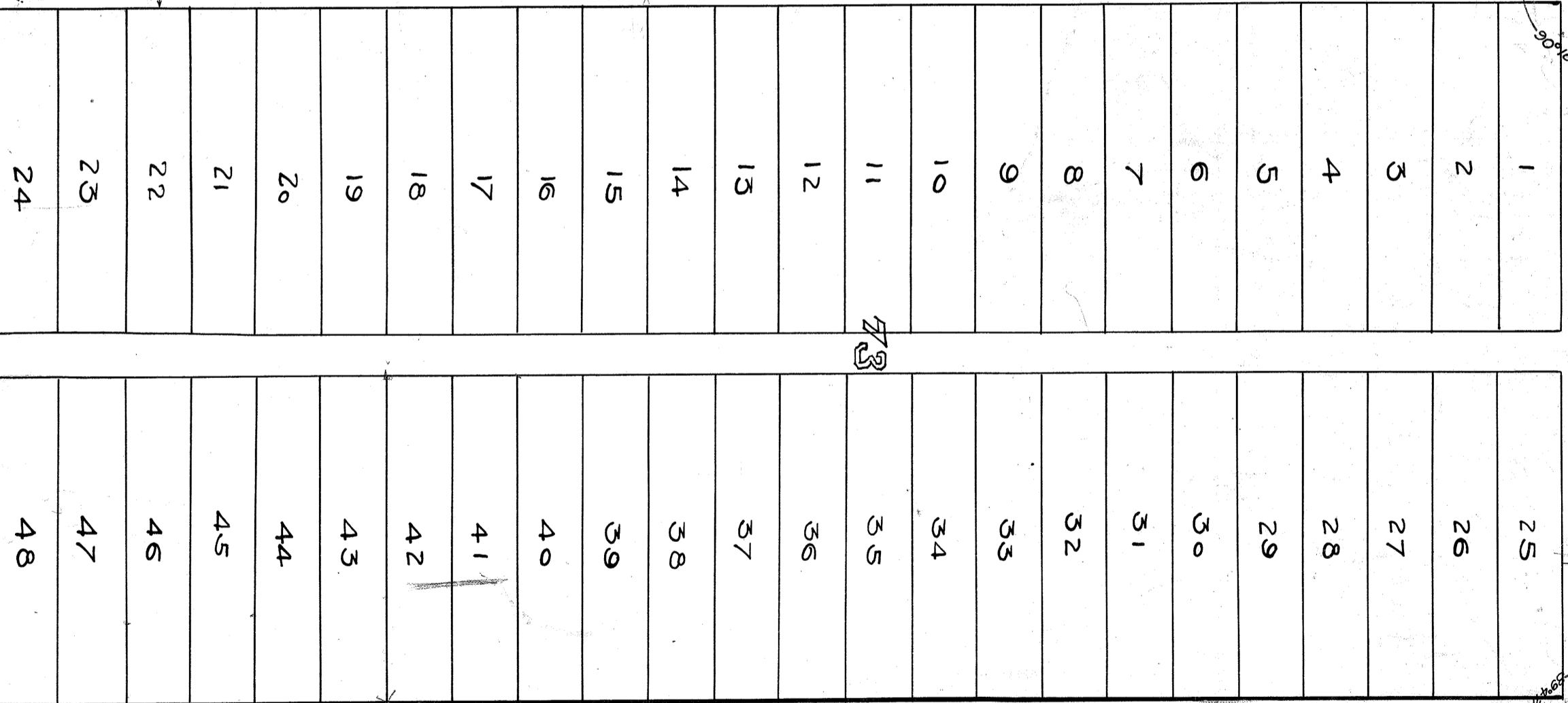


AVE

ARNOLD

ST

ST.



TERRACE

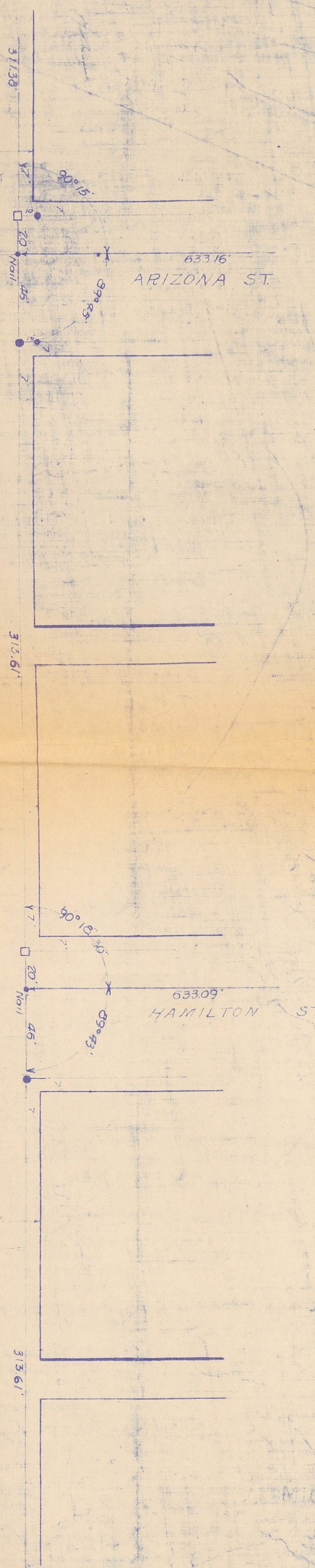
VILLA

ARIZONA ST

HAMILTON ST.

AVE

MICROFILMED
JAN 24 1963



UNIVERSITY

AVE.

ST.

ARNOLD

VILLA

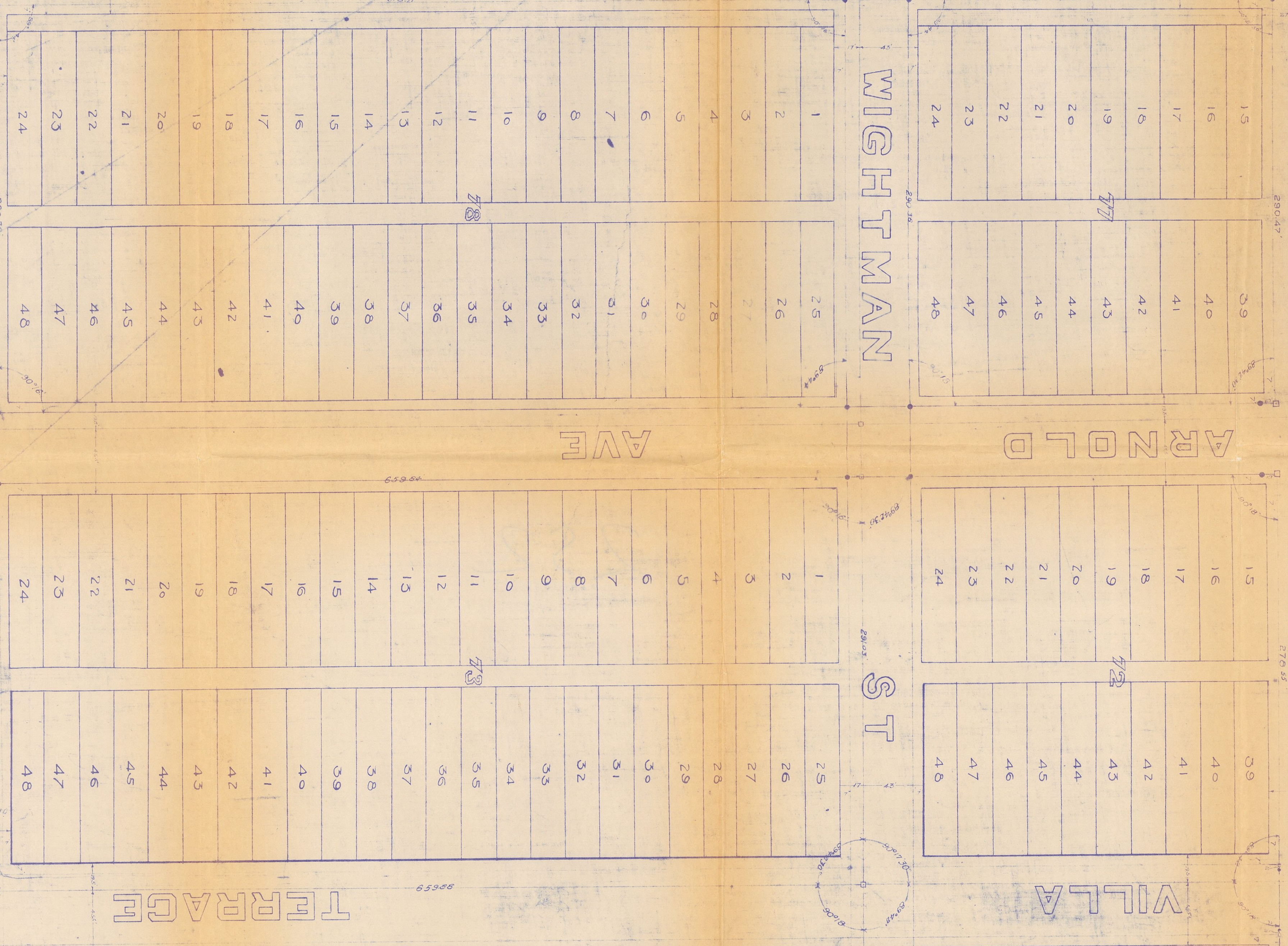
WIGHTMAN

ST

ARIZONA

LANDIS

TERRACE



$$\frac{259}{11} = 23.545$$

$$\frac{267.39}{11} = 24.308$$

$$\frac{230}{11} = 20.909$$

$$\frac{21.9}{11} = 1.991$$

$$\frac{21.5}{11} = 1.955$$

ARIZONA

LANOIS

WIGHTMAN

ARNOLD

ST

TERRACE

VILLA

UNIVERSITY

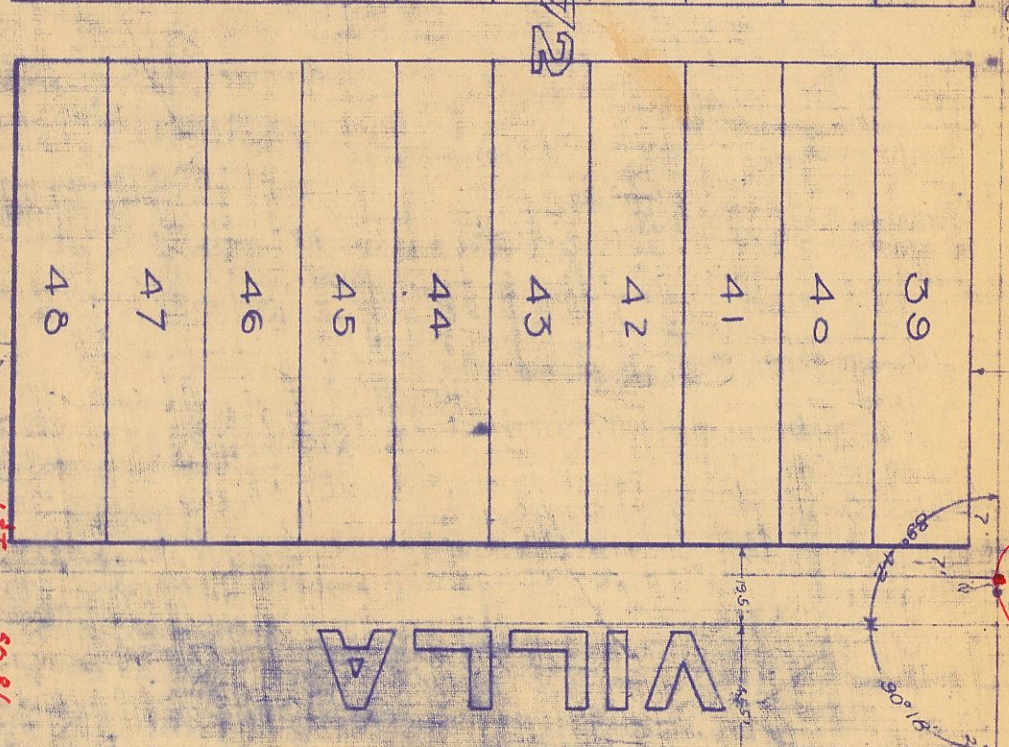
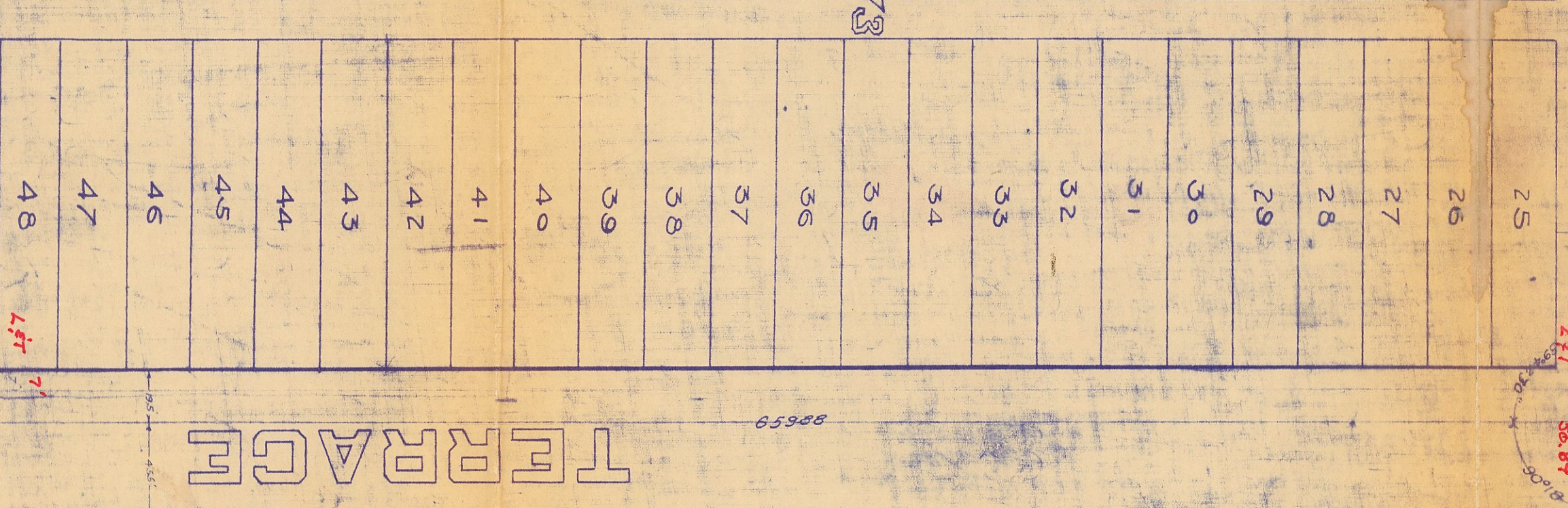
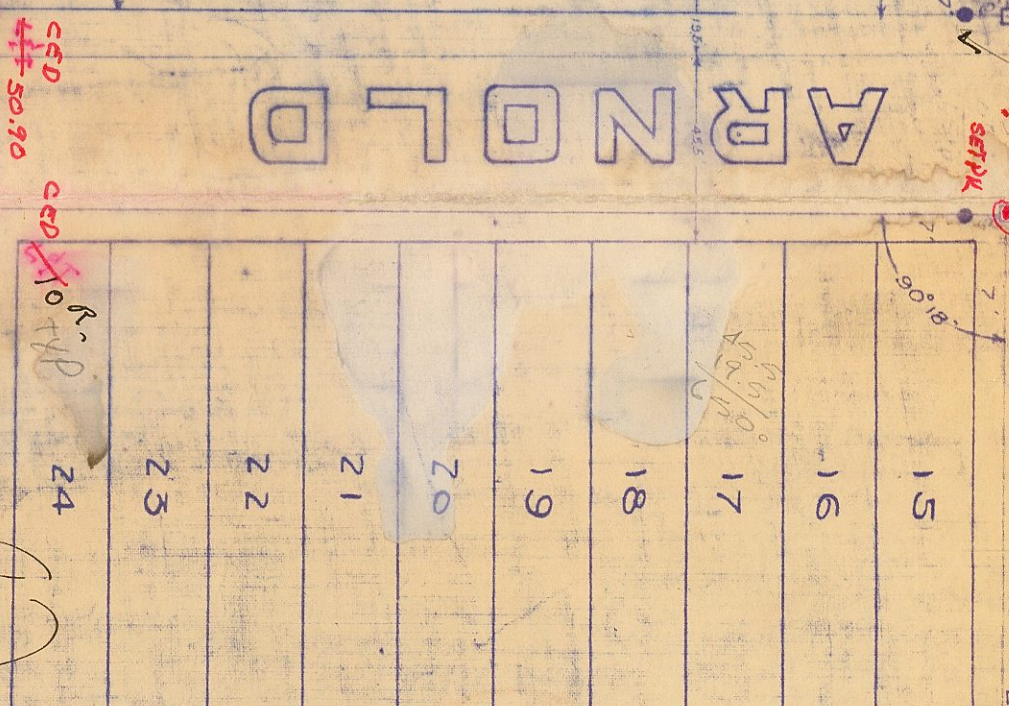
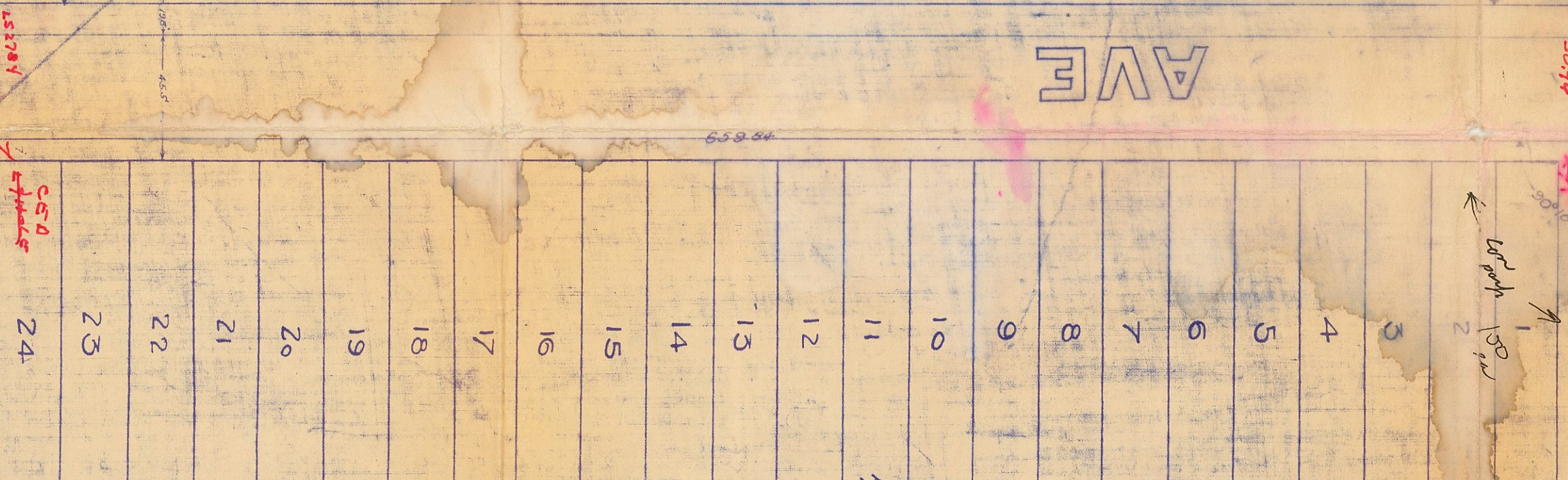
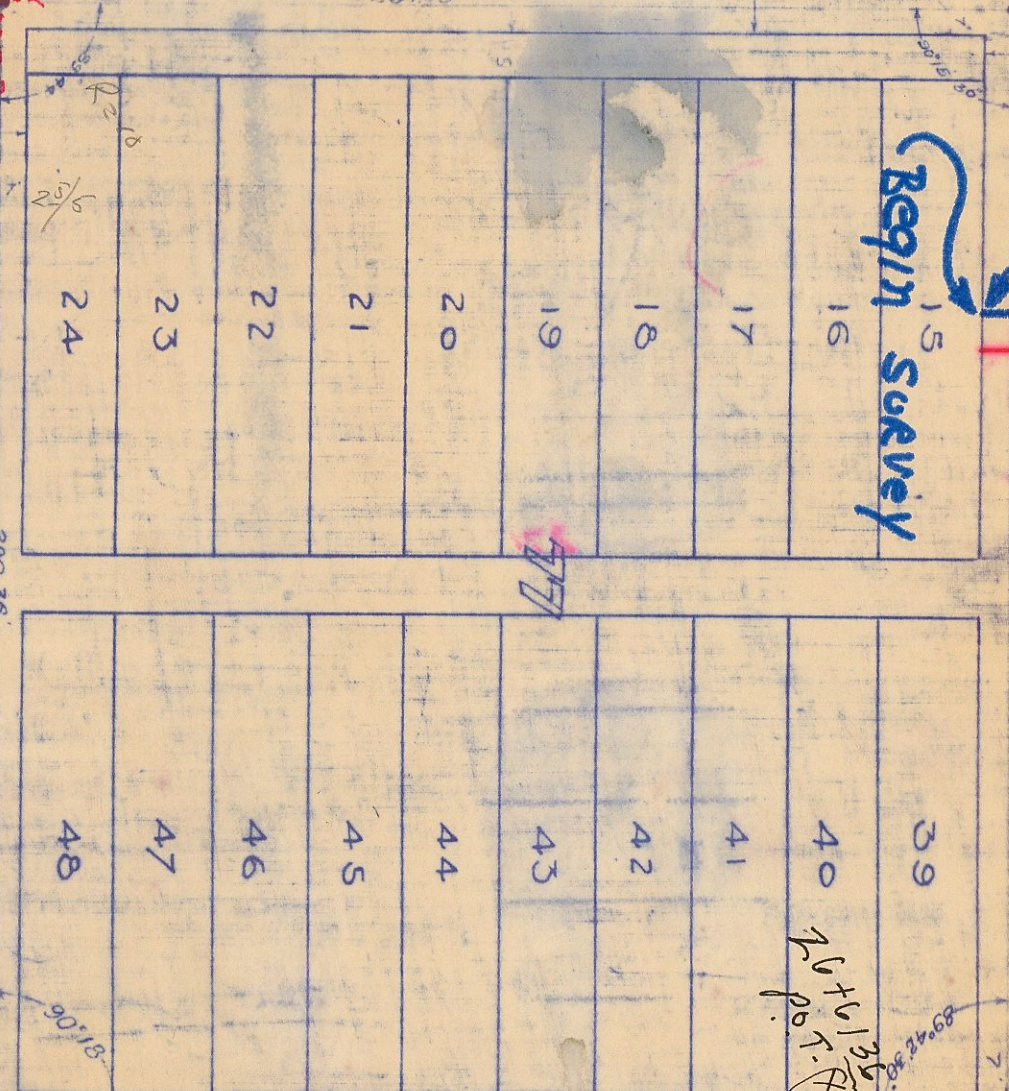
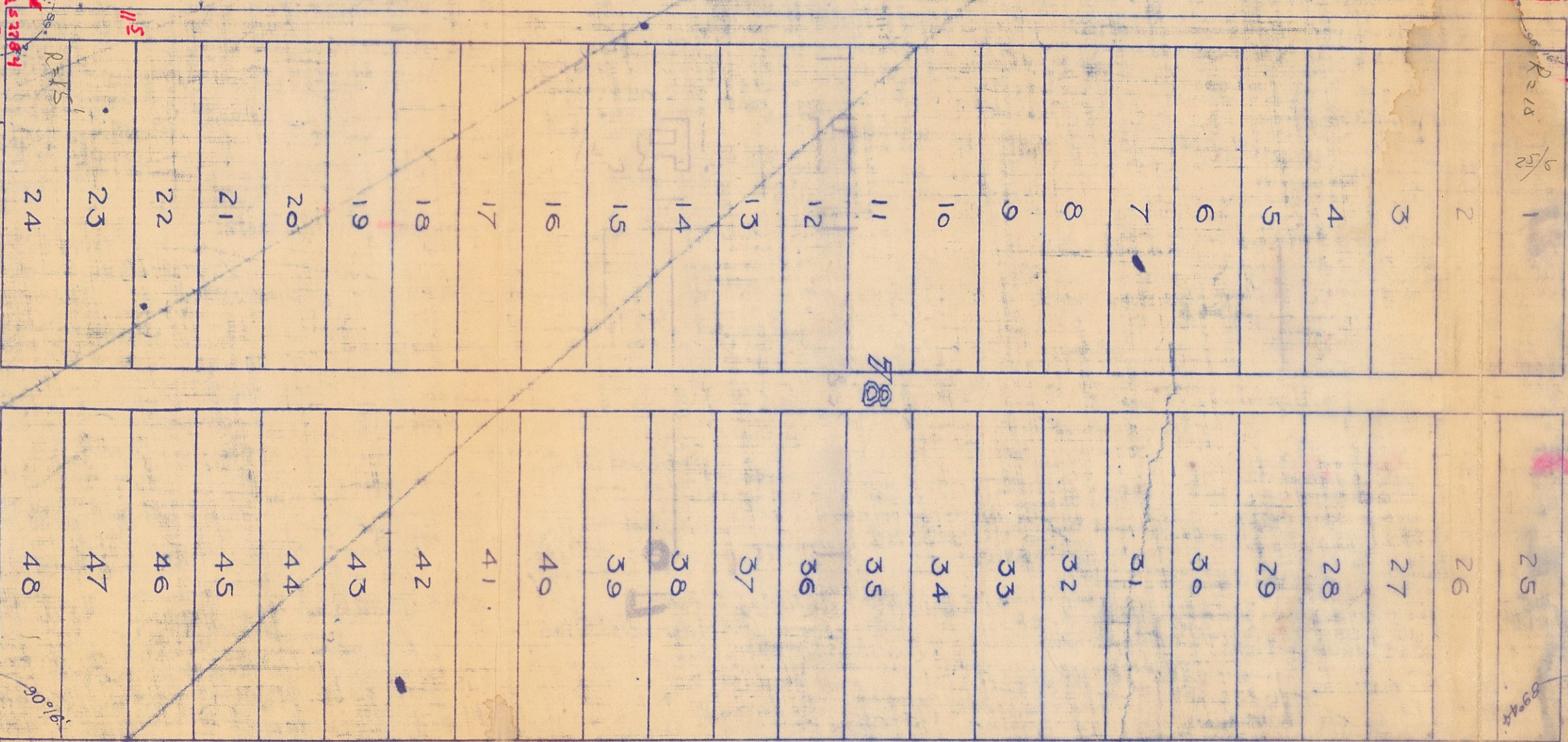
AVE

HAMILTON ST

Begin Survey

C/L & SURVEY LINE

PROPOSED WATER LINE



27+37.30
and (X)

45
#0 0' 0" 5/8
17+01.32 (7)
24+07.57
400 0' 40"
AF

211.55

1094
H 5 0 1
1094

252B

246

253

652

198

109