



RESUBDIVISION 5 OF 19 BLOCKS 20 MAP NO. (226) 5, 6, 15, 18 & 16, 889 6 CRITTENDENS 20 258 ADD

MICROFILMED  
JAN 24 1983

258

(259)

(260)

(222)

4374  
1956

Closing - Res. No. 16035  
12-29-1913

Closing  
Res. No. 16285  
12-29-1913

Closing  
Res. No. 16285  
12-29-1913

MAP NO. 656

MAP NO. 1069

MAP NO. 811

MAP NO. 855

MAP NO. 1915

BLK B  
ESTADILLO  
& CAPRONS  
ADDN  
Map 650

MAP NO. 811

MAP NO. 650



RESUBDIVISION OF 9 BLOCKS MAP NO. 105

5 6 7 8 16

6 COLLETTENS

258

NORTH SIDE ADDITION

MAP NO. 666

AMENDED PLAT OF HILLCREST

MAP NO. 1059

FLEISCHERS ADDITION

MAP NO. 811

A. BUSH ADDITION

MAP NO. 1915

B. WILLIAMS SUBD.

MAP NO. 855

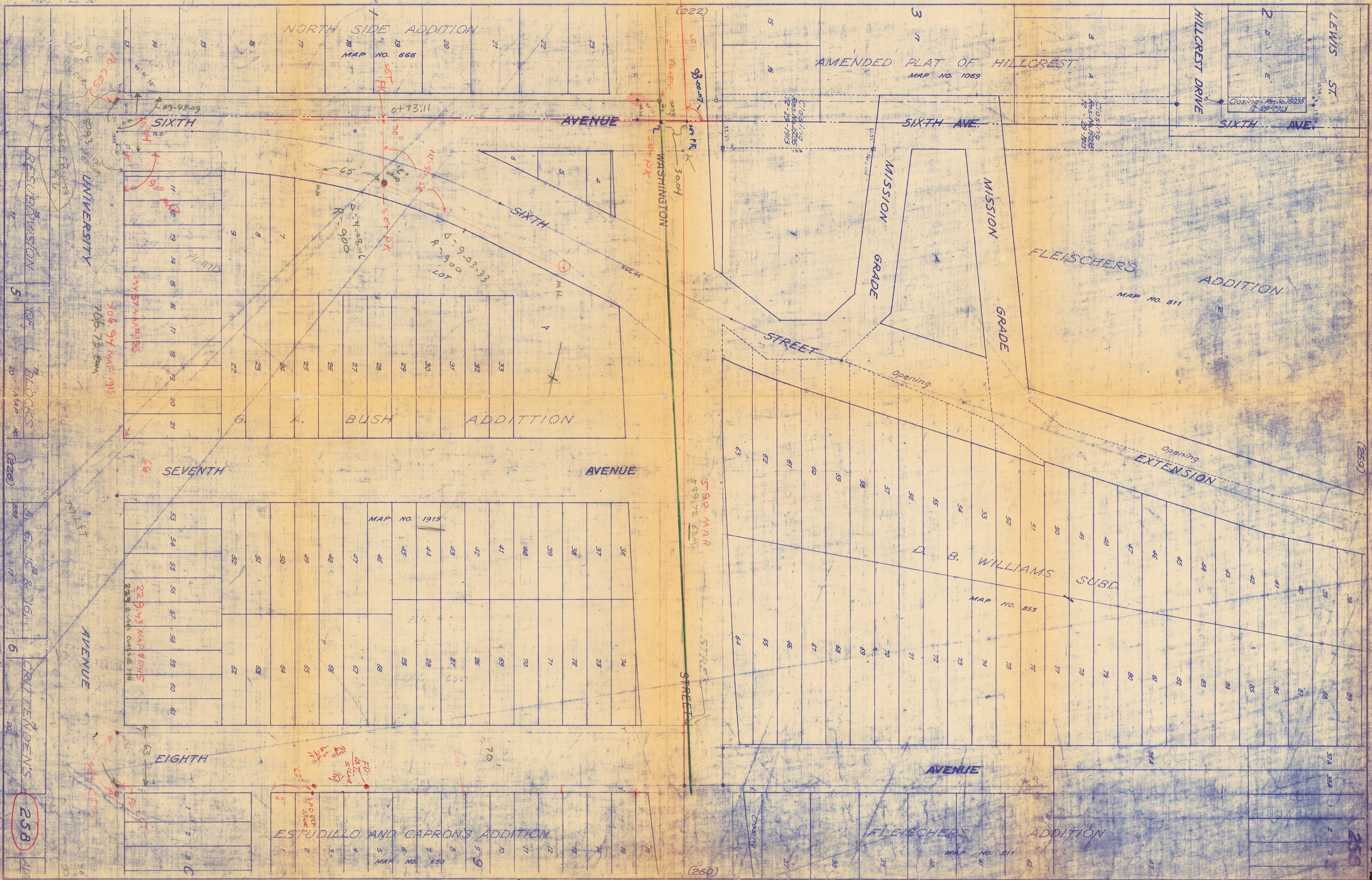
ESTUDIOLO AND CAPRONS ADDITION

MAP NO. 657

575 Block.  
 582 = 7X7 UNIVER TO PROP WASHINGTON.  
 582.38 = FB 1264 PG-2.  
 (589.38 = 7X7 TO 7X7)

(644.16 =) TO NEW PLAT.

FD 1264



Nov 7-22 30

NORTH SIDE ADDITION

MAP NO. 666

AMENDED PLAT OF HILLCREST  
MAP NO. 1069

LEWIS ST.  
HILLCREST DRIVE  
SIXTH AVE.

AVENUE

SIXTH AVE.

SIXTH

WASHINGTON STREET

MISSION GRADE

MISSION GRADE

FLEISCHERS ADDITION  
MAP NO. 811

SIXTH

STREET

UNIVERSITY

706.94 MAP 1915  
706.73 EDM

BUSH ADDITION

AVENUE

SEVENTH

EXTENSION

MAP NO. 1915

550 MAP  
589.72 EDM

B. WILLIAMS SUBD.  
MAP NO. 855

AVENUE

EIGHTH

ESTUDILLO AND CAPRONS ADDITION  
MAP NO. 850

FLEISCHERS ADDITION  
MAP NO. 811

RESUBDIVISION

5

OF 9 BLOCKS

(226)

5

6 15 & 16

6

CRITTENDENS

(258)

AD

M3

258

258 B

(259)

(260)

88 209

3644 587

(222)

314 2

Closing Res No 16035  
12-29-1913

Closing Res No 16035  
12-29-1913

Closing Res No 16035  
12-29-1913

$\Delta = 4-08-16$   
 $R = 900$

$\Delta = 9-03-33$   
 $P = 900$

89-93-09

0+73.11

3004

20-44

2188

M 11

PLINTO

254 STAMP 1915

229-43 MAP 1915  
229 2-545 CUMUL @ 7M

FD  
45  
SLIDE

FD  
45  
SLIDE

300

Closing

54  
LINE

mm