

Field Book  
1704

1320-50  
1320.53  
1321-38 Map

119° 58' 37.5"

RACHAEL

AVE.

ALBEMARLE

CUMBERLAND

WESTWOOD

ST.

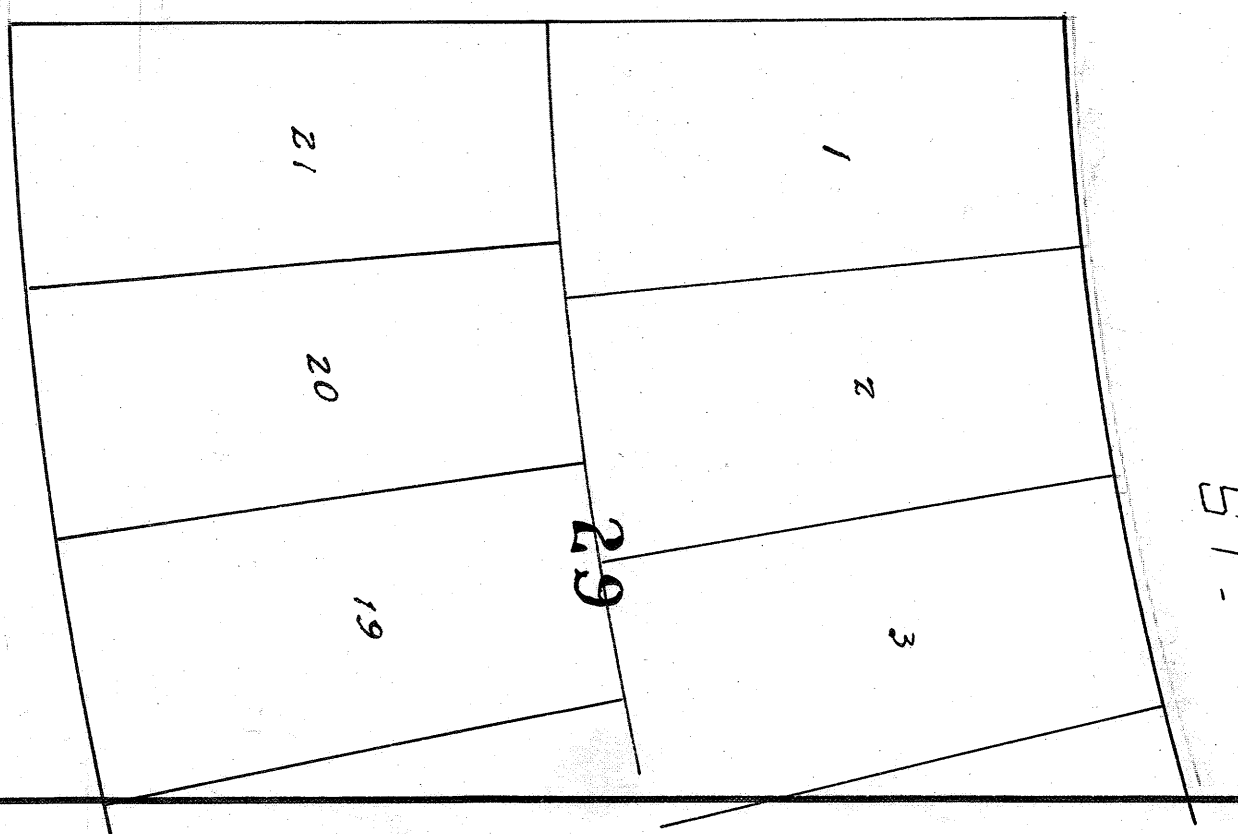
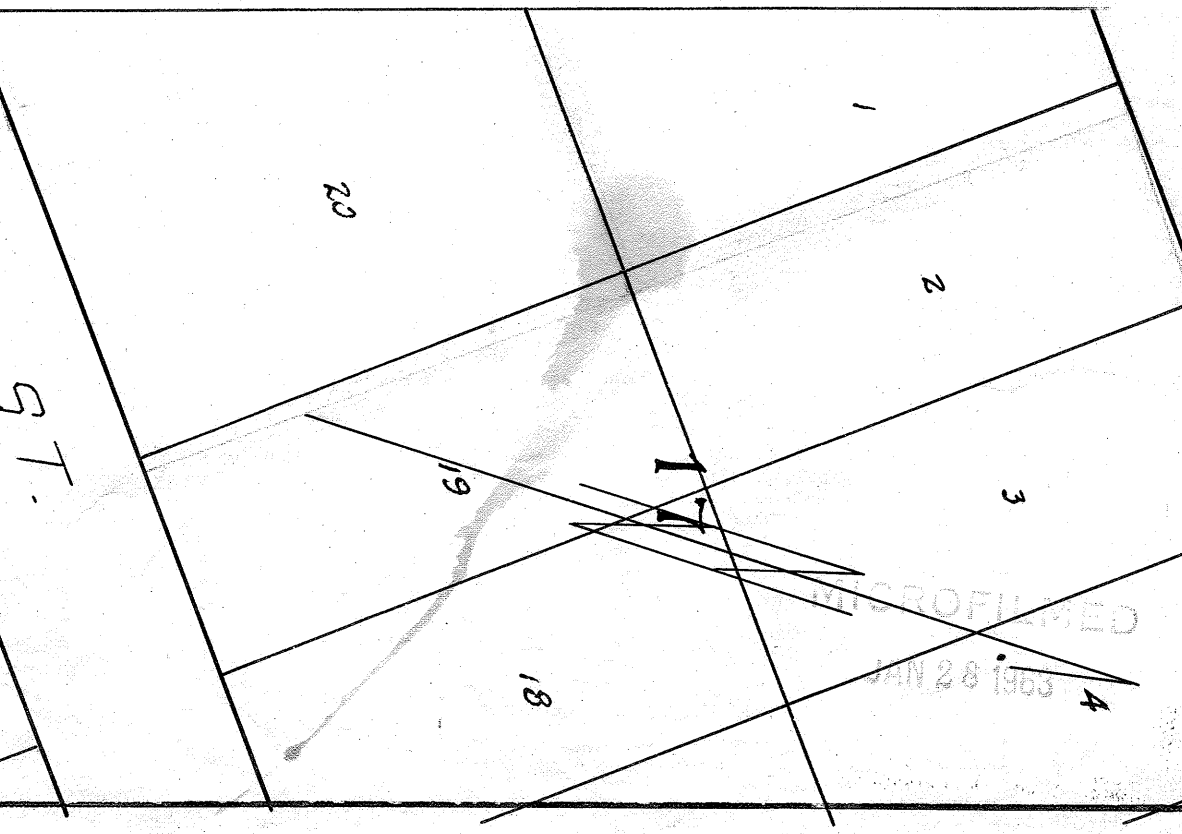
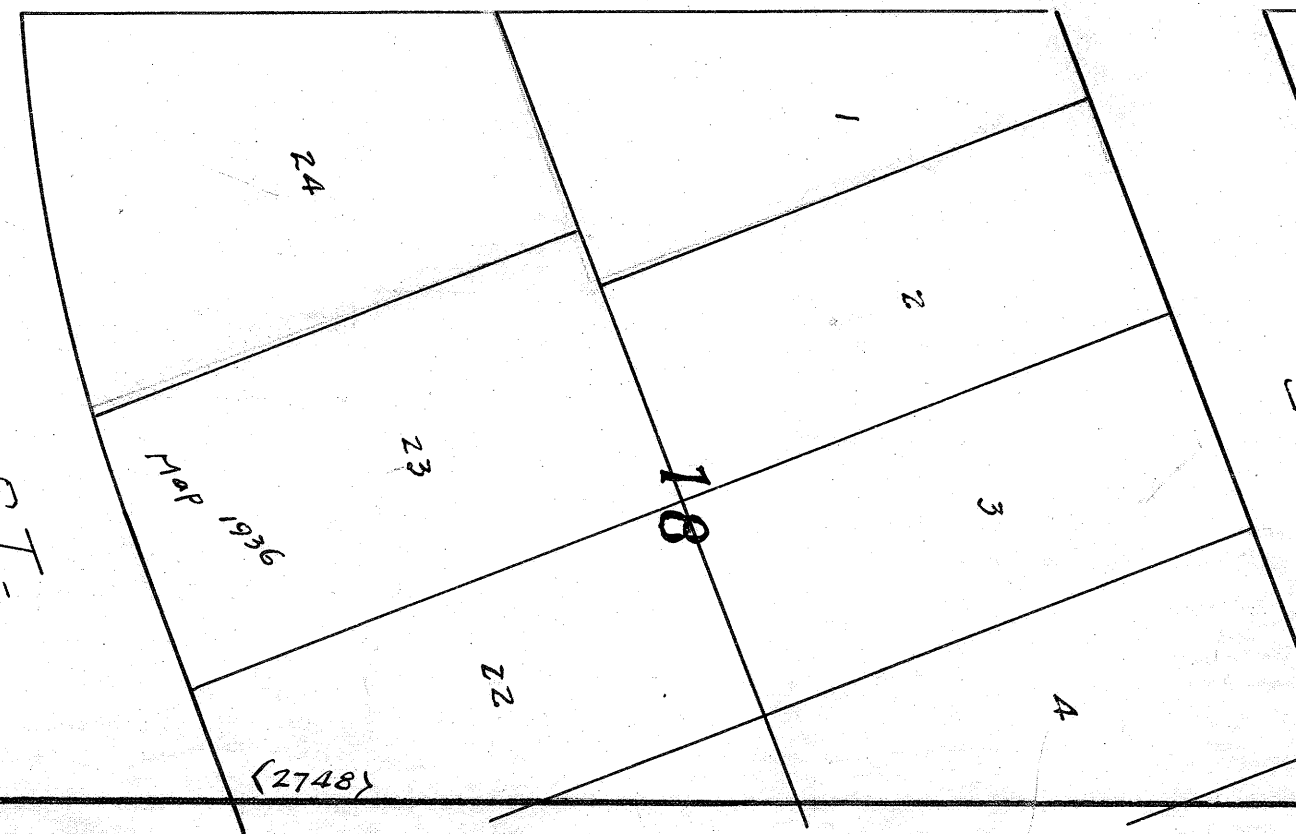
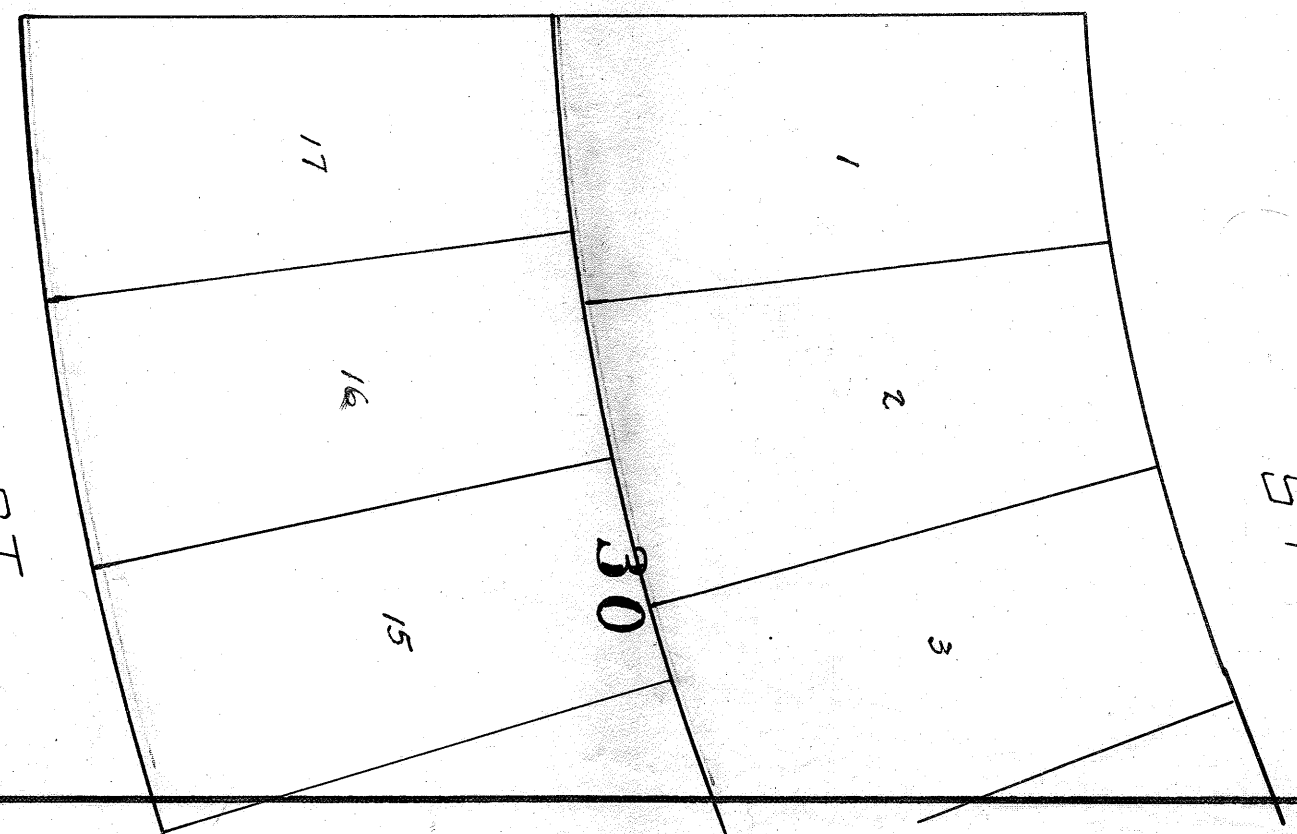
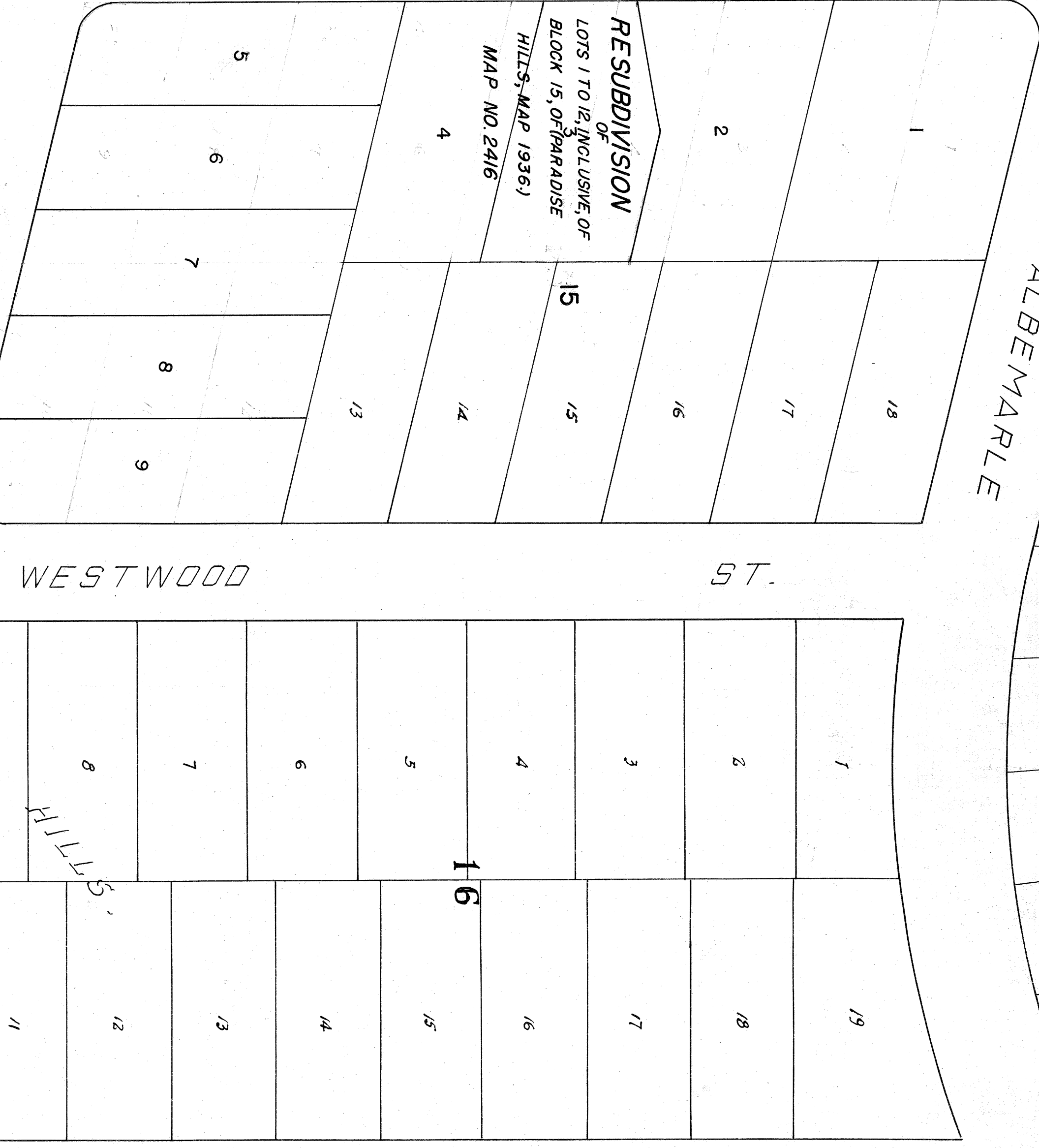
HILLS

ST.

ST.

2749

RESUBDIVISION  
OF  
LOTS 1 TO 12, INCLUSIVE, OF  
BLOCK 15, OF PARADISE  
HILLS, MAP 1936)  
MAP NO. 2416



Sec 102  
Cond. 102  
S.W. Cor. 2

2749  
F.B. 1704

2749

REPRODUCTION  
MAY 20 1963