

POLK

AVE.

379.42'

379.71'

379.46'

ST.

ST.

MICROFILMED
JAN 25 1963

1	48
2	47
3	46
4	45
5	44
6	43
7	42
8	41
9	40
10	39
11	38
12	37
13	36
14	35
15	34
16	33
17	32
18	31
19	30
20	29
21	28
22	27
23	26
24	25

1	48
2	47
3	46
4	45
5	44
6	43
7	42
8	41
9	40
10	39
11	38
12	37
13	36
14	35
15	34
16	33
17	32
18	31
19	30
20	29
21	28
22	27
23	26
24	25

173

172

679.91'

679.95'

680.00'

LINCOLN

AVE.

379.42'

379.71'

379.46'

LOUISIANA

TEXAS

198

199

632.93'

633.15'

1	48
2	47
3	46
4	45
5	44
6	43
7	42
8	41
9	40
10	39
11	38
12	37
13	36
14	35
15	34
16	33
17	32
18	31
19	30
20	29
21	28
22	27
23	26
24	25

1	48
2	47
3	46
4	45
5	44
6	43
7	42
8	41
9	40
10	39
11	38
12	37
13	36
14	35
15	34
16	33
17	32
18	31
19	30
20	29
21	28
22	27
23	26
24	25

MISSISSIPPI

TEXAS

UNIVERSITY

AVE.

313.59'

313.71'

311.88'

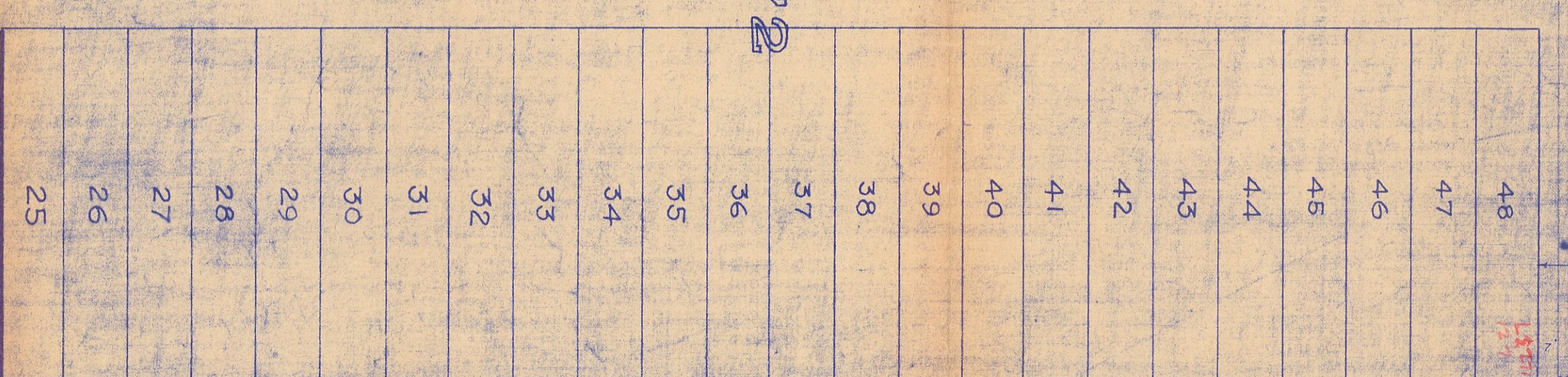
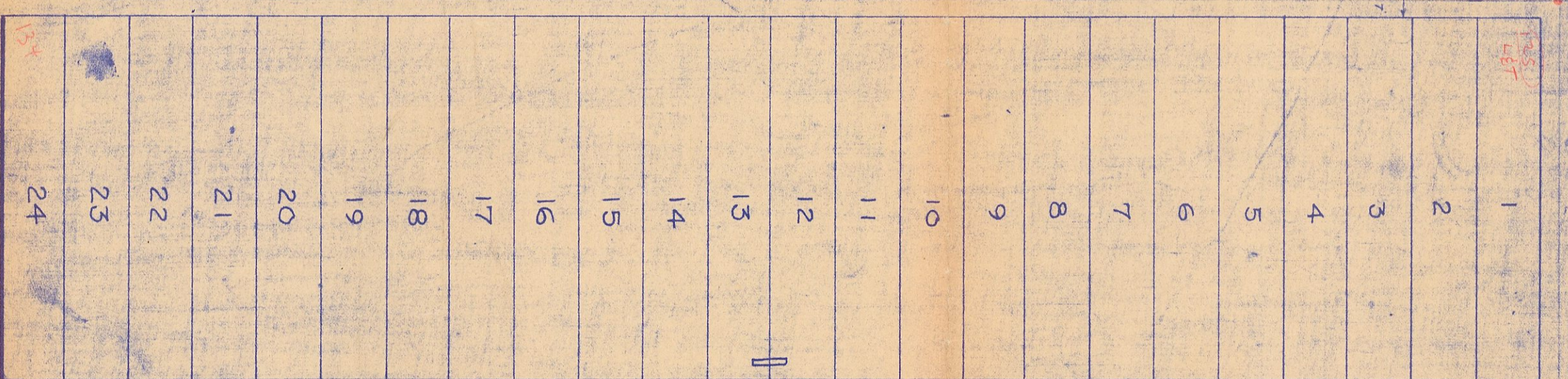
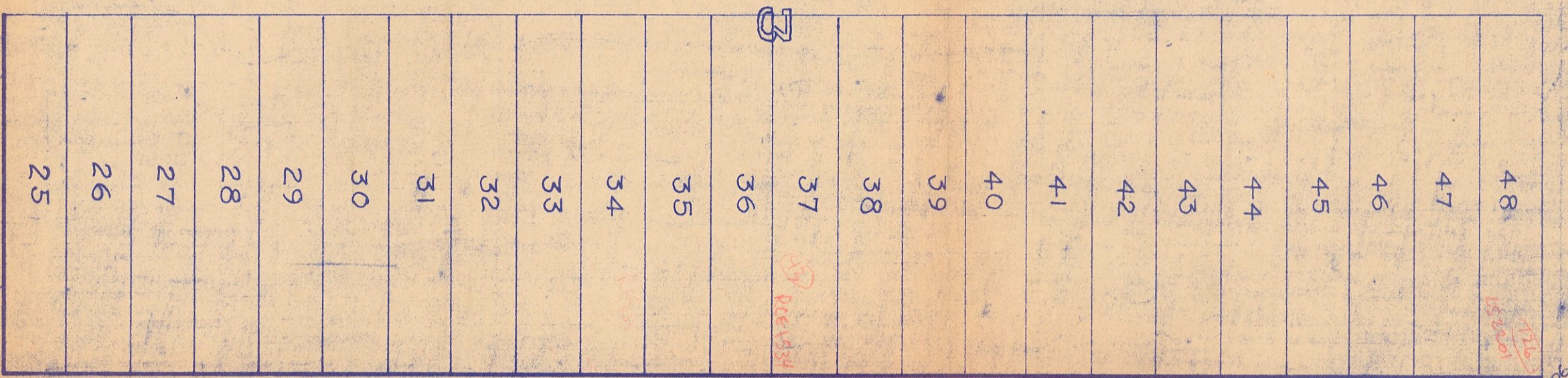
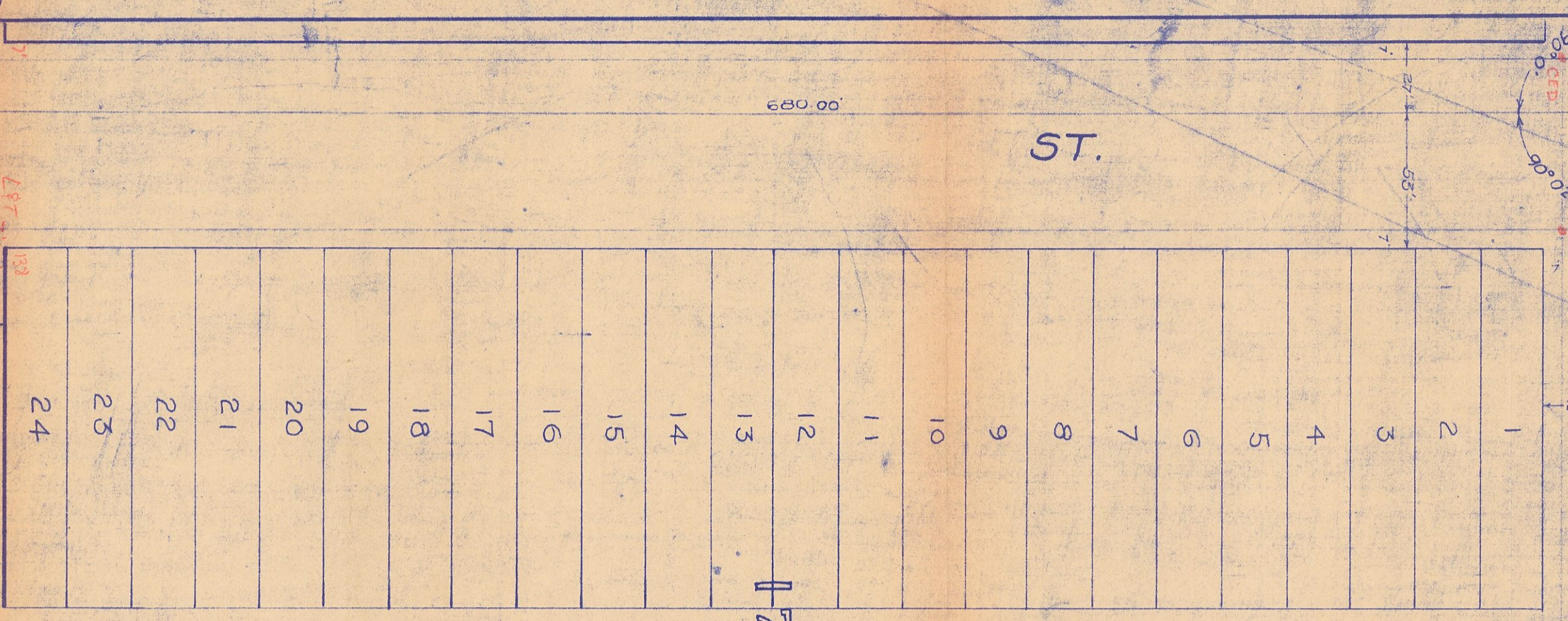
POLK

AVE.

ST.

ST.

ST.



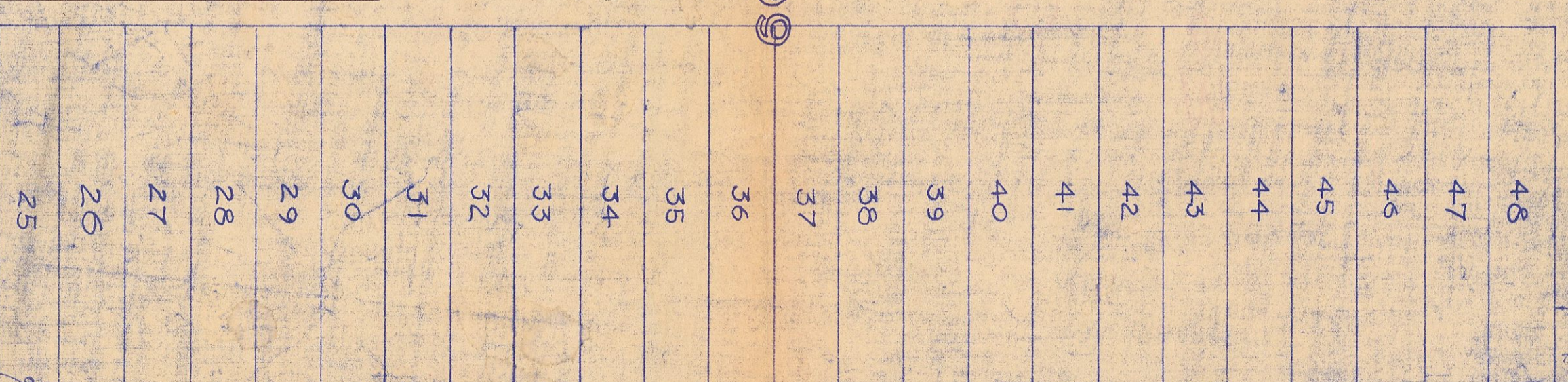
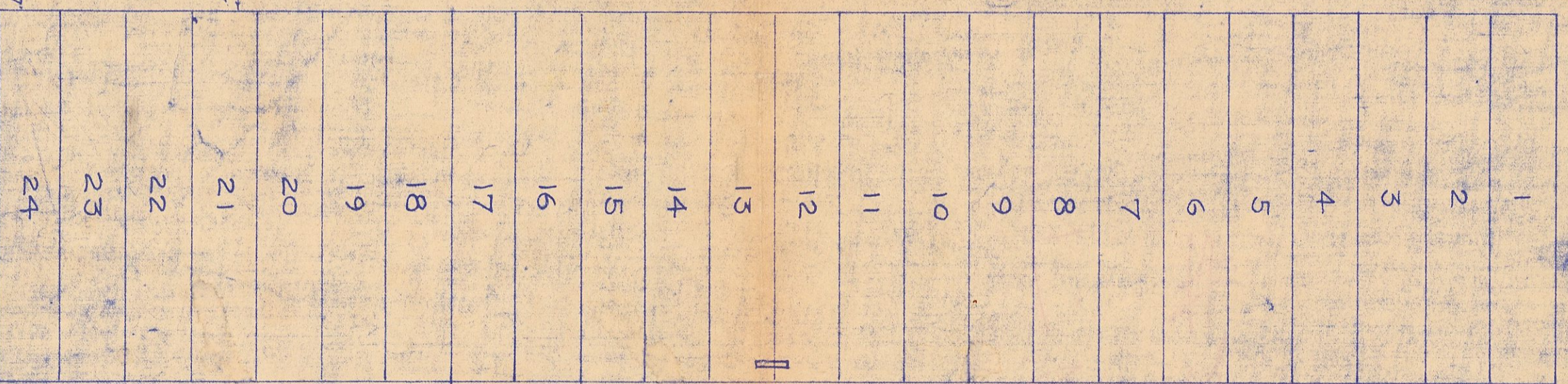
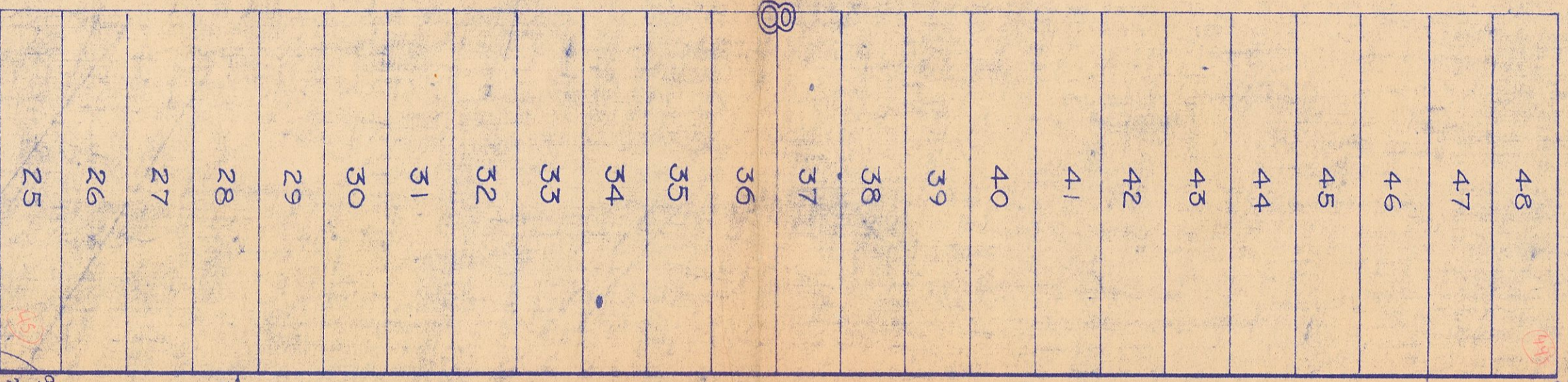
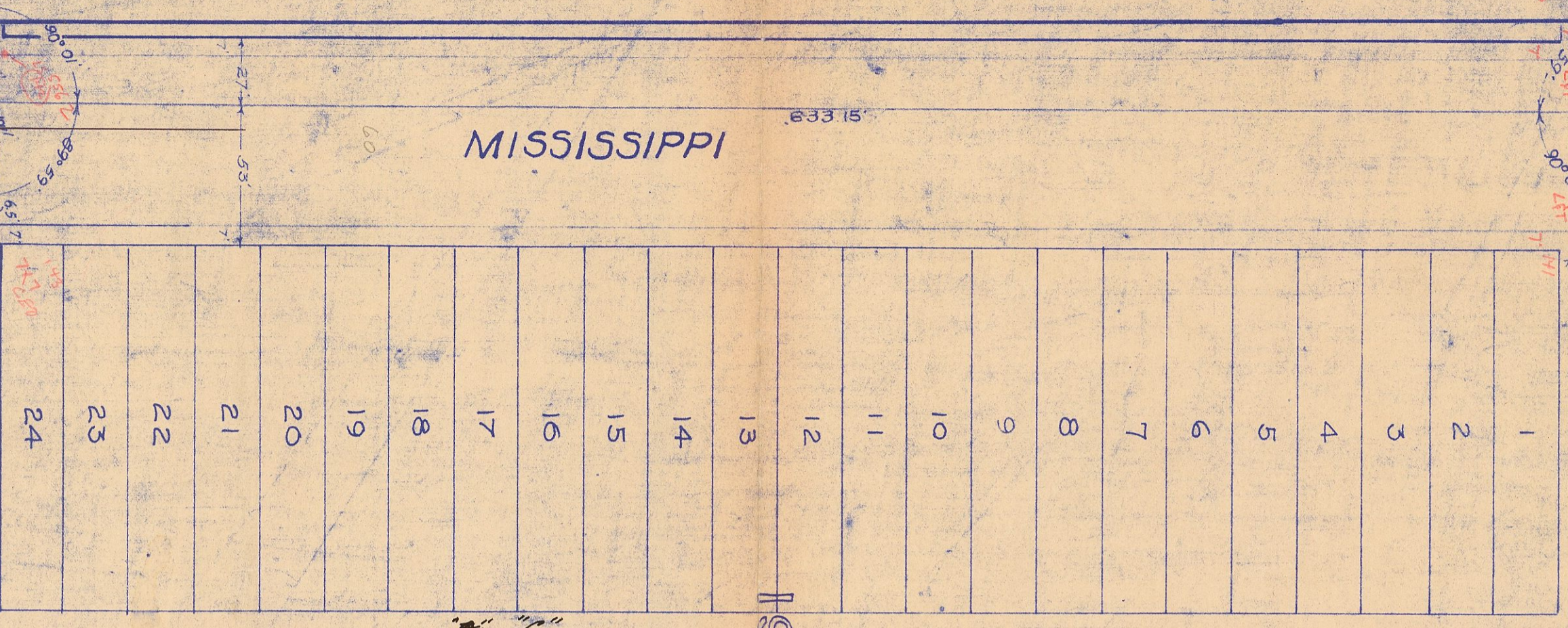
LINCOLN

AVE.

MISSISSIPPI

LOUISIANA

TEXAS



UNIVERSITY

AVE.

3180.24
1561.83
5170.01

5170.01
1561.83
7159.90

7159.90
1561.83
5170.01

1561.83
7159.90

1561.83

UNIVERSITY

AVE.

293