

(3605)

NO. 3397

0.179 89'

378.43'

211.62'

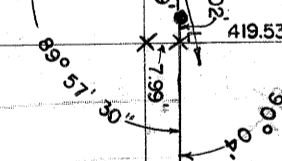
271.9'

1322.38'

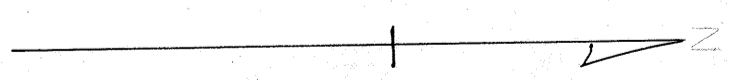
347.14'

681.02'

Handwritten notes: 1/3, 1/5, 1/8, 1/4, 1/2, 3/4, 1, 2, 3, 4, 5, 6, 7, 8, 9, 10, 11, 12, 13, 14, 15, 16, 17, 18, 19, 20, 21, 22, 23, 24, 25, 26, 27, 28, 29, 30, 31, 32, 33, 34, 35, 36, 37, 38, 39, 40, 41, 42, 43, 44, 45, 46, 47, 48, 49, 50, 51, 52, 53, 54, 55, 56, 57, 58, 59, 60, 61, 62, 63, 64, 65, 66, 67, 68, 69, 70, 71, 72, 73, 74, 75, 76, 77, 78, 79, 80, 81, 82, 83, 84, 85, 86, 87, 88, 89, 90, 91, 92, 93, 94, 95, 96, 97, 98, 99, 100



0.42° 05'
R = 400.66'
L = 293.80'



MICROFILMED
JAN 28 1983
C861 & NWJ

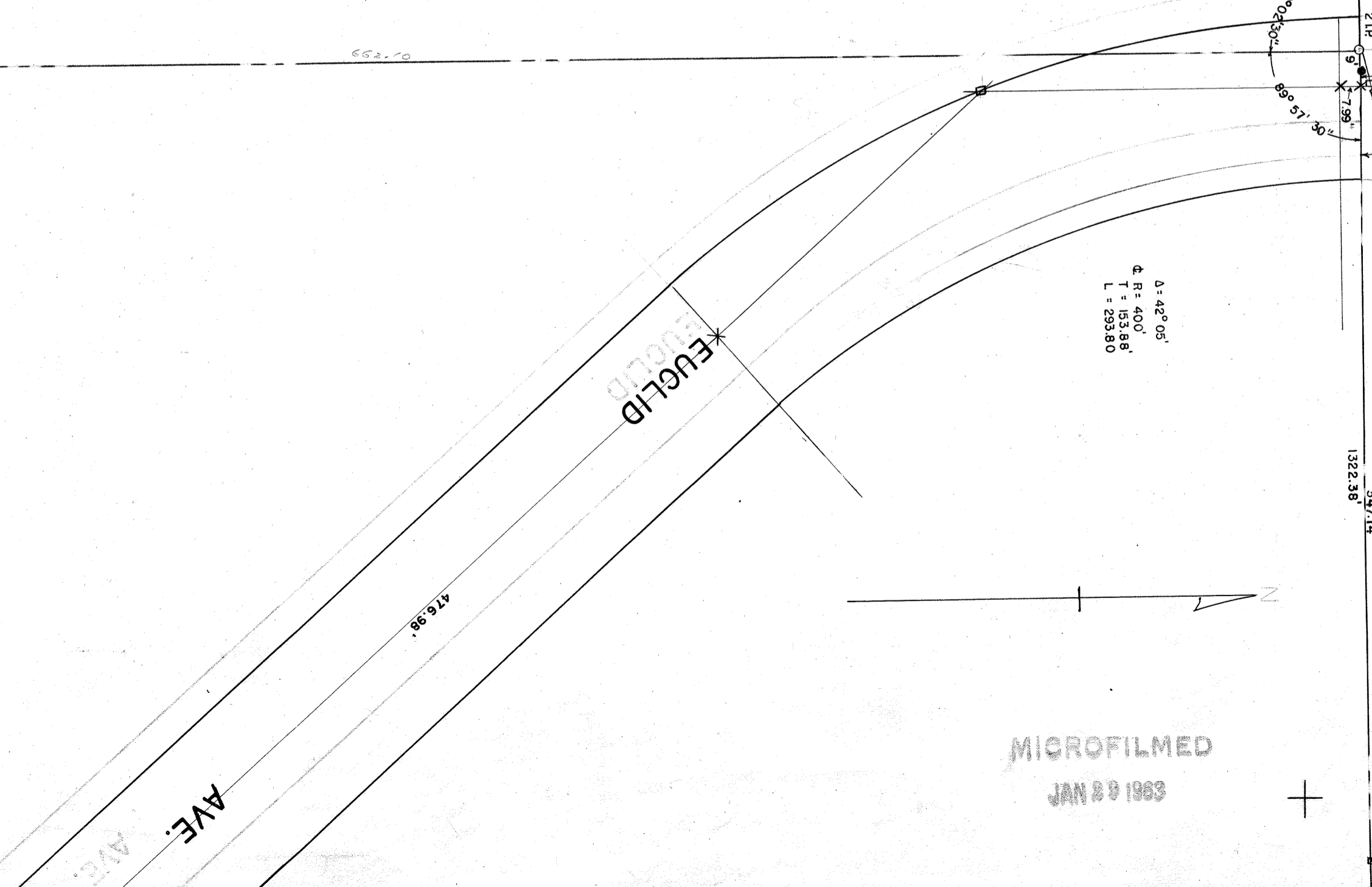
(3396)

(3398)

2

EX-MISSION LANDS OF SAN DIEGO

MAP 283



CITY OF SAN DIEGO
ENGINEERING DEPARTMENT

SCALE 1" = 50'

TIE POINT SHEET (3397)

REFERENCES: STG. 57A, 57B, D, 3398, B

NO. 3397