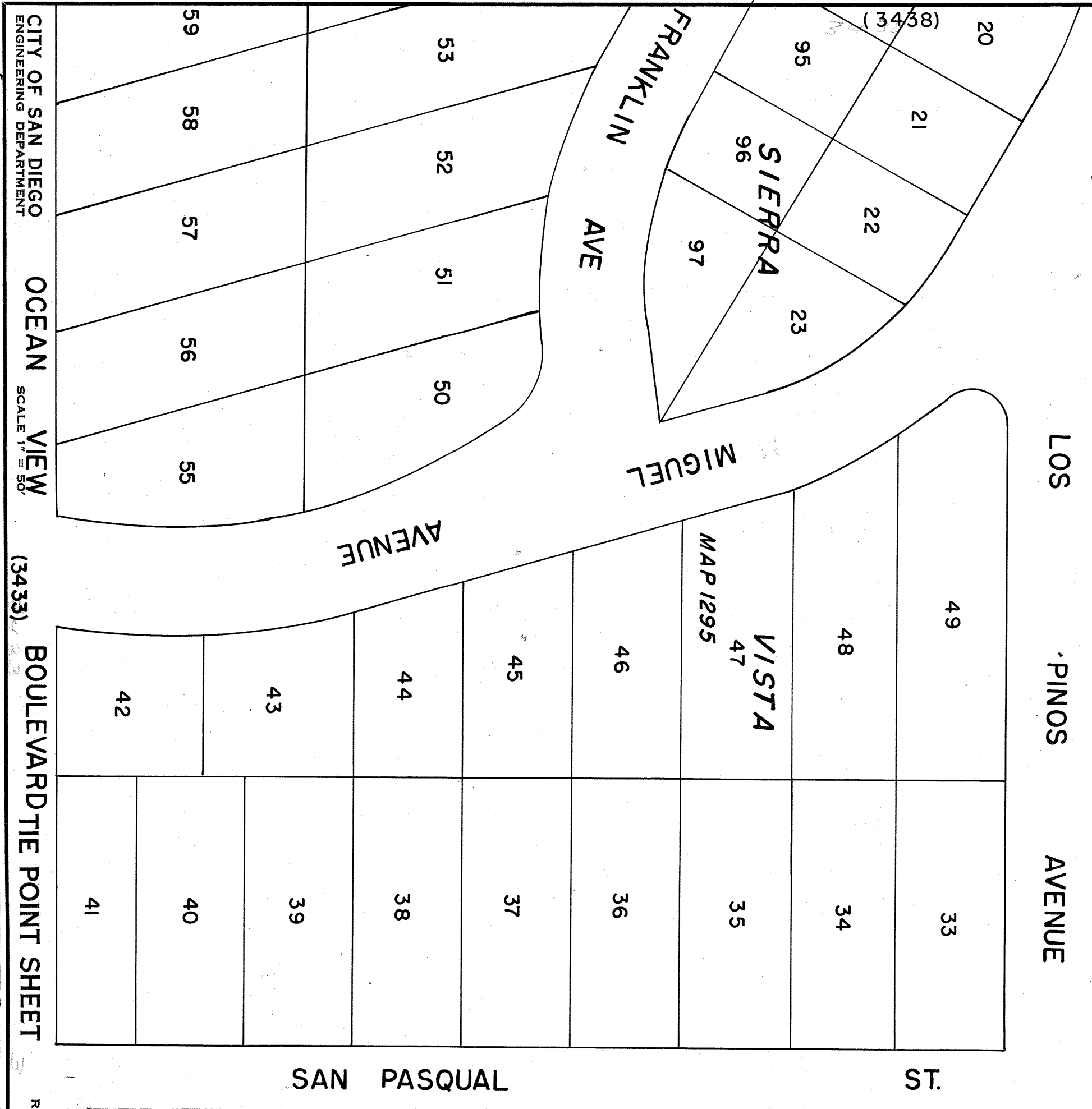
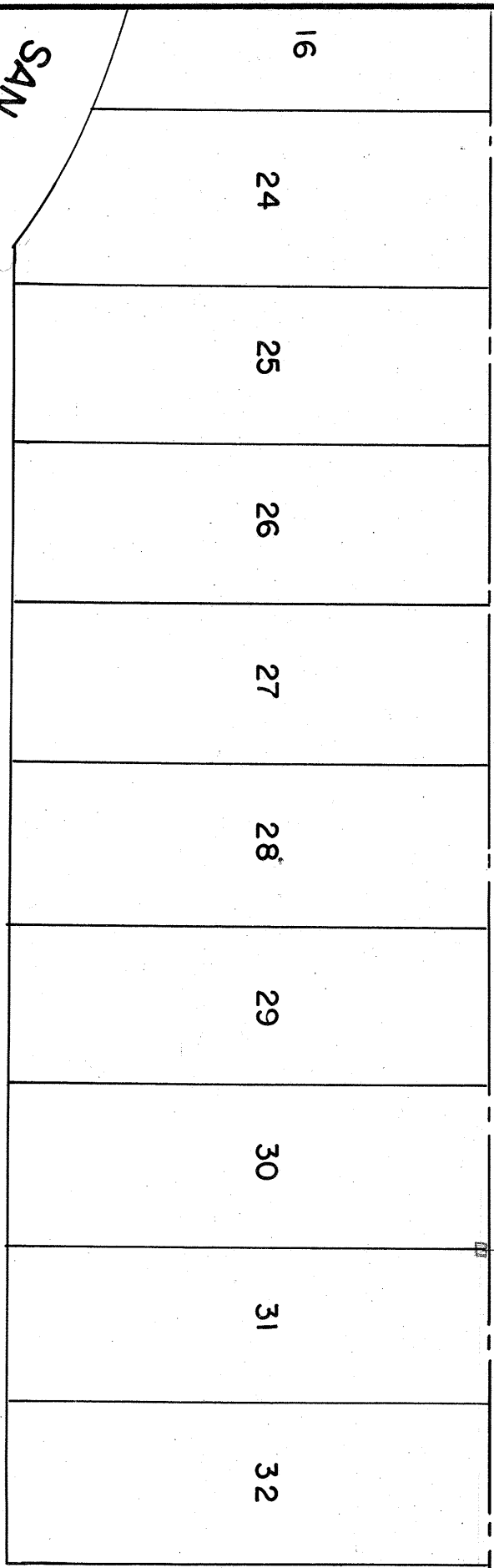
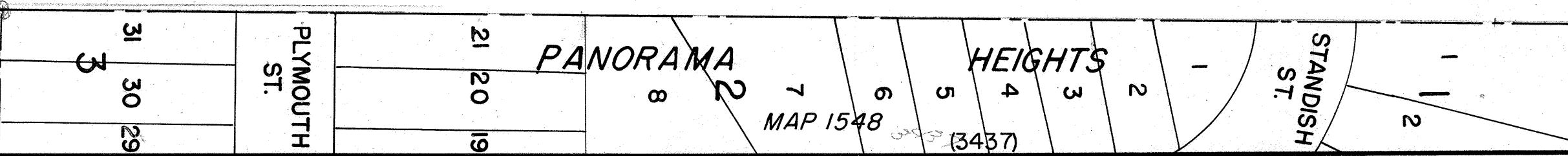


MICROFILMED
JAN 29 1963



(3439)

3439

CITY OF SAN DIEGO
ENGINEERING DEPARTMENT
OCEAN VIEW
SCALE 1" = 50'

(3433) BOULEVARD THE POINT SHEET

REFERENCES

(3432) PLANNING

(3431)

NO. 3440

43 RD.

ST.

COSGROVE VENICE HEIGHTS
PROPOSED (3436)