

13 22  
23

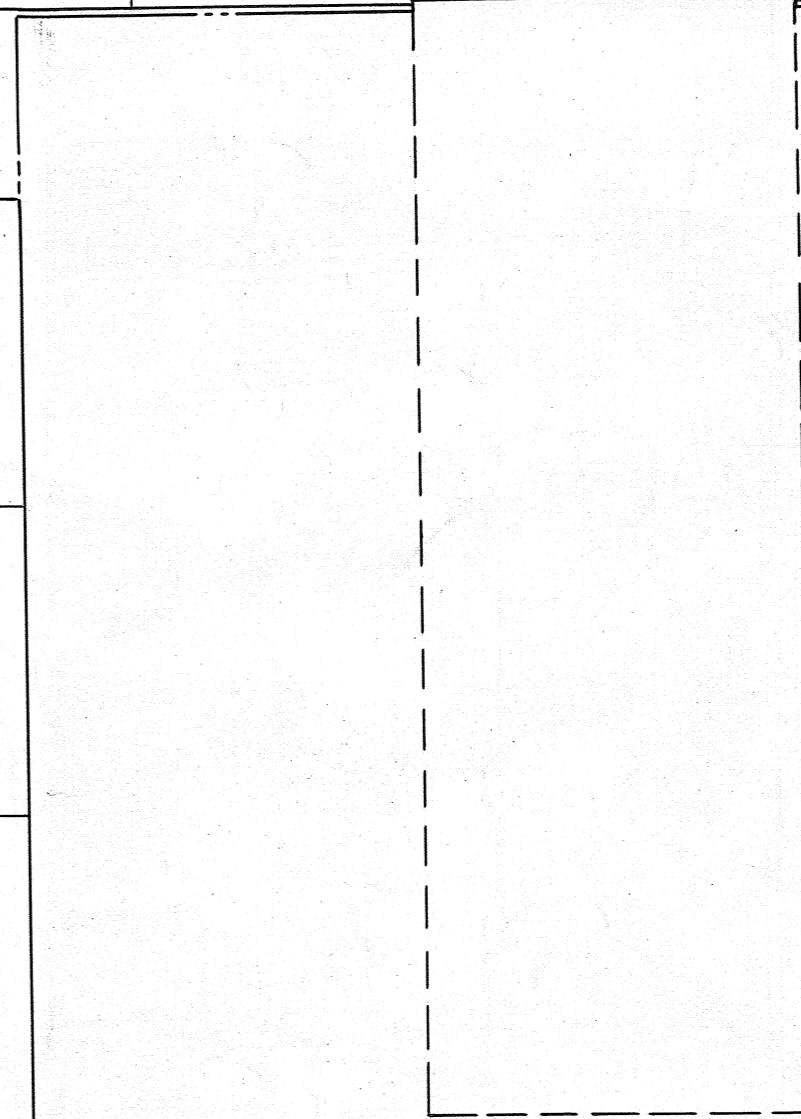
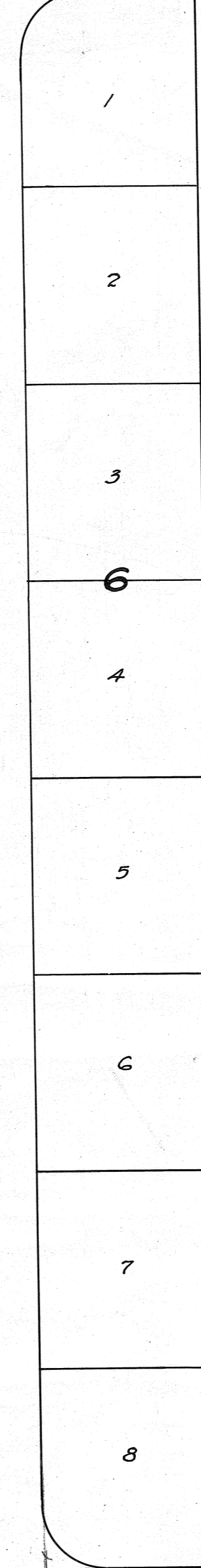
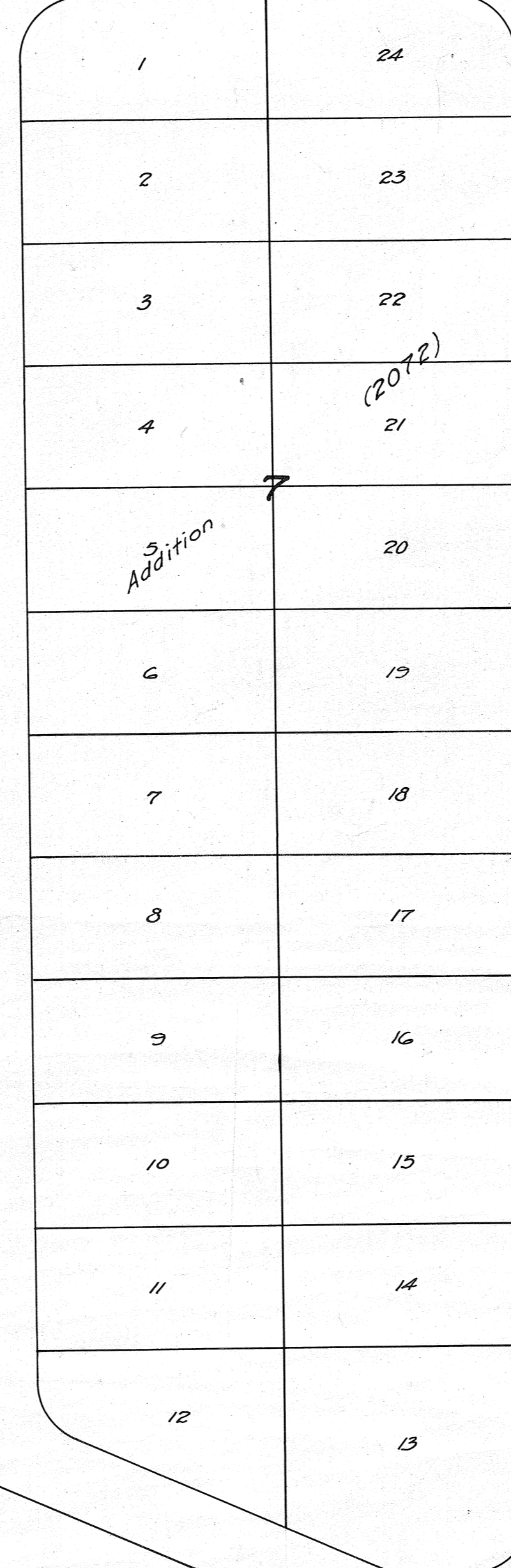
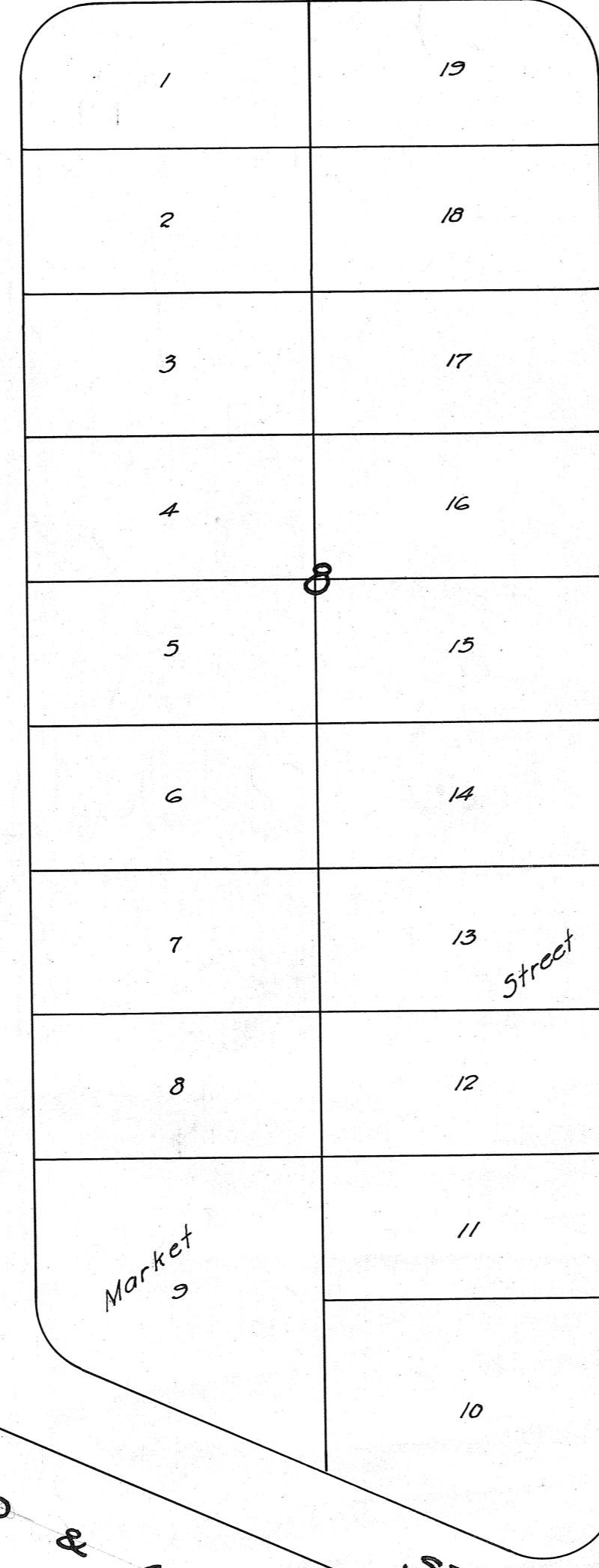
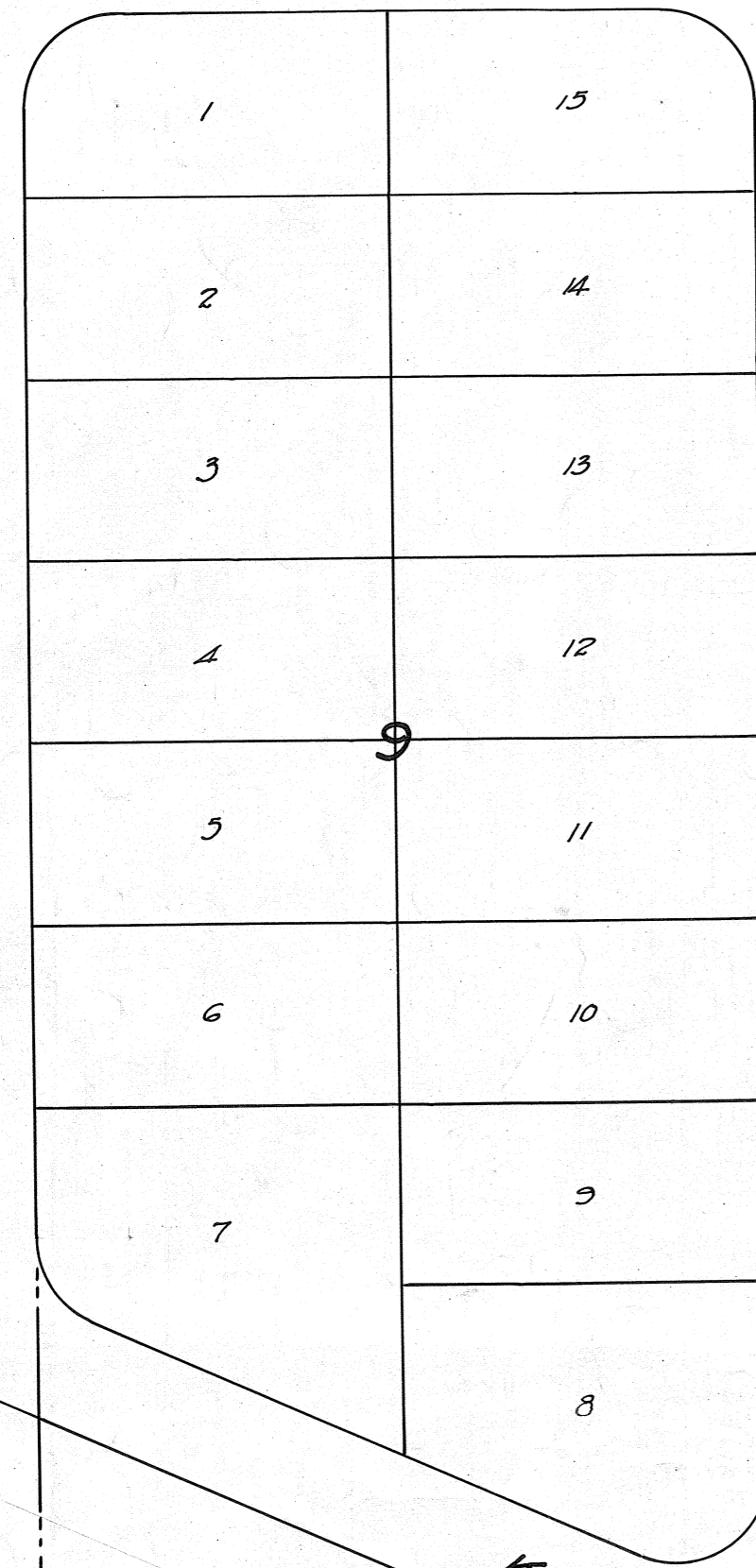
15 14

15 14

12 3 3449 13

18 4 17

15 5 14

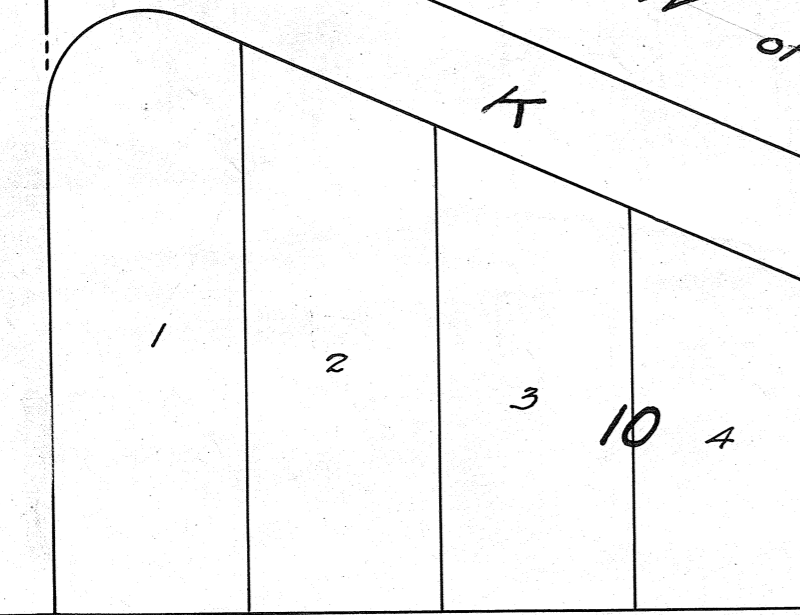


Portion of Lot 38, Ex Mission Lands (283)

Portion of Lot 37 Ex Mission Lands (283)

CITY (SAN DIEGO) 3452

3448



BOUNDARY COUNTY ST.

R of W of S D & A Ry. ST.

CITY (SAN DIEGO) 3450

BOUNDARY COUNTY

46

45 Ex Mission Lands (283)

James C Wallace Sub (1226)

MICROFILMED JAN 29 1983

3442

3441

1774 3450