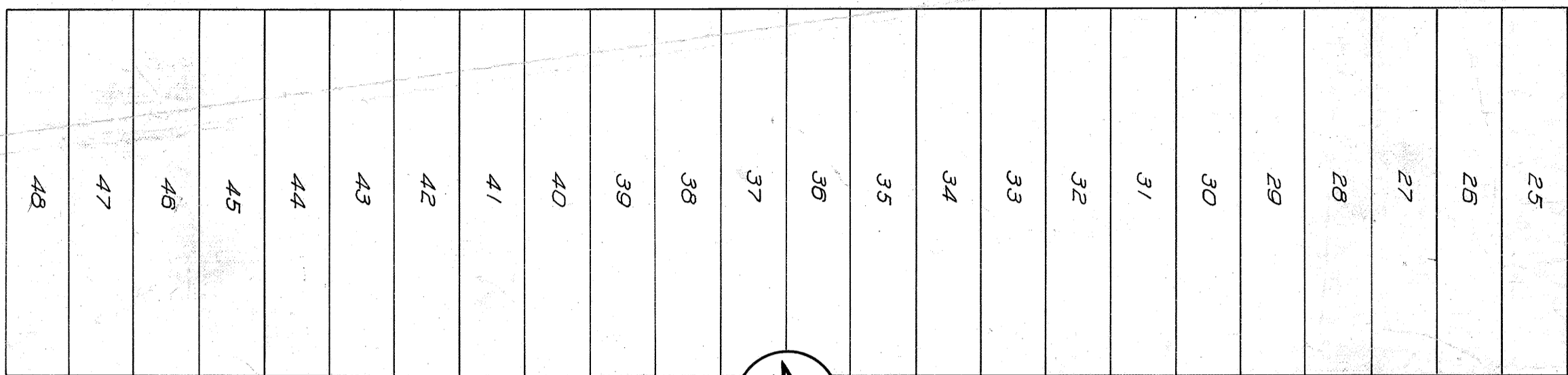


SE COR. OF NE 1/4 OF PL. 1343

SW COR. OF E 1/2 OF NE 1/4 OF P. 1 1343

BOSTON

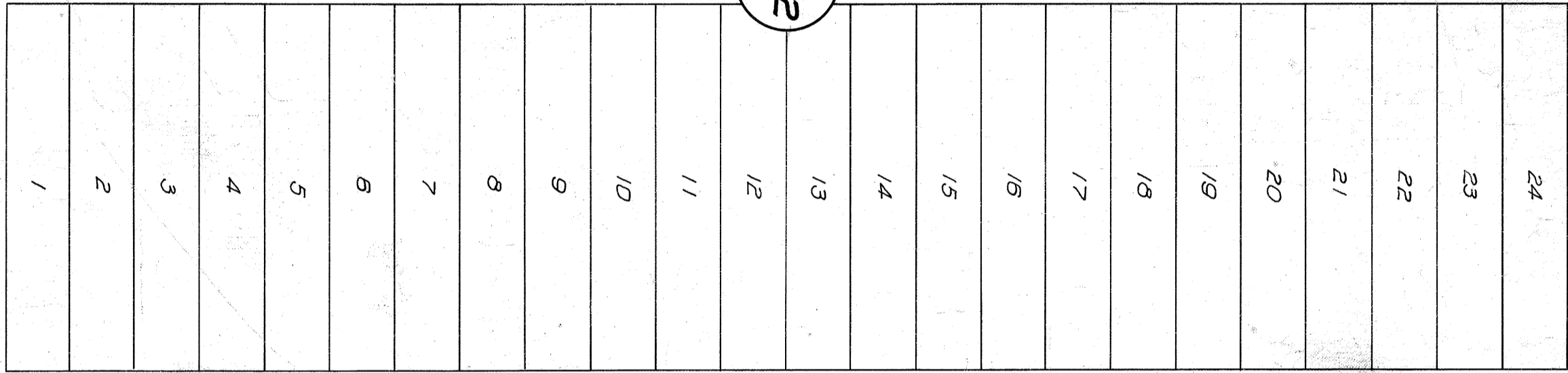
AVE.



397TH

387TH

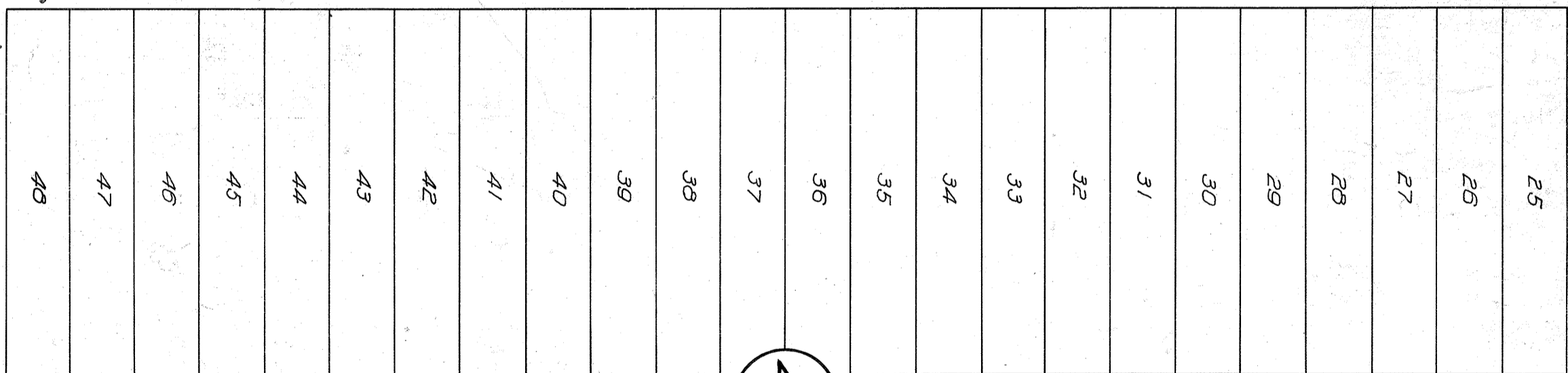
422



390.0'

NEWTON

AVE.

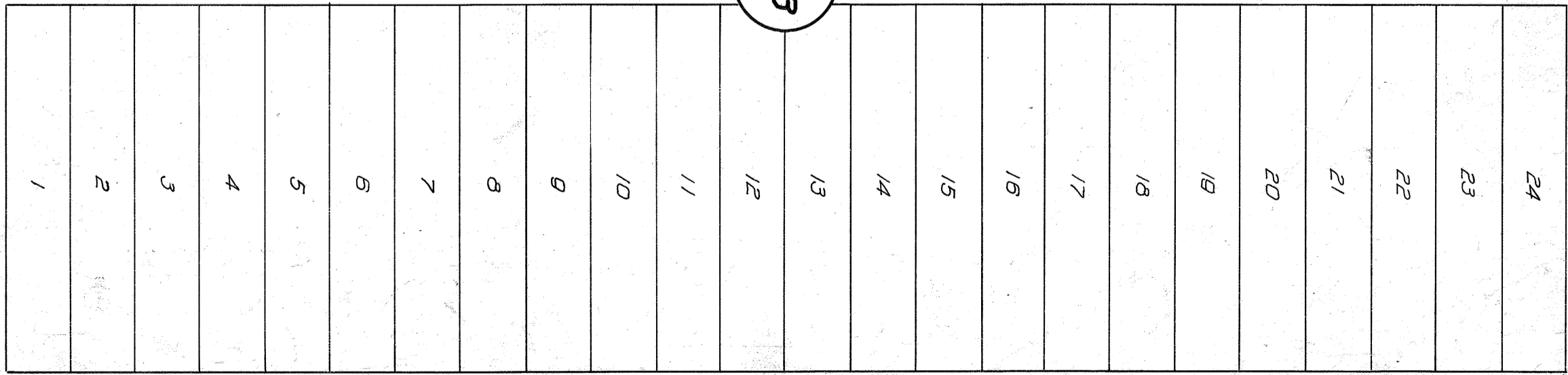


390.0'

ST.

ST.

423



NATIONAL

AVE.

MICROFILMED
JAN 25 1963

4 40TH.

NEWTON

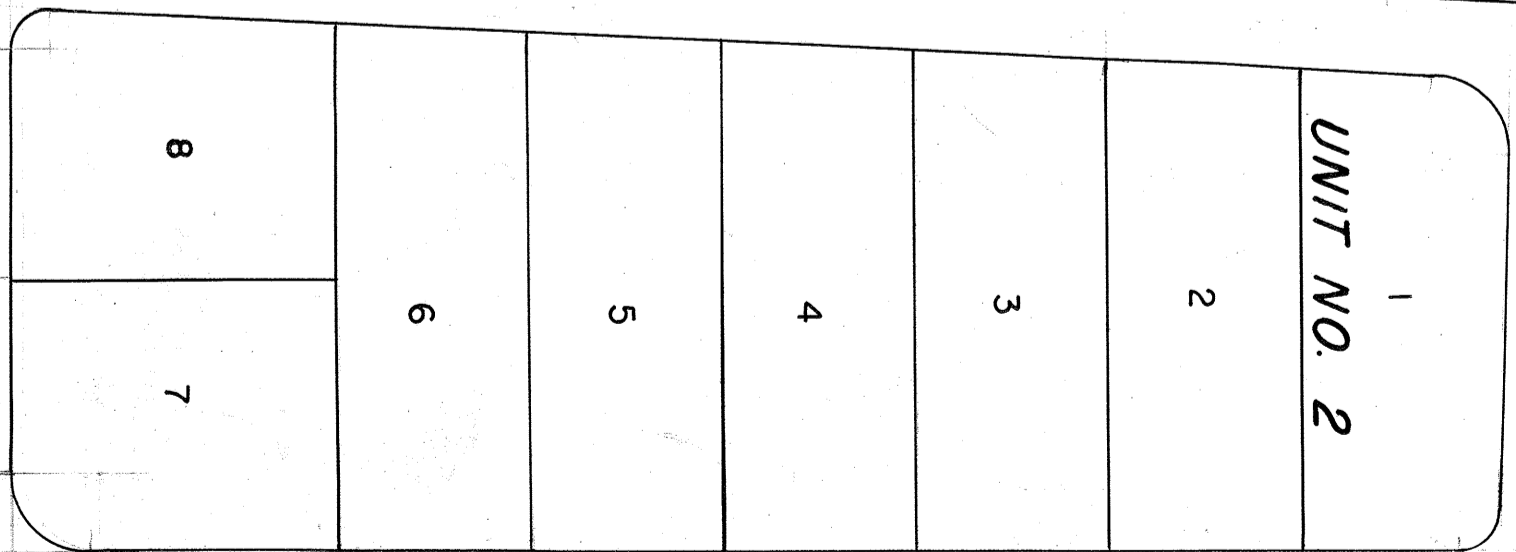
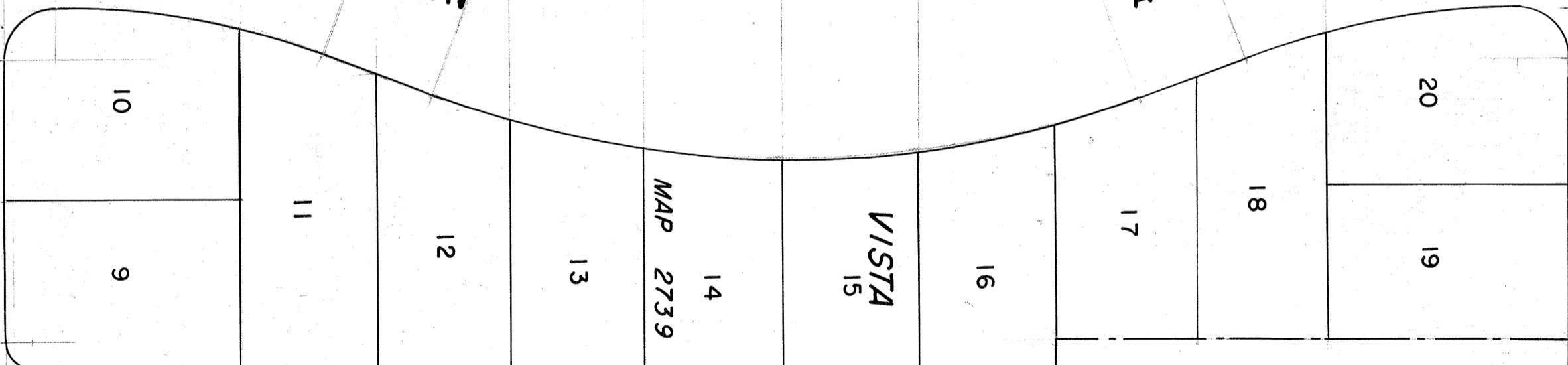
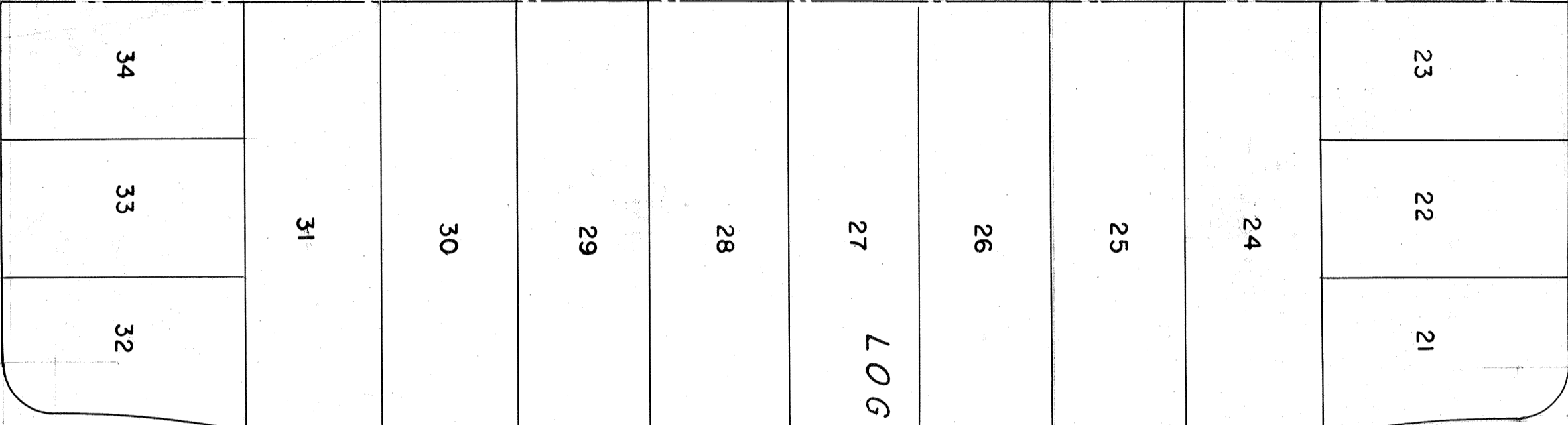
AVE.

LOGAN

VISTA

UNIT NO. 2

MAP 2739



ST.