

KEATING

1	64	13
2		14

1		13
2	71	14
		15
		16

1		13
2		14
3		15
4	79	16
5		17
		18

MICROFILMED
JAN 25 1953

ANDREWS

1		13
2		14
3		15
4		16
5		17
6	65	18
7		19
8		20
9		21
10		22
11		23
12		24

1		13
2		14
3		15
4		16
5		17
6	70	18
7		19
8		20
9		21
10		22
11		23
12		24

3		
4		
5		
6	80	18
7		19
8		20
9		21
10		22
11		23
12		24

WELLBORN

1		13
2		14
3		15
4		16
5		17
6	66	18
7		19
8		20
9		21
10		22
11		23
12		24

1		13
2		14
3		15
4		16
5		17
6	69	18
7		19
8		20
9		21
10		22
11		23
12		24

1		13
2		14
3		15
4		16
5		17
6	81	18
7		19
8		20
9		21
10		22
11		23
12		24

PUTERBAUGH

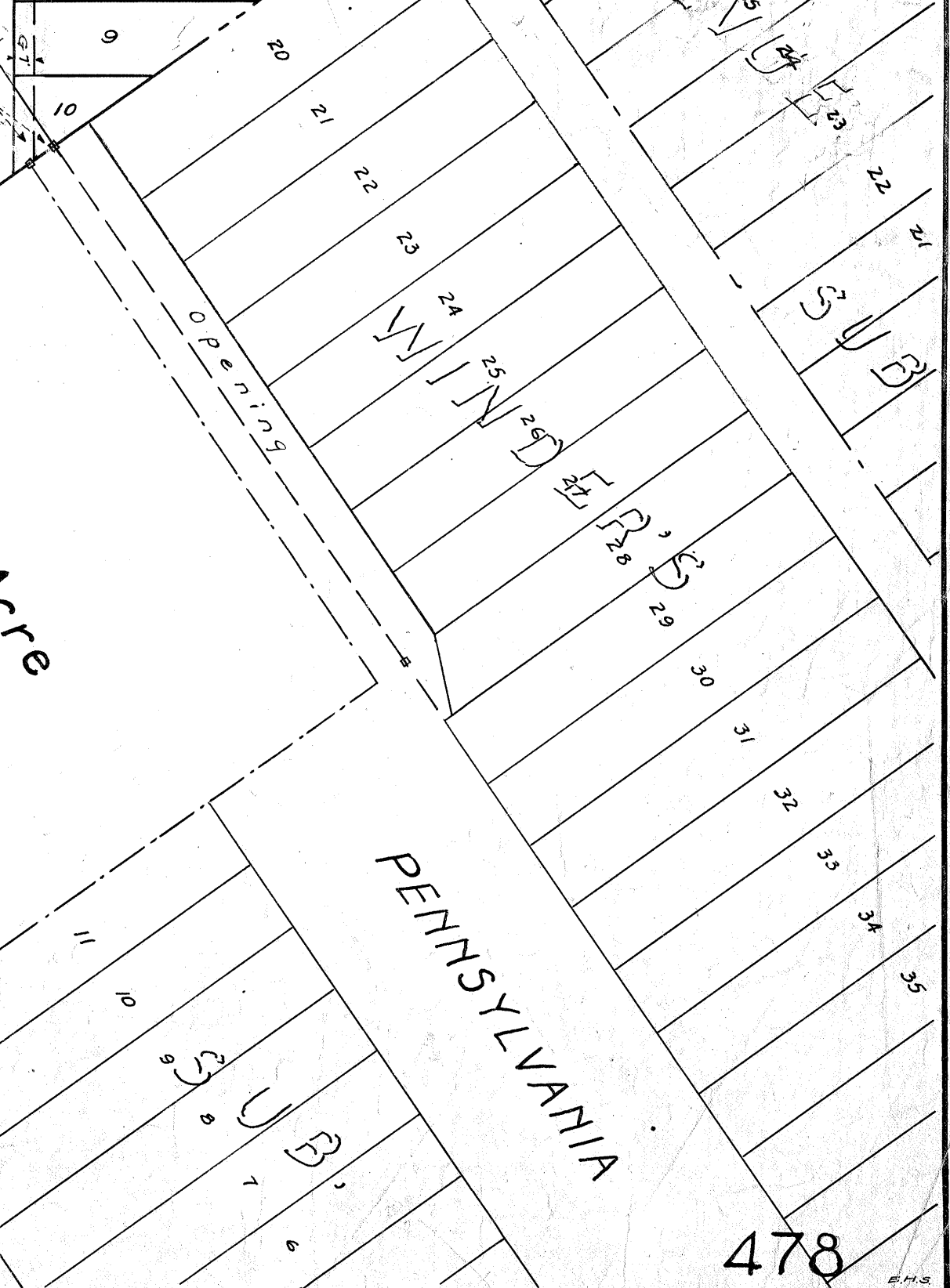
NEALE

CLOSING
Res 32046

1		13
2		14
3		15
4		16
5		17
6	67	18
7		19
8		20
9		21
10		22
11		23
12		24

CLOSING
FREMONT ST.
Res 26137

1		13
2		14
3		15
4		16
5		17
6		18
7		19
8		20
9		21
10		22
11		23
12		24



481

480

477