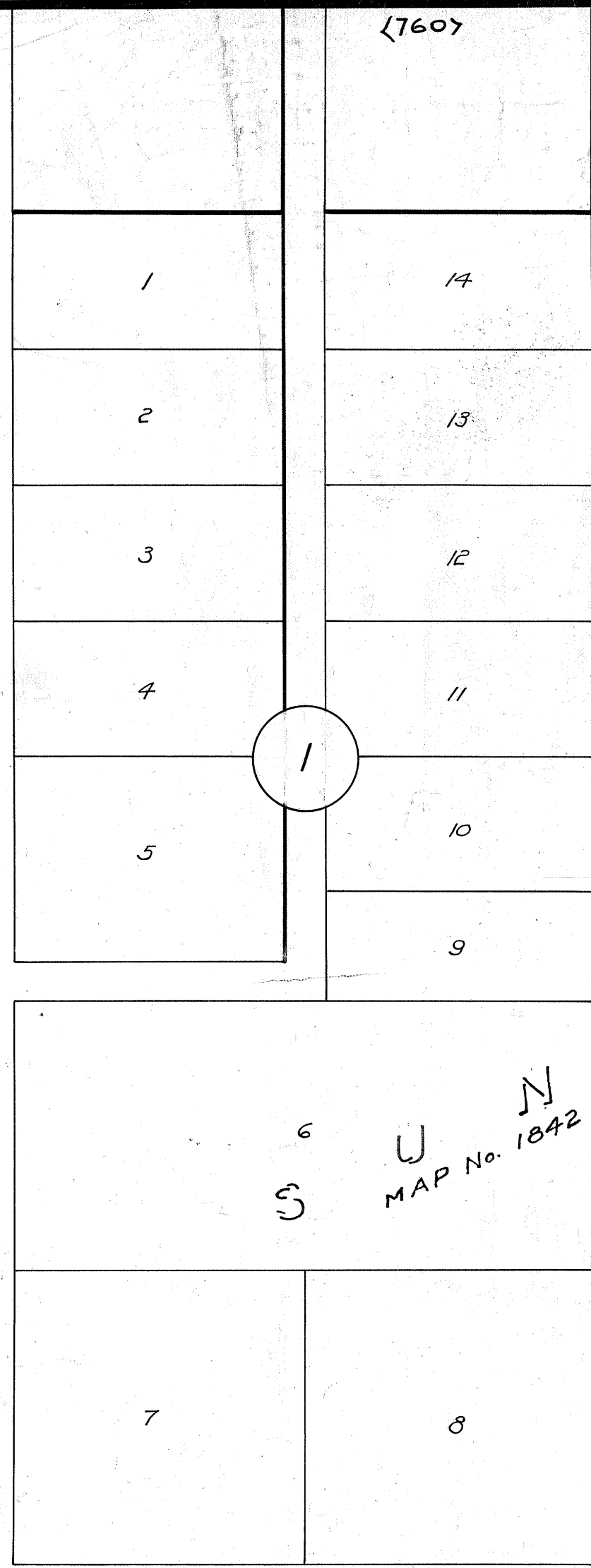
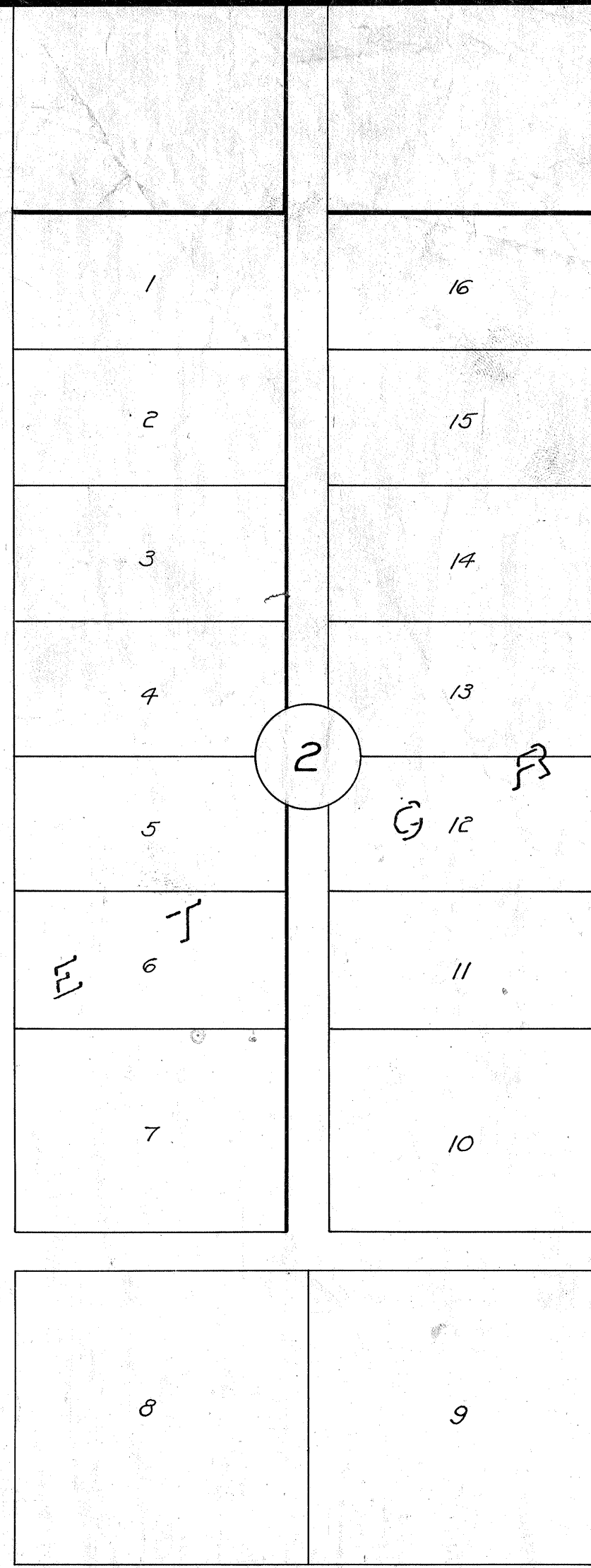


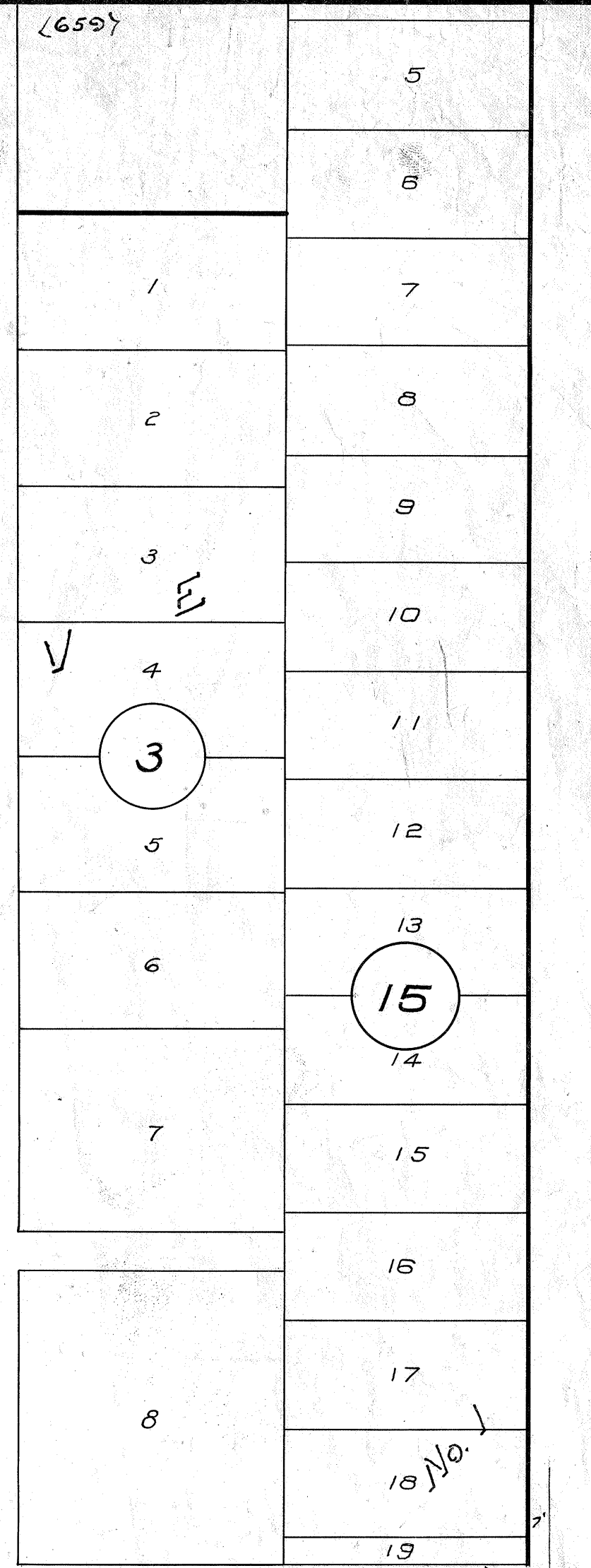
BRIGHTON AVENUE



LONG BRANCH AVENUE



MUIR AVENUE



VOLTAIRE ST.

MICROFILMED
JAN 23 1963

VENICE STREET

30' OPENING

ST. OPENING

(757)

14

A L J MAP No. 1078

A: 189.2'
E: P: 532.01'
E: L: 122.57'

115.33'
R: 502.01'

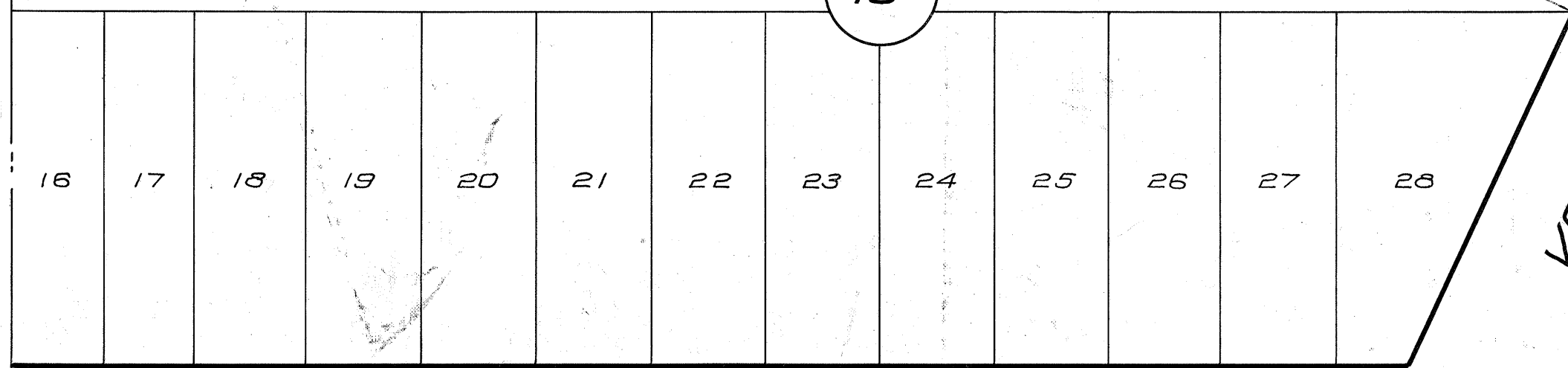
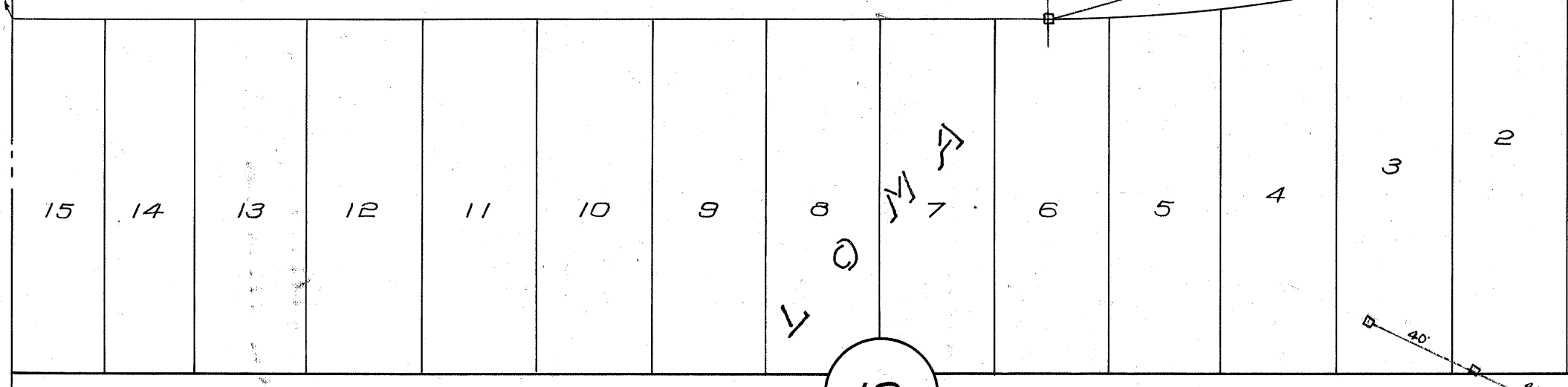
156.05'

MENDOCINO

$\Delta = 31^\circ 32'$
 $R: 520.82'$
 $E: L: 286.64'$

BLVD.

ST.



VOLTAIRE

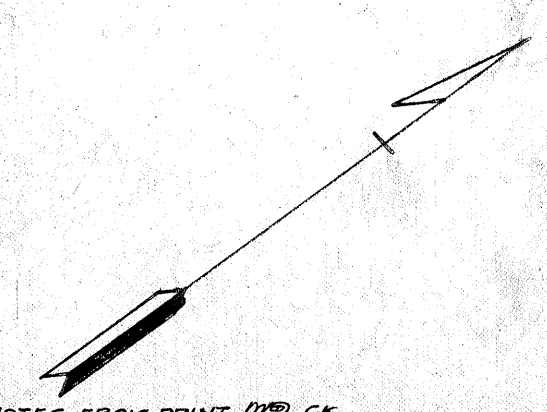
ST.

CATALINA

BLVD.

UDAL ST.

657
(657)



WHITTIER