

P.L. Sewers
1000

1000

LEVEL BOOK

No. 410 T

F.B. 1000

EUGENE DIETZGEN CO.,

Drawing Materials and Surveying Instruments.

NEW YORK.

CHICAGO.

SAN FRANCISCO.

TABLES FOR EXCAVATIONS AND EMBANKMENTS.
 DISTANCES FROM CENTER OF ROADWAY FOR CROSS-SECTIONING.
 ROADWAY 20 FEET WIDE. SIDE SLOPES 1 TO 1.
 FOR SINGLE TRACK EXCAVATION.

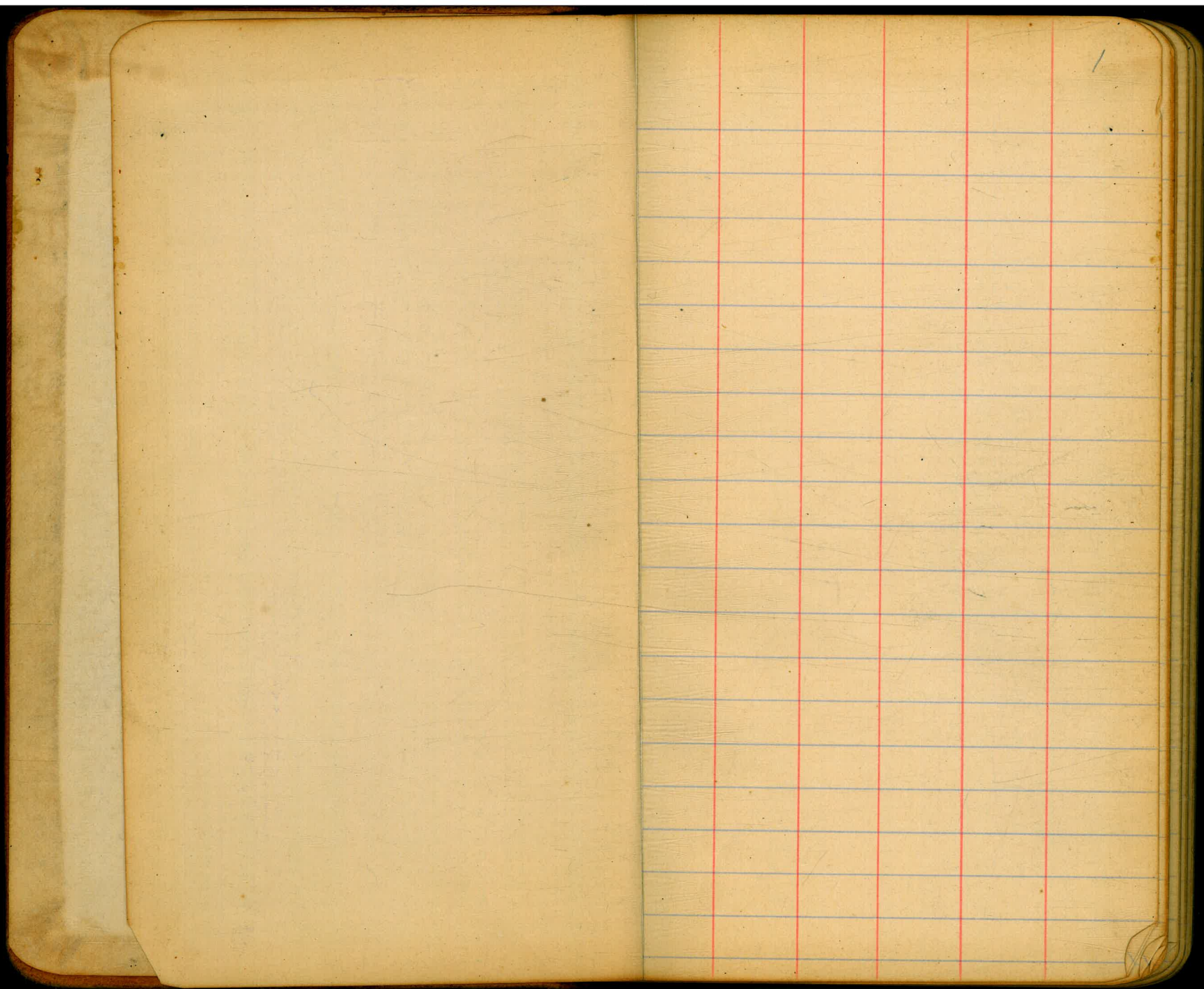
Copyright, 1902. No. 39340.

	0	.1	.2	.3	.4	.5	.6	.7	.8	.9	
0	10.0	10.1	10.2	10.3	10.4	10.5	10.6	10.7	10.8	10.9	0
1	11.0	11.1	11.2	11.3	11.4	11.5	11.6	11.7	11.8	11.9	1
2	12.0	12.1	12.2	12.3	12.4	12.5	12.6	12.7	12.8	12.9	2
3	13.0	13.1	13.2	13.3	13.4	13.5	13.6	13.7	13.8	13.9	3
4	14.0	14.1	14.2	14.3	14.4	14.5	14.6	14.7	14.8	14.9	4
5	15.0	15.1	15.2	15.3	15.4	15.5	15.6	15.7	15.8	15.9	5
6	16.0	16.1	16.2	16.3	16.4	16.5	16.6	16.7	16.8	16.9	6
7	17.0	17.1	17.2	17.3	17.4	17.5	17.6	17.7	17.8	17.9	7
8	18.0	18.1	18.2	18.3	18.4	18.5	18.6	18.7	18.8	18.9	8
9	19.0	19.1	19.2	19.3	19.4	19.5	19.6	19.7	19.8	19.9	9
10	20.0	20.1	20.2	20.3	20.4	20.5	20.6	20.7	20.8	20.9	10
11	21.0	21.1	21.2	21.3	21.4	21.5	21.6	21.7	21.8	21.9	11
12	22.0	22.1	22.2	22.3	22.4	22.5	22.6	22.7	22.8	22.9	12
13	23.0	23.1	23.2	23.3	23.4	23.5	23.6	23.7	23.8	23.9	13
14	24.0	24.1	24.2	24.3	24.4	24.5	24.6	24.7	24.8	24.9	14
15	25.0	25.1	25.2	25.3	25.4	25.5	25.6	25.7	25.8	25.9	15
16	26.0	26.1	26.2	26.3	26.4	26.5	26.6	26.7	26.8	26.9	16
17	27.0	27.1	27.2	27.3	27.4	27.5	27.6	27.7	27.8	27.9	17
18	28.0	28.1	28.2	28.3	28.4	28.5	28.6	28.7	28.8	28.9	18
19	29.0	29.1	29.2	29.3	29.4	29.5	29.6	29.7	29.8	29.9	19
20	30.0	30.1	30.2	30.3	30.4	30.5	30.6	30.7	30.8	30.9	20
21	31.0	31.1	31.2	31.3	31.4	31.5	31.6	31.7	31.8	31.9	21
22	32.0	32.1	32.2	32.3	32.4	32.5	32.6	32.7	32.8	32.9	22
23	33.0	33.1	33.2	33.3	33.4	33.5	33.6	33.7	33.8	33.9	23
24	34.0	34.1	34.2	34.3	34.4	34.5	34.6	34.7	34.8	34.9	24
25	35.0	35.1	35.2	35.3	35.4	35.5	35.6	35.7	35.8	35.9	25
26	36.0	36.1	36.2	36.3	36.4	36.5	36.6	36.7	36.8	36.9	26
27	37.0	37.1	37.2	37.3	37.4	37.5	37.6	37.7	37.8	37.9	27
28	38.0	38.1	38.2	38.3	38.4	38.5	38.6	38.7	38.8	38.9	28
29	39.0	39.1	39.2	39.3	39.4	39.5	39.6	39.7	39.8	39.9	29
30	40.0	40.1	40.2	40.3	40.4	40.5	40.6	40.7	40.8	40.9	30
31	41.0	41.1	41.2	41.3	41.4	41.5	41.6	41.7	41.8	41.9	31
32	42.0	42.1	42.2	42.3	42.4	42.5	42.6	42.7	42.8	42.9	32
33	43.0	43.1	43.2	43.3	43.4	43.5	43.6	43.7	43.8	43.9	33
34	44.0	44.1	44.2	44.3	44.4	44.5	44.6	44.7	44.8	44.9	34
35	45.0	45.1	45.2	45.3	45.4	45.5	45.6	45.7	45.8	45.9	35
36	46.0	46.1	46.2	46.3	46.4	46.5	46.6	46.7	46.8	46.9	36
37	47.0	47.1	47.2	47.3	47.4	47.5	47.6	47.7	47.8	47.9	37
38	48.0	48.1	48.2	48.3	48.4	48.5	48.6	48.7	48.8	48.9	38
39	49.0	49.1	49.2	49.3	49.4	49.5	49.6	49.7	49.8	49.9	39
40	50.0	50.1	50.2	50.3	50.4	50.5	50.6	50.7	50.8	50.9	40

Calculated by F. E. Paradis, C. E.

MICROFILMED

DEC 16 1964



Levels @ Alley bet Bangor St & Bow Ave from
 sta 20+96 "C" Line (Book 941 Page 28) South
 for 7964 or 25' north of H.L. Jennings

B.M.	1.12	168.62		167.50
T.P.	0.95	159.30	10.27	158.35
2+0 - sta 20+96			10.69	148.6
+15			8.4	150.9
+21			9.8	149.5
+29			14.1	145.2
+44			13.8	145.5
+47			11.2	148.1
+50			10.6	148.7
+58			7.7	151.6
+75			3.6	155.7
T.P.	12.77	171.78	0.29	159.01
+88			9.3	162.5
1			1.1	170.7
T.P.	12.47	183.88	0.37	171.41
+25			11.5	182.4
T.P.	12.68	196.40	0.16	183.72
T.P.	12.38	208.49	0.29	196.11
+50			10.5	198.0
T.P.	12.33	220.39	0.43	208.06

Sheet 42

May 23 1916
 Dunkle
 Sham
 Barker

				220.39
+75			4.7	215.7
T.P.	12.61	232.58	0.42	219.97
+90			9.6	223.0
2			6.1	226.5
T.P.	13.04	245.47	0.15	232.43
+75			12.3	233.2
+30			10.7	234.8
+45			8.8	236.7
+50			6.9	238.6
+55			5.0	240.5
+75			1.5	244.0
T.P.	14.70	256.91	0.26	245.21
3			9.8	247.1
+25			7.2	249.7
+50			5.1	251.8
+75			3.1	253.8
4			1.3	255.6
T.P.	11.79	267.85	0.85	256.06
+50			9.8	258.1

267.85

5+0		8.8	259.1
+50		7.2	260.7
6		5.0	262.9
+50		3.1	264.8
T.P.	2.59	273.64	2.80 265.05
7		7.6	266.0
+50		6.1	267.5
+96 ⁴		5.23	268.4

2.70 270.34

Rico st

SPT Intal

Levels 4 Alley bet. John st & Bow Ave
from sta 25+16.5 C Line (Book 991 page 28) ³
East for 250'

B.M.	10.84	178.34		167.50
0+0			7.29	171.04
+35			2.0	170.3
+50			6.2	172.1
+65			2.9	175.4
T.P.	11.46	179.56	0.24	178.10
+75			10.9	178.7
+80			8.9	180.7
1			0.3	189.3
T.P.	11.28	200.48	0.36	189.20
+95			0.3	200.2
T.P.	11.87	212.12	0.23	200.25
+50			5.4	206.7
+60			0.7	211.4
T.P.	12.51	224.32	0.31	211.31
467			5.0	219.3
+75			3.5	220.8
T.P.	12.63	236.64	0.31	224.01
2			8.0	228.6
+25			1.5	235.1
T.P.	9.25	245.13	0.76	235.88
+50			5.70	239.4

Sheet 42

Levels of Alley bet John & Jennings Sts from
Sta 29+12.3 "C" Line East for 352'

4

B.M.	12.74	203.44		190.70				249.94	
+0			2.14	201.30	2+36		12.8	237.1	
T.P.	10.63	213.60	0.47	202.97	+39		4.6	205.3	
+50			11.1	202.5	+50		1.1	208.8	
+62			10.7	202.9	T.P.	10.60	260.17	0.37	249.57
+75			2.9	210.4	+55		9.2	251.0	
T.P.	12.32	225.91	0.01	213.59	+75		8.0	252.2	
1			7.1	218.8	+83		7.7	252.5	
+13			1.8	224.1	+94		11.3	248.9	
T.P.	11.52	237.12	0.31	225.60	B.		9.9	250.3	
+25			9.5	227.6	+05		9.0	251.2	
+50			6.1	231.0	+06		6.8	253.4	
+54			6.8	230.3	+25		15.5	254.9	
+55			8.3	228.8	+52		2.62	257.55	
+70			14.2	222.9					
+86			15.0	222.1					
+93			12.3	224.8					
2			11.9	225.2					
+10			7.1	230.0					
+12			9.2	227.9					
+18			4.2	232.9					
+25			2.7	234.4					
T.P.	12.93	249.94	0.11	237.01					

Sheet 42

Levels of Alley bet John & Jennings sts
 from sta 29+50.9 "C" Line West for 302
 5 Dunkle
 17 Shan
 16 Banker

B.M.	5.80	207.10		201.30
0+0-29+50.9 "C" Line		3.6		203.5
+50		7.7		199.4
+90		9.0		198.1
+96		6.3		200.8
1		5.8		201.3
T.P.	13.10	219.95	0.25	206.85
+25		12.2		207.8
T.P.	12.54	232.28	0.21	219.74
+50		12.1		220.2
T.P.	12.32	244.25	0.35	231.93
+75		11.7		232.6
+91		0.9		243.4
T.P.	12.76	256.71	0.30	243.95
2		8.9		246.8
+25		4.8		251.9
+50		1.8		254.9
T.P.	5.81	261.19	1.33	255.38
3+02		3.58		257.6

Sheet 42

10.72 = 50.17

Levels of Alley bet John & Inez sts from sta 26+26
 "C" Line West for 367

B.M.	17.23	183.27		171.04
0+0		3.3		180.0
+47		3.8		179.5
+50		7.7		175.6
+55		3.8		179.5
+62		3.3		179.5
+64		4.3		179.0
+90		4.3		179.0
1		6.7		181.6
T.P.	11.23	194.70	0.40	182.87
+25		8.7		186.0
+50		3.0		191.7
T.P.	12.11	206.39	0.42	199.28
+75		6.8		199.6
T.P.	12.19	218.09	0.49	205.90
2		9.3		208.8
T.P.	12.25	229.95	0.39	217.70
+25		11.7		218.3
T.P.	12.50	247.13	0.32	229.63

Sheet 42

Levels of Alley bet Inez & T. Allot from 3/2
 22" 150" line west for 627'

6

	242.13		
2+50		11.2	230.9
+63		5.0	237.1
+75		1.7	240.4
T.P.	11.87	253.58	0.42 241.71
3		8.6	245.0
+50 cut 8'		3.7	249.9
+67		3.14	250.44

126	249.59	12.25	241.33
		15.2	227.4

B.M.	10.85	169.20	158.35
0+0-st 22" 150" line	10.85		158.3
+50		7.4	161.8
1		3.8	165.4
T.P.	11.44	180.46	0.18 169.02
+50		11.3	169.2
2		6.6	173.9
T.P.	12.96	193.12	0.29 180.17
+50 cut 8'		10.9	182.2
+75		7.0	186.1
+90		4.2	188.9
3		0.5	192.6
T.P.	12.57	205.42	0.28 192.85
+21		5.9	199.5
+31		4.6	200.8
+42		0.5	204.9
T.P.	12.23	217.28	0.37 205.05
+50		11.2	206.1
+54		10.4	206.9
+60		7.7	209.6

Sheet 42

	217.28		
3+75		4.2	313.1
4 cut 12'		1.6	215.7
T.P.	11.46	228.48	0.26 217.02
+20		10.8	217.7
+50		7.9	220.6
5		3.4	225.1
T.P.	4.95	231.97	1.46 227.02
+50		3.3	228.7
6		3.7	228.3
+27		4.5	227.5

Levels of Spatic from sta 6+47.4
 intersection of Rice St or Sta 5+15.3

"C" Line to 7th
 Dunkle
 9th St
 10th St
 16th St
 Bunker

B.M.	10.57	31.95	
T.P.	12.19	43.47	0.67 31.22
T.P.	11.68	54.87	0.22 43.19
T.P.	12.43	66.91	0.39 54.48
0+0 = Sta 6+47.4 "C" Line			8.4 58.5
+05			3.5 58.4
+07			4.5 62.4
+25			3.0 63.9
T.P.	12.68	79.12	0.47 66.44
+43			11.8 67.3
+50			9.6 69.5
+75			2.5 76.6
T.P.	12.60	91.55	0.17 78.95
+88			11.0 80.6
1			8.4 83.2
+251			4.6 87.0
+50			1.0 90.6
T.P.	12.40	103.63	0.32 91.23
+75			9.5 94.1
2			6.0 97.6

21.32 old elev - wheel
 21.38 new elev - west

Sheet 40

Levels & Pice st from & Spathic or sta 5715²
 opp page west fol 870' 8

	103.63			
2+25		2.1	181.5	
T.P.	12.30	115.59	0.34	103.29
+50		10.6	105.0	
+75		6.7	108.9	
3		3.5	112.1	
T.P.	12.38	127.57	0.40	115.19
+50		10.3	117.3	
+75		7.2	120.4	
A		2.7	124.9	
T.P.	12.22	139.49	0.30	127.27
+25		10.7	128.8	
+50		5.9	133.6	
+75		2.3	137.2	
T.P.	12.43	151.76	0.21	139.28
5		11.2	140.6	
+15 ² Int & Pice st		9.54	142.22	

				151.76
0+0 = sta 5+15 ² Spathic		9.54	142.2	
+25		5.2	146.6	
+50		1.4	150.4	
T.P.	12.66	164.21	0.21	151.55
+75		9.9	154.3	
1		8.8	155.4	
+92		11.3	152.9	
+50		9.3	154.9	
+75		4.5	159.7	
T.P.	12.67	176.52	0.36	163.85
2		9.2	167.3	
+25		4.0	172.5	
T.P.	12.57	188.85	0.24	176.28
+50		10.5	178.4	
+75		4.7	184.2	
T.P.	12.53	201.02	0.36	188.49
3		12.0	189.0	
+25		7.8	193.2	
+50		4.4	196.6	

Sheet 41

20102

3+54		4.2	197.8
+55		3.1	197.9
+75		0.0	201.0
T.P.	12.69	213.52	0.19 200.83
4		8.5	205.0
+25		3.7	209.8
T.P.	12.54	225.77	0.29 213.23
+50		10.4	215.1
+75		6.1	219.7
5		2.3	223.5
T.P.	12.48	237.95	0.30 225.47
+25		10.6	227.1
+50		6.8	231.2
+75		3.0	235.0
T.P.	11.92	249.57	0.30 237.65
6		11.9	237.7
+25		9.7	239.9
+50		6.8	242.8
+75		4.9	244.7

9

249.57

7+0		2.6	247.0
T.P.	8.91	257.91	0.57 249.00
+25		8.6	249.3
+50 cut 8'		6.8	251.1
8		5.9	252.0
+50 cut 7'		6.3	251.6
+70		5.6	252.3

Levels - Lot Line bet Hemetite & Spatite
from Sta 44849 "C" Line South for 648'

B.M.	11.97	61.39	17.12	
0+0		11.97	49.4	
+50		8.3	53.1	
+65		9.0	52.4	
+68		11.1	50.3	
+72		9.2	52.2	
+92		7.5	52.9	
1		7.5	53.9	
+15		6.1	55.3	
+25		4.7	56.7	
T.P.	12.21	73.43	0.17	61.22
+50		11.2	62.2	
2		6.9	66.5	
+50		3.6	69.8	
+75		1.5	71.9	
T.P.	12.16	85.34	0.25	73.18
3		10.6	74.7	
+25		8.2	77.1	
+50		5.6	79.7	

Sheet 40

		85.34		
+75		3.2	82.1	
T.P.	12.24	97.37	0.21	85.13
4		11.9	85.5	
+25		7.4	90.0	
+50		3.4	94.0	
T.P.	12.45	109.44	0.38	96.99
+75		11.6	97.8	
5		8.0	101.4	
+25		4.1	105.3	
+50		1.1	108.3	
T.P.	6.28	115.55	0.17	109.27
+75		5.0	110.6	
6		4.6	111.0	
+22		6.0	109.6	
+32		5.7	109.9	
1				
+48		4.82	110.7	

10

ends of Hemetite st from sta 3+22" C' line
south for 1108.3' onto & Spathe st in Golden
Park Add

B.M.	11.62	50.17	38.55
0+0 = sta 3+22" C' line	11.62		38.6
+50		10.0	40.2
1		8.4	41.8
+50		8.8	41.4
2		8.9	41.3
+50		9.4	40.8
+81 cut 5'		9.8	40.4
3		7.4	42.8
+20		6.8	43.4
+42		2.4	47.8
+50		1.4	48.8
T.P.	12.56	62.54	0.19 49.98
4		8.8	53.7
+25		4.2	58.3
+50		3.2	59.3
5 cut 7'		0.7	61.8
T.P.	12.16	74.16	0.54 62.00
+50		2.6	65.6

Sheet 40

		74.16		
5+80			6.3	67.9
6			5.3	68.9
+50 cut 8'			0.5	73.7
T.P.	11.60	25.27	0.49	73.67
7			8.4	76.9
7+11			7.4	77.9
+37			12.7	72.6
+50			7.2	77.1
+63			2.0	83.3
T.P.	12.70	97.60	0.37	84.90
+75			10.8	86.8
8			6.1	91.5
+25			3.5	94.1
T.P.	12.70	109.96	0.34	97.26
+50			10.7	99.3
+75			5.9	104.1
9			3.8	106.2
+25			1.0	109.0
T.P.	8.17	117.89	0.14	109.82

	117.99			
9+50 cut 15'		6.5	111.5	
+75		6.5	111.5	
10		9.4	108.6	
+25		14.4	103.6	
+40		16.7	101.3	
+50		14.0	104.0	
+75		5.0	103.0	
+85		2.3	115.9	
T.P.	1196	128.89	106	116.93
11			11.8	117.1
+08 ³ = Φ Spathe			10.77	118.12

Levels of SPATHIC STAS shown in Golden Park 12
Add from Φ Hemetite or sta 111082 opp page
North for 301.5' to Φ Alley bet. Lucinda & Rice

128.89

0+0 = sta 111082 ³			10.77	118.1
+25			10.6	118.3
+50			12.0	116.9
+71			15.9	113.0
+75			15.2	113.7
1			13.5	115.4
+75			9.0	119.9
+79 ⁵ Φ Lucinda			7.97	120.92
+50			4.4	124.5
+75			0.9	128.0
T.P.	1083	137.95	0.27	128.62
2			2.9	130.6
+25			6.7	132.8
+50			5.61	133.9
3			3.6	135.9
+01 ³ Φ Alley bet Lucinda & Rice			3.70	135.25

Sheet 41

Levels of Alley bet. Lucinda & Rice from E
Spathic West for

B.M.	12.19	147.94		135.75
0+0 = E Spathic			12.19	135.8
+25			7.8	140.1
+50			4.0	143.9
T.P.	12.54	160.17	0.31	147.63
+75			10.7	149.5
1			3.4	156.8
T.P.	12.48	172.40	0.25	159.2
+25			9.8	162.6
+50			4.2	168.2
T.P.	12.52	184.68	0.24	172.16
+75			11.5	173.2
2			7.8	176.9
+25			3.8	180.9
+50			0.2	184.5
T.P.	12.21	196.80	0.09	184.59
+75			7.1	189.7
3			1.4	195.4
T.P.	12.52	209.18	0.14	196.66

Sheet 41

13

				209.18	
+25				8.2	201.0
+50				2.4	206.8
T.P.	12.17	221.05	0.30	208.88	
+75				10.7	210.4
4				6.4	214.7
+19				2.5	218.6
+25				2.2	218.9
+29				2.1	219.0
T.P.	12.24	232.66	0.63	220.42	
+50				8.9	223.8
+75				4.2	228.5
5				0.8	231.9
T.P.	12.04	244.44	0.26	232.40	
+75				9.2	235.2
+35				8.2	236.2
+50				5.4	239.0
+75				0.8	243.6
T.P.	12.42	256.60	0.26	244.8	
6				8.5	248.1
+12				6.5	250.1

		256.60		
6+25			5.4	251.2
+50			3.7	252.9
+75			1.8	254.8
T.P.	12.25	268.59	0.26	256.34
7			11.9	256.7
+25			10.2	258.4
+50			8.1	260.5
+75			6.2	262.4
8			4.3	264.3
+25			2.9	265.7
+40			2.39	266.20

Levels of Lucinda St from E Spathic St west 14
for 840'

B.M.	12.07	132.99		120.92
0+0 Sta	1429 ⁵	Spathic	12.07	120.9
+10			10.5	122.5
+25			6.2	126.8
T.P.	12.38	145.08	0.29	132.70
+50			9.1	136.0
+75			3.7	141.4
T.P.	12.19	156.24	0.43	144.65
1			10.9	145.9
+25			5.9	150.9
+50			0.7	156.1
T.P.	12.13	168.79	0.18	156.66
+75			6.7	162.1
2			1.0	167.8
T.P.	12.22	180.74	0.27	168.52
+25			6.7	174.0
+50			0.7	180.0
T.P.	12.47	192.91	0.30	180.44
+75			7.4	185.5

Sheet 41

		192.91		
3+0			2.4	190.5
T.P.	12.21	204.91	0.21	192.70
+25			10.4	194.5
+38			7.8	197.1
+50			6.5	198.4
+75			3.5	201.4
T.P.	11.96	216.63	0.24	204.67
4			12.1	204.5
+25			3.3	208.3
+50			4.7	211.9
+54			4.1	212.5
+57			2.1	214.5
+75			1.2	215.4
T.P.	12.33	228.91	0.55	216.08
5			8.1	220.3
+25			2.6	225.8
T.P.	12.42	240.58	0.25	228.16
+50			10.3	230.3
+75			5.2	235.4

15

				240.58
6+0			0.5	240.1
T.P.	12.28	252.62	0.24	240.34
+25			8.0	244.6
+50			3.7	248.9
T.P.	12.12	264.29	0.45	252.17
7			8.7	255.6
+50			2.5	261.8
T.P.	10.54	274.48	0.35	263.94
+75			9.7	264.8
8			6.1	268.4
+40			3.6	270.9

Levels Rosecrans st from sta 0+0 "C" line
 (Book 9A1 Page 28) south for 1133 = $\frac{1}{4}$ Rosecrans

6/15/16 DunMc
 Shar
 Bonker

Change to 6' E of curb line 16
 See pages 27-28

Station	Offset	Height	Distance	Station	Offset	Height	Distance
B.M. Mon X.E. Rosecrans 2 Tall hat		21.38				41.30	
8+0 = Sta 0+0 "C" line	7.0	22.5		8+50	4.4	36.9	
+50	6.6	22.9		9	2.2	39.1	
1	6.6	22.9		+50	0.1	41.2	
+50	6.1	23.4		T.P.	10.99	51.83	0.46
2	5.7	23.8		10	8.4	43.4	
+50	5.2	24.3		+50	6.1	45.7	
3	4.6	24.9		11	4.0	47.8	
+50	4.2	25.3		+33	2.6	49.2	
4	3.8	25.7					
+50	3.3	26.2					
5	3.0	26.5					
+50	2.5	27.0					
6	1.9	27.6					
+50	1.1	28.4					
T.P.	12.44	41.30	0.65	28.26			
7		11.0	30.3				
+50		8.8	32.5				
8		6.5	34.8				

Sheet 40

Levels of Upshur st from E Scott west
for 515'

B.M.	1166	23.04		21.38
0+0 of Scott			11.2	11.8
+50			10.8	12.2
1			9.5	13.5
+50			8.4	14.6
2			7.5	15.5
+50			6.3	16.7
3			4.3	18.7
+50			4.3	18.7
+70 = Rosecrans			3.8	19.2
4			3.7	19.3
+06			3.6	19.4
+10			1.9	21.1
+50			1.2	21.8
T.P.	410	26.88	0.26	22.78
5			3.5	23.4
+15			2.9	24.0

Sheet 40

Levels of Rosecrans from E Upshur north 17
for 110'

		23.04		
0+0			3.8	19.2
+50			4.0	19.0
1			3.7	19.3
+10			3.8	19.2

Sheet 40

Levels of Rosecrans from E Upshur
south for 165'

		23.04		
0+0			3.8	19.2
+50			3.7	19.3
1			2.9	20.1
+50			2.3	20.7
+65			2.0	21.0
2			3.2	21.1
+36.9 Apt.			2.6	21.7
+92.3 = 5166 + 36.87 on page 28		1.95	22.38	on 5166

Sheet 40

3.95

24.33

20.38

B.P. Rosecrans

Levels for "Y" Line Page 19

B.M.	6.52	189.81		183.23
0+0253 54+17 ⁵ / ₈ Line			13.3	176.5
+10			11.8	178.0
+22			8.4	181.4
+30			3.4	186.4
+42 ¹ / ₂ Canyon Street			4.35	185.46
	11.30	196.76		
+50			11.4	185.4
+72			12.8	184.0
+76			3.5	193.3
+96			0.3	196.5
T.P.	11.59	208.02	0.33	196.43
1			10.4	197.6
+25			8.7	199.3
+50			6.6	201.4
+75			4.2	203.8
2			6.0	207.0
T.P.	12.23	219.72	0.47	207.55
+25			10.5	209.3
+50			8.1	211.7
+71 ¹ / ₂ Alley			6.17	213.61
+87			4.4	215.4
3			2.5	217.3
T.P.	12.71	231.75	0.74	219.04
+17			9.6	222.2

Sheet 45

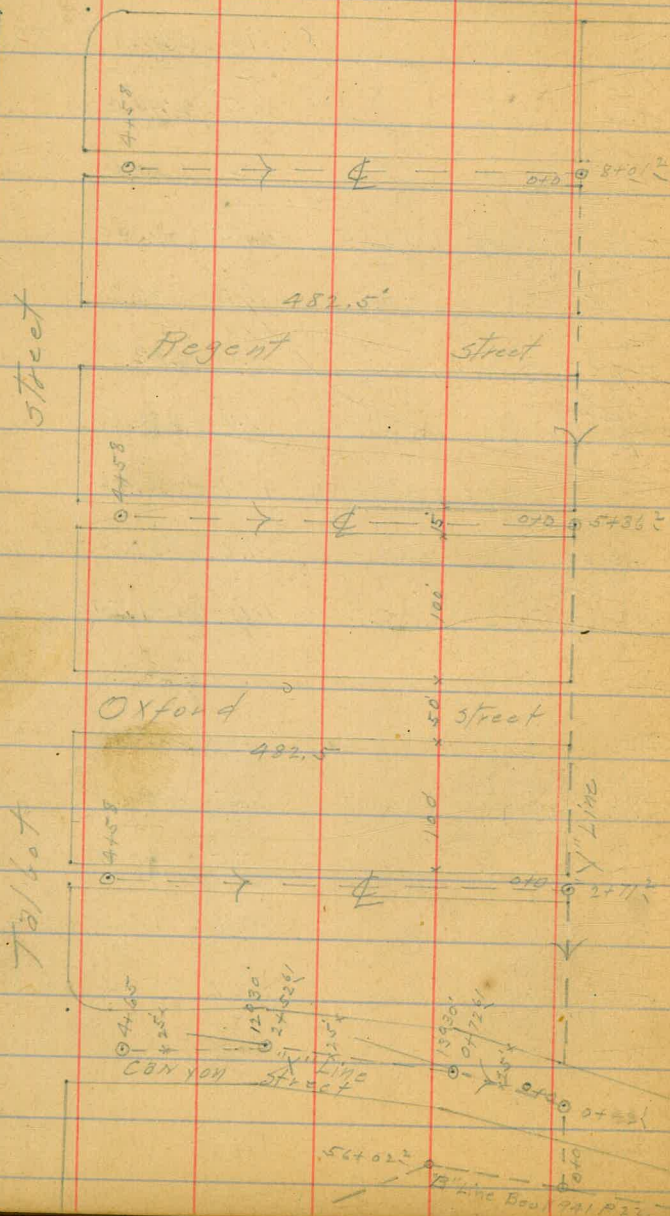
18

				231.75
3+28				8.0
				223.8
+34				6.1
				225.7
+50				4.2
				227.6
+75				2.5
				229.3
4				1.2
				230.6
T.P.	12.05	243.25	0.55	231.20
+25				11.1
				232.2
+50				9.6
				233.7
5				6.8
				236.5
+36 ¹ / ₂ Alley				4.79
				238.46
+50				4.0
				239.3
T.P.	11.22	252.76	1.71	241.54
6				11.0
				241.8
+50				8.6
				244.2
7				6.5
				246.3
+50				5.5
				247.3
+69				5.8
				247.0
+81 ¹ / ₂ Alley				2.67
				250.09

11/16 Dunkle
Span
Bunker

Catalina

Blvd



Levels for ⁴ Alley bet Canyon & Oxford sts

19

B.M.	12.07	225.68		213.61
050257	21712	Y Line	12.07	213.6
150			11.8	213.9
			10.5	215.2
+33			10.7	215.0
+50			7.1	216.6
+75			7.1	218.6
2			5.1	220.6
+50			2.8	222.9
T.P.	3.14	221.19	2.63	223.05
3			6.6	224.6
+50			5.6	225.6
4			4.8	226.4
+50			3.8	227.4
+58			3.7	227.5

Sheet 45

11.31 218.82

51018

Levels for "X" line page 19

B.M.	11.36	196.82		185.46
0+0			11.36	185.5
+50			2.2	188.0
+72 ⁶¹ L 13° 30'			7.6	189.2
1			5.7	191.1
+50			2.7	194.1
T.P.	12.32	208.33	0.81	196.01
2			11.1	197.2
+50			8.3	200.0
+52 ⁶¹ L 10° 30'			2.2	200.1
3			5.2	203.1
+50			2.2	206.1
T.P.	11.96	219.95	0.34	207.99
4			10.7	209.3
+50			7.4	212.6
+65			6.3	213.7
			1.13	218.82

Sheet 45

Levels of Alley bet Oxford & Regent

20

B.M.	10.34	248.80		238.46
0+0=572.5+36 ² X Line	10.34			238.5
+50 cut 8'			8.7	240.1
1			7.1	241.7
+50			5.4	243.4
2			4.8	244.0
+50			4.4	244.4
3 cut 8'			4.8	244.0
T.P.	6.56	251.90	3.96	244.84
+50			6.6	244.8
4 cut 8'			6.1	245.3
+50			5.9	245.5
+58 cut 7'			5.84	245.56

Sheet 45

Levels of Alley bet Regent & Catalina Blvd

B.M.	12.31	262.40	250.09
0+0 = 3/2 8' + 0.2" line	12.31	250.1	
+50	10.2	252.2	
1	7.8	254.6	
+50	5.4	257.0	
2	3.4	259.0	
+50	2.2	260.2	
T.P.	4.67	269.98	2109 260.31
3		4.6	260.4
+50		4.7	260.3
4		4.9	260.1
+50		5.3	259.7
+58		5.5	259.5
B.M.		3.42	261.56

Sheet 45

Levels of Alley bet Charles & Wilcox St from sta 36+27.8 Line west for 875' 21

B.M.	7.44	231.74	223.30
0+0 = 36+27.8 R 106° 33'	11.5	220.2	
+13		11.7	220.0
+25		10.2	221.5
+46		6.4	225.3
+50		3.5	228.2
T.P.	12.28	243.51	0.51 231.23
+60		10.2	233.3
+75		7.5	236.0
1		3.7	239.8
+25		1.8	241.7
+37		0.5	243.0
T.P.	12.06	255.38	0.19 243.32
+50		9.4	246.0
+75		3.3	252.1
T.P.	12.97	268.20	0.15 255.23
2		8.9	259.3
+25		4.3	263.9
+50		2.2	266.0
+71.8 = E.L. Loma View	11.91	279.19	0.92 267.28

Sheet 48

279.19

3+0			10.7	268.5
+50			8.0	271.2
4			5.9	273.3
+50			3.2	276.0
5			0.5	278.7
T.P.	12.05	291.00	0.24	278.95
+50			9.1	281.9
6			5.5	285.5
+12			4.0	287.0
+50			3.1	287.9
T.P.	8.46	299.12	0.34	290.66
7			7.6	291.5
+50			5.5	293.6
8			3.6	295.5
+50			2.1	297.0
+75			2.2	296.9

Levels beginning at sta 32+83 "C" Line thence west
 in E Alley for 541.2' to E Silver Gate thence south in
 E Silver Gate to sta 7+06² or E Wilcox st thence west
 in E Wilcox to sta 9+40

B.M.	13.01	220.01		207.00
0+0 = sta 32+83 R 106° 33'			11.0	209.0
+22			11.0	209.0
+50			6.7	213.3
T.P.	12.62	222.22	0.41	219.60
+75			11.4	220.8
1			5.3	226.9
+10			2.9	229.3
T.P.	12.61	244.43	0.35	231.87
+25			7.3	237.2
T.P.	12.85	257.12	0.21	244.27
+50			3.8	253.3
T.P.	12.03	268.99	0.16	256.96
+61			11.2	259.8
+73 ^B = E.L. Lantz View			9.8	259.2
2			7.1	261.9
+50			4.0	265.0
3			1.6	267.4
T.P.	11.53	280.38	0.14	268.85

Sheet 43

				280.38	
			3+50	10.8	269.6
			4	8.5	271.9
			+50	6.0	274.4
			+75	4.6	275.8
			5	2.5	277.9
			+75	1.5	278.9
			T.P.	11.87	290.22
			+41 ² = E Silver Gate	11.4	279.4
			+50	11.2	279.6
			6	10.1	280.7
			+50	9.0	281.8
			7	7.8	283.0
			+06 ² = E Wilcox	7.6	283.2
			+15	7.8	283.0
			+50	5.8	285.0
			8	3.2	287.6
			+50	1.9	289.4
			T.P.	3.64	294.03
			9	3.6	290.4
			+40 cut 6'	3.8	290.2

7/16/6
 23
 Dunkle
 Show
 Bunker

Levels beginning at Sta 104+74.917' Line of 7's of
 & Orchard thence on line 7' south of & Orchard
 to Sta 6+24.5 or & Venice thence south in & Venice to
 & Alley or Sta 8+07.5 thence west into Alley to Sta 14+0
 or 37.5 E of 5217.5 B&B 6.22

B.M.	190	206.10		209.20
0+0			9.7	196.4
+50		✓	9.1	197.0
1			8.9	197.2
+50			7.7	198.2
2			6.8	199.3
+50			5.3	200.8
3			4.4	201.7
+50			1.9	204.2
T.P.	11.31	216.26	1.15	204.95
4			9.5	206.8
+50			6.9	209.4
5			7.5	211.8
+50			1.9	214.4
T.P.	11.08	227.07	0.27	215.99
6			10.5	216.6
+24.5 & Venice			9.63	217.4
+50			9.6	217.5

Sheet 14

6+24.5 & Venice
 8+07.5 = & Alley south of Orchard
 14+0 = end

				227.07
+50			9.6	217.5
+50			9.1	218.0
7			9.3	217.8
+50			9.3	217.8
8+0			8.7	218.4
8+07.5 & Alley	Orchard		8.67	218.4
+50	South of		5.8	221.3
9			8.4	223.7
T.P.	12.48	237.83	1.72	225.35
+50			11.7	226.1
10			9.0	228.8
+50			6.1	231.7
11			2.9	234.9
T.P.	12.74	248.65	1.92	235.91
+50			10.3	238.4
12			6.6	242.1
+50			2.7	246.0
T.P.	3.32	251.51	0.46	248.19
788			3.4	248.1

251.51

+ 92 .	2.7	248.8
73	2.4	249.1
+ 25	+ 6	246.9
+ 50	6.6	244.9
14+0 End	9.50	242.01

Levels of Pacific from Redondo East
for Coronado

9.60 199.52
B.M. 466 of Redondo Pacific 189.92

22302

0+0 = Redondo

9.6 189.9

7+50

5.4 217.6

+50

8.2 191.3

8+0

4.3 218.7

1+0

6.8 192.7

7+50

4.6 218.4

+50

5.5 194.0

9+0

6.1 216.9

2+0

3.2 196.3

7+37

8.13 214.89

T.P.

1134 210.29 0.57 198.95

+50

8.8 201.5

3+0

5.5 204.8

+30

3.3 207.0

4+0

0.8 209.5

T.P.

9.01 218.96 0.34 209.95

+50

7.9 211.1

5+0

6.5 212.5

+50

5.3 213.7

6+0

4.4 214.6

+50

4.1 214.9

7+0

2.9 216.1

T.P.

4.93 220.02 0.87 218.09

Sheet 15

4/28/19 Dunkle
Shaw
Evans

Hub 18+19.27

16
105.96

17462

54
x16

PROSECUTIONS

17750

End of sewer to be
constructed at present

Mon N.W. P.L. 186

57
107
18

19° 37'

Mon N.E. P.L. 186

2865

L+3687

554

236.7 to 6' 6"

35'

1013'

Refer to this book

SEWER

54
57

3° 04' 30"

57

Hub 2+53.13

Scott

57

6° 53'

107
18

60 to existing 4" iron pipe

Bay

2000
2000
2000
2000

Levels for proposed sewer - see sketch page 27

B.M., S.W. New Main & Pascorans	20.38		
3.53	23.91		
T.P.	0.65	16.05	8.51
		15.40	
T.P.	8.81	12.10	12.76
		3.29	
0+0 = bottom of 4" iron pipe	11.71		0.39
+04		9.3	2.8
+25		9.4	2.7
+50		8.5	3.6
+75		8.5	3.6
1		7.5	4.6
+50		5.8	6.3
2		3.8	8.3
+53 ³ = ctr. of Scott's T&T bot	2.9		9.2
3		2.2	9.9
+50		0.4	11.7
T.P.	10.84	22.79	0.15
			11.95
4		9.0	13.8
+50		7.1	15.7
5		5.3	17.5
+50		3.2	19.6
6		1.3	21.5

		22.79		
6+36 ⁸⁷			0.4	22.4
T.P.	6.44	28.86	0.37	22.42
+50			6.4	22.5
7			6.31	22.6
+50			6.1	22.8
8			5.8	23.1
+50			5.5	23.4
9			5.0	23.9
+50			4.6	24.3
10			4.1	24.8
+50			3.6	25.3
11			3.3	25.6
+50			2.6	26.3
+75 ⁸⁵			2.3	26.6
12			2.2	26.7
+50			1.4	27.5
T.P.	12.15	39.80	1.21	27.65
13			10.8	29.0
+50			9.1	30.7

51.51
12.56
68.97
68.97
52.0
68.97

97.8
54.29

29

		39.80		
14	+0		6.9	32.9
	+50		4.6	35.2
	15		2.4	37.4
	+50		0.2	39.6
T.P.	12.32	51.82	0.30	39.50
	16		9.9	41.9
	+50		7.8	44.0
	17		5.5	46.3
	+50		3.4	48.4
	+62		2.9	48.9
18	3.88	55.39	0.3	51.51
			5.3	50.1
	+12.87	Dot		51.1
	+50		4.0	51.4
	+45		3.5	51.9
19			3.0	52.4
	+25 = Baker's lateral		3.1	52.3
	+50		3.6	51.8
20			5.3	50.1
	+50		7.2	48.2
21			9.2	46.2

Sta 21+97.5 ← 73.0' House Floor = 63.4

Sta 20+47.5 ← 59.5' House Floor = 66.6

Sta 19+37.5 ← 65.0' House Floor = 71.6

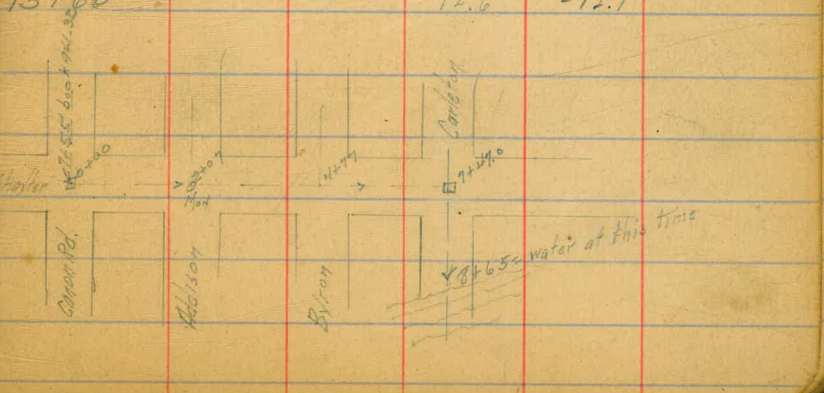
Sta 18+60.9

House
= 75.6 = upper floor
66.0 = lower

19.4
 toward
 Miller
 sign
 toward
 Canon Rd to & at Carleton thence SE on E
 of Carleton into Bay

By 3M	Canon	0.23	20.61	20.38	
		1.95	10.71	11.85	8.76
2	Canon Rd.	1.90	3.52	9.09	1.62
	book 941-32.	1.00			
			2.0	1.5	
			2.3	1.2	
			3.0	0.5	
2			3.2	0.3	
	+ 07 = E Addison	Mark	3.20	0.32	
			3.5	0.0	
3			4.1	-0.6	
			4.5	-1.0	
4			4.9	-1.4	
			5.4	-1.9	
	+ 77 = E Byron		5.4	-1.9	
5			5.6	-2.1	
			6.6	-3.1	
			6.5	-3.0	
6			6.7	-3.2	
			6.9	-3.4	
7			7.3	-3.8	

	3.16				
	+ 47 = E of Carleton	-0.10	6.78	-3.26	07 hub.
	+ 50		3.3	-3.4	
	+ 6.50		4.1	-4.2	
	+ 75		2.3	-2.4	
	8		2.5	-2.6	
	+ 38		1.6	-1.7	
	+ 50	Tree	3.4	-3.5	
	+ 65 = edge of water @ 9.45 A.		5.8	-5.9	
	9		7.2	-7.3	
	10		8.7	-8.8	
	+ 90		11.4	-11.5	
	12+30		12.2	-12.3	11+50
	13+90		11.3	-11.4	
	15+60		12.6	-12.7	



3/17/20
 Gregory Moore Miller Shan
 Construction Notes
 Sewer & Carleton St
 from & Evergreen to 400' E. of & Shaxter
 stakes set 5' N. of & at Carleton.

					Grade		
0	+00 = & Evergreen M.H.	36.40	10.57	25.83	20.00	5.83	
	+50	1.66	25.85	12.21	24.19	19.32	4.87
1			21.4	23.71	18.65	5.06	
	+50		2.20	23.65	17.98	5.67	
2			24.3	23.4	17.30	6.12	
	+50		3.13	22.72	16.63	6.09	
3			4.09	21.76	15.95	5.81	
	+35		4.74	21.11	15.47	5.64	
	+70 = M.H. & Locust		5.03	20.82	15.0	5.82	
4			5.46	20.39	14.42	5.97	
	+50		6.76	19.09	13.44	5.65	
5			7.90	17.95	12.47	5.48	
	+50		8.90	16.95	11.49	5.46	
6			10.07	15.78	10.52	5.26	
	+50		11.12	14.73	9.54	5.19	
7	0.33	12.09	12.09	13.76	8.57	5.19	
	+55 & Rosecrans M.H.	0.80	13.29	7.5	5.79		
8		1.60	12.49	6.75	5.74		
	+50	2.46	11.64	5.90	5.74		
9		3.57	10.52	5.06	5.46		

1351
 9457

1945
 16.88
 4
 8440
 6752

1947 31
 2720
 97
 107

1409

$$\begin{array}{r} 370 \\ 287 \\ 716 \\ 257 \\ \hline 1182 \end{array}$$

+50		475	9.34	4.21	5.13	
10		5.87	8.22 ⁵	3.37	4.85	
+50		6.94	7.15	2.52	4.63	
11		7.75	6.34	1.68	4.66	
+40 = 2 Scott M.H.		8.42	5.67	1.0	4.67	
12		9.40	4.69	+0.03	4.66	
+50		10.07	4.02	-0.79	4.81	
13	1.44	4.63	10.90	3.19 ²	-1.40	4.79
+50		2.13	2.50 ^{1.62}	-2.41	4.91	
14		2.78	1.85	-3.22 ^{1.22}	5.07	
+50		3.23	1.40	-4.03	5.43	
15 + 10 = 2 Shaker M.H.		7.80	-3.16	-5.0	1.84	
+60		7.85	-3.22	-5.15	1.93	
16 + 10 = E End of Cement pipe		8.79	-4.16	-5.31	1.15	
+50						
17						
+50						
18						
+50						
19 + 10 = End of Outfall					-6.26	

$$\begin{array}{r} 1622 \\ 6 \\ \hline 9732 \end{array}$$

$$\begin{array}{r} 1688 \\ 20 \\ \hline 67520 \end{array}$$

32

.90312

$$\begin{array}{r} 400 \overline{) 1210} \\ \underline{1200} \\ 100 \\ \underline{100} \\ 0 \end{array}$$

$$\begin{array}{r} 631 \\ 218 \\ \hline 413 \end{array}$$

$$\begin{array}{r} 535 \\ 314 \\ \hline 221 \end{array}$$

$$\begin{array}{r} 505 \\ 316 \\ \hline 189 \end{array}$$

$$\begin{array}{r} 601 \\ 171 \\ \hline 430 \end{array}$$

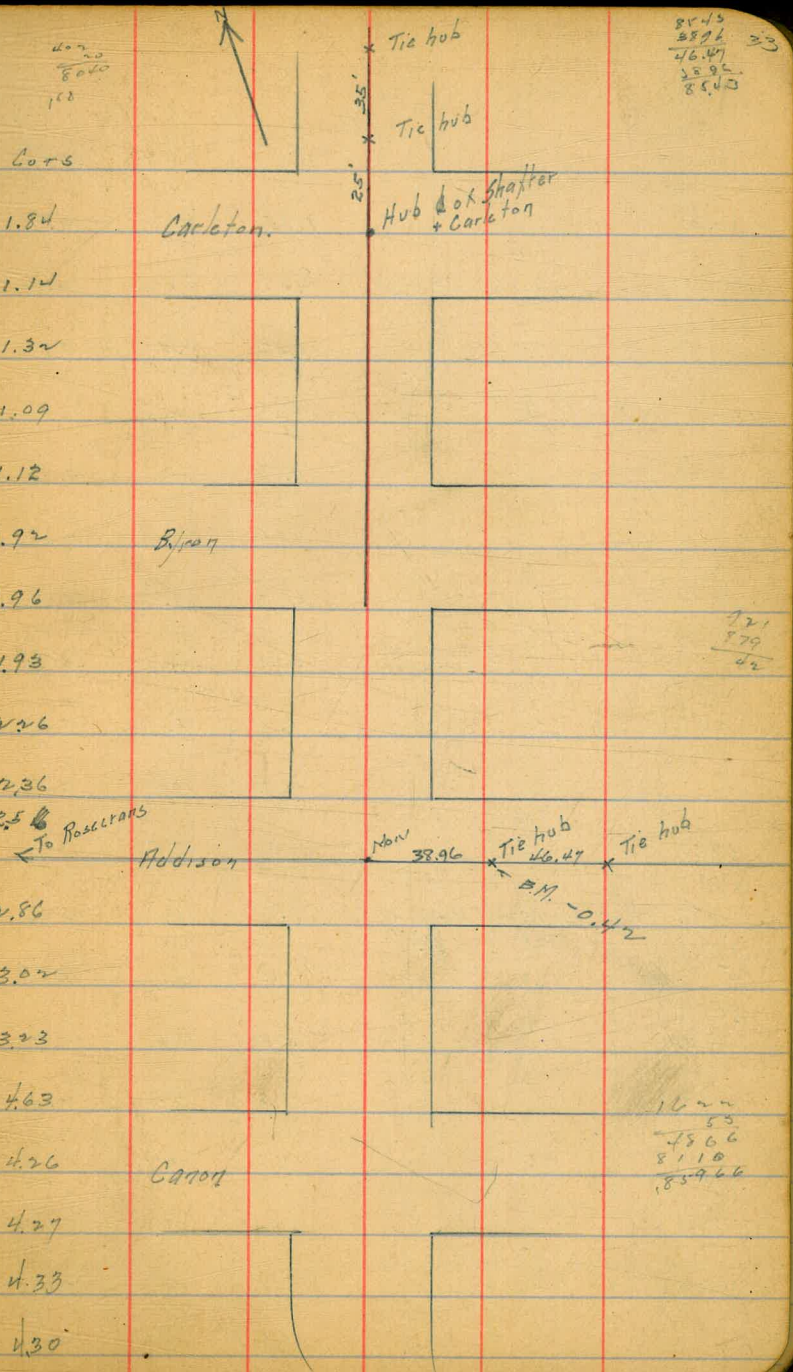
$$\begin{array}{r} 352 \\ 215 \\ \hline 137 \end{array}$$

BM.

piles are
12' centers
West pile is 16' from
220

3/17/22
 Gregor Moore Miller Shaw
 Construction Notes
 Sewer & of Shafter from
 E. of Carleton to E. of Canon St.
 thence on E. Canon St to
 E. of Evergreen St. status set 5 E.

15+10 on last page =	8.79	0.32	Nov & Addison + Shafter	1.84
0+00 = M.H. & Carleton.	11.95	-3.16	-5.0	1.14
+50	12.45	-3.66	-4.80	1.32
1	12.07	-3.28	-4.60	1.09
+50	12.10	-3.31	-4.40	1.12
2	11.87	-3.08	-4.20	1.92
+50	10.87	-2.08	-4.00	1.96
+70 = M.H. & Byron	10.75	-1.96	-3.92	1.93
3	10.66	-1.87	-3.80	2.26
+50	10.13	-1.34	-3.60	2.36
4	9.83	-1.04	-3.40	2.86
+50	9.43	-0.64	-3.20	3.02
5	8.93	-0.14	-3.00	3.23
+40 = M.H. & Addison	8.60	+0.19	-2.83	4.63
6	8.15	+0.64	-2.59	4.26
+50	7.55	1.24	-2.34	4.27
7	6.72	2.07	-2.19	4.33
+47 = M.H. & Canon St.	6.52	2.27	-2.00	4.30
8	Line is laid 2.5	5.60	3.19	-1.14
+50	H. of E. of Canon on W. of old sewer	4.84	3.97	-0.33



	8.79					
9			3.40	5.39	10.48	4.91
+50			1.95	6.84	1.29	5.55
10	17.27	20.39	0.67	8.12	2.10	6.02
+50			10.87	9.52	2.91	6.61
11+17 = M.H. & Scott			9.75	10.64	4.0	6.64
+50			8.93	11.46	4.85	6.61
12			8.00	12.39	6.13	6.26
+50			6.93	13.46	7.42	6.00
13			5.70	14.69	8.70	5.99
+50			4.21	16.18	9.98	6.20
14			4.95	17.44	11.27	6.17
+50			2.53	18.56	12.58	6.01
+87 = M.H. & Roscerans on S.			0.85	19.54	13.5	6.04
15	13.01	35.29	13.63	19.76	13.86	5.90
+50			12.06	21.34	15.24	6.10
16			11.33	22.06	16.61	5.48
+50			10.04	23.35	17.99	5.36
17			8.45	24.94	19.36	5.58
+50			7.18	26.24	20.72	5.47
18			5.82	27.57	22.11	5.46

Line is laid 2.5' N. of Canon on 1/2 of old sewer.

2568
52
7704
7704
84744

162
67
1130
972
10850

34
2565
57
17996
7704
34016

3339 $\frac{1857}{2267}$

$\frac{285}{1926}$
 $\frac{325}{12178}$

$\frac{3919}{1757}$
 $\frac{3919}{50947}$

$\frac{3919}{1757}$

$\frac{3919}{50947}$
 $\frac{27438}{19694}$
 $\frac{22253}{3919}$

+50		4.43	2896	2349	5.47
+87 M.H. & Locust		3.05	30.34	24.3	5.84
19		2.66	3073	45.01 377	5.72
+50		1.54	3185	26.97 347	4.88
T.P.	1223	45.12	0.50	32.89	
20		11.61	3351	28.93 377	4.58
+50		10.15	3497 3919	30.89 377	4.08
21		8.18	3694	32.85 377	4.09
+50		6.34	3878	34.81	3.97
22		4.02	4110	36.77 377	4.33
+57.0 M.H. & Evergreen		0.29	4483	39.0	5.83

$\frac{3919}{1757}$
 $\frac{3919}{50947}$

370

1450

1110

3400

3330

720

370

8

3/22/22 Gregory Moore Miller Shaw
 Construction Notes
 Sewer on Rosecrans
 from 2.5 N. of & of Canon St.

BM	3.34	43.72	20.58	B.P. Rose + Canon
14+87 pegged in this book				
0+00				13.5
+50		4.03	19.69	13.74
1		4.45	19.27	13.99
+50		4.45	19.79	14.23
2		4.46	19.27	14.48
+50		4.00	19.72	14.72
+72.5 M.H. & Upshur		4.20	19.52	14.83
3		4.07	19.65	14.97
+50		3.92	19.78	15.21
4		3.50	20.23	15.46
+50		2.86	20.86	15.70
5+09.4 M.H. Δ 14°13' R	8.47	30.45	1.74	21.98
+50		8.23	21.22	16.31
6		7.80	21.65	16.69
+50		7.70	22.75	17.06
7		7.40	23.05	17.44
+50		7.00	23.45	17.81
8		6.50	23.95	18.19
+42.5 M.H.		6.17	24.28	18.5

5094
 2725
 2369

5096
 3331
 8425

27
 98
 98
 101

29
 29
 401
 445

36

20.38	13.74	13.99	7.5	7.5		
374	10.48	10.23	4.1	4.1		
3422		4.99	2.8	2.8		
		5.24	3.0	3.0		
	14.23	14.48	1.27	1.27		
	9.97	9.77	9.50	9.89	1.37	15.21
	5.02	4.73	4.96	4.65	9.24	9.01
					4.55	4.30
15.46	15.70	16.00				
8.76	8.52	8.23				
4.85	5.06	5.67				

30.45

1123

9		5.64	24.81	19.00	5.81	
+50		5.13	25.32	19.44	5.88	
10		4.70	25.75	19.58	5.87	
+50		4.37	26.08	20.32	5.76	
11		3.80	26.65	20.76	5.89	
+50		3.47	26.98	21.20	5.78	
	12.15	39.76	27.61			
+83	M.H. & Bassamer.	12.30	27.46	21.5	5.96	
12		11.90	27.86	22.20	5.66	
+50		10.21	29.55	24.26	5.79	
13		7.96	31.80	26.31	5.49	
+50		5.78	32.98	28.38	5.60	
14		3.36	36.40	30.43	5.97	
+64.5	M.H. 1306	52.06	0.76	39.00	33.0	6.00
15		11.20	40.36	34.62	6.24	
+50		9.15	42.91	36.79	6.12	
16		6.93	45.13	38.96	6.17	
+50		4.70	47.36	41.13	6.23	
17		2.75	49.31	43.30	6.81	
	changed N 1.6 to N 17 5.45					
+39.2	M.H. Δ 36°56' L, 55.68	1.83	50.23	45.0	5.23	
18		3.76	57.92	45.59	6.33	

41
17
287
41
697
4337
372
2185
30359
1301
162

8425
3475
11840
2785
12625
2783
17408
2783
20191
2168

4129
627
40625
8258
24974
2590625
17408
200

0870
57
6056
4390

37

878
53
2634
2634
28974

55.68

+50

333

5235

4609

6.26

19

4.39

51.31

46.59

4.72

+40.8 DE

5.96

49.72

47.0

2.72

38

4/3/22
 Gregory Construction Notes
 Moore Sewer & Addison St
 Miller
 Show from & Shafter to & Evergreen

				Grade	
20+00	12.39	12.58	0.19	-2.83	
+50		10.98	1.60	-1.77	3.37
1		9.29	3.29	-0.71	4.00
+50		8.08	4.50	0.35	4.15
2		6.68	5.90	1.41	4.49
+50		5.18	7.40	2.47	4.93
3		3.72	8.86	3.53	5.33
+50		2.63	9.95	4.59	5.36
+70 = M.H. & Scott.		2.36	10.22	5.00	5.22
4	12.19	23.12	1.65	10.93	5.70
+50	11.	11.13	11.99	6.87	5.12
5		9.67	13.46	8.04	5.41
+50		8.42	14.70	9.21	5.49
6		6.46	16.67	10.38	6.29
+50		4.20	18.92	11.55	7.37
7		3.90	19.22	12.72	6.50
+55 = M.H. & Rosecrans		3.89	19.25	14.0	5.46
8		3.30	19.82	15.29	4.53
+50	12.30	34.16	1.27	21.85	5.13

2338.50
 70140

212
 20
 230

2338
 51
 11670
 11670
 128090

2857
 41
 11228
 11228
 128560

2857
 41
 11228
 11228
 128560



34.15

9		11.04	2311	18.15	4.96	
+ 50		9.37	2478	19.58	5.20	
10		8.70	2545	21.01	4.46	
+ 50		6.42	2873	22.44	6.29	
11		4.89	29.26	23.87	5.39	
+ 40 = M.H. & Locust		3.88	30.27	25.00	5.27	
12		2.10	32.05	26.86	5.19	
+ 50	11.95	4.34	2.68	33.47	28.41	5.06
13		10.26	35.18	29.97	5.21	
+ 50		9.00	36.42	31.52	4.90	
14		6.87	38.55	33.08	5.47	
+ 50		4.84	40.58	34.63	5.95	
15				36.19		
+ 10 = M.H. & Evergreen	1.50	43.92	36.5	7.42		

3 10.5

1.64

18.128

2557.0

1.14280

40

Tie hub
 x 35' □ Max 25' x Tie hub

Tie hub
 x 25' □ Max 25' x Tie hub

4/18/20
 187
 20
 3740

Gregory
 Moore
 Miller
 Shaw

Construction Notes
 Sewer line of Byron
 from M.H. & of Shelter
 to Cox Evergreen

page 33
 Grade.

stake at 2170 page 33 11.87 9.91 -1.96

M.H.
 2170 page 33
 = 0+00

				-3.92	
0+50		10.84	-0.93	-2.99	2.06
1		9.17	+0.74	-2.05	2.79
+50		7.95	1.96	-1.12	3.08
2		6.76	3.15	-0.18	3.33
+50		5.63	4.28	+0.75	3.53
3+00		4.11	5.80	1.69	4.11
+50		2.61	7.30	2.62	4.68
+70	M.H. & Scott.	1.99	7.92	+3.0	4.92
4		1.04	8.87	3.74	5.13
T.P.	11.70	21.36	0.25	9.66	
+50		11.28	10.08	4.98	5.10
5		9.83	11.53	6.21	5.32
+50		8.86	12.50	7.45	5.05
6		7.31	14.05	8.68	5.37
+50		5.56	15.80	9.92	5.88
7		3.87	17.49	11.14	6.35
+55	M.H. & Rossetrans	3.73	19.63	12.5	5.13
8		3.42	19.94	13.61	4.33
T.P.					
+50	11.33	31.79	0.90	20.46	14.84
					5.62

187
 20
 3740

2408
 30
 76080

2466
 11
 12840
 123
 136

41

75
58
1120 31.79

9			10.30	21.49	16.08	5.41
+ 50			9.00	22.79	17.31	5.48
10			7.84	23.95	18.55	5.40
+ 50			6.54	25.25	19.78	5.47
11			5.21	26.58	21.01	5.57
+ 40	MH & Locust		4.62	27.17	22.0	5.17
12			3.36	28.43	23.05	5.38
+ 50			2.44	29.35	23.98	5.42
13			1.63	30.36	24.81	5.55
+ 50	5.20	3640	0.59	31.20	25.69	5.51
14			4.01	32.39	26.57	5.82
+ 50			3.22	33.18	27.45	5.73
15 + 10	MH & Evergreen		2.15	34.25	28.5	5.75

2468
60
98720

1757
60
105420

Contour 1' above curb La Jolla Blvd: near Bishop school

RT
PMS
8/29/22

7.0
3+44
11.5 2+05 14.0
3+05
16.5 2+98 27.5
2+98
2+64 59.5
17.5 2+32 57.5
2+82

18.0 1+97 42.0
1+97
1+68 49

14.5
1+51
23.5 1+38 48
14.3
33.5 0+93 32.5
2+84

18.0
0+61
0+52
17.0

0+86
6.0

EG Cop track

214.72

135.24 301

62

EG Cop track

47

1st bank → 28.5
5797
RT bank → 22
5782

5702
14.5

19.2

5748

5730
26.5

11.5

5702

4+86
4.5

1.0

4+69

4+58
5.5

4+87
2.2

17.0

4+29

4+13
2.0

20.0

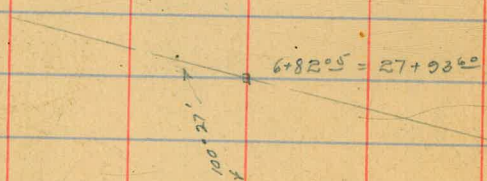
3+87

3+68
40.0

2+92
52.5

3+22
15.5

W-7' Line Draper.



End → 37.0

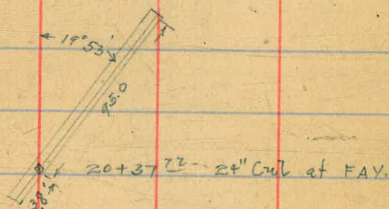
Rt bank: 1925

L bank: 45.0

L bank: 22.5

Rt bank: 6.0

6+04



Sewer levels \pm Addison Evergreen to Willow

$\left\{ \begin{array}{l} D \\ M \\ S \end{array} \right. 9/29/22$

44

	+	\pm	-	BM	
	11.13	31.80		20.67	Canyon Rosecrans
	12.17	43.91	0.06	31.79	
	11.63	53.44	2.10	41.81	3 nails NE Cor. Addison & Evergreen
00 = Flow Line Manhole Cen Addison & Evergreen			16.76	36.68	
+25			9.0	44.4	
+87			7.1	46.3	
1+00			4.9	48.5	
+14			4.9	48.5	
+20			15.9	37.5	
1+58			3.5	49.9	
1+70			4.8	48.6	
#	12.12	65.34	0.22	53.22	
+85			10.6	54.7	
2+30			6.6	58.7	
#	8.52	77.99	1.17	69.17	
2+67			5.3	67.7	
3			4.1	68.9	
+35 = E.L. Willow			1.3	71.7	
3+70 = \pm Willow & Addison					

72.99
 - 12.76
 60.23
 + 0.28
 60.51
 - 12.76
 47.75
 + 0.26
 48.01
 - 12.80
 35.21
 + 0.74
 35.95
 - 10.13
 25.82
 + 3.64
 29.46
 - 8.82
 20.64 = Initial B.M.

Sewer in Talbot St From Existing Sewer in
Rosecrans to a point 1750 ft West.

8/18/23

Miller
Shaw
Walk

45

B.M. S.W. Rosecrans & Canon Rd	6.39	27.06		20.67			
F.L.M.H. 56' North Crown Pl. in Talbot			10.76	16.3			
00 = Int Existing sewer in Rosecrans + P.L. in Talbot			4.42	22.64	16.72		+5.92
T.P.	11.15	33.79	4.42	22.64			
0+50			5.55	28.24	19.37		+8.87
1+00			6.22	27.57	22.02		+5.55
1+50			4.03	27.76	24.67		+5.09
1+75			2.85	30.74	25.99		+4.95

4/12/21 Gregory

Preliminary Lower Levels of Alley West
of Eads from 150' N of H.L. of
to 2 Alley N. of Westbourne
thence N to La Jolla Blvd

46

					+40		54	110.9	
	2.00	128.31	126.31	on bed 12500	+56		57	110.6	
150' N. of H.L. 0+00			4.9	123.4	+65		65	109.8	
+30			5.2	123.1	5		75	108.8	
+50			5.8	122.5	+40		85	107.8	
1			6.7	121.6	+50		8.1	108.2	
+35			6.7	121.6	+65		94	106.9	
+60			5.5	122.8	6		10.9	105.4	
2			5.6	122.7	+35		12.7	103.6	
+12			5.7	122.6	T.P.	0.27	103.63	13.01	103.36
+25			7.3	121.0	+65		0.9	102.7	
+50			8.8	119.5	+80		1.8	101.8	
3			12.1	116.2	7		1.9	101.7	
T.P.	1.05	116.37	12.99	115.32	+09	W.L. Draper	1.6	102.0	
+27			1.9	114.4	+11		3.1	100.5	
+30			3.3	113.0	+50		5.1	98.5	
+35			2.5	113.8	8		7.0	96.6	
+50			2.2	114.1	+50		9.2	94.4	
APR + 70 = 2 Alley N. of Westbourne			2.2	114.1	9		11.0	92.6	
4			3.6	112.7	+15		11.3	92.3	

10363
123

+30			12.5	91.1
T.P.	0.83	91.86	12.60	91.03
+60			1.6	90.2
10			2.7	89.1
+50			3.7	88.1
+75			3.9	87.9
11			3.4	88.4
+50			5.0	86.8
+95			6.0	85.8
12			6.4	85.4
+15			6.4	85.4
+40			7.3	84.5
+70			9.0	82.8
13			9.9	81.9
+50			11.3	80.5
14			13.2	78.6
T.P.	4.84	84.48	12.22	79.64
+16			6.2	78.2
+45			7.2	77.2
+33			6.7	77.7

47

+33			7.1	77.3
+38			9.9	74.5
+423 = E. Edge of paving			9.65	74.8
			5.47	79.01

BP. SE
Westbourne

4/24/24 Gregory

Preliminary Senior Levels
Center of Blk N. of Westbourne St
from S. W. of West edge of paving on
La Jolla Blvd. to E. Neptune Pl.

Station	5. W. of W Edge paving on La Jolla	547	84.48	79.01	BP. SE Westbourne	6		10.2	62.5			
				7.9	76.5		+50	11.5	61.2			
	+7.50 = cement curb			7.51	76.6		7	13.1	59.6			
	+17.50 = W.L. La Jolla Blvd.			7.71	76.7	on hub	TP	097	6073	1296	59.76	on hub 6+97.6
	+20			7.4	77.0		+35	1.9	58.8			
	+50			8.6	75.8		+50	2.1	58.6			
	+80			9.4	74.0		+80	3.3	57.4			
1				10.0	74.4		8	3.3	57.4			
	+50			12.1	72.3		+05.0	3.2	57.5			
	TP	082	72.92	12.58	71.90		+30	5.0	55.7			
2				2.4	70.3		+50	3.3	55.4			
	+20			2.9	69.8		9	6.5	54.2			
	+40			2.3	70.4		+50	7.8	52.9			
	+65			5.0	67.7		10	9.6	51.1			
3				6.1	66.6		+25	10.3	50.4			
	+50			7.0	65.7		+50	12.1	48.6			
4				7.4	65.3		TP	094	48.97	1270	48.03	
	+50			8.2	64.5		11	2.7	46.2			
5				9.2	63.5		+30	5.3	43.6			
	+50			9.9	62.8		+70	10.2	38.7			

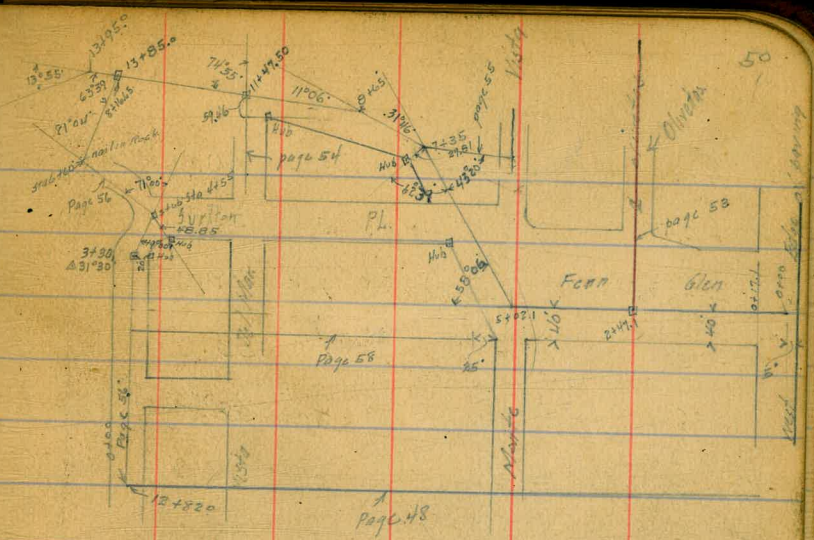
TP	052	36.75	12.74	36.23
12			1.7	35.0
+ 23 = E. end of garage			4.4	32.3
S. Side of garage is on L. line				
+ 39 = Ward of garage			5.3	31.4
+ 62 = E.L. Neptune.			7.4	29.3
+ 82 d ✓			8.5	28.2
change this from +82 to +82			4.04	(32.71)
see page 54 for continuation on Neptune Pl.				SW. cor of Porch.

23/24 survey Preliminary Survey Levels
in Fern Glen
Wok La Lolla Blvd

5' W. of W. Edge of parking La Lolla Blvd = 0+00	0.19	79.20	79.01	8.0	71.2
+35				9.6	69.6
+60				12.6	66.6
+65				17.1	62.1
+68				12.7	56.5
+90				14.8	64.4
1				14.6	64.8
+70				12.1	67.1
+75				12.9	66.3
T.P.	054	67.61	12.13	67.07	
2				3.8	63.8
+47.1 = Olivetas				6.10	61.5 on stub
+55				6.7	60.9
+67				4.9	62.7
+77				4.6	63.0
3				6.1	61.5
+37				9.7	57.9
+50				10.1	57.5
+65				11.8	55.8

For construction notes see book 1030.28

C



+90				17.4	50.2
4				16.8	50.8
+33				11.6	56.0
+60				12.5	55.1
T.P.	021	55.35	12.17	55.14	
+82				2.9	52.4
5+02.10 = 2 Monte Vista				3.44	51.91 on stub
+50				5.1	50.2
+92				7.5	47.8
6				8.8	46.5
+30				12.7	42.6
T.P.	128	43.80	12.83	42.58	
+35				0.9	42.9

+50			3.0	40.8	
+65			8.0	35.8	
+70			4.8	39.0	
+75			4.8	39.0	
+88			7.0	36.8	
7 = bottom creek			10.9	32.9	
+08.0			8.6	35.2	
+15			9.2	34.6	
+35 Δ 31°46'L			8.17	35.69	on stub
+60			10.8	33.0	
+68			7.6	36.2	
8			8.7	35.1	
+06.0			10.7	33.1	
+12			11.2	32.6	
T.P.	166	32.93	12.53	31.47	
+30			6.4	27.5	
+38 = creek			8.0	24.9	
+55			6.1	26.8	
+62			3.3	29.6	
+65 Δ 11°06'L			3.56	29.4	on stub
			1.37		

+70			4.1	28.8	
+88 = creek bottom			11.7	21.2	
9+10 = ✓ ✓			11.3	21.6	
+12			9.4	23.5	
+30			2.4	30.5	
+45			2.2	30.7	
+65			3.6	29.3	
+88			4.9	28.0	
10			7.6	25.3	
+25			10.3	21.6	
+37			10.1	22.8	
+50			11.9	21.0	6'L = 5' lower
+62			11.5	21.4	
+75			12.2	20.7	
+90			12.0	20.9	
11			13.0	19.9	
TR	169	22.42	12.20	20.43	
+35 = creek			8.0	14.42	
+47.50 = centre of Vicks Del. Mar			2.42	20.00	on stub
+75			1.0	21.42	

+90		+0.2	22.6
12 + 03.40		1.21	21.2 on stub
+06.0		1.6	20.8
+13		6.2	16.2
+24		9.0	13.4
+33 = platform of swimming pool	16.0		6.4
+60		16.5	5.9
+65		10.1	12.3
+71		9.4	13.0
13		14.6	7.8
+15		15.8	6.6
+31		10.5	11.9
+60		11.4	11.0
TP.	0.77	12.32	10.87 11.55
+68		2.6	9.7
+81		6.6	5.7
+85.0		6.82	5.50 on stub

+95.0 Δ 13°55' L.
 OUTFALL levels on page 57

152

NI-1232

Cross Section of proposed Tank Sta

Sta. 13+60 on opposite page.

15' N. of d	6.1	6.2
7' ✓ ✓ ✓	4.4	7.9
d	1.3	11.0
6' S. of d	0.2	12.1
15' ✓ ✓ ✓	+0.5	12.8
Sta. 13+68		
15' S. of d	0.3	12.
6' ✓ ✓ ✓	0.8	11.5
d	2.6	9.7
7' N. of d	5.3	7.0
15' ✓ ✓ ✓	6.5	5.8
Sta. 13+81		
15' N. of d	7.4	4.9
7' ✓ ✓ ✓	6.8	5.5
d	6.6	5.7
5' S. of d	5.6	6.7
15' ✓ ✓ ✓	3.7	8.6
Sta. 13+92		
15' S. of d	6.9	5.4
4' N. of d	7.4	4.9
14' ✓ ✓ ✓	7.1	5.2
15' ✓ ✓ ✓	7.4	4.9
d	5.4	4.1
Sta. 13+99		
15' N. of d	2.5	2.8
10' ✓ ✓ ✓	2.5	3.5
3' ✓ ✓ ✓	2.9	3.4
d	2.9	4.1
15' S. of d	7.6	4.7

4/20/24. Leveling Levels & Elevations
from No. 11. of St. of Fern Glen to
80.5' N.

3+41.1 page 50

67.61 from page 50

50+00	6.10	61.5	on stub
+10	7.7	59.9	
+18	11.7	55.9	
+19	9.7	57.9	
+25	11.3	56.3	
+28 = creek bottom	14.1	53.2	
+37 = ✓	13.9	53.7	
+38	11.4	56.2	
+46	10.3	57.3	
+55	7.0	60.6	
+80.5 = S. End of paving	6.47	61.2	

get your own from here North. See profile

4/23/21 Grand Lower Levels 2 of 1 Sta. Del. for
from Fern Uba Line 5.

Sta. 11+47.50 Page 50	12.13	52.13	2000	Sta. 11+47.50 Page 51
+0100		12.13	20.00	
+090		10.2	21.9	
T.P.	10.62	42.53	0.22	31.91
+40		8.2	34.3	
+52		5.8	36.7	
+60		5.7	36.8	
+73		4.9	37.6	
1		4.8	37.7	
+45		4.0	38.5	
+50		4.6	37.9	
+75		4.0	38.5	
2		4.2	38.3	

Wright's survey Levels for Sewer from Sta 7+35
page 51 to d. of Monte Vista

55

Sta 7+35 page 51 = 0+00	12.19	47.82	35.63
			35.63
+20		8.3	39.5
+40		7.7	40.1
+67		9.1	38.7
+95		4.6	43.2
1+01		0.6	47.2
+12 = 1' S. of S. end of curb		1.2	46.6
+27.30 = d. of Monte Vista		0.25	47.6 on paving

see street profile for levels North from here

4/29/24 Gregory

Levels on box

Nestune Pl.

from 110' 5" x 52' Belvedere

To Arenas, see sketch page 50

12+82 page 49

= 110' 5" x
52' Belvedere
= 20+00

0.67

3338

32.71

BM page 49

5

3.8

17.0

5.17

28.21

on stub

+23

5.6

15.2

0+50

4.7

28.5

+30

7.6

13.2

1

4.0

29.3

+41

5.4

15.4

+50

4.0

29.3

+58

7.4

13.4

2

3.6

29.7

+68

9.8

11.0

on sand stone

+50

4.2

29.1

6

8.6

12.2

7+29.30

2+80

4.4

28.9

on stub

+10

10.2

10.6

3+30 Δ 31'30" R

4.59

28.8

✓ ✓

T.P.

1.08

9.20

12.69

8.12

+50

4.3

29.0

+40

2.8

6.4

on sand stone

4

3.5

29.8

+60 Δ 81'00" R

3.95

5.3

on railing

+08.0

4.1

29.2

7

3.6

5.6

+15.0

6.6

26.7

+50

2.2

7.0

+43

11.1

22.2

8

+70

4.3

4.9

on sand stone

+46

13.2

20.1

8

3.9

5.3

+55 Δ 71'00" L

12.95

20.43

on stub

+16.65 = 131.25 page 52

3.75

5.15

= 55' page 52

+59

11.8

21.5

T.P.

0.27

20.81

12.84

20.34

+65

1.8

19.0

+75

1.8

19.0

4/20/21 Group of Levels for CURFALL
End of Fern Glen

57

Station	0.18	5.68	5.50	st. dat 13+85 on p. 52		8.1	-9.6	on Rock
Stations Continued from page 52					+48			
14		1.4	4.2		+50	8.7	-10.2	Rock 5 lower
+0.0		3.0	2.6		+75	9.0	+0.5	on Rock
+10.0		4.5	1.1		3	9.6	-10.1	Rock 7 lower
+17		4.3	1.3	on Rock			-1	
+18		5.3	.3					
+53		5.7	-1					
+63		7.4	-1.8	Rock 1.8 lower				
1		10.6	-5	Rock 2.7 lower				
+10		11.5	-5.9	Rock				
+18		12.3	-6.7					
+19		11.7	-6.1	on Rock				
+30		11.4	-5.8	✓ ✓				
+32		12.8	-7.2					
T.P	4.32	-1.57	11.57	-5.89				
+50			6.0	-7.57	Rock 0.5 lower			
+70			6.5	-8.	on Rock			
+72			6.2	-7.7	✓ ✓			
+75			6.8	-8.3				
2			7.5	-9.0	Rock 8 lower			
+45			7.7	-9.2	on Rock			

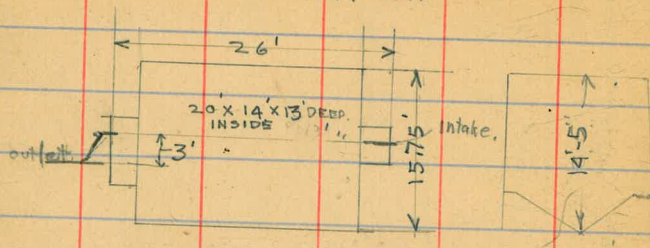
4/29/24 Gering

Levels through the centers
of Blocks 3 and 4 First
Addition to S. La Jolla.

58

✓	6.59	58.50	51.91	on stub 5402.1 page 56	2.80 page 56 + 29.30 = 2 Neptune P/	6.03	29.05	on stub
25 W. of W.L. on Monte Vista 20+00			2.03	56.5	on stub			
+50			1.8	56.7				
1			2.0	56.5				
+50			3.3	55.2				
2			4.7	53.8				
+50			6.3	52.2				
3			8.2	50.3				
+50			9.7	48.8				
4			11.6	46.9				
+34.50 = EL Vista Del Mar			13.1	45.4				
T.P.	1.12	46.56	13.06	45.44				
+62.00 = d Vista Del Mar			2.47	44.1	on stub			
5			4.5	42.0				
+50			7.8	38.7				
+90			11.0	35.5				
6			11.4	35.1				
+50			14.0	32.5				
T.P.	1.82	35.08	13.30	33.26				
7			4.8	31.2				

Tank Granilla St.



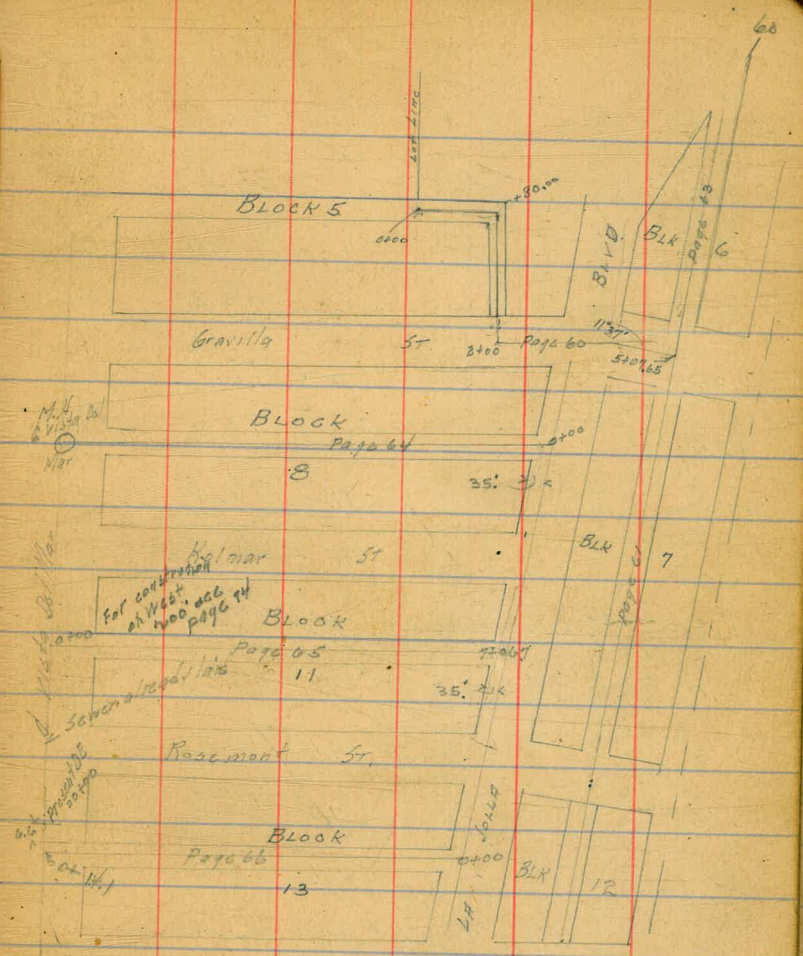
5/21/24
Sewer
✓

Sewer Levels in
Blk 5 La Jolla Strand

118 7 12
0.00 68.86 68.86

BP NA
Granilla
La Jolla Blvd
Top of cut stake
marked 6.73

0+00		8.9	58.6	
+7.0		10.2	58.6	= bottom ditch
+5.0		9.3	59.5	✓ ✓
+8.0 $\Delta 90^\circ R$		8.1	60.7	✓ ✓
1		7.2	61.6	✓ ✓
T.P.	1195	7531	5.50	6336
+5.0		11.8	63.5	✓ ✓
+6.0		10.2	65.1	no ditch
+8.5 = Top curb		10.03	65.3	
+8.6		10.6	54.7	
2 +00 = d Granilla $\Delta 90^\circ L$		10.2	65.1	
+5.0		8.9	66.6	
3		6.9	68.4	
+36.5		5.5	69.8	
+41.6 = ^{West} edge of paving		5.56	69.8	
+7.5		5.5	69.8	
+91.80 $\Delta 11^\circ 37' R$		4.4	70.9	
4		4.0	71.3	
+5.0		7.9	72.6	



5		1.8	73.5		+40	4.6	81.5	bottom ditch
	+07.65 = 6 1/2 h. Δ 90°00'R	1.5	73.8		+75	3.5	82.6	Top natural grd
	T.P. 11.80 86.11	1.00	74.31		9	3.6	82.5	
	+20	12.7	73.4		+40	3.4	82.7	
	+32	12.2	73.9		+65	2.0	84.1	natural grd.
	+35	13.3	72.8	=beginning ditch	+90	1.8	84.3	-
	+70	11.4	74.7	bottom ditch	10	2.9	83.2	ditch
6		10.5	75.6	✓ -	+32	3.1	83.0	✓
	+18	8.8	77.3	✓ ✓	+57.7 = 6	3.4	82.7	natural
	+20	9.8	76.3	- ✓	+65	3.5	82.6	✓
	+60	9.6	76.5	- ✓	+70	4.7	81.4	ditch
	+85	7.3	78.8	✓ ✓	+80	4.5	81.6	-
7		7.6	78.5	✓ -	+90	2.5	83.6	natural
	+12	6.4	79.7	✓ ✓	11	2.0	84.1	✓
	+15	7.2	78.9	✓ ✓	T.P. 3.47 86.93	2.45	83.66	
	+35	6.1	80.0	- ✓	+30	2.6	84.3	ditch
	+60	7.2	78.9	✓ ✓	like here is on a curve	3.5	83.4	-
	+90	6.8	79.3	✓ ✓	+75	3.2	83.7	✓
8		6.0	80.11	✓ ✓	12	3.6	83.3	✓
	+12	4.9	81.2	✓ ✓	+55	3.8	83.1	

+75	6.7	80.2
13	6.9	80.0
14	7.7	79.2
15	6.3	80.6
16	4.8	82.1
17	3.1	83.8
18	1.3	85.6
19	0.4	86.5

Sewer Levels
 2 Alley BLK 6 La Jolla Strand

5 97 63
 15 123
 7 55

Station	Offset	Level	TP on page 61	Level
✓	0.26	74.57	74.31	+17 18.8 55.8
Box Gravelle = 0+00		0.8	73.7	+21 19.3 55.3
+12.5		2.0	72.5	+23 18.1 56.5
+20		1.1	73.4	+50 12.3 62.3
+30		1.4	73.1	+60 9.9 64.7
+70		3.0	71.5	+66.69 9.4 65.2
1		4.2	70.3	
+45		5.8	68.7	
+65		4.9	69.6	
+88		5.8	68.7	
+92		6.3	68.2	
2		9.5	65.0	
+13		11.8	62.8	
+32		17.7	56.9	
+45		16.4	57.2	
+62		14.6	60.0	
+81		15.5	59.1	
+85		16.4	58.2	
+89		18.3	56.3	
3 +00		16.9	57.7	
+13		17.0	57.6	

5/21/20 Gregory Sewer Levels 2 x
 Alley Bk. 8 La Jolla Strand

129.70 300 125.17
 126.60 153 101.15
 450 1054
 679.75 563
 850 1617
 30
 745.36

✓													
5' Max W edge of paving at Blvd 20+00	6.35	75.11	68.86	BP. M. M. Garcia	+50			7.8	55.3	m ditch			
			4.5	72.6		+70		7.8	55.3	✓	✓		
+15			3.4	71.7		5		8.8	54.3	natural			
+35.6 = W. La Jolla Blvd			3.2	71.9		+15		8.7	54.4	✓			
+65			3.9	71.2		+30		10.1	53.0	m ditch			
1			4.8	70.3		+35		11.6	51.5	✓	✓		
+42			6.2	68.9	natural	+55		13.2	49.9	✓	✓		
+45			6.6	68.5	ditch	T.P.	0.30	50.59	1287	5025			
+50			6.8	68.3	✓	+70		2.8	47.7	m ditch			
+55			8.3	66.8	✓	6		6.6	43.9	✓	✓		
+75			9.1	66.0	✓	+10		7.5	43.0	✓	✓		
2+05.0			10.2	64.9	✓	+13		6.0	44.5	natural			
+07			11.2	63.9	✓	+50		9.9	40.6				
+50			12.6	62.5	✓	+70		12.2	38.3				
T.P.	0.51	63.12	12.50	62.61		T.P.	0.36	38.27	1268	3791			
+90			1.4	61.7	natural	7		4.6	33.6				
3+40			2.7	60.4	✓	+8		6.8	31.4				
+60			4.0	59.1	-	+18		9.2	29.0				
4			4.8	52.3	✓	+30		10.1	28.1				
+30			6.0	57.1	ditch	+45.4 = d of Vista Del Mar Flowline Sewer =		10.54	27.7	Top M.H.			
								16.17	22.1				

5/21/54 Gregory

Sewer Levels BLK 11
La Jolla Strand
from Vista Del Mar
To La Jolla Blvd

38.27 Hd from page 64

	10.05	40.27	8.05	30.22	
Vista Del Mar		=	14.60	25.67	Top of pipe manhole
+0100			10.0	30.27	
+40			9.6	30.6	
+50			4.6	35.6	
+75			1.3	38.9	
T.P.	12.51	52.78	0.00	40.27	
1			10.8	41.9	
+50			4.8	47.9	
+70			2.5	50.2	
T.P.	14.59	64.98	0.39	52.39	
2 +070			8.6	56.3	
+45			4.9	60.0	
+85			3.3	61.6	
3			2.7	62.2	
+50			1.1	63.8	
T.P.	12.35	76.71	0.42	64.56	
4			11.3	65.6	
+35			9.8	67.1	
+40			10.1	66.8	

117.91
450
123.75
64.14
30

151

65

+60			8.7	68.2	
5			7.4	69.5	
+50			4.8	72.1	
+75			4.1	72.8	
6			2.9	74.0	
+35			1.6	75.3	
+70.5	= W of La Jolla Blvd		1.2	75.7	
+92			0.8	76.1	
T.P.	4.77	81.13	0.77	76.14	
7			4.1	77.0	
+06.7	5' W of West Edge	aving	3.6	77.5	

5/1/41
✓

Senior Levels:
& Alley Bk 13
La Solla Strand
from La Blvd to Vista Del Mar

5' w. of N. 2490
paving of
0+00

8113 H.S. from page 65

		3.0	78.1
+20		5.1	76.0
+36.5	-N.L. Blvd.	5.4	75.7
+65		6.2	74.9
1		7.5	73.6
+50		9.4	71.7
2		10.9	70.2
T.P.	0.41	6934	1220 6893
+50		1.1	68.2
3		3.0	66.3
+10		3.0	66.3
+50		5.1	64.2
4		7.6	61.7
+15		8.5	60.8
+45		10.5	58.8
T.P.	0.14	5664	1284 5650
+80		1.3	55.3
5		4.1	52.5
+30		7.3	48.3

12141
275
10884
60525
30
30
670

72290 267 132 66

T.P.	0.31	4418	1277 4387
+75			1.3 42.8
6			4.1 40.0
+33			7.9 36.2
+43			10.1 34.0
+50			10.3 33.8
+52			11.2 32.9
+70.25	-Vista Del Mar.		11.8 32.3
	6.34	40.02	10.50 33.68
			9.60 30.42

5/2/20

Sewer Levels at Vista Del Mar.
 from 6.6' Hot.HL of Alley in
 B/R 13 produced West's South

✓

4002

67

←

6.6' Hot.HL Alley prod.	Top of pipe maybe	12.42	27.6
0+00 = present D.E		7.4	32.6
+20		7.4	32.6
+75		6.2	33.8
1		6.2	33.8
+50		4.3	35.7
+96		3.1	36.6
2		6.5	33.5
+12		8.2	31.8
+35		8.1	31.9
+95		10.2	29.8
+95		9.7	30.3
3 + 0.5		6.2	33.8
+20		4.5	35.5
+60		4.2	35.8
4		2.9	37.1
+50		0.8	39.2

Goes up quite rapidly from here

0.93 72.94 79.01 B.M. SE
Westbourne

T.P. 4.76 75.70 90° 70.94

Elev. Flow Line 30" pipe at Outlet 12.42 63.28

28.5' S. of N.L. Flinn Glen

8' E. of W. Prop. Line

Inlet end filled flush with

Top of paving

Culvert not functioning

No indication of any pipe at or near Arenas

5/28/24

Levels on OUTFALL SEWER
and Septic Tank Gravilla ST.
d = d of Gravilla

69

0.42	30.24	30.42	BP. SE Holman + Kitch Oct.	1' N. of d	3.8	14.3	SW. cor of Tank = Top of Septic Tank
	10.86	19.98	= Top of M.H.	10' " " "	3.1	15.0	
6 Gravilla and 2' W. of EL Neptune place = present M.H.	0.10	18.12	12.82	18.02	3' 5' "	6.0	12.12
		15.07	= Elev. flow line M.H.	4' " " "	4.5	13.6	
5' W. of E.L. Neptune		1.6	16.7	6' " " "	8.2	9.9	
	25' W. of E.L. Neptune						50' W. of E.L. Neptune
d of Gravilla		2.9	15.2	d	7.8	10.3	
4' 3" of d		2.8	15.3	5' 3" of d	8.1	10.0	
7' " " "		1.7	16.4	7' " " "	10.1	8.0	
10' " " "		3.0	15.12	10' " " "	10.1	8.0	
7' N. " " "		1.9	16.2	10' N. " " "	7.1	11.0	
10' " " "		0.1	18.0				60' W. of E.L. Neptune
	30' W. of E.L. Neptune			d	8.0	10.1	
d		3.1	14.7	10' N. of d	8.2	9.9	
1' 3" of d		5.2	12.9	8' 3' " "	10.8	7.3	
7' " " "		1.9	16.2	10' " " "	10.8	7.3	
10' " " "		3.6	14.5				68' W. of E.L. Neptune
10' N. " " "		2.3	15.8	d	7.2	10.9	
	39' W. of E.L. Neptune = West End Septic Tank			6' 5" of d	7.7	10.4	
d		6.0	12.12	9' " " "	11.7	6.9	
				10' " " "	11.2	6.9	

4' N of G	8.0	10.12
6' " "	7.0	11.12
10' " "	7.6	10.5
74' W. of E.L. Neptune.		
G	10.2	7.9
10' N of G	10.7	7.4
6' S " "	7.8	10.3
10' " "	10.0	8.12
78' W. of E.L. Neptune.		
G	11.3	6.8
10' S. of G	11.4	6.7
10' N " "	11.0	7.1
86' W. of E.L. Neptune.		
G	11.4	6.7
10' N of G	11.8	6.4
10' S " "	12.1	6.0
90' W. of E.L. Neptune.		
G	13.4	4.7
10' S of G	13.4	4.7
10' N " "	13.4	4.7

T.P.	1.16	6.55	12.73	5.39	
100' W. of E.L. Neptune.			2.1	4.45	Rock as Lower
125' " " "			4.1	2.45	Top of Rock
129' " " "			5.2	1.35	No Rock
168' " " "			8.6	-2.05	" "
212' " " "			14.1	-7.55	" "

Breakers Too High To Go Further.

Rock 1.4 Lower.

Moore
C.W.
Harry
6/24/10

Sewer Levels on Neptune Pl.
Belvedere South to Bowler St

3398

71

127	33.98	3271	Surf of Parade	3+87	3.8	30.18	N Rim of Draw #2
				4-	11.1	22.88	
Es. Neptune North set Hub. 0+00 at Belvedere 55' S of Belvedere			20' W of EL of Neptune	+03	12.2	21.78	
S +50	4.60	29.38		10' W of +03	14.8	19.18	
1-	5.1	28.88		12' ✓ ✓	25.8	8.18	
+50	5.8	28.18		15' ✓ ✓ ✓	29.8	4.18	
2-	6.3	27.68		409.	11.6	22.38	
+50	6.1	27.88		+12	7.6	26.38	
+68.5	5.3	28.68	N Rim of Draw #1	5' W of +12	9.3	24.68	
+69.10	6.11	27.87	set in Hub 12' W of Westbourne	4+22	3.6	30.38	
+76	10.3	23.68		5' W of +22	7.7	26.28	
+80	10.7	23.28		+28	5.4	28.58	
+81	9.6	24.38		5' W of +25	10.2	23.78	
+84	9.3	24.68		#1	5.4	28.58	
+89	4.7	29.28	S Rim of Draw	+31	9.3	24.68	
3-	4.7	29.28		5' W of +31	3.3	30.68	S Rim Draw #3
+07	4.8	29.18	N Rim of Draw #2	+32	7.8	26.18	
+16	13.3	20.68		5' W of +31	3.3	30.68	
+21	13.3	20.68		+50	3.1	30.88	
+31	4.8	29.18	S ✓ ✓ ✓ #2	5+00	3.0	30.98	
+50	4.4	29.58		+50			

3398

4932

72

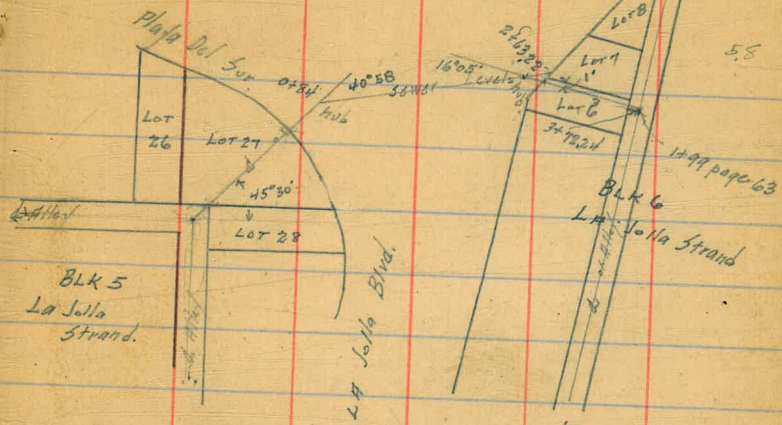
6+00		3.1	30.88
+25 ^{LS} & Nautilus		2.9	31.08
+50		2.7	31.28
7-		2.0	31.98
+50		1.1	32.88
8-		0.9	33.08
T.P.	3.61	36.85	0.87 33.11
+52		3.6	33.25
+55.35 $\Delta 15^{\circ} 57' L+$		5.7	31.15
+60		7.3	29.55
+65		7.6	29.25
+66		6.8	30.05
+72		6.2	30.65
+74		8.2	28.65
9-		9.2	27.65
+40		7.5	29.35
9 +64.67 $\Delta 74^{\circ} 07' L+$		7.57	29.28
10-		3.8	33.05
T.P.	12.73	49.32	0.26 36.59
+50		11.4	37.92

11+0217

7.6 41.72 ± 0.1 Alley106' Note of
Bowair
set NAL Bowair +
el. Neptune Pl.
set hub

6/26/24 Sewer Levels in BLKS 5 and 6
shown on opposite page

6 ex #116/3	0.41	69.27	6886 BP La Jolla + Graviola
BLK 5 = 0+00			8.38 on stub
+ 0.40		7.4	61.9
+ 0.50		6.1	63.2
+ 0.70		5.4	63.9
+ 1.00		6.7	62.6
+ 50		7.2	62.1
+ 63		7.3	62.0
+ 67		8.5	60.8
+ 80.4 = Top of Cement Ob		8.9	60.4
+ 80.41 = dirt gutter		10.0	59.3
+ 84.0 Δ 40°58' R		9.83	on stub
1		8.8	60.5
+ 25		7.7	61.6
+ 50		7.1	62.2
+ 75		6.7	62.6
2		5.5	63.8
+ 09.0		5.1	64.2
+ 17.55 = W edge paving		5.18	64.1
+ 41.25 = E - -		6.43	62.9



2+63.22 Δ 16°05' R	6.48	62.8	on stub
+ 70	5.8	63.5	
+ 88	4.2	65.1	
3	4.0	65.3	
T.P.	3.63	68.75	4.15 65.12
+ 15			2.1 66.65
+ 50			0.7 68.05
+ 60			+ 0.7 68.05
+ 72.24			3.55 65.20

51
35
1.00

73

58

8/12/24 *Gregory* Sewer Construction
 in BLK 11 La Jolla Strand
 from present Sewer to Vista Del Mar
 to 200' East

74

	949	39.89	30.42	Grade	Cost	
0+00 to Vista Del Mar		9.65	30.24	24.00	+ 6.24	
+50			39.5	35.94	30.35	+ 5.59
T.P.	16.24	55.95	0.18	39.71		
1			13.80	42.15	36.70	+ 5.45
+50			7.94	48.01	43.05	+ 4.96
2			0.89	55.06	49.40	+ 4.66

2nd prv
 13 bore from Miller
 Levels on Curb Lines Guy St
 from Witherby to Couts

	0.60	254.02		251.42
	E.L. Witherby			
N. Cb		9.1		242.9
S. ✓		11.2		240.8
	50' E			
S. Cb		7.7		244.3
N ✓		6.7		245.3
	75' E			
N Cb		6.4		245.6
S ✓		6.6		245.4 244.0
	100' E			
S Cb		7.1		244.9
N ✓		6.8		245.2
	125' E			
N Cb		7.3		244.7
S Cb		8.3		243.7
	150' E			
S Cb		9.5		242.5 241.3
N ✓		7.8		244.2

160' E = WL. Couts

N Cb	8.5		243.5
S ✓	11.5		240.5 240.0
	Levels on Couts St Curb Lines		
	N. Line Guy St		
W Cb	7.8		
E ✓	7.6		
	50' N		
E Cb	3.1		
W ✓	3.6		
	75' N		
W Cb	1.5		
E ✓	0.7		
	S.L. GUY ST.		
E Cb	12.9		
W Cb	13.1		
	0.25	239.29	12.98 239.04

239.7

50' 3.0 x GUY

Wcb

4.9

347

Ecb

5.7

100' 3.0 x GUY

Ecb.

11.05 338.24

Wcb.

11.8 329.5 427

76

320.5

Location of Palm Boxes on N side
of Lewis bet 1st St & Bachman Place

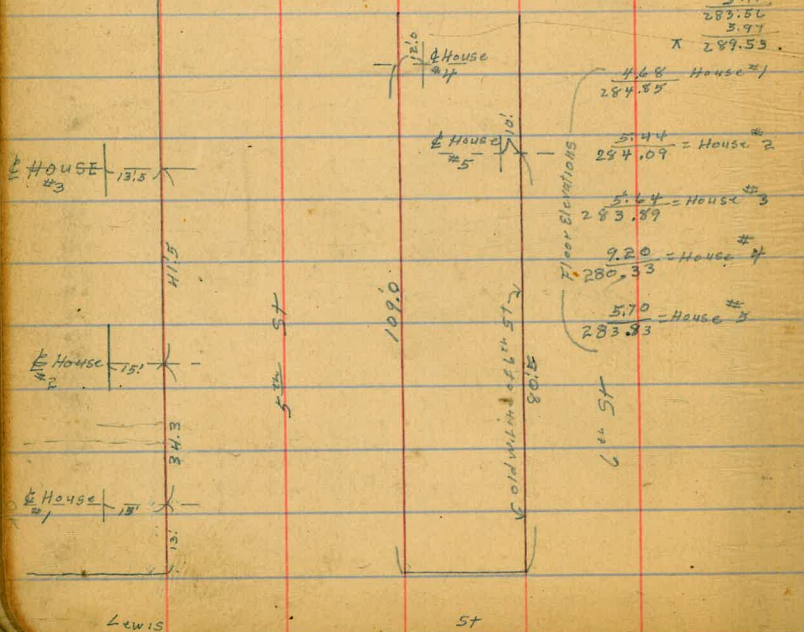
5/20/20
mils.

E line 1st = 00

1+25.5 E = 1st Box that is outside curb line	1.35 out at top 1.70 " " Bottom
1+42.9 E = 2nd " " " " " "	1.15 out at top 1.50 " " Bottom
1+59.5 E = 3rd " " " " " "	1.20 out at top 1.45 " " Bottom
1+74.7 E = 4th " " " " " "	1.1 out at top 1.45 " " Bottom
1+91.2 E = 5th " " " " " "	1.0 out at top 1.4 " " Bottom
8.5 E of within Bachman Place = 6th " " " " " "	1.2 out at top 1.5 " " Bottom
107.3 of N. on Lewis = 7th of above Box protrudes E. of curb of Bachman Pl.	1.7 out at top 1.1 " " Bottom

Location of Houses and elevations
on 5th and 6th Sts. N. of Lewis

5/20/20
mils.



8+17

10187
43

370 692
320
320
2460
2600

96467
1375
1102-17

25
165
415

66
145
803

1254
174
142.7
16.1
158.8
15.2
174.7

3022
802
3824
0.33
3791
1263
50.54
0.28
5026
1300
6330
0.69
6561
13.21
7586
700
456
68.86

21
133
24.3

132
110
490

35.50	35.65	35.80	37.45	37.60	37.75	37.90	38.05	39.10	41.5	29
37.00	37.15	37.30	38.95	39.10	39.25	39.40	39.55	39.70	42.85	29
38.50	38.65	38.80	40.45	40.60	40.75	40.90	41.05	41.20	42.85	24
40.00	40.15	40.30	41.95	42.10	42.25	42.40	42.55	42.70	43.85	26
41.50	41.65	41.80	43.45	43.60	43.75	43.90	44.05	44.20	45.85	25
43.00	43.15	43.30	44.95	45.10	45.25	45.40	45.55	45.70	47.35	26
44.50	44.65	44.80	46.45	46.60	46.75	46.90	47.05	47.20	48.85	27
46.00	46.15	46.30	47.95	48.10	48.25	48.40	48.55	48.70	50.35	28
47.50	47.65	47.80	49.45	49.60	49.75	49.90	50.05	50.20	51.85	29
49.00	49.15	49.30	50.95	51.10	51.25	51.40	51.55	51.70	53.35	30
50.50	50.65	50.80	52.45	52.60	52.75	52.90	53.05	53.20	54.85	31
52.00	52.15	52.30	53.95	54.10	54.25	54.40	54.55	54.70	56.35	32
53.50	53.65	53.80	55.45	55.60	55.75	55.90	56.05	56.20	57.85	33
55.00	55.15	55.30	56.95	57.10	57.25	57.40	57.55	57.70	59.35	34
56.50	56.65	56.80	58.45	58.60	58.75	58.90	59.05	59.20	60.85	35
58.00	58.15	58.30	59.95	60.10	60.25	60.40	60.55	60.70	62.35	36
59.50	59.65	59.80	61.45	61.60	61.75	61.90	62.05	62.20	63.85	37
61.00	61.15	61.30	62.95	63.10	63.25	63.40	63.55	63.70	65.35	38
62.50	62.65	62.80	64.45	64.60	64.75	64.90	65.05	65.20	66.85	39
64.00	64.15	64.30	65.95	66.10	66.25	66.40	66.55	66.70	68.35	40
65.50	65.65	65.80	67.45	67.60	67.75	67.90	68.05	68.20		
67.00	67.15	67.30								

Calculated by F. E. Paradis, C. E.

28.05

2006' RT
 2011' LT Δ 269.10
 Δ 12°28' LT
 Δ 77°32' LT
 43.47 4.72 38.55

74.07

3722' Hemlock

54.87

5.45

49.42

351.4
 321.9
 663.38
 341.69
 49.42
 306.69

4782' Lot line

6447'

S.W. 7' PTS

509.4
 394.4
 1103.8

1175.8
 634.8
 531.4
 594.4

1175.8
 1103.8
 72.0

1762
 1690

468 House #1

284.85

House #2

5.44 = House #2

284.09

5.64 = House #3

283.59

9.20 = House #4

280.33

5.70 = House #5

283.33

Floor Elevations

109.0

6" ST

6" ST

House #1

13.5

411.5

House #2

34.3

House #3

13.5

Lewis

ST

1812.87
 48
 1860.87

1125
 637

963.69
 137.5
 1101.19

1762

136
 70
 206

7.2
 19
 53

477

42
 37
 0.5
 55.35
 44.8
 100000

DISTANCES FROM CENTER OF ROADWAY FOR CROSS-SECTIONING

ROADWAY 14 FEET WIDE. SIDE SLOPES 1 1/2 TO 1.

FOR SINGLE TRACK EMBANKMENT.

0	.1	.2	.3	.4	.5	.6	.7	.8	.9	
7.00	7.15	7.30	7.45	7.60	7.75	7.90	8.05	8.20	8.35	0
8.50	8.65	8.80	8.95	9.10	9.25	9.40	9.55	9.70	9.85	1
10.00	10.15	10.30	10.45	10.60	10.75	10.90	11.05	11.20	11.35	2
11.50	11.65	11.80	11.95	12.10	12.25	12.40	12.55	12.70	12.85	3
13.00	13.15	13.30	13.45	13.60	13.75	13.90	14.05	14.20	14.35	4
14.50	14.65	14.80	14.95	15.10	15.25	15.40	15.55	15.70	15.85	5
16.00	16.15	16.30	16.45	16.60	16.75	16.90	17.05	17.20	17.35	6
17.50	17.65	17.80	17.95	18.10	18.25	18.40	18.55	18.70	18.85	7
19.00	19.15	19.30	19.45	19.60	19.75	19.90	20.05	20.20	20.35	8
20.50	20.65	20.80	20.95	21.10	21.25	21.40	21.55	21.70	21.85	9
22.00	22.15	22.30	22.45	22.60	22.75	22.90	23.05	23.20	23.35	10
23.50	23.65	23.80	23.95	24.10	24.25	24.40	24.55	24.70	24.85	11
25.00	25.15	25.30	25.45	25.60	25.75	25.90	26.05	26.20	26.35	12
26.50	26.65	26.80	26.95	27.10	27.25	27.40	27.55	27.70	27.85	13
28.00	28.15	28.30	28.45	28.60	28.75	28.90	29.05	29.20	29.35	14
29.50	29.65	29.80	29.95	30.10	30.25	30.40	30.55	30.70	30.85	15
31.00	31.15	31.30	31.45	31.60	31.75	31.90	32.05	32.20	32.35	16
32.50	32.65	32.80	32.95	33.10	33.25	33.40	33.55	33.70	33.85	17
34.00	34.15	34.30	34.45	34.60	34.75	34.90	35.05	35.20	35.35	18
35.50	35.65	35.80	35.95	36.10	36.25	36.40	36.55	36.70	36.85	19
37.00	37.15	37.30	37.45	37.60	37.75	37.90	38.05	38.20	38.35	20
38.50	38.65	38.80	38.95	39.10	39.25	39.40	39.55	39.70	39.85	21
40.00	40.15	40.30	40.45	40.60	40.75	40.90	41.05	41.20	41.35	22
41.50	41.65	41.80	41.95	42.10	42.25	42.40	42.55	42.70	42.85	23
43.00	43.15	43.30	43.45	43.60	43.75	43.90	44.05	44.20	44.35	24
44.50	44.65	44.80	44.95	45.10	45.25	45.40	45.55	45.70	45.85	25
46.00	46.15	46.30	46.45	46.60	46.75	46.90	47.05	47.20	47.35	26
47.50	47.65	47.80	47.95	48.10	48.25	48.40	48.55	48.70	48.85	27
49.00	49.15	49.30	49.45	49.60	49.75	49.90	50.05	50.20	50.35	28
50.50	50.65	50.80	50.95	51.10	51.25	51.40	51.55	51.70	51.85	29
52.00	52.15	52.30	52.45	52.60	52.75	52.90	53.05	53.20	53.35	30
53.50	53.65	53.80	53.95	54.10	54.25	54.40	54.55	54.70	54.85	31
55.00	55.15	55.30	55.45	55.60	55.75	55.90	56.05	56.20	56.35	32
56.50	56.65	56.80	56.95	57.10	57.25	57.40	57.55	57.70	57.85	33
58.00	58.15	58.30	58.45	58.60	58.75	58.90	59.05	59.20	59.35	34
59.50	59.65	59.80	59.95	60.10	60.25	60.40	60.55	60.70	60.85	35
61.00	61.15	61.30	61.45	61.60	61.75	61.90	62.05	62.20	62.35	36
62.50	62.65	62.80	62.95	63.10	63.25	63.40	63.55	63.70	63.85	37
64.00	64.15	64.30	64.45	64.60	64.75	64.90	65.05	65.20	65.35	38
65.50	65.65	65.80	65.95	66.10	66.25	66.40	66.55	66.70	66.85	39
67.00	67.15	67.30	67.45	67.60	67.75	67.90	68.05	68.20	68.35	40

Calculated by F. E. Paradis, C. E.

Handwritten calculations and notes on the top left of the left page, including numbers like 80, 11, 165, 1792, 143, 540, 50, 89, 38, 22.67, 570, 24.57, 21.33, 17.62, 11+758, 2863, 250, 24.00, 10.5, 2.5, 39, 23.

DISTANCES FROM CENTER OF ROADWAY FOR CROSS-SECTIONING.

ROADWAY 16 FEET WIDE. SIDE SLOPES 1 1/2 TO 1.

FOR SINGLE TRACK EMBANKMENT.

	0	.1	.2	.3	.4	.5	.6	.7	.8	.9	
0	8.0	8.2	8.3	8.5	8.6	8.8	8.9	9.1	9.2	9.4	
1	9.5	9.7	9.8	10.0	10.1	10.3	10.4	10.6	10.7	10.9	
2	11.0	11.2	11.3	11.5	11.6	11.8	11.9	12.1	12.2	12.4	
3	12.5	12.7	12.8	13.0	13.1	13.3	13.4	13.6	13.7	13.9	
4	14.0	14.2	14.3	14.5	14.6	14.8	14.9	15.1	15.2	15.4	
5	15.5	15.7	15.8	16.0	16.1	16.3	16.4	16.6	16.7	16.9	
6	17.0	17.2	17.3	17.5	17.6	17.8	17.9	18.1	18.2	18.4	
7	18.5	18.7	18.8	19.0	19.1	19.3	19.4	19.6	19.7	19.9	
8	20.0	20.2	20.3	20.5	20.6	20.8	20.9	21.1	21.2	21.4	
9	21.5	21.7	21.8	22.0	22.1	22.3	22.4	22.6	22.7	22.9	
10	23.0	23.2	23.3	23.5	23.6	23.8	23.9	24.1	24.2	24.4	
11	24.5	24.7	24.8	25.0	25.1	25.3	25.4	25.6	25.7	25.9	
12	26.0	26.2	26.3	26.5	26.6	26.8	26.9	27.1	27.2	27.4	
13	27.5	27.7	27.8	28.0	28.1	28.3	28.4	28.6	28.7	28.9	
14	29.0	29.2	29.3	29.5	29.6	29.8	29.9	30.1	30.2	30.4	
15	30.5	30.7	30.8	31.0	31.1	31.3	31.4	31.6	31.7	31.9	
16	32.0	32.2	32.3	32.5	32.6	32.8	32.9	33.1	33.2	33.4	
17	33.5	33.7	33.8	34.0	34.1	34.3	34.4	34.6	34.7	34.9	
18	35.0	35.2	35.3	35.5	35.6	35.8	35.9	36.1	36.2	36.4	
19	36.5	36.7	36.8	37.0	37.1	37.3	37.4	37.6	37.7	37.9	
20	38.0	38.2	38.3	38.5	38.6	38.8	38.9	39.1	39.2	39.4	
21	39.5	39.7	39.8	40.0	40.1	40.3	40.4	40.6	40.7	40.9	
22	41.0	41.2	41.3	41.5	41.6	41.8	41.9	42.1	42.2	42.4	
23	42.5	42.7	42.8	43.0	43.1	43.3	43.4	43.6	43.7	43.9	
24	44.0	44.2	44.3	44.5	44.6	44.8	44.9	45.1	45.2	45.4	
25	45.5	45.7	45.8	46.0	46.1	46.3	46.4	46.6	46.7	46.9	
26	47.0	47.2	47.3	47.5	47.6	47.8	47.9	48.1	48.2	48.4	
27	48.5	48.7	48.8	49.0	49.1	49.3	49.4	49.6	49.7	49.9	
28	50.0	50.2	50.3	50.5	50.6	50.8	50.9	51.1	51.2	51.4	
29	51.5	51.7	51.8	52.0	52.1	52.3	52.4	52.6	52.7	52.9	
30	53.0	53.2	53.3	53.5	53.6	53.8	53.9	54.1	54.2	54.4	
31	54.5	54.7	54.8	55.0	55.1	55.3	55.4	55.6	55.7	55.9	
32	56.0	56.2	56.3	56.5	56.6	56.8	56.9	57.1	57.2	57.4	
33	57.5	57.7	57.8	58.0	58.1	58.3	58.4	58.6	58.7	58.9	
34	59.0	59.2	59.3	59.5	59.6	59.8	59.9	60.1	60.2	60.4	
35	60.5	60.7	60.8	61.0	61.1	61.3	61.4	61.6	61.7	61.9	
36	62.0	62.2	62.3	62.5	62.6	62.8	62.9	63.1	63.2	63.4	
37	63.5	63.7	63.8	64.0	64.1	64.3	64.4	64.6	64.7	64.9	
38	65.0	65.2	65.3	65.5	65.6	65.8	65.9	66.1	66.2	66.4	
39	66.5	66.7	66.8	67.0	67.1	67.3	67.4	67.6	67.7	67.9	
40	68.0	68.2	68.3	68.5	68.6	68.8	68.9	69.1	69.2	69.4	

Calculated by F. E. Paradis, C. E.

Handwritten notes at the top of the right page: "230.2 mile Palcazoro 2 Santa Barbara", "212.1", "578 25 + 028", "745", "2785 36", "279.5", "477", "270", "477", "272.5", "236.9", "509 2".

Handwritten calculations on the right page: "17960", "10500", "7455", "2407", "27", "257.91", "12.70", "248.21", "8138", "5-15", "165", "110", "4312", "39", "4312", "39", "38808", "12936", "478.7", "1200", "270", "200", "1230", "1923", "38808", "12936", "516.1", "11068", "5000", "9320", "270", "72.61' L", "120°30'", "466.61", "8301", "10190", "8301", "4465", "355", "507.5", "8301", "805", "275", "470", "540.0", "1889", "630", "825", "810", "1347.5", "435", "481", "371", "31560", "30184", "12936", "509", "281", "17408", "271.5", "L. L. Loma Vieja", "1417000", "173.8", "44", "11500", "11180", "32060.5", "279.14", "130", "277", "137.1", "11.27", "280", "3", "405.8", "279.5", "44", "12550", "11.71", "4115", "17", "2805", "2115", "1000", "325", "643.35", "85", "699.56", "20000", "5400", "185000", "4.312", "375", "21560", "30184", "12936", "1417000".



Handwritten notes on the right page: "0411", "62", "20575", "8230", "4690", "259187", "102115", "2017", "279.14", "130", "405.8", "279.5", "12550", "2805", "2115", "1000", "325", "643.35", "85", "699.56", "20000", "5400", "185000", "4.312", "375", "21560", "30184", "12936", "1417000".