

1016

FIELD BOOK

360

1016

1016

# KEUFFEL & ESSER CO.

DRAWING MATERIALS

AND

SURVEYING INSTRUMENTS.

NEW YORK.

CHICAGO. ST. LOUIS. SAN FRANCISCO. MONTREAL.

## Tables for Excavations and Embankments.

DISTANCES FROM CENTER OF ROADWAY FOR CROSS-SECTIONING.

ROADWAY 16 FEET WIDE. SIDE SLOPES 1 TO 1.

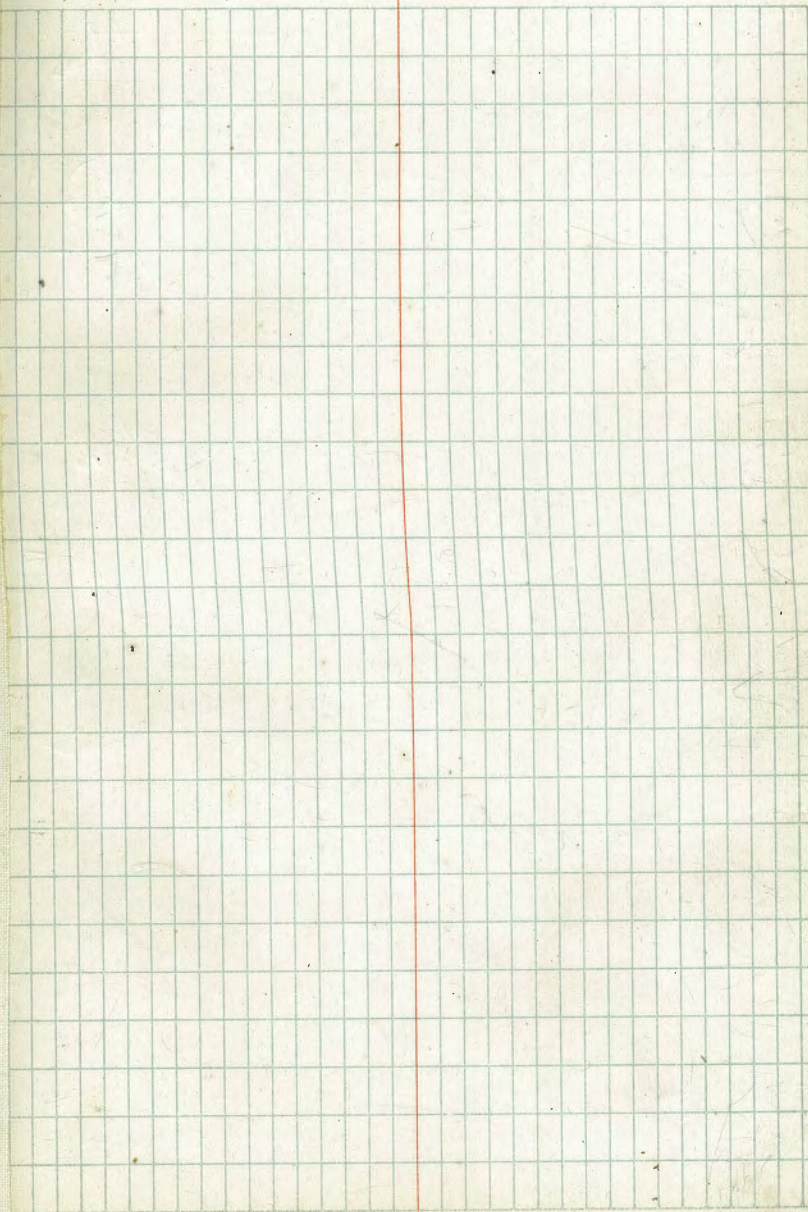
FOR SINGLE TRACK EXCAVATION.

" Copyright, 1895, by Keuffel & Esser Co."

	0	.1	.2	.3	.4	.5	.6	.7	.8	.9	
0	9.0	9.1	9.2	9.3	9.4	9.5	9.6	9.7	9.8	9.9	0
1	10.0	10.1	10.2	10.3	10.4	10.5	10.6	10.7	10.8	10.9	1
2	11.0	11.1	11.2	11.3	11.4	11.5	11.6	11.7	11.8	11.9	2
3	12.0	12.1	12.2	12.3	12.4	12.5	12.6	12.7	12.8	12.9	3
4	13.0	13.1	13.2	13.3	13.4	13.5	13.6	13.7	13.8	13.9	4
5	14.0	14.1	14.2	14.3	14.4	14.5	14.6	14.7	14.8	14.9	5
6	15.0	15.1	15.2	15.3	15.4	15.5	15.6	15.7	15.8	15.9	6
7	16.0	16.1	16.2	16.3	16.4	16.5	16.6	16.7	16.8	16.9	7
8	17.0	17.1	17.2	17.3	17.4	17.5	17.6	17.7	17.8	17.9	8
9	18.0	18.1	18.2	18.3	18.4	18.5	18.6	18.7	18.8	18.9	9
10	19.0	19.1	19.2	19.3	19.4	19.5	19.6	19.7	19.8	19.9	10
11	20.0	20.1	20.2	20.3	20.4	20.5	20.6	20.7	20.8	20.9	11
12	21.0	21.1	21.2	21.3	21.4	21.5	21.6	21.7	21.8	21.9	12
13	22.0	22.1	22.2	22.3	22.4	22.5	22.6	22.7	22.8	22.9	13
14	23.0	23.1	23.2	23.3	23.4	23.5	23.6	23.7	23.8	23.9	14
15	24.0	24.1	24.2	24.3	24.4	24.5	24.6	24.7	24.8	24.9	15
16	25.0	25.1	25.2	25.3	25.4	25.5	25.6	25.7	25.8	25.9	16
17	26.0	26.1	26.2	26.3	26.4	26.5	26.6	26.7	26.8	26.9	17
18	27.0	27.1	27.2	27.3	27.4	27.5	27.6	27.7	27.8	27.9	18
19	28.0	28.1	28.2	28.3	28.4	28.5	28.6	28.7	28.8	28.9	19
20	29.0	29.1	29.2	29.3	29.4	29.5	29.6	29.7	29.8	29.9	20
21	30.0	30.1	30.2	30.3	30.4	30.5	30.6	30.7	30.8	30.9	21
22	31.0	31.1	31.2	31.3	31.4	31.5	31.6	31.7	31.8	31.9	22
23	32.0	32.1	32.2	32.3	32.4	32.5	32.6	32.7	32.8	32.9	23
24	33.0	33.1	33.2	33.3	33.4	33.5	33.6	33.7	33.8	33.9	24
25	34.0	34.1	34.2	34.3	34.4	34.5	34.6	34.7	34.8	34.9	25
26	35.0	35.1	35.2	35.3	35.4	35.5	35.6	35.7	35.8	35.9	26
27	36.0	36.1	36.2	36.3	36.4	36.5	36.6	36.7	36.8	36.9	27
28	37.0	37.1	37.2	37.3	37.4	37.5	37.6	37.7	37.8	37.9	28
29	38.0	38.1	38.2	38.3	38.4	38.5	38.6	38.7	38.8	38.9	29
30	39.0	39.1	39.2	39.3	39.4	39.5	39.6	39.7	39.8	39.9	30
31	40.0	40.1	40.2	40.3	40.4	40.5	40.6	40.7	40.8	40.9	31
32	41.0	41.1	41.2	41.3	41.4	41.5	41.6	41.7	41.8	41.9	32
33	42.0	42.1	42.2	42.3	42.4	42.5	42.6	42.7	42.8	42.9	33
34	43.0	43.1	43.2	43.3	43.4	43.5	43.6	43.7	43.8	43.9	34
35	44.0	44.1	44.2	44.3	44.4	44.5	44.6	44.7	44.8	44.9	35
36	45.0	45.1	45.2	45.3	45.4	45.5	45.6	45.7	45.8	45.9	36

Calculated by Julien A. Hall, M. Am. Soc. C. E.

FOR KEITH'S RAILROAD CURVE TABLES SEE END OF BOOK.



5/21/17  
Gregory  
Moore  
Miller

Cross SECTION OF  
Survey for Location of  
Production or Lookout  
Drive from Beverly Tract  
to Extension of Market St.

2  
02

N.  
↑  
00

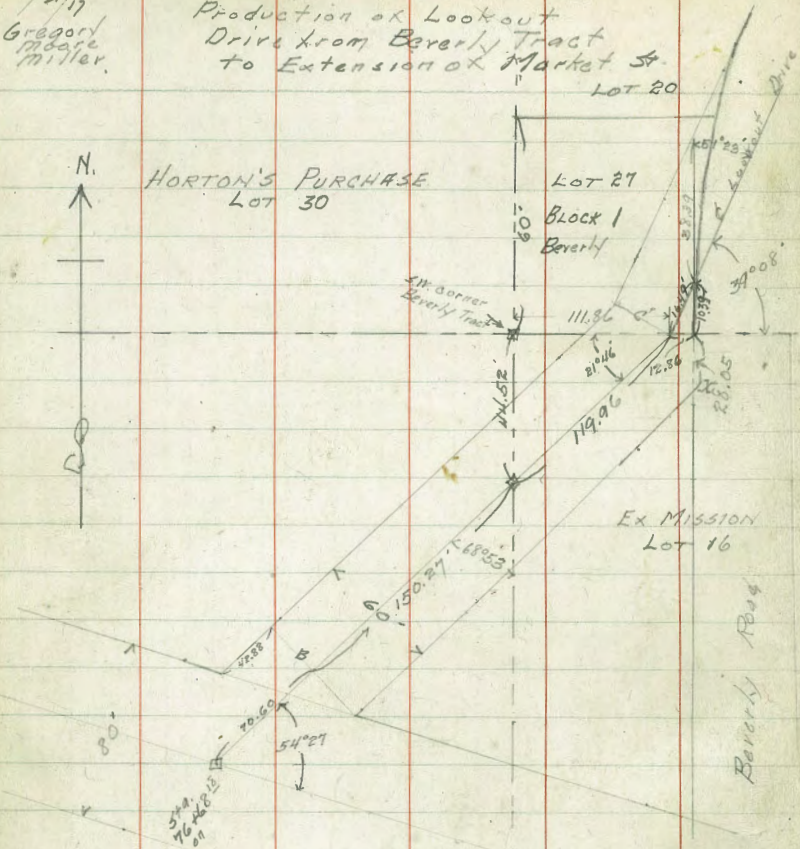
HORTON'S PURCHASE  
LOT 30

LOT 27  
Block 1  
Beverly

LOT 20

EX MISSION  
LOT 16

Beverly Bus



5/17  
Gregory  
Moore  
Miller

CROSS SECTION OF  
Road shown on  
Preceding Page  
60' wide  
15' walks

B.M.	1.03	119.45	112.42	Walter pole on Beverly Rd
T.P.	12.71	126.46	5.70	113.75 on hub
N. Line of Market St.				
W		12.0	114.5	
cb		11.1	115.4	
1/4		9.6	116.9	
c		8.6	117.9	
1/4		7.8	118.7	
+5		7.7	118.8	
cb		9.2	117.3	
+3		10.2	116.3	
E		10.2	116.3	
42.88' No. of West. 00' East } = SECT B				
E		10.2	116.3	
+6		10.0	116.5	
cb		7.8	118.7	
+3		6.6	119.9	
1/4		6.4	120.1	
c		5.9	120.6	
1/4		5.6	120.9	
cb		5.6	120.9	
W		8.5	118.0	
25' No.				
W		3.4	123.1	
cb		3.1	123.4	

126.46

3  
33

1/4		2.6	123.9	
c		2.8	123.7	
1/4		3.2	123.3	
cb		5.1	121.4	
E		8.2	118.3	
50' No.				
E		3.6	122.9	
cb		4.4	125.1	
1/4		0.8	125.7	
c		0.8	125.7	
1/4		1.0	125.5	
cb		1.0	125.5	
W		1.4	125.1	
T.P.	14.71	137.72	0.45	126.01
75' No.				
W		10.7	127.0	
cb		10.3	127.4	
1/4		9.8	127.9	
c		9.4	128.3	
1/4		9.1	128.6	
cb		8.7	129.0	
E		9.2	128.5	
100' No.				
E		5.3	132.4	
cb		4.7	133.0	
1/4		4.3	133.4	

137.72

C			5.2	132.5
1/4			5.6	132.1
db			6.9	130.8
W			7.6	130.1
T.P.	11.85	148.00 ✓ 123' No.	1.57	136.15 ✓
W			9.0	139.0
db			8.9	139.1
1/4			9.2	139.8
C			11.5	136.5
1/4			11.5	136.5
db			10.6	137.4
E			10.4	137.6
		125.5' No.		
E			9.8	138.2
db			10.3	137.7
1/4			10.9	137.1
C			11.0	137.0
1/4			8.9	139.1
db			8.9	139.1
W			15.5	132.5
		140' No.		
W			15.6	132.4
db			15.6	132.4
+5			15.5	132.5
1/4			8.4	139.6

148.00

4  
0.4

C			8.0	140.0
1/4			7.6	140.4
db			8.3	139.7
E			7.7	140.3
		154.5' No.		
E			5.0	143.0
db			5.2	142.8
1/4			5.4	142.6
C			6.0	142.0
1/4			7.0	141.0
+7			7.3	140.7
db			15.5	132.5
W			15.6	132.4
		158' No.		
W			7.6	140.4
db			7.3	147.7
+5			5.4	142.6
1/4			4.5	143.5
C			5.0	143.0
1/4			4.8	143.2
db			4.8	143.2
E			4.8	143.2
		175' No.		
E			3.8	144.2
db			3.9	144.1
1/4			4.0	144.0

148.0

C	36	144.4
1/2	35	144.5
cb	35	144.5
W	34	144.6
200' No.		
W	25	145.5
cb	24	145.6
1/2	22	145.8
C	19	146.1
1/2	23	145.7
cb	22	145.1
E	34	144.6
236' No.		
E	31	144.9
cb	27	145.3
1/2	24	145.6
C	23	145.7
1/2	18	146.2
cb	15	146.5
W	18	146.2
265.43' No.		
W	19	146.1
cb	27	145.3
1/2	32	144.8
C	29	145.1
1/2	41	143.9

148.0

5

05

cb	58	142.2
E	74	140.6
TR	8.02	147.67
272.1' No. on East = West Line at Beverly Rd		
265.43' - - - - - East = Angle Point on East Line		
E	152	132.5
+6	150	132.7
cb	96	138.1
+2	61	141.6
1/2	47	143.0
C	31	144.6
1/2	29	144.8
cb	23	145.4
W	15	146.2
270.23' No. on Center Line = SECT C		
265.43' No. on East		
W	15	146.2
cb	23	145.4
1/2	31	144.6
C	33	144.4
1/2	50	142.7
+5	58	141.9
cb	10.9	136.8
+2 approx	14.5	133.2
Point on N. L. Beverly Rd		
4.5' No. on Center		
00' - - - - - West		
E (cb + 5 approx)	10.7	137.0
1/2	61	141.6
C	41	143.6

147.67

1/4 9.5 1442

ob 2.3 1457

W 1.5 1462

West Line Beverly Road produced. No.

W 2.8 1449

ob 4.0 1437

1/2 5.1 1426

C 7.3 1404

1/2 9.1 1386

ob 13.9 1338

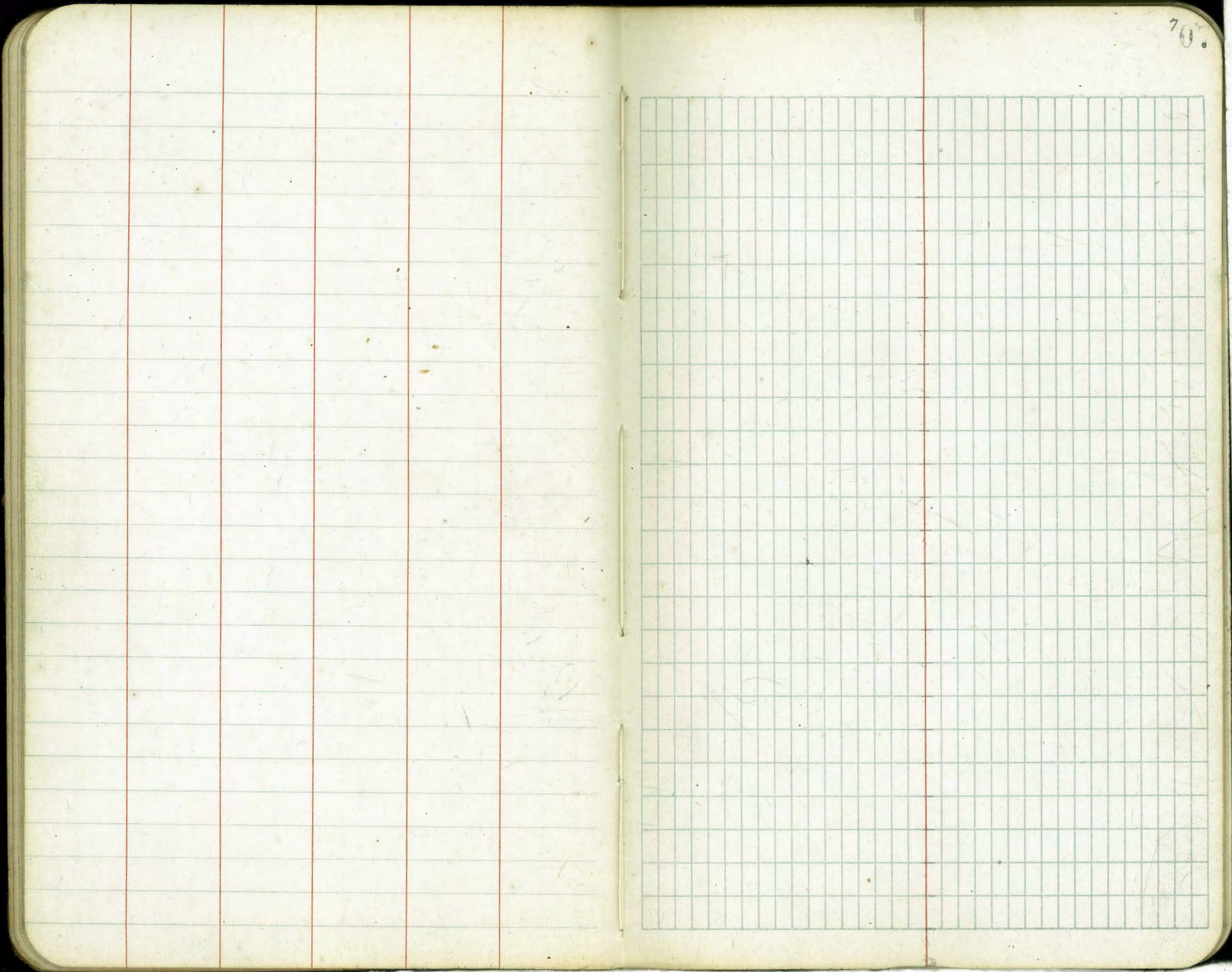
Point X 14.5 1332

B.M. 342

Nail in pole  
144.25 SE Lookout  
Beverly Rd.  
OX = 144.20

80





5/23/17 Gregory  
Kramer  
Miller

Cross SECTION OF ROAD  
shown on Next Page  
60 mi de 10' walks  
from St. Beverly Tract  
to City Boundary

Should be  
144.00

144.25  
Half SE  
Lookout Drive  
& Alameda St

B.M. 0.99

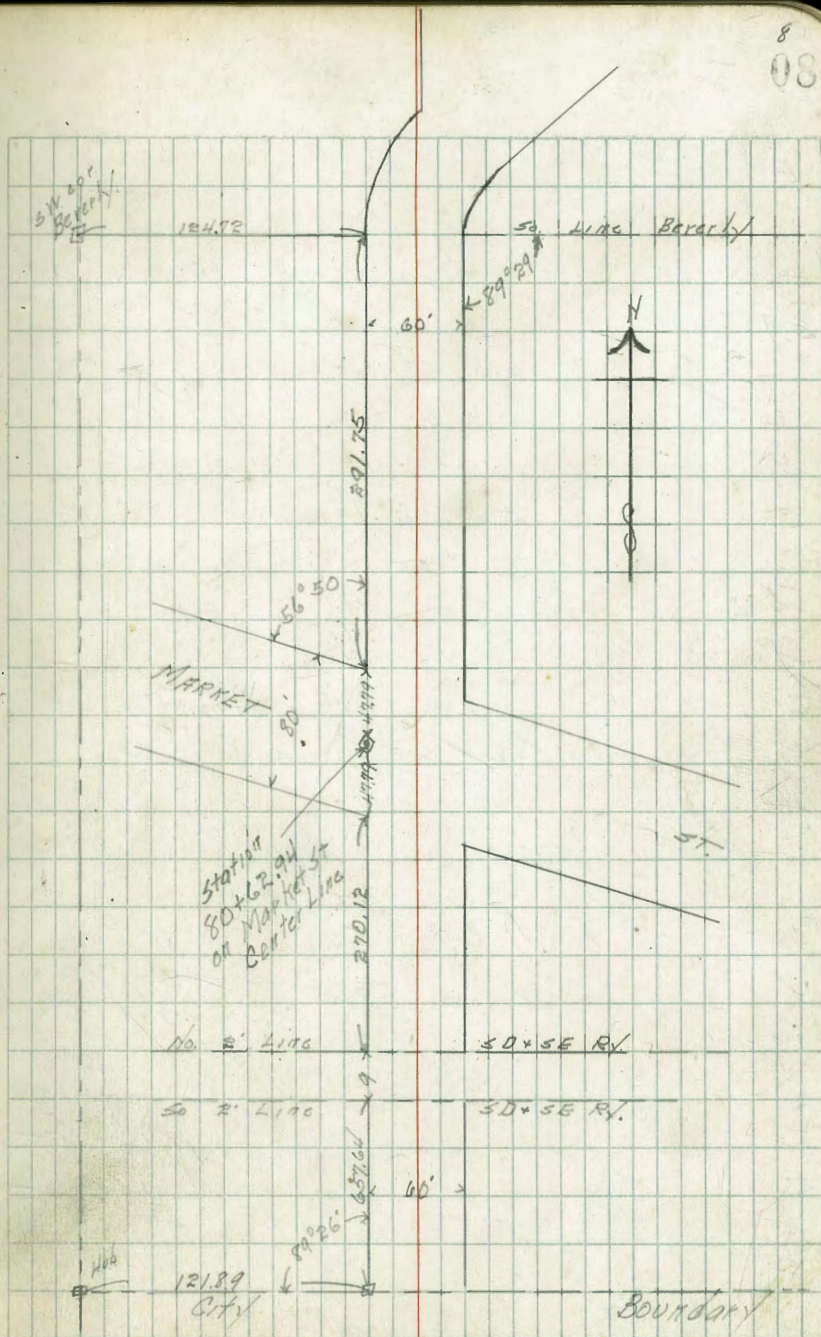
145.19  
145.24

144.25

So. LINE BEVERLY TRACT

E	4.1
cb	5.0
+2.5	4.9
+5	5.6
+8	8.3
1/4	8.8
+2	8.5 6.8
C	6.8
1/4	7.3
cb	7.9
+7	7.9
W	6.7
28.05 So.	
W	12.8
+3	12.4 10.7
cb	10.2
1/4	10.1
C	9.9
+3	10.3 12.4
1/4	11.7 10.3
cb	8.2
E	4.9

end of cement  
curb on Lookout



145.24  
145.19

50' So

E		6.6	
cb		9.1	
1/4		11.1	
+5		11.9	
+6		14.7	
+8		14.8	
C		12.9	
1/4		12.2	= center Road
cb		12.2	
+7		12.6	
		14.3	
W		14.0	

T.P.	1.46	134.68	133.22
		134.73	133.27

100' So

W		6.7	
+3		7.4	
cb		6.5	
1/4		6.4	= ctr Road
C		7.3	
+5		7.8	
1/4		5.8	
cb		3.2	
E		0.0	

150' So

E		6.5	
cb		9.2	

Road from Beverly 9

13468

00

1/4			11.7	
+5			12.7	
C			11.4	
+3			10.6	
1/4			10.8	= ctr Rd
cb			10.8	
W			11.3	
T.P.	1.40	123.09	124.9	121.69
		123.14		121.74

200' So

W			6.1	
+4			6.1	
cb			4.0	
1/4			3.8	ctr Rd
C			3.8	
+5			5.2	
1/4			4.0	
+5			3.9	
cb			2.8	
E			0.0	

250' So

E			0.8	
cb			3.0	
1/4			3.8	
+6			4.7	
C			8.2	
+3			8.1	

12314  
123.09

1/2	7.4	ctr Rd
cb	7.6	
W	8.5	
291.25 So. = No. Line Market St. on West		
W	10.0	
cb	9.8	ctr Rd
1/2	9.5	
C	10.3	
1/2	8.9	
cb	7.5	
E	5.6	
291.75 So. on West } 330.96 v - East } = N.L. Market St. 80.5' } Factor on diagonal		
E	8.0	
cb	9.1	
1/2	10.1	
C	11.0	
1/2	10.3	
cb	9.9	ctr Rd
W	10.0	
No. Curb Market. on diagonal		
W	10.8	
cb	11.0	ctr Rd
1/2	11.1	
C	12.7	
+2	12.9	
+4	10.3	

Road from Barabky 10

10

1/2	9.7	
cb	9.9	
E	8.8	
No. Quarter on diagonal		
E	9.0	
cb	9.6	
+9	11.9	
1/2	11.7	
	10.5	
+8	10.6	
C	13.4	
1/2	12.0	
cb	11.6	ctr Rd
W	11.6	
Center Market Ditto		
W	12.3	
cb	12.3	ctr Rd
1/2	12.8	
C	13.9	
+3	14.1	
1/2	10.7	
cb	10.3	
E	9.9	
So. Quarter Ditto		
E	10.3	
cb	10.9	
1/2	11.1	

123.14  
123.09

Road from Beverly 11

+9		11.4	
C		14.6	
1/4		13.3	
cb		13.0	ctr Rd
W		12.9	

So. Curb (taken on Diagonal)

W		13.6	
cb		13.8	ctr Rd
1/4		14.0	
C		14.8	
+3		11.9	
1/4		11.5	
cb		11.5	
E		10.7	

So. Line Market St (on Diagonal)

E		11.9	111.2
cb		12.0	
1/4		12.3	
+7		12.5	
T.P.	00	110.61 <del>110.66</del>	12.48 <del>110.66</del>
+10		4.2	
C		3.0	
1/4		2.3	
cb		1.9	ctr Rd
W		1.8	

11  
426.54' So. of S.L. Beverly = S.L. Market on East.

W		3.6	
cb		3.3	ctr Rd
1/4		3.3	
C		4.1	
+4		4.2	
1/4		0.6	
1/4		0.5	
cb		0.2	
E		+0.5	111.2

450' So. of Beverly

E		1.2	
cb		1.3	
1/4		1.7	
+6		1.9	
+8		4.9	
C		4.8	
1/4		4.3	ctr Rd
cb		4.2	
W		4.5	

500' So.

W		6.9	
cb		6.2	
1/4		6.0	ctr Rd
C		6.8	
+3		4.9	

110.66  
110.51

1/4	
ct	4.8
E	4.3
	3.7
	550' So.
E	5.0
ct	7.2
+5	8.6
1/4	8.9
C	8.9
+3	7.6
1/4	7.8
ct	7.8
W	8.5
	565' So.
W	8.8
ct	8.2
1/4	8.0
C	8.2
+5	9.1
1/4	9.4
ct	9.3
E	9.3
	587' So.
E	10.6
ct	9.4
+4	8.3

ctr Rd.

ctr Rd.

11061

Road from Berery So. 12  
12

1/4		8.8	
C		8.8	
1/4		9.9	
ct		9.8	ctr Rd.
W		9.6	
		588' So.	
W		9.7	
ct		9.9	ctr Rd.
1/4		10.0	
C		8.8	
1/4		8.7	
+6		8.2	
ct		9.6	
+7		10.8	
		13.0	
E		13.1	
T.P.	227	105.44 105.47	7.46
		600' So.	103.15 103.20
E		9.0	
ct		9.0	
+5		7.8	
1/4		5.6	
+6		3.8	
C		3.7	
+6		3.5	
		6.5	
1/4		6.4	
+5		5.3	

105.47  
105.42

cb 5.1  
+6 5.2  
W 6.4

611' 50.

W 7.7  
+4 5.4  
cb 5.1  
+5 5.1  
1/4 7.9  
C 8.2  
1/4 9.6  
cb 9.0  
E 9.3

612' 50.

E 9.3  
cb 9.0  
1/4 9.6  
C 8.3  
1/4 8.0  
cb 9.7  
W 9.2

620' 50.

W 9.9  
cb 9.9  
1/4 9.9  
C 9.8

ctr Rd

ctr road

bridge

bridge

Road from Beverly So. 13

13

1/6 9.6  
cb 9.2  
E 9.3

626' 50.

E 9.1  
cb 9.3  
1/4 9.4  
C 9.6  
1/4 9.5  
cb 9.2  
W 8.2

bridge

627' 50.

W 8.2  
+4 5.0  
cb 4.9  
+3 4.8  
+6 8.8  
1/4 9.5  
C 9.6  
1/4 9.4  
cb 9.3  
E 9.1

ctr road

635' 50.

E 8.4  
cb 8.8  
1/4 9.0

105.47  
105.42

C	8.9	
1/4	8.7	
+2	8.5	
+8	4.5	
cb	4.4	ctr Rd.
+7	4.4	
W	6.7	
643' So		
W	4.4	
+3	3.1	
cb	3.2	ctr Rd.
+3	3.8	
1/4	7.5	
C	8.1	
1/4	8.0	
+7	6.2	
cb	4.4	
E	4.2	
657.45 So. = No. 2' Line of Rf.		
E	0.4	
E	+0.22	105.69 on rail.
cb	0.9	
1/4	0.9	
C	0.9	
1/4	1.1	
cb	0.5	

105.47

Road from Beverly So. 14

14

W	0.4	
W	0.25	on rail
T.P.	0.97	106.14 106.19
		105.17 105.22
666.45' So. = So. 2' Line of Rf.		
W	1.1	
cb	1.3	
1/4	1.9	
C	1.7	
1/4	1.7	
cb	1.7	
E	1.6	
676' So		
E	5.5	
cb	5.6	
1/4	6.0	
C	6.1	
1/4	6.1	
cb	2.0	at rd
W	2.0	
692' So		
W	3.5	
cb	3.5	ctr rd
1/4	7.6	
C	8.0	
1/4	8.1	
cb	7.9	



106.19  
106.14

E	82	
	700' So	
E	5.4	
cb	5.3	
1/4	5.6	
+7	5.9	
C	7.1	
1/4	6.6	
+3	6.3	
cb	3.8	ctr rd
W	3.9	
	750' So	
W	5.2	
cb	5.0	ctr rd
+5	6.0	
1/4	6.5	
C	6.1	
1/4	5.7	
cb	5.8	
E	5.5	
	800' So	
E	4.7	
cb	4.7	
1/4	4.8	
C	5.0	
1/4	5.7	

106.14

Road from Beverly So. 15  
15

cb	4.6	ctr rd
W	4.6	
	857' So	
W	3.9	
cb	3.7	ctr rd
1/4	5.1	
C	4.8	
1/4	5.0	
cb	5.0	
E	5.1	
	900' So	
E	1.1	
cb	1.5	
1/4	1.7	
C	2.0	
+7	2.5	
1/4	3.3	
cb	2.8	
W	2.3	ctr rd
T.P.	12.20	118.23 +17.88
		0.11
		106.23 -106.08
	950' So	
W	12.3	ctr rd
cb	12.2	
1/4	11.7	
C	11.2	
1/4	10.8	

118.28  
118.23

cb 10.1

E 8.6

1000' So

E 5.7

cb 5.7

1/4 6.2

c 6.8

1/2 8.2

cb 9.6

W 9.7

ctr rd

1050' So

W 7.1

ctr rd

cb 7.8

1/4 6.8

ctr 6.5

1/2 6.2

cb 5.8

E 5.6

1100' So

E 3.9

cb 4.2

1/4 4.4

c 4.7

1/2 4.8

cb 4.4

W 3.8

ctr rd

118.23

Road from Beverly So, 16

16

1130' So

W 1.2

ctr rd

cb 2.0

1/4 3.0

c 3.0

1/2 3.0

cb 2.6

E 1.8

T.P. 12.68 <sup>130.82</sup> ~~130.87~~ 009 <sup>118.14</sup> 118.18

1150' So

E 10.5

cb 11.6

1/4 12.2

c 12.8

1/2 13.6

+6 13.6

cb 12.4

+2 11.5

W 11.7

ctr rd

1175' So

W 8.6

cb 8.9

1/4 9.9

c 10.1

1/2 9.7

cb 9.0

130.87  
130.84

Road from Beverly So. 17

17

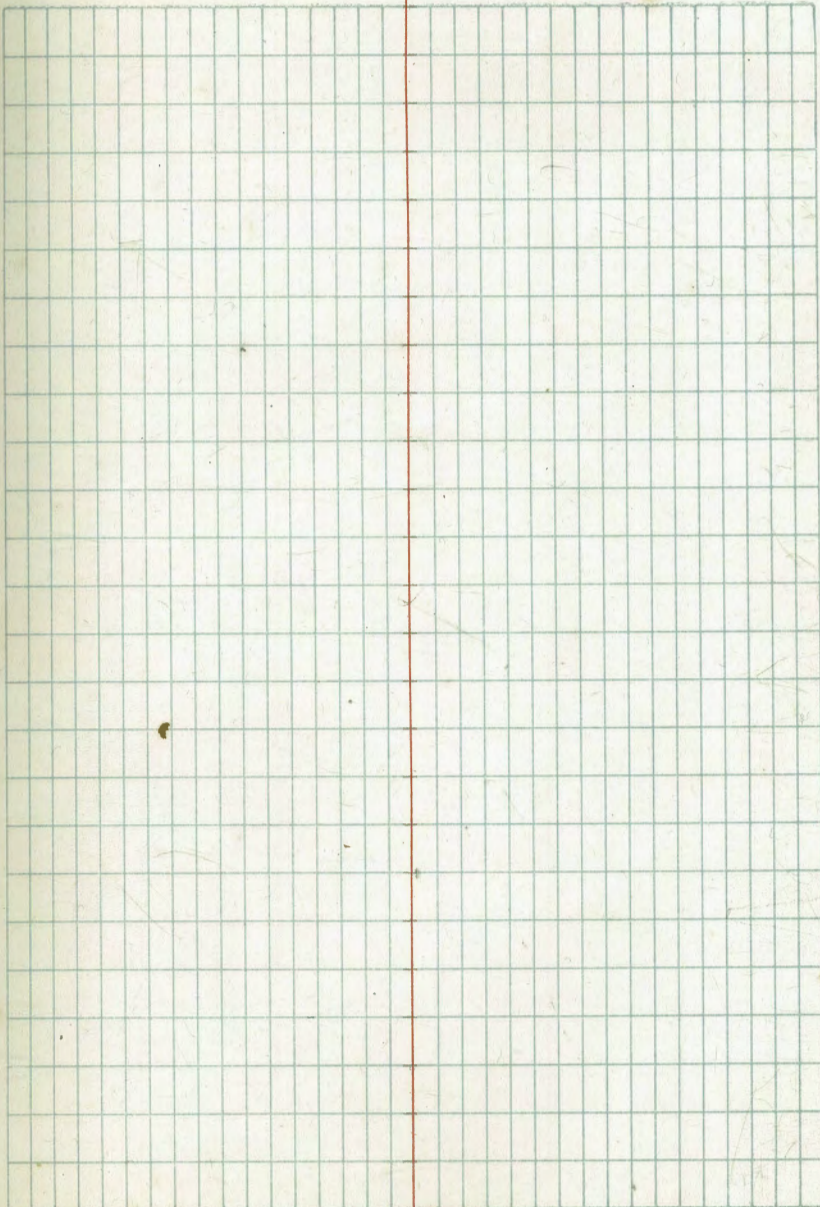
E			88	
	1200' 50			
E			3.0	
cb			4.5	
1/4			5.0	
C			5.3	
1/4			5.6	
cb			4.9	
W			5.1	ctr rd.
T.P.	9.89	140.66 140.21	0.05	130.77 130.82
	1235' 50			
W			9.9	ctr rd.
cb			9.6	
+3			9.3	
			8.5	
1/4			8.6	
C			7.7	
1/4			7.0	
cb			6.1	
E			5.6	
	1250' 50			
E			4.1	
cb			3.8	
1/4			4.2	
C			5.6	
1/4			6.1	
+7			6.7	
			7.5	

cb			7.7	
W			7.9	ctr rd.
	1275' 50			
W			5.3	ctr rd.
cb			5.6	
+4			5.6	
			4.8	
1/4			4.8	
C			4.8	
1/4			4.0	
cb			3.9	
E			3.7	
	1300' 50			
E			2.3	
cb			3.4	
1/4			3.8	
C			4.0	
1/4			4.0	
+6			3.9	
			4.6	
cb			4.5	
W			4.3	
	1324.09' 50. = City Boundary			
W			3.8	
cb			3.7	
+5			2.8	
1/4			2.4	
C			2.4	

140.71  
148.66

1/2			25		
at			24		
E			14		
B.M.			400	136.71	Hub City Lim. + W Line Rd.
T.P.	0.88	129.92	11.07	129.64	
T.P.	1.42	118.23	13.11	116.51	
chk.			5.79	112.44	nail 17 pole = 112.42

11'



A grid of 20 columns and 20 rows on a graph paper page. The grid is formed by light green lines. A vertical red margin line is positioned to the left of the grid, and a horizontal red margin line is positioned above the grid. The grid is currently empty.

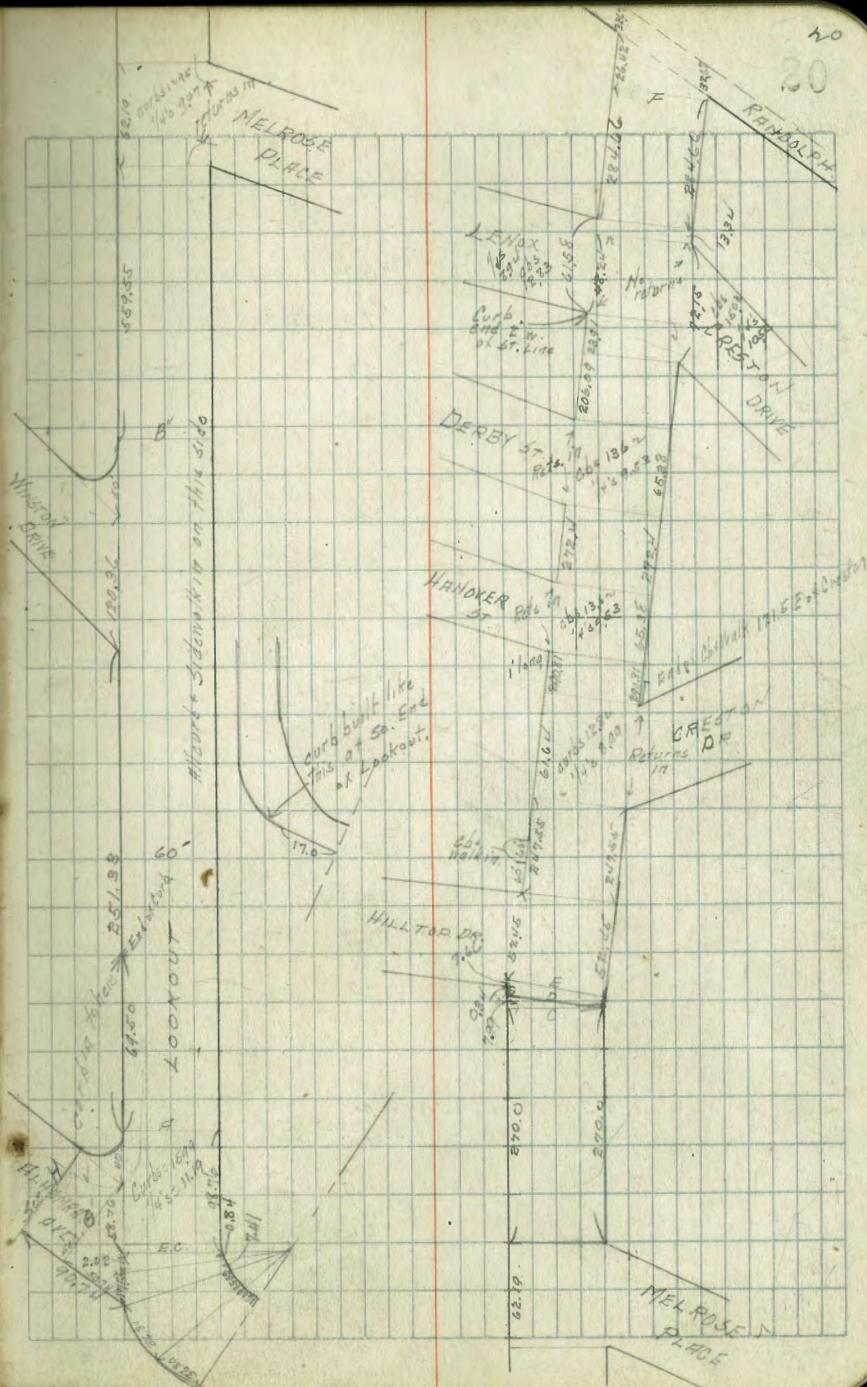
CROSS SECTION OF  
LOOKOUT DRIVE  
ENTIRE LENGTH

60' wide  
12.5' curbs  
875'  $\frac{1}{4}$ "

	5.79	118.21		118.42	MAIN IN ROLE 16' Meters E LINE BEAR 50.4
T.P.	12.22	130.37	0.06	118.15	
T.P.	11.37	141.57	0.17	130.20	
T.P.	12.47	145.65	8.39	133.18	
T.P.	5.70	149.90	1.45	144.20	SE Lookout + Alhambra

So Line Bearer Tract

E			88	141.1	
+1			93		
0.5			96		
			10.0		
+3			10.3		
+6			12.0		
$\frac{1}{4}$			12.2		
			11.5		
C			11.5	138.4	
$\frac{1}{4}$			12.0		
$\frac{1}{4}$			12.3		
+5			13.2		
W			11.4	138.5	
					36.80' No. on West 16.09' - East.
W			7.5	142.4	
+7			9.0		
0.5			8.8		
$\frac{1}{4}$			8.7		
C			8.9	141.0	
$\frac{1}{4}$			9.2		
+5.75			9.0		
			8.5		= cement



+11.0	8.4	
E	7.6	142.3
	36.81' No. of Last sect on West } = West Line of Alhambra Rd 15.53' - - - - - East }	
E	6.2	143.7
+1	7.0	
cb	7.3	on cement.
+5	7.6	
1/4	6.7	
C	6.6	143.3
1/4	6.1	
cb	6.5	
W	5.8	144.1 = W. L. Alhambra
	17.55' No. of Last Section on West } = West Curb Alhambra 9.41' - - - - - East }	
W	5.3	144.6
cb	6.0	
1/4	5.7	
C	5.9	144.0
1/4	6.0	
cb	6.8	
+11.5	6.7	
→ E	6.0	143.9
	20% East of Last Section on No. } = E.C. 0.84' - - - - - 50 }	
→ S	6.0	143.9
+1.5	6.4	143.5
cb	6.7	143.2 on cement.
1/4	6.0	143.9

C	58	144.1
1/2	56	144.3
cb	60	143.9
1/4	52	144.7
	9.20 East of E.C. = West Quarter	
1/4	49	145.0
cb	56	
1/4	52	
C	54	144.5
1/2	55	
cb	60	
+11	58	
S	51	144.8
	11.19 East of Quarter = Center	
S	46	145.3
1/4	51	
cb	53	on cement
1/4	49	
C	48	145.1
1/2	48	
cb	53	
N	46	145.3
	11.19 East of Center = E 1/4	
N	43	145.6
cb	49	
1/4	44	

149.00

C		42	145.9
1/4		44	
cb		45	on cement
+11		43	
S		37	146.2
1119' East of Quarter = E. Curb (produced)			
S		34	146.5
cb		38	on cement
1/4		38	
C		36	146.3
1/4		40	
cb		42	
No.		41	145.8
1599' East of Curb = E. L. Alhambra (produced)			
N		32	146.7
cb		35	
1/4		32	
C		29	147.0
1/4		30	
+5		37	
cb		30	
S		28	on cement
S		24	147.5
T.P.	1210	161.47	0.53
149.37			
40' East of Last SECTION = "H"			
S		11.3	150.2
cb		11.8	149.67 on curb
		12.2	

161.47

LOOKOUT DRIVE 22

22

+3		12.9	
1/4		12.4	
C		12.3	149.2
1/4		12.8	
cb		12.4	on cement
		11.9	
N		11.8	149.7
50' East of A			
N		8.6	152.9
cb		8.6	on cement
1/4		10.3	
1/4		9.5	
C		9.2	152.3
1/4		9.2	
+5		9.6	
cb		8.9	on cement
		8.4	
S		8.0	153.5
89.50' East			
No. 66		7.2	154.3 End of Curb
100' East			
S		4.7	156.8
cb		5.0	on cement
		5.5	
+5		6.2	
1/4		5.6	
C		5.7	155.8
1/4		6.0	
cb		7.0	
		6.5	
+2		5.5	



		161.47		
N			5.2	156.3
		125' E		
N			36	157.9
+10			4.0	
			4.9	
cb			5.6	
1/2			4.1	
C			3.8	157.7
1/2			3.7	
+5			4.0	
cb			3.7	on cement
5			2.8	158.7
		150' E		
5			0.8	160.7
cb			1.3	on cement
+3			2.5	
1/2			1.8	
C			1.8	159.7
1/2			2.0	
cb			2.7	
+2			2.5	
			1.9	
N			1.7	159.4
T.P.	12.56	173.90	0.13	161.34
		200' E		
N			10.3	163.6
+9			10.3	
cb			11.3	

LOOKOUT 23  
23

17390

1/2			10.7	
C			10.4	163.5
1/2			10.4	
+1			11.3	
cb			10.1	on cement
			9.6	
5			9.2	164.7
		251.33' E = W. L. WINSTON DRIVE		
5			4.6	169.3
+2			5.1	
cb			5.3	on cement
			5.9	
+2			7.5	
1/2			6.5	
C			6.4	167.5
1/2			6.6	
cb			7.9	
+3			6.5	
N			6.1	167.8
		20.06' E = W. CB		
N			4.5	169.4
+11			5.4	
cb			6.5	
1/2			5.1	
C			4.5	169.4
1/2			4.6	
			5.9	
cb			3.6	on cement
+10			3.1	

173.90

30			2.7	171.2	
		20.06 E =	W 1/4		
30			0.5	173.4	
+2			1.7		
cb			1.95		on cement
			2.5		
+2			4.1		
1/4			3.0		
c			3.0	170.9	
1/4			3.5		
cb			4.9		
+2			4.7		
			3.6		
N			3.4	170.5	
		20.06 E =	Center		
N			2.3	171.6	
cb			2.4		
1/4			1.8		
c			1.2	172.7	
1/4			1.2		
+4			1.5		
			2.9		
cb			1.2		
			0.8		on cement
T.P.	12.83	186.61	0.12	173.78	
+10			12.8		
5			11.7	174.9	
		20.06 E =	E 1/4		
5			9.3	177.3	Bank out 6'
+3			11.0		

LOOKOUT

24

24

186.4

cb			11.3		on cement
			12.1		
+7			14.0		
			12.2		
1/4			12.2		
c			12.2	174.4	
1/4			13.0		
cb			14.3		
			14.4		
+3			13.3		
N			13.7	172.9	
		20.06 E =	Curb		
N			11.9	174.7	
+10			11.5		
			13.2		
cb			13.5		
+2			12.4		
1/4			11.2		
c			10.9	175.7	
1/4			10.6		
+4			10.7		
			12.1		
cb			11.5		
			9.65		on cement
+10			9.2		
5			7.65	179.0	Bank out 6' above this
		20.06 E =	EL WINSTON Dr. (Produced)		
5			5.9	180.7	Bank out 5.5' above this
+3			7.7		
cb			7.95		on cement
			10.0		
+5			8.7		
1/4			8.8		

186.61

C		9.2	177.4	
1/4		9.5		
cb		11.5		
+3		9.9		
N		10.4	176.2	
50' E = SECT B.				
N		6.2	180.4	
+10		6.5		
cb		7.7		
1/4		5.4		
C		5.0	181.6	
1/4		4.8		
+6		5.0		
cb		4.2		
		3.8		on cement.
+10		3.6		
S		2.2	184.4	back cut 4.5'
T.P.	12.59	199.41	0.09	186.52
50' E of B'				
S		9.0	190.4	back cut 5'
+3		11.2		
cb		11.6		on cement
+2		12.6		
1/4		12.7		
C		13.0	186.4	
1/4		13.3		
cb		14.9		

LOOKOUT

25

25

19941

+3		13.4		
N		13.7	185.7	
100' E of B				
N		8.2	191.2	
+10		8.5		
cb		10.0		
1/4		8.1		
C		7.7	191.7	
1/4		7.6		
+5		7.6		
cb		6.3		on cement.
+10		5.9		
S		4.2	195.2	back cut 5'
150' E of B				
S		+1.2	200.6	back 5.5'
+3		0.6		
cb		3.9		on cement.
+5		4.0		
		2.9		
1/4		2.4		
C		2.5	196.9	
1/4		2.5		
+5		3.3		
		5.0		
cb		4.7		
		2.6		
+3		2.7		
N		2.7	196.9	
T.P.	13.06	212.03	0.44	198.97

21203

200' E. of B

N		9.8	202.2	
+9		9.9		
cb		11.1		
1/4		10.0		
C		9.6	202.4	
1/4		9.2		
+3		9.4 10.5		
cb		8.5 8.1		on cement
+10		7.6		
S		6.4	205.6	bank out 6'
	250' E			
S		1.0	211.0	bank out 63'
+3		2.6		
cb		2.7		on cement
+5		5.2 3.9		
1/4		3.6		
C		4.0	209.0	
1/4		4.4		
cb		6.0		
+4		4.6		
N		4.9	207.1	
T.P.	12.76	224.57	0.22	211.31
		300' E.		
N		12.0	212.6	
+9		12.2		

21459

LOOK OUT

26

26

N		12.9		
1/4		11.6		
C		11.4	213.2	
1/4		11.0		
+5		11.1		
cb		10.3 10.0		on cement
+10		9.6		
S		7.3	217.3	bank out 45'
	350' E			
S		3.5	221.1	bank out 9'
+3		4.6		on cement
cb		4.7 6.3		
1/4		5.9		
C		6.3	218.3	
1/4		6.4		
cb		7.0		
+5		6.3		
N		6.1	218.5	
	400' E			
N		9.7	223.9	
+9		0.5		
cb		2.1		
1/4		0.7		
C		0.7	223.9	
1/4		0.6		
+3		1.2		

T.P.	1302	237.57	0.02	224.55	
cb			12.5		on cement
+10			12.2		
S			9.3	228.3	bank cut 10.5'
		450' E			
S			4.8	232.8	bank cut 10.5'
+3			6.8		
cb			7.1 } 8.2 }		on cement
1/4			8.1		
C			8.5	229.1	
1/4			8.6		
cb			9.0		
+5			8.3		
N			8.3	229.3	
		500' E			
N			8.8	234.8	
+9			9.3		
cb			4.0		
1/4			3.0		
C			3.1	234.5	
1/4			2.9		
+5			3.6		
cb			2.5 } 1.8 }		on cement
+10			1.5		
S			0.6	237.0	bank cut 8.5'
T.P.	777	245.21	0.13	237.44	

27

245.21

LOOKOUT

40' side  
12.5' curb  
3.75' 1/4"

5	2.4	242.8	bank cut 5'
B.M.	2.83	242.38	inside curb 10.5' 3/4" Melrose Lookout on cement
cb	3.2		
cb	3.8		
1/4	4.8		
1/4	4.3		
C	4.3	240.9	
1/4	4.6		
cb	5.1		
1/4	4.4	240.8	
		12.95' E = N curb	
N	3.4	241.8	
cb	4.3		
1/4	3.8		
C	3.4	241.8	
1/4	3.3		
cb	2.8		
S	2.4	242.8	
	3.1		= 3.00 return
		4.07' E of Cb = N 1/4	
S	1.5	243.7	
cb	2.3		
1/4	2.9		
C	3.0	242.2	
1/4	3.3		

245.21

dt	3.7	
N	3.1	242.1
9.07' E = Center		
N	2.8	242.4
dt	3.4	
1/4	3.2	
C	2.8	242.4
1/4	2.7	
dt	2.6	
S	1.7	243.5
9.07' E = E 1/4		
S	1.7	243.5
dt	2.4	
1/4	2.6	
C	2.8	242.4
1/4	3.2	
dt	3.4	
N	2.6	242.6
9.07' E = E. Cb.		
N	2.6	242.6
dt	3.4	
1/4	3.3	
C	2.8	242.4
1/4	2.8	
dt	2.5	
S	1.9	243.3
	2.0	5. and ret.

245.21

LOOKOUT

28

28

12.95' E = E. L. MELROSE PL.

S	1.6	243.6	on cement
dt	1.9		
1/4	2.7		
	3.1		
C	3.1	242.1	
1/4	3.4		
dt	3.4		
N	2.8	242.4	
50' East of Melrose			
N	3.6	241.6	
dt	3.8		
1/4	3.6		
C	3.9	241.3	
1/4	3.8		
dt	3.5		on cement
	3.0		
S	2.7	242.5	
120' E.			
S	4.2	241.0	on cement
dt	4.6		
	4.8		
1/4	4.5		
C	4.7	240.5	
1/4	5.0		
dt	5.2		
N	4.6	240.6	
200' E.			
N	5.5	239.7	

21521

cb	56	
1/4	56	
C	5.2	240.0
1/4	5.3	
cb	5.4 } 5.0 }	on cement
S	4.8	240.4
S	61	239.5
+2	5.2	
cb	5.4 } 6.2 }	on cement
1/4	5.9	
C	5.5	239.7
1/4	5.8	
cb	5.6	
+10	4.9	
N	4.0	241.2
		Method 60 with 1022346
		USE THIS SECTION FOR
		NL HILLTOP DRIVE
N	4.6	240.6
+3	5.1	
cb	5.8	
1/4	5.9	
C	5.6	239.6
1/4	5.9	
cb	5.7 } 5.4 }	on cement
+10.5	5.2	
S	6.1	239.1

270' E = SECT. C''

7.99' E on No. 20' E = 50' = SECT D.

USE THIS SECTION FOR  
NL HILLTOP DRIVE

245.21

LOOKOUT.

29  
20

8.00' E = SECT E

S	6.1	239.1
+2	5.2	
cb	5.5 } 6.2 }	239.7 on cement
1/4	6.0	
C	5.6	239.6
1/4	5.9	
cb	5.9	
N	5.3	239.9
N	5.3	239.9
cb	6.1	
1/4	6.0	
C	5.7	239.5
1/4	6.1	
cb	6.4 } 6.6 }	on cement
+10.5	5.3	
S	6.1	239.1
S	6.7	239.0
+2	5.6	
cb	5.8 } 6.6 }	on cement
1/4	6.3	
C	5.9	239.3
1/4	6.2	
cb	6.5	

2.02' E of Sec E = Web

10.02' E of 6.6' = 1/4

245.21

N	6.2	239.0	
10.01' E = Center			
N	6.4	238.8	
ob	6.7		
1/4	6.5		
C	6.2	239.0	
1/4	6.6		
ob	7.0 } 6.2 }		cement
+10.5	5.9		
S	6.4	238.8	
10.02' E = 1/4			
S	6.9	238.3	
+2	6.2		
ob	6.45 } 7.2 }		cement
1/4	6.8		
C	6.6	238.6	
1/4	6.7		
ob	7.0		
N	6.5	238.7	
10.02' E = E Cb.			
N	6.8	238.4	
ob	7.2		
1/4	7.0		
C	6.9	238.3	
1/4	7.2		
ob	7.3 } 6.7 }		cement

245.21

LOOKOUT 30

30

+10.5	6.5		
S	7.1	238.1	
10.02' E = E.L. HILLTOP DR.			
S	7.4	237.8	
+2	6.8		
ob	7.0 } 7.7 }	238.3	cement
1/4	7.2		
C	7.1	238.1	
1/4	7.2		
ob	7.2		
N	6.1	239.1	
60' E of HILLTOP = W End of ob on No.			
N	7.9	237.3	
ob	8.1 } 8.6 }	237.2	on cement
1/4	8.6		
C	8.4	236.8	
1/4	8.6		
ob	8.9 } 8.25 }	236.4	on cement
+10.5	8.1		
S	8.6	236.6	
TR 10.36 <u>249.01</u>	8.53	236.68	
180' E = E End of Cb on No.			
S	10.4	236.1	
+2	10.6		
ob	10.6 } 11.2 }	236.4	on cement
1/4	10.8		



247.04

C	10.8	236.2	
1/4	11.0		
cb	11.1 10.6	236.2	on cement.
N	10.5	236.5	

150' E.

N	10.8	236.2	
cb	10.9		
1/4	10.9		
C	10.7	236.3	
1/4	10.7		
cb	11.2 10.8	235.8	on cement.
+10.5	10.7		
S	11.1	235.9	

247.55 E = W.L. CRESTON DR. <sup>60' wide</sup>  
<sub>12.5' 1/4" 8.75' 1/4"</sub>

S	8.9	238.7	
cb	8.5 9.0		on cement.
1/4	9.0		
C	8.8	238.2	
1/4	8.9		
cb	9.2		
N	8.6	238.4	

12.84' E = W cb

N	8.2	238.8	
cb	8.5		
1/4	8.4		
C	8.2	238.8	

LOOKOUT 31

31

1/4	8.4		
cb	8.6		
S	8.5	238.5	
	8.99' E = W 1/4		
S	7.9	239.1	
cb	8.0		
1/4	8.2		
C	7.8	239.2	
1/4	7.9		
cb	8.2		
N	8.0	239.0	
	8.99' E = Center		
N	7.8	239.2	
cb	7.9		
1/4	7.5		
C	7.4	239.6	
1/4	7.8		
cb	7.7		
S	7.1	239.9	
	8.99' E = E 1/4		
S	7.1	239.9	
cb	7.5		
1/4	7.3		
C	7.0	240.0	
1/4	7.2		
cb	7.6		

247.04

N		7.3	239.7	
	8.99'E = E. Cb.			
N		6.9	240.1	
cb		7.2		
1/4		6.7		
c		6.6	240.4	
1/4		6.9		
cb		7.1		
S		6.2	240.4	
	12.84'E = E.L. CRESTON DR.			
S		5.8	241.2	
B.M.		6.21	240.83	NE. end of walk on SE. end of CRESTON LOOKOUT
cb		6.04		cement
1/4		6.5		
c		6.1	240.9	
1/4		6.3		
cb		6.8		
N		6.5	240.5	
	50'E			
N		4.5	242.5	
cb		4.6		Fill
1/4		4.2		
c		4.0	243.0	
1/4		4.3		
cb		4.5		
		3.84		on cement
410.5		3.6		

LOOKOUT 32

247.04

S		3.2	243.8	
	100'E			
S		0.8	246.2	
1/2		1.1		
cb		1.2		cement
1/4		2.2		
		1.9		
c		1.7	245.3	
1/4		1.9		
cb		2.0		
1/10		2.0		
N		3.5	243.5	
	121.5'E = East End of Walk on Cb. on So.			
So. Cb.		0.20	246.8	
T.P.	11.74	258.58	0.20	246.84
	150'E			
N		10.7	247.9	
cb		11.1		
1/4		11.0		
c		10.8	247.8	
1/4		11.1		
cb		11.6		
1/2		10.6		
S		10.4	248.4	
	230.81'E = W. end of Cb. + walk on No.			
S		6.3	252.3	
cb		7.1		

+1		7.8	
1/4		7.3	
C		7.0	251.6
1/4		7.3	
cb		7.6	
N		6.63	on cement
		6.5	252.1
N	240.81' E = W.L. HANOVER ST		60 wide 72.5' obs. 87.5' W.L.
cb		3.6	255.0
1/4		3.8	cement
1/4		4.8	
C		4.6	
1/4		4.3	254.3
cb		4.6	
+1		4.8	
S		4.1	
		4.0	254.6
	136.2' E = W cb		
S		3.4	255.2
+11		3.7	
cb		4.4	
1/4		4.0	
C		3.7	254.9
1/4		3.9	
cb		4.2	
N		3.6	255.0
		4.4	use for back-sight
	9.53' E = W 1/4	254.2	use for forward sight
N		3.4	255.2
cb		3.9	

1/4		3.4	
C		3.3	255.3
1/4		3.4	
cb		3.9	
+1.5		3.2	
S		2.9	255.7
	9.53' E = Center		
S		2.6	256.0
+11		2.8	
cb		3.6	
1/4		3.0	
C		2.9	255.7
1/4		3.1	
cb		3.2	
N		3.0	255.6
	9.53' E = E 1/4		
N		2.7	255.9
cb		3.2	
1/4		2.7	
C		2.5	256.1
1/4		2.7	
cb		3.5	
+1.5		2.5	
S		2.2	256.4
	9.53' E = E cb		
S		1.9	256.7

258.58

+11		2.2	
cb		2.9	
1/4		2.3	
c		2.0	256.6
1/4		2.4	
cb		2.8	
H		2.5	256.1

1362 E = E.L. HANOVER

N		1.7	256.9	
cb		1.9		on cement
1/4		2.2		
c		1.9		
c		1.6	257.0	
1/4		1.8		
cb		2.0		
+2		1.5		
S		1.1	257.5	

T.P. 12.95 27067 0.86 257.72

100' E of HANOVER

S		9.2	261.5	
cb		9.3		
+1		9.8		
1/4		9.6		
c		9.5	261.2	
1/4		9.5		
+6		10.2		
cb		9.5		on cement

270.67

LOOKOUT. 34

34

N		9.3	261.4	
200' E				
N		4.8	265.9	
cb		5.04		on cement
1/4		5.10		
1/4		5.2		
c		5.1	265.6	
1/4		5.4		
cb		5.3		
+2		4.8		
S		4.8	265.9	
272.4' E = W.L. DERBY ST				60' wide 12.5' high 8.75' thick
S		1.9	268.8	
cb		2.1		
+1		2.5		
1/4		2.6		
c		2.1	268.6	
1/4		2.3		
cb		2.7		
cb		1.9		on cement
N		1.6	269.1	
1362' E = W. Cb				
N		1.9	268.8	
cb		2.0		
1/4		1.9		
c		1.6	269.1	
1/4		2.0		

270.67

db			2.0	
+2			1.4	
S			1.5	269.2
		9.53' E = W/U		
T.P.	6.40	275.59	1.48	269.19
S			5.8	269.8
+11			6.0	
db			6.5	
1/4			6.5	
C			6.2	269.4
1/4			6.5	
db			6.6	
1/4			6.5	269.1
		9.53' E = Center		
N			5.8	269.8
db			6.3	
1/4			6.1	
C			5.9	269.7
1/4			6.3	
db			6.1	
+2			5.7	
S			5.5	270.1
		9.53' E = E 1/4		
S			5.0	270.6
+11			5.4	
db			5.8	

LOOKOUT 35

35

1/4			6.0	
C			5.5	270.1
1/4			5.6	
db			6.0	
N			5.9	269.7
		9.53' E = E 1/4		
N			5.7	269.9
			4.9	270.7
db			5.6	
1/4			5.3	
C			5.3	270.3
1/4			5.7	
db			5.5	
+2			5.2	
S			4.9	270.7
		13.62' E = E.L.		
S			4.7	270.9
db			5.2	
1/4			5.4	
C			4.9	270.7
1/4			5.1	
+6			5.6	
db			4.8	
N			4.7	270.9
		77' E of DERBY ST		
N			3.8	271.8
db			4.0	
			4.5	

cement

cement

275.59

1/4		4.4	
c		4.2	271.4
1/4		4.7	
cb		4.9	
+1		4.5	
S		4.5	271.4
	97° E		
S		4.5	271.4
cb		4.7	
+1		5.2	
1/4		5.1	
c		4.6	271.0
1/4		4.8	
cb		5.1 } 3.9 }	271.7 cement
N		3.8	271.8
	110° E		
N		4.6	271.0
cb		4.8	270.6 cement
1/4		5.5	
1/4		5.5	
c		5.4	270.2
1/4		5.7	
+7		5.8	
cb		5.3	
S		5.0	270.6
	130° E		
S		6.6	269.0

275.59

LOOKOUT

36

cb		6.8	
+1		7.4	
1/4		7.1	
c		6.7	268.9
1/4		6.7	
cb		6.9	
cb		6.0	269.6 cement
N		5.8	269.8
	125° E		
N		8.5	267.1
cb		8.75	266.8 cement
1/4		9.7	
1/4		9.7	
c		9.8	265.8
1/4		10.4	
+7.5		10.7	
cb		10.3	
S		10.2	265.4
T.P.	413	268.44	11.28
			264.31. End of Grid Mittanox
	206.09° E = H.L. CRESTON DRIVE		
S		4.6	263.8
cb		4.6	
1/4		4.6	
c		3.9	264.5
1/4		3.9	
cb		3.9	
N		3.1	265.3 cement
N		2.9	265.5

268.44

15.03' E = W Ch CRESTON

N	3.6	264.8	
cb	3.8		cement
	4.5		
1/4	4.5		
C	4.3	264.1	
1/4	5.1		
cb	5.1		
S	5.1	263.0	

888' E of last Sect = Mt. LENOX ST.

S	5.4	263.0	
cb	5.5		
1/4	5.3		
C	4.6	263.4	
1/4	4.7		
cb	4.8		
	4.1		cement.
N	3.6	264.8	

164' E of Last Sect = W 1/4 CRESTON.

N	3.6	264.8	
cb	4.8		
1/4	4.7		
C	4.6	263.8	
1/4	5.3		
cb	5.6		
S	5.1	263.0	

10.52' E on So. } = Center CRESTON  
11.19' - - No. } = Curb LENOX

S	5.4	263.0	
---	-----	-------	--

LOOKOUT

37  
37

cb	5.6		
1/4	5.1		
C	4.7	263.7	
1/4	4.9		
cb	5.0		
N	4.3	264.1	
	10.52' E on So. } = E 1/4 CRESTON 8.94' - - No. } = W 1/4 LENOX.		
N	4.4	264.0	
cb	4.9		
1/4	5.0		
C	4.8	263.6	
1/4	5.1		
cb	5.9		
S	5.9	262.5	
	8.94' E on No. } = Center LENOX 8.03' - - So. }		
S	5.8	262.6	
cb	6.1		
1/4	5.5		
C	5.0	263.4	
1/4	5.0		
cb	4.9		
N	4.5	263.9	
	8.94' E of Last = Curb CRESTON.		
N	4.4	264.0	
cb	5.0		
1/4	5.0		

26844

1/4		5.6	
db		6.1	
S		5.6	262.8
	645' E of last = E 1/4 LENOX.		
S		5.6	262.8
db		6.0	
1/4		5.8	
C		5.1	263.3
1/4		5.2	
db		5.1	
N		4.4	264.0
	8.94' E of last on No = Curb Lenox 3.58' - - - - - 50 = E.L. Creston		
N		4.5	263.9
db		5.1	
1/4		5.2	
C		5.2	263.2
1/4		5.9	
db		6.0	
+10		5.8	
S		6.3	261.9
	12.83' E of last on No 13.34' - - - - - 50 = E.L. LENOX.		
S		6.9	261.5
+2		6.0	
db		6.0	
1/4		5.9	
C		5.3	263.1

26847

LOOKOUT

58  
58

1/4		5.3	
db		5.3	
+2		4.9	
N		4.2	264.2
	100' E of LENOX.		
N		4.9	263.5
db		5.5	
1/4		5.4	
C		5.6	262.8
1/4		6.0	
+8		6.4	
db		6.0	
S		6.0	262.4
	200' E		
S		6.6	261.8
db		6.7	
1/4		7.1	
1/4		6.7	
C		6.2	262.2
1/4		6.4	
+8		6.5	
db		6.0	
N		5.8	262.6
	250' E		
N		6.3	262.1
db		6.2	



268.44

+1	6.8	
1/2	6.7	
c	6.4	262.0
1/4	7.0	
cb	7.2	
S	7.2	261.2

284.66'E = SECT. F.

S	7.4	261.0
cb	7.6	
1/4	7.0	
c	7.1	261.3
1/2	7.4	
+6	7.2	
cb	6.8	
N	6.4	262.0

$$\left. \begin{array}{l} 36.42 = 11 \text{ N} \\ 20 = 30 \end{array} \right\} = \text{W.L. RANDOLPH (Diamond)}$$

N	6.8	261.6
cb	7.1	
1/4	7.7	
c	7.3	261.4
1/4	7.4	
cb	7.7	
S	7.3	261.1

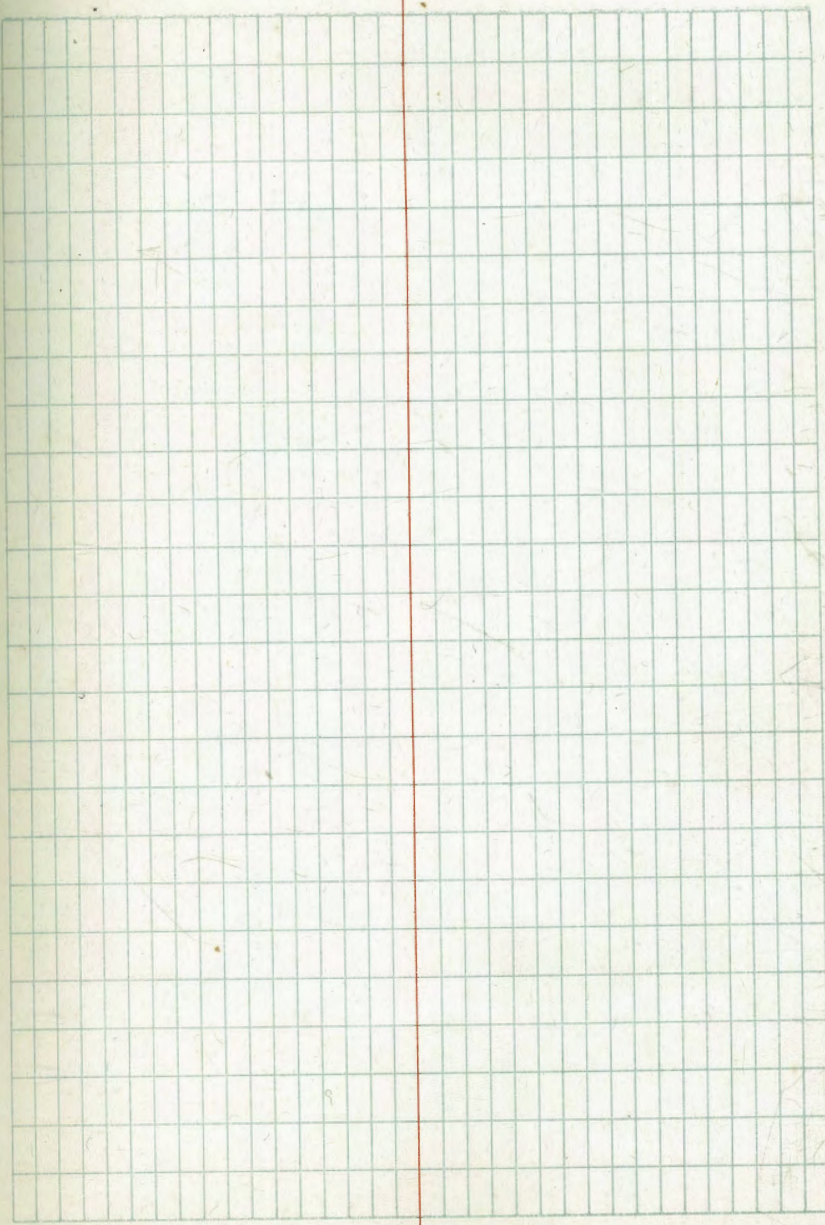
LOOKOUT 39

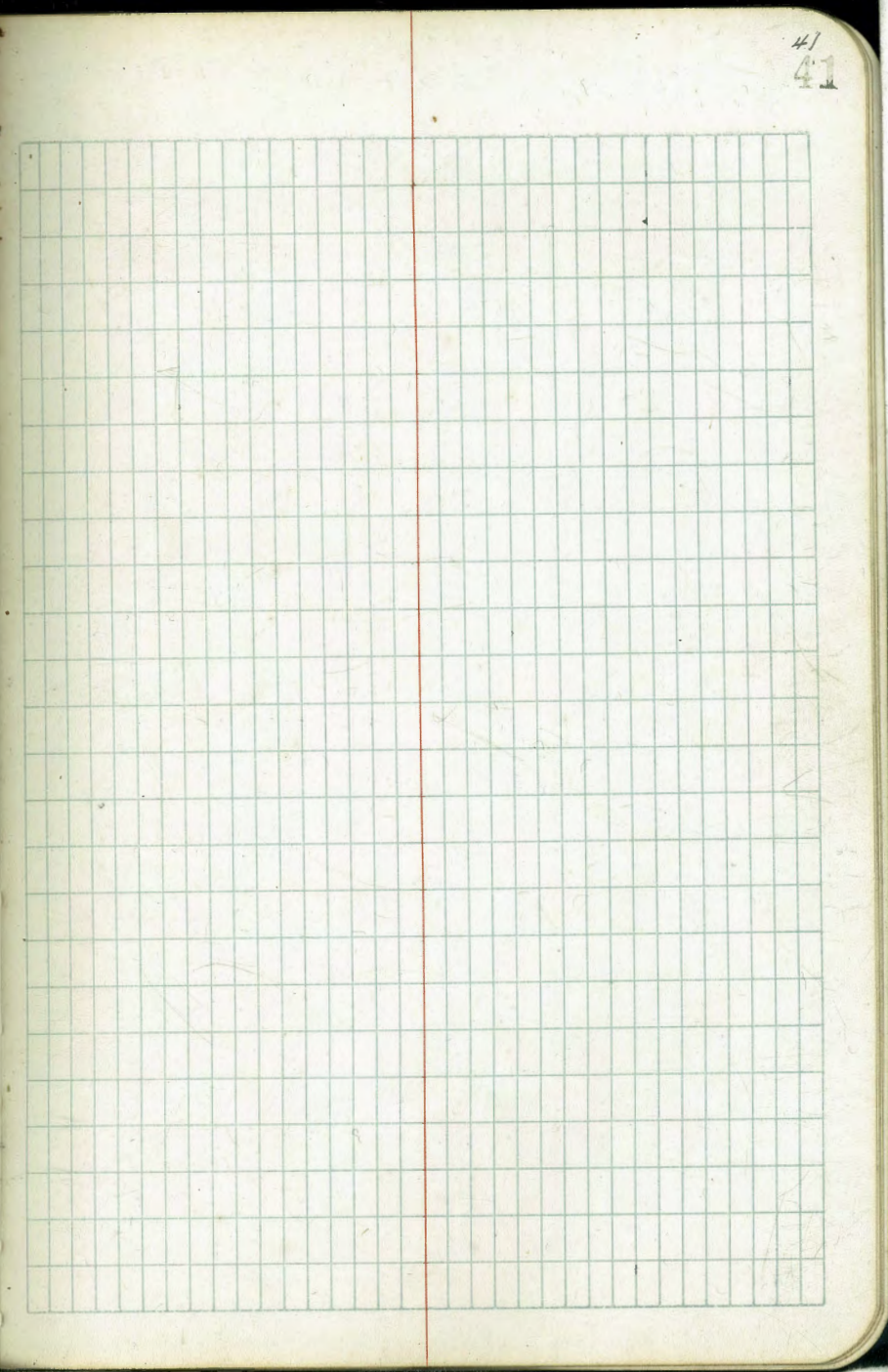
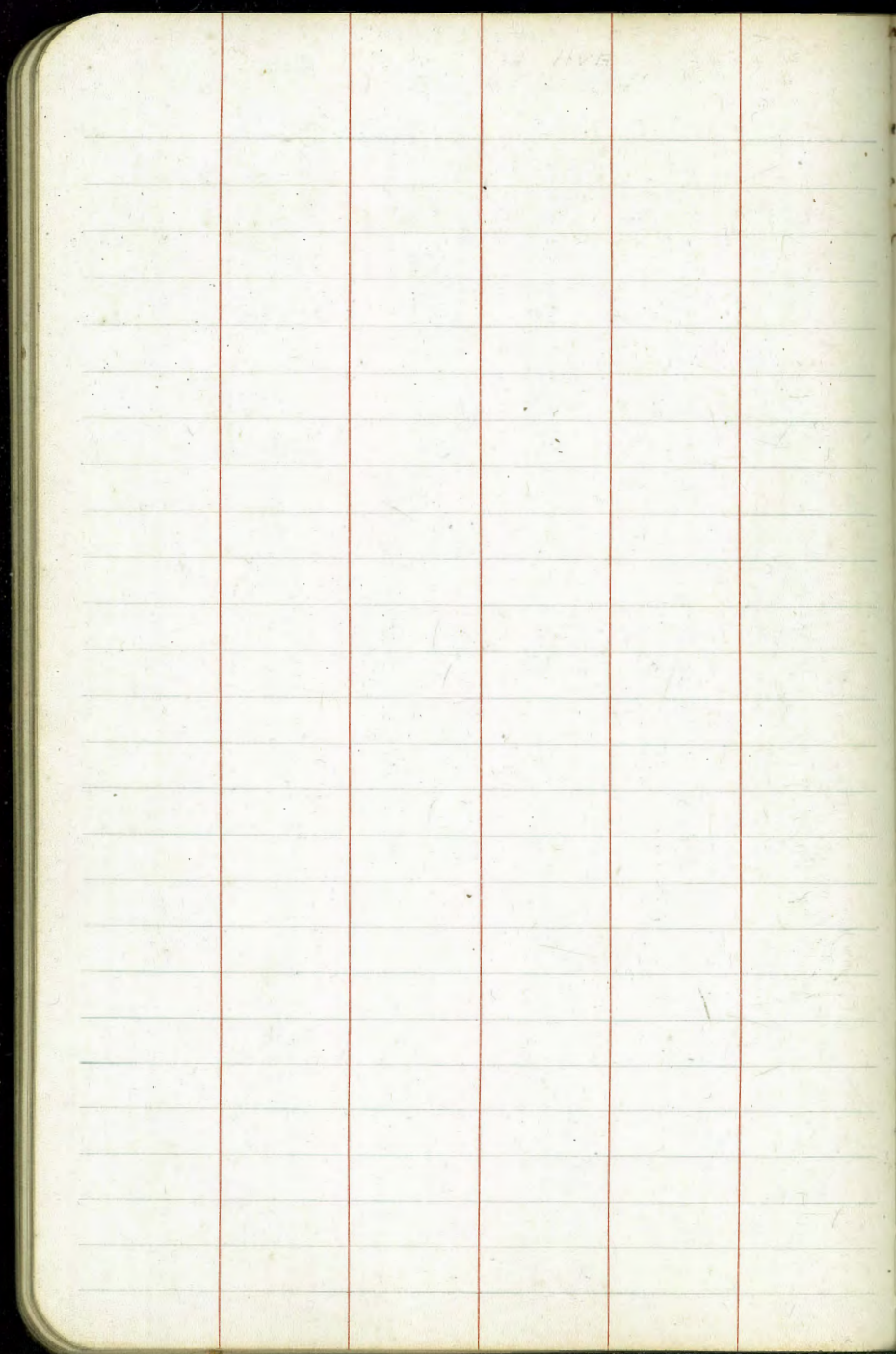
39

32.67'E = EL. RANDOLPH (Diamond)

S	6.5	261.9
cb	6.4	
1/4	6.5	
c	6.9	261.5
1/4	7.0	
cb	6.7	
N	6.0	262.4
BM	9.67	258.77

W.L. SW  
Randolph  
Lookout





Survey of Blocks 44 & 50  
Park Villas

University Ave.

hub 279.40' hub 51'

44

Missouri

337.81'  
323.84'

325.20'  
339.23'

Barograph St.

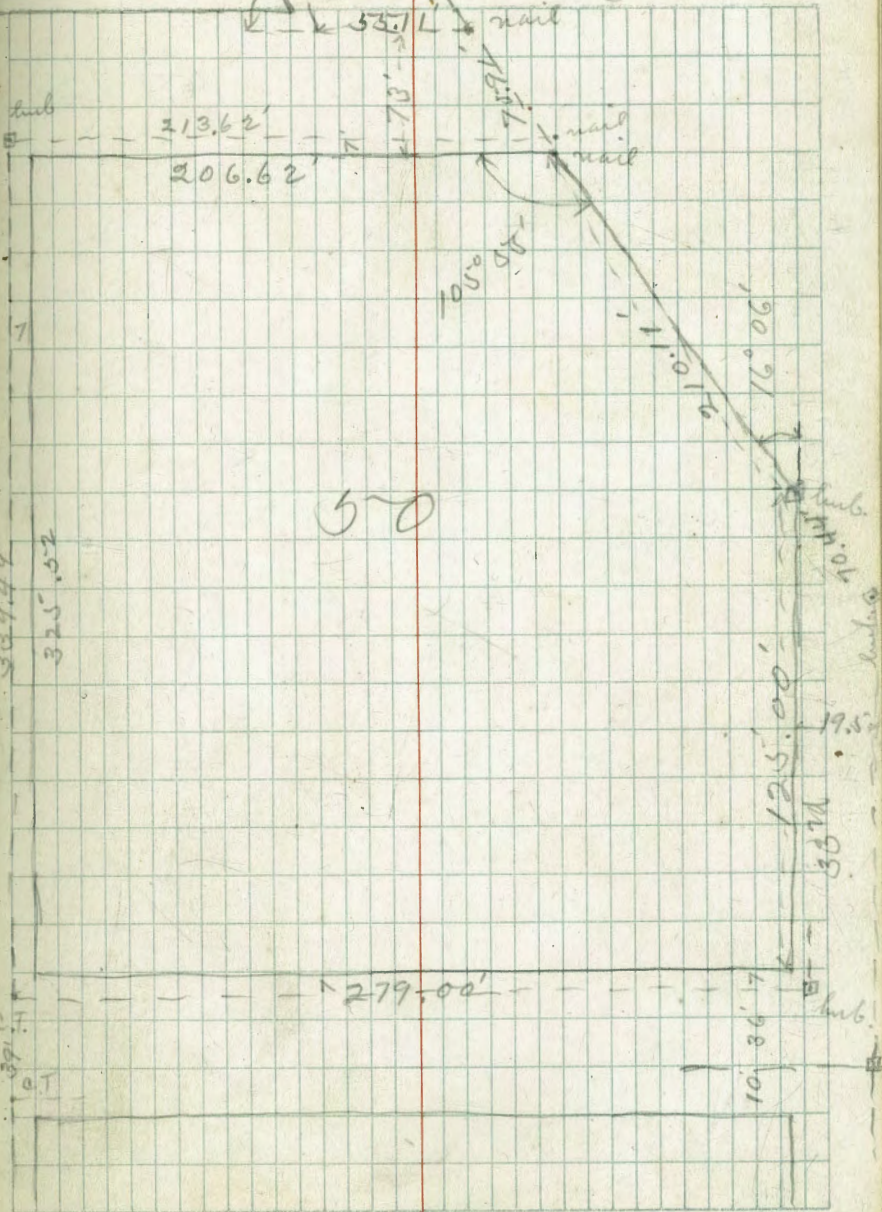
279.03' C.T. 51'

Wightman

101.51'

June 19/17 Childs 42  
Evans 42  
moore

74° 05'



6/27/11  
Gregory  
Moore  
Miller

Survey of Road from  
Market St Extension  
to Alhambra St  
in Berkeley

43

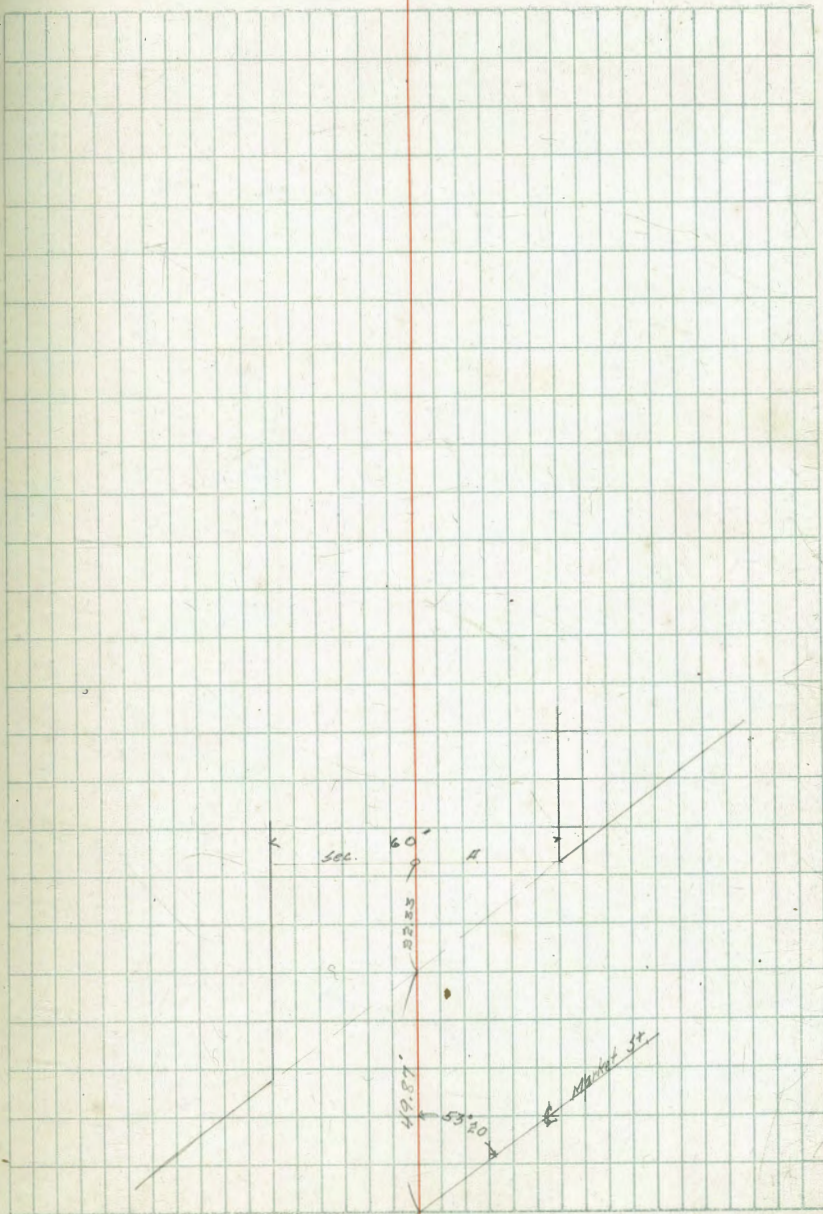
43

13+73 A 16°31'

10+00.0 P.O.T.

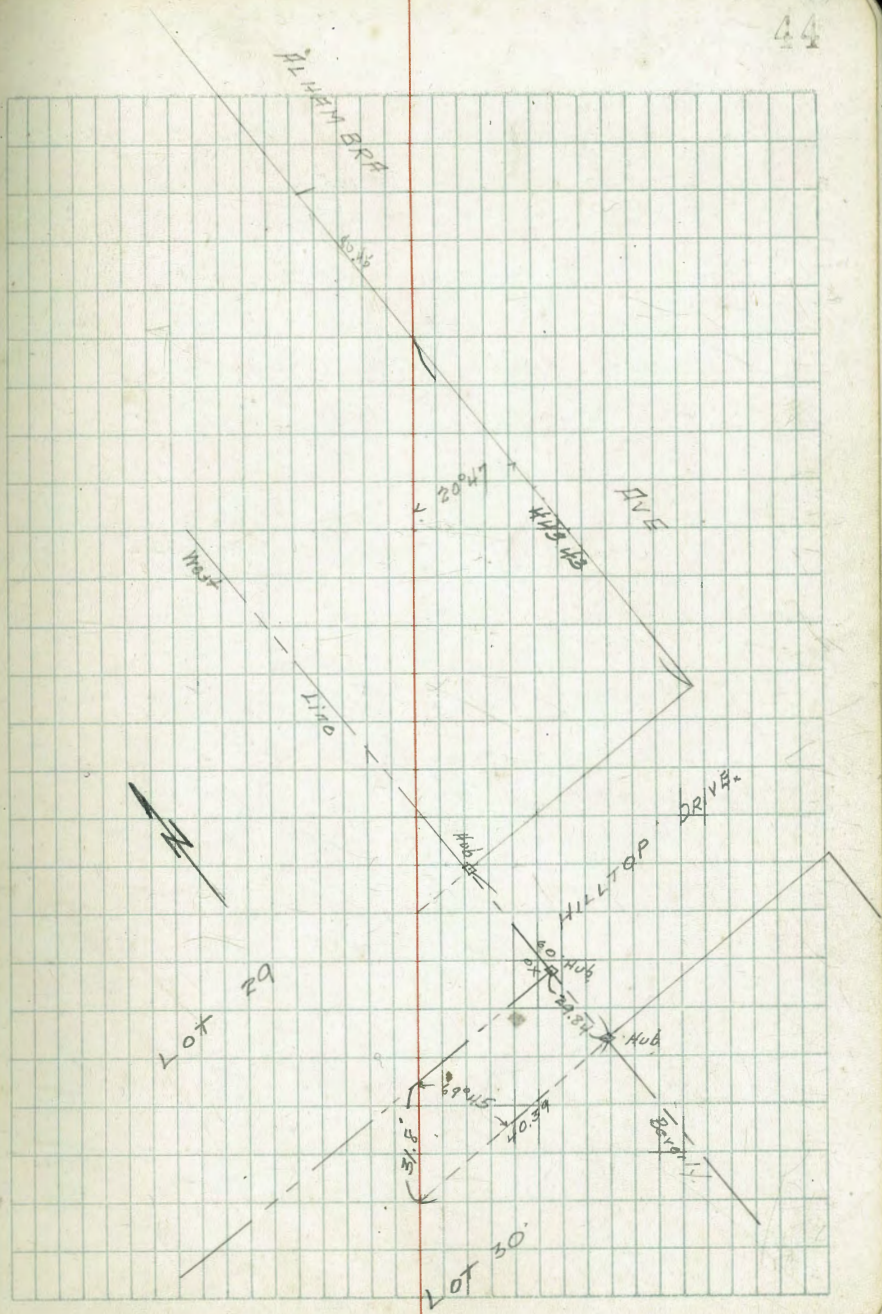
+72.20 -

Sta 69+00=on L Market St, 53°20' L



21 + 20.63

15 + 21.06



6/27/17  
Gregory  
Madre  
Miller

Levels over Road  
Shown on Page 43 this book

on B.M.	369	145.02	141.83	Page No. of Sta 67 Market
		00 = <u>Market St.</u> on diagonal.		
E		9.6	135.4	
C		14.5	130.5	
H.		24.7	120.3	
		49.87 No. = <u>N.L. Market St.</u>		
W		18.6	126.4	
C		11.7	133.3	
E		6.5	138.5	
		49.87 No. on E } = <u>SECA</u> = 72.20 No. on L. 94.54' - W } sec page 43		
E		6.5	138.5	
C		9.2	135.8	
W		11.3	133.7	
		77' No. on L.		
W		10.9	134.1	
C		8.8	136.2	
E		4.8	140.2	
		100' No.		
E		37	141.3	
C		7.1	137.9	
W		8.5	136.5	
		150' No.		
W		3.8	131.2	
C		3.1	131.9	
E		1.7	143.3	

145.02

45  
45

TP	11.77	145.19	136	145.66
		200' No.		
E			10.2	145.2
C			10.0	145.4
W			10.6	144.8
		250' No.		
W			9.4	146.0
C			10.4	145.0
E			9.9	145.5
		265' No.		
E			8.6	146.8
		270' No.		
C			8.4	147.0
		300' No.		
E			9.1	146.3
C			10.0	145.4
W			9.8	145.6
W		315' No.	10.0	145.4
		325' No.		
E			2.0	148.4
		335' No.		
C			8.0	146.8
W			7.3	148.1
		350' No.		
W			8.8	146.6
C			9.2	146.2

E		8.9	146.5
	400' No.		
E		7.9	147.5
C		8.2	147.2
W		7.9	147.5
	415' No.		
E		8.4	147.0
	420' No.		
W		6.6	148.6
	425' No.		
C		7.4	148.0
	450' No.		
W		7.5	147.9
C		8.6	146.8
E		12.1	143.3
	485' No.		
E		14.0	141.4
	500' No.		
E		11.3	143.9
C		8.9	146.5
W		7.8	147.6
	515' No.		
E		8.6	146.8
	550' No.		
W		6.9	148.5
C		6.6	148.8

E		7.5	147.9
	565' No.		
C		5.2	150.2
	600' No.		
E		7.2	148.2
C		6.4	149.0
W		6.2	149.2
	625' No.		
W		4.3	151.1
	650' No.		
W		5.6	149.8
C		5.5	149.7
E		5.8	149.6
	665'		
E		7.0	148.4
W		4.5	150.9
	700' No.		
E		5.4	150.0
C		3.7	151.7
W		4.0	151.4
	710' No.		
W		3.0	152.4
	715' No.		
C		5.0	150.4



155.43

750' No

W		2.6	152.8
C		4.2	151.2
E		5.1	150.3

800' No

E		3.9	152.2
C		3.0	152.4
W		2.9	152.5

830' No

E		1.4	154.0	
TP	2.51	159.60	3.94	152.09

850' No

W		6.4	153.2
C		6.6	153.0
E		7.2	152.4

860' No

W		7.4	152.2
---	--	-----	-------

880' No

W		5.2	154.3
---	--	-----	-------

900' No

E		5.1	154.5
C		5.1	154.5
W		4.9	154.7

915' No

W		6.5	153.1
---	--	-----	-------

159.60

935' No

W		6.2	153.4
C		4.5	155.1
E		6.4	153.2

955' No

E		8.0	151.6
C		5.7	153.9
W		3.9	155.7

970' No

W		2.9	156.7
---	--	-----	-------

1000' No

W		4.3	155.3
C		5.1	154.5
E		2.8	149.8

1003' No

C		5.7	153.9
---	--	-----	-------

1018' No

W		4.9	154.7	
TP	1.64	148.17	13.07	146.53

1040' No

E		9.6	138.6	
C		5.3	142.9	
W		0.0	148.2	
TP	1.89	137.17	12.88	135.28

47

137.17

1080' No.

W	2.1	135.1
C	7.8	129.4
E	13.0	124.2

1095' No.

E	13.0	124.2
C	10.4	126.8

1097' No.

E	15.0	122.2
---	------	-------

1102' No.

E	12.9	124.3
C	14.1	123.1

1108' No.

C	14.1	123.1
---	------	-------

1110' No.

C	12.8	124.4
W	11.6	125.6

1118' No.

W	12.1	125.1
---	------	-------

1120' No.

W	13.4	123.8
---	------	-------

1125' No.

W	13.2	124.0
---	------	-------

1128' No.

W	12.2	125.0
---	------	-------

137.17

48

1131' No.

E	12.7	124.5
---	------	-------

1140' No.

C	12.5	124.7
---	------	-------

1155' No.

C	10.4	126.8
---	------	-------

W	11.0	126.2
---	------	-------

1170' No.

W	8.6	128.6
---	-----	-------

E	11.9	135.3
---	------	-------

1200' No.

W	0.3	136.9
---	-----	-------

T.P.	12.67	149.39
------	-------	--------

C	5.5	143.9
---	-----	-------

E	3.7	145.7
---	-----	-------

T.P.	12.19	160.88
------	-------	--------

1218' No.

E	7.9	153.0
---	-----	-------

C	8.6	152.3
---	-----	-------

1240' No.

W	15.4	145.5
---	------	-------

1275' No.

W	14.1	146.8
---	------	-------

C	7.0	153.9
---	-----	-------

E	7.2	153.7
---	-----	-------

160.88

1300' No

E		0.1	154.8
C		6.9	154.0
W		12.6	148.3
T.P.	12.41	168.49	4.80
		156.08	

1350' No

W		17.3	151.2
C		12.1	156.4
E		11.2	157.3

1368.78' No. = Angle pt. on West.

E		10.0	158.5
C		10.6	157.9
W		15.1	153.4

$$\left. \begin{array}{l} 1368.78' \text{ No. on West} \\ 1377.22' \text{ - East} \end{array} \right\} = \text{Angle pt. on all Lines}$$

W		15.1	153.4
C		10.4	158.1
E		9.8	158.7

$$\left. \begin{array}{l} 1368.78' \text{ No. on West} \\ 1385.65' \text{ - East} \end{array} \right\} = 1377.22' \text{ on center Line}$$

E		9.4	159.1
C		10.3	158.7
W		15.1	153.4

$$\left. \begin{array}{l} 1391.55' \text{ No. on West Line} \\ 1400' \text{ No. on center Line} \\ 1408.45' \text{ - East} \end{array} \right\}$$

W		15.0	153.5
C		9.7	158.8
E		8.7	159.8

168.49

49

1450' No. on Center Line

E		7.4	161.0
C		7.3	161.2
W		9.2	159.3
		1500' No on C	
W		8.0	160.5
C		7.1	161.4
E		7.4	161.1
		1550' No	
E		7.3	161.2
C		6.7	161.8
W		7.0	161.5
		1580' No on C	
W		4.7	163.8
		1600' No on C	
W		5.5	163.0
C		6.5	162.0
E		6.0	162.5
		1625' No on C	
W		5.4	163.1
		1640' No on C	
W		3.9	164.6
		1659.08' No on C	
E		5.0	163.5
C		5.2	163.3
W		5.1	163.4

HILLTOP  
1ST WITH H.L.

168.49

1680' No on G.

W	5.3	163.7
E	31	165.4

1700' No on G.

E	3.9	164.6
C	4.9	163.6
W	36	164.9

1720' No on G.

W	5.2	163.3
C	4.8	163.7
E	3.4	165.1

1730' No on G.

C	3.4	165.1
---	-----	-------

1750' No on G.

E	5.0	165.3
C	4.4	164.1
W	3.8	164.7

1760' No on G.

C	4.3	164.2
---	-----	-------

1780' No.

C	2.9	165.6
---	-----	-------

1800' No.

W	36	164.9
C	3.5	165.0
E	3.1	165.4

168.49

50

1820' No on G.

E	1.4	167.1
---	-----	-------

1850' No on G.

E	3.2	165.3
C	2.6	165.9
W	2.0	166.5

T.P.	1231	178.65	215	166.34
------	------	--------	-----	--------

1900' No on G.

W	10.6	168.1
C	11.4	167.3
E	12.6	166.1

1950' No on G.

E	12.4	166.3
C	11.2	167.5
W	9.9	168.8

2000' No on G.

W	9.2	169.5
C	10.9	167.8
E	12.1	166.6

2041.59' No on G.

E	12.4	166.3 = W.L. P.H. number
C	10.2	168.5
W	7.5	171.2

2060' No on G.

W	8.4	170.3
---	-----	-------

178.65

2075' No. 07  $\phi$ 

C 4.4 169.3

21+20.63' No. 07  $\phi$  = N.L. Alhambra

C 6.6 172.1

W 51 173.6

25' No. 07 Last sect. on Mast.

W 38 174.9

T.P. 300 180.16 1.49 177.16

21+99.67' No. 07  $\phi$  dis.

W 1.4 178.8 = N.L. Alhambra

6/28/77 Gregory Moore 171116

CROSS SECTION OF ALHAMBRA AVE ENTIRE LENGTH

60' wide  
12.5 wghts  
8.75' 1/4's

BM. 5.41 149.61 144.20 SE Alhambra  
Lookout rail.  
N.W. LINE LOOKOUT DRIVE (see sketch page 20)

W		54	144.2
cb.		48	144.8
1/4		46	145.0
c		43	145.3
1/4		40	145.6
cb		37	145.9
E		27	146.9

50.74' No. on West }  
" " " East } = SECT G.

E		27	146.9 on tangent.
cb		33	146.3
1/4		34	146.2
c		34	146.2
1/4		37	145.9
cb		37	145.9
W		34	146.2

40' No. = SECT H. = EC on East.

W		14	148.2
+4		29	146.7
cb		29	146.7
1/4		31	146.5
c		28	146.8
1/4		29	146.7
cb		29 2.25	146.7 147.36 on cement

149.61

52

E		21	147.5
E		36' No. = break in grade on curb	
E		1.8	147.8
cb		1.9	147.7 on cement
1/4		2.4	147.2
c		2.8	146.8
1/4		3.1	146.5
cb		2.9	146.7
+4		1.9	147.7
W		1.3	148.3
W		76' No. = break in grade on curb	
W		1.6	148.0
cb		1.6	148.0
1/4		1.7	147.9
c		2.2	147.4
+3		3.0	146.6
1/4		2.7	146.9
cb		2.9	146.7
E		2.31	147.30 on cement
E		2.2	147.4
E		85' No. =	
E		2.1	147.5
+2.5		2.6	147.0
cb		2.74	146.87 on cement
1/4		2.2	146.3
c		3.3	146.3
1/4		3.4	146.2
1/4		1.7	147.9

cb	2.0	147.6	
W	1.6	148.0	
96' No. = break in grade on curb			
W	5.2	144.4	
cb	2.0	147.6	
1/2	1.9	147.8	
+3	2.1	147.5	
C	3.6	146.0	
1/2	3.9	145.7	
cb	3.36	146.75	on cement
+10	3.3	146.3	
E	1.7	147.9	
105' No.			
E	2.5	147.1	
+1	4.2	145.4	
cb	4.40	145.21	on cement
1/4	4.9	144.7	
C	4.5	145.1	
1/2	3.0	146.6	
cb	4.3	145.3	
W	7.7	141.9	
136' No. = No. End. of Curb.			
-15	21.0	128.6	
W	17.1	132.5	
cb	12.8	136.8	
+2	11.2	138.4	

1/2	10.7	138.9	
C	10.5	139.1	
1/2	9.6	140.0	
cb	8.6	141.0	on cement
+11.5	8.2	141.4	
E	3.1	146.5	
150' No.			
E	6.9	142.7	
+2	8.6	141.0	
cb	10.5	138.8	
1/2	12.0	137.6	
C	12.7	136.9	
1/4	13.1	136.5	
cb	15.9	133.7	
+2	19.2	130.4	
W	20.2	129.4	
+20	26.1	123.5	
T.P.	0.28	136.87	130.2
T.P.	2.20	127.40	125.20
203' No.			
-40	15.7	111.7	
-8	17.1	110.3	
W	10.7	116.7	
cb	6.6	120.8	
1/2	1.9	125.5	

+2	0.2	127.2
C	0.4	127.0
$\frac{1}{4}$	0.4	127.0
+3	0.5	126.9
dt	2.4	125.0
E	3.1	124.3
207 No.		
E	4.1	123.3
dt	3.0	124.4
+5	1.2	126.2
$\frac{1}{4}$	1.1	126.3
C	1.2	126.2
+6	1.0	126.4
$\frac{1}{4}$	2.9	124.5
dt	6.7	120.7
W	15.1	112.3
+8	18.1	109.3
+40	15.7	111.7
225 No.		
-40	15.1	112.8
W	17.3	110.1
dt	14.4	113.0
$\frac{1}{4}$	6.2	121.2
+2	4.1	123.0
C	4.3	123.1
$\frac{1}{4}$	4.2	123.2

dt	5.9	121.5
E	7.1	120.3
+10	6.6	120.8
250 No.		
-10	9.0	118.4
E	10.4	117.0
dt	9.2	118.2
$\frac{1}{4}$	7.4	120.0
C	7.7	119.7
$\frac{1}{4}$	16.1	111.3
dt	16.4	111.0
+7	16.4	111.0
W	15.3	112.1
+30	14.9	112.5
282 No.		
-30	14.2	113.2
W	14.5	112.9
dt	15.2	112.2
$\frac{1}{4}$	16.1	110.3
C	16.2	110.2
+6	15.3	112.1
$\frac{1}{4}$	10.2	117.2
dt	7.0	115.4
E	12.6	114.8
+10	11.3	116.1



T.P.	6.95	127.40 121.89	11.86	115.54
		294' No.		
-10			5.8	116.1
E			7.2	114.7
db.			6.6	115.3
1/4			9.3	112.6
C			10.0	111.9
1/4			10.2	111.7
db			10.0	111.9
+4			9.4	112.5
W			10.1	111.8
+20			9.0	112.9
			9.5	112.4
		325' No.		
-20			8.6	113.3
W			8.8	113.1
db			9.9	112.0
1/4			9.7	112.2
C			8.1	113.8
1/4			7.9	114.0
db			8.6	113.3
E			7.7	114.2
+10			6.2	115.7
		375' No.		
-10			6.1	115.8
E			7.6	114.3
db			7.9	114.0

ALHAMBRA 55

121.89

1/4			7.7	114.2
C			7.4	114.5
1/4			6.4	115.5
2.5			7.5	114.1
db			8.0	113.9
W			8.4	113.5
+15			8.2	113.7
		400' No.		
-15			7.7	114.2
W			7.9	114.0
db			7.7	114.2
1/4			7.8	114.1
			5.6	116.3
C			6.3	115.6
1/4			7.1	114.8
db			7.2	114.7
E			7.1	114.8
+10			5.7	116.2
		450' No.		
-10			5.0	116.9
E			7.0	114.9
db			6.3	115.6
1/4			6.0	115.9
C			6.6	115.3
1/4			6.5	115.4
db			6.7	115.2
W			7.0	114.9

12189

+15		7.5	114.4
	500' No		
-15		47	117.2
-8		47.1	117.2
W		8.1	113.8
		8.4	113.5
db		7.4	114.5
1/4		6.9	115.0
C		6.5	115.4
1/2		5.7	116.2
db		6.1	115.8
E		4.8	117.1
+10		4.6	117.3
	550' No		
-10		5.5	116.4
E		6.1	115.8
db		6.0	115.9
1/4		5.4	116.5
C		5.1	116.8
1/2		5.8	116.1
db		4.7	117.2
W		4.2	117.7
+10		3.9	118.0
	600' No		
-10		2.6	119.3
W		2.2	119.7
+2		3.2	118.7

12189

ALHAMBRA

56

db		3.0	118.9
1/4		1.7	120.2
		3.3	118.6
C		3.7	118.2
1/4		3.6	118.3
db		3.7	118.2
E		4.4	117.5
+10		5.1	116.8
	650' No		
-15		4.1	117.8
E		3.4	118.5
db		4.5	119.1
1/4		3.3	118.6
C		1.1	120.8
1/4		1.1	120.8
db		2.8	119.1
W		2.1	119.8
+10		2.0	119.9
TP	635 126.45	1.79	120.10
	675' No		
-10		6.7	119.8
W		7.0	119.5
db		6.9	119.6
1/4		5.9	120.6
C		6.2	120.3
1/4		6.6	119.9

12645

cb	7.8	118.7
E	7.9	118.6
+15	7.9	118.6
700' No.		
-15	8.5	118.0
E	7.3	119.2
cb	7.4	119.1
1/4	6.9	119.6
C	7.3	119.2
1/2	6.1	120.4
1/2	5.5	121.0
cb	6.3	120.2
W	7.0	119.5
+10	6.6	119.9
750' No.		
-10	6.7	119.8
W	7.0	119.5
cb	6.7	119.8
1/2	6.6	119.9
C	6.8	119.7
1/4	6.8	119.7
cb	7.5	119.0
E	7.7	118.8
+15	7.7	118.8
800' No.		
-15	7.5	119.0
E	6.5	120.0

ALHAMBRA

57

12645

cb	66	119.9
1/2	61	120.4
C	5.9	120.6
1/2	6.0	120.5
cb	5.6	120.9
W	5.7	120.8
+15	7.0	119.5
850' No.		
-15	6.7	119.8
W	6.3	120.2
cb	5.4	121.1
1/4	5.2	121.3
C	5.1	121.4
1/2	5.3	121.2
cb	4.9	121.6
E	5.0	121.5
+15	5.8	120.7
895' No.		
-15	5.4	121.1
E	4.0	122.5
cb	4.6	121.9
1/2	5.1	121.4
C	4.8	121.7
1/2	5.1	121.4
cb	5.9	120.6

126.45

+11.5		56	120.9
W		3.6	122.9 use for forward
		<del>5.6</del>	<del>120.9</del> use this for
+10		2.9	123.6 back section
	922' No.		
-10		0.0	126.5
W		1.0	125.5
+4		2.1	124.1
cb		2.5	124.0
+2		4.9	121.6
1/4		5.4	122.1
C		4.6	121.9
1/6		4.1	122.4
cb		5.1	121.4
E		3.9	122.6
+15		4.4	122.1
	940' No.		
-15		3.8	122.7
F		3.8	122.7
cb		4.2	122.3
1/4		4.2	122.3
C		5.3	121.2
1/4		5.7	120.8
		1.6	124.9
cb		1.9	124.6
T.P.	12.53	137.33	124.80
+6		12.7	124.6
W		9.9	127.4

137.33

58

960' No.

W	9.5	127.8
cb	11.4	125.9
1/4	11.9	125.4
C	11.7 } 15.2 }	125.6 122.1
1/4	15.3	122.0
cb	15.1	122.2
E	14.9	122.4
+15	14.7	122.6
	985' No.	
-15	14.0	123.3
F	14.3	123.0
cb	14.3	123.0
1/4	14.2 } 10.8 }	123.1 126.5
C	11.0	126.3
1/4	11.1	126.2
cb	10.9	126.4
+8	9.3	128.0
W	7.0	130.3
	995' No.	
W	6.4	130.9
H	7.6	129.7
cb	10.2	127.1
1/4	10.7	126.6
C	10.7	126.6
1/4	10.4	126.9

137.33

db	11.5	125.8
	14.4	122.9
E	13.9	123.4
+15	13.7	123.6

1050' No.

-15	12.5	124.8
E	12.5	124.8
db	88	128.5
1/4	89	128.4
C	9.1	128.2
1/4	9.0	128.3
db	7.9	129.4
W	9.7	138.6

1100' No.

W	1.2	136.1
+7	4.4	132.9
db	5.4	131.9
+3	6.9	131.0
1/4	6.3	131.0
db	6.7	130.6
1/4	6.1	131.2
db	6.9	131.0
E	11.5	125.8
+15	11.5	125.8

1142.4' No = St. Hill Top Dr

60' wide  
12.5' marks

-20	10.4	126.9
E	8.94	128.39

Hub SE

137.33

ALHAMBRA

50

db	4.3	133.0
1/4	3.0	134.3
C	2.6	134.7
1/4	2.1	135.2
db	0.0	137.3
T.P.	12.98	142.20
W	6.7	142.5
So Curb		
W	5.3	143.9
db	4.9	139.3
1/4	12.7	136.5
C	13.3	135.9
1/4	14.2	135.0
db	15.3	133.9
E	15.1	131.1
+20	21.4	127.8
So Quarter		
-20	19.8	129.4
E	17.7	131.5
db	15.2	134.0
1/4	15.7	135.5
C	12.3	136.9
1/4	11.9	137.3
+5	10.9	138.3
db	9.1	140.1

179.20

W		40	145.2
	Center		
W		36	145.6
cb		44	139.8
1/4		110	138.2
c		114	137.8
1/2		126	136.6
cb		143	134.9
E		170	132.2
+20		203	128.9
	No Quarter		
-20		21.7	127.5
E		16.2	133.0
cb		11.7	137.5
1/4		10.1	139.1
c		10.1	139.1
1/2		10.0	139.2
cb		8.7	140.5
W		1.5	147.7
	No Curb		
W		00	149.2
cb		7.4	141.8
1/4		8.9	140.3
c		9.1	140.1
1/2		9.1	140.1
cb		10.4	138.8

149.20

ALHAMBRA

60

E		15.7	133.5
+20		20.0	129.2
	No LINE		
-20		18.2	131.0
E		14.3	134.9
cb		8.6	140.6
1/4		7.5	141.7
c		7.4	141.8
1/2		6.3	142.9
cb		5.3	143.9
T.P.	12.06	161.08	0.18
W		9.5	151.6
	25' No		
W		6.0	155.1
cb		12.9	148.2
1/4		14.7	146.4
c		15.8	145.3
1/2		15.3	145.8
cb		16.4	144.7
E		22.2	138.9
+15		26.2	134.9
	50' No		
-15		19.8	141.3
E		15.8	145.3
W		13.2	147.9

161.05

1/4		11.6	149.5
C		11.2	149.9
1/4		9.2	151.9
cb		8.3	152.8
W		3.9	157.2
	75' No		
W		2.6	152.5
cb		6.0	155.1
1/4		6.4	154.7
C		6.2	154.9
1/4		7.0	154.1
cb		8.0	153.1
E		9.7	151.4
+10		12.3	148.3
	100' No		
-10		9.7	157.4
E		8.4	152.7
cb		7.0	154.1
1/4		6.6	154.5
C		6.0	155.1
1/4		4.9	156.2
cb		4.9	156.2
W		2.1	159.0
T.P.	15.89	140.22	175 159.33

170.22

AL

61

150' No

W		8.8	161.4
H		10.2	160.0
cb		11.6	158.6
1/4		12.2	158.0
C		12.9	157.3
1/4		13.2	157.0
cb		13.3	156.9
E		15.3	154.9
+10		16.4	153.8
	200' No		
-10		15.2	155.0
E		13.7	156.5
cb		10.8	159.4
1/4		10.9	159.3
C		11.0	159.2
1/4		16.5	159.7
cb		9.7	160.3
W		8.2	162.0
	250' No		
W		5.0	165.2
H		5.8	164.8
cb		7.2	163.0
1/4		7.9	162.3
C		8.4	161.7
1/4		9.5	160.7

mat' = slighter

170.22

ob	97	1615.
E	11.3	158.9
+10	12.9	157.3
300' No		
-10	12.1	158.1
E	10.3	159.9
+5	8.4	161.8
ob	80	162.2
1/4	8.9	161.9
C	80	162.2
1/4	7.4	162.8
ob	7.3	162.9
+11.5	6.2	164.0
W	5.3	164.9
358.88' No = S.L. of surveyed st papers		
W	4.2	166.0
+5	5.6	164.6
ob	5.8	164.8
1/4	5.6	164.6
C	5.6	164.6
1/4	6.1	164.1
ob	6.3	163.9
+10	6.8	163.4
E	8.2	162.0
+10	10.3	159.9

170.22

62

400' No

-10		6.9	163.3	
E		6.0	164.2	
+2		4.6	165.6	
ob		4.3	165.9	
1/4		3.9	166.3	
C		3.7	166.5	
1/4		3.5	166.7	
ob		3.8	166.4	
+7		3.3	166.9	
W		2.0	168.2	
413.43' No = center of surveyed st				
TP	11.96	181.59	0.59	169.65
W			9.5	172.1
ob			10.5	171.1
1/4			10.9	170.7
C			11.1	170.5
1/4			11.2	170.4
ob			11.7	169.9
E			11.4	170.2
500' No				
E			6.1	175.5
ob			6.4	175.2
1/4			5.9	175.7
C			5.6	176.0
1/4			5.5	176.1



181.59

cb			5.7	175.9
W			5.4	176.2
		527.98' No. = N.L.		Surveyed St.
W			2.9	178.7
cb			3.5	178.1
1/4			3.4	178.2
C			3.3	178.3
1/4			3.4	178.2
cb			3.8	177.8
E			3.8	177.8
T.P.	13.05	190.23	4.41	177.15
		600' No.		
E			8.0	182.2
cb			8.0	182.2
1/4			7.9	181.3
C			7.7	182.5
1/4			7.9	182.3
cb			8.0	182.2
W			8.3	181.9
		650' No.		
W			5.4	184.8
cb			5.9	184.3
1/4			5.7	184.5
C			5.5	184.7
1/4			5.2	185.0
cb			5.3	184.9

ALHAMBRA

63

190.23

E			5.1	185.1
		700' No.		
E			3.3	186.9
cb			3.4	186.8
1/4			3.3	186.9
C			3.4	186.8
1/4			3.7	186.5
cb			4.1	186.1
W			4.3	185.9
		750' No.		
W			3.3	186.9
cb			2.6	187.6
1/4			2.6	187.6
C			2.2	188.0
1/4			1.9	188.3
cb			1.9	188.3
E			1.9	188.3
		800' No.		
E			1.8	188.4
cb			1.4	188.8
1/4			1.3	188.9
C			1.5	188.7
1/4			1.9	188.3
cb			1.9	188.3
W			1.5	188.4
T.P.	11.81	200.36	1.68	188.55

200.36

850 No

W	10.5	189.9
cb	10.4	190.0
1/4	10.1	190.3
c	9.8	190.6
1/4	9.7	190.7
cb	10.0	190.4
E	10.0	190.4

900 No

E	8.5	190.9
cb	8.1	191.3
1/4	8.8	191.6
c	8.8	191.6
1/4	8.8	191.6
cb	8.9	191.5
W	9.0	191.4

959.8 = 51. Lenox Ave 60 wide <sup>1/12.5 corbs</sup> 8.75 1/4

W	7.5	192.9
cb	7.4	193.0
1/4	7.3	193.1
c	7.5	192.9
1/4	8.1	192.3
cb	8.8	191.6
E	9.4	191.0

ALHAMBRA

64

200.36

50. Curb

E	9.2	191.2
cb	8.5	191.9
1/4	8.2	192.2
c	8.0	192.4
1/4	8.0	192.4
cb	7.7	192.7
W	7.8	192.6

50. 1/4

W	7.7	192.7
cb	7.8	192.6
1/4	7.9	192.5
c	8.0	192.4
1/4	8.4	192.0
cb	8.7	191.7
E	9.2	191.2

Center

E	7.2	191.7
cb	8.6	191.8
1/4	8.1	192.3
c	7.9	192.5
1/4	7.9	192.5
cb	7.8	192.6
W	7.6	192.8

No. 1/4

W	7.6	192.8
cb	7.8	192.6
1/4	7.7	192.7
C	7.8	192.6
1/4	8.0	192.4
cb	8.4	192.0
E	9.4	191.2

No. Curb.

E	9.2	191.2
cb	8.4	192.0
1/4	7.4	193.0
C	7.4	193.2
1/4	7.2	193.2
cb	7.5	192.9
W	7.3	193.1

No. Line Lemox Ave.

W	7.0	193.5
cb	7.2	193.2
1/4	7.1	193.3
C	7.9	193.1
1/4	7.9	192.5
cb	8.3	192.1
E	9.4	191.0

50' No.

E	77	192.7
cb	66	193.8
1/4	61	194.3
C	55	194.9
1/4	54	195.0
cb	54	195.2
W	50	195.0

100' No.

W	42	196.2
cb	46	195.8
1/4	46	199.8
C	51	195.3
1/4	60	194.4
cb	64	194.0
E	77	192.7

150' No = N.L. Beverly

E	9.7	190.7
cb	8.5	191.9
1/4	7.6	192.8
C	6.8	193.6
1/4	6.1	194.3
cb	5.4	195.0
W	4.3	196.1
B.M.	3.42	196.94

Rock on  
N.L. Beverly  
75' 30" od  
Boundary



7/19/19 Gregory  
Moore  
Miller

CROSS SECTION OF  
WINSTON DRIVE.  
IN BEARSLEY  
ENTIRE LENGTH

80' wide  
10.0' curbs  
10.0' / 4's

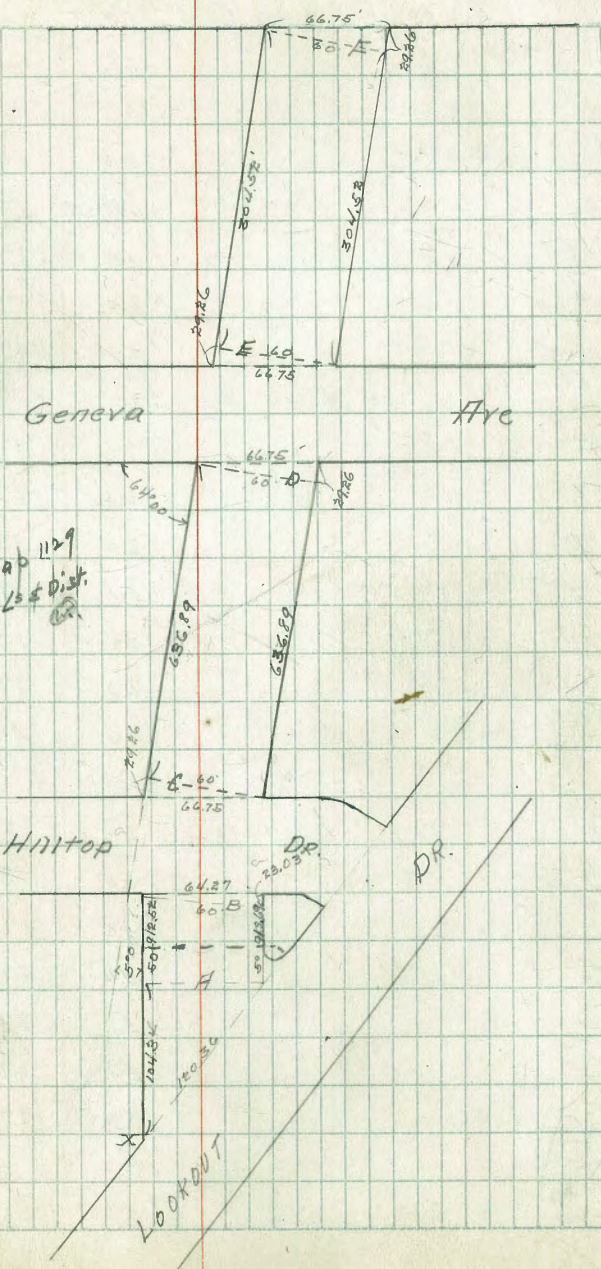
BM	13.00	157.20	144.20	144.20	144.20
T.P.	12.29	169.00	0.49	156.41	156.41
T.P.	10.07	178.79	0.28	168.72	168.72
N.L. Lookout Drive					
W			11.0	167.8	
cb			9.1	169.4	
1/4			8.3	170.5	
c			7.2	171.6	
1/4			5.9	172.9	
cb			4.1	174.7	
E			2.6	176.2	
17.39' No. of PT X					
-10			15.1	163.7	
W			12.8	166.0	
cb			9.1	169.4	
34.98' No. of PT X					
W			9.9	168.9	
cb			9.1	169.4	
1/4			8.3	170.5	
52.17' No. of PT X					
c			7.2	171.6	
1/4			8.0	170.8	
cb			8.3	170.5	
W			8.6	170.2	

11/1 SE Lookout  
+ Alternation

11 roads killed  
4 feet

Lenox

DRIVE



17879

100' No. of Lookout No.

SECTION A

W	68	172.0	Already filled 6 feet.
cb	61	172.7	
1/4	53	173.5	
c	48	174.0	
1/4	40	174.8	
cb	33	175.3	
E	26	176.7	

50' No. of A

E	16	177.2	
cb	29	175.9	
1/4	39	174.9	
c	46	174.4	
1/4	52	173.6	
cb	66	172.7	
W	79	168.9	

65' No. of A

W	95	169.3	Already filled 3 feet.
cb	66	172.7	
1/4	50	173.8	
c	42	174.6	
1/4	32	175.6	
cb	21	176.7	
E	03	178.5	

100' No. of A

E	1.9	176.9	
---	-----	-------	--

WINSTON

68

17879

cb	40	174.8	
1/4	43	174.5	
c	51	173.7	
1/4	59	172.9	
cb	61	172.7	
W	10.5	168.1	filled 1 foot
+10	12.2	166.6	
150' No.			
-10	12.0	166.8	
W	11.1	167.7	
cb	85	170.5	
1/4	81	170.7	
c	74	171.4	
1/4	67	172.1	
1/4	58	173.0	
E	3.8	175.0	already cut 1.3
200' No.			
E	5.6	173.2	already cut 3.0
cb	7.2	171.6	
1/4	7.8	171.0	
c	8.3	170.5	
1/4	9.1	169.7	
cb	9.9	168.9	
W	10.4	168.4	grade
260' No.			
W	11.0	167.8	cut

178.79

cb			11.3	167.5	
1/4			11.0	167.8	
c			10.0	168.8	
1/4			8.9	169.9	
cb			7.5	171.3	
+7			6.9	171.9	
E			5.5	173.3	1.8 out.
		300' No.			
E			10.1	168.7	0.5 out.
+5			12.9	163.9	
T.P.	207	167.85	13.01	165.78	
cb			1.9	166.0	
1/4			2.7	165.2	
c			4.0	163.9	
1/4			4.2	163.7	
cb			4.2	163.7	
W			3.8	164.1	0.5 out.
		325' No.			
W			9.6	158.3	0.5 hill
cb			9.0	158.9	
1/4			8.3	159.6	
c			7.3	160.6	
1/4			6.9	161.0	
cb			6.3	161.6	
E			3.8	164.1	natural

WINSTON

69

167.81

337' No.

E			7.6	160.3	grade
cb			7.7	160.2	
1/4			8.0	159.9	
c			8.6	159.3	
1/4			9.4	158.5	
cb			10.0	157.9	
W			10.9	157.0	1.5 fill
		375' No.			
W			12.3	155.6	80' fill. 50' widened 10' feet
cb			11.7	156.2	
1/4			11.4	156.5	
c			10.8	157.1	
1/4			10.6	157.3	
cb			9.3	158.6	
E			8.7	159.2	
		400' No.			
E			9.1	158.8	grade
cb			9.2	158.7	
1/4			9.7	158.2	
c			10.0	157.9	
1/4			11.2	156.7	
cb			12.2	155.7	
W			11.9	156.0	8' x 16' bank widened out. 10' feet
		420' No.			
W			10.7	157.2	4' x 16' bank widened out. 8' feet

167.85

cb	10.3	157.6	
1/4	8.5	157.4	
C	7.6	160.3	
1/4	7.2	160.7	
cb	6.5	161.4	
E	6.5	161.4	2.4 cut

450' No.

E	27	165.2	3.8 cut
+P	42	163.7	
cb	48	163.1	
1/4	5.4	162.5	
C	5.2	162.7	
1/4	6.2	161.7	
cb	8.2	159.7	
W	8.6	159.3	grade

485' No.

W	3.4	164.5	2.0 cut
cb	3.7	164.2	
1/4	3.6	164.3	
C	3.1	164.8	
1/4	3.0	164.9	
cb	2.0	165.9	
E	+0.6	168.5	3.5 cut

520' No.

E	1.2	166.7	2.2 cut
+5	3.4	164.5	
cb	3.9	164.0	

167.85

WINSTON 70

1/4	4.8	163.6	
C	4.9	163.0	
+5	5.9	162.0	
1/4	5.4	162.5	
cb	6.1	161.8	
W	5.9	162.0	0.8 cut

5450

W	10.8	157.1	grade
cb	7.9	158.0	
1/4	8.6	159.3	
C	8.2	159.7	
1/4	8.6	161.3	
cb	6.5	161.4	
E	5.4	162.5	0.5 cut

600' No.

E	7.0	160.9	
cb	8.2	159.7	
1/4	10.5	157.4	
C	11.3	158.6	
1/4	11.8	158.1	
cb	12.2	155.7	
W	13.0	154.9	5' fill; bank 8' wide

620' No.

W	14.2	153.7	5' fill; bank 6' wide
cb	13.4	154.5	
1/4	12.8	155.1	



167.55

C	12.7	155.2	
1/4	12.6	153.3	
cb	12.1	153.8	
E	10.7	157.2	natural
640' No.			
E	8.5	159.4	natural
cb	10.6	157.3	
1/4	11.6	156.3	
C	10.8	157.1	
1/4	11.2	156.7	
cb	11.7	156.2	
W	11.9	156.0	0.5 hill.
660' No.			
W	7.3	160.6	grade.
cb	8.7	159.2	
1/4	10	158.9	
C	9.2	158.7	
1/4	9.2	158.7	
cb	9.7	158.2	
E	9.5	158.4	natural.
680' No.			
E	6.6	161.3	natural.
cb	6.4	161.5	
1/4	5.6	162.3	
C	5.1	162.8	
1/4	4.9	163.0	

WINSTON

71

167.81

cb			52	162.7	
W			30	164.9	1.0' cut.
700' No.					
W			07	167.2	2.5 cut
cb			21	165.8	
1/4			23	165.6	
C			25	165.4	
1/4			31	164.8	
cb			26	165.3	
E			24	165.5	0.2 cut
TP	579	17059	305	164.80	
725' No.					
E			22	168.4	1.5 cut
cb			27	167.9	
1/4			31	167.5	
C			23	168.3	
1/4			21	168.5	
cb			26	168.0	
W			24	168.2	1.5 cut
750' No.					
W			50	165.6	grade
cb			50	165.6	
1/4			37	166.9	
C			22	168.4	
1/4			20	168.6	
cb			10	169.6	

170.59

E	0.2	170.4	2.2 cut.
762' No.			
E	0.7	169.9	1.0 cut.
cb	1.4	169.2	
1/4	2.9	167.7	
C	3.1	167.5	
1/2	4.0	166.6	
cb	5.9	164.7	
W	7.2	163.4	
+10	8.8	161.8	
775' No.			
-10	11.5	159.1	
W	11.7	158.9	
+3'	9.2	161.4	
cb	9.2	161.4	
1/4	7.7	162.9	
C	6.3	164.3	
1/2	5.6	165.0	
cb	4.8	165.8	
E	3.4	167.2	
+10	2.6	168.0	
792' No.			
-10	8.5	162.1	
E	8.0	162.6	
cb	8.1	162.5	
1/4	8.9	161.7	

WINSTON

170.59

72

C	10.1	160.5
1/4	10.1	160.5
+6	10.5	159.8
cb	12.8	157.8
W	15.6	152.0
+15	20.3	150.3
+30	18.3	152.3
800' No.		
-30	15.3	152.3
W	16.3	152.3
+8	14.7	155.9
cb	13.4	157.2
+2	11.4	159.2
1/4	11.0	159.6
C	11.0	159.6
1/4	10.3	160.3
cb	9.4	161.2
E	11.0	159.6
+30	10.0	160.6
805' No.		
-20	10.2	160.4
E	11.5	159.1
cb	10.3	160.3
1/4	10.5	160.1
C	11.4	159.2
1/4	11.8	158.8

170.59

cb	12.3	158.3
W	14.9	155.7
+30	20.6	150.0
820' No		
-30	18.5	152.1
-20	20.0	150.6
-15	16.6	154.0
W	14.4	156.2
cb	13.6	157.0
1/4	12.8	157.8
C	12.1	158.5
1/4	11.0	159.6
cb	10.2	160.4
E	9.3	161.3
+15	8.0	162.6
825' No		
-15	7.2	163.4
E	8.5	162.1
cb	10.4	160.2
1/4	11.2	159.4
C	12.1	158.5
1/4	12.8	157.8
cb	13.3	157.3
+5	17.9	152.7
W	12.0	153.6
+15	18.7	151.9

WINSTON

170.59

73

+30	16.6	154.0
835' No		
-20	12.1	158.5
W	12.9	157.7
cb	14.0	156.6
1/4	14.5	156.1
+5	11.5	159.1
C	11.0	159.6
1/4	9.7	160.9
cb	8.0	162.6
E	6.8	163.8
+15	5.7	164.9
850' No		
-10	2.5	168.1
E	3.6	167.0
cb	5.8	164.8
1/4	8.9	161.7
+5	9.4	161.2
C	14.0	156.6
+5	11.5	159.1
1/4	10.3	160.3
cb	10.3	160.3
W	9.8	160.8
+15	8.0	162.6

170.59

865' No.

-10		5.1	165.5
W		6.1	164.5
cb		5.8	164.8
1/4		6.6	164.0
C		7.5	163.1
+3		7.7	162.9
1/4	1	10.9	159.7
+4		7.3	163.3
cb		5.7	164.9
E		11	169.5
+10		0.0	170.6

882' No.

-10		+0.1	170.7	
E		0.8	169.8	
cb		6.6	164.0	
+3		8.6	162.0	
+7		5.0	165.6	
1/4		4.3	166.3	
C		9.1	167.5	
1/4		1.8	168.8	
cb		1.6	169.0	
W		1.4	169.2	
T.P.	12.34	182.84	0.09	170.50
+15		0.2	182.6	

182.82

WINSTON

74

900' No.

-10		8.2	174.6
W		5.3	174.5
cb		8.3	174.5
1/4		10.6	172.2
C		12.4	170.4
1/4		14.0	168.8
+3		15.0	167.8
+7		17.9	164.9
cb		12.5	165.0
+3		15.4	167.4
E		14.3	168.5
+15		8.4	174.4

930' No.

-10		2.0	180.8
E		6.0	176.8
cb		10.4	172.4
1/4		8.1	174.7
1/4		7.5	175.3
+5		7.1	175.7
C		5.0	177.8
1/4		3.0	179.8
cb		2.8	180.0
W		2.8	180.0
W		1.3	181.5

945' No.

cb			0.4	182.4	
1/4			0.3	182.5	
C			0.8	182.0	
1/2			3.2	179.6	
+5			5.0	177.8	
cb			5.0	177.8	
+4			7.0	175.8	
E			5.9	176.9	
+10			0.5	182.3	
T.P.	11.24	193.66	0.42	182.42	
96369' No. = SECT B.					
E			9.3	184.2	
cb			10.0	183.7	
+6			10.7	183.0	
1/4			8.8	184.9	
C			8.9	184.8	
1/2			9.6	184.1	
cb			9.8	183.9	
W			10.6	183.1	
So LINE HILLTOP DR. <sup>60' ST</sup> <sub>125'</sub> curbs					
W			10.6	183.1	
cb			9.1	184.6	
1/4			8.0	185.7	
C			7.0	186.7	
1/2			6.5	187.2	
			5.7	188.0	
E			2.8	190.9	cut 1.0

13.39' No. = So CURB					
E			3.1	190.6	
cb			5.0	188.7	
1/4			5.2	188.5	
C			5.7	188.0	
1/2			6.5	187.2	
cb			7.5	186.2	
W			9.1	184.6	2.0 fill
9.37' No. = So Quarter.					
W			9.0	184.9	✓ ✓
+5			6.9	186.8	
1/4			6.6	187.1	
1/2			6.2	187.5	
C			5.6	188.1	
1/4			5.0	188.7	
1/2			4.5	189.2	
E			3.2	190.5	
9.37' No. = Center					
E			2.7	191.0	
cb			4.2	189.5	
1/4			4.9	188.8	
C			5.1	188.3	
1/2			6.0	187.7	
cb			6.4	187.3	
+5			6.7	187.0	
W			8.9	184.8	1.5 fill
9.37' No. = No. 1/4					
W			8.3	185.2	✓ ✓
+3			7.0	186.7	
cb			6.3	187.2	
1/4			5.8	187.9	
C			5.2	188.5	
1/2			4.5	189.2	
cb			3.9	189.8	
E			2.7	191.0	
9.37' No. = No. Cb					
E			2.2	191.3	
cb			3.7	190.0	
1/4			4.2	189.3	
C			5.1	188.6	
1/2			5.6	188.1	
cb			6.0	187.7	
+6			6.6	187.1	
W			8.2	185.3	1.5 fill
13.39' No. = NL HILLTOP DR					
W			9.43	184.23	on hub
+5			6.4	187.3	
cb			6.6	187.1	
1/4			5.6	188.1	
C			5.0	188.7	
1/2			4.5	189.2	
cb			3.4	190.3	
E			2.2	191.5	1.5 cut

19366

29.26' No. 00 W

20' E = SECT C

E	2.2	191.5
cb	3.2	190.3
1/4	4.0	189.2
C	5.0	188.7
1/4	5.3	188.4
cb	5.8	187.9
W	7.8	185.9
50' No. of C.		
W	8.1	185.6
cb	6.1	187.6
1/4	5.5	188.2
C	5.1	188.6
1/4	4.5	189.2
cb	3.3	190.2
+7	2.3	191.4
E	0.2	193.5
100' No.		
E	1.7	192.0
+2	2.1	190.6
cb	3.8	189.9
1/4	5.1	188.6
C	5.4	188.3
1/4	6.2	187.5
cb	6.8	186.9
W	7.5	186.2
150' No.		
W	8.3	185.2
cb	8.0	185.7
1/4	7.8	185.9
C	7.5	186.2
1/4	7.0	186.7
cb	5.7	188.0
E	4.5	189.2
200' No.		
E	5.6	188.1
+1	6.3	187.4
cb	7.4	186.3
1/4	8.5	185.7
C	8.6	185.1
1/4	9.4	184.3
cb	9.8	183.9
W	10.7	183.0
250' No.		
W	15.4	178.3
cb	14.4	178.8
1/4	14.8	178.9
C	13.5	180.2
1/4	12.2	181.5
cb	10.9	182.8
E	9.3	184.4

natural.

cut 1.0

WINSTON

76

TP	040 181.07	300' No.	12.99	180.67
E			4.2	176.9
cb			5.3	175.8
1/4			5.8	175.3
C			7.0	174.1
1/4			7.4	173.7
cb			7.8	173.3
W			8.3	172.8
+10			10.7	170.4
325' No.				
-15.0			15.0	166.1
W			12.7	168.4
cb			12.8	168.3
1/4			12.9	168.2
C			12.5	168.6
1/4			12.3	168.8
cb			12.7	168.4
E			12.8	168.3
+10			12.8	168.3
TP	1.10 169.11		13.06	168.01
343' No.				
-20			9.4	159.7
E			8.9	160.2
cb			6.1	163.0
1/4			5.7	163.4
C			5.7	163.4
1/4			5.7	163.4
cb			5.2	163.9
W			4.2	164.2
+15			4.8	164.3
370' No.				
-15			6.4	162.7
W			7.2	161.9
cb			8.3	160.8
1/4			7.7	161.4
C			7.2	161.9
1/4			8.9	160.2
cb			9.6	159.5
E			9.4	159.7
+10			6.0	163.1
400' No.				
-10			+0.7	169.8
E			1.9	167.2
cb			5.2	163.9
1/4			8.2	160.9
C			9.8	159.3
+6			10.2	158.9
1/4			10.9	158.2
cb			11.1	158.0
W			11.8	157.3
+20			7.3	160.8

		425' No	14.2	134.9
-25			15.0	134.1
-10			13.1	136.0
W			11.9	137.2
cb			11.6	137.5
+3			8.5	160.6
1/4			4.1	165.0
C			0.7	168.4
1/4	10.01	178.23	0.89	165.22
+10			7.2	171.0
cb			3.8	174.4
E		450' No	2.1	176.1
E			2.7	175.4
+R			4.2	174.0
cb			6.9	171.3
1/4			10.7	167.5
C			13.5	164.7
1/4			17.2	161.0
cb			19.6	158.6
W			22.7	155.5
+R5		475' No	16.4	161.8
-20			12.8	165.4
W			11.3	166.9
cb			9.8	168.4
1/4			8.5	169.5
C			7.0	171.2
1/4			4.6	173.6
cb			1.3	176.9
E		500' No	3.9	174.3
cb			5.8	172.4
1/4			7.1	171.1
C			8.3	169.9
1/4			9.0	169.2
cb			10.1	168.1
W			11.3	166.9
+10		515' No	13.3	164.9
-10			13.3	164.9
W			12.6	166.2
cb			9.4	168.8
1/4			7.9	170.3
C			7.3	170.9
1/4			6.8	171.4
cb			5.6	172.6
E		550' No	4.1	174.1
E			4.9	173.3

cb		63	171.9
1/4		8.1	170.1
C		9.4	168.8
1/4		10.0	168.2
cb		11.3	168.9
W		11.8	166.4
+10		12.0	166.4
		575' No	
-10		12.8	165.4
W		12.3	165.9
cb		11.9	166.3
1/4		10.4	167.8
C		8.4	169.8
1/4		7.7	170.5
cb		6.1	172.1
E		3.7	174.5
		600' No	
E		4.9	173.3
1/4		6.3	171.9
1/4		7.9	170.3
C		8.5	169.7
1/4		10.6	167.6
cb		11.3	166.9
W		11.9	166.3
+10		12.5	165.7
		636.89' No = SECTION D	
-10		12.3	165.9
W		12.0	166.23
cb		11.1	167.1
1/4		10.2	168.0
C		9.0	169.2
1/4		7.4	170.8
cb		6.5	171.7
E		4.6	173.6
		SL Geneva Ave	60' wide
E		4.1	174.1
cb		5.8	172.4
1/4		7.9	170.3
C		9.4	168.8
1/4		10.2	168.0
cb		10.9	167.3
W		12.0	166.2
+10		12.3	165.9
		13.9' No = Sp. Curb	
-10		12.3	165.9
W		11.1	167.1
cb		10.2	168.0
1/4		9.4	168.8
1/4		9.0	169.2
C		7.6	170.6
1/4		5.9	172.3
E		4.5	173.7

9.75' No. = So Quarter

E	38	174.4
cb	56	172.6
1/4	70	171.2
c	85	169.7
1/4	94	169.0
cb	10.0	168.2
W	10.7	167.5
+10	11.7	166.5

9.75' No. = Center

-10	11.2	167.0
W	10.6	167.6
cb	9.7	168.5
1/4	8.9	169.3
c	7.8	170.4
1/4	6.4	171.8
cb	5.0	173.2
E	3.2	175.0

9.75' No. = No. Quarter

E	30	175.2
cb	4.9	173.3
1/4	5.9	172.3
c	6.5	171.4
1/4	8.4	169.8
cb	9.6	168.6
W	10.6	167.6
+10	11.5	166.7

178.23

9.75' No. = No. Cb

-10	11.5	166.7
W	10.5	167.7
cb	9.2	169.0
1/4	8.1	170.1
c	6.9	171.3
1/4	5.9	172.3
cb	4.9	173.3
E	2.9	175.3

13.9' No. = NL General

E	2.8	175.4
cb	3.6	174.6
1/4	5.9	172.3
c	7.2	171.0
1/4	8.0	170.2
cb	9.3	168.9
W	10.4	167.8
+10	11.2	167.0

29.26' No. 0.01 W } = SECT E  
0.0 - - E

-10	10.3	167.9
W	9.5	168.7
cb	8.6	169.6
1/4	7.8	170.4
c	6.9	171.3
1/4	5.7	172.5
cb	4.0	174.2
E	2.8	175.4



177.23

50' No

E		1.9	176.3
cb		3.5	174.7
1/4		4.7	173.5
c		5.8	172.4
1/4		6.5	171.7
cb		7.2	171.0
W		7.6	170.6
+10		8.4	169.8

100' No

-10		6.9	171.3	
W		6.2	172.0	
cb		5.6	172.6	
1/4		5.1	173.1	
c		4.3	173.9	
1/4		3.8	174.4	
cb		2.8	175.4	
T.P.	5.16	180.49	2.90	175.39
E		4.4	176.1	

150' No

E		4.9	175.6
cb		5.7	174.8
1/4		6.1	174.4
c		6.8	173.7
1/4		7.3	173.2
cb		7.7	172.8

180.49

70

W

81

172.4

200' No

W		6.8	173.7
cb		6.4	174.1
1/4		6.2	174.3
c		5.7	174.8
1/4		5.3	175.2
cb		5.1	175.4
E		4.3	176.2

250' No

E		2.9	177.6
cb		3.6	176.9
1/4		3.7	176.8
c		3.8	176.7
1/4		4.0	176.5
cb		4.2	176.1
W		5.2	175.3

280' No

W		5.3	175.2
cb		5.4	175.1
1/4		5.8	174.7
c		5.2	175.3
1/4		4.5	176.0
cb		3.5	177.0
E		3.4	177.1

18049

304.52' No. = SECT F

E	63	174.2
cb	70	173.5
$\frac{1}{4}$	75	173.0
c	91	171.4
$\frac{1}{2}$	96	170.9
cb	96	170.9
W	94	171.1

S.L. LENOX AVE

W	94	171.1
cb	97	170.8
$\frac{1}{4}$	101	170.4
c	108	169.7
$\frac{1}{4}$	91	171.4
cb	59	174.6
E	328	177.21 on hub

WINSTON

80

# KEITH'S RAILROAD CURVE TABLES.

Published by KEUFFEL & ESSER CO., New York.

Entered according to Act of Congress in the year 1883,  
by W. Keuffel & H. Esser, in the office of the Librarian of Congress,  
in Washington, D. C.

Copyright, 1902, by Keuffel & Esser Co.

## HOW TO USE KEITH'S TABLES.

### EXAMPLE.

Wanted a Curve with an Ext. of about 12 ft. Angle  
of Intersection or I. P. =  $23^{\circ} 20'$  to the R. at Station  
542+72.

Ext. in Tab. IV opposite  $23^{\circ} 20' = 120.87$   
 $120.87 \div 12 = 10.07$ . Say a  $10^{\circ}$  Curve.

Tan. in Tab. IV opp.  $23^{\circ} 20' = 1183.1$   
 $1183.1 \div 10 = 118.31$ .

Tab. V correction for A.  $23^{\circ} 20'$  for a  $10^{\circ}$  Cur. = 0.16  
 $118.31 + 0.16 = 118.47 =$  corrected Tangent.

(If corrected Ext. is required find in same way)  
Ang.  $23^{\circ} 20' = 23.33^{\circ} \div 10 = 2.3333 =$  L. C.

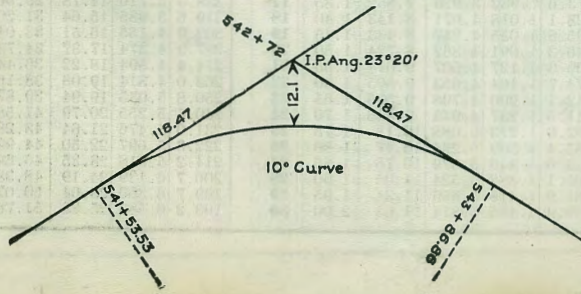
$2^{\circ} 19\frac{1}{2}' =$ def. for sta.	542	I. P. = sta.	542+72
$4^{\circ} 49\frac{1}{2}' =$ " " "	+50	Tan. =	1.18.47
$7^{\circ} 19\frac{1}{2}' =$ " " "	543	B. C. = sta.	541+53.53
$9^{\circ} 49\frac{1}{2}' =$ " " "	+50	L. C. =	2.33.33
$11^{\circ} 40' =$ " " "	543+	E. C. = Sta.	543+86.86

$100 - 53.53 = 46.47 \times 3' (\text{def. for 1 ft. of } 10^{\circ} \text{ Cur.}) = 139.41' =$   
 $2^{\circ} 19\frac{1}{2}' =$  def. for sta. 542.

Def. for 50 ft. =  $2^{\circ} 30'$  for a  $10^{\circ}$  Curve.

Def. for 36.86 ft. =  $1^{\circ} 50\frac{1}{2}'$  for a  $10^{\circ}$  Curve.

(These tables are published in Field Books of  
KEUFFEL & ESSER Co., New York, N. Y.)



Handwritten notes and calculations on the left page of the notebook, including a vertical list of numbers (75, 85, 100, 127, 150, 175, 200, 203, 207, 225, 250, 275, 300, 325, 350, 375, 400, 425, 450, 475, 500, 525, 550, 575, 600, 625, 650, 675, 700, 725, 750, 775, 800, 825, 850, 875, 900, 925, 950, 975, 1000) and several arithmetic problems such as  $323.82 + 14 = 337.82$ ,  $325.47 + 14 = 339.47$ ,  $325.39 + 14 = 339.39$ , and  $443.43 + 14 = 457.43$ .

Handwritten notes at the top of the right page, including  $+ 5 W 149 30 206$ ,  $+ 20 W 170 15 187 30 166$ , and a small table of numbers:  $100.9$ ,  $112.45$ ,  $0.675$ ,  $278.2$ ,  $309.5$ ,  $9.76$ .

DISTANCES FROM CENTER OF ROADWAY FOR CROSS-SECTIONING.  
 ROADWAY 14 FEET WIDE. SIDE SLOPES 1½ TO 1.  
 FOR SINGLE TRACK EMBANKMENT.

	0	.1	.2	.3	.4	.5	.6	.7	.8	.9	
0	7.0	7.2	7.3	7.5	7.6	7.8	7.9	8.1	8.2	8.4	0
1	8.5	8.7	8.8	9.0	9.1	9.3	9.4	9.6	9.7	9.9	1
2	10.0	10.2	10.3	10.5	10.6	10.8	10.9	11.1	11.2	11.4	2
3	11.5	11.7	11.8	12.0	12.1	12.3	12.4	12.6	12.7	12.9	3
4	13.0	13.2	13.3	13.5	13.6	13.8	13.9	14.1	14.2	14.4	4
5	14.5	14.7	14.8	15.0	15.1	15.3	15.4	15.6	15.7	15.9	5
6	16.0	16.2	16.3	16.5	16.6	16.8	16.9	17.1	17.2	17.4	6
7	17.5	17.7	17.8	18.0	18.1	18.3	18.4	18.6	18.7	18.9	7
8	19.0	19.2	19.3	19.5	19.6	19.8	19.9	20.1	20.2	20.4	8
9	20.5	20.7	20.8	21.0	21.1	21.3	21.4	21.6	21.7	21.9	9
10	22.0	22.2	22.3	22.5	22.6	22.8	22.9	23.1	23.2	23.4	10
11	23.5	23.7	23.8	24.0	24.1	24.3	24.4	24.6	24.7	24.9	11
12	25.0	25.2	25.3	25.5	25.6	25.8	25.9	26.1	26.2	26.4	12
13	26.5	26.7	26.8	27.0	27.1	27.3	27.4	27.6	27.7	27.9	13
14	28.0	28.2	28.3	28.5	28.6	28.8	28.9	29.1	29.2	29.4	14
15	29.5	29.7	29.8	30.0	30.1	30.3	30.4	30.6	30.7	30.9	15
16	31.0	31.2	31.3	31.5	31.6	31.8	31.9	32.1	32.2	32.4	16
17	32.5	32.7	32.8	33.0	33.1	33.3	33.4	33.6	33.7	33.9	17
18	34.0	34.2	34.3	34.5	34.6	34.8	34.9	35.1	35.2	35.4	18
19	35.5	35.7	35.8	36.0	36.1	36.3	36.4	36.6	36.7	36.9	19
20	37.0	37.2	37.3	37.5	37.6	37.8	37.9	38.1	38.2	38.4	20
21	38.5	38.7	38.8	39.0	39.1	39.3	39.4	39.6	39.7	39.9	21
22	40.0	40.2	40.3	40.5	40.6	40.8	40.9	41.1	41.2	41.4	22
23	41.5	41.7	41.8	42.0	42.1	42.3	42.4	42.6	42.7	42.9	23
24	43.0	43.2	43.3	43.5	43.6	43.8	43.9	44.1	44.2	44.4	24
25	44.5	44.7	44.8	45.0	45.1	45.3	45.4	45.6	45.7	45.9	25
26	46.0	46.2	46.3	46.5	46.6	46.8	46.9	47.1	47.2	47.4	26
27	47.5	47.7	47.8	48.0	48.1	48.3	48.4	48.6	48.7	48.9	27
28	49.0	49.2	49.3	49.5	49.6	49.8	49.9	50.1	50.2	50.4	28
29	50.5	50.7	50.8	51.0	51.1	51.3	51.4	51.6	51.7	51.9	29
30	52.0	52.2	52.3	52.5	52.6	52.8	52.9	53.1	53.2	53.4	30
31	53.5	53.7	53.8	54.0	54.1	54.3	54.4	54.6	54.7	54.9	31
32	55.0	55.2	55.3	55.5	55.6	55.8	55.9	56.1	56.2	56.4	32
33	56.5	56.7	56.8	57.0	57.1	57.3	57.4	57.6	57.7	57.9	33
34	58.0	58.2	58.3	58.5	58.6	58.8	58.9	59.1	59.2	59.4	34
35	59.5	59.7	59.8	60.0	60.1	60.3	60.4	60.6	60.7	60.9	35
36	61.0	61.2	61.3	61.5	61.6	61.8	61.9	62.1	62.2	62.4	36

Calculated by Julien A. Hall, M. Am. Soc. C. E.