

1042

LEVEL BOOK

373

KEUFFEL & ESSER CO.

DRAWING MATERIALS

AND

SURVEYING INSTRUMENTS.

NEW YORK.

CHICAGO. ST. LOUIS. SAN FRANCISCO. MONTREAL.

Tables for Excavations and Embankments.

DISTANCES FROM CENTER OF ROADWAY FOR CROSS-SECTIONING.
ROADWAY 18 FEET WIDE. SIDE SLOPES 1 TO 1.
FOR SINGLE TRACK EXCAVATION.

"Copyright, 1896, by Keuffel & Esser Co."

	0	.1	.2	.3	.4	.5	.6	.7	.8	.9	
0	9.0	9.1	9.2	9.3	9.4	9.5	9.6	9.7	9.8	9.9	0
1	10.0	10.1	10.2	10.3	10.4	10.5	10.6	10.7	10.8	10.9	1
2	11.0	11.1	11.2	11.3	11.4	11.5	11.6	11.7	11.8	11.9	2
3	12.0	12.1	12.2	12.3	12.4	12.5	12.6	12.7	12.8	12.9	3
4	13.0	13.1	13.2	13.3	13.4	13.5	13.6	13.7	13.8	13.9	4
5	14.0	14.1	14.2	14.3	14.4	14.5	14.6	14.7	14.8	14.9	5
6	15.0	15.1	15.2	15.3	15.4	15.5	15.6	15.7	15.8	15.9	6
7	16.0	16.1	16.2	16.3	16.4	16.5	16.6	16.7	16.8	16.9	7
8	17.0	17.1	17.2	17.3	17.4	17.5	17.6	17.7	17.8	17.9	8
9	18.0	18.1	18.2	18.3	18.4	18.5	18.6	18.7	18.8	18.9	9
10	19.0	19.1	19.2	19.3	19.4	19.5	19.6	19.7	19.8	19.9	10
11	20.0	20.1	20.2	20.3	20.4	20.5	20.6	20.7	20.8	20.9	11
12	21.0	21.1	21.2	21.3	21.4	21.5	21.6	21.7	21.8	21.9	12
13	22.0	22.1	22.2	22.3	22.4	22.5	22.6	22.7	22.8	22.9	13
14	23.0	23.1	23.2	23.3	23.4	23.5	23.6	23.7	23.8	23.9	14
15	24.0	24.1	24.2	24.3	24.4	24.5	24.6	24.7	24.8	24.9	15
16	25.0	25.1	25.2	25.3	25.4	25.5	25.6	25.7	25.8	25.9	16
17	26.0	26.1	26.2	26.3	26.4	26.5	26.6	26.7	26.8	26.9	17
18	27.0	27.1	27.2	27.3	27.4	27.5	27.6	27.7	27.8	27.9	18
19	28.0	28.1	28.2	28.3	28.4	28.5	28.6	28.7	28.8	28.9	19
20	29.0	29.1	29.2	29.3	29.4	29.5	29.6	29.7	29.8	29.9	20
21	30.0	30.1	30.2	30.3	30.4	30.5	30.6	30.7	30.8	30.9	21
22	31.0	31.1	31.2	31.3	31.4	31.5	31.6	31.7	31.8	31.9	22
23	32.0	32.1	32.2	32.3	32.4	32.5	32.6	32.7	32.8	32.9	23
24	33.0	33.1	33.2	33.3	33.4	33.5	33.6	33.7	33.8	33.9	24
25	34.0	34.1	34.2	34.3	34.4	34.5	34.6	34.7	34.8	34.9	25
26	35.0	35.1	35.2	35.3	35.4	35.5	35.6	35.7	35.8	35.9	26
27	36.0	36.1	36.2	36.3	36.4	36.5	36.6	36.7	36.8	36.9	27
28	37.0	37.1	37.2	37.3	37.4	37.5	37.6	37.7	37.8	37.9	28
29	38.0	38.1	38.2	38.3	38.4	38.5	38.6	38.7	38.8	38.9	29
30	39.0	39.1	39.2	39.3	39.4	39.5	39.6	39.7	39.8	39.9	30
31	40.0	40.1	40.2	40.3	40.4	40.5	40.6	40.7	40.8	40.9	31
32	41.0	41.1	41.2	41.3	41.4	41.5	41.6	41.7	41.8	41.9	32
33	42.0	42.1	42.2	42.3	42.4	42.5	42.6	42.7	42.8	42.9	33
34	43.0	43.1	43.2	43.3	43.4	43.5	43.6	43.7	43.8	43.9	34
35	44.0	44.1	44.2	44.3	44.4	44.5	44.6	44.7	44.8	44.9	35
36	45.0	45.1	45.2	45.3	45.4	45.5	45.6	45.7	45.8	45.9	36

Calculated by Julien A. Hall, M. Am. Soc. C. E.

LaJolla + Ampudia SW Mon 44.43
 Estudillo SE SPK 77.40
 Wetherby NE 70.53
 Trias NW 52.66
 Coats NE 80.40
 Bandini SE 85.66
 Wright NE 82.62
 Juan + Wallace SE Mon 14.42
 Taylor + Chesnut SW 6.04
 Near Old Palms Apple white pole 7.80

MICROFILMED

DEC 18 1964

MICROFILMED

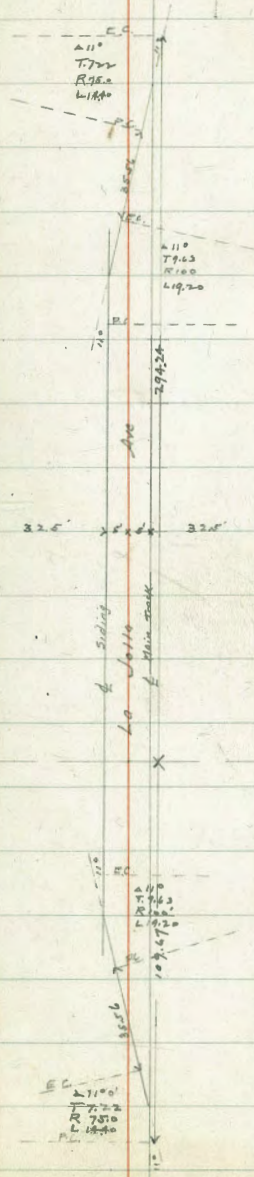
DEC 18 1964

Location of S.D. Elect Ry Co's Turnout on La Jolla Ave 19

(Davis 1-A
Pacho
Sherwin

Cuts

St.



71.87

LA JOLLA 2

E	0.7	71.2
50' No. 10 x A		
E	1.2	70.7
+4	2.1	69.8
28	2.3	69.6
cb	3.5	68.4
1/4	3.2	68.7
C	3.2	68.7
1/4	3.7	68.2
cb	4.4	67.5
W	4.3	67.6
100' No		
W	4.4	67.5
cb	4.8	67.1
+1	5.1	66.8
1/4	4.0	67.9
C	3.6	68.3
1/4	3.6	68.3
cb	3.9	68.1
+1	3.1	68.8

E	2.3	69.6
134.63' No. = SECTION B		
E	2.1	69.8
+6	2.7	69.2
+8	4.1	67.8
cb	4.0	67.9
1/4	3.9	68.0
C	4.0	67.9
1/4	4.4	67.5
+7	5.5	66.4
cb	5.0	66.9
W	4.8	67.1
534' No. 27 W } = C 00 - - E		
W	5.0	66.9
cb	5.1	66.8
+3	5.6	66.3
1/4	4.4	67.5
C	4.0	67.9
1/4	3.9	68.0
cb	4.1	67.9

Tract 1

71.87

LA JOLLA 3

+2		4.3	67.6	1/4		4.9	67.0
+3		4.9	69.0	C		4.4	67.5
E		2.1	69.8			4.2	67.7 W rail
	5.34 No. on W 00 - - E	} = "D"		1/4		4.6	67.3
E		2.1	69.8	+8		4.7	67.2
+7		2.9	69.0	db		3.9	68.0
+8		4.3	67.6	+6		3.3	68.6
db		4.1	67.8	E		1.4	70.5
1/4		3.9	68.0		100' No.		
C		4.8	67.9	E		2.7	69.2
1/4		4.5	67.4	+5		4.2	67.7
+7		5.6	66.3	db		4.7	67.2
db		5.1	66.8	+2		5.1	66.8
W		5.5	66.4	1/4		4.9	67.0
	50' No. of "D"			+7.5		4.7	67.2 W rail
W		5.6	66.3	C		5.0	66.9
+9		5.7	66.2	1/4		5.5	66.4
db		6.1	65.8	+9		6.6	65.3
+1		6.5	65.4	db		5.9	66.0
+6		3.3	66.6	W.		6.0	65.9
				T.P.	2.27	69.09	6.05 65.82

68.09

L7 Jolla #

162' No. = E.

W

31

65.0

W 31 65.0

11.26' No. = So. Corb

cb 2.7 65.4

W 3.4 64.7

+1 3.4 64.7

cb 3.0 65.1

1/2 2.6 65.5

+1 3.7 64.4

c 2.1 66.0

1/4 2.9 65.2

1.8 66.3 w rail

c 2.7 65.4

1/4 1.9 66.2

1/4 2.7 65.4

cb 2.4 65.7

+10 2.9 65.2

+2 1.5 66.6

cb 2.0 66.1

E 0.6 67.5

E 1.7 66.4

30.97 No on E
00 - - W

S.L. MORTENSIA

SECTIONS TAKEN PARALLEL
TO So. Line
ACROSS NORTHEN

8.45' No. of So. Corb = So. Quarter

E 1.3 66.8

E 1.8 66.3

cb 1.5 66.6

cb 2.2 65.9

+2 2.8 65.3

+2 3.1 65.0

1/4 2.4 65.7

1/4 2.8 65.3

c 2.4 65.7

c 2.9 65.2

1/4 2.5 65.6

1/4 3.1 65.0

+10 3.5 64.6

+9 3.8 64.3

cb 2.8 65.3

cb 3.9 64.8

68.09

LA JOLLA 5

+9		37	644	W		56	625
W		42	639		8.44' No. of No. 1/4 = No. Cb.		
	8.44' No. of So. 1/4 = Center			W		50	631
W		51	630	cb		41	640
cb		36	64.5	1/4		36	64.5
+1		41	64.0	C		34	64.7
1/4		33	64.8	1/4		32	64.7
C		31	65.0	+9		40	641
1/4		30	65.1	cb		28	653
+9		34	64.7	E		23	658
cb		28	653		11.26' No. of No. Cb = No. Line HORTENSIA		
+3		22	65.9			28	653
E		20	66.1	E			
	8.45' No. of Center = No. 1/4			cb		28	653
E		23	658	+2		42	639
+10		27	65.4	1/4		36	64.5
cb		39	64.2	C		35	64.6 w rail.
1/4		32	64.9	1/4		36	64.5
C		31	65.0	cb		40	641
1/4		34	64.7	cb		41	64.0
cb		40	641	W		45	63.6

6809

LA JOLLA 6

SECT. F = So. Line JEFFERSON

7.83 No. of 4 = So. Cb JEFFERSON

W	4.5	636	E	2.2	65.9
+7	4.6	635	+3	3.0	65.1
cb	4.3	638	+9	3.4	64.7
+7	4.8	633	cb	3.8	64.3
1/4	4.1	640	+1	4.5	63.6
c	3.7	644	1/4	4.2	63.9
+ 2.93 = INT. of 1/4 No. of 4	3.6	64.5	4.2	63.9	w rail
13.97' No. of F = G =			c	4.3	63.8
W	4.9	63.2	1/4	4.7	63.4
+9	4.6	63.5	+4	4.9	63.2
cb	5.0	63.1	+9	5.7	62.4
+1	5.2	62.9	cb	5.1	63.0
1/4	4.5	63.6	W	5.1	63.0
c	4.0	64.1	16.35' No. of So Cb = So. 1/4		
3.9	64.2	w rail	W	5.7	62.4
1/4	4.0	64.1	+9	5.6	62.5
+9	4.2	63.9	cb	6.0	62.1
cb	2.9	65.2	1/4	5.1	63.0
E	2.8	65.3	c	4.7	63.4

		4.6	63.5	W rail	+9		6.6	61.5
1/4		4.7	63.4		cb		7.3	60.8
+9		5.2	62.9		1/4		6.2	61.9
cb		3.8	64.3		C		5.7	62.4
+5		3.4	64.7				5.5	62.6 W rail
E		1.1	67.0		1/4		5.7	62.4
	16.35	No. of 30	1/4 = Center		cb		6.0	62.1
E		2.2	65.9		+1		4.6	63.5
+5		4.0	64.1		+7		4.1	64.0
+9		4.1	64.0		E		2.5	65.6
cb		5.7	62.4			16.35	No. of 1/4 = No. Cb	
1/4		5.2	62.9		E		3.7	64.4
		5.0	63.1	W rail	+5		5.0	63.1
C		5.1	63.0		cb		5.3	62.8
1/4		5.7	62.4		+1		6.5	61.6
+9		6.8	61.3		1/4		6.2	61.9
cb		6.2	61.9				5.9	62.2 W rail
W		6.2	61.9		C		6.1	62.0
	16.35	No. of Ctr. =	No. 1/4		1/4		6.8	61.3
W		6.7	61.4		cb		7.6	60.5

68.09

LA JOLLA 8

+1		7.2	60.9		C		8.1	60.0
W		7.2	60.9		1/4		8.7	59.4
	21.80 No. of No. Cb. = No. Lines				cb		9.7	58.4
W		8.0	60.1		+1		9.2	58.9
+9		7.6	60.5		W		9.3	58.8
cb		8.2	59.9			100 No		
1/4		7.5	60.6		W		10.9	59.2
C		6.8	61.3		+9		10.5	57.6
		6.6	61.5	w rail	cb		10.9	57.2
1/4		6.8	61.3		1/5		10.1	58.0
+9		7.1	61.0		C		9.5	58.6
cb		5.9	62.2				9.4	58.7 w rail
+6		5.5	62.6		1/4		9.6	58.5
E		3.6	64.5		+9		9.9	58.2
	50 No				cb		8.5	59.6
E		6.5	61.6		+7		8.4	59.7
+9		7.2	60.9		E		8.0	60.1
cb		8.2	59.9			150 No		
1/4		8.1	60.0		E		9.5	58.6
		8.0	60.1	w rail	+9		9.9	58.2

68.09

LA JOLLA 9

cb			11.1	57.0	E		0.6	57.0
1/4			11.0	57.1		30.7 No. on E 00 - - W		
			10.9	57.2	W rail	E	1.3	56.3
C			11.0	57.1	+5		1.7	55.9
1/4			11.6	56.5	cb		1.8	55.8
cb			12.5	55.6	+2		3.0	54.6
+3			12.2	55.9	1/4		2.8	54.8
W			12.3	55.8	C		2.7	54.9
T.P.	1.68	57.57	12.20	55.79	1/4		3.1	54.5
		212' No. = SECT H.			SEE SKETCH P 13	+9	4.0	53.6
W			3.4	54.2	cb		3.8	53.8
cb			3.5	54.1	W		3.4	54.2
+2			3.8	53.8		11.23' No. = 30 Cb.		
1/4			2.9	54.7	W		3.7	53.9
C			2.3	55.3	cb		4.0	53.6
			2.1	55.5	W rail	+1.0	4.3	53.3
1/4			2.4	55.4	1/4		3.5	54.1
cb			2.1	55.5	C		3.0	54.6
+1			1.0	56.6	1/4		3.2	54.4
+5			1.1	56.5	+9		3.3	54.3

57.57

cb 2.1 55.5

E 1.7 55.9

8.43' No. 0 x So. Cb = So. 1/4

E 1.9 55.7

cb 2.6 55.0

+2 3.6 54.0

1/4 3.3 54.3

c 3.2 54.4

1/4 3.7 53.9

+9 4.4 53.2

cb 4.2 53.4

+9 4.2 53.4

W 3.7 53.9

8.43' No. 0 x So. 1/4 = Center

W 4.3 53.3

cb 4.3 53.3

1/4 3.9 53.7

c 3.4 54.2

1/4 3.5 54.1

+9 3.8 53.8

2A JOLLA

10

cb 2.7 54.9

E 2.3 55.3

8.43' No. 0 x Center = No. 1/4

E 2.1 55.5

cb 3.1 54.5

+2 4.0 53.6

1/4 3.7 53.9

c 3.5 54.1

1/4 4.0 53.6

cb 4.5 53.1

W 4.7 52.9

8.42' No. 0 x No. 1/4 = No. Cb

W 4.9 52.7

cb 4.9 52.9

1/4 4.2 53.4

c 3.8 53.8

1/4 3.9 53.7

+8 4.1 53.5

cb 3.1 54.5

E 2.8 54.8

57.57

LA JOLLA 11

11.23 No. of No. Cb = No. LINE TRIAS

E		31	54.5			4.3	54.3	
cb		34	54.2			8.6	50.0 = flow line at intake	
+3		42	53.4			50' No.		
1/4		41	53.5	E		5.2	53.4	
C		38	53.8	w rail				
		40	53.6	cb		5.5	53.1	
1/4		46	53.0	+2 = ctr of 6" drain under tracks		6.9	51.9 = flow line	
+9		53	52.3	+4		6.0	52.6	
cb		50	52.6	1/4		6.1	52.5	
W		50	52.6	+0.7		6.0	52.6 w rail	
chk BM.	5.94	58.60	4.91	52.66	34' N.W. TRIAS	C	6.6	52.0
	30.7' No. on W					1/4	7.2	51.4
	00					E = SECT I SEE SKETCH P 13		
W		65	52.1	cb		8.1	50.5	
cb		68	51.8	W		7.8	50.8	
1/4		61	52.5			100' No.		
C		54	53.2	W		9.2	49.4	
+4.6		50	53.6	w rail		4.6	49.0	
1/4		53	53.3	1/4		8.5	50.1	
+8		54	53.2	C		8.0	50.6	
cb		49	53.9	1/4		9.4	51.2	

58.60

+6		7.1	51.5	w rail
cb		7.2	51.4	
+7		6.9	51.7	
E		6.0	52.6	
150' No.				
E		8.3	50.3	= Emit
+4.5		8.0	50.6	w rail
cb		8.2	50.6	
1/4		8.7	49.9	
C		9.4	49.2	
1/4		10.1	48.5	
cb		11.1	47.5	
W		10.9	47.7	
300' No.				
W		12.4	46.2	
+4		12.8	45.8	
cb		12.6	46.0	
1/4		11.5	47.1	
C		11.0	47.6	
1/4		10.4	48.2	

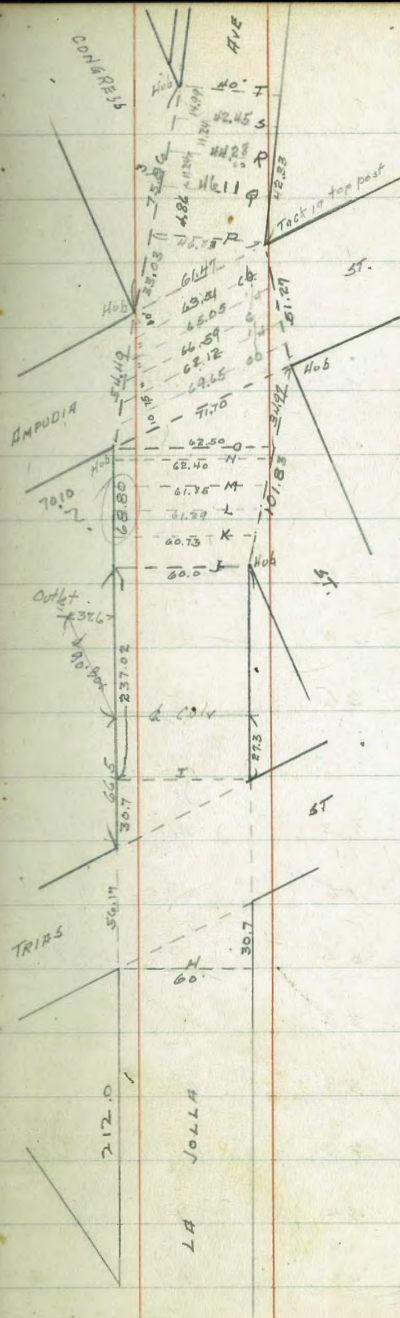
L# Jol L# 12

cb			10.1	48.5
E			9.5	49.1
237.02 No. = J				
E			10.3	48.3
T.P.	0.65	48.95	10.30	48.30 on hub.
+8			0.8	48.1
cb			1.2	47.7
+2			1.8	47.1
1/4			1.9	47.0
C			2.3	46.6
1/4			2.8	46.1
cb			4.3	44.6
+2			3.8	45.1
W			3.8	45.1
T.P.	0.80	49.10	0.65	48.30
20.31' No of J = M. curb Congress = K				
W			4.4	44.7
+3			5.1	44.1
+10 = cb			4.5	44.6
cb + 2			4.9	44.2

$cb + 10 = 1/4$	3.8	45.3
$1/4 + 10 = c$	3.1	46.0
$c + 10 = 1/4$	2.6	46.5
$1/4 + 5$	2.8	46.3
$1/4 + 9$	2.6	46.5
$1/4 + 10 = Ecb$	1.7	47.4
$Ecb + 6$	1.5	47.6
$\checkmark + 10.73 = E.L.$	0.7	48.4

15.72' No. of K = $\frac{1}{2}$ Congress = L

$E.L$	0.8	48.3
$E.L + 2.3$	1.8	49.3
$E.L + 11.29 = cb$	2.1	47.0
$cb + 1$	3.3	45.8
$cb + 10 = 1/4$	3.1	46.0
$1/4 + 10 = c$	3.5	45.6
$c + 10 = 1/4$	4.1	45.0
$1/4 + 8$	5.2	43.9
$1/4 + 10 = cb$	5.1	44.0
$cb + 7$	5.5	43.6
$\checkmark + 10 = W$	4.7	44.4



237.02
15.37
252.37
149.24
102.88

15.72 No. 0 x L = center Congress M.

W	5.2	439
+3	5.8	433
+10 = cb	5.3	438
cb + 1	5.7	434
cb + 10 = 1/4	4.4	447
1/4 + 10 = C	3.9	452
C + 10 = 1/4	3.6	455
1/4 + 5	3.9	452
+8	3.6	455
+10 = cb	2.7	464
cb + 10	2.3 } 1.8 }	468 473
+ 11.85 = E.L.	1.6	475

18.35 No. 0 x M = 0 = SL AMPUDIA ON W + 260 No. 0 x M

E.L.	2.3	468
+ 3.5	3.0	461
+ 12.5 = cb	3.2	459
cb + 1	4.2	449
+ 5	4.4	447
+ 10 = 1/4	4.2	449
1/4 + 10 = C	4.4	447

C + 10 = 1/4

1/4 + 10 = cb

cb + 1

+7

710 = W.

34.97' No. 00 E
00 - - W

= SL AMPUDIA ST.

W

+3

+10

+ 11.95 = cb

cb + 11.95 = 1/4

1/4 + 11.95 = C

C + 11.95 = 1/4

1/4 + 2

+10

+ 11.95 = cb

cb + 8

+ 11.95 = E.L.

10' No. 0 x SL = 50. CB

E

5.0	441
5.9	432
5.6	435
6.1	430
5.7	434
5.7	434
5.7	434
6.1	430
5.9	432
6.1	430
5.1	440
4.8	443
4.9	442
5.0	441
4.0	451
4.1	450
3.8	453
3.5	456
3.8	453
3.8	453

$+11.61 = cb.$	43	44.8
$cb + 6$	5.3	43.8
$\sqrt{4} + 11.61 = \frac{1}{4}$	50	44.1
$\frac{1}{4} + 11.61 = c$	50	44.1
$c + 11.61 = \frac{1}{4}$	5.6	43.5
$\frac{1}{4} + 8$	6.4	42.7
$\sqrt{4} + 11.60 = cb$	6.2	42.9
$cb + 11.61 = N.L.$	6.0	43.1
	to $\frac{1}{4}$	
W	6.2	42.9
$W + 11.35 = cb$	6.2	42.9
$cb + 4$	6.7	42.4
$cb + 11.36 = \frac{1}{4}$	5.8	43.3
$\frac{1}{4} + 11.35 = c$	5.2	43.9
$c + 11.35 = \frac{1}{4}$	5.1	44.0
$\frac{1}{4} + 6$	5.6	43.5
$\frac{1}{4} + 11.36 = cb$	4.3	44.8
$cb + 11.35 = E.L.$	4.0	45.1
	Center Ampudia	
E	43	44.8

$E + 11.1 = cb.$	45	44.6
$cb + 4$	5.9	43.2
$cb + 11.1 = \frac{1}{4}$	5.3	43.8
$\frac{1}{4} + 11.1 = c$	5.4	43.7
$c + 11.09 = \frac{1}{4}$	6.1	43.0
$\frac{1}{4} + 6$	7.0	42.1
$\sqrt{4} + 11.1 = cb$	6.2	42.9
$cb + 11.1 = N.L.$	6.3	42.8
	to $\frac{1}{4}$	
$N.L.$	6.4	42.7
$\sqrt{4} + 10.84 = cb$	6.3	42.8
$cb + 3$	7.1	42.0
$cb + 10.84 = \frac{1}{4}$	6.4	42.7
$\frac{1}{4} + 10.84 = c$	5.6	43.5
$c + 10.84 = \frac{1}{4}$	5.6	43.5
$\frac{1}{4} + 10.85 = cb$	6.2	42.9
$cb + 1$	5.6	43.5
$\sqrt{4} + 3$	4.5	44.6
$\sqrt{4} + 10.84 = E.L.$	4.4	44.7

49.10

No. Corb

E.L.	4.6	44.5
+4	4.6	44.5
+10.58 = cb	6.5	42.6
cb + 10.59 = 1/4	5.9	43.2
1/4 + 10.58 = c	5.9	43.2
c + 10.59 = 1/4	6.4	42.7
1/4 + 7	7.3	41.8
c + 10.58 = cb	6.5	42.6
cb + 10.59 = W.L.	6.6	42.5

No. Line Ampudia

W.L.	7.0	42.1
+ 10.24 = cb	6.9	42.2
cb + 3	7.3	41.8
cb + 10.25 = 1/4	6.5	42.6
1/4 + 10.24 = c	6.2	42.9
c + 10.25 = 1/4	6.4	42.7
1/4 + 10.24 = cb	6.6	42.5
cb + 3	6.9	42.2
+ 10.25 = E.L.	5.2	43.9

cb from this pt = 10'

1/4 = 5'

LA Jolla

16

33.03 No. on W } SECTION P.
00 - - E

E	5.2	43.9
+6	7.0	42.1
+10 = cb	6.8	42.3
cb + 5 = 1/4	6.8	42.3
1/4 + 5 = c	6.8	42.3
c + 5 = 1/4	6.8	42.3
1/4 + 5 = cb	7.0	42.1
cb + 16.83 = W.L.	7.7	41.4

4.86' No. of P = Center Congress = Q

W.L.	7.7	41.4
+ 16.11 = cb	7.1	42.0
cb + 5 = 1/4	7.0	42.1
1/4 + 5 = c	7.0	42.1
c + 5 = 1/4	7.0	42.1
1/4 + 5 = cb	7.0	42.1
+ 4	7.1	42.0
+ 10 = E.L.	5.2	43.9

11.24' No. of Q = E 1/4 Congress = R

E	5.9	43.2
---	-----	------

+6	7.7	41.4	$\frac{1}{2}$	8.8	40.3
+10 = cb	7.5	41.6	c	8.6	40.5
cb + 5 = $\frac{1}{4}$	7.5	41.6	$\frac{1}{2}$	8.6	40.5
$\frac{1}{4}$ + 5 = c	7.5	41.6	cb	8.7	40.4
c + 5 = $\frac{1}{2}$	7.5	41.6	W	9.2	39.9
$\frac{1}{2}$ + 5 = ob	7.6	41.5		0.91	45.34
cb + 14.28 = W.L.	8.3	40.8		4.67	44.48
					St. Max Amadio La Jolla
11.24 No. of R = E Cb Congress = 5.			W	8.1	37.2
W.L.	8.6	40.5	cb	7.4	37.9
+12.45 = ob	8.0	41.1	$\frac{1}{5}$	7.2	38.1
cb + 5 = $\frac{1}{4}$	7.9	41.2	c	7.3	38.0
$\frac{1}{4}$ + 5 = c	8.0	41.1	$\frac{1}{4}$	7.4	37.9
c + 5 = $\frac{1}{2}$	8.0	41.1	cb	7.9	37.4
$\frac{1}{2}$ + 5 = ob	8.2	40.9	E	7.4	37.9
cb + 3	8.4	40.7			100' No
+10 = E.L.	6.9	42.2	E	9.3	36.0
14.99 No. of S = E.L. Congress = T. = regular section for 40' St. from here or 10' walls 5' $\frac{1}{2}$			cb	9.7	35.6
E.L.	7.8	41.3	$\frac{1}{2}$	9.2	36.1
+8	9.2	39.9	c	9.2	36.1
cb	9.1	40.0	$\frac{1}{2}$	9.2	36.1

db	9.4	35.9	T.P.	4.42	36.90	12.80	32.48
W	10.3	35.0			250' No.		
	150' No.			W		5.8	31.1
W	11.9	33.4	db			5.4	31.5
db	11.2	34.1	1/4			5.0	31.9
1/4	11.0	34.3	C			4.8	32.1
C	11.0	34.3	1/4			4.8	32.1
1/4	11.0	34.3	db			4.8	32.1
db	11.3	34.0	E			4.8	32.1
+5	11.5	33.8			276.5' No. or E } sketch on 276.0' ✓ W } = 15" pipe Inlet is 2.5' W. of E. line Outlet is 0.8' E. of W ✓		
E	10.9	34.4	E end whert.			7.2	29.7
	200' No.		W ✓			8.6	28.3
E	12.5	32.8			286.53' No. = SECT U		SEE SKETCH PAGE 23
db	12.5	32.8	E			5.0	31.9
1/4	12.5	32.8	db			5.1	31.8
C	12.5	32.8	1/4			5.0	31.9
1/4	12.7	32.6	C			5.2	31.7
db	13.0	32.3	1/4			5.4	31.5
87	13.4	31.9	db			5.7	31.2
W	13.2	32.1	+5			6.4	30.5

3690

LA JOLLA 19

W		7.7	29.2	cb		55	31.4
	2496' No. on E do - W } = So. Line ARISTA ST. SECTION 3 TAKEN PARALLEL TO SO. LINE			1/4		53	31.6
W		7.7	29.2	C		50	31.9
L3		6.4	30.5	1/4		4.9	32.0
cb		5.6	31.3	cb		4.7	32.2
1/4		5.4	31.5	E		4.4	32.5
C		5.2	31.7		Center		
1/4		5.0	31.9	E		4.4	32.5
cb		5.1	31.8	cb		4.6	32.3
E		4.7	32.2	1/4		4.9	32.0
	So. Curb			C		4.9	32.0
E		4.6	32.3	1/4		5.1	31.8
cb		4.4	32.0	cb		5.3	31.6
1/4		5.0	31.9	W		6.1	30.8
C		5.0	31.9		No 1/4		
1/4		5.3	31.6	W		5.7	31.2
cb		5.6	31.3	cb		5.2	31.7
W		6.7	30.2	1/4		5.0	31.9
	So. 1/4			C		4.8	32.1
W		6.3	30.6	1/4		4.7	32.2

36.90

cl	4.4	32.5
E	4.2	32.7
No. Corb.		
E	3.5	33.4
+4	4.4	32.5
cl	4.3	32.6
1/4	4.5	32.4
C	4.7	32.2
1/4	4.8	32.1
cl	5.0	31.9
W	5.5	31.4

No LINE ARISTA

W	4.9	32.0
cl	4.6	32.3
1/4	4.4	32.5
C	4.4	32.5
1/4	4.3	32.6
cl	4.3	32.6
E	3.0	33.9

LA JOLLA 20

21.22 No. on W } = SECT V
00 " " E }

E	3.0	33.9
+7	4.1	32.8
cl	4.1	32.8
1/4	4.2	32.7
C	4.2	32.7
1/4	4.2	32.7
cl	4.0	32.9
W	4.0	32.9

20' No.

W	3.3	33.6
cl	3.5	33.4
1/4	3.5	33.4
C	3.6	33.3
1/4	4.1	32.8
cl	3.9	33.0
+6	3.5	33.4
E	2.2	34.7

40' No. = Adobe wall of Cemetery on E

E	1.4	35.5
---	-----	------

3690

LA JOLLA 21

ob			4.1	32.8		73' No.		
1/4			4.1	32.8	E		3.8	33.8
+1			3.8	33.1	+6		2.9	34.7 = adobe wall
C			3.8	33.1	ob		4.4	33.2
1/4			3.9	33.0	1/4		4.0	33.6
ob			3.3	33.6	C		4.2	33.4
W			3.1	33.8	1/4		4.5	33.1
		65' No.			ob		6.5	31.1
W			4.3	32.6	+5		6.8	30.8
+6			6.1	30.8	W		5.1	32.5
ob			5.7	31.2		78' No.		
+4			4.7	32.2	W		5.1	32.5
1/4			3.8	33.1	+5		7.0	30.6
C			3.6	33.3	ob		6.5	31.1
1/4			3.8	33.1	1/4		4.5	33.1
ob			4.5	32.4	C		4.3	33.3
+6			1.9	35.0 = adobe wall	1/4		3.9	33.7
E			1.9	35.0 = 4' inside concrete m.	ob		3.8	33.8
T.P.	4.37	37.59	3.68	33.22	E		2.4	35.2 = adobe wall

37.59

85 No.

E	4.4	332
+5	4.8	328
cb	3.7	339
1/4	4.0	336
C	4.4	332
1/4	4.6	330
cb	6.8	308
+5	6.9	307
W	5.2	324

120 No.

W	5.4	322
+6	6.6	310
cb	6.3	313
1/4	5.8	318
C	4.5	331
1/4	4.2	334
cb	3.9	337
+7	3.5	341
F	4.2	334

LA JOLLA

22

155.24 No. = SECTION W

F	4.2	334
+6	3.4	342
cb	4.0	336
1/4	4.3	333
C	4.7	329
1/4	6.0	316
cb	6.3	313
W	5.5	321

376 No. = SECTION X

W	5.7	319
+5	6.5	311
cb	6.7	309
1/4	5.6	320
C	4.5	331

SECT. Y = W.L. SAN DIEGO AV.

F	4.2	334
cb	4.0	336
1/4	4.4	332
C	4.5	331

8/29/18 Gregory

CROSS SECTION OF SAN DIEGO AVE
From La Jolla Ave to.

75' wide
12' walks
12.75' $\frac{1}{4}$'s

24

10.68 No. of Curb = $\frac{1}{4}$ La Jolla

37.59 from preceding page

SECT. A = S.E. Line La Jolla Ave.

E	+1.8	39.4	$\frac{1}{4}$	0.9	36.7
cl.	+1.0	38.6	C	2.1	35.5
$\frac{1}{4}$.01	37.5	$\frac{1}{4}$	4.1	33.5
C	0.7	36.9	+10	5.0	32.6
$\frac{1}{4}$	1.4	36.2	cl.	3.7	33.9
cl.	2.7	34.9	W	4.4	33.2
W	4.2	33.4			

10.68 No. of $\frac{1}{4}$ = Center La J.

21.37 No. of S.E. Curb La Jolla

W	4.0	33.6	W	4.6	33.0
+6	3.6	34.0	cl.	4.0	33.6
cl.	4.9	32.7	$\frac{1}{4}$	3.6	34.0
$\frac{1}{4}$	2.7	34.9	C	2.8	34.8
C	1.5	36.1	$\frac{1}{4}$	1.6	36.0
$\frac{1}{4}$	0.6	37.0	cl.	0.7	36.9
cl.	+0.1	38.7	E	0.0	37.6
E	+1.0	38.6			

10.68 No. of Center = No $\frac{1}{4}$ La J.

37.59

SAN DIEGO 25

1/4		24	352	+7		5.2	32.4
C		3.3	343	C		5.5	32.1
1/4		3.7	339	+3		5.5	32.1
cb		4.1	335	+8		4.3	333
+9		4.7	329	1/4		4.3	333
W		5.6	320	cb		5.3	323
	10.68' No. 04	1/4 = No. Cb La J.		+4		7.1	30.5
W		7.1	30.5	+8		7.3	30.3
+7		4.6	330	W		6.4	31.2
cb		4.6	330		10' No. 04	B"	
1/4		4.4	332	W		5.9	31.7
+5		4.7	329	+7		7.1	30.5
C		3.7	339	cb		6.6	31.0
1/4		2.9	347	+4		5.0	32.6
cb		2.3	353	1/4		4.3	33.3
E		1.9	363	+7		4.5	33.1
	21.37' No. 04	Cb = N.W. Line	SECT B ₁ La Jolla	C		5.7	31.9
E		2.4	352	+6		5.6	32.0
cb		3.3	343	1/4		4.3	33.3
1/4		3.8	338	cb		3.7	33.9

37.59

SAN DIEGO 26

E		31	34.5		C	5.0	32.6
	40' No. 0 x B"				+8	6.9	30.7
E		4.3	33.3		1/4	5.9	31.7
db		4.9	32.7		db	5.9	31.7
1/4		5.5	32.1		E	5.3	32.3
+6		6.3	31.3				
C		4.7	32.9		E	5.7	31.9
1/4		5.1	32.5		db	6.1	31.5
+3		5.2	32.4		+11	6.3	31.3
+10		7.2	30.4		1/4	6.8	30.8
db		6.7	30.9		+2	7.2	30.4
+4		5.9	31.7		+9	5.3	32.3
W		5.8	31.8 = E rail		C	5.0	32.6
	17.12' No. 0 x B = So Line COND. ST ^{50' ST}				+4	5.3	32.3
W		6.6	31.0		+8	7.7	29.9
db		6.0	31.6 = F.E. 0 x E rail		+11	7.7	29.9
+4		6.2	31.4		1/4	7.1	30.5
1/4		7.9	29.7		+4	6.2	31.4
+3		7.5	30.1		db	5.7	31.9
+8		5.1	32.5		W	7.3	30.3

So Curb

So Quarter

+3

7.3

30.3

W

8.5

29.1

+9

5.3

32.3

+4

6.8

30.8

C

5.2

32.4

cb

6.0

31.6

+5

7.3

30.3

1/4

6.3

31.3

+11

7.6

30.0

+3

7.8

29.8

1/4

6.4

31.2

+6

7.8

29.8

cb

6.2

31.4

= W rail

+8

5.9

31.7

+6

7.1

30.5

C

5.1

32.5

+10

8.1

29.5

+4

5.3

32.3

W

8.3

29.3

+11

7.5

30.1

No. Quarter

1/4

7.2

30.4

W

8.5

29.1

+4

6.5

31.1

+3

8.2

29.6

cb

6.3

31.3

+7

6.8

30.8

E

5.8

31.8

cb

6.8

30.8

Center

+6

5.9

31.7

E

6.0

31.6

1/4

6.2

31.4

cb

6.3

31.3

+4

7.6

30.0

+8

6.8

30.8

+9

7.4

30.2

1/4

7.4

30.2

C

5.3

32.3

37.59

SAN DIEGO.

21

+4		5.3	32.3		No LINE CONDE ST.		
+9		7.6	30.0	W		8.6	29.0
1/4		7.6	30.0	+7		8.6	29.0
cb		6.6	31.0	cb		6.9	30.7
E		6.9	31.3	+10		5.8	31.8 E rail
	No. Curb			1/4		6.2	31.4
E		6.5	31.1	+6		7.3	30.3
cb		6.7	30.9	C		6.1	31.5
1/4		7.7	29.9	+5		6.0	31.6
+3		7.7	29.9	+10		7.5	30.1
+8		5.6	32.0	1/4		7.8	29.8
C		5.5	32.1	cb		6.8	30.8
+4		7.2	30.4	E		6.7	30.9
+8		7.6	30.0		50' No.		
1/4		6.3	31.3	E		7.0	30.6
+5		5.8	31.8	cb		7.2	30.4
cb		6.9	30.7	1/4		7.8	29.8
+4		6.9	30.7	+6		6.4	31.2
+8		8.4	29.2	C		6.5	31.1
W		8.5	29.1	+7		5.9	31.7

37.59

1/2	6.5	31.1
+5	7.0	30.6
+7	8.1	29.5
cb	8.1	29.5
+5	8.3	29.3
+6	9.2	28.4
W	9.1	28.6
100' No		
W	8.8	28.8
cb	8.9	28.9
+3	7.8	29.8
+11	7.5	30.1
1/4	6.6	31.0
C	5.7	31.9
1/4	6.9	30.7
+3	7.4	30.2
cb	6.7	30.9
E	6.4	31.2
150' No		
E	5.0	32.6

SAN DIEGO

21

+5	5.5	32.1
cb	5.5	32.1
1/4	5.8	31.8
+6	5.4	32.2
C	5.4	32.2
1/4	7.1	30.5
+3	7.3	30.3
+6	8.3	29.3
cb	8.3	29.3
W	8.2	29.4
200' No		
W	7.2	30.4
cb	7.2	30.4
+10	7.4	30.2
1/4	6.5	31.1
C	5.3	32.3
+6	6.1	31.5
1/4	5.7	31.9
+5	4.9	32.7
cb	4.9	32.7
E	4.1	33.5

37.59

1/4		54	32.7
c		54	32.2
1/4		58	31.8
cb		63	31.3
W		68	30.8
	No. Quarter		
W		71	30.5
cb		65	31.1
1/4		59	31.7
c		55	32.1
1/4		55	32.1
cb		51	32.5
E		46	33.0
	No. Curb		
E		50	32.6
cb		54	32.2
1/4		55	32.1
c		55	32.1
1/4		61	31.5
cb		68	30.8

SAN DIEGO

31

N

7.10

30.49

= cement curb

No. LINE Harnay
curb + walk in on W side from Harnay to 50' No. also
N.W. return.

W

68

30.8

cb

71

30.5

+6

63

31.3

63

31.3

c

56

32.0

1/4

56

32.0

cb

49

32.7

E

48

32.8

TP

221

3541

4.39

33.20

50' No

E

1.8

33.6

+6

23

32.1

cb

2.5

32.9

+6

3.2

32.2

1/4

5.5

31.9

c

37

31.7

1/4

3.9

31.5

cb

5.1

30.3

W

4.8

30.6

35.41

100' No

W	5.0	30.4
cb	4.8	30.6
1/4	4.2	31.2
+9	4.1	31.3
C	3.7	31.7
1/4	3.5	31.6
cb	2.9	32.5
+6	2.4	33.0
E	2.4	33.0

150' No

E	2.2	33.2
+6	2.4	33.0
cb	2.6	32.8
+10	3.0	32.4
1/4	3.7	31.7
+7	4.1	31.3
C	4.0	31.4
1/4	4.1	31.3
+10	4.8	30.6

35.41

SAN DIEGO

32

cb 46 30.8

W 47 30.7

175' No

W 45 30.9

cb 45 30.9

+2 49 30.5

1/4 41 31.3

C 40 31.4

+7 43 31.1

1/4 40 31.4

+10 20 33.4

cb 20 33.4

+6 18 33.6

E 1.4 34.0

200' No

E 1.6 33.8

+6 1.7 33.7

cb 2.1 33.3

1/4 3.5 31.9

+2 4.0 31.4

c	41	31.3
1/4	41	31.3
+11	4.7	30.7
cb	4.3	31.1
W	4.2	31.2

250' No

W	4.6	30.8
cb	4.5	30.9
+2	5.0	30.4
1/4	4.4	31.0
c	4.5	30.9
1/4	3.8	31.6
cb	2.7	32.7
+6	2.3	33.1
E	2.2	33.2

300' No. = S.L. Twigg St 50' wide
10' walkway

E	2.7	32.7
+6	3.0	32.4
cb	3.5	31.9
1/4	4.6	30.8

c	5.4	30.0
1/4	5.2	30.2
+10	5.6	29.8
cb	5.1	30.3
W	5.4	30.0

So. Curb

W	5.5	29.9
cb	5.3	30.1
+3	5.7	29.7
1/4	5.3	30.1
c	5.5	29.9
1/4	4.7	30.7
cb	3.6	31.8
+6	3.0	32.4
E	2.6	32.8

So. Quarter

E	2.7	32.7
+6	3.1	32.3
cb	3.6	31.8
1/4	4.7	30.7

+10		50	304
+11		55	299
c		55	299
1/4		56	300
+10		57	297
cb		54	300
W		58	296
	Center		
W		58	296
cb		55	299
+3		59	295
1/4		55	299
c		56	298
+2		56	298
+3		51	303
1/4		48	306
cb		59	315
+6		35	319
E		30	324

No. Quarter

		29	32.5
		32	32.7
		38	31.6
		49	30.5
		57	29.7
		56	29.8
	+10	60	29.4
	cb	57	29.7
	W	58	29.6
			No. Curb
	W	6.2	29.2
	cb	6.0	29.4
	+3	6.2	29.2
	1/4	58	29.6
	c	59	29.5
	1/4	49	30.5
	cb	41	31.3
	+6	33	32.1
	E	31	32.3

35,41

No. Line TWIGGS

E		27	32.7
+6		37	31.7
cl		44	31.0
1/4		56	29.8
C		61	29.3
1/4		59	29.5
cl		63	29.1
W		62	29.2
	50' No.		
W		67	28.7
+4		72	28.2
cl		69	28.5
+4		74	28.0
1/4		69	28.5
C		71	28.3
1/4		65	28.9
+5		57	29.7
cl		53	30.1
+6		40	31.4

3541

SAN DIEGO

35

E

30

32.4

100' No

E		54	30.0	
+6		61	29.3	
cl		67	28.7	
+5		66	28.8	
1/4		74	28.0	
+8		75	27.9	
T.P.	1.22	29.79	684	28.57
+10		2.6		27.2
C		2.5		27.3
1/4		2.0		27.3
+10		3.2		26.6
cl		2.8		27.0
W		2.2		27.6
	150' No			
W		3.6		26.2
cl		4.0		25.8
+2		4.2		25.6
1/4		3.6		26.2

~~29.79~~
29.79

C	36	262
1/4	29	269
+3	30	268
+7	1.8	280
cb	1.7	281
+6	1.6	282
E	1.1	287

200' No.

E	28	270
+6	30	268
cb	32	266
1/4	40	258
C	48	250
1/4	47	251
+10	57	241
+11	48	250
cb	48	250
W	51	247

250' No.

W	61	237
---	----	-----

SAN DIEGO

36

29.79

+7	6.7	23.1
cb	6.4	23.4
+3	6.9	22.9
1/4	6.3	23.5
C	6.1	23.7
+5	5.9	23.9
+9	5.0	24.8

1/4	4.8	25.0
cb	4.4	25.4
+6	4.5	25.3
E	4.5	25.3

300' No. = S. L. MASON
ST OPEN ON W. only
50' wide
10' walls

E	5.6	24.2
+6	5.4	24.4
cb	5.4	24.4
1/4	6.0	23.8
+8	7.2	22.6
C	7.2	22.6
1/4	7.5	22.3
+10	8.1	21.7

29.79

cb	7.5	22.3
+6	8.2	21.6
W	7.8	22.0

So. Curb.

W	8.2	21.6
cb	8.2	21.6
1/4	7.7	22.1
c	7.5	22.3
+5	7.4	22.4
1/4	6.2	23.6
cb	5.8	24.0
+6	5.9	23.9
E	5.7	24.1

So. Quarter

E	5.7	24.1
+6	6.0	23.8
cb	6.0	23.8
1/4	6.4	23.4
+9	7.7	22.1
c	7.7	22.1

SAN DIEGO

37

1/4	7.8	22.0
cb	8.3	21.3
W	8.3	21.5

Center.

W	8.6	21.2
cb	8.5	21.3
1/4	8.0	21.8
c	7.7	22.1
+5	7.7	22.1
1/4	6.6	23.2
cb	6.2	23.6
+6	6.1	23.7
E	6.0	23.8

No. Quarter

E	6.1	23.7
+6	6.4	23.4
cb	6.3	23.5
1/4	6.7	23.1
+8	8.0	21.8
c	7.8	22.0

1/4	81	21.7	1/4	85	21.3
cb	86	21.2	cb	90	20.8
W	88	21.0	W	98	20.5
	No. Curb.		50	No.	
W	80	21.8	W	98	20.0
cb	87	21.1	cb	10.0	19.8
1/4	82	21.6	1/4	93	20.5
C	80	21.8	C	9.1	20.7
+6	80	21.8	+7	9.2	20.6
1/4	69	22.9	1/4	8.3	21.5
cb	66	23.2	cb	8.1	21.7
+6	65	23.3	+6	8.0	21.8
E	61	23.7	E	7.7	22.1
	No. LINE MASON ON WEST		74.6 = 5L. of MASON ON E	considered as a 42' ST 12' walk on So. side 10' walk on N. side 5' 1/2'	
E	62	23.5	E	8.4	21.4
+6	68	23.0	+6	8.6	21.2
cb	7.0	22.8	cb	8.6	21.2
1/4	7.1	22.7	1/4	8.7	21.1
+8	8.2	21.6	C	9.2	20.6
C	8.2	21.6	1/4	9.6	20.2

29.79

+10		10.4	19.4
cb		10.1	19.7
W		10.3	19.5
	So Curb. ✓		
W		10.1	19.7
cb		10.2	19.6
+3		10.5	19.3
1/4		9.9	19.9
C		9.1	20.7
1/4		9.0	20.8
cb		8.9	20.9
E		8.8	21.0
	So Quarter ✓		
E		8.9	21.0
cb		9.0	20.8
1/4		9.1	20.7
C		9.3	20.5
1/4		10.1	19.7
+9		10.9	18.9
cb		10.1	19.7

SAN DIEGO

39

		W	10.3	19.5
		Center ✓		
		W	10.8	19.0
		cb	10.5	19.3
		+4	11.0	18.8
		1/4	10.3	19.5
		C	9.5	20.3
		1/4	9.2	20.6
		cb	9.1	20.7
		E	9.2	20.6
		No Quarter		
		E	9.3	20.5
		cb	9.1	20.7
		1/4	9.3	20.5
		C	9.7	20.1
		1/4	10.3	19.5
		+9	11.0	18.8
		cb	10.6	19.2
		W	11.0	18.8

29.79

No. Curb.

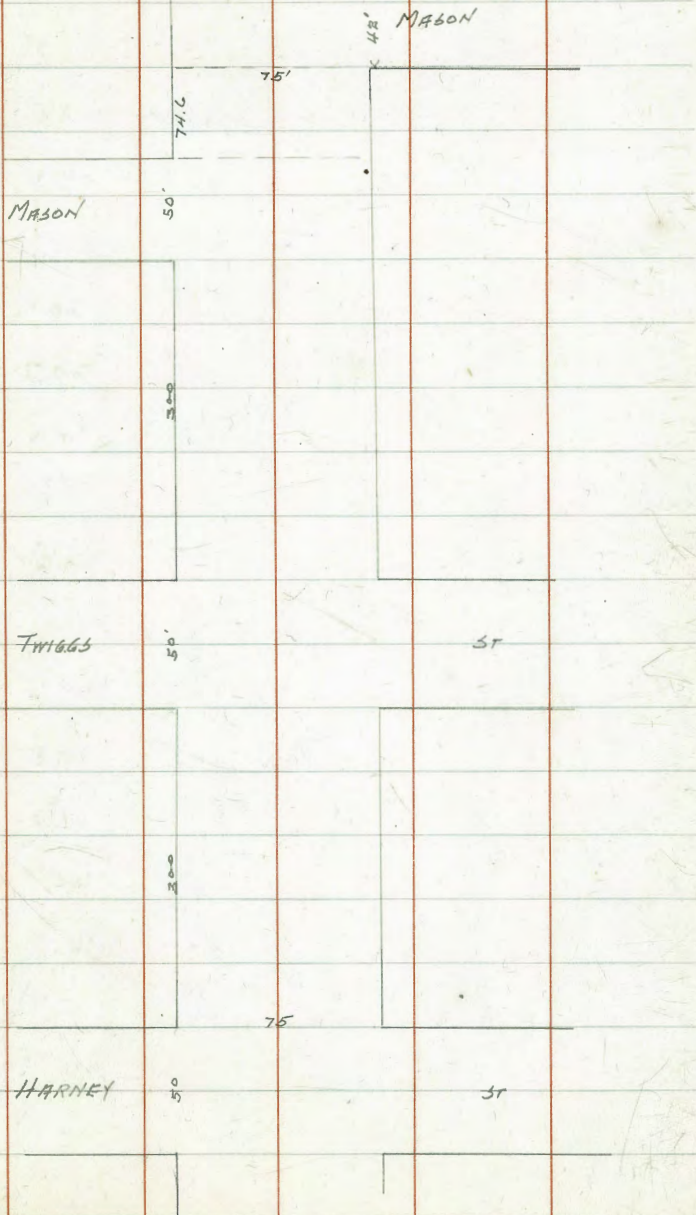
W	11.1	187
df	10.8	19.0
1/4	10.5	19.3
C	9.7	20.1
1/4	9.3	20.5
df	9.1	20.7
E	9.3	20.5

No. LINE

E	9.2	20.6
df	9.2	20.6
1/4	9.6	20.2
C	10.0	19.8
1/4	11.1	18.7
df	11.3	18.5
W	11.2	18.6
T.P.	7.62	22.17

SAN DIEGO

10



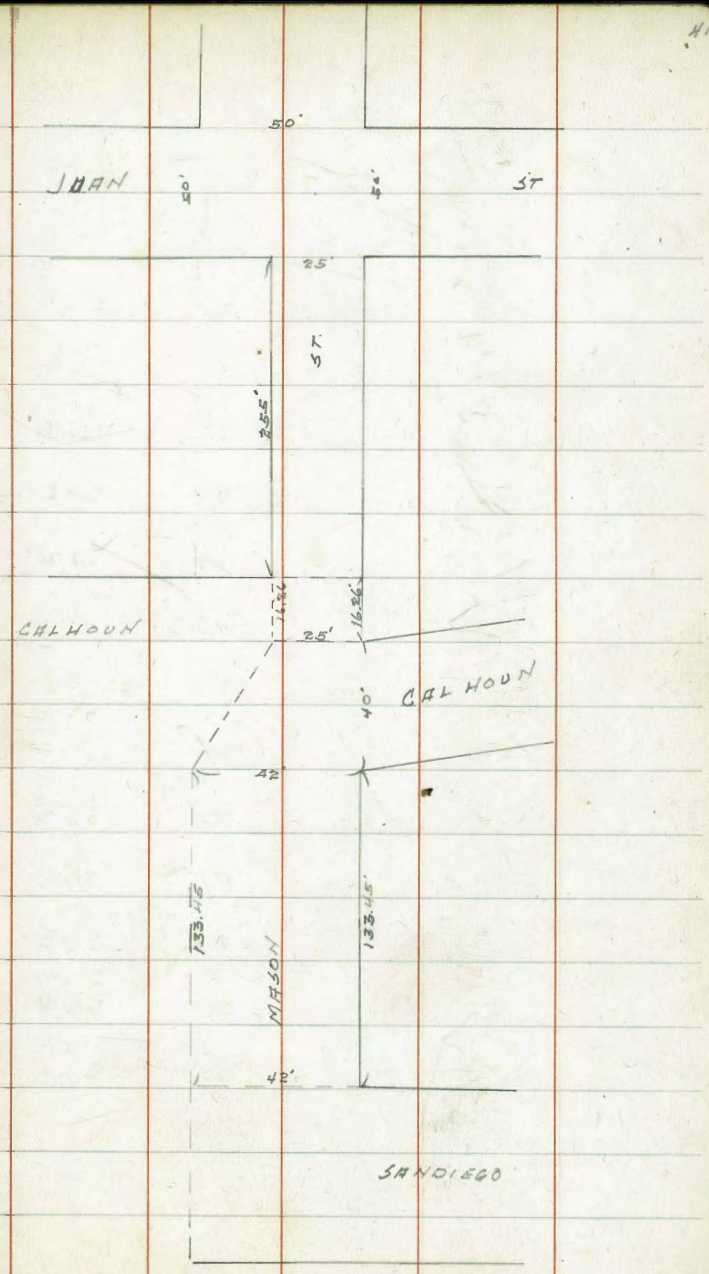
9/2/8
Gregg
Miller
Shaw

CROSS SECTION OF
MASON ST
From San Diego Avenue
to Juan St.

12' curb on So. Side
from San Diego to
Calhoun and 10' on No. Side.
5' cbs both sides from
Calhoun to Juan.

T.P.	3.21	25.38	22.17	TP on Ramona
E L San Diego Ave				
S		4.0	21.4	E
cb		4.4	21.0	
1/4		4.5	20.9	
c		4.7	20.7	
1/4		4.8	20.6	
cb		4.9	20.5	
N		4.8	20.6	W
50' E (N)				
N		4.7	20.7	
cb		4.6	20.8	
1/4		4.4	21.0	
c		4.0	21.4	
1/4		3.8	21.6	
cb		3.6	21.8	
+6.8		3.6	21.8	= Ramona

S is under bldg



S is under bldg			
+2.7	2.7	22.7	= front of Rear
cb	2.8	22.6	
1/4	3.1	22.3	
c	3.6	21.6	
1/4	3.8	21.6	
cb	3.8	21.6	
N	4.2	21.2	

133.45 E = W.L. CALHOUN ST.

N	4.0	21.4	
cb	3.3	22.1	
1/4	3.2	22.2	
c	3.1	22.3	
1/4	3.2	22.2	
cb	2.6	22.8	
+11	2.3	23.1	= front Rear

S is under bldg

5' E of W.L. = cb

S	2.5	22.9	
+11.13 = cb	2.5	22.9	

+4.84 = 1/4	3.0	22.4	
+4.84 = c	3.0	22.4	
+4.84 = 1/4	3.1	22.3	
+4.85 = cb	3.1	22.3	
+9.39 = N	2.8	21.6	
7.5' E of cb = 1/4			
N	3.5	21.9	
+8.43 = cb	3.0	22.4	
+4.61 = 1/4	3.0	22.4	
+4.61 = c	2.9	22.5	
+4.61 = 1/4	2.8	22.6	
+4.61 = cb	2.5	22.9	
+9.82 = S	2.2	23.2	
7.5' E of 1/4 = c			
S	2.1	23.3	
+8.5 = cb	2.5	23.1	
+4.37 = 1/4	2.8	22.6	
+4.38 = c	2.8	22.6	
+4.37 = 1/4	2.9	22.5	
+4.38 = cb	2.9	22.5	

+ 7.5 = No.		3.3	22.1
	7.5' E = 1/4		
No.		3.1	22.3
+ 6.55 = cb		2.8	22.6
+ 4.14 = 1/4		2.7	22.7
+ 4.15 = c		2.7	22.7
+ 4.14 = 1/4		2.8	22.6
+ 4.15 = cb		2.0	23.4
+ 7.18 = So.		1.9	23.5
	7.5' E = cb		
So		2.1	23.3
+ 5.87 = cb		2.2	23.2
+ 3.91 = 1/4		2.2	23.2
+ 3.9 = c		2.6	22.8
+ 3.91 = 1/4		2.5	22.9
+ 3.91 = cb		2.6	22.8
+ 5.62 = N.		2.8	22.6
	5' E of So. = E.L. Calhoun or So. 1.26' " " No. = center " " No.	2.6	22.8
N		2.8	22.6
+ 5 = cb		2.5	22.9

+ 3.75 = 1/4		2.4	23.0
+ 3.75 = c		2.5	22.9
+ 3.75 = 1/4		2.2	23.2
+ 3.75 = cb		2.2	23.2
+ 5 = So		2.1	23.3 = SE Calhoun + Mason
	7.5' E on No. 3.74' E = So } = E 1/3 of Calhoun or No.		
S		2.0	23.4
+ 5 = cb		2.1	23.3
+ 3.75 = 1/4		2.3	23.1
+ 3.75 = c		2.3	23.1
+ 3.75 = 1/4		2.3	23.1
+ 3.75 = cb		2.4	23.0
+ 5 = N		2.6	22.8
	7.5' E of 1/4 = E cb Calhoun or No		
N		2.4	23.0
+ 5 = cb		2.3	23.1
+ 3.75 = 1/4		2.2	23.2
+ 3.75 = c		4.1	23.3
+ 3.75 = 1/4		2.2	23.2
+ 3.75 = cb		1.9	23.6

+5 = S			1.5	23.9	
		5' E of ab = E.L. Calhoun on No.			
S is under bldg.			4.0	21.4	
+5 = cb			1.2	24.2	
+3.75 = 1/4			2.1	23.3	
+3.75 = C			2.0	23.4	
+3.75 = 1/4			2.0	23.4	
+3.75 = ct			2.1	23.3	
+5 = N			2.3	23.1	
B.M.	6.57	30.23	2.02	23.96	511. Calhoun + Mason 5.1
		50' E			
N			6.2	24.0	
+5			6.0	24.2	
+10			6.0	24.2	
+15			6.1	24.1	
+20			6.0	24.2	
+23.1			5.4	24.8	edge of porch
S			x x		under bldg.
		100' E			
S			3.8	26.4	

+2		4.2	24.0
+3		5.0	25.2
+5		5.0	25.2
+10		4.9	25.3
+15		5.0	25.2
+20		5.2	25.0
+25 = N		5.2	25.0
	150' E		
N		3.9	26.3
+7		4.7	25.5
+5		4.4	25.8
+10		4.1	26.1
+15		3.9	26.3
+20		4.0	26.2
+25 = S		4.4	25.8
	500' E		
S		3.7	26.5
+5		3.9	26.3
+10		4.0	26.2
+15		4.3	25.9

30.23

+20	46	25.6
+23	48	25.8
+25 = No	45	25.7

255° E = WL. JUAN ST.

No	43	25.9
+35	42	26.0
+10	40	26.2
+15	35	26.7
+20	34	26.8
+25 + So	32	27.0
T.P.	4.32	25.91

MASON

45

9/12/18 bridge

CROSS SECTION OF
JUAN ST
from St. Mason Street
To N.L. Taylor Street

50' ST
10' 265
7 1/4' 1/4's

T.P. 1.69 27.60 25.91 TP on page 45

St. Mason St.

W 0.6 270

cb 0.5 271

1/4 0.4 272

c 0.4 272

1/4 0.5 271

cb 1.0 266

E 1.8 258

5' No = 50 cb on West

E 1.9 257

cb 1.0 266

1/4 0.7 269

c 0.6 270

1/4 0.6 270

cb 0.7 269

W 0.7 269

10' No. of St. = 50 cb on East

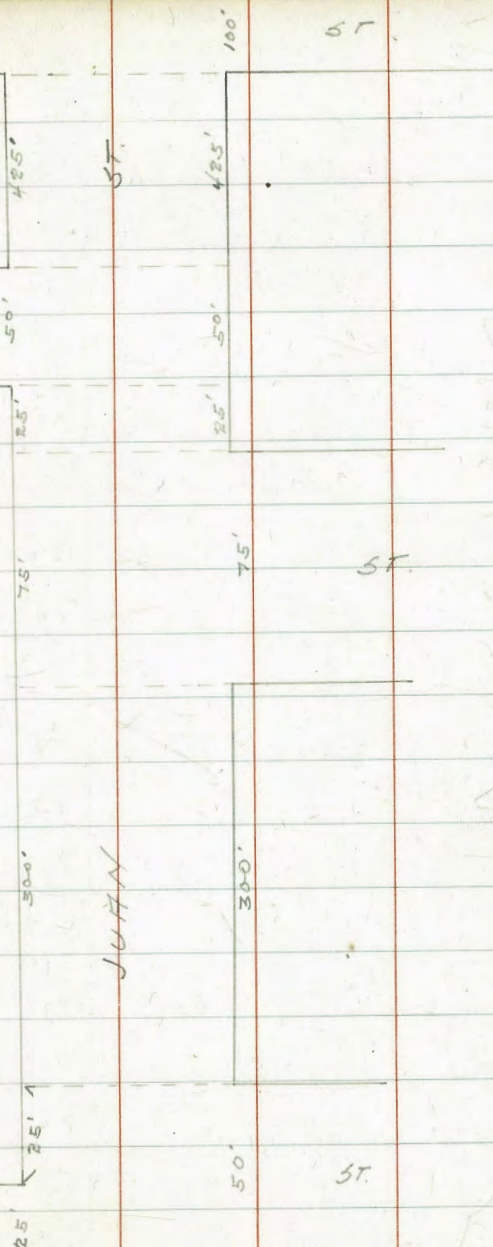
W 0.9 267

TAYLOR

57

46

WALLACE



cb	08	268
1/4	07	269
c	07	269
1/4	08	268
cb	11	265
E	18	258

15' No. of 50 Line

E	20	256
cb	12	264
1/4	10	266
c	09	267
1/4	09	267
cb	10	266
W	14	262

17.5' No. of 50 Line = 5 1/4 on East.

W	15	261
cb	12	264
1/4	10	266
c	10	266
1/4	11	265

cb	13	263
E	23	253
30' No. of 50 Line		
E	25	251
cb	16	260
1/4	12	264

c	11	265
1/4	11	265
cb	13	263
W	16	260

25' No. of 50 Line = center of Mason on E = No Line - - - W

W	17	259
cb	16	260
1/4	13	263
c	15	263

1/4	14	262
cb	18	258
E	23	253

7.5' No. of Last Section = 10 1/4 Mason on E

E	38	238
---	----	-----

2760

+5	33	243
+8	22	254
cb	21	255
1/4	18	258
c	17	259
1/4	19	257
cb	21	255
W	21	255
7.5 No. of last Sect = No. of Mason on E.		
W	25	251
cb	28	253
1/4	22	254
c	20	256
1/4	21	255
cb	23	253
+5	34	242
E	35	241
10' No. of last Sect. = No. of Mason on E.		
E	38	238
cb	36	240

JUAN

48

2760

cb	29	247
1/4	27	249
c	26	250
1/4	27	249
cb	27	249
W	30	246
50' No. of Mason		
W	52	224
cb	47	229
1/4	46	230
c	48	228
1/4	48	228
cb	50	226
+5	59	217
E	60	216
100' No. of Mason		
E	73	203
cb	66	210
1/4	65	211
c	64	212

	27.60		
1/4	6.3	21.3	
cb	6.5	21.1	
W	6.7	20.9	
150' No. of Mason			
W	7.8	19.8	
+4	8.7	18.9	
cb	8.4	19.2	
1/2	8.2	19.4	
C	8.2	19.2	
1/4	8.2	19.2	
cb	8.3	19.3	
+3	8.6	19.0	
+6	7.3	20.3	
E	7.4	20.2	
200' No. of Mason			
E	10.6	17.0	
+6	10.9	16.7	
cb	10.3	17.3	
1/4	10.2	17.4	
C	10.0	17.6	

	27.60	JUAN	49
1/4	10.2	17.4	
cb	10.3	17.3	
W	10.5	17.1	
250' No. of Mason			
W	12.2	15.4	
cb	12.0	15.6	
1/4	11.8	15.8	
C	11.7	15.9	
1/4	12.0	15.6	
cb	12.8	14.8	
E	12.8	14.8	
300' No. = SL WALLACE ST on E 17' obs ^{75' wide}			
E	14.1	13.5	
+6	14.7	12.9	
cb	14.2	13.4	
1/4	13.6	14.0	
C	13.2	14.4	
1/4	13.1	14.5	
cb	13.3	14.3	
W	13.2	14.4	
on B.M.	4.52	18.94	13.18
			14.42
			Mod SE Wallace & Juan

1894

JUAN

50

So. Corb.

W	5.0	139
cb	4.9	140
$\frac{1}{4}$	4.8	141
c	4.9	140
$\frac{1}{4}$	5.3	136
cb	5.6	133
E	6.3	126

So $\frac{1}{4}$

E	5.9	130
cb	5.4	135
$\frac{1}{2}$	5.1	138
c	5.0	139
$\frac{1}{4}$	5.1	138
cb	5.2	137
W	5.4	135

Center

W	5.9	132
cb	5.4	135
$\frac{1}{4}$	5.4	135

c	5.2	13.7
$\frac{1}{4}$	5.4	13.5
cb	5.6	13.3
E	5.9	13.0
	No. $\frac{1}{4}$	
E	6.5	12.4
cb	6.5	12.4
$\frac{1}{4}$	6.4	12.5
c	6.1	12.8
$\frac{1}{4}$	5.7	13.2
cb	5.8	13.1
W	6.0	12.9
	No. Corb.	
W	6.4	12.5
cb	6.1	12.8
$\frac{1}{4}$	6.0	12.9
c	6.4	12.5
$\frac{1}{4}$	6.6	12.3
cb	6.9	12.0
E	6.8	12.1

18.94

No Line Wallace St.

E	6.5	12.4	
cb	6.4	12.5	
1/4	6.5	12.4	
c	6.6	12.3	
1/4	6.4	12.5	
cb	6.3	12.6	
W	6.6	12.3	
25' No. = S.L. Wallace St on West ^{50' wide} 10' abs			
W	6.7	12.2	
cb	6.6	12.3	
1/4	6.6	12.3	
c	6.5	12.4	
1/4	6.7	12.2	
cb	6.7	12.2	
E	6.7	12.2	
Sp. Curb			
E			under house
cb			✓
1/4			✓

1894

JUAN

51

c			under house
+3	6.3	12.6	edge porch.
1/4	7.0	11.9	
cb	6.9	12.0	
W	6.9	12.0	
So. Quarter			
W	7.2	11.7	
cb	7.0	11.9	
1/4	7.1	11.8	
+5	6.4	12.5	edge porch
c	x		under house
1/4	x		✓
cb	x		✓
E	x		✓
Center			
E			under house
cb			✓
1/4			✓
c			✓
+2.3	6.6	12.3	edge porch

1894

1/4	7.3	11.6
cb	7.2	11.7
W	7.4	11.5
No. Quarter		
W	7.5	11.4
cb	7.4	11.5
1/4	7.4	11.4
+5.5	6.9	12.0

edge porch

c	x	under house
1/4	x	- -
cb	x	- -
E	x	- -

No. Curb

E		under house
cb		- -
1/4		- -
c		- -
+1.6	7.1	11.8
1/4	7.6	11.3
cb	7.5	11.4

edge porch

1894

JUN

52

W.

7.4 11.5

No Line Wallace on west.

W

6.9 12.0

+4.

7.8 11.1

cb

7.6 11.3

1/4

7.8 11.1

+6.4

7.3 11.6

edge porch

c

x

under house

1/4

x

cb

x

E

x

T.P.

6.14

15.48

9.60

9.34

50 No.

E

4.5

11.0

cb

4.0

11.5

1/4

4.3

11.2

T.P.

2.74

12.08

6.14

9.34

c

1.8

10.3

1/4

1.6

10.5

cb

1.6

10.5

1205

+5			1.3	10.8
W			0.2	11.9
	100° No			
W			1.0	11.1
+7			2.1	9.7
cb			2.5	9.6
1/4			2.1	9.7
C			2.7	9.4
1/2			3.1	9.0
cb			3.2	8.9
E			3.3	8.8
TP	1.84	11.18	2.74	9.34
		130° No		
E			2.5	8.7
cb			2.8	8.4
1/4			2.6	8.6
C			2.3	8.9
1/4			2.4	8.8
cb			2.4	8.8
+4			2.2	9.0

JUN.

53

11.18

W			+1.1	12.3
	155° No			
W			2.3	8.9
cb			3.1	8.1
1/4			2.8	8.4
C			2.7	8.5
1/4			2.9	8.3
+5			3.2	8.0
cb			2.6	8.6
+4			1.7	9.5
+5			1.8	9.4
E			2.6	8.6
		170° No		
E			3.2	8.0
cb			3.3	7.9
1/4			3.0	8.2
C			3.0	8.2
1/4			3.0	8.2
cb			3.2	8.0
W			3.5	7.7

11.18

200 No

W	5.9	5.3
cb	4.0	7.2
1/4	3.6	7.6
C	3.5	7.7
1/4	3.6	7.6
cb	4.2	7.0
E	4.6	7.0

250 No

E	5.9	5.3
+5	6.2	5.0
cb	4.6	6.6
1/4	4.4	6.8
C	4.3	6.9
1/4	4.6	6.6
cb	4.7	6.5
+5	5.9	5.3
W	6.9	4.3

300 No

W	7.1	4.1
---	-----	-----

11.18

JUAN

54

+5	7.6	3.6
cb	5.9	5.3
+2	5.2	6.0
1/4	5.3	5.9
C	5.1	6.1
1/4	5.2	6.0
cb	5.3	5.9
+3	7.3	3.9
E	7.2	4.0

350 No

E	7.0	4.2
+5	7.7	3.5
cb	5.7	5.5
1/4	5.6	5.6
C	5.6	5.6
1/4	5.6	5.6
cb	5.3	5.9
+5	7.9	3.3
W	6.3	4.9

400' No

W	7.4	3.8
+5	8.3	2.9
cb	5.4	5.8
1/4	5.9	5.3
C	6.2	5.0
1/2	6.4	4.8
cb	6.5	4.7
+6	7.9	3.3
E	7.4	3.8

425' No. = SL. TAYLOR ST

100' wide
16' marks
17' 1/15

E	7.5	3.7
cb	7.1	4.1
1/4	6.8	4.4
C	6.2	5.0
1/4	5.9	5.3
cb	5.5	5.7
+4	8.0	3.2
W	8.2	3.0

18" Double Pipe Culvert across Juan St at
10.5' No. of So. Line of Taylor St

12.5' No.

W	9.3	1.9
+4	9.4	1.8
	7.5	3.7
cb	5.9	5.3
1/4	5.8	5.4
C	6.1	5.1
1/4	6.6	4.6
cb	7.1	4.1
E	6.9	4.3

= Flow line of
pipe

13' No.

	8.8	2.4
	6.9	4.3
E	6.9	4.3
cb	7.1	4.1
1/4	6.6	4.6
C	6.1	5.1
1/4	5.8	5.4
cb	5.9	5.3
W	7.9	3.3

= Flow line

11.18

Y	So. Curb		
W		7.6	36
cb		6.2	5.0
+3		5.5	5.7
1/4		5.8	5.1
c		6.2	5.0
1/4		6.5	4.7
cb		7.0	4.2
E		7.2	4.0

So. Quarter

E		6.9	4.3
cb		6.5	4.7
1/4		6.2	5.0
c		6.1	5.1
1/4		5.7	5.5
+3		5.3	5.9
cb		6.1	5.1
W		7.2	4.0

Center

W		7.7	3.5
---	--	-----	-----

11.18

JUN 17

56

cb		6.7	4.5
1/4		5.8	5.4
c		5.7	5.5
1/4		5.9	5.3
cb		6.0	5.2
E		6.1	5.1

No. Quarter

E		5.6	5.6
cb		5.9	5.3
1/4		6.2	5.0
c		6.5	4.7
1/4		7.2	4.0
cb		7.6	3.6
W		7.8	3.4

No. Curb

W		8.8	2.4
cb		7.5	3.7
1/4		7.4	3.8
c		6.9	4.3
1/4		6.9	4.3

cb	6.4	4.8
----	-----	-----

E	7.4	3.8
---	-----	-----

No. LINE TAYLOR ST.

E	6.5	4.7
---	-----	-----

cb	7.1	4.1
----	-----	-----

1/4	7.0	4.2
-----	-----	-----

C	7.1	4.1
---	-----	-----

1/4	7.2	4.0
-----	-----	-----

cb	7.4	3.8
----	-----	-----

W	8.7	2.5
---	-----	-----

T.P.	4.80	6.38	Top Hydrated SE.
------	------	------	---------------------

9/21/5
Gregory
Miller
Shaw

CROSS SECTION OF
TAYLOR ST.
from EL. of Juan St
to 150' E of EL. of
Hickory St

100' ST
16' cbs
17' 1/4's

955

58

B.M.

317

9.55

6.38

Tab. Height
SE. Juan Taylor

+5

6.2

3.4

E. L. JUAN ST.

5

5.9

3.7

5

5.9

3.7

50' E

+12.5

7.2

2.4

5

5.6

4.0

+13.0

5.2

4.4

cb

5.5

4.1

cb

5.6

4.0

+6

5.5

4.1

1/4

5.2

4.4

+8

6.4

3.2

c

4.5

5.1

+12

5.3

4.3

1/4

4.4

5.2

1/4

5.3

4.3

cb

5.7

3.9

+7

5.1

4.5

N

4.8

4.8

c

4.8

4.8

25' E

+10

4.6

5.0

N

4.5

5.1

1/4

4.5

5.1

cb

4.8

4.8

+8

5.2

4.4

+13

4.8

4.8

cb

5.0

4.6

1/4

4.1

5.5

N

4.5

5.1

c

4.9

4.7

100' E

1/4

5.2

4.4

N

4.9

4.7

+10

5.2

4.4

cb

5.3

4.3

9.55

+9	52	44
1/4	46	50
+7	45	51
c	44	52
+10	47	49
1/4	50	46
+8	55	41
+10	62	34
+13	51	45
cb	53	43
5	54	42
150' E		
5	57	39
cb	54	42
+4	56	42
+6	61	35
+12	50	46
1/4	47	49
+7	44	52
c	42	54

9.57

TAYLOR.

59

+10	44	52
1/4	47	49
cb	53	43
N	50	46
200' E		
N	49	47
cb	52	44
+10	52	44
1/4	46	50
+7	42	54
c	40	56
+10	43	53
1/4	47	49
+11	58	38
cb	56	40
5	60	36
250' E		
5	55	41
cb	50	46
+3	48	48

9.55

c	38	58
+10	40	56
1/4	42	54
+6	46	50
+10	56	40
+14	49	47
cb	49	47
3	47	49
Center Sunset on No.		
3	47	49
cb	48	48
+4	50	46
+7	56	40
+12	44	52
1/4	42	54
+7	41	55
c	37	59
+10	40	56
1/6	42	54
cb	47	49

9.55

TAYLOR.

61

N	45	51
E. Quarter		
N	44	52
cb	48	48
1/4	42	54
+7	40	56
c	37	59
+10	40	56
1/4	42	54
+6	45	51
+10	56	40
+13	49	47
cb	48	48
3	48	48
E. Curb		
3	49	47
cb	48	48
+3	48	48
+6	57	39
+9	47	49

9.55

9.53

TAYLOR

62

1/4		4.2	5.4		50' E = W.L. Sunset Blvd on So.			
+7		4.0	5.6	S.		4.8	4.8	
C		3.7	5.9	cb		5.1	4.5	
+10		4.0	5.6	+4		4.6	5.0	
1/4		4.1	5.5	+7		5.4	4.7	
cb		4.6	5.0	+10		4.6	5.0	
N.		4.7	4.9	1/4		4.2	5.4	
	E.L. Sunset Blvd. on No.			+7		4.0	5.6	
N		4.5	5.1	C		3.6	6.0	
cb		4.7	4.9	+10		3.9	5.7	
1/4		4.1	5.5	1/4		4.2	5.4	
+7		3.9	5.7	+8		4.7	4.9	
C		3.7	5.9	cb		4.3	5.3	
+10		4.0	5.6	N.		4.6	5.8	
1/4		4.3	5.3	T.P.	4.67	10.32	3.90	5.65
+7		4.6	5.0			W. Corb.		mail in pole N.W. Sunset (on So) + Taylor
+10		5.5	4.1	N		5.3	5.0	
+13		4.7	4.9	cb		5.2	5.1	
cb		4.6	5.0	1/4		4.9	5.4	
S		4.8	4.8	+7		4.7	5.6	

c	43	60
+10	47	56
1/4	49	54
+11	62	41
cb	58	45
S	54	49
West Quarter		
S	54	49
cb	57	46
+7	59	44
1/6	48	55
+7	46	57
c	43	60
+10	46	57
1/4	50	53
cb	51	52
N	52	51
Center Sunset Blvd on So		
N	51	52
cb	51	52

1/4	49	54
+7	46	57
c	43	60
+10	46	57
1/4	48	55
+10	59	44
cb	58	45
So	54	49
E. Quarter		
So	51	52
cb	58	45
+7	59	44
+12	50	53
1/4	49	54
+7	46	57
c	43	60
+10	46	57
1/4	49	54
cb	49	54
N	49	54

E. Curb

N	48	55
cb	50	53
1/4	48	55
+7	46	57
C	43	60
+10	46	57
1/4	48	55
+5	50	53
+10	59	44
cb	57	46
So.	44	59

E. Line Sunset Blvd. on So.

So.	48	55
cb	57	46
+7	60	43
+10	50	53
1/4	48	55
+7	46	57
C	43	60

TAYLOR

+10

1/4

cb

No.

N

cb

1/4

+7

C

+10

1/4

+10

cb

S.

S.

cb

+6

1/4

50' East

45 58

47 56

50 53

48 55

50 53

51 52

47 56

45 59

42 61

45 58

46 57

56 47

54 49

42 59

100' E.

46 57

54 49

56 47

45 58

1032

+7	44	59
c	40	63
+10	43	60
1/4	45	58
cb	46	57
N	47	56
150' E		
N	46	57
cb	49	56
1/4	43	60
+7	41	62
c	40	63
+10	41	62
1/4	43	60
+10	54	51
cb	47	56
So.	46	57
200' E = Wt. Whitman St		
So	47	56
cb	47	56

50' wide
10' abs

1032

TAYLOR

65

+7	49	54
1/4	44	59
+7	42	61
c	39	64
+10	41	62
1/4	44	61
cb	41	62
No	43	60
W Corb		
No	47	56
cb	46	57
1/4	42	61
+7	41	62
c	39	64
+10	42	61
1/4	44	59
cb	47	56
3	48	55
W Quarter		
3	48	55

10.32

cb	45	58
1/4	44	59
+7	42	61
C	39	64
+10	41	62
1/4	42	61
cb	45	58
No.	46	57

Center Whitman.

No.	42	61
cb	44	59
1/4	42	61
+7	41	62
C	40	63
+10	43	60
1/4	44	59
cb	47	56
So.	49	54

E Quarter

So.	48	55
-----	----	----

10.32

TAYLOR

66

cb	49	54
1/4	44	59
+7	41	62
C	39	64
+10	41	62
1/4	42	61
cb	43	60
No.	41	62

E Curb

No.	44	59
cb	44	59
1/4	42	61
+7	41	62
C	38	65
+10	42	61
1/4	44	59
cb	50	53
So.	50	53

E. L Whitman St

So.	48	55
-----	----	----

10.32

cl	49	5.4
+6	50	5.3
1/4	43	6.0
+7	41	6.2
c	37	6.6
+10	40	6.3
1/4	42	6.1
cl	42	6.1
No.	41	6.2
29.5' E = ^{on to side} 4' of 35' cement walk to house elev. = 6.32		
50' E		
No.	41	6.2
cl	45	5.8
1/4	43	6.0
+7	39	6.4
c	37	6.6
+10	41	6.2
1/4	43	6.0
+10	49	5.4
cl	47	5.6

rod = 4.0
elev. = 6.32

= 6' under house

10.32

TAYLOR

67

50.	4.3	6.0
100' E		
50.	4.6	5.7
cl	4.6	5.6
+7	4.8	5.5
1/4	4.3	6.0
+7	4.6	6.3
c	3.7	6.6
+10	3.9	6.4
1/4	4.0	6.3
cl	4.0	6.3
No.	3.9	6.4
150' E		
No.	4.1	6.2
cl	4.0	6.3
1/4	4.2	6.1
+7	3.9	6.4
c	3.5	6.8
+10	4.0	6.3
1/4	4.1	6.2

10.32

+10		47	56
cl		44	59
So		44	59
	200' E		
So		36	67
+7		44	59
cl		44	59
1/4		39	64
+7		36	67
c		33	70
+10		36	67
1/4		38	65
cl		41	62
No.		40	63

220' E on No. = ^{3.5'} cement walk to house elev ^{rod tops} 6.27

250' E

No.		39	64
cl		38	65
1/4		37	66
+7		33	70

10.32

TAYLOR

68

c		31	7.2
+10		32	7.1
1/4		35	6.8
cl		41	6.2
So.		33	7.0
T.P.	5.93	13.61	2.64 7.68
	300' E = W.L. Chesnut St.		
So.		6.0	7.6
cl		6.2	7.4
1/4		6.5	7.1
+7		6.1	7.5
c		6.0	7.6
+10		6.1	7.5
1/4		6.5	7.1
+4		6.9	6.7
cl		6.8	6.8
No.		6.6	7.0
	W. Curb		
No.		6.8	6.8
cl		6.8	6.8

1361

713	6.9	6.7
1/4	6.4	7.2
+7	6.0	7.6
c	5.9	7.7
+10	5.9	7.7
1/4	6.4	7.2
df	6.4	7.2
So.	6.2	7.4
N. Quarter		
So.	6.3	7.3
df	6.4	7.2
1/4	6.4	7.2
+7	5.9	7.7
c	5.8	7.8
+10	6.1	7.5
1/4	6.4	7.2
+4	6.8	6.8
df	6.9	6.7
No.	6.9	6.7

1361

TAYLOR

69

Center Chestnut

No.	6.9	6.7
df	6.7	6.9
+12	6.7	6.9
1/4	6.3	7.3
+7	5.9	7.7
c	5.8	7.8
+10	6.0	7.6
1/4	6.4	7.2
df	6.3	7.3
So.	6.2	7.4
E. Quarter		
So.	6.4	7.2
df	6.2	7.4
1/4	6.2	7.4
+7	5.9	7.7
c	5.9	7.9
+10	5.8	7.8
1/4	6.3	7.3
+5	6.7	6.9

1361

1361

TAYLOR

70

db		6.9	6.7	+10		5.7	7.9
No.		6.9	6.7	1/4		6.0	7.6
	E Curb.			+7		6.5	7.1
No.		6.8	6.8	db		6.4	7.2
db		7.0	6.6	No.		6.3	7.3
+12		6.7	6.9		40' E		
1/4		6.2	7.4	No.		6.5	7.1
+7		5.7	7.9	db		6.2	7.4
c		5.7	7.9	1/4		5.4	8.2
+10		5.9	7.7	+7		5.3	8.3
1/4		6.2	7.4	c		4.9	8.7
db		6.3	7.3	+10		5.0	8.6
So.		5.7	7.9	1/4		5.4	8.2
	E. L. Chesnut St.			+5		5.8	7.8
So.		5.5	8.1	db		5.7	7.9
db		5.4	8.2	So.		5.4	8.2
+9		6.4	7.2		90' E		
1/4		6.1	7.5	So.		4.3	9.3
+7		5.8	7.8	db		4.4	9.2
c		5.6	8.0	1/4		4.3	9.3

9.1 = elev of
cement at
SE cor.

1361

2096

TAYLOR

71

+7		40	9.6
c		41	9.5
+10		45	9.1
1/4		49	8.7
ch		60	7.6
No.		65	7.1
150' E			
No.		61	7.5
ch		5.2	8.2
+7		4.4	9.2
1/4		39	9.7
+7		36	10.0
c		34	10.2
+10		34	10.2
1/4		39	9.7
+6		38	9.8
ch		21	11.5
T.P.	10.55	20.96	320
So.		6.9	14.1

10.41

200' E

So.		2.6	18.4
+4		2.9	18.1
+13		8.7	12.3
ch		8.8	12.2
1/4		9.8	11.2
+7		9.8	11.2
c		9.9	11.1
+10		10.2	10.8
1/4		10.5	10.5
+11		10.5	10.5
ch		11.5	9.5
+12		12.1	8.9
No.		12.5	8.5
230' E			
No.		9.8	11.2
ch		9.2	11.8
1/4		9.6	11.4
c		9.5	11.5
+10		9.2	11.8

2096

2096

TAYLOR

72

1/4		9.0	12.0	C	7.0	14.0
cb		7.0	14.0	+10	7.0	14.0
+7		3.5	17.5	1/4	5.9	15.1
So.		+1.5	22.5			
		+1.4	22.4	cb	+2.3	23.3
	260° E			So.	+14.0	35.0
So.		+5.7	26.7			
+6		+5.3	26.3	So.	+14.8	35.8
cb.		+0.6	21.6	cb	+3.6	24.6
1/4		7.9	13.1	+13	5.1	15.9
+7		8.2	12.8	1/4	6.2	14.8
C		8.3	12.7	+7	6.8	14.2
+10		8.4	12.6	C	6.9	14.1
1/4		8.7	12.3	+10	6.9	14.1
cb		9.2	11.8	1/4	7.0	14.0
No.		9.6	11.4	cb	7.4	13.6
	300° E = W.L. Hickory St		50' midg 10' walls	No.	7.8	13.2
No.		8.2	12.8			
cb		7.7	13.3	No.	7.6	13.4
1/4		7.3	13.7	cb	7.2	13.8
+7		7.2	13.8	1/4	6.9	14.1

West curb

West 1/4

2096

+7	6.9	14.1
C	6.5	14.2
+10	6.3	14.7
1/4	5.8	15.2
+3	5.3	15.7
cb	+6.3	27.3
So	+16.6	37.6
Center Hickory.		
So	+16.8	37.8
cb	+7.3	28.3
+13	5.1	15.9
1/4	5.5	15.5
+7	6.3	14.7
C	6.5	14.2
+10	6.8	14.2
1/4	6.9	14.1
cb	7.0	14.0
No.	7.4	15.6
3' East of Ctr		
No.	7.3	13.7

2096

TAYLOR

73

cb	7.0	14.0
1/4	6.8	14.2
+7	6.5	14.2
C	6.7	14.3
+10	6.0	15.0
1/4	5.3	15.7
+7	3.8	17.2
cb	+6.2	27.2
So	+13.6	34.6
E. Quarter		
So	+16.6	37.6
cb	+7.8	28.8
+10	4.3	16.7
1/4	5.3	15.7
+7	5.9	15.1
C	6.6	14.4
+10	6.6	14.4
1/4	6.8	14.2
cb	6.8	14.2
No.	7.0	14.0

20.96

20.96

TAYLOR

74

No	6.6	14.4
cb	6.6	14.4
1/4	6.6	14.4
+7	6.6	14.4
etr	6.4	14.6
+10	5.5	15.5
1/4	4.5	16.5
+6	2.8	18.2
cb	+8.5	29.5
So.	+20.9	41.9
E.L. Hickory.		
So.	+22.5	43.5
cb	+8.1	29.1
1/4	3.7	17.3
+7	4.7	16.3
c	6.1	14.9
+10	6.3	14.7
1/4	6.4	14.6
cb	6.3	14.7
No.	6.2	14.8

18' E of Hickory.

No.	5.5	15.5
cb	5.9	15.1
1/4	6.2	14.8
+7	6.2	14.8
c	6.2	14.8
+10	5.6	15.4
1/4	3.6	17.4
+8	0.0	21.0
cb	+13.1	34.1
So.	+24.4	45.4
22' E		
So.	+34.2	55.2
+3	+22.6	43.6
cb	+13.2	34.2
+9	0.1	20.9
1/4	4.6	16.4
+7	5.8	15.2
c	6.3	14.7
+10	6.3	14.7
1/4	6.2	14.8

2096				2096 TAYLOR			
cb		5.8	15.2	1/4		5.4	15.8
No.		5.4	15.6	+7		6.0	15.0
	44' E			c		6.5	14.5
No.		5.1	15.9	+10		6.3	14.7
cb		5.9	15.1	1/4		6.1	14.9
1/4		6.1	14.9	cb		5.9	15.1
+7		6.3	14.7	No		5.3	15.7
c		6.5	14.5		60' E		
+10		6.0	15.0	No		5.6	15.4
1/4		4.9	16.1	cb		5.8	15.2
cb		+2.8	23.8	1/4		6.1	14.9
+3		+3.7	24.7	+7		6.3	14.7
+14		+27.9	48.9	c		6.4	14.6
So		+35.0	56.0	+10		6.0	15.0
	50' E			1/4		5.5	15.5
So		+28.7	49.7	cb		2.9	18.1
+3		+27.2	48.2	+6		+0.2	21.2
+11		+3.3	24.3	+9		+8.0	29.0
cb		0.8	20.2	So		+13.3	34.3
+7		4.2	16.8				

20.96

75' E

So	+5.3	26.3
+12	2.9	18.1
cb	3.5	17.5
1/4	5.2	15.8
+7	5.9	15.1
C	6.3	14.7
+10	6.4	14.6
1/4	6.2	14.8
cb	6.2	14.8
No	5.8	15.2
90' E		
No.	5.7	15.3
cb	6.3	14.7
1/4	6.4	14.6
C	6.4	14.6
1/4	5.2	15.8
cb	2.7	18.3
+7	1.2	19.8
So	+2.5	23.5

2096 TAYLOR.

76

125' E

So	+3.3	24.3
+10	3.2	17.8
cb	3.8	17.2
1/4	5.4	15.6
C	6.6	14.4
1/4	6.1	14.9
cb	5.6	15.4
No	4.8	16.2

133' E

No.	4.6	16.4
cb	5.7	15.3
1/4	6.1	14.9
C	6.6	14.4
1/4	6.3	14.7
cb	6.1	14.9
+4	4.5	16.5
So.	+3.3	24.3

2096

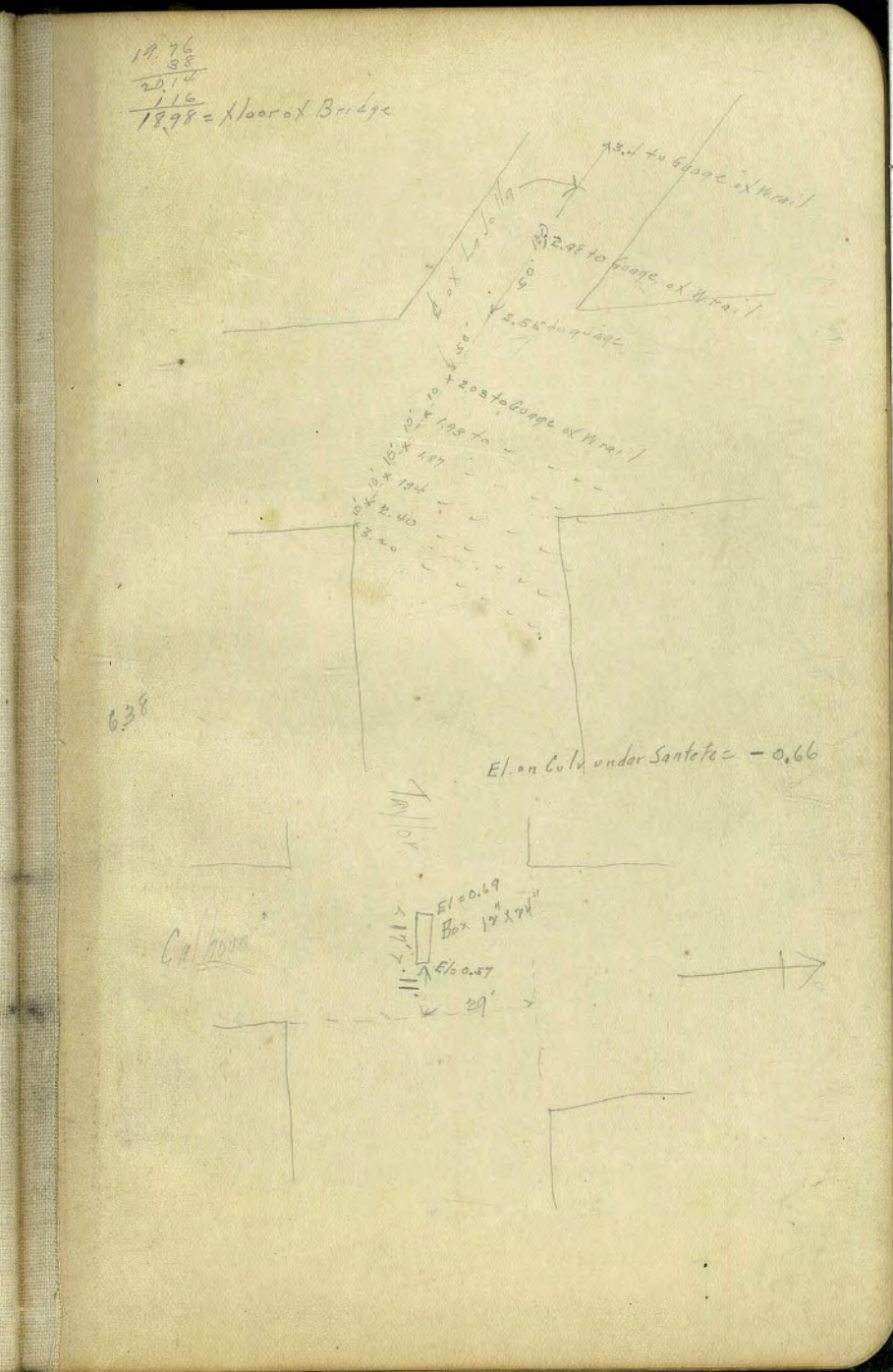
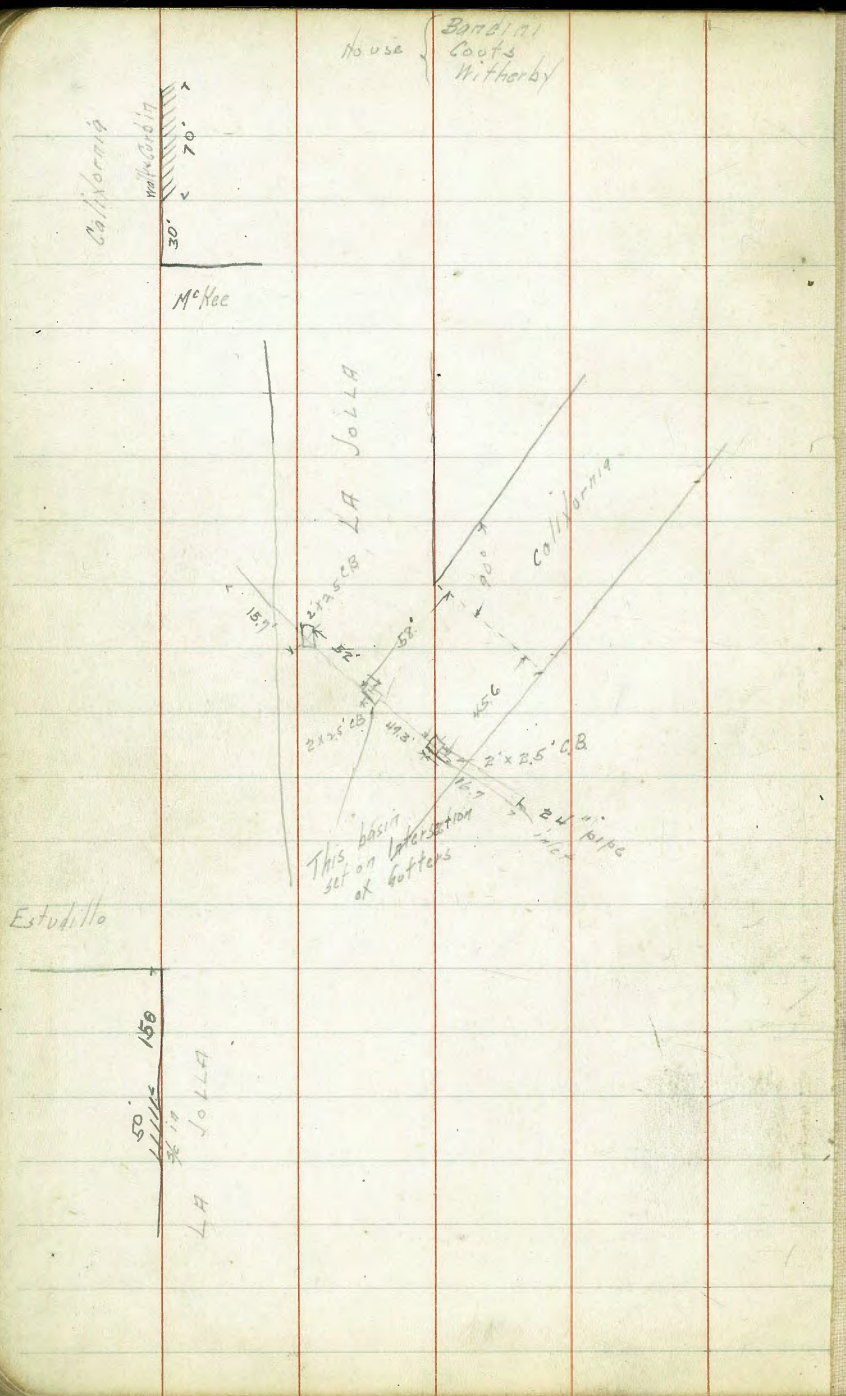
TAYLOR

77

150' E

So.			3.1	17.9	
cb			6.2	14.8	
1/4			6.8	14.2	
c			6.4	14.6	
1/4			6.1	14.9	
cb			5.8	15.2	
No.			5.2	15.8	
T.P.			1.20	19.76	So. end coping old concrete bridge
T.P.	6.33	14.62	12.67	18.29	
T.P.	4.85	18.39	1.08	13.54	
chk			3.91	14.48	SE. Juan & Wallace

		HT		22.17	±
	8.75	30.92		Ground	
		Grade			
Horney		30.8	4.5	31.4	+0.6
	5.67	35.90		0.69	3.0.23
1		30.2	4.7	31.2	+0.9
2		29.8	4.6	31.3	+1.5
3 Twiggs		29.3	0.69	30.2	+0.9
0 "		28.8	1.5	29.4	+0.6
1		26.9	3.6	27.3	+0.5
2		24.8	5.9	25.9	+1.1
3 Mason		22.8	8.7	22.2	-0.6
0 "		21.8	9.6	21.3	-0.5



1647 Edgemont.

6027
250

5/5771
1155
46.20

4383
1513
2870

81.5
62

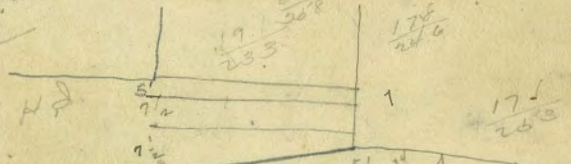
5.62

444

444

444

18
13
31.0 T.P.
11



41.9
133
55.2

116
48.6

141
49.3

148
48.6

149
49.5

3669
583
2826

29.12
40
30.3
22
22
22
22
17

126
48.6

126
48.6

126
48.6

1113
937
20.50

130
178

587
62
444
1563
391

130
178

843
982
1825

81
7
16
3350
16
11750
411750
237

651
718
1373
1658
41

10183
6686
5497

5617
2808

51620
11.23

2812
1155

2246

43377

42170

1195

4283.48

2200

11.61

83
26
57

DISTANCES FROM CENTER OF ROADWAY FOR CROSS-SECTIONING.

ROADWAY 14 FEET WIDE. SIDE SLOPES 1 1/2 TO 1.

FOR SINGLE TRACK EMBANKMENT.

	0	.1	.2	.3	.4	.5	.6	.7	.8	.9	
0	7.0	7.2	7.3	7.5	7.6	7.8	7.9	8.1	8.2	8.4	0
1	8.5	8.7	8.8	9.0	9.1	9.3	9.4	9.6	9.7	9.9	1
2	10.0	10.2	10.3	10.5	10.6	10.8	10.9	11.1	11.2	11.4	2
3	11.5	11.7	11.8	12.0	12.1	12.3	12.4	12.6	12.7	12.9	3
4	13.0	13.2	13.3	13.5	13.6	13.8	13.9	14.1	14.2	14.4	4
5	14.5	14.7	14.8	15.0	15.1	15.3	15.4	15.6	15.7	15.9	5
6	16.0	16.2	16.3	16.5	16.6	16.8	16.9	17.1	17.2	17.4	6
7	17.5	17.7	17.8	18.0	18.1	18.3	18.4	18.6	18.7	18.9	7
8	19.0	19.2	19.3	19.5	19.6	19.8	19.9	20.1	20.2	20.4	8
9	20.5	20.7	20.8	21.0	21.1	21.3	21.4	21.6	21.7	21.9	9
10	22.0	22.2	22.3	22.5	22.6	22.8	22.9	23.1	23.2	23.4	10
11	23.5	23.7	23.8	24.0	24.1	24.3	24.4	24.6	24.7	24.9	11
12	25.0	25.2	25.3	25.5	25.6	25.8	25.9	26.1	26.2	26.4	12
12	26.5	26.7	26.8	27.0	27.1	27.3	27.4	27.6	27.7	27.9	13
14	28.0	28.2	28.3	28.5	28.6	28.8	28.9	29.1	29.2	29.4	14
15	29.5	29.7	29.8	30.0	30.1	30.3	30.4	30.6	30.7	30.9	15
16	31.0	31.2	31.3	31.5	31.6	31.8	31.9	32.1	32.2	32.4	16
17	32.5	32.7	32.8	33.0	33.1	33.3	33.4	33.6	33.7	33.9	17
18	34.0	34.2	34.3	34.5	34.6	34.8	34.9	35.1	35.2	35.4	18
19	35.5	35.7	35.8	36.0	36.1	36.3	36.4	36.6	36.7	36.9	19
20	37.0	37.2	37.3	37.5	37.6	37.8	37.9	38.1	38.2	38.4	20
21	38.5	38.7	38.8	39.0	39.1	39.3	39.4	39.6	39.7	39.9	21
22	40.0	40.2	40.3	40.5	40.6	40.8	40.9	41.1	41.2	41.4	22
23	41.5	41.7	41.8	42.0	42.1	42.3	42.4	42.6	42.7	42.9	23
24	43.0	43.2	43.3	43.5	43.6	43.8	43.9	44.1	44.2	44.4	24
25	44.5	44.7	44.8	45.0	45.1	45.3	45.4	45.6	45.7	45.9	25
26	46.0	46.2	46.3	46.5	46.6	46.8	46.9	47.1	47.2	47.4	26
27	47.5	47.7	47.8	48.0	48.1	48.3	48.4	48.6	48.7	48.9	27
28	49.0	49.2	49.3	49.5	49.6	49.8	49.9	50.1	50.2	50.4	28
29	50.5	50.7	50.8	51.0	51.1	51.3	51.4	51.6	51.7	51.9	29
30	52.0	52.2	52.3	52.5	52.6	52.8	52.9	53.1	53.2	53.4	30
31	53.5	53.7	53.8	54.0	54.1	54.3	54.4	54.6	54.7	54.9	31
32	55.0	55.2	55.3	55.5	55.6	55.8	55.9	56.1	56.2	56.4	32
33	56.5	56.7	56.8	57.0	57.1	57.3	57.4	57.6	57.7	57.9	33
34	58.0	58.2	58.3	58.5	58.6	58.8	58.9	59.1	59.2	59.4	34
35	59.5	59.7	59.8	60.0	60.1	60.3	60.4	60.6	60.7	60.9	35
36	61.0	61.2	61.3	61.5	61.6	61.8	61.9	62.1	62.2	62.4	36

Calculated by Julien A. Hall, M. Am. Soc. C. E.

15620
15630
1.26
67.16
33.78