

1073

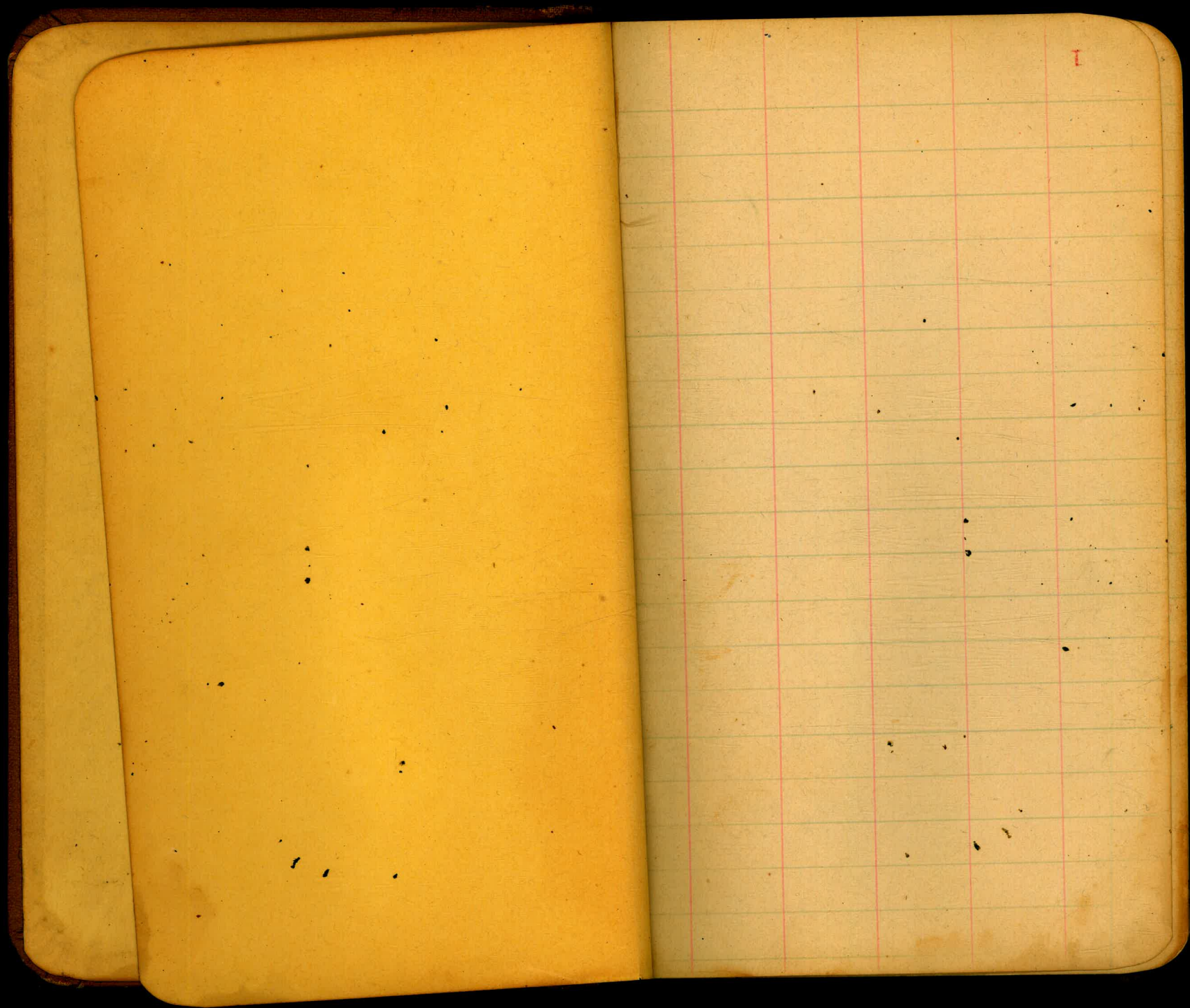
LEVEL BOOK

380

MICROFILMED

DEC 21 1964

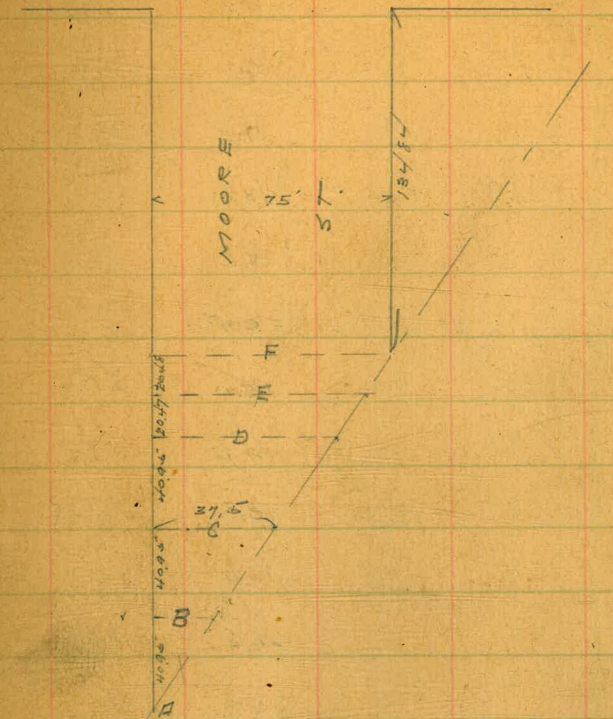
1073



3/29/10 Gregory Moore Miller Shaw
 CROSS SECTION OF 20' CBS
 MOORE ST. 75' ST.
 End To End

	0.13	60.63	60.53	NW Clayton + Cal.
PT A ✓				
W		9.6	51.2	
40.95' N = SEC B ✓				
W		10.4	50.2	
W.L. California		9.3	51.3	on paving
40.95' N = SEC. C				
W.L. California = ctr of Moore		7.7	52.9	on paving
7.5 E. of Web.		10.2	50.4	
CB		10.6	50.0	
W.L.		11.4	49.2	
40.95' N = SEC D ✓				
W.L.		12.8	47.8	
CB		11.7	48.9	
+2.5		11.3	49.3	
+7.5		10.8	49.8	
C		9.7	50.9	
+10		8.1	52.5	
+15		7.6	53.0	

CLAYTON ST. 125' 37' 12'



+15.75 = W.L. CAL.		6.6	54.0	on paving
20.47' N = SEC. E				
W.L. Cal.		6.3	54.3	on paving
ECB		7.7	52.9	
W.L. +2.5		8.3	52.3	
W.L. +7.6		9.1	51.5	

✓

	60.63	
C	10.0	50.6
+10	10.5	50.2
+15	11.4	49.2
cb	13.0	47.6
W	13.6	47.0

20.48 N = SEC F

W	15.0	45.6
cb	14.6	46.0
+2.5	13.3	47.3
+7.5	11.9	48.7
+12.5	10.8	49.8
C	10.7	49.9
+10	10.6	50.0
+15	10.1	50.5
cb	10.0	50.6
+10	10.0	50.6
+15	8.3	52.3

EL = W.L. CAL.

15' N. of F.

F	8.9	51.7
---	-----	------

	60.63	Moore
cb	11.2	49.4
+2.5	11.3	49.3
+5	11.9	48.7
+7.5	11.9	48.7
+10.5	11.4	49.2

C	10.8	49.8
+4	10.7	49.9
+10	12.1	48.5
+15	13.8	46.8
cb	14.0	46.6
W	15.2	45.4

30' N. of F.

W	14.8	45.8
cb	13.8	46.8
+2.5	13.7	46.9
+7.5	12.1	48.5
+13.5	10.7	49.9
C	10.8	49.8
+10	11.5	48.1
+12.5	12.0	48.6
+15	12.0	48.6

✓	60.63		
cb		11.0	49.6
+10		10.1	50.5
E		8.0	53.6
	45' N		
E		9.1	51.5
cb		11.0	49.6
+2.5		12.0	48.6
+7.5		12.0	48.6
+10		11.1	49.5
C		10.8	49.8
+5		11.0	46.9
+10		12.2	48.4
+15		13.5	47.1
cb		13.4	47.2
W		15.0	45.6
	100' N		
W		14.4	46.2
cb		12.8	47.8
+2.5		13.0	47.6
+4.5		13.1	47.5

60.63	MOORE	4
+7.5	12.0	48.6
+13.5	11.0	49.6
C	11.1	49.5
+10	11.3	49.3
+15	11.3	49.3
cb	9.1	51.5
E	7.9	52.7
T.P.	4.50 53.94	11.19 49.44
	134.84 = 3L Clayton St 80' wide W' cbs	
E	1.1	52.8
cb	2.5	51.4
+2.5	3.6	50.3
+5.0	4.6	49.3
+7.5	4.6	49.3
C	4.4	49.5
+10	5.0	48.9
+15	6.3	47.6
cb	6.1	47.8
W	7.7	45.2

53.94

S. Co

W	7.8	46.1
cb	6.4	47.5
+2.5	6.3	47.6
+7.5	5.1	48.8
c	4.4	49.5
+10	4.6	49.3
+12.5	4.4	49.5
+15	3.4	50.5
cb	3.7	50.2
E	1.1	52.8

S. Quarter

E	1.6	52.3
cb	2.9	51.0
+2.5	3.5	50.4
+7.5	4.0	49.9
c	4.4	49.5
+10	4.8	49.1
+15	5.8	48.1
cb	6.1	47.8

53.94

MOORE

5

W 8.0 45.9

Center Clayton

W	7.8	46.1
cb	5.6	48.3
+2.5	5.2	48.7
+7.5	4.6	49.3
c	4.4	49.5
+10	3.7	50.2
+15	3.5	50.4
cb	3.4	50.5
E	1.8	52.1

N. Quarter

E	1.9	52.0
cb	3.4	50.5
+2.5	3.6	50.3
+7.5	3.9	50.0
c	4.5	49.4
+10	5.2	48.7
+15	5.9	48.0
cb	6.1	47.8
W	7.9	46.0

✓

53.94

N. Curb

W	8.6	44.3
cb	6.9	47.0
+2.5	6.4	47.5
+7.5	5.2	48.7
c	4.8	49.1
+10	4.6	49.3
+15	4.4	49.5
cb	3.5	50.4
E	2.0	51.9

N.L. Clayton

E	2.3	51.6
cb	3.6	50.3
+2.5	3.9	50.0
+7.5	4.9	49.0
c	5.0	48.9
+5	4.8	49.1
+10	5.8	48.1
+15	6.9	47.0
cb	7.2	46.7

53.94

MOORE

6

W

9.1 44.8

50° N.

W	9.6	44.3
cb	8.0	45.9
+2.5	8.0	45.9
+5	7.7	46.2
+7.5	6.7	47.2
+15.0	5.0	48.9
c	5.3	48.6
+10	5.7	48.2
+15	6.1	47.8
cb	4.8	49.1
E	3.0	50.9

100° N.

E	3.2	50.7
cb	4.8	49.1
+2.5	5.3	48.6
+4.5	6.3	47.6
+7.5	6.4	47.5
c	5.4	48.5

✓

5394

+3	5.3	48.6
+10	6.8	47.1
+13	8.1	45.8
+15	8.3	45.6
cb	8.2	45.7
W	10.0	43.9

150' N

W	9.3	44.6
cb	7.8	46.1
+2.5	7.8	46.1
+7.5	6.9	47.0
#14.5	5.5	48.4
c	5.5	48.4
+10	6.2	47.7
+13	6.2	47.7
+15	5.3	48.6
cb	4.9	49.0
E	3.4	50.5

200' N

E	3.3	50.6
---	-----	------

5394

MOORE

7

cb	4.3	49.6
+2.5	5.7	48.2
+7.5	6.0	47.9
+12.5	6.4	47.5
c	5.8	48.1
+10	6.5	47.4
+15	7.1	46.8
cb	7.3	46.6
W	8.8	45.1

250' N

W	8.1	45.8
cb	6.7	47.2
+2.5	7.3	46.6
+7.5	6.6	47.3
c	5.9	48.0
+6	6.5	47.4
+10	5.5	48.4
+15	5.2	48.7
cb	4.1	49.8
E	2.5	51.4

✓

53.94

300' N. = 51 Sutherland 80' wide 14' dia

E	2.1	51.8
cb	3.7	50.2
+2.5	4.0	49.9
+7.5	4.3	49.6
+13.5	6.5	47.4
C	6.2	47.7
+10	6.4	47.5
+12	5.7	48.2
+15	5.8	48.1
cb	6.0	47.9
W	7.4	46.5
S. cb.		
W	7.4	46.5
cb	6.0	47.9
+2.5	5.9	48.0
+7.5	5.9	48.0
+9.5	6.6	47.3
C	6.4	47.5
+4	6.3	47.6

53.94

MOORE

8

+7.5	3.8	50.1
+10	3.8	50.1
+15	3.8	50.1
cb	3.6	50.3
E	1.8	52.1
S. Quarter		
E	1.8	52.1
cb	3.3	50.6
+2.5	3.5	50.4
+7.5	2.8	51.1
+10	3.7	50.8
+13.5	6.6	47.3
C	6.4	47.5
+7.5	6.7	47.2
+10	5.5	48.4
+15	5.7	48.2
cb	5.8	48.1
W	7.0	46.9
Center Sutherland		
W	6.6	47.3
+10	6.2	47.7

✓

53.94

cb	47	49.2
+2.5	48	48.1
+7.5	50	48.9
+10	6.7	47.2
c	6.5	47.4
+3.5	6.7	47.2
+10	3.0	50.9
+15	3.0	50.9
cb	2.7	51.2
E	1.6	52.3
N. Quarter		
E	1.9	52.0
cb	2.9	51.0
+2.5	2.9	51.0
+7.5	2.8	51.1
+10	3.1	50.8
+13.5	6.6	47.3
c	6.7	47.2
+7.5	6.6	47.3
+10	5.1	48.8

53.94

Moore

9

+15	4.8	49.1
cb	3.9	50.0
+10	5.8	48.1
W	6.7	47.2
N. Cb.		
W	7.0	46.9
+10	6.1	47.8
cb	4.4	49.5
+2.5	5.3	48.6
+7.5	5.5	48.4
+10.0	6.9	47.0
c	7.0	46.9
T.P.	6.55	53.54
+3.5	6.95	46.99
+3.5	6.5	47.0
+10	2.9	50.6
+15	3.1	50.4
cb	3.0	50.5
E	1.9	51.6
N.L Sutherland		
E	2.6	50.9

✓

53.54

cb	3.2	50.3
+2.5	2.4	51.1
+7.5	4.5	49.0
+12.5	5.5	48.0
+13.5	6.6	46.9
c	6.7	46.8
+7.5	6.6	46.9
+10	5.6	47.9
+15	6.1	47.4
cb	6.1	47.4
W	6.8	46.7
W	7.4	46.1
cb	6.9	46.6
+2.5	6.8	46.7
+7.5	6.8	46.7
c	6.7	46.8
+3.5	6.6	46.9
+7.5	3.5	50.0
+10	3.8	49.7

30' N

53.54

Moore

10

+15	4.9	48.6
cb	5.0	48.5
E	4.1	49.4
43' N		
E	4.4	49.1
cb	5.5	48.0
+2.5	5.4	48.1
+7.5	5.3	48.2
c	6.9	46.6
+10	7.0	46.5
+15	7.1	46.4
cb	7.1	46.4
W	7.5	46.0
W	7.8	45.7
cb	7.4	46.1
+2.5	7.3	46.2
+7.5	7.3	46.2
c	7.1	46.4
+10	7.1	46.4

59' N

✓

	53.54	
+15	7.3	46.2
cb	7.0	46.5
E	6.3	47.2

80' N. = E. End of necessary cuts.

E	5.4	48.1
cb	7.4	46.1
+2.5	7.4	46.1
+7.5	6.1	47.4
+12.5	7.2	46.3
c	7.4	46.1
+10	7.5	46.0
+15	7.6	45.9
cb	7.6	45.9
W	8.2	45.3

100' N

W	8.3	45.2
cb	8.0	45.5
+3.5	7.9	45.6
+7.5	7.7	45.8
c	7.4	46.1

53.54 Moore 11

+10	7.5	46.0
+15	7.8	45.7
cb	6.8	46.7
E	4.8	48.7

105' N

E	4.3	49.2
cb	6.4	47.1
+2.5	7.0	46.5
+7.5	7.6	45.9
c	7.4	46.1
+10	7.9	45.6
+15	9.4	44.1
cb	10.8	42.7
+5	9.5	44.0
W	9.9	43.6

137' N

W	10.9	42.6
+12	11.6	41.9
cb	13.3	40.2
+2.5	11.8	41.7

✓ 5354

+7.5	8.7	44.8	W
0	8.0	45.5	
+4	7.7	45.8	W
+10	5.4	48.1	+4
+15	5.0	48.5	+8
cb	4.7	48.8	cb
E	2.6	50.9 40.9	+2.5
155' N. = W. End of Necessary/cont.			
175' N			
E	0.3	53.2	+3.5
cb	3.1	50.4	+10
+2.5	3.5	50.0	+15
+7.5	3.7	49.8	cb
+13.5	8.1	45.4	E
0	8.2	45.3	
+10	8.5	45.0	E
+15	8.7	44.8	+15
cb	10.0	43.5	cb
+11	12.7	40.8	+2.5
+15	14.5	39.0	+7.5

53.54 Moore 12

12.0	41.5
200' N	
12.5	41.0
15.3	38.2
12.5	41.0
12.0	41.5
11.3	42.2
9.0	44.5
8.4	45.1
8.3	45.2
5.3	48.2
4.4	49.1
3.9	49.6
0.5	53.0
250' N	
3.7	49.8
6.5	47.0
7.7	45.8
8.4	45.1
9.0	44.5

✓	53.54						Moore	13
+10		96	43.9	+12			8.9	44.6
c		87	44.8	E			7.1	46.4
+10		97	43.8	TP-BM	1.65	49.70	5.49	48.05 = E Tie hubs
+15		12.0	41.5					S. Curb.
cb		131	40.4	E			4.7	45.0
+11		14.2	39.3	cb			7.7	42.0
+15		17.3	36.2	+2.5			8.3	41.4
W		14.8	38.7	+7.5			8.2	41.5
	3014' N = S.L. NOELL ST		80' wide 14' obs	+10.0			7.9	41.8
W		20.9	32.6	+12.5			6.3	43.4
+4		19.2	34.3	c			5.4	43.3
+5		15.6	37.9	+5			5.6	44.1
cb		13.6	39.9	+10			7.5	42.2
+2.5		12.8	40.7	+15			10.0	39.7
+7.5		10.7	43.8	cb			10.8	38.9
+13.5		9.2	44.3	W			13.0	36.7
c		9.4	44.1					S. Quarter
+10		11.1	42.4	W			13.2	36.5
+15		10.4	43.1	cb			11.7	38.0
cb		10.2	43.3	+2.5			10.5	39.2

	49.70	
✓		
+7.5	7.6	42.1
+12.5	5.5	44.2
c	5.4	44.3
+5	6.5	43.2
+8	8.1	41.3
+10	8.5	41.2
+15	8.1	41.3
cb	7.9	41.8
E	5.1	44.6
	Center NOELL	
E	5.3	44.4
cb	8.7	41.0
+2.5	8.7	41.0
+7.5	8.8	40.9
+12.5	6.1	43.3
c	5.6	44.1
+5	5.8	43.9
+10	8.0	41.7
+15	10.8	38.9
cb	12.0	37.7

	49.70	Moore	14
W		13.8	35.9
	N. Quarter		
W		14.4	35.3
cb		12.4	37.3
+2.5		11.2	38.5
+7.5		7.9	41.8
+12.5		5.9	43.8
c		5.8	43.9
+5		6.5	43.2
+10		9.2	40.5
+15		9.0	40.7
cb		8.2	41.5
E		5.0	44.7
	N. Corb.		
E		4.9	44.8
cb		8.9	40.8
+2.5		9.3	40.4
+7.5		9.2	40.5
+12.5		6.5	43.2
c		5.7	44.0

✓

49.70

+5	5.9	43.8
+10	8.6	41.1
+15	11.2	38.5
cb	12.2	37.5
+2	13.0	36.7
W	14.8	34.9

N. L. NOELL

W	14.4	35.3
+15	13.3	36.4
cb	11.6	38.1
+2.5	11.2	38.5
+7.5	8.8	40.9
+12.5	6.0	43.7
C	5.8	43.9
+5	6.7	43.0
+10	9.3	40.4
+15	9.2	40.5
cb	9.0	40.7
E	5.5	44.2

49.70

Moore

15

40' N

E	7.8	41.9
cb	9.3	40.4
+2.5	9.5	40.2
+5.0	9.7	40.0
+7.5	8.7	41.0

+12.5	6.3	43.4
C	5.8	43.9
+5	6.0	43.7
+10	8.3	41.4
+15	11.9	37.8
cb	12.5	37.2
W	12.5	37.2

80' N

W	12.5	37.2
+15	12.3	37.4
cb	11.3	38.4
+2.5	10.3	39.4
+7.5	7.6	42.1
+10.5	6.2	43.5

✓	49.70		
C		5.7	44.0
+5		6.7	43.0
+10		9.0	40.7
+15		8.7	41.0
cb		8.4	41.3
E		6.4	43.3

100' N

E		5.6	44.1
cb		6.1	43.6
+2.5		6.2	43.5
+7.5		6.3	43.4
c		5.7	44.0
+6		6.0	43.7
+10		7.7	42.0
+15		10.2	39.5
cb		10.9	38.8
W		11.9	37.8

130' N

W		10.9	38.8
cb		10.1	39.6

49.70 Moore

+2.5		9.4	40.3
+7.5		6.4	43.3
C		5.4	44.3
+10		5.4	44.3
+15		5.0	44.7
cb		5.0	44.7
E		3.8	45.9

150' N

E		3.9	45.8
cb		4.8	44.9
+2.5		4.8	44.9
+7.5		4.9	44.8
C		5.4	44.3
+5		5.4	44.3
+10		6.8	42.9
+15		9.0	40.7
cb		9.5	40.2
W		10.0	39.7

190' N

W		8.1	41.6
---	--	-----	------

	49.70		
✓ cb		7.0	42.7
	200' N		
W		9.6	40.1
+10		8.7	41.0
+15		6.7	43.0
cb		6.4	43.3
+2.5		6.1	43.6
+7.5		5.2	44.5
c		4.8	44.9
+2.5		5.2	44.5
+10		3.9	45.8
+15		3.2	46.5
cb		3.2	46.5
+15		2.6	47.1
E		1.5	48.2
	210' N		
↓ ⇒ W ← ↑		7.3	42.4
+9		6.6	43.1
cb		8.6	41.1
+2.5		7.6	42.1
+7.5		5.2	44.5

	49.70		Moore
+15		4.6	45.1
c		5.0	44.7
T.P.	6.76	56.20	0.26
		255' N	
E		5.5	50.7
cb		7.6	48.6
+2.5		8.2	48.0
+7.5		8.4	47.8
+14.0		10.9	45.3
c		10.9	45.3
+10		11.1	45.1
+15		10.9	45.3
cb		10.9	45.3
W		12.7	43.5
		284' N	
W		11.4	44.8
+15		10.1	46.1
cb		9.1	47.1
+2.5		9.2	47.0
+7.5		10.3	45.9

	56.20		
✓			
+10	10.8	45.4	
c	10.6	45.6	
+3.5	10.6	45.6	
+10	7.0	49.2	
+15	7.3	48.9	
cb	7.2	49.0	
E	5.5	50.7	
301.6 = 5 L. Estudillo ^{80 wide} _{14' obs}			
E	5.2	51.0	
cb	6.2	50.0	
+2.5	6.3	49.9	
+7.5	6.9	49.3	
+14.0	10.3	45.9	
c	10.2	46.0	
+7.5	10.5	45.7	
+10	10.0	46.2	
+15	9.9	46.3	
cb	9.7	46.5	
W	11.4	44.8	

	56.20	Moore	18
	5. cb		
W		10.4	45.8
cb		8.9	47.3
+2.5		9.9	46.3
+7.5		10.2	46.0
c		10.3	45.9
+3.5		10.1	46.1
+7.5		7.1	49.1
+10		6.7	49.5
+15		5.9	50.3
cb		5.3	50.9
E		3.7	52.5
5. Quarter			
E		2.4	53.8
cb		4.9	51.3
+2.5		5.1	51.1
+7.5		6.4	49.8
+10		6.9	49.3
+15		9.9	46.3
c		10.0	46.2

✓	56.20		
+7.5	10.1	46.1	
+10	8.8	47.4	
+15	8.3	47.9	
cb	8.2	48.0	
W	10.5	45.7	

Center Estodillo

W	10.2	46.0	
cb	8.2	48.0	
+2.5	8.7	47.5	
+7.5	9.2	47.0	
+10	10.0	46.2	
C	9.9	46.3	
+3	9.8	46.4	
+10	5.7	50.5	
+15	4.7	51.5	
cb	4.2	52.0	
E	2.3	53.9	

N. Quarter

E	2.2	54.0	
cb	4.0	52.2	

56.70	Moore	
+2.5	4.5	51.7
+7.5	5.8	50.4
+14.5	9.7	46.5
C	9.7	46.5
+7.5	9.8	46.4

+10	10.2	46.0
+15	9.1	47.1
cb	8.0	48.2
W	10.1	46.1

N. Gurb

W	10.1	46.1
+10	9.5	46.7
cb	9.3	46.9
+2.5	8.3	47.9
+7.5	9.6	46.6
C	9.6	46.6
+3.5	9.2	46.8
+7.5	6.3	49.9
+10	5.8	50.4
+15	4.9	51.3

V

56.20

cb 4.8 51.4 +10

E 2.3 53.9 +15

N.L. Estudillo

E 2.6 53.6

cb 5.2 51.0

+2.5 5.2 51.0

+7.5 5.9 50.3

+13.5 9.3 46.9

c 9.3 46.9

+10 9.3 46.9

+15 8.5 47.7

cb 8.5 47.7

W 9.9 46.3

50' N

W 9.4 46.8

cb 7.1 49.1

+2.5 7.3 48.9

+7.5 8.5 47.7

c 8.9 47.3

+2.5 9.0 47.2

56.20

Moore

20

4.4 51.8

3.9 52.3

3.7 52.5

2.7 53.5

100' N

E 2.1 54.1

cb 3.2 53.0

+2.5 3.2 53.0

+7.5 5.3 50.9

+14.0 8.3 47.9

c 8.5 47.7

+10 8.4 47.8

+15 7.0 49.2

cb 7.2 49.0

W 9.1 47.1

150' N

W 9.5 46.7

cb 7.0 49.2

+2.5 7.2 49.0

+7.5 8.7 47.5

✓ 56.20

C	8.6	47.6
+2.5	8.6	47.6
+10	5.7	50.5
+15	4.5	51.7
cb	3.6	52.6
+5	3.7	52.5
E	2.2	54.0
200' N.		
E	2.2	54.0
+15	3.3	52.9
cb	2.6	53.6
+2.5	3.6	52.6
+7.5	5.6	50.6
+15	8.8	47.4
C	8.5	47.7
+10	9.0	47.2
+15	8.4	47.8
cb	8.0	48.2
W	9.8	46.4

56.20 Moore 21

250' N

W	9.5	46.7
cb	6.3	49.9
+2.5	7.9	48.3
+7.5	8.0	48.2
+10	9.0	47.2
C	8.7	47.5
T.P.	8.09	55.36
	8.93	47.27
+2.5	8.0	47.3
+10	3.9	51.4
+15	2.8	52.5
cb	2.1	53.2
E	0.0	55.3
302.2' N = S. L. WRIGHT ST 80' wide 14' cbs		
E	0.0	55.3
+17	2.5	52.8
+20 - cb	3.7	51.6
+2.5	4.0	51.3
+7.5	3.9	51.4
+14	8.2	47.1

5536

C	7.9	47.4
+7.5	8.3	47.0
+10	6.5	48.5
+15	6.2	49.1
cb	6.1	49.2
W	9.0	46.3
5. Cb		
W	9.4	45.9
cb	6.4	48.9
+2.5	6.3	49.0
+7.5	7.1	48.2
+10	8.4	46.9
C	8.1	47.2
+3	8.3	47.0
+7.5	4.6	50.7
+10	4.0	51.3
+15	3.6	51.7
cb	3.0	52.3
E	0.5	54.8

55.3

MOORE

22

5. Quarter

E	0.7	54.6
cb	3.2	52.1
+2.5	3.9	51.4
+7.5	3.9	51.4
+10	4.5	50.8
+14	8.4	46.9
C	8.2	47.1
+7.5	8.5	46.8
+10	7.4	47.9
+15	6.6	48.7
cb	7.0	48.3
W	9.6	45.7
center Wright		
W	9.7	45.6
cb	6.5	48.8
+2.5	7.1	48.2
+7.5	7.5	47.8
+10	8.6	46.7
C	8.2	47.1

✓	55.36	
+3.5	8.4	46.9
+10	5.0	50.3
+15	3.8	51.5
cb	3.5	51.8
E	1.2	54.1

N. Quarter

E	1.0	54.3
cb	4.2	51.1
+2.5	4.8	50.5
+7.5	5.3	50.0
+14	8.3	47.0
C	8.3	47.0
+7.5	8.6	46.7
+10	7.5	47.8
+15	7.5	47.8
cb	7.1	48.2
W	9.8	45.5

N. Curb

W	10.2	45.1
cb	7.6	47.7

+2.5	7.1	48.2
+7.5	7.4	47.9
+10	8.8	46.5
C	8.5	46.8
+3.5	8.6	46.7
+10	5.6	49.7
+15	5.0	50.3
cb	4.4	50.9
E	1.5	53.8

N.L. WRIGHT

E	1.8	53.5
cb	4.5	50.8
+2.5	4.8	50.5
+7.5	5.5	49.8
+15	8.7	46.6
C	8.6	46.7
+7.5	8.9	46.4
+10	8.3	47.0
+15	8.5	46.8
cb	8.3	47.0

	5536	
+5	8.2	47.1
W	10.6	44.7
(Wright) 50' N		
W	11.0	44.3
cb	8.4	46.9
+2.5	9.0	46.3
+7.5	8.6	46.7
+10.0	9.4	45.9
c	9.1	46.2
+4.5	9.3	46.0
+10	5.9	49.4
+15	5.1	50.2
cb	5.3	50.0
+5	3.7	51.6
E	1.9	53.4
100' N		
E	3.8	51.5
+5	3.9	51.4
cb	6.6	48.7
+2.5	7.1	48.2

	5536	Moore
+7.5	7.4	47.9
+12	10.0	45.3
c	9.7	45.6
+6.5	10.2	45.1
+10	9.6	45.7
+15	9.1	46.2
cb	9.1	46.2
W	12.3	43.0
150' N		
W	15.1	40.2
cb	13.6	41.7
+2.5	13.5	41.8
+7.5	12.0	43.3
c	10.4	44.9
+10	10.8	44.5
+15	9.4	45.9
cb	8.6	46.7
E	6.3	49.0
200' N		
E	8.3	47.0

		55.36		
✓				
+17			10.3	45.0
cb			11.7	43.6
+2.5			12.1	43.2
+7.5			12.5	42.8
c			11.4	43.9
+7.5			11.9	43.4
T.P.	7.15	50.66	11.85	43.51
+10			8.2	42.4
+15			10.0	40.6
cb			10.2	40.4
W			11.4	39.2
		250' N		
W			11.3	39.3
cb			9.3	41.3
+2.5			9.6	41.0
+7.5			8.7	41.9
+10			7.9	42.7
c			7.4	43.2
+10			7.2	43.4
+15			6.5	44.1

	50.66	Moore	25
cb		5.0	45.6
E		2.9	47.7
	300.5' N = 5 L BANDINI		80' wide 14' obs
E		2.6	48.0
cb		5.3	45.3
+2.5		6.4	44.2
+7.5		7.2	43.4
+14		8.5	42.1
c		8.0	42.6
+10		9.1	41.5
+15		9.4	41.2
cb		9.5	41.1
+5		9.4	41.2
W		11.1	39.5
	50' Curb		
W		11.5	39.1
cb		9.6	41.0
+2.5		9.7	40.9
+7.5		9.0	41.6
c		8.4	42.2

✓

50.66

+10	7.5	43.1
+15	7.0	43.6
cb	6.5	44.1
E	31	47.5
S. Quarter		
E	33	47.3
cb	6.4	44.2
+2.5	7.0	43.6
+7.5	7.6	43.0
+15.0	8.9	41.7
C	8.6	42.0
+10	9.4	41.2
+15	10.1	40.5
cb	10.3	40.3
+5	9.8	40.8
W	11.1	39.5
Center Bandini		
W	11.7	38.9
+15	10.2	40.4
cb	10.8	39.8

50.66

Moore

26

+2.5	10.3	40.3
+7.5	9.8	40.8
C	8.9	41.7
+4	9.3	41.3
+10	8.3	42.3
+15	7.6	43.0
cb	6.1	44.5
E	3.5	46.1
N. Quarter		
E	3.9	46.7
cb	6.5	44.1
+2.5	7.6	43.0
+7.5	8.8	41.8
+13.5	9.7	40.9
C	9.3	41.3
+10	10.1	40.5
+15	11.3	39.3
cb	11.4	39.2
+5	10.7	39.9
W	12.2	38.4

✓

50.66

N. Curb

W	72.4	38.2
+15	11.2	39.4
cb	11.8	38.8
+2.5	11.6	39.0
+7.5	10.5	40.1
c	9.6	41.0
+4	10.1	40.5
+10	9.4	41.2
+15	8.6	42.0
cb	6.8	43.8
E	4.7	45.9

N.L BANDINI

E	5.3	45.3
+17	7.0	43.6
cb	9.2	41.4
+2.5	9.7	40.9
+7.5	9.7	40.9
+13.5	10.3	40.3
c	9.9	40.7

50.66

Moore

27

+10	10.9	39.7
+15	12.4	38.2
cb	12.5	38.1
+5	11.7	38.9
W	13.1	37.5
B.M.	4.62	42.55
	12.73	37.93

50.11

W. Tie hub
Bandini.

W	7.9	34.6
cb	5.6	36.9
+2.5	6.3	36.2
+5.0	6.0	36.5
+7.5	4.9	37.6
+10	3.8	38.7
c	3.0	39.5
+10	4.0	38.5
+15	3.8	38.7
cb	3.0	39.5
+5	1.5	41.0
E	0.0	42.5

✓

42.55

100' N

E	1.7	40.8
+10	3.3	38.2
+14	4.4	38.1
cb	5.3	37.2
+2.5	5.5	37.0
+7.5	5.6	36.9
c	4.1	38.4
+7.5	5.0	37.5
+10	6.6	35.9
+15	9.2	33.3
cb	9.7	32.8
+10	9.7	32.8
W	10.7	31.8

150' N

W	12.0	30.5
+10	10.7	31.8
cb	10.5	32.0
+2.5	9.9	32.6
+7.5	7.3	35.2

42.55

Moore

28

+10.0	6.0	36.6
c	5.0	37.6
+10	6.3	36.3
+15	6.1	36.5
cb	5.5	37.1
+8	3.6	39.0
E	2.1	40.5

200' N

E	2.3	40.3
+15	4.7	37.9
cb	6.5	36.0
+2.5	6.8	35.7
+7.5	7.2	35.4
c	6.0	36.6
+7.5	6.9	35.7
+10	8.1	34.4
+15	10.6	31.9
cb	11.2	31.3
W	12.7	29.8

✓

42.53

250' N

W	14.2	28.4
cb	12.8	29.8
+2.5	12.2	30.6
+7.5	9.6	33.0
+10	7.6	34.8
c	6.7	35.9
+7.5	7.7	34.9
+10	8.8	33.7
+15	8.5	34.0
cb	7.7	34.8
+5	6.1	36.4
E	3.9	38.6
301.1' N = 5L. Courts 80' wide 14' cbs		
E	4.8	37.7
+15	7.0	35.5
cb	8.7	33.8
+2.5	9.3	33.2
+7.5	9.8	32.7
c	7.8	35.0

42.55

Moore

29

+7.5	8.5	34.0
+10	10.2	32.3
+15	12.6	30.0
cb	13.3	29.2
+5	12.9	29.6
W	14.5	28.1
5. Curb		
W	14.7	27.9
+15	13.0	29.6
cb	13.3	29.2
+2.5	12.8	29.7
+7.5	10.2	32.4
+10	8.8	33.7
E	7.8	34.7
+10	9.8	32.7
+15	9.1	33.4
cb	8.7	33.8
+7	6.9	35.6
E	5.0	37.5

✓	42.55		
	S. Quarter		
E	(Couts)	5.2	37.3
+15		6.9	35.6
cb		9.0	33.6
+2.5		9.4	33.2
+7.5		10.0	32.6
c		8.1	34.5
+7.5		9.2	33.4
+10		10.5	32.1
+15		12.8	29.8
cb		13.3	29.3
W		14.7	27.9
	Center Coutts		
W		14.7	27.9
cb		13.4	29.2
+2.5		12.6	30.0
+7.5		10.6	31.9
+10		9.3	33.2
c		8.4	34.2
+10		10.0	31.5
+15		9.1	33.4

42.55	Moore	30
cb	8.8	33.7
+7	6.8	35.7
E	5.1	37.4
	N. Quarter	
E	5.1	37.4
+13	7.1	35.4
cb	8.8	33.7
+2.5	9.0	33.5
+7.5	9.7	32.8
c	8.6	33.9
+7.5	9.5	33.0
+10	10.6	31.9
+15	13.1	29.4
cb	13.6	28.9
+2.5	13.0	29.5
W	14.3	28.2
	N. curb	
W	14.9	27.8
+17.5	12.6	29.9
cb	13.4	29.1
+2.5	13.1	29.4

✓	42.55		
+7.5		10.7	31.9
+10		9.6	33.0
c		8.8	33.8
+10		9.5	33.0
+15		9.0	33.5
cb		8.7	33.8
+2.0		7.4	35.1
E		4.9	37.6

N.L. Courts

E		4.8	37.7
+19		7.7	34.8
cb		8.5	34.0
+2.5		9.1	33.4
+7.5		9.6	32.9
C		9.0	33.5
T.P.	3.20	36.29	9.46
			33.09
+8.5		3.6	32.7
+10		4.4	31.9
+15		6.2	30.1
cb		6.9	29.4

	36.3	Moore	31
W		8.5	27.8
	50' N		
W		8.9	27.4
cb		7.4	28.9
+2.5		7.1	29.2
+7.5		5.2	31.1
+9.0		4.1	32.1
c		3.4	32.9
+10		4.1	32.2
+15		3.7	32.6
cb		3.2	33.1
+2		2.0	34.3
E		0.0	36.3
	100' N		
E		1.6	34.7
+17		3.4	32.9
cb		5.1	31.2
+2.5		5.3	31.0
+7.5		5.6	30.7
c		4.0	32.3

36.29

+7.5	4.6	31.7
+10	6.1	30.2
+15	8.3	28.0
cb	8.9	27.4
W	10.2	26.1

150' N

W	10.8	25.5
+10	9.2	27.0
cb	8.8	27.5
+2.5	8.5	27.8
+7.5	7.5	28.8
+11.0	5.0	31.3
C	4.5	31.8
+10	6.3	30.0
+15	5.8	30.5
cb	5.5	30.8
+5	3.4	32.9
E	1.7	34.6

200' N

E	2.0	34.3
---	-----	------

26.3

Moore

32

+12	33	33.0
cb	6.2	30.1
+2.5	6.5	29.8
+7.5	6.6	29.7
C	4.7	31.6
+5	5.0	31.3
+10	8.0	28.3
+15	8.8	27.5
cb	8.8	27.5
W	11.4	24.9

250' N

W	12.1	24.2
cb	9.7	26.6
+2.5	9.4	26.9
+5.0	8.9	27.4
+7.5	8.5	27.8
+16.0	5.4	30.9
C	5.4	30.9
+7.5	5.1	31.2
+10	5.6	30.7

36.29

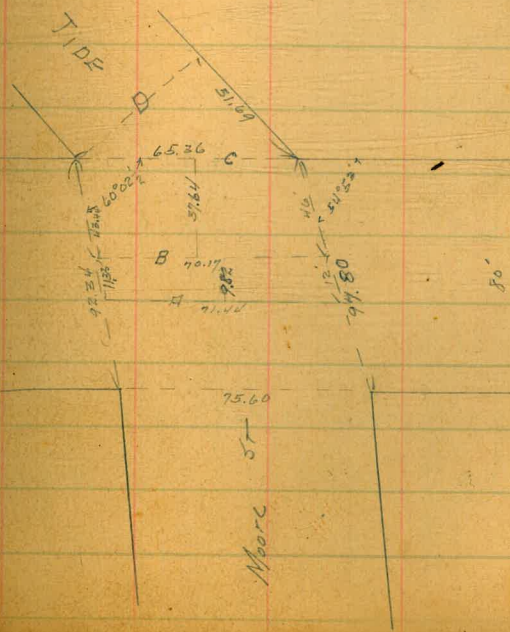
+15	66	29.7
cb	6.9	29.4
E	2.8	33.5
300' N		
E	4.7	31.6
+14	7.1	29.2
cb	5.8	30.5
+3.5	5.3	31.0
+7.5	5.2	31.1
+11	5.8	30.5
+13	7.7	28.6
0	8.4	27.9
+10	9.5	26.8
+15	10.0	26.3
cb	10.3	26.0
W	12.6	23.7
328.52 on West } 318.89 - East } = S.L. Witherby		
W	12.9	23.4
cb	11.3	25.0
+2.5	11.0	25.3

263

Moore

33

+7.5	10.2	26.1			
c	7.7	28.6			
+10	6.8	29.5			
+15	6.5	29.8			
cb	6.3	30.0			
+14	5.9	30.4			
E	6.2	30.1			
T.P.	1.20	24.94	12.55	23.74	of Moore + N.L. Witherby
T.P.	9.35	22.78	11.51	13.43	
chk.			12.32	10.46	= 10.52 BM of Moore



Gregory
Miller
CROSS SECTION OF
S. 1/2 SLIDE ST Produced 40' wide
to Witherby.

7.99 31.81^v Hub E
W 3.5 W Moore
N. 1/2 W

SECTION A. (see preceding page)

E	1.4	30.4	✓
+6	5.7	26.1	
+25	6.7	25.1	
+50	9.1	22.7	
+71.4 = W	10.9	20.9	✓

SECTION B

W	11.6	20.2	✓
+40.17	9.7	22.1	
+45.17	7.7	24.1	
+70.17 = E	6.4	25.4	✓

SECTION C = N.L. WITHERBY

E	9.1	22.7	✓
+32	11.1	20.7	
+65.30 = W T.P.	12.7	19.1	
with noing	12.68	19.13	

SECTION D = 0+00

W	1.1	19.2	✓
+14	0.7	19.6	
+27	0.4	19.9	

E	0.1	20.2	
		0 + 49.09	
E	2.7	17.6	✓
+13	3.0	17.3	
+46	3.6	16.7	
+40 W	3.8	16.5	✓
		1 + 0.0	

W	5.8	14.5	✓
+14	5.4	14.9	
+29	5.2	15.1	
+40 = E	5.2	15.1	✓

+58.85 = N.L. of HANCOCK on W

E	8.3	12.0	✓
+13	8.7	11.6	
+46	9.0	11.3	
+40 = W	9.1	11.2	✓

+89.89 = N.L. of HANCOCK on E

W	11.3	9.0	✓
+13	11.3	9.0	
+46	10.9	9.4	

2027

E	10.4	9.9	✓
2+22.13 = 3.1 Hancock on W.			
E	10.9	9.4	✓
+13	11.3	9.0	
+26	12.2	8.1	
+40 = W	12.6	7.7	✓
T.P.	8.26	15.74	12.79
			7.48
2+53.17 = 3.1 Hancock on E = 0400			
W	8.5	7.2	✓
+14	7.9	7.8	
+27	7.1	8.6	
+40 = E	6.1	9.6	✓
	0+12		
E	5.7	10.0	✓
+13	6.6	9.1	
+26	7.5	8.2	
+40 = W	8.1	7.6	✓
0+34 = 6 Ocean Beach R/ or W			
W	6.4	9.3	✓
+14	7.7	8.0	

6325
3105
3224

TIDE 35

+21	6.2	9.5
+27	6.2	9.5
+40 = E	5.6	10.1
	0+52	
E	4.9	10.8
+13	5.1	10.6
+15	7.5	8.2
+26	6.6	9.1
+40 = W	8.3	7.4
	0+59	
W	5.5	10.2
+22	6.0	9.7
+4	8.2	7.5
+16	6.6	9.1
+27	7.5	8.2
+31	4.9	10.8
+40 = E	4.9	10.8
	0+75	
E	4.1	11.6
+6	7.5	8.2

+13	7.1	8.6
+17	6.6	9.1
+26	8.0	7.7
+28	8.3	7.4
+33	5.0	10.7
+40=W	5.1	10.6 ✓

0+95

W	4.1	11.6 ✓
+14	3.6	12.1
+19	4.5	11.2
+21	8.3	7.4
+26	9.6	8.1
+31	6.8	8.9
+40=E	7.9	7.8 ✓

1+30 = 1/2 of D.B.R. on E

E	7.0	8.7 ✓
+11	8.4	7.3
+13	3.8	11.9
+14	4.3	13.4
+26	2.8	12.9

+40=W	3.3	12.4 ✓
-------	-----	--------

1+57

W	2.5	13.2 ✓
+14	2.9	12.8
+24	3.3	12.4
+27	5.0	10.7
+31	8.1	7.6
+40=E	7.4	8.3 ✓

1+63

E	7.4	8.3 ✓
+8	8.1	7.6
+13	3.6	12.1
+26	3.1	12.6
+32	2.6	13.1
+40=W	7.2	8.5 ✓

1+80 = 1/2 Santa Fe on W

W	5.8	9.9 ✓
+14	6.8	8.9
+26	7.5	8.2
+30	7.6	8.1

+30.1	7.0	8.7
+33.	7.1	8.6
+33.1	7.8	7.9
+40. = E	7.3	8.4 ✓
	1+96	
E	6.6	9.1 ✓
+15 = CTR SANTE FE	6.0	9.7
+26	6.6	9.1
+40. W	7.5	8.2 ✓
	2+08	
W	7.9	5.8 ✓
+10	8.3	7.4
+14.	6.6	9.1
+27	6.4	9.3
+40 = E	6.0	9.7 ✓
	2+24	
E	5.9	9.8 ✓
+6	5.8	9.9
+13	7.6	8.1
+26	9.1	6.6

+40. W	9.4	6.3 ✓
	2+50	
W	11.4	4.3 ✓
+14	10.6	5.1
+27	9.8	5.9
+34	6.9	8.8
+40 = E	6.5	9.2 ✓
	3+00	
E	9.7	6.0 ✓
+6	10.0	5.7
+9	11.8	3.9
+13	12.1	3.6
+26	12.9	2.8
+40 = W	13.3	2.4 ✓
	3+35	
W	14.2	1.5 ✓
+14	14.1	1.6
+27	13.5	2.2
+32	12.1	3.6
E	12.2	3.5 ✓

3+40.69 = N.L. Kurtzon W

E	12.4	3.3	✓
+8	12.6	3.1	
+13	13.6	2.1	
+26	14.2	1.5	
+36	14.2	1.5	
+40=W	13.1	2.6	✓

3.21 6.20 12.75 2.99

3+50.69

W	3.6	2.6	✓
+12	3.7	2.5	
+14	4.7	1.5	
+27	4.8	1.7	
+36	3.3	2.9	
+40=E	3.5	2.7	✓

3+60.69

E	3.9	2.3	✓
+13	4.7	1.5	
+26	3.7	2.5	
+40=W	5.1	1.1	✓

3+74.39 = N.L. Kurtzon E

W	4.2	2.0	✓
+14	5.2	1.0	
+27	3.9	2.3	
+40=E	4.1	2.1	✓

3+90.7

E	4.3	1.9	✓
+13	5.0	1.2	
+26	4.3	1.9	
+40=W	4.3	1.9	✓

4+05.7

W	5.1	1.1	✓
+14	4.3	1.9	
+27	4.2	2.0	
+40=E	4.3	1.9	✓

4+24.7

E	4.5	1.7	✓
+13	4.6	1.6	
+26	5.1	1.1	
+40	5.6	0.6	✓

4425.7

W	4.9	1.3 ✓
+1	5.6	0.6
+14	5.1	1.1

4440.09 = 3 L. Kurtzon W

W	4.8	1.4
+8	4.9	1.3
+9	5.5	0.7
+12	5.6	0.6
+27	4.8	1.4
+40 = E	4.5	1.7

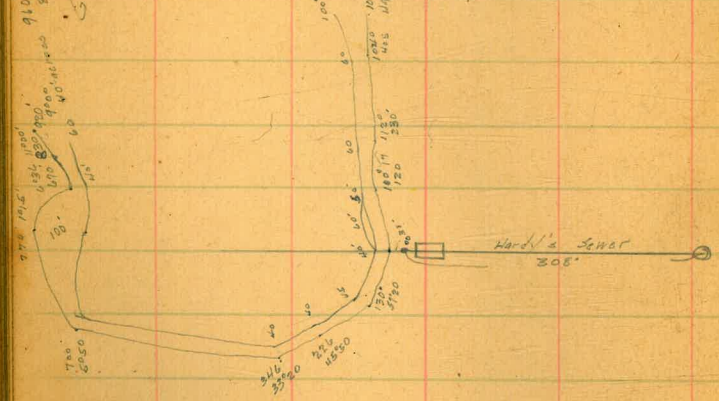
4473.10 = 3 L. Kurtzon ²⁰⁴⁰⁰ L. Tide

E	4.7	1.5
+13	5.2	0.8
+24	5.7	0.5
+26	5.1	1.1
+40	5.2	1.0

chk BM

4.66 1.54 = ^{1.00} Kurtz
4.3

1100	1210
1.57' R	25' L
40	45
1090	1100
30' R	40
960	1090
50' R	40
3057.2	20
910	920
800	810
40	45
1140	1230
950	1000
70	40
1590	1680
1450	1450
2870	2870
50	50



100
110
120
130
140
150
160
170
180
190
200
210
220
230
240
250
260
270
280
290
300
310
320
330
340
350
360
370
380
390
400
410
420
430
440
450
460
470
480
490
500

4/29/20

Gregor
Moor
Miller
Shaw.CROSS SECTION of PROPERTY W. of
HANCOCK ST

9.56

20.10

10.50

Men With
Hancock

113.46' S of 3 L. Hortensia St

W.L. Hancock = Cl. of Tide St. 10.4 19.7

C.L. ✓ 10.0

E.L. ✓ 10.2

67' S. of 3 L. Hortensia St

E.L. Hancock 9.6

C.L. ✓ 7.0

W.L. ✓ 8.0

58.9 W. of W.L. Hancock = Cl. of Tide 8.3 Top Bank

20' S. of 3 L. Hortensia St

120.5' W. of W.L. Hancock = Cl. Tide 11.7

96' W. - - - - - 11.6 = Bottom Bank

90' - - - - - 5.5 = Top Bank

45' ✓ ✓ ✓ ✓ ✓ 6.4

W.L. Hancock 6.6

C.L. ✓ 6.5

E.L. ✓ 5.8

41

3 L. Hortensia St. 50' wide

E.L. Hancock 5.2

C.L. - 6.1

W.L. - 5.7

35' W. of - - - 5.7

75' - - - - - 4.8

110' - - - - - 4.3 Top Bank

113' - - - - - 8.3

120' - - - - - 11.2 Bottom Bank

145.7' - - - - - = Cl. of Tide 16.5

C.L. Hortensia

158.9 W. of W.L. Hancock 10.0 = Front Bank

145' - - - - - = Bottom Bank 10.8 9.3

140' - - - - - = Top - 8.3

117' - - - - - 5.1

115' - - - - - 3.6

95' - - - - - 3.2

85' - - - - - 3.8

70' - - - - - 4.8

W.L. Hancock 4.6

C.L. Hancock 4.9

E.L. ✓ 4.9

N.L. Hortensia

E.L. Hancock 4.0

C.L. ✓ 3.9

W.L. ✓ 3.4

40' W of ✓ ✓ 2.5

45' ✓ ✓ ✓ 2.4

113' ✓ ✓ ✓ 3.1

139' ✓ ✓ ✓ 6.1

143' ✓ ✓ ✓ 11.4

156.3' ✓ ✓ ✓ = E rail Santa Fe 10.1

50' N. of N.L. Hortensia

151.0' W. of W.L. Hancock = E rail S.F. 10.4

127' ✓ ✓ ✓ - Bottom Bank 11.7

121' ✓ ✓ ✓ 6.4

91' ✓ ✓ ✓ 2.3

75' ✓ ✓ ✓ 1.1

35' ✓ ✓ ✓ + 0.3

W.L. Hancock 0.0

C.L. Hancock 0.8

E.L. ✓ 0.7

T.P. 700 26.29 0.81 19.29

100' N. of Hortensia

E.L. Hancock 3.6

C.L. ✓ 3.6

W.L. ✓ 3.5

35' W of W.L. Hancock 4.5

75' ✓ ✓ ✓ 7.7

128' ✓ ✓ ✓ 14.2

132' ✓ ✓ ✓ 18.3

144' ✓ ✓ ✓ = E rail Santa Fe 17.0

150' N. of Hortensia

137.1' ✓ ✓ ✓ = E rail Santa Fe 17.2

125' ✓ ✓ ✓ 18.7

120' ✓ ✓ ✓ 15.4

105' ✓ ✓ ✓ 13.1

75' ✓ ✓ ✓ 8.6

30' ✓ ✓ ✓ 4.0

✓ ✓ ✓ 2.7

C.L. Hancock

2.2

E.L. ✓

1.5

200' N. of N.L. Hortensia

E.L. ✓

1.0

C.L. ✓

2.4

W.L. ✓

4.0

35' W. of ✓ ✓ ✓

6.2

81' ✓ ✓ ✓ ✓

10.1

112' ✓ ✓ ✓ ✓

15.6

117' ✓ ✓ ✓ ✓

19.1

129' ✓ ✓ ✓ ✓ = E. rail Santa Fe

17.4

250' N. of Hortensia

119.4' W. of W.L. Hancock = E. rail S.F.

17.8

108' ✓ ✓ ✓ ✓

19.3

104' ✓ ✓ ✓ ✓

16.5

85' ✓ ✓ ✓ ✓

13.3

30' ✓ ✓ ✓ ✓

7.2

W.L. Hancock

4.2

C.L. ✓

2.2

E.L. ✓

0.2

300' N. = S.L. Trias St 50' wide

E.L. Hancock

10.2

C.L. ✓

1.5

W.L. ✓

2.9

25' N. of ✓ ✓

7.7

75' ✓ ✓ ✓ ✓

14.0

95' ✓ ✓ ✓ ✓

18.2

97' ✓ ✓ ✓ ✓

19.8

109' ✓ ✓ ✓ ✓ = E. rail S.F.

18.1

N.L. Trias St.

97.7' N. of W.L. Hancock

18.4

77' ✓ ✓ ✓ ✓

20.2

84' ✓ ✓ ✓ ✓

18.4

65' ✓ ✓ ✓ ✓

15.8

30' ✓ ✓ ✓ ✓

9.2

W.L. Hancock

5.4

C.L. ✓

2.5

E.L. ✓

0.8

50' N. of Trias	
E. L. Hancock	1.4
C. L. ✓	4.2
W. L. ✓	7.3
20' N. of ✓ ✓ ✓	9.4
50' ✓ ✓ ✓ ✓	14.3
70' ✓ ✓ ✓ ✓ ✓	18.3
74' ✓ ✓ ✓ ✓ ✓	20.4
85.7' ✓ ✓ ✓ ✓ ✓ = Erail S.F.	18.4
100' N. of Trias	
72.9' ✓ ✓ ✓ ✓ ✓ = Erail S.F.	18.8
61' ✓ ✓ ✓ ✓ ✓	20.4
58' ✓ ✓ ✓ ✓ ✓	17.8
30' ✓ ✓ ✓ ✓ ✓	12.3
W. L. Hancock	
C. L. ✓	5.5
E. L. ✓	3.2
150' N. of Trias	
E. L. -	6.2
C. L. -	8.8

W. L. Hancock	
T.P. ✓.61	16.83
19' N. of W. L. Hancock	4.5
25' ✓ ✓ ✓ ✓	7.7
45' ✓ ✓ ✓ ✓	8.9
48' ✓ ✓ ✓ ✓	11.2
58.8' ✓ ✓ ✓ ✓ ✓ = Erail S.F.	9.4
200' N. of Trias	
43' N. of W. L. Hancock = Erail	9.7
25' ✓ ✓ ✓ ✓	12.0
10' ✓ ✓ ✓ ✓	10.0
W. L. Hancock	
C. L. -	3.7
E. L. ✓	0.8
250' N. of Trias	
E. L. Hancock	3.0
C. L. -	6.6
13' N. of ✓ ✓	8.8
W. L. -	12.4
9' N. of ✓ ✓ ✓	13.1
27.8' ✓ ✓ ✓ ✓ ✓ = Erail S.F.	9.9

300' N. = S. L. Ampudia

12 W. of M. L. Hancock = Erall SF 10.1

M. L. Hancock 12.9

10 E. XV ✓ 13.0

C. L. Hancock 8.8

18 E. XV ✓ 5.5

E. L. ✓ 2.9

T. P. 10.92 19.63 8.33 8.50

chk B.M. 8.89 10.54

□ Footage at Wonder King

$$\frac{5.3 + 4.8}{2} \times 1.8 = \frac{5.3}{1.8} + \frac{4.8}{1.8} = 2.94 + 2.67 = 5.61$$

9.50'

$$\frac{4.3 + 6.4}{2} \times \frac{10 + 11.2}{2} = \frac{5.35}{2.1} = 25.48$$

56.70'

$$\frac{6.4 + 7.5}{2} \times \frac{10 + 10.8}{2} = \frac{6.95}{2.1} = 33.10$$

72.28

$$\frac{7.5 + 7.7}{2} \times \frac{10 + 10.4}{2} = \frac{7.6}{2.1} = 36.19$$

77.52

$$\frac{7.7 + 7.8}{2} \times \frac{10 + 10.9}{2} = \frac{7.75}{2.1} = 36.90$$

180.99

$$\frac{7.8 + 7.9}{2} \times \frac{10 + 10.3}{2} = \frac{7.85}{2.1} = 37.38$$

79.68

$$\frac{7.9 + 7.6}{2} \times \frac{10 + 10.6}{2} = \frac{7.75}{2.1} = 36.90$$

79.83

$$\frac{7.6 + 7.3}{2} \times \frac{10 + 10.6}{2} = \frac{7.45}{2.1} = 35.48$$

76.72

$$\frac{7.3 + 7.1}{2} \times \frac{10 + 10.8}{2} = \frac{7.2}{2.1} = 34.29$$

72.88

$$\frac{7.1 + 6.2}{2} \times \frac{10 + 10.6}{2} = \frac{6.65}{2.1} = 31.67$$

68.50

$$\frac{6.2 + 4.9}{2} \times \frac{10 + 10.4}{2} = \frac{5.55}{2.1} = 26.43$$

56.61

$$\frac{4.9 + 3.6}{2} \times \frac{10 + 10.4}{2} = \frac{4.25}{2.1} = 20.24$$

42.33

$$\frac{3.6 + 2.1}{2} \times \frac{10 + 10.3}{2} = \frac{2.85}{2.1} = 13.57$$

27.91

$$\frac{2.1 + 1.3}{2} \times \frac{10 + 10.2}{2} = \frac{1.7}{2.1} = 8.10$$

12.17

$$\frac{1.2}{2} \times 22 = 13.2$$

13.2

$$\frac{3.7}{2} \times 20 = 37.0$$

37.0

$$\frac{2.7 + 5.1}{2} \times 20 = 69.0$$

88.0

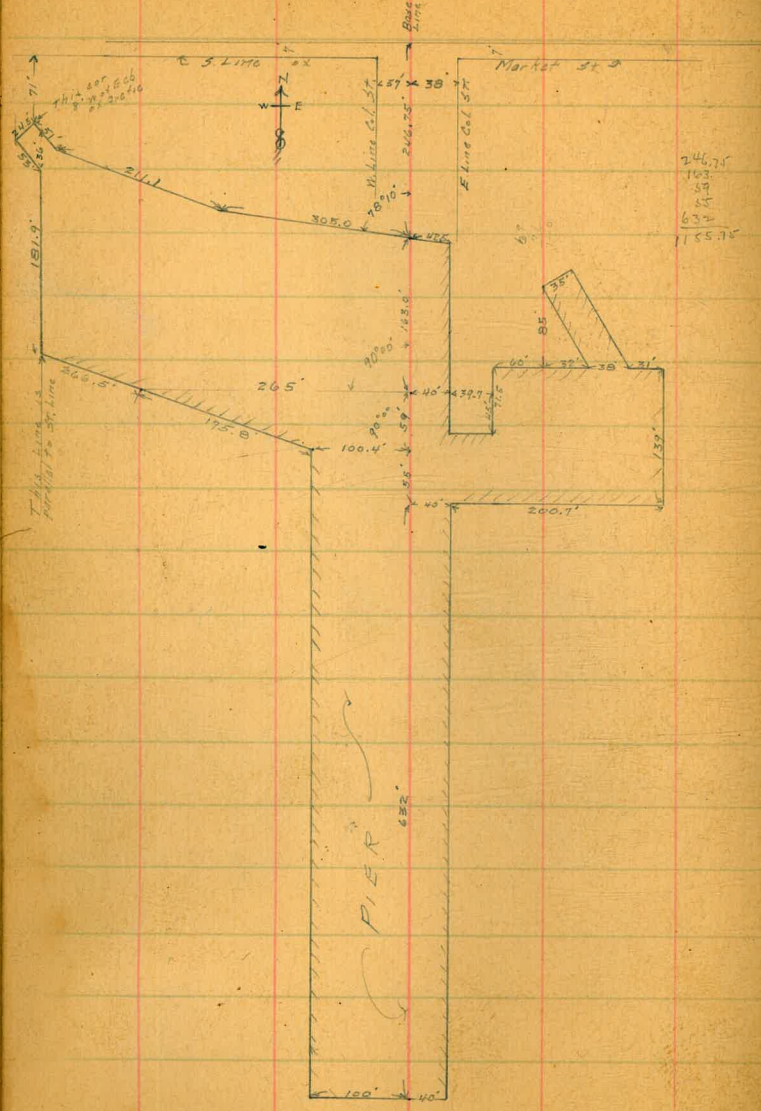
$$\frac{5.1 + 4.1}{2} \times 20 = 86.0$$

92.0

$$\frac{4.1 + 5}{2} \times 25 = 97.5$$

1047.09

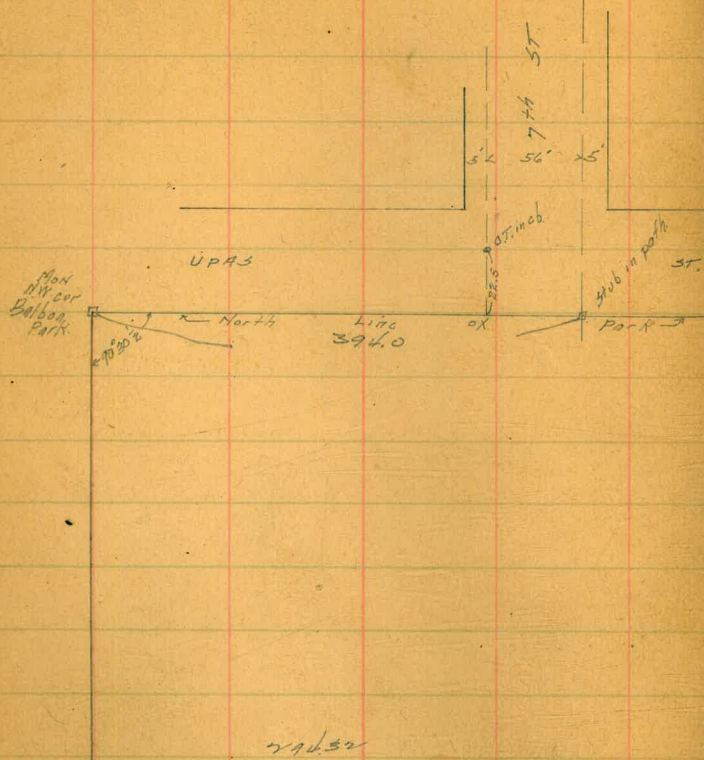
W. J. Shaw
Granger
Master
Pier
Shaw
Location of Master Lumber Co
Pier at foot of
Columbia St



5/14/20

Gregory Miller
Shaw
Elmer dork.

Survey NW cor
Balboa Park.



294.32		
250' E. of EL 6th St N.C.B.	8.55	on cement 285.77
275' - - - - -	9.79	✓ ✓ 284.53
475' ✓ ✓ ✓ ✓ ✓ S ✓	9.7	on dirt 284.6
300' ✓ ✓ ✓ ✓ ✓	10.8	✓ 283.5
300' ✓ ✓ ✓ ✓ ✓ N ✓ = WL 7th St	11.0	283.32 on cement
314' ✓ ✓ ✓ ✓ ✓	11.5	282.8
on S. side at Catch Basin	11.24	on dirt ob 282.5
	11.4	282.9
	12.1	282.2 on gratings

(see drawing)

8/13/20

Gregory Miller
Shaw

Levels to determine
Elevations on Upas St
6th to 7th
to establish Grades

48

525	204.32	289.07	SW 6th + Upas St
EL 6th St N. curb.	4.80	289.52	on cement.
25' E of EL 6th ✓	5.0	289.3	on dirt
50' ✓ ✓ ✓ ✓ ✓	4.8	289.5	✓ ✓
61' ✓ ✓ ✓ ✓ ✓	4.7	289.6	✓ ✓
This pt. is on E. Edge of Walkway.	4.0	290.3	-
100' ✓ ✓ ✓ ✓ ✓	4.2	290.1	✓ ✓
100' ✓ ✓ ✓ ✓ ✓ N ✓	4.05	290.27	on cement.
125' ✓ ✓ ✓ ✓ ✓	4.59	289.73	✓ ✓
125' ✓ ✓ ✓ ✓ ✓ S ✓	4.6	289.7	on dirt
150' ✓ ✓ ✓ ✓ ✓	5.1	289.2	✓ ✓
150' ✓ ✓ ✓ ✓ ✓ N ✓	5.10	289.22	on cement
175' ✓ ✓ ✓ ✓ ✓	5.64	288.68	✓ ✓
175' ✓ ✓ ✓ ✓ ✓ S ✓	5.7	288.62	on dirt
200' ✓ ✓ ✓ ✓ ✓	6.3	288.02	✓ ✓
200' ✓ ✓ ✓ ✓ ✓ N ✓	6.15	288.17	on cement
225' ✓ ✓ ✓ ✓ ✓	7.32	287.00	✓ ✓
225' ✓ ✓ ✓ ✓ ✓ S ✓	7.4	286.9	on dirt
250' ✓ ✓ ✓ ✓ ✓	8.5	285.8	✓ ✓

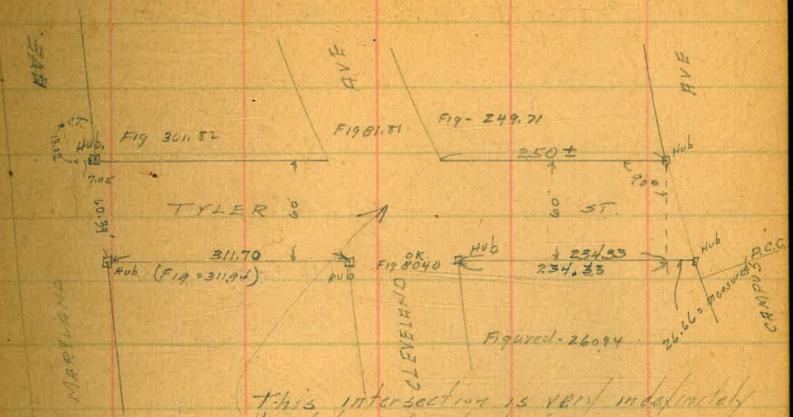
continued on opposite page

Gregory Miller Shaw
 CROSS SECTION of 60' wide TYLER AVE from Campus to Maryland 14 CDS 8' 1/4"

416 348.52 344.36

M L CAMPUS AVE

S	7.2	341.3
cb	7.6	340.9
1/4	7.5	341.6
C	7.6	340.9
1/4	8.0	340.6
cb.	8.9	339.6
N	8.1	340.4
26.66 W on So } 00 - - N } = 00		
N	8.1	340.4
cb	9.0	339.5
1/4	8.2	340.1
C	8.2	340.1
1/4	8.6	339.9
cb	8.6	339.9
S	9.2	339.3
0+25		
S	10.6	337.9
cb	10.5	337.0



1/4	10.2	338.1
C	10.3	338.2
1/4	10.2	338.3
cb	10.2	338.3
N	10.1	338.4
0+25		
N	10.7	337.9
cb	10.9	337.6
1/4	11.2	337.3
C	11.2	337.3
1/4	10.9	337.6
cb	11.2	337.3

34852

S			11.5	337.0
	0470			
S			13.2	335.3
cb			13.1	335.4
1/4			12.9	335.6
C			12.6	335.9
1/4			12.2	336.3
cb			12.1	336.1
N			11.8	336.7
T.P.	0.56	336.00	13.08	338.44
		1400		
N			1.3	334.7
cb			1.8	334.2
1/4			2.1	333.9
C			2.1	333.6
1/4			2.1	333.6
cb			2.7	333.3
S			3.6	332.4
		1420		
S			7.0	329.0

TYLER

50

cb			5.9	330.1
1/4			5.1	330.9
C			4.6	331.4
1/4			5.1	330.9
cb			5.3	330.7
N			4.5	331.5
		1435		
N			6.1	329.9
cb			8.0	328.0
		1440		
N			9.1	326.9
cb			8.1	327.6
1/4			8.3	327.7
C			8.1	327.9
1/4			8.6	327.4
cb			8.9	327.1
S			9.6	326.4
		1470		
S			13.1	322.9
cb			12.7	323.3

1/4			12.5	323.5
0			12.1	323.9
1/4			12.2	323.7
cb			12.0	324.0
N			11.5	324.5
T.P.	0.11	323.11	13.00	323.0
		2+00		
N			2.3	320.5
cb			2.7	320.4
1/4			2.9	320.2
0			2.8	320.3
1/4			2.9	320.2
cb			3.1	320.0
48			3.6	319.5
5			3.0	320.1
		2+20		
5			5.3	317.7
cb			4.8	318.3
1/4			5.0	318.1
0			4.6	318.5

1/4			5.6	317.5
cb			4.3	318.8
N			4.3	318.8
		2+22		
5			9.0	314.1
+5			8.5	314.6
+6			5.6	317.5
cb			5.1	318.0
		234.25 2+34.25 = E.L. Cleveland on So.		
N			5.9	317.2
cb			5.7	317.4
1/4			8.6	314.5
0			6.9	316.2
+3			9.1	315.0
1/4			9.7	313.4
cb			10.5	312.6
5			10.4	312.7
		2334.25 2+34.25 on S 2+50± on N 249.41		
		= E.L. Cleveland (Grabco)		
3			10.4	312.7
cb			11.2	311.9

1/2		10.5	312.6
-----	--	------	-------

c		10.0	313.1
---	--	------	-------

1/2		9.9	313.2
-----	--	-----	-------

cb		10.2	312.9
----	--	------	-------

N		10.0	313.1
---	--	------	-------

	1.28	311.55	12.64	310.27
--	------	--------	-------	--------

E. L. of Maryland.

N		13.8	298.8
---	--	------	-------

cb		14.3	297.3
----	--	------	-------

1/2		14.1	297.5
-----	--	------	-------

c		14.1	297.5
---	--	------	-------

1/2		14.3	297.3
-----	--	------	-------

cb		14.6	297.0
----	--	------	-------

s		14.4	297.2
---	--	------	-------

680' East N
00 " " S } = 0.0

s		14.4	297.2
---	--	------	-------

cb		14.4	297.2
----	--	------	-------

1/2		14.3	297.3
-----	--	------	-------

c		14.1	297.5
---	--	------	-------

1/2		14.1	297.5
-----	--	------	-------

cb		14.0	297.6
----	--	------	-------

N		13.8	297.8
---	--	------	-------

0+50

N		10.3	301.3
---	--	------	-------

cb		12.2	299.2
----	--	------	-------

1/2		12.5	298.8
-----	--	------	-------

c		12.6	299.0
---	--	------	-------

1/2		12.4	299.2
-----	--	------	-------

cb		12.4	299.2
----	--	------	-------

s		12.2	299.4
---	--	------	-------

0+78

s		11.2	300.4
---	--	------	-------

cb		10.7	300.9
----	--	------	-------

1/2		10.9	300.7
-----	--	------	-------

c		10.6	301.0
---	--	------	-------

1/2		10.8	300.8
-----	--	------	-------

cb		10.8	300.8
----	--	------	-------

N		11.0	300.6
---	--	------	-------

1+00

N		10.0	304.6
---	--	------	-------

db	9.4	302.2
1/4	9.9	301.7
c	10.0	301.6
1/4	9.7	301.9
cb	10.1	301.5
+3	10.1	301.5
5	17.6	294.0
+18	27.8	283.8
+40	34.6	277.0
	1+25	
-35	33.7	277.9
-25	33.4	278.2
5	23.7	287.9
cb	15.3	296.3
1/4	9.0	302.6
c	8.8	302.8
1/4	9.1	302.5
cb	9.0	302.8
N	8.6	303.0

	1+50	
N	8.4	303.2
cb	8.4	303.2
1/4	8.4	303.2
c	8.9	302.7
+3	9.6	302.0
1/4	14.7	296.9
cb	19.8	291.8
5	28.7	282.9
+4	30.0	271.6
+10	30.1	271.5
+30	24.4	287.2
	1+75	
-40	40.5	281.1
5	46.6	285.0
+10	46.0	285.6
cb	24.4	287.2
1/4	16.8	294.8
c	9.1	302.5
1/4	8.2	303.5

311.55

cb	81	303.5
N	77	303.9
	+100	
N	68	304.8
cb	70	304.6
1/4	71	304.5
c	98	301.8
1/4	16.2	295.4
cb	21.9	289.7
5	22.1	289.2
+15	16.5	295.1
	+25	
-10	11.4	300.2
3	13.6	298.0
cb	10.1	301.5
1/4	4.9	306.7
c	4.5	309.1
1/4	5.1	306.5
cb	5.6	306.0
+9	5.7	305.9

TYLER

54

N	7.6	304.0
+9	13.3	298.3
+20	12.9	298.7
	+50	
-20	13.3	298.3
-10	11.9	299.7
N	8.6	303.0
+8	3.6	308.0
cb	3.6	308.0
1/4	3.0	308.6
c	2.5	309.1
1/4	2.7	308.9
cb	2.8	308.8
3	6.7	304.9
+10	6.7	304.7
	+65	
-10	5.0	306.6
3	3.7	307.9
cb	2.3	309.3
1/4	2.2	309.4
c	2.4	309.2

3/11/55

55

1/4	2.5	309.2
cb	2.6	309.4
N	2.9	308.7

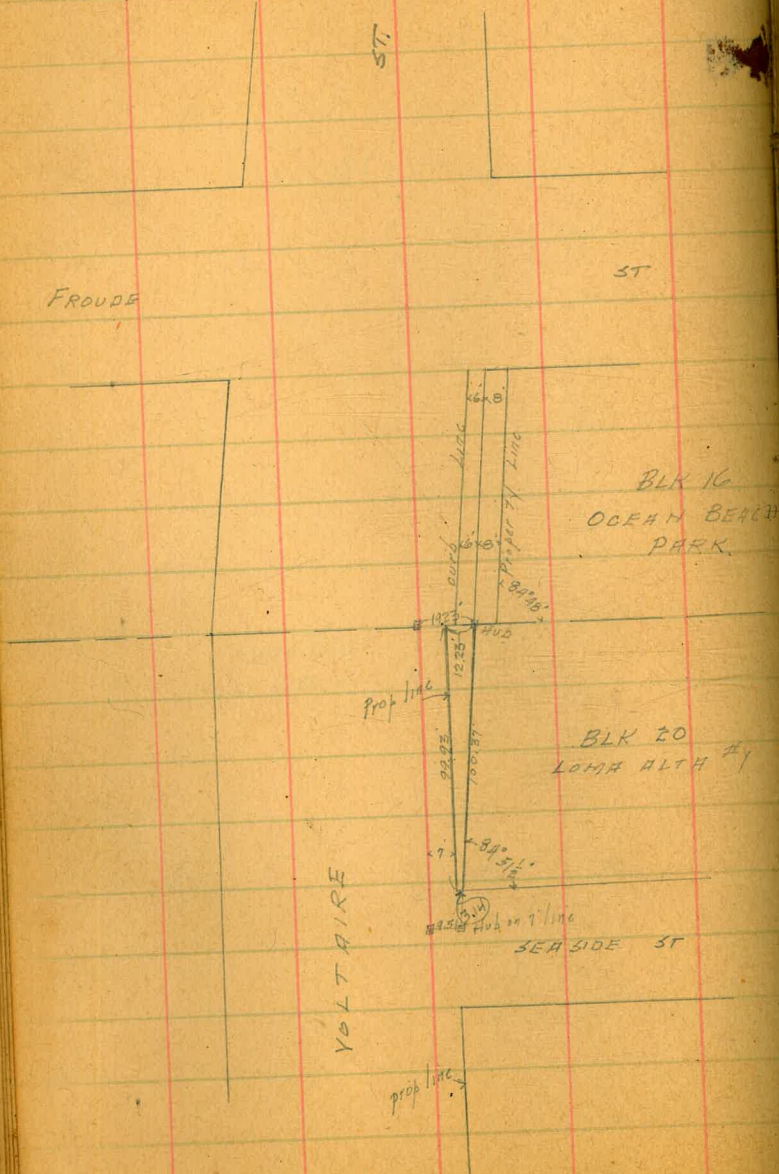
 $2 + 96^{\pm} = \text{W.L. Cleveland on N.}$

N	1.7	309.7
cb	2.1	309.5
1/4	2.1	309.5
C	2.1	309.5
1/4	2.2	309.4
cb	2.3	309.3
S	3.1	308.5

$$\left. \begin{array}{l} 2 + 94.23 \\ 2 + 94.86 \text{ on } \sim \\ 3 + 11.70 \text{ on } S \\ 3 + 11.73 \end{array} \right\} = \text{W.L. Cleveland}$$

S	1.8	309.8
cb	1.8	309.8
1/4	1.9	309.7
C	1.9	309.7
1/4	1.9	309.7
cb	1.9	309.7
N	1.7	309.9

Gregory Miller Survey of Proposed Opening
8/3/20 thru Blk 20 Loma Alta #1



8/9/00 Grand
171160 Cross
3944W for Pueblo lot 1266
Section of E. Side of
Clay Products Corp.
Borrow Pit

150' 165 BM
176.64
- 9.01
167.63
150' 165 BM
of Section
of Pueblo
176.00 - 167.63
8.37

12.38	180.01		167.63
12.18	191.68	0.51	179.50
12.30	203.29	0.69	190.99
13.00	215.79	0.50	202.79
13.26	228.68	0.37	215.42
13.07	241.58	0.17	228.51
13.14	254.46	0.26	241.32
12.91	266.54	0.83	253.69
12.51	278.65	0.40	266.14

E.L. P.L. 1266

550' S. of NE Cor.		9.92	on hub
525' - - - -		11.1	
500' - - - -		8.82	on hub
463' ✓ ✓ ✓ ✓		10.5	
450' ✓ ✓ ✓ ✓		3.7	
T.P. 13.21	291.61	0.25	278.40

50' W. of E.L.

500' S. of N.L. 1266		4.0	
550' - - - -		3.4	

450' S. of N.L. 1266	0.6
565' - - - -	3.6

E.L. P.L. 1266

600' S. of N.L. 1266	13.0
613' - - - -	10.9
625' - - - -	10.2
637' - - - -	10.9
650' - - - -	13.11

15' W. of E.L. 1266

650' S. of N.L. 1266	7.3
637' - - - -	5.7
625' - - - -	5.3

T.P. 9.82 297.74 3.69 287.92

50' W. of E.L. 1266

600' S. of N.L. 1266	4.3
613' ✓ ✓ ✓ ✓	4.9
625' - - - -	4.4
637' ✓ ✓ ✓ ✓	4.6
650' ✓ ✓ ✓ ✓	4.3
675' ✓ ✓ ✓ ✓	7.5

50' W. of E.L. (cont)

700' S. of N.L. 1266		13.0		
T.P.	0.78	284.76	1276	284.98
725' S. of N.L. 1266		6.7		
750' ✓ ✓ ✓ ✓ ✓		11.7		

E.L. 1266

675' S. of N.L. 1266		12.0		
T.P.	1.79	273.55	1300	271.76
700' S. of N.L. 1266		6.22		on hub
725' ✓ ✓ ✓ ✓ ✓		13.0		
T.P.	4.79	263.24	1310	260.45
750' S. of N.L. 1266		10.58		on hub



Pueblo Lot.
1266



10/15/20 Gregor's X section of Barrow, Pit
 Moller N. of Hancock N. of Tide
 Shaw see page 41 for Original
 9.27 19.81 10.54 Nov. Hancock
 & with

67' S. of Hortensia
 21' N. of W.L. Hancock 8.0 old grd
 40' ✓ ✓ ✓ ✓ ✓ 10.1
 58.7 ✓ ✓ ✓ ✓ ✓ 10.4

62' S. of Hortensia
 65' N. of W.L. Hancock 10.3
 55' ✓ ✓ ✓ ✓ ✓ 8.8
 50' ✓ ✓ ✓ ✓ ✓ 10.2
 30' ✓ ✓ ✓ ✓ ✓ 8.9
 25' ✓ ✓ ✓ ✓ ✓ 7.8 old grd

52' S. of Hortensia
 25' N. of W.L. Hancock 7.3 old grd
 40' ✓ ✓ ✓ ✓ ✓ 10.0
 53' ✓ ✓ ✓ ✓ ✓ 9.8
 65' ✓ ✓ ✓ ✓ ✓ 5.5
 73' ✓ ✓ ✓ ✓ ✓ 7.1
 75' ✓ ✓ ✓ ✓ ✓ 10.2
 80' ✓ ✓ ✓ ✓ ✓ 10.5

20' S. of Hortensia
 110' N. of W.L. Hancock 10.6
 94' ✓ ✓ ✓ ✓ ✓ 7.9
 84' ✓ ✓ ✓ ✓ ✓ 11.1
 60' ✓ ✓ ✓ ✓ ✓ 10.4
 40' ✓ ✓ ✓ ✓ ✓ 9.1
 33' ✓ ✓ ✓ ✓ ✓ 6.1 old ground

S. L. Hortensia
 39' ✓ ✓ ✓ ✓ ✓ 5.5 old grd
 50' ✓ ✓ ✓ ✓ ✓ 11.1
 70' ✓ ✓ ✓ ✓ ✓ 11.7
 120' ✓ ✓ ✓ ✓ ✓ 10.2

Take out 64 cu. yds of 3 piles left in
 C. L. Hortensia
 125' N. of W.L. Hancock 10.2 9.6 old grd
 100' ✓ ✓ ✓ ✓ ✓ 11.2
 65' ✓ ✓ ✓ ✓ ✓ 11.0
 55' ✓ ✓ ✓ ✓ ✓ 11.5
 45' ✓ ✓ ✓ ✓ ✓ 7.9
 41' ✓ ✓ ✓ ✓ ✓ 3.8 old grd.

1981

10' N. of C.L. Hortensia

50' W. of W.L. Hancock 2.9 old grd.

55' v v v v 8.3

N.L. Hortensia

41' W. of W.L. Hancock 2.2 old grd.

43' v v v v 7.3

18' N. of Hortensia

T.P. 8.62 26.72 1.71 18.10

33' W. of W.L. Hancock 8.2 old grd.

38' N. of Hortensia

9' v v v v 14.3

7' v v v v 7.1 old grd.

50' N. of Hortensia

3' v v v v 6.5 old grd.

5' v v v v 14.0

100' N. of Hortensia

5' v v v v 4.1 old grd.

7' v v v v 15.8

60

150' N. of Hortensia

2' W. of W.L. Hancock 3.3 23.4 old grd.

4' v v v v 15.1

175' N.

4' W. of W.L. Hancock 4.0 old grd.

6' v v v v 16.5

200' N.

10' v v v v 16.6

7' v v v v 4.6 old grd.

225' N.

10' v v v v 5.6 old grd.

13' v v v v 15.6

250' N.

16' v v v v 16.0

14' v v v v 6.0 old grd.

275' N.

21' v v v v 6.6 old grd.

24' v v v v 16.6

26.72

300' N

33' W of W. L. Hancock 7.9 old grd.

37' " " " " 17.3

310' N.

39' " " " " 8.6 old grd.

43' " " " " 17.4

317' N. = old grd across = 0.0

T.P. 178 15.45 13.05 .13.67

310' N. of Hortensia

40' W of W. L. Hancock 6.6 old grd.

73' " " " " 3.6

70' " " " " 6.2

60' " " " " 10.2

50' " " " " 8.5

300' N.

44' " " " " 10.4

66' " " " " 10.3

77' " " " " 3.6 old grd.

Subtract 19 c.y.

Borrow P.T.

61

275' N

83' W of W. L. Hancock 4.6 old grd.

76' " " " " 10.1

50' " " " " 10.2

35' " " " " 10.3

250' N.

24' " " " " 9.5

19' " " " " 9.8

52' " " " " 8.0

65' " " " " 8.1

75' " " " " 9.8

85' " " " " 8.6

92' " " " " 4.6 old grd.

225' N.

90' " " " " 2.4 old grd.

88' " " " " 6.3

70' " " " " 8.7

50' " " " " 7.9

45' " " " " 9.3

22' " " " " 9.2

1545

200' N.

18' W. of W. L. Hancock	9.7
42' ✓ ✓ ✓ ✓	9.6
46' ✓ ✓ ✓ ✓	8.3
68' ✓ ✓ ✓ ✓	8.6
77' ✓ ✓ ✓ ✓	7.5
93' ✓ ✓ ✓ ✓	7.0
99' ✓ ✓ ✓ ✓	7.7

175' N.

120' ✓ ✓ ✓ ✓	7.7
125' ✓ ✓ ✓ ✓	6.9
115' ✓ ✓ ✓ ✓	7.9
73' ✓ ✓ ✓ ✓	8.1
67' ✓ ✓ ✓ ✓	8.6
45' ✓ ✓ ✓ ✓	7.9
40' ✓ ✓ ✓ ✓	9.6
14' ✓ ✓ ✓ ✓	9.6

Borrow Pit

62

150' N.

14' W. of W. L. Hancock	9.7
35' ✓ ✓ ✓ ✓	9.8
42' ✓ ✓ ✓ ✓	8.0
58' ✓ ✓ ✓ ✓	8.2
56' ✓ ✓ ✓ ✓	9.3
75' ✓ ✓ ✓ ✓	7.9
93' ✓ ✓ ✓ ✓	8.5
105' ✓ ✓ ✓ ✓	7.6
125' ✓ ✓ ✓ ✓	7.7

subtract 4.4 c.f.

100' N.

132' W. of W. L. Hancock	7.4	old grd.
105' ✓ ✓ ✓ ✓	6.6	
90' ✓ ✓ ✓ ✓	7.9	
75' ✓ ✓ ✓ ✓	6.9	
71' ✓ ✓ ✓ ✓	8.5	
56' ✓ ✓ ✓ ✓	8.4	
55' ✓ ✓ ✓ ✓	7.4	
43' ✓ ✓ ✓ ✓	7.6	

15.45

40' N. of W.L. Hancock 9.1

15' ✓ ✓ ✓ ✓ ✓ 9.4

50' N

16' ✓ ✓ ✓ ✓ ✓ 8.6

38' ✓ ✓ ✓ ✓ ✓ 9.0

44' ✓ ✓ ✓ ✓ ✓ 9.3

55' ✓ ✓ ✓ ✓ ✓ 8.2

66' ✓ ✓ ✓ ✓ ✓ 8.2

75' ✓ ✓ ✓ ✓ ✓ 6.6

95' x ✓ ✓ ✓ ✓ ✓ 7.1

105' ✓ ✓ ✓ ✓ ✓ 6.4

127' ✓ ✓ ✓ ✓ ✓ 7.1

38' N

127' ✓ ✓ ✓ ✓ ✓ 6.6

105' ✓ ✓ ✓ ✓ ✓ 6.4

90' ✓ ✓ ✓ ✓ ✓ 7.3

72' ✓ ✓ ✓ ✓ ✓ 6.6

66' ✓ ✓ ✓ ✓ ✓ 8.0

45' ✓ ✓ ✓ ✓ ✓ 8.3

23' ✓ ✓ ✓ ✓ ✓ 8.5

63

18' N

35' N. of W.L. Hancock 7.7

60' ✓ ✓ ✓ ✓ ✓ 7.8

90' ✓ ✓ ✓ ✓ ✓ 6.8

100' ✓ ✓ ✓ ✓ ✓ 6.3

130' ✓ ✓ ✓ ✓ ✓ 6.2

N.L. Hortensia

143' N. of W.L. Hancock 6.2

115' ✓ ✓ ✓ ✓ ✓ 6.4

95' ✓ ✓ ✓ ✓ ✓ 6.1

90' ✓ ✓ ✓ ✓ ✓ 7.5

70' ✓ ✓ ✓ ✓ ✓ 7.5

51' ✓ ✓ ✓ ✓ ✓ 7.8

10' N. of E. of Hort.

63' ✓ ✓ ✓ ✓ ✓ 7.3

100' ✓ ✓ ✓ ✓ ✓ 6.7

145' ✓ ✓ ✓ ✓ ✓ 5.9

old grd.

11/19/20

Levels Trias 5T

64

	5.84	58.50	5266	5266				
					6			6.6
M.L. LaJolla Ave 20+00								7.0
0+15								5.8
0+50					7			5.8
0+90								5.6
1+00								5.5
1+25								6.5
T.P.	1.32	46.75	13.07	46.43				7.9
1+50								10.5
2+00								9.9
4+50					9			9.9
3								10.9
T.P.	0.43	34.48	14.70	34.05				10.2
4+50								10.53
4								23.95
4+50								3.8
4+75								4.9
5					11			6.9
4+40								10.1
								11.8

+ 82.3 = Hancock - Mortensia

for remainder to Tide see book 1079

7/9/41
Gregory
Maack
Miller
Cross Section of
Alley B/K 211
University Heights
bet 32nd + Bancroft
N. of Univ. Ave.

65

	323	355.14	351.91	SW Chiv + 32 nd
		N. Linn Walk		
		5.31	349.83	on curb
W.		5.68	349.46	on paving
C		6.12	349.00	✓ ✓
E		6.02	349.12	+ curb
		25' N		
E		6.4	348.7	
C		6.0	349.1	
W.		6.1	349.0	
T.P.	144	349.80	678	348.36 ✓
		50' N		
W		0.9	348.9	
C		1.4	348.4	
E		4.0	347.8	
		104' N		
E		38	346.0	
C		31	346.7	
		+ 9.5 = center of garage door	2.2	347.6 cement floor

	159' N			
		9.5 W. of E = center of 18' door	3.8	346.0 dirt floor
		C	4.6	345.2 ✓
		E	5.0	344.8
	200' N			
		E	6.6	343.2 ✓
		C	5.8	344.0
		+ 9.4 = fence	5.0	344.8
	260' N			
		9.6 W. of E = fence	7.3	342.5
		C	8.0	341.8
		E	8.6	341.2 ✓
	309' N			
		- 5.0 = center of 18' door	10.4	339.4
		E	10.4	339.4
		C	10.4	339.3
		+ 9.7 = fence	10.3	339.5

349.80

345' N

W	11.1	338.7
+5	12.2	337.6
C	12.1	337.7
E	12.8	337.0

350' N

E	12.8	337.0
C	12.8	337.0
W	12.6	337.2

T.P. 9.53 347.33 12.0 337.80

356' N. 9'E of C = 17.67 of 1' x 1.5' wood box
 Box runs SE from this point thru private prop.
 Elev. of Non line 11.65 335.68.

395' N

d	9.65	337.68	stop of C.I. 21081.
---	------	--------	------------------------

400' N

W	9.8	337.5
C	8.9	338.4
E	8.8	338.5

66

405' N

E	8.7	338.6
C	8.8	338.5
+5	7.5	339.9
W	5.7	341.6

430' N

W	5.3	342.0
C	8.2	339.1
E	8.0	339.3

400' N

E	6.5	340.8
+1	7.6	339.7
C	7.9	339.4
W	5.1	342.2

455' N

W	4.9	342.4
+7	7.1	340.2
C	7.5	339.8
+2	7.2	340.1
+1	6.1	341.2
E	6.1	341.2

34733

470 N

E	57	341.6
C	59	341.4
W	71	340.2

475 N

W	58	341.5
C	55	341.5
E	56	341.7

500 N

E	50	342.3
C	50	342.3
W	55	341.8

550 N

W	39	343.4
C	35	343.9
E	35	343.8

599 N = SL Lincoln

E	24	344.9
C	30	344.3
W	28	344.5

67

obs on Siskiwok 5th. St. Lincoln 32nd 342 343.91

see page 94 for notes on design

7/11/21
 Green
 Moore
 Miller
 CROSS SECTION OF
 Alley in Bk 483 C.C. Seaman's
 from E.L. Goldfinch to
 E.L. Falcon

	6.57	✓66.57	260.00	B.P.N.E. Goldfinch
				E.L. Goldfinch
S		(4.8)	261.8	= on inside edge of sidewalk
		5.1	261.5	
C		4.9	261.7	
N		5.0	261.6	
		(4.58)	261.99	= inside edge of sidewalk
	50' E			
N		5.0	261.6	
C		4.9	261.7	
S		5.5	261.1	
+5		5.6	261.0	
	92.5' E = center of 8' door			
-5		5.4	261.2	
3		5.2	261.4	
C		4.7	261.9	
+6		5.2	261.4	
N		5.0	261.6	= edge of adjacent drive

			195.52	
				Falcon
				Goldfinch
				157'
				0.1'
				107' E = center of 9' door
				9.5' N of Center = front of garage
		5.0	261.6	
		4.7	261.9	
		5.0	261.6	
		4.7	261.9	
		5.2	261.4	
	150' E			
		4.7	261.9	
		4.6	262.0	
		4.9	261.7	
		4.5	262.1	
		4.5	262.1	

266.57

195.5 = W.L. Falcon

N	(3.9)	262.7	= inside edge of mark
C	41	262.5	
+7	44	262.2	
S	43	262.3	
+5	43	262.3	

14' E. of W.L. = curb

-5	45	262.1	
on S Line of Alley = outlet of ^{pipe} 6" pipe	(5.6)	261.0	= flow line of 6" pipe
S	43	262.3	
C	39	262.7	
N	44	262.2	
+3 = inlet of 6" pipe	49	261.7	= flow line
cb on N Line of Alley W.L. Falcon 405		262.52	
7.1 E of W.Cb.		= 21.1	
N	40	262.6	
C	38	262.8	
S	42	262.4	
+5	43	262.3	

69

9.6 E of W.Cb.

S Line of Alley = Outlet of pipe	.50	261.6	= flow line of 5" pipe running to E gutter
<u>282</u>			
14.2' E of W.Cb.			
-5	40	262.6	
S	38	262.8	
C	38	262.8	
N	38	262.8	

21.3 E. of W.Cb.

N	<u>35.3</u>		
C	39	262.7	
S	39	262.7	
S	37	262.9	
+5	38	262.8	

42.4 28.4 E. of W.Cb. = E.Cb.

-5	37	262.9	
S	36	263.0	
C	39	262.7	
N	40	262.53 on curb.	
in gutter	4.57	262.00	flow line inlet.

Nov. 57

32.0

7.6' E of E ob = E.L. Falcon

N	38	7628
C	38	7628
S	37	7629
+5	35	7631

70

2/11/21
 Grappo
 Mooney
 Miller
 Cross Section of Alley
 Blk 203 Univ Heights
 bet Idaho + Oregon
 N. of Univ

	261	348.66	346.05
		N. L. Vair.	
E		4.87	343.79 on curb
C		5.22	343.44 on parking
W		5.06	343.60 on curb
		35' N	
W		4.5	344.2
C		4.6	344.1
E		4.1	344.3
		7 1/2' H. = center of 6' door.	
-6 = front of garage		4.0	344.7
E + apr = edge of Apron		4.6	344.1
C		4.6	344.1
W		4.9	343.8
		122' N = center of 10' door	
-1.5 = front of garage		4.75	343.71
W = edge of Apron		5.0	343.7
C		4.6	344.2
E		4.1	344.3

			145' H.
E (fence .4 in alley)	4.5	344.2	✓
C	4.7	344.0	✓
W	5.2	343.5	✓
		175' N.	
W	5.8	342.9	✓
C	5.5	343.2	✓
E (fence .7 in alley)	5.5	343.2	✓
		210' N.	
E (fence .7 in alley)	4.7	344.0	✓
C	5.5	343.2	✓
W	5.1	343.6	✓
		234' N = center 8' door.	
-1.0 = edge of Apron	3.1	345.6	✓
W	3.2	345.5	✓
C	3.1	345.3	✓
E (fence .6 in alley)	3.2	345.5	✓
	930	356.56	1.40 347.06

280' N = center 8' door

E (fence 8 in alley)	9.3	347.3	
C	9.3	347.3	
W	9.4	347.2	
+ 3.2 = front of garage	9.3	347.3	dirt floor

305' N = center 8' door

- 3.2 = front of garage	8.25	348.31	cement floor
W = edge of apron	8.35	348.21	
C	8.4	348.2	
E (fence 4 in alley)	8.2	348.4	

345' N = center 8' door

- 1.6 = front of garage	6.7	349.9	cement floor
E (no apron)	6.8	349.8	
C	7.1	349.5	
W	7.2	349.4	

392' N = cent of doors 8' on W

- 0.5	5.6	351.0	cement floor
W (no apron)	5.7	350.9	
C	5.6	351.0	
E (no apron)	5.2	351.4	
+ 11.5 = front of garage	5.1	351.5	dirt floor

405' N = center of 8.5 door

- 1.5 = front of garage	4.7	351.9	cement floor
E no apron	4.8	351.8	
C	5.3	351.3	
W	5.2	351.4	
+ 1.0 = front of garage no door	5.4	351.2	

444' N = center of 7.5 door

- 5.0	4.2	352.2	cement floor
W	4.6	352.0	
C	4.5	352.1	
E (fence 7 in alley)	4.3	352.3	

478' N = center of 8' door

E (no fence)	3.2	353.2	
C	3.1	353.2	
W	3.3	353.3	
W also	3.1	353.5	cement floor

525' N = center of 8' door

- 2 = front of garage	1.9	354.7	cement floor
W	2.1	354.5	
C	1.9	354.7	

E 2.0 354.6 ✓

561' N = center of 8' door

E 0.4 356.2 ✓

C 0.6 356.0 ✓

W 1.2 355.4 ✓

+ 2 = front of garage 1.5 355.1 ✓ cement floor

479 360.90 ✓ 0.45 356.11 ✓

580' N

W 4.4 356.5 ✓

C 4.1 356.8 ✓

E 3.8 357.1 ✓

599' N = 51 Lincoln

(E) on cement curb 3.9 357.51 ✓

E 3.9 357.0 ✓

C 4.2 356.7 ✓

W 4.4 356.5 ✓

(W) on cement curb 3.61 357.29 ✓

cbk 10.00 350.90 ✓ 350.95
SE corner
of Lincoln

8/5/21 Gregor Add. notes on
 Alley B/R 311 Univ Heights

2+17.02 = End of old box 46 336.5 Ground.
 LINCOLN AVE

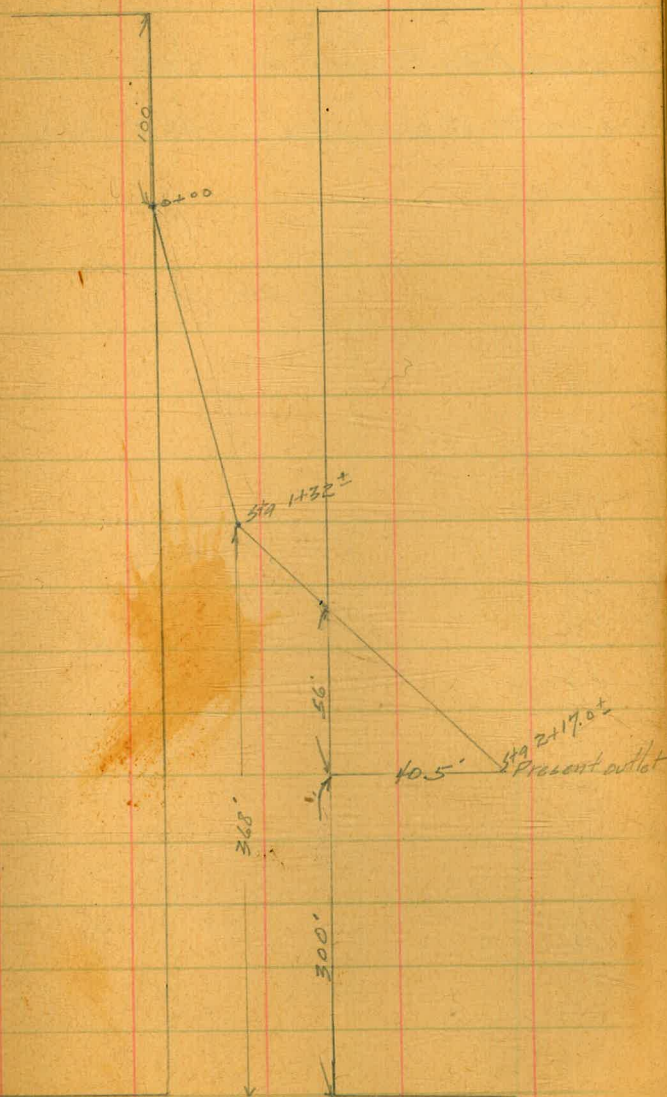
2.22 354.13 341.71 B.M. 341.71
 3.35 344.74 1273 341.10
 Outlet of Box 12.20 332.54 F.L.

Outlet is 40.5' E of E.L. at Sta 3+00

5.10 347.11 2.73 342.01
 60' W of W.L. at Sta. 5+15 6.8 340.3

Levels of proposed Drain

0+00		5.3	341.8
+41		5.6	341.5
+34		6.9	340.2
+43		5.1	341.5
+60		6.3	340.8
+90		7.0	340.1
+100		8.0	339.1
+15		9.4	337.7
+37 [±]	C.B. site	9.8	337.3
+50		10.1	337.0
TP.	0.85 341.06	6.90	340.21
+80		3.9	337.2



UNIV.

AVE

Curb Elev. at Moore
& East End of Under Xing
Paving.

75

5.59 32.33 26.74

Ry. Co.
End of Curb at W.L. Moore built by A 4.58 27.75

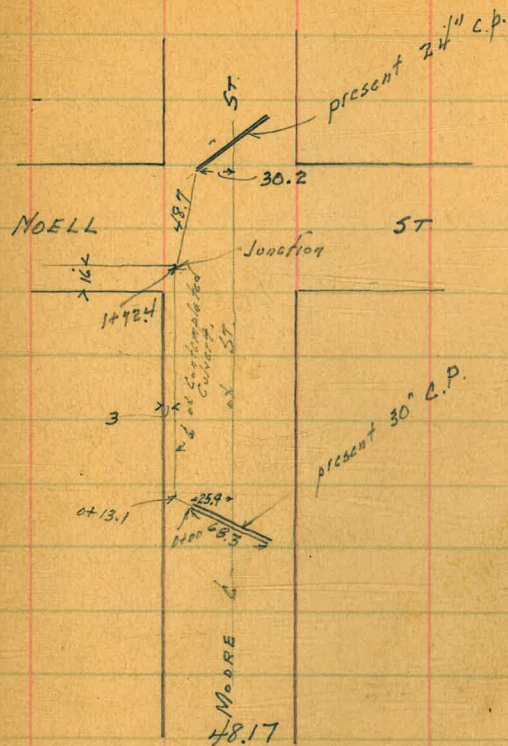
Paving in gutter at above place. 5.05 27.28

4/16/25
Gregory

Levels for Culvert
Moore St
at Noell

BP Hospital
514 5th
Clayton

227	52.04 ✓	49.77	
312	48.17 ✓	6.99	45.05 ✓
Flow Line at Inlet of 30"		7.62	40.55
Outlet = 0+00		8.56	39.61
0+13.1 = Δ		6.7	41.5
+25		8.0	40.2
+50		9.4	38.8
1+00		11.6	36.6
+11.0		11.4	36.8
+12.0		9.2	39.0
+25		13.1	35.1
+50		14.0	34.2
+58		12.1	36.1
+64		9.6	38.6
+72.4 Δ 90° L = Junction		9.0	39.2
+78		11.4	36.8
+90		13.0	35.2
+91		15.3	32.9
2+00		15.5	32.7

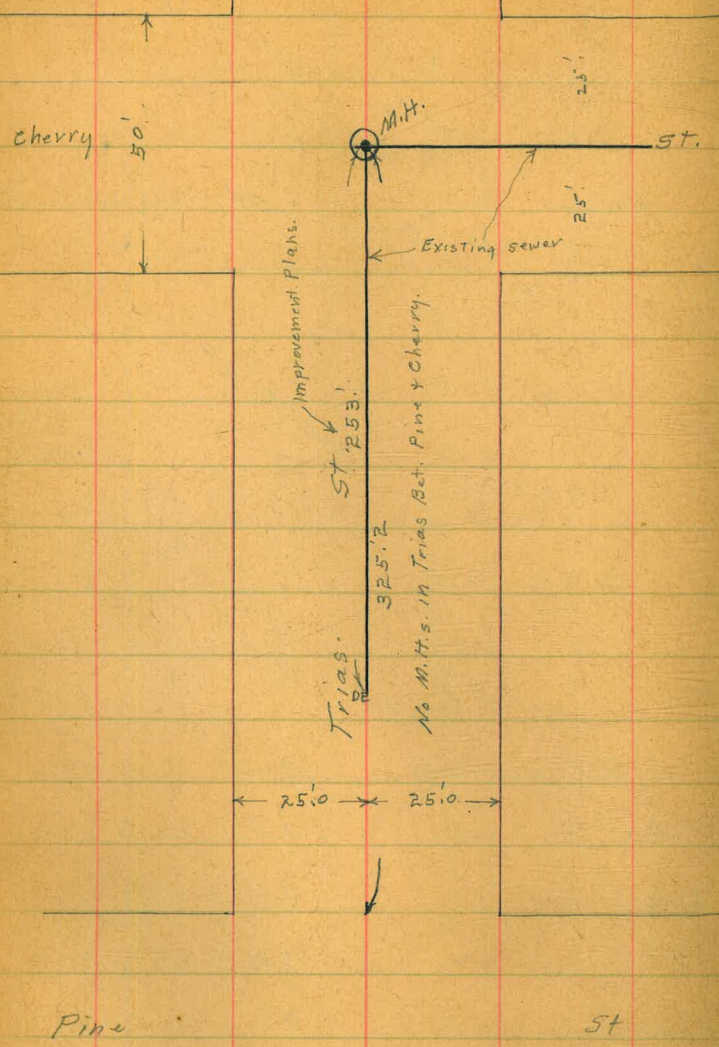


Outlet of 24" pipe = 0+00	12.03	36.14 ✓
0+06.0	12.5	35.7 ✓
+13.0	6.6	41.6 ✓
+21.0	7.2	41.0 ✓
+23.0	9.8	38.4 ✓
+32	11.6	36.6 ✓
+35	10.4	37.8 ✓
+48.7 Junction	9.0	39.2 ✓

Indexed
C.S.K.

Sewer Location Trias St.
Pine to Cherry

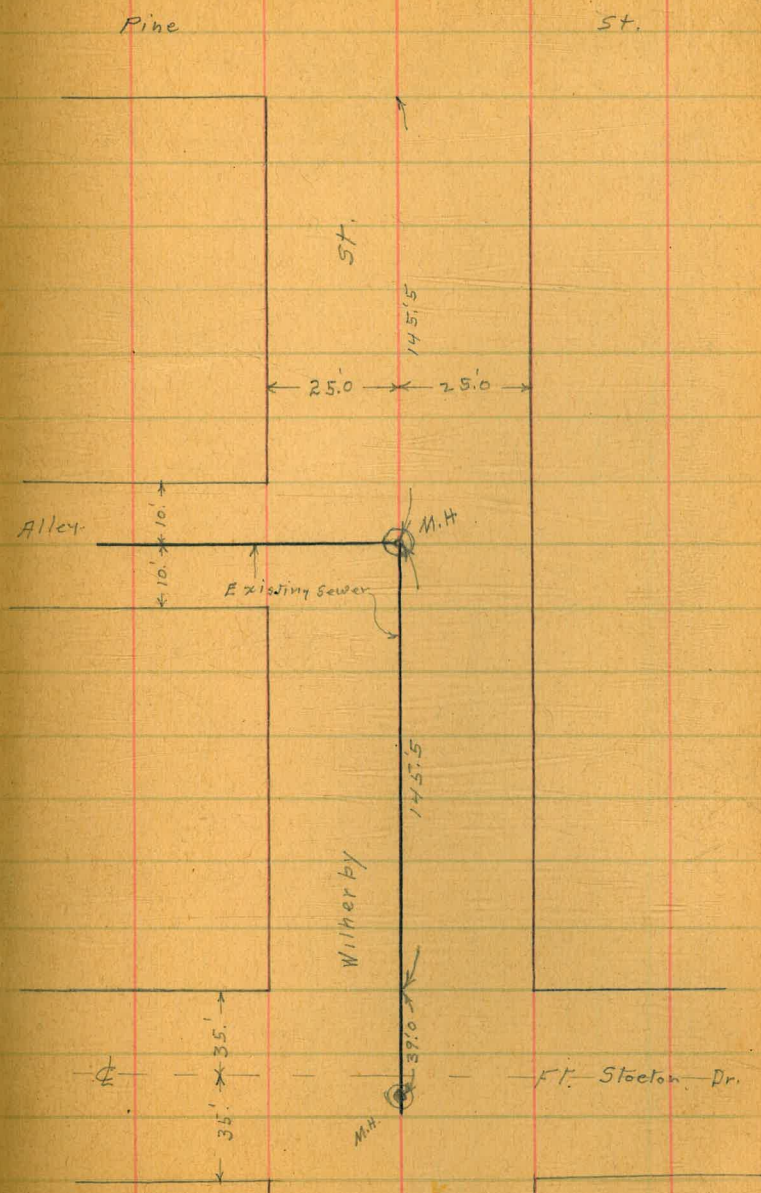
6-4-32
Miller
Walker
Bliss

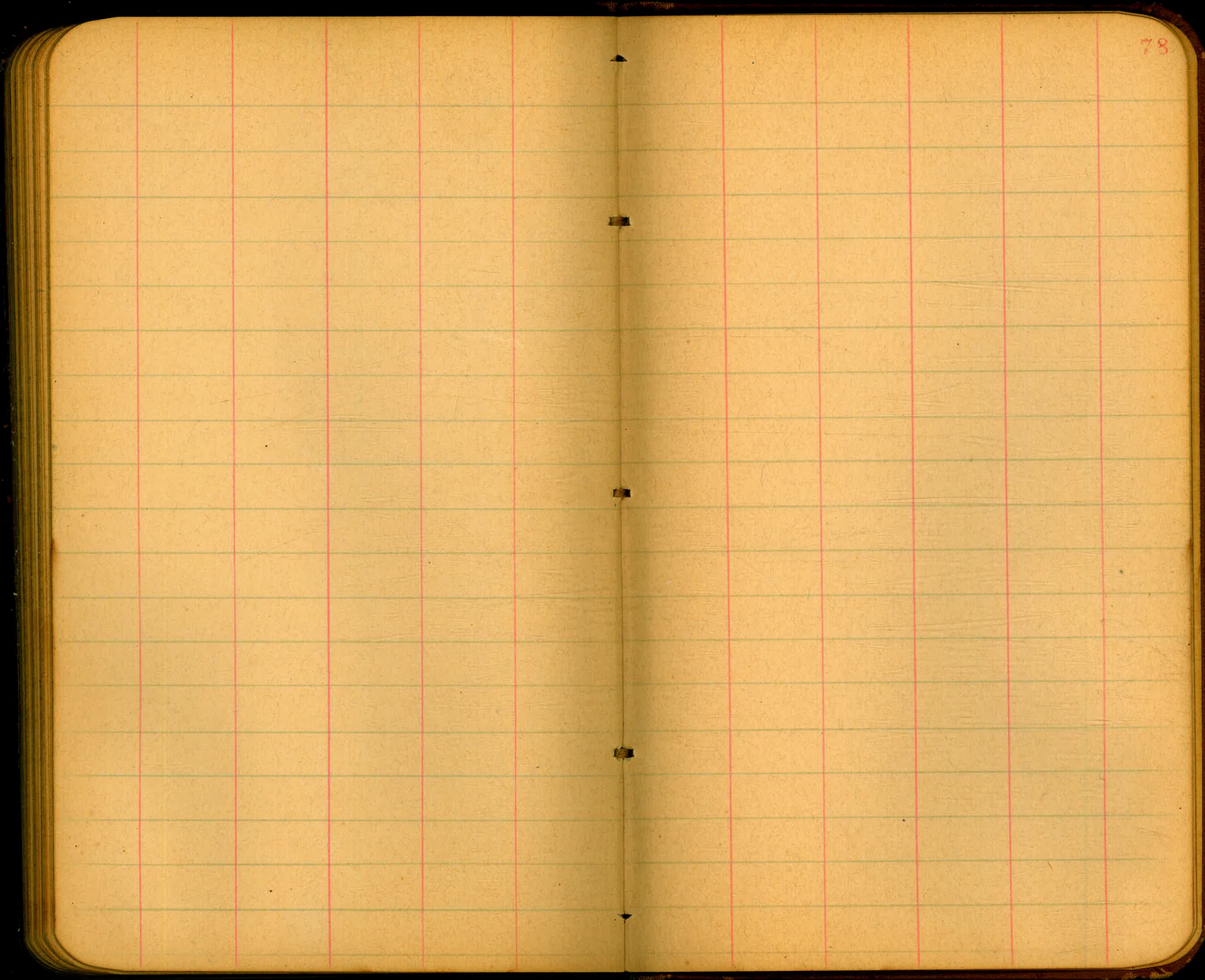


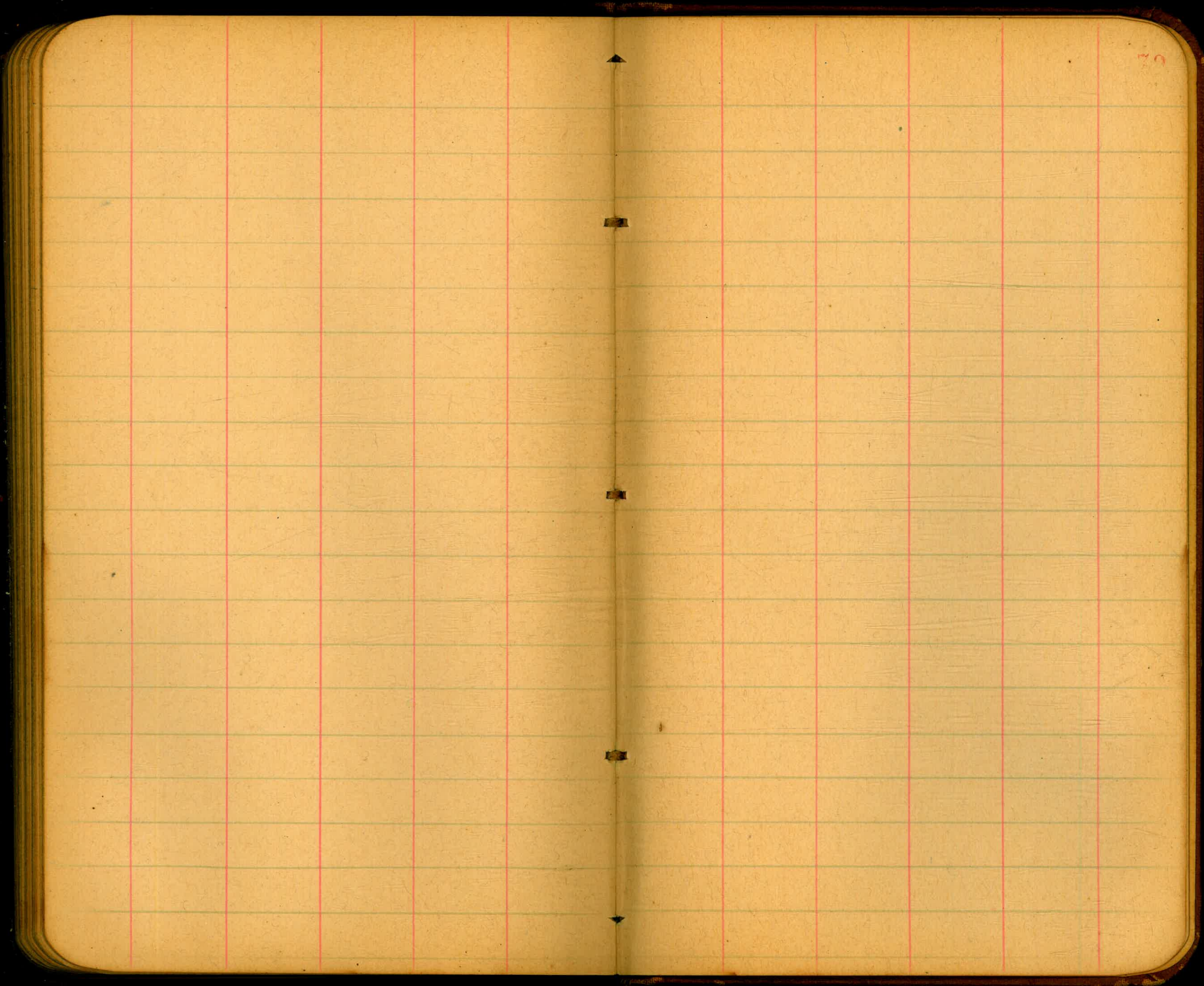
Indexed
C.S.K.

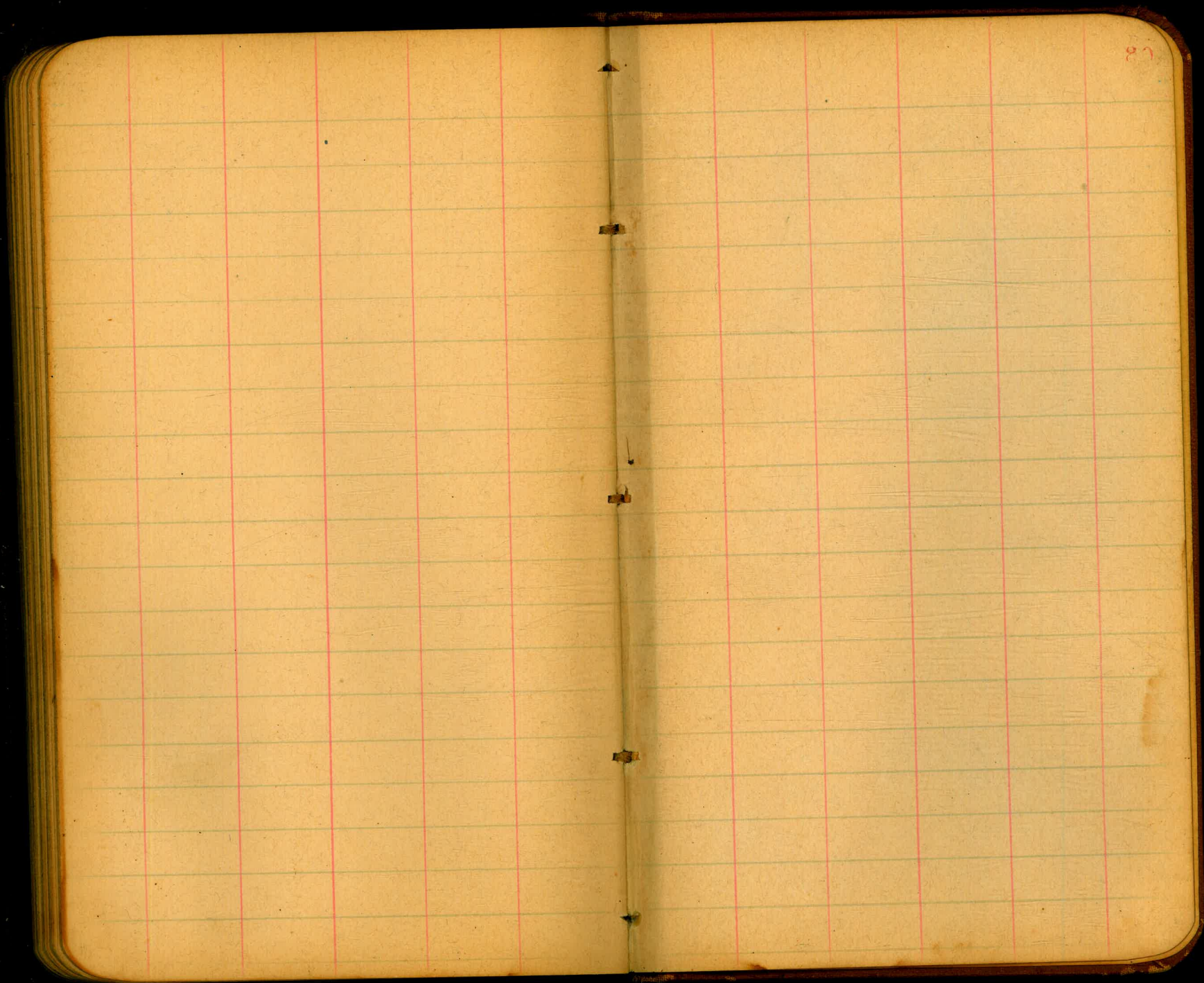
Sewer Location Witherby.
from Ft. Stockton North to Alley.

77









87

73
 36.5
 133.0
 116.0
 122.5
 373
 187
 11820
 115

133 66
 20
 58 15
 78
 63 2
 123.0
 127.5
 105.6
 49.5
 60.40
 373
 82 21
 15
 410
 85
 15
 373
 200
 6
 1000
 1.5
 5000
 10000
 27/24400
 903
 27/15000
 555

30" pipe in
 24" pipe
 All co. in but
 2. CB 17
 SE 100 ft
 415.5
 900
 3093
 2700
 555
 7663

72.5
 75.0
 77.5
 90
 102.5
 112.5
 125.0
 55
 732.5
 60
 1336
 866
 1234
 3346
 1338
 1338
 1338
 833
 3093

88
 176
 1056
 1164
 127.5
 467
 17.5
 85
 100
 108
 117
 60
 484
 1236
 1823
 910
 80
 72800
 27
 85 10 105 117 6
 10 10 10 10 10

344
 130
 1040
 530
 434
 26177
 26256
 509
 26229
 26203
 26177

38
 17
 17
 9
 56
 117
 36
 25219
 26287
 477
 26258
 373
 26230
 401
 26202
 429
 26174

26181

107 40
 200
 00037

5 short
 2.2 long

0700
 0715
 0730
 0745
 1400
 1+34 = SL Clayton
 4.34

301.6
 284
 255
 210
 190
 150
 130
 100
 80
 40

st 50th
 +30
 43
 59
 80
 100
 127 105
 175
 205
 40
 304.4
 1265
 622.5

s/c on Maryland
 127' CB
 622.5' walk

90
 85
 56
 51



30.60

4) 11.3
 28

4) 103
 26

3517
35413

163.8

B.M. = 1054

257.50 To East side
77.83 bet. rails

297.58 nail to MARK (6.78)

W.L. Hand book

12
34
52
59
75
95

130
157
163
180
196
208
224
238
250

335 - 340 = ELK ans

41
40
100
120
150
170

10
20
34.70
50
65
84
85

W 7.3
+9 6.6
26 8.6
+25 7.6
+7.5 5.2
+5 4.6
0 5.0

22.33
22.17
1

475.0

52.5

100638

90

490

220

214

521

2630 | 16560
15780
10520
7920
22600

2650 | 16560
15900
9600
7950
16500
15900

00638
415
5104
638
2522
266684

00636
415
5088
636
2544
266848

16.56
267
14.19

Crover Hill 131 30493
28429 701
on Unit. 81.9 29788
40.9
20.47
10.23
15.34

24 15
5
120 412

113 46

7.5
7

10.

17.6
236
718
512

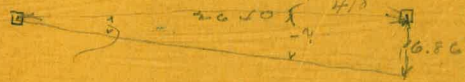
515
61
1205

1.126

605 | 68.0
601
750
601
1450
1210
240

3680
113
56.7

1.126



22 22
638
17776
6666
13327
1418636

4 | 18190
4547
2273

11.00
91
45.5
15 6.5

17 6
367
3.1
12
64
21
372
172

81
45
112
61
30
109

61
61
937
61
158.7
129

65
86.5
1575

65
716
1070

721
61

2666
297
2663