

1084

1084

LEVEL BOOK

373

1084

KEUFFEL & ESSER CO.

DRAWING MATERIALS

AND

SURVEYING INSTRUMENTS.

NEW YORK.

CHICAGO. ST. LOUIS. SAN FRANCISCO. MONTREAL.

Tables for Excavations and Embankments.

DISTANCES FROM CENTER OF ROADWAY FOR CROSS-SECTIONING.
ROADWAY 18 FEET WIDE. SIDE SLOPES 1 TO 1.
FOR SINGLE TRACK EXCAVATION.

" Copyright, 1895, by Keuffel & Esser Co. "

MICROFILMED
DEC 2 1954

	.1	.2	.3	.4	.5	.6	.7	.8	.9		
0	9.0	9.1	9.2	9.3	9.4	9.5	9.6	9.7	9.8	9.9	0
1	10.0	10.1	10.2	10.3	10.4	10.5	10.6	10.7	10.8	10.9	1
2	11.0	11.1	11.2	11.3	11.4	11.5	11.6	11.7	11.8	11.9	2
3	12.0	12.1	12.2	12.3	12.4	12.5	12.6	12.7	12.8	12.9	3
4	13.0	13.1	13.2	13.3	13.4	13.5	13.6	13.7	13.8	13.9	4
5	14.0	14.1	14.2	14.3	14.4	14.5	14.6	14.7	14.8	14.9	5
6	15.0	15.1	15.2	15.3	15.4	15.5	15.6	15.7	15.8	15.9	6
7	16.0	16.1	16.2	16.3	16.4	16.5	16.6	16.7	16.8	16.9	7
8	17.0	17.1	17.2	17.3	17.4	17.5	17.6	17.7	17.8	17.9	8
9	18.0	18.1	18.2	18.3	18.4	18.5	18.6	18.7	18.8	18.9	9
10	19.0	19.1	19.2	19.3	19.4	19.5	19.6	19.7	19.8	19.9	10
11	20.0	20.1	20.2	20.3	20.4	20.5	20.6	20.7	20.8	20.9	11
12	21.0	21.1	21.2	21.3	21.4	21.5	21.6	21.7	21.8	21.9	12
13	22.0	22.1	22.2	22.3	22.4	22.5	22.6	22.7	22.8	22.9	13
14	23.0	23.1	23.2	23.3	23.4	23.5	23.6	23.7	23.8	23.9	14
15	24.0	24.1	24.2	24.3	24.4	24.5	24.6	24.7	24.8	24.9	15
16	25.0	25.1	25.2	25.3	25.4	25.5	25.6	25.7	25.8	25.9	16
17	26.0	26.1	26.2	26.3	26.4	26.5	26.6	26.7	26.8	26.9	17
18	27.0	27.1	27.2	27.3	27.4	27.5	27.6	27.7	27.8	27.9	18
19	28.0	28.1	28.2	28.3	28.4	28.5	28.6	28.7	28.8	28.9	19
20	29.0	29.1	29.2	29.3	29.4	29.5	29.6	29.7	29.8	29.9	20
21	30.0	30.1	30.2	30.3	30.4	30.5	30.6	30.7	30.8	30.9	21
22	31.0	31.1	31.2	31.3	31.4	31.5	31.6	31.7	31.8	31.9	22
23	32.0	32.1	32.2	32.3	32.4	32.5	32.6	32.7	32.8	32.9	23
24	33.0	33.1	33.2	33.3	33.4	33.5	33.6	33.7	33.8	33.9	24
25	34.0	34.1	34.2	34.3	34.4	34.5	34.6	34.7	34.8	34.9	25
26	35.0	35.1	35.2	35.3	35.4	35.5	35.6	35.7	35.8	35.9	26
27	36.0	36.1	36.2	36.3	36.4	36.5	36.6	36.7	36.8	36.9	27
28	37.0	37.1	37.2	37.3	37.4	37.5	37.6	37.7	37.8	37.9	28
29	38.0	38.1	38.2	38.3	38.4	38.5	38.6	38.7	38.8	38.9	29
30	39.0	39.1	39.2	39.3	39.4	39.5	39.6	39.7	39.8	39.9	30
31	40.0	40.1	40.2	40.3	40.4	40.5	40.6	40.7	40.8	40.9	31
32	41.0	41.1	41.2	41.3	41.4	41.5	41.6	41.7	41.8	41.9	32
33	42.0	42.1	42.2	42.3	42.4	42.5	42.6	42.7	42.8	42.9	33
34	43.0	43.1	43.2	43.3	43.4	43.5	43.6	43.7	43.8	43.9	34
35	44.0	44.1	44.2	44.3	44.4	44.5	44.6	44.7	44.8	44.9	35
36	45.0	45.1	45.2	45.3	45.4	45.5	45.6	45.7	45.8	45.9	36

Calculated by Julien A. Hall, M. Am. Soc. C. E.

8.89

Levels on Pipeline La Jolla Delmar

Note: # = Road

SE = 20' Sa # Road

0
81.55

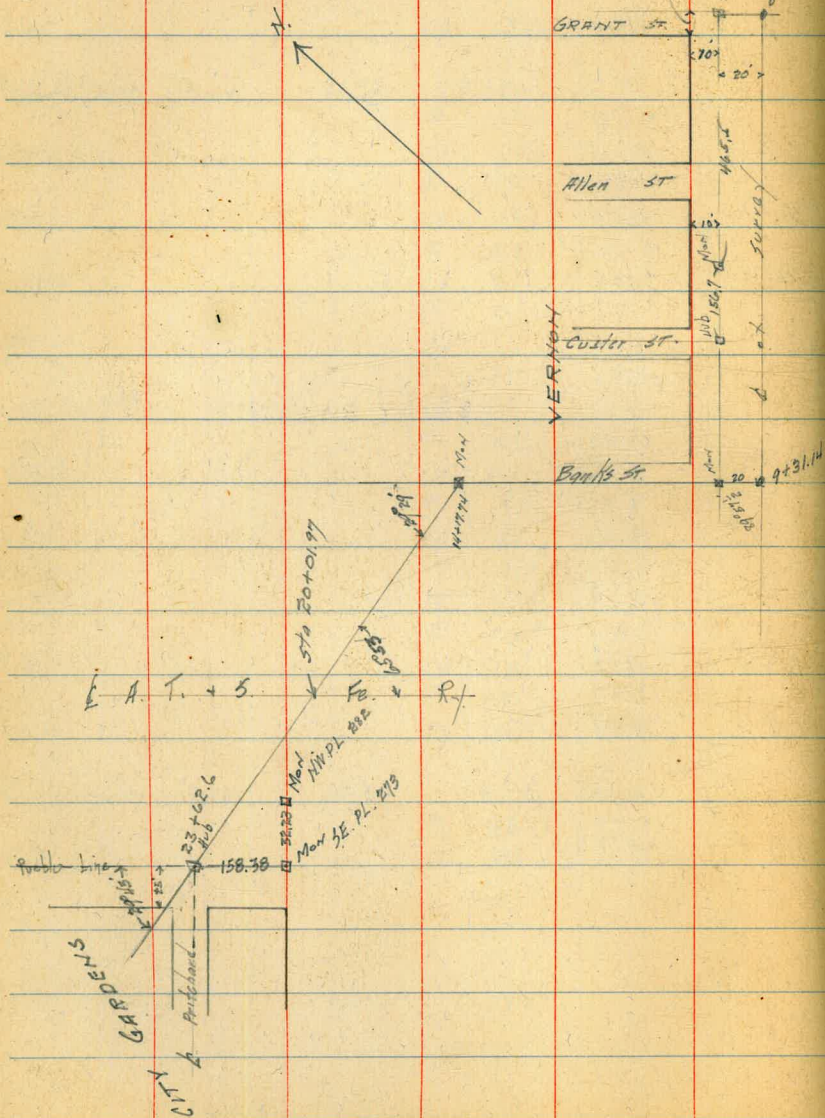
					Gr	Cut	EM. spike Pole #	ELV
	215	8370	# 4.2	79.5				
30+50			SE 2.5	81.2	75.5	5.7		
			# 6.0	77.7				
31-			SE 5.0	78.7	73.7	5.0		
			# 6.4	77.3				
+15.92 PC			SE 5.0	78.7				
			# 6.7	77.0				
+25			SE 5.2	78.5	72.8	5.7		
			# 7.8	75.9				
+50			SE 5.7	78.0	71.9	6.1		
			# 8.8	74.9				
+75			SE 6.5	77.2	71.0	6.2		
			# 9.6	74.1				
32-			SE 7.7	76.0	70.1	5.9		
			# 10.3	73.4				
+25			SE 8.9	74.8	69.2	5.6		
			# 10.9	72.8				
+50			SE 9.9	73.8	68.3	5.5		
			# 11.7	72.0				
+75			SE 11.6	72.1	67.4	4.7		
			# 12.7	71.0				
33-			SE 12.6	71.1	67.2	3.9		
TP on 33+00	326	7441	12.55	71.15				
			# 3.8	70.6				
+25			SE 3.9	70.5	67.0	3.5		
			# 4.1	70.3				
+50			SE 3.8	70.6	66.7	3.9		
			# 4.2	70.2				
+75			SE 3.9	70.5	66.5	4.0		
			# 4.3	70.1				
+86.44 EC			SE 3.7	70.7				
			# 4.3	70.1				
34-			SE 3.7	70.7	66.2	4.5		
			# 4.7	69.7				
+50			SE 3.5	70.9	65.1	5.8		
			# 5.4	69.0				
+75			SE 2.8	71.6	64.6	7.0		

					Gr	Cut	
	7441						22
35-				6.3	68.1	64.0	5.6
				SE 4.8	69.6		
				E 8.7	65.7		
+50				SE 8.4	66.0	61.6	4.4
				E 11.5	62.9		
36-				SE 10.8	63.6	59.2	4.4
T.P. bath 36+50	0.25	61.36	13.30	61.11			
				E 1.1	60.2		
36+50				SE 1.0	60.3	56.8	3.5
				E 2.3	59.0		
37-				SE 3.2	58.1	55.5	2.6
				E 3.0	58.3		
+50				SE 2.5	58.8	54.2	4.6
				E 3.3	58.0		
38-				SE 1.5	59.8	53.4	6.4
				E 3.4	57.9		
+0.5. 98 P.C.				SE 1.4	59.9		
				E 4.7	56.6		
+50				SE 2.8	58.5	52.6	5.9
				E 8.0	53.3		
39-				SE 8.1	53.2	50.1	3.1
				E 10.5	50.8		
+50				SE 10.5	50.8	47.5	3.3
				E 12.4	48.9		
40-				SE 11.7	49.6	45.0	4.6
				E 13.4	47.9		
+50				SE 12.4	48.9	44.5	4.4
T.P. Hub +50	3.10	52.01	12.45	48.91			
				E 4.8	47.2		
41-				SE 4.0	48.0	44.0	4.0

checked B.M. 5677

Survey of Road from
Old Town Dyke to
City Gardens

6
1567



6
259
891

Levels on ϕ of Survey on opposite pg
Mon. at 0.00

	2.50	11.39	8.89	
0+00 = Top of Dyke		+2.3	13.7	
0+04.0		+2.3	13.7	
0+10		1.7	9.7	
0+70		3.5		
1+00		2.8		
2+00		3.1		
2+25		1.9		
3+00		3.3		
4+00		5.0		
5+00		6.7		
5+15		5.0		
5+25		9.3		
6+00		8.8		
7		9.0		
8		8.2		
9		8.1		
TP	983	1354	7.68	3.71
9+31.14			11.80	

66.80
23626
30244

44

13.54

9+55			11.4	
10			12.7	
+25			10.7	
+55			5.8	
11			5.3	
12 = 3 End of Cow yard			5.8	
13			5.2	
14			6.2	
+17.74			7.2	
T.P.	4.16	11.98	5.72	7.82
15			5.0	
16			3.7	
17			4.0	
18			4.5	
19			5.6	
+45			5.5	
+50			7.0	
+80			6.3	
+90			7.4	
20			1.6	

Top of trail	1.00
20+13	2.4
+20	5.5
+55	8.5
+93	5.3
21	2.2
+22	4.8
+37	10.3
+60	9.8
+80	6.1
22	5.7
23	7.1
+20	7.4
+40	4.1
+50	4.9
T.P.	5.15 10.02 7.11 4.89
+626 1/2 Pritchard	5.2
24	5.6
25	5.1
26	5.5

10.02

5
5

27	5.0
28	6.5
29	5.6
30	5.5
+24.4 = d of Michigan Ave	5.2

Acreage under Irrigation between
Army + Navy School
and La Jolla

3000

0.5
.25
3.50
1.00
5.00
1.75

11.00

.25

.75

.25

.50

45.00

.20

1

10

2

3.1

45.0

2.0

2.0

1.5

17

11.0

26.75

15.00

28.0

22.5

113.75

6
6

Card paid 113.75

2.25
14.50
18.25
24.00

59.00

1.75

11.0

8.75

6.25

45.0

59.00

52.75

GRAND

225.0

J Yamashita

7A

Wakatsuki

20A

Y Nakada 6/31 Bird Park 25A

J.T. Makimura 5/4 ✓ - 6A

G. J. Toni P.L. 1773 30A

T Ouyq. 20A

Matsumoto K Yamashita 20A
4A

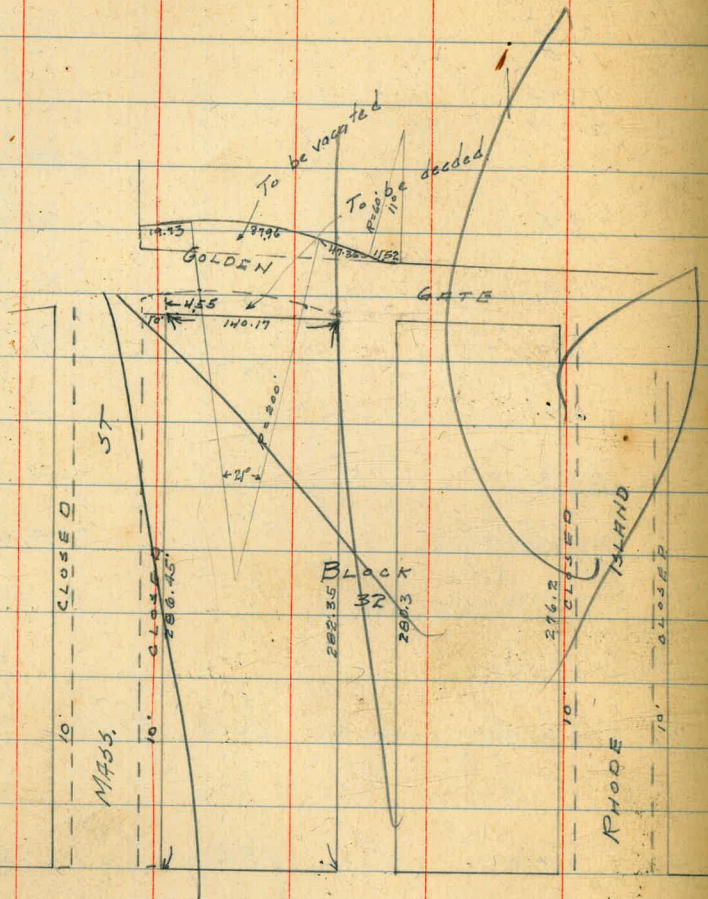
To E. R. Bowen

1120 Central Bldg

L. A

R.W thru BIK 32
University Hgts
Golden Gate Ave.

7
11. 7



UNION ST

5095
506
57
15195
50.45 24.9
3002 77
35455 1743
30390 1743
15195
15534.355 1917.3

Date to Elm 15534.36
Total Date to Elm. 19451.66
Albatross 16946.13
505.53

937
802
17395
8698
54
63
26094
52188
547974
66642
52 52
124
52
624
4292
66692
5479.74
661.92
112.30

1615
72
11230
Total Elm St Inter 6258.96

Albatross ST

93.7 238
14.2 133
79.5 377
18.5 185
3975
6360
79.5 26
1570.75 65
13
52
676
4292
71892

Elm St inter 1570.75
718.92
Total Elm St Inter 2289.67

Elm to Fir.

238
262
500
26
141
706
582
3525
30
30
900
7065
286.6
30
8598.0
3140
1932
4288
71400
706.5
9143.7

80 798 17454
80 5840 52362
5236
58604

Fir St. INTER 5860
Fir St. Alb. to Front. 10360.00

Fir to Grape 52 300 15600 15600

80 17454
80 69816
6400
69816
570184
Grape ST. 5701.84

301.1
51.9
37099
301.1
15055
1562709
Grape to Hawthorn 15627.1

198
80
63840
Hawthorn ST. 5685.8

5185
301
5186 5186
15535
1560655
518
301
518
1560655
Hawthorn to Ivy 15606.0

80.2
100

Ivy St. 5685.8

300.5
51.9
270.6
300.5
1502.5
1559.596
788
80
638.40

Ivy to Juniper 15596.0

Juniper St. 5685.8

300.1
51.8
248.3
300.1
1556.0
3
1
30
240

Juniper to Kalmia 15560.7

No sidewalk NE. cor.
Kalmia St. 5506.9

300.2
51.55
300.2
1037.0
1555.55
1556.5370

Kalmia to Laurel 15565.4

Laurel St. 5701.8

301.1
51.8
51.76
301.1
51.76
51.76
1552.5
1551.925

Laurel to Maple 15581.9

Maple St. 3743.0

JUNIPER ST.

804
1020

51.85
51.99
1038.2
51.8
200.5
404.4
1038.2
1040.044
999.54

Albatross to Front 9998.4 ✓

- Gutters 402.0

201.5
5
100.75
20
992.5
51.9

Front to First 9485.35 ✓

- Gutters 982.5

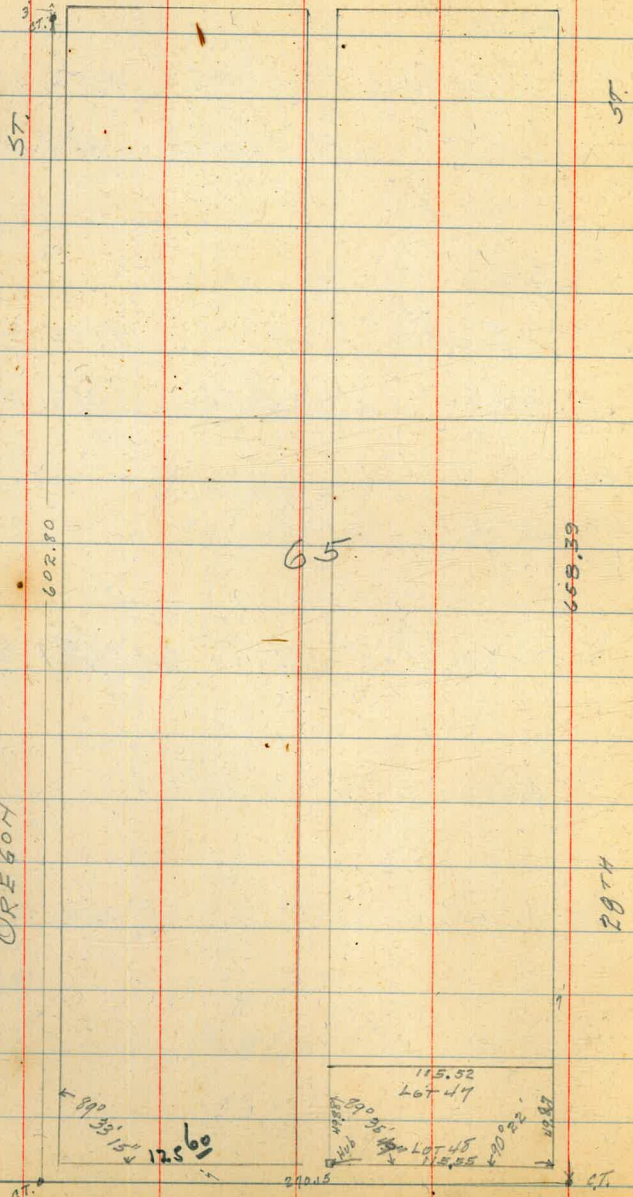
201.5
51.9
1513.5
201.5
100.75
10457.85
982.5
9475.35
10

217681.68

5/26/21 Gregory Survey Lots 47-48 Blk 65
Moore
Miller
Shaw

DWIGHT

ST



OREGON

28TH

MYRTLE

AVE

Gregory
Phare
Miller
Shaw

Cross Section of The West Half
of Arctic St
from 100' N. of 1st to
200' N. of 1st

11

150' N.

B.M. 1.43 48.12 45.89

n 40 37.82 14.70 35.42

100' N. of 1st

d of Arctic 7.1

W. 1/2 7.5

cb 7.8

W.L 7.6

150' N.

W.L 8.0

cb 8.2

1/4 8.2

d 7.0

140' N.

d 7.2

+8 8.3

1/4 9.6

+8 9.6

cb 8.6

W. 8.3

W 9.2

+10 9.5

cb 10.1

1/2 9.9

+10 2.4

C 7.2

278.40

55.59' N. of P.C. on E }
53.76' " " " " W } = 6' x 14' cement runway

E 5.6 272.8 ✓
C 5.6 272.8 ✓
+5 5.3 273.1 ✓ Edge of cement
W 4.99 273.41 ✓ on cement

83.38' N. of P.C. on E
80.63' " " " " W

W 4.5 273.9 ✓
C 5.2 273.2 ✓
E 5.0 273.4 ✓
111.18' N. of P.C. on E
107.51' " " " " W

E 4.1 274.3 ✓
C 4.3 274.1 ✓
W 4.2 274.2 ✓
132.97' N. of P.C. on E
134.39' " " " " W

W 4.0 274.4 ✓
C 3.9 274.5 ✓
E 3.8 274.6 ✓
166.76' N. of P.C. on E
161.27' " " " " W

E 3.7 274.7 ✓
C 3.8 274.6 ✓

W 3.8 274.6 ✓
T.P. 5.63 280.58 3.45 274.95 ✓

194.56' N. of P.C. on E
188.16' " " " " W } = 6' 10' cement drive

-1.5 5.30 275.28 = edge cement.
W 5.4 275.2 ✓
C 5.6 275.0 ✓

E 5.4 275.2 ✓ fence 0.5' moly.
222.35' N. of P.C. on E
215.02' " " " " W } = E.C.

E 5.4 275.2 ✓
C 5.2 275.4 ✓
+5 5.6 275.0 ✓
W 5.4 275.4 ✓

50' N. of E.C.

W 4.8 275.8 ✓
C 4.8 275.8 ✓
E 4.8 275.8 ✓

80' N. of E.C.

E 4.9 275.7 ✓
C 5.0 275.6 ✓
W 4.9 275.9 ✓

100' N. of EC

W		5.3	275.3	✓
+4		5.9	274.7	✓
C		5.8	274.8	✓
E		5.7	274.9	✓
	135' N. of EC on E 137.98 - - - W			1/2 SEC. B.
-2.5		7.8	272.8	✓
E		8.1	271.5	✓
C		7.4	273.2	✓
+4.1 = wall		7.4	273.2	✓
W		5.9	274.7	✓
T.P.	2.90 274.11	7.37	273.21	✓
	70' N. of Bon E 22.98 - - - W			
W		4.6	271.5	✓
C		3.2	270.9	✓
E		3.3	270.8	✓
	41' N. of Bon E 23.98 - - - W			
E		3.4	270.7	✓
C		3.3	270.8	✓
+		3.3	270.8	

+4.5

W		1.9	272.2	
W		1.5	272.6	✓
	50' N. of Bon E 52.98 - - - W			
W		4.1	270.0	✓
+1.5		4.3	269.8	✓
+4.0		6.2	267.9	✓
C		5.9	268.2	✓
E		5.7	268.4	✓
	75' N. of Bon E 77.98 - - - W			
E		7.8	266.3	✓
+2		8.3	265.8	✓
C		8.2	265.9	✓
+4.5		8.5	265.6	✓
W		5.4	268.7	✓
	105' N. of Bon E 107.98 - - - W			
W		8.6	265.6	✓
+4		11.2	262.6	✓
C		11.2	262.6	
+6		11.1	262.7	
E		10.6	263.5	✓

274.11

110.07 N.A.K. B. & E.

117.24 - - - W.F.L. Ft Stockton Dr.

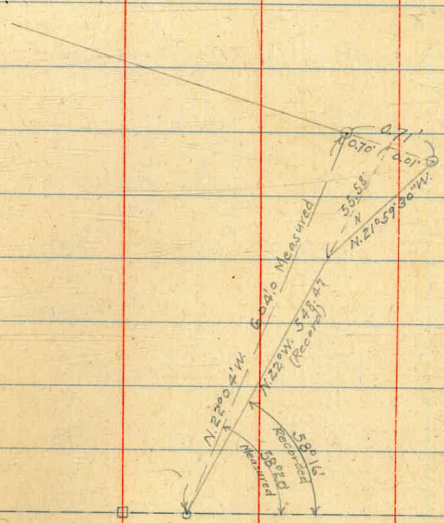
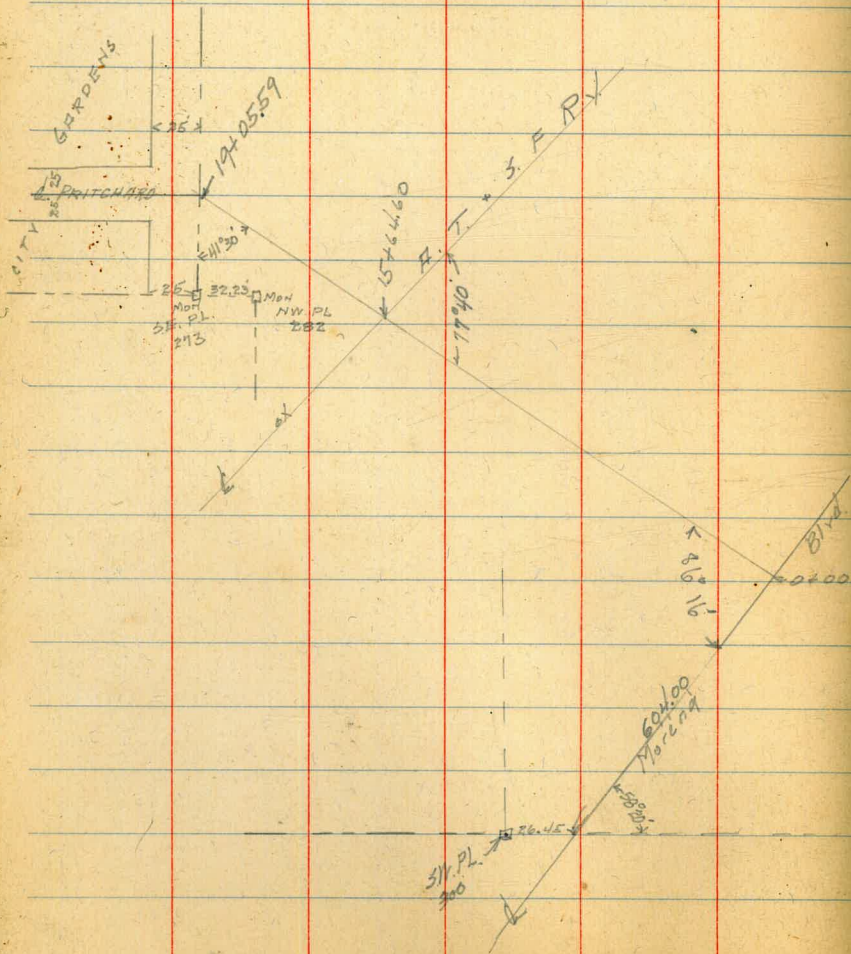
1375

E	17.20	261.91	on curb
C	12.25	261.6	
W	12.16	261.97	
CHK B.M. SE. Hickory + Ft. Stock	13.98	261.41	= cement curb
		260.13	= 260.16.

7/14/21 Gregory
Krook
Miller

Survey of Road To
City Gardens
from Morena Blvd

16



Calculation of correction to record
center line of Morena Boulevard.
G.R.H.

8/12/21 Moore
Miller

Property Levels on 32nd St
SL Grape to Sh Elm

280.06

17

				WL		6.0	274.1
					2+50		
310	280.06	276.96	SW BP 32 nd + Grapes	WL		7.6	72.5
	Sh Grape produced from West = 0+00			EL		8.9	71.2
WL		1.0	79.1		3+00		
EL		1.1	79.0	EL		10.8	69.3
		0+20		WL		9.5	70.6
EL		1.4	78.7		3+20		
WL		1.0	79.1	WL		10.3	69.8
		0+50		EL		11.6	67.5
WL		1.8	78.3		3+65 Nk Fir to West 60' wide		
EL		1.8	78.3	EL		14.2	65.9
		1+00		WL		12.8	67.3
EL		3.4	76.7	T.F.	0.13	267.21	12.98
WL		3.0	77.1			Ck Fir	
		1+50		WL		1.9	65.3
WL		4.2	75.9	EL		3.3	63.9
EL		5.3	74.8			S.L Fir = 0+00	
		2+00		EL		5.1	62.1
EL		7.2	72.9	WL		4.2	63.0

267.21

0+50

WL 8.2 259.0

EL 8.6 58.6

0+75

EL 10.7 56.5

WL 9.9 57.3

1+00

WL 13.1 54.1

EL 12.7 54.5

T.P. 0.93 255.18 12.96 254.25

1+50

EL 5.8 49.4

WL 9.7 45.5

1+62.5

WL 10.83 44.4

T.P. 0.99 243.17 13.00 242.18

2+00

WL 2.9 40.3

EL 1.1 42.1

243.17

2+50

EL 8.3 234.9

WL 10.8 32.4

2+75.0 = N.L. Elm on the East

WL 14.4 28.8

EL 17.3 30.9

T.P. 0.05 230.17 13.05 230.12

2+99.25 = N.L. Elm on the West

EL 3.4 26.8

WL 5.5 24.7

3+15 = C Elm on East

WL 8.1 22.1

EL 4.7 25.5

3+29.25 = C Elm on West

EL 6.3 23.9

WL 10.2 20.0

3+55 = S.L. Elm on East

WL 13.7 16.5

EL 8.6 21.6

18

center of
4.5 Cem. Walk

3 + 59.25 = Sh Elm on V/est

EL	9.0	221.2	
WV	14.6	15.6	
SE Check in EM	6.67	223.50	220.48 SE 32 nd Elm

11969

1/4	78	111.9	1/4	53	114.4
c	78	111.9	cb	58	113.9
1/4	83	111.4	E	54	114.3
cb	90	110.7	158.90' N. of W } 145.76' - - E } = SL Imperial Ave		
+1	83	111.7	E	42	115.5
E	75	112.2	cb	41	115.6
50' N. of B			1/4	35	116.2
E	67	113.0	c	33	116.4
cb	74	112.3	1/4	36	116.1
1/4	69	112.8	cb	37	116.0
c	66	113.7	+2	27	117.0
1/4	66	113.1	W	24	117.3
cb	68	112.9			
W	60	113.7			
100' N. of B					
W	43	115.4			
+8	48	114.9			
cb	56	114.1			
1/4	53	114.4			
c	52	114.7			

	2+50		4.8	75.4				
	3+		5.8	74.4	0+00		1.5	78.7
Blanco	+ 25.3 = 0+85 on Drain #3		6.2	74.0	+ 20		3.5	76.2
	1097 + 50		6.2	74.0	+ 35		3.3	76.9
	1897 4		5.8	74.4	+ 40		5.2	75.0
	1860 + 27		5.2	74.8	+ 50		5.5	74.9
	208 + 98.3 = Δ pt 4 + 483		7.6	74.6	+ 53		4.3	75.9
	2727 5+03	4+53	11.8	68.4	+ 85 = 3+25.3 on Drain #2		6.2	74.0
	2897 + 50	5+60	13.0	67.2		2.81	76.86	5.97
	3097 6	5+50	14.0	66.2				74.25
	3597	6+00	15.97	64.25				

Drain #4

0+00	2.7	74.2
+35	4.7	72.2
+65	6.5	70.4
+91	7.5	69.4
1400	8.7	67.2

PK

Drain Notes
on 37th St
N. of Woolman

	0.0	63.42	63.42	Top of SE Woolman
J.P.	5.27	55.76	12.93	50.79
0+00			6.1	49.7
0+30			6.6	49.2
+34.5	= Inlet of iron pipe		7.5	48.3
+36			5.9	49.9
+45			4.7	51.1
+72			5.5	50.3
+74	= E. End 14" dia. leading to p. SW		8.55	47.21
				Top of N pipe



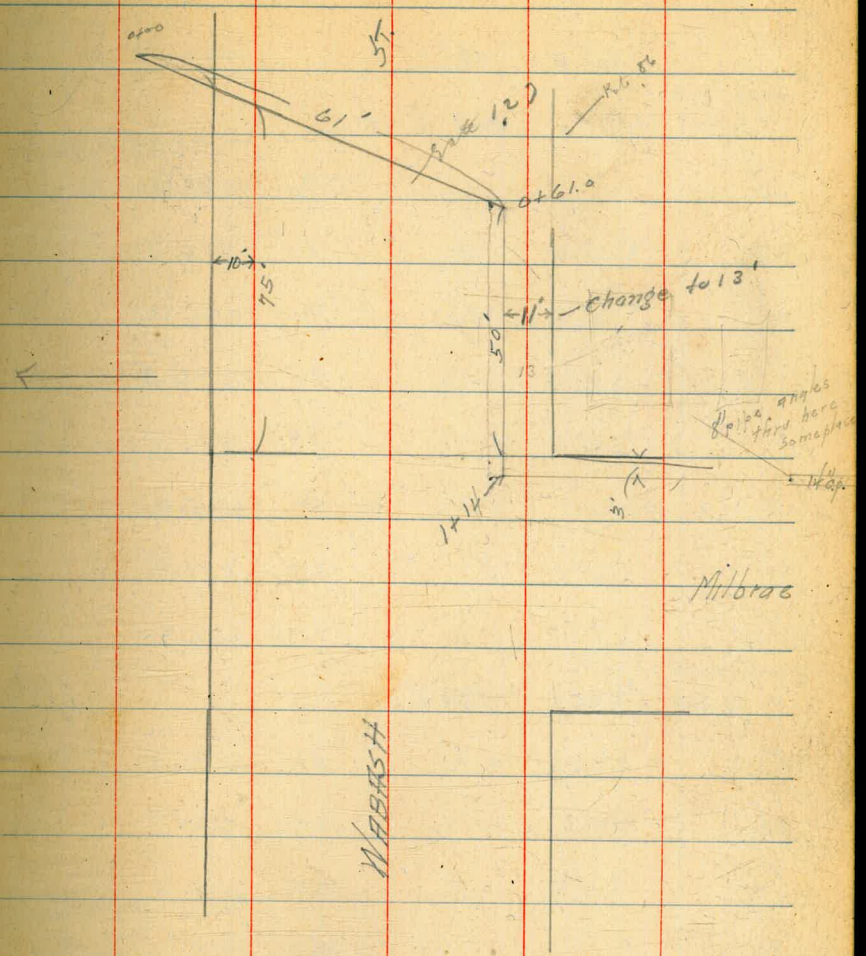
Woolman

Ave.

1/9/22 Gregor Miller Levels etc on Drain Nabash + Milbrac

12.22
1.28

				171/550 Nabash + Milbrac
	1.79	87.38	85.59	
0+00		8.1	79.3	
0+10	3	8.4	79.0	
0+23		8.9	78.5	
+26		8.3	79.1	
+28		8.1	79.3	
+61.0		7.4	80.0	
1+00		5.5	81.9	
+14	A pt.	4.6	82.8	
+25		5.2	82.2	
2+00		9.7	77.7	
+80		14.4	73.0	
+82	= Top of present 14" pipe	17.82	69.56	



2/10/20

Gregory
Dipore
170/100
300WCROSS SECTION OF
1 VV ST
from 362' E of 31st
To 450 - - -80' ST
16' cbs
12' 1/4's

	2.42	285.41	282.99	
Grade N side	277.14			
" S side	276.14	362' E of 31st		
N		7.1	278.0	
+5		8.7	276.7	
cb.		9.2	276.7	
1/4		9.1	276.3	
c		9.3	276.1	
1/4		9.4	276.0	
cb		10.0	275.6	
S		9.1	276.3	
Grade N side = 276.45				
" S side 275.45		385' E		
S		9.0	276.4	
cb		10.7	274.7	
1/4		10.7	274.7	
c		10.3	275.1	
1/4		10.6	274.8	
+4		10.5	274.9	
+9		14.1	271.3	
cb		12.2	273.2	

BP NW
31st + 1 VV

+5	285.41	10.7	274.7
+12		9.0	276.4
N		7.3	278.1
Grade N side = 276.24			
" S side = 275.24	392' E		
N		8.0	277.4
+11		12.3	273.1
cb		11.8	273.6
1/4		11.6	273.8
T.P.	2.64	276.04	12.01
c		4.8	271.2
+8		6.2	269.8
1/4		5.2	270.8
+8		6.2	269.8
cb		1.5	274.5
S		0.2	275.8
Grade N side = 276.2			
" S side 275.2	400' E		
S		0.7	275.3
+14		2.1	273.9
cb		3.1	272.9
+3		3.7	272.3

continued page 28

2/10/23 Gregory Levels on Curb + Sidewalk
1/4 VV 5T.

28541

r.v	28541	282.99	BP NW 3/20/23
300' E of 31st			
sidewalk is 533 wide + 15 5' from 1/2 and 367 from curb			
N edge sidewalk N side	6.30	279.11	
N curb	6.43	278.98	
S ✓	7.39	278.0 ✓	
S edge sidewalk S side	7.17	278.24	
325' E of 31st			
S edge sidewalk S side	7.94	277.47	
S curb	8.20	277.21	
N ✓	7.44	277.97	
✓ edge sidewalk N side	7.08	278.33	
walk is no good from 330' E of 31st East on N side			
350' E of 31st			
N curb.	8.56	276.85	
S ✓	9.21	276.20	
S edge sidewalk S side	8.91	276.50	
walk ends on S side 367' E of 31st			
S edge sidewalk S - at 367' E	9.33	276.08	
S curb ✓	10.08	275.33	
N ✓ ends at 362' E	8.90	276.51	

Plotted
2/17/23
JRB

S curb Ends at 390 E of 31st	10.60	274.81	
Levels N of 5T Curb E. of Fern			
1.46	28547	284.01	
50' E of Fern			
S curb	5.93	279.54	
S edge S. sidewalk	5.80	279.67	
75' E			
S curb	6.77	278.70	
N edge S. sidewalk	6.80	278.67	
S ✓	6.68	278.79	
85' E			
S edge S sidewalk	7.01	278.46	
N ✓ ✓ ✓	7.11	278.36	
S curb	7.13	278.34	
100' E			
S curb	7.71	277.76	
N edge S. sidewalk	7.78	277.69	
S ✓ ✓ ✓	7.60	277.87	

continued Page 30 ✓

Plotted
2/17/23
see 541 B
JRB

+4	9.4	266.6
1/4	7.6	268.4
C	7.1	268.9
1/4	3.2	270.8
cb	4.0	272.0
N	2.3	273.7
+5	2.8	273.2
	407' E	
-5	8.5	267.5
N	7.9	268.1
+11	8.5	267.5
cb	10.7	265.3
+6	9.5	266.5
1/4	10.7	265.3
C	9.5	266.5
+4	9.3	266.7
+5	12.3	263.7
1/4	12.3	263.7
+3	12.3	263.7
cb	5.0	271.0

Plotted
Feb 13 1923
HRS

+9	27604	4.3	271.7	
S		3.5	272.5	
	420' E			
S		8.2	267.8	
+5		9.4	266.6	
cb		13.3	262.7	
TP.	140	265.12	12.32	263.72
+9		4.3	260.8	
1/4		7.7	257.4	
+9		6.7	258.4	
C		8.3	256.8	
+5		7.0	258.1	
1/4		8.2	256.9	
cb		5.0	260.1	
N		4.7	260.4	
	430' E			
N		11.6	253.5	
cb		10.8	254.3	
1/4		12.9	252.2	
+9		13.0	252.1	

c	12.1	2530
1/4	10.9	2542
cb	7.2	2579
s	0.5	2647

445' E

s	6.5	2586
cb	14.0	251.1
1/4	17.1	2480
c	19.0	246.1
1/4	18.8	246.3
cb	20.0	245.1
N	17.3	247.8

450' E

N	15.0	250.1
cb	16.8	248.3
1/4	19.2	245.9
c	19.3	245.8
1/4	18.3	246.8
cb	16.8	248.3
s	8.4	2567

Plotted
Feb 13 1923
JHS

Continued from page 27

285.47

115' E

30

S edge s sidewalk 7.41 27806

N - - - 7.47 27800

S curb 7.54 27793

179' E = C. B. s. side

Top of C.B. 8.32 27715

S curb 7.30 27817

N edge s sidewalk 7.50 27797

S - - - 7.42 27805

150' E

S edge s sidewalk 7.04 27843

N - - - 7.07 27840

S curb 7.16 27831

133' E = C. B. on N side

Top of C.B. 7.70 27777

- - curb 6.38 27909

Plotted 2/12/23
See D-541
2/12/23

H.I. 66.27

319'E = Double garage on N 0.5' out Alley Dirt

N 5.3 60.9

E 5.7 60.5

S 5.9 60.3

350'E

S 6.0 60.2

E 5.9 60.3

N 5.5 60.7

394'E = garage on N cement Floor 3.7 out of Alley

N- 3.7 4.63 61.61 on Floor

N- 0.4 4.83 61.41 on cement
porch

N 5.0 61.2

E 5.5 60.7

S 5.5 60.7

425'E = garages N 1.6 out San Line both Dirt

S 5.3 60.9

E 4.9 61.3

N 5.0 61.2

465'E

N 4.3 61.9

E 4.7 61.5

S 4.8 61.4 ✓

H.I. 66.24

507'E = Triple garage on N 3.0 out of Alley Dirt

" " = garage on S 1.5' out of Alley Dirt

S 4.5 61.7

E 4.3 61.9

N 4.0 62.2

540'E

N 3.6 62.6

E 4.1 62.1

S 4.1 62.1

575'E

S 3.3 62.9

E 3.5 62.7

N 3.2 63.0

600'E

N 3.85 62.39 on curb return

E 4.30 61.9

S 4.10 62.1 on curb return

T.P. 3.32 H.I. 5.04 4.52 61.72 ✓

B.M. N.E. 25th Imperial 6.11 58.93 ✓

32

X See Alley in B/K 13 Cleveland Hts
15' wide

Walnut Brooks Bet Front + 1st
8/20/23 mill
5 ha

265.76

33

13. M. N. W. Front & Walnut
Formerly 1st

11.88 262.78

250.90

133' N = Garage on W. Cement Floor 7' Back

5.0 60.8

00 = N. Line Walnut

E

5.0 60.8

E

1.76

61.07

one return

W

5.4 60.4

E

2.58

60.7

on pavement

W+2.7

5.63 60.13 on cement apron

W

T.P.

3.42 HF 265.76

2.72

60.06

on cement

W+7.0

5.51 60.75 " " Floor

2.44

260.34

25' N

160' N = Garages E & W Cement Floors

W

5.03

60.73

on cement wall

W-3.0

4.49 61.27 " " "

E

5.0

60.8

W-1.0

4.69 61.07 " " apron

E

5.3

60.5

W

4.7 61.1

50' N

E

5.1

60.7

E

3.9 61.9

E

5.1

60.7

E+4.6

3.67 62.09 " " Floor

W

5.01

60.7

on cement wall

178' N

90' N = Garage on W Cement Floor 5.3 out of Alley

E

3.5 62.26

W-5.3

4.91

60.85

on cement floor

E

4.1 61.66

W-2.5

4.95

60.81

" " Apron

W

4.0 61.8

W

5.0

60.8

213' N = Garage on W 4.0' Back

E

4.9

60.9

W-4.0

3.88 61.88 " " "

E

5.0

60.8

W-3.0

3.95 61.81 " " apron

W

3.7 62.06

Plotted
Aug 31 1923
JBB

HI. 265.76

213N Con

C		3.6	62.2	
E		3.5	62.3	
	244' N = Garage on E 10' Back wood Floor			
E-03		2.80	63.0	on Floor
E		3.2	62.6	
C		3.2	62.6	
W		3.4	62.4	
T.P.	5.24 HI 267.78	3.22	262.54	

282' N = Garage on E Dirt Floor 9.0 Back

W		5.5	62.3	
C		5.5	62.3	
E		5.3	62.5	
	330' N			
E		5.6	62.2	
E		5.7	62.1	
W		5.8	62.0	

350' N = cement walk to House on line

W		6.13	61.65	on cement Walk
---	--	------	-------	----------------

366' N = Garage on E. Cement Floor 8.0 Back

W		5.7	62.1	
E		5.6	62.2	
E		5.6	62.2	

HI. 267.78

400' N.

E		5.3	62.5	
C		5.5	62.3	
W		5.6	62.2	
	430' N			
W		5.8	62.0	
C		5.6	62.2	
E		5.1	62.9	

460' N = Garages E & W cement Floors

E		5.35	62.43	on cement Floor on Line
E+I		5.45	62.33	on cement apron
C		5.6	62.2	
W		6.0	61.8	
W+36		6.00	61.8	'Garage' no more

500' N E. Fence 1.0' in Alley

W		5.2	62.6	
C		5.0	62.8	
E		4.7	63.1	

539' N = garage on E. cement Floor 5.0 Back

E-5		4.14	63.64	on cement Floor
E+I		4.32	63.46	" " Apron

Beisr. 250 & 270 N. Garage
 on E. Side, Wood Floor. Entrance
 to E. Alley. is 1.1 in Alley

HI. 267.78

539' N con.

C 4.6 63.2

W 4.7 63.1

575' N

W 4.6 63.2

C 4.5 63.3

E 4.5 63.3

590' N

E 5.5 62.3

C 6.3 61.5

+4 6.3 61.5

W 5.6 62.2

600' N = S. Line Brooks

W 8.0 59.8 on lawn

C 7.9 59.9

+3 7.9 59.9

E 6.8 61.0

602.5' N = S. Line Sidewalk on Brooks

E 8.05 59.73 on sidewalk

W 8.60 59.18 " "

T.P. 267 261.95 8.50 259.28

T.P. 9.08 252.87 13M, NW Front of Brooks Formerly 135

No Alley. 7-14-1951

X See Alley BIK 13. Mission Hills. Hermosa To Stephens
 Bet Lewis & Montecito 20' Wide

Ht. 281.69

150' W

36

EM	5.91	Ht. 281.69	275.78	s. E Stephens + Lewis	S	7.4	74.3
					E	7.7	74.0
					N	8.2	73.5
							159' W = Garage on S 10' Back cement Floor
S	6.33		75.36	on cement cb	N		
E	6.6		75.19				
N	6.57		75.12	" " "	S-10	6.10	75.6 on cement Floor
	15' W				S-6.0	6.55	75.14 " " apron
N	6.3		75.4				200' W = E Line Garage on S. 10' Back cement Floor
E	5.8		75.9		N	9.3	72.4
+9	5.8		75.9		E	9.0	72.7
S	5.0		76.7		S	8.0	73.7
	50' W				S+6.0	7.45	74.24 on cement apron
S	5.4		76.3		S+10.0	7.00	74.7 " " Floor
+2	6.1		75.6				225' W = W Line Garage
E	5.9		75.8		S-10	7.00	74.7 " " "
N	6.4		75.3		S-6.	7.50	74.2 " " apron
	95' W = Garage on N cement Floor 5.5 Back				S	8.3	73.4
N-5.5	6.72		74.97	on cement Floor	E	8.9	72.8
N	6.92		74.77	" " apron	N	10.0	71.7
E	6.6		75.1		+5.	10.2	71.5
+8	6.7		75.0				
S	5.8		75.9				✓

Platted
 Sept 4 1923
 H.R.B.

HI 281.69

250'W

N	9.8	71.9	C
E	8.7	73.0	S
S	8.1	73.6	

300'W

S	8.0	73.7	C
E	8.5	73.2	N

N

T.P.

5.67

279.01 ✓

9.2

72.5

8.35

273.39 ✓

325'W = Garage on N 70' Floor 2.0' Nap Line

N-2.0	6.70	72.3	on wood sill	N
-------	------	------	--------------	---

N-2.0	7.2	71.8	on ground.	N+3.5
-------	-----	------	------------	-------

N	7.1	71.9		E
---	-----	------	--	---

E	6.0	73.0		S
---	-----	------	--	---

S	4.8	74.2		
---	-----	------	--	--

370'W

S	4.8	74.2		E
---	-----	------	--	---

E	5.0	74.0	+ 6.5	
---	-----	------	-------	--

N	5.8	73.2		N
---	-----	------	--	---

380'W

N	4.1	74.9		N
---	-----	------	--	---

+4.0	3.9	75.1	+4.2	
------	-----	------	------	--

HI 279.01

380'W (cont)

37

4.8	74.2	
-----	------	--

4.8	74.2	
-----	------	--

385'W

4.7	74.3	
-----	------	--

4.9	74.1	
-----	------	--

5.0	74.0	
-----	------	--

402'W = E. End Garage cement Floor 2.5' Back

N-2.5

4.92	74.08	on cement floor
------	-------	-----------------

N

4.95	74.06	" "
------	-------	-----

N+3.5

5.12	73.89	on endment apron
------	-------	------------------

E

5.0	74.0	
-----	------	--

S

4.5	74.5	
-----	------	--

434'W = W. End cement walk running W. from garage 3.5' in Alley

S

4.4	74.6	
-----	------	--

E

4.7	74.3	
-----	------	--

+ 6.5

4.61	74.4	on S. Edge of walk
------	------	--------------------

N

4.58	74.43	on walk
------	-------	---------

#75'W

N

4.0	75.0	on lawn
-----	------	---------

+4.2

4.2	74.8	S. Edge of lawn
-----	------	-----------------

279.01

475. W (con)

38

e 4.4 746

s 4.4 746

489. W = E. End wall 4.2' in alley running W to Sta. 500

s 5.4 736

e 5.8 732

+57 5.6 734 Bottom wall

+58 4.4 746 Top of wall

N 4.2 748

500. W = E. Line Hermosa Way

N 5.3 737 on wall

+42 5.4 736 on wall

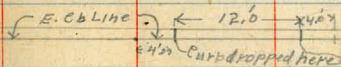
+43 8.20 708 Bottom wall

e 8.40 706 on cement wall

s 9.58 7043 " " "

T.P. 7.21 277.54 8.68 270.33

T.P. 4.50 273.04 B.M. NW Hermosa Monticito



Hermosa Way

11/2/23 Gregory

CROSS SECTION OF
A PORTION OF CURLEW ST.
S. of Juniper

39

BM 6.85 104.68 97.83 SW Union 1/4 JUNIPER ST.

5' Curb Line of Juniper.

12' W. of E.L. of Union 8.7 95.9 ✓

E.L. of Union 8.0 96.6 ✓

30' E. of E.L. Union 7.3 97.3 ✓

62.7" - - - - = E.L. of Curlew 6.0 98.6 ✓

on curb 5.72 98.96 ✓

E.L. of JUNIPER

57.2" E. of E.L. Union = E.L. of Curlew 4.9 99.7 ✓

50' - - - - - 5.2 99.4 ✓

30' - - - - - 6.5 98.1 ✓

E.L. of Union 7.8 96.8 ✓

11' W. of - - - 8.2 96.4 ✓

14' - - - - - 8.5 96.1 ✓

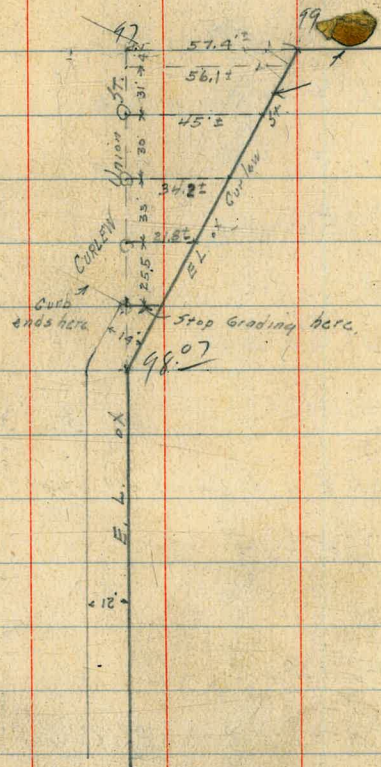
4' 5" of S.L. Jun.

14' W. of E.L. of Union 8.5 96.1 ✓

11' - - - - - 8.2 96.4 ✓

7.4 97.4 ✓

30' E. of - - - 5.7 98.9 ✓



ST.

UNION

96.07

98.07

34.3

57.2
56.1
45.2
34.2
25.5
19.2
12.0

Curb ends here
Stop Grading here

10468

35' 3.0 x 3.2 of Juniper

45' E. of E.L. Union = EL Curlew	29	101.7	✓
42' ✓ ✓ ✓ ✓	4.0	100.6	✓
30' ✓ ✓ ✓ ✓	4.8	99.8	✓
5' ✓ ✓ ✓ ✓	6.6	98.0	✓
E.L. of Union	7.2	97.4	✓
5' W. of ✓ ✓ ✓ ✓	8.0	96.6	✓
12' ✓ ✓ ✓ ✓	8.4	96.2	✓

65' 3.0 x 3.2 of Juniper

12' W. of E.L. of Union	8.2	96.2	✓
✓ ✓ ✓ ✓	7.1	97.5	✓
15' E. of ✓ ✓ ✓ ✓	5.6	99.0	✓
30' - - - -	4.8	99.8	✓
34.2' - - - - = EL Curlew	3.0	101.6	✓

100' 3.0 x 3.2 of Juniper

21.7' E. of E.L. Union = EL Curlew	4.0	100.6	✓
18' ✓ ✓ ✓ ✓	5.4	99.2	✓
10' - - - -	6.1	98.5	✓
✓ ✓ ✓ ✓	7.1	97.5	✓
10' W. of ✓ ✓ ✓ ✓	7.6	97.0	✓
18' ✓ ✓ ✓ ✓	8.1	96.5	✓

10469

125.5' 3.0 x 3.2 Juniper

12' W. of E.L. of Union	7.8	96.8	✓
2.4' - - - - = Cement Curb	6.48	98.16	✓
E.L. of Union	6.4	98.2	✓
7' E. of - - - -	6.1	98.5	✓
12' - - - - = EL Curlew	4.4	100.2	✓

11/2/23 Gregory CROSS SECTION OF
BRANT ST
from N.L. LAUREL

				W	155.50	167.38	98	157.58 ✓
on B.M.	11.37	155.50	144.13	30' N				
	12.75	167.38	0.37	155.13	W	157.75	87	158.6 ✓
		N.L. of Laurel		+7			91	158.2 ✓
West Line	155.25	11.7	155.68 ✓	cb	157.50		93	158.0 ✓
✓ Curb on cement	155.0	12.26	155.14 ✓	+1			10.3	157.0 ✓
+1 on paving		12.70	154.8 ✓	1/4			9.4	157.9 ✓
1/4 ✓		12.33	155.05 ✓	c	158.13		93	158.0 ✓
c ✓	155.5	11.98	155.40 ✓	1/4			92	158.1 ✓
1/4 ✓		11.85	155.53 ✓	E gutter			91	158.2 ✓
E gutter		11.85	155.53 ✓	✓ cb	158.76	on cement	8.24	159.14 ✓
E cb on cement	156.0	11.05	156.33 ✓					
		3' N		E cb	161.28	on cement	6.10	161.28 ✓
E cb on cement	156.28	10.79	156.59 ✓	✓ gutter			7.3	160.0 ✓
✓ gutter		11.5	155.88 ✓	1/4			7.3	160.0 ✓
1/4		11.5	155.88 ✓	c	160.54		7.7	159.6 ✓
c ✓	155.76	11.7	155.68 ✓	1/4			7.8	159.5 ✓
1/4		11.8	155.58 ✓	+12			9.0	158.3 ✓
+11		11.8	155.58 ✓	cb	159.80		7.7	159.6 ✓
cb ✓	155.25	11.0	156.38 ✓	+7			7.8	159.5 ✓
				W	160.05		7.4	159.98 ✓

Platted
Mar 1928
Stimney

167.38

100' N 167.38

W	161.34	5.4	161.9 ✓
+7		6.0	161.3 ✓
cb	161.09	5.7	161.6 ✓
+2		6.7	160.6 ✓
1/4		5.7	161.6 ✓
c	161.83	5.4	161.9 ✓
1/4		5.7	161.6 ✓
E gutter		5.6	161.7 ✓
✓ curb (on cement)	162.58	4.75	162.63 ✓
x 130' N			
E curb (on cement)	163.50	3.86	163.5 ✓
- gutter		4.8	162.5 ✓
1/4		4.7	162.6 ✓
c	162.75	4.1	163.1 ✓
1/4		4.7	162.6 ✓
cb	162.0 break	5.1	162. ✓
+11		4.7	162.6 ✓
W	162.25	4.1	162. ✓

167.38

BRANT.

42

150' N

W	162.50	3.9	163.4 ✓
+4		4.3	163.0 ✓
cb	162.25	4.3	163.0 ✓
1/4		4.1	163.2 ✓
c	163.00	3.7	163.6 ✓
1/4		4.3	163.0 ✓
E gutter		4.2	163.1 ✓
✓ curb (on cement)	163.75	3.58	163.8 ✓

175' N

E curb (on cement)	164.07	3.27	164.11 ✓
- gutter		3.8	163.5 ✓
1/4		3.8	163.5 ✓
c	163.32	3.3	164.0 ✓
1/4		3.9	163.4 ✓
cb	162.57	4.3	163.0 ✓
W	162.82	4.4	162.9 ✓

200' N

-5		6.8	160.5 ✓
W	163.14	5.8	161.5 ✓

+5		4.7	162.6	✓
cb	16289	4.5	162.8	✓
+5		5.3	162.0	✓
1/4		4.9	162.4	✓
c	16364	3.6	162.7	✓
1/4		3.8	162.5	✓
E gutter		3.6	162.7	✓
E curb	16439 (on cement)	2.95	162.43	✓
	212' N			
E curb	16454 (on cement)	2.79	162.59	✓
E gutter		3.5	163.88	✓
1/4		3.8	162.58	✓
c	16379	3.7	162.6	✓
+5		4.0	163.3	✓
1/4		6.3	161.0	✓
+9		6.6	160.7	✓
cb	16304	5.2	162.1	✓
W	16329	9.8	157.5	✓
+10		11.5	155.8	✓

Curb E 164.55
Prop E 164.80
Prop E 164.90
Curb E 164.65

2+13 = End of grading WPL
2+70 = " 113.89C WPL

163.05 curb W
163.30 WPL
163.74 curb W
162.89 PLW

				X 225' N	167.38	
-15					16.5	150.8 ✓
W	16325				13.9	152.4 ✓
+9				brook	11.0	156.3 ✓
cb	16320 X				7.7	159.6 ✓
1/4					7.9	159.1 ✓
+8					4.3	163.0 ✓
c	16395 on Manhole				4.2	162.9 ✓
1/4					3.9	163.1 ✓
E gutter					3.5	163.8 ✓
E curb	16471 (on cement)				2.67	164.2 ✓
	237' N					
E curb	16474 (on cement)				2.67	164.2 ✓
E gutter					3.5	163.8 ✓
1/4					4.5	162.8 ✓
c	163.98				6.2	160.9 ✓
1/4					10.0	157.5 ✓
+11					9.7	157.6 ✓
cb	16323				11.7	155.6 ✓
W	16348				16.4	150.9 ✓

		167.38			
15' W		19.8	147.5	✓	
25' W		23.9	143.4	✓	
		245' N			
-35		30.8	136.5	✓	
W	163.50	18.8	148.5	✓	
cb	163.25	"	14.2	153.1	✓
+2		11.2	156.1	✓	
1/4		11.4	153.9	✓	
C	164.01	8.6	158.7	✓	
1/4		6.6	160.7	✓	
E gutter		4.6	164.7	✓	
✓ curb	164.76 (on cement)	4.65	164.73	✓	
		249' N			
E curb	164.77 (on cement)	4.63	164.75	✓	
✓ gutter		6.5	160.8	✓	
+5		10.3	157.0	✓	
1/4		11.9	155.4	✓	
C	164.01	12.6	154.7	✓	
1/4		11.9	155.4	✓	
+11		11.8	155.5	✓	

cb	163.26	14.2	153.1	✓
W	163.51	20.7	146.6	✓
+35		32.7	137.6	✓
E curb	164.78 = 2+57 Endg	eroding on W curb line. 163.27 W curb		
	265' N			
W		27.7	139.6	✓
cb		16.2	151.1	✓
1/4		12.9	154.4	✓
C		13.4	153.9	✓
1/4		12.5	154.8	✓
+8		12.0	155.3	✓
cb		7.4	159.9	✓
		2+60 Break		
WP	163.55			
W. Curb	163.3			
C	164.05			
E. curb	164.80			

48 wide -10 W	5 1/4		
	11.9		
	10.0	275.86	
cb	7.9	277.96	
1/4	7.2	278.66	
c	6.6	279.26	
1/4	6.5	279.36	
cb	6.5	279.36	
E	6.6	279.26	

48.6	Center		
E	5.6	280.26	
cb	5.7	280.16	
1/4	6.0	279.86	
c	6.3	279.56	
1/4	6.5	279.36	
cb	7.0	278.86	
W	7.9	277.96	

48.8	11 1/4		
W	6.8	279.06	
cb	6.4	279.46	
1/4	6.0	279.86	

c	5.6	280.26
1/4	5.4	280.46
cb	5.4	280.46
E	5.1	280.76

N. Curb

49.3 E	4.7	281.16
cb	4.9	280.96
1/4	5.2	280.66
c	5.6	280.36

1/4	5.6	280.26
cb	5.8	280.06
W	6.2	279.66

50.06 wide

N.L. IVY

W	5.8	280.06
cb	5.4	280.46
1/4	5.3	280.56
c	5.0	280.86
1/4	4.7	281.16
cb	4.5	281.36
E	4.5	281.36

50' N

E	33	282.56
cb	35	282.36
1/4	37	282.16
C	39	281.96
1/4	39	281.96
cb	42	281.66
W	43	281.56

100' N

W	3.0	282.86		
cb	2.8	283.06		
1/4	2.8	283.06		
C	2.5	283.36		
1/4	2.5	283.36		
cb	2.2	283.66		
E	1.9	283.96		
T.P.	11.13	296.74	0.25	285.61

140' N

E	11.8	284.94
cb	12.1	284.64

1/4

C

1/4

cb

W

57.1

W

cb

1/4

C

1/4

cb

E

57.9

E

cb

1/4

C

1/4

cb

W

12.1 284.64

12.3 284.44

12.3 284.44

12.5 284.24

12.6 284.14

175' N

11.2 285.54

11.2 285.54

11.2 285.54

11.0 285.74

11.3 285.44

11.3 285.44

10.8 285.94

200' N

8.7 288.04

9.0 287.74

9.1 287.64

9.4 287.34

9.7 287.04

9.9 286.84

10.0 286.74

00/000

590

225° N

W	8.4	288.34	10' wide
cb	8.3	288.44	
1/4	8.2	288.54	
c	8.0	288.74	
1/4	7.8	288.94	
cb	7.9	288.84	
E	7.4	289.34	

250° N

60' E	6.6	290.14	
cb	6.7	290.04	
1/4	6.7	290.04	
c	6.8	289.94	
1/4	7.0	289.74	
cb	7.3	289.44	
W	7.2	289.54	

sections here taken
on askew295° on W }
300.44 - E } = 54 Juniper

80' wide

60' W	6.5	290.24	
cb	6.1	290.64	
1/4	6.2	290.54	

c	6.2	290.54	✓
1/4	5.4	291.34	
cb	5.2	291.54	
E	4.9	291.84	✓
J. Curb			
60' E	4.5	292.24	✓
cb	4.6	292.14	
1/4	4.9	291.84	
c	5.0	291.74	
1/4	5.1	291.64	
cb	6.6	290.14	
W	7.8	288.94	
J 1/4			
60' W	7.6	289.14	
cb	6.4	290.34	
1/4	5.2	291.54	
c	4.8	291.94	
1/4	4.5	291.24	
cb	4.3	292.44	
E	4.3	292.44	✓

29674

327d

49

Center Juniper

63	E	3.8	292.94	✓	L	3.5	293.24	
	cb	4.0	292.74		1/4	4.0	292.74	
	1/4	4.2	292.54		cb	4.5	292.24	
	c	4.5	292.24		W	6.8	289.94	
	1/4	5.1	291.64					5' S. of N.L. Juniper
	cb	6.6	290.14		W	6.7	290.04	
	W	7.3	289.44		cb	5.4	291.34	
								N.L. of both Junipers
	W	7.1	289.64		W	4.5	292.24	
	cb	6.4	290.34		cb	3.8	292.94	
	1/4	4.4	292.34		1/4	3.7	293.04	
	c	4.0	292.74		c	3.1	293.64	
	1/4	3.6	293.14		1/4	3.0	293.74	
	cb	3.6	293.14		cb	2.9	293.84	
	E	3.5	293.24	✓	E	2.8	293.94	✓
								1/2 of N. on W } 00 - - - E. } = N.L. Juniper on E
64	E	3.2	293.54	✓	E	2.8	293.94	✓
	cb	3.3	293.44		cb	2.8	293.94	
	1/4	3.4	293.34		1/4	3.0	293.74	
					c	3.0	293.74	

Taken on a skew

N 1/4

650

1/4		6.4	296.24		5 1/4		
C		6.0	296.64		E	4.7	297.9
1/4		6.0	296.64		cb	4.8	297.8
cb		6.1	296.54		1/4	4.8	297.8
E		5.9	296.7		C	4.8	297.8
53.3	99.74" N = 5.2 Kalmia on W.				1/4	5.0	297.6
E		5.1	297.54	✓	cb	5.2	297.4
cb		5.3	297.3		W on paving	4.95	297.7
1/4		5.2	297.4		Center		
C		5.2	297.4	✓	W on paving	4.64	298.0
1/4		5.7	296.9		cb	4.8	297.8
gutter		5.7	296.9		1/4	4.9	297.7
Web (on cement)		5.02	297.6	✓	C	4.7	297.9
53.3	5 Curb				1/4	4.6	298.0
W.L.	on paving	5.53	297.1		cb	4.6	298.0
cb		5.3	297.3		E	4.5	298.1
1/4		5.3	297.3				
C		5.0	297.6				
1/4		5.0	297.6				
cb		5.0	297.6				
E		5.0	297.6				

N 1/4 on W 5.2 on E

C	46	298.0	
1/4	48	297.8	
cb	48	297.8	
W (on paving)	4.75	297.89	
N. Curb on W. S. Carbon E			
W on paving	5.06	297.58	
cb	4.9	297.7	
1/4	4.8	297.8	
C	4.4	298.2	
1/4	4.1	298.5	
cb	4.2	298.4	
E	4.4	298.2	✓
N. L. on West S 1/4 East			
E	4.3	298.2	✓
cb	3.9	298.7	
1/4	4.0	298.6	
C	4.5	298.1	
1/4	4.8	297.8	
gutter	5.0	297.6	
W cb on cement	4.44	298.2	

523		Center on E	(at angles from here)	
gutter	4.25	298.39		
W cb (on cement)	5.0	297.6		
1/4	4.6	298.0		
C	4.2	298.4	✓	
1/4	3.9	298.7		
cb	3.7	298.9		
E	3.6	299.0	✓	
N 1/4 on E				
524	E	3.5	299.1	✓
cb	3.5	299.1		
1/4	3.6	299.0		
C	3.8	298.8		
1/4	4.4	298.2		
gutter	4.9	297.7		
W cb on cement	4.15	298.49		
N. Cb on E				
W cb	4.03	298.6		
gutter	4.8	297.8		
1/4	4.4	298.2		

C	38	298.8			100' N		
1/4	36	299.0		504	E	2.8	299.8 ✓
cb	3.5	299.1			cb	2.8	299.8
E	3.3	299.3	—		1/4	2.9	299.7
51.85	N.L. on E				C	3.1	299.5 ✓
E	2.7	299.9	✓		1/4	3.6	299.0
cb	3.2	299.4			gutter	3.9	298.7
1/4	3.5	299.1			W cb (on cement)	3.10	299.5 ✓
C	3.9	298.7	✓		150' N		
1/4	4.3	298.3		498	W cb (on cement)	3.03	299.6 ✓
gutter	4.6	298.0			gutter	3.5	299.1
W cb (on cement)	3.95	298.69			1/4	3.5	299.1
50' N					C	3.0	299.6 ✓
51	W cb on cement	3.50	299.1		1/4	2.8	299.8
gutter	4.3	298.3			cb	2.7	299.9
1/4	3.9	298.7			E	2.6	300.0 ✓
C	3.5	299.1	✓		200' N		
1/4	3.3	299.3		490	E	2.7	299.9 ✓
cb	3.2	299.4			cb	2.8	299.8
E	2.7	299.9	✓		1/4	2.9	299.7

C		33	299.3	✓
1/4		36	299.0	
gutter		39	298.7	
cb (on cement)		379	299.3	✓
	250 N			
1/82 cb		347	299.17	✓
gutter		42	298.4	
1/4		37	298.9	
C		31	299.5	✓
1/4		28	299.8	
cb		28	299.8	
E ^s		29	299.7	✓
T.P.	785	30754	2.95	299.69
492		380 N = 5 L	Laurel on E	
E		83	299.2	✓
cb		83	299.2	
1/4		83	299.2	
C		85	299.0	✓
1/4		89	298.6	
gutter		93	298.2	
cb on cement		857	298.97	✓

	5 cb on E			
Wcb (cement)		8.65	298.89	
gutter		9.4	298.1	
1/4		88	298.7	
C		84	299.1	
1/4		82	299.3	
cb		83	299.2	
E		83	299.2	✓
	5 1/4 on E			
E		81	299.4	✓
cb		82	299.3	
1/4		83	299.2	
C		84	299.1	
1/4		89	298.6	
gutter		94	298.1	
Wcb on cement		8.70	298.8	
	Center			
Wcb on cement		8.77	298.77	
gutter		9.5	298.0	
1/4		89	298.6	

C	8.1	299.1				
1/4	8.2	299.3		E	8.0	299.5
cb	8.0	299.5		cb	7.9	299.6
E	8.1	299.4	✓	1/4	8.1	299.4
	N 1/4			C	8.4	299.1
E	8.0	299.5	✓	1/4	8.9	298.6
cb	8.0	299.5		cb	9.2	298.3
1/4	8.1	299.4		W	9.5	298.0
C	8.1	299.1			5 1/4 on W N.L. - E on askew	
1/4	9.0	298.5		W	9.1	298.4
gritter	9.5	298.0		cb	8.9	298.6
W cb (on cement)	8.86	298.68		1/4	8.7	298.8
	SL on W N. cb - E	on askew		C	8.3	299.2
W cb on (cement)	8.90	298.6		1/4	8.0	299.5
gritter	9.4	298.1		cb	7.9	299.6
1/4	8.8	298.7		E	7.9	299.6
C	8.4	299.1	✓		center on West	rt angles
1/4	8.1	299.4		E	7.8	299.7
cb	7.9	299.6		cb	7.8	299.7
E	8.0	299.5	✓	1/4	8.0	299.5

C	8.3	299.2
1/4	8.6	298.9
cb	8.7	298.8
W	8.8	298.7
N 1/4 on West		
W	9.0	298.6
cb	8.7	298.8
1/4	8.5	299.0
C	8.1	299.4
1/4	7.8	299.7
cb	7.7	299.8
E	7.7	299.8
N. Curb on W.		
E	7.5	300.0
cb	7.4	300.1
1/4	7.8	299.7
C	8.2	299.3
1/4	8.7	298.8
cb	8.9	298.6
W	9.3	298.2

		N.L. on West	46.18	56
46.40	Web on cement	8.47	299.07	
	gutter	8.9	298.6	
	1/4	8.8	298.7	
	C	8.3	299.2	
	1/4	7.7	299.8	
	cb	7.0	300.5	
	E	7.1	300.4	
	50' N		(46.49)	
46.40	E	5.8	301.7	
	cb	5.2	302.3	
	1/4	7.4	300.1	
	C	7.8	299.7	
	1/4	8.3	299.2	
	gutter	8.6	298.9	
	Web (on cement)	7.98	299.56	
	100' N		(46.20)	
46.40	Web (on cement)	7.34	300.2	
	gutter	8.0	299.5	
	1/4	7.7	299.8	

C	7.3	300.2	-
1/4	6.5	301.0	
cb	3.7	303.8	
E	4.1	303.4	✓
47	150' N		(47.01)
E	3.3	304.2	✓
cb	3.6	303.9	
1/4	6.2	301.3	
C	6.9	300.6	✓
1/4	7.2	300.3	
gutter	7.4	300.1	
Web on cement	6.85	300.69	(47.42)
47E	200' N = 5.2 Maple 60' wide		
Web on cement	6.30	301.2	
gutter	7.0	300.5	
1/4	7.1	300.4	
C	6.8	300.7	✓
1/4	5.9	301.6	
cb	3.1	304.4	
E	2.7	304.8	✓

5 Curb

57

(47.48)

E	2.9	304.6	
cb	3.2	304.3	
1/4	6.1	301.4	
C	6.7	300.8	
1/4	7.1	300.4	
cb	7.1	300.4	
W	6.9	300.6	
5 1/4			(47.54)
W	6.7	300.8	
cb	6.8	300.7	
1/4	7.0	300.5	
C	6.6	300.9	
1/4	5.9	301.6	
cb	3.2	304.3	
E	2.7	304.8	
center			(47.60)
E	2.6	305.0	
cb	3.1	304.4	
1/4	6.0	301.5	

C	6.6	300.9
1/4	6.8	300.7
cb	6.6	300.9
W	6.3	301.2
	N 1/4	
W	6.6	300.9
cb	6.9	300.6
1/4	7.0	300.5
C	6.7	300.8
1/4	6.0	301.5
cb	2.8	304.7
E	2.4	305.1
	N. Curb	
E	2.4	305.1
cb	2.8	304.7
1/4	6.2	301.3
C	6.8	300.7
1/4	7.2	300.3
cb	7.3	300.2
W	7.0	300.5

47.66

47.73

2683

N.L. Maple

58
47.79

47.5

W curb

gutter

1/4

C

1/4

cb

E

Ad = 268.26

30 5.0 x 5.2 NY

- 10

W

cb

1/4

C

1/4

cb

6.40 301.1

7.3 300.2

7.5 300.0

7.2 300.3

6.4 301.1

2.8 304.7

2.6 304.9

17.0 51.3

13.4 54.9

10.8 57.5

8.6 59.7

7.5 60.8

6.1 62.2

4.2 64.1

3/11/24 Gregory CROSS SECTION OF
 32nd ST
 from SL Maple on E To NL Notmed.
 odd widths
 10 curbs
 1/4's are 25% at road

306.62

59

(47.77)

5.51	306.62	301.11	49.7 wide	3 1/4	7.54	99.18
4 1/4 wide here	SL Maple E of 32 nd	Maple 80 wide	W ob			
W Curb	5.62	301.00	W gutter		8.2	98.4
W. Gutter	6.5	300.1	1/4		8.4	98.2
1/4	6.6	300.00	C		8.1	98.5
C	6.3	00.3	1/4		7.2	99.4
1/4	5.6	01.0	cb		3.1	03.5
+2	5.4	01.2	E		2.6	04.0
+5	2.1	04.5	47.8	Center		
cb	2.1	04.5	E		3.1	03.5
E	1.8	04.8	+1.5 cb		3.3	03.1
47.5	S. Curb		+1.5		3.6	03.0
E	2.2	04.4	47.80	1/4	7.9	98.7
cb	2.5	04.1	+3		8.6	98.0
+1.5	2.6	04.0	C		8.5	98.1
+4	4.9	01.7	1/4		9.2	97.4
1/4	6.3	00.3	W. gutter		9.1	97.5
C	7.2	99.4	W ob		8.42	98.20
1/4	7.4	99.2	47.9	N 1/4		
gutter	7.3	99.3	W ob		9.38	99.24
curb	6.47	300.15				

(480.2)

(481.0)

30662

W gutter		10.2	96.4	
1/4		10.2	96.4	
C		9.8	96.8	
+4		9.5	97.1	
1/4		8.2	98.4	
+5		4.5	02.1	
cb		4.1	02.5	
E		3.7	02.9	
48.0	N. Corb			4818
E		4.7	01.9	
cb		5.2	01.4	
+3		6.0	00.6	
1/2		8.9	97.7	
+4		10.7	95.9	
C		11.0	95.5	
1/4		11.3	95.3	
W gutter		11.1	95.5	
v curb		10.41	96.21	
48.1	N.L. Maple			48.27
W curb		11.42	96.20	

30662

37nd

60

W gutter		12.0	94.6	
1/4		12.4	94.2	
C		12.1	94.5	
+3		11.6	95.0	
1/4		9.3	97.3	
cb		6.6	00.0	
E		6.1	00.5	
48.2	10' N			4833
E		6.9	99.7	
cb		7.3	99.3	
+4		7.7	98.9	
1/4		10.9	95.7	
+4		12.7	93.9	
C		12.8	93.8	
1/4		13.1	93.5	
W gutter		12.7	93.9	
v curb		12.19	94.43	
48.30	30' N			48.45
W gutter		14.7	91.9	
1/4		14.7	91.9	

306.62

C			14.4	92.2
1/4			13.2	93.4
+2			11.1	95.5
cb			10.6	96.0
E			10.2	96.4

48.50

55' N

4861

E			12.8	93.8
cb			13.0	93.6
T.P.	1.45	295.08	12.99	293.63

+5			2.0	93.1
----	--	--	-----	------

1/4			3.5	91.6
-----	--	--	-----	------

+4			4.7	90.4
----	--	--	-----	------

C			4.9	90.2
---	--	--	-----	------

1/4			5.2	89.9
-----	--	--	-----	------

W gutter			5.3	89.8
----------	--	--	-----	------

W curb			4.13	90.95
--------	--	--	------	-------

48.90		90' N		
-------	--	-------	--	--

4882

W curb			6.81	88.27
--------	--	--	------	-------

v gutter			8.0	87.1
----------	--	--	-----	------

1/4			7.8	87.3
-----	--	--	-----	------

295.08

327.0

61

C			7.3	87.8
+4			6.9	88.2
1/4			3.7	91.4
cb			3.8	91.3
E			3.8	91.3

49.02 W. 60 123.27 N = 3L Jan Mar 2005 60' 54"

4902

E			5.6	89.5
---	--	--	-----	------

cb			5.8	89.3
----	--	--	-----	------

1/4			5.8	89.3
-----	--	--	-----	------

+5			8.8	86.3
----	--	--	-----	------

C			9.0	86.1
---	--	--	-----	------

1/4			9.5	85.6
-----	--	--	-----	------

W gutter			9.9	85.2
----------	--	--	-----	------

v curb			9.21	85.87
--------	--	--	------	-------

B.M.			9.38	85.70
------	--	--	------	-------

S Curb				
--------	--	--	--	--

4902

W. cb line			10.1	85.0
------------	--	--	------	------

1/4			9.8	85.3
-----	--	--	-----	------

C			9.2	85.9
---	--	--	-----	------

+4			6.3	88.8
----	--	--	-----	------

29505

32nd

4928 62

1/4	6.2	88.9
cb	6.5	88.6
E	6.3	88.8
5 1/4		
E	7.2	87.9
cb	7.2	87.9
1/4	6.9	88.2
+w	7.1	88.0
C	9.7	85.4
1/4	10.2	84.9
cb	10.0	85.1
Center		
cb	10.5	84.6
1/4	10.5	84.6
+5	10.2	84.9
C	9.8	85.3
+5	8.0	87.1
1/4	7.8	87.3
cb	7.7	87.4
E	7.7	87.4

4916

4922

49.2	N 1/4	
E	8.7	86.4
cb	9.2	85.9
1/4	9.2	85.9
C	10.5	84.6
1/4	10.7	84.4
W	10.9	84.4
49.2	N Corb	49.34
Wcb	11.1	84.0
1/4	11.0	84.1
C	10.7	84.4
1/4	10.7	84.4
cb	10.6	84.5
E	10.6	84.5
49.2	N.L. San Marcos	49.41
E	10.7	84.4
cb	10.8	84.3
1/4	11.0	84.1
C	11.1	84.0
1/4	11.2	83.9

49506

32nd

63

cb	11.4	83.7	+	10.7	84.4
W	11.1	84.0	W	10.6	84.5
Not graded or curbed from here			55' N		49.75'
49.4 ⁺ wide	15' N	49.50	W	10.6	84.5
W	9.9	85.7	+7	10.8	84.3
+4	11.7	83.4	cb	12.7	84.4
cb	12.0	83.1	1/4	11.7	83.4
1/4	11.6	83.5	C	13.7	81.4
C	11.4	83.7	1/4	13.5	81.6
1/4	11.4	83.7	cb	13.5	81.6
cb	11.7	83.4	E	13.2	81.9
E	11.0	84.1	70' N		49.84
49.6 ⁺ wide	48' N	49.71	E	12.8	84.3
E	12.9	84.7	cb	13.7	81.4
cb	13.3	81.8	+3	15.0	80.1
1/4	13.2	81.9	1/4	14.9	80.7
C	13.0	84.1	C	15.1	80.0
1/4	12.9	84.7	+2	13.3	81.8
cb	12.4	84.7	1/4	15.2	79.9
+2	12.1	83.0	cb	11.8	83.3

W		11.0	84.1	
T.P.	0.41	282.55	1294	282.14
499±		85' N		4994
-10		9.4	73.7	
W		7.1	75.5	
cb		5.8	76.8	
1/4		3.6	79.0	
c		2.7	79.9	
+2		3.7	78.9	
1/4		3.9	78.7	
cb		3.6	79.0	
E		1.2	81.4	
		95' N		50.00
E		3.4	79.7	
+5		2.8	79.8	
cb		4.6	78.0	
1/4		4.7	77.9	
c		4.2	78.4	
1/4		8.8	73.8	
cb		11.6	71.0	

W		13.1	69.5	
+20		14.9	67.7	
		117.1 = 5L	Not mag	75.4 wide 17 cbs 5013
-25		20.0	67.6	
W		17.8	64.8	
cb		14.7	67.9	
1/4		10.2	72.4	
c		6.3	76.3	
1/4		5.9	76.7	
cb		5.6	77.0	
+3		4.5	78.1	
E		8.5	74.1	
		51.1±		5. Curv
E		11.3	71.3	
cb		6.2	76.4	
1/4		6.1	76.5	
c		5.4	77.2	
1/4		9.6	73.0	
cb		12.7	69.9	
W		11.5	71.1	
+20		15.0	67.6	

282.55

5 1/4

-10	9.2	73.4
W	7.5	75.1
cb	7.5	75.1
+6	7.3	75.3
1/4	5.1	77.5
+4	3.9	78.7
C	5.7	76.9
1/4	5.6	77.0
cb	5.8	76.8
E	12.6	70.0
54.3	Center	
E	8.1	74.5
cb	4.8	77.8
1/4	4.7	77.9
C	4.6	78.0
+1/4	3.3	79.3
1/4	3.9	78.7
cb	3.4	79.2
W	3.9	78.7
+5	4.3	78.3

282.55

56.2 ±

N 1/4

32nd

65

W			1.7	80.9
cb			1.4	81.2
1/4			1.7	80.9
C			2.8	79.8
1/4			2.9	79.7
cb			2.5	80.1
E			3.4	79.2
TP	991	29/21	1.25	281.30
57.6 ±				
E			8.8	82.4
cb			9.0	82.2
+3			9.6	81.6
1/4			9.3	81.9
C			9.2	82.0
+5			8.1	83.1
1/4			8.0	83.2
cb			8.2	83.0
W			8.3	82.9

29/31

N. Line Not mag.

32nd

66

59.3[±]

W

6.6 85.6

cb

6.4 85.8

1/4

5.8 85.4

+5

5.9 85.3

+8

7.2 84.0

c

7.2 84.9

1/4

7.3 83.9

+7

7.5 83.7

cb

6.2 85.0

E

6.2 85.0

43' N.

E

0.5 290.7

3/11/24 Gregory CROSS SECTION OF THE 75' GRADED PORTION OF 10' Cement CB NOT MEAS ST Bancroft to 33rd

7.78	30186	294.08	BP H/L Bancroft
	See book 1110 for E.L. Bancroft 13 10' from N. Line instead of 12'		
	60' E of E-L. Bancroft		
10'	5.0' x H/L = cement cb	6.59	95.27
	gutter	7.0	94.9
25'	5.0' x H/L	6.4	95.5
37'	" " "	5.5	96.4
40'	" " "	2.2	99.7
	300 old notes for 5 1/2' of st. 95 E		
10'	5.0' x H/L = cement cb	5.93	96.93
	gutter	6.3	95.4
25'	5.0' x H/L	5.5	96.4
38'	" " "	4.9	97.0
40'	" " "	1.3	99.6

125' E = break in grade

10'	5.0' x H/L = cement cb	5.36	96.50
	gutter	6.0	95.9
25'	5.0' x H/L	5.5	96.4
37'	" " "	4.8	97.1
40'	" " "	1.2	99.7

187.5' E = break in grade where it shouldn't be

10'	5.0' x H/L = cement cb	7.05	94.81
	gutter	7.3	94.6
25'	5.0' x H/L	6.5	95.4
34'	" " "	6.3	95.6
38'	" " "	1.7	99.2
	2500' E = WL 33rd		
10'	5.0' x H/L = cement cb	7.83	94.03
25'	" " "	7.4	94.5
35'	" " "	7.0	94.9
39'	" " "	3.0	98.9

Cross Sections of Alley (15' wide)
 BIK 15 Mission Hills

Moore
 1 1/2 1/2

280.29

68

on BM on	9.52	277.80	26828	Sunset & 1/2 1/2
T.P	8.18	280.29	569	272.11
		EL. ST. JAMES		
S on paving		8.09		272.20
C ✓		8.33		271.96
N ✓		8.07		272.22
		46' E		
N		7.3		273.0
C		7.7		272.6
S E of Garage Eln of Conc Apron		7.25		273.0 on line
		63' E		
S		7.2		273.1
C		7.4		272.9
N		7.2		273.1
N & Garage Conc Apron		7.09		273.2 on line
		100' E		
N		6.1		274.2
C		6.5		273.8
S		6.2		274.1
+ 1.5 E Conc Apron to Garage		5.50		274A

S - 1.5 E Garage Conc Apron	5.60	274.7
		110' E
S	4.9	275.4
C	4.8	275.5
N fence from Alley	4.8	275.5
		200' E
N	3.7	276.6
C	3.5	276.8
S	3.0	277.3
		213' E
S - 1 & Garage Conc floor	2.50	277.8
S + 1 ✓ Apron	2.98	277.3
		243' E
S	2.9	277.4
+ 1	3.6	276.7
C	3.6	276.7
N	3.3	277.0
		265' E
N	4.3	276.0

	280.29		
+3		5.0	275.3
C		5.1	275.2
+3		5.1	275.2
S		3.9	276.4
	282'E		
S		4.9	275.4
+4		5.7	274.6
C		5.6	274.7
+U		5.4	274.9
N		5.1	275.2
	300'E		
N		6.1	274.2
+3		6.9	273.4
C		6.9	273.4
+3		7.1	273.2
S		7.0	273.3
	333'E		
S		9.5	270.8
C		9.5	270.8
+4		9.0	271.2

	280.29			
N			8.5	271.8
			355'E	
N & Garage Concrete			9.44	270.8 on Line
+3			10.2	270.1
C			10.5	269.8
S			10.9	269.4
TP	1.35	271.21	10.43	269.86
			381'E	
-5			3.3	267.9
S			3.0	268.2
C			2.7	268.5
+3			2.3	268.9
N			1.4	269.8
			393'E	
S & of Garage Concrete			3.8	267.4 7 S of SL
			400'E	
N			1.5	269.7
+4			2.6	268.6
C			3.0	268.2
S			3.5	267.7
+3			3.9	267.3

271.2'

407' E

N of Garage Conc floor 1.20 270.0 ✓ N of NW

417' E

N 3.0 268.2

C 3.7 267.5

S 4.2 267.0

+5 4.7 266.5

450' E

-5 6.3 264.9

S 6.0 265.2

+2 5.6 265.8

C 5.5 265.7

+3 5.1 265.8

N 4.0 267.2

460'

S of Garage Conc Apron 6.12 265.09 1/2 S of SW

✓ floor 5.04 266.17 1/2 S of SW

494' E

-8 of Conc Apron 3.63 267.58

N 4.5 266.7

271.2'

C

5.2 265.8

S

6.1 265.1

+5

6.7 264.5

500' E

-5

6.3 264.9

S

6.0 265.2

C

5.1 265.8

N

4.6 266.6

520' E

N

3.8 267.4

+3

5.0 266.2

C

5.5 265.7

S

5.9 265.3

530' E

S of Garage dirt floor 5.5 265.7 on line

C 5.4 265.8

+1 5.2 266.0

N 4.0 267.2

570' E

S-5 of Garage wood floor 5.30 265.9

271.21

600'E

N		4.4	266.8
+1		4.6	266.6
+4		5.6	265.6
C		6.0	265.2
S		6.2	265.0

637'E

S		7.1	264.1
+4		7.7	263.5
C		7.7	263.5
+4		7.2	264.0
N		6.3	264.9

wL of Sheridan

N	641.9 E	on Facing	8.13	263.08
C	644.95 E	✓	8.36	262.85
S	648.0 E	✓	8.34	262.87
TP	2.58	268.55	5.24	265.97
ch BM	Sunset + Sheridan		351	265.04 265.04

Note: - Cross Section of Alley (15' wide)
 E Measurements BIK 16 Mission Hills

265.27

72

Measurement	Distance	Elevation	Notes	Direction	Height	Elevation
ONBM SW B.P.	13.25	265.27	252.00	LYNDON ST. JAMES	84.55 E = PC	260.3
		EL St. James = 200				260.5
S on paving		4.57	260.70		47	260.6
C ✓		4.46	260.81		4.3	261.0
N ✓		3.69	261.58		92 E	
	2' E			N-2 & Garage Concrete Apron	41.6	261.11
N ✓		3.6	261.7			
+3		4.1	261.2	S 3' 50" / 51" ✓	4.69	260.58
C		4.4	260.8		100 E	
S		4.6	260.6		41	261.2
	25' E				4.5	260.8
S		4.9	260.4		4.6	260.7
C		4.4	260.8		120 E	
+4		4.2	261.1		43	261.0
N		3.6	261.7		4.4	260.9
	50' E				4.0	261.3
N		3.8	261.5		150 E	
+3		4.7	260.6		2.6	262.7
C		4.8	260.5		3.1	262.2

	265.27								
S		3.2	262.1		T.P	6.23	269.36	4.61	263.13
T.P	5.49	267.74	3.02	262.25			290' E		
		160' E			N-12	4 Garage conc./floor		5.85	263.51
S-10	4 Double Garage Conc./floor	5.66	262.08	10' 5.0' 1st			300' E		
		175' E						6.2	263.2
S		5.6	262.2					6.1	263.3
C		5.2	262.5					6.4	263.0
N		4.7	263.0				320' E		
		200' E			N	8' W of NW Garage Conc. Floor		4.96	264.40
N		4.7	263.0				350' E		
+1		5.4	262.3					5.6	263.8
C		5.3	262.4					5.3	264.1
S		5.6	262.1					5.2	264.2
		250' E						4.00' E	
S		5.8	261.9					5.5	263.9
C		5.5	262.2					5.8	263.5
+1		5.4	262.3					5.8	263.6
N		5.0	262.7					4.6	264.8
		258' E						4.8	264.6
S	18"x18" C.I. Grating C.B.	6.14	261.60						
	flow line	7.31	260.40						

edge of C.B. on S. Hill
 Drains S thru private prop
 to Lyndon Road
 top of grate

26936

415'E

74

S 5.8 263.6

+2 7.4 262.0

C 7.2 262.2

N 7.0 262.4

430'E

N 9.6 259.8

C 9.9 259.5

S 9.4 260.0

ALL LYNDON

S 449.25E on paving 12.74 256.62

C 442.3E ✓ ✓ 12.07 257.29

N 432.75E ✓ ✓ 11.50 257.86

T.P. 580 ✓ 684 ✓ 12.74 256.62

checked to BM 1043 251.99 LYNDON 252.02

Park - Georgia
Univ - Lincoln

Cross Section of Alley 20' wide
BIK 194 UNIV. HqHTS. ^{12/16/64} Moore

339.12

75

on BM Univ + Georgia	361	340.02	336.41	sw. 2P	W	8.70	330.4
		NL UNIV = 00			+8	8.5	330.6
E on paving		8.55	331.47		C	7.8	331.3
C		9.37	330.65		+3	6.9	332.2
W		9.30	330.72		E	6.9	332.2
T.P.	843	339.12	9.33	330.69		100' N	
		8' N			E	7.0	332.1
E	± of Double Garage	7.70	331.4	N. Garage ^{Dirt floor} & Concrete	+4	7.0	332.1
		27' N			C	7.9	331.2
W		8.8	330.3		W	8.0	331.1
C		8.5	330.6			105' N	
+3		8.2	330.9		W - 1.5 Garage dirt floor	7.70	331.4
+9	Pepper tree 14" diam				C	7.8	331.3
E		7.2	331.9		+4	7.2	331.9
		50' N			E	7.0	332.1
E		7.7	331.4			135' N	
+5		8.3	330.8		E & Garage Conc floor	5.0	334.1 Double G
C		8.5	330.6		+W	6.2	332.8
W		8.9	330.2		C	6.7	332.4
		75' N			W	7.0	332.1

Plotted Dec 24, 1924
 L. G. Golden

3391v

153' N

w/	Double Garage Conc Floor	6.40	332.7
G		6.4	332.7
+G		6.1	333.0
E		5.3	333.8

165' N

E - d	Sedge Conc Floor	5.03	334.1
E		5.4	333.7
C		6.2	332.9
w/		6.5	332.6

196' N

w/		6.2	332.9
C		5.7	333.4
+5		5.2	333.9
E		5.0	334.1
+d	N ✓ ✓	4.92	334.2

250' N

E		4.3	334.8
+5		4.8	334.3
C		5.4	333.7

33912

76

w/ 5.6 333.5

285' N

w/		5.2	333.9
C		5.0	334.1
E		4.3	334.8
+1	Double Garage Wood floor	4.0	335.1

305' N

- 3	Double Garage	4.0	335.1	Dirt floor
E		4.4	334.7	
C		5.0	334.1	
w/		5.0	334.1	

325' N

1 w/ at E. Pepper tree 16" diam

350' N

w/		5.2	333.9
C		5.0	334.1
E		4.1	335.0

381' N

E	Garage dirt floor	4.60	334.5
C		5.0	334.1

3 Garages

339.12

W		5.1	334.0	
W	Garage Conc floor	5.5	333.6	on line
	420' N			
W		4.7	334.4	
C		4.9	334.2	
E		4.7	334.4	
T.P	50.5	339.12	50.5	334.07
	458' N			
E	Garage Conc floor	4.70	334.4	✓
C		5.1	334.0	
W		5.1	334.0	
	492' N			
W	Garage Conc floor	5.40	333.7	on line
C		5.1	334.0	
E	✓ Dirt floor	4.65	334.47	✓ ✓
	550' N			
E		4.4	334.7	
+5		4.9	334.2	
C		5.2	333.9	
W		5.2	333.9	

339.12

		573.1		77
W		5.2	333.9	
C		4.9	334.4	
+3		5.4	333.7	
E		4.5	334.6	
		574.5	= SL Lincoln	
E	on Cement Return	6.48	332.64	
C		6.2	332.9	
W	Return not yet constructed	6.3	332.8	
	checked B.M.	6.89	332.23	NE BR Park Rd Lincoln 332.20

Missing curb on left

Gutter all gone practically

Curb gone from 91.6 to 181.6 E of PC. on the
side of 1st St E of Rosacrans. (S. Side)

Gutter gone for 12.5 further

27
24
526
13.2

122
396
518
386
21

250
225
200
175
140
100
50

123.7

1771
17677
353.37

1249
796
453.0 1.0128
353
1000
706
2940

17

1024
225
799

102.5
91.6

5 84
C6 16.8
1/2 183
C 193
1/6 19.2

123.27 5L 3M
NL ✓
15
~~48~~
48
55
Change 85
100
Change 95

4
35
65
100

3
30
57.5
100
130
150
175
200
225
287
445

.0128
128
768
826
128
22528

10
30
55
90

