

1098

LEVEL BOOK

373

KEUFFEL & ESSER CO.

DRAWING MATERIALS

AND

SURVEYING INSTRUMENTS.

NEW YORK.

CHICAGO. ST. LOUIS. SAN FRANCISCO. MONTREAL.

Tables for Excavations and Embankments.

DISTANCE FROM CENTER OF ROADWAY FOR CROSS-SECTIONING.
 ROADWAY 18 FEET WIDE. SIDE SLOPES 1 TO 1.
 FOR SINGLE TRACK EXCAVATION.

"Copyright, 1895, by Keuffel & Esser Co."

	0	.1	.2	.3	.4	.5	.6	.7	.8	.9	
0	9.0	9.1	9.2	9.3	9.4	9.5	9.6	9.7	9.8	9.9	0
1	10.0	10.1	10.2	10.3	10.4	10.5	10.6	10.7	10.8	10.9	1
2	11.0	11.1	11.2	11.3	11.4	11.5	11.6	11.7	11.8	11.9	2
3	12.0	12.1	12.2	12.3	12.4	12.5	12.6	12.7	12.8	12.9	3
4	13.0	13.1	13.2	13.3	13.4	13.5	13.6	13.7	13.8	13.9	4
5	14.0	14.1	14.2	14.3	14.4	14.5	14.6	14.7	14.8	14.9	5
6	15.0	15.1	15.2	15.3	15.4	15.5	15.6	15.7	15.8	15.9	6
7	16.0	16.1	16.2	16.3	16.4	16.5	16.6	16.7	16.8	16.9	7
8	17.0	17.1	17.2	17.3	17.4	17.5	17.6	17.7	17.8	17.9	8
9	18.0	18.1	18.2	18.3	18.4	18.5	18.6	18.7	18.8	18.9	9
10	19.0	19.1	19.2	19.3	19.4	19.5	19.6	19.7	19.8	19.9	10
11	20.0	20.1	20.2	20.3	20.4	20.5	20.6	20.7	20.8	20.9	11
12	21.0	21.1	21.2	21.3	21.4	21.5	21.6	21.7	21.8	21.9	12
13	22.0	22.1	22.2	22.3	22.4	22.5	22.6	22.7	22.8	22.9	13
14	23.0	23.1	23.2	23.3	23.4	23.5	23.6	23.7	23.8	23.9	14
15	24.0	24.1	24.2	24.3	24.4	24.5	24.6	24.7	24.8	24.9	15
16	25.0	25.1	25.2	25.3	25.4	25.5	25.6	25.7	25.8	25.9	16
17	26.0	26.1	26.2	26.3	26.4	26.5	26.6	26.7	26.8	26.9	17
18	27.0	27.1	27.2	27.3	27.4	27.5	27.6	27.7	27.8	27.9	18
19	28.0	28.1	28.2	28.3	28.4	28.5	28.6	28.7	28.8	28.9	19
20	29.0	29.1	29.2	29.3	29.4	29.5	29.6	29.7	29.8	29.9	20
21	30.0	30.1	30.2	30.3	30.4	30.5	30.6	30.7	30.8	30.9	21
22	31.0	31.1	31.2	31.3	31.4	31.5	31.6	31.7	31.8	31.9	22
23	32.0	32.1	32.2	32.3	32.4	32.5	32.6	32.7	32.8	32.9	23
24	33.0	33.1	33.2	33.3	33.4	33.5	33.6	33.7	33.8	33.9	24
25	34.0	34.1	34.2	34.3	34.4	34.5	34.6	34.7	34.8	34.9	25
26	35.0	35.1	35.2	35.3	35.4	35.5	35.6	35.7	35.8	35.9	26
27	36.0	36.1	36.2	36.3	36.4	36.5	36.6	36.7	36.8	36.9	27
28	37.0	37.1	37.2	37.3	37.4	37.5	37.6	37.7	37.8	37.9	28
29	38.0	38.1	38.2	38.3	38.4	38.5	38.6	38.7	38.8	38.9	29
30	39.0	39.1	39.2	39.3	39.4	39.5	39.6	39.7	39.8	39.9	30
31	40.0	40.1	40.2	40.3	40.4	40.5	40.6	40.7	40.8	40.9	31
32	41.0	41.1	41.2	41.3	41.4	41.5	41.6	41.7	41.8	41.9	32
33	42.0	42.1	42.2	42.3	42.4	42.5	42.6	42.7	42.8	42.9	33
34	43.0	43.1	43.2	43.3	43.4	43.5	43.6	43.7	43.8	43.9	34
35	44.0	44.1	44.2	44.3	44.4	44.5	44.6	44.7	44.8	44.9	35
36	45.0	45.1	45.2	45.3	45.4	45.5	45.6	45.7	45.8	45.9	36

Calculated by Julien A. Hall, M. Am. Soc. C. E.

MICROFILMED

DEC 21 1966

+13.
 25 ✓
 46 ✓
 54 ✓
 94 ✓
 172 ✓
 145 ✓
 174 ✓
 200
 222, walk
 250
 300

20
 50
 100
 150
 200
 230
 250
 300
 30
 40
 45 to curb
 50
 100
 150
 174 walk
 200-193 " "
 250-230 " "
 270
 295.3 PL
 293.8 e

X See Felton from N. Line of Cedar to S line P.L. 1140
 14' Curbs
 13' 1/4
 80' Wide
 B.M.

10/5/22
 Miller
 Sight
 Walbrook

2

1

	0.06	225.45	225.39
		N Line Cedar	
N		4.3	221.7 ✓
E		3.9	221.6 ✓
1/4		3.3	221.2 ✓
E		3.6	221.9 ✓
1/4		3.7	221.8 ✓
+12		3.3	221.2 ✓
E		2.9	221.6 ✓
+1		2.4	223.1 ✓
E		2.7	224.8 ✓
E	10' S	3.5	224.0 ✓
+11		3.2	224.3 ✓
C		4.9	220.7 ✓
E	N CURB	5.4	220.1 ✓
E		5.6	219.9 ✓
1/4		5.5	220.0 ✓
E		5.0	220.5 ✓
1/4		4.6	220.9 ✓
C		5.0	220.5 ✓
W		5.2	220.3 ✓

225,45

N 1/4

2

W	5.7	219.8 ✓
C	5.3	220.2 ✓
1/4	5.5	220.0 ✓
E	6.0	219.5 ✓
1/4	6.6	218.9 ✓
C	7.0	218.4 ✓
E	7.1	218.4 ✓
E	8.1	217.4 ✓
C	7.2	218.3 ✓
1/4	7.0	218.5 ✓
E	6.8	218.7 ✓
1/4	6.4	219.1 ✓
C	5.7	219.8 ✓
W	5.7	219.8 ✓
W	6.4	219.1 ✓
C	6.4	219.1 ✓
1/4	7.1	218.4 ✓
E	7.2	218.3 ✓
1/4	7.2	218.3 ✓
C	7.0	218.4 ✓

S 1/4

+9		7.0	218.6 ✓
E		8.1	217.4 ✓
E	S Curb	7.7	217.8 ✓
C		7.4	218.1 ✓
1/4		7.6	217.9 ✓
E		7.5	218.0 ✓
1/4		7.8	217.7 ✓
C		7.3	218.2 ✓
W		6.6	218.9 ✓
W	S Line Cedar	6.1	219.4 ✓
C		7.4	217.7 ✓
+2		9.4	216.1 ✓
+4		8.6	216.9 ✓
1/4		8.7	216.8 ✓
E		8.3	217.2 ✓
1/4		7.6	217.9 ✓
C		7.3	218.2 ✓
E		8.3	217.2 ✓
E	13'S	8.3	217.2 ✓
C		8.7	216.8 ✓

#I
225.45

4

1/4			8.5	217.0 ✓
E			9.2	216.3 ✓
1/4			9.8	215.7 ✓
+10			9.7	215.8 ✓
C			9.0	216.5 ✓
W			6.3	219.2 ✓
W		25.5	6.9	218.6 ✓
+11			9.0	216.5 ✓
E			10.1	215.4 ✓
1/4			10.4	215.1 ✓
+3			10.0	215.5 ✓
E			10.5	215.0 ✓
+10			10.8	214.7 ✓
1/4			12.2	213.3 ✓
+2			13.2	212.3 ✓
C			14.3	211.2 ✓
E			15.3	210.2 ✓
+10			16.3	209.2 ✓
T.P. B.M. Cedar	0.26	225.65	0.06	225.39
		41 S		
-20			29.2	196.5 ✓
E			28.5	197.2 ✓

225.65

5

+12		26.3	199.8 ✓
C		24.5	201.2 ✓
1/4		14.6	211.1 ✓
+5		12.1	113.6 ✓
B		16.2	214.5 ✓
1/4		10.8	214.9 ✓
C		10.2	215.5 ✓
W		7.5	218.2 ✓
W	46'S	7.6	218.1 ✓
C		10.5	215.7 ✓
1/4		10.9	214.9 ✓
+4'		11.2	214.5 ✓
B		17.4	208.3 ✓
1/4		22.1	203.5 ✓
+7		24.4	201.3 ✓
+7.5		27.0	198.7 ✓
C		28.1	197.6 ✓
E		30.3	195.4 ✓
+30		34.0	191.7 ✓

225.65

56'S

6

- 35		36.7	208.9.0	✓
E		26.1	209.6	✓
- C		22.8	207.9	✓
+ 3'		21.7	204.0	✓
1/4		15.3	210.4	✓
+ 5		12.7	213.0	✓
E		11.9	213.8	✓
1/4		11.0	214.7	✓
E		10.8	214.9	✓
W		7.7	218.0	✓
W	94'S	6.3	219.4	✓
+ 10		7.9	217.8	✓
C		10.1	215.6	✓
1/4		10.4	215.3	✓
E		10.8	214.9	✓
+ 10		11.7	214.0	✓
1/4		12.8	212.9	✓
+ 10		18.2	207.5	✓
E		18.7	207.0	✓
E		22.7	203.0	✓
+ 20		23.7	202.0	✓

225.65

112.1 S

7

-15 19.6 206.1 ✓

E 17.8 207.9 ✓

+11 17.4 208.3 ✓

C 16.1 209.6 ✓

1/4 11.6 214.1 ✓

E 10.5 215.2 ✓

1/4 10.3 215.4 ✓

+11 9.8 215.9 ✓

C 8.8 216.9 ✓

+2 7.7 218.0 ✓

W 6.0 219.7 ✓

145 S

W 4.9 220.9 ✓

+10 6.3 219.4 ✓

C 9.3 216.4 ✓

1/4 9.2 216.5 ✓

E 9.8 215.9 ✓

1/4 10.5 215.2 ✓

+6 11.0 214.7 ✓

C 12.4 213.3 ✓

E 13.7 212.0 ✓

+10 13.9 211.8 ✓

225.65
1755

E	10.2	215.0	✓
E	9.8	216.9	✓
1/4	9.4	216.3	✓
B	8.7	217.0	✓
1/4	8.3	217.4	✓
+10	7.9	217.8	✓
C	5.4	220.3	✓
W	4.2	221.5	✓
	200'S		
W	3.7	222.0	✓
+12	4.9	220.8	✓
E	6.3	219.4	✓
+2	7.0	218.7	✓
1/4	7.6	218.1	✓
B	7.9	217.8	✓
1/4	8.6	217.1	✓
C	8.7	217.0	✓
+4.	7.7	218.0	✓
E	8.4	217.3	✓
	222S		
E	7.9	217.8	✓ on walkhouse

H.I.
225.65
250 S

9

E		7.5	218.2	✓	
+10		7.1	218.6	✓	
E		8.2	217.0	✓	
1/4		7.8	217.9	✓	
E		7.1	218.6	✓	
1/4		6.8	218.9	✓	
+11		6.4	219.3	✓	
E		5.5	220.2	✓	
+2		4.4	221.3	✓	
W		3.4	222.3	✓	
T.P.	4.57	222.80	7.42	218.23	✓
			300'S = N. line Beech 80' wide		
W		0.8	222.0	✓	
+11		1.9	220.9	✓	
C		3.5	219.3	✓	
1/4		4.2	218.6	✓	
B		4.7	218.1	✓	
1/4		5.4	217.9	✓	
+9		6.2	216.6	✓	
E		5.8	217.0	✓	
E		6.1	216.7	✓	

Curbs on Beech = 20'
1/4 " = 10'

222.80

N. Oak Line Beech

10

E	7.0	215.8	✓
C	6.6	216.2	✓
1/4	6.0	216.8	✓
1/2	5.1	217.7	✓
1/4	4.2	218.6	✓
+10	3.4	219.4	✓
E	3.0	219.8	✓
W	1.7	221.1	✓
	N 1/4		
W	2.4	220.4	✓
E	3.5	219.3	✓
1/4	4.6	218.4	✓
1/2	5.4	217.2	✓
1/4	6.1	216.7	✓
E	6.6	216.2	✓
E	7.1	215.7	✓
	E Beech		
E	7.5	215.3	✓
E	7.1	215.7	✓
1/4	6.7	216.1	✓
1/2	5.8	217.0	✓
1/4	5.1	217.7	✓

C		4.3	218.5 ✓
W		2.9	219.9 ✓
W	S 1/4	3.8	219.0 ✓
C		5.0	217.8 ✓
1/4		5.9	216.9 ✓
E		6.5	216.3 ✓
1/4		7.0	215.8 ✓
E		7.6	215.2 ✓
E		8.2	214.6 ✓
E	S curb	8.7	214.1 ✓
O		8.2	214.6 ✓
1/4		7.6	215.2 ✓
E		7.0	215.8 ✓
1/4		6.7	216.1 ✓
C		5.5	217.3 ✓
W		4.4	218.4 ✓
W	S. Line Beech	5.4	217.4 ✓
C		6.7	216.1 ✓
r 2		7.6	215.2 ✓
1/4		8.0	214.8 ✓

E		8.2	214.6 ✓
1/4		8.6	214.2 ✓
C		9.2	213.6 ✓
E		9.7	213.1 ✓
-5	20' S	11.0	211.8 ✓
E		10.8	214.0 ✓
C		10.2	212.6 ✓
1/4		9.6	213.2 ✓
E		9.1	213.7 ✓
1/4		8.9	213.9 ✓
E		8.4	214.4 ✓
+1		8.0	214.8 ✓
W		7.3	216.5 ✓
W	50' S	8.8	214.0 ✓
C		9.3	213.6 ✓
+2		9.9	214.9 ✓
1/4		9.7	213.1 ✓
E		10.1	212.7 ✓
1/4		10.7	212.1 ✓
C		11.7	211.5 ✓

222.80

13

+5			11.5	211.3	✓
E			12.5	210.3	✓
+5		100'S	13.0	209.8	✓
-10			14.6	206.2	✓
E			15.0	207.8	✓
C			13.7	209.1	✓
1/4			12.4	210.4	✓
E			11.5	211.3	✓
1/4			11.2	211.6	✓
+9.			11.4	211.4	✓
E			11.0	211.8	✓
W			10.4	212.4	✓
T.P.	0.70	211.26 150 S	11.54	211.26	✓
W			0.9	211.1	✓
C			1.0	211.0	✓
+2			1.5	210.5	✓
1/4			1.6	210.4	✓
E			1.8	210.2	✓
1/4			2.9	209.1	✓
C			4.5	207.5	✓

E		7.0	205.0 ✓
4/10		8.4	203.6 ✓
	200 S		
-10		13.4	198.6 ✓
E		11.2	200.8 ✓
C		8.2	203.8 ✓
1/4		6.9	205.1 ✓
E		5.4	206.6 ✓
1/4		5.2	206.8 ✓
C		4.6	207.4 ✓
+2		3.5	208.5 ✓
W		2.7	209.3 ✓
	250'S		
W		5.3	206.7 ✓
+11		5.8	206.2 ✓
C		6.7	205.3 ✓
1/4		6.7	205.3 ✓
E		7.4	204.6 ✓
1/4		7.9	204.1 ✓
+8		8.3	203.7 ✓
C		10.1	201.9 ✓
E		12.4	199.6 ✓
+15		15.1	196.9 ✓

211.96

300 S=N Line Ash

15

E	7.5	204.0	✓
C	7.0	205.0	✓
1/4	6.9	205.1	✓
E	6.4	205.6	✓
1/4	6.4	205.6	✓
C	6.8	205.2	✓
+3	6.2	205.8	✓
W	6.3	205.7	✓
	N. CURB Ash		
W	7.4	204.6	✓
C	7.0	205.0	✓
+8	6.7	205.3	✓
+10	6.3	205.7	✓
1/4	6.2	205.8	✓
E	5.5	206.5	✓
1/4	5.4	206.6	✓
C	5.2	206.9	✓
E	5.4	206.6	✓
	N. 1/4		
E	3.7	208.3	✓
C	3.9	208.1	✓
1/4	4.0	208.0	✓

211.96

E		4.9	207.1 ✓
1/4		5.9	206.1 ✓
+6		6.5	205.5 ✓
C		6.7	205.3 ✓
W	E Ash	7.8	204.2 ✓
W		7.6	204.4 ✓
C		6.8	205.2 ✓
+8		6.1	205.9 ✓
1/4		5.6	206.4 ✓
E		4.3	207.7 ✓
1/4		3.3	208.7 ✓
C		2.7	209.3 ✓
E	S 1/4	2.5	209.5 ✓
E		1.9	210.1 ✓
C		2.2	209.8 ✓
1/4		3.2	208.8 ✓
E		4.4	207.6 ✓
1/4		5.9	206.1 ✓
+7		6.9	205.1 ✓
C		7.3	204.7 ✓

16

W	S curb	7.9	204.1 ✓
W		8.8	203.7 ✓
+5		8.1	203.9 ✓
C		8.0	204.0 ✓
1/4		6.4	205.6 ✓
1/2		4.9	207.1 ✓
1/4		3.3	208.7 ✓
C		2.4	209.6 ✓
E		1.8	210.7 ✓
C	S. Lime Ash	1.2	210.8 ✓
H12		2.0	210.0 ✓
C		2.9	209.1 ✓
+3		4.5	207.5 ✓
1/4		5.1	206.9 ✓
E		5.9	206.1 ✓
1/4		7.2	204.8 ✓
+5		8.0	204.0 ✓
C		8.8	203.7 ✓
+2		8.9	203.1 ✓
+4		8.1	203.9 ✓
W		9.6	202.4 ✓

211.96
30'S

-5	11.5	200.5 ✓
W	11.0	201.0 ✓
E	9.6	202.4 ✓
+9	9.7	202.2 ✓
+11	8.6	202.4 ✓
1/4	8.5	203.5 ✓
E	7.1	204.9 ✓
1/4	6.0	206.0 ✓
+9	4.7	207.3 ✓
E	2.6	209.4 ✓
E	1.3	210.7 ✓
50ft on W	12.2	199.8 ✓
W	11.7	200.3 ✓
W Curb	10.6	201.4 ✓
10ft on W	13.7	198.3 ✓
W	13.2	198.8 ✓
W Curb	10.9	201.1 ✓
E	2.6	209.4 ✓
+10	4.4	207.6 ✓
E	6.8	205.7 ✓

211.96

1/4		7.7	204.3 ✓
1/2		8.7	203.3 ✓
1/4		10.2	201.8 ✓
C		11.4	200.6 ✓
W		12.0	200.0 ✓
+10		13.1	198.9 ✓
T.P.	2.95	9.97	201.99 ✓
	204.94 ✓ 100.15		
-10		7.6	197.3 ✓
W		7.4	197.15 ✓
C		6.8	198.1 ✓
1/4		5.9	199.0 ✓
+8		5.7	199.2 ✓
1/2		4.6	200.3 ✓
1/4		3.4	201.5 ✓
+10		2.8	202.1 ✓
e		1.3	203.6 ✓
E		0.0	204.9 ✓
E	150 S	4.2	200.7 ✓
+4		5.2	199.7 ✓
C		6.0	198.9 ✓

on B.M. Men S.W. Ash & Felton

19

1/4		6.9	198.0	✓	
+8		7.6	197.3	✓	
+10		8.3	196.6	✓	
1/8		8.3	196.6	✓	
1/4		8.5	196.4	✓	
E		9.4	195.5	✓	
W		10.2	194.7	✓	
+10		11.1	193.8	✓	
	174 S				
E		5.3	199.6	✓	Walk to House End is 0.7 in street
	193 S				
E		7.3	197.6	✓	Cement Drive " " " "
	200 S				
-10		13.3	191.6	✓	
W		12.8	192.1	✓	
E		12.0	192.9	✓	
1/4		11.3	193.6	✓	
1/8		10.7	194.2	✓	
1/4		10.5	194.4	✓	
+7.		10.2	194.7	✓	
E		8.8	198.1	✓	
E		7.9	197.0	✓	

204.94

21

230' S

E 8.55 196.39 Walktohouse ✓

250' S

E 9.8 195.1 ✓

+5 11.8 193.1 ✓

E 12.2 194.7 ✓

1/4 13.1 191.8 ✓

E 13.8 191.1 ✓

1/4 15.2 189.7 ✓

E 15.1 189.8 ✓

W 15.3 189.6 ✓

+10 16.2 188.7 ✓

270 S

-10 18.0 186.9 ✓

W 16.5 188.4 ✓

E 16.5 188.4 ✓

1/4 16.0 188.9 ✓

E 15.0 189.9 ✓

1/4 14.0 190.9 ✓

E 13.4 191.5 ✓

E 12.2 192.7 ✓

295.5 S. on W or 293.8 on E = S. Line P.L. 1140

E 13.4 191.5 ✓

E 14.1 190.8 ✓

1/4		15.3	189.6 ✓
1/8		16.4	188.5 ✓
1/4		17.0	187.9 ✓
e		18.4	186.5 ✓
w		19.4	185.5 ✓
+10	20.9 10' S. of P.L. line		184.0 ✓
w		21.1	183.8 ✓
e		18.7	186.2 ✓
1/4		17.7	187.2 ✓
1/8		17.0	187.9 ✓
1/4		15.4	189.5 ✓
e		14.4	190.5 ✓
e		13.7	191.2 ✓
T.P.		2.95	201.99 ✓

B.M. Ash + Felton

Levels on Prospect Place From
E. Line College St and 295 ft E.10/9/72 Miller
Sights
Walbrack

B.M.	12.11	199.99		187.88
		E. Line College		
N.		8.3		191.7
S.		6.7		193.3
T.P.	12.84	212.70	0.13	199.86
		150' E = E Oliver Lake		
S		9.3		203.4
N		12.4		200.3
		212' E.		
S		5.10		207.6
		230' E		
N		7.5		205.7
		250' E		
N		8.0		204.7
		270' E		
S		1.9		210.8
		295' E		
S		1.8		210.9

NW Cor. College & Prospect Place

W91K drive to house

Breaks down into canyon

Breaks down into canyon

20' wide

X See Olivet Lane from S. Line Prospect Place To N. Line Exchange place

10/9/22
Miller
Sight
Waibrock

T.P. 12.94 212.80 199.86 Preceding Page
S. Line Prospect Place

W		10.0	202.8	
+2		10.1	202.7	
E		9.4	203.4	
E		9.2	203.6	Rockwall 0.5' in the Lane
E	50'S	7.2	208.6	" " " "
E		6.9	205.9	
+6		7.7	205.1	
W		7.7	205.1	
W	100'S	5.6	207.2	
E		4.6	208.2	
E		4.9	207.9	" " " "
E	150'S	3.0	209.8	Rock wall ends at Sta. 140.5
+3		3.3	209.5	
E		3.1	209.7	
W		3.7	209.1	
E	175'S	2.35	210.45	Brick Walk
E	200'S	1.65	211.15	on N. End of Cement Drive
E		1.9	210.9	
W		2.7	210.1	

111'S = 200' for 100'S
17' W of N. L. corner of
E. = 207.14

H.I.
212.80

Olivet Lane

Olivet Lane

25

238'S

1.65

211.15

on S. End
Cement drive

250'S

2.3

210.5

W

E

1.7

211.1

+7

1.6

211.2

E

0.8

212.0

T.P.

2.81

213.91

1.70

211.10

278'S

W

3.0

210.9

Garage floor

300'S

E

0.6

213.3

+3

2.4

211.5

E

2.6

211.3

W

3.4

210.5

350'S

W

3.5

210.4

E

3.1

210.8

+7

2.4

211.5

E

1.3

212.6

400'

E

2.2

211.7

+5

3.5

210.4

E

3.9

210.0

W

4.5

209.4

410'

7.6' W. of N.L. = Front of Garage dirt floor

5.5

208.4

213.91

Olivet Lane

26

450'S

W			6.3	207.6	Garage floor
E			5.7	208.2	
E			4.2	209.7	
E		462.5	5.3	208.6	
E			6.3	207.6	
W			6.2	207.7	
W		497.5	8.8	205.1	
+4			10.3	203.6	
E			10.0	203.9	
E			9.0	204.9	
E		5'00'S = Mline Exchange	9.92	203.99	on curb
E			10.5	203.4	
W			12.02	201.89	on curb
T.P.	1.18	212.28	2.81	211.10	
T.P.	0.35	200.22	12.41	199.87	
T.P.			12.35	187.87	RM. Gleece + Pres

12/23/24
Gregory
Moore
Ennis
Shaw

CROSS SECTION OF
MARCEY AVE
29th to 30th

(Taken as a 60'
st. with 10' cbs
+ 1/4' using the
S. Line of the alley
as S. line of 60' st
71.26 BPNW
29th to 30th

76.6

27

Manhole 290' W. of W.L. 29th 10' N. x 32' Marcey, 75.32
8.13 76.58 71.26

Manhole on W.L. 29th St 10' N. x 32' Marcey, 6.00.
70.38

West Curb Line 29th St

cb	7.1	69.5	1/4	6.8	69.8	
1/4	7.0	69.6	1/4	6.8	69.8	
c	6.8	69.8	c	6.8	69.8	
S.L	76.6	7.1	69.5	1/4	6.8	69.8
cb	7.3	69.3	cb	6.6	70.0	
1/4	7.1	69.5	N	6.3	70.0	
c	6.9	69.7		East 1/4		
1/4	6.3	70.3	N	6.6	70.0	
cb	5.9	70.7	cb	6.6	70.0	
N	5.9	70.7	1/4	7.0	69.6	
	West 1/4 29th		c	7.2	69.4	
N	6.3	70.3	1/4	7.2	69.4	
cb	6.3	70.3	cb	7.3	69.3	
1/4	6.8	69.8	S	7.3	69.3	
c	7.0	69.6		East Curb		
1/4	7.3	69.3	S	7.3	69.3	
cb	7.3	69.3	cb	7.2	69.4	
S	7.4	69.2	1/4	6.9	69.7	
	center		c	6.7	69.9	
S	7.3	69.3	1/4	6.6	70.0	

76.58

766

cb 6.7 69.9

N 6.6 70.0

8'E.ox E

cb.

N 6.4 70.2

cb 6.5 70.1

1/4 6.4 70.2

c 6.5 70.1

1/4 6.5 70.1

cb 6.8 69.8

s 6.8 69.8

E.L. 29th st

s 6.8 69.8 ↓

cb 6.6 70.0

1/4 6.0 70.6

c 5.8 70.8

1/4 5.7 70.9

cb 5.5 71.1 ↓

N 5.3 71.3 ↓

50'E

N 4.7 71.9 ↓

766

Marcey

28

cb 5.4 71.2

1/4 5.7 70.9

c 5.8 70.8

1/4 5.8 70.8

cb 6.1 70.5

s 6.0 70.6 ↓

100'E

s 5.7 70.9 ↓

cb 5.8 70.8

1/4 5.2 71.4

c 5.1 71.5

1/4 5.0 71.6

cb 4.7 71.9

N 4.4 72.2 ↓

125'E

N^o 4.0 72.6 ↓

cb 4.3 72.3

1/4 4.9 71.7

c 5.2 71.4

1/4 5.3 71.3

74.58

(766)

cb 56 71.0 ↓

S 54 71.2 ↓

150' E

S 52 71.4 ↓

cb 53 71.3

1/2 50 71.6

C 47 71.9

1/4 42 72.4

cb 38 72.8 ↓

N 35 73.1 ↓

175' E

N 43 72.3 ↓

cb 45 72.1

1/4 47 71.9

C 46 72.0

1/4 46 72.0

cb 50 71.6 ↓

S 50 71.6 ↓

200' E

S 53 71.3 ↓

Marcey 29

(766)

cb 57 70.9

1/4 58 70.8

C 54 71.2

1/4 53 71.3

cb 51 71.5

N 48 71.8 ↓

250' E

N 52 71.4 ↓

cb 55 71.1

1/4 57 70.9

C 59 70.7

1/4 59 70.7

cb 58 70.8

S 57 70.9 ↓

270' E

Machete 10' N. of S.L.

(766)

557 (71.01) ↓

300' E

S 57 70.9 ↓

cb 59 70.7

1/4 61 70.5

7658

76.6

c	61	70.5
1/4	59	70.7
cb	58	70.8
N	52	71.0

350'E

N	53	71.3
cb	55	71.1
1/4	56	71.0
c	55	71.1

1/4	54	71.2
cb	57	70.9
s	54	71.2

400'E

s	52	71.4
cb	54	71.2
1/4	53	71.3
c	50	71.6

1/4	50	71.6
cb	47	71.9
N	48	71.8

430'E

76.6

Marccy

30

N	43	72.3
cb	44	72.2
1/4	45	72.1
c	44	72.2
1/4	46	72.0
cb	51	71.5
s	50	71.6

450'E

s	49	71.7
cb	49	71.7
1/4	47	71.9
c	46	72.0

1/4	44	72.2
cb	37	72.9
N	34	73.2

500'E

N	40	74.6
cb	40	72.6
1/4	38	72.8

76.58

(76.6)

c	3.9	72.7
1/4	4.3	72.3
cb	4.4	72.2
s	4.3	72.3

525' E

s	4.2	72.4
cb	3.8	72.8
1/4	4.1	72.5
c	4.1	72.5

1/4	4.1	72.5
cb	3.0	73.6
N	2.3	74.3

550' E

N	3.0	73.6
cb	3.4	73.2
1/4	3.5	73.1

c	3.2	73.4
1/4	3.2	73.4
cb	3.8	72.8
s	4.0	72.6

(76.6)

Marcox.

31

600' E = 1/4 L. 30th St

s	3.0	73.6
cb	2.9	73.7
1/4	2.77	73.81
1/4	3.1	73.5

c	3.1	73.5
1/4	3.1	73.5
cb	2.8	73.8
N	2.5	74.1

~20/23

Gregory
17/10/19
17/11/19

CROSS SECTION OF
ALLEY BLOCK 7 15' wide
HILLCREST
bet 3rd & 4th Univ to Wash.

32

6.4^m 490.94 ✓ 284.52 -3

H.L. University/ W

W 4.75 286.19 ✓ on paving C

C 4.98 285.96 ✓ ✓ ✓ E

E 4.72 286.22 ✓ ✓ ✓

35' N E

E 4.4 286.5 ✓ C

C 4.6 286.3 ✓ W

W 4.5 286.4 ✓ +3

70' N

W 4.4 286.5 ✓ 1.7 W. of W.L.

C 4.6 286.3 ✓

E 4.6 286.3 ✓ -1.7

104' N W

E 4.5 286.4 ✓ C

C 4.6 286.3 ✓ E

W 4.4 286.5 ✓

+2 = cement floor garage 4.35 286.59 ✓ -3

E

133' N = 5. End cement floor on W.

4.20 286.74 ✓ ± on cement

4.4 286.5 ✓

4.4 286.5 ✓

4.4 286.5 ✓

159' N = N end of cement floor on W

4.3 286.6 ✓

4.3 286.6 ✓

4.3 286.6 ✓

4.18 286.76 ✓ = on cement.

193' N

3.75 287.19 = wood floor

204' N

3.80 287.14 ✓ cement floor

3.50 287.14 ✓

3.9 287.0 ✓

4.0 286.9 ✓

242.5' N

2.9 288.0 = wood floor

3.4 287.5 ✓

C		36	287.3 ✓
W		38	287.1 ✓
T.P.	553	292.77 ✓	3.70 287.26 ✓
		302' N	
W		5.7	287.1 ✓
C		5.6	287.2 ✓
E		5.4	287.4 ✓
+4		5.2	287.6 ✓ = dirt floor
		356' N	
-1		5.23	287.54 ✓ = cement floor
E		5.2	287.6 ✓
C		5.2	287.6 ✓
W		5.3	287.5 ✓
		386' N = 5.616	apron on E
W		5.0	287.8 ✓
C		5.0	287.8 ✓
E = edge apron		4.74	288.03 ✓
		408' N = N. end apron on E	
E = edge apron		4.65	288.12 ✓
C		5.0	287.8 ✓

W		4.8	288.0 ✓
		450' N	
W		5.0	287.8 ✓
C		4.8	288.0 ✓
E		4.88	287.89 ✓ = cement floor
		480' N	
E = N. end garage entrance from H.		4.5	288.3 ✓
		496' N	
E		4.6	288.2 ✓
C		4.7	288.1 ✓
W = edge cement apron		4.70	288.07 ✓
		530' N	
W		4.6	288.2 ✓
C		4.6	288.2 ✓
E		4.8	288.0 ✓
		560' ± N = 5 L Washington	
E		4.56	288.21 on paving
C		4.83	287.94 ✓ -
W		4.65	288.12 ✓ -

2/20/23

Gregory
Thorb
Miller
Shaw

LEVELS ON
E ST.
from E.L. of Harbor St
to W.L. of Atlantic

75' wide
12' cbs

34

	3.77	9.93	6.16	Top Hyd SE Harbor St	S
Elev. of floor People's Fish Co	4.55	5.3			C
W. La. of Park Strip on Harbor St					N
S	4.9	5.0			
C	4.8	5.1			N
N	5.7	4.2			C
	E.L. Harbor St. = 0+00				S
N	5.4	4.5			
C	5.0	4.9			S
S	4.6	5.3			C
1/2 E = center of gas Co M.H.	5.05	4.9			N
	50' E				
S	4.7	5.2			
C	5.1	4.8			
N	5.3	4.6			
	100' E				N
N	5.3	4.6			C
C	5.0	4.9			S
S	4.8	5.1			

150' E

100' E = W.L. BELT ST 100' wide

1/2 BELT ST

15.5' E. of 1/2 BELT ST

	4.7	5.2		
	4.70	5.2		= Gas Co. M.H.
	5.0	4.9		
	4.6	5.3		
	4.4	5.5		
	4.6	5.3		
	4.5	5.4		
	4.3	5.6		
	4.4	5.5		
	4.17	5.7		= Gas Co M.H.
	E.L. Belt St			
	4.7	5.2		
	4.2	5.7		
	4.1	5.8		
	50' E			
	4.8	5.1		

9.93

C 4.5 5.4

N 3.8 6.1

100' E

N 4.7 5.2

C 5.1 4.8

S 5.1 4.8

140' E

S 5.5 4.4

C 5.7 4.2

N = ^{Warehouse} E of Spur to Naval 4.7 5.2

4.57 5.3 = Top of rail

168' E

N 4.7 5.2

C 5.5 4.4

S = ^{Warehouse} E of spur to Naval 4.84 5.1 = Top rail

200.12' E - W L Atlantic

S 5.2 4.5

C 5.3 4.6

N 5.9 4.0

T.P. 4.93 5.20

Hub NW
Belt + F

E 37.

35

Top of rail Atlantic St 5.39

2/20/23

Gregory
Thorp
Miller
ShawLevels on
F 5th
Harbor to Atlantic

3.01

9.17

6.16

Top Hydrant
SE Harbor F

N. L. Park Strip on Harbor St

S

5.1

4.1

C

5.0

4.2

N

4.3

4.9

E. L. Harbor St

N

4.5

4.7

C

5.2

4.0

S

5.2

4.0

50' E

S

5.4

3.8

C

4.6

4.6

N

4.2

5.0

100' E

N

4.7

4.5

C

4.9

4.3

S

4.6

4.6

150' E

S

3.7

5.5

36

C

4.8

4.4

N

3.8

5.4

Floor of Am. Union Fish Co.

3.90

5.3

300' E = W.L. Belt St 100 wide

N

3.4

5.8

C

4.3

4.9

S

4.4

4.8

E. L. Belt

S

3.8

5.4

C

4.3

4.9

N

3.7

5.5

E. L. Belt

N

3.9

5.3

C

4.5

4.7

S

3.6

5.6

50' E

S

3.7

5.5

C

4.4

4.8

N

4.2

5.0

957

100° E

N	4.7	4.5
C	4.9	4.3
S	4.6	4.6

150° E

S	5.2	4.0
C	5.0	4.2
N	4.7	4.5

300/10 E = W.L. Atlantic

N	5.7	3.5
C	5.3	3.9
S	6.4	2.8
Toprail Atlantic St 3L.	5.67	3.5
✓ ✓ - - N.L.	5.33	3.9

2/23/23

Gregory
Meyer
ShawLevels on Cement Curb
BROADWAY
from Atlantic to Harbor

on B.M.	4.59	10.88	5.99	BP 5. Bottom Mini Pier
		W. L. Atlantic		
N. Curb		6.68	4.20	
		50' W.		
N. Curb		6.06		
		100' W.		
N. Curb		5.51		
		150' W.		
N. Curb		4.95		
		200' W. = E.L. Belt.		
N. Curb		4.35	6.53	
		250' W.		
N. Curb		3.82		
		255.5' W.		
N. Curb		3.73		
		300' W. = W.L. Belt.		
N. Curb		4.05	6.83	
		350' W.		
N. Curb		4.38		

100.6 38
62
943

	385.5 = End of Curb at Spur Tract			
N. Curb		4.69	6.19	
	412' W = End of Curb at spur			
N. Curb		4.82	6.06	
	450' W.			
N. Curb		4.98		
	500' W.			
N. Curb		5.37		
	550' W.			
N. Curb		5.71		
	594.3' W = W. End of Curb on N.			
N. Curb		6.07	4.8	
	W. L. Atlantic			
S. Curb		6.66	3.2	
	50' W.			
S. Curb		6.12	4.8	
	100' W.			
S. Curb		5.50	5.4	
	150' W.			
S. Curb	5.57	11.53	4.92	5.96

1153

200' W = E.L. Belt.

5. Curb 5.02 6.5

250' W.

5. Curb 4.46 7.0

255.5 W.

5. Curb 4.37 7.1

300' W. = W.L. Belt

5. Curb 4.67 6.8

350' W.

5. Curb 4.97 6.5

400' W.

5. Curb 5.45 6.1

450' W.

5. Curb 5.75 5.7

500' W.

5. Curb 6.08 5.4

550' W.

5. Curb 6.57 4.9

555.5 W = P.C. of Return

5. Curb 6.66 4.8

3/20/43 Gregory Moore Shaw

Cross Section of
ALLEY BLK 32 Higgins
26th to 27th
A + B.

B.M.	10.96	207.88 ✓	196.92	317 36" + B
				FL 26 th
S on curb return		6.72	201.16 ✓	
S		7.4	200.5 ✓	
C		7.0	200.9 ✓	
N = ground + curb		6.42	201.46 ✓	
				10' E
N		7.5	200.4 ✓	
+6		8.0	199.9 ✓	
C		7.3	200.6 ✓	
S		8.4	199.5 ✓	
				40' E
S		7.9	200.0 ✓	
C		7.3	200.6 ✓	
N		7.6	200.3 ✓	
				60' E
N		6.4	201.5 ✓	
+2		7.2	200.7 ✓	
C		7.2	200.7 ✓	

S		7.3	200.6 ✓	
				84' E
N = Edge cement apron		6.30	201.58 ✓	garage 4' back
				100' E
S		6.7	201.2 ✓	
C		6.6	201.3 ✓	
N		6.3	201.6 ✓	
				150' E
N		5.2	202.7 ✓	
+4		5.8	202.1 ✓	
C		5.4	202.5 ✓	
S		5.8	202.1 ✓	
				200' E
S		5.1	202.8 ✓	
C		4.8	203.1 ✓	
+7		5.2	202.7 ✓	
N		4.5	203.4 ✓	
				207' E
S = front of garage cement		4.84	203.04 ✓	
+5 = edge of apron		5.05	202.93 ✓	

20788

232' E

N = front of garage cement fl. 4.15 203.73 ✓

250' E

N 4.5 203.4 ✓

C 4.2 203.7 ✓

+7 4.6 203.3 ✓

S 4.1 203.8 ✓

270' E

S 4.3 203.6 ✓

C 4.2 203.7 ✓

+5 4.3 203.6 ✓

N = front of garage cement fl. 3.76 202.12 ✓

282' E

S = front of garage board fl. 4.45 203.63 ✓

306' E

-v = front of garage 3.15 204.73 ✓

N = edge of cement apron 3.30 204.59 ✓

+5 3.9 204.0 ✓

C 3.6 204.3 ✓

S 3.8 204.1 ✓

41

356' E

S 2.6 205.3 ✓

C 2.3 205.6 ✓

+6 2.5 205.4 ✓

N = edge cement apron 1.65 206.33 ✓

+v = front of garage 1.45 206.63 ✓

T.P. 6.38 211.91 2.35 205.53 ✓

368' E

S = front of cement floor 6.07 205.84 ✓

382' E

S = front of cement fl. 5.75 206.16 ✓

+1.6 = edge of v apron 5.87 206.04 ✓

C 5.5 206.4 ✓

+7 5.6 206.3 ✓

N 5.1 206.8 ✓

415' E

N 4.1 207.8 ✓

+3 4.8 207.1 ✓

C 4.4 207.5 ✓

+7 5.3 206.6 ✓

S 5.0 206.9 ✓

7-11-91

445' E

S	5.1	206.8	✓
C	4.6	207.3	✓
+6	5.0	206.9	✓
N	4.5	207.4	✓
+4 = front of wood floor garage	4.10	207.81	✓

480' E

N	4.30	207.61	✓
+3	4.6	207.3	✓
C	4.6	207.3	✓
S = front of wood floor garage	4.80	207.11	✓

510' E

S	5.10	206.81	✓
+030	4.7	207.2	✓
C	4.5	207.4	✓
+6	4.6	207.3	✓
N = edge of cement apron garage 6' N. of N.L.	3.85	208.06	✓

550' E

N	4.7	207.2	✓
---	-----	-------	---

42

+3

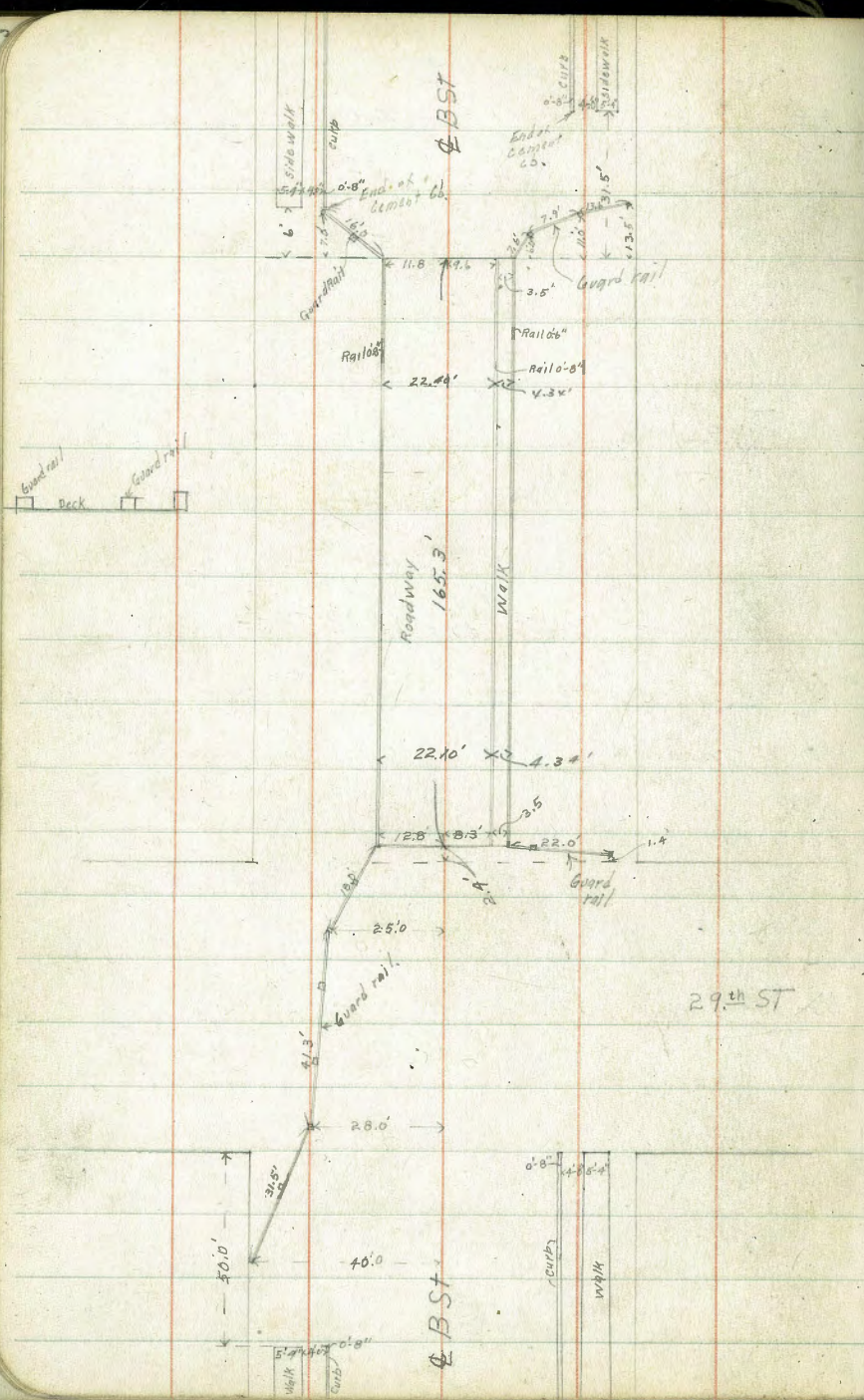
C	5.1	206.8	✓
C	4.7	207.2	✓
S	5.1	206.8	✓

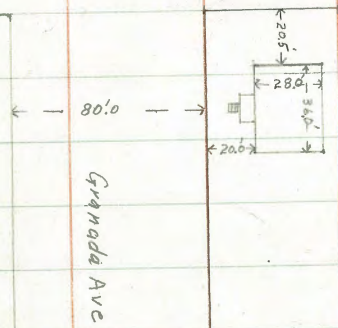
570' E

S	5.5	206.4	✓
C = Manhole	4.94	206.97	✓
+6	5.4	206.5	✓
N	4.7	207.2	✓

600' E = WL. 27th St

N on cement curb	8.27	208.64	✓
N - ground	9.9	204.0	✓
C	8.2	203.7	✓
+3	8.5	203.4	✓
S	6.0	205.9	✓
S on cement curb.	8.95	204.96	✓





Date St

B.M. S.W. Cor					
Date + Granada	8.54	216.49		207.95	
T.P.	2.88	212.67	6.70	209.79	
S.E. Cor of Basement			4.74	207.93	on cement Basement Floor
S.W. Cor ✓			4.75	207.92	"
N.W. Cor ✓			5.40	207.27	Flow Line of Drain
2'5" E of N.W. Cor ✓			5.17	207.50	
N.E. Cor ✓			4.82	207.85	

(See Book 823, Page 76)

Xsec. of Alley BIK 2
15' wide

Florence Moore
miler

Hqts. #17/23
Shaw
C.W.

27699
59045

						4.9	281.0	
	8.90	28589	276.99	EM. SP. Wash. + Alkat 2035	W	1+11		
		N.L. Washington = 0+00						
W		7.50	278.4	Alley Return	W		4.0	281.9
C		7.7	278.2		E		4.0	281.9
E		7.40	278.5	Alley Return	E		4.0	281.7
		+04				1+26		
E		5.8	280.1	in w. of W.L.			3.5	282.4
+5		7.1	278.8			1+42		
C		7.0	278.9	E on line			3.5	282.4
+3		6.8	279.1	C			3.5	282.4
W		5.2	280.7	W			3.0	282.5
		+20		T.P.		6.06	288.47	3.48
W		4.8	281.1				1+67	
C		5.1	280.8	E on line			5.9	282.6
E		4.9	281.0				1+86	
		+64						
-7		4.9	281.0	Garage Dirt floor	W		5.6	282.9
E		4.8	281.1		W		5.6	282.9
C		4.8	281.1		E		5.7	282.8
							5.8	282.7

Garage
Dirt floor

Garage
Dirt floor

Double Garage
Dirt floor

Garage
dirt floor

Garage
Dirt floor

Garage
Dirt floor

	2+30				3+31			
-7 E	4.9	283.6	Garage Dirt floor	35' w of WL	3.76	284.7	Garage Conc. floor	
	2+31			1.5 ✓ ✓ ✓	3.96	284.5	✓ Apron	
-7	4.9	283.6	Garage Dirt floor		3+50			
E	4.8	283.7		W	3.9	284.6		
C	4.7	283.8		C	3.8	284.7		
W	4.8	283.7		E	3.9	284.6		
+4.5	4.9	283.6	Garage Dirt floor		4+07			
	2+48			-0.9	3.32	285.2	Apron to Conc. Garage floor	
T'E of E.V.	4.6	283.9	Garage Dirt floor	E	3.3	285.2		
	2+65			C	3.3	285.2		
W	4.6	283.9		W	3.3	285.2		
C	4.6	283.9			4+20			
E	4.6	283.9		-3'	3.02	285.43	Double Garage Dirt floor	
	3+13			TP	5.54	290.96	3.05	285.42
E on line	4.0	284.5	Garage Dirt floor		4+70			
C	3.9	284.6		-3'	5.3	285.7	Garage Dirt floor	
W	4.0	284.5		W	5.3	285.7		
+5	4.1	284.4		C	5.2	285.8		
			Garage Dirt floor	E	5.1	285.9		

290.96

47

+5	5.06	285.9	Garage Conc. floor			6+20	
	4+86			W		4.6	286.4
4' w of wb	5.9	285.1	Garage Dirt floor	C		4.27	286.7 Sewer Mt.
	4+91			E		3.9	287.1
3' E of EL	4.62	286.4	Garage Conc. floor			6+20 = S.L. Lewis	
	5+30			E		4.5	286.5
E	4.8	286.2		C		4.9	286.1
C	5.1	285.9		W		4.8	286.2
W	5.2	285.8		T.D	+37	286.99	4.34 286.62
+4	5.2	285.8	Garage Dirt floor	old am		6.02	284.97 Lewis + Front 5+96
	5+52						N.B. - Lewis not graded
-3.7'	4.6	286.4	Garage Dirt floor				
W	4.9	286.1					
C	4.8	286.2					
E	4.7	286.3					
	5+94						
-4.5'	4.1	286.9	Garage Dirt floor				
E	4.1	286.4					
C	4.8	286.2					
W	4.6	286.4	Garage on wb. Dirt floor				

Xsec of 33d Landis to Myrtle
65' wide 10' abs

Moore
Miller
C.W.

48

				cb	4.0	337.6
	3.10	341.57	338.47	4	4.1	337.5
N.B: 10' abs on Landis	N.L. Landis	60' wide		c	4.3	337.3
w		3.7	337.9	4	4.4	337.2
cb		4.1	337.5	cb	4.7	336.9
1/2		4.2	337.4	E	4.9	336.7
c		4.0	337.6			Center
1/4		4.5	337.1	E	4.8	336.8
cb		4.5	337.1	d	4.5	337.1
E		4.7	336.9	4	4.3	337.3
	N 1/2			c	4.4	337.4
E		5.0	336.6	4	4.0	337.1
d		4.9	336.7	cb	3.8	337.8
1/4		4.8	336.8	w	3.7	337.9
c		4.6	337.0			S 1/4
4		4.4	337.2	w	4.0	337.6
cb		4.3	337.3	d	4.3	337.3
w		4.2	337.4	4	4.4	337.2
	N 1/4			c	4.4	337.2
w		3.8	337.8	4	4.5	337.1

341.57

cb	4.7	336.9
E	5.0	336.6
3 cb		
E	4.9	336.7
cb	5.1	336.5
1/4	4.6	337.0
c	4.7	336.9
1/4	4.4	337.2
cb	4.6	337.0
W	4.3	337.3

S.L. Landis

W	4.3	337.3
+9	4.4	337.2
cb	4.8	336.8
1/4	4.6	337.0
c	4.8	336.8
1/4	4.8	336.8
cb	5.5	336.1
+1	5.0	336.6
E	4.9	336.7

334d.

49

50.5

E	5.7	335.9
cb	5.1	336.5
+1	5.8	335.8
1/4	5.1	336.5
c	5.2	336.4
1/4	5.1	336.5
cb	5.5	336.1
+1	5.1	336.5
W	5.1	336.5

100.5

W	6.0	335.6
cb	6.0	335.6
+1	6.6	335.0
1/4	6.0	335.6
c	6.2	335.4
1/4	6.3	335.3
+10	9.0	334.6
cb	6.5	335.1
E	6.6	335.0

341.57

150' S

E	7.3	334.3	✓
cb	7.0	334.6	
+1	7.5	334.1	
1/4	6.8	334.8	
C	6.8	334.8	✓
1/4	6.4	335.2	
+10	7.1	334.5	
cb	6.5	335.1	
W	6.2	335.4	✓

200' S

W	6.5	335.1	✓
cb	6.5	335.1	
+1	7.1	334.5	
1/4	6.7	334.9	
C	6.8	334.8	✓
1/4	6.9	334.7	
+10	7.6	334.0	
cb	7.1	334.5	
E	7.4	334.2	✓

33rd

50

250' S

E on lawn	7.4	334.2	✓
cb	7.5	334.1	
+1	8.0	333.6	
1/4	7.2	334.4	
C	7.2	334.4	✓
1/4	7.1	334.5	
+10	7.8	333.8	
cb	7.1	334.5	
W	7.2	334.4	✓

300' S

W	7.9	333.7	✓
cb	7.9	333.7	
+1	8.3	333.3	
1/4	7.7	333.9	
C	7.8	333.8	✓
1/4	7.7	333.9	
+10	8.4	333.2	
cb	7.9	333.7	
E on lawn	8.0	333.6	✓

34157

350 5

E	8.9	332.7	✓
cb	9.0	332.6	
+1	9.4	332.2	
1/4	8.7	332.9	
C	8.9	332.7	✓
1/4	8.6	333.0	
+10	9.1	332.5	
cb	8.7	332.9	
W	8.6	333.0	—

400 5

W	9.5	332.1	✓
cb	9.5	332.1	
+1	10.1	331.5	
1/4	9.4	332.2	
C	9.4	332.2	✓
1/4	9.2	332.4	
+10	10.0	331.6	
F cb	9.5	332.1	
E	9.6	332.0	✓

33rd 51

450 5

E	10.0	331.6	✓
cb	9.8	331.8	
+1	10.1	331.5	
1/4	9.7	331.9	
C	9.7	331.9	✓
1/4	9.6	332.0	
+10	10.3	331.3	
cb	9.7	331.9	
W	9.6	332.0	✓

500 5

W	10.7	330.9	✓
cb	10.7	330.9	
+1	11.2	330.4	
1/4	10.5	331.1	
C	10.6	331.0	✓
1/4	10.4	331.2	
+10	11.0	330.6	
cb	10.6	331.0	
E	10.7	330.9	✓

341.57

550'S

E		11.7	329.9	✓
cb		11.7	329.9	
+1		12.2	329.4	
1/4		11.6	330.0	
c		11.9	329.7	✓
1/4		11.9	329.7	
+10		12.8	328.8	
cb		12.2	329.4	
W		12.2	329.4	✓
T.P.	0.83	330.33	1217 329.40	
			600'S = N.L. DWIGHT. ^{60'S} 10' cbs.	
W		1.4	328.8	✓
cb		1.2	329.0	
+1		1.7	328.5	
1/4		1.2	329.0	
c		1.5	328.7	—
1/4		1.5	328.7	
cb		1.8	328.4	
+1		1.4	328.8	
E		1.2	329.0	✓

331d. 52

N. Curb

E	1.4	328.8
cb	1.6	328.6
1/4	1.5	328.7
c	1.4	328.8
1/4	1.2	329.0
cb	1.5	328.7
W	1.2	329.0

N. Quarter

W	1.3	328.9
cb	1.3	328.9
1/4	1.3	328.9
c	1.4	328.8
1/4	1.3	328.9
cb	1.4	328.8
E	1.4	328.8

Center

E	1.5	328.7	✓
cb	1.7	328.5	
1/4	1.5	328.7	

3 Line

C	1.3	328.9	✓
1/4	1.3	328.9	
cb	1.5	328.7	
W	1.6	328.6	✓

W	2.6	327.6	✓
cb	2.2	328.0	
+1	2.5	327.7	
1/4	2.1	328.1	

5. Quarter

W	1.9	328.3	
cb	1.9	328.3	
1/4	1.7	328.5	
C	1.8	328.4	
1/4	1.9	328.3	
cb	2.1	328.1	
E	2.3	327.9	

C	2.0	328.2	✓
1/4	2.0	328.2	
+10	2.4	327.8	
cb	2.2	328.0	
E	2.3	327.9	✓

50' 5

5. Curb

E	2.3	327.9	
cb	2.1	328.1	
1/4	1.8	328.4	
C	1.9	328.3	
1/4	2.1	328.1	
cb	2.2	328.0	
W	2.3	327.9	

E	3.1	327.1	✓
cb	3.2	327.0	
* +1	3.6	326.6	
1/4	2.8	327.4	
C	2.5	327.7	✓
1/4	3.0	327.2	
+10	3.6	326.6	
cb	3.3	326.9	
W	3.4	326.8	✓

330.23

100'5

W	49	325.3	✓
cb	48	325.4	
+1	53	324.9	
1/4	47	325.5	
C	43	325.9	✓
1/4	42	326.0	
+10	49	325.3	
cb	43	325.9	
E	41	326.1	✓

150'5

E	52	325.0	✓
cb	55	324.7	
+1	60	324.2	
1/4	53	324.9	
C	56	324.6	✓
1/4	58	324.4	
+10	67	323.5	
cb	63	323.9	
W	72	323.0	✓

335d.

54

200'5

W	96	320.6	✓
cb	84	321.8	
1/4	75	322.7	
C	73	322.9	✓
1/4	69	323.3	
+10	74	322.8	
cb	68	323.4	
E	70	323.2	✓

250'5

E	79	322.3	✓	
cb	78	322.4		
+1	84	321.8		
1/4	80	322.2		
C	84	321.8	✓	
1/4	91	321.1		
cb	94	320.8		
W	10.1	320.1	✓	
TP	7.96	326.96	11.23	319.00

32696

295 5

-10	8.6	318.4	
W	9.3	317.7	✓
cb	8.3	318.7	
1/4	8.0	319.0	
C	7.8	319.2	✓
1/4	6.6	320.4	
+10	6.7	320.3	
cb	6.3	320.7	
E	5.9	321.1	✓

350 5

E	7.7	319.3	✓
cb	8.2	318.2	
+1	8.6	318.4	
1/4	8.9	318.1	✓
C	9.5	317.5	✓
1/4	9.3	317.7	
+10	9.6	317.4	
cb	9.3	317.7	
W	7.7	319.3	✓

33rd

55

400 5

W	5.5	321.5	✓
cb	6.5	320.5	
+1	7.4	319.6	
1/4	7.7	319.3	
C	8.7	318.3	✓
1/4	10.5	316.5	
cb	12.1	314.9	
+6	12.1	314.9	
E	11.5	315.5	✓
+10	10.1	316.9	

413 5

-10	11.2	315.8	
E	12.3	314.7	✓
cb	11.4	315.6	
1/4	10.2	316.8	
C	8.2	318.8	✓
1/4	7.0	320.0	
+10	6.9	320.1	
cb	6.1	320.9	
W	5.1	321.9	✓

32696

450' S

W	36	323.4	✓
cb	4.8	322.2	
+1	5.4	321.6	
1/4	5.7	321.3	
c	6.4	320.6	✓
1/4	8.2	318.8	
cb	9.3	317.7	
E	11.0	316.0	✓
+15	13.3	313.7	

475' S

-10	10.6	316.4	
E	8.9	318.1	✓
cb	7.9	319.1	
1/4	6.9	320.1	
c	5.6	321.4	✓
1/4	4.9	322.1	
+10	4.6	322.4	
cb	4.0	323.0	
W	3.2	323.8	✓

33+d

56

500' S

W	2.7	324.3	✓
cb	3.5	323.5	
+1	4.1	322.9	
1/4	4.3	322.7	
c	4.9	322.1	✓
1/4	6.1	320.9	
cb	7.0	320.0	
E	7.9	319.1	✓
+10	9.1	317.9	

550' S

-5	7.1	319.9	✓
E	6.9	320.1	✓
cb	6.0	321.0	
1/4	5.0	322.0	
c	3.7	323.3	✓
1/4	3.1	323.9	
+10	3.1	323.9	
cb	2.4	324.6	
W	1.9	325.1	✓

597 S

W	1.4	325.6	✓
cb	1.9	325.1	
+1	2.7	324.3	
1/4	2.7	324.3	
C	2.8	324.2	✓
1/4	3.8	323.2	
cb	4.4	322.6	
E	4.6	322.4	✓

600 S = NL Myrtle

E	4.8	322.2	✓
cb	4.6	322.4	
1/4	4.0	323.0	
C	3.6	323.4	
1/4	3.6	323.4	
cb	4.1	322.9	
W	4.0	323.0	✓

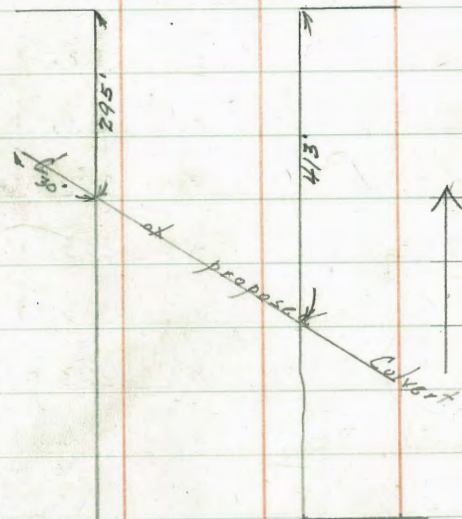
Dirt curb on West of NW Ret. = 4.15 ^{322.81} for checking

Notes on proposed Culvert.

0+00	8.3	318.7
+30 = WL 33rd	9.3	317.7
+60	9.5	317.5
1+00	9.0	318.0
+35	11.0	316.0
+40	11.7	315.3
+64 = F.L. 33rd	12.4	314.6
2+00	12.9	314.1

Dwight

St.



Myrtle

St.

7/9/24

Sewer Levels Box
Olivet St from S. L. ok
Exchange

57

				✓			5.2	202.31
				+15			4.5	203.01
36 Exchange = 0+00	5.62	207.51	201.89	Top of curb page 26			7.2	200.31
			6.72	200.79	on paving			
+30			5.8	201.71			11.1	196.41
+50			6.2	201.31	T.P.	1.47	196.18	12.80 194.71
+70			6.4	201.11	+40		1.0	195.18
+78			6.9	200.61	+50		5.2	190.98
1			6.3	201.21	6		10.6	185.58
+15			6.6	200.91	+25		13.1	182.68
+40			4.1	203.41	T.P.	1.28	184.58	12.88 183.30
+55			3.6	203.91	+75		6.3	178.28
+80			5.0	202.51	7		7.9	176.68
2			4.5	203.01	+25		11.5	173.08
+12			5.0	202.51	T.P.	0.75	172.96	12.37 172.21
+30			4.4	203.11	+65		4.5	168.46
+45			2.1	205.41	+83		5.0	167.96
+65			3.6	203.91	8		2.1	164.86
3			3.1	204.41	+50		13.5	159.46
+35			3.6	203.91	T.P.	0.30	160.36	14.90 160.06
+60			3.2	204.32	9		5.0	155.36

16036

+10			59	1544.6	
+50			10.4	149.96	
TP	2.08	150.22	12.22	148.14	
+80			2.2	148.02	
10			4.5	145.72	
+50			10.4	139.82	
+60			11.6	138.62	
+86.1	Δ 57°10' L		13.1	137.12	rail
TP	0.02	137.19	13.05	137.17	
11			0.5	136.69	
+45			1.4	135.79	
12			3.1	134.09	
+50			2.3	136.89	
+91.90	Δ 90°00' R. L. + Line Act 30 & 31 Bk 3		4.8	135.39	
13			2.2	134.99	
+50			8.9	128.29	
+60			10.7	126.49	
14			11.6	125.59	
+30			11.8	125.39	
+53			12.0	125.19	
+56.70	= M.H. & Alley		12.93	124.26	Top of M.H.
			21.73	115.46	= Flow Line

Levels at rt angles to
Sta 10+80 from Δ Olivet to Δ College

5.80	142.97	137.17
0+00 = Δ Olivet	5.7	137.27
0+20	6.3	136.67
+35	6.1	136.87
+55	7.3	135.67
+80	8.0	134.97
1+00	7.5	135.47
+10	9.2	133.77
+30 = E.L. Exchange	9.8	133.17
+80 = Δ ✓	11.0	131.97

$\frac{31.5}{13.5}$
 $\frac{11.0}{9.6}$
 $\frac{21.4}{21.4}$
 $\frac{12.4}{8.2}$
 $\frac{21.1}{21.1}$
 $\frac{20399}{114}$
 $\frac{21541}{625}$
 $\frac{20856}{743}$
 $\frac{21599}{85}$
 $\frac{20714}{20714}$

$\frac{1345}{0196}$
 $\frac{925}{420}$
 $\frac{1348}{1348}$
 $\frac{7}{2051}$

40
68

28496
 28496

DISTANCES FROM CENTER OF ROADWAY FOR CROSS-SECTIONING.
 ROADWAY 14 FEET WIDE. SIDE SLOPES $1\frac{1}{2}$ TO 1.
 FOR SINGLE TRACK EMBANKMENT.

	0	.1	.2	.3	.4	.5	.6	.7	.8	.9	
0	7.0	7.2	7.3	7.5	7.6	7.8	7.9	8.1	8.2	8.4	0
1	8.5	8.7	8.8	9.0	9.1	9.3	9.4	9.6	9.7	9.9	1
2	10.0	10.2	10.3	10.5	10.6	10.8	10.9	11.1	11.2	11.4	2
3	11.5	11.7	11.8	12.0	12.1	12.3	12.4	12.6	12.7	12.9	3
4	13.0	13.2	13.3	13.5	13.6	13.8	13.9	14.1	14.2	14.4	4
5	14.5	14.7	14.8	15.0	15.1	15.3	15.4	15.6	15.7	15.9	5
6	16.0	16.2	16.3	16.5	16.6	16.8	16.9	17.1	17.2	17.4	6
7	17.5	17.7	17.8	18.0	18.1	18.3	18.4	18.6	18.7	18.9	7
8	19.0	19.2	19.3	19.5	19.6	19.8	19.9	20.1	20.2	20.4	8
9	20.5	20.7	20.8	21.0	21.1	21.3	21.4	21.6	21.7	21.9	9
10	22.0	22.2	22.3	22.5	22.6	22.8	22.9	23.1	23.2	23.4	10
11	23.5	23.7	23.8	24.0	24.1	24.3	24.4	24.6	24.7	24.9	11
12	25.0	25.2	25.3	25.5	25.6	25.8	25.9	26.1	26.2	26.4	12
13	26.5	26.7	26.8	27.0	27.1	27.3	27.4	27.6	27.7	27.9	13
14	28.0	28.2	28.3	28.5	28.6	28.8	28.9	29.1	29.2	29.4	14
15	29.5	29.7	29.8	30.0	30.1	30.3	30.4	30.6	30.7	30.9	15
16	31.0	31.2	31.3	31.5	31.6	31.8	31.9	32.1	32.2	32.4	16
17	32.5	32.7	32.8	33.0	33.1	33.3	33.4	33.6	33.7	33.9	17
18	34.0	34.2	34.3	34.5	34.6	34.8	34.9	35.1	35.2	35.4	18
19	35.5	35.7	35.8	36.0	36.1	36.3	36.4	36.6	36.7	36.9	19
20	37.0	37.2	37.3	37.5	37.6	37.8	37.9	38.1	38.2	38.4	20
21	38.5	38.7	38.8	39.0	39.1	39.3	39.4	39.6	39.7	39.9	21
22	40.0	40.2	40.3	40.5	40.6	40.8	40.9	41.1	41.2	41.4	22
23	41.5	41.7	41.8	42.0	42.1	42.3	42.4	42.6	42.7	42.9	23
24	43.0	43.2	43.3	43.5	43.6	43.8	43.9	44.1	44.2	44.4	24
25	44.5	44.7	44.8	45.0	45.1	45.3	45.4	45.6	45.7	45.9	25
26	46.0	46.2	46.3	46.5	46.6	46.8	46.9	47.1	47.2	47.4	26
27	47.5	47.7	47.8	48.0	48.1	48.3	48.4	48.6	48.7	48.9	27
28	49.0	49.2	49.3	49.5	49.6	49.8	49.9	50.1	50.2	50.4	28
29	50.5	50.7	50.8	51.0	51.1	51.3	51.4	51.6	51.7	51.9	29
30	52.0	52.2	52.3	52.5	52.6	52.8	52.9	53.1	53.2	53.4	30
31	53.5	53.7	53.8	54.0	54.1	54.3	54.4	54.6	54.7	54.9	31
32	55.0	55.2	55.3	55.5	55.6	55.8	55.9	56.1	56.2	56.4	32
33	56.5	56.7	56.8	57.0	57.1	57.3	57.4	57.6	57.7	57.9	33
34	58.0	58.2	58.3	58.5	58.6	58.8	58.9	59.1	59.2	59.4	34
35	59.5	59.7	59.8	60.0	60.1	60.3	60.4	60.6	60.7	60.9	35
36	61.0	61.2	61.3	61.5	61.6	61.8	61.9	62.1	62.2	62.4	36

Calculated by Julien A. Hall, M. Am. Soc. C. E.