

1100

1100

LEVEL BOOK

373

KEUFFEL & ESSER CO.

DRAWING MATERIALS

AND

SURVEYING INSTRUMENTS.

NEW YORK.

CHICAGO. ST. LOUIS. SAN FRANCISCO. MONTREAL.

Tables for Excavations and Embankments.

DISTANCES FROM CENTER OF ROADWAY FOR CROSS-SECTIONING.
ROADWAY 18 FEET WIDE. SIDE SLOPES 1 TO 1.
FOR SINGLE TRACK EXCAVATION.

" Copyright, 1895, by Keuffel & Esser Co."

	0	.1	.2	.3	.4	.5	.6	.7	.8	.9	
0	9.0	9.1	9.2	9.3	9.4	9.5	9.6	9.7	9.8	9.9	0
1	10.0	10.1	10.2	10.3	10.4	10.5	10.6	10.7	10.8	10.9	1
2	11.0	11.1	11.2	11.3	11.4	11.5	11.6	11.7	11.8	11.9	2
3	12.0	12.1	12.2	12.3	12.4	12.5	12.6	12.7	12.8	12.9	3
4	13.0	13.1	13.2	13.3	13.4	13.5	13.6	13.7	13.8	13.9	4
5	14.0	14.1	14.2	14.3	14.4	14.5	14.6	14.7	14.8	14.9	5
6	15.0	15.1	15.2	15.3	15.4	15.5	15.6	15.7	15.8	15.9	6
7	16.0	16.1	16.2	16.3	16.4	16.5	16.6	16.7	16.8	16.9	7
8	17.0	17.1	17.2	17.3	17.4	17.5	17.6	17.7	17.8	17.9	8
9	18.0	18.1	18.2	18.3	18.4	18.5	18.6	18.7	18.8	18.9	9
10	19.0	19.1	19.2	19.3	19.4	19.5	19.6	19.7	19.8	19.9	10
11	20.0	20.1	20.2	20.3	20.4	20.5	20.6	20.7	20.8	20.9	11
12	21.0	21.1	21.2	21.3	21.4	21.5	21.6	21.7	21.8	21.9	12
13	22.0	22.1	22.2	22.3	22.4	22.5	22.6	22.7	22.8	22.9	13
14	23.0	23.1	23.2	23.3	23.4	23.5	23.6	23.7	23.8	23.9	14
15	24.0	24.1	24.2	24.3	24.4	24.5	24.6	24.7	24.8	24.9	15
16	25.0	25.1	25.2	25.3	25.4	25.5	25.6	25.7	25.8	25.9	16
17	26.0	26.1	26.2	26.3	26.4	26.5	26.6	26.7	26.8	26.9	17
18	27.0	27.1	27.2	27.3	27.4	27.5	27.6	27.7	27.8	27.9	18
19	28.0	28.1	28.2	28.3	28.4	28.5	28.6	28.7	28.8	28.9	19
20	29.0	29.1	29.2	29.3	29.4	29.5	29.6	29.7	29.8	29.9	20
21	30.0	30.1	30.2	30.3	30.4	30.5	30.6	30.7	30.8	30.9	21
22	31.0	31.1	31.2	31.3	31.4	31.5	31.6	31.7	31.8	31.9	22
23	32.0	32.1	32.2	32.3	32.4	32.5	32.6	32.7	32.8	32.9	23
24	33.0	33.1	33.2	33.3	33.4	33.5	33.6	33.7	33.8	33.9	24
25	34.0	34.1	34.2	34.3	34.4	34.5	34.6	34.7	34.8	34.9	25
26	35.0	35.1	35.2	35.3	35.4	35.5	35.6	35.7	35.8	35.9	26
27	36.0	36.1	36.2	36.3	36.4	36.5	36.6	36.7	36.8	36.9	27
28	37.0	37.1	37.2	37.3	37.4	37.5	37.6	37.7	37.8	37.9	28
29	38.0	38.1	38.2	38.3	38.4	38.5	38.6	38.7	38.8	38.9	29
30	39.0	39.1	39.2	39.3	39.4	39.5	39.6	39.7	39.8	39.9	30
31	40.0	40.1	40.2	40.3	40.4	40.5	40.6	40.7	40.8	40.9	31
32	41.0	41.1	41.2	41.3	41.4	41.5	41.6	41.7	41.8	41.9	32
33	42.0	42.1	42.2	42.3	42.4	42.5	42.6	42.7	42.8	42.9	33
34	43.0	43.1	43.2	43.3	43.4	43.5	43.6	43.7	43.8	43.9	34
35	44.0	44.1	44.2	44.3	44.4	44.5	44.6	44.7	44.8	44.9	35
36	45.0	45.1	45.2	45.3	45.4	45.5	45.6	45.7	45.8	45.9	36

Calculated by Julien A. Hall, M. Am. Soc. C. E.

Oct 19-22

Instr R.M.G. 2
Rec A.E.B

Line A. Instrument 200' North of Pier 4 East of Bulkhead Foresight at 0100

Sounding No	Azimuth	Gauge	Time	Inst. Ht.	Foresight	Backsight	Lead	Elev
Line A - 1	98° 43'	4.00	10.40 AM	2100 Bulk	0100 Bulk		32.0	28.0
2	69° 26'						36.0	32.0
3	59° 20'						36.0	32.0
4	42° 24'						35.5	31.5
5	37° 07'						35.5	31.5
6	31° 02'						35.0	31.0
7	27° 23'						32.0	28.0
								Line A N.L. Pier
Line B - 1	45° 14'	3.8					33.0	22.2
2	48° 40'						35.5	31.7
3	53° 17'						35.5	31.7
4	58° 36'						36.0	32.2
5	64° 50'						36.0	32.2
6	72° 45'						36.0	32.2
7	78° 57'						34.5	30.7
8	85° 37'						35.0	31.2
9	91° 18'						35.0	31.2
10	98° 42'						32.0	28.2
								Line B N.L. Pier

Instrument 200' North of Pier Foresight at 0700

Sounding No	Azimuth	Gauge	Time	Inst at	Foresight	Back sight	Lead	Elev	
Line C - 1	98°18'	3.6					20.0	16.4	
2	90°36'						33.0	19.4	
3	81°50'						32.0	33.4	
4	77°31'						36.5	32.9	
5	71°00'						36.5	32.9	
6	66°41'						36.5	32.9	
7	61°45'						36.0	32.4	
8	58°18'						35.0	31.5	
9	57°15'	3.5	11.00 AM	200 Bulk	0700 Bulk		33.0	29.5	Line C North Line Pier
Line D - 1	74°26'						31.0	27.5	Line D North Line Pier
2	76°35'						35.0	31.5	
3	78°18'						36.0	32.5	
4	80°30'						36.0	32.5	
5	82°30'						35.5	32.0	
6	84°12'						35.5	32.0	
7	86°28'						36.0	32.5	
8	88°24'						35.0	31.5	
9	89°55'						35.0	31.5	

Sounding No	Azimuth	Gauge	Time	Instr At	Forasight	Backsight	Lead	Elev
Line D-10	91° 33'	3.5		2100 Bulk	0100		35.0	31.8
11	93° 28'						35.0	31.5
Line E-1	94° 35'	3.3		2100 Bulk	0100		34.0	30.7
2	91° 30'						35.5	32.2
3	88° 10'						37.0	33.7
4	85° 21'						37.5	34.2
5	82° 30'						38.0	34.7
6	80° 16'						38.0	34.9
7	78° 22'						38.5	35.4
8	77° 04'						38.0	34.9
9	76° 24'	3.1	11.15 AM				34.0	36.9 NL Prev Line E
Line A 1	36° 37'	2.6	11.30 AM	5400 Plev	0100 Plev		7.0	4.4
2	32° 45'						8.5	5.9
3	31° 33'						14.0	11.4
4	29° 25'						24.0	21.4
5	28° 30'						27.0	26.4
6	27° 18'						32.0	29.4

Sounding No.	Azimuth	Gauge	Time	Inst. at	foresight	backsight	lead	Elev.	
Line B - 1	36° 23'			5100 Pier	0100 Pier		33.0	30.4	
2	38° 00'	2.5					30.5	28.0	
3	38° 41'						27.0	24.5	
4	39° 32'						29.0	17.5	
5	40° 16'						15.0	12.5	
6	40° 55'						10.0	7.5	
7	41° 42'						8.0	5.5	
8	42° 26'						7.0	4.5	
Line C - 1	55° 04'	2.4	11.36 AM	5100 Pier	0100 Pier		7.0	4.6	
2	57° 31'						9.0	6.6	
3	49° 50'						16.0	13.6	
4	45° 08'						32.0	29.6	
Line I - 1	149° 40'	2.2	11.47 AM	5100 Pier	0100		16.0	13.8	Approx Pier head line
2	147° 20'						26.0	22.8	
3	146° 22'						30.0	27.8	
4	144° 55'						31.0	28.8	
5	143° 24'						32.0	29.8	
6	140° 20'						33.0	30.8	
7	137° 20'						33.0	30.8	

Sounding No	Azimuth	Gauge	Time	Instr at	Foresight	Backsight	lead	Elek	
8	132°13'						32.0	30.8	opp end of Pier
9	127°48'						33.5	31.3	
10	122°33'						33.0	30.8	
11	118°16'						33.0	30.8	
12	110°24'						33.0	30.8	
13	102°06'						33.0	30.8	
14	93°56'						33.0	30.8	
15	84°50'						26.0	23.8	
16	80°54'						24.0	21.8	
17	76°03'						22.0	19.8	
18	72°22'						18.0	16.0	
19	65°14'						14.0	12.0	
20	62°46'						8.5	6.5	
21	58°30'						8.5	6.5	
22	55°02'						7.0	5.0	
23	50°00'						6.5	4.5	
24	46°50'						7.0	5.0	
25	40°30'						7.0	5.0	
26	38°54'						6.0	4.0	

Sounding No	Azimuth	Gauge	Time	Inst at	Fore sight	Backsight	Lead	Elev	
27	35° 45'			5100 Pier	0100 Pier		7.0	5.2	
28	34° 30'						6.0	4.2	
29	33° 46'	1.5	1200 M				6.0	4.2	
30							7.0	5.2	At Bulkhead
Line-2 1	38° 50'	+ 0.30	1.05 PM	5100 Pier	0100 Pier		6.5	- 6.2	At Bulkhead
2	42° 02'						5.0	- 4.7	
3	45° 10'						4.0	- 3.7	
4	48° 48'						5.0	4.7	
5	53° 21'						5.0	4.7	
6	58° 45'						5.0	4.7	
7	64° 10'						5.0	4.7	
8	69° 40'						6.0	5.7	
9	70° 30'						6.5	6.2	
10	71° 30'						13.0	12.7	
11	73° 40'	0.2					18.0	18.0	
12	75° 35'						18.5	18.5	
13	79° 37'						15.0	15.0	
14	85° 30'						14.0	14.0	
15	90° 53'						19.5	19.5	

Sounding No	Azimuth	Gauge	Time	Inst. at	Fore sight	Backsight	Lead	Elev
16	95°16'			5100 Plev	0100 Plev		23.5	23.5
17	99°40'						27.0	27.0
18	104°30'						31.0	31.2
19	108°50'						31.5	31.7
20	112°35'	-0.2	1.30 PM				31.0	31.2
21	116°10'	-0.3	1.45 PM				30.0	30.3
22	120°52'						30.5	30.8
23	124°35'						30.0	30.3
24	128°30'						30.0	30.3
25	131°05'						26.0	26.3
26	134°00'						22.0	22.3
27	134°56'						12.0	12.4
28	136°38'						16.5	16.9
29	138°50'						7.0	7.4
30	141°58'						7.0	7.4
31	142°08'						7.0	7.4
32	145°25'	-0.4	1.55 PM				7.5	7.9

Sounding	Azimuth	Gauge	Time	Instr at	Fore sight	Backsight	lead	Elev
Line 3-1	142°08'	-0.4	1.55 PM	5400 Pev	0+00 Pev		10.0	10.5
2	139°02'						9.0	9.5
3	135°40'						8.0	8.5
4	131°42'						7.0	7.5
5	125°08'						6.0	6.5
6	121°15'						5.5	6.0
7	115°30'						5.5	6.0
8	107°08'						15.0	15.5
9	103°22'						22.0	23.5
10	99°16'						23.0	23.5
11	95°25'						21.0	21.5
12	91°46'						19.0	19.5
13	88°10'						15.0	15.5
14	81°22'						18.0	18.5
15	77°10'						18.0	18.5
16	74°02'						20.0	20.5
17	71°35'						4.0	4.5
18	69°05'						3.5	4.0
19	64°23'						3.5	4.0

Approx Pierhead

Sounding No	Azimuth	Gauge	Time	Instr at	Foresight	Backsight	Lead	Elev	
20	60°12'						4.0	4.5	
21	57°05'						4.0	4.5	
22	52°45'						4.0	4.5	
23	50°12'						4.0	4.5	
24	42°30'						4.0	4.5	
25	46°00'	-0.6	2.10 PM				5.0	5.5	AT Bulkhead
Line -4-							1.0	1.6	AT Bulkhead
1	52°15'			5700 PIER	00. PIER		3.0	3.6	near Bulkhead
2	56°35'						3.5	4.1	
3	60°24'						4.0	4.6	
4	66°20'						4.0	4.6	
5	70°08'						4.0	4.6	
6	74°30'						4.0	4.6	
7	76°53'						15.0	15.6	
8	78°20'						20.0	20.6	
9	80°45'						24.0	24.6	
10	86°00'						20.0	20.6	
11	87°32'						14.0	14.6	
12	89°15'						13.0	13.6	

Sounding No	Azimuth	Gauge	Time	Indy of	Foresight	Backsight	Lead	Elev	
13	92° 35'						16.0	16.6	
14	95° 06'						20.0	20.6	
15	98° 16'						22.0	22.6	
16	103° 00'						21.0	21.6	
17	105° 45'						21.5	21.1	
18	106° 35'						5.0	5.6	
19	109° 00'						4.5	5.1	
20	115° 36'						5.0	5.6	
21	119° 08'						5.5	6.1	
22	122° 25'						7.0	7.6	
23	126° 04'						7.5	8.1	
24	128° 28'						8.5	9.1	
25	132° 06'						9.0	9.6	
26	134° 12'						10.0	10.6	
27	136° 40'	-0.6	2.20 PM				10.0	10.6	Approx Pier beam
Line - 5 = 1	136° 28'			Steel Pier	0.00		12.0	12.6	
2	134° 20'						11.0	11.6	
3	129° 14'						10.0	10.6	

Sounding No	Azimuth	Gauge	Time	Inst. at	Fore sight	Back sight	Lead	Elev.
L 1072.5 - 2	124° 56'						9.0	9.6
3								
4	120° 28'						8.0	8.6
5	116° 28'						7.0	7.6
6	113° 08'						6.0	6.6
7	109° 51'						5.0	5.6
8	104° 43'						5.5	6.1
9								
10	103° 35'						14.0	14.6
11	102° 05'						20.0	20.6
12	99° 30'						21.0	21.6
13	97° 00'	07					16.5	17.2
14	95° 48'						15.5	16.2
15	92° 14'						15.0	15.7
16	88° 30'						15.0	15.7
17	85° 12'						19.0	19.7
18	82° 10'						20.5	21.2
19	80° 15'						10.0	10.7
20	78° 06'						4.5	5.2
21	76° 15'						4.0	4.7
22	70° 10'						4.0	4.7

Sounding No	Azimuth	Gauge	Time	Instr at	Foresight	Back sight	Lead	Elev	
Line 5- 23	64°55'						4.0	4.5	
24	61°08'						3.0	3.8	
25	59°12'	-0.8	2.35 PM				1.0	1.8	80' from Bullhead
Line 6- 1	58°43'						1.0	1.5	AT Bullhead
2	61°14'						4.0	4.8	
3	64°00'						4.0	4.8	
4	66°36'						4.0	4.8	
5	69°48'						4.5	5.3	
6	73°00'						4.5	5.3	
7	76°56'						4.0	4.8	
8	81°45'						4.5	5.3	
9	83°45'						17.0	17.5	
10	84°43'						20.5	21.3	
11	87°49'						21.0	21.8	
12	90°19'						15.0	15.8	
13	91°35'						16.5	17.3	
14	93°00'						17.0	17.8	
15	97°18'						21.0	21.8	
16	97°47'						23.0	23.8	

Soundings No	Azimuth	Gauge	Time	Insty at	Fore sight	Backsight	Lead	Elev	
Line-6-17	100°22'			5400 plev	0.00		24.0	24.6	
18	103°00'						20.0	20.6	
19	103°50'						15.0	15.6	
20	105°02'						6.0	6.6	
21	107°51'						5.0	5.6	
22	109°58'						6.0	6.6	
23	113°18'						7.0	7.6	
24	115°17'						8.0	8.6	
25	118°45'						8.5	9.1	
26	121°10'						9.0	9.6	
27	124°05'						9.0	9.6	
28	127°30'						10.0	10.6	near pierhead line
Line-7 1	125°00'	-0.6	2.55 PM	5400 plev	0.00 plev		9.0	9.6	" " "
2	123°05'						9.0	9.6	
3	120°08'						8.5	9.1	
4	116°06'						8.0	8.6	
5	112°23'						8.0	8.6	
6	109°45'						7.0	7.6	
7	107°07'						6.0	6.6	

Soundings No	Bazimuth	Gauge	Time	Instr at	Foresight	Backsight	lead	Elev
Line 2 - 8	102° 27'						4.5	5.1
9	98° 34'						5.5	6.1
10	95° 43'						4.0	4.6
11	92° 32'						9.0	9.6
12	91° 45'						14.0	14.6
13	91° 00'						16.5	17.1
14	89° 02'						18.0	18.6
15	86° 16'						15.0	15.6
16	85° 30'						7.0	7.6
17	84° 08'						5.0	5.6
18	79° 57'						4.5	5.1
19	76° 16'						4.5	5.1
20	73° 35'						4.5	5.1
21	71° 41'						4.5	5.1
22	69° 50'						5.0	5.6
23	66° 40'						5.0	5.6
24	63° 20'						5.0	5.6
25	63° 00'						6.0	6.6
26	62° 13'						9.0	9.6
27	61° 47'						9.0	9.6

At Bulkhead

Sounding No	Azimuth	Gauge	Time	Insty at	Fore sight	Back sight	Lead	Elev	
Line 8 - 1	63°36'	-0.4	3.10 PM	5400 Plev	0100 Plev		8.0	8.4	At Bulkhead
2	65°10'						6.0	6.4	
3	66°47'						5.5	5.9	
4	68°35'						5.0	5.4	
5	72°16'						5.0	5.4	
6	75°18'						5.0	5.4	
7	78°20'						5.0	5.4	
8	79°58'						5.0	5.4	
9	82°30'	0.3					4.5	4.8	
10	85°40'						4.5	4.8	
11	88°35'						4.5	4.8	
12	92°08'						4.0	4.3	
13	95°43'						4.5	4.8	
14	99°15'	0.					4.5	4.8	
15	101°20'						5.0	5.3	
16	103°30'						5.5	5.8	
17	106°10'	0.2					6.0	6.2	
18	107°35'						7.0	7.2	
19	109°04'						8.0	8.2	

1/15/23

Gregory
M. 076
Miller
ShawCROSS SECTION OF
ALLEY BLK A ALLEN TERRACE
Hermosa Way to Valley Vista

18

Distances taken on Center Line

0+85 = E. of Drive on S.

	0.65	277.13	276.48	B.P. HW Hermosa + Altamira	S-L	7.17	70.3	on cement.
J.P.	12.28	277.48	11.93	265.20		1+00		
		5.5 E. of N.L. Hermosa = edge of sidewalk			S	7.0	70.5	
S		11.27	66.3	on cement walk	C	7.1	70.4	
N		13.25	64.3	✓ - ✓	N	7.7	69.8	
(This section on diagonal) 0+00 = N.L. Hermosa + E. of Alley						1+50		
N		12.8	64.7		N	6.5	71.0	
C	Platted 1-23-23 De.	12.5	65.0		C	6.1	71.4	
S		11.3	66.2		S	6.0	71.5	
		0+30				1+85		
S		9.2	68.3		S = edge of Apron	5.18	72.3	
C		9.7	67.8		S+0.5	5.5	72.0	
+9		10.0	67.5		C	5.4	72.0	
N		9.5	68.0		N = dirt floor	5.9	71.6	can be above this
	0+65					2+00		
N		8.2	69.3		N	5.5	72.0	
+1		8.6	68.9		C	5.2	72.1	
C		8.3	69.2		S	4.75	72.7	
S		7.8	69.7					

	2+50		
S	4.1	73.4	
C	4.3	73.2	
N	4.6	72.9	

2+83 = center double garage

S = edge cement floor 3.1 74.4

3+00

N	3.5	74.0
C	3.3	74.2
S	4.8	74.7

3+50

S	2.4	75.1
C	2.7	74.8
N	3.1	74.4

3+87

S = edge cement apron 2.50 75.0

4+00

N	4.3	73.2
C	4.2	73.3
S	3.4	74.1

	4+30		
S	4.6	72.9	
C	5.3	72.2	
N	5.4	72.1	

4+65

N	8.2	69.3
C	7.9	69.6
S	7.4	70.1

4+87

S = edge cement floor 9.33 68.2

5+00

S	10.2	67.3
C	11.5	66.0
N	12.0	65.5

Taken on diagonal. 5+15.3 = El Valle Vista

N	13.8	63.7
C	13.9	63.6
S	13.4	64.1

5+21.5 = edge of walk

S	13.6	63.9
N	14.2	63.3

04 cement walk ✓ ✓ ✓

51.80

N cb 22nd

S	5.3	46.5
cb	5.3	46.5
1/4	5.6	46.2
C	5.8	46.0
+10	5.4	46.4
1/4	5.6	46.2
+5	6.1	45.7
cb	4.5	47.3
+7.86 = 5 rail siding	4.23	47.57
+13.31 = N ✓	4.18	47.62
N	4.1	47.7
	W 1/4	
N	3.63	48.17
+5.04 = N rail siding	4.19	47.61
+10.47 = S ✓ ✓	4.19	47.61
cb	4.5	47.3
1/4	5.1	46.7
C	5.4	46.4
1/4	5.4	46.4

51.80

21

cb	5.2	46.6
S	5.1	46.7
	E 22 nd	
S	4.7	47.1
cb	4.8	47.0
1/4	5.0	46.8
C	5.1	46.7
1/4	4.9	46.9
+12.12 = 5 rail siding also N cb	4.13	47.67
N cb + 4.52 = N ✓	4.13	47.67
N	3.23	48.57
	E 1/4	
N	3.12	48.68
+13.62 = N rail siding also N cb	4.05	47.75
N cb + 5.04 = S ✓ ✓	4.05	47.75
1/4	4.7	47.10
C	4.9	46.9
1/4	4.8	47.0
cb	4.8	47.0
S	4.8	47.0

5180

E cb

10' S. of SL

3.9 47.9

SL

4.8 47.0

cb

4.3 47.5

1/4

4.6 47.2

c

4.6 47.2

1/4

4.53 47.27

c

= S. rail siding

4.11 47.69

= N v v

4.09 47.71

cb

3.9 47.90

N

3.36 48.45 on paving

N

2.72 49.08 on curb

EL 22nd

N

2.4 49.4

cb

3.6 48.2

+3

3.8 48.0

+4

4.6 47.2

= N. rail siding

4.21 47.59

= S v v

4.3 47.50

1/4

4.8 47.0 ✓

5180

+0.0

= N. rail Main

4.3 47.37

+5.70

= S v v

4.4 47.4

c

4.7 47.1

1/4

4.8 47.0

cb

4.3 47.5

S

4.3 47.5

+10

4.2 47.6

18.52' E of EL 22

S

4.3 47.5

cb

4.3 47.5

1/4

4.4 47.4

c

4.4 47.4

+2

5.8 46.0

+8

4.8 47.0

1/4

4.7 47.1

+8

5.0 46.8

+9

2.6 49.2

cb = X Line

2.6 49.2

35.71' E

N 1/4 = X Line

4.5 47.3 ✓

51.80

+5	48	470
+10	57	46.1
c	42	47.6
1/4	43	47.5
cb	41	47.7
s	41	47.7

52.90 E

s	38	48.0
cb	41	47.7
1/4	39	47.9
+3	47	47.1
c = X Line	45	47.3

70.09 E

3 1/4 = X Line	38	48.0
cb	40	47.8
+8	46	47.2
s	42	47.6

87.28 E

s	37	48.1
cb = X Line	36	48.2

51.80

23

105.8 E = Point A

5

3.2 48.6

Elev. S D + A Track 150 E of EL 22nd = 48.20----- 150 W. of WL 22nd = 48.66Levels d 22nd
H. 2 51.80

3 L.N.

4.7	47.1
25'5	4.5 47.3
50' ✓	4.6 47.2
100' ✓	4.8 47.0
150' ✓	5.3 46.5 ✓

Top of Curb & Elevations
on Irving Street West of Crosby

HI = 55.47

24

5547

W. L. Cros. S. Curb	157	5390
C	17	538
N Curb	151	5396

350 W

N Curb	491	50.56
C	50	50.5
S. Curb	488	50.59

50' West

N Curb	235	5312
C	25	530
S.	233	5314

300 W

S. Curb	536	50.1
C	54	50.1
N Curb	544	50.03

100' West

S. Curb	309	5238
C	32	523
N Curb	323	5224

312 W

S. Curb	542	50.05
N Curb	563	49.84
S. Curb	578	49.69

150 W

N Curb	410	5137
C	40	515
S. Curb	383	5164

328 W

S. Curb	550	49.97
C	58	49.7
N Curb	563,	49.84

200 W

S. Curb	457	5090
C	46	509
N Curb	465	5082

350 W

N Curb	551	49.96
--------	-----	-------

24 = 5547

400' W

N Curb	565	49.82
C	610	49.37
S Curb	583	49.64

423' W

N Curb	560	49.87
Top Catch Basin	760	47.87

450' W

S Curb	608	49.39
C	64	49.07
N Curb	613	49.34

457' W

S Curb	605	49.42
Top Catch Basin	775	47.72

470' W

S Curb	630	49.17
--------	-----	-------

500' W

N Curb	695	48.52
C	66	48.9
S Curb	652	48.95

21 = 5547

25

526' W = END of N Curb.

S Curb	645	49.02
N Curb	747	48.00

550' W

S Curb	704	48.43
C	67	48.77

600' W = End Curb on South

S Curb	805	47.42
C	72	48.27

1/25/23
Moore
31/11/23

Elev. on Sewer Pipe
43 West of West Curb 4th St
107.3' S. x 54. A St.

101.3

12.77
63.5
19.12

1026

0.22 60.66

60.44

Top of Brick Wall.

5.87

54.79

Flow Line of Pipe

19.12

41.54

1/25/23

Gregory Moore Miller Shaw.

CROSS SECTION OF GEORGIA ST 60' wide 10' cbs from 10' N. of N.L. Myrtle to

29382

27

				cb		3.4	2904
	-0.23	293.82	294.05	+7		3.1	2907
		10' N. of N.L. Myrtle		W		0.5	2933
W		2.2	291.6		N. Curb		
+3		3.5	290.3	W		1.8	2920
cb		3.8	290.0	+3		3.0	2908
+1		4.4	289.4	cb		3.6	2902
1/4		4.5	289.3	1/4		4.0	2898
c		4.4	289.4	c		4.5	2893
1/4		4.9	288.9	+3		4.8	2890
cb		4.8	289.0	1/4		7.4	2864
E		5.0	288.8	cb		10.3	2835
		N.L. Myrtle (60' St 10' cbs)		E		12.5	2813
E		9.1	284.7	+5		14.2	2796
cb		8.3	285.5		N. Quarter		
1/4		5.4	288.4	-10		16.0	2778
+4		4.4	289.4	E		13.2	2806
c		4.3	289.5	cb		10.5	2833
1/4		4.3	289.5	+6		9.4	2844
+9		4.0	289.8	1/4		8.3	2855

Profiles plotted (April 24-1915) Jan 1923 HCB Profile 557

✓

✓

	293.82		
+8	5.2	2886	
C	5.2	2886	
1/4	4.1	289.7	
cb	3.3	290.5	
W	2.7	291.1	
	Center Myrtle		
W	3.8	290.0	
cb	4.8	289.0	
1/4	5.1	288.7	
C	7.5	286.3	
1/4	9.6	284.2	
cb	11.5	282.3	
E	13.8	280.0	
+10	16.4	277.4	
	S. Quarter		
-10	17.0	276.8	
E	14.8	279.0	
cb	13.0	280.8	
1/4	11.2	282.6	
C	9.5	284.3	

	293.82	Georgia	25
1/4	7.4	286.4	
cb	7.4	286.4	
W	6.6	287.2	
	S. Curb		
W	8.6	285.2	
cb	9.2	284.4	
1/4	10.2	283.4	
C	11.5	282.3	
1/4	13.0	280.8	
cb	14.5	279.3	
E	16.3	277.5	
+10	17.7	276.1	
	S L Myrtle		
-10	18.8	275.0	
E	17.3	276.5	
cb	15.8	278.0	
1/4	14.5	279.3	
C	13.0	280.8	
1/4	12.1	281.7	
cb	11.5	282.3	
W	10.9	282.9	

293.82

10' 5

W		12.9	281.9
T.P.	0.40	281.19	13.03 280.79
cb		0.7	280.5
1/4		1.4	279.8
C		2.2	279.0
1/4		3.4	277.8
cb		4.5	276.7
E		5.8	275.4
+10		6.9	274.3

25' 5

-10		8.0	273.2
E		7.0	274.2
cb		5.7	275.5
1/4		4.6	276.6
C		4.0	277.2
1/4		3.3	277.9
cb		2.9	278.3
(E) W		2.5	278.7
+10		2.1	279.1

281.19

Georgia

49

50' 5

-10		5.6	275.6
W		5.8	275.4
cb		5.7	275.5
1/4		5.7	275.5
C		5.9	275.3
1/4		6.1	275.1
cb		7.1	274.1
E		8.5	272.7
+10		9.2	272.0

85' 5

-10		10.4	270.8
E		9.4	271.8
cb		9.1	272.1
1/4		8.9	272.3
C		9.2	272.0
1/4		9.2	272.0
cb		9.3	271.9
W		9.6	271.6
+10		10.0	271.2

281.19

115' S

-10	10.7	270.5
W	10.6	270.6
cb	10.5	270.7
1/4	10.3	270.9
c	10.3	270.8
1/4	10.5	270.7
cb	11.0	270.2
E	11.4	269.8
+10	12.6	268.6

130' S

-10	12.9	268.3		
E	12.1	269.1		
cb	11.1	270.1		
1/4	11.0	270.2		
c	10.9	270.3		
1/4	11.0	270.2		
cb	11.8	269.4		
T.P.	1.51	270.42	12.28	268.91
W	1.9	268.5		
+10	3.2	267.2		

270.42

150' S

-10	11.7	258.7
W	7.2	263.7
+5	5.0	265.4
cb	4.3	266.1
1/4	3.1	267.3
c	2.3	268.1
1/4	1.8	268.6
cb	1.7	268.7
E	2.4	269.0
+10	3.2	267.2

165' S

-10	5.4	265.0
E	4.2	266.2
cb	3.9	266.5
1/4	4.0	266.4
c	5.1	265.3
1/4	6.6	263.8
cb	11.5	258.9
W	14.6	255.8
+10	18.7	251.7

Georgi

20

270.42

180' 5

-10		24.3	246.1
W		21.1	249.3
cb		17.8	252.6
1/4		14.0	256.4
C		11.0	259.4
1/4		9.4	261.0
cb		7.4	263.0
E		7.4	263.0
+10		8.3	262.1

200' 5

-10		12.3	258.1
F		12.7	257.7
TP	0.42	258.02	12.82 257.60
cb		2.0	256.0
1/4		4.2	253.8
C		6.9	251.1
1/4		10.3	247.7
cb		0.6	257.4
W		17.1	240.9
+10		18.4	239.6 ✓

258.02

225' 5

31

-10		27.6	230.4
W		24.3	233.7
cb		21.7	236.3
1/4		19.0	239.0
C		16.3	241.7
1/4		14.0	244.0
cb		10.4	247.6
E		7.3	250.7
+10		5.5	252.5
+25		4.9	243.1

250' 5

-25		10.3	247.7
E		14.5	243.5
cb		17.4	240.6
1/4		20.9	237.1
C		23.9	234.1
1/4		26.9	231.1
cb		29.6	228.4
W		32.0	226.0 ✓

1/25/23

Gregory
Hoops
Miller
Shaw

CROSS SECTION OF
MYRTLE AVE
from W.L. of Georgia St.
to E.L. of Indiana St.

60 ft 10' obs

295.96

32

50' W

for W.L. Georgia see intersection of Myrtle Georgia

N

4.2 291.8

15' W. of W.L. Georgia

cb

5.8 290.3

on B.M.

191

295.96

294.05

BP NW Indiana
+ Myrtle

1/4

7.4 288.6

N

0.9 295.1

c

9.1 286.9

cb

2.3 293.7

1/4

11.3 284.7

1/4

3.2 292.8

cb

13.7 282.3

c

5.2 290.8

s

16.4 279.6

1/4

7.8 288.7

65' W

cb

10.4 285.6

s

18.7 277.3

s

12.5 283.5

cb

17.1 282.9

Profiles plotted.
Jan. 1923
H.P.B.

35' W

1/3

15.1 280.9

s

13.3 282.7

c

12.2 283.8

cb

11.0 285.0

1/4

10.0 286.0

1/4

8.6 287.4

cb

8.4 287.6

c

6.1 289.9

N

7.0 289.0

1/4

4.7 291.3

80' W

cb

3.3 292.7

N

10.1 285.9

N

2.3 293.7

cb

12.2 283.8

1/4

13.9 282.1

T.P.

0.3 W

282.96

13.32 282.64

282.96

C		3.4	279.6
1/4		5.2	277.8
cb		6.3	276.7
S		7.5	275.5
+10		9.1	273.9
	100' W		
-10		16.0	267.0
S		14.9	268.1
cb		13.1	269.9
1/4		10.8	272.2
C		8.8	274.2
1/4		6.7	276.3
cb		5.4	277.6
N		3.7	279.3
	110' W		
N		8.0	275.0
cb		10.0	273.0
1/4		11.0	272.0
C		12.7	270.3
T.P.	0.21	270.14	13.03 269.93

Myrtle

33

1/2	270.14	3.1	267.1
cb		5.3	264.8
S		8.0	262.1
+10		10.1	260.0
T.P.	2.36	260.42	12.08 258.06
	135' W		
-15		13.3	247.1
S		8.8	251.6
cb		6.5	253.9
1/4		5.1	255.3
C		3.5	256.9
1/4		1.9	258.5
cb		0.9	259.5
N		0.0	260.4
+10		+1.0	261.4
	153' W		
-15		6.2	254.7
N		7.5	252.9
cb		8.9	251.5
1/4		10.1	250.3

	260.42		
c	11.8	248.6	
1/4	14.2	246.2	
cb	16.4	244.0	
s	17.7	242.7	
+15	20.2	240.2	
	158° W		
-15	21.7	238.7	
s	19.8	240.6	
cb	17.7	242.7	
1/4	16.4	244.0	
c	15.1	245.3	
1/4	13.2	247.2	
cb	12.00	248.4	
N	9.9	250.5	
+15	8.6	251.8	
	173° W		
-15	14.8	245.6	
N	16.5	243.9	
cb	16.5	243.9	
1/4	16.4	244.0	

	260.42	Myrtle	34
c	15.5	245.9	
1/4	18.3	242.1	
cb	18.6	241.8	
s	18.8	241.6	
+15	19.0	241.4	
	190° W		
-15	10.2	250.2	
s	9.4	251.0	
cb	9.4	251.0	
1/4	9.8	250.6	
c	12.1	248.3	
+1	9.4	251.0	
1/4	8.8	251.6	
cb	8.2	252.2	
N	8.2	252.2	
+15	9.2	251.2	
	210° W		
-15	+0.4	260.8	
T.P	12.54	260.4	
N	10.1	262.8	

27294				27294			
				Myrtle			
				35			
cb	10.4	267.5	I N	3.0	269.9		
+7	11.6	261.3	cb	3.0	269.9		
1/4	15.4	257.5	1/4	3.4	269.5		
c	12.9	260.0	c	3.4	269.5		
1/2	12.4	260.5	1/4	3.4	269.5		
cb	12.4	260.5	cb	3.5	269.4		
s	13.1	259.8	s	3.2	269.7		
+15	12.3	260.6	+10	3.4	269.5		
	220' W		T.P.	12.96	285.70	0.20	272.74
-15	7.5	265.4		245' W.			
s	7.4	265.5	-10	12.8	272.9		
cb	7.0	265.9	s	12.0	273.7		
1/4	6.4	266.5	cb	12.4	273.3		
c	7.2	265.7	1/4	12.0	273.7		
1/4	6.8	266.1	c	12.1	273.6		
cb	6.3	266.6	1/4	12.6	273.1		
N	6.8	266.1	cb	12.5	273.2		
+15	8.9	264.0	N	12.1	273.6		
	235' W		+10	12.0	273.7		
-10	3.4	269.5					

285.70

270° W.

-10		4.7	281.0
N		3.9	281.8
cb		3.0	282.7
1/4		2.0	283.7
C		1.3	284.4
1/4		1.4	284.3
cb		1.7	284.0
S		2.7	283.0
+10		3.4	282.3

T.P. 10.53 295.66 0.57 285.13

290° W

-10		7.0	288.7
S		6.0	289.7
cb		4.7	291.0
1/4		4.5	291.2
C		5.4	290.3
1/4		5.4	290.3
cb		4.8	290.9
N		6.6	289.2
+10		8.2	287.5

on Fresh Kill

Myrtle

36

306± = EL Indian

N	295.66	2.2	293.5
cb		3.0	292.7
1/4		3.3	292.4
C		2.9	292.8
1/4		2.8	292.9
cb		2.9	292.8
S		3.0	292.7
chk. BM		1.67	293.99 = 94.05

Levels Smitzer Dam

37

	0.72	73.92		73.20
137' 5.0' Base @ 0+00 - Top of Bank	8.4			65.4
137' ✓ ✓ ✓ 10' W of 0+00	0.4			73.4
137' ✓ ✓ ✓ 25' E ✓ 0+00	10.0			63.9
137' ✓ ✓ ✓ 49' E ✓ 0+00	10.1			63.8
165' ✓ ✓ ✓ @ 0+00	10.4			63.5
165' ✓ ✓ ✓ 25' E of 0+00	10.1			63.8
165' ✓ ✓ ✓ 25' W ✓ ^{Top of Bank} 0+00	10.1			63.8
165' ✓ ✓ ✓ 40' ✓ ✓ 0+00	3.2			70.7

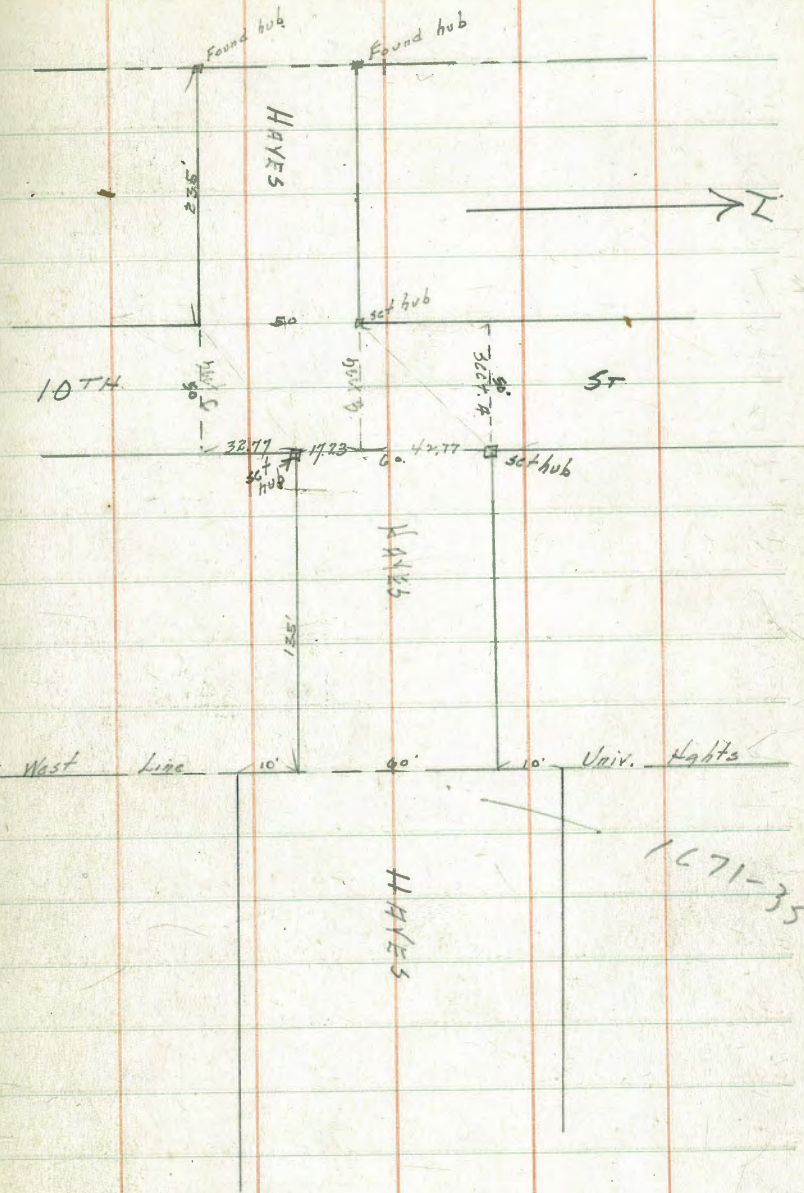
2/15/23 Gregory Miller
 CROSS SECTION OF HAYES AVE
 From WL Univ. Lights To West End of Hayes
 60' St 10' C&S 10' 1/4
 50' St 10' 7.5 1/4
 293.96 - 292.06 + Lincoln

on B.M.	1.90			
T.P.	0.58	288.87	5.67	288.29
T.P.	1.17	277.24	12.80	276.07
N		1.0		276.2
cb		1.4		275.8
1/4		1.5		275.7
C		1.2		276.0
1/4		1.2		276.0
cb		1.5		275.7
S		1.0		276.2

WL University Lights

13' West

-20		15.2		267.0
S		9.8		267.4
cb		9.8		267.4
1/4		10.9		266.3
C		10.8		266.4
1/4		9.8		267.4
cb		9.2		268.0
N		7.8		269.4
+10		1.5		275.7



1671-35

277.24

29' West

-5	+0.5	277.7 ✓
N	1.8	275.4 ✓
cb	7.0	270.2 ✓
1/4	12.0	265.2 ✓
+7	17.8	259.4 ✓
C	18.4	258.8 ✓
1/4	19.8	257.4 ✓
cb	21.0	256.2 ✓
S	22.2	255.0 ✓
+15	23.0	254.2 ✓
+25	27.1	250.1 ✓

38' West

-30'	34.2	243.0 ✓
-15	27.0	250.2 ✓
S	24.5	252.7 ✓
cb	20.5	256.7 ✓
1/4	18.5	258.7 ✓
C	14.7	262.5 ✓
1/4	7.4	269.8 ✓

cb

N

N

+5

cb

1/4

C

1/4

cb

S

+10

+20

-15

S

cb

1/4

C

T.P.

2.8

+1.1

50' West

+1.6

+0.8

+0.9

2.3

5.4

8.9

13.6

19.1

17.4

19.8

60' West

14.3

9.9

6.6

4.7

4.5

7.51

282.09

7.66

HAYES 39

274.4 ✓

278.3 ✓

278.8 ✓

278.0 ✓

278.1 ✓

274.9 ✓

271.8 ✓

268.3 ✓

263.6 ✓

257.1 ✓

259.8 ✓

257.4 ✓

262.9 ✓

267.3 ✓

270.6 ✓

272.5 ✓

274.7 ✓

274.58 ✓

28209

1/4	4.6	277.5 ✓
cb	3.7	278.9 ✓
N	2.4	279.7 ✓
83' West		
N	1.8	280.3 ✓
cb	2.9	279.2 ✓
1/4	3.7	278.4 ✓
c	4.9	277.2 ✓
1/4	6.0	276.1 ✓
cb	7.9	274.2 ✓
S	9.1	273.0 ✓
+10	12.2	269.9 ✓
108' West		
-10	7.1	275.0 ✓
S	5.7	276.4 ✓
cb	5.0	277.1 ✓
1/4	4.6	277.5 ✓
c	3.9	278.2 ✓
1/4	2.7	279.4 ✓
cb	2.1	280.0 ✓

HAYES 40

N	0.6	281.5 ✓
135' West = E.L. 10 th St.		
N	0.88	281.21 ✓ on hub
cb	1.6	280.5 ✓
1/4	2.1	280.0 ✓
c	2.5	279.6 ✓
1/4	3.2	278.9 ✓
cb	3.7	278.4 ✓
S	3.6	278.5 ✓

Cross section of 10th St. (50 wide) roads

Section A. = N.L. Hayes Ave grad. West

E	0.9	281.2 ✓
cb	1.2	280.9 ✓
1/4	0.5	281.6 ✓
c	0.4	281.7 ✓
1/4	0.3	281.8 ✓
cb	0.5	281.6 ✓
W	0.6	281.5 ✓
10' S. of Sect A		
W	0.7	281.4 ✓

280.09

cb	0.6	281.5 ✓
1/4	0.7	281.4 ✓
C	0.7	281.4 ✓
1/4	0.6	281.5 ✓
cb	1.1	281.0 ✓
E	1.6	280.5 ✓
20' S. of Sect. A		
E	2.1	280.0 ✓
cb	1.8	280.3 ✓
1/4	1.1	281.0 ✓
C	0.7	281.4 ✓
1/4	0.8	281.3 ✓
cb	0.7	281.4 ✓
W	0.5	281.6 ✓
30' S. of Sect. A = E of Hayes		
W	0.6	281.5 ✓
cb	0.8	281.3 ✓
1/4	0.9	281.2 ✓
C	1.0	281.1 ✓
21	1.7	280.4 ✓

HAYES

41

1/4	2.0	280.1 ✓
cb	2.5	279.6 ✓
E	2.5	279.6 ✓
40' S. of Sect. A		
E	3.2	278.9 ✓
cb	2.5	279.6 ✓
1/4	2.1	280.0 ✓
C	1.2	280.9 ✓
1/4	1.0	281.1 ✓
cb	1.0	281.1 ✓
W	0.8	281.3 ✓
42.77 S. of A = Sect B = N. L Hayes prod. E		
W	1.0	281.1 ✓
cb	1.1	281.0 ✓
1/4	1.1	281.0 ✓
C	1.5	280.6 ✓
1/4	2.2	279.9 ✓
cb	2.8	279.3 ✓
E	3.4	278.7 ✓

48209

50' S of Sect A.

F	3.7	278.4	✓
cb	3.0	279.1	✓
1/4	2.3	279.8	✓
C	1.5	280.6	✓
1/4	1.2	280.9	✓
cb	1.1	281.0	✓
W	0.9	281.2	✓

10' S of Sect B = ^{prod. E} Hays on Hays

W	0.9	281.2	✓
cb	1.2	280.9	✓
1/4	1.3	280.8	✓
C	1.8	280.3	✓
1/4	2.5	279.6	✓
cb	3.1	279.0	✓
E	3.8	278.3	✓

17.23' S of Sect B = 5L Hays produced W.

E	3.6	278.5	✓
cb	3.0	279.1	✓
1/4	2.6	279.5	✓

HAYES

42

C	1.9	280.2	✓
1/4	1.5	280.6	✓
cb	1.3	280.8	✓
W	1.1	281.0	✓

Use above section for 1/4 of Hays produced E.

25' S of Sect. B.

W	1.2	280.9	✓
cb	1.4	280.7	✓
1/4	1.6	280.5	✓
C	2.1	280.0	✓
1/4	2.7	279.4	✓
cb	3.2	278.9	✓
E	3.8	278.3	✓

32.5' S of B.

E	3.7	278.4	✓
cb	2.7	279.4	✓
1/4	2.3	279.8	✓
C	1.9	280.2	✓
1/4	1.6	280.5	✓
cb	1.4	280.7	✓
W	1.3	280.8	✓

282.09

40' S. of Sect. B.

W	1.5	280.6 ✓
cb	1.5	280.6 ✓
1/4	1.8	280.3 ✓
c	2.2	279.9 ✓
1/4	2.6	279.0 ✓
cb	3.1	279.0 ✓
E	4.2	277.9 ✓
E	5.7	276.4 ✓
cb	4.0	278.1 ✓
1/4	2.9	279.2 ✓
c	2.4	279.7 ✓
1/4	2.0	280.1 ✓
cb	1.8	280.3 ✓
W	1.8	280.3 ✓ on lawn

CROSS SECTION OF HAYES WEST OF

10th St. 50' wide

West Line of 10th St

I		
N	1.0	281.1

HAYES

43

cb	0.9	281.2 ✓
1/4	1.1	281.0 ✓
c	1.2	280.9 ✓
1/4	1.3	280.8 ✓
cb	1.5	280.6 ✓
s	1.8	280.3 ✓

35' West

s	2.8	279.3 ✓ on lawn
cb	2.7	279.4 ✓
1/4	2.4	279.7 ✓
c	2.2	279.9 ✓
1/4	2.0	280.1 ✓
cb	2.0	280.1 ✓
N	1.5	280.6 ✓

70' West

N	3.9	278.2 ✓
cb	4.0	278.1 ✓
1/4	4.2	277.9 ✓
c	4.5	277.6 ✓
1/4	4.8	277.3 ✓

282.09

cb 5.1 277.0 ✓

S 5.5 276.6 ✓

100' West

S 8.1 274.0 ✓

cb 7.5 274.6 ✓

1/4 7.2 274.9 ✓

c 7.0 275.1 ✓

1/4 6.8 275.3 ✓

cb 6.5 275.6 ✓

N 6.3 275.8 ✓

125' West

N 8.5 273.6 ✓

cb 8.4 273.7 ✓

1/4 8.8 273.3 ✓

c 9.2 272.9 ✓

1/4 9.5 272.6 ✓

cb 9.6 272.5 ✓

S 10.0 272.1 ✓

HAYES

44

145' West

S 11.1 271.0 ✓

cb 10.9 271.2 ✓

1/4 10.9 271.2 ✓

c 10.6 271.5 ✓

1/4 10.7 271.4 ✓

cb 10.9 271.2 ✓

N 11.1 270.7 ✓

175' W.

N 12.9 269.2 ✓

cb 12.4 269.7 ✓

1/4 12.3 269.8 ✓

c 12.2 269.9 ✓

1/4 12.2 269.9 ✓

cb 12.3 269.8 ✓

S 12.3 269.8 ✓

235' W = West End Hayes Ave.

S 13.3 268.8 ✓

cb 12.9 269.2 ✓

1/4 12.9 269.2 ✓

48209

C 13.2 268.9 ✓

1/4 13.0 269.1 ✓

cb 13.3 268.8 ✓

N 13.6 268.5 ✓

45

2/15/23
Gregory
Phore
Miller

CROSS SECTION of
Alley Block 244 Univ. Heights
West of Park Blvd,
North of Myrtle, 30' wide

296.08

46

	0.77	296.77	296.00	cb. NW Park & Myrtle	W	61	290.0
				N. Curb Line Myrtle	C	61	290.0
E		6.74	290.03	on cement	E = edge cement apron	5.85	290.23
				N. L. Myrtle	+3.7' = front of garage	5.23	290.85 = cement floor
E		6.51	90.26	on cement	85' N = S end of cement apron on E.L.		
E		6.9	89.9	on ground	E = edge apron	4.91	291.17 on cement
C		7.5	89.3		101' N = center of garage		
W		7.9	88.9		E = edge apron	4.82	291.26
T.P.	6.39	296.08	7.08	289.69	(-3.8' front of garage)	4.57	291.51
				20' N	C	5.2	290.9
W					W	5.4	290.7
C					113.4' = N. end of aforesaid apron		
+S					E	4.70	291.4
E					117.8' = S end of another apron		
				50' N	E = edge apron	4.25	291.83
E					133' N = N. end of above		
C					E = edge apron	4.20	291.9
W					C	4.6	291.5
					W	4.8	291.3

296.08

155' N

W	5.0	291.1
C	4.7	91.4
E	4.1	92.0

175' N

E	4.5	91.6
C	5.2	90.9
W	5.1	91.0

200' N

W	4.4	91.7
C	4.2	91.9
E	3.8	92.3

220' N

E	3.6	92.5
C	3.6	92.5
W	3.8	92.3

245' N

W	3.9	92.2
C	3.8	92.3
E	3.6	92.5

296.08

270' N

E	2.4	293.7
C	2.8	93.3
W	2.9	93.2

300' N

W	3.1	93.0
+5	2.4	93.7
C	2.8	93.3
E	3.0	293.1

319' N SL Brooks

E	2.94	293.14 on curb
E	3.4	92.7
C	3.6	92.5
W	3.5	92.6
W	3.33	292.75 on curb

47

2/21/73

Gregory
Miller
shaw

CROSS SECTION OF
NUTMEG ST 75.4' wide
32nd to Fox 93rd 12' obs

37
48

+15

7.9

1.16

287.08

285.92

SECTION A.

-20 9.2 277.9 ✓

3 14.0 273.1 ✓

cb 16.5 270.6 ✓

1/4 17.6 269.5 ✓

c 11.9 275.2 ✓

1/4 8.0 279.1 ✓

cb 4.8 282.3 ✓

N 2.3 284.8 ✓

11.33' E on S = sect. B = 0400

N 2.3 284.8 ✓

cb 4.8 282.3 ✓

+10 8.2 278.9 ✓

1/4 11.2 275.9 ✓

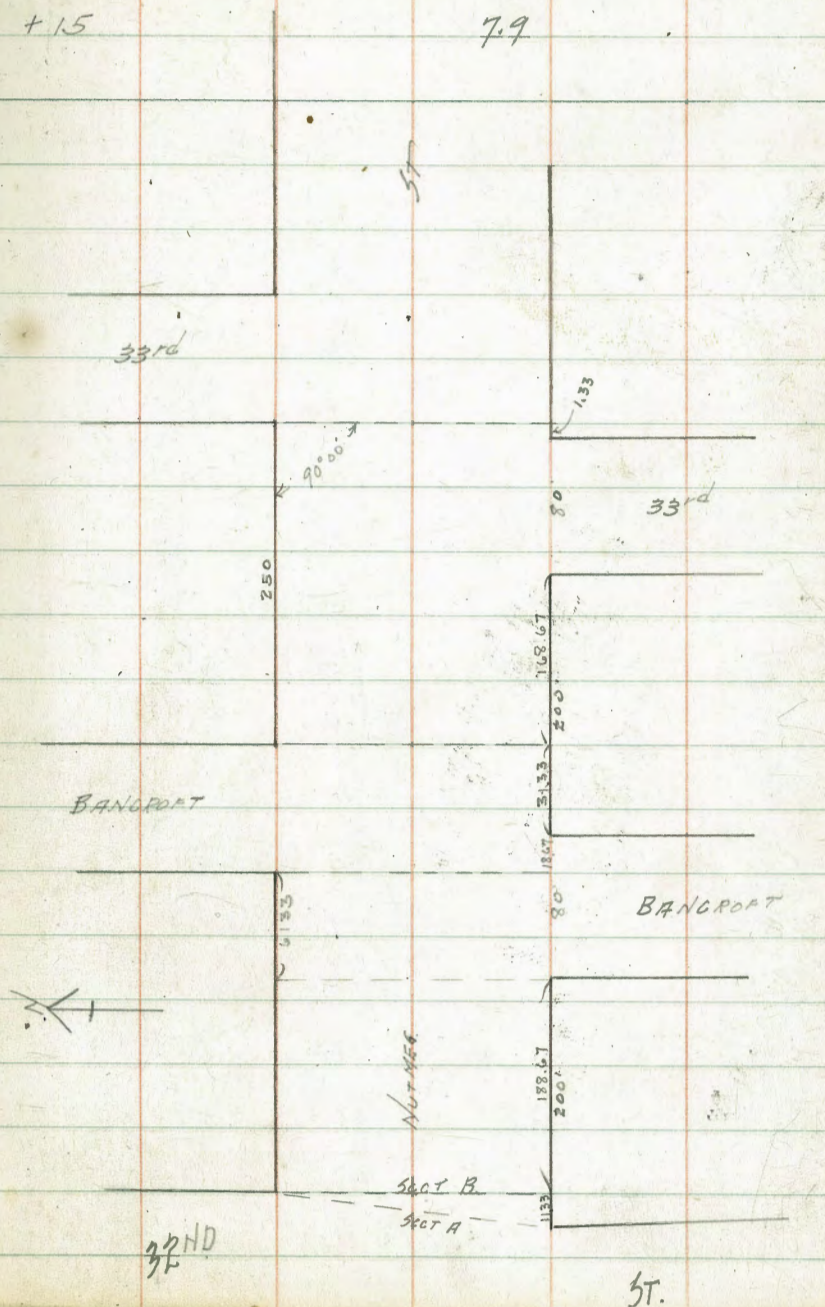
c 13.0 274.1 ✓

+6 20.0 267.1 ✓

1/4 19.8 267.3 ✓

cb 17.2 269.9 ✓

5 13.3 270.8 ✓



287.08

0 + 24

S	8.2	278.9 ✓
cb	13.1	274.0 ✓
1/4	19.0	268.1 ✓
+6	19.2	267.9 ✓
C	16.6	270.5 ✓
1/4	9.9	277.2 ✓
cb	6.2	280.9 ✓
N	9.7	283.4 ✓

0 + 39

N	5.6	281.5 ✓
cb	7.6	279.5 ✓
1/4	11.2	275.9 ✓
C	13.3	268.8 ✓
+8	18.4	268.7 ✓
1/4	15.1	272.0 ✓
cb	11.4	275.7 ✓
S	6.5	280.6 ✓

0 + 62

S	4.3	282.8 ✓
---	-----	---------

NUTMEG

49

cb	9.3	277.8 ✓
1/4	14.5	277.6 ✓
+9	18.4	268.7 ✓
0	18.5	268.6 ✓
+5	16.1	271.0 ✓
1/4	15.9	271.2 ✓
cb	14.1	273.0 ✓
N	13.5	273.6 ✓
+20	10.5	276.6 ✓

0 + 83

N	6.0	281.1 ✓
cb	9.3	277.8 ✓
1/4	12.6	274.5 ✓
+8	15.8	271.3 ✓
C	16.0	271.1 ✓
1/4	10.5	276.6 ✓
cb	6.2	280.9 ✓
S	1.8	285.3 ✓

1 + 15

S	+1.0	288.2 ✓
---	------	---------

cb	2.0	285.1 ✓
1/4	5.6	281.5 ✓
c	10.3	276.8 ✓
1/4	13.5	273.6 ✓
+5	13.5	273.6 ✓
cb	8.8	278.3 ✓
+4	6.2	280.9 ✓
N	3.3	283.8 ✓
1+50		
-15	1.6	285.5 ✓
N	6.0	281.1 ✓
+8	9.8	277.3 ✓
cb	10.0	277.1 ✓
+6	10.0	277.1 ✓
1/4	7.9	279.2 ✓
c	4.8	282.3 ✓
1/4	2.0	285.1 ✓
cb	+1.0	288.1 ✓
5	+2.9	290.0 ✓

1+60		
5	+3.6	290.7 ✓
cb	+2.1	289.2 ✓
1/4	0.0	287.1 ✓
c	3.3	283.8 ✓
1/4	5.8	281.3 ✓
cb	9.2	277.9 ✓
N	9.1	278.0 ✓
+15	2.8	284.3 ✓
1+83		
-20	5.8	281.3 ✓
-15	8.0	279.1 ✓
N	8.0	279.1 ✓
cb	4.6	282.5 ✓
1/4	1.5	285.6 ✓
T.P.	11.18	298.25
c	10.4	287.9 ✓
1/4	8.9	289.4 ✓
cb	7.6	290.7 ✓
5	6.6	291.7 ✓

298.25

1+88.67 = W.L. Bancroft on S 80° 5'

S	6.4	291.9	✓
cb	7.2	291.1	✓
1/4	8.5	289.8	✓
C	9.7	288.6	✓
1/4	11.5	286.8	✓
cb	14.3	284.0	✓
N	16.5	281.8	✓
+15.	19.1	279.2	✓
+25	18.8	279.5	✓
C of Bancroft on S			
N	7.7	290.6	✓
cb	7.5	290.8	✓
1/4	7.1	291.2	✓
+6	6.1	292.2	✓
C	6.1	292.2	✓
1/4	6.1	292.2	✓
cb	5.6	292.7	✓
S	5.1	293.2	✓

51

21.33 E of above = W.L. Bancroft on the North 50° 5'

S	3.7	294.6	✓
cb	4.7	293.6	✓
1/4	4.5	293.8	✓
C	5.2	293.1	✓
1/4	5.8	292.5	✓
cb	5.9	292.0	✓
N	5.6	292.7	✓
18.67 E of last above = E.L. Bancroft on S			
N	4.9	293.9	✓
cb	4.5	293.8	✓
1/4	4.4	293.9	✓
C	3.5	294.9	✓
1/4	3.2	295.1	✓
cb	3.0	295.2	✓
S	2.6	295.7	✓
6.33 E of last above = C Bancroft on N			
S	4.3	296.0	✓
cb	2.5	295.8	✓
1/4	2.8	295.5	✓

305.74

C		10.8	295.9	✓
N		13.3	292.4	✓
T.P.	4.26	296.67	13.33	292.41 ✓

Hub NE 33rd

- 29240

50' E

N		11.1	285.6	✓
C		8.2	288.5	✓
S		7.2	289.5	✓
T.P.	0.22	284.01	12.88	283.79

100' E

S		3.5	280.5	✓
C		5.8	278.4	✓
N		7.5	276.5	✓

132' E

N		13.2	270.8	✓
C		11.6	272.4	✓
S		9.7	272.3	✓

148.7 E = W.L. of Fulton - ST. on S.

S		12.5	271.5	✓
C		14.7	269.3	✓
N		19.1	262.9	✓

19.7
200
51.00
148.67

53

3/1/23
 loc. of
 mber.
 Miller
 Shaw

CROSS SECTION OF
 DODSON ST.
 from N.L.K. to S.L. I

80' ST
 20' cbs
 10' 1/4 S

T.P.

975

83.46

6.51

73.71

54

B.M.

0.75

8022

79.47 BP 5E 29 AM

35' N

N.L.K. ST

W.	5.6	74.6	✓
+10	5.5	74.7	✓
cb.	6.2	74.0	✓
1/4	5.6	74.6	✓
C	5.7	74.5	✓
1/4	5.7	74.5	✓
cb	5.7	74.5	✓
+10	6.0	74.2	✓
E	6.0	74.2	✓
4' N			
E	5.9	74.3	✓
+10	5.7	74.5	✓
cb.	6.6	73.6	✓
1/4	6.8	73.9	✓
C	6.5	73.7	✓
1/4	6.5	73.7	✓
cb	6.4	73.8	✓
+10	6.0	74.2	✓
W	5.7	74.5	✓

W

+10

cb

1/4

C

1/4

cb

+10

E

E

+10

cb

1/4

C

1/4

cb

+10

W

8.9

9.4

9.5

9.7

9.8

10.0

10.0

10.2

8.8

8.7

9.6

9.8

9.7

9.8

9.6

9.5

9.3

9.0

74.6

74.1

74.0

73.8

73.7

73.5

73.5

73.3

74.7

74.8

73.9

73.7

73.8

73.7

73.9

74.0

74.2

74.5

70' N

83.46

9 1.85

DODSON

56

cb	60	77.5 ✓		✓ 270' N.			
+10	5.2	78.3 ✓	E		3.8	79.7 ✓	
W	4.9	78.6 ✓	+10		3.4	80.1 ✓	
+1	4.1	79.4 ✓ on lawn	cb		2.9	80.6 ✓	
	206.5 N.		1/4		2.1	81.4 ✓	
W	3.9	79.6 ✓ on cement walk to house	c		2.4	81.1 ✓	
	235 N.		1/4		2.4	81.1 ✓	
W	2.2	81.3 ✓	cb		4.3	81.2 ✓	
+1	3.0	80.4 ✓	+10		1.5	84.0 ✓	
+10	3.4	80.1 ✓	+19.		1.1	84.4 ✓	
cb	4.1	79.4 ✓	W		0.1	80.4 ✓ on lawn	
1/4	4.3	79.2 ✓	T.P.	1027	93.36 ✓	0.37	83.09 ✓
c	4.0	79.5 ✓			282' N.		
1/4	4.9	78.6 ✓	W		9.2	84.2 ✓	on cement walk to house
cb	4.8	78.7 ✓			300' N. = 5.6 J. 5+	80' wide	20' cbs 10' 1/2
+10	5.3	78.2 ✓	W		8.2	85.2 ✓	
E	5.7	77.8 ✓	+10		9.0	84.4 ✓	
	244' N.		cb		9.8	83.6 ✓	
W	1.85	81.61 ✓ on cement walk to house	1/4		9.8	83.6 ✓	
			c		10.0	83.4 ✓	

1/4	10.0	83.4 ✓
cb	10.6	82.8 ✓
+10	11.1	82.3 ✓
E	11.2	82.2 ✓

10' N. of S.L.

E	10.3	83.1 ✓
+10	10.1	83.3 ✓
cb	9.8	82.6 ✓
1/4	9.0	84.4 ✓
c	9.1	84.3 ✓
1/4	8.9	84.5 ✓
cb	8.6	84.8 ✓
+10	8.4	85.0 ✓
W	7.8	85.6 ✓

S. Curb

W	7.5	85.9 ✓
+10	7.8	85.6 ✓
cb	7.8	85.6 ✓
1/4	8.2	85.2 ✓
c	8.4	85.0 ✓

1/4	8.5	84.9 ✓
cb	8.8	84.6 ✓
+10	9.4	84.0 ✓
E	9.5	83.9 ✓

S. Quarter

E	9.2	84.2 ✓
+10	8.9	84.5 ✓
cb	8.6	84.8 ✓
1/4	8.1	85.3 ✓
c	7.6	85.8 ✓
1/4	7.4	86.0 ✓
cb	6.6	86.8 ✓
+10	5.7	87.7 ✓
W	5.5	87.9 ✓

Center J. 51

W	4.3	89.1 ✓
+10	4.7	88.7 ✓
cb	5.6	87.8 ✓
1/4	6.4	87.0 ✓
c	6.8	86.6 ✓

93.36

1/4	7.5	85.9 ✓
cb	7.0	86.4 ✓
+10	7.5	85.9 ✓
E	8.6	84.8 ✓

N. Quarter

E	6.6	86.8 ✓
+10	6.5	86.9 ✓
cb	5.8	87.6 ✓
1/4	6.3	87.1 ✓
C	5.6	87.8 ✓
1/4	5.1	88.3 ✓
cb	4.7	88.7 ✓
+10	3.8	89.6 ✓
W	3.4	90.0 ✓

N. Curb

W	2.4	91.0 ✓
+10	2.9	90.5 ✓
cb	3.3	90.1 ✓
1/4	3.7	89.7 ✓
C	4.4	89.0 ✓

DODSON

58

1/4	5.0	88.4 ✓
cb	5.0	88.4 ✓
+10	5.2	88.2 ✓
E	5.5	87.9 ✓

10' N. of N. Curb

E	4.4	89.0 ✓
+10	3.9	89.5 ✓
cb	3.9	89.5 ✓
1/4	3.4	90.0 ✓
C	3.0	90.4 ✓
1/4	2.3	91.1 ✓
cb	1.6	91.8 ✓
+10	1.3	92.1 ✓
W	0.7	92.7 ✓

N.L. J 5T

W	+1.7	95.1 ✓
+10	+0.3	93.7 ✓
cb	0.2	93.2 ✓
1/4	1.2	92.2 ✓
C	1.8	91.6 ✓

9336

1/4			2.5	90.9 ✓
cb			2.7	90.7 ✓
+10			2.9	90.5 ✓
E			3.4	90.0 ✓
chk BM			3.06	90.30 ✓ ⁹⁰³⁷ _{1/2}
TP	12.92	106.23 ✓	0.05	93.31 ✓
		✓ 25' N		
E			13.4	92.8 ✓
+10			13.3	92.9 ✓
cb			12.5	93.7 ✓
1/4			12.1	94.1 ✓
C			11.7	94.5 ✓
1/4			11.3	94.9 ✓
cb			10.7	95.5 ✓
+10			9.6	96.6 ✓
W			9.3	96.9 ✓ <small>Some as slope 1/2 hr. of West +4.5</small>
		✓ 50' N		
W			5.1	101.1 ✓
+10			5.5	100.7 ✓
cb			6.6	99.6 ✓

D00307

59

1/4			7.8	98.4 ✓
C			8.8	97.4 ✓
1/4			9.6	96.6 ✓
cb			9.8	96.4 ✓
+10			10.6	95.6 ✓
E			10.8	95.4 ✓
		✓ 75' N		
E			8.5	97.7 ✓
+10			7.8	98.4 ✓
+15			8.5	97.7 ✓
cb			7.5	98.7 ✓
1/4			7.2	99.0 ✓
C			5.9	100.3 ✓
1/4			4.5	101.7 ✓
cb			3.5	102.7 ✓
+10			2.4	103.8 ✓
W			1.3	104.9 ✓
TP	11.19	116.63	0.79	105.44 ✓
		82' N		
W			10.3	106.3 ✓

11663

+10	11.5	105.1
cb	13.0	103.6 ✓
√ 100' N		
W	7.5	109.1 ✓
+10	8.7	107.9 ✓
cb	9.8	106.8 ✓
1/4	11.4	105.2 ✓
C	13.0	103.6 ✓
1/4	14.3	102.3 ✓
cb	14.8	101.8 ✓
+5	15.7	100.9 ✓
+10	15.4	101.2 ✓
E	15.8	100.8 ✓
√ 135' N		
E	12.3	104.3 ✓
+10	11.8	104.8 ✓
+15	10.6	106.0 ✓
cb	10.8	105.8 ✓
1/4	10.0	106.6 ✓
C	9.0	107.6 ✓

DODSON

60

1/4	7.4	109.2 ✓
cb	5.9	110.7 ✓
+10	4.6	112.0 ✓
W	3.6	113.0 ✓
√ 170' N		
W	+1.1	117.7 ✓
+10	0.6	116.0 ✓
cb	1.9	114.7 ✓
1/4	3.1	113.5 ✓
C	4.1	112.5 ✓
1/4	5.0	111.6 ✓
cb	5.8	110.8 ✓
+5	7.2	109.4 ✓
+10	6.9	109.7 ✓
E	7.7	108.9 ✓
√ 200' N		
E	3.2	113.4 ✓
+10	2.3	114.3 ✓
cb	4.3	114.3 ✓
1/4	1.0	115.6 ✓

C			0.0	116.6 ✓
T.P.	12.88	129.48 ✓	0.03	116.60 ✓
1/2			11.9	117.6 ✓
cb			10.7	118.8 ✓
+10			9.3	120.2 ✓
W			8.2	121.3 ✓
		✓ 235' N		
W			4.1	125.4 ✓
+10			5.1	124.4 ✓
cb			6.2	123.3 ✓
1/4			7.3	122.2 ✓
C			8.3	121.2 ✓
1/2			9.1	120.4 ✓
cb			9.6	119.9 ✓
+10			10.2	119.3 ✓
E			10.6	118.9 ✓
		✓ 270' N		
E			3.8	125.7 ✓
+10			3.7	125.8 ✓
cb			3.8	125.7 ✓

DODSON

61

+5			4.8	124.7 ✓
1/4			5.0	124.5 ✓
C			4.5	125.0 ✓
1/2			3.9	125.6 ✓
+6			1.7	127.8 ✓
cb			1.3	128.2 ✓
+10			0.8	128.7 ✓
W			0.3	129.2 ✓
T.P.	3.77	132.58 ✓	0.67	128.81
		✓ 285' N		
W			1.8	130.8 ✓
+10			2.4	130.2 ✓
cb			2.2	130.4 ✓
+8			5.7	126.9 ✓
1/4			5.9	126.7 ✓
C			5.9	126.7 ✓
1/4			6.1	126.5 ✓
cb			4.2	128.4 ✓
+10			4.3	128.3 ✓
E			4.2	128.4 ✓

132.58

2.47

DODSON.

62

✓ 298' N.

E	2.6	130.0 ✓
+10	3.9	128.7 ✓
cb	4.1	128.5 ✓
7 +5	4.0	128.6 ✓
1/4	4.8	127.8 ✓
c	5.0	127.6 ✓
1/4	5.0	127.6 ✓
2/4	4.8	127.8 ✓
cb	2.2	130.4 ✓
+10	2.0	128.6 ✓
W	0.9	121.7 ✓

✓ 300' N. = 3L I 5T

W	4.0	128.6 ✓
+10	3.6	129.0 ✓
cb	4.6	128.0 ✓
1/2	4.9	127.7 ✓
c	4.9	127.7 ✓
1/2	4.9	127.7 ✓
cb	5.0	127.6 ✓

+10

E
CHK B.M.

43

4.1

2.47

128.12 ✓

128.15 ✓

130.11

Mon SE

Dodson + I

3/1/23 Gregory
Thorp
Miller
Shaw

Cross Section at
J 54
from the W.L. 30th
to E.L. 29th

80' wide
20' cbs
10' 1/4's

BP SW. 1

63

	10.26	77.27	77.01		65' W.		
	✓ W.L. 30th			5		8.6	78.7 ✓
5		10.0	77.3 ✓	+10		8.1	79.2 ✓
+10		10.0	77.3 ✓	cb		7.4	79.9 ✓
cb		10.2	77.1 ✓	1/4		7.5	79.8 ✓
1/4		9.8	77.8 ✓	+3		6.5	80.8 ✓
c		9.4	77.9 ✓	c		6.1	81.2 ✓
1/4		9.1	78.2 ✓	1/4		5.5	81.8 ✓
cb		8.8	78.5 ✓	cb		5.1	82.2 ✓
+10		7.8	79.5 ✓	+10		4.0	83.3 ✓
N		7.3	80.0 ✓	N		3.9	83.4 ✓
	✓ 35' W.				✓ 100' W.		
N		5.6	81.7 ✓	N		2.4	84.9 ✓
+10		6.0	81.3 ✓	+10		3.0	84.3 ✓
cb		6.5	80.8 ✓	cb		3.7	83.6 ✓
1/4		7.2	80.1 ✓	1/4		3.7	83.6 ✓
c		8.0	79.3 ✓	c		5.1	82.2 ✓
1/4		8.9	78.4 ✓	1/4		5.8	81.5 ✓
cb		8.4	78.9 ✓	+5		6.3	81.0 ✓
+10		9.4	77.9 ✓	cb		6.0	81.3 ✓
5		9.8	77.5 ✓				

87.27

+10	6.7	80.6	✓
S	7.3	80.0	✓
✓ 135' W			
S	6.8	80.5	✓
+1	6.5	80.8	✓
+10	5.6	81.7	✓
cb	5.0	82.3	✓
1/4	5.1	82.2	✓
+5	3.8	83.0	✓
C	3.4	83.9	✓
1/4	3.0	84.3	✓
cb	2.7	84.6	✓
+5	2.5	84.8	✓
+10	0.8	86.5	✓
N	0.0	87.3	✓
✓ 165' W			
N	+1.4	88.7	✓
+10	+0.6	87.9	✓
cb	0.5	86.8	✓
+7	2.3	85.0	✓

J 57. 64

1/4	2.6	84.7	✓
C	3.0	84.3	✓
1/4	3.8	83.5	✓
cb	4.1	83.2	✓
+10	5.4	81.9	✓
+19	6.0	81.3	✓
S	6.5	80.8	✓
sec intersection for E.L. Dodson 300' W.			
✓ ✓ ✓ W.L. Dodson			
T.P.	12.36	99.63	0.00 87.27
chk B/M only.		9.29	90.34 Min H.S. Dodson
✓ 35' W. of W.L. Dodson.			
S	13.2	86.4	✓
+10	12.0	87.6	✓
+18	11.9	87.7	✓
cb	10.8	88.8	✓
1/4	9.5	90.1	✓
C	8.1	91.5	✓
1/4	5.9	93.7	✓
cb	4.6	95.0	✓

+10	2.7	96.9	✓
N	1.7	97.9	✓
✓ 65' W			
N	+1.0	100.6	✓
+10	-0.4	99.2	✓
cb	1.8	97.8	✓
1/4	3.2	96.4	✓
C	5.1	94.5	✓
1/4	7.0	92.6	✓
cb	8.4	91.2	✓
+5	9.7	89.9	✓
+10	10.4	89.2	✓
S	11.6	88.0	✓
✓ 100' W			
S	9.8	89.8	Level out.
+3	7.8	91.8	✓
+10	7.3	92.3	✓
+15	6.9	92.7	✓
cb	5.1	94.5	✓
1/4	3.9	95.7	✓

c	2.2	97.4	✓
1/4	0.8	98.8	✓
T.P.	11.25	110.28	0.60 99.03 ✓
cb	9.7	100.6	✓
+10	8.4	101.9	✓
N	7.5	102.8	✓
✓ 102' W			
N	6.3	104.0	✓
+10	8.1	102.2	✓
cb	9.5	100.8	✓
113' W			
S	17.6	92.7	= elev on ground front ex 44209c
✓ 135' W			
N	2.8	107.5	✓
+4	4.4	105.9	✓
+10	4.8	105.5	✓
cb	6.6	103.7	✓
1/4	8.3	102.0	✓
c	9.9	100.4	✓
1/4	11.5	98.8	✓

110.28

cb	12.7	97.6 ✓
+10	15.4	94.9 ✓
S	15.7	94.6 ✓
✓ 170' W		
S	13.3	97.0 ✓
+10	12.4	97.9 ✓
+14	11.3	99.0 ✓
cb	10.8	99.5 ✓
1/4	8.8	101.5 ✓
c	7.1	102.2 ✓
X +3	7.1	102.2 ✓
1/4	5.4	104.9 ✓
cb	3.7	106.6 ✓
+10	2.2	108.1 ✓
N	+0.2	110.5 ✓

✓ 200' W. = E.L. 29¹⁴

N	+2.1	112.4 ✓
+10	-0.3	110.0 ✓
cb	2.1	108.2 ✓
1/4	3.8	106.5 ✓

J 57

66

c	5.5	104.8 ✓
1/4	7.1	103.2 ✓
+8	8.4	101.9 ✓
cb	9.6	100.7 ✓
+10	11.4	98.9 ✓
S	12.6	97.7 ✓

3/1/23 Garage
 19' square
 pillar
 show

CROSS SECTION OF
 ALLEY BLK 7 NUTTS 15' wide
 + Blk 7 Brood 205
 3rd + 4th 5' x 10' Rdn

291.13

67

BM	226	291.13	288.87	BR NW 4 1/2' Rdn	E = garage floor wood	5.8	285.3		
		5.6 Rdn				150' S			
E	286.88	4.36	286.77	Top Paring	E	285.02	5.7	285.4	
C	286.50	4.89	286.24	- -	C	284.74	6.4	284.7	
W	286.62	4.96	286.17	- -	W	284.95	6.3	284.8	
		10' S				174' S			
W	286.51	4.4	286.7		E = garage floor dirt	6.30	284.8		
C	286.38	4.4	286.7			180' S			
E	286.76	3.9	287.2		3.8' W x W.L. = board floor garage	6.13	285.00		
		55' S				200' S			
E	286.20 = garage floor cement	4.83	286.30		W	284.40	6.7	284.4	
C	285.86	5.30	285.83		C	284.15	6.8	284.3	
W	286.01	5.30	285.83		E	284.40	6.8	284.3	
		100' S				210' S			
W	285.51	5.7	285.4		3.8' W x W.L. = dirt floor	6.9	284.2		
C	285.33	5.7	285.4			258' S = center double garage or W			
E	285.64	5.4	285.7		E	284.17	6.8	284.3	
		106' S			C	283.92	6.9	284.2	
E = garage floor dirt		5.63	285.50		W = dirt floor	284.17	6.8	284.3	

291.13

285'5

W	28406	7.0	2841
C	28381	7.1	2840
E	28406	7.0	2841
300'5			
E	28400	7.0	2841
C	= 283.75	6.8	2843
	Manhole	6.58	284.55
W	28400	6.7	2844

320'5 = N end cement runway on W

W		6.95	284.18
---	--	------	--------

350'5 = S end of above runway

W	28380	7.10	2840
---	-------	------	------

garages on this runway 4' W. of W.L.

C	28354	7.3	2838
---	-------	-----	------

E	28380	7.4	2837
---	-------	-----	------

355'5

E = dirt floor		7.5	2836
----------------	--	-----	------

400'5

E	28360	8.0	2831
---	-------	-----	------

C	28335	7.9	2832
---	-------	-----	------

291.13

68

W	28360	8.0	2831
---	-------	-----	------

412'5

W = edge cement apron		7.65	28348
-----------------------	--	------	-------

garage is
5' W. of W.L.

440'5

W =	283.45 (283.50)	7.6	2835
-----	--------------------	-----	------

C	283.23 (283.28)	7.8	283.3
---	--------------------	-----	-------

E = edge apron cement	283.56 (283.51)	7.57	28356
-----------------------	--------------------	------	-------

garage is
2.8' E. of W.L.
floor = 283.6

TP	4.20	287.62	7.81	283.32
----	------	--------	------	--------

470'5

E	283.44 (283.52)	4.3	2833
---	--------------------	-----	------

C	283.14 (283.23)	4.1	2835
---	--------------------	-----	------

W	283.34 (283.43)	4.1	2835
---	--------------------	-----	------

507'5

-2 = cement floor		4.32	28330
-------------------	--	------	-------

W =	283.21 (283.34)	4.4	2832
-----	--------------------	-----	------

C	283.03 (283.16)	4.4	2832
---	--------------------	-----	------

E	283.36 (283.48)	4.5	2831
---	--------------------	-----	------

524'5

-4 = garage dirt floor		3.9	2837
------------------------	--	-----	------

E		4.4	2832
---	--	-----	------

28762

550' S

E	283.76 (283.43)	46	283.0
C	282.90 (283.09)	42	283.4
W	283.05 (283.24)	46	283.0

580' S

W	282.94 (283.17)	45	283.1
C	287.82 (283.04)	44	283.2
E	283.19 (283.40)	46	283.0

600' S - NL Pennsylvania

E = Top Curb	283.13 (283.38)	447	283.15
E = ground	282.26 (283.00)	48	282.8
C = Nantala	282.87 (283.12)	4.83	282.79
W = Top Curb		475	282.87

N. Cb Line Pennsylvania

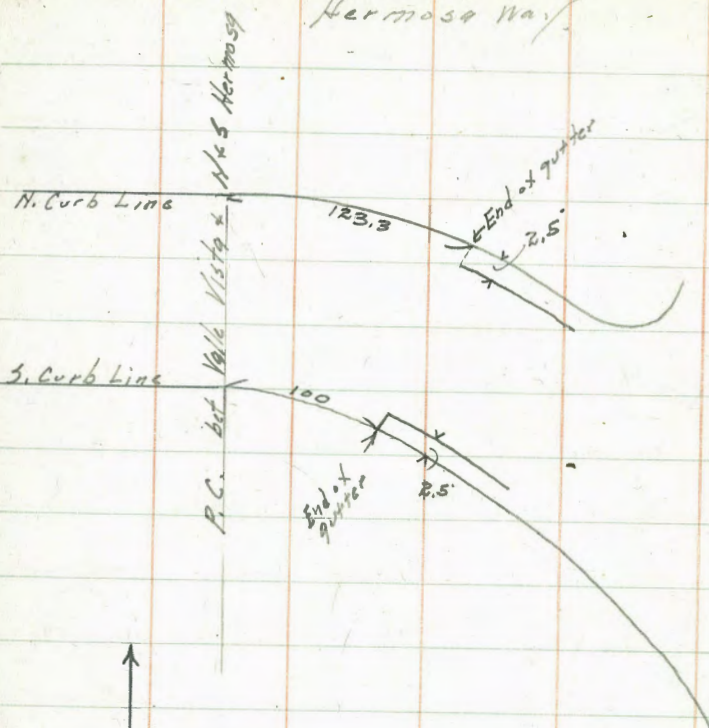
W Top Curb		4.95	282.67
E ✓ ✓		4.74	282.88
ch R B.M.		2.27	285.35

B.P. N/W
4th Penn

281.56

69

Location of gutters
Hermosa Way



CROSS SECTION OF 60' wide
REDWOOD ST 10' cbs.
from EL 32nd to Fallon
60' ST.

312.37

71

65 E

17.68	312.37	299.69	5	6.1	306.3	✓
EL. 32nd.			cb	6.1	306.2	✓
5	12.7	299.7	+5	6.1	306.3	✓
cb	12.9	299.5	+6	7.1	305.3	✓
1/4	12.6	299.8	1/4	7.2	305.2	✓
C	12.3	300.1	C	7.1	305.3	✓
1/4	12.0	300.4	1/4	6.8	305.6	✓
cb	12.2	300.2	cb	7.5	304.9	✓
N	12.6	299.8	+1	6.7	305.7	✓
	35 E		N	6.7	305.7	✓
N	8.8	303.6		100 E		
+9	9.0	303.4	N	4.5	307.9	✓
cb	9.5	302.9	+9	4.5	307.9	✓
1/4	9.2	303.2	cb	5.6	306.8	✓
C	9.5	303.9	1/4	4.6	307.8	✓
1/4	9.9	302.5	C	4.8	307.6	✓
+2	9.7	302.5	1/2	4.9	307.5	✓
+3	9.0	303.4	+4	4.7	307.7	✓
cb	8.8	303.6	+5	4.1	308.3	✓
5	8.9	303.5				

312.37

cb	4.2	308.2 ✓
5	4.3	308.1 ✓
150' E		
5	1.1	311.0 ✓
cb	1.2	311.2 ✓
+5	1.3	311.1 ✓
+6	1.8	310.6 ✓
1/4	2.0	310.2 ✓
c	1.7	310.7 ✓
1/4	1.6	310.8 ✓
cb	1.6	310.8 ✓
+1	1.7	310.7 ✓
H	1.9	310.5 ✓
5.57	317.34	0.60 311.77 ✓
200' E		
H	4.3	313.0 ✓
+9	4.1	313.2 ✓
cb	4.8	312.5 ✓
1/4	4.1	313.2 ✓
c	4.4	312.9 ✓

REDWOOD 72

1/4	4.4	312.9 ✓
+4	4.2	313.1 ✓
+5	3.7	313.6 ✓
cb	3.6	313.7 ✓
5	3.8	313.5 ✓
250' E = W.L. Bancroft		
5	2.8	314.5 ✓
cb	2.8	314.5 ✓
+5	2.8	314.5 ✓
+6	3.3	314.0 ✓
1/4	3.2	314.1 ✓
c	3.2	314.1 ✓
1/4	2.8	314.5 ✓
cb	3.3	314.0 ✓
+1	2.8	314.5 ✓
H	2.7	314.6 ✓
Cement Return in on NW E6r 314.37.		
E.L. Bancroft - NE 100 315.0		
H	2.3	315.0 ✓
+9	4.3	314.8 ✓

cb	29	314.4	✓
1/4	25	314.8	✓
c	26	314.7	✓
1/4	28	314.5	✓
+4	29	314.4	✓
+5	26	314.9	✓
cb	24	314.9	✓
s	25	314.8	✓
	50' 5		
s	23	315.0	✓
cb	23	315.0	✓
+5	22	315.1	✓
+6	27	314.6	✓
1/4	27	314.6	✓
c	26	314.7	✓
1/4	23	315.0	✓
cb	28	314.5	✓
+1	21	315.2	✓
N	21	315.2	✓

	100' 5		
N	23	315.0	✓
+9	25	314.8	✓
cb	30	314.3	✓
1/4	26	314.7	✓
c	28	314.5	✓
1/4	29	314.4	✓
+5	29	314.4	✓
+6	26	314.9	✓
cb	25	314.8	✓
s	26	314.8	✓
	130' E		
s	28	314.5	✓
+5	30	314.3	✓
cb	34	313.9	✓
1/4	34	313.9	✓
c	32	314.1	✓
1/4	32	314.1	✓
cb	33	314.0	✓
+1	26	314.7	✓
N	25	314.8	✓

3/7.34

200' E

N	51	312.2	✓
+9	48	312.5	✓
cb	54	311.9	✓
1/4	52	312.1	✓
c	54	311.9	✓
1/4	54	311.9	✓
+4	51	312.2	✓
+5	46	312.7	✓
cb	46	312.7	✓
S	45	312.8	✓
250' E = N.L. 33rd			
S	59	311.4	✓
cb	60	311.3	✓
1/4	63	311.0	✓
c	62	311.1	✓
1/4	60	311.3	✓
cb	60	311.3	✓
N	56	311.7	✓
chk BM	56.9	311.65	✓

Cement return in NW cor.

REDWOOD 74

N Curb

N	62	311.1	✓
cb	63	311.0	✓
1/4	63	311.0	✓
c	63	311.0	✓
1/4	64	310.9	✓
cb	63	311.0	✓
S	60	311.3	✓
N. 1/4			
S	66	310.7	✓
cb	66	310.7	✓
1/4	65	310.8	✓
c	63	311.0	✓
1/4	60	311.3	✓
cb	61	311.2	✓
N	61	311.2	✓
Center			
N	59	311.4	✓
cb	59	311.4	✓
1/4	60	311.3	✓

C	6.2	311.1	✓	S	6.2	311.1	✓
1/4	6.5	310.8	✓	cb	6.0	311.3	✓
cb	6.6	310.7	✓	+5	6.0	311.3	✓
S	6.6	310.7	✓	+6	6.4	310.9	✓
	E 1/4			1/4	6.3	311.0	✓
S	6.7	310.6	✓	c	6.2	311.1	✓
cb	6.7	310.6	✓	1/4	6.1	311.2	✓
1/4	6.5	310.8	✓	cb	5.8	311.5	✓
c	6.2	311.1	✓	(concrement)	5.34	312.00	✓
1/4	6.1	311.2	✓	N	5.2	312.1	✓
cb	6.0	311.3	✓		50'E		
H	6.0	311.3	✓	N	5.2	312.1	✓
	E. Curb			+9	5.2	312.1	✓
N	5.9	311.4	✓	cb	5.8	311.5	✓
cb	6.1	311.2	✓	1/4	5.5	311.8	✓
1/4	6.2	311.1	✓	c	5.8	311.5	✓
c	6.2	311.1	✓	1/4	5.9	311.4	✓
1/2	6.2	311.1	✓	+4	6.1	311.2	✓
cb	6.0	311.3	✓	+5	5.6	311.7	✓
S	6.2	311.1	✓	cb	5.6	311.7	✓
	Cement Return in NE Cor.			S	5.8	311.5	✓

100' E

S	5.0	312.2	✓
cb	5.0	312.3	✓
+5	5.1	312.2	✓
+6	5.5	311.8	✓
1/4	5.5	311.8	✓
C	5.6	311.7	✓
1/4	5.5	311.8	✓
cb	5.5	311.8	✓
+1	5.0	312.3	✓
N	4.8	312.5	✓
140' E			
N	3.8	313.5	✓
+9	3.8	313.5	✓
cb	4.8	312.5	✓
1/4	4.9	312.4	✓
C	5.2	312.1	✓
1/4	5.3	312.0	✓
+4	5.3	312.0	✓
+5	4.8	312.5	✓

cb	4.8	312.5	✓
S	4.8	312.5	✓
200' E			
S	4.5	312.8	✓
cb	4.5	312.8	✓
+5	4.5	312.8	✓
+6	5.0	312.3	✓
1/4	5.1	312.2	✓
C	5.0	312.3	✓
1/4	4.8	312.5	✓
cb	5.0	312.3	✓
+1	4.4	312.9	✓
N	4.3	313.0	✓
250' E - WL FELTON 50' wide 10' cbs			
N	4.3	313.0	✓
+9	4.4	312.9	✓
cb	4.8	312.5	✓
(on cement	4.28	313.06	✓
1/4	4.8	312.5	✓
C	5.1	312.2	✓

cement return in on N.W. Corner.

1/4	5.7	312.1	✓
+4	5.3	312.0	✓
+5	5.0	312.3	✓
cb	5.0	312.3	✓
S	5.2	312.1	✓

W. Curb

S	5.2	312.1	✓
cb	5.1	312.1	✓
1/4	5.3	312.0	✓
C	5.0	312.3	✓
1/4	4.9	312.4	✓
cb	4.9	312.4	✓
N	4.8	312.5	✓

W 1/4

N	4.6	312.7	✓
cb	4.8	312.5	✓
1/4	4.7	312.6	✓
C	4.9	312.4	✓
1/4	5.0	312.3	✓
cb	5.1	312.2	✓
S	5.1	312.2	✓

Center

S	5.0	312.3	✓
cb	4.9	312.4	✓
1/4	4.9	312.4	✓
C	4.9	312.4	✓
1/4	4.7	312.6	✓
cb	4.6	312.7	✓
N	4.3	313.0	✓

E 1/4

N	4.5	312.8	✓
cb	4.6	312.7	✓
1/4	4.6	312.7	✓
C	4.8	312.5	✓
1/4	4.7	312.6	✓
cb	4.9	312.4	✓
S	5.1	312.2	✓

E. Curb

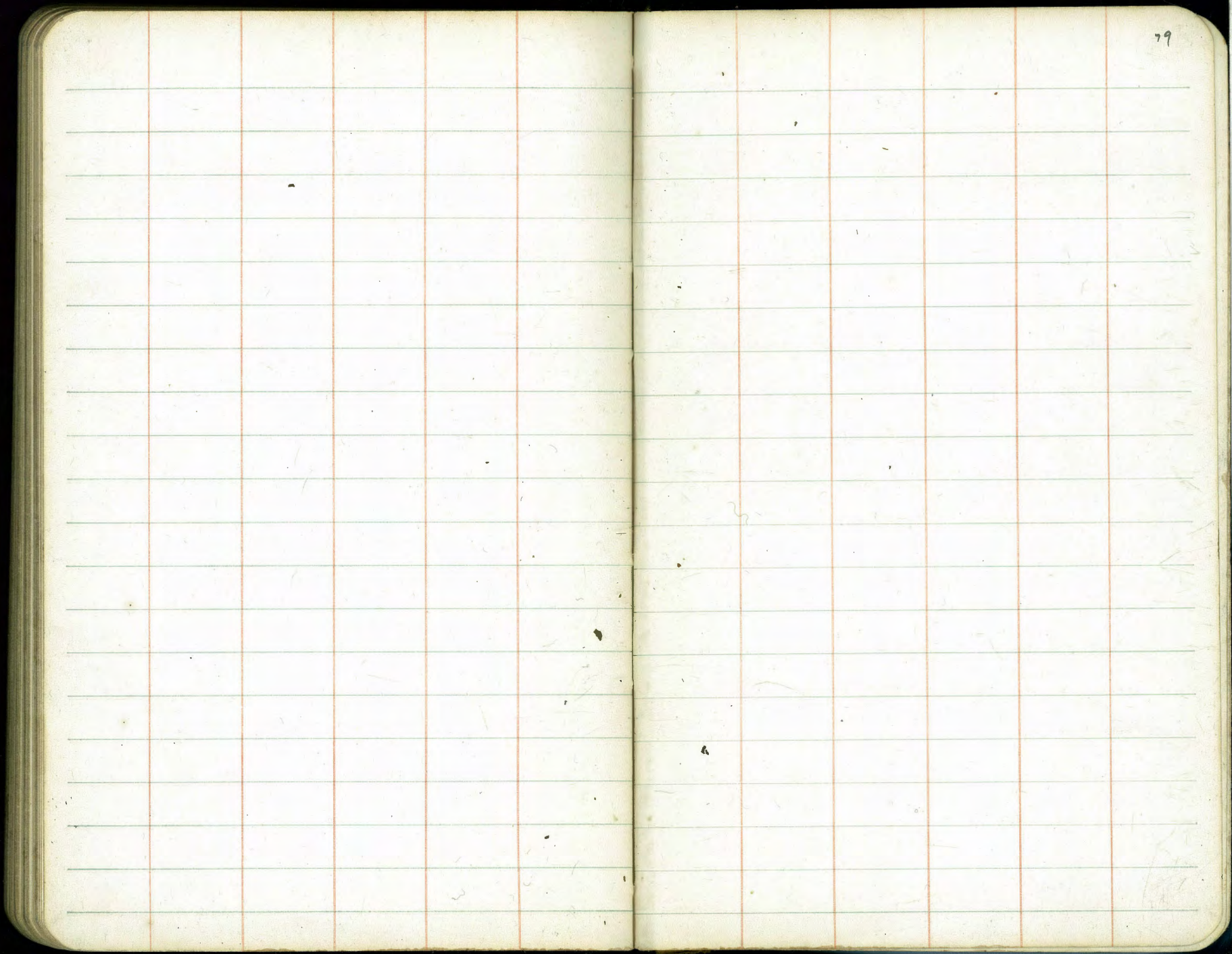
S	5.0	312.3	✓
cb	4.9	312.4	✓
1/4	4.5	312.8	✓

Cement return in on NE corner.

C	4.9	312.4 ✓
1/4	4.6	312.7 ✓
cb	4.6	312.7 ✓
H	4.6	312.7 ✓
(on cement)	4.03)	313.31 ✓

E.L. Felton

N	3.9	313.4 ✓
+9	4.2	313.1 ✓
cb	4.7	312.6 ✓
1/4	4.6	312.7 ✓
C	4.6	312.7 ✓
1/4	4.6	312.8 ✓
cb	4.7	312.6 ✓
S	4.9	312.4 ✓



4
35
70
100
135
170
200
235
270
300

25
50
75
100
135
170
200
235
270
300
298

30
65
100
135
165
200

311.61
5.23

316.84
10.73

306.11
6.49

312.60
17.80

294.80

1.5

NE Hub 299.80
S.E. ✓

NE Pt. 315.0

NW Pt. 314.37

~~317.27~~
~~7.09~~
~~311.00~~

312.60
7.33

311.27
7.45

319.22

13.0
4.2

11-1-11111111

DISTANCES FROM CENTER OF ROADWAY FOR CROSS-SECTIONING.
 ROADWAY 14 FEET WIDE. SIDE SLOPES 1 1/2 TO 1.
 FOR SINGLE TRACK EMBANKMENT.

	0	.1	.2	.3	.4	.5	.6	.7	.8	.9	
0	7.0	7.2	7.3	7.5	7.6	7.8	7.9	8.1	8.2	8.4	0
1	8.5	8.7	8.8	9.0	9.1	9.3	9.4	9.6	9.7	9.9	1
2	10.0	10.2	10.3	10.5	10.6	10.8	10.9	11.1	11.2	11.4	2
3	11.5	11.7	11.8	12.0	12.1	12.3	12.4	12.6	12.7	12.9	3
4	13.0	13.2	13.3	13.5	13.6	13.8	13.9	14.1	14.2	14.4	4
5	14.5	14.7	14.8	15.0	15.1	15.3	15.4	15.6	15.7	15.9	5
6	16.0	16.2	16.3	16.5	16.6	16.8	16.9	17.1	17.2	17.4	6
7	17.5	17.7	17.8	18.0	18.1	18.3	18.4	18.6	18.7	18.9	7
8	19.0	19.2	19.3	19.5	19.6	19.8	19.9	20.1	20.2	20.4	8
9	20.5	20.7	20.8	21.0	21.1	21.3	21.4	21.6	21.7	21.9	9
10	22.0	22.2	22.3	22.5	22.6	22.8	22.9	23.1	23.2	23.4	10
11	23.5	23.7	23.8	24.0	24.1	24.3	24.4	24.6	24.7	24.9	11
12	25.0	25.2	25.3	25.5	25.6	25.8	25.9	26.1	26.2	26.4	12
13	26.5	26.7	26.8	27.0	27.1	27.3	27.4	27.6	27.7	27.9	13
14	28.0	28.2	28.3	28.5	28.6	28.8	28.9	29.1	29.2	29.4	14
15	29.5	29.7	29.8	30.0	30.1	30.3	30.4	30.6	30.7	30.9	15
16	31.0	31.2	31.3	31.5	31.6	31.8	31.9	32.1	32.2	32.4	16
17	32.5	32.7	32.8	33.0	33.1	33.3	33.4	33.6	33.7	33.9	17
18	34.0	34.2	34.3	34.5	34.6	34.8	34.9	35.1	35.2	35.4	18
19	35.5	35.7	35.8	36.0	36.1	36.3	36.4	36.6	36.7	36.9	19
20	37.0	37.2	37.3	37.5	37.6	37.8	37.9	38.1	38.2	38.4	20
21	38.5	38.7	38.8	39.0	39.1	39.3	39.4	39.6	39.7	39.9	21
22	40.0	40.2	40.3	40.5	40.6	40.8	40.9	41.1	41.2	41.4	22
23	41.5	41.7	41.8	42.0	42.1	42.3	42.4	42.6	42.7	42.9	23
24	43.0	43.2	43.3	43.5	43.6	43.8	43.9	44.1	44.2	44.4	24
25	44.5	44.7	44.8	45.0	45.1	45.3	45.4	45.6	45.7	45.9	25
26	46.0	46.2	46.3	46.5	46.6	46.8	46.9	47.1	47.2	47.4	26
27	47.5	47.7	47.8	48.0	48.1	48.3	48.4	48.6	48.7	48.9	27
28	49.0	49.2	49.3	49.5	49.6	49.8	49.9	50.1	50.2	50.4	28
29	50.5	50.7	50.8	51.0	51.1	51.3	51.4	51.6	51.7	51.9	29
30	52.0	52.2	52.3	52.5	52.6	52.8	52.9	53.1	53.2	53.4	30
31	53.5	53.7	53.8	54.0	54.1	54.3	54.4	54.6	54.7	54.9	31
32	55.0	55.2	55.3	55.5	55.6	55.8	55.9	56.1	56.2	56.4	32
33	56.5	56.7	56.8	57.0	57.1	57.3	57.4	57.6	57.7	57.9	33
34	58.0	58.2	58.3	58.5	58.6	58.8	58.9	59.1	59.2	59.4	34
35	59.5	59.7	59.8	60.0	60.1	60.3	60.4	60.6	60.7	60.9	35
36	61.0	61.2	61.3	61.5	61.6	61.8	61.9	62.1	62.2	62.4	36

Calculated by Julien A. Hall, M. Am. Soc. C. E.

Handwritten notes and calculations on the left page of the notebook. Includes:

- Vertical list of numbers: 30, 02, 83, 150, 160, 183, 247.
- Section header: "W.L." (Water Level).
- Various arithmetic calculations, including long divisions like $\frac{132.65}{1.77}$ and $\frac{132.65}{1.77}$.
- Diagrams showing cross-sections of embankments with dimensions and labels like "W.L.", "14", "19.2", "14.8", "14.9", "14.8", "14.9", "14.8", "14.9".
- Additional calculations: $\frac{132.65}{1.77} = 74.94$, $\frac{132.65}{1.77} = 74.94$, $\frac{132.65}{1.77} = 74.94$.
- Other numbers: 530, 535, 540, 545, 548, 549, 550, 555, 560, 565, 570, 575, 580, 585, 590, 595, 600, 605, 610, 615, 620.