

5

1105

FIELD BOOK.

No. 483

MICROFILMED

DEC 21 1964

1105



Prospect and Boulevard NE. Plg 68.00

" " Cervier NW " 73.95

95

105

~~115~~

145

169

175

151

200

200

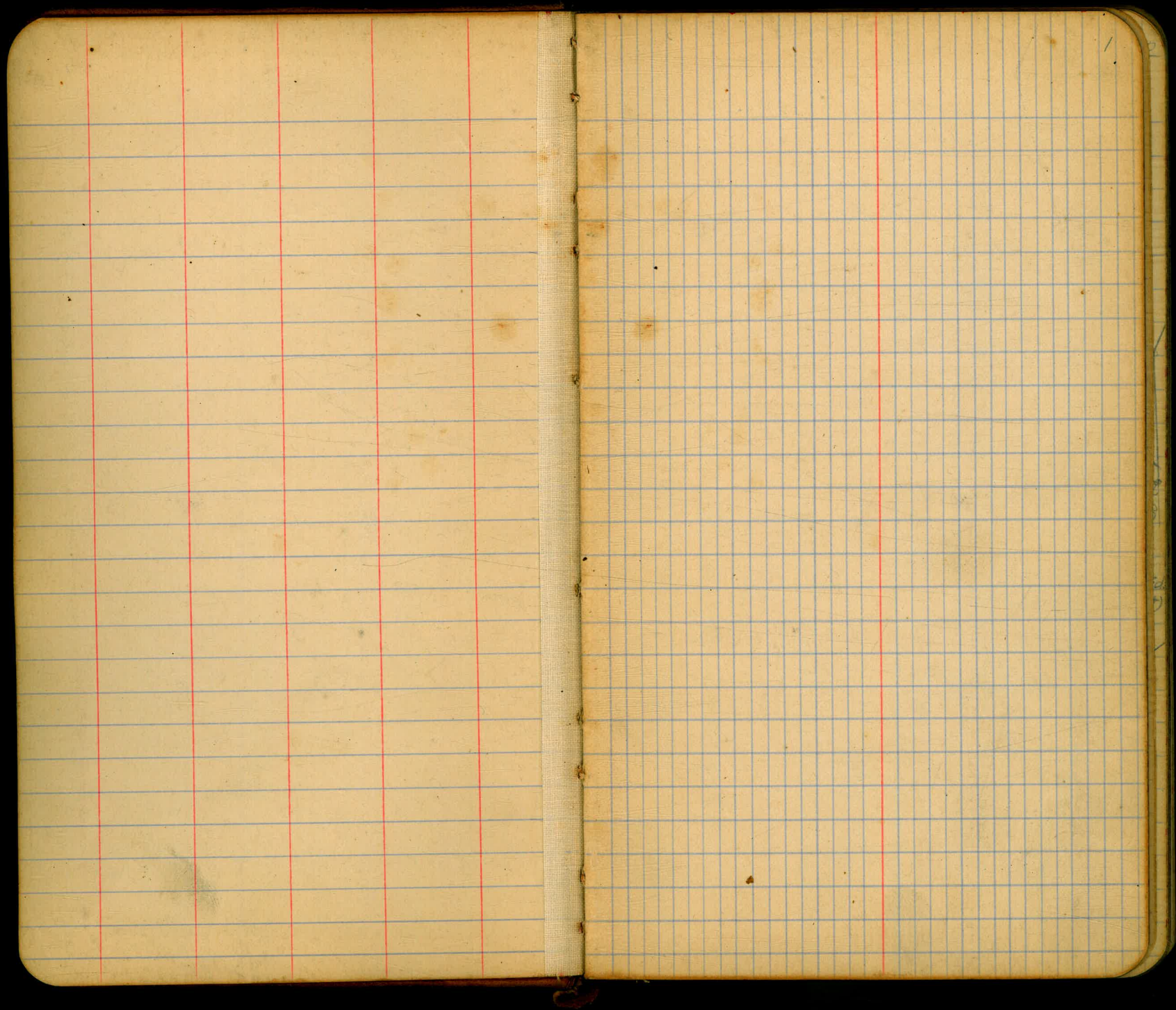
Index

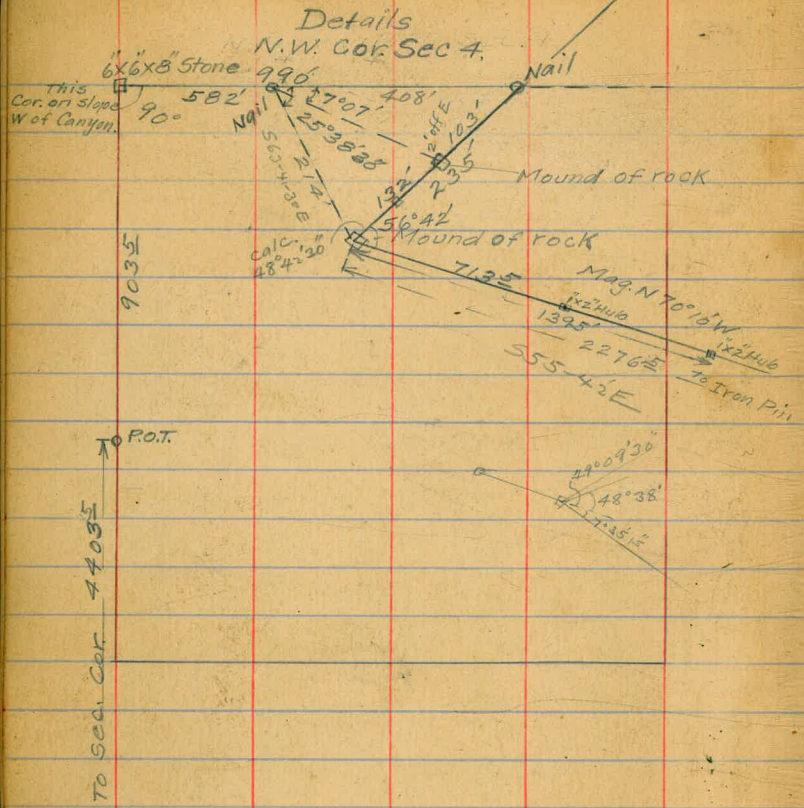
Harvey Ranch Survey

Pages 2-7 incl.

Tracts A, B, etc. At Upper

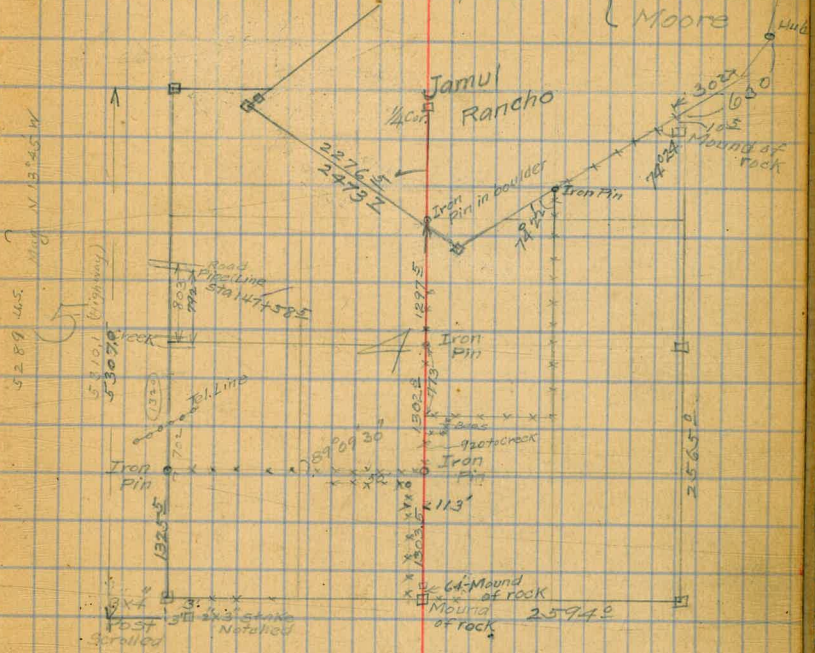
Otay Dam Pages 10-15



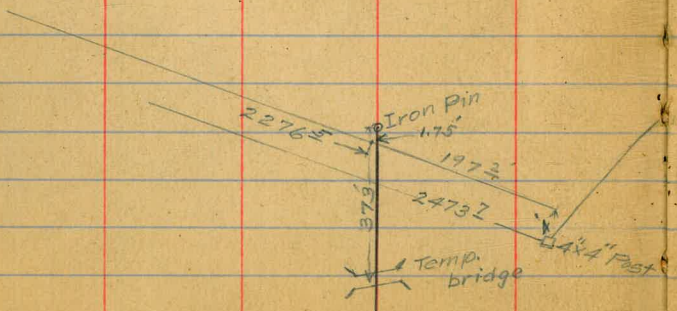


Resurvey Sec. 4 T185R1E

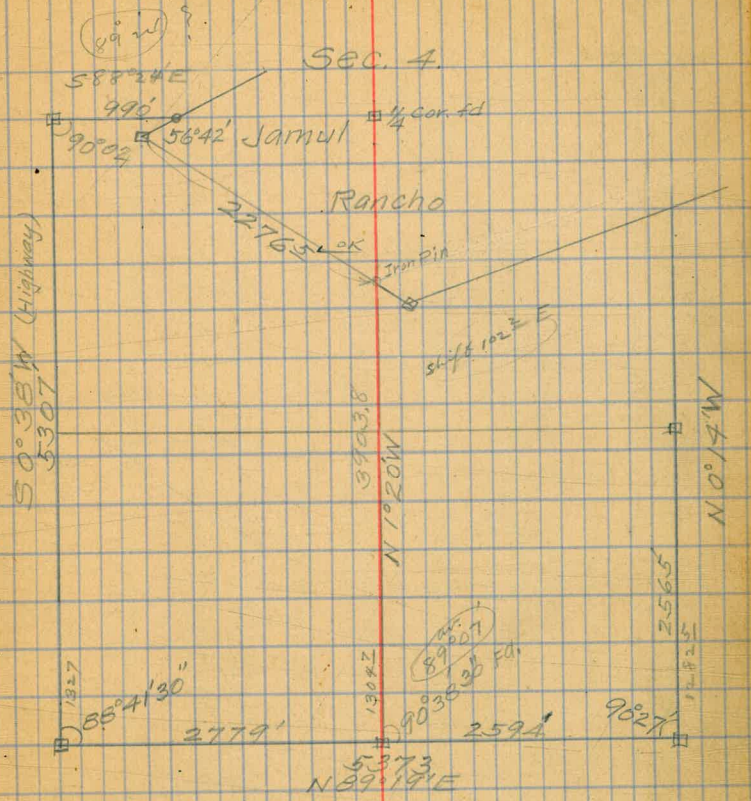
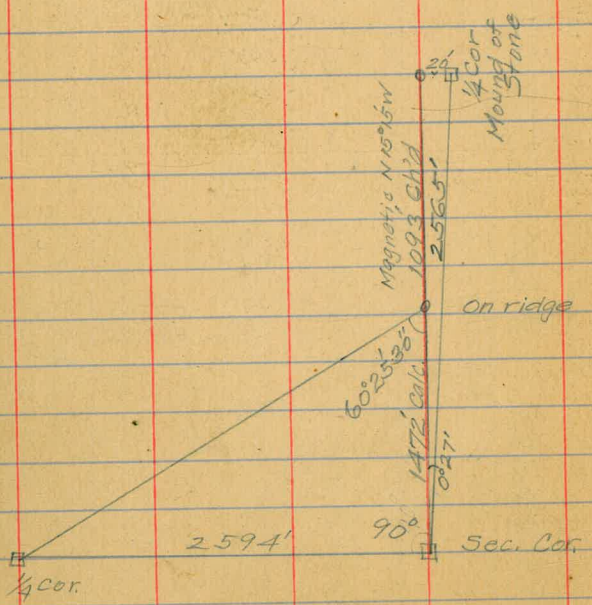
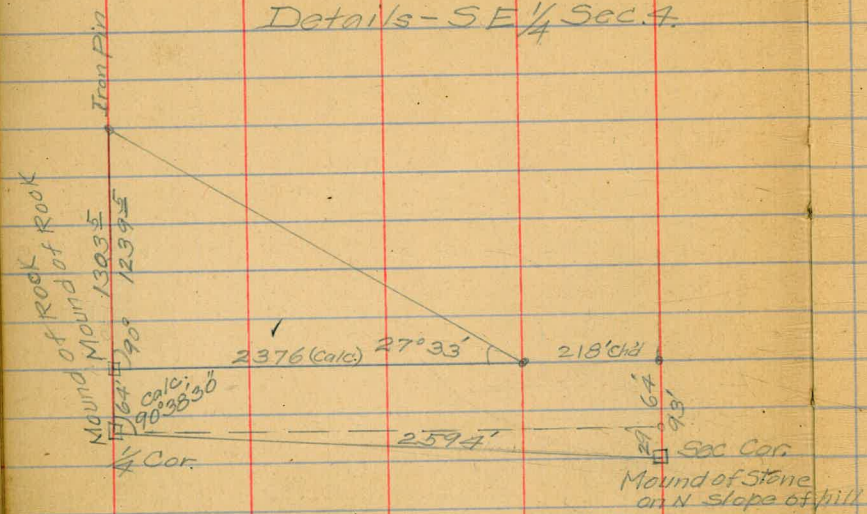
Sept. 1916
(Brunner
Otter
Moore)



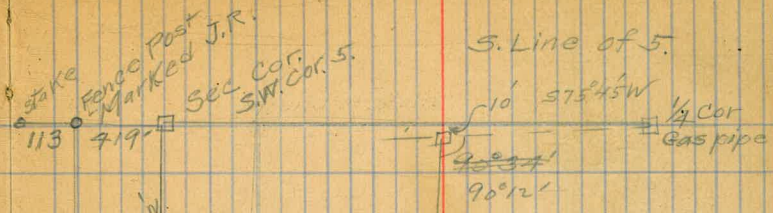
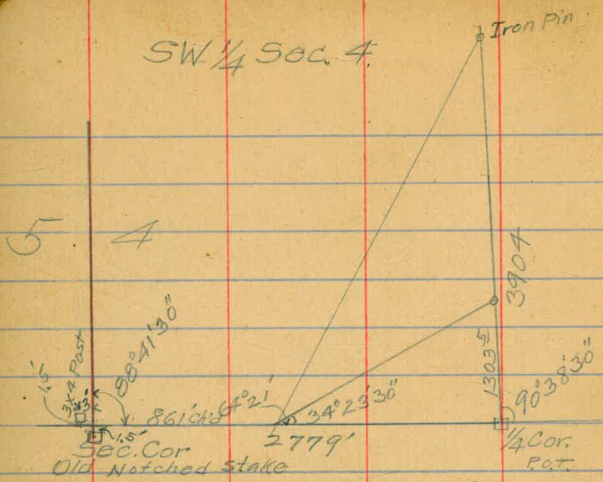
Details
S.E. Cor. Jamul Prop.



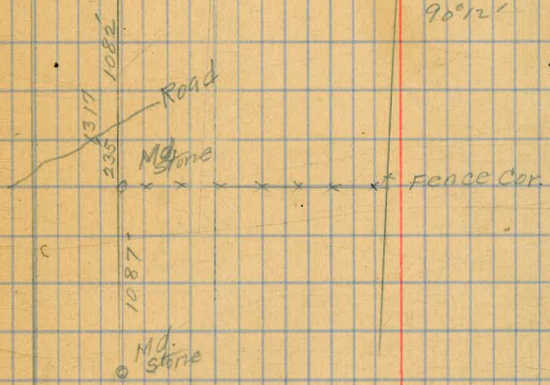
Details - SE 1/4 Sec. 4.



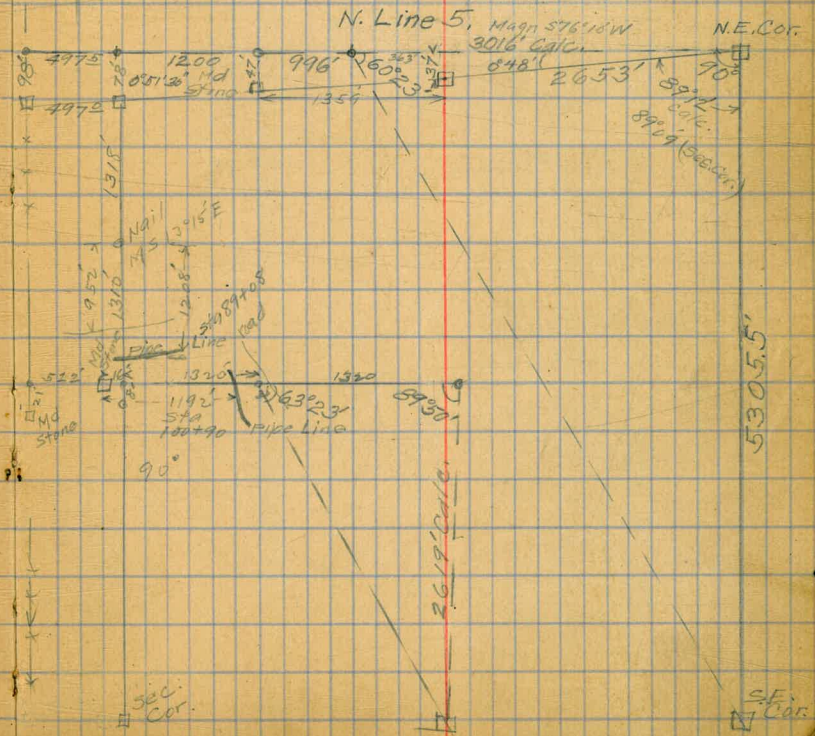
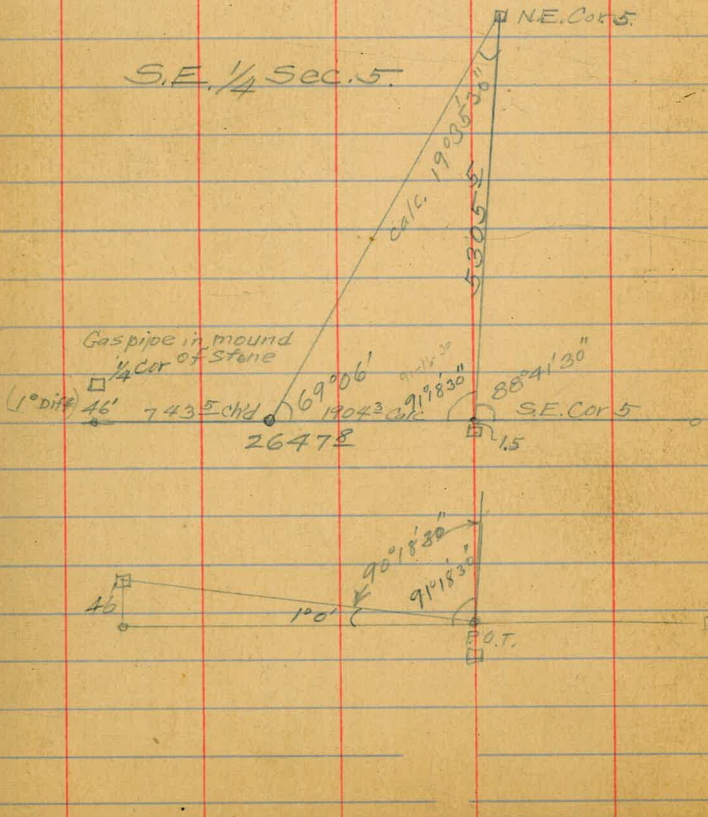
SW 1/4 Sec. 4



5 4



S.E. 1/4 Sec. 5

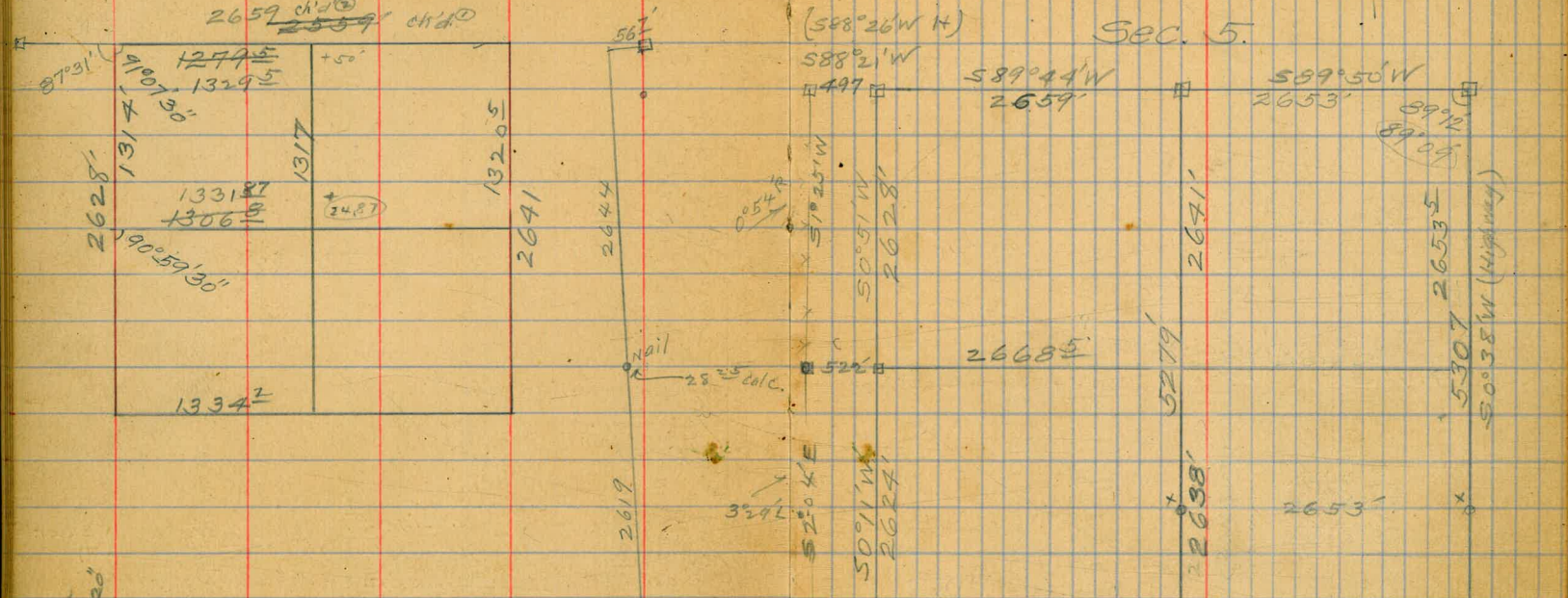


5305.5

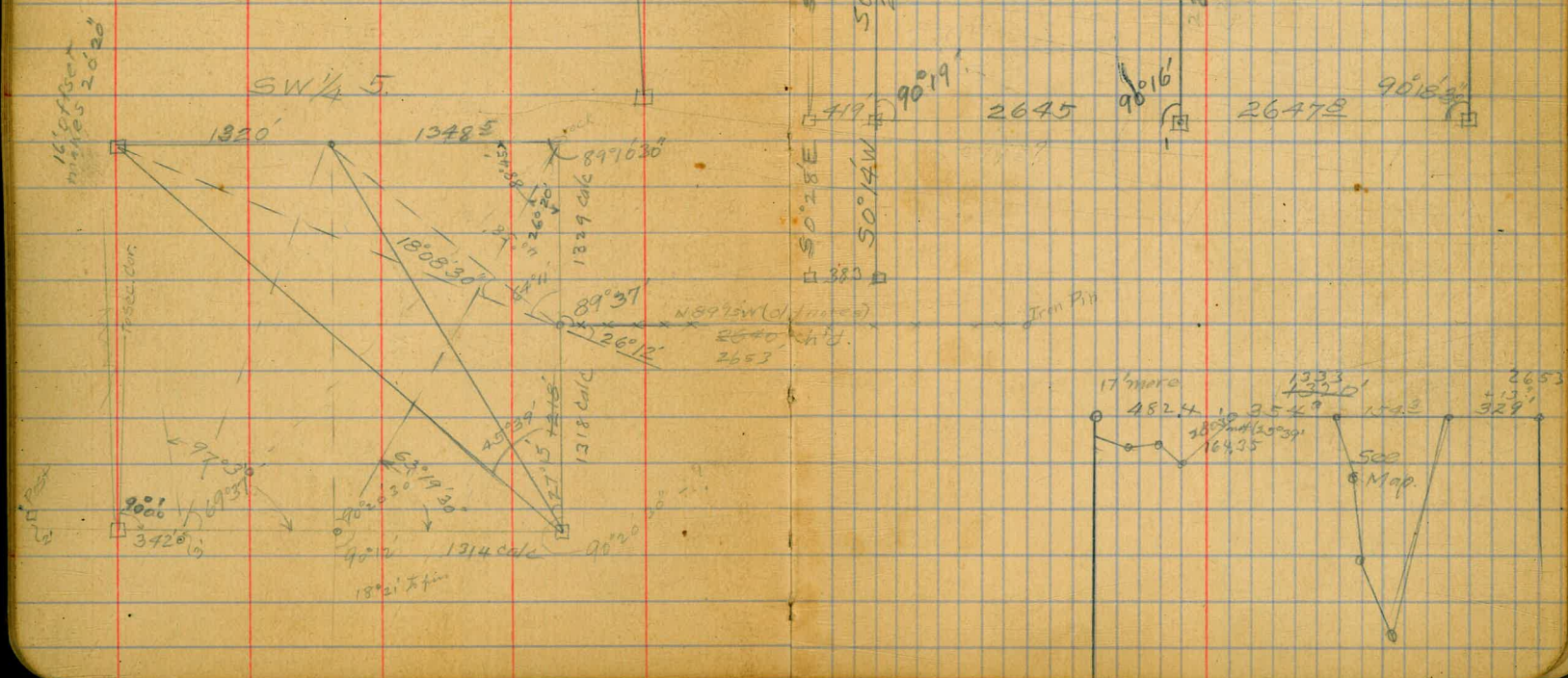
SE. Cor.

NW 1/4 5

Sec. 5.

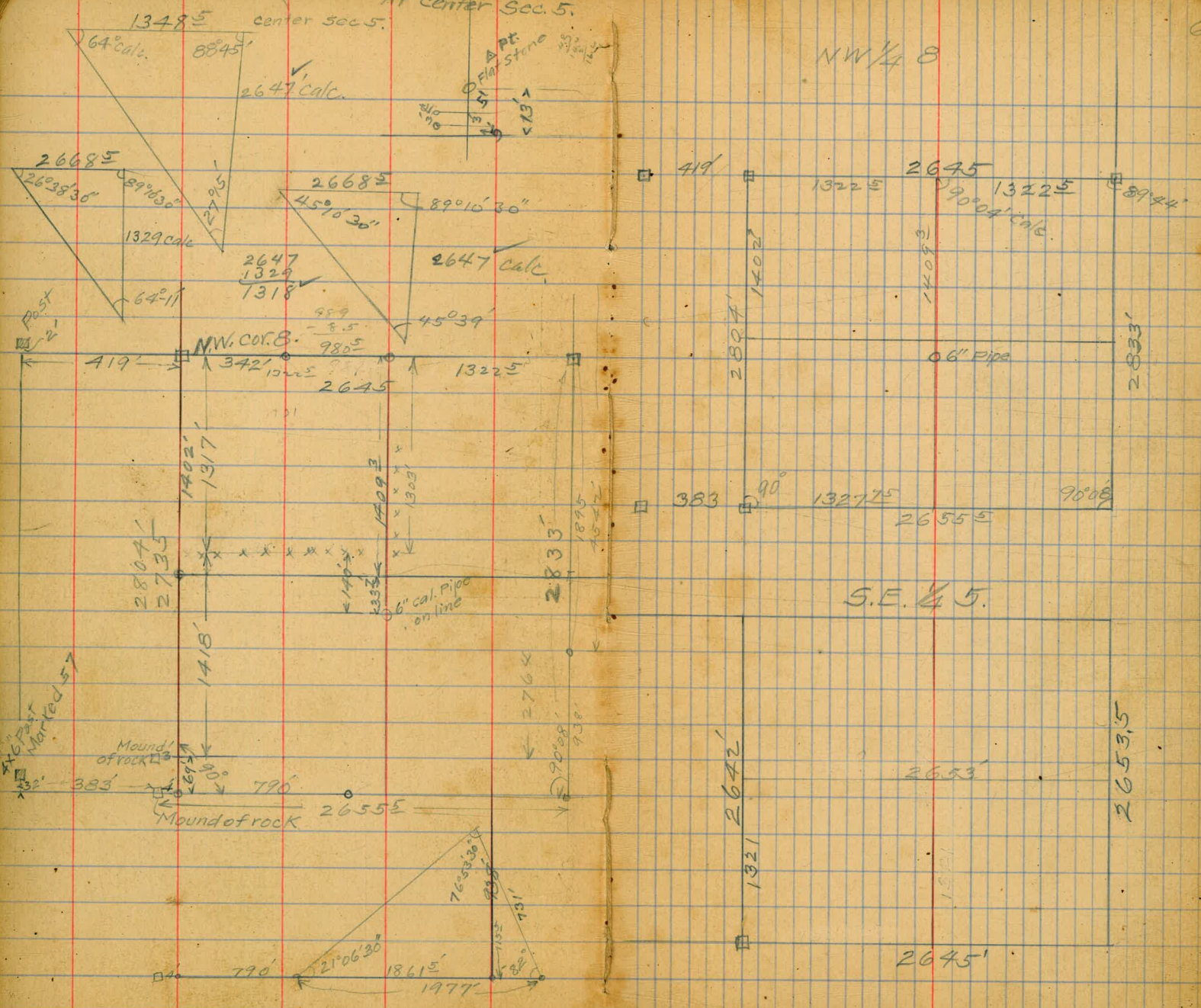


SW 1/4 5



At center Sec. 5.

6



NW 1/4 8

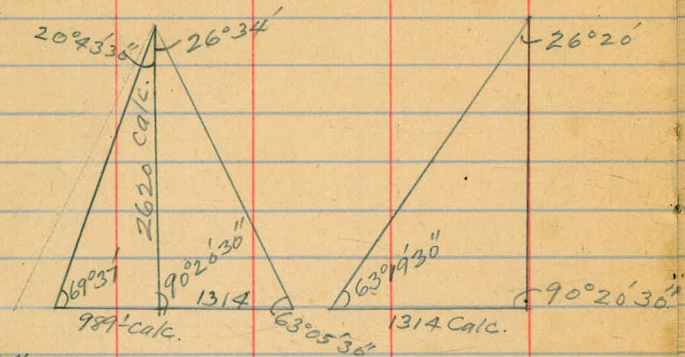
S.E. 1/4 5.

2642
1321

2653.5

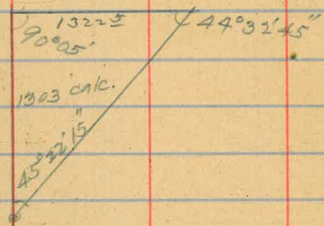
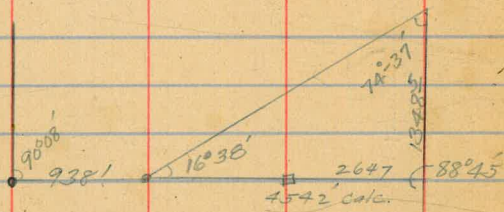
2645'

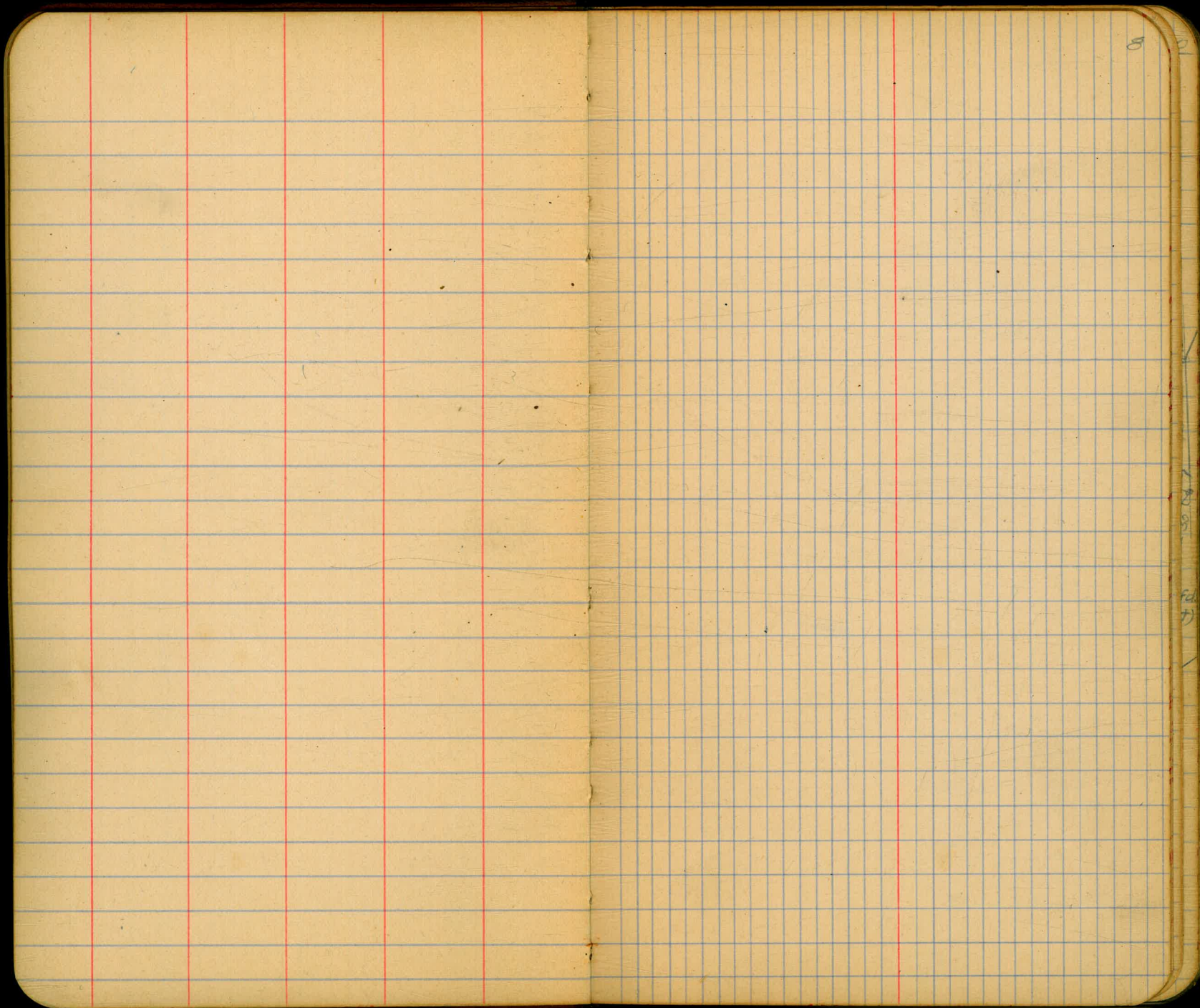
Δ s in SW $\frac{1}{4}$ 5.

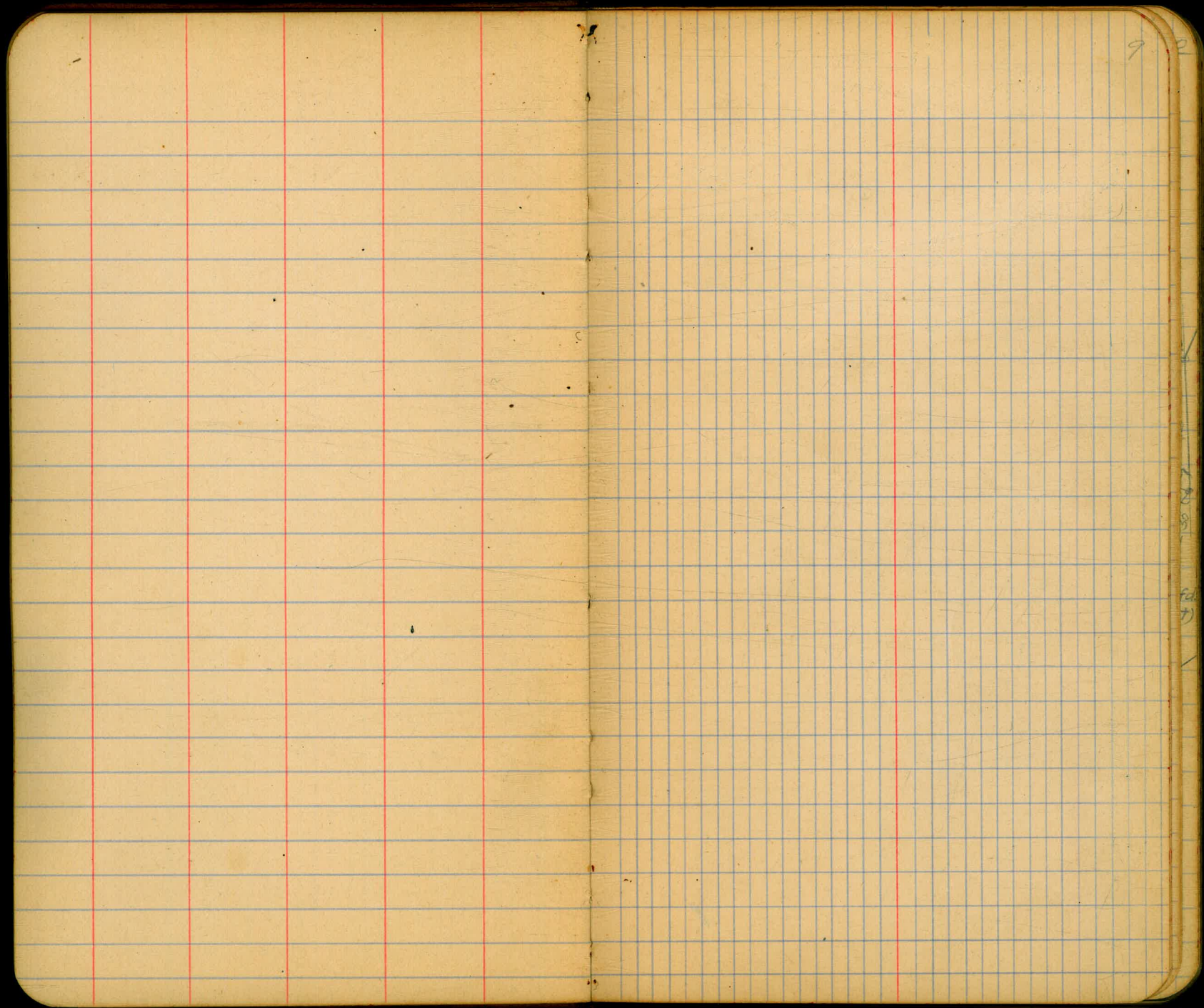


1314
 989
 342

 2645







9. 2

8
9
7

Sketches showing points
on 156 Contour of Lower Otay
reservoir and 100 ft. R.W. adjacent.

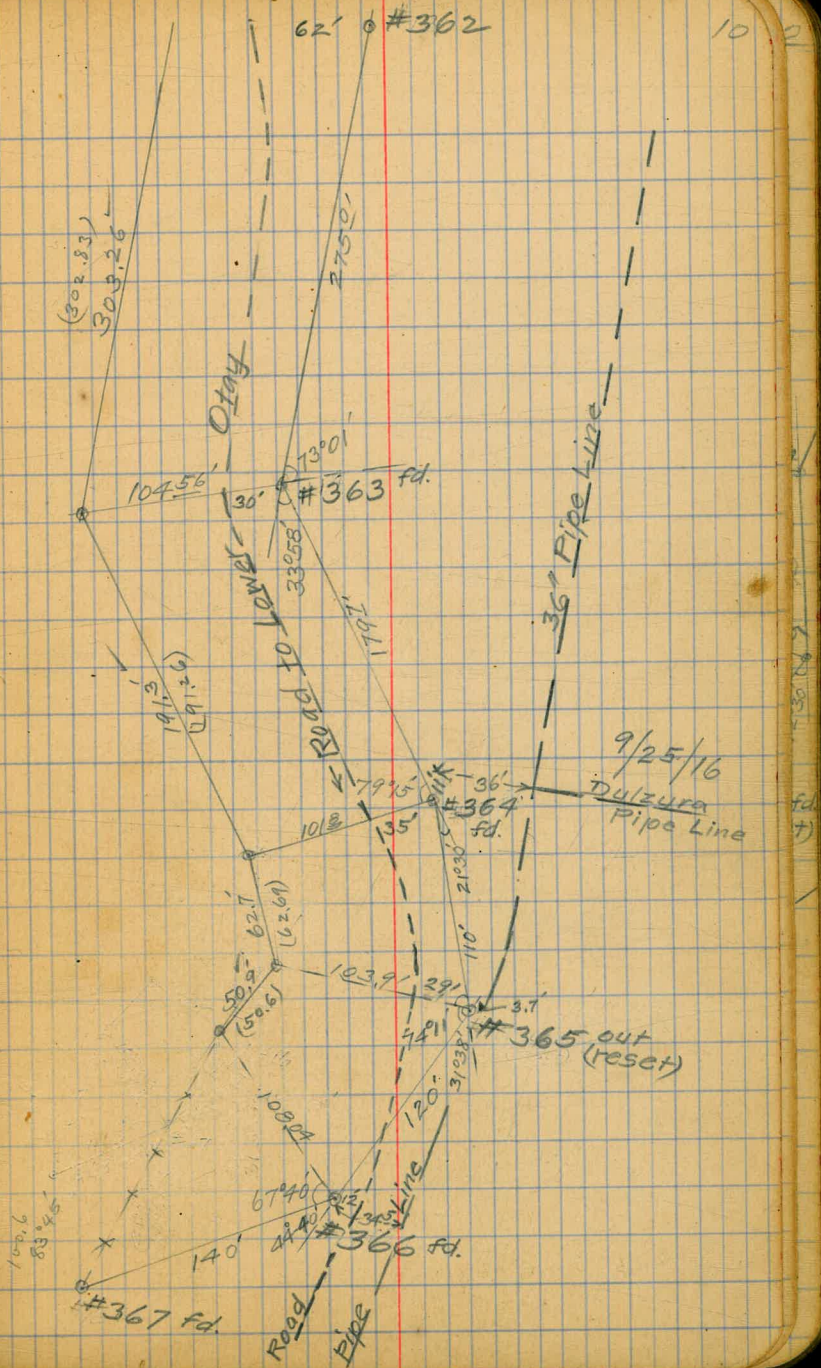
Surveyed Sept. 1916

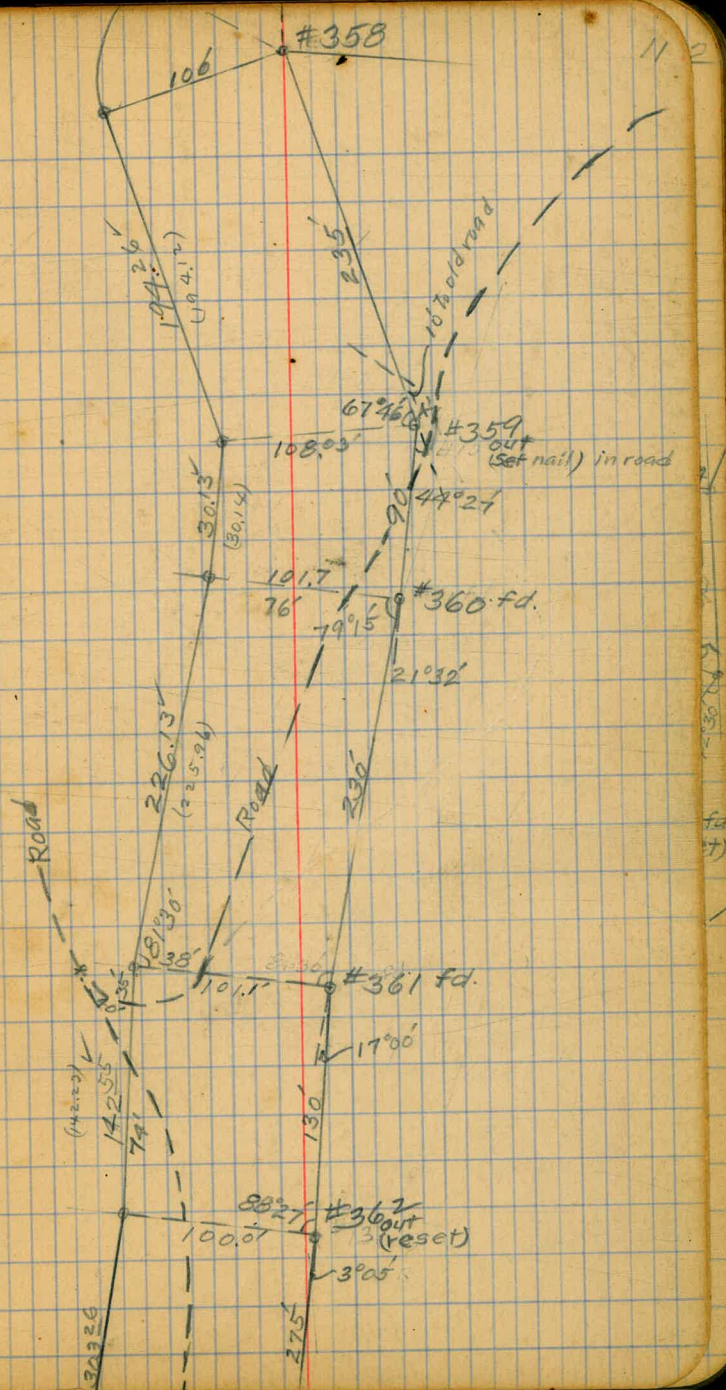
By Brunner

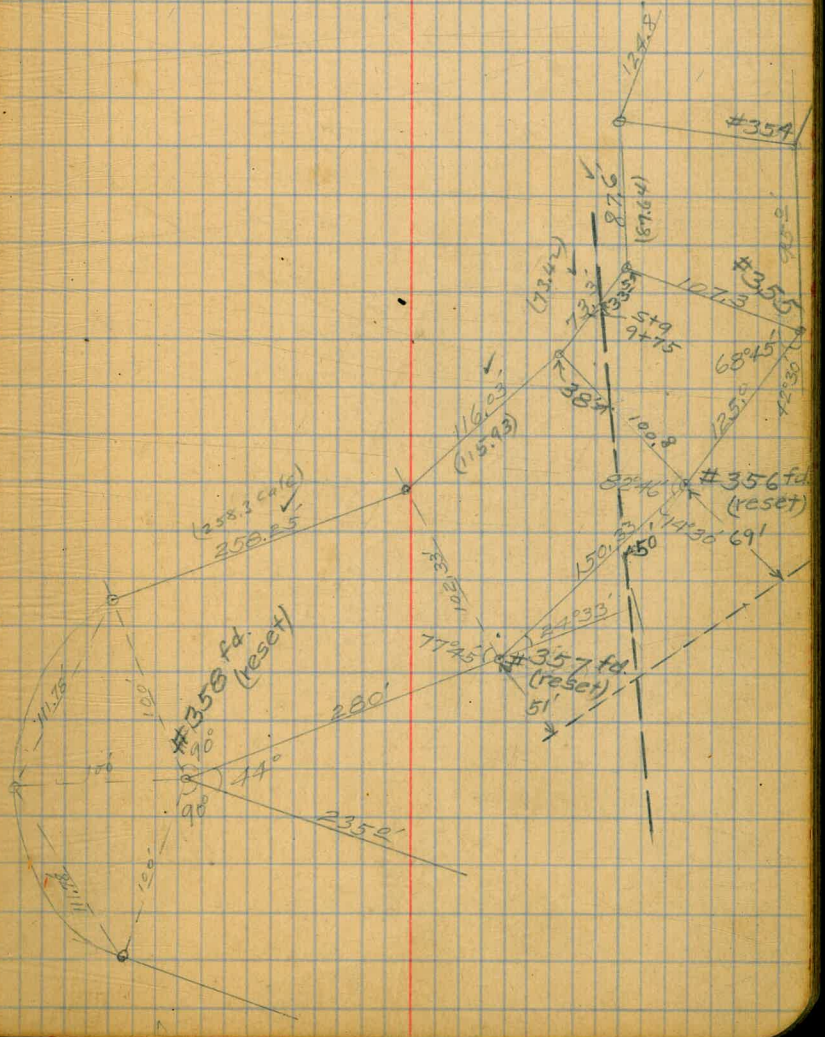
Otten

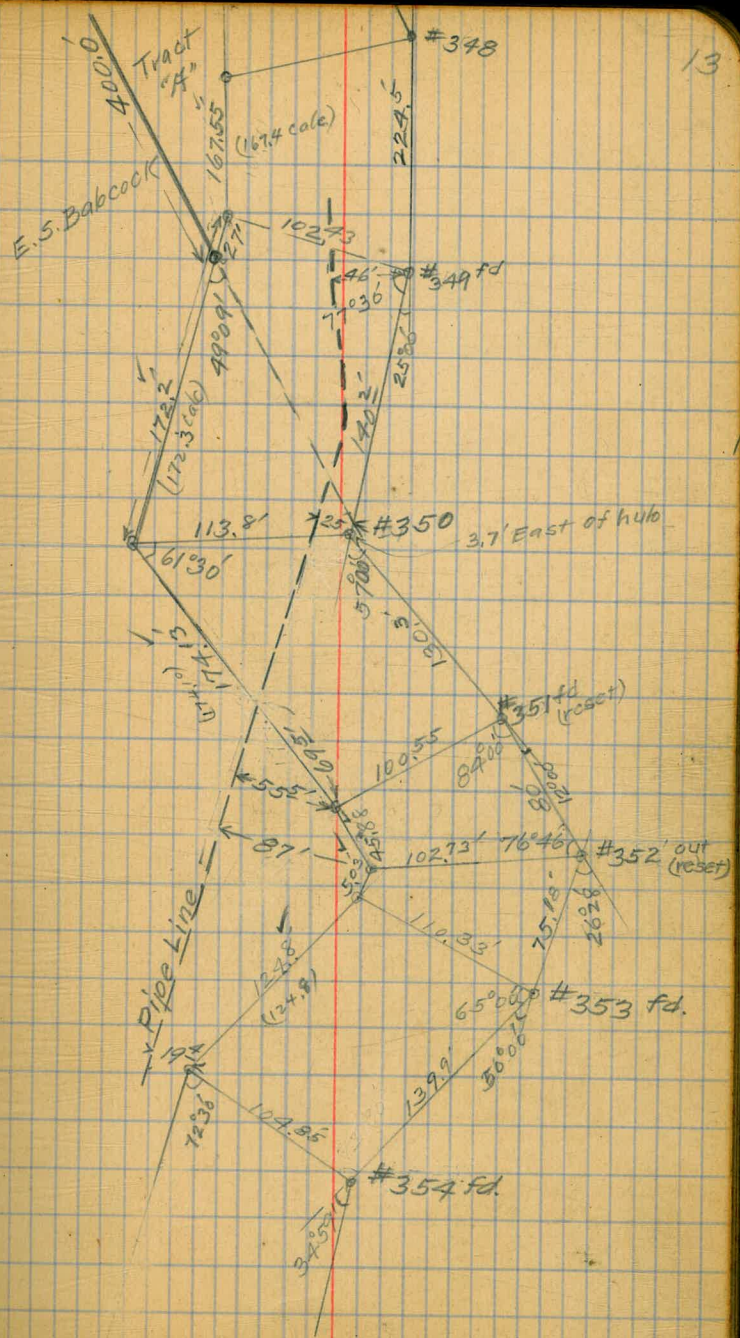
Moore

Note: 1" pipe set at cars on property lines
Other points marked by hubs.

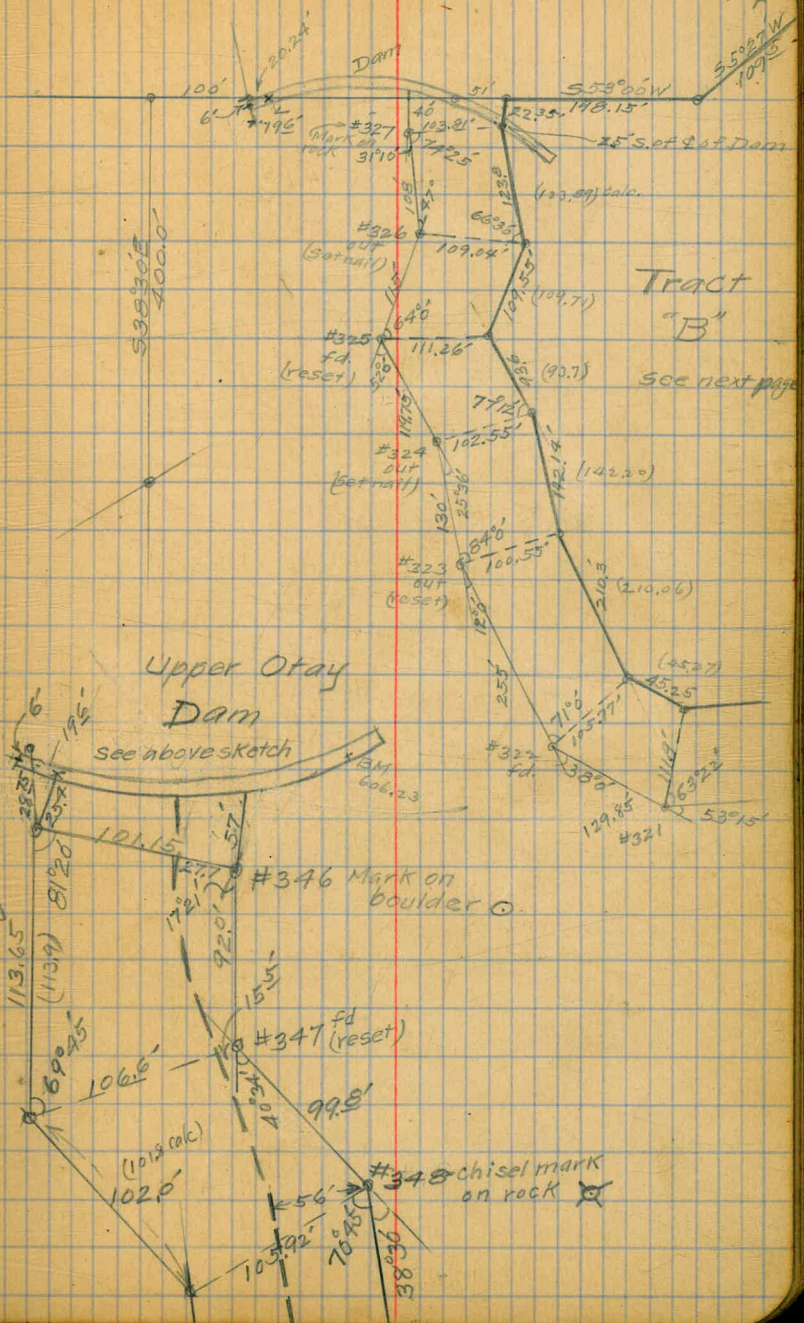


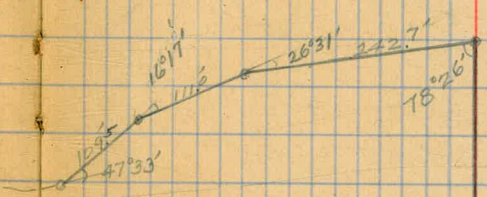
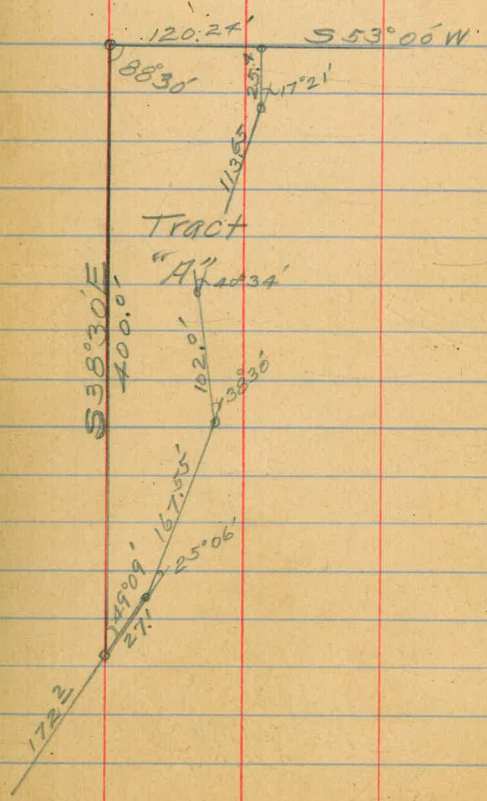






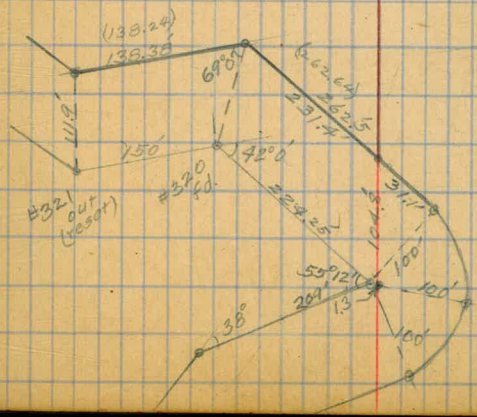
14





Tract "B"

N 30° 15' W
909.0



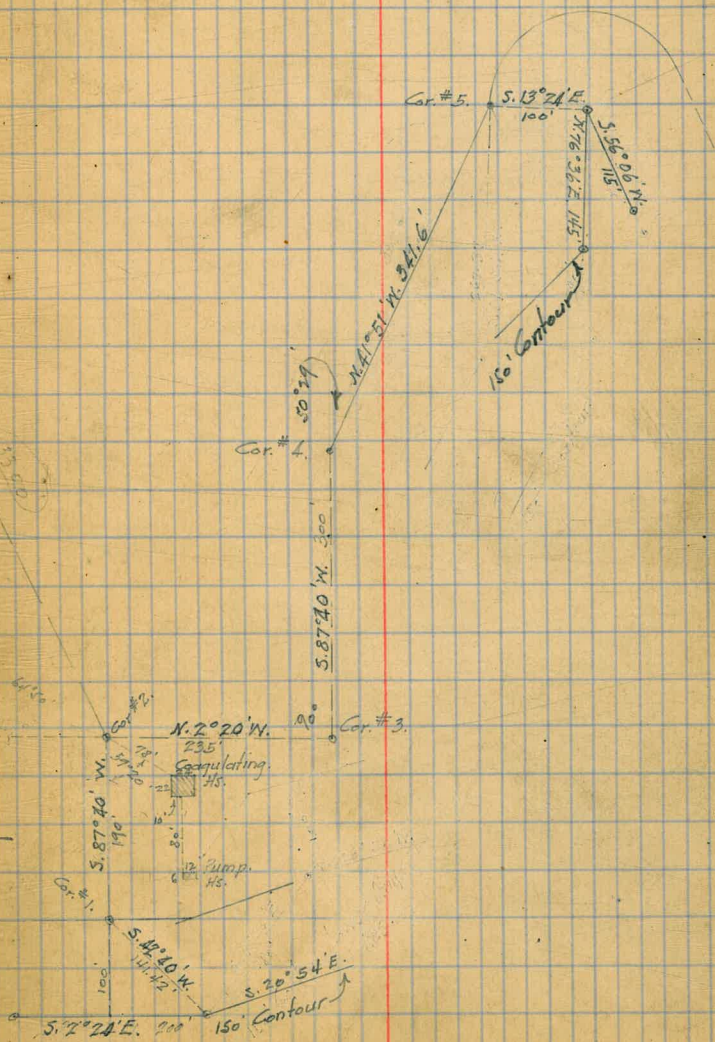
Cramwell
Monroe.
Drunner.

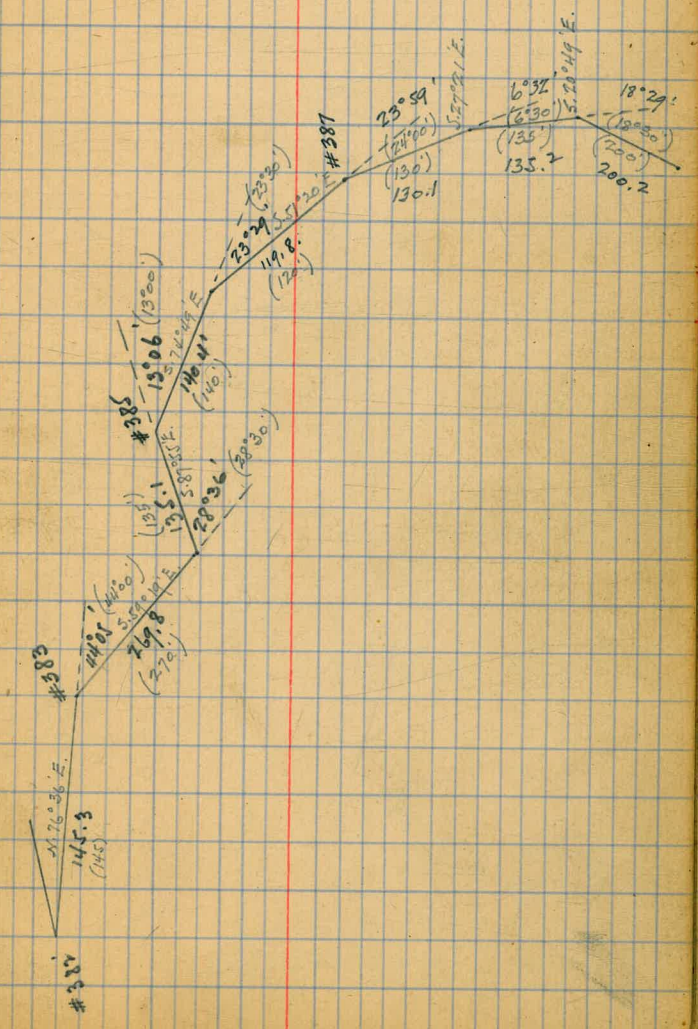
11-27-16.

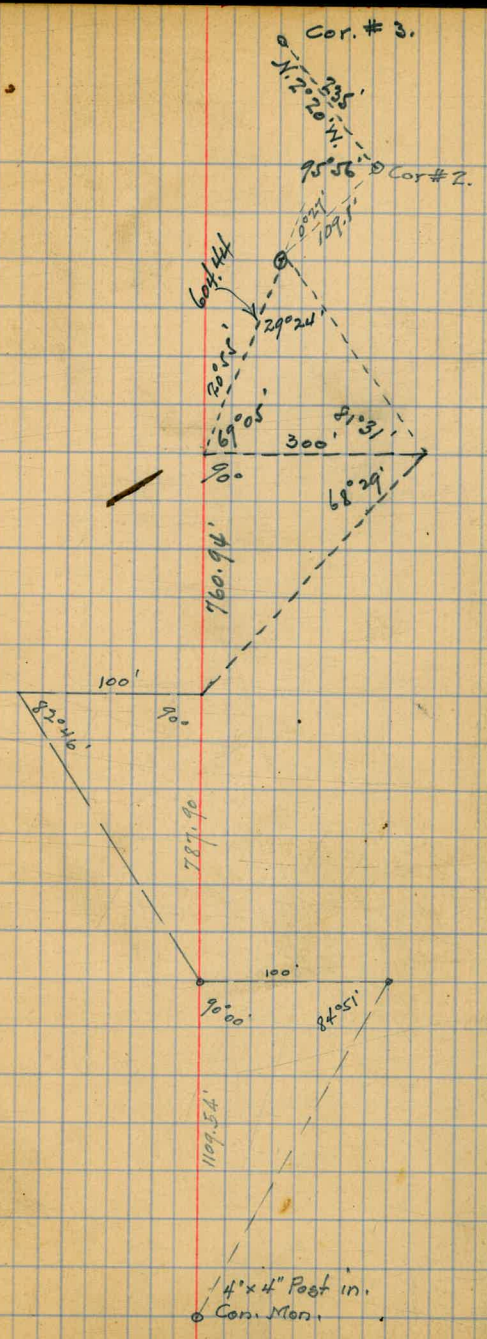
16

SURVEY FOR LAND REQUIRED FOR
AND ROAD.
COAGULATING PLANT IN RE. JANAI

Cor. #1 to Janai.







9/18/23 Corapay X section of Hillside Drive
 17' La Jolla Vista
 50' wide 10' cbs

99.68

19

on B.M. 104 99.68 98.64
 Top of curb
 S. Side Hillside
 + E side Torrey

17' W on N
 20' ✓ ✓ 3

W edge of Paving.

S	2.90	96.78 ✓	-5	2.4	97. ✓ ✓
C	1.75	96.93 ✓	N	3.1	96.5 ✓
N	0.63	96.05 +	cb	3.2	96. ✓ ✓
	3" Wax Edge on S		1/4	3.7	96.9 ✓
	6.4" - ✓	-N	+4	4.2	95.4 ✓
N	0.9	96.7 ✓	C	6.8	94.8 ✓
cb	1.4	96. ✓ ✓	+5	10.7	88.9 ✓
1/4	1.6	96.0 ✓	1/4	11.1	88.5 ✓
C	2.1	97.5 ✓	cb	12.2	87. ✓ ✓
1/4	2.8	96.8 ✓	+7	6.8	94.8 ✓
cb	2.7	96.9 ✓	S	6.7	94.9 ✓
S	2.8	96.8 ✓	+10	6.2	93. ✓ ✓
on curb cement.	2.70	96.9 ✓			

13' W on S
 10' ✓ - N

23' W on N
 26' ✓ ✓ 5

S	3.0	96.6 ✓	-10	7.1	94.5 ✓
cb	6.7	94.9 ✓	S	7.4	94. ✓ ✓
1/4	7.2	94. ✓ ✓	+7	13.1	86.5 ✓
+5	7.0	94.6 ✓	cb	13.2	86. ✓ ✓
C	5.6	94.0 ✓	1/4	12.6	87.0 ✓
+5	2.7	96.9 ✓	C	7.2	94. ✓ ✓
1/4	2.2	97.4 ✓	+4	4.3	95.3 ✓
cb	2.3	97.0 ✓	1/4	3.7	95.9 ✓
N	1.3	96.3 ✓	cb	3.8	95.8 ✓
			N	3.8	95.8 ✓
			+5	3.2	96. ✓ ✓

99.68

32' W of N
35' - - 5

-5	4.5	95.1 ✓
N	4.7	94.9 ✓
cb	4.7	94.9 ✓
1/4	4.5	95.1 ✓
C	4.2	94.4 ✓
1/2 +5	7.7	91.9 ✓
1/2	10.2	89.4 ✓
cb	13.4	86.4 ✓
S	13.7	85.9 ✓
+5	8.0	91.6 ✓

50' W of N
53' - - 5

-5	9.9	89.7 ✓
S	15.4	84.4 ✓
cb	14.8	84.8 ✓
1/2	9.0	90.6 ✓
C	7.3	91.3 ✓
1/4	6.3	93.3 ✓
cb	6.2	93.4 ✓
N	6.3	93.3 ✓
+5	5.7	93.9 ✓

65.5' W of N } = W.L. Torrey Pond.
68.9' - - 5

-5	6.3	93.3 ✓
N	6.8	94.8 ✓
cb	7.2	94.4 ✓
1/4	7.2	94.4 ✓

99.68

20

C	9.5	90.1 ✓
1/2	8.4	91.4 ✓
cb	10.2	89.4 ✓
+7	10.7	88.9 ✓
S	14.0	85.4 ✓
+3	15.9	83.7 ✓
+10	15.9	83.7 ✓
+17	11.5	88.1 ✓

5' W of WL

-20	12.0	87.6 ✓
-15	16.4	83.4 ✓
-3	16.1	83.5 ✓
-5	11.2	88.4 ✓
cb	10.3	89.3 ✓
1/2	9.4	90.4 ✓
C	9.5	90.1 ✓
1/4	7.6	94.0 ✓
cb	7.4	94.4 ✓
N	6.7	94.9 ✓
+5	6.1	93.5 ✓

30' W. of WL

N	7.3	94.3 ✓
cb	8.4	91.4 ✓
1/2	9.1	90.5 ✓
C	10.2	89.4 ✓
1/4	11.0	88.6 ✓

~~9968~~ 9968

cb	11.2	88.4 ✓
S	12.1	87.5 ✓
+10	17.4	87.1 ✓
+15	17.5	87.1 ✓

65' W of WL

-10	14.3	85.3 ✓
S	13.1	86.5 ✓
cb	12.4	87.1 ✓
1/4	11.3	88.3 ✓
C	10.9	88.7 ✓
1/4	9.7	89.9 ✓
cb	9.4	90.1 ✓
N	9.0	90.6 ✓

100' W. of W.L

N	11.3	88.3 ✓
cb	11.4	88.4 ✓
1/4	11.1	88.5 ✓
+ 3.5	10.9	88.7 ✓
C	11.8	87.8 ✓
1/4	11.9	87.7 ✓
cb	12.5	87.1 ✓
+7	12.6	87.0 ✓
S	12.0	87.6 ✓

128.73 W of WL = Sect A ^{see sketch page 24}

S	12.4	87.1 ✓
cb 3	13.4	86.1 ✓

9968

21

cb	13.5	85.8 ✓
1/4	13.3	86.3 ✓
+6	13.4	86.1 ✓
C	12.6	87.0 ✓
1/4	12.9	86.7 ✓
cb	13.0	86.6 ✓
N	13.0	86.6 ✓

Sect B

TP. 024	86.95	12.97	86.71	on hub
N		0.2	86.7	✓
cb		0.9	86.0	✓
1/4		1.0	85.9	✓
C		1.3	85.6	✓
1/4		1.7	85.2	✓
cb		1.8	85.1	✓
S		2.1	84.8	✓

Sect C

-5 = W		4.0	81.9	✓
cb		3.7	83.1	✓
1/4		2.9	84.0	✓
C		2.3	84.6	✓
1/4		1.5	85.1	✓
cb		1.4	85.5	✓
N = E		0.9	86.0	✓
		0.2	86.7	✓

change of direction here.

86.92

86.95

	48.92 Non E 51.29 N on W	1.9	85.0 ✓
E			
cb		2.7	84.2 ✓
1/6		3.2	83.7 ✓
C	$\sqrt{\frac{100}{50.1}}$	3.9	83.0 ✓
1/4		4.4	81.5 ✓
cb		4.7	81.2 ✓
W		5.6	81.3 ✓
+5		6.3	80.6 ✓
	98.92 Non E 103.71 N on W		
-10		8.6	78.3 ✓
W		7.8	79.1 ✓
cb		7.0	79.9 ✓
1/4		6.2	80.7 ✓
C	$\sqrt{\frac{100}{11.3}}$	5.3	81.6 ✓
1/4		4.9	81.0 ✓
cb		4.3	81.2 ✓
E		3.5	83.2 ✓
	146.92 Non E 154.04 N on W		
E		5.2	81.7 ✓
cb		6.2	80.7 ✓
1/4		6.8	80.1 ✓
C	$\sqrt{\frac{1300}{150.7}}$	7.4	79.5 ✓
1/4		8.2	78.7 ✓
cb		9.0	77.9 ✓
W		10.2	76.7 ✓
+10		11.0	75.9 ✓

147
48.92
75.92
86.95

22

	195.92 Non E 205.41 N on W		
-10		12.1	74.8 ✓
-10		11.2	75.7 ✓
W		10.2	76.5 ✓
cb		10.0	76.9 ✓
1/4		9.4	77.5 ✓
C	$\sqrt{\frac{101.5}{200}}$	8.8	78.1 ✓
1/4		8.2	78.7 ✓
cb		7.6	79.3 ✓
E			
	240.92 Non E 252.59 N on W		
-10		10.0	76.9 ✓
W		10.9	76.0 ✓
cb		11.5	75.4 ✓
1/4		12.2	74.7 ✓
C	$\sqrt{\frac{1492.51}{246}}$	12.9	74.0 ✓
1/4		13.3	73.6 ✓
cb		13.9	73.0 ✓
W		14.5	72.4 ✓
+10			
TP	214 76.15	12.94	74.01
	285.92 Non E 299.77 N on W		
-10		5.8	70.3 ✓
W		5.1	71.0 ✓
cb		4.1	72.0 ✓
1/4		3.5	72.6 ✓
C	$\sqrt{\frac{1885}{292.8}}$	3.0	73.1 ✓
1/4		2.6	73.7 ✓

76.15

	76.15	
cb.	1.8	74.3 ✓
+8	1.8	74.3 ✓
E	1.1	75.0 ✓
	325.92' N on E 341.71' N on W	
E	2.7	73.4 ✓
cb	3.4	74.7 ✓
1/4	3.8	74.3 ✓
C	4.1	74.0 ✓
1/4	4.8	71.5 ✓
cb	5.1	71.0 ✓
W	5.7	70.4 ✓
+10	6.5	69.6 ✓
	365.92' N on E 385.65' N on W	
-10	8.3	67.8 ✓
W	7.5	68.6 ✓
cb	6.8	69.3 ✓
1/4	6.4	69.7 ✓
C	5.8	70.3 ✓
1/4	5.0	71.1 ✓
cb	4.2	71.9 ✓
E	3.8	71.3 ✓
	406.07' N on E 425.74' N on W	
E	5.2	70.9 ✓
cb	6.0	70.1 ✓
1/4	6.7	69.4 ✓
C	7.3	68.8 ✓
	483.18 413.9	

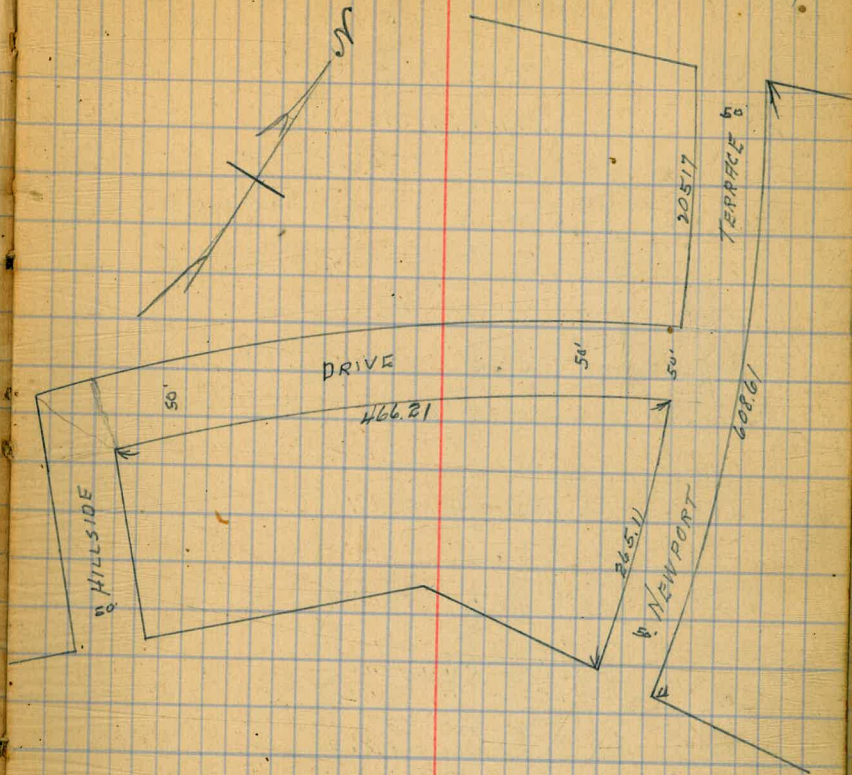
	76.15	
1/4	8.1	68.0 ✓
cb	8.7	67.4 ✓
W	9.4	66.7 ✓
+10	9.7	66.4 ✓
	428.09' N on E 448.81' N on W	
-10	15.8	66.3 ✓
W	14.5	61.6 ✓
cb	12.6	63.5 ✓
1/4	11.7	64.4 ✓
C	10.5	65.6 ✓
1/4	9.7	66.4 ✓
cb	8.4	67.7 ✓
E	7.2	68.9 ✓
TP	0.72	63.85
	130.2 451.21' N on E 471.07' N on W	
-5	1.9	61.9 ✓
E	2.5	61.3 ✓
cb	3.8	60.0 ✓
1/4	4.9	58.9 ✓
C	6.2	57.6 ✓
1/4	6.9	56.9 ✓
cb	7.9	55.9 ✓
W	9.1	54.7 ✓
+10	9.8	54.0 ✓
	466.21' N on E 494.13' N on W } = 5 L Newport Terrace 446.13	
W	10.6	53.4 ✓

365.92
341.71
76.15

23

63.85

			63.85		
cb			97	54.1	✓
1/4			91	54.7	✓
c		480 L	82	55.4	✓
1/4			76	56.3	✓
cb			66	57.2	✓
E			59	57.9	✓
T.P.	12.23	70.23	585	58.00	on hub
T.P.	12.43	81.32	1.34	62.89	
T.P.	12.35	93.57	0.10	81.22	



X See Newport Terrace from N. Line Paving on Footway
 Pines Road to S. Line Spindrift Drive 9/19/23
 50' wide
 10' db
 7.5' H

93.57 H.I. From P924

N Line Paving

E	0.85	91.74 ✓
E	0.60	91.97 ✓
W	0.25	93.3 ✓
	10' N of Paving on W	
	7' N of " " E	
W	2.4	91.1 ✓
E	2.0	91.5 ✓
1/4	1.8	91.7 ✓
1/2	1.9	91.6 ✓
1/4	1.8	91.7 ✓
E	1.5	91.0 ✓
E	1.7	91.8 ✓
	20' N of Paving on W	
	17' N " " " E	
-10	8.0	85.5 ✓
E	8.1	85.4 ✓
C	8.8	84.7 ✓
1/4	9.1	84.2 ✓
1/2	9.4	84.1 ✓
1/4	9.3	84.2 ✓
C	8.9	84.6 ✓
W	9.7	83.8 ✓
+10	9.4	84.1 ✓
	25' N of Paving on W	
	22' N " " " E	
-20	11.0	81.5 ✓
W	11.2	81.3 ✓

93.57

25

93.57

E	10.9	84.6 ✓
1/4	11.0	84.5 ✓
1/2	11.4	84.1 ✓
1/4	11.5	84.0 ✓
C	11.8	84.7 ✓
E	11.2	84.3 ✓
+15	10.2	83.3 ✓
	30' N of Paving on W	
	27' " " " " E	
-15	10.9	84.6 ✓
E	12.5	81.0 ✓
E	12.6	80.9 ✓
1/4	12.6	80.9 ✓
1/2	12.4	81.1 ✓
1/4	12.0	81.5 ✓
C	11.9	81.6 ✓
W	12.2	81.3 ✓
+15	11.2	84.3 ✓
T.P.	120	82.43
	41' N of Pavment on W	
	58' N " " " " E	
-15	12.34	81.23
W	2.2	80.2 ✓
E	4.4	78.0 ✓
1/4	5.5	76.9 ✓
1/2	5.8	76.6 ✓
1/4	5.7	76.7 ✓
1/2	6.0	76.4 ✓
C	5.7	76.7 ✓

82.43

E		5.7	76.7 ✓
+15		5.4	77.0 ✓
	31.34 N of N. Line Ferry Road on W		
	31.4 " " " " " " " " " "		P.C.
-15		7.9	75.5 ✓
E		8.9	73.5 ✓
E		8.8	73.6 ✓
1/4		8.8	73.6 ✓
1/2	31	8.6	73.8 ✓
1/4		8.4	74.0 ✓
E		7.8	74.6 ✓
W		6.5	75.9 ✓
+10		4.6	77.8 ✓

33.77' N on W North of P.C.

-10		6.6	75.8 ✓
W		8.9	73.5 ✓
E		11.0	71.4 ✓
1/4		11.3	71.1 ✓
1/2	35	11.4	71.0 ✓
1/4		11.3	71.1 ✓
E		11.2	71.2 ✓
E		11.0	71.2 ✓
+10		10.7	71.7 ✓

83.77' N. on W

-10		13.9	68.5 ✓
E		14.9	67.5 ✓
E		14.4	68.0 ✓

82.43

1/4		14.4	68.0 ✓
1/2		14.7	67.7 ✓
1/4		14.7	67.7 ✓
E	89	14.8	67.6 ✓
W		14.2	68 ✓
+10		13.7	68.7 ✓
T.P.	1.99	72.11	12.31 70.12

133.77' N on W

-5		5.7	66.1 ✓
W		4.3	65.8 ✓
E		7.2	64.9 ✓
1/4		7.2	64.9 ✓
1/2	140	7.2	64.9 ✓
1/4		7.4	64.7 ✓
E		7.3	64.8 ✓
E		7.3	64.8 ✓
+10		7.2	64.9 ✓

183.77' N. on W

+10		12.1	60.0 ✓
E		11.8	60.3 ✓
E		11.5	60.6 ✓
1/4		11.5	60.6 ✓
1/2	38.5	11.5	60.6 ✓
1/4	19	11.3	60.8 ✓
E		11.0	61.1 ✓
W		9.4	62.9 ✓
+5		8.0	64.1 ✓

72.11
 TP 3.37 62.39 13.09 59.02
 233.77' Non W = S. Line Hillside Drive
 25715 Non E

W		7.5	57.8 ✓
E		5.2	57.1 ✓
1/4		5.4	56.9 ✓
1/2	2090 245	5.6	56.7 ✓
1/4		5.7	56.6 ✓
E		6.0	56.3 ✓
E		6.2	56.1 ✓
+10		6.2	56.1 ✓

+10 S. Ea. Hillside Drive
 " E

-10		6.7	55.6 ✓
E		7.0	55.3 ✓
C		6.8	55.5 ✓
1/4		6.5	55.8 ✓
1/2	10	6.4	55.9 ✓
1/4		6.1	56.2 ✓
C		6.0	56.3 ✓
W		5.3	57.0 ✓

12.5
19.5 E S. 1/4

W		6.0	56.3 ✓
E		6.6	55.7 ✓
1/4		6.9	55.4 ✓
1/2	12.5 18	7.1	55.2 ✓
1/4		7.1	55.2 ✓
C		7.2	55.1 ✓
E		7.6	54.7 ✓
+10		7.0	55.3 ✓

62.39 27

225 @ Hillside Drive 64.3
 275 E

-10		7.4	56.7 ✓
E		7.9	55.1 ✓
E		7.7	56.6 ✓
1/4		7.7	56.6 ✓
1/2	26	7.7	54.6 ✓
1/4		7.3	55.0 ✓
C		7.5	54.8 ✓
W		6.9	55.1 ✓

11 1/4
 132.5
 35.75 E

W		7.6	56.2 ✓
C		7.8	56.5 ✓
1/4		7.8	54.5 ✓
1/2	33	7.9	56.1 ✓
1/4		7.9	54.1 ✓
C		7.9	54.4 ✓
E		8.4	53.9 ✓
+10		8.1	56.2 ✓

+40 W N. Ch.
 24 E

-10		8.7	53.6 ✓
E		8.7	53.6 ✓
C		8.4	53.9 ✓
1/4		8.4	53.9 ✓
1/2	4 ✓	8.3	54.0 ✓
1/4		8.4	53.9 ✓
C		8.5	53.8 ✓
W		8.2	54.1 ✓

62.39

67.39

+50 N. Line Hillside Drive

55E

W	9.2	53.1 ✓
C	9.4	51.9 ✓
1/4	9.1	53.2 ✓
1/2	9.1	53.2 ✓
1/4	9.0	53.2 ✓
C	8.9	53.4 ✓
E	9.3	53.0 ✓
+10	9.1	53.2 ✓

42.30' N of N Line Hillside Drive on W

46.55 E

-10	12.4	49.9 ✓
E	13.3	49.0 ✓
C	13.0	49.3 ✓
1/4	13.0	49.3 ✓
1/2	13.0	49.3 ✓
1/4	13.0	49.3 ✓
C	12.9	49.5 ✓
W	11.9	50.4 ✓
+10	11.5	50.8 ✓

T.P. 4.30 53.79 12.90 49.49

84.6' N on W. = E.C.

43.06 E

-10	6.5	47.2 ✓
W	7.1	46.6 ✓
C	7.8	45.9 ✓
1/4	8.1	45.6 ✓
1/2	8.4	45.3 ✓
1/4	9.0	44.7 ✓

88

53.79

58

C	8.0	45.7 ✓
E	7.8	45.9 ✓
+10	7.2	46.5 ✓

54.29' N of E.C.
60.25 W

-10	11.0	42.7 ✓
E	11.8	41.9 ✓
C	12.2	41.5 ✓
1/4	12.3	41.4 ✓
1/2	12.8	40.9 ✓
1/4	11.9	41.8 ✓
C	11.6	42.1 ✓
W	11.0	42.7 ✓

T.P. 1.90 44.91 10.78 43.01
108.59 N. of E.C. on E7
120.57 N. " " " " WS = S. Line Spindrift Drive

W	7.10	37.8
C	7.3	37.6
1/4	7.4	37.5
1/2	7.4	37.5
1/4	7.2	37.7
C	7.4	37.5
E	7.6	37.3

114

Xsec of Alley BK 131 Univ Hqts Bldg
20' Alley

Moore 11/1/23

336.48

29

Side	Dist	Elev	Notes
	5.2 ↓	325.09 ✓	
18' Sidewalk		319.85	NW BP Howard-Georgia
S. Concrete Curb Georgia	5.66	319.43	No Alley Return on either side
N " "	5.79	319.30	2.5' curb road on N side Alley, Georgia side
ot 00 = W.L. Georgia			
N	5.8	319.3	
C	5.6	319.5	
S	5.5	319.6	
ot 27			
S	5.1	320.0	
C	5.1	320.0	
N	5.0	320.1	
+50			
N	1.9	323.2	
C	2.0	322.2 ✓	
S	2.4	322.7	
TP	11.83	336.48 ✓	0.44
+75			
S	10.7	325.9	
C	10.3	326.2 ✓	
N	10.2	326.3	
+100			
N	6.9	329.6	
C	7.4	329.1	
S	7.6	328.9	

Plotted by Tolman 10-22-23

Side	Dist	Elev	Notes
S		333.3	1 + 39.5 = El Alley to South
C		333.0	3.2
N		333.7	3.5
			3.3
1 + 59.5 = W.L. Alley to South			
N		334.90	1.58
C		334.87	1.61
S		334.2 ✓	2.3
TP	3.04	336.7 ✓	2.80
ot 00 = S.L. of E + W Alley 90° L			
N		334.2	2.5
C		333.6	3.1
E		333.2 ✓	3.5
ot 32			
E		333.01 ✓	3.71
C		331	3.6
W		333.7	3.0
ot 43			
W		333.4	3.3
C		332.9	3.8
E		332.89 ✓	3.83
ot 54			
E		332.1 ✓	4.6
C		332.8	3.9
W		333.3	3.4

Garage on East conc. floor

Garage on East conc. floor

326.72

0+68

W	3.5	333.4
C	3.9	332.8
E	4.80	331.92
+ 0.8	4.71	332.01

Center door to
House. floor Elev

1+00

E	5.1	331.6
C	4.3	332.4
W	3.6	333.1

1+40

W	4.0	332.7
C	5.1	331.6
E	5.2	331.5

1+74

E	6.6	330.1
C	6.5	330.2
W	5.1	331.6

1+75

= N.E. Howard

W	5.93	330.79		
C	6.7	330.0		
E	7.15	329.57		
TP	2.38	327.58	11.52	325.20
TD	ckd BM	7.76	319.82	BM 319.85

W. Hill
Elev Curve
Curve
14' sidewalk
on Howard
E. Miller Return
Curve Curve

50

10/3/23

Gregory
Thurs

CROSS SECTION OF

ELECTRIC AVE.

from N.L. Graviña

to N.L. Palomar

3370' wide

12.35

81.21

68.86

B.P. NW
Graviña

N.L. Graviña 50' wide 10' cbs.

W		54	75.8 ✓
+8.42		5.3	75.9 ✓
+16.85		4.8	76.1 ✓
25.27	x	4.5	76.7 ✓
E		36	77.6 ✓

+10 N. Curb

E		48	76.2 ✓
+8.42	x	5.2	76.0 ✓
+16.85		5.6	75.6 ✓
+25.27		5.7	75.5 ✓
W		59	75.3 ✓
on cement curb		5.37	75.2 ✓

+25 center Graviña

W		54	75.8 ✓
+8.42		5.2	76.0 ✓
+16.85		5.1	76.1 ✓
+25.27	x	4.7	76.5 ✓
E		42	77.0 ✓

+40 South Curb

E		4.1	77.1 ✓
+8.42	x	4.4	76.8 ✓
+16.85		4.6	76.6 ✓
+25.27		5.3	75.9 ✓
W		53.0	75.9 ✓

16.5

81.2

31

+50 S.L. Graviña

W		5.2	76.0 ✓
+8.42		4.9	76.3 ✓
+16.85		4.4	76.8 ✓
+25.27	x	3.5	77.7 ✓
E		2.5	78.7 ✓

+100 50' S

E		1.6	79.6 ✓
+8.42	x	2.0	79.2 ✓
+16.85		2.6	78.6 ✓
+25.27		2.7	78.3 ✓
W		3.1	78.1 ✓

+150 100' S

W		1.9	79.3 ✓
+8.42		1.6	79.6 ✓
+16.85		1.3	79.9 ✓
+25.27	x	1.2	80.0 ✓
E		0.8	80.4 ✓

TP	724	87.97	0.48	80.73 ✓
----	-----	-------	------	---------

+200 150' S

E		7.0	80.9 ✓
+8.42	x	7.2	80.7 ✓
+16.85		7.3	80.6 ✓
+25.27		7.5	80.4 ✓
W		7.6	80.5 ✓

Profile for
Water Main in
Electric Ave
Nov 19 1923
500' L
M.P.B.

8797

2+50 200'S

W		6.8	81.1 ✓
+8.42		6.8	81.1 ✓
+16.85		6.6	81.3 ✓
+25.27	x	6.5	81.4 ✓
E		6.3	81.6 ✓

3+00 250'S

E		6.0	81.9 ✓
+8.42	+	5.9	82.0 ✓
+16.85		6.1	81.8 ✓
+25.27		6.5	81.4 ✓
W		6.6	81.3 ✓

3+50 300'S

W		5.7	82.2 ✓
+8.42		5.6	82.3 ✓
+16.85		5.5	82.4 ✓
+25.27	+	5.4	82.5 ✓
E		5.4	82.5 ✓

4+00 350'S

E		5.1	82.8 ✓
+8.42	+	5.0	82.9 ✓
+16.85		5.2	82.7 ✓
+25.27		5.2	82.7 ✓
W		5.2	82.5 ✓

ELECTRIC

32

8799

4+50 400'S

W		5.3	82.6 ✓
+8.42		5.1	82.8 ✓
+16.85		4.8	83.1 ✓
+25.27	x	4.8	83.1 ✓
E		4.5	83.4 ✓

5+00 450'S

E		4.4	83.5 ✓
+8.42	+	4.4	83.5 ✓
+16.85		4.5	83.4 ✓
+25.27		4.7	83.2 ✓
W		5.1	82.8 ✓

5+50 500'S = N/L Rosemont 50' wide
10' cbs

W		4.8	83.1 ✓
+8.42		4.5	83.4 ✓
+16.85		4.3	83.6 ✓
+25.27	x	4.1	83.8 ✓
E		4.1	83.8 ✓

5+60 N c b

E		4.0	83.9 ✓
+8.42	+	4.0	83.9 ✓
+16.85		4.2	83.7 ✓
+25.27		4.6	83.4 ✓
W		4.8	83.1 ✓

5+67 N 1/4

W		4.6	83.4 ✓
---	--	-----	--------

87.97

+8.42		44	83.5 ✓
+16.85		40	83.9 ✓
+25.27	x	37	84.2 ✓
E		36	84.3 ✓

5+25 Center

E		36	84.3 ✓
+8.42	x	36	84.3 ✓
+16.85		40	83.9 ✓
+25.27		42	83.7 ✓
W		44	83.5 ✓

5+82 5 1/2

W		44	83.5 ✓
+8.42		43	83.6 ✓
+16.85		40	83.9 ✓
+25.27	x	36	84.3 ✓
E		36	84.3 ✓

5+90 5 Curb

E		35	84.4 ✓
+8.42	x	38	84.1 ✓
+16.85		38	84.1 ✓
+25.27		41	83.8 ✓
W		44	83.5 ✓

6+00 5 L. Rosemont

W		42	83.7 ✓
+8.42		39	84.0 ✓
+16.85		36	84.5 ✓

87.9

33

+25.27	x		36	84.3 ✓
E			35	84.4 ✓
	6+50	50' S	= P.C.	
E			30	84.9 ✓

+8.42	x		34	84.5 ✓
+16.85			36	84.3 ✓
+25.27			38	84.1 ✓
W			39	84.0 ✓

7+00 100' S

W			42	83.7 ✓
+8.42			40	83.9 ✓
+16.85			37	84.0 ✓
+25.27	x		38	84.1 ✓
E			34	84.5 ✓

7+50 150' S

E			44	83.5 ✓
+8.42	x		44	83.5 ✓
+16.85			46	83.3 ✓
+25.27			44	83.5 ✓
W			47	83.2 ✓

7+64 ⁴⁸/₂₅ 164.485 = N.L. Palomar

W			48	83.1 ✓
+8.42			49	83.0 ✓
+16.85			50	82.9 ✓
+25.27	x		48	83.1 ✓
E			49	83.0 ✓

7+90 = 82.4

10/21/43

Gregory

CRD33 SECTION OF
ROSEMONT ST. Electric to La Jolla

50' wide

10' cbs

87.97 H.S. from preceding

15' W of WL Electric Ave

S	1.7	86.2	✓
+5	4.5	85.4	✓
cb	4.5	85.7	✓
1/2	4.6	85.3	✓
C	4.5	85.4	✓
1/2	4.6	85.3	✓
cb	4.8	85.1	✓
N	4.7	85.7	✓

60' W of WL Electric

N	4.6	85.3	✓
cb	4.7	85.4	✓
1/2	4.6	85.3	✓
C	4.8	85.1	✓
1/2	4.8	85.1	✓
cb	4.7	85.4	✓
+6	4.3	85.6	✓
S	2.8	85.1	✓

110' W

S	4.3	85.6	✓
cb	4.8	85.1	✓
1/4	5.2	85.7	✓
C	5.1	85.8	✓
1/2	5.2	85.7	✓
cb	5.1	85.8	✓

87.9

34

N

4.9

83.0 ✓

160' W

N

5.5

82.4 ✓

+5

6.7

81.1 ✓

cb

6.8

81.1 ✓

1/2

6.7

81.1 ✓

C

6.6

81.3 ✓

1/2

6.5

81.4 ✓

cb

5.8

81.1 ✓

S

5.4

81.5 ✓

210' W - EL. La Jolla Blvd.

S

7.2

80.7 ✓

cb on cement

7.57

80.4 ✓

+1

8.2

79.7 ✓

1/2

8.3

79.6 ✓

C

8.1

79.8 ✓

1/2

8.3

79.6 ✓

+7

8.3

79.6 ✓

cb on cement

7.62

80.35 ✓

N

6.9

81.0 ✓

7.22

80.75

made
cor
return.

11/9/23

Gregory

CROSS SECTION OF

BOYD ST. 50' wide 10' cbs

From N.L. of Johnson Ave. (Johnson is closed)

To

5' on N. These
sections start from
N.W. N. Line

2793.0 End of walk

1.20

280.50

279.30

End of walk
15' S. West side
of N. side Johnson

5.00

277.82

7.68

272.82

New North Line of Johnson Ave.

W

4.4 273.4

cb

4.8 273.0

1/4

5.0 272.8

c

5.3 272.5

1/4

5.2 272.6

cb

5.2 272.6

E

5.1 272.7

50' N

E

3.4 274.4

cb +3

4.2 273.6

cb

4.6 273.2

1/4

4.6 273.2

c

5.0 272.8

1/4

5.1 272.7

cb

5.0 272.8

W

4.8 273.0

95' N

W

5.8 272.0

cb

5.2 272.6

1/4

4.8 273.0

c

4.8 273.0

1/4

4.5 273.3

cb

3.8

274.0

+8

2.3

275.5

E

1.8

276.0

105' N

E

4.5

276.3

cb

2.6

275.2

1/4

3.6

274.2

c

4.1

273.7

1/4

4.4

273.4

cb

5.0

272.8

W

5.7

272.1

145' N

-5

6.7

271.1

W

5.8

272.0

cb

4.8

273.0

1/4

4.0

273.8

c

3.1

274.7

1/4

2.4

275.4

cb

1.8

276.0

E

0.9

276.9

169' N

E

2.0

275.8

cb

3.0

274.8

1/4

4.0

273.8

c

5.0

272.8

1/4

5.9

271.9

cb	6.6	271.7 ✓
W	8.5	269.3 ✓
+10	10.3	267.5 ✓
175' N		
-10	11.1	266.7 ✓
W	9.2	268.6 ✓
cb	8.0	269.8 ✓
1/4	7.4	270.4 ✓
c	6.9	270.9 ✓
1/4	6.2	271.6 ✓
cb	5.4	272.4 ✓
+6	4.8	273.0 ✓
E	3.7	274.1 ✓
181' N		
E	4.5	273.3 ✓
cb	5.6	272.2 ✓
1/4	6.1	271.7 ✓
c	7.2	270.6 ✓
1/4	8.0	269.8 ✓
cb	8.4	269.4 ✓
W	10.3	267.5 ✓
+10	12.2	265.6 ✓
200' N		
-10	15.5	262.3 ✓
W	13.9	263.9 ✓
cb	12.6	265.2 ✓

1/4	11.7	266.1 ✓
c	10.6	267.2 ✓
1/4	8.1	269.7 ✓
+3	6.2	271.6 ✓
cb	6.1	271.7 ✓
E	6.0	271.8 ✓
220' N		
E	7.0	270.8 ✓
cb	7.4	270.4 ✓
1/4	11.3	266.5 ✓
c	13.9	263.9 ✓
1/4	15.0	262.8 ✓
cb	16.5	261.3 ✓
W	19.1	258.7 ✓
+15	23.4	254.4 ✓
230' N		
W	42.9	254.9 ✓
cb	19.5	258.3 ✓
1/4	16.8	261.0 ✓
c	15.5	262.3 ✓
1/4	14.2	263.6 ✓
cb	12.1	265.7 ✓
E	8.5	269.3 ✓

11/14/23 Survey

Preliminary Survey
North + East of Hortons St
and Pine Sts
For levels see page 41

179.40
740.5
4016.37
777.87
1170.1
1661.3

68.95
340.53
409.38

7+96 Δ 71°53' Right

6+88 Δ 67°12' Right

6+63.5 = fence

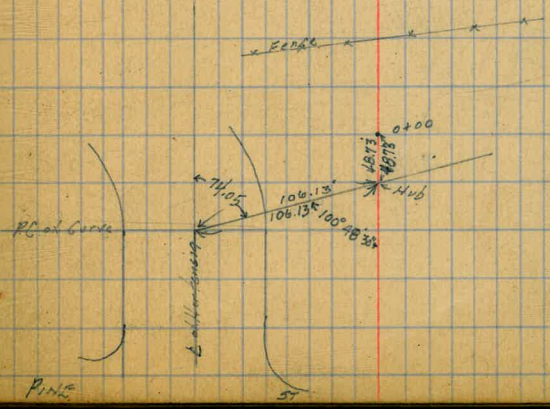
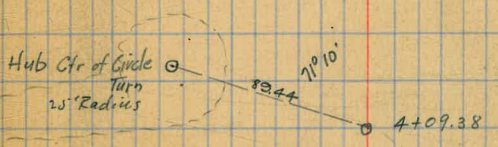
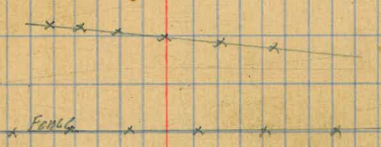
5+10 = fence on Lot Line

4+82 Δ 45°20'00" Left

3+40.53 Δ 82°45' Left

0+07.5 = Fence on Lot Line

0+00



20+19.15 Δ 66°30' R

18+58 Δ 56°02' Right

17+35 Δ 13°06' Left

14+40 Δ 28°29' Left

13+52° 78°50' Left

11+27⁰⁰ 34°25' Right

10+23.88 P.O.T.

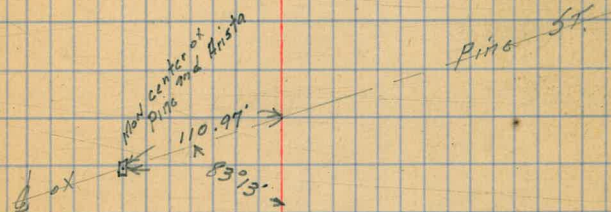
9+70 Δ 52°17' Left

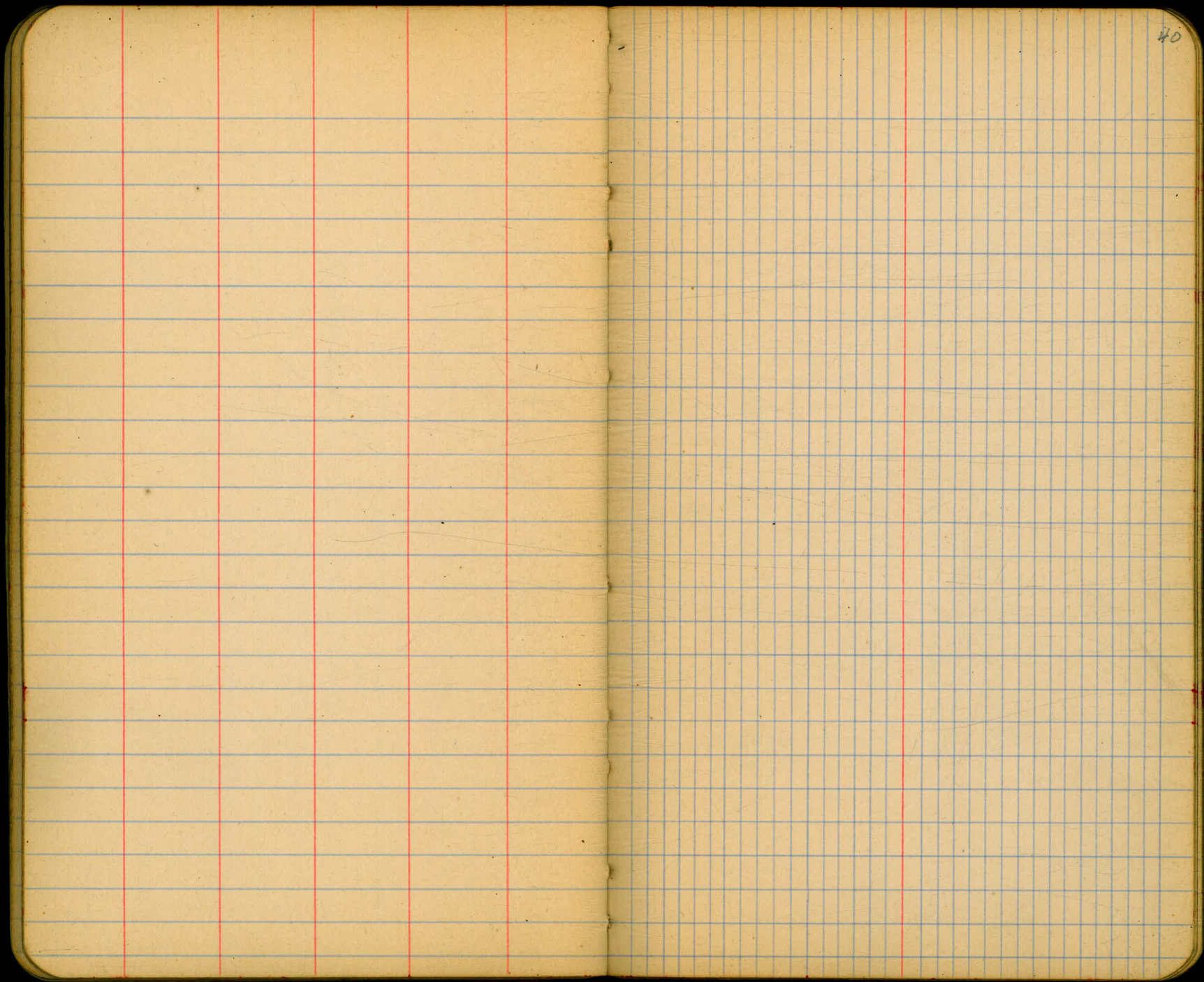
$27 + 31.12 = E. \text{ of Pine St}$

25400 \odot

23440 Δ $64^{\circ}22'$ left.

21453 Δ $77^{\circ}24'$ left.





40

11/4/33

Gregory Levels on Sewer Preliminary on page 37

103
235.4

632
185
47
357

41

	2.20	258.69		256.49	Top H/d SE Pine + 100'	+ 10	6+46.1	1.4	48.0	✓
	0.02	245.73	12.98	245.71		+ 50	6+86.1	3.8	45.6	✓
	6.75	244.43	8.05	237.68		+ 61	6+97.1	4.3	245.1	
(2+36.1) 0+00			2.97	241.46	on hub	+ 63	6+99.1	6.2	243.7	
(2+46.1) +10			1.2	43.2		+ 82	6+118.1	11.15	38.28	on hub
(2+76.1) +40	Top of Wall		1.3	43.1		5	7+36.1	12.7	236.7	
(2+79.1) +43			3.0	41.4		+ 137	7+49.1	12.7	236.7	
(2+86.1) +50			3.4	41.0		T.P.	3.58	12.60	36.83	✓
(3+19.1) +83	Top of Wall		5.9	38.5		+ 23	7+59.1	6.5	233.9	
(3+21.1) +85			7.4	37.0		+ 50	7+80.1	6.9	233.5	
(3+36.1)			8.3	36.1		6	8+36.1	8.1	232.3	
(3+51.1) +15			8.1	36.3		+ 01	8+37.1	6.3	234.1	
(3+78.1) +42			4.7	39.7		+ 40	8+76.1	5.2	235.2	
(3+86.1) +50			4.8	39.6		+ 50	8+86.1	6.2	234.2	
(4+36.1) 2			6.4	38.0		+ 70	9+06.1	5.2	235.2	
(4+56.1) +20			7.1	37.3		+ 88	9+26.1	6.39	34.02	✓
(4+70.1) +34			6.2	38.2		+ 97		11.6	228.8	
(4+72.1) +36			3.8	40.6		1		13.5	226.9	
(4+86.1) +50			3.7	40.7		+ 02		18.0	222.4	
(4+96.1) +60	on walk		3.7	40.7		+ 10.0		23.0	217.4	
(5+86.1) 3			4.0	40.4		+ 18.0		28.9	211.5	
T.P.	8.74	49.43	3.74	40.69		+ 24.0		29.0	211.4	
(5+76.63) +40.53 Δ			8.57	40.86	on hub	+ 35.0		24.0	216.4	
(5+86.10) +50			7.3	42.1		+ 45.0		17.5	222.9	
(6+01.1) +65			4.2	45.2		+ 55.0		9.9	230.5	
(6+36.1) 4			1.6	47.8		+ 63		9.9	230.5	

See Page 65

+65			7.2	233.2	
TP	290	38.14	5.17	35.24	
+96 Δ	71°53	Right	2.18	235.96	on hub
8			4.4	233.7	
+04.0			9.7	228.4	
+16.0			17.7	220.4	
+21.0			22.8	215.3	
+36.0			29.7	208.4	
+42.5			37.2	200.9	
+48.0			36.8	201.3	
+58.0			33.7	204.4	
+75.0			22.0	216.1	
+85.0			16.2	221.9	
9			8.8	229.3	
+09.0			5.5	232.6	
+20			4.6	233.5	
+50			5.0	233.1	
+70 Δ			5.71	32.43	on hub
TP	9.93	47.26	0.81	37.33	
+85			10.3	236.0	
10			7.1	240.2	
+20			6.3	241.0	
+238.5			6.67	240.59	on hub
+35			7.3	240.8	
+50			9.8	237.5	
+65			13.3	234.0	
TP	2.81	37.62	12.45	34.91	

	15.9	37.2	12.2	42	
	37.0	3.2			
+80			5.8	31.8	✓
+90			6.8	30.8	✓
11			9.1	28.5	✓
+04.0			9.1	228.2	
+05.0			10.8	226.8	
		5' E. of above	14.1	223.5	
+07.0			10.8	226.8	
+11.0			11.7	25.9	✓
+12.0			15.0	22.6	✓
		1' E. of above	17.0	220.6	
+20			9.2	228.4	
+27.6 Δ	34°25 R	12.77	5.35	232.27	on hub
+50			9.5	235.54	
+68			7.0	238.04	
12			2.8	242.24	
TP	535	249.93	0.46	244.58	
+25			4.5	245.4	
+50			2.6	247.3	
+75			1.8	248.1	
13			3.1	246.8	
+15			4.4	245.5	
+30			9.8	240.1	
TP	188	238.95	12.86	237.07	✓
+40			3.1	235.9	
+52 Δ	78°50	Left	8.17	230.78	on hub
+65			9.4	229.6	✓

continued on page 45

Grades on Rossmont

La Jolla Blvd
to
Electric

El LaJolla	^S 80.75	80.75
+ 52.5	82.0	81.88
105	83.25	83.0
1+57.5	83.72	83.32
210	84.15	83.65

80.75
82.1
88.96

S	82.00	83.25	83.72	84.15
	<u>2.94</u>	<u>5.71</u>	<u>5.24</u>	<u>4.81</u>
	<u>5.2</u>	<u>5.9</u>	<u>2.4</u>	<u>3.0</u>
	+ 1.76	+ .21	+ 3.14	+ 1.81
N	81.88	83.00	83.32	83.65
	<u>7.08</u>	<u>5.96</u>	<u>5.64</u>	<u>5.31</u>
	<u>6.0</u>	<u>3.6</u>	<u>3.2</u>	<u>4.1</u>
	+ 1.08	+ .36	+ 2.24	+ 1.31

Grades on Electric
Gravilla to Palomar

5' walks
30' Rdwy

	WL	EL
SL Gravilla	76.25	
+50	77.60	
1 -	78.95	
+50	80.30	
2 - brk	81.65	
+50	81.98	
3 -	82.31	
+50	82.64	
4 -	82.98	
+50	83.31	
S = NL Reservoir	83.65	
SL ✓	84.15	
+50 brk	84.85	
1 -	84.25	
+50	83.65	
+66	83.45	83.45

BM inside low return 1130 ft
Kabolita + Reservoir

44

80.75							
82							
88.96							
	76.00	76.60	78.95	80.30	81.65	81.98	82.31
	12.96	12.36	10.01	8.66	7.31	6.98	6.65
		9.4	8.7	7.3	6.9	5.7	4.6
		+ 2.96	+ 1.31	+ 1.36	+ 0.1	+ 1.28	+ 2.05
82.66	82.98	83.31	83.65	84.15	84.85	84.25	83.65
4.3	5.98	5.65	-	-	4.11	4.71	5.31
4.6	3.3	2.3			2.6	3.8	4.6
+ 1.72	+ 2.68	+ 3.05			+ 1.51	+ 2.91	+ 0.71
83.45							
5.51		5.51					
4.8		4.3					
+ 0.71		+ 1.2					

+75		11.5	227.5	
+85		12.3	226.7	
14		10.0	229.0	
+20		6.7	232.3	
+40 Δ	28°29' left	3.2	235.8	
+48		1.2	237.8	
+54		2.6	236.4	
+66		7.8	234.2	
+76		10.0	229.0	
+80		12.0	227.0	
TP	5.77	232.17	12.55	226.40
15		9.0	223.2	
+01.0		10.5	221.7	
+18.0		11.8	222.4	
+25.0		14.7	217.5	
+31.0		12.0	220.2	
+50		12.2	220.0	
+60		11.5	220.7	
+80		5.6	226.6	
+90		6.2	226.0	
16		11.2	221.0	
+12		13.3	218.9	
+28		14.5	219.7	
+38		13.4	218.8	
+46		11.8	220.4	
+48		12.0	220.2	

17		11.5	220.7	
+50		8.8	223.4	
+60		0.55	231.62	
TP	1225	243.87	12.9	231.0
+82		4.3	239.6	
+94		3.3	240.6	
17		2.79	241.08	on hub
+35 Δ	13°06' left	0.9	243.0	
+55		1.07	242.80	
TP	4.04	246.84	5.4	241.14
+95		8.8	238.0	
18		12.9	233.9	
+11		9.5	237.3	
+19		13.7	230.1	
+29		17.6	229.2	
+42		17.0	229.8	
+50		14.6	232.2	
+54		17.49	229.35	on hub
+58 Δ	4.63	233.98	10.0	224.00
+66		7.3	226.7	
+67		6.3	227.7	
+76		10.9	223.1	
+78		13.5	220.5	
+82.5		14.0	220.0	
+85.0		11.3	222.7	
+92		13.6	220.4	
19				

233.98

+10			13.5	220.5	✓	219
T.P.	-0.03	221.23	12.72	221.26	✓	
+17			5.5	215.7	✓	
T.P.	0.39	209.00	12.62	208.61	✓	
+36			3.2	205.8	✓	
T.P.	0.47	196.58	12.89	196.11	✓	
+50			4.1	192.5	✓	
+58			12.8	183.8	✓	
+60			12.9	183.7	✓	
+66			9.2	187.4	✓	
+69			12.0	184.6	✓	
+73			9.0	187.8	✓	
+75			9.2	187.4	✓	
+78			8.1	188.5	✓	
T.P.	12.59	209.03	0.14	196.44	✓	
+90			7.9	201.1	✓	
20+00			0.4	208.6	✓	1.5.13 5' lower
T.P.	12.17	220.49	0.71	208.32	✓	?
T.P.	9.08	229.10	0.47	220.02	✓	
+19.25 Δ	66°30' P		6.43	222.67	✓	215.8
+30			4.9	224.2	✓	
+44			5.0	224.1	✓	
+50			2.8	224.3	✓	
T.P.	11.77	240.74	0.13	228.97	✓	
+63			4.6	236.1	✓	
+85			4.5	236.2	✓	

12.67

+93						10.2	230.5
21						10.8	229.9
+05.0						10.9	229.8
+09.0						8.4	232.3
+13						11.1	229.6
+20						14.0	226.7
T.P.	3.25	234.89				9.10	231.6
+53 Δ	77°24'					12.84	222.05 on bed
+69						3.1	231.8
+76						+0.9	234.0
+85						4.9	230.0
22						5.6	229.3
+13						10.1	224.8
+50						13.3	221.6
+63						12.0	222.9
+76						3.7	231.2
+81						4.1	230.8
+95						12.2	222.7
23						11.0	223.9
T.P.	6.79	231.34				10.34	224.55
+12						8.0	223.3
+20						8.6	222.7
+28						10.9	220.4
+30						11.8	219.5
+40 Δ	64°22' Left					13.77	217.57
+50						10.0	221.3

137
2196

2019
15
161

104
16
150

3425
12
5400

40

14.6
on bed

213.2

12.5

107

12.50

+65			7.3	224.0	
+75			3.8	227.5	
T.P.	1262	243.80	0.76	231.18	
24			10.4	233.4	
+20			6.2	237.6	
+35			4.0	239.8	
+50			2.3	241.5	
+75			1.0	242.8	
T.P.	3.29	246.72	0.37	243.43	
25	= summit (in saddle)		2.38	244.34	on stub ^{HP}
+50			2.6	244.1	
26			3.5	243.2	
+50			4.5	242.2	
27			5.8	240.9	
+31.12	d of Pins ft		5.86	240.86	
chk center Mon			2.38	244.34	244.10

3/28/24 temporary - CROSS SECTION OF ALLEY BLOCK 1 15' wide
 FLORENCE HEIGHTS
 bet Front & 1st
 from Wash to Lewis

370 288.72 285.02 NE 1st & Wash

N/L Washington

E	6.32	287.40	Top parapet
C	6.76	281.96	
W	6.58	287.14	

5' N

W	5.5	283.22
+3	6.3	287.42
C	6.2	282.52
+4	6.1	287.62
E	5.2	283.52

30' N

E	5.1	283.62
+5	5.6	283.12
C	5.6	283.12
W	5.3	283.42

60' N

W	5.2	283.52
C	5.4	283.32
E	5.2	283.52

90' N = Center double on E side

- 2.5 = front of block

E	5.4	283.32
E	5.3	283.42
C	5.4	283.32
W	5.2	283.52

145' N

W	5.0	283.72
C	5.2	283.52
E	5.0	283.72

192' N

E = edge cement apron

E	4.10	284.12
C	4.3	284.42
W	4.4	284.32

233' N

T.P. 67.5 291.18

- 3' = edge cement apron

W	6.29	284.43
W	6.58	284.60
W	6.6	284.58
C	6.7	284.48
E	6.5	284.68

245' N

E	6.3	284.88
C	6.1	285.08
W	6.3	284.88

297' N

W	6.0	285.18
C	5.9	285.28
E	5.8	285.38
+ 3.5 = edge apron	5.87	285.31
+ 6 = front	5.83	285.35

307' N

- 6' = front Garage

	5.60	285.58
--	------	--------

-3.5 = front of garage. 570 285.18

E 58 285.38

330' N

E 55 285.68

C 56 285.58

W 58 285.38

348' N

W 56 285.58

C 56 285.58

E 55 285.68

+3 = edge apron 549 285.69

+4.5 = front of garage 536 285.81

400' N

E 51 286.08

C 51 286.08

W 54 285.78

432' N

W 49 286.28

C 49 286.28

+7.0 = cement apron 487 286.31

E = floor 465 286.53

472' N

-3.2 = edge apron 456 286.62

E 46 286.58

C 46 286.58

W 46 286.58

500' N

W 46 286.58

C 44 286.78

E 43 286.88

540' N

E 42 286.98

C 43 286.88

W 41 287.08

573' N

W 39 287.18

C 39 287.28

E 39 287.28

part = dirt floor 39 287.28

610' N

E 34 287.78

C 35 287.68

W 37 287.48

641.2 = S. L. Lewis St.

W on cement c.b. 360 287.58

C 38 287.38

E 360 287.58

E on cement curb 343 287.75

3/26/24 Geog. GROSS SECTION OF ALLEY BLOCK 4 15' wide Cleveland Heights bet Front and First Robinson to Unit.

100' N = N end cement apron on E

9.33	279.30	269.99	NE. Front + Robinson
	NL Robinson		
W on curb	6.92	272.38	
W paving	7.09	272.41	
C	7.13	272.17	
E	6.70	272.60	
E on curb	6.54	272.76	
	4' N		
E	5.7	273.60	
+3	5.9	273.40	
C	6.1	273.20	
W	5.5	273.80	
	40' N		
W	4.6	274.70	
C	4.7	274.60	
E	4.5	274.80	
	75' N		
E	3.9	275.40	
C	3.8	275.50	
W	3.9	275.40	
	80' N = S end cement apron on E		
E Line	3.67	275.63	
garage 3.5 E. of E.L.			
	93' N		
W-4 = cement floor	3.8	275.50	

W	3.8	275.50	
C	3.9	275.40	
E = edge cement apron	3.57	275.73	
	105' N		
W-4 = front wood floor	3.1	276.2	
	125' N		
E = wood floor	3.3	276.0	
E	3.6	275.7	
C	3.9	275.4	
W	3.9	275.4	
	165' N		
W	3.7	275.6	
C	3.6	275.7	
E	3.2	276.1	
	181' N		
E = edge cement apron	3.15	276.15	
	194.5' N		
E = front cement floor	3.10	276.2	
	205' N		
E	3.8	275.5	
C	4.2	275.1	
W	3.9	275.4	
	245' N		
-4.7 = dirt floor	3.3	276.0	
W	3.7	275.6	

C		3.9	275.4
E		3.9	275.4
TP	580 281 1/2	3.68	275.62 ✓

293 N

- 1/2 cement floor 5.53 275.89

E 5.8 275.62

C 5.7 275.72

W 5.6 275.82

* 343 N

W 5.2 276.12

C 5.4 276.02

E 5.1 276.32

373 N

E 3.9 277.52

+ 4 4.6 276.82

C 4.6 276.82

W 4.7 276.72

393 N

W 4.1 277.32

C 4.2 277.22

E 3.6 277.82

409 N

E 3.1 278.32

+ 4 4.1 277.32

C 4.1 277.32

W 3.9 277.52

416.8 N = 3L Unit

W	570	275.72	on bearing
C	570	275.72	✓
E	570	276.15	✓ ✓

3/25/44
 600 ft. CROSS SECTION OF
 BLK 224 Vail Heights 20' wide
 bet Robin & Pennsylv.
 from Vt. to Richmond

582 290.78

284.96 NE Pennsylv
 + Vermont

E. L. Vermont

S	on cement curb	4.58	286.20	
C		4.3	286.48	
N	on cement curb	4.44	286.34	
	10' E			
N		4.4	286.38	
C		3.9	286.88	
S		4.6	286.18	
	55' E			
S		3.3	287.48	
TV		3.7	287.08	
C		2.9	287.88	
N		3.5	287.28	
	100' E			
N		2.5	288.28	
C		1.9	288.88	
TV		2.4	288.38	
S		1.9	288.88	
	120' E			
S		1.7	289.08	
+3		2.2	288.58	
C		1.6	289.18	
N	front dirt floor	1.7	289.08	
TP	6.73	295.96	1.77	289.01

133' E

	4" 5 of 5% = cement floor	6.18	289.56
		160' E	
N		5.9	289.84
C		6.1	289.64
S		6.1	289.64
		181' E	
N	= cement floor	5.20	290.54
		183' E	
S	= dirt floor	5.7	290.04
		190' E	
N	= cement floor	5.15	290.59
		210' E	
S	= dirt floor	5.4	290.34
C		5.5	290.24
N		5.0	290.74
		230' E	
N	= dirt floor	5.0	290.74
C		5.1	290.64
S		5.2	290.54
		260' E	
S	= dirt floor	5.0	290.74
C		5.0	290.74
N		5.2	290.54
		287' E	
N		5.2	290.54

C	5.3	290.44
S = center of 17' cement apron	5.13	290.61
332' E		
S = dirt floor	5.5	290.74
C	5.7	290.04
N	5.9	290.04
370' E		
N = dirt floor	5.4	290.34
N	5.5	290.24
C	5.8	289.94
S	5.6	290.14
411' E		
S = center 20' double dirt fl.	5.5	290.24
C	5.7	290.04
N	5.4	290.34
431' E		
N = dirt floor	5.4	290.34
456' E		
N	5.2	290.54
C	5.5	290.24
S	5.5	290.24
+1 = dirt floor	5.4	290.34
475' E		
N = front of cement floor	4.86	290.88
498' E		
S = center of 16' dirt fl.	5.0	290.74

S	5.1	290.64
C	5.2	290.54
N	4.9	290.84
530' E		
N	4.5	291.24
C	4.5	291.24
S	4.6	291.14
+1 = cement floor	4.52	291.22
575' E		
S	4.1	291.64
C	4.2	291.54
N	4.2	291.54
600 E		
N Top of cement curb	3.50	292.24
C	3.9	291.84
S Top of cement curb	3.64	292.10

S. L. Talbot Gregory. CROSS SECTION 40' wide
 OF
 ARMADA PL.
 from Talbot St S.
 423 32.28 ✓ 28.05
 12.60 44.44 0.44 31.84 ✓
 S. L. Talbot.

E	5.4	39.0 ✓
+10	4.8	39.6 ✓
+20=C	4.1	40.3 ✓
+30	3.5	40.9 ✓
+40=W	2.4	42.0 ✓

Sec. A = 0+00

W	2.4	42.0 ✓
+10	3.1	41.3 ✓
+20=C	3.9	40.5 ✓
+30	4.3	40.1 ✓
+40=E	4.8	39.6 ✓

0+40

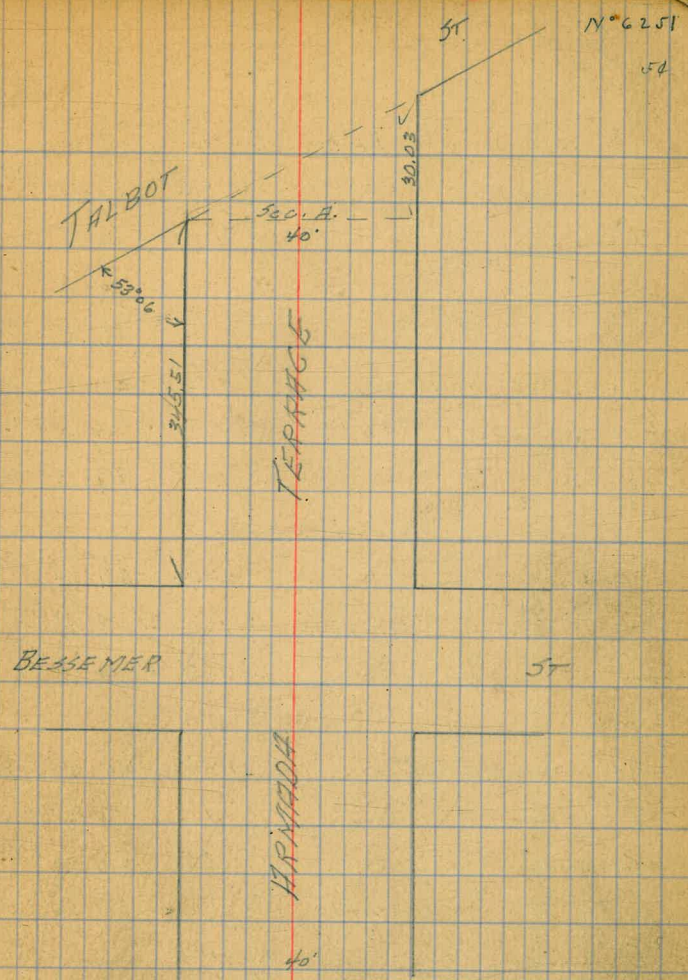
E	4.1	40.3 ✓
+10	3.4	41.0 ✓
+20	2.7	41.7 ✓
TP.	11.11	51.96 ✓ 3.59 40.85 ✓
+30	9.5	42.5 ✓
+40=W	8.7	43.3 ✓

0+70

W	8.6	43.4 ✓
+10	9.3	42.7 ✓
+20	10.3	41.7 ✓
+30	11.3	40.7 ✓
E	11.5	40.5 ✓

566 000 R
 1094
 for Talbot St

N° 6251
54



E	11.9	40.1 ✓
+10	11.1	40.9 ✓
+20	10.6	41.4 ✓
+30	9.7	42.3 ✓
W	9.2	42.8 ✓

5196

1+50

-5	9.0	43.0	✓
W	9.4	42.6	✓
+10	10.0	42.0	✓
+20	11.0	41.0	✓
+30	11.3	40.7	✓
E	11.9	40.1	✓
+10	12.8	39.2	✓

2+00

-10	12.6	39.4	✓
E	12.2	39.8	✓
+10	11.7	40.3	✓
+20	11.2	40.8	✓
+30	10.4	41.6	✓
W	9.5	42.5	✓
+5	8.8	43.2	✓

2+10

-5	7.5	44.5	✓
W	9.2	42.8	✓
+10	10.6	41.4	✓
+20	11.3	40.7	✓
+30	11.8	40.2	✓
E	12.6	39.4	✓
+10	12.5	39.5	✓

2+25

-10	12.9	39.1	✓
-----	------	------	---

Armadg

55

E	12.7	39.3	✓
+10	12.3	39.7	✓
+20	11.5	40.5	✓
+30	9.2	42.8	✓
W	6.8	45.2	✓

2+47

W	6.5	45.5	✓
+10	7.7	44.3	✓
+20	8.5	43.5	✓
+30	10.5	41.5	✓
E	12.2	39.8	✓
+10	12.6	39.4	✓

2+75

-10	11.5	40.5	✓
E	10.8	41.2	✓
+10	9.2	42.8	✓
+20	6.3	45.7	✓
+26	4.9	47.1	✓
+30	6.1	45.9	✓
+37	5.3	46.7	✓
W	3.9	48.1	✓

3+00

W	1.8	50.2	✓
+10	2.5	49.5	✓
+20	2.0	50.0	✓
+23	2.3	49.7	✓

already
cut 4.3already
cut 5.7

5196

+30		4.5	47.5 ✓
E		8.2	43.8 ✓
+10		10.7	41.3 ✓
	3+25		
-7		3.4	48.6 ✓
E		0.8	51.2 ✓
T.P.	13.08	64.87 ✓	0.17
+10		13.1	51.9 ✓
+20		12.5	52.4 ✓
+30		13.6	51.3 ✓
+37		11.5	53.4 ✓
W		10.3	54.6 ✓ <small>Alread. but 3.5</small>
	3+45.51	N.L. Bessemer 60' wide	
W		7.2	57.7 ✓ <small>skipped 2'</small>
+4		10.5	54.4 ✓
+10		9.9	55.0 ✓
+20		10.6	54.3 ✓
+30		11.3	53.6 ✓
E		11.9	53.0 ✓
+5		12.5	52.4 ✓
	N. curb		
E		11.7	53.8 ✓
+10		9.4	55.5 ✓
+20		8.4	56.5 ✓
+30		7.1	57.8 ✓
+37		6.7	58.2 ✓

Armada
56

W		52	59.7 ✓
	N 1/4		
W		3.8	61.1 ✓
+10		5.5	59.4 ✓
+20		6.5	58.4 ✓
+30		7.8	57.1 ✓
E		9.2	55.7 ✓
	center Bessemer		
E		9.1	55.8 ✓
+10		7.9	57.0 ✓
+20		6.6	58.3 ✓
+30		5.0	59.9 ✓
W		3.5	61.4 ✓
	S 1/4		
W		2.8	62.1 ✓
+10		4.9	60.0 ✓
+20		6.5	58.4 ✓
+30		7.7	57.2 ✓
E		9.0	55.9 ✓
	S curb		
E		8.9	56.0 ✓
+10		7.4	57.5 ✓
+20		6.1	58.8 ✓
+30		4.7	60.2 ✓
+33		3.0	61.9 ✓
W		2.2	62.7 ✓

64.87

S.L. Bessemer = 0+04

W	0.9	60.0	✓
+10	3.3	61.6	✓
+13	5.1	59.8	✓
+20	5.5	59.4	✓
+30	6.8	58.1	✓
E	7.4	57.5	✓
+5	7.6	57.3	✓

0+35

-7	6.2	58.7	✓	
E	5.0	59.9	✓	
+10	4.7	60.2	✓	
+20	3.9	61.0	✓	
+26	3.2	61.7	✓	
T.P.	1258	76.02	✓	
		1.43	63.44	✓
+30	9.7	66.3	✓	
+34	7.8	68.2	✓	
+39	10.8	65.2	✓	
W	10.8	65.2	✓	

0+50

W	10.1	65.9	✓
+10	10.3	65.7	✓
+15	13.6	62.4	✓
+20	14.0	62.0	✓
+30	15.1	60.9	✓
E	16.2	59.8	✓
+10	17.1	58.9	✓

Armada

57

0+53

-10	17.1	58.9	✓
E	16.1	59.9	✓
+5	14.4	61.6	✓
+7	14.9	61.1	✓
+10	15.0	61.0	✓
+20	13.8	62.2	✓
+30	12.4	63.6	✓
W	11.6	64.4	✓ Lovelov

0+73

W	11.9	64.1	✓ ✓ ✓
+10	12.1	63.9	✓
+20	12.4	63.6	✓
+30	13.3	62.7	✓
+35	13.0	63.0	✓
E	14.8	61.2	✓
+10	16.3	59.7	✓

0+74

-10	16.3	59.7	✓
E	14.8	61.2	✓
+5	13.0	63.0	✓
+10	13.2	62.8	✓
+20	12.2	63.8	✓
+24	12.2	63.8	✓
+26	10.2	65.8	✓
+30	9.3	66.7	✓
W	7.4	68.6	✓

760v

1+00

W	4.4	71.6	✓
+10	6.8	69.2	✓
+17	8.3	67.7	✓
+20	10.2	65.8	✓
+30	11.1	64.9	✓
E	12.6	63.4	✓
+7	13.6	62.4	✓

1+08

-7	12.4	63.6	✓
E	11.8	64.2	✓
+10	10.3	65.7	✓
+20	9.7	66.3	✓
+22	7.8	68.2	✓
+28	5.9	70.1	✓
+30	4.5	71.5	✓
+36	1.8	74.2	✓
W	1.1	74.9	✓

1+17

W	3.1	72.9	✓
+10	5.3	70.7	✓
+18	7.0	69.0	✓
+19	9.2	66.8	✓
+20	9.2	66.8	✓
+30	9.7	66.3	✓
E	11.1	64.9	✓
+7	12.0	62.0	✓

Armada

58

1+50

-7	9.5	66.5	✓
E	8.2	67.8	✓
+7	6.3	69.7	✓
+10	6.3	69.7	✓
+20	6.5	69.5	✓
+21	6.5	69.5	✓
+25	2.8	73.2	✓
+30	1.6	74.4	✓

T.P	8.44	83.62	✓	
W		7.1	76.5	✓

1+80

W	3.9	80.7	✓
+10	5.5	78.1	✓
+15	6.5	77.1	✓
+20	10.8	72.8	✓
+30	10.8	72.8	✓
+33	10.8	72.8	✓
E	12.5	71.1	✓
+9	14.3	69.3	✓

2+07

-10	13.6	70.0	✓
E	11.1	72.5	✓
+7	9.7	73.9	✓
+10	9.8	73.8	✓
+20	9.0	74.6	✓

8362

+22	5.9	77.7 ✓
+30	3.7	79.9 ✓
W	0.7	82.9 ✓

2+10

W	1.6	82.0 ✓
+10	5.2	78.4 ✓
+19	7.3	76.3 ✓
+20	8.8	74.8 ✓
+30	9.5	74.2 ✓
+34	9.6	74.0 ✓
E	11.4	72.2 ✓
+10	13.3	70.3 ✓

2+13

-10	13.1	70.5 ✓
E	11.3	72.3 ✓
+6	9.6	74.0 ✓
+10	9.3	74.3 ✓
+20	8.8	74.8 ✓
+23	5.5	78.1 ✓
+30	3.8	79.8 ✓
W	1.1	82.5 ✓

2+30

W	1.7	81.9 ✓
+10	4.0	79.6 ✓
+14	4.8	78.8 ✓
+16	7.1	76.5 ✓

Armady
59

+20	7.4	76.2 ✓
+30	8.1	75.5 ✓
E	8.4	75.2 ✓
+1	10.3	73.3 ✓
+10	12.8	70.8 ✓

2+45

-10	13.0	70.6 ✓
-3	11.5	72.1 ✓
E	10.2	73.4 ✓
+5	7.4	76.2 ✓
+10	6.8	76.8 ✓
+20	5.8	77.8 ✓
+30	5.2	78.4 ✓
+35	4.5	79.1 ✓
W	3.3	80.3 ✓

2+55

W	3.5	80.1 ✓
+10	4.1	79.5 ✓
+20	7.4	76.2 ✓
+30	10.0	73.6 ✓
E	12.5	71.1 ✓
+10	14.5	69.1 ✓

2+68

-13	15.1	68.5 ✓
E	13.7	69.9 ✓
+10	14.6	71.0 ✓

+20		99	73.7 ✓
+30		7.4	76.2 ✓
W		2.8	80.8 ✓
+13 = Front of garage		1.05	82.57 ✓

2+78

-10		1.1	82.5 ✓
W		6.4	77.2 ✓
+10		9.8	73.8 ✓
+20		10.9	72.7 ✓ bottom
+30		12.8	70.8 ✓ ✓
E		13.7	69.9 ✓
+15		15.5	68.1 ✓

2+83

-10		11.9	71.7 ✓
E		10.2	73.4 ✓
+10		9.1	74.5 ✓
+20		9.6	74.0 ✓
+27		7.5	76.1 ✓
+30		7.8	75.8 ✓
+35		8.3	75.3 ✓
W (Culv. crosses here 1/2 pot in)		7.3	76.3 ✓
+9		3.6	80.0 ✓

3+00

T.P.	5.98	87.64	1.96	81.66 ✓
W			0.2	87.2 ✓
+10			2.2	85.4 ✓

+20		4.0	83.6 ✓
+30		5.9	81.7 ✓
E		7.5	80.1 ✓
+10		9.0	78.6 ✓

1x further south is wanted former notes are still good.

2+90° = End of Line.

2+26° A U 60° 53'

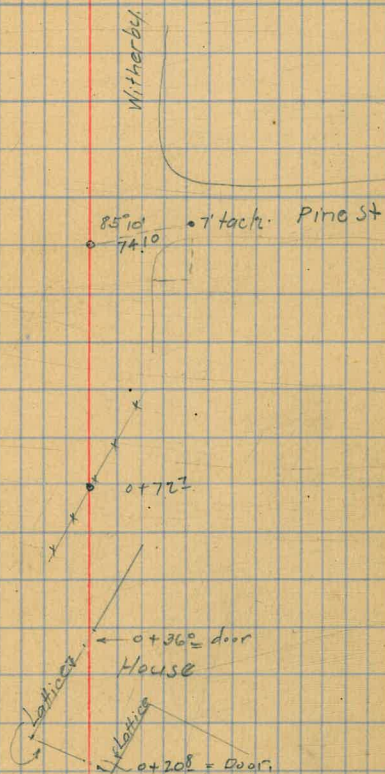
} that used

0+86° A L + 5° 30' Δ changed to 629'48" by G.R.H

0+02° ART (43° 35') 42° 19' R

0+00° P.O.T. = 0+00° Gregory's Sec Page 37

3+40° 53' Gregory's



	+	π	-	
	7.35	272.41		26706 FLug N.E. Cor TF195 & Fort Stockton. 270.02 BR Pine ✓
			4.39	
#	2.35	266.44	10.32	264.09 Curb Hortensia
#	0.18	253.71	12.91	253.53 Curb Hortensia
2+90 Note: this Sta is roughly 13.5' from Curb			^{Hub} 6.44	247.27
2+90 On Curb as noted above			0.53	253.18
2+50			10.8	242.9
2+26° A			6.38	247.33
2+00			10.7	243.0
1+50			10.1	243.6
1+00			11.8	241.9
0+862 Δ	4.22	206.81	^{Hub} 11.12	242.59
0+68			4.2	242.6
0+65			2.8	244.0
0+50			3.4	243.4
0+43			4.0	242.8
0+40			5.5	241.3
0+30			4.6	242.5
0+22° Δ			5.84	241.0
0+00 = 0+00 Gregory's			5.65	241.16 = 241.96

Stationing used in plotting.

$$0+00 = 2+34.1$$

$$0+10.1$$

$$0+36.1$$

$$0+86.1$$

$$1+36.1$$

$$1+49.4$$

$$1+68.1$$

$$1+71.1$$

$$1+86.1$$

$$1+93.1$$

$$1+96.1$$

$$2+06.1$$

$$2+34.1$$

Cherry St to Allen's Dairy

Dennan
Steck
Kelly
Sep 1974

G.3

	+	+	-	
	3.38	273.40		270.02 Sec Page 61
98+00° Misson Valley Line.	0+00		6.18	267.2
	0+50		7.0	266.4
16+62° = 102+40 Misson Valley Line. Δ R ⁺ 72° 51'	1+00		7.9	265.5
N+60 Fence.	1+50 = Line of Trias		16.7	261.7
	# 1.13	262.67	11.86	261.54 End Curd
13+00 Under fence.	2+00 = Line Pine		2.0	260.7 0+00
	On floor of Templeton Johnsons Place. He says His plumbing is 60 below		0.92	261.75
13+28° Δ Lt 1° 28' ?	2+50		5.3	257.4 0+50
12+16° P.O.T. Nail.	3+00		9.1	253.6 1+00
	# 3+26° 1.17	252.65	11.19	251.48 ✓ 0+00
10+25° P.O.T.	# 1.12	241.05	12.72	239.93
	3+50		3.4	237.7
8+19° P.O.T.	# 0.38	229.39	12.04	229.01
	4+75		5.8	223.6
6+40° Lt N° 09'	# 0.88	217.35	12.92	216.47
	4+00		2.2	215.2
5+44° P.O.T.	# 1.58	206.78	12.15	205.20 ✓
	4+30		4.3	202.5
5+16 Δ Lt 85° 51' = ± Cherry	+ 20		0.5	206.3
	4+50		1.9	204.9
3+26° P.O.T. - ± Cherry (By original Map) 126° E of Trias	4+80		0.2	206.6
	5+00		5.5	201.3
0+00 = ± Cherry St 150' West of Trias	5+10		9.4	197.4
	5+16 Δ R 0.10	199.07	7.81	198.97

Abandoned

	+	∑	-	
		199.07		
5744 ^L POT			Hub 1.03	198.04
5750			2.1	197.0
5762			8.8	190.3
#	0.91	186.98	Rock 13.00	186.07
6+00			6.5	180.5
#			Hub	
6+90 ^A	0.31	176.23	11.06	175.92
6+00			5.2	171.0
6+85			8.1	168.1
7+00			12.2	164.0
#	0.48	164.76	11.95	164.28
7+25			3.1	161.7
+50			8.6	156.2
8+00			12.4	152.4
#	0.91	152.86	12.81	151.95
8+19 ² POT			Hub 3.50	149.36
#			Rock	
750	0.49	140.93	12.42	140.44
+75			5.5	135.4
9+00			9.7	136.2
9+50			10.8	130.1
#	0.00	128.18	12.75	128.18
10+00			7.2	121.0
+25			10.9	117.3
#	0.09	115.56	12.71	115.47
10+50			1.2	114.4
10+95 ⁵ POT			7.32	108.24
11+00			8.2	107.4

	+	∑	-	
		115.56		
#	0.44	103.01	12.99	Rock 102.57
11+50			2.9	100.1
11+68			4.9	98.1
11+80			8.4	94.6
#	1.48	92.30	12.19	Rock 90.82
12+10			1.3	91.0
12+16 ² POT			Naill 6.4	85.9
#	4.90	87.26	9.94	Rock 82.36
12+35			2.8	84.5
12+40			4.7	82.6
12+50			5.0	82.3
12+00			6.9	80.4
12+28 ^A			Hub 9.01	78.25
#	0.22	74.53	12.95	74.21
+46			4.3	70.2
+50			4.9	69.6
14+00			12.2	62.3
#	1.05	63.94	11.64	62.89
+50			7.5	56.4
15			12.6	51.3
#	0.31	52.40	11.85	52.09
+50			5.4	47.0
+60			5.2	47.2
16+00			8.3	44.1
16+50			9.9	42.5
16+62 ² = 102+40			11.20	check 41.20 = 41.45

Contd from Page 417

9+08.95

9+36.1

9+65.7

#

6+72⁸⁰

#

7+00

#

#

7+29⁶ = 5+16 = Cherry St line

6.27

1.25

0.56

1.25

2.03

244.55

237.10

225.30

213.87

203.80

900

Hubb
3.16

12.36

6.1

12.73

12.49

4.13

2.38.28 = 4+82 Page 21

235.55

233.94

224.74

219.7

212.57

201.33

199.23 = 198.97
check 7

$$102 + 40 = 41^{\circ} 6'$$

$$102 + 97 = 36.85$$

6+40 = Cherry St Line

7+29⁶ = Δ Rt 58° 14' 30"
5+16 = Cherry St line Page 23

6+72⁸⁰ Δ Rt 100° 35' Note: Set 6+72⁸⁰ On Greg's tangent 4+82 to 6+88²

4+82 = Gregory's line See Page 37

10+35.5

Concrete Man centered 1/4" Pipe

2' x 2" x 1' Post. Cor.



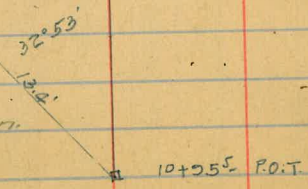
Marking in Man with reference to our line

8+10.5

Nail 12+16.5 P.O.T.

Concrete Man centered

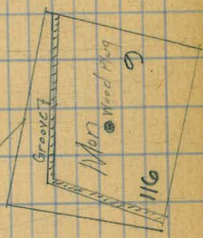
With 1/4" Pipe
 Note: This Man replaces the post noted by Hatch as being on the line between Bernard & Allen.



10+55.5 P.O.T.

8+10.5

11' 4" 45.00
 6+40.5



For Change see P 70

$\Delta L 37^{\circ} 55'$

6+40: Cherry St Allen Dairy line.

$2+14^4 = 5+16^{\circ}$ Page 63 = $7+29^{\circ}$ Page 65 = $\Delta L 37^{\circ} 55'$

$1+417^{\circ} \Delta R 41^{\circ} 50'$

0+20²⁶ P.O.T. Northside of Mrs Kelly's runway Hub.

00 = South side of Mrs Kelly's Runway. No hub.

Ca
Nite
Note
not
lin

	+	-	
	283	272.85 [✓]	270.02 See Page 61
#	1.54	266.73 [✓]	766 265.17 On sidewalk.
00	On Mrs Kelly's Curb of Driveway	6.24	260.49
0+00 ⁵	" " " " Driveway	6.73	260.00
0+20	" " " " "	6.85	259.88
0+20 ²⁶	Hub P.O.T.	7.21	259.52
0+00		10.8	255.93
#	0.99	254.91	12.81 253.92
1+00		7.5	247.41
#	0.11	242.76	12.26 242.65
1+417 ⁵	$\Delta R 41^{\circ}$	5.06	237.70
1+50		7.3	235.46
#	0.08	230.46	12.38 230.38
1+65		1.2	229.3
#	0.95	218.80	12.61 217.85
1+80		7.6	211.7
#	1.73	207.77	12.76 206.04
2+00		5.0	202.8
2+06		9.8	198.0
2+14 ²	$= 5+16^{\circ} = 7+29^{\circ}$	8.86	198.91 = 198.97 = 199.27

see page 70 for change

Abandoned

Line on \pm Trias

	+	π	-	
	3.26	273.28		270.02 See Page 67
00 = S.L. of Pine St			3.1	270.2
0+25 \pm " "			2.7	270.6
0+50 N.L. " "			2.9	270.4
1+00			3.6	269.7
1+50			4.5	268.8
2			5.8	267.5
+50			7.5	265.8
3			9.2	264.1
+50 S.L. Cherry St			10.8	262.5
3+75 = \pm Cherry St			11.7	261.6

This line used in Trias of paving

Sewer \perp Pine St

69

	+	π	-	
	4.82	274.84		270.02
00 = W.C. of ^{Trias} Pine St			2.5	270.3
+50			4.6	270.2
1+00			5.0	269.8
+50			5.9	268.9
2+00			6.5	268.3
2+50			7.1	267.7
3+00 = El. Ampudia.			8.9	265.9
#	-0.02	263.94	10.88	263.96
3+50 = W.C. Ampudia			+0.1	264.0
4			0.6	263.3
+50			2.1	261.8
5			4.4	259.5
+50			5.7	259.2
6			10.5	258.4
#	1.50	253.41	12.03	251.91
+50			6.6	246.8
7			9.4	244.0
7+35 ⁹ Hub = 3+82 ⁵ of line back of Cob's place:			11.05	242.31

Abandoned
Also ran 781-47

BM

1+4175	0.11	237.81		237.70
1+60			7.8	230.0
1+67			10.5	227.3
T.P.	0.34	225.54	12.61	225.20
1+82			10.5	215.0
T.P.	2.23	215.36	12.41	213.13
1+94.5			8.7	206.7
1+95.59			11.14	204.3

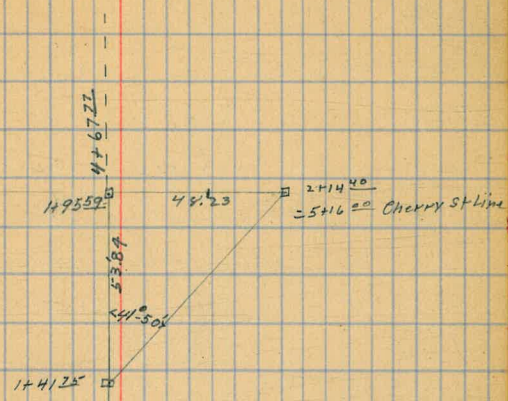
on Hub sta 1141.75
Page 67

00 1105P 63

Plotted
1-8-24
CAT

on hub

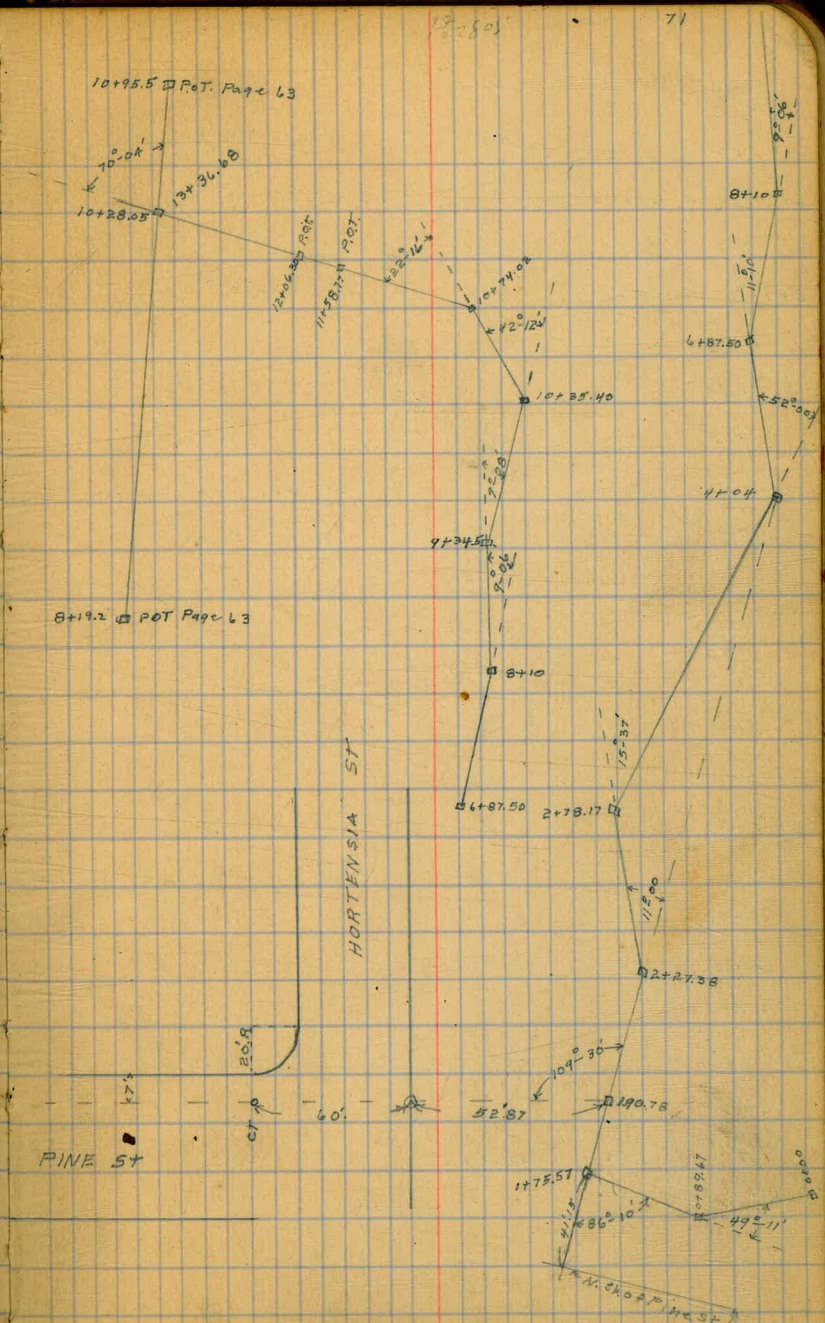
POB 3+26



Sewerline from Pine & Hortensia
To RT With Line Page 63

B.M.	0.32	256.81		256.49	Top Hydrant SE W. to Horby Pine
(1+34.22) 00 = N. Ch. Line of Pine			3.92	252.9	on ch
1+45.24 +11			4.6	252.7	
T.P.	0.34	244.34	12.81	244.00	
0+41.15 = Sta 1+75.57			12.15	237.19	on Hub

Line from Sta 0+00 Page 71 To 13+36.68					
B.M.	0.32	256.81		256.49	Top Hydrant SE W. to Horby Pine
T.P.	0.34	244.34	12.81	244.00	
0+00			5.87	238.47	on hub
+17			4.0	240.3	
0+24.88 Start Line +55			7.6	236.7	
0+89.67 Δ 49° 11' R			7.32	237.02	
1+00			8.2	236.1	
+17			10.3	234.0	
+20			13.4	230.9	
+23			11.5	232.8	
+31			11.8	232.5	
+35			14.9	229.4	
+38			13.2	231.1	
+57			14.3	230.0	
T.P. 1+75.57 Δ 86° 10' R 0.18		232.37	12.15	232.19	on hub
1+84			3.8	228.4	
1+90.78 POT			4.13	228.24	on hub
+97			2.8	229.6	
2+00			4.9	227.5	



232.37

+2			3.4	229.0
R+27.38 = A 11°00' L			3.50	228.9 on hub
+53			3.7	228.7
B+78.17 = A 15°37' R			6.16	226.21
3+00			6.4	226.0
+30			6.2	226.4
+65			3.9	228.5
H+04 = A 52°00' L			7.37	225.00 on hub
T.P.	3.85	228.85	7.37	225.00
+20			3.3	225.6
+35			2.1	226.8
+60			2.1	226.8
5+00			4.6	224.3
+30			5.5	223.4
+60			8.3	220.6
+80			8.1	220.8
6+00			7.0	221.9
+25			6.8	222.1
+50			6.5	222.4
G+87.50 = A 11°10' R			7.08	221.77
7+00			7.8	221.1
T.P.	9.52	231.29	7.08	221.77
+18			9.9	221.4
+24			11.0	220.3
+50			10.7	220.6
+55			9.3	222.0

231.29

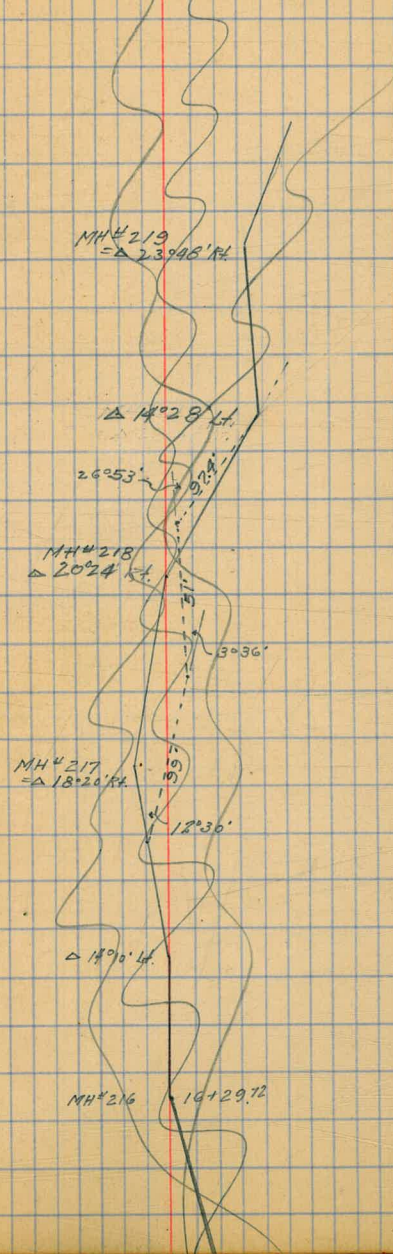
72

+60			10.4	220.9
T.P.	3.85	222.42	12.72	218.57
+83			5.2	217.4
+86			6.4	215.6
+97			5.5	216.9
B+10 = A 9°06' L			8.72	213.70 on hub
+30			8.5	213.9
+60			9.1	213.3
+80			9.4	213.0
9+00			10.2	212.4
+15			10.4	212.0
9+34.5 = A 9°08' R			12.11	210.31 on hub
+45			12.1	210.3
+60			11.4	211.0
+80			11.8	210.6
10+00			11.9	210.5
T.P.	4.47	214.05	12.84	209.58
10+35.40 = A 42°12' L			6.06	208.0 on hub
+50			4.1	210.0
^{74.01} RMG			7.0	207.1
10+72.02 = A 22°16' L			7.2	206.9
+85			8.9	205.4
11+00			11.8	202.3
T.P.	1.15	202.78	12.42	201.63
+58.77 R.O.T.			8.4	194.4 on hub
T.P.	1.23	191.26	12.75	190.03

191.24

11+90			7.6	183.7
12+00			12.3	179.0
T.P.	110	179.73	12.63	178.63
12+20			11.8	167.9
T.P.	0.76	147.73	12.76	166.97
12+37			7.5	160.2
T.P.	0.27	155.03	12.97	154.76
T.P.	1.26	143.56	12.73	142.30
12+75			5.3	138.3
T.P.	0.78	131.53	12.81	130.75
12+95			7.7	123.8
13+10			12.0	119.5
T.P.	1.03	119.80	12.76	118.77
13+36.68 = 10+2805 Page 64			3.13	116.7
CHK			11.40	108.40 = 108.24 on PPT 10+955 Page 64

PROPOSED CHANGE IN ALIGNMENT
Bet. MH# 216 AND MH# 219
PLAN Sheet #4 Profile #16



Nline	El		
31	31		70
05	5		100
10	08		150
10	10		200
10	7		210
64	58		220
			247
			275
			300
			325
			345.51

62.39
4.38
58.01

241.05
506
266.14
12.57
233.57
233.57
4.23
229.34

75092
10
300.328

01837
457
2.15
12859
14696
7348
8955396

125049
1502940



114.87
60
52.67

33.77
50
83.77

2/108.59
54.29

760
205
555

103.06
17.51
120.57
108.59
12.28

141.75

20.25
10
10
10

10735.44
24.62
10740.06
25.94

85.90
89.47
175.47
15.21
190.68
5.60
207.38
250.79
278.17

359
195.59
53.84

576
48.23
467.77

13+52
15.32
13+36.28

119.8
11.4
108.4

48.73
7.1
56.73

152.43

10+955
67.45
10+28.05

149.36



21+53
20 1 15
14 3 20