

1108

DEVIL BOOK

383

MICROFILMED

DEC 21 1964

12/5/23 Gregory Curb Notes Date St

- 8' curb N side Date E.L. 4th 59 E.
- 1 Curb on S. Side from W.L. 3rd to 100' W to be built up. 80 at 3rd St .5 at 50' W. 2nd 80. at 100' W.
- Curb on S. Side from EL 2nd to 40' E to be built up. 80 at 40' E. 2nd .5 at EL 2nd. Return to be built up on SE cor 2nd .5 at East end 80 at S. end. 3' of Return curb gone at S. end. of SE Return.
- 1 Curb on S. Side to be built up, from 50' W. of 2nd to 100' W. of 2nd 80 at 50' W. 4 at 80' W. 2nd 80 at 100' W.
- 1 Curb to be replaced on N side from 35' E. of 1st to 50' E. of 1st
- Curb on S. Side to be built up, from EL Union to 100' E 80 at EL Union .55 at 100' E
- Wing walls on N and S. of W.L. Union to be extended 5' are 5' long now.
- 3' Curb to be replaced on S. End of SE. return Columbia
- 5' Wing Wall to be built on N side at EL India
- 10' " " " " " " " " W.L.
- West of India curb is only in on N side for 100' W. of India.

12/5/23 Gregory Curb Notes on Cedar St

- 1 No Curb in on either Side West of India
- Build 10' Wing wall on N. Side at W.L. India
- 5 " " " " " " " " E.L.
- 1 Replace curb from 17' E. of State to 65' E. on N. Side
- 1 " " " " " " " " on N. Side from 50' E. of Front to 100' E
- 1 " " " " " " " " " " " " " " 5 " " " " E.L. Front to 22' E
- 1 " " " " " " " " " " " " " " 5 " " " " 65' W. of 2nd to 80' W
- 1 " " " " " " " " " " " " " " EL 2nd to 100' E. on N. Side
- 1 Build curb from " " 3rd to 100' " " " " 5 "
- 1 Replace " " on N. Side from 24' W. of W.L. 4th to 28' W.
- 1 " " " " " " " " " " " " " " EL 4th to 8' E.
- 1 " " " " " " " " " " " " " " 65' W. of 5th to 80' W. of 5th
- 1 " " " " " " " " " " " " " " W.L. 5th to 100' W.

12/10/23 Gregory Culvert Notes Mission Beach Blvd

1.21	3.16	1.95
	3.73	2.51
3.93	2.23	-1.70
	2.80	-1.13

Top N. of S. of Pacific

Culvert #1

N. Cb Line Mission Beach 0+00 in gutter	4.8	-2.6
on cement curb	4.10	-1.87
+7	4.9	-2.7
+11	6.8	-4.6
+20	6.9	-4.7

Culvert #2

E. Cb Line 0+00	4.25	-2.01
gutter 0+00	5.0	-2.8
+25	4.0	-1.8
+40	4.7	-2.5
+60	5.7	-2.9
+65	6.9	-4.7
+75	7.6	-5.4
T.P.	4.77	5.73
	4.34	1.27

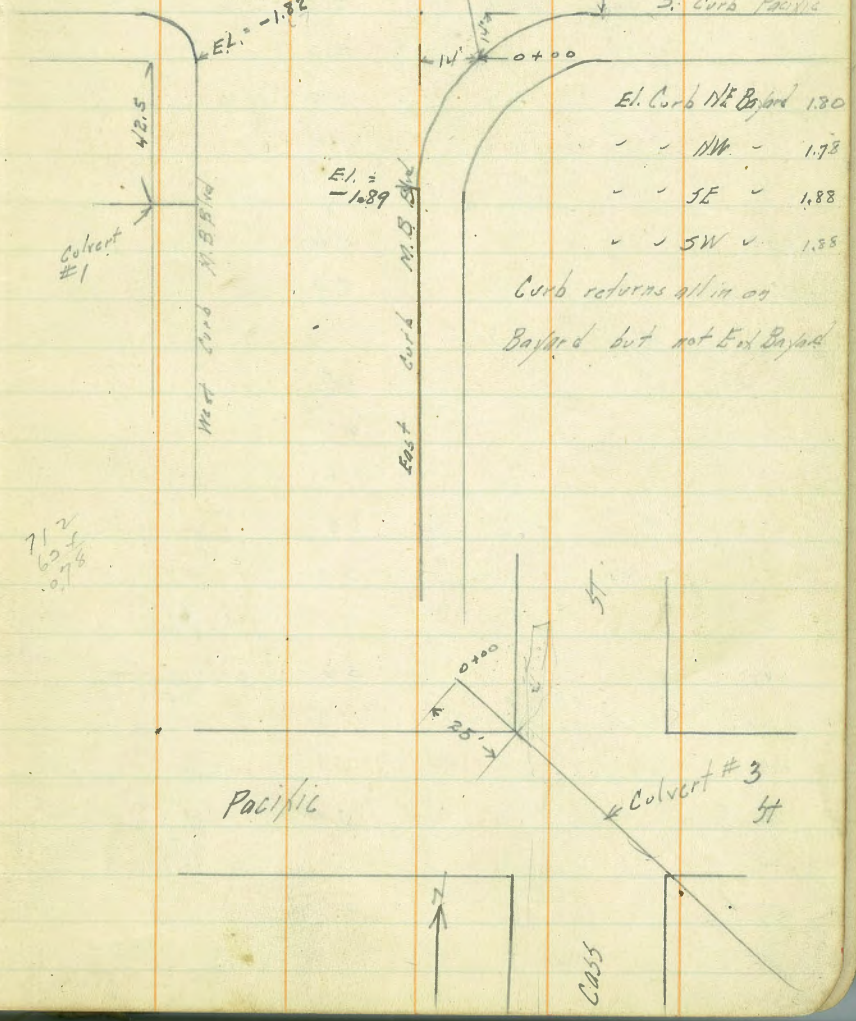
on cement.

Culvert #3

0+00	5.0	+0.7
+050	5.7	+0.6
+10 = edge present road	6.0	+0.3
+25	4.8	+0.9
+36 = E. Edge present road	3.6	+2.7
+41	6.3	+0.6
+50	7.1	-0.8
+75	8.0	-2.3

Plotted Dec 26 1943
 See 1474-L
 1943

Pacific



Ave

- El. Curb NE Bayford 1.80
- - NW - 1.78
- - SE - 1.88
- - SW - 1.58

Curb returns all in on Bayford but not End Bayford

Pacific

Cross

12/10/23 Craport CROSS SECTION 00 60' wide
 HIGH ST 10' cbs.
 from SL Paving to S.
 End of Night

282
286 134
272

119.5

3

W	1231	113.50	101.19	cb	5.0	114.5	✓
	6.65	119.50	112.85	E	4.9	114.6	✓
				+5	4.6	114.9	✓
	3L Paving				85' 5		
W		2.7	112.8 ✓	-5	5.2	114.3	✓
cb		3.3	116.2 ✓	E	5.5	115.7	✓
1/4		3.2	116.3 ✓	cb	6.4	113.1	✓
c		2.7	116.8 ✓	1/4	6.1	113.2	✓
1/4		2.5	117.0 ✓	c	6.0	113.5	✓
+9		2.6	116.9 ✓	1/4	6.4	113.1	✓
cb		0.8	118.7 ✓	cb	6.6	113.0	✓
E		0.3	119.2 ✓	W	6.1	113.4	✓
	3' 5			+5	6.1	113.2	✓
E		1.7	117.8 ✓		103' 5		
cb		2.7	116.8 ✓	-10	7.8	111.7	✓
1/4		2.6	116.9 ✓	W	8.0	111.5	✓
c		2.9	116.6 ✓	+6	8.1	111.4	✓
1/4		3.2	116.3 ✓	cb	6.8	114.7	✓
cb		3.5	116.0 ✓	1/4	6.7	114.8	✓
W		3.0	116.5 ✓	c	6.1	113.4	✓
	50' 5			1/4	6.0	113.5	✓
W		4.3	115.4 ✓	cb	6.9	114.6	✓
cb		5.2	114.3 ✓	+1	7.4	114.1	✓
1/4		5.1	114.4 ✓	E	7.3	114.4	✓
c		4.9	114.6 ✓	+10	6.9	114.2	✓
1/4		5.0	114.5 ✓				

119.50

113' 5

-10	5.9	113.2	✓
E	6.1	113.4	✓
+8	6.2	113.3	✓
cb	6.7	112.8	✓
1/4	5.9	113.6	✓
C	6.1	113.4	✓
1/4	6.6	112.9	✓
+8	6.9	112.6	✓
cb	7.6	111.9	✓
+2	8.3	111.1	✓
W	8.8	110.7	✓
+10	8.7	110.8	✓

Notes for proposed Culvert

SL.

120'

Paving

10'

HIGH

Culvert

+00	7.0	114.5	✓
+10	7.2	114.3	✓
+20	7.0	114.5	✓
+32	5.9	113.6	✓
+40	7.0	114.5	✓
+65	8.6	110.9	✓
+85	9.7	109.8	✓

119.5 HIGH

4

140' 5

-10	9.1	110.4	✓
W	8.6	110.9	✓
cb	8.3	111.2	✓
+2	6.7	114.8	✓
1/4	5.9	113.6	✓
C	5.0	114.5	✓
1/4	5.0	114.5	✓
cb	5.6	113.9	✓
+2	4.9	112.6	✓
E	4.2	115.3	✓
+5	4.0	115.5	✓

160' 5

E	3.5	116.0	✓
+8	4.1	115.4	✓
cb	4.7	114.8	✓
+5	4.2	115.3	✓
1/4	4.2	115.3	✓
C	4.3	115.2	✓
1/4	5.1	114.4	✓
cb	6.1	113.4	✓
W	6.8	112.7	✓
+5	6.8	112.7	✓

200' 5

-5	4.9	114.6	✓
W	4.8	114.7	✓

119.50

								HIGH	5
cb			4.3	115.2	/	+7		130.47	
1/4			3.5	116.0	/	cb		10.0	120.4 ✓
c			2.8	116.7	/	+2		10.3	120.1 ✓
1/4			2.5	117.0	/	+3		10.4	120.0 ✓
+6			2.3	117.2	/	E		9.3	121.1 ✓
cb			2.7	116.8	/			8.8	121.6 ✓
+3			1.5	118.0	/	E	300'S		
E			1.1	118.4	/	+5		8.1	122.2 ✓
T.P	11.87	130.47	0.90	118.60	/	+6		8.3	122.1 ✓
		250'S				cb		9.4	121.0 ✓
E			10.6	119.8	✓	1/4		9.0	121.2 ✓
cb			11.3	119.1	✓	c		9.3	121.1 ✓
+4			10.9	119.5		1/4		9.8	120.6 ✓
1/4			11.2	119.2	✓	cb		10.1	120.2 ✓
c			11.6	118.8	✓	W		11.0	119.2 ✓
1/4			11.9	118.5	✓	+10		12.1	118.3 ✓
cb			12.6	117.8	✓			12.7	117.7 ✓
-14			13.4	117.0	✓		350'S		
+5			13.9	116.5	✓	-10		11.0	119.4 ✓
		270'S				W		10.4	120.0 ✓
-5			13.4	117.0	✓	cb		9.1	121.3 ✓
W			13.0	117.4	✓	1/4		8.5	121.9 ✓
cb			12.2	118.2	✓	c		7.9	122.5 ✓
1/4			11.2	119.2	✓	1/4		7.7	122.7 ✓
c			10.8	119.2	✓	+6		7.5	122.9 ✓
1/4			10.1	120.3	✓	cb		7.8	122.6 ✓
						+3		8.1	122.3 ✓

13047

+4	7.1	123.3	/
E	6.5	123.9	/
400' 5			
E	4.3	126.1	/
+7	4.9	125.5	/
+8	6.2	124.4	/
cb	6.1	124.3	/
1/4	6.1	124.3	/
C	6.5	123.9	/
1/4	6.9	123.5	/
cb	7.2	123.0	/
W	8.5	121.9	/
+10	8.7	121.7	/
425' 5			
-5	7.2	123.2	/
W	6.7	123.7	/
+8	6.3	124.1	/
cb	6.8	123.6	/
1/4	6.2	124.4	/
C	5.7	124.7	/
1/4	5.4	125.0	/
cb	5.2	125.4	/
+2	5.1	125.3	/
+3	4.0	126.4	/
E	3.8	126.6	/

E	
+7	
+8	
cb	
1/4	
C	
1/4	
cb	
+3	
W	
+5	
W	
cb on cement	
gutter	
1/4	
C	
1/4	
gutter	
cb on cement	
E	
E	
cb	
(on cement)	

13047

HIGH

450' 5

3.3	127.1	/
3.7	126.7	/
4.5	125.9	/
4.6	125.9	/
4.7	125.7	/
5.0	125.4	/
5.4	125.0	/
6.0	124.4	/
5.5	124.9	/
5.9	124.5	/
6.1	124.3	/
490' 5 - 11L Pearl 5T		
4.2	126.2	/
4.4	126.0	/
5.1	125.3	/
4.7	125.7	/
4.2	126.4	/
4.4	126.0	/
4.4	126.0	/
3.30	127.1	/
4.9	127.5	/
5L Pearl		
1.0	129.4	/
1.5	128.9	/
(4.30)		

13047

+1			2.6	127.8 ✓
1/4			2.4	128.0 ✓
c			2.9	127.5 ✓
1/4			3.1	127.5 ✓
cb	on cement		3.28	127.7 ✓
W			2.7	127.7 ✓
T.P	1231	14263	0.15	130.32
		30' 5		
W			12.3	130.3 ✓
+9			12.6	130.0 ✓
cb			13.0	129.6 ✓
1/4			12.3	130.3 ✓
c			11.8	130.8 ✓
1/4			11.7	120.9 ✓
cb			11.8	130.8 ✓
+2			11.8	130.8 ✓
+3			10.7	131.9 ✓
E			10.2	132.2 ✓
		60' 5		
E			7.7	134.9 ✓
+6			8.3	134.3 ✓
+7.5			9.7	132.9 ✓
cb			9.8	132.8 ✓
1/4			9.6	133.0 ✓
c			9.8	132.8 ✓
1/4			10.0	132.6 ✓

		HIGH	
cb		10.6	132.0 ✓
+2		11.1	131.5 ✓
+3		10.4	132.2 ✓
W		10.8	131.8 ✓
	100' 5		
W		8.8	133.8 ✓
+7		8.5	134.1 ✓
+8		9.0	133.6 ✓
cb		9.0	133.6 ✓
+5		8.3	134.3 ✓
1/4		8.2	134.4 ✓
c		8.0	134.6 ✓
1/4		8.0	134.6 ✓
+7		7.7	134.9 ✓
cb		8.0	134.6 ✓
+3		6.9	135.7 ✓
+4		6.9	135.7 ✓
E		6.5	136.1 ✓
	150' 5		
E		4.4	138.2 ✓
+7		5.0	137.6 ✓
+8		6.1	136.8 ✓
cb		6.1	136.8 ✓
1/4		5.8	136.8 ✓
c		5.8	136.8 ✓
1/4		6.3	136.8 ✓

742.6

7

142.63

+6	6.6	136.0 ✓
cb	7.1	135.5 ✓
+3	6.6	136.0 ✓
W	6.9	135.7 ✓
185' S		
W	5.8	136.8 ✓
cb	5.5	137.1 ✓
+3	5.0	137.6 ✓
1/4	4.8	137.8 ✓
c	4.5	138.1 ✓
1/2	4.4	138.2 ✓
cb	4.6	138.0 ✓
+1	4.6	138.0 ✓
+2	2.8	139.8 ✓
E	2.5	140.1 ✓
200' S		
E	2.2	140.4 ✓
+8	2.6	140.0 ✓
+9	4.2	138.4 ✓
cb	4.2	138.4 ✓
1/4	4.0	138.6 ✓
c	4.0	138.6 ✓
1/4	4.5	138.1 ✓
+7	4.7	137.9 ✓
cb	5.2	137.4 ✓
W	5.3	137.3 ✓

HIGH
142.63

8

250' S		
W	4.7	137.9 ✓
cb	4.2	138.4 ✓
+3	3.5	139.1 ✓
1/4	3.2	139.2 ✓
c	2.8	139.8 ✓
1/4	2.4	140.1 ✓
+6	2.2	140.2 ✓
cb	2.6	140.0 ✓
+2	2.6	140.0 ✓
+3	0.9	141.7 ✓
E	0.6	142.0 ✓
T.P.	6.86	148.62
285' S		
E	5.1	143.5 ✓
+7	5.4	143.2 ✓
+8	7.2	141.4 ✓
cb	7.2	141.4 ✓
+5	7.2	141.4 ✓
1/4	7.4	141.2 ✓
c	7.8	140.8 ✓
1/4	8.1	140.5 ✓
cb	9.1	139.5 ✓
W	9.5	139.1 ✓
310' S		
W	8.2	140.4 ✓

148.62

cb	8.1	140.5 ✓
1/4	7.4	141.2 ✓
c	7.1	141.5 ✓
1/4	6.7	141.9 ✓
cb	6.6	142.0 ✓
+1	6.6	142.0 ✓
+2	5.3	143.3 ✓
F	4.5	144.1 ✓

350'S

E	3.3	145.3 ✓
+9	4.1	144.5 ✓
cb	5.2	143.4 ✓
1/4	5.7	142.9 ✓
c	6.0	142.6 ✓
1/4	6.6	142.0 ✓
cb	7.6	141.0 ✓
W	7.6	141.0 ✓

400'S = 3. End

W	6.6	142.0 ✓
cb	6.0	142.6 ✓
1/4	5.0	143.6 ✓
c	4.3	142.3 ✓
1/4	3.8	142.8 ✓
cb	3.3	145.3 ✓
+1	2.6	146.0 ✓
E	1.7	146.9 ✓

HIGH

9

12/10/23

Levels on Cement Curb
on Graviella St
from W.L. La Jolla Blvd to
Vista Del Mar.

			NW Graviella & La Jolla Blvd	
	1.48	70.34	68.86	5 cb
		W.L. La Jolla Blvd (on 5=0+00)		N ✓
N cb		1.49	68.85	T.P.
S ✓		1.38	68.96	1
		100' W.		N. Cb
S cb		4.79	65.55	S ✓
N ✓		5.27	65.07	T.P.
		200' W		
N cb		8.67	61.67	S cb
S ✓		8.20	62.14	N ✓
		250' W = break in grade		
S cb		9.92	60.47	N cb
N ✓		10.36	59.98	
		300' W		N cb
N cb		12.61	57.73	
S ✓		12.23	58.11	
T.P.	0.28	57.85	12.77	57.57
		400' W		
S cb		4.38	53.47	
N ✓		4.52	53.33	
		475' W = break in grade		
N cb		7.82	50.03	
S ✓		7.73	50.08	

5785

10

500' W

		10.35	47.5	
		10.36	47.49	
	0.20	45.07	12.98	44.87
		600' W		
		7.66	37.41	
		7.77	37.3	
	0.67	33.14	12.60	32.47
		692.5	on N	} = EL. Vista Del Mar
		694	- 5	
		4.95	28.19	
		4.93	28.21	
		W.L. Vista Del Mar		Curb goes on S side from here
		7.24	25.30	
		107.40' W = End of Curb on N		
		12.73	20.41	

Levels on Curb
 Vista Del Mar
 from 5L
 33.14 from last page.
 S.L. Playa Del Sur

Ecb 5.20 27.94

W ✓ on Dirt 7.8 25.4

113.5 N. of N.L. of Gravilla = N. End of Cement on 11657.

Wcb 7.67 25.47

N.L. Gravilla St.

W. Cb 7.74 25.40

E ✓ 4.92 28.22

S.L. Gravilla St.

E. cb 5.00 28.14

W. cb gone (washed out)

34' S. of S.L. Gravilla = End cement curb.

W. cb 7.37 25.77

N.L. Kolmar

Wcb. 6.06 27.08

E ✓ 2.93 30.21

S.L. Kolmar

E cb. 2.73 30.41 on B.P.

W - 5.67 27.47

100' S. of Kolmar = End of Cement Cb. on E.

E. Cb. 7.77 39.18 1.73 31.41

N.L. Rosemont

E cb on dirt 6.6 32.6

W - - - 8.7 30.5

25
 33.5
 39.18

S.L. Rosemont

W. Cb on dirt 8.5 20.7

E - - - 6.0 33.2

N.L. Palomar End of Grading

E Cb on dirt 3.6 35.6

W - - - 6.0 33.2

T.P. 1.67 29.11 11.74 27.44

12/20/23 Gregory Levels on Cement Curb
Kolmar St

29.11 from last page
108' N. of W.L. Vista Del Mar = End of Curb

Sob 9.95 19.16

N/Cb 9.90 19.7

W.L. Vista Del Mar

N/Cb 7.00 17.11

S ✓ 1.67 27.44

12.75 43.16 30.41 from last page

E.L. Vista Del Mar on N = 0+00

Sob 12.75 30.41

N ✓ 12.93 30.43

all distances are measured on N Curb

T.P. 12.45 55.51 0.10 43.06

100' E

N/Cb 12.14 43.31

S ✓ 12.08 43.43

T.P. 12.81 67.49 0.83 54.68

206.0 E = break in grade.

Sob 10.03 57.46

N ✓ 10.07 57.44

300' E

N/Cb 7.07 60.44

S ✓ 6.97 60.52

406 E = break in grade

Sob 3.69 63.8

N ✓ 3.71 63.76

T.P. 12.64 79.59 0.54 66.95

500' E

Sob 11.57 68.04

N ✓ 11.98 67.61

600' E

N/Cb 7.86 71.73

S - 7.11 72.28

656' E on S } W.L. La Jolla Blvd.
662' E on N }

Sob 4.62 74.97

N ✓ 5.25 74.34

T.P. 0.55 78.39 1.75 77.84

12/10/23

Levels on
Rosemont ST.

78.39 from last page

W. L. La Jolla Blvd. on S = 0 + 00

N. Cb		0.57	77.87	
S ✓		0.64	77.75	
(distances measured on S) 100' W				
S. Cb		5.09	73.30	
N ✓		5.23	73.16	
200' W				
N Cb		9.80	68.59	
S ✓		9.65	68.74	
T.P.	0.89	66.35	12.93	65.46
302' W = End of Cement on S.				
S Cb		2.00	64.35	
N ✓		2.18	64.17	
358' W = End of Cement on N				
N Cb		4.47	61.88	
S ✓ on dirt		4.8	61.6	
391' W = break in grade				
S Cb on dirt		6.9	59.5	
N ✓ ✓ ✓		7.0	59.4	
400' W				
N Cb on dirt		8.0	58.4	
S ✓ ✓ ✓		7.7	58.7	
T.P.	0.01	53.57	12.79	53.56

5357

450' W

S Cb on dirt	1.3	57.3
N ✓ - ✓	1.0	57.6

500' W

N Cb on dirt	7.0	46.6
S ✓ - ✓ -	6.7	46.9

550' W

S Cb on dirt	12.5	41.1
N ✓ - -	12.8	40.8

T.P. 0.98

41.55 1300 40.57

6192 on N } = EL. Vista Del Mar
620.52 - -

N Cb on dirt	8.2	33.4
S ✓ - ✓	8.0	33.6

12/24/23
 Gregory. Levels on Curb
 Mission Beach Blvd
 To Establish Grades

H1 = +7.79

14

	1.13	10.65	952	BP NE Voltaire - Beach	E cb
T.P.	1.42	11.67	0.40	10.25	
T.P.	4.95	7.29	933	2.34	W cb
	N. End of Bridge				
E cb		0.73	656	End of	W cb
W ✓		0.81	6.48		
	50' N on L				W cb
W. cb.		1.90	539		
E ✓		2.05	5.24		
	100' N on L				
E. cb.		3.70	3.89		
W ✓		3.57	3.72		
	150' N on L				
W cb		5.20	2.09		
E ✓		5.10	2.19		
	207' N = End of Curve both sides				
E cb		5.90	1.39		
W ✓		6.19	1.10		
	N. of E.C. = P.C. on West				
W. cb.		7.02	+ 0.27		
E ✓	on Tangent	6.88	+ 0.41		
	N. of last above = P.C. on East				
E cb.		7.43	- 0.14		

PC of S. Curve into San Diego Pl.	
8.40	- 1.11
PC. of 25' Radius Curve on W.	
8.10	- 0.81
E.C. of 25' Radius Curve on W	
8.04	- 0.75 ✓
Center of 50' Radius Curve	
8.04	- 0.75 ✓
E.C. of 50' Radius Curve	
8.05	- 0.76 ✓
W cb Line Mission	
N Line San Diego Pl.	
E. cb Line Mission	8.39 - 1.10

✓

Cross Section of Palm 50' wide center 50'
India to Columbia 10' walks

10631

535	106.31	100.96	SFBP Indat Olive	N	7.2	99 .1	✓
	EL India				20' E		
S	6.0	100.3 ✓		-10	7.7	98 .6	✓
cb	6.0	100.3 ✓		-05	7.7	98 .6	✓
1/4	6.4	99.9 ✓		N	11.0	95 .3	✓
c	6.7	99.6 ✓		cb	11.2	95 .1	✓
1/2	6.9	99.4 ✓		1/2	11.2	95 .1	✓
cb	7.1	99.2 ✓		i	10.1	96 .2	✓
N	7.0	99.3 ✓		1/4	9.8	96 .5	✓
	03' E			+05	8.2	98 .1	✓
N	7.0	99.3 ✓		cb	4.7	101 .6	✓
cb	7.2	99.1 ✓		S	4.4	101 .9	✓
1/2	7.1	99.2 ✓			32' E		
c	6.3	100.0 ✓		-05	3.6	102 .7	✓
1/4	5.9	100.4 ✓		S	3.5	102 .8	✓
cb	5.8	100.5 ✓		+08	3.8	102 .5	✓
S	5.6	100.7 ✓		cb	5.3	101 .0	✓
	10' E			1/2	9.3	97 .0	✓
S	5.0	101.3 ✓		c	10.7	95 .6	✓
cb	5.3	101 .0 ✓		1/4	10.9	95 .4	✓
1/4	5.5	100 .8 ✓		cb	10.9	95 .4	✓
c	6.8	99 .5 ✓		N	11.6	95 .7	✓
1/2	9.6	96 .7 ✓		+04	11.1	95 .2	✓
+03	11.1	95 .2 ✓		+10	7.5	98 .8	✓
cb	10.9	95 .4 ✓					
+03	7.0	99 .3 ✓					

106.31

16.5' E = Grating of Culvert 2 x 2.5

1.8' S of NL Palm to center

98.5	96.46 ✓	Top of Grating
19.45	86.86 ✓	Flange of Culvert

55' E

-12	6.1	100.2 ✓
-06	11.5	94.8 ✓
N	10.4	95.9 ✓
ct	10.4	95.9 ✓
1/4	10.3	96.0 ✓
c	9.6	96.7 ✓
+04	9.1	97.2 ✓
1/4	7.3	99.0 ✓
ct	1.5	104.8 ✓
S	1.4	104.9 ✓
+05	1.4	104.9 ✓
T.P.	881	115.10 ✓
		0.02
		106.29 ✓

75'

-05	7.8	107.3 ✓
S	7.8	107.3 ✓
ct	7.8	107.3 ✓
+04	8.1	107.0 ✓
1/4	10.4	104.7 ✓
c	15.3	99.8 ✓
1/4	18.3	96.8 ✓
ct	18.2	96.9 ✓
N	19.3	95.8 ✓

115.10

16

+06

+13

-20

-10

N

+05

ct

1/4

c

1/4

ct

S

+08

15' S of 1/2 Palm to Center of Garage Concrete floor

20.0 98.1 ✓

14.6 100.5 ✓

100' E

15.5 99.6 ✓ st of house

15.8 99.3 ✓

19.1 96.0 ✓

17.5 97.6 ✓

17.5 97.6 ✓

16.0 99.1 ✓

10.9 104.2 ✓

5.5 109.6 ✓

4.6 110.5 ✓

4.5 110.6 ✓

4.8 110.3 ✓

92' E

6.20 108.9 ✓

110' E

-08 2.4 112.7 ✓

S 2.3 112.8 ✓

ct 2.9 112.2 ✓

+03 4.0 111.1 ✓

1/4 7.1 108.0 ✓

c 10.8 104.3 ✓

1/4 14.1 101.0 ✓

ct 16.5 98.6 ✓

N 17.7 97.4 ✓

+05	17.7	97.4 ✓
+09	15.6	99.5 ✓
+20	15.9	99.2 ✓
135' E		
-27	13.8	101.3 ✓
-15	13.6	101.5 ✓
-03	13.6	101.5 ✓
N	15.3	99.8 ✓
cb	14.2	100.9 ✓
1/4	11.6	103.5 ✓
C	8.6	106.5 ✓
1/4	3.5	111.6 ✓
cb	+2.3	117.4 ✓
+02	+3.3	118.4 ✓
S	+3.2	118.3 ✓
+05	+3.2	118.3 ✓
136' E = End of Conc. pipe Culvert		
0.5' S. of N.L. Red on flowline	15.93	99.17 ✓ 14" Digm.
145' E		
S	+5.8	120.9 ✓
+08	+5.5	120.6 ✓
cb	+4.2	119.3 ✓
1/4	-1.1	114.0 ✓
C	6.0	109.1 ✓
1/4	11.1	104.0 ✓
cb	12.9	102.2 ✓

N	13.1	102.0 ✓
+15	12.8	102.3 ✓
+30	11.5	103.6 ✓
163' E		
-30	10.7	104.4 ✓
-15	11.8	103.3 ✓
N	11.4	103.7 ✓
cb	6.8	108.3 ✓
1/4	3.4	111.7 ✓
T.P.	127.47	0.43 ✓
C	11.9	115.6 ✓
1/4	7.5	120.0 ✓
+6.5	30	124.5 ✓
cb	3.2	124.3 ✓
S	3.2	124.3 ✓
175' E		
S	1.3	126.2 ✓
cb	1.1	126.4 ✓
+1	0.0	127.5 ✓
+3	0.0	127.5 ✓
1/4	2.4	125.1 ✓
C	6.7	120.8 ✓
1/4	10.0	117.5 ✓
cb	14.8	112.7 ✓
N	19.5	108.0 ✓
+2	19.5	108.0 ✓

12747

+5		16.7	110.8 ✓
+45		16.7	110.8 ✓
	184' E		
-20		11.6	115.9 ✓
-6		10.8	116.7 ✓
-4		14.2	113.3 ✓
N		13.8	113.7 ✓
cb		13.0	114.5 ✓
+3		11.1	116.4 ✓
1/4		7.1	120.4 ✓
c		2.3	125.2 ✓
T.P.	6.39	133.62	0.21 ✓
1/4		5.3	128.3 ✓
+5.5		4.1	129.5 ✓
cb		6.3	127.3 ✓
5		6.3	127.3 ✓
	191' E		
5		5.6	128.0 ✓
cb		5.6	128.0 ✓
+2		3.7	129.9 ✓
1/4		4.1	129.5 ✓
+6.5		4.7	128.9 ✓
c		8.5	124.8 ✓
+5		14.0	119.6 ✓
1/4		14.0	119.6 ✓
cb		14.3	119.3 ✓

N
+2
+6
+15
-6
-4
N
cb
1/4
+2
c
1/4
+5
cb
5
5
cb
+2.5
1/4
c
1/4
cb
N
+5

center 50' of PALM

18

15.0	118.6 ✓
15.0	119.6 ✓
12.7	120.9 ✓
13.0	120.6 ✓
200' E = W.L. Columbia on South.	
5.9	127.7 ✓
9.0	124.6 ✓
8.9	124.7 ✓
7.4	126.2 ✓
7.1	126.5 ✓
4.7	128.9 ✓
4.4	129.2 ✓
3.9	129.7 ✓
3.9	129.7 ✓
5.1	128.5 ✓
4.9	128.7 ✓
W.L. Columbia on 5' E of W.L. Columbia on N	
4.9	128.7 ✓
5.1	128.5 ✓
3.9	129.7 ✓
4.1	129.5 ✓
4.4	129.2 ✓
4.6	129.0 ✓
4.7	128.9 ✓
5.1	128.5 ✓
5.3	128.3 ✓

W.L. Columbia N. and S on askew						
-5	49	128.7	✓	+20	14.0	119.6 ✓
N	48	128.8	✓		30' E	
cb	40	129.6	✓	-20	14.0	119.6 ✓
1/4	41	129.5	✓	N	13.7	119.9 ✓
c	44	129.2	✓	+2	13.7	119.9 ✓
1/4	41	129.5	✓	cb	6.5	127.1 ✓
+5	39	129.7	✓		45' E	
cb	49	128.7	✓	N 1/4	+3.5	137.1 ✓
S	49	128.7	✓	+6	1.1	132.5 ✓
E.L. Columbia on askew (Palm taken 80' into stream here)				cb	4.0	129.6 ✓
N	2.8	130.8	✓	N	13.2	120.4 ✓
cb	3.1	130.5	✓	+25	13.9	119.7 ✓
1/4	3.0	130.6	✓		65' E	
c	2.6	131.0	✓	-40	12.4	121.2 ✓
1/4	1.8	131.8	✓	N	9.3	124.3 ✓
cb	1.3	132.3	✓	cb	5.1	128.5 ✓
S	0.8	132.8	✓		78' E	
6' E of E.L. Columbia on S				5' S of N cb	2.8	130.8 ✓
-20	13.8	119.8	✓	N cb changed from previous	4.0	129.6 ✓
-15	13.8	119.8	✓	N	7.0	126.6 ✓
N	7.6	126.0	✓	+10	8.0	125.6 ✓
cb	2.1	131.5	✓		85' E	
8' S of N cb				-10	6.5	127.1 ✓
15' E of E.L. Col.				N	5.5	128.1 ✓
N cb	0.3	130.3	✓		110' E	
N	5.2	128.4	✓	N	+0.2	133.8 ✓
N	13.5	120.1	✓	+10	0.6	123.0 ✓

TP 12.37 145.85 ✓ 0.14 133.48
 12.63 158.17 ✓ 0.31 145.54 ✓
 12.56 170.74 ✓ + 0.02 158.19 ✓

CROSS SECTION OF CENTER 50' OF PALM ST.

This section is 6.5' W. of W.L. of STATE STATE CONSIDERED TO BE 50' wide

N	8.4	162.3 ✓	1/4
cb	9.1	161.6 ✓	c
1/4	9.8	160.9 ✓	1/4
c	9.5	161.2 ✓	cb
1/4	9.7	161.0 ✓	+7
cb	10.3	160.4 ✓	N
S	9.5	161.2 ✓	

This section is 45' wide W.L. of STATE (50' wide)

S	8.4	162.3 ✓	+2
cb	6.0	164.7 ✓	cb
1/4	5.9	164.8 ✓	TP
c	7.0	163.7 ✓	1/4
1/4	8.1	162.6 ✓	c
cb	8.1	162.6 ✓	1/4
N	6.6	164.1 ✓	cb
			S
N	4.8	165.9 ✓	
cb	6.3	164.4 ✓	S
1/4	5.4	165.3 ✓	cb
c	4.3	166.4 ✓	1/4
1/4	3.4	167.3 ✓	c

W.cb

W 1/4

2.6	168.1 ✓
2.2	168.5 ✓
0.7	170.0 ✓
1.0	169.7 ✓
1.8	168.9 ✓
2.4	168.3 ✓
3.1	167.6 ✓
4.6	166.1 ✓
4.2	166.5 ✓
3.4	167.3 ✓

E of State

2.2	168.5 ✓
2.8	167.9 ✓
2.4	168.3 ✓
1.14	169.60 ✓
12.5	169.7 ✓
11.54	170.66 ✓ on Mon
11.0	171.2 ✓
10.6	171.6 ✓
10.3	171.9 ✓

E 1/4

8.3	173.9 ✓
8.6	173.6 ✓
9.4	172.8 ✓
9.4	172.8 ✓

1/4	11.2	171.0	✓
cb	12.3	169.9	✓
N	12.4	169.8	✓

E C6

N	10.3	171.9	✓
cb	10.3	171.9	✓
1/4	8.9	173.3	✓
c	8.1	174.1	✓
1/4	7.5	174.7	✓
cb	7.1	175.1	✓
S	6.8	175.4	✓

This section 25'E of 6 State E.L. State

S	4.9	177.3	✓
cb	5.0	177.2	✓
1/4	5.4	176.8	✓
c	6.1	176.1	✓
1/4	6.8	175.4	✓
cb	7.9	174.3	✓
N	8.2	174.0	✓

11/3/24 *brp*

CROSS SECTION OF
NUTMEG AND STATE
NUTMEG considered 80' wide 14' obs
State - 75' - 12'

	11.97	155.53		143.56	BP Olive & Col.
	0.55	143.31	12.77	142.76	
	N. L. STATE				
N L of Nutmeg		7.0		126.3	✓
cb		12.0		131.3	✓
1/4		12.1		131.2	✓
c		11.8		131.5	✓
1/4		12.3		131.0	✓
cb		12.6		130.7	✓
+13		12.4		130.9	✓
s		13.3		130.0	✓
TP.	2.13	133.16	12.28	131.03	✓
+15			12.3	120.9	✓
+20			13.0	120.2	✓
	W. Cb of State				
-30		19.2		114.0	✓
-17		15.6		117.6	✓
s		4.8		128.4	✓
+3		2.4		130.8	✓
cb		2.6		130.6	✓
1/4		2.5		130.7	✓
c		2.3		130.9	✓
1/4		2.5		130.7	✓
cb		2.8		130.4	✓
N		3.5		129.7	✓
+10		4.5		128.7	✓

W 1/4

-10	5.1	127.8	✓
N	4.3	128.9	✓
cb	3.5	129.7	✓
1/4	2.8	130.4	✓
c	2.8	130.4	✓
1/4	2.7	130.5	✓
cb	2.8	130.4	✓
+6	2.8	130.4	✓
s	6.8	126.4	✓
+30	20.6	112.6	✓
+40	23.1	110.1	✓
	Center State		
-45	27.8	105.4	✓
-45	22.7	110.5	✓
-15	18.6	114.6	✓
s	8.9	120.3	✓
+7	4.0	129.2	✓
cb	4.0	129.2	✓
+2	9.5	123.7	✓
1/4 +8	6.5	126.7	✓
+10	3.3	129.9	✓
1/4	3.2	130.0	✓
c	3.2	129.9	✓ on hub
1/4	3.3	129.9	✓
cb	3.9	129.2	✓

N	4.8	128.4	✓
+10	6.2	127.0	✓
E. Quarter			
-10	8.1	125.1	✓
N	6.2	127.0	✓
cb	4.8	128.4	✓
1/4	4.3	128.9	✓
C	4.0	129.2	✓
1/4	5.6	127.6	✓
+10	7.6	125.6	✓
cb	13.4	119.8	✓
+8	19.3	112.9	✓
+9	15.4	117.8	✓
S	16.1	107.1	✓
+23	27.2	106.0	✓
+45	31.3	101.9	✓
E. Curb			
-45	34.8	98.4	✓
-32	33.6	99.6	✓
-7	25.1	108.1	✓
-5	26.1	107.1	✓
S	26.0	107.2	✓
+3	21.2	112.0	✓
cb	17.8	115.4	✓
1/4	14.9	118.3	✓
C	13.2	119.8	✓

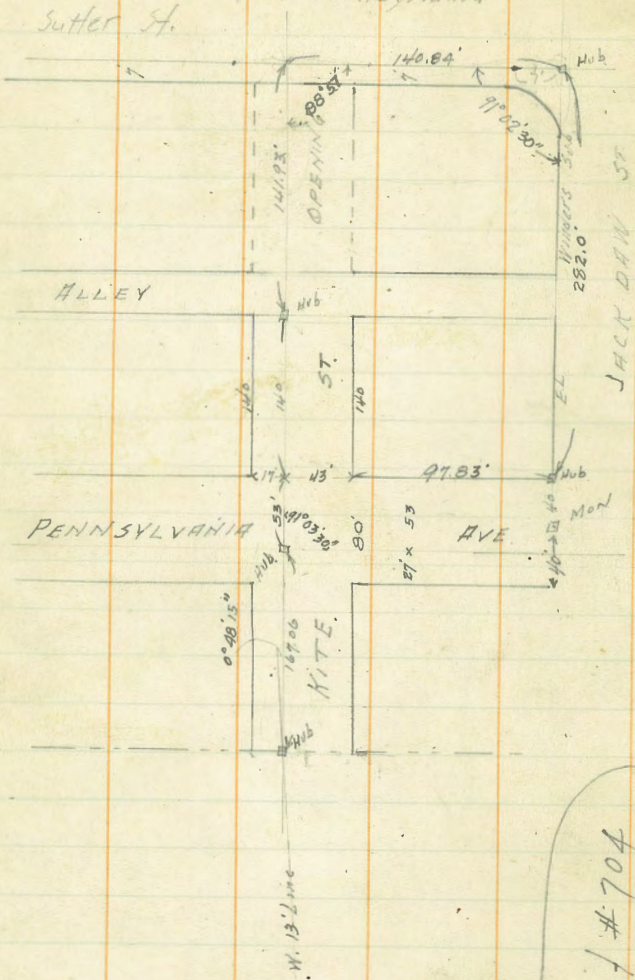
1/4		12.8	120.4	✓	
+7		12.2	121.0	✓	
T.P.	0.14	120.57	12.73	120.43	✓
cb		0.7	120.1	✓	
+8		3.1	117.7	✓	
N		4.3	116.5	✓	
+15		5.7	115.1	✓	
E. L State					
-10		13.3	107.5	✓	
N		12.2	108.6	✓	
cb		9.2	111.6	✓	
+6		7.7	113.1	✓	
1/4		7.3	112.5	✓	
C		8.1	112.7	✓	
1/4		8.8	112.0	✓	
+7		7.5	112.3	✓	
cb		10.8	110.0	✓	
S		13.2	107.6	✓	
T.P.	0.45	108.12	12.90	107.67	✓
+23		10.1	98.0	✓	
+50		13.2	92.9	✓	
15' E					
-25		15.0	93.1	✓	
-15		12.4	95.7	✓	
S		10.8	97.3	✓	
cb		8.1	100.0	✓	

1/4	7.0	101.1	✓
c	6.3	101.8	✓
1/4	5.9	102.2	✓
cb	6.1	102.0	✓
N	7.3	100.8	✓
+10	5.4	102.7	✓

30 E

-10	10.3	97.8	✓
N	12.7	95.4	✓
cb	12.2	95.9	✓
1/4	12.2	95.9	✓
c	13.4	94.7	✓
1/4	14.1	94.0	✓
cb	14.6	93.5	✓
5	16.4	91.7	✓

1/30/24 Gregor SURVEY FOR THE
 OPENING OF
 KITE ST
 from Pennsylvania to Sutter



B Sheet #704
 2-19-24
 1045-L

179-59-60
 91-07-30
 85° 57' 30"

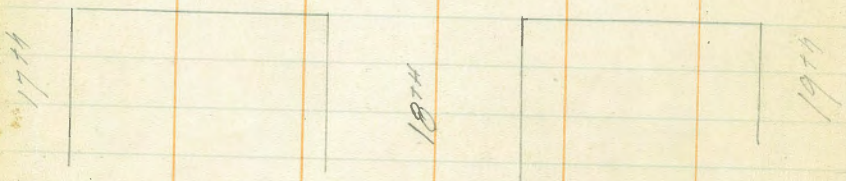
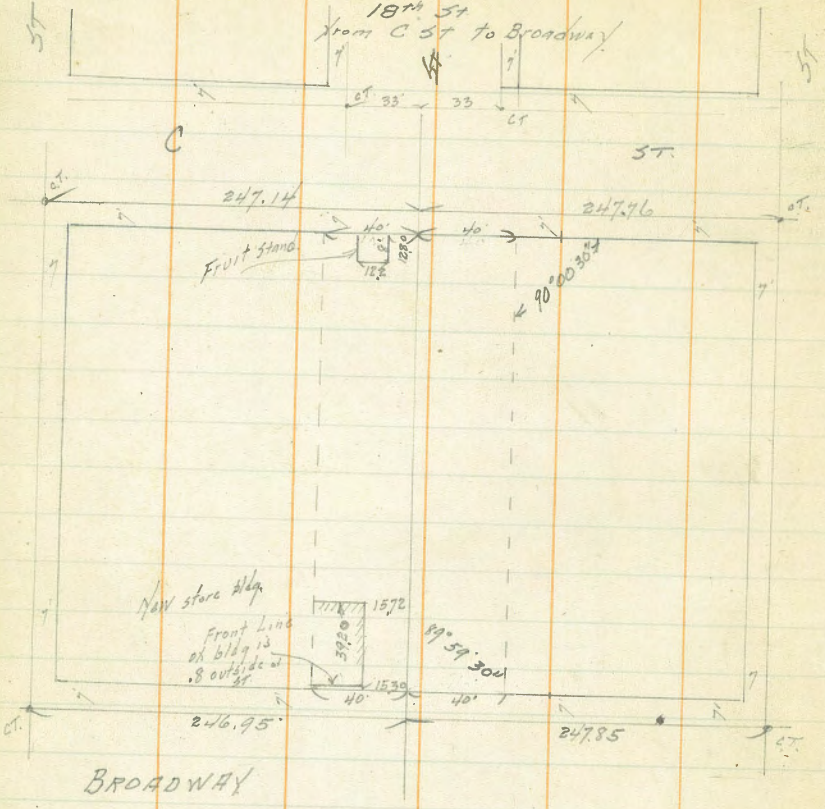
Thorn & Gregory N.W.B.P. 318-01

14082
 43
 9182

211

1/30/24
 Survey for the
 Opening of
 18th St
 from C St to Broadway

147.76



3/10/44 Survey for Location of Mission Valley
 Moore Way between University + Washington

5+15

4+80 Δ 30° 20' Rt.

4+40

4+00

3+00

2+50

2+00

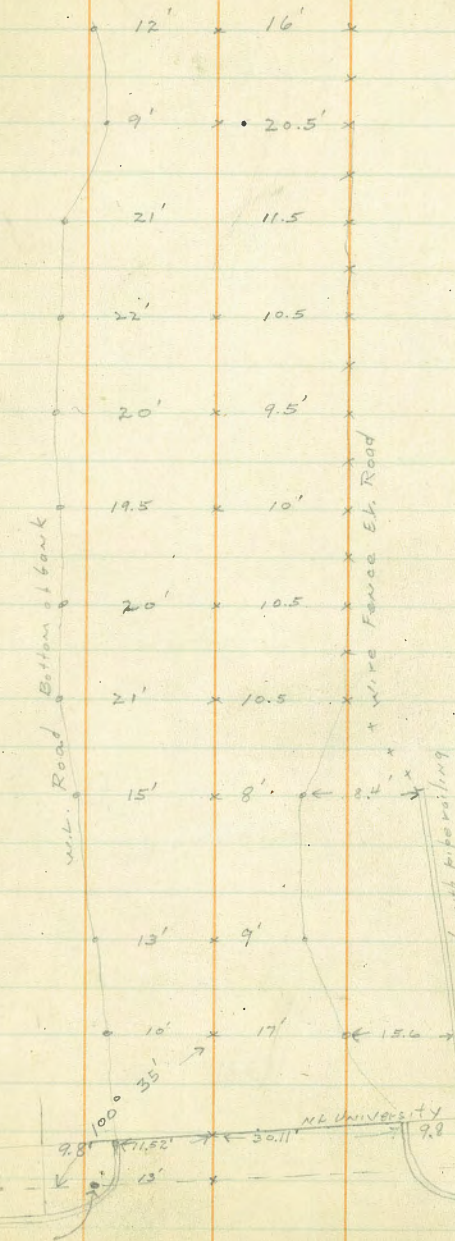
1+83

1+45

1+00

0+50

0+07
 N 7 Line of
 University = 0+00



Hospital Grounds

N.W. 7 track

Survey for Mission Valley Way

8+00

7+65

7+35

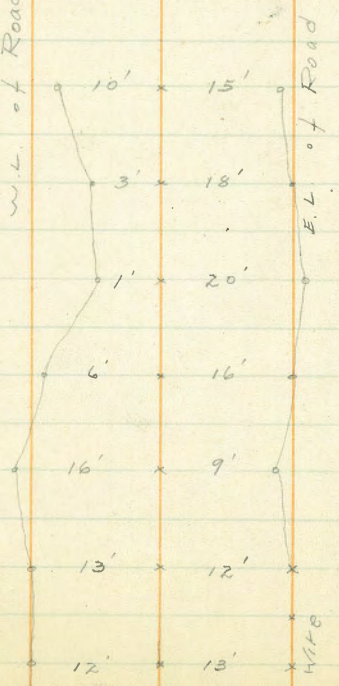
7+00

6+70 Δ $28^{\circ} 51' Lt$

6+40

6+00

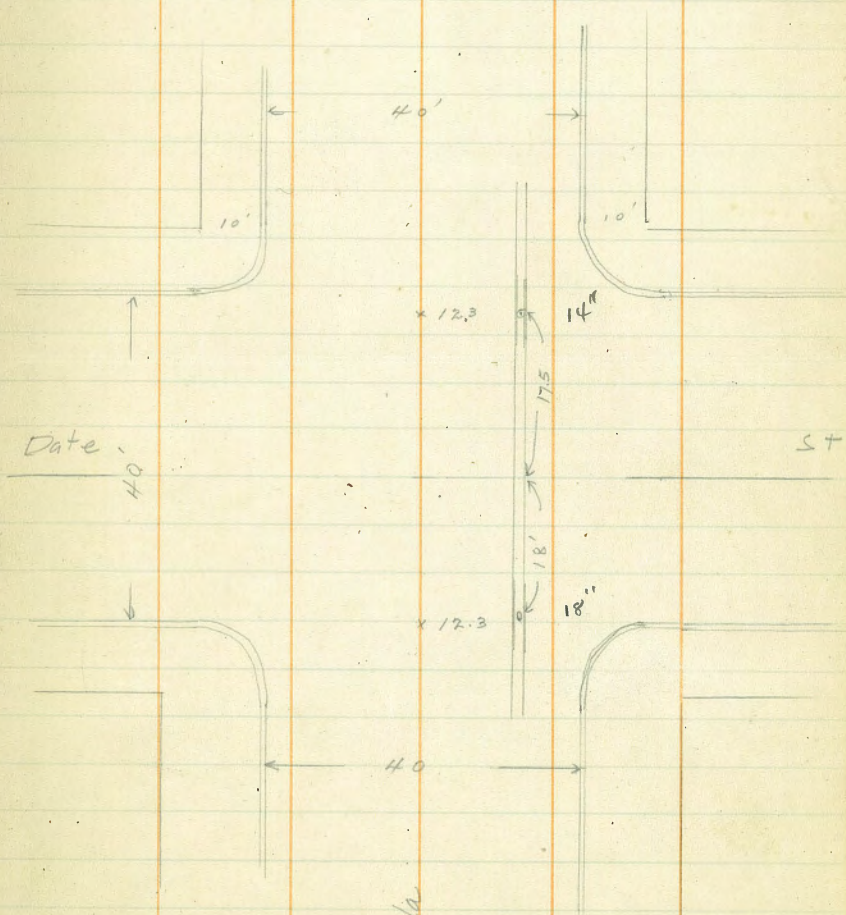
W.L. of Road Bottom of bank



Fence
Hospital Grounds

3/11/44
 Location and Elev. of 6" Water Main
 Granada + Date

	5.50	213.45	207.95	6W 57 Date + Granada
18' S of E of Date top of Main	7.46	205.99		
17.5 N ✓ ✓ ✓ ✓ ✓	7.22	206.13		

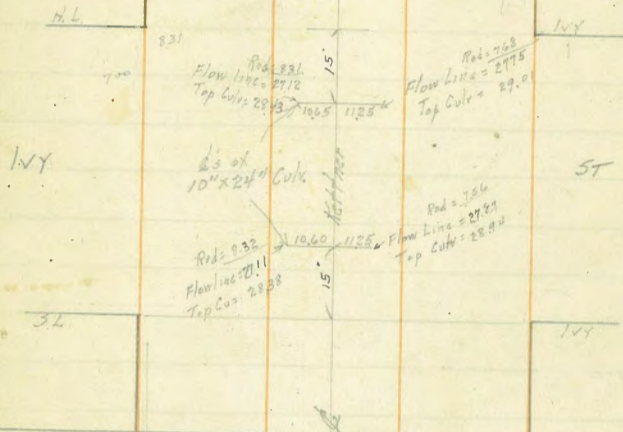


Granada

4/7/24 Gregory

Location and Elev. Culk. under Tracks at Kettner Blvd + IVY

4539 SW Indio + IVY
 833
 16.7
 1.2
 3.2
 35.13 Hd.



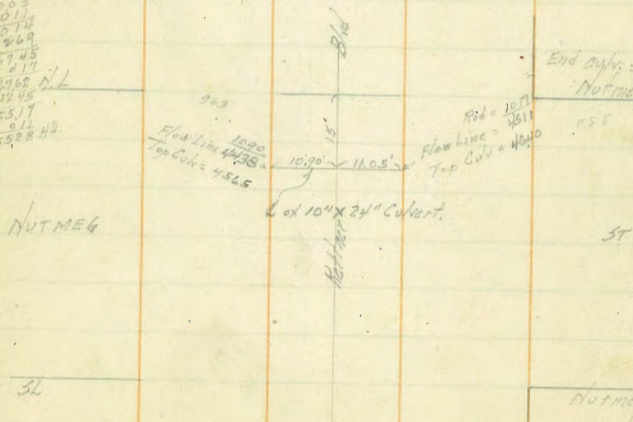
4/7/24 Gregory

Location & Elev. Culvert under Tracks at Nutmeg + Kettner Blvd

4190 SE Indio
 823
 9273
 10.0
 80.0
 0.1
 1.2
 1.2
 0.1
 2.6
 12.45
 55.17
 0.1
 59.28 Hd.

Levels West of
 End of Culk. on
 N. gutter line

End of Culk. = 4100	11.05	4545
Nutmeg +72	0.2	46.2
+75	0.5	46.1
+76	1.0	45.6
+75	2.9	43.7
+58.0	12.9	34.6
+60.0	13.0	33.6



733
 52
 118

85
 10.9
 2.8

31
 10.9
 2.8

LOCATION OF TEMPORARY CONSTRUCTION ON KETTNER BLVD

Temporary Track on East Side from 65' N. of NL Maple To 102' S. of 5L Maple.

Temporary Track from 101.5' N. of NL Nutmeg to 203' S. of 5L Maple on West Side

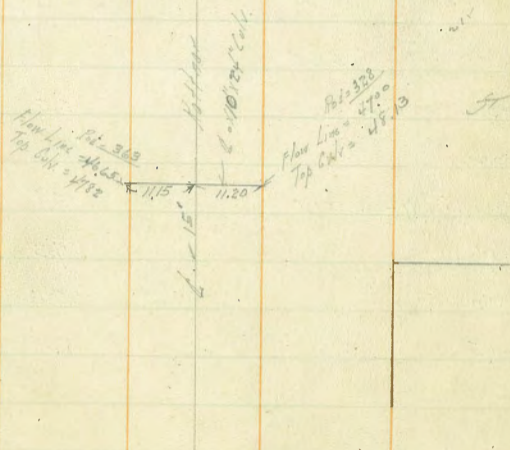
Temporary Track on East Side from 82' S. of 5L Kalmia To 125' N. of N.L. Kalmia

Temporary Track on West Side from 79.5' S. of 5L Kalmia To 175' N. of N.L. Kalmia

Location and Elevation of Culvert Under Tracks at Sassafras + Kettner Blvd

4205' spk V. 200 + Kettner
 3.10
 48.15
 7.40
 4375
 6.53
 50.88

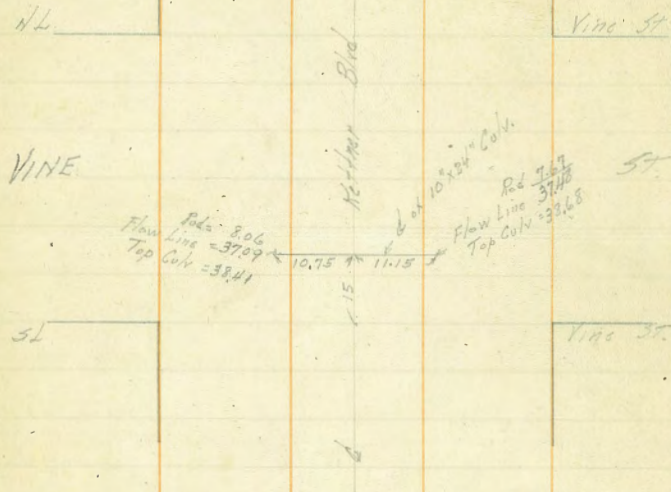
Sassafras



733
 52
 118

Location of Elev. Culvert under
Track Vine St. + Kettner

42.50 - 57.15 = 14.65
3.15
45.35 = H.L.

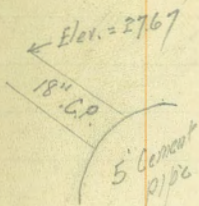


Levels west of End of Culvert along S. gutter

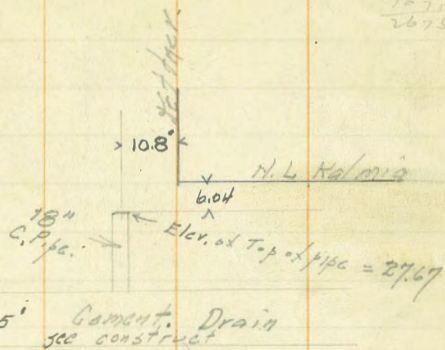
Station	5.52	43.93	38.41
0+00 = End of Culv.		5.5	38.4
+02		5.0	38.9
+24.75 = W. Kettner		5.8	38.1
+40		7.3	36.6
+50		7.9	36.0
+65		8.4	35.5

Location of Stand pipe
at Kalmia + Kettner

15.00 31
10.20
25.20



W. Kettner



East Line

31. Kalmia

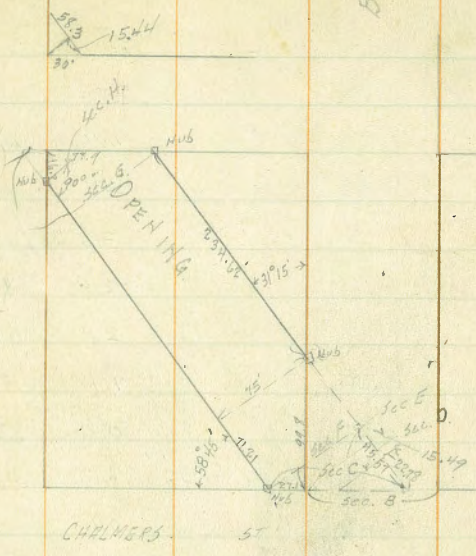
4/24/01. Gregory. CROSS SECTION OF
 STREET OPENING
 THRU BLY 168 MIDDLE TOWN
 from Chalmers to Winder
 11.87 58.86 40.99 304 NW
 Willow etc.

75' wide 12' cas 3. Line Chalmers - Sec. A.

W. - on rail of S.D.E.	4.96	47.90
HE cb	4.5	48.4
1/4	4.1	48.8
c	3.3	49.6
1/4	3.0	49.9
+11	3.2	49.7
+11.5	2.5	50.4
E	2.0	50.9
3 Curb of Chalmers		
E	1.9	51.0
cb	2.7	50.2
1/4	2.5	50.4
c	3.1	49.8
1/4	3.5	49.4
cb	4.6	48.3
W	4.6	48.3
3 1/4 of Chalmers		
W	4.5	48.4
cb	4.4	48.5
1/4	3.4	49.5
c	2.6	50.3
1/4	2.0	50.9
cb	1.5	51.4
E	1.1	51.8

WINDER

CALIFORNIA



Center of Chalmers

E	0.6	52.3
cb	1.0	51.9
1/4	1.5	51.4
c	2.3	50.6
1/4	3.0	49.9
cb	4.1	48.8
W	4.3	48.6
+3.0	4.4	48.5

N. 1/4 of Chalmers

-10	5.2	47.7
W	4.9	48.0
cb	4.7	48.2
1/4	3.5	49.4
C	2.9	50.0
1/4	2.1	50.8
cb	1.1	51.8
E	0.8	52.1

N. Curb Chalmers

E	0.6	52.3
cb	1.7	51.2
1/4	1.7	51.2
C	2.0	50.9
1/4	2.8	50.1
cb	3.4	49.5
E W	4.4	48.5
+18	5.2	47.7
+35 = inlet of 15" corrugated pipe	8.12	44.74 on Flow Line

N. L. Chalmers = Sec. B

-27.1	5.7	47.2
-17.1	5.1	47.8
W	2.0	50.9
cb	1.7	51.2
1/4	1.2	51.5
C	0.7	52.2

1/4	0.5	52.4
+3	1.1	51.8
cb	0.7	52.2
E	+0.5	53.4

Sec. C.

E	0.8	52.1
+8	1.1	51.8
cb	0.4	52.5
1/4	1.0	51.9
C	1.5	51.4
1/4	2.0	50.9
cb	4.1	48.8
+6	5.1	47.8
W	5.7	47.2

Sec. D = 22.78 N. of C on East.

C	1.5	51.4
E 1/4	1.0	51.9
E cb	0.1	52.8
E	+0.3	52.6
T.P.	6.54	57.65
	1.75	51.11

Sec. E = 15.49 N. of Sec. D

E	4.4	53.2
cb	4.8	52.8
1/4	5.3	52.3
C	5.9	51.7
+10	6.2	51.4

1/2	40	53.6
+6	41	53.5
+8	81	49.5
cb = NL Chalmers also.	88	48.8

Sec. F

W	10.5	47.1
+10	99	47.7
cb	90	48.6
+5	75	50.1
+6	43	53.3
1/4	34	54.2
+5	27	54.9
+6	57	51.9
c	58	51.8
1/4	52	51.4
cb	46	53.0
E	42	53.4

35.60' N. of Sec. F

F	99	53.7
cb	43	53.3
+11	45	53.1
+12	81	54.5
1/4	31	54.3
c	35	54.1
+4	38	53.8
+6	65	51.1

1/2	7.8	49.8
+6	7.9	49.7
+8	9.9	47.7
cb	10.6	47.0
+8	10.6	47.0
W	10.1	47.5

71.21' N. of Sec. F = 0+00

W	9.5	48.1
cb	10.3	47.3
1/4	10.0	47.6
+4	7.5	50.1
c	6.5	51.1
+3.5	5.5	52.1
+5	3.0	54.6
1/4	2.1	55.5
cb	0.9	56.7
+11	1.3	56.3
E	3.1	54.5

0+04.0

F	1.2	56.4
cb	0.7	56.9
1/4	2.4	55.2
+6	1.7	55.9
+8	5.8	51.8
c	6.8	50.8
+7	7.2	50.4

1/4	10.0	47.6
cb	10.2	47.4
+8	10.0	47.6
W	9.1	48.5

0+25

W	10.1	47.5
+2	8.8	48.8
+10	8.2	49.4
cb	10.0	47.6
1/4	10.2	47.4
+9	9.5	48.1
C	6.0	51.6
1/4	5.3	52.3
+3	4.4	53.2
+5	1.9	55.7
cb	1.3	56.3
E	0.3	57.3

0+50

E	0.6	57.0
cb	1.3	56.3
+2	4.9	52.7
1/4	6.7	50.9
+6	7.1	50.5
+10	9.2	48.4
C	9.7	47.9
1/4	9.7	47.9

+5	9.0	48.6
+8	7.6	50.0
cb	8.2	49.4
+10	8.9	48.7
W	10.0	47.6

0+75

W	9.8	47.8
cb	8.7	48.9
1/4	7.9	49.7
+2	9.8	47.8
C	9.8	47.8
+12	8.8	48.8
1/4	7.7	49.9
+2	6.5	51.1
cb	5.1	52.5
+3	4.5	53.1
+5	1.8	55.8
E	1.3	56.3

1+00

E	1.6	56.0
+2	2.0	55.6
+4	4.8	52.8
cb	6.1	51.5
+4	5.8	51.8
+8	9.0	48.6
1/4	9.5	48.1

76	9.7	47.9
E	8.6	49.0
+7	7.6	50.0
1/4	7.9	49.7
cb	8.9	48.7
+10	9.7	47.9
W	10.5	47.1

1+14

W	10.3	47.3
cb	9.5	48.1
1/4	8.1	49.5
+2	9.1	48.5
+9	8.6	49.0
+11	7.2	50.4
C	7.2	50.4
+8	7.6	50.0
+10	9.5	48.1
1/4	9.5	48.1
+10	8.5	49.1
cb	6.0	51.6
+6	5.5	52.1
E	2.7	54.9

1+30

E	4.9	52.7
+7	5.5	52.1
+9	8.3	49.3

cb	8.8	48.8
+10	9.1	48.5
1/4	6.9	50.7
+5	6.8	50.8
+9	6.0	51.6
C	7.2	50.4
+6	8.0	49.6
+8	9.7	47.9
1/4	9.6	48.0
+3	9.6	48.0
+7	8.7	48.9
cb	9.1	48.2
W	10.1	47.5

1+55

W	10.2	47.4
cb	9.5	48.1
+3	10.4	47.2
1/4	10.4	47.2
+2	10.4	47.2
+5	8.9	48.7
C	8.1	49.5
+7	9.3	50.3
1/4	5.7	51.9
+5	5.0	52.6
+10	8.8	48.8
cb	8.8	48.8

+10		8.0	49.6
E		4.5	53.1
	1+65		
E		8.4	49.2
cb		8.7	48.9
+4		4.5	53.1
+7		4.9	52.7
1/4		7.3	50.3
C		8.2	49.4
1/4		9.0	48.6
+2		9.1	48.5
+5		10.6	47.0
+12		10.6	47.0
cb		9.8	47.8
W		9.8	47.8
	2+02.0		
W		10.9	46.7
+3		11.4	46.2
+8		11.3	46.3
cb		9.8	47.8
1/4		8.9	48.7
C		8.4	49.2
+1		8.4	49.2
+3		9.7	47.9
1/4		8.7	48.9
+2		7.5	50.1

cb		5.2	52.4
+7		6.0	51.6
E		8.3	49.3
	2+20		
E		5.9	51.7
cb		5.6	52.0
1/4		7.1	50.5
+10		9.5	48.1
C		10.3	47.3
+2		10.3	47.3
+4		8.8	48.8
1/4		9.1	48.5
cb		9.8	47.8
+8		9.9	47.7
W		11.7	45.9
	2+34.62 = Sec G		
W		11.5	46.1
+5		10.0	47.6
cb		10.1	47.5
1/4		9.5	48.1
+3		9.5	48.1
+6		10.6	47.0
C		8.6	49.0
1/4		6.7	50.9
cb		6.2	51.4
+2		7.1	50.5

E	6.9	50.7
Sec. H.		
Int. of S.L. Winder	10.9	46.7
W 1/4	10.8	46.8
W cb	10.4	47.2
W.L.	10.6	47.0
S.L. Winder Taken diagonally with Kettner		
W.L. produced N.	12.5	45.1
+2	10.6	47.0
E.L. Cal. 57.	10.7	46.9
cb	10.7	46.9
1/4	11.4	46.2
c	10.0	47.6
1/2	7.7	49.9
cb	7.5	50.1
+3	7.7	49.9
E	6.9	50.7
N.L. Winder taken diagonally		
E	9.8	47.8
E.L. Cal.	12.0	45.6
3' N. of N.L. Winder on E.L. Kettner		
N.L. Winder	10.0	47.6
E.L. Kettner	8.3	49.3
15.44' N. of N.L. Winder on E.L. Kettner		
E.L. Kettner	8.8	48.8
23' W. of E.L. Kettner	9.7	47.9

25.72' W. of E.L. Kettner	= E.L. Cal.	12.0	45.6
54' N. of N.L. Winder on E.L. Kettner			
E.L. Cal.		11.8	45.8
W Kettner		9.4	48.2
58.3' N. of N.L. Winder			
E.L. Cal. + E.L. Kettner.		11.8	45.8 ✓
N.L. Winder			
E-cb of Cal.		12.7	44.9
W ✓ ✓		13.7	43.9
Culvert is 27' W. of ^{EL} Cal. 1' N. of S. cb Winder			
Inlet Culvert @ S. cb line Winder	=	41.1	
Track on S.L. Winder	=	43.4	

8/24 Gregory

Survey of Road
Thru P.L. 1299

54+58.97

Ex = 1'-2"

50+60

49+80

46+95.27

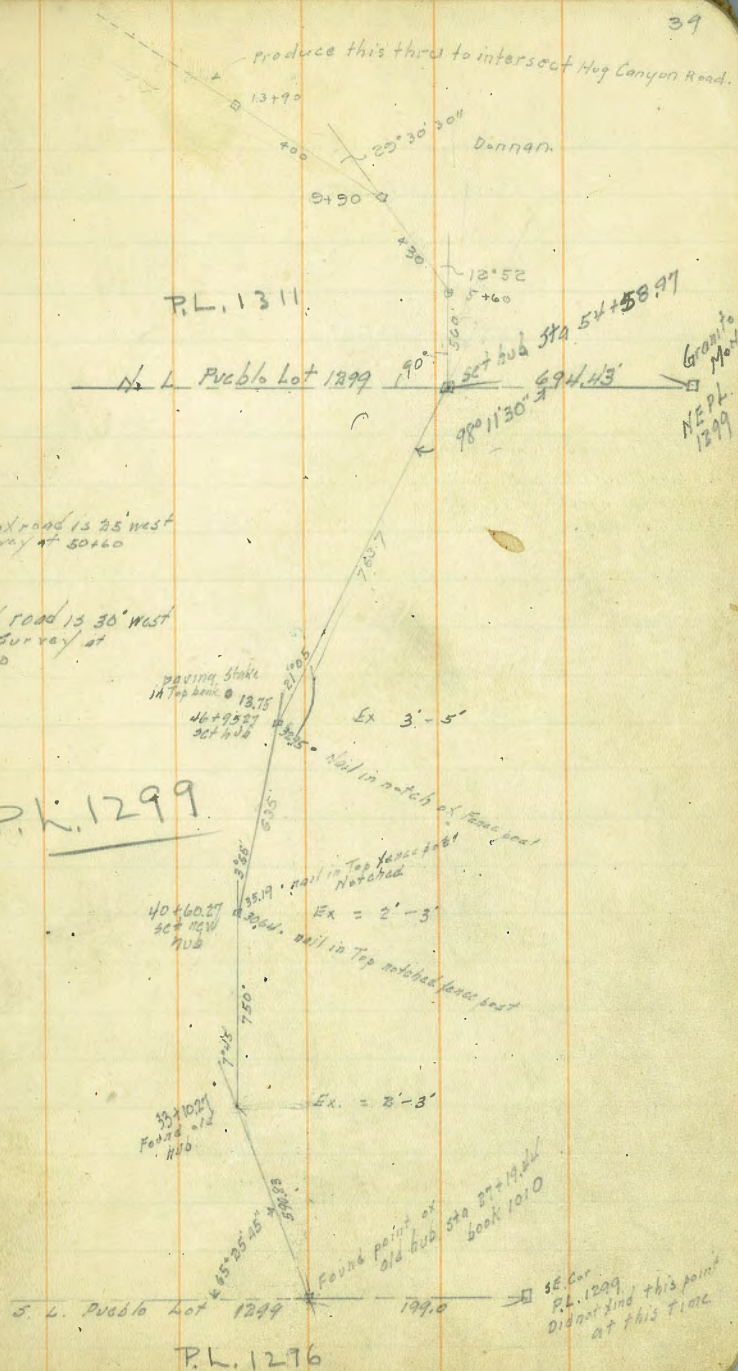
Δ 21°05' R

40+60.27

Δ 3°55' R

33+10.27 in book 1010 Δ 7°45' R

27+19.44 in book 1010



P.L. 1311

N. L. Publo Lot 1299

West edge of road is 25 west
ex E of survey at 50+60

West edge of road is 30 west
ex E of survey at
44+80

P.L. 1299

S. L. Publo Lot 1299

P.L. 1276

SE Cor
P.L. 1299
did not find this point
at this time

B.M.	13.06	198.07		185.01	sw. College & Exchange
T.P.	12.90	210.84	0.13	197.94	
T.P.	12.81	223.58	0.07	210.77	
			0.71	222.87	B.M. Ten Hydrant & Exchange E. Side Soleford Ave.
T.P.	12.87	236.39	0.06	223.52	
T.P.	11.23	247.24	0.34	236.01	
			1.41	245.83	B.M. B.P. N.C. Cor Exchange & Pepita
S.E. Cor Exchange & Pepita			1.08	246.16	on cb.
on E. Line Pepita			1.30	245.94	on cb.
S.E. Cor Exchange & Pepita			4.91	242.33	on cb.
S. Line Exchange			6.07	241.17	on cb.
S.W. Exchange & Pepita					
S. Line Exchange					
S.W. Exchange & Pepita					
W. Line Pepita					

10/20/24 N. Sec. of 28th ST from S. Line Palm to N. Line of Nutmeg

Make sharp wall

B.M.	7.79	302.74	294.95	NE Palm + 28 th				
		00 = S. Line Palm ST			20' W	4.6	296.1	
					10.5' W	4.3	296.4	
EHner 2' W		296.0	6.67	on Edge walk	10' W	6.01	296.7	on Eb
+10' W		295.9	6.88	on Eb	2' W	5.87	296.9	on Edge walk
+20' W		295.7	7.0					100' S
+21' W		295.6	7.1		2' W	5.65	297.1	on Edge walk
+22' W		295.0	7.7		10' W	5.84	296.9	on Eb
30' W		294.6	8.1		10.5' W	6.4	296.1	
41.5' W		294.7	8.0		20' W	6.4	296.3	
	50' S				30' W	6.3	296.4	
41.5' W		295.6	7.1		41.8' W	6.2	296.5	
26' W		295.4	7.3					150' S
21' W		296.2	6.5		41.5' W	6.3	296.4	
20' W		296.2	6.5		30' W	5.9	296.8	
10' W		296.3	6.37	on Eb	20' W	5.9	296.8	
2' W		296.6	6.14	on Edge walk	10.5' W	6.0	296.7	
	75' S				10' W	5.27	297.5	on Eb
2' W of E. Line 28 th		296.8	5.91	on Edge walk	2' W	5.02	297.7	on Edge walk
10' W		296.7	6.08	on Eb				200' S Brk
20' W		296.4	6.3		2' W	4.53	298.2	on Edge walk
22' W		295.9	6.8		10' W	4.78	298.0	on Eb
35' W		296.3	6.4		10.2' W	5.6	297.1	
41.5' W		296.1	6.6		20' W	5.5	297.2	
	80' S				28' W	5.5	297.2	
41.5' W		296.2	6.5		41.5' W	6.0	296.7	
33' W		296.5	6.2					

302.74
205' S

46.5 W	7.6	295.1	
41.5 W	6.9	295.8	
40' W	6.5	296.2	
28' W	5.6	297.1	
20' W	5.6	297.1	
10.2 W	5.6	297.1	
10' W	4.96	297.78	on cb.

250' S

10' W	5.63	297.8	on cb.
10.2 W	6.3	296.4	
20' W	6.3	296.4	
25' W	6.2	296.5	
35' W	6.6	296.1	
41.5 W	7.6	295.1	
46.5 W	8.1	294.6	

300' S

46.5 W	9.2	294.5	
41.5 W	7.5	295.2	
35' W	7.1	295.6	
20' W	7.1	295.6	
10.2 W	7.1	295.6	
	6.47	296.3	on cb.

325' S = End of curv walk & curb

F. line	6.4	296.3	
2' W	6.71	296.0	on Edge Walk
10' W	6.89	295.8	on Curb Not for Yardage S.

302.74

9' W	7.0	295.7	Yardage S.
10' W	7.5	295.2	
20' W	7.5	295.2	
32' W	7.6	295.1	
41.5	7.3	295.4	
46.5	8.6	294.1	

350' S

46.5 W	9.2	293.5	
41.5 W	8.3	294.4	
32' W	7.8	294.9	
20' W	8.0	294.7	
11' W	8.0	294.7	
10' W	7.6	295.1	
E. line	7.0	295.7	

400' S

E. line	8.1	294.6	
10' W	8.4	294.3	
11' W	9.1	293.6	
20' W	8.9	293.8	
35' W	8.7	294.0	
41.5 W	9.3	293.4	
46.5 W	9.5	293.2	

450' S

46.5 W	10.5	292.2	
41.5 W	10.2	292.5	
34' W	9.5	293.2	

302.74

450's (cont)

20'W	9.7	293.0
10'W	9.9	292.8
10'W	9.3	293.4
E. Line	8.9	293.8

500's

E. Line	9.8	292.9
10'W	10.1	292.6
11'W	10.9	291.8
20'W	10.7	292.0
30'W	10.3	292.4
41.5 W	10.7	292.0
46.5 W	11.3	291.4

550's

46.5 W	12.5	290.2
41.5 W	12.2	290.5
30'W	11.4	291.3
20'W	11.6	291.1
11'W	11.8	290.9
10'W	11.1	291.6
E. Line	10.8	291.9

600's

E. Line	11.6	291.1
10'W	12.0	290.7
11'W	12.4	290.3
20'W	12.6	290.1
31'W	12.3	290.4

302.74

28th St

43

35'W	13.0	289.7
41.5 W	13.3	289.4
46.5 W	13.6	289.1

Moore
in highCross Section of Alley (20' wide)
BIK 206 Univ. Hgts.

and BM SWBP E. 46	360.47	355.01	Univ. + 30th
	NL V. 100		
E	5.2V	355.15	
C	5.56	354.91	
W	5.4V	355.05	
	50' N		
W	4.6	355.9	
C	4.6	355.9	
E	4.8	356.0	
	90' N		
E	4.1	356.4	
C	4.2V	356.3	
W	4.3	356.2	
+V	4.0	356.5	
	150' N		
W	4.1	356.4	
C	3.8	356.7	
E	3.6	356.9	
	191' N		
E	3.2	357.3	
C	3.5	357.0	
W	3.2	357.3	
+5 # 2 door Garage Conc. Floor	3.0	357.5	
T.P.	8.00	365.28	3.19 357.28
	211' N		
-5	7.33	357.95	

365.28

44

W	7.6	357.7	
C	7.9	357.4	
E	7.7	357.6	
	239' N		
-10 # Garage Conc. Floor	6.7V	358.56	
E	7.2	358.1	
C	7.7	357.6	
W	7.5	357.8	
+5	7.40	357.9	
	259' N		
W	7.5	357.8	
C	7.3	358.0	
+2	6.9	358.4	
E	6.8	358.5	
+10	6.45	358.83	
	280' N		
E	6.9	358.4	
C	7.2	358.1	
W	7.5	357.8	
	297' N		
W	7.5	357.8	
C	6.7	358.6	
E	6.6	358.7	
+10	6.3	359.0	
	310' N		
-10	5.8	359.5	

36528

E		6.2	359.1		
C		6.2	359.1		
W		6.3	359.0		
	350' N				
W		5.8	359.5		
C		5.8	359.5		
E		5.7	359.6		
	375' N				
E		4.4	360.9		
C		4.8	360.5		
W		5.0	360.3		
	400' N				
W		4.9	360.4		
C		4.6	360.7		
E		4.1	361.2		
	427' N				
E-3	SL of 4 door Garage	4.30	360.98	conv. floor	
E		4.30	360.98		
C		4.4	360.9		
W		4.5	360.8		
	430' N				
W	SL of 3 ✓	4.44	360.84	✓	✓
	462' N				
W	N ✓ ✓ ✓	4.39	360.89		
C		4.4	360.9		
E		4.2	361.3		

36528

45

	468' N				
E-3	N of 4 door Garage	4.10	361.2	Conv. floor	
	500' N				
E		3.8	361.5		
C		3.8	361.5		
W		4.0	361.3		
	507' N				
E-3	SL of 4 door Garage	3.60	361.7	✓	✓
	540' N				
W		3.4	361.9		
C		3.4	361.9		
E		3.4	361.9		
	545' N				
E-3	N ✓ ✓	3.60	361.7	✓	✓
	560' N				
E		3.0	362.3		
C		3.0	362.3		
+5		3.1	362.2		
W		1.9	363.4		
	596' N				
W		2.0	363.3		
+4		3.4	361.9		
C		3.7	361.6		
E		3.6	361.7		
	600' N = SL Lincoln				
E	Alloy Return	3.88	361.40		

C			4.1	361.2	
W	Alley return		381	361.47	
TP	463	36662	329	361.99	
check BM	sw 7' track 20th + Lincoln		555	361.81	361.02

Moore
initialsCross Section of Hill 20' wide
BIK 9 L.W. Kimball's (G 425) (H=1)

on BM NEBP	124.19	111.50	24th St
	EL 24th = 0.0		
S	5.38	118.81	
C	5.19	119.00	
N	4.47	119.72	
	25' E		
N	4.8	119.4	
C	4.9	119.3	
S	5.2	119.0	
	58' E		
S	4.10	120.1	
C	4.2	120.0	
N	3.9	120.3	
+2.5	flowline of Drain	3.96	120.23 from Apartment
	68' E		
N-3	2 door Garage on Core/H/bron	3.49	120.70
	87' E		
N-3	✓ ✓ ✓	2.79	121.40
N		2.9	121.3
C		3.5	120.7
S		3.5	120.7
	93' E		
S	Garage wood floor	3.50	120.7
	112' E		
S		2.8	121.4
C		2.4	121.8

124.19

.77

N		1.9	122.3
+3	2 door Garage Core/H/bron	1.76	122.43
	132' E		
-3	✓ ✓ ✓ ✓	1.09	123.10
N		1.2	123.0
C		1.5	122.7
S		1.7	122.5
	144' E		
S	Garage wood floor	1.70	122.49
T.T.D	11.9	135.98	0.15 124.04
		174' E	
S	✓ ✓ ✓	12.30	123.7
		184' E	
N-4	✓ dirt	9.9	126.1
		196' E	
S	Garage Core floor	10.53	125.45 on H/bron
C		10.5	125.5
N		9.8	125.2
		206' E	
N-7	✓ wood floor	7.7	128.5
N		8.7	127.3
45		9.7	126.3
C		10.1	125.9
S		9.4	126.6
		245' E	
S	✓ dirt floor	6.0	130.0

135.98

C			6.3		129.7
N			6.4		129.6
		266'E			
N			4.6		131.4
C			4.9		131.1
S	Garage dirt floor		5.4		130.6
		308'E			
S	2 door Garage Conc floor		2.80		133.2
C			2.6		133.4
N			1.3		134.7
N	1048	126.28	0.18	135.80	
		356'E			
N			9.9		136.4
C			10.5		135.7
S	Fence H in Alley		10.5		135.7
		374'E			
N	2 door Garage ? floor		8.70		137.6
		392'E			
S	2 Garage Conc Apron		8.3		138.0
		407'E			
S	3 ✓ ✓ ✓		7.65		138.63
S			7.6		138.7
C			7.7		138.6
+9.6	✓ ✓ ✓		6.53		139.75
N			6.40		139.9
		443'E			
N	✓ ✓ ✓		4.82		141.45

146.28

49

				457'E	
-3	Garage dirt floor		4.30		142.0
N			4.7		141.6
+6			5.8		140.5
C			5.8		140.5
S	✓ Conc floor		6.10		140.2
				475'E	
S			5.6		140.7
C			5.2		141.1
+			5.1		141.2
N			4.4		141.9
+3	2 door Garage dirt floor		4.15		142.13
				493'E	
N			3.9		142.4
C			4.6		141.7
S	Garage Conc floor		4.7		141.6
				507'E	
S	✓ ✓ ✓		4.38		141.90
C			4.0		142.3
N	✓ dirt ✓		3.9		142.4
				536'E	
-1.5	✓ ✓ ✓		1.8		144.5
N			2.3		144.0
+3			3.0		143.3
C			3.2		143.1
S			3.08		143.20

14628

560' E

S top cement walk	27.4	143.54
C	2.8	143.5
N	2.4	143.9

600' E = well 25th

N on paving	2.06	144.22	
C	2.94	143.34	
S	3.30	142.98	
T.F. 0.78	143.19	487	14141
ch BM 25th + 1st NEOR.	11.53	130.66	13067

49

Moore 1/6
Walker 1/5
Preston
Cross Section of Alley 20' Wide
BIK 335 Choates Add. ^{21st + 32nd}
N. of Woodman

on B.M. BRAND.	6.73	55.34	48.61
		00-FL 31 st	
-10		12.2	43.1 ✓
SL		10.8	44.5 ✓
C & of Sewer. M.H.P.M.		9.92	45.4
+5		9.0	46.3 ✓
N		8.5	46.8 ✓
+5		8.1	47.2 ✓
	25' E		
-5		6.0	49.3 ✓
N		6.6	48.7 ✓
C		7.6	47.7 ✓
S		8.1	46.9 ✓
+10		9.6	45.7 ✓
	49' E		
-5		6.8	48.5 ✓
S		6.4	48.9 ✓
C		5.0	50.3 ✓
N		4.5	50.8 ✓
+5		3.5	51.8 ✓
	55' E		
-5		2.0	53.3 ✓
N		2.4	52.9 ✓
C		4.2	51.1 ✓
S		5.7	49.6 ✓
+5		6.4	48.9 ✓

55.34

50

63' E

-5		4.1	51.2 ✓
S		3.1	52.2 ✓
C		2.3	53.0 ✓
N		1.8	53.5
	70' E		
N		1.7	53.6
C		2.6	52.7
S		2.9	52.4
+5		3.3	52.0
T.P. in Pole 837	63.71	0.0	55.34
	80' E		
-5		11.5	52.2
S		10.8	52.9
C		9.4	54.3
N		8.8	54.9
	90' E		
N		6.4	57.3
C		7.5	56.2
+8		8.1	55.6
S		9.4	54.3
+5		9.7	54.0
	125' E		
-5		9.1	54.6
S		8.0	55.3
+3		6.1	57.6

637/

C			5.6	58.1
N			4.7	59.0
	123' E			
2' S of NL Paper tree	14" diam			
	150' E = Lath Fence across Alley			
N			3.7	60.0
C			5.1	58.6
S			6.5	57.2
	179' E			
S			7.3	56.4
C			5.5	58.2
N			4.0	59.7
+ 1/2 φ of Conc Runway			3.78	59.9
T.P	662	62.10	8.23	58.48
	190' E			
5' S of φ Date Palm	12" diam			
	211' E			
N			4.8	57.3
C = Fig tree	10" diam.		6.1	56.0
S			7.3	54.8
	235' E			
-5			10.0	52.1
S			9.3	52.8
C			8.3	53.8
N			7.0	55.1
251' E	1' N of φ 2 Fig tree	6" diam		

6210

51

275' E = Lath Fence across Alley

-5			10.0	52.1
N			10.6	51.5
C			11.7	50.4
S			12.1	50.0
+10			12.9	49.2
	280' E			
-10			9.4	52.7
S			10.1	52.0
+5			11.0	51.1
C			11.1	51.0
N			10.6	51.5
+10			10.6	51.5
	296' E			
-10			10.0	52.1
N			10.4	51.7
C			10.8	51.3
+7			10.9	51.2
S			9.9	52.2
+5			8.8	53.3
	314' E			
-5			8.6	53.5
S			9.3	52.8
C			9.0	53.1
N			9.2	52.9
+10			9.0	53.1

6210

318' E

-10	8.5	53.6
N	9.0	53.1
C	8.4	53.7
+4	7.8	54.3
+7	6.9	55.2
S	6.3	55.8
+5	6.1	56.0

325 E

S - 3.5 ^{under} of Garage Construction 5.60 56.25

343 E

-5	5.5	56.6
S	5.5	56.5
C	5.3	56.8
+5	5.4	56.2
N	5.8	56.3
+10	6.4	55.7

350 E

-10	5.0	57.1
N	4.4	57.7
C	3.8	58.3
S	3.1	59.0
+5	3.0	59.1
T.P.	13.08	71.59
		359
		58.51

365 E

S	6.4	64.7
+1 Fence in Alley	7.4	63.7

71.59

52

N	10.6	61.0
+1	11.6	60.0
+10	12.4	59.2

380 E

-5	9.6	62.0
-4	9.4	62.2
N	8.0	63.6
+4	6.8	64.8

C	6.2	65.4
+9.2 = Garage dirt floor	6.0	65.6
S	6.0	65.6

403 E

S	4.5	67.1
C	4.7	66.9
N	5.0	66.6

440 E

-1.4 & v v v	3.8	67.8
N	2.8	67.8
C	3.7	67.9
S	3.7	67.9

465 E

S	3.8	67.8
+5 = Double Garage dirt floor	3.8	67.8
C	3.6	68.0
N	3.1	68.5

fence in Alley
5

7159

508' E

- 1.8	# Garage dirt floor	2.8	68.8
N		2.90	68.7
C		3.2	68.4
S		3.4	68.2

535' E

S	Fence in alley #	2.3	69.3
C		2.6	69.0
N		2.6	69.0

565' E

N		1.1	70.5
C		1.6	70.0
S		1.4	70.2

600' E = WL 32nd

S		1.9	69.7
C		1.5	70.1
N		0.9	70.7

T.P. 158 7149 168 69.91

check to RM 32nd + Woolman 11.15 60.34

see top H. 1st + 60.40

N.B. 31st + 32nd Not graded

60' wide X Sec Myrtle from E. Line Arnold
to W. Line Villa Terrace

1/15/25
W. L. Sisson
Sisson

292.01

54

B.M. 13.00 292.01 279.01

oo = E. Line Arnold

N 12.7 279.3

cb 13.05 279.05 on amt cb

H 13.7 278.3

1/4 13.7 278.3

c 13.7 278.3

1/4 14.0 278.0

cb 14.0 278.0

S 13.8 278.7

6'E

S 13.5 278.5

c 13.3 278.7

1/4 13.3 278.7

c 13.2 278.8

1/4 13.0 279.0

cb 12.9 279.1

N 11.7 280.3

30'E

N 10.6 281.4

cb 12.2 279.8

1/4 12.1 280.0

c 12.2 279.8

1/4 12.3 279.7

c 12.7 279.3

S 12.7 279.3

60'E

S 11.6 280.4

cb 11.7 280.3

1/4 11.4 280.6

c 11.4 280.6

1/4 11.3 280.7

cb 11.0 281.0

N 9.9 282.1

83'E

N 8.6 283.4

cb 9.3 282.7

1/4 9.7 282.3

c 10.0 282.0

1/4 10.0 282.0

cb 10.4 281.6

S 10.7 281.3

+5 11.2 280.8

110'E

-10 11.7 280.3

S 10.8 281.2

cb 10.0 282.0

1/4 9.4 282.6

c 8.8 283.2

1/4 8.3 283.7

cb 7.9 284.1

N 7.5 284.5

292.01

135'E

N	5.7	286.3
cb	6.2	285.8
1/4	6.9	285.2
C	7.7	284.3
1/4	8.4	283.6
cb	8.7	283.3
S	9.2	282.8
+10	9.4	282.6
	165'S	
-10	8.5	283.5
S	7.8	284.2
cb	7.2	284.8
1/4	6.6	285.4
C	6.0	286.0
1/4	5.0	287.0
cb	4.4	287.6
N	3.8	288.2
+5	3.5	288.5
	195'E	
-5	0.0	292.0
N	0.1	291.9
cb	0.6	291.4
1/4	1.2	290.8
C	1.9	290.1
1/4	3.0	289.0
cb	3.9	288.1

292.01

Myrtle

55

S		5.0	287.0	
+15		5.8	286.2	
	210'E			
-15		3.6	288.4	
S		2.8	289.2	
+7		1.9	290.1	
cb		0.8	291.2	
T.P.	11.11	302.21	0.91	291.10
1/4			8.8	293.4
+5			7.7	294.5
C			8.8	293.4
1/4			7.2	295.0
cb			7.1	295.1
N			6.5	295.7
	220'E			
N			5.4	296.8
cb			5.8	296.4
1/4			6.2	296.0
C			6.4	295.8
1/4			7.5	294.7
cb			9.4	292.8
S			10.5	291.7
18			10.4	291.8

302.21

243' E

- 5	4.8	297.4
S	5.0	297.2
cb	4.6	297.6
1/4	4.4	297.8
C	4.2	298.0
1/4	3.7	298.5
cb	3.5	298.7
N	3.5	298.7

255' E

N	2.7	299.5
cb	2.8	299.4
1/4	3.0	299.0
C	3.1	299.1
1/4	3.1	299.1
+5	3.2	299.0
cb	4.4	297.8
S	4.1	298.1
+5	3.9	298.3

264.3^E = W. Line Villa Terrace to N.

- 5	2.8	299.4
S	2.5	299.7
cb	1.7	300.5
+4	2.4	299.8
1/4	2.4	299.8
C	2.4	299.8
1/4	2.8	299.4

302.21

Myrtle 56

+8	2.7	299.5
cb	2.21	300.0 on emb. cb.
N	2.0	300.2
264.3' E. on N. on Diagonal to 271.3' E. on S. - 7' log in Villa Terrace		
N	2.0	300.2
cb	2.20	300.01 on emb. cb.
cb	2.9	299.3 on ground
1/4	2.8	299.4
C	2.6	299.6
1/4	2.8	299.4
+6	2.7	299.5
cb	1.8	300.4
S	2.0	300.2

+ H.I. - June 23rd 1925
 xsection of Kite St 60' wide 10' Cbs 10' C's
 from Sutter to Marine View Advt. See page 25 this book. *Donnan Blinn*

Sutter & Jackdaw B.P.N.W. Cor 262.00

271.9

	9.94	271.94	262.00
On S cb of Sutter, Int E line of Kite (Cement)	0.22	✓ 265.07 ✓	
" " " " " " " " "	2.73	✓ 269.41 ✓	
W.L. Elevs taken on inner edge of Cement sidewalk	2.52	✓ 269.4 ✓	
" " " " " " " " "	3.09	✓ 268.15 ✓	
" " " " " " " " "	3.67	✓ 269.47 ✓	
" " " " " " " " "	4.21	✓ 267.73 ✓	
" " " " " " " " "	4.64	✓ 267.50 ✓	
" " " " " " " " "	5.40	✓ 266.54 ✓	
" " " " " " " " "	6.07	✓ 265.87 ✓	
0+01 E.U.	5.2	✓ 266.7 ✓	
" " " " " " " " "	4.0	✓ 267.9 ✓	
" " " " " " " " "	3.5	✓ 268.4 ✓	
" " " " " " " " "	3.0	268.9 ✓	
" " " " " " " " "	3.1	268.8 ✓	
" " " " " " " " "	2.4	269.5 ✓	
" " " " " " " " "	1.5	270.4 ✓	
0+00 W.L.	1.9	270.0 ✓	
" " " " " " " " "	2.7	269.2 ✓	
" " " " " " " " "	3.8	268.1 ✓	
" " " " " " " " "	3.9	268.0 ✓	
" " " " " " " " "	4.7	267.2 ✓	
" " " " " " " " "	5.3	266.6 ✓	
E.L.	6.1	265.8 ✓	

0+75 E.U.

W.L.
1+00 W.L.

E.L.

1+23 E.U.

h
114
L
114
Ch

W.L.

1+35 = S.L. Alley W.L. On lawn

Cb
1/2
E
1/2

271.94

271.9

6.6	265.3 ✓
6.0	265.9 ✓
5.5	266.4 ✓
4.7	267.2 ✓
3.7	268.2 ✓
3.0	268.9 ✓
2.1	269.8 ✓
2.4	269.5 ✓
2.9	269.0 ✓
3.6	268.3 ✓
4.6	267.3 ✓
5.7	266.2 ✓
6.4	265.5 ✓
6.9	265.0 ✓
7.7	264.2 ✓
7.5	264.4 ✓
6.9	265.0 ✓
5.5	266.4 ✓
4.7	267.2 ✓
4.3	267.6 ✓
3.0	268.9 ✓
2.9	269.0 ✓
4.2	267.7 ✓
4.9	267.0 ✓
5.6	266.3 ✓
6.8	265.1 ✓

271.90

271.9

cb	7.3	264.6	✓
+3 ^E	5.7	266.2	✓
E.L.	5.8	266.1	✓
1450 E.U.	5.8	266.1	✓
+6	5.8	266.1	✓
+8	7.2	264.7	✓
cb	7.1	264.8	✓
1/4	7.1	264.8	✓
±	6.2	265.7	✓
1/4	5.2	266.7	✓
cd	4.5	267.4	✓
W.C. On lawn	3.4	268.5	✓
W.C. 1467 ^E = ± 4' Cement walk to house	3.44	268.5	✓
2400 W.C. On lawn	3.4	268.5	✓
cb	5.1	266.8	✓
1/4	5.9	266.0	✓
±	6.2	265.7	✓
1/4	6.4	265.5	✓
cb	6.7	265.2	✓
+3	6.7	265.2	✓
+4	6.0	265.9	✓
E.L.	5.9	266.0	✓
W.C. 2412 = ± 4' Cement walk to house	3.4	268.5	✓
±	5.32	273.80	✓
2400 E.U.	7.8	266.1	✓
+6	7.8	266.1	✓

273.80

58

273.9

+7	8.3	265.6	✓
cb	8.2	265.7	✓
1/4	7.6	266.3	✓
±	7.2	266.7	✓
1/4	6.7	267.2	✓
cb	6.3	267.6	✓
+8	5.8	268.1	✓
W.C.	5.2	268.7	✓
W.C. 2475 = N.C. Pennsylvania Ave.	5.1	268.8	✓
cb	5.6	268.3	✓
1/4	6.1	267.8	✓
±	6.0	267.4	✓
1/4	6.9	267.0	✓
cb	7.1	266.8	✓
E.L.	7.4	266.5	✓
Note: Three cement porches to houses under construction on the east side of the st, at sta 1462 ^E - Porch 4' East, Rod=650 2408 ^E - porch 4' East Rod=622 sta 2400 = porch 4' East of E.L. Rod=662			
N.Cb Penn 14' Cb 13' Gts.			
E.L.	7.2	266.7	✓
	7.0	266.9	✓
	6.6	267.3	✓
	6.4	267.5	✓
	6.1	267.8	✓
	5.5	268.4	✓
W.C.	5.0	268.9	✓

273.95

273.9

N 1/4 Penn Ave.

W.L.	4.6	269.3	✓
	5.3	268.6	✓
	5.8	268.1	✓
	6.0	267.9	✓
	6.5	267.4	✓
	7.0	266.9	✓
E.L.	7.3	266.6	✓

E Penn Ave.

E.L.	7.0	266.9	✓
	6.7	267.2	✓
	6.4	267.5	✓
	5.8	268.1	✓
	5.6	268.3	✓
	5.3	268.6	✓
W.L.	4.8	269.1	✓

S 1/4 Penn Ave.

W.L.	4.9	269.0	✓
	5.2	268.7	✓
	5.5	268.4	✓
	5.7	268.2	✓
	6.2	267.7	✓
	6.6	267.3	✓
E.L.	7.2	266.7	✓

S cb Penn Ave.

E.L.	7.0	266.9	✓
------	-----	-------	---

273.95

273.9

Cb

	6.2	267.7	✓
	6.0	267.9	✓
	5.7	268.2	✓
	5.4	268.5	✓
	5.1	268.8	✓
W.L.	4.6	269.3	✓

oo = S.W. Penn Ave

W.L.	4.6	269.3	✓
cb	5.0	268.9	✓
1/4	5.4	268.5	✓
+	5.5	268.4	✓
1/4	5.7	268.2	✓
+6	5.7	268.2	✓
+9	5.2	268.7	✓
Cb	5.3	268.6	✓
E.L.	5.8	268.1	✓

o + 50 E.L.

Cb	5.5	268.4	✓
+5	5.3	268.6	✓
+8	6.0	267.9	✓
1/4	6.0	267.9	✓
+	5.7	268.2	✓
1/4	5.5	268.4	✓
cb	4.9	269.0	✓
W.L.	4.5	269.4	✓

273.80

273.9

0+75 ^{W.L.}	57.4	268.5	✓
cb	5.7	268.2	✓
1/4	6.2	267.7	✓
⊕	6.3	267.6	✓
1/4	6.6	267.3	✓
+6	6.7	267.2	✓
+5	6.0	267.9	✓
cb	6.1	267.8	✓
E.L.	6.2	267.7	✓
+00 E.L.	7.0	266.9	✓
cb	6.9	267.0	✓
+2	7.3	266.6	✓
+4	7.5	266.4	✓
1/4	7.4	266.5	✓
⊕	7.2	266.7	✓
1/4	7.3	266.6	✓
cb	6.9	267.0	✓
W.L.	6.3	267.6	✓

(1+40^W 1+38^E) E = N.L. Marine View

Note: Kite St. from here South is laid with 8' Cbs & 4'-3" Sidewalks, inner edge on P.L.

W.L. On cement walk	8.81	265.04	✓
+8 " " Cb	9.10	264.75	✓
cb.	8.8	265.1	✓
1/4			

273.85 See next page.
273.9

60

⊕	8.9	265.0	✓
1/4	8.9	265.0	✓
cb	9.2	264.7	✓
+2 On Cement Cb.	9.50	264.4	✓
E.L. " " Walk.	9.20	264.7	✓

xsection of Penn Ave E. L. Kite to W. C. Jackdow.

14' Cb 13' Qts: 80' st.

June 22nd 1925

annan.
Bliss
Northern.

273.85 See Preceding Page.

	+	T	-	?
N.C.			7.4 ✓	
cb			7.2 ✓	
1/4			7.3 ✓	
€			7.0 ✓	
1/4			7.2 ✓	
cb			7.0 ✓	
S.L.			5.8 ✓	
0+25 S.L.			6.1	
+5			6.3	
+9			8.2	
cb			8.4	
1/4			8.6	
€			8.0 ✓	
1/4			8.2	
+5			8.3	
cb			7.9	
+8			6.7	
+10			7.5	
N.C.			8.0	
#	3.43	267.90 ✓	9.38	264.47 ✓
0+50 N.C.			1.9	
+9			1.6	
cb			4.0	
+2			4.5	

+

267.90

1/4	4.5
€	5.3
1/4	5.3
cb	4.7
+5	4.7
S.L.	0.7
0+75 S.L.	1.6
+3	5.2
+10	7.0
cb	7.7
1/4	8.1
€	8.0
1/4	7.4
+6	7.0
cb	5.8
+6	2.2
N.C.	2.5
0+92 N.C.	3.7
+7	3.4
+10	4.9
+11	8.0
cb	8.8
1/4	7.2
€	7.1
1/4	9.1
cb	9.6

+ π
267.90

+7		9.6
S.L.		6.0
0+97 S.L.		8.3
+9		9.8
Cb		9.9
1/6		9.4
±		9.4
1/4		9.4
Cb		9.2
+3		8.7
+7		4.9
N.L.		5.1

0+978 ± = W.L. Jackdaw St.

N.L. On Cement Return		9.66
Cb " " "		9.83
1/4		9.4
±		9.4
1/4		9.4
Cb		9.8
+5		9.9
S.L.		8.0

#	6.21	265.03 [✓]	9.08	258.82
			2.96	262.07 = Initial B.M.

Plotted
7/19/21

X See Alleys in B.I.K.E.
Starkeys Prospect Park

7/16/25
miles

63

N. + S. Alley 20' wide
B.M. BP 10.62 89.63 79.01
SE. W. of Bourne + La Jolla Blvd

89.63
90'S.

S. of line of West Bourne

W	6.54	83.09	ancmt cl
E	5.93	83.50	" " "

E	5.3	84.3
C	5.5	84.1
W	5.4	84.7

00 = S. Line West Bourne No. Alley returns in.

115'S = Double garage on W cmt floor 10' Back

E	4.2	85.4
FS	5.5	84.1
φ	5.5	84.1
+8	5.7	83.9
W	5.0	84.6

W - 10	5.22	84.4 on floor
W	5.6	84.0
E	5.7	83.9
E	5.5	84.1

5'S

W	4.9	84.7
E	5.1	84.5
+7	5.1	84.5
E	3.8	85.8

163.45 S = N. Line B. W. Alley = φ Double garage on W cmt floor 9.5' Back

E	5.1	84.5
C	5.4	84.7
N	5.6	84.0
W + 9.5	5.15	84.48 on floor

200'S

41'S = φ Double Garage on W cmt floor 4' Back

E	3.4	86.7
+4	4.8	84.8
E	4.9	84.7
W	4.9	84.7
W + 4	4.81	84.82 on floor

W	5.4	84.7
E	5.0	84.6
E	5.0	84.6

234'S = φ Double garage on W cmt floor 8' Back

43'S = φ Double garage on W cmt floor 4' Back

W - 4	5.0	84.5
W	5.2	84.4
C	5.1	84.5
+7	5.0	84.6
E	3.4	86.0

E	5.0	84.6
C	5.2	84.4
W	5.4	84.7
W + 8	5.2	84.4 on floor

89.63

260' S

W	5.1	84.5	
C	5.0	84.6	
C	4.8	84.8	
	300' S		
E	5.4	84.2	
C	5.4	84.0	
W	5.2	84.4	
	340' S		
W	5.6	84.0	
C	6.3	83.3	
E	5.6	84.0	(.)
	347.95 = N Line Nautilus Alley return 100' W		
			Nat " " E
C	5.9	83.7	
C	6.8	82.8	
W	5.9	83.7	on chnt cl
W	7.31	82.32	No yardage
	12' S. of N. Line = N. cl		
W	7.55	82.08	on chnt cl
E	6.90	82.73	" " "

BIB B StarKeys Prospect Park

E-W Alley

87.63

64

00 = E Line N. & S. Alley 20' wide

N	5.1		
C	5.2		
S	5.1		
	10' E		
S	3.4		
C	3.7		
N	3.8		
	50' E		
N	1.8		
C	2.0		
S	1.4		
T.P.	12.04	100.98	0.69
		100' E	89.74
S	11.6		
C	11.4		
N	11.5		
	150' E		
N	10.0		
C	10.1		
S	9.8		
	200' E		
S	8.4		
C	8.4		
N	8.6		

100.98
250' E

N 7.2

E 7.0

S 4.8

300' E

S 5.6

C 5.5

N 5.5

350' E

N 3.8

C 3.8

S 3.7

400' E

S 1.6

C 1.8

N 1.8

T.P. 9.45 109.28 1.15 99.83

450' E

N 8.3

C 8.4

S 8.5

500' E

S 4.1

C 6.3

N 6.5

109.28

530' E

N 5.1

E 4.8

S 4.3

560' E = W Line Draper Ave

S 2.9

C 3.1

N 3.5

CHK

6.17 103.11 Draper & West Beach

one b SW cor

103.11 Draper & West Beach

70' wide
10' ch-s
12.5' hys

Albatross X Sec.
Douglass St. South

9/10/25
Miller

66

273.08

BM.	2.55	273.08	270.53	sw Douglass + Albatross
				00 = End of on E. side Albatross RR Map S. line Douglass
E Prop		1.9	271.2	
E ch		2.44	270.64	on end cut ch
				S ch line Douglass
E		1.8	71.3	
ch		2.4	70.5	
14		3.0	70.1	
25		4.0	69.1	
26		2.9	70.2	
14		2.7	70.4	
C		2.5	70.6	
14		2.1	71.0	
ch		1.9	71.2	
W		2.57	70.51	on end ch
				00 = S line Douglass
W		4.1	72.0	
ch		1.8	71.3	
14		2.1	71.0	
C		2.7	70.4	
14		2.9	70.2	
17		3.0	70.1	
ch		2.2	70.9	
E		1.9	71.2	
	30' S			
E		2.5	70.6	

ch	1.8	71.3	✓
14	3.3	69.8	✓
C	2.8	70.3	✓
14	2.3	70.8	✓
ch	1.8	71.3	✓
W	1.3	71.8	✓
			50' S
W	1.7	71.4	✓
ch	2.3	70.8	✓
14	2.6	70.5	✓
C	3.4	69.5	✓
14	3.7	69.4	✓
ch	2.7	70.4	✓
E	2.9	70.2	✓
			75' S
E	4.2	68.9	✓
ch	4.3	68.8	✓
14	4.3	68.8	✓
C	3.9	69.2	✓
14	3.1	70.0	✓
ch	2.5	70.6	✓
W	1.9	71.2	✓
			100' S
W	2.7	70.4	✓
ch	3.3	69.8	✓
14	3.3	69.8	✓

273.04
100 S (cont)

c	4.2	68.9✓
114	4.7	68.4✓
cl	6.1	67.0✓
e	13.1	60.0✓
+35	29.3	43.8✓

125' S

-	34.1	
-25	30.6	42.5✓
e	20.4	52.7✓
cl	15.3	57.8✓
+7	11.5	61.6✓
114	7.5	65.6✓
c	4.9	68.2✓
14	4.3	68.8✓
cl	4.1	69.0✓
w	3.7	69.4✓ <small>elev of gravel Drive</small>

135' S

w	3.2	69.5✓
cl	3.6	69.5✓
+1	5.4	67.7✓
14	6.1	67.0✓
c	9.2	63.9✓
14	13.0	60.1✓
cl	17.7	55.4✓
e	21.7	51.4✓
+30	34.6	38.5✓
+50	40.0	33.1✓

Albatross 67

273.04

140' S

-50	40.5	32.6✓
-30	35.5	37.6✓
e	24.0	49.1✓
cl	19.2	53.9✓
14	13.8	59.3✓
c	10.3	62.8✓
14	8.7	64.4✓
cl	8.3	64.8✓
+1	5.9	67.2✓
w	4.1	69.0✓

Cross Section N. S. Alley Block 109 Chm. Hghts

Between Utah & Kansas

From S.L. Meade to East Alley Blk 109

20 Wide

S.L. Meade
Kansas Meade

B.M.	494	371.72	366.78
		S.L. Meade	371.7
E		384	367.88
Gutter		42	367.5
S		42	367.5
Gutter		43	367.4
N Top. Cb		3.78	367.94
		5.5	
H		42	367.5
+1		46	367.1
S		48	366.9
E		48	367.5
		25.5	
E		4.5	367.2
S		47	367.0
H		44	367.3
		30.5	
H		46	367.1
S		54	366.3
+2		58	365.9
+8		57	366.0
E		50	366.7
		50.5	
E		57	366.0
+3		61	365.6

371.72

S	61	371.7
H	53	365.6
	75.5	
H	56	366.1
S	60	365.7
+5	60	365.7
E	50	366.7
	100.5	
E	55	366.2
+8	58	365.9
S	61	365.6
H	58	365.9
	145.5	
H	59	365.8
S	58	365.9
E	59	365.8
	160.5	
E	49	367.3
S	49	366.8
H	52	366.5
	180.5	
H	52	366.5
S	52	366.5
E	49	366.8
	200.5	
E	58	365.9

68
5-29-26
5-5-50
31-5-5
Northam

371.72

Z		53	<u>371.7</u> 366.4
H		55	366.4
	2765		
H		54	366.3
Z		55	366.4
F		48	366.9
	2505		
F		51	366.1
Z		56	366.1
H		56	366.1
	2755		
H		52	366.5
Z		52	366.5
+5		48	366.9
F		52	366.5
TP	6.00	372.49	523 366.49
		300.5	<u>372.5</u>
F		61	366.4
Z		63	366.4
H		59	366.6
	320.3		
H		52	367.3
+3		51	367.4
+7		59	366.6
Z		57	366.8
+4		53	367.2

69

372.99

F		53	<u>372.5</u> 367.4
	3505		
F		50	367.5
Z		59	366.6
+7		53	367.2
H		45	368.0
	365.5		
H		51	366.9
Z		56	366.9
F		53	367.4
	375.5		
F		50	367.5
Z		52	367.3
H		53	367.4
	400.5		
H		54	367.1
Z		57	366.8
F		58	366.8
	450.5	112 EXD 1114	
F		50	367.5
Z		55	367.0
H		53	367.2

Cross Section East of Block 109 Univ. Heights

Between El Cajon + Mead

From Kansas + Mead

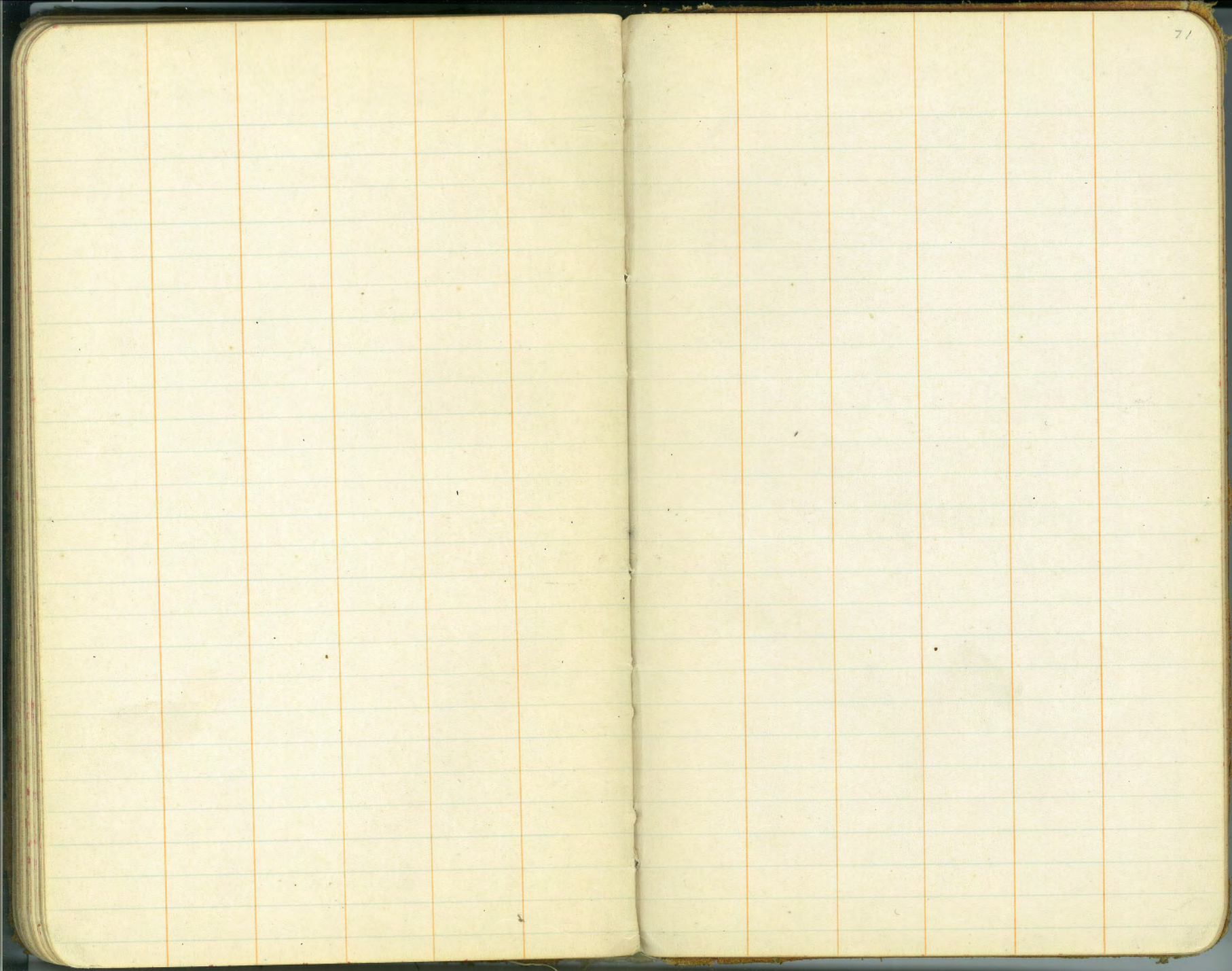
10' side

	372.49		
	N. L. Kansas	<u>372.5</u>	
H	Top Cb + Ground	41.9	368.4
	" Paving	4.55	367.94
L		48	367.69
	Top Paving	4.55	367.74
S	" Cb + Ground	4.1	368.3
	50' N		
S		41	368.4
L		42	368.3
H		50	367.5
	100' N		
H		52	367.3
L		42	368.3
S		39	368.6
	120' N		
S		54	367.1
L		58	366.7
H		54	367.1
	140' N - E. L. H. S. Alley		
H		50	367.5
L		52	367.3
S		47	367.8
	150' N - E. L. H. S. Alley		
S		50	367.5
L	Top Plan Hole	50.4	367.5

20' N - E. L. H. S. Alley
Dr. Garage Conc. Floor
4.13 367.9

70
5-18-21
5:45 PM
3:15 PM
North

			377.5
			367.1
		54	
	160' N - E. L. H. S. Alley		
H		53	367.1
L		55	367.0
S		50	367.5
	200' N		
S		44	368.1
L		47	367.8
H		46	367.9
	235' N		
H		42	368.3
L		42	368.3
S		40	368.5
	255' N		
S		36	368.9
L		37	368.8
H		38	368.7
	275' N		
H		27	369.8
L		27	369.8
S		24	370.1
	300' N - E. L. H. S. Alley		
S	Top Paving + Ground	208	370.41
L	" "	219	370.30
H	" "	211	370.38



730
50
75
100
25
35
40
50

DIRECTIONS FOR USE OF TABLES

TABLE No. 1.

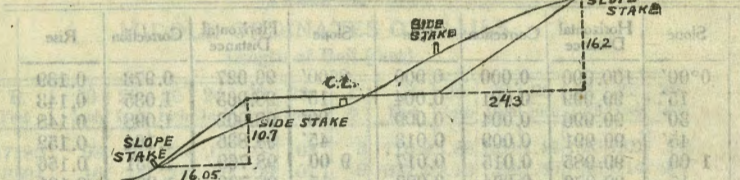
Distance of slope stake from side or shoulder stake for any width roadway, slope $1\frac{1}{2}$ to 1. If ground is nearly level, the cut or fill at side stake is located by the double entry method in left column and top row. The number in body of table in same row and column gives distance level estimate the difference in elevation between the side stake and slope stake, lower target by this amount if cut, elevate if fill. Add this amount to cut or fill and find distance in table. Set up rod at this distance from slope stake. If it does not make the right adjustment necessary.

**IMPROVED TABLES
AND
INFORMATION**

TABLE No. 2.

To find Tangent and External for curve of any other degree, divide by degree of curve and add connection found in column of connections. Degree of curve with a given T may be found by dividing tangent (or external), opposite T by given tangent (or external). The distance from a point on the tangent to the curve is very nearly the square of the tangent length divided by twice the radius.

INCLINED DISTANCE OF 100 FT. REDUCED TO HORIZONTAL



DISTANCES FROM SIDE STAKES FOR CROSS-SECTIONING.

SLOPE 1 1/2 TO 1. ROADWAY OF ANY WIDTH.

	0	1	2	3	4	5	6	7	8	9	
0	0 00	0 15	0 30	0 45	0 60	0 75	0 90	1 05	1 20	1 35	0
1	1 50	1 65	1 80	1 95	2 10	2 25	2 40	2 55	2 70	2 85	1
2	3 00	3 15	3 30	3 45	3 60	3 75	3 90	4 05	4 20	4 35	2
3	4 50	4 65	4 80	4 95	5 10	5 25	5 40	5 55	5 70	5 85	3
4	6 00	6 15	6 30	6 45	6 60	6 75	6 90	7 05	7 20	7 35	4
5	7 50	7 65	7 80	7 95	8 10	8 25	8 40	8 55	8 70	8 85	5
6	9 00	9 15	9 30	9 45	9 60	9 75	9 90	10 05	10 20	10 35	6
7	10 50	10 65	10 80	10 95	11 10	11 25	11 40	11 55	11 70	11 85	7
8	12 00	12 15	12 30	12 45	12 60	12 75	12 90	13 05	13 20	13 35	8
9	13 50	13 65	13 80	13 95	14 10	14 25	14 40	14 55	14 70	14 85	9
10	15 00	15 15	15 30	15 45	15 60	15 75	15 90	16 05	16 20	16 35	10
11	16 50	16 65	16 80	16 95	17 10	17 25	17 40	17 55	17 70	17 85	11
12	18 00	18 15	18 30	18 45	18 60	18 75	18 90	19 05	19 20	19 35	12
13	19 50	19 65	19 80	19 95	20 10	20 25	20 40	20 55	20 70	20 85	13
14	21 00	21 15	21 30	21 45	21 60	21 75	21 90	22 05	22 20	22 35	14
15	22 50	22 65	22 80	22 95	23 10	23 25	23 40	23 55	23 70	23 85	15
16	24 00	24 15	24 30	24 45	24 60	24 75	24 90	25 05	25 20	25 35	16
17	25 50	25 65	25 80	25 95	26 10	26 25	26 40	26 55	26 70	26 85	17
18	27 00	27 15	27 30	27 45	27 60	27 75	27 90	28 05	28 20	28 35	18
19	28 50	28 65	28 80	28 95	29 10	29 25	29 40	29 55	29 70	29 85	19
20	30 00	30 15	30 30	30 45	30 60	30 75	30 90	31 05	31 20	31 35	20
21	31 50	31 65	31 80	31 95	32 10	32 25	32 40	32 55	32 70	32 85	21
22	33 00	33 15	33 30	33 45	33 60	33 75	33 90	34 05	34 20	34 35	22
23	34 50	34 65	34 80	34 95	35 10	35 25	35 40	35 55	35 70	35 85	23
24	36 00	36 15	36 30	36 45	36 60	36 75	36 90	37 05	37 20	37 35	24
25	37 50	37 65	37 80	37 95	38 10	38 25	38 40	38 55	38 70	38 85	25
26	39 00	39 15	39 30	39 45	39 60	39 75	39 90	40 05	40 20	40 35	26
27	40 50	40 65	40 80	40 95	41 10	41 25	41 40	41 55	41 70	41 85	27
28	42 00	42 15	42 30	42 45	42 60	42 75	42 90	43 05	43 20	43 35	28
29	43 50	43 65	43 80	43 95	44 10	44 25	44 40	44 55	44 70	44 85	29
30	45 00	45 15	45 30	45 45	45 60	45 75	45 90	46 05	46 20	46 35	30
31	46 50	46 65	46 80	46 95	47 10	47 25	47 40	47 55	47 70	47 85	31
32	48 00	48 15	48 30	48 45	48 60	48 75	48 90	49 05	49 20	49 35	32
33	49 50	49 65	49 80	49 95	50 10	50 25	50 40	50 55	50 70	50 85	33
34	51 00	51 15	51 30	51 45	51 60	51 75	51 90	52 05	52 20	52 35	34
35	52 50	52 65	52 80	52 95	53 10	53 25	53 40	53 55	53 70	53 85	35
36	54 00	54 15	54 30	54 45	54 60	54 75	54 90	55 05	55 20	55 35	36
37	55 50	55 65	55 80	55 95	56 10	56 25	56 40	56 55	56 70	56 85	37
38	57 00	57 15	57 30	57 45	57 60	57 75	57 90	58 05	58 20	58 35	38
39	58 50	58 65	58 80	58 95	59 10	59 25	59 40	59 55	59 70	59 85	39
40	60 00	60 15	60 30	60 45	60 60	60 75	60 90	61 05	61 20	61 35	40
41	61 50	61 65	61 80	61 95	62 10	62 25	62 40	62 55	62 70	62 85	41
42	63 00	63 15	63 30	63 45	63 60	63 75	63 90	64 05	64 20	64 35	42
43	64 50	64 65	64 80	64 95	65 10	65 25	65 40	65 55	65 70	65 85	43
44	66 00	66 15	66 30	66 45	66 60	66 75	66 90	67 05	67 20	67 35	44
45	67 50	67 65	67 80	67 95	68 10	68 25	68 40	68 55	68 70	68 85	45
46	69 00	69 15	69 30	69 45	69 60	69 75	69 90	70 05	70 20	70 35	46
47	70 50	70 65	70 80	70 95	71 10	71 25	71 40	71 55	71 70	71 85	47
48	72 00	72 15	72 30	72 45	72 60	72 75	72 90	73 05	73 20	73 35	48
49	73 50	73 65	73 80	73 95	74 10	74 25	74 40	74 55	74 70	74 85	49
50	75 00	75 15	75 30	75 45	75 60	75 75	75 90	76 05	76 20	76 35	50

Computed by L. Leland Locke.

3 1/2" x 1/2" wood new BP 4861
 22 ✓ sw up hgt 6040
 v + Franklin 707' new sp. 40

98° 11' 30"
 8 30
 89° 41' 30"

89° 41' 30"

+ 1.21
- 4.86

294.96
7.79
302.74

1780
060
1840
1020
820
174
994
532
462
004
466
642
-1.82
447
265

1133
994
139

cc.
466
-201

712
139
573

192.94
12.06
210.94

47.5
-1.5
46.0

265
189

410
187
223

452
-1.87
57

447
-182

583
-28

6196
Curb
Cleveland

5. Curb
Cleveland

5 Line
Cleveland

N Edge 213.30 paving

000490
1160
29
04060

695.10
69
694.43

S. de Palm

516 End EL 3007 to End of CB
539 ✓ ✓ ✓ ✓ ✓

271944
1590
3310
706027

469527
16370
545897

98° 11' 30"

SE India + Palm 999.6 = 99.98
SE - Olive 100.96

173.45
173.45
347.9

136 E = End of Conc Pipe Culvert
05 S of N L 14" Dia
15.93 Flowline

30 11
11 10
41.51

278
188

647
466
181

4982
408
5390

32.60
17
15.60

623
8
498.4
624
560.8

286
180

27090

+ 92
15'S

6.20
4x4
55

277
27.5
19.9
50
43
140.4

12.60
2
1.39
15.93

EL India
03
10
20
32
55
75
110
135
145
163
175
184
191
200

277
141
102

648
65
583
300

40 6027
16.31
469527

163.45
20.45
546.90