

1111

LAST

FIELD BOOK

No. 385 F

Mount SE Cedar 23470

Our Leather Bound Engineers Note Books are carried in the following rulings:

- No. 380 LEVEL BOOK. Left and Right Hand Page the same as Left Hand Page of this Book.
- No. 382 FIELD BOOK. Left Hand Page as in this Book, Right Hand Page 4 x 4 to the inch, Center Line Red.
- No. 384 MINING TRANSIT BOOK. Left Hand Page as in this Book, Right Hand Page 8x8 to the inch, Center Line Red.
- No. 385 FIELD BOOK. Left Hand Page as in this Book, Right Hand Page 8 vertical and 4 horizontal lines to the inch, Center Line Red.

We also carry the Note Books listed above, bound in extra strong Fabri-Hide (otherwise the same quality of book), which can be furnished at a somewhat lower price.

In ordering Fabri-Hide covered books, add the letter "F" to catalog number.

THE FREDERICK POST CO.

ENGINEERING and DRAFTING SUPPLIES

IRVING PARK STATION

CHICAGO, ILL.

92 FIFTH ST.
PORTLAND, ORE.

79 NEW MONTGOMERY ST.
SAN FRANCISCO, CAL.

AGENTS FOR

"BERGER" TRANSITS and LEVELS

"GURLEY" SURVEYING and HYDRAULIC INSTRUMENTS

"CHICAGO" STEEL TAPES, etc.

2/29/24 Gregory

CROSS SECTION OF
 FELTON ST 65' wide
 from N.L. Dwight to Old Boundary Line
 15' strip
 114.92' strip - Bound

10.70 334.80 324.00
 4.51 334.53 478 330.02

N.L. Dwight

W	53	29.2
cb	56	28.9
1/4	56	28.9
C	57	28.8
1/4	59	28.6
cb	61	28.4
E	62	28.3

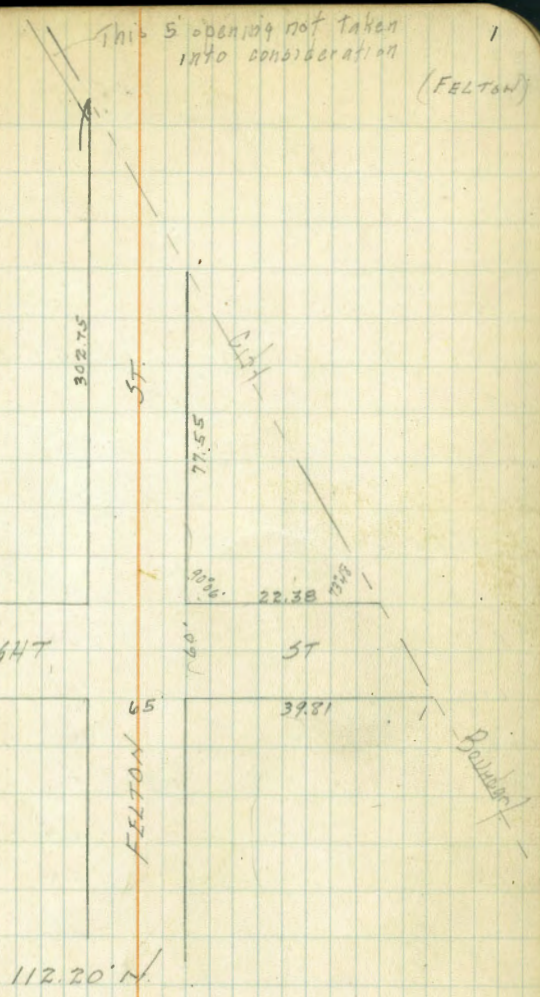
50' N

E	57	28.8
cb	59	28.6
1/4	56	28.9
C	53	29.2
1/4	53	29.2
cb	52	29.3
W	50	29.5

77.55' N

W	49	29.6
cb	51	29.4
1/4	52	29.3
C	53	29.2
1/4	55	29.0
cb	56	28.9
+9	58	28.7
E. OLD CITY LINE	52	26.3

X sections plotted by CAT 3-3-20



E. cb = OLD CITY LINE	7.7	326.8
+2	59	28.6
1/4	60	28.5
C	52	27.3
1/4	49	27.6
cb	47	27.5
W	45	30.0

151.18' N

W	4.3	29.2
cb	4.4	29.1
+1	4.6	29.9
+2	5.2	29.3
1/4	5.4	29.1
C	6.2	28.3
1/4 = OLD CITY LINE	7.8	26.7

190.15' N

Center = ✓ ✓ ✓	7.6	26.9
W 1/4	6.1	28.4
+8	5.9	28.6
cb	4.9	29.6
W	4.7	29.8

229.13' N

W	4.9	29.6
cb	5.2	29.3
+4	6.8	27.7
1/4 = OLD CITY LINE	7.5	27.0

268.10' N

Wcb = OLD CITY LINE	7.0	27.5
+3	5.5	29.0
W	5.1	29.4

302.75' N

W = OLD CITY LINE	5.8	28.7
-------------------	-----	------

2/29/41 Gregory

CROSS SECTION OF
DWIGHT ST 60' wide
from E. L. Felton to
OLD CITY LINE

952
52098

3

22.38' E ON N } = OLD CITY LINE
39.81' ✓ S

334.53 from preceding page.

E. L. FELTON

N	6.2	27.8.3
cb	6.5	28.0
1/4	6.7	27.8
c	6.4	28.1
1/4	6.8	27.7
cb	6.8	27.7
S	7.0	27.5

S
cb
+9
1/4
c
1/4
cb
+2
N

7.1	27.4
7.1	27.4
7.2	27.3
8.9	25.6
8.5	26.0
8.3	26.2
8.4	26.1
7.5	27.0
6.5	28.0

22.38' E
6.71

S	7.3	27.2
cb	7.0	27.5
1/4	7.2	27.0
c	7.3	27.2
1/4	7.8	26.7
cb	8.0	26.5
+1	6.9	27.6
N = OLD CITY LINE	6.5	28.0

31.09' E

c =	8.7	25.8
+9	8.3	26.2
1/4	7.5	27.0
+2	6.8	27.7
cb	7.0	27.5
S	7.1	27.4

2/29/24 Gregory

CROSS SECTION OF
LANDIS ST 60' wide
from 100' E of 33rd to 10' eas

OLD CITY BOUNDARY

10.80

33rd

324.00

3' Men Boundary
& Nightman

100' E of E L 33rd

+7

2.8

0.6

2.6

5

2.7

179.14' on S
161.71' = H = Old City Boundary line

N

0.9

5

3.4

cb

1.1

cb

3.3

1/4

0.6

+4

3.2

c

0.7

+7

4.3

1/4

0.6

1/4

4.3

cb

0.6

c

4.3

5

0.5

1/4

4.5

140' E

cb

4.3

5

2.1

+8

4.3

cb

4.3

N

3.3

1/4

2.2

c

2.2

1/4

4.3

cb

2.4

N

4.3

161.

N = Old City Boundary

3.3

+3

4.2

cb

4.0

1/4

3.7

c

3.3

1/4

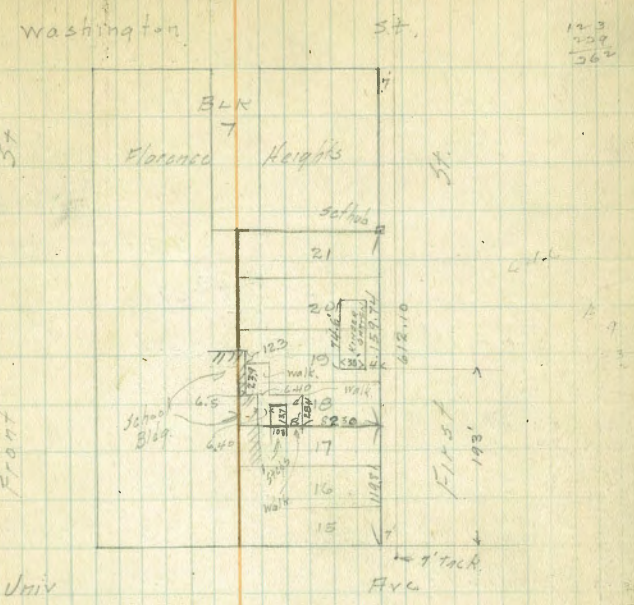
3.4

+5

3.4

3/19/24 Grapery. Contours of Lots
18 + 21 196
BLK 7 Florence Heights

	0.95	279.45	278.50	BP NE Univ. + 1st
WL 1st		3.2 Lot 18		
34' W.	0.8		278.6 ✓	
89.3' W. Edge of Walk	0.7		278.7 ✓	
	0.56		278.89 ✓	
		5' N. of 52 Lot 19		
100.6' N. of WL 1st = Edge of Walk	1.11		278.3 ✓	
82.3' - - - 1st	1.7		277.7 ✓ = Edge of Canon	
34' - - -	0.9		278.5 ✓	
WL 1st	0.6		278.8 ✓	
5' W. cor. Kinder garden	2.2		277.7 ✓ = Edge Canon	
		33' N. of 52 Lot 19		
42' W. of WL 1st	3.7		275.7 ✓	
56' - - -	10.8		268.2 ✓	
73' - - -	13.9		265.5 ✓	
93' - - -	11.9		267.5 ✓	
108' - - -	53		274.1 ✓	
113.4' - - -	2.5		276.9 ✓	
132' - - -	2.5		276.9 ✓	
		6' N. of 52 Lot 20		
T.P.	2.32	270.09	267.77	
134' N. of W.L. First	+ 0.40		270.5	
114' - - -	1.8		269.5 ✓	
94' - - -	6.5		263.5 ✓	
79' - - -	10.6		259.5 ✓	
68' - - -	10.5		259.5 ✓	
34' - - -	+ 3.7		273.8	



	270.09		
24' N. of 52 Lot 20			
34' W. of WL 1st	+ 0.5	270.6	
61' - - -	13.0	257.0 ✓	
87' - - -	14.2	255.8 ✓	
114' - - -	8.9	261.1 ✓	
134' - - -	8.7	261.3 ✓	
		9' N. of 52 Lot 21	
134' N. of WL 1st	14.9	255.1 ✓	
4' N. of last above	18.3	251.7 ✓	
114' N. of WL 1st	17.4	252.6 ✓	
89' - - -	16.3	253.7 ✓	
59' - - -	5.0	265.0 ✓	
35' - - -		273.3	

NW 7' track 5
123
259
262

270.09

29' No. 5 L. Lot 21

134' W. of W.L. 1st	18.6	√511	✓
114' " " " "	17.2	√548	✓
89' " " " "	9.4	√606	✓
70' " " " "	2.3	√67.7	✓

N.L. Lot 21

134' W. of W.L. 1st	14.9	√55.1	✓
114' " " " "	10.8	√59.2	✓
89' " " " "	4.7	√65.3	✓
70' " " " "	0.4	√69.6	✓

T.P. 1223 231.97 0.35 269.74

45' W. of W.L. 1st	2.6	√79.3	✓
40' " " " " 1st and 1/2' S. of N.L. 21	3.1	√78.8	✓
W.L. 1st ST	2.3	√79.6	✓
N.W. cor Hindergraben	3.0	√79.9	✓

4/5/24 Gregory

CROSS SECTION OF
ALLEY BLOCK 2 MISSION HILLS
Sierra Vista To Valle Vista 15 wide

	279	280.26	277.49	SW Altamira + Sierra Vista
		W L Sierra Vista		
N		4.33	275.93	on paving
C		4.64	275.62	✓ ✓
S		4.44	275.82	✓ ✓
		45' W		
S		4.0	276.26	
+5		4.4	275.86	
C		4.4	275.86	
N		4.1	276.16	
		60' W		
N		5.1	275.16	
C		5.2	275.06	
S		5.2	275.06	
		83' W		
		7.1	274.53	7' N. of N.L. = cement floor
		100' W		
S		7.7	272.56	
C		7.6	272.66	
N		7.2	273.06	
		124' W		
		-3.5	272.12	= ctr of 15' cement floor
N		8.7	271.56	
+4.5		9.1	271.16	
C		9.3	270.96	

280.26

7

5	9.5	270.76	
	126' W		
	4.3	270.56	= dirt floor
	137' W		= East end double garage on N
S	9.9	270.36	
C	9.9	270.36	
	+6' = edge apron	9.55	270.71
	N = front of garage	9.42	270.84
	151' W = West end of		
	N = front of garage	9.53	270.73
	+1.5 = edge apron	9.80	270.46
+3	10.3	269.96	
C	10.3	269.96	
S	10.4	269.86	
	175' W		
S	10.9	269.36	
+5	11.4	268.86	
C	11.1	269.16	
+2.5	11.1	269.16	
N	10.1	270.16	
T.P.	5.30	274.02	11.54 268.72
	143' W		= east end of Fire hedge on N. Hedge 13
	3' in alley		
	200' W		
N	4.8	269.22	
+5	5.8	268.22	

4/5/2

274.02

8

C	5.8	268.22
S	5.6	268.42

235' W

N	S	7.3	266.72
C	G	7.4	266.62
S	H	7.5	266.52
	N	6.8	267.22

244.22 - 248.22 - 5 } = E.L. Valle Vista

+5	N	8.25	265.77
C	C	8.33	265.69
N	S	8.30	265.72

N
C
S

7' N. 2

S
C
N

-3.5

N
+4.5
C

1/2" 1/4"
Moore

Cross Section of Front St. 70' wide
Washington South 10' 3/4"

6.62	283.61	276.99	mm. B.P. Altohus + Wash.
	SL Wash.		
w/ cement cb	4.66	278.95	
✓ gut. paving	5.08	278.53	
1/4	4.68	278.93	
C	4.42	279.19	
1/2	4.46	279.15	
(E gutter)	(4.75)	278.86	
E curb vsot his for yardage	4.4	279.21 ✓	
(✓ on cement)	(4.07)	279.54	
	20' 5"		
E cb Line not on cement	4.7	278.91	
1/2	5.2	278.41	
C	5.8	277.81	
1/4	6.0	277.61	
cb not on cement	5.5	278.11	
	40' 5" 5' End of curb on West		
Web	4.92	278.69	
Wgutr	6.0	277.61	
1/2	6.3	277.31	
C	6.1	277.51	
1/2	5.5	278.11	
E gutter	5.3	278.31	
cb on cement	4.60	279.01	

40' 5"	Egutr.	5.3	278.31	
	1/4	5.5	278.11	
	C	6.1	277.51	
	1/2	6.3	277.31	
	W. Cb Line.	6.52	277.09	Top step
	W.L.	11.90	271.71	Bottom Step
		60' 5"		
	W.	11.9	271.71	
	cb	6.3	277.31	
	1/4	6.4	277.21	
	C	6.3	277.31	
	1/4	5.9	277.71	
	Egutr.	5.6	278.01	
		85' 5"		
	Egutr.	5.9	277.71	
	1/4	6.3	277.31	
	C	6.5	277.11	
	1/4	6.6	277.01	
	+7	7.7	275.91	
	cb	10.7	272.91	
	W	13.6	270.01	
		100' 5"		
	W	17.2	266.41	
	cb	14.5	269.11	
	+6	12.5	271.11	

T.P.	467	282.06	622	277.39 ✓
1/4			82	273.86
+7			74	274.66
+9			5.5	276.56
c			5.5	276.56
1/2			49	279.16
E gutter			4.6	277.46
✓ curb on cement			3.78	279.28
	125' 5			
E gutter			4.8	277.26
1/4			4.9	277.16
+1			4.9	277.16
+11			9.0	273.06
c			10.8	271.26
1/2			14.5	267.56
cb			19.0	263.56
W			21.8	260.26
	150' 5			
W			29.8	252.26
+2			28.9	253.16
cb			24.2	257.86
1/4			19.2	262.86
+3			18.4	263.66
c			14.5	267.56
+12			8.7	273.36
1/4			5.5	276.56

+7	4.6	277.46
E gutter	4.8	277.26
	160' 5 = 5' End of Cb on E	
E cb on cement	4.46	277.60
r-gutr	4.5	277.56
1/4 at Top of Wood bulkhead	5.8	276.26
+0.5	10.1	271.96
c	16.0	266.06
+9	19.2	262.86
1/4	21.2	260.86
cb	27.0	255.06
E.G.	29.6	252.46
W	30.2	251.86
	175' 5	
W	30.9	251.16
+6	31.5	250.56
cb	28.9	253.16
+6	24.6	257.46
1/4	21.7	260.36
c	17.5	264.56
+7	14.8	267.26
+12	11.6	270.46
1/4	6.6	275.46
cb	5.1	276.96
E	4.7	277.36

FRONT
10

189' 5

277.26

E 4.6 277.46

cb 7.5 274.56

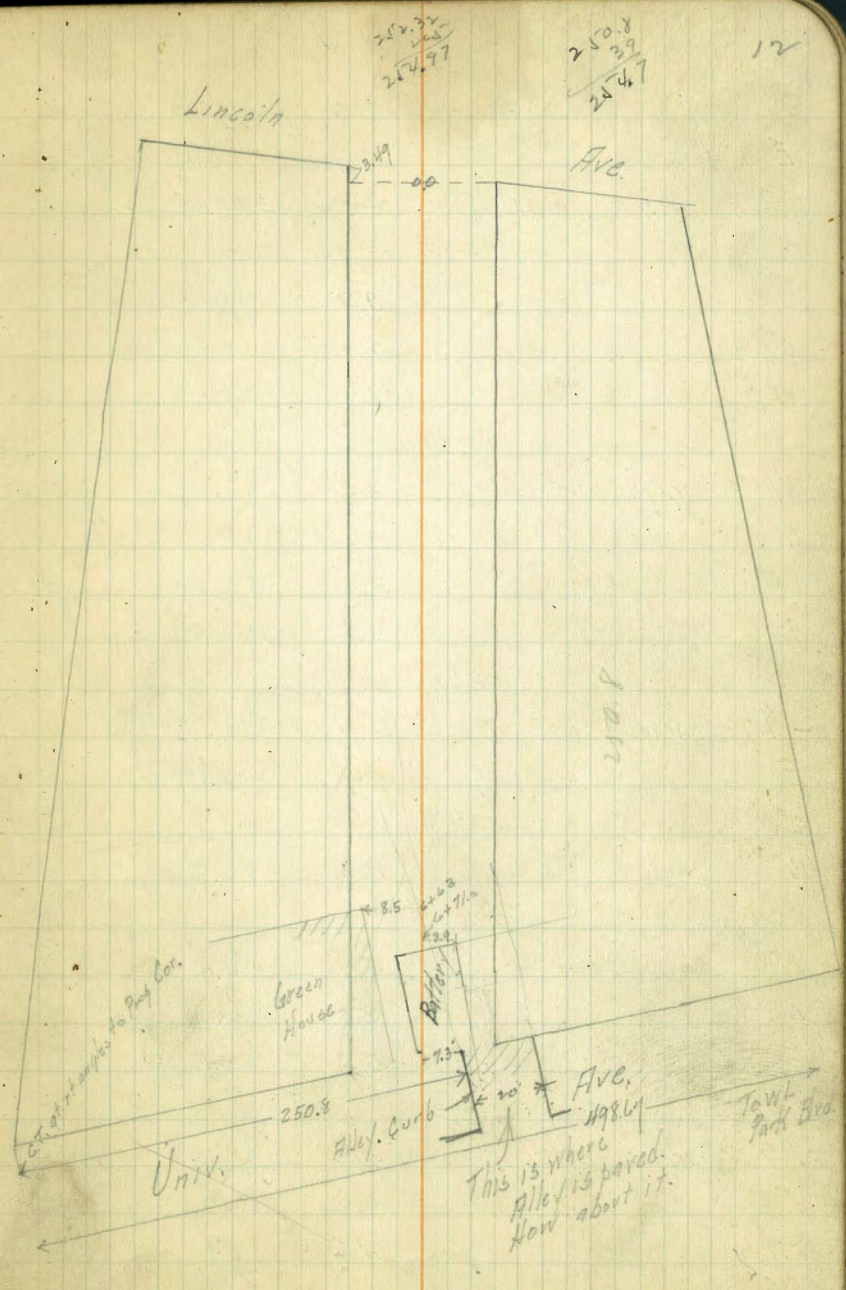
1/4 14.3 267.76

c 19.8 262.26

) (

CROSS SECTION OF ALLEY
BLK 193 Univ Heights
bet Centre + Park Blvd
from Lincoln to Univ.

BM	1.44	323.64	332.20	BONE
			x 322.20	Park to Lincoln
		S.L. Lincoln		
E	on cement curb	5.06	328.60	✓
C		5.8	327.8	✓
W	on cement curb	5.47	328.17	✓
	347 500W 20' - E } = 0+00			
W		6.0	327.64	✓
C		6.3	327.3	✓
E		5.0	328.6	✓
	0+25			
E		6.5	327.1	✓
C		7.1	326.4	✓
+5		8.2	325.4	✓
W		8.3	325.3	✓
	0+49			
W		10.0	323.6	✓
C		9.5	324.1	✓
E		8.8	324.8	✓
+1.3 = garage dirt floor		8.7	324.9	✓
	0+75			
E		10.5	323.1	✓
C		11.2	322.4	✓
W		11.3	322.3	✓
	1+00			
W		12.9	320.7	✓



			<u>328.64</u>	
C			12.7	370.9 ✓
E			12.1	371.5 ✓
T.P.	1.20	311.88	1296	370.68
		1+15	<u>311.9</u>	
E			0.9	371.0 ✓
C			2.1	373.8 ✓
W			1.7	370.8 ✓
		1+39		
W = garage dirt floor			3.1	308.8 ✓
C			3.7	308.7 ✓
+4			3.6	308.2 ✓
E			3.1	308.8 ✓
		1+61		
-1.7 = garage cement			4.09	307.79 ✓
E			4.2	307.7 ✓
C			4.6	307.3 ✓
W			4.3	307.6 ✓
		2+00		
W			5.9	306.0 ✓
C			5.7	306.2 ✓
E			5.5	306.4 ✓
		2+13		
-1.3 garage dirt			5.8	306.6 ✓
E			6.0	305.9 ✓
C			5.8	306.1 ✓
W			6.1	305.8 ✓

			<u>311.88</u>	13
			2+35	
			<u>311.9</u>	
W			7.1	304.8 ✓
C			7.2	304.7 ✓
E			6.6	305.3 ✓
		2+45		
W = edge cement apron			7.20	304.7 ✓
3.5' W o x W L = garage			6.85	305.03 ✓
		2+81		
E			8.6	303.3 ✓
C			8.9	303.0 ✓
W			8.4	303.5 ✓
+1.3 = garage dirt floor			8.1	303.8 ✓
		2+89		
4.3 E o x E L = garage dirt			8.4	303.4 ✓
		3+25		
W			9.0	302.9 ✓
C			9.7	302.2 ✓
E			10.0	301.9 ✓
		3+75		
E			11.1	300.8 ✓
C			11.7	300.2 ✓
W			12.2	309.7 ✓
		4+03		
W			12.8	309.1 ✓
C			12.0	309.9 ✓
E			11.3	300.6 ✓

TP. 0.10 309.48
499.48 1250 299.38

W+11
E = N. end of long garage dirt +0.45 300.0
299.5

C 0.0 309.5
308
W 0.9 298.6 ✓

W+32
W 1.7 307
297.8 ✓

C 0.9 308
299.6 ✓
E 0.2 309
299.5 ✓

W+35
E 0.7 308
299.8 ✓

C 1.1 308
298.4 ✓
W 1.8 307
297.7 ✓

W+60
W 2.5 307
297.0 ✓

C 2.0 307
297.5 ✓
E 1.5 308
298.0 ✓

W+81
E = S. end of long garage dirt 1.60 307
297.9 ✓

C 2.5 307
297.0 ✓
W 2.9 306
296.6 ✓

W+88
W 3.1 306
296.4 ✓

C 2.6 306
296.9 ✓
E 2.9 306
296.6 ✓

E 5+11
299.5
4.0 305
295.5 ✓

C 3.3 306
296. ✓ ✓
W 3.9 305
295.6 ✓

W+45
W 5.6 303
293.4 ✓

C 4.3 305
294. ✓ ✓
E 5.5 304
294.0 ✓

W+70
E 6.2 303
293.3 ✓

+4 6.1 303
293.4 ✓
C 4.5 305
295.0 ✓

+3 4.6 304
294.9 ✓
W in chicken yard 6.7 300
294.8 ✓

W+90
-5 8.5 301
291.0 ✓
W 8.6 300
290.9 ✓

C 8.2 301
291.1 ✓
E 8.1 301
291.0 ✓

+5 8.3 301
291. ✓
W+85
-10 9.3 300
290. ✓

E 9.4 300
290.1 ✓
C 9.8 300
290.7 ✓

W 10.0 300
290. ✓ ✓
+10 10.0 300
290. ✓ ✓

$6+45$ $299 \downarrow$
 -20 10.1 $\sqrt{289.4}$ ✓
 W 9.8 $\sqrt{289.7}$ ✓
 C 9.5 $\sqrt{290.0}$ ✓
 E 9.3 $\sqrt{290.1}$ ✓
 +20 8.7 $\sqrt{290.8}$ ✓

$6+63$
 -20 9.0 $\sqrt{290.5}$ ✓
 E 10.1 $\sqrt{289.4}$ ✓
 C 10.4 $\sqrt{289.1}$ ✓
 +8.5 = NE cor Green House 10.7 $\sqrt{289.8}$ ✓
 W 10.8 $\sqrt{289.7}$ ✓
 +10 11.3 $\sqrt{288.4}$ ✓

$6+73.3 =$ N side Battery Street
 W = under house 10.0 $\sqrt{289.5}$ ✓
 +3.5 = E side green house 10.0 $\sqrt{289.5}$ ✓
 C 9.7 $\sqrt{289.8}$ ✓
 E 9.9 $\sqrt{289.6}$ ✓
 +20 8.5 $\sqrt{291.0}$ ✓

$6+84$
 -20 3.7 $\sqrt{295.8}$ ✓
 E 6.3 $\sqrt{293.2}$ ✓
 C 8.3 $\sqrt{291.2}$ ✓
 W = under green house 9.1 $\sqrt{290.2}$ ✓
 835 30616 1.67 $\sqrt{297.81}$ ✓

30616

$\sqrt{30616}$

15

$6+98.3 \pm$ on 4 = N.L. Univ.
 -20 6.4 $\sqrt{299.8}$ ✓
 C 6.0 $\sqrt{300.0}$ ✓
 +7.3 = edge of Alley Parking 5.3 $\sqrt{300.73}$ ✓ on parking
 E 5.5 $\sqrt{300.7}$ ✓

5/2/14 Grapery CROSS SECTION OF
 FIRST ST 62.15' wide @ Road.
 from S.L. Pennsylv. 10' cbs
 N.L. Breakers 10.5' 1/4's

							1.5	269.1 ✓
	109	280.43		279.34	BP NW 3rd Pennsylv.	1/4	20	268.6 ✓ 268.4
T.P.	102	270.55	10.90	269.53			2.1	268.5 ✓
		S.L. Pennsylv.					1.69	268.86 ✓ on cement
E cb				0.53	on 270.03	W	2.8	267.8 ✓
- gutter				1.09	on 269.46			
1/4				2.99	269.56	-7	67	263.9 ✓
c				0.99	269.56	W	40	266.6 ✓
1/4				1.16	269.39	+8	20	268.6 ✓
W gutter				1.55	269.00	cb	22	268.4 ✓
cb				1.06	269.49	1/4	22	268.4 ✓
				75.5 = End of cement sidewalk on W.			16	269.0 ✓
W.L				1.84	268.71 ✓	1/4	16	269.0 ✓
+ 1.75 = Wedge of sidewalk				1.60	268.95	gutter	18	268.8 ✓
+ 7.20 = E				1.51	269.04	curb	13	269.23 ✓ on cement
cb				1.67	268.88			
gutter				2.1	268.5 ✓	E cb 1	1.54	269.01 ✓ on cement
1/4				2.0	268.6 ✓	gutter	22	268.4 ✓
c				1.5	269.1 ✓	1/4	22	268.4 ✓
1/4				1.4	269.2 ✓	c	24	268.2 ✓
gutter				1.6	269.0 ✓	1/4	27	267.9 ✓
E curb				1.25	269.30	+6	34	267.2 ✓
				77.55 = End of cement cb on W.		cb	5.1	265.5 ✓
E curb				1.26	269.29	W	11.8	258.2 ✓
gutter				1.6	269.0 ✓	+4	27.8	242.8 ✓
1/4				1.4	269.2 ✓			

92' 5"

120' 5"

	140' S		
-50	28.6	242.0	✓
-5	21.1	249.5	✓
W	17.8	252.8	✓
cb	11.3	259.3	✓
1/4	3.5	267.1	✓
c	3.0	267.6	✓
1/4	2.9	267.7	✓
gutter	2.2	268.4	✓
cb	1.65	268.90	✓ on cement

	150' S		
cb	1.72	268.83	✓ on cement
gutter	2.5	268.1	✓
1/4	3.6	267.0	✓
c	3.6	267.0	✓
1/4	4.2	(266.2)	266.4
cb	12.0	258.6	✓
W	17.7	252.9	✓
+60	31.0	239.6	✓

	162' S		
-60	38.7	231.9	✓
-55	40.7	229.9	✓
-45	28.4	242.2	✓
W	15.1	255.5	✓
cb	8.7	261.9	✓
1/4	3.4	267.2	✓

	180' S		
+5	4.2	266.4	✓
c	4.1	266.5	✓
1/4	4.1	266.5	✓
gutter	2.8	267.8	✓
cb	1.77	268.78	✓ on cement
E cb	20.5	268.50	✓ on cement
gutter	2.5	268.1	✓
+5	2.5	268.1	✓
+8	4.6	266.0	✓
1/4	4.8	265.8	✓
c	4.9	265.7	✓
1/4	4.4	266.2	✓
+5	5.0	265.6	✓
cb	7.7	262.9	✓
W	15.5	255.1	✓
+17	26.5	244.1	✓
+40	35.4	235.2	✓
+57	42.4	228.2	✓
+70	38.4	232.2	✓
	200' S = S end of curb on E		
-70	41.0	229.6	✓
-58	45.7	224.7	✓
-35	36.1	234.5	✓
W	18.8	251.8	✓
cb	13.5	257.1	✓

270.55
200' S

1/4	6.6	264.0 ✓
+5	5.9	264.9 ✓
C	5.9	264.7 ✓
1/4	5.9	264.7 ✓
+W	5.9	264.7 ✓
+6	7.9	267.7 ✓
gutter curb	7.6	268.0 ✓
+2.6 = outside edge of sidewalk	2.18	268.37 ✓ on cement curb
	2.17	268.38 ✓ on curb
	220' S	
2.6 E. of E cb line = edge of walk.	2.32	268.23 ✓ on cement curb
cb	3.3	267.3 ✓
+3	3.3	267.3 ✓
+7	7.3	263.3 ✓
1/4	7.4	263.2 ✓
C	7.0	263.6 ✓
+6	7.0	263.6 ✓
1/4	9.5	261.1 ✓
cb	17.1	253.5 ✓
W	25.1	245.5 ✓
+12	31.2	239.4 ✓
+30	35.6	235.0 ✓
+60	46.2	224.4 ✓
+70	43.3	227.3 ✓
	250' S	
-70	48.3	222.3 ✓

157
18

-58	52.0	218.6 ✓
-33	39.7	230.9 ✓
-20	36.3	234.3 ✓
W	26.6	244.0 ✓
cb	19.8	250.8 ✓
1/4	12.2	258.4 ✓
+7	9.2	261.4 ✓
C	8.9	261.7 ✓
1/4	8.9	261.7 ✓
+5	8.5	262.1 ✓
cb	2.7	267.9 ✓
	275' S	
T.P. 1.33	261.95 ✓	9.90
Ecb	+5.0	267.0 ✓
+6	1.5	260.5 ✓
1/4	1.6	260.4 ✓
C	1.4	260.6 ✓
+3	1.5	260.5 ✓
1/4	4.7	257.3 ✓
cb	12.3	249.7 ✓
W	18.9	243.1 ✓
+38	33.3	228.7 ✓
+62	44.5	217.5 ✓
+80	41.0	221.0 ✓
	300' S	
-70	46.8	215.2 ✓

261.98

67.41

1st

19

-30	(300.9)	32.4	229.6 ✓
W		20.2	241.8 ✓
cb		12.3	249.7 ✓
1/2		6.0	256.0 ✓
+7		2.5	259.5 ✓
C		2.2	259.8 ✓
1/4		2.2	259.8 ✓
+7		1.7	260.3 ✓
cb		+4.0	266.0 ✓
Cement curb sidewalk			267.41 Top of sidewalk
EL		+5.7	267.7 ✓
	310 S		
EL		+6.0	268.0 ✓
+2		+6.0	268.0 ✓
cb		0.2	261.8 ✓
+5		2.3	259.7 ✓
1/4		2.3	259.7 ✓
C		2.2	259.8 ✓
+3		2.2	259.8 ✓
1/2		7.6	254.4 ✓
cb		15.2	246.8 ✓
WL		20.7	241.3 ✓
+25		30.8	231.2 ✓
+70		47.5	214.5 ✓
	330 S		
-80		52.2	209.8 ✓
-35		21.0	231.0 ✓

-25		28.4	233.6 ✓
-10		22.7	239.3 ✓
WL		17.7	244.3 ✓
cb		12.2	249.8 ✓
1/4		6.5	255.5 ✓
+7		4.9	259.1 ✓
C		2.8	259.2 ✓
1/4		2.4	259.6 ✓
+6		1.5	260.5 ✓
+8		+3.2	265.2 ✓
cb		+4.0	266.0 ✓
E		+6.3	268.3 ✓
	347 S		
E		+6.4	268.4 ✓
+5		+5.9	267.9 ✓
cb		+4.4	266.4 ✓
+3		+3.8	265.8 ✓
+5		0.9	261.1 ✓
1/4		2.3	259.7 ✓
C		2.5	259.5 ✓
+7		2.2	259.8 ✓
1/4		4.1	257.9 ✓
cb		11.4	251.6 ✓
W		15.6	246.4 ✓
+15		23.3	238.7 ✓
+42		31.9	230.1 ✓

250.6

365'5

-55	35.0	227.0 ✓
-35	30.4	231.6 ✓
W	16.7	245.3 ✓
cb	12.1	249.9 ✓
1/4	4.2	257.8 ✓
+4	2.7	259.3 ✓
C	2.5	259.5 ✓
1/4	2.4	259.6 ✓
+5	1.4	260.6 ✓
+6	+3.9	265.9 ✓
cd	+4.3	266.3 ✓
+4	+6.2	268.2 ✓
E	+6.7	268.7 ✓
385'5		
E	+6.7	268.7 ✓
+6	+5.7	267.7 ✓
cb	+4.2	266.2 ✓
+4	+2.7	264.7 ✓
+5	0.7	261.3 ✓
1/4	2.3	259.7 ✓
C	2.2	259.8 ✓
1/4	1.5	260.5 ✓
+5	2.2	259.8 ✓
cb	6.3	255.7 ✓
W	12.9	249.1 ✓
+30	26.7	235.3 ✓
+55	35.4	226.6 ✓

390'5

-55	34.7	227.3 ✓
-25	25.8	236.2 ✓
-2	13.0	249.0 ✓
W	9.0	253.0 ✓
+6	7.8	254.2 ✓
cb	4.6	257.4 ✓
+5	2.2	259.8 ✓
1/4	1.6	260.4 ✓
C	2.4	259.6 ✓
1/4	2.3	259.7 ✓
+6	0.9	261.1 ✓
+7	+2.4	264.4 ✓
cb	+3.9	265.9 ✓
+3	+5.6	267.6 ✓
E	+6.4	268.4 ✓
400'5 = N. end of 4' cement walk		
7.25' Max E.L. = Wedge walk	+4.45	266.43 ✓
405'5		
E	+6.4	268.4 ✓
+3	+5.6	267.6 ✓
+3.30 = E. edge of walk	+4.6	266.6 ✓
cb	+4.2	266.2 ✓
+3	+3.5	265.5 ✓
+9	1.7	260.3 ✓
1/4	2.1	259.9 ✓

405 S

C	2.2	259.8 ✓
+6	1.5	260.5 ✓
1/4	1.9	260.1 ✓
cb	2.8	259.2 ✓
W	6.5	255.5 ✓
+2	6.5	255.5 ✓
+2.5	11.0	251.0 ✓
+10	14.0	248.0 ✓
+35	25.2	236.8 ✓
420 S		
-35	25.2	236.8 ✓
-10	12.8	249.2 ✓
-2.5	10.8	251.2 ✓
-2.0	6.6	255.4 ✓
W	6.6	255.4 ✓
+4.0	6.6	255.4 ✓
cb	2.2	259.8 ✓
+2	1.3	260.7 ✓
+8	2.2	259.8 ✓
1/4	2.2	259.8 ✓
C	2.3	259.7 ✓
1/4	2.3	259.7 ✓
+3	2.0	260.0 ✓
cb	+4.5	266.5 ✓
+6.7	+4.7	266.7 ✓
+7.0	+5.2	267.2 ✓

433 S 445 21

E	+5.2	267.2 ✓
429 S		
E	+5.0	267.0 ✓
+6.6	+4.5	266.5 ✓
cb	+3.8	265.8 ✓
+3	+3.3	265.3 ✓
+8	1.8	260.2 ✓
1/4	2.0	260.0 ✓
C	2.2	259.8 ✓
1/4	2.7	259.3 ✓
+4	2.8	259.2 ✓
cb	6.0	256.0 ✓
+6	8.6	253.4 ✓
W	7.9	254.1 ✓
+2	7.9	254.1 ✓
+2.5	12.1	249.9 ✓
+10	14.6	247.4 ✓
+28	21.8	240.2 ✓
+40	27.3	234.7 ✓
430 S		
C	2.2	259.8 ✓
E 1/4	2.0	260.0 ✓
+4	1.5	260.5 ✓
cb	+2.9	264.9 ✓
+3	+4.5	266.5 ✓
E	+5.0	267.0 ✓

261.98

434' 5

-40	26.9	235.1 ✓
-20	20.5	241.5 ✓
W	12.4	249.6 ✓
cb	8.6	253.4 ✓
1/4	5.3	256.7 ✓
+7	3.9	258.1 ✓
(+7.1 = Top of Bridge Abut.)	(7.56)	259.42 ✓
C	2.2	259.8 ✓
1/4	1.6	260.4 ✓
+3	1.5	260.5 ✓
cb	+2.8	264.5 ✓
+3.4 = end of walk	+4.5	266.5 ✓
E	+4.8	266.8 ✓

441' 5

E	+4.0	266.0 ✓
cb	+1.5	263.5 ✓
+4.5	0.0	262.0 ✓
+50	4.0	258.0 ✓
1/4	5.8	256.2 ✓
C	7.6	254.4 ✓
1/4	7.2	254.8 ✓
cb	10.5	251.5 ✓
W	15.8	246.2 ✓
+15	20.5	241.5 ✓
+40	29.2	232.8 ✓

157

22

447' 5

-40	29.4	232.6 ✓
-20	22.5	239.5 ✓
W	17.3	244.7 ✓
cb	14.1	247.9 ✓
1/4	10.2	251.8 ✓
C	9.7	252.3 ✓
+8	7.8	254.2 ✓
1/4	6.4	255.6 ✓
+4	4.7	257.3 ✓
cb	4.0	258.0 ✓
E	2.5	259.5 ✓

452' 5

E	2.5	259.5 ✓
cb	4.5	257.5 ✓
+5	6.4	255.6 ✓
1/4	9.0	253.0 ✓
+4	10.7	251.3 ✓
C	12.5	249.5 ✓
+6	13.3	248.7 ✓
1/4	14.6	249.4 ✓
cb	16.8	245.2 ✓
W	19.4	242.6 ✓
+19	24.1	237.9 ✓
+40	30.7	231.3 ✓
T.P.	0.43	249.78 ✓
	12.63	249.35 ✓

249.78

470' S

-50	25.6	224.2 ✓
-20	18.7	231.1 ✓
W	15.0	234.8 ✓
cb	12.8	237.0 ✓
1/4	9.2	240.6 ✓
C	8.8	241.0 ✓
1/4	6.4	243.4 ✓
cb	3.2	246.6 ✓
F	0.5	249.3 ✓
+20	+5.3	255.1 ✓

485' S

-23	1.5	248.3 ✓
E	6.9	242.9 ✓
cb	9.5	240.3 ✓
1/4	12.2	237.6 ✓
C	14.0	235.8 ✓
1/4	14.4	235.4 ✓
cb	17.2	232.6 ✓
N	18.8	231.0 ✓
+23	22.6	227.2 ✓
+30	24.1	225.7 ✓
+60	27.6	222.2 ✓

500' S

-60	250	224.8 ✓
-50	256	224.2 ✓

157

23

-30

W

cb

1/4

C

1/4

cb

F

+5

+35

-35

E

+2

cb

1/4

C

1/4

cb

W

+8

+34

+50

-50

-33

23.7 226.1 ✓

20.6 229.2 ✓

18.9 230.9 ✓

17.5 232.3 ✓

16.6 233.2 ✓

16.2 233.6 ✓

14.3 235.5 ✓

12.9 236.9 ✓

12.0 237.8 ✓

9.2 240.6 ✓

512' S

9.4 240.4 ✓

11.5 238.3 ✓

12.5 237.3 ✓

14.1 235.7 ✓

15.6 234.2 ✓

16.2 233.6 ✓

17.0 232.8 ✓

18.8 231.0 ✓

20.2 229.6 ✓

20.2 229.6 ✓

22.3 227.5 ✓

21.0 228.8 ✓

530' S

16.1 233.7 ✓

18.7 231.1 ✓

249.78

530' S

-8	13.1	236.7 ✓
W	12.6	237.2 ✓
cb	10.5	239.3 ✓
+4	12.7	237.1 ✓
1/4	9.0	240.8 ✓
+4	9.2	240.6 ✓
center	8.5	241.3 ✓
1/4	8.3	241.5 ✓
+3	8.3	241.5 ✓
+6	10.9	238.9 ✓
cb	11.0	238.8 ✓
E	9.0	240.8 ✓
+25	7.4	242.4 ✓

555' S

T.P.	10.26	259.03 ✓	1.01	248.77 ✓
-20			4.7	254.3 ✓
E			6.5	252.5 ✓
+5			8.0	251.0 ✓
cb			7.0	252.0 ✓
+7			7.9	251.1 ✓
1/4			7.3	251.7 ✓
c			6.9	252.1 ✓
1/4			7.3	251.7 ✓
cb			9.0	250.0 ✓
W			12.5	246.5 ✓
+16			15.0	244.0 ✓

137

24

259.03

+26

-15

W

cb

1/4

c

1/4

cb

+8

E

+5

T.P.

11.77

268.80 ✓

259.55

18.1

240.9 ✓

570' S

8.5 250.5 ✓ |6.6 252.4 ✓ |4.1 254.9 ✓ |2.6 256.4 ✓ |1.8 257.2 ✓ |1.8 257.2 ✓ |1.8 257.2 ✓ |0.9 258.1 ✓ |0.0 259.0 ✓ |+0.6 259.6 ✓ |2.0 257.03 ✓ |~~247.78~~

579' S

-5

E

cb

1/4

c

1/4

cb

W

+10

-

-10

W

6.3 253.3 | 267.5 ✓ |6.4 253.2 | 267.4 ✓ |6.8 252.8 | 267.0 ✓ |8.9 250.7 | 259.9 ✓ |9.8 249.8 | 259.0 ✓ |8.9 250.7 | 259.9 ✓ |10.2 249.4 | 258.6 ✓ |10.5 249.1 | 258.3 ✓ |11.7 247.9 | 257.1 ✓ |

581' S

10.5 249.1 | 258.3 ✓ |9.1 250.5 | 259.7 ✓ |

268.80

cb		9.0	250.6	259.8 ✓
1/4		6.5	253.1	262.3 ✓
+5	-concrete about	5.25	254.30	263.55 ✓
C		5.2	254.4	263.6 ✓
1/4		5.2	254.4	263.6 ✓
+5		5.2	254.4	263.6 ✓
cb		6.5	253.1	262.3 ✓
E		6.2	253.4	262.6 ✓
+5		5.8	253.8	263.0 ✓

588 5

-5		5.0	254.6	263.8 ✓
E		5.0	254.6	263.8 ✓
cb		5.2	254.4	263.6 ✓
1/4		4.8	254.8	264.0 ✓
C		4.8	254.8	264.0 ✓
1/4		4.7	254.9	264.1 ✓
cb		4.6	255.0	264.2 ✓
W		5.2	254.4	263.6 ✓

600 5

W	on corner walk	4.84	254.71	263.96 ✓
cb	✓ cement	5.13	254.92	263.67 ✓
1/4		4.9	254.7	263.9 ✓
0		4.8	254.8	264.0 ✓
1/4		4.6	255.0	264.2 ✓
cb	on cement	3.99	255.50	264.51 ✓
E	on corner walk	3.40	256.15	265.4 ✓

157

25

Sewer Levels on Kurtz St
 NL Harasthy N. to 3L of Sutherland

5/1/20
 100000

	0.15	38.87	38.72
	1.08	26.95	25.87
NL Harasthy S'W of E'ct of Kurtz		4.9	22.1
50' N		4.9	22.1
100 ✓		5.2	21.8
150 ✓		5.5	21.5
200 ✓		6.0	21.0
250 ✓		5.9	21.1
300 ✓ Intersection of Saxto's Spur		6.7	20.3
340 N		6.5	20.5
350 ✓		6.6	20.4
400 ✓		8.4	18.6
440 ✓		10.5	16.5
465 ✓		15.7	11.3
500 ✓		15.7	11.3
550 ✓		15.5	11.5
600 ✓		15.0	12.0
640 ✓		14.4	12.6
680 ✓		13.9	13.1

new top Hyd't
 Harasthy & Hancock

to Agar-Agar
 Factory

Sewer Levels & Emory
Atlantic to Kurtz Sts

5/2/24
Moore

26.95 H₂O carried Forward

TR	776	24.61 ✓	10.10	16.85
0+10 = # Atlantic			15.7	8.9
6 E			15.7	8.9
25 E			12.0	12.6
50 ✓			11.7	12.9
75 ✓			11.7	12.9
100 ✓			10.4	14.2
142 ✓			8.3	16.3
150 ✓			8.9	15.7
200 ✓			8.0	16.6
225 ✓			6.3	18.3
237 ✓ = # of Calif Paving Co's Spur			4.4	20.2
250 ✓			5.4	19.2
265 ✓			4.4	20.2
270 ✓ = # of S. Leg of Santa Fe Wye			3.2	21.4
274 E			4.0	20.6
286 ✓			3.5	21.1
290 ✓			4.3	20.3
296 E =			2.6	22.0
302 ✓ = # of Main Santa Fe RR			2.6	22.0
307 E			2.6	22.0
314 ✓			3.8	20.8
319 ✓			1.0	23.6
325 ✓			1.6	23.0
350 ✓			0.6	24.0

365 E

0.2

24.4

371 ✓

3.6

21.0

375 E = # of Kurtz

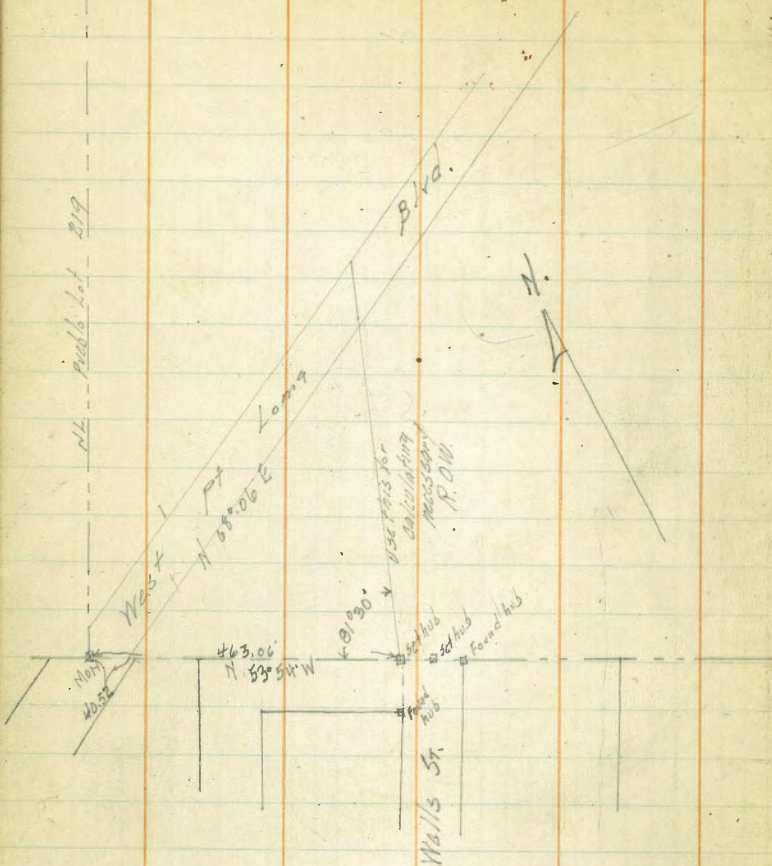
3.0

21.6

Plotted
5-3-24
CAT

5/21/74 Grapery

Notes for Road R.O.W.
Thru P.L. 219.



X Sec. Alley BIK 7 Miss Hills 15 wide
From N. Line Sunset to W. Line Inghel side

B.M. 13.09 274.11 261.02 N.E. cor Sunset
4-Witherby
T.P. 7.66 278.94 283 271.28

Sec. A
W 8.01 $\sqrt{70.93}$ ✓ on paving
C 7.68 $\sqrt{71.46}$ ✓ " "
E 7.12 $\sqrt{71.8}$ ✓ " "
E 7.00 $\sqrt{71.94}$ ✓ " curb

Sec B = 00
E 7.12 $\sqrt{71.8}$ ✓ " paving
E 7.4 $\sqrt{71.5}$ ✓
W 7.7 $\sqrt{71.2}$ ✓

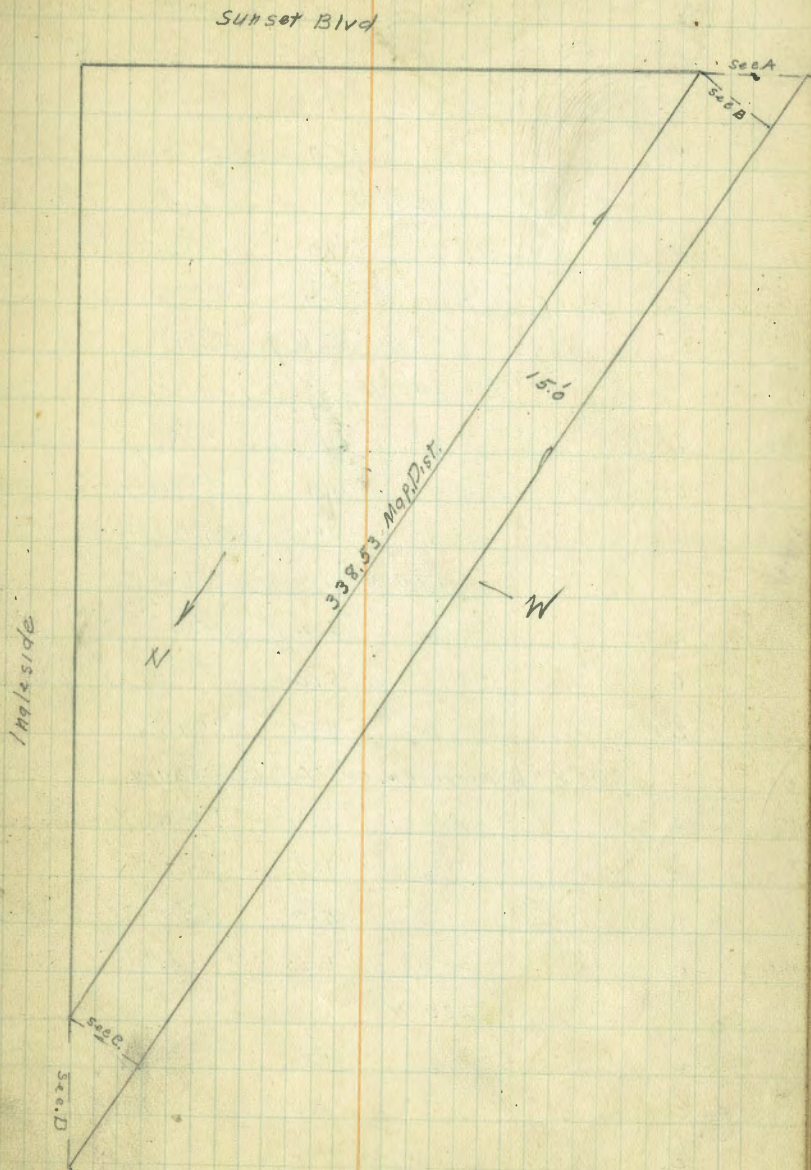
10' N.
W 7.4 $\sqrt{71.5}$ ✓
E 6.9 $\sqrt{71.0}$ ✓
C+S 5.9 $\sqrt{73.0}$ ✓
E 6.0 $\sqrt{72.9}$ ✓

15' S N.
7.20 $\sqrt{71.7}$ ✓ on cement Apron
at W. of Line

40' N
E 5.3 $\sqrt{73.4}$ ✓
E+3 5.2 $\sqrt{73.7}$ ✓
E 6.0 $\sqrt{72.9}$ ✓
W 6.3 $\sqrt{74.6}$ ✓

78' N = S End cement Drive on E 0.5 in Alley

W 5.8 $\sqrt{75.1}$ ✓
C 5.8 $\sqrt{73.1}$ ✓
E 4.9 $\sqrt{74.0}$ ✓
E 4.90 $\sqrt{75.1}$ ✓ on cement



278.94

98' N = N End Drive on E 0.5 in Alley

E	4.73	✓74.4	✓ on cement
E	5.1	✓73.8	✓
C	5.4	✓73.5	✓
W	5.7	✓73.2	✓

125' W

W	5.7	✓73.4	✓
C	5.6	✓73.2	✓
E	5.1	✓73.8	✓

140' N

E	4.8	✓74.1	✓
E	4.9	✓74.0	✓
W	5.1	✓73.8	✓

170' N

W	5.2	✓73.7	✓
C	5.0	✓73.9	✓
E	4.4	✓74.5	✓

205' N = Garage on W. Cmt. Floor 6. W of Alley

E	4.4	✓74.5	✓
E	4.7	✓74.2	✓
W	5.0	✓73.9	✓
on floor + 6.0	5.25	✓73.69	✓

230' N

W	5.4	✓73.5	✓
C	5.0	✓73.9	✓
E	4.6	✓74.3	✓

278.94

250' N

90

E	4.0	✓74.9	✓
C	4.3	✓74.6	✓
W	5.2	✓73.7	✓

275' W

W	4.8	✓74.1	✓
C	4.7	✓74.2	✓
E	4.0	✓74.9	✓

301' N = Garage on W. Cmt. Floor 5' W. of Line

E	4.5	✓74.4	✓
C	4.5	✓74.4	✓
W	4.6	✓74.3	✓
W + 5	4.76	✓74.18	on Cmt Floor

338' 53 Map Dist = See C.

W	5.0	✓73.9	✓
C	5.0	✓73.9	✓
E	4.7	✓74.4	✓

See D.

E	5.13	✓73.81	on Alley return stake no return in
E	4.7	✓74.2	on ground
C	5.2	✓73.7	✓
W	5.4	✓73.5	✓

7/9/4

CROSS SECTION OF
3rd ST 80' ST 14' CBS
from H.L. OliveCatch Basin Must be provided at N.E. Corner 3rd Olive
B.P. NE 3rd
7 Olive

5.31

267.25

261.94

H.L. Olive

E	4.9	262.3
cb on cement	5.34	261.9
gutter on paving	5.8	261.4
1/4	5.28	261.9
c	5.22	262.0
1/4	5.48	261.7
W gutter	5.98	261.2
cb on cement	5.41	261.8
W on lawn	5.2	262.0

7' N

W on lawn	5.0	262.2
Web on cement	5.36	261.8
gutter	5.7	261.5
1/4	5.4	261.8
c	4.8	262.4
+7	4.6	262.6
1/4	4.9	262.3
cb	4.8	262.4
E	4.4	262.8

18.5' N = end of cb on W

E	4.6	262.6
cb	4.8	262.4
1/4	4.6	262.6

C

1/4

gutter

cb on end of cement

W on lawn

W

cb

1/4

c

1/4

cb

E

E

cb

1/4

c

1/4

+7

cb

+7

W

W. cb

1/4

4.6

5.4

5.6

5.30

5.3

55' N

6.0

5.7

5.3

4.6

4.4

4.4

3.8

65' N

3.3

4.2

4.4

4.8

5.2

6.0

7.5

8.4

17.2

100' N

20.5

11.8

262.6

261.8

261.6

261.9

261.9

261.2

261.5

261.9

262.6

262.8

262.8

263.4

263.9

263.0

262.8

262.4

262.0

261.2

259.7

258.8

250.0

246.8

255.4

+12	3.8	263.4
C	3.8	263.4
1/4	3.4	263.8
cb	3.1	264.1
E	2.4	264.8

180° N

E	1.5	265.7
+7	2.0	265.2
cb	3.0	264.2
1/4	3.0	264.2
+6	3.2	264.0
C	7.8	259.4
1/4	11.9	255.3
cb	20.6	246.6
W	30.0	239.2

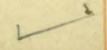
140.8° N = S. End of private paving

W		
cb	24.8	242.4
1/4	16.1	251.1
C	7.5	259.7
+6	3.4	263.9
1/4	2.4	264.8
+1.6 = N. edge of paving	2.22	265.0
cb on paving	2.16	265.09
(+1.0 = private curb (can be removed))	1.72	
E	1.3	265.95

Sewer Levels from Hub +100 @ 33rd St. 40' N. of N. Line
 of Date to @ Barclay St 40' S. of S. Line E.I.M.
 See sketch Page 34

EM.	7.13	241.78		234.65	Mon 5.8. 33 rd + Cedar
0+00			6.32	235.46	on Hub
+25			7.2	34.6	
+50			7.9	33.9	
+75			11.5	30.3	
I.P.	0.65	229.82	12.61	229.17	
1+00			3.0	26.8	
1+20 Δ 72°-15' L			5.03	247.9	on Hub
+37			5.4	24.4	
+45			4.8	25.0	
+70			4.8	25.0	
+88			5.8	24.0	
2+00			4.7	25.1	
+20			5.0	24.8	
+40			4.5	25.3	
+52			4.7	25.1	
+57			5.1	24.7	
2+67 Δ 22°-13' L.			4.87	224.95	on Hub
I.P.	2.64	227.59	4.87	224.95	" "
3+00			2.8	24.8	
+35			3.6	24.0	
3+67 Δ			4.22	23.37	
4+00			4.7	22.9	
+20			4.7	22.9	
+30			5.0	22.6	
437.90			4.78	22.81	on Hub

Plotted
 Oct. 17 1924
 H.R.B.
 See 218 D



10/1/24

Cross Section of Alley Bk 6
Breed + Chase Add 20' wideMoore
Shaw
Eaton

18939

36

8.99

189.39

180.40

N 125' + Fst

N

w/ 25th = 0+0

C

S PAVING

7.43

181.96 ✓

S

C ✓

7.68

181.71 ✓

N ✓

7.28

182.11 ✓

8.5' w/

N Cr Apron (Cem.)

N v Garage Dirt floor

N

4.9

182.5 ✓

+ 1 Cr. Peppertree 18" Diam

5.0

182.2 ✓

+ 2

5.4

182.0 ✓

C

6.0

182.4 ✓

S

6.0

183.4 ✓

34' w/

S

5.0

182.6 ✓

C

4.9

182.5 ✓

N

4.7

182.7 ✓

40.8' w/

N

4.5

182.9 ✓

+ 3

5.1

182.2 ✓

C & M.H

4.90

182.5 ✓

S

5.0

182.2 ✓

92' w/

S BARN 3 IN ALLEY

5.5

183.9 ✓

C

5.9

183.5 ✓

+ 6.8 Cr Apron (Cement)

5.62

183.77 17.7' wide

N v Garage wood floor

4.74

184.5 ✓

189.4
100' w/

5.6

183.8 ✓

6.1

183.3 ✓

5.8

183.6 ✓

131' w/

6.45

184.9 ✓ 1' N of NL

6.1

183.3 ✓ 3.3 ✓ ✓ ✓

141' w/

N v v v v

6.1

183.3 ✓ 3.3 ✓ ✓ ✓

N Cr Cem Apron

6.47

182.9 ✓ 1' v ✓ ✓

150' w/

S

7.4

182.0 ✓

C

7.3

182.1 ✓

16

7.4

182.0 ✓

N

7.0

182.1 ✓

T.P. 361

18480

8.20

181.19

192.2' w/

N Cr Garage cem floor

2.95

181.85 ✓ 4' N of NL

200' w/

N

3.4

181.4 ✓

C

3.8

181.0 ✓

S

4.0

180.8 ✓

229' w/

S Cr Garage Dirt floor

4.20

180.6 ✓ 3' in Alley

250' w/

S

4.4

180.4 ✓

184.80

C	4.1	180.2 ✓	
N	4.3	180.5 ✓	
	257.5' W		
N Cr Garage cement floor	4.31	180.29 ✓	2' N of NL
	267.5' W		
N	4.38	180.2 ✓	✓ ✓ ✓
	281' W		
S EL cement Apron	5.28	179.5 ✓	
	298.5' W		Garage 7.4' back
S WL ✓ ✓	5.57	179.13 ✓	
	300' W		
N	5.0	179.8 ✓	
+3	5.7	179.1 ✓	
C	5.6	179.2 ✓	
S	5.8	179.0 ✓	
	309.5' W		
S Cr Garage cement floor	6.0 ↓	178.76 ✓	on line
	313' W		
N Cr ✓ ✓ ✓	5.0	179.8 ✓	✓ ✓
	326' W		
N ✓ ✓ Dirt floor	5.0	179.8 ✓	✓ ✓ ✓
+H	6.2	178.1 ✓	
C	6.2	178.1 ✓	
S	6.5	178.3 ✓	
	350' W		
S	6.9	177.9 ✓	

184.80

37

C	7.3	177.5 ✓	
+6	7.5	177.3 ✓	
N	6.5	178.3 ✓	
T.P. 190	177.9	177.85	8.85 175.95
	382' W		
N	0.7	177.4 ✓	
+3	2.2	175.7 ✓	
C	1.9	176.0 ✓	
+7.8 Cr Cem Apron	2.80	175.1 ✓	
S Cr Garage cement floor	1.98	175.87 ✓	
	400' W		
S	2.9	175.0 ✓	
U	2.9	175.0 ✓	
+7	3.1	174.8 ✓	
N	2.3	175.6 ✓	
	436' W		
S Cr Garage cement floor	4.96	174.89 ✓	on line
	450' W		
N	4.4	173.5 ✓	
+3	5.1	174.8 ✓	
C	5.3	174.6 ✓	
S	5.1	174.8 ✓	
	489.5' W		
S Cr Double Garage cement floor	7.20	170.7 ✓	on line
	500' W		
S	7.2	170.7 ✓	

177.85

177.9

38

C		7.1	170.8 ✓
N		6.7	171.4 ✓
	507' W		
N	cr Garage 1st floor	6.6 ✓	171.4 ✓ on line
	536.5' W		
S	✓ ✓ dirt ✓	8.90	169.0 ✓
	536' W		
N		7.9	170.0 ✓
+3		8.7	169.4 ✓
C		8.8	169.1 ✓
S		8.9	169.0 ✓
	561' W		
N	cr Garage dirt floor	9.20	168.7 ✓
C		10.1	167.8 ✓
S		10.4	167.5 ✓
	580' W		
S		11.8	166.1 ✓
C		11.7	166.4 ✓
+6		11.5	166.2 ✓
N		10.2	167.7 ✓
T.P.	5.51	170.9 ✓	12.44
			165.41 ✓
		600' W	EV of north
N	cr Paving	5.93	164.99 ✓
C	✓ ✓	6.50	164.6 ✓
S	✓ ✓	6.62	164.30 ✓
check BM		14.13	156.79 ✓ 156.81

254.23

+8		12.3	242.5 ✓
S		10.7	244.1 ✓
TP	0.14	241.34 ✓	13.63 241.20 ✓
		124' W = E1 of IDYLLWILD	
S		0.0	241.3 ✓
cb		+0.1	241.4 ✓
1/2		+0.3	241.6 ✓
C		+0.2	241.5 ✓
1/2		-0.3	241.0 ✓
cb		0.1	241.7 ✓
+5		0.0	241.3 ✓
+10		1.1	240.4 ✓
1/2		1.0	240.3 ✓
+5		1.1	240.4 ✓
		130' W	
-5		3.5	237.8 ✓
1/2		3.0	238.3 ✓
cb		1.9	239.4 ✓
1/2		1.1	240.2 ✓
C		0.8	240.5 ✓
1/2		0.6	240.7 ✓
cb		0.5	240.8 ✓
S		0.3	241.0 ✓
		139' W = E of IDYLLWILD	
S		1.0	240.3 ✓
cb		1.8	239.5 ✓

241.34

Penn. Ave

40

1/2		2.5	238.8 ✓
C		2.8	238.5 ✓
1/4		2.5	238.8 ✓
cb		2.4	238.9 ✓
1/2		3.3	238.0 ✓
+5		3.4	237.9 ✓
		145' W	
-10		7.2	234.3 ✓
1/2		6.3	235.0 ✓
cb		5.2	236.1 ✓
+5		4.2	237.1 ✓
1/4		4.1	237.2 ✓
C		4.1	237.2 ✓
1/4		3.9	237.4 ✓
cb		3.2	238.1 ✓
+3		2.3	239.0 ✓
S		2.0	239.3 ✓
		154' W = W of IDYLLWILD	
S		3.4	237.9 ✓
+4		4.1	237.2 ✓
+11		4.1	237.2 ✓
cb		5.1	236.2 ✓
+5		5.3	236.0 ✓
1/2		5.9	235.4 ✓
C		5.8	235.5 ✓
1/2		5.8	235.5 ✓

241.34

+4	6.0	235.3	✓
cb	7.3	234.0	✓
N	7.8	233.5	✓
+10 = Sedge of patch to Residence	8.0	233.3	✓ Good for yardage floor E.L.V.
	175'W		
-10 ✓ ✓ ✓ ✓	13.3	228.0	✓ for yardage
N	12.5	228.8	✓
+4	11.3	230.0	✓
cb	11.3	230.0	✓
+4	9.9	231.4	✓
v	10.0	231.3	✓
1/4	9.9	231.4	✓
+1	9.0	232.3	✓
cb	8.7	232.6	✓
+3	7.2	234.1	✓
+11	7.4	233.9	✓
S	5.7	235.6	✓
	189'W		
S	7.0	230.3	✓
+3	9.5	231.8	✓
+11	9.0	232.3	✓
cb	10.7	230.6	✓
1/4	12.3	229.0	✓
c	12.5	228.8	✓
1/4	13.3	228.0	✓
+5	14.3	227.0	✓

241.34

Penn Ave

41

cb	15.3	226.0	✓
+4	17.0	224.3	✓
+12	17.0	224.3	✓
N	16.0	225.3	✓
+1	15.3	226.0	✓
+10	15.3	226.0	✓
	195'W		
-10	15.7	225.6	✓
-1	16.0	225.3	✓
N	17.0	224.3	✓
+3	17.4	223.9	✓
cb	17.6	223.7	✓
+3	15.8	225.5	✓
1/4	14.4	226.9	✓
c	13.5	227.8	✓
1/4	13.4	227.9	✓
+1	12.6	228.7	✓
+6	12.3	229.0	✓
cb	11.5	229.8	✓
+2	9.9	231.4	✓
+12	10.7	230.6	✓
S	7.3	234.0	✓
	205'W		
S	6.6	234.7	✓
+3	11.7	229.6	✓
cb	12.9	228.4	✓

241.34

1/4	15.0	226.3	✓
C	15.3	226.0	✓
1/4	16.0	225.3	✓
+5	17.7	223.6	✓
cb	18.0	223.3	✓
+10	19.0	222.3	✓
N	18.0	223.3	✓
+3	16.9	224.4	✓
+10	17.1	224.2	✓

215' W = El. of Penn A to Right = W Loc. D.I.R.H.

-15	23.0	218.3	✓
N	21.5	219.8	✓
cb	19.3	222.0	✓
1/4	18.1	223.2	✓
C	17.2	224.1	✓
1/4	17.0	224.3	✓
cb	15.6	225.7	✓
+3	12.8	228.5	✓
+5	13.2	228.1	✓
+6	14.1	227.2	✓
+13	13.8	227.5	✓
S	8.5	232.8	✓

225' W = E of

S	11.5	230.0	✓
T.P.	0.0	228.79	✓
+2	4.0	229.8	✓

228.79

Penn. Ave.

42

+9	3.8	225.0	✓
+12	2.0	226.8	✓
cb	3.5	225.3	✓
1/4	5.7	223.1	✓
C	6.2	222.6	✓
1/4	7.1	221.7	✓
cb	8.2	220.6	✓
N	11.0	217.8	✓
+15	13.6	215.2	✓

235' W = E 1/4

-15	14.3	214.5	✓
N	11.9	216.9	✓
cb	9.1	219.7	✓
1/4	8.1	220.7	✓
C	7.2	221.6	✓
1/4	6.4	222.4	✓
+6	5.8	223.0	✓
cb	4.4	224.4	✓
+4	4.0	224.8	✓
+6	5.4	223.4	✓
+13	5.5	223.3	✓
S	2.8	226.0	✓

245' W = E of Penn to North

S	5.0	223.8	✓
+2	6.8	222.0	✓
+8	6.9	221.9	✓

22879

cb	5.8	223.0	✓
+1	6.9	221.9	✓
1/4	7.2	221.6	✓
c	7.7	221.1	✓
1/4	8.5	220.3	✓
cb	9.8	219.0	✓
N	11.7	217.1	✓
+15	14.5	214.3	✓
	250'W		
-15	14.7	214.1	✓
N	12.2	216.6	✓
cb	9.1	219.7	✓
1/4	8.3	220.5	✓
c	8.0	220.8	✓
1/4	7.7	221.1	✓
cb	7.7	221.1	✓
S	7.9	220.9	✓
	255'W		
S	8.4	220.4	✓
cb	8.2	220.6	✓
1/4	8.2	220.6	✓
c	8.4	220.4	✓
1/4	8.6	220.2	✓
cb	9.0	219.8	✓
+10	9.5	219.3	✓
N	12.4	216.4	✓

22879

Penn Ave

43

+15	14.8	214.0	✓
	260'W =	BL. of Godsal Lane	
-15	15.5	213.3	✓
N	14.1	214.7	✓
+2	9.7	219.1	✓
cb	8.9	219.9	✓
1/4	8.8	220.0	✓
c	8.7	220.1	✓
1/4	8.6	220.2	✓
cb	8.5	220.3	✓
S	8.8	220.0	✓
	265'W		
S	9.0	219.8	✓
cb	8.8	220.0	✓
1/4	8.9	219.9	✓
c	9.0	219.8	✓
1/4	9.0	219.8	✓
cb	9.0	219.8	✓
N	9.7	219.1	✓
+2	15.1	213.7	✓
+15	15.7	213.1	✓
	275'W	= WL of Godsal Lane	
-15	16.2	212.6	✓
-2	16.0	212.8	✓
N	9.8	219.0	✓
cb	9.2	219.6	✓

22879

1/4	9.2	219.6	✓
C	9.2	219.6	✓
+ 5 = Elev. of path to residence	9.0	219.8	✓
✓ ✓ and 10' west = Elev.	8.0	220.8	✓ of Porch to and Residence
1/4	9.0	219.8	✓
1/4	9.3	219.5	✓
S = W.L. of Godsall	9.7	219.1	✓

Note - Please check my elev. to Godsall Lane Notes

956-32

Penn Ave

44

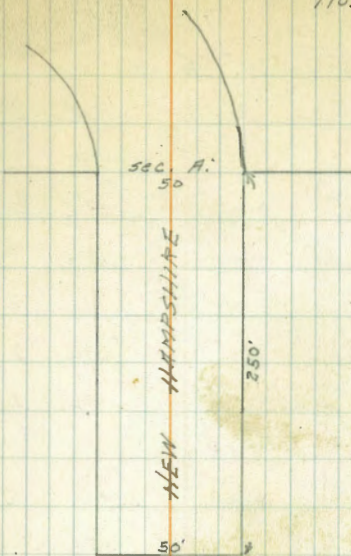
12/10/21 Gregory
 Cross section of 50' wide
 New Hampshire St. 10' cbs
 Thru the opening at S End.

on B.M.	710	335.13		333.03	BPNE Madison + Mass
	1.51	324.18	1246	322.67	
	1.12	312.28	1302	311.16	
	0.43	302.76	995	302.33	

Sec. A

W.		2.57	300.21	on hub
+9		2.5	300.3	
cb		2.9	299.9	
1/4		2.9	299.9	
c		3.0	299.8	
1/4		3.0	299.8	
cb		3.1	299.7	
E		3.0	299.8	
	no' S			
E		3.8	299.0	
cb		3.9	298.9	
1/4		3.7	299.1	
c		3.7	299.1	
1/4		3.7	299.1	
cb		3.6	299.2	
+2		3.4	299.4	
W		3.6	299.2	
	50' S			
W		5.6	297.2	
cb		5.3	297.5	

New Hampshire 45



+5	5.5	297.3
1/4	5.6	297.2
+3	5.1	297.7
c	4.9	297.9
1/4	4.8	298.0
cb	4.7	298.1
E	4.6	298.2
	61' S	
E	5.1	297.7
cb	5.1	297.7
1/4	5.3	297.5
c	5.5	297.3
1/4	5.9	296.9
cb	6.5	296.3
W	7.2	295.6

30276

69' 5

W	7.2	295.6
cb	7.0	295.8
1/4	6.7	296.1
C	6.2	296.6
1/4	5.8	297.0
cb	5.6	297.2
E	5.4	297.4

71' 5

E	5.4	297.4
cb	5.6	297.2
1/4	5.9	296.9
C	6.4	296.4
1/4	7.1	295.7
cb	7.2	295.6
+1	8.0	294.8
W	8.9	293.9

95' 5

-10	16.9	285.9
W	13.3	289.5
cb	11.4	291.4
+1	10.4	292.4
1/4	10.2	292.6
C	9.2	293.6
1/4	8.2	294.6
cb	7.6	295.2
E	6.6	296.2

New Hampshire 46

96' 5

E	6.7	296.1
cb	7.7	295.1
1/4	8.2	294.6
C	9.3	293.5
1/4	10.4	292.4
+4	10.5	292.3
+5	12.5	290.3
cb	12.9	289.9
W	15.0	287.8
+10	17.1	285.7

105' 5

-10	17.8	285.0
W	15.2	287.6
cb	13.0	289.8
+2	11.8	291.0
1/4	11.7	291.1
C	10.4	292.4
1/4	9.5	293.3
cb	8.5	294.3
E	7.5	295.3

109' 5

E	7.9	294.9
cb	9.1	293.7
1/4	10.2	292.6
C	11.2	291.6

-1/2	12.3	290.5
+4	12.5	290.3
+5	13.4	289.4
cb	13.8	289.0
+9.5	16.2	286.6
W	17.8	285.0
+10	18.3	284.5

126.5

-15	25.1	277.7
W	19.2	283.6
+8	18.9	283.9
cb	17.4	285.4
1/4	16.0	286.8
+1	14.9	287.9
c	14.6	288.2
1/2	13.2	289.6
cb	11.8	291.0
E	10.0	292.8

GRADING SHOULD STOP AT 125.5, at most.

150.5

E	14.4	288.4
cb	16.5	286.3
1/4	19.5	283.3
c	20.5	282.3
+2	20.5	282.3
+3	21.6	281.2

1/4	22.3	280.5
+4	22.4	280.4
cb	23.7	279.1
+9	28.0	274.8
W	31.0	271.8
+2	31.1	271.9
+3	38.6	264.2
+12	38.8	264.0

Alley BIK I Univ Hts
 from N. Line Adams Ave to S. Line Works Ave

4/1/25
 P.M.

393.77

44

88' N = Garage on E. Dirt floor 57 Back

B.M.	4.73	393.77	389.04	S.E. 30th & Adams
				00 = N Line Adams Ave
E		4.84	388.91	on ch.
E		5.00	388.77	" Paving
C		5.35	388.42	" "
W		5.05	388.72	" "
W		4.87	388.90	" ch.
				4' N
W		4.8	388.97	
E		4.7	389.07	
W		4.5	389.27	
E		4.8	388.97	
				27' N
E		4.3	389.47	
W		4.0	389.77	
C		3.9	389.87	
W		4.0	389.77	
				45' N
W		4.2	389.57	
E		4.0	389.77	
E		4.3	389.47	
				70' N
E		4.4	389.37	
E		4.3	389.47	
W		4.7	389.07	

E		4.4	389.37	
				100' N
W		4.5	389.27	
E		4.4	389.37	
E		4.7	389.07	
				125' N
E		4.6	389.17	
C		4.8	388.97	
W		4.8	388.97	
				152' N = S. End of 3 Garages on E 3.4 Back cmt floors
W		4.9	388.87	
C		4.6	389.17	
E		4.7	389.07	
W		4.7	389.07 on floor	
				182' N = N. end Garages on E
				-3.4
E		4.8	388.97	
E		5.3	388.47	
C		4.8	388.97	
W		5.2	388.57	
				202' N = Garage on W. cmt floor 1.2' Back
				-1.2
				4.9
W		5.2	388.57	
C		5.1	388.67	
E		5.4	388.37	

393.77

49

235' N.

E	5.2	388.57
L	5.2	388.57
W	5.0	388.77

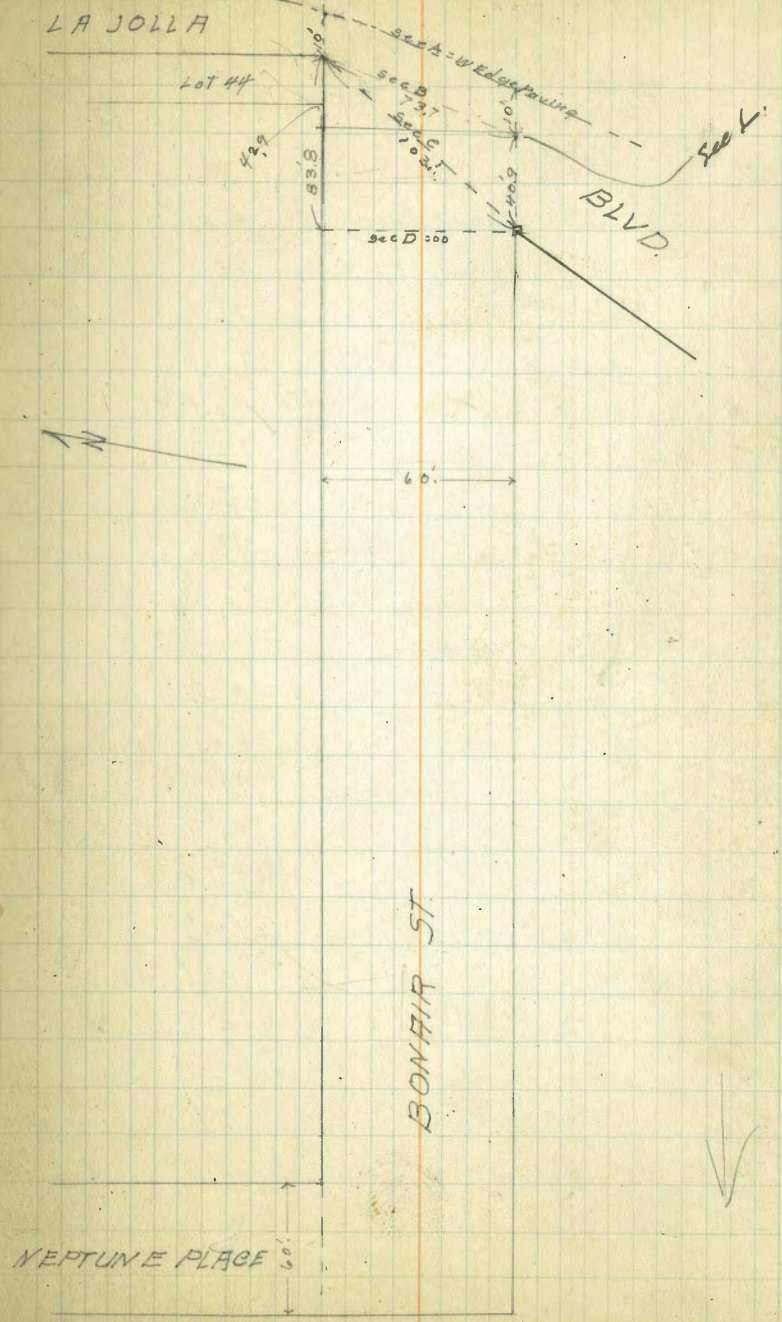
247' No S. Line Works

W	5.30	388.47	on ct
W	5.47	388.30	" Paving
L	5.82	387.95	" "
E	5.54	388.23	" "
	5.45	388.32	" ct

4/2/25
miller

Bonair St X Sec
from wedge paving on La Jolla Blvd to White Neptune Place

B.M.	4.08	83.09	79.01	La Jolla Blvd S.E. + Westburn
T.P.	1.58	74.55	10.12	77.97
Sec A = Wedge Paving				
N		1.32	73.23	on Paving
C		1.89	72.66	" "
S		2.74	71.81	" "
Sec B = 10' W. of W Line Paving				
S		2.1	72.5	
C		1.3	73.3	
Ncb		0.5	74.1	
N = N.W. cor Bonair & La Jolla Blvd		0.1	74.5	
Sec C				
N = N.W. cor Bonair & La Jolla Blvd		0.1	74.5	
Ncb		0.6	74.0	
1/4		1.3	73.3	
C		1.3	73.3	
1/4		1.7	72.9	
cb		2.1	72.5	
S = S.W. cor La Jolla Blvd & Bonair		3.1	71.5	
Sec D = 00				
S = S.W. cor La Jolla Blvd & Bonair		3.1	71.5	
76		2.5	72.1	
cb		2.3	72.3	
1/4		2.4	72.2	
C		2.7	72.4	
1/4		2.4	72.2	



74.55

0100 (cont)

cb	2.2	72.4
+2	1.5	73.1
N	1.5	73.1
9'W of 0100		
W	1.8	72.8
+8	1.8	72.8
cb	2.3	72.3
1/4	2.5	72.1
C	2.3	72.3
1/4	2.6	72.0
cb	2.0	72.6
S	2.0	72.6
40'W		
S	3.0	71.6
+7	2.6	72.0
cb	3.2	71.4
1/4	3.5	71.1
C	2.9	71.7
1/4	3.2	71.4
+6	3.1	71.5
cb	2.1	72.5
N	2.4	72.2
75'W		
N	3.3	71.3
cb	3.0	71.6
+4	4.2	70.4

74.55

Bonair

51

1/4	4.3	70.3
C	4.1	70.5
1/4	4.6	70.0
cb	4.3	70.3
+2	3.7	70.9
S	4.1	70.5
100'W		
S	5.5	69.1
cb	5.3	69.3
1/4	5.4	69.0
C	5.3	69.3
1/4	5.2	69.4
+3	4.8	69.8
cb	4.6	70.0
N	4.4	70.2
150'W		
N	5.8	68.8
cb	6.1	68.5
1/4	6.5	68.1
C	6.8	67.8
1/4	7.0	67.6
cb	7.0	67.6
+2	6.5	68.1
S	6.7	67.9

74.55

200' W

S	8.6	66.0
cb	8.3	66.3
1/4	8.3	66.3
C	8.1	66.5
1/4	8.0	66.6
+4	7.6	67.0
cb	7.4	67.2
N	7.0	67.6

250' W

N	7.8	66.8
cb	8.3	66.3
1/4	8.6	66.0
C	9.1	65.5
1/4	9.5	65.1
cb	9.5	65.1
S	9.6	65.0

300' W

S	10.3	64.3
cb	9.8	64.8
r2	10.1	64.5
1/4	10.1	64.5
C	9.5	65.1
1/4	9.1	65.5
+5	8.6	66.0
cb	8.6	66.0
N	8.5	66.1

74.55

350' W

N	9.8	64.8
cb	10.3	64.3
1/4	10.5	64.1
C	10.7	63.9
1/4	11.2	63.4
cb	10.9	63.7
S	11.1	63.5

400' W

S	12.2	62.4
cb	11.7	62.9
r2	12.2	62.4
1/4	12.7	61.9
C	11.9	62.7
1/4	11.7	62.9
cb	11.4	63.2
N	11.5	63.1

450' W

N	12.4	62.2
cb	12.2	62.4
1/4	12.2	62.4
C	13.0	61.6
T.P. 102	12.74	61.81
1/4	11.6	61.2
cb	11.5	61.3
S	11.3	61.5

BONAIR

52

62.83

480' W

S	2.0	60.8
cb	2.0	60.8
1/4	1.7	61.1
C	1.9	60.9
1/4	2.0	60.8
cb	1.9	60.9
N	1.6	60.2

500' W

N	2.0	60.8
cb	2.3	60.5
1/4	2.5	60.3
C	2.4	60.4
1/4	2.2	60.6
cb	2.4	60.4
S	2.4	60.4

560' W

S	3.7	59.1
cb	3.6	59.2
1/4	3.4	59.4
C	3.6	59.2
1/4	3.6	59.2
cb	3.5	59.3
N	3.4	59.4

600' W

N	4.6	58.2
cb	4.4	58.0

62.83

Bangor

53

1/4	4.7	58.1
C	5.2	57.6
1/4	5.1	57.7
cb	5.2	57.6
S	5.2	57.6

650' W

S	6.5	56.5
cb	6.7	56.1
1/4	6.8	56.0
C	6.5	56.3
1/4	6.5	56.3
cb	6.2	56.6
N	6.1	56.7

700' W

N	7.7	55.1
cb	7.4	55.0
1/4	7.8	55.0
C	8.0	54.8
1/4	8.3	54.5
cb	7.9	54.9
S	8.1	54.7

750' W

S	9.8	53.0
cb	9.8	53.0
1/4	9.9	52.9
C	9.9	52.9

62.83

1/4			9.7	53.1
cb			9.5	53.3
N			9.6	53.2
		800'W		
N			11.9	50.9
cb			11.6	51.2
+3			11.6	51.2
+6			12.2	50.6
1/4			12.0	50.8
c			12.1	50.7
1/4			12.2	50.6
+5			12.5	50.3
cb			12.2	50.6
S			12.1	50.7
T.P.	0.08	49.97	12.94	49.89
		850'W		
S			2.5	47.5
cb			2.9	47.1
+5			3.2	46.8
1/4			2.3	47.7
c			1.7	48.3
3/4			2.3	47.7
+2			2.1	47.9
+4			1.2	48.8
cb			1.2	48.8
N			2.0	48.0

49.97

Bonaire 54

		900'W		
-3			4.0	46.0
N			5.3	44.7
+4			6.4	43.6
cb			4.3	43.7
1/4			5.6	44.4
c			5.8	44.2
1/4			6.1	43.9
cb			6.0	44.0
S			6.1	43.9
+5			5.6	44.4
		920'W		
-5			6.7	43.5
S			6.9	43.1
cb			7.8	42.2
1/4			7.7	42.3
c			7.4	42.6
1/4			7.5	42.5
+5			8.4	41.6
cb			8.4	41.6
+8			7.6	42.4
N			6.7	43.3
+3			5.7	44.3
		942'W		
N			5.4	44.6
cb			7.0	43.0
1/4			7.4	42.6
+7			8.1	41.9

942.0 W (EOW)

0	9.8	40.2
1/4	10.4	39.6
1/2	10.3	39.7
3/4	9.3	40.7
1.5	8.4	41.6
S	8.2	41.8
1.5	8.8	41.2

975' W

-10	13.7	36.3
S	13.8	36.2
CB	11.6	38.4
1/4	9.4	40.6
C	7.9	42.1
1/3	7.4	42.6
1/4	7.2	42.8
CB	6.5	43.5
N	5.2	44.8

1000' W

N	6.1	43.9
CB	7.0	43.0
1/4	7.3	42.7
C	7.7	42.3
1/4	8.9	41.1
CB	10.1	39.9
S	11.1	38.9
1.5	11.6	38.4

1025' W

-5	10.9	39.1
S	10.5	39.5
CB	9.5	40.5
1/4	8.2	41.8
C	8.4	41.6
1/4	8.2	41.8
CB	7.9	42.1
N	6.6	43.4

1044' W

N	6.9	43.1
1.5	7.0	43.0
CB	8.4	41.6
1/4	9.2	40.8
C	9.2	40.8
1/4	8.8	41.2
CB	9.5	40.5
S	10.8	39.5
1.5	11.3	38.7

1060' W

-10	17.2	32.8
S	16.8	33.2
CB	11.3	38.7
1/4	10.2	39.8
C	10.3	39.7
1/4	10.3	39.7
1.5	9.7	40.3

cb	9.0	41.0
N	8.2	41.8
1080' W		
N	9.9	40.1
cb	10.7	39.3
+6	11.3	38.3
1/4	11.9	38.1
C	12.6	37.4
1/4	12.6	37.6
+5	13.1	36.9
cb	16.3	33.7
S	17.8	32.2
+8	18.3	31.7
+12	16.3	33.7
1095' W		
-5	16.2	33.8
S	15.1	34.9
cb	14.7	35.3
1/4	14.3	35.7
C	14.0	36.0
1/4	12.6	37.4
cb	11.6	38.4
N	11.2	38.8

1110' W		
N	17.3	37.7
cb	12.9	37.1
1/4	13.0	37.0
T.P. 0.26	37.34	12.89
+3	0.2	37.0
+6	1.8	35.5
C	2.8	34.5
1/4	2.9	34.4
cb	4.0	33.3
S	4.6	32.7
+5	5.1	32.2
1130' W		
-30	26.0	11.3
-20	24.1	13.2
-4	16.0	21.3
S	11.4	25.9
cb	7.3	30.0
+2	5.7	31.6
1/4	4.5	32.8
C	4.7	32.6
1/4	4.3	33.0
cb	3.3	34.0
N	1.1	36.2
1144' W		
N	5.5	31.8
cb	5.9	31.4

1/4	6.1	31.2
C	6.2	31.1
1/4	6.4	30.9
+4	6.6	30.7
cb	10.7	26.6
S	14.4	22.9
+3	22.2	15.0
+28	26.7	10.6

1148' W

-28	26.7	10.6
-15	25.9	11.4
S	21.3	16.0
+5	18.5	18.8
cb	12.6	24.7
+5	6.6	30.7
1/4	6.9	30.4
L	6.7	30.6
1/4	6.5	30.8
cb	6.2	31.1
N	6.1	31.2

1162' W = E. line Neptune Place

N	7.4	29.9
+3		
+4	8.0	29.3
cb	7.8	29.5
1/4	7.5	29.8

C	8.3	29.0
1/4	9.0	28.3
+7	10.4	26.9
cb	14.0	23.3
S	18.7	18.6
+9	20.4	16.9
+22	26.7	10.6
+28	26.9	10.4

E.cb

+28	27.0	10.3
+20	26.8	10.5
S	16.2	21.1
cb	13.5	23.8
+6	13.0	24.3
1/4	9.5	27.8
C	9.0	28.3
1/4	8.3	29.0
cb	8.2	29.1
N	8.6	28.7

E 1/4

N	9.0	28.3
cb	9.2	28.1
1/4	9.5	27.8
L	10.1	27.2
1/4	11.0	26.3
cb	15.2	22.1

37.34

E 1/4 (con)

S	20.7	16.6
+12	25.8	11.5
+26	27.2	10.1
-25	27.6	9.7
-10	25.6	11.7
S	21.8	15.5
cb	16.3	21.0
+5	12.5	24.8
1/4	12.0	25.3
C	11.0	26.3
1/4	10.6	26.7
cb	10.3	27.0
N	10.2	27.1
N	11.2	26.1
cb	11.3	26.0
1/4	11.5	25.8
+5	12.3	25.0
C	12.0	25.3
1/4	13.3	24.0
+5	13.5	23.8
cb	16.0	21.3
+4	19.1	18.2
S	21.0	16.3
+8	24.6	12.7

W. 1/4

37.34

Bohain 58

W 1/4 (con)

+18	25.5	11.8
+20	26.7	10.6
+27	27.7	9.6
-29	28.4	8.9
-10	25.6	11.7
S	21.8	15.5
cb	16.9	20.4
1/4	14.4	22.9
C	13.4	23.9
+4	12.3	25.0
1/4	12.3	25.0
cb	12.2	25.1
N	12.4	24.9
N	13.9	23.4
+4	13.4	23.9
cb	13.6	23.7
1/4	13.9	23.4
C	14.4	22.9
1/4	16.3	21.0
cb	17.2	20.1
+7	18.0	19.3
S	20.9	16.4
+10	25.3	12.0
+25	27.8	9.5

W. cb.

W. Line Neptune Place

Server Construction

Broadway From 27th St. to 28th St

7-29-25 59
 AS 55417
 W 9155
 6 10/11/20

B.M.				180.01	82 5/8 Cor 27th St E Grades	
	12.70	192.71				
T.P.	1.42	193.39	0.74	191.97		
0+00	DE		0.95	192.14	190.00	+2.14
	+50		0.25	193.14	189.50	+3.64
1+00	Break		0.27	193.12	189.00	+4.12
	+42		1.80	191.59	185.70	+5.89
	+84		4.83	188.54	182.40	+6.14
2+26			8.40	184.99	179.10	+5.89
	+68		11.67	181.72	175.80	+5.92
T.P.	0.70	181.08	13.01	180.38		
3+10			2.86	178.22	172.50	+5.72
	+52		6.21	174.87	169.40	+5.47
	+94		9.56	171.52	166.30	+5.22
4+36			12.81	168.27	163.20	+5.07
T.P.	0.44	168.71	12.81	168.27		
	+78		3.86	164.85	160.10	+4.75
5+20	Break		7.18	161.53	157.00	+4.53
	+65		10.00	158.71	155.00	+3.71
6+10	DE		9.27	159.44	153.00	+6.44

sewer construction Corto Gordo Ave.
 From Dead End to Center Treat St.

BM	12.24	192.25	180.01	S.M. Car 27.75 Grades 178.55	
0+00 DE		10.93	181.32	178.55	+2.77
+53.1		9.87	182.31	178.23	+4.15
1+06.2		9.03	183.22	177.91	+5.31
+59.3		7.61	184.64	177.59	+7.05
2+12.5		6.10	186.15	177.27	+8.88
+65.4		5.37	186.88	176.95	+9.93
3+18.8		4.94	187.31	176.63	+10.68
+71.9		6.15	186.10	176.31	+9.79
4+25.0 @ Drop M.H.		8.40	183.85	176.00	+7.85 +9.85

sewer construction Treat St From D.E to
 Center San Luis St
 192.25

0+0		14.51	177.74	175.0	+2.74
+38.33		10.01	182.24	174.67	+7.57
+76.66		6.05	186.20	174.33	+11.87
1+15.0 @ Drop M.H.		8.40	183.85	174.00	+9.85
T.P. 1.40	180.79	12.86	179.39		
+65		1.71	179.08	173.5	+5.58
2+11		7.29	173.50	165.41	+8.09
T.P. 0.07	167.77	13.09	167.70		
+57		5.37	162.40	157.31	+5.09
T.P. 0.38	155.14	13.01	154.76		
3+03		7.34	152.80	149.22	+3.58
+49		10.67	144.47	141.12	+3.35

sewer construction, Treat St. Cont.

	155.14			Grades	
T.P. 0.08	142.52	12.70	142.44		
3+95.0 Bk		4.91	137.71	133.0	+4.71
4+23.23		7.78	134.74	130.0	+4.74
4+51.47 M.H.		12.00	130.52	127.0	+3.52

San Luis St. From E. Treat to Existing Sewer in 28th St.

	142.52				
T.P. 2.95	133.61	12.76	129.76		
0+00 M.H.		3.09	130.52	127.00	+3.52
0+51.92		4.77	128.84	126.67	+2.17
1+02.84		4.20	129.41	126.34	+3.07
1+54.27		2.73	130.88	126.00	+4.88
2+05.69		2.63	130.98	125.67	+5.31
2+57.12		4.08	129.53	125.34	+4.19
3+08.54		2.71	130.90	125.00	+5.90
+59.97		5.50	128.11	124.67	+3.44
4+11.4		5.45	128.16	124.34	+3.82
4+62.82 M.H. Drop or		2.75	130.86	124.00	+6.86 +12.86
T.P. 0.57	131.43		130.86		
4+92.82		6.63	124.80	116.20	+8.60
5+22.22 Bk		12.08	119.37	114.40	+4.97
+71.32		15.70	115.73	114.10	+1.63
6+19.82 M.H. Existing Sewer		5.65	125.78	113.80	+11.98

Setter Construction 27th & G St

From D.E. in G St to Existing M.H. in 27th & B Alley

5th E. 27th St

7.30.25
 180.01
 6 North

B.M.	0153	180.54		180.01		
T.P.	1.24	168.72	13.06	167.48		
	0.29	156.01	13.10	155.72		
T.P.	13.25	169.14	0.12	155.89	Grades	
T.P.	10.28	178.96	0.46	168.69		
0+00	DI		4.02	174.94	165.00	+9.94
+40			6.82	172.14	161.5	+10.64
+80		167.14	2.62	166.52	158.0	+8.52
+120			4.28	162.86	154.50	+8.36
+160	Δ M.H. @ 27th St	156.01	0.71	155.25	151.0	+4.25
+207.5			2.90	153.11	148.0	+5.11
+235.0			7.25	149.76	145.0	+3.76
+302.5			11.09	144.92	142.0	+2.92
+375.0	Existing M.H.				139.0	

Sewer Const. Alley So. 6 E 27th St
From DE to M.H. E 27th St.

		156.01				
	13.25	169.14	0.12	155.89	Grades	
0+0	DE		0.31	168.83	159.0	+9.83
+40	sk		7.50	161.64	151.0	+10.64
		156.01				
+75			0.12	155.89	146.5	+9.89
1+10	sk		6.16	149.85	140.0	+7.85
+40						
+75						

Sewer Construction G St From Dead End
to Existing Sewer 177th St.

		178.96				
0+00			1.50	177.46	166.50	+10.96
+35			0.86	178.10	165.25	+12.85
+70	sk		4.22	174.24	164.00	+10.74
T.P.						
1+20	0.75	169.09	10.62	168.34	158.00	+10.34
+70			7.53	161.56	152.00	+9.56
T.P.	0.78	157.24	12.63	156.46		
2+20			1.91	155.28	146.00	+9.28
+70	M.H.		11.50	145.74	140.00	+5.74
T.P.	0.40	144.80	12.84	144.40		
3+20			11.14		126.50	+7.16
T.P.	0.83	132.99	12.64	138.16		
T.P.	5.06	125.52	12.53	120.46		
+70	sk		8.22	117.30	113.00	+4.30
4+15			12.20	112.32	110.50	+1.82
+60	M.H.		3.50	122.02	108.00	+14.02
T.P.	6.83	131.94	0.41	125.11		
4+19.82	M.H. stab		6.09	125.85	125.28	

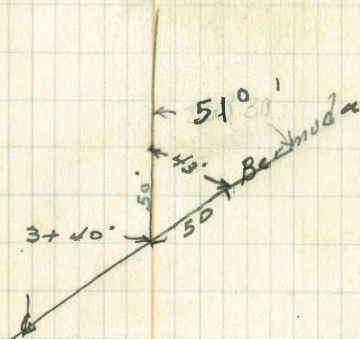
9/18/25 Gregory / Phelps
Sewer Levels on 6
Bermuda St Outfall
B.S.B.

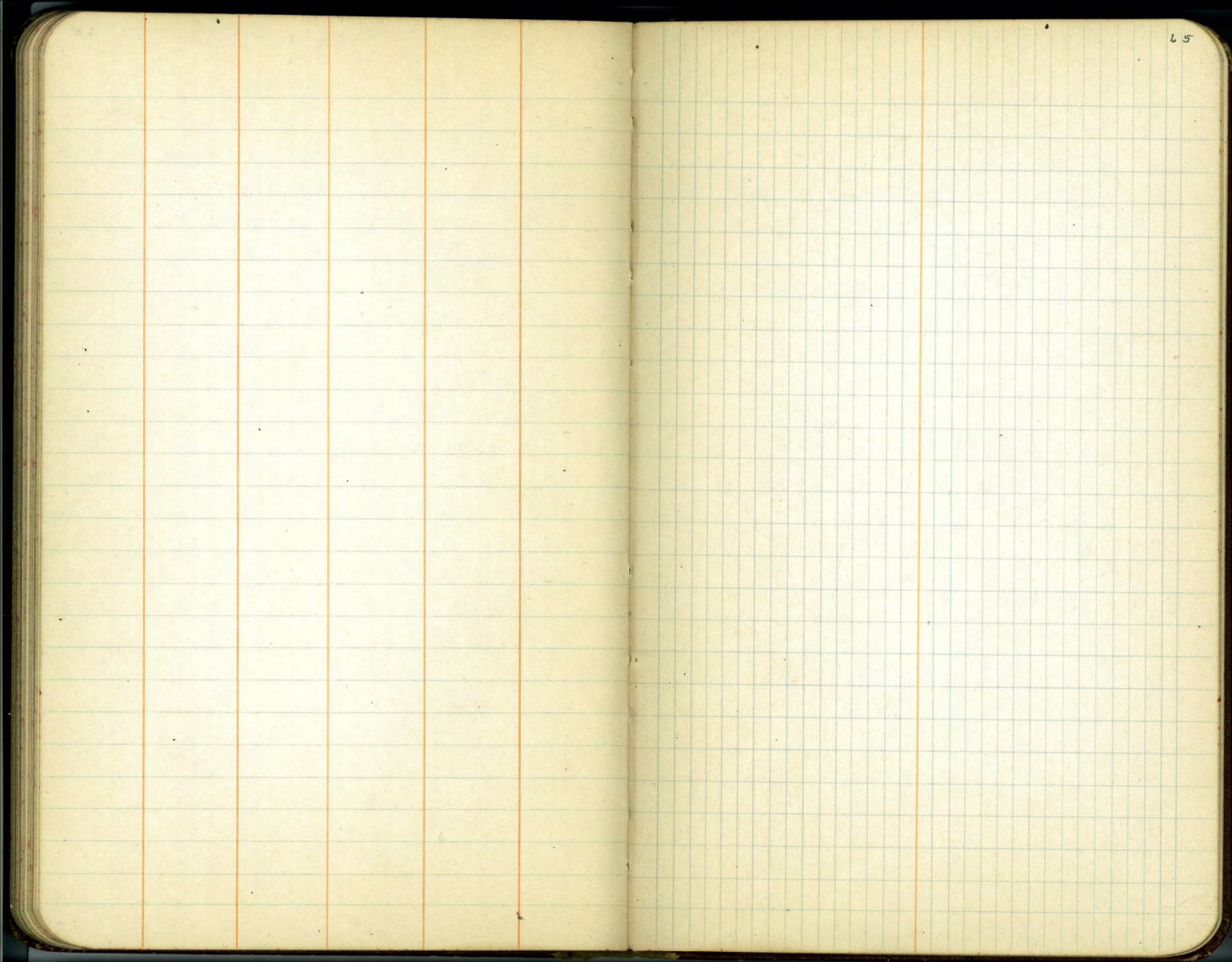
	+	21.	-	20.
	5.44	25.44		
307' W. of W.L. Bermuda			2.9	22.40
313' " " " " edge bank out			3.0	22.4
T.P.	4.45	27.15	3.24	22.20
20' S. of 307' W = edge of Bank			5.2	21.9
3+15			10.4	16.7
3+19			12.8	14.3
7' N. of 3+19 Top of Bank			4.8	22.3
6' S. of 3+19			13.7	13.4
14' " " 3+19			13.3	13.8
T.P.	1.90	16.15	12.90	14.25
3+30			10.2	3.9
3+40 Δ Left 51° 30'			13.5	2.6
T.P.	1.60	0.455	13.20	0.295
3+46 on rock			1.8	2.7
3+50 " "			2.5	2.0
3+53			5.0	-0.5
3+70			4.4	.1
4+40			6.0	-1.5
4+60 Rock on N.			8.0	-3.5
+68 on Rock			8.4	-3.9
+90 Rock on S.			9.4	-4.9
5+45			10.2	-5.7

12.00

24

20. Can return
St. Bermuda
De Fec.





Date St Extension

12/5/25
mills

7. Sec of S. 50' of Balboa Park from
E. Line of 9th St 178' East

B.M.	8.56	158.97	149.91	SW Cor 9 th & Cedar
T.P.	8.85	162.25	4.17	154.20

16' W of E. ch. line of 9th + 50' N. of S. line of Park

162.9

N	6.9	156.0	on emt cl
---	-----	-------	-----------

E. ch. of 9th

N	6.7	156.2	on town st
---	-----	-------	------------

+10	7.5	155.4
-----	-----	-------

+20	7.7	155.2
-----	-----	-------

+30	8.1	154.8
-----	-----	-------

+40	8.7	154.2
-----	-----	-------

+50 = S. Line Park	8.9	154.0
--------------------	-----	-------

10' E of E. ch.

5	8.5	154.4
---	-----	-------

+10	8.8	154.4
-----	-----	-------

+20	8.3	154.6
-----	-----	-------

+30	8.0	154.9
-----	-----	-------

+40	7.6	154.3
-----	-----	-------

+50 = N	7.3	154.6
---------	-----	-------

8. line 9th

N	6.2	156.7
---	-----	-------

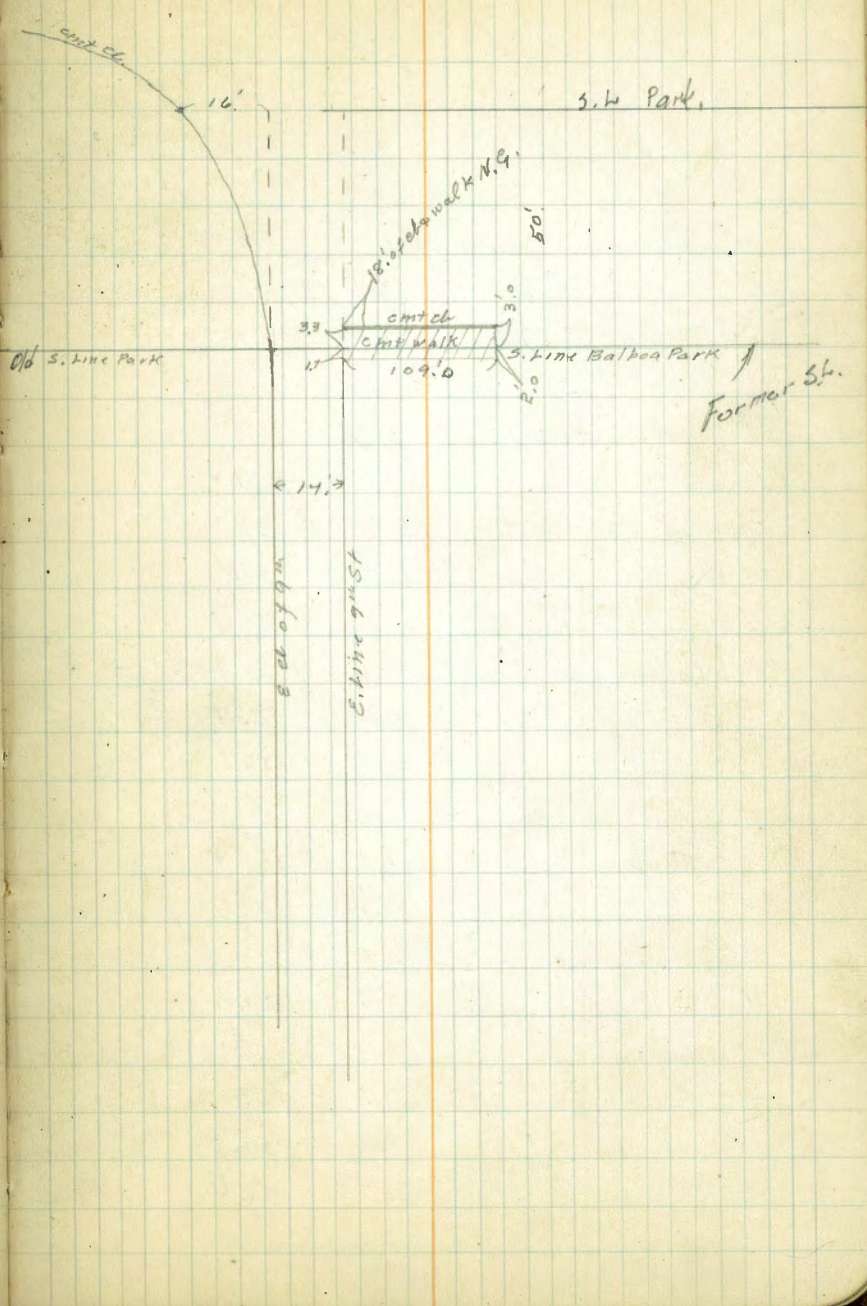
+10	4.6	156.3
-----	-----	-------

+20	7.2	155.7
-----	-----	-------

+30	8.1	154.8
-----	-----	-------

+40	8.6	154.3
-----	-----	-------

+50 = S	8.7	154.2
---------	-----	-------



162.85

4'E.0 of E. line 162.9

S	8.7	154.2
+5	8.7	154.2
+10	8.5	154.4
+20	8.3	154.6
+30	7.0	155.9
+40	4.4	156.5
+50=N	5.3	157.6

20'E

N	4.8	158.1
+10	5.7	157.2
+20	6.8	156.1
+22	7.5	155.4
+30	7.9	155.0
+40	8.6	154.3
+45	9.0	153.9
+50=S	9.1	153.8

35'E

S	9.3	153.6
+5	9.2	153.7
+10	8.9	154.0
+17	8.7	154.2
+20	7.8	155.1
+30	5.8	157.2
+40	5.6	157.3
+50=N	3.5	159.4

162.85

60'E

N	4.9	<u>162.9</u> 158.0
+10	5.2	157.7
+22	6.6	156.3
+30	8.2	154.7
+40	9.5	153.4
+45	9.9	153.0
+50=S	9.7	153.2

100'E

S	10.3	152.6	open track
+5	10.6	152.3	
+10	9.8	153.1	
+20	8.8	154.1	
+30	7.4	155.5	
+40	5.6	157.3	
+50=N	5.0	157.9	

135'E

N	4.6	158.3
+10	6.3	156.6
+20	8.3	154.6
+30	9.9	153.0
+40	10.0	152.9
+45	10.9	152.0
+50=S	10.7	152.2

Date ST 67

	162.85	172. E	162.9	
S		12.0	150.9	
+10		11.5	151.4	
+15		11.2	151.7	
+25		9.0	153.9	
+40		7.4	155.5	
+50=N		6.6	156.3	
175.8 = Top grate C.B. 2' X 2' s. edge is 33 N of S. Line Park.				
catch basin		12.1	150.8	Top grate
	178. E			
N		8.0	154.9	
+10		9.0	153.9	
+20		10.5	152.4	
+30		12.5	150.4	
+40		13.3	149.6	
+50=S		12.9	150.0	

E + W Alley Bk 3 Hartleys North Park
 from E. line 31st to W. line Herman

12/5/10
 with

359.92

69

1.94 359.92 357.98

N. W. L. H. V.
 & Illinois

S
 C
 N

00 = E. line 31st ST 359.9

N 4.61 355.3

ch. paving

C 4.81 355.0

paving

S 4.65 355.3

ch. + paving

10' E

S 4.10 355.9

C 3.9 356.0

N 3.8 356.1

50' E

N 3.7 356.2

C 3.8 356.1

S 3.7 356.2

90' E

N 4.1 355.8

C 4.1 355.8

S 4.3 355.6

132.46 C = ϕ No. 5. Alley

S 5.2 354.7

C 5.2 354.7

N 5.0 354.9

165' E

N 5.9 354.0

C 6.0 353.9

S 5.8 354.1

200' E

359.9

6.5 353.4

6.6 353.3

6.4 353.5

220' E

6.2 353.7

6.5 353.4

6.5 353.4

264.92 E = W. line Herman

6.84 353.2

cut of
 roadway

6.85 353.07

paving

6.79 353.1

"

6.58 353.3

"

6.40 353.5

cut of
 roadway

No 8 Alley B1K3 Hartleys North Park
 X.320 from No Line Wightman

12/5/25

359.92 Page 69

00 = N. Line Wightman 359.9

E	8.36	351.5	cont'd
E	8.68	351.2	paving
C	8.82	351.1	"
W	8.60	351.3	"
W	8.50	351.4	cont'd

10' N

W	7.1	352.8
E	7.4	352.3
E	7.1	352.8

35' N

E	6.2	353.7
E	6.5	353.4
W	6.3	353.6

15' N

W	5.5	354.4
C	5.7	354.2
E	5.6	354.3

80' N = Garage on E cont floor 15 back

E-1.5	5.70	354.4	cont floor
E	5.8	354.1	
E	5.7	354.2	
W	5.4	354.5	

359.92

70

103 Garage on E dirt floor 2.5 back

W	5.5	354.4	
C	5.7	354.2	
E	5.7	354.2	
E-2.5	5.7	354.2	dirt floor

150' N

E	5.4	354.5
E	5.3	354.6
W	5.3	354.6

200' N = S. Line E. & W. Alley

W	4.9	355.0
E	5.2	354.7
E	5.1	354.8

T.P. 4.97 258.67 6.20 = 253.72

CHK on BM

CHK on BM.

NW 1/4
 2.03 256.66 = 256.50
 NW 1/4
 0.71 257.98 = 257.98
 BM, 20
 not chk

555 599 p 28
 6-13-39

B/K 119 U.H. X. Sec of E & W
 Alley W. Line of 30th to E. Line Kansas

12/10/25
 Miller

BM.	6.53	369.63		363.10	s.e. Ohio & El Cajon
T.P.	7.24	373.41	3.44	366.17	
			00 = W. Line 30 th	373.4	
S			7.24	366.16	Top cmt cl
S			7.47	365.93	Paving
C			7.67	365.73	"
N			7.54	365.86	"
N			7.42	365.98	cmt cl
			10' W		
N			6.2	367.2	
+1			6.9	366.5	
C			6.8	366.6	
+7			7.0	366.4	
S			5.7	367.7	
			25' W		
S			4.4	369.0	
+5			6.0	367.4	
C			5.9	367.5	
+4			6.1	367.3	
N			5.5	367.9	
			40' W		
N			5.4	368.0	
+1			5.8	367.6	
C			5.7	367.7	
+L			5.5	367.9	
S			4.9	368.5	

				373.41		71
				373.4		
				65' W double Garage N. cmt floor	5.3	368.1
					5.7	367.7
					5.5	367.9
					5.4	368.0
						cmt floor
				100' W		
					5.3	368.1
					4.8	368.6
					5.0	368.4
				130' W		
					4.2	368.2
					5.2	368.2
					5.0	368.4
				150' W = 1/2 N+S Alley		
					4.9	368.5
					4.9	368.5
					4.8	368.6
				167' W = 1/2 Art Brom's Garage cmt floor 26 back		
					5.3	368.1
					5.3	368.1
					5.1	368.3
				54 26	5.0	368.4
				200' W		
					5.2	368.2
					5.2	368.2
					5.0	368.4
						on Arts Lawn

373.41
217' W = Garage on N

emt floor 3' Back
373.4

N-3	4.68	368.72	emt floor
N	4.85	368.55	emt apron
E	5.0	368.4	
S	5.0	368.4	on Arts Lawn

250' W

S	4.4	369.0	on Arts Lawn
E	4.6	368.8	
N	4.4	369.0	

275' W

N	4.4	369.0	
E	4.6	368.8	
S	4.4	369.0	
TI	4.1	369.3	on Arts Lawn

300' W = E. Line Kansas St

S	3.98	369.42	on Arts Curb
S	4.5	368.9	ground
E	4.8	368.6	v v
N	4.5	368.9	v v
N	4.02	369.38	emt cl.



on Arts Lawn

Blk 119 U.H. Sec N45 Alley 12/10/45
 from S. line E+W Alley to N. line Howard miller

373.41

73

373.41 Page 72

00 - S. line E+W Alley

373.4

W	5.1	368.3
E	4.9	368.5
E	5.1	368.3

30' S

E	5.5	367.9
E	5.5	367.9
N	5.4	368.0

35' S

W	5.3	368.1
+2	5.3	368.1
+5	4.3	369.1
+9	5.5	367.9
E	5.5	367.9
+4	4.7	368.7
+7	5.6	367.8
E	5.8	367.6

60' S

E	6.2	367.2
+3	6.0	367.4
+6	4.8	368.6
E	5.3	368.1
+2	4.5	368.9
+5	6.0	367.4
W	6.0	367.4

W

+6

E

+8

E

E

+4

+8

E

+3

+5

+8

W

W

E

E

70' S

5.5

373.4

367.9

5.9

367.5

5.1

368.3

5.3

368.1

6.0

367.4

84' S

5.7

367.7

5.7

367.7

4.0

369.4

4.0

369.4

4.0

369.4

5.0

368.4

4.0

369.4

4.8

368.6

87' S

5.0

368.4

5.0

368.4

5.2

368.2

100' S

4.9

368.5

4.6

368.8

4.7

368.7

5.4

368.0

115' S

5.4

367.6

5.6

367.8

5.8

367.6

373.41
135' S

E	5.5	<u>373.4</u> 367.9
e	5.8	367.6
w	5.7	367.7

150' S

w	5.7	367.7
C	6.0	367.4
E	5.8	367.6

165' S

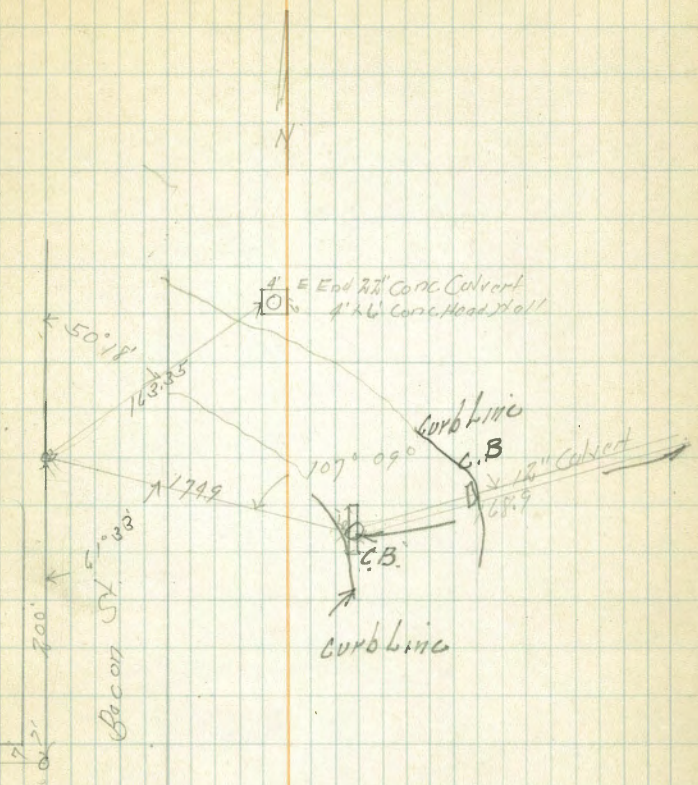
e	5.4	367.6
e	6.0	367.4
w	5.5	367.9

175 + m - = N. line Howard

w	5.7	367.7
C	6.0	367.4
E	5.8	367.6

Location Calverts Bacon and Lotus St
Ocean Beach

75
12.17.25



Lotus St

Alley BIK 1190H

Grades	
North	South
369.33	369.42
Par 68.92	Par 369.35

N	S
4.00	372.97
	68.92

E. Kansas

+25	369.10	369.18	3.82 3.75 +0.15	3.79 3.82 -0.03
-----	--------	--------	-----------------------	-----------------------

+50	368.87	368.94	4.16 3.75 +0.41	4.03 3.93 +0.10
-----	--------	--------	-----------------------	-----------------------

+75	368.64	368.70	4.33 4.11 +0.22	4.17 3.17 +1.0
-----	--------	--------	-----------------------	----------------------

1400	368.41	368.46	4.56 4.48 +0.08	4.51 3.51 +1.0
------	--------	--------	-----------------------	----------------------

1425	368.18	368.23	4.79 4.41 +0.38	4.74 4.00 +0.74
------	--------	--------	-----------------------	-----------------------

+40	368.04	368.09	4.93 4.23 +0.70	4.88 4.74 +0.14
-----	--------	--------	-----------------------	-----------------------

+60	367.86	367.89	5.11 4.34 +0.76	5.08 4.24 +0.84
-----	--------	--------	-----------------------	-----------------------

2400	367.49	367.51	5.48 4.45 +1.03	5.46 4.38 +1.08
------	--------	--------	-----------------------	-----------------------

+25	367.26	367.27	5.71 5.00 +0.71	5.70 4.56 +1.14
-----	--------	--------	-----------------------	-----------------------

+50	367.03	367.03	5.94 5.17 +0.77	5.94 4.81 +1.13
-----	--------	--------	-----------------------	-----------------------

+80	366.75	366.75	6.22 5.22 +1.00	6.22 4.20 +2.02
-----	--------	--------	-----------------------	-----------------------

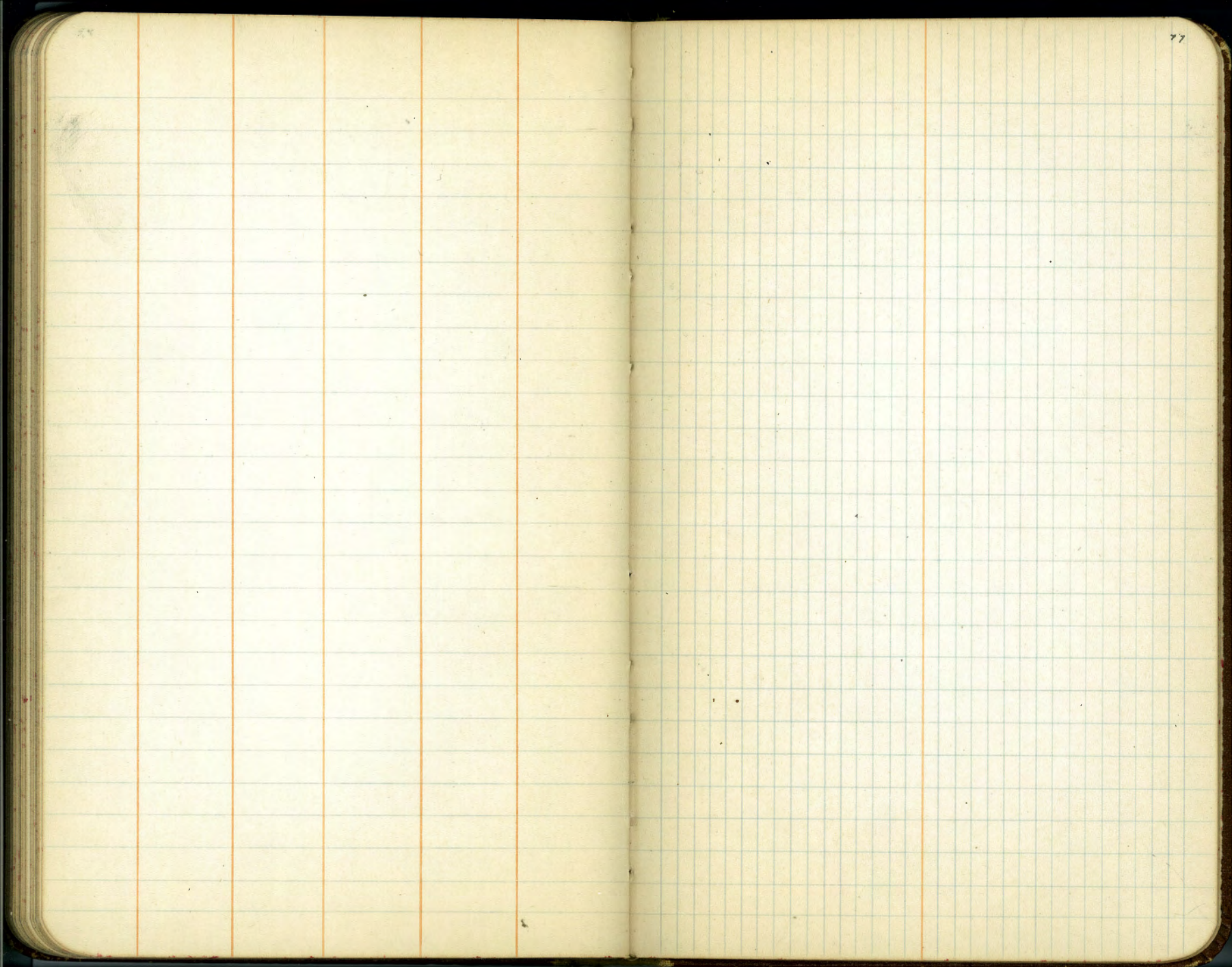
3400	366.20	366.04		
------	--------	--------	--	--

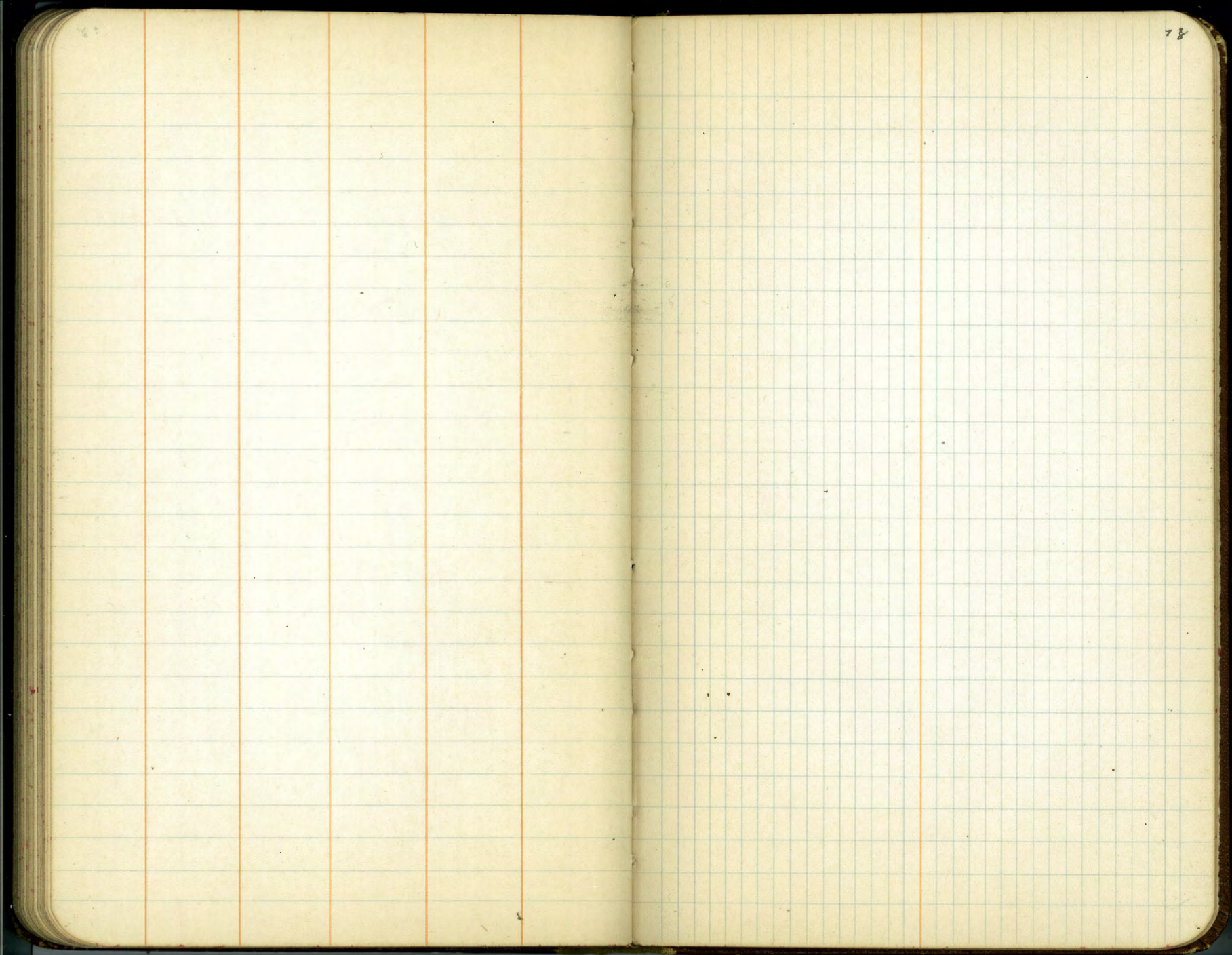
68.97
4.00
72.97
4.60
68.37

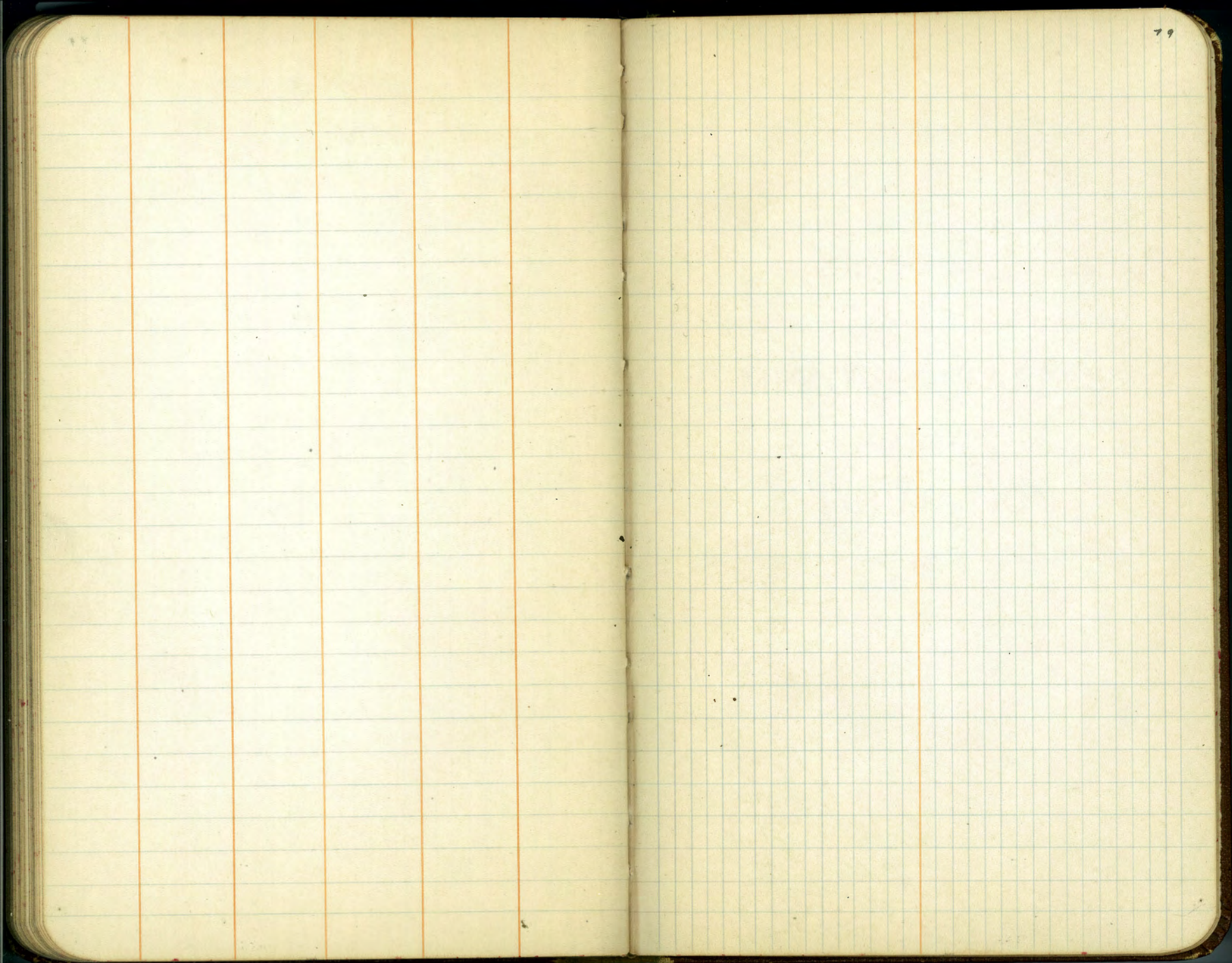
009214

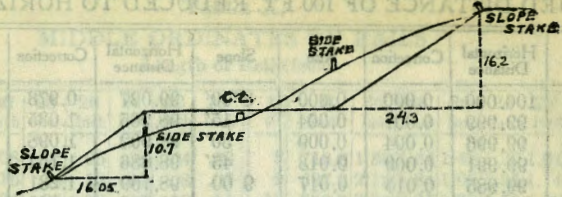
0096

WL 30th









DISTANCES FROM SIDE STAKES FOR CROSS-SECTIONING

SLOPE 1 1/4 TO 1. ROADWAY OF ANY WIDTH.

	0	.1	.2	.3	.4	.5	.6	.7	.8	.9	
0	0 00	0 15	0 30	0 45	0 60	0 75	0 90	1 05	1 20	1 35	0
1	1 50	1 65	1 80	1 95	2 10	2 25	2 40	2 55	2 70	2 85	1
2	3 00	3 15	3 30	3 45	3 60	3 75	3 90	4 05	4 20	4 35	2
3	4 50	4 65	4 80	4 95	5 10	5 25	5 40	5 55	5 70	5 85	3
4	6 00	6 15	6 30	6 45	6 60	6 75	6 90	7 05	7 20	7 35	4
5	7 50	7 65	7 80	7 95	8 10	8 25	8 40	8 55	8 70	8 85	5
6	9 00	9 15	9 30	9 45	9 60	9 75	9 90	10 05	10 20	10 35	6
7	10 50	10 65	10 80	10 95	11 10	11 25	11 40	11 55	11 70	11 85	7
8	12 00	12 15	12 30	12 45	12 60	12 75	12 90	13 05	13 20	13 35	8
9	13 50	13 65	13 80	13 95	14 10	14 25	14 40	14 55	14 70	14 85	9
10	15 00	15 15	15 30	15 45	15 60	15 75	15 90	16 05	16 20	16 35	10
11	16 50	16 65	16 80	16 95	17 10	17 25	17 40	17 55	17 70	17 85	11
12	18 00	18 15	18 30	18 45	18 60	18 75	18 90	19 05	19 20	19 35	12
13	19 50	19 65	19 80	19 95	20 10	20 25	20 40	20 55	20 70	20 85	13
14	21 00	21 15	21 30	21 45	21 60	21 75	21 90	22 05	22 20	22 35	14
15	22 50	22 65	22 80	22 95	23 10	23 25	23 40	23 55	23 70	23 85	15
16	24 00	24 15	24 30	24 45	24 60	24 75	24 90	25 05	25 20	25 35	16
17	25 50	25 65	25 80	25 95	26 10	26 25	26 40	26 55	26 70	26 85	17
18	27 00	27 15	27 30	27 45	27 60	27 75	27 90	28 05	28 20	28 35	18
19	28 50	28 65	28 80	28 95	29 10	29 25	29 40	29 55	29 70	29 85	19
20	30 00	30 15	30 30	30 45	30 60	30 75	30 90	31 05	31 20	31 35	20
21	31 50	31 65	31 80	31 95	32 10	32 25	32 40	32 55	32 70	32 85	21
22	33 00	33 15	33 30	33 45	33 60	33 75	33 90	34 05	34 20	34 35	22
23	34 50	34 65	34 80	34 95	35 10	35 25	35 40	35 55	35 70	35 85	23
24	36 00	36 15	36 30	36 45	36 60	36 75	36 90	37 05	37 20	37 35	24
25	37 50	37 65	37 80	37 95	38 10	38 25	38 40	38 55	38 70	38 85	25
26	39 00	39 15	39 30	39 45	39 60	39 75	39 90	40 05	40 20	40 35	26
27	40 50	40 65	40 80	40 95	41 10	41 25	41 40	41 55	41 70	41 85	27
28	42 00	42 15	42 30	42 45	42 60	42 75	42 90	43 05	43 20	43 35	28
29	43 50	43 65	43 80	43 95	44 10	44 25	44 40	44 55	44 70	44 85	29
30	45 00	45 15	45 30	45 45	45 60	45 75	45 90	46 05	46 20	46 35	30
31	46 50	46 65	46 80	46 95	47 10	47 25	47 40	47 55	47 70	47 85	31
32	48 00	48 15	48 30	48 45	48 60	48 75	48 90	49 05	49 20	49 35	32
33	49 50	49 65	49 80	49 95	50 10	50 25	50 40	50 55	50 70	50 85	33
34	51 00	51 15	51 30	51 45	51 60	51 75	51 90	52 05	52 20	52 35	34
35	52 50	52 65	52 80	52 95	53 10	53 25	53 40	53 55	53 70	53 85	35
36	54 00	54 15	54 30	54 45	54 60	54 75	54 90	55 05	55 20	55 35	36
37	55 50	55 65	55 80	55 95	56 10	56 25	56 40	56 55	56 70	56 85	37
38	57 00	57 15	57 30	57 45	57 60	57 75	57 90	58 05	58 20	58 35	38
39	58 50	58 65	58 80	58 95	59 10	59 25	59 40	59 55	59 70	59 85	39
40	60 00	60 15	60 30	60 45	60 60	60 75	60 90	61 05	61 20	61 35	40
41	61 50	61 65	61 80	61 95	62 10	62 25	62 40	62 55	62 70	62 85	41
42	63 00	63 15	63 30	63 45	63 60	63 75	63 90	64 05	64 20	64 35	42
43	64 50	64 65	64 80	64 95	65 10	65 25	65 40	65 55	65 70	65 85	43
44	66 00	66 15	66 30	66 45	66 60	66 75	66 90	67 05	67 20	67 35	44
45	67 50	67 65	67 80	67 95	68 10	68 25	68 40	68 55	68 70	68 85	45
46	69 00	69 15	69 30	69 45	69 60	69 75	69 90	70 05	70 20	70 35	46
47	70 50	70 65	70 80	70 95	71 10	71 25	71 40	71 55	71 70	71 85	47
48	72 00	72 15	72 30	72 45	72 60	72 75	72 90	73 05	73 20	73 35	48
49	73 50	73 65	73 80	73 95	74 10	74 25	74 40	74 55	74 70	74 85	49
50	75 00	75 15	75 30	75 45	75 60	75 75	75 90	76 05	76 20	76 35	50

Computed by L. Leland Locke.

d
+10
e
+3
+20
35
60
100
35
72
28

NW End 560
177.0
75
635
620

9) 14.5
155

280
2795

520
593

14) 90
82
60
52
1929

8060
7345
1612

00
80
50
61
70
71
95
105
149
126

520
721
6121

220

9006
7345
16354
17900
1606

612
53
5571

104137
728745
102135
1760295

346458
1732290
2078748
22519770

29053
173180

520

104137
312405
416540
4477805

346458
1732290
1385832
157638390

29053
203371
29053
473901

560
53
613

29053
27819
261477
29053
2032244
2032244
58106
808225407

775
246
11220
3899
5118
3397
19015
3198
22913
321

24519
43
23119
15766
7755
225 no
30275

1743
238

3597
24510
3161
30275

225 no
6930
4) 153.90
3897

20
321

225 no
11220
45000
225 no
225 no
225 no
25335000
195
583
500
650

N = 6188
S = 7931

12937
45
17437
44
17731
1743
16188

N 244 23
248.22

20
40 end of on W
68
85
100
125
150
160 end of on E
175

367
77090
43790

56.08
122.0
178.58
11.31

9.53
J 20
10.73

179589.87

120
147
267

225
28
247

189 S edge of 6' walk to Residence on EL

267
27
70
37.34
10.45
36.89



1477
954
300
513
300
2100
1301
172
179.60
107.45
72-14

1477
954
300
513
300
2100
1301
172

25
50
75
100
125
150
175
200
225
250
275
300
325
350
375
400
425
450
475
500
525
550
575
600
625
650
675
700
725
750
775
800
825
850
875
900
925
950
975
1000

Alameda N Line Sheridan Ave 50.4
S " Sunset 51.4

35
7) 4.7
4
10
67
91
71
871