

1113

DIETZGEN
TRADE MARK

ENGINEERS
FIELD BOOK
No. 404

1113

Grand Ave.
NW Jewell BP. 5184

EUGENE DIETZGEN CO.

DRAWING MATERIALS, MATHEMATICAL and SURVEYING INSTRUMENTS

Chicago New York San Francisco New Orleans Pittsburg Toronto

Distances from Center of Roadway for Cross-Sectioning
Roadway 16 feet wide. Side Slopes 1 on 1.
For Single Track Embankment.

H	0	.1	.2	.3	.4	.5	.6	.7	.8	.9	H
0	8.0	8.1	8.2	8.3	8.4	8.5	8.6	8.7	8.8	8.9	0
1	9.0	9.1	9.2	9.3	9.4	9.5	9.6	9.7	9.8	9.9	1
2	10.0	10.1	10.2	10.3	10.4	10.5	10.6	10.7	10.8	10.9	2
3	11.0	11.1	11.2	11.3	11.4	11.5	11.6	11.7	11.8	11.9	3
4	12.0	12.1	12.2	12.3	12.4	12.5	12.6	12.7	12.8	12.9	4
5	13.0	13.1	13.2	13.3	13.4	13.5	13.6	13.7	13.8	13.9	5
6	14.0	14.1	14.2	14.3	14.4	14.5	14.6	14.7	14.8	14.9	6
7	15.0	15.1	15.2	15.3	15.4	15.5	15.6	15.7	15.8	15.9	7
8	16.0	16.1	16.2	16.3	16.4	16.5	16.6	16.7	16.8	16.9	8
9	17.0	17.1	17.2	17.3	17.4	17.5	17.6	17.7	17.8	17.9	9
10	18.0	18.1	18.2	18.3	18.4	18.5	18.6	18.7	18.8	18.9	10
11	19.0	19.1	19.2	19.3	19.4	19.5	19.6	19.7	19.8	19.9	11
12	20.0	20.1	20.2	20.3	20.4	20.5	20.6	20.7	20.8	20.9	12
13	21.0	21.1	21.2	21.3	21.4	21.5	21.6	21.7	21.8	21.9	13
14	22.0	22.1	22.2	22.3	22.4	22.5	22.6	22.7	22.8	22.9	14
15	23.0	23.1	23.2	23.3	23.4	23.5	23.6	23.7	23.8	23.9	15
16	24.0	24.1	24.2	24.3	24.4	24.5	24.6	24.7	24.8	24.9	16
17	25.0	25.1	25.2	25.3	25.4	25.5	25.6	25.7	25.8	25.9	17
18	26.0	26.1	26.2	26.3	26.4	26.5	26.6	26.7	26.8	26.9	18
19	27.0	27.1	27.2	27.3	27.4	27.5	27.6	27.7	27.8	27.9	19
20	28.0	28.1	28.2	28.3	28.4	28.5	28.6	28.7	28.8	28.9	20
21	29.0	29.1	29.2	29.3	29.4	29.5	29.6	29.7	29.8	29.9	21
22	30.0	30.1	30.2	30.3	30.4	30.5	30.6	30.7	30.8	30.9	22
23	31.0	31.1	31.2	31.3	31.4	31.5	31.6	31.7	31.8	31.9	23
24	32.0	32.1	32.2	32.3	32.4	32.5	32.6	32.7	32.8	32.9	24
25	33.0	33.1	33.2	33.3	33.4	33.5	33.6	33.7	33.8	33.9	25
26	34.0	34.1	34.2	34.3	34.4	34.5	34.6	34.7	34.8	34.9	26
27	35.0	35.1	35.2	35.3	35.4	35.5	35.6	35.7	35.8	35.9	27
28	36.0	36.1	36.2	36.3	36.4	36.5	36.6	36.7	36.8	36.9	28
29	37.0	37.1	37.2	37.3	37.4	37.5	37.6	37.7	37.8	37.9	29
30	38.0	38.1	38.2	38.3	38.4	38.5	38.6	38.7	38.8	38.9	30
31	39.0	39.1	39.2	39.3	39.4	39.5	39.6	39.7	39.8	39.9	31
32	40.0	40.1	40.2	40.3	40.4	40.5	40.6	40.7	40.8	40.9	32
33	41.0	41.1	41.2	41.3	41.4	41.5	41.6	41.7	41.8	41.9	33
34	42.0	42.1	42.2	42.3	42.4	42.5	42.6	42.7	42.8	42.9	34
35	43.0	43.1	43.2	43.3	43.4	43.5	43.6	43.7	43.8	43.9	35
36	44.0	44.1	44.2	44.3	44.4	44.5	44.6	44.7	44.8	44.9	36
37	45.0	45.1	45.2	45.3	45.4	45.5	45.6	45.7	45.8	45.9	37
38	46.0	46.1	46.2	46.3	46.4	46.5	46.6	46.7	46.8	46.9	38
39	47.0	47.1	47.2	47.3	47.4	47.5	47.6	47.7	47.8	47.9	39
40	48.0	48.1	48.2	48.3	48.4	48.5	48.6	48.7	48.8	48.9	40

166.10
57.20
108.90

Example—If point is 22.6 ft. above grade, how far should it be from center line to be a slope stake point? Ans. from Table 30.6. For same slopes but other widths of roadbed, correct above figures by one-half difference in width of roadbed; thus in example above, for 20 ft. roadbed distance will be $30.6 + (20 - 16) \div 2$ or 2 ft. added to 30.6 = 32.6. For slopes of 1 on 1½ see inside of back cover.
Copyright, 1914, by Eugene Dietzgen Co.

Moore

Cross Section of
Garret Ave Jewel West

60 width = 1/18 1/2
 2nd split
 20 ft
 1/4 + 5/16 = Edges
 of bar in
 Jewel
 Grand Ave

	12.93	64.77		51.84
	8.25	72.79	0.73	64.04
		W.L. Jewel		
S		3.5		68.5
cb		3.8		68.5
+3		4.1		68.2
P = 1/2		3.77		68.5
C		3.65		68.6
P = 1/4		3.76		68.5
+7		3.9		68.4
cb		3.4		68.9
N		2.6		69.7
		30 W		
N		2.7		69.6
+10		2.5		69.8
cb		3.1		69.2
+3		4.2		68.1
P		3.86		68.4
H		3.86		68.4
+6		4.2		68.1
cb		3.2		69.1
S		3.3		69.0
		100 W		
S		3.4		68.9
cb		3.6		68.7

+2		4.6		67.7
1/4		4.31		68.0
1/4		4.28		68.0
+8		4.7		67.6
cb		3.7		68.6
N		3.6		68.7
		150 W		
N		3.9		68.4
cb		4.0		68.3
+3		5.1		67.2
1/4		4.71		67.6
1/4		4.69		67.6
+8		5.1		67.2
cb		3.9		68.4
S		3.6		68.7
		200 W		
S		4.0		68.3
+10		4.0		68.3
cb		4.4		67.9
+2		5.5		66.8
1/4		5.08		67.2
1/4		5.02		67.3
+7		5.4		66.9
cb		4.6		67.7
N		4.4		67.9

7229

235' W

N	5.0	67.3
cb	5.0	67.3
+6	6.0	66.3
1/4	5.28	67.0
1/4	5.27	67.0
+7	6.0	66.3
cb	4.4	67.9
S	4.1	68.2

270' W

S	4.0	68.3
cb	4.6	67.7
+3	6.3	66.0
1/4	5.85	66.4
1/4	5.88	66.4
+6	6.4	65.9
cb	5.3	67.0
+10	4.9	67.4
N	5.1	67.2

320' W

N	6.0	66.3
cb	5.9	66.4
+5	6.8	65.5
1/2	6.31	66.0
1/4	6.36	65.9
+8	6.8	65.5

7229

GARNET 2

ct	5.1	67.2
S	4.6	67.7
	330' W	
S	5.0	67.3
+17	4.9	67.4
cb	6.5	65.8
+3	7.2	65.1
1/4	6.90	65.4
1/4	6.90	65.4
+6	7.3	65.0
cb	6.3	66.0
N	7.8	65.1
	350' W	
N	7.7	64.6
cb	7.7	64.6
1/2	7.23	65.1
1/4	7.23	65.1
+5	7.6	64.7
cb	6.4	65.9
S	5.9	66.4
	400' W	
S	7.2	65.1
+10	7.5	64.8
cb	8.4	63.9
1/4	8.08	64.2
1/4	8.08	64.2

7229

+5		8.5	63.8
cb		8.5	63.8
N		8.2	64.1
	450' W		
N		8.9	63.4
+6		9.3	63.0
cb		9.2	63.1
1/4		8.95	63.3
1/4		8.95	63.3
cb		9.0	63.3
+10		8.3	64.0
S		8.6	63.7
	495' W		
S		8.8	63.5
cb		9.6	62.7
1/4		9.57	62.7
	500' W = E.L. 170rdham	^{100' ST} 20 obs	
S		10.1	62.2
cb		9.9	62.4
1/4		9.63	62.7
1/4		9.70	62.6
+5		10.0	62.3
cb		9.8	62.5
N		9.4	62.9
	E Cb		
N		9.8	62.5

GARNET 3

cb		9.8	62.5
1/4		9.82	62.5
1/4		9.85	62.4
cb		10.0	62.3
S		10.1	62.2
	E 1/4		
S		9.9	62.4
cb		9.9	62.4
1/4		9.92	62.4
1/4		9.85	62.4
cb		9.8	62.5
N		9.4	62.9
	Center		
N		9.7	62.6
cb		9.5	62.8
+5		10.0	62.3
1/4		9.90	62.4
1/4		10.04	62.3
cb		10.0	62.3
S		9.7	62.6
	W 1/4		
S		9.9	62.4
cb		10.1	62.2
1/4		10.03	62.3
1/4		9.92	62.4

72.29

cb		10.0	62.3	
N		9.9	62.4	
	W. C6			
N		9.5	62.8	
cb		9.7	62.6	
+5		10.0	62.3	
1/4		9.87	62.4	
1/6		9.94	62.4	
cb		10.0	62.3	
5		9.6	62.7	
	W. L. Ingraham			
5		9.7	62.6	
cb		9.9	62.4	
1/6		9.81	62.5	
1/6		9.81	62.5	
+5		10.2	62.1	
+6		9.5	62.8	
cb		9.4	62.9	
N		8.9	63.4	
T.P.	8.62	71.74 ✓	9.17	63.12
		50 W		
N		8.1	63.6	
cb		8.5	63.2	
+3		8.6	63.1	
+5		9.3	62.4	
1/6		8.70	63.0	

GARNET 4

1/6		8.70	63.0	
+4		9.1	62.6	
cb		9.0	62.7	
5		8.9	62.8	
	100 W			
5		8.4	63.3	
+2		8.0	63.7	
cb		6.9	64.8	
+3		8.8	62.9	
1/6		8.17	63.5	
1/6		8.18	63.5	
+6		9.2	62.5	
+7		8.0	63.7	
cb		7.4	64.3	
+10		7.3	64.4	
N		7.8	63.9	
	145' W			
5/1/6		7.64	64.1	
+6		8.2	63.5	
+7		7.5	64.2	
cb		7.5	64.2	
+10		7.1	64.1	
5		7.8	63.9	
+5		8.0	63.7	
	150 W			
T.P.	6.21	70.34 ✓	7.61	64.13 ✓

70.3L ✓

150' W

S	57	64.6
+15	54	64.9
cb	59	64.4
+4	68	63.5
1/4	6.22	64.1
1/2	6.25	64.1
+6	7.1	63.2
+7	6.2	64.1
cb	59	64.4
+5	5.5	64.8
N	5.8	64.5

200' W

N	4.8	65.5
+17	4.6	65.7
cb	5.2	65.1
+3	6.4	63.9
1/2	5.69	64.6
1/4	5.77	64.5
+7	6.4	63.9
cb	5.7	64.6
+3	5.2	65.1
S	5.6	64.7

250' W

S	4.5	65.8
+15	4.5	65.8
cb	4.9	65.4

GARNET 5

+3	6.0	64.3
1/2	5.23	65.1
1/4	5.17	65.2
+7	5.7	64.6
cb	4.3	66.0
+3	3.9	66.4
N	3.4	66.9

300' W

N	3.2	67.1
+17	3.2	67.1
cb	3.8	66.5
+3	5.3	65.0
1/2	4.77	65.6
1/4	4.67	65.7
+6	5.4	64.9
+7	4.0	66.3
cb	4.0	66.3
S	4.7	65.6

350' W

S	4.4	65.9
cb	3.7	66.6
+2	3.5	66.8
1/2	4.7	65.6
1/4	4.12	66.2
1/2	4.15	66.2

7032

+7		4.4	65.9
cb		3.6	66.7
+5		3.1	67.2
N		3.1	67.2

400' W

N		2.9	67.4
cb = East End of Cement Cb		2.93	67.4
gutter		4.0	66.3
1/4		3.57	66.77
1/4		3.59	66.75
+5		3.8	66.5
cb		3.6	66.7
S		4.2	66.1

T.P.	3.12	70.44 ✓	3.02	67.32
------	------	---------	------	-------

450' W

S		3.8	66.6
cb		3.6	66.8
1/4		3.12	67.32
1/4		3.12	67.32
gutter		3.3	67.1
Top of Cement Cb		2.51	67.93
N		2.3	68.1

500' W = E.L. Haines 80' wide 20' 865
10' 1/4's

N		2.2	68.2
cb Top of Cement		1.95	68.49
gutter		2.8	67.6

End of Cb
for B/A

70.44

GARNET

6

1/4		2.52	67.92
1/4		2.50	67.9
cb		3.0	67.2
S		3.2	67.2
	E. Curb		
S		2.9	67.5
cb		3.1	67.3
1/4		2.7 ✓	67.7
1/4		2.72	67.72
cb		2.7	67.7
N		2.3	68.1
	E 1/4		
N		2.4	68.0
cb		2.6	67.8
1/4		2.57	67.9
1/4		2.57	67.9
cb		2.7	67.7
S		2.7	67.7
	Center		
S		2.7	67.7
cb		2.5	67.9
1/4		2.46	68.0
1/4		2.46	68.0
cb		2.6	67.8
N		2.2	68.2

7044 ✓

W. 1/2

N	1.4	69.0
cb	1.8	68.6
+3	2.6	67.8
1/4	2.30	68.1
1/2	2.32	68.1
cb	2.6	67.8
S	2.2	68.2

W CB

S	2.2	68.2
cb	2.0	68.4
+4	2.6	67.8
1/4	2.21	68.2
1/2	2.30	68.2
+7	2.6	67.8
cb	1.3	69.1
N	1.2	69.2

W. L. Haines

N	1.7	68.7
+17	1.3	69.1
cb	2.2	68.2
+3	2.6	67.8
1/4	2.28	68.16
1/2	2.27	68.17
cb	2.6	67.8
S	2.3	68.1

GARNET

7

50' W

S	2.8	67.6
cb	3.3	67.1
1/4	3.60	66.8
1/2	3.60	66.8
+8	3.9	66.5
cb	2.6	67.8
+2	1.0	69.4
N	1.3	69.1

100' W

N	2.0	68.4
cb	2.4	68.0
+3	5.4	65.0
1/4	5.11	65.3
1/2	5.11	65.3
cb	5.2	65.2
+10	4.4	66.0
S	4.1	66.3

140' W

S	4.6	65.8
+13	4.7	65.7
cb	5.2	65.2
+3	5.7	64.7
+4	6.6	63.8
1/4	6.31	64.1
1/2	6.31	64.1

7044

+6	6.7	63.7
cb	3.0	67.4
N	3.5	66.9

200' W

N	4.7	65.7
cb	5.1	65.3
+3	8.4	67.0
1/2	8.10	67.3
1/4	8.10	67.3
+5	8.3	67.1
cb	6.7	63.7
+10	6.4	64.0
S	6.6	63.8

250' W

S	8.5	61.9
cb	8.0	62.4
+3	8.2	62.2
+4	9.9	60.5
1/4	9.60	60.8
1/2	9.60	60.8
+6	9.6	60.8
+8	6.8	63.6
cb	6.8	63.6
N	6.8	63.6

300' W

N	9.2	61.7
---	-----	------

GARNET

8

cb	9.2	61.7
+4	11.4	59.0
1/2	11.14	59.3
1/4	11.14	59.3
+5	11.4	59.0
cb	9.8	60.6
S	11.0	59.4

350' W

S	12.5	57.9	
cb	12.7	57.7	
1/2	12.56	57.88	
1/4	12.56	57.88	
+5	12.7	57.7	
cb	11.1	59.3	
N	11.2	59.2	
T.P. 093	58411	12.96	57.48

400' W

N	1.0	57.4
cb	1.0	57.4
+4	2.1	56.7
1/2	2.04	56.4
1/4	2.04	56.4
+6	2.2	56.7
cb	1.5	56.9
+10	1.1	57.3
S	1.5	56.9

58.41

450' W

S	3.0	55.4
+10	2.8	55.6
cb	3.3	55.1
+5	3.6	54.8
1/4	3.54	54.9
1/4	3.54	54.9
+5	3.7	54.7
cb	2.5	55.9
N	2.6	55.4
500' W = E.L. Gresham ^{70' 5'} no cbs		
N	3.8	54.6
+10	3.8	54.6
+15	3.2	55.2
cb	3.5	54.9
+5	4.7	53.7
1/4	4.89	53.5
1/4	4.89	53.5
+5	4.9	53.5
cb	4.0	54.4
S	4.1	54.3
E Curb.		
S	4.4	54.0
+10	4.2	54.2
cb	4.9	53.5
+6	5.4	53.0

58.41

GARNET

9

1/4	533	53.1
1/4	533	53.1
+5	52	53.8
cb	42	54.2
N	46	53.8
E 1/4		
N	46	53.8
cb	43	54.1
+5	54	53.0
1/4	551	52.9
1/4	551	52.9
+5	55	52.9
cb	53	53.1
+10	48	53.6
S	50	53.4
Center Gresham		
S	50	53.4
+10	48	53.6
cb	51	53.3
+5	57	52.7
1/4	570	52.7
1/4	570	52.7
+5	56	52.8
cb	46	53.8
N	44	54.0

58.41

W 1/4

N	4.7	53.7
cb	5.1	53.3
+5	5.7	52.7
1/4	5.83	52.6
1/4	5.83	52.6
+5	5.9	52.5
cb	5.5	52.9
+10	5.1	53.3
S	5.3	53.1

W Comb

S	5.4	53.0
cb	5.2	53.2
+5	6.1	52.3
1/4	5.97	52.4
1/4	5.97	52.4
cb	5.3	53.1
N	5.2	53.2

W L. Gresham

N	5.9	52.5
cb +10	5.6	52.8
cb	5.5	52.9
+5	6.3	52.1
1/4	6.15	52.26
1/4	6.15	52.26
cb	6.5	51.9

58.41

GARNET

10

+10	5.6	52.8
S	6.1	52.3
100 W		
S	7.4	51.0
cb	7.8	50.6
1/4	7.57	50.8 ↓
1/4	7.57	50.8 ↓
+5	7.8	50.6
cb	7.3	51.1
+7	6.4	52.0
N	6.8	51.6
200 W		
N	7.6	50.8
+13	7.7	50.7
cb	8.3	50.1
+5	9.3	49.1
1/4	9.10	49.3
1/4	9.10	49.3
+5	9.2	49.2
cb	8.5	49.9
S	8.4	50.0
300 W		
S	9.0	49.4
cb	9.3	49.1
+6	10.3	48.1

58.41

1/4			10.12	48.3
1/4			10.12	48.3
+5			10.4	48.0
cb			9.3	49.1
N			9.5	48.9
		400 W		
N			10.3	48.1
cb			10.7	47.7
+6			11.6	46.8
1/4			11.04	47.4
1/4			11.04	47.4
+5			11.5	46.9
cb			11.0	47.4
S			10.5	47.9
T.P.	0.60	48.39v	10.62	47.79v
		500 W = EL Fossil 20' curbs 10' 1/2"		
S			2.5	45.9
cb			2.3	46.1
+6			2.6	45.8
1/4			1.97	46.4
1/4			1.97	46.4
+7			2.8	45.6
cb			1.6	46.8
N			1.6	46.8
		E cb		
N			1.7	46.7

48.4

GARNET

11

cb			2.2	46.2
+3			2.9	45.5
1/4			2.32	46.1
1/4			2.32	46.1
cb			2.6	45.8
S			2.6	45.8
		E 1/4		
S			2.6	45.8
cb			2.8	45.6
1/4			2.51	45.9
1/4			2.51	45.9
+7			2.9	45.5
cb			2.7	45.7
N			2.3	46.1
		Center		
N			2.4	46.0
cb			2.7	45.7
+3			3.0	45.4
1/4			2.87	45.7
1/4			2.87	45.7
cb			3.2	45.2
S			3.6	44.8
		x 1 1/4		
S			3.6	44.8
cb			3.4	45.0
1/4			2.88	45.5

48.39

1/4	2.88	45.5
+7	3.1	45.3
cb	2.8	45.6
N	2.5	45.9
w cb		
N	2.6	45.8
cb	2.7	45.7
+3	3.1	45.3
1/2	3.01	45.4
1/4	3.06	45.3
cb	3.2	45.2
S	3.7	44.7
w L Fanuel St		
S	3.9	44.5
cb	3.4	45.0
+J	3.8	44.6
1/2	3.0	45.4
1/4	3.0	45.4
+7	3.1	45.3
cb	2.7	45.7
N	2.7	45.7
100 w/		
N	3.5	44.9
cb	3.6	44.8
+3	4.3	44.1
1/4	4.01	44.4

Garnet

12

1/4	4.61	44.4
+6	4.8	43.6
cb	4.2	44.2
S	4.7	43.7
200 w/		
S	5.4	43.6
cb	4.6	43.8
+4	5.6	42.8
1/4	5.09	43.3
1/2	5.09	43.3
+6	5.9	42.5
cb	3.9	44.5
N	3.9	44.5
230 w/		
N	4.0	44.4
+17	3.7	44.7
cb	4.6	43.8
+3	6.2	42.2
1/4	5.48	42.9
300 w/		
N	5.1	43.3
+17	5.0	43.4
cb	6.7	41.7
1/4	6.20	42.2
1/4	6.20	42.2
+6	6.9	41.5

48.39

cb	5.5	42.9
S	6.2	42.2

400 W

S	7.8	40.6
cb	7.1	41.3
+2	7.2	41.2
+3	8.1	40.3
1/4	7.28	41.1
1/4	7.28	41.1
+7	7.8	40.6
cb	7.3	41.1
+3	6.0	42.4
N	6.2	42.2

500 W = EL Everett + St 10⁰ 1/4⁵

N	7.4	41.0
+17	7.5	40.9
cb	8.8	39.6
1/4	8.47	39.9
1/4	8.47	39.9
+6	9.3	39.1
+7	8.5	39.9
cb	8.6	39.8
S	9.2	39.2

T.P. 120 41.12 ✓ 8.47 39.92 ✓

ECL

S	2.2	38.9
---	-----	------

41.12

Garnet

13

cb	1.6	39.5
+3	1.4	39.7
+6	2.3	38.8
1/4	1.51	39.6
1/4	1.51	39.6
cb	2.1	39.0
+3	1.4	39.7
N	0.7	40.4
E 1/4		
N	0.4	40.7
+17	0.9	40.2
cb	2.4	38.7
1/4	1.68	39.4
1/4	1.68	39.4
+7	2.5	38.6
cb	1.4	39.7
S	2.4	38.7
C		
S	2.7	38.4
cb	1.8	39.3
+3	1.7	39.4
+5	2.5	38.6
1/4	1.95	39.2
1/4	1.95	39.2
cb	2.4	38.7
+3	0.5	40.6

4112

N	0.4	40.7
	w/ 1/4	
N	0.7	40.4
+17	0.6	40.5
cb	2.5	38.6
1/4	2.20	38.9
1/4	2.20	38.9
+6	2.8	38.3
cb	1.8	39.3
S	2.7	38.4
	w/ cb	
S	2.9	38.2
cb	1.9	39.2
+3	1.9	39.2
+5	3.0	38.1
1/4	2.32	38.8
1/4	2.32	38.8
cb	2.2	38.9
+3	1.0	40.1
N	0.9	40.2
	w/ Everett J+	
N	1.5	39.6
+17	1.6	39.5
cb	3.0	38.1
1/4	2.25	38.9
1/4	2.25	38.9

Garnet

14

+5	3.3	37.8
+7	2.4	38.7
cb	2.8	38.3
S	3.7	37.4
	100 w/	
S	5.0	36.1
cb	4.0	37.1
+2	3.6	37.5
+2	4.1	37.0
1/4	3.48	37.6
1/4	3.48	37.6
cb	4.0	37.1
+3	3.2	37.9
N	3.1	38.0
	200 w/	
N	3.9	37.2
+17	3.9	37.2
cb	5.3	35.8
1/4	4.68	36.4
1/4	4.68	36.4
+7	5.4	35.7
cb	4.9	36.2
S	6.2	34.9
	300 w/	
S	6.8	34.3
cb	5.8	35.3

4112

tr	5.8	35.3
+5	6.3	34.8
1/4	5.88	35.2
1/4	5.88	35.2
ct	6.5	34.6
+3	4.8	36.3
N	4.8	36.3
400 w/		
N	6.4	34.7
+17	6.3	34.8
ct	7.6	33.5
1/4	7.13	34.0
1/4	7.13	34.0
+6	7.8	33.3
+8	7.3	33.8
ct	7.3	33.8
S	7.9	33.2
440 w/		
S	7.8	33.3
ct	7.7	33.4
+5	8.3	32.8
1/4	7.60	33.5
1/4	7.60	33.5
+5	7.90	33.2
ct	7.8	33.3
+10	6.9	34.2

Garnet 15

N	6.8	34.3
480 w/		
N	6.7	34.4
ct	7.9	33.2
+5	8.4	32.7
1/4	8.10	33.0
1/4	8.10	33.0
+6	9.0	32.1
+7	8.1	33.0
ct	8.3	32.8
S	9.0	32.1
500 w/ = EL DAWIES		
S	9.1	32.0
ct	8.3	32.8
+4	9.1	32.0
1/4	8.40	32.7
1/4	8.40	32.7
+5	8.6	32.1
ct	8.1	33.0
N	7.4	33.7
T.P. 1.40	35.19/	7.33 33.79/
EOL		
N	2.1	33.1
ct	2.7	32.5
+5	2.9	32.3
1/4	2.9	32.3

35.19

1/4	2.9	32.3
+6	3.3	31.9
+7	2.8	32.4
cb	2.8	32.4
S	3.6	31.6

E 1/4

S	3.7	31.5
cb	3.3	31.9
+4	3.6	31.6
1/4	3.07	32.1
1/4	3.07	32.1
+5	3.0	32.2
cb	2.8	32.4
N	2.4	32.8

C

N	2.6	32.6
at	2.8	32.4
+5	3.2	32.0
1/4	3.23	32.0
1/4	3.23	32.0
+5	3.6	31.6
cb	3.3	31.9
S	3.7	31.5

W 1/4

S	4.1	31.1
at	3.3	31.9

Garnet

16

+4	3.5	31.7
1/4	3.38	31.8
1/4	3.38	31.8
+5	3.4	31.8
cb	3.2	32.0
N	2.8	32.4
	W/cb	
N	1.9	33.3
cb	2.4	32.8
+	3.2	32.0
N 1/4	3.35	31.8
S 1/4	3.57	31.6
+5	3.7	31.5
+7	3.1	32.2
cb	3.1	32.2
S	3.7	31.5
	W L Dawes	
S	4.2	31.0
cb	3.2	32.0
+3	3.2	32.0
+5	3.9	31.3
1/4	3.48	31.7
1/4	3.48	31.8
cb	3.8	31.4
+3	2.7	32.5
N	2.2	33.0

35.19

100 W

N	3.7	31.5
+18	3.9	31.3
cb	4.7	30.5
1/4	4.17	31.0
1/4	4.17	31.0
+7	4.7	30.5
cb	4.3	30.9
S	5.5	29.7

200 W

S	6.0	29.2
cb	5.1	30.1
+2	5.1	30.1
+9	5.7	29.5
1/4	5.00	30.2
1/4	5.00	30.2
cb	5.1	30.1
+3	4.3	30.9
N	4.2	31.0

300 W

N	4.8	30.4
+18	5.0	30.2
cb	5.8	29.4
+3	6.4	28.8
1/4	5.78	29.4
1/4	5.78	29.4

35.19

GARNET.

17

+7	6.6	28.6
+8	5.7	29.5
cb	5.7	29.5
+16	6.7	28.5
S	6.4	28.8

400 W

S	6.8	28.4
cb	6.4	28.4
+3	7.0	28.2
1/4	6.56	28.6
1/4	6.56	28.6
cb	6.6	28.6
+10	5.8	29.4
N	5.9	29.3

T.P. 134 29.63 ✓ 6.90 28.29
 450 W = End of regular 30' paving for Garnet ^{300 paving plants}

N	1.0	28.6
cb	1.4	28.2
1/4	1.23	28.4
1/4	1.28	28.3
cb	1.9	27.7
+2	1.1	28.5
S	1.4	28.4
S	2.2	27.43

500 W = F.L. Cass St. ^{80' ST} 20' cbs

29.63

cb	on cement End of return	2.14	27.49
✓	in gutter on paving	2.53	27.10
N	✓	1.80	27.83
✓	on cement End of Ret.	1.18	28.45
N		0.7	28.93

Full returns in NE = SE Cass

N	end. of NE ret.	1.15	28.48
S	✓ S.E. ✓	2.20	27.43

Intersection paved from Et Cass to 10' W. of Cass

N. 1/4 of Cass = W. end of paving

S	on paving	2.80	26.83
C	✓	2.20	27.43
N	✓	1.65	27.98

W Curb

N		1.9	27.73
cb		2.3	27.33
1/4		2.4	27.23
C		2.5	27.13
1/4		2.5	27.13
cb		2.6	27.03
S		3.1	26.53

W.L. Cass

S		2.7	26.93
cb		2.8	26.83
1/4		2.6	27.03
C		2.2	27.43

29.63

GARNET

18

1/4		2.4	27.23
cb		2.3	27.33
N		2.0	27.63
	40' W		
N		2.6	27.03
cb		3.0	26.63
1/4		3.7	25.93
1/4		3.7	25.93
C		3.0	26.63
1/4		3.6	26.03
1/6		3.7	25.93
EB		3.2	26.43
S		3.6	26.03
	100' W		
S		4.3	25.33
cb		3.7	25.93
1/3		4.5	25.13
1/4		4.3	25.33
C		3.6	26.13
1/3		3.3	26.33
1/4		4.1	25.53
1/8		4.3	25.33
cb		3.3	26.33
N		3.3	26.33

2963

200' W

N	4.1	25.53
cb	4.2	25.43
+1	5.2	24.43
1/4	4.8	24.83
+7	4.2	25.43
C	4.3	25.33
1/4	5.0	24.63
+6	5.4	24.23
cb	4.7	24.93
S	5.6	24.03

250' W

S	6.1	23.53
cb	5.5	24.13
+3	5.4	24.23
+4	6.0	23.63
1/4	5.7	23.93
C	4.9	24.73
+3	4.5	24.83
1/4	5.4	24.23
+9	5.7	23.93
cb	4.6	25.03
N	4.9	24.73

300' W

N	5.4	24.23
cb	5.3	24.33

29.63

GARNET.

19

+1	6.3	23.33
1/4	5.9	23.73
C	5.4	24.23
1/4	5.8	24.83
+7	6.2	23.43
+8	5.6	24.03
cb	5.6	24.03
S	6.2	23.43
400' W		
S	7.7	21.93
cb	7.0	22.63
+2	7.0	22.63
+3	7.8	21.83
1/4	7.2	22.43
E	6.4	23.23
1/4	6.9	22.73
cb	7.0	22.63
+1	6.3	23.33
N	6.5	23.13
TP.	3.21 25.22	7.62 22.01
500' W = E.L. Bayard		
N	3.2	22.02
+19.5	3.4	21.82
cb	3.9	21.32
1/4	3.6	21.62

on N side of Bayard
+ 4.0080' 3"
20' 65"

2522

C	3.4	21.82
1/4	4.0	21.22
+8	4.5	20.72
cb	4.0	21.22
S	4.5	20.72
E. Cb		
S	4.6	20.62
cb	4.3	20.92
+3	4.7	20.52
1/4	4.2	21.02
C	3.8	21.42
1/4	4.0	21.22
cb	4.3	20.92
N	3.7	21.52
E 1/4		
N	3.4	21.82
+18	3.6	21.62
cb	4.3	20.92
1/4	4.1	21.12
C	4.2	21.02
1/4	4.3	20.92
cb	4.4	20.82
S	4.8	20.42
Center Bayard		
S	5.1	20.12
cb	4.7	20.52

2522

GARNET.

20

1/4	4.7	20.52
C	4.4	20.82
1/4	4.3	20.92
cb	4.4	20.82
N	4.1	21.12
W 1/4		
N	4.5	20.72
cb	4.6	20.62
1/4	4.4	20.82
C	4.5	20.72
1/4	4.7	20.52
cb	5.0	20.22
S	5.0	20.22
W Cb		
S	4.9	20.32
cb	4.8	20.42
1/4	4.8	20.42
C	4.7	20.52
1/4	4.7	20.52
cb	4.6	20.62
N	4.4	20.82
N Property to curb is graded from here West 5'4" sidewalk built. No Curb, N.E. of Sidewalk 15'4" from prop. line		
N edge of walk at Wcb =	3.75	21.47
S	3.82	21.40

2522
N. Line Bayard

N	3.8	21.42
+4' = N. edge walk	3.64	21.59
+9.33' S - -	3.72	21.50
+17	4.1	21.12
cb	4.8	20.42
1/4	4.9	20.32
C	4.9	20.32
1/4	5.1	20.12
cb	5.0	20.22
S	5.6	19.62
T.P. -117	22.67	21.50

N.B. Curb Line taken 14' from Prop Line from here
50' W

S	3.2	19.47
+14' = cb	2.9	19.77
+6	2.5	20.17
1/4	3.1	19.57
C	2.8	19.87
1/4	2.9	19.77
+7	2.8	19.87
+10	2.3	20.37
cb	2.3	20.37
+4.67 = S. edge walk	2.06	20.61
N + 9.33 = - - -	3.01	19.66

100' W

2267

GARNET 21

cb	30	19.67
1/4	34	19.27
C	33	19.37
1/4	38	18.87
+10	32	19.47
cb	36	19.07
S	39	18.77
	150' W	
S	45	18.17
cb	44	18.27
+4	40	18.67
1/4	46	18.07
C	43	18.37
1/4	39	18.77
cb	39	18.77
+4.67 = S. edge walk	38.5	18.82
	200' W	
N + 9.33 = - - -	470	17.97
cb	47	17.97
1/4	5.1	17.57
C	47	17.97
1/4	50	17.67
cb	5.2	17.47
S	5.2	17.47

22.67

250' W - West end of S. ed walk on N.

S	6.2	16.47
cb	6.2	16.47
+6	6.5	15.87
1/4	6.0	16.67
c	5.8	16.87
1/4	6.2	16.47
cb	5.9	16.77
+4.67 = S. edge walk (do not use for prod)	5.46	17.21
N	5.6	17.07

280' W.

N	6.8	15.87
cb	6.8	15.87
1/4	6.7	15.97
c	6.7	15.97
1/4	6.9	15.77
+5	7.6	15.07
cb	6.8	15.87
S	6.9	15.77

300' W

S	7.6	15.07
cb	7.3	15.37
+4	7.3	15.37
+9	8.4	14.27
1/4	7.7	14.97
c	7.5	15.17

22.67

GARNET

22

1/4	7.9	14.77
cb	7.6	15.07
N	7.2	15.47
350' W		
1/4	7.8	14.87
cb	8.2	14.47
1/4	9.2	13.47
c	9.4	13.27
1/4	9.7	12.97
+3	10.2	12.47
cb	10.1	12.57
S	10.4	12.27
400' W. 16" Colvert here if any		
S	10.1	12.57
cb	10.1	12.57
1/4	9.9	12.77
c	9.7	12.97
1/4	9.7	12.97
cb	9.4	13.27
N	9.3	13.37
450' W		
N	9.4	13.27
cb	9.4	13.27
+5	9.1	13.57
1/4	9.7	12.97

22.67

C	9.1	13.57
1/4	9.7	12.97
cb	9.4	13.27
S	9.3	13.37

480' W

S	9.1	13.57
cb	8.7	13.97
1/4	8.9	13.77
C	8.4	14.27
1/2	9.1	13.57
+3	9.2	13.47
+6	8.3	14.37
cb	8.5	14.17
N	8.3	14.37

500' W = E.L. Allison 80' St 14' 65% RR

N	8.2	14.47
cb	8.2	14.47
+6	8.2	14.47
+9	8.8	13.87
1/2	8.5	14.07
C	8.3	14.37
1/4	8.8	13.87
cb	9.0	13.67
S	9.0	13.67

E. Curb

S	8.4	14.27
---	-----	-------

22.67

GARNET

23

cb	83	14.37
1/2	88	13.87
C	86	14.07
1/4	87	13.97
cb	81	14.57
N	78	14.87
E. Quarter		
N	80	14.67
cb	82	14.47
1/2	84	14.27
C	86	14.07
1/4	89	13.77
cb	88	13.87
S	87	13.97
Center		
S	93	13.37
cb	90	13.67
1/2	89	13.77
C	86	14.07
1/4	83	14.37
cb	85	14.17
N	79	14.77
N.W. = West rail		
N (Top of rail)	813	14.54
S (✓ ✓ ✓)	930	13.37

19.76

145' W

N	3.8	15.96
cb	4.1	15.66
1/4	4.6	15.16
c	3.6	16.16
45	3.2	16.56
1/4	3.6	16.16
cb	4.3	15.46
S	5.0	14.76

180' W

S	4.7	15.06
cb	4.6	15.16
1/4	4.6	15.16
c	3.5	16.26
1/4	4.3	15.46
cb	3.8	15.96
N	3.8	15.96

200' W

N	3.4	16.36
cb	3.6	16.16
1/4	4.2	15.56
c	3.5	16.26
1/4	4.2	15.56
cb	4.3	15.46
S	4.4	15.36

GARNET

230' W

S	4.4	15.36
cb	4.0	15.76
1/4	3.8	15.96
c	3.2	16.56
1/4	4.1	15.66
cb	3.5	16.26
N	3.0	16.76

260' W

N	3.3	16.46
cb	3.5	16.26
1/4	4.1	15.66
c	3.4	16.36
1/4	4.5	15.26
cb	4.1	15.66
S	4.2	15.56

300' W

S	4.2	15.56
cb	4.2	15.56
1/4	4.1	15.66
c	3.5	16.26
1/4	4.0	15.76
cb	3.5	16.26
N	3.2	16.56

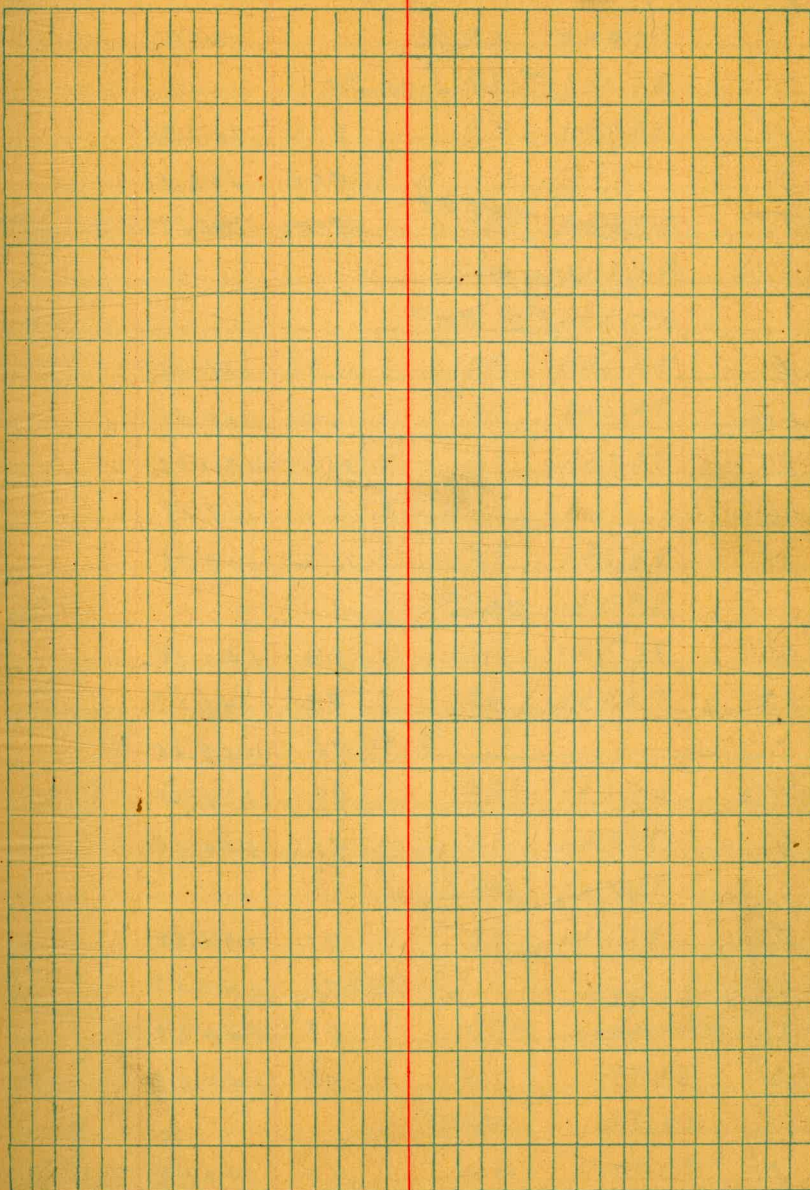
350' W

N	4.9	16.86
---	-----	-------

1976

cb	3.3	16.43
1/4	3.7	16.06
c	3.0	16.76
1/4	3.9	15.86
cb	4.3	15.46
s	4.7	15.06
385'N = Far as can be graded		
s	4.3	15.5
cb	4.0	15.76
1/4	3.8	15.96
c	3.4	16.36
1/4	3.4	16.36
cb	2.9	16.86
N	2.9	16.9

GARNET 26



3/26/24
Gregory.

bet 6th CROSS SECTION OF 20' wide
24th to 25th ALLEY BLK 8
Brood and Chase's

146.41
BP NW
24th + G.

27

	0.25	146.66	146.41
	E Cb Line 24th		
N		87.2	137.94
S		9.80	136.86
T.P.	12.61	149.48	979
	No Alley returns in E.L. 24th		
S		11.3	138.18
+W		12.0	137.48
C		11.6	137.88
+G		11.4	138.08
N		10.2	139.28
	25'E		
N		83	141.18
+3		93	140.18
C		95	139.98
+7		97	139.78
S		9.0	140.48
	65'E		
S		7.1	142.38
C		7.1	142.38
+6		6.8	142.68
N		5.8	143.68
	100'E		
N		4.5	144.98

H		57	143.78
C		57	143.78
S		5.6	143.88
	135'E		
	- 0.6 = cement floor garage.		4.53
S		4.5	144.98
C		4.2	145.28
+6		3.9	145.58
N		3.0	146.48
	+5 = Front of garage dirt.		2.1
	155'E		
N		2.9	146.58
+2		3.5	145.98
C		3.5	145.98
S		3.6	145.88
	178'E		
	0.5' N of S.L.		2.38
	0.6 - - - -		2.1
C		2.0	147.48
N		1.6	147.88
	200'E		
T.P.	10.71	159.43 156.61	0.76
N			148.72 145.90
C		10.1	149.33
		10.4	149.03
	+9.3 = 6/29		10.2
			149.23

	156.67 159.43		
	245' E		
1' N of S.L. = Garage wood floor	8.90	150.73	
	250' E		
S	8.6	150.83	
C	8.3	151.13	
N = West End Cement Apron	7.62	151.81	Garages 6.76 N of N.L.
	270' E		
N = edge cement apron	7.24	151.19	
C on Manhole	7.58	151.85	
S	7.8	151.63	
	281' E		
S = dirt floor	7.5	151.93	
	300' E = East End cement apron on N		
S	6.9	151.53	
C	6.8	151.63	
N = edge apron	6.44	151.99	
	340' E		
N	5.6	153.83	
C	5.8	153.63	
S	5.9	153.53	
	363' E		
-3 = front of 14' garage	4.50	154.93	wood floor
S	5.2	154.73	
C	5.1	154.33	
N	4.9	154.53	

			Alloy BLK 8.	25
			391.5' E	
-4 = center of 12' door	3.30	156.13		dirt floor
N	3.7	155.73		
+2	4.1	155.33		
C	4.1	155.33		
S	4.3	155.13		
			404' E = W. end cement apron on S	
0.7 N of S.L. = edge apron	3.02	156.41		
0.8 " " " "	3.3	156.13		
C	3.7	155.73		
+7	3.3	156.13		
N	2.6	156.83		
			423' E = E. end cement apron on S	
N = Wand wood floor garages	1.6	157.83		
+5	2.6	156.83		
C	2.7	156.73		
+9.3 = edge apron	2.53	156.90		
			448' E	
1.1 N of S = edge cement floor	1.10	158.33		
C	1.4	158.03		
N = 805' end wood floor garages	1.0	158.43		
T.P.	8.47	164.67	167.49	159.02 156.20
			455' E = Wand double garage on N	
N	8.3	159.19		
+3	9.1	158.39		
C	9.3	158.19		

4/25/21 Gregory

CROSS SECTION OF
H ST FROM 50' WIDE
to X 23 TO WL 23rd ST
12.5' CBS

	110	165.97	164.87	
				23rd = 50' w. da.
-15		166.0 165.97 0.8	165.7 ✓	
S		0.9	165.1 ✓	
+4		1.3	164.7 ✓	
CB		7.1	158.9 ✓	
1/4		11.0	158.0 ✓	
5'		14.5	157.5 ✓	
1/4		18.6	147.4 ✓	
1/4		22.3	143.7 ✓	
+15		29.4	137.6 ✓	
	W 1/4	34.0	137.0 ✓	
-15		32.9	132.1 ✓	
H		26.7	139.3 ✓	
1/4		20.8	145.7 ✓	
1/4		17.9	148.7 ✓	
C		12.7	153.2 ✓	
1/4		8.8	157.7 ✓	
CB		4.3	161.7 ✓	
+5.5		1.4	166.6 ✓	
S		1.7	164.2 ✓	
+15		1.3	164.7 ✓	
	W CB.			
-15		0.94	165.02 ✓	Top Curb
-10		2.3	163.7 ✓	
S		2.6	163.4 ✓	
+12		2.1	163.9 ✓	
CB		2.1	163.9 ✓	
1/4		6.2	159.8 ✓	
C		10.1	155.9 ✓	
1/4		14.6	151.4 ✓	

see page 34
for additional
Notes on intersection694
277
7.5
4.20
1.56
3.73
4.9056
166.0

30

		165.97	
CB		18.6	147.1 ✓
N		24.2	144.8 ✓
+15		31.0	135.0 ✓
	WL 23rd		
-13		51.6	134.1 ✓
-7		27.0	139.0 ✓
1/4		23.5	147.5 ✓
1/4		21.7	144.3 ✓
CB		15.2	150.8 ✓
1/4		11.5	154.5 ✓
C		7.2	158.8 ✓
1/4		3.5	167.5 ✓
CB		3.5	167.5 ✓
S		3.7	167.3 ✓
+5		3.2	167.8 ✓
+15 = edge of walk		0.77	165.70 ✓
	15' W		
-5		3.8	167.4 ✓
S		4.3	167.7 ✓
CB		5.4	160.6 ✓
1/4		5.7	160.3 ✓
C		5.7	160.3 ✓
1/4		5.7	160.3 ✓
CB		8.9	157.1 ✓
N		15.9	150.1 ✓
+15		21.7	144.3 ✓

166.0
165.97
30 West

-10	13.4	157.6	✓
N	8.5	157.5	✓
cb	7.5	158.4	✓
1/4	7.6	158.4	✓
c	7.4	158.6	✓
1/4	6.7	159.0	✓
+4	5.5	160.5	✓
cb	5.2	160.8	✓
S	4.7	161.3	✓

40° W

S	4.8	161.2	✓
cb	5.2	160.8	✓
1/4	5.5	160.5	✓
+1.5	5.6	160.4	✓
+3.0	7.9	158.1	✓
c	8.7	157.3	✓
1/4	8.9	157.1	✓
cb	8.9	157.1	✓
N	9.6	156.4	✓

50° W

N	10.3	155.7	✓
cb	10.1	155.9	✓
1/4	10.1	155.9	✓
c	9.7	156.3	✓
+1	9.5	156.5	✓

166.0
165.97

A 5T

31

+3	5.5	160.5	✓
1/4	5.4	160.6	✓
cb	5.3	160.7	✓
S	5.0	161.0	✓
70° W			
S	5.3	160.7	✓
cb	5.5	160.5	✓
1/4	5.7	160.0	✓
c	11.9	154.1	✓
1/4	12.2	153.8	✓
cb	12.2	153.8	✓
+2	11.8	154.4	✓
N	11.6	154.4	✓
90° W			
N	13.1	152.9	✓
cb	13.7	152.3	✓
+2	14.2	151.8	✓
1/4	14.1	151.9	✓
c	14.0	152.0	✓
+1	13.8	152.1	✓
+5	7.0	159.0	✓
1/4	6.8	159.1	✓
cb	6.6	159.4	✓
+12.0 = N edge of garage	6.3	159.7	✓

166.0
100' W 165.97

S		7.1	158.9 ✓
cb		7.3	158.7 ✓
1/4		7.3	158.7 ✓
+5		14.5	151.2 ✓
C		15.0	151.0 ✓
1/4		15.1	150.9 ✓
cb		15.0	151.0 ✓
N		14.5	151.5 ✓
TP	6.48	159.52	153.04
		130' W	
		159.5	
N		10.8	148.7 ✓ on lamp
+10		10.7	148.8 ✓
cb		11.5	148.0 ✓
1/4		11.4	148.1 ✓
C		11.0	148.5 ✓
+4		6.1	153.2 ✓
1/4		5.5	154.0 ✓
+1		4.0	155.5 ✓
cb		3.6	155.9 ✓
S		2.3	157.2 ✓
		165' W	
S		6.1	153.4 ✓
cb		7.4	152.1 ✓
+5.5		8.1	151.4 ✓
1/4		9.7	149.8 ✓

A ST 32

159.5 ✓

+2.5		10.4	149.1 ✓
+3.5		12.6	146.9 ✓
C		14.1	145.2 ✓
1/4		14.2	145.3 ✓
cb		14.1	145.4 ✓
N on lamp		13.5	146.0 ✓
		197' W	
N		15.8	143.7 ✓
cb		15.8	143.7 ✓
1/4		15.9	143.6 ✓
C		15.8	143.7 ✓
+2		15.8	143.7 ✓
+4		13.3	146.2 ✓
1/4		13.0	146.5 ✓
+1		12.8	146.7 ✓
#2		11.8	147.7 ✓
cb		11.4	148.0 ✓
+4		9.6	149.9 ✓
S		9.6	149.9 ✓
TP	0.19	147.10	146.91
		700' W = EL 22nd	80' ST 14' obs
		147.10	
		2.71	144.59 ✓ on lamp
S		2.9	144.2 ✓
cb		3.6	143.5 ✓
1/4		3.8	143.3 ✓

	147.1	
1/4	3.8	143.3 ✓
cb	3.9	143.2 ✓
N	3.7	143.4 ✓
		E cb
N	4.5	142.6 ✓
cb	4.5	142.6 ✓
1/4	4.3	142.8 ✓
c	4.2	142.9 ✓
1/4	4.1	143.0 ✓
cb	4.1	143.0 ✓
S	3.8	143.3 ✓
		Top of Gb
	3.20	143.9 ✓
		E 1/4
S	4.0	143.1 ✓
cb	4.3	142.8 ✓
1/4	4.4	142.7 ✓
c	4.6	142.5 ✓
1/4	4.8	142.3 ✓
cb	4.9	142.2 ✓
+8	5.3	141.8 ✓
N	5.6	141.5 ✓
+13	11.5	138.6 ✓
		Center
-15	14.8	134.3 ✓
N	12.0	135.1 ✓
cb	5.5	141.6 ✓

	147.1	
1/4	5.2	141.9 ✓
c	5.1	142.0 ✓
1/4	5.0	142.1 ✓
cb	4.9	142.2 ✓
S	4.5	142.6 ✓
		W 1/4
S	4.8	142.3 ✓
cb	5.1	142.0 ✓
1/4	4.9	142.2 ✓
c	5.7	141.4 ✓
1/4	7.1	140.0 ✓
cb	8.9	138.2 ✓
N	11.8	135.3 ✓
+15	14.3	132.8 ✓
		W Curb
-15	13.8	133.0 ✓
N	11.4	135.7 ✓
cb	8.6	138.5 ✓
1/4	7.5	139.6 ✓
c	6.8	140.3 ✓
1/4	6.3	140.8 ✓
cb	5.5	141.2 ✓
S	5.2	141.9 ✓
+15 = cannot cb	5.12	141.98 ✓

Levels on 23rd & A ST.

6' W. of W. C.B.

	147.1	
	5.5	141.6 ✓
S		
cb	6.9	140.7 ✓
1/4	7.2	139.4 ✓
C	7.8	139.3 ✓
1/4	8.5	138.6 ✓
cb	9.0	138.1 ✓
N	9.4	137.7 ✓
+10	11.4	135.7 ✓

W. L. 22nd

-10	10.6	134.5 ✓
N	9.5	137.6 ✓
cb	9.1	138.0 ✓
1/4	8.9	138.7 ✓
C	8.0	139.1 ✓
1/4	7.7	139.4 ✓
cb	7.2	139.9 ✓
S	6.2	140.9 ✓

220 67.23-11.6 65.00

E 1/4 of 23rd

5 1/4	12.8	52.4 ✓
cb	9.7	57.5 ✓
S	1.7	65.5 ✓
+15	2.1	65.1 ✓

E Curb

-15	13.4	65.84 ✓ on cement.
-2.5	1.7	65.5 ✓
S	3.2	64.0 ✓
cb	11.4	55.8 ✓
1/4	14.1	53.1 ✓

E.L. 23rd

5 1/4	14.0	53.4 ✓
cb	11.2	56.0 ✓
S	3.9	63.3 ✓
+5	1.6	65.6 ✓
+15	1.2	66.0 ✓

6/26/24

Levels on
Rosemont ST
from Electric Ave. East
To Establish Grades

93
8380B.P. 6m. r. 1/4
+ La Jolla

12.63 81.49 68.86

12.75 93.15 1.09 80.40

E. L. Electric Ave

S cb on cement. 9.35 83.80

N - no ret. on NE 9.71 83.44

0+00

S cb on dirt 8.7 84.5

N cb 9.5 83.7

0+50

N cb 7.4 85.8

S ✓ 6.8 86.4

1+00

S cb 5.6 87.6

N ✓ 5.9 87.3

1+50

N cb 3.7 89.5

S ✓ 3.8 89.4

2+04.37 = W.L. La Jolla Blvd.

S cb 4.3 90.9

N - 2.0 91.7

2+36.5 = E.L. La Jolla Blvd.

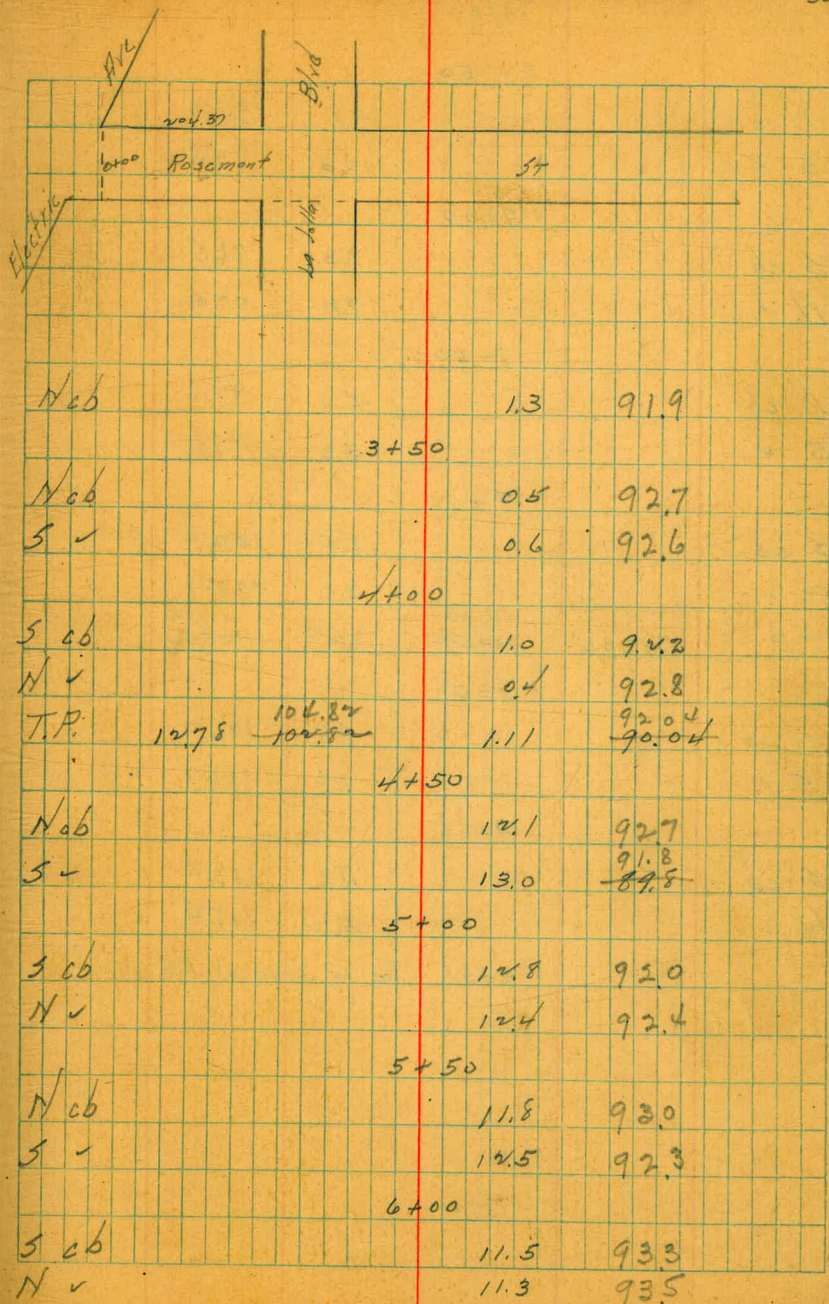
N cb 1.8 91.4

S ✓ 2.0 91.2

3+00

S cb 1.6 91.6

35



10282
10482

6+50

N cb	9.8	95.0
S ✓	10.3	94.5

7+00

S cb	8.3	96.5
N ✓	7.8	97.0

7+50

N cb	5.2	99.6
S ✓	5.2	99.6

8+00

S ab	2.4	102.4
N ✓	2.1	102.7
T.P.	1205	116.59 114.59

8+50

N cb	9.9	106.7
S ✓	9.7	106.9

9+00

S cb	4.2	112.4
N ✓	5.2	111.4

9+38 = Top of slope of S.D. Electric

6/26/24 Group Levels on La Jolla Blvd. 1224

95.74

37

37°

From N.L. Rosemont
To establish Grades 92.04
92.74
95.74
90.04

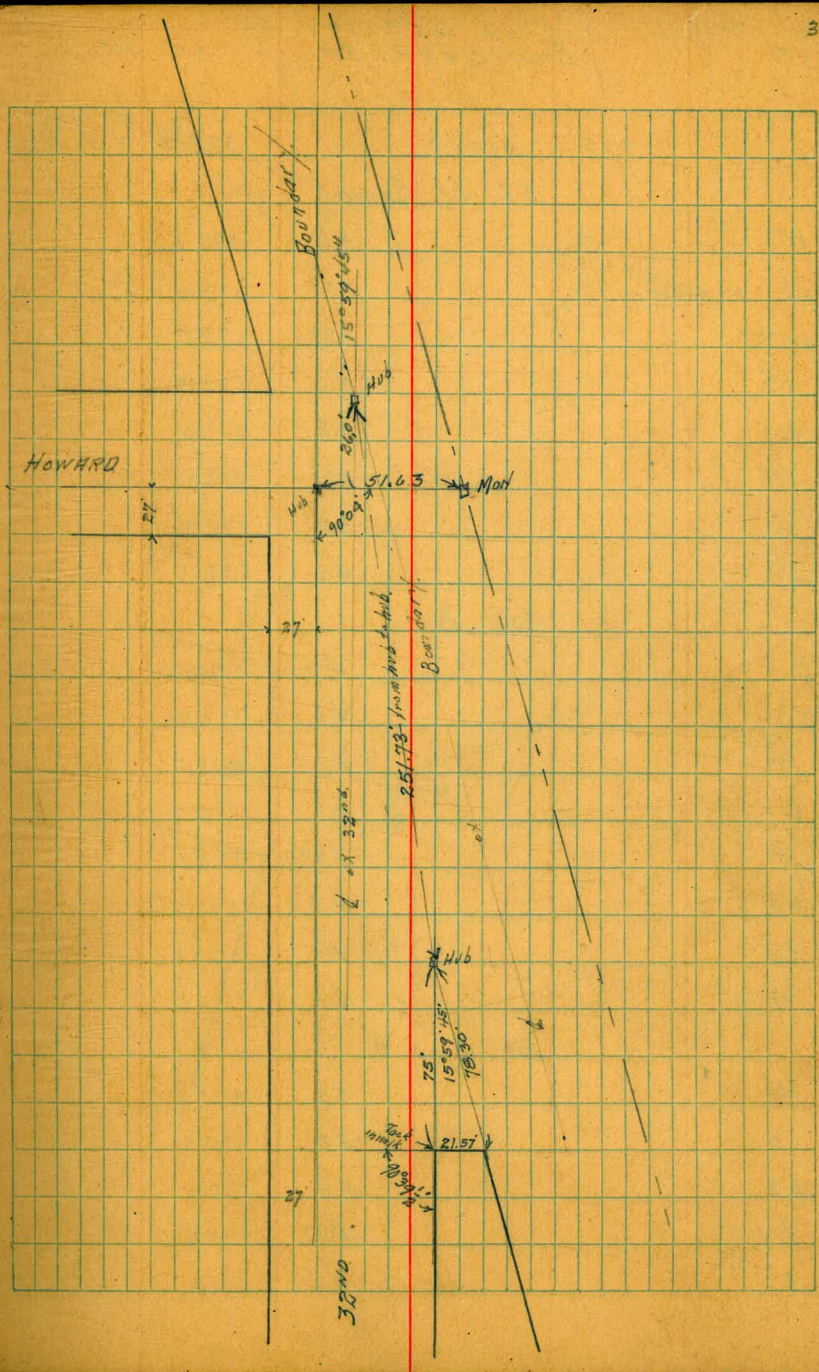
N.L. Rosemont

E cb on sidewalk grade stake	4.3	91.31
W ✓ ✓ dirt	4.5	91.2
50' N		
W cb on dirt	5.3	90.4
E ✓ ✓	5.0	90.7
65' N		
E cb on sidewalk grade stake	5.16	90.58
100' N		
E cb on dirt	5.9	89.8
W ✓ ✓	6.3	89.4
130.5' N		
E cb on sidewalk grade stake	5.89	89.85
150' N		
W cb on dirt	7.0	88.7
E ✓ on dirt	6.7	89.0
198' N		
E cb on sidewalk grade stake	6.63	89.11
W ✓ on dirt	7.8	87.9
232' N		
W cb on dirt	8.3	87.4
E ✓ ✓ stake	7.55	88.19
280' N		
E cb on sidewalk stake	9.58	86.16
W ✓	9.5	86.2

330' ✓

W cb	10.8	84.9
E ✓ on stake	11.65	84.09
380' N		
E cb on stake	13.75	81.99
W ✓ - dirt	13.3	82.4
430' N		
W cb	15.1	80.6
E ✓ on stake	15.82	79.92

7/19/24 Gregory. Survey at 32nd Howard
& Boundary for
Paving



1/4	5.1	375.7
+2	5.4	375.4
cb	5.2	375.6
F	5.0	375.8

80' S

E	5.1	75.7
cb	5.0	75.8
+5	5.0	75.8
+9	5.8	75.0
1/4	5.8	75.0
C	5.7	75.1
1/4	5.8	75.0
+8	6.2	74.6
cb	5.5	75.3
W	5.5	75.3

125 S

W	6.2	374.6
cb	7.1	73.7
+4	7.2	73.6
1/4	6.8	74.0
C	6.8	74.0
1/4	7.2	73.6
+5	7.2	73.6
cb	6.8	74.0
E	6.2	74.6

140' S

E	6.7	74.1
cb	7.1	373.7
1/4	7.3	73.5
C	7.1	73.7
1/4	7.2	73.6
+7	7.2	73.4
cb	7.3	73.5
W	6.6	74.2

160' S

W	7.8	73.0
cb	7.7	73.1
1/4	7.7	73.1
C	7.6	73.2
1/4	7.9	72.9
+6	7.0	73.8
cb	7.0	73.8
E	7.0	73.8

200' S

E	8.3	72.5
cb	8.4	72.4
1/4	8.6	72.2
C	8.5	72.3
1/4	8.5	72.3
cb	8.3	72.5
W	8.1	72.7

230'5

W	9.0	71.8
cb	9.1	71.7
1/2	9.0	71.8
c	9.0	71.8
1/4	9.2	71.6
+3	8.8	72.0
cb	8.8	72.0
E	8.9	71.9

260'5

E	9.6	71.2
cb	9.8	71.0
1/4	10.0	70.8
c	9.7	71.1
1/2	9.7	71.1
cb	9.7	71.1
W	9.7	71.1

300'5

W	10.8	70.0
cb	10.8	70.0
1/4	10.8	70.0
c	10.9	69.9
+5	10.8	70.0
1/2	11.3	69.5
+3	11.1	69.7
cb	11.2	69.6
E	11.1	69.7

BOUNDARY #1

331.5± Sec. C. N.L. Howard

E	12.3	68.5
cb	12.1	68.7
1/2	11.8	69.0
c	11.6	69.2
1/4	11.8	69.0
cb	11.7	69.1
W	11.6	69.2

Sec. D

W	12.7	68.1
cb	13.0	67.8
1/4	12.7	68.1
c	12.7	68.1
+5	13.0	67.8
+7	12.6	68.2
1/4	12.6	68.2
cb	12.5	68.3
E	12.2	68.6

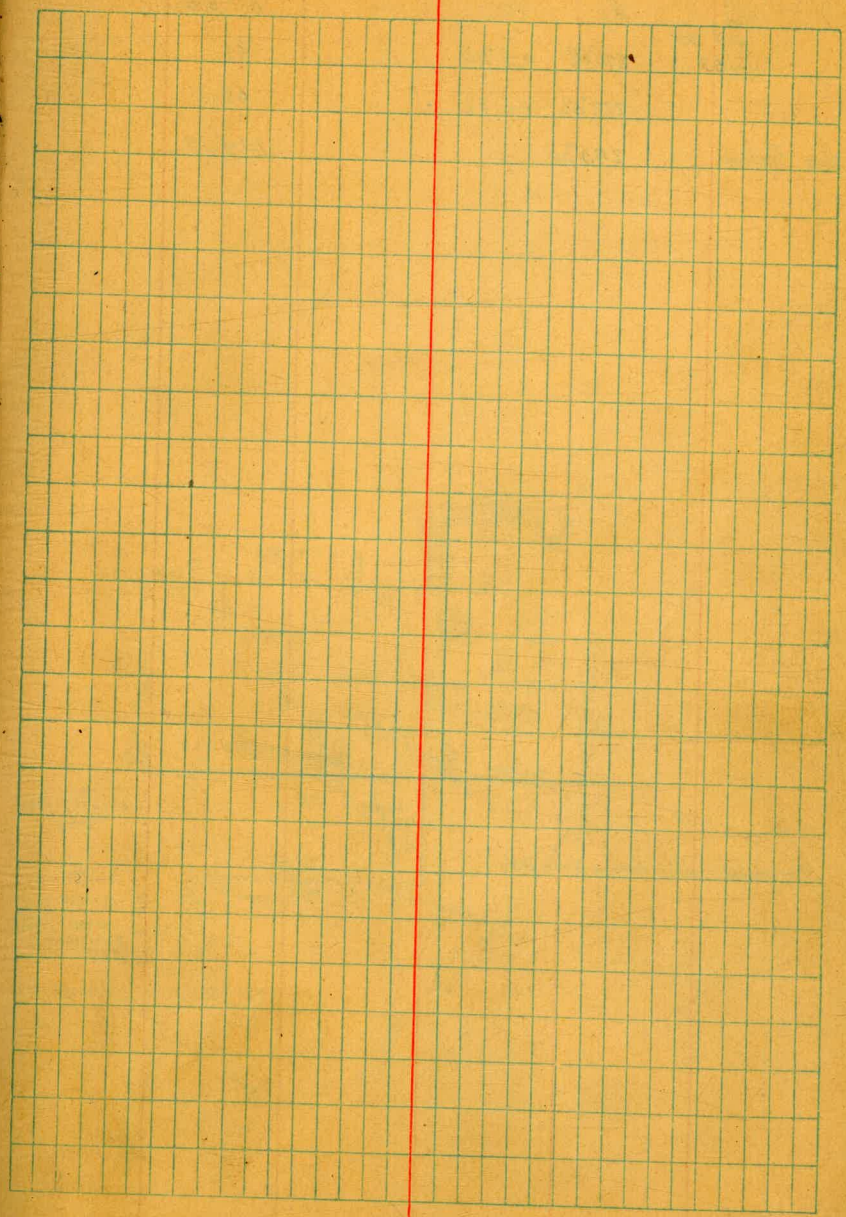
Walker
3-22-27

LEVELS on New Improvements
in Alley. Bk 251 Univ. Hts.

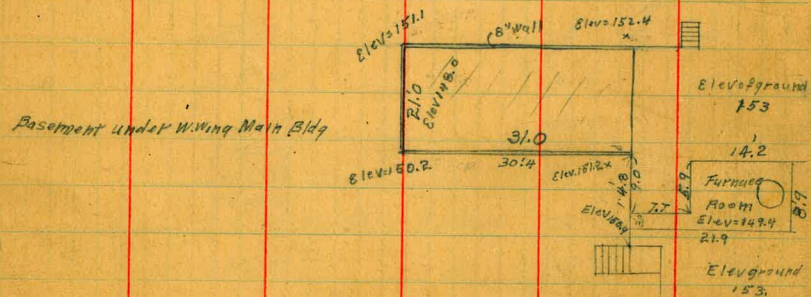
NO. 89.					
Cypress + Georgia	12.25	296.25		284.00	
T.P.	13.02	309.19	0.08	296.17	
T.P.	3.34	311.50	1.03	308.16	
78' S S.W. Cypress = N. Edge of Garage on N 4' Back					Con. Floor
N End on Con. Floor	3.45			308.05	
97' S = S end above Garage	3.53			307.97	
118' S = N End of Con. Apron on N 0.5' Back	4.12			307.38	
132' " = S " " " " " "	4.30			307.2	
167' S = S Garage on N 5' Back	5.0			306.5	
212' S = N End of Con. Apron on N 2.9' Back	7.26			304.24	
281' " = S " " " " " "	7.37			304.13	
363' S = N Edge of Apron on N on line	10.12			301.38	Floor 2 higher
382' S = S " " " " " "	10.44			301.06	
365' S = N " " " " E 3.5' in Alley	11.12			300.38	
384' " = S " " " " " " "	11.33			300.17	
401' S = N " " " " W on line	11.89			299.61	Floor 2 higher
420' " = S " " " " " " "	12.49			299.01	
T.P.	0.32	299.73	12.09	299.41	
412' S = N " " " " E " "	2.02			297.71	
435' S = S " " " " E " "	2.58			297.15	Garage Floor
467' S = S Garage on E Con Floor	3.79			296.94	7' higher
chk on B.M. Indiana + Myrtle	5.77			293.96	
				294.05 = B.M.	
				0.09	

X. Section's Page 51

Ad.	A3	Var Angle	Hor Dis	Rod	
144.53	183°01		60.4	10.2	134.33
	187°34		100	9.1	135.43
	187°34		86'	8.9	135.63
-	194°45		74'	7.1	137.43
	209°56		46.7	4.3	140.23
	225°03 = Tree		34.0	3.4	141.13
	280°19 = ✓		31.5	0.9	143.63
	315°17 = ✓		26.2	1.9	142.63
	305°40 = ✓		46.5	+0.6	143.93
	264°20 = ✓		46.0	0.5	145.03
	245°17		37'	1.8	142.73
	228°57 = Tree		58.4	2.5	142.03
	206°29 = ✓		88.0	5.6	138.93
	236°16 = ✓		82.6	1.5	143.03
	250°47 = ✓		90.6	+0.3	144.83
	229°12 = ✓		119'	3.0	141.53
	218°40		94.5	3.5	141.03
	218°40'		124.5	5.0	139.53
	244°44'				
	244°32 -		100	0.3	144.23
	244°44				
	249°32 = SW cor New Bldg		122.8	1.4	143.13
	234°17		112	1.9	142.63
	234°27 = Thomas bush		147	3.9	140.63
	234°30 = End of Fence ^{New Bldg} 7mm		179'	5.7	138.83
SW cor New Bldg	258°13 +3.46 -		98.7		
SW cor Terrace	264°59 +4°22		104'		

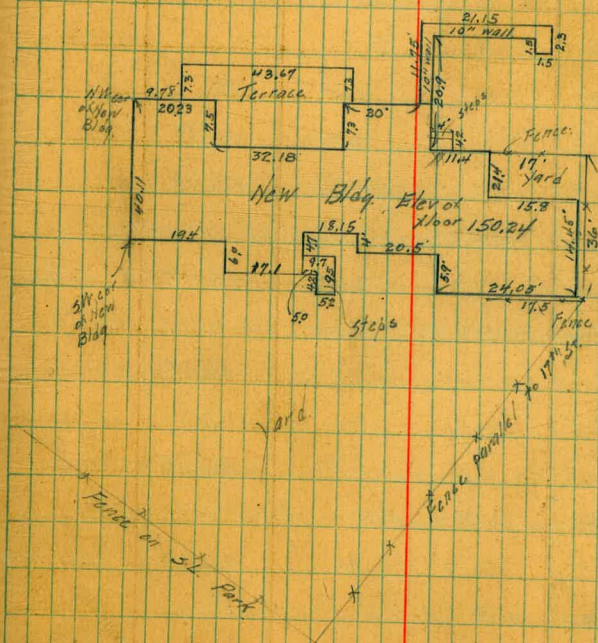


HD	Az	Ver.	Hor Dis
Rod 501 144.53	270°48'	+5.20	81'
	282°56'	+6.31	60.5
New Station	290°00'		104.13



BM 145.35	3.7	5.2	3.4	5.5	4.2	7.4
9.24	150.29	147.4	151.2	151.1	152.4	12.5
154.59						8.65
54.1		152.5				108.0
149.48		4.8				
7.12		148.9				
136.60						
7.44						
147.16						
31.63						
132.79						

221
52
171 45'



Platted & Computed by Mrs. J.B.B.
Garage Book 10-page HoS

see Alley BIK 177 Manassee & Schiller
Crosby to Pewey bet Kearney & Logan

B.M. 215 50.14 47.99

E. line Crosby

N	45.84 pavement	4.04	46.1	on cb
N	46.15	4.30	45.84	on paving
C	45.5 pavement	4.64	45.5	" "
S	46.00	4.39	45.75	" "
S	45.75 pavement	4.25	45.89	cb

10' E

S		4.0	46.14	
E		4.4	45.74	
N		4.2	45.94	

50' E

N		4.0	46.14	
E		4.3	45.84	
S		3.8	46.34	

75' E Garage on N cement floor 0.5 out of Alley

N		4.05	46.09	on g. floor
---	--	------	-------	-------------

109' E Garage on N dirt floor 0.7 out of Alley

S		3.7	46.44	
C		4.2	45.94	
N		3.8	46.34	

118' E Garage on N wood floor 0.5 out of Alley

N-0.5		3.1	47.04	on wood floor
-------	--	-----	-------	---------------

145' E Garage on N dirt floor 0.7 out of Alley

N		3.1	46.54	
E		3.9	46.24	
S		3.3	46.84	

mills
8/14/24
B.E. Crosby
& Kearney

50.14

46

185' E Garage cement floor 2.5 out of Alley				
N-2.5		2.42	47.52	on floor
N-1.0		2.87	47.27	on edge of floor
207' E Garage on S wood floor 0.6 out of Alley				
S-0.6		2.31	47.83	on line
S		2.6	47.54	
C		3.1	47.04	
N		2.5	47.64	
N		1.85	48.29	on wood floor
226' E Garage on S wood floor 0.5 out of Alley				
S-0.5		2.25	47.89	on wood floor
S		2.4	47.74	on ground
T.P.	5.90	53.63	2.41	47.73
229' E Garage on S dirt floor 0.4 out of Alley				
S-0.4		5.80	47.83	on floor
237' E Garage on S wood floor 0.5 out of Alley				
S-0.5		5.95	47.68	" "
246' E Garage on S wood floor 0.4 out of Alley				
S-0.4		5.92	47.71	" "
255' E Garage on S wood floor 0.5 out of Alley				
N		5.5	48.13	
C		5.6	48.03	
S		5.8	47.83	
S+0.5		6.2	47.43	on floor

53.63

261' E Double Garage on N dirt floor 1.6 out of Alley

N-1.1 5.1 47.93 on floor

N 5.4 48.23

288' E Garage on S dirt floor on line

S 5.5 48.13 on floor

E 5.4 48.23

N 5.4 48.23

330' E Garage on N dirt floor 0.6 in the Alley

N 5.2 48.43 on floor

347' E Garage on N dirt floor 0.7 in Alley
" " S " " 2.0 out of Alley

N 5.0 48.63

E 5.2 48.43

S 5.2 48.43

S+2.0 5.3 48.33 on floor

366' E Garage on N cement floor 1.9 out of Alley

N-1.9 4.5 49.13 on floor

N-0.3 5.0 48.63 on edge apron

N 5.0 48.63

418' E Garage on N cement floor 1.4 out of Alley

S 4.8 48.83

E 4.8 48.83

C+9.8 4.50 49.13 on edge apron

N+1.4 4.00 47.63 on c. floor

438' E Garage on N dirt floor 0.3 in Alley

N 4.7 48.93

47

53.63

450' E Both Fences 0.5 in Alley

N 4.6 49.03

E 4.8 48.83

S 4.8 48.83

double garage on N dirt floor 0.5 in Alley
490' E = W End of 5 garages on S dirt floors 0.3 in Alley

S 4.4 49.23 on floor

E 4.3 49.33

N 4.4 49.23 " "

535' E = E End 5 garages on S

S 3.5 50.03

Double garage on N dirt floor 0.3 in Alley
550' E garage on S cement floor 0.3 out of Alley

N 3.2 50.43

E 3.5 50.13

S 3.45 50.18 on cement floor

580' E

S 2.4 51.23

E 3.0 50.63

N 2.6 51.03

601' E = W Line Dewey

N 1.77 51.86 on cb

E 2.3 51.33

S 2.10 51.53 on cb

T.P. 6.1 57.44 2.30 51.33

T.P. 2.94 54.50 = 54.49 Dewey

SM NB.
Dewey
& Kearney

12/13/24 Moore Cross Section of Alley 20' wide
BIK 44 La Jolla Park "Blue Bird Lane"

on spike SE	14.60	180.45	165.85	Torrey Road Exchange
N.L. of Exchange				
W on paving		6.75	173.70	
C ✓ ✓		6.55	173.90	
E ✓ ✓		6.28	174.17	
5' N				
E		4.8	175.7	
C		5.5	175.0	
+E		6.1	174.1	
W		5.7	174.8	
62' N				
W of Double Garage on Conc. Apron	5.06	175.39	ON	
C		4.2	176.3	
E		3.9	176.6	
65' N				
E of Garage Conc. floor	3.68	176.77	15 E of EL.	
100' N				
E		2.8	177.7	
+3		3.3	177.2	
C		4.0	176.5	
W		4.4	176.1	
160' N				
W		4.2	176.3	
C		3.4	177.1	
E		2.10	178.4	

180.45

49

+3 of Double Garage	1.8	178.7	Dist floor
179' N			
E	2.8	177.7	
C	3.8	176.7	
W	3.9	176.6	
205' N			
W	3.9	176.6	
C	3.8	176.7	
E	3.2	177.3	
TP	449	180.70	4.2 ✓ 176.21
225' N			
E	2.7	178.0	
+W	3.7	177.0	
C	4.5	176.2	
W	4.2	176.5	
279' N			
W	5.4	175.3	
C	5.2	175.4	
+E	4.8	175.9	
E	3.0	177.7	
295' N			
E of Garage on Conc. Apron	4.40	176.3	on E. Line
311' N			
E ✓ ✓ ✓ ✓	4.40	176.3	✓ ✓
C	5.0	175.7	
W	5.5	175.2	

180.70

339' N

W on stub	6.10	174.6	Note stub for grade
W ✓ ground	6.3	174.4	
C	5.1	175.6	
E	4.8	175.9	
			For Supt. Ogan Pueblo Farm
	362' N		
E	4.9	175.8	
C	5.5	175.2	
W	6.3	174.4	
W on stub	6.08	174.62	✓ ✓

378' N

E S edge of Conc. Apron 5.25 175.45 on E line

395' N

W	6.0	174.7	
C	6.3	174.4	
E N edge of Conc. Apron	5.2~	175.78	✓ ✓

450' N

E foot of retaining wall (Conc.)	6.8	173.9	
C	7.7	173.0	
W	7.8	172.9	

500' N = S.L. of Prospect

W on paving	10.26	170.44	
C ✓ ✓	9.0	171.7	
E ✓ ✓	7.6~	173.08	

50

60 } 170 1.0116
 1.00
 1.60

F0.88

.0116
 41
 176
 464
 1756
 175
 17548
 460
 = 0.88
 .0116
 18
 428
 176
 175208.8
 746
 = 0.59

F0.59

Cypress + Myrtle
Indiana + Georgia

Cross Section of Alley (20' wide) 12/19/24
BIK 251 Univ. Hqts.

on BM	11.4	312.12	300.98
	1.72	310.62	308.90
		SL Cypress	
W Alley Return		5.31	305.31
C		6.4	305.2
E ✓		6.29	304.33
	2' S		
E		3.4	307.2
+6		2.5	308.1
+8		4.5	306.1
C		5.0	305.6
+7		4.8	305.8
W		2.1	308.5
	20' S		
W		1.8	308.8
+4		2.8	307.8
C		2.8	307.8
+3		2.5	308.1
E		2.0	308.6
	40' S		
E		1.8	308.8
C		2.0	308.6
W		1.7	308.9
	75' S		
W		2.4	308.2
C		2.2	308.4

Plotted Dec. 24, 1924
Larry Golden

310.62

51

E		2.5	308.1	
	88' S			
W	Double Garage Conc floor	2.52	308.1	4.5 W of W
	100' S			
E		2.9	307.7	
C		3.0	307.5	
W		2.9	307.7	
	129' S			
W		3.3	307.3	
C		3.7	306.9	
E		3.6	307.0	
+1	Garage Conc floor	3.45	307.1	
	157' S			
E		4.4	306.2	
C		4.1	306.5	
W		3.8	306.8	
+7	✓	3.46	307.1	
	187' S			
-12	Double Garage	4.02	306.6	Conc. floor
W		4.7	305.9	
C		4.9	305.7	
E		5.1	305.5	
	210' S			
E		5.9	304.7	
C		5.5	305.1	
W		5.1	305.5	

310.62

250' S

W	5.8	304.8
C	6.4	304.2
E	7.0	303.6

277' S

E	7.4	303.2
C	6.9	303.7
W	6.5	304.1
+2 & Garage Conc Apron	6.34	304.3

300' S

W	7.3	303.3
C	7.9	302.7
E	8.1	302.5

320' S

E	✓ ✓	Conc floor	8.91	301.7	outline
C			8.4	302.2	
+4			8.1	302.5	
W			7.0	303.6	
+3	✓ ✓	✓ ✓	6.35	304.2	✓ ✓

355' S

-3	✓ ✓	✓ ✓	7.51	303.1	
W			7.9	302.7	
C			9.1	301.5	
+4			9.7	300.9	
E			9.1	301.5	

310.62

374' S

E	Double Garage	Conc floor	10.12	300.5	Apron width 18.0 outline
+2.5		✓ Apron	10.29	300.3	
C			10.0	300.6	
+9		✓ Apron	9.36	301.2	
W+1	Double Garage	Conc floor	9.02	301.6	Apron width 19.0

400' S

W			10.8	299.8
C			11.3	299.3
E			11.4	299.2

411' S

E			12.4	298.2
C			12.0	298.6
+8 &	Conc Apron		11.27	299.35

W	✓	Garage Conc floor	10.32	300.3	Apron width 18.0 outline
TP	1.35	300.001	11.97	298.051	

430' S

W			2.6	297.4
C			2.8	297.2
E			2.9	297.1

450' S

E			3.7	296.3
C			4.0	296.0
W			4.0	296.0

470' S

W			5.9	294.1
---	--	--	-----	-------

300.00

C		5.8	294.2
E		5.4	294.6
	484' S		
E		6.5	293.5
C		6.5	293.5
W		7.2	292.8
	494' S		
-10		13.2	286.8
W		11.3	288.7
C		10.8	289.2
+7		8.9	291.1
E		7.5	292.5
	500' S		
E		7.8	292.2
+4		9.9	290.1
C		11.2	288.8
+6		14.1	285.9
W		14.3	285.7
+10		16.6	283.4
	510' S		
-10		21.0	279.0
W		18.3	281.7
C		14.0	286.0
E		10.0	290.0
	525' S		
E		12.1	287.9

300.0

53

C	16.0	284.0	
W	20.3	279.7	
+10	24.6	275.4	Myrtle & Indiana
Ch. B.M. 1137	591	294.09	294.05

Look up profile of NW of Myrtle to establish grade of Alley S of Myrtle section & even slope between.

NEW LEVELS ON RECENT IMPROVEMENTS
PAGE 42 - staker

Moore
12/1Cross Section of Alley 20' wide
BIK 139 Univ. Hgts.

on B.M. spike SE	8.57	313.77	305.25	Lincoln Cleveland
NL inside edge of s/w 10' w of web	5.0		308.8	No utility Return slur laid across Alley
SL	✓ ✓ ✓ ✓ ✓ ✓	5.30	308.5	
WL Cleveland = 00 on E of Alley				
S = 00 - 7.3		5.0	308.8	
C		5.3	308.5	
N = 00 + 7.3		4.9	308.9	
7.3 W of 00 on E				
N		4.9	308.9	
C		5.0	308.4	
S		5.0	308.8	
25' W				
S		5.0	308.4	
C		5.8	308.0	
+E		5.6	308.2	
N		4.9	308.9	
50' W				
N		5.0	308.4	
+E		6.0	307.4	
C		6.6	307.2	
S		6.0	307.4	
T.P.	1.37	307.41	7.73	306.04
7.3 W				
Pebble tree 15 S of NL 12" diam				
81' W				
-3	Garage dirt floor	1.3	306.1	

307.41

54

S	1.4	306.0	
C	1.5	305.9	
N	1.5	305.9	
100' W			
N	Treble Garage Conc. floor	2.3	305.1
C		2.2	305.2
S		2.3	305.1
+E		2.30	305.1
150' W			
S		3.9	303.5
C		4.0	303.4
N		3.9	303.5
200' W			
N		5.1	302.3
C		5.3	302.1
S	Conc. floor on line	5.1	302.3
N	for Double Garage Conc. floor	4.77	302.6
220' W			
S		5.1	302.3
C		5.3	302.1
N		5.5	301.9
235' W			
N	Double Garage Conc. floor	5.50	301.6 is N of NL
243' W			
Approx. E. of Alley to Mast.			
N		5.6	301.8
C		5.0	302.4

307.41

243' W

S	4.7	302.7
+1 Garage dirt floor	4.75	302.65

268' W

S	4.10	303.3
---	------	-------

C	4.6	302.8
---	-----	-------

N Approx. WL of Alley to North	5.2	302.1
--------------------------------	-----	-------

t of Alley to North

20' N of NL	6.8	300.6
-------------	-----	-------

70' ✓ ✓	7.8	299.6
---------	-----	-------

T.P. 128	307.12	4.57	302.84
----------	--------	------	--------

302' W

N WL of Shed 7 in Alley	3.6	303.5	16' long
-------------------------	-----	-------	----------

C	3.5	303.6
---	-----	-------

S	3.2	303.9
---	-----	-------

+2 Garage dirt floor	3.2	303.9
----------------------	-----	-------

325' W

S	3.4	303.7
---	-----	-------

C	3.3	303.8
---	-----	-------

N	3.3	303.8
---	-----	-------

356' W

N	4.0	303.1
---	-----	-------

C	4.2	302.9
---	-----	-------

S Garage wood floor	3.30	303.3	on line
---------------------	------	-------	---------

383' N

-3	4.5	302.6
----	-----	-------

S	4.5	302.6
---	-----	-------

307.12

55

C	4.7	302.4
---	-----	-------

N	4.6	302.5
---	-----	-------

400' W

N	5.2	301.9
---	-----	-------

C	5.0	302.1
---	-----	-------

S	4.8	302.3
---	-----	-------

416' W

-3 Garage conc. floor	5.08	302.0
-----------------------	------	-------

S	5.3	301.8
---	-----	-------

Fl & Cove Apron	5.22	301.8	10' wide
-----------------	------	-------	----------

C	5.3	301.8
---	-----	-------

N	5.5	301.6
---	-----	-------

440' W

N	6.2	300.9
---	-----	-------

C	5.8	301.3
---	-----	-------

S	5.7	301.4
---	-----	-------

475' W

S	7.3	299.8
---	-----	-------

C	7.8	299.3
---	-----	-------

N	7.7	299.4
---	-----	-------

493' W

N	8.7	298.4
---	-----	-------

+5	9.6	297.5
----	-----	-------

C	9.0	298.1
---	-----	-------

+3	8.4	298.7
----	-----	-------

S	7.8	299.3
---	-----	-------

307.2

500' W

S		8.4	298.7
+7		9.5	297.6
C		10.6	296.5
+5		10.9	296.2
A		9.7	297.4

509' W = EL of Maryland

N	Alley Return	12.64	294.48
N		12.0	295.1
C		12.2	294.9
S		11.5	295.6
S	Alley Return	12.55	294.57
TP	1125 305.58	12.79	294.33
check BM	Lincoln + Cleveland	0.32	305.25 305.25

20' wide 2500 Alley in BIK 245 Univ Hg 62

Up to Myrtle Bet Herbert + Park Blvd

1/14/24
made
S.W. W
G.W.
S. 13504

279.61 57

BM 9.17 296.14 2.86.97 S. Willpas + Albert
T.P. 3.55 297.61 2.08 294.06

00 = N. Line Upas

E 3.55 294.06 cmt eb.
E 3.9 293.7 ground ✓
C 4.0 293.6
W 4.1 293.5 ground.
W 3.82 293.79 cmt cb.

44' N = S. End Cmt. Apron on E

W 4.6 293.10
C 4.5 293.1
+6 4.4 293.2 on W. edge
E 4.1 293.5 cmt apron
on E. edge

62' N = N. End cmt apron = S. End Garage on E. 9.8 from E

E 3.7 293.9 on garage floor
+38 4.5 293.1 on W. Edge
C 4.6 293.0
W 4.5 293.1 cmt apron

99' N = N. End garage

W 4.8 292.8
C 4.7 292.9
+7 4.7 292.9
E 3.5 294.1 on garage floor

100' N

E 4.2 293.4

+3 4.7 292.9
C 4.7 292.9
W 4.8 292.8

140' N

W 4.8 292.8
C 4.4 293.2
+7 4.6 293.0
E 4.3 293.3

185' N

E 4.0 293.6
+3 4.6 293.0
C 4.5 293.1
W 4.5 293.1

215' N

W 4.3 293.3
C 4.3 293.3
E 4.3 293.3

230' N

E 4.5 293.1
C 5.0 292.6
W 4.7 292.9

240' N

N 4.9 292.7
+4 4.5 293.1
+5 5.5 292.1
C 5.4 292.2
E 5.3 292.3

279.61

300' N

E	5.7	291.9
+4	5.8	291.8
+5	5.8	291.8
C	5.3	292.3
W	5.2	292.4

335' N

W	5.3	292.3
+3	5.3	292.3
+5	7.3	290.3
C	7.0	290.6
E	6.6	291.0

339.5' N = SL. Myrtle

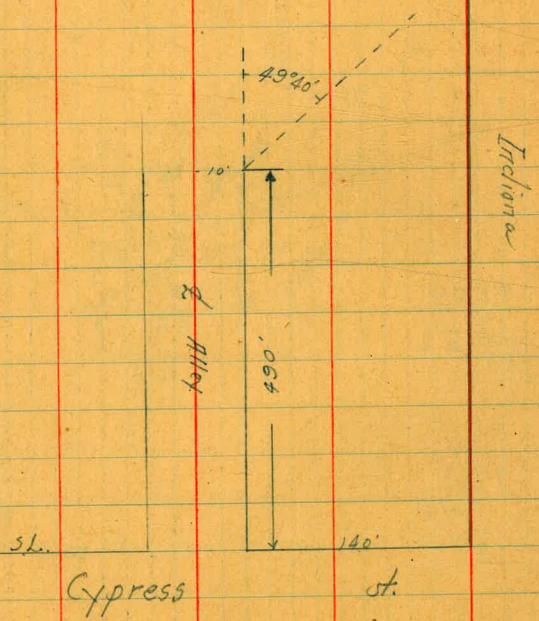
E	7.02	290.59 on cent of
C	7.4	290.2
W	7.80	289.8 " " "

58

WALKER
3-21-27

LEVELS FOR DRAIN IN ALLEY
490' 5" Cypress, Bet. INDIANA & GEORGIA

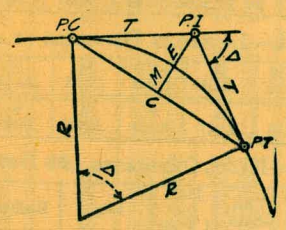
NUMBER			
Myrtle + Indiana	270	296.75	294.05
0+00		7.0	289.8
+11		10.0	286.8
+25		17.5	279.3
+46		26.0	270.8
+76 = Bottom Gulch		40.0	256.8



Indiana

DIETZGEN'S RAILROAD CURVE AND REDUCTION TABLES

Copyright, 1914, by Eugene Dietzgen Co., New York City



CURVE FORMULAS

- Radius = $R = \frac{50}{\sin \frac{D}{2}}$ (1) Degree of Curve = D and $\sin \frac{D}{2} = \frac{50}{R}$ (2)
- Tangent = $T = R \tan \frac{\Delta}{2}$ (3) Length of Curve = $L = 100 \frac{\Delta}{D}$ (4)
- Middle ordinate = $M = R(1 - \cos \frac{\Delta}{2})$ (5) = $R \text{vers} \frac{\Delta}{2}$ (6)
- External = $E = T \tan \frac{\Delta}{4}$ (7) = $R \div \cos \frac{\Delta}{2} - R$ (8) = $R \text{exsec} \frac{\Delta}{2}$ (9)
- Long Chord = $C = 2 R \sin \frac{\Delta}{2}$ (10) Δ = Central Angle

EXPLANATION AND USE OF TABLES

Stations.—Given P. I. = Sta. 161 + 60.35 to find Sta. of P. C. and P. T. $\Delta = 62^\circ 10'$ $D = 8^\circ 20'$. From Table IV for 1° curve $T = 3454.1$ and $+8\frac{1}{3} = 414.49$ ft. From Table V correction = .36 or $T = 414.85$ ft. P. C. = Sta. P. I. - $T = 157 + 45.50$. Also from (4) $L = 746.00$ and P. T. = Sta. P. C. + $L = 164 + 91.50$.

Offsets.—Tangent offsets vary (approximately) directly with D and with square of the distance. Thus tangent offset for Sta. 158 on above curve is 2.16 ft. found as follows. From Table III tangent offset for 100 ft. = 7.27 ft. Distance = $158 - \text{Sta. P. C.} = 54.50$, hence offset = $7.27 (54.50 \div 100)^2 = 2.16$ ft. Also square of any distance divided by twice the radius equals (approximately) the distance from tangent to curve. Thus $(54.50)^2 \div (2 \times 688.26) = 2.16$ ft.

Deflections.—Deflection angle = $\frac{1}{2} D$ for 100 ft., $\frac{1}{4} D$ for 50 ft., etc. For c ft. = (in minutes) $.3 \times C \times D^\circ$ or = defl. for 1 ft. from Table III $\times C$. For Sta. 158 of above curve = $.3 \times 54.5 \times 8\frac{1}{3} = 136.2'$ or $2^\circ 16.2'$, or = $2.50 \times 54.5 = 136.2'$ from Table III. For Sta. 159 deflection angle = $2^\circ 16.2' + 8^\circ 20' \div 2 = 6^\circ 26.2'$, etc.

Externals.—May be found in similar manner to tangents. Thus E for curve above is 91.37. For from Table IV for 1° curve $E = 960.6$ for $8^\circ 20' = 960.6 \div 8\frac{1}{3} = 91.27$ and from Table V correction = .10 or $E = 91.37$ ft. Or suppose $\Delta = 32^\circ$ and E is measured and found to be 42 ft. What is D ? From Table IV $E = 230.9$ and $+42 = 5.5$ or $D = 5^\circ 30'$.

Swi Spike 165.55
 28.580
 1714500

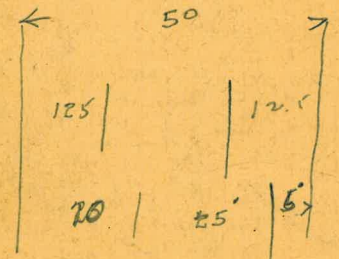
SWBP 22+B 145.42
 SE -- 23+V 164.87

14531
 727
 15262
 235

50
 80
 125
 140
 160
 200
 230
 260
 300
 330

35
 70
 100
 110
 130
 150
 160
 170
 185
 200

49040'



75 | 570
 525
 450

75 | 470 (.63)
 450
 200

30179
 9406
 757
 517

6720

97
 61.5

138
 198
 67.4

158
 51.4

2022
 925
 1045
 3215
 4263

DISTANCES FROM CENTER OF ROADWAY FOR CROSS-SECTIONING.

Roadway 16 feet wide. Side Slopes 1 on 1 1/2.
 For Single Track Embankment.

H	0	.1	.2	.3	.4	.5	.6	.7	.8	.9	H
0	8.0	8.2	8.3	8.5	8.6	8.8	8.9	9.1	9.2	9.4	0
1	9.5	9.7	9.8	10.0	10.1	10.3	10.4	10.6	10.7	10.9	1
2	11.0	11.2	11.3	11.5	11.6	11.8	11.9	12.1	12.2	12.4	2
3	12.5	12.7	12.8	13.0	13.1	13.3	13.4	13.6	13.7	13.9	3
4	14.0	14.2	14.3	14.5	14.6	14.8	14.9	15.1	15.2	15.4	4
5	15.5	15.7	15.8	16.0	16.1	16.3	16.4	16.6	16.7	16.9	5
6	17.0	17.2	17.3	17.5	17.6	17.8	17.9	18.1	18.2	18.4	6
7	18.5	18.7	18.8	19.0	19.1	19.3	19.4	19.6	19.7	19.9	7
8	20.0	20.2	20.3	20.5	20.6	20.8	20.9	21.1	21.2	21.4	8
9	21.5	21.7	21.8	22.0	22.1	22.3	22.4	22.6	22.7	22.9	9
10	23.0	23.2	23.3	23.5	23.6	23.8	23.9	24.1	24.2	24.4	10
11	24.5	24.7	24.8	25.0	25.1	25.3	25.4	25.6	25.7	25.9	11
12	26.0	26.2	26.3	26.5	26.6	26.8	26.9	27.1	27.2	27.4	12
13	27.5	27.7	27.8	28.0	28.1	28.3	28.4	28.6	28.7	28.9	13
14	29.0	29.2	29.3	29.5	29.6	29.8	29.9	30.1	30.2	30.4	14
15	30.5	30.7	30.8	31.0	31.1	31.3	31.4	31.6	31.7	31.9	15
16	32.0	32.2	32.3	32.5	32.6	32.8	32.9	33.1	33.2	33.4	16
17	33.5	33.7	33.8	34.0	34.1	34.3	34.4	34.6	34.7	34.9	17
18	35.0	35.2	35.3	35.5	35.6	35.8	35.9	36.1	36.2	36.4	18
19	36.5	36.7	36.8	37.0	37.1	37.3	37.4	37.6	37.7	37.9	19
20	38.0	38.2	38.3	38.5	38.6	38.8	38.9	39.1	39.2	39.4	20
21	39.5	39.7	39.8	40.0	40.1	40.3	40.4	40.6	40.7	40.9	21
22	41.0	41.2	41.3	41.5	41.6	41.8	41.9	42.1	42.2	42.4	22
23	42.5	42.7	42.8	43.0	43.1	43.3	43.4	43.6	43.7	43.9	23
24	44.0	44.2	44.3	44.5	44.6	44.8	44.9	45.1	45.2	45.4	24
25	45.5	45.7	45.8	46.0	46.1	46.3	46.4	46.6	46.7	46.9	25
26	47.0	47.2	47.3	47.5	47.6	47.8	47.9	48.1	48.2	48.4	26
27	48.5	48.7	48.8	49.0	49.1	49.3	49.4	49.6	49.7	49.9	27
28	50.0	50.2	50.3	50.5	50.6	50.8	50.9	51.1	51.2	51.4	28
29	51.5	51.7	51.8	52.0	52.1	52.3	52.4	52.6	52.7	52.9	29
30	53.0	53.2	53.3	53.5	53.6	53.8	53.9	54.1	54.2	54.4	30
31	54.5	54.7	54.8	55.0	55.1	55.3	55.4	55.6	55.7	55.9	31
32	56.0	56.2	56.3	56.5	56.6	56.8	56.9	57.1	57.2	57.4	32
33	57.5	57.7	57.8	58.0	58.1	58.3	58.4	58.6	58.7	58.9	33
34	59.0	59.2	59.3	59.5	59.6	59.8	59.9	60.1	60.2	60.4	34
35	60.5	60.7	60.8	61.0	61.1	61.3	61.4	61.6	61.7	61.9	35
36	62.0	62.2	62.3	62.5	62.6	62.8	62.9	63.1	63.2	63.4	36
37	63.5	63.7	63.8	64.0	64.1	64.3	64.4	64.6	64.7	64.9	37
38	65.0	65.2	65.3	65.5	65.6	65.8	65.9	66.1	66.2	66.4	38
39	66.5	66.7	66.8	67.0	67.1	67.3	67.4	67.6	67.7	67.9	39
40	68.0	68.2	68.3	68.5	68.6	68.8	68.9	69.1	69.2	69.4	40

Example—If point is 22.6 ft. above grade, how far should it be from center line to be a slope stake point? Ans. from Table 41.9. For same slopes but other widths of roadbed correct above figures by one-half difference in width of roadbed; thus in example above for 20 ft. roadbed distance will be 41.9+(20-16)+2 or 2 ft. added to 41.9 =43.9. For slopes of 1 on 1 see inside of front cover.