

1116

1116

DILLZGEN
TRADE MARK

ENGINEERS'
FIELD BOOK

No. 454

EUGENE DIETZGEN CO.

DRAWING MATERIALS, MATHEMATICAL and
SURVEYING INSTRUMENTS

Chicago New York San Francisco New Orleans Pittsburg Toronto

Distances from Center of Roadway for Cross-Sectioning
Roadway 16 feet wide. Side Slopes 1 on 1.
For Single Track Embankment.

MICROFILMED

JES 2 1964

H	0	.1	.2	.3	.4	.5	.6	.7	.8	.9	H
0	0	8.1	8.2	8.3	8.4	8.5	8.6	8.7	8.8	8.9	0
1	0	9.1	9.2	9.3	9.4	9.5	9.6	9.7	9.8	9.9	1
2	0	10.1	10.2	10.3	10.4	10.5	10.6	10.7	10.8	10.9	2
3	0	11.1	11.2	11.3	11.4	11.5	11.6	11.7	11.8	11.9	3
4	0	12.1	12.2	12.3	12.4	12.5	12.6	12.7	12.8	12.9	4
5	0	13.1	13.2	13.3	13.4	13.5	13.6	13.7	13.8	13.9	5
6	0	14.1	14.2	14.3	14.4	14.5	14.6	14.7	14.8	14.9	6
7	0	15.1	15.2	15.3	15.4	15.5	15.6	15.7	15.8	15.9	7
8	0	16.1	16.2	16.3	16.4	16.5	16.6	16.7	16.8	16.9	8
9	0	17.1	17.2	17.3	17.4	17.5	17.6	17.7	17.8	17.9	9
10	0	18.1	18.2	18.3	18.4	18.5	18.6	18.7	18.8	18.9	10
11	0	19.1	19.2	19.3	19.4	19.5	19.6	19.7	19.8	19.9	11
12	0	20.1	20.2	20.3	20.4	20.5	20.6	20.7	20.8	20.9	12
13	0	21.1	21.2	21.3	21.4	21.5	21.6	21.7	21.8	21.9	13
14	0	22.1	22.2	22.3	22.4	22.5	22.6	22.7	22.8	22.9	14
15	0	23.1	23.2	23.3	23.4	23.5	23.6	23.7	23.8	23.9	15
16	0	24.1	24.2	24.3	24.4	24.5	24.6	24.7	24.8	24.9	16
17	0	25.1	25.2	25.3	25.4	25.5	25.6	25.7	25.8	25.9	17
18	0	26.1	26.2	26.3	26.4	26.5	26.6	26.7	26.8	26.9	18
19	0	27.1	27.2	27.3	27.4	27.5	27.6	27.7	27.8	27.9	19
20	0	28.1	28.2	28.3	28.4	28.5	28.6	28.7	28.8	28.9	20
21	0	29.1	29.2	29.3	29.4	29.5	29.6	29.7	29.8	29.9	21
22	0	30.1	30.2	30.3	30.4	30.5	30.6	30.7	30.8	30.9	22
23	0	31.1	31.2	31.3	31.4	31.5	31.6	31.7	31.8	31.9	23
24	0	32.1	32.2	32.3	32.4	32.5	32.6	32.7	32.8	32.9	24
25	0	33.1	33.2	33.3	33.4	33.5	33.6	33.7	33.8	33.9	25
26	0	34.1	34.2	34.3	34.4	34.5	34.6	34.7	34.8	34.9	26
27	0	35.1	35.2	35.3	35.4	35.5	35.6	35.7	35.8	35.9	27
28	0	36.1	36.2	36.3	36.4	36.5	36.6	36.7	36.8	36.9	28
29	0	37.1	37.2	37.3	37.4	37.5	37.6	37.7	37.8	37.9	29
30	0	38.1	38.2	38.3	38.4	38.5	38.6	38.7	38.8	38.9	30
31	0	39.1	39.2	39.3	39.4	39.5	39.6	39.7	39.8	39.9	31
32	0	40.1	40.2	40.3	40.4	40.5	40.6	40.7	40.8	40.9	32
33	0	41.1	41.2	41.3	41.4	41.5	41.6	41.7	41.8	41.9	33
34	0	42.1	42.2	42.3	42.4	42.5	42.6	42.7	42.8	42.9	34
35	0	43.1	43.2	43.3	43.4	43.5	43.6	43.7	43.8	43.9	35
36	0	44.1	44.2	44.3	44.4	44.5	44.6	44.7	44.8	44.9	36
37	0	45.1	45.2	45.3	45.4	45.5	45.6	45.7	45.8	45.9	37
38	0	46.1	46.2	46.3	46.4	46.5	46.6	46.7	46.8	46.9	38
39	0	47.1	47.2	47.3	47.4	47.5	47.6	47.7	47.8	47.9	39
40	0	48.1	48.2	48.3	48.4	48.5	48.6	48.7	48.8	48.9	40

Example—If point is 22.6 ft. above grade, how far should it be from center line to be a slope stake point? Ans. from Table 30.6. For same slopes but other widths of roadbed, correct above figures by one-half difference in width of roadbed; thus in example above, for 20 ft. roadbed distance will be $30.6 - (20 - 16) \div 2$ or 2 ft. added to $30.6 = 32.6$. For slopes of 1 on 1½ see inside of back cover.
Copyright, 1914, by Eugene Dietzgen Co.

7/31/44

Sewer Construction
Spruce Hawk to Reynard Way

☐ Hawk + Spruce = 0+00	+ 3.98	181.0
+ 40 Bk	+ 6.51	178.0
+ 80 Bk	+ 3.75	163.0
+ 105 M.H. inlet	+ 6.24	152.0
Top M.H.		154.0
D.M.H.	+ 12.24	146.0
1+50	+ 5.97	145.59
2 -	+ 3.78	145.13
2+50	+ 5.58	144.62
2+80 M.H. & Goldfinch	+ 1.40	144.41
3 -	+ 3.28	144.23
+ 50	+ 8.55	143.77
4	+ 10.00	143.32
+ 50	+ 7.76	142.86
4+90 Bk	+ 3.83	142.5
5+70 Bk	+ 2.03	135.0
5+40 M.H. & Falcon	+ 1.20	127.0
Top M.H. 15° 05' Rt		133.0
5+70	+ 3.10	115.0
6+00 Bk	+ 3.56	103.0
+ 40	+ 3.26	95.0
+ 80 Bk	+ 2.94	87.0
7+00 Bk ¹ M.H.	+ 4.62	86.19

on Wedgie / Rim

191.20

12.80

178.42	178.0	163.0	152.0		146
0.04	23.22	16.11	15.18		26.18
	6.71	12.36	7.24		8.24
					12.24
179.11	+ 6.51	+ 3.75			
12.36					
166.75					
0.43					
167.18	14.55	14.513	14.42	14.41	14.23
13.00	10.65	11.17	11.52	11.83	12.01
154.18	4.08	7.33	5.98	10.42	8.73
2.06	5.97	+ 3.78	5.58	+ 1.40	+ 3.28
156.24					+ 8.55
10.00					
144.18	4.5	13.5	27.0	15.0	103.0
0.01	1.374	7.19	4.55	3.73	15.73
144.19	9.91	7.16	35		11.60
12.24	+ 3.83	2.03	+ 0.20	+ 3.14	12.17
131.25					+ 3.56
0.30					
131.55					
12.58	86.19				
118.67	11.95				
1.06	7.33				
118.73	4.62				
12.11					
106.56					
10.64					
106.60					
10.24					
95.65					
2.49					
98.14					
7.20					
90.24					

Man tied S. & Goldfinch 20' RHUB

17.12

8.65
47.56

Sewer Construction
Moore Hawk Walnut to Redwood

1	ϕ Walnut = 00 M.H. ✓ Set SE. 7' Hub	229.0	+583
	+50	228.63	+747
1		228.26	+752
	+50	227.89	+732
2		227.52	+719
	+50	227.15	+703
3	3+79.88 PL Set E 7' Hub	226.78	+648
	+50	226.41	+628
4		226.04	+612
	+50	225.67	+466
5	ϕ Upas M.H. Set S.E. 7' Hub	225.3	+596
	+40 Brk	225.0	+464
	+70	222.80	+449
6		220.60	+436
	+50	216.93	+375
7		213.26	+424
	+50	209.60	+435
8		205.93	+467
	+40 Brk	203.0	+513
	+80.10 ϕ Thorn M.H. ✓ Mon. N.G.	202.0	+564
9+10		201.25	+628
	+40 Brk	200.5	+523
	+70	198.05	+443
10		195.60	+502
	+50	191.53	+525

Sewer 16 size Brooks

246.59	229.0	228.63	228.26	227.89	227.52	227.15
0.82	9.66	9.03	10.40	10.77	11.44	11.51
247.41	38.2	2.56	1.88	3.45	3.85	4.48
12.88	+5.53	+7.47	+7.52	+7.32	+7.19	+7.03
24.23						
227.03	226.78	226.41	226.04	225.67	225.30	225.00
12.67	11.88	12.25	12.62	12.89	13.36	13.46
214.36	5.40	5.97	4.20	6.53	7.40	8.00
0.47	6.28	+6.28	+6.42	+6.16	+5.96	+4.64
214.83						
12.71						
203.12	20.60	14.83	13.76	209.60	205.93	203.0
00.00	6.43	10.10	13.77	5.23	8.90	11.83
203.12	20.7	6.15	9.53	5.8	4.23	6.70
	+4.36	+3.95	+4.24	+4.35	+4.67	+5.13
	201.25	200.50	198.05	195.60	191.53	
	13.58	14.33	16.78	6.57	10.59	
	73	7.15	11.25	1.50	5.32	
	+6.28	+5.25	+4.93	+5.02	+5.25	

Sewer Construction
Hawk Walnut to Redwood

11		187.45	+5.41
+30 Brk		185.0	+5.35
+65		183.92	+3.98
12		182.85	+2.78
+30		181.92	+2.25
+60.10	& Spruce M.H. Set SE. 7' Hub	181.0	+3.98
13		182.0	+4.37
+50.		183.26	+5.03
14		184.52	+5.16
+50		185.78	+5.12
+82.65	M.H. Δ 36° 05' L	186.60	+5.28
15		187.83	+4.63
+50		191.40	+4.55
16		194.96	+5.29
+50		198.54	+5.86
+70.57	DE	200.0	+5.81

Goldfinch Thorn to Spruce

20=40's of SL Thorn. DE.		187.0	+3.96
+30		184.50	+4.56
+60 Brk		182.0	+5.40
1		177.6	+7.34
+50		172.1	+8.09
2		166.6	+6.73
+30		163.3	+4.51
+60 Brk		160.0	+1.51
3 = M.H.		144.41	+1.44

20212 HI
12.63 checked on Hawk + Spruce
7.42
82.85 183.26
B.M. NE. 8. 71.04
11.15
12.19 3

189.49	87.45	85.0	83.26	82.85	81.92	81.0
1.73	4.67	6.22	7.30	8.37	9.39	10.22
191.22	9.26	12.87	13.26	15.89	17.05	17.24
	+5.41	+5.35	+5.16	+4.88	+2.25	+3.98
192.63			13.98			
1.86						
194.90	182.0	183.26	184.52	185.78	186.60	187.83
0.10	12.90	11.84	10.38	9.12	8.30	7.07
194.80	8.53	6.81	5.22	4.00	3.02	2.14
12.15	+1.37	+5.03	+5.16	+5.12	+5.18	+4.63
206.95	191.40	194.96	198.54	200.0		
	15.55	11.99	8.41	6.95		
	11.00	6.70	2.55	1.12		
	+4.55	+5.29	+5.86	+5.81		

191.22
-3.30
190.96 = Elev DE Goldfinch + Thorn

Mon tied S. on & Hawk 25' and 50'

183.84					
7.50					
191.34	187.00	184.50	182.00	179.60	172.10
11.80	4.34	6.84	9.34	13.74	19.24
189.54	3.88	2.88	3.94	6.40	11.15
180.40	+3.96	+5.29	+5.16	+4.734	+8.09
12.19	166.60	163.30	160.00		144.41
167.81	12.40	16.70	8.21		11.32
.40	6.27	2.19	6.70		9.88
168.21	+6.73	+4.51	+1.51		+1.44
13.28					
154.93					
1.50					
159.73					

Mon tied S. on & of Goldfinch 20' to Horton

Sewer Construction
Goldfinch - Upas to Thorn to R. Way.

00 = D.E.		212.0	+5.37
+50		208.15	+5.26
1	7.64%	204.31	+4.82
+50		200.46	+4.45
2		196.61	+3.81
+30		194.31	+3.94
+60 Brk		192.0	+4.20
3+00 M.H. Δ 90° 00' L		191.0	+4.77
+50		186.35	+5.12
4	9.29%	181.71	+4.22
+50		177.06	+4.16
5		172.42	+3.98
+50		167.77	+3.79
+90.65 MH Fairfield Drive		164.0	+5.70
6+40 Brk		163.0	+4.33
+80 Brk		155.0	+3.91
7 -		148.50	+4.99
7+20 Brk		142.0	+4.70
+55	40.00%	128.0	+2.70
+90 Brk		114.0	+3.81
8	12.122%	112.20	+2.90
+40		105.0	+3.20
+81.75 M.H. Existing Sewer Main		97.45	6.09

21760 stub 55' 6" upas on Goldfinch

1073 4

21760	212.0	208.15	204.31	200.46	196.61	192.31
12.55	6.85	10.70	14.54	6.39	10.24	12.54
218.55	12.85	11.44	9.72	19.4	6.42	12.54
12.55	-5.37	+5.26	+4.82	+4.45	+3.81	+3.94
206.20	192.0	191.0	186.35	181.71	177.06	172.42
0.55	12.85	15.85	8.50	13.14	5.28	9.92
206.55	10.65	11.08	3.35	8.52	1.12	5.94
13.00	+4.20	+4.77	+5.12	+4.32	+2.16	+3.94
143.85	167.77	164.0				
1.00	14.57	18.40				
144.85	10.70	12.70				
12.55	+3.74	+5.70				
182.30						
0.44						
182.34						
2.85						
169.49						
12.91						
182.40						
1.27						
149.49	163.0	155.0	148.50	142.0	128.0	
0.25	6.77	14.77	9.41	15.91	6.11	
149.74	2.44	10.86	2.42	11.21	3.21	
12.00	+4.22	+3.91	+4.99	+4.70	+2.70	
157.74						
0.14						
157.91	114.0	112.20	105.0	97.45		
12.63	8.35	10.15	5.85	13.40		
145.28	4.54	7.25	2.65	7.31		
0.22	+3.81	+2.90	+3.20	+6.09		
145.52						
11.67						
133.85						
0.44						
134.11						
11.76						
122.35						
12.35						
110.00						
12.35						
12.87						
109.48						
1.37						
110.85						
7.54						
103.29						

check stub Junction present sewer
See 98 p. 49

Fairfield Drive
THORN N 190'

00 = 5+9065 on THORN Main Sewer	164.0	+5.70
+40 = P.C. = Brk	165.0	+4.20
+60 3° 38' 36"	166.33	+3.72
+80 7° 16' 36"	167.66	+3.92
+100 10° 54' 34"	169.00	+4.76
+20 14° 33' 12"	170.33	+4.83
+40 18° 11' 30"	171.66	+3.38
+60 21° 49' 48"	173.00	+4.68
+80 25° 28' 00"	174.33	+7.01
+90. E.C. D.E. 27° 17' 15"	175.0	+6.62

chords 18.19
6.667%

182.40	164.0	165.0	166.33	167.66	169.0
	+5.70	17.40	16.07	14.74	13.40
		13.20	12.35	10.82	8.64
		+4.20	+3.72	+3.92	+4.76
	170.33	171.66	173.0	174.33	175.0
	12.07	10.74	9.40	8.07	7.40
	7.24	7.36	4.72	1.06	0.78
	+4.83	+3.38	+4.68	+7.01	+6.62

Goldfinch 356.07' N of E Upas = 0+00
 UPAS Goldfinch E to Reynard W

0+00	DE	234.0	+3.98
+30		233.69	+4.59
+60	$\Delta 33^\circ 43'$ Rt	233.38	+4.95
1 -		232.98	+5.76
+50		232.47	+5.84
+96.07	Brk	232.0	+4.80
2		231.63	
+50		227.10	+4.77
3		222.57	+4.47
+25		220.30	+4.75
+56.07	M.H 90° Lt & Upas	217.50	+5.71
3+96.07	Brk	214.50	+6.25
4		214.02	
+50		208.11	+6.05
5 1		202.21	+5.51
+50		196.30	+5.43
6		190.39	+4.74
+16.07	Brk	188.50	+5.08
+40.04	E Falcon MH	187.10	+5.16
+76.07	Brk	185.0	+3.95
7		182.12	+3.95
+50		176.12	+3.98
8		170.12	+4.02
+50		164.12	+3.83
9		158.12	+4.51

Goldfinch

25' Tied E on split of $\Delta 72^\circ 08' 30''$

sub	ΔH	234.0	33.49	32.38	32.98	32.27	232.0	27.10	22.57
2386	0.47	9.08	9.39	9.70	10.10	10.61	11.08	15.98	8.30
243.08	1.55	5.10	4.80	4.75	4.34	4.77	6.25	11.21	3.83
240.53	0.34	+3.98	+4.29	+4.95	+5.76	+5.84	+5.80	+4.77	+4.47
230.17	0.27	20.30	17.50	14.50	208.11	202.21	96.30	90.39	88.50
231.5	0.20	10.57	13.37	16.37	10.26	16.36	10.23	16.34	6.73
218.57	0.82	5.82	7.66	10.12	4.41	10.85	5.0	11.60	1.85
217.75	0.81	+4.75	+5.71	+6.25	+6.05	+5.51	+5.43	+4.74	+5.08
206.73	1.54	87.10	85.0	82.12	76.12	70.12	64.12	58.12	
94.19	0.51	7.63	9.73	14.61	6.15	12.15	5.83	11.83	
94.73	0.54	5.47	5.78	8.66	2.17	8.13	2.	7.22	
124.49	0.03	+5.76	+3.95	+3.95	+3.98	+4.02	+3.83	+2.51	
82.24	0.03								
82.27	1.67								
69.60	0.35								
69.95	12.78								

Tied S. 25' on E of Goldfinch

Goldfinch - Upas to Reynard W

9+17 ⁷⁷	± Eagle M.H.	156.0	+117
+47 ⁷⁷	Brk	142.0	+319
+75	33.666%	132.83	+266
10		124.41	+282
+25	Brk Δ 2120' R	116.0	+381
+50	16.003%	111.98	+289
+81 ⁸³	± Existing Sewer	107.0	+7.0

208-D
2126-V

169.98						
1278						
57.17	156.0	142.0	32.83	2.41	116.0	11.98
9.29	13.95	15.46	17.44	8.40	16.81	9.19
157.46	1278	12.27	9.78	5.58	13.00	6.30
12.27	+1.17	+3.19	+2.66	+2.82	+3.81	+2.89
145.19						
0.95						
145.27	107.0					
12.85	14.17					
32.44	7.17					
0.39	+ 7.0					
32.81						
13.18						
119.63						
1.64						
121.17						
7.17						
114.00						

Sewer Construction
Brookston Horton Ave 1 B15 St

00 = 40' S of SL Brookes D.E.	238.0	+7.49
+50	237.63	+7.80
1	237.27	+7.76
+50	236.90	+7.82
2	236.54	+8.01
+50	236.18	+8.13
3 = 4 Walnut M.H. ^{0.729%}	235.81	+8.18
+50	235.45	+8.60
4	235.08	+8.25
+40	234.79	+8.82
+80 Brk	234.50	+8.67
5	231.75	+8.39
+20 Brk	229.0	+8.06
+60	220.0	+8.69
6 Brk	211.0	+8.34
+37.5	204.5	+8.20
+75 Brk, NL Horton Fldd.	198.0	+8.51
7 ^{2.97%} ^{2.96%}	190.59	+8.29
+30.05	181.70	+8.32
^{61.11} +60.11 NL Upas M.H. Δ 29' 19" R	172.5	+8.54
+80 Brk	171.0	+8.53
8 +15.93	162.0	+8.62
+51.86 D.M.H. Δ 29' 19" Lt. inlet	153.0	+8.24
outlet	148.5	+8.64
+90.93	144.75	+8.27

Set SE 7' Hub

246.59	238.0	237.63	237.27	236.90	236.54	236.18	235.81
249.26	11.26	11.63	11.99	12.36	12.72	13.08	13.45
246.82	3.77	3.83	4.23	4.52	4.71	4.95	5.22
246.82	+7.49	+7.80	+7.76	+7.82	+8.01	+8.13	+8.18
237.10	35.45	35.08	34.79	34.50	34.25	33.90	33.60
244.69	13.81	14.18	14.47	14.76	15.05	15.30	15.50
244.84	4.21	5.93	7.65	11.08	14.96	18.02	21.41
244.84	+9.60	+8.45	+6.82	+3.67	+4.39	+4.06	+4.69
212.17	211.0	204.5	198.0	190.59	181.70	172.5	162.0
212.17	13.84	7.94	14.44	9.59	6.30	5.50	17.0
212.17	7.50	4.70	10.93	4.30	0.98	8.96	11.47
212.17	+4.34	+3.24	+3.51	+5.29	+5.32	+6.54	+5.53
200.18	162.0	153.0	148.5	144.75			
200.18	14.40	11.40	13.90	7.08			
187.64	8.78	9.24	9.26	4.81			
187.64	+5.62	+2.14	+6.64	+2.27			
188.00							
188.00							
175.02							
175.02							
176.40							
176.40							
143.56							
143.56							
164.40							
164.40							
151.58							
151.58							
151.83							

73' checked stub
156.66

Bis St Sewer Brookes to Horton

9+30	Brk	141.0	+2.72
+50		140.63	+2.50
10		139.70	+5.43
+50		138.77	+2.42
11		137.85	+3.12
+25		137.38	+4.61
+54.11	$\Delta 49^\circ 21' 30''$ Rt	136.85	+3.70
12	Brk	136.0	+3.86
+30	Brk	125.0	+3.74
+75.61	Existing M.H. Flowline	122.22	✓

1.85%
%

11

151.82	141.0	40.63	39.70	38.77	37.85	37.38	36.85
11.28	10.83	11.70	12.13	13.06	13.98	14.45	14.98
140.55	8.11	8.70	6.70	10.21	10.56	9.82	11.28
3.53	+2.72	+2.50	+5.43	2.02	+3.12	+4.61	+3.70
144.08							
11.98							
132.10	136.0	125.0	122.22				
0.61	8.08	7.71	10.49				
132.71	2.24	3.97	✓				
	+3.86	+3.74	10.49				

Curb Grades I St 25th to 26th

	Sct		25th	26th
El 25th = 00	128.70	-	130.70	✓
+40 Brk	127.0	0.0	129.0	0.0
+60 Brk	126.0	0.0	128.0	0.0
1-	120.86	0.0	122.86	0.0
+38 ³⁰ w/ Alley	115.94	0.0	117.94	0.0
+62 ³⁰ El ✓	112.85	0.0	114.85	0.0
2-	108.0	0.0	110.0	0.0
+40 ✓	104.5	+0.62	106.5	+0.50
+80 ✓	103.2	+0.71	105.2	0.0
3-	103.0	+0.77	105.0	0.0
+20 ✓	103.2	+0.79	105.2	0.0
+60 ✓	104.3	+1.18	106.3	+0.50
+95 ✓	108.0	0.0	110.0	+1.27
4+50			121.24	0.0
5-			131.47	0.0
+50			141.70	-0.35
+61 ¹⁹ w/ 26th	143.0		144.0	-0.30

21.05%

N 25th + 1st

13067
066
13133
1288
11845

	N	130.70	129.0	128.0	122.86	117.94	117.94
		0.63	2.33	3.33	8.47	1.68	1.68
						0.95	0.95
							+0.73
	S	2.40	2.33	5.93	10.47	3.68	3.68
							2.18
							✓

	N	El Alley	N.L.	110.0	106.5	105.2	105.0
		114.85	115.35				
		0.77	4.77	9.00	2.56	3.86	4.04
			3.33		2.06		
			+0.77		+0.50		
	S	6.77	5.2	11.64	4.86	8.66	6.06
		0.0	7.37	✓	3.90	5.15	5.39
			-1.0	✓	+0.62	+0.71	+0.77

	N	105.2	106.3	110.0	121.24	131.47
		3.86				
			2.76	9.69		
			2.24	6.45	10.07	11.24
			+0.50	11.19		
	S	8.86	4.76	11.69		
		5.07	3.58			
		+0.77	+1.18			

	N	141.7	144.0		145.87
		1.19	1.87		
		1.24	1.19		
		-0.35	-0.30		

21052
14.8
63.156
10.024
3.381470

1143
8.26

11152
8.37

10/29/24 Gregory Levels on House
 between Kellogg & Lawrence
 on San Antonio
 To determine Sewer Elev

0.95	34.55		33.60	BP NE Roscrans & Kellogg
1.12	22.99	12.88	21.67	
4.53	15.03	12.29	10.50	NH Kellogg & San Antonio

Elev. of Soil pipe 107' N. of N.H. Kellogg and

52.5' E. of E.L. San Antonio 9.77 5.26

This pipe is outlet of House Sewer

Elev. of Floor of House 7.13 7.90

Elev. on Paring
 Roscrans & Sterne

12

	4.99	7.09		3.10	SW of Mon Sterne
SL Sterne & of paring			5.20	2.89	
NL ✓ ✓ - -			5.55	2.58	

8/28/24 Gregory.

X Section of a Portion
 of Front ST 70 ST 10' cbs
 Front ST has a 50' Roadway

	4.5	256.95	252.90	NW Front 7' Brookes
				200' N. of Brookes
				Curb end is 200' N. of Brookes on West.
W cb.	6.70	250.25		on cement
1/4	6.40	250.55		
C	6.1	250.85		
1/4	6.0	250.95		
E gutter	6.0	250.95		
E cb	5.65	251.30		on cement
				203' N. of Brookes
E cb	5.82	251.13		on cement
E gutter	6.1	250.85		
1/4	6.0	250.95		
C	5.9	251.05		
+5	5.6	251.35		
+9	6.4	250.55		
1/4	6.4	250.55		
+9	6.2	250.75		
cb	6.5	250.45		
W	6.5	250.45		
				208' N.
W	6.6	250.35		
cb	6.2	250.75		
# +4	5.8	251.15		
1/4	5.9	251.25		
+5	5.4	251.55		

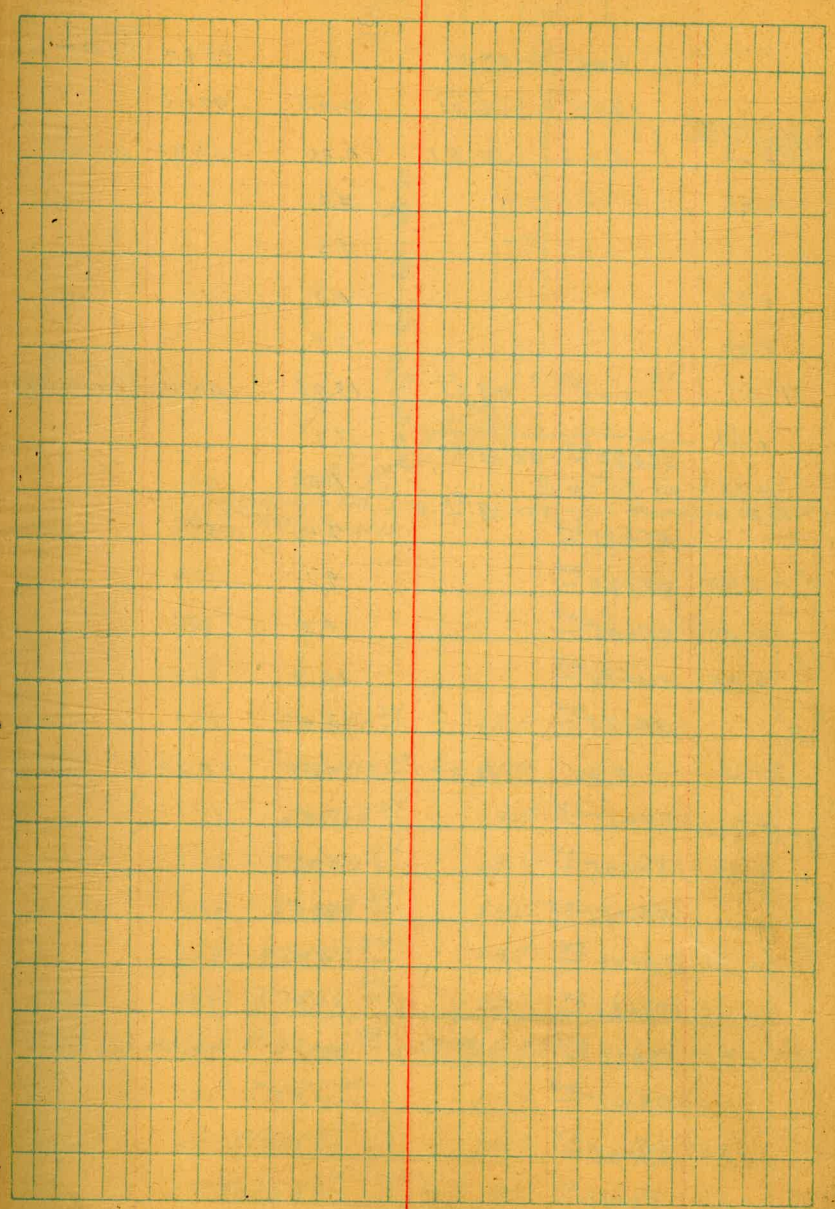
649 13

+6	4.8	252.15		
C	4.7	252.25		
1/4	4.8	252.15		
+9	4.7	252.25		
E cb	6.08	250.89		on cement
				212' N
E cb	6.31	250.64		
E gutter	6.6	250.35		
+2	6.6	250.35		
+5	4.5	252.45		
1/4	4.6	252.35		
C	4.7	252.25		
+5	5.0	251.95		
+6	5.5	251.45		
1/4	5.8	251.15		
+7	5.0	251.15		
cb	6.5	250.45		
W	6.7	250.25		
				215' N. = End of Cb. on East.
cb on End of East.	6.49	250.46		
				222' N
W	7.2	249.75		
cb	6.6	250.35		
+4	6.9	250.05		
+7	6.2	250.75		

1/4	5.8	251.15
C	5.2	251.75
+5	5.1	251.85
+6	6.4	250.55
1/4	6.6	250.35
cb	7.0	249.95
E	8.4	248.55

230' N.

E	10.0	246.95
cb	10.2	246.75
+5	6.8	250.15
1/4	6.7	250.25
C	6.7	250.25
+3	5.8	251.15
1/4	6.2	250.75
+4	6.8	250.15
cb	7.3	249.65
W	7.6	249.35



	90.52			
+ 50	$50 + 05 \overset{24}{\underline{\quad}}$	8.1	82.4	
8	$49 + 55 \overset{24}{\underline{\quad}}$	6.8	83.7	
+ 50	$49 + 05 \overset{24}{\underline{\quad}}$	6.0	84.5	
9	$48 + 55 \overset{24}{\underline{\quad}}$	4.9	85.6	
+ 04.19	$\overset{\text{Sta 9+58.07}}{\text{book 941-11}} = 48 + 51 \overset{05}{\underline{\quad}}$	$11.03 \overset{R}{\underline{\quad}}$	85.88	on stub

new line cont from Book 975 page 28

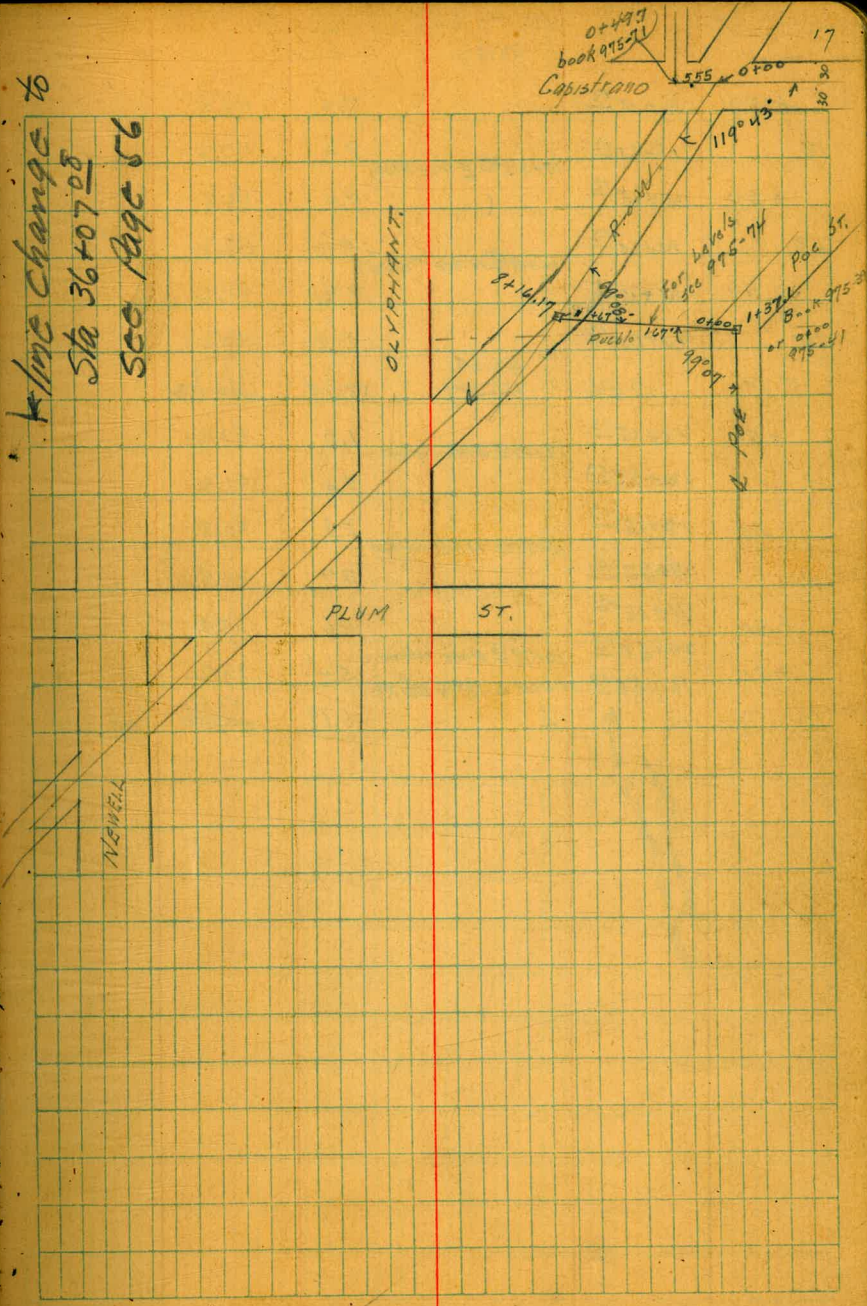
11/2/22 Gregory

Sewer Levels on
& R. W. from
Capistrano to ~~Macawley~~ ST
Hub @ 41+00.3
book 975-71

Capistrano + 555 R. W. Sta 0+00	27+65 ¹³	70.09	Δ 3° RT	68.30	on stub
+ 50	27+15 ¹³	71.0	Δ 3°-27'-03"	68.1	
1	26+65 ¹³	71.3		67.8	
+ 50	26+15 ¹³	71.5		67.6	
2	25+65 ¹³	71.8		66.9	
+ 50	25+15 ¹³	72.1		66.7	
3	25+06 ⁵¹	POT = 25+12 ⁹³	Δ 12° 05' Lt	64.3	
+ 50	24+65 ¹³	72.3		63.8	
4	23+65 ¹³	72.5		61.6	
+ 50	23+15 ¹³	72.9		60.2	
5	22+65 ¹³	73.0		59.1	
+ 50	22+15 ¹³	73.3		57.8	
T.P.	1.47	58.72		12.84	57.25
6	21+65 ¹³	73.4		56.7	
+ 50	21+15 ¹³	73.7		55.4	
7	20+65 ¹³	73.9		54.8	
+ 50	20+15 ¹³	74.3		54.4	
8	19+65 ¹³	74.5		53.7	
+ 16.17 Δ 10° 05' R	19+48 ⁹⁶	55.82		5.49	53.23 on bus
+ 50	19+15 ¹³	74.7		53.4	
9	18+65 ¹³	74.9		52.9	
+ 50	18+15 ¹³	75.4	18+39 ⁴⁶ N line Olyphant	3.4	52.4
10	17+65 ¹³	75.6		51.6	
+ 50	17+15 ¹³	76.0	17+30 ⁹⁶ S line Olyphant	5.0	50.8
11	16+65 ¹³	75.8		50.0	
	16+54 ¹³		W line Plum		

Continued in book 941 page 5

K line change to Sta 36+07.05 See page 56



55.22

+50	16+15 ¹³		7.0	48.8	
12	15+65 ¹³		8.0	47.8	
+50	15+15 ¹³	15+62 ⁶³ E line Plum	9.0	46.8	
13	14+65 ¹³		10.1	45.7	
+50	14+15 ¹³	14+19 ⁶⁵ N line Howell	11.2	44.6	
14	13+65 ¹³		12.2	43.6	
T.P.	0.46	43.59 46.49	12.69	43.13 46.03	
+50	13+15 ¹³		1.0	42.6	
15	12+65 ¹³	13+16 ⁶³ S line Howell	2.0	41.6	
+50	12+15 ¹³		2.8	40.8	
16	11+65 ¹³	11+70 ⁶³ W line Willow	3.7	39.9	
+50	11+15 ¹³		4.6	39.0	
+80	10+65 ¹³	10+79 ⁶³ E line Willow	5.4	38.2	
17	= Δ ↑	N line Δ 18°15' 32" Rt	6.19	37.40 40.30	on hub

Continued from
Book 47, page 2

18

12/13/24

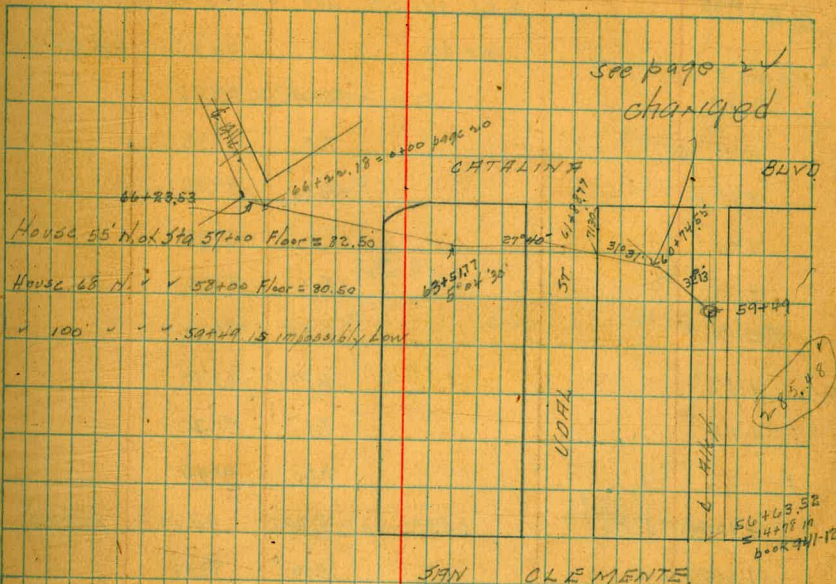
Levels on Sewer Line
shown on opposite page

Continued from Book 941 page 12

	11.99	7413		62.14	Catalina +Valeria
	12.4	86.57	0.00	74.13	
d. of Alley 282.42 W. of San Clemente = 59+49	59+74.21	Δ 32°-13' Lt	6.11	80.46	77.85 on hub
+61	+86.21		6.4	80.77	
+63	+88.21		4.9	81.67	
+71	+96.21		4.4	82.27	
+79	60+04.21		6.2	80.37	
+89	60+14.21		6.2	80.37	
60	60+25.21		7.1	79.47	
+11	60+36.21		6.3	80.27	
+22	+47.21		6.0	80.57	
+23	+48.21		6.6	79.97	
+37	+62.21		6.0	80.57	
+60	60+85.21		1.8	84.77	
	4.88	60+99.26			17.55
+74.55	Δ 31° 21' L	90.37	1.08	85.49	on hub
61	61+25.21		3.9	86.47	
+17	61+42.21		3.4	86.97	
+35	61+60.21		6.2	84.17	
+51	61+76.21		5.7	84.67	
+80	62+05.21		7.2	83.17	
+88.77	Δ 29° 40' L	62+13.98	6.33	84.04	98.00
+93	62+18.21		5.3	85.07	
62	62+25.21		5.1	85.27	
+50	62+75.21		2.0	88.37	
63	63+25.21		0.0	90.57	

see page 24 for change.

29.65
14.00
52.48
66+23.42
13.21
60+22.18
19

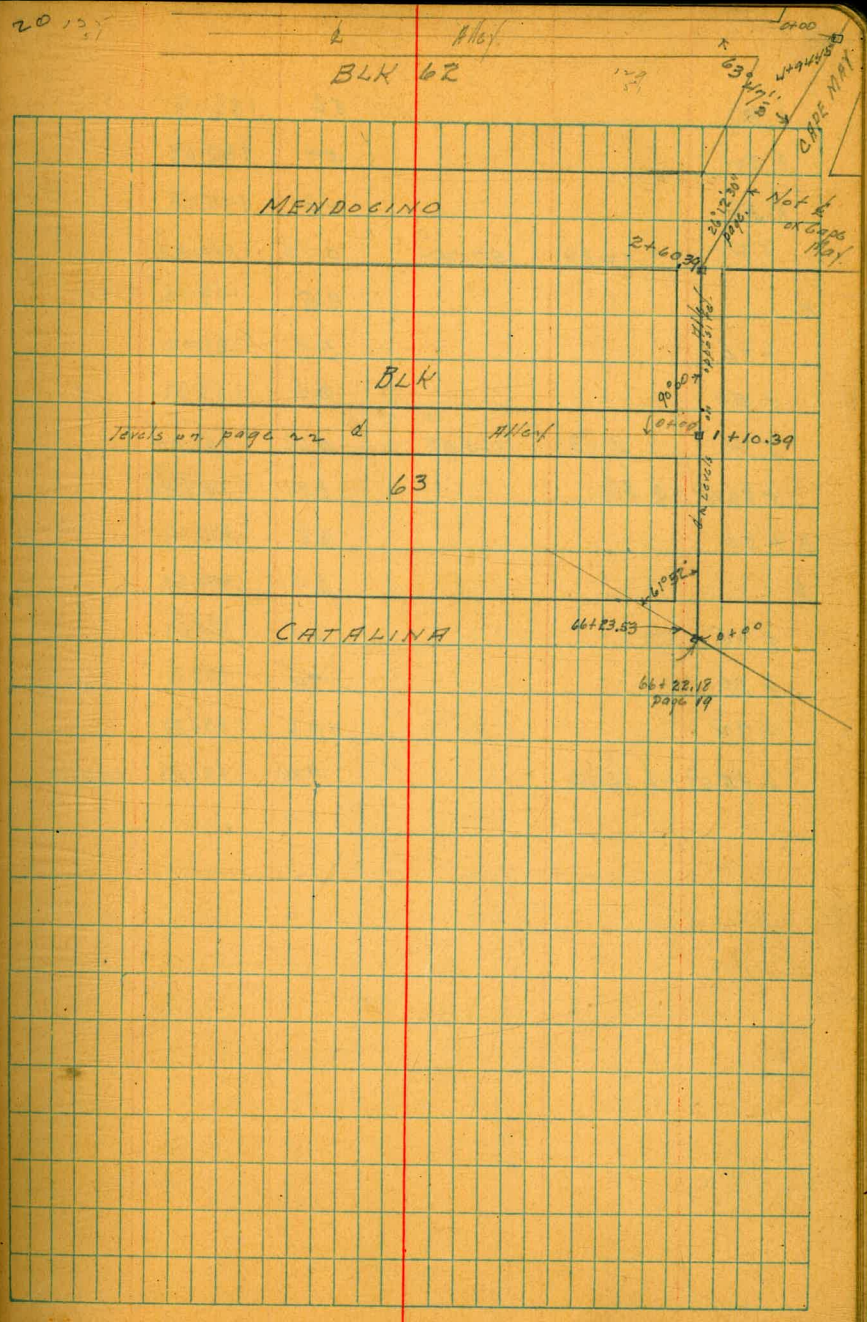


TP	11.30	10.163	0.04	90.33
63+07.0	63+32.21	11.2	90.43	
+12	63+37.21	8.8	92.83	
+25	63+50.21	8.2	93.43	
+50	63+75.21	7.6	94.03	
+51.77	Δ 5° 04' 30" R.	8.60	93.03 on hub	
+75	64+00.21	8.7	92.93	
64	64+25.21	5.9	95.73	
+50	64+75.21	6.3	95.33	
65	65+25.21	7.3	94.53	
+25	65+50.21	7.2	94.43	
+45	65+70.21	6.0	95.63	
66	66+25.21		95.03	
+22.18 = d. Alley	66+47.39	Δ 57° 50' 10" R.	74.80 on hub	

Cont. in Book 965 pg 2

12/17/27 Gregory Levels on ^{SW} of Alley/ BLK 63 Pt Loma Heights
 on Line along Cape May
 from Catalina Blvd to
 E of Venice see opposite sketch

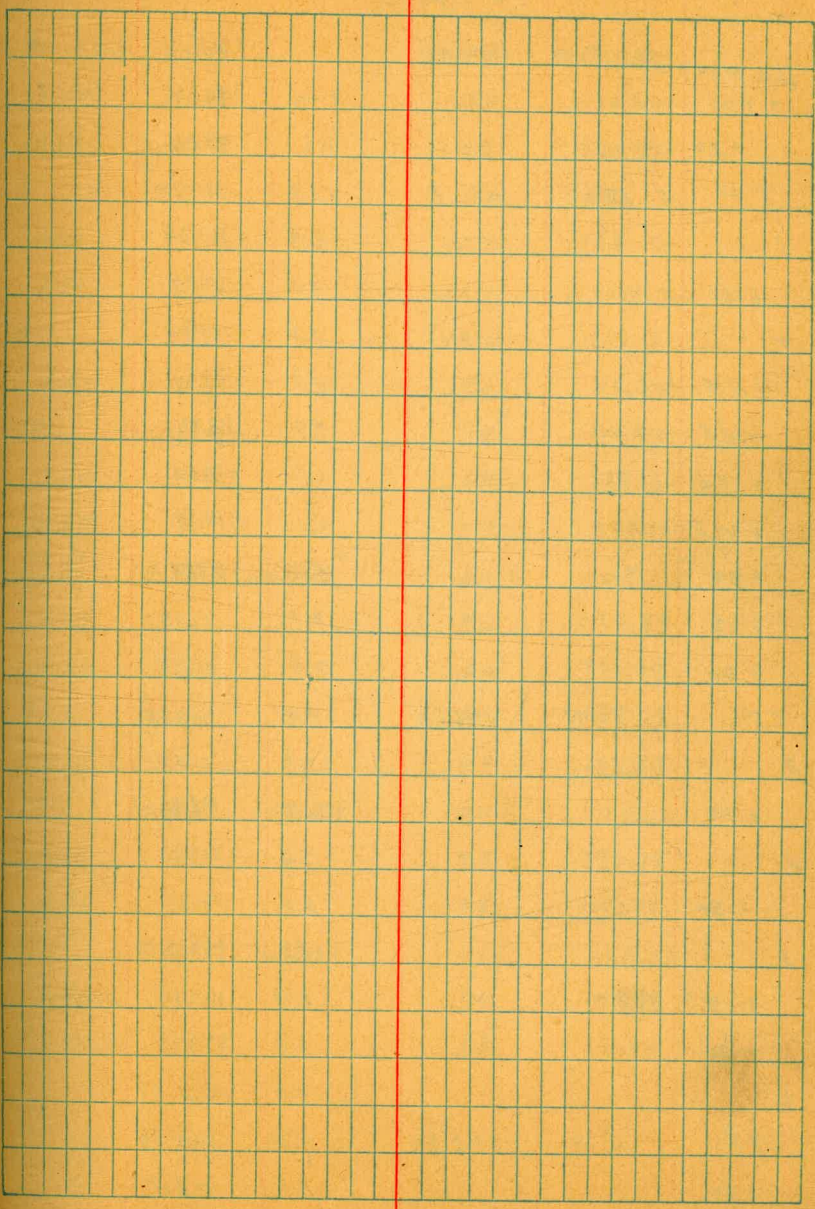
66+47 ^{39.62}					
Sta 66+22.18 page 19	7.44	102.30		94.86	hub @ 0100
+0+00			7.44	94.86	
+14			7.5	94.80	
+15			18.1	84.20	
+21			18.6	83.70	
+24			18.6	83.70	
+27			17.2	85.10	
+37			16.9	85.40	
+47			8.1	94.20	
1			8.2	94.10	
+10.39 = Alley	12.84	106.91	8.23	94.07	on hub
+25			13.0	93.91	
+55			9.8	97.11	
+65			7.4	99.51	
TP	12.90	119.54	0.07	106.84	
2+00			13.0	106.54	
+10			7.9	111.64	
+25			1.7	117.84	
TP	12.44	131.96	0.02	119.52	
+42			4.8	127.16	
+48			3.0	128.46	
+60.39 Δ 26°12'20"			2.57	129.39	
TP	12.86	144.78	0.04	131.92	
3			10.9	133.78	
+15			9.5	135.28	



+ 30			8.6	136.18
+ 50			5.7	139.08
+ 56			4.3	140.48
T.P.	1289	157.22	0.45	146.33
4			9.5	147.72
+ 25			5.9	151.32
+ 50			3.6	153.62
T.P.	943	165.97	0.68	156.54
+ 9.45 = Q Alley			8.51	157.46
5 + 50			6.8	159.17
6			6.4	159.57
+ 35			6.0	159.97
+ 50			7.4	158.57
+ 72			10.6	155.37
+ 95.08 = Q Yenice			9.99	155.48 enstvb

94.66

21



12/17/24

Gregory

Levels on 6 Alloys Blks 63+61
 bat May Jacimo + Catalina
 from Sta 1 + 10.39 paguro
 to 1190' 5'

Pt Loma Ag 48

22

1 + 10.39 on E-W Alloy 8.23	102.30	94.09	hub area
+ 0.00	8.23	94.07	
+ 50	3.6	98.70	
T.P.	13.04	114.19	1.15 101.15
1		12.8	101.39
+ 50		9.4	104.79
"		5.8	108.39
+ 11.5		4.9	109.39
+ 14.5		7.8	106.39
+ 18.6		4.7	109.49
+ 22.5		4.0	110.19
+ 32		5.9	108.29
+ 35		3.7	110.5
+ 50		2.8	111.4
T.P.	12.78	126.63	0.34 113.85
3		12.8	113.8
+ 50		11.0	115.83
4		7.9	118.73
+ 50		6.0	120.63
5		4.5	122.13
+ 12 ⁺ POT.		3.79	122.84 on hub
+ 50		3.0	123.63
6		2.5	124.13
T.P.	4.19	128.32	2.50 124.13
+ 50		3.2	125.13

7		3.9	124.42
+ 50		5.0	123.32
+ 82		6.6	121.72
8		8.2	120.12
+ 20		10.2	118.12
+ 50		11.1	117.2
9		10.6	117.7
+ 50		9.0	119.32
10		7.4	120.92
+ 30		6.3	122.02
+ 50		1.2	127.12
T.P.	13.34	141.49	0.17 128.15
+ 65		9.6	131.89
+ 80		5.4	136.09
11		3.3	138.19
+ 12		4.0	137.49
T.P.	12.44	150.48	3.45 138.02
+ 35		7.7	142.78
+ 50		2.5	147.98
T.P.	9.78	158.31	1.95 148.53
+ 75		8.4	149.91
+ 90 DE		8.3	150.01

12/17/24 Gregory Levels & Alley Bk 62 Pt Lima Heights
from Cape May to Newport.

Sta 4+00	851	165.97	157.46	on stub over
+50			8.51	157.46
TP	13.37	176.58	6.0	159.97
+50		179.58	3.5	162.47
2			2.76	163.21
+50			11.1	165.48
3			7.9	168.68
+50			4.0	172.58
TP	12.95	187.03	2.50	174.08
+50		190.03	10.8	176.23
4			7.2	179.83
+50			4.0	183.03
TP	12.23	197.93	1.33	184.70
+50		200.93	12.4	187.5
5			11.0	186.93
+50			10.7	187.23
6			10.9	187.03
+50			8.9	189.63
7			6.7	191.23
+0.5			6.7	191.23
+12			13.5	184.43
+16			8.8	189.13
+22			11.1	186.83
+27			15.7	182.73
+34			12.3	185.63
+44			18.0	172.83
+50			13.1	184.83

+72	12.5	185.43
+80	15.9	182.03
+84	13.1	184.83
+88	14.8	183.13
+90	12.5	185.43
+95	14.4	183.53
+98	12.2	185.73
8+04.0	15.9	182.63
+10	10.7	186.23
+15	9.7	188.03
+19	13.0	184.93
+25	9.3	189.63
+29	12.3	185.63
+32	11.5	186.43
+39	16.6	181.33
+50	6.0	191.93
+55	5.0	192.93
+57	2.3	195.63
TP	12.74	212.22
+65	0.45	197.48
+73	15.5	194.72
9	11.1	199.12
+50	8.9	201.32
10	6.5	203.72
TP	12.72	212.22
	1.17	207.02

22¹/₇₇

+50 11.8 209.97

11 8.7 213.07

+50 4.4 217.37

12 + 01.99 D.E. 1.3 220.47

T.P. 13.25 223⁴/₆₀ 0.62 223¹/₁₅

3.13 223⁵/₆₀ 1.93 223²/₄₇

5.39 223⁰/₂₁

230M
NW Newport
+ Venice
on cb.

change in sewer line See page 19

59+74.71 = A 29°32' LT

GRADE
77.02

60 77.12

+50 77.22

+91.1 E edge Conc. Stairs

+96 w v r v

60 + 99.88 = A 36°47' LT 77.55

61 + 50 77.76

62 77.95

+17.36 = A 78.00

See ^{Dwg} B-970

91.1
25.8
116.9

80.46
10.52
90.98

77.14	77.22	77.55	77.76	77.95	78.00
13.84	13.66	13.43	13.22	13.03	12.98
10.00	12.12	9.92	6.38	7.01	6.26
+3.84	+1.52	3.51	+6.84	+6.02	+6.02

1/9/44 Geography

CROSS SECTION OF
B 5th 80' WIDE 14' OBS
from E.L. 18th ST to W.L. 22nd

B.S.T 25

	1.17	25.37	84.20	84.20
	0.16	73.14	12.39	72.98
	1.45	69.40	5.19	67.95
	E.L. 18 th			
N			1.2	68.2
cb			1.46	67.94
gutter			1.8	67.6
1/4			2.4	67.0
c			2.7	66.7
1/4			3.3	66.1
gutter			3.6	65.8
cb			3.46	65.94
S			3.2	66.2
	3' E			
S			3.4	66.0
cb			3.4	66.0
1/4			3.1	66.3
c			2.6	66.8
1/4			2.3	67.1
+8			2.3	67.1
+12			1.7	67.7
cb			0.9	68.5
N			0.7	68.7
	45' E			
N			0.9	68.5

	1.1	68.3
cb	1.1	68.3
+1	2.7	66.7
1/4	3.2	66.2
c	3.3	66.1
1/4	3.1	66.3
cb	2.8	66.6
S	3.7	65.7
	80' E	
S	4.4	65.0
+4	3.9	65.5
+8	1.9	67.5
cb	1.4	68.0
1/4	2.2	67.2
+4	3.8	65.6
c	3.8	65.6
1/4	3.7	65.7
+10	3.4	66.0
cb	2.2	67.2
N	1.7	67.7
	92' E	
N	2.0	67.4
+11	2.4	67.0
cb	3.0	66.4
+4	3.7	65.7
1/4	4.3	65.1

69.40

c	43	65.1
+9	43	65.1
1/4	31	66.3
cb	0.9	68.5
+6	2.2	67.2
+8	3.5	65.9
5	4.1	65.3

102° E

5	2.5	66.9
cb	2.5	66.9
1/4	3.5	65.9
#4	4.8	64.6
c	4.8	64.6
1/4	4.8	64.6
+11	4.3	65.1
cb	3.9	65.5
N	3.2	66.2

120° E

N	6.1	63.3
cb	6.1	63.3
1/4	6.0	63.4
c	5.6	63.8
+8	5.5	63.9
1/4	4.6	64.8
+9	3.3	66.1
cb	4.1	65.3
5	3.3	66.1

B. ST 26

150° E

5	5.9	63.5
cb	5.4	64.0
1/4	5.7	63.7
+5	6.7	62.7
c	6.6	62.8
1/4	6.9	62.5
cb	7.1	62.3
N	6.9	62.5

165° E

N	7.2	62.2
cb	7.7	61.7
1/4	7.3	62.1
c	7.1	62.3
+7	7.2	62.2
1/4	6.0	63.4
+3	5.3	64.1
cb	5.5	63.9
+4	8.6	60.8
+12	9.3	60.1
5	8.8	60.6
+5	7.6	61.8

185° E

-5	10.5	58.9
5	10.0	59.4
+8	9.7	59.7

69.40

cb			67	62.7
+5			48	64.6
1/4			68	62.6
+7			78	61.6
C			78	61.6
1/4			77	61.7
cb			81	61.3
N			80	61.4
200' E = WL 19 th 80' wide				
N			82	61.2
cb			84	61.0
1/4			80	61.4
C			80	61.4
+7			79	61.5
1/4			7.2	62.2
cb			48	64.6
+4			5.7	63.7
S			10.4	59.0
TP	8.66	71.18	6.88	62.52
		8'E		
S			10.5	60.7 (58.9)
+9			9.6	61.6
cb			86	62.6
+7			9.0	62.2
1/4			8.6	62.6
+5			9.7	61.5

B. ST 27

C			10.0	61.2
1/4			9.9	61.3
cb			10.0	61.2
N			9.8	61.4
W. Corb.				
N			10.1	61.1
cb			10.3	60.9
1/4			10.0	61.2
C			10.0	61.2
+11			9.8	61.4
1/4			9.0	62.2
+7			8.7	62.5
cb			9.6	61.6
+4			8.0	63.2
+10			9.8	61.4
S			9.8	61.4 (59.4)
W Quarter				
S			8.5	62.7 (60.9)
cb			9.0	62.2
+4			8.7	62.5
1/4			9.9	61.3
C			9.9	61.3
1/4			10.1	61.1
+7			10.5	60.7
cb			10.0	61.2

71.18

+5	9.8	61.4
N	10.8	60.4

Center 19th St.

N	11.2	60.0
+5	10.8	60.4
+11	9.6	61.6
cb	10.0	61.2
+6	10.4	60.8
1/4	10.0	61.2
c	9.8	61.4
1/4	9.9	61.3
cb	10.0	61.2
S	10.0	61.2 ✓

East 1/4

S	10.0	61.2 ✓
cb	9.9	61.3
1/4	9.9	61.3
c	10.0	61.2
1/4	10.0	61.2
+7	10.4	60.8
cb	9.6	61.6
N	11.1	60.1

East Curb

N	11.4	59.8
cb	10.6	60.6
+6	10.2	61.0

B St 28.

1/4	10.1	61.1
c	10.0	61.2
1/4	9.9	61.3
cb	10.0	61.2
S	10.1	61.1 ✓

East Line 19th St.

S	10.1	61.1 ✓
cb	10.0	61.2
1/4	10.0	61.2
c	10.1	61.1
1/4	10.2	61.0
+7	10.5	60.7
+8	10.1	61.1
cb	10.0	61.2
+4	10.8	60.4
N	10.8	60.4

25' E

N	10.9	60.3
+5	10.1	61.1
cb	9.9	61.3
+8	10.3	60.9
1/4	10.2	61.0
c	10.0	61.2
1/4	10.2	61.0
cb	10.2	61.0
S	10.5	60.7

71.18

50' E

S	10.5	60.7
cb	10.0	61.2
1/4	10.0	61.2
C	10.0	61.2
1/4	10.0	61.2
cb	10.1	61.1
N	9.9	61.3

75' E

N	9.8	61.4
cb	9.9	61.3
1/4	9.7	61.5
C	9.8	61.4
1/4	9.8	61.4
cb	10.0	61.2
S	10.0	61.2

100' E

S	9.6	61.6
cb	9.0	62.2
1/4	9.0	62.2
C	9.3	61.9
1/4	9.3	61.9
cb	9.4	61.8
N	9.4	61.8

135' E

N	8.9	62.3
---	-----	------

B. ST 29

cb	8.7	62.5
1/4	8.4	62.8
C	8.5	62.7
1/4	8.3	62.9
cb	8.2	63.0
S	8.8	62.4

170' E

S	7.4	63.8
cb	7.4	63.8
1/4	7.2	64.0
C	7.1	64.1
1/4	7.3	63.9
cb	7.6	63.6
N	7.7	63.5

190' E

N	7.0	64.2
cb	7.0	64.2
1/4	6.6	64.6
C	6.2	65.0
1/4	6.1	65.1
cb	6.2	65.0
S	4.2	67.0

200' E = WL 20' W 80' wide

S	3.5	67.7
1/4	3.8	67.4

cb	5.0	66.2
1/4	5.5	65.7
c	5.6	65.6
1/4	5.9	65.3
cb	6.5	64.7
N	6.6	64.6

W. Curb

N	6.0	65.2
cb	5.7	65.5
1/4	5.2	66.0
c	4.9	66.3
1/4	4.6	66.6
cb	3.9	67.3
S	3.2	68.0
+ 20 = End of Cement cb on 20 th	1.70	69.48

W. Quarter

S	2.6	68.6
cb	3.2	68.0
1/4	3.8	67.4
c	4.2	67.0
1/4	4.5	66.7
cb	4.9	66.3
N	4.9	66.3

Center

N	3.7	67.5
cb	4.0	67.2

1/4	3.7	67.5
c	3.4	67.8
1/4	3.3	67.9
cb	2.8	68.4
S	2.1	69.1
E Quarter		
S	1.8	69.4
cb	2.4	68.8
1/4	2.8	68.4
c	3.0	68.2
1/4	3.0	68.2
cb	3.1	68.1
N	3.1	68.1
E Curb		
N	2.3	68.9
cb	2.3	68.9
1/4	2.1	69.1
c	2.0	69.2
1/4	1.6	69.6
cb	1.0	70.2
S	0.9	70.3
TP	12.70	83.55
Top Hyd SE 20 th & B	10.42	73.13

83.55

E. L. 20th ST.

S		12.6	71.0
+3		11.2	72.4
+5		11.8	71.8
+9		11.9	71.9
+10		11.0	72.6
cb		11.0	72.6
+8		11.2	72.4
1/4		11.7	71.9
+5		12.4	71.2
C		12.9	70.7
1/4		13.1	70.5
cb		13.2	70.4
N	under house	12.8	70.8
	4' E		
N	under house	12.5	71.1
cb		12.7	70.9
1/4		12.7	70.9
C		12.4	71.2
+5		12.1	71.5
+7		11.6	72.0
1/4		11.1	72.5
+7		10.4	73.2
cb		10.3	73.3
+6		10.6	73.0
S		9.6	74.0

B. ST 31

12' E

S		9.3	74.3
cb		9.4	74.2
+8		9.5	74.1
1/4		9.8	73.8
+7		10.2	73.4
C		11.0	72.6
1/4		11.6	72.0
cb		12.0	71.6
N		12.0	71.6
	20' E		
N		11.2	72.4
cb		11.4	72.2
1/4		10.9	72.7
C		10.1	73.5
1/4		8.9	74.7
cb		8.5	75.1
S		5.6	78.0
	33' E		
S		5.6	78.0
cb		6.1	77.5
1/4		7.2	76.4
C		8.6	75.0
1/4		9.3	74.3
cb		10.2	73.4
N		10.2	73.4
+10		10.1	73.5

9617

C			6.7	89.5
+4			6.0	90.2
1/4			5.5	90.7
+5			5.3	90.9
cb			3.0	93.2
T.P.	12.60	108.45	0.32	95.85
S			11.40	97.05
		120' E		
S			1.9	106.6
+3			3.9	104.6
cb			7.0	101.5
1/4			10.7	97.8
C			13.6	94.9
1/6			16.5	92.0
cb			19.2	89.3
N			23.2	85.3
+12			24.3	84.2
+25			26.8	81.7
		135' E		
-25			25.2	83.3
-16			24.6	83.9
N			20.1	88.4
+7			18.2	90.3
cb			16.6	91.9
1/4			13.5	95.0
C			10.1	98.4

B. ST 33

+5			8.6	99.9
1/4			5.6	102.9
+4			4.7	103.8
+8			4.0	104.5
cb			2.8	105.7
+8			+3.6	112.1 ✓
S			+4.0	112.5 ✓
		140' E		
S			+4.6	113.0 ✓
+5			+4.0	112.5 ✓
cb			1.3	107.2
+3			3.0	105.5
+9			3.6	104.9
1/4			4.9	103.6
+6			7.0	101.5
C			9.0	99.5
1/4			12.9	95.6
cb			15.9	92.6
N			20.2	88.3
+8			21.6	86.9
+15			24.0	84.5
+25			24.8	83.7
		150' E		
-25			23.8	84.7
-17			23.0	85.5

120.92

+7	208	100.1
cb	23.5	97.4
+7	27.0	93.9
N	28.4	92.5
+15	32.8	88.1
+25	32.7	88.2
+35	29.8	91.1
	200' E = WL 21 st St. 54. 80' wide 14' cbs	
-35	28.7	92.2
-25	31.6	89.3
N	27.7	93.2
+7	25.0	95.9
cb	22.3	98.6
1/4	15.2	105.7
+6	13.4	107.5
C	10.8	110.1
1/4	7.7	113.2
cb	5.3	115.6
+10	3.6	117.3
S	2.5	118.4
	W. Corb.	
S on cement curb	2.82	118.10
+4	3.1	117.8
+6	0.3	120.6
cb	0.7	120.2
1/4	1.3	119.6

256
229

B. St 35

C		3.9	117.0
1/4		10.7	110.2
cb		17.8	103.1
N		24.0	96.9
+25		30.8	90.1
+35		27.7	93.2
	6' E		
-35		27.5	93.4
-28		29.9	91.0
N		23.3	97.6
+6		20.3	100.6
+10		17.4	103.5
cb		15.7	105.2
1/4		6.7	114.2
C		1.6	119.3
T.P.	559	126.08	043
+5		5.5	120.6
1/4		3.8	122.3
+6		3.5	122.6
cb		4.0	122.1
+10		6.2	119.9
S		6.2	119.9
	West 1/4		
S		5.9	120.2
cb		4.9	121.2

126.08

1/4	2.9	123.2
+7	2.8	123.3
C	4.5	121.6
+6	5.9	120.2
1/4	11.1	115.0
+6	15.1	111.0
cb	19.0	107.1
N	26.8	99.3
+30	35.4	90.7
+40	30.8	95.3
Center		
-45	27.7	98.4
-30	33.6	92.5
N	23.9	102.2
+10	20.2	105.9
cb	17.6	108.5
1/4	12.4	113.7
+8	6.2	119.9
C	2.6	123.5
+7	2.6	123.5
1/4	3.6	122.5
cb	4.3	121.8
5	4.7	121.4
Top of Manhole on S Line	4.0	122.08
East Quarter		
5	4.8	121.3

170 136 136 136 136 136 13.57.36

cb	3.6	122.5
1/4	3.0	123.1
C	2.6	123.5
1/4	3.2	122.9
cb	11.9	114.2
N	21.6	104.5
+32	31.6	94.5
+40	28.9	97.2
East Curb		
-40	28.4	97.7
-30	29.6	96.5
-20	28.2	97.9
N	19.1	107.0
cb	9.3	116.8
+7	3.6	122.5
1/4	1.2	124.9
C	1.8	124.3
1/8	2.4	123.7
cb	3.2	122.9
+10	3.4	122.7
+12	4.8	121.3
5	4.8	121.3
Top of Curb	6.10	119.98
Top of Hydrant. 135.03	3.88	122.20 ✓

135P3

00 = E Line R1st ST

S	13.8	121.2
+5	11.6	123.4
+8	9.7	125.3
cb	10.4	124.6
1/4	10.5	124.5
c	9.9	125.1
1/4	8.5	126.5
cb	16.7	118.3
N	26.1	108.9
+23	37.5	97.5
+37	37.9	97.1
+45	35.0	100.0

4'E

N-45	34.3	100.7
-36	37.5	97.5
-22	37.0	98.0
N	26.3	108.7
cb	16.2	118.8
+12	8.5	126.5
1/4	8.5	126.5
c	9.5	125.5
1/4	10.2	124.8
+8	10.4	124.6
cb	9.8	125.2
S	9.3	125.7

15'E

S	7.5	127.5
+7	7.9	127.1
cb	7.4	127.6
+2	9.3	125.7
1/4	9.3	125.7
c	8.7	126.3
1/4	7.8	127.2
cb	16.3	118.7
N	26.6	108.4
+18	35.6	99.4
+38	36.3	98.7
+45	33.2	101.8
30'E		
-45	32.4	102.6
-41	34.4	100.6
-21	35.0	100.0
N	28.6	106.4
cb	18.4	116.6
1/4	8.8	126.2
+6	7.5	127.5
c	7.3	127.7
1/4	7.9	127.1
+8	8.1	126.9
cb	6.4	128.6
+9	6.8	128.2
S	6.3	128.7

B. ST 37

135.03
50'E

S	4.6	130.4
cb	5.0	130.0
+3	5.9	129.1
1/4	5.9	129.1
c	5.6	129.4
+9	4.3	128.7
1/4	8.8	126.2
cb	18.2	116.8
N	28.2	106.8
+17	32.8	102.2
+25	33.7	101.3
+38	32.3	102.7
+45	29.0	106.0

70'E

-45	23.7	111.3
-33	31.3	103.7
-20	31.2	103.8
N	25.0	110.0
cb	17.5	117.5
1/4	6.7	128.3
+4	3.9	131.1
c	3.5	131.5
1/4	4.9	130.1
+6	3.9	131.1
+9	3.0	132.0
cb	2.9	132.1
S	2.4	132.6

85'E

S	1.2	133.8
cb	1.9	133.1
1/4	2.4	132.6
c	1.8	133.2
+6	2.9	132.1
1/4	8.0	127.0
+8	14.5	120.5
cb	16.0	119.0
N	23.6	111.4
+16	28.4	106.6
+23	29.8	105.2
+31	29.3	105.7
+40	25.5	109.5

100'E

-40	21.3	113.7
-30	27.3	107.7
+19	26.8	108.2
N	19.7	113.3
+5	19.9	115.1
cb	14.3	120.7
1/4	6.1	128.9
+7	0.8	134.2
c	0.5	134.5
1/4	0.7	134.3
cb	0.9	134.1
S	0.4	134.6

B. ST 38

T.P. 10.72 145.64 0.11 134.92

120'E

S	9.0	136.6
cb	9.8	135.8
1/4	9.0	136.6
C	8.8	136.8
+7	9.2	136.4
1/4	12.1	133.5
cb	20.2	125.4
N	28.7	116.9
+29	35.0	110.6
+35	32.7	112.9

135'E

-35	30.6	115.0
-30	33.0	112.6
-14	29.4	116.2
N	24.2	121.4
+7	21.8	123.8
cb	16.2	129.4
1/4	8.2	137.4
+3	7.2	138.4
C	7.4	138.2
1/4	7.6	138.0
cb	8.1	137.5
S	7.5	138.1

140'E

S	6.1	139.5
cb	6.7	138.9
1/4	7.0	138.6
C	6.8	138.8
+10	6.5	139.1
1/4	7.0	138.6
cb	15.5	130.1
+6	19.3	126.3
N	22.7	122.9
+4	24.1	121.5
+31	32.0	113.6
+35	30.8	114.8

152'E

-33	24.1	121.5
-18	23.5	122.1
N	18.5	127.1
cb	13.9	131.7
+11	6.5	139.1
1/4	6.2	139.4
+6	5.2	140.4
C	5.5	140.1
1/4	5.8	139.8
cb	6.2	139.4
+8	5.9	139.7
S	5.2	140.4

145.64

165' E. 1' W. of W. Line house

S	3.8	141.8
+9	4.7	140.9
cb	4.7	140.9
1/4	4.4	141.2
e	4.0	141.6
+7	3.8	141.8
1/4	5.0	140.6
+3	5.1	140.5
cb	11.5	134.1
N	13.2	132.4
+25	19.4	126.2

178' E

N	7.6	138.0	Under cement porch
+42	no yardage 2.0	143.6	s. edge of mt = porch ch. top = no yardage
+43	7.4	138.2	S. of porch on ground
cb	5.9	139.7	
+10	2.8	142.8	
1/4	2.4	145.2	
c	2.6	143.0	
1/4	2.9	142.7	
cb	3.3	142.3	
S	2.6	143.0	

187' E

S	1.6	144.0
cb	2.2	143.4
1/4	2.0	143.6

145.64

B. ST 40

e	1.8	143.8	
1/4	1.7	143.9	
cb	1.6	144.0	
+98	1.9	143.7	s. side on mt walk
N	1.8	143.8	W side on mt walk

200' E = W. Line 22nd ST

N	0.4	145.2	Nudge on mt walk
cb	0.75	144.89	on mt cb
1/4	1.2	144.4	
c	0.9	144.7	
1/4	0.9	144.7	
cb	0.8	144.8	
mt cb	No yardage 0.32	145.32	
S	0.0	145.64	
T.P. B.M.	0.20	145.44 = 145.42	S.W. 22+B

80' wide
14' eas
13' 1/4

2 See. 19th St from N Line of C. ST 11/24/25
to S Line of B. ST

Miller
Shaw
E.W.
Sisson
TR. at Eb N. 1/4
18' x B. See 25

41

110 69.05 69.95

00 = N. Line C. ST

E	1.5	67.6	
eb	2.7	66.7	
eb	not yardage	66.96	on cmt. ch
1/4	2.9	66.2	
e	3.2	65.9	
1/4	3.7	65.4	
eb	4.03	65.02	on cmt. ch
W	4.2	64.9	

18' N

W	8.7	60.4	against House
+7	4.3	64.8	
eb	4.2	64.9	
1/4	3.9	65.2	
e	3.4	65.7	
1/4	3.1	66.0	
eb	2.7	66.4	
e	2.4	66.7	

41' N = N End House on W

E	3.8	65.3	
eb	3.7	65.4	
1/4	4.2	64.9	
e	4.2	64.9	
1/4	4.5	64.6	
eb	4.5	64.6	

+6 4.6 64.5

+10 8.2 60.9

W 9.2 59.9

+20 12.8 56.3

61' N

-20 13.2 55.9

W 10.9 58.2

eb 4.6 64.5

1/4 4.7 64.4

e 4.8 64.3

1/4 5.0 64.1

eb 4.6 64.5

E 4.8 64.3

70' N

-5 6.0 63.1

E 5.8 63.3

+4 5.2 63.9

eb 5.1 64.0

1/4 5.4 63.7

e 5.2 63.9

1/4 4.7 64.4

eb 4.8 64.3

+4 5.2 63.9

W 10.3 58.8

+5 13.0 56.1

= +20 13.5 55.6

69.05
95' N = S. Edge House on W 3' Back

-20	13.4	55.7	
-5	12.9	56.2	
W	11.2	57.9	
99' N			
-3	12.1	57.0	against House
W	11.3	57.8	
CB	5.9	63.2	
1/4	5.7	63.4	
E	6.2	62.9	
1/4	6.2	62.9	
CB	5.8	63.3	
+8	6.0	63.1	
E	6.7	62.4	
+5	6.7	62.4	

100' N

-5	6.7	62.4	
E	6.7	62.4	
+6	6.0	63.1	
CB	5.8	63.3	
1/4	6.2	62.9	
E	6.2	62.9	
1/4	5.7	63.4	
CB	5.6	63.5	
W	6.2	62.9	
+3	12.1	57.0	against House

105' N

19th St 42

-3	12.2	56.9	against house
W	6.4	62.7	
CB	6.9	62.2	
+2	6.0	63.1	
1/4	5.7	63.4	
E	6.2	62.9	
1/4	6.2	62.9	
CB	5.9	63.2	
+8	6.1	63.0	
E	6.9	62.2	
+5	6.9	62.2	

106' N

-5	6.9	62.2	
E	6.9	62.2	
CB	6.1	63.0	
+6	5.9	63.2	
1/4	6.2	62.9	
E	6.2	62.9	
1/4	5.7	63.4	
+11	5.8	63.3	
CB	7.3	61.8	
W	11.9	57.2	
+3	12.2	56.9	against House

69.05

123' N = N edge House on W

-20	13.9	55.2
-10	12.8	56.3
W	11.0	58.1
cb	6.9	62.2
+7	6.3	62.8
14	6.2	62.9
c	6.3	62.8
14	6.4	62.7
cb	6.3	62.8
+8	6.2	62.9
E	6.8	62.3
+5	6.6	62.5

150' N

-5	7.1	62.0
E	7.2	61.9
+4	6.6	62.5
cb	6.7	62.4
14	6.7	62.4
c	6.4	62.7
14	6.4	62.7
cb	7.7	61.4
+6	8.3	60.8
W	10.7	58.4
+3	12.8	56.3
+20	13.9	55.2

181' N = sedge House 1' Back

-20	13.0	56.1
-3	12.2	56.9
W	10.5	58.6
+10	8.9	60.2
cb	8.3	60.8
14	7.1	62.0
c	6.8	62.3
14	6.9	62.2
cb	7.2	61.9
+8	7.2	61.9
E	7.7	61.4
+5	8.0	61.1

196' N = N Edge House 1' Back

-5	7.6	61.5
E	7.4	61.7
cb	7.4	61.7
14	7.0	62.1
c	6.8	62.3
14	6.8	62.3
cb	9.0	60.1
W	11.0	58.1
+15	12.0	57.1

207' N

-15	11.1	58.0
W	11.4	57.7
+10	10.6	58.5

19th ST

43

69.05
207' N (con)

cb	9.3	59.8
+2	8.0	61.1
1/4	6.4	62.7
+5	5.7	63.4
c	6.8	62.3
1/4	7.4	61.7
cb	7.5	61.6
E	6.9	62.2
+5	7.0	62.1

228' N

-5	6.6	62.5
E	6.8	62.3
cb	7.6	61.5
1/4	7.6	61.5
c	5.9	63.2
1/4	5.0	64.1
cb	6.9	62.2
+6	9.6	59.5
W	10.6	58.5
+15	10.6	58.5

240' N

-15	9.5	59.6
W	9.2	59.9
cb	7.3	61.6
+7	5.5	63.6
1/4	5.6	63.5

19th ST 44

c	5.9	63.2
1/4	7.7	61.4
cb	7.7	61.4
E	7.4	61.7
+5	7.3	61.8

260' N

-5	7.4	61.7
E	7.1	62.0
cb	7.9	61.2
1/4	8.0	61.1
c	7.0	62.1
1/4	6.9	62.2
cb	7.4	61.7
W	7.8	61.3
+15	7.4	61.7

265' N

-5	6.0	63.1
W	5.4	63.3
+10	6.0	63.1
cb	7.4	61.7
1/4	6.8	62.3
c	4.7	62.4
1/4	6.0	61.1
cb	7.9	61.2
E	7.7	62.0
-2	7.1	62.0

69.05
275'N

-5	6.9	62.2
E	6.9	62.2
cb	7.8	61.3
1/4	8.0	61.1
e	7.5	61.6
+5	6.4	62.7
1/4	7.1	62.0
cb	6.4	62.7
w	8.0	61.1
+10	6.5	62.6

285'N

-10	8.4	60.7
w	10.4	58.7
cb	8.0	61.1
1/4	6.6	62.5
+9	6.0	63.1
e	7.1	62.0
1/4	8.1	61.0
cb	7.8	61.3
E	7.2	61.9
+5	7.8	61.3

300'N = S. Line B.S.T

E	8.0	61.1
cb	8.0	61.1
1/4	7.9	61.2
e	7.9	61.2

19th ST

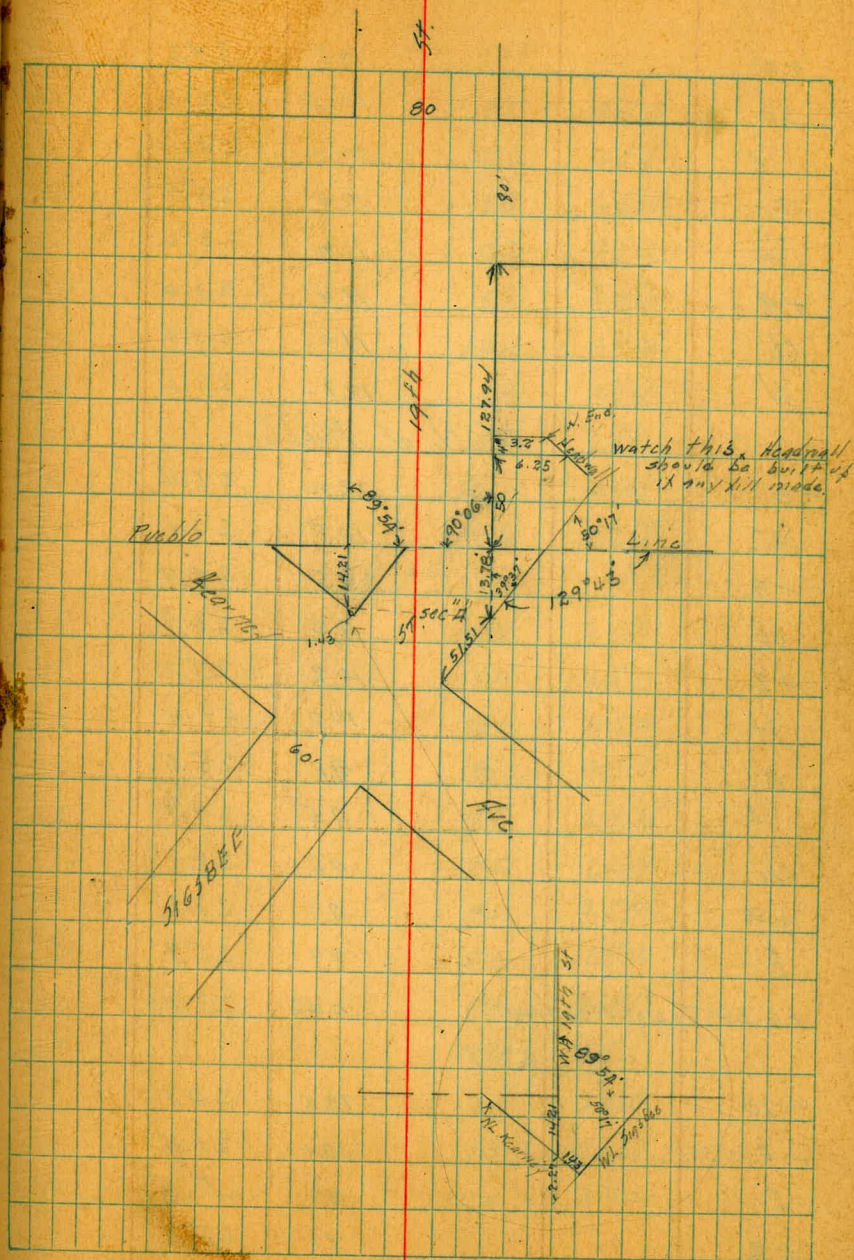
45

1/4	8.2	60.9
cb	9.5	59.6
+6	10.2	58.9
w	10.1	59.0

1/12/25

Gregory. CROSS SECTION OF
19th St
from N.L. Kearney to N.L. N. St.

	10.86	34.36	23.50	NE Sigbee & Kearney
		N.L. Kearney		
F		10.7	23.7	
cb		10.8	23.6	
+3		11.4	23.0	
1/4		11.6	22.8	
C		11.5	22.9	
1/2		11.7	22.7	
+5		11.8	22.6	
cb		11.3	23.1	
W		11.0	23.4	
+1.43		11.0	23.4	
		Sec. A		
W		11.0	23.4	
+10		11.1	23.3	
cb		11.4	23.0	
+4		11.6	22.8	
1/4		11.3	23.1	
C		10.7	23.7	
1/2		10.7	23.7	
+9		10.7	23.7	
cb		10.2	24.2	
E		9.8	24.6	
		Pueblo Line		
F		9.5	24.9	



+11	9.8	24.6
cb	10.4	24.0
1/4	10.3	24.1
c	10.5	23.9
1/4	11.2	23.2
+9	11.4	23.0
cb	11.0	23.4
W	10.8	23.6

50' N. of Pueblo.

-5	12.0	22.4
W	10.8	23.6
+5	9.5	24.9
cb	9.5	24.9
+2	10.2	24.2
1/4	10.0	24.4
B	9.4	25.0
1/4	9.5	24.9
cb	9.6	24.8
+4	9.1	25.3
E	8.7	25.7
+6.25 = Top of Headwall	10.43	23.93

57' N

-10	13.5	20.9
-5 = End of Wing Wall	13.0	21.4
E	9.1	25.3
+B	8.8	25.6

+10	8.7	25.7
cb	9.6	24.8
1/4	9.3	25.1
c	9.2	25.2
1/4	9.8	24.6
+11	10.0	24.4
cb	9.4	25.0
+11	9.3	25.1
W	10.1	24.3
+5	11.6	22.8

67' N

-5	11.4	25.0
W	9.4	25.0
+3	9.0	25.4
cb	9.1	25.3
+2	9.8	24.6
1/4	9.5	24.9
c	9.0	25.4
1/4	9.2	25.2
cb	9.3	25.1
+1	8.6	25.8
E	8.4	26.0
+2	8.3	26.1
+10	10.4	24.0

3436

75' N

-5	6.1	28.3
E	7.4	27.0
+2	8.2	26.2
cb	8.4	26.0
+2'	9.0	25.4
1/4	8.9	25.5
C	8.8	25.6
1/4	9.2	25.2
cb	9.5	24.9
+3	8.9	25.5
+13	8.7	25.7
W	9.1	25.3
+5	10.3	24.1

100' N

-1	4.9	29.5
-0.5	7.0	27.4
W	7.2	27.2
+2	7.7	26.7
cb	8.1	26.3
+1	8.8	25.6
1/4	8.6	25.8
C	8.2	26.2
1/4	8.0	26.4
cb	8.0	26.4
+11	7.7	26.7

19+4 48

S	6.3	28.1
+2	4.7	29.7
	12.7.94	11. = 5L N. 5ft 80' wide
-3	4.0	30.4
E	5.3	29.1
+2	6.8	27.6
+9	7.2	27.2
cb	6.5	27.9
1/4	7.1	27.3
C	7.1	27.3
1/4	7.6	26.8
cb	7.5	26.9
+12	7.1	27.3
W	6.5	27.9
+1	4.4	30.0
	5. Curb	
-5	6.5	27.9
W	6.3	28.1
cb	5.6	28.8
+5	6.0	28.4
1/4	5.8	28.6
C	5.6	28.8
1/4	5.6	28.8
cb	5.6	28.8
+	4.8	29.6
E	4.4	30.0
+5	3.0	31.4

34.36

8" H. x 5" Curb

E	3.6	30.8
+4	4.2	30.2
+7	3.5	30.9
cb	3.5	30.9
1/4	3.4	31.0
c	3.6	30.8
+8	3.6	30.8
1/4	4.0	30.4
cb	4.8	29.6
W	5.5	28.9

5. 1/4

W	4.9	29.5
cb	4.3	30.1
1/4	3.8	30.6
c	3.6	30.8
1/4	3.3	31.1
cb	3.1	31.3
E	3.1	31.3

Center N St

E	3.6	30.8
cb	3.6	30.8
+4	3.0	31.4
1/4	3.0	31.4
c	3.2	31.2
1/4	3.6	30.8

194 St 49

cb	4.0	30.4
+4	3.9	30.5
W	4.3	30.1
3.85 W. of R = 2' 5.0" Rail		
W	4.9	29.5
W. on Rail		
+9	4.1	30.3
cb	3.9	30.5
1/4	3.7	30.7
c	3.3	31.1
1/4	3.1	31.3
cb	3.2	31.2
E	3.4	31.0
E. on rail		
	2.58	31.78
N. 1/4 = 2' N. of rail		
E	2.6	31.8
cb	2.9	31.5
1/4	3.0	31.4
c	3.3	31.1
1/4	3.6	30.8
cb	3.7	30.7
W	4.0	30.4
N. Curb		
W	4.0	30.4
cb	3.7	30.7

34/36

404
100
504

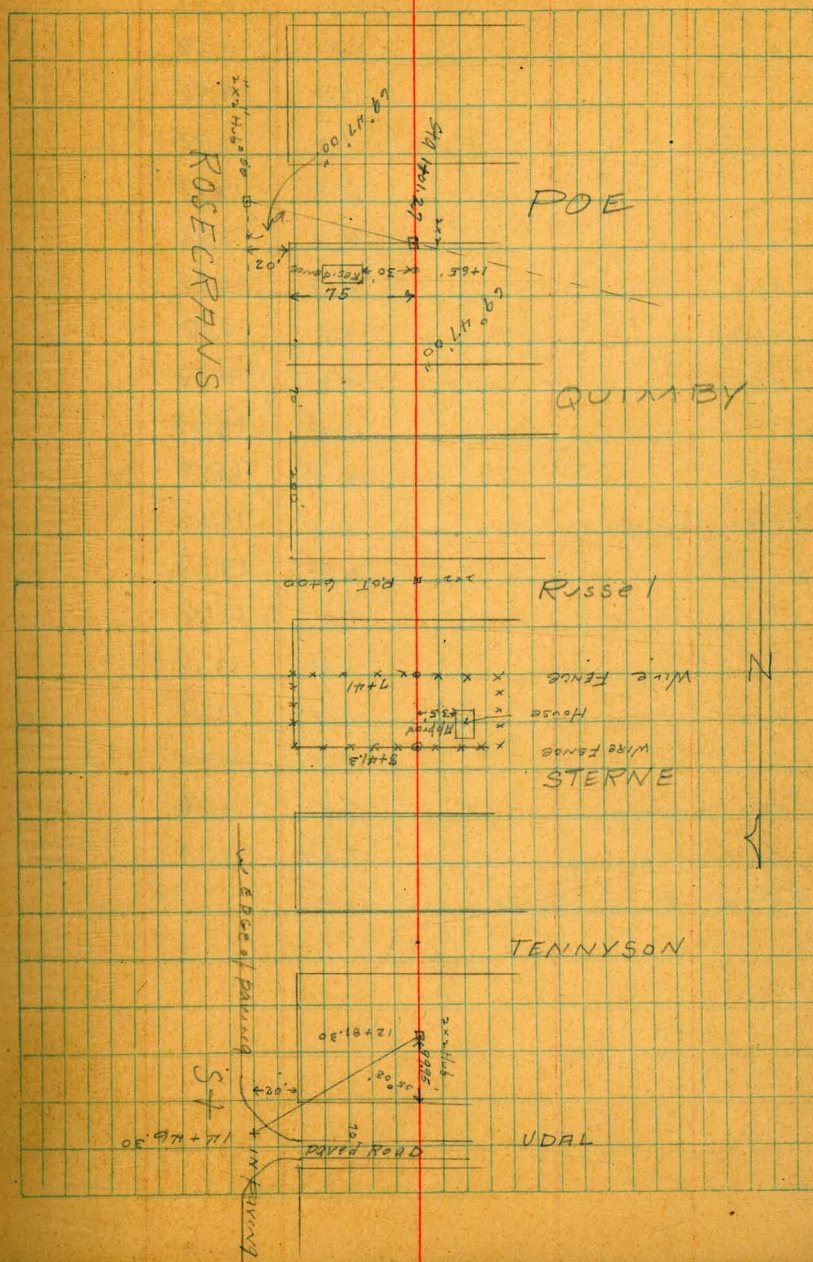
1/4		3.5	30.9
c		3.0	31.4
1/4		2.8	31.6
cb		2.7	31.7
E		2.3	32.1
10 H. of Cb			
E		1.3	33.1
+8		1.2	33.2
cb		2.2	32.2
+3		3.2	31.2
+5		2.7	31.7
1/4		2.8	31.6
c		3.0	31.4
1/4		3.4	31.0
cb		3.8	30.6
W		4.0	30.4
NL N 54			
W		3.7	30.7
cb	cement cb under this	3.7	30.7
1/4		3.4	31.0
c		2.9	31.5
1/4		2.7	31.7
+8		2.8	31.6
+10		3.7	30.7
cb		4.0	30.4
+2		3.7	30.7
cement curb		(5.24)	29.07

50

+13		3.5	30.9
E		1.4	33.0
27' N			
E		2.70	31.66
cb on cement cb		2.94	31.42
1/4		2.1	32.3
c		2.2	32.2
1/4		2.5	31.9
cb on cement cb		3.19	31.17
W		2.90	31.46
45' N			
W		1.40	32.96
cb on cement		1.71	32.65
gutter		2.4	32.0
1/4		1.9	32.5
c		1.5	32.9
1/4		1.4	33.0
gutter		2.0	32.4
cb on cement		1.34	33.02
E		1.09	33.27

Sewer Levels 75' W of WL of Rosecrans
Between UDAL + POE STS. Roseville ADD

Rosecrans + Russell BM Swiss Men	972	1495	523
Wedge of Paving 3' Est 00			4.38
00 on Hub		994	5.01
+5		8.9	6.05
+50		8.4	6.55
1+01:27 on Hub A N of P.O.		7.5	7.41
+50		6.7	8.25
2		6.1	8.85
+50		5.6	9.35
3		5.0	9.95
+50		4.0	10.95
4		2.7	12.75
+50		2.0	12.95
5		1.3	13.65
+50		0.6	14.35
T.P.	395	18.68	14.73
+88		4.3	14.38
6 P.O.T. on Hub		5.77	12.91
+25		5.7	12.98
+28		5.5	13.48
+58		5.1	13.58
7		5.9	12.78
+50		6.6	12.08
8		7.5	11.18
+50		8.3	10.38



9		8.4	10.28
+50		9.1	9.58
10		8.8	9.88
+50		7.8	10.88
11		6.5	12.18
+50		4.8	13.88
+60		4.7	13.98
+62		3.9	14.78
+65		4.3	14.38
12		3.4	15.28
+50		2.8	15.88
+81.0 on tub Δ		2.15	16.53
13		2.9	15.78
+50		3.9	14.78
14		4.9	13.78
+10		5.1	13.58
+15		6.7	11.98
+40 on sl. of paving		7.92	10.78
+46.30 on paving		7.55	11.13
T.P. Moran Rosecrans & Russell		13.18	5.20 ✓ 5.23

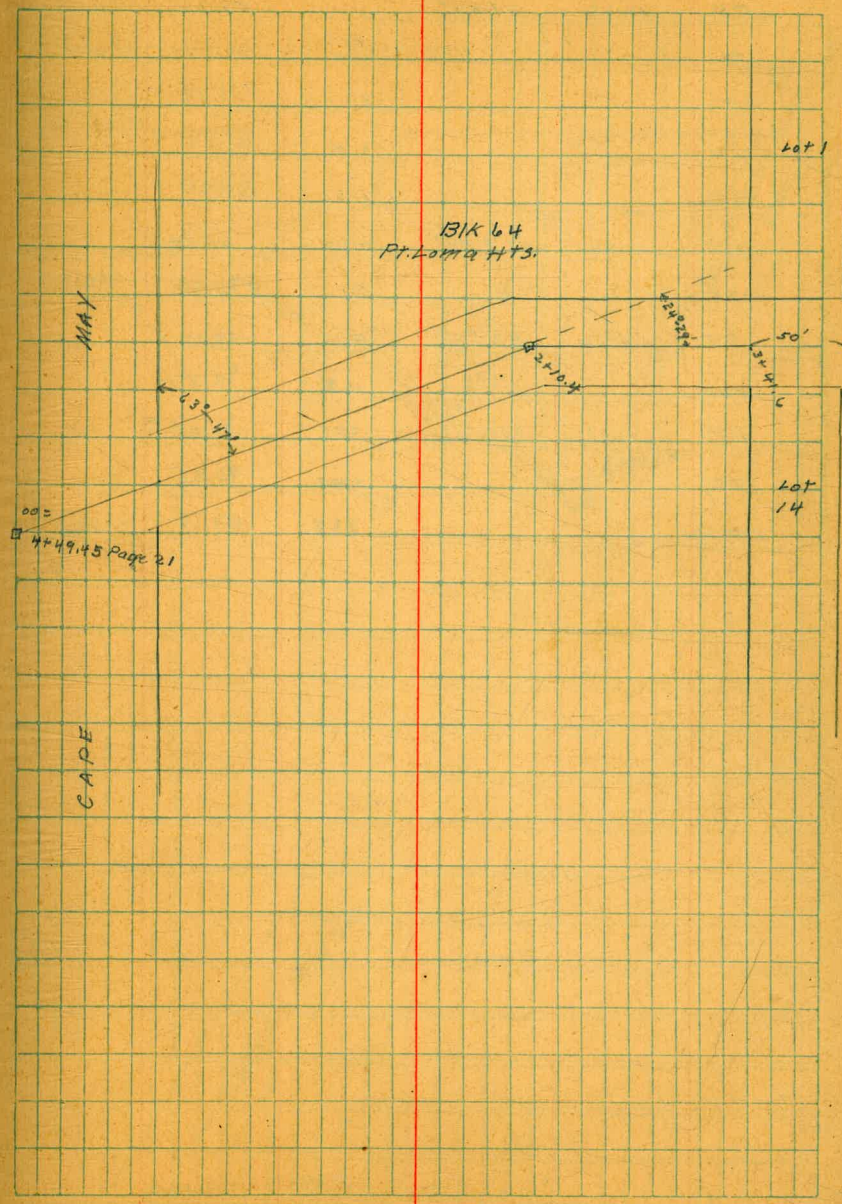
Prelim. Sewer in BIK 64
Pt. Loma HTS

1/26/25
John
Shaw
C.M.
Sisson

52 W

4449.45 =			
00 = B.M.	1.21	158.67	
+50		3.0	155.67
+100		5.0	153.67
+150		6.4	152.27
+175		7.3	151.37
2+00		10.1	148.57
2+100 ⁰ Δ R40-R9R	11.29	147.38	on stub
2+35	14.7	143.97	
+50	15.5	143.17	
+65	16.9	141.77	
3+00	17.8	141.37	
3+20	17.5	141.17	
3+41.6 S. Line Lots 14/14	17.0	141.67	

4448.45 stub BIK 63
157.46 in Cap May Page 21



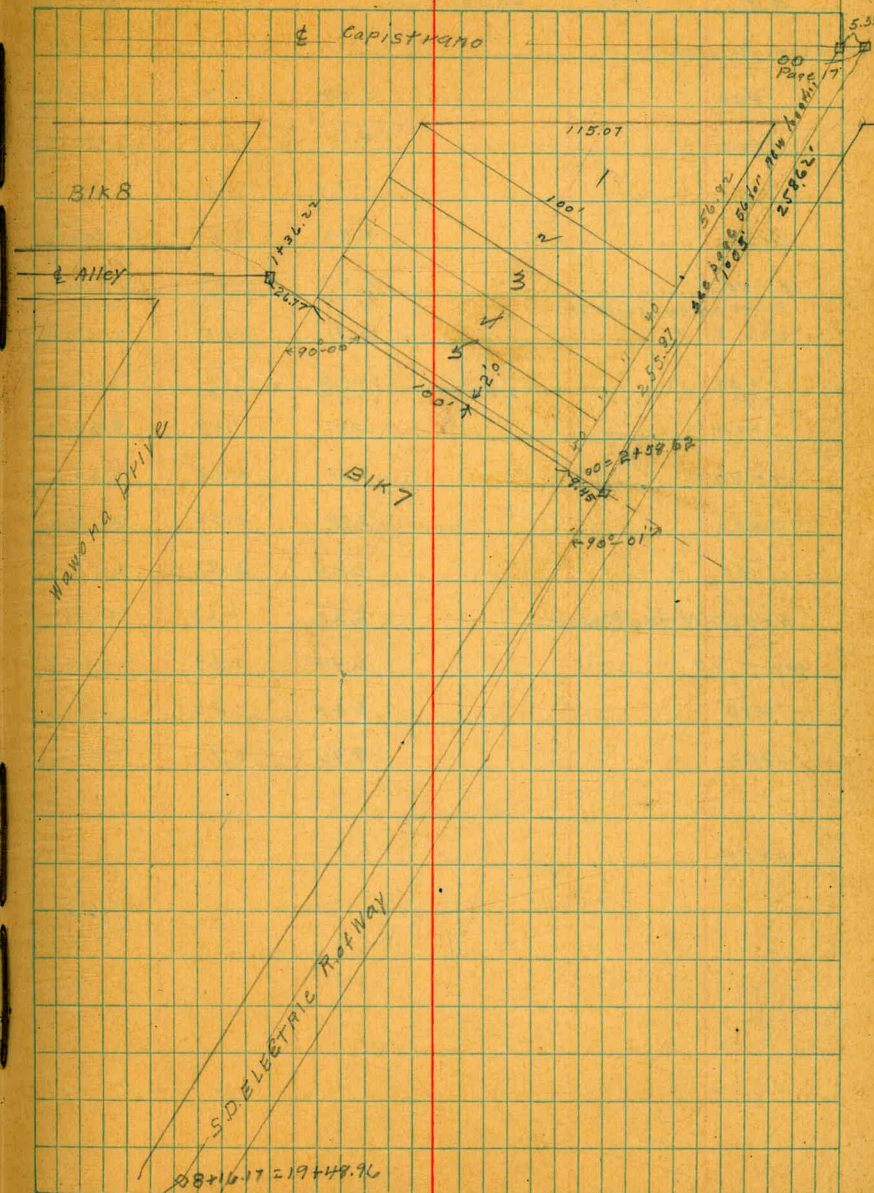
Prelim Sewers in BIK 7 & 8 Pt Loma Hts

1/24/75

Miller
Shan
SW
of 3544

53

B.M.	12.62	65.88 ✓		53.24	on stub Page 17
00			0.60	65.28	on stub
+8			1.1	64.18	
+12			2.5	63.38	
+18			1.6	64.28	
T.P.	12.52	77.80 ✓	0.60	65.28 ✓	
+25			7.1	76.70	
T.P.	12.48	90.12 ✓	0.16	77.64 ✓	
+50			11.8	78.32	
T.P.	11.01	101.06 ✓	0.07	90.05 ✓	
+100			10.7	96.36	
+36.22			3.38	97.68	on stub



Grades for Water on Canon Road
from S. Line Rosecrans to 100' S of Shafter

1/26/25
S.M. L.H.
S.M. L.H.
S.M. L.H.
S.M. L.H.

54

B.M.	0.28	20.75	20.67	S.M. Canon + Rosecrans	
00 = S Line Rosecrans				16.0	
+50			3.69	17.31	14.67
1+00			4.78	16.17	13.33
1+50			6.24	14.71	12.00
2+00			7.53	13.42	10.67
2+50			8.43	12.52	9.33
3+00 = N Line Scott St			9.54	11.41	8.00
00 = S " " "			10.71	10.24	7.5
+50			12.05	8.96	6.17
T.P.	0.23	2.73	12.45	8.50	
1+00			1.27	7.46	4.83
1+50			2.65	6.08	3.50
2+00			3.90	4.83	2.17
+50			4.82	3.91	0.83
3+00 = N Line Shafter			6.08	2.65	-0.5
00 = S " " "			6.44	2.29	-1.0
+50			6.97	1.76	-1.5
1+00			7.96	0.77	-2.0
2+00					

3/2/25 Gregory

Sewer Levels
on a line 98' N. of W.L. of
Rosecrans from E. of Emerson
To E. of Ingelow

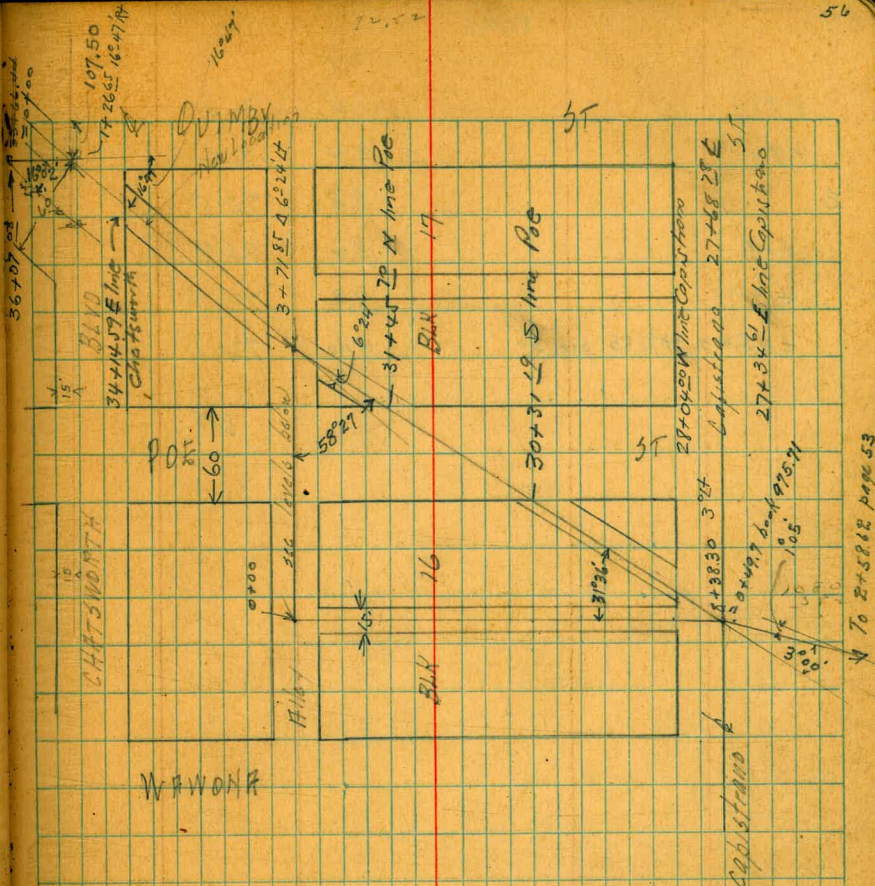
	777	8.92	1.15	B.P. SW Gothic + Rose
E. of Emerson 98' N. of W.L. Rosecrans: 0.00				
+ 50		2.4		
1		2.6		
+ 50		3.0		
2		3.8		
+ 15		4.3		
+ 32		4.4		
+ 53 = S curb Fenelon		3.6		
+ 53 = " gutter Fenelon		4.0		
+ 70 = E F -		4.8		
+ 87 = N gutter Fenelon		4.0		
+ 87 = " curb Fenelon		5.0		
3 + 02.0		4.2		
+ 15		4.0		
+ 40		6.2		
+ 50		6.6		
4		4.8		
+ 50		4.9		
5		5.0		
+ 05		5.2		
+ 23 = S curb Garrison		4.6		
+ 23 = " gutter "		4.8		
+ 40 = " "		5.7		
+ 57 = N gutter "		4.6		
		5.7		

55

+ 57 = N curb Garrison	4.8
6 + 00	4.9
+ 50	4.8
7	4.1
+ 50	4.1
8	3.9
+ 10 = E Hugo	4.0
+ 30	4.3
+ 40	3.3
9	3.8
+ 50	4.1
10 +	4.0
+ 50	4.0
+ 80 = E Ingelow	3.9

3/10/25 Gregory. Sewer Levels
 on Relocation of Sewer on old R.P. ROW
 from E of Alley N. of Chatsworth to
 Capistrano

	36+07.08	4.81	91.95	77.14	B.P. Chatsworth & E.L. ROW
	33+66.44 = 0+00	in former notes		2.46	79.49 on old stub
	+50	35+57.08		3.4	78.6
1		35+07.08		4.0	78.0
	+20.3 = 12" culvert	34+86.78		(6.80)	75.15 = Flow line
	+26.65 (16" Δ R)	34+80.93		4.94	77.01 on new stub
	+53	34+54.08		5.36	76.59 on existing
	+81.2 = 12" culvert	34+25.88		(9.13)	72.52 = Flow line
2		34+07.08		6.3	75.7
	+50	33+57.08		7.3	74.7
3		33+07.08		8.5	73.5
	+25	32+42.08		9.2	72.8
	+71.85 (6" Δ L)	32+72.08		9.90	72.05 on stub.
		32-35.23			
4		32+07.08		2.5	71.8
	+50	31+57.08		3.2	71.1
5		31+07.08		4.0	70.3
	+50	30+57.08		4.7	69.6
6		30+07.08		5.2	69.1
	+50	29+57.08		5.4	68.9
7		29+07.08		5.8	68.5
	+50	28+57.08		6.1	68.2
8		28+07.08		6.1	68.2
	+26 = center of 30"	27+81.08		(8.81)	65.48 = Top of pipe
	+38.30 Δ 3'00" L.	27+18.78		6.23	68.06 on stub
9		27+07.08		6.8	67.5
	+50	26+57.08		6.9	67.4
10		26+07.08		7.2	67.1
	+50	25+57.08		8.1	66.2
	+94.15 = 2+58.62	25+06.53		9.26	65.03 on stub



Levels in N+5 Alley B/K 16+17.

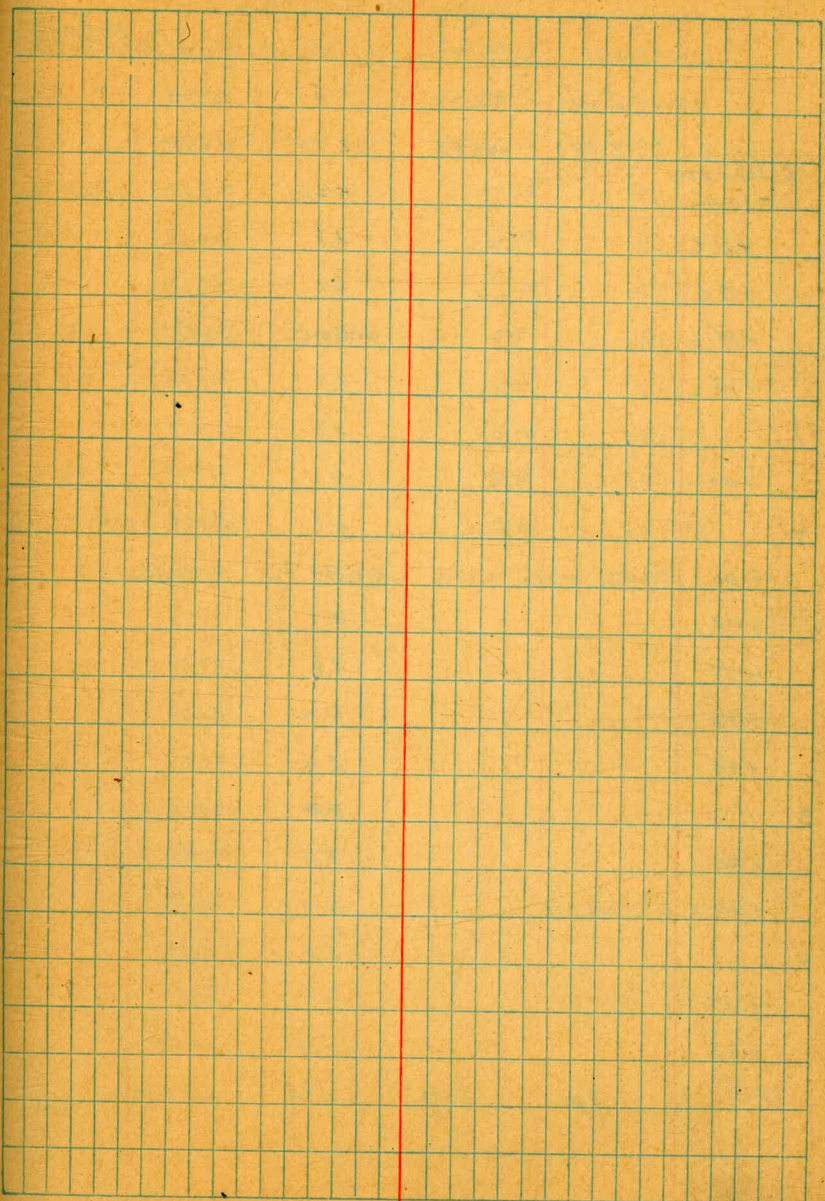
	81.95		
0+00		7.8	74.2
+50		8.6	73.4
1		9.3	72.7
+15		10.4	71.6
+18		10.85	71.10
+49 = center of		14.32	67.63 = Flow Line
+65		9.8	72.15

continued.

81.95

+88	11.4	70.6
+92	10.4	71.6
2	9.5	72.5
+19	8.6	73.4
+22	9.3	72.7
+45.0 = 3+71.85 page 56	9.90	72.1

✓



3/13/25 Gregory

Sewer Levels on
Monte Vista from
to Sea Lane to 75' N. of N.L. Marine

560
100
300

	0.70	71.21		70.51	BR Sea Lane & La Jolla
	5.24	65.27	1118	60.03	
	3.94	56.48	12.73	52.54	
to Sea Lane 30+00			5.25	51.23	on paving
+11			5.8	50.68	
+17			5.1	51.38	
+50			5.0	51.18	
+65			4.4	52.08	
1			4.8	51.68	
+50			4.6	51.88	
2			4.8	51.68	
+50			5.0	51.18	
+73			5.1	51.38	
+77			8.6	47.88	
+83			8.2	48.28	
+88			5.4	51.08	
3			5.3	51.18	
+30			5.5	50.98	
+60 = to Marine			5.4	51.18	
4			5.5	50.98	
+50			6.2	50.68	
+85			6.6	48.88	
T.P.	9.40	60.93	4.95	51.53	

Sewer Levels on Marine ST
from to Monte Vista

6093 from opp page

65 W. of 60 of Monte Vista	18.5	42.43
53 ✓ ✓ ✓ ✓ ✓	14.6	46.33
45 ✓ ✓ ✓ ✓ ✓	11.6	48.83
42 ✓ ✓ ✓ ✓ ✓	11.5	49.13
40 ✓ ✓ ✓ ✓ ✓	13.9	47.03
34 ✓ ✓ ✓ ✓ ✓	11.0	49.93
to of Monte Vista = 0+00	9.8	51.13
+50	8.4	52.53
1	6.2	54.73
+50	3.9	57.03
52 = W.L. Olivetas	2.0	58.93

Marine is graded from here East.

12.76
 4.24
 17.00
 17.2
 16.
 33
 12.6
 16
 28.6

19
 16
 5

20.3
 10
 30.3

56
 12.4
 18.4

179.60
 50.17
 129.43

47.60
 8.65
 56.25

12.86
 + 0.48
 - 12.86
 + 0.00
 - 12.93
 + 0.08
 11.75
 83.44

658
 220.4
 398.2

220.3
 199.2
 210.2

658.07
 220.13
 578.26

109.45
 26.77
 136.22

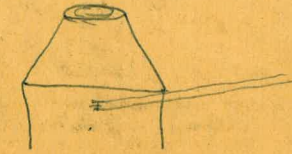
19.6
 10
 35.6

37 73
 2 11
 49 32

4.53
 2270
 2048
 2220

256
 24-24R

+50
 1400
 1500
 2000
 2+10.4
 750
 3+00
 3+41.59



164.40
 77.4
 156.66

134.22
 97.92
 38.78

930.00
 590.92
 339.07

8116.17
 2758.62
 5357

DISTANCES FROM CENTER OF ROADWAY FOR CROSS-SECTIONING.
 Roadway 16 feet wide. Side Slopes 1 on 1½.
 For Single Track Embankment.

H	0	.1	.2	.3	.4	.5	.6	.7	.8	.9	H
0	8.0	8.2	8.3	8.5	8.6	8.8	8.9	9.1	9.2	9.4	0
1	9.5	9.7	9.8	10.0	10.1	10.3	10.4	10.6	10.7	10.9	1
2	11.0	11.2	11.3	11.5	11.6	11.8	11.9	12.1	12.2	12.4	2
3	12.5	12.7	12.8	13.0	13.1	13.3	13.4	13.6	13.7	13.9	3
4	14.0	14.2	14.3	14.5	14.6	14.8	14.9	15.1	15.2	15.4	4
5	15.5	15.7	15.8	16.0	16.1	16.3	16.4	16.6	16.7	16.9	5
6	17.0	17.2	17.3	17.5	17.6	17.8	17.9	18.1	18.2	18.4	6
7	18.5	18.7	18.8	19.0	19.1	19.3	19.4	19.6	19.7	19.9	7
8	20.0	20.2	20.3	20.5	20.6	20.8	20.9	21.1	21.2	21.4	8
9	21.5	21.7	21.8	22.0	22.1	22.3	22.4	22.6	22.7	22.9	9
10	23.0	23.2	23.3	23.5	23.6	23.8	23.9	24.1	24.2	24.4	10
11	24.5	24.7	24.8	25.0	25.1	25.3	25.4	25.6	25.7	25.9	11
12	26.0	26.2	26.3	26.5	26.6	26.8	26.9	27.1	27.2	27.4	12
13	27.5	27.7	27.8	28.0	28.1	28.3	28.4	28.6	28.7	28.9	13
14	29.0	29.2	29.3	29.5	29.6	29.8	29.9	30.1	30.2	30.4	14
15	30.5	30.7	30.8	31.0	31.1	31.3	31.4	31.6	31.7	31.9	15
16	32.0	32.2	32.3	32.5	32.6	32.8	32.9	33.1	33.2	33.4	16
17	33.5	33.7	33.8	34.0	34.1	34.3	34.4	34.6	34.7	34.9	17
18	35.0	35.2	35.3	35.5	35.6	35.8	35.9	36.1	36.2	36.4	18
19	36.5	36.7	36.8	37.0	37.1	37.3	37.4	37.6	37.7	37.9	19
20	38.0	38.2	38.3	38.5	38.6	38.8	38.9	39.1	39.2	39.4	20
21	39.5	39.7	39.8	40.0	40.1	40.3	40.4	40.6	40.7	40.9	21
22	41.0	41.2	41.3	41.5	41.6	41.8	41.9	42.1	42.2	42.4	22
23	42.5	42.7	42.8	43.0	43.1	43.3	43.4	43.6	43.7	43.9	23
24	44.0	44.2	44.3	44.5	44.6	44.8	44.9	45.1	45.2	45.4	24
25	45.5	45.7	45.8	46.0	46.1	46.3	46.4	46.6	46.7	46.9	25
26	47.0	47.2	47.3	47.5	47.6	47.8	47.9	48.1	48.2	48.4	26
27	48.5	48.7	48.8	49.0	49.1	49.3	49.4	49.6	49.7	49.9	27
28	50.0	50.2	50.3	50.5	50.6	50.8	50.9	51.1	51.2	51.4	28
29	51.5	51.7	51.8	52.0	52.1	52.3	52.4	52.6	52.7	52.9	29
30	53.0	53.2	53.3	53.5	53.6	53.8	53.9	54.1	54.2	54.4	30
31	54.5	54.7	54.8	55.0	55.1	55.3	55.4	55.6	55.7	55.9	31
32	56.0	56.2	56.3	56.5	56.6	56.8	56.9	57.1	57.2	57.4	32
33	57.5	57.7	57.8	58.0	58.1	58.3	58.4	58.6	58.7	58.9	33
34	59.0	59.2	59.3	59.5	59.6	59.8	59.9	60.1	60.2	60.4	34
35	60.5	60.7	60.8	61.0	61.1	61.3	61.4	61.6	61.7	61.9	35
36	62.0	62.2	62.3	62.5	62.6	62.8	62.9	63.1	63.2	63.4	36
37	63.5	63.7	63.8	64.0	64.1	64.3	64.4	64.6	64.7	64.9	37
38	65.0	65.2	65.3	65.5	65.6	65.8	65.9	66.1	66.2	66.4	38
39	66.5	66.7	66.8	67.0	67.1	67.3	67.4	67.6	67.7	67.9	39
40	68.0	68.2	68.3	68.5	68.6	68.8	68.9	69.1	69.2	69.4	40

Example—If point is 22.6 ft. above grade, how far should it be from center line to be a slope stake point? Ans. from Table 41.9. For same slopes but other widths of roadbed correct above figures by one-half difference in width of roadbed; thus in example above for 20 ft. roadbed distance will be 41.9 + (20 - 16) + 2 or 2 ft. added to 41.9 = 43.9. For slopes of 1 on 1 see inside of front cover.