

1117

ASTA

FIELD BOOK

No. 385 F

MICROFILMED

DEC 21 1964

Our Leather Bound Engineers Note Books are carried in the following rulings:

- No. 380 LEVEL BOOK. Left and Right Hand Page the same as Left Hand Page of this Book.
- No. 382 FIELD BOOK. Left Hand Page as in this Book, Right Hand Page 4 x 4 to the inch, Center Line Red.
- No. 384 MINING TRANSIT BOOK. Left Hand Page as in this Book, Right Hand Page 8x8 to the inch, Center Line Red.
- No. 385 FIELD BOOK. Left Hand Page as in this Book, Right Hand Page 8 vertical and 4 horizontal lines to the inch, Center Line Red.

We also carry the Note Books listed above, bound in extra strong Fabri-Hide (otherwise the same quality of book), which can be furnished at a somewhat lower price.

In ordering Fabri-Hide covered books, add the letter "F" to catalog number.

## THE FREDERICK POST CO.

ENGINEERING and DRAFTING SUPPLIES

IRVING PARK STATION

CHICAGO, ILL.

92 FIFTH ST.  
PORTLAND, ORE.

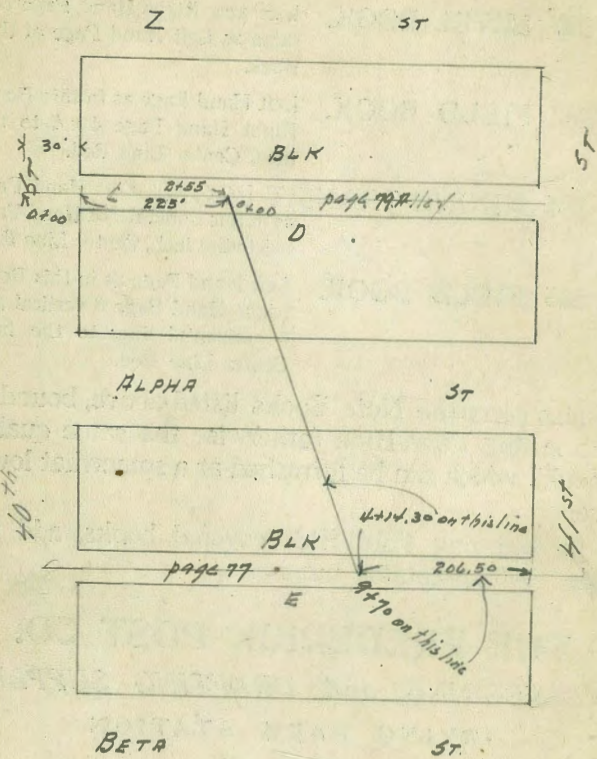
79 NEW MONTGOMERY ST.  
SAN FRANCISCO, CAL.

AGENTS FOR

"BERGER" TRANSITS and LEVELS

"GURLEY" SURVEYING and HYDRAULIC INSTRUMENTS

"CHICAGO" STEEL TAPES, etc.



Sewer Levels  
 from 2 of Alley in Blk D  
 To d ✓ ✓ ✓ E Ocean Vista

2 of Alley Blk D  
 = 0+00  
 30.78 N.S. from page 79

+50	43	26.48
1	38	26.98
T.P. 12.96	43.32	0.42
+10	17.0	26.32
+45	14.0	29.32
+75	11.9	32.42
2	13.1	30.22
+10	18.3	29.02
+20	12.7	30.62
+35	11.4	31.92
+50	9.2	34.12
+70	8.1	35.22
+93	8.7	34.62
3	11.5	31.82
+10	7.5	35.82
+60	2.8	40.52
+85	2.6	40.72
4	4.2	39.12
+14.3 = 9+70 page 77	5.9	37.42

Stations on Profile	Bay Side Lane	Mission Beach	Grade	Cut.
9/24/24 M.H. 3' W of E.L. Mission E Bay Side = 30+56.55	4.97		-0.05	
30+12.25	9.03		-4.06	Flow Line present C.I. pipe
29+67.95	5.10	-0.13	-4.15	+4.02
29+23.65	3.96	1.01	-4.25	+5.26
28+79.35 M.H.	4.87	2.10	-4.34	+6.44
28+33.77	2.04	2.93	-4.44	+7.37
27+98.19	1.96	3.01	4.55	+7.56
27+42.62	1.96	3.01	4.67	+7.68
26+99.55 M.H. & Alley Bk 3	2.40	2.57	4.78	+7.35
26+49.67	2.81	2.16	-4.90	+7.06
26+02.30	3.08	1.89	5.02	+6.91
25+54.92	3.54	1.43	5.14	+6.57
25+07.55 M.H. Alley Bk 6	4.14	0.83	5.26	+6.09
24+60.95	5.39	+0.11	-5.38	+5.49 +5.46
24+4.35	6.19	-0.69	-5.50	+4.81
23+67.75	6.90	-1.40	-5.61	+4.21
23+21.15 M.H. Alley Bk 10	6.98	-1.48	-5.73	+4.25
22+99.10	6.93	-1.43	-5.84	+4.41
22+39.05	6.51	-1.01	-5.94	+4.93
21+95.0	6.35	-0.85	-6.05	+5.20
21+52.95 M.H. Alley Bk 16	5.96	-0.46	-6.16	+5.70
21+04.38	5.55	-0.05	-6.27	+6.22
20+55.81	6.81	+0.51	-6.39	+6.90
20+07.23	6.29	+1.03	-6.51	+7.54
19+58.95 M.H. Alley Bk 19	5.52	+1.80	-6.63	+8.43
	5.32	+2.00	-6.75	+8.75

406

375  
1.47

495  
0.07 5.67

19+11.50		5.11	2.21	-6.87	+9.08
18+64.35		5.22	2.10	-6.99	+9.09
15+17.20		4.60	2.72	-7.11	+9.83
17+70.05 M.H. Alley Bk 24		4.43	2.89	-7.23	+10.12
17+22.07		4.08	3.24	-7.35	+10.59
16+74.10		4.43	2.89	-7.47	+10.36
16+26.12		5.12	2.20	-7.59	+9.79
15+78.15 M.H. Alley Bk 27		5.62	1.70	-7.71	+9.41
15+39.00		5.86	1.46	-7.81	+9.27
14+99.88		6.27	1.05	-7.90	+8.95
14+60.74 Drop M.H. & Capistrano		6.64	+0.68	-8.00	+8.68
	3.75		-0.10	-11.00	+11.68
14+10.47		3.05	0.60	-10.92	+11.52
13+60.2 M.H. Alley Bk 32		3.61	+0.04	-10.85	+10.89
13+12.5		3.79	-0.14	-10.78	+10.64
12+64.8		3.84	-0.19	-10.71	+10.52
12+17.1		3.95	-0.30	-10.64	+10.34
11+69.4 M.H. Alley Bk 38		3.98	-0.33	-10.57	+10.24
10+22.8		4.03	-0.38	-10.50	+10.12
10+76.3		4.00	-0.35	-10.43	+10.08
10+29.8		3.96	-0.31	-10.36	+10.05
9+83.3 M.H. Alley Bk 40		4.06	-0.40	-10.29	+9.89
9+6.7		4.29	-0.30	-10.22	+9.92
9+36.6		4.29	-0.30	-10.22	+9.92
8+89.9		4.34	-0.35	-10.15	+9.80
8+43.2		4.35	-0.36	-10.08	+9.72
7+96.4 M.H. Alley Bk 43		4.28	-0.29	-10.01	+9.72

102-2008505

4.39  
3.99  
-0.40

30  
3.99

796.4	M.H. Alley BIK 43	4.28	-0.29	-10.01	+9.72
5115 745.25		4.34	-0.35	-9.93	+9.58
693.10		4.37	-0.40	-9.86	+9.46
642.95		4.42	-0.43	-9.78	+9.35
591.80	M.H. Alley BIK 48	4.52	-0.53	-9.71	+9.18
484 543.4	345 H2 from page	4.13	-0.68	-9.63	+8.95
495.0		4.31	-0.86	-9.56	+8.70
446.6		4.51	-1.06	-9.49	+8.43
398.3	M.H. Alley BIK 51	4.63	-1.18	-9.42	+8.24
307 904.135	3.07 3.90	5.32	-1.42	-9.34	+7.92
9021.45		5.27	-1.37	-9.27	+7.70
89+11.85		5.48	-1.58	-9.19	+7.61
89+21.61	M.H. Alley BIK 56	5.28	-1.38	-9.12	+7.74
88+69.91	4.70	6.22	-1.52	-9.05	+7.53
88+18.21		6.40	-1.70	-8.98	+7.28
87+66.51		5.99	-1.29	-8.90	+7.61
87+14.7	M.H. Alley BIK 59	4.25	+0.45	-8.83	+9.28
86+73.27	87+24.7 on page	4.55	+0.15	-8.75	+8.90
86+21.84		4.60	+0.10	-8.68	+8.73
85+70.41		4.65	+0.05	-8.67	+8.74
85+18.98		4.71	+0.43	-8.60	+9.03
84+67.55		3.98	+0.72	-8.52	+9.24
84+16.14	M.H. PC.	4.10	+0.60	-8.45	+9.05
		6.93	-2.23	-8.37	+6.14

93+14.75

91+21.25

6.08  
10 Erton  
in plans  
dis for M.H.  
206.9

continued on page 24

1316  
386  
-9.24

931476

5.59  
13  
31

1332

1580.5  
25.8  
26.6

87.7  
17.7  
104.4

4060  
4.23  
433

714  
483  
231

887  
231  
606

644

9/27/24

Sewer Construction  
 BKS 27 & 28  
 Mission Beach

6) 3.63  
 60

4) 3.74  
 78

6) 2.32  
 387

M.H. & Bayside Lane <sup>347</sup> 4.97  
 20+00

5400 @ 15+75.15  
 170

0+48.4	4.48	+ 0.49	- 6.01	+ 6.50
0+96.8	5.67	- 2.70	- 5.62	+ 4.92
1+45.2	5.07	- 0.10	- 5.24	+ 5.14
+ 93.6	5.30	- 0.33	- 4.85	+ 4.52
2+40.0	5.45	- 0.48	- 4.46	+ 3.98
2+90.6	9.05	- present CI	- 4.08	

Kind present CI @ Blvd  
 & Alca BLK 28

WL Mission Blvd  
 20+00

8.11			- 3.14	
+ 50.3	5.03	- 0.06	- 2.35	+ 2.29
1+00.6	3.94	+ 1.03	- 1.56	+ 2.59
1+50.9	2.60	+ 2.37	- 0.78	+ 3.65
2+01.2	1.16	+ 3.81	0.0	+ 3.81
34' Nox. 2+01.2	1.22	+ 3.75	+ 0.5	+ 3.25
34' 5" 2+01.2	1.19	+ 3.78	+ 0.5	+ 3.28

Sewer Construction  
 & Allys Blks 24+23

5) 234.2  
 47.54  
 5  
 $\frac{6}{53}$   
 $\frac{100}{100}$   
 $\frac{6}{15}$   
 $\frac{25}{25}$   
 $\frac{6}{175}$   
 $\frac{29.1}{29.1}$

Sta 17+70.5 M. # page 2	3.60	3.26	-0.14	BM.	-6.73	Drop.
20+00						
+50						
1		2.95	0.31		-5.93	+6.26
+50						
1		3.33	-0.07		-5.64	+5.57
+50						
2		3.76	-0.50		-5.35	+4.85
+50						
2		4.37	-1.11		-5.06	+3.95
+50						
3+08.8 - End point CI @ Blvd		4.39	-1.13		-4.77	+3.64
WL Mission Blvd. ALLEY BLK 23		7.74	-4.48		-4.48	- Flow Line CI
20+00 T.P.	6.90	5.53	7.00	-3.74	-3.74	= Flow Line CI
0+47.84			4.63	-1.37	-2.79	+1.94
0+95.69			6.38	-0.85	-1.84	+1.80
1+43.53			5.57	-0.04	-0.90	+2.02
1+91.37			4.41	1.12	+0.05	+2.31
2+39.24 & Strand Way			3.17	7.36	+1.00	+2.35
34.02 N. of 2+39.24			2.18	3.35	+1.50	+1.77
34.02 S. of 2+39.24			2.26	3.27	+1.50	+1.90



Sewer Construction  
 & Alleys 19 & 20 Mission Beach

⑤) 29612  
 49.35

⑥) 28911  
 48.18

⑥) 229  
 .3816

326  
 177  
 1.49

⑥) 439  
 .721

Sta	Notes	340	326	-0.14	S.D. Elec. BM	
349 19+58.95	page 1					
20+00	M.H.					
0+49.35		1.31	1.95	-6.75	+8.70	
0+98.70		2.52	0.74	-6.37	+7.11	
1+48.05		3.21	0.05	-5.99	+6.04	
1+97.40		3.56	-0.30	-5.60	+5.30	
2+46.95		3.89	-0.63	-5.22	+4.59	
2+96.13	End present D.I. E.L. of Blvd	4.34	-1.08	-4.84	+3.76	
7.P.	16.90	7.72		-4.46	= Flow Line C.I.	
	5.53	4.63	-1.37			
W.L. Blvd = ✓ ✓ ✓	Alley Blk 20					
20+00		8.92		-3.39	=	
0+48.18		5.87	-0.34	-2.66	+2.32	
0+96.36		4.80	0.73	-1.93	+2.66	
1+44.55		3.99	1.54	-1.20	+2.74	
1+92.81		3.34	1.19	-0.47	+2.66	
2+40.89		2.60	2.93	+0.47	+2.66	
2+89.11	DEX & Strand Way	1.90	3.63	+1.00	+2.63	
34.07 N. of 289.11 D.E		2.00	3.53	+1.50	+2.03	
34.07 S - - -		2.00	3.53	+1.50	+2.03	

Sewer Construction 1M  
 Alleys 16 & 15  
 Mission Beach

10/22/20  
 Muller  
 Shaw  
 Wal

B.M	3.83	3.69	Dev	Grade
Sta 2+45.25	M.H. Page 1-00		-0.14	-6.27
0+49.3		4.09	-0.40	-5.82
0+98.6		4.09	-0.40	-5.34
1+47.9		4.59	-0.90	-4.90
1+97.2		4.24	-0.55	-4.44
2+46.5		4.42	-0.73	-3.98
2+95.8	End C.I. Pipe E Line Blvd	7.21	-3.52	-4.00 Profile
J.P.	7.21	4.10	-0.41	-3.52 on pipe
00 = " " " " W " "		9.56	-2.76	-3.5 Profile
				-2.76 on pipe
0+49.71		6.27	+0.53	-2.13
0+99.42		5.33	+1.47	-1.51
1+49.13		4.56	+2.24	-0.88
1+98.87		4.04	+2.74	-0.25
2+48.55		3.70	+3.10	+0.37
2+98.25	D.E.X. E Stradway	3.29	+3.51	+1.0
65' N. of 298.25		3.03	+3.73	+2.0
555 " "		3.56	3.24	+2.0

Avalon Court

+5.42
+4.96
+4.00
+3.89
+3.25
+2.66
+2.98
+3.12
+2.99
+2.73
+2.51
+1.73
+1.24

Sewer Construction  
 3' W. of E.L. Mission Blvd from  
 M.H. & Bay Side Line to

1.2  
 2.1  
 2.5

595  
 443  
 152  
 73

Sta	Notes	5.07	63.9'	4.97	-0.05	SDE R/BM	Drop 25
Sta 211	M.H. & Bay Side Sta 30+56.5 to 30+00						-3.81
0+4	+31.95		5.80	-0.83		-3.56	+2.73
0+9	+63.9 DE		5.89	-0.92		-3.31	+2.39
1+4							
1+9							
2+4							
2+9							
7							
00							
0+4							
0+9							
1+4							
1+9							
2+4							
2+9							
65' N							
55 S							

Sewer Construction  
 2 x Alley BIK 6  
 Mission Beach

3.11

M.H. 251 09.55 page 1  
 = 0+00

+42.7		7.36	0.75	-5.13
+85.4	4.56	4.97 from page 12.70	0.41	-4.85
1 + 28.1	4.56	4.56	0.41	-4.97
1 + 70.8 M.H. & Alley		4.84	0.13	-4.28
2 + 14.95		4.97	0.0	-4.0
+ 59.07 = present C.I. pipe @ Mission Blvd.		4.60	0.37	3.17
		7.30	-2.33	-2.33

Sewer Construction  
 2 Alley BIK 3

M.H. 261 26.47.05 page 1  
 = 0+00

+35 DE		4.75	0.22	-4.65
				-4.65
				-3.75

4.12  
 29.17

38

7

Drop to Bayside

+3.60
+4.98
+4.41
+4.00
Changed to hit raise at Bayside
+3.54

Flow Line C.I. @ Blvd. .67 higher than grade

Drop 0.25 from Alley Line to Main

+3.97

Sewer Construction  
 2 Alley Blks 2-3 & 6  
 Mission Beach  
 4.97 H. J. from page 1

1170  
 316

10

0000

+52.7  
 1+05.4  
 +58.1  
 2+108  
 2+62.5  
 3+162 DE

4.58 0.39  
 4.37 0.60  
 4.52 0.45  
 4.91 0.06  
 4.95 0.02  
 5.10 -0.13

-3.75  
 -3.43  
 -3.12  
 -2.80  
 -2.49  
 -2.17  
 -1.85

raised to fit change  
 +3.82  
 +3.72  
 +3.25  
 +2.54  
 +2.19  
 +1.72

Sewer Construction  
& Alleys BLK 10 & 12

311 HD from page 9

23+21.15 M.H.  
20+00

	9.00		- 5.84	
0+45.15	4.11	- 1.00	- 5.47	+ 4.47
0+90.03 = M.H.	3.88	- 0.77	- 5.10	Drop M.H. + 4.33
1+41.90	4.48	- 1.37	- 4.62	+ 3.25
1+93.97	4.16	- 1.05	- 4.13	+ 3.08
2+45.64	3.63	- 0.58	- 3.64	+ 3.12
2+97.53 = End present C.I. El. Blvd	6.27		- 3.16	Flow Line C.I.
0+00 End present C.I. W.L. Blvd	5.33		- 2.22	Flow Line C.I.
6.27	3.65	- 0.57		
+47.03	5.07	0.57	- 1.78	+ 2.35
+94.06	4.59	1.05	- 1.33	+ 2.38
1+41.09	4.20	1.44	- 0.89	+ 2.33
1+88.12	3.69	1.95	- 0.44	+ 2.39
2+35.16 = DEX & Strand Way	3.27	2.37	0.00	+ 2.37
60' S. of ✓ ✓	3.57	2.07	+ 0.50	+ 1.57
60' N. of ✓ ✓	2.99	2.65	+ 0.50	+ 2.15

5th 0+90.03 M.H. above  
20+00

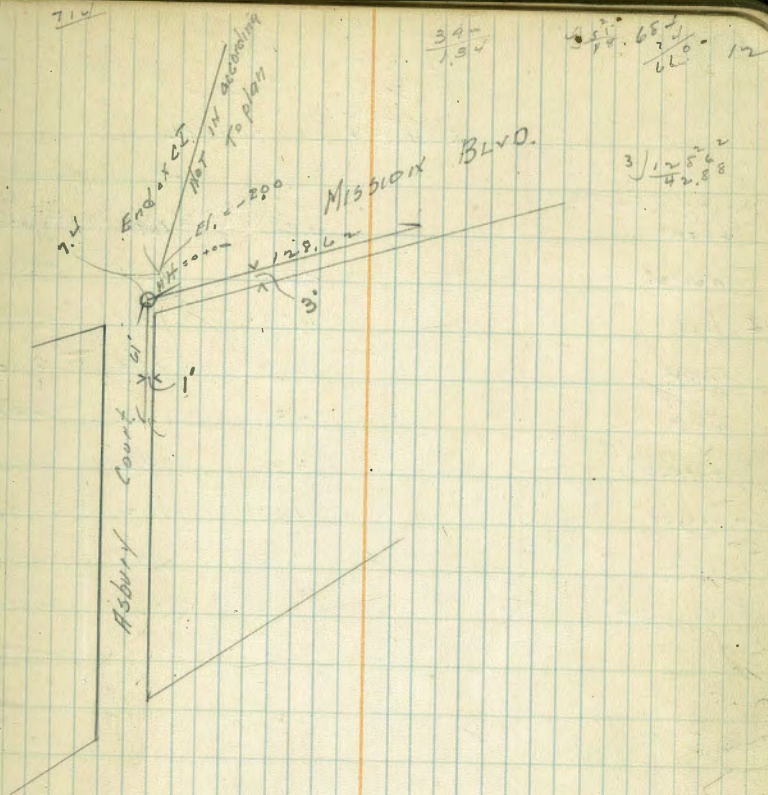
Branch & Alley BLK 10

	3.88	- 0.77	- 4.80	+ 4.03
0+45.5	5.44	- 2.33	- 4.25	+ 1.92
0+91	4.23	- 1.12	- 3.70	+ 2.58
1+36.5	3.82	- 0.71	- 3.15	+ 2.44
1+82.0 = End of present C.I.	5.71		- 2.60	Flow Line C.I.

Sewer Construction  
 3' 17" front of BLK 9  
 & 1' N. of S.L. of Asbury Court.  
 This line changed from d. v. to  
 4' 5" x d. 7% cement walk

	5.14				
M.H. 3' E of W.L. Mission + 1' N. of S.L. of Asbury = 20400 M.H.	7.14	- 0.25	B.M.		
	4.64	0.50	- 1.90	Flowline CI	+ 2.40
0+61 + D.E.	4.62	0.52	- 1.50		+ 2.02
M.H. Above 20400			- 1.90		+ 2.40
0+42.88	4.58	0.56	- 1.71		+ 2.27
0+85.76	4.60	0.54	- 1.53		+ 2.07
1 + 28.62 D.E.	4.50	0.64	- 1.35		+ 1.99

Line 3' E of W.L. Mission S. of Asbury



Sewer Construction  
 & Strand Way  
 from 30' H. - K Anacapa Court  
 To 45' -  
 5.14 H.S. from page 12

M.H. 4 5' 19" d  
 30' H. - K Anacapa  
 20+00

	6.60	-1.46		
	4.18	p.96	-1.40	+2.36
0+52.5	4.34	0.80	-1.10	+1.90
1+05	4.70	44	-0.80	+1.24
1+57.5	4.49	0.65	-0.50	+1.15
2+10	4.30	0.84	-0.20	+1.04
2+62.5	4.21	93	+0.10	+1.03
3+15.0	4.02	112	0.40	+1.52
3+67.5	3.83	131	0.70	+2.01
4+20 DE	3.62	152	+1.00	+2.52

Flow Line G.I. pipe 6' Ex. M.H.

July 20 1952  
 13

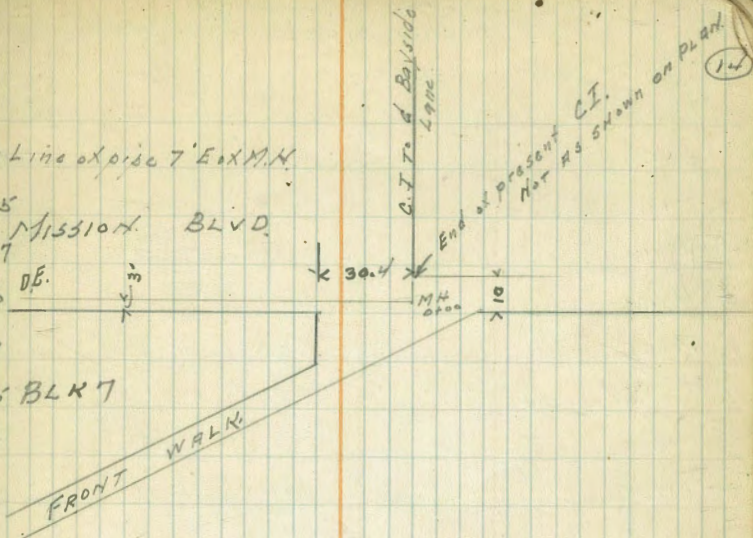


Sewer Construction  
 in front of BLK 7  
 Mission Beach,  
 see sketch opposite

M.H. 3' E of WL 4.48  
 Mission Blvd  
 + 30.4' S of S End of  
 BLK 7  
 - 0 + 00  
 0 + 34.4  
 0 + 68.8  
 1 + 18.8  
 1 + 68.8 DE

4.43	-1.05	S.O.E.R. BM
687	-2.44	
470	-0.27	-2.42
450	0.03	-2.24
399	0.44	-2.06
370	0.73	-1.78
358	0.85	-1.5

Flow Line of pipe 7' E of M.H.  
 + 2.15  
 Mission Blvd.  
 + 2.27  
 DE.  
 + 2.50  
 + 2.51  
 + 2.35 BLK 7



Sewer Construction  
 N. Alleys 31 & 32 Mission Beech

B.M.	Elev	5.85	-0.10	Adjusted 5.00	
00 & Bayside Lane					
+45.9		6.22	-0.37	-4.60	+4.23
+91.8		5.98	-0.13	-4.21	+4.04
1+37.7		5.91	-0.06	-3.82	+3.76
1+83.6		6.25	-0.40	-3.43	+3.03
2+29.6 E. Inc Blvd		8.88		-3.03	
00 W. Inc Blvd		7.99		-2.04	
+44.05		4.03	1.82	-1.53	+3.35
+88.10		2.91	2.94	-1.02	+3.94
1+32.15		2.00	3.85	-0.51	+4.34
1+76.20 @ Strandway M.H		1.71	4.14	0.0	+4.14
34'S " " " "		1.58	4.27	+0.5	+3.77
34'N " " " "		1.65	4.20	+0.5	+3.70

Sewer Construction

14 Alleys 35 + 36 Mission Beach

(14)

B.M.	5.95	5.85	-0.10	13	
00 = M.H. @ Bayside Lane 71 + 69.40					- 5.5
+ 48.5	6.22	- 0.37	- 5.0		+ 4.63
+ 97.6	6.63	- 0.78	- 4.5		+ 3.72
1 + 46.4	6.35	- 0.50	- 4.0		+ 3.50
1 + 95.30 = Line Blvd	9.35		- 3.50		
00 = W. " "	7.91		- 2.06		
+ 41.6	3.64	2.21	- 1.54		+ 3.75
+ 83.2	2.76	3.09	- 1.03		+ 4.12
1 + 24.8	2.34	3.51	- 0.51		+ 4.02
1 + 66.40 = M.H. @ Stroud Way	1.64	4.21	0.0	Raised 2.0	+ 4.21
34' S " " " " "	1.81	4.04	+ 1.0	Raised 2.0	+ 3.04
34' N " " " " "	1.80	4.05	+ 1.0	Raised 2.0	+ 3.05

Sewer Construction  
 IN ALLEYS 39 & 40 MISSION BEACH

	5.21	5.28			
00 = M.H. Sta 9+83.3 Bay side Lane				+0.07 B.M.	
				-6.0	raised
				-5.5	0.5
+47.9	5.98	-0.70	-5.06	+4.36	
+95.8	5.93	-0.65	-4.63	+3.98	
1+43.7	5.99	-0.71	-4.20	+3.47	
1+91.7 E. Line Blvd	9.05		-4.0		
00 W. Line Blvd	7.99		-3.77		
+43.7	3.92	1.36	-2.71		
+87.4	2.84	2.44	-1.78	+3.14	
1+31.1	2.08	3.20	-0.85	+3.29	
1+74.9 M.H. & Strandway	1.16	4.12	+0.07	+3.13	
34'S " " " " "	1.10	4.18	+1.0	+3.12	
34'N " " " " "	1.15	4.13	+1.5	2.68	
			+1.5	2.63	

Sewer Construction  
 IN Alleys BIKs 43 & 44 Mission/Beech

	5.24	5.28			
00 = M.H. Sta 796.4 Bay Side Lane					
+48.8		5.50	-0.22	-5.53	+3.31
+91.6 - x into A. alley				-5.12	+5.22
+97.8		5.22	+0.06	-5.06	+5.12
+46.7		5.70	-0.42	-4.59	+4.17
Meas 1189.4					
Map 1295.5 E. Hua Blvd		9.48		-4.20 DRAIN	
00 = W. Line Blvd		8.46		-3.18"	
+49.1		4.20	1.08	-2.38	+3.46
+78.2		2.91	2.37	-1.59	+3.96
1+47.3		2.80	3.48	-0.79	+4.27
1296.3 M.H. @ Strandway		1.04	4.24	0.0	+4.24
34'S " " " "		1.02	4.26	+0.5	+3.76
34'N " " " "		1.04	4.24	+0.5	+3.74
				raised 1'	
48' x 26' at 91.6 DE				-4.0	+3.97

Tap 1 BM  
 -6.5  
 -6.0 Rains + 405

2.57  
 5.31

009.42 190 / 1.86 0 009.48  
 92 171.0  
 1894 7.00  
 8532 1400  
 87

15

009.48  
 0.5688

7.46  
 5.48  
 3.77

Sewer Construction  
 IN A Heys BIKs 47-48 Mission Beach

	3.38	3.45	+0.07		
00 - M.H. Sta 5+91.8 Bayside Lane				-5.5	
+43.9		3.82	-0.37	-5.2	+4.83
+87.8		3.75	-0.30	-4.9	+4.60
+31.8 cross		3.93	-0.38	-4.60	+4.22
1+92.8 - Elm. Blvd		7.63	-4.18	-4.18	
BM 5.56	5.63		+0.07		
00 - W. " "		8.35	-2.72	-2.72	
+46.5		4.74	+0.89	-1.98	+2.87
+93.0 cross		3.65	+1.98	-1.23	+3.21
46					
+39.6		2.88	+2.75	-0.49	+3.24
+86.2		1.87	+3.76	+0.25	+3.51
2+32.7 M.H. @ Strandway		1.27	4.34	+1.0	+3.36
34 S " " "		1.29	4.34	+1.5	+2.84
34 N " " "		1.13	4.50	+1.5	+3.0
48 S of 1+318 cross		3.18	-0.33	-3.50	+3.17
48 S of 93.0 cross		3.21	2.42	-0.73	+3.15

91  
 971  
 51  
 421  
 2.97  
 193 / 1320 6084  
 1158  
 1620  
 1544  
 760  
 19  
 00654  
 .61  
 684  
 4104  
 42  
 .00654  
 132  
 1368  
 2052  
 654  
 90288

Sewer Construction  
IN Alleys BIKS 514 & 2 MISSION Beech

	338	345		+0.07 SDE B.M.	
00 = M.H. Sta. 3+98.3 @ Bayside Lane				- 5.75	
+57.9		4.96	- 1.51	- 5.24	
1+03.8		4.40	- 0.95	- 4.75	
1+55.7		4.21	- 0.76	- 4.26	
2+07.6 S. Line Blvd		4.20	- 0.75	- 3.75	
00 = W. " "	4.90	7.02	+ 0.83	SDE B.M. - 2.12	
+45.7		4.38	+ 0.52	- 1.62	
+71.4		3.87	+ 1.03	- 0.92	
1+37.1		3.10	+ 1.80	- 0.32	
1+82.8		2.27	+ 2.63	+ 0.28	
2+28.5		1.26	+ 3.62	+ 0.88	
2+74.3 DE. X @ Strandway		0.24	+ 4.66	+ 1.5 <sup>road</sup>	
34'S " " " "		0.13	+ 4.77	+ 2.0	
34'N " " " "		0.29	+ 4.61	+ 2.0	

missed .75

+3.74

+3.30

+3.49

= Flow Line C.I.

= Flow Line C.I.

+ 2.04

+ 1.95

+ 2.12

+ 2.35

+ 2.76

+ 3.16

+ 2.77

+ 2.61

Sewer Construction  
& Alley BIKs

BM	3.22	3.84	56 + 55	-1.38	-6.0	
0+00 = M.H. & Bayside					-5.60 <sub>45</sub>	
+49.78			5.40	-1.56	-5.15 <sub>45</sub>	
+99.56			5.26	-1.92	-4.20 <sub>45</sub>	
1+49.34			5.04	-1.20	-4.25	
1+99.82			4.84	-1.00	-3.80	
vs 48.90 = K.H. Blvd.			7.19		-3.35	
	4.07	4.90		+0.83		
Wh. Blvd 0+00			7.12	-2.22	-2.22	
+51.32			4.15	+0.75	-1.85	
1+04.63			4.64	+0.26	-1.48	
1+53.96			4.59	+0.31	-1.11	
vs 06.27			4.21	+0.69	-0.74	
vs 56.58			4.27	+2.63	-0.37	
3+07.90 = 6 Strand			1.10	3.80	0.0	
34 5.07 3+07.90			0.60	4.30	+0.5	
34 11' 3+07.90			0.78	4.12	+0.5	

Stub M.H. BIK 56 + Bayside  
raised 0.4

+13.59

+3.78

+3.05

+2.80

SDE BM

= Flow Line G.I.

+2.60

+1.74

+1.42

+1.43

+3.00

+3.80

+3.80

+3.62

6/27  
37



Sewer Construction  
 & Alley BIKS  
 59 & 60

B.M.	522	3.84	-1.38	-6.0	See P. 21
0+00 M.H. Backside		3.39	+0.45	-6.000	PK Sec P. 3
+52.2		3.71	+0.13	-5.55	+5.48
1+04.4		3.95	-0.11	-5.11	+5.00
1+56.6		4.76	-0.92	-4.66	+3.74
2+08.8		4.49	-0.65	-4.21	+3.56
2+61.0		4.28	-0.44	-3.77	+3.33
3+13.2	EL. Blvd 407	7.16	-3.32	-3.32	Flow Line
	490		+0.93		
W.L. Blvd.		7.06	-2.16	-2.16	Flow Line C.T.
+47.66		4.90	00	-1.26	+1.86
+95.32		4.81	+0.09	-1.55	+1.64
1+42.97		4.59	+0.31	-1.24	+1.55
1+90.63		5.26	-0.36	-0.93	+0.57
2+38.29		4.17	+0.73	-0.67	+1.35
2+85.96		4.65	+2.46	-0.31	+2.56
3+33.60	4 Strand	1.27	+3.63	0.0	+3.63
34' S. of 3+33.6		1.07	+3.83	+0.50	+3.33
34' N. of 3+33.6		1.35	+3.55	+0.50	+3.05

Sewer Construction  
High Pressure Line  
CAPISTRANO PL.

	5.00	4.90		- 0.10	
Pump Station			483	+ 0.07	- 5.00
+ 52.74 + 54.12			458	+ 0.32	- 4.71
+ 08.25					
1+ 05.5 = Bay Side Line 20+00			478	+ 0.12	- 4.43
0+44.36			461	+ 0.29	- 4.19
0+88.72			481	+ 0.09	- 3.95
1+ 33.07			529	- 0.39	- 3.71
1+ 77.43			524	- 0.34	- 3.47
2+ 21.79			520	- 0.30	- 3.24
2+ 56.14	4.23	4.13	5.00	- 0.10	- 3.05
			4.71	- 0.58	- 3.05
2+ 66.14 = E.L. Mission 20+00			5.14	- 1.01	- 3.00
0+40			466	- 0.53	- 2.66
0+90			403	+ 0.10	- 2.24
1+ 24.2		4.90		- 0.10	- 1.94
1+ 68.4			393	+ 0.97	- 1.94
2+ 12.6			293	+ 1.97	- 1.54
2+ 56.8 = E.L. Strand Way	4.00	7.50	230	+ 2.60	- 1.14
0+47.41			144	+ 3.46	- 0.75
0+94.82			314	+ 4.36	- 0.30
1+42.23			242	+ 5.08	+ 0.15
1+89.64					+ 0.60
2+ 37.06 = Settling Tank					+ 1.05
					+ 1.50

TRUNK LINE  
continued from page 3

84+16.14 M.H. PC	490	693	-2.23	-8.37	+6.14
		455	+0.15	-8.34	+7.49
		438	+0.32	-8.31	+8.53
		419	+0.51	-8.28	+8.79
		385	+0.85	-8.21	+9.10
		387	+0.83	-8.22	+9.05
		361	+1.09	-8.19	+9.28
		365	+1.05	-8.16	+9.21
		376	+0.95	-8.13	+9.08
82+29.79 M.H. EC	5.37	409	-0.33ok 1.28	-8.10	+9.38
81+79.99		452	+0.85	-8.03	+8.88
81+79.99		459	+0.78	-7.96	+8.74
80+79.99		486	+0.61	-7.88	+8.39
80+79.99		466	+0.71	-7.80	+8.51
79+81.79 M.H.		478	+0.69	-7.73	+8.32
79+31.79		474	0.63	-7.66	+8.19
78+81.79		453	0.84	-7.58	+8.12
78+31.79		463	0.74	-7.51	+8.25
77+81.79		450	0.87	-7.43	+8.30
77+31.79		454	0.93	-7.36	+8.29
76+81.79 M.H.		451	+0.86	-7.28	+8.14
76+31.79		469	0.68	-7.20	+7.88
75+81.79		482	0.65	-7.13	+7.68
75+31.79	5.47	484	0.63		
		486	0.51	-7.06	+7.59 +7.69
		474			
74+81.79		477	0.73		
		479	0.60	-6.98	+7.58 +7.71
		452	0.91		
74+81.79		462	0.77	-6.91	+7.68 +7.82
		415	1.32		
73+81.79 M.H. PC		447	1.76	-6.84	+7.92 +8.16

This radius was  
changed to 1485' by  
Mission Beach Co.

CURVE INTO 9 parts  
4.5 on Δ = 4° 17' 54"  
chord Δ = 20.68

This tangent moved 106'  
West by Mission Beach  
Company

483  
530  
1317  
540  
777

1057

1427  
9.78

547  
481  
666

547  
160  
387

1200  
847  
713

25186  
1877  
66309  
570

73+81.95 M.H. PC. 6.60

This radius changed to 306.5 by Mission Beach Company. Curve into 15 parts

5.47

-113

506 BND Ventura

-6.84 +8.6  
-6.82 +303  
-6.80 +441  
-6.77 +303  
-6.75 +309  
-6.72

4.22	1.25	x -6.70	+7.95
4.31	1.16	-6.67	+7.83
4.28	1.19	-6.65	+7.84
4.46	1.01	-6.62	+7.63
4.16	1.31	-6.60	+7.91
4.18	1.29	-6.57	+7.86
4.27	1.20	-6.55	+7.75
4.02	1.45	-6.52	+7.97
4.54	0.93	-6.50	+7.43
4.68	0.79	-6.47	+7.26
4.96	0.71	-6.40	+7.11
5.20	0.27	-6.33	+6.60
5.07	0.40	-6.27	+6.67
5.45	0.02	-6.20	+6.22
5.87	-0.40	-6.13	+5.73
6.18	-0.71	-6.07	+5.36
6.32	-0.95	-6.00	+5.15
5.01	-1.13	-11.00	+9.46
5.01	-1.47	-10.93	+9.46
5.30	-1.76	-10.86	+9.09

71+33.63 = M.H. EC.

71+23.8  
70+802

70+366

69+930

69+494

69+058

68+622

68+18.6 M.H. & Alford Ventura + Island  
4.67 3.54

67+7168

67+2476

1343

$$\begin{array}{r} 1488 \\ -566 \\ \hline 922 \end{array}$$

$$\begin{array}{r} 420 \\ -51.05 \\ \hline 368.95 \end{array}$$

$$\begin{array}{r} 64381 \\ -928 \\ \hline 63453 \end{array}$$

$$\begin{array}{r} 5803 \\ -2000 \\ \hline 3803 \end{array}$$

$$\begin{array}{r} 512 \\ -23.7 \\ \hline 488.3 \end{array}$$

$$\begin{array}{r} 4206.9 \\ -51.7 \\ \hline 4155.2 \end{array}$$

66+77.84		354	5.53	-1.99	-10.77	+8.78
66+30.9 = Alley Bk 99			5.30	-1.76	-10.69	+8.93
65+52.7			4.54	-1.00	-10.61	+9.61
65+34.5			5.03	-1.49	-10.53	+9.04
64+86.3			4.92	-1.38	-10.45	+9.07
64+38.1 = Alley Bk 104			4.70	-1.16	-10.37	+9.21
63+87.05	5.64	4.51	5.83	-1.13	-10.29	+8.97
63+36.00			5.63	-1.12	-10.21	+9.09
62+84.95			5.56	-1.05	-10.13	+9.08
62+33.90 = M.H. Alley Bk 107	4.90	4.06	5.35	-0.84	-10.06	+9.15
61+89.16			5.07	-1.01	-9.98	+8.87
61+44.42			5.00	-0.94	-9.91	+8.97
60+99.68			5.11	-1.05	-9.82	+8.79
60+54.94			5.05	-0.99	-9.77	+8.78
60+10.20 = M.H. Bk 112			5.13	-1.07	-9.70	+8.63
59 58.5			5.03	-0.97	-9.61	+8.64
59+06.8			5.10	-1.04	-9.52	+8.48
58 55.1			5.22	-1.16	-9.43	+8.27
58+03.4 = M.H. Bk 115			5.38	-1.32	-9.33	+8.01
57+53.3	3.39	3.90	5.25	+0.51	-9.24	+7.92
57+03.2	4.46	3.13	4.45	-1.33	-9.16	+7.76
56+53.1			4.53	-1.40	-9.08	+7.71
56+03.0 = M.H. Bk 120			4.69	-1.37	-9.00	+7.46
55+54.25			4.78	-1.54	-8.92	+7.30
55+05.50			4.66	-1.62	-8.84	+7.31

00164  

$$\begin{array}{r} 207 \\ -16 \\ \hline 191 \\ -207 \\ \hline 328 \\ -328 \\ \hline 36736 \end{array}$$

2' longer than  
 showing  
 2' longer than  
 showing

54+56.75		4.70	-1.57	-8.76	+7.29
54+08.00 = M.H. Blk 123		4.81	-1.68	-8.68	+7.00
53+56.85		4.96	-1.83	-8.59	+6.76
53+05.70		4.95	-1.82	-8.51	+6.69
52+54.55		5.32	-2.19	-8.43	+6.24
54+09.40 = M.H. Blk 128		5.15	-2.02	-8.35	+6.33
51+54.05		5.17	-2.04	-8.28	+6.24
51+09.70		5.20	-2.07	-8.20	+6.13
50+61.95		5.04	-1.91	-8.12	+6.21
50+14.00 = M.H. Blk 131		5.04	-1.91	-8.04	+6.13
49+67.33		6.78	-1.75	-7.96	+6.21
49+20.66		6.68	-1.65	-7.88	+6.23
49+77.90		6.60	-1.57	-7.80	+6.23
48+27.00 = M.H. Blk 136		6.50	-1.47	-7.73	+6.26
47+80.78		5.78	-1.59	-7.65	+6.06
47+32.13		5.78	-1.59	-7.57	+5.98
46+57.11		5.76	-1.59	-7.49	+5.92
B.M. 6PKB1W 0.74	3.82		+2.08		+6.04
46+41.15 = M.H. 139		5.57	-1.38	-7.42	+6.04
50.035 B.M.					
45+91.11		4.84	-1.52	-7.34	+5.82
45+41.08		4.54	-1.22	-7.26	+6.04
44+91.06		4.89	-1.57	-7.18	+5.61
44+41.03 = M.H. Blk 144		5.05	-1.73	-7.10	+5.37
46.65					
43+94.35		5.11	-1.79	-7.02	+5.23
43+47.73		5.19	-1.87	-6.94	+5.07
43+01.08		5.29	-1.97	-6.86	+4.89
42+54.43 M.H. Blk 147		5.24	-1.92	-6.79	+4.87

$$\frac{4 \times 2046}{51.16}$$

27

$$\frac{6 \times 159}{47.3}$$

T.P.	4.87	3.32 2.95	5.24	-1.92		
42+54.43 = M.H. BIK 147					-6.79	
<sup>47.33</sup> 42+07.11			4.90	-1.95	-6.71	+4.76 ✓
<sup>1.0 LANG</sup> 41+59.79			4.87	-1.92	-6.63	+4.71 ✓
41+12.46			5.00	-2.05	-6.55	+4.50 ✓
40+65.13 M.H. BIK 152			5.18	-2.23	-6.48	+4.25 ✓
<sup>42.4</sup> 40+17.73			5.33	-2.38	-6.40	+4.02 ✓
<sup>OK</sup> 39+70.33			5.40	-2.45	-6.32	+3.87 ✓
39+22.93			5.53	-2.58	-6.24	+3.66 ✓
38+75.53 M.H. BIK 155			5.14	-2.19	-6.17	+3.98 ✓
<sup>50.95</sup> <sup>B.M.</sup> <sup>2.12</sup> <sup>+2.85</sup> 38+24.58			5.20	-2.35	-6.08 -6.00	+3.73
37+73.6 M.H. SAN Juan Place			4.44	-1.47	-11.00	+4.51 +9.51 ✓
<sup>50.95</sup> 37+22.68			4.65	-1.80	-10.91	+9.11
36+71.73 = M.H. & BIK 160			4.57	-1.72	-10.82	+9.10 ✓
<sup>51.18</sup> <sup>T.P.</sup> <sup>5.35</sup> <sup>+2.82</sup> 36+20.53			4.37	-1.52		
36+20.53			5.57	-1.75	-10.72	+8.97
<sup>1.5 short</sup> 35+69.38			5.39	-1.57	-10.64	+9.07
35+18.20			5.42	-1.60	-10.55	+8.95
34+67.03 M.H. BIK 163			5.17	-1.35	-10.46	+9.11 ✓
<sup>51.8</sup> 34+15.85			5.29	-1.47	-10.38	+8.91
33+64.67			5.03	-1.21	-10.29	+9.08
33+13.50			4.92	-1.10	-10.20	+9.10
32+62.33 M.H. BIK 168			4.65	-0.83	-10.11	+9.28 ✓
<sup>50.8</sup> 32+11.85			4.73	-0.91	-10.02	+9.11
31+61.33			4.74	-0.92	-9.93	+9.01
31+10.83			4.75	-0.93	-9.84	+8.91
30+60.33 M.H. BIK 171			4.62	-0.80	-9.75	+8.95 ✓

continued on page 44

Sewer Construction  
 Alley B/R 96+97

7/27/11  
 391

68+18.6 = pipe	4.67	3.54			-1.13	
0+00			433	2.79		
			440	2.86	-7.00	+6.21
+503						+543
1+00.6			471	-1.17	-6.60	+4.87
1+50.9			493	-1.39	-6.21	+4.32
2+01.2			498	-1.44	-5.82	+3.83
2+51.5			514	-1.60	-5.43	+3.30
3+01.8			528	-1.74	-5.04	+2.89
3+52.2 = End CI pipe = El. Blvd			530	-1.76	-4.65	
			7.80		-4.26	
WL Blvd = 0+00				7.20		-3.66
+4735				4.95	-1.41	-3.46
+4470				5.13	-1.59	-3.25
1+4205				5.01	-1.47	-3.05
1+8940				3.40	+0.14	-2.84
2 3675				1.90	+1.64	-2.63
2+8410				0.78	+2.76	-2.42
3+3145	11.11	10.40		4.20	-0.71	-2.21
3+788 = DEX.				6.10	4.30	-2.21
				4.63	5.77	-2.20
34' 5.0 x DEX				4.93	5.47	-0.75
34' N v v v v				4.49	5.91	+1.00

Flow Line CI

168  
 21



Sewer Construction  
 Alley BIKs 994.100

66+309 2491.26  
 = 0+00

354

0+486.2

0+97.25

1+458.7

1+94.50

2+431.2

2+91.72

3+103.7

3+89.00 = End CJ. K.L. Blvd

4.97

4.90

5.08

5.22

5.08

5.04

5.10

4.55

7.08

-1.43

-1.36

-1.54

-1.68

-1.54

-1.50

-1.56

-1.57

-3.54

-6.90

-6.66

-6.40

-6.15

-5.90

-5.68

-5.40

-5.15

-4.90

-

+5.22

+5.04

+4.61

+4.22

+4.11

+3.90

+3.59

+3.59

= Flow Line C.I.

W.L. Blvd: 0+00

11.11

10.40

4.38

6.12

4.25

11.82

12.07

12.29

11.56

8.13

5.02

3.47

3.76

3.39

-0.84

-2.82

-0.71

-1.42

-1.67

-1.89

-1.16

+2.27

5.38

6.93

6.64

7.01

-4.50

-4.14

-3.78

-3.42

-3.06

-2.70

-2.34

-1.98

+1.0

+1.0

+3.66

+2.72

+2.11

+1.53

+1.90

+4.97

+9.72

+8.91

+6.44

+6.01

+2.45  
 -1.7  
 0.75

3389  
 486.2

30

2.37  
 3.4

1.24  
 4.22  
 5.00  
 2.11  
 2.82  
 1.22  
 -1.24

+2.33

+2.33

+2.33

+2.33

+2.33

+2.33

Sawyer Construction  
 Alleys Bk. 104 & 103

354

64+38.1  
 20400

0+47.32

0+94.44

1+41.66

1+88.88

2+36.10

2+83.32

3+30.54

3+77.8 - CI pipe El. Blvd

Wt Blvd = 20400

11.11

1040

0+47.6

0+95.2

1+42.8

1+90.4

2+38

2+85.6

3+33.2 DEX

34'S of DEX

34'N of DEX

4.70 -1.16 -6.40

4.54 -1.00 -6.15

4.44 -0.90 -5.90

4.60 -1.06 -5.65

4.46 -0.92 -5.40

4.60 -1.06 -5.16

4.54 -1.00 -4.90

4.44 -0.90 -4.65

4.48 -0.94 -4.40

7.03 -3.49 -4.40

4.25 -0.71 -4.00

13.00 -2.60 -4.00

11.62 -1.22 -3.89

12.10 -1.70 -3.65

12.10 -1.70 -3.07

10.90 -0.50 -2.56

8.29 +2.01 -2.46

5.29 +5.11 -2.24

3.83 +6.57 -1.83

3.80 +6.60 +1.00

3.60 +6.80 +1.00

+5.15

+5.00

+4.59

+4.40

+4.99

+3.90

+3.75

+3.46

stake +3.09

Flon line

+2.47

+1.68

+1.87

+2.26

+4.46

+7.25

+8.40

+5.60

+5.80

7) 3337  
 476

7) 3500  
 4922

31

7) 249  
 31

Sewer Construction  
 Filley's BIKs. 107 - 114

BIK 107	4.32	4.83	+0.51	1.20	1.10
00 = D.M.H. Bayside					-5.65
52.66 W		5.44	-0.81	-5.06	+4.25
105.22		5.57	-0.74	-4.83	+3.89
157.98		5.53	-0.70	-4.19	+3.49
210.64		5.50	-0.67	-3.76	+3.07
263.3		5.35	-0.52	-3.32	+2.80
315.96 C.I. EL Blvd		7.72	-2.89	-2.89	

BIK 114					
00 = D.M.H. Bayside					-5.51
51.7 W		5.81	-1.01	-4.99	+3.98
102.34		5.78	-0.95	-4.49	+3.54
155.01		5.73	-0.90	-3.98	+3.08
206.68		5.66	-0.82	-3.48	+2.65
258.35 C.I. EL Blvd		7.81	-2.98	-2.98	

Sewer Construction BIK 111 Mission Bys

WL Blvd C.I. = 0.00	7.57				
0+51.72		9.86	-2.29	-2.29	= Flow Line C.I. Main
1+03.44		7.71	-0.14	-1.24	+1.80
1+55.16		7.44	0.13	-1.58	+1.71
2+06.88		6.43	1.14	-1.22	+4.36
2+58.60 = 2 Strand m/DEX		3.77	3.80	-0.86	+4.66
34' 5 0%		1.33	6.24	-0.50	+6.74
34' 4 0%		1.20	6.37	+2.00	+4.37
		1.38	6.21	+2.00	+4.21

2566  
51.77 32

5 179  
358

Sewer Construction

Blk 115 + 116

4/20/88 33

	+483				
00-D.M.H. Baylido,		912	-133	-912	+80
52.58 W		616	-133	-55	
105.16		629	-146	-488	+342
157.74		603	-120	-427	+307
210.37 C.I. - EL Blvd		604	-121	-365	+7.84
	7.57	7.87	-3.04	-3.04	
CI. WL Blvd 50+00		996	-239	-240	
0+53.05		806	-247	-180	+1.31
1+06.10		662	+295	-120	+215
1+59.16		380	+377	-0.60	+4.37
2+12.20 = 6 Strand May M.H.		148	+609	00	+609
34' S		1.56	6.01	+2.0	+4.01
34' N		1.44	6.13	+2.0	+4.13

Sewer Construction

Blks 108

	9.80	10.31	+0.51		
WL Blvd Blk 108		12.50	-2.19	-2.19	
0+50.13		10.90	-0.59	-2.50	+1.41
1+00.27		11.28	-0.97	-1.00	+0.83
1+50.40		10.95	-0.64	-1.60	+0.96
2+00.53		9.34	+0.97	-1.40	+2.37
2+50.66		6.37	+3.94	-1.20	+5.14
3+00.8 DEX		374	+6.57	-1.00	+7.57
34' S		379	6.52	+2.00	+4.52
34' N		4.00	6.31	+2.00	+4.31

Sewer Construction  
Files 130 & 119

4/15/26  
40.47  
4/18/26  
46  
15 88 34

M  
M.H. Sta 36+30 page 26  
= 0+00

3.13 from page 27

1/ Logger then shown

0+43.47	4.53	-1.40	-5.03	+3.63
0+90.95	4.50	-1.37	-4.57	+3.20
1+36.42	4.51	-1.38	-4.10	+2.72
1+81.90 = C.F. L.H. Blvd.	6.77	-3.64	-3.64	= Elev. Flow Line
C.F. W.L. Blvd = 0+00	11.29	-2.95	-2.95	✓ ✓ ✓
0+40.47	8.58	-0.24	-1.96	+1.72
0+80.95	7.27	+1.07	-0.97	+2.04
1+27.42	4.82	3.52	+0.02	+3.50
1+61.90 = Strand Way	2.43	5.71	+1.5	+4.71
34' S	2.58	5.76	+1.22	+3.76
34' N	2.48	5.66	+1.18	+3.66

Sewer Construction  
Alleys 123 & 124 Mission Beach

4/17/66 38

3.13 from page 27

M.H. 54+08.90					
- 0+00				- 5.6	
0+40.12	4.77	- 1.64	- 8.06	+ 3.42	
0+80.25	4.74	- 1.61	- 4.62	+ 3.01	
1+20.37	4.72	- 1.59	- 4.18	+ 2.59	
1+60.5 = C.I. Fl. Blvd.	6.87	- 3.74	- 3.74	- Flow Line present C.I.	
C.I. W.L. Blvd = 0+00	12.77	- 3.05	- 3.05	✓ ✓ ✓	
0+40	8.90	+ 0.82	- 1.70	+ 2.52	
+ 80	6.18	8.54	- 0.35	+ 3.87	
1+40 = Strand Way.	4.28	5.44	+ 1.0	+ 4.44	
34' S	4.18	5.54	+ 1.5	+ 4.04	
34' N.	4.23	5.49	+ 1.5	+ 3.94	

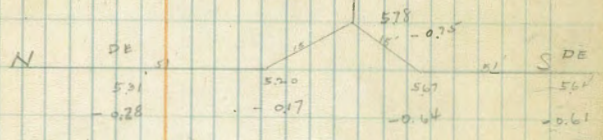
Sewer Construction  
 Filley 128+127

M.H. 54+03.40				
500 @ Bayside			-4.50	
485.6 w	6.89	-1.86	-3.91	
97.12	6.30	-1.27	-3.32	
145.7 = EL Blvd	7.77	-2.74	-2.74	

~~+7.35 @~~ -2.02  
~~5.00 @~~ 7.05  
 5.03 +11

Y = 6' E of EL Blvd		-0.75	-2.82	+2.07
S A		-0.64	-2.60	+1.96
S D.E.		-0.61	-1.82	+1.21
N A		-0.17	-2.60	+1.43
N D.E.		-0.28	-1.82	+1.54

Flowline CI



WL Blvd = 00	11.66	-1.94	-1.94	Flowline CI
+42.2	6.46	+3.06	-0.47	+3.53
M.H. + 84.6 @ Strandway	4.37	+5.35	+1.0	+4.35
34' S	4.42	+5.30	+1.5	+3.80
34' N	4.48	+5.24	+1.5	+3.74

Sewer Construction  
 MILEYS BINS 131 & 132

MH 50x14.0				503
@ Bayside = 0.0			-4.5	
+45.5 W	6.25	-1.42	-3.62	+2.20
+91.0	5.61	-0.58	-2.74	+2.16
+136.5 = EL Blvd	6.89	-1.86	-1.86	Flowline C.I.

00 = WL Blvd	10.60	-0.88	-0.88	✓ ✓ ✓
+29.5	6.51	+3.21	+0.06	+3.15
MH +59 = @ Strand Way	5.00	+4.72	+1.0	+3.72
34' S	4.80	+4.92	+1.5	+3.42
34' N	4.85	+4.87	-1.5	+3.32



Sewer Construction  
 Alleys 12145 136 + 135

MH 4877.55					
4 Bay Side = 00					
43.66 W	588	-0.85	-2.96	+2.11	
87.30	4.86	+0.17	-1.91	+1.74	
130.9 = El Blvd	590	-0.87	-0.87		Flowline C.T.

503

MH 1314 = 00	1017	-0.13	-0.13	✓	✓	✓
MH 445.8 = 4 Strandway	510	+4.94	+1.0		+3.94	
3' S	50'	+5.00	+1.5		+3.50	
0' N	50'	+5.00	+1.5		+3.50	

Sewer Construction  
 Alleys Rks 139 + 140

MH 462113

E Bayside = 00

+42.86 W

+85.73

1 + 28.6 = EL Blvd

45.50 + 40.20 = 85.70

			-4.0
499	-0.80	-2.92	
3.99	+0.20	-1.83	
494	-0.75	-0.75	

+2.12

+1.63

Flowline C.I.

W L Blvd = 00

MH 481 W = E Strandway

34' S

34' N

10.00	+0.04	+0.04	
542	+4.62	+1.00	
535	+4.69	+1.5	
534	+4.50	+1.5	

✓ ✓ ✓

+3.62

+3.19

+3.00

Sewer Construction  
ALLEYS BIKS 144 & 143

7<sup>15</sup>58

	10.03	8.30		-1.73	(5.00)	
00 = DM.H. & Bayside Lane					-4.50	
31st St						
42.9						
0+43.93			9.34	-1.04	-3.34	+2.34
0+87.86			8.22	+0.08	-2.25	+2.33
1+31.80 E. Anne Blvd			9.43		(-1.5)	
					-1.13	on pipe
					(1.0)	
00 = W. Line Blvd			8.15		+0.15	on pipe
54.0 235th						
0+56.3 = M.H. & Strandway			3.45	4.85	+1.0	+3.85
34'S			3.47	4.83	+1.5	+3.33
34' N			3.44	4.86	+1.5	+3.36
T.P.	1.94	6.80	3.44	4.86		

Sewer Construction

ALLEYS BIKS 147 & 148

00 = DM.H. & Bayside Lane					OK	
					-4.5	
0+47.37			7.93	-1.13	-3.56	+2.43
0+94.74			7.30	-0.50	-2.62	+2.12
1+42.1 = E. Line Blvd			8.48		(-2.5)	
					-1.68	on pipe
					(2.0)	
00 = W. Line Blvd			7.68		-0.88	on pipe
0+32.75			3.47	3.33	+0.06	+3.27
473						
0+65.5 = M.H. & Strandway			1.53	5.27	+1.00	+4.27
34'S			1.80	5.00	+1.5	+3.50
34' N			1.64	5.16	+1.5	3.66

Sewer Construction  
 Alleys BIKs 1514152

	373	4.46		+0.73		
00 = P.M.H. & Bay side Lane					-5.5	
					-5.0	
0+41.3		6.50			-4.44	+2.40 ✓
0+82.6		6.15			-3.89	+2.20 ✓
1+23.9		5.58			-3.33	+2.21 ✓
1+65.5 E Line Blvd		7.24		-2.78	-3.5	on pipe
					-2.78	
		6.80 sec R 40			(3.0)	
00 = W. Hne Blvd		8.73			-1.93	on pipe
0+41.4		3.85	+2.95		-0.47	+3.42 ✓
0+82.8 = M.H. & Strandway		1.56	5.24		+1.0	+4.24 ✓
34'S		1.71	5.09		+1.5	+3.59 ✓
34'N		1.62	5.18		+1.5	+3.68 ✓

Sewer construction

Alleys BIKs 1554156

					6.18 Main Line	
00 = M.H. & Bay side Lane					-5.5	
0+47.7		6.53	-2.07		-4.83	+2.76 ✓
0+95.4		6.06	-1.60		-4.17	+2.57 ✓
1+43.1		5.41	-1.15		-3.50	+2.35 ✓
					-3.5	
1+90.8 E Line Blvd		7.30			-2.84	on pipe
		6.80			(-3.0)	
00 = W. Hne Blvd		8.80	-2.00		-2.00	on pipe
OK 0+49.2		3.74	3.06		-0.50	+3.56 ✓
0+98.4 = M.H. & Strandway		1.20	5.60		+1.0	+4.60 ✓
34'S		1.27	5.53		+1.5	+4.03 ✓
34'N		1.30	5.50		+1.5	+4.00 ✓

Sewer Construction  
14 Alleys BIKs 160+159

	5.38	3.65		-1.73	sec P. 28	
00 = DM, H & Bayside Lane				-5.5		
				-5.50		
+54.8		5.44		-1.79	-4.81	+3.02
1+09.6		5.23		-1.58	-4.11	+2.53
1+64.4		4.71		-1.06	-3.42	+2.36
2+19.2 = Flipps Blvd		6.38			-2.73	
	1.92	7.95		6.03		on Pipe
00 = W Line Blvd			10.88		-3.0	
					-2.95	on Pipe
X +57.6		5.73	+2.22	-0.47	+2.69	
	7.80	10.03	+0.73			
145.2 = Strandway		4.00	6.03	+2.0	+4.03	
34 S		4.19	5.84	+2.5	+3.34	
34 N		4.25	5.78	+2.5	+3.28	

5.8  
5.8  
5.8  
5.8  
6.8



Sewer Construction

17 Alleys BIKs 163+164

	5.32	3.97		-1.35	-6.0	
00 = Bayside Lane					-5.5	Raised 0.5
+49.32		5.57		-1.60	-4.91	+3.31
+98.64		5.39		-1.42	-4.32	+2.90
1+47.96		4.86		-0.89	-3.73	+2.84
1+97.28		4.48		-0.51	-3.14	+2.63
246 = E Line Blvd		6.52			-3.5	
	2.44	8.05		+5.41	-2.55	on Pipe
00 = W Line Blvd			9.86		-3.0	
					-1.81	on Pipe
X +44.2		6.35	+1.70	-0.87	+2.57	
+98.4		4.32	+3.73	+0.06	+3.67	
	10.03					
1+32.6 = Strandway		4.62	5.41	+1.0	+4.41	
34 S		4.73	5.30	+1.5	+3.80	
34 N		4.42	5.61	+1.5	+4.11	

apparently means Insert Grade 1940  
70'

Sewer Construction  
1st Alley BIKs 1684167

00 = DM.H & Bayside Lane 487	4.04	-0.83	-6.0
+52.2	5.02	-0.98	-4.96
1+04.4	5.08	-1.04	-4.42
1+56.6	4.97	-0.93	-3.28
2+08.8	4.60	-0.56	-3.34
2+61.0 = E. Line Blvd.	8.34	6.85	-2.81
00 = W. Line Blvd	10.50		-2.16
1+51.6	6.81	+1.53	-1.11
1+03.2	10.03	4.89	+3.45
1+54.8 = Mt. & Stradway	4.81	5.22	+1.0
34 1/2 S	4.83	5.20	+1.5
34 1/2 N	4.54	5.49	+1.5

Sewer Construction  
1st Alley BIKs 1714172

00 = DM.H & Bayside Lane	3.59	4.30	+0.71	-6.0
+52.86	5.09	-0.79	-4.51	-5.0
1+08.72	4.94	-0.68	-4.01	
1+56.58	4.80	-0.50	-3.52	
2+11.44	4.54	-0.24	-3.02	
2+64.3 = E. Line Blvd	1.76	8.34	6.83	6.58
00 = W. Line Blvd		10.48		-2.53
+43.85	7.89	+0.45	-1.35	-3.0
+87.7	6.44	+1.90	-0.57	-2.14
1+31.55	10.03	4.24	+4.10	
1+73.4 = Mt. & Stradway		3.45	6.58	
34 1/2 S	4.05	5.98	+2.0	
34 1/2 N	3.33	6.70	+2.0	

Raised 0.5	+3.98
	+3.38
	+2.95
	+2.78
on Pipe	
on pipe	
	+2.64
	+3.50
	+4.22
	+3.70
	+3.99

Raised 1.0	+3.72
	+3.33
	+3.02
	+2.78
on pipe	
	+1.80
	+2.47
	+3.89
	+5.58
	+3.98
	+4.70

6.27  
58  
6.85  
+0.71  
3.59  
7.30  
5.04  
0.79  
5.26  
-0.96

Sewer Construction  
Main Line Bayside Lane (con. from P. 28)

	5.20	4.37	Gnd -0.87	I.E.	
30+60.33 M.H. Alley BIK 171 <small>5.20</small>	5.20		-0.80	-9.75	+8.95 ✓
30+05.50	5.34		-0.97	-9.65	+8.68
29+50.67	4.60		-0.23	-9.56	+9.33
28+95.84	5.66		-1.29	-9.46	+8.17
28+41.00 = M.H. Alley BIK 176 <small>42.03</small> <small>4.90</small> +3.68	5.59		-1.22	-9.37	+8.15 ✓
27+94.77	4.87 ✓		-1.19	-9.30	+8.11 ✓
27+56.94	4.95 ✓		-1.27	-9.22	+7.95
27+4.90 D.M.H. Alley BIK 179 <small>42.07</small>	4.83 ✓		-1.15	-9.15	+8.00 ✓
26+72.84	4.44 ✓		-0.96	-9.08	+8.12
26+30.77	4.76 ✓		-1.08	-9.00	+7.92
25+88.7 D.M.H. Alley BIK 184 <small>42.76</small>	4.59 ✓		-0.91	-8.93	+8.02 ✓
25+46.54	4.64 ✓		-0.98	-8.86	+7.88
25+04.37	4.54 ✓		-0.99	-8.78	+7.90
24+62.20 D.M.H. Alley BIK 187 <small>42.7</small>	4.52 ✓		-0.84	-8.71	+7.87 ✓
24+19.5	4.56 ✓		-0.88	-8.64	+7.76
23+76.8	4.71 ✓		-1.03	-8.56	+7.53
23+31.4 D.M.H. Alley BIK 192 <small>42.6</small> <small>TR</small> <small>4.85</small> <small>3.73</small>	4.80 ✓ 4.80		-1.12 -1.12	-8.48	+7.36 ✓
22+88.8	4.95 ✓		-1.22	-8.40	+7.18
22+46.2	4.91 ✓		-1.18	-8.33	+7.15
22+036 = D.M.H. Alley BIK 195 <small>85.45</small> <small>3.57</small>	4.86 ✓		-1.13	-8.26	+7.13 ✓
21+68.15	4.61		-1.04	-8.20	+7.16
21+32.70 F.T.	4.74		-1.15	-8.14	+6.99
20+97.25	4.72		-1.20	-8.08	+6.83
20+61.80 D.M.H. Alley BIK 200	4.77		-1.20	-8.01	+6.81 ✓
	3.44	4.41	0	+0.97	
	4.14	3.37	4.98	-0.57	

## Grade

## Grand

1920 20192		4.67	-1.10	-7.93	+6.83	
192766	1 longer than shown	4.78	-1.21	-7.86	+6.65	
192340 M.H. Alley 203		4.68	-1.11	-7.79	+6.68 ✓	
182914		4.64	-1.07	-7.72	+6.65	
184428		4.81	-1.24	-7.64	+6.40	
184062 M.H. Alley 205		4.80	-1.23	-7.56	+6.33 ✓	
174636		4.57	-1.00	-7.48	+6.48	
174210	1 longer than shown	4.42	-0.85	-7.41	+6.56	
164784 M.H. 211		4.33	-0.76	-7.34	+6.58 ✓	
164358		4.75	-1.18	-7.26	+6.08	
154932		4.75	-1.18	-7.19	+6.01	
154506 M.H. 216		4.45	-0.88	-7.12	+6.24 ✓	
154081	4.67	3.46	4.78	-1.21	-7.05	+5.84
144656		4.79	-1.33	-6.97	+5.64	
144230 M.H. 219		4.83	-1.37	-6.89	+5.52 ✓	
134809		4.77	-1.31	-6.81	+5.50	
134388		4.70	-1.24	-6.74	+5.50	
124967 M.H. 221	3.49	4.18	-0.72	-6.67	+5.95 ✓	
124494		4.86	-1.37	-6.59	+5.22	
1240318		4.82	-1.33	-6.51	+5.18	
1145640 M.H. 227		4.47	-0.78	-6.43	+5.65 ✓	
1141407		4.80	-1.31	-6.36	+5.05	
1047174	12 longer than shown	4.57	-1.08	-6.29	+5.21	
1042940 M.H. 232		4.60	-1.11	-6.21	+5.10 ✓	
94857		4.77	-1.28	-6.13	+4.85	
9442	10 shorter than shown	4.53	-1.04	-6.05	+5.01	



8+98.3 M.H. Δ 430	4.21	4.08	-0.59	-5.98	+5.39 ✓
8+48.0		4.65	-0.44	-5.29	+5.45
7+97.7 M.H. Δ		8.50	-4.29	-5.80	+1.51 ✓
4.1 +55.0		8.29	-4.08	-5.72	+1.64
		7.05	-2.87		+2.85
7+13.9		7.77	-3.56	-5.65	+2.09
6+72.0 M.H. & Riley BH 239		7.92	-3.71	-5.58	+1.87 ✓
4.7 6+248		7.97	-3.76	-5.50	+1.74
5+476		8.16	-3.95	-5.42	+1.47
5+304 = M.H. Δ		8.50	-4.29	-5.34	+1.05 ✓
4+81.1		5.08	-0.87	-5.25	+4.38
4+318 = M.H. Δ EL Blvd.		5.13	-0.92	-5.16	4.24 ✓
3+87.43		5.16	-0.95	-5.08	+4.13
3+43.06		4.79	-0.58	-5.01	+4.43
2+98.69 M.H. & Riley		4.78	-0.57	-4.94	+4.37 ✓
4.1 2+54.52		5.13	-0.92	-4.87	+3.95
2+10.35		5.30	-1.09	-4.79	+3.70
1+64.2 M.H. & Riley		5.05	-0.84	-4.71	+3.87 ✓
1+21.5		5.70	-1.49	-4.64	+3.15
0+76.8		5.62	-1.41	-4.56	+3.15
0+32.1		5.19	-0.98	-4.48	+3.50
-0+12.6				-4.40	
50 stub		5.55	-1.34	-3.50	+2.16

Alley BHK 194 Univ Hls 10/31/25  
 Univ To Lincoln bet Park Blvd + Georgia

	E Line	W Line
20: N Line Univ	331.47	
+20 B	331.30	331.10
+60	331.70	331.45
+100 B	332.10	331.80
+155 B	333.30	333.00
+201.67	333.70	333.50
+248.33	334.10	334.00
+295.00 B	334.50	334.50
+343.0	34.32	34.26
+391.0	34.14	34.02
+439.0	33.96	33.78
+487.0	33.78	33.54
+535.0 B	333.60	333.30
+575 Stinchinton	332.57 OTched	332.65 50 bds.

336.41 SW Univ + Georgia

336.41						
3.26						
339.27						
7.55						
330.72						
6.17						
337.17						
2.93						
334.26						
4.92						
339.18						
	W	B	B	B	B	B
	7.56	31.10	31.45	31.80	33.00	33.50
	330.71	6.09	5.74	5.39	4.19	3.69
		7.00	7.17	5.29	4.19	3.50
		-0.91	-1.43	0.0	0.0	+0.16
	E	8.81	31.30	31.70	32.10	33.30
		331.46	5.99	5.74	5.09	3.99
		331.47	4.55	5.72	4.99	3.17
		Paying	+1.34	-0.23	+0.10	+0.75
	W	B	B	B	B	B
	34.00	34.50	34.26	34.02	33.78	33.54
	3.19	4.68	4.92	5.16	5.40	5.64
	3.23	4.38	5.45	5.48	4.90	4.64
	-0.09	+0.20	-0.53	-0.27	+0.50	+1.00
	E	34.10	34.50	34.22	34.14	33.96
		3.09	2.69	4.86	5.04	5.22
		2.09	2.33	2.86	3.77	4.77
		+1.00	+0.36	+2.00	+1.27	+0.43
	W	33.80	32.65	5.85	32.80	
		5.83	6.53	33.33	6.38	
		4.76		Top	6.38	
		+1.12		cut	0.00	
	E	33.60	4 OK.			
		5.58	32.57			
		4.26	6.61			
		+1.32	6.61			
			0.00			
			cut			

Sewer Construction  
 17 Alleys BIKS 176 + 175

B.M.	3.61	7.32	+0.71			
D.E. 564 E of Bayside Lane		5.70	-1.38	-4.6	+ 3.22	12.78
oo=M.H. @ Bayside Lane				-6.2	Raised 0.5	6.2
+52.7		5.49	-1.17	-5.5		13.40
+105.4		5.09	-0.77	-4.9		
+158.1		5.07	-0.75	-4.29		
2+10.8		4.83	-0.51	-3.68		
2+63.5 = E. Line Blvd		6.79		-3.07		
				-2.46		
				-3.5		
	10.90	11.61	+0.71			
oo = w. Line Blvd / M.H.		13.40		-3.0		
+47.77		11.57	+0.04	-1.79		
+95.55		10.35	+1.26	-1.14		+ 1.18
1+43.32		7.12	+4.49	-0.49		+ 1.75
1+91.10 = T. @ Strandway		3.99	+7.62	+0.76		+ 4.33
2+49.5 = D.E.		6.80	+4.81	+0.80		+ 6.82
				+2.00		+ 2.81
38' S. of T.		4.01	7.60	+3.5		+ 4.10

Sewer Construction  
in A Keys BIKs 179+180

	5.56	4.41	-1.15			
RE. 56.4 E of DMH.		4.78	-0.37	-4.0	+3.63	
oo = D.M.H. @ Bayside Lane		5.56	-1.15	-5.0		
+50.1		5.22	-0.81	-4.60	+3.79	
+100.2		4.85	-0.44	-4.19	+3.75	
+150.3		4.91	-0.50	-3.79	+3.29	
+200.4		4.91	-0.50	-3.38	+2.88	
93.9				-3.5		
2+53.9 = E. Line Blvd		7.39		-2.98		
$\frac{7.6}{6.15}$						
				-3.0		
oo = W. Line Blvd M.H.		11.58		-2.41		
+50.64		9.33	old	-1.28	+1.42	
+101.28		7.98	1.49	-0.46	+1.95	
+151.92		4.02	5.45	+0.26	+5.09	
+202.56		1.55	7.92	+1.18	+6.74	
2+53.2 D.E. 48'33" W. of Strandway		4.03	5.44	+2.0	+3.44	

+ 0.97 BM spike  
 4.00  
 4.97 HI  
 4.50 TP  
 -1.53 Tot of bell  
 11.00  
 9.47 HI

How to use

Sewer Construction  
in Alleys in Blks 184 & 183

	4.76	3.85	P.M. -0.91	44 -4.0 -5.8 -5.0		
DE 56.4 E. of Bayside Lane		4.13	-0.28		+3.72	
00 = M.H. @ Bayside Lane						4.97
3/4 Short						6.28 TP
+49.06		7.59	-3.74	-4.52	+0.78	-1.41 Top of bell
+98.12		4.25	+0.40	-4.03	+3.63	10.41
1+47.18		3.95	-0.10	-3.55	+3.45	9.00 HI
1+96.24		4.05	-0.23	-3.06 -3.5	+2.83	
1+453 = E. Line Blvd.		6.43		-2.58 -3.0		
	9.00			-3.0		
00 = W. Line Blvd. M.H.		11.00		-2.0		
+50.7		9.15	-0.15	-1.20	+1.05	
1+01.4		8.12	+0.88	-0.40	+1.28	
1+52.1		3.87	5.13	+0.40	+4.73	
2+02.8		1.00	8.03	+1.20	+6.80	
2+53.5 = DE. 48.4 W. of Strandway		2.87	6.15	+2.0	+4.13	

SEWER Construction  
in Alleys in BIRs 1874188

	4.86	4.02	-0.84	-4.5	
DE. 56.6 E of D.M.H.		4.35	-0.33	-4.0	+3.67
00 = D.M.H. @ Bayside Lane				-5.0	
1746.94		4.86	-0.84	-4.53	3.69
1793.68		4.91	-0.89	-4.06	+3.17
1740.52		4.91	-0.89	-3.58	+2.69
1787.36		4.90	-0.88	-3.11	+2.23
2342 = E. Line Blvd		6.66	-2.64	-2.64	

-1.41  
10.25  
8.84

51

	8.84 H1			-3.0	
00 = W. Line Blvd. M.H.		10.66		-1.82	
1749.94		8.68	+0.16	-1.05	+1.23
1799.88		7.58	+1.06	-0.29	+1.55
1749.82		3.76	5.08	+0.45	+4.63
1799.76		1.23	7.61	+1.22	+6.39
2+30.10		2.31	6.53	+1.62	+4.91
2+49.7 = DE. 48.4 W. of Strandway				+2.0	

flowline

Front step of both house

Sewer construction  
 in Alleys in Bks 192 & 191

R.44  
 3.73

DE=56.8 E. of D.M.H.	4.30	-0.57	-4.00	+3.41
000 D.M.H. @ Bayside Lane			-5.5	
			-5.0	
3.4 short +55.3	4.74	-1.01	-4.48	+3.47
+10.6	4.45	-0.72	-3.97	+3.25
1+65.9	4.35	-0.62	-3.46	+2.84
			-3.5	
2+41.3 = E Line Blvd	6.68		-2.95	
BM 3.94 4.91		+0.97		
I.P. 9.02 10.76	3.17	1.74		
00-M.H. W Line Blvd	13.03		-3.0	
			-2.27	
+48.62	10.12	+0.64	-1.32	+1.96
+97.24	9.02	+1.74	-0.36	+2.10
1+45.86	5.52	+5.24	+0.59	+4.65
1+94.48	3.00	+7.76	+1.54	+6.22
2+43.10 D.F. 48.4 W. of Strandway	5.16	+5.60	+2.5	+3.10

Sewer Construction  
in Alleys BIKS 195-196

	4.41	3.68	-1.13		
P.E. = 57.38 of P.M.H.		4.23	-0.55	-4.0 -5.5	+3.45
00 = P.M.H. @ Bayside Lane				-5.0	
+51.35		4.62	-0.94	-4.34	+3.45
1402.7		4.51	-0.83	-3.77	+2.94
✓ 1454.05		4.46	-0.78	-3.16 -3.5	+2.38
0 2+05.4 = E. Line Blvd		6.22		-2.54	
		10.76			
254	10.17	3.19	7.57	-3.0	
00 = M.H. W.H.M. Blvd		11.99		-1.88	
+46.94		8.30	+1.81	-1.00	+2.81
+93.88		6.23	+3.84	-0.13	+4.01
1+40.82		4.21	5.90	+0.75	+5.15
1+87.76		2.54	7.57	+1.62	+5.95
2+34.7 P.E. 48.4 W. of Strandway		4.24	5.87	+2.5	+3.37



Sewer Construction  
 Alleys BIKS 200-199

1946  
 100

	508	4.30		-0.74		
DE=57.4 E. of R.M.H			5.39	-1.09	-4.0	+2.91
00=D.M.H. & Bayside Lake					-5.0	
1.85 Short			5.36	-1.06	-4.35	+3.29
+48.65			5.25	-0.95	-3.71	+2.76
+97.80			4.44	-0.54	-3.07 -3.5	+2.53
1745.95			6.73		-2.43	
1794.6 = E Line Blvd			4.50	-0.20	-1.93	+1.73
33' N						
13M	7.56	8.53	+8.97		SPK Blvd -3.0	
00=M.H. W. Line Blvd			10.35	-1.82	-1.82	ON PIPE
+5528			6.75	1.78	-0.74	+2.52
1710.56			4.29	4.24	+0.34	+3.90
1765.84			2.10	6.43	+1.42	+5.01
2+21.10 DE 48.4 W of Strandway			2.70	5.83	+2.5	3.33

Sewer Construction  
Alleys BIKS 203 & 204

T.P.	431	430	2.80	+1.50	-4.0	
DE. 57.4 E of MH			4.86	-0.55	-4.0	+3.45
00 = DMH @ Bayside Lane					-5.0	
46.5			5.2	-0.91	-4.39	+3.48
930			5.1	-0.81	-3.78	+2.97
1+39.5 1907			4.88	-0.57	-3.18	+2.61
1+86.0 = E. Line Blvd	New Lines C.I.				-2.57	
S						
S						
N						
33' N			8.66	+0.31	-1.4	+1.71
SPK Elm St 31	8.00	8.97		+0.97	-3.0	
00 = N.H.W. Line Blvd			10.68		-1.91	ON PINE
+51.1			6.25	2.72	-0.8	+3.52
1+02.2			4.20	4.77	+0.3	+4.47
1+53.2			2.73	6.24	+1.4	+4.84
2+04.3 D.F. 48' W. Strandway			2.96	6.07	+2.5	+3.57

Sewer Construction  
 VALLEYS BIKS 2089207

341 4.38 +0.97

P.E. 57.4 E of DMH.	5.45	-0.87	-4.00
00 = D.M.H. @ Bayside Lane			-5.0
0+46	5.34	-0.96	-4.49
0+92	5.26	-0.88	-3.98
0+46 1793	4.98	-0.60	-3.47
00 = E Line Blvd	7.35	-2.97	-2.97

+3.13  
 +3.83  
 +3.10  
 +2.87  
 = Flow Line

8.97

33' S	8.66	+0.31	-1.5
33' N	8.66	+0.31	-1.5
00 = M.H. W Line Blvd	10.98		-3.0
+45.88	5.79	3.18	-2.01
+91.76	3.23	5.74	-0.88
1+37.64	3.00	5.97	+0.25
1+83.5 P.E. 48. NW. of Strandway	3.02	5.95	+1.38

+1.84  
 +1.81  
 +4.06  
 +5.49  
 +4.59  
 +3.45

Sewer Construction  
 Alleys BIKS 2114212

	512	438 466	484	-0.46	-4.00 -5.0	+4.01
D.E. 574 E of D.M.H.			465	+0.01	-4.00	+4.01
00 = D.M.H. & Bayside Lane					-4.5	
+45.5			5.40	-0.74	-4.07	+3.33
x91.0			5.09	-0.43	-3.65	+3.22
1+366 181.9			4.76	-0.10	-3.22 -3.7	+3.12
1+819 = E Line Blvd			7.43	-2.77	-2.8	Flow Line
S						+2.76
S						
N						+2.79
N						
BM 514	7.51	8.48		0.97		
S			8.15	+0.33	-1.5	+1.83
N			8.15	+0.33	-1.5	+1.83
00 = W Line Blvd			10.39	-1.91	-1.91	
+56.33			4.30	4.18	-0.44	+4.62
1+12.66			2.33	6.15	+1.63	+5.12
1+69 = DE. 484 W. of Broadway			2.61	5.87	+2.5	+3.37

Sewer Construction  
Alleys BIKs 2164215

505	4.17		-0.88	-4.0	
D.E. 57.2 E of DM.H.		4.63	-0.46	-3.5	+3.04
00 = D.M.H. @ Bayside Lane				-4.5	
+35.46		5.19	-1.04	-3.90	+2.88
+10.97 16.44		4.74	-0.57	-3.30	+2.73
1166 1/2 E. Line Blvd		6.88	-2.71	-2.70	Flow Line CI
S		4.39			+2.00
S					
	8.48				
00 = M.H. W. Line Blvd		10.44		-3.0	
+53.77		4.80	3.28	-0.48	+4.16
+107.54		2.42	6.06	+1.01	+5.05
+61.3 D.E. 48.4 W. Strandway		2.52	5.96	+2.5	+3.46

Ref  
1392-1

3 10.6  
5.5

6 3.0  
5.1

6.35

58

Sewer Construction  
Alleys BIKs 219+220

346 x rampage 46

DE. 56.8 E D.M.H.	4.60	-1.14	-4.00 -50	+2.86
00=D.M.H. @ Bayside Lane			-4.5	
+48.4	4.92	-1.46	-3.84	+2.38
0+16.3 145.2	4.20	-0.74	-3.17 -2.5	+2.43
E. Line Blvd	5.97	-2.51	-2.5	= Flow Line C.I.

9.30

10.36

4.06 6th Page 38  
-30

00=M.H. W. Line Blvd	12.77	-1.91	-1.91	
+54.1	6.75	3.61	-0.44	+4.05
1+08.2	4.35	6.01	+1.03	+4.98
1+62.3 DE H.S.H.W. Strandway	4.64	5.70	+2.5	+3.20

2.40  
6.7

53.9  
5.5  
19.7

3/14/57  
48.0

3/14/57  
7.0

59

Sewer Construction  
 Elevs Blks 224 & 223

346 from page 45

DE. 56.4 E. of D.M.H. & Bay Side		4.07	- 0.41	- 3.5	+ 3.09
oo = D.M.H. & Bay Side				- 50 - 4.5	
o + 43.73		4.33	- 0.87	- 3.83	+ 2.96
o + 46.46		3.90	- 0.44	- 3.15	+ 2.71
1 + 29.7 = E. Line Blvd.		5.93	- 2.47	- 3.5 - 2.47	= Flow Line C.I.
	7.31	7.76	3.01	0.45	
M.H. W. Blvd. - 1000		9.79	- 2.03	- 30 - 2.0	= Flow Line
+ 43.08		5.63	2.13	- 0.88	+ 3.01
+ 46.16		7.58	5.18	+ 0.24	+ 4.94
1 + 24.23		1.46	6.30	+ 1.37	+ 4.93
1 + 12.30 DE 48.0 W. of M. Street		2.10	5.66	+ 2.50	+ 3.16

73  
62  
913  
979

58  
505  
593

477  
4307  
5203  
27

31237  
60  
112

Sewer Construction  
Alloys 227 & 228

DE 56.4 East of Bayside	7.30	6.52	-0.78 from page 45	-3.5	+2.70
			7.32	-0.80	
DE & Bayside = 0100			11.02	4.50	-4.5
+ 56.95			7.28	-0.76	-3.57
+ 13.9 = E.L. Mission			9.16	-2.64	-2.84
					= Flow Line C.I. Main
W.L. Mission Blvd.			8.28	-1.76	-1.76
+ 48.35			5.78	+0.74	-1.06
+ 96.70			3.20	+3.32	-0.36
+ 45.05			0.66	+5.86	+0.34
+ 93.40 = 1/2 W. of W.L. Strand.			0.30	+6.22	+1.04
			1.40	5.12	

9.16  
24.27  
18.6  
9.5

76.6  
6.7  
8.28

43.76  
9.4

61



## Sewer Construction

792

62

Alleys BLK 232 &amp; 231

57.6 Excl Bayside	<sup>0.66</sup> 5.78	5.12 from page 67	6.52	-0.74	-4.0	+3.26
M.H. & Bayside					-4.5	
+52.9		6.56	-0.78	-3.66	+2.88	
1+05.8 = E.L. Mission Blvd		8.59	-2.81	-2.81	-Flow Line C.I.	
W.L. Mission Blvd		7.92	-2.14	-2.14	Flow Line C.I.	
+55.3		5.76	+0.02	-1.85	+1.87	
1+10.6		3.82	+1.96	-1.57	+3.53	
1+65.9		0.51	+5.27	-1.29	+6.56	
2+21.2 = 48' W of W.L. Strand		0.66	+5.12	-1.00	+6.12	
		5.90	-0.12			

## Sewer Construction

Alleys 234 &amp; 235

600

588

-012 from page 63

4 Bayside

= 0+00

-4.5

0+50

6.44

-0.56

-3.83

+3.27

1+00 = E.L. Mission Blvd

9.04

-3.16

-3.16

Flow Line

W.L. Mission Blvd = 0+00

7.91

-2.03

-2.03

Flow Line C.I.

0+51.86

6.00

-0.12

-1.82

+1.70

1+03.77

6.08

-0.20

-1.62

+1.42

1+55.58

3.99

+1.89

-1.41

+3.30

2+07.44

1.42

+4.16

-1.21

+5.67

2+59.30 = 424 W of W.L. Strand

0.63

+5.25

-1.00

+6.25

6.58

-0.70

Sewer Construction  
 Alleys 239 & 238

66.5  
 56  
 920

3/217  
 72

64

507 437 -070 from page 63

M.L. & Bayside 20+02				-5.00	
0+48.5	476	-038	-4.27	+389	
+97.0	474	-037	-355	+3.18	
1+45.5 = R.L. Blvd.	720	-283	-283	= Flow Line C.I.	

588 from page 63

W.L. Blvd = 0+00	820	-232	-232	Flow Line C.I.
0+51.5	694	-106	-210	+1.04
1+02.30	656	-068	-188	+1.20
1+53.45	492	+096	-166	+2.62
2+04.60	328	+260	-146	+4.04
2+55.75	184	+404	-122	+526
3+06.9 = 45.4 W. of W.L. Strand	456	+525	-1.00	+6.21

990 from page 65

Janer Construction

Alley BIK 241

437 from page 64

6.63

WL Mission Blvd 50x00

0+49.7		532	- 2.26	- 2.26	Flow Line C.T.
+ 99.4		592	- 0.95	- 2.16	+ 1.21
1+ 49.1		580	- 1.55	- 2.06	+ 0.51
1+ 98.8		464	- 1.43	- 1.96	+ 0.53
2+ 48.5		234	- 0.27	- 1.86	+ 1.59
2+ 98.2	5.71	0.28	+ 2.03	- 1.76	+ 3.79
3+ 47.9	9.80	4.32	+ 4.09	- 1.66	+ 5.75
	= 484 W. of WL Strand.		+ 5.48	- 1.56	+ 7.04

7/30/79

601  
62

65

Sewer Construction  
 B/K 244 Mission Beach

	5.91	6.58	+0.67	-3.5	
00=M.H. w. Ligne 13 lrd		8.86	-2.28	-2.28	Flow line
+53.2		7.09	-0.51	-2.15	+ 1.67
1+06.4		7.43	-0.85	-2.08	+ 1.23
1+59.6		7.19	-0.61	-1.98	+ 1.37
2+12.8		6.87	+0.29	-1.88	+ 1.59
2+66.0		4.97	+1.61	-1.78	+ 3.39
3+19.2		2.44	+3.94	-1.68	+ 5.62
3+72.5 DE		1.03	5.55	-1.58	+ 7.13

Sewer Construction  
 Alley BIK 245 Miss Beech  
 654 Page 66

T.P.	376	8.67	1.17	5.41	-3.5	
00 - M.H. White Blvd			11.17	-2.50	-2.50	Flow Line C.I.
454.5			9.70	-1.03	-2.35	+1.32
1+09.0			9.74	-1.07	-2.20	+1.13
1+23.5			9.15	-0.48	-2.06	+1.57
2+18.0			8.29	+0.38	-1.90	+2.28
2+72.5			6.67	2.00	-1.71	+3.75
3+17.2			4.88	3.67	-1.60	+5.29
3+81.8 D.E.			3.26	5.41	-2.45	+5.86

1051  
 64  
 1117

## Sewer Construction

Alley N. of BIK 248 Miss. Beech

8.67 from page 67

This Line is 7' 5.0" x 11.0" here.			
00: M.H. W. Line Blvd	11.80	- 3.13	- 3.13
754.6	10.18	- 1.51	- 2.93
1409.2	9.86	- 1.19	- 2.73
1463.8	9.50	- 0.83	- 2.53
2418.4	8.49	+ 0.18	- 2.33
2473.0	6.60	+ 2.07	- 2.13
3427.6	4.49	+ 4.18	- 1.93
3482.3 FT. End of line.	3.81	+ 4.86	- 1.73

Line 6' Max &amp; here.

$$\begin{array}{r} 1118 \\ 62 \\ \hline 1180 \end{array}$$

68

Flow Line C.T.

+ 1.42
+ 1.54
+ 1.70
+ 2.51
+ 4.20
+ 6.11
+ 6.59

## SEWERS IN BLOCK 389, PACIFIC BEACH

69

B.M.	6.69	3.56	-3.13	Fl. existing	MH Page 69
71	00=M.H. 6' Alley in Breyer Place	5.04	-1.48	-2.85	+1.37 ✓
	+356	5.67	-2.11	-2.71	+0.10 ✓
72	01713 M.H. 8' W. Alley	5.62	-2.06	-2.57	+0.51 ✓
	+483	5.45	-1.89	-2.37	+0.48 ✓
	+966	5.39	-1.83	-2.18	+0.35 ✓
73	1445 M.H. 6' E. W. Alley	5.64	-2.08	-1.99	-0.09 ✓
	+45' N. D.E.	5.82	-2.26	-1.81	-0.45 ✓
				-1.99	
74	00=M.H. 3				
	+50' W B.K.	4.99	-1.43	-1.59	+0.16 ✓
	+100' W	3.42	-0.06	-1.19	+1.13 ✓
	+150'	1.58	+1.99	-0.79	+2.77 ✓
75	1+875 M.H. 6' Strandway	0.85	+2.71	-0.49	+3.20 ✓
	40' N. D.E.	0.39	+3.17	0.0	+3.17 ✓
	35' S. D.E.	1.14	+2.42	0.0	+2.42 ✓
				-2.57	
76	00=M.H. 2				
	+50' W	4.59	-1.03	-2.17	+1.14 ✓
	+100' W B.K.	4.12	-0.56	-1.77	+1.21 ✓
	+150' W	3.07	+0.49	-1.37	+1.86 ✓
	1+875 M.H. 6' Strandway	1.70	+1.36	-1.07	+2.93 ✓
	375' N	1.69	+1.87	-0.67	+2.86 ✓
	75' N. D.E.	1.46	+2.10	-0.32	+2.42 ✓
	35' S. D.E.	1.78	1.78	-0.92	+2.50 ✓

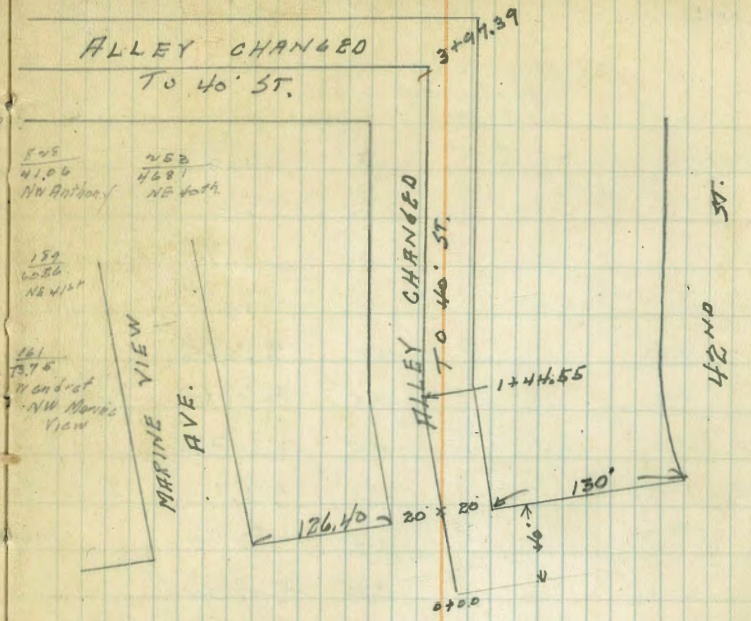


2/26/25

Gregory Levels on E. of 40<sup>th</sup> St (formerly the alley)  
 bet Marine View Ave and 42<sup>nd</sup> St  
 N. of Division St.

	BM. No. of Main + Division			
	1245	25.52	1307	
	1172	36.82	042	2510
	1277	49.34	025	36.57
	13.15	62.45	0.04	49.30
Boundary Line of St produced South.	1300	75.36	0.09	62.36
0+00			6.2	68.56
+15			10.1	65.26
T.P.	008	62.97	12.47	62.89
+50			7.8	55.17
T.P.	021	50.43	12.75	50.22
1			7.5	42.93
T.P.	0.05	37.49	12.99	37.44
+40			1.6	35.89
+44.55 Δ			2.2	35.29
+58			3.6	33.89
+75			7.1	30.39
2			9.6	27.89
+30			12.9	24.59
+60			14.3	23.19
3			15.3	22.19
+50			15.5	21.99
+97.39 Δ 90° L.			16.0	21.49
4+15			15.8	21.69
+50			13.6	23.89
5			8.6	28.89
+45			6.3	31.19

2 plotted in sheet 12



+50			4.6	32.89
T.P.	460	37.92	4.17	33.32
+75			3.8	34.12
6			3.9	34.02
+50			4.7	33.22
7			5.0	32.92
+50			4.8	33.12
8			4.1	33.82
+35			4.7	33.22
+68.09 = W. Alley			5.1	32.82
T.P.	6.95	44.29	0.58	37.34

sheet 12

2/26/21 Gregory

Levels 30' N. x S. Line  
of Eta St  
from d. of 40th St N. x Eta  
To 500' W. end of 40th  
44.29 Hd. from page 70

Box 40th St, 20+00	31.99	12.3	31.99
+40		8.6	35.69
+80		4.5	39.79
1		2.7	41.59
+45		0.4	43.89
2		0.5	43.79
+50		0.9	43.39
3		2.1	42.19
+50		2.4	41.89
4		2.7	41.59
+50		3.2	41.09
5		3.7	40.59
T.P.	12.32	56.58	44.26

2/26/21 Gregory

Levels d. o. x  
EPSILON ST.  
from d. of 40th St.  
To 400' W. end of 40th St.  
56.58 Hd. from opposite page

Box 40th St 20+00		2.5	54.08
+50		3.8	32.78
1		4.1	52.48
+50		6.1	50.48
2		7.0	49.58
+50		7.6	48.98
3		8.6	47.98
+50		9.0	47.58
4		9.0	47.58
T.P.	1303	69.23	038 56.20
	1268	81.71	020 69.03
	1204	93.75	00 81.71
	422	96.92	1.05 92.70
	035	84.38	1289 84.03
	2.10	74.37	1291 71.47
	12.75	75.35	11.77 62.60
	068	63.08	1295 62.40
	033	50.61	1280 50.28

71

page

7/26/05 Gregory  
 Sewer Levels & Alleys Bks A+B  
 Ocean Vista Add  
 Between Boston + Z Aves  
 East + West of 41st St.

50.61 H.D. from page 71

W of Alley + Approx City Boundary = 0+00		9.4	41.21
0+07.0		9.3	41.31
0+40		11.9	38.71
T.P.	0.52 38.33	12.80	37.81
1		5.2	33.13
+50		7.8	30.53
2		9.8	28.53
+50		12.0	26.33
T.P.	2.32 27.99	12.66	25.67
3		3.3	24.69
+50		3.7	24.29
4		3.8	24.19
+50		4.1	23.89
5 +09.0 = W of 41st		4.5	23.49
+50		4.8	23.19
6		4.9	23.09
+50		5.2	22.79
+95 = creek bank		6.4	21.59
7		9.1	18.89
+20		10.5	17.49
+80 = bottom of creek		15.5	12.49

Plotted sheet 18

27.99 BM from  
 Sewer Levels & of 41st St  
 from W of Z St to Alpha  
 thence East.

27.99 H.D. from opposite page.

W of Z St = 0+00		3.5	24.49	<small>this hole 10.605 at 11th St 700 SE</small>
T.P.	12.51 40.50	0.00	27.99	cor 41st + Z
+50		11.6	28.90	
+75		7.6	32.90	
1		0.1	40.40	
T.P.	12.72 53.03	0.19	40.31	
+10		10.5	42.53	
+30		7.9	45.13	
+70		2.5	50.53	
T.P.	12.67 65.57	0.13	52.90	
+90 = W of Alley		10.1	55.47	
2		8.1	57.47	
+07.0		7.0	58.57	
+15.0		6.5	59.07	
+30		3.6	61.97	
T.P.	8.65 74.05	0.17	65.40	
+55		5.7	66.35	
+65		4.2	69.85	
+85		4.6	69.45	
3		6.4	67.65	
+30		10.8	63.25	
+80 = W of ALPHA ST		14.7	59.35	
+83		15.2	58.85	
4		12.6	61.45	
+30		4.0	70.05	

Plotted sheet 19

+45		2.5	71.55	
5		3.4	73.65	
+50		7.2	66.85	
+60		7.9	66.15	
+70 = d Alley		7.6	66.45	
+85		6.8	67.25	
6		8.0	66.05	
+15		9.3	64.75	
+35		8.7	65.35	
+50		6.5	67.55	
+75		6.9	67.15	
7		5.7	68.35	
+30		6.7	67.35	
+60 = d Beta St Δ 90° L.		11.2	62.85	
+75		10.0	64.05	
+90		10.8	63.25	
8		10.5	63.55	
+20		8.6	65.45	
+50		7.8	66.25	
+75		6.1	67.95	
9		2.6	71.45	
+50		1.4	72.65	
TR	13.03	86.65	0.43	73.62
10		12.3	74.35	
+20		11.9	74.75	
+40		12.7	73.95	

+65		12.0	74.65
+90		10.0	76.65
11		9.4	77.25
+10		9.4	77.25
+20		10.3	76.35
+30		10.2	76.45
+50		9.0	77.65
+75		9.3	77.35
12		8.8	77.85
+40		8.2	78.45
+55		6.0	80.65
13		4.3	82.35
+30		3.5	83.15
+55		4.4	82.25
+85		4.1	82.55
14		2.6	84.05
+30		3.0	83.65
+60		0.7	85.95
15		1.0	85.65
+47.80 = city Boundary		0.6	86.05

10 Ted Sheet 18  
 R

Paving Grades  
Alley BIK 16  
La Jolla Park

1/28/25 melle

BN 68.00 Prospect & La Jolla Blvd

	W	E
S. End of New E. Ch Grade	46.5	48.8
" " " " Paving "	46.1	48.4
30.5 S on E.		
= 33.5 on W. = 00	45.7	46.0
47.5 S	42.42	42.72
93. S	39.15	39.45
142. S	35.87	36.17
Prk 190. S	32.4	32.9
Prk 225. S	31.35	31.65
Prk 260. S	30.1	30.4
Prk 310. S	29.3	29.6
Prk 370. S	27.3	27.6
420. S	23.9	24.2

	cb	Pav				
	46.5	46.1	45.7	42.42	39.15	
	10.05	9.88	10.85	14.13	4.94	
	+0.17	0.58	+1.0	+1.0	6.09	
					-7.15	
	48.9	48.4	46.0	42.72	39.45	
	7.65	8.15	10.55	13.83	4.64	
	5.45	5.45	6.55	10.26	2.13	
	2.20	2.70	+4.0	+3.57	+2.51	
	35.87	32.6	31.35	30.1	29.3	27.3
	8.22	11.49	12.74	2.2	3.72	5.72
	9.00	11.8	11.43	2.73	5.27	6.32
	-0.78	-0.31	+1.31	+0.19	-1.55	-0.60
	36.12	32.9	31.65	30.4	29.6	27.6
	7.92	11.19	12.44	13.69	14.44	5.42
	4.85	8.72	10.9	11.69	12.49	6.32
	+3.07	+2.47	+1.53	+2.0	+2.0	3.58
						1.84

Paving Grades  
Alley BIK 17 La Jolla Park

	W	E
N. End of New E. Ch grade	47.63	
" " " " Paving "	47.13	
50' on W.		
= 55.4' on E = 00	46.7	47.0
Prk 59. N.	47.1	47.4
105.67 N	48.37	48.67
152.34 N	49.64	49.94
Prk 199.0 N	50.9	51.2
259. N	51.65	51.95
Prk 319. N	52.4	52.7

	cb	Paving				
	47.0	46.7	47.1	48.37		
	8.0	8.30	7.90	6.63		
	9.74	9.74	6.90	6.87		
	-7.74	-1.44	+1.00	-0.24		
	47.63	47.13	47.0	47.4	48.67	
	7.37	7.87	8.0	7.60	6.33	
	5.24	5.72	4.26	4.14	2.39	
	2.15	2.65	+3.74	+3.46	+3.94	
	49.64	50.9	51.65	52.4		
	5.36	4.10	6.88	6.13		
	6.79	5.60	9.29	7.82		
	-1.43	-1.5	-2.41	-1.19		
	49.94	51.2	51.95	52.7		
	5.06	7.33	6.58	5.83		
	2.71	6.33	5.58	5.11		
	+2.35	+1.0	+1.0	+0.72		

	W	E
319' N	52.4	52.7
365.67N (42.67)	52.6	52.9
412.34N	52.8	53.1
BK 459' N (83)	53.0	53.3
514' N	53.42	53.72
569' N	53.84	54.14
624' N	54.28	54.58
BK 679' N	54.7	55.0

Cuts for Drain Alley Bk 16

	192 2584	2390 nail GRADE		
0+00 = C.B. @ S End	1.74	24.10	21.17	+293
+14.6 = Δ	2.81	23.03	20.32	+271
+50	4.61	21.23	18.27	+296
1	7.54	18.30	15.35	+295
+50	10.56	15.28	12.43	+285
+81.4			10.62	

Sewer Cuts

	56.45			
Lateral # 3	1.66	54.79	53.4	+1.39
0+00 = DE	2.84	53.61	51.2	+2.41
+62.5	3.70	52.75	50.7	+2.05
1+25 M.H	4.05	52.70	50.2	+2.20

56.45  
2.45  
57.80

1109  
512  
76 = 1 963

1011 750  
732  
726  
12.09

75

	N	52.6	52.8	53.0	53.42	53.84
58.53	5.73	5.73	5.73	5.53	7.43	7.03
6.31	7.55	7.55	5.73	7.83	8.97	6.74
52.22	-7.62	0.0	-2.3	-1.52	+0.29	
81.65						
60.87						
11.48						
59.39 826 Cur						

	E	52.9	53.1	53.3	53.72	54.14
416	5.63	5.43	7.57	7.15	6.73	
56.71 paving of cur	4.65	4.43	6.00	4.85	3.66	
= 56.71 Profile	+0.98	+1.00	+1.57	+2.30	+3.07	

W	54.28	54.70
	6.59	6.17
	7.96	6.17
	-1.37	0.0

E	54.58	55.00
	6.29	5.87
	3.86	3.85
	+2.43	2.04



Gregory  
 Sawyer Levels  
 d. Alleys Bks E. F. & G  
 Ocean View Add.  
 8665 Hd from page 73

City Boundary & Alley = 0+00	+0.8	87.5
0+50	0.9	85.75
1	2.3	84.35
+50	2.4	84.25
2	3.1	83.55
+50	3.5	83.15
3	4.7	81.95
+50	5.9	80.75
+70	6.8	79.85
+90	6.2	80.45
4	6.9	79.75
+20	9.0	77.65
+50	9.2	77.45
5	11.3	75.35
+20	13.2	73.45
T.P. 0.54 7431	12.88	73.77
+65	2.3	72.01
+90	4.3	70.01
6	4.6	69.70
+40	4.4	69.91
+80	4.3	70.01
7	5.4	68.91
+10	6.5	67.81
+33.5 41st	8.0	66.31
+55	11.2	63.11

100' N =  
 4.2 Lower

T.P. 0.20 61.53 1298 61.33  
 8 +60 2.4 59.13  
 9 T.P. 0.44 48.94 10.5 55.93  
 13.03 51.83  
 +40 3.7 45.24  
 +55 7.1 41.84  
 +70 = Junction of cut-off 11.4 37.54  
 +77 8.5 40.24  
 10. 5.7 43.24  
 set BM 10.72 38.22  
 +45 2.3 46.64  
 +60 1.5 47.44  
 +75 2.3 46.64  
 11 5.4 43.54  
 +22 9.4 39.54  
 +35 7.6 41.34  
 +55 3.4 45.94  
 12 1.0 47.94  
 T.P. 1.81 49.63 11.2 47.82  
 +50 2.4 47.23  
 13 2.0 47.63  
 +30 2.1 47.53  
 +50 0.1 49.53  
 14 1.5 48.13  
 +20 1.6 48.03  
 +50 0.7 48.93  
 15+00 1.3 48.33  
 +27 4.9 44.73  
 +47 7.8 41.83  
 T.P. 0.11 36.96 12.83 36.80  
 16 9.8 27.11  
 T.P. 0.00 24.52 12.39 24.52  
 +50 6.1 18.42  
 +70 7.9 16.62  
 17 8.2 16.32  
 +40 8.5 16.02  
 +75 10.6 13.92  
 18 9.5 15.02  
 +60 7.5 15.02  
 +75 10.8 13.72  
 19 9.7 14.82  
 +050 9.2 15.32  
 +50 9.5 15.02  
 20 9.6 14.92  
 +10 9.6 14.92  
 +20 8.5 15.72  
 +53.5 = 6 40th St. 9.1 15.42  
 39th St.  
 set BM 8.54 15.98  
 T.P. 12.56 32.78 6.30 18.22

see front 1/2 leaf  
 see front 1/2 leaf  
 100' N = 4.2 Lower  
 13+93 54 40th  
 100' N = 4.2 Lower

Stake  
 BM Taylor

7.41/5.10  
 10.06 20.51  
 SW 1/4 10.64



Sewer in Guy St from 225 S. of M.H.  
N. of Mission Hills Blvd to M.H.

B.M.							
	0.20	241.91		241.71	Terrence + Pringle		
T.P.	0.09	229.17	12.83	229.08			
T.P.	0.12	216.45	12.84	216.33		GRADE	
T.P.	0.25	203.73	12.97	203.48	on stubs		
225's			Ground 8.8	194.9	8.60 195.13	191.0	+ 4.13
200's			12.2	191.5	11.97 break 191.76	189.0	+ 2.76
T.P.	0.85	191.87	12.71	191.02			
188's			2.8	189.1			
195's			6.1	185.8			
175's			6.0	185.9	5.64 186.19	181.5	+ 4.69 (End of Ditch)
T.P.	0.20	179.34	12.73	179.14			
150's			3.4	175.9	3.27 break 176.07	174.0	+ 2.07
T.P.	0.21	166.87	12.68	166.66			
125's			1.0	165.9			
100's			12.8	154.1	12.56 154.31	151.77	+ 2.54
T.P.	0.39	154.70	12.56	154.31			
92's			4.7	150.0			
80's			9.2	146.5			
T.P.	0.11	141.96	12.85	141.85			
50's			9.8	132.2	9.03 132.93	129.55	+ 3.38
T.P.	0.53	129.70	12.79	129.17			
T.P.	1.34	118.18	12.86	116.84	116.84		
15's			1.8 ground	116.4	1.34 break Flow line	114.0	+ 2.84
00			4.0	114.2	10.19 107.99	111.0	3' drop

Sewer Levels  
Alleys in Blks C + D Ocean Vista

± 90<sup>ms</sup>

6<sup>th</sup> of 41<sup>st</sup> St  
= 0.00

30.78 HD from page 77.

			12.1	18.68
+50			11.3	19.48
1			9.7	21.08
+50			8.8	21.98
2			7.1	23.68
+33			7.1	23.68
+35			9.2	21.58
+37			7.0	23.78
+55			5.6	25.18
+65			4.8	25.98
+80			2.4	28.38
T.P.	12.96	43.32	0.42	30.36
3			10.5	22.82
+25			4.4	38.92
+65			2.5	40.82
4			3.7	39.62
+20			5.0	38.32
+60			4.7	38.62
5			3.6	39.72
+15			3.7	39.62
+50			1.0	42.32
T.P.	13.10	56.42	0.00	43.32
+75			9.6	46.82
6			8.2	48.22
+30			5.7	50.72
+60			0.9	55.52
T.P.	12.70	68.96	0.16	56.26
7			8.8	60.16
+10			7.5	61.46
+30			3.3	65.66

See front fly leaf.  
see front fly leaf.  
Junction of Cut-off

This line can be made to serve only Lots 5 of Block from Sta 2+50 East.

+75			3.3	65.66
T.P.	366	63.25	9.37	59.59
			3.3	59.95
+35			11.2	52.05
+55			12.9	50.35
+57			15.7	47.55
+60			12.9	50.35
+70			11.8	51.45
+90			11.6	51.65
set B.M.			10.96	52.29
9+10			9.1	54.15
T.P.	12.60	75.40	0.45	62.80
+55			9.8	65.60
+80			3.5	71.90
10			2.1	73.30
T.P.	10.91	86.29	0.02	75.38
+25			10.0	76.29
+50			7.9	78.39
+75			7.5	78.79
11			6.0	80.29
+20			5.2	81.09
+40			6.9	79.39
+60			5.1	81.19
12			4.8	81.49
+50			3.8	82.49
+80			1.8	84.49
+90			2.4	83.89

W  
-  
+  
e  
S  
D  
P  
10

Top of Stake 8+90

Cleveland + Richmond regular 80' x 80' intersection ✓  
bet. Str. Richmond + Blaine

54.80  
51.2  
105.6  
52.75  
17.3  
158.25  
364.45  
527.2  
912.575

912.57

118.5  
51.8  
948.0  
118.5  
592.5  
6138.30

61,383.0

7,050.67 ✓

Term. Blaine

7700 7835  
7950 509  
509 x 78.35 70515  
2 39175  
3988015  
199400

1994.00 ✓

Opp Term Blaine

25.45 x 710 + 0160 E. x E. ob. 63.19 off.

2061.41 ✓  
626.65  
1434.76 ✓

bet. Blaine + Lincoln

499  
501  
499  
2498  
249999

24999.9

110.8  
50.8  
7764  
5540  
5628.64

5628.64 ✓  
30688.54

Lincoln int. regular bet. Lincoln + Tyler regular 52

bet. Tyler + Van Buren

51.8  
250 x 51.8  
25900  
1036  
12950.0

12950.00

15225.00

2479.55 ✓

1185.56

31840.11

6-  
509  
1108

79  
391  
178.5

DIRECTIONS FOR USE OF TABLES

TABLE No. 1.

Distance of slope stake from side or shoulder stake for any width roadway, slope 1 1/2 to 1. If ground is nearly level, the cut or fill at side stake is located by the double entry method in left column and top row. The number in body of table in same row and column gives distance

IMPROVED TABLES

AND

INFORMATION

If it does not make the slight adjustment to cut or fill and distance in table set up amount if cut, elevate it fill. Add this amount the side stake and slope lower target by this level estimate the difference in elevation between

TABLE No. 2.

To find tangent and External for curve of any other degree, divide degree of curve and add correction found in column of corrections.

Degree of curve with a given I may be found by dividing tangent (or external), opp. (ext.) by given tangent (or ext.)

The distance from the tangent to the curve is very nearly square of the tangent length divided by twice the radius.

290  
52  
500  
1250

290  
52  
500  
1250

290  
52  
500  
1250

290  
52  
500  
1250

290  
52  
500  
1250

290  
52  
500  
1250

## DIRECTIONS FOR USE OF TABLES

TABLE No. 1.

Distance of slope stake from side or shoulder stake for any width roadway, slope  $1\frac{1}{2}$  to 1. If ground is nearly level, the cut or fill at side stake is located by the double entry method in left column and top row. The number in body of table in same row and column gives distance from side stake to slope stake. If ground is not level estimate the difference in elevation between the side stake and slope stake, lower target by this amount if cut, elevate if fill. Add this amount to cut or fill and find distance in table. Set up rod at this point, and line of sight should cut target. If it does not make the slight adjustment necessary.

TABLE No. 9.

To find Tangent and External for curve of any other degree, divide by degree of curve and add correction found in column of corrections.

Degree of curve with a given I may be found by dividing tangent, (or external), opposite I by given tangent, (or external).

The distance from a point on the tangent to the curve is very nearly the square of the tangent length divided by twice the radius.

68 + 186  
1 277  
309

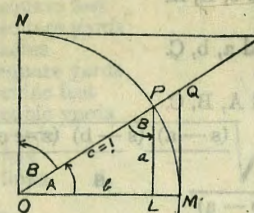


TABLE II  
TRIGONOMETRIC FORMULÆ

$$\angle A = \angle MOP \quad \angle B = \angle PON = \angle OPL$$

$$R = OB = c = 1$$

$$\sin A = \frac{a}{c} = \frac{a}{1} = a = \cos B = LP$$

$$\cos A = \frac{b}{c} = \frac{b}{1} = b = \sin B = OL$$

$$\tan A = \frac{a}{b} = \frac{MQ}{OM} = \frac{MQ}{1} = MQ = \cot B = MQ$$

$$\cot A = \frac{NT}{ON} = \frac{NT}{1} = NT = \tan B = NT$$

$$\sec A = \frac{OQ}{OM} = \frac{OQ}{1} = OQ = \csc B = OQ$$

$$\csc A = \frac{OT}{ON} = \frac{OT}{1} = OT = \sec B = OT$$

$$\text{vers } A = \frac{LM}{OP} = LM = \text{covers } B \#$$

$$\text{covers } A = \frac{OP - LP}{OP} = OP - LP = \text{vers } B$$

$$\text{exsec } A = PQ = \text{coexsec } B$$

$$\text{coexsec } A = PT = \text{exsec } B$$

$$\sin \frac{1}{2} A = \sqrt{\frac{1 - \cos A}{2}} \quad \cos \frac{1}{2} A = \sqrt{\frac{1 + \cos A}{2}}$$

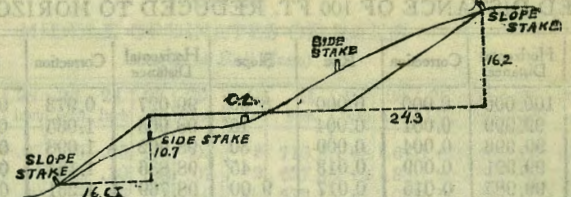
$$\sin 2A = 2 \sin A \cos A \quad \cos 2A = \cos^2 A - \sin^2 A$$

$$\text{Law of Lines} \quad \frac{\sin A}{a} = \frac{\sin B}{B} = \frac{\sin C}{C}$$

$$\text{Law of Cosines} \quad c^2 = a^2 + b^2 - 2ab \cos C$$

$$\text{Law of Tangents} \quad \frac{a+b}{a-b} = \frac{\tan \frac{1}{2}(A+B)}{\tan \frac{1}{2}(A-B)}$$

TABLE XII  
INCLINATION OF 100 FT. REDUCED TO HORIZONTAL



DISTANCES FROM SIDE STAKES FOR CROSS-SECTIONING.

SLOPE 1 1/4 TO 1. ROADWAY OF ANY WIDTH.

	0	.1	.2	.3	.4	.5	.6	.7	.8	.9	
0	0 00	0 15	0 30	0 45	0 60	0 75	0 90	1 05	1 20	1 35	0
1	1 50	1 65	1 80	1 95	2 10	2 25	2 40	2 55	2 70	2 85	1
2	3 00	3 15	3 30	3 45	3 60	3 75	3 90	4 05	4 20	4 35	2
3	4 50	4 65	4 80	4 95	5 10	5 25	5 40	5 55	5 70	5 85	3
4	6 00	6 15	6 30	6 45	6 60	6 75	6 90	7 05	7 20	7 35	4
5	7 50	7 65	7 80	7 95	8 10	8 25	8 40	8 55	8 70	8 85	5
6	9 00	9 15	9 30	9 45	9 60	9 75	9 90	10 05	10 20	10 35	6
7	10 50	10 65	10 80	10 95	11 10	11 25	11 40	11 55	11 70	11 85	7
8	12 00	12 15	12 30	12 45	12 60	12 75	12 90	13 05	13 20	13 35	8
9	13 50	13 65	13 80	13 95	14 10	14 25	14 40	14 55	14 70	14 85	9
10	15 00	15 15	15 30	15 45	15 60	15 75	15 90	16 05	16 20	16 35	10
11	16 50	16 65	16 80	16 95	17 10	17 25	17 40	17 55	17 70	17 85	11
12	18 00	18 15	18 30	18 45	18 60	18 75	18 90	19 05	19 20	19 35	12
13	19 50	19 65	19 80	19 95	20 10	20 25	20 40	20 55	20 70	20 85	13
14	21 00	21 15	21 30	21 45	21 60	21 75	21 90	22 05	22 20	22 35	14
15	22 50	22 65	22 80	22 95	23 10	23 25	23 40	23 55	23 70	23 85	15
16	24 00	24 15	24 30	24 45	24 60	24 75	24 90	25 05	25 20	25 35	16
17	25 50	25 65	25 80	25 95	26 10	26 25	26 40	26 55	26 70	26 85	17
18	27 00	27 15	27 30	27 45	27 60	27 75	27 90	28 05	28 20	28 35	18
19	28 50	28 65	28 80	28 95	29 10	29 25	29 40	29 55	29 70	29 85	19
20	30 00	30 15	30 30	30 45	30 60	30 75	30 90	31 05	31 20	31 35	20
21	31 50	31 65	31 80	31 95	32 10	32 25	32 40	32 55	32 70	32 85	21
22	33 00	33 15	33 30	33 45	33 60	33 75	33 90	34 05	34 20	34 35	22
23	34 50	34 65	34 80	34 95	35 10	35 25	35 40	35 55	35 70	35 85	23
24	36 00	36 15	36 30	36 45	36 60	36 75	36 90	37 05	37 20	37 35	24
25	37 50	37 65	37 80	37 95	38 10	38 25	38 40	38 55	38 70	38 85	25
26	39 00	39 15	39 30	39 45	39 60	39 75	39 90	40 05	40 20	40 35	26
27	40 50	40 65	40 80	40 95	41 10	41 25	41 40	41 55	41 70	41 85	27
28	42 00	42 15	42 30	42 45	42 60	42 75	42 90	43 05	43 20	43 35	28
29	43 50	43 65	43 80	43 95	44 10	44 25	44 40	44 55	44 70	44 85	29
30	45 00	45 15	45 30	45 45	45 60	45 75	45 90	46 05	46 20	46 35	30
31	46 50	46 65	46 80	46 95	47 10	47 25	47 40	47 55	47 70	47 85	31
32	48 00	48 15	48 30	48 45	48 60	48 75	48 90	49 05	49 20	49 35	32
33	49 50	49 65	49 80	49 95	50 10	50 25	50 40	50 55	50 70	50 85	33
34	51 00	51 15	51 30	51 45	51 60	51 75	51 90	52 05	52 20	52 35	34
35	52 50	52 65	52 80	52 95	53 10	53 25	53 40	53 55	53 70	53 85	35
36	54 00	54 15	54 30	54 45	54 60	54 75	54 90	55 05	55 20	55 35	36
37	55 50	55 65	55 80	55 95	56 10	56 25	56 40	56 55	56 70	56 85	37
38	57 00	57 15	57 30	57 45	57 60	57 75	57 90	58 05	58 20	58 35	38
39	58 50	58 65	58 80	58 95	59 10	59 25	59 40	59 55	59 70	59 85	39
40	60 00	60 15	60 30	60 45	60 60	60 75	60 90	61 05	61 20	61 35	40
41	61 50	61 65	61 80	61 95	62 10	62 25	62 40	62 55	62 70	62 85	41
42	63 00	63 15	63 30	63 45	63 60	63 75	63 90	64 05	64 20	64 35	42
43	64 50	64 65	64 80	64 95	65 10	65 25	65 40	65 55	65 70	65 85	43
44	66 00	66 15	66 30	66 45	66 60	66 75	66 90	67 05	67 20	67 35	44
45	67 50	67 65	67 80	67 95	68 10	68 25	68 40	68 55	68 70	68 85	45
46	69 00	69 15	69 30	69 45	69 60	69 75	69 90	70 05	70 20	70 35	46
47	70 50	70 65	70 80	70 95	71 10	71 25	71 40	71 55	71 70	71 85	47
48	72 00	72 15	72 30	72 45	72 60	72 75	72 90	73 05	73 20	73 35	48
49	73 50	73 65	73 80	73 95	74 10	74 25	74 40	74 55	74 70	74 85	49
50	75 00	75 15	75 30	75 45	75 60	75 75	75 90	76 05	76 20	76 35	50

Computed by L. Leland Locke.

1005  
169 / 960  
845  
960  
845  
105

69  
005  
545  
545  
3775

$2.2$   
 $0.37$   
 $7.4$   
 $8.2$   
 $4$   
 $7.8$   
 $3$   
 $7.5$   
 $4$   
 $11$   
 $3$   
 $6) 376$   
 $627$   
 $-2.133$   
 $627$   
 $-1.506$   
 $627$   
 $-0.879$   
 $627$   
 $-0.252$   
 $627$   
 $10.375$   
 $627$   
 $+1.002$   
 $192.4$   
 $49.2$   
 $49.2$   
 $96.4$   
 $1244.6$   
 $7.92.8$

$1/8$   
 $4.27$   
 $3.5$   
 $62.75$   
 $48$   
 $-3.27$   
 $-4.47$   
 $-4.90$   
 $-5.36$   
 $-5.82$   
 $-6.27$   
 $3.66$   
 $0049$   
 $5) 232.7$   
 $46.54$   
 $93.08$   
 $186.16$   
 $1486.16$   
 $50232.70$   
 $2450$   
 $15$   
 $25$   
 $17.5$   
 $3.83$   
 $13.67$   
 $577$   
 $50$   
 $1052$   
 $54$   
 $733.0$   
 $763.5$   
 $22$   
 $98.8$   
 $1733.5$   
 $2063.1$

$49.3$   
 $49.6$   
 $49.8$   
 $147.9$   
 $49.3$   
 $197.2$   
 $49.3$   
 $246.5$   
 $49.8$   
 $295.8$   
 $05.70$   
 $4.18$   
 $3.67$   
 $-0.47$   
 $6.16$   
 $48$   
 $6.67$   
 $4130$   
 $22$   
 $620$   
 $644$   
 $666$   
 $688$   
 $710$   
 $730$

$207.6$   
 $51.9$   
 $103.8$   
 $155.1$   
 $207.6$   
 $6274.3$   
 $45.7$   
 $91.4$   
 $137.1$   
 $182.8$   
 $228.5$   
 $274.3$   
 $53$   
 $3) 131.8$   
 $43.9$   
 $87.8$   
 $131.8$   
 $114$   
 $26.64$   
 $26.64$   
 $80.04$   
 $39.27$   
 $47.27$   
 $45.43$   
 $101.52$   
 $19.31$   
 $262.84$   
 $124.15$   
 $377.39$   
 $372$   
 $2000$   
 $1860$   
 $1400$   
 $185.61$   
 $81.61$   
 $6585$   
 $4061$   
 $3998$   
 $4094$   
 $3805$   
 $3502$   
 $450.70$   
 $397.39$   
 $848.09$   
 $1765$   
 $80$   
 $10$   
 $2668$   
 $0085$   
 $267$   
 $2250$   
 $2136$   
 $1140$   
 $0050$   
 $050$   
 $3400$

$85$   
 $152$   
 $46.5$   
 $23$   
 $46.6$   
 $139.6$   
 $186.2$   
 $232.9$   
 $236.4$   
 $231.8$   
 $215.8$   
 $2.6$   
 $5) 234.2$   
 $46.84$   
 $1768$   
 $80$   
 $10$   
 $2668$   
 $90$   
 $1768$   
 $130$   
 $2.36$   
 $3$   
 $3.96$   
 $2581$   
 $250.5$   
 $217.6$   
 $3.8$   
 $254.3$   
 $50.1$   
 $3.8$   
 $33.9$   
 $177$   
 $85$   
 $585$   
 $1416$   
 $147$   
 $226$   
 $149$   
 $-076$

$252.7$   
 $23$   
 $3) 139.7$   
 $46.6$   
 $96.2$   
 $139.8$   
 $6.00$   
 $3.30$   
 $62.68$   
 $477$   
 $25$   
 $250.5$   
 $24.82$   
 $2$   
 $25.732$   
 $2581$   
 $250.5$   
 $217.6$   
 $3.8$   
 $254.3$   
 $50.1$   
 $3.8$   
 $33.9$

$5.15$   
 $5.36$   
 $52$   
 $48$   
 $44$   
 $00$   
 $252.7$   
 $23$   
 $3) 139.7$   
 $46.6$   
 $96.2$   
 $139.8$   
 $6.00$   
 $3.30$   
 $62.68$   
 $477$   
 $25$   
 $250.5$   
 $24.82$   
 $2$   
 $25.732$   
 $2581$   
 $250.5$   
 $217.6$   
 $3.8$   
 $254.3$   
 $50.1$   
 $3.8$   
 $33.9$