

1120

MINING
TRANSIT BOOK
384

MICROFILMED

DEC 21 1964

130171

141597
12 53
1-287

FREDERICK
POST
COMPANY
SAN FRANCISCO, CAL.



926
3554
1792
7854
1445

1157.41E

68.05

150.25
9874
60100
15025
12020
135225
147255350

63.4

15.20

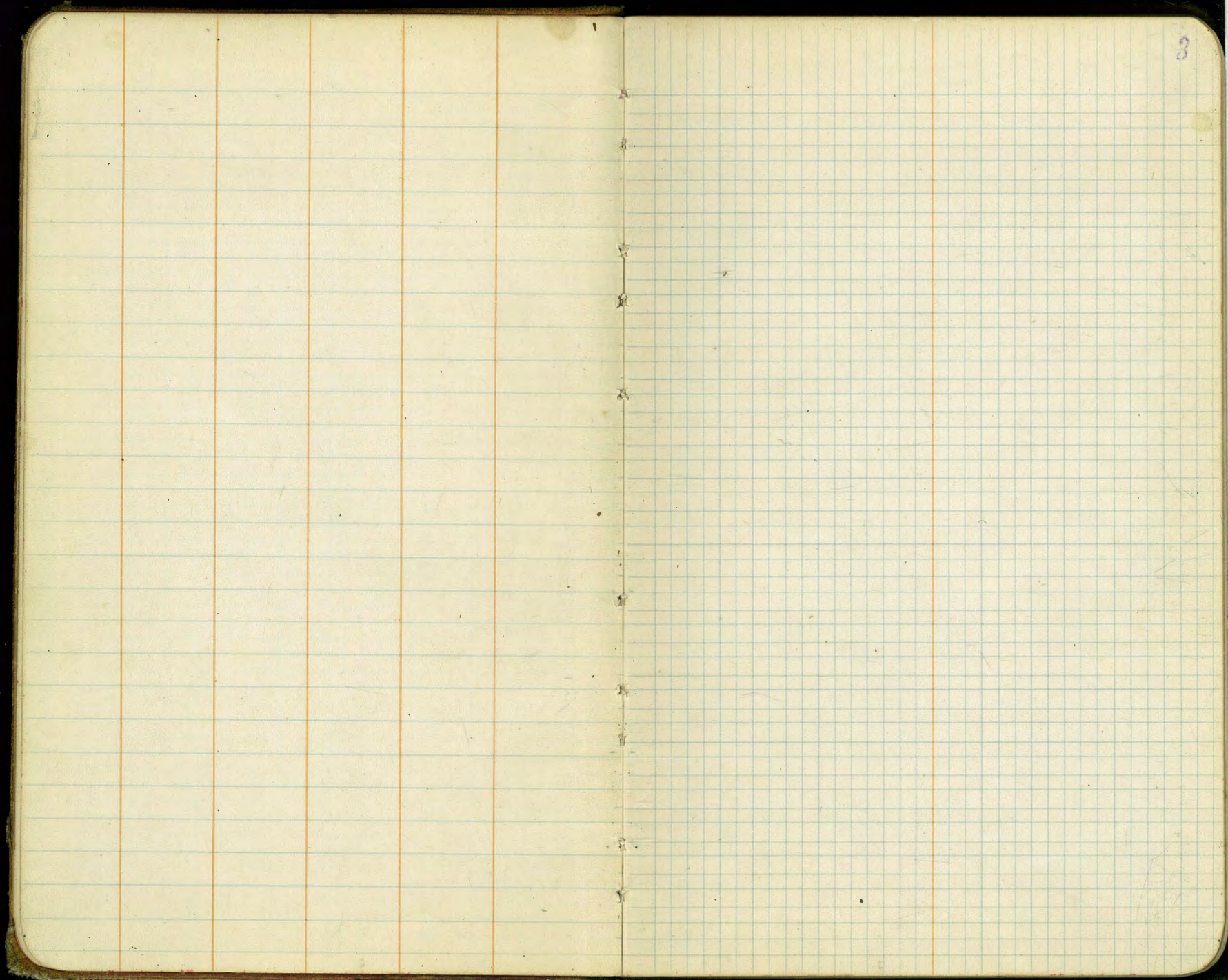
9644
6814
38526
28932
57864
1174292

989

Lexington Park Sewers
Transit Notes

INDEX

Manzanita Drive + Jasmine St	Page	4
Blocks 10 + 34 + Hollywood Ave	"	5-6
Manzanita Dr. West End Block 35	"	7
Poppy Place	"	8
Blocks 9-8-6 And Oak St	"	9-10
Block 33	"	11
Violet + Sycamore	"	12-
Poppy Lane	"	6
Violet - Sycamore - Orchid - Millard	"	12-14
Blk A Belmont (Sewer)		16-
Drain Bet. Texas & Louisiana		17
Center St. (Sewer)		18-19
Primrose, Hollywood, Jasmine, Pepper, Sycamore (Lexington Park)		40-55



3

Location of Servers
Manzanita Dr. & Jasmine St.

From West Line Lot 5 Block 37 to E. Jasmine & Alley B18 & 6

For Levots see book # 1119 Page 19

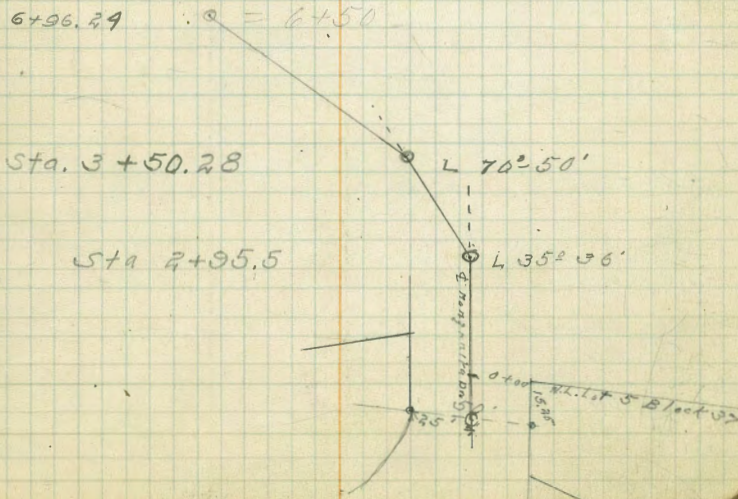
6+96.29 = Sta. 6+50 in level book # Page 13
& Jasmine & Alley

3+50.28 A L 70° 50'

2+95.5 A L 35° 36'

Manzanita Dr.
West line lot 5 Block

37 = 0+00 = 0+00 in level book # Page 19



Location of Semyers
 10 Block 10-34 Hollywood Ave To Existing Center at Irvington ave
 For levels see Pages 21 to 24 + 31 + 34 in level book # 1119
 Cont on Page 6.

17+07.25 Δ L 28°13'

15+30.71 Δ L 8°15'

13+75.08 Δ L 3°04' = 4+66.40 From 15485 So. Marzanita Dr
 Lot 22 Block 34

11+43.46 Δ R 47°36'

9+75.66 P.O.T.

8+69.88 Δ R 53°21'

6+38.28 P.O.T.

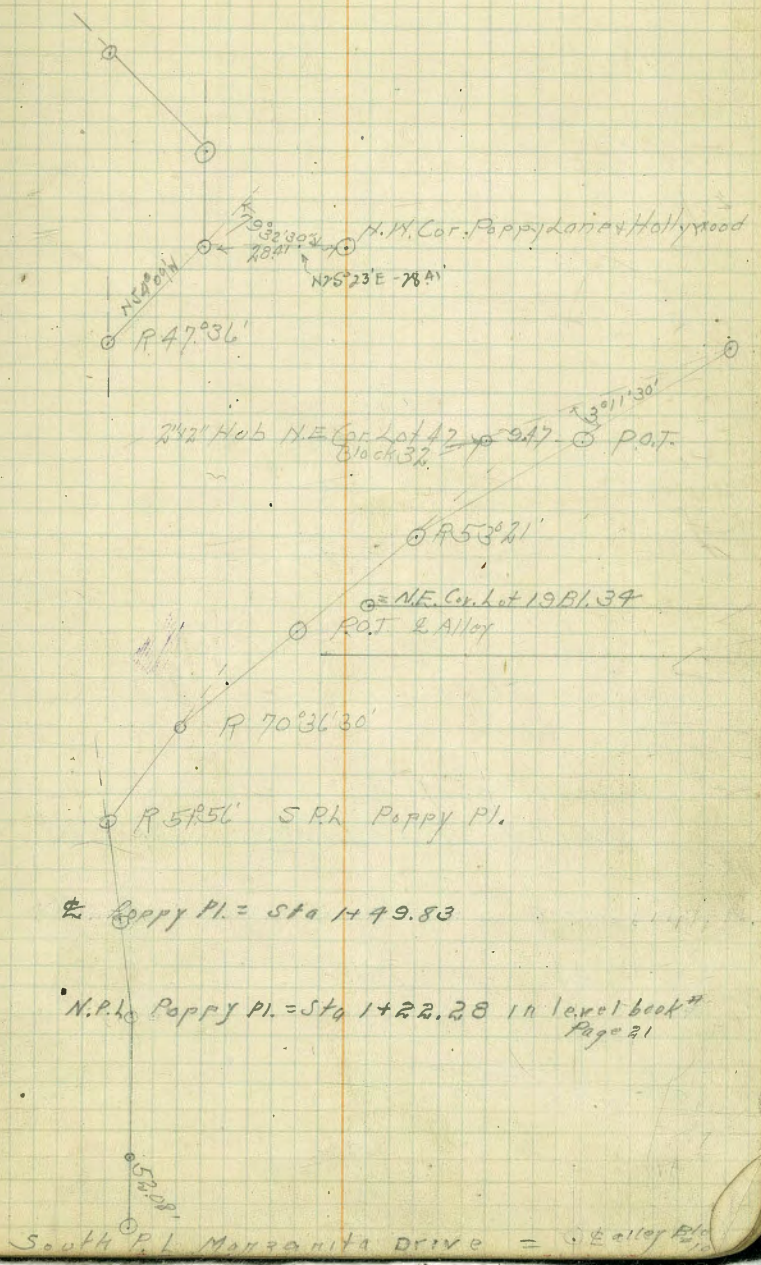
3+54.28 Δ R 70°36'30" M.H. # 78

1+77.13 Δ R 51°56'

1+49.83 P.O.T.

1+22.28 Δ L 51°34'

52.88' South Marzanita Dr
 Block 10 E Alley
 = 0+00



Location of Serris
 Poppy Lane Between Blocks 34 + 35
 From So. Line Lot 22 B139 to Hollywood Ave

LEVELS - Book # 1119 pages 27-28

6

4 + 66.43 = 13 + 75.08
 See Page 5

2 + 04.6 Δ R 54° 07'

E Poppy Lane
 Opp. S. Line Lot 22 B139
 0 + 00

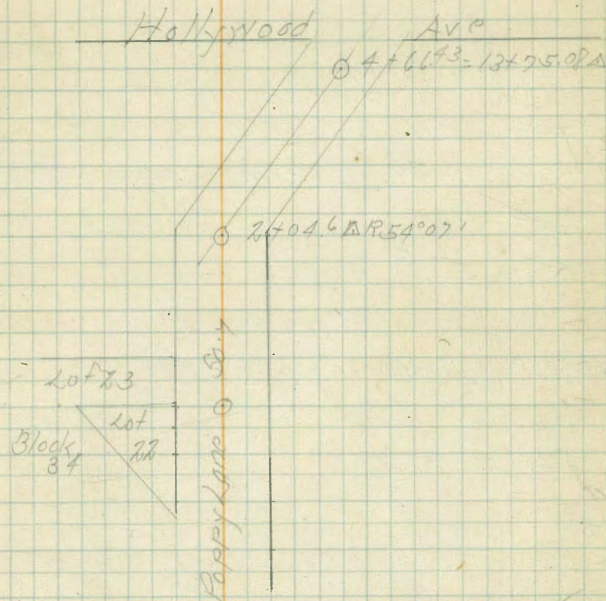
In Block 10 + 34 Cont

20 + 04.3 Man Hole Center

18 + 05.1 Δ R 43° 10'

17 + 02.75 Δ L 28° 13'

Cont From Page 5



Location of Sewer
 Margarita Drive West End Cross Blk 35 to Alley
 From S.W. Cor Lot 22 Bl 37 to E Alley + Holly Cross Ave

10.9.77 7

For Levels see Book #1119 Page 25

18+49²⁰ end = 17+02.45 Page 5 this book.

17+80²¹ O.P.O.T.

17+33¹⁶ ΔL 56°58' MH#25

15+52⁰⁹ P.O.T. Lot line 19+20 Bl 35

14+92⁸⁵ P.O.T. E. Lot line 19+20 Bl 35 at Margarita Dr.

14+62⁸⁵ ΔP 0°51' MH#24

11+62¹⁰ ΔP 16°30' MH#23

10+04³⁸ P.O.T. MH#22

8+30.6 ΔL 71°48' MH#21

6+47.12 ΔP 59°35' MH#20

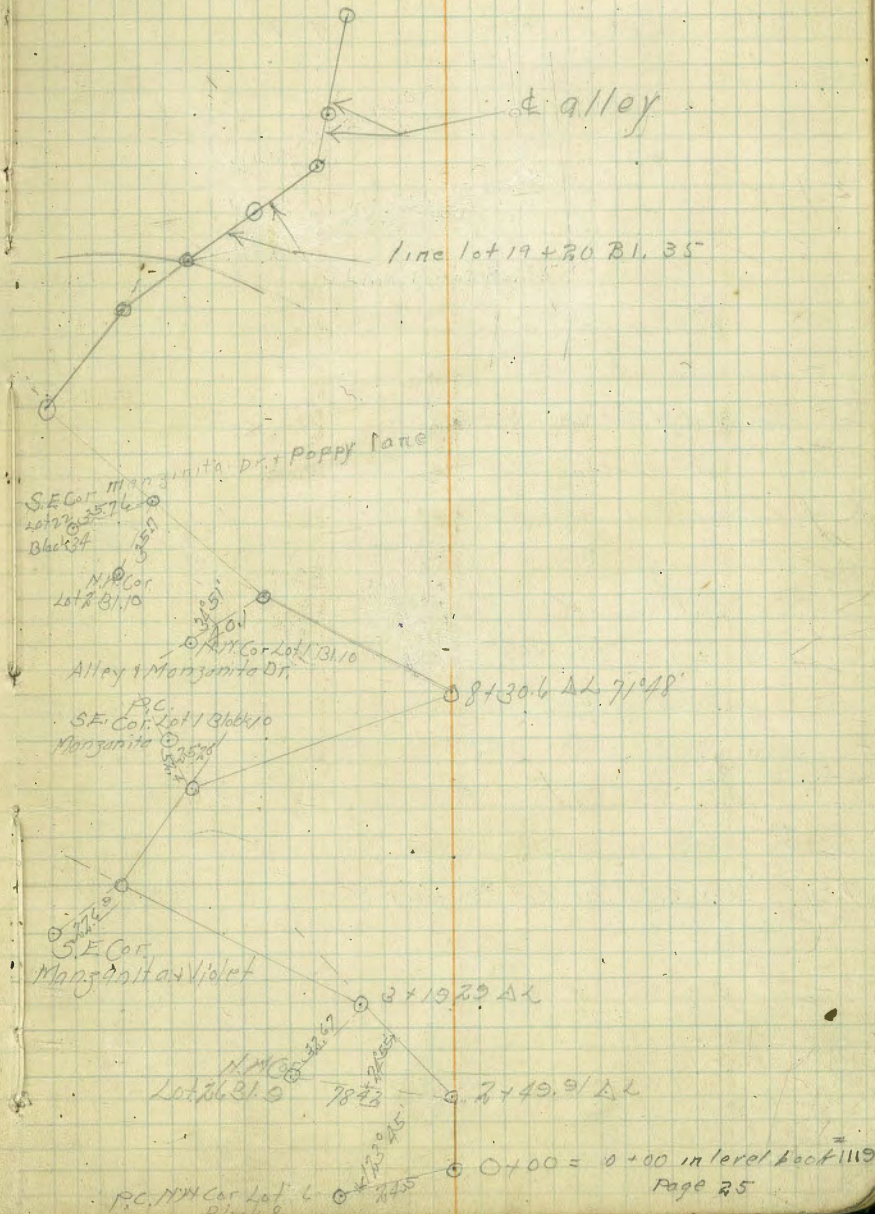
5+53.54 ΔP MH#19

5+39.5 ΔP 49°01'

3+19.79 ΔL 58°38' MH#18

2+49.91 ΔL 46°05' MH#17

0+00 = 71.5 No. P.C. N.W. Cor Lot 6 Block 8



Location Senter
Poppy Place
From N. Lot Line 26 Bl. 34 to E. Manzanita Dr.

496.20
034.57

8

Levels Page 37 Book # 1117

all lot.

2+32.01 = 10+0438 P.O.T. Manzanita Dr.

0+00 = N. Lot Line Lot 26 Block 34

N. N. Cor
Lot 25 Bl. 34 P.C. 230
3457

P.C. E.R.L. of Poppy Pl.
Lot 46 Block 10

0+00

35.12

Location Servers
 E. Alley in Block 9-8-6
 Between Hollyroot + Manzanita Dr
 From EPL Violet to Oak + Lexington Ave.

Cont Page 10

14+15.97 Δ R 8°55' ✓

12+15.3 Δ R 5°41' ✓

11+75 ○ AL 82°31' ✓ E Oak St. x

11+50 ○ P.O.T. MPL Oak

6+75 ○ P.O.T. E.P.L. Jasmine

6+50 ○ P.O.T. E. Jasmine

6+25 ○ P.O.T. MPL Jasmine

3+00 ○ P.O.T. E.P.L. Primrose

2+75 ○ P.O.T. E.P. Primrose

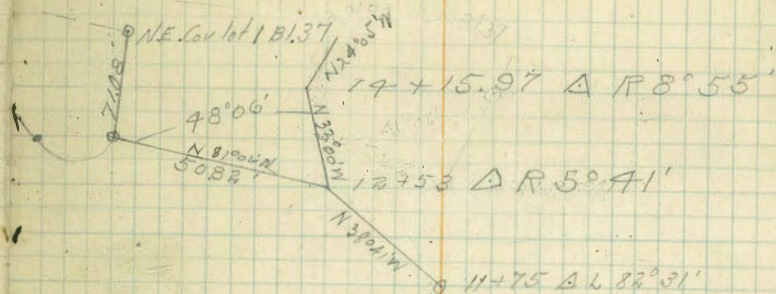
2+50 ○ P.O.T. MPL Primrose

1+25 ○ P.O.T. E. Alley's

0+00 = 25' East of East line Violet St.

For levels see Pages 11-16 in
 level book #1119

9



N 49°50' E

E. Alley

MPL Primrose

E.P.L. Violet

Location Searched
 Blocks 9-8-6 And Oak St
 Cont From Page 9

265
 3200

17+175 Center Existing Man Hole

15+98.10 Δ L 24°01' ✓

15+73.73 Δ L 30°43' ✓

14+15.97 Δ R

Man Hole
 Existing Sewer 17+175
 200' No. Pl. Lexington + Oak

SS321E

114' Cor
 of Alley at Oak St
 Block 38 20+37

69.29 So. NE Cor
 Lot 34 Bl 38

0.23 P

21.5

NS60W

10

15+98.10 Δ L 24°01'

15+73.73 Δ L 30°43'

14+15.97 Δ R

Location Series
 In Block 33 & Alley Between Hollywood & Pepper Dr.
 for levels see Page 35 in level book # 119

10-15-24
 C.B. Miller
 N.P. Lot 9
 A. Simon

11

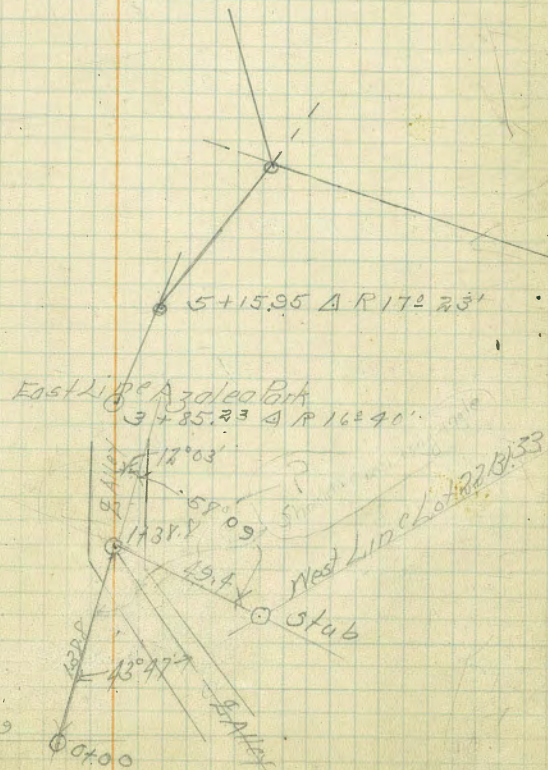
6+06.43 Δ W = 8+69.22 Δ R See Page 5

5+15.95 Δ R 17° 23'

3+85.23 Δ R 16° 40'

1+38.8 Δ L 12° 03'

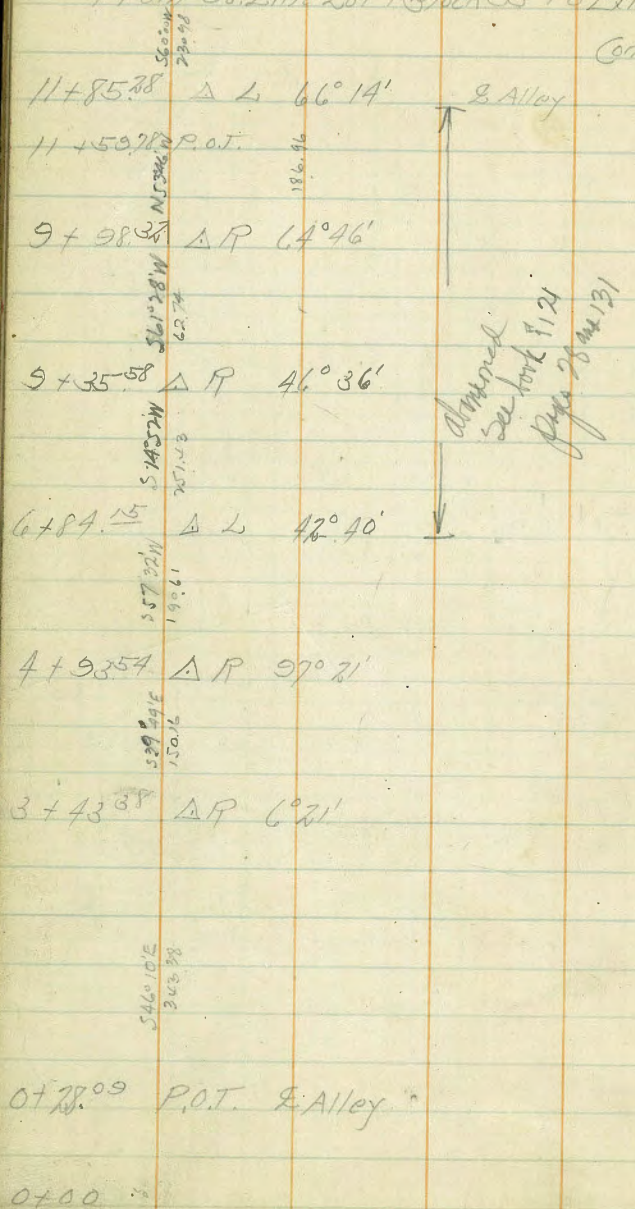
0+00



Location of Servers
On Violet-Sycamore-Orchid-Willow to Hobart

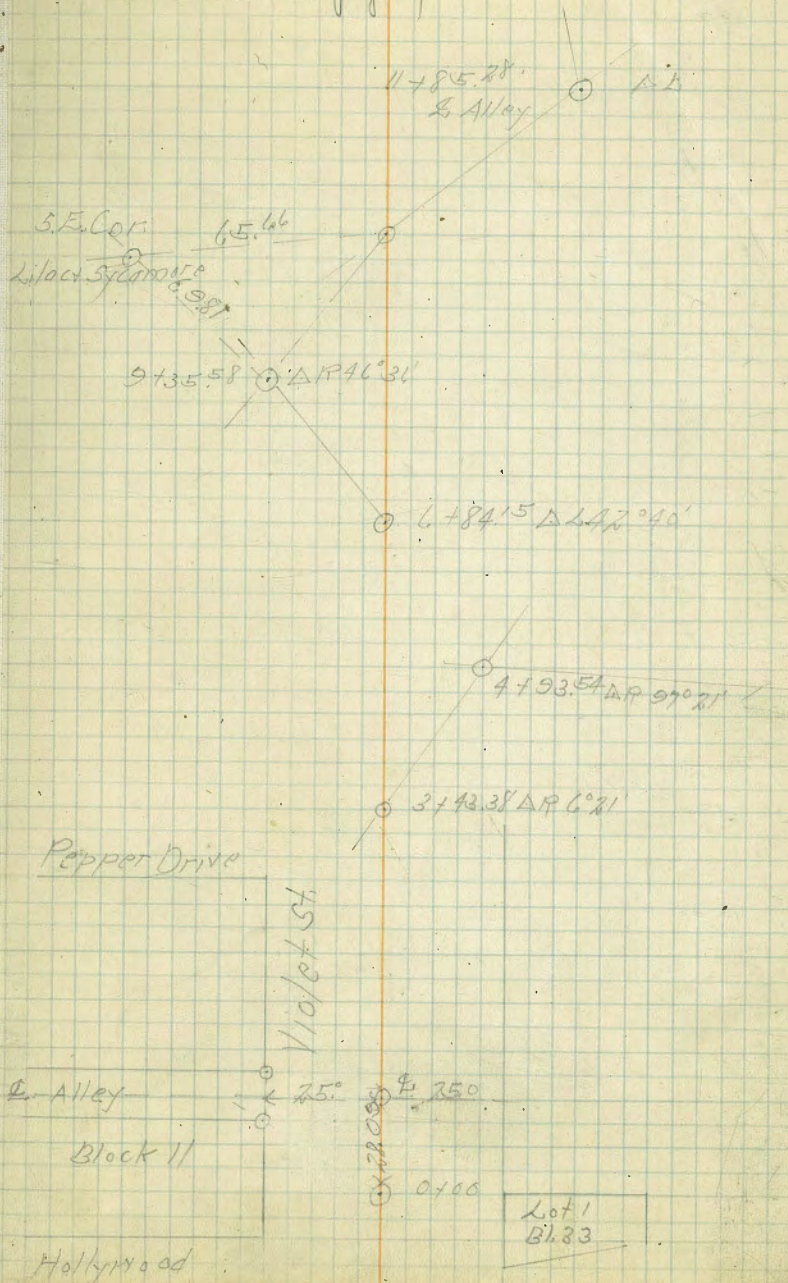
From So. Line Lot 1 Block 33 to Existing Server

Cont on Page 13



Level's Book #119 page 39

1971
1965
10-15-72
12



Location of Servers
 Violet - Sycamore - Orchid - Willow to Klabas

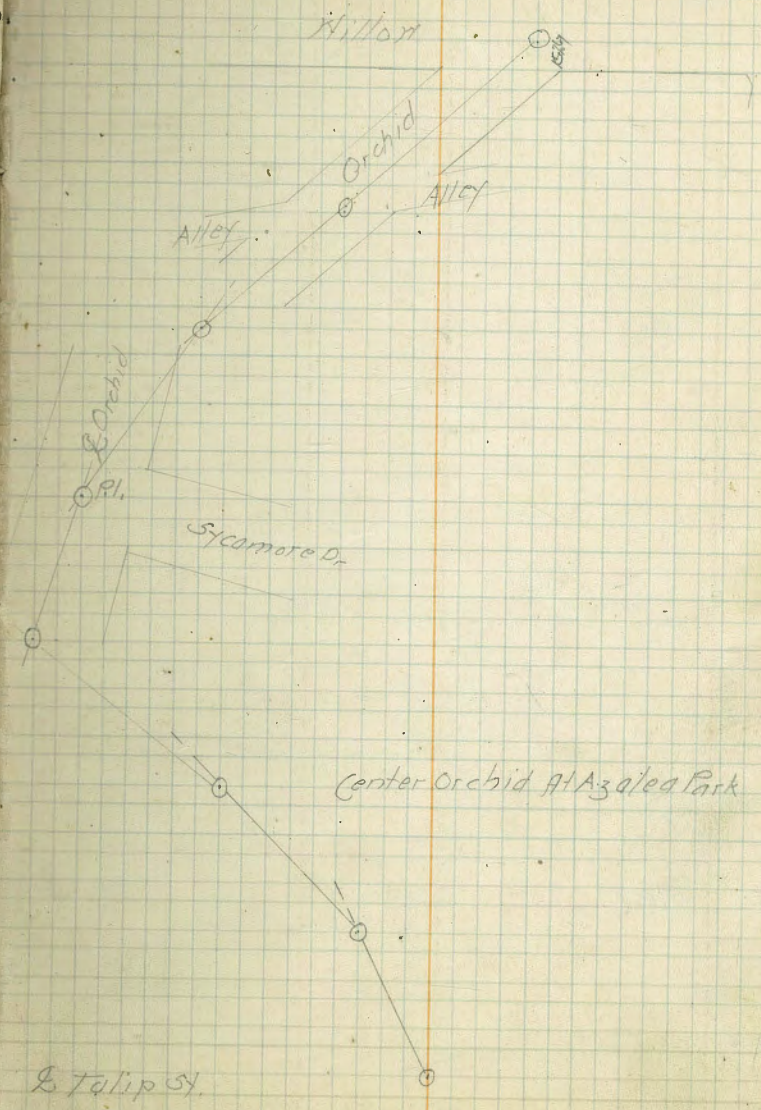
Cont. From Page 12

Cont Page 14

- 24 + 71.50 P.O.T. 2118
- 23 + 64.33 Δ R 40°16' 104846
 L Orchid & Willow Pl.
- 21 + 35.42 P.O.T. 32424
 L Alley
- 20 + 35.04 Δ R 38°22'
510.5 W 9.0
- 19 + 41.04 Δ R 11°21' 50°30 E 15.5
 Pl. Orchid & Sycamore
- 17 + 83.53 Δ L 25°40'
57.5 W 8.1
- 17 + 05.95 Δ L 58°24'
377.2 W 11.3
- 15 + 95.65 Δ L 29°06'
1732.0 W 17.9
- 14 + 16.26 Δ R 46°40'



10-17-24 13



Location of Sewers
 Violet - Sycamore - Orchard - Millport to Mabark
 Cont. From Page 13

18.17.71
 C.B. Walker
 R.A. Proctor
 A. Sisson

14

34 + 17.79

637.39

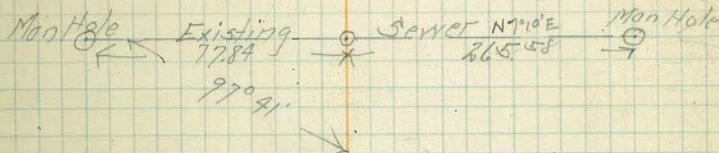
27 + 75.00 P.O.T.

91.68

26 + 83.32 P.O.T.

1058.66
 589.29111

see books 1119-46
 518-14



Pt. Millport & Pepper

Millport

Pepper Dr.

BIR A Belmont
 Prelim. Sewer Levels in Alley from M.H.
 21' N. of E El Cajon Ave to Pt 911.02 N.

B.M. RP 384	
00 = M.H. 21.0 N. of El Cajon Ave	12.98
T.P. 10.50	2.20
00	11.1
+11.1	11.1
+27'	10.2
1+00	9.8
1+50	8.9
2+00	6.7
+40	3.7
3+00	1.7
75' N. of 3+00	5.2
+60	0.0
T.P. 5.48	0.04
4+00	5.6
+50	5.5
5+00	5.3
+50	5.0
6+00	4.8
+50	4.6
7+00	5.0
+50	4.8
8+00	5.3
+50	5.7
9+11.02	5.1

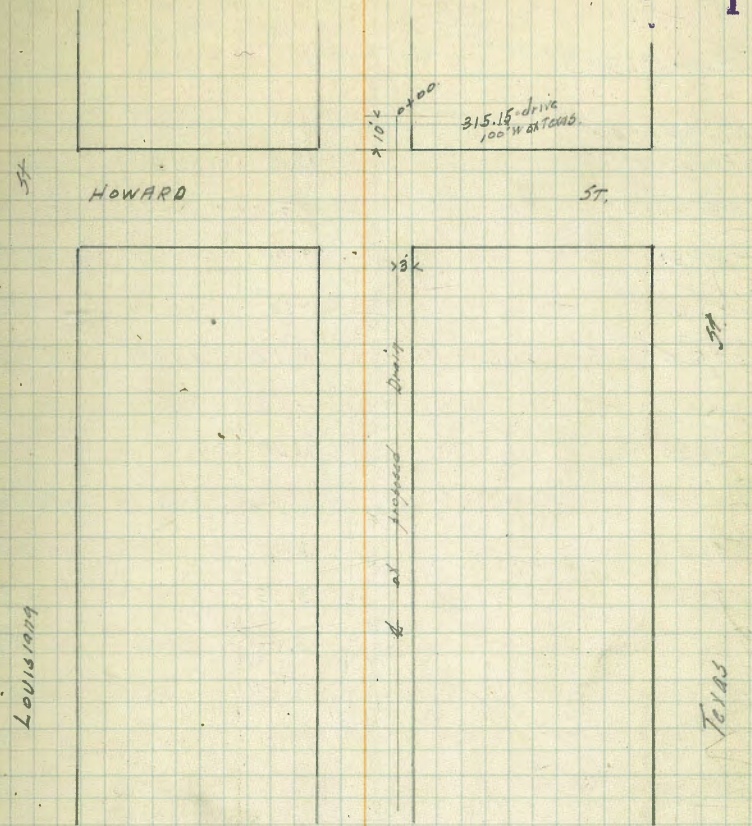
S.W. Sierra
 El Cajon Ave

Flow line

ground

2/25/25 *Gregory* Levels for Drain
 S. of Howard bet Texas + Louisiana

10' N. of N.W. Howard = 0+00	1.70	319.74	318.04
+ 21		4.3	315.4
+ 35		4.0	315.3
+ 55		2.6	317.1
+ 65		2.6	317.1
1		5.6	314.1
+ 50		6.5	313.2
2		6.8	312.9
+ 50		7.6	312.1
+ 95		8.8	310.9
+ 98	can dump here.	10.5	309.2
		11.2	308.5



3/29/25 Gregory

Sewer Construction
 Center from & Alley bet Eads & Fay
 To 15' E of E. Fay thence S to 51.04' of
 ex N.W. Westbourne.

PLAN #230 D

Grade

Station	17.86	149.71	131.85	Flow Line MH		
M.H. Center & Alley						
1+07.50			11.38	138.33	135.0	+3.33
2+51.75			9.35	140.36	136.21	+4.15
1+07.50			7.30	142.41	137.42	+4.99
1+53.75			5.80	143.91	138.64	+5.27
2+05 = M.H. 15' old Fay Δ 90° R			5.10	144.61	140.0	+4.61
2+51.67			4.70	145.01	140.32	+4.69
2+98.33			4.49	145.22	140.63	+4.59
3+45.00			4.42	145.49	140.95	+4.54
3+91.67			3.96	145.75	141.24	+4.51
4+38.33			3.73	145.98	141.57	+4.41
4+85 M.H.			3.44	146.27	141.89	+4.38
5+31.67			3.20	146.51	142.21	+4.30
5+78.33			3.10	146.61	142.52	+4.09
6+25.00			2.68	147.03	142.83	+4.20
6+71.67			2.28	147.43	143.14	+4.29
7+18.33	746	155.06	2.11	147.60	143.46	+4.14
7+65 M.H. & Rockville			6.61	148.42	143.78	+4.64
8+11.67			6.09	148.97	144.09	+4.88
8+58.33			5.09	149.97	144.41	+5.56
9+05.			4.40	150.66	144.72	+5.94
9+51.67			3.52	151.34	145.03	+6.31
9+98.33			4.09	150.97	145.35	+5.62
10+45 M.H.			3.14	151.92	145.67	+6.25
10+90.33			4.51	150.55	145.98	+4.57
11+35.67			3.46	151.60	146.28	+5.32

LINE ON FAY PUT 21' E. of d. To Miss Water Gate

1138
426
336
124

5/22
4.53 = 18

2
4
5
6
7
8
9
10

15506

11+81.00	2.97	152.09	146.59	+5.50
12+26.33	4.47	150.59	146.89	+3.70
12+71.67	6.02	149.04	147.20	+1.84
13+17.00 DE	6.34	148.72	147.50	+1.22

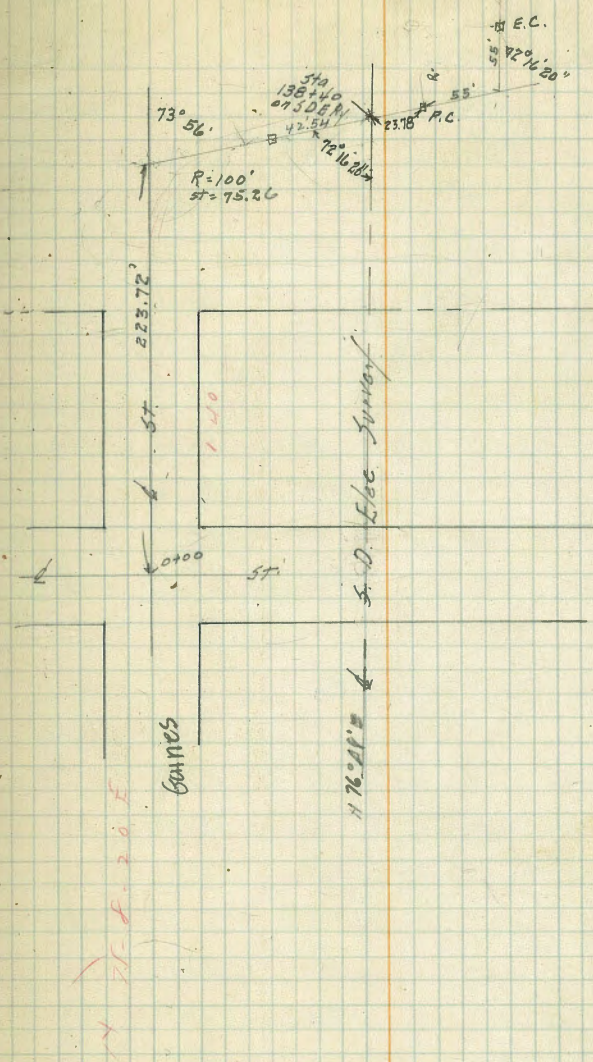
$$\begin{array}{r} 13 \\ 366 \end{array}$$

19

3/31/25

Gregory

Survey of Mission Valley
Road N of River



10' elev
10' 1/4s
Xsec. of the Middle 60' of G St.
30th to 200' E of 21st.

Moore
Plaster
Walker

G St.

21

NWBF	3.02	160.08	157.06	G + 30th			
					+7	6.1	153.98
					1/4		
on Cement cb	EL 30th						
N		2.14	157.94			5.7	157.38
		2.2	157.88		c	5.8	154.28
cb		2.4	157.68		1/4	5.7	151.38
1/4		2.3	157.78		cb	5.2	154.88
c		2.4	157.68		s	4.7	155.38
1/4		2.5	157.58		+5	4.7	155.38
+3		3.0	157.08				
						25' E	
cb		3.5	156.58		-5	5.9	154.18
+5		3.2	156.88		s	6.1	153.98
s		2.5	157.58		cb	6.7	153.38
	7' E				1/4	7.2	152.88
s		4.0	156.08		c	7.7	152.38
cb		4.5	155.58		1/4	8.3	151.78
1/4		4.7	155.38		cb	8.9	151.18
c		4.8	155.28		N	9.5	150.58
+5		4.1	155.98		+10	9.9	150.18
+7		3.5	156.58				
1/4		4.4	155.68			35' E	
cb		4.8	155.28		-10	11.4	148.68
N		5.3	154.78		N	11.0	149.08
+5		5.4	154.68		cb	10.7	149.38
					1/4	10.2	149.88
	12' E				c	9.3	150.78
-5		7.0	153.08		1/4	8.6	151.48
N		6.7	153.38		cb	7.7	152.38
+7		5.7	154.38		s	7.0	153.08
cb		5.6	154.48		+5	6.7	153.38

160.08

50' E

-5	8.6	151.48
S	9.0	151.08
cb	9.8	150.28
+5 1/4	10.7	149.38
+5	11.4	148.68
C	11.8	148.28
1/4	11.9	148.18
cb	12.2	147.88
N	12.4	147.68
+4	12.5	147.58
+7	12.9	147.18
+15	13.5	146.58

65' E

-15	17.3	142.78
-13	17.3	142.78
-12	15.4	144.68
N	14.9	145.18
cb +5	14.3	145.78
cb	14.0	146.08
1/4	13.7	146.38
C	13.6	146.48
1/4	12.6	147.48
cb	11.7	148.38
S	10.7	149.38
+5	10.2	149.88

+5

~~T.R.~~

G 8T

22

75' E

-5	11.2	148.88	
S	11.7	148.38	
cb	12.7	147.38	
1/4	13.5	146.58	
T.P.	0.51 · 147.69	12.90	147.18
C	1.8	145.89	
1/4	2.3	145.39	
cb	3.5	144.19	
N	4.7	142.99	
+10	6.0	141.69	
+15	5.8	141.89	

95' E

-15	8.0	139.69
N	8.5	139.19
+5	8.5	139.19
cb	7.5	140.19
1/4	5.2	142.49
C	3.6	144.09
+4	3.1	144.59
1/4	2.5	145.19
cb	2.1	145.59
S	1.2	146.49
+5	0.8	146.89

122.05 E

-5

S

4.1 143.59

4.6 143.09

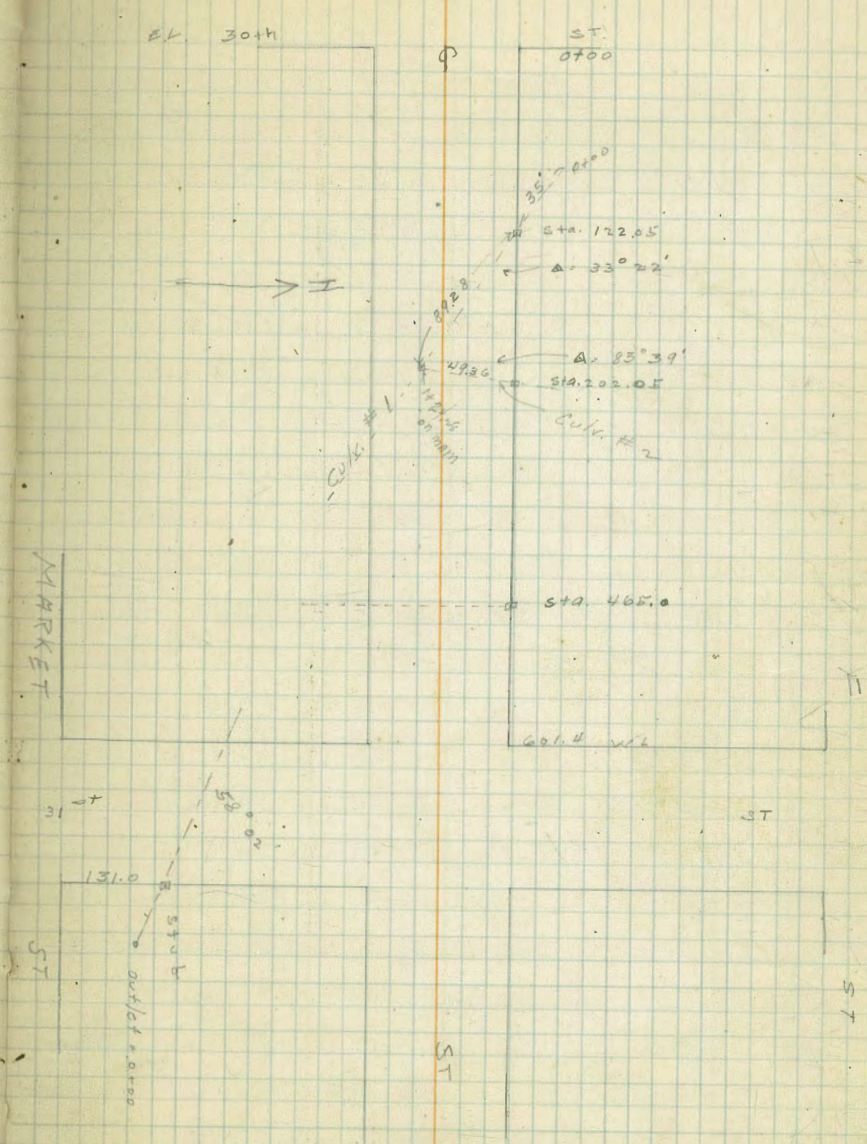
cb	5.9	141.79
1/4	7.3	140.39
c	9.1	138.59
1/2	10.8	136.89
cb	11.0	136.69
N	10.67	137.02 on hub
+10	10.1	137.59
+15	9.3	138.39

Levels on Culvert #1

35' N.W. of N.L. = 0100	7.7	139.99
+10	8.5	139.19
+35 = N.L.	10.67	137.02
+60	11.9	135.79
+85	13.4	134.29
1 + 24.28 = Junction	15.3	132.39
+55	16.6	131.09
+70	17.8	129.89
+90	17.9	129.79

Levels on Culvert #2

35' N.E. of N.L. = 0200	9.4	138.79
0 + 35	11.68	136.01
+52	12.7	134.99
+65	14.2	133.49
0 + 84.36 = Junction	15.3	132.39



147.69

145' E 0x 30''

-15	8.0	139.69
N	10.9	136.79
cb	11.8	135.89
1/4	12.5	135.19
C	12.5	135.19
1/4	12.0	135.69
cb	10.9	136.79
B	8.9	138.79
+5	8.2	139.49

163' E

-5	10.7	136.99
5	11.6	136.09
cb	12.8	134.89
1/4	13.5	134.19
C	13.6	134.09
1/4	12.4	135.29
cb	10.5	137.19
N	8.4	139.29
+10	6.5	141.19

175' E

-10	6.1	141.59
N	7.8	139.89
cb	9.8	137.89
1/4	12.2	135.49
C	14.0	133.69
+5	14.5	133.19

1/4

cb	14.6	133.09
5	13.9	133.79
-5	12.9	134.79
-7	12.7	134.99
-10	11.7	135.99
	10.8	136.89

187' E

-15	11.9	135.79
-7	14.0	133.69
5	14.2	133.49
cb	14.7	132.99
1/4	14.7	132.99
C	14.0	133.69
1/4	12.5	135.19
cb	10.4	137.29
N	8.6	139.09
+10	7.2	140.49

200' E

-15	10.1	137.59
N	11.5	136.19
cb	12.4	135.29
1/4	13.0	134.69
C	13.9	133.79
1/4	14.9	132.79
cb	15.3	132.39
5	15.6	132.09
+8	15.1	132.59
+10	12.5	135.19

147.69

208° E

-25	14.2	133.49
-9	16.5	131.19
5	15.8	131.89
06	15.5	132.19
1/2	14.1	133.59
C	12.9	134.79
1/2	12.1	135.59
06	12.0	135.69
N	11.5	136.19
+15	9.8	137.89

217° E

-15	7.6	140.09
N	9.0	138.69
06	9.5	138.19
1/2	9.8	137.89
C	10.5	137.19
1/2	12.9	134.79
06	14.7	132.99
+6	15.4	132.29
5	15.8	131.89
+20	15.6	132.09

225° E

-20	16.7	130.99
-10	17.0	130.69
5	15.7	131.99
+8	14.1	133.59

G 5T

25

06	13.1	134.59
1/2	11.5	136.19
C	9.4	138.29
1/2	8.1	139.59
06	7.3	140.39
N	6.6	141.09

250° E

N	4.0	143.69
06	5.5	142.19
1/2	6.7	140.99
C	8.0	139.69
+6	8.8	138.89
1/2	10.0	137.69
06	12.4	135.29
5	14.1	133.59
+5	15.3	132.39
+10	16.4	131.29
+20	18.0	129.69
+30	17.6	130.09

275° E

-40	18.2	129.49
-28	19.4	128.29
-20	18.4	129.29
-10	15.9	131.79
5	13.2	134.49
06	10.7	136.99
1/2	8.3	139.39

147.69

C			6.3	141.39
1/4			4.7	142.99
cb			2.5	145.19
N			0.8	146.89
T.P.	7.96	154.58	1.07	146.62
		300' E		
N			3.2	151.38
cb			6.0	148.58
1/4			8.4	146.18
C			11.0	143.58
1/4			13.9	140.68
+5			16.1	138.48
cb			17.4	137.18
+6			18.6	135.98
+8			19.8	134.78
S			20.7	133.88
+5			21.9	132.68
+10			23.5	131.08
+20			26.0	128.58
+35			28.0	126.58
+40			26.5	128.08
		325' E		
-4.5			28.5	126.08
-3.7			29.6	124.98
-12			23.9	130.68
-10			22.4	132.18
S			19.6	134.98

6 57

26

cb			17.2	137.38
1/4			13.1	141.48
C			10.0	144.58
1/4			6.5	148.08
cb			3.7	150.98
N			0.5	157.08
		335' E		
N			0.5	157.08
cb			3.7	150.88
1/4			6.7	147.88
C			10.4	144.18
1/4			13.3	141.28
cb			17.7	136.88
S			20.1	134.48
+10			23.3	131.28
+40			29.6	124.98
+45			29.0	125.58
		350' E		
-10			30.0	124.58
-20			26.0	128.58
-10			24.2	130.38
-2			22.1	132.48
S			20.5	134.08
cb			17.8	136.78
1/4			14.6	139.98
C			11.3	143.28
1/4			8.1	146.48
cb			4.6	149.98

154.58

N		2.1	152.48
	375' E		
N		7.4	147.18
cb		9.0	145.58
1/4		12.1	142.48
T.P.	0.09	142.17	142.08 ✓
c		1.9	140.27
1/4		4.1	138.07
cb		7.3	134.87
S		9.2	132.97
+5		11.0	131.17
+40		18.2	123.97
	409' E		
-30		16.2	125.97
-20		14.0	128.17
S		10.6	131.57
cb		9.4	132.77
1/4		7.5	134.67
c		5.6	136.57
1/4		4.3	137.87
cb		2.5	139.67
N		0.9	141.27
	405' E		
N		2.6	139.57
cb		3.7	138.47
1/4		5.0	137.17
c		6.2	135.97

G 5T 27

	425' E		
N		4.9	137.27
cb		6.3	135.87
1/4		7.0	135.17
c		7.7	134.47
1/4		9.0	133.17
cb		11.0	131.17
S		12.4	129.77
+5		13.9	128.27
+25		15.8	126.37
	465' E = site for calv		
-25		18.1	124.07
S		14.0	128.17
cb		12.8	129.37
1/4		11.7	130.47
c		9.8	132.37
1/4		9.3	132.87
cb		9.1	133.07
N		7.0	135.17
	500' E		
N		6.0	136.17
+4		6.2	135.97
+7		5.9	136.27
cb		6.5	135.67
+5		7.5	134.67
1/4		7.8	134.37
c		9.0	133.17

1/4	10.5	131.67
cb	12.1	130.07
5	13.2	128.97
+15	15.8	126.37
525' E		
-15	15.1	127.07
5	12.4	129.77
+7	9.8	132.37
cb	9.7	132.47
1/4	9.1	133.07
c	8.3	133.87
1/4	7.4	134.77
+5	6.7	135.47
cb	5.4	136.77
N	4.5	137.67
559' E		
N	3.5	138.67
cb	3.0	137.17
1/4	3.7	136.47
c	2.8	135.37
+5	7.1	135.07
1/4	6.8	135.37
+5	8.4	133.77
cb	9.0	133.17
5	10.8	131.37
+15	13.2	128.97

575' E		
-15	11.1	131.07
5	8.8	133.37
cb	7.1	135.07
1/4	6.2	135.97
c	5.3	136.87
1/4	4.4	137.77
cb	3.6	138.57
N	2.5	139.67
601.4' E = 11.1 31st ST		
N	1.6	140.57
cb	2.6	139.57
1/4	4.0	138.17
c	4.5	137.67
1/4	5.1	137.07
cb	6.2	135.97
5	7.5	134.67
11.1 31st ST		
5	8.5	133.67
cb	7.5	134.67
1/4	6.7	135.47
c	5.9	136.27
1/4	5.2	136.97
cb	4.5	137.67
N	3.8	138.37
25' E		
N	4.2	137.97

142.17

cb	4.7	137.47
1/4	5.5	136.67
c	6.7	135.47
1/4	7.5	134.37
cb	8.7	133.47
S	9.4	132.77
+10	10.3	131.87
50' E		
-15	12.0	130.17
S	9.7	132.47
cb	8.3	133.87
1/4	7.3	134.87
c	6.1	136.07
1/4	5.0	137.17
cb	4.5	137.67
N	4.0	138.17
75' E		
N	3.0	139.17
+5	3.9	138.27
cb	4.3	137.87
1/4	4.8	137.37
c	5.8	136.37
1/4	7.2	134.97
cb	8.1	134.07
S	9.4	132.77
+20	13.2	128.97

G 55

29

100' E		
-20	13.6	128.57
S	10.5	131.67
cb	8.8	133.37
1/4	7.2	134.97
c	5.4	136.77
1/4	4.4	137.77
cb	3.8	138.37
15	3.3	138.87
1	2.2	139.97
120' E		
N	3.3	138.87
cb	3.9	138.27
1/4	5.2	136.97
c	6.2	135.97
+5	7.2	134.97
1/4	8.4	133.77
cb	10.0	132.17
S	12.0	130.17
+20	16.1	126.07
125' E		
-20	16.5	125.67
S	12.8	129.37
cb	10.7	131.47
1/4	8.9	133.27
c	7.0	135.77
+5	6.1	136.07

142.17

1/4			5.6	136.57
cb			4.7	137.47
N			3.9	138.27
		145° E		
N			8.3	133.87
cb			9.0	133.17
1/4			9.7	132.47
C			10.7	131.47
1/4			12.5	129.67
T.P.	2.42	131.61	12.98	129.19
cb			4.0	127.61
S			5.8	125.81
+20			10.1	121.51
		150° E		
-20			10.8	120.81
S			6.7	124.91
cb			4.9	126.71
1/4			3.1	128.51
C			1.4	130.21
+5			0.6	131.21
1/4			0.2	131.41
cb			10.4	132.01
N			0.8	130.81
		170° E		
N			5.1	126.51
cb			5.4	126.21
1/4			6.0	125.61

G 57

30

C			6.6	125.01
1/4			7.6	124.01
cb			9.1	122.51
S			10.5	121.11
+20			12.9	118.71
		175° E		
-20			13.7	117.91
S			10.9	120.71
cb			9.5	122.11
1/4			8.7	122.91
C			7.5	124.11
1/4			6.6	125.01
cb			6.2	125.41
N			5.7	125.91
+7			4.7	126.91
+8			2.8	128.81
		190° E		
-8			5.6	126.01
-7			8.1	123.51
N			8.8	122.81
cb			9.1	122.51
1/4			10.0	121.61
C			10.7	120.91
1/4			11.2	120.41
cb			12.3	119.31
S			13.5	118.11
+20			15.9	115.71

13/61

200 E

-20	18.6	113.01
5	16.3	115.31
cb	14.7	116.91
1/2	13.7	117.91
C	12.9	118.71
1/4	12.1	119.51
cb	11.1	120.51
N	10.1	121.51
+10	8.6	123.01

IF YOU GO BELOW THIS USE THE
FORMER NOTES. signed Pres. Coolidge

T.P. 0.20 118.83 ✓ 12.98 118.63 ✓

G 57

31

4/15/25

Gregory
Moore
Preston
WalkerCROSS SECTION OF
31 ST
From Market To F ST
118.8320' ST
10' COS

11883

31.0'

32

	N.L. Market		
E		14.6	104.23
cb		14.0	104.43
1/4		14.1	104.73
C		13.8	105.03
1/4		13.7	105.13
+9		13.6	105.23
cb		13.9	105.53
W		13.6	105.23
	4' N		
W		3.4	115.43
cb		5.2	113.63
1/4		7.5	111.33
C		9.1	109.73
1/4		10.0	108.83
cb		10.5	108.33
E		12.1	106.73
	25' N		
-5		11.7	107.13
E		11.1	107.73
cb		9.5	109.33
+5		8.5	110.33
1/4		8.0	110.83
C		6.4	112.43
1/4		5.4	113.43
+6		3.0	115.83

cb		3.0	115.83
W		2.0	116.83
	50' N		
W		1.0	117.83
cb		3.3	115.53
1/4		5.1	113.73
C		6.7	112.13
+6		7.5	111.33
1/4		5.2	110.63
cb		9.7	109.13
E		11.3	107.53
+5		11.9	106.93
	75' N		
-10		13.0	105.83
E		11.4	107.43
cb		10.4	108.43
1/4		9.1	109.73
C		7.4	111.43
1/4		5.9	112.93
cb		4.3	114.53
W		2.1	116.73
	100' N		
W		3.9	114.93
cb		5.6	113.73
1/4		7.0	111.83

118.83

C	8.3	110.53
1/4	10.0	108.83
cb	10.8	108.03
E	11.3	107.53
+10	11.9	106.93

125' N

-10	11.4	107.43
E	11.1	107.73
cb	11.0	107.83
1/4	10.6	108.23
C	9.9	108.93
1/4	9.5	109.33
cb	8.3	110.53
1/4	6.0	112.83

Levels for Culvert on 310' bet. Market + G.S.T.S.

Outlet = 0.00 See sketch	11.9	106.93
+20 = EL 310' (on stub)	10.7	108.09
+45	10.0	108.83
+60	9.9	108.93
+80	9.3	109.53
+92	8.3	110.53
+20 = inlet	6.9	111.93

143' N

-5	8.0	110.83
1/4	8.1	110.43
cb	9.4	109.43
1/4	10.2	108.63

118.83

310' N

33

C	9.9	108.9
1/4	10.0	108.8
cb	10.2	108.6
E	10.2	108.6
+10	10.6	108.2

103' N

-10	8.3	110.5
E	8.6	110.2
cb	9.0	109.8
1/4	9.0	109.8
C	8.9	109.9
1/4	9.1	109.7
cb	9.3	109.5
1/4	8.0	110.8
+10	7.4	111.4

175' N

-10	7.5	111.3
1/4	8.1	110.7
cb	7.9	110.9
1/4	8.1	110.7
C	7.9	110.9
+4	7.5	111.3
1/4	7.7	111.1
cb	7.8	111.0
E	7.5	111.3
+10	7.2	111.5

	200' N			
-5		3.0	115.83	
E		3.1	115.73	
cb		3.5	115.33	
1/4		4.0	114.83	
C		4.0	114.83	
+6		3.8	115.03	
1/4		4.1	114.73	
cb		4.6	114.23	
W		5.3	113.53	
+10	225' N	5.5	113.23	
-10		0.2	118.13	
W		0.1	118.73	
T.P.	12.70	131.36	0.17	118.66
cb			12.30	119.06
+5			11.6	119.76
1/4			11.4	119.96
C			12.1	119.26
1/4			11.4	119.96
cb			11.4	119.96
+3			11.2	120.16
E			10.5	120.46
+5			11.5	119.86
-5	250' N		6.5	124.86
E			6.8	124.56
cb			6.8	124.56

1/4			6.8	124.56
C			7.1	124.26
1/4			7.6	124.36
cb			7.3	124.66
W			8.1	123.26
+10			8.2	123.06
-10	275' N		3.4	127.96
W			3.1	128.26
cb			2.8	128.56
1/4			2.6	128.76
C			2.0	129.36
1/4			2.2	129.16
cb			2.4	128.96
E			2.0	129.36
+5			2.0	129.36
T.P.	12.80	144.00	0.16	131.20
-5	300' N		11.4	132.60
E			11.4	132.60
cb			11.3	132.7
1/4			11.3	132.7
C			11.1	132.9
1/4			10.9	133.1
cb			10.9	133.1
W			10.9	133.1
+10			11.0	133.0

144.00

310.80 W - new SL of GST

w	9.3	134.7
+8	9.0	135.0
cb	9.4	134.6
+5	9.6	134.4
1/4	9.6	134.4
c	9.5	134.2
1/4	10.0	134.0
cb	10.3	133.7
E	10.3	133.7
Scb		
E	9.3	134.7
cb	8.9	135.1
1/4	8.8	135.2
e	8.6	135.4
1/4	8.1	135.9
+7	8.0	136.0
cb	7.6	136.4
w	7.9	136.1
S 1/4		
w	6.9	137.1
cb	6.7	137.3
1/4	7.2	136.8
c	7.6	136.4
1/4	7.9	136.1
cb	8.1	135.9
E	8.5	135.5

144.00

310.80

35

E	7.6	136.4
cb	7.4	136.6
1/4	6.9	137.1
c	6.7	137.3
1/4	6.4	137.6
cb	6.1	137.9
w	6.3	137.7
N 1/4		
w	5.7	138.3
cb	6.4	138.6
1/4	5.6	138.4
c	5.9	138.1
1/4	6.0	138.0
cb	6.2	137.8
E	7.0	137.0
N 1/4		
E	6.3	137.7
cb	5.7	138.3
1/4	5.3	138.7
c	5.2	138.8
1/4	4.8	139.2
cb	4.7	139.3
w	4.4	139.6

144.00

NL of CST

w			3.4	140.6
+3			4.4	139.6
cb			4.4	139.6
+6			4.4	139.6
1/4			4.0	140.0
c			4.6	139.4
1/4			4.6	139.4
cb			5.0	139.0
E			5.5	138.5
		25' N		
E			4.0	140.0
cb			3.4	140.6
1/4			3.4	140.6
c			3.3	140.7
+6			2.8	141.5
1/4			2.5	141.5
cb			2.6	141.4
+8			2.3	141.7
w			1.9	142.1
T.P	10.59	153.71	0.88	143.1 ✓
		50' N		
w			9.5	144.21
+3			10.3	143.41
cb			10.7	143.01
1/4			10.8	142.91
c			11.0	142.71
1/4			11.4	142.31

153.71

31 pt 36

cb			11.5	142.21
E			12.1	141.61
		75' N		
E			10.8	142.91
cb			10.0	143.71
1/4			10.3	143.41
c			9.4	144.31
1/4			9.1	144.61
cb			8.9	144.81
+8			8.1	145.61
w			7.3	146.41
		100' N		
w			5.8	147.91
+3			6.7	147.01
cb			7.3	146.41
1/4			7.8	145.91
c			8.0	145.71
+3			8.8	144.91
1/4			9.5	144.21
+3			9.0	144.71
cb			8.8	144.91
E			9.5	144.21

153.71

125' N

E	8.1	145.61
cb	7.6	146.11
1/4	7.9	145.81
c	7.7	146.01
1/4	7.3	146.41
cb	6.2	147.51
+8	5.3	148.41
w	4.5	149.21

150' N

w	3.2	150.51
+9	4.1	149.61
cb	4.1	149.61
+5	5.5	148.21
1/4	5.5	148.21
c	5.7	148.01
1/4	6.7	147.01
cb	6.8	146.91
E	7.2	146.51

175' N

E	7.1	146.61
cb	6.3	147.41
1/4	6.3	147.41
c	5.7	148.01
+7	5.1	148.61
1/4	4.2	149.51
cb	3.9	149.81

153.71

31.01

37

+4	3.5	150.21
+7	2.7	151.01
w	2.7	151.01

200' N

w	2.3	151.41
+5	2.6	151.11
cb	3.5	150.21
1/4	4.3	149.41
c	5.3	148.41

1/4	6.2	147.51
cb	6.3	147.41
E	7.1	146.61
+5	7.5	146.21

208' N

-10	8.4	145.31
E	7.2	146.51
cb	6.4	147.31
1/4	6.0	147.71
c	5.2	148.51
1/4	4.4	149.31
cb	3.5	150.21
+3	3.4	150.31
+6	2.4	151.31
w	2.0	151.71

153.7'

	235' N		
W		1.1	151.81
+J		2.4	151.31
+b		3.3	150.41
cb		3.7	150.01
1/4		4.5	149.21
C		5.5	148.21
1/4		5.5	148.21
cb		5.6	148.11
E		9.3	144.41
+10		11.1	142.61

150' N

-10		9.7	144.01
E		8.0	145.71
+7		5.7	148.01
cb		5.5	148.21
1/4		5.4	148.51
C		5.2	148.51
1/4		4.5	149.21
cb		3.9	149.81
W		2.9	150.81

275' N

W		3.3	150.41
cb		4.3	149.41
1/4		4.9	148.81
C		4.9	148.81
1/4		5.4	148.31

153.7'

38

+7		5.9	147.81
cb		6.9	146.81
E		7.0	146.71
+5		7.2	146.51

292' N

E		6.3	147.41
cb		6.1	147.61
+5		6.3	147.41
1/4		5.5	148.21
C		5.0	148.71
1/4		4.9	148.81
cb		4.6	149.11
W		3.5	150.21

306' N

W		2.8	150.91
+7		3.8	149.91
cb		4.7	149.01
1/4		4.7	149.01
C		5.3	148.41
1/4		5.3	148.41
cb		5.7	148.01
+5		5.4	148.31
E		5.6	148.11
E		5.4	148.31

310' N = SL of F ST.

153.71

31.07

39

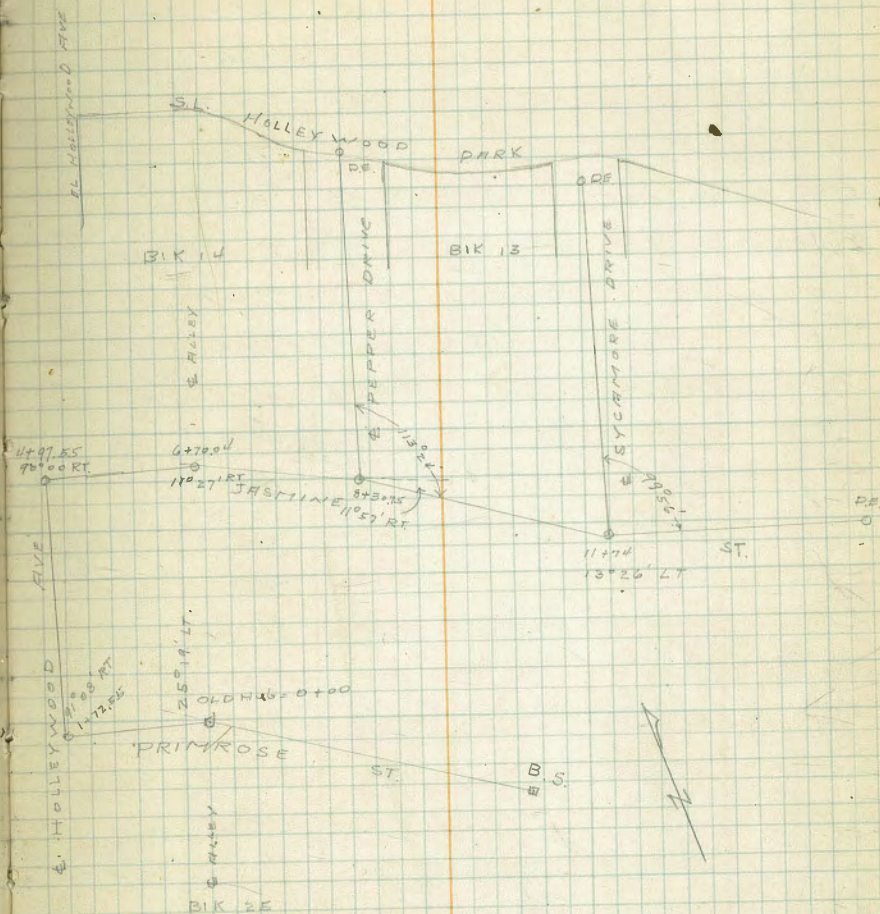
+ 8			5. ✓	148.31	
cb			5.7	148.01	
+ 5			5. ✓	148.31	
1/4			5. ✓	148.51	
c			3. ✓	148.51	
1/4			4.7	149.01	
cb			4.7	149.01	
✓			3.7	150.01	
T.P.	12.86	159.69 ✓	6.88	146.83 ✓	
T.P. check to B.M.			2.90	157.09 ✓	157.06

PRELIM. SEWER LEVELS ON
 PRIMROSE, HOLLEYWOOD AVE, JASMINE, PEPPER &
 SYCAMORE LEXINGTON PARK E.S.D.

IRON PIPE NUMBER	804	292.12	284.08	HOLLEYWOOD VIOLET
didn't & RILEY 0700 - ON PRIMROSE Δ 25° 19' LT. B.S. ON Δ to South		6.43	285.69	
+50		5.5	286.6	
1		5.2	286.9	
+38.5 Edge of box 1x9		5.5	286.6	
+45 = gutter ✓		5.9	286.2	
+61.5 edge ✓		5.5	286.6	
1 + 72.55 Δ 91° 08' RT. to Hollywood		5.29	286.83	ON Hub
2		5.2	286.9	
+50		4.9	287.2	
3		4.5	287.6	
+50		3.9	286.2	
4		3.6	286.5	
+50		3.4	286.7	
+97.55 Δ		3.33	288.79	ON Hub
5 + 10 w edge paving		3.4	286.7	
+26 gutter ✓		3.7	288.4	
+32 edge ✓		3.4	288.7	
+50		3.4	288.7	
6		2.9	289.2	
+50		3.2	288.9	
90° 00' RT +700 Δ = A.T.P. 390	292.35	3.67	288.45	
7		4.4	289.0	
+50		5.1	287.3	
8		5.1	287.3	
+ Pepper Drive +307.5 Δ 11° 57' RT.		5.37	286.98	

Moore
 Preston 5/5/5
 Walker

40



8+50			6.0	286.4	
9			7.3	285.1	
+50			8.2	284.2	
10			9.4	283.0	
+50			10.5	281.9	
11			11.0	281.4	
+50			12.3	280.1	
T.P.	0.84	280.85	12.34	280.01	
+74	Δ 13°26' LT. & SYCAMORE		19.0	278.95	
12			2.5	278.4	
+50			4.0	276.9	
13			8.1	277.8	
+50			12.7	266.2	
T.P.	2.16	270.43	12.58	268.27	
14			6.4	264.0	
+42.25	= DE. CENTER of JASMINE BR 250		8.98	261.45	on Radius HV+
check to DE. at BR 25 (MH. #93)			4.41	266.02	265.92

LEVELS & SYCAMORE

	5.19	284.14		277.95	
Δ 11+74 = 0+00			5.19	279.0	
0+10			4.1	280.0	
+40	APPROX NL JASMINE		3.6	280.5	
+50			3.5	280.6	
1			3.6	280.5	
+50			4.4	279.7	
2			4.7	279.4	

+50			4.1	280.0	
3			2.5	281.6	
+50			1.0	283.1	
4			0.1	284.0	
+50			0.3	283.8	
+89.47	= DE APPROX SE of		2.5	281.6	Hollywood Park

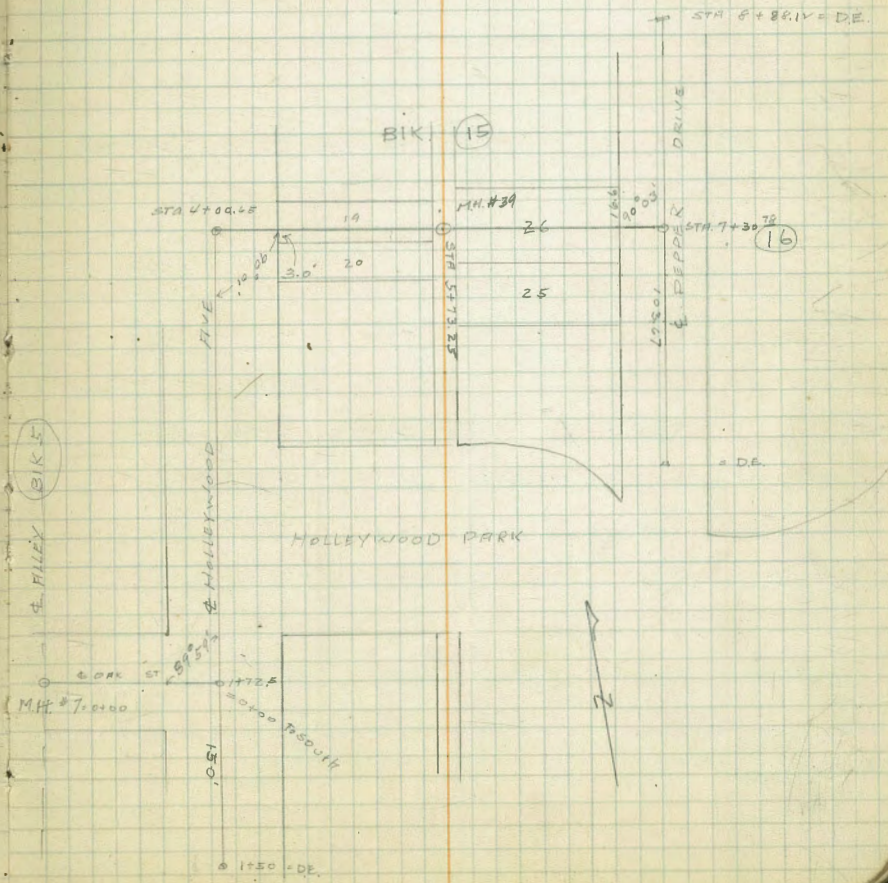
LEVELS on E of PEPPER DRIVE

At 3075 = 0+00	5.05	292.03		286.98	
+10			4.4	287.6	
+34	APPROX NL JASMINE		4.0	288.0	
+50			3.6	288.4	
1+00			2.6	289.4	
+50			2.1	289.9	
2			2.2	289.8	
+50			3.7	288.3	
3			7.2	282.8	
+22			8.9	282.1	
+36.7	= DE APPROX SE		10.43	281.10	Hollywood Park

5/16/33 PRELIM. SEWER LEVELS @ OAK ST to @ HOLLYWOOD AVE thru BIK 15 to @ PEPPER DRIVE.

MOORE
PROSTON
WALKER

Station	Notes	Level	Level
on tran. lge. BM	6.56	294.07	287.51
M.H. #7 = 0+00 on Hub		7.35	286.72
+50		7.0	287.1
1		7.1	287.0
+50		7.6	286.5
+72.5 A = @ Hollywood		7.70	286.4
50' S of @ Oak + Hollywood		6.40	287.2
100' S ✓		6.1	288.0
150' S = D.E. on hub ✓		5.50	289.6
2		8.0	286.1
+50		8.3	285.8
3		8.4	285.7
+50		7.7	286.3
4 + 00.65 = A ON Hub		6.82	287.75
+28		7.0	287.1
+29		6.3	287.8
+50		5.9	288.2
5		5.9	288.2
+50		6.0	288.1
+73.25 = @ + Alley BIK 15		6.53	287.54
6		6.9	287.2
+13		9.0	285.1
+26		7.6	286.5
+50		7.2	286.9
+75		5.6	288.5
7		5.2	288.9
+17		5.2	288.9



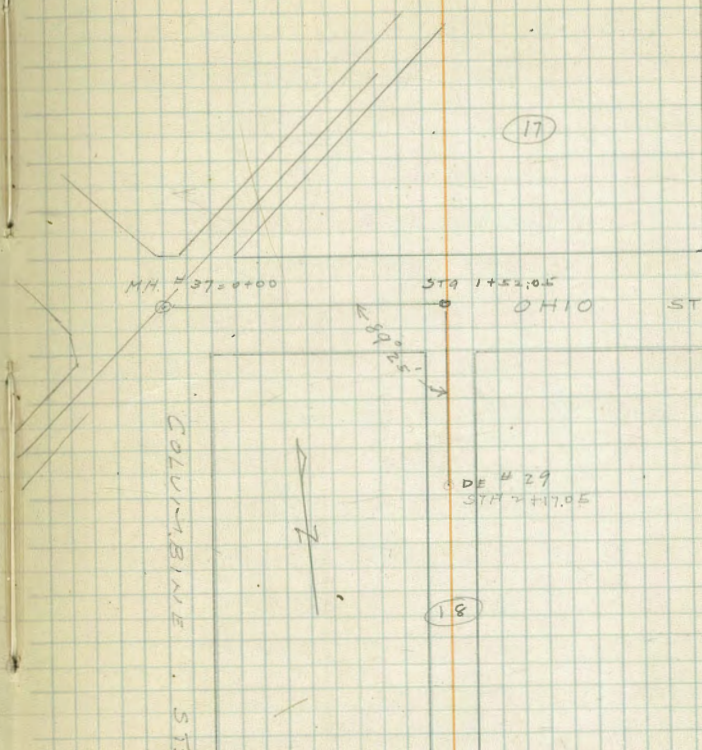
294.07

43

719	7.6	286.5
7 + 30.78 = A @ of PEPPER DRIVE	5.25	288.82
50.5 of 7130.78	7.0	287.1
75 ✓ ✓ ✓	8.6	285.5
1 + 03.67 ✓ ✓	10.47	283.60
7 + 50	4.7	289.4
8	3.6	290.5
+ 50	2.0	291.5
+ 88.14 = DE on hub	1.97	292.10

LEVELS @ OHIO ST to @ of HILLY BIK 18

Cont. Mon. BM U53	303.53	299.00	PAIRMENT @ OHIO ST
M.H. # 37 = 0+00	7.36	296.17	ON HUB
+ 50	6.9	296.6	
	6.2	297.3	
+ 52.05 = @ OHIO to @ HILLY BIK 18	5.30	298.2	✓ ✓
+ 77.05 = SL OHIO ST	5.62	297.89	✓ ✓
2 + 17.05 = DE # 29	6.2	297.3	



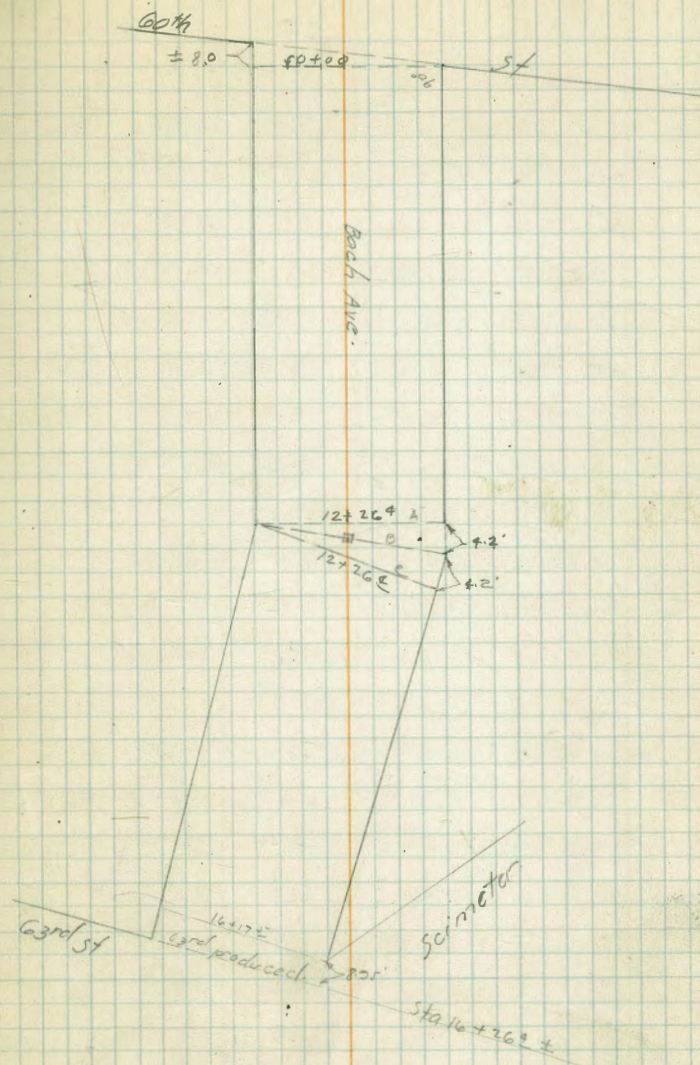
July 2nd 25
Dannan
Bliss
Northern
10' Cls 10' Qts

X-section of Bach $\frac{1}{2}$ mi wide from 60th to 63rd

#	8.41	339.68 ✓		331.27 Nails in Pole S.W. Cor 63 rd & Bach. page 28 Book 1012
#	1.56	336.83 ✓	4.41	335.27 ✓
#	2.90	327.14 ✓	12.64	324.19 ✓
#	0.20	314.68 ✓	12.66	314.48 ✓
#	0.00	302.68 ✓	12.00	302.68 ✓
#	0.33	292.29 ✓	10.72	291.96 ✓
#	4.20	287.79 ✓	8.70	283.59 ✓
			1.55	286.24 ✓ Nails fence post S.E. Cor 60 th & Bach.

Section on E.L. 60th St (diagonal)

S.L.		1.9	285.9 ✓
+8		1.9	285.9 ✓
c6		2.6	285.2 ✓
+1.5		3.3	284.5 ✓
$\frac{1}{4}$		3.3	284.5 ✓
$\frac{1}{4}$		4.0	283.8 ✓
$\frac{1}{4}$		5.2	282.6 ✓
c6		5.7	282.1 ✓
H.L.		7.0	280.8 ✓
	0+00	See Sketch.	
H.L.		7.0	280.8 ✓
		5.7	282.1 ✓
$\frac{1}{4}$		5.1	282.7 ✓
$\frac{1}{4}$		4.0	283.8 ✓
$\frac{1}{4}$		3.6	284.2 ✓
+5		3.4	284.4 ✓



+ π 287.79

Cb	2.8	285.0 ✓
+3	2.1	285.7 ✓
S.L.	1.6	286.2 ✓
0+20		
S.L.	1.5	286.3 ✓
+7	2.1	285.7 ✓
Cb	2.5	285.3 ✓
+1.5	3.2	284.6 ✓
+1	3.0	284.8 ✓
1/4	3.4	284.4 ✓
±	4.0	283.8 ✓
	4.9	282.9 ✓
	5.8	282.0 ✓
N.L.	5.6	282.2 ✓

0+54 ± of dirt floor Garage 1.7 N. of N.L.

N.L. → 1.7	5.0	282.3 ✓
N.L.	5.0	282.3 ✓
Cb	5.2	282.6 ✓
1/4	4.8	283.0 ✓
±	4.0	283.8 ✓
1/4	3.5	284.3 ✓
+2	3.3	284.5 ✓
+8	3.5	284.3 ✓
Cb	2.6	285.2 ✓
S.L.	2.0	285.8 ✓
#	1.5	286.24 B.M.

1.90

288.14

+ π 288.14

Back - 45

1+00

S.L.	4.0	283.6 ✓
Cb.	4.4	283.7 ✓
+3	5.1	283.0 ✓
1/4	4.6	283.5 ✓
±	4.6	283.5 ✓
1/4	5.1	283.0 ✓
+8	5.7	282.4 ✓
Cb	5.6	282.5 ✓
N.L. On lawn.	6.0	282.1 ✓
N.L.+10 On lawn	6.2	281.9 ✓
N.L.-10 In Garden	4.6	283.5 ✓
N.L.	4.3	283.8 ✓
Cb	4.2	283.9 ✓
+1	4.6	283.5 ✓
1/4	4.5	283.6 ✓
±	4.7	283.4 ✓
1/4	5.2	282.9 ✓
+3	5.4	282.7 ✓
Cb	5.4	282.7 ✓
S.L.	5.8	282.3 ✓
S.L.+10	6.6	281.5 ✓
1+75		
S.L.-10	7.6	280.5 ✓
S.L.	7.0	281.1 ✓
Cb	6.3	281.8 ✓
1/4	5.7	282.4 ✓

+

π
288.14

⊖	5.0	283.1 ✓
1/4	4.7	283.4 ✓
Cb	4.4	283.7 ✓
N.C.	3.9	284.2 ✓
N.C. +10	4.1	284.0 ✓

2+00

N.C. -10	3.6	284.5 ✓
N.C.	2.9	284.2 ✓
1/4	4.4	283.7 ✓
⊖	4.8	283.3 ✓
1/4	5.8	282.3 ✓
+1	6.4	281.7 ✓
Cb	6.9	281.2 ✓
S.C.	7.3	280.8 ✓
S.C. +10	7.6	280.5 ✓

2+20

S.C. -10	6.8	281.3 ✓
S.C.	6.7	281.4 ✓
Cb	6.3	281.8 ✓
1/4	5.7	282.4 ✓
+3	4.9	283.2 ✓
⊖	4.5	283.6 ✓
1/4	4.4	283.7 ✓
+8	4.0	284.1 ✓
Cb	3.7	284.4 ✓
N.C.	2.9	285.2 ✓

+

π
288.14

Bach 46

N.C.	2.3	285.8 ✓
Cb	3.0	285.1 ✓
+2	3.6	284.5 ✓
1/4	4.1	284.0 ✓
⊖	4.5	283.6 ✓
1/4	5.1	283.0 ✓
Cb	5.6	282.5 ✓
S.C.	5.0	282.6 ✓
S.C. +10	5.6	282.5 ✓

3+00

S.C. -10	3.6	284.5 ✓
S.C.	3.3	284.8 ✓
Cb	2.8	285.3 ✓
1/4	3.0	285.1 ✓
⊖	2.8	285.3 ✓
1/4	2.5	285.6 ✓
+8	2.1	286.0 ✓
Cb	1.8	286.3 ✓
N.C.	1.7	286.4 ✓

#	10.33	297.26 ✓
---	-------	----------

3+00

N.C.	10.1	287.2 ✓
Cb	10.1	287.2 ✓
1/4	10.4	286.9 ✓
⊖	10.7	286.6 ✓
1/4	10.8	286.5 ✓

+
π
297.26

Cb From Cb to RL is clover lawn. 10.9 286.4 ✓
 S.L. 10.7 286.6 ✓
 287.49
 260.0 on North side of 9' Cement walk to house from N. Curb line 9.77 = End of walk: RL Same Elev.

4+0.0

S.L. From S.L. to Cb is clover lawn. 8.1 289.2 ✓
 Cb 8.7 288.6 ✓
 1/4 9.2 288.1 ✓
 † 9.4 287.9 ✓
 1/4 9.0 287.8 ✓
 †8 9.7 287.6 ✓
 Eb 9.9 287.4 ✓
 N.L. 11.0 286.3 ✓
 N.L. +10 12.2 285.1 ✓

4+7.5

N.L. -10 11.1 286.2 ✓
 N.L. 10.0 287.3 ✓
 9.2 288.1 ✓
 8.6 288.7 ✓
 † 8.1 289.2 ✓
 7.8 289.5 ✓

Cb to S.L. = Clover lawn.

Cb 6.5 290.8 ✓
 S.L. 6.4 290.9 ✓
 4+5.0
 S.L. 5.4 291.9 ✓
 Cb 5.8 291.5 ✓
 † 6.1 291.2 ✓

+
π
297.26

47

1/4 6.5 290.8 ✓
 † 6.7 290.6 ✓
 1/4 7.6 289.7 ✓
 †7 8.0 289.3 ✓
 Cb 7.8 289.5 ✓

N.L. 8.4 288.9 ✓
 N.L. 10 7.7 287.6 ✓

4+7.5

N.L. -10 9.1 288.2 ✓
 N.L. 8.1 289.2 ✓
 Cb 7.3 290.0 ✓
 † 7.7 289.6 ✓
 1/4 6.8 290.5 ✓

† E 5.7 291.6 ✓
 1/4 5.5 291.8 ✓
 †9 5.4 291.9 ✓
 Cb 5.1 292.2 ✓

+3 Cb to S.L. on Clover lawn. 4.2 293.1 ✓
 S.L. 4.2 293.1 ✓

5+0.0

S.L. 3.2 294.1 ✓
 †8 S.L. to Cb on Clover lawn. 3.5 293.8 ✓

Cb 3.8 293.5 ✓
 †7 4.6 292.7 ✓
 1/4 4.6 292.7 ✓
 † 4.0 292.8 ✓
 1/4 5.2 292.1 ✓
 † 5.7 291.6 ✓

	+	π 297.26	-	
+8			6.0	291.3 ✓
Cb			5.7	291.6 ✓
N.C.			6.6	290.7 ✓
N.C.+10			7.7	289.6 ✓
		$\bar{5}+\bar{2}\bar{5}$		
N.C.-10			4.8	292.5 ✓
N.C.			4.5	292.8 ✓
Cb			4.1	293.2 ✓
+1			4.6	292.7 ✓
$\frac{1}{2}$			3.3	294.0 ✓
E			2.6	294.7 ✓
$\frac{1}{4}$			2.8	294.5 ✓
+7			2.8	294.5 ✓
Cb			2.0	295.3 ✓
S.C.			1.0	296.3 ✓
+7.0				
N.C.-10			3.0	294.3 ✓
N.C.			2.5	294.8 ✓
Cb			2.0	295.3 ✓
+1			2.4	294.9 ✓
$\frac{1}{2}$			1.1	296.2 ✓
E			0.6	296.7 ✓
$\frac{1}{4}$			0.8	296.5 ✓
+8			1.2	296.1 ✓
#	12.95	309.84 ✓	0.37	296.89 ✓
Cb			12.8	297.0 ✓
S.C.			12.1	297.7 ✓

	+	π 309.84	-	
S.C.		6+00	8.4	301.4 ✓
Cb			9.1	300.7 ✓
+1			9.8	300.0 ✓
$\frac{1}{4}$			9.4	300.4 ✓
E			9.0	300.8 ✓
$\frac{1}{4}$			9.8	300.0 ✓
Cb			11.0	298.8 ✓
+1			10.4	299.4 ✓
N.C.			10.3	299.5 ✓
N.C.+10			10.3	299.5 ✓
		6+50		
N.C.-10			5.1	304.7 ✓
N.C.			4.7	305.1 ✓
+8			4.6	305.2 ✓
Cb			5.2	304.6 ✓
$\frac{1}{4}$			4.6	305.2 ✓
E			4.1	305.7 ✓
$\frac{1}{4}$			4.6	305.2 ✓
+9			5.0	304.8 ✓
Cb			4.1	305.7 ✓
S.C.			3.9	305.9 ✓
#	12.54	322.34 ✓	0.04	309.80 ✓
		7+00		
S.C.			12.1	310.2 ✓
Cb			12.1	310.2 ✓
+1			12.9	309.4 ✓

322.34

1/2 12.3 310.0 ✓
 E 12.0 310.3 ✓
 1/2 12.4 309.9 ✓
 +8 12.2 309.0 ✓
 cb 12.6 309.7 ✓
 N.W. 12.3 310.0 ✓

7400

N.W. 7.4 314.9 ✓
 +8 7.4 314.9 ✓
 cb 7.9 314.4 ✓
 +5 8.2 314.1 ✓
 1/2 7.7 314.6 ✓
 E 7.4 314.9 ✓
 1/2 8.0 314.3 ✓
 cb 9.0 313.3 ✓
 +1 8.1 314.2 ✓
 S.W. 8.4 313.9 ✓

8400

S.W. 6.3 316.0 ✓
 cb 6.5 315.8 ✓
 1/2 5.4 316.9 ✓
 E 4.8 317.5 ✓
 1/2 4.9 317.4 ✓
 cb 4.8 317.5 ✓
 +6 5.0 317.3 ✓
 cb 4.4 318.2 ✓
 N.W. 3.9 318.5 ✓

322.34

8400
 N.W. 1.9 320.4 ✓
 cb 2.8 319.5 ✓
 +6 3.6 318.7 ✓
 1/2 3.3 319.0 ✓
 E 3.4 318.9 ✓
 1/2 3.8 318.5 ✓

9400

cb 4.5 317.8 ✓
 S.W. 4.5 317.8 ✓
 S.W. 4.0 318.3 ✓
 cb 3.8 318.5 ✓
 1/2 2.8 319.5 ✓
 E 2.2 320.1 ✓
 1/2 1.8 320.5 ✓
 +6 2.1 320.2 ✓
 cb 1.4 320.9 ✓
 N.W. 0.5 321.8 ✓

2.6 328.88 ✓

9400

N.W. 5.9 323.0 ✓
 cb 6.9 322.0 ✓
 +3 7.7 321.2 ✓
 1/2 7.5 321.4 ✓
 E 8.1 320.8 ✓
 1/4 8.9 320.0 ✓
 cb 10.0 318.9 ✓
 S.W. 11.3 317.6 ✓
 +10 12.0 316.9 ✓

π
328.88

10+00

S.U. -10	11.7	317.2 ✓
S.U.	10.9	318.0 ✓
Cb	10.0	318.9 ✓
1/4	8.7	320.2 ✓
€	7.9	321.0 ✓
1/4	7.1	321.8 ✓
+7.	6.9	322.0 ✓
Cb	6.0	322.9 ✓
+3	5.1	323.8 ✓
N.U.	4.6	324.3 ✓

10+25

N.U.	4.5	324.4 ✓
Cb	5.9	323.0 ✓
1/4	6.9	322.0 ✓
€	7.6	321.3 ✓
1/4	8.4	320.5 ✓
Cb	9.8	319.1 ✓
S.U.	10.8	318.1 ✓
S.U.+10	11.6	317.3 ✓

10+50

S.U. -10	11.7	317.2 ✓
S.U.	10.1	318.8 ✓
Cb	9.4	319.5 ✓
1/4	8.3	320.6 ✓
€	7.2	321.7 ✓
1/4	6.6	322.3 ✓

π
318.98

50

Cb	5.8	323.1 ✓
N.U. In Cypress hedge	4.7	324.2 ✓
10+25		
N.U. In Cypress hedge	4.2	324.7 ✓
Cb	5.5	323.4 ✓
+3	6.1	322.8 ✓
1/4	6.1	322.8 ✓
€	6.6	322.3 ✓
1/4	7.4	321.5 ✓
Cb	8.4	320.5 ✓
S.U.	9.0	319.9 ✓
S.U.+10	10.6	318.3 ✓

11+00

S.U. -10	10.2	318.7 ✓
S.U.	8.7	320.2 ✓
Cb	8.1	320.8 ✓
1/4	7.1	321.8 ✓
€	5.9	323.0 ✓
1/4	5.5	323.4 ✓
+6	5.6	323.3 ✓
Cb	4.7	324.2 ✓
N.U. In Cypress hedge	3.5	323.4 ✓

11+25

N.U. Roadway to house	2.8	326.1 ✓
Cb.	3.9	325.0 ✓
1/4	4.7	324.2 ✓
€	5.3	323.6 ✓
1/4	6.3	322.6 ✓

32888

Cb	7.5	321.4 ✓
S.L.	8.0	320.9 ✓
S.L. - 10	8.8	320.1 ✓

Note: from 11+42 to 11+73 on S.R. is 8" Concrete wall.

11+50

S.L. - 10	5.0	323.9 ✓
S.L. on top of wall	4.78	324.10 ✓
S.L. at bottom of wall on Ground	6.3	322.6 ✓
Cb	6.5	322.4 ✓
1/4	5.2	323.7 ✓
E	4.0	324.9 ✓
1/4	3.6	325.3 ✓
Cb	3.0	325.9 ✓
N.L.	1.6	327.3 ✓

11+73 East End of Wall.

S.L. on wall	4.36	324.52 ✓
S.L. on Ground	4.7	324.2 ✓
#	10.62	327.18
	12+00	2.32
		326.56 ✓

N.L.	7.2	330.0 ✓
Cb	8.5	328.7 ✓
+6	8.7	328.5 ✓
1/4	9.5	327.7 ✓
E	9.8	327.4 ✓
1/4	10.5	326.7 ✓
Cb	11.5	325.7 ✓
S.L.	12.2	325.0 ✓

327.18

51

S.L. + 1	12.9	324.3 ✓
S.L. + 10	13.2	324.0 ✓

(A) 12+26 ± on W side of triangle. See sketch.

S.L. - 10	11.2	326.0 ✓
S.L.	10.6	326.6 ✓
Cb	10.0	327.2 ✓
1/4	9.0	328.2 ✓
E	8.5	328.7 ✓
+4	8.6	328.6 ✓
+5	8.1	329.1 ✓
1/4	7.4	329.8 ✓
Cb	6.5	330.7 ✓
N.L.	5.4	331.8 ✓

Sec B

N.L.	5.2	332.0 ✓
Cb	6.4	330.8 ✓
1/4	7.2	330.0 ✓
+5	8.0	329.2 ✓
+6	8.5	328.7 ✓
E	8.5	328.7 ✓
1/4	8.8	328.4 ✓
Cb	10.0	327.2 ✓
S.L.	10.6	326.6 ✓
S.L. + 10	11.2	326.0 ✓

12+26 ± = Sec C

S.L. - 10	12.7	324.5 ✓
S.L. - 1	12.4	324.8 ✓

+

π
337.18

S.C.	10.6	326.6 ✓
cb	10.0	327.2 ✓
1/4	8.8	328.4 ✓
±	8.3	328.9 ✓
+4	8.4	328.8 ✓
+5	7.8	329.4 ✓
1/4	7.1	330.1 ✓
cb	6.3	330.9 ✓
N.L.	4.9	332.3 ✓
	12+0	
N.L.	4.1	333.1 ✓
cb	5.4	331.8 ✓
1/4	6.0	331.2 ✓
+5	6.6	330.6 ✓
+7	7.2	330.0 ✓
±	7.2	330.0 ✓
1/4	7.8	329.4 ✓
cb	8.8	328.4 ✓
S.C.	9.7	327.5 ✓
S.C.	10.4	326.8 ✓
	13+0	
S.C.-10	8.1	329.1 ✓
S.C.	7.0	330.2 ✓
cb	6.4	330.8 ✓
1/4	5.4	331.8 ✓
±	4.9	332.3 ✓
+5	5.0	332.2 ✓

+

π
337.18

52

+6	9.5	332.7 ✓
1/4	3.9	333.3 ✓
cb	3.0	334.2 ✓
N.L.	1.6	335.6 ✓
	13+0	
N.L.	0.1	337.1 ✓
+9	0.1	337.1 ✓
cb	1.5	335.7 ✓
+2	1.9	335.3 ✓
1/4	2.2	335.0 ✓
+2	2.8	334.4 ✓
±	2.6	334.6 ✓
1/4	3.3	333.9 ✓
cb	4.2	333.0 ✓
S.C.	4.9	332.3 ✓
	14+0	
S.C.	3.8	333.4 ✓
cb	2.8	334.4 ✓
1/4	2.2	335.0 ✓
±	1.4	335.8 ✓
1/4	1.4	335.8 ✓
+1	1.4	335.8 ✓
+3	1.0	336.2 ✓
cb	0.7	336.5 ✓
H	5.93	$\frac{341.75}{341.65}$
H	1.36	335.42 - 335.82
H	3.9	337.9 ✓
N.L.	3.3	338.5 ✓

π
~~341.65~~
~~341.75~~
 14+25-

N.C.	2.7	339.1 ✓
+5-	3.4	338.4 ✓
Cb	4.8	337.0 ✓
+2	5.6	336.2 ✓
1/4	6.1	335.7 ✓
E	5.9	335.9 ✓
1/4	6.6	335.2 ✓
cb	7.4	334.4 ✓
S.C.	8.3	333.5 ✓
14+50		
S.C.-10	10.2	331.6 ✓
S.C.	9.2	332.6 ✓
cb	8.1	333.7 ✓
1/4	7.1	334.7 ✓
E	6.6	335.2 ✓
1/4	6.7	335.1 ✓
+4	6.8	335.0 ✓
+5-	6.3	335.5 ✓
Cb	5.5	336.3 ✓
+5-	3.7	338.1 ✓
N.C.	3.2	338.6 ✓
14+75		
N.C.	4.1	337.7 ✓
+5-	5.0	336.8 ✓
Cb	6.1	335.7 ✓
+4	7.6	334.2 ✓

π
~~341.65~~
~~341.75~~

1/4	7.4	334.4 ✓
E	7.7	334.1 ✓
1/4	8.3	333.5 ✓
Cb	9.1	332.7 ✓
S.C.	10.5	331.3 ✓
S.C.+10	11.4	330.4 ✓
15+90		
S.C.-10	13.1	328.7 ✓
S.C.	12.6	329.2 ✓
Cb	11.0	330.8 ✓
1/4	10.2	331.6 ✓
E	9.1	332.7 ✓
1/4	8.7	333.1 ✓
+8	8.7	333.7 ✓
+9	8.0	333.8 ✓
Cb	8.0	333.8 ✓
+2	6.8	335.0 ✓
N.C.	5.8	336.0 ✓
15+25		
N.C.	7.0	334.8 ✓
+8	8.1	333.7 ✓
Cb	8.8	333.0 ✓
#	8.10	333.50 333.60
+2	6.0	332.1 ✓
1/2	6.4	332.2 ✓
E	7.0	331.6 ✓
+6	8.8	329.8 ✓
1/4	7.4	329.2 ✓
4.98 338.48 338.58 ✓		

	+	π	-	
		338.48 338.58		
cb			10.4	328.2 ✓
S.L			10.8	327.8 ✓
S.L + 15			11.8	326.8 ✓
		15+00		
S.L - 15			15.3	323.3 ✓
S.L			15.0	323.6 ✓
cb			13.5	325.7 ✓
1/4			11.3	327.3 ✓
t			7.2	331.4 ✓
1/4			6.7	331.9 ✓
cb			6.5	332.1 ✓
+4			5.2	333.4 ✓
N.L			4.0	334.6 ✓
		15+75		
N.L			4.0	334.6 ✓
cb			5.4	333.2 ✓
+4			6.6	332.0 ✓
1/4			6.6	332.0 ✓
t			7.0	331.6 ✓
+2			6.7	331.9 ✓
1/4			11.5	327.1 ✓
cb			15.5	323.1 ✓
S.L			17.5	321.1 ✓
S.L + 15			19.7	318.9 ✓
S.L - 30			21.5	317.1 ✓

	+	π	-	
		338.58		54
		16+00		
S.L - 20			15.7	322.9 ✓
S.L			11.9	326.7 ✓
cb			10.6	328.0 ✓
+5			10.0	328.6 ✓
1/4			8.1	330.5 ✓
+5			6.1	332.5 ✓
t			6.1	332.5 ✓
1/4			6.2	332.4 ✓
+1			5.4	333.2 ✓
+7			4.3	334.3 ✓
cb			4.0	334.6 ✓
N.L			3.2	335.4 ✓
		16+17 \pm Cor Bach & Scimeter		
N.L			2.3	336.3 ✓
cb			3.3	335.3 ✓
1/4			4.6	334.0 ✓
+2			4.9	333.7 ✓
+3			5.7	332.9 ✓
t			5.6	333.0 ✓
1/4			5.3	333.3 ✓
cd			8.3	330.3 ✓
S.L			9.5	329.1 ✓
S.L - 10			11.5	327.1 ✓
		16+17 \pm N & 16+26 \pm S - Diagonal = 63 Scimeter, Bach.		
		-10	10.0	328.6 ✓

	+	π	-	
		338.48		
		338.58		
S.U.			8.7	329.9 ✓
C6			6.2	332.4 ✓
+2			5.0	333.1 ✓
16			5.3	333.3 ✓
E			5.5	333.1 ✓
+6			5.5	333.1 ✓
+7			4.6	334.0 ✓
1/4			4.2	334.4 ✓
C6			3.0	335.6 ✓
N.U.			2.3	336.3 ✓
#			7.25	331.33 331.23 = Initial O.M.

80' wide
14' elev
13' 1/2"

Fay St X Sec
from S. Line Westbourne St North

7/10/25 Miller

156.93

B.M. 3.71 151.85 148.14 7th Hvd St Fay
+ Center

T.P. 5.11 156.93 0.03 151.82 4+03

S. Line Westbourne St

W-20 12.8 143.1

W 10.7 146.2

+10 9.3 147.6

cl 9.9 147.0

+10 5.4 151.5

1/4 4.9 152.0

+2 3.9 152.99

+5 3.8 153.1

+11 4.4 152.5

C 5.2 151.7

+7 9.7 147.2

+10 9.7 147.2

1/4 8.6 148.3

cl 8.5 148.4

+4 9.1 147.8

E 8.9 148.1

+10 8.4 148.5

12.5 N = S cl

3+90.5

-10 8.6 148.3

E 8.9 148.0

cl 9.4 147.5

+4 9.2 147.7

1/4 10.1 146.8

+3.5 = E. End 36" Culvert 3.5 N of 11.50 10.6

Flowline

C 4.3 152.6
+7 3.7 153.2
+10.2 3.87 153.06
1/4 5.0 151.9
+2 5.0 151.9

cl 10.3 146.6

r2 11.5 145.4

+1.3 would divert 3.5% of this section 11.8 145.1

W 11.9 145.0

+20 13.7 143.2

30 N of S Line = N Line Westbourne = 0.0 373

-20 13.7 143.2

W 13.2 143.7

+2 12.3 144.6

cl 11.6 145.3

1/4 4.8 152.1

+3.8 3.75 153.18

+6 3.6 153.3

E 4.3 152.6

+10 10.5 146.4

1/4 10.4 146.5

cl 9.7 149.2

E 9.3 147.6

+10 8.9 148.1

25' N 3+48

-10 8.9 148.0

E 9.4 147.5

cl 9.4 147.5

1/4 10.3 146.6

156.93

t2	10.2	146.7	
C	4.2	152.7	
+6	3.6	153.3	
+ 8.8	3.64	153.29	w rail no yardage
1/4	4.7	152.2	
cl	12.1	144.8	
W	13.3	143.6	
+20	14.3	142.6	
	50' N		3723
- 20	15.4	141.5	
W	14.5	142.4	
cl	11.9	145.0	
1/4	4.6	152.3	
+3.4	3.53	153.40	w rail No yardage
+6	3.5	153.4	
C	4.1	152.8	
+7	4.1	148.8	
1/4	7.4	149.1	
cl	8.4	148.5	
+12	7.8	149.1	
E	4.2	150.7	
+5	5.4	151.3	
	70' N		3703
-5	3.7	153.2	
E	4.5	152.4	
+2	7.0	149.9	
cl	7.5	149.4	

156.93

Fay 57

1/4	6.9	150.0	
+7	7.2	149.7	
C	4.1	152.8	✓
+7	3.5	153.4	
1/4	4.5	152.4	
+2	4.8	152.1	
cl	11.8	145.1	
+3	12.5	144.4	
+7	14.8	142.1	
W	15.3	141.6	
+20	16.8	140.1	
	95' N		2788
- 20	17.3	139.6	
W	17.7	139.2	
+3	15.6	141.3	
+8	15.2	141.7	
cl	12.7	144.8	
1/4	4.6	152.3	
+7	3.5	153.4	
C	4.3	152.6	
+5	7.1	149.8	
1/4	7.3	149.6	
cl	7.2	149.7	
+11	7.0	149.9	
E	4.4	152.5	
+5	3.8	153.1	

	152.93 105' N		2+68
-7	5.9	150.0	
E	4.9	150.0	
cl	4.9	150.0	
14	7.1	149.8	
+8	7.1	149.8	
E	4.3	152.6	
+6	3.6	153.3	
14	4.5	152.4	
cl	12.0	144.9	
+5	14.9	142.0	
+11	14.9	142.0	
W	16.1	140.8	
+25	18.4	138.5	
	130' N		2+43
-25	18.1	138.8	
W	15.0	141.9	
+3	14.3	142.6	
+8	14.0	142.9	
cl	11.6	145.3	
+2	11.2	145.7	
14	4.4	152.5	
+7	3.3	153.6	
E	4.0	152.9	
+4	6.4	150.5	
14	6.5	150.4	
cl	6.1	150.8	
+12	5.7	151.2	

	152.93	Fay	58
E	3.9	153.0	
+5	3.3	153.6	
	155' N		2+18
E	0.8	156.1	
+3	4.8	152.1	
cl	5.1	151.8	
14	5.0	151.9	
+10	5.4	151.5	
E	4.1	152.8	
+6	3.3	153.6	
14	4.3	152.6	
+10	9.8	147.1	
cl	10.0	146.9	
W	11.4	145.1	
+15	13.7	143.2	
	170' N		2+03
-15	12.6	144.3	
W	10.6	146.3	
+8	9.4	147.5	
cl	9.2	147.7	
+4	9.3	147.6	
14	4.2	152.7	
+7	3.3	153.6	
E	4.1	152.8	
+2	4.9	152.0	
14	4.5	152.4	

	156.93		
cl		4.5	152.4
+15		4.1	152.8
e		0.3	156.6
	185' N		1488
e		0.0	156.9
+3		3.9	153.0
cl		4.2	152.7
1/4		4.5	152.4
+11		4.8	152.1
c		4.0	152.9
+6		3.3	153.6
+9		3.18	153.75
1/4		4.2	152.7
+9		9.1	147.8
cl		9.0	147.9
w		7.9	147.0
+15		12.4	144.5
	200' N		1473
-20		14.6	142.3
w		11.4	145.5
+7		9.3	147.6
cl		9.3	147.6
+4		9.3	147.6
1/4		4.5	152.4
+7		3.3	153.6
e		4.0	152.9
+3		4.7	152.2

w rail
No yardage

	154.93	Fay	59
1/4		4.3	152.6
cl		4.2	152.7
+11		4.2	152.7
e		+1.0	157.9
	230' N		1743
e		+1.6	158.5
+4		4.6	152.3
cl		4.8	152.1
1/4		4.6	152.3
c		4.3	152.6
+6		3.2	153.7
1/4		4.4	152.5
+2		4.6	152.3
cl		10.8	146.1
w		13.9	143.0
+20		17.5	139.4
	255' N		1718
-78. Esida shed		18.0	138.9
w		17.3	139.6
+10		13.6	143.3
cl		12.6	144.3
1/4		4.4	152.5
+7		3.2	153.7
c		4.3	152.6
+7		4.3	152.6
1/4		5.3	151.6
cl		5.5	151.4

156.93

+10	5.2	151.7
e	0.0	156.9

300' N

0473

e	3.1	153.8
---	-----	-------

+2	5.7	151.2
----	-----	-------

cl	6.2	150.7
----	-----	-------

+8	6.2	150.7
----	-----	-------

h4	5.2	151.7
----	-----	-------

+5	4.6	152.3
----	-----	-------

c	4.3	152.6
---	-----	-------

+6	3.2	153.7
----	-----	-------

+9	3.13	153.80
----	------	--------

h4	4.5	152.4
----	-----	-------

cl	12.1	144.8
----	------	-------

+7	15.6	141.3
----	------	-------

w	17.0	139.9
---	------	-------

+18 extended	18.0	138.9
--------------	------	-------

320' N

0453

-12 extended	17.8	139.1
--------------	------	-------

w	16.2	140.7
---	------	-------

+8	14.7	142.2
----	------	-------

cl	11.9	145.0
----	------	-------

h4	4.7	152.2
----	-----	-------

+7	3.3	153.6
----	-----	-------

c	4.2	152.7
---	-----	-------

h4	4.8	152.1
----	-----	-------

+4	5.9	151.0
----	-----	-------

156.93

Fay

60

cl	6.1	150.0
+13	6.2	150.7
e	5.7	151.2
+5	5.2	151.7

340' N

0433

-5	5.3	151.6
----	-----	-------

e	6.2	150.7
---	-----	-------

cl	6.4	150.5
----	-----	-------

h4	5.5	151.4
----	-----	-------

+4	4.5	152.4
----	-----	-------

c	4.2	152.7
---	-----	-------

+6	3.3	153.6
----	-----	-------

h4	4.5	152.4
----	-----	-------

cl	11.1	145.8
----	------	-------

+4	15.3	141.6
----	------	-------

w	16.3	140.6
---	------	-------

+20	17.1	139.8
-----	------	-------

355' N

0418

-20	16.7	140.2
-----	------	-------

w	15.3	141.6
---	------	-------

+12	11.0	145.9
-----	------	-------

cl	9.9	147.0
----	-----	-------

+3	8.6	148.3
----	-----	-------

+6	8.2	148.7
----	-----	-------

h4	4.5	152.4
----	-----	-------

+7	5.6	153.3
----	-----	-------

c	4.3	152.6
---	-----	-------

+4	4.4	152.5
----	-----	-------

156.93

1/4	5.5	151.4
+5	5.9	151.0
cl	6.1	150.8
E	4.9	152.0
+5	4.1	152.8

375' N

0-02

E	2.6	154.3
+5	2.9	154.0
cl	4.3	152.6
1/4	4.7	152.2
+5	4.4	152.5
E	4.4	152.5
+6	3.9	153.0
+9	3.70	153.2
1/4	4.7	152.2
+7	5.0	151.9
cl	4.4	152.5
+9	3.7	153.2
w	4.9	152.0

w rail
no yardage

380' N

w	4.0	152.9
+5	3.6	153.3
cl	4.6	152.3
+8	5.0	151.9
1/4	4.4	152.5
+7	4.0	152.9
E	4.3	152.6

156.93

Fay

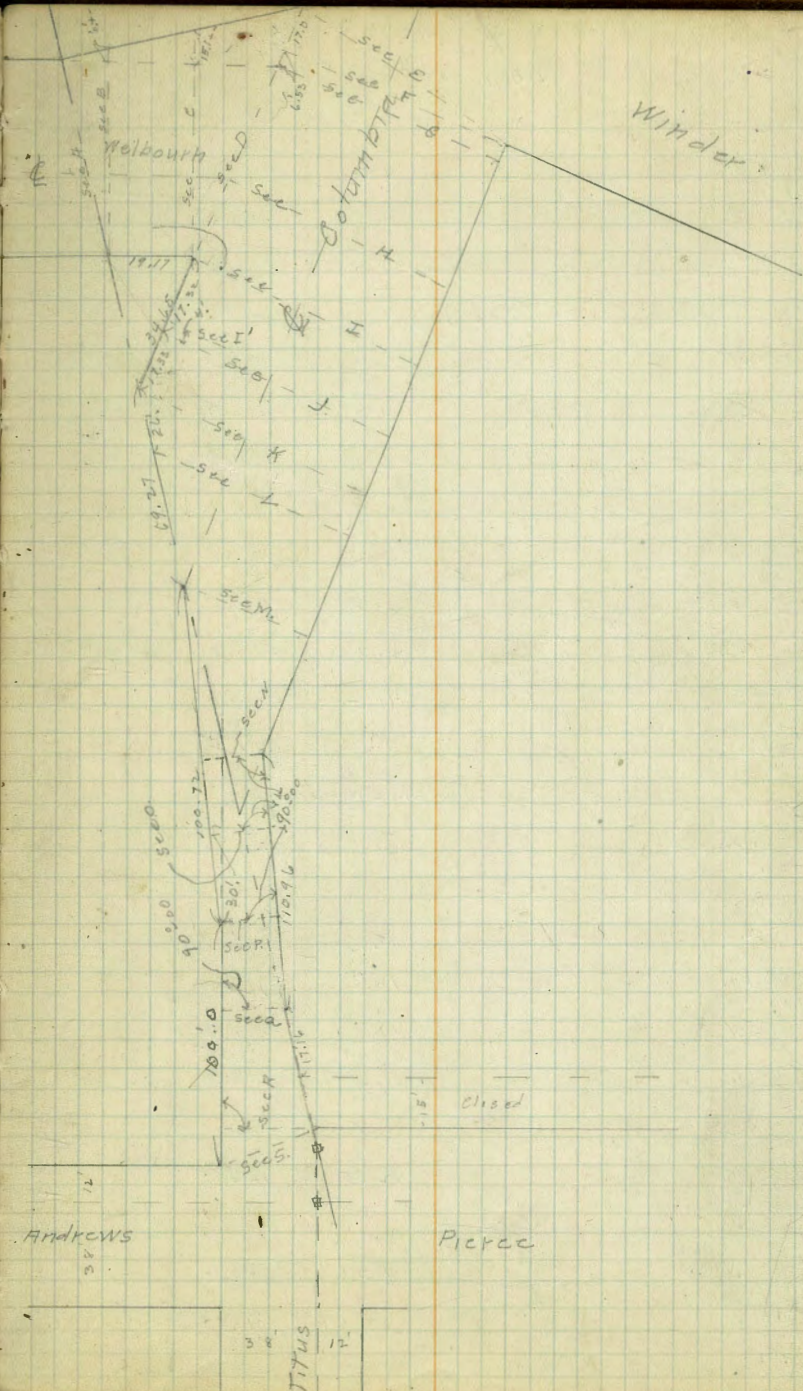
61

1/4	4.4	162.5
cl	4.1	152.8
+7	2.8	154.1
E	2.5	154.4

Columbia & Welbourn X Sec

8/18/25
man

B.M.	12.58	89.64		77.06	inding a sw Winder
TP	12.55	102.17	0.02	89.62	
SW Cor Columbia & Winder			1.13	101.04	onemt return
TP	12.84	114.99	0.02	102.15	
		Sec A			
S		(115.0)	+3.1	118.1	
cl			+1.0	116.0	
1/4			+0.3	115.3	
c			0.3	114.7	
1/4			0.3	114.7	
cl			0.7	114.3	
N			3.0	114.0	
		Sec B			
N			3.0	114.0	
cl			1.9	113.1	
1/4			1.2	113.7	
c			1.6	113.4	
1/4			1.3	113.7	
cl			0.91	114.1	
S			+0.9	115.9	
S. line opening 76			+2.2	117.2	
		Sec C ✓			
SHine - 15.1 =			0.3	114.7	
S line opening			1.9	113.1	
S. line			4.4	110.6	
cl			4.2	110.8	
1/4			4.3	110.7	



114.99

115.3

c
1/4
cl
N = N.E. Cor Columbia
& Walbourn

4.7 110.3
4.2 110.8
4.3 110.7
4.4 110.6

Sec D ✓

N = N.E. Cor Columbia

4.4 110.6

cl 4.3 110.7

1/4 5.2 109.8

c 5.9 109.1

1/4 6.2 108.8

cl 6.3 108.7

+ 4 6.7 108.3

S 4.2 110.8

S.E. Cor Walbourn & Columbia
+ 23.53 = Shire Opening

3.6 111.4

S.E. Cor Columbia & Windsor

one mt + cl 11.10 103.89

Sec E ✓

E 3.6 111.4

+ 2 10.2 104.8

cl 11.0 104.0

1/4 11.4 103.6

c 11.9 103.1

1/4 12.5 104.5

Sec F ✓

W 13.6 101.4

cl 13.67 101.32 - one mt cl

114.99

115.0

1/4

c

1/4

cl

+ 10

E

Sec G ✓

E

+ 12

cl

1/4

c

1/4

cl

W

Sec H E. end = Walbourn ✓

W

cl

1/4

c

1/4

cl

E:

Sec I ✓

E

+ 6

cl

1/4

c

1/4

12.5 107.5
11.6 103.4
11.1 103.9
10.5 104.5
9.8 105.4
3.7 111.3

4.2 110.8

8.2 106.8

9.2 105.8

10.4 104.6

11.3 103.7

12.0 103.0

13.3 101.7

13.3 101.7

12.6 104.4

12.3 104.7

11.4 103.6

10.8 104.4

9.5 105.5

8.0 107.0

5.9 109.1

4.4 110.6

4.5 110.5

7.3 107.7

8.2 106.8

9.3 105.7

9.8 105.4

63

114.99

		(115.6)	
cl		11.0	104.0
w		11.6	103.4
T.P.	903	113.37 ✓	104.34
		sec I ✓	
		(113.4)	
E		2.7	110.7
+H		2.4	110.6
+L		4.4	109.0
cl		5.0	108.4
		sec J ✓	
w		9.5	103.9
cl		8.8	104.6
H		7.9	105.5
L		6.9	106.5
H		5.8	107.6
cl		4.9	108.5
E		4.1	109.3
		sec K ✓	
E		3.2	110.7
cl		4.1	109.3
H		4.9	108.5
L		6.0	107.4
H		6.8	106.6
cl		8.4	105.0
w		9.0	104.4

113.37

64

		sec L ✓	
		(113.4)	
		9.0	104.4
w		8.4	105.0
cl		6.6	106.8
H		5.4	108.0
L		4.6	108.8
H		2.9	110.5
		cl = approx P.h.	
		sec M ✓	
		♀ Columbia	5.2
w H		6.6	106.8
cl		7.7	105.7
w		9.2	104.5
+5		10.0	103.4
		sec N ✓	
		-5	9.2
		w	8.3
		10.65 E = ♀ 21" strip	6.7
		21.35 = ♂ 21" strip	5.3
		sec O ✓	
		E	5.3
		+10.65 = ♀ 21" strip	6.5
		+21.35 = white 21" strip	7.4
		sec P ✓	
		white 21" strip	8.0
		+10.65 = ♀ 21"	6.7
		+21.35 = ♂ 21" strip	5.2

113.37

Sec a ^(113.4) ✓

E	4.7	108.7
+14' = \downarrow	6.2	107.7
+28 = W Line	7.9	105.5

Sec R ✓

W	8.7	104.7
+28.5 = \downarrow	6.9	106.5
+37 = E	5.7	107.7

Sec S ✓

E = S.E. Cor Titus & Andrews	6.4	107.0
+19.5 = \downarrow	7.3	106.1
+39 = W = S.W. Cor Titus & Pierce	8.7	104.7

Cross Section 31st St.
From N.L.E to N.L.W

60' wide
10' Cb's
10' G's

8' N.W.
E 430' W

184.10

1-15-54
15-15-54
18-15-54
19-15-54
66

BM	3.25	190.881		189.63
TP	4.05	184.10 ✓	10.83	180.05
		N.L.E St.		
M			37	180.4
CB			36	180.5
1/4			35	180.6
2			31	181.0
1/4			32	180.9
CB			32	180.9
E			35	180.6
		175		
E			37	180.4
CB			40	180.1
1/4			35	180.6
2			40	180.1
1/4			47	179.4
CB			48	179.3
M			46	179.5
		20'S = CB		
M Top Carb.			48	179.34
Gutter			52	178.9
CB			52	178.9
1/4 Top Carb			50.9	179.01
1/4 END			50	179.1
2			50.0	179.1
1/4			55	178.6
CB			57.9	178.4

E	62	177.9
	36.5 = 1/4	
E	50	179.1
CB	52	178.9
1/4	54	178.7
2	55	178.6
1/4	54	178.7
CB	53	178.8
M	51	179.0
	40.5 = 2 E	
M	49	179.4
CB	51	179.0
1/4	54	178.7
1/4	52	178.9
2	45	179.6
1/4	40	180.1
CB	37	180.4
E	36	180.5
	50.5 = 1/4	
E	34	180.7
CB	38	180.3
1/4	39	180.4
2	46	179.5
1/4	52	178.9
CB	54	178.7
M	52	178.9

31st St.

184.10

60'S-CB

N	Top Curb	510	179.0
	Ground	54	178.7
CB		54	178.7
1/4		51	179.0
E		47	179.4
1/4		44	179.7
CB		41	180.0
E		40	180.1

80'S - S L F S L ✓

E		40	180.1
CB		39	180.4
1/4		40	180.1
E		38	180.3
+8		40	180.1
1/4		45	179.6
CB	Top Retain	509	179.01
N		48	179.3

75'S ✓

N		56	178.5
+3		56	178.5
CB		50	179.1
1/4		46	179.5
E		44	179.7
1/4		43	179.8
CB		43	179.8
E		45	179.6

184.10

67

54'S ✓

E		55	178.6
CB		55	178.6
1/4		54	178.7
E		55	178.6
1/4		57	178.4
CB		59	178.4
+5		69	177.4
N	Top Conc Walk	674	177.36

79'S ✓

N	Top Conc Drive	821	175.86
CB		80	176.1
1/4		77	176.4
E		74	176.7
1/4		69	177.3
1/4		66	177.5
CB		67	177.4
E		65	177.6

100'S ✓

E		77	176.4
CB		79	176.4
1/4		80	176.1
+5		84	175.7
E		85	175.6
1/4		87	175.4
CB		90	175.1
N		90	175.1

94'S Conc Walk
850
175.6

31754

18410

175.5 ✓

X	11.3	174.8
CB	11.2	174.9
1/4	10.6	173.5
Z	10.4	173.7
1/4	10.1	174.0
CB	10.0	174.1
E	9.6	174.5

150.5 ✓

E	11.8	174.3
CB	12.3	171.8
17	12.0	174.1
1/4	12.5	171.6
TP	135	172.51 ✓
Z	12.89	171.21
Z	161	170.95
+6	16	171.0
1/4	10	171.6
CB	14	171.7
X	21	170.5

175.5 ✓

X	59	166.7
CB	58	167.4
1/4	50	167.6
Z	46	168.0
1/4	41	168.5
CB	37	168.9
+5	39	168.7

17256

68

E	2.3	169.3
E	200.5 ✓	6.6
+5	7.2	165.4
CB	6.9	165.7
1/4	7.3	165.3
Z	7.9	164.7
1/4	8.4	164.7
CB	9.3	163.3

X	10.4	164.7
+10	11.5	161.1

220.5 ✓

-10	17.5	158.1
X	15.0	157.6
CB	13.1	159.5
1/4	11.7	160.9
Z	10.9	161.7
1/4	10.6	164.0
CB	9.9	164.7
+5	10.4	164.4
E	9.6	163.0

TP 192 / 1488 ✓ 1260 159.96

E	250.5 ✓	38	158.1
+5	5.0	156.9	
CB	5.7	156.7	
1/4	5.3	156.6	
Z	6.1	155.8	

31st 57

161.88

1/4	58	156.1
CB	56	156.3
1/4	59	156.0
+10	41	157.8

265.5

-10	3.4	158.5
1/4	6.2	155.7
+5	7.2	154.7
CB	6.8	155.1
1/4	6.5	155.4
E	6.6	155.3
1/4	6.7	155.7
CB	7.2	154.7
E	7.0	154.9

275.5

E	8.0	153.9
CB	8.7	153.7
1/4	8.2	153.7
E	7.8	154.1
1/4	7.1	154.8
CB	7.5	154.4
1/4	7.9	157.0

299.5

1/4	5.9	156.0
CB	8.1	153.8
+4	9.2	154.7
+5	10.0	151.9

161.88

69

1/4	10.5	151.4
E	11.3	150.6
1/4	11.4	150.5
CB	11.9	150.4
+5	11.1	150.8
E	11.1	150.5

304.5 = 2.5 x 11.75

E	12.1	149.8
CB	11.8	150.1
1/4	11.6	150.3
E	11.4	150.5
1/4	10.8	151.1
CB	10.6	151.3
1/4	10.4	151.5

TP	6.97	165.96	289	158.99
BM			2.01	163.95

30.4 x 11.75
= 357.3125
163.95

Cross Section Alley Block 22 Univ. Hgts.
Between Florida & Alabama
From N. L. Madison to S. L. Adams

20' wide

BM	LR3	33592	329.09
		at N. L. Madison Ave	
N	Top Curb	47.6	331.16
	Gutter	50	330.9
S		49	331.0
	Gutter	47	31.4
E	Top Curb	46.4	31.48
		25' N	
F		44	31.5
S		44	31.5
N		42	31.7
		50' N	
N		41	31.8
S		41	31.8
+3		39	34.0
E	Top Conc. Walk	43	31.6
		75' N	
F		42	31.7
+5		38	34.1
S		41	31.8
N		39	34.0
		93' N	
-28	Garage Dirt Floor	38	34.1
N		38	34.1
S		39	34.0
E		40	31.9

BRIDGE
Madison - Florida

		33592	110' N	40	31.9
+28	Garage Dirt Floor				
-10	Do. Garage Dirt Floor			38	34.1
E				38	34.1
S				39	34.0
N				39	34.0
TP	LR3	338.84	3.21		332.71
			140' N		
N				63	34.5
S				63	34.5
E				62	34.6
	8' Garage Conc. Floor			5.89	33.75
			160' N		
F				52	33.6
S				57	33.1
N				60	34.8
			195' N		
-55	Garage Conc. Floor			47.0	34.1
N				47	34.1
S				50	33.8
E				45	34.3
	+58' Garage Dirt Floor			43	34.5
			215' N		
E				41	34.7
+5				48	34.0
S				47	34.1
N				41	34.7
			235' N		
N				40	34.8

1-21-21
5-15-21
8-15-21
North
70

118' N
Garage Dirt
27' N L.L.
3.5

180' N Garage
Dirt Floor
4.5' N L.L.
Add
5.6
33.4

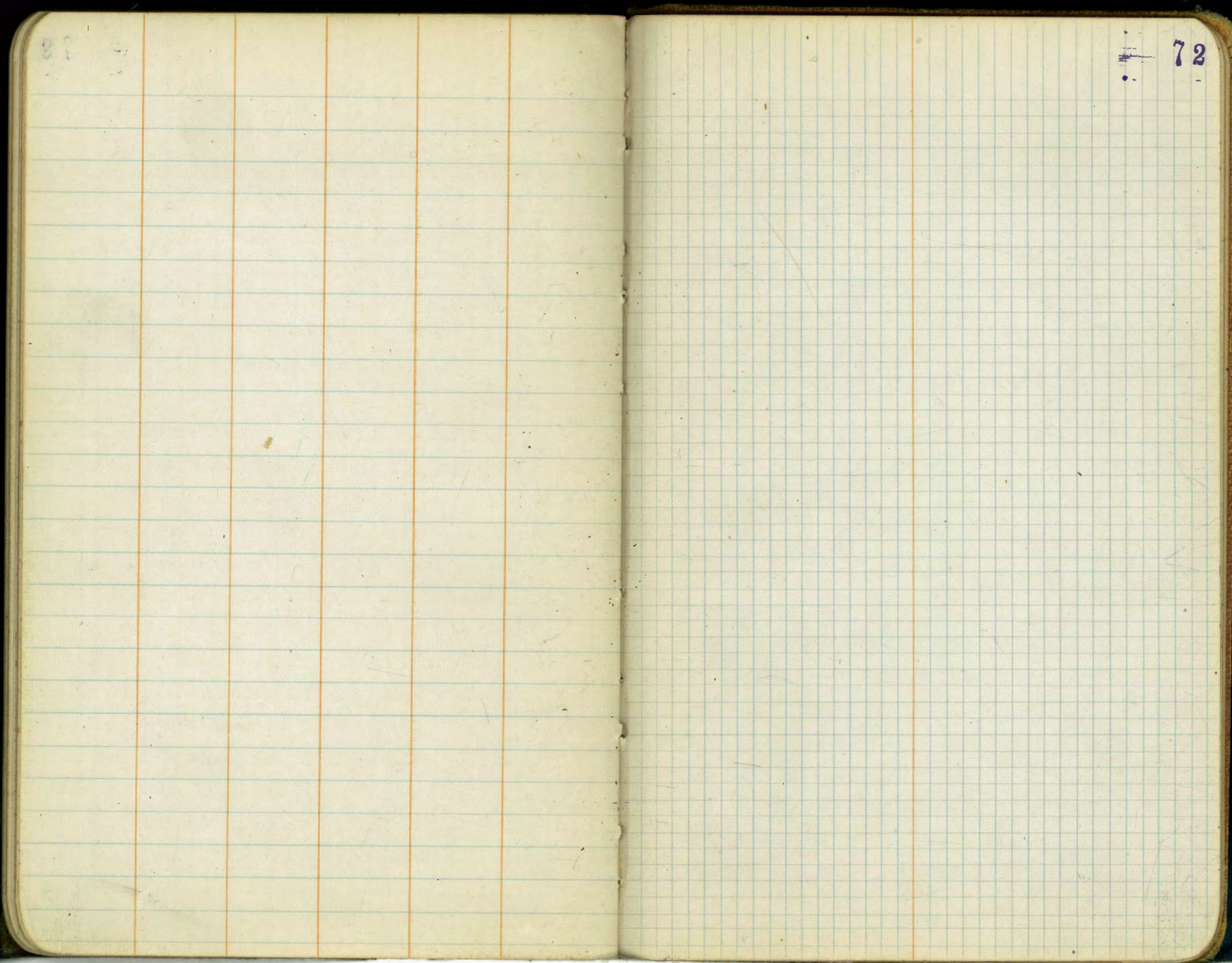
338.84

L	41	34.7	
E	38	35.0	245' N Garage Dirt Floor
	250' N		43 E E L P
E	37	35.1	3.6 35.7
S	4.0	34.8	
N	4.0	34.8	
N	3.4	35.4	
	270' N		
N	3.4	35.4	
46	3.9	34.9	
S	3.3	35.5	280' N Garage Dirt Floor
43	3.0	35.8	E L E L
E	3.3	35.5	3.1 35.7
	300' N		
E	3.3	35.5	Garage Dirt Floor
S	3.8	35.0	
N	3.6	35.7	
	334' N		
N	3.8	35.0	
S	4.0	34.8	
E	3.8	35.0	345' N Garage Dirt Floor
473	3.7	35.1	40' N W L P
	355' N		3.50 35.3
E	4.1	34.7	
S	4.3	34.5	
N	4.0	34.8	

338.84

378' N

N	4.3	34.5	
S	3.9	34.9	
E	4.0	34.8	Do. Garage Dirt Floor
	395' N		
E	3.7	35.1	
S	3.6	35.2	
N	3.6	35.2	
	407' N		
N	3.3	35.5	
45	3.4	35.4	
S	3.0	35.8	
E	2.8	36.6	Garage Dirt Floor
	430' N		
E	1.5	37.3	
S	1.5	37.3	
45	2.1	36.7	
S	2.3	36.5	
N	2.4	36.4	
	445' N		
N	2.3	36.5	
S	2.0	36.8	
E	1.4	37.4	
TP	4.77	342.41	
	4654' N = So. Adams		
E	4.69	337.79	
S	4.72	337.76	
N	4.38	338.70	
	340.04		So. Adams 240' N E L



72

6/189
31

4667
674
18668
32669
25002
3125558

211) 5.000 (0237
422
780
633
1470

5721
0237
40098
17171
11450
1356785

30984
712
30272

330.64
72.91
317.67

13.67
101.29
32

32888
466
32922

33718
1291
32423

0.85
101.32

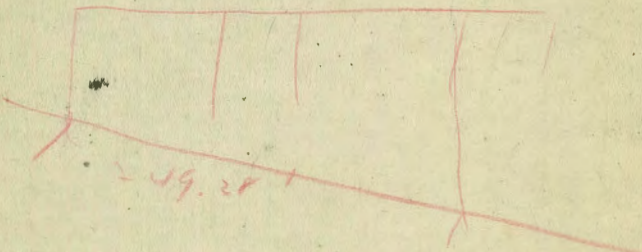
1.205
3322
20205
93 09

53075
4428
17705
40
1735

30353
6040
47.89

295.01

270 .A.



249.28

30501
7.12
189