

1123

LEVEL BOOK

300  
300

1123

MICROFILMED

DEC 21 1964

137.33  
15.3

818

028873

4441

47.42

11  
12  
13



sewer, Manzanita Dr, Dahlia to Oak 29

Talman  
Hoelzig  
8-21-28

X-section 39th St. fr. 60' N. of  
Adams to Merivale

2, 34 373.21 370.87 <sup>SEBP</sup> Adams 39

0+00 = N.L. Adams

0+60

EL		5.0	368.2
cb		5.75	367.46
Gut		6.1	367.1
1/4		5.7	367.5
1/2		5.4	367.8
3/4		5.6	367.6
Gut		6.2	367.0
cb		5.53	367.98
WL		5.2	368.0

0+00 Section N.L. Adams

Min	370.21
5.76	370.51
6.33	369.94
5.87	370.90
5.49	370.78
5.47	370.80
5.58	370.69
5.19	371.14
Top	
ECB Top	
ECB Bot	
E 1/4	
E 1/2	
E 3/4	
WCB Bot	
" " Top	

0+80

EL		6.6	366.6
cb		6.71	366.50
Gut		7.1	366.1
1/4		6.6	366.6
1/2		6.2	366.8
3/4		6.5	366.7
Gut		7.0	366.2
cb		6.54	366.67
W.L		5.8	367.4

373.21

0+100

50' Street  
10' curbs  
15' Guts

EL		7.2	366.2
cb		7.28	365.93
Gut		7.4	365.8
1/4		7.1	366.1
1/2		6.9	366.3
3/4		7.0	366.2
Gut		7.3	365.9
Chronic			
WL		6.4	366.8
TP	3.47	369.78	7.11 366.11

1+20

EL		4.0	365.6
cb (covered)		4.07	365.5
1/4		3.7	365.9
1/2		3.6	366.0
3/4		3.7	365.9
Gut		4.0	365.6
WL		3.1	366.5

1+40

EL		4.0	365.6
cb		4.4	365.2
1/4		4.1	365.5
1/2		4.0	365.6
3/4		4.0	365.6



369.58

cb		4.3	365.3
WL		3.5	366.1
	1+68		
EL		4.6	365.0
cb		5.0	364.6
1/4		4.4	365.2
E		4.3	365.3
1/2		4.3	365.3
cb		4.4	365.2
S/W	(1+65±)	3.50	366.08
WL		3.8	365.8

200

EL		5.4	364.2
+3		4.7	364.9
cb		5.3	364.3
1/4		5.2	364.4
E		4.9	364.7
1/4		4.8	364.9
cb		5.2	364.4
S/W		4.05	365.53
WL		4.0	365.6

Plotted by Tolman

369.58

1+68.68

WL S/W		4.39	365.19	
cb		5.1	364.5	
1/4		5.2	364.4	
E		5.1	364.6	
1/2		5.0	364.2	
gut		6.0	363.6	
T.C.B		5.34	364.26	
EL		5.3	364.3	
SW end		5.10	364.28	
TP	6.37	372.08	3.47	366.11
			1.58	370.9 ✓

5 "B Line"

Location Servers  
From Sta 15+00 A Line Thru Hollywood  
Park To Sta 47+00 A Line

10+05.07  $\Delta L$  144°34' For Levels 88-97

8+80.6  $\Delta R$  97°50'

6+96.8  $\Delta R$  70°56'

5+31.13  $\Delta L$  8°56'

3+48.9  $\Delta L$  157°57'

0+00  $\Delta$  = 74°41'  $\Delta$   
= 15+00 A Line B.S. on 14+00 P.O.T.

14+00  $\odot$  P.O.T.

N 56°27' W  
14.07

S 25°42' W  
113.8

S 40°47' W  
165.67

S 13°42' W  
182.23

N 08°20' W

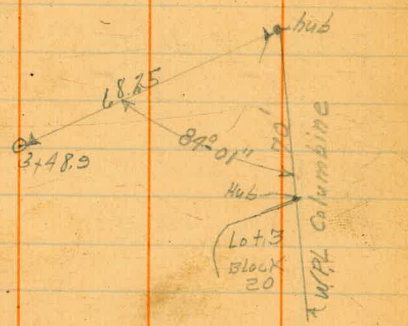
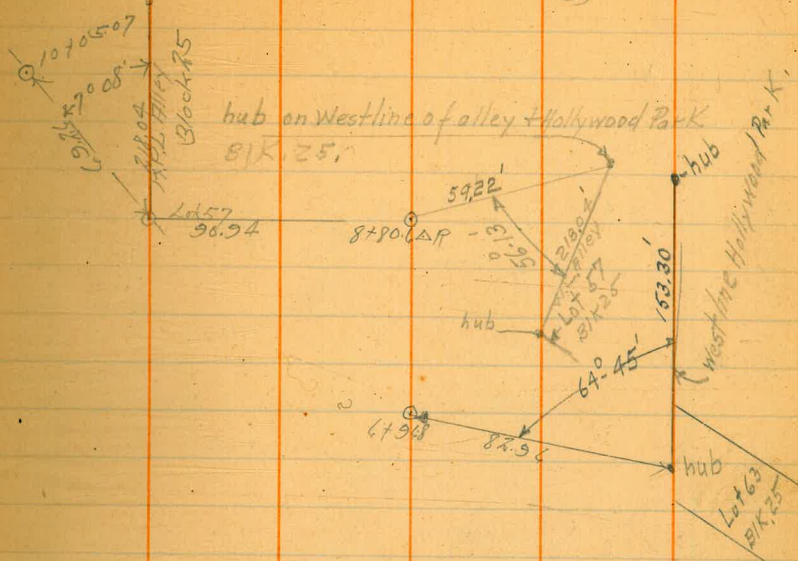
N 162°12' E

Lexington Park

H.H. Hile  
C.B. Walker  
A.S. 18507

1871-24

4





7 "Blind" Cont.

18224

22+70.0 ΔR 70° 26'

S45°26'W  
183.58

19+300 ΔR 12° 19'

S25°26'E  
340.0

18+06.0 ΔL 132° 48'

S37°29'E  
172.0

17+53.75 ΔL 42° 52'

N15°01'W  
57.25

14+50.0 ΔR 26° 24'

N42°00'W  
303.75

14+00 P.O.T

N69°23'W  
95.2

13+55.0 ΔR 91° 52'

S19°34'W  
156.1

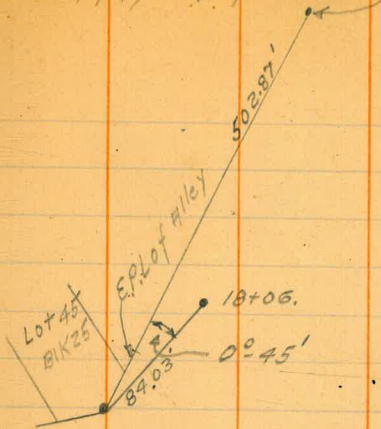
12+23.780 P.O.T

S21°31'E  
193.63

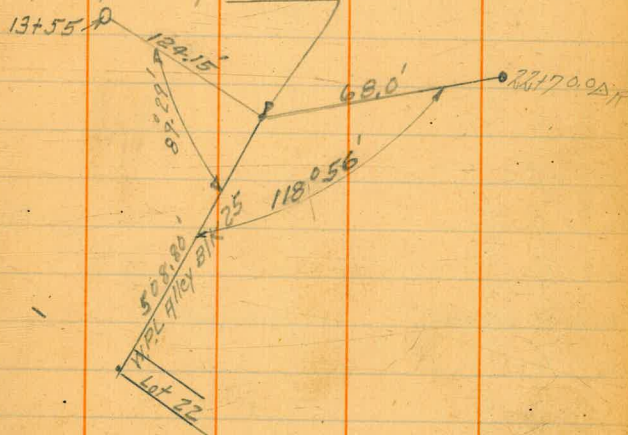
11+98.9 ΔR 40° 35'

hub on EPL of Alley + Hollywood Park

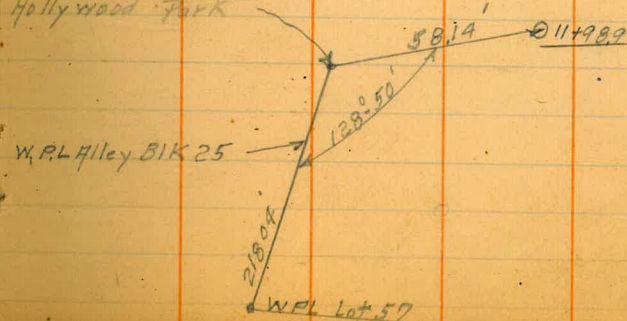
8



hub on W.P.L of Alley + Hollywood Park



hub on W.P.L + Alley + Hollywood Park









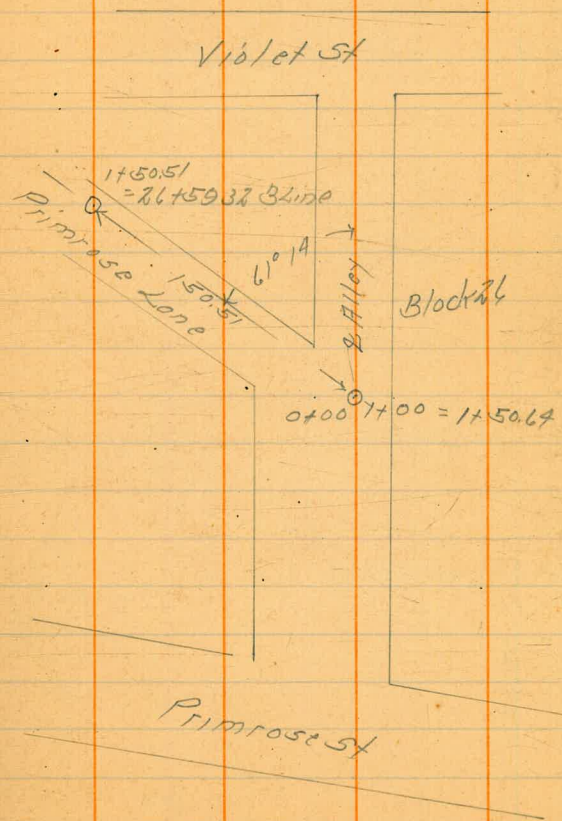
Location Servers  
Primrose Lane Block 26

For Levels Page 99

$$1+50.510 = 26+59.32 \text{ B line}$$

$$0+00 \quad \Delta \Delta 61^{\circ}14' = 1+00 = 1+50.64$$

Lexington Park





Location Sectors  
Block 25 From Center of E+M  
Alley To Bline

For Levels Page 10/11/02

5+55.68 @ = 18+06 Δ L Bline

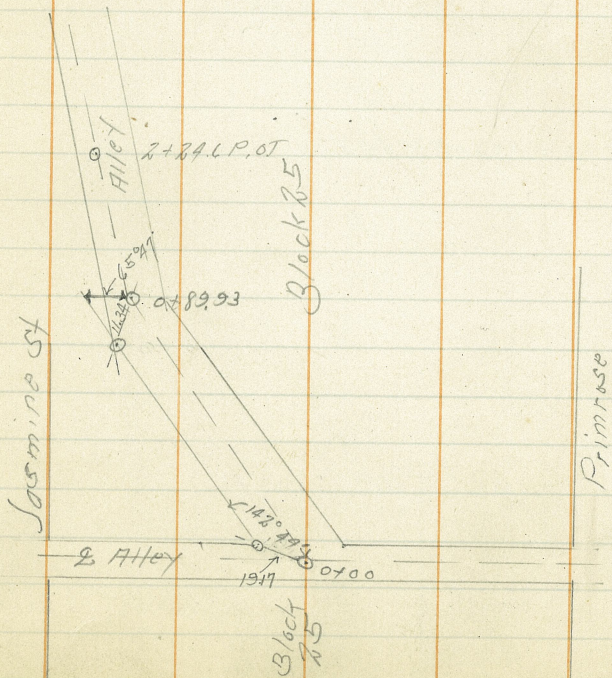
4+71.0 Δ 22° 06'

2+246 O.P.O.T. 28197

0+89.93 Δ P 59° 03'

0+00 @ = 3+774

Lexington Park





Location Servers  
Block 25 East Jasmine

For Levels Page 103

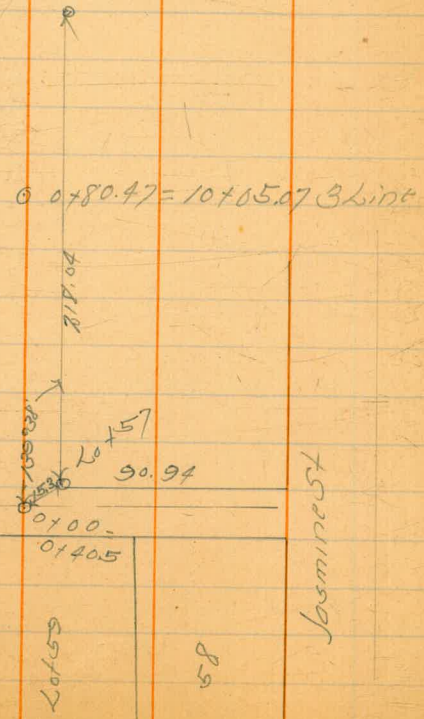
See 1114 Page 121

0+80.47 @ = 10+05.07 B Line

0+00 @ = 0+40.5 Δ P

Hollywood Park

Block 25





17 Location Servers  
Alley in Block 20

For Levels Page 105

R+46.61 50+85.67 B Line

1988

0+66.73 AP 75°17'

0+00 0 = 3150.0 AP E Alley



divided

Hollywood Park

45°  
R+46.61 0 = 0+85.67

Lot 4  
Block 20

Block 20

Lot 6

< South E Alley

0+66.73 AP 75°17'

0+00  
3150.0 AP



Location Setter  
 Change of Line From Alloys Bl. 16-13  
 To B Line

For Levels Page 104

1+49.51  $\odot$  = 3+48.94  $\Delta$  B Line

0+00  $\Delta$  = 5+92.0 AP  
 $R_{58^{\circ}40'}$   
 BS on 4+53.12

4+53.12  $\odot$



21

Location Servers  
Center Talip From Sycamore South.  
To Center Alley Block 29

For hotels Page 107

5+5515 0 = 2A/4 = 0+00

5+2515 0 = H.P. L Alley Block

3+5856 0 = 14/1621 AP

0+00 0 = 14+1626 2 Talip + Sycamore  
Box 1120-13

22

12-9-77

✓

Willow

2 Talip

3+5856

Block 29

Lot 20

" 21

File

5+2515 H. Alley Line  
5+5515  
0 2+0100

0 0+00 = 14+1626

Sycamore



21 23

Location Servers  
Center Talip St. North of Millon

For Levy's Page 108

24

5+

5+

1+16.71 © = 3+58.56

3+

0+00

0+

Block 29

Millon

1+16.71 =  
3+58.56

Talip

0+00

2742

Millon St.

Con Man  
& Talip Millon



25

## Sewer Location to Service

Lots 2-84 BIK 17 Lexington Park

2 Moors  
Walker  
Proctor  
1/1/12

+535 on 222 hub 0000

+1303.04

297.69

- 6' W of WL of Farmment  
00 = DE Line of Lot 1 + 2

3.04

300.0 222 hub

+50

4.1

298.9

1 -

4.9

298.1

111.27 =

0 + 03.68

A 4350 R1

5.29

297.75 222 hub

Plotted

26

Sewer Location to Serve  
Lots 19-23 BIK 9 Lexington  
Primrose St

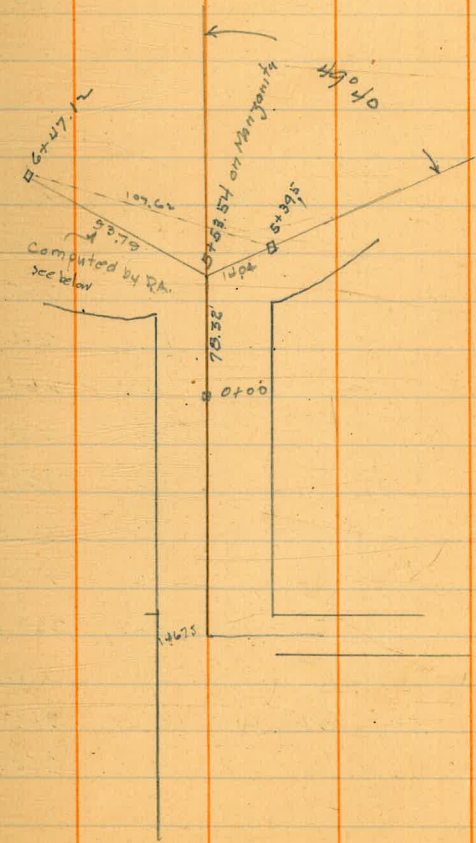
Moore  
Walker  
Pratt  
1/11/00

+ 4.43 on hub Sta 2+5 St Primrose		291.46	
		H.I. 295.89	
00 = D.E. Line of Lots 22+23 BIK 9	3.48	292.41	see hub
+ 50	4.0	291.9	
1-	4.5	291.4	
+ 67.78 = Sta 2+75 St Primrose	5.36	290.53	see hub

Sewer Location to serve Lots

Facing on Violet BIK 9 Lexington

on hub Sta 112.5 Intersection of # of Alley 1			
+ 0.62		289.73	
		H.I. 290.35	
7832 # of Violet			
00 = D.E. Line of Lots 3+4 BIK 9	3.09	287.26	see hub
1+7832 + 50	3.8	286.6	
1+7832	4.5	285.9	
1+7832 $\Delta 90^\circ Lr$			
+ 67.5 = # of Violet & # of Alley	5.19	285.16	see hub
+ 78	5.5	284.9	
+ 80	4.5	285.9	
+ 92.5 = N.E. of Violet	4.30	286.05	see hub
2 + 17.5 = Sta 2+00	3.4	287.0	



$$\sqrt{1404^2 + 107.62^2 - (2(1404 \times 107.62) \cdot 65.584)} = \sqrt{11779.186 - 1981.928} = \sqrt{9797.258} = 98.98$$



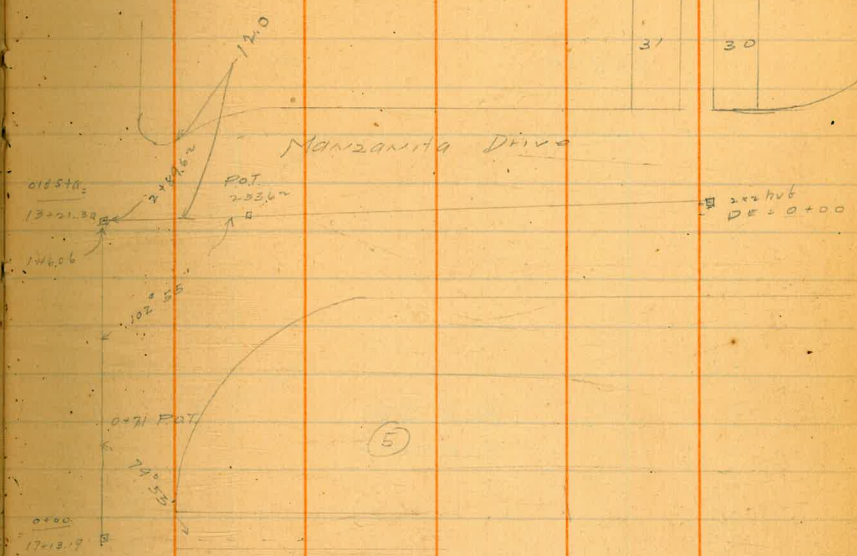
Sewer Location on Manzanita  
S to Oak St. + Relocation of  
Trunk Line on Oak St

Moore  
Incident  
Project

on H06 & Oak + Alley BIK 5

0900 17+12.19	+2.16	288.87		286.71	
+50			3.2	285.7	
+71 POT			3.78	285.09	285.09
+82			4.5	284.4	
+85			6.3	282.6	
105			14.1	274.8	
115			14.5	274.4	
T.P.	150	277.74	12.63	276.24	
130			7.7	270.0	
14606 = A Junction 13+21.30 Old Station			12.35	265.39	
50 N of 0200 9L Lot 30 BIK 36			16.0	261.7	
0900 = RE			8.83	268.91	268.91
+80			9.2	268.5	
1			8.6	269.1	
+50			8.5	269.2	
2			7.5	270.2	
+53.62 POT			7.27	269.47	269.47
+56			7.6	270.1	
T.P.	150	266.61	12.63	265.11	
2 + 89.62			1.22	265.39	
			1.22	265.39	

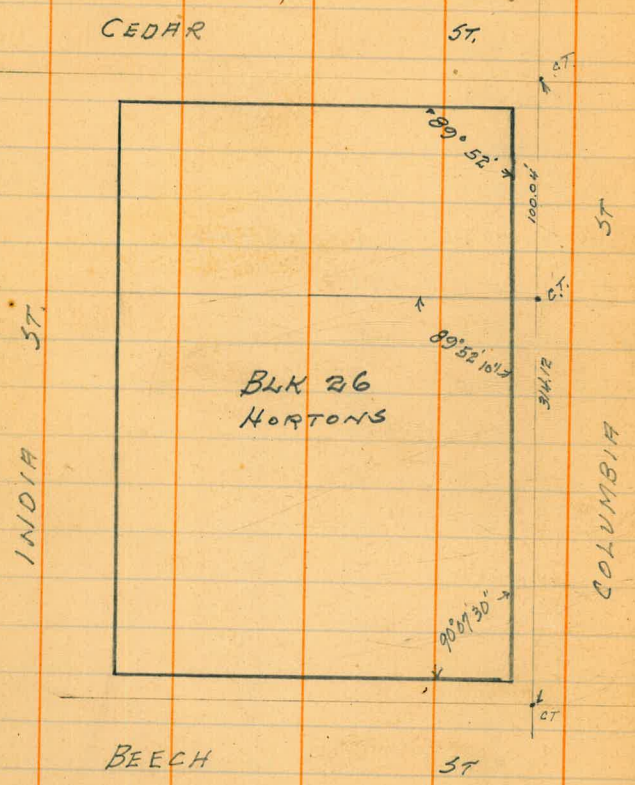
38



31 2/17/25

Georgian Survey Lots for  
FIRE DEPT

32





33 2/17/21 Corograph Levels on Tank Site  
Foot of McCall St.

049	38.63		38.14 NW McCall & Reservoirs
008	25.72	12.99	25.64
007	13.04	12.71	12.97
003	2.47	10.60	2.44

9' E of E.L. San Antonio = Edge of Apron

N. Cb Line	3.56	- 7.09	on cement
E. McCall	3.56	- 1.09	- -
S. Cb Line	3.53	- 1.08	- -

10' E. of E.L. San Ant.

S. Cb Line	4.2	- 1.73
9' N. of S. Cb Line	4.7	- 2.23
10' " " " "	4.3	- 1.83
18' " " " "	4.7	- 2.23
N. Cb Line	5.0	- 2.53

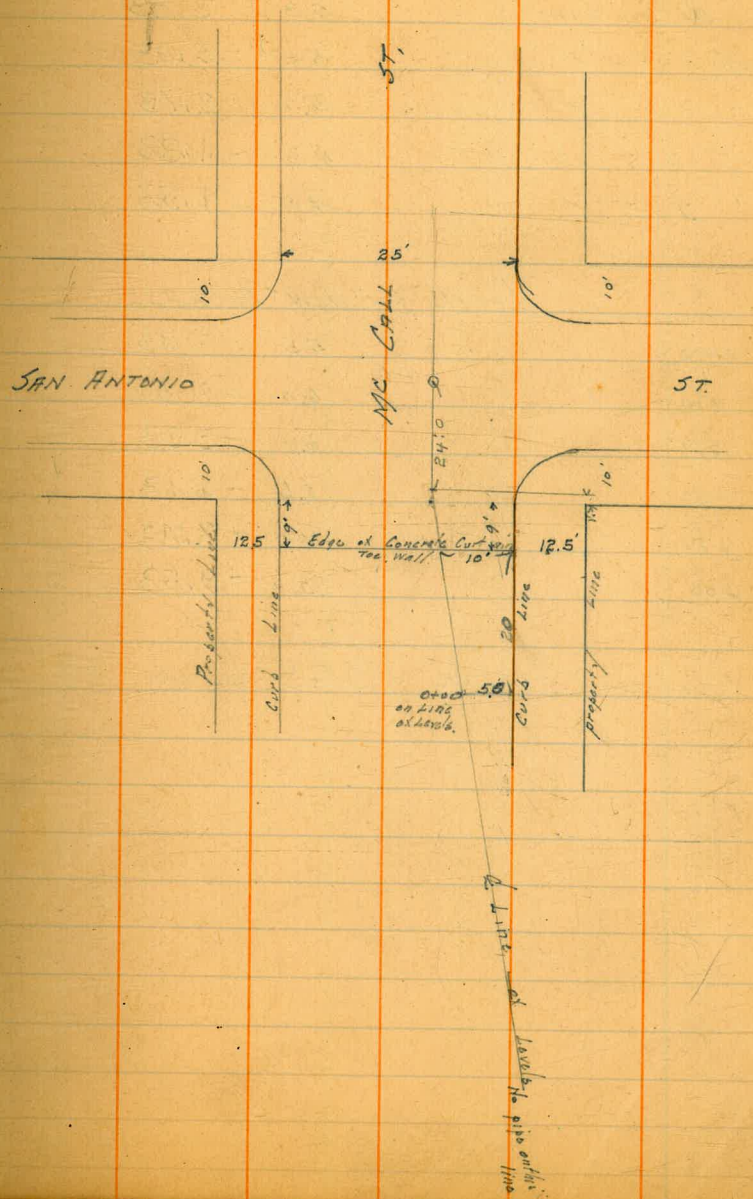
19' E. of E.L. San Ant.

N. Cb Line	4.7	- 2.23
7.5' " " " "	5.2	- 2.73
11' " " " "	5.0	- 2.53
17' " " " "	4.2	- 1.73
22' " " " "	4.2	- 1.73
S. Cb Line	3.5	- 1.03

24' E. of E.L. San Ant.

S. Cb Line	3.9	- 1.43
13' N. of " " " "	4.1	- 1.63
14' " " " "	5.6	- 3.13
N. " " " "	4.7	- 2.23

34





## 29' E of EL San Ant

N. Gb Line	5.3	- 2.83
6' S. of ✓ ✓ ✓	5.5	- 3.03
10' ✓ ✓ ✓ ✓ ✓	5.2	- 2.73
11' ✓ ✓ ✓ ✓ ✓	4.3	- 1.83
5' ✓ ✓	4.0	- 1.53

## Levels for new OUTFALL

0+00	5.5	- 3.03
+10	6.0	- 3.53
+17	6.4	- 3.93
+40	8.6	- 6.13
+80	10.7	- 8.23
+100	12.0	- 9.53

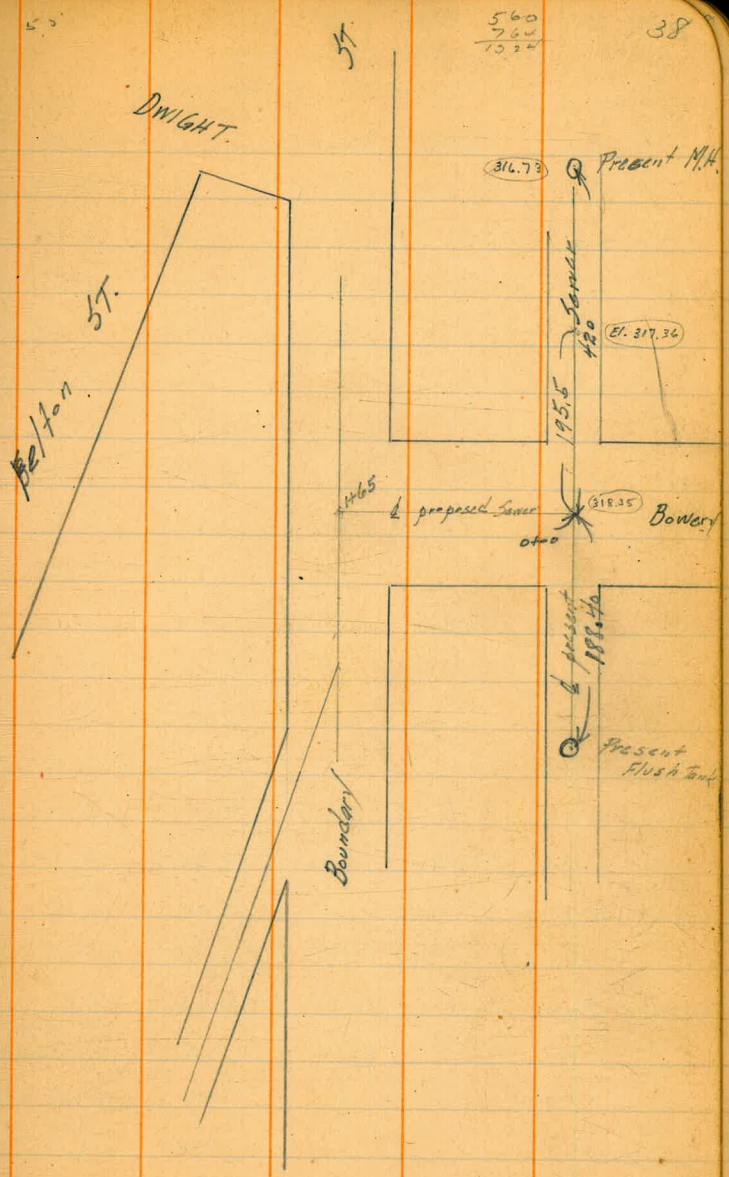
See book 945 page 78



37 3/30/21

Sewer Levels on  
Bowery & Boundary to  
Serre Blk 60 Park Villas

	4.99	329.97	324.98	NE Bowery & Boundary
Elev. Bottom of present sewer 1955 N.O. 11	✓	✓	12.61	317.36
✓ ✓ ✓ ✓ M.H.			13.24	316.73
1/2 of Alley + Bowery = 0.00			4.9	325.1
+15			5.2	324.8
+50			4.5	225.5
1 + 00			3.7	326.3
+35			3.7	326.3
+45			5.6	324.4
+53			6.2	323.8
+65 = Δ 90° L.			5.8	324.2
2 + 15			6.3	323.7
+65			7.1	222.9
T.P.	4.56	327.46	7.07	322.90
3 + 15			5.4	322.1
+56 Δ R			6.2	321.3
+81			6.4	321.1
4 + 06			5.1	322.4
+36			5.3	322.2
+56			6.0	321.5
5 + 06			7.8	317.7
50' N.O. 1465			3.0	324.5



560  
760  
1024

38



Sewer Levels  
Alley Bet Falspar & Emerald  
E Noyes To E Quincy

7/6/25  
mllr

SW. cor Garnet  
& Lamont

67.01

B.M.	5.94	71.77		65.83	
T.P.	5.85	76.73	0.89	70.84	
0+00 = E Noyes			5.73	71.04	on stub
+20			7.0	69.73	
+36			6.3	70.43	
+50			7.2	69.53	
1+00			8.6	68.13	
+50			9.1	67.63	
2+00			10.1	66.63	
+50			11.2	65.53	
T.P.	2.92	73.02	6.63	70.10	
3+00			4.6	68.42	
+25			1.0	72.02	
+50			3.5	71.52	
4+00			2.7	70.32	
+50			4.3	68.72	
5+00			5.2	67.82	
+60			6.6	66.42	
5+80 = E Olney			7.03	65.99	on stub
6+00			7.5	65.52	
+50			10.2	62.82	
7+00			12.9	60.12	
T.P.	6.05	67.01	12.06	60.96	
7+50			9.6	57.41	
+65			10.0	57.01	
+69			11.9	55.11	

7+72			10.6	56.41	
8+00			10.8	56.21	
+50			9.3	57.71	
9+00			8.0	59.01	
+50			8.2	58.81	
10+00			7.5	59.51	
+50			6.7	60.31	
11+00			4.1	62.91	
+27			2.3	64.71	
11+60 = E Pendleton ST			1.77	65.24	on stub
12+00			2.2	64.81	
+50			3.4	63.61	
13+00			4.8	62.21	
+29			6.5	60.51	
14+29			11.7	55.31	
T.P.	0.63	4	12.18	54.83	
		55.46			
14+29			3.8	51.66	
+75			10.8	44.66	
T.P.	4.99	B	12.62	42.84	
		47.83			
15+29 = E Quincy			11.69	36.14	



41

Sewer Levels  
 Alley Bet Garnet & Felspar  
 & Pendleton & Quiney  
 N.E. = D Page 44  
 55.15

7/6/25 ✓

Pacific Beach Sewer  
7/2

00 = & Pendleton	11.8	43.35	
+10	11.9	43.25	
+50	9.1	46.05	
1+00	5.7	49.45	
+50	4.0	51.15	
2+00	3.2	51.95	
+50	2.3	52.85	
3+00	1.9	53.25	
+35	3.1	52.05	
3+69 = & Quiney	7.62	47.53	on stub

Sewer Levels  
 of GUNNEY  
 from Alley N of Emerald to Pacific St.

55.46 = y Page 40

00 = Alley N of Emerald		5.7	49.76	
+11		6.8	48.66	
+25		9.8	45.66	
+35		8.2	47.26	
+50		8.5	46.96	
+65		9.4	46.06	
+78		11.8	43.66	
+88		10.5	44.96	
1+00		11.1	44.36	
+50		13.0	42.46	
T.P.	4.99	<sup>B</sup> 47.83	42.84	
2+00		7.7	40.13	
+50		9.0	38.83	
+67		13.3	34.53	
+81		12.2	35.63	
+82		10.0	37.93	
3+00		10.9	36.93	
+50 = Alley bet Emerald & Felspar		11.69	36.14	on stub
4+60		10.7	37.13	
+30		9.1	38.73	
+55		6.2	41.63	
+75		6.1	41.73	
5+00		4.1	43.73	
+25		2.6	45.23	
+50		1.0	46.83	

47.83

<sup>D</sup>

55.15 ✓

T.P.	7.46	55.15	0.14	47.69 ✓	
4+00			7.4	47.75	
+30			6.6	48.55	
+50			7.2	47.95	
7+00 = Alley bet Felspar & Garret			7.62	47.53	on stub
+25			8.0	47.15	
+50			9.6	45.55	
+75			10.6	44.55	
8+00			13.1	42.05	
T.P.	0.26	42.60	12.81	42.34 ✓	
+15			2.5	40.10	
+19			5.0	37.60	
+23			5.7	36.90	
+28			8.6	34.00	
+30			10.9	31.70	
+38			11.8	30.80	
T.P.	0.13	29.63	13.10	29.50 ✓	
+43			5.1	24.53	
+50			5.6	24.03	
+53			4.5	25.13	
8+65			4.65	24.98	Nudge Garret St Paving
8+85			4.25	25.38	S. edge Garret St Paving
9+00			5.0	24.63	
+25			7.2	22.43	
+45			7.9	21.73	
+70			12.3	17.43	



		29.63		
9+75			10.9	18.73
10+00			12.5	17.13
T.P.	5.99	F 27.96	12.66	16.97 ✓
+50			7.3	15.66
11+00			7.7	15.26
+50			8.0	14.96
+95			8.4	14.56
12+00			10.6	12.36
+02			9.0	13.96
12+32.7	♀ Hornblend		9.05	13.91 ✓
(Note - bet Gornet & Ivy there is a surplus of 7.70)				
12+65			9.6	13.36
13+00			10.3	12.66
+50			11.3	11.66
14+00			12.1	10.86
14+02.7	♀ Alley bet Hornblend & Ivy		12.28	10.68 on stub
T.P.	0.99	H 11.67	12.28	9. 10.68 ✓
14+50			1.9	4.77
15+00			3.3	8.37
+50			4.1	7.57
+95			4.2	7.47
16+07			2.9	8.77
+17			3.0	8.17
+45			6.0	5.67
17+00			6.2	5.47
+30			6.2	5.47

				11.67	
17+60				6.7	4.97
18+00				7.8	3.87
18+02.7	♀ Alley bet Ivy & Thomas			7.88	3.79 ✓ on stub
T.P.	1.90		5.69	7.88	3.79 ✓
+50				2.7	3.29
19+00				3.9	1.79
+50				4.2	1.49
20+00				4.5	1.19
+50				4.1	1.59
21+00				4.5	1.19
21+52.7	♀ Alley bet Thomas & Reed			4.77	-0.92 on stub
22+00				5.3	0.39
+50				5.4	0.29
23+00				5.2	0.49
+50				5.4	0.29
24+00				5.7	-0.01
+50				5.7	-0.01
25+02.7	♀ Alley bet Reed & Oliver		4.87	4.46	6.10
T.P.					-0.41 on stub
25+50				4.9	-0.44
26+00				5.1	-0.64
+20				4.6	-0.14
+50				5.0	-0.54
27+00				5.2	-0.74
+50				5.5	-1.04
28+00				5.8	-1.34
28+32.7	♀ Alley bet Oliver & Pacific			6.07	-1.61 on stub

47

Sewer Levels  
 on  $\Phi$  Hornblend from  $\Phi$  Quincy to  $\Phi$  Pendleton

22.96 = F. Page 46

00 = $\Phi$ Quincy	9.05	13.91	on stub
+30	8.8	14.16	
+34	6.9	16.06	
+50	6.9	16.06	
1 -	4.0	16.96	
+30	5.6	17.36	
+50	4.4	18.56	
2+00	3.1	19.86	
+50	1.8	21.16	
3+00	0.8	22.16	
+35	0.0	22.96	
3+69 = $\Phi$ Pendleton	+0.8	23.76	

Pacific Beach Sewers 48

Sewer Levels  
 Alley bet Hornblend + NY  
 from  $\Phi$  Pendleton to  $\Phi$  Quincy

22.96 Page 48

00 = $\Phi$ Pendleton	2.4	20.56	
+50	3.5	19.46	
1+00	4.7	18.26	
+50	6.2	16.76	
+65	6.0	16.96	
2+00	7.1	15.86	
+20	7.2	15.76	
+50	7.8	15.16	
3+00	9.9	13.06	
+35	10.9	12.06	
+50	12.5	10.46	
3+69 = $\Phi$ Quincy	12.28	10.68	on stub.



Sewer Levels  
 & Alley bet Ivy & Thomas  
 from & Quincy to 50' w of Morell

11.67 = H Page 46

00 = & Quincy		7.88	3.79	on stub
+14		7.3	4.37	
+20		7.3	4.37	
+25		6.3	5.37	
+50		6.3	5.37	
1+00		5.1	6.57	
+50		4.3	7.37	
2+00		3.7	7.97	
+50		2.9	8.77	
3+00		1.7	9.97	
T.P.	12.70	22.86	10.16	
+35		11.8	11.06	
3+68 = & Pendleton		10.8	12.06	
4+00		10.4	12.46	
+50		8.9	13.96	
5+00		8.7	14.16	
+50		7.7	15.16	
6+00		6.4	16.46	
+50		5.1	17.76	
7+00		4.1	18.76	
+50		3.0	19.86	
8+00		2.4	20.46	
+50		1.5	21.36	
+75		1.1	21.76	
9+00		1.4	21.46	

		22.86		
9+25				
T.P.	12.59	38.22	0.8	22.06
9+48 = & Olney			0.23	22.63
			11.9	23.32
10+00			8.9	26.32
+35			6.8	28.42
+70			5.1	30.12
11+00			3.8	31.42
+30			3.0	32.22
+65			0.9	34.32
12+00			0.0	35.22
T.P.	3.48	38.65	0.05	35.17
+50			2.1	36.55
13+00			1.7	36.95
+50			1.3	37.35
+65			1.1	37.55
14+00			1.9	36.75
+50			3.7	34.95
15+00			5.5	33.15
+05			6.1	32.65
+12			5.7	32.95
15+28 = & Noyes			6.3	32.75
+60			8.2	30.45
16+00			10.7	27.95
+32			11.1	27.55
+37			12.0	26.65
+43			11.2	27.45
+82			11.0	27.65



51

38.65

17+00			11.3	27.35
+50			9.6	29.05
18+00			6.2	32.45
+50			5.1	33.55
19+00			3.7	34.95
T.P.	5.98	41.71	2.92	35.73
+50			6.1	35.61
+80			6.8	34.91
20+00			8.1	33.61
+55			9.6	32.11
+75			8.8	32.91
21+00			4.8	34.91
21+08 = $\phi$ Morell			6.7	35.01
+50			4.7	37.01
+70			4.2	37.51
+80			3.4	38.31
+98			2.6	39.11
OH Hub			8.39	33.32
T.P.	13.24	54.13	0.82	40.89
T.P.	12.12	66.06	0.19	53.94
chk on B.M.			0.27	65.79 = 65.83

 $\phi$  Thomas  
E 7' line MorellSW ex. Lamont  
& Garnet

B.M.

4.03

37.35

33.35

33.32

Thomas &amp; Morell

T.P. for B.M. on Hub

7.55

29.80

E 7' line Morell  
& ReedSewer Levels Pacific Beach sewers  
 $\phi$  Alley to  $\phi$  Thomas & Reed  
from 350' W of Morell to  $\phi$  Quincy

52

✓

5.59	38.91	33.32	Thomas & Morell	
00 = 350' W of Morell		9.1	29.81	
+43		10.5	28.41	
+83		9.3	29.61	
1+00		7.9	31.01	
+35		5.0	33.91	
+50		4.8	34.11	
2+00		4.5	34.41	
+50		4.5	34.41	
3+00		4.4	34.51	
+50		4.5	34.41	
3+90 = $\phi$ Morell		4.4	34.11	
+440		6.1	32.81	
+75		7.3	31.61	
5+00		8.1	30.81	
+25		9.1	29.81	
+60		11.7	27.21	
T.P.	0.59	26.34	13.16	25.75
6+00		1.7	24.24	
+50		7.4	18.94	
+60		7.7	18.64	
7+00		9.6	16.74	
+50		9.0	17.34	
+97		9.7	16.24	
8+02		10.5	15.85	
+10		10.0	16.34	



26.34

+50			10.9	15.44
9+00			7.6	18.14
+30			3.5	22.84
9+70 = $\phi$ Noves			0.20	26.14 ✓ on stub
T.P.	5.38	31.52 ✓	0.20	26.14 ✓
10+00			3.6	27.92
+50			3.4	28.12
11+00			3.6	27.92
+50			3.4	28.12
12+00			3.9	27.62
+50			4.6	26.92
13+00			5.2	26.32
+50			6.3	23.22
14+00			7.0	24.22
+25			8.1	23.42
+60			10.5	21.02
15+00			13.3	18.22
T.P.	0.55	20.39 ✓	11.68	19.84 ✓
+25			4.2	16.19
15+50 = $\phi$ Olney			5.0	15.39
16+00			7.4	12.99
+50			10.1	10.29
17+00			11.1	9.29
+50			11.7	8.69
+65			11.4	8.99
18+00			12.1	8.29

+50			12.8	7.59
T.P.	0.68	8.14 ✓	12.93	7.46 ✓
19+00			1.1	7.04
+50			2.5	5.64
20+00			3.5	4.64
+50			5.0	3.14
21+00			6.5	1.64
21+30 = $\phi$ Pendleton			7.3	0.84
+60			7.7	0.44
22+00			7.8	0.34
+50			7.6	0.54
23+00			7.7	0.44
+50			7.3	0.94
24+00			7.1	1.04
+50			7.2	0.94
24+99 = $\phi$ Quincy			7.2	0.94
T.P. chk			4.35	3.79 3.97 ✓ on stub Page 4



Sewer Levels  
Alley Bet Reed & Oliver

4.46 Page 46

00 = Alley		4.87	-0.41	on stub
+50		4.4	0.06	
1+00		4.7	-0.24	
+50		4.8	-0.34	
2+00		5.0	-0.54	
+50		4.8	-0.34	
+65		4.6	-0.14	
+90		5.2	-0.74	
3+10		4.7	-0.24	
+50		5.3	-0.84	
+69 = Pendleton		5.3	-0.84	
4+00		5.4	-0.94	
+50		5.4	-0.94	
5+00		5.1	-0.64	
+50		5.1	-0.64	
6+00		5.3	-0.84	
T.P.	12.86	12.25	5.07	-0.61
+50		13.4	-1.15	
7+00		13.5	-1.25	
+50		12.9	-0.65	
8+00		11.5	0.75	
+50		9.3	2.95	
+75		8.2	4.05	
9+00		8.4	3.85	
+15		6.6	5.65	

12.25

9+49 = Alley		5.9	6.35
10+00		5.0	7.25
+50		4.3	7.95
11+00		3.4	8.85
T.P.	10.41	19.78	2.88
T.P.	2.60	20.48	1.90
+50		11.6	8.88
12+00		10.4	10.08
+50		9.0	11.48
13+00		7.8	12.68
+50		8.4	12.08
14+00		9.9	10.58
+50		13.2	7.28
15+00		16.3	4.18
15+29 = No. 15		17.0	3.5 <sup>48</sup>
+70		16.7	3.78
16+00		14.2	6.28
+30		12.2	8.28
+45		11.5	8.98
17+00		7.0	13.48
+25		5.1	15.38
+50		4.1	16.38
18+00		1.8	18.68
T.P.	10.59	29.46	1.61
			18.87

set BM on Pub  
& Reed w 7' line  
Olney



	29.46		
18+50		11.2	18.26
19+00		11.1	18.36
+50		10.1	19.36
+75		9.1	20.36
20+00		7.0	22.46
+30		4.5	24.96
+40		4.0	25.46
+85		4.3	25.16
21+00 = $\phi$ Morell		5.0	24.46
+50		6.2	23.26
22+00		7.4	22.06
+30		9.0	20.46
+75		8.6	20.86
23+00		6.6	22.86
+20		4.8	24.66
+35		4.1	25.36
T.P.	12.72	41.73 <sup>✓</sup>	0.45
+70		12.2	29.53
24+00		9.2	32.53
+20		7.8	33.93
+50		7.2	34.53
25+00		5.0	36.73
+30		4.0	37.73
+50		2.7	39.03
26+00		2.2	39.53

	41.73		
26+50		1.2	40.53
+75		1.3	40.43
26+89 = $\phi$ Lament		0.6	41.13
T.P.	1.89	41.12 <sup>✓</sup>	2.50
			39.23 <sup>✓</sup>

Sewer Levels  
E Alley bet Oliver + Pacific

4.12 Page 58

00 = E Lamont			3.9	37.22
+15			4.3	36.82
+25			3.5	37.62
+60			3.8	37.32
1+00			4.1	37.02
+40			4.2	36.92
+55			4.9	36.22
2+00			4.7	36.42
+50			4.9	36.22
3+00			6.3	34.82
+50			8.0	33.12
4+00			11.4	29.72
T.P.	0.55	28.62	13.05	28.07
+50			1.3	27.32
5+00			4.9	23.72
+56			8.3	20.32
+62			9.5	19.12
5+50 = E Merrill			9.7	18.92
6+00			11.0	17.62
+50			12.5	16.12
T.P.	0.44	16.05	13.01	15.61
+70			1.1	14.95
7+00			4.4	11.65
+50			8.7	7.35
+65			10.4	5.65

16.05

8+00				10.8	5.25
+15				10.5	5.55
+50				7.9	8.15
+75				7.7	8.35
9+00				8.0	8.05
+25				8.9	7.15
+65				11.0	5.05
10+00				12.4	3.65
T.P.	1.22	4.83		12.44	3.61
+50				2.6	2.23
+75				2.8	2.03
11+00				4.2	0.63
+15				4.2	0.23
+45				7.3	-2.47
11+60 = E Noyes				7.52	-2.67 on stub
12+00				8.0	-3.17
+50				8.2	-3.37
13+00				8.1	-3.27
+50				7.8	-2.97
14+00				7.7	-2.87
+75				7.2	-2.37
+78				9.6	-4.77
+88				10.4	-5.57
15+00				9.9	-5.07
+07				8.0	-3.17
+50				7.7	-2.87



T.P.	5.09	4.83 2.28	7.64	-2.81
16+00			5.0	-2.72
+50			4.8	-2.52
17+00			4.6	-2.32
17+40 = $\phi$ Olney			4.1	-1.82
+68			4.1	-1.82
+72			7.0	-4.72
+85			7.2	-4.92
+87			5.2	-2.92
18+00			5.2	-2.92
+56			4.6	-2.32
19+00			4.2	-1.92
+50			3.7	-1.42
20+00			3.7	-1.42
+50			3.7	-1.42
21+00			3.4	-1.12
+50			3.5	-1.22
22+00			3.3	-1.02
+50			3.3	-1.02
23+00			3.2	-0.92
23+20 = $\phi$ Pendleton			3.2	-0.92
+50			3.1	-0.82
24+00			3.7	-1.42
+35			3.6	-1.32
+43			5.8	-3.52
+50			3.9	-1.62

	2.28	3.3	-1.02
24+75		6.0	-3.72
+83		3.2	-0.92
+92		3.0	-0.72
25+00		3.3	-1.02
+50		3.7	-1.42
26+00		3.8	-1.52
+50		3.9	-1.62
26+89 = $\phi$ Quincy			

Sewer Levels  
at Noys Stfrom the Alley bet Pacific + Oliver  
To the Alley bet

	12.34	9.65	-2.69
00 = the Alley bet Pacific + Oliver	12.34		-2.69
+50	11.4		-1.75
1+00	10.3		-0.65
+50	9.1		0.55
+65	8.3		1.35
2+00	8.3		1.35
+50	8.1		1.55
3+00	7.5		2.15
3+40 = the Alley bet Oliver + Reed	6.2		3.5 <sup>45</sup>
+70	4.9		4.75
4+00	3.3		6.35
+50	0.2		9.45
T.P.	12.04	21.61	9.57
5+00			11.91
+12			13.71
+50			16.01
6+00			17.31
+60			20.41
T.P.	12.39	33.87	21.48
+50			24.07
6+90 = the Alley bet Reed + Thomas			26.1 <sup>07</sup>
+700			26.37
+50			27.47
8+00			28.07
+50			29.17

Page 54  
ch Kongreuhl

33.87

+70	4.3	29.57
+73	4.7	29.17
+83	4.1	29.77
9+00	3.4	30.47
+50	2.0	31.87
10+00	1.4	32.47
10+40 = the Alley bet Thomas + Ivy	1.5	32.4 <sup>37</sup>

ch K page 50



65

Sewer levels  
at Alley Bk & Venice Park

7/10/23

✓

BM Hub	0.57	30.37	29.80	ET Line Model at Reed Page
T.P.	+6.23	25.78	19.55	
Set BM Hub		2.25	23.53	S.W. 7' Hub Model Pacific
00=30' N of S. line Pacific		9.7	16.08	
+20		8.8	16.98	
+50		7.2	18.58	
+100		6.9	18.88	
+150		6.6	19.18	
+200		6.5	19.28	
+250		7.3	18.48	
+300		8.6	17.18	
+350		10.2	15.58	
+400		11.8	13.98	
T.P.	402	17.70	12.10	17.70
+50		5.3	12.40	
+500		6.4	11.30	
+550		6.9	10.80	
+600		6.3	11.40	
+550		5.5	12.20	
+80.5 = & Sunset Ave		4.6	13.10	
+700		4.5	13.20	
+225		3.9	13.80	
+555		5.2	12.50	
+ 868 of Mission Blvd		4.60	13.10	on cmr cr
+800		4.3	13.40	
+120		7.2	13.50	

## Pacific Beach Sewers

66

17.70	3.4	14.30	
8+14	3.4	14.30	
+18	9.9	7.80	
+35	19.0	-1.30	
+60	20.6	-2.90	
+71	21.6	-3.90	on mud flat
+75	22.0	-4.30	" " "
9+00	8.01	24.07	1.64
T.P.	8.01	24.07	16.06

Sewer Levels  
 1/2 Alley 14 Blks R+5 Venice Park ✓

24.07 Page 66

00	28.5	-4.43	on mud flats
+13	27.8	-3.73	" " "
+32	25.2	-1.17	
+60	17.5	6.57	
+75	12.1	11.97	
+90	4.9	19.17	
+100	3.7	20.37	
+25	3.2	20.87	
+40	4.3	19.77	
+50	3.7	20.37	
2+00	4.3	19.77	
+60	4.4	19.67	
3+00	6.6	17.47	
+50	6.5	17.57	
+65	6.3	17.77	
+80	7.0	17.07	
4+00	6.7	17.37	
+20	6.7	17.37	
+50	7.4	16.67	
4+78.5 = 1/2 Sunset Ave	6.7	17.37	
5+00	6.7	17.37	
+35	5.7	18.37	
+70	7.1	16.97	
6+00	6.9	17.17	
T.P. 11.02 2995	5.14	18.93	
+50	1.2	18.65	

2995

7+00	10.5	19.45
+50	9.7	20.55
8+00	8.3	21.65
+50	6.9	23.05
9+00	5.2	24.75
+50	4.2	25.75
10+00	3.0	26.95
+50	2.2	27.75
11+00	1.1	28.85
+50	0.0	29.95
+50	0.9	29.05
11+60 = 30' N of S. line Pacific	0.9	29.05



Sewer Levels in Alley  
 B1K 2 Sterling Park + B1Ks 7-19-29 Fortuna Park

7/15/55

BM	12.81	36.34	23.53	7' Hub Page 65
T.P.	5.67	39.88	2.13	34.21
00: 350' N. of $\phi$ C			5.4	34.48
+50			6.6	33.28
1+00			7.5	32.38
+50			8.7	31.18
2+00			9.4	30.48
+50			10.6	29.28
3+00			11.6	28.28
T.P.	0.97	29.71	11.14	28.74
3+50 = $\phi$ Chico St			2.2	27.51
4+00			3.3	26.41
+40			3.3	26.41
+50			3.7	26.01
5+00			4.0	25.71
+50			4.6	25.11
6+00			5.3	24.41
+22.5 = $\phi$ Sunset			5.6	24.11
+50			6.0	23.71
7+00			6.5	23.21
+50			7.1	22.61
8+00			8.1	21.61
+50			8.9	20.81
9+00			9.4	20.31
+50			9.9	19.81
10+00			9.6	20.11

## Pacific Beach Sewers

T.P.	7.23	29.71	27.72	7.22	20.49
+50				7.3	20.42
11+00				6.1	21.62
+50				4.8	22.92
12+00				4.2	23.52
+50				3.7	24.02
12+775 = $\phi$ Roosevelt				3.7	24.02
13+50				3.9	23.82
14+00				4.4	23.32
+50				5.1	22.62
15+00				5.9	21.82
+50				6.6	21.12
16+00				7.5	20.22
+50				8.2	19.52
+80				8.3	19.42
+85				9.2	18.52
17+00				8.6	19.12
+37				9.7	18.02
T.P.	9.93	30.24	7.41	20.31	Top of Bank



Sewer levels in Alley  
BIKs 2B-1848 Fortuna Park & BIK1 Sterling Park

30.24 HI Page 70

00 = 55' S. of La Playa	7.7	22.54	Top Bank
0+55 La Playa	7.2	23.04	Parish on Mission Blvd
0+65	7.8	22.44	
0+90	6.8	23.14	
1+50	6.9	23.34	
+75	7.3	22.94	
2+00	5.3	24.94	
+30	4.7	25.54	
+60	6.2	24.04	
2+90	4.5	25.74	
3+00	5.0	25.24	
+50	4.9	25.34	
+70	4.1	26.14	
+50	3.6	26.64	
5+00	3.1	27.14	
+50	2.5	27.74	
6+00	1.9	28.34	
T.P.	2.72	31.37	
+30	3.4	27.97	
+80	3.4	27.97	
7+00	5.4	25.97	
7+30 Roosevelt	6.0	25.37	
+60	6.5	24.87	
+80	4.5	26.87	
8+00	4.7	26.67	
+50	4.9	26.47	

31.37

9+00	5.9	25.47
+50	6.2	25.17
10+00	5.7	25.67
+50	5.0	26.37
11+00	4.3	27.07
+50	3.1	28.27
12+00	2.4	28.97
+50	1.9	29.47
13+00	1.1	30.27
T.P.	11.74	41.83
+30	10.8	31.03
+60	10.2	31.63
14+05 Sunset	10.0	31.83
+20	9.0	32.83
+40	9.2	32.63
+60	7.2	34.63
15+00	6.2	35.63
+35	5.5	36.33
+50	4.6	37.23
+90	4.2	37.63
16+05	3.1	38.73
+45	4.7	37.13
+55	5.4	36.43
16+77.5 Chico	5.0	36.83
17+20	3.9	37.93
+45	4.2	37.63



	41.83		
17+70		2.9	38.93
18+00		2.4	38.94
+50		1.0	40.83
19+00		0.2	41.63
T.P.	8.22	49.65 ✓	0.40
+50		6.6	43.05
+85		5.8	43.85
20+00		5.7	43.95
20+27.5 = 350' N of Chico		5.2	44.45
T.P.	6.39	54.43 ✓	1.61
			48.04 ✓

## Sewer Levels in Alleys

7<sup>1/2</sup> - 7 - 17 + 27 Fortuna Park Add

	54.43	HI Page 73	
00 = 40's. of Pacific		4.6	49.83
+25		5.0	49.43
+70		6.0	48.43
+100		5.1	49.33
+50		6.1	48.33
2+00		7.3	47.13
2+50 = Chico		10.4	44.03
T.P.	0.74	44.46 ✓	10.71
+85		1.2	43.26
3+00		0.7	43.76
+50		2.8	41.66
4+00		4.2	40.26
+50		5.1	39.36
5+00		6.6	37.86
5+22.5 = Sunset		6.7	37.26
+50		7.7	36.76
6+00		8.6	35.86
+50		9.6	34.86
+75		9.7	34.76
7+00		10.6	33.86
+50		10.7	33.76
8+00		11.3	33.16
+50		12.0	32.46
T.P.	1.68	35.06 ✓	11.08
9+00		3.0	32.06



	35.06			
9+50		3.6	31.46	
10+00		4.2	30.86	
+50		4.9	30.16	
11+00		5.6	29.46	
+50		5.9	29.16	
11+97.5 = $\frac{1}{2}$ Roosevelt		6.4	28.66	
12+50		6.4	28.66	
13+00		6.0	29.06	
+50		4.8	30.26	
14+00		3.8	31.26	
+50		2.8	32.26	
15+00		2.1	32.96	
T.P.	1.16	24.61	1.61	33.45
+35		1.4	33.21	
+70		1.4	33.21	
16+00		1.7	32.91	
+50		2.5	32.11	
17+00		3.4	31.21	
+50		4.3	30.31	
18+00		5.3	29.31	
+32		5.5	29.11	
+40		7.8	26.81	
+52		7.7	26.91	
+55		8.4	26.21	
+65		7.7	26.91	
18+72.5 = $\frac{1}{2}$ La Playa		7.8	26.81	

Pacific Beach Sewers  
Sewer Levels in Alleys  
36-26-1046 Fortuna Park Add

	34.61	H.I. Page 75		
sd B.M. T.P.	482	3.2.29	7.15	27.46
00=46' N of S. Line Fortuna Park			8.1	24.19
+50			7.3	24.99
1+00			6.6	25.69
+50			6.0	26.29
2+00			5.7	26.59
+50			4.6	27.69
+65			5.3	26.99
3+00			5.2	27.09
+50			4.6	27.69
4+00			4.8	27.49
+50			4.7	27.59
+80			4.2	28.09
5+00			4.4	27.89
+10			4.6	27.69
+40			6.6	25.69
5+56 = $\frac{1}{2}$ La Playa			5.9	26.39
+85			5.6	26.69
6+00			4.0	28.29
+50			4.1	28.19
7+00			4.5	27.79
+50			5.5	26.79
+75			6.4	25.89
8+00			8.5	23.79
+50			9.4	22.69

$\frac{1}{2}$  La Playa  
on Mon W.7' Inc Shasta



		32.29		
8+75			9.2	23.09
T.P.	9.42	32.12	9.59	22.70
9+00			9.7	22.42
+50			9.8	22.32
10+00			9.6	22.52
+50			9.0	23.12
11+00			8.1	24.02
+50			6.9	25.22
12+00			5.6	26.52
12+31 = E Roosevelt			4.8	27.32
+50			4.3	27.82
13+00			3.1	29.02
+50			2.0	30.12
785			1.0	31.12
14+00			1.2	30.92
T.P.	10.97	42.15	0.94	31.18
+50			10.2	31.95
15+00			8.9	33.25
+50			8.0	34.15
16+00			7.1	35.05
+50			5.8	36.35
17+00			4.4	37.75
+50			3.4	38.75
18+00			2.2	39.95
+50			1.1	41.05
T.P.	8.45	50.26	0.36	41.61

Top of Post N &  
Car Fence

		50.24		
19+06 = E Sunset			7.9	42.36
+50			6.5	43.76
20+00			5.8	44.46
+50			4.8	45.46
21+00			4.0	46.26
+50			2.8	47.46
22+00			2.2	48.06
+50			1.6	48.66
T.P.	7.78	56.66	1.38	48.88
23+00			7.0	49.66
+50			6.8	49.86
24+00			6.5	50.16
24+28.5 = 40's of Pacific			2.3	50.36
Set BM			12.64	44.02
T.P.	1.01	47.65	10.02	46.64
T.P.	3.37	37.99	13.03	34.42
T.P.	8.25	35.98	10.24	27.73
			12.47	23.49

Man & Jewell  
S. Line Pacific

23.53 Hub Perches



79

Pacific Beach Sewers 80



81

Pacific Beach Sewers 82

(cont) P 110



83 "B" line level notes thru Hollywood Park  
 For Location Page 57 to 10

	+	H I	-	Elev.
Hub at 0+00 B line and 15+00 P line.				249.22
15+00 P line				
0+00 B line	3.88		253.10	
+25			4.20	248.9
+50			7.10	246.0
+75			12.6	240.5
+92			17.6	235.5
1+00			13.9	239.2
+25			8.5	244.6
+50			4.0	249.1
+75			3.6	249.5
2+00			5.5	247.6
+05			6.8	246.3
+25			7.7	245.4
+50			7.7	245.4
+75			6.2	246.9
3+00			7.2	245.9
+25			4.4	248.7
3+48.9 A L			4.55	248.55
+75			7.7	245.4
+90			10.4	242.7
4+00			9.0	244.1
+25			8.3	244.8
+50			7.0	246.1
+75			8.2	244.9
5+00			8.4	244.7

"Lexington Park"

84



	+	HI	-	Elev.
		253.10	8.1	245.0
5+25			7.9	245.2
5+31.13 Δ			8.1	245.0
5+50			9.5	243.2
+75			9.1	244.0
6+00			6.9	246.2
+25			8.2	244.9
+50			9.2	243.9
+75			9.71	243.39
6+96.8 Δ			10.0	243.1
7+25			10.7	242.4
+50			10.2	242.9
+75			10.1	243.0
8+00			11.0	242.1
+25			10.2	242.9
+50			10.4	242.7
+75			11.64	241.46
T.P. on hub 8+80.6 Δ	5.99	247.45		
9+00			4.3	243.2
+25			4.7	242.8
+50			6.4	241.1
+75			7.1	240.4
+85			8.5	239.0
10+00			5.7	241.8
10+05.07 Δ			4.85	242.60



87 "B Line" Cont.

88

	+	H I	-	Elev.
10+25		247.45	5.2	244.3
+50			6.7	240.8
+75			8.2	239.3
11+00			9.1	238.4
+25			9.1	238.4
+50			8.6	238.9
+75			7.6	239.9
11+98.9 $\Delta$			11.25	236.70
12+25			8.8	238.7
+50			5.2	242.3
12+73.28 P.O.†			5.16	247.79
13+00			6.7	240.8
+25			7.6	239.9
+50			9.3	238.7
+55 $\Delta$			11.07	236.38
+65			6.8	240.7
+75			5.5	242.0
T.P. on hub 14+00 P.O.†			4.16	243.29
	2.41	245.70		
14+25			7.8	242.9
+35			4.3	241.4
14+50 $\Delta$			8.46	237.24
+75			8.3	237.4
15+00			8.7	237.0
+25			11.0	234.7



	+	HI	-	Elev.
15+50		245.70	7.2	238.5
15+75			11.0	234.7
16+00			12.3	233.4
16+25			11.0	234.7
+50			9.7	236.0
+75			9.7	236.0
17+00			10.4	235.3
+25			9.3	236.4
17+53.75 Δ			7.43	238.27
+75			11.6	234.1
+81			13.7	232.0
+94			10.4	235.3
18+06 Δ			7.7	238.0
+25			8.5	237.7
+50			9.3	236.4
+75			9.3	236.4
19+00			10.9	234.8
+30 Δ			13.8	231.9
+50			14.2	231.5
+75			14.0	231.7
20+00			14.4	231.3
+25			15.0	230.7
+50			14.8	230.9
+75			14.7	231.0
21+00			15.1	230.6



	+	H.I.	-	Elev.
21+25		245.70	14.9	230.8
21+50			14.3	231.4
+75			13.8	231.9
22+00			12.2	233.5
+25			11.0	234.7
+50			11.4	234.3
T.P.	0.3	233.93	12.07	233.63
22+70 Δ			2.81	231.12
23+00			1.2	232.7
+25			2.4	231.5
+50			2.7	231.2
+75			1.8	232.1
24+00			2.3	231.6
+25			2.5	231.4
24+53.58 Δ			5.6	228.3
+75			4.4	229.5
25+00			7.4	226.5
+25			7.2	226.7
+50			4.2	229.7
+75			1.9	237.0
T.P.	469	237.20	1.42	232.51
26+00			6.0	231.2
+15			8.1	229.1
+25			11.0	227.2



	+	HI	-	Elev.
26+40		237.20	11.2	276.0
+50			12.7	274.5
+59.36 Δ			10.16	277.04
+75			11.3	275.9
+90			9.4	277.8
27+00			9.6	277.6
+25			11.9	275.3
+50			11.2	276.0
+75			8.2	279.0
27+88.42 Pct. 0			7.03	230.17
28+00			6.3	230.9
+25			7.2	230.0
+50			8.1	229.1
+60			8.7	228.5
+70			10.3	226.9
28+80 Δ			13.13	224.07
29+00			9.0	228.2
+25			7.5	229.7
+50 Pct. 0			8.73	228.47
+75			11.1	226.1
30+00			12.8	224.3
+25			15.6	221.6
+50			15.8	221.4
+75			15.6	221.6
31+00			13.4	223.8



	+	H.I.	-	Elev.
31 + 25		237.20	11.9	225.3
+ 50			12.7	224.5
31 + 50 Δ			13.20	224.0
+ 75			11.9	225.3
32 + 00			10.3	226.9
+ 25			10.2	227.0
+ 50			12.1	225.1
T. P.	7.32	233.80	10.72	226.48
32 + 56.96 Δ			10.32	223.48
+ 75			9.3	224.5
33 + 00			7.5	226.3
+ 25			7.7	226.1
+ 50			7.0	226.8
+ 75			6.3	227.5
34 + 00			8.2	225.6
+ 25			11.5	222.3
+ 40			14.0	219.8
+ 50			13.1	220.7
+ 60			11.9	221.9
34 + 76.22 Δ			11.69	222.11
35 + 00			11.7	222.1
+ 25			12.9	220.9
+ 40			13.7	220.1
+ 50			12.0	221.8
+ 75			10.4	223.4



97 "B Line" Cont.

			Elev.
35+90	233.80	10.1	273.7
36+00		7.2	276.6
36+09.20 Δ		4.39	229.41

station 47+00 on #line.

98



Levels on Servers  
Block 26 Primrose Lane

For Location Page 11

0700	<sup>1100</sup> <sup>15014</sup> 07706	0.19	263.18	262.97
+ 15			3.1	259.6
+ 25			7.3	255.9
+ 40			10.3	252.9
T.P.	0.45		250.97	250.52
+ 50			0.0	251.0
+ 65			3.3	247.7
+ 75			7.1	243.9
T.P.	0.80		239.09	238.28
+ 90			0.9	238.2
+ 100			5.5	233.6
+ 25			9.2	229.9
+ 40			13.4	225.7
+ 50.51	07710		12.05	227.04



Levels on Scaffers  
Block 25 From Center E.V.M.  
Alley to 3 Line

Location Page 13

TP on Hub	Opp Lot 353 25 10.54	271.04	760.50
0+0.0	on Hub	4.67	766.37
+25		5.8	765.2
+35		7.2	763.8
+50		7.7	763.3
+60		9.1	761.9
+65		6.9	764.1
+75		7.3	763.7
+89.93	on Hub	11.40	759.64
1+00		12.0	759.0
+25		13.5	757.5
+40		14.2	756.8
+50		15.0	756.0
+60		13.8	757.2
+75		12.3	758.7
+85		10.8	760.2
2+00		10.2	760.8
+246	on P.O.T. on Hub	10.96	760.08
+50		13.1	757.9
T.P.	0.30	258.64	727.0
+75		5.5	753.1
+90		9.4	749.2
3+00		10.0	748.6
+10		8.8	749.8
+25		11.1	747.5

## Lexington Park

258.64

3+50		14.1	744.5
T.P.	0.04	246.07	726.3
+75		2.3	743.8
+85		1.6	744.5
4+00		2.2	743.9
+25		4.0	741.1
+50		5.8	740.3
+65		5.6	740.5
+71	on Hub	4.12	741.95
5+00		5.6	740.5
+25		6.8	739.3
+50		7.9	738.3
+55.610 = 18+06	on Hub	8.15	737.92



## Levels on SENSORS

Block 25 East Jasmine ✓

For Location Page 15

0 + 00	0	254.30	247	251.83
+ 25			5.2	249.1
+ 35			7.4	246.9
+ 50			7.8	246.5
+ 65			9.8	244.5
+ 80.47	0		11.73	242.57
	on Hub			
	= 10 + 05.07			

Levels SENSORS ✓  
Change of Line From Alley's Blocks 1.6 + 1.3  
To B Line

Location Page 19

T.P. 31489	9.66	258.21		248.55
0 + 00	5.192		3.66	254.55
	on Hub			
+ 10			4.2	254.0
+ 25			2.6	255.6
+ 40			1.7	256.5
+ 50			2.6	255.6
+ 75			6.6	251.6
+ 100			10.2	248.0
+ 25			11.2	247.0
+ 35			13.3	244.9
+ 40			11.4	246.8
+ 49.51	0	248.5	9.66	248.55
	on Hub			

See Book 1119-79-81



For Location Page 17

T.P. on Hub				
8700.3 line 12.76	261.98		249.22	
15100.4				
T.P. 12.08	271.76	2.30	259.48	
94° 0+0.0	0 = 9150	0.53	271.23	
on Hub				
100 + 10		4.3	267.5	
110 + 25		9.0	262.8	
120 + 35		12.8	259.0	
T.P. 1.04	260.72	12.08	259.68	
100° + 50		7.5	253.2	
110 + 60		11.8	248.9	
120° + 66.73	0 on Hub	10.84	249.88	
130 + 75		10.9	249.8	
140 + 0.0		12.2	248.5	
150 + 25		13.3	247.4	
160 + 40		12.8	247.9	
170° + 50		13.3	247.4	
T.P. 1.17	249.60	12.29	248.43	
180 + 75		5.9	243.7	
190 + 0.0		7.2	242.4	
200 + 25		8.5	240.7	
210° + 46.6	0 = 0155.673 line	10.49	239.11	
on Hub				



Levels on Servers

Center Talip From Sycamore

12.9.24  
H.H.Hilo  
So. Central  
7513300

For Location Page 21

T.P. on Hub 1411621 Rt. Talip to Sycamore	0.46	763.58	763.12	
0+00	0.46	763.12		
+25	0.8	762.9		
+50	1.2	762.4	50'E P 3.1	
+75	2.0	761.6		
1+00	2.6	761.0		
+25	3.2	760.4		
+50	3.9	759.7		
+75	4.6	759.0		
2+00	5.4	758.2	50'E P 3.8	
+25	6.2	757.4		
+50	7.0	756.6		
+75	7.7	755.9		
3+00	8.2	755.4		
+25	8.6	755.0		
+50	9.0	754.6		
+58.56 on Hub	9.10	754.48		
+70	9.9	753.7		
+75	8.2	755.4		
4+00	7.3	756.3		
+25	7.5	756.1		
+50	9.0	754.6		
+75	10.3	753.3		
5+00	10.5	753.1		
+25.15 on Alley side	12.06	751.52		
+55.15 0+0400	12.38	751.26		

Levels on Servers

Center Talip From Willow North

✓

For Location Page 23

T.P. on Hub 1411621 Rt. Talip to Sycamore	0.46	763.58	263.12	
0+00 off Hub			10.23	253.35
+25			9.9	253.7
+50			9.8	253.8
+75			9.4	254.2
1+00			9.3	254.3
+167.10 = 3+58.56			9.10	254.48

50'E  
P  
15.9

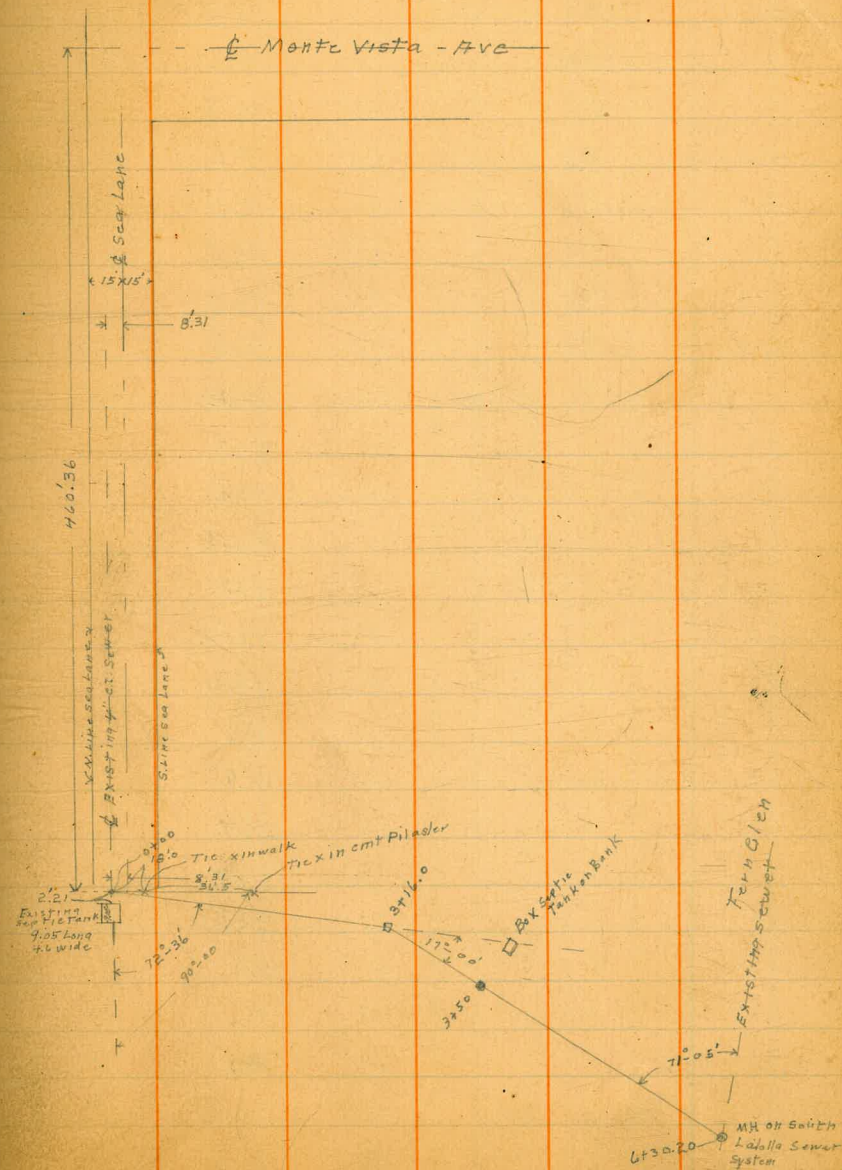


## Sewer Location

From Existing 4" C.I. Pipe 8.31 N. of Sealane  
to M.H. E of New Tank in Fern Glenn

B.M.	0.37	36.63	36.26	NW Sealane + Vista Del Mar
T.P.	0.18	23.85	23.96	
T.P.	4.21	17.36	10.70	13.15
Existing 4" C.I. Pipe 00 = 2.71 E of Box			10.44	6.92 Flow Line Pipe
00 " " "			7.8	9.6 on ground
+ 25' Concrete wall W. E. of line			8.4	9.0
+50			7.9	9.5
+100			9.0	8.4
+150			9.6	7.8
+200			10.1	7.3
+250			10.5	6.9
+300			10.8	6.6
3316 ± 17 = 00' R			9.84	7.48 on hub
3450 Septic Tank			9.7	7.7
+400			10.3	7.1
+400			10.9	6.5
+450			10.2	7.2
+475			11.4	6.0
+500			11.0	6.4
+448			8.4	9.0
+54			5.9	11.5
+78			6.9	10.5
+95			10.9	6.5
6+03			15.7	1.7
+25			9.7	7.7
			14.40	P. 90 = 310 Profile

Plotted





111 Levels Vista St. A to Vista Suburb Tract 1/4  
 15' E of From 10'S E RST to N Line Southern

B.M.	6.38	(74.64)	88.66	3/4 Cor Spk 126
0+00	= 10'S E RST	5.7	89.1	Rst + Vista Top E Edge Paving 512
+50		4.3	90.3	
1+00		3.0	91.6	
+50		2.1	92.5	
2+00		2.1	92.5	Top E Edge Paving 189
+50		2.3	92.3	
3+00		2.8	91.8	Top Edge Pav 270
TP	197	(23.91)	91.94	
+50		2.6	91.3	
4+00		3.1	90.8	
+33	@ Gate Conc Drive Way	2.7	90.44	
+50		4.0	89.9	
5+00		4.4	89.5	Top E Edge Paving 416
+50		4.9	89.0	
6+00		5.3	88.6	
+20	N.L. Urban Ave	5.0	88.9	
+50		4.7	89.2	
+70	Flankings	7.04	86.87	18 Cor. Iron Pipe Top E Edge Paving 503
7+00		5.2	88.7	
+50		5.1	88.8	
8+00		4.8	89.1	
+50		4.4	89.5	
TP	150	(92.21)	89.71	
9+00		4.2	90.0	

Plotted See Sheet 1844L

(94.21)

9+50	4.3	89.9	
10+00	4.5	89.7	
+50	4.7	89.5	
11+00	5.1	89.1	Top E Edge Paving 464
+50	5.2	89.0	
12+00	5.1	89.1	
+30	5.3	88.9	
+40	6.0	88.2	
+80	6.1	88.1	N.L. Southern

9.11.2  
 9.2.25  
 9.6.5  
 11.5.10  
 5.10.11



113. LINDS FRST. Alto Visto No 1 & Homedale & Lees Add.  
10' S & From 5' E & Vista St to 5' E & Wood Lane

BM	1086	(99.12)		88.26	3rd 1/2 SW Cor FR 1/2 1/4
0+0 = 5' E & Vista St.		105	9.7	89.4	
+30			9.4	89.7	
+50			8.5	90.6	
1+00			6.3	92.8	
+50			4.3	94.8	
2+00			2.4	96.7	
+50			1.9	97.2	
3+00			1.7	97.4	
+25 = 10' E & West St.			2.1	97.0	
+50			1.7	97.4	
4+00			1.6	97.5	
TP	451	(102.05)	1.61	97.51	
+50			4.6	97.5	
5+00			4.7	97.4	
+50			4.9	97.2	
6+00			4.9	97.2	
+60 = 10' E & Meridian Blvd			4.1	97.7	
7+00			3.6	98.5	
+50			2.3	99.8	
8+00			1.0	101.1	
TP	1278	(114.61)	0.32	101.83	
+50			12.5	102.1	
9+00			11.4	103.2	
+50			10.5	104.1	
307			3.3	105.71	SW Cor FR 1/2 1/4

Plotted - Sheet 184LL

114

		(114.61)		
9+95 = 10' E & East St.			9.9	104.7
10+00			9.4	105.2
+50			7.7	106.9
11+00			5.0	109.6
+50			1.9	112.7
TP	1264	(126.85)	0.40	114.21
12+00			1.88	116.1
+50			7.4	119.5
SW			4.98	121.93
13+00			4.6	122.3
+05 = 5' W & Upper				
+20 = 10' E & Upper St.			3.4	123.5
+50			2.4	124.5
14+00			0.4	126.5
TP	880	(135.33)	0.37	126.53
+30			7.6	127.7
+50			7.8	127.5
15+00			9.5	128.8
120			9.8	128.5
+45			8.9	126.4
16+00			7.3	128.0
+25			6.1	129.2
+59 = 10' E & Escoclast			5.4	129.9
17+00			4.3	131.1
+25			3.2	132.1
+50			2.9	132.4

Spk Pole  
SW Cor FRST.  
40' E of  
12196



Plotted

	135.33		
+70		24	132.9
18+00		28	132.5
+50		20	133.3
19+00		0.5	134.8
TP	12.15	0.49	134.84
+30		10.7	136.3
+50		10.1	136.9
+84	10' E of Ocean View St.	8.1	138.9
20+00		7.3	139.7
+10		6.6	140.4
+30		6.2	140.8
+50		5.1	141.9
+75		5.1	141.9
21+00		6.1	140.9
+10		6.3	140.7
+20		6.2	140.8
+25		5.2	141.8
+50		5.9	141.1
+70		5.0	142.0
+85		3.9	143.1
22+00		4.5	142.5
+5		4.8	142.2
+15		4.6	142.4
+50		4.2	142.8
+75		4.7	142.3

Plotted

	146.99		
23+00		4.3	142.7
+09	10' E of Monte Vista St.	5.0	142.0
+20		6.1	140.9
+45		7.2	139.8
+70		10.2	136.8
24+00		14.9	132.1
TP	0.65	13.07	133.98
+8		4.3	130.3
+45		13.5	121.1
+60		14.0	120.6
+75		13.0	121.6
25+00		8.9	125.7
+10		9.1	125.5
+55		3.8	130.8
+60		4.0	130.6
26+00		5.9	128.7
+50		9.2	125.4
+64	5' E of Wood Lane	11.8	122.8
		5.3	128.94

HW Cor  
R + Wood Lane  
12871 Corner Base  
Fence Post



117

CROSS SECTION OF  
33d ST. WOOLMAN North 1290'80' wide  
14' cb  
13' 1/4 S

SE Top Hydr	156	18.78	17.22	Woolman + 328
		NL Woolman = 0408		
E		<del>188</del> 3.5	153	✓
cb		3.7	15.1	✓
1/4		4.0	148	✓
c		4.2	146	✓
1/4		4.4	144	✓
cb		3.7	151	✓
w		4.2	146	✓
	25' N			
-5		5.0	138	✓
w		4.7	141	✓
cb		4.7	141	✓
1/4		5.1	137	✓
c		5.3	135	✓
1/4		4.6	142	✓
+10		3.3	155	✓
cb		3.9	149	✓
E		4.3	145	✓
	50' N			
E		3.8	150	✓
cb		4.7	141	✓
1/4		4.5	143	✓
c		5.5	133	✓
1/4		5.2	136	✓
+4		4.9	139	✓

11/25/25  
Moore  
Walker  
Preston  
S.H.W.  
Northward

18.78

118

	188	138
cb	5.0	138 ✓
w	5.9	149 ✓
+5	6.1	142 ✓
		71' N
-5	6.9	119 ✓
w	6.6	122 ✓
cb	6.3	125 ✓
+10	6.0	128 ✓
1/4	6.3	145 ✓
c	6.4	124 ✓
+7	4.9	139 ✓
1/4	4.8	140 ✓
cb	5.0	138 ✓
E	5.1	137 ✓
+5	6.0	128 ✓
		82' N
-10	8.6	102 ✓
E	7.8	110 ✓
+7	6.1	127 ✓
cb	6.5	123 ✓
1/4	6.2	126 ✓
+8	6.3	125 ✓
c	7.1	112 ✓
1/4	7.2	116 ✓
+5	6.7	121 ✓
cb	6.5	123 ✓



119

18.78

			18.8		
w			7.0	118	✓
+10			7.5	113	✓
	91' N				
-10			8.2	106	✓
w			7.7	112	✓
cb			7.6	114	✓
1/4			7.3	115	✓
	100' N				
-10			9.0	98	✓
w			8.4	104	✓
cb			8.1	102	✓
1/4			7.6	114	✓
+3			7.8	110	✓
+7			8.7	101	✓
+11			8.4	106	✓
c			6.0	148	✓
1/4			6.1	142	✓
cb			6.4	144	✓
+4			6.7	141	✓
E			8.2	106	✓
+10			7.8	110	✓
T.P.	10.05	18.54	10.29	8.49	✓
	125' N				
			18.5		
-10			7.7	108	✓
E			6.6	119	✓
cb			6.4	141	✓

18.54

33.0

120

			18.5		
1/2			7.6	109	✓
c			9.0	95	✓
+8			9.6	89	✓
+10			9.0	95	✓
1/4			8.8	92	✓
cb			8.6	99	✓
+6			8.0	105	✓
+9			8.4	101	✓
w			8.7	98	✓
+7			9.2	93	✓
+15			11.8	62	✓
	135' N				
-15			12.6	59	✓
-11			12.6	59	✓
w			9.3	94	✓
cb			9.1	94	✓
1/4			8.9	96	✓
+3			9.2	93	✓
+4			9.9	86	✓
c			9.5	90	✓
1/4			8.8	92	✓
cb			9.0	95	✓
+8			9.4	91	✓
E			7.0	115	✓
+6			6.1	144	✓
+8			9.3	92	✓
+15			9.2	93	✓



171

1854

	145' N	185	
-15		8.2	103 /
E		9.2	93 /
+6		9.2	93 /
+10		7.2	113 /
cb		7.2	113 /
+5		8.8	97 /
1/2		8.9	96 /
C		10.0	85 /
+10		10.4	81 /
1/4		9.6	89 /
cb		9.4	91 /
+5		10.3	83 /
W		10.6	79 /
+9		13.0	55 /
+15		13.1	54 /
	152' N		
-15		9.8	82 /
-12		11.9	66 /
W		12.0	65 /
cb		11.2	73 /
1/4		10.4	82 /
C		10.7	78 /
1/4		10.1	81 /
cb		9.1	94 /
E		8.7	98 /
+15		8.0	105 /

1854

33 d

172

	160' N	18.5	
-15		11.6	69 /
E		11.1	74 /
cb		10.7	78 /
1/4		10.8	77 /
C		11.1	74 /
1/4		11.1	74 /
cb		11.4	72 /
W		10.5	80 /
+5		9.7	88 /
+10		7.3	114 /
+15		7.3	114 /
	170' N = Cholla Creek		rucha aqua berg
-15		7.2	113 /
-9		7.6	102 /
W		8.7	98 /
cb		9.4	91 /
1/4		11.0	75 /
C		11.4	71 /
+5		12.1	64 /
1/4		11.2	73 /
cb		10.7	78 /
E		10.3	82 /
+15		10.8	77 /
	187' N		
-15		8.1	104 /
E		8.2	103 /



123

1854

	185		
cb	9.1	94	/
1/4	9.7	88	/
c	9.1	94	/
+5	9.4	91	/
+6	9.9	86	/
1/4	9.4	91	/
+5	8.4	102	/
cb	7.6	109	/
w	7.0	115	/
+10	7.0	115	/
	200W		
-10	6.9	116	/
w	6.9	116	/
cb	7.3	112	/
+11	8.1	104	/
1/4	8.7	98	/
+7	8.7	98	/
+10	8.0	105	/
c	8.0	105	/
+5	9.0	95	/
1/4	9.4	91	/
cb	8.7	98	/
+5	8.5	101	/
E	8.0	105	/
+10	8.1	104	/

1854

33 d

124

	185		
-10	7.6	109	/
E	7.5	110	/
cb	7.5	110	/
1/4	7.2	113	/
c	6.4	121	/
+7	6.5	120	/
+9	6.9	116	/
1/4	6.9	116	/
+3	6.4	121	/
cb	7.1	114	/
w	6.1	124	/
+10	5.8	122	/
	250W		
-10	5.4	131	/
w	5.4	131	/
cb	6.0	125	/
+10	6.0	125	/
1/4	6.3	122	/
c	5.9	126	/
+6	6.4	121	/
1/4	7.3	112	/
cb	7.0	115	/
E	7.3	112	/
+10	7.3	112	/
	275W		
-10	6.9	116	/



185

18.54

	<u>185</u>		
E	6.5	140	/
+5	6.0	145	/
cb	6.3	144	/
1/4	6.5	140	/
c	5.9	146	/
1/4	6.1	142	/
+5	5.7	148	/
+7	6.2	143	/
cb	6.0	145	/
w	5.3	132	/
+10	5.3	132	/
	300 W		
-10	5.1	132	/
w	5.1	132	/
cb	5.6	129	/
1/4	6.1	122	/
c	6.3	121	/
1/4	6.3	122	/
cb	6.2	123	/
+10	6.1	122	/
E	7.0	115	/
+10	8.9	96	/
	325 W		
-5	5.8	147	/
E	5.8	142	/
cb	5.7	148	/

18.54

33 d

186

	<u>185</u>		
1/4	6.0	145	/
c	5.7	148	/
1/4	5.8	142	/
cb	5.6	149	/
w	5.3	132	/
+5	5.1	132	/
	350 W		
-5	5.1	132	/
w	5.1	132	/
cb	5.6	149	/
1/4	5.5	130	/
c	4.9	136	/
+5	4.9	136	/
1/4	5.4	131	/
cb	5.2	133	/
E	5.2	133	/
+5	5.2	133	/
	386 W = Palm		
	400 W		
E	4.2	143	/
cb	4.4	142	/
+10	4.1	144	/
1/4	4.8	132	/
+7	4.9	136	/
c	4.4	141	/
1/4	5.1	134	/
	5' E of Edt		



137

1854

	185		
cb	5.0	135	/
w	5.3	134	/
432' N = palm 2' E of Eck			
450' N			
w	5.2	133	/
cb	5.0	135	/
1/4	5.2	135	/
c	5.0	135	/
1/4	5.2	133	/
cb	5.0	135	/
E	4.9	136	/
468' N = palm 2' E of Eck			
475' N			
E	4.9	136	/
cb	5.4	131	/
1/4	5.5	130	/
c	4.9	136	/
+5	4.8	132	/
1/4	5.3	132	/
cb	4.9	136	/
w	4.9	136	/
500' N			
w	4.7	138	/
cb	4.8	132	/
1/4	4.7	138	/
+3	4.2	143	/

1854

33 d 138

	185		
c	4.0	145	/
1/4	4.1	144	/
cb	4.6	139	/
E	4.7	138	/
510' N = Acacia Tree 3.5' E of Eck			
525' N			
E	3.6	149	/
cb	3.8	142	/
1/4	3.6	149	/
+5	3.6	149	/
+8	3.1	154	/
c	3.2	153	/
1/4	4.3	142	/
cb	4.3	142	/
w	4.5	140	/
T.P.	6.80 2.171	3.63	14.91
550' N			
w	7.8	139	/
cb	7.6	141	/
1/4	7.5	141	/
+3	7.0	142	/
c	7.0	142	/
1/4	7.0	142	/
cb	7.1	146	/
E	6.6	151	/
570' N = Acacia tree 4' E of Eck			



129

2171

	600' N	<u>Y12</u>	
E		5.4	163 ✓
+10	= Cypress tree		
cb		6.3	154 ✓
1/4		6.8	149 ✓
c		6.7	150 ✓
1/4		7.1	143 ✓
cb		7.4	143 ✓
w		7.2	145 ✓

620' N = Cypress tree 1' E of Ecb

630' ✓ = Palm 3' ✓ ✓

646' ✓ = Acacia tree 1' W of wcb

650' N

w		6.4	153 ✓
cb		6.3	154 ✓
1/4		6.5	154 ✓
c		6.5	154 ✓
1/4		6.1	156 ✓
cb		5.4	163 ✓
E		4.8	169 ✓

676' N Acacia tree 1' W of wcb

693' ✓ Palm 3' E ✓ Ecb

700' N

E		4.0	172 ✓
cb		4.4	173 ✓
1/4		4.6	172 ✓
c		4.4	173 ✓

2171

330

130

		<u>Y12</u>	
1/4		4.6	171 ✓
cb		4.2	175 ✓
w		4.5	174 ✓
	750' N		
w		4.3	174 ✓
cb		4.2	175 ✓
1/4		4.0	172 ✓
c		4.1	176 ✓
1/4		4.2	175 ✓
cb		4.2	175 ✓
E		3.8	179 ✓

753' N = Palm 3' E of Ecb

768' N = Acacia tree 3' ✓ ✓ ✓

P 5.55 23.37 3.89 17.82

800' N

		<u>Y3</u>	
E		5.3	181 ✓
cb		5.1	182 ✓
1/4		5.3	181 ✓
c		5.2	182 ✓
1/4		5.4	180 ✓
cb		5.5	179 ✓
w		5.6	178 ✓

810' N = Olive tree 1' E of Ecb

824' N = ✓ ✓ ✓ ✓ ✓

858' N = ✓ ✓ ✓ ✓ ✓



131

2337

		73 ↓	
w	850' N	5.7	172 ✓
cb		5.7	172 ✓
1/4		5.7	172 ✓
c		5.4	180 ✓
1/4		5.5	179 ✓
cb		5.3	181 ✓
E		5.3	181 ✓
	900' N		
E		5.0	184 ✓
cb		4.5	189 ✓
1/4		5.3	181 ✓
c		5.2	182 ✓
1/4		5.4	180 ✓
cb		5.4	180 ✓
w		5.4	180 ✓
	906' N = Olive tree 1' E of ECB		
	950' N		
w		5.3	181 ✓
cb		5.2	184 ✓
1/4		5.2	182 ✓
c		5.2	182 ✓
1/4		5.1	183 ✓
cb		4.9	185 ✓
E		4.8	186 ✓
	954' N = Olive tree 1' E of ECB		

2337

330

138

		73 ↓	
E	1000' N	4.4	190 ✓
cb		4.5	189 ✓
1/4		4.7	182 ✓
c		5.0	184 ✓
1/4		5.0	184 ✓
cb		5.0	184 ✓
w		5.1	183 ✓
	1032' N = Olive tree 1' E of ECB		
	1050' N		
w		4.6	188 ✓
cb		4.6	188 ✓
1/4		4.7	182 ✓
c		4.5	189 ✓
1/4		4.6	188 ✓
cb		4.5	189 ✓
E		4.1	193 ✓
	1100' N		
E		3.9	195 ✓
cb		4.1	193 ✓
1/4		4.3	191 ✓
c		4.3	191 ✓
1/4		4.5	189 ✓
cb		4.5	189 ✓
w		4.6	188 ✓
	1110' N = Olive tree 1' E of ECB		



	1150' W	73 ↓ J.J.	190 ✓
w			
cb		4.2	192 ✓
1/4		4.2	192 ✓
c		4.2	192 ✓
1/4		4.1	193 ✓
cb		4.0	194 ✓
E		4.1	193 ✓

1164' W = Olive trees 1' E of Ect

1200' W

E		4.0	194 ✓
cb		3.7	192 ✓
1/4		3.9	195 ✓
c		3.9	195 ✓
1/4		4.0	194 ✓
cb		4.2	192 ✓
w		4.2	192 ✓

1250' W

w		4.0	194 ✓
cb		3.9	195 ✓
1/4		3.9	195 ✓
c		3.7	192 ✓
1/4		3.7	192 ✓
cb		3.3	✓01 ✓
E		3.4	✓00 ✓

1251' W = Olive trees 1' E of Ect

1278' W = ✓ ✓ ✓ ✓ ✓

	1290' W = PL.	73 ↓	33d
E		2.7	✓02 ✓
cb		3.0	✓04 ✓
1/4		3.5	199 ✓
c		3.5	199 ✓
1/4		3.4	✓00 ✓
cb		3.5	199 ✓
w		3.5	199 ✓
TP	7.10	28.10	2.37 21.00
TP	3.50	31.55	0.05 28.05
TP	0.62	29.66	2.51 29.04

29.04  
 2.89  
 31.93  
 83  
 23.63  
 2.23  
 25.86  
 6.92  
 18.94  
 2.24  
 22.78  
 8.10  
 14.18  
 4.49  
 18.67  
 1.41  
 17.26

= 17.22 Woolman + 33d SETOP Hyd

3.65 26.01

28.85  
NETOP Hyd  
Imp. + 33d25.81 SETOP  
L 432d

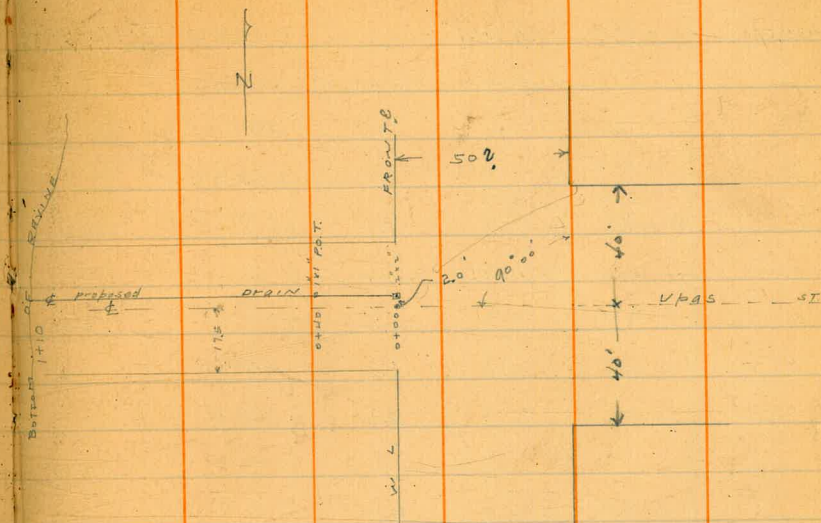


135

LOCATION OF CULVERT + DRAIN  
VPAS + FRONT11/25/5  
Moore

SWBP	0.15	257.66		257.51	VPAS
TP	0.24	244.95	1.96	244.70	
0+00 on hub			3.93	241.01	
0+40 ✓			6.39	238.55	
0+50			9.5	235.4	
TP	1.01	233.10	1.985	232.09	
0+60			5.9	227.1	
0+77			14.1	219.0	
TP	0.39	220.65	12.84	220.86	
0+97			7.6	213.0	
1+10 BOTTOM REVISION			10.2	210.4	

136





137

CROSS SECTION OF  
ALLEY BIK II MISSION HILLS 15' wide

NEBP	1095	277.89	266.94	FT. STOCKTON SIERRA VISTA
				ST. DE FORT STOCKTON on angle
W		9.0	268.87 ✓	
C		8.9	268.95 ✓	
E		8.7	269.18 ✓	
				636 S on WL = 0100
E		8.7	269.18 ✓	
C		8.5	69.4 ✓	
W		8.1	69.8 ✓	
				17'S
W		6.0	71.9 ✓	
C		6.8	71.1 ✓	
TP		7.0	70.9 ✓	
E		6.0	71.9 ✓	
				40'S
E		5.2	72.7 ✓	
C		5.5	72.4 ✓	
W & Conc. Apron to Garage		5.8	72.71 ✓	11' wide
				65'S
W		4.7	73.2 ✓	
C		5.0	72.9 ✓	
E	Conc. walk	4.7	73.2 ✓	
				80'S
E	Conc. Apron to Garage	4.50	73.39 ✓	
C		4.9	73.0 ✓	
W		4.6	73.3 ✓	

277.89

138

W + G	# double Garage	J.3 ✓	73.55 ✓	Conc floor
				100'S
W		J.4	73.5 ✓	
C		4.7	73.2 ✓	
E		4.3	73.6 ✓	
+15 E	Conc. Apron	4.7	73.62 ✓	
				125'S
E		4.3	73.6 ✓	
C		4.5	73.4 ✓	
W		4.3	73.6 ✓	
				155'S
W		3.7	74.2 ✓	
C		3.9	74.0 ✓	
E		3.6	74.3 ✓	
				196'S = NL of East + West Alley
E		3.3	74.6 ✓	
C		3.2	74.7 ✓	
W		3.0	74.9 ✓	
TP	8.2 ✓	283.19	29 ✓	274.95 ✓
				E.L. ST JAMES = 0100
C	on paving	7.8	75.4 ✓	
				13'E
C		6.3	76.9 ✓	
				50'E
C		6.4	76.8 ✓	



	95' E		
C		7.1	76.1 ✓
S	on Conc. Apron	6.70	76.49 ✓
	139' E		
C		8.3	74.9 ✓
S	Conc. Apron to Garage	7.50	75.69 ✓
	175' E		
E		9.0	74.2 ✓
	200' E		
C		9.3	73.9 ✓
	220' E		
C		9.2	74.0 ✓
	250' E		
E		8.8	74.4 ✓
	290' E		
C		8.8	74.4 ✓
	320' E		
E		7.1	76.1 ✓
	350' E		
C		3.4	79.8 ✓
	375' E		
E		2.4	80.8 ✓
	394' E		
C		2.5	80.7 ✓
	410' E		
C		3.8	79.4 ✓

	N Garage	3.50	79.69 ✓
	450' E		
C		6.0	76.8 ✓
	480' E		
C		7.4	75.8 ✓



141 Levels on 39th St Adams to Menlo Ave

Stationing Measured on East Curb

	Stn	37231	370.87
		N.L. Adams	
N	1.22		71.14
E	1.87		70.49
	25'H		
E	3.28		69.08
N	2.68		69.68
	50'H		
N	4.25		68.11
E	4.41		67.90
	75'H		
E	5.64		66.72
N	5.46		66.74
	100'H		
Ground	5.4		66.96
N Top Cb	6.39		65.97
E Top Cb	6.43		65.93
Ground	6.0		66.36
TP	331	369.24	365.90
	125'H		
E Ground	3.3		65.94
E Cb	3.98		65.26
N Cb	4.02		65.20
Ground	2.9		66.44
	150'H		
N Ground	3.1		66.14
cb	5.07		64.17

Additional sections  
on page 2

S.F.G.P  
Adams & 39th

Grades {  
371.4  
370.5

	Stn	369.24
E Cb	1.77	64.47
E Ground	3.8	65.44
	175'H	
E Ground	4.2	65.04
E Cb out		
N Cb	5.22	64.02
N Ground	3.8	65.44
	200'H	
N Ground	4.2	65.04
N Cb	4.87	64.37
E Cb	5.20	64.04
E Ground	6.4	64.84
	225'H	
E Ground	7.7	64.54
E Cb	1.90	64.34
N Cb	4.86	64.38
N Ground	4.30	64.94
	250'H	
N Cb	1.91	64.33
E Cb	5.06	64.18
	Opp. 262'H	
N Cb	4.77	64.47
Flow Line	6.06	63.18
	3.13	367.31
	275'H	
E	3.34	64.0
	300'H	
E	3.50	63.8

142  
9-21-26  
S. F. G. P.  
Bliss  
Northrop

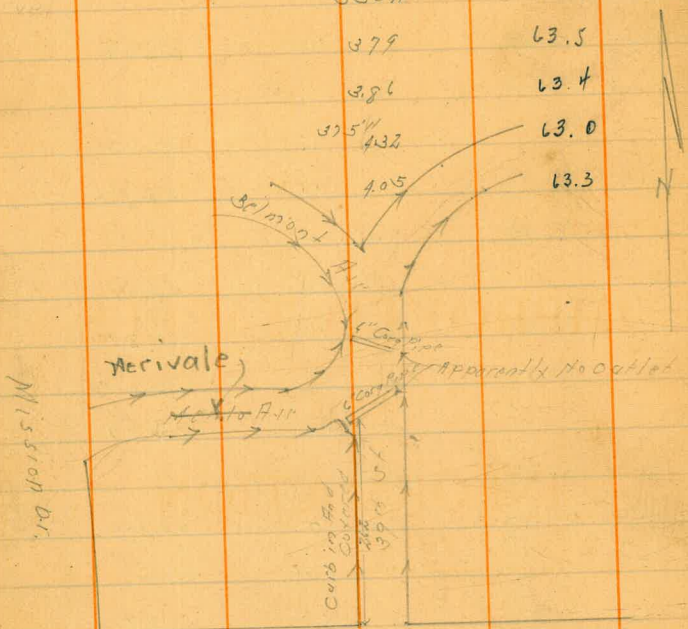
Opp. 262'H on N Cb 6" Corp Pipe  
Apparently the outlet

on Cb  
1750.07E



347.3

	325'H	
E	3.28	363.6
M	3.62	63.7
	350'H	
M	3.79	63.5
E	3.86	63.4
E	375'H 4.32	63.0
M	4.05	63.3



Adams Hill

	400'H	
E	4.80	67.5
E	475'H 5.28	67.0
	450'H	
E	5.72	61.6
M	5.38	61.9
	475'H	
M	5.96	61.3
E	6.15	61.1
	500'H	
E	6.65	60.7
M	6.53	60.8

DIRECTIONS FOR USE OF TABLES

TABLE No. 1.

Distance of slope stake from side or shoulder stake for any width roadway, slope 1 1/2 to 1. If ground is nearly level, the cut or fill at side stake is located by the double entry method in left column and top row. The number in body of table in same row and column gives distance of slope stake from side or shoulder stake.

**IMPROVED TABLES**

AND

**INFORMATION**

TABLE No. 2.

To find Tangent and External for curve of any other degree, divide by degree of curve and add correction found in column of corrections. Degree of curve with a given T may be found by dividing tangent (or external) opposite T by given tangent (or external). The distance from a point on the tangent to the curve is very nearly the square of the tangent length divided by twice the radius.



25362 = POT  
 36  
 289.62 = Junction  
 12606  
 102 55  
 1688.19  
 25  
 1712.19  
 1870

TABLE X.

MIDDLE ORDINATES OF RAILS  
 Length of Rail (feet)

C	R	30	28	26	24	22	20	C	R	30	28	26	24	22	20
o /	Feet	Inch	Inch	Inch	Inch	Inch	Inch	o	Feet	Inch	Inch	Inch	Inch	Inch	Inch
0-20	17189	.08	.07	.06	.05	.04	.03	8	716.8	1.88	1.64	1.42	1.20	1.01	.84
0-40	8594	.16	.14	.12	.10	.08	.07	9	637.3	2.12	1.84	1.60	1.35	1.14	.94
1-0	5730	.24	.20	.18	.15	.13	.10	10	573.7	2.36	2.05	1.78	1.50	1.27	1.04
1-20	4297	.31	.27	.23	.20	.17	.13	11	521.7	2.59	2.26	1.95	1.65	1.39	1.15
1-40	3438	.39	.34	.29	.25	.21	.17	12	478.3	3.83	2.47	2.15	1.81	1.54	1.26
2-0	2865	.47	.41	.35	.30	.25	.20	13	441.7	3.05	2.66	2.30	1.96	1.66	1.36
2-20	2456	.55	.48	.41	.35	.29	.23	14	410.3	3.30	2.87	2.48	2.10	1.78	1.46
2-40	2149	.63	.55	.47	.40	.33	.27	15	383.1	3.54	3.08	2.68	2.26	1.91	1.57
3-0	1910	.71	.62	.53	.45	.38	.31	16	359.3	3.76	3.28	2.83	2.40	2.04	1.67
3-20	1719	.78	.68	.59	.50	.42	.35	17	338.3	4.00	3.48	3.02	2.57	2.16	1.78
3-40	1563	.86	.75	.65	.55	.46	.38	18	319.6	4.21	3.67	3.18	2.70	2.28	1.87
4-0	1433	.94	.82	.71	.60	.50	.42	19	302.9	4.45	3.89	3.36	2.86	2.41	1.98
4-20	1323	1.02	.89	.77	.65	.55	.45	20	287.9	4.70	4.09	3.55	3.00	2.54	2.09
4-40	1228	1.10	.96	.83	.70	.59	.48	22	262.0	5.16	4.44	3.84	3.30	2.80	2.29
5	1146	1.18	1.03	.89	.75	.63	.52	24	240.5	5.64	4.92	4.20	3.59	3.04	2.50
6	955.3	1.41	1.23	1.06	.90	.76	.62	26	222.3	6.07	5.29	4.58	3.88	3.29	2.70
7	819.0	1.65	1.44	1.24	1.05	.89	.73								

TABLE XI.

SHORT RADIUS CURVES

Radius Feet	Chord Feet	Central Angle	Deflection Angle	Deflection for 1 Foot
35	10	16-26	8-13	49.3
45	10	12-46	6-23	38.3
50	15	17-16	8-38	34.5
60	15	14-22	7-11	28.8
75	15	11-30	5-45	23.0
100	20	11-30	5-45	17.3
120	20	9-34	4-47	14.3
150	20	7-39	3-49	11.5
190	25	7-32	3-46	9.15
200	25	7-10	3-35	8.6
225	25	6-25	3-12	7.7
240	25	5-58	2-59	7.2
250	25	5-44	2-52	6.9
275	25	5-12	2-36	6.2
288	50	9-58	4-59	6.0
300	50	9-32	4-46	5.7
350	50	8-12	4-06	4.9
376	50	7-40	3-50	4.6
400	50	7-10	3-35	4.3
410	50	7-00	3-30	4.2

To find length of curve divide angle from P. C. to P. T. by central angle of chord and multiply by length of chord.

TABLE XII.  
 INCLINED DISTANCE OF 100 FT. REDUCED TO HORIZONTAL

Slope	Horizontal Distance	Correction	Rise	Slope	Horizontal Distance	Correction	Rise
0°00'	100.000	0.000	0.000	8°00'	99.027	0.973	0.139
15'	99.999	0.001	0.004	15'	98.965	1.035	0.143
30'	99.996	0.004	0.009	30'	98.902	1.098	0.148
45'	99.991	0.009	0.013	45'	98.836	1.164	0.152
1 00	99.985	0.015	0.017	9 00	98.769	1.231	0.156
15	99.976	0.024	0.022	15	98.700	1.300	0.161
30	99.966	0.034	0.026	30	98.629	1.371	0.165
45	99.953	0.047	0.031	45	98.556	1.444	0.169
2 00	99.939	0.061	0.035	10 00	98.481	1.519	0.174
15	99.923	0.077	0.039	15	98.404	1.596	0.178
30	99.905	0.095	0.044	30	98.325	1.675	0.182
45	99.885	0.115	0.048	45	98.245	1.755	0.187
3 00	99.863	0.137	0.052	11 00	98.163	1.837	0.191
15	99.839	0.161	0.057	15	98.079	1.921	0.195
30	99.813	0.187	0.061	30	97.992	2.008	0.199
45	99.786	0.214	0.065	45	97.905	2.095	0.204
4 00	99.756	0.244	0.070	12 00	97.815	2.185	0.208
15	99.725	0.275	0.074	15	97.723	2.277	0.212
30	99.692	0.308	0.078	30	97.630	2.370	0.216
45	99.657	0.343	0.083	45	97.534	2.466	0.221
5 00	99.619	0.381	0.087	13 00	97.437	2.563	0.225
15	99.580	0.420	0.092	15	97.338	2.662	0.229
30	99.540	0.460	0.096	30	97.237	2.763	0.233
45	99.497	0.503	0.100	45	97.134	2.866	0.238
6 00	99.452	0.548	0.105	14 00	97.030	2.970	0.242
15	99.406	0.594	0.109	15	96.923	3.077	0.246
30	99.357	0.643	0.113	30	96.815	3.185	0.250
45	99.307	0.693	0.118	45	96.705	3.295	0.255
7 00	99.255	0.745	0.122	15 00	96.593	3.407	0.259
15	99.200	0.800	0.126	15	96.479	3.521	0.263
30	99.144	0.856	0.131	30	96.363	3.637	0.267
45	99.087	0.913	0.135	45	96.246	3.754	0.271

For each foot take one one-hundredth of each reading.

TABLE XIII.

MINUTES IN DECIMALS OF A DEGREE.

0 30"	.00833	10' 30"	.17500	20' 30"	.34167	30' 10"	.50833	40' 30"	.67500	50' 10"	.84167
1 00	.01667	11 00	.18333	21 00	.35000	31 00	.51667	41 00	.68333	51 00	.85000
30	.02500	30	.19167	30	.35833	30	.52500	30	.69167	30	.85833
2 00	.03333	12 00	.20000	22 00	.36667	32 00	.53333	42 00	.70000	52 00	.86667
30	.04167	30	.20833	30	.37500	30	.54167	30	.70833	30	.87500
3 00	.05000	18 00	.21667	23 00	.38333	33 00	.55000	43 00	.71667	53 00	.88333
30	.05833	30	.22500	30	.39167	30	.55833	30	.72500	30	.89167
4 00	.06667	14 00	.23333	24 00	.40000	34 00	.56667	44 00	.73333	54 00	.90000
30	.07500	30	.24167	30	.40833	30	.57500	30	.74167	30	.90833
5 00	.08333	15 00	.25000	25 00	.41667	35 00	.58333	45 00	.75000	55 00	.91667
30	.09167	30	.25833	30	.42500	30	.59167	30	.75833	30	.92500
6 00	.10000	16 00	.26667	26 00	.43333	36 00	.60000	46 00	.76667	56 00	.93333
30	.10833	30	.27500	30	.44167	30	.60833	30	.77500	30	.94167
7 00	.11667	17 00	.28333	27 00	.45000	37 00	.61667	47 00	.78333	57 00	.95000
30	.12500	30	.29167	30	.45833	30	.62500	30	.79167	30	.95833
8 00	.13333	18 00	.30000	28 00	.46667	38 00	.63333	48 00	.80000	58 00	.96667
30	.14167	30	.30833	30	.47500	30	.64167	30	.80833	30	.97500
9 00	.15000	19 00	.31667	29 00	.48333	39 00	.65000	49 00	.81667	59 00	.98333
30	.15833	30	.32500	30	.49167	30	.65833	30	.82500	30	.99167
10 00	.16667	20 00	.33333	30 00	.50000	40 00	.66667	50 00	.83333	60 00	1.00000



$$\begin{array}{r} 420 \\ 195 \\ \hline 224.5 \end{array}$$

$$\begin{array}{r} 6300 \\ 4490 \\ \hline 18100 \\ 17960 \\ \hline 1400 \end{array}$$

$$\begin{array}{r} 814 \\ 435 \\ \hline 3.79 \end{array}$$

$$\begin{array}{r} 612.8 \\ 30. \\ \hline 37.5 \\ 680.3 \\ 30.5 \\ \hline 710.8 \end{array}$$

$$\begin{array}{r} 0025 \\ 200 \\ \hline 1600 \end{array}$$

$$\begin{array}{r} 4.1 \\ 8 \\ \hline 36.0 \\ 2 \\ \hline 2772 \end{array}$$

$$\begin{array}{r} 12327 \\ 175 \\ \hline 12407.7 \\ 1.35 \\ 1.25 \\ \hline 1.35 \\ \hline 18.027 \end{array}$$

1006

$$\begin{array}{r} 895210 \\ 1794420 \end{array}$$

$$\begin{array}{r} 369 \\ 580 \\ 249 \\ 32 \\ \hline 729 \end{array}$$

$$\begin{array}{r} 7098 \\ 7698 \\ 1387 \\ 6257 \\ 292 \\ \hline 6245 \\ 38 \\ \hline 6165 \end{array}$$

To

1990 ~  
 2885  
 258

$$\begin{array}{r} 18102.7 \\ 31.50 \\ \hline 21.527 \\ 3.50 \\ \hline 25.027 \\ 2.90 \\ \hline 27.927 \\ 40 \\ \hline 28.327 \end{array}$$

1961 J

$$\begin{array}{r} 329 \\ 40 \\ \hline 3.69 \end{array}$$

$$\begin{array}{r} 895230 \\ 895210 \\ \hline 111 \end{array}$$

$$\begin{array}{r} 70.87 \\ 230 \\ \hline 7371 \\ 711 \\ \hline 6611 \\ 307 \\ \hline 6948 \\ 347 \\ \hline 28411 \end{array}$$

$$\begin{array}{r} 10,000 \\ 7500 \\ \hline 2500 \end{array}$$

$$\begin{array}{r} 366.11 \\ 6.37 \\ \hline 372.48 \\ 158 \\ \hline 370.90 \end{array}$$