

1124

PASTS

FIELD BOOK

No. 385 F

MICROFILMED

DEC 21 1964

Our Leather Bound Engineers Note Books are carried in the following rulings:

- No. 380 LEVEL BOOK. Left and Right Hand Page the same as Left Hand Page of this Book.
- No. 382 FIELD BOOK. Left Hand Page as in this Book, Right Hand Page 4 x 4 to the inch, Center Line Red.
- No. 384 MINING TRANSIT BOOK. Left Hand Page as in this Book, Right Hand Page 8x8 to the inch, Center Line Red.
- No. 385 FIELD BOOK. Left Hand Page as in this Book, Right Hand Page 8 vertical and 4 horizontal lines to the inch, Center Line Red.

We also carry the Note Books listed above, bound in extra strong Fabri-Hide (otherwise the same quality of book), which can be furnished at a somewhat lower price.

In ordering Fabri-Hide covered books, add the letter "F" to catalog number.

THE FREDERICK POST CO.
ENGINEERING and DRAFTING SUPPLIES
IRVING PARK STATION
CHICAGO, ILL.

92 FIFTH ST.
PORTLAND, ORE.

79 NEW MONTGOMERY ST.
SAN FRANCISCO, CAL.

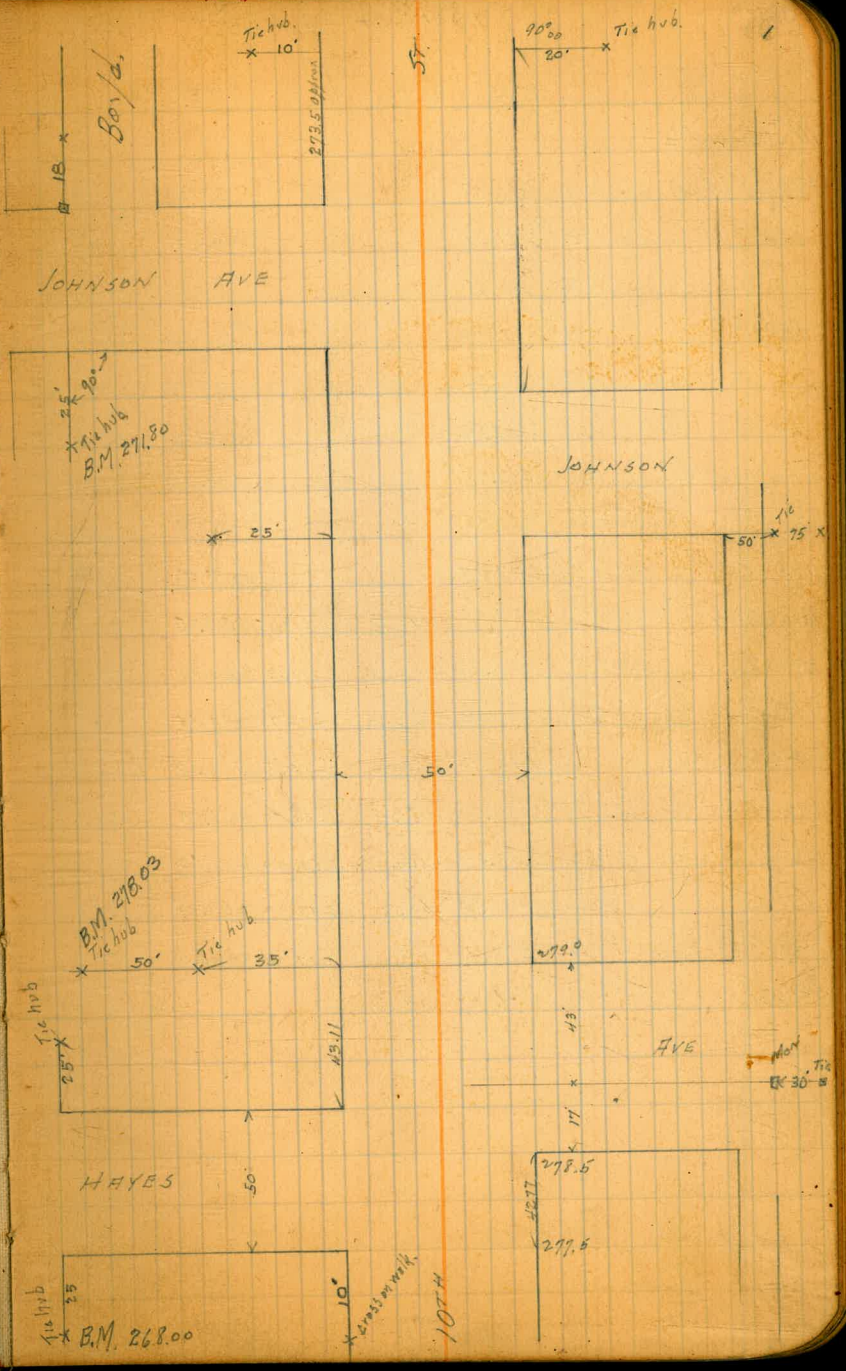
AGENTS FOR

"BERGER" TRANSITS and LEVELS
"GURLEY" SURVEYING and HYDRAULIC INSTRUMENTS
"CHICAGO" STEEL TAPES, etc.

2/20/25

GRADES ON TENTH
HAYES & JOHNSON STS

	S.L.	Scb	Neb	N.L.				
W. end of Hayes o.p. 268.75	268.50 12.37 12.10 +0.27		268.00 12.87 12.28 +0.59	268.25	-0.3			
60'E break 0.0 269.75	269.50 11.37 11.15 +0.22		269.00 11.87 11.23 +0.64	269.25	-0.1			
100'E break to r. 271.25	271.00 9.87 9.87 0.0		270.50 10.37 9.99 +0.38	270.75	+0.7			
135'E 0.0	273.50 7.37 7.58 -0.21		273.25 7.62 7.86 -0.24		+2.5			
170'E +od 276.25	276.00 4.87 4.95 -0.08		274.00 4.87 4.86 +0.01	276.25	+2.5			
235'E - W.L. 10 th +1.4 278.75	278.50 2.37 2.91 -0.54		278.00 1.87 1.98 .11	279.25	+2.1			
E.L. 10 th -0.8 278.75	278.5 6.27 6.28 +0.19	6.87 6.55 +0.32	279.0	279.25	+2.6			
25'E on S 62.5 E 277.50	278.00 7.37 6.74 +0.58		278.25 2.59 2.45 +0.14	278.25	+2.6			
125'E - W.L. Alley 276.25			277.56 3.31 3.24 +0.53	277.25	0.0			
	277.02 2.84 280.87				-0.6			
N	268.45 6.5 6.8 -0.3	269.45 5.5 5.6 -0.1	270.75 4.0 3.3 +0.7	273.50 5.8 3.3 +2.5	276.25 6.1 3.5 +2.5	279.25 5.6 3.0 +2.6	279.25	
S	268.45 6.6 6.0 +0.0	269.75 5.0 5.0 0.0	271.45 3.5 3.3 +0.2	273.75 5.5 5.5 0.0	276.25 8.6 8.2 +0.4	278.75 6.1 4.9 +1.4	278.75	
284.56 12.66 272.19 2.54 274.73	N	279.25 6.6 4.0 +2.6	279.25 7.6 7.6 0.0	279.25				
	S	277.5 7.1 6.6 +0.5	277.5 7.87 7.66 +0.21					



10TH ST. GRADES

	W.L.	FL	
N. End = 10th =			
= 280' N of Johnson on W. +3.3	281.25	281.25	-2.7
250' N	+4.1 281.41	281.46	+3.2
200' N	+1.2 281.68	281.82	+1.5
150' N	+0.8 281.94	282.18	+1.9
100' N	+0.9 282.22	282.54	+3.7
50' N	+1.7 282.48	282.90	+1.2
N.L. Johnson W.	+1.3 282.75	283.25	+1.3
SL ⁵⁰ ✓	+0.6 281.75	282.98	+1.7
N.L. ✓ on E	-2.8 282.25	282.75	+1.8
SL ✓ on E	-3.3 282.75	282.5 283.75	+0.2
51.67' S	-0.9 282.56	282.31 283.13 283.38	+2.2
103.33' ✓	-0.5 282.38	282.13 282.76 283.01	+2.1
140' ✓ break.	+0.2 282.25	282.00 282.5 282.75	+2.6
206.68' S.	+0.3 281.59	281.34 281.50 281.95	+3.0
240' S ✓ break.	+0.2 281.25	281.00 281.00 281.25	+3.4
275' ✓	+0.7 280.63	280.34 280.00 280.25	+3.4
309.86' ✓ - N.L. Hayes on E	+1.3 280.01	279.76 279.00 279.25	+2.6
351.63' ✓ - W. +2.1	279.25	279.00	

28132
490
18622

288.33 sek in pole WL Van Vliet + 54. Johnson

288.33 1.51 289.84 8.52 281.32 3.53 284.85	W	282.75 7.1 10.4 -3.3	282.56 7.3 5.2 -0.9	282.38 7.4 7.2 -0.5	282.25 7.6 7.4 +0.2	281.59 8.2 7.9 +0.3	281.25 8.6 8.4 +0.2	280.62 9.2 8.5 +0.7
288.33 2.42 288.73	W	282.45 6.5 9.3 -2.8	281.75 7.0 6.4 +0.6	282.25 6.0 4.7 +1.3	282.05 6.8 4.6 +1.7	281.94 8.2 6.5 +0.9	281.68 6.8 5.8 +1.2	281.41 7.3 4.9 +2.4
279.03 7.24 285.87	W	281.25 7.4 4.2 +3.3	279.00 4.37 4.14 +0.47	279.76 5.61 3.13 +0.48	280.38 4.99 4.88 +0.16	281.00 4.37 4.49 -0.12	281.34 4.03 3.74 +0.22	
	E	281.25 7.5 10.2 -2.7	279.00 6.37 5.81 +0.56	280.00 6.37 5.61 +0.76	280.00 5.37 5.29 +0.08	281.00 4.37 4.04 +0.35	281.50 3.87 3.80 +0.07	
	W	282.00 3.87 2.85 +0.52	282.83 3.24 3.07 +0.17	282.31 3.10 2.44 +0.62				
	E	282.50 2.86 2.76 +0.10	282.76 2.61 2.26 +0.35	283.13 2.24 1.01 +1.23				

W. 280.01 279.25
28
2.5
+1.3
E 279.25
5.6
3.0
+2.1

1/20/25

JOHNSON AVE GRADES

	S.L.	N.L.	
West End Johnson	-0.5	273.25	273.25 +1.1
W.L. Boyd	-0.4	273.01	272.75 +0.7
EL Boyd	+0.1	272.75	272.25 +2.0
53' E	+0.8	274.55	274.25 +3.1
106' E	+0.8	276.35	276.25 +4.4
159' E	-1.7	278.15	278.25 +4.0
212' ✓	-1.2	279.95	280.25 +3.0
265' ✓ Mt. 10 th	+0.6	281.75	282.75 +1.3
EL 10 th	+0.2	283.75	282.75 +1.8
62.5' E	+0.1	285.83	284.83 +1.5
125' E	-0.3	287.92	286.92 +0.4
135' E		288.25	287.25

289.84

288.73	N	8692	5453
281.54		36	57
218		32	42
283.72		+0.4	+1.8
184			
271.80	S	28992	28583
		19	40
		22	33
		-0.3	+0.7
			6.1
			59
			+0.2

287.95	N	28225	27825	27625	27425	27225	27225	27225	27225
60		35	55	75	95	115	110	105	100
47		28	157	31	24	25	102	111	119
41.3		23.0	40	44	48.1	+2.0	70.7	+1.1	
281.75	S	27924	27815	27635	27455	27225	2730	27325	
70		35	56	74	92	110	107	105	
64		50	73	66	82	102	111	119	
+0.6		-1.2	-1.7	+0.8	+0.5	+0.1	-0.4	-0.5	

288.33
22.3
290.56

1/21/25 Gregor

GRADES ON CHESTNUT ST

N.L.

E.L. TRIAS

50' E	254.35
100' E	250.39
150'	250.50
200' - WL Pleasure	248.62
240' - EL	246.75

25103	W	25535	25547	256	25467	25335	25055	24615
324		5.0	47	438	57	7.0	48	78.6
25427		2.8	15	25	29	3.7	20	70
642								
25384		+2.2	+32	+1.9	+2.8	+3.3	+5.1	+6.6
653								
26038								

	E	25421	25474	25521	25397	25260	2499	246
		6.15	5.6	5.1	6.46	7.8	10.6	18.4
		6.6	5.4	5.6	6.7	7.5	11.3	11.3
		-0.5	+0.2	-0.5	-0.2	+0.3	+1.7	+3.1
							+2.4	

	N	24962	25050	25237
		11.76	9.9	8.0
		4.0	3.9	4.3
		+7.8	+6.0	+3.7

40 wide GRADES ON PLEASURE LANE

WL. E.L.

3L Hickory	+2.2	255.35	254.25	-0.5		
50' 5	+4.9	53.93	5318	5475	+1.8	
100'	+5.4	52.50	5176	256.25	-0.5	+3.0
150'	+6.4	51.05	5030	5090	-0.4	+3.5
200'	+7.0	49.60	4884	253.60	+2.3	4.0
250'	+7.0	48.18	47.43	2495	+2.4	+4.3
300' - WL Chestnut	+6.75	246.75	246.0	+0.1		

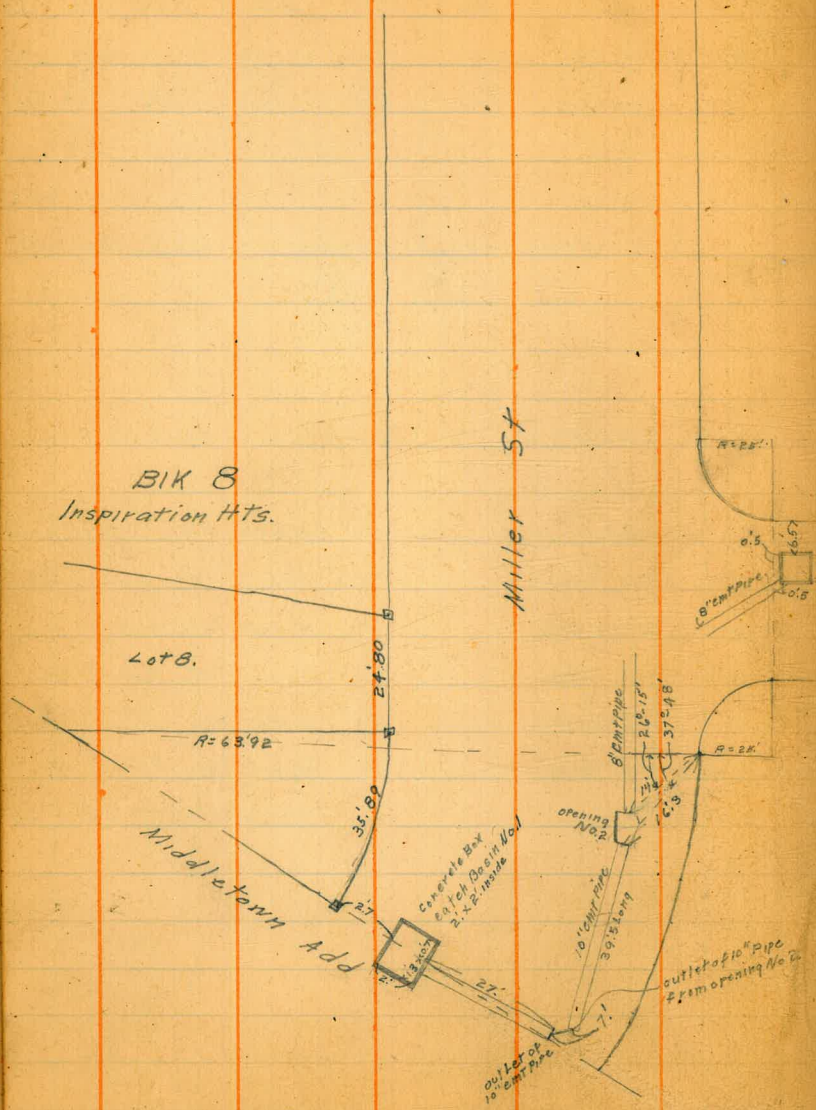
750
37
187

7.15
0.75
1.87

11.23
3.22
14.98
24.50

1/23/25
Miller
Shaw
C.W.
Sisson

Location of Catchbasins at Arden Way
and Miller Strs.



				5
B.M.	12.03	273.05		261.021 N.E. with Arden & Sunset
T.P.	0.57	260.41	13.01	260.04
T.P.	4.35	253.42	11.54	249.07
Top of C.B. No. 1			8.63	444.79
Flow Line Pkwn C.B. No. 1			9.94	443.46
" " outlet C.B. No. 1			12.35	441.07
" " at opening No. 2			7.32	446.10
Top of C.B. No. 3			1.77	451.65
Flow Line Pipe in C.B. No. 3			3.42	450.00
" " outlet of 10" pipe from opening No. 2			16.90	436.54

Cross Section of Alley
BK3 Florence Hqts. 15' wide

2/9/25

Moore
Preston
Walker

NUMBER	0.80	277.79	276.99
		NL of Washington	
E on paving		9.13	268.66
C ✓ MH		9.70	268.09
W ✓		9.71	268.08
		2' N	
W		7.8	270.0
+3		8.9	268.9
C		8.9	268.9
+4		8.9	268.9
E		6.2	271.6
		10' N	
E		3.0	274.8
+2		3.5	274.3
+3		5.3	272.5
+5		7.6	270.2
C		7.5	270.3
+5		7.5	270.3
W		5.8	272.0
		40' N	
W		2.6	275.2
+2		2.6	275.2
+3		3.2	274.6
C		3.0	274.8
+1		3.0	274.8

Washington
Albatross

Emley Return
10' in Alley

	277.79		
E		1.5	276.3
		55' N	
E		1.1	276.4
C		2.1	275.7
W		2.3	275.5
T.P.	571	281.39	2.11 275.68
		72' N	
-19 Garage dirt floor		5.90	275.49
W		5.6	275.8
C		5.5	275.9
E		4.7	276.7
		100' N	
E		4.2	277.2
C		4.5	276.9
W		4.6	276.8
		130' N	
W		4.2	277.2
C		4.1	277.3
E		3.6	277.8
+4 Garage Cem. floor		3.00	278.39
		165' N	
E on line ✓ ✓		2.80	278.59
C		2.8	278.6
W		3.0	278.4
		200' N	
W		2.4	279.0

C

		281.29	
E		2.1	279.3
E		2.1	279.3
	245' N		
Cem. Apron			
E on Line Garage	Cem. floor	0.60	280.79
C		1.0	281.3
W		1.2	280.2
T.P.	6.76	287.60	0.55
			280.84
	288' N		
W		6.2	281.4
C		6.1	281.5
E		5.9	281.7
+3 rd Cem Apron	Garage	5.8	281.78
			Cem floor
	304' N		
E		6.3	281.3
C		6.2	281.4
W		6.1	281.5
+7	Garage floor?	6.10	281.50
	325' N		
W		5.6	282.0
C		5.8	281.8
E		5.5	282.1
+8	Garage dirt floor	5.5	282.1
	367' N		
E		4.7	282.9
C		5.0	282.6
W	Cem Apron on line	4.9	282.7
+6	Garage Cem. floor	4.8	282.8

		287.60	
	400' N		
W		4.6	283.0
C		4.5	283.1
E		4.0	283.6
T.P.	4.90	288.24	4.26
			283.34
	430' N		
-6	Garage dirt floor	4.6	283.6
E		4.7	283.5
C		4.9	283.3
W		5.1	283.1
	450' N		
W		5.4	282.8
C		4.8	283.4
+6.9	E Cem Apron	6.5 wide	4.20
			284.04
			Apron Entrance to House
E		4.4	283.8
			for yardage
	480' N		
E		5.0	283.2
C		5.0	283.2
W		5.3	282.9
	515' N		
W		5.4	282.8
C		5.1	283.1
E		4.7	283.5
+0.2	Garage wood floor	3.85	284.39
	555' N		
-0.4	dirt floor	4.32	283.92

		288.24		
C	E		4.6	283.6
E	C		4.9	283.3
Dem. Albatross	W		5.0	283.2
E " owl		575' N		
C	W		5.3	282.9
W	C		5.0	283.2
T.P.	E		4.7	283.5
		600' N		
W	E		4.0	284.2
C	C		4.3	283.9
E	W		4.7	283.5
+35 Co		620' N		
	E owl MH.		4.1	284.1
E		640' N = SL Lewis		
C	W		4.5	283.7
W	C		4.5	283.7
+7	E		4.2	284.0
	TP	6.46 ~ 90°/8	4.22	284.02
W	check 3P sw Lewis + Albatross		6.48	284.00 284.01
C				
E				
+8				
E				
C				
W				
+6				

	Cross Section of Henry to Clark	Fosterbaugh	50' wide Moore 10' slw Preston Walker		221.00		
BPSE	0.46	249.06	248.60	Henry + Blomeda	W	14.6	406.4
SP	0.12	236.14	130.4	236.02	cb	8.7	414.3
T.P.	0.29	223.62	12.81	223.33	+5	4.0	417.0
T.P.	3.36	221.00	5.98	217.64	1/4	4.0	417.0
	St. Henry				C	4.0	417.01
W		3.6	417.4	✓	1/4	3.7	417.3
cb top of Gen. cb		3.36	417.44		cb	3.5	417.5
cb for yardage		3.9	417.1		E	3.3	417.7
1/4		3.3	417.7				
C		3.1	417.9	✓	E	3.7	417.31
1/4		3.0	418.0		cb	3.8	417.4
+3.5 top of Gen. cb	SE Return should + Return	2.40	418.6		1/4	3.9	417.1
cb for yardage	Henry + Peterbaugh	2.6	418.4		C	4.7	416.3
E		1.9	419.1	✓	1/4	4.5	416.5
	10' S				cb	9.4	411.6
E		2.5	418.5	✓	W	17.0	404.0
cb		3.4	417.6		+12	23.0	198.0
1/4		3.3	417.7		+41	29.6	191.4
C		3.5	417.5				
1/4		3.5	417.5				
cb		3.0	418.0	✓	-40	28.0	193.0
W		4.8	416.4		-25	24.5	196.5
+10		9.7	411.3		W	15.3	405.7
	25' S				cb	8.5	412.5
					+4	5.7	415.3
-25		21.5	199.5		1/4	5.9	415.1
-12		20.0	401.0		C	5.4	415.8

	221.00		
1/2		4.7	716.3
cb		4.7	716.3
+7		4.2	716.8
E		3.0	718.0 ✓
	100' S		
E		1.7	719.3 ✓
cb		5.2	715.8
1/4		5.8	715.4
c		6.2	714.8 ✓
1/2		6.7	714.3
cb		7.7	713.3
W		13.7	707.3 ✓
+15		19.6	701.4
+30		24.6	196.4
	125' S		
-30		24.6	196.4
-15		18.8	704.2
W		14.0	707.0 ✓
+5		9.8	711.4
cb		9.0	714.0
1/4		8.4	714.6
c		7.9	713.1 ✓
+5		7.5	713.5
1/4		6.1	714.9
cb		5.2	715.8
+1		4.8	716.4

	221.00	Puterbaugh	
+3		3.0	718.0
E		0.7	740.3 ✓
	127' S		
E		0.7	740.3 ✓
+7		2.9	718.1
cb		5.3	715.7
1/4		6.1	714.9
+3		7.6	713.4
c		8.0	713.0
1/4		8.6	714.4
cb		9.3	711.7
W		10.3	710.7 ✓
+4	NL of Garage on stilts	10.4	710.6 ✓
	133' S		
WL - 4 # Garage Cem. floor		10.4	710.6 ✓
	150' S		
-5	in yard	11.0	710.0 ✓
W		11.0	710.0 ✓
cb		10.4	710.6
1/4		10.1	710.9
c		9.4	711.6 ✓
+3		8.5	714.5
1/4		6.5	714.5
cb		4.0	717.0
+7		2.1	718.9
E		0.3	740.7 ✓

221.0

167'S	low of w.l. = # of porch floor	9.8	711.4	Residence ✓
	177'S			
E		2.3	718.7	✓
+3		4.4	716.6	
cb		5.5	715.5	
1/4		7.6	713.4	
+2		7.6	713.4	
c		10.0	711.0	✓
1/2		10.7	710.3	
cb		11.3	709.7	
w		11.2	709.8	✓
	180'S			
-15 SL of Above Residence		19.0	707.0	✓
w		14.5	706.5	✓
cb		11.6	709.4	
1/4		11.1	709.9	
c		10.4	710.6	✓
1/4		7.8	713.4	
+5		7.2	713.8	
cb		5.7	715.3	
+5		4.7	716.3	
E		2.6	718.4	✓
	205'			
E		5.8	715.4	✓
+3		7.3	713.7	
cb		8.2	712.8	

221.00

Peter Gough

+3	9.4	711.6
1/4	9.9	711.1
c	11.6	709.4 ✓
+2	12.0	708.0
1/4	13.4	707.6
cb	14.4	706.6
+5	14.4	706.6
w	17.2	703.8 ✓
+15	21.4	199.6
	? 225'S	
-15	23.7	197.3
-7	22.0	199.0
w	18.0	703.0 ✓
cb	17.7	703.3
1/4	16.8	704.4
+2	16.7	704.3
+3	15.7	705.3
c	14.3	706.7 ✓
1/4	12.7	708.3
cb	11.5	709.5
+7	10.7	710.3
+8	10.0	711.0
E	9.4	711.6 ✓
T.P. 064	208.64 ✓	
	250'S	
E	2.1	706.5

2086L

+2	3.1	405.5
+5	2.8	405.8
cb	4.0	404.6
1/4	5.4	403.7
c	7.2	401.4
1/4	8.3	400.3
+5	9.7	198.9
cb	9.9	198.7
w	10.5	198.1
+iv	14.0	194.6

275'S

-13	17.8	190.8
-5	15.4	193.4
w	14.8	193.8
cb	14.3	194.3
+3	14.3	194.3
1/4	12.9	195.7
c	11.9	196.7
1/4	10.8	197.8
cb	9.9	198.7
E	8.7	199.9

301'S = NW Clark St

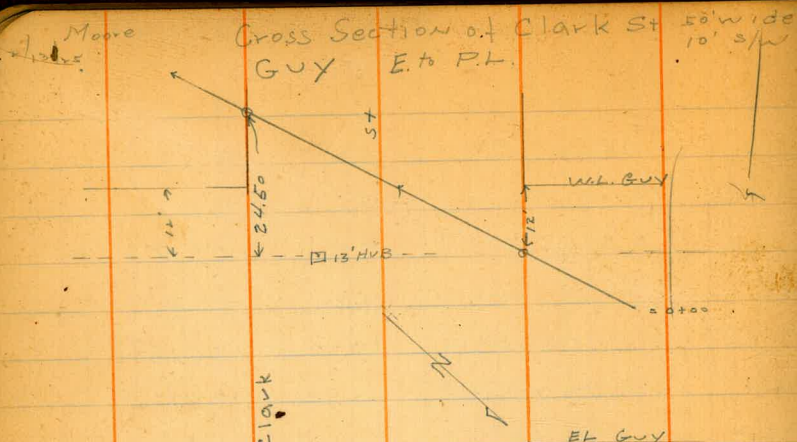
E	12.1	196.54
cb	13.3	195.3
1/4	15.3	193.3
T.P	1.40	19724
	12.80	195.84

19724

Pterbaugh

12

c	5.1	194.1
1/4	6.2	191.0
+4	7.5	189.7
cb	7.7	189.5
w	8.3	188.9
T.P	0.50	184.64
	13.10	184.14
T.P	0.23	172.44
	12.43	172.21
T.P	0.21	159.71
	12.94	159.50
T.P	5.93	153.13
	12.51	147.20



Culvert Notes
 CLARK + GUY

153.13 π

0+00 = 25' N of NL of CLARK	12.1	146.0
25' S = NL CLARK	15.0	138.1
32' S	15.0	137.5
35' S	13.9	139.4
60' S	16.8	136.3
63' S	19.1	134.0
65' S	18.0	135.1
75' S	19.7	133.4
82' S = S.L. ✓	21.5	131.6
107' S	24.5	128.6
127' S	26.5	126.6

0+00 = 34' W of W.L. of Guy St

N	0.6	154.5
ct	3.2	149.9
1/4	5.5	147.6
C	7.6	145.5
1/4	10.1	143.0
ct	12.3	140.8
S	15.3	137.8
+10	19.0	134.1
+25	21.5	131.6
20' E		
-30	18.0	135.1
-10	21.5	131.6
S	21.5	131.6
ct	16.5	136.6
1/4	15.2	137.9
C	13.3	139.8
1/4	10.8	142.3
ct	9.1	144.0
N	5.8	147.3
W.L. GUY		
-15	5.5	147.6
N	11.2	141.9
ct	16.2	136.9
+4	14.3	138.8
1/4	14.8	138.3

15313

C.	15.7	137.4
1/2	17.1	136.0
cb	16.2	136.9
S	14.0	139.1
+15	10.7	142.4
	w/ cb	
-10	8.6	144.5
S	8.7	144.4
cb	9.2	143.9
1/2	10.1	143.0
C	10.3	142.8
1/2	11.2	141.7
cb	12.7	140.4
+5	15.2	137.9
N	15.2	137.9
+2	12.5	140.6
+20	7.1	146.0
	w/ cb + 2	
-25	6.1	147.0
-7	12.0	141.1
-5	14.1	139.0
N	15.0	138.1
+3	12.7	140.4
cb	12.2	140.7
1/2	10.5	144.6
C	9.5	143.6

15313

Clark St

14

1/2	8.8	144.3
cb	8.7	144.4
S	8.1	145.0
-15	8.2	144.9
	w/ 1/2	
-15	7.2	145.7
S	6.4	146.7
cb	6.4	146.7
1/2	6.4	146.7
C	6.5	146.6
1/2	7.3	145.8
cb	9.2	143.9
N	11.2	141.7
+8	11.8	141.3
+10	13.8	139.3
+13	11.1	142.0
+25	7.2	145.7
	center	
-25	11.9	141.2
-20	10.2	142.9
N	7.3	145.8
cb	5.1	148.0
1/2	4.2	148.9
C	3.9	149.2
1/2	3.6	149.5
cb	3.9	149.4

S		4.4	148.7
+15		5.3	147.8
T.P.	11.23	16.2	151.58
	E 1/4		
-15		13.5	149.3
S		12.0	150.8
cb		11.6	151.4
1/4		11.1	151.7
c		11.1	151.7
1/4		11.5	151.3
cb		11.8	151.0
N		12.6	150.4
+12		13.2	149.4
+25		16.3	146.5
+30		19.8	143.0
	E cb		
-25		12.2	150.6
-12		10.1	154.7
N		9.4	153.4
cb		9.1	153.7
1/4		9.0	153.0
c		9.2	153.6
1/4		9.4	153.4
cb		9.8	153.0
S		10.6	154.4
+15		11.7	154.1

T.P.	786	17067	0.00	162.81
		EL Guy	0.0000	
-15				17.6 153.1
S				16.4 154.3
cb				15.5 155.4
1/4				14.8 155.9
c				14.7 156.0
1/4				14.6 156.1
cb				14.1 156.6
N				14.1 156.6
+15				14.6 156.1
		18'E		
-10				9.3 161.4
N				8.9 161.8
cb				9.2 161.5
1/4				9.9 160.8
c				10.5 160.4
1/4				10.7 160.0
cb				11.2 159.5
S				11.9 158.8
+15				12.6 158.1
		25'E		
-15				11.6 159.1
S				10.8 159.9
cb				10.7 160.5
1/4				10.0 160.7

170.67

c	9.3	161.4
-14	9.0	161.7
cb	8.5	167.3
N	7.8	167.91
+10	7.7	163.0
50' E		
-5	4.5	166.4
N	5.2	165.5
cb	6.0	164.7
1/2	6.6	164.1
c	6.9	163.8
1/2	7.6	163.1
cb	8.1	167.6
S	8.7	167.0
+15	9.8	160.9
75' E		
-15	6.7	164.0
S	5.7	165.0
cb	4.9	165.8
1/2	4.2	166.5
c	3.6	167.1
1/2	3.0	167.7
cb	2.3	168.4
N	1.4	169.3
+5	0.6	170.1
T.P.	11.23	181.60
	0.30	170.37

181.60

Clark St 16

100' E ✓		
-5	7.3	174.3
N	8.2	173.4
cb	9.2	177.4
1/2	9.8	171.8
c	10.4	171.2
1/2	11.5	170.1
cb	12.5	169.4
S	13.3	168.3
+15	14.6	167.0
125' E		
-15	11.7	169.9
S	10.7	170.91
cb	8.8	177.8
1/2	8.0	173.6
c	7.3	174.3
1/2	6.3	175.3
cb	5.7	175.9
N	4.1	177.5
+5	4.0	177.6
150' E		
-5	0.2	181.4
N	0.7	180.9
cb	1.9	179.7
1/2	3.0	178.6
c	3.9	177.7

181.60

1/2			4.9	176.7
cb			5.9	175.7
S			7.0	174.6
+15			8.8	174.8
		175' E		
-15			5.8	175.8
S			3.7	177.9
cb			2.4	179.4
1/2			1.5	180.1
c			0.4	181.4
T.P.	11.39	192.36	0.63	180.97
1/2			10.1	187.3
cb			9.3	183.1
S			7.9	184.5
+5			7.1	185.3
		191' E		
-5			4.6	187.8
N			5.2	187.4
cb			7.0	185.4
1/2			8.2	184.4
c			8.6	183.8
1/2			9.8	184.6
cb			11.1	181.3
S			12.3	180.1
+15			14.0	178.4

192.26

Clark St 17

Approx 201.5' E = w L Poterbaugh

-15			12.8	179.7
S			11.1	181.3
cb			9.8	184.6
1/2			9.0	183.4
c			8.1	184.3
1/2			7.0	185.4
cb			5.5	186.9
N			3.2	189.4
		w cb		
N			2.8	189.6
cb			4.5	187.9
1/2			5.7	186.7
c			6.6	185.7
1/2			7.7	184.7
cb			8.6	183.8
S			9.7	184.7
+15			11.1	181.3
		w 1/2		
-15			10.9	181.5
S			9.0	183.4
cb			7.8	184.6
1/2			6.7	185.7
c			5.7	186.7
1/2			4.9	187.5
cb			3.4	189.0
N			1.3	191.1

192.36

Center

Peterbaugh ✓

N		0.2	194.4
cb		2.2	190.4
1/4		3.8	188.6
c		4.5	187.9
1/4		5.8	186.6
cb		7.0	185.4
S		8.1	184.3
+15		9.9	184.5
	E 1/4 ✓		
-15		9.9	184.5
S		7.0	185.36
cb		6.2	186.4
+5		5.8	186.6
+6		4.8	187.6
1/4		4.6	187.8
c		3.2	189.4
1/4		2.7	189.7
+3		2.2	190.4
+4		1.5	190.9
cb		1.0	191.4
T.P	10.17	202.11	0.42 191.94
N			8.6 193.5
	E cb		
N			6.9 195.4
cb			9.2 194.9

202.11

Clark St. 18

+2	9.6	194.5
+3	10.4	191.7
1/4	11.2	190.9
c	12.2	189.9
1/4	13.3	188.8
+4	14.3	187.8
+5	15.5	186.6
cb	15.7	186.4
S	16.1	186.0
+2	16.7	185.4
+15	19.0	183.1
	EV Peterbaugh ✓	
-15	18.8	183.3
-2	16.2	185.9
S	15.5	186.6
cb	14.8	187.3
+3	14.3	187.7
+4	13.3	188.8
1/4	12.5	189.6
c	11.2	190.9
1/4	9.4	192.7
cb	8.7	193.4
+2	8.3	193.8
+3	6.6	195.5
N	5.7	196.4

202.11

7' E ✓

N	5.8	196.3
+2	6.9	195.2
cb	7.5	194.6
+5	7.8	194.3
1/4	9.0	193.1
C	10.7	191.4
1/4	12.2	189.9
+4	13.6	188.5
+5	14.3	187.8
cb	14.6	187.5
S	15.3	186.8
+2	16.2	185.9
+15	18.2	183.9

25' E ✓

-15	17.2	184.9
-1	14.8	187.3
S	14.0	188.1
cb	13.7	188.4
+2	13.6	188.5
+3	12.7	189.4
1/4	11.5	190.6
C	10.1	194.0
1/4	8.5	193.6
cb	6.9	195.2
.	4.7	197.4

202.11

Clark St 19.

50' E ✓

N	2.6	199.5
cb	4.4	197.7
1/4	6.0	196.1
C	7.7	194.4
1/4	9.1	193.0
+5	10.7	191.4
cb	12.0	190.1
S	12.4	189.7
+2	13.3	188.8
+15	15.6	186.5

75' E ✓

-15	13.5	188.6
-1	11.0	191.1
S	10.5	191.6
cb	10.5	191.6
+1	9.3	194.8
1/4	7.7	194.4
C	6.0	196.1
1/4	4.4	197.7
cb	2.0	200.1
N	0.0	202.1

T.P. 645 207.26 130 20081

100' E ✓

N	33	204.0
cb	6.0	201.3

207.26

1/4	7.9	199.4	
0	10.2	197.1	
1/4	11.7	195.6	
cb	13.3	194.0	
+1	14.5	192.8	
S	14.7	192.6	✓
+1	15.2	192.1	
+15	17.8	189.5	
	125' E ✓		
-15	16.9	190.4	
-2	14.7	192.6	
S	14.0	193.3	✓
+8	14.0	193.3	
+9	12.4	194.9	
cb	12.3	195.0	
1/4	10.7	196.6	
0	9.4	197.9	
1/4	7.4	199.9	
cb	5.1	202.4	
✓	2.5	204.8	✓
	150' E ✓		
N	3.1	204.4	✓
cb	5.7	201.6	
1/4	8.0	199.3	
0	9.6	197.7	
1/4	11.4	195.9	

207.26

Clark St 20

cb	12.8	194.5	
+1	14.3	193.0	
S	14.2	193.1	✓
+2	15.2	192.1	
+15	17.2	190.1	
	165' E ✓		
-15	17.3	190.0	
-3	15.6	191.7	
S	14.4	192.9	✓
cb	14.4	192.9	
+1	12.8	194.5	
1/4	11.4	195.9	
0	10.0	197.3	
1/4	9.0	198.3	
cb	7.0	200.3	
✓	4.1	203.4	✓
	181.68' E ✓		
✓	5.3	204.0	✓
cb	7.9	199.4	
1/4	9.5	197.8	
0	10.6	196.7	
1/4	11.8	195.5	
cb	13.3	194.0	
+1	14.4	192.9	
S	14.7	192.6	✓
+3	15.7	191.6	
+15	17.5	189.8	

207.26

Clark St

181.68' E on NL ✓
200' E on SL

-15		19.3	188.0	
S		15.3	197.0	1
cb		14.1	193.4	
1/4		12.0	194.3	
C		11.5	195.8	
1/4		10.7	196.6	
cb		8.4	198.9	
N		5.3	407.0	1

181.68' E on NL ✓

216.64' E on SL

N		5.3	407.0	1
cb		8.2	199.1	
1/4		9.5	197.8	
C		11.9	195.4	
1/4		13.5	193.8	
cb		15.5	191.8	
S		18.5	188.8	1
+15		23.0	184.3	
T.P.	12.00	218.58	0.68	206.58
T.P.	13.12	231.36	0.34	218.24
T.P.	13.05	244.33	0.08	231.28
T.P.	898	252.15	1.16	243.17
check BM at start		3.53	248.57	248.60

Moore
1/18/5Cross Section of Alley
BIK 4 Hartley North Park 15' Wide.

NWBP	0.23	356.73	356.56
		6.67	50.00
		6.91	49.82
		0400=WL 32 nd	
N		6.6	50.1
C		6.8	49.9
S		6.7	50.0
	50' W		
S		6.0	50.7
C		6.2	50.5
N		6.2	50.5
	100' W		
N		5.7	51.0
C		5.6	51.1
S		5.8	50.9
	133' W		
S		5.4	51.3
C		5.4	51.3
N		5.1	51.6
	150' W		
N		5.3	51.4
C		5.4	51.3
S		4.9	51.8
	200' W		
S		4.1	52.6

Moore

Univ. Ark -
IowaNo Alley
Returns in

	125	356.73	22
C		4.5	52.2
N		4.5	52.2
	239' W		
N		4.0	52.7
C	Rim of M.H.	4.12	52.61
S		3.8	52.9
	266' W =		EL HERIMAN
S	on paving	4.30	52.43
C	✓ ✓	4.38	52.35
N	✓ ✓	4.18	52.55
	11		
	Ndx Wightman WL of Alley	8.64	48.07 on Cords
	✓ ✓ ✓ EL ✓ ✓	8.89	47.84 ✓ ✓
	0400 = N.L. of Wightman		
E		8.5	48.2 No Alley
C		8.4	48.5 Returns in
W		8.0	48.7
	50' N		
W		7.4	49.3
C		7.5	49.2
E		7.8	48.9
	100' N		
E		6.5	50.2
C		6.1	50.6
W		6.5	50.1

356.73

150' N

W 5.7 51.0

C 6.3 50.4

E 6.3 50.4

200' N = SL of T Alley

E 5.0 51.7

C 5.4 51.3

W 5.3 51.4

30th St.
 X Sec. Woolman to National

	132	89.55	88.03
			Woolman EMM. N. 30'
		00 = S. Line Woolman Ave	
W		1.1	88.5
cb		1.7	87.9
+5		2.3	87.3
1/4		2.2	87.4
+11		2.1	87.5
c		3.0	86.6
1/4		3.5	86.1
cb		3.8	85.8
E		3.4	86.2
		3' S.	
E		3.5	86.1
cb		3.6	86.0
1/4		3.4	86.2
c		3.1	86.5
+2		2.1	87.5
1/4		1.9	87.7
+5		2.1	87.5
cb		0.9	88.8
W		0.3	89.3
		30' S	
W		0.6	89.0
cb		1.0	88.6
+6		1.7	87.9
1/4		1.8	87.8

89.55

24

		89.55	
+11		2.0	87.6
c		3.1	86.5
1/4		3.2	86.4
cb		3.5	86.1
E		4.0	85.6
		60' S	
E		4.2	85.4
cb		3.5	86.1
1/4		3.2	86.4
c		3.0	86.0
1/4		2.1	87.5
+8		1.9	87.7
cb		1.1	88.6
W		0.8	88.8
		90' S	
W		1.2	88.4
cb		1.4	88.2
+2		2.2	87.4
1/4		1.9	87.7
+11		2.3	87.3
c		3.2	86.4
1/4		3.2	86.4
+11		3.6	86.0
cb		3.0	86.6
E		3.5	86.1

89.55

125'S

E	7.0	85.6
cb	3.5	86.1
+2	4.1	85.5
1/4	3.9	85.7
C	3.9	85.7
+4	2.3	87.3
1/4	2.5	87.1
+8	2.3	87.3
cb	1.0	88.6
W	1.5	88.1

140'S

W	1.0	88.6
cb	1.6	88.0
+5	2.8	86.8
1/4	2.7	86.9
+10	2.9	86.7
E	4.1	85.5
1/4	4.3	85.6
cb	4.5	85.1
+4	4.1	85.5
E	4.5	85.1

155'S

E	5.0	84.6
+11	4.3	85.3
cb	4.8	84.8
1/4	4.7	84.9

89.55

30'S

25

E	4.4	84.0
+4	2.9	86.7
1/4	2.6	87.0
+8	2.8	86.8
cb	2.0	87.4
W	2.2	87.4

180'S

W	3.4	86.2
cb	3.6	86.0
1/4	4.3	85.3
+9	4.9	84.7
E	6.2	83.4
1/4	6.1	83.5
+11	6.4	83.2
cb	5.9	83.7
E	6.6	83.0

205'S

E	8.2	81.4
cb	8.0	81.6
1/4	7.6	82.0
E	8.0	81.6
+3	7.3	82.3
1/4	7.0	82.6
cb	5.7	83.9
W	5.2	84.4

89.55

220'S

W	7.0	82.6
cb	7.4	82.2
1/4	8.1	81.5
+11	8.2	81.4
C	8.8	80.8
1/4	8.4	81.2
cb	8.6	81.0
E	9.0	80.6

260'S

E	11.0	78.6
cb	10.8	78.8
1/4	10.4	79.2
C	10.5	79.1
1/4	9.8	79.8
cb	9.8	79.8
W	9.4	80.2

300'S = N. Line Valle Ave 80' wide rd'cb 10'1/4

W	10.3	79.3
cb	11.1	78.5
1/4	11.5	78.1
E	12.1	77.5
1/4	12.3	77.3
cb	12.6	77.0
E	12.8	75.8
T.P.	0.88	77.71
		12.72
		76.83

77.71

N. cb.

E	2.20	75.5
C	2.7	75.0
cb	1.6	76.1
+6	1.0	76.7
1/4	0.9	76.8
C	0.8	76.9
1/4	0.2	77.5
cb	0.0	77.7
W	10.3	78.00

N. 1/4

W	0.0	77.7
cb	0.1	77.6
1/4	0.7	77.0
C	1.1	76.6
1/4	1.2	76.5
+7	1.3	76.4
cb	1.9	75.8
E	3.1	74.6
E		
E	3.2	74.5
cb	2.2	75.5
+6	1.7	76.0
1/4	1.6	76.1
C	1.5	76.2
1/4	1.0	76.7
cb	0.3	77.4
W	0.3	77.4

30th

26

on curb
no yardage

on ground

77.71

S. 1/4

W	0.6	77.1
eb	0.6	77.1
1/4	2.1	75.6
c	1.8	75.9
1/4	2.0	75.7
+7	2.0	75.7
cb	2.7	75.0
E	3.7	74.0

S, CB.

E	3.73	73.98
E	4.0	73.7
cb	3.0	74.7
+6	2.4	75.5
1/4	2.5	75.2
c	2.3	75.4
1/4	2.3	75.4
cb	1.3	76.4
W	0.9	76.8

00 = S. Line Valle Ave

W	1.7	76.0
cb	2.2	75.5
1/4	3.1	74.6
c	3.4	74.3
1/4	3.4	74.3
+7	3.4	74.3
cb	3.9	73.8
E	5.2	72.5

77.71

30th

27

45'S

-10	7.5	70.2
E	5.8	71.9
cb	5.3	72.4
1/4	5.0	72.7
c	5.1	72.6
+4	3.9	73.8
1/4	4.1	73.6
cb	3.0	74.7
W	2.5	75.2

90'S

W	3.9	73.8
cb	4.3	73.4
1/4	4.6	73.1
+9	4.4	73.3
c	6.5	71.2
1/4	6.1	71.6
cb	6.1	71.6
E	6.7	71.0
+5	7.2	70.5

125'S

-5	9.6	68.1
E	9.6	68.1
cb	8.0	69.7
1/4	7.2	70.5
c	7.3	70.4
+6	6.2	71.5

77.71

1/4	6.3	71.4
cb	5.0	72.7
w	4.5	73.2
140's		
w	5.1	72.6
cb	6.1	71.6
1/4	7.1	70.6
+10	7.2	70.5
c	8.0	69.7
1/4	7.7	70.0
+7	7.8	69.9
cb	8.6	69.1
E	11.1	66.6
+10	12.0	65.7
160's		
-15	14.7	63.0
E	13.7	64.0
cb	8.1	69.6
1/4	8.0	69.7
c	8.6	69.1
+5	7.5	70.2
1/4	7.4	70.3
cb	6.9	70.8
w	6.1	71.6

77.71

30th

28

175's		
w	6.5	71.2
cb	7.5	70.2
1/4	8.0	69.7
c	8.9	68.8
1/4	8.5	69.2
cb	8.8	68.9
+2	8.8	68.9
E	14.4	63.3
+1.5	14.6	68.1 Front of House
148A		
200's		
-1.5	15.5	62.2
E	14.8	62.8
+11	9.6	68.1
cb	9.6	68.1
1/4	9.3	68.4
c	9.4	68.3
1/4	8.8	68.9
cb	8.2	69.5
w	8.4	69.3
225's		
w	8.7	69.0
cb	8.7	69.0
1/4	8.9	68.8
c	9.5	68.2
1/4	9.7	67.0
cb	9.4	68.3

77.71

225' S (cont)

+18	9.4	68.3
E	11.1	66.6
+12	15.4	62.3
+20	15.8	61.9

247.5 = N. End House 2.8' off line

-20	15.8	61.9
-11	15.4	62.3
E	9.7	68.0
cb	9.8	67.9
1/4	9.9	67.8
0	9.5	68.2
1/4	8.9	68.8
cb	8.7	69.0
W	8.1	69.6

260' S

W	8.0	69.7
cb	8.5	69.2
1/4	9.2	68.5
0	9.7	68.0
1/4	9.3	67.9
cb	9.5	68.2
E	9.5	68.2
+3	10.5	67.2

280' S

E	9.0	68.7
cb	9.3	68.4

against House

77.71

30'' 2.9

1/4	9.7	68.0
0	9.4	68.3
1/4	9.2	68.5
cb	8.5	69.2
W	7.9	69.8

300' S = N. line Martin Ave 80' wide 20' obs 10' 1/4

W	7.6	70.1
cb	7.8	69.9
1/4	8.2	69.5
0	9.0	68.7
1/4	9.0	68.7
cb	8.4	68.3
E	8.3	68.4

N. cb

E	8.20	69.5 ^{on cb}
cb	7.7	70.0
1/4	8.2	69.5
0	8.4	69.3
1/4	6.6	71.1
cb	6.6	71.1
W	5.5	72.2

N. 1/4

W	5.2	72.5
cb	6.0	71.7
1/4	6.2	71.5
+11	6.8	70.9

77.71

c	8.0	69.7
1/4	7.7	70.0
cb	7.3	70.4
+9	7.5	70.2
E	8.4	69.3
	E	
E	7.7	70.0
+5	6.7	71.0
cb	6.7	71.0
1/4	7.3	70.4
E	7.4	70.3
+4	6.4	71.3
1/4	6.2	71.5
cb	5.4	72.3
w	5.0	72.7
	S. 1/4	
w	5.1	72.6
cb	4.9	72.8
+6	6.0	71.7
1/4	5.7	72.0
c	6.8	70.9
1/4	6.8	70.9
cb	6.3	71.4
E	7.3	70.4

77.71

30th 30

S. cb

E	6.72	70.99	on cb No voidage
E	7.1	70.6	dirt
cb	6.1	71.6	
1/4	6.4	71.3	
c	6.3	71.4	
+9	5.4	72.3	
1/4	5.3	72.4	
+11	5.5	72.2	
cb	4.7	73.0	
w	4.3	73.4	
	00 = S. Line	MATH Avc	
w	4.1	73.6	
cb	4.2	73.1	
1/4	4.8	72.9	
c	5.6	72.1	
1/4	5.8	71.9	
+9	5.8	71.9	
cb	5.2	72.5	
E	5.6	72.1	
	50' S		
c	5.1	72.6	
cb	3.9	73.8	
+3	5.0	72.7	
1/4	4.9	72.8	
c	5.0	72.7	
+3	4.0	73.7	

		77.71		
1/4			3.9	73.8
cb			3.3	74.4
W			3.7	74.0
		90'S		
W			2.4	75.3
cb			2.9	74.8
1/4			3.5	74.2
C			4.1	73.6
1/4			4.3	73.4
cb			4.2	73.5
E			4.7	73.0
T.P.	5.06	78.63	4.14	73.57
		150'S		
E			4.9	73.7
cb			4.6	74.0
1/4			4.5	74.1
C			4.2	74.4
1/4			3.7	74.9
cb			3.5	75.1
W			3.4	75.2
		165'S		
W			3.9	74.7
cb			3.0	75.6
1/4			3.6	75.0
C			4.4	74.2
1/4			4.4	74.2

		78.63		307 ^h 31
cb			4.5	74.1
E			4.8	73.8
		200'S		
E			4.2	74.4
cb			4.2	74.4
1/4			4.1	74.5
C			3.9	74.7
1/4			3.7	74.9
cb			3.0	75.6
W			2.7	75.9
		240'S		
W			2.5	76.1
cb			3.1	75.5
1/4			2.9	75.7
C			3.9	74.7
1/4			4.1	74.5
cb			4.4	74.2
E			4.4	74.2
		270'S		
E			4.1	74.5
cb			4.1	74.5
1/4			4.2	74.4
C			3.7	74.9
1/4			3.3	75.3
cb			3.0	75.6
W			3.3	75.3

78.63
300' S = N. Line Greely Ave 80' wide - 10' cbs 10' in

W	2.9	75.7
cb	3.1	75.5
1/4	3.2	75.4
E	3.9	74.7
1/4	4.1	74.5
cb	4.4	74.2
E	4.3	74.3
	N. cb	
E	4.62	74.01 <small>on cb. No yardage</small>
E	4.8	73.8
cb	4.2	74.4
1/4	4.0	74.6
E	3.8	74.8
1/4	3.3	75.3
cb	3.0	75.6
W	3.0	75.6
	N. 1/4	
W	3.1	75.5
cb	3.0	75.6
1/4	3.2	75.4
E	3.8	74.8
1/4	3.8	74.8
cb	4.1	74.5
E	4.9	73.7
	±	
E	4.5	74.1

78.63
300' S = N. Line Greely Ave 80' wide - 10' cbs 10' in

cb	3.9	74.7
1/4	3.8	74.8
E	3.7	74.9
1/4	3.3	75.3
cb	3.4	75.2
W	3.3	75.3
	S. 1/4	
W	3.0	75.6
cb	2.7	75.9
1/4	3.0	75.6
E	3.5	75.1
1/4	3.7	74.9
cb	3.8	74.8
E	4.9	73.7
	S. cb	
E	4.65	73.98 <small>on cb.</small>
cb	3.7	74.9
1/4	3.6	75.0
E	3.5	75.1
1/4	2.9	75.7
cb	2.9	75.7
W	3.1	75.5
	00 = S. Line Greely Ave	
W	2.9	75.7
cb	2.4	76.2
1/4	2.9	75.7

c	3.5	75.1
1/4	3.6	75.0
cb	3.5	75.1
E	3.9	74.7
15'S		
E	3.6	75.0
cb	3.4	75.2
+2	3.8	74.8
1/4	3.6	75.0
c	3.5	75.1
1/4	3.1	75.5
cb	3.1	75.5
w	4.1	74.5
35'S		
w	3.5	75.1
cb	3.5	75.1
1/4	3.2	75.4
c	3.6	75.0
1/4	3.7	74.9
+11	3.8	74.8
cb	3.3	75.3
E	3.7	74.9
45'S		
E	3.6	75.0
cb	3.2	75.4
+2	4.1	74.5

1/4	4.0	74.6
E	4.0	74.6
1/4	3.9	74.7
cb	3.9	74.7
w	3.7	74.9
100'S		
w	4.4	74.2
cb	4.1	74.5
1/4	4.5	74.1
E	4.8	73.8
1/4	4.7	73.9
+11	4.6	74.0
cb	3.8	74.8
E	3.8	74.8
125'S		
E	4.2	74.4
cb	4.4	74.2
+2	5.0	73.6
1/4	5.0	73.6
E	5.2	73.8
1/4	4.7	73.9
cb	4.9	73.7
w	5.2	73.4
150'S		
w	5.0	73.6
cb	5.2	73.4

1/4	5.2	73.4
0	5.6	73.0
1/4	5.3	73.3
+11	5.4	73.2
eb	4.9	73.7
E	4.8	73.8
200' E		
E	5.7	72.9
eb	6.2	72.4
+2	6.5	72.1
1/4	6.2	72.4
E	6.5	72.1
1/4	6.3	72.3
eb	6.3	72.3
W	6.0	72.6
230' S		
W	5.9	72.7
eb	6.6	72.0
1/4	6.6	72.0
E	4.8	71.8
1/4	6.6	72.0
+11	7.0	71.6
eb	6.4	72.2
E	6.1	72.5

255' S		
E	6.6	72.0
eb	6.9	71.7
+2	7.6	71.0
1/4	7.2	71.4
E	7.4	71.2
1/4	7.2	71.4
eb	7.1	71.5
W	7.4	71.2
300' S = N. Line Logan Ave graded		
W	7.4	71.2
eb	7.68	70.95 on eb.
1/4	8.3	70.3
E	8.0	70.6
1/4	7.9	70.7
+11	8.0	70.6
eb	7.67	70.96 on eb.
E	7.2	71.4
CHK BM	7.72	70.91 = 70.91 a 30 th N.W. Logan
00 = S. Line Logan Ave		
E	7.8	70.8
eb	8.8	69.8
+2	9.3	69.3
1/4	9.0	69.6
E	9.0	69.6
1/4	9.2	69.4
eb	9.2	69.4
W	9.7	69.9

78.63

20'S

W	9.5	69.1
cb	9.6	69.0
1/4	9.4	69.2
C	9.1	69.5
1/4	9.2	69.4
+11	9.6	69.0
cb	9.2	69.4
E	8.6	70.6

60'S

E	9.7	68.9
cb	9.5	69.1
+2	10.0	68.6
1/4	9.4	69.2
E	9.3	69.3
1/4	9.8	68.8
+10	10.2	68.4
cb	9.7	68.9
W	9.7	68.9
T.P.	2.27 7 4.20	9.70 68.93

100'S

W	2.7	68.5
cb	2.6	68.6
+2	3.3	67.9
1/4	2.7	68.5
E	2.2	69.0
1/4	2.6	68.6

71.20

30''

35

+9	2.9	68.3
cb	2.3	68.9
E	2.1	69.1

150'S

E	2.5	68.7
cb	2.6	68.6
+3	3.4	67.8
1/4	3.1	68.1
E	2.9	68.3
1/4	3.2	68.0
+10	3.8	67.4
cb	3.3	67.9
	3.1	68.1

165'S

W	3.5	67.7
cb	3.6	67.6
+3	4.1	67.1
1/4	3.6	67.6
E	3.2	68.0
1/4	3.4	67.8
cb	3.6	67.6
E	3.4	67.8

200'S

E	4.1	67.1
cb	4.3	66.9
1/4	4.2	67.0

71.20

E	4.0	77.2
1/4	4.4	76.8
1/11	4.7	76.5
cb	4.3	76.9
W	4.0	77.2

245' S

W	5.3	75.9
cb	5.6	75.6
1/4	5.4	75.8
C	5.1	76.1
1/4	5.2	76.0
cb	5.2	76.0
E	4.9	76.3

270' S

E	6.0	75.2
cb	6.1	75.1
1/4	5.8	75.4
C	5.6	75.6
1/4	6.0	75.2
cb	6.1	75.1
W	6.0	75.2

300' S = N. line National Ave

W	6.1	75.1
cb	6.24	74.96
1/4	6.2	75.0
C	6.2	75.0

on curb

71.20

30th St

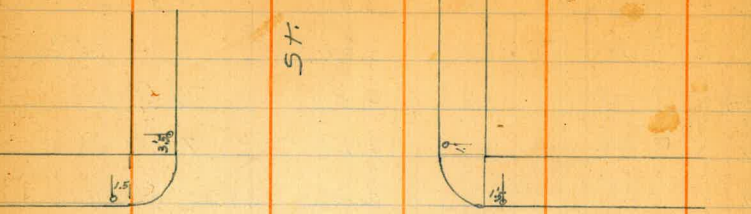
36

1/4	6.4	74.8
cb	6.24	74.7
cb	6.5	74.7
E	6.2	75.0
chk B.M.	6.28	74.92 = 6491 + National

ohcb
no yardage

NW 30'

Location of S.P.E. RR. Poles on 30th
Bet Wightman and Lincoln



Univ.

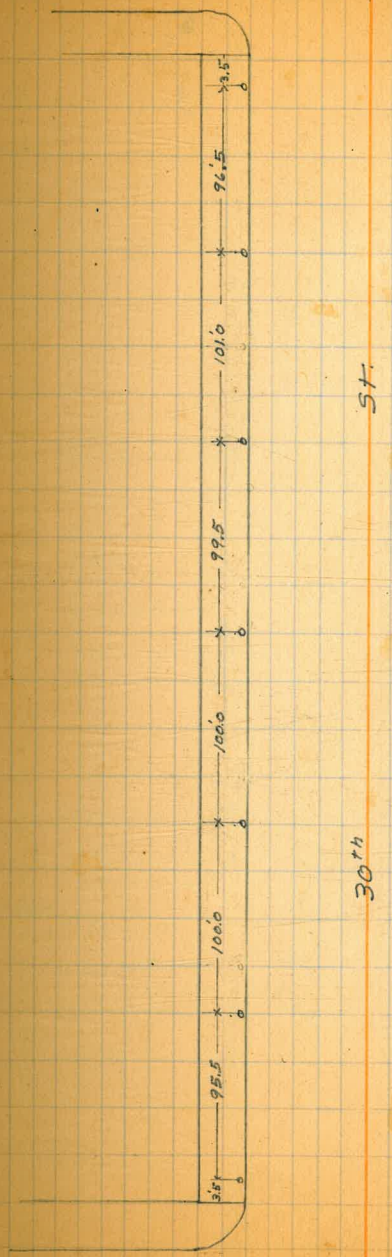
Ave



30th

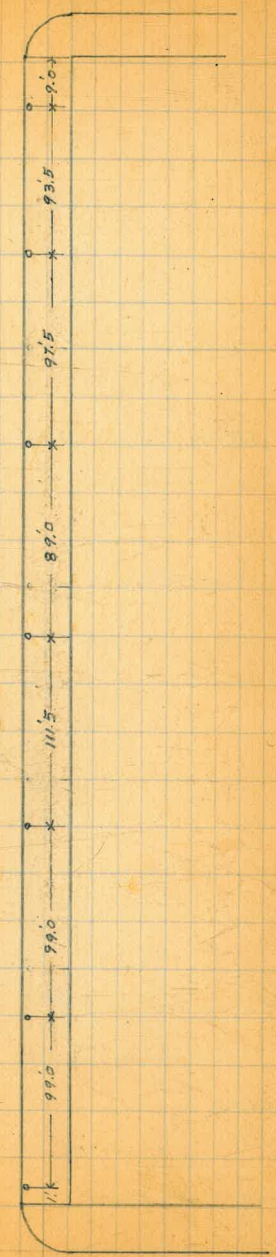


Lincoln Ave 37



30th

ST.



Ave

Univ.

Location of S.P.E.R.R. Poles on
Univ Ave from Idaho to 31st St



Utah



Idaho



Granada

St



St

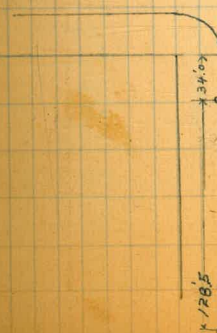


Kansas

30th



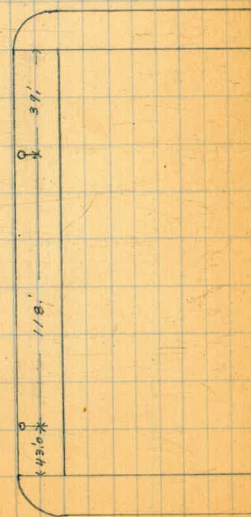
30th



30th

30th

Kansas



Granada Ave

Illinois St



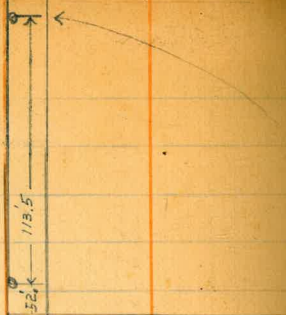
Ohio St



30th St

Ave.

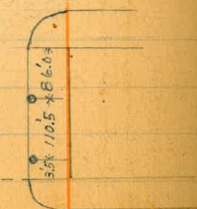
UNIV



Crim St



Ray St



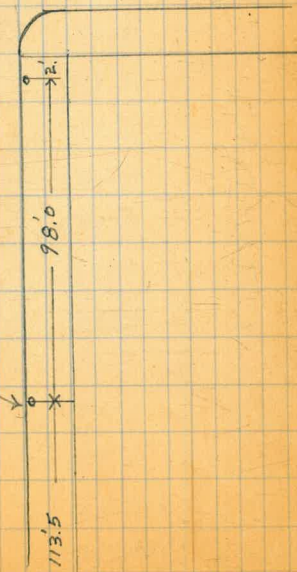
30th St

Illinois St

UNIV Ave.



31st St



113.5

Wolfe Moore
 BANCROFT Cross Section
 Woolman to Webster
 60' wide
 10' SW
 51.68

Start of Hwt.	0.03	60.43	60.40	Woolman + 32'
T.P.	373	51.68	12.48	47.95
		N.L. Woolman (51.7)		
w		16.4	35.3	
cb		17.6	34.1	
+3		18.5	33.2	
1/4		18.6	33.1	
c		18.7	33.0	
1/2		19.2	32.5	
cb		19.0	32.7	
+5		18.9	32.8	
+8		18.0	33.7	
E		18.1	33.6	
		3' N		
E		16.9	34.8	
+5		17.3	34.4	
cb		16.0	35.7	
+6		18.1	33.6	
+8		19.1	32.6	
1/4		19.0	32.7	
e		18.6	33.1	
1/2		18.5	33.2	
+9		17.9	33.8	
cb		16.6	35.1	
+5		14.2	37.5	
w		13.9	37.8	

	25' N	(51.7)	13.9	37.8
w			14.8	36.9
+8			16.2	35.5
cb			17.5	34.2
+3			18.2	33.3
1/4			18.3	33.4
c			18.3	33.4
1/4			16.5	35.2
+w			16.0	35.7
cb			16.2	35.5
E				
	50' N		15.2	36.5
E			15.0	36.7
cb			15.2	36.5
+8			16.1	35.6
1/4			16.1	35.6
c			15.9	35.8
1/4			16.7	35.0
cb			14.0	37.7
+1			13.2	38.5
w				
	75' N		12.2	39.5
w			13.2	38.5
+8			13.9	37.8
cb			13.9	37.8
+				

5168

(51.7)

+3	15.3	36.4
+5	14.8	36.9
1/4	14.2	37.5
c	14.6	37.3
1/4	14.5	37.2
+5	13.9	37.8
cb	14.0	37.7
E	14.0	37.7
	100' N	
-5	13.7	38.0
E	13.0	38.7
cb	12.9	38.8
1/4	13.1	38.6
c	12.5	39.2
1/4	12.5	39.2
+7	12.7	39.0
cb	11.3	40.4
wl	10.6	41.1
	125' N	
wl	8.7	43.0
cb	9.1	42.3
+2	9.5	42.2
+5	11.1	40.6
1/4	10.9	40.8
c	10.6	41.1
1/4	11.4	40.3

5168

BANCROFT

(51.7)

cb	11.3	40.4
E	11.5	40.2
+5	12.0	39.7
	150' N	
-5	10.0	41.7
E	10.0	41.7
cb	10.3	41.4
1/4	10.3	41.4
c	9.2	42.5
1/4	9.2	42.5
+6	9.0	42.7
+8	7.7	44.0
cb	7.6	44.1
wl	6.8	44.9
	10' N of NW woodman 1' E of E of	olive tree 6" DIAM
27'		
45'		
58'		bepper tree 3" ✓
64'		olive stump (alive) 10" ✓
90'		pepper tree 4" ✓
180'		Eucalyptus stump (dead) 48" ✓
	175' N	
wl	5.2	46.5
cb	5.4	46.3 ✓
+2	5.6	46.1 ✓
+4	7.1	44.6 ✓

51.68

51.7

1/2	7.4	44.3 ✓
0	7.5	44.2 ✓
1/4	8.5	43.2 ✓
cb	8.2	43.3 ✓
E	8.9	42.8 ✓
+5	9.2	42.5 ✓
	200 W	
-5	8.3	43.4 ✓
E	7.9	43.8 ✓
cb	7.2	44.5 ✓
1/4	7.2	44.5 ✓
C	5.8	45.9 ✓
1/2	5.5	46.2 ✓
+7	5.2	46.3 ✓
cb	4.6	47.1 ✓
+5	3.6	48.1 ✓
1/2	3.1	48.6 ✓
	215 W	
1/2	2.6	49.1 ✓
cb	2.0	47.7 ✓
1/2	4.2	47.3 ✓
e	4.8	46.9 ✓
1/2	6.2	45.5 ✓
cb	6.2	45.3 ✓
E	7.2	44.5 ✓
+5	8.0	43.7 ✓

51.68

BANCROFT

42

225 W

51.7

-5	7.0	44.7 ✓
E	6.1	45.6 ✓
cb	5.8	45.9 ✓
1/4	5.5	46.2 ✓
C	4.0	47.7 ✓
1/2	3.3	48.4 ✓
+5	3.8	47.9 ✓
cb	2.6	49.1 ✓
1/2	2.1	49.6 ✓
T D	12.66	64.33
	250 W	
	0.01	51.67
	64.3	
1/2	10.6	53.7 ✓
cb	12.3	52.0 ✓
+1	12.5	51.8 ✓
+2	13.2	50.9 ✓
1/2	13.2	50.9 ✓
C	14.0	50.3 ✓
1/2	15.9	48.4 ✓
cb	16.8	47.5 ✓
E	18.1	46.2 ✓
+10	19.2	45.1 ✓
	270 W	
-10	18.3	46.0 ✓
E	17.0	47.3 ✓
cb	15.8	48.5 ✓

64.33

64.3

1/4	14.0	50.3✓
+5	13.0	51.3✓
c	12.3	52.0✓
1/4	11.6	52.7✓
+7	11.1	53.2✓
cb	9.5	54.8✓
w	7.1	57.2✓
280 w		
w	6.6	57.7✓
cb	9.3	55.0✓
+3	10.8	53.5✓
1/4	11.0	53.3✓
c	11.2	53.1✓
1/4	13.3	51.0✓
cb	15.3	49.0✓
E	16.9	47.4✓
+10	17.9	46.4✓
300 w = SL FRANKLIN ←		
-10	16.0	48.3✓
e	14.4	49.9✓
3' S ON AL = FIGTREE 12" DIAM.		
cb	12.4	51.9✓
+7	11.7	52.6✓
1/4	10.8	53.5✓
c	8.8	55.5✓
1/4	9.0	55.3✓

80' wide

20' db

10' 1/2

olive tree
Stuart 16" Diam
(Alive)

64.33

BANCROFT

43

64.3

cb	8.6	55.7✓
+1	6.8	57.5✓
+7	5.9	58.4✓
w	4.4	59.9✓
SL +2		
w	4.2	60.1✓
+3	5.9	58.4✓
+6	6.2	57.9✓
+7	8.1	56.2✓
cb	8.3	56.0✓
w 1/4	8.8	55.5✓
SL +10		
w 1/4	7.8	56.5✓
+6	7.5	56.5✓
+8	6.3	58.0✓
w cb	6.1	58.2✓
+6	4.9	59.4✓
+7	3.8	60.5✓
w	3.7	60.6✓
SL +14		
w	3.2	61.1✓
+3	3.5	60.8✓
+4	4.3	60.0✓
cb	5.8	58.5✓
+3	6.2	58.1✓
+4	7.2	57.1✓

64.33

64.3

w 1/4		7.2	57.1 ✓
	SL + 16		
w 1/4		6.7	57.6 ✓
+6		6.9	57.4 ✓
+7		5.7	58.6 ✓
cb		4.5	59.8 ✓
+3		3.5	60.8 ✓
w		3.0	61.3 ✓

Sob

w		2.5	61.8 ✓
+9		3.2	61.1 ✓
cb		3.8	60.5 ✓
+2		5.2	59.1 ✓
+5		6.5	57.8 ✓
1/4		6.3	58.0 ✓
-C		6.6	57.7 ✓
+5		7.0	57.3 ✓
1/4		8.1	56.2 ✓
+5		9.5	54.8 ✓
cb		10.2	54.0 ✓
E		11.7	52.6 ✓
+10		13.4	50.9 ✓

S 1/4

-10		12.2	52.1 ✓
E		10.0	54.3 ✓
cb		8.3	56.0 ✓

5' N on Ecb Line = Olive stump 30" diam (alive)

64.33

BANCROFT

44

64.3

+5		7.5	56.8 ✓
+8		6.3	58.0 ✓
1/4		6.1	58.2 ✓
C		5.3	59.0 ✓
1/4		5.1	59.2 ✓
+5		4.8	59.5 ✓
+6		3.6	60.7 ✓
cb		2.0	62.3 ✓
w		1.0	63.3 ✓

T.P. 1287	77.09	0.11	64.22
		<u>77.1</u>	

w		11.8	65.3 ✓
cb		13.0	64.1 ✓
+4		14.7	62.4 ✓
+5		15.9	61.2 ✓
1/4		16.3	60.8 ✓
C		16.5	60.6 ✓
1/4		17.3	59.8 ✓
cb		19.1	58.0 ✓
E		21.8	55.3 ✓
+10		23.4	53.7 ✓

N 1/4

-10		25.1	55.0 ✓
E		21.1	56.0 ✓
cb = olive stump 24" diam	olive	18.5	58.6 ✓
1/4		16.6	60.5 ✓

77.09

77.1

c	16.7	60.4✓
1/4	15.1	62.0✓
+5	14.7	62.4✓
+6	13.4	63.7✓
cb	11.8	65.3✓
w	9.8	67.3✓

N/cb

w	8.3	68.8✓
cb	10.5	66.6✓
+5	13.1	64.0✓
+6	14.4	62.7✓
1/4	14.5	62.6✓
c	14.9	62.2✓
1/4	15.5	61.6✓
+2	16.7	60.4✓
cb	17.8	59.3✓

8' N of cb = olive stump alive 12" diam

+7	19.7	57.4✓
+8	20.7	56.4✓
E	21.0	56.1✓
+10	21.4	55.7✓

NL FRANKLIN

-10	20.5	56.6✓
E	19.0	58.1✓
+8	16.8	60.3✓
cb	16.6	60.5✓

77.09

BANCROFT

45

77.1

+8	15.9	61.2✓
+9	14.3	62.8✓
1/4	13.6	63.5✓
c	12.8	64.3✓
1/4	12.3	64.8✓
+2	11.9	65.2✓
+5	10.3	66.8✓
+7	8.2	68.9✓
cb	7.9	69.2✓
w	5.3	71.8✓

25' N

w	3.5	73.6✓
cb	5.5	71.6✓
+3	6.2	70.9✓
1/4	9.8	67.3✓
c	10.6	66.5✓
1/4	11.5	65.6✓
+1	13.5	63.6✓
cb	14.7	62.4✓

3' N of cb = olive tree 8" diam

E	16.3	60.8✓
+1	17.7	59.4✓
+10	18.0	59.1✓

38' N of E = E of Carriage Dirt floor 0.5 m street

42' N

E	15.0	62.1✓
---	------	-------

77.09

77.1

cb		13.4	63.7✓
+9		12.2	64.9✓
1/4		10.4	66.7✓
+3		9.3	67.8✓
c		9.2	67.9✓
	44' N		
c		8.9	68.2✓
+7		9.3	67.8✓
1/4		10.2	66.9✓
+1		12.1	65.0✓
cb		13.0	64.1✓
+1	= Olive Tree 6" diam	12.0	65.1✓
E		12.3	62.8✓
+3		14.8	62.3✓
+10		15.9	61.2✓
	50' N		
-10		14.7	62.4✓
-1		14.5	62.6✓
E		13.8	63.3✓
cb		11.3	65.8✓
	10' N of cb = Olive Tree 6" diam		
+8		10.6	66.5✓
+9		9.8	67.3✓
1/4		9.1	68.0✓
+3		8.6	68.5✓
c		8.4	68.7✓

77.09

BANCROFT 46

77.1

+9		8.3	68.8✓
1/4		7.0	70.1✓
+1		4.3	72.8✓
cb		3.3	73.8✓
1/4		1.4	75.7✓
	75' N		
1/4		0.4	76.7✓
cb		1.5	75.6✓
+7		2.5	74.6✓
1/4		4.5	72.6✓
+2		6.3	70.8✓
c		6.2	70.9✓
1/4		6.6	70.5✓
+2		8.1	69.0✓
cb		8.4	68.7✓
	2' N and 1' E = Olive Tree 8" diam.		
+5		9.7	67.4✓
E		9.7	67.4✓
+8		9.4	67.7✓
	100' N		
-8		7.1	70.0✓
E		6.6	70.5✓
+8		5.4	71.7✓
cb		4.9	72.2✓
	6' S and 3' E of cb = Olive Tree 10" diam		
+7		4.8	72.3✓

77.9

77.1

1/4			3.5	73.6 ✓
c			3.9	73.2 ✓
+7			3.8	73.3 ✓
+9			2.0	75.1 ✓
1/4			1.5	75.6 ✓
+3			0.8	76.3 ✓
cb			0.0	77.1 ✓
T.F.	787	84.21	0.75	76.3 ✓
+7			6.6	77.6 ✓
w			5.8	78.4 ✓
		111' N		
w			5.3	78.9 ✓
+5			6.3	77.9 ✓
cb			6.7	77.5 ✓
+5			6.7	77.5 ✓
1/4			7.3	76.9 ✓
+3			8.4	75.8 ✓
+4			10.2	74.0 ✓
c			10.2	74.0 ✓
1/4			9.5	74.7 ✓
+3			10.3	73.9 ✓
cb			10.5	73.7 ✓
+3 = Olive Tree 10' DIAM			10.7	73.5 ✓
E			11.7	72.5 ✓
+5			12.5	71.7 ✓

84.21

BANCROFT

47

134' N 84.2

E			9.8	74.4 ✓
+7 = Olive Tree 12" DIAM				
cb			9.1	75.1 ✓
1/4			8.6	75.6 ✓
c			9.2	75.0 ✓
+6			8.6	75.6 ✓
+7			7.5	76.7 ✓
1/4			6.7	77.5 ✓
cb			5.9	78.3 ✓
+7			5.7	78.5 ✓
+8			4.9	79.3 ✓
w			4.9	79.3 ✓
		150' N		
w			5.0	79.2 ✓
cb			5.3	78.9 ✓
+5			5.4	78.8 ✓
1/4			6.1	78.1 ✓
+5			7.3	76.9 ✓
c			7.6	76.6 ✓
1/4			7.4	76.8 ✓
cb			8.0	76.2 ✓
E			9.4	74.8 ✓
		175' N		
E			7.8	76.4 ✓
cb			7.3	76.9 ✓

84.21

84.2

1/2	6.2	78.0 ✓
c	5.8	78.4 ✓
1/4	5.2	79.0 ✓
cb	4.3	79.9 ✓
w	4.1	80.1 ✓

200' N

w	3.7	80.5 ✓
cb	3.7	80.5 ✓
1/2	3.8	80.4 ✓
+s	4.6	79.6 ✓
C	5.2	79.0 ✓
1/2	4.8	79.4 ✓
cb	4.8	79.4 ✓
E	6.2	77.8 ✓

225' N

E	5.2	79.0 ✓
cb	4.4	80.0 ✓
1/2	3.2	80.8 ✓
c	3.7	80.5 ✓
1/2	3.3	80.9 ✓
cb	3.3	80.9 ✓
w	3.0	81.2 ✓

245' N

w	3.0	81.2 ✓
cb	3.2	81.0 ✓
1/2	3.4	80.8 ✓

84.21

BANCROFT

48

84.2

c	3.7	80.5 ✓
1/2	3.7	80.5 ✓
cb	3.1	81.1 ✓
+s	3.1	81.1 ✓
E	4.8	79.4 ✓

255' N

E	5.5	78.7 ✓
+s	4.7	79.5 ✓
cb	4.0	79.6 ✓
+b	3.6	80.6 ✓
1/2	4.7	80.1 ✓
C	4.0	80.2 ✓
1/2	3.7	80.5 ✓
+s	3.8	80.4 ✓
cb	3.6	80.6 ✓
+s	3.6	80.6 ✓
w	2.6	81.6 ✓

275' N

w	3.2	80.8 ✓
+s	4.2	80.0 ✓
cb	4.2	79.8 ✓
1/2	5.0	79.2 ✓
C	5.0	78.8 ✓
+s	6.3	77.9 ✓
1/2	5.7	78.5 ✓
cb	6.2	78.0 ✓
E	6.5	77.7 ✓

84.21

84.2

99' N

E		9.2	75.0 ✓
cb		9.2	75.0 ✓
1/4		8.4	75.8 ✓
+5		8.3	75.9 ✓
C		8.7	75.5 ✓
+6		8.1	76.1 ✓
+8		6.2	78.0 ✓
1/4		5.9	78.3 ✓
cb		5.4	78.8 ✓
W		4.9	79.3 ✓
W	301' N	SL clay	= 80' wide
cb		8.7	75.5 ✓ 10' slat 12' / 165
1/4		8.9	75.3 ✓
C		9.1	75.1 ✓
+5		9.1	75.1 ✓
1/4		8.7	75.5 ✓
cb		9.0	75.2 ✓
E		9.9	74.3 ✓
E		9.9	74.3 ✓
T.P.	0.75	77.75	72.1
			77.00 ✓
			77.8
E		4.9	72.9 ✓
cb		4.7	73.1 ✓
1/4		3.6	74.2 ✓
+5		3.1	74.7 ✓

77.75

BANCROFT

119

77.8

C		3.0	74.8 ✓
1/4		3.7	74.1 ✓
+3		4.2	73.6 ✓
cb		4.6	73.2 ✓
W		4.1	73.7 ✓
	S rt		
W on Com cb		4.70	73.05 ✓
cb		4.9	72.9 ✓
1/4		4.6	73.2 ✓
C		4.1	73.7 ✓
1/4		4.6	73.2 ✓
cb		6.7	71.1 ✓
E		6.8	71.0 ✓
	Culvert + cleavert on S gutter		see plans for clay st grading
	+7		
E		7.3	70.5 ✓
cb		7.3	70.5 ✓
W		6.3	71.5 ✓
+5		5.2	72.6 ✓
C		4.9	72.9 ✓
1/4		5.0	72.8 ✓
cb		5.4	72.4 ✓
W		5.5	72.3 ✓
	S 1/4		
W		3.7	72.1 ✓
cb		5.8	72.0 ✓

77.75

77.8

1/4	5.5	72.3 ✓
e	5.6	72.2 ✓
+ 1/4	5.8	72.0 ✓
1/4	6.8	71.0 ✓
cb	7.5	70.3 ✓
+ 1/2	7.7	70.1 ✓
E	7.5	70.3 ✓
	⊕	
E	8.4	69.4 ✓
cb	8.3	69.5 ✓
1/4	7.5	70.3 ✓
c	6.9	70.9 ✓
1/4	6.8	71.0 ✓
cb	6.8	71.0 ✓
w	6.5	71.3 ✓
	N 1/4	
w	7.3	70.5 ✓
cb	7.5	70.3 ✓
1/4	7.6	70.2 ✓
e	7.7	70.1 ✓
1/4	8.4	69.4 ✓
cb	9.1	68.7 ✓
E	9.5	68.3 ✓
	Ncb	
E	9.6	68.2 ✓
cb	9.2	68.6 ✓

one Cent. Approach to

Auto Drive

77.75

BANCROFT

50

77.8

1/4	9.0	68.8 ✓
c	8.7	69.1 ✓
1/4	8.2	69.6 ✓
cb	7.6	70.2 ✓
w on cent cb	7.67	70.08 ✓
	Culvert + cleanout	on N gutter
	+ 3	
w	7.5	70.3 ✓
cb	7.7	70.1 ✓
1/4	7.9	69.9 ✓
c	8.0	69.8 ✓
1/4	8.6	69.2 ✓
cb	9.2	68.6 ✓
E	9.7	68.1 ✓
	N/L CLAY	
E	10.0	67.8 ✓
	Foot Double Garage	E of EL
cb	9.3	68.5 ✓
1/4	8.8	69.0 ✓
c	8.8	69.0 ✓
1/4	8.3	69.5 ✓
cb	8.1	69.7 ✓
w	7.6	70.2 ✓
T.P.	12.4	70.28
	10' N	70.3
w	0.3	70.0 ✓
cb	0.7	69.6 ✓

7028

70.3

1/4		1.1	69.2✓
C		1.3	69.0✓
1/4		1.6	68.7✓
cb		1.9	68.4✓
E		2.9	67.4✓
+15	= NL of Davis Gauge	10.6	59.7✓
	17' N		
-15		11.0	59.3✓
-3		7.6	62.7✓
E		3.4	66.9✓
cb		2.1	68.2✓
1/4		1.8	68.5✓
C		1.7	68.6✓
1/4		1.6	68.7✓
cb		1.7	69.2✓
1/4		0.6	69.7✓
	20' N		
1/4		0.6	69.7✓
cb		1.0	69.3✓
1/4		1.7	68.6✓
C		1.8	68.5✓
1/4		1.8	68.5✓
+8		2.1	68.2✓
cb		4.5	65.8✓
+5		5.7	64.6✓
+6		5.1	65.2✓

7028

BANCROFT 51

70.3

E		6.8	63.5✓
+4		8.3	62.0✓
+10		10.9	59.4✓
+15		11.4	58.9✓
	40' N		
-20		16.5	53.8✓
E		13.7	57.2✓
cb		9.7	60.6✓
+5		8.7	61.6✓
1/4		6.7	63.6✓
+5		3.7	64.6✓
C		3.0	67.3✓
1/4		2.6	67.7✓
cb		1.8	68.5✓
1/4		0.9	69.4✓
	50' N		
1/4		1.7	68.6✓
cb		2.2	68.1✓
1/4		3.1	67.2✓
+7		3.9	66.4✓
C		5.3	65.0✓
1/4		9.0	61.3✓
cb		11.5	58.8✓
E		13.8	56.5✓
+10		15.0	55.3✓
+20		16.4	53.9✓

7028

70.3

75' N

-20	17.1	53.2 ✓
E	14.3	56.0 ✓
+8	13.3	57.0 ✓
cb	12.6	57.7 ✓
+6	11.9	58.4 ✓
1/4	10.5	59.8 ✓
C	5.5	64.8 ✓
+5	4.4	65.9 ✓
1/4	4.0	66.3 ✓
cb	3.5	66.8 ✓
N	3.2	67.1 ✓

80' N = Eucalyptus tree 8" diam on w. cb line

100' N

N	3.2	67.1 ✓
cb	3.6	66.7 ✓
1/4	3.9	66.4 ✓
C	4.8	65.5 ✓
+5	6.5	63.8 ✓
1/4	8.0	62.3 ✓
cb	10.5	59.8 ✓
E	12.4	57.9 ✓
+10	14.2	56.1 ✓
+20	15.5	54.8 ✓
115' N		
-20	14.2	56.1 ✓

7028

70.3

BANCROFT

52

E	10.9	59.4 ✓
+2	10.1	60.2 ✓
cb	9.1	61.2 ✓
+6	8.2	62.1 ✓
+8	7.6	62.7 ✓
1/4	7.2	63.1 ✓
C	5.0	65.3 ✓
+5	3.8	66.5 ✓
1/4	3.6	66.7 ✓
cb	2.5	67.8 ✓
N	0.3	70.0 ✓

125' N

N	0.3	70.0 ✓
cb	2.5	67.8 ✓
1/4	3.8	66.5 ✓
+5	4.3	66.0 ✓
C	5.5	64.8 ✓
1/4	7.7	62.6 ✓
+2	7.7	62.6 ✓
+8	9.2	61.1 ✓
cb	9.5	60.8 ✓
+8	10.2	60.1 ✓
E	11.3	59.0 ✓
+10	12.4	57.7 ✓
+20	14.0	56.3 ✓

7028

70.3

35 N of MC clay on # = M.H.

220

68.08 ✓

on RIM

150' N

-20

14.7

55.6 ✓

E

12.3

58.0 ✓

+3

11.8

58.5 ✓

+6

11.0

59.3 ✓

cb

10.6

59.7 ✓

+5

10.5

59.8 ✓

+6

9.8

60.5 ✓

1/4

8.9

61.4 ✓

+5

8.0

62.3 ✓

C = M.H.

6.57

63.71 ✓

on RIM

1/4

6.3

64.0 ✓

+5

4.9

65.4 ✓

cb

4.1

66.2 ✓

W

2.3

68.0 ✓

175' N

W

3.7

66.6 ✓

cb

6.0

64.3 ✓

1/4

8.1

62.2 ✓

C

8.3

62.0 ✓

+6

10.5

59.8 ✓

1/2

10.7

59.6 ✓

+2

10.6

59.7 ✓

+3

11.5

58.8 ✓

7028

BANCROFT

53

cb

11.7 58.6 ✓

E

13.2 57.1 ✓

+15

14.3 56.0 ✓

200' N

-15

15.3 55.0 ✓

E

14.2 56.1 ✓

cb

13.0 57.3 ✓

1/4

12.1 58.2 ✓

C

10.7 59.6 ✓

+6

9.3 61.0 ✓

1/4

9.2 61.1 ✓

+5

8.6 61.7 ✓

cb

7.1 62.9 ✓

W

5.3 65.0 ✓

225' N

W

7.3 63.0 ✓

cb

8.8 61.5 ✓

+5

9.6 60.7 ✓

1/4

9.7 60.6 ✓

+4

9.9 60.4 ✓

C

11.0 59.3 ✓

1/4

12.6 57.7 ✓

cb

13.3 57.0 ✓

E

14.2 56.1 ✓

+15

15.6 54.7 ✓

70.28

70.3

250' N

-15	15.9	54.4 ✓
E	14.6	55.7 ✓
cb	13.7	56.6 ✓
1/2	12.7	57.6 ✓
+7	11.7	58.6 ✓
c	10.7	59.6 ✓
+3	10.1	60.2 ✓
1/2	9.9	60.4 ✓
+8	9.7	60.6 ✓
cb	9.3	61.0 ✓
W	8.3	62.0 ✓

265' N of Basement Garage

275' N

895	61.33 ✓	main L. dirt floor
W	8.3	62.0 ✓
cb	9.6	60.7 ✓
1/4	9.8	60.5 ✓
c	10.7	59.6 ✓
+5	12.1	58.2 ✓
1/4	12.6	57.7 ✓
+5	13.8	56.5 ✓
cb	13.9	56.4 ✓
E	14.6	55.7 ✓
+15	15.5	54.8 ✓

70.28

BANCROFT 54

70.3

295' N

-15	14.7	55.6 ✓
E	13.7	56.6 ✓
cb	12.9	57.4 ✓
1/2	12.1	58.2 ✓
+7	11.5	58.8 ✓
c	10.8	59.5 ✓
+3	10.3	60.0 ✓
1/4	9.7	60.6 ✓
cb	9.8	60.5 ✓
+5	9.3	61.0 ✓
W	8.5	61.8 ✓

301.40' N = SL of Webster - 80' wide

W	8.6	61.7 ✓	14' 5/8"
+5	9.5	60.8 ✓	13' 1/4"
cb	9.7	60.6 ✓	
1/4	9.9	60.4 ✓	
c	10.7	59.6 ✓	
1/2	11.6	58.7 ✓	
cb	12.1	58.2 ✓	
E	12.3	58.0 ✓	
+6	14.2	56.1 ✓	
+10	14.1	56.2 ✓	
T.P.	10.35	68.98	11.65 58.63 ✓
-		Sdb	
-10	12.6	56.4 ✓	

6898

(69.0)

-6	12.4	56.6 ✓
-2	11.2	57.8 ✓
E	10.4	58.6 ✓
cb	10.3	58.7 ✓
1/4	10.1	58.9 ✓
c	9.1	59.9 ✓
1/2	8.3	60.7 ✓
cb	8.1	60.9 ✓
w	7.7	61.3 ✓
w on Cem. cb	8.81	60.17 ✓
	S 1/4	
w	7.5	61.5 ✓
cb	7.6	61.4 ✓
1/4	7.9	61.1 ✓
c	9.0	60.0 ✓
1/4	10.3	58.7 ✓
cb	10.2	58.8 ✓
E	10.2	58.8 ✓
+3	11.6	57.4 ✓
+10	12.4	56.6 ✓
	E	
-10	12.1	56.9 ✓
-5	11.6	57.4 ✓
E	9.9	59.1 ✓
cb	9.9	59.1 ✓
1/2	9.6	59.4 ✓

6898

(69.0)

BANCROFT 55

c	8.7	60.3 ✓
1/4	8.1	60.9 ✓
cb	7.6	61.4 ✓
w	7.2	61.8 ✓
	N 1/4	
w	7.1	61.9 ✓
cb	7.6	61.4 ✓
1/4	8.1	60.9 ✓
c	8.5	60.5 ✓
1/4	9.3	59.7 ✓
cb	9.5	59.5 ✓
E	9.7	59.3 ✓
+8	12.2	56.8 ✓
+10	12.0	57.0 ✓
	N cb	
-10	11.5	57.5 ✓
-8	11.7	57.3 ✓
E	9.1	59.9 ✓
cb	9.2	59.8 ✓
1/4	8.9	60.1 ✓
c	8.7	60.3 ✓
1/4	8.1	60.9 ✓
cb	7.5	61.5 ✓
w on Cem. cb	6.77	62.21 ✓
	NL of Webster	
w	5.9	63.1 ✓

6898

69.0

db	6.5	62.5✓
1/4	7.0	62.0✓
c	7.6	61.4✓
1/2	8.0	61.0✓
db	8.7	60.3✓
F	8.7	60.3✓
+8	11.5	57.5✓
+10	11.6	57.4✓
3' N		
-10	11.4	57.6✓
-6	11.1	57.9✓
-2	10.6	58.4✓
E	8.7	60.3✓
db	8.1	60.9✓
1/2	7.8	61.2✓
c	7.2	61.6✓
1/4	6.5	62.5✓
db	6.0	63.0✓
+5	5.1	63.9✓
w	3.4	65.6✓
8' N		
w	3.2	65.8✓
db	5.4	63.6✓
1/2	6.1	62.9✓
c	6.8	62.2✓
+7	8.5	60.5✓

6898

BANCROFT

56

69.0

1/2	8.7	60.3✓
db	9.5	59.5✓
E	10.2	58.6✓
+10	11.2	57.8✓
25' N		
-10	11.5	57.5✓
E	10.2	58.8✓
db	9.5	59.5✓
+6	9.0	60.0✓
+8	8.4	60.6✓
1/4	8.3	60.7✓
C	6.2	62.7✓
1/2	5.2	63.8✓
db	4.4	64.6✓
+8	3.4	65.6✓
w	2.3	66.7✓
50' N		
w	1.0	68.0✓
+4	3.0	66.0✓
db	3.7	65.3✓
+7	4.2	64.8✓
1/4	4.8	64.2✓
+8	5.3	63.7✓
C	5.9	63.1✓
1/2	7.9	61.1✓
+4	8.1	60.9✓

6898

69.0

+b	8.7	60.3✓
cb	9.0	60.0✓
E	10.2	58.8✓
+10	11.2	57.8✓
75' N		
-10	11.0	58.0✓
E	9.8	59.2✓
cb	8.5	60.5✓
1/2	7.4	61.6✓
c	5.0	64.0✓
1/2	4.3	64.7✓
cb	2.8	66.2✓
w	1.0	68.0✓
100' N		
w	0.7	68.3✓
+b	2.6	66.4✓
cb	3.0	66.0✓
1/2	4.5	64.5✓
c	5.1	63.9✓
+5	5.4	63.6✓
1/2	7.6	61.4✓
cb	8.7	60.3✓
E	9.9	59.1✓
+10	11.2	57.8✓
125' N		
-10	11.3	57.7✓

6898

BANCROFT 57

69.0

E	10.0	59.0✓
cb	9.9	59.1✓
+3	8.2	60.8✓
1/2	7.6	61.4✓
+5	2.9	64.1✓
c	4.9	64.1✓
1/2	4.8	64.2✓
cb	3.0	66.0✓
w	0.5	68.5✓
127' N		
w	0.3	68.7✓
cb	3.0	66.0✓
+4	3.3	65.7✓
+7	4.3	64.7✓
w 1/2	4.7	64.3✓
130' N		
w 1/2	4.6	64.4✓
cb	3.3	65.7✓
w	3.0	66.0✓
w	134' N = Bot of Garage	3.0 66.0✓
139' N		
w	2.8	66.2✓
cb	3.1	65.9✓
140' N		
w	0.7	68.3✓
cb	2.9	66.1✓

Dir St.
Dirt floor

6898

(69.0)

1/4	3.9	65.1 ✓
c	4.8	64.2 ✓
+7	5.5	63.5 ✓
1/4	6.7	62.3 ✓
+5	8.3	60.7 ✓
cb	9.0	60.0 ✓
E	9.9	59.1 ✓
+10	10.8	58.2 ✓
154 w/		
-1.0	10.7	58.3 ✓
E	9.9	59.1 ✓
cb	8.9	60.1 ✓
1/4	7.8	61.2 ✓
c	6.3	62.7 ✓
1/4	4.3	64.7 ✓
cb	2.2	66.8 ✓
w/	0.1	68.9 ✓
160 w/		
w/	1.3	67.7 ✓
cb	3.4	65.6 ✓
+3	3.8	65.2 ✓
+6	4.7	64.3 ✓
1/4	5.4	63.6 ✓
c	7.0	62.0 ✓
1/4	8.0	61.0 ✓
cb	9.1	59.9 ✓

6898

BANCROFT 58

E		10.1	58.9 ✓
+10		10.9	58.1 ✓
TP	12.84	81.81	0.01 68.97 ✓
TP	858	90.39	0.00 81.81 ✓
or SW Mon CTRY + 32 nd		12.31	78.08 ✓ 78.06

5/14/25

LOGAN AVE XSEX.
36th to 38th

80' inside
11' 1/2
12' 1/2

90.75

3.07 90.75 87.68

wl 38th

n	6.1	84.7
cb	7.2	83.6
1/2	8.2	82.6
c	8.7	82.1
1/2	8.9	81.9
cb	9.1	81.7
S	9.2	81.8

25' wl

S	10.1	80.7
cb	10.0	80.8
1/2	10.0	80.8
c	9.7	81.1
1/2	9.2	81.4
cb	8.6	82.2
N	7.3	83.4

50' wl

n	9.2	81.6
cb	9.8	81.0
1/2	10.1	80.7
C	10.5	80.3
1/2	10.7	80.1
cb	10.7	80.1
S	10.9	79.9

75' wl

S	11.3	79.5
cb	11.0	79.8
1/2	11.4	79.4
c	11.0	79.8
1/2	11.2	79.6
cb	10.8	80.0
N	10.6	80.2

100' wl

N	12.5	88.3
cb	12.4	88.4
1/2	12.0	88.8
c	11.9	88.9
1/2	11.9	88.9
cb	12.0	87.8
S	12.2	87.6

125' wl

S	13.3	87.5
cb	12.8	88.0
1/2	12.6	88.2
c	12.4	88.4
1/2	12.4	88.4
cb	12.5	88.3
N	12.5	88.3

150' wl

N	12.4	88.4
---	------	------

90.75

cb		12.6	88.2	
1/4		12.9	87.9	
c		12.8	88.0	
1/4		13.1	87.7	
cb		13.9	86.9	
S		14.3	86.5	
T.P.	239	81.12	12.0~	78.73
	175' w			
S		4.1	77.0	
cb		3.9	77.2	
1/4		3.6	77.5	
c		3.3	77.8	
1/4		3.2	77.9	
cb		2.4	78.7	
nl		2.2	78.9	
	200' w			
nl		2.3	78.8	
cb		2.8	78.3	
+8		2.9	78.2	
+10		3.3	77.8	
1/4		3.5	77.6	
e		3.6	77.7	
1/4		3.4	77.7	
+6		3.4	77.7	
+7		3.2	77.9	
cb		3.5	77.6	
S		4.1	77.0	

81.12

LOGAN

60

	225' w			
S		3.9	77.2	
cb		4.2	76.9	
1/4		3.9	77.2	
c		3.6	77.5	
1/4		3.7	77.4	
+5		3.2	77.9	
cb		3.0	78.1	
nl		2.6	78.5	
	250' w			
nl		2.6	78.5	
cb		3.1	78.0	
+7		3.4	77.7	
1/4		3.7	77.4	
c		3.8	77.3	
1/4		4.0	77.1	
cb		4.6	76.5	
S		5.0	76.1	
	275' w			
S		4.7	76.4	
cb		4.5	76.6	
+9		4.4	76.7	
1/4		4.6	76.5	
c		4.2	76.9	
1/4		4.1	77.0	
+5		3.8	77.3	

8112

+6		3.6	77.5
cb		3.2	77.9
N		2.6	78.5
	300' W		
N		3.1	78.0
cb		3.4	77.7
+7		3.6	77.5
+8		3.9	77.2
1/4		4.1	77.0
c		4.1	77.0
1/4		4.3	76.8
+4		4.5	76.6
+5		4.0	77.4
cb		4.4	76.7
S		4.9	76.2
	325' W		
S		4.1	77.0
cb		3.6	77.5
+8		3.9	77.2
+9		4.0	77.1
1/4		4.2	76.9
c		4.3	76.8
1/4		4.4	76.7
+5		4.2	76.9
+6		3.9	77.2
cb		3.9	77.2
N		3.7	77.4

8112

LOGAN

61

	350' W		
N		4.7	76.4
cb		4.6	76.5
+8		4.6	76.5
+9		4.9	76.2
1/4		5.0	76.1
c		4.6	76.5
1/4		4.6	76.5
+4		4.5	76.6
+5		4.0	77.1
cb		4.0	77.1
S		4.2	76.9
	400' W		
S		5.8	75.3
cb		5.8	75.3
+8		5.9	75.2
+10		6.7	74.4
1/4		6.7	74.4
c		6.6	74.5
1/4		6.9	74.2
cb		6.7	74.4
N		6.5	74.6
	425' W		
+5		9.8	71.3
N		9.1	72.0
cb		8.2	72.9

8112

1/4		7.7	73.4	
c		7.5	73.6	
1/4		7.6	73.5	
cb		7.3	73.8	
S		7.0	74.1	
	450' W			
S		8.6	72.5	
cb		9.2	71.9	
1/4		9.1	72.0	
c		9.4	71.7	
1/4		10.0	71.1	
+11		10.5	70.6	
cb		11.1	70.0	
N		13.7	67.4	
+10		14.5	66.6	
	475' W			
-10		17.3	63.8	
N		16.6	64.5	
cb		13.4	67.7	
1/4		12.0	69.1	
c		11.3	69.8	
1/4		10.6	70.5	
cb		11.2	69.9	
S		11.2	69.9	
T.P	1.97	70.53	12.56	68.56

70.53

LOGAN

60

	500' W		
S		3.2	67.3
cb		4.0	66.5
1/4		3.9	66.6
c		4.6	65.9
1/4		5.7	64.8
+7		6.4	64.1
cb		7.3	63.2
N		9.5	61.0
+10		9.8	60.7
	525' W		
-10		12.6	57.9
N		10.8	59.7
+7		9.3	61.2
cb		8.5	62.0
1/4		7.8	62.7
c		6.0	64.5
+6		5.1	65.4
1/4		5.3	65.2
cb		5.6	64.9
S		5.7	64.8
	550' W		
S		7.4	63.1
cb		7.2	63.3
1/4		6.8	63.7
c		6.9	63.6

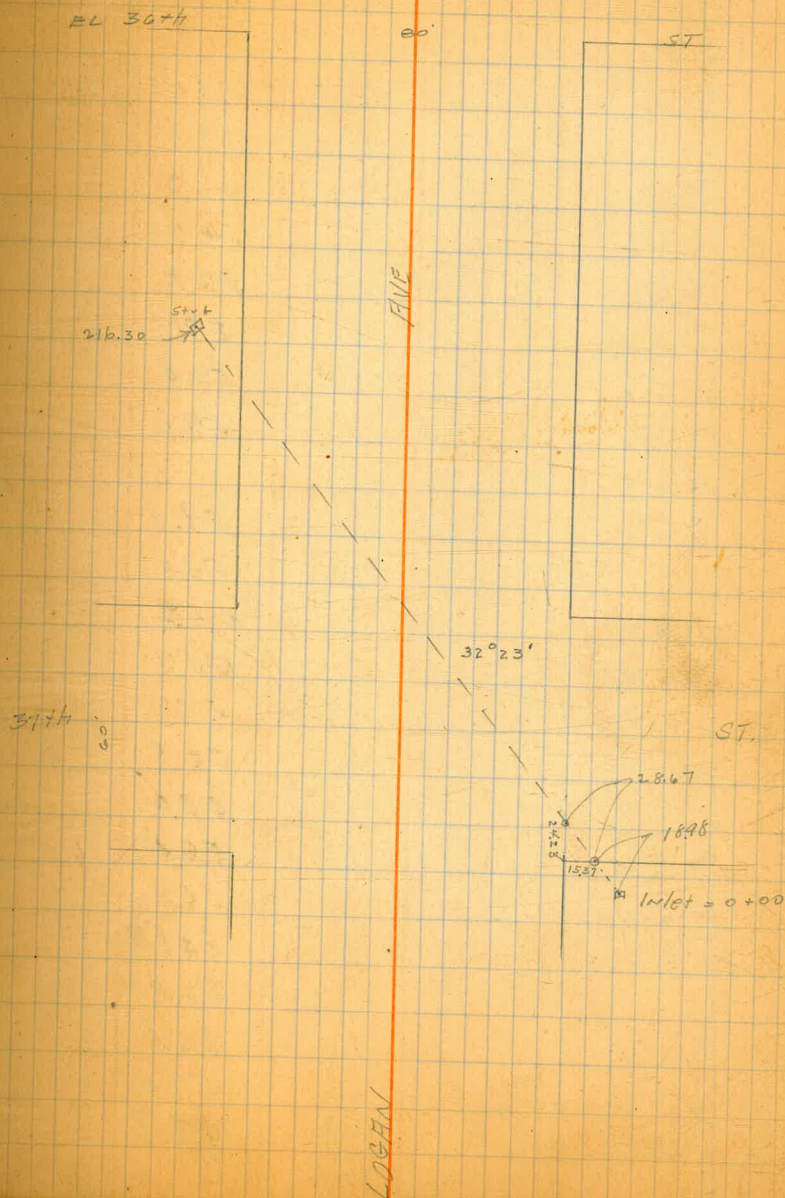
7053

1/2			7.8	62.7
cb			10.5	60.0
N			12.9	57.6
+15			14.5	56.0
	575 W			
-15			16.6	53.9
N			15.6	54.9
cb			13.6	56.9
1/2			10.0	60.3
c			8.3	62.2
1/2			8.0	62.5
cb			8.0	62.3
S			8.9	61.6
	600 W = EL 3774			
S			9.7	60.8
cb			9.8	60.7
1/2			10.6	59.9
c			12.2	58.3
1/2			15.1	55.4
cb			15.7	54.8
N			16.5	54.0
+15			16.4	54.1
T.P.	11.45	81.88	0.10	70.43
T.P.	9.03	90.13	0.78	81.10
check to B.M.			2.49	87.64

LOGAN

63

Location of Culvert on Logan at 37th



61.15

C		10.2	51.0
1/4		10.0	51.2
dt.		9.7	51.5
✓		9.1	52.1
+10		6.9	54.3
T.P.	391	55.02	100 ✓
			51.11
Levels for culvert inlet = 0100			
0100 exist		1.38	53.64
+10		1.2	53.6
+15		0.9	54.1
+18.98 = pt 37th		1.3	53.7
+47.65 = NW Logan		2.3	52.7
+60		2.8	52.2
+75		2.8	52.2
+105		4.1	50.6
+10		5.5	49.5
+30		7.8	47.2
+50		8.5	46.5
+80		9.6	45.4
+95		9.6	45.4
+97		9.1	45.9
+108		9.2	45.8
+110		11.0	44.0
+16.30 = outlet		10.38	44.64

55.02

Logan

65

25' W of W/L	37th	
1	2.2	52.8
+3	3.1	51.9
cb	4.1	50.9
+8	4.4	50.6
1/4	6.0	49.0
C	7.0	48.0
+6	6.5	48.5
1/4	5.9	49.1
cb	5.7	49.3
S	5.3	49.7
50' W		
-5	7.0	48.0
S	7.3	47.7
dt	7.3	47.7
+6	7.7	47.3
1/4	8.1	46.9
+7	8.0	47.0
+8	6.7	48.3
C	6.3	48.7
1/4	5.2	49.8
cb	3.6	51.4
✓	2.1	52.9
75' W		
1	2.7	52.3
cb	3.5	51.5
+3	4.0	51.0

550v

1/2	5.7	49.3
c	7.3	47.7
1/4	8.2	46.8
+8	8.9	46.1
+9	9.5	45.5
cb	9.7	45.3
+10	9.2	45.8
S	8.7	46.3
+5	8.4	46.6

100' w

-10	10.4	44.6
S	10.0	45.0
cb	8.8	46.2
1/2	8.0	47.0
c	7.3	47.7
1/4	5.6	49.4
+7	4.8	50.2
cb	4.6	50.4
+6	4.6	50.4
N	4.0	51.0

125' w

N	4.3	50.7
+7	5.0	50.0
cb	5.9	49.1
1/4	6.4	48.6
c	7.3	47.7

5502

LOCAN

66

1/2	7.7	47.3
+7	8.4	46.6
cb	9.0	46.0
S	9.3	45.7
+1	10.2	44.8
+10	10.3	44.7

150' w

-5	9.7	45.3
S	8.5	46.5
cb	8.2	46.8
1/2	7.5	47.6
c	6.7	48.3
1/4	5.9	49.1
cb	5.3	49.7
+5	4.5	50.5
+6	4.0	51.0
N	3.6	51.4

175' w

N	1.6	53.4
cb	3.3	51.7
1/2	4.2	50.8
c	4.7	50.3
1/4	5.6	49.4
cb	6.5	48.5
S	7.3	47.7
+5	7.3	47.7

5502

	200 W			
S			5.5	19.5
cb			5.3	19.7
1/2			3.9	51.1
C			3.2	51.8
1/4			2.8	52.2
cb			2.3	52.7
N			0.1	54.6
T.P.	286	57.19	0.69	54.33
	225 W			
N			2.2	55.0
+5			3.1	53.8
cb			4.1	53.1
1/2			4.2	53.0
C			4.7	52.5
1/4			5.5	51.7
cb			5.8	51.4
+7			5.6	51.6
S			5.5	51.7
	250 W			
S			5.1	51.8
cb			5.4	51.8
1/4			5.2	52.0
+5			4.8	52.4
C			4.5	52.7
1/4			4.1	53.1

57.19

LOGAN

67

cb		3.8	53.4
+9		3.2	54.0
N		2.0	55.2
	275 W		
N		2.7	54.5
+5		4.1	53.1
cb		4.5	52.7
+8		4.0	53.2
1/4		4.0	53.2
C		4.6	52.6
1/4		5.2	52.0
+6		5.7	51.5
cb		5.6	51.6
S		5.6	51.6
	300 W		
S		6.1	51.1
cb		6.3	50.9
1/4		6.0	51.3
+4		5.6	51.6
C		5.4	51.8
1/4		5.2	52.0
cb		5.1	51.8
+9		5.1	52.1
N		4.5	52.7
	325 W		
N		6.3	50.9

57.19

cb	6.7	50.5
1/2	6.6	50.6
c	6.6	50.6
1/2	7.0	50.2
cb	7.3	49.9
S	7.5	49.7

350 w

-5	9.5	47.7
S	9.2	48.0
+10	8.9	48.3
cb	8.4	48.8
1/2	8.0	49.3
c	7.4	49.9
1/2	7.1	50.1
1/4	7.3	49.9
cb	7.2	50.0
N	7.2	50.0

375 w

N	6.7	50.5
cb	6.5	50.7
+6	6.3	50.9
1/2	6.9	50.3
c	7.3	49.9
1/2	7.9	49.3
cb	8.7	48.5
S	9.1	48.1
+5	9.1	48.1

57.19

LOGAN

68

400 w

S	7.8	49.4
d	7.1	50.1
1/2	6.5	50.7
c	5.6	51.6
1/2	5.4	51.8
cb	5.2	52.0
N	4.7	52.5

425 w

N	4.0	53.2
45	4.7	52.5
cb	5.1	52.1
1/2	5.5	51.7
c	6.0	51.2
1/2	6.2	51.0
cb	6.8	50.6
S	7.1	50.1

450 w

S	7.3	49.9
cb	7.6	49.6
1/2	7.1	50.1
c	6.6	50.6
1/2	6.3	50.9
d	5.6	51.6
+9	5.3	51.9
N	4.5	52.7

475' w / 57.19

N	4.7	52.5
cb	5.1	52.1
+5	5.3	51.9
+10	6.0	51.2
1/4	6.2	51.0
C	6.3	50.9
1/2	7.3	49.9
cb	7.6	49.6
S	7.6	49.6
500' w		
S	7.1	50.1
cb	7.4	49.8
1/2	7.0	50.2
C	6.2	50.8
1/2	5.5	51.7
+8	4.9	52.3
cb	5.0	52.2
+9	4.8	52.4
1/2	4.0	53.2
525' w		
1/2	3.1	54.1
+5	3.8	53.4
cb	4.2	53.0
+11	4.3	52.9
1/2	4.0	53.2
C	4.7	52.5

57.19

LOGAN 69

1/2	5.6	51.6
cb	6.2	51.0
S	6.5	50.7
550' w		
S	5.8	51.4
cb	5.3	51.9
+10	5.0	52.2
1/2	4.6	52.6
C	3.7	53.5
1/4	3.8	53.4
cb	4.3	52.9
1/2	3.6	53.6
575' w		
1/2	4.7	52.5
cb	5.0	52.2
1/2	4.7	52.5
C	4.2	53.0
1/4	5.2	52.0
1/2	5.9	51.3
S	6.4	50.8
600' w = EL of 3.6 + h = 60' wide		
S	9.6	47.6 10' cts
cb	8.8	48.4 10' 1/4 s
1/2	8.5	48.9
C	7.8	49.4
+5	8.4	48.8

5719

1/4		7.9	49.3
45		7.2	50.0
cb		7.2	50.0
N		6.3	50.8
	+2		
N		7.2	50.0
cb		7.9	49.3
1/5		8.3	48.9
C		8.9	48.3
1/4		9.6	47.6
cb		10.3	46.9
S		10.9	46.3
	E cb		
S		11.1	46.1
cb		10.3	46.9
1/4		9.6	47.6
C		9.0	48.2
1/4		8.2	49.0
cb		7.4	49.8
N		6.8	50.4
	E 1/5		
N		7.0	50.2
cb		7.6	49.6
1/4		8.6	48.6
C		9.4	47.8
1/4		9.8	47.4

5719

LOGAN 70

cb		10.3	46.9
S		11.2	46.0
	E of 36th		
S		12.2	45.0
cb		11.6	45.6
1/4		10.6	46.6
C		9.7	47.5
1/4		8.7	48.5
cb		7.5	49.7
N		7.3	49.9

with 36th occupied by grove of Eucalyptus

T.P. 11.80 68.68 0.31 5688

check to T.P. 212 68.56 68.56

36670

GRADE

+ 70	8.0	58.7		
+ 80	11.5	55.2		
+ 85	9.5	57.2		
29	8.0	58.7	359.0	58.7
+ 75	8.4	58.3		
+ 50	7.9	58.8	58.1	59.0
30	9.3	57.4	58.0	57.1
+ 50	9.0	57.7	7.0	57.5
31	10.1	56.6	57.0	56.4
+ 25	10.6	56.1	57	
+ 50	10.5	56.2	56.2	55.8
TP	4.35	360.15	10.90	355.80
32	3.4	54.8	56	56.4
+ 50	4.7	55.5	55.5	55.1
+ 40	4.4	56.8		
33	3.7	54.5	355.0	54.5
+ 50	7.3	52.9		52.7
34	9.0	51.2		50.7
+ 50	10.5	49.7	349.6	48.2
+ 60	11.6	48.6		
+ 90	12.2	48.0		
35	11.4	48.8	348.5	48.4
+ 10	10.8	49.4		
+ 45	12.0	48.2		
+ 50	15.7	44.5		42.8
+ 58	11.7	48.5		

Blow off.

36015

GRADE 72

36	11.7	48.5		48.4
+ 20	10.3	49.9		
+ 42	10.8	49.4		
+ 50	11.7	48.5		49.2
+ 89	11.2	49.0		
+ 97	15.5	44.7		
37	12.5	47.7		47.8
+ 05	10.0	50.2		
+ 30	11.7	48.5		
+ 50	11.0	49.2		47.9
+ 58	12.1	48.1		
38	10.6	49.6	340.5	49.1
+ 38	10.3	49.9		49
+ 50	8.9	51.3	351.5	51.0
+ 75	7.4	52.8		
39	6.0	54.2		53.9
+ 30	4.9	57.3	357.5	
+ 50	2.5	57.7		56.9
+ 97	4.0	58.2		
40	2.6	57.6	358.5	56.1
TP	8.30	364.43	40.2	56.13
+ 05	5.8	58.6		
+ 35	6.6	57.8		
+ 50	6.2	58.2	58.3	57.5
41	7.5	56.9	58.2	56.1
+ 50	6.6	57.8	58.0	56.6

364.43

GRADE

42	67	57.7	57.8	56.9
+50	65	57.9	57.6	57.5
43	69	57.5	357.5	57.2

N

cb

1/4

C

1/4

cb

S

S

cb

+6

1/4

C

1/4

cb

N

continued from page 78

HT 78.98

15' E of W.L. Bancroft

74 71.6

72 71.8

65 71.5

73 71.7

77 71.3

78 71.2

85 70.5

30' E of W.L. Bancroft.

10.0 69.0

9.6 69.4

10.0 69.0

10.2 68.8

10.1 68.9

9.7 69.3

9.6 69.4

9.7 69.3

J ST

73

Level Alley

North Zangibar Court Mission Beach
From N.E. Mission Blvd to N Edge Board Walk
South Lure Alley

BM	917	1028	1-11	North Point Sect Mission Blvd fact
0+00	- N.E. Mission Blvd		8.67	1.61 Top Curb
+10			9.0	1.3
+50			9.1	1.2
1+00			9.0	1.3
+50			8.5	1.8
2+00			7.8	2.5
+50	- Lure Street May		6.5	3.8
+70	" " " "		5.6	4.7
3+00			4.4	5.9
+20	2. Strand May From Sect		3.6	6.7
+50			3.5	6.8
4+00			3.2	7.1
121.6	N.E. Edge Board Walk		3.10	7.18 Top Blk Head

North Lure Alley

1028

8.47	1.81	Top Curb
9.1	1.2	
9.3	1.0	
8.7	1.6	
8.8	1.5	
8.1	2.2	
6.1	4.2	
5.4	4.9	
4.1	6.2	
3.5	6.8	
3.3	7.0	
3.1	7.2	
3.03	7.0	Top Blk Head

Levels Strand Way N. of N. Alley to Mission Beach
From N Line of N Alley to Mission Beach to S Line Pacific Ave

	H.I. 10.28	West Side Strand Way
0+00 = N Line of N Alley Mission Beach	5.6	4.7
+50	5.3	5.0
+100	4.7	5.6
+25 S. L. Court from East Center Block to Pacific Beach	4.6	5.7
+45 N. " " " "	4.6	5.7
+100	3.7	6.6
+35	3.4	6.7
+70	3.7	6.6

H.I. 10.28 East Side Strand Way

6.3	4.0
6.0	4.3
5.8	4.5
5.9	4.4
5.7	4.6
4.7	5.6
4.1	5.9
4.3	6.0

Levels Court Center Block 389 Pacific Beach to side
From 20' N West Mission Blvd to E Line Strand Way

H.I. 10.28

South Side

0+0 = 20' N West Curb Mission Blvd	9.8	0.5
+50	9.7	0.6
+100	8.6	1.7
+50	7.9	2.4
+100	6.7	3.6
+40 = E Line Strand Way	5.7	4.6

H.I. 10.28

North Side Court

9.9	0.4
9.5	0.8
8.8	1.5
8.0	2.3
6.5	3.8
5.7	4.6

Levels Mission Blvd

50' N East to 1st Card

From N Line of N Alley in Mission Beach to S Line Pacific

10.28

76

0+00	= N Line of N Alley Mission Beach	9.1	1.2
	Top Paving Gutter	9.11	1.17
1+50		9.7	0.6
	Top Paving Gutter West Card	9.28	1.00
1+00		9.8	0.5
	Top Paving	9.24	0.94
1+25	= S Line Court	9.8	0.5
	Top Paving	9.38	0.90
1+45	= N Line Court	9.9	0.4
2+00		9.7	0.6
	Top Paving Gutter	9.53	0.75
1+35		9.8	0.5
1+70	= S.L.	10.0	0.3
	Top Paving Gutter	9.60	0.68

9/21/25

Gregory

CROSS SECTION OF
J. ST.
from 32nd to Bancroft

88.75

J ST.

77

	6.49	88.75	82.26	Max NW 32 nd J.	cb	5.1	83.6
		EL 32 nd			N	4.8	83.9
						35' E	
N		7.4	81.3		N	4.5	84.2
cb		7.5	81.2		cb	4.4	84.3
+2		7.4	81.3		1/4	4.4	84.3
+3		6.6	82.1		C	4.6	84.1
1/4	(Figured -Lorry-)	6.6	82.1		1/4	4.5	84.2
C		6.7	82.0		cb	4.7	84.0
+8		6.8	81.9		S	4.9	83.8
+10		6.6	82.3			75' E	
1/4		6.2	82.5		S	5.5	83.2
+12		6.0	82.7		cb	5.2	83.5
cb		7.0	81.7		1/4	4.7	84.0
on cement		7.17	81.58		C	4.6	84.1
S		6.8	81.9		1/4	4.2	84.5
		4' E			cb	4.0	84.7
S		4.9	83.8		N	3.8	84.9
cb		4.8	83.9			125' E	
1/4		4.9	83.8		N	5.5	83.2
+6		5.2	83.5		cb	5.5	83.2
+11		6.0	82.7		1/4	5.7	83.0
C		6.3	82.4		C	6.0	82.7
+7		5.9	82.8		1/4	6.2	82.5
+11		4.9	83.8		cb	6.0	82.7
1/4		4.9	83.8		S	6.1	82.6

88.75

200' E of 32nd.

S	6.0	82.7
cb	5.6	83.1
1/4	5.6	83.1
c	5.8	82.9
1/2	5.9	82.8
cb	5.5	83.2
N	5.0	83.7

250' E

N	4.4	84.3
cb	4.7	84.0
1/4	5.1	83.6
c	5.3	83.4
1/2	5.6	83.1
cb	5.7	83.0
S	6.1	82.6

285' E

S	6.2	82.5
+10	5.7	83.0
cb	5.6	83.1
1/4	5.3	83.4
c	4.9	83.8
1/2	4.6	84.1
cb	4.4	84.3
N	4.3	84.4

88.75

J ST 78

305' E

N	4.1	84.6
+2	4.2	84.5
cb	6.7	82.0
1/4	7.8	80.9
c	7.7	81.0
1/2	8.4	80.3
+4	8.9	79.8
+9	8.9	79.8
cb	8.5	80.2
+4	8.0	80.7
S	8.7	80.0

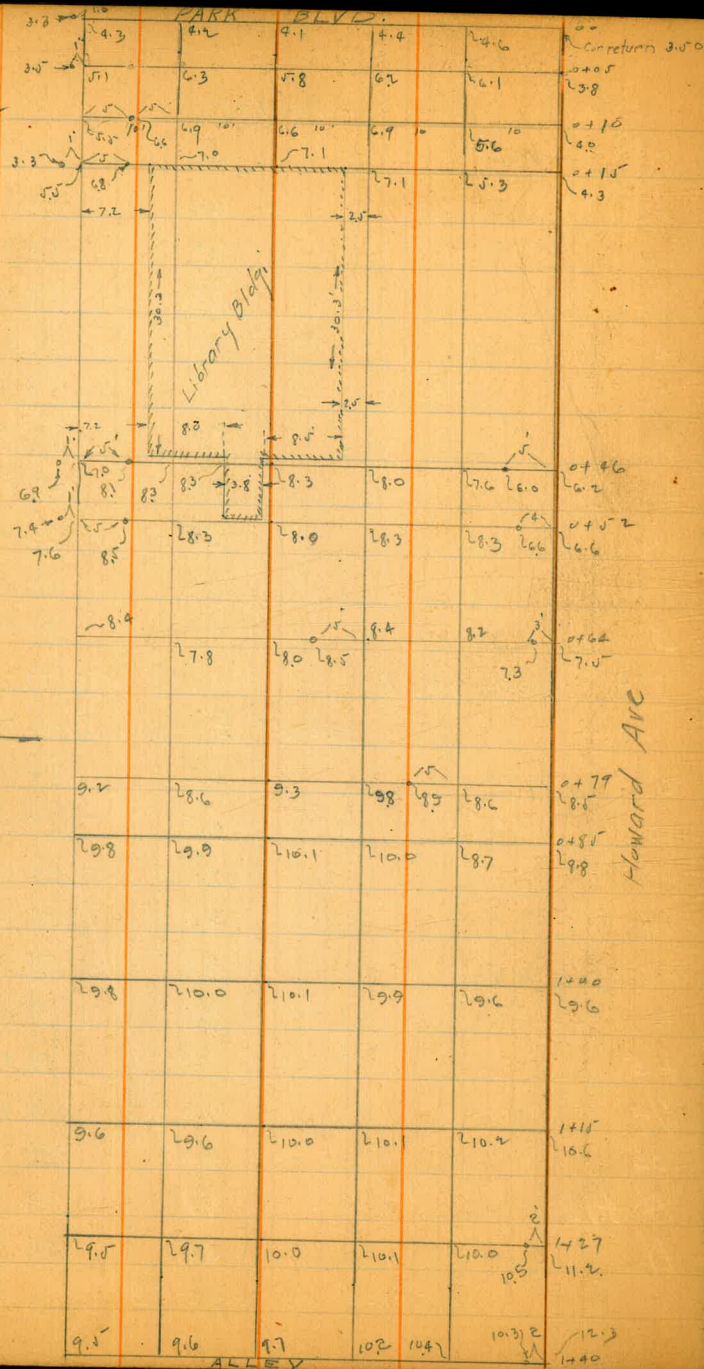
T.P.	0.39	78.98	10.16	78.59
------	------	-------	-------	-------

332.5 ± E = W.L. Bancroft.

S	4.2	74.8
cb	4.7	74.3
+7	4.8	74.2
1/4	3.9	75.1
+2	3.7	75.3
c	4.6	74.4
+5	5.0	74.0
1/4	4.6	74.4
cb	4.3	74.7
+10	4.1	74.9
N	3.5	75.5

continued on page 73

H.I. 343.62



Topog Lot 1 Blk 142 University Hts.
Public Library.

June 16th 25
Daman
Bliss
Northern.

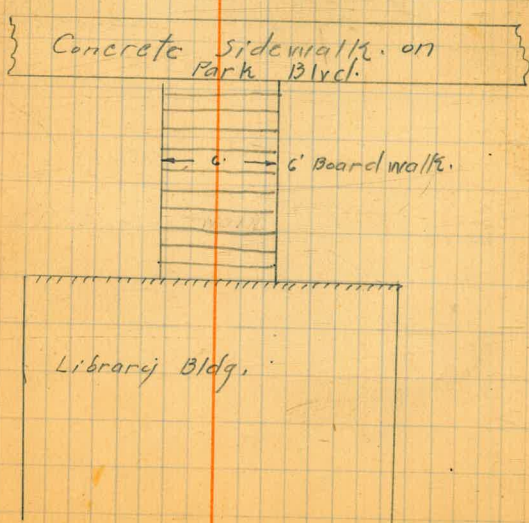
B.P. 342.84
4.07
346.73
6.72
340.121 on Cub
3.41
943.62 H.I.

1.50 Cor
7.1 West = E/c of inner edge of East sidewalk on Park Blvd, where it is intersected by South line of Library lot produced West, Rod 3.20

Inner edge of sidewalk on East side of Park Blvd at Cor Howard Rod 3.42

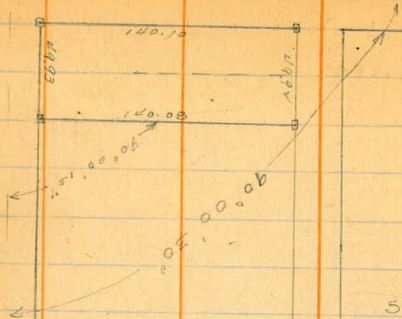
317.85
+ 12.90
330.75
332.40
+ 10.04
342.44
- 2.20
340.24

B.P. N.W. Cor Georgia & Howard.



HOWARD

314.28



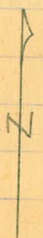
SURVEY OF LOTS

BIK UNIV. HGTS.

FOR SANDIEGO PUBLIC

LIBRARY

Moore
Preston
Walker 6/1/25



PARK

BLVD

43.10'

313.97

Max Cover

DIRECTIONS FOR USE OF TABLES

TABLE No. 1.

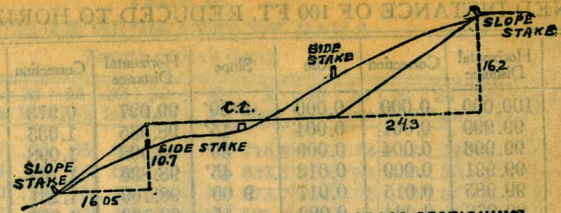
Distance of slope stake from side or shoulder
 stake for any width roadway, slope 1/2 to 1.
 If ground is nearly level, the cut or fill at side
 stake is located by the double entry method in
 the column and top row. The number in both

IMPROVED TABLES
 AND
 INFORMATION

TABLE No. 2.

To find Tangent and External for curve of
 any other degree, divide by degree of curve and
 add correction found in column of corrections.
 Degree of curve with a given L may be found
 by dividing tangent (or external), opposite L by
 given tangent (or external).
 The distance from a point on the tangent to
 the curve is very nearly the square of the tangent
 length divided by twice the radius.

TABLE XII
DISTANCES FROM SIDE STAKES FOR CROSS-SECTIONING



DISTANCES FROM SIDE STAKES FOR CROSS-SECTIONING

SLOPE 1/4 TO 1. ROADWAY OF ANY WIDTH.

	0	.1	.2	.3	.4	.5	.6	.7	.8	.9	
0	0 00	0 15	0 30	0 45	0 60	0 75	0 90	1 05	1 20	1 35	0
1	1 50	1 65	1 80	1 95	2 10	2 25	2 40	2 55	2 70	2 85	1
2	3 00	3 15	3 30	3 45	3 60	3 75	3 90	4 05	4 20	4 35	2
3	4 50	4 65	4 80	4 95	5 10	5 25	5 40	5 55	5 70	5 85	3
4	6 00	6 15	6 30	6 45	6 60	6 75	6 90	7 05	7 20	7 35	4
5	7 50	7 65	7 80	7 95	8 10	8 25	8 40	8 55	8 70	8 85	5
6	9 00	9 15	9 30	9 45	9 60	9 75	9 90	10 05	10 20	10 35	6
7	10 50	10 65	10 80	10 95	11 10	11 25	11 40	11 55	11 70	11 85	7
8	12 00	12 15	12 30	12 45	12 60	12 75	12 90	13 05	13 20	13 35	8
9	13 50	13 65	13 80	13 95	14 10	14 25	14 40	14 55	14 70	14 85	9
10	15 00	15 15	15 30	15 45	15 60	15 75	15 90	16 05	16 20	16 35	10
11	16 50	16 65	16 80	16 95	17 10	17 25	17 40	17 55	17 70	17 85	11
12	18 00	18 15	18 30	18 45	18 60	18 75	18 90	19 05	19 20	19 35	12
13	19 50	19 65	19 80	19 95	20 10	20 25	20 40	20 55	20 70	20 85	13
14	21 00	21 15	21 30	21 45	21 60	21 75	21 90	22 05	22 20	22 35	14
15	22 50	22 65	22 80	22 95	23 10	23 25	23 40	23 55	23 70	23 85	15
16	24 00	24 15	24 30	24 45	24 60	24 75	24 90	25 05	25 20	25 35	16
17	25 50	25 65	25 80	25 95	26 10	26 25	26 40	26 55	26 70	26 85	17
18	27 00	27 15	27 30	27 45	27 60	27 75	27 90	28 05	28 20	28 35	18
19	28 50	28 65	28 80	28 95	29 10	29 25	29 40	29 55	29 70	29 85	19
20	30 00	30 15	30 30	30 45	30 60	30 75	30 90	31 05	31 20	31 35	20
21	31 50	31 65	31 80	31 95	32 10	32 25	32 40	32 55	32 70	32 85	21
22	33 00	33 15	33 30	33 45	33 60	33 75	33 90	34 05	34 20	34 35	22
23	34 50	34 65	34 80	34 95	35 10	35 25	35 40	35 55	35 70	35 85	23
24	36 00	36 15	36 30	36 45	36 60	36 75	36 90	37 05	37 20	37 35	24
25	37 50	37 65	37 80	37 95	38 10	38 25	38 40	38 55	38 70	38 85	25
26	39 00	39 15	39 30	39 45	39 60	39 75	39 90	40 05	40 20	40 35	26
27	40 50	40 65	40 80	40 95	41 10	41 25	41 40	41 55	41 70	41 85	27
28	42 00	42 15	42 30	42 45	42 60	42 75	42 90	43 05	43 20	43 35	28
29	43 50	43 65	43 80	43 95	44 10	44 25	44 40	44 55	44 70	44 85	29
30	45 00	45 15	45 30	45 45	45 60	45 75	45 90	46 05	46 20	46 35	30
31	46 50	46 65	46 80	46 95	47 10	47 25	47 40	47 55	47 70	47 85	31
32	48 00	48 15	48 30	48 45	48 60	48 75	48 90	49 05	49 20	49 35	32
33	49 50	49 65	49 80	49 95	50 10	50 25	50 40	50 55	50 70	50 85	33
34	51 00	51 15	51 30	51 45	51 60	51 75	51 90	52 05	52 20	52 35	34
35	52 50	52 65	52 80	52 95	53 10	53 25	53 40	53 55	53 70	53 85	35
36	54 00	54 15	54 30	54 45	54 60	54 75	54 90	55 05	55 20	55 35	36
37	55 50	55 65	55 80	55 95	56 10	56 25	56 40	56 55	56 70	56 85	37
38	57 00	57 15	57 30	57 45	57 60	57 75	57 90	58 05	58 20	58 35	38
39	58 50	58 65	58 80	58 95	59 10	59 25	59 40	59 55	59 70	59 85	39
40	60 00	60 15	60 30	60 45	60 60	60 75	60 90	61 05	61 20	61 35	40
41	62 00	62 15	62 30	62 45	62 60	62 75	62 90	63 05	63 20	63 35	41
42	63 00	63 15	63 30	63 45	63 60	63 75	63 90	64 05	64 20	64 35	42
43	64 50	64 65	64 80	64 95	65 10	65 25	65 40	65 55	65 70	65 85	43
44	66 00	66 15	66 30	66 45	66 60	66 75	66 90	67 05	67 20	67 35	44
45	67 50	67 65	67 80	67 95	68 10	68 25	68 40	68 55	68 70	68 85	45
46	69 00	69 15	69 30	69 45	69 60	69 75	69 90	70 05	70 20	70 35	46
47	70 50	70 65	70 80	70 95	71 10	71 25	71 40	71 55	71 70	71 85	47
48	72 00	72 15	72 30	72 45	72 60	72 75	72 90	73 05	73 20	73 35	48
49	73 50	73 65	73 80	73 95	74 10	74 25	74 40	74 55	74 70	74 85	49
50	75 00	75 15	75 30	75 45	75 60	75 75	75 90	76 05	76 20	76 35	50

Computed by L. Leland Locke.

Hicks With. 25106
v Norden 24898 NE

206-46
9/6 5000
4575
4250
3660
5900

2/1
F46
2/84

206-46

J280 20000 (7/4)
1900 30
400 2420
250
1200

5179
36

25500
24671
6 820
1433

24818 50
24962 100
25106 100
25250 200
25393 200
25538

C
0-1
0-20
0-40
1-0
1-20
1-40
2-0
2-20
2-40
3-0
3-20
3-40
4-0
4-20
4-40
5
6
7

To find 1

209
W 17.0
21.4

-15 237
-8 220
W 18.0

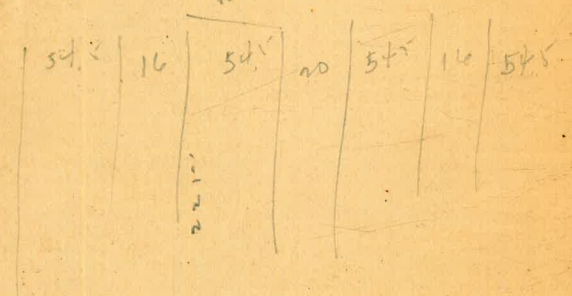
40
3
W 17.0
+12 23.0
W 1 29.6
-40 28.0
-25 24.5
W 15.3

21
5
125
300
37500
SW Mon 78.06 2nd day
50 spike 8533 ✓ w/obster

19.5
1.4.5
34.0
70.1

Chart

245.5 247.15 253.1 255.33
244.5 245.81 105 252.1 120 254.33



40.1
54
146.0

20
51
160
54
145.0

54
16
125.0

40
33.5
6.5

4.8
12.1
16.9

2548
7.5
132.98
23
187.7
24.23
15.37

58.5
113.5
98.5
265.5
188.5
129.5
240

254.88
252.83
2567
18.75
47.25
- NL 1000

White 31
X 2.1
X
X 98
X
X 113.5
X
X 52
E Grim
W
3
X
X 129
X
108.5
X OKPROPAN
W. Roy
84.0
X
110.5
X
3.5
8.30

X
1.5
E Illinois
W Illinois
47.0
X
116.0
X
130.5
X
6.5
E Ohio
W Ohio
34.5
X
124.5
X
136.0
X
1.
8.30

47
116
130.5
14.5
300.0

136
124.5
34.5
295