

1127.

WISCONSIN

FIELD BOOK

No. 135E

1127

MICROFILMED

DEC 4 1964

Our Leather Bound Engineers Note Books are carried in the following rulings:

- No. 380 LEVEL BOOK. Left and Right Hand Page the same as Left Hand Page of this Book.
- No. 382 FIELD BOOK. Left Hand Page as in this Book, Right Hand Page 4 x 4 to the inch, Center Line Red.
- No. 384 MINING TRANSIT BOOK. Left Hand Page as in this Book, Right Hand Page 8x8 to the inch, Center Line Red.
- No. 385 FIELD BOOK. Left Hand Page as in this Book, Right Hand Page 8 vertical and 4 horizontal lines to the inch, Center Line Red.

We also carry the Note Books listed above, bound in extra strong Fabri-Hide (otherwise the same quality of book), which can be furnished at a somewhat lower price.

In ordering Fabri-Hide covered books, add the letter "F" to catalog number.

THE FREDERICK POST CO.

ENGINEERING and DRAFTING SUPPLIES

IRVING PARK STATION

CHICAGO, ILL.

92 FIFTH ST.
PORTLAND, ORE.

79 NEW MONTGOMERY ST.
SAN FRANCISCO, CAL.

AGENTS FOR

"BERGER" TRANSITS and LEVELS

"GURLEY" SURVEYING and HYDRAULIC INSTRUMENTS

"CHICAGO" STEEL TAPES, etc.

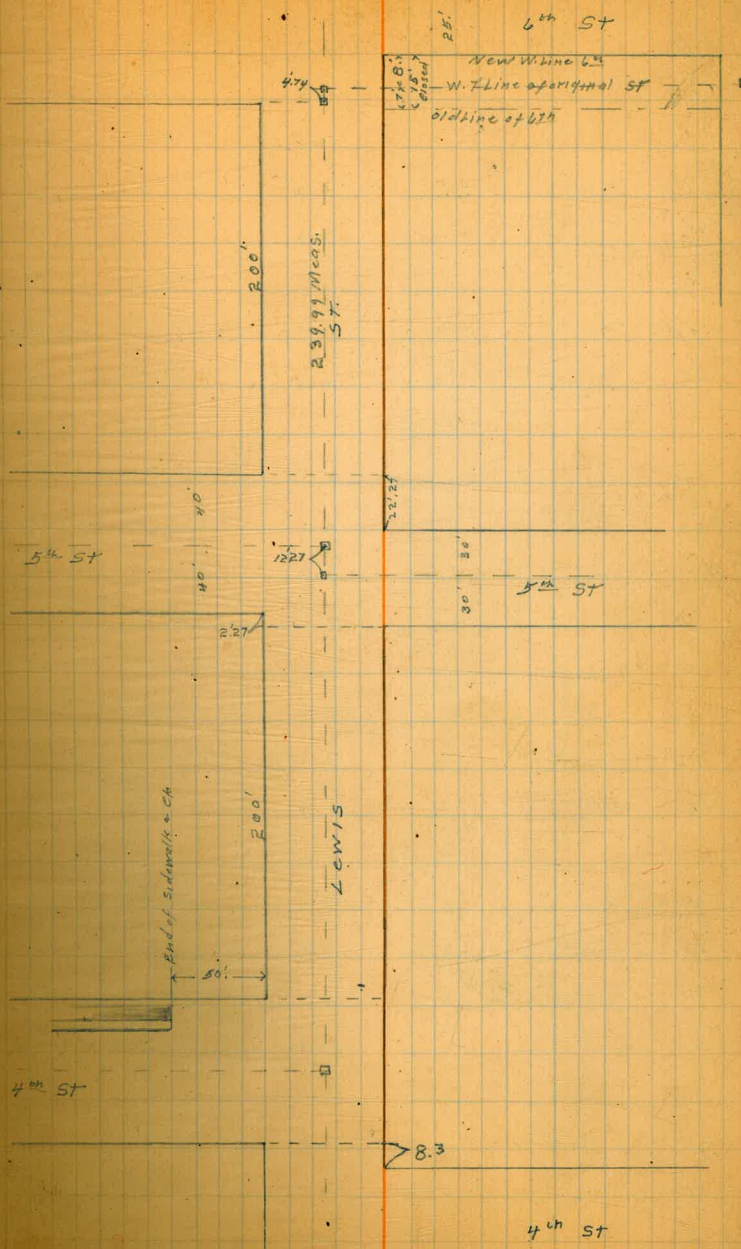
55' wide
12' ch. on S.
12' ch. on N.
8.125 % S.

Lewis ST X Sec

from E Line of 4th produced from south to E line 6th

5/6/25
mill

BM.	0.26	283.38	283.12	S.W. 4 th Lewis
E. Line 4 th ST Produced from S.				
SCB		19.4	281.44	Est. Gr 281.5 on amt cb
+ 0.2		2.2	281.2	
1/4		2.2	281.2	
c		2.5	280.9	
1/4		2.8	280.6	
N. cb		3.3	280.1	
+ 0.8		2.87	280.51	on amt cb
80' wide 12' ch. S 14' ch. N 8.3 E = W. Line 4 th Produced from N.				
N. Line 710'		3.10	280.30	on amt cb
N. cb		3.3	280.1	
1/4		3.1	280.3	
c		2.5	280.9	
1/4		2.4	281.0	
+ 0.8		2.5	280.9	
SCB		1.92	281.46	on amt cb
W. cb				
S		1.7	281.7	
cb		2.5	280.9	amt cb N. 2
+ 0.2		2.9	280.5	
1/4		2.7	280.7	
c		2.7	280.7	
1/4		3.0	280.4	
cb		3.5	279.9	
N		3.8	279.6	



283.38

	W. 1/4		
N	3.5	279.9	
cb	3.3	280.1	
1/4	3.2	280.2	
C	2.9	280.5	
1/4	2.9	280.5	
+8	3.1	280.3	
cb	2.33	281.05	one mt. cb. N.G.
S	2.0	281.4	
	E		
S.	2.2	281.2	
cb	2.23	281.15	one mt. cb. N.G.
+0.2	3.2	280.2	
1/4	3.2	280.2	
C	3.2	280.2	
1/4	3.6	279.8	
cb	4.0	279.4	
N	3.9	279.5	
	E. 1/4		
N	4.6	278.8	
cb	4.5	278.9	
1/4	4.2	279.2	
C	4.0	279.4	
1/4	3.7	279.7	
+8'	3.3	280.1	
cb	2.30	281.08	one mt. cb. N.G.
S	2.4	281.0	

283.38

Lewis

	E. cb		
S	3.2	280.2	
cb	2.76	280.62	one mt. cb. N.G.
+0.2	3.1	280.3	
1/4	3.8	279.6	
C	4.9	278.5	
1/4	5.7	277.7	
cb	5.9	277.5	
N	5.6	277.8	
50' N = s. end cb	3.99	279.39	
	oo = E Line 4 th Produced from N.		
N	5.3	278.1	
cb	5.3	278.1	
1/4	5.1	278.3	
C	4.7	278.7	
1/4	4.3	279.1	
cb	4.1	279.3	
S	4.1	279.3	
	4' E		
S	3.4	280.4	
cb	4.4	279.0	
1/4	4.5	278.9	
C	4.8	278.6	
1/4	5.4	278.0	
cb	5.7	277.7	
N	5.5	277.9	
+5	5.5	277.9	

283.38

	20' E	
-20	18.7	264.7
N	17.9	265.5
cb	16.3	267.1
1/4	13.5	269.9
c	14.5	268.9
1/4	13.5	269.9
cb	9.9	273.5
+7	4.3	279.1
S	3.9	279.5
	30' E	
S	3.4	280.0
cb	9.3	274.1
1/4	14.8	268.6
c	19.8	263.6
1/4	21.2	262.2
cb	24.7	258.7
N	24.0	259.4
+30	25.5	257.9
	39' E	
-50	29.8	253.6
-20	32.4	250.0
N	29.6	253.8
cb	23.5	259.9
1/4	21.3	262.1
c	18.2	265.2
1/4	13.2	270.2

283.38

Lewis

5

cb	8.7	274.7
+8	3.3	280.1
S	3.1	280.3
	48' E	
S	3.4	280.0
cb	10.0	273.4
1/4	14.9	268.5
c	19.1	264.3
1/4	21.2	262.2
cb	23.7	259.7
N	25.8	257.6
+10	28.4	255.0
+20	34.7	248.7
+50	35.0	248.4
	60' E	
-55	34.5	244.9
-20	35.6	247.8
-13	29.2	254.2
N	25.9	257.5
cb	22.8	260.6
1/4	19.3	264.1
c	14.8	268.6
1/4	12.9	270.5
cb	5.2	278.2
S	2.0	281.4

283.38

70' E

S	1.0	282.4
cb	2.4	281.0
1/4	8.3	275.1
C	14.1	269.3
1/4	17.3	266.1
cb	20.4	263.0
N	22.0	261.4
+13	27.2	256.2
+17	30.7	252.7
+21	28.7	244.7
+31	33.0	250.4
+36	33.8	249.6
+43	36.0	247.4
	89' E	
-40	28.0	255.4
-10	20.5	262.9
N	21.0	262.4
cb	14.7	268.7
1/4	12.4	271.0
C	9.8	273.6
1/4	3.8	279.6
+5	1.0	282.4
cb	0.9	282.5
S	0.4	283.0

283.38

Lewis

6

100' E

S		0.4	283.0
cb		0.5	282.9
1/4		1.2	282.2
C		6.3	277.1
1/4		8.5	274.9
cb		11.3	272.1
N		12.7	270.7
+3		14.7	268.7
+20		19.8	263.6
T.P.	11.43	290.13 ✓	4.88 278.50 ✓
		123' E	
N		12.3	277.8 <small>cont wall on line 5' high</small>
+9		12.5	277.6
cb		11.2	278.9
1/4		9.2	280.9
C		7.5	282.6
1/4		6.9	283.2
cb		7.0	283.1
S		6.9	283.2
		145' E	
S		6.2	283.9
cb		7.0	283.1
1/4		6.8	283.3
C		6.6	283.5
1/4		7.1	283.0
cb		7.6	282.5
N		7.8	282.3

290.13

00 = 197.73'E = W. line 5th on S.

N	6.6	283.5
cb	6.1	284.0
1/4	5.9	284.2
C	6.2	283.9
1/4	6.7	283.4
cb	6.7	283.4
S	6.5	283.2

2.27 E of 00 section = W. line 5th on N

S	6.5	283.2
cb	6.7	283.4
1/4	6.7	283.4
C	6.2	283.9
1/4	5.9	284.2
cb	6.1	284.0
N	6.6	283.5

10' E of 00 = W. cb of 5th on S

N	6.1	284.0
cb	5.8	284.3
1/4	5.9	284.2
C	6.2	283.9
1/4	6.7	283.4
cb	7.1	283.0
S	7.20	282.93

ancmt cb

16.27 E of 00 = W. cb of 5th on N

S	7.2	282.9
cb	7.1	283.0

LEWIS 7

290.12

1/4	4.8	283.3
c	6.3	283.8
1/4	5.7	284.4
cb	5.8	284.3
N	6.0	284.1

20' E of 00 = W 1/4 of 5th on S

N	5.6	284.5
cb	5.6	284.5
1/4	5.7	284.4
c	6.3	283.8
1/4	6.7	283.4
cb	7.1	283.0
S	7.2	282.8

29.27 E of 00 = W 1/4 of 5th on N

S	6.9	283.2
cb	6.7	283.4
1/4	6.5	283.6
c	6.1	284.0
1/4	5.6	284.5
cb	5.5	284.6
N	5.5	284.6

30' E of 00 = E 5th on S

N	5.5	284.6
cb	5.5	284.6
1/4	5.6	284.5
c	6.1	284.0

290.13

Lewis 8

1/4	6.5	283.6
cb	6.7	283.4
S	6.9	283.2

40' E of 00 = E 1/4 of 5th on S

S	7.1	283.0
cb	7.0	283.1
1/4	6.8	283.3
c	6.3	283.8
1/4	5.7	284.4
cb	5.5	284.6
N	5.3	284.8

42.27 E of 00 = E 5th on N

N	5.3	284.8
cb	5.5	284.6
1/4	5.7	284.4
c	6.3	283.8
1/4	6.8	283.3
cb	7.0	283.1
S	7.1	283.0

50' E of 00 = E 1/4 of 5th on S

S	6.73	283.40 uncorrected
402	7.2	282.9
cb	7.0	283.1
1/4	6.6	283.5
c	6.3	283.8
1/4	6.0	284.1

290.13

eb	5.6	284.5
----	-----	-------

N	5.0	285.1
---	-----	-------

55.27 E of 00 = E 1/4 of 5th on N.

N	5.0	285.1
---	-----	-------

eb	5.4	284.7
----	-----	-------

1/4	5.5	284.6
-----	-----	-------

C	6.1	284.0
---	-----	-------

1/4	6.4	283.7
-----	-----	-------

eb	6.7	283.4
----	-----	-------

S	6.6	283.5
---	-----	-------

60' E of 00 = E. Line 5th on S

S	6.0	284.1
---	-----	-------

eb	6.4	283.7
----	-----	-------

1/4	6.1	284.0
-----	-----	-------

C	6.0	284.1
---	-----	-------

1/4	5.2	284.9
-----	-----	-------

eb	5.3	284.8
----	-----	-------

N	5.0	285.1
---	-----	-------

68.27' E of 00 = E eb to N

N	5.0	285.1
---	-----	-------

eb	5.1	285.0
----	-----	-------

1/4	5.2	284.9
-----	-----	-------

C	5.9	284.7
---	-----	-------

1/4	6.1	284.0
-----	-----	-------

eb	5.9	284.2
----	-----	-------

S	4.8	285.3
---	-----	-------

290.13

Lewis 9

82.27 E of 00 = E. Line 5th on N = 00

S	4.6	285.5
---	-----	-------

eb	5.1	285.0
----	-----	-------

1/4	5.3	284.8
-----	-----	-------

C	5.3	284.8
---	-----	-------

1/4	5.0	285.1
-----	-----	-------

eb	5.0	285.1
----	-----	-------

N	4.9	285.2
---	-----	-------

20' E of E line of 5th on N

N	5.0	285.1
---	-----	-------

eb	4.9	285.2
----	-----	-------

1/4	4.8	285.3
-----	-----	-------

C	4.8	285.3
---	-----	-------

1/4	4.7	285.4
-----	-----	-------

eb	4.6	285.5
----	-----	-------

S	4.4	285.7
---	-----	-------

60' E

S	4.5	285.6
---	-----	-------

eb	4.7	285.4
----	-----	-------

1/4	4.8	285.3
-----	-----	-------

C	4.7	285.4
---	-----	-------

1/4	4.9	285.2
-----	-----	-------

eb	4.8	285.3
----	-----	-------

N	5.0	285.1
---	-----	-------

290.13

100' E

N	5.0	284.9
cb	5.1	285.0
1/4	5.1	285.0
E	5.0	285.1
1/4	5.0	285.1
cb	4.8	285.3
S	4.8	285.3

150' E

S	5.0	285.1
cb	5.2	284.9
1/4	5.2	284.9
C	5.2	284.9
1/4	5.5	284.6
cb	5.5	284.6
N	5.2	284.9

R12.74 = W. Line of 6th 25' wide

N	5.3	284.8
cb	5.5	284.6
1/4	5.3	284.8
C	5.3	284.8
1/4	5.2	284.9
cb	5.1	285.0
S	5.0	285.1

12.5 E = ϕ of 6th

S	4.9	285.2
cb	5.0	285.1

290.13

Lewis 10

1/4	5.1	285.0
C	5.1	285.0
1/4	5.2	284.9
cb	5.2	284.9
N	5.2	284.9

25' E = E Line of 6th

N	5.3	284.8
cb	5.2	284.9
1/4	5.0	285.1
C	5.1	285.0
1/4	4.9	285.2
cb	4.9	285.2
S	4.8	285.3

T.P. 4.99 290.36 4.76 285.37

6th ST X Sec from S. line Lewis 25' wide
To N. line of Hillcrest Drive290.36
00 = S. Line of Lewis ST

N	5.2	285.2
ϕ	5.2	285.2
E	5.1	285.3

30' S

E	4.8	285.6
C	5.0	285.4
N	5.1	285.3

290.36

74' S

W	5.1	285.3
C	4.8	285.6
E	4.5	285.9

80' S = N. line Hillcrest Drive

E	5.96	284.40
C	5.6	284.8
W	6.1	284.3
T15	6.2	284.2

on N. line cmt drive
to Mercy Hospital

on old W line

2' S. of N. line

-15	7.2	283.2
W	6.3	284.1
C	5.9	284.5
E	5.9	284.5

14.5' S = S line cmt drive to Hospital N. Drive

E	5.95	284.41
C	4.3	284.1
W	6.7	283.7

on cmt

45.5' S of N. line = N. line S. drive to Hospital 14' wide

W	6.7	283.7
C	6.2	284.2
E	5.74	284.62

on cmt

5' line Hillcrest Drive

E	5.84	284.52
C	6.0	284.4
W	6.6	283.8

on cmt

Sixth Lewis 11

290.36

T.P. 6.40
ch K on B.M.

290.66

6.10

284.26

2.71

287.95

N.W. Cor Washings
Hillcrest Drive

80' wide
10' Cbs
15' 1/4s

5th ST X SEC 5/12/25 miles
from N Line Lewis North

Elev. Cp S.W. 5th Lewis 4.94

287.87

282.93

Page 7

00 - N. Line Lewis

W	4.3	283.5 v	on lawn
+5	3.95	283.9	edge walk N.E.
cb	3.9	284.0	
1/4	3.3	284.6	
C	3.1	284.8 v	
1/4	2.8	285.1	
cb	2.8	285.1	
E	2.7	285.2 v	
25' N			
E	3.2	284.7	
cb	3.2	284.7	
1/4	3.3	284.6	
C	3.5	284.4	
1/4	3.9	284.0	
+6	3.4	284.1	
+12	4.8	283.1	
cb	4.8	283.1	
+5	4.57	283.30	edge walk N.E.
W	4.6	283.3	on lawn
50' N			
W	5.0	282.9	
+5	5.05	282.82	on E. edge walk N.E.
cb	5.5	282.4	
+8	4.6	283.3	
1/4	4.3	283.6	
5	4.1	283.8	

287.87
77
77
96
107
111
118

287.87

17

1/4	4.0	283.9	
cb	3.9	284.0	
C	3.7	284.2	
70' N			
E	4.2	283.7	
cb	4.8	283.1	
1/4	4.9	283.0	
C	5.1	282.8	
1/4	5.5	282.4	
cb	5.6	282.3	
+5	5.28	282.59	edge walk N.E.
W	5.2	282.7	on lawn
92' N			
W	5.2	282.7	on lawn
+5	5.44	282.43	edge walk N.E.
cb	5.9	282.0	
1/4	6.4	281.5	
+9	6.5	281.4	
C	6.1	281.8	
1/4	6.5	281.4	
cb	6.3	281.6	
E	6.6	281.3	
96' N			
E	6.8	281.1	
cb	7.4	280.5	
1/4	7.5	280.4	

287.87

	96' N (cont)		
C	7.5	280.4	
+2	6.8	281.1	
1/4	6.7	281.2	
cl	6.1	281.8	
+5	5.5	282.4	Edge walk N. g.
W	107' N 5.3	282.6	on lawn
	107' N. = Mend walk		
W	5.3	282.6	on walk to house
cl	4.3	281.6	
+2	6.9	281.0	
1/4	7.6	280.3	
E	7.8	280.1	
1/4	8.1	279.8	
cl	9.0	278.9	
E	9.2	278.7	
+5	9.2	278.7	
	111' N		
-5	9.3	278.6	
E	9.3	278.6	
cl	9.2	278.7	
1/4	9.5	278.4	
C	8.7	279.2	
1/4	8.4	279.5	
+5	7.4	280.5	
cl	7.1	280.8	
+1	6.4	281.5	
W	5.6	282.3	

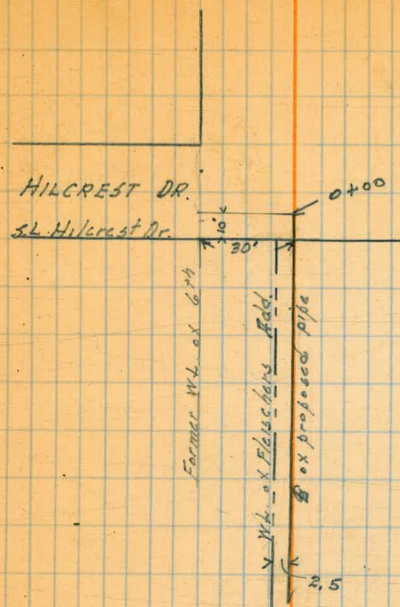
287.87

5th ST 13

	115' N.		
W	4.4	281.5	
+5	6.7	281.2	
+7	7.7	280.2	
cl	7.8	280.1	
+10	8.2	279.7	
+12	9.0	278.9	
1/4	9.0	278.9	
E	9.8	278.1	
1/4	9.5	278.4	
cl	9.6	278.3	
E	9.5	278.4	
+5	9.5	278.4	
	118' N		
-5	12.7	275.2	
E	12.2	275.7	
cl	12.7	275.2	
+11	13.8	274.1	
1/4	9.8	278.1	
E	9.5	278.4	
1/4	9.0	278.9	
+5	9.0	278.9	
+7	8.2	279.7	
cl	7.9	280.0	
+7	7.7	280.2	
W	6.7	281.2	

5/13/25 Gregory Levels on proposed DRAIN
 from Hilcrest Drive down
 former 6th St.

306	287.68	284.62	on pavement at Hospital
	4.78	282.90	on N. 6th St.
	4.71	282.97	✓ N. 6th St.
0+00 on curb.	3.3	284.4	
+08.0	3.3	284.4	
+15	4.1	285.6	
+50	3.0	284.7	
+83	4.5	283.2	
+88	6.5	281.2	
1+00	11.7	276.0	
+10	18.3	269.4	
15' W. of 0+00	4.1	283.6	
30' ✓ 0+00	5.5	282.2	
			on Former W.L. 6th.
10' N. of 5+00	4.7	283.0	
20' - - 5-	4.5	283.2	
30' ✓ - - -	4.3	283.4	
40' ✓ - - -	5.4	282.3	on N. 6th line



91.33

100' E (con)

+3	7.9	83.4 ✓
14	7.9	83.4 ✓
cb	8.2	83.1 ✓
N	8.1	83.2 ✓

130' E

N	6.7	84.6 ✓
cb	7.1	84.2 ✓
14	7.2	84.1 ✓
+4	7.3	84.0 ✓
+6	8.3	83.0 ✓
C	8.3	83.0 ✓
14	8.1	83.2 ✓
Gutter	8.6	82.7 ✓

200' E

scb	5.97	85.36 ✓
G	6.7	84.6 ✓
14	6.4	84.9 ✓
C	6.5	84.8 ✓
14	6.5	84.8 ✓
+6	6.7	84.6 ✓
cb	6.2	85.1 ✓
+5	7.9	86.4 ✓
N	4.7	86.6 ✓

250' E

N	3.2	88.1 ✓
+7	3.3	88.0 ✓

91.33

+8	4.3	87.0 ✓
cb	4.3	87.0 ✓
+2	5.5	85.8 ✓
14	5.5	85.8 ✓
14	5.1	86.2 ✓
C	4.7	86.6 ✓
14	4.7	86.6 ✓
G	4.8	86.5 ✓

300' E

54	2.46	88.87 ✓
G	3.4	87.9 ✓
14	2.8	88.5 ✓
C	2.9	88.4 ✓
14	3.4	87.9 ✓
+6	3.6	87.7 ✓
cb	4.4	88.9 ✓
+4	1.7	89.6 ✓
N	1.5	89.8 ✓

350' E

N	0.0	91.3 ✓
cb	0.6	90.7 ✓
+3	1.8	89.5 ✓
14	1.7	89.6 ✓
C	1.1	90.2 ✓
14	1.1	90.2 ✓
Gutter	1.6	89.7 ✓

103.57

650 B. 2071

1/4		3.6	100.0 ✓	
C		3.2	100.4 ✓	
1/4		3.2	100.4 ✓	
9		3.4	100.2 ✓	
710.8 E = W Line Draper St.				
scd		0.47	103.10 ✓	
9		1.3	102.3 ✓	
1/4		1.2	102.4 ✓	
C		1.2	102.4 ✓	
1/4		1.4	102.2 ✓	
+8		1.6	102.0 ✓	
cl		0.9	102.7 ✓	
N		1.3	102.3 ✓	
W cl.				
N		0.3	103.3 ✓	
cl		0.9	102.7 ✓	
1/4		0.9	102.7 ✓	
C		0.9	102.7 ✓	
1/4		0.6	103.0 ✓	
cl		0.7	102.9 ✓	
+5		0.2	103.4 ✓	
T.P.	12.41	115.52	0.46	103.11 ✓
S		11.3	104.2 ✓	

115.52

W. 1/4

S		10.5	105.0 ✓
cl		12.1	103.4 ✓
1/4		12.2	103.3 ✓
E		12.3	103.2 ✓
1/4		12.5	103.0 ✓
cl		12.3	103.2 ✓
N		12.3	103.2 ✓
E			
N		12.0	103.5 ✓
cl		12.0	103.5 ✓
1/4		12.0	103.5 ✓
C		11.8	103.7 ✓
1/4		11.4	104.1 ✓
cl		11.6	103.9 ✓
S		10.4	105.1 ✓
E 1/4			
S		9.6	105.9 ✓
cl		11.3	104.2 ✓
1/4		11.4	104.1 ✓
C		11.7	103.8 ✓
1/4		11.6	103.9 ✓
cl		11.6	103.9 ✓
N		11.5	104.0 ✓

115.52

E cl

N	11.6	103.9 ✓
cl	11.6	103.9 ✓
1/4	11.7	103.8 ✓
e	11.7	103.8 ✓
1/4	11.6	103.9 ✓
cl	11.2	104.3 ✓
S	9.4	106.1 ✓

oo = E. Line Draper

S	8.6	106.9 ✓
+4	9.3	106.2 ✓
+5	10.7	104.8 ✓
cl	11.1	104.4 ✓
1/4	11.4	104.1 ✓
c	11.5	104.0 ✓
1/4	11.6	103.9 ✓
cl	11.5	104.0 ✓
+4	11.7	103.8 ✓
N	11.0	104.5 ✓

50' E

N	8.3	107.2 ✓
+7	8.9	106.6 ✓
cl	10.1	105.4 ✓
1/4	9.9	105.6 ✓
c	9.7	105.8 ✓
1/4	9.8	105.7 ✓
cl	9.7	105.8 ✓

115.52

19

+2	8.7	106.8 ✓
+7	8.5	107.0 ✓
+8	7.3	108.2 ✓
S	6.5	109.0 ✓

100' S

S	4.2	111.3 ✓
+4	4.7	110.8 ✓
+5	5.9	109.6 ✓
+10	6.2	109.3 ✓
cl	7.4	108.1 ✓
1/4	7.2	108.3 ✓
c	7.1	108.4 ✓
1/4	7.5	108.0 ✓
cl	7.8	107.7 ✓
+5	6.7	108.8 ✓
N	6.5	109.0 ✓

150' E

N	4.5	111.0 ✓
+10	4.5	111.0 ✓
cl	5.4	110.1 ✓
1/4	4.6	110.9 ✓
c	4.7	110.8 ✓
1/4	4.8	110.7 ✓
cl	5.0	110.5 ✓
+1	4.0	111.5 ✓
+5	3.4	112.1 ✓

115.52

150' E (cont)

+7 2.2 113.3 ✓

S 1.6 113.9 ✓

165' E

S 1.1 114.4 ✓

cl 1.9 113.6 ✓

+5 3.2 112.3 ✓

1/4 2.6 112.9 ✓

E 3.4 112.1 ✓

1/4 3.3 112.2 ✓

cl 3.5 112.0 ✓

N 3.8 111.7 ✓

200' E

N 2.7 112.8 ✓

cl 2.6 112.9 ✓

1/4 2.2 113.3 ✓

E 1.6 113.9 ✓

1/4 1.3 114.2 ✓

cl 0.5 115.0 ✓

S 0.0 115.5 ✓

T.P. 12.64 127.75 0.03 115.09 ✓

4/12/25
miller

Nautilus St 7 Sec

from 380.5 E of Draper East

127.75 Page 20

180.5 E of E line Draper End of cl on N

Depth	Distance	Reading	Correction	Result
Nd	9.05		end of point el	
380.5 E of E line Draper = 00 End of grading				
T.P.	212.23	139.89	0.09	127.66
N		8.0		131.9
cl		7.9		132.0
"4		8.4		131.5
E		8.4		131.5
"4		8.4		131.5
Gutter		8.4		131.5
35' E				
E		6.0		133.9
"4		6.1		133.8
C		5.9		134.0
"4		6.0		133.9
cl		6.1		133.8
N		5.7		134.2
45' E				
N		3.9		136.0
cl		4.8		135.1
"4		5.3		134.6
E		5.3		134.6
"4		5.3		134.6
E		5.6		134.6

139.89

70' E = E end curb on S.

S		2.3		137.6
cl		3.17		136.72
"4		3.5		136.4
C		3.7		136.2
"4		3.6		136.3
T7		3.6		136.3
cl		2.8		137.1
N		2.4		137.5
100' E				
N		0.4		139.5
cl		0.8		139.1
"4		1.1		138.8
C		1.0		138.9
"4		1.0		138.9
cl		0.7		139.2
T.P.	112.59	132.16	0.32	139.57
S		11.5		140.7
150' E				
S		8.8		143.4
cl		9.5		142.7
"4		10.0		142.2
E		10.1		142.1
"4		10.1		142.1
cl		10.2		142.0
N		10.4		141.8

152.16

200' E

N	8.6	143.6
cl	7.6	144.6
1/4	7.5	144.7
C	7.4	144.8
1/4	6.7	145.5
cl	6.5	145.7
S	5.2	147.0

225' E

S	3.6	148.6
cl	4.0	148.2
1/4	5.4	146.8
C	5.6	146.6
1/4	5.6	146.6
cl	5.6	146.6
N	7.2	145.0
+5	8.0	144.2

238' E

N	4.4	147.8
cl	4.7	147.5
1/4	4.7	147.5
C	4.8	147.4
1/4	4.6	147.6
cl	4.1	148.1
S	3.9	148.3

152.16

290' E

S	3.1	149.1
cl	2.4	149.8
1/4	2.3	149.9
C	1.9	150.3
1/4	1.8	150.4
cl	1.9	150.3
N	2.8	149.4

305' E

N	2.4	149.8
cl	2.5	149.7
+6	0.9	151.3
1/4	1.0	151.2
C	1.4	150.8
1/4	1.7	150.5
d	2.7	149.5
+2	3.8	148.4
S	3.8	148.4

310' E Track on S

S	2.60	149.6 on Rail
cl	3.8	148.4
+6	3.7	148.5
1/4	1.9	150.3
C	0.8	151.4
1/4	0.1	152.1
cl	0.0	152.2
+3	0.1	152.1

152.16
310' E (con)

44		2.0	150.2	
N		2.3	149.9	
T.P.	11.55	163.45	0.26	151.90

319' E

N		11.1	152.4
cl		11.0	152.5
1/4		11.2	152.3
c		15.0	149.5
1/4		14.6	148.9
cl		14.0	149.5
S		14.6	148.9

321' E

S		15.2	148.3
cl		14.9	148.7
1/4		14.3	149.2
c		13.6	149.9
1/4		14.9	148.6
cl		14.6	148.9
N		10.8	152.7

339' E

N		14.5	149.0
cl		14.0	149.5
1/4		13.3	150.2
c		13.9	149.6
1/4		14.8	148.7
cl		14.9	148.6
S			

163.45

S	347' E	14.8	148.9
+8		15.0	148.5

347' E

-5		12.7	150.8
S		14.6	148.9
cl		15.0	148.5
1/4		14.8	148.7
c		14.9	148.6
1/4		13.7	149.8
cl		13.0	150.5
N		14.5	149.0
+5		14.5	149.0

354' E = 1/2 Track on N

N	12.63	150.82 on Rail
cl	13.7	149.8
1/4	14.9	148.6
c	14.9	148.6
1/4	14.8	148.7
cl	14.6	148.8
S	11.9	151.6

359' E

S	7.3	156.2
+4	10.2	153.3
cl	12.6	150.9
+3	14.9	148.6
1/4	15.0	148.5

163.45

c	14.8	148.7
1/4	14.8	148.7
cl	14.7	148.8
N	13.2	150.3

368' E

N	14.1	149.4
cl	14.4	149.1
1/4	14.8	148.7
c	14.3	149.2
1/4	11.0	152.5
PT	5.8	157.7
cl	5.9	157.6
S	6.6	156.9

388' E

S	4.7	158.8
cl	4.2	159.3
1/4	4.2	159.3
c	4.5	159.0
1/4	4.8	158.7
+4	4.8	158.7
cl	11.7	151.8
+6	8.4	155.1
N	4.9	158.6

391.2

N	4.6	158.9
cl	4.7	158.8

163.45

24

1/4	4.4	159.1
c	4.1	159.4
1/4	3.9	159.6
cl	3.8	159.7
S	4.0	159.5

TP	12.34	174.73	106	162.39
----	-------	--------	-----	--------

410' E

S	13.8	160.9
cl	13.9	160.8
1/4	13.8	160.9
c	13.9	160.8
1/4	14.1	160.6
cl	14.1	160.6
N	13.8	160.9

430' E

N	8.7	166.0
cl	10.1	164.6
1/4	11.0	163.7
c	12.0	162.7
1/4	12.3	162.4
cl	12.2	162.5
S	12.0	162.7

460' E

S	9.6	165.1
cl	8.7	166.0
1/4	7.8	167.2

463.45
174.73 + 60' E End

c		4.5	168.2
1/4		5.6	169.1
cl		4.6	170.1
N		3.2	171.5
TP	13.03	1787.13	0.63
			167.42
			174.10

500' E

N		5.9	181.2
cl		7.4	179.7
1/4		8.3	178.8
c		9.3	177.8
1/4		10.3	176.8
cl		11.7	175.4
S		13.5	173.6

518.7 E = E End St.

S		9.6	177.5
cl		7.7	179.4
1/4		5.9	181.2
c		4.4	182.7
1/4		3.2	183.9
cl		2.3	184.8
N		1.2	185.9

La Jolla Beach Sub.

0+00	+1.4	58.5		58°	-1.0
100	+1.2	57.44			56.94 -0.6
200	+1.4	56.57			55.87 -0.1
300	+1.4	55.31			54.81 -0.2
400	+1.5	54.25			53.75 -0.2
500	+2.2	53.19			52.69 +0.3
600	+2.7	52.12			51.62 +1.2
700	+2.8	51.06			50.56 +1.7
800	+0.9	50°			49.5 +0.8

Pearl

St.

B.P. Prospect & La Jolla Blvd N.E.

68.08
+ 2.50
70.58 H.I.
- 11.14
59.43
+ 6.77
66.20 H.I.
- 41.86
24.34
- 0.01
24.33
12.06
49.27 Pin 7 Line Pearl
+ 11.83
61.10 H.I.

61.10	61.10	61.10	61.10	61.10	61.10
51.62	52.12	53.19	52.69	52.75	52.20
7.48	8.98	7.91	8.41	7.30	6.80
8.02	6.00	5.97	7.86	7.28	5.10
+1.46	+2.98	+2.44	+0.50	+0.07	+1.20
20	20	20	20	20	20
+1.21	2.73	+2.17	+0.30	-0.18	1.41
61.10	61.10	61.10	61.10	61.10	61.10
55.31	54.81	52.12	56.52	57.69	57.19
5.79	6.29	4.98	4.58	3.41	3.91
9.11	6.28	5.10	3.20	2.17	4.52
+1.68	0.09	-0.12	+1.38	1.24	-0.61
20	20				
+1.43	-0.24				

70.51	50.00	51.06	52.12	53.19	54.25	55.31
2.52	10.70	9.64	8.58	7.51	6.45	5.39
73.03		9.14	8.08			
12.38	00	+0.50	+0.50	00	00	00
60.65						
0.65						
60.70	11.20	10.14	9.08	8.01	6.95	5.89
11.41	10.70	9.64	8.58	7.51	6.45	5.39
49.29	+0.50	+0.50	+0.50	+0.50	00	00
			8.83			
	56.37	57.44	58.50			
	4.33	3.26	2.20			
	00	00	0.80			
			+1.80			
	4.83	3.76	2.70			
	00	00	2.10			
			00			

June 17th 25
Dennan
Bliss
Southern

	+	π	-	
	4.74	83.75	79.01	B.R. See page 14
	12.92	91.19	5.48	78.27 NE Cor Nautilus
N 000 = E. L. La Jolla Blvd.		12.92	78.27	
S		13.52	77.67	
S 0+50		12.31	78.88	
N		11.70	79.99	
N 1+00		10.10	81.09	
S		10.61	80.58	
S 1+33 ⁶	} Curb torn out for entrance No Returns	9.44	81.75	
S 1+43 ⁶		9.15	82.04	
S 1+50		8.95	82.24	
N 1+30 Return to R.W.	} Entrance	9.18	82.01	
N 1+47 ² No Return		8.50	82.69	
N 1+50		8.42	82.77	
N 2+00		6.67	84.52	
S "		7.19	84.00	
S 2+50		5.52	85.67	
N 2+80		5.00	86.19	
N 3+00		3.20	87.99	
S 2+80 ⁷	} Curb torn out for entrance no returns.	4.45	86.74	
S 2+90 ⁶		4.12	87.07	
S 3+00		3.79	87.40	
S 3+91 ⁰	} Entrance finished.	2.36	88.89	
S 3+52 ⁶		1.92	89.27	
N 3+28 ⁶	} Curb torn out for entrance No returns.	2.26	88.93	
N 3+37 ⁸		1.95	89.24	

Note: Where Curbs are noted as torn out, they have been broken out with a sledge, and no attempt made to put them in shape since.

All readings on Concrete Cbs unless otherwise noted.

	+	π	-	
		91.19		
N3+50			1.04	89.65
S4+00 #	12.96	103.83	0.32	90.87
N4+00			12.42	91.41
N4+50			10.29	93.54
S4+50			10.82	93.01
S5+00			8.33	95.50
N5+00			7.92	95.91
N5+24			6.73	97.10
N5+34 ²			6.20	97.59
Curb torn out for entrance No returns				
N5+50			5.51	98.32
S5+50			6.06	97.77
S6+00			3.58	100.25
N6+03			2.96	100.87
N6+50			0.65	103.18
S6+50			1.25	102.58
#	12.84	116.67	0.00	103.83
S7+00			11.61	105.06
S7+11 ² = Wil. Draper Ave.			11.05	105.62
				someones turn.
N7+11 ² = " " "			10.58	106.09
N0+00 = E.L. Draper Ave curb broken off				
N0+01 -			10.00	106.67
S0+00 = E.L. Draper Ave			10.03	106.64
S0+50			6.76	109.91
N0+50			6.79	109.88
N1+00			3.44	113.23

	+	+	-	
		116.67 ✓		
S1400			3.42	113.25
S1450			0.07	116.60
N1450			0.08	116.59
#	12.83	129.50	0.00	116.67
N 1480	End of Cement Curb on North side of St.		^{10.89}	118.61
S 1489	Curb torn out for entrance No returns.		10.26	119.24
S1497			9.68	119.82
S2400			9.54	119.96
S2450			6.19	123.31
S3400			2.82	126.68
#	7.96	137.46 ✓	0.00	129.50
3450 S			7.46	130.00
N3450	On Dirt Cb		7.7	129.76
N 400	Worn down Driveway to school.		4.6	132.86
S 400	" " "		4.13	133.33
S 4400	side of St. End of Cement Cb on South		0.82	136.64
N 4400	On dirt Cb		0.6	136.86
#	0.02	125.01	12.47	124.99 ✓
#	0.00	112.51 ✓	13.00	112.01 ✓
#	0.90	100.45	12.92	99.59 ✓
#	1.57	89.11	12.95	87.54 ✓
#			10.11	79.00 = 79.01 Initial Point.

June 20th 1925

Donna
Bliss
Northern.

Xsection of Alley in Blk 73 Ocean Beach.

B.M. B.P.N.E. Cor Newport & Abbott.

	+	π	-	
	3.39	7.89		6.50
	6.71	12.29	4.31	5.58
000 E.L. Abbott St				
00 S. On Alley Eb at P.L.			6.10	6.2
" " " Paving			6.30	6.0
" E " "			6.73	5.56
" N. " "			6.33	5.96
" N " Alley Cb at P.L.			6.23	6.06
0+25 S			5.8	6.5
E			5.7	6.6
N			5.4	6.9
0+45 N			5.4	6.9
E			5.3	7.0
S			5.3	7.0
0+65 Garage 1' South of line			5.3	7.0
0+75 S			4.2	8.1
E			4.3	8.0
N			4.6	7.7
1+00 S			4.0	8.3
E			4.0	8.3
N			4.3	8.0
1+25 N			4.3	8.0
E			3.7	8.6

Plan 706-B

Tolman
7-8-26

Yd. Blk. 8-330

+

π

12.29

-

Ele

30

S			2.0	10.3
1450 S			0.7	11.6
E			3.1	9.2
N			4.2	8.1
1475 N			1.6	10.7
E			1.6	10.7
S			0.4	11.9
#	975	105.98	10.6	11.23
2400 S			2.6	13.4
E			3.8	12.2
N			3.6	12.4
2425 N			3.9	12.1
E			4.3	11.7
S			2.7	13.3
2450 S			3.5	12.5
E			4.8	11.2
N			3.8	12.2
2475 N			3.7	12.3
E			5.3	10.7
S			4.6	11.4
2490 S			8.1	7.9
E			7.5	8.5
N			5.5	10.5
3115 N			7.7	8.3
E			8.4	7.6
S			8.9	7.1

	+	T 10.98	-	
#	5.30	13.35	7.93	8.05
3432 = ± Dirt floor Garage 5's of S.L.			5.7	7.7
S.			5.9	7.5
E			6.0	7.4
N			6.0	7.4
3440 N			5.7	7.7
E			5.8	7.6
S Step to house.			5.7	7.7
3471 = ± Dirt floor Garage 4's of S.L.			5.6	7.8
S			5.6	7.8
E			5.5	7.9
N			5.1	8.3
3494 = ± Dirt floor Garage 4's of S.L.			4.8	8.6
S			5.1	8.3
E			5.0	8.4
N			5.0	8.4
4+325 ± Entrance to 4 door Garage West Door.			3.5	9.9
S			3.9	9.5
E			4.2	9.2
N			4.4	9.0
4460 ± Entrance to S door of 4 door garage			3.2	10.2
S			3.5	9.9
E			3.7	9.7
N			3.7	9.7
#	4.80	10.51	2.69	10.71
3700 N			5.8	9.7

	+	T 10.51	-	
#			5.3	10.2
S			5.4	10.3
3750 S			5.0	10.5
E			5.0	10.5
N			5.0	10.5
6+00 = W.L. of Bacon St N			5.6	9.9
E			5.6	9.9
S			5.5	10.0
W Cb of Bacon St S Cement Cb			5.76	9.75
" " " " " N Cement Cb			5.84	9.67
# 5.08			14.92	9.74
3.77			11.05 = B.M. =	
			SW. Newport @ Bacon.	

Upas St Cut stakes June 24th 25

Dunnart
Bliss
Northern

Upas	St	Cut stakes
306 ²⁰	5+28 ^c	306 ²⁰
304 ⁵⁰	5+50	304 ²
303 ²²	5+25	303.27 ✓
303 ²⁵ ✓	5+00	303.09 ✓
304 ²⁸ ✓	4+75	303.40 ✓
305 ²⁸ ✓	4+50	304.36 ✓
307.57	4+00	306.72 ✓
309.86 ✓	3+50	309.07 ✓
312.14 ✓	3+00	311.43
314.43	2+50	313.78
316.72 ✓	2+00	316.14 ✓
317 ²⁰ ✓	1+75	317.10 ✓
318 ²³ ✓	1+50	317.83 ✓
318 ²⁸ ✓	1+25	318.17 ✓
318 ²⁷ ✓	1+00	318.17 ✓
318.23 ✓	0+50	317.83 ✓
318 ²⁰ ✓	0+00	317.5 ✓

Gregory St.

T Horn

St.

PM. 318.01
6.12
324.01 H.I.
- 8.62
315.39
0.01

315.40
- 12.34
303.06
3.90
306.96 H.I.
- 0.36
306.60
+ 12.76
317.56
1.60
317.96 PM.

320.01
18.72
- 5.09
15.12
- 0.03

324.01
18.20
- 5.76
5.73
+ 0.03

324.01
18.42
- 5.87
6.09
0.50

324.01
17.75
- 6.26
7.00
- 0.74

324.01
18.58
- 5.43
5.33
+ 0.10

324.01
18.08
- 5.73
6.17
- 0.29

324.01
18.73
- 5.08
4.95
+ 0.3

324.01
18.42
- 5.59
6.24
- 0.65

324.01
18.08
- 5.43
4.82
+ 0.61

324.01
18.08
- 5.73
6.87
- 0.66

324.01
17.91
- 6.06
4.72
+ 1.34

324.01
17.40
- 6.61
7.17
- 0.56

324.01
16.97
- 7.04
4.96
+ 2.38

324.01
16.39
- 7.62
7.09
0.00

324.01
14.68
- 7.33
5.15
+ 3.78

324.01
14.03
- 7.78
9.34
+ 0.64

324.01
12.34
- 1.62
6.72
+ 4.90

324.01
11.68
- 12.33
11.81
+ 0.12

324.01
10.11
- 13.90
8.62
+ 5.28

317.40
309.32
- 6.08
6.39
- 0.31

315.40
06.97
- 8.43
9.63
- 1.20

315.40
07.82
- 7.58
2.66
+ 4.92

315.40
05.53
- 9.87
6.80
+ 3.02

315.40
04.63
- 10.77
10.02
+ 0.75

315.40
304.20
- 11.20
12.30
- 1.14

306.96
04.61
- 2.30
4.84
- 2.49

306.96
03.70
- 3.26
1.93
- 8.67

306.96
03.34
- 3.62
12.49
- 8.87

306.96
4.24
- 2.72
6.68
- 3.96

306.96
03.52
- 3.44
6.92
- 3.48

306.96
4.74
- 2.21
6.83
- 4.62

306.96
4.24
- 2.71
3.87
- 1.16

306.96
06.25
- 7.1
3.73
- 3.02

306.96
06.25
- 0.71
1.09
- 0.38

See next page

Thorn St. See previous page.

Tack in sidewalk

318.0	0+00	317.0
317.47	0+50	316.50
316.92	1+00	316.00
316.38	1+50	315.50
315.84	2+00	315.00
315.30	2+50	314.50
314.75	3+00	314.00
314.21	3+50	313.50
313.67	4+00	313.00
313.13	4+50	312.50
312.58	5+00	312.00
312.04	5+50	311.50
311.5	6+00	311.0

Gregory St.

Lead plug

Redwood St

318.01 D.R.N.W. Gregory & Thorn.

32 0.55 HT
6.90
31 4.10
4.66
= 318.76 HI

320.50
17.47
3.08
3.10
- 0.02
- 2.00
- 4.27

320.50
16.80
4.00
4.30
- 0.20
2.00
- 0.50

320.50
18.00
2.50
2.48
+ 0.07
2.00
- 0.18

320.50
17.00
3.00
4.03
- 0.28
2.00
- 0.78

320.50
16.92
3.63
3.40
+ 0.23
2.00
- 0.02

320.50
16.00
4.00
4.60
- 0.00
2.00
0.30

320.50
16.38
4.17
4.17
0.00
- 0.25
- 0.25

320.50
15.00
5.00
4.70
+ 0.30
+ 0.05

320.50
15.84
4.71
4.86
- 0.15
- 0.20
- 0.40

320.50
15.00
5.40
5.31
+ 0.24
2.00
- 0.01

320.50
15.30
5.20
5.47
- 0.22
- 0.47

320.50
14.50
6.00
5.95
+ 0.20
2.00
- 0.05

320.50
14.78
5.80
5.60
+ 0.10
2.00
- 0.10

320.50
14.00
6.00
6.40
+ 0.10
0.25
- 0.10

318.76
314.46
4.30
4.13
+ 0.17

318.76
13.78
5.01
5.30
- 0.24

318.76
313.97
4.79
4.65
+ 0.14

318.76
313.30
5.46
5.72
- 0.26

318.76
13.38
5.38
4.80
+ 0.53

318.76
12.70
6.01
6.27
0.26

318.76
12.83
5.93
5.27
+ 0.66

318.76
12.25
6.51
6.21
+ 0.30

318.76
12.39
6.37
6.5
6.62
0.6

318.76
11.80
6.91
6.33
+ 0.58

318.76
11.40
7.26

318.76
11.20
7.57
7.30
+ 0.27

6/30/25

CENTER ST. X Sec
From W. Line DRAPER to W. Line GIRARD

60' wide
10' ch
10' ch

BM. Tie Hub	72.70	115.77	103.05	w. line Draper 20' Sag Sealane
B.M. B.P.		9.29	106.48	Sw. Center Draper
				W. Line Draper
N. cl		9.22	106.05	sm cent cl
S. cl		9.25	106.5v	
				W. cl.
S		8.4	107.4	
cl		8.9	106.9	
1/4		8.9	106.9	
2		8.7	107.1	
1/4		8.9	106.9	
cl		9.4	106.4	
N		9.2	106.6	
				W 1/4
N		9.0	106.8	
cl		8.8	107.0	
1/4		8.4	107.4	
2		8.2	107.6	
1/4		8.3	107.5	
cl		8.2	107.6	
S		8.1	107.7	
				E
S		7.8	108.0	
cl		7.9	107.9	
1/4		7.7	108.1	
2		7.7	108.1	

115.77

1/4	8.0	107.8	
cl	8.4	107.4	
N	8.7	107.1	
			E 1/4
N	8.4	107.4	
cl	8.3	107.5	
1/4	7.7	108.1	
2	7.2	108.6	
1/4	7.3	108.5	
cl	7.4	108.4	
S	7.0	108.8	
			E. cl
S	6.3	109.5	
cl	6.6	109.2	
1/4	7.4	108.4	
1/4	7.1	108.7	
2	6.7	109.1	
1/4	7.2	108.6	
cl	8.0	107.8	
1/3	7.6	108.2	
N	7.7	108.1	
			00 = E. Line Draper
N	6.7	109.07	
cl	7.0	108.8	
1/2	7.5	108.3	
1/4	6.8	109.0	

115.77

C	6.3	109.5
14	4.6	109.7
+7	6.7	109.7
cl	6.2	109.6
S	5.9	109.9

50! E

S	3.4	112.4
cl	3.7	112.1
+1	4.6	112.2
14	4.2	111.6
C	3.9	111.9
14	4.3	111.5
+9	4.9	110.9
cl	4.3	111.5
N	4.2	111.6

100! E

N	2.0	13.2
cl	1.9	13.9
+1	2.6	13.2
14	2.0	13.8
C	1.6	14.2
14	2.0	13.8
+8	2.7	13.1
cl	1.4	14.4
S	1.4	14.4
T.P.	12.55	128.12
	0.20	115.57

Gentler 25

128.12

150! E

S	11.6	116.5
cl	11.6	116.5
+2	12.4	115.7
14	12.0	116.1
C	11.6	116.5
14	12.0	116.1
+8	12.8	115.3
cl	12.1	116.0
N	12.1	116.0

200! E

N	10.1	18.0
cl	10.0	18.1
+2	10.5	17.6
14	9.9	18.2
C	9.5	18.6
14	10.0	18.1
+9	10.3	17.8
cl	9.5	18.6
S	9.3	18.8

250! E

S	7.4	20.7
cl	7.5	20.6
+1	7.9	20.2
14	7.7	20.4
C	7.4	20.7

128.12

1/4	7.6	170.5
+8	8.2	19.9
cl	7.9	170.7
N	8.0	70.1

300' E

N	5.9	22.2
cl	5.9	22.2
X		
1/4	5.4	22.7
C	5.3	22.8
1/4	5.6	22.5
+ 9	5.8	22.3
cl	5.5	22.6
S	5.3	22.8

350 E

S	3.3	24.8
cl	3.1	25.0
+2	3.7	24.4
1/4	3.5	24.6
C	3.2	24.9
1/4	3.5	24.6
cl	3.8	24.3
N	3.6	24.5

400' E

N	1.8	26.3
cl	1.7	26.4

Genter 36

128.12

1/4	1.1	127.0
C	0.9	27.2
1/4	0.7	27.4
cl	1.0	27.1
S	0.6	27.5
T.P.	12.33	146.40V
		0.05
		128.07

429' E

S	11.8	128.6
cl	11.9	28.5
1/4	11.3	29.1
C	11.4	29.0
1/4	11.7	28.7
cl	12.4	27.8
N	12.4	27.8

432' E = White Eads

N	11.4	129.0
+7	11.4	129.0
cl	12.2	28.2
1/4	11.5	28.9
C	11.1	29.3
1/4	11.3	29.1
cl	11.4	29.0
S	10.5	29.9

140.40

00 = E. Line Eads

S	9.4	131.0	
cl	9.77	130.63	on emt cl
1/4	9.4	31.0	
C	9.5	30.9	
1/4	10.1	30.3	
+7	10.4	30.0	
cl	10.23	130.19	on emt cl
N	9.9	30.5	

2: E

N	8.7	31.7	
+5	9.6	30.8	
cl	9.3	31.1	
+2	10.3	30.1	
1/4	9.9	30.5	
C	9.4	31.0	
1/4	9.3	31.1	
+7	9.7	30.7	
cl	8.2	32.2	
S	7.5	32.9	

10: E

S	7.0	33.4	
cl	7.5	32.9	
+3	8.9	31.5	
1/4	8.7	31.7	
C	8.6	31.8	

Center 37

140.40

1/4	8.9	131.5	
+8	9.3	31.1	
cl	8.0	32.4	
N	8.3	32.1	

30: E

N	7.3	33.1	
cl	7.1	33.3	
+2	7.8	32.6	
1/4	7.5	32.9	
C	7.3	33.1	
1/4	7.2	33.2	
+7	7.4	33.0	
cl	6.2	34.2	
S	5.9	34.5	

65: E

S	4.1	36.3	
cl	4.8	35.6	
+2	5.7	34.7	
1/4	5.5	34.9	
C	5.6	34.8	
1/4	5.7	34.7	
+8	6.2	34.2	
cl	5.5	34.9	
N	5.7	34.7	

140.40

100' E

N	4.0	36.4
cl	3.8	36.6
+1	4.4	36.0
1/4	4.1	36.3
C	3.9	36.5
1/4	3.8	36.6
+7	4.0	36.4
cl	3.1	37.3
S	2.7	37.7

158' E

S	0.5	39.9
cl	0.6	39.8
+3	1.2	39.2
1/4	1.0	39.4
C	1.0	39.4
1/4	1.3	39.1
+9	2.0	38.4
cl	1.5	38.9
N	1.7	38.7

162' E

N	1.0	39.4
cl	1.1	39.3
+1	1.7	38.7
1/4	1.2	39.2
C	0.8	39.6

Gentler 38

140.40

1/4		0.8	139.6	
+7		1.1	39.3	
cl		0.2	40.2	
T.P.	12.23	152.49V	0.14	140.24
S		11.5	41.0	

200' E

S	10.4	42.1
cl	10.8	41.7
+2	11.8	40.7
1/4	11.6	40.9
C	11.2	41.1
1/4	12.0	40.5
+8	12.4	40.1
cl	11.9	40.6
N	11.9	40.6

2130' E

N	10.1	42.4
cl	10.0	42.5
+2	10.5	42.0
1/4	9.9	42.6
C	9.4	43.1
1/4	9.6	42.9
+8	9.8	42.7
cl	9.1	43.4
S	8.7	43.8

152.49

300 E - w Line Fay

S	7.2	45.3
cl	7.2	45.3
13	8.1	46.4
14	7.9	46.6
C	7.8	44.7
14	8.5	44.0
+8	8.8	43.7
cl	8.7	43.8
cl	8.26	44.13 ^{on chnt cl}
N	8.6	43.9

00 = E Line Fay

N	7.1	45.4
cl	7.37	45.17 ^{chnt cl}
14	7.1	45.4
C	6.9	45.6
14	6.7	45.8
cl	4.2	46.3
S	5.9	46.6

3'E

S	5.6	46.9
cl	5.9	46.6
14	6.4	46.1
C	6.8	45.7
14	6.9	45.6
cl	6.9	45.6
N	6.8	45.7

152.49

5'E

N	5.3	47.2
+8	5.4	47.1
cl	6.5	46.0
14	6.4	46.1
C	6.5	46.0
+7	6.6	45.9
14	4.4	48.1
cl	3.9	48.6
S	3.5	49.0

14'E

S	3.0	49.5
cl	3.7	48.8
14	4.3	48.2
C	5.0	47.5
14	5.6	46.9
cl	5.1	47.4
N	5.4	47.1

40'E

N	4.5	48.6
cl	4.4	48.1
14	4.2	48.3
C	3.8	48.7
14	3.7	48.8
cl	2.8	49.7
S	2.3	50.2

Gentler

39

152.49

	<u>70' E</u>	
S	2.1	150.2
cb	2.5	50.0
1/4	2.8	49.7
C	2.7	49.8
1/4	3.5	49.0
cb	3.2	49.3
N	3.3	49.2

100' E

N	1.6	50.9
cb	1.8	50.7
1/4	2.1	50.4
C	1.8	50.7
1/4	2.2	50.3
cb	1.9	50.6
S	1.4	51.1
T.P.	10.76	163.13
	0.12	152.37

154' E

S	10.0	53.1
cb	10.1	53.0
1/4	10.2	52.9
C	9.8	53.3
1/4	9.6	53.5
cb	9.4	53.7
N	8.9	54.2

163.13

Genter 40

200' E

N	7.4	155.7
+5	7.5	55.6
+7	8.1	55.0
cb	8.2	54.9
1/4	8.1	55.0
C	7.7	55.4
1/4	7.9	55.2
cb	7.9	55.2
S	7.5	55.6

230' E

S	6.1	57.0
cb	6.4	56.7
1/4	6.5	56.6
C	6.7	56.4
1/4	6.6	56.5
cb	6.5	56.6
N	6.3	56.8

245' E

N	5.8	57.3
cb	5.6	57.5
1/4	5.4	57.7
C	5.6	57.5
1/4	6.0	57.1
cb	5.9	57.2
S	5.2	57.9

163.13

265' E

S	4.6	158.5
cl	5.0	158.1
¹ / ₄	5.0	158.1
C	5.1	58.0
¹ / ₄	5.3	57.8
cl	5.4	57.7
N	5.0	58.1

300' E = W. Line Girard

N	4.3	58.8
cl	4.0	59.1
¹ / ₄	4.0	59.1
+6	4.3	58.8
C	3.3	59.8
¹ / ₄	3.6	59.3
cl	3.7	59.4
S	3.3	59.8
T.P.	3.97	159.16

SpK Fence Post
N.W. Center's Chair

80' wide
14' cbs
13' 1/2

30th ST X Sec
from S. Line National Ave S.

6/30/25
small

EM.	0.30	65.21	64.91
		00 = S. Line National	
W		1.0	64.2
cb		1.28	63.93
+1		1.7	63.5
1/4		1.6	63.6
c		1.5	63.7
1/4		1.4	63.8
cb		1.5	63.7
E		1.1	64.1
		7.5	
E		1.1	64.1
+10		2.0	63.1
cb		2.6	62.6
1/4		1.6	63.6
c		1.7	63.5
1/4		1.9	63.3
cb		1.5	63.7
W		2.0	63.2
		50' S	
W		2.0	63.2
+12		2.4	62.8
cb		3.5	61.7
1/4		4.2	61.0
c		3.7	61.3
1/4		3.9	61.3

N.W. 30th
+ Nat.

orient cb

cb	3.9	61.7
c	2.4	62.8
	100' E	
E	4.4	60.8
cb	4.9	60.3
1/4	5.0	60.2
c	5.5	59.7
1/4	5.6	59.6
+10	5.2	60.0
cb	4.3	60.9
+2	3.4	61.8
W	3.1	62.1
	105' S	
E	5.3	59.9
cb	4.9	60.3
	133' S	
W	4.0	61.2
+11	3.9	61.3
cb	5.0	60.2
+5	6.0	59.2
1/4	6.3	58.9
c	6.5	58.7
1/4	6.2	59.0
cb	6.2	59.0
E	6.3	58.9

65.21

42

65.21

145' S

E	6.7	58.5
cl	7.0	58.2
1/4	6.8	58.4
e	6.9	58.3
1/4	6.3	58.9
cl	5.7	59.5
w	5.2	60.0

175' S

1/4	6.5	58.7
CB	6.9	58.3
1/4	7.4	57.8
C	7.7	57.5
1/4	7.8	57.4
CB	7.6	57.6
E	6.6	58.6

200' S

E	6.9	58.3
CB	8.1	57.1
1/4	7.9	57.3
C	8.2	57.0
1/4	7.9	57.3
cl	7.4	57.8
w	7.2	58.0
+5	7.2	58.0

65.21

250' S

w-5	8.3	56.9
w	8.3	56.9
cl	8.5	56.7
1/4	8.6	56.6
C	8.7	56.5
1/4	8.2	57.0
cl	8.6	56.6
E	8.0	57.2

280' S

E	8.2	57.0
cl	9.0	56.2
1/4	8.6	56.6
C	8.9	56.3
1/4	8.9	56.3
cl	8.9	56.3
1/4	8.3	56.9
w	8.0	57.2

3005- N. Line Newton

w	8.1	57.1
cl	8.25	56.96
cl	8.7	56.3
1/4	9.2	56.0
C	8.7	56.5
1/4	8.6	56.6
cl	8.7	56.5
E	8.1	57.1

on cm cl
170 yds30th ST 43

65.21
00 = S. Line Newton

e		9.1	56.1
cb		9.3	55.9
" ₁₄		9.3	55.9
c		9.6	55.6
" ₁₄		10.1	55.1
+9		10.3	54.9
cb		9.7	55.5
cb		9.25	55.96
w		9.1	56.1
T/P	159	56.98	9.82
		8' S.	55.39
w		2.6	54.4
w		2.6	54.4
cb		2.2	54.8
" ₁₄		1.9	55.1
c		1.7	55.3
" ₁₄		0.9	56.1
cb		1.5	55.5
E		0.9	56.1
		40' S.	
E		1.1	55.9
+10		1.0	56.0
cb		2.4	54.6
+13		1.8	55.7
" ₁₄		1.3	55.7
c		2.0	55.0

no yardage
on cent. cb.

30th 57+4

56.98

" ₁₄		2.1	54.9
cb		3.0	54.0
w		3.7	53.3
+5		4.4	52.6
		70' S.	
-5		4.8	52.2
w		4.3	52.7
cb		3.4	53.6
" ₁₄		2.4	54.6
c		2.4	54.6
" ₁₄		1.5	55.5
cb		2.6	54.4
+4		1.3	55.7
E		1.3	55.7
		100' S.	
E		1.9	55.1
+10		2.2	54.8
cb		2.8	54.2
" ₁₄		2.1	54.9
c		2.9	54.1
" ₁₄		2.9	54.1
cb		3.4	53.6
w		4.3	53.7
+2		4.6	53.4

56.98
120' S.

w	3.7	53.3
cl	3.3	53.7
"4	3.0	54.0
e	3.1	53.9
"4	2.4	54.6
cl	3.3	53.7
+4	2.6	54.4
E	2.4	54.6

140' S.

E	2.9	54.1
cl	3.4	53.6
"4	3.3	53.7
e	3.7	53.3
"4	4.0	53.0
cl	3.9	53.1
w	4.6	52.4

170' S.

w-2	6.1	50.9
w	6.1	50.9
+8	6.1	50.9
cl	5.5	51.5
"4	5.7	51.3
e	5.5	51.5
"4	4.0	53.0
cl	4.0	53.0
E	3.8	53.2

56.98

30th SP45

193' S.

E	4.5	52.5
cl	4.6	52.4
"4	4.8	52.2
e	4.0	51.0
"4	6.2	50.4
cl	6.8	52.2
w	6.9	50.1
+5	7.2	49.8

200' S.

-5	8.2	48.8
w	7.4	49.2
cl	7.1	49.9
"4	6.3	50.7
e	6.9	50.2
"4	4.8	52.2
cl	4.9	52.1
E	4.6	52.4

235' S.

E	5.6	51.4
cl	6.0	51.0
"4	6.2	50.8
e	6.1	50.9
"4	6.0	51.0
cl	6.4	50.6
+3	7.7	49.3
w	7.3	49.7

56.98

250' S

w	7.9	49.1
+9	8.0	49.0
+11	6.6	50.4
cb	6.5	50.5
1/4	6.3	50.7
c	6.4	50.6
1/4	7.8	49.2
cb	7.4	49.6
E	7.3	49.7

267' S

E	7.6	49.4
cb	8.5	48.5
+1	9.2	47.8
1/4	9.2	47.8
c	8.0	47.0
+5	7.6	49.4
1/4	7.7	49.3
cb	8.6	48.4
w	9.1	47.9
+5	10.2	46.8

282' S

-5	10.2	46.8
w	9.7	47.3
cb	10.6	46.4
1/4	10.1	46.9
c	9.6	47.4
1/4	9.1	47.9

56.98

30th St 46

cb	8.4	48.6
E	7.7	49.3

296' S

E	7.7	49.3
cb	8.3	48.7
1/4	9.4	47.6
c	10.2	46.8
1/4	10.7	46.3
cb	10.4	46.6
w	10.9	46.1
+5	11.3	45.7

300' S = N. Line Boston

w	7.9	49.1
cb	7.98	49.00
cb	8.4	48.6
1/4	8.3	48.7
c	7.9	49.1
1/4	8.3	48.7
cb	8.3	48.7
E	7.7	49.3

No charge
on amt cb

00 = S. Line Boston

E	8.6	48.4
cb	8.9	48.1
+9	7.5	49.5
1/4	7.8	49.2
c	8.0	49.0

56.98

1/4	8.5	48.5
cl	8.9	49.1
w	8.5	48.5
3' S		
w	5.7	51.3
cl	6.0	51.0
1/4	6.8	50.2
c	6.4	50.6
+10	7.5	49.5
1/4	6.6	50.4
cl	6.4	50.6
E	5.9	51.1
20' S		
E	4.3	52.7
cl	5.1	51.9
1/4	5.1	51.9
c	5.2	51.8
1/4	5.5	51.5
cl	5.6	51.4
w	5.7	51.3
40' S		
w	6.2	50.8
cl	6.0	51.0
1/4	5.9	51.1
c	5.5	51.5
1/4	5.1	51.9

36th ST 47

56.98

cl	5.1	51.9
E	4.8	52.2
100' S		
E	5.5	51.5
cl	6.5	50.5
1/4	6.5	50.5
c	7.0	50.0
1/4	7.0	50.0
cl	4.8	51.2
w	7.0	50.0
130' S		
w	7.7	49.3
cl	8.4	48.6
140' S		
w	8.4	49.6
cl	8.5	48.5
1/4	8.4	48.6
c	8.0	49.0
1/4	7.5	49.5
cl	7.6	49.4
E	7.1	49.9
T.P.	0.12	48.25
170' S		
E	0.1	48.3
cl	0.2	48.0
1/4	0.5	47.2

48.25

C	170' S (20M)	47.5
	0.8	
114	1.1	47.2
cb	1.1	47.2
W	1.5	46.8

200' E

W	3.0	45.3
cb	2.7	45.6
114	2.3	46.0
E	2.2	46.1
114	1.8	46.5
cb	1.6	46.7
E	1.0	47.3

250' S

E	3.5	44.8
cb	3.6	44.7
114	3.9	44.4
C	4.2	44.1
114	4.3	44.0
cb	4.4	43.9
W	4.9	43.4

295' S

W	6.1	42.2
110	5.9	42.4
cb	7.1	41.2
114	6.8	41.5
C	6.4	41.5

30th ST 48

48.25

110	5.2	43.1
114	5.0	43.3
cb	4.9	43.4
E	4.7	43.6

300' S = N. Line Main ST

E	6.7	41.6
cb	6.9	41.4
114	6.6	41.7
E	7.1	41.2
114	7.2	41.1
cb	7.5	40.8
W	4.9	41.4

400' S Line Main ST

W	8.8	39.5
cb	8.8	39.5
114	8.8	39.5
C	8.6	39.7
114	8.5	39.8
cb	8.5	39.8
E	7.9	40.4

40' S

E	8.8	39.5
cb	9.4	38.9
114	9.1	39.2
C	9.7	38.6
114	10.1	38.2

48.25

cl	10.5	37.8
W	9.7	38.6
60' S.		
W	11.6	36.7
cl	12.2	36.1
1/4	11.8	36.5
C	11.0	37.3
1/4	10.4	37.9
cl	10.2	38.1
E	10.0	38.3
80' S.		
E	10.1	38.2
cl	10.6	37.7
1/4	10.6	37.7
C	11.8	36.5
1/4	12.7	35.6
cl	13.2	35.1
W	13.3	35.0
15	13.4	34.9
100' S.		
- 10	15.4	32.9
W	15.1	33.2
cl	14.9	33.4
1/4	14.0	34.3
C	12.9	35.4
1/4	11.6	36.7
cl	11.0	37.3
E	10.5	37.8

48.25

125' S.

30th ST 49

E	11.1	37.2
cl	11.5	36.8
1/4	12.8	35.5
C	14.6	33.7
1/4	15.8	32.5
cl	16.5	31.8
W	16.6	31.7
+10	16.8	31.5
T.P.	0.38	42.68
140' S.		
- 10	12.1	30.6
W	12.0	30.7
cl	11.7	31.0
1/4	10.7	32.0
C	8.9	33.8
1/4	6.9	35.8
cl	6.0	36.7
E	5.3	37.4
150' S.		
E	6.2	36.5
cl	6.7	36.0
1/4	7.7	35.0
C	9.3	33.4
1/4	11.2	31.5
cl	12.1	30.6
W	12.3	30.4
+10	12.5	30.2

TOP
5.2 M/min
W. 2 1/2" Fire Hydrant + 30"

42.68 / 65' S

-10		13.3	29.4
w		13.7	29.0
cl		13.3	29.4
1/4		12.1	30.6
c		10.1	32.6
1/4		7.9	34.8
cl		6.3	36.4
E		5.8	38.9

200' S.

E		9.9	32.8
cl		10.4	32.5
1/4		11.0	31.7
c		12.5	30.2
T.P.	0.11	30.46	30.35
1/4		2.1	28.4
cl		3.9	26.6
w		4.2	26.3
+5		3.7	26.6

240' S

-5		7.6	22.9
w		7.8	22.7
cl		7.1	23.4
1/4		6.2	24.3
c		4.7	25.8
1/4		3.4	27.1
d		3.0	27.5
E		2.0	28.5

30.46
240' S

e		2.6	27.9
cl		4.0	26.5
1/4		5.4	25.1
c		7.3	23.2
1/4		8.3	22.2
cl		8.9	21.6
w		9.0	21.5
+5		8.8	21.9

285' S

-10		11.1	19.5
w		11.6	19.0
cl		11.3	19.2
1/4		9.8	20.7
c		7.3	23.2
+8		5.6	24.9
1/4		5.3	25.2
cl		4.1	26.4
E		3.7	26.8

300' S = N. Line Colton

e		5.0	25.5
cl		5.8	24.7
1/4		6.6	23.9
c		8.5	22.0
1/4		11.2	19.3
cl		12.6	17.9
w		12.8	17.7
+10		12.2	18.3

30.46

N cl

-10		12.9	17.6
W		13.7	16.8
cl		13.8	16.7
1/4		12.6	17.9
e		10.7	19.8
1/4		9.0	21.5
cl		7.8	22.7
E		6.0	24.5

N, 1/4

E		7.4	23.1	
cl		9.6	20.9	
1/4		11.3	19.2	
c		12.6	17.9	
1/4		13.8	16.7	
cl		15.0	15.5	
W		14.5	16.0	
+10		13.4	17.1	
T.P.	6.20	25.16	11.50	18.96

E

-10		8.8	16.4
W		10.3	14.9
cl		10.6	14.6
1/4		10.6	14.6
c		9.4	15.8
1/4		7.5	17.7
cl		5.3	19.9
E		3.5	21.7

25.16

S 1/4

E		4.1	21.1
cl		6.5	18.7
1/4		8.4	16.8
c		10.3	14.9
1/4		11.5	13.7
cl		11.5	13.7
W		11.5	13.7
+10		9.3	15.8

S. cl.

-80		10.6	14.6
W		12.4	12.8
cl		12.7	12.5
1/4		12.0	13.2
c		10.8	14.4
1/4		9.0	16.2
cl		7.5	17.7
E		3.8	21.4

00 = S. Line Colton

E		1.5	23.7
cl		4.0	21.2
1/4		8.0	17.2
c		11.0	14.2
1/4		13.0	12.2
cl		13.8	11.4
W		13.5	11.7
+10		12.1	13.1

25.16

20' S

- 10	15.8	9.6	0
W	15.9	9.3	
cl	14.9	10.3	
1/4	12.8	12.7	
E	8.6	16.6	
1/4	4.9	20.2	
cl	1.2	24.0	
E	0.5	24.7	

35' S

E	2.5	22.7
cl	1.2	24.0
+7	1.3	23.9
1/4	2.2	23.0
C	6.6	18.6
+5	8.3	16.9
1/4	11.4	13.4
+6	14.2	11.0
cl	15.5	9.7
W	18.2	7.0
+15	18.1	7.1

50' S

- 15	21.2	4.0
W	20.0	5.7
cl	17.4	7.8
1/4	12.5	12.7
1/6	10.2	15.0

25.16

30" S

52

C		9.3	15.9
1/4		7.9	17.3
cl		8.1	17.1
E		9.6	15.6
T.P.	0.54	13.21	12.49
			12.67

70' S

- 5		7.0	6.7
E		7.1	6.1
cl		6.4	6.8
1/4		6.4	6.8
C		7.4	5.8
1/4		7.8	5.4
cl		9.2	4.0
W		10.5	2.7
+10		11.6	1.6

90' S

- 10		14.6	- 1.4
W		15.1	- 1.9
cl		15.2	- 2.0
1/4		15.2	- 2.0
C		14.7	- 1.5
1/4		14.3	- 1.1
cl		14.5	- 1.3
E		14.4	- 1.2
+10		14.3	- 1.1

35' wide
4.5' ch
R6 Roadway
13 to E

Shirley Ann Place
X Sec Alley B1K 51 Univ Hts Montoe
to Madison & Louisiana Texas

7/1/25
m

344.16

53

B.M.	6.81	344.16	337.35
		00 = N. Line Montoe	
W		5.4	338.76
+4.5 = ch		5.4	338.76
ch + 3 = old Line		5.40	338.76
E		5.6	338.56
+10 = old Line		5.14	339.02
+13 = E ch		5.3	338.86
E		5.3	338.86
	15' N		
E		4.8	339.36
ch		5.0	339.16
+9		4.9	339.26
E		4.2	339.96
+10		4.6	339.36
ch		4.8	339.36
W		4.7	339.46
	55' N		
W		4.2	339.96
ch		4.2	339.96
+6		4.3	339.86
E		3.1	341.06
+9		5.2	339.96
ch		5.0	339.16
E		4.4	339.76

SE. Louisiana
& Monroe
338.618 Estab
by Grade on Montoe

on chmt cl.
338.781 Estab
by Grade on Montoe

100' N

E	4.2	339.96
ch	4.4	339.76
C	3.4	340.76
ch	4.1	340.06
W	3.9	340.26

140' N

W	4.0	340.16
ch	4.0	340.16
+10'	3.6	340.56
E	4.4	339.76
ch	4.3	339.86
E	4.2	339.96

160' N

E	4.0	340.16
ch	4.2	339.96
C	4.6	339.56
ch	4.1	340.06
W	4.1	340.06

200' N

W	4.4	339.76
ch	4.6	339.56
C	4.5	339.66
ch	4.4	339.76
E	4.5	339.66

344.16

250' N

E		3.4	340.56
cb		3.7	340.46
c		3.9	340.26
cb		4.0	340.16
w		4.1	340.06

300' N

w		3.5	340.66
cb		3.4	340.76
c		3.6	340.56
cb		3.8	340.36
E		3.8	340.36

TP 7.49 347.94 3.71 340.45

350' N

E		7.2	340.74
cb		7.2	340.74
c		7.2	340.74
cb		7.2	340.74
w		7.2	340.74

400' N

w		7.0	340.94
cb		7.0	340.94
c		6.9	341.04
cb		6.6	341.34
E		6.6	341.34

347.94

Shirley Ann Place

54

435' N

E		5.8	342.14
cb		5.9	342.04
c		6.2	341.74
cb		6.2	341.74
w		6.2	341.74

475' N

w		5.7	342.24
cb		5.9	342.04
c		5.9	342.04
cb		5.7	342.24
E		5.5	342.44

500' N

E		5.0	342.94
cb		5.1	342.84
c		5.5	342.44
cb		5.8	342.14
w		5.8	342.14

550' N

w		4.6	343.34
cb		4.7	343.24
c		4.7	343.24
cb		4.9	343.04
E		4.7	343.24

347.94

e	4.0	343.94
el	4.0	343.94
old eline	3.67	344.27
c	4.2	343.74
old w line	3.75	344.19
el	3.9	344.04
w	3.9	344.04

344.14 Established
on Madison Ave

No yardage
on cement el

No yardage
on cement el

344.33 Established
on Madison Ave

55

Sewer Levels 4th St
 From E. St to E. K St
 Levels on top of Today's 10 Pavement
 18.5 From West Curb.

BM	8.35	36.98 ^v	88.63	ON 416011
E 5040			1.13	35.85 - 19.30 ^v
+25.35			1.98	35.50 - 17.68 ^v
+50.70			1.94	35.04 - 17.06 ^v
+76.05			2.42	34.56 - 16.44 ^v
+70.40			2.25	34.03 - 15.82 ^v
+26.75			3.43	33.55 - 15.20 ^v
+52.10			3.93	33.05 - 14.58 ^v
+77.45			4.47	32.51 - 13.96 ^v
+102.80			4.97	32.01 - 13.34 ^v
+28.15			5.46	31.52 - 12.72 ^v
+53.50			5.88	31.10 - 12.10 ^v
+78.85			6.40	30.58 - 11.48 ^v
3+10420			6.83	30.15 - 10.86 ^v
+29.55			7.18	29.80 - 10.24 ^v
+54.90			7.58	29.46 - 9.62 ^v
+80.34	2 E. St		7.84	29.14 - 9.00 ^v
4+10569			8.15	28.53 - 8.62 ^v
+31.04			8.79	28.19 - 8.23 ^v
T.P. +56.39	1.75	27.68 ^v	9.25	27.73 ^v - 7.85 ^v
+71.74			2.47	27.21 ^v - 7.46 ^v
5+10709			3.01	26.67 ^v - 7.08 ^v
+82.44			3.51	26.17 ^v - 6.69 ^v
+57.79			3.98	25.70 ^v - 6.31 ^v
+23.14			4.51	25.17 ^v - 5.92 ^v

Cuts

17.55 ^v
17.82 ^v
17.98 ^v
18.12 ^v
18.21 ^v
18.35 ^v
18.47 ^v
18.55 ^v
18.67 ^v
18.80 ^v
19.00 ^v
19.10 ^v
19.29 ^v
19.56 ^v
19.84 ^v
20.12 ^v
19.91 ^v
19.96 ^v
19.88 ^v
19.75 ^v
19.59 ^v
19.48 ^v
19.39 ^v
19.25 ^v

56
 8.3.25
 5.5.50
 3.1.50
 1.1.50

41st Server Levels Cont

		29.68				
610899			499	24.69	5.54	19.15
+3384			558	24.16	5.15	19.01
+5919			611	23.57	4.77	18.80
+8454			655	23.13	4.38	18.75
710989			713	22.55	4.00	18.55
+3524			751	22.17	3.61	18.56
716053	£ 60%		788	21.80	3.23	18.57
T.P	131	23.19	780	21.88		
+8656			171	21.48	3.10	18.38
811259			204	21.17	2.97	18.20
+3862			252	20.67	2.84	17.83
+6465			300	20.19	2.71	17.48
+9068			338	19.81	2.58	17.23
911671			384	19.35	2.45	16.90
+4274			435	18.84	2.32	16.52
+6877			489	18.30	2.19	16.11
+9480			538	17.81	2.06	15.75
1012083			592	17.27	1.93	15.34
+4686			648	16.91	1.80	15.11
+7289			674	16.45	1.67	14.78
+9892			687	16.32	1.54	14.78
1112495			670	16.49	1.41	15.08
+5100	£ Market		672	16.47	1.28	15.19
+7702			724	15.95	1.20	14.75
BM			872	15.47	Market	

4th St. Sewer Levels Cont.

T.P.		23.19 ✓					
12+03.04	1552	16.69 ✓	8.02	15.17 ✓	1.12		14.05 ✓
+29.06			2.17	14.52 ✓	1.05		14.47 ✓
+55.08			2.51	14.18 ✓	0.97		13.21 ✓
+81.10			2.89	13.80 ✓	0.89		12.91 ✓
13+07.12			3.35	13.34 ✓	0.81		12.53 ✓
+33.14			3.76	12.93 ✓	0.73		12.20 ✓
+59.16			4.22	12.47 ✓	0.66		11.81 ✓
+85.18			4.56	12.13 ✓	0.58		11.55 ✓
14+11.20			4.97	11.72 ✓	0.50		11.22 ✓
+37.22			5.19	11.50 ✓	0.42		11.08 ✓
+63.24			5.69	11.100 ✓	0.34		10.66 ✓
+89.26			6.05	10.64 ✓	0.27		10.37 ✓
15+15.28			6.47	10.22 ✓	0.19		10.03 ✓
+41.24	2 I.S.H.		6.72	9.96 ✓	0.11 ✓		9.85 ✓
+66.58			7.07	9.62 ✓	0.05		9.47 ✓
B.M.	264	12.55 ✓	6.78	9.91 ✓	9.94		
+91.92			3.28	9.27 ✓	0.00		9.27 ✓
16+17.26			3.70	8.85 ✓	-0.05		8.90 ✓
+42.60			4.00	8.55 ✓	-0.10		8.65 ✓
+67.94			4.47	8.08 ✓	-0.15		8.23 ✓
+93.28			4.77	7.78 ✓	-0.20		7.98 ✓
17+18.62			5.14	7.41 ✓	-0.25		7.66 ✓
+43.96			5.59	6.97 ✓	-0.30		7.27 ✓
+69.30			5.93	6.62 ✓	-0.35		6.97 ✓
+94.64			6.26	6.29 ✓	-0.40		6.69 ✓

4th St Senior Levels Cont.

	12.55				
18+19.98		6.57	5.98	-0.45	6.43
+45.32		6.99	5.56	-0.50	6.06
+70.66		7.28	5.27	-0.55	5.82
+96.00		7.49	5.06	-0.60	5.66
19+21.34	2 J St	7.68	4.87	-0.65	5.52
B.M.	3.76	8.16	7.65	4.90	3.74 Cor 4.41
+46.69		3.63	4.53	-0.70	5.23
+72.04		4.03	4.13	-0.76	4.89
+97.39		4.12	4.04	-0.81	4.85
20+22.74		4.45	3.71	-0.86	4.57
+48.09		4.80	3.36	-0.91	4.27
+73.44		4.92	3.24	-0.96	4.20
+98.79		5.18	2.98	-1.01	3.99
21+24.14		5.50	2.66	-1.06	3.72
+49.49		5.77	2.39	-1.11	3.50
+74.84		5.99	2.17	-1.16	3.33
22+00.19		6.18	1.98	-1.21	3.19
+75.54		6.45	1.71	-1.26	2.97
+50.89		6.70	1.46	-1.31	2.77
+76.24		6.87	1.29	-1.36	2.65
22+01.59	2 K St	7.01	1.15	-1.41	2.56
B.M.		6.77	0.37	3.74 Cor 2nd 4.58	

Server Construction 4th St. Change Cts From N to E
 From E to Market
 Levels on Trenches in Pavement 155 From East Curb

60.
8-18-25

BM	815	36.78	28.63	STN Cts 4th St FSI	
0+0.0	815		35.78 ✓	18.30	17.48 ✓
+36			35.38 ✓	17.42	17.96 ✓
+72			34.80 ✓	16.54	18.26 ✓
+108			34.02 ✓	15.66	18.36 ✓
+144			33.28 ✓	14.78	18.50 ✓
+180			32.58 ✓	13.90	18.68 ✓
+216			31.79 ✓	13.01	18.78 ✓
+252			31.03 ✓	12.13	18.90 ✓
+288			30.48 ✓	11.25	19.23 ✓
+324			29.91 ✓	10.37	19.54 ✓
+60			29.39 ✓	9.49	19.90 ✓
+80.34	FSI		29.15 ✓	9.00	20.15 ✓
T.P.					
+96	185	30.61	28.76 ✓	8.76	20.00 ✓
+132			28.16 ✓	8.21	19.95 ✓
+168			27.43 ✓	7.66	19.77 ✓
+204			26.71 ✓	7.12	19.59 ✓
+240			26.08 ✓	6.57	19.51 ✓
+276			25.41 ✓	6.03	19.38 ✓
+312			24.61 ✓	5.48	19.13 ✓
+348			23.82 ✓	4.93	18.89 ✓
+384			23.09 ✓	4.38	19.71 ✓
+420			22.39 ✓	3.84	18.55 ✓
+456			21.82 ✓	3.29	18.54 ✓
F.P.	134	23.22	21.88 ✓		

2007%
 28101

Sewer Construction 4th St Cont

746053 = + G St

43-22 ✓

7498	1.94	21.28 ✓	3.23 - 3.07	18.21 ✓
8728	2.44	20.78 ✓	2.89	17.89 ✓
+64	3.05	20.17 ✓	2.71	17.46 ✓
9100	3.58	19.64 ✓	2.53	17.11 ✓
736	4.18	18.94 ✓	2.35	16.59 ✓
+72	5.12	18.09 ✓	2.17	15.92 ✓
10408	5.76	17.46 ✓	1.99	15.47 ✓
+44	6.44	16.78 ✓	1.81	14.97 ✓
+80	6.91	16.31 ✓	1.63	14.68 ✓
11116	6.71	16.51 ✓	1.45	15.06 ✓
+51 8 Market St	6.70	16.52	-1.28 -	15.24 ✓
B.M.	7.75	15.97	314 Cor 4th St Market St.	

0.50

8/22/25 *Group* CROSS SECTION OF ALLEY BLK 140 University Heights

	1249	324.51	312.24	Tyler + Clave SE	W	5.2	329.6	
	1046	334.80	324.34			0760		
		S.L. Tyler + 0100			W	5.0	329.8	
		distances are all given on Center Line of Alley				C	4.5	330.3
W.		1010	324.70	encurb	+4	4.3	330.5	
C		9.4	325.36	on paving	+5	3.0	331.8	
E gutter		8.10	326.70	" "	E	4.6	332.2	
E		7.58	327.22	on curb		1400		
		+ 02.0			E	2.3	330.5	
E		6.8	328.0		+7	3.6	331.2	
+1		7.6	327.2		+9	5.2	329.6	
C		8.3	326.5		C	5.2	329.6	
+8		9.1	325.4		W	5.3	329.5	
W		9.0	325.8		+5	7.8	327.0	
		+ 15.0				1415.0		
W		5.9	328.9		-4 = garage dirt floor	7.2	327.4	
+2		6.3	328.5		W	6.6	328.2	
C		5.8	329.0		C	5.4	329.4	
+6		5.6	329.2		+3	5.3	329.5	
E		5.2	331.1		+6	4.2	330.4	
		+ 33.0			E	3.2	331.6	
E		1.9	332.9			24.0		
+4		3.0	331.8		E	2.9	331.9	
+6		4.4	330.4		+9	5.3	329.5	
C		4.2	330.6		C	6.4	328.4	
+5		4.7	330.1		+5	6.3	328.3	
					W	7.2	327.6	

Plotted on profile 8-25-25 CAT

33480

	2+50	fence 4.6 in alley on E	
-5		10.0	324.8
W		8.6	326.2
+4		8.2	326.6
+9		8.1	326.7
C		7.2	327.6
E		5.5	329.3
TP	4.46	3+00 330.57	8.69 326.17
E		2.1	328.5
+6		2.1	328.5
+7		3.8	326.8
C		4.6	326.0
W		4.7	325.9
	3+50	fence 4 in alley on E	
W		5.1	325.5
C		5.0	325.6
+2		5.0	325.6
+6		3.9	326.7
E		3.0	327.6
	4+00		
E		3.4	327.2
+6		4.6	326.0
C		5.0	325.6
+5		5.5	325.1
W		6.4	324.2
+5		7.4	323.2

Alley BK 140

63

4+17 is apparently the Δ

		6.0	324.6
		5.4	325.2
		5.1	325.5
		4.4	326.2
TP	6.05	331.83	4.79
			4+22
E			6.6
C			6.6
+4			7.2
W			7.6
			4+44
TP	0.06	323.54	8.35
W			0.40
C			0.30
E			0.0
			4+70
E			2.0
C			2.8
W			3.5
			5+00
W			6.6
C			6.1
E			5.5
			5+15
E			5.25
+4			6.2
			6.9

- 4 = garage cement

32354

C		7.0	316.5
+6		7.2	316.3
W		7.6	315.9
+7 = garage cement		7.62	315.92

5+30

W		8.9	314.6
C		8.9	314.6
+3		8.8	314.7
+6		8.2	315.3
E		8.2	315.3

5+93

E		10.8	312.7
+4		11.1	312.4
C		11.7	312.4
+8 = garage cement		11.02	312.52
W		11.0	312.5

6+46

TP	0.72	311.99	1227	311.27
W		1.2		310.8
C		1.2		310.8
E		1.0		311.0

6+95

E		2.7		309.3
+6		3.0		309.0
C		3.1		308.9
+7		3.3		308.7
W		3.5		307.5

64

7+03 = Sand Alley on West

W	446	307.53	on curb
W	466	307.33	on paring
C	39	308.1	
+3	3.5	308.5	
E	3.1	308.9	
+1 = garage cement	3.06	308.93	

Edge of paring

7+37[±] = edge of paring

E	564	306.35	on curb
E	581	306.18	on paring
C	554	306.45	
W	466	307.33	on paring
W	446	307.53	on curb

Cross Section Alley Block 209 Univ. Hgths
Between Illinois + Iowa
From N. University to S. Lincoln 20' wide

PLOTTED
9-11-25 A.G.W.

65
8.29.25
5.50.00
Bills
Barbara
1.56.00

B.M.	Elev.	3627.5	356.50	NW Cor Cdn. Hgts
		0.00 = N. University		
E.L. Top Parking	52.7		357.48	
E. " "	53.0		357.5	
N.L. " "	50.8		357.67	
		5' N		
N.L.	4.5		358.3	
E.	4.9		357.9	
E.L.	5.1		357.7	
		50' N		
E.L.	4.5		358.3	
E.	4.4		358.4	
+5	4.6		358.2	
N.L.	4.2		358.6	
		92' N		
-2 Cor Garage	3.71		359.04	
N.L. Top Cor Appro	4.1		358.7	
+3	3.2		358.9	
E.	4.1		358.7	
E.L.	4.3		358.5	
+1.5 Top Cor Appro	4.25		358.5	
+3 Cor Garage Cdn Floor	4.12		358.63	
		135' N		
-3 Cor Garage	3.84		358.91	
-1 Cor Appro	3.88		358.87	

Elev.	3627.5	359.0	
E.L.		3.8	359.0
E.		3.9	358.9
N.L.		3.7	359.1
			150' N
N.L.		3.7	359.1
E.		3.7	359.1
E.L.		3.4	359.4
			182' N
E.L.		3.1	359.7
+3		3.8	359.0
E.		3.7	359.1
N.L. Cor Appro		3.36	359.39
N. Cor Garage Cdn Floor		3.30	359.5
			200' N
N.L.		3.3	359.5
E.		3.5	359.3
+7		3.7	359.1
E.L.		3.0	359.8
			220' N
E.L.		2.6	360.2
+5		3.4	359.4
E.		3.4	359.4
+6		3.4	359.4
N.L.		2.6	360.2
			240' N

N. Cor Garage
Cdn Floor
1.5 N. Hgts.
377.

N. Cor Garage
Cdn Floor
1.5 N. Hgts.
396-358.79

Alley Block 700 U.N. Hight Cont.

North side

	362.75		
W.L.		2.8	360.0
+6		3.4	359.4
2		3.3	359.5
E.L. Cen Garage Dirt Floor		3.5	359.3
T.P.	7.03	366.38	359.35
	256'N		
-3.5 Cen Garage Dirt Floor		6.6	359.8
E.L.		6.8	359.6
2		6.7	359.7
+6		6.6	359.8
M.L.		6.5	359.9
+4 Cen Garage Dirt Floor		6.35	360.03
	294'N		
M.L. Cen Garage Conc Floor		5.88	360.56
2		6.1	360.3
+9		6.3	360.1
E.L.		6.0	360.4
	315'N		
E.L.		5.6	360.8
2		5.5	360.9
M.L.		5.4	361.0
	359'N		
M.L.		5.1	361.3
2		5.4	361.0
E.L.		5.2	361.2

280'N
Cen Garage
Dirt Floor
0.54' M.L.
360.25

	366.38		
+1 Top Conc Apron		5.17	361.21
+4 Cen Garage Conc Floor		5.03	361.35
	408'N		
E.L.		4.8	361.6
2		4.8	361.6
M.L.		4.8	361.6
+0.6 Top Conc Apron		4.70	361.7
+6.5 Cen Garage Conc Floor		4.57	361.81
	460'N		
-8 Cen Garage Conc Floor		4.28	362.10
E.L. Top Conc		4.5	361.9
+2 " " Apron		4.60	361.8
2		4.7	361.7
M.L.		4.8	361.6
	481'N		
-1 Cen Garage Conc Floor		4.33	362.05
M.L.		4.36	362.02
+3 Cen Garage		4.45	361.93
2		4.5	361.9
+3		4.4	362.0
E.L.		4.3	362.1
	505'N		
+5 Cen Garage		4.13	362.25
+10 Cen Garage		4.26	362.12
E.L.		4.2	362.2

325'N Cen
Garage
Conc Floor
7.04' M.L.
361.36

445'N
Cen Garage
Dirt Floor
4.8
361.58

193'N
Cen Garage Conc
6.5' E.L. Foot
4.07 362.31
6.15
6.15

Alley Block 209 Univ. Hgts. Cot.

To Hide

67

366.38

X		4.5	361.9	367M Car Garage Curb floor 5.00
+C		4.7	362.0	Gas 362.43
XL		4.5	361.9	Car Garage 5.50

555 N

XL		4.0	362.4	Gas 362.33
+0.5	Car Garage Curb floor	3.95	362.43	
X		3.7	362.7	
EL		4.0	362.4	

585 N

EL		4.0	362.2	
+C		4.2	362.2	
X		4.1	362.3	
XL	Car Garage	4.0	362.4	

598.5 Shine Lincoln

XL	Top Curb	3.87	362.51	✓
Gutter		4.6	361.8	
X		4.6	361.8	
+X		4.3	362.1	
Gutter		4.7	361.7	
EL	Top Curb	4.06	362.32	✓

TR	5.50	367.83	4.05	362.33	
B.M.			5.11	362.72	NE Car Lincoln 11.00 362.72

Bench Marks

On Woodman And Post Alto Vista Tracts

BM	0.19	87.70		87.51	SW Top Hyd Woodman 4th
T.P.	2.14	79.91	10.23	77.47	
T.P.	0.49	67.86	12.54	67.37	
T.P.	0.23	55.25	12.84	55.02	
BM			9.48	45.77	B.N.E. Car. Corp. Culvert Waldman 10th San Diego
T.P.	3.52	45.67	13.10	42.15	
T.P.	6.70	49.78	2.59	43.08	
T.P.	12.91	61.71	0.98	48.80	
T.P.	13.01	74.16	0.56	61.15	
T.P.	11.06	84.54	0.68	73.48	
T.P.	11.30	94.69	1.15	83.39	
BM			6.43	88.26	Spk Pit SW Car Post Alto Vista
T.P.	8.89	102.44	1.14	93.55	
T.P.	10.10	107.21	5.30	97.14	
T.P.	10.65	117.83	0.06	107.18	
BM			12.57	105.26	SW Car SW 2nd Post Alto Vista
T.P.	12.15	129.35	0.63	117.20	
BM			7.45	121.90	SW Car Spine Post Alto Vista
T.P.	10.51	137.86	2.00	127.35	
BM			4.76	133.10	Spk Pit SW Car Spine 100' E. of Escuela
	9.13	146.91	0.08	137.98	
BM			7.51	139.40	Spk Pit SW Car Spine Post Alto Vista
T.P.	7.21	136.11	12.01	134.90	
BM			7.60	148.71	SW Car Corp. Waldman 10th Wood Lane

Levels Wood Lane 5th = 49 + 6.57 68

From 10' SW of Woodman to 10' SW of Post
Alto Vista Suburb Tract No 2

Graded

BM	179.5	141.66	178.71	SW Car Woodman 10th
0+0			19.1	
10' SW of Woodman 5th Wood Lane			19.4	
+10			15.6	
+50			10.7	
+100			5.6	
+150			0.0	
+200			8.1	
T.P.	12.91	154.54	0.03	141.62
+50			4.7	
+100			4.1	
+150			3.5	
+200			4.4	
+250			5.0	
+300			5.5	
+350			5.9	
+400			5.75	
T.P.	10.40	157.99	9.8	149.2
+450			9.1	
+500			7.8	
+550			5.7	
+600			5.3	
+650			4.8	
+700			5.1	
+750			5.7	
+800				

Levels Wood Lane Crst.

(158.99)

10+50		6.9	152.1
11+00		8.3	150.7
1150		8.9	150.1
12+00		9.4	149.6
1250		9.8	149.2
13+00		9.1	149.9
1376 = 10.58 P.S.		7.8	151.2
1384 on Top Rowing		7.65	151.34
T.P. 296	154.28	7.67	151.38

Levels Monte Vista St.

10.58
From So. Linn St to N. Linn Urban Ave

Alto Vista Suburb Road No. 2

(154.28)

Not Graded

0+00 = 5.100 St		4.7	149.6
140		5.5	148.8
150		6.0	148.1
1700		6.4	147.9
175		5.9	148.4
150		4.0	150.3
170		5.8	149.1
2100		4.6	149.7
195		6.1	149.2
160		6.4	147.9
3400		7.9	146.4
T.P. 0.57	147.10	7.75	146.53
115		6.7	146.4
150		8.8	144.9
165		8.3	143.8
185		8.3	144.8
4100		8.3	143.8
115		4.8	147.9
150		4.5	147.6
190		4.8	147.3
5100		4.1	147.7
115		4.7	147.4
150		5.3	147.8
190		4.1	141.0
6100		5.5	141.6
62		7.7	

Plotted

139.35
10.58 P.S.
151.38

Levels Monte Visto St Cont.

Plotted

		(147.10)		Not Graded
6+5			5.4	141.7
+10			8.0	139.1
+31			7.2	139.9
+37			5.0	142.1
+44.7	1052.904		5.1	142.0
+55			6.0	141.1
+85			6.8	140.9
+100			5.6	141.5
+110			5.8	141.3
+150			8.4	138.7
+160			8.6	138.5
8+100			11.1	136.0
T.P.	7.41	(143.35)	11.4	135.9
+50			7.7	135.7
9+100			7.3	136.1
+15			7.7	135.7
+10			6.1	137.3
+55			6.1	137.3
+75			5.1	138.3
10+100			5.8	138.2
+15			4.2	139.2
+80			4.5	138.9
11+100			5.9	137.5
+35			6.4	137.0
+70			9.0	134.4

70

(143.35)

11+80			9.5	133.9
12+00			10.2	133.2
+25			13.9	129.5
+35			14.5	128.9
+47.7 - N. Line of Road			15.6	127.8
T.P.	0.37	130.76	12.98	130.37

Plotted

Levels Ocean View St. 10' E2
 From N Line Urban Ave to S Line Q

Lees Add. + Alt. + Stationing
 Plotting

Plotted

71

130.76

Not Graded

138.44

0+0 = N Line Urban Ave	13.1	117.7
+25	12.1	118.7
+40	13.2	117.6
+55	12.6	118.2
+75	70.4	120.4
1+00	10.9	119.9
+50	70.2	120.6
+80	9.0	121.8
2+00	7.0	123.8
+20	5.9	124.9
+50	3.4	127.4
+75	1.9	128.9
3+00	1.2	129.6
TP 784	0.16	130.60
+15	8.7	129.7
+45	6.5	131.9
+70	7.8	130.6
4+00	7.3	131.1
+20	7.1	131.3
+35	7.8	130.6
+58	7.4	131.0
+90	5.0	133.4
5+00	5.8	132.6
+10	6.1	132.3
+50	4.8	134.2

6+00	1.7	136.7
TP 9.26	0.99	137.65
-20 - 100 ft RST	8.7	138.8
+40	8.8	139.3 N Edge Road
+45	7.0	140.5
+55	6.5	141.0
7+00	6.4	141.1
+55	6.1	141.4
+85	7.8	139.7
8+00	7.9	139.6
+25	8.0	139.5
+60	8.9	138.6
9+00	7.8	139.7
+30	7.6	139.9
+65	5.6	141.9
10+00	6.0	141.5
+20	5.8	142.3
+65	5.0	142.5
11+00	5.6	141.9
TP 261	5.84	141.67
+20	2.5	141.8
+50	0.8	143.5
12+00	1.6	142.7
+67 = S Line QST	3.0	141.3
129.33	3.74	140.54

147.51

144.28

Levels Escudella St. Alto Vista Tron N 07
 10' E% From 10' S2 Pst to 10' S2 Pst" Plotted

	114.78	Graded 30' N de E.M.S	
TP 0-1.5 E% Pst	122.01	1298	131.30
0+00 = 10' S2 Pst	127.95	4.0	128.0
+25		5.6	126.4
+50		8.9	125.1
1+00		9.4	122.6
+50		10.6	121.4
2+00		11.2	120.8
+50		11.6	120.4
3+00		12.1	119.9
+50		12.4	119.6
4+00		12.5	119.5
+50		11.8	120.2
5+00		10.9	121.1
+30		10.0	122.0
6+20 = 10' S2 Pst		10.2	121.8
TP 2.41	124.24	10.21	121.80
+50		3.3	120.9
7+00		4.4	119.8
+50		4.6	119.6
8+00		4.9	119.3
+50		5.1	119.1
9+00		5.0	119.2
+50		4.5	119.7
10+00		3.8	120.4
+50		2.3	121.9

Plotted

72

	154.24	
11+00	0.9	123.3
TP 2.97	133.74	0.17
+50		8.9
12+00		7.7
+50		5.9
13+00		4.6
13.97 = 10' S2 Pst		4.0
B.M.		11.20

Spl. Pst
 5' S2 E
 Pst 10' S2 Pst
 121.90

Levels Upper St. Alto Vista No. 2
 10' E 2. From 10' 58" P.S. 4" to N. Line Southern Ave.

Plotted (See Sheet 1845 L)

Graded 30' wide E. of St. Spt. 12/15/52
 South of Southern Ave.

115.28

B.M.	2.50	124.40	121.90	
TP	4.47	115.96	12.91	111.49
	6.43	(119.61)	2.78	113.78
0-1	So. Edge Pavement		4.20	115.4
0+00	- 10' 58" P.S. 4"		3.8	115.8
+50			3.3	116.3
+100			3.6	116.0
+150			3.5	116.1
+200			3.6	116.0
+250			4.0	115.6
+300			4.9	114.7
+350			5.8	114.8
+400			6.6	113.0
+450			7.4	112.2
+500			7.8	111.8
+550			7.2	112.4
+600			6.4	113.0
TP	2.10	(115.28)	6.43	113.18
+25	N.L. Q.S.T.		2.2	113.1
+50			2.0	113.3
+700			2.8	112.5
+50			3.3	112.0
+800			3.8	111.5
+50			4.3	111.0
+900			5.0	110.3

Plotted

23

				9.50	5.6	109.7
				10.00	5.8	109.5
				+50	5.5	109.8
				11.00	3.9	111.4
	TP	12.71	(124.21)		3.78	111.50
				+50	3.9	114.3
				12.00	6.7	117.5
				+50	3.1	121.1
				13.00	1.0	123.2
				13.17	0.8	123.4
				+50	0.8	123.4
				13.71		
				14.00		
				+50		
				15.00		
				+50		
				16.00		
				+50		
				17.00		
				+50		
				18.00		
				+50		
				19.00		
				+50		
				20.00		

10' E 2. would be 17' 04" feet higher than levels shown on 1845

Levels corrected P.S. 4" Graded 30' wide from 1845

Spt. 12/15/52 or P.S. 4" Upper St.

Levels Upper St. Cent.

Plotted (See 1845L)

Station	Offset	13321	Graded 30' Wide From	131.1
20+50				131.1
21+00				130.4
TP	0.00	132.05		132.05
+50				130.2
22+00				128.7
+15				128.7
+50				126.6
23+00				125.4
+50				124.5
24				123.6
+50				123.5
25+00				123.5
+50				123.9
26+00				124.0
+117 = N. Line Southern Ave				124.5
TP	1.53	120.86		119.33

30' 17 1/2" Top Lot Stake

Levels East St. Alto Vista N + Homatah
1022 From N. Line Southern Ave to 1052 Post

Station	Offset	120.86	Graded 60' Wide From	114.9
0+00 = N. Line Southern Ave				114.9
+50				115.4
1+00				116.0
+50				114.1
2+00				111.9
+50				110.5
3+00				110.3
+50				111.3
4+00				113.3
+50				115.8
5+00				117.6
TP	2.18	119.81		117.63
+50				118.6
6+00 = S. Line Urban Ave				118.4
7+00				118.0
+50				115.6
8+00				112.5
+50				100.5
9+00				109.6
+50				107.9
10+00				106.7
TP	39.5	110.83		106.88
+50				106.1
11+00				105.8
+50				105.8

Plotted See 1845L

Levels East St. Cont.

110.83

Not Graded N. L.R. to N.A.Q.

106.14

Graded to wide from N.L. Q.S.

11750	5.1	105.7
12700	4.9	105.9
+80	6.1	104.7
3M	5.6	105.22
13700	5.9	104.9
+10	6.6	104.2
+15	6.8	104.6
+50	7.3	103.5
14700	8.2	102.6
+50	9.2	101.6
15700	10.1	100.7
+30	12.9	97.9
+50	12.7	98.4
16700	10.4	100.2
TP	10.5	100.32
+50	5.3	100.8
+85	5.0	101.1
17700	6.6	99.5
+30	10.7	95.4
+50	11.2	94.9
+65	10.9	95.2
18700	7.9	98.2
+50	7.0	99.1
19700	6.8	99.3
+40	5.7	100.4

-10.57. F.S.

Plotted

Sta. P. 16 & 17
F.S. East St
105.22

58%

106.14

Slide S.S.

19750	4.5	101.6
20700	1.9	104.2
+50	0.0	106.1
TP	6.9	106.12
21700	5.7	107.4
+50	4.9	108.2
22700	4.4	108.7
+50	4.8	108.9
23700	4.4	108.7
+50	4.8	108.3
24700	5.4	107.7
+50	6.0	107.1
25700	6.8	106.8
+50	7.1	106.0
26700	8.1	105.0
+11.8	8.0	105.1
+18.7	7.85	105.23
TP	8.22	106.32
TP	10.41	105.04

Plotted

113.08

S. Edge Paving

Levels Meridian Blvd.

5' N.E. From 10'S & Pst to Pst From Pst to N.L. Southern 10'E8.

(105.04)

Graded 15' Wide E.W. &

0-15	Top Pavement	109.3	94.1	S Edge Pavement
0+0		10.7	94.3	
+50		10.1	94.9	
1+00		9.6	95.4	
+50		9.2	95.8	
2+00		7.4	96.6	
+30		5.6	99.4	
+50		5.0	100.0	
3+00		4.6	100.4	
+50		4.4	100.6	
4+00		3.0	102.0	
+50		1.0	104.0	
TP	397	(108.33)	96.8	104.36
5+00		2.4	105.9	
+50		1.7	106.6	
6+00		2.0	106.3	
+26	N.L. QST	2.4	105.9	
+50		3.4	104.7	
7+00		5.8	102.5	
+50		7.4	100.9	
8+00		9.1	99.2	
+50		10.0	98.3	
9+00		11.0	97.3	
+50		12.1	95.9	
TP	564	(100.95)	130.2	95.31

Plotted see 1045 L

(100.95)

10+00		6.7	94.3	
+50		8.0	93.0	
11+00		11.8	89.2	
+50		13.1	87.9	
12+00		10.3	90.7	
+50		7.5	93.5	
13+00		3.7	97.3	Meridian Graded
+81.25 = 10'S & Pst		3.4	97.6	+ Curbs 5'S & Pst
+53.7 N. End. Curb		3.3	97.7	Levels 10'E & 50. of Pst
TOP CURB		2.6	98.79	
" " " "		2.50	98.36	
+70		2.4	98.6	
14+00		1.6	99.4	
+50		1.6	99.4	
15+00		1.5	99.5	
+50		1.5	99.5	
16+00		1.2	99.2	
6.32	(105.55)	1.72	99.23	
+50		6.6	99.0	
17+00		6.2	99.4	
+50		6.1	99.5	
18+00		5.7	99.9	
+50		5.8	99.8	
19+00		5.6	100.0	
+56 N.L. Urban Av		5.1	100.5	
TOP CURB		4.33	101.22	
" " " "		5.58	99.97	

Levels Meridian Blvd Cont.

Station	Notes	10555	Level	100.9
20700			4.7	100.9
+16	S. Line Urban Ave		4.5	101.1
	Top E Curb		3.53	102.03
	" W "		5.22	100.33
+50			4.0	101.6
21700			3.6	102.0
+50			3.2	102.4
22700			2.4	103.2
+50			1.5	104.1
23700			0.5	105.1
TP	892	11278	1.69	103.86
+50			7.1	105.1
24700			6.7	106.1
+50			5.8	107.0
25700			4.2	108.6
+50			2.9	109.9
26700			4.0	108.8
+17.3	= N Line Southern Ave		4.5	108.3
	Top E Curb		4.30	108.48
	" W "		3.20	109.58
TP	131	10103	13.06	99.72

Levels West St, Alto Vista Suburb Tract No. 1
10' E.S. From N Line Southern Ave to 10' S. E. P.S.

Station	Notes	10123	Level	Graded 60% dc
0+0	= N Line Southern Ave		6.9	94.1
+50			8.4	97.6
1+00			8.5	97.5
+50			8.5	97.5
2+00			8.0	93.0
+50			8.4	97.6
3+00			8.0	93.0
+50			7.8	93.2
4+00			7.8	93.2
+50			7.8	93.2
5+00			7.2	93.7
+50			7.1	93.9
TP	4.35	9859	6.79	94.24
6+00	S. Line Urban Ave		4.8	93.8
+10			4.9	93.7
+14			6.1	97.5
+30			4.9	93.7
+50			5.5	93.1
+60			4.7	93.9
7+00			4.6	94.0
+50			4.9	93.7
8+00			5.0	93.6
+50			4.3	94.3
9+00			4.2	94.4
+50			4.2	94.4

Plotted
See Sheet
1844 L

N.E. Cor. Sutter & Goldfinch B.P. 266.79

256.99
+ 7.04
264.03
- 6.01
258.02
+ 3.76
261.78

N.W. Cor. Sutter & Eagle

H.I.

261.78 61.78 61.78 61.78 61.78
56.30 57.20 56.00 56.90 56.60
5.48 4.58 5.78 4.98 5.18
- 0.05 4.33

261.78 261.78 261.78 261.78 261.78 261.78
56.40 56.21 56.05 6.11 56.16 56.21
5.38 5.07 5.73 5.67 5.67 5.57
Cor. 4 + 0.05 + 0.05 + 0.00

West St Cont.

Plotted - 18 JUL

28

(98.59)

10400 4.8 94.6
+ 50 3.5 95.1
11400 3.1 95.5
+ 50 2.5 96.1
TP 467 (100.59) 2.70 95.89
12400 4.8 96.4
+ 50 3.4 97.2
+ 65 3.1 97.5
+ 80 = 1608.705 3.6 97.0
BM 12.37 88.21

Spk Pole
S.W. Cor.
Rdly Vista
88.21

Vista St. Book No 1182 Page 111

PSA

118-116

Woolmax + Yoth

87.51
- 2.43
84.94
- 1.25
77.19
+ 0.65
77.84
- 12.87
64.97
+ 0.11
64.11
- 12.27
52.84
+ 0.19
53.03
- 12.22
40.81
+ 2.53
43.11
- 0.23
42.88
+ 12.95
61.85
- 0.22
61.63
+ 12.63
74.26
- 0.51
73.75
+ 11.96
85.69
- 0.27
85.32
+ 12.20
97.52
- 0.06
97.46
+ 9.81
107.27
- 0.51
106.76
+ 12.60
119.36
- 0.27
119.09
+ 12.01
131.10
- 0.17
130.93
+ 12.80
143.73

143.73

- 8.33

135.40

+ 2.07

137.47

- 8.62

128.85

TR. NW. CO. WOODMAN 1917

CONC. BEE HIVE

Cost. Page Hi Way Guard.

240'	@36.	86.	46.
Hauling posts + wire		20.	00
Mt's + cons inc. paint etc.		113.	50
		<hr/>	
		\$219.	90

posts 8' etc.

Armedo @44k.

DIRECTIONS FOR USE OF TABLES

TABLE No. 1.

Distance of slope stake from side or shoulder stake for any width roadway, slope 1% to 1. If ground is nearly level, the cut or fill at side stake is located by the double entry method in

IMPROVED TABLES

AND

INFORMATION

TABLE No. 2.

To find Tangent and External for curve of any other degree, divide by degree of curve and add correction found in column of corrections. Degree of curve with a given L may be found by dividing tangent (or external), opposite L by given tangent (or external). The distance from a point on the tangent to the curve is very nearly the square of the tangent length divided by twice the radius.

22.3 52.5 430
14. 432
8.3

10
18
24.25
34.4
42.5
55.

+ 0.65
- 12.87

29° 23

53.03
7.45
45.58

80
24
456
14

804.83
40 47
6722
3
145.85
61.24 - 45.28
3 47 00
2 37 00
3 47 00
11 21 15
3 47 00
15 08 00
3 47 00
18 53 00
3 47 00
22.42 00
34.5

19.00
9.99
10.46
39.45
4
93.95
2
45.45

8.76
7
4.96

8994
450
8542

3 | 112
37

23.00
9.99
32.99

30° 37
61.12

3 | 68

140

88° 8' 20
29.22

27° 23
3
9