

1136

DIETZGEN
TRADE MARK

ENGINEERS'
FIELD BOOK
No. 404

Drain

32ND

Thorn

Page 70

EUGENE DIETZGEN CO.

DRAWING MATERIALS, MATHEMATICAL and
SURVEYING INSTRUMENTS

Chicago New York San Francisco New Orleans Pittsburg Toronto

Distances from Center of Roadway for Cross-Sectioning
Roadway 16 feet wide. Side Slopes 1 on 1.
For Single Track Embankment.

H	0	.1	.2	.3	.4	.5	.6	.7	.8	.9	H
0	8.0	8.1	8.2	8.3	8.4	8.5	8.6	8.7	8.8	8.9	0
1	9.0	9.1	9.2	9.3	9.4	9.5	9.6	9.7	9.8	9.9	1
2	10.0	10.1	10.2	10.3	10.4	10.5	10.6	10.7	10.8	10.9	2
3	11.0	11.1	11.2	11.3	11.4	11.5	11.6	11.7	11.8	11.9	3
4	12.0	12.1	12.2	12.3	12.4	12.5	12.6	12.7	12.8	12.9	4
5	13.0	13.1	13.2	13.3	13.4	13.5	13.6	13.7	13.8	13.9	5
6	14.0	14.1	14.2	14.3	14.4	14.5	14.6	14.7	14.8	14.9	6
7	15.0	15.1	15.2	15.3	15.4	15.5	15.6	15.7	15.8	15.9	7
8	16.0	16.1	16.2	16.3	16.4	16.5	16.6	16.7	16.8	16.9	8
9	17.0	17.1	17.2	17.3	17.4	17.5	17.6	17.7	17.8	17.9	9
10	18.0	18.1	18.2	18.3	18.4	18.5	18.6	18.7	18.8	18.9	10
11	19.0	19.1	19.2	19.3	19.4	19.5	19.6	19.7	19.8	19.9	11
12	20.0	20.1	20.2	20.3	20.4	20.5	20.6	20.7	20.8	20.9	12
13	21.0	21.1	21.2	21.3	21.4	21.5	21.6	21.7	21.8	21.9	13
14	22.0	22.1	22.2	22.3	22.4	22.5	22.6	22.7	22.8	22.9	14
15	23.0	23.1	23.2	23.3	23.4	23.5	23.6	23.7	23.8	23.9	15
16	24.0	24.1	24.2	24.3	24.4	24.5	24.6	24.7	24.8	24.9	16
17	25.0	25.1	25.2	25.3	25.4	25.5	25.6	25.7	25.8	25.9	17
18	26.0	26.1	26.2	26.3	26.4	26.5	26.6	26.7	26.8	26.9	18
19	27.0	27.1	27.2	27.3	27.4	27.5	27.6	27.7	27.8	27.9	19
20	28.0	28.1	28.2	28.3	28.4	28.5	28.6	28.7	28.8	28.9	20
21	29.0	29.1	29.2	29.3	29.4	29.5	29.6	29.7	29.8	29.9	21
22	30.0	30.1	30.2	30.3	30.4	30.5	30.6	30.7	30.8	30.9	22
23	31.0	31.1	31.2	31.3	31.4	31.5	31.6	31.7	31.8	31.9	23
24	32.0	32.1	32.2	32.3	32.4	32.5	32.6	32.7	32.8	32.9	24
25	33.0	33.1	33.2	33.3	33.4	33.5	33.6	33.7	33.8	33.9	25
26	34.0	34.1	34.2	34.3	34.4	34.5	34.6	34.7	34.8	34.9	26
27	35.0	35.1	35.2	35.3	35.4	35.5	35.6	35.7	35.8	35.9	27
28	36.0	36.1	36.2	36.3	36.4	36.5	36.6	36.7	36.8	36.9	28
29	37.0	37.1	37.2	37.3	37.4	37.5	37.6	37.7	37.8	37.9	29
30	38.0	38.1	38.2	38.3	38.4	38.5	38.6	38.7	38.8	38.9	30
31	39.0	39.1	39.2	39.3	39.4	39.5	39.6	39.7	39.8	39.9	31
32	40.0	40.1	40.2	40.3	40.4	40.5	40.6	40.7	40.8	40.9	32
33	41.0	41.1	41.2	41.3	41.4	41.5	41.6	41.7	41.8	41.9	33
34	42.0	42.1	42.2	42.3	42.4	42.5	42.6	42.7	42.8	42.9	34
35	43.0	43.1	43.2	43.3	43.4	43.5	43.6	43.7	43.8	43.9	35
36	44.0	44.1	44.2	44.3	44.4	44.5	44.6	44.7	44.8	44.9	36
37	45.0	45.1	45.2	45.3	45.4	45.5	45.6	45.7	45.8	45.9	37
38	46.0	46.1	46.2	46.3	46.4	46.5	46.6	46.7	46.8	46.9	38
39	47.0	47.1	47.2	47.3	47.4	47.5	47.6	47.7	47.8	47.9	39
40	48.0	48.1	48.2	48.3	48.4	48.5	48.6	48.7	48.8	48.9	40

Example—If point is 22.6 ft. above grade, how far should it be from center line to be a slope stake point? Ans. from Table 30.6. For same slopes but other widths of roadbed, correct above figures by one-half difference in width of roadbed; thus in example above, for 20 ft. roadbed distance will be $30.6 + (20 - 16) \div 2$ or 2 ft. added to 30.6 = 32.6. For slopes of 1 on 1½ see inside of back cover.

Copyright, 1914, by Eugene Dietzgen Co.

No 1136

Block 187

Sewer Construction
 Florence Ave Alley Block 45-49-K
 From Existing Sewer to M.H. Alley 914 K Montecello + Elliott St.

Fairmount + Montecello Add.

8-27-51
 Sisson
 31 05
 Northern

T.P.				NE 1/4 Lot 6 Set East of Alley Grades 337.80	Code	
497	347.35	344.38				
51+74 =	M.H. Existing Florence Alley 914 K					
+2686		5.66	341.69	338.11	+358	
50+79.78		5.78	342.07	338.28	+365	
+32.58		4.98	342.37	338.24	+363	
49+85.44		4.30	343.05	339.05	+400	
+138.29		5.08	342.27	339.37	+390	
48+91.15		4.23	343.12	339.68	+344	
+44.0	M.H. Alley 914 K	2.99	344.36	340.00	+424	
47+96.86		2.18	345.17	340.57	+460	
+49.72		1.43	345.92	341.14	+478	
T.P. +02.57	10.47	357.11	0.71	346.64	341.71	+422
46+55.43		10.05	347.06	342.28	+478	
+08.28		9.66	347.45	342.85	+460	
45+61.14		9.01	348.10	343.42	+468	
+14.00	M.H. Alley 914 K	8.23	348.88	344.00	+488	
44+66.86		7.49	349.62	345.14	+448	
+19.72		6.49	350.62	346.28	+434	
43+72.58		5.53	351.58	347.42	+416	
+25.43		4.38	352.73	348.56	+417	
42+78.29		2.75	354.34	349.70	+466	
T.P. +31.14	6.29	362.04	1.36	355.75	350.84	+491
41+84.00	M.H. Alley 914 K	4.75	357.29	352.00	+529	
+21.77	90° 00'	5.23	356.81	352.10	+491	
24+25.6		5.10	356.94	352.80	+414	

5 Sewer Construction
 2 Alley Block A Belmont Add.
 From Lot Line 1/2 BKA to Existing M.H. El Cajon Ave

BM	622	35443	OK	34821	34821	Code Man. NE El Cajon & Euclid
						Grades
8+860 =	Existing M.H.				33805	
	El Cajon Ave. 385 NL					
8+3834			5.17	34926	340.04	(+9.22)
7+9067			4.97	34946	342.04	+7.82
+43			4.30	35013	344.03	+6.10
6+9534			2.46	35197	346.02	+5.95
T.P.	998	36398	0.43	35200		
7+747			8.67	35529	348.01	+7.28
6+00	M.H.		6.72	35726	350.00	+7.26
+50			5.48	35850	350.43	+8.07
5+00			5.02	35896	350.84	+8.18
+50			4.87	35911	351.25	+7.84
4+00			5.10	35888	351.67	+7.81
+50			4.53	35945	352.07	+7.36
T.P.						
3+00	M.H. 522	36510	4.10	35988	352.50	+7.38
+50			5.33	35977	352.75	+7.02
2+00			5.22	35988	353.00	+6.88
+50			5.45	35965	353.25	+6.40
1+00			5.84	35921	353.50	+5.76
+50			6.15	35895	353.75	+5.20
0+0	DE		5.49	35961	354.00	+5.61
T.P.	2 H46		5.81	35979	354.20	

7 Sewer Construction
 2 Alley Block K + Elliot St.

ford Page 3

38727

Grades

11+26.66			4.57	382.70	372.19	+ 10.51
10+80.00			4.65	382.62	72.63	+ 9.94
T.P. 10+33.33	3.09	385.69	4.67	382.60	72.84	+ 9.74
9+26.66			1.77	383.92	73.05	+ 10.87
9+40.00	o M.H.		3.61	382.08	73.24	+ 8.84
8+93.33			4.27	381.42	73.42	+ 8.00
8+46.66			4.83	380.86	73.61	+ 7.25
8+00.00			5.21	380.48	73.80	+ 6.68
7+53.33			5.48	380.21	73.98	+ 6.23
7+06.66			6.02	379.67	74.17	+ 5.50
6+60.00	Δ 90° M.H. E Elliot St.		5.41	380.28	74.36	+ 5.92
6+12.86			5.12	380.57	74.55	+ 6.02
5+65.72			4.75	380.99	74.74	+ 6.25
5+18.58			4.76	380.93	74.92	+ 6.01
4+71.43			4.48	381.21	75.11	+ 6.10
T.P. 4+24.29	6.69	388.57	3.91	381.88	75.30	+ 6.58
3+77.14			6.05	382.52	75.49	+ 7.03
3+30.00	o M.H.		5.61	382.96	75.68	+ 7.28
2+82.86			5.12	383.15	75.87	+ 7.29
2+35.72			5.01	383.56	76.06	+ 7.50
1+88.57			4.80	383.77	76.25	+ 7.52
1+41.43			5.19	382.38	76.44	+ 6.94
0+94.29			5.55	383.02	76.62	+ 6.40
0+47.14			5.30	383.27	76.81	+ 6.46
0+00	o M.H.		5.17	383.40	377.00	+ 6.40
-17+33.49			4.98	382.68	372.57	

8
 8-25-25

13 Sayer Construction
 2 Alley Block 5 Alhambra Park
 From Lot Line 14th to E Elliot St.

	5.34	388.74	383.40	on stub @ 17+33.69	
6+5545 M.H. Drop E Elliot St.		5.34	383.40	Grades 379.00	+4.40
6+0896		5.44	83.30	79.82	+4.08
5+6797		4.76	83.98	79.43	+4.55
5+1598		4.76	83.98	79.64	+4.34
4+6748		4.76	83.98	79.86	+4.12
4+2799		4.91	83.83	80.07	+3.76
3+7649		5.01	83.73	80.29	+3.44
3+30.0 O.M.H.		4.53	84.21	380.50	+3.71
2+8285		4.19	84.55	80.72	+3.83
T.P. 2+3571 6.34	391.6	3.92	384.82	80.93	+3.89
1+8857		5.87	85.29	81.14	+4.15
1+4143		5.66	85.50	81.36	+4.14
0+9428		5.36	85.80	81.57	+4.23
0+4714		5.03	86.13	81.79	+4.34
0+00 DE = Lot 2, 1, 14, 14, 2, 14, 5		3.99	87.19	382.00	+5.17
T.P.	5.22	385.94		on Hub 6+4425 B. Arnold Korte 385.93	

Server Construction
S Alley Block 4 Alhambra Park
From Lot Line 20421 to S Elliot St

	859	39199		38846	015400 17433.69 221105 Grades	
17+33.69 M.H. Drop = S Elliot St		✓	8.59	83.40	879.00	+4.40
+64.41			7.05	84.54	79.50	+5.04
18+19.13			6.64	85.35	80.00	+5.35
+61.85			4.38	85.61	80.50	+5.11
19+04.57			5.87	86.17	81.00	+5.17
+47.29			5.46	86.53	81.50	+5.03
+90.00 O.M.H.			4.89	387.10	382.00	+5.10
20+33.11			4.52	87.47	82.83	+5.14
+76.23			4.33	87.66	82.67	+4.99
T.P. 21+19.34	511	39344	3.64	88.35	83.00	+5.35
+62.46			5.08	88.38	82.83	+5.05
22+05.57			4.72	88.68	82.67	+5.01
+98.69 A90° M.H.		✓	4.68	88.78	384.00	+4.78
+89.18			5.05	88.41	84.20	+4.21
23+29.69 D.E. W = Lot Line 20421			5.53	87.93	84.40	+3.53

2137
 Above Measurements
 9-24-40
 Mather
 Blaw
 10611
 3015

E+IX Alley Block 4 From Lot Line 23424 to M.H.

		39346		88.61	84.40	
0+0 - Lot Line 23424 D.E.			4.85	88.61	84.40	+4.21
+40.5			4.57	88.89	84.20	+4.69
+81.0 O.M.H. = 22+48.69			4.68	88.78	384.00	+4.21

Sewer Construction
 S. Alley 3/4 of A. Albemarle Park
 From lot 20 to M.H. & E. Elliot St.

	2.57	389.53	384.94	Station 6 1/2 E. Elliot Grades	
0+00 DE		7.88	81.65	380.46	+1.23
+50		6.89	82.64	80.72	+1.24
1+00		6.34	83.19	79.82	+1.37
+50		5.27	84.21	79.62	+1.04
2+00 M.H. - 6 1/2 E. Elliot St.	2.57		84.94	379.62	+1.37

Survey Construction
 Contour Bind. and Alley Block 6 Alhambra Park
 From DE Lot 1 Block 10 to M.H. Elliot St

T.P.	4.04	374.57	390.53	57046 0+85 21244.10 97005	384.00	
0+100 DE.		5.02	89.55	386.00	+3.55	
+480		5.18	89.39	85.68	+3.71	
+96.0		5.45	89.12	85.35	+3.77	
1+140		5.55	89.02	85.02	+3.99	
+92.0		5.89	88.68	84.70	+3.98	
2+140.0 O.M.H.		6.28	88.29	384.38	+3.91	
+86.18		6.58	87.97	84.06	+3.93	
3+132.31		6.60	87.97	83.75	+4.02	
+78.54		6.64	87.93	83.43	+4.50	
4+124.72		7.02	87.55	83.12	+4.43	
T.P. +70.90 O.M.H. 217	389.26	7.48	387.09	382.80	+4.29	
5+114.23		7.01	87.25	82.51	+4.74	
+57.57		7.09	87.17	82.21	+4.96	
6+100.91		7.33	86.93	81.92	+5.01	
+44.25 Δ.M.H.		7.01	86.25	381.63	+4.62	
+88.12		4.40	84.86	81.32	+3.54	
7+131.98 Δ.M.H.		5.72	83.54	381.00	+2.56	
+78.84		5.32	83.94	80.81	+3.13	
8+125.70		4.28	84.98	80.63	+4.35	
+72.56		3.23	86.03	80.44	+5.59	
T.P. 9+119.42	3.63	390.47	84.12	386.84	80.25	+6.59
+66.28		3.33	87.14	80.06	+7.18	
10+113.14		3.69	86.78	79.88	+6.00	
+60.0 O.M.H.		3.35	87.12	379.69	+7.43	

Contour Blvd Alley B.K.6 Cont.

390.47

11+09.10	479	385.68	379.49	+6.19
+58.19	508	85.39	79.30	+6.09
12+07.28	568	84.79	79.10	+5.69
+56.38	582	84.65	78.90	+5.75
13+05.47	543	85.04	78.70	+6.34
+54.56	473	85.74	78.51	+7.23
14+03.65	574	84.73	878.31	+6.44

25 Sewer Construction
 E. Alleys Block 9 Alhambra Park

T.P.	4.04	394.57	390.53	on 5/10/67 0.125 SEVEN ALLEY	
0+00 DE = Lot Line 11/2		3.88	90.69	387.00	+3.69
+42.5		3.90	90.67	86.75	+3.90
+85.0 Δ M.H.		4.08	90.49	86.50	+3.99
1+31.49		4.37	90.20	86.25	+3.95
+77.98		4.39	90.18	86.00	+4.18
2+24.47		4.26	90.31	85.75	+4.56
+70.96		4.62	89.95	85.50	+4.45
3+17.45		4.60	89.97	85.25	+4.72
+63.94		4.61	89.94	85.00	+4.96
4+10.43		5.16	89.41	84.75	+4.66
+56.92 Δ M.H. % SEVEN ALLEY		5.21	89.34	84.50	+4.86
T.P. Δ M.H. 498	394.27	5.28	389.29	on 5/10/67 0.125 SEVEN ALLEY	

South East Alley Blk 9
 394.27

0+00 DE = Lot 22+23 Blk 9		5.72	88.55	385.50	+3.05
+41.67		5.53	88.74	85.17	+3.57
+83.33		5.28	88.99	84.83	+4.16
1+25.00 Δ M.H. % N+S ALLEY		4.91	89.36	84.50	+4.86
+73.65		4.66	89.61	84.08	+5.53
2+22.30		4.18	90.09	83.65	+6.44
+70.95		5.04	89.21	83.22	+5.99
3+19.60 Δ M.H. = 4+70.90 S Contour Blvd		7.18	87.09	382.80	+4.29

North East Alley Blk 9
 394.57

0+00 DE = Lot 11+12 Blk 9		4.40	90.17	386.90	+3.27
0+40.0 Δ M.H. % N+S ALLEY		4.08	90.49	386.50	+3.99

27 Sewer Construction
 Contour 344.4 & Alley 314.7 Albambrg Part
 From 2 Contour on p. lot line 1423 1/2 11 to 2 Elliot St.

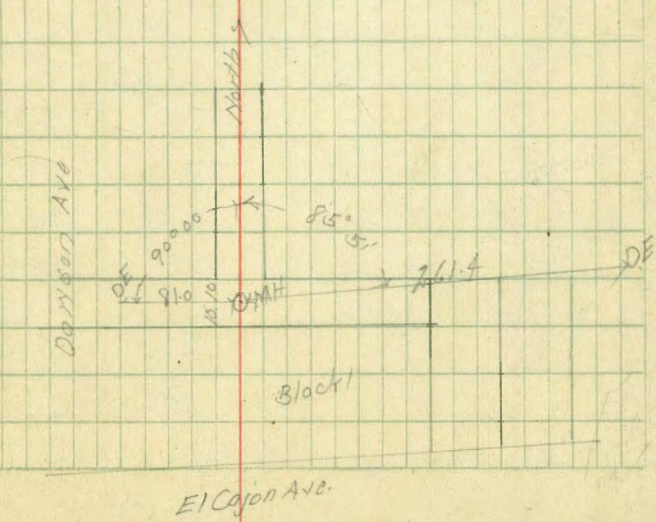
8-27-25 28

39274 Contour 31

0+00 DE 2 Contour 344.4 1423 1/2 11	8.65	384.09	382.08	+2.01	
+46.39	7.33	85.41	81.90	+3.51	
+92.78	6.64	86.10	81.71	+4.39	
1+39.17 Δ M.H.	6.42	86.32	81.53	+4.79	
+86.34	4.45	88.29	81.34	+6.95	
2+33.50	4.90	87.84	81.15	+6.69	
+80.67	5.01	87.73	80.95	+6.78	
3+27.83	4.77	87.97	80.76	+7.21	
TP +75.00 Δ M.H. 446	392.33	4.87	87.87	390.57	+7.30
4+22.40	4.42	87.91	80.38	+7.53	
+69.80	4.70	87.63	80.19	+7.44	
5+17.20	5.51	86.82	80.00	+6.82	
+64.60	5.64	86.69	79.81	+6.88	
6+12.00 Δ M.H. = 210 2 Elliot St.			377.62	+7.32	
TP	5.47	386.16	386.27		

Serra Construction
 E+W N+S Alley Block 1 + Contour Blvd Alhambra Park
 From Lot 19+20 8/41 to 8 N+S Alley

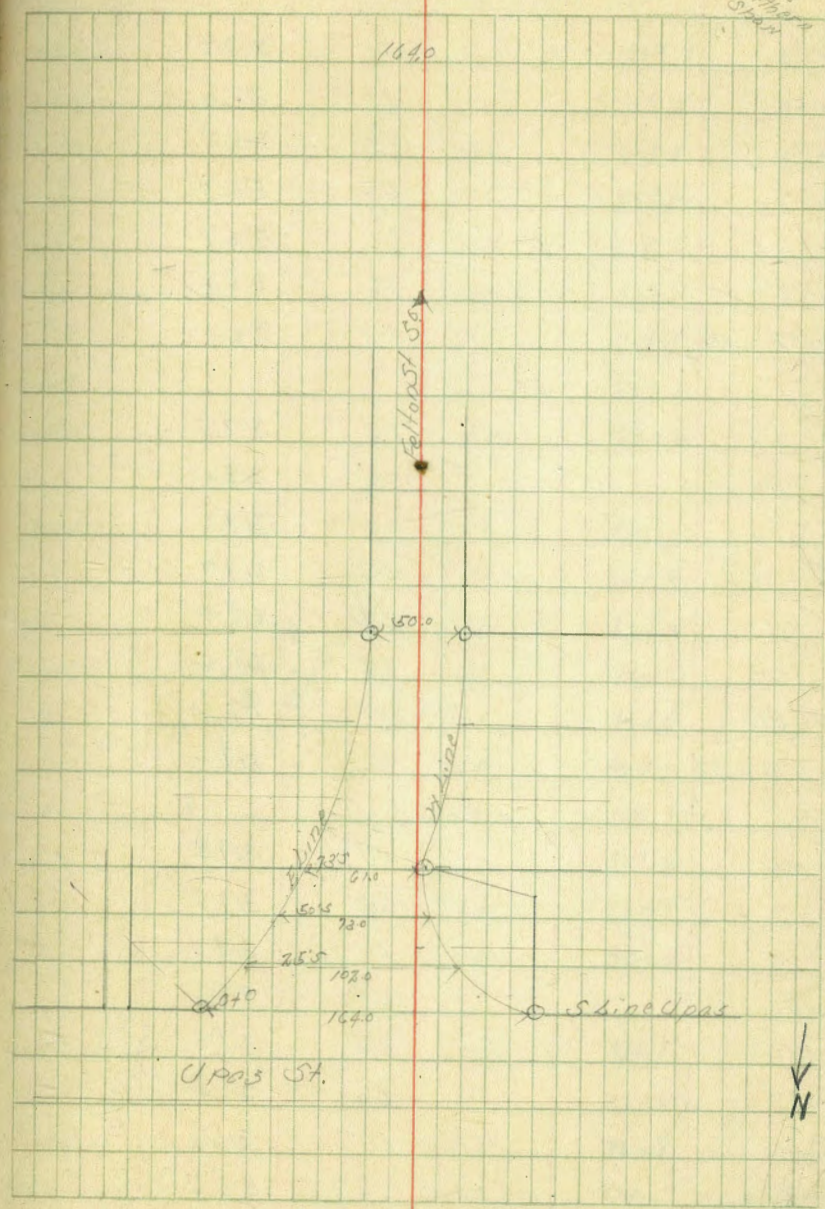
	6.06	397.51		391.45	376.00		
0+00 DE			3.89	93.62	390.00		+3.68
- Lot Line 2081							
+43.57			4.56	92.95	89.67		+3.28
+87.13			5.11	92.40	89.33		+3.07
1+30.70			5.08	92.43	89.00		+3.43
+74.21			5.04	92.47	88.67		+3.80
2+128.3			5.52	91.99	88.33		+3.66
+61.40 ΔMH			5.82	91.69	88.00		+3.69
N+S Alley Block 1 + Contour Blvd.							
From DE Lot Line 13914 to MH 2 Contour + Alley 8147							
0+00 DE			6.56	91.95	388.40		+3.55
- Lot Line 13914							
+40.5			6.74	91.27	88.20		+3.97
+81.0 ΔMH			5.82	91.69	388.00		+3.69
TP -2161.0	4.05	395.50	6.04	391.75			
1+28.60			5.15	90.35	87.76		+2.59
+76.20			5.46	90.04	87.53		+2.51
2+23.80			5.54	89.96	87.29		+2.67
+71.40			5.22	90.28	87.05		+3.23
3+19.00			4.61	90.89	86.81		+4.08
+66.60			4.22	91.22	86.59		+4.69
4+14.20			3.48	92.02	86.34		+5.68
+61.80 ΔMH			3.26	92.24	86.10		+6.14
TP -2161.0	2.21	391.50	3.19	392.31			
5+06.50			2.30	92.22	85.92		+6.50
+51.20			2.55	91.97	85.24		+6.63
+95.90			3.56	90.96	84.96		+6.00
6+40.60			4.19	90.33	84.58		+5.75



Cross Section Felton St
From S.L. Upas to 200' S of S.L. Upas
H.L.

BM	514	323.59	318.45	3P SURV. CO. UPAS ST. 3310
TP	715	325.01	573	317.86
S.L. Upas				
E.L. Felton		111	313.9	
+10		10.5	314.5	
+12		10.4	314.6	
+17		10.8	314.2	
+20		10.8	314.2	
+30		10.3	314.7	
+40		9.6	315.4	
+50		8.8	316.2	
+60		8.5	316.5	
+70		8.2	316.8	
+80		8.1	316.9	
+90		7.7	317.3	
100		7.5	317.5	
115		7.7	317.3	
122		6.3	318.7	
135		6.8	318.8	
164 P.C. MedLine		6.1	318.8	
25'S				
M.L.		5.9	319.1	
+11		6.1	318.9	
+15		7.2	317.8	
+30		7.2	317.8	

8-28-25
5:55 PM
Felton St
Upas



Cross Section Felton St.
So. Ups

325.01

+40	71	317.9
+50	74	317.6
+70	82	316.8
+86	89	316.1
+92	81	316.9
+99	86	316.4
+102 = EL	83	316.7

50'S

EL	72	317.8
+10	70	318.0
+13	79	317.1
+30	73	317.7
+50	66	318.4
+65	68	318.2
+68	58	319.2
+73 = M.L.	58	319.2

73'S

M.L.	51	319.9
+7	52	319.8
+10	59	319.1
+25	58	319.2
+40	65	318.5
+47	66	318.4
+50	60	319.0
+61 EL	63	318.7

325.61

96'S

50' wide
10' CBS
7 1/2 gts

EL	53	319.7
CB	52	319.8
+3	56	319.4
1/4	56	319.4
2	53	319.7
1/4	52	319.8
CB	51	319.9
+7	46	320.4
M.L.	44	320.6
		118'S
M.L.	40	321.0
+6	41	320.9
CB	42	320.2
1/4	44	320.6
2	44	320.6
1/4	49	320.1
+5	51	319.9
CB	57	319.3
+3	43	320.7
EL	44	320.6
		140'S
EL	39	321.1
+9	38	321.2
CB	47	320.8
+2	45	320.5

on Radius
produced

Cross Section Felton St.
So. Ups

325.01

50' side
10' Curb
7.50's

1/4	4.3	320.7
2	3.9	321.1
1/4	4.1	320.9
+5	4.5	320.5
CB	4.3	320.7
+2	3.8	321.2
W.L.	3.8	321.2

180's

W.L.	3.4	321.6
CB	3.5	321.5
Top Curb	3.65	321.3
Gutter	3.9	321.1
1/4	3.5	321.5
2	3.8	321.8
1/4	3.5	321.5
+5	3.8	321.2
CB	3.2	321.7
+1	3.2	321.8
E.L.	3.1	321.9

220's

E.L.	3.0	322.0
+9	3.0	322.0
CB	2.3	321.7
+1	3.5	321.5
1/4	3.2	321.8

325.01

2	3.0	322.0
1/4	3.1	321.6
+5	3.9	321.1
CB Top	3.07	322.0
W.L.	2.8	322.2

Cross Section Bancroft St
From S. L. Palm to N. L. Nutmeg

50' wide
10' C.B.
75' Q.T.S.

BM.	12.60	306.68	294.08	8 P.N.E. Cor Nutmeg & Bancroft
			306.7	
			0 + 0 = S. L. Palm	
N.L.		2.0	304.7	
C.B. Top		2.18	304.6	
Gutter		2.8	303.9	
1/4		2.5	304.2	
2		2.6	304.1	
1/4		2.5	304.2	
Gutter		2.5	304.2	
C.B. Top		2.15	304.5	End Corb
E.L.		1.9	304.8	
		15' S		
E.L.		1.8	304.9	
C.B.		1.9	304.8	
+2		2.2	304.5	
1/4		2.3	304.4	
2		2.6	304.1	
1/4		2.4	304.3	
C.B.		2.3	304.4	
+5		1.8	304.9	
N.L.		1.7	305.0	
		40' S		
N.L.		1.5	305.2	
C.B.		2.1	304.6	
+4		2.4	304.3	

40
8.28.25
S. L. Palm
N. L. Nutmeg
300'

	306.68	306.7
1/4	2.4	304.3
2	2.4	304.3
1/4	2.2	304.5
C.B.	2.0	304.7
E.L.	2.0	304.7
	80' S	
E.L.	2.3	304.4
C.B.	2.4	304.3
1/4	2.6	304.1
2	2.6	304.1
1/4	2.6	304.1
C.B.	2.5	304.2
N.L.	2.8	303.9
	100' S	
N.L.	3.1	303.6
C.B.	2.8	303.9
1/4	3.0	303.7
2	3.0	303.7
1/4	2.7	304.0
C.B.	2.6	304.1
E.L.	2.4	304.3
	150' S	
E.L.	2.5	304.2
C.B.	2.6	304.1
1/4	2.7	304.0

	306.68	306.7
Z	3.0	303.7
1/4	3.1	303.6
CB	3.0	303.7
ML	3.3	303.4
	200's	
ML	3.5	303.2
CB	3.2	303.5
1/4	3.3	303.4
Z	3.2	303.5
1/4	2.7	304.0
CB	2.5	304.2
EL	2.6	304.1
	250's	
EL	3.6	303.1
CB	3.6	303.1
1/4	3.9	302.8
Z	4.1	302.6
1/4	4.3	302.4
CB	4.4	302.3
ML	4.9	302.8
+5	5.2	301.5
	300's	
-5	6.7	300.0
ML	6.1	300.6
CB	5.8	300.9
1/4	5.7	301.0

	306.68	306.7	
Z	5.4	301.3	TOP MH
1/4	5.0	301.7	
CB	4.7	302.0	
EL	4.8	301.9	
	350's		
EL	6.5	300.2	
CB	6.6	300.1	
1/4	7.0	299.7	
Z	7.3	299.4	
1/4	7.4	299.3	
CB	7.4	299.3	
ML	8.1	298.6	
+10	8.8	296.9	
	400's		
-10	11.1	295.6	
ML	9.6	297.1	
+5	9.2	297.5	
CB	9.0	297.7	
1/4	9.0	297.7	
Z	9.1	297.6	
1/4	8.9	297.8	
CB	9.0	297.7	
EL	9.1	297.6	
	450's		
EL	9.5	297.2	

43 Cross Section Bancroft St.
From S.W. Palm to N.W. Nutmeg

50' side
10' Cbs
7.5' gts

	306.62	306.7
CB Top	9.74	297.0
Gutter	10.0	296.7
1/4	9.9	296.8
2	10.0	296.7
1/4	10.0	296.7
CB	9.9	296.8
1/4	10.2	296.5
+5	10.6	296.1
460's		
-5	11.9	294.8
1/4	11.3	295.4
+3	11.0	295.7
CB	10.5	296.2
1/4	10.6	296.1
2	10.7	296.0
1/4	10.6	296.1
Gutter	10.8	295.9
CB Top	10.28	296.4
EL	10.0	296.7
500's		
EL	10.7	296.0
CB Top	10.95	295.7
Gutter	11.4	295.3
1/4	11.1	295.6
2	11.3	295.4

44

	306.62	306.7
1/4	11.3	295.4
CB	11.3	295.4
1/4	11.2	294.9
+5	12.0	294.7
550's		
-5	12.1	294.3
1/4	12.3	294.5
CB	11.9	294.8
1/4	11.8	294.9
2	11.7	295.0
1/4	11.8	294.9
Gutter	12.1	295.6
CB Top	11.93	294.9
EL	11.5	295.2
599.9's White Nutmeg		
EL	12.5	294.2
CB Top	12.63	294.1
Gutter	12.9	293.8
1/4	12.3	294.4
2	12.4	294.3
1/4	12.5	294.2
CB	12.8	293.7
1/4	13.1	293.6

45 Gass Section 33rd St
From S. L. Palm to N. Nutmeg

50' Wide
10' Casing
7 1/2" G.S.

B.P.N.E.C. Co.
Nutmeg Street

BM	12.60	306.68	294.08	
T.P.	3.31	306.49	3.50	303.18
	010 = S. L. Palm			<u>306.5</u>
WL		0.81		305.7
CB Top		1.05		305.4
Gutter		1.5		305.0
1/4		1.5		305.0
1/2		1.4		305.1
1/4		1.2		305.3
Gutter		1.1		305.4
CB Top		0.48		306.0
E.L.		0.3		306.2
	15' S			
E.L.		0.3		306.2
CB		0.6		305.9
1/4		1.0		305.5
1/2		1.3		305.2
1/4		1.4		305.1
CB		1.3		305.2
WL		1.3		305.2
	50' S			
WL		2.1		304.4
CB		2.2		304.3
1/4		2.1		304.4
1/2		1.9		304.6
1/4		1.6		304.9

30649

46
8.28.25

					366.5
CB		1.0			305.2
1/2		1.0			305.5
E.L.		1.2			305.3
	100' S				
E.L.		2.6			303.9
1/2		2.9			303.6
1/4		3.3			303.2
CB		3.3			303.2
1/2		3.2			303.3
1/4		3.6			302.9
1/2		3.6			302.9
1/4		3.8			302.7
CB		3.7			302.8
WL		3.4			303.1
	150' S				
WL		4.7			301.8
CB		5.2			301.3
1/4		5.5			301.0
1/2		5.3			301.2
1/4		5.6			300.9
CB		5.4			301.1
E.L.		5.2			301.3
	200'				
-5		8.2			298.3
E.L.		8.0			298.5
CB		7.8			298.7

			50' N 100'
	306.49		306.5
1/4		7.2	299.3
2		7.1	299.4
1/4		7.1	299.4
CB		6.7	299.8
ML		6.0	300.5
	350'S		
ML		7.7	298.8
CB		8.4	298.1
1/4		9.0	297.5
2		9.2	297.3
1/4		9.5	297.0
+5		9.9	296.6
CB		10.7	295.8
EL		11.7	294.8
+10		12.2	294.3
	300'S		
-15		15.8	290.7
EL		14.7	291.8
CB		13.2	293.3
1/4		12.1	294.4
+4		11.0	295.5
2		11.0	295.5
1/4		10.9	295.6
CB		10.4	296.1
ML		9.7	296.8

	350'S			306.5	
ML			11.9		294.6
CB			12.2		294.3
1/4			12.3		294.2
2			12.3		294.2
+5			12.3		294.2
T.P.	2.50	296.91	12.28	294.71	296.7
1/4			3.2		293.5
CB			6.1		290.6
EL			7.7		289.0
+10			9.9		285.8
	400'S				
-25			12.5		284.2
EL			10.2		286.5
+9			9.6		287.5
CB			8.2		288.5
1/4			4.5		292.2
+5			3.0		293.7
2			3.1		293.6
1/4			3.1		293.6
CB			3.0		293.7
ML			2.9		293.5
	420'S				
ML			2.5		294.2
CB			2.9		293.8
1/4			3.2		293.5

Cross Section 53rd St

	296.71	296.7
6	3.2	293.5
1/4	4.6	292.1
C.B.	7.7	289.0
+5	9.9	286.8
EL	10.7	286.0
+2.5	13.1	283.3
	449' S	
-2.5	13.6	283.1
EL	11.9	284.8
C.B.	9.5	287.2
1/4	5.9	290.8
+5	3.8	293.5
2	3.1	293.6
1/4	3.2	293.5
+2 Top Conc Apron	3.11	293.6
M.L. Top Apron	2.95	293.7
	475' S	
M.L.	2.8	293.9
C.B.	3.0	293.7
1/4	3.3	293.4
2	3.3	293.4
1/4	4.4	292.3
C.B.	8.7	288.0
EL	10.7	286.0
+2.0	13.6	283.1

5077.10

12.5 N Edge
Conc Apron5.1 Edge Conc
Apron

	296.71	296.7
	500' S	
-2.0	12.2	284.5
EL	9.4	287.3
C.B.	8.3	288.4
1/4	3.4	293.3
2	3.2	293.5
1/4	3.3	293.4
C.B.	3.0	293.7
M.L.	2.6	294.1
	520' S	
M.L.	2.18	294.5
C.B. Top Conc Apron	2.89	293.8
1/4	3.1	293.6
2	3.2	293.5
1/4	3.4	293.3
C.B.	5.4	291.3
+5	7.3	289.4
EL	8.2	288.4
+1.5	10.6	286.1
	530' S	
-1.5	9.8	286.9
EL	7.4	289.3
+5	5.6	291.1
C.B.	3.1	293.6
1/4	3.0	293.7
2	3.3	293.4

N. Edge Conc
8' Walk

Cross Section 33rd St,
From S.L. Palm to N.L. Nutmeg

296.71

50' wide
10' CBs
75' Q/S
296.7

1/4	3.0	293.7
CB	2.8	293.9
+2	2.6	294.1
N.L.	2.2	294.5
550'S		
N.L.	2.5	294.2
+2	3.1	293.6
CB	3.2	293.5
1/4	3.3	293.4
2	3.2	293.5
1/4	3.2	293.5
CB	3.2	293.5
EL	3.2	293.5
+5	3.6	293.1
+10	7.2	289.5
585'S		
EL	3.7	293.0
CB	3.2	293.5
1/4	2.8	293.9
2	2.7	294.0
1/4	2.6	294.1
CB	2.4	294.3
+5	2.1	294.6
N.L.	2.0	294.7

595.15'S N.L. into Nutmeg

296.71

296.7

N.L.	2.8	293.9	To A.C. 2.52
CB	2.9	293.8	
1/4	2.7	293.8	
2	3.0	293.7	
1/4	3.3	293.4	
CB	3.7	293.0	
EL	4.0	292.7	
+5	4.4	292.3	
TR	7.80	301.88	294.02
B.M.		7.80	294.06
N.E. Cor Nutmeg at Barcroft 294.08			

Survey of Relocation
of Hog Canon Road.

13+50' @ POT.

8+75' Δ 3°19' L

4+25' Δ 4°26' R.

1+16.24 EC.

100' R.

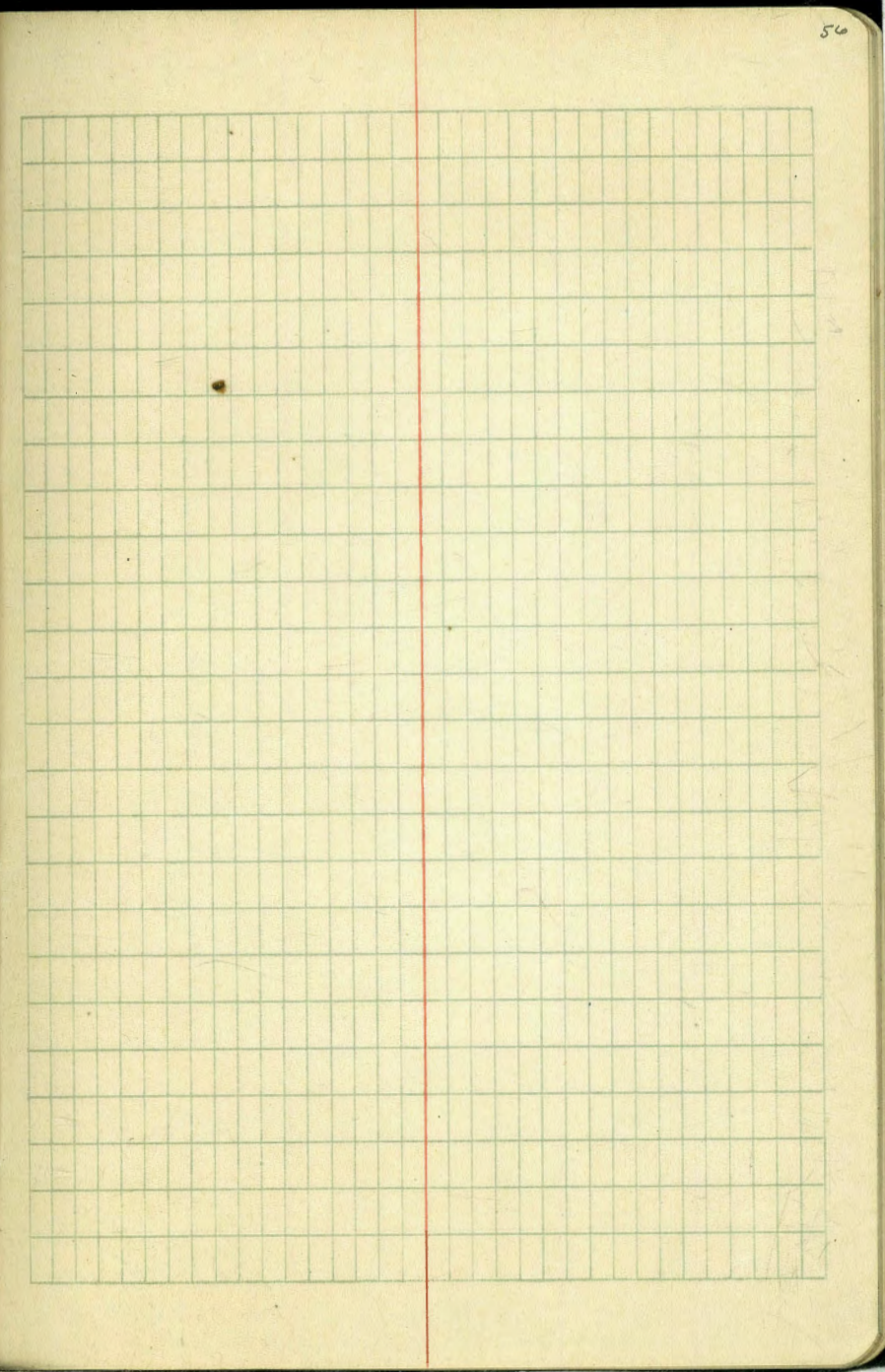
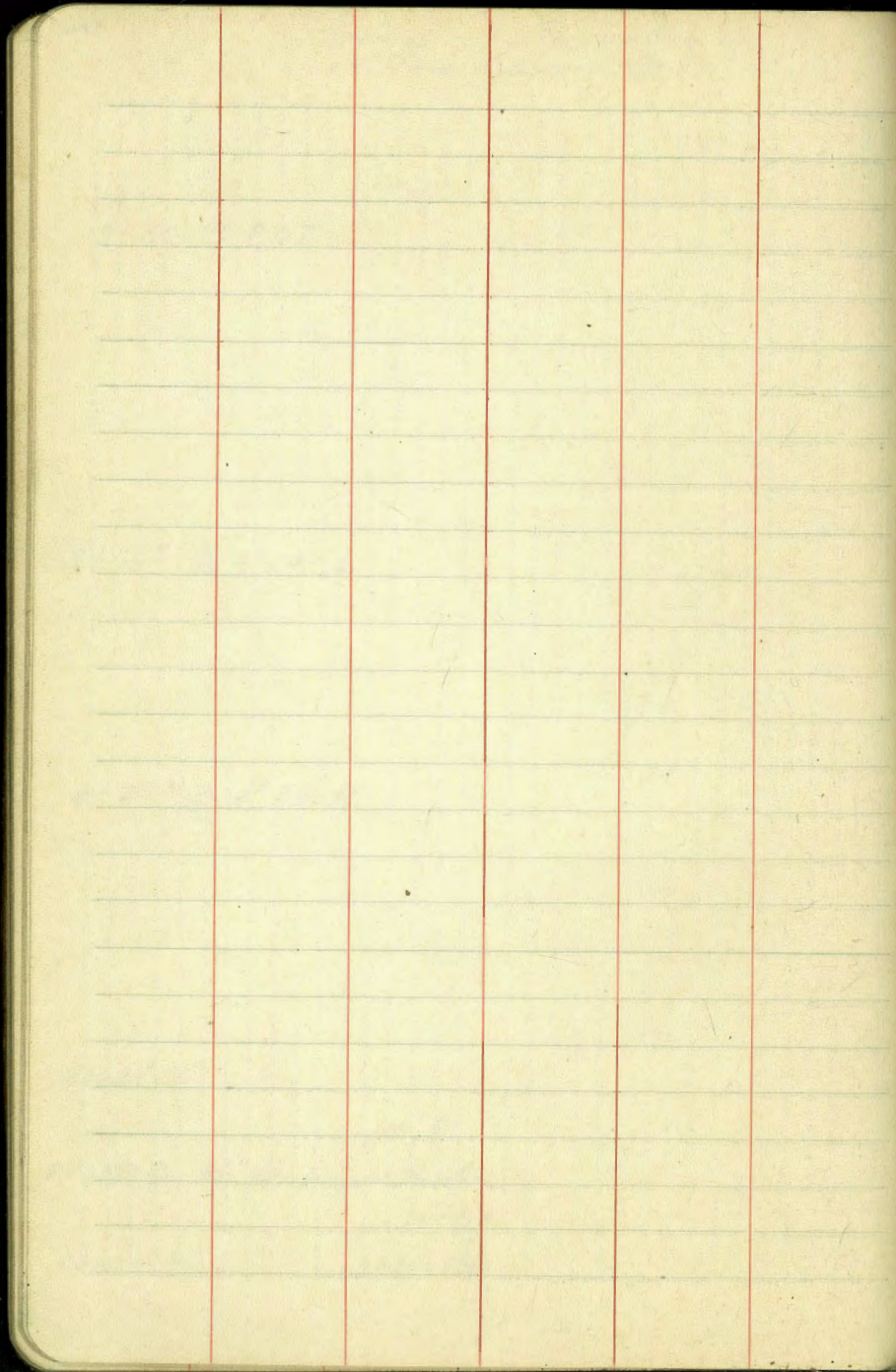
0+6590 Δ 66°46' L. 19.76 = E

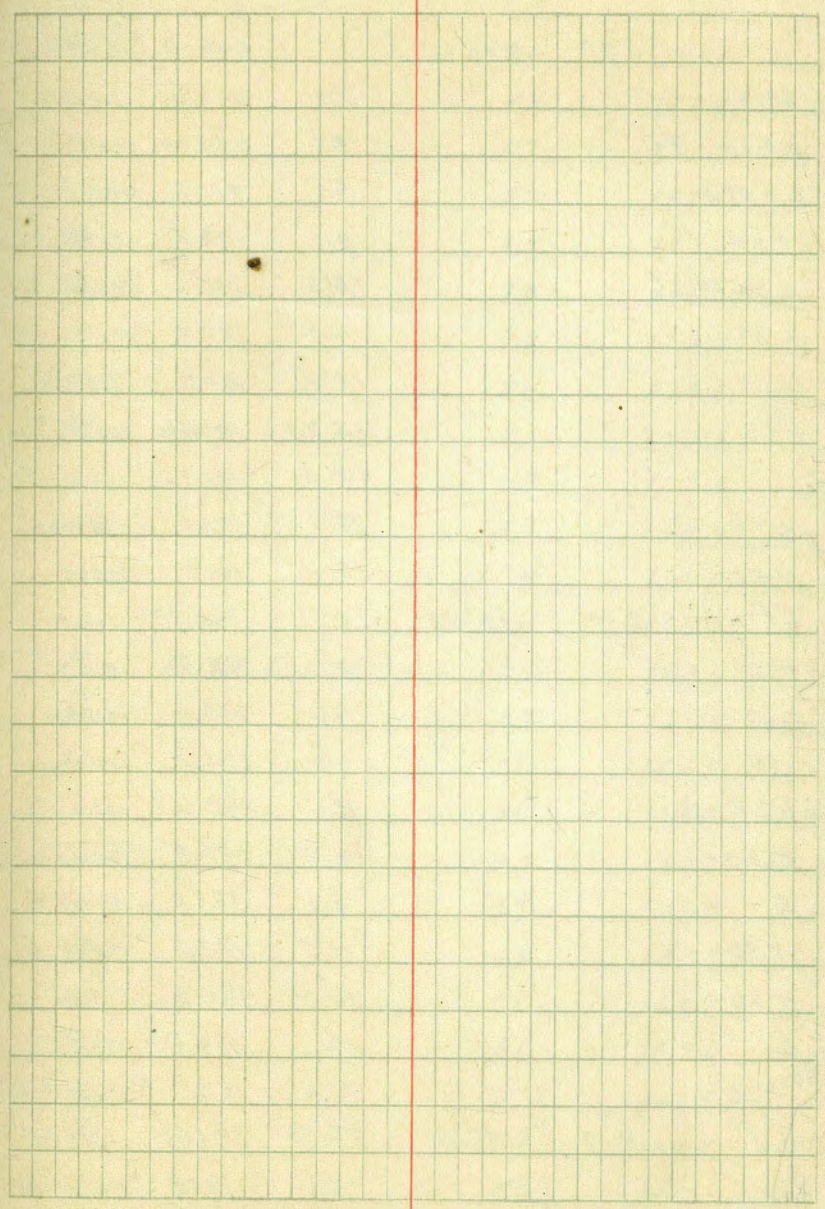
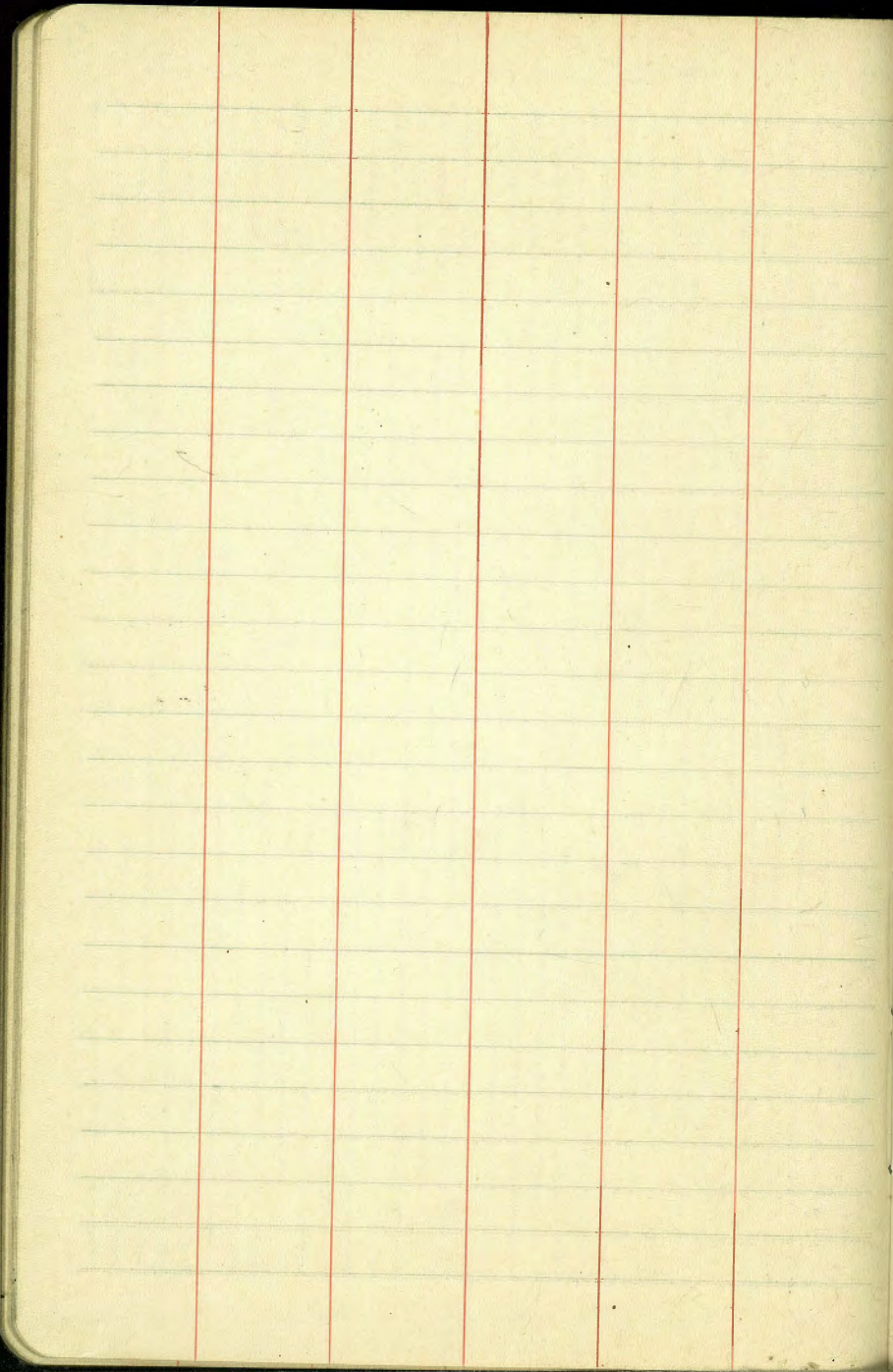
116.24 = LC.

0+00 = PC.

65.90 = ST.

Hub at side of Road.
Hog Canon Road





Levels Hog Canon Road

Station	Level	206.60	200.00	Assumed delay of 500 at 0+65.90
- 60.0			206.6	
0+00	P.C.		203.2	203.2
0+58.6			200.8	200.8
1+00			193.5	193.5
+16.24	E.C.		191.1	197.54
+33			189.7	196.77
+50			190.2	194.0
+75			191.4	195.3
2			191.1	194.6
+45			192.8	193.90
+50			194.2	193.20
T.P.	2.90	196.69	193.79	
3+10			193.9	191.50
+40			190.1	190.60
+90			195.1	189.06
4+25	Δ		192.58	188.3
+50			190.2	187.6
5			187.6	186.20
+30			185.2	185.50
+60			182.5	184.50
6			184.6	183.4
+50			185.1	182.0
T.P.	4.17	187.93	183.76	
7			180.8	180.60

187.93

60

+20	7.4	180.5	180.04
+50	4.3	183.6	179.20
+80	6.7	181.2	178.96
8+10	5.3	182.6	179.50
+50	6.5	181.4	176.4
+75	7.31	180.62	175.7
9	9.2	178.7	175.0
+50	12.4	175.5	173.6
T.P.	0.07	175.44	
10	2.9	172.5	172.20
+40	5.8	169.6	170.31
11	11.4	164.0	167.48
+50	12.4	163.0	165.17
T.P.	0.63	163.71	
+90	2.7	161.0	163.24
+95	7.8	155.9	163.0
12	3.0	160.7	162.76
+06.0	3.5	160.8	162.48
+10	7.7	156.0	162.29
+15	4.0	159.7	162.05
+50	2.8	160.9	160.40
+93	6.1	154.6	158.37
13+50	2.73	160.98	155.68
+80	2.8	160.9	154.44
14	5.6	158.11	153.50

		163.71			Graves
14+50			8.9	154.8	151.14
15			13.7	150.0	148.78
T.P.	0.79	151.86	12.64	151.07	
+50			4.3	147.6	146.42
+75			4.6	147.3	145.24
16			3.7	148.2	144.06
+50	P.D.T.		4.07	147.79	141.42 on 1006
17			7.8	144.1	139.06
+50			11.8	140.1	136.70
T.P.	-0.05	138.98	12.83	139.03	
18			3.7	135.3	134.34
+50			7.4	131.6	131.98
19			15.8	125.2	129.72
T.P.	3.33	129.53	12.78	126.20	
+50			4.1	125.4	127.36
+70			3.4	126.1	126.42
20+00	△	R.	5.77	123.76	1250 - 12

Cross Section Nutmeg St

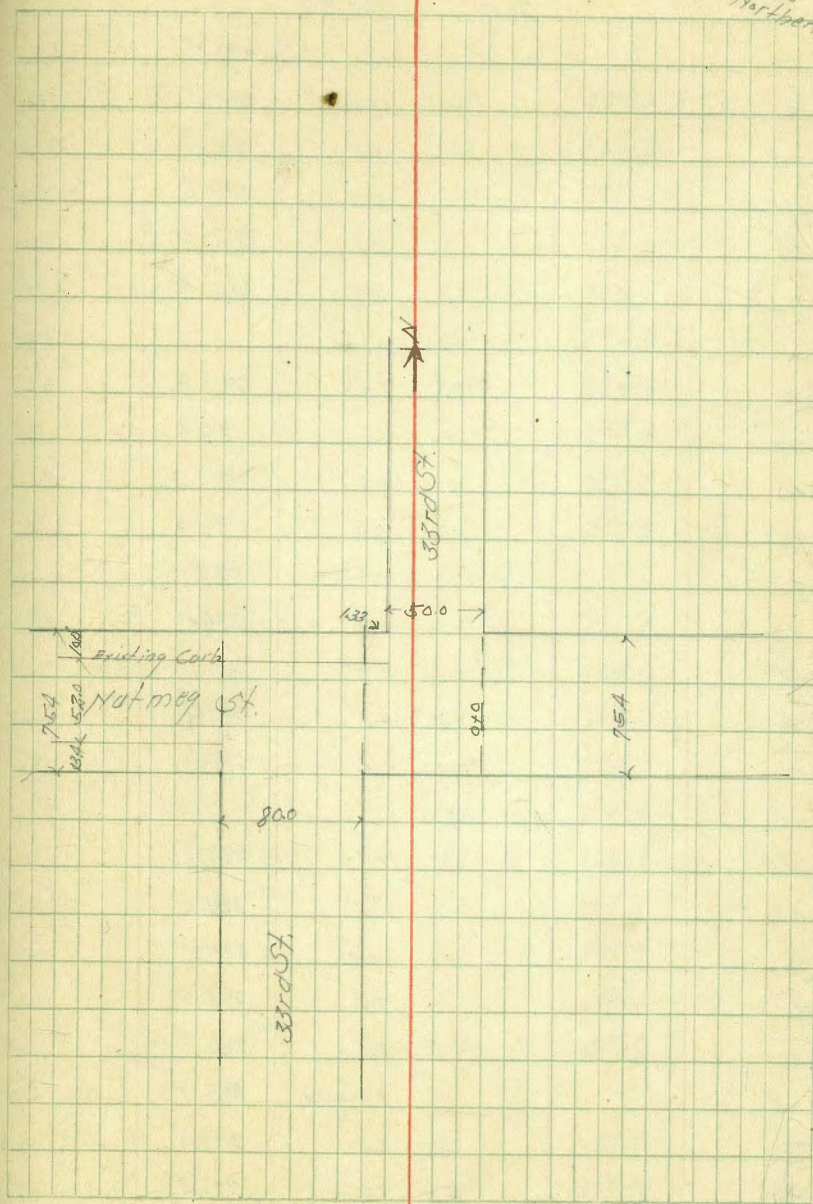
From E.L. 33rd St on North to W.L. 33rd St on South

NE side
10' Casp. N
13' " " S
13.0' Grt

NE Cor
Nutmeg St
33rd St

BM	11.04	205.12	294.08
1		at 00 = E.L. 33rd St. From North	
N		12.5	292.6
CB		12.5	292.6
1/4		12.1	293.0
+3		12.4	292.7
2		11.3	293.8
+3		10.2	294.9
1/4		9.8	295.3
CB		9.5	295.6
S		9.5	295.6
	10' XX		
S		8.4	296.5
CB		8.7	296.4
1/4		9.0	295.1
+10		9.4	295.7
2		11.1	294.0
+6		11.8	293.3
1/4		11.6	293.5
CB		11.7	293.4
N		12.2	292.9
	17.5' XX		
N		11.9	293.7
CB		11.6	293.5
1/4		11.2	293.9

9-23-25
5:55 PM
Bliss
Northern



Hatmeg St. Cont.

75.4 Nide
10.0 Cbs/No.
13.4 ... 50.
13.0 Qts

20512

+9	11.3	293.8
Z	10.4	294.7
+5	8.6	296.5
1/4	8.3	296.8
CB	8.1	297.0
S	8.0	296.9
25' W		
S	7.5	297.6
CB	7.6	297.5
1/4	7.8	297.3
+9	8.2	296.8
Z	9.7	295.4
+5	11.0	294.1
1/4	11.0	294.1
CB	11.2	293.9
N	11.4	293.7
32.5' W		
N	11.3	293.8
CB	11.1	294.0
1/4	10.9	294.2
Z	9.9	295.2
+1	8.4	296.7
+5	7.4	297.7
1/4	7.2	297.9
CB	7.2	297.9
S	7.2	297.9

66

20512

40' W

S	6.8	298.3
CB	6.8	298.3
1/4	6.7	298.2
+9	7.0	298.1
Z	8.4	296.7
+2	10.3	294.8
+6	10.9	294.2
1/4	10.7	294.4
CB	11.2	293.9
N	11.6	293.5
50' W		
N	11.2	293.9
CB Top	11.1	294.0
Gutter	11.4	293.7
1/4	10.7	294.4
+1/2	10.2	294.9
Z	8.2	296.9
+5	6.3	298.8
1/4	6.3	298.8
CB	6.1	299.0
S	6.3	298.8
51.33' W		
S	6.3	298.8
CB	6.2	298.9

Nutmeg St Cont.

75.4 1/2
10.0 CB 1/2
13.4 " 50
13.0 Qts

20512

1/4	6.3	298.8
+10	6.4	298.5
2	8.1	297.0
+1	10.2	294.9
1/4	10.6	294.5
Gutter	11.4	293.7
CB Top	11.09	294.0
N	10.9	294.2

05133' 1/4

N	10.8	294.3
CB Top	10.94	294.2
Gutter	11.2	293.9
1/4	10.7	294.4
+12	10.1	295.0
2	8.8	296.3
+5	6.1	299.0
1/4	5.8	299.3
CB	5.8	299.3
5	5.5	299.6

78133' 1/4

5	5.6	299.9
C	5.2	299.9
1/4	5.5	299.6
+8	5.7	299.4
2	7.2	297.9

20512

+1	9.6	295.5
1/4	10.4	294.7
Gutter	11.1	294.0
CB Top	10.77	294.3
N	10.7	294.4

91.33' 1/4

N	10.5	294.6
CB Top	10.63	294.5
Gutter	10.9	294.2
1/4	10.3	294.8
+12	9.8	295.3
2	7.1	298.0
+5	5.5	299.6
1/4	5.0	300.1
CB	5.0	300.1
5	5.0	300.1

104133' 1/4

5	4.8	300.3
CB	4.6	300.5
1/4	4.8	300.3
+8	4.9	300.4
2	6.6	298.5
+7	9.8	295.3
1/4	9.9	295.2
Gutter	10.8	294.3

Not mag St Cont.

75.4 W. side
10.0 Cas No.
13.4 " 50.
13.0 Gts.

205.12

CB Top	10.46	294.6
N.L.	10.4	294.7

117.33' X

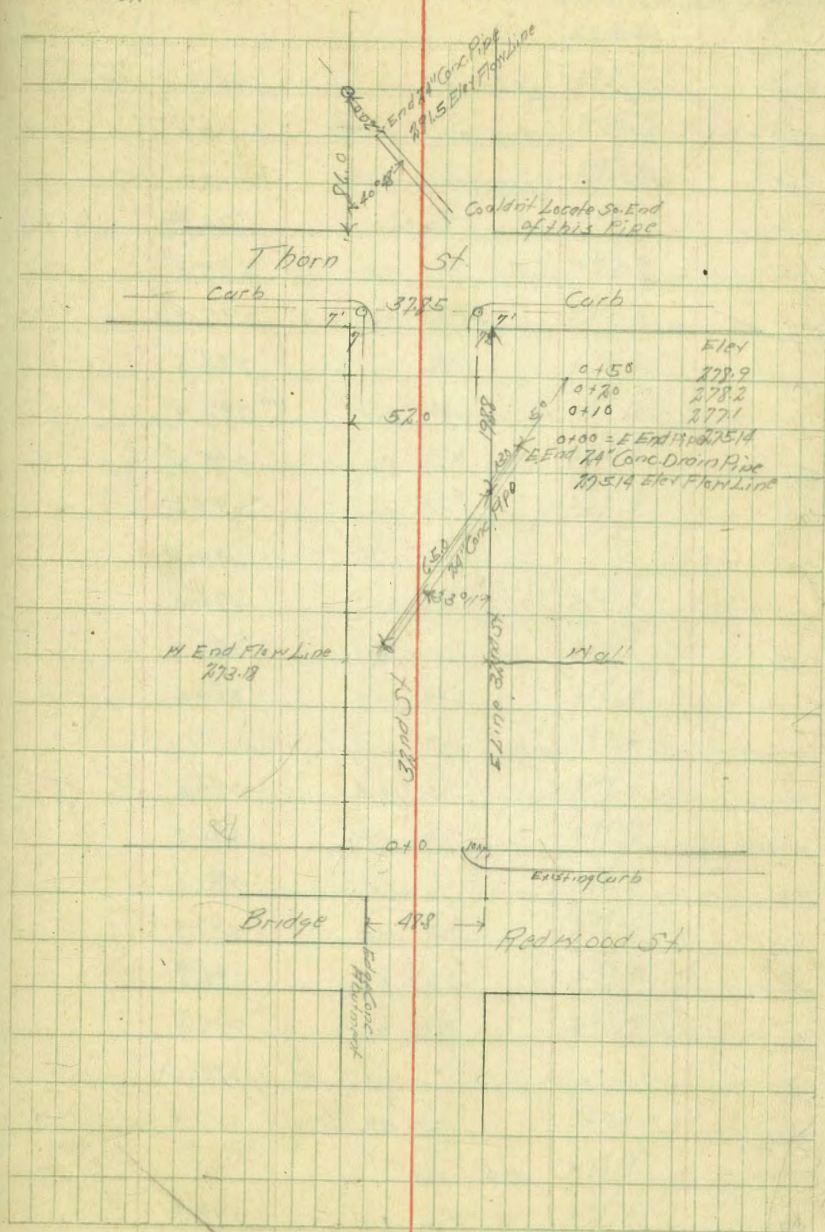
H	10.0	295.1
CB	10.21	294.9
Gutter	10.5	294.6
1/4	9.8	295.3
+11	9.4	295.7
2	6.5	298.6
+5	4.6	300.5
1/2	4.4	300.5
CB	4.4	300.7
S	4.5	300.6

131.33' W - N.L. 35th St From South

S	4.6	300.5
CB	4.3	300.8
1/4	4.2	300.9
+10	4.4	300.7
2	6.1	299.0
+2	8.7	296.4
1/4	9.5	295.6
Gutter	10.1	295.0
CB Top	9.81	295.3
N	9.6	295.5

Location 24" Conc. Drain Pipe
32nd St Between Redwood + Thorn St.

70



71 Cross Section 37nd St
From N. Line Redwood to S. Line Thorn St

58' wide
10' Cbs
8' 9/16

B.P.N.E.
Helmert
Benedict

B.M.	1176	305.24	294.08
TP	463	309.18	0.99
TP	310	303.35	8.93
		0 + 0 = N.L. Redwood	303.4
E		8.1	295.3
CB	Top	8.30	295.1
Gutter		8.6	294.8
1/4		8.5	294.9
2		8.7	295.2
1/4		8.1	295.3
CB		8.7	294.7
+7		9.0	294.0
11		10.1	293.3
+20		19.0	284.4
	5' N		
-20		19.4	284.0
11		9.6	294.8
CB		6.4	297.0
1/4		5.5	297.9
2		6.6	296.8
1/4		7.6	295.8
CB		7.4	296.0
E.L.		5.9	297.5
	15' N		
E		3.5	299.9

72

303.35

303.4

+8	5.7	295.7
CB	5.7	295.7
1/4	6.0	297.4
2	5.8	298.1
1/4	5.5	297.9
CB	6.4	297.0
11	12.5	290.9
+3	14.6	288.5
+15	19.4	284.0
+35	28.0	275.4
	50' N	
-35	29.4	274.0
-15	20.5	282.9
11	15.0	288.4
CB	5.8	297.6
+3	4.8	298.6
1/4	4.7	298.7
2	5.0	298.4
1/4	4.8	298.6
CB	4.4	299.0
E	3.5	299.9
	50' N	
E	3.3	300.1
CB	4.6	298.8
1/4	4.8	298.6

	303.35	303.4
2	4.9	298.5
1/4	4.5	298.9
+6	5.3	298.1
CB	6.3	297.1
N	13.3	290.1
+7	18.4	285.0
+20	25.0	278.4
+35	30.5	272.9
	75'N	
-35	28.5	274.9
-20	22.0	281.4
N	10.5	292.9
+8	4.9	298.5
CB	4.7	298.7
1/4	5.0	298.4
2	5.0	298.4
1/4	5.0	298.4
+7	5.1	298.3
CB	4.3	299.1
+8	3.9	299.5
E	1.6	301.8
	100'N	
E	1.9	301.5
+2	4.3	299.1
CB	4.5	298.9
+1	5.5	297.9

	303.35	303.4
1/2	5.5	297.9
2	5.3	298.1
1/2	5.6	297.8
CB	5.2	298.2
N	6.5	296.9
+20	18.1	285.3
	125'N	
-10	10.0	293.4
N	6.7	296.7
CB	5.9	297.5
1/4	5.8	297.6
2	5.4	298.0
1/4	5.7	297.7
+6	5.9	297.5
CB	4.8	298.6
18	4.5	298.9
E	2.0	301.4
	150'	
E	2.2	301.2
+2	4.6	298.8
CB	5.3	298.1
+1	6.0	297.4
1/4	5.8	297.6
2	5.8	297.6
1/4	6.1	297.3

	303.35	57' wide 10' Cbs 8' 9 1/2 303.4
CB	6.9	296.5
M	8.1	295.3
+10	10.0	293.4
	175' N	
-10	10.7	292.7
M	9.2	294.1
CB	8.1	295.3
1/4	7.1	296.3
E	6.3	297.1
+3	6.6	296.8
1/4	6.8	296.6
+6	7.0	296.4
CB	5.4	298.0
+8	5.1	298.3
E	2.6	300.8
	200' N	
E	2.6	300.8
+2	6.1	297.3
CB	6.5	296.9
+2	8.1	295.3
1/4	8.4	295.0
E	8.0	295.4
1/4	8.5	294.9
CB	9.8	293.6
M	11.5	291.9
+15	15.3	288.1

	303.35	
	275' N	303.4
-30	258	277.6
M	18.6	284.8
CB	15.6	287.8
1/4	11.8	291.6
E	10.2	293.2
1/4	10.5	292.9
+0	10.4	293.0
CB	9.5	293.9
+3	9.0	295.4
E	7.3	296.1
TP	1.55 296.08	128.5
	250' N	290.53
E		292.1
E		291.4
+8		290.7
CB		290.1
+2		289.7
1/4		289.5
E		290.2
1/4		285.0
CB		280.7
+8		279.6
M		278.1
+30		271.9
	275' N	
-30		272.1

238' of E Line
18' x 18' 000 Post
Meeting C. 200/24
Elev. 844.0 295.33
+ Top 281.36

	292.08	292.1
M.L.	179	274.2
CB	149	277.2
+6	13.3	278.8
1/4	118	280.3
2	72	284.9
+3	58	286.3
1/4	60	286.1
CB	60	286.1
+2	50	287.4
E	41	288.0
+5	15	290.6
	300'N	
-15	37	288.4
E	8.3	283.8
CB	8.2	283.9
1/4	8.5	283.6
+6	8.5	283.6
2	9.4	282.7
1/4	15.0	277.1
CB	16.4	275.7
1/4	18.0	274.1
+25	20.2	271.9
+35	19.2	271.9
	325'N	
-30	12.0	280.1

Bol Geod

	292.08	292.1
-15	18.3	274.8
1/4	18.5	273.6
CB	16.3	275.8
+6	15.9	276.2
1/4	14.9	277.2
2	11.1	281.0
+3	10.2	281.9
1/4	10.1	282.0
CB	9.9	282.2
+2	9.9	282.2
E	11.4	280.7
+20	6.2	285.9
	350'N	
-20	10.0	282.1
-6	13.4	278.7
E	12.9	279.2
CB	9.9	282.2
1/4	9.8	282.3
+6	9.7	282.4
2	10.3	281.8
1/4	15.2	276.9
+2	11.9	280.2
CB	16.0	276.1
1/4	15.0	277.1
+20	11.0	281.1

Bol Geod

See Sketch Page 76

MEMO 22 Dec 1920

1290 273.18

EEM 22 Dec 1920

11.22 F. 275.14

		292.08		58'N 10'CB 8'Q/S
TP	11.11	297.35	58.4	286.21
		375'N		297.3
-10			11.6	285.7
N			14.1	283.2
CB			18.0	279.3
1/4			17.6	279.7
+7			14.8	282.5
Z			14.6	282.7
1/4			14.4	282.9
CB			14.7	282.6
E			18.4	278.9
+10			19.5	277.8
+25			16.6	280.7
		400'N		
-2.5			18.4	278.7
-5			19.5	277.8
E			17.8	279.5
CB			18.2	284.1
+2			12.8	285.1
1/4			12.3	285.0
Z			12.0	285.3
+4			12.4	284.9
1/4			12.9	284.4
CB			11.5	285.8
N			6.0	291.3
+10			0.6	296.7

				80 9-24-85
		425'N		297.3
N			0.9	296.4
CB			5.7	291.6
1/4			7.7	289.6
+2			8.6	288.7
Z			8.5	288.8
1/4			8.9	288.4
+4			8.2	289.1
CB			9.5	287.8
E			16.4	280.9
+10			18.4	278.9
+20			19.2	278.1
+30			17.6	279.7
		450'N		
-3.5			18.8	278.5
-20			17.2	280.1
E			10.7	286.6
CB			5.7	291.6
1/4			5.6	291.7
Z			5.3	292.0
+6			5.3	292.0
1/4			4.2	293.1
CB			2.5	295.3
N			0.0	297.3
TP	9.90	305.20	2.05	295.30

	30520		305.2
	475'N		
M		1.9	303.3
CB		8.6	296.6
+2		8.8	296.4
1/4		11.2	294.0
E		10.4	294.8
1/4		10.6	294.6
CB		10.8	294.4
E		10.5	294.7
+3		10.8	294.4
A30		7.8	287.4
	500'N		
-10		8.9	296.3
E		8.4	296.8
CB		8.6	296.6
1/4		8.5	296.7
E		8.4	296.8
1/4		8.3	296.9
CB		5.0	300.2
+7		0.7	304.5
M		0.1	305.1
TP	5.37	309.38	11.9
		52.5'N	309.4
M		3.0	306.4
+3		3.2	306.2

	30938		309.4
CB		6.0	303.4
+3		6.6	302.8
1/4		9.0	300.4
+4		10.9	298.5
E		10.5	298.9
1/4		10.7	298.7
CB		10.6	298.8
E		10.4	299.0
+10		10.4	299.0
	550'N		
-7		8.4	301.0
E		8.2	301.2
CB		8.0	301.4
1/4		8.5	300.9
E		8.2	301.2
+5		8.1	301.3
1/4		6.6	302.8
+2		5.2	304.2
CB		4.3	305.1
+6		3.3	306.1
M		2.1	307.3
	575'N		
M		1.5	307.9
+2		1.7	307.7
+6		3.7	305.7

	30938	52W 10 Cbs 8' 9" S	309.4
CB		4.0	305.4
+3		4.2	305.2
1/4		5.3	304.1
E		6.1	303.3
1/4		6.2	303.4
CB		5.8	303.6
E		4.7	304.7
+10		8.1	301.3
	576' 11"		
-10		4.1	305.3
E		4.2	305.2
CB		4.5	304.9
1/4		4.6	304.8
E		4.3	305.1
1/4		4.0	305.4
CB		3.4	306.0
+9		1.8	307.6
11		1.2	308.2
	5988 - 0 L THOP		
11		3.1	306.3
CB TOP		3.36	306.0
Gather Top Binog		4.00	305.4
1/4 " "		3.93	305.5
E " "		4.02	305.4
1/4 " "		4.30	305.1

	30938	309.4	
Gather Top Binog	4.28	304.6	
CB " Carb	4.39	305.0	
E	4.2	305.2	
B.M.	2.06	307.32	S.E. of N.Y.D. Top Theat. 37nd St 307.26

85 Cass Section Sandst.

From N Line Thornt. to S Lapas

52' wide
10' CBS
8' 9 1/2
309.4

	309.38 070 = N L Thornt	
E	47	304.7
CB Top	48	304.6
Gutter " Paring	52.3	304.2
" " "	44.0	305.0
" " "	32.1	305.6
" " "	34.3	306.0
Gutter " "	34.4	306.0
CB " "	30.3	306.4
" " "	2.6	306.8
	7.1	
5	1.7	307.7
"	3.8	305.6
7	5.6	303.8
CB	4.6	304.8
15	3.4	306.0
"	3.4	306.0
"	3.9	305.5
"	5.1	304.3
CB	6.0	303.4
E	5.1	304.3
	15.1	
E	5.2	304.2
CB	6.5	302.9
"	6.1	303.3
"	4.6	304.8

86

	309.38	309.4
7.5	3.1	305.8
"	3.7	305.7
CB	5.7	303.7
7.5	8.5	300.9
"	5.5	303.9
7.8	0.1	308.8
	30.1	
-10	0.7	308.7
"	7.0	302.4
CB	12.3	297.1
7.4	12.1	297.3
"	10.3	299.1
"	8.0	301.4
"	8.5	300.9
7.6	8.6	300.8
CB	7.8	301.6
7.5	5.8	303.6
E	5.7	303.7
	50.1	
E	5.6	303.8
7.5	5.9	303.5
CB	8.6	300.8
7.2	9.3	300.1
"	7.2	300.2
7.5	8.1	301.0

	309.38	309.4	
Z	9.1	300.0	
1/4	13.6	295.8	
+5	15.1	294.3	
CB	14.9	294.5	
M	9.0	300.4	
+10	0.7	308.7	
	81'N		
-23	4.0	305.4	
M	16.8	292.6	
CB	16.9	292.5	
1/4	14.3	295.1	
Z	10.1	299.3	
Z3	8.3	301.1	
1/4	8.9	300.5	
+6	8.9	300.5	104'N on E 4' Walk Conc 304.51
CB	8.0	301.4	
+7	6.0	303.4	
E	5.6	303.8	
	108'N		
E	4.6	304.8	
+6	5.2	304.2	118'N on E 3' Walk Conc 305.23
CB	5.9	303.5	
1/4	6.9	302.5	
Z	6.3	303.1	
1/4	9.7	299.7	

	309.38	309.4	
CB	15.1	294.0	
M	15.8	293.6	
+20	15.0	294.4	See Sketch Page 70 Final on 28' 20' 1/2 179
	132'N		
-30	14.9	294.5	
-20	15.5	293.9	
M	11.0	298.4	
CB	8.7	300.7	
1/4	5.7	303.7	
15	4.6	305.4	
Z	4.1	305.3	
1/4	4.5	304.9	
+7	4.3	305.1	
CB	3.7	305.7	145'N on E 4' Walk Conc 307.68
+6	3.6	305.8	
E	2.5	306.9	
	150'N		
E	1.6	307.8	
CB	2.3	307.1	
+2	2.9	306.5	
1/4	2.9	306.5	
Z	2.7	306.7	
1/4	2.6	306.8	
1/4	4.9	304.5	
CB	9.8	299.6	

			52' wide 10' Cbs 8' OLS 309.4	
	309.38			
N		1.49	294.5	
+15		1.43	295.1	170' N on E 2' Conc Mark
+30		9.7	299.7	308.98
	175' N			
-30		7.5	301.9	
-15		12.6	296.8	
N		11.5	297.9	
CB		7.1	301.8	
1/4		3.0	306.4	
+4		1.2	308.2	
2		1.5	307.9	
1/4		1.5	307.9	
+6		1.5	307.9	120' N on E 4' Conc Mark
CB		1.0	308.4	309.20
+7		1.0	308.4	
E		0.0	309.4	
TP	6.79	315.36	308.57	
E		200' N	315.4	
			310.6	
+2		5.4	310.0	205' N on E 2' Conc Drive
CB		5.4	310.0	30.76
+3		6.0	309.4	210' N on E 2' Conc Drive
1/4		5.6	309.8	311.14
2		5.9	309.5	
1/4		5.5	309.9	
CB		8.9	306.5	

	315.36		315.4	
N		1.46	301.2	
+15		17.5	297.9	220' N on E 3' Conc Mark
+30		18.0	297.4	312.72
	225' N			
-20		11.5	303.9	
N		7.9	307.5	
+5		4.6	310.8	
CB		4.6	310.8	
1/4		4.5	310.9	
2		4.0	311.4	240' N on E 2' Conc Drive
1/4		3.9	311.5	313.26
+5		4.2	311.2	
CB		3.7	314.7	
+8		3.5	311.9	
E		2.9	312.5	
	250' N			
E		1.7	313.7	250' N on E 2' Conc Drive
CB		2.1	313.3	313.61
+4		3.2	312.2	
1/4		2.7	312.7	
2		2.8	312.6	
1/4		3.2	312.2	260' N 2' Conc Mark
+6		3.4	312.0	314.45
CB		2.7	312.7	
N		2.9	312.5	
+5		3.9	311.5	

91 Cross Section 3rd St.

BM	9.80	31706	307.26	SE Cor Top Hnd Thorn + 300
		275'N	317.1	
11 - Top Conc Walk		3.34	312.8	
CB		3.4	313.7	
+4		4.2	312.9	
1/4		3.8	313.3	
2		3.4	313.7	
1/4		3.5	313.6	
+3		3.8	313.3	
CB		2.9	314.2	
+1		2.6	314.5	
E		2.3	314.8	
		300'N		
E		0.7	316.4	
+2		1.3	315.8	
CB		1.5	315.6	
+3		2.8	314.3	
1/4		2.8	314.3	
2		2.4	314.7	
1/4		2.9	314.2	
+4		3.3	313.8	
CB		2.4	314.7	303' N ONE 4' Conc Walk
11		2.4	314.7	0.40 316.7
		325'N		
11		1.3	315.8	

92
10.315
317.1
317.1
317.1

	31706	317.1	
CB		1.1	316.0
+4		2.1	315.0
1/4		1.6	315.5
2		1.1	316.0
1/4		1.4	315.7
+4		1.5	315.6
CB		0.3	316.8
E		0.0	317.1
TP 1	8.20	22.522	0.14 316.92
		3150'N	325.2
E		6.9	318.3
+2		7.3	317.9
+9		7.3	317.9
CB		7.6	317.6
+2		8.7	316.5
1/4		8.3	316.9
2		8.1	317.1
1/4		8.4	316.8
+4		8.8	316.4
CB		8.0	317.2
11		8.7	317.0
		375	
11 Conc Walk		6.94	318.4
11		7.2	318.0
CB		7.10	318.2

	325.22	325.2	
14		8.1	317.1
14		7.6	317.6
2		7.1	318.1
14		7.4	317.8
13		7.8	317.4
CB		6.6	318.6
11		6.3	318.9
18		6.3	318.9
E		5.6	319.6
	400'N		
E		4.8	320.4
12		5.4	319.8
CB		5.5	319.7
14		6.8	318.4
14		6.5	318.7
2		6.2	319.0
14		6.8	318.4
13		6.8	318.4
CB		5.8	319.4
12		5.5	319.7
14		5.9	319.3
	475'N		
14		5.0	320.2
CB		5.2	320.0
14		5.9	319.3

4.20'N only
4' Cont Walk
4.99
320.2

	325.22	325.2	
14		5.1	319.6
2		5.2	320.2
14		5.5	319.7
15		5.6	319.6
CB		4.5	320.7
18		4.5	320.7
E		4.1	321.1
	450'N		
E		3.5	321.7
12		3.8	321.4
CB		3.9	321.3
14		4.8	320.4
14		4.8	320.4
2		4.3	320.9
14		4.9	320.3
15		5.2	320.0
CB		4.4	320.8
14		4.4	320.8
	475'N		
14		3.8	321.4
CB		3.7	321.5
15		4.5	320.7
14		4.2	321.0
2		3.6	321.6
14		4.0	321.2
14		4.3	320.9

463' None
3' Conc 170'N
340: 322.1

	325.22	325.2	
CB		3.3	324.9
+8		3.1	322.1
E		2.9	321.3
	500'N		
E		2.3	322.9
+8		2.5	322.7
CB		2.6	322.6
+4		3.6	321.6
14		3.0	322.2
E		2.8	322.4
14		3.3	321.9
14		3.8	321.4
CB		2.9	322.3
14		3.3	321.9
	525'		
14		2.5	322.7
CB		2.5	322.7
+4		3.2	322.0
14		2.8	322.4
E		2.3	322.9
14		2.7	322.5
+4		2.8	322.4
CB		2.0	323.2
+		2.0	323.2
E		1.7	323.5

503' N on E
3' Conc Walk
220
323.0

523' N on E
4' Conc Drive
173
323.5

524' N on E
2' Conc Drive
159
323.6

535' N on E
4' Conc Walk
159
323.8

	550'N		
		1.0	324.2
F		1.4	323.8
+3		1.4	323.8
CB		2.7	323.0
+4		1.9	323.3
14		1.7	323.5
E		2.1	323.1
14		2.4	322.8
+5		1.9	323.3
CB		2.1	323.1
14			
	575'N		
14		1.4	323.8
19		1.3	323.9
CB		1.6	323.6
+2		1.9	323.3
14		1.5	324.7
E		1.1	324.1
14		1.2	324.0
+4		1.6	323.6
CB		1.0	324.2
+8		0.9	324.3
F		0.8	324.4
	575'N		
E		0.8	325.0

578' N on E
4' Conc Walk
104
324.2

	325.11		325.2
CB		0.7	324.5
+4		0.8	324.4
1/4		0.7	324.7
2		0.8	324.4
1/4		1.1	324.1
+6		1.5	323.7
CB		1.0	324.2
1/4		1.3	323.9

598.8 = 5 Line 0 pass 54

1/4		1.2	324.0
CB Top		1.88	323.9
Gutter " Paving		1.55	323.6
1/4 " "		1.04	324.2
2 " "		0.70	324.5
1/4 " "		0.64	324.6
Gutter " "		0.53	324.7
CB Top		0.81	325.0
E		0.2	325.0

3rd need Carbs on S.L. 0 pass 35.4

TP	0.53	313.07	12.68	312.54	SE TOP 1100
BM			5.80	307.26	32104 Ups

Location & Levels of Sidewalks & Drives
003rd St Between Thorn & Palm

				SE Tap Hch. St Thorn
BM.	032	307.58	307.26	
TP	670	305.67	8.61	298.97

0+0 =

So Line Redwood

2+24 4' Conc Walk = 397 301.69

2+42 8' Conc Drive = 386 302.81

2+47 " " " = 281 302.86

2+71 4' Conc Walk = 272 303.39

2+93 8' Conc Drive = 273 303.49

2+98 " " " = 276 303.51

Palm

101 Cross Section Alley Block 70 Park Villas
 Between Oregon Villa Terrace
 From SLD Dright to N.L. Myrtle

51501
 15' wide 1/19/66

317.89

BM	0.99	325.00	324.01	3P. 32 Cor. Dright + Oregon
TP	4.50	317.89	313.39	
0+0 - SLD Dright				
E	Top Carb	6.99	311.40 ✓	
	Gutter Top Pavement	6.93	310.96 ✓	
±	" "	7.68	310.21 ✓	
X	" "	8.01	309.88 ✓	
	Top Carb	7.97	309.92 ✓	
	Top Wall Core	5.63	312.26 ✓	
2's				
X		5.0	312.9 ✓	
+2		4.7	313.2 ✓	
+1		6.6	311.3 ✓	
±		6.7	311.2 ✓	
+4		6.2	317.7 ✓	
+5		3.8	314.1 ✓	1st part Brick Chimney on SLD Alley
E		3.3	314.6 ✓	
20's				
E		3.2	314.7 ✓	
+1		3.7	314.2 ✓	
±		4.5	313.4 ✓	
X		5.0	312.9 ✓	
40's				
-5.5	Garage Concrete Floor	5.95	311.94 ✓	
X		5.6	312.3 ✓	
±		4.7	313.2 ✓	

102
 1-19-76
 5:30 PM
 8135
 Northwest

E		3.9	314.0 ✓	
+1	Conc. Floor	3.66	314.23 ✓	
60's				
E		4.1	313.8 ✓	
+1		4.7	313.2 ✓	
±		5.1	312.8 ✓	
+3		5.2	312.7 ✓	SLS on E
+4		4.9	313.0 ✓	Board Fence on SLD Alley
X		5.1	312.5 ✓	
100's				
X		6.0	311.9 ✓	
+2		5.0	312.9 ✓	
+4		5.5	312.4 ✓	
±		5.1	312.8 ✓	
+3		5.2	312.7 ✓	
E		4.0	313.9 ✓	Fence on SLD Alley
140's				
E		4.3	313.6 ✓	
±		4.9	313.0 ✓	Fence on 1st Alley
+5		5.0	312.9 ✓	
X		6.1	311.8 ✓	
160's				
X		4.8	313.1 ✓	
±		3.9	314.0 ✓	176's on E Conc. Walk
E		3.8	314.1 ✓	344 - 314.45
200's				
E		3.7	314.2 ✓	Fence 10/10/76

317.89

Z			40	313.9 ✓	
N			47	313.2 ✓	
		230's			
N			45	313.4 ✓	
+3			39	314.0 ✓	
Z			37	314.2 ✓	
E			35	314.4 ✓	Fence 1A 19.7.11.07
		260's			
E			25	315.4 ✓	Fence 1.3 19.7.11.07
Z			28	315.1 ✓	
+4			31	314.8 ✓	
N			46	313.3 ✓	
T.P.	8.90	324.55	2.24	315.15 ✓	
		275's			
N			95	315.1 ✓	
+3			88	315.8 ✓	
Z			86	316.0 ✓	
E			86	316.0 ✓	Fence 1.6 19.7.11.07
		288's			
E			84	316.2 ✓	Fence 1.6 19.7.11.07
Z			90	315.6 ✓	
N			98	314.8 ✓	
		300's			
N			93	315.3 ✓	
Z			85	316.1 ✓	
E			85	316.1 ✓	Fence 1.6 19.7.11.07

324.55

103

312's

E			79	316.7 ✓	
+4			74	317.2 ✓	
Z			78	316.8 ✓	
N			90	315.6 ✓	
		331's			
N			87	315.9 ✓	
Z			81	316.5 ✓	
		16.5 Garage Dirt Floor			
E			78	316.8 ✓	
			78	316.8 ✓	
		340's			
E			64	318.2 ✓	
+3			71	317.5 ✓	
Z			71	317.5 ✓	
			76	317.0 ✓	
N			88	316.4 ✓	
		355's			
N			77	317.4 ✓	
Z			68	317.8 ✓	
E			66	318.0 ✓	Fence 1.0 19.7.11.07
		380's			
E			61	318.5 ✓	Fence 1.0 19.7.11.07
Z			64	318.2 ✓	
N			66	318.0 ✓	
		400's			
N			52	319.2 ✓	
Z			52	319.4 ✓	

377.55

E	5.2	319.4	Fence 1.0 10 Alley
420's			
E	5.1	319.5	Fence 1.0 10 Alley
Z	5.6	319.0	
M	5.0	319.6	
435's			
M	5.5	319.1	
Z	4.9	319.7	
E	4.5	320.1	Fence 1.0 10 Alley
445's			
E	4.3	320.3	
Z	4.7	319.9	
M	5.2	319.4	
455's			
M	4.7	319.9	
Z	4.0	320.6	
+7	Garage Conc. Floor	3.1	321.37
E	3.2	321.4	
480's			
E	4.1	320.5	Fence 0.5 10 Alley
Z	4.3	320.3	
M	4.8	319.8	
500's			
M	4.1	320.5	
Z	3.8	320.8	
E	3.4	321.2	Fence 0.5 10 Alley

104

520's			
E	2.9	321.7	508' on E Line Conc Floor
Z	3.0	321.6	504 - 321.71
M	3.3	321.3	
515's			
M	2.5	322.1	
Z	2.1	322.5	
E	1.8	322.8	
600's = N.L. Myrtle Ave			
E	1.5	323.1	
Z	1.8	322.8	
M	2.2	322.4	
TP	11.75	324.22	1.98
BM		1.77	322.23 322.51 322.51

Cross Section Alley Block 39 Grns Add.

Between Market and 1st.

From E Line 26th to W Line 27th St.

20' wide

5162011

1/19/26

B.M. 0.61 1726.5 171.99
 TP 2.40 162.11 1294 159.71

0 to 0 = E L 26th St.

S Top Carb 10.63 151.48
 +2 9.3 157.8
 2 8.6 153.5
 N Top Carb 10.3 151.8

7' E

N 3.1 159.0
 +1 3.3 158.8
 +6 2.6 159.5
 2 3.7 158.4
 S 4.0 158.1

25' E

-2.5 Top Carb Walk out Basement of House 115.5 160.56
 S 1.0 160.7
 +7 0.7 161.4
 2 0.4 161.7

TP 1223 173.38 096 161.15
 N 11.3 162.1

50' E

N 6.3 167.1
 2 6.6 166.8
 S 7.3 166.1

68' E

-5 Garage Dirt Floor 5.0 168.4

8 P.S.W.

9 + 26th St.

34' E Exc. Sp. Top Carb. Porch 82.2 ~ 165.06

173.38

105

1/19/26
 5162011
 Bliss
 Northern

S 49 168.5
 2 46 168.8
 N 46 168.8

77' E

N 3.6 169.8
 +4 3.6 169.8
 +5 2.8 170.6
 2 2.8 170.6
 S 3.5 169.9

100' E

S 2.7 170.7
 +1 1.6 171.7
 +6 2.8 170.6
 2 3.1 170.3
 N 3.0 170.4

119' E

N 2.3 171.1
 2 2.5 170.9
 +4 2.5 170.9
 +8 1.5 171.9
 S 2.4 171.0

125' E

S 2.5 170.9
 2 2.4 171.0
 N 1.9 171.5
 TP 6.14 172.19 133 172.05

178.19

	136'E		
N	6.2	172.0	
+8	5.1	172.6	
±	5.7	172.5	
+8	5.7	172.5	
+8	5.1	173.1	139'E Top of 6.11-17209
S	5.3	172.9	
	150'E		
S	4.3	173.9	147'E on S House 10 in 194
+5	5.0	173.2	
±	5.4	172.8	
N	5.3	172.9	161'E on S House 35 in 194
	175'E		
N	4.6	173.6	169'E on S E Edge House
±	4.8	173.4	
S	4.7	173.5	190'E on S Garage 54536 Dirt Floor 4.8-1936
	200'E		
S	4.4	173.8	
±	4.8	173.4	
N	4.8	173.4	
	225'E		
N	4.9	173.3	
±	5.1	173.1	
S	4.8	173.4	
	250'E		
S	7.6	170.6	
±	7.6	170.6	

178.19

106

		72	171.0
	261'E		
N		8.3	169.9
±		8.6	169.6
+8		8.1	170.1
S		8.3	169.9
	275'E		
S		9.5	168.7
+8		10.0	168.2
±		10.7	167.5
N		10.7	167.5
	300'E		
N		13.0	165.2
±		12.8	165.4
+3		12.4	165.8
S		11.8	167.0
	325'E		
S		13.5	165.2
+4		13.2	165.0
+6		13.1	164.6
±		13.2	164.4
N		14.0	164.2
TF	0.57	165.99	13.72
		165.47	
	350'E		
N		1.9	164.1
±		2.3	163.7
+8		2.2	163.8

258'E on S
Garage Dirt Floor
8.15-1902

318'E 25536
Garage Dirt Floor
12.6-1936

16599

S	16	1644	360'E 00N Garage Cone Floor 10/29/16 195 100.04
	375'E		
S	30	1630	
E	32	1628	
N Top Cone Wall	320	1628	
	400'E		398'E 1'E Ed Cone Wall 10/29/16 136 101.13
N	44	161.6	
E	48	161.2	
S	47	161.3	419'E B.M.H. 55.90 100.59
	425'E		
S	55	160.5	
E	58	160.2	
N	61	159.9	
	450'E		
N	88	157.2	
E	86	157.4	
+3	84	157.6	
S	80	158.0	
	475'E		
S	119	154.1	
E	118	154.2	
N	123	153.7	
	480'E		
N	145	151.5	
+3	145	151.5	
+5	132	152.8	
E	130	153.0	

16599

107

S	125	153.5	
+3	0.71	154.18	125.52
	487'E		153.47
S	75	151.7	
+5	77	151.5	
E	40	150.2	
+3	34	150.8	
N	34	150.8	
	500'E		
N	74	146.8	
+5	70	147.2	
+1	65	147.7	
E	63	147.9	
S	63	147.9	
	510'E		
S	74	146.8	
E	72	146.3	
N	82	146.0	
+5 Garage Deck Floor	82	145.9	
	525'E		
N	97	144.5	
E	94	144.8	
S	96	145.0	
	545'E		
S	112	143.0	
E	112	143.0	
N	111	143.1	

154.8

550'E

N		19.4	134.8
+2		18.9	141.3
E		12.0	142.2
S		12.3	141.9
TP	0.0	<u>142.16</u>	142.06

562'E

S		4.1	137.8
E		4.6	137.6
+7		4.6	137.6
N		8.6	133.6

575'E

N		8.1	134.1
E		7.7	134.5
S		7.3	134.9

588'E

S		7.8	134.4
+4		8.4	133.8
E		10.0	132.2
+6		10.5	131.7
N		11.4	130.8

595'E

N		12.4	129.8
+2		12.8	129.4
+8		14.0	129.2
E		13.5	128.7
+3		11.8	130.4

142.16

108

S			10.3	131.9
TP	6.73	<u>136.24</u>	120.5	129.51

600'E N 1.27 + 0.3

S			9.5	126.7
E			9.8	126.4
+9			10.0	126.2
N Top Curb Pt. 100			110.4	125.2

TP	10.64	<u>146.17</u>	0.71	135.53
----	-------	---------------	------	--------

SPT			40.1	142.14
-----	--	--	------	--------

BP SE

135.27 + 0.3
142.14

Alloy Cross Section / 20' wide ^{Moore} 11/18/26
 BIK 210 UNIV H945

359.41

109

SWBP	750	359.41	357.91	UNIV 732nd
	NL UNIV 1710-00			
E	on bearing	4.98	354.43	
C		5.02	354.39	
W		4.87	354.54	
	0750			
W		5.0	54.4	
C		4.7	54.7	
E		4.5	54.9	
	0760			
W	-7' garage cem floor	4.50	54.9	
	1700			
E		3.7	55.7	
C		3.8	55.6	
W		4.1	55.3	
	1730			
-	3' double garage dirt floor	3.7	55.7	
W		3.7	55.7	
C		3.8	55.6	
E		3.6	55.8	
	1750			
E	S edge garage dirt floor	3.2	56.2	dirt floor
	1760			
E	N " " " "	3.1	56.3	" "
	1775			
E		3.1	56.3	

Plotted 12/21/26
 Lony

C		3.1	56.3	
TP	6.77	367.96	3.22	56.19
W			6.4	56.6
	+2' S edge cem Apron		6.2	56.75
	2' on			5 door garage
E	S edge cem Apron	5.98	56.98	in alley door garage
	2' + 2.6			
-	2' S edge cem Apron	5.97	56.99	in door garage
W		5.9	57.1	
C		6.0	57.0	
	+9' S edge " "	5.99	56.97	3 " "
	3' + 6.0			
E		5.8	57.2	fence 1 1/2' / 10'
C		5.8	57.2	
W		5.7	57.3	
	3' + 0.0			
W		5.5	57.5	
C		5.5	57.5	
E		5.6	57.4	fence 8' x 10'
	3' + 4'			
E	-W garage dirt floor	4.8	58.2	
C		4.9	58.1	
W		5.4	57.8	
	3' + 8.7			
E	Garage Cem Apron	4.50	58.5	Apron level in alley

36296

4+00			
W		4.9	358.1
C		4.7	58.3
E		4.5	58.5
4+50			
E		4.7	58.3
C		4.6	58.4
W		4.6	58.4
4+50			
W	Sedge Cem Apron	4.22	58.71 on line
4+96			
W	N edge " "	4.17	58.79 " "
4+93			
E	Level p Cem Apron 10 wide	4.50	58.5 S. valley
5+06			
W	p garage cem floor	4.00	59.0 S. valley
C		4.3	58.7
E		4.7	58.3
5+34			
E	Sedge Cem Apron	4.13	58.83 on line
5+47			
E	N edge " "	4.22	58.74 " "
5+56			
E	garage dirt floor	4.3	58.7 S. valley
C		4.3	58.7
W		4.1	58.9

36296

5+80			
W		4.0	359.0
C		4.2	58.8
E		4.5	58.5
5+95 = St. Lincoln			
E	top cem return	7.20	55.7
C		6.1	56.9
W	" " "	5.78	357.18
T.P.	2.42	3.59.49	58.9
ch	DIT	win 4.32	nd 251.91 351.91

60/34 C5

DISTANCES FROM CENTER OF ROADWAY FOR
CROSS-SECTIONING.

Roadway 16 feet wide. Side Slopes 1 on 1½.
For Single Track Embankment.

H	0	1	.2	.3	.4	.5	.6	.7	.8	.9	H
0	8.0	8.2	8.3	8.5	8.6	8.8	8.9	9.1	9.2	9.4	0
1	9.5	9.7	9.8	10.0	10.1	10.3	10.4	10.6	10.7	10.9	1
2	11.0	11.2	11.3	11.5	11.6	11.8	11.9	12.1	12.2	12.4	2
3	12.5	12.7	12.8	13.0	13.1	13.3	13.4	13.6	13.7	13.9	3
4	14.0	14.2	14.3	14.5	14.6	14.8	14.9	15.1	15.2	15.4	4
5	15.5	15.7	15.8	16.0	16.1	16.3	16.4	16.6	16.7	16.9	5
6	17.0	17.2	17.3	17.5	17.6	17.8	17.9	18.1	18.2	18.4	6
7	18.5	18.7	18.8	19.0	19.1	19.3	19.4	19.6	19.7	19.9	7
8	20.0	20.2	20.3	20.5	20.6	20.8	20.9	21.1	21.2	21.4	8
9	21.5	21.7	21.8	22.0	22.1	22.3	22.4	22.6	22.7	22.9	9
10	23.0	23.2	23.3	23.5	23.6	23.8	23.9	24.1	24.2	24.4	10
11	24.5	24.7	24.8	25.0	25.1	25.3	25.4	25.6	25.7	25.9	11
12	26.0	25.2	26.3	26.5	26.6	26.8	26.9	27.1	27.2	27.4	12
13	27.5	27.7	27.8	28.0	28.1	28.3	28.4	28.6	28.7	28.9	13
14	29.0	29.2	29.3	29.5	29.6	29.8	29.9	30.1	30.2	30.4	14
15	30.5	30.7	30.8	31.0	31.1	31.3	31.4	31.6	31.7	31.9	15
16	32.0	32.2	32.3	32.5	32.6	32.8	32.9	33.1	33.2	33.4	16
17	33.5	33.7	33.8	34.0	34.1	34.3	34.4	34.6	34.7	34.9	17
18	35.0	35.2	35.3	35.5	35.6	35.8	35.9	36.1	36.2	36.4	18
19	36.5	36.7	36.8	37.0	37.1	37.3	37.4	37.6	37.7	37.9	19
20	38.0	38.2	38.3	38.5	38.6	38.8	38.9	39.1	39.2	39.4	20
21	39.5	39.7	39.8	40.0	40.1	40.3	40.4	40.6	40.7	40.9	21
22	41.0	41.2	41.3	41.5	41.6	41.8	41.9	42.1	42.2	42.4	22
23	42.5	42.7	42.8	43.0	43.1	43.3	43.4	43.6	43.7	43.9	23
24	44.0	44.2	44.3	44.5	44.6	44.8	44.9	45.1	45.2	45.4	24
25	45.5	45.7	45.8	46.0	46.1	46.3	46.4	46.6	46.7	46.9	25
26	47.0	47.2	47.3	47.5	47.6	47.8	47.9	48.1	48.2	48.4	26
27	48.5	48.7	48.8	49.0	49.1	49.3	49.4	49.6	49.7	49.9	27
28	50.0	50.2	50.3	50.5	50.6	50.8	50.9	51.1	51.2	51.4	28
29	51.5	51.7	51.8	52.0	52.1	52.3	52.4	52.6	52.7	52.9	29
30	53.0	53.2	53.3	53.5	53.6	53.8	53.9	54.1	54.2	54.4	30
31	54.5	54.7	54.8	55.0	55.1	55.3	55.4	55.6	55.7	55.9	31
32	56.0	56.2	56.3	56.5	56.6	56.8	56.9	57.1	57.2	57.4	32
33	57.5	57.7	57.8	58.0	58.1	58.3	58.4	58.6	58.7	58.9	33
34	59.0	59.2	59.3	59.5	59.6	59.8	59.9	60.1	60.2	60.4	34
35	60.5	60.7	60.8	61.0	61.1	61.3	61.4	61.6	61.7	61.9	35
36	62.0	62.2	62.3	62.5	62.6	62.8	62.9	63.1	63.2	63.4	36
37	63.5	63.7	63.8	64.0	64.1	64.3	64.4	64.6	64.7	64.9	37
38	65.0	65.2	65.3	65.5	65.6	65.8	65.9	66.1	66.2	66.4	38
39	66.5	66.7	66.8	67.0	67.1	67.3	67.4	67.6	67.7	67.9	39
40	68.0	68.2	68.3	68.5	68.6	68.8	68.9	69.1	69.2	69.4	40

Example—If point is 22.6 ft. above grade, how far should it be from center line to be a slope stake point? Ans. from Table 41.9. For same slopes but other widths of roadbed correct above figures by one-half difference in width of roadbed; thus in example above for 20 ft. roadbed distance will be 41.9 + (20—16) * 2 or 2 ft. added to 41.9 = 43.9. For slopes of 1 on 1 see inside of front cover.

Made in Germany.