

1140



ENGINEERS'
FIELD BOOK
No. 404

EUGENE DIETZGEN CO.

DRAWING MATERIALS, MATHEMATICAL and SURVEYING INSTRUMENTS

Chicago New York San Francisco New Orleans Pittsburg Toronto

Distances from Center of Roadway for Cross-Sectioning
Roadway 16 feet wide. Side Slopes 1 on 1.
For Single Track Embankment.

H	0	.1	.2	.3	.4	.5	.6	.7	.8	.9	H
0	8.0	8.1	8.2	8.3	8.4	8.5	8.6	8.7	8.8	8.9	0
1	9.0	9.1	9.2	9.3	9.4	9.5	9.6	9.7	9.8	9.9	1
2	10.0	10.1	10.2	10.3	10.4	10.5	10.6	10.7	10.8	10.9	2
3	11.0	11.1	11.2	11.3	11.4	11.5	11.6	11.7	11.8	11.9	3
4	12.0	12.1	12.2	12.3	12.4	12.5	12.6	12.7	12.8	12.9	4
5	13.0	13.1	13.2	13.3	13.4	13.5	13.6	13.7	13.8	13.9	5
6	14.0	14.1	14.2	14.3	14.4	14.5	14.6	14.7	14.8	14.9	6
7	15.0	15.1	15.2	15.3	15.4	15.5	15.6	15.7	15.8	15.9	7
8	16.0	16.1	16.2	16.3	16.4	16.5	16.6	16.7	16.8	16.9	8
9	17.0	17.1	17.2	17.3	17.4	17.5	17.6	17.7	17.8	17.9	9
10	18.0	18.1	18.2	18.3	18.4	18.5	18.6	18.7	18.8	18.9	10
11	19.0	19.1	19.2	19.3	19.4	19.5	19.6	19.7	19.8	19.9	11
12	20.0	20.1	20.2	20.3	20.4	20.5	20.6	20.7	20.8	20.9	12
13	21.0	21.1	21.2	21.3	21.4	21.5	21.6	21.7	21.8	21.9	13
14	22.0	22.1	22.2	22.3	22.4	22.5	22.6	22.7	22.8	22.9	14
15	23.0	23.1	23.2	23.3	23.4	23.5	23.6	23.7	23.8	23.9	15
16	24.0	24.1	24.2	24.3	24.4	24.5	24.6	24.7	24.8	24.9	16
17	25.0	25.1	25.2	25.3	25.4	25.5	25.6	25.7	25.8	25.9	17
18	26.0	26.1	26.2	26.3	26.4	26.5	26.6	26.7	26.8	26.9	18
19	27.0	27.1	27.2	27.3	27.4	27.5	27.6	27.7	27.8	27.9	19
20	28.0	28.1	28.2	28.3	28.4	28.5	28.6	28.7	28.8	28.9	20
21	29.0	29.1	29.2	29.3	29.4	29.5	29.6	29.7	29.8	29.9	21
22	30.0	30.1	30.2	30.3	30.4	30.5	30.6	30.7	30.8	30.9	22
23	31.0	31.1	31.2	31.3	31.4	31.5	31.6	31.7	31.8	31.9	23
24	32.0	32.1	32.2	32.3	32.4	32.5	32.6	32.7	32.8	32.9	24
25	33.0	33.1	33.2	33.3	33.4	33.5	33.6	33.7	33.8	33.9	25
26	34.0	34.1	34.2	34.3	34.4	34.5	34.6	34.7	34.8	34.9	26
27	35.0	35.1	35.2	35.3	35.4	35.5	35.6	35.7	35.8	35.9	27
28	36.0	36.1	36.2	36.3	36.4	36.5	36.6	36.7	36.8	36.9	28
29	37.0	37.1	37.2	37.3	37.4	37.5	37.6	37.7	37.8	37.9	29
30	38.0	38.1	38.2	38.3	38.4	38.5	38.6	38.7	38.8	38.9	30
31	39.0	39.1	39.2	39.3	39.4	39.5	39.6	39.7	39.8	39.9	31
32	40.0	40.1	40.2	40.3	40.4	40.5	40.6	40.7	40.8	40.9	32
33	41.0	41.1	41.2	41.3	41.4	41.5	41.6	41.7	41.8	41.9	33
34	42.0	42.1	42.2	42.3	42.4	42.5	42.6	42.7	42.8	42.9	34
35	43.0	43.1	43.2	43.3	43.4	43.5	43.6	43.7	43.8	43.9	35
36	44.0	44.1	44.2	44.3	44.4	44.5	44.6	44.7	44.8	44.9	36
37	45.0	45.1	45.2	45.3	45.4	45.5	45.6	45.7	45.8	45.9	37
38	46.0	46.1	46.2	46.3	46.4	46.5	46.6	46.7	46.8	46.9	38
39	47.0	47.1	47.2	47.3	47.4	47.5	47.6	47.7	47.8	47.9	39
40	48.0	48.1	48.2	48.3	48.4	48.5	48.6	48.7	48.8	48.9	40

no this

M I C R O P L A N E

Example—If point is 22.6 ft. above grade, how far should it be from center line to be a slope stake point? Ans. from Table 30.6. For same slopes but other widths of roadbed, correct above figures by one-half difference in width of roadbed; thus in example above, for 20 ft. roadbed distance will be $30.6 + (20 - 16) \div 2$ or 2 ft. added to 30.6 = 32.6. For slopes of 1 on 1 1/2 see inside of back cover.

Cross Section Alley Block 43 Univ. Heights
 Between Cleveland & Campus
 From Monroe to Madison

30' wide

B.M.	6.51	354.41	347.90
		0+0 = N Line Monroe	
N Top Curb		5.63	348.78
Gutter in Pav.		5.70	348.71
S " "		5.99	348.42
Gutter " "		5.70	348.71
E Top Curb		5.43	348.98
		5' N	
E		5.1	349.3
S		5.4	349.0
+5		5.3	349.1
+7		5.0	349.4
N		5.3	349.1
		30' N	
N		5.0	349.4
S		5.0	349.4
+4		5.0	349.4
+5		5.4	349.0
+7		4.7	349.7
E		4.8	349.6
		50' N	
E		5.2	349.2
+3		4.7	349.7
+4		5.2	349.2
+6		5.1	349.3
S		5.3	349.1

BRSE
 Monroe & Clark

10-1-25
 5:55 AM
 5885
 107117

		354.41	
N		5.1	349.3
		75' N	
N		5.0	349.4
S		5.0	349.4
+5		4.8	349.6
+8		5.4	349.0
E		5.7	348.7
		100' N	
E		5.6	348.8
+7		5.3	349.1
S		5.2	349.2
N		5.1	349.3
		107' N	
N		4.8	349.6
+1		5.8	349.2
S		5.2	349.2
+4		5.3	349.1
+6		5.7	348.7
E Garage Dirt Floor		5.5	348.9
		150' N	
E		5.0	349.4
+4		5.8	349.2
S		5.1	349.3
N		4.9	349.5
		772' N	

3 Alley Block 43 Unit Hghts Cont. 20' wide

	354.41		
N	47	349.7	
S	50	349.4	
E Garage Dirt Floor	52.6	349.15	
	200'N		
-3 4 Garages	48.3	349.58	
E	4.8	349.6	
S	4.9	349.5	207'N
N	4.7	349.7	Do Garage N Conc Floor 4.56, 4.85 SEM, 4.6 conc floor 4.88
	217'N		
N	4.6	349.8	
S	4.7	349.7	
E	4.7	349.7	
	250'N		
E	4.3	350.1	
S	4.3	350.1	239'N
N	4.4	350.0	Top 1/4, 4.50
	300'N		
N	4.1	350.3	
+2	4.0	350.4	
+4	3.7	350.7	
S	3.8	350.6	
+5	3.9	350.5	
E	4.2	350.2	
T.P.	5.61	354.34	3.68 350.73
	307'N		

H.I.
356.34

-1 Garage Dirt Floor	6.24	350.08	
E	5.8	350.5	
S	5.7	350.6	
N	5.6	350.7	
	338'N		
N	5.8	350.5	
E	5.8	350.5	
E	6.0	350.3	
+4 Garage Dirt Floor	5.85	350.49	
	355'N		
-1 Sd End of Garages Conc Floor	5.60	350.7	
E	5.6	350.7	
S	5.6	350.7	
N	5.8	350.5	
	397'N		
N	5.6	350.7	
+2	5.4	350.9	
E	5.4	350.9	
E	5.2	351.1	
+0.5 N End of Garage Conc Floor	5.25	351.09	1st Floor from Head 2010 4/16
	430'N		
-3.5 Do Garage Conc Driv	5.35	351.0	
E	5.6	350.7	
E	5.5	350.8	
+6	5.6	350.7	
N	5.7	350.6	

5 Alley Block 43 Univ Heights Cont. 2022.10

35634

450'N

N	5.6	350.7
+7	5.5	350.8
S	5.8	350.5
E	5.8	350.5

487'N

-1 Garage Conc Floor	5.5	351.19
E	5.1	351.7
+3	5.5	350.8
S	5.4	350.9
N	5.4	350.9

507'N

-6 Garage Hard Floor	5.5	351.09
N	5.4	350.9
S	5.3	351.0
E	5.6	350.7

531'N

-5 No. Garage Conc Floor	4.89	351.45
E	5.4	350.9
S	5.2	351.1
+5	5.5	350.8
N	5.7	350.6

550'N

N	5.4	350.9
+8	5.2	351.1

35634

E	5.1	351.2
E	5.4	350.9
575'N		
E	5.0	351.3
N	5.4	350.9
S	5.0	351.3
+6	5.1	351.2
N	5.2	351.1

600.5'N = 5 Line Madison

N TOP Bldg	5.05	351.79
S in N.H.	5.11	351.23
E in Bldg	4.89	351.45

TP	3.61	355.72	4.23	352.11
----	------	--------	------	--------

7 Cross Section Alley Block 44 Univ Heights
 Between Campus + North
 From S Line Madison to N. Monroe 20' wide

35578		
0+0 = S Line Madison		
E Top Fasing	3.36	352.36
S " "	3.6	352.06
N " "	3.35	352.37
5'S		
N	2.9	352.8
+2	3.3	352.4
S	3.3	352.4
E	3.1	352.6
150'S		
E	3.7	352.0
+3	3.9	351.8
S	3.6	352.1
N	3.5	352.2
67'S		
N	3.8	351.9
S	3.7	352.0
+6	4.1	351.6
E Garage Conc Floor	3.68	352.04
78'S		
E	3.6	352.1
+2	4.3	351.4
S	4.0	351.7
N 2 Ribbon Conc Drives	3.66	352.06
+6.5 Garage Conc Floor	2.80	352.92

35578		
106'S		
-6 Garage Int Floor	3.80	351.92
N	3.8	351.9
S	4.0	351.7
E	3.8	351.9
+4.5 Garage Conc Floor	3.55	352.12
114'S		
-4 Garage Conc Floor	3.71	352.01
+2 Conc Apron	3.96	351.76
E	3.9	351.8
S	4.1	351.6
N	4.1	351.6
140'S		
-0.8 Garage Conc Floor	4.0	351.6
N	4.1	351.6
S	4.3	351.4
+6	4.3	351.4
+8	3.7	352.0
E	3.6	352.1
157'S		
E	4.2	351.5
S	4.3	351.4
N Conc Apron	4.23	351.49
+6 Garage Conc Floor	3.85	351.87
188'S		

185'S
 155' E L
 Conc Apron
 3.90
 55' E L
 90' 10" E
 3.46

9. Alley Block 4A Univ. Hgts. Cont

20' wide

	35572		
E	Garage Conc Floor	3.68	351.04
E	Ground	4.1	351.6
+6		4.7	351.0
±		4.6	351.1
W		4.6	351.1

20' S

-1	Conc Drive	4.34	351.38
W		4.5	351.2
±		4.7	351.0
+8		4.8	350.9
E		4.6	351.1
TP	3.72	35510	4.34

240'S

E		4.0	351.1
+3		4.3	350.8
±		4.3	350.8
W		4.4	350.7

260'S

-4	Garage Conc Floor	3.66	351.44
-2.5	Conc. Apron	4.01	351.59
W		4.2	350.9
+3		4.6	350.5
±		4.4	350.7
+7		4.2	350.9
E	Conc Apron	3.82	351.28
+3.5	Garage Conc Floor	3.61	351.49

35510

300'S

E		4.2	350.9
+2		4.6	350.5
E Top MH		4.64	350.46
W		4.8	350.3

Garage Conc Floor
310'S
40' E.D.
4.80

336

W		5.2	349.9
±		5.1	350.0
+3		5.0	350.1
+6		4.8	350.3
E		4.8	350.3

+0.5 Conc Apron

+3.0 Garage Conc Floor

		4.50	350.3
		4.80	350.3

356'S

E		5.1	350.0
±		5.2	349.8
W		5.3	349.8
+4	Garage Dirt Floor	5.2	349.9

383'S

-5	Garage Dirt Floor	5.4	349.7
W		5.2	349.8
+7		5.5	349.6
±		5.4	349.7
E	Garage Dirt Floor	5.6	349.5

400'S

20' wide

	355.10	
E	55	349.6
2	56	349.5
N	57	349.4
	430's	
N	60	349.1
2	58	349.3
E	57	349.4
+1.5 Do Garage Dirt Floor	57.9	349.7
	465's	
-3.0 Do Garage Conc Entrance	6.0	348.5
E	6.6	348.5
+4	6.8	348.9
2	6.1	349.0
N	5.9	349.2
	480's	
N	6.8	348.9
+4	6.8	348.8
2	6.3	348.8
+5	6.3	348.8
E	7.2	347.9
+3 Garage Dirt Floor	7.7	347.4
	495's	
-3 Garage Dirt Floor	7.5	347.6
E	7.4	347.7
+5	6.5	348.6

355.10

E	6.8	348.9
N	6.5	348.6
	507'	
-2 Garage Conc Floor	5.96	349.14
N Conc Apron	6.1	349.0
+3	6.4	348.7
2	6.3	348.8
E	6.5	348.6
	530'	
-1.7 Garage Dirt Floor	6.55	348.55
E	6.5	348.6
2	6.4	348.7
N	6.4	348.7
N	6.5	348.6
2	6.4	348.7
+8	6.4	348.7
E Top Conc Wall	6.38	348.78
	575's	
E Top Conc Wall	6.31	348.79
+3	6.7	348.4
2	6.6	348.5
+6	6.6	348.5
N	6.9	348.2
	594's	

Conc 156 1/2
25' x 12"
Monroe

355.10

W		6.9	348.2
+3		6.7	348.4
£		6.7	348.4
+8		6.7	348.4
E	Top Conc. Wall	6.31	348.79

600.5' S = N Line Monroe

E	Top Carb	6.90	348.2
E	" Wall	6.32	348.78
	Gutter Top Parings	6.98	348.02
£	" " "	7.20	347.9
	Gutter " "	6.95	348.15
W	Top Carb	6.65	348.45

T.P.	6.07	354.24	6.93	348.17
B.M.			6.32	347.92

 3P SE
 Monroe
 Cleveland
 34790

10/2/46 Moore	CROSS SECTION OF TITUS ST HENRY TO ALAMEDA PI.			50' wide 10' SW
SEBP	0.91	249.51	-	249.60 Henry & Alameda
T.P.	0.05	236.73	12.83	236.68
T.P.	0.13	223.91	12.95	223.78
Set B.M. NW track Henry & Guy		2.91		221.00
T.P.	0.56	211.59	12.88	211.03
T.P.	0.52	199.27	12.88	198.71
T.P.	0.03	186.67	12.63	186.64
NL HENRY - 0+00				
E ch on cen.			10.50	176.17
W ch ✓			11.93	174.74
37.5' N				
W ch dirt		199.7		177.0
E ch on cen.			8.13	178.54
T.P.	7.06	185.60	8.13	178.54
75' N = END of ch + SW on EAST				
E ch on cen.			4.74	180.86
W ch dirt			6.3	179.3
100' N				
W ch			5.0	180.6
E ch			4.00	181.6
125' N				
E ch			3.2	182.2
W ch			4.4	181.2
150' N				
W ch			4.1	181.5
E ch			3.0	182.6

175' N			
E ch		3.2	182.4
W ch		4.1	181.5
200' N			
W ch		4.3	181.3
E ch		3.8	181.8
225' N			
E ch		4.7	180.9
W ch		5.7	179.9
250' N			
W ch		7.1	177.5
E ch		6.7	178.9
CROSS SECTION OF INTERSECTION OF TITUS & CLARK ST.			
	0.93	175.94	175.01
T.P.	1.31	164.34	12.91
T.P.	0.12	158.75	5.71
NL CLARK			
E Garage floor		5.70	153.05
ch on cen. ch		6.77	151.98
1/4		6.4	152.44
1/4		6.8	152.0
1/4		6.8	152.0
ch		7.0	151.8
W		7.0	151.8
+ 5			

50' wide
10' SW
75' N

SPT C.T.
HENRY & TITUS

158.75

NL + 4

-5	7.4	151.4
w	7.1	151.7
cb	6.7	152.1
+v	6.5	152.3
1/4	3.1	155.7
+v	2.7	156.1
e	3.4	155.4
1/4	4.2	154.6
cb	3.2	155.6
+4	2.0	156.8
+5	0.7	158.1
E	0.0	158.8

N cb = 10'S

E	0.2	157.6
cb	1.8	157.0
1/4	3.0	155.8
c	3.3	155.5
+5	3.2	155.4
1/4	4.4	154.4
+5	6.2	152.6
cb	6.6	152.2
w	7.3	151.5
+5	7.7	151.1

N 1/4 = 17.5 S

-5	8.3	150.5
----	-----	-------

158.75

TITUS

w	7.7	151.1
cb	6.6	151.1
+v	6.5	152.2
+5	5.2	153.6
1/4	4.7	154.1
c	4.2	154.6
1/4	3.3	155.5
cb	2.6	156.2
E	1.2	157.4

E = 25'S

E	2.1	156.7
cb	3.3	155.5
1/4	3.9	154.9
c	4.9	153.9
1/4	5.7	153.1
cb	6.4	152.4
w	7.8	151.0
+1	8.8	150.0
+5	9.3	149.5

5/4 = 32.5 S

-5	8.4	150.4
w	7.2	151.4
cb	7.0	151.8
1/4	6.0	152.8
c	5.3	153.5
1/4	4.6	154.2
cb	3.9	154.9
E	3.0	155.8

158.75

S of = 40' S

E	2.1	156.7
cb	2.7	156.1
+2	3.1	155.7
+5	5.1	153.7
1/2	5.3	153.5
c	5.9	152.9
1/4	6.7	152.1
cb	7.5	151.3
w	8.4	150.4
+5	9.3	149.5

SL = 50' S

-5	10.2	148.6
w	9.8	149.0
cb	8.4	150.4
1/4	7.6	151.2
c	6.8	152.0
1/4	6.1	152.7
cb	5.2	153.6
+5	3.4	155.4
E	2.9	155.9

10' S = 60' S

E	6.1	152.7
cb	6.9	151.9
1/4	7.5	151.4
c	8.1	150.7
1/2	8.7	150.1

T. T. U. S

17

cb	9.5	149.3
w	10.6	148.2
+5	11.7	147.1
20' S = 70' S		
-5	13.3	145.5
w	12.0	146.8
cb	11.0	147.8
1/2	10.1	148.7
c	9.7	149.1
1/4	9.2	149.4
cb	8.9	149.9
E	8.3	150.5
+5	8.1	150.7

Sewer Construction
 Auburn Drive From Existing M.H. & Euclid Ave
 And Auburn Drive to 81st East

		340.68 316 343.84 8.05 340.79 5.97 346.76 5.57 341.19 7.03 348.22 7.78 339.49
0+ Existing M.H. & Euclid + Auburn	333.00	
50'E	333.30	
100'E	333.60	
150'E	333.90	
200'E	334.20	
232.95'E - MH	334.40	
50'E	334.70	
100'E	335.00	
150'E	335.30	
200'E	335.60	
234'E - AMH	335.80	
50'E	336.10	
100'E	336.40	
150'E	336.70	
200'E	337.00	
250'E	337.30	
300'E	337.60	
349.82'E = D.F.	337.90	

11-13-25
5-5-27
Northwood
MH

346.76	346.70	346.76	346.76	346.76
333.80	333.70	333.90	334.20	334.40
13.96	13.16	12.86	12.56	12.36
4.12	5.39	5.20	4.18	4.51
+7.34	+7.77	+7.66	+7.38	+7.85
346.76	346.76	346.76	346.76	346.76
334.70	335.00	335.30	335.60	335.80
12.06	11.76	11.46	11.16	10.96
5.03	6.05	6.12	6.60	6.09
+7.63	+6.71	+6.34	+6.76	+6.94
346.76	346.76	346.76	346.76	346.76
336.70	336.40	336.70	337.00	337.30
10.06	10.36	10.06	11.38	10.44
4.56	4.93	5.43	6.36	6.97
+5.56	+5.43	+4.69	+4.36	+4.57
348.78	348.78			
337.70	337.90			
10.68	10.82			
5.23	4.97			
+5.19	+5.35			

Server Construction

South Heber Drive
From Euclid + S. Auburn to 630.5 East

010 Existing M.H.	331.50	St. Ford 339.49
Euclid + S. Auburn		3.59
50'E	331.80	343.01
		0.69
100'E	332.10	347.37
		4.27
150'E	332.40	342.90
		5.47
		339.43
199'E = AMH	332.69	4.10
		343.53
50'E	332.99	2.26 N.Y. drive
		BM 340.27 and Euclid
100'E	333.29	
150'E	333.59	
200'E	333.89	
250'E	334.19	
290.5'E = AMH	334.38	
50'E	334.68	
100'E	334.98	
151'E - Dead End	335.28	

331.50	344.90	344.90	344.90	343.01	343.01
	337.90	352.10	337.20	332.69	332.69
	13.10	1.280	12.50	10.37	10.37
	48.5	3.25	3.01	0.26	0.26
	+8.72	+8.95	+9.27	+9.68	+8.07
				MM	
343.01	343.01	343.01	343.01	342.01	343.01
333.22	333.59	333.89	334.19	334.38	334.68
9.77	9.47	9.77	8.87	8.78	8.38
3.88	5.18	5.37	4.23	4.30	3.80
+5.89	+4.69	+3.85	+4.44	+4.38	+4.58
				DE	
343.01	343.01				
334.98	335.28				
8.08	7.78				
2.01	4.28				
+4.07	+3.30				

Cross Section of E+M Alley Bk. 3 Park Villas
 Between University And Nightmare
 From Herman to 31st St. 15' wide

BM	164	358.14	356.50	B.P.M.M. Univ. 1/10/22
				0 to W.L. Herdman
N	Top Curb	476		
"	Top Paving	495		
E		517		
S	Top P	523		
"	Top Curb	511		
	20' W			
S		5.0		
E		5.2		
+3		5.1		
N		4.5		
	40' W			
N		4.4		
+2		4.5		
E		5.0		
S		4.9		
	60' W			
-1.5	Top Brick Walk	4.57		
S		4.8		
E		5.0		
N		4.8		
	80' W			
N		4.5		
+5		4.5		

11-25-25
 Station
 Buss
 Herdman

	359.14	
E		4.7
S		4.7
	100' W	
S		4.2
E		4.5
+1		4.2
N		4.3
	120' W	
N		4.0
E		4.1
S		3.7
	132.54 to N.W. Alley	
S		3.5
E		3.6
N		3.3
	140' W	
N		3.1
E		3.2
S		3.2
	160' W	
S		2.9
E		3.0
N		2.8
	180' W	
N		2.6

35814

L		2.5
S		2.6

200' W

S		2.4
L		2.3
N		2.3

220' W

N		2.1
L		2.1
S		2.0

240' W

S		2.2
L		2.3
N		2.1

255

N		2.1
L		2.3
S		2.5

TP	432	359.50	2.96	355.12
----	-----	--------	------	--------

265' W = E. 1.31' W

S	Top Spring	4.39
L	" "	4.66
N	" "	4.28

CROSS SECTION OF H.S.
From California to Atlantic

80' wide
15' Cbs.
13' qts

BRNL
A 4' Kettles

BM	1.18	16.18	15.00
TP	2.91	11.43	7.66
			8.51
		N.L. California = 0+0	
H		3.2	8.2
CB		3.4	8.0
1/4		3.1	8.3
2		3.1	8.3
+2		3.1	8.3
+5		3.5	7.9
+8	Top Rail	3.1	8.3
1/4		3.6	7.8
CB		3.4	7.8
+10	Top Rail	3.28	8.15
S		3.7	7.7
S		3.9	7.5
CB		3.8	7.6
+8		3.3	8.1
1/4		3.6	8.2
2		3.5	7.9
1/4		3.5	7.9
CB		3.6	7.8
H		3.5	7.9
H		3.5	7.8

N.L. California = 0+0

11' W

16' W

A 5T

11.43

CB	3.8	7.6
1/4	3.6	7.8
2	3.5	7.8
+2	3.4	8.0
+10	1.1	10.3
1/4	0.9	10.5
+1	1.0	10.4
+10	4.4	7.0
+12	6.79	4.64
CB	6.8	4.6
+4	3.8	7.6
S	4.1	7.3
S	4.2	7.2
+10	3.7	7.7
CB	6.9	4.5
+2	6.7	4.7
+12	1.2	10.2
1/4	0.8	10.6
+3	1.4	10.0
+12	3.6	7.8
2	3.7	7.7
1/4	3.7	7.7
CB	3.6	7.8
N	3.7	7.7

N. End 13' 24"
Hood Calvert

Flot Line

25' W

N. End Ditch Floor
Boiler Marks

11.43

50'W

N	38	7.6
+7	40	7.4
CB	45	6.9
1/4	45	6.9
E	45	6.9
+12	20	9.4
1/4	67	8.7
+8	52	6.2
+9	62	5.2
CB	61	5.3
+05	49	6.5
+3	44	7.0
S	50	6.4

7.5'W

S	60	5.4
+3	60	5.4
+13	47	6.7
CB	48	6.6
+4	56	5.8
+11	47	6.7
1/4	48	6.6
+5	45	6.9
+7	53	6.1
E	52	6.2

11.43

A ST

23

1/4	53	6.1	
+7	53	6.1	
CB	50	6.4	
N	Door Brailer Works Dirt Floor	47	7.2

100'W

N	51	6.3
CB	54	6.0
1/4	57	5.7
E	51	5.8
+5	51	5.8
1/4	51	6.3
+4	48	6.6
+9	58	5.6
CB	54	6.0
+2	47	6.7
+9	66	4.8
S	66	4.8

125'W

S	65	4.9
+4	68	4.6
+10	55	5.9
CB	58	5.6
1/4	60	5.4
E	59	5.5
1/4	61	5.3

11.43

75	5.9	5.5
CB	5.6	5.8
76	5.5	5.9
N	6.4	5.0

150' W

N	6.2	5.2
73	5.7	5.7
CB	5.9	5.5
73	6.0	5.4
74	6.2	5.2
S	6.4	5.0
74	6.5	4.9
CB	6.1	5.3
77	5.8	5.6
S	6.4	5.0

175' W

S	6.2	5.1
CB	6.3	5.1
72	6.3	5.1
74	6.7	4.7
S	6.5	4.9
74	6.0	5.4
CB	6.7	5.3
78	5.7	5.7
N	7.2	4.2

11.43

200' W - E Atlantic

N	7.4	4.0
74	6.9	4.5
710	6.7	4.7
CB	6.1	5.3
77	5.5	5.9
74	6.4	5.0
S	6.4	5.0
74	6.5	4.9
CB	6.9	4.5
S	6.8	4.6

205' W

S	6.9	4.5
CB	6.8	4.6
74	6.6	4.8
S	6.5	4.9
74	6.5	4.9
CB	6.8	4.6
N	6.7	4.7

220' W

N	6.9	4.5
CB	6.7	4.7
74	6.4	5.0
S	6.7	4.7
74	6.6	4.8

A 5T

11.43

CB 6.6 4.8

S 6.8 4.6

23.5'N

S 6.6 4.8

CB 6.4 5.0

H 6.2 5.2

T8 6.4 5.0

L 5.7 5.7

H 5.6 5.8

T9 5.1 6.3

CB 6.3 5.1

H 6.2 5.2

25.0'N 2 Hortic

H 5.8 5.6

CB 6.6 4.8

H 6.3 5.1

T4 4.8 6.6

T8 6.1 5.3

L 6.2 5.2

H 6.1 5.3

CB 6.1 5.3

T2 5.8 5.6

S 6.1 5.3

21.5'N

S 5.7 5.7

A ST

11.43

T8 5.1 6.3

T11 6.2 5.2

CB 6.1 5.3

H 5.8 5.6

T8 6.2 5.2

L 5.8 5.6

T5 6.3 5.1

H 6.4 5.0

T9 6.5 4.9

T10 5.8 5.6

CB 6.2 5.2

T4 7.0 4.4

H 6.3 5.1

26.0'N

H 5.7 5.7

T5 6.6 4.8

CB 6.7 4.7

T11 6.4 5.0

H 6.4 5.0

T8 5.9 5.5

T10 5.2 6.2

L 5.3 6.1

T8 6.1 5.3

H 5.8 5.6

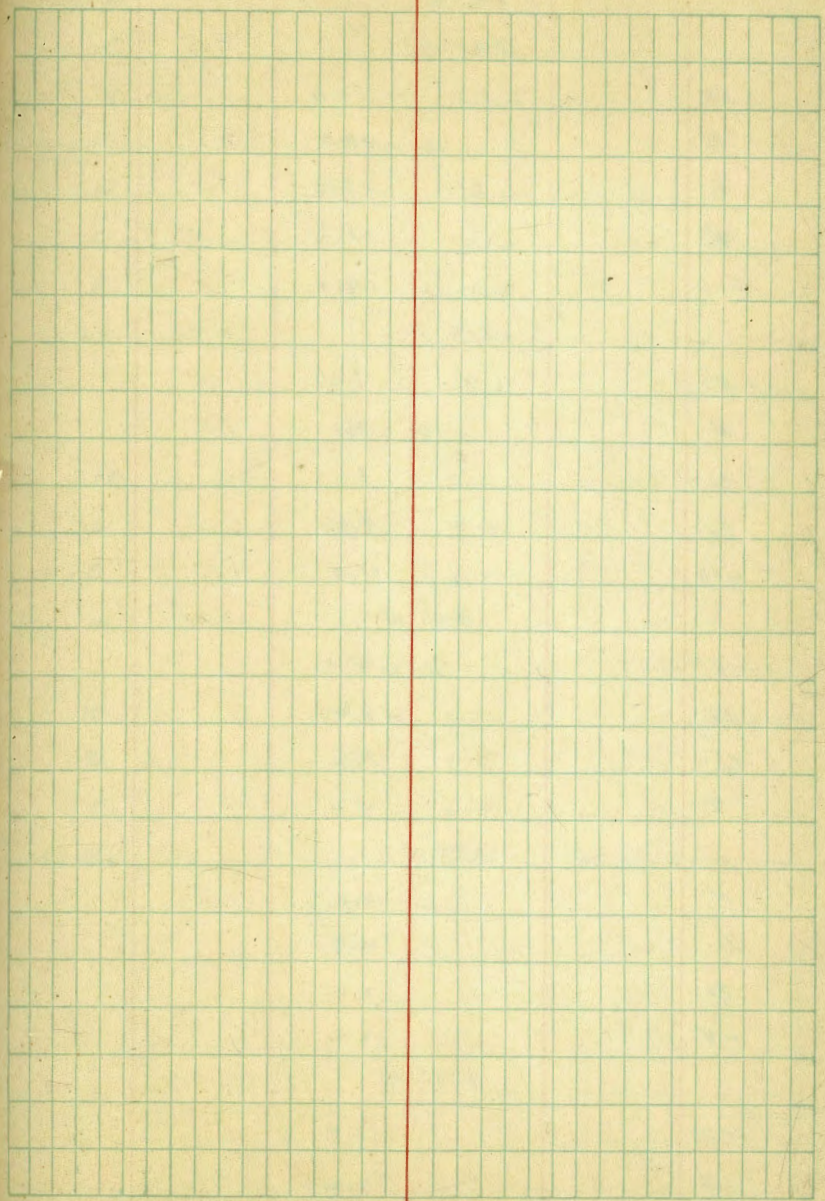
CB 6.0 5.4

11.43

S		5.6	5.8
	3000ft - N. Atlantic		
S		5.5	5.9
+5		5.9	5.5
CB		5.7	5.7
1/4		5.7	5.7
2		6.0	5.4
+3		5.6	5.8
1/4		5.3	6.1
+5		6.1	5.3
+8		5.9	5.5
CB		6.7	4.7
N		6.8	4.6

TP	7.05	17.72	1.26	10.17
BM			2.23	14.99

NE AS 100
Kellner
15.00



X See Alley BIK & La Jolla Strand 1/8/26
Continued from Book 11 A1 Page 59

69.76

300' N

-10	12.6
E	12.2
C	12.0
W	13.1
+10	14.0

316' N

-5	7.6
W	9.1
C	9.6
E	9.8
+10	11.0

340' N

-8	10.0
E	6.4
C	5.2
W	4.0

355' N

N	4.0
C	4.9
E	7.6
+8	12.2

372' N

-10	10.0
-8	12.2

69.76

27

372' N

E	6.4
C	4.4
W	3.5

381' N

W	3.2
C	6.4
E	8.8
+7	11.9

9.1

400' N

-10	7.0
C	4.3
C	3.0
W	3.0

418' N

W	2.5
C	2.5
E	2.5

E side paving

CHK BM

1.69

68.07 = 68.02

X Sec Alley BK 5
La Jolla Strand

BM	1.18	70.04	68.86	NW of La Jolla Blvd & Gravel
				N. & S. Alley 10' wide
				00 = N Line Gravel
E		4.38	65.56	on cement walk
C		4.8	65.4	
W		4.76	65.28	on cement walk
				30' N
W		5.3	64.7	
C		5.5	64.5	
E		5.4	64.6	
				60' N
E		6.4	63.6	
C		6.5	63.5	
W		6.6	63.4	
				90' W = S Line E & W Alley
W		7.7	62.3	
C		7.8	62.2	
E		7.4	62.6	
				E. & W. Alley 10' wide
				E. Line N & S Alley
S		7.4	62.6	
C		7.5	62.5	
N		7.6	62.4	
				10' W = W Line N & S Alley = 00
N		7.8	62.2	
C		7.7	62.3	
S		7.7	62.3	

70.04
15' W of 00

28

S			7.6	62.4
C			8.5	61.5
N			8.0	62.0
				35' W
N			9.0	61.0
E			9.6	60.4
S			8.9	61.1
				60' W
S			10.2	59.8
C			10.6	59.4
N			10.2	59.8
				100' W
N			11.5	58.5
E			11.5	58.5
S			10.7	59.3
				150' W
S			13.1	56.9
C			14.1	55.9
N			13.4	56.6
T.P.	0.24	57.73	12.55	57.49
				200' W
N			3.2	54.5
C			3.4	54.3
S			2.8	54.9

57.73

250' W

S	4.4	52.9
C	5.1	52.6
N	5.2	52.5

300' W = double garage on S end approx 4' Back

N	4.8	50.9	
C	6.7	51.0	
S	4.6	51.1	
+4	6.1	51.6	emt approx
+9	5.4	52.3	emt floor

329' W

S	7.2	50.5
C	7.7	50.0
N	8.0	49.7

331' W = E end Garage on N 7' Back

N-7	8.8	48.9	dirt floor
N	8.3	49.4	
C	7.8	49.9	
S	7.3	50.4	

340' W = Garage on S. emt. floor 9' Back

S-9	7.2	50.5	emt floor
S	7.6	50.1	
C	8.0	49.7	
N	8.5	49.2	

355' W

N	9.2	48.5
C	8.8	48.9
S	8.3	49.4

57.73

315' W = W end Garage on N 7' Back

S	9.5	48.7	
C	9.8	47.9	
N	9.7	48.0	
+7	10.1	47.6	dirt floor

380' W = E end Garage on S dirt floors 4.3' Back

N	9.9	47.8	
C	10.1	47.6	
S	9.8	47.9	
+4,3	9.5	48.7	dirt floor

399' W = double Garage on S

S-4,3	9.8	48.9	dirt floor
S	10.7	47.0	
C	11.3	46.4	
N	11.0	46.7	

401' W

N	11.2	46.5	
C	11.6	46.1	
S	11.1	46.6	
+4,3	10.7	47.0	dirt floor

416' W = W end Garage on S 4.3' Back

S-4,3	11.2	46.5
S	12.0	45.7
C	12.3	45.4
N	12.1	45.6

ALYBIAK 5
La Jolla Strand 29

		57.73		
		420' W		
N		12.5	45.2	
E		12.9	44.8	
S		12.8	44.9	
T.P.	0.73	45.53	12.93	44.80
		450' W		
S		3.3	42.2	
E		3.7	41.9	
N		3.3	42.2	
470' W = E. end Garage on S. 5' Back				
N		4.9	40.6	
E		5.2	40.3	
S		5.1	40.4	
+5		5.6	39.9	dirt floor
496' W = W. end Garage on S 4.7 Back				
S-4.7		6.7	38.8	dirt floor
S		6.5	39.0	
E		6.9	38.6	
N		6.4	38.9	
		515' W		
N		8.8	36.7	
E		9.0	36.5	
S		9.0	36.5	
		530' W		
S		10.7	34.8	
E		10.5	36.0	
N		10.4	35.1	dirt drive in yard

		45.53	Bike La Jolla Strand 30	
		560' W		
N		12.7	32.8	
E		13.1	32.4	
S		13.1	32.4	
T.P.	2.97	35.94	12.56	32.97
		580' W		
S		6.3	29.6	
E		6.2	29.7	
N		5.5	30.4	
586.4 = E. Line Vista Del Mar Fwy				
N		7.70	28.2 on cent cl	
E		7.4	28.5	
S		7.55	28.39 on cent cl	
T.P.	12.78	42.00	6.72	29.22

15' wide 2 sec #11-y BIK 8 La Jolla strand 1/8 pl. m. l. n.

H2.00 Page 30

00 = E. Line Vista Del Mar Ave &

N	(4700)	12.7	29.3	on cont. et.
C		12.5	29.5	
S		12.6	29.4	on cont. et.

6' E & dist.

S		9.7	32.3	
C		10.2	31.8	
N		10.7	31.3	

30' E

N		8.1	33.9	
C		7.7	34.3	
S		7.7	34.6	

50' E

S		3.4	38.6	
C		3.1	38.9	
N		3.5	38.5	

T.P.	12.60	54.60	0.0	42.00
------	-------	-------	-----	-------

80' E

N		12.4	42.2	
C		12.4	42.2	
S		11.5	43.1	

100' E

S		9.5	45.1	
C		10.3	44.3	
N		10.0	44.6	

54.60

150' E

N		4.3	50.3
C		3.9	50.7
S		3.4	51.2
T.P.	10.25	64.42	0.43

200' E

S		9.3	55.6
C		9.6	54.8
N		10.0	54.4

250' E

N		8.2	56.2
C		8.2	56.2
S		7.4	57.0

300' E

S		6.5	57.9
C		6.7	57.7
N		6.1	58.3

345' E. Garage on S. dirt floor 1' Back

N		5.6	58.8
C		5.6	58.8
S		5.2	59.2
S+I		5.0	59.4

dirt floor

400' E

S		3.0	61.4
C		3.6	60.8
N		3.5	60.9

		64.42		
		450' E		
N		1.4	63.0	
E		1.8	62.6	
S		1.1	63.3	
T.P.	10.35	74.53	0.24	64.18

		500' E		
S		9.4	65.1	
E		9.5	65.0	
N		9.2	65.3	

		530' E		
N		7.7	66.8	
E		7.9	66.6	
S		7.9	66.6	

		570' E		
S		5.5	69.0	
E		5.5	69.2	
N		5.5	69.0	

		600' E		
N		5.0	69.5	
E		4.9	69.6	
S		4.9	69.6	

		650' E		
S		3.0	71.5	
E		3.4	71.1	
N		3.4	71.1	

74.53

Allen Bldg @ La Jolla Strand

670' E

N		2.6	71.9	
E		2.6	71.9	
S		2.5	72.0	

W Line La Jolla Blvd 680' E + or -

S		1.80	72.7	no yardage on amt. cl.
S		2.5	72.0	ground
E		2.6	71.9	
N		2.5	72.0	ground
N		2.20	72.3	no yardage on amt. cl.

T.P.	3.50	75.84	2.19	72.34
------	------	-------	------	-------

T.P.			7.00	68.84 = 68.86 Page 28
------	--	--	------	-----------------------

50' wide
10' els
7.545

Rosemont 7 Sec from E. Line Vista
Del Mar Ave, East

1/26/20
miller

40.70

33

B.M. 10.28 40.70 30.42 SE 1/4 1/4
+ Vista Del Mar

E. Line Vista Del Mar Ave on diagonal

S	7.4	33.3	
cl	7.55	33.15	on cm 7' return
114	7.4	33.1	
E	7.4	33.1	
114	7.9	32.8	
+4	8.2	32.5	
cl	7.9	32.8	
N	7.6	33.4	

E. Line Vista Del Mar on N? = 00 90° 00

+ 3.04 E. of E. Line on S

N	7.6	33.1	
cl	7.6	33.1	
+3.5	8.0	32.7	
114	7.7	33.0	
E	7.5	33.2	
114	7.5	33.2	
cl	7.2	33.5	
+T	6.6	34.1	
S	5.7	35.0	

20' E of 00 90° 00

S	4.3	36.4	
+H	5.1	35.6	
cl	5.4	35.3	
114	5.8	34.9	
E	5.4	35.3	

on cm 7' return

45' E of 00

114	5.9	34.8	
cl	5.8	34.9	
N	5.4	35.3	
N	2.6	38.1	
+7	2.8	37.9	
cl	3.7	37.0	
114	3.3	37.4	
E	2.7	38.0	
114	3.2	37.5	
cl	3.2	37.5	
+2	2.5	38.2	
S	2.2	38.5	
S	0.0	40.7	
cl	0.7	40.0	
114	1.0	39.7	
E	0.9	39.8	
114	1.0	39.7	
+2	2.2	38.5	
cl	2.2	38.5	
+2	0.9	39.8	
N	0.5	40.2	
T.P.	12.58	53.06	0.22 40.48

42' E

53.06
65' E

N	12.5	40.6
+7	12.7	40.4
cl	13.4	39.7
14	13.1	40.0
E	12.9	40.7
14	13.0	40.1
cl	12.6	40.5
S	11.6	41.5

75' E

S	10.9	42.7
cl	11.3	42.8
14	11.7	42.4
E	11.9	42.2
14	12.0	41.1
cl	12.5	40.6
N	12.6	40.5

77' E

N	10.7	42.4
+5	11.5	41.6
+8	12.0	41.1
cl	13.0	40.1
+5	11.8	41.3
14	11.8	41.3
E	11.6	41.5
14	11.5	41.6
cl	11.1	42.0
S	11.7	41.4

53.06

Rosemont 34

95' E

S	8.3	44.8
cl	8.9	44.4
14	9.4	43.7
E	9.4	43.7
14	9.5	43.6
+3	9.7	43.4
cl	10.6	42.4
+1	9.3	43.8
N	8.7	44.4

115' E

N	6.1	47.0
+7	6.7	46.7
cl	7.2	45.9
+4	7.9	45.2
14	7.3	45.8
E	7.2	45.9
14	7.1	46.0
cl	6.9	46.1
S	6.4	46.7

130' E

S	4.6	49.5
cl	5.3	47.8
14	5.4	47.7
E	5.3	47.8
14	5.7	47.4
+5	6.2	47.9

53.06
130' E (204)

cl	5.3	47.8
+8	5.2	47.9
N	4.0	49.1

160' E

N	70.4	53.5
+5	1.7	51.4
cl	1.8	51.3
+2.5	2.7	50.4
1/4	2.1	51.0
0	2.0	51.1
1/4	2.2	50.9
cl	2.2	50.9
S	1.3	51.8

T.P. 10.05 62.45 0.66 52.40

185' E

S	8.0	54.5
cl	9.0	53.5
1/4	8.7	53.8
0	8.6	53.9
1/4	8.5	54.0
+4	9.1	53.4
cl	7.9	54.6
+8	7.3	55.2
N	6.3	56.2

62.45
200' E

Rosemont 35

N	4.7	57.8
+4	4.1	56.4
cl	4.1	56.4
+2.5	7.2	55.3
1/4	6.6	55.9
0	6.8	55.7
1/4	6.9	55.6
cl	6.9	55.6
S	5.9	56.6

220' E

S	3.3	59.2
+8	3.7	58.8
cl	4.3	58.2
1/4	4.3	58.2
0	4.2	58.3
1/4	4.1	58.1
+5	4.7	57.8
cl	4.1	58.1
+7	3.7	58.8
N	3.0	59.5

240' E - W. End cl on S.

N	1.5	61.0
cl	2.1	60.1
1/4	2.6	59.9
0	2.5	60.0
1/4	2.6	60.0

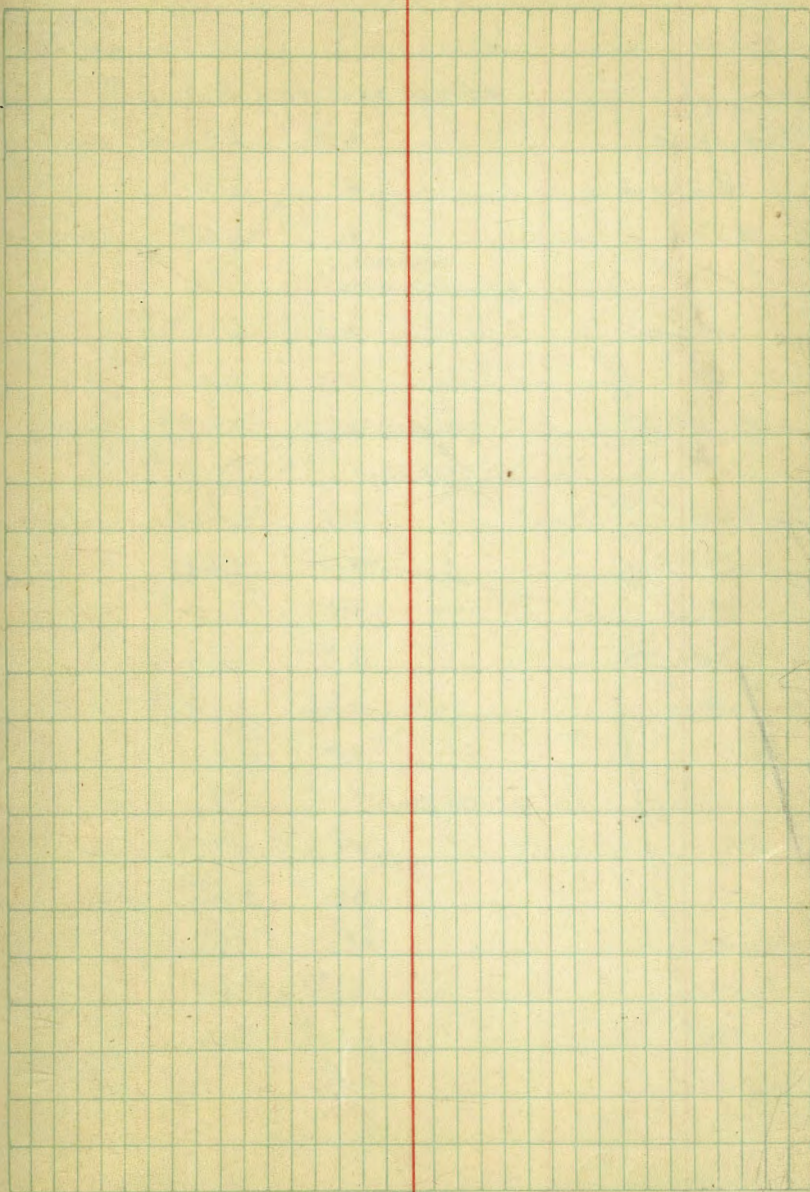
62.45
249.5 E com

cl	2.5	60.0	dirt
cl	1.94	60.51	no yardage emt cl
r2	2.2	60.3	
S	1.7	60.8	

260 E - Wend cl on N

S. cl	0.58	61.87	emt, cl
r0.2	1.1	61.4	
1.4	1.5	61.0	
C	1.2	61.3	
1.4	1.1	61.4	
r7	1.0	61.5	dirt
cl	0.61	61.84	emt cl
N	0.4	62.1	
T.P.			

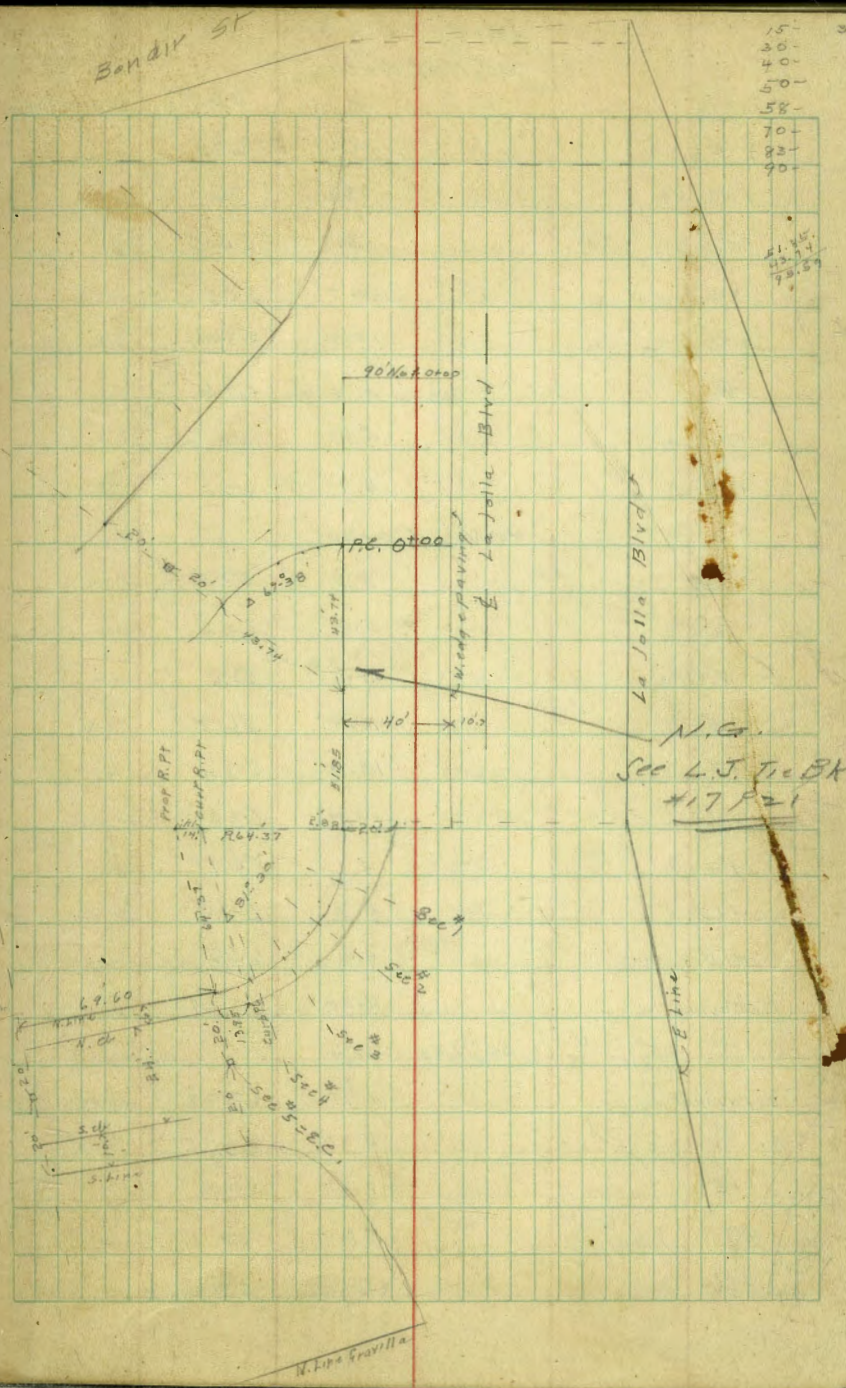
Rosemont 36



La Jolla Blvd 1500
 from Playa Del Norte to
 Playa Del Sur

This 24' is 200' low
 24' 200' 200'
 N.W. Playa Del Norte
 + La Jolla Blvd

B.M.	0.16	68.18	68.02	
		90' N. of 0+00	Page 37	
10' W. of 2 = Wedge paving		3.76	64.42	paving
20' W. = W. cl.		4.1	63.1	
40' W. W. Line		4.3	63.9	
		83' N. of 0+00		
W.		4.7	63.5	
cl.		4.2	64.0	
W. paving		3.81	64.37	paving
		70' N. of 0+00		
W. Paving		3.93	64.25	paving
+8' W		3.8	64.4	
+17		6.8	61.4	
+20' cl		5.1	63.1	
+10		4.7	63.5	
W. Line		4.9	63.3	
		58' N. of 00		
W		5.1	63.1	
+10		8.0	60.2	
+20' cl		10.7	57.5	
+5		9.3	58.9	
+14		3.9	64.3	
W. paving		4.06	64.12	paving



15-
 20-
 30-
 40-
 50-
 58-
 70-
 83-
 90-
 37
 11.4
 12.4
 13.4

68.18
50' N of 0+00

W. Paving	4.21	63.97	on paving
+5	4.1	64.1	
+17	13.8	54.4	
cl	13.7	54.5	
+5	13.7	54.5	
+12	10.2	58.0	
W	6.6	61.6	
+2	5.6	62.6	
+10	5.7	62.5	

40' N. of 0+00

-10	5.5	62.7	
-7	5.7	62.5	
W	10.1	58.1	
+5	11.4	56.8	
+7	15.0	53.2	
cl	14.4	53.8	
+3	14.1	54.1	
+13	5.3	62.9	
+15	4.0	62.2	
W. paving	4.30	63.88	paving

30' N of 0+00

E. paving	4.90	63.28	on paving
W. "	4.33	63.85	" "
+5	4.3	63.9	
+7	5.4	62.6	
cl	15.2	58.0	

68.18
La Jolla Blvd

+12	15.7	52.5	
+18	12.4	55.8	
W. Line	11.7	56.5	
+3	10.4	57.8	
+14	5.8	62.4	
+20	6.0	62.2	
15' N of 0+00			
-25	6.5	61.7	
-19	6.4	61.8	
-6	12.8	55.4	
W. line	14.4	53.8	
+14	16.2	52.0	
+6	19.0	49.2	
+8	18.0	50.2	
+12	17.5	50.7	
cl	13.5	54.7	
+12	6.0	62.2	
+15	4.5	63.7	
W. paving	4.50	63.68 on paving	
0+00 P.C. into Playa Del Norte			
E. paving	5.27	62.91 on paving	
W. Paving	4.60	63.58	
+5	5.0	63.2	
+18	14.4	53.8	
cl	18.6	49.6	
+5' outlet 36" corr pipe Culvert	19.4	48.8	No yardage flow line

68.18

0+00 (can)

cb+7	20.0	48.2
+15	20.0	48.2
W Lind	17.4	50.8
+9	14.0	54.2
+24	7.0	61.2
+30	7.1	61.1

7' S. of 0+00

N-30	7.4	60.8
-27	7.4	60.8
-17	12.4	55.8
W	19.9	48.3
+4	20.2	48.0
+12	19.6	48.6
+18	14.7	53.5
cl	13.5	54.7
+15	4.8	63.4
W. PAVING	4.65	63.53

15' S. of 0+00

W. PAVING	4.72	63.46
+5	4.6	63.6
+8	6.5	61.7
cl	14.0	54.2
+8	16.8	49.4
+11	20.0	48.2
+17	20.3	47.9
W	20.3	47.9

on paving

d/wash

75
20
AP 42-74
55
65
95.29

68.18

La Jolla Blvd 39.

+18	13.1	55.1
+30	7.7	60.5
+35	7.7	60.5

30' S. of 0+00

N-50	8.4	59.8
-43	8.4	59.8
-30	13.0	55.2
-17	16.2	52.0
-10	20.7	47.5
-4	21.2	47.0 & wash
W	21.2	47.0
+5	18.5	49.7
cl	12.7	55.5
+8	7.4	60.8
+14	4.6	63.6
W. PAVING	4.81	63.37

43' 74 S. of 0+00 = R.P.P.

E. PAVING	5.74	62.44
W. PAVING	4.82	63.36
+7	5.0	63.2
+15	7.9	60.3
cl	10.1	58.1
W	18.3	49.9
+7	20.2	48.0
+12	22.3	45.9 & wash
+20	19.3	48.9
+25	17.6	50.6

68.18
55' S of 0+00

N-27	21.6	46.6	
-20	22.5	45.7	q wash
-15	21.0	47.2	
W	16.7	51.5	
P 15	10.0	58.2	
cl	8.4	59.8	
+6	6.5	61.7	
+12	5.0	63.2	
cl + 20.6 - w. edge paving	4.80	63.4	paving on curve

65' S of 0+00

E. edge paving	5.50	62.7	
W. edge paving 41.6 E of whine	4.66	63.52	
+6.4 - +5 W of Tangent	4.8	63.4	
+14	6.1	62.1	
cl	8.3	59.9	
+13	11.5	56.7	
W	14.9	53.3	
+25	21.2	47.0	
+30	23.0	45.2	q wash

80' S of 0+00

-27	21.0	47.2	
-8	17.2	51.0	
W	14.5	53.7	
+10	10.6	57.6	
cl	6.7	61.5	
+10	5.4	62.8	

68.18

La Jolla Blvd 40

+20	4.4	63.8	
95' 59 S of 0+00 = P.C. into Playa Del Sur			
E-20' E of wcl	4.2	64.0	
+10	4.7	63.5	
+10 - cl	6.2	62.0	
+4	6.4	61.8	
+12	11.1	57.1	
W	13.3	54.9	
+15	16.6	51.6	
+25	19.5	58.7	
This curve in 5 parts S.M. line chd. 18.25 20's chd. 23.92			
Sec #1			
NH-20	17.0	51.2	
N	11.7	56.5	
+8	7.0	61.2	
+13	5.9	62.3	
+17 - approx. mat. cl	5.4	62.8	
+40	4.5	63.7	
Sec #2			
40' S of N line	5.0	63.2	
+14.5 - " " " - cl	5.5	62.7	
4 " " " "	6.1	62.1	s. edge Terrace Porch
N. line	10.0	58.2	under tea room porch
+17	14.3	51.9	N side Tea room

68.18
Sec #3

N-20		16.3	51.9
N		7.7	60.5
4' S. of N Line		6.8	61.4
11.6' or - 5' of N " = cl		6.6	61.6
20' S. " " "		6.1	62.1
40' " " " "		6.1	62.1
T.P.	0.07	60.81	7.44
		60.74	

Sec #4

30' S. of N. line of Playa Del Sur	0.0	60.81
8.8' " " " = cl	0.1	60.7
N. Line	0.2	60.6

Sec #5 = E.C. 10' wide 10' deep

N. Line	1.2	59.6	
+6 = N cl	1.1	59.7	
+20 = Φ	1.1	59.7	
+28.5 presented	1.2	59.6	gutter
+28.5	0.46	60.35	emb cl

35' W

28' S. of N line = presented	3.4	57.4	cl bank gutter
20' " " " = Φ	2.9	57.9	
6' " " " = cl	3.1	57.7	
N	3.3	57.5	

69.6 W = P.C. $\Delta = 49.08$ $\Phi R 197.60$

N-13		11.5	49.3
N		6.5	54.3
4' S. of N Line		4.9	55.9
6' " " " = cl		4.9	55.9

Curb elevations on W. cl. of
La Jolla Blvd from N. line Gravilla North
To E.C. at Sec #5 Page

Measurements taken on emb. opp.

B.M.	0.28	69.14	68.86	NW Gravilla + La Jolla Blvd
20' N. Line Gravilla	0.28		68.86	
+50' N	2.00		67.14	
1400	4.41		64.73	
1450	7.03		62.11	
1481 = E.C. at Sec #5 Page	2.79		60.35	

60.81
P.C. (cont)

20's = ϕ	5.6	55.2	
28.95 = Present cl	5.1	55.9	gutter
28.95	4.10	56.71	orient cl
This curve divided into 8 parts			
		each N = 23.24	8 " ϕ 21.14
sec #1			
32.2 S. of N line = Present cl	5.05	55.76	orient cl
gutter	5.9	54.9	
20's of N line = ϕ	5.4	55.4	
6' " " " = cl	5.9	54.9	
N	8.3	52.5	
+ 20	16.4	44.4	
sec #2			
N - 12	14.5	46.3	
N	11.4	49.4	
+ 4.5	10.1	50.7	
6's = cl	8.2	52.6	
10's	6.8	54.0	
20's = ϕ	6.3	54.5	
30's	6.5	54.3	
37.15 = present cl	6.7	54.1	gutter
37.15	5.91	54.90	orient cl
sec #3			
40.3 S. of N line = present cl	6.67	54.12	orient cl
40' " " " = S line	7.5	53.3	
30' " " " " = S cl	7.3	53.5	
20' " " " " = ϕ	7.1	53.7	

60.81

Playa Del Sur 42

12's of N line	7.6	53.7	
6' " " " = cl	10.5	52.3	
N	15.4	45.4	
+ 16	17.0	43.8	
sec #4			
N - 23	19.7	41.1	
5' 8" above	Not in section	23.0	ϕ wash
N - 18	23.5	37.3	ϕ wash
N - 8	19.2	41.6	
N	16.8	44.0	
6's = cl	12.4	48.4	
13's	7.9	52.9	
20's = ϕ	7.9	52.9	
30's	7.7	53.1	
40's = S line	8.1	52.7	
41.55 = present cl	7.35	53.46	
sec #5			
40.75 = present cl	7.88	52.93	
40's = S line	8.9	51.9	
30's	8.3	52.5	
20's = ϕ	8.4	52.4	
11's	9.1	51.7	
6's = cl	13.7	47.1	
N	17.5	43.3	
+ 6	20.9	39.9	
+ 10	23.7	37.1	ϕ wash
+ 15	21.0	39.8	
+ 17	18.3	42.5	

60.81
see #6

N-18	14.7	46.1	
-13	23.4	37.0	
-10	23.8	37.0	¢
-7	23.5	37.3	
N	13.9	46.9	
6's = cl	12.0	48.8	
8's	9.8	51.0	
20's = ¢	9.1	51.7	
30's	9.0	51.8	
39.75 = present cl.	9.5	51.3	gutter
39.75	8.46	52.35	cl.
	see 7		
35.45 = present cl	9.01	51.80	cl
35.15	10.0	50.8	gutter
30's	10.0	50.8	
20's = ¢	9.8	51.0	
6's = cl	10.4	50.4	
N	12.6	48.2	
+9	17.6	43.2	
+12	25.5	35.3	
+18	25.6	35.2	¢ wash
+23	26.0	34.8	
+25	19.0	41.8	
	see #8 = E.C. = P.T.		
N-8	18.0	42.8	
	12.6	48.2	

60.81
Playa Del Sur. 43

6's = cl	11.0	49.8	
20's = ¢	10.4	50.4	
30's	10.8	50.0	
31.85 = present cl	9.70	51.11	on cl
	10' W of P.T.		
30.25 = Present cl	10.14	50.67	on cl
30's	11.1	49.7	gutter
20's = ¢	10.8	50.0	
6's = cl	11.4	49.4	
N	11.6	49.2	
	25' W of P.T. present cl is 29.25 of N. line		
	44.78 W of P.T. = P.C.		
N	12.7	48.1	
+6 = cl	12.0	48.8	
20's = ¢	11.8	49.0	
29.35 = present cl	11.9	48.9	gutter
29.3	11.06	49.75	cl
^{on P.C.} T.P. (Hub) 0.69	49.40	12.10	48.76 48.71
	This curve divided 4 Parts $\Delta 72=36$		{ 20.47 ¢ chd 14.17 N. line chd
	*		
28.75 = cont cl	0.20	49.2	cl
.. ..	1.0	49.4	gutter
¢	1.1	48.3	
1.5 = N cl	0.7	49.7	
N	1.4	48.0	

49.40
#2

N	1.6	47.8	
rk = cl	1.0	48.4	
☐	1.6	47.8	
28.95 = present cl	1.6	47.8	gutter
v	1.11	48.29	ent. cl

#3

28.60 S = present cl	1.65	47.75	cl
v	2.0	47.4	gutter
☐	2.1	47.3	
6'S = N. cl	1.6	47.8	
N	1.9	47.5	

#4 = P.R.C.

N	2.5	46.9	
rk = cl	2.3	47.1	
☐	2.5	46.9	
30.6 S = present cl gone	2.8	46.6	gutter

This curve divided 4 parts $\Delta = 83^{\circ}00'$ $\frac{519.24}{26.55} N \text{ lin} = \text{thd}$

#7

32'S cl gone	2.9	46.5	
31'S	3.3	46.1	gutter
25'S	3.5	45.9	
☐	3.0	46.4	
13'S	2.6	46.8	
6'S = cl	3.1	46.3	
N	3.3	46.1	

49.40

Pharo Del Sur

44

#2

N-4	3.9	45.5	
N	4.5	44.9	
rk = cl	3.9	45.5	
15'S	3.3	46.1	
☐	3.6	45.9	
25'S	4.3	45.1	
30'S cl gone	4.0	45.4	gutter
31'S	3.5	45.9	

#3

31'S cl gone	3.8	45.6	
30'S	4.5	44.9	gutter
26'S	5.0	44.4	
☐	4.5	44.9	
16'S	4.2	45.2	
6'S = cl	4.8	44.6	
N	4.6	44.8	

#4 = E.C.

N-10	11.7	37.7	
N-6	10.5	38.9	
N	8.6	40.8	
rk = cl	6.0	43.4	
rk = cl	6.1	43.3	
12'S	5.5	44.9	
☐	5.5	44.9	
25'S	6.0	43.4	
31'S cl gone	5.4	44.0	gutter
	4.3	42.1	

49.40

40' W = P.C.

30.5 S = present cl	6.08	43.32	cl
✓	6.7	42.7	gutter
⊕	7.4	42.0	
14'S. of N	7.3	42.1	
6'S = cl	8.1	41.3	
3'S	8.2	41.2	
N	10.3	39.1	
+15'	15.7	33.7	
This curve divided 10 parts (17.82 clhd Δ=50°00' 16.57 N. line chd)			
N-15	17.4	32.0	
N-10	14.6	34.8	
N	10.7	38.7	
+1.5'	9.0	40.4	
6'S = cl	8.8	40.6	
12'S	8.2	41.2	
⊕	8.3	41.1	
29.5 = present cl	8.0	41.0	gutter
✓	6.92	42.48	cl
Sec #2			
29.70 S = present cl	7.98	41.42	cl
✓ ✓	9.0	40.0	gutter
23'S	9.8	39.6	
⊕	9.6	39.8	
14'S	9.3	40.1	
6'S = cl	9.7	39.7	
N	10.3	39.1	
+8'	13.6	35.8	

49.40

Plaza Del Sur. 45

#3
Sec 3

N	11.0	38.4	
+6 = cl	10.8	38.6	
12'S	10.4	39.0	
⊕	10.8	38.4	
23'S	11.1	38.3	
30.5 S = present cl	10.3	39.1	gutter
✓	9.20	40.2	cl
Sec #4			
21.1 S = present cl	10.35	39.05	cl
✓	11.0	38.4	gutter
23'S	12.0	37.4	
⊕	11.9	37.5	
14'S	11.8	37.6	
6'S = cl	12.3	37.1	
1'S	12.5	36.9	
N	12.0	37.4	
+4'	12.1	37.3	
#5 Sec 5			
N-4	13.7	35.7	
N	13.5	35.9	
2'S	14.2	35.2	
6'S = cl	13.8	35.6	
15'S	13.0	36.4	
⊕	13.2	36.2	
33.1 S = present cl	12.6	36.8	gutter
✓	11.85	37.55	cl

49.40

T.P.	0.25	36.78	12.87	36.53
			#	
			Sec 6	
32.4 s = present cl		0.58	36.20	cl
✓ ✓		1.7	35.1	gutter
±		2.0	34.8	
15's		1.8	35.0	
6.5 = cl		2.6	34.2	
2's		2.8	34.0	
N		2.4	34.4	
+4		2.6	34.2	
			#	
			Sec 7	
N-4		3.9	32.9	
N		3.9	32.9	
2.5		4.2	32.6	
6.5 = cl		3.7	33.1	
+15.5		3.2	33.6	
±		3.6	33.2	
31.9 s = present cl		3.2	33.6	gutter
✓ ✓		2.12	34.66	cl
			#	
			Sec 8	
32.2 s = present cl		3.78	33.00	cl
✓ ✓		4.9	31.9	gutter
±		5.1	31.7	
15's		4.7	32.1	
6.5 = cl		5.2	31.6	
+5		5.5	31.3	
N		5.1	31.7	
+4		5.2	31.6	

36.78
Sec #7

Playa Del Sur 46

N-4	6.1	30.7
N	6.0	30.8
16's - cl	6.5	30.3
15's	6.1	30.7
±	6.4	30.4
32.9 s = present cl	6.6	30.2 gutter
✓ ✓	5.87	30.91 cl
		#
		Sec 10 = P.R.C. East of Vista Del Mar
34.7 s = present cl	7.17	29.61 cl
✓ ✓	8.2	28.6 gutter
±	7.5	29.3
6.5 = cl	8.0	28.8
N	7.0	29.8
		#
		29.41 N line cl
		26.92 cl
		#
		16's soil
cl s of Playa Del Sur + Vista Del Mar	8.79	28.0
CRANEM " " " " " "	8.86	27.92 = 27.96
		CRAN. S. E. Vista Del Mar + Playa Del Sur
		#
		Sec 7
N-3.4	8.9	27.9
N	8.9	27.9
+6 = cl	9.4	27.4
12's	9.5	27.3
±	9.1	27.7
30's	9.7	27.1
36's	9.7	27.1 gutter

Sec #2

40's	10.7	26.1	
30's	10.7	26.1	
4	10.4	26.4	
6's = cl	10.8	26.0	
N	10.6	26.2	
+46	10.2	26.6	and purpified

Sec #3

N-9.2	10.85	25.93	" " "
N	11.8	25.0	
6's = cl	12.4	26.4	
C	11.7	25.1	
30's	11.7	25.1	
40's	11.8	25.0	
45's	11.7	25.1	

Sec #4

45's	13.1	23.7	
40's	13.0	23.8	
30's	13.0	23.8	
4	13.2	23.6	
6's = cl	13.3	23.5	
N	13.4	23.4	
BM 0.18	28.14	27.96	as 3' into 1000 + with 100' map

Sec 5 = E.C. - RT.

N	5.5	22.6	
+6 = cl	5.7	22.4	
4	5.6	22.5	

30's	5.4	22.7	
40's = S Line	5.5	22.6	
27.5 M = P.C. $\Delta 90^{\circ} 00'$ $QR = 17.5'$			
40's = S Line	6.5	21.6	
30's	6.5	21.6	
4	6.4	21.7	
6's = cl	6.8	21.3	
N	6.9	21.2	
This curve 5 parts { $\frac{1}{5}$ chd $R=12'$ $27.37'$ $\Delta 18^{\circ} 00'$			
Sec #7			
N	7.5	20.6	
+6 = cl	7.4	20.7	
4	7.5	20.6	
+30	7.6	20.5	
+40 = S Line	7.5	20.6	
Sec #2			
40's	8.4	19.7	
30's	8.3	19.8	
4	8.2	19.9	
6's = cl	8.0	20.1	
N	8.0	20.1	
Sec #3			
N	8.4	19.7	
+6 = cl	8.5	19.6	
4	8.4	19.3	
+30	8.7	19.4	
+40 = S	8.9	19.2	

28.14 #
Sec 4

40° = S.W. line	9.6	18.5
30°	9.0	19.1
♀	9.0	19.1
6.5 = cl	8.7	19.4
N.E. line	8.5	19.6

Sec 4 1/2 Δ = 9° 00' ♀ chd 10.57

N.E. line	8.7	19.4
11 = cl	8.8	19.3
♀	9.1	19.0
+ 30'	9.1	19.0
+ 40 = W line	9.6	18.5
14' out	10.7	17.4

Sec 4 3/4 Δ 4° 00' ♀ chd 5.20

W-13	11.0	17.1
W-3	10.1	18.0
40° = W	13.1	15.0
32' W	9.4	18.7
♀	9.1	19.0
+ 4' = cl	8.8	19.3
E	8.7	19.4
T.P. 3.00	8.80	19.34

22.34
(32.34)

Sec 5 = C.C. = P.T.

E	2.9	19.4
16 = cl	3.1	19.2
♀	3.2	19.0
32' W	3.6	18.7

~~22.34~~
22.34

Playa Del Sur 48

33' W	6.1	16.7
40° = W line	8.9	13.3
4' out	9.1	13.7
5' "	4.5	17.8
15' "	5.4	18.9

7' Net P.T.

W-14	5.5	16.8
W-11	12.2	10.1
W-4	10.2	10.1
40° = W line	7.5	14.8
39' W	4.4	17.8
30' W	3.5	18.8
♀	3.4	18.9
6' W = cl	3.2	19.1
2' W	2.7	19.6
E line	2.0	20.3

10' N of P.T.

E	1.1	21.2
4' W	3.0	19.3
6' W	3.2	19.1
♀	3.5	18.9
28' W	3.8	18.5
30' W	7.7	17.6
38' W	9.2	13.1
40° = W line	5.7	16.6
3' out	4.5	17.8
8' "	11.8	10.5
15' "	12.4	9.9

~~3004~~
2234
14' N of PT.

W-10	5.1	17.7
40' W - W line	11.8	10.5
36' W	8.2	14.1
30' W	4.3	18.0
Φ	3.7	18.6
6' W - cl	3.1	19.2
4' W	2.9	19.4
E	0.4	21.9

19' N of PT.

E	0.5	21.6
4' W	3.0	19.3
6' W - cl	3.2	19.1
19' W	2.8	18.5
Φ	5.5	16.8
24' W	4.1	18.2
30' W	6.9	15.4
40' W - W line	8.6	13.7
7' out	13.0	9.3
10' out	5.1	17.7
13 "	5.3	17.0

23' N of PT.

15' out	14.3	18.0
40' W - W line	11.8	10.5
30' W	10.0	12.3
21' W	7.0	17.3
Φ	3.7	18.6

~~3004~~
2234

Playa del Sur 49

6' W - cl	3.2	19.1
3' W	3.0	19.3
E	0.8	21.5

24' N of PT

E	0.8	21.5
13	3.0	19.3
16' - cl	3.2	19.1
Φ	3.7	18.6
30' W	4.6	17.7
37' W	4.7	10.6
40' W - W line	11.9	10.4
16' out	14.3	8.0

31' N of PT

20' out	15.0	7.3
40' W - W line	4.7	17.6
30' W	4.0	18.3
Φ	3.9	18.4
6' W - cl	3.4	19.9
3' W	2.9	19.4
E	1.3	21.0

36' N of PT

4' W - W line	4.1	18.7
5' out	4.7	17.6

22.34
58' N of PT

E	3.1	19.1
6' W = cl	3.8	18.5
⊕	4.3	18.0
30' W	4.5	17.8
40' W = w line	4.7	17.6
5 out	4.8	17.5

60' N of P.T.

10' out	11.2	11.1
40' W = w line	9.7	12.6
34' W	4.7	17.6
⊕	4.3	18.0
6' W = cl	3.8	18.5
E	3.0	19.3

70' N of P.T.

E	3.7	18.6
16' cl	4.0	18.3
⊕	4.3	18.0
30' W	4.7	17.6
40' W = w line	4.9	17.4
5 out	5.1	17.2

82' 35" N = P.T.

5 out	5.2	17.1
40' W = w line	5.2	17.1
30' W	5.0	17.3
⊕	4.5	17.8
1' W	4.2	18.1
E	3.6	18.7

Playa Del Sur 50

60' wind
10' obs
10' 1/4"

Vista Del Mar X Sec
S. line Playa Del Sur to Gravilla

11/4/26

57' Playa Del Sur
+ Vista Del Mar

BNI	3.20	37.16	27.96
S. line Playa Del Sur (on arc)			
E gutter	4.4		26.8
1/4	4.5		26.7
c	5.1		26.1
1/4	5.6		25.6
cl	6.0		25.2
+5	6.3		24.9
	6.4		24.8

50' S. of S. line on E. line Playa Del Sur 90°-00'

w-5	5.5		25.7
w	5.8		25.4
cl	6.0		25.2
1/4	5.4		25.8
c	4.6		26.6
1/4	4.2		27.0
gutter	4.0		27.2

100' S. on E.

E gutter	3.7		27.5
1/4	4.0		27.2
c	4.6		26.5
1/4	5.3		25.9
cl	5.6		25.6
w	5.4		25.8
+5	5.1		26.1

31.16

51

150' S. on E.

-5	5.6		25.6
w	5.6		25.6
cl	5.7		25.5
1/4	5.8		25.9
c	4.7		26.5
1/4	4.3		26.9
E gutter	3.8		27.4
190' S. on E = N line Gravilla on diagonal			
E cl	2.91		28.25
gutter	2.6		27.6
1/4	4.0		27.2
c	4.6		26.6
1/4	5.1		26.1
cl	5.5		25.7
w	5.6		25.6

50' wide
10' deepGrayilla 25' x
from La Lolla Ave to Electric Ave
BVD1/4/26
meter

82.13

52

BM

13.27

82.13

68.86

N.W. Grayilla
& La Lolla Blvd

- 00' wide La Lolla Ave

N pr of

3.4

78.7

S "

1.4

80.7

5' W - wind curb returns

S

1.5

80.6

S cl

2.33

79.80

embed

N cl

3.33

78.80

N.

3.3

78.8

10' W

N

3.5

78.6

+3

3.4

78.7

+4

2.8

79.3

+7

3.3

78.8

N cl

3.4

78.7

S cl

2.4

79.7

+5

1.0

81.1

S

1.4

80.7

50' W

S

2.6

79.5

+3

2.6

79.5

+4

3.2

78.9

+7

3.9

78.2

S cl

3.7

78.4

N cl

4.4

77.7

+5

4.4

77.7

+7

3.8

78.3

N

4.4

77.7

75' W

N

4.3

77.8

+3

3.8

78.3

+5

4.8

77.3

+9

5.4

76.7

N cl

5.0

77.1

S cl

4.5

77.6

S

3.8

78.2

80' W

S

3.9

78.2

cl

4.7

77.4

N cl

5.1

77.0

+1

5.5

76.6

+4

4.9

77.2

+6

3.9

78.2

N

2.9

78.2

70' W

N

4.7

77.4

+3

4.1

78.0

+5

4.8

77.3

cl

5.3

76.8

S cl

5.0

77.1

+4

4.5

77.6

+6

3.8

78.3

S

4.1

78.0

82.13
104' W

S	3.4	78.7
+4	3.0	79.1
+6	4.3	77.8
+8	4.5	77.6
+9	5.3	76.8
scl	5.4	76.7
Ncl	5.6	76.5
+2	5.4	76.7
+6	4.0	78.1
N	4.6	76.5

109.35 W. on S. = B. end curb return

scl 5.61 76.52 on curb

on diagonal 114.35 W. on S. / 110.5 W. on N. = E Line Electric Ave

N	4.3	77.8
+4	3.7	77.4
+7	4.4	77.7
N. cl	5.82	76.31
scl + 2	5.5	76.6
+3	4.5	77.6
+7	4.2	77.9
S	3.2	78.9

4' W of E Line on diagonal

S	3.6	78.5
+5	5.5	76.6
N. cl	5.3	76.8
N prop	5.0	77.1

5' W of E Line on diagonal

Gravilla 53

N	5.1	77.0
N. cl	5.4	76.7
S. Line	5.62	76.51
W. Line Electric		
S. cl	6.21	75.92
N. cl	6.23	75.90

s end
curb return

Cross Section Emerald St
From H.L. Everts to E.L. Graham

80 yds
20 Cbs
10' qts

SE from Mid
Emerald
Tunnel

BM	1.92	61.71	60.29
		0 to H.L. Everts	
S		9.4	
114		8.9	
7.16		9.3	
Cb		9.1	
1/4		8.5	
S		7.8	
1/4		8.2	
Cb		8.3	
+5		7.8	
H		7.4	
		20' E - Cb	
H		7.1	
Cb		8.0	
1/4		8.1	
S		7.7	
1/4		8.3	
Cb		8.8	
+5		9.1	
+6		8.7	
S		9.1	
		1/4	
S		9.1	
Cb		8.6	
1/4		8.1	

61.71

54
3.18.76
31.5.77
31.5.77
Nadigawa

S	7.8
1/4	7.8
Cb	7.6
H	7.2
	2. Everts
H	6.7
Cb	7.3
1/4	7.6
S	7.6
1/4	8.0
Cb	8.3
S	8.3
	1/4
S	8.6
Cb	8.3
1/4	8.1
S	7.8
1/4	7.5
Cb	7.3
H	7.0
	Cb
H	7.0
Cb	7.6
1/4	7.5
S	7.8
1/4	8.2
Cb	8.6

Emerald

61.71

S	9.0
	0.70 = ELEvents
S	8.8
+15	8.1
+16	8.5
cb	8.4
1/4	8.0
2	7.3
1/4	7.5
cb	7.7
+2	7.7
+4	7.1
N	6.7
	50'E
N	6.5
+15	6.5
+18	7.2
cb	7.1
1/4	7.0
2	6.8
1/4	7.8
cb	8.6
+2	8.6
+4	8.3
S	8.6
	100'E
S	7.8

61.71

+15	7.5
+18	8.0
cb	7.8
1/4	7.1
2	6.3
1/4	6.8
cb	7.0
+2	7.0
+4	6.5
N	6.1
	150'E
N	5.8
+16	6.0
+18	6.4
cb	6.4
1/4	6.2
2	5.6
1/4	6.2
cb	7.0
+3	7.2
+5	6.7
S	7.7
	200'E
S	6.9
+15	6.4
+17	6.8
cb	6.7

Emerald

	617'	
1/4		6.0
2		5.3
1/4		5.5
Cb		5.7
+3		5.7
+5		5.7
N		5.0
	250'E	
N		4.3
+15		4.7
+17		5.3
Cb		5.3
1/4		5.0
2		4.6
1/4		5.4
Cb		6.1
+3		6.1
+5		5.7
5		6.1
	300'E	
5		5.5
+15		5.2
+17		5.7
Cb		5.5
1/4		4.8
2		4.1
1/4		4.5

617'

	617'	
Cb		4.6
+3		4.6
+5		4.1
N		3.9
	350'E	
N		3.6
+15		3.8
+17		4.4
1/4		4.1
2		3.8
1/4		4.5
Cb		5.2
+3		3.2
+5		4.9
3		5.1
	400'E	
5		4.7
+15		4.6
+17		4.9
Cb		4.8
1/4		4.2
2		3.6
1/4		3.7
Cb		3.7
+04		3.9
+05		3.4
N		3.2

120' Eonsd
Covey Walk
4.68

Emerald

61.71

450' E

N	2.8
+15	3.2
+16	3.8
Cb	3.7
1/4	3.6
Z	3.4
1/4	4.0
Cb	4.1
+2	4.7
+4	4.4
S	4.8

500' E = W.L. Fandol

S	4.0
+15	3.8
+18	4.2
Cb	4.2
1/4	3.6
Z	3.0
1/4	3.0
Cb	3.2
+5	3.2
+6	2.7
N	2.4
Cb	
N	2.5
Cb	3.0

61.71

57

1/4	3.0
Z	3.0
1/4	3.1
Cb	3.1
S	4.2
1/4	
S	4.0
Cb	3.2
1/4	2.8
Z	2.7
1/4	2.6
Cb	2.5
N	2.3
Z Fandol	
N	1.9
Cb	2.3
1/4	2.2
Z	2.5
1/4	2.8
Cb	3.0
S	3.1
1/4	
S	3.9
Cb	3.4
1/4	3.1
Z	2.8
1/4	2.5

Emerald

(17)

Cb			2.1	
N			2.1	
		Cb		
N			1.7	
Cb			2.5	
1/4			2.5	
2			2.7	
1/4			3.2	
Cb			3.5	
+3			3.7	
+5			3.3	
S			3.5	
		E. Fossil		
S			3.7	
+16			3.3	
+18			3.8	
Cb			3.8	
1/4			3.3	
2			2.6	
1/4			2.6	
Cb			2.7	
+11	N End Conc. Salt		2.6	
N			2.0	
TP	5.77	66.6	1.98	60.29
		50F		
N			6.1	
+9	E End Conc. Salt		6.57	

66.6

58

+15				6.7
+17				7.1
Cb				7.0
1/4				6.8
2				6.8
1/4				7.3
Cb				7.9
+2				7.8
+5				7.5
S				7.8
		100F		
S				7.5
+15				7.1
+18				7.7
Cb				7.5
1/4				7.0
2				6.3
1/4				6.3
Cb				6.8
+3				6.9
+5				6.1
N				5.8
		150F		
N				5.7
+15				6.9
+17				6.5
Cb				6.5

Emerald

66.06

1/4	6.2
2	6.0
1/4	6.6
cb	7.2
+2	7.3
+4	6.8
s	7.1
2.00' E	
s	6.2
+17	6.0
cb	6.5
1/4	5.7
2	5.1
1/4	5.3
cb	5.7
+4	5.6
+5	5.1
N	4.8
2.50' E	
N	4.6
+1.5	4.8
+17	5.2
cb	5.2
1/4	5.0
2	4.8
1/4	5.6
cb	6.2

59

66.06

+7	5.8
s	6.1
3.00' E	
s	5.8
+19	5.6
cb	6.1
1/4	5.4
2	4.6
1/4	4.8
cb	5.0
+3	5.1
+5	4.6
N	4.4
3.50' E	
N	4.3
+1.5	4.4
+17	4.9
cb	4.9
1/4	4.7
2	4.4
1/4	5.3
cb	5.9
+3	5.6
s	5.8
4.00' E	
s	5.5
+19	5.1

Emerald

66.06

Cb	5.5
1/4	5.0
2	4.4
1/4	4.5
Cb	4.7
+1	4.7
+5	4.3
H	4.0

450 L

H	3.5
+15	3.7
+17	4.4
Cb	4.2
1/4	3.9
2	3.5
1/4	4.3
Cb	5.0
+2	4.6
5	5.0

500 L - N.L. Gresham

5	4.2
+19	3.9
Cb	4.3
1/4	3.7
2	3.1
1/4	3.4
Cb	3.6

66

+3	3.7
+5	3.1
H	2.8

Cb

H	2.8
Cb	3.1
1/4	3.1
2	2.9
1/4	3.3
Cb	4.1
5	4.6

1/4

5	4.0
Cb	3.5
1/4	3.3
2	3.0
1/4	2.8
Cb	2.6
H	2.3

2 Gresham

H	2.0
Cb	2.1
1/4	2.7
2	2.9
1/4	3.0
Cb	3.1
5	3.3

Emerald

6606

1/4

S 32

Cb 3.0

1/4 3.0

2 2.8

1/4 2.6

Cb 2.5

H 2.2

Cb

H 2.1

Cb 2.5

1/4 2.5

2 2.7

1/4 2.9

Cb 3.1

S 3.3

EL Gresham

S 2.9

Cb 2.5

1/4 2.4

2 2.1

1/4 1.7

Cb 1.6

H 1.3

61

Cross Section Faoual St
From SL Diamond to 2. Alley S. of Emerald

80' wide
20' Cbs
10' Gts

69.12

BM	883	69.12	60.29
		0.10 - SL Diamond	
H		3.3	
cb		3.7	
+1		4.0	
1/4		3.4	
2		3.3	
1/4		3.2	
+8		3.6	
cb		3.3	
F		3.0	
		50.5	
F		4.1	
cb		4.3	
+2		4.7	
1/4		4.4	
2		4.0	
1/4		4.6	
+9		5.4	
cb		4.8	
H		5.1	
		100.5	
H		6.0	
cb		5.8	
+2		6.3	
1/4		5.8	

WE Top 1/4
Faoual + Emerald

60' Cop. E.L.
Cone. Drive
398

2	5.0
1/4	5.5
+8	5.8
cb	5.3
F	5.4
	135.5 - 2 Alley
F	6.3
cb	6.0
+1	6.6
1/4	6.2
2	5.6
1/4	6.5
+9	6.8
cb	6.2
H	6.6
	150.5
H	6.8
cb	6.6
+2	7.4
1/4	6.8
2	6.0
1/4	6.4
+9	6.7
cb	6.4
F	6.6
	200.5

-7.5 Garage + Conc. Floor

7.22

62
3-18-26
Bussan
8/3/50
Hortland

Fanal

69.12

E	7.6
cb	8.0
+5	8.1
1/4	7.9
2	7.1
1/4	7.9
+9	8.2
cb	7.7
W	7.9

250'S

W	9.2
cb	9.1
+1	9.7
1/4	9.2
2	8.8
1/4	8.9
+8	9.3
cb	9.0
E	9.0

270'S = 1/4 Fanal

E	9.4
cb	9.2
1/4	9.5
2	9.3
1/4	9.7
cb	9.7
W	9.8

63

69.12

TP	1.42	61.91	883	60.89
			0.10 = 1/4 Fanal	
E			3.7	
cb			3.4	
+5			4.1	
1/4			3.9	
2			3.6	
1/4			4.0	
cb			4.0	
W			4.1	
			50'S	
W			5.4	
cb			5.2	
+1			5.7	
1/4			5.1	
2			4.8	
1/4			4.9	
+7			5.4	
cb			4.9	
E			5.0	
			100'S	
E			5.9	
cb			5.9	
+2			6.5	
1/4			6.1	
2			6.0	

Fandel

6.71

'4 6.1

+9 6.7

cb 6.1

H 6.4

• 1355 = E. Alley

H 7.1

cb 7.1

+1 7.4

'4 6.9

£ 6.7

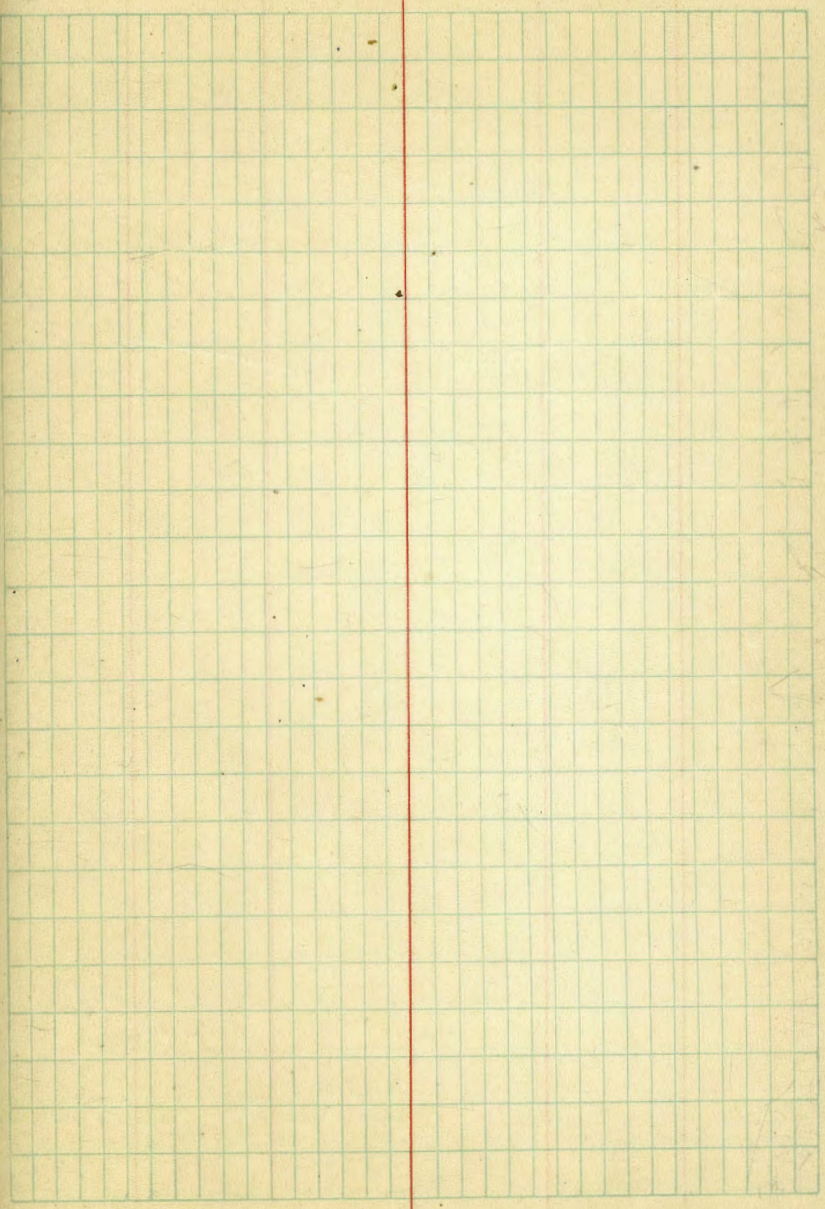
'4 6.7

+6 7.0

cb 6.7

F 6.5

64



63
23 20
48 45
68 65 75
98 85 77

115

130

140

185

200

220

240.5 DE.B

260. DE.N

115.57

12.44

6.47

134 90

128.41 SAILK.Y

1120

90

75

60

40

25

+ 3'

98.60
12.38
86.22

8.80
9.42

60.11
30.11
20
25
40
60
75
90
120
125.4
145
155
166
184
190
196
213
237

6.16.7
72.7

50.4
24.6
24.4

10

3

26

165

225

6.34

DISTANCES FROM CENTER OF ROADWAY FOR
CROSS-SECTIONING.

Roadway 16 feet wide. Side Slopes 1 on 1 1/2.
For Single Track Embankment.

H	0	.1	.2	.3	.4	.5	.6	.7	.8	.9	H
0	8.0	8.2	8.3	8.5	8.6	8.8	8.9	9.1	9.2	9.4	0
1	9.5	9.7	9.8	10.0	10.1	10.3	10.4	10.6	10.7	10.9	1
2	11.0	11.2	11.3	11.5	11.6	11.8	11.9	12.1	12.2	12.4	2
3	12.5	12.7	12.8	13.0	13.1	13.3	13.4	13.6	13.7	13.9	3
4	14.0	14.2	14.3	14.5	14.6	14.8	14.9	15.1	15.2	15.4	4
5	15.5	15.7	15.8	16.0	16.1	16.3	16.4	16.6	16.7	16.9	5
6	17.0	17.2	17.3	17.5	17.6	17.8	17.9	18.1	18.2	18.4	6
7	18.5	18.7	18.8	19.0	19.1	19.3	19.4	19.6	19.7	19.9	7
8	20.0	20.2	20.3	20.5	20.6	20.8	20.9	21.1	21.2	21.4	8
9	21.5	21.7	21.8	22.0	22.1	22.3	22.4	22.6	22.7	22.9	9
10	23.0	23.2	23.3	23.5	23.6	23.8	23.9	24.1	24.2	24.4	10
11	24.5	24.7	24.8	25.0	25.1	25.3	25.4	25.6	25.7	25.9	11
12	26.0	26.2	26.3	26.5	26.6	26.8	26.9	27.1	27.2	27.4	12
13	27.5	27.7	27.8	28.0	28.1	28.3	28.4	28.6	28.7	28.9	13
14	29.0	29.2	29.3	29.5	29.6	29.8	29.9	30.1	30.2	30.4	14
15	30.5	30.7	30.8	31.0	31.1	31.3	31.4	31.6	31.7	31.9	15
16	32.0	32.2	32.3	32.5	32.6	32.8	32.9	33.1	33.2	33.4	16
17	33.5	33.7	33.8	34.0	34.1	34.3	34.4	34.6	34.7	34.9	17
18	35.0	35.2	35.3	35.5	35.6	35.8	35.9	36.1	36.2	36.4	18
19	36.5	36.7	36.8	37.0	37.1	37.3	37.4	37.6	37.7	37.9	19
20	38.0	38.2	38.3	38.5	38.6	38.8	38.9	39.1	39.2	39.4	20
21	39.5	39.7	39.8	40.0	40.1	40.3	40.4	40.6	40.7	40.9	21
22	41.0	41.2	41.3	41.5	41.6	41.8	41.9	42.1	42.2	42.4	22
23	42.5	42.7	42.8	43.0	43.1	43.3	43.4	43.6	43.7	43.9	23
24	44.0	44.2	44.3	44.5	44.6	44.8	44.9	45.1	45.2	45.4	24
25	45.5	45.7	45.8	46.0	46.1	46.3	46.4	46.6	46.7	46.9	25
26	47.0	47.2	47.3	47.5	47.6	47.8	47.9	48.1	48.2	48.4	26
27	48.5	48.7	48.8	49.0	49.1	49.3	49.4	49.6	49.7	49.9	27
28	50.0	50.2	50.3	50.5	50.6	50.8	50.9	51.1	51.2	51.4	28
29	51.5	51.7	51.8	52.0	52.1	52.3	52.4	52.6	52.7	52.9	29
30	53.0	53.2	53.3	53.5	53.6	53.8	53.9	54.1	54.2	54.4	30
31	54.5	54.7	54.8	55.0	55.1	55.3	55.4	55.6	55.7	55.9	31
32	56.0	56.2	56.3	56.5	56.6	56.8	56.9	57.1	57.2	57.4	32
33	57.5	57.7	57.8	58.0	58.1	58.3	58.4	58.6	58.7	58.9	33
34	59.0	59.2	59.3	59.5	59.6	59.8	59.9	60.1	60.2	60.4	34
35	60.5	60.7	60.8	61.0	61.1	61.3	61.4	61.6	61.7	61.9	35
36	62.0	62.2	62.3	62.5	62.6	62.8	62.9	63.1	63.2	63.4	36
37	63.5	63.7	63.8	64.0	64.1	64.3	64.4	64.6	64.7	64.9	37
38	65.0	65.2	65.3	65.5	65.6	65.8	65.9	66.1	66.2	66.4	38
39	66.5	66.7	66.8	67.0	67.1	67.3	67.4	67.6	67.7	67.9	39
40	68.0	68.2	68.3	68.5	68.6	68.8	68.9	69.1	69.2	69.4	40

Example—If point is 22.6 ft. above grade, how far should it be from center line to be a slope stake point? Ans. from Table 41.9. For same slopes but other widths of roadbed correct above figures by one-half difference in width of roadbed; thus in example above for 20 ft. roadbed distance will be 41.9 + (20 - 16) + 2 or 2 ft. added to 41.9 = 43.9. For slopes of 1 on 1 see inside of front cover.

Made in Germany.