

1141

DIEZGEN  
TRADE MARK

ENGINEERS

FIELD BOOK

No. 404



EUGENE DIETZGEN CO.

DRAWING MATERIALS, MATHEMATICAL and SURVEYING INSTRUMENTS

Chicago New York San Francisco New Orleans Pittsburg Toronto

Distances from Center of Roadway for Cross-Sectioning  
Roadway 16 feet wide. Side Slopes 1 on 1.  
For Single Track Embankment.

H	0	.1	.2	.3	.4	.5	.6	.7	.8	.9	H
0	8.0	8.1	8.2	8.3	8.4	8.5	8.6	8.7	8.8	8.9	0
1	9.0	9.1	9.2	9.3	9.4	9.5	9.6	9.7	9.8	9.9	1
2	10.0	10.1	10.2	10.3	10.4	10.5	10.6	10.7	10.8	10.9	2
3	11.0	11.1	11.2	11.3	11.4	11.5	11.6	11.7	11.8	11.9	3
4	12.0	12.1	12.2	12.3	12.4	12.5	12.6	12.7	12.8	12.9	4
5	13.0	13.1	13.2	13.3	13.4	13.5	13.6	13.7	13.8	13.9	5
6	14.0	14.1	14.2	14.3	14.4	14.5	14.6	14.7	14.8	14.9	6
7	15.0	15.1	15.2	15.3	15.4	15.5	15.6	15.7	15.8	15.9	7
8	16.0	16.1	16.2	16.3	16.4	16.5	16.6	16.7	16.8	16.9	8
9	17.0	17.1	17.2	17.3	17.4	17.5	17.6	17.7	17.8	17.9	9
10	18.0	18.1	18.2	18.3	18.4	18.5	18.6	18.7	18.8	18.9	10
11	19.0	19.1	19.2	19.3	19.4	19.5	19.6	19.7	19.8	19.9	11
12	20.0	20.1	20.2	20.3	20.4	20.5	20.6	20.7	20.8	20.9	12
13	21.0	21.1	21.2	21.3	21.4	21.5	21.6	21.7	21.8	21.9	13
14	22.0	22.1	22.2	22.3	22.4	22.5	22.6	22.7	22.8	22.9	14
15	23.0	23.1	23.2	23.3	23.4	23.5	23.6	23.7	23.8	23.9	15
16	24.0	24.1	24.2	24.3	24.4	24.5	24.6	24.7	24.8	24.9	16
17	25.0	25.1	25.2	25.3	25.4	25.5	25.6	25.7	25.8	25.9	17
18	26.0	26.1	26.2	26.3	26.4	26.5	26.6	26.7	26.8	26.9	18
19	27.0	27.1	27.2	27.3	27.4	27.5	27.6	27.7	27.8	27.9	19
20	28.0	28.1	28.2	28.3	28.4	28.5	28.6	28.7	28.8	28.9	20
21	29.0	29.1	29.2	29.3	29.4	29.5	29.6	29.7	29.8	29.9	21
22	30.0	30.1	30.2	30.3	30.4	30.5	30.6	30.7	30.8	30.9	22
23	31.0	31.1	31.2	31.3	31.4	31.5	31.6	31.7	31.8	31.9	23
24	32.0	32.1	32.2	32.3	32.4	32.5	32.6	32.7	32.8	32.9	24
25	33.0	33.1	33.2	33.3	33.4	33.5	33.6	33.7	33.8	33.9	25
26	34.0	34.1	34.2	34.3	34.4	34.5	34.6	34.7	34.8	34.9	26
27	35.0	35.1	35.2	35.3	35.4	35.5	35.6	35.7	35.8	35.9	27
28	36.0	36.1	36.2	36.3	36.4	36.5	36.6	36.7	36.8	36.9	28
29	37.0	37.1	37.2	37.3	37.4	37.5	37.6	37.7	37.8	37.9	29
30	38.0	38.1	38.2	38.3	38.4	38.5	38.6	38.7	38.8	38.9	30
31	39.0	39.1	39.2	39.3	39.4	39.5	39.6	39.7	39.8	39.9	31
32	40.0	40.1	40.2	40.3	40.4	40.5	40.6	40.7	40.8	40.9	32
33	41.0	41.1	41.2	41.3	41.4	41.5	41.6	41.7	41.8	41.9	33
34	42.0	42.1	42.2	42.3	42.4	42.5	42.6	42.7	42.8	42.9	34
35	43.0	43.1	43.2	43.3	43.4	43.5	43.6	43.7	43.8	43.9	35
36	44.0	44.1	44.2	44.3	44.4	44.5	44.6	44.7	44.8	44.9	36
37	45.0	45.1	45.2	45.3	45.4	45.5	45.6	45.7	45.8	45.9	37
38	46.0	46.1	46.2	46.3	46.4	46.5	46.6	46.7	46.8	46.9	38
39	47.0	47.1	47.2	47.3	47.4	47.5	47.6	47.7	47.8	47.9	39
40	48.0	48.1	48.2	48.3	48.4	48.5	48.6	48.7	48.8	48.9	40

Example—If point is 22.6 ft. above grade, how far should it be from center line to be a slope stake point? Ans. from Table 30.6. For same slopes but other widths of roadbed, correct above figures by one-half difference in width of roadbed; thus in example above, for 20 ft. roadbed distance will be 30.6 + (20 - 16) ÷ 2 or 2 ft. added to 30.6 = 32.6. For slopes of 1 on 1½ see inside of back cover.

Copyright, 1914, by Eugene Dietzgen Co.



10/1/25  
Moore

ALLEY CROSS SECTION 15' wide  
BIK 30 PARK VILLAS

NWBSP <sup>VPAS</sup> 310' 240 331.39 328.99

N.L. VPAS = 0+00

E ON PAVING 4.75 326.64  
C 4.78 326.61  
W 4.87 326.52

25' N

W 5.0 26.4  
C 4.7 26.7  
E 4.5 26.9

**PLOTTED**  
11-20-21

51' N

- 2' CONC. Garage floor 3.26 28.13  
- 0.2' APRON 11.5' wide 3.71 27.68  
E 4.0 27.4  
C 4.5 26.9  
W 4.6 26.8

84' N

W 3.9 27.5  
C 3.5 27.9  
E 3.3 28.1  
+ 7.5' CONC. Garage floor 2.7 28.7

100' N

E 2.9 28.5  
C 3.2 28.2  
W 3.1 28.0

120' N 331.39

W	2.8	28.6
C	2.8	28.6
E	2.7	28.7
+ 6.5' CONC. Garage floor	2.3	29.1
150' N		
E	1.6	29.9
C	2.1	29.3
W	2.1	29.0
175' N		
W	2.1	29.0
C	2.0	29.4
E	1.5	29.9
200' N		
E	1.4	30.0
C	1.7	29.7
W	1.7	29.7
225' N		
W	1.4	30.0
C	1.2	30.2
E	1.2	30.2
250' N		
E	0.6	30.8
C	0.9	30.5
W	1.4	30.0
275' N		
W	1.3	30.1



301.39

C 1.0 30.4

E 0.5 30.9

294' N

E 0.7 30.7

C 0.9 30.5

W 1.5 29.9

300 N = SL MYRTLE

W on paving 4.53 26.86

C ✓ ✓ 4.70 26.69

E ✓ ✓ 4.41 26.98



10/1/55  
Moore

CROSS SECTION OF ALLEY  
BIK 08 PARK VILLAGES 15' wide

NE. Mon.	0.6' 339.49	338.85	Univ. Ave Oregon
	SL WIGHTMAN 20100		NOTE: WIGHTMAN NOT OFFICIALLY GRADED betw VILLAGES TERRACE & Oregon
E		10.1	29.4
C		10.8	28.7
W		11.4	28.1
	5'S		
W		6.2	33.3
+V		9.7	29.8
C		10.1	29.4
E		9.8	29.7
	25'S		
E		6.1	33.4
+J		7.5	32.0
C		7.5	32.0
+3		7.2	32.3
+J		6.5	33.0
+5		4.8	34.7
W		5.0	34.5
	41'S		
W		4.1	35.4
C		4.5	35.0
E		4.2	35.3
	58'S		
-3	Garage floor	22.6	37.29
-0.3	Conc. Apron	30.0	36.45

PLOTTED  
11-21-55

339.49

33

E		3.1	36.4
C		3.2	36.3
W		3.1	36.4
TP 513	341.40	3.2	36.27
	84'S		
-3	Garage dirt floor	5.2	36.2
W		5.2	36.2
C		5.1	36.3
E		4.8	36.6
	125'S		
E		3.9	37.5
C		4.8	36.6
W		5.0	36.4
	143'S		
-0.6	Garage dirt floor	5.4	36.0
W		5.4	36.0
C		4.9	36.5
+6.9	Conc. Apron	4.2	37.2
+10.9	Garage floor	3.5	37.9
	175'S		
E		4.0	37.0
C		5.1	36.3
W		4.8	36.6
	195'S		
-7	Conc. Garage floor	5.0	36.4
W		4.9	36.5



		341.40	
C		4.6	36.8
E		4.2	37.2
225'S			
E		4.2	37.2
C		4.5	36.9
W		5.0	36.4
244'S			
-9.5	Conc. Garage floor	6.1	35.3
W		5.5	35.9
C		4.9	36.5
E	Shed in Alley 0.6	4.6	36.8
275'S			
E		5.1	36.0
C		5.6	35.8
W		5.8	35.6
295'S			
W		6.3	35.1
C		6.5	34.9
E		6.3	35.1
+7.1	Garage dirt floor 325'S	6.2	35.2
E		7.1	34.3
C		7.1	34.3
W		7.1	34.0
341'S			
-6.5	Garage under construction	7.7	33.7

		341.40	
W		8.1	33.3
C		7.5	33.9
E		7.2	34.2
+2.5	Garage dirt floor 359'S	7.0	34.4
-2.8	Garage Board floor	7.2	34.2
E		7.7	33.7
C		7.8	33.6
W		8.1	33.3
+4.2	Garage dirt floor 376'S	8.1	33.3
W		8.1	33.0
C		8.1	33.3
E		7.8	33.6
+2.8	Conc. floor	7.1	34.3
T.P.	271 335.82	8.29	333.11
408'S			
E		2.8	33.0
C		3.0	32.8
W		3.2	32.6
+2.2	Garage dirt floor 422'S	3.2	32.6
W		3.6	32.2
C		3.3	32.5
E		2.7	33.1
+5	Garage dirt floor	2.0	33.8

N. ENTRANCE



335.82

460.5'S

- 6.4	Garage Conc. floor	2.4	33.4
E		3.3	32.5
C		4.0	31.8
W		4.2	31.6
+ 2.3	Conc Apron Garage	4.30	31.5

500'S

W		4.7	31.1
C		4.5	31.3
E		3.8	32.0

543'S

- 5.6	Garage Conc. floor	2.5	33.3
E		3.9	31.9
C		5.2	30.6
W		5.7	30.1

550'S

W		5.6	30.2
C		5.2	30.6
E		4.2	31.6
+ 0.7	NL Conc. Apron	4.13	31.5
+ 8.6	Double Garage	2.5	33.28 Conc. floor

572'S

- 0.1	SL Conc. Apron	4.14	31.68
E		4.3	31.5
C		5.0	30.8
W		5.4	30.4

590'S

335.82

5

W		6.0	29.8
C		6.3	29.5
+ 3		6.0	29.8
+ 5		4.6	31.2
E		4.3	31.5

600'S = NL Landis

E on Corn ALLEY Return	7.39	28.43
C	8.0	27.82
W ✓ U ✓ U ✓	8.73	27.09
TP 1030	341.87	4.25
check to BY	3.47	338.40

58.57

338.40

Landis  
on apron







Mission Avenue Grades  
From S Line Klauber to W. Kearney

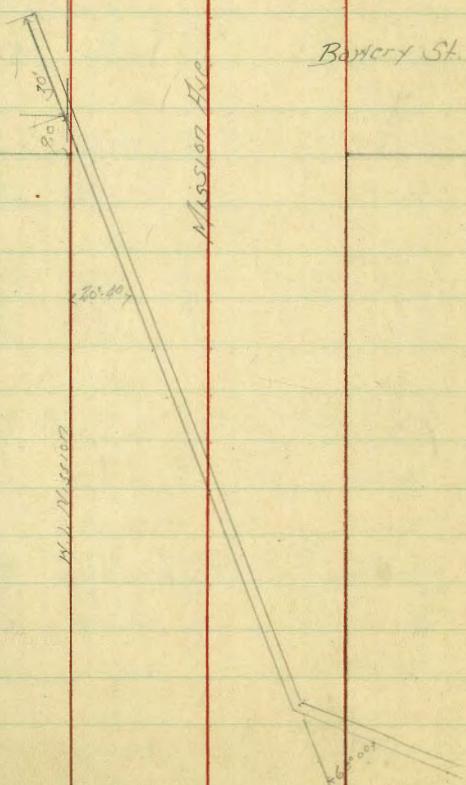
	E Line	W Line	
SL Barker	316.75	317.25	
50's	316.63	317.13	
100's	316.50	317.00	
150's	316.38	316.88	
200's	316.25	316.75	
250's	316.13	316.63	
300's	316.00	316.50	
350's	315.88	316.38	
400's	315.75	316.25	
450's	315.63	316.13	
500's	315.50	316.00	
550's	315.38	315.88	
600's NAFallon	315.25	315.75	
SL Fallon	314.75	315.25	
50's	314.33	314.75	
100's	313.91	314.25	
150's	313.50	313.75	
200's	313.08 ?	313.25	
250's Bk	312.66	312.75	Bk
300's Bk	312.00	312.00	Bk
350's Bk	310.59	310.75	Bk.
400's	309.22	309.25	
450's	307.85	307.75	
500's	306.48	306.25	
550's	305.11	304.75	
600's NAFallon	303.75	303.25	

3130.5 M.	E	319.05 12.72 310.33 0.92 311.00 12.63 308.37 12.68 305.69	320.05 11.63 311.06 -0.7 310.36 12.63 307.73 12.68 305.05	321.05 10.51 310.54 12.63 307.91 12.68 305.23	322.05 9.39 310.02 12.63 307.39 12.68 305.71	323.05 8.27 309.50 12.63 306.87 12.68 306.19	324.05 7.15 308.98 12.63 306.35 12.68 306.67	325.05 6.03 308.46 12.63 305.83 12.68 307.15	326.05 4.91 307.94 12.63 305.31 12.68 307.63	327.05 3.79 307.42 12.63 304.79 12.68 308.11	328.05 2.67 306.90 12.63 304.27 12.68 308.59	329.05 1.55 306.38 12.63 303.75 12.68 309.07	330.05 0.43 305.86 12.63 303.23 12.68 309.55	331.05 -0.69 305.34 12.63 302.71 12.68 310.03	332.05 -1.81 304.82 12.63 302.19 12.68 310.51	333.05 -2.93 304.30 12.63 301.67 12.68 310.99	334.05 -4.05 303.78 12.63 301.15 12.68 311.47	335.05 -5.17 303.26 12.63 300.63 12.68 311.95	336.05 -6.29 302.74 12.63 300.11 12.68 312.43	337.05 -7.41 302.22 12.63 299.59 12.68 312.91	338.05 -8.53 301.70 12.63 299.07 12.68 313.39	339.05 -9.65 301.18 12.63 298.55 12.68 313.87	340.05 -10.77 300.66 12.63 298.03 12.68 314.35	341.05 -11.89 300.14 12.63 297.51 12.68 314.83	342.05 -13.01 299.62 12.63 296.99 12.68 315.31	343.05 -14.13 299.10 12.63 296.47 12.68 315.79	344.05 -15.25 298.58 12.63 295.95 12.68 316.27	345.05 -16.37 298.06 12.63 295.43 12.68 316.75	346.05 -17.49 297.54 12.63 294.91 12.68 317.23	347.05 -18.61 297.02 12.63 294.39 12.68 317.71	348.05 -19.73 296.50 12.63 293.87 12.68 318.19	349.05 -20.85 295.98 12.63 293.35 12.68 318.67	350.05 -21.97 295.46 12.63 292.83 12.68 319.15	351.05 -23.09 294.94 12.63 292.31 12.68 319.63	352.05 -24.21 294.42 12.63 291.79 12.68 320.11	353.05 -25.33 293.90 12.63 291.27 12.68 320.59	354.05 -26.45 293.38 12.63 290.75 12.68 321.07	355.05 -27.57 292.86 12.63 290.23 12.68 321.55	356.05 -28.69 292.34 12.63 289.71 12.68 322.03	357.05 -29.81 291.82 12.63 289.19 12.68 322.51	358.05 -30.93 291.30 12.63 288.67 12.68 322.99	359.05 -32.05 290.78 12.63 288.15 12.68 323.47	360.05 -33.17 290.26 12.63 287.63 12.68 323.95	361.05 -34.29 289.74 12.63 287.11 12.68 324.43	362.05 -35.41 289.22 12.63 286.59 12.68 324.91	363.05 -36.53 288.70 12.63 286.07 12.68 325.39	364.05 -37.65 288.18 12.63 285.55 12.68 325.87	365.05 -38.77 287.66 12.63 285.03 12.68 326.35	366.05 -39.89 287.14 12.63 284.51 12.68 326.83	367.05 -41.01 286.62 12.63 283.99 12.68 327.31	368.05 -42.13 286.10 12.63 283.47 12.68 327.79	369.05 -43.25 285.58 12.63 282.95 12.68 328.27	370.05 -44.37 285.06 12.63 282.43 12.68 328.75	371.05 -45.49 284.54 12.63 281.91 12.68 329.23	372.05 -46.61 284.02 12.63 281.39 12.68 329.71	373.05 -47.73 283.50 12.63 280.87 12.68 330.19	374.05 -48.85 282.98 12.63 280.35 12.68 330.67	375.05 -49.97 282.46 12.63 279.83 12.68 331.15	376.05 -51.09 281.94 12.63 279.31 12.68 331.63	377.05 -52.21 281.42 12.63 278.79 12.68 332.11	378.05 -53.33 280.90 12.63 278.27 12.68 332.59	379.05 -54.45 280.38 12.63 277.75 12.68 333.07	380.05 -55.57 279.86 12.63 277.23 12.68 333.55	381.05 -56.69 279.34 12.63 276.71 12.68 334.03	382.05 -57.81 278.82 12.63 276.19 12.68 334.51	383.05 -58.93 278.30 12.63 275.67 12.68 334.99	384.05 -60.05 277.78 12.63 275.15 12.68 335.47	385.05 -61.17 277.26 12.63 274.63 12.68 335.95	386.05 -62.29 276.74 12.63 274.11 12.68 336.43	387.05 -63.41 276.22 12.63 273.59 12.68 336.91	388.05 -64.53 275.70 12.63 273.07 12.68 337.39	389.05 -65.65 275.18 12.63 272.55 12.68 337.87	390.05 -66.77 274.66 12.63 272.03 12.68 338.35	391.05 -67.89 274.14 12.63 271.51 12.68 338.83	392.05 -69.01 273.62 12.63 270.99 12.68 339.31	393.05 -70.13 273.10 12.63 270.47 12.68 339.79	394.05 -71.25 272.58 12.63 269.95 12.68 340.27	395.05 -72.37 272.06 12.63 269.43 12.68 340.75	396.05 -73.49 271.54 12.63 268.91 12.68 341.23	397.05 -74.61 271.02 12.63 268.39 12.68 341.71	398.05 -75.73 270.50 12.63 267.87 12.68 342.19	399.05 -76.85 269.98 12.63 267.35 12.68 342.67	400.05 -77.97 269.46 12.63 266.83 12.68 343.15	401.05 -79.09 268.94 12.63 266.31 12.68 343.63	402.05 -80.21 268.42 12.63 265.79 12.68 344.11	403.05 -81.33 267.90 12.63 265.27 12.68 344.59	404.05 -82.45 267.38 12.63 264.75 12.68 345.07	405.05 -83.57 266.86 12.63 264.23 12.68 345.55	406.05 -84.69 266.34 12.63 263.71 12.68 346.03	407.05 -85.81 265.82 12.63 263.19 12.68 346.51	408.05 -86.93 265.30 12.63 262.67 12.68 346.99	409.05 -88.05 264.78 12.63 262.15 12.68 347.47	410.05 -89.17 264.26 12.63 261.63 12.68 347.95	411.05 -90.29 263.74 12.63 261.11 12.68 348.43	412.05 -91.41 263.22 12.63 260.59 12.68 348.91	413.05 -92.53 262.70 12.63 260.07 12.68 349.39	414.05 -93.65 262.18 12.63 259.55 12.68 349.87	415.05 -94.77 261.66 12.63 259.03 12.68 350.35	416.05 -95.89 261.14 12.63 258.51 12.68 350.83	417.05 -97.01 260.62 12.63 257.99 12.68 351.31	418.05 -98.13 260.10 12.63 257.47 12.68 351.79	419.05 -99.25 259.58 12.63 256.95 12.68 352.27	420.05 -100.37 259.06 12.63 256.43 12.68 352.75	421.05 -101.49 258.54 12.63 255.91 12.68 353.23	422.05 -102.61 258.02 12.63 255.39 12.68 353.71	423.05 -103.73 257.50 12.63 254.87 12.68 354.19	424.05 -104.85 256.98 12.63 254.35 12.68 354.67	425.05 -105.97 256.46 12.63 253.83 12.68 355.15	426.05 -107.09 255.94 12.63 253.31 12.68 355.63	427.05 -108.21 255.42 12.63 252.79 12.68 356.11	428.05 -109.33 254.90 12.63 252.27 12.68 356.59	429.05 -110.45 254.38 12.63 251.75 12.68 357.07	430.05 -111.57 253.86 12.63 251.23 12.68 357.55	431.05 -112.69 253.34 12.63 250.71 12.68 358.03	432.05 -113.81 252.82 12.63 250.19 12.68 358.51	433.05 -114.93 252.30 12.63 249.67 12.68 358.99	434.05 -116.05 251.78 12.63 249.15 12.68 359.47	435.05 -117.17 251.26 12.63 248.63 12.68 360.00	436.05 -118.29 250.74 12.63 248.11 12.68 360.52	437.05 -119.41 250.22 12.63 247.59 12.68 361.04	438.05 -120.53 249.70 12.63 247.07 12.68 361.56	439.05 -121.65 249.18 12.63 246.55 12.68 362.08	440.05 -122.77 248.66 12.63 246.03 12.68 362.60	441.05 -123.89 248.14 12.63 245.51 12.68 363.12	442.05 -125.01 247.62 12.63 244.99 12.68 363.64	443.05 -126.13 247.10 12.63 244.47 12.68 364.16	444.05 -127.25 246.58 12.63 243.95 12.68 364.68	445.05 -128.37 246.06 12.63 243.43 12.68 365.20	446.05 -129.49 245.54 12.63 242.91 12.68 365.72	447.05 -130.61 245.02 12.63 242.39 12.68 366.24	448.05 -131.73 244.50 12.63 241.87 12.68 366.76	449.05 -132.85 243.98 12.63 241.35 12.68 367.28	450.05 -133.97 243.46 12.63 240.83 12.68 367.80	451.05 -135.09 242.94 12.63 240.31 12.68 368.32	452.05 -136.21 242.42 12.63 239.79 12.68 368.84	453.05 -137.33 241.90 12.63 239.27 12.68 369.36	454.05 -138.45 241.38 12.63 238.75 12.68 369.88	455.05 -139.57 240.86 12.63 238.23 12.68 370.40	456.05 -140.69 240.34 12.63 237.71 12.68 370.92	457.05 -141.81 239.82 12.63 237.19 12.68 371.44	458.05 -142.93 239.30 12.63 236.67 12.68 371.96	459.05 -144.05 238.78 12.63 236.15 12.68 372.48	460.05 -145.17 238.26 12.63 235.63 12.68 373.00	461.05 -146.29 237.74 12.63 235.11 12.68 373.52	462.05 -147.41 237.22 12.63 234.59 12.68 374.04	463.05 -148.53 236.70 12.63 234.07 12.68 374.56	464.05 -149.65 236.18 12.63 233.55 12.68 375.08	465.05 -150.77 235.66 12.63 233.03 12.68 375.60	466.05 -151.89 235.14 12.63 232.51 12.68 376.12	467.05 -153.01 234.62 12.63 231.99 12.68 376.64	468.05 -154.13 234.10 12.63 231.47 12.68 377.16	469.05 -155.25 233.58 12.63 230.95 12.68 377.68	470.05 -156.37 233.06 12.63 230.43 12.68 378.20	471.05 -157.49 232.54 12.63 229.91 12.68 378.72	472.05 -158.61 232.02 12.63 229.39 12.68 379.24	473.05 -159.73 231.50 12.63 228.87 12.68 379.76	474.05 -160.85 230.98 12.63 228.35 12.68 380.28	475.05 -161.97 230.46 12.63 227.83 12.68 380.80	476.05 -163.09 229.94 12.63 227.31 12.68 381.32	477.05 -164.21 229.42 12.63 226.79 12.68 381.84	478.05 -165.33 228.90 12.63 226.27 12.68 382.36	479.05 -166.45 228.38 12.63 225.75 12.68 382.88	480.05 -167.57 227.86 12.63 225.23 12.68 383.40	481.05 -168.69 227.34 12.63 224.71 12.68 383.92	482.05 -169.81 226.82 12.63 224.19 12.68 384.44	483.05 -170.93 226.30 12.63 223.67 12.68 384.96	484.05 -172.05 225.78 12.63 223.15 12.68 385.48	485.05 -173.17 225.26 12.63 222.63 12.68 386.00	486.05 -174.29 224.74 12.63 222.11 12.68 386.52	487.05 -175.41 224.22 12.63 221.59 12.68 387.04	488.05 -176.53 223.70 12.63 221.07 12.68 387.56	489.05 -177.65 223.18 12.63 220.55 12.68 388.08	490.05 -178.77 222.66 12.63 220.03 12.68 388.60	491.05 -179.89 222.14 12.63 219.51 12.68 389.12	492.05 -181.01 221.62 12.63 218.99 12.68 389.64	493.05 -182.13 221.10 12.63 218.47 12.68 390.16	494.05 -183.25 220.58 12.63 217.95 12.68 390.68	495.05 -184.37 220.06 12.63 217.43 12.68 391.20	496.05 -185.49 219.54 12.63 216.91 12.68 391.72	497.05 -186.61 219.02 12.63 216.39 12.68 392.24	498.05 -187.73 218.50 12.63 215.87 12.68 392.76	499.05 -188.85 217.98 12.63 215.35 12.68 393.28	500.05 -189.97 217.46 12.63 214.83 12.68 393.80
-----------	---	---	---	---	--	--	--	--	--	--	--	--	--	---	---	---	---	---	---	---	---	---	--	--	--	--	--	--	--	--	--	--	--	--	--	--	--	--	--	--	--	--	--	--	--	--	--	--	--	--	--	--	--	--	--	--	--	--	--	--	--	--	--	--	--	--	--	--	--	--	--	--	--	--	--	--	--	--	--	--	--	--	--	--	--	--	--	--	--	--	--	--	--	--	--	--	--	--	--	--	--	--	---	---	---	---	---	---	---	---	---	---	---	---	---	---	---	---	---	---	---	---	---	---	---	---	---	---	---	---	---	---	---	---	---	---	---	---	---	---	---	---	---	---	---	---	---	---	---	---	---	---	---	---	---	---	---	---	---	---	---	---	---	---	---	---	---	---	---	---	---	---	---	---	---	---	---	---	---	---	---	---	---



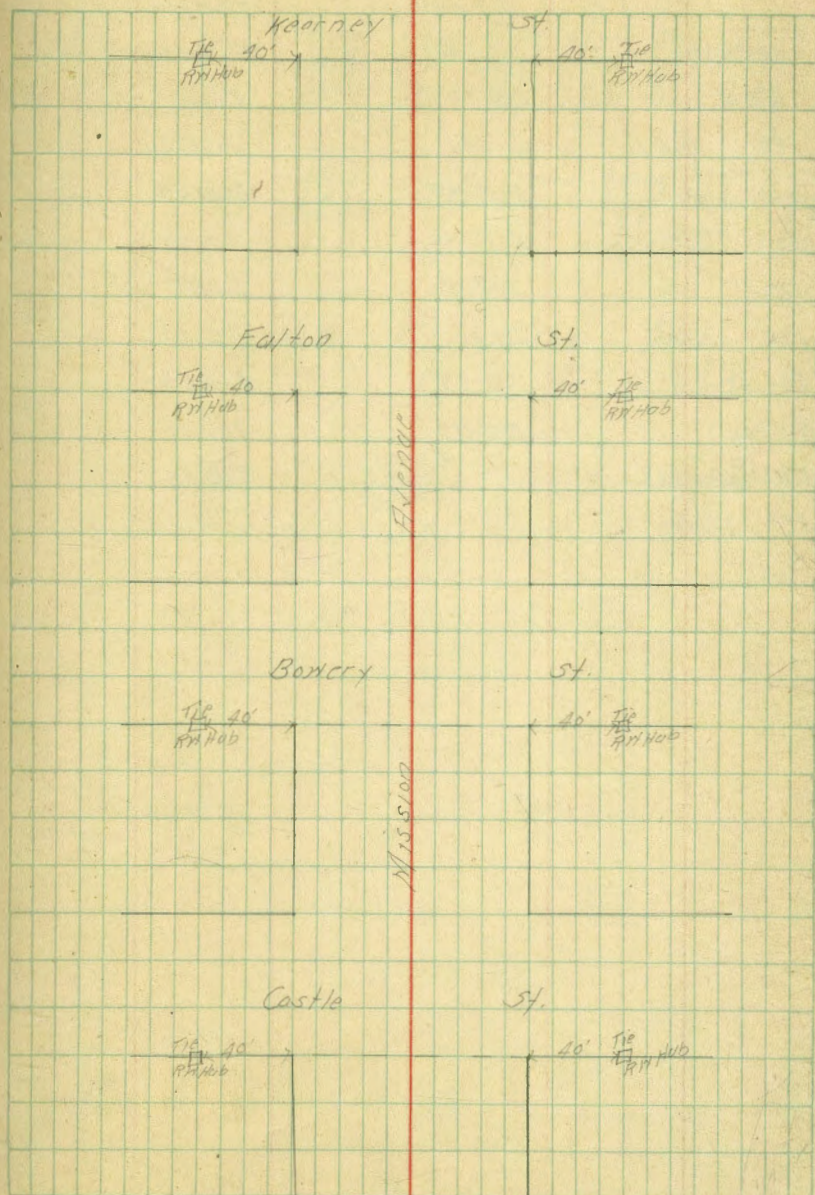
Culvert No 3

0+0 = N End	308.8
10's	305.8
65's	300.3
130's	
195's A	
233.5's	295.5
272's E End	279.0



Mission Avenue Ties  
From N Line Castle to N Line Kearney

8 8









Clark St Grades  
From E Line Guy to N<sup>th</sup> Line Middleboro Add.

	N side	S <sup>o</sup> side
E L Peterborough	188.75	186.75
50° E	190.78	189.27
100° E	193.31	191.80
150° E	195.84	194.33
181.65° E N <sup>th</sup> line Middleboro Add	197.45	195.97
216.85		196.75

H L Peterborough	186.75	185.25
50° N	178.75	177.25
100° N	170.75	169.25
150° N	162.75	161.25
200° N E L Guy	154.75	153.25

10  
10

209.41					
18.44					
196.97	N	188.25	209.41	209.41	209.41
0.70			196.78	193.31	195.94
197.67			186	161	134
12.10			8.8	3.3	5.8
185.57			79.9	+16.7	+10.0
185.73					
12.71	S	197.67	197.67	197.67	197.67
173.58		186.25	189.62	191.80	194.33
0.17		16.9	8.4	5.9	3.3
173.41		12.2	9.3	6.1	5.5
173.24		-1.3	-0.9	-0.8	-2.2
173.07					
13.54					
186.56					
0.33					
186.23					
182.03					
198.26					
0.72					
197.54					
18.17					
210.47	N	197.67	185.73	185.73	173.16
0.01		184.25	178.75	176.25	162.75
210.46		7.0	6.0	13.0	7.0
9.65		+2.9	+2.8	+3.6	+3.4
220.05					
1.21	Peterborough				
218.84	2120.5	185.73	185.73	173.16	173.16
		185.25	177.25	162.75	161.25
		0.5	9.5	3.9	1.9
		5.5	11.5	5.9	11.3
		-5.0	-3.0	-1.2	+0.6

Guy St

15' 10.5

Clark

49.00

Peterborough St

St.

13' 10.5

50° E

10' 10.5

10' 10.5

10' 10.5

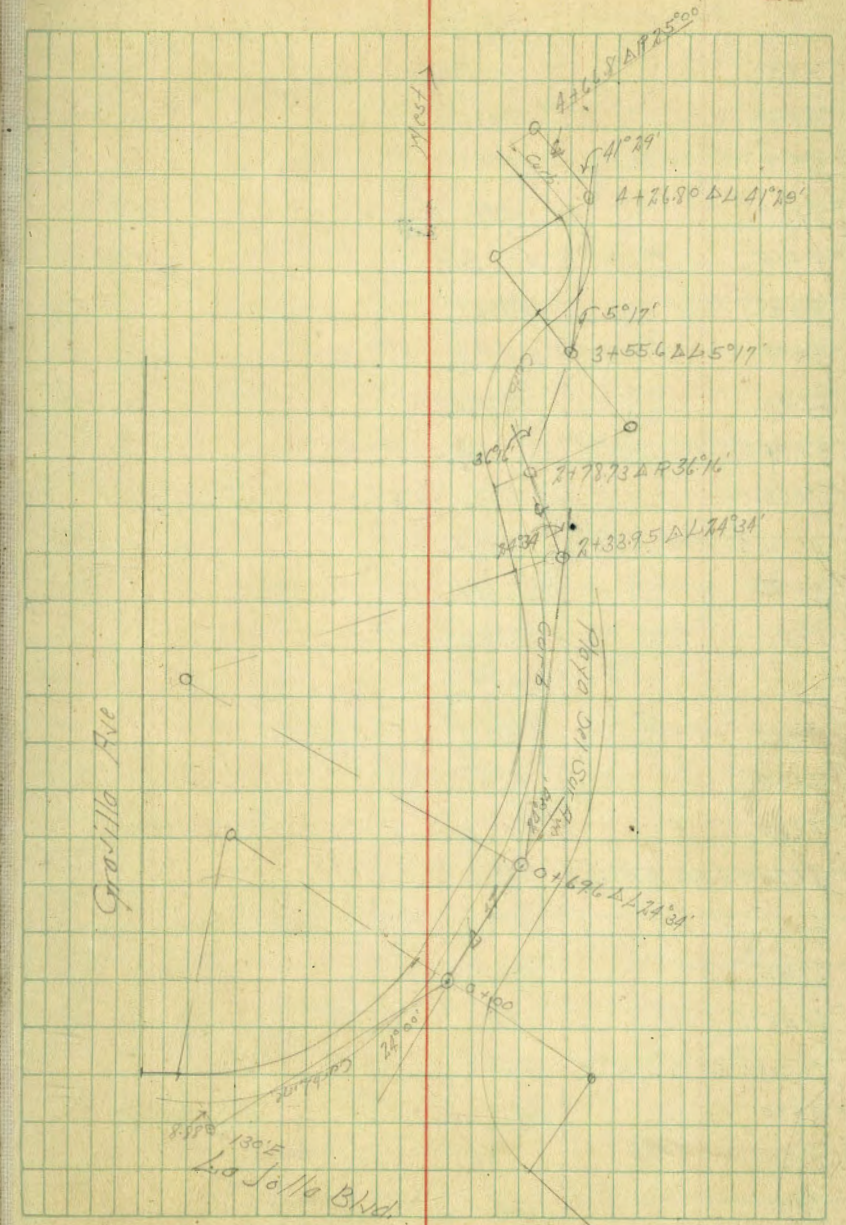
10' 10.5



Location of Curb on Playa Del Sur Ave Southside  
 From La Jolla Blvd to Anita Blvd.  
 Using Established PC + EC As Angle Points

	Curb From Angle Line	
1+75	4.02L	All Distances Given 90° From Angle Line
1+60	3.52L	All Angle Points 90° From Back Tangent
1+45	3.33L	
1+30	3.17L	
1+15	3.11L	
1+00	3.58L	
+90	4.17L	
+80	6.10L	
+69.6 P.C. Δ 74°34'	8.97L	
+60	8.42L	
+50 Broken	8.12L	
+35 Broken	7.66L	
+19 Broken	8.02L	
+10	8.12L	
0+00 E.C.	8.32L	
-10° E	5.06L	
-26° E	Line	
-35° E	2.50P	
-50° E	5.64P	
-65° E	7.54P	
-80° E	7.52P	
-90° E	5.99P	
-100° E	3.50P	
-111° E	Line	
-130° E	8.88L	

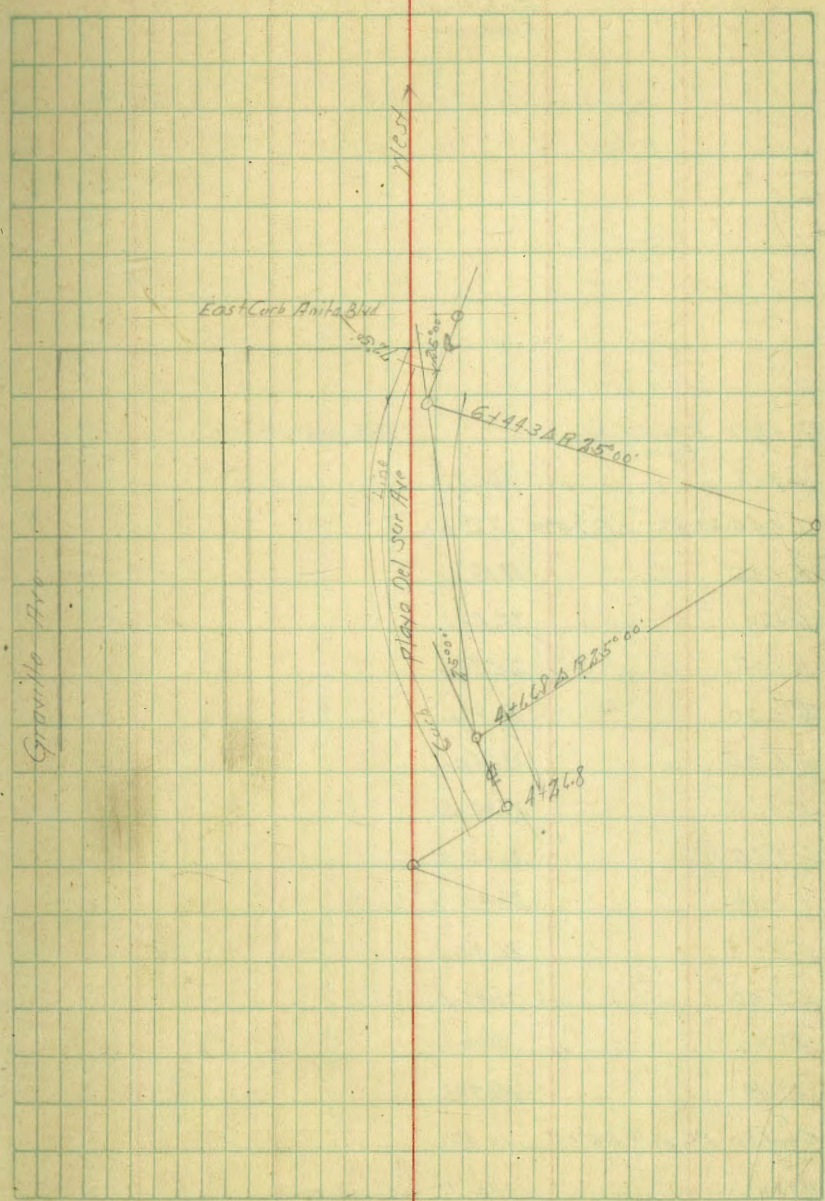
Back Tangent





Location Curb on Playa Del Sar Ave

Location	Curb on Playa Del Sar Ave	Curb From Royle Drive	
4+50		11.12 L	
4+40		10.97 L	
4+26.80	EC $\Delta 41^{\circ} 29'$	14.50 L	
4+23.6		11.89 L	Curb OK
4+15		6.13 L	Curb out
4+03.8		Line	Curb out
4+00		1.89	Curb out
3+90		2.89	Curb out
3+78.6		Line	Curb out
3+65		6.07 L	Curb out
3+55.60	PRC $\Delta 25^{\circ} 17'$	11.30 L	Curb broken
3+40		17.13 L	
3+30		19.83 L	
3+20		21.37 L	
3+10		21.37 L	
3+00		19.23 L	
2+90		16.07 L	
2+78.73	RC $\Delta 9^{\circ} 36' 16''$	9.17 L	
2+65		9.08 L	
2+55		9.23 L	
2+45		9.92 L	
2+33.95	EC $\Delta 29^{\circ} 34'$	11.65 L	
2+15		7.70 L	
2+00		6.00 L	
1+90		5.8 L	





Carb. From  
Angle Line

Location	Carb. From Angle Line	36.71 So End Refer 11
6+81.1	ECarb Line Anita Blvd	
6+68	16.67 L	
6+44.30	EC. ΔP 25°00' 15.88 L	
6+35	18.13 L	
6+20	22.23 L	
6+05	25.84 L	
5+90	29.81 L	
5+75	31.08 L	
5+60	31.94 L	
5+45	31.00 L	
5+30	29.45 L	
5+15	26.45 L	
5+00	22.06 L	
4+90	18.90 L	
4+80	15.70 L	
4+66.80	PC ΔP 25°00' 10.47 L	
4+60	10.94 L	



Cross Section Along West Park Blvd  
From S.L. Univ. Ave to M.L. Essex

15' wide

BM	040	317.22	316.82	NE Univ. Ave Park Blvd
	040 = S.L. Univ. Ave		317.22	
N	Top Pav 109	5.77	311.45	
E	" "	5.79	311.43	
E	" "	5.82	311.80	
	10'S			
-1.5		10.3	306.9	
E		8.0	309.2	
E		7.7	309.5	
+4		7.6	309.6	
N		7.5	309.7	
	20'S			
N		9.2	308.0	
+1 =	Top Conc. Wall N End For Light Staff To Apt. Ho.	9.17	308.05	133 S. End 2190's Staff 9.30
E		9.4	307.8	
E		9.7	307.5	
+3		9.8	307.4	
+1.5		12.4	303.8	
	30'S			
-1.5		14.0	303.2	
-8		13.9	303.3	
-5		11.6	305.6	
E		11.4	305.8	
9		11.2	306.0	
N		10.9	306.3	

11-16-25  
5.28  
14  
Barber

TP	062	317.22	305.00	1885	304.27
			50'S		305.0
				1.7	303.3
				1.9	303.1
				1.9	303.1
				2.3	302.7
			7.5'S		
-5				4.0	301.0
E				4.0	301.0
E				3.9	301.1
+4				3.7	301.3
N				3.6	301.4
			100'S		
N				4.4	300.6
+3				4.4	300.6
E				5.0	300.0
E				4.9	300.1
+5				4.7	300.3
			118'S		
-5				5.6	299.4
E				5.5	299.5
E				5.6	299.4
N				5.67	299.33
			125'S		
N				5.9	299.1

N. Center Conc Drive  
To Apt House







Cross Section of 31<sup>st</sup> St  
 From 875 S. S. L. Horn to 500 S. S. L. Horn

65' wide  
 16' C.C.S.  
 11.25' S.L.S.

B.M.	170	320.18	318.98	318.98
TP	425	311.90	1253	307.65
		375' S. S. L. Horn		For Notes N of Here See No 1096 Page 71 311.9
F			0.1	311.5
CB			1.5	310.4
1/4			2.5	309.4
2			3.2	308.6
1/4			4.3	307.6
CB			8.6	303.3
N			13.3	298.6
+30 Bottom Gable			28.6	283.3
+45			27.2	284.7
		400' S		
-50			28.6	283.3
-40 Bot Gable			29.3	282.6
N			12.9	299.0
CB			8.8	303.1
1/4			6.9	305.0
2			5.0	306.9
1/4			3.9	308.0
CB			3.2	308.7
F			1.5	310.4
		408' S		
F			1.8	310.1
+1			2.6	309.3

16

	311.90	311.9	
CB	3.6	308.3	
1/4	4.3	307.6	
2	5.0	306.9	
1/4	7.9	304.0	
CB	10.2	301.7	417' S. S. L. Horn Bottom Corner Step
N	14.3	297.6	3.4
+30	25.2	286.7	Top Malt 285
+40 Bot Gable	30.6	281.3	
+50	28.4	282.5	
			425' S
-50	30.2	281.7	
-45 Bot Gable	31.3	280.6	
-30	30.6	281.3	
-26	28.6	283.3	
N	20.5	291.4	
CB	16.3	295.6	
1/4	11.9	300.0	
2	8.6	303.3	
1/4	5.3	306.7	
CB	4.7	307.2	
+9	3.6	308.3	
F	2.5	309.4	
			455' S
F	5.3	306.6	
CB	5.9	306.0	



31st St Cont.

	31190	311.9
1/4	115	300.4
2	18.2	293.7
1/4	24.8	287.1
CB	30.0	281.9
1/4	33.8	278.1
+10 Bld Gulch	34.0	277.9
+25	33.2	278.7
+50	27.8	284.1
	475.5	
-35	18.8	293.1
-15	31.0	280.9
-12	33.4	278.5
1/4	34.8	277.1
+6 Bld Gulch	35.1	276.3
CB	35.2	276.7
1/4	27.6	284.3
2	22.0	289.9
1/4	15.9	296.0
CB	10.3	301.6
+8	7.5	304.4
E	6.3	305.7
	50.5	
E	6.5	305.4
+2	2.2	299.7
CB	14.3	297.6

17

	31190	311.9
1/4	18.2	293.5
2	25.8	286.1
1/4	31.6	280.3
CB	35.7	276.2
1/4 Bld Gulch	35.1	276.3
+35	11.7	300.2
TP	10.0	310.8
1/4	3.1	310.98
1/4	3.1	310.96
		11.4 310.0 + 31.8 312.2







32°N + Palm

	308.71	308.7
1/1	3.4	305.3
1/4	4.0	304.7
CB	4.2	304.5
1/8	4.6	304.1
E	5.0	303.7

42°N

E	5.0	303.7
1/5	4.5	304.2
CB	4.5	304.2
1/4	4.3	304.4
1/3	4.3	304.4
2	3.3	305.4
1/4	3.4	305.3
CB	3.6	305.1
1/4	3.5	305.2

46°N

1/4	5.1	303.3
CB	5.4	303.3
1/4	5.3	303.4
2	5.3	303.4
1/4	5.3	303.4
CB	5.4	303.3
E	5.2	303.5

50°N, CB

E Top Carb	4.9	304.0
------------	-----	-------

19

308.71

308.7

E	5.0	303.7
CB	4.9	303.8
1/4	4.7	304.0
2	4.4	304.3
1/4	4.3	304.4
CB	4.4	304.3
1/4	4.3	304.4

60°N = N.A. Palm

1/4	4.2	304.5
CB	4.2	304.5
1/4	4.3	304.4
E	4.0	304.7
1/4	3.9	304.8
CB	4.0	304.7
E	4.5	304.2



Levels On Essex Street  
 N Line & Foot So Line  
 From W.L. Park Blvd. to

50' Wide

B.P.N.E.

Up to 1st Blvd

B.M.	1150	318.38	316.82	
		South Line Essex	318.32	
		Ret Top Cb	9.12	309.20 S Gutter 99'
0+0	- W.L. Park Blvd.	Top Walk	8.81	309.51
+5			10.6	307.7
+8			11.1	307.2
+20			11.9	306.4
+25	S. End Curb		11.11	307.21
+35			12.7	305.6
TP	199	308.08	12.23	306.09 308.08
+50			2.9	305.2
+100			6.2	301.9
+35	Car Drive		8.24	299.84
+45	E. Alley		8.5	299.6
+60	W.L. Alley		10.2	297.8
+61			10.4	297.7
+92				
+100			12.8	295.3
TP	097	296.27	12.78	295.30 296.27
+10			14	294.9
+35			6.3	290.0
+40				
+57			8.6	287.7
+62			7.9	288.4
TP	344	290.83	8.88	287.32

11-11-25  
 535.50  
 290  
 290

Center Essex

19.50

North Line Essex

318.32

	8.56	309.76	8.79	309.53	Ret Top Cb	8.10	310.22
					Top Walk	7.82	310.50
	8.9	309.4				8.0	310.3
	9.2	309.0				8.9	309.4
	10.2	308.1				10.1	308.2
	11.5	306.8				11.8	306.5
				308.08			308.08
	2.5	305.6			2.6		305.5
	6.4	301.7			6.0		302.1
	9.2	298.9			9.1		299.0
	10.0	298.1			10.8		297.3
	11.2	296.9			11.0		297.1
					Top Walk	10.07	298.01
					Top Curb	12.19	295.59
					Top Walk	12.38	294.70
	14.3	293.8			12.7		294.4
				296.27			296.27
	3.2	293.1			3.2		292.9
	5.7	290.6			5.5		290.8
					Top Walk	5.26	291.01
					" Stop	5.63	290.64
	7.4	288.9			6.0		290.3
	7.7	288.6			6.9		289.4



29083

South Line

3100	44	286.4
450	53	285.5
4602	47	286.1

21

Center

37	287.1
46	286.2
20	285.8

North Line

35	287.3
42	286.6
31	287.4

2492 2011

Top of 1/4

289 287.84

3142 2011

Top of 1/4

477 286.06

3143 1954

Top of 1/4

426 285.97







28.50

4's of N cl (con)

cl	7.0	21.5
W	6.3	22.2
N. 14		
W	6.9	21.6
cl	6.7	21.8
14	5.9	22.6
+7	2.0	26.5
C	1.3	27.2
14	1.0	27.5
cl	0.5	28.0
E	0.1	28.4
♀ Gravilla		
E	+0.3	28.80
cl	0.6	27.9
14	1.1	27.4
C	1.7	26.8
+4	2.9	25.6
14	6.1	26.4
cl	6.7	21.8
W	8.2	20.3
4's of E		
W	8.8	19.7
cl	8.7	19.8
14	7.9	20.6
+5	4.0	24.5
C	1.7	26.8

28.50

V. isla Del Mar

23

14	1.0	27.5
cl	0.5	28.0
E	0.0	28.5
S. 14		
C	0.0	28.5
cl	0.5	28.0
14	1.1	27.4
C	1.9	26.6
+7	5.5	23.0
14	8.2	20.3
cl	8.8	19.7
W	9.0	19.5
S. cl		
W	9.3	19.2
+5	7.6	20.9
cl	6.2	22.3
14	4.8	23.7
+6	2.2	26.3
C	1.6	26.9
14	1.1	27.4
cl	0.6	27.9
E	0.0	28.5
4's		
E. cl	0.7	27.8
14	1.2	27.3
C	1.4	27.1



R8.50

N'S (con)

C+6	2.4	26.1
1/4	7.1	21.4
cl	9.2	19.3
W	9.5	19.0

S. Line Grayilla

W	9.6	18.9
cl	9.0	19.5
+5	8.8	19.7
1/4	5.9	22.6
+3	2.6	25.9
C	7.6	26.9
1/4	1.1	27.4
gutter	0.9	27.6
cl	0.30	27.2

R'. S. on W = 5.65 S. on E = 90°00'

E. gutter	0.9	27.6
1/4	1.2	27.3
C	1.5	27.0
+3	1.9	26.6
+5	3.8	24.7
1/4	6.3	22.2
+5	8.4	20.1
cl	8.7	19.8
+4.8	5.2	23.3
+4.9	2.90	25.6

4'. of walk <sup>N.9</sup> 90° S. of S. Line Grayilla  
 #5. of curl gone S. of S. Line Grayilla

one edge  
 cent walk

R9.50

Vieta Del Mar

14' S. on W = 17.65 S. on E

24

W+5	2.80	25.7	E. edge walk
+9	3.0	25.5	
cl	7.9	20.6	
+8	7.7	20.8	
1/4	4.9	23.6	
+4	2.7	25.8	
C	1.5	27.0	
1/4	1.5	27.0	
E gutter	1.2	27.3	

R5' S. on W = R8.65 S. on E.

E gutter	1.0	27.5	
1/4	1.3	27.2	
C	1.4	27.1	
1/4	7.5	21.0	
+8	7.2	21.3	
cl	4.2	24.3	
+3	2.9	25.6	
+5	2.9	25.7	E. edge walk

R9' S. on W = 32.65 S. on E.

W+5	2.7	25.8	E. edge walk
+4	2.8	25.7	
cl	3.6	24.9	
+1	6.6	21.9	
+6	6.8	21.7	
1/4	4.4	24.1	
+3	2.3	26.2	







Gravilla X. Sec.  
from W. line Vista Del Mar to E. line Neptune Place.

28.50

W. line Vista Del Mar

S	9.5	19.0	
el	9.3	19.2	
14	9.0	19.5	
+3.5	8.9	19.6	
C	8.2	20.3	
14	6.9	21.6	
+3.5	4.2	22.3	
N. el	3.28	25.29	Snott el

W. line Vista Del Mar on S. + 3.04 W. on N = 00 = 90° 00'

N gutter	4.0	24.5	
+6	4.1	24.4	
14	7.4	21.1	
C	7.5	21.0	
+5	9.0	19.5	
14	9.0	19.5	
el	9.4	19.1	
S	9.5	19.0	
+2	3.4	25.1	
-5	5.0	23.5	
-2	5.0	23.5	
S	10.0	18.5	
el	10.0	18.5	
+1	10.0	18.5	
+4	8.7	19.8	
14	8.5	20.0	

15' W

28.50

26.

C	8.1	20.4
14	7.9	20.6
+3	4.9	23.6
N gutter	5.4	23.1
	25' W	
N gutter	5.2	23.3
14	5.3	23.2
+2	6.8	21.7
C	8.0	20.5
14	10.4	18.1
el	10.7	17.8
S	10.5	18.0
+2	6.0	22.5
+5	6.0	22.5
	35' W	
-5	6.5	22.0
-2	6.5	22.0
S	10.4	18.1
el	11.4	17.1
14	6.4	22.1
C	6.2	22.3
14	5.8	22.7
N gutter	5.7	22.8



28.50  
50' W

N. gutter	6.3	27.2
14	6.1	22.4
0	6.7	21.8
14	7.6	20.9
+2	7.8	20.7
cl	11.7	16.8
S	12.5	16.0
+3	9.3	19.2
+5	9.0	19.5

40' W

-8	10.4	18.1
-3	10.9	17.6
S	12.8	15.7
+4	12.8	15.7
cl	10.4	18.1
14	10.6	17.9
2	7.2	21.3
14	6.6	21.9
N. gutter	6.8	21.7

65' W

N. gutter	7.1	21.4
14	6.9	21.6
2	7.1	21.4
+4	7.4	21.1
14	12.1	16.4
cl	13.0	15.5
S	12.7	15.8
+3	11.3	17.2
+10	10.9	17.6

28.50  
70' W  
Gravilla 27

-10	11.7	16.8
S	13.3	15.2
+8	13.0	15.5
cl	11.0	17.5
14	7.7	20.8
2	7.3	21.2
14	7.1	21.4
N. gutter	7.3	21.2

85' W

N. gutter	8.0	20.5
14	9.0	19.5
2	9.14	19.36
14	9.0	19.5
cl	9.3	19.2
+5	10.2	18.3
S	13.8	14.7
+8	11.3	17.2
+12	12.6	15.9

100' W on S. & 96.96' W on N-E line Neptune Place  
on Septic Tank

S	11.8	16.7
+8	12.0	16.5
cl	10.9	17.6
+2	10.0	18.5
+5	9.17	19.33
14	9.2	19.3
2	9.2	19.3
14	1.2	19.3
N gutter	8.3	20.2



40' wide Neptune Place Sec  
from S. Line Playa Del Sur to S. Line Palomar

11/24/25  
muller

25.47

35' S

28

28.50

T.P.	0.18	25.47	3.21	25.29
00 = S. Line Playa Del Sur on E. 171.5 N. of N. Line Oravilla at 90°-00'				
E			5.2	70.3
+10 W			5.6	19.9
+20			6.1	19.4
+30			6.7	18.8
+40 = W. Line			8.6	16.9
40' S				
W			8.2	17.2
+8 E			7.1	18.4
+15			7.7	17.8
+20			4.0	19.5
+30			5.3	20.2
+40 = E			4.9	20.6
25' S				
6-15			8.0	17.5
- 8			10.9	14.6
E			11.0	14.5
+10 W			7.1	18.4
+15			7.3	18.2
+25			10.7	14.8
+30			10.9	14.6
+40 = W			12.0	13.5

Sections taken at 90°-00'

W	18.6	11.9
+5 E	13.1	12.4
+15	10.9	14.6
+25	8.2	17.3
+35	11.6	13.9
+40 E	11.8	13.7
8+15	10.1	15.4
50' S		
E-15	11.9	13.6
E	12.3	13.2
+10 W	12.9	12.6
+20	13.5	12.0
+30	14.1	11.4
+40 = W	15.1	10.4
64' S		
W	15.1	10.4
+5 E	14.5	11.0
+10	9.8	15.7
+20	9.3	16.2
+30	9.2	16.3
+32	12.3	13.2
+40 = E	11.8	13.7
8+2	8.5	17.0
+5	10.6	14.9
+15	8.2	17.3



25.47  
70'S

E-15	6.8	18.7
-3	8.7	16.8
E	11.3	14.2
+10	7.0	18.5
+20	6.9	18.6
+30	8.0	17.5
+35	10.7	14.8
+40=W	9.7	15.8

80'S

W	5.7	19.8
+10	5.2	20.3
+20	5.1	20.4
+30	5.0	20.5
+37	5.3	20.2
+40=E	7.8	17.7
+5	6.0	19.5

90'S

E-5	3.0	22.5
E	5.4	20.1
+5	2.1	19.4
+10	4.5	21.0
+20	4.7	20.8
+30	3.7	21.8
+40=W	3.3	22.7

25.47  
95'S  
Neptune Place  
29

W	3.2	22.3
+10	3.1	22.4
+18	2.7	22.8
+20	4.5	21.0
+30	4.4	21.1
+40=E	3.7	21.8

125'S

E	4.3	21.2
+10	4.8	20.7
+20	4.6	20.9
+24	4.6	20.9
+30	7.1	18.4
+40=W	8.2	17.3

143'S

-20	8.6	
-10	9.0	
W	14.0	11.5
+10	9.8	15.7
+20	5.0	20.5
+30	5.1	20.4
+40=E	7.4	21.1

156'S

E	4.5	21.0
+10	5.2	20.3
+20	5.5	20.0
+30	5.7	19.8
+40=W	7.8	17.7
50		90
60		84



-10	25.47		
W	165.5	15.0	90
+10 E		10.5	105
+20		5.8	12.7
+30		5.2	20.3
+40 = E		4.4	21.1

171.5 S = N. 1/2 to Gravilla

sections taken at 90°

E		4.6	20.9
+10		5.3	20.2
+20		5.7	19.8
+30		6.4	19.1
+40 = W		10.6	14.9

N. cl

W		9.7	15.8
+10		6.8	18.7
+20		5.7	19.8
+30		5.5	20.0
+40 E		5.3	20.2

N. 1/4

E		6.1	19.4
+10		6.1	19.6
+20		6.1	19.6
+23		6.3	19.2
+30		8.3	17.2
+40 = W		9.6	15.9

E

W		10.8	14.7
+10		8.4	17.1

25.47

Neptune Place

30

+15	6.4	19.1
+20	6.1	19.6
+30	6.1	19.4
+40 = E	6.1	19.4
	5.14	
E	6.1	19.4
+10	6.1	19.6
+20	6.1	19.6
+25	7.0	18.5
+33	10.3	15.2
+40 = W	12.2	13.3
	S. cl	
W	15.3	10.2
+5	14.9	10.6
+15	12.2	13.3
+20	7.0	18.5
+30	7.3	18.2
+40 = E	7.8	17.7
	H. S. of S. cl	
E	9.0	16.5
+10	9.4	16.1
+20	10.2	15.3
+30	12.4	13.1
+34	14.8	10.7
+40 = W	15.6	9.9



25.47  
00 = S. Line Gravilla

W	15.4	10.1
+10	15.2	10.3
+15	14.2	11.3
+25	9.8	15.7
+40 = E	8.8	16.7

10.5

E 90	8.3	17.2
-3	9.7	15.8
E	8.6	16.9
+10 W	8.8	16.7
+17	11.8	13.7
+30	12.8	12.7
+40 = W	12.8	12.7

25.5

W	13.4	12.1
+10 E	12.2	13.3
+20	12.2	13.3
+30	11.0	14.4
+35	8.6	16.9
+40 = E	8.2	17.3
+5	8.0	17.5

30.5

E	6.3	19.2
+10 W	10.9	14.7
+20	12.4	13.1
+30	13.4	12.1
+40 = W	14.5	11.0

25.47

Neptune Place

40.5

31

W	15.0	10.5
+10 E	7.8	17.7
+20	7.2	18.3
+30	7.0	18.5
+40 = E	6.6	18.9

50.5

E	6.7	18.8
+10 W	7.0	18.5
+20	7.2	18.3
+30	7.7	17.8
+40 = W	8.1	17.4

110.5

W	8.2	17.3
+10	8.1	17.4
+20	7.3	18.2
+30	6.9	18.6
+40 = E	6.8	18.7

120.5

E	6.8	18.7
+10	6.9	18.6
+20	7.3	18.2
+30	7.8	17.7
+34	7.9	17.6
+40 = W	14.0	11.5



	25.47			
	150' S			-15 = 6A
N		17.1	8.4	
+12		7.0	18.5	
+20		6.7	18.8	
+30		6.7	18.8	
+40 = E		6.4	19.1	
	175' S			
E		6.7	18.8	
+10		6.7	18.8	
+20		6.7	18.8	
+35		16.5	9.0	
+40 = W		17.3	8.2	
+55			5.6	
	190' S		6A	
-15				
W		17.4	8.1	
+14		15.5	10.0	
+24		7.0	18.5	
+30		6.7	18.8	
+40 = E		6.8	18.7	
E-5		6.2	19.3	
T.P.	2.89	22.71	5.65	19.82
	200' S			
E-5		3.9	18.8	
E		4.1	18.6	
+10		4.1	18.6	
+15		7.4	15.3	
+25		11.6	11.1	
+40 = W		13.6	9.1	
+55			7.7	

	22.71			
	203' S			Naptime Place 3W
-15				7.7
N		12.8		9.9
+12		4.8		17.9
+14		4.5		18.7
+16		9.7		13.0
+20		10.5		12.2
+25		9.0		13.7
+30		4.0		18.7
+40 = E		4.1		18.6
+5		3.9		18.8
	213' S			
E-5		8.8		18.7
E		4.0		18.7
+10		4.0		18.7
+20		4.0		18.7
+30		4.5		18.7
+40 = W		12.0		10.7
+85				7.7
	215.4 S = N. Line Kelman			sections taken at 90.00
W		11.4		11.3
+7		4.4		18.3
+13		3.3		19.4
+20		4.1		18.6
+30		3.7		19.0
+40 = E		3.1		19.6



22.71

N. cl.

E	3.1	19.6
+10	3.4	19.3
+20	3.7	19.0
+28	3.0	19.7
+35	4.1	18.6
+40=W	7.2	15.5

N. 44

W	9.0	13.7
+4	5.8	16.9
+12	3.5	19.2
+20	3.5	19.2
+30	3.9	18.8
+40=E	2.8	18.9

E

E	2.6	20.1
+12	3.9	18.8
+17	8.2	14.5
+21	8.7	14.0
+23	10.0	12.7
+40=W	12.5	10.2 <sup>10.6</sup>
48		10.2
53		8.7

114

W	5.8	16.9
+10	5.0	17.7
+20	4.0	18.7
+30	4.1	18.6
+40=E	2.9	19.3

22.71

S. cl.

Nap Yeh-Place

33

E	3.1	19.6
+10	3.7	19.0
+18	3.7	19.0
+22	2.7	20.0
+30	3.8	18.9
+40=W	6.0	16.7

S. Line Holmar = 00

W	5.4	17.3
+5	3.8	18.9
+17	2.0	20.7
+22	3.6	19.1
+30	3.6	19.1
E	2.9	19.8

301

22.83

19.82

Page 32

20.5

E	3.2	19.6
+10	4.1	18.7
+17	4.1	18.7
+25	2.4	20.4
+33	3.1	19.7
+40=W	4.3	18.5

40.5

W	5.4	17.4
+10	4.8	18.0
+20	4.5	18.3
+30	4.3	18.5
+40=E	3.8	19.0



22.82

70.5

E	3.9	18.9
+10	4.1	18.7
+20	4.7	18.1
+30	5.3	17.5
+40=W	5.9	16.9

105.5

W	5.7	17.1
+10	5.9	16.9
+20	5.0	17.8
+30	5.0	17.8
+40=E	4.0	18.8

112.5

E	3.8	19.0
+10	4.6	18.2
+17	5.4	17.4
+25	8.0	14.8
+37	11.6	11.2
+40=W	9.2	13.6

123.5

W	13.3	9.5
+7	12.5	10.3
+14	6.1	16.7
+20	5.6	17.2
+30	5.6	17.2
+40=E	2.8	20.0

22.83

Neptune Place

34

128.5

E	2.7	20.1
+2	3.0	19.8
+10	6.2	16.6
+17	7.7	15.1
+30	11.8	11.0

+40=W

13.8

9.0

+50

7.0

+60

7.0

162.5

W	14.5	8.3
+10	13.7	9.1
+20	6.2	16.6
+28	6.3	16.5
+34	3.5	19.3
+40=E	1.9	20.9

175.5

E	2.1	20.7
+4	3.0	19.8
+12	5.3	17.5
+18	5.8	17.0
+25	11.9	10.9
+27	9.2	13.6
+35	9.8	13.0
+40=W	13.0	9.8

184.5

W	7.7	15.1
+8	6.3	16.5
+10	8.0	14.8



22.83

184.5 com.

+15	10.5	17.3
+22	5.6	17.2
+25	5.2	17.6
+27	7.9	14.9
+35	5.7	17.1
+40 = E	2.1	20.7

189.5

E	1.8	21.0
+5	2.2	20.6
+16	5.8	17.0
+20	9.7	13.1
+24	10.0	12.8
+31	6.3	16.5
+40 = W	9.2	13.6

195.5

N	6.7	16.1
+10	2.1	20.7
+12	4.0	16.8
+16	8.9	13.9
+27	7.4	15.4
+33	2.4	20.4
+40 = E	1.6	21.2

200.5

E	1.5	21.3
+7	2.4	20.4
+14	7.2	15.6

22.83

Neptune Place

35

+23	8.0	14.8
+27	5.9	16.9
+28	1.7	21.1
+40 = <del>E</del>	1.7	21.1

206.5

W	1.8	21.0
+12	1.5	21.3
+13	4.6	18.2
+20	7.0	15.8
+26	2.3	20.5
+40 = E	1.4	21.4

R15.4 S = N. Line Rosemont

80 inside  
1000  
7.5 1/2sections taken  
at 90°

C	0.4	22.4
+10	1.9	20.9
+20	2.1	20.7
+30	1.6	21.2
+40 = W	1.9	20.9

T.P. 7.68 27.50 19.82 Page 32

6'S. of N. line

E	5.0	22.5
+10	6.3	21.2
+20	6.4	20.9
+23	6.0	21.5
+30	6.3	21.2
+40 = W	6.8	20.7



27.50  
7.05.0 of N line

W	6.8	20.7
+10	6.4	21.1
+12	9.4	18.1
+21	10.1	17.4
+22	6.7	20.8
+30	6.3	21.2
+39	5.1	22.4
+40=E	10.3	17.2

N. cl

E	12.3	15.3
+7	10.4	17.1
+20	12.3	15.2
+30	11.2	16.3
+40=W	6.8	20.7

5'S of cl

W	15.3	12.2
+10	14.6	12.9
+20	14.0	13.5
+32	11.4	16.1
+34	12.5	15.0
+40=E	13.0	14.5

N. '14

E	13.4	14.4
+10	14.0	13.5
+20	14.2	13.3
+30	15.1	12.4
+40=W	15.4	12.1

27.50

4

Neptune Place

36

W	13.7	13.8
+10	13.7	13.8
+20	14.6	12.9
+30	14.0	13.5
+40=E	13.5	14.2

S. '14

E	13.6	13.9
+10	13.2	14.3
+18	12.1	15.4
+24	4.9	22.6
+30	5.2	22.3
+40=W	5.8	21.7

3.5 S. of S. '14

W	5.6	21.9
+10	5.0	22.5
+17	4.5	23.2
+23	10.0	17.5
+32	11.2	16.3
+40=E	11.2	16.3

S. cl

E	4.7	22.8
+10	5.2	22.3
+20	5.5	22.0
+23	4.3	23.2
+30	4.9	22.6
+40=W	6.1	21.4



27.50  
00 = S. L. H. - Rosemont

W	7.9	19.6
+10	7.3	20.2
+15	5.5	22.0
+20	5.1	22.4
+30	5.2	22.3
+40 = E	4.3	23.2

20' S

E	3.7	23.8
+5	4.4	23.1
+20	4.6	22.9
+23	4.9	22.6
+30	7.7	19.8
+40 = W	9.1	18.4

32' S

W	12.4	15.1
+10	11.2	16.3
+12	6.7	20.8
+20	4.7	22.8
+30	4.3	23.2
+40 = E	4.1	23.4

37' S

E	4.1	23.4
+10	4.3	23.2
+20	4.4	23.1
+24	4.7	22.8
+27	6.5	21.0
+40 = W	7.3	20.2

27.50  
44' S

Neptune Place  
37

W	5.1	22.4
+10	5.1	22.4
+20	4.5	23.0
+30	4.2	23.3
+40 = E	4.0	23.5

50' S

E	3.6	23.9
+10	4.1	23.4
+20	4.3	23.2
+23	3.3	24.2
+30	3.5	24.0
+35	7.8	19.7
+40 = W	8.7	18.8

60' S

W	10.4	17.1
+13	7.3	20.2
+15	2.7	24.8
+18	2.7	24.8
+20	4.1	23.4
+30	3.9	23.6
+40 = E	3.6	23.9

69' S

E	3.6	23.9
+10	3.9	23.6
+20	4.7	22.8
+27	8.4	19.1
+40 = W	9.1	18.4



27.50

83'S

W	12.9	14.6
+10	10.5	17.0
+20	4.9	22.6
+30	4.2	23.3
+40=E	3.7	23.9

93'S

E	3.7	23.8
+10	4.1	23.4
+20	4.5	23.0
+26	7.1	20.4
+36	8.2	19.3
+40=W	7.7	19.8

100'S

W	7.5	20.0
+10	5.5	22.0
+18	2.9	24.6
+20	3.8	23.7
+30	4.0	23.5
+40=E	3.5	24.0

110'S

E	3.2	24.3
+10	4.0	23.5
+20	4.0	23.5
+22	2.1	25.4
+30	3.4	24.1
+40=W	6.1	21.4

27.50

117'S

W	6.6	20.9
+10	3.5	24.0
+16	2.5	25.0
+20	4.1	23.4
+30	4.0	23.5
+40=E	3.3	24.2

121'S

E	3.5	24.0
+3	3.7	23.8
+4	6.8	20.7
+12	6.6	20.9
+20	7.2	20.3
+22	3.4	24.1
+30	3.8	23.7
+40=W	6.5	21.0

130'S

W	11.1	16.4
+5	9.0	18.5
+10	6.1	21.4
+15	6.9	20.6
+20	9.6	17.9
+30	8.6	18.9
+36	7.7	19.8
+40=E	8.7	18.8
+15	7.5	20.0

Neptune Place

38



27.50  
138.5

-10	6.5	21.0
8	9.6	17.9
+10	10.5	17.0
+22	10.6	16.9
+28	4.8	20.7
+30	3.0	24.5
+32	6.4	20.7
+40=W	11.0	16.5

148.5

W	11.3	16.2
+5	7.7	17.8
+7	6.8	20.7
+10	9.5	18.0
+15	11.3	16.4
+20	10.8	16.7
+21	8.8	18.7
+25	9.4	17.9
+30	10.1	17.4
+40=E	9.6	17.9
+4	8.2	19.3
+7	4.3	23.2

155.5

-10	7.7	19.8
8	9.6	17.9
+12	8.9	18.6
+17	4.3	23.2

27.50

Neptune Place

39

+22	4.8	22.7
+28	8.5	19.0
+30	12.1	15.4
+37	8.6	18.9
+40=W	11.9	15.6

164.5

W	14.0	13.5
+5	12.7	14.8
+10	9.5	18.0
+20	4.4	23.1
+30	3.7	23.8
+33	8.5	19.0
+40=E	8.5	19.0
+15	8.5	19.0

170.5

E	3.1	24.4
+3	3.6	23.9
+7	6.4	21.1
+15	7.4	20.1
+23	8.5	19.0
+28	10.6	16.9
+30	9.8	17.7
+40=W	13.7	13.8



27.50

177.5

W	13.6	12.9
+6	10.7	16.8
+18	9.1	23.4
+30	3.6	23.9
+40=E	3.4	24.1

186.5

E	3.1	24.4
+10	3.6	23.9
+15	4.1	23.4
+20	6.2	21.3
+25	9.2	18.3
+30	10.0	17.5
+35	12.4	15.1
+40=W	13.2	14.3

188.5

W	12.7	14.8
+5	11.6	15.9
+10	7.8	19.7
+20	4.3	21.2
+25	5.0	22.5
+30	8.1	19.4
+40=E	7.0	20.5
+15	6.6	20.9

195.5

-15	8.7	18.8
E	9.0	18.5

27.50

Neptune Place

40

+10	9.8	17.7
+21	9.1	18.4
+23	4.8	22.7
+30	9.6	17.9
+40=W	11.7	15.8

200.5

W	12.4	15.1
+10	11.0	16.5
+20	10.7	16.8
+30	10.2	17.3
+40=E	9.5	18.0
+15	8.6	18.9

211.5

-7	8.2	19.3
E	8.9	18.6
+10	5.3	22.2
+13	3.7	23.8
+20	3.9	23.6
+30	4.7	22.8
+40=W	4.3	16.2

2154 S = N. Lin. Palomar sections taken at 90°00

W	12.8	14.7
+5	10.2	17.3
+10	4.7	22.8
+15	3.5	24.0
+20	3.4	23.9



27.50  
N. Line (C.D.)

+32	3.4	24.1
+38	8.3	19.2
+40 = E	8.3	19.2
10' S of N. line 90° 00'		
E	3.9	23.6
+3	2.3	25.2
+10	2.1	25.4
+20	3.0	24.5
+26	3.7	23.8
+40 = W	8.5	19.0
15' S of N. line 90° 00'		
W	11.5	16.0
+10	6.7	20.8
+12	4.9	22.6
+20	2.9	24.6
+34	1.6	25.9
+40 = E	2.0	25.2
20' S of N. line 90° 00'		
E	1.5	26.0
+10	1.8	25.7
+20	2.9	24.6
+25	3.6	23.9
+30	5.0	22.5
+35	5.1	22.4
+40 = W	10.0	16.5

27.50  
30' S of E = S. line Palomar section Taken on S. line at 90° 00'

Neptune Place

41

W	9.8	17.7
+10	7.5	20.0
+18	2.3	25.2
+20	1.8	25.7
+30	1.3	26.2
+40 = E	1.0	26.5
		26.6



Rosemont X. Sec.  
 from E. line Neptune Place to W. line Vista Del Mar

11/27/35  
 miles

27.50 Page 41

00 = E. line Neptune Place on diagonal

S	4.3	73.7
cb	4.7	77.8
+4	11.2	16.3
S 1/4	13.6	13.9
C	13.5	14.0
1/4	13.1	14.4
+2.5	13.0	14.5
cb	12.3	15.2
+3	10.3	17.2
+4	5.0	22.5
N.	5.1	22.4

4. E. on N 4 7.0 E. on S = 90° 00'

N	4.9	22.6
+1	8.8	18.9
+4	11.4	16.1
cb	12.4	15.1
1/4	12.7	14.8
C	13.2	14.3
1/4	13.5	14.0
cb	12.1	15.4
+2	4.1	23.4
S	3.8	23.7

27.50

12' E on S 90°

42

S	3.5	24.0
+3	3.8	23.7
+6	8.8	18.7
cb	12.5	15.0
1/4	13.2	14.3
+5	13.0	14.5
C	9.9	17.6
1/4	12.2	15.3
cb	12.0	15.5
N	9.2	18.3
+3	7.6	19.9
+4	4.9	22.6 Top
15' E on S 90° 00'		
-4	4.7	22.8 Top
-3	7.6	19.9
N	7.5	20.0
+7	9.1	18.4
cb	11.8	15.7
+4	11.8	15.7
1/4	10.0	17.5
+4	8.4	19.1
C	4.3	23.7
+1	9.5	18.0
1/4	13.0	14.5
cb	12.6	14.9
+1	10.0	17.5
+5	8.4	19.1
+7	3.6	23.9
S.	3.4	24.1



27.50  
R2. E on S 90° 00'

S	2.7	24.8
+5	3.2	24.3
+6	8.5	18.0
cl	10.0	17.5
+1	12.2	15.3
4	12.6	14.9
2	8.2	19.3
L1	3.5	24.0
+5	3.7	23.8
+6	6.7	20.8
4	8.1	19.4
+1	11.0	16.5
cl	11.2	16.3
N	4.4	23.1

32' E on S

N	3.1	24.4
+2	3.2	24.3
cl	9.8	17.7
+5	10.1	17.4
4	3.4	24.1
+5	3.0	24.5
C	7.5	20.0
+4	12.0	15.5
4	12.6	14.9
cl	11.5	16.0
+8	7.0	20.5
S	1.8	25.7

Top

27.50  
H2. E on S, 90° 00'

Rosemont

43

S-4 0.5 27.0

S	4.8	27.7
cl	8.3	19.2
4	12.1	15.4
C	5.6	21.9
+3	2.2	25.3
4	2.6	24.9
+3	3.1	24.4
+5	8.4	19.1
cl	8.7	18.8
H	2.2	25.3
N	2.5	25.0

49' E on S, 90° 00'

N	1.7	25.8
+9	1.8	25.7
cl	5.3	22.2
+5	7.4	20.1
4	2.2	25.3
+3	2.6	24.9
C	6.8	20.7
+5	11.0	16.5
4	11.2	16.3
cl	10.0	17.5
+2	9.4	18.1
S	4.3	23.2
+1	0.7	26.8

Top



27.50  
57' E on S 90° 00

S	0.3	27.2
+1	0.4	27.1
+2	7.7	19.8
cl	9.5	18.0
1/4	8.2	19.3
e	9.5	18.0
+1	1.1	26.4
1/4	1.3	26.2
+2	6.3	21.2
cl	5.6	21.9
+1	1.2	26.3
N	1.3	26.2
65' E on S. 90° 00		
N	0.3	27.2
+8	0.5	27.0
cl	5.0	22.5
+1	1.2	26.3
1/4	0.7	26.8
+4	0.6	26.9
+5	9.0	18.5
C	6.6	20.9
1/4	8.0	19.5
cl	9.1	18.4
+1	0.0	27.5
S	10.2	27.70
T.P.	10.43	37.72
	0.21	27.29

37.72 Rosemont  
69' E. on S. 90°

44

S	9.7	28.0
cl	9.8	27.9
1/4	10.3	27.4
C	10.6	27.1
1/4	10.8	26.9
+2	14.8	22.9
cl	14.4	22.9
+1	10.6	27.1
N	10.2	27.5
77' E. on S. 90° 00		
N	9.3	28.4
+5	8.6	29.1
cl	10.5	27.2
1/4	10.3	27.4
C	9.3	28.4
1/4	8.0	29.7
cl	7.4	30.3
+5	7.3	30.4
S	8.6	29.1
82' E. on S + 79' E on N = 90° 00		
S	8.4	29.3
cl	8.7	29.0
1/4	8.7	29.0
C	8.5	29.2
1/4	8.5	29.2
cl	8.0	29.7
N	9.3	28.4



37.72  
100 E. on S + 100 E on N - W line Vista Del Mar on diagonal

N	7.5	30.2
cb	7.4	30.3
114	7.6	30.1
c	7.7	30.0
114	7.9	29.8
cb	7.8	29.9
S	7.5	30.2

Rosemont

45

For additional Notes on Rosemont See Page



30' wide Palomar St. Sec  
from E. line Neptune Place to E. line Electric

11/21/25  
under

37.72 Page 45

CHK on B.M.P.

7.32

30.40-30.42

S.E. Palomar  
+ Vista Del Mar

on diagonal E. line Neptune Place

N	18.5	19.2
+10	14.0	23.7
+15	12.2	22.5
+20	11.7	26.0
+30=S	11.3	26.4
+10	11.1	26.6
-10	10.6	27.1
S	10.8	26.9
10	11.0	26.7
+22	11.2	26.5
+24	14.0	22.7
+30=N	17.4	20.3
+10	19.1	18.6
20' E. on N 90° 00'		
N	11.7	26.6
+10	11.1	26.6
+20	10.6	27.1
+30=S	10.3	27.4
+10	10.0	27.7
-10	8.0	29.7
S	8.3	29.4
+10	8.4	29.1
+20	9.0	28.7
+30=N	9.1	28.6

37.72  
60' wide  
10' E. on 100' E. on N = W. line Vista Del Mar 90° 00'

46

N	5.5	32.2
+10	5.3	32.4
+20	5.1	32.6
+30=S	5.0	32.7
+10	4.9	32.8
-10	4.9	34.0
S	3.8	33.9
+10	4.2	33.5
+20	4.5	33.2
+30=N	4.8	33.9
W. cl 90° 00'		
N	3.8	33.9
+10	3.6	34.1
+20	3.2	34.5
+30=S	2.8	34.9
+10	2.6	35.1
-10	1.8	35.9
S	1.8	35.9
+10	2.0	35.7
+20	2.6	35.1
+20=N	3.1	34.6
+15	3.5	34.2
E. 1/4 90° 00'		
N-15	3.2	34.5
N	2.2	35.1
+10	1.5	36.2
+20	1.1	36.6
+30=S	0.7	37.0
+10	0.4	37.3



37.72

E. cl

90° 00'

0.0 37.7

0.1 37.6

+10 0.2 37.5

+20 1.0 36.7

+21 2.1 35.6

+24 2.0 35.7

+25 1.3 36.4

+30=N 1.5 36.2

+25 2.5 35.2

T.P. 12.93 50.36 0.29 37.43

E. Line. Vista Del Mar

N-25 14.7 35.7

N 13.0 37.4

+9 12.4 38.0

+10 14.5 35.9

+12 14.5 35.9

+13 12.4 38.0

+20 12.0 38.4

+30=S 11.5 38.9

+10 11.3 39.1

51° E.

-10 10.4 40.0

S 11.0 39.4

+10 11.4 39.0

+16 11.8 38.4

+17 14.0 36.4

+19 14.0 36.4

50.36

Palomar

47

+20 11.8 38.6

+30=N 12.0 38.4

50' E

N 5.8 44.6

+10 5.8 44.6

+11 8.7 41.7

+13 7.8 47.6

+15 6.0 44.4

+20 5.7 44.7

+30=S 5.8 44.6

+10 5.5 44.9

80' E

-10 0.7 49.7

S 0.9 49.5

+10 1.1 49.3

+16 1.4 49.0

+20 2.9 47.5

+22 2.9 47.5

+23 1.3 49.1

N 1.5 48.9

T.P. 13.04 63.21 0.19 50.17

100' E

N 10.8 52.4

+9 10.9 52.3

+10 12.9 50.3

+15 11.9 51.3



63.21

100'E (CON)

+16	10.7	52.5
+20	10.8	52.6
+30=S	10.8	52.6
+10	10.8	52.6

125'E

-10	8.8	54.4
S	7.7	55.5
+5	7.2	56.0
+10	7.1	56.1
+15	7.3	55.9
+19	8.1	55.1
+20	7.0	56.2
+30=N	7.5	55.7

150'E

N	4.0	59.2
+10	4.1	59.1
+11	4.0	57.2
+14	6.0	57.2
+15	4.7	58.5
+20	4.4	58.8
+30=S	5.2	58.0
+10	6.4	56.8

175'E

-10	2.0	61.2
S	1.7	61.5
+10	1.7	61.5

63.21

Palomar

48

+14	1.9	61.3
+15	4.2	59.0
+17	4.2	59.0
+20	2.2	61.0
+30=N	2.0	61.2

190'E

N	1.5	61.7
+9	1.4	61.8
+10	2.8	60.4
+14	2.8	60.4
+15	1.0	62.2
+20	0.7	62.5
+30=S	0.7	62.5
+10	0.5	62.7

195'E

-10	0.2	63.0
S	0.6	62.6
+10	0.4	62.8
+20	0.9	62.3
+30=N	0.9	62.3

T.P. 13.38 75.77 0.82 62.39

250'E

N	10.9	64.9
+10	10.7	65.1
+20	10.6	65.2
+30=S	10.7	65.1
+10	10.6	65.2



75.77  
295'E

-10	8.5	67.3
S	8.7	67.1
+10	8.5	67.3
+20	9.2	66.6
+30=N	8.7	67.1

325'E

N	7.6	68.2
+10	7.9	67.9
+20	8.0	67.8
+30=SS	7.6	68.2
+10	7.4	68.4

350'E

-10	6.9	68.9
-4	6.7	69.1
-2	8.2	67.6
S	8.2	67.6
+10	8.1	67.7
+20	8.3	67.5
+30=N	6.9	68.9

375'E

N	6.2	69.6
+5	6.4	69.4
+6	8.0	67.8
+10	8.1	67.7
+20	7.8	68.0
+30=SS	7.2	69.6

75.77

Palomar

49

+2	7.1	68.7
+3	6.1	69.7
+10	6.1	69.7

400'E

-10	5.5	70.3
S	5.7	70.1
+8	6.0	69.8
+10	6.9	68.9
+20	7.5	68.3
+21	5.7	70.1
+30=N	5.5	70.3

425'E

N	5.3	70.5
+8	4.9	70.9
+10	6.7	69.1
+17	6.4	69.4
+20	4.6	71.2
+30=SS	5.3	70.5
+10	4.7	71.1

450'E

-10	4.2	71.6
S	4.4	71.2
+10	4.4	71.4
+20	4.3	71.5
+30=N	4.3	71.5



75.77  
475.1' E

N	3.7	72.1
+10	3.6	72.2
+20	3.5	72.3
+30=S	3.5	72.3
+10	3.6	72.2

500' E

-10	3.0	72.8
S	3.0	72.8
+10	3.0	72.8
+20	2.7	73.1
+30=N	2.9	72.9

550' E 90°00

N	1.6	74.2
+10	1.5	74.3
+20	1.6	74.2
+30=S	1.6	74.2
+10	1.5	74.3

592.8' E. on N-W line La Jolla Blvd on (arc diagonal)

-10	0.7	75.1
S	0.8	75.0
+10	0.6	75.2
+20	0.7	75.1
+30=N	0.0	75.8

T.P. 12.24 87.75 0.24 75.51 N.W. 1/4 Cor La Jolla Palomares

8' E. of W. line on arc

N	12.2	75.6
---	------	------

87.75

Palomares

50

+10	12.4	75.4
+20	12.5	75.3
+30=S	12.5	75.3
+10	12.5	75.3

12' E. of W. line on arc

-10	12.3	75.5
S	12.2	75.6
+5	13.2	74.6
+10	14.0	73.8
+20	13.0	74.8
+30=N	12.0	75.8

20' E. of W. line on arc

-7	12.35	75.40 orientel
N	11.8	76.0
+5	13.2	74.6
+20	14.2	73.6
+26	14.2	73.6
+30=S	11.9	75.9
+10	11.9	75.9

10' E. of W. line on arc

-10	11.8	76.0
-9	14.3	73.5
S	13.4	74.0
+10	13.6	74.2
+25	11.7	76.1
+30=N	11.3	76.5



87.75  
15' E of W. cl on arc

N	11.0	76.8
+10	10.8	77.0
+20	10.5	77.3
+30=S	10.4	77.4
+10	10.4	77.4

23' E of W cl = wedge Paving on arc

S	10.30	77.5	on paving
N	10.30	77.5	" "

43' E of W cl = E. edge Paving on arc

N	10.30	77.4	" "
S	10.30	77.5	" "

E. cl on arc

S-10	10.4	77.4
S	10.4	77.4
+10	10.3	77.5
+20	10.3	77.5
+30=N	10.0	77.9

N. on "emt cl mayardage 9.54 78.21

E. line hadolla Blvd

N	9.2	78.6
+9	9.5	78.3
+10	10.1	77.7
+20	10.0	77.8
+30=S	10.2	77.6
+10	10.3	77.5

87.75  
5' E of East Line on N

Palomar

51

S-10	10.5	77.3
S	10.0	77.8
+10	10.0	77.8
+20	10.0	77.8
+21	9.5	78.3
+27	9.3	78.5
+30=N	7.7	80.1

50' E of E Line 90°-00

N	6.4	81.4
+4	7.9	79.9
+10	8.2	79.6
+11	8.7	79.1
+20	8.8	79.0
+30=S	8.8	79.0
+10	9.2	78.6

101.25 E. of E. Line = W Line Alley 90°-00

S-10	8.3	79.5
S	7.7	80.1
+10	7.8	80.0
+18	7.8	80.0
+28	7.1	80.7
+30=N	5.6	82.2

112' E. 90°-00

N	6.4	81.4
+10	7.4	80.4
+20	7.6	80.2



87.15

+30=S	7.3	80.5
+10	7.9	79.9

130' E

90° 00

S-10	7.4	80.4
S	6.7	81.1
+10	7.0	80.8
+14	6.9	80.9
+30=N	4.6	83.2

165' E

90° 00

N	3.5	84.3
+7	5.3	82.5
+20	6.1	81.7
+30=S	5.8	82.0
+10	6.6	81.2

200' E

S-10	6.4	81.4
S	5.7	82.1
+10	5.5	82.3
+17	5.3	82.5
+30=N	3.2	84.6

212.5 E = W. Line Electric on arc

N	4.6	83.7
+10	5.5	82.3
+20	5.4	82.4
+30=S	5.7	82.1
+10	6.4	81.4

87.15

Palomar

52

E Electric on arc

S-10	6.0	81.8
S	4.8	83.0
+10	5.0	82.8
+20	5.0	82.8
+30=N	4.8	83.0

E. Line Electric on arc

N	5.0	82.8
+10	4.9	82.9
+20	4.7	83.1
+30=S	4.5	83.3
+10	4.2	83.6



Hwy BIK 12 La Jolla Strand 1 1/2 miles  
 10' wide 2 sec from N. line Palomar to Rosemont

Measurements of E are

12.04 87.55 75.51

00 = N. line Palomar on diagonal

W 5.4 82.2

C 5.8 81.8

E 6.1 81.5

12' N

E 4.8 82.8

C 4.4 83.2

W 4.3 83.3

40' N

W 3.9 83.7

C 3.6 84.0

E 3.4 84.2

70' N

E 3.0 84.6

C 3.3 84.3

W 3.6 84.0

100' N

W 2.8 84.8

C 2.7 84.9

E 2.4 85.2

138.33 N = E, C

E 2.6 85.0

C 2.8 84.8

W 2.8 84.8

87.55

170' N

53

W 2.5 85.1

C 2.4 85.2

E 2.3 85.3

178.33 = E, W, Rosemont

E 3.4 84.2

C 3.8 83.8

W 3.8 83.8



50' wide  
10' elev  
75' 1/4"

Rosemont 2 Set  
from W. Line Electric to E. Line La Jolla Blvd

87.55 Page 53

00 = W. Line Electric

S	4.0	83.6
cl	4.3	83.3
1/4	3.9	83.7
C	4.0	83.6
1/4	4.2	83.4
cl	4.3	83.3
N	4.3	83.3

7' W

N	3.4	84.2
+5	3.8	83.8
cl	4.3	83.3
1/4	4.2	83.4
C	4.0	83.6
1/4	4.1	83.5
cl	4.1	83.5
+7	3.8	83.8
B	0.9	86.7

50' W

S	2.2	85.4
+2	3.9	83.7
cl	4.1	83.5
1/4	4.2	83.4
C	3.7	83.9
1/4	4.2	83.4

87.55

54

cl	4.1	83.5
N	4.0	83.6

80' W

N	4.5	83.1
cl	4.5	83.1
1/4	4.5	83.1
C	4.1	83.5
1/4	4.5	83.1
cl	4.5	83.1
+7	4.1	83.5
S	2.6	85.0

105' W = E. Alley

S	3.8	83.8
cl	4.2	83.6
1/4	4.5	83.1
C	4.6	83.0
1/4	4.8	82.8
cl	4.3	83.3
N	3.9	83.7

125' W

N	4.5	83.1
+4	5.3	82.3
cl	5.4	82.2
1/4	5.4	82.2



97.55

125' W (cont)

c	5.5	82.1
114	5.0	82.6
cl	4.9	82.7
s	4.5	83.1

170' W

s	5.5	82.1
cl	5.8	81.8
4	6.5	81.1
c	6.5	81.1
114	6.5	81.1
cl	5.7	81.9
75	6.5	81.1
N	5.5	82.1

R10' W = E. Line La Jolla Blvd

N	6.5	81.1	
cl	7.20	80.35	on emtel
71	7.9	79.7	
114	8.0	79.6	
c	7.7	79.9	
114	7.8	79.8	
79	7.6	80.0	
cl	7.15	80.40	on emtel
s	6.8	80.8	

Rosemont

55



10' wide BIK 7 La Jolla Strand 2 Sec.  
from N. Line Rosemont to S. Line Gravilla

87.55 Page 55

00 - N. Line Rosemont

N	3.5	84.1
E	3.9	83.7
E	4.1	83.5

10' N

E	2.6	85.0
E	2.8	84.8
N	3.0	84.6

17' N

N	2.5	85.1
E	2.4	85.2
E	2.3	85.3

50' N

E	2.6	85.0
E	2.6	85.0
N	3.3	84.3

65' N = Garage on W. Dirt floor 1' back

N	3.6	84.0
E	3.5	84.1
E	3.0	84.6

100' N

E	3.6	84.0
E	3.8	83.8
N	3.9	83.7

87.55  
135' N

56

N	5.1	82.5
E	4.8	82.8
E	4.4	83.2

145' N = Garage on W. ent. floor 1.5' back

E	4.6	83.0
E	4.9	82.7
N	5.1	82.5 ent. floor

170' N

N	5.5	82.1
E	5.1	82.5
E	4.8	82.8

200' N

E	5.2	82.4
E	5.5	82.1
N	5.7	81.9

225' N

N	5.7	81.9
E	5.8	81.8
E	5.7	81.9

250' N

E	6.4	81.2
E	6.3	81.3
N	6.5	81.1

J.P.	0.66	81.29	6.32	81.23
------	------	-------	------	-------



81.89  
300' N

W	1.4	80.5
C	1.3	80.6
E	1.4	80.5

350' N

E	2.5	79.4
C	2.6	79.3
W	2.7	79.2

400' W

W	3.9	78.0
C	3.8	78.1
E	3.7	78.2

4.30' N

E	4.2	77.7
C	4.4	77.5
W	5.0	76.9

4.40' N

W	5.7	76.2
C	5.4	76.3
E	5.7	76.2

500' N = S. Line - Gravilla.

E	7.0	74.9
C	7.1	74.8
W	7.3	74.6

T.P.

8.21 73.68

Alley Ret N side

Gravilla

N.W. La Jolla

CHK on B.M.

13.01 68.84: 68.96

Gravilla



Alley B1M to La Jolla Strand  
from N Line Grayilla to E Line La Jolla Blvd

T.P.	1.33	75.01	73.68	Page 57
	00-N Line Grayilla			
W			1.33	73.7 orient ed no yardage
W			1.9	73.1
E			1.6	73.4
E			1.6	73.4
E			1.10	73.9 orient ed no yardage
	10' N			
E			2.2	72.8
E			2.0	73.0
W			2.3	72.7
	55' N			
W			4.1	70.9
C			3.9	71.1
E			3.8	71.2
	100' N			
E			5.4	69.6
E			5.6	69.4
W			5.7	69.3
	120' N			
W			6.3	68.7
C			4.0	69.0
E			5.5	69.5
	130' N			
E			5.3	69.7
C			5.5	69.5
W			5.5	69.5

75.01  
160' N

58

W			6.0	69.0
E			6.0	69.0
E			5.8	69.2
	175' N			
E			8.2	66.8
E			7.8	67.2
W			8.2	66.8
	180' N			
W			9.3	66.7
C			10.4	64.6
E			9.6	65.4
T.P.	2.23	69.76	7.48	67.53 on Mitt
	187' N			
-5			7.2	
C			5.3	
C			5.8	
W			5.3	
+5			5.6	
	203' N			
-10			10.7	
W			11.6	
C			12.4	
-E			12.7	
+10			10.6	



69.76  
218' N

-10	8.6
E	10.5
+3	12.4
C	12.4
W	13.4
+10	14.3

235' N

-10	12.7
W	10.1
C	10.4
E	9.0
+5	8.2

258' N

-10	11.4
E	11.0
C	11.0
W	11.2
+10	12.7

264' N

-10	13.5
W	13.1
C	13.1
E	12.8
+10	12.6

69.76

B1K6 La Jolla Strand

272' N

59

-10	12.7
E	13.1
C	13.0
W	13.2
+10	13.8

278' N

-10	13.0
W	11.8
C	12.3
E	11.2
+10	10.0

290' N

-10	11.6
E	12.1
C	12.2
W	12.5
+10	12.6

296' N

-10	14.3
W	14.1
C	13.7
E	13.8
+10	13.7

Continued Book 1140 Page 27



Corbline Playa del Sur Rtriangle to Napier's Pca

P.I. =  $\frac{203}{0}$   $\frac{196}{25}$   $\frac{136}{50}$   $\frac{113}{67}$   $\frac{59}{83}$

Gravilla St. - N. ch.

0  $\frac{200}{15}$   $\frac{185}{23}$   $\frac{161}{36}$   $\frac{103}{50}$   $\frac{62}{68}$   $\frac{30}{71}$

165  $\frac{145}{24}$   $\frac{85}{43}$   $\frac{85}{48}$   $\frac{101}{50}$   $\frac{100}{56}$   $\frac{60}{60}$

176  $\frac{160}{20}$   $\frac{101}{50}$  100' Sol Gravilla  $\frac{96}{65}$

S ch - Kolmar

198  $\frac{190}{17}$   $\frac{200}{23}$   $\frac{166}{43}$   $\frac{110}{50}$   $\frac{76}{65}$

Roseport

60 ft to Bluff  $\frac{52}{10}$  m 10 ft

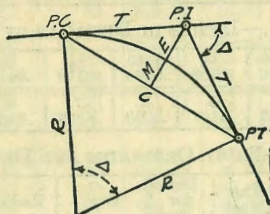
10.42 20 ft

228  $\frac{20}{50}$   $\frac{175}{50}$   $\frac{112}{80}$

236  $\frac{197}{50}$   $\frac{100}{66}$

## DIETZGEN'S RAILROAD CURVE AND REDUCTION TABLES

Copyright, 1914, by Eugene Dietzgen Co., New York City



### CURVE FORMULAS

Radius =  $R = \frac{50}{\sin \frac{D}{2}}$  (1) Degree of Curve =  $D$  and  $\sin \frac{D}{2} = \frac{50}{R}$  (2)

Tangent =  $T = R \tan \frac{\Delta}{2}$  (3) Length of Curve =  $L = 100 \frac{\Delta}{D}$  (4)

Middle ordinate =  $M = R(1 - \cos \frac{\Delta}{2}) = R \text{vers} \frac{\Delta}{2}$  (6)

External =  $E = T \tan \frac{\Delta}{4} = R \div \cos \frac{\Delta}{2} - R$  (8) =  $R \text{exsec} \frac{\Delta}{2}$  (9)

Long Chord =  $C = 2 R \sin \frac{\Delta}{2}$  (10)  $\Delta$  = Central Angle

### EXPLANATION AND USE OF TABLES

Stations.—Given P. I. = Sta. 161 + 80.35 to find Sta. of P. C. and P. T.  $\Delta = 62^\circ 10'$   $D = 8^\circ 20'$ . From Table IV for  $1^\circ$  curve  $T = 3454.1$  and  $\div 8\frac{1}{3} = 414.49$  ft. From Table V correction = .36 or  $T = 414.85$  ft. P. C. = Sta. P. I. -  $T = 157 + 45.50$ . Also from (4)  $L = 746.00$  and P. T. = Sta. P. C. +  $L = 164 + 91.50$ .

Offsets.—Tangent offsets vary (approximately) directly with  $D$  and with square of the distance. Thus tangent offset for Sta. 158 on above curve is 2.16 ft. found as follows. From Table III tangent offset for 100 ft. = 7.27 ft. Distance =  $158 - \text{Sta. P. C.} = 54.50$ , hence offset =  $7.27 (54.50 \div 100)^2 = 2.16$  ft. Also square of any distance divided by twice the radius equals (approximately) the distance from tangent to curve. Thus  $(54.50)^2 \div (2 \times 688.26) = 2.16$  ft.

Deflections.—Deflection angle =  $\frac{1}{2} D$  for 100 ft.,  $\frac{1}{4} D$  for 50 ft., etc. For  $c$  ft. =  $(m \text{ minutes}) .3 \times C \times D$  or = defl. for 1 ft. from Table III  $\times C$ . For Sta. 158 of above curve =  $.3 \times 54.5 \times 8\frac{1}{3} = 136.2'$  or  $2^\circ 16.2'$ , or =  $2.50 \times 54.5 = 136.2'$  from Table III. For Sta. 159 deflection angle =  $2^\circ 16.2' + 8^\circ 20' \div 2 = 6^\circ 26.2'$ , etc.

Externals.—May be found in similar manner to tangents. Thus  $E$  for curve above is 91.37. For from Table IV for  $1^\circ$  curve  $E = 960.6$  for  $8^\circ 20' = 960.6 \div 8\frac{1}{3} = 91.27$  and from Table V correction = .10 or  $E = 91.37$  ft. Or suppose  $\Delta = 32^\circ$  and  $E$  is measured and found to be 42 ft. What is  $D$ ? From Table IV  $E = 230.9$  and  $\div 42 = 5.5$  or  $D = 5^\circ 30'$ .



