

1147

WILSON
TRADE MARK

EUGENE DIETZGEN CO.

DRAWING MATERIALS, MATHEMATICAL and
SURVEYING INSTRUMENTS

Chicago New York San Francisco New Orleans Pittsburg Toronto

Distances from Center of Roadway for Cross-Sectioning
Roadway 16 feet wide. Side Slopes 1 on 1.
For Single Track Embankment.

H	0	.1	.2	.3	.4	.5	.6	.7	.8	.9	H
0	8.0	8.1	8.2	8.3	8.4	8.5	8.6	8.7	8.8	8.9	0
1	9.0	9.1	9.2	9.3	9.4	9.5	9.6	9.7	9.8	9.9	1
2	10.0	10.1	10.2	10.3	10.4	10.5	10.6	10.7	10.8	10.9	2
3	11.0	11.1	11.2	11.3	11.4	11.5	11.6	11.7	11.8	11.9	3
4	12.0	12.1	12.2	12.3	12.4	12.5	12.6	12.7	12.8	12.9	4
5	13.0	13.1	13.2	13.3	13.4	13.5	13.6	13.7	13.8	13.9	5
6	14.0	14.1	14.2	14.3	14.4	14.5	14.6	14.7	14.8	14.9	6
7	15.0	15.1	15.2	15.3	15.4	15.5	15.6	15.7	15.8	15.9	7
8	16.0	16.1	16.2	16.3	16.4	16.5	16.6	16.7	16.8	16.9	8
9	17.0	17.1	17.2	17.3	17.4	17.5	17.6	17.7	17.8	17.9	9
10	18.0	18.1	18.2	18.3	18.4	18.5	18.6	18.7	18.8	18.9	10
11	19.0	19.1	19.2	19.3	19.4	19.5	19.6	19.7	19.8	19.9	11
12	20.0	20.1	20.2	20.3	20.4	20.5	20.6	20.7	20.8	20.9	12
13	21.0	21.1	21.2	21.3	21.4	21.5	21.6	21.7	21.8	21.9	13
14	22.0	22.1	22.2	22.3	22.4	22.5	22.6	22.7	22.8	22.9	14
15	23.0	23.1	23.2	23.3	23.4	23.5	23.6	23.7	23.8	23.9	15
16	24.0	24.1	24.2	24.3	24.4	24.5	24.6	24.7	24.8	24.9	16
17	25.0	25.1	25.2	25.3	25.4	25.5	25.6	25.7	25.8	25.9	17
18	26.0	26.1	26.2	26.3	26.4	26.5	26.6	26.7	26.8	26.9	18
19	27.0	27.1	27.2	27.3	27.4	27.5	27.6	27.7	27.8	27.9	19
20	28.0	28.1	28.2	28.3	28.4	28.5	28.6	28.7	28.8	28.9	20
21	29.0	29.1	29.2	29.3	29.4	29.5	29.6	29.7	29.8	29.9	21
22	30.0	30.1	30.2	30.3	30.4	30.5	30.6	30.7	30.8	30.9	22
23	31.0	31.1	31.2	31.3	31.4	31.5	31.6	31.7	31.8	31.9	23
24	32.0	32.1	32.2	32.3	32.4	32.5	32.6	32.7	32.8	32.9	24
25	33.0	33.1	33.2	33.3	33.4	33.5	33.6	33.7	33.8	33.9	25
26	34.0	34.1	34.2	34.3	34.4	34.5	34.6	34.7	34.8	34.9	26
27	35.0	35.1	35.2	35.3	35.4	35.5	35.6	35.7	35.8	35.9	27
28	36.0	36.1	36.2	36.3	36.4	36.5	36.6	36.7	36.8	36.9	28
29	37.0	37.1	37.2	37.3	37.4	37.5	37.6	37.7	37.8	37.9	29
30	38.0	38.1	38.2	38.3	38.4	38.5	38.6	38.7	38.8	38.9	30
31	39.0	39.1	39.2	39.3	39.4	39.5	39.6	39.7	39.8	39.9	31
32	40.0	40.1	40.2	40.3	40.4	40.5	40.6	40.7	40.8	40.9	32
33	41.0	41.1	41.2	41.3	41.4	41.5	41.6	41.7	41.8	41.9	33
34	42.0	42.1	42.2	42.3	42.4	42.5	42.6	42.7	42.8	42.9	34
35	43.0	43.1	43.2	43.3	43.4	43.5	43.6	43.7	43.8	43.9	35
36	44.0	44.1	44.2	44.3	44.4	44.5	44.6	44.7	44.8	44.9	36
37	45.0	45.1	45.2	45.3	45.4	45.5	45.6	45.7	45.8	45.9	37
38	46.0	46.1	46.2	46.3	46.4	46.5	46.6	46.7	46.8	46.9	38
39	47.0	47.1	47.2	47.3	47.4	47.5	47.6	47.7	47.8	47.9	39
40	48.0	48.1	48.2	48.3	48.4	48.5	48.6	48.7	48.8	48.9	40

Example—If point is 22.6 ft. above grade, how far should it be from center line to be a slope stake point? Ans. from Table 30.6. For same slopes but other widths of roadbed, correct above figures by one-half difference in width of roadbed; thus in example above, for 20 ft. roadbed distance will be $30.6 + (20 - 16) \div 2$ or 2 ft. added to $30.6 = 32.6$. For slopes of 1 on $1\frac{1}{2}$ see inside of back cover.

Copyright, 1914, by Eugene Dietzgen Co.

777
58 1/2
62 1/2
75 1/2
81 1/2

no tree

Cross Section Alley Block 165 University Heights
 Between Kansas and 30th St.
 From Lincoln to Park

366.71

1

BM	568	366.71	361.03	Lincoln +30 5' x 9' Tack
			0+0 = N.L. Lincoln	
E	Top Curb		4.56	
+5			5.2	
±			5.0	
+8			4.9	
N	Top Curb		4.44	8' N on N.L. Curb Step 2.73
			10' N	
N			3.5	
+3			4.6	
±			4.5	
+6			4.3	
E			3.7	
			25' N	
E			3.4	
+3			3.1	
+5			3.9	
±			3.9	
+8			3.9	
N			3.5	

	50' N	
N	3.5	70' N 3' N N.L.
±	3.5	Garage Dirt Floor 2.6
E	3.4	
	100' N	90' N 00' E
E	2.6	Do. Garage Conc Floor 2.6
±	2.7	
N	2.8	

Gross Section Alley Block 3.5 Resub Teratto
 Between Wilson and 36th St.
 From Orange to El Cajon

15' Wide

381.64

75' N

1-29-54
 31-5-54
 No. 7-1-54
 2

BM	6.11	381.64	375.5	3.0 N N Orange + 3.0' N	E	4.0	377.4
		0 to = 11 L Orange			Z	4.1	377.5
E	Top Curb		5.49	376.1	N	4.1	377.5
Z			5.3	376.3			9.0' N 4.5' E Garage Conc Floor 375 377.9
						100' N	
N	Top Curb		5.30	376.6	N	3.4	378.2
		10' N			Z	3.9	377.7
N			4.5	377.1	E	4.0	377.6
+1			4.5	377.1			125' N
Z			5.0	376.6	E	3.8	377.8
E			4.8	376.8	Z	3.6	378.0
		25' N			+3	3.5	378.1
E			4.3	377.3	N	3.5	378.1
Z			4.5	377.1			143' N
+2			4.2	377.4	N	3.1	378.5
N			4.2	377.4	Z	3.2	378.4
		50' N			E	3.7	377.9
N			4.1	377.5	10.5 Conc Apron	3.75	377.9
+3			4.7	377.4	14 Garage Conc Floor	3.59	378.0
Z			4.3	377.3			15' N 4.5' E Garage Conc Floor 360 378.4
E			4.0	377.6		175'	3.7

381.64

E 3.5 378.1

W 3.5 378.1

200'N

-4.5 3 Garage Conc Floors 3.14 378.5

W 3.3 378.3

E 3.5 378.1

E 3.7 377.9

235'N

E 3.4 378.2

E 3.1 378.5

W 3.2 378.4

+3.5 3 Garage Conc Floors 3.13 378.5

250'N

W 3.3 378.3

E 3.1 378.5

E 3.2 378.4

275'N

E 3.2 378.4

E 3.0 378.6

W 2.6 379.0

381.69

285'

W 3.2 378.4

E 3.1 378.5

E 3.0 378.6

293'N

-3.5 Garage Conc 2.90 378.7

E 3.0 378.6

E 3.3 378.3

W 3.4 378.2

11.5 Garage Conc Floor 3.15 378.5

312'N

-0.5 Do Garage Conc 3.20 378.4

W 3.2 378.4

E 3.5 378.1

E 3.5 378.1

TP 464 382.99 3.39 378.30

340'N

E 4.9 378.0

E 4.4 378.5

W Do Garage Conc Floor 4.52 378.4

3

382.94

375'N

N	46	378.3
E	48	378.1
N	50	377.9

400'N

E	47	378.2
E	47	378.2
N	45	378.4

425'N

N	48	378.1
E	48	378.1
E	48	378.1

450'N

E	51	377.8
E	50	377.9
N	49	378.0

475'N

N	46	378.3
E	46	378.3
E	48	378.1

382.94

500'N

E	50	377.9
E	48	378.1
N	47	378.2

525'N

N	47	378.2
E	48	378.1
E	50	377.9

550'N

E	52	377.7
E	50	377.9
N	46	378.3

575'N

N	43	378.6
E	45	378.4
E	48	378.1

600'N

E	45	378.4
E	43	378.6
N	43	378.6

588'N
 2.5' from N.H.
 Top
 44/ 378.5

4

38294

5

6.7' H = 3.4, El. Cajon Blvd

W	Top Curb	3.81	379.1
	Gutter Paring	4.01	378.9
E	"	4.22	378.7
	Gutter Paring	4.02	379.03
E	Top Curb	3.91	379.0

TP	3.81	282.66	4.09	378.85
----	------	--------	------	--------

BM			4.80	374.05
----	--	--	------	--------

8P.5H
 El Cajon rd
 Station
 377.94

Cross Section Alley Block St Park Villas
 Between Bancroft And 33rd
 From Nighthman To Landis
 15' wide

34707

2.2.16
 5.55.22
 8.15.1
 Nighthman
6

B.M.	12.67	346.11	333.44	N.H. B.P. University Boundary		115' S	347.1 343.9
		0.10 - 5 L Nighthman	346.1				344.1
E	Top Carb	3.31	347.8			3.0	344.2 ✓
	Gutter	3.8	347.3			2.9	344.4
±		3.5	347.6			2.7	344.4
	Gutter	3.1	343.0			135' S	343.8
W	Top Carb	2.66	343.4	Fence 27' in Alley		3.3	343.8
		15' S				3.3	343.7
W		1.9	344.2	Fence 27' in Alley		3.4	343.7
±		2.0	344.1			153' S	344.2
E		2.6	343.5			2.9	344.1
		50' S				3.0	344.0
E		1.0	345.1			3.1	344.0
±		1.4	344.7			190' S	343.2
W		1.5	344.6			3.9	343.2
		75' S				3.9	343.2
		1.6	344.5	Fence 26' in Alley		4.1	343.0
±		1.6	344.5	Fence 26' in Alley		E Garage Dirt Floor	343.0
E		2.0	344.1	10' So End Foot of 10' in Alley		238' S	343.4
TP	27.5	347.07	179	344.38		4.7	342.4
						4.7	342.9
						4.2	342.9
						3.73	343.4
						3.41	343.7

207.5 N. End
 Conc Apron
 2 Garages
 Apron 2.8 in Alley
 Garage 0.8 in Alley
 Apron 3.0
 3.2

347.07

347.1

345.5

347.1

N 3.4 343.7

N 4.9 342.2

260'S

E 4.9 342.2

N 3.8 343.3

E 5.1 342.0

E 3.7 343.4

+3 Do Garage Conc Floor 5.10 342.0

E 4.4 342.7

365'S

280'S

E 4.9 342.2

E 5.4 341.7

E 4.1 342.5

E 5.2 341.9

N 4.3 342.8

N 5.4 341.7

300'S

385'S

N 4.5 342.6

N 6.0 341.1

E 4.6 342.5

E 6.0 341.1

E 5.1 342.0

E 6.3 340.8

318'S

422'S

-3 Do Garage Conc Floor 5.0 342.1

-6.2 Garage Conc Floor 6.33 340.8

E 5.0 342.1

E 6.3 340.8

E 4.6 342.5

E 6.1 341.0

N Conc. P. Floor 4.59 342.5

N 6.2 340.9

+1.5 Do Garage Conc Floor 4.27 342.8

460'S

N 6.5 340.6

E 6.3 340.8

		347.07		347.1
F			6.6	340.5
		500.5		
F			7.0	340.1
Z			6.8	340.3
+4			6.3	340.8
N			7.0	340.1
		525.5		
N			7.4	339.7
Z			7.2	339.9
E			7.3	339.8
		550.5		
E			7.3	339.8
Z			7.2	339.9
N			7.6	339.5
		575.5		
N	Top Conc Drive old photos		7.7	339.4
Z			7.6	339.5
F			8.2	338.9
TP	1.01	342.20	8.95	338.12

		585.5		342.2
F			3.7	338.5
Z			4.2	338.0
N	Top Conc Drive Not Used		3.1	339.1
		600.5		
N	Top Conc Drive Not Used		3.3	338.9
+2			4.6	337.6
Z			5.4	336.8
+5			5.7	336.5
F			5.0	337.2
		606.85		N.L. Landis
E	Top Carb		5.37	336.8
+2			6.1	336.1
Z			6.1	336.1
N	Gutter		5.7	336.5
			5.29	336.9
	BM		3.81	338.39

NW B.P.
Landis + 3201
338.47

Cross Section Alley Block 35 Parrish + Loomis Field
 Between 26th + 27th St.
 From Broadway to Est.

20' side

2.7.82
 Survey
 Block
 Parrish

B.M.	0.52	191.45	190.93	NH BP Broadway 27	180.67		
E	Top Curb	0+0 = 5th Broadway	174.6	178.99	-10	13.5	167.2
	Gutter		18.0	178.45	H	9.1	171.6
TP	2.31	180.67	18.09	178.36	+4	9.9	170.8
±			3.2	177.5	±	10.1	170.6
H	Top Curb		3.21	177.46	+3	9.7	171.0
		10'S			+5	6.7	174.0
H			4.7	176.0	E	3.4	177.3
+4			5.3	175.4		65'S	
±			5.1	175.6	E	5.9	174.8
+7			4.0	176.7	+5	8.8	171.9
E			1.4	179.3	+8	12.6	168.1
		25'S			±	13.1	167.6
E			2.0	178.7	+6	13.0	167.7
+3			4.4	176.3	H	12.5	168.2
+6			7.6	173.1	+10	16.4	164.3
±			8.0	172.7		88'S	
+6			7.9	172.8	-10	18.9	161.8
H			7.1	173.6	H	16.4	164.3
+10			12.1	168.6	±	15.3	165.4

		180.67				168.07			
						150'S			
+2			13.4	167.3			9.8	158.9	
E			10.2	170.5			7.8	160.9	
TP	0.39	168.07	129.4	167.73			6.9	161.2	
		90'S					5.6	162.5	
E			1.8	166.3			5.7	162.4	
Z			2.9	165.2			5.5	162.6	
N			3.1	165.0			4.2	163.9	
+10			6.0	162.1	94'S STEEL Garage Dirt Floor 174 -166.33		2.6	165.5	168'S I EXL. No. End Conc Wall 6" Wide #1 Top 5.52 -162.55
		113'S							
-10			8.0	160.1			2.7	165.4	
N			4.2	163.9			4.5	163.6	
Z			3.9	164.2			6.2	161.9	
E			2.4	165.7			6.3	161.8	
+2	Conc Approx		1.88	166.19			6.2	161.9	
+5	Do Garage Conc Floor		1.59	166.48			7.24	160.83	
		175'S							
E			2.7	165.4					
Z			4.9	163.2					
N			5.9	162.2					
+10			8.6	159.5					
							200'S		
							12.0	156.1	
							9.60	158.47	
							7.9	160.2	

168.07

±		7.8	160.3
+3		7.6	160.5
+4		6.0	162.1
E		3.6	164.5
	22.5'S		
E		6.5	161.6
+5		7.7	160.4
+6		9.4	158.7
±		9.5	158.6
+9.5	Top Conc Wall	11.02	157.05
W		12.2	155.4
	23.1'S		
W		12.3	154.8
+10.5	Top	11.28	156.79
+2		10.2	157.9
±		10.0	158.1
E		8.9	159.2
	25.0'S		
E		10.7	157.4
±		11.2	156.9

11

168.07

+9	Top Conc Wall	10.94	157.13
W		13.4	154.7
	25.7'S		
W		13.7	154.4
+1	Top Conc Wall	11.18	156.89
±		11.4	156.7
+7		11.2	156.9
+8		10.2	157.9
E		9.4	158.7
	27.5'S		
E		9.7	158.4
+3		10.3	157.8
+1		11.8	156.3
±		12.2	155.9
+9	Top Conc Wall	12.07	156.00
W		14.5	153.6
	29.8'S		
W		15.5	152.6
+1	Top Conc Wall	13.20	154.87
±		13.9	154.7

16807

+4			13.0	155.1
+5			12.1	156.0
F			10.3	157.8

300.5 = XL EST

E	TopCar		11.29	156.78
	Gutter		11.5	156.6
+7			13.3	154.8
Z			13.8	154.3
+8			13.8	154.3
X	TopCurb		15.09	152.98
TP	11.49	17138	8.18	159.89
TP	13.08	18420	0.76	171.12
B.M.			4.15	180.05

SN 32
E 1277
180.01

Grass Section Eyrie Road

25' Wide
24.5' Between Curbs Returns

SE B.P.
Adams + 30ths

25' N

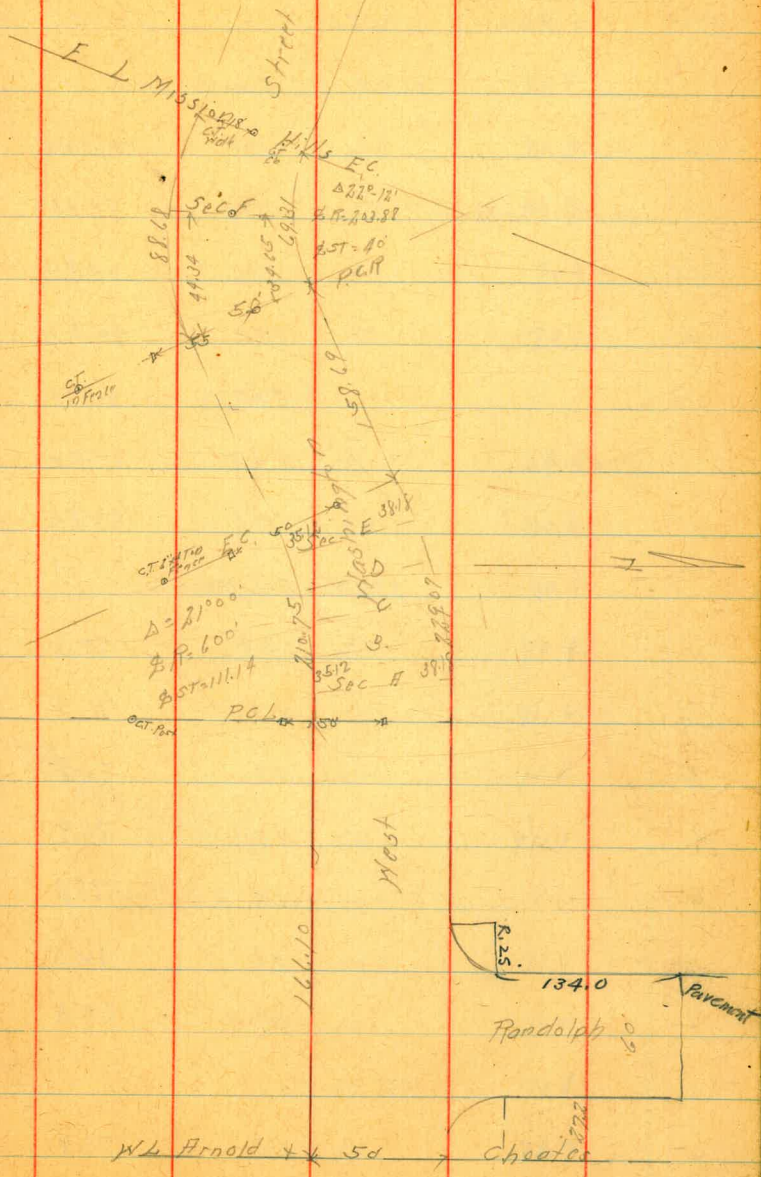
7-13-56
S. J. Johnson
D. L. Hartland
13

BM	A. 25	393.29	389.04	389.04	E	49	394.9 390.0
TP	596	395.15	410	389.19	+5	44	390.5
TP	3.95	394.91	419	390.96	2	43	390.6
	0+0	: N. Copley Taken on D 199.65'		394.9	N	42	390.7
N	Top Curb	4.45	390.4	390.4		40' N	
N	Gutter	4.7	390.2	390.2	N	42	390.7
2		5.1	389.8	389.8	2	45	390.4
E	Gutter	4.9	390.0	390.0	+7	47	390.2
E	Top Curb	4.28	390.2	390.2	E	50	389.9
	0+0 on West 1.6 N on East					65' N	
E		4.7	390.2	390.2	E	5.3	389.6
L		5.1	389.8	389.8	+5	5.1	389.8
N		4.7	390.2	390.2	2	4.8	390.1
	15' N				N	4.4	390.5
N		4.2	390.7	390.7		90' N	
2		4.7	390.2	390.2	N	5.2	389.7
E		5.0	389.9	389.9	2	5.1	389.3
					E	6.0	388.9

Sketch West Washington St.
Through Mission Hills Park

3-7-26 14

For Cross Sections See Next Page



Cross Section West Washington St

From W L Arnold + Choates to E L
Mission Hills.

50' wide
10' Cbs
7 1/2' Gls

SE. BP
Washington
+ Lark

27485

8-9-16
5:55 AM
Miss
Washington
15

BM	491	274.85	269.94 ✓				
		0+0 = W L Arnold + Choates					
S	Top Carb	1.80	273.05		cb	2.7	272.2
	Gutter Top Rainy	2.32	272.53		1/4	3.4	71.5
1/4	"	2.03	272.82		cb	4.0	70.9
2		1.98	272.87		N	4.8	70.1
1/4		2.15	272.70				
	Gutter	2.45	272.40		N	5.0	69.9
N	Top Carb	1.96	272.89		cb	4.3	70.6
		272' N = E L Randolph			1/4	4.2	70.7
N		4.3	70.6		2	4.0	70.9
cb		3.7	71.1		1/4	3.7	71.2
1/4		3.3	71.6		cb	3.1	71.8
2		3.2	71.7		S	3.2	71.7
1/4		3.1	71.8				
						572' N = E Randolph	
cb		2.6	72.3		S	3.4	71.5
S		2.6	72.3		cb	3.5	71.4
		372' N = cb			1/4	4.1	70.8
S		3.6	71.9		2	4.2	70.7

274.85

1/4	45	70.4
cb	47	70.2
H	54	69.5

672H = 1/4

H	56	69.3
cb	51	69.8
1/4	49	70.0
2	47	70.7
1/4	46	70.3
cb	37	71.7
S	36	71.3

772H = cb

S	40	70.9
cb	41	70.8
+1	42	70.6
+3	49	70.0
1/4	51	69.8
2	53	69.6
1/4	54	69.5

274.85

cb	54	76.5
H	60	68.9

872H = XL Randolph

H	66	68.3
cb	58	69.1
1/4	59	69.0
2	58	69.1
1/4	56	69.3
+2	56	69.3
cb	45	70.4
S	42	70.7

100H

S	48	70.1
cb	50	69.9
+5	44	68.5
1/4	63	68.6
2	67	68.2
1/4	68	68.1
cb	66	68.3

27485

27485

N	7.3	67.6
	12.5' M	
N	8.3	66.6
Cb	7.7	67.4
+2	8.1	66.8
1/4	8.0	66.9
±	7.9	67.0
1/4	7.8	67.1
+3	8.2	66.7
Cb	6.2	68.7
+3	5.1	69.3
S	5.4	69.5
	1.50' M	
S	5.9	69.0
+7	6.4	68.3
Cb	7.9	67.0
+2	9.0	65.7
1/4	9.0	65.9
±	9.0	65.9

1/4	9.1	65.8
+3	9.2	65.7
Cb	8.7	66.7
N	9.5	65.4
	106.1' M - PC	
	Div Curve into 6 Parts H 3818 A B C D E F 535.12	
N	10.4	64.5
Cb	9.6	65.3
+2	9.3	65.6
+3	9.8	65.1
1/4	9.6	65.3
±	9.5	65.4
1/4	9.6	65.3
+5	9.6	65.3
Cb	8.2	66.7
+4	6.9	68.0
S	6.4	68.5
	25.1' M of PC 001 23.4' " " " 005	
S	7.1	67.8
+3	7.5	67.4

27485

+P	9.8	265.0
Cb	10.0	64.8
1/4	10.1	64.7
L	10.0	64.8
1/4	9.9	65.0
Cb	10.5	64.3
H	10.7	64.1
H	11.0	63.8
Cb	10.7	64.1
1/4	10.2	64.6
L	10.1	64.7
1/4	10.3	64.5
Cb	10.1	64.7
S	9.1	65.7
S	9.8	65.0
+3	10.0	64.8
+5	10.7	64.1

1 pc.
38.1877005
Spec B = 35.1877005

Spec B

27485

Cb	10.6	64.2
1/4	10.6	64.2
L	10.5	64.3
1/4	10.7	64.1
Cb	10.9	64.0
H	11.9	63.0
H	11.1	63.7
Cb	11.3	63.5
1/4	11.2	63.6
L	10.9	64.0
1/4	10.9	64.0
Cb	10.8	64.1
+7	10.9	64.0
S	9.9	65.0
S	10.3	64.5
+3	11.1	63.7
Cb	11.1	63.7

Spec C

Spec D

274.85

1/4		11.0	263.8
2		11.0	263.8
+3		11.1	63.7
+6		12.0	62.8
1/4		12.1	62.7
cb		12.3	62.5
N		13.4	61.4
TP	528	268.5	1128
		500	263.57
		500	263.57
		8.0	60.8
cb		7.7	61.1
1/4		6.7	62.1
+5		4.9	64.0
2		5.0	63.8
1/4		5.0	63.8
cb		5.0	63.8
+6		5.1	63.7
5		4.2	64.6

EC

268.85

		3.5	65.3
		3.4	65.4
		5.0	63.8
		4.9	64.0
		4.7	64.1
		4.7	64.1
		4.5	64.3
		6.1	62.7
		6.5	62.3
		75" of EC	
		6.0	62.8
		5.3	63.5
		4.5	64.3
		4.5	64.3
		4.4	64.4
		4.1	64.2
		3.3	65.5
		2.4	66.4

5000

26885

S	25	266.3
cb	33	65.5
+2	45	64.3
1/4	43	64.5
2	43	64.5
1/4	43	64.5
+5	40	64.8
cb	48	64.0
H	61	67.7
100 ft		
H	59	63.0
+7	40	64.8
cb	39	65.0
1/4	42	64.6
2	41	64.7
1/4	42	64.6
+2	42	64.6
cb	27	66.1
S	18	67.0

26885

130 ft

S	18	267.0
cb	27	66.1
+3	31	65.7
1/4	42	64.6
2	42	64.6
1/4	43	64.5
cb	42	64.6
+4	42	64.6
H	54	63.4
Divided Curve into 2 Parts		
159.7 = P.C.P		
44.34 ans		
34.65 ans		
H	54	63.4
+5	48	64.0
cb	48	64.0
1/4	48	64.0
2	47	64.1
+5	46	64.2
1/4	40	64.8
cb	29	66.0
X 5	22	66.6

SOL F = 34.65' N 011
44.39' H 005

S	28	266.0
cb	3.3	65.5
1/4	4.6	64.2
+3	5.3	63.5
2	5.5	63.3
1/4	5.8	63.0
cb	5.8	63.0
H	5.5	63.3
	231 H 300 H 295 H 005	of last sect.
H	6.1	62.7
cb	6.5	62.3
1/4	6.5	62.3
2	5.9	63.0
1/4	5.4	63.4
cb	4.4	64.4
2.5	4.1	64.4
S	3.0	65.8
	EG = FL Missou Hills	
S	4.9	64.0

+3		6.5	267.3
cb	Top	6.5	62.1
	Gutter Top Parings	7.46	61.4
1/4	" "	7.30	61.55
2	" "	7.31	61.54
1/4	" "	7.71	61.14
	Gutter	8.26	60.6
	cb Top	7.77	61.08
H		7.3	61.5
B.M.		7.15	267.70

B.P. Min
H.L. Washington
FL Missou Hills

Cross Section Randolph St
From So End Parking to N.W. Washington

6' Wide
10' Cb
10' G's

Stop curb
Washington
Randolph

3-11-86
G. L. Lison
B. J. S.
Northwood

273.56

0.47	273.52	273.05	Gutter	5.5	268.0
	010 - S End Parking		1/4	5.5	68.0
E Cb Top	4.47	269.05	2	5.5	68.0
Gutter Top Parking	5.10	68.42	1/4	5.8	67.7
1/4	4.80	68.72	Cb	6.2	67.3
2	4.74	68.78	"	6.7	66.8
1/4	5.05	68.47		7.5's	
Gutter	5.50	68.02	"	7.1	66.4
Cb Top End	5.04	68.48	2.5	7.0	66.5
"	4.9	68.12	Cb	6.1	67.4
	25's		1/4	6.0	67.5
"	6.8	67.3	2	5.7	67.8
Cb	5.9	67.6	1/4	5.7	67.8
1/4	5.9	67.6	Gutter	5.6	67.9
2	5.4	68.1	Cb Top	5.04	68.48
1/4	5.4	68.1		100	
Gutter	5.4	68.1	E Cb Top	5.02	68.5
Cb Top	4.72	68.8	Gutter	5.7	67.8
	50's		1/4	5.5	68.0
Cb	4.89	68.63	2	5.7	67.8

90's Cb E Cb
Caleb 3/11/86
593 67.59

27358

23

1/4 6.0 767.5

Cb 6.2 767.37

1/4 7.2 66.3

1.07'
500' Cb
Catch Basin
6.88-66.51

125' 5

1/4 7.0 66.5

Cb 5.9 67.6

1/4 5.7 67.8

2 5.6 67.9

1/4 5.4 68.1

Gutter 4.8 68.7

E Cb Top 3.98 69.54

159' 5 = N. L. West Washington

E Top Carb 2.04 71.48

7.05 3.1 70.4

Cb 3.5 70.0

1/4 3.7 69.8

2 4.1 69.6

1/4 4.4 69.1

Cb 4.6 68.9

1/4 5.8 68.17

10' cl's
20' Pavement

La Jolla Blvd & Sec
Gentler St South

3/29/26
Miller
N.W. La Jolla Blvd
& Archon near La Jolla
Rushville

74.82
9.5' S = N Line (Archon) on W. 40' wide

24

BM 7.08 74.82 67.74

W. cl. 6.60 68.22

00 = S Line Gentler St

11.7 E = W. edge Pavement 6.27 68.55

E 3.9 71.0

E " " 6.22 68.60

+1 4.9 69.9

11' W 5.9 68.9

+8 4.8 70.0

10' W = cl 5.5 69.3 6891

+10 = cl 5.8 69.0 691

E. Line 5.2 69.6

cont cl no yardage 5.46 69.36

135' S = S. Line Archon on W.
W. side Blvd Paved From Gentler St to this section with oil Macadam

+21.6 = E edge Pavement 5.87 68.95

E. Line 5.5 69.3

20' S

10' W = cl 5.6 69.2 6883

Pavement 5.93 68.89

11' W 6.3 68.5

13' W of E. Line 6.0 68.8

E. edge Pavement 6.46 68.36

10' W = cl 5.4 69.4 6906

W " " 6.36 68.46

E. Line 5.0 69.8

11.7' W = W. cl 6.80 68.02

50' S

140' S

E 5.0 69.8

E. edge pavement 6.45 68.37

+4 5.3 69.5

E. cl 6.4 68.4 6878

+10 = cl 5.3 69.5 690

E. Line 5.8 69.0

+11 6.0 68.8

200' S

Pavement 6.12 68.70

E. Line 6.2 68.6

E. cl 6.6 68.2 687
E. edge Pavement 6.58 68.24

74.82

260' S = N. line Rushville on W 50' wide
This intersection paved with oil Macadam

W. cl	7.04	67.74	
11.8' E = W. edge Pavement	6.80	68.02	
E " "	6.70	68.06	
10' W = cl	6.6	68.2	68.58
2' W of E Line	6.2	68.6	
E. Line	5.7	69.1	
300' S =	S. cl of Rushville on W 50' wide		
	N. Line Arenas on E 60' "		
E. line	5.7	69.1	
+2' W	6.2	68.6	
+10' W = E. cl.	6.8	68.0	68.5
E. edge Pavement	6.77	68.05	
10' S =	S. Line of Rushville on W		
	N. cl Arenas on E		
W. cl	7.04	67.78	
11.9' E = W. edge Pavmt	6.80	68.02	
E " "	6.7	68.1	
E. cl	6.5	68.3	68.5
2' W. of E Line	6.1	68.7	
E. line	5.5	69.3	

74.82

Arenas on E

La Jolla Blvd

25

E. line	4.9	69.9	
+2'	6.0	68.8	
E. cl	6.5	68.3	68.75
E. edge Pavmt	6.65	68.17	
S. cl Arenas on E			
E. edge Pavmt	6.52	68.30	
11' W of E Line	6.3	68.5	
E. cl	5.6	69.2	69.0
2' W of E Line	5.1	69.7	
E. Line	4.6	70.2	
00' S Line Arenas on E			
E. line	4.6	70.2	
10' W E. cl	5.4	69.4	69.0
12' W	6.2	68.6	
22' W. of E. Line = E. edge Pavmt	6.43	68.39	
50' S			
E. edge Pavmt	6.06	? 68.76	
12' W of E Line	5.9	68.9	
E. cl	5.2	69.6	69.31
1' W of E. line	4.5	70.3	
E. line	4.0	70.8	

74.82
100'S

E. Line	4.0	70.8
10' W = edge	4.3	70.5
15' W	5.7	69.1
E. edge Pav't	5.66	69.16

125'S

E. edge Pav't	5.46	69.36
17' W of E. Line	5.1	69.7
14' " " "	3.8	71.0
10' " " " = edge	3.9	70.9
E. Line	3.6	71.2

140'S = old N. Line, Rushville on E

E. Line	3.5	71.3
10' W = edge	3.9	70.9
14' W	4.9	69.9
E. edge Pav't	5.36	69.46

158'S

E. edge Pav't	5.15	69.67
15' W. of E. Line	4.6	70.2
10' " " " = edge	3.7	71.1
E. Line	2.7	72.1

74.82
160'S = New N. Line Rushville on E

E. Line	3.5	71.3
10' W = E. edge	4.3	70.5
E. edge Pav't	5.15	69.67

178'S

E. edge Pav't	5.03	69.79
E. edge	4.2	70.6
E. Line	3.0	71.8

179'S

E. Line	1.9	72.9
8' W	2.3	72.5
10' W = E. edge	4.0	70.8

E. edge Pav't	5.00	69.8
---------------	------	------

180' N. L. Rushville
(?) 185'S = New S. Line Rushville on E

220' W. of E. Line = E. edge pav't	5.00	69.8
11' W. of E. Line	4.1	70.7
10' " " " = edge	2.4	72.4

E. Line	1.8	73.0
---------	-----	------

200'S = old N. Line Rushville on E. = 00

E. Line	1.8	73.0
110' W = E. edge	2.4	72.4

La Jolla Blvd 25

	74.82			
12' W of E. line	4.2	70.6		
E. edge Pavmt	4.82	70.0		
	50'S			
E. edge Pavmt	4.47	70.35		
15' W of E. line	4.1	70.7		
E. cl	3.2	71.6	70.86	
E. line	1.5	73.3		
	100'S			
E. line	1.5	73.3		
2' W	2.9	71.9		
10' W = cl	3.7	71.1	71.18	
E. edge pavmt	4.18	70.64		
T.P.	11.47	82.24	4.05	70.77
104'S = S. end cl + walk on W. 14.7 N. of N. line Ferr & Ken on W				
W. line La Jolla Blvd	11.4	70.8		
10' W = cl	11.47	70.77	70.37	
22.0 E = wedge Pavmt	11.52	70.72		
118.75 = N. line Ferr & Ken on W 90.5' wide				
W. line - 2	12.1	70.1		
W. line	12.0	70.2		

	82.24			
+10 = w cl	10.8	71.4		La Jolla Blvd 125 140 27 14.7.2 70.5
W. edge pavmt	11.44	70.80		
E. " "	11.37	70.87		
E. cl	11.1	71.1	71.3	
4' W of E. line	10.5	71.7		
3' W " "	9.9	72.3		
E. line	9.3	72.9		
	125'S			
E. line	9.1	73.1		
2' W	9.6	72.6		
4' W	10.6	71.6		
E. cl	11.1	71.1	71.34	
E. edge pavmt	11.35	70.89		
W " "	11.45	70.79		
W cl	10.7	71.5		
W. line	12.9	69.3		
6' W	16.5	65.7		
10' W	46.6	65.6		
	140'S			
10' W of W. line	14.8	65.4		
W. line	16.6	65.6		

82.24

140's (con)

2' E of W line	12.7	69.5	
10' " " " = w cl	10.4	71.8	
w edge par'nt	11.28	70.98	
E " "	11.21	71.03	
12' W of E line	11.2	71.0	
E. cl	10.5	71.7	71.44
3' W of E line	10.3	71.9	
E. line	8.6	73.6	

149. E S N line Fern Glen on E. 60' wide

E. line	8.3	73.9	
2' W	8.6	73.6	
3' W	9.8	72.4	
10' E. cl	9.7	72.5	71.5
11' W	11.0	71.2	
E edge par'nt	11.15	71.09	
w " "	11.22	71.02	
w. cl	10.7	71.5	
w. line	11.7	70.5	
5' W	11.4	70.9	

82.24

N. of Fern Glen on E

La Jolla Blvd

28

w line	11.7	70.5	
w cl	11.2	71.0	
w par'nt	11.15	71.09	
E "	11.14	71.00	71.5
12' W of E line	10.6	71.6	
10' " " " = cl	9.8	72.4	
E. line	9.0	73.2	

E Fern Glen on E

E. line	9.4	72.8	
E. cl	10.3	71.9	71.75
E. edge par'nt	11.00	71.24	
w " "	11.00	71.24	
w. cl	11.2	71.0	
w line	11.4	70.8	

S. cl Fern Glen

w line	11.1	71.1	
w. cl.	10.9	71.3	
w edge par'nt	10.82	71.42	
E " "	10.90	71.34	
E. cl	10.6	71.6	72.0
E. line	9.7	72.5	

82.24
 00 = S line Fern Elevation W + E
 W. cl in from here to west Bourne

E line	9.1	73.1
10' W = E cl	9.9	72.3
22' W = E edge part mt	10.82	71.42
W "	10.72	71.52
12' W = W. cl on N end of cent cl	10.83	71.41
W line	11.0	71.2
55' S		
E. edge part mt	9.54	72.70
16' W of E line	9.9	72.3
E. cl	8.3	73.9
3' W of E line	8.5	73.7
E line	7.9	74.3
110' S = N line Belvedere on W		
E. line	5.9	76.3
2' W	6.5	75.7
10' W = E cl	7.1	75.1
15' W	8.6	73.6
E. edge part mt	8.30	73.9
W. " "	8.30	73.94
W. cl.	8.12	74.11

82.24

140' S

La Jolla Blvd

29

E. edge part mt	7.78	74.46
17' W of E line	7.6	74.6
14 " " "	6.4	75.8
10 " " " = cl	6.6	75.6
5 " " " "	6.3	75.9
E. line	4.7	77.5
170' S = S line Belvedere on W		
E. line	4.1	78.1
E. cl	4.3	77.9
15' W of E line	4.7	77.5
17 " " " "	6.9	75.3
E. edge part mt	7.21	75.03
W " "	7.24	75.0
W. cl.	7.14	75.1
200' S		
E. edge part mt.	6.72	75.52
18' W of E. line	6.8	75.4
14 " " " "	4.8	77.4
10 " " " " = cl	4.7	77.5
3 " " " "	4.7	77.5
E. line	3.7	78.5

82.24
240' S

E. Line	3.0	79.2
10' W = E cl.	3.8	78.4
15' W	3.8	78.4
17' W	6.5	75.7
22' OW = E. Pavmt	6.03	76.21

270' S

E. edge pavmt	5.61	76.63
16' W of E Line	6.2	76.0
14' " " " "	2.8	79.4
10' " " " " = cl.	3.0	79.2
E. Line	2.6	79.6

300' S

E. Line	2.6	79.6
7' W	2.0	79.8
10' W = E cl.	2.1	80.1
11' W	2.3	79.9
17' W	5.3	76.9
E. edge pavmt	5.17	77.07

82.24
332' S

E. edge Pavmt	4.7	77.5
17' W of E Line	4.9	77.3
15' " " " "	2.3	79.9
10' " " " " = cl.	2.2	80.0
E. Line	2.0	80.0

333.4' S = N Line Westbourne St on E 60' wide Pavmt
intersection
on E.

E. Line	3.9	78.3		
10' E. cl.	4.13	78.11		
11' W	4.7	77.5		
22' OW = E. edge Pavmt	4.64	77.60		
T.P. on B.M.	4.00	83.01	3.18	79.06 = 79.01

390' S = old N. Line Westbourne on W 80' wide

W. Line	4.6	78.4
10' E-W cl. N. end ext cl.	4.64	78.37
RR. H. E = W. edge pavmt	4.63	78.38

400' N = New N. Line Westbourne on W 60' wide

W. edge Pavmt	4.55	78.46
W. cl.	4.6	78.4
W. Line	4.8	78.2

La Jolla
731' W

30

use this B.M.
S.W. Westbourne
La Jolla Blvd

83.01
Westbourne

w line	4.3	78.7
w cl	4.2	78.8
w edge Pavmt	4.35	78.66
00 = New S. Line Westbourne ohw		
w. edge pavmt	4.16	78.65
w cl	3.9	79.1
w line	3.9	79.1

10'S = old S. Line Westbourne

w	4.1	78.9
cl	3.9	79.1
pavmt	4.13	78.88

50'S

pavmt	4.2	78.79
cl	4.1	78.9
w	4.3	78.8

100'S

w	4.3	78.8
cl	4.3	78.8
pavmt	4.45	78.56

83.01

1.50'S

pavmt	4.63	78.38
cl	4.4	78.6
w	4.4	78.6
200'S		
w	4.6	78.4
cl	4.5	78.5
pavmt	4.81	78.20

250'S

pavmt	5.03	77.98
cl	4.5	78.5
w	4.7	78.3

270'S

w	4.7	78.3
cl	4.5	78.5
pavmt	5.10	77.91

279.5'S = N. Line Nautilus ohw paved on we E
intersection

pavmt	5.11	77.9
cl	5.15	77.86
w	5.2	77.8

emt Return

La Jolla Blvd

31

83.01				83.01				
00 = S. Lim - Nautilus on W								
W cl	5.64	77.37	+5'E	5.4	77.6			
+1'E	6.1	76.9	+7'E	6.7	76.3			
12.4 22.4E = pavmt	5.68	77.33	pavmt	6.60	76.41			
28'S = S. end cl & walk on W				100'S				
pavmt	6.01	77.0	pavmt	6.82	76.19			
entel	5.95	77.06	7'E of cl	6.9	76.1			
W	5.8	77.2	T.P.	3.50	79.67	6.84	76.17	
55'S				6'E of cl				
W	5.9	77.1	cl	2.0	77.7			
cl	6.0	77.0	W	2.5	77.2			
+2'E	6.5	76.5						
pavmt	6.30	76.71	126'S					
57'S				W				
pavmt	6.24	76.67	cl	2.6	77.1			
6'E of cl	6.5	76.5	+5'E	2.1	77.6			
cl	6.2	76.8	+7'E	2.2	77.5			
+1'W	4.9	78.1	pavmt	3.7	76.-			
W line	5.5	77.5	131'S					
83'S				pavmt				
W	5.7	77.3	5'E of cl	4.0	75.7			
cl	5.1	77.9	cl	3.8	75.9			
				W	3.2	76.5		
				W	2.7	77.0		

28
25
27
23
26
24
31
43
44
75
90
20
40
45

79.67

143'S

w	2.7	77.0
cl	3.1	76.6
+6 E	4.2	75.5
par'nt	4.2	75.5

148'S

par'nt	4.3	75.4
6'0' of cl	4.2	75.5
5' E of cl	2.7	77.0
cl	2.3	77.4
w	2.7	77.0

175'S

w	3.1	76.6
cl	3.3	76.4
+1	4.3	75.4
par'nt	4.8	74.9

190'S

par'nt	4.95	74.72
cl	4.5	75.2
+6 w	4.3	75.4
+7 w	3.6	76.1
w	3.5	76.4

19.67

197'S

w	4.4	75.3
cl	4.6	75.1
par'nt	5.13	74.54

240'S

par'nt	5.88	73.79
cl	5.1	74.6
w	4.8	74.9

275'S = N. Line Bonair St

w	5.2	74.5
ent cl return	5.68	74.0
gutter on par'nt	6.40	73.27

La Jolla Blvd

33

X Sec of Washout on E. Side
Sunset Blvd E. of Sherman Road
See page 35 for Plat

4/6/06
null

100.8

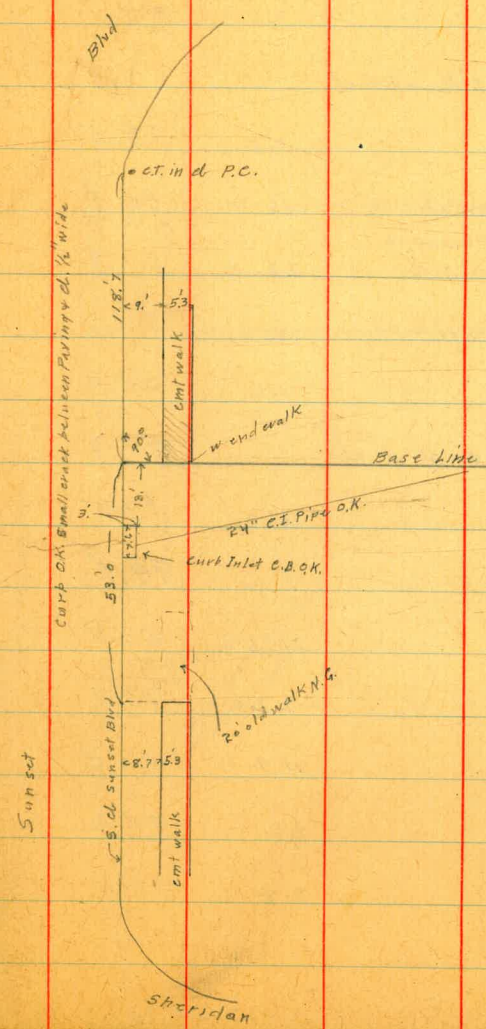
7.5

34

					25' W	0.4	100.4	
R.M.	0.8	100.8	100.	Top of C.B. assumed	20' W	0.6	100.2	
00: S. of S.S. Blvd					13' W	6.4	94.4	
o Base Line - Bl.		0.5	100.5	Top of	1' W	0.6	100.2	
17.5' W		0.8	100.0	" " C.B. w. edge C.B.	B.L.	0.4	100.4	
20.8' W		0.7	100.1	Top of				
					9' S			
					B.L.	0.4	100.4	on end walk
20.8' W		0.9	99.9		-1.0	3.5	97.3	side walk under run 1'0
13.1' W		1.1	99.7		10' W	5.6	95.2	
12' W		3.8	97.0		14' W	7.2	93.6	
8' W		2.1	98.7		20' W	0.7	100.1	
7' W		0.8	100.0		25' W	0.5	100.3	
B.L.		0.4	100.4					
					14' S. - S. edge walk			
					25' W	0.4	100.4	
B.L.		0.4	100.4		20' W	0.6	100.2	
7' W		0.6	100.2		15' W	8.8	92.0	
13' W		4.0	96.8		13' W	8.5	92.3	
18' W		0.8	100.0		7' W	3.9	96.9	
20' W		0.6	100.2		5' W	6.1	94.7	
					1' W	6.1	94.7	
					B.L.	8.3	92.5	walk not undetermined

		100.4		
		21'S		
B.L			6.0	94.8
1' W			7.8	93.0
7' W			7.0	93.8
12' W			11.8	89.0
15' W			8.0	92.8
20' W			7.0	93.8
		31'S		
20' W			12.5	88.3
13' W			13.0	87.8
T.P.	0.5	88.3	13.0	87.8
10' W			3.0	85.3
8' W			1.3	87.0
B.L.			1.5	86.8
		42'S		
B.L.			6.3	82.0
3' W			7.5	80.8
5' W			5.7	82.6
20' W			5.7	82.6

		84.3	
		53'S of S. Cl.	
20' W		10.0	78.3
8' W		11.4	76.9
13' W		12.0	76.3
10'E of B.L.		11.3	77.0



2 Sec of Washout on N. side
Washington St Bet Brant & Engle

4/6/26
mull.

B.M. 0.3 100.3

on N. cl. wash 100.3
100. assumed at Baseline

00 = N. cl. of Washington

00 = Baseline 0.3 100.0 on cl.

20' W E edge curb Inlet } Top 3 sides ok.
N. side & Bottom gone } present but gone

50' W 0.6 99.7 " "

1' N. of N. cl.

40' W 0.8 99.5

35' W cl. not undermined 16.0 84.3

at this point the cl. & pavement is
20' W undermined 2' S. of N. cl. 16.0 84.3

8' W cl. not undermined 5.6 94.7

6' W Baseline 1.0 99.3

9' N. of cl. 0.8 99.5

Baseline 0.9 99.4

4' W 1.2 99.1

8' W 11.6 88.7

23' W 23.0 77.3

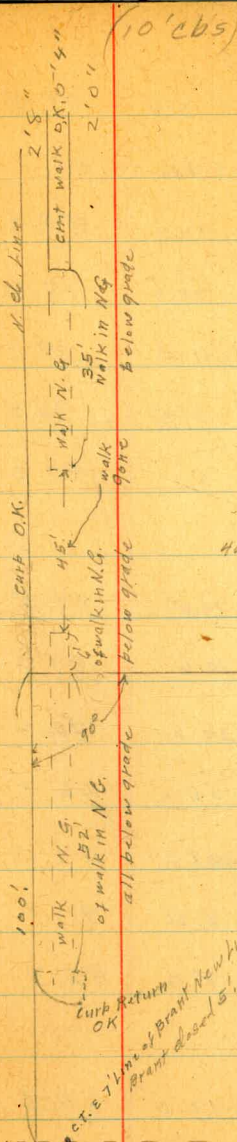
39' W 11.9 88.4

43' W 1.0 99.3

50' W 0.8 99.5

57

Washington



40' of 14" C.I. Pipe can be used

100'
walk N.S.
at walk in N.C.
all below grade
Curb Return OK
etc. 7' line of Brant New line
Brant about 5'

100.3
13' N of el

50' W	0.8	99.5
44' W	1.6	98.7
40' W	12.0	88.3
23' W	30.0	70.3
8' W	11.0	89.3
3' W	3.5	96.8
Baseline	3.1	97.2
	23' N	
Baseline	10.8	89.5
5' W	10.6	89.7
13' W	30.0	70.3
21' W	34.0	66.3
29' W	37.0	63.3
45' W	8.4	91.9
50' W	8.0	92.3
	30' N	
50' W	13.3	87.0
38' W	13.0	87.3
33' W	38.0	62.3
27' W	38.0	62.3

100.3

37

2' 0	3.3	97.0	
T.P. 00	87.3	13.0	87.3
8' W	2.0	85.3	
Baseline	2.1	85.2	
	40' N		
Baseline	9.3	78.0	
14' W	9.2	78.1	
22' W	20.0	67.3	
27' W	25.5	61.8	
33' W	25.5	61.8	
45' W	9.7	78.6	
50' W	8.5	78.8	
	50' N		
50' W	14.8	72.5	
44' W	14.2	72.6	
43' W	26.3	61.0	
28' W	26.2	61.1	
15' W	15.5	71.8	
Baseline	15.7	71.6	

87.3
60' N.

Base Line	20.0	67.3
20' W	21.0	66.3
24' W	28.0	59.3
39' W	28.0	59.3
40' W	20.8	66.5
45' W	21.0	66.3

70' N

40' W	24.8	62.5
36' W	24.9	62.4
34' W	30.0	57.3
25' W	30.0	57.3
20' W	25.6	61.7
Base Line	22.0	65.3

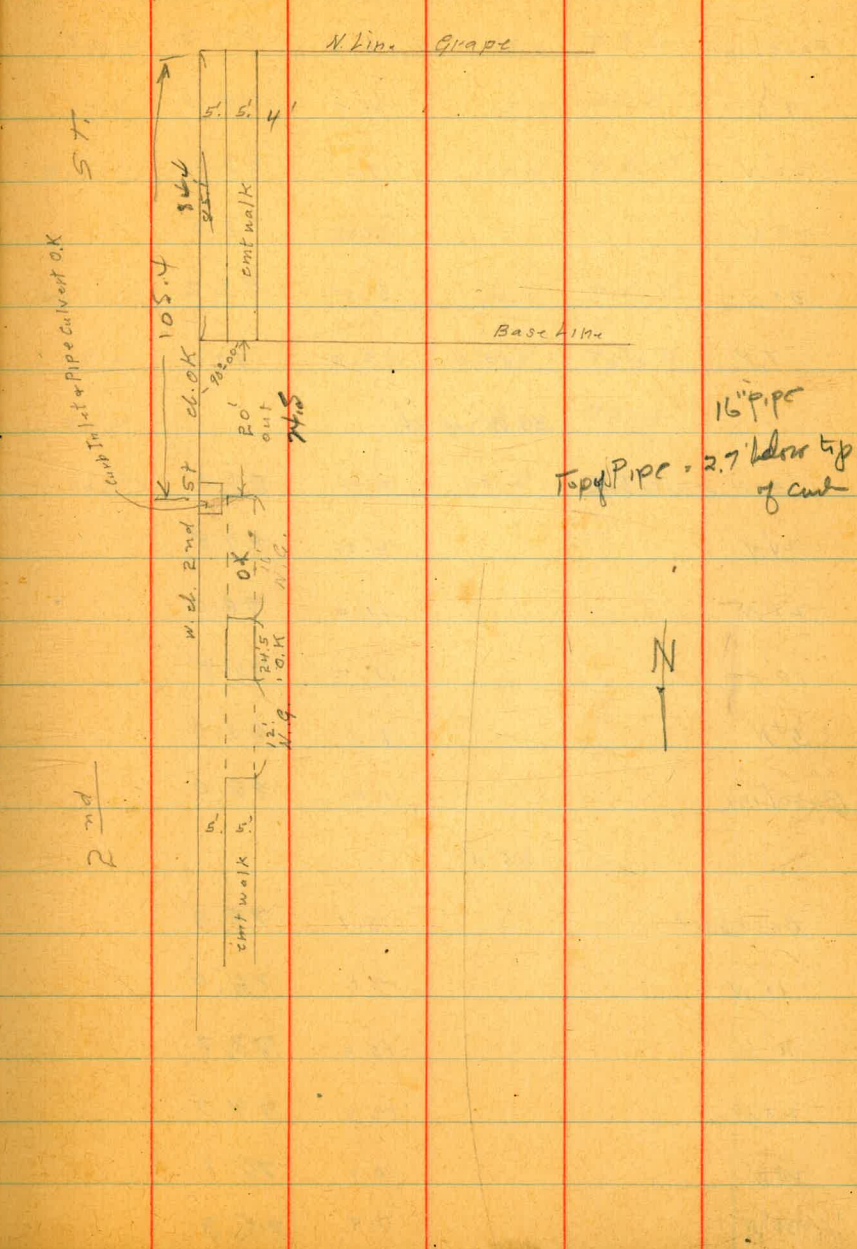
80' N

Base Line	23.0	64.3
20' W	27.2	60.1
25' W	30.5	56.8
45' W	30.5	56.8

hardage computed by Stark

X See Washout W side Rnd ST
 4-6-26
 mill.
 Top el at Baseline
 100.0 assumed

B.M.	00	100.0	
00 = W. cl. line of R nd ST.			
Baseline	0.0	100.0	on cl.
20' N	0.3	99.7	on cl.
1' W of cl.			
18' N	0.3	99.7	on C.B.
17' N	8.6	91.4	
Baseline	00	100.0	
4' W of cl.			
Baseline	0.2	99.8	
8' N	0.6	99.4	
12' N	17.1	82.9	
18' N	17.1	82.9	
20' N	0.5	99.5	on C.B.
14' W = W line R nd			
30' N	0.9	99.1	
25' N	1.0	99.0	
23' N	15.0	85.0	
7' N	18.0	82.0	
5' N	4.0	96.0	
Base Line	1.8	98.2	



16" pipe
 Top of pipe = 2.7' below tip of cut



	100.0			
3' S. of Baseline	21' W. of cl	6.8	93.2	
Baseline		6.8	93.2	
9' N		21.0	79.0	
22' N		17.0	83.0	
25' N		6.2	93.8	
30' N		6.8	93.2	
T.P.	00	87.0	13.0	87.0

	31' W of cl			
30' N of Baseline		2.0	85.0	
24' N		2.2	84.8	
22' N		11.0	76.0	
10' N		11.2	75.8	
5' N		1.0	86.0	
Baseline		1.0	86.0	

	45' W			
Baseline		8.7	78.3	
10' N		9.6	76.4	
11' N		13.3	73.7	
23' N		12.5	74.5	
24' N		10.9	76.1	
30' N		11.7	75.3	

	87.0			
	52' W of cl			
30' N		15.0	72.0	
15' N		13.4	73.6	
5' N		13.0	74.0	
Baseline		11.0	76.0	
	60' W			
Baseline		12.6	74.4	
5' N		14.8	72.2	
20' N		15.0	72.0	
30' N		13.5	73.5	

2 Sec Wash out at Myrtle
and Alabama sts

4-9-26
Mills

41

B.M. 1.3 252.8 251.50 H.W. Myrtle
& Alabama

0+00 = 30'E of B Line Alabama

Base Line = S. 7' Line of Myrtle on W.

35' S of BL	13.4	239.4
45' " "	19.0	233.8
65' " "	16.3	236.5
80	15.6	37.2
95' S of BL	13.0	39.8
	10' W of 00	
90' S of BL	9.1	43.7
84' " "	12.6	40.2
70' " "	14.2	38.6
60' " "	14.0	38.8
55' " "	13.3	39.5
44' " "	13.6	39.2
40' " "	19.3	33.5
37' " "	19.3	33.5
30' " "	12.0	40.8

MYRTLE

57' Line Myrtle

Return
and OK

50' of walk out

2.0
5.33
2.67

Alabama

300' of
Sewer gone

Base Line

14' to 5' and
d. from BL

Sewer out?
M.H.

Walk + about
Return out

Return
in OK

Myrtle

5460700

2.0

2.67

5.33

175

252.8
22' W of 00

155' of BL	2.0	50.8
21 " " "	3.5	49.3
34 " " "	19.3	33.5
37 " " "	19.3	33.5
51 " " "	7.0	45.8
55 " " "	6.7	46.1
60 " " "	9.6	43.2
70 " " "	11.0	41.8
80 " " "	9.1	43.7
90 " " "	2.4	50.4

28' W of 00

90 " " "	2.3	50.5
74 " " "	2.8	50.0
72 " " "	8.3	44.5
67 " " "	7.1	45.7
65 " " "	3.4	49.4
54 " " "	4.2	48.6
36 " " "	19.5	33.3
31 " " "	19.5	33.3
20 " " "	1.6	51.2
10 " " "	1.2	51.6

Top

252.8
35' W of 00

17.5' S of BL	1.4	51.4
18 " " "	6.1	46.7
27 " " "	20.0	32.8
35 " " "	20.0	32.8
52 " " "	6.7	46.1
59 " " "	5.0	47.8
60 " " "	3.7	49.1
64 " " "	3.5	49.3
65 " " "	5.8	47.0

1' W of above

68 " " "

1' W of above

70' S of BL

70' S of BL

49 " " "

47 " " "

36 " " "

28 " " "

15 " " "

12 " " "

42' W of 00

2.9	49.9
3.8	49.1
13.4	39.4
20.4	32.4
17.0	33.8
12.0	40.8
2.4	50.4

52
Send walk
Top or walk

Top

Top

Top

	252.4			
	54' W of 00			
21'S of BL		2.0	50.8	Top
22' " " "		16.0	36.8	
28' " " "		20.4	32.4	
39' " " "		20.4	32.4	
48' " " "		3.0	49.8	Top

68' W of 00.

55' " " "		3.2	49.6	Top
49' S. B. L.		3.5	49.3	
40' " " "		21.0	31.8	
29' S. " "		21.5	31.3	
18' " " "		10.2	42.6	
17' " " "		2.2	50.6	Top

78' W of 00

3' " " "		2.8	50.0	Top
4' " " "		10.8	42.0	
22' " " "		17.6	35.2	
26' " " "		22.7	30.1	
32' " " "		21.8	31.0	
46' " " "		6.2	46.6	
57' " " "		3.2	49.6	Top

252.8

83' W of 00

57'S of BL		3.2	49.6	Top
47' " " "		3.3	49.5	Top
44' " " "		20.0	32.8	
25' " " "		23.3	29.5	
10' " " "		15.1	37.7	
7' " " "		2.1	50.7	Top

90' W of 00 = White Alabama

7' " " "		2.1	50.7	Top
9' " " "		16.1	36.7	
17' " " "		18.3	33.5	
23' " " "		24.2	28.6	
29' " " "		20.3	32.5	
45' " " "		13.2	39.6	Top

105' W of 00

45' " " "		1.4	51.4	on old fill
42' " " "		1.4	51.4	" Top "
39' " " "		9.0	43.8	
30' " " "		25.4	27.4	
18' " " "		26.3	26.5	

252.4
105' W of 00 Cor

16.5' BL	22.2	30.6	
11' "	22.0	30.8	
7' "	15.5	37.3	
Basaltina	1.4	51.4	Top
5' N of "	00	52.8	old fill

120' W of 00

B.L.	6.6	46.2	Virgin Soil
11' S BL	9.3	43.5	
25' S BL	27.5	25.3	
39' " " "	26.2	26.6	
40' S " "	19.7	33.1	Top old fill

135' W of 00

40' " " "	28.4	24.4	
23' " " "	28.4	24.4	
B.L.	20.6	32.2	

Continued from Book 1131 Page 58

THORN ST N 51 E

FRONT TO UNION

198.25 Book 1131 Page 58

25' E. of old Elime State St

S-10	10.7	187.6
S	9.8	188.5
U	8.7	189.6
1/4	7.8	190.5
E	6.4	191.9
1/4	5.4	192.9
U	4.5	193.8
N	3.1	195.2
50' E		
N	1.8	196.5
U	2.8	195.5
1/4	3.8	194.5
E	4.8	193.5
1/4	5.6	192.7
U	6.8	191.5
S	7.7	190.6
+10	8.3	190.0

198.25

75' E

45

S-10			7.1	191.2
S			5.5	192.8
U			4.4	193.9
1/4			3.7	194.6
E			3.0	195.3
1/4			2.4	195.9
U			2.0	196.3
N			0.4	197.9
T.P.	13.28	211.321	0.21	198.04
100' E				
N			12.1	199.2
U			13.1	198.2
1/4			14.0	197.3
E			14.7	196.6
1/4			15.3	196.0
U			15.8	195.5
S			17.0	194.3
+10			17.0	194.3

	211.32 125'E		
S-10		14.3	197.0
S		14.5	196.8
el		14.0	197.3
1/4		13.0	198.3
e		12.3	199.0
1/4		11.5	199.8
el		11.1	200.2
N		9.8	201.5
	150'E		
✓		7.2	204.1
el		8.5	202.8
1/4		9.0	202.3
e		9.5	201.8
1/4		9.2	202.1
el		9.7	201.6
S		11.5	199.8
+10		11.6	199.7

	175'E		
-10		8.3	203.0
S		8.1	203.2

	211.32	Thorn St
el		7.1
1/4		6.5
e		5.9
1/4		6.2
el		5.8
N		5.1

200'E = White Union

N		2.7
el		3.0
1/4		3.5
e		3.6
1/4		3.9
el		4.2
S		5.3
+10		5.4
T.P.		1.34

ctr Mark
Thorn Union

43 w i d o
5.47 obs
7.92 1/45

State St X Sec
(Thorn St North)

4-9-20
mull.

198.48

47

B.M.

11.24

198.48

187.20

ch. Men
Thorn St front

cl

4.9

189.6

00 = New N. Line - Thorn St

1/4

7.7

190.8

W

9.5

189.0

e

6.3

192.7

cl

9.5

189.0

1/4

5.2

193.3

1/4

9.1

189.4

cl

4.3

194.2

e

8.6

189.9

E

2.8

195.7

1/4

8.4

190.1

29' N

d

6.1

192.4

E

2.1

196.4

E

5.4

193.1

cl

2.5

196.0

15' N

1/4

5.0

193.5

E

3.7

194.8

e

6.0

192.5

cl

4.4

194.1

1/4

7.4

191.1

1/4

5.6

192.9

cl

9.0

189.5

e

6.6

191.9

W

10.3

188.2

1/4

7.7

190.8

+8

11.0

187.5

cl

8.6

189.9

33' N

W

9.3

189.2

W-8

11.0

187.5

24' N

W

9.8

188.7

W-9'

11.8

186.7

Double Garage
in basement
on floor

cl

8.7

189.8

W'

10.1

188.4

1/4

1.0

191.5

198.48

33 N (con)

e	5.3	193.2	
1/4	3.6	194.9	
cl	2.4	196.1	
e	1.8	196.7	
	35 N		
e	1.7	196.8	
cl	2.3	196.2	
1/4	3.4	195.1	
e	5.4	193.1	
1/4	6.6	191.9	
cl	7.2	191.3	
w	7.1	191.4	on town
+ 4	7.0	191.5	small house
	55 N		
- 4	6.2	192.3	
w	6.4	192.1	
cl	6.4	192.3	
1/4	5.0	193.5	
e	3.8	194.7	
1/4	2.2	196.3	

198.48

48

cl	1.5	197.0	
e	1.0	197.5	
	70 N		
e	0.7	197.8	
cl	1.2	197.3	
1/4	2.0	196.5	
e	2.8	195.7	
1/4	3.7	194.8	
cl	4.7	193.8	
w	5.5	193.0	
	100 N		
w	4.9	193.6	
cl	4.4	194.1	
1/4	3.8	194.7	
e	3.0	195.5	
1/4	1.7	196.8	
cl	1.2	197.3	
e	0.6	197.9	

198.49
125' N

e	1.9	196.6
d	2.4	196.1
1/4	3.0	195.5
c	3.6	194.9
1/4	4.6	193.9
cl	5.5	193.0
w	6.2	192.3

155' N

w	8.8	189.7
cl	7.8	190.7
1/4	6.4	192.1
c	5.7	192.8
1/4	4.8	193.7
cl	3.5	195.0
E	3.0	195.5

180' N

E	5.9	192.6
cl	6.3	192.2
1/4	7.6	190.9
c	9.7	189.8

198.49

49

1/4	9.6	188.9
d	10.8	187.7
w	11.6	186.9

200' N

w-5	13.7	184.8
w	12.9	185.6
cl	12.3	186.2
1/4	11.3	187.2
c	10.4	188.1
1/4	9.3	189.7
cl	8.6	189.4
E	8.0	190.5

225' N

E	10.6	187.9
cl	11.2	187.3
1/4	12.0	186.5
c	12.9	185.6
1/4	14.1	184.4
T.P.	0.21	185.87
cl	2.0	183.9
w	3.0	182.9
+5	3.5	182.4

185.87
250'N

W	7.4	178.5
cl	6.3	179.6
1/4	5.2	180.7
C	3.6	182.3
1/4	2.4	183.5
cl	1.8	184.1
E	1.2	184.7

260'N

E	2.6	183.3
cl	3.8	182.1
1/4	4.8	181.1
C	5.7	180.2
1/4	7.0	178.9
cl	8.0	177.9
W	8.9	177.0

280'N

W	14.1	171.8
cl	13.4	172.5
1/4	12.0	173.9
E	11.3	174.6

185.87

1/4	10.1	175.8
cl	8.7	177.2
E	8.0	177.9

300'N

E	12.3	173.6
cl	13.4	172.5
1/4	14.6	171.3
C	15.7	170.2
T.P.	0.14	173.38
1/4	12.67	172.20

1/4	4.3	169.1
cl	5.7	167.7
W	6.3	167.1

315'N = S. Line U pas

W	9.4	164.0
cl	8.7	164.7
1/4	7.5	165.9
C	6.2	167.2
1/4	4.8	168.6
cl	3.9	169.5
E	3.4	170.0

173.38

T.P.

5.56

167.68

11.26

162.12

ctr Mon

T.P.

8.47

159.21

State & pas

Cross Section of Birch St
From Una to Osborn

80' wide
14' Cbs
18' Qls

Thor to Una Sta 4966

134 Mon
Birch Vents

23.10
25.5

50
5. 10. 15. 20. 25. 30. 35. 40. 45. 50.

BM	177	23.10	21.33	S	8.5	14.6
		0.0 = E. Una		cb	7.7	15.4
S		10.9	12.2	+6	7.5	15.2
cb	on End Return + Ground	10.97	12.13	77	8.8	14.3
1/4		10.7	12.4	1/4	8.1	15.0
2		10.6	12.5	2	8.1	15.0
1/4		10.5	12.6	1/4	7.7	15.4
cb	on End Ret	9.97	13.13	cb	6.9	14.2
H		9.5	13.6	11	6.0	17.1
		2.5		H	5.9	17.2
H		5.8	17.3		5.0 E	
cb		6.0	17.1	H	5.9	17.2
+9		8.8	14.3	cb	6.0	17.1
1/4		10.1	13.0	+8	6.5	16.6
2		10.3	12.8	1/4	6.6	16.5
1/4		10.3	12.8	2	6.9	16.2
+7		10.3	12.8	1/4	7.4	16.7
+9		7.9	15.2	15	7.6	15.5
				+8	7.3	15.8
cb		8.0	15.1	cb	7.5	15.6
S		9.1	14.0	S	7.8	15.3

Birch

2310

100'F

S	84	14.7
cb	77	15.4
+5	74	15.7
+8	78	15.3
74	75	15.6
Z	71	16.0
74	65	16.6
79	67	16.4
cb	60	17.1
N	55	17.6
150'F		
N	57	17.4
cb	68	16.9
+3	69	16.2
74	66	16.5
Z	70	16.0
74	72	15.9
+7	79	15.2
+9	74	15.7
cb	75	15.6

2310

200'F

S	85	14.6
200'F		
S	79	15.2
cb	75	15.6
+4	73	15.8
+6	77	15.4
74	73	15.8
Z	68	16.3
74	67	16.4
+10	69	16.2
cb	61	17.0
N	57	17.4
250'F		
N	58	17.3
cb	58	17.3
+3	65	16.6
74	65	16.6
Z	66	16.5
74	71	16.0
77	73	15.8
+0	68	16.3

Bireb

2310

cb	7.0	16.1
s	7.4	15.7
	300E	
s	6.0	17.1
cb	6.2	16.9
+5	6.0	17.1
+7	6.3	16.8
1/4	6.1	17.0
2	5.8	17.3
1/4	5.5	17.6
+10	5.6	17.5
cb	4.9	18.2
H	4.8	18.3
	350E	
H	4.6	18.5
cb	4.8	18.3
1/4	5.4	17.7
1/4	5.2	17.9
2	5.5	17.6
1/4	6.0	17.1
+7	6.3	16.6

2310

54

+9	6.1	17.0
cb	6.2	16.9
s	6.9	16.2
	380E	
s	6.2	16.9
cb	5.8	17.3
+5	5.8	17.3
+7	6.2	16.9
1/4	5.7	17.4
2	5.5	17.6
1/4	5.3	17.8
+10	5.5	17.6
cb	5.0	18.1
H	4.9	18.2
TP	5.14	21.47
	1.77	21.33
	400E	
H	8.1	18.4
cb	8.4	18.1
+3	8.4	18.1
+4	8.8	17.7
1/4	8.2	17.8

Birch	2647		
2	8.7	17.8	
14	8.1	17.9	
+6	8.1	17.9	
+8	8.1	18.4	
cb	8.0	18.5	
S	7.9	18.6	
	450'E		
S	6.5	20.0	
cb	6.3	20.2	
+5	6.1	20.4	
+7	6.7	19.8	
14	6.6	19.9	
+6	6.0	20.5	
2	6.7	19.8	
+6	6.6	19.9	
14	7.3	19.2	
+7	7.9	18.6	
+10	7.3	19.2	
cb	7.5	19.0	
N	7.7	18.8	

500 E

	2647		
N	6.2	20.3	
cb	6.0	20.5	
+3	5.6	20.9	
14	5.2	21.3	
2	5.5	21.0	
14	5.7	20.8	
cb	6.1	20.4	
S	6.2	20.3	
	550'E		
S	5.4	21.1	
cb	5.3	21.2	
14	4.7	21.8	
2	4.4	22.1	
14	4.4	22.1	
cb	4.4	22.1	
N	4.0	22.5	
	600'E = 1/2 Vasta		
N	3.4	22.9	
cb on Return	2.77	22.7	
Gutter	4.7	21.8	
14	4.2	22.3	
2	4.3	22.2	

Birch

26.47

1/4	48	21.7
Gutter	55	21.0
on Cb Return	772	21.7
S	4.7	21.8

E. Vesta

S	38	22.7
on Cb Return	379	22.68
Gutter	45	22.0
1/4	3.7	22.8
2	3.4	23.1
1/4	3.7	22.8
Gutter	38	22.7
on Cb Return	286	23.61
H	28	23.7

50°F

H	21	24.4
Cb	21	24.4
+3	21	24.4
+6	28	23.7
1/4	28	23.7
2	25	24.0

26.47

1/4	26	23.9
Cb	25	24.0
S	27	23.8

100°F

S	1.9	24.6
Cb	18	24.7
1/4	16	24.9
2	14	25.1
+4	12	25.3
1/4	1.7	24.8
+6	1.7	24.8
+9	0.9	25.6
Cb	0.9	25.6
N	0.8	25.7

TP

11.54

3688

1.13

2534

150°F

N	9.6	27.3
Cb	10.0	26.9
+4	10.1	26.8
+6	10.4	26.3
1/4	10.8	26.1

3688	3688	
L	10.8	76.1
1/4	11.3	75.6
cb	11.3	75.6
S	11.5	75.4
200'E		
S	11.5	75.3
cb	11.0	75.9
1/4	10.5	76.4
L	9.7	77.2
1/4	9.4	77.5
+6	9.2	77.7
cb	8.3	78.6
H	7.9	79.0
220'E		
H	6.6	30.7
+5	7.2	29.7
cb	7.6	29.7
+3	7.1	29.5
+8	8.8	28.1
1/4	9.1	27.8
2	9.3	27.6

3688	3688	
1/4	10.3	76.6
cb	10.8	76.1
S	10.8	76.1
250'E		
S	10.2	76.7
cb	10.4	76.5
+10	10.1	76.8
1/4	9.7	77.2
2	8.8	78.1
1/4	8.7	78.2
+8	7.7	79.2
cb	7.5	79.4
+6	7.3	79.6
H	6.2	30.7
300'E		
H	6.3	30.6
+10	6.8	30.1
cb	6.8	30.1
+6	7.0	29.9
1/4	7.6	29.3
2	8.0	28.9
1/4	8.8	28.1

Bireb

3688

17		91	27.5
cb		95	27.4
s		97	27.2
	350' E		
s		90	27.9
cb		87	28.2
14		80	28.9
z		74	29.5
14		70	29.9
+8		64	30.5
cb		64	30.5
H		61	30.8
	400' E		
H		56	31.3
cb		60	30.9
+4		61	30.8
14		67	30.7
z		68	30.1
+5		69	30.0
14		75	29.4
+6		80	28.9

385' E on N.E.
Cone Drive
519CYPRESS HEDGE
2010 st

3688

58

19		77	29.2
cb		79	29.0
s		80	28.9
	450' E		
s		70	29.9
cb		67	30.2
+5		66	30.3
+6		70	29.9
14		66	30.3
z		58	31.1
14		59	31.0
+10		57	31.2
		53	31.5
11		53	31.5
cb		51	31.8
H		46	32.3
	500' E		
H	FACE ON SL	42	32.7
cb		42	32.7
+6		43	32.6
17		42	32.1
14		48	32.1

440' E on N.E.
Hocia Tree
472' E on N.E.
Cone Walk
439418' E on S.E.
Cone Walk
683410' E on N.E.
Cone Walk
510

Tree on CBL

2	47	37.7
74	55	31.4
+7	61	30.8
+8	59	31.0
cb	61	30.8
s	65	30.3

550°E

s	57	31.7
cb	47	37.7
+7	42	37.7
+8	46	37.3
74	43	37.6
2	37	33.2
74	40	32.9
+6	39	33.0
+8	32	33.7
cb	33	33.6
74	30	33.9

590°E

74	29	34.0
+12	28	34.1

cb	42	37.7
74	43	37.6
2	41	37.8
74	47	37.7
+8	45	37.4
+10	47	37.7
cb	39	33.0
s	44	37.5

Loc = W.L. Haden

s	52	31.7
cb on Ret + Ground	52	31.67
74	50	31.9
2	45	37.4
74	47	37.7
Gutter	45	37.4
cb on Return	43	37.56
N	42	37.7
TP	503	37.22
	429	37.59

E.L. Haden

N	37	33.9
cb on Return	37	33.63

cb Return
W.L. Birch + Haden

Birch

3762

Gutter	46	330
44	44	332
2	43	333
1/4	45	331
+7	47	329
Gutter	56	320
on Carb Return	49	327
S	48	328
	25	
S	26	340
+9	35	341
cb	48	328
74	44	332
2	41	335
74	42	334
+7	44	332
cb	37	329
+1	31	345
H	27	349
	105	
H	30	346
cb	32	344

3762

60

	42	343
+5	39	337
1/4	37	339
2	37	339
1/4	39	339
+7	41	335
79	37	339
cb	37	339
S	38	338
	505	
S	42	334
cb	44	332
44	44	332
46	48	328
44	45	331
2	43	333
44	42	334
+8	41	335
19	37	339
cb	37	339
H	31	345

37.62

100 E

N	41	335
Cb	41	335
+3	41	33.5
+6	48	32.8
14	47	32.9
Z	49	32.7
14	54	32.2
Cb	58	31.8
S	60	31.6

150 E

S	66	31.0
+10	63	31.3
Cb	60	31.6
14	56	32.0
Z	51	32.5
14	49	32.7
+7	47	32.9
+10	43	33.3
Cb	43	34.3
N	42	34.4

100 E
Wood 18 Tim
TABLETS N

37.62

200 E

N	44	34.2
Cb	44	34.2
+5	46	34.0
+6	52	32.4
14	49	32.7
Z	50	32.6
14	56	32.0
Cb	58	31.8
S	61	31.5

250 E

S Conc Walk + Ground	53.5	32.27
Cb	55	32.1
+9	52	32.4
+8	57	31.9
14	54	32.2
Z	52	32.4
14	49	32.7
Cb	49	32.7
N	46	34.0

300 E

178 E 27 HD.
Conc Drive
356

67 Feet 16 H.S.L.

215 E conc
Conc Walk
575

N	41	33.5
Ob	45	33.1
+3	45	33.1
+5	51	32.2
1/4	52	32.4
+7	48	32.8
L	49	32.7
1/4	53	32.3
+5	58	31.8
+7	47	32.9
cb	47	32.9
S	46	33.0
32.7E		
S	54	32.2
+5	50	32.6
cb	49	32.7
+7	47	32.9
+9	60	31.6
1/4	54	32.2
+5	50	32.6
L	49	32.7

308 EOD N
ConcHolk
325-27

1/4	50	32.6
+7	54	32.2
+11	42	33.4
cb	43	33.3
N	42	33.4
350E		
N	40	33.6
cb	42	33.4
+3	44	33.0
+6	57	31.9
1/4	53	32.3
L	53	32.3
+5	55	32.1
1/4	62	31.4
+7	64	31.2
cb	70	30.6
S	81	29.5
TP	9.38	37.07
385.5E - Δ		
S	11.5	25.6
cb	10.1	27.0

34.50
14" Hand Saw
FUEL 31.5
808
OVERALL
34.15
FUEL
9.30

on A Mon.

Birch

37.07

71.6 E - H. L. Osborn

60' wide
10' Cbs
10' Q/s

S	67	30.4
cb	65	30.6
1/4	61	31.0
S	62	30.9
1/4	66	30.5
cb	66	30.5
H	59	31.8
H cb		
H	46	32.5
cb	58	31.3
H	62	30.9
1/4	63	30.8
S	58	31.3
1/4	56	31.5
cb	60	31.1
S	61	31.0
H 1/4		
S	61	31.0
cb	55	31.6
1/4	48	32.3

37.07

S	50	32.1
1/4	58	31.3
cb	52	31.9
H	42	32.9
S Osborn		
H	36	33.5
cb	42	32.9
1/4	50	32.1
S	44	32.7
1/4	43	32.8
cb	51	32.0
S	60	31.1
H 1/4		
S	52	31.9
cb	45	32.6
1/4	38	33.3
S	37	33.4
1/4	43	32.8
S	41	33.0
cb	35	33.6
H	32	33.9

Bireb

37.07

L. Cb

H		2.7	34.4
Cb		3.0	34.1
1/4		3.6	33.5
2		3.2	33.9
1/4		3.4	33.7
Cb		4.2	32.9
+2		3.5	33.6
S		4.2	32.9

FL Osborn

S		4.2	32.9
+8		3.4	33.7
Cb		4.1	33.0
+2		3.5	33.6
1/4		3.0	34.1
2		2.9	34.2
1/4		3.0	34.1
Cb		2.6	34.5
H		2.3	34.8
TP	11.85	4.04	36.19
TP	957	56.32	46.75

65

TP

4.58

5483

6.07

50.25

BM

4.52

50.31

N Entrance to School

40th Epsilon
5039

Cross Section Birch St.
Cno to Thor

80' 1941
18' 1945
18' 1945

5-25-22

16.79

66

3.511

BM	197	23.16		21.22	13 ft Man Birch + Vetch	S	5.3	11.5
TP	4.64	<u>16.79</u>	10.97	12.13	5 ft Ch. ^{3' 1/2} Ch. ^{1/2}	cb	4.8	12.0
		W.L. Cno				1/4	4.2	12.6
S			5.5	11.3		2	3.7	13.1
cb	on Refectory Ground		5.6	11.2		1/4	3.6	13.2
1/4			5.3	11.5		1/2	3.7	13.1
2			5.4	11.4		cb	2.3	14.5
1/4			5.3	11.5		H	2.3	14.5
cb	on Refectory Ground		4.62	12.17				
H			4.4	12.6		H		
		2 1/4				cb	3.0	13.8
H			1.7	15.1		1/4	3.3	13.5
cb			2.0	14.8		1/4	4.1	12.7
1/2			4.5	12.3		2	4.1	12.7
1/4			5.3	11.5		1/4	4.7	12.1
2			5.1	11.7		cb	5.7	11.1
1/4			5.0	11.8		S	6.9	9.9
1/2			5.2	11.6				
cb			5.5	13.3				
S			5.4	11.4		S	7.5	9.3
						cb	5.6	11.2

1.6021

Garage Dirt Floor

Birch

1679

+4	59	11.4
+5	60	10.8
1/4	52	11.6
2	46	12.2
1/4	47	12.1
+7	48	12.0
cb	39	12.9
H	37	12.2
13511		
H	48	12.0
cb	52	11.6
+3	51	11.7
+6	60	10.8
1/4	56	11.2
2	53	11.5
1/4	61	10.7
+8	68	10.0
+9	64	10.4
cb	66	10.2
S	84	8.4
+10	101	

1679

67

-15	11.6	5.2
S	95	7.3
cb	77	9.1
1/4	76	9.2
+5	80	8.8
1/4	70	9.8
2	65	10.3
1/4	65	10.3
+9	72	9.6
cb	66	10.2
+5	59	10.9
H	61	10.7
17011		
H	84	8.4
+5	85	8.3
cb	75	9.3
+6	77	9.1
1/4	72	9.6
2	74	9.4
1/4	78	9.0
+8	87	8.1

Birch

16.79

+9		82	86
cb		84	84
s		10.0	68
+15 N Edge Pond		12.9	39
	200' N		
-10 N Edge Pond		13.3	35
s		11.6	52
cb		10.3	65
1/4		9.4	74
z		8.7	81
1/4		8.4	84
cb		8.6	87
N		8.8	80
	220' N		
N		9.7	71
cb		9.7	71
1/4		10.1	67
z		9.9	6.9
1/4		10.9	5.9
cb		11.8	5.0
s		12.3	4.5

16.79

68

+10 Edge Pond		13.4	34
	250' N		
s		12.3	4.5
cb		12.1	4.7
1/4		12.0	4.8
z		11.2	5.6
1/4		11.2	5.6
cb		11.4	5.7
N		11.0	5.8
TP	4.50	9.33	1.83
		300' N	
N		5.0	4.3
cb		4.9	4.4
1/4		4.9	4.4
z		4.9	4.4
1/4		5.2	4.1
1/4		5.5	3.8
1/4		5.0	4.3
cb		4.8	4.5
s		4.8	4.5
+10		4.2	5.1

215' N
20' N H.L.
Coast Pond
870

Birch

9.33

325 W

S	4.2	5.1
cb	4.6	4.7
+4	4.6	4.7
+6	5.3	4.0
1/4	5.2	4.1
2	5.1	4.2
1/4	5.2	4.1
cb	5.1	4.1
N	5.2	4.1

350 W

N	4.8	4.5
cb	5.2	4.1
1/4	5.3	4.0
2	5.0	4.3
1/4	5.2	4.1
+7	5.4	3.9
cb	4.5	4.8
+7	4.0	5.3
S	1.5	7.8

9.33

325 W

S	3.5	5.8
cb	4.1	4.9
+4	4.7	4.6
+6	5.3	4.0
1/4	5.3	4.0
2	5.0	4.3
1/4	5.3	4.0
cb	5.1	4.2
N	4.7	4.6

400 W

N	4.6	4.7
cb	4.8	3.4
1/4	5.1	3.9
2	5.2	4.1
1/4	5.4	3.9
+8	5.7	3.6
+9	4.9	4.4
cb	4.5	4.8
2	4.1	5.2

450 W

S	4.2	5.1
---	-----	-----

69

Birch

932

+5	5.3	40
cb	5.0	43
+5	5.2	41
+6	6.0	33
1/9	5.6	37
2	5.0	43
1/4	4.9	44
cb	4.5	48
H	4.4	49
500' H		
H	4.6	47
cb	4.6	47
1/4	4.9	44
2	4.9	44
1/4	5.4	39
cb	5.6	37
S	5.2	41
530' H		
S	5.9	36
cb	6.2	31
1/4	4.7	56

933

70

2	4.6	47
1/4	4.5	48
+5	4.8	45
cb	5.0	43
H	4.3	50
550' E		
H	4.3	50
cb	4.5	48
1/4	4.1	49
2	4.3	50
1/4	4.3	50
+7	4.7	46
cb	4.6	47
S	5.0	43
600' EL Tbor		
S	4.7	46
cb	4.6	47
1/4	4.1	47
2	4.3	50
1/4	4.4	49
cb	4.3	50

Birch

9.33

N			4.2	5.0
			ECb	
H			4.2	5.1
cb			4.3	5.0
1/4			4.1	4.9
L			4.3	5.0
1/4			4.3	5.0
cb			4.2	5.1
S			4.2	5.1
TP	6.31	12.11	3.53	5.80
			E 1/4	
S			7.1	5.0
cb			7.2	4.9
1/4			7.3	4.8
L			6.7	5.2
1/4			6.9	5.2
cb			7.0	5.1
N			7.0	5.1
			L Thor	
H			7.0	5.1
cb			7.0	5.1

12.11

71

1/4			7.1	5.0
L			7.0	5.1
1/4			7.0	5.1
cb			7.3	4.8
S			7.3	4.8
			H 1/4	
S			7.2	4.9
cb			7.0	5.1
1/4			7.2	4.9
L			6.9	5.2
1/4			7.0	5.1
cb			6.9	5.2
H			6.9	5.2
			H cb	
H			6.9	5.2
S			6.9	5.2
1/4			6.9	5.2
L			7.0	5.1
1/4			7.1	5.0
cb			7.2	4.9
S			7.2	4.9

Birch

12.11

N.L. T bar

S			7.3	4.8	
cb			7.2	4.9	
11			7.3	4.8	
L			7.0	5.1	
14			6.9	5.2	
cb			6.9	5.2	
N			6.9	5.2	
TP	7.25	16.71	2.65	9.16	
TP			4.58	12.13	SE Cor Birchwood

Cross Section of Columbia St.
From Andrews to Keating

5077.0
125 Cbs
6259.5

9896

73
910.0
535.0
375.0
North

114
Pipes
& Ladders

BM	1232	90.29 ✓		77.97
TP	8.72	98.96 ✓	0.05	90.24
		H.L. Andrews		
S		4.1		94.86
Cb	on Top	3.90		95.56
	on Conc Gutter	4.19		94.77
1/4		3.8		95.1
2		3.2		95.7
1/4		2.9		96.0
	Gutter Conc	3.23		95.73
Cb	on Top	2.43		96.53
+5		2.2		96.76
+6		0.3		98.66
N		0.0		98.96
		2.11		
N		0.2		98.76
Cb		1.7		97.26
+1		2.5		96.46
1/4		3.0		95.96
2		3.3		95.66

1/4		3.8		
Cb		3.7		
S		4.6		94.76
		25.11		
S		8.3		90.66
Cb		6.6		
1/4		5.6		93.36
2		5.4		
Cb		5.8		95.16
N		5.0		
		50.11		
-5	on House Floor	7.06		
N		8.7		90.76
Cb		9.8		
1/4		10.5		88.46
2		11.0		
1/4		11.7		
Cb		12.0		86.96
S		12.31		86.65
TP	612	87.77 ✓		

87.77

75' 11"

-18		5.8	
S		8.8	79.0
Cb		9.3	
1/2		9.2	
Z		9.3	78.5
1/4		9.2	
Cb		8.3	
H		7.8	80.5
+9	House Ground	7.6	
	60 House Floor	3.53	
	90' 11"		
-10		11.8	
H		11.7	76.1
Cb		11.9	
1/4		12.1	
Z		11.9	75.9
1/4		11.6	
Cb		11.3	
1.8		10.8	
S		9.5	78.3

87.77

74

+10		7.5	
	100' 11"		
-10		8.4	
S		10.6	77.2
17		11.8	
Cb		14.7	
1/4		14.8	
Z		12.4	75.4
1/4		12.2	
Cb		12.3	
H		12.0	75.8
+15		11.4	
	Heating		
	Exterior 30" Cond. Pipe		
	16" Proposed Culvert		
	50' Columbia		
	Levels of Proposed Culvert		
	+0 - At N.W. of Columbia	10.3	
	+20 - At Columbia	11.2	
	+4.3	12.2	
	+6.0	13.8	
	+7.0 - 50' Columbia	14.7	

Columbin

87.77

+80 - End Exist. 109 30" Cond Pipe
Floor Line 13.75

112.52

-15

10.6

76.7

H

11.1

cb

11.5

1/4

11.8

2

12.0

75.8

1/4

12.7

cb

13.8

+7

14.6

5

14.7

73.1

+15

9.8

150.11

-18

8.7

135.11
H.N.L.
House on Floor
487

-11

11.1

5

13.5

74.3

+8

12.7

cb

11.9

1/4

11.0

2

10.2

77.6

1/4

10.9

cb

9.2

87.22

H

6.9

80.9

+10

5.9

175.11

-10

+1.6

H

0.9

86.9

cb

3.3

1/4

4.5

2

5.1

82.4

1/4

6.1

cb

7.2

5

8.2

79.6

+10

8.7

+15

9.0

TP

12.88

99.97

0.78

84.99

200.11

-15

13.0

5

12.4

87.6

cb

11.5

1/4

11.5

2

9.4

90.6

1/4

8.3

Columbia				12422			
cb			69	cb			9.7
H			95.1	H Bottom Cabbleroll			8.9
+10				Top " "			6.56
TP	1329	11259 ✓	0.67			275.11	
				H			1.2
H Bottom Cabbleroll			74	cb			1.5
Top " "			47	"			1.8
cb			91	2			2.2
"			10.1	"			2.5
2			10.8	cb			3.0
			101.8	S			3.3
"			11.8	TP	1224	13663 ✓	0.93
cb			14.1				123.79 ✓
S			16.1				290.11
+15			15.2	S on Hood Porch			9.1
TP	1214	12422 ✓	0.51				8.46
			112.08	cb			9.3
				"			9.0
S			19.0	2			8.6
			110.2	"			7.8
cb			12.7	cb			6.6
"			12.0	H			7.2
2			11.7				129.4
"			10.2	og Cone Walk + porch			7.15

Columbia

136.63

300' N = E.L. Keating

N	6.9	129.7
TOP Conc Hall	4.8	
cb	6.9	
'/4	6.9	
z	7.0	129.6
'/4	6.3	
cb	7.1	
s	7.3	127.3
	10' N = cb	
s	7.8	128.8
cb	6.3	
'/4	6.0	
z	4.5	132.1
'/4	4.1	
cb	3.7	
N	3.0	133.6
	3' W cb	
N	1.5	135.1
cb	2.5	
'/4	2.3	

Keating
50' N
10' Cbs
7.5 qts

136.63

77

z	3.9	132.7
'/4	5.5	
cb	6.2	
s	7.7	128.9
	'/4	
s	7.7	128.9
cb	5.8	
'/4	4.7	
z	4.0	132.6
'/4	3.4	
cb	2.6	
N	1.5	135.1
	z Keating	
N	1.4	135.2
cb	3.1	
'/4	3.1	
z	4.1	132.5
'/4	5.0	
cb	5.5	
s	7.5	124.1
	'/4	

Columbia

136.63

S	6.9	130.7
cb	5.1	
1/4	1.1	
L	3.7	132.9
1/4	3.1	
cb	2.4	
H	0.6	136.0
	cb	
H	0.0	136.6
cb	1.1	
1/4	2.6	
L	3.4	133.2
1/4	3.9	
cb	1.5	
S	6.5	130.1
	7" H cb	
S	5.9	131.2
cb	4.8	131.8
1/4	1.2	
L	3.6	133.0
1/4	3.0	

136.63

78

cb	1.9	134.7
H	0.0	136.6
	N.L. Keating	
H	3.4	133.2
7 10 Top cb	3.6	133.01
cb	4.1	
1/4	4.3	
L	4.7	131.9
1/4	5.2	
cb	6.0	
+2.5 Top Carb	5.69	130.94
S	5.9	131.2

149.2
30.5

118.7

80

