

1152

DEIZGEN
TRADE MARK

ENGINEERS'
LEVEL BOOK

No. 410

EUGENE DIETZGEN CO.

DRAWING MATERIALS, MATHEMATICAL and
SURVEYING INSTRUMENTS

Chicago New York San Francisco New Orleans Pittsburg Toronto

Distances from Center of Roadway for Cross-Sectioning
Roadway 16 feet wide. Side Slopes 1 on 1.
For Single Track Embankment.

H	0	.1	.2	.3	.4	.5	.6	.7	.8	.9	H
0	8.0	8.1	8.2	8.3	8.4	8.5	8.6	8.7	8.8	8.9	0
1	9.0	9.1	9.2	9.3	9.4	9.5	9.6	9.7	9.8	9.9	1
2	10.0	10.1	10.2	10.3	10.4	10.5	10.6	10.7	10.8	10.9	2
3	11.0	11.1	11.2	11.3	11.4	11.5	11.6	11.7	11.8	11.9	3
4	12.0	12.1	12.2	12.3	12.4	12.5	12.6	12.7	12.8	12.9	4
5	13.0	13.1	13.2	13.3	13.4	13.5	13.6	13.7	13.8	13.9	5
6	14.0	14.1	14.2	14.3	14.4	14.5	14.6	14.7	14.8	14.9	6
7	15.0	15.1	15.2	15.3	15.4	15.5	15.6	15.7	15.8	15.9	7
8	16.0	16.1	16.2	16.3	16.4	16.5	16.6	16.7	16.8	16.9	8
9	17.0	17.1	17.2	17.3	17.4	17.5	17.6	17.7	17.8	17.9	9
10	18.0	18.1	18.2	18.3	18.4	18.5	18.6	18.7	18.8	18.9	10
11	19.0	19.1	19.2	19.3	19.4	19.5	19.6	19.7	19.8	19.9	11
12	20.0	20.1	20.2	20.3	20.4	20.5	20.6	20.7	20.8	20.9	12
13	21.0	21.1	21.2	21.3	21.4	21.5	21.6	21.7	21.8	21.9	13
14	22.0	22.1	22.2	22.3	22.4	22.5	22.6	22.7	22.8	22.9	14
15	23.0	23.1	23.2	23.3	23.4	23.5	23.6	23.7	23.8	23.9	15
16	24.0	24.1	24.2	24.3	24.4	24.5	24.6	24.7	24.8	24.9	16
17	25.0	25.1	25.2	25.3	25.4	25.5	25.6	25.7	25.8	25.9	17
18	26.0	26.1	26.2	26.3	26.4	26.5	26.6	26.7	26.8	26.9	18
19	27.0	27.1	27.2	27.3	27.4	27.5	27.6	27.7	27.8	27.9	19
20	28.0	28.1	28.2	28.3	28.4	28.5	28.6	28.7	28.8	28.9	20
21	29.0	29.1	29.2	29.3	29.4	29.5	29.6	29.7	29.8	29.9	21
22	30.0	30.1	30.2	30.3	30.4	30.5	30.6	30.7	30.8	30.9	22
23	31.0	31.1	31.2	31.3	31.4	31.5	31.6	31.7	31.8	31.9	23
24	32.0	32.1	32.2	32.3	32.4	32.5	32.6	32.7	32.8	32.9	24
25	33.0	33.1	33.2	33.3	33.4	33.5	33.6	33.7	33.8	33.9	25
26	34.0	34.1	34.2	34.3	34.4	34.5	34.6	34.7	34.8	34.9	26
27	35.0	35.1	35.2	35.3	35.4	35.5	35.6	35.7	35.8	35.9	27
28	36.0	36.1	36.2	36.3	36.4	36.5	36.6	36.7	36.8	36.9	28
29	37.0	37.1	37.2	37.3	37.4	37.5	37.6	37.7	37.8	37.9	29
30	38.0	38.1	38.2	38.3	38.4	38.5	38.6	38.7	38.8	38.9	30
31	39.0	39.1	39.2	39.3	39.4	39.5	39.6	39.7	39.8	39.9	31
32	40.0	40.1	40.2	40.3	40.4	40.5	40.6	40.7	40.8	40.9	32
33	41.0	41.1	41.2	41.3	41.4	41.5	41.6	41.7	41.8	41.9	33
34	42.0	42.1	42.2	42.3	42.4	42.5	42.6	42.7	42.8	42.9	34
35	43.0	43.1	43.2	43.3	43.4	43.5	43.6	43.7	43.8	43.9	35
36	44.0	44.1	44.2	44.3	44.4	44.5	44.6	44.7	44.8	44.9	36
37	45.0	45.1	45.2	45.3	45.4	45.5	45.6	45.7	45.8	45.9	37
38	46.0	46.1	46.2	46.3	46.4	46.5	46.6	46.7	46.8	46.9	38
39	47.0	47.1	47.2	47.3	47.4	47.5	47.6	47.7	47.8	47.9	39
40	48.0	48.1	48.2	48.3	48.4	48.5	48.6	48.7	48.8	48.9	40

Des. Instrument Co.

Example—If point is 22.6 ft. above grade, how far should it be from center line to be a slope stake point? **Ans.** from Table 30.6. For same slopes but other widths of roadbed, correct above figures by one-half difference in width of roadbed; thus in example above, for 20 ft. roadbed distance will be $30.6 + (20 - 16) \div 2$ or 2 ft. added to $30.6 = 32.6$. For slopes of 1 on $1\frac{1}{2}$ see inside of back cover.
Copyright, 1914, by Eugene Dietzgen Co.

Gross Section of Block 25 (Am. Park Villa) between Hwy & Grind From Myrtle to Upas 15' side

333.43

3-24-6
1
3
2
1
North

160' S

B.M. 334 335.74 331.90 NE Myrtle 30' W 4.7 328.7

TP 499 333.43 6.80 328.44 E 5.1 328.3

020 - S. L. Myrtle

E 5.0 328.4

W Top Curb 499 328.44 130' S

Gutter Top Pavement & Ground 5.22 328.21 E 4.6 328.8

E 5.51 327.92 +3 5.0 328.4

Gutter " " & Ground 5.43 328.0 E 5.1 328.3

F " Curb 5.34 328.09 +4 4.9 328.5

75' S

44.3
3' DIA
Conc Drive
477
371.60

E 5.3 328.1 H 3.8 329.6 150' S

E 5.1 328.3 W 4.0 329.4

H 5.2 328.2 +3 4.6 328.8

50' S

E 4.7 328.7

W 5.3 328.1 E 4.6 328.8

E 5.1 328.3 170' S

E 5.5 327.9 -E 4.3 329.1

75' S

E 4.3 329.1

E 5.1 328.3 W 3.9 329.5

Scale 5' = 10'

E 5.1 328.3 200' S

W 5.2 328.2 W 4.0 329.4

See Legend

333.43

Z	4.2	329.2	
E	4.1	329.0	
212'S			
E	4.1	329.3	
Z	4.2	329.2	
H	3.9	329.5	
+6	to Garage Conc Floor	3.65	329.78

225'S

H	3.9	329.5
Z	4.3	329.1
+5	4.0	329.4
E	5.5	329.9

250'S

E	3.6	329.8
+2	4.1	329.3
Z	4.6	328.8
+5	4.5	328.9
H	3.7	329.7

272'S

H	4.1	329.3
+3	4.9	328.5

333.43

Z	4.9	328.5
E	5.5	327.9
to End Garage Conc Floor to Entrance		
292'S		
E	7.41	326.02
Z	5.9	327.5
H	5.4	328.0

300'S - H.L. Clips

W Top Curb + Ground	6.93	326.50
Gutter Top Paving	7.35	326.08
Z	7.3	326.1
E Top Paving + Ground	7.60	325.83

Cross Section Alley Block 248 Univ. Hgts.
Between Park Blvd + Indiana From Cypress to Park Blvd

30810

3-24-26
3
5
6
7
8
9
10
11
12
13
14
15
16
17
18
19
20
21
22
23
24
25
26
27
28
29
30
31
32
33
34
35
36
37
38
39
40
41
42
43
44
45
46
47
48
49
50
51
52
53
54
55
56
57
58
59
60
61
62
63
64
65
66
67
68
69
70
71
72
73
74
75
76
77
78
79
80
81
82
83
84
85
86
87
88
89
90
91
92
93
94
95
96
97
98
99
100

BM	724	308.10	300.81	SE Top of Cypress Park Blvd	E	4.6	303.5
M		0+0 = N of Cypress				25'H	
		7.7	300.4		E	5.7	302.4
	Top Curb	7.53	300.57		E	3.9	304.7
+1		7.3	300.8		+2	3.9	304.7
2		7.0	301.1		+7	2.8	305.3
+3		7.0	301.1		M	3.0	305.1
E		7.7	300.4			34'H	
	Top Curb	7.73	300.37		M	2.8	305.3
		2'H			E	3.0	305.1
E		6.4	301.7		E	3.5	304.6
8		6.7	301.4			58'H	
+6		6.4	301.7		-1 Garage 2nd Floor	3.4	304.7
+7		4.4	303.7		E	3.4	304.7
M		4.4	303.7		+6	3.0	305.1
		7'H				3.0	305.1
M		3.0	305.1		M	2.9	305.2
+4		3.1	305.0			75'H	
+7		5.9	302.2		M	3.0	305.1
8		5.9	302.2		E	3.2	304.9
+7		5.8	302.3		E	2.7	305.4

PLOTTED
4-21-26

724

30810

100' N

-1	Dr. Garage Dirt Floor	3.2	304.9
E		3.2	304.9
Z		3.3	304.8
H		3.3	304.8

125' N

H		3.2	304.9
Z		3.2	304.9
E		3.2	304.9

119' Non
XX
Corr 0.5
to #114

304.9

304.9

304.9

Fence
0.6 in Alley

304.8

146' N to
H.H.L.
Garage Dirt
Floor
3.3

TP	2.21	307.08 ✓	3.23	304.87
----	------	----------	------	--------

150' N

E		2.9	304.7
Z		2.3	304.8
H		2.3	304.8

175' N

H		3.0	304.1
Z		2.9	304.7
E		2.7	304.4

Garage Conc Floor

2.45

304.63 07 in Alley

30708

200' N

E		3.2	303.9
Z		3.3	303.8
H		3.3	303.8

225' N

H		3.4	303.7
Z		3.4	303.7
E		3.4	303.7

250' N

E		3.7	303.4
Z		3.8	303.3
H		3.5	303.6

275' N

H		4.0	303.1
Z		4.0	303.1
E		4.3	307.8
Z		3.98	303.10
E		4.0	303.1

194' N 5.0
3.3 L
Garage Conc Floor
3.10230' N 5.0
H.H.L. Garage
Conc Floor
3.50

303.4

303.3

303.6

303.1

303.1

307.8

Garage Conc Floor

303.10

303.1

300' N

E		4.9	307.1
Z		4.6	307.5
H		4.5	307.6

293' N 1.8 in Alley
Garage Dirt Floor

307.08

365'N

N 48 307.3

Fence
0.810 Alley

E 46 307.5

E 46 307.5

Fence
1.010 Alley

350'N

E 49 307.2

340'N on
Garage Ramp

464 307.2

E 53 301.8

N 53 301.8

Fence to
108 Alley

375'N

N 61 301.0

N 62 300.9

N 59 301.2

E 58 301.3

E 58 301.3

400'N

E 65 300.6

E 63 300.8

N 68 300.9

425'N

N 66 300.5

N 69 300.7

307.08

5

6.2 300.9

6.5 300.6

445'N

5.9 301.7

6.2 300.9

6.3 300.8

454'N

5.8 301.3

Top Curb 5.86 301.22

E 6.0 301.1

E 5.8 301.3

E L Park Blvd. = See A

E Top Curb + Paving 5.75 301.33

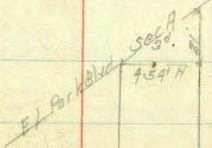
E Top Paving 6.01 301.07

N Top Curb + " 5.86 301.22

TP 5.75 309.93 2.93 304.18

BM 9.06 300.87

SE Top Hyd.
Grass + Park Blvd
300.87



Cross Section N+S Alley Block O Valle Vista Terrace
From N Adams to S Cliff St. 15' Wide

BM	4.96	356.03	351.07	S.W. 1/4 Adams & Lucas
0+0 - N Adams Ave				
F		4.5	351.5	
	Top Curb	4.6	351.43	
	Gutter Top Siding	4.80	351.23	
±	" "	4.98	351.05	
	Gutter " "	4.65	351.38	
	Top Curb	4.55	351.48	
H		4.7	351.6	
15' N				
H		3.4	352.6	40' N Center Pole Over Head
±		3.1	352.4	N. S. 1/4 Adams & Lucas
F		3.8	352.2	
50' N				
F		3.1	52.9	
±		3.1	52.9	
H		2.9	53.1	
75' N				
H		2.1	53.4	
±		2.9	53.1	

356.03

E		2.9	53.1	
100' N				
	-5 Garage Conc Floor	3.0	53.0	
F		3.0	53.0	
±		2.4	53.6	
H		2.3	53.7	
125' N S.E. 1/4 Alley				
H	Garage Conc Floor N Entrance	1.89	54.14	
±		1.8	54.2	
F		2.2	53.8	
137.5' N S.E. 1/4 Alley				
F		2.1	53.8	
±		1.6	54.4	
H		1.5	54.5	
140' N N.E. 1/4 Alley				
H		1.4	54.6	
±		1.5	54.5	
F	Garage Ditch Floor	2.2	53.8	
TP	57.5	357.5	1.53	359.50

3-24-76
5:55 PM
Bliss
Northman

6

35975

175'N

-4	Garage Conc Floor	5.31	54.44
E		5.3	54.5
E		5.1	54.7
N		5.0	54.8

200'N

N		4.9	54.9	215' N 4' E 24' Garage Ditch 5.17-354.5
E		5.1	54.7	
E		5.3	54.5	

220'N

-3.6	Do. Garage Conc Floor	5.33	54.42
E	Conc. Apron	5.43	54.32
E		5.0	54.8
N		4.7	55.1

258'N

N		4.6	55.2
E		4.8	55.0
E		4.9	54.9

266.5 = 26.0144 St.

E		5.9	53.9
Top Cord		5.93	53.82

35975

7

Gutter Top Paving	6.06	53.69
E " "	6.11	53.64
Gutter " "	5.77	53.98
Top Curb	5.59	54.16
N	5.4	54.4

TP	3.96	356.40	7.31	352.44
BM			5.34	357.06

S. W. Man
Redms +
Louisiana
3/2/07

Gross Section Dumas
From N.L. Rosecrans to 200' N.L. Plum

70' N.L. Plum
18' Cbs
8 1/2' Guts
✓
G.W.B.P.
Rosecrans
Curtis

	+	-					
BM	51.6	47.47	14.33	✓		7.7	47.8
TP	717	55.14	1.52	47.97		7.1	48.0
		0+0 = N.L. Rosecrans				7.2	47.9
N+11	Top Curb	6.93	48.21			6.1	49.0
	Gutter Curb	7.75	47.39		Gutter	7.1	48.0
Cb	Line Produced E	7.0	48.1		Cb Top Curb	6.83	48.31
1/4		7.3	47.8			29.11	
2		7.7	47.4		Cb	6.83	48.31
+3		7.9	47.2		+2	6.1	49.0
1/4		7.3	47.8		+3	6.5	48.6
Cb		7.8	47.5		+5	7.2	47.9
+4		8.2	46.9		1/4	7.1	48.0
5		8.1	47.0		2	7.3	47.8
	25.11				+5	6.9	48.2
5		8.0	47.1		+7	7.6	47.9
Cb		8.0	47.1		1/4	8.4	46.7
+6		7.8	47.2		+2	8.4	46.7
1/4		7.1	48.0		+4	10.5	44.6
+5		6.7	48.4		Cb	8.1	47.0
+6		7.3	47.8		5	7.8	47.3

18" Core Pipe
Flaw Line
10.51
Core Head Wall
8.55

3.25.11
55.14
8.55
47.8

Damos

5514

50' W

✓

S	6.8	48.3
Cb	7.9	47.2
+2	8.8	46.3
1/4	6.7	48.4
+4	6.5	48.6
+6	7.2	47.9
2	7.2	47.9
1/4	7.0	48.1
+2	6.3	48.8
+4	6.1	49.0
Gutter	6.8	48.5
Cb Top	6.52	48.62
	75' W	
NCB	6.34	48.80
+2	6.3	48.8 ✓
+6	5.6	49.5
1/4	6.8	48.5
2	6.7	48.4
+4	6.8	48.2
+6	6.4	48.7

5514

✓

10

1/4	6.7	48.4
+5	7.4	47.7
Cb	7.5	47.6
+3	7.2	47.9
S	6.2	48.9
	100' W	
S	5.9	49.2
1.15	7.0	48.1
Cb	7.0	48.1
+5	6.9	48.2
1/4	6.6	48.5
+4	6.0	49.1
1.6	6.5	48.6
2	6.3	48.8
1/4	6.2	48.9
+4	5.3	49.8
+6	6.1	49.0
Cb	6.0	49.1
TOP	6.01	49.13
	125' W	
NCB	5.56	49.58

Domas

5514

✓

Gutter	57	49.2
+2	58	49.3
+6	52	49.9
1/4	57	49.4
2	60	49.1
+4	60	49.1
+5	54	49.7
1/4	61	49.0
Cb	60	49.1
S	57	49.4
150' H		
S	50	50.1
Cb	57	49.4
1/4	58	49.3
+4	51	50.0
+6	55	49.6
2	57	49.4
1/4	56	49.5
+3	50	50.1
Gutter	56	49.5
Cb Top	53.4	49.78

5517

175' H

✓

11

H.Cb Top	49.2	50.22
Gutter	52	49.9
+2	53	49.8
+5	48	50.3
+7	52	49.9
1/4	52	49.9
2	53	49.8
+4	48	50.3
1/4	51	50.0
Cb	50	50.1
S	49	50.2
200' H		
S	41	51.0
+2	47	50.4
Cb	46	50.5
1/4	48	50.3
+4	43	50.8
+6	48	50.3
2	49	50.2
1/4	48	50.3

Dumas

55.14

✓

+3	4.2	50.9
+6	4.7	50.4
Gutter	4.7	50.4
Cb Top	4.21	50.39
22.5' H		
H Cb Top	4.55	50.59
Gutter	4.5	50.6
+2	4.4	50.7
+6	3.8	51.3
1/4	4.3	50.8
2	4.4	50.7
+5	4.1	51.0
1/4	4.3	50.8
Cb	4.1	51.0
S	4.0	51.1
2.50' H		
S	2.2	52.4
+5	3.8	51.3
Cb	3.6	51.5
1/4	3.9	51.4
2	4.0	51.1

55.14

✓

1/4	3.9	51.2
+3	3.5	51.6
+6	4.0	51.4
Gutter	4.1	51.0
Cb Top	4.15	50.99
27.5' H		
Cb Top	3.88	51.26
Gutter	3.7	51.4
+2	3.8	51.3
+6	3.0	52.1
1/4	3.4	51.7
2	3.4	51.7
+5	3.0	52.1
Cb	2.6	52.5
+16	3.4	51.7
S	2.8	52.9
300' H = E.2 Locust		
S	2.4	52.7
Cb	2.5	52.6
+2	2.1	53.0
1/4	2.1	53.0
+6	2.3	52.8

Locust
70' H do
18' Cbs
2' gats

2		3.0	52.1
1/4		3.0	52.1
+3		2.5	52.6
Cb	Line Prod. II	2.9	52.2
+7		3.8	51.3
Top Cb		3.37	51.77
	Cb		
H		2.6	52.5
Cb		2.4	52.7
+5		2.1	53.0
+6		2.6	52.5
1/4		2.6	52.5
2		2.4	52.5
+1		2.0	53.1
1/4		1.7	53.4
Cb		1.9	53.2
S		1.8	53.3
	1/4		
S		1.5	53.6
Cb		1.6	53.5
1/4		1.6	53.5

2		1.8	53.5
1/2		2.6	52.6
1/4		2.6	52.5
+3		2.4	52.7
+4		1.8	53.3
Cb		2.1	53.0
H		2.0	53.1
TP	11.85	65.20	1.79
		Locust	
H		11.5	53.7
Cb		11.9	53.3
+4		11.8	53.4
+5		12.3	52.9
1/4		12.4	52.8
+7		12.3	52.9
2		11.7	53.5
1/4		11.5	53.7
Cb		11.5	53.7
S		11.3	53.9
	1/4		
S		10.9	54.3

cb	11.2	54.0
1/4	11.1	54.1
2	11.6	53.6
+1	12.2	53.0
1/4	12.1	53.1
+3	12.0	53.2
+4	11.5	53.7
cb	11.4	53.8
H	11.2	54.0
	cb	
H	11.1	54.1
cb	11.4	53.1
+4	11.4	53.8
+5	11.9	53.3
1/4	12.0	53.2
2	11.9	53.3
11	11.4	53.8
1/4	10.9	54.5
cb	10.9	54.3
s	10.7	54.3

H2 Locust

s	9.9	55.3
cb	10.5	54.7
1/4	10.3	54.9
2	10.8	54.4
+1	11.3	53.9
1/4	11.2	54.0
+5	11.4	53.8
+6	10.8	54.4
cb	11.0	54.2
H	10.7	54.5
	25W	
Hcb	10.44	54.76
Gutter	10.2	55.0 ✓
1/4	10.4	54.8
+5	10.3	54.9
2	9.6	55.6
1/4	9.2	56.0
cb	9.0	56.2
+8	8.9	56.3
+10	9.1	56.1
+13	9.3	55.9

Curb + Walk
Covered

Domas

65.20

✓

s		27	57.5
	50.11		
s		78	57.4
+5		85	56.7
+8		85	56.7
+9		73	57.9
cb		75	57.7
1/4		77	7.3
2		86	56.6
+1		90	56.2 ✓
1/4		89	56.3
+6	S Edge Case Gutter	90.5	56.15 ✓
Gutter Case		7.23	55.97
cb Top		866	56.54
	75.11		
cb Top		675	58.45
Gutter		7.35	57.85
+ 2.5.32 C.9		7.27	57.99
1/4		72	58.10
2		72	58.10
+5		68	58.14

65.20

✓

15

		18	6.0	59.2
		14	6.0	59.2
		cb	5.8	59.4
		16	6.2	59.0
		17	8.0	57.2
		710	7.6	57.6
		712	6.6	58.6
		s	6.5	58.7
	100.11			
		s	4.7	60.5
		+5	5.0	60.2
		16	7.2	57.9
		+11	6.8	58.4
		712	4.6	60.6
		cb	4.6	60.6
		11	4.2	61.0
		12	4.0	61.2
		2	5.2	60.0
		11	5.3	59.9
		+6 SE CG	5.28	59.82
		Gutter	5.16	59.70

6520

✓

Cb Top	494	60.26
	12.5M	
HCb Top	302	62.17
Gutter	3.60	61.60
12.5 SE CG	2.93	61.77
'14	32	62.0
2	35	61.7
+3	3.6	61.6
+4	27	62.5
'14	30	62.2
Cb	33	61.9
+6	44	60.8
+8	54	59.8
+10	42	61.0
+13	34	61.8
5	30	62.2
	1.50M	
5	0.7	64.5
+6	1.7	63.5
+8	4.0	61.2
+16	4.7	60.5

6520

✓

16

Cb	41	61.1
17	1.2	64.0
+1	0.1	65.1
+5	0.9	64.3
2	1.0	64.2
'14	1.3	63.9
+6 SE CG	1.52	63.68
Gutter Cone	1.71	63.49
Cb Top	1.19	64.01 ✓
TP	9.67	74.67
	0.20	65.00
	17.5M	
HCb Top	8.74	65.93 ✓
Gutter	7.33	65.34
12.5 SE CG	9.13	65.54
'14	8.8	65.9
2	8.6	66.1
+5	8.6	66.1
+6	7.8	66.9
'14	7.3	67.4
+6	13.0	61.7
Cb	12.9	61.8

+1	12.8	64.9
+5	8.5	66.2
+8	8.4	66.1
+9	12.7	62.0
+12	11.7	63.0
+14	8.4	66.3
S	8.0	66.7
	190' W	
S	7.1	67.6
+12	7.5	67.2
+14	10.9	63.8
cb	11.4	63.3
+3	11.2	63.5
+5	7.5	67.2
1/4	7.5	67.2
2	7.4	67.1
1/4	2.9	66.8
+6. SECG	8.10	66.57
Gutter	8.31	66.36
cb Top	7.28	66.95
	800' W	

H. cb Top	6.91	67.76
Gutter	7.22	67.18
+2.5 SECG	7.22	67.34
1/4	7.0	67.7
2	6.9	67.8
1/4	6.8	67.9
+3	6.5	68.2
+7	10.7	64.0
cb	10.7	64.0
+3	11.0	63.7
+5	6.5	68.2
S	6.0	68.7
	225' W	
S	4.0	70.7
+5	5.0	69.7
+11	4.6	70.1
1/4	7.5	67.2
cb	8.4	66.3
+2	10.3	64.4
+4	10.4	64.3
+5	4.6	70.1

Damas	74.67	✓		74.67	✓	18
1/4		51	69.6	+5	1.5	73.2
2		50	69.7	+12	1.6	73.1
1/4		51	69.6	cb	2	70.0
+6 SECG		517	69.20	+3	5.6	69.1
Conc Gutter		5.68	66.99	1/4	2.0	72.7
cb Top		509	69.58	2	1.7	73.0
	250W			1/4	1.9	72.8
H cb Top		3.28	71.41	+6 SECG	2.15	72.52
Conc Gutter		3.81	70.83	Conc Gutter	2.33	72.34
+2.5 SECG		3.61	71.06	cb Top	1.74	72.93
1/4		3.3	71.14		275W	
2		3.1	71.6 ✓	cb Top	1.40	73.27
1/4		3.5	71.2	Conc Gutter	1.96	72.71
+3		2.9	71.8	+2.5 SECG	1.83	72.84
+5		2.6	65.5	1/4	1.6	73.1
cb		9.1	65.1	2	1.4	73.3
+3		2.5	66.2	+5	1.6	73.1
+4		3.0	71.7	1/4	2.3	72.4
+13		2.9	71.8	2	2.3	72.4
5		2.2	72.5	+5	4.3	70.4
	270W			cb	2.4	72.3
5		0.8	73.9			

+4		11	73.6
+13		1.1	73.6
5		0.3	74.4
TP	9.52	84.13 ✓	0.04
			74.61
			Evergreen 70' wide 18' Cbs BSQs
			306 W = E L Evergreen
5		84	75.7
+13		9.5	74.6
cb		114	72.7
+6		111	73.0
+7		96	74.5
1/4		96	74.5
2		97	74.4
1/4		96	74.5
cb		100	74.1
+5	SEC 9	1023	73.90
	Conc Guller	1030	73.83
+85	Top Conc Cb	975	74.38
	cb		
N		97	74.4
cb		92	74.9
1/4		90	75.1

2		90	75.1
1/4		91	75.0
13	2	102	73.3
+6		106	73.5
cb		100	74.1
+3		91	75.0
5		83	75.8
1/4			
5		77	76.4
+12		88	75.3
cb		101	74.0
+3		104	73.7
1/4		90	75.1
+5		85	75.6
2		86	75.5
1/4		88	75.3
cb		89	75.2
N		94	74.7
			2 Evergreen
N		90	75.1
cb		86	75.5

14	85	75.6
2	82	75.9
+5	84	75.7
14	89	75.2
+2	101	74.0
cb	86	75.5
5	77	76.4
	14	
5	76	76.5
cb	83	75.8
+1	83	75.8
+3	97	74.4
+6	97	74.4
14	87	75.4
+5	79	76.2
2	80	76.1
14	82	75.9
cb	84	75.7
11	84	75.8
	cb	
11	88	75.8

cb	82	75.9
14	80	76.1
2	78	76.3
+5	77	76.4
14	92	74.9
+2	93	74.8
+6	79	76.2
cb	78	76.3
5	72	76.9
	14	
	5	
	+5	
	cb	
	+1	
	14	
	2	
	14	
	cb	
	+5.5	SE.C.G.
	+8	Conc Gutter
	816	75.97
	828	75.75

14 Evergreen

Damas

84.13

✓

Top Cb

77.9

76.34

25'H

H Top Cb

63.5

77.78

Cone Gutter

69.3

77.20

+2.5 SE CG

63.3

77.30

1/4

63

77.6

2

61

78.0

1/4

62

77.9

+2

72

76.9

+6

70

77.1

Cb

5.5

78.6

+9

4.9

79.2

5

11

82.5

50'H

5

0.1

83.7

+9

3.4

80.7

+16

3.7

80.4

Cb

6.2

77.9

+3

60

78.1

+4

4.8

79.3

1/4

4.7

79.4

84.13

✓

21

2

47

79.4

1/4

48

79.3

+6 SE CG

526

78.87

Cone Gutter

537

78.76

Cb Top

478

79.35

75'H

H Cb Top

320

80.93

Cone Gutter

377

80.36

+2.5 SE CG

366

80.47

1/4

32

80.9

2

32

80.9

1/4

31

80.7

+2

35

80.6 ✓

+3

46

79.5

+6

45

79.6

Cb

34

80.7

+2

25

81.6

+9

23

81.8

5

+0.5

83.6

TP

836 ✓

9200 ✓

0.99

8364

5

100'H

Dumas	92.00	✓
S	58	86.1
+8	88	83.2
+15	88	83.2
+16	113	80.7
Cb	115	80.5
+3	112	80.8
+4	100	82.0
1/4	96	82.4
2	95	82.5
1/4	96	82.4
16	10.00	82.00
Conc Gutter	10.09	81.91
Cb Top	9.49	82.51
	125.11	
HCB	794	84.06
Conc Gutter	8.52	83.48
+2.5 SEC9	8.43	83.57
1/4	79	84.1
2	79	84.1
1/4	82	83.7
+4	87	83.3

	92.00	✓
+5	10.0	82.0
Qb	10.2	81.8
+1	71	84.9
110	7.0	85.0
S	4.0	88.0
	150.11	
S	28	89.2
+6	54	86.6
Cb	58	86.2
11	7.5	84.5
+5	66	85.4
11	64	85.6
2	63	85.7
11	64	85.6
+6, SEC9	684	85.16
Conc Gutter	682	85.08
Cb Top	635	85.65
	175.11	
H.C TOP	478	87.22
Conc Gutter	522	86.68
+2.5 SEC9	520	86.70

Damas

9200

1/4		48	87.2
2		48	87.2
1/4		49	87.1
+4		51	86.9
+5		62	85.8
+7		59	86.1
cb		37	88.3
110		34	88.6
5		0.6	91.4
TP	10.87	101.65	0.86
		200' N	
3		86	93.1
+8		117	90.0
cb		121	88.6
11		142	87.5
+4		142	87.5
+5		131	88.6
1/4		130	88.7
2		128	88.9
1/4		129	88.8
+6. SEC gutter		1225	88.40

101.65

✓

23

Conc Gutter	12.38	88.27
cb Top	12.82	88.82
	22.57	
HCb Top	11.24	90.41
Conc Gutter	11.28	89.87
+2.5 SEC G.	11.68	89.97
1/4	11.2	90.5
2	11.1	90.6
1/4	11.3	90.4
13	12.0	89.7
17	12.0	89.7
cb	10.5	91.2
+10	9.8	91.9
3	6.1	95.6
	2.50 N	
5	9.8	97.5
+8	8.7	95.0
cb	9.0	92.7
+7	11.2	90.4
+5	10.0	91.7
1/4	9.8	91.9

Dumas	101.65	✓
2	97	92.0
1/4	98	91.9
+6 SE CG	10.17	91.48
Conc Gutter	10.22	91.37
Cb Top	972	91.93
	275 W	
H Cb Top	8.15	93.50
Conc G	8.72	92.93
+2.5 SE CG	8.69	92.96 ✓
1/4	8.7	93.3
2	85	93.2
1/4	87	93.0
+1	88	92.9
+2	96	92.1
+5	96	92.1
+6	76	94.1
Cb	75	94.2
+8	73	94.4
5	33	98.4

300' W - 52' Willow

Willow
70' wide
15' Cb
85' 92'

	101.65	✓
S	57	96.0
+10	6.7	95.0
TOP Curb	6.78	95.17
Conc Gutter	7.10	94.25
+16	7.5	94.2
Cb	8.6	93.1
+2	7.8	93.9
1/4	7.5	94.2
2	7.3	94.4
1/4	7.4	94.3
Cb	7.5	94.2
+7.5 SE CG	7.66	93.99
+8 Gutter	2.80	93.85
Top Curb	2.25	94.40
TP	10.88	107.51
	5.02	96.63
	Cb	
H	13.3	94.2
Cb	12.9	94.6
1/4	12.7	94.8
2	12.6	94.9
1/4	12.8	94.7
Cb	12.2	94.6

Base Lamp Post
E Dumas Willow

S	120	95.5
	14	
S	118	95.7
+13	126	94.9
cb	126	94.9
1/4	123	95.2
2	123	95.2
1/4	124	95.1
cb	122	94.8
H	130	94.5
	<i>E. H. 110x</i>	
H	122	94.7
cb	122	95.2
1/4	122	95.3
2	118	95.7
1/4	118	95.7
cb	117	95.8
+8	118	95.6
S	112	96.3
	14	
S	111	96.4

+6	116	95.9
cb	116	95.9
1/4	113	96.2
2	112	96.3
1/4	117	95.8
cb	121	95.4
H	125	95.0
	cb	
H	126	94.9
cb	118	95.7
1/4	115	96.0
2	111	96.4
1/4	110	96.5
cb	112	96.3
+5	113	96.2
S	114	96.1
	<i>X 2 1/2 110x</i>	
S	98	97.7
17	104	97.1
+8	110	96.5
cb	110	96.5

1/4		10.1	97.4
+3		10.2	97.3
+4		10.4	96.9
2		10.6	96.8
1/4		11.0	96.5
Cb		11.4	96.1
+7	SECG	11.81	95.63
+10	Conc Gutter	12.13	95.38
Cb Top		11.55	95.96
	13'W		
NL +157	Cb Top	10.45	96.83
	Conc Gutter	11.25	96.26
Cb	SECG	11.15	96.36
1/4		10.5	97.0
2		10.1	97.4
+3		9.8	97.7
1/4		10.2	97.3
+2		10.6	96.9
Cb		10.6	96.9
+8		10.9	97.1
+13		9.0	98.5

S		2.4	105.1
		2.5'W	
S		4.2	103.3
+7		9.4	98.1
Cb		9.7	97.6
1/4		10.0	97.5
+3		9.6	97.9
2		9.8	97.7
1/4		10.2	97.3
+6	SECG	10.56	96.95
	Conc Gutter	10.68	96.83
	Cb Top	10.10	97.41
	50'W		
Cb Top		8.88	98.63
Gutter		8.13	98.08
+15	SECG	9.32	98.19
1/4		8.0	98.5
2		8.8	98.7
1/4		8.6	98.9
+5		8.5	97.9
Cb		9.7	97.8

Dumas	107.51	✓
+2	92	98.3
S	76	99.9
	75'W	
S	64	101.1
+8	84	99.1
cb	85	99.0
+2	92	98.3
+4	91	98.4
1/4	96	99.9
2	71	100.1
1/4	77	99.8
+6 SEC9	809	99.44
Gutter	821	99.30
cb Top	714	99.67 ✓
	100'W	
cb Top	639	101.12
Gutter	695	100.56
+2.5 SEC9	695	100.66
1/4	65	101.0
2	63	101.2
1/4	64	101.1

2	107.51	✓
+7	83	99.2
cb	77	99.6
+8	73	100.2
S	50	102.5
	125'W	
S	58	101.7
+13	69	100.6
cb	63	101.2
1/4	63	101.2
+7	54	102.1 ✓
1/4	52	102.3 ✓
2	51	102.4 ✓
1/4	52	102.2 ✓
+6 SEC9	559	101.92
Gutter	572	101.79
cb	518	102.37
	150'W	
cb	394	103.57
Gutter	450	103.01
+2.5 SEC9	436	103.15
1/4	40	103.5

Dumps		107.51	✓	
2			103.5	
1/4			103.5	
+4			101.8	
+7			102.0	
Cb			103.0	
+3			102.9	
+7			102.4	
+16			104.4	
S			107.5	
TP	9.55	115.50	105.95	
		170.17		
S			112.4	
+6			109.9	
+7			106.0	
Cb			103.8	
+2			102.8	
+4			102.6	
1/4			104.3	
2			104.5	
1/4			104.3	
+6 SECG			104.6	

		115.50	✓	28
Gutter			103.96	
Cb Top			104.52	
		175.54		
Cb			104.86	
Gutter			104.28	
+2.5 SECG			104.41	
1/4			104.7	
2			104.8	
1/4			104.7	
+4			102.3	
Cb			105.15	
+2			108.9	
+8			109.4	
S			112.15	
		200.54		
S			112.8	
+4			111.2	
+15			109.3	
+17			105.9	
Cb			105.2	
+4			103.9	

+6	11.4	104.1
1/4	9.6	105.9
2	9.4	106.1
1/4	9.6	105.9
+6 SECG	9.85	105.65
Gutter	9.98	105.52
Cb Top	9.41	106.09
	225'W	
Cb	8.16	107.34
Gutter	8.71	106.76
+2.5 SECG	8.56	106.94
1/4	8.5	107.0
2	8.4	107.1
1/4	8.6	106.9
+3	8.6	106.9
+7	9.7	105.8
Cb	10.1	105.4
+4	5.1	110.4
+13	3.7	111.8
5	1.7	113.8

250'W

5	0.3	115.2
+6	3.2	112.3
+14	4.1	111.4
Cb	9.0	106.5
+5	7.3	108.2
1/4	7.3	108.2
2	7.1	108.4
1/4	7.3	108.2
+6 SECG	7.34	108.16
Gutter	7.49	108.01
Cb Top	6.96	108.58
	275'W	
Cb Top	5.65	109.85
Gutter	6.23	109.27 ✓
+2.5 SECG	6.15	109.35
1/4	6.2	109.3
2	6.1	109.4
1/4	6.5	109.10
Cb	6.7	108.8
+3	4.8	111.3
+11	3.8	112.2

Dumas

115.50

✓

S	0.5	115.0
	300 ft	EL Plum From S
S	0.0	115.5 ✓
+7	3.0	112.5 ✓
+14	4.2	111.3
+17	6.4	109.1
Cb	6.4	109.1
+5	6.3	109.2
+6	5.6	109.9
'14	5.5	110.0
z	5.1	110.4
'14	5.2	110.3
+6 SECG	5.16	110.34
Gutter	5.27	110.23
Cb Top	4.69	110.61
	4.7	
Cb	4.60	110.90
Gutter	5.20	110.30
+2.5	5.12	110.37
'14	5.0	110.5
z	5.0	110.6

115.50

1

✓

	5.5	110.0
	6.2	109.3
	6.1	109.4
	3.8	111.7
	1.8	113.7
	1.6	113.9
	10.7	
	4.0	111.5
	4.8	110.7
	6.1	109.4
	5.3	110.2
	5.1	110.4
	4.8	110.7
	4.8	110.7
	4.91	110.59 ✓
	4.88	110.52
	4.43	111.07
	Cb	
	4.20	111.30
	4.77	110.73
	4.69	110.81

30

1/4	4.5	111.0
±	4.4	111.1
1/4	4.9	110.6
+4	5.6	109.9
cb	5.1	110.4
s	3.8	111.7
1/4		
s	3.4	112.1
cb	4.6	110.9
+1	5.0	110.5
+3	4.5	111.0
1/4	4.4	111.1
±	4.1	111.4
1/4	4.3	111.2
+6 SEC9	4.54	110.96
Gutter	4.61	110.89
cb Top	4.05	111.45
± Plum		
cb Top	3.89	111.61
Gutter	4.44	111.06
+2.5 SEC9	4.39	111.11

1/4	4.0	111.5
±	3.7	111.8
1/4	3.9	111.6
+4	4.1	111.4
+9	4.6	110.9
cb	4.2	111.3
s	3.3	112.2
TP	10.74	123.91
1/4		
s	11.4	112.3
cb	12.5	111.4
+3	12.1	111.1
1/4	12.3	111.6
±	12.0	121.9
1/4	12.2	111.7
+6 SEC9	12.60	111.03
Gutter	12.68	111.22
cb Top	12.12	111.78
cb		
H.cb	11.92	111.98
Gutter	12.57	111.39

577 Cor Sidewalk
Dumas + Plum

3-30-26

Domas

123.90

✓

+2.5 SECG	12.45	111.45
1/4	11.9	112.0
2	11.7	112.2
1/4	11.9	112.0
+4	12.7	111.2
cb	12.5	111.4
S	11.5	112.4
XL Plum		
S	10.0	113.9
+5	10.1	113.8
+10	8.5	115.4
+13	9.1	114.8
cb	11.9	112.0
+5	12.3	111.6
1/4	11.4	112.5
2	11.2	112.7
1/4	11.5	112.4
+6 SECGutter	11.91	111.99
Gutter	12.00	111.90
cb Top	11.45	112.45

3'W

123.90

✓

32

11. cb top	11.38	112.52
Gutter	11.98	111.92
+2.5 SECG	11.90	112.00
1/4	11.3	112.16
2	11.0	112.9
1/4	11.3	112.6
+1	12.1	111.8
cb	11.8	112.1
+5	7.9	116.0
S	5.7	118.2
2.5'W		
S	5.5	116.4
12	6.3	117.6
+16	7.5	116.4
cb	11.0	112.9
1/4	10.5	113.4
2	10.8	113.7
1/4	10.5	113.4
+6 SECG	11.05	112.85
Gutter	11.14	112.76
cb Top	10.60	113.30

12390

45	51	118.8
710	56	118.3
711	41	119.8
713	46	119.3
714	75	116.4
cb	72	116.7
72	63	117.6
74	61	117.8
2	60	117.9
74	60	117.9
76 SECG	625	117.55
Gutter	6.48	117.42
cb Top	5.92	117.91
	150.71	
HCb Top	4.80	119.10
Gutter	5.35	118.53
72.5 SECG	5.20	118.70
74	50	118.90
2	48	119.1
74	48	119.1
76	54	118.5

12390

34

cb	56	118.3
72	46	119.3
77	78	121.2
S	52	120.7
	175.71	
S	20	121.7
715	26	121.3
717	11	119.5
cb	44	119.5
74	38	120.1
2	37	120.2
74	37	120.2
76 SECG	399	119.91
Gutter	413	119.77
cb Top	3.51	120.34
	128.71	
HC Top	2.97	121.43
Gutter	2.94	120.96
72.5 SECG	2.81	121.06
74	2.6	121.3
2	2.5	121.4
74	2.5	121.4

123.90

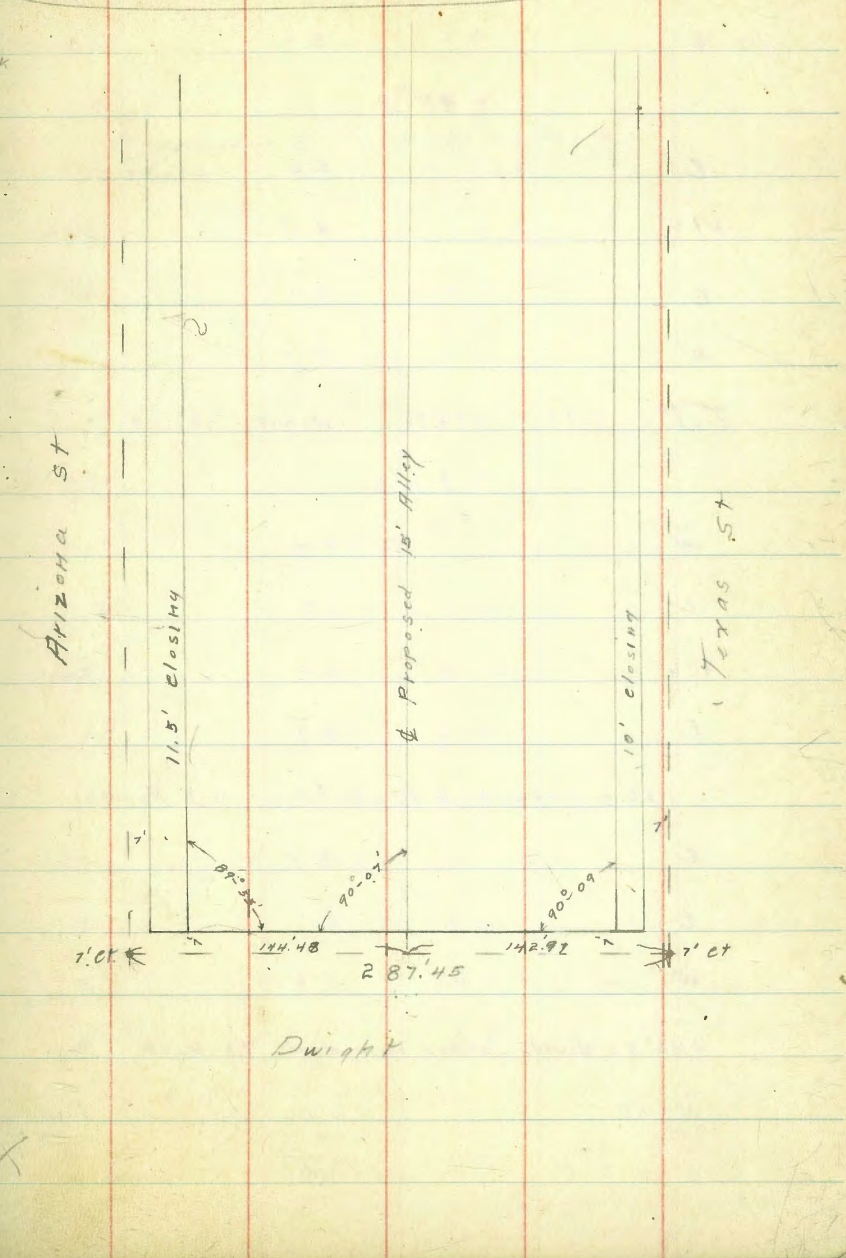
70' Wide
18' Chs
8 1/2' Qts

+1	2.2	121.6
+3	3.0	120.9
cb	2.7	121.2
+4	1.0	122.9
5	0.3	123.6
	200' W	
5	0.2	123.7
+10	0.8	123.1
+12 E End Walk	1.9	122.0
cb Top For Check	2.09	121.81
Gutter Conc.	2.68	121.21
+2.5 Edge	2.59	121.31
1/4	2.1	121.5
2	2.4	121.5
1/4	2.5	121.4
+6 S Edge Conc Gutter	2.88	121.02
Gutter	3.02	120.88
cb Top	2.34	121.56

Blk 16 Paulip add.

X Sec Proposed Alley 15 wide
 from Dwight 250 S. Paul Texas & Arizona
 5/25/94
 sq Dwight
 & Arizona

B.M.	9.95	291.04	281.09
	00 = S. line Dwight		
E		5.6	garage floor! Back Facing Dwight
E		5.2	
W		4.9	
	46' 5" = garage on E wood floor 2.5 Back		
W		4.8	
E		4.9	
E		5.2	floor same
	Fences on E 15 in Alley		
	77' 5"		
E		5.1	
+1.5		4.5	fence
E		4.7	
+4		4.5	
W		4.1	
	85' 5" garage on E dirt floor 2.0 Back		
W		4.3	
+1		4.7	
E		4.8	



291.04

Y3		4.8	
E		5.2	floor
	95' S		
E		5.0	
+1.5		4.5	fence
C		4.4	
W		4.2	
T.P.	7.97	294.74	4.25 286.79
		110' S	
W		7.4	
E		7.9	
+4		7.9	fence
E		8.9	
	124's garage on E dirt floor 2.5 Back		
E		8.5	floor
E		8.1	
W		7.9	
	140's = double garage on W dirt 7.5 back		
W-7.5		6.4	floor
W		7.5	

294.76

37

		7.7	
+58		7.5	fence
E		8.4	
	garage on E dirt floor 2.3 Back		
	163' double " " W " " " 7.5 "		
8-2.3		7.8	
E		7.5	
E		7.3	
W		7.0	
+7.5		6.3	
	185' S		
W		6.2	
E		6.2	
+4		6.2	
E		7.4	
	205' S		
E		5.2	
C		4.7	
W		4.9	

294.76

230'S

W 4.3

E 4.7

E 4.8

250'S

E 4.7

E 3.9

W 3.6

275'S

W 3.3

E 3.5

E 4.0

300'S

E 3.6

E 3.6

W 3.4

306'S qaraqon W

W 2.7

70' wide
1.8' elev
8.5 44

Zola STX Sec
Chatsworth to Roscrans

5-28-26
mult

165.45

39

50' E of 0+00

B.M.	3.87	165.45	161.58	W. of Chatsworth 200' S. of Road	S	2.4	163.1
	25' W of E line of Chatsworth = E edge Paving				cl	2.6	162.9
opposite N.E. cor Zola + Chatsworth	3.26	162.19	on paving	1/4	2.8	162.7	
opposite S.E. cor Zola + Chatsworth	2.71	162.74	" "	0	3.1	162.4	
	E. Line Chatsworth			1/4	3.4	162.1	
S	2.5	163.0		cl	3.4	162.1	
cl	2.6	162.9		N	3.5	162.0	
1/4	2.6	162.9					
	2.6	162.9		N	4.0	159.5	
	2.5	163.0		1/4	6.2	159.3	
	2.7	162.8		cl	4.8	160.7	
	2.7	162.8		1/4	4.8	160.7	
	2.7	162.8		0	4.6	160.9	
	90° 00' with Zola 00 = 52' E of E line Chatsworth on S			1/4	4.5	161.0	
N	2.7	162.8		cl	4.4	161.1	
cl	2.7	162.8		S	4.0	161.5	
1/4	2.4	163.1					
	2.0	163.5		S	4.7	160.8	
1/4	1.9	163.6		cl	5.6	159.9	
cl	1.8	163.7		1/4	5.9	159.9	
S	1.7	163.8		0	5.8	159.7	

100' E

120' E

	165.45 120'E (cont)		
74	5.8	159.7	
cl	6.0	159.5	
78	6.6	158.9	
N	6.5	159.0	
	130'E		
N	4.8	159.0	
cl	6.9	158.6	
114	6.9	158.9	
c	6.8	158.7	
114	6.9	158.6	
cl	6.4	159.1	
S	5.6	159.9	
	170'E		
S	7.0	158.5	
cl	7.5	158.0	
114	7.8	157.7	
c	7.7	157.8	
114	7.8	157.7	
cl	7.8	157.7	
H10	8.3	157.2	
N	8.1	157.4	

	165.45	201a	
	205'E = FL.		
N	9.1	156.4	
+10	10.1	155.4	
cl	8.9	156.6	
114	8.4	157.1	
c	8.6	156.9	
114	8.3	157.2	
cl	8.3	157.2	
S	8.0	157.5	
	225'E		
S	8.5	157.0	
cl	8.9	156.6	
114	9.2	156.3	
c	9.6	155.9	
114	9.8	155.7	
cl	10.6	154.9	
N	12.3	153.2	
+5	12.7	152.8	
	250'E		
-10	14.2	151.3	
-5	13.9	151.6	

165.45
250' E (CON)

N	12.9	152.6
+10	11.7	153.8
el	11.4	154.1
14	10.7	154.8
c	10.4	155.1
14	10.0	155.5
el	9.9	155.6
S	9.6	155.9
	275' E	
S	10.4	155.1
el	10.6	154.9
14	10.7	154.8
c	11.4	154.1
14	11.7	153.8
el	12.4	152.9
N	14.1	151.4
+5	14.5	151.0
+10	15.3	150.2

165.45
295' E

2012

41

-70	15.4	150.1
N	14.8	150.7
+5	13.8	151.7
el	12.4	153.1
14	12.2	153.3
c	11.7	153.8
14	11.3	154.2
el	11.2	154.3
S	11.0	154.5
	325' E	
S	12.1	153.4
el	12.5	153.0
T.P.	0.36	154.19
14	11.62	153.83
14	11.2	153.0
c	1.4	152.8
14	1.4	152.8
el	1.7	152.5
N	2.4	151.8
+10	3.5	150.7

154.19
350' E

-10	5.8	148.4
N	3.7	150.5
cl	2.8	151.4
1/4	2.5	151.7
e	2.3	151.9
1/4	2.0	152.2
cl	1.6	152.6
S	1.4	152.8
370' E		
S	2.1	152.1
cl	2.5	151.7
1/4	2.7	151.5
e	3.2	151.0
1/4	3.6	150.6
cl	4.2	150.0
N	5.6	148.6
+10	6.2	148.0
400' E		
-10	8.2	146.0
N	7.1	147.1

154.19

Zola

42

+10	5.8	148.4
cl	5.5	148.7
1/4	5.2	149.0
e	4.7	149.5
1/4	4.1	150.1
cl	3.7	150.5
S	2.7	151.5
430' E = W Line clove		
-30	1.4	152.6
S	3.3	150.9
cl	4.0	150.2
1/4	4.5	149.7
e	5.4	148.8
1/4	6.3	147.9
cl	7.3	146.9
N	8.9	145.3
+10	9.9	144.3
+30	11.2	143.0
W cl		
N	8.4	145.8
cl	6.8	147.4

70' wide
cl
145

154.19
W. cl (com)

1/4	6.2	148.8
e	5.4	148.8
1/4	4.8	149.4
cl	4.3	149.9
s	3.1	151.1
	W 1/4	
s	3.0	151.2
cl	3.9	150.3
1/4	4.3	149.9
e	4.7	149.5
1/4	5.4	148.8
cl	6.2	148.0
N	8.1	146.1
	⊕	
N	8.6	145.6
cl	6.3	147.9
1/4	5.1	149.1
e	4.5	149.7
1/4	4.3	149.9
cl	3.8	150.4
s	3.3	150.9

154.19

Zola

43

E 1/4	3.6	150.6
cl	4.0	150.2
1/4	4.4	149.8
e	4.4	149.8
1/4	5.0	149.2
cl	5.4	148.4
N	8.5	145.7
	E. cl	
N	8.7	145.5
cl	6.0	148.2
1/4	4.7	149.5
e	4.7	149.5
1/4	4.6	149.6
cl	4.2	150.0
s	4.1	150.1
	oo = E Line Clove	
-30	4.7	149.5
s	5.6	148.6
cl	5.2	149.0
1/4	5.2	149.0

154.19

00 = 2 lines above (cont)

c	5.0	149.2
14	5.4	148.8
cl	6.4	147.8
N	9.6	144.6
+10	11.0	143.2
+30	13.5	140.7
	25' E	
-10	11.7	142.5
N	10.8	143.4
cl	8.5	145.7
14	8.0	146.2
c	7.7	146.7
14	7.9	146.3
cl	7.5	146.7
S	6.4	147.8
	40' E	
-5	7.4	146.8
S	7.9	146.3
cl	8.8	145.4
14	9.3	144.9

154.19

Zona

44

c	9.4	144.6
14	9.8	144.4
cl	10.2	143.0
N	11.2	143.0
+10	12.2	142.0
	65' E	
-10	13.8	140.4
N	14.0	140.2
cl	13.3	140.9
14	12.6	141.6
c	11.8	142.4
14	10.8	143.4
cl	9.9	144.3
S	8.1	146.1
+5	7.5	146.7
	100' E	
S	7.1	147.1
cl	10.4	143.8
14	11.9	142.3
c	13.2	141.0

148.62
225' E

-15	13.6	135.0
N	10.0	138.6
cl	7.5	141.1
1/4	6.8	141.8
c	5.7	142.9
1/4	4.5	144.1
cl	3.6	145.0
S	1.2	147.4
R50' E		
S	1.5	147.1
cl	2.9	145.7
1/4	3.3	145.3
C	4.2	144.4
1/4	6.6	142.8
d	8.0	140.6
N	10.2	138.4
+10	12.0	136.6
R75' E		
-10	12.5	136.1
N	10.8	137.8

148.62

Zola

46

cl	8.6	140.0
1/4	7.4	141.2
c	5.9	142.7
1/4	5.0	143.6
cl	4.2	144.4
S	1.9	146.7
300' E = W Line Plum		
-20	0.7	147.9
S	2.9	145.7
cl	5.5	143.1
1/4	6.6	142.0
c	7.4	141.0
1/4	8.7	139.9
cl	9.8	138.8
N	12.0	136.6
+30	15.9	132.7
W. cl		
N	13.1	135.5
+10	11.2	137.4
d	10.0	138.6

70' wide
14°
cl

148.62			148.62			201a		
114		8.5	140.1	el		6.9	141.7	47
e		8.0	140.6	s		4.2	144.4	
114		7.5	141.1		E 114			
el		6.4	142.2	s		4.5	144.1	
s		3.9	144.7	el		7.0	141.6	
	W 114			114		8.0	140.6	
s		4.2	144.4	e		9.2	139.4	
el		6.8	141.8	114		10.4	138.2	
114		7.4	141.0	el		11.6	137.8	
e		8.4	140.0	✓		13.7	134.9	
114		9.2	139.4		E el			
el		10.1	138.5	✓		14.5	134.1	
+8		11.7	136.9	el		11.5	137.1	
N		13.1	135.5	114		10.2	138.4	
	♀			e		9.0	139.6	
N		13.2	135.4	114		7.7	140.9	
el		11.0	137.6	el		6.9	141.7	
114		9.7	138.9	s		4.7	143.9	
e		9.3	139.3					
114		8.0	140.6					

148.62
oo: Eline Plum

-30	0.8	147.8
S	4.8	143.8
cl	6.9	141.7
14	7.4	141.0
C	8.5	140.1
14	9.9	138.7
cl	11.1	137.5
N	13.6	135.0
+25	20.0	128.6
	30'E	
-10	15.6	133.0
N	14.0	134.6
cl	11.0	137.6
14	9.6	139.0
C	7.5	141.1
14	6.7	141.9
cl	6.2	142.4
S	4.2	144.4

148.62
55'E

.5	3.8	144.8
cl	6.0	142.6
14	7.1	141.5
C	8.3	140.3
14	9.5	139.1
cl	10.8	137.8
N	14.0	134.6
+10	16.1	132.5
	85'E	
-10	14.9	133.7
N	12.7	135.9
cl	10.0	138.6
14	8.6	140.0
C	6.7	141.9
14	5.3	143.3
cl	5.0	143.6
S	3.2	145.4
	100'E	
S	2.1	145.5
cl	4.5	144.1

Zota

48

	148.62		
	100' E	(con)	
1/4	5.3	143.3	
e	6.5	142.3	
1/4	8.1	140.5	
el	9.5	139.1	
N	12.7	135.9	
+10	14.5	134.1	

	150' E		
-10	12.0	136.6	
N	10.0	138.6	
el	7.4	141.2	
1/4	6.1	142.5	
e	4.8	143.8	
1/4	3.6	145.0	
el	2.8	145.8	
S	1.4	147.2	

	200' E		
S	1.2	147.4	
el	2.7	145.9	
1/4	3.3	145.3	
e	4.3	144.3	

	148.62		201a
1/4			5.1 143.5
el			5.6 143.0
N			8.4 140.2
+10			10.2 138.4
T.P.	7.55	147.78	8.39 140.23
		235' E	

N			7.6 140.2
el			5.5 142.3
1/4			5.4 142.4
e			4.9 142.9
1/4			4.2 143.6
el			2.6 145.2
+8			1.7 146.1
S			1.1 146.7

	260' E		
S			1.6 146.2
el			2.6 145.2
1/4			4.2 143.6
e			4.7 143.1
1/4			5.5 142.3

on Lot 148.62
Side Zola 100' W. of
Willow

147.78
260'E

cl	5.9	141.9
N	7.4	140.4
	283'E	
N	7.3	140.5
+7	6.3	141.5
cl	6.5	141.3
114	6.6	141.2
2	5.6	142.2
114	5.2	142.6
+3	3.6	144.2
cl	3.2	144.6
S	2.1	145.7
	291'E	
S	2.5	145.3
+12	3.9	143.9
cl	5.8	142.0
+3	9.2	138.6
114	8.5	139.3
C	8.8	139.0
114	8.2	139.6

147.78

Zola

50

cl	7.8	140.8
+9	6.0	141.8
N	7.0	140.8
	298'E	
114	7.5	140.3
+11	7.4	140.4
cl	9.8	138.0
114	10.3	137.5
C	10.2	137.6
114	10.2	137.6
cl	9.7	138.1
+5	9.3	138.4
+12	7.3	140.5
S	2.7	145.1
	300'E = W Lim. Willow Evergreen (graded)	
S	8.0	139.8
+10	9.56	138.22 Wand amt cl
cl	10.0	137.8
114	10.3	137.5
C	10.4	137.4

W. Line Willow

(cont)

114	10.6	137.2	
cl	10.6	137.2	
+ 8	10.54	137.24	wend emtel
N	10.8	137.0	
	oo = E. Line Willow		
✓	11.8	136.8	
110	11.64	136.14	Endemtel
cl	11.2	136.6	
114	11.2	136.6	
e	11.1	136.7	
1/4	11.1	136.7	
cl	10.7	137.1	
+ 8	10.64	137.14	Endemtel
S	10.0	137.8	
	4' 5		
S	49	142.9	
cl	56	142.2	
114	61	141.7	
e	64	141.4	
114	67	141.1	

d	7.3	140.5	
N	8.5	139.3	
	50' E		
N	9.0	138.8	
cl	9.2	139.6	
1/4	7.8	140.0	
e	7.5	140.3	
1/4	7.2	140.6	
cl	6.8	141.0	
S	6.2	141.6	
	100' E		
S	8.1	139.7	
cl	8.7	139.1	
1/4	8.9	138.9	
e	9.2	138.6	
114	9.3	138.5	
cl	9.5	138.3	
N	9.9	137.9	

147.78
125' E

N	10.7	137.1
cl	10.6	137.2
14	10.5	137.3
cl	10.3	137.5
14	10.2	137.6
cl	10.0	137.8
S	9.2	138.6

150' E

S	10.3	137.5
cl	11.3	136.5
14	11.4	136.4
cl	11.4	136.4
14	11.8	136.0
cl	12.0	135.8
N	12.4	135.4

151' E

N	14.2	133.6
cl	13.1	134.7
14	12.0	135.8
T.P.	3.30	138.45
	12.63	135.15

138.45
200 E

N	6.2	132.3
cl	5.6	132.9
14	5.1	133.4
cl	4.8	133.7
14	4.4	134.1
cl	4.0	134.5
S	3.4	134.9

250' E

S	6.9	131.6
cl	7.4	131.1
14	7.8	130.7
cl	8.0	130.5
14	8.1	130.4
cl	8.4	130.1
N	9.4	129.1

300' E = W. King Evergreen

-30	14.5	124.0
N	12.7	125.8
cl	12.2	126.3
14	11.5	127.0
cl	11.5	127.0

70' wide
18' dia
85' dia

138.45

W Lins Evergreen (con)

1/4	11.2	127.3
el	11.1	127.4
S	10.8	127.7
+30	10.3	128.2
	W. el.	
S	12.3	126.2
el	12.4	126.1
1/4	12.6	125.9
e	12.9	125.6
1/4	13.1	125.4
el	13.4	125.1
N	14.3	124.2
	W 1/4	
N	15.0	123.5
el	13.9	124.6
1/4	13.6	124.9
e	13.5	125.0
1/4	13.4	125.1
el	13.1	125.4
S	12.8	125.7

138.45

Zola

53

ϕ	13.5	125.0
d	13.7	124.8
1/4	14.0	124.5
e	14.4	124.1
1/4	14.5	124.0
d	14.5	124.0
N	15.4	123.1
	E. 1/4	
N	16.1	122.4
d	15.3	123.2
1/4	15.2	123.3
e	15.0	123.5
1/4	14.7	123.8
d	14.5	124.0
S	14.2	124.3
T.P	1.10	128.81
	10.74	127.71
	E. d	
S	5.1	123.7
el	5.4	123.4
1/4	5.7	123.1

S.W. BIK cut
Evergreen
& Zola

	128.81	
e	5.9	122.9
1/4	6.1	122.7
el	6.5	122.3
N	7.5	121.3
	00 = E Line Evergreen	
- 30	9.7	119.1
N	8.7	120.1
el	7.9	120.9
1/4	7.6	121.2
e	7.4	121.4
1/4	7.1	121.7
el	6.8	122.0
S	6.4	122.2
+30	6.5	122.3
	50'E	
S	10.6	118.2
el	11.2	117.6
1/4	11.5	117.3
e	12.1	116.7
1/4	12.6	116.2
el	12.8	116.0
N	13.4	115.2

	128.81	
T.P.	0.30	114.29
	100'E	
N		5.7 110.6
el		5.2 111.1
1/4		4.5 111.8
e		4.1 112.2
1/4		3.5 112.8
el		3.0 113.3
S		2.0 114.3
	125'E	
S		4.2 112.1
el		5.1 111.2
1/4		5.8 110.5
e		4.4 109.9
1/4		7.0 109.3
el		7.5 108.8
N		8.6 107.7
	150'E	
N		11.2 105.1
el		10.0 106.3

		116.29			105.12	20/a	
		150' E				55	
1/4			9.4	106.9	el	2.2	102.9
C			8.8	107.5	S	1.0	104.1
1/4			8.2	108.1		22.5' E	
el			7.5	108.8	S	4.1	101.0
S			6.5	109.8	el	5.6	99.5
		180' E			1/4	6.3	98.8
S			9.7	106.6	C	7.2	97.9
el			10.7	105.6	1/4	8.0	97.1
1/4			11.7	104.6	el	8.8	96.3
C			12.5	103.8	N	9.7	95.4
1/4			13.0	103.3		250' E	
T.P	154	105.12	12.71	103.54	N	12.7	92.4
el			2.4	102.7	el	12.5	92.0
N			3.4	101.7	1/4	11.6	93.5
		200' E			C	10.6	94.5
N			4.1	99.0	1/4	10.0	95.1
el			5.1	100.0	el	9.2	95.9
1/4			4.1	101.0	S	7.6	97.5
C			3.7	101.4			
1/4			3.0	102.1			

105.12
275' E

92.39

91.14

Zola

56

S		11.3	93.8	C	8.6	83.8	
U		12.9	92.2	U	9.2	83.2	
U		13.8	91.3	U	9.9	82.5	
C		14.6	90.5	N	11.0	81.4	
U		15.2	89.9	S			
U		15.8	89.3	W U			
N		16.6	88.5	N	12.2	80.2	
				U	11.3	81.1	
T.P.	0.21	92.39	14.94	92.18	U	10.6	81.8
	300' E = W Line	200' E	70' wide 18' deep 8.5' high		C	9.9	83.5
- 30		9.0	83.4				
N		8.1	84.3	U	8.8	83.6	
U		7.0	85.4	U	8.3	84.1	
U		6.2	86.2	S	7.0	85.4	
C		5.4	87.0				
U		4.9	87.5	S	8.3	84.1	
U		4.2	88.2	U	9.8	82.6	
S		2.4	90.0	U	10.5	81.9	
+30		1.5	90.9				
	W. U			C	11.4	81.0	
S		5.5	86.9	U	12.0	80.4	
U		4.9	85.5	U	12.6	79.8	
U		2.7	84.7	N	13.3	79.1	

N			15.7	76.7	e	4.4	75.4	
cl			14.3	78.1	"	4.0	76.0	
"			13.4	79.0	cl	3.5	76.5	
c			12.9	79.5	s	3.0	77.0	
"			12.1	80.3	"			
cl			11.5	80.9	-30	3.8	77.2	on wedge emt walk
s			10.5	81.9	B.M. 5	4.04	75.93	N.W. cor emt walk
		E. cl			+12	4.1	75.9	
s			12.5	79.9	+13	4.3	73.7	
cl			13.2	79.2	cl	4.4	73.6	
"			13.7	78.7	"	4.4	73.6	
c			14.6	77.8	c	4.0	74.8	
"			15.0	77.4	"	4.3	73.7	
cl			16.0	76.4	cl	7.0	73.0	
T.P.	0.28	79.97	12.70	79.67	N	6.4	73.6	
N			4.0	76.0	+30	4.7	75.3	
		15' E. of E cl				10' E.		
N			5.7	74.3	N	7.9	72.1	
cl			4.2	73.8	cl	8.7	71.3	
"			5.5	74.5	"	8.2	71.8	

79.97
10'E. (cont)

67.93

Zola

58

e			7.6	72.4	1/4	6.5	61.4	
1/4			7.1	72.9	cl	6.5	61.4	
cl			6.7	73.3	S	6.3	61.6	
S			6.1	73.9				
								80'E
		18'E = emt walk to house on S line			SS	7.9	60.8	
S			7.5	72.5	cl	8.2	59.7	
		35'S			1/4	8.1	59.8	
S			11.4	68.6	e	8.1	59.8	
cl			12.0	68.0	1/4	8.1	59.8	
1/4			12.4	67.6	cl	7.9	60.0	
e			12.7	67.3	N	6.1	61.8	
1/4			12.9	67.1				82'E
cl			13.1	66.9	e	8.5	59.4	
N			12.0	68.0	S 1/4	9.2	58.7	
T.P.	0.59	67.93	12.63	67.34	S cl	9.6	58.3	
		70'E			S	9.4	58.5	W end garage floor on line
N			4.8	63.1				98'E
cl			4.8	61.1	S	9.6	58.3	E end of above garage
1/4			4.5	61.4	S cl	10.3	57.6	
e			4.5	61.4	S 1/4	10.0	57.9	
					e	10.0	57.9	

67.93
100' E

S	11.4	56.5
cl	12.0	55.9
114	11.2	56.7
e	10.5	57.4
114	10.5	57.4
cl	9.5	58.4
+8	9.0	58.9
N	7.5	60.4

123' E = ϕ amt stripsto House on N 1' Back

N	10.6	57.3	amt drive
cl	12.0	55.9	
114	12.9	55.0	
e	12.9	55.0	
114	13.9	54.0	
cl	15.0	52.9	
S	15.0	52.9	
+5	15.0	52.9	
	135' E		
-5	17.0	50.9	
S	17.0	50.9	

67.93

135' E (cont)

cl	15.5	52.4
114	14.9	53.0
e	14.8	53.1
114	14.6	53.3
2 cl	13.6	54.3
+13	12.0	55.9
11	12.2	55.7
T.P.	0.15	55.17
	12.91	55.02

148' E

N	0.9	54.3
+9	0.6	54.6
+10	2.2	53.0
cl	2.8	52.4
114	3.4	51.8
e	3.4	51.4
114	3.8	51.4
cl	4.1	51.1
S	5.8	49.4

55.17				55.17			
151' E = W end garage on S 1.5 Back							
S	7.0	48.2	floor	.	8.1	47.1	
el	5.6	49.6		114	8.0	47.2	
114	5.0	50.2		el	7.6	47.6	
e	4.3	50.9		N	6.1	49.1	
114	4.0	51.2		S	190' E = E. End above Garage		
el	3.6	51.6		N	8.5	46.7	
N	2.8	52.4		el	9.6	45.6	
170' E = E. end of above Garage				ts	9.4	45.8	
N	5.3	49.9		tl	10.4	44.8	
el	6.5	48.7		114	10.4	44.8	
114	7.0	48.2		e	10.2	45.0	
e	7.1	48.1		114	10.5	44.7	
114	7.3	47.9		el	10.4	44.8	
el	7.1	48.1		S	9.2	46.0	floor
S	7.2	48.0	floor	205' E			
175' E = ^{W. end} garage on S 1.0 Back				S	12.5	42.7	
S	9.2	46.0	floor	el	12.7	42.5	
+15	9.0	46.2		114	12.8	42.4	
el	7.8	47.4		e	12.4	42.8	
114	8.1	47.1		114	12.8	42.8	

55.17
205'E (Eon)

14+2		12.0	43.2
cl		11.8	43.4
+8		10.8	44.4
N		10.8	44.4
T.P.	0.37	42.90	12.64
		42.53	
		235'E	
N		3.5	39.4
+14		4.0	38.9
cl		4.9	38.0
11.4		5.2	37.7
e		4.7	38.2
11.4		4.8	38.1
+4		4.9	38.0
cl		4.0	38.9
15		4.0	38.9
		265'E	
S		7.2	35.7
cl		7.3	35.6
+3		7.6	35.3
14		8.9	34.0

42.90

201a

61

		1.4	9.2	33.7
		e	9.1	33.8
		+6	9.4	33.5
		11.4	8.3	34.6
2		cl	7.8	35.1
		N	7.5	35.4
		295'E		
		N	10.7	32.2
		+15	10.6	32.3
		cl	11.2	31.7
		+7	12.1	30.8
		+8	14.7	28.2
		11.4	14.7	28.2
		e	14.2	28.7
		11.4	15.7	27.2
		+2	11.5	31.4
		cl	11.0	31.9
		+2	9.8	33.1
		S	10.4	32.5

T.P. 2.35 32.72 12.53 30.37

300' E-W Line - Rose spans

S 5.8 26.9

d 6.0 26.7

1/4 6.0 26.7

C 5.0 27.7

1/4 5.4 27.3

ch 4.7 28.0

N 4.6 28.1

Wedge Paving

N 7.5 25.2 paving

S 7.5 25.2

TP 1.78 25.65 8.85 23.87

chk on BM

7.64 18.01¹⁸⁰¹ SW. Pos
+ X SW

348.33

348.3
347.8

Cross Section N. S. Alley Block 78 Chain Heights
Between Park Blvd. North From East Alley to Monroe 20' W

64

349.98

350.0

250' N

0.0 - N. S. Alley

S 3.5 344.8

W 5.6 344.4

S 3.5 344.8

S 5.3 344.7

S 3.4 344.9

E 5.3 344.7

N 3.9 344.4

275' N

25' N

N 3.5 344.8

E 5.7 344.3

S 3.2 345.1

S 5.2 344.8

S 3.2 345.1

S 5.2 344.8

300' N. E. L. North

W 5.7 344.3

S 3.7 344.6

50' N

Top Curb 3.32 345.0

W 5.8 344.8

Top Pavement 3.48 344.8

S 5.4 344.6

L " " Ground 3.75 344.6

E 5.5 344.5

N " " Ground 3.54 344.8

80' N

Top Curb 3.15 344.8

E Garage Conc Floor on Conc Apron 5.2 345.0

TP 5.36 349.98 3.71 344.62

7.4 W Edge Conc Apron 4.9 345.1

S 4.9 345.1

W 4.8 345.2

100' N

W 4.7 345.3

		350.0	
Z	52	344.8	
E	51	344.9	
00 Conc Apron	503	345.0	
	145'N		
- 40 Garage Conc Floor	484	345.2	
E Conc Apron	495	345.0	
Z	52	344.8	
H	50	345.0	
+1 Conc Apron	502	345.0	
+5 Garage Conc Floor	480	345.2	
	200'N		
H	52	344.8	
Z	53	344.7	
78	57	344.3	
E	50	345.0	
	250'N		
E	57	344.3	
Z	54	344.6	
H	54	344.6	
	300'N		
H	53	344.7	

110' N 5' W
Garage
Conc Floor
5.07

212' N 45' W
39 Garage Conc Floor
5.23

225' N 40' E
Garage 30' Conc Floor
5.29

294' N 5' W
Garage Conc Floor
5.09 344.9

1' N 10' W
Conc Apron

515 344.8

		350.0	
Z	53	344.7	
E	57	344.3	
	323'N		
E Garage	52	344.8	
Z	49	345.1	
H	51	344.9	
+1 Conc Apron	492	345.1	
+6 4 Garages Conc Floors	473	345.3	
	355'N		
H on Conc Walk	450	345.5	
Ground	48	345.2	
Z	47	345.3	
E Garage Dirt Floor	52	344.8	
	375'N		
E	50	345.0	
Z	47	345.3	
+8	49	345.1	
H on Conc Walk & Ground	435	345.6	
	400'N		
H on Conc Walk & Ground	453	345.5	
Z	45	345.5	
E	46	345.4	

347.98

350.0

125' N

Cross Section E-W Highway Block 79 Chas. Hights
Between Maude & Monroe From North to Camps

10' N

6/14
315.46
315.57
315.58
315.59
315.60
315.61
Maude + North

66

E 4.3 345.7

B.M. 5.61

350.63

344.99

E 4.3 345.7

0.10 = N.L. North

350.6

N 4.7 345.3

S Top Curb + Paving

4.96

345.6

150.5 = S.L. Monroe

L Top Paving

4.21

345.4

N 4.2 345.1

N

1.99

345.6

0.2 Curb + Paving

4.10

345.9

"

1.84

345.8

L Top Paving & Ground 4.52 345.5

10' N

E " " " 4.30 345.7

N

4.5

346.1

L

4.1

346.2

+3

4.7

345.9

+4

4.0

346.6

3

4.0

346.6

40' N

.5

3.6

347.0

Feet 1.0 in 116

+1.1

3.6

347.0

+2

4.0

346.6

L

3.9

346.7

N

3.8

346.8

75' N

N

3.7

346.9

	350.63		350.6		352.65		352.7
L		3.6	347.0			42	348.5
S		3.6	347.0			43	348.4
TP	5.55	352.65	353	347.10		225W	
		100W	352.7			44	348.3
			347.2	96' N 260W 1/2 Sec. Conc Drive		44	348.3
S		5.5	347.2	533 347.2		44	348.3
L		5.6	347.1	Garage Conc Pav 152 347.2		40	348.7
H		5.5	347.2			384	348.9
				+ 1/2 Do Garage Conc Floor			
		12.5W				250W	
H		5.1	347.6			40	348.7
L		5.1	347.3			38	348.9
S		5.3	347.4			38	348.9
		151W = 2.145 Alley				378	348.9
S		4.2	348.4			275W	
L		4.2	348.0			34	349.3
H		4.7	348.0			36	349.1
		175W				37	349.0
H		4.1	348.3			302W = E.L. Campus	
L		4.5	348.2			339	349.3
S		4.2	348.5			349	349.2
		200W				371	349.0
S		4.1	348.6			364	349.1
						359	349.1

Cross Section N to S Alley Block 79 Elev. Hghts
 Between North & Corners From East Alley to Monroe 20 Slide

352.65

0.10 = N.L. Elev. 352.7

W	48	347.9
S	46	348.1
E	48	347.9
50' N		
E	49	347.8
+3	55	347.2
S	54	347.3
W	54	347.3
60' N		
W	47	348.0
+3	54	347.3
S	54	347.3
E	52	347.5
85' N		
E	52	347.5
+3	55	347.2
S	54	347.3
+5	57	347.0
W	55	347.2

352.65

125' N

352.7

W	57	347.0
S	56	347.1
+3	57	347.0
E	51	347.6
142' N		
-8 Garage & 2nd Floor	59	346.8
E	57	347.0
S	54	347.3
+3	58	346.9
W	57	347.3
+6 Garage & 2nd Floor	53	347.4
175' N		
W	51	347.6
+7	56	347.1
S	55	347.2
E	56	347.1
+1 Corridor & Garages Cage Floors	54.5	347.3
200' N		
E	56	347.1
S	54	347.3
W House to Alley	55	347.1

68
 01-26

222'N

352.7

N Center 4 Garages
Dirk Floor 3

5.6

347.1

E

S

5.8

346.9

1.5

E

6.2

346.5

S

250'N

S

N

E

6.0

346.7

+2

6.1

346.6

N

S

5.7

347.0

S

N

5.7

347.0

E

275'N

N

5.5

347.2

E

S

5.8

346.9

S

E

5.9

346.8

N

300'N

E

5.9

346.8

1/8" STEEL
Garage Dirk Floor

N

S

5.1

347.1

5.7

S

N

5.3

347.4

E

340'N

N

5.1

347.6

E Top Curb Parking + Ground

S

5.3

347.4

S Top Parking + M.H.

E

5.7

347.0

N " Parking + Ground

+2 Do Garage Conc Floors

5.6

347.3

N " Curb

325'N

352.7

356' N 000' L
Garage + Dirk Floor

4.9

347.8

4.9

5.3

347.4

5.1

347.6

5.0

347.7

380' N 400' L
Garage + Dirk Floor

400'N

4.9

4.9

347.8

372' N 515' E L
Garage Conc Floor

4.9

347.8

4.9

4.9

347.8

425'N

N

4.8

347.9

S

4.8

347.9

E

4.6

348.1

445'N

E

4.2

348.5

S

4.5

348.2

N

4.1

348.3

450' N. 52' Mansoc

N

4.53

348.2

S

4.84

347.9

E

4.55

348.1

4.25

348.4

Course Section Alley Block 81 Clow, Hgble.
Between Cleveland + Maryland From Monrovia Made

20' Wide

351.02

351.0

346.5

170
L 11 21
S 11 20
Blair
Monrovia

SE

+0.5 on Conc Floor

4.54

BM 3.12 351.02 347.90

+3 Do Garage Conc Floor

3.97

347.0

0.00 SL Monrovia 351.0

1.00'S

E Top Curb + Pavement Ground 5.57 345.4

E

4.8

346.2

10.5'S on EL
Conc Floor

Top Conc Wall 4.82 346.2

E

5.0

346.0

11.2 346.3

E Top Pavine 6.02 345.0

H

5.1

345.9

11.5'E L Garage
Conc Floor
4.3' 346.6

H Top Curb + Pav + Ground 5.80 345.2

1.40'S

10'S

H

5.7

345.3

H 4.8 346.2

E

5.2

345.8

2.5'S on EL
to Conc Wall

E 5.2 345.8

E

4.9

346.1

4.10 346.9

E 5.0 346.0

E

4.9

346.1

+1.5 Garage Dirt Floor

50'S

1.83'S

E 4.4 346.6

E

4.8

346.2

-1.0 Garage Bad Floor

E 4.9 346.1

E

5.0

346.0

H 5.0 346.0

E

5.4

345.6

+1 Top Conc Wall 4.88 346.1

H

5.7

345.3

72'S

E

5.50

345.5

+5 Garage Conc Floor

-1 Do Garage Dirt Floor 5.0 346.0

2.30'S

H 5.0 346.0

H

5.7

345.3

E 4.8 346.2

E

5.5

345.5

E 4.7 346.3

E

5.6

345.4

270'S

351.0

E		5.2	345.8
+1 Garage dirt Floor		5.2	345.8
L		5.4	345.6
H		5.6	345.4

300'S

H		5.7	345.3
L		5.7	345.3
E	Force 2' in Alley	5.6	345.4

350'S

E		5.5	345.5
L		6.0	345.0
H		6.0	345.0

437

349.34

TP		6.05	344.97
----	--	------	--------

400'S

349.3

H	Garage Dirt Floor	3.5	345.8
L		3.5	345.8
E		3.9	345.4

450'S

344.9

E		4.1	344.9
L		4.3	345.0
H	Force 2' in Alley	4.3	345.0

4.2'S W.L.
 34. Garage Dirt Floor
 3.9
 Garage
 374.59 F.L.
 Conc. Approx
 396 345.9

500'S

349.3

H		4.8	344.5
L		5.0	344.3
E		4.4	344.9

555'S

E		5.4	343.9
L		5.6	343.7
E	Garage dirt Floor	5.3	344.0

H

		5.3	344.0
--	--	-----	-------

585'S

H		5.3	344.0
L		6.1	342.9
H		7.5	341.8

L

		7.7	342.0
--	--	-----	-------

H

		7.1	342.2
--	--	-----	-------

L

		5.3	344.0
--	--	-----	-------

E

		5.3	344.0
--	--	-----	-------

600'S

E		6.7	342.0
H		7.2	342.1
L		9.1	340.2
L		9.4	339.9

510'S on E.L.
 Garage Dirt Floor
 4.1

349.32

				349.3
46		91		340.2
W		86		340.7
			60' S = N.L. Meade	
W	Top Curb & Paving	9.58		339.7
L	" Paving	9.81		339.5
E	" "	9.43		339.9
E	" Curb	9.03		340.3
TP	1.88	340.80	10.42	338.92

Cross Section Alley Block 96 Univ. Heights
Between Cleveland & Maryland From Meade to Van Buren
340.80

2074 side 72
61426

				340.8
			0 to S to Meade	
	E Top Curb	1.49		339.3
	" Paving	2.02		338.8
L	" "	2.64		338.2
W	Top Curb & Paving	2.69		338.1
		15.5		
W	" "	1.7		339.1
	13 Conc Walk 18' wide	1.63		339.2
L	" "	1.47		339.3
15	" "	1.3		339.5
E	" "	0.3		340.5
		15.5		
E	" "	1.0		339.8
L	Top of Hole	1.83		339.6
17	Conc Walk	1.37		339.4
W	" "	1.7		339.1
		56.5		
W	" "	2.8		338.0
13	Conc Walk	2.76		338.0
L	" "	2.8		338.0

		396.80		340.8 338.8	
E		70			
		70.5			
-3	Garage Conc Floor	2.57		338.2	
-0.5	Conc Apron	2.91		337.9	
E		2.9		337.9	
±		3.9		336.9	
+9	Conc Walk	4.12		336.7	90.5-38.5 ft Garage 2nd Floor
H		4.1		336.7	
+2	Garage Dirt Floor	4.0		336.8	
		100.5			
H		60		334.8	
+1	Conc Walk	5.80		335.0	112.5-52.5 ft of Conc Walk 6.40
±		5.7		335.1	
E		4.6		336.2	
		133.5			
-4.5	Garage Conc Floor	6.04		334.8	
E	Conc Apron + Ground	6.28		334.5	
±		7.5		333.3	
H		7.7		332.9	
		165.5			
H		106		330.3	

		340.80		340.8 331.1	73
+3		9.7			
±		9.7		331.1	135 L.M.H.L. Garage Conc Floor
+4		9.5		331.3	1138 329.4
E		8.2		332.6	Conc Apron on H 1092 329.9
		200.5			
-7.5	Garage Conc Floor	9.11		331.7	
-2.5	Conc Apron	9.56		331.2	
E		9.7		331.1	
±		10.6		330.2	
H		11.2		329.6	
		225.5			
	Top Wall 5' x 12' Slender on Top Conc	10.8		330.0	
H		11.0		329.8	
±		11.0		329.8	
+4		11.0		329.8	
E		10.1		330.7	
+1.1	Garage Dirt Floor	9.7		331.1	
		250.5			
E		9.4		331.4	
+3		11.2		329.6	
±		11.0		329.8	

		340.80		340.8		334.65		
H			11.2	329.6		322.5		334.7
	Top Wall Timber on Conc		11.2	330.0			3.5	331.2
			27.5				4.2	330.0
	Top Wall Timber on Conc		10.90	330.0			5.1	329.6
H			11.6	329.2			6.4	328.3
L			11.0	329.8	225' 5" STEEL Garage Cont. Floor		6.4	328.3
+7			10.8	330.0	29' 31.7		38.5	328.3
F			9.9	330.9			6.7	328.0
TP	492	334.65	11.07	329.72			5.52	329.2
			300'S	334.7			5.0	329.7
F			3.6	331.1	320' 5" STEEL Garage Cont. Floor		4.7	330.0
L	Top Wall Hole		4.50	330.2	69 327.8		3.4	331.3
H			5.1	329.6			2.40	332.3
			337.5				400'S	
-3	Garage dirt		6.5	328.2			3.3	331.4
H	7		6.5	328.2			4.9	329.8
L			5.2	329.5			5.69	329.0
+3			4.8	329.9			6.5	328.2
+6			4.0	330.7			425'S	
F			3.3	331.4			6.7	328.0
+6	So. Garage dirt floor		2.8	331.9			5.9	328.8

372.5 NE End
 Conc Wall
 1' 10.5" High
 5.52 329.2

334.65

334.65

Z	59	334.7 328.8
72	57	329.0
+4	45	330.2
F	38	330.9
450'S		
F	52	329.5
Z	68	327.9
H	74	327.3
475'S		
H	80	326.7
Z	76	327.1
+7	71	327.6
F	55	329.2
485'S		
- 4.5 Do Garage Conc Floor	72	327.5
F	75	327.2
Z	81	326.6
H	86	326.1
+3 Do Garage Conc Floor	87	326.0
500'S		
H	82	326.5

44'S
4' FB Euc.
Tree 2 Dam

48'S on E
Euc. Tree 2 Dam

46'S on W L
Conc. Sitch 5' up

794

Face of 10' 1/2

Z	84	334.7 326.3
F	74	327.3
TP	83.5	327.30
530'S		
- 2 Garage Dirt Floor	85	327.3
F	82	326.6
+5	43	325.5
Z	41	325.2
H	52	324.6
565'S		
H on Conc Walk	66	323.1
Z	61	323.7
+2	59	323.9
F	39	325.9
on Conc Walk	38.4	325.6
590'S		
on Conc Walk	38.4	326.6
F	48	325.0
+6	61	323.7
+7	72	322.6
Z	72	322.6
H on Conc Walk & Ground	8.58	321.2
599'S		

Bottom Conc Walk
Foundation to 2 story House

352 329.82

- 2 Garage Dirt Floor

1258

H on Conc Walk

Z

+2

F

on Conc Walk

on Conc Walk

F

+6

+7

Z

H on Conc Walk & Ground

38982

599'5

8.00

~~329.8~~

321.9

Conc Walk

H

9.7

320.1

L

9.0

320.1

+4

8.3

321.5

+5

6.0

323.8

E

4.7

325.1

Top Conc Walk

3.33

326.5

Cobb's - N.L. Van Soren

E Top Curb & Ground

7.27

322.6

"

7.88

321.9

L Top Pav 109

9.21

320.6

H " "

10.11

319.7

H " Curb & Ground

9.84

320.0

TP 10.39

339.80

0.91

328.91

TP 1.70

340.35

1.15

338.15

BM

6.98

333.97

N.W.
Noble & Portland
838.07Cross Section Alley Block 162 Univ. Hgts
Between Iowa & Illinois. From Lincoln to Park

BM

1.45

367.37

362.92

0.0 - N.L. Lincoln

H Top Curb

4.33

367.4

363.0

Ground

5.0

362.4

L

4.9

362.5

E Ground

4.8

362.6

Top Curb

4.53

362.9

5'H

E

4.4

363.0

L

4.6

362.1

H

4.6

362.8

4.5'H

-2 Garage Conc Floor

3.80

363.6

H

4.1

363.3

L

4.4

363.0

E

4.6

362.8

6.0'H

E

4.6

362.8

L

4.5

362.9

H Fence 0.5 in Alley

4.3

363.1

76

C. 18 21
5.5005
Noble &
SF
Lincoln
Illinois

367.37

85' N

367.4

W	Fence 0.5 to 1.1 m	4.4	363.0
L		4.2	363.2
+9		4.2	363.2
+6		3.5	363.9
F		3.4	364.0

100' N

>

F		3.9	363.5
L		3.8	363.6
H		4.5	363.9

140' N

H		3.6	363.8
L		3.8	363.6
F		3.5	363.9

180' N

F		3.8	363.6
+0.6	Garage dirt floor	3.8	363.6
L		3.8	363.6
H		3.8	363.6

200' N

H		3.6	363.8
---	--	-----	-------

367.37

3.8

367.4

363.6

L		3.8	363.5
F		3.9	363.5
F	Fence 1.0 to 1.1 m	3.8	363.6
L		3.4	364.0
H		3.0	364.0

225' N

H		3.5	363.9
L		3.4	364.0
F	Fence 1.5 to 1.1 m	3.4	364.0

300' N

F	Fence 0.5 m	2.9	364.5
L		3.3	364.1
H		3.2	364.2

343' N

H		2.7	364.7
L		3.0	364.4
F		3.2	364.2

TP	5.31	369.88	2.80	364.57
----	------	--------	------	--------

11	Conc. Apron		5.57	367.9
----	-------------	--	------	-------

+4	Garage Conc. Floor		5.49	364.3
----	--------------------	--	------	-------

364.4

77

31988

375'N

369.9

355'N 134'W

Conc Apron

Z

52

369.9

78

364.7

E

50

364.9

5.1

5' FEEL
Conc Floor
5.4'

W

51

364.8

564' N 134' W
Garage Conc
Floor

Z

52

364.7

542'

185 365.0

W

55

364.4

W

51

364.8

Conc Apron 110816

517 364.7

400'N

Z

54

364.5

W

Shed 07' x 11' Alley

54

364.5

+8 Conc Apron

546

364.4

Z

50

364.9

E Garage Conc Floor

5.06

364.8

516' N 134' W
In Garage
Dirt Floor

E

55

364.4

E Ground

5.0

364.5

5.5

415'N

580'N

-2 Garage Conc Floor

531

364.6

E Garage Conc Floor

6.15

363.7

E

54

364.5

+7 Conc Apron

6.15

363.7

+2 Conc Apron

545

364.4

Z

6.3

363.6

Z

52

364.7

+5

6.3

363.6

W

50

364.9

W

6.0

363.9

+1 Garage Dirt Floor

50

364.9

594'N

470'N

W

6.2

363.2

W Fence 10' x 10' Alley

53

364.6

494' N 0.5' FEEL
Garage Conc Floor

Z

6.7

363.2

Z

51

364.8

5.3' Apron 210
364.6 Alley

+5

6.9

363.0

E

56

364.3

E

6.6

363.3

500'N

601' N = S. L. Path

E

56

364.3

E Top Curb + Ground

7.73

362.7

369.88

569.9

L 7.8 362.1

14 7.5 362.4

Top Curb 7.27 362.6

TP 6.13 368.32 7.69 362.19

BM 3.21 369.53 7.00 366.32?

BM 6.62 362.91

SE. Pk 4 +
1/11/1913
366.47
SE.
Lincoln +
1/11/1913
362.92

70
42
28
14

9005

9007

9009

