

115A

ENCANTO

1154

TRANSIT

398

1154

H. S. CROCKER COMPANY

DRAWING MATERIALS AND
SURVEYING INSTRUMENTS

SAN FRANCISCO

TABLES FOR EXCAVATIONS AND EMBANKMENTS

DISTANCES FROM CENTER OF ROADWAY FOR CROSS-SECTIONING

Roadway 18 Feet Wide. Side Slopes 1 to 1.
For Single Track Excavation.

"Copyright, 1895, by Kueffel & Esser Co."

	0	.1	.2	.3	.4	.5	.6	.7	.8	.9	
0	9.0	9.1	9.2	9.3	9.4	9.5	9.6	9.7	9.8	9.9	0
1	10.0	10.1	10.2	10.3	10.4	10.5	10.6	10.7	10.8	10.9	1
2	11.0	11.1	11.2	11.3	11.4	11.5	11.6	11.7	11.8	11.9	2
3	12.0	12.1	12.2	12.3	12.4	12.5	12.6	12.7	12.8	12.9	3
4	13.0	13.1	13.2	13.3	13.4	13.5	13.6	13.7	13.8	13.9	4
5	14.0	14.1	14.2	14.3	14.4	14.5	14.6	14.7	14.8	14.9	5
6	15.0	15.1	15.2	15.3	15.4	15.5	15.6	15.7	15.8	15.9	6
7	16.0	16.1	16.2	16.3	16.4	16.5	16.6	16.7	16.8	16.9	7
8	17.0	17.1	17.2	17.3	17.4	17.5	17.6	17.7	17.8	17.9	8
9	18.0	18.1	18.2	18.3	18.4	18.5	18.6	18.7	18.8	18.9	9
10	19.0	19.1	19.2	19.3	19.4	19.5	19.6	19.7	19.8	19.9	10
11	20.0	20.1	20.2	20.3	20.4	20.5	20.6	20.7	20.8	20.9	11
12	21.0	21.1	21.2	21.3	21.4	21.5	21.6	21.7	21.8	21.9	12
13	22.0	22.1	22.2	22.3	22.4	22.5	22.6	22.7	22.8	22.9	13
14	23.0	23.1	23.2	23.3	23.4	23.5	23.6	23.7	23.8	23.9	14
15	24.0	24.1	24.2	24.3	24.4	24.5	24.6	24.7	24.8	24.9	15
16	25.0	25.1	25.2	25.3	25.4	25.5	25.6	25.7	25.8	25.9	16
17	26.0	26.1	26.2	26.3	26.4	26.5	26.6	26.7	26.8	26.9	17
18	27.0	27.1	27.2	27.3	27.4	27.5	27.6	27.7	27.8	27.9	18
19	28.0	28.1	28.2	28.3	28.4	28.5	28.6	28.7	28.8	28.9	19
20	29.0	29.1	29.2	29.3	29.4	29.5	29.6	29.7	29.8	29.9	20
21	30.0	30.1	30.2	30.3	30.4	30.5	30.6	30.7	30.8	30.9	21
22	31.0	31.1	31.2	31.3	31.4	31.5	31.6	31.7	31.8	31.9	22
23	32.0	32.1	32.2	32.3	32.4	32.5	32.6	32.7	32.8	32.9	23
24	33.0	33.1	33.2	33.3	33.4	33.5	33.6	33.7	33.8	33.9	24
25	34.0	34.1	34.2	34.3	34.4	34.5	34.6	34.7	34.8	34.9	25
26	35.0	35.1	35.2	35.3	35.4	35.5	35.6	35.7	35.8	35.9	26
27	36.0	36.1	36.2	36.3	36.4	36.5	36.6	36.7	36.8	36.9	27
28	37.0	37.1	37.2	37.3	37.4	37.5	37.6	37.7	37.8	37.9	28
29	38.0	38.1	38.2	38.3	38.4	38.5	38.6	38.7	38.8	38.9	29
30	39.0	39.1	39.2	39.3	39.4	39.5	39.6	39.7	39.8	39.9	30
31	40.0	40.1	40.2	40.3	40.4	40.5	40.6	40.7	40.8	40.9	31
32	41.0	41.1	41.2	41.3	41.4	41.5	41.6	41.7	41.8	41.9	32
33	42.0	42.1	42.2	42.3	42.4	42.5	42.6	42.7	42.8	42.9	33
34	43.0	43.1	43.2	43.3	43.4	43.5	43.6	43.7	43.8	43.9	34
35	44.0	44.1	44.2	44.3	44.4	44.5	44.6	44.7	44.8	44.9	35
36	45.0	45.1	45.2	45.3	45.4	45.5	45.6	45.7	45.8	45.9	36

Calculated by Julien A. Hall, M. Am. Soc. C. E.

517.23 w...
25

ELK. 159+16
4+45
4.71

FROM
Loring's Book Store
SAN DIEGO, CAL.

517.23 Wolf lauber

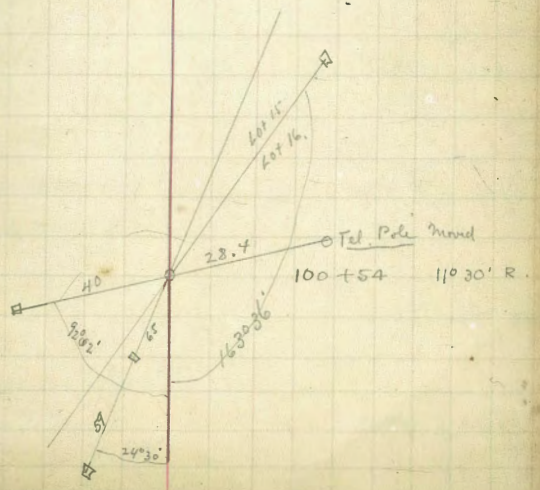
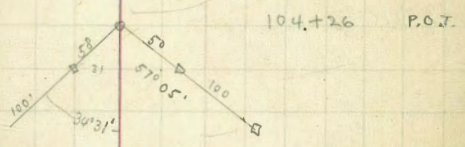
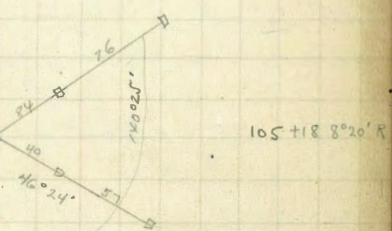
25

66

ELK. 159+16
4+16
471

FROM
Loring's Book Store
SAN DIEGO, CAL.

Have on
Tel. Pole
out



117+77⁸³ P.T. 21°08'₂ 42°17' N 37°38'E

R=250
L=184.50
T=96.57
CL=49.25
PI=116.90
17.57
12.94
6.30
0.46

115+93³³ P.C. R.

112+75⁸⁵ P.T. 26°50' 53°40' N 22°05'E S 88°42'E

111+58⁷⁷ P.C. L

110+77²⁸ Δ 14°50'R

N 75°35'E N 76°28'E

106+90 Δ 17°51'L

N 61°00'E S 85°41'E

105+18 Δ 8°20'R

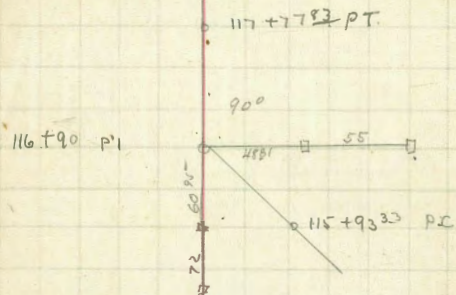
N 72°30'E N 85°59'E

104+26 P.O.T.

100+54 Δ 11°30'R

N 70°30'E N 74°28'E

1



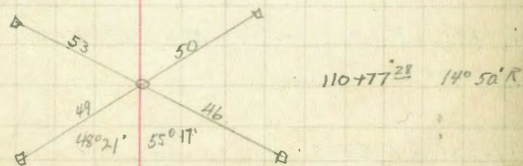
R=125

T=63.23

L=117.08

CL=49.67

PI. 112+22.



117

115+ 207+97 T.O.T.

112+ 205

194+26

111+

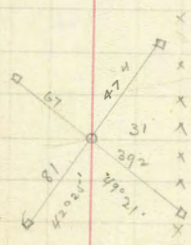
110+ 191+059 P.T. $23^{\circ}07'$ $46^{\circ}15'$ N $20^{\circ}30'E$ N $35^{\circ}36'E$

106

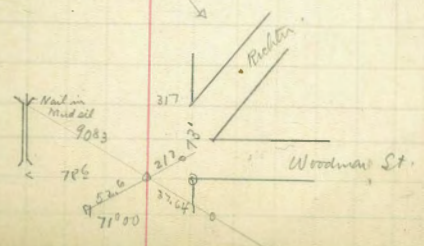
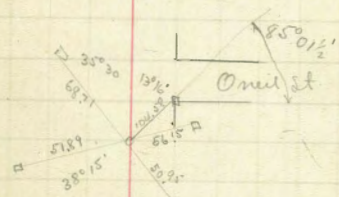
105+ 179+43¹⁸ P.C.L.

104

100+ 168+75 P.O.T.



R=1440
L=1162.39
T=614.95
CL=99.29
PI=185+58¹³



117+77⁵³

115+93³³

112+75⁸

111+56

110+77

106+

105+

104

100

117

115

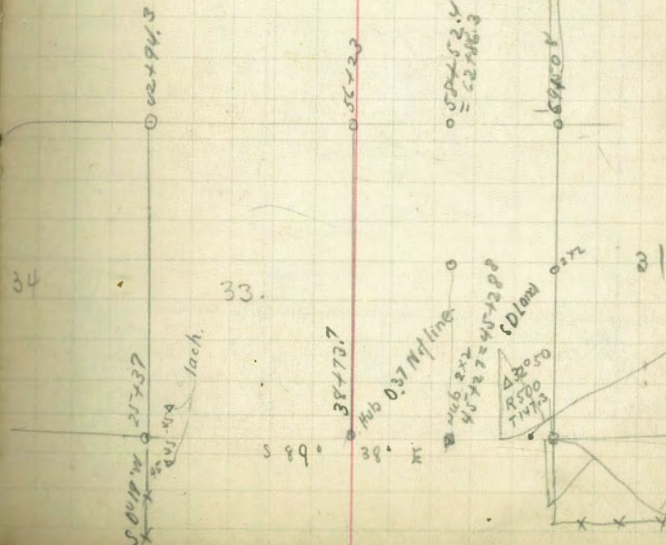
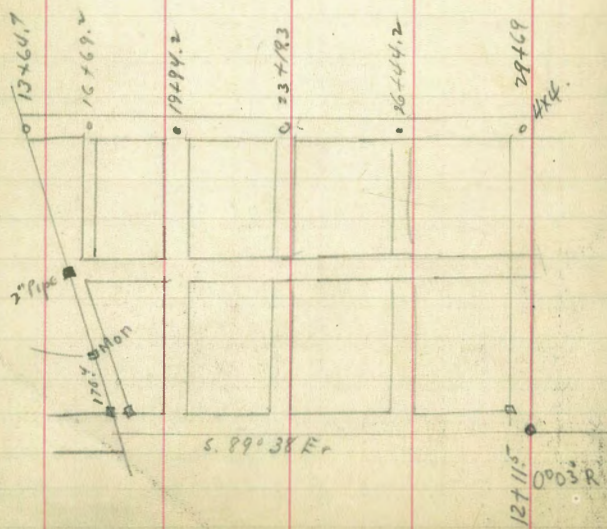
112

11

11

1

1



444 Post

17

CITY Limits.

28

31

33

34

442.

17

CITY LIMITS

28

Andrew Hanson

Δ 67.4
R 200
T 134.0

744.88.2

Harris Steel Co.

Loring

Δ 40.50
R 2.50
T 9.5

72.117

Robt. Dick

664.99.1
333.11.3
sect 33
sect 34
sect 35
1.140.00
1.141.9

31

Δ 240.24
R 500.0
T 145.7

117

553.14.6

574.21.1

3200.0

Δ 300.0
R 200.0
T 156.0

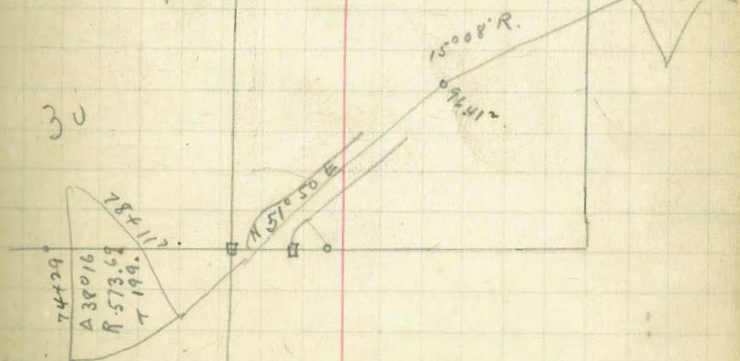
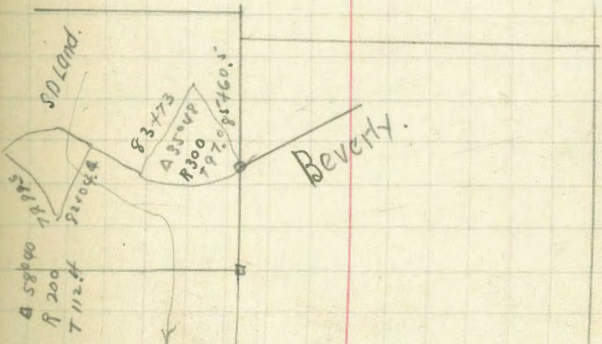
667.31.0

N 0° 19' E

331.5

574

5.89° 54.15



Δ 58.00
R 200
T 112.4

83.473

Δ 27.48
R 300
T 97.58460.1

Beverly

30

744.29

Δ 38.016
R 573.59
T 149.0

784.117

N 57° 50' E

15008' R.

094417

10 1/2% Gravel
17.600
Miller

LEVELS ON
HUNSAKER ST 60' wide
from SD+SE R/
to Brooklyn Ave

9

on Suntop Stand	5.61	155.61	150.0	assumed elev on SH. 757 stand w above ground
TP	1.26	143.90	142.64	
W			10.57	on No. rail at West E. of St
E			9.43	on No. rail at E. Loc St.

No. 2' Line SD+SE R/

W			11.4	132.5
C			11.0	132.9
E			10.1	133.8

3' No. (Taken parallel to R/ Track)

E			9.5	134.4
C			10.2	133.7
W			11.4	132.5

10' No. of No. 2' Line (parallel to R/)

W			7.4	136.5
C			6.7	137.2
E			7.0	136.9

25' No. of No. 2' Line (parallel to R/)

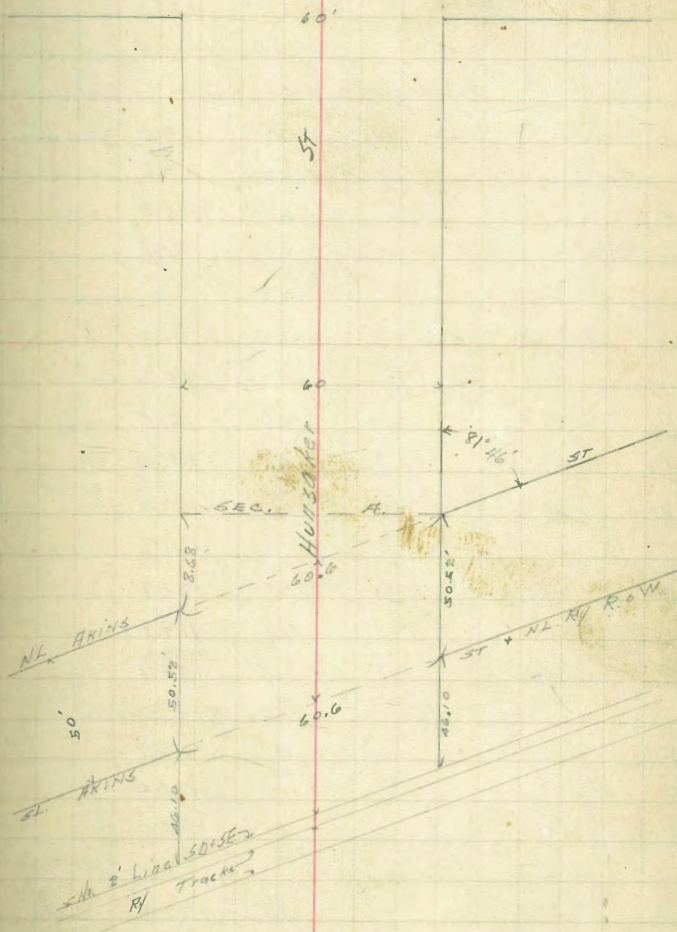
E			8.7	135.2
C			7.9	136.0
W			8.5	135.4

40' No. of No. 2' Line (parallel to R/)

W			12.3	125.6
C			15.0	128.9
E			11.0	132.9
TP	0.46	131.28	12.55	131.22

Brooklyn

Ave



136.72 = nails in pole on E. of Hunsaker St No. side of R/

50' No. of 2' Line (taken parallel to R/S)		
E	2.5	129.3
C	6.4	125.4
W	7.4	124.4
54' No. of 2' Line (parallel to R/S)		
W	7.6	124.2
	12.2	119.6
C	6.8	125.0
E	4.6	127.2
60' No. of 2' Line -		
E	5.5	126.3
69' No. of 2' Line (parallel to R/S)		
E	5.9	125.9
C	6.8	125.0
W	12.0	119.8
	12.7	119.1
85' No. of 2' Line (parallel to R/S)		
W	11.1	120.7
C	12.0	119.8
E	11.2	120.6
	7.1	124.7
96.6' No. of 2' Line = N.L. AVINS AVE		
E	11.1	110.7
C	11.2	120.4
W	10.8	121.0
8.68' No. of Last Section West } = SECT. A. East }		
W	9.5	122.3
C	10.9	120.9
E	11.1	120.7

8' No. of SECT. A.	
E	11.4 120.4
C	9.7 122.1
15' No.	
W	7.8 124.0
C	6.9 124.9
E	13.1 118.7
20' No.	
E	7.5 124.3
C	7.0 124.8
W	7.6 124.2
50' No.	
W	7.8 124.0
C	7.2 124.6
E	6.7 125.1
75' No.	
E	7.1 124.7
C	8.3 123.5
W	8.0 123.8
100' No.	
W	6.6 125.2
C	7.9 123.9
E	8.1 123.7
150' No.	
E	6.1 125.7
C	6.3 125.5
W	6.6 125.2

131.78

200' No. of SEC. A

W	6.4	125.4
C	6.1	125.7
E	6.5	125.3

250' No.

E	5.7	126.1
C	5.5	126.3
W	6.2	125.6

300' No.

W	5.3	126.5
C	4.6	127.2
E	5.2	126.6

350' No.

E	3.2	128.6
C	3.2	128.6
W	3.2	128.6

375' No.

W	0.9	130.9
C	1.2	130.6
E	0.9	130.9
T.P.	12.52	142.28
		0.82
		130.96

400' No.

E	9.7	133.8
C	9.6	133.9
W	9.0	134.5

450' No.

W	1.7	141.8
C	2.0	141.5
E	2.0	141.5

HUNSACKER

11

TP	13.15	156.30	0.33	143.15
----	-------	--------	------	--------

500' No.

E	7.2	149.1
C	7.9	148.4
W	8.4	147.9

550' No.

W	2.1	154.2
C	0.8	155.5

TP	13.01	168.71	0.50	155.80
----	-------	--------	------	--------

E	11.7	157.1
---	------	-------

600' No.

E	5.6	163.2
C	7.0	161.8
W	8.0	160.8

650' No.

W	2.1	166.7		
C	0.9	167.9		
T.P.	13.07	181.87	0.01	168.20
E	12.9	168.0		

700' No.

E	6.4	175.5
C	6.6	175.3
W	7.7	174.2

750' No.

W	1.1	180.8		
C	0.8	181.1		
E	0.9	181.0		
T.P.	12.96	194.68	0.15	181.72

194.68

12

800' No

E		8.3	186.4
C		7.8	186.9
W		7.7	187.0

850' No

W		3.7	191.0
C		3.3	191.4
E		3.8	190.9
T.P.	1306	207.73	0.01 194.67

900' No

E		11.6	196.1
C		11.0	196.7
W		11.2	196.5

956' No. = 51. Brooklyn Ave 60' wide

W		3.2	204.5
C		4.1	203.6
E		5.2	202.5

center Brooklyn

E		1.4	206.3
C		0.4	207.3
T.P.	6.32	213.55	0.50 207.23
W		5.5	208.1

No Line Brooklyn

W		2.9	210.7
C		3.1	210.5
E		4.0	209.6
BM		9.16	201.39

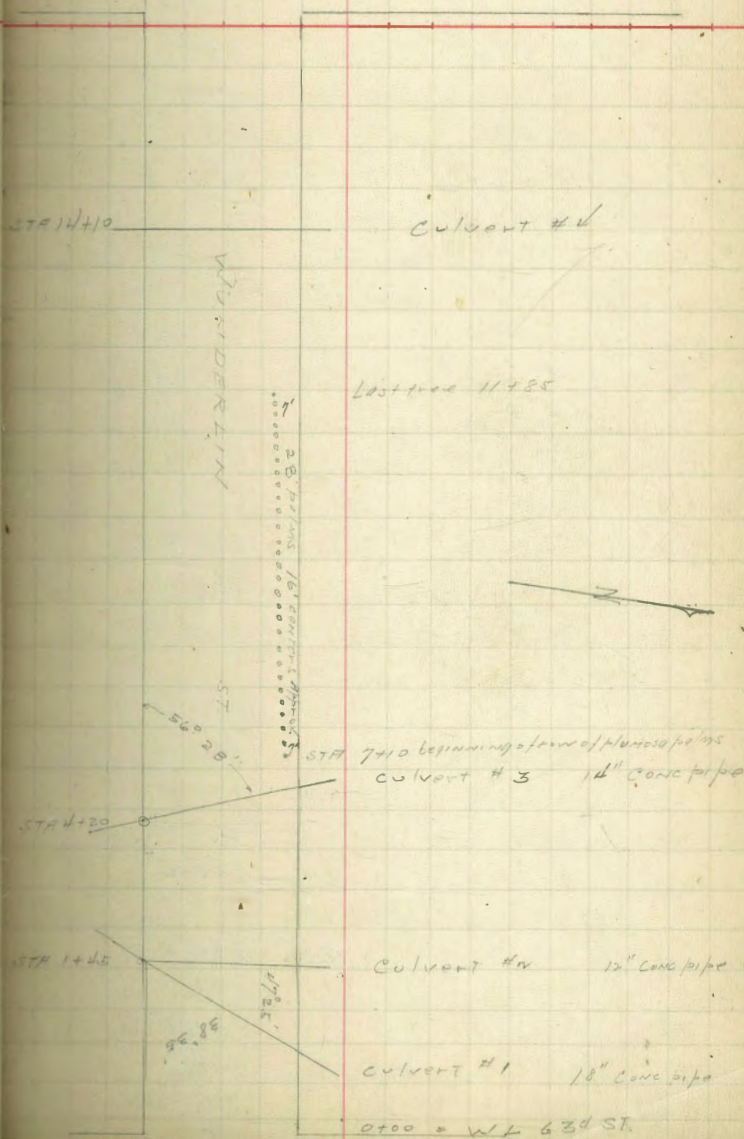
201.39
pole 54 ft
Brooklyn

Cross Section of Wunderlin ST

63d to 60+4

60' wide
10' c/c
10' 1/4's

E	NW spike	12.77	197.51		1797	AKIM = FORQUIS
C	TP	12.64	204.55	0.52	1919.2	
W	TP	12.95	217.30	0.23	204.34	
	TP	12.86	230.16	2.00	217.30	
W	TP	12.61	242.27	0.40	229.76	
C	TP	12.57	254.76	0.15	242.19	
E	TP	12.85	267.78	0.36	254.40	
T	TP	13.23	279.78	1.23	266.05	
	TP	12.23	290.74	0.77	278.61	
E	TP	10.44	300.64	0.54	290.44	
C	TP	3.64	301.11	3.15	297.49	
W	Check on NW spike set spike			0.15	300.97	Wunderlin SW 65d
		WL 63d = 0+100				
W	3		5.3		295.8	
C	cb		6.0		295.1	
E	1/4		7.1		294.8	
	c		7.1		294.0	
E	1/4		7.1		294.0	
C	45		9.2		291.9	
T	cb		10.1		291.0	
W	w		10.9		290.2	
		0+25 West				
W	-10		15.2		285.9	
C	N		14.6		286.5	
E	cb		14.4		286.7	
B	+6		14.0		287.1	
	1/4		12.9		288.2	
	c		12.5		288.6	



1946

301.11

			12.5	288.6
E	1/4			
C	cb		12.1	289.0
W	S		10.4	290.7
	+5		10.0	291.1
W	T.P.	1.63	12.96	288.15
C		0+50		
E	-5		4.0	285.8
T	SL		4.4	285.4
	+5		5.6	284.2
E	cb		6.1	283.7
C	1/4		5.7	284.1
W	c		5.7	284.1
	1/4		6.2	283.6
W	cb		6.9	282.9
C	N		7.5	282.3
E	+15		7.5	282.3
		0+75		
E	-15		7.4	282.4
C	N		9.2	280.6
T	cb		9.4	280.4
W	1/4		1.4	280.4
	c		9.4	280.6
W	1/4		9.7	280.1
C	cb		9.6	280.2
E	S		9.1	280.7
B	+5		8.7	281.1
	T.P.	6.89	11.25	278.53

385.42

Wunderlin

14

			100 Wats	
			-10	8.1 277.3
			S	8.4 277.6
			cb	8.6 276.8
			1/4	8.2 277.2
			c	7.0 278.4
			1/4	6.3 279.1
			17	5.8 279.6
			cb	4.6 280.8
			N	3.7 281.7
			+10	2.4 283.0
			1+25	
			-10	3.9 281.5
			N	4.7 280.7
			cb	5.3 280.1
			+3	6.6 278.8
			1/4	6.9 278.5
			c	7.4 278.0
			+3	8.5 276.9
			1/4	8.9 276.5
			cb	9.8 275.6
			S	10.4 275.3
			+15	10.6 274.8
			1+45	
			-15	12.6 272.8
			S	11.8 273.6
			cb	10.9 274.5
			1/4	9.6 275.8
			S	8.3 277.1

285.4v

	1/6	7.3	278.1
E	cb	7.0	278.4
C	+1	6.6	279.0
W	1/1	5.5	279.9
	+10	4.5	280.9
W	Levels for Culvert #1		
C	24.25' Not ML on line Culvert = 0+00	3.1	282.3
E	+24.05' ML	4.3	281.1
T	+50	5.7	279.7
	+75	7.1	278.3
E	+80	8.6	276.8
C	+95	9.8	275.6
W	+100	10.4	275.0
	+20.5' SL	11.8	273.6
W	+52.32' outlet 220' out at R.R. &	14.2	271.2
C	Culvert #2		
E	10' Not ML = 0+00	4.7	280.7
	+10' ML	5.9	279.5
E	+15	6.2	279.2
C	+20	7.3	278.1
T	+35	7.9	277.5
W	+45	9.0	276.4
	+55	10.4	275.0
W	+70' Junction with Culv #1	11.8	273.6
C	+55		
E	-10	4.0	281.4
B	1/1	4.8	280.6
	cb	5.2	280.0
	+4	6.7	278.7

285.4v

w/under lin

15

	1/1	7.1	278.3
	0	8.0	277.4
	1/4	8.7	276.7
	cb	10.1	275.3
	S	12.0	273.4
	+15	13.0	272.4
	+75		
	-15	14.0	271.4
	S	12.1	273.3
	cb	10.1	275.3
	1/1	8.8	277.4
	0	7.5	277.9
	1/1	6.8	278.6
	+8	6.4	279.0
	cb	5.5	279.9
	1/1	4.3	281.1
	+5	3.4	282.0
	+100		
	-8	4.0	281.4
	1/1	4.6	280.8
	cb	5.5	279.9
	+2	6.2	279.2
	1/1	6.5	278.9
	C	7.2	278.2
	1/4	7.9	277.5
	cb	8.9	276.5
	S	10.2	275.2
	+15	12.0	275.4
	TP	6.49	284.99
		6.7v	278.50

284.99

	+46	4.5	280.5
A	+49	5.6	279.4
C	+70	4.6	275.6
V	+8399 = sk	10.5	274.5
	+86	11.5	273.5
V	+01.98 = outlet = 15' out of RIA	13.2	271.8
	+30		
A	-5	3.0	282.8
T	N	3.0	282.0
	cb	4.2	280.8
A	1/4	4.3	280.7
C	+5	4.6	280.4
V	C	5.8	279.2
	1/4	7.7	277.3
V	+6	9.6	275.4
C	cb	10.2	274.8
A	S	9.6	275.6
	+15	8.2	276.8
E	4.55		
C	-15	5.1	279.9
T	S	5.1	279.9
V	cb	5.4	279.6
	1/4	5.7	279.3
V	+7	5.5	279.5
C	C	4.6	280.4
E	+4	3.2	281.6
B	1/4	3.2	281.8
	cb	3.2	281.8
	+7	4.6	280.4

284.99

Inundation

17

N	11.2	280.7
+10	3.4	281.6
	4.70	
-10	4.2	280.8
N	4.0	281.0
+6	3.0	282.0
cb	2.1	282.9
1/4	2.0	283.0
C	2.2	282.8
+5	3.3	281.7
1/4	3.1	281.9
cb	2.5	282.5
S	2.5	282.5
+10	2.9	282.1
TP	72.22 297.02	0.20 284.79
	5100	
-5	10.0	287.0
S	10.1	286.9
cb	10.0	287.0
1/4	10.8	286.2
C	10.9	286.1
1/4	10.9	286.1
cb	10.9	286.1
N	10.9	286.1
+10	10.9	286.1
	5135	
-5	5.0	292.0
N	5.3	291.7
cb	5.4	291.8

297.0v

	+3		5.8	291.2
E	1/4		5.5	291.5
C	c		5.3	291.7
W	1/4		5.4	291.6
	+2		4.8	292.2
W	cb		4.2	292.8
C	s		3.8	293.2
E	5+3			
T	Wcb		3.6	293.4
	+7		3.2	293.8
E	N on edge lawn		0.7	296.3
C	5+68 = P comm with residence	0.13		296.89
W	T.P. 857	3.0546	0.13	296.89
	5+80			
W	s		6.6	298.9
C	cb		7.1	298.4
E	+7		7.1	298.4
	1/4		8.4	297.1
E	c		8.2	297.3
C	1/4		8.5	297.0
T	+6		9.0	296.5
W	cb		8.0	297.5
	N		8.2	297.3
	tw on lawn		8.5	297.0
	6+03			
E	-v on lawn		8.3	297.2
E	N		5.7	299.8

305.46

Wonderlin

18

	6+05			
	-v		5.4	300.1
	N		5.4	300.1
	cb		5.6	299.9
	tw		5.6	299.9
	+4		6.6	298.9
	1/4		5.9	299.6
	c		5.8	299.7
	1/4		6.0	299.5
	tw		5.0	300.5
	cb		4.9	300.6
	s		4.7	300.8
	6+05			
	s		3.5	302.0
	cb		3.4	302.1
	+7		3.5	302.0
	1/4		4.6	300.9
	tw		4.2	301.3
	c		4.0	301.5
	1/4		4.1	301.4
	+6		4.4	301.1
	+8		3.5	302.0
	cb		3.7	301.8
	N		3.6	301.9
	6+50			
	N		1.6	303.9
	tw		1.7	303.8
	+1		1.8	303.7
	+3		2.9	302.6

30546

1/4		2.5	303.0
e		2.6	302.9
1/4		3.3	302.2
+2		2.7	302.8
cb		2.8	302.7
S		3.2	302.3
S	6+75	2.4	302.1
cb		2.9	302.6
+8		2.4	303.1
1/4		2.8	302.7
e		2.1	303.4
1/4		2.0	303.5
+7		2.3	303.2
cb		1.6	303.9
N		1.2	304.3
N	7+27	1.9	303.56
+8	send r ✓	2.1	303.4
cb		2.4	303.1
+5		3.4	302.1
1/4		2.9	302.6
e		3.2	302.3
1/4		3.6	301.9
00		4.2	301.3
S		4.6	300.9
S	7+90	7.5	298.0
cb		6.7	298.8

305.46

Winderhol

19

1/4		5.8	299.7
e		5.3	300.2
1/4		4.8	300.7
cb		4.1	301.4
N	from Hprod to Garage	3.2	302.3 11' wide
	8+11 = 2 Hprod ✓		
N		3.9	301.6
	8+25		
N		4.3	301.2
cb		5.0	300.5
+5		5.6	299.9
1/4		5.6	299.9
e		6.4	299.3
1/4		6.6	298.9
cb		7.2	298.3
S		7.9	297.6
S	8+75	9.0	296.5
cb		8.2	297.3
1/4		7.6	297.9
e		7.2	298.3
1/4		6.7	298.8
+7		7.0	298.5
+8		6.3	299.2
cb		6.2	299.3
N		5.4	300.1
N	9+05	6.6	298.9
cb		6.9	298.6

0
1
2
3
4
5
6
7
8
9
10
11
12
13
14
15
16
17
18
19
20
21
22
23
24
25
27
28
29
30
31
32
33
34
35
36

30546

290.62

12/20/2012

20

tr		7.8	297.7
tl		7.0	298.2
1/4		7.6	297.9
c		8.1	297.4
1/4		8.5	297.0
cb		8.7	296.8
S		9.2	296.3
	9+50		
S		11.9	293.6
cb		11.8	293.7
1/4		11.2	294.3
c		10.6	294.8
1/4		10.5	295.0
+7		10.7	294.8
cb		9.8	295.7
N		9.3	296.2
	9+85		
N		10.5	295.0
cb		11.1	294.4
tr		12.0	293.5
1/4		11.9	293.6
c		12.7	292.8
T.P.	07d	12.58	292.88
1/4		1.7	291.9
cb		2.6	291.0
S		3.2	290.4
	10+25		
S		4.9	288.7
cb		4.5	289.1

1/4		3.8	289.8
c		2.9	290.7
1/4		2.1	291.5
+7		2.3	291.3
cb		1.6	292.0
N		0.9	292.7
	10+60		
N		2.3	291.3
cb		3.1	290.5
tr		3.3	290.3
+5		4.0	289.6
1/4		3.9	289.7
c		4.5	289.1
1/4		5.7	287.9
cb		5.9	287.7
S		6.0	287.6
	10+91		
S		8.8	284.8
ct		8.6	285.0
1/4		7.5	286.1
c		6.9	286.7
1/4		6.2	287.4
cb		5.4	288.2
N on April Cms.		4.30	288.32 g' wide
	11+30		
N		7.2	286.3
cb		8.3	285.3
+6		8.7	284.9
+6		9.5	284.1

0
1
2
3
4
5
6
7
8
9
10
11
12
13
14
15
16
17
18
19
20
21
22
23
24
25
26
27
28
29
30
31
32
33
34
35
36

293.62

1/4	-	9.9	283.7	
e		10.1	282.7	
1/4		11.7	281.9	
cb		12.1	281.5	
S		12.7	280.9	
+5		13.0	280.6	
	11+50			
-5		15.0	278.6	
S		14.9	278.7	
cb		13.6	280.0	
1/4		13.3	280.3	
c		12.5	280.8	
1/4		11.8	281.8	
cb		10.3	283.3	
N		9.1	284.5	
T.P.	0.40	281.13	12.89	280.73
	11+80			
N		0.0	281.1	
cb		1.0	280.1	
+5		2.2	278.9	
1/4		2.6	278.5	
e		2.9	278.2	
1/4		3.5	277.6	
cb		4.3	276.8	
S		4.7	276.4	
+5		5.1	276.0	
	12+00			
-10		8.4	272.7	
S		7.8	273.3	

281.13

Wunderlin

21

cb		7.1	274.0	
1/4		6.7	274.4	
c		6.0	275.1	
1/4		5.4	275.7	
cb		4.2	276.9	
N		3.7	277.4	
	12+20			
-5		7.6	273.5	
-1		7.6	273.5	
N		9.5	271.6	
cb		10.4	270.7	
1/4		10.9	270.2	
e		11.4	269.7	
1/4		11.7	269.4	
cb		12.2	268.9	
S		12.6	268.5	
40		13.7	267.4	
T.P.	5.75	274.11	12.77	268.36
	12+50			
-10		9.7	264.4	
S		9.0	265.1	
cb		9.0	265.1	
1/4		8.6	265.5	
c		8.0	266.1	
1/4		7.0	266.7	
cb		6.8	267.3	
N		6.0	268.1	
41 top cobbles wall		2.6	271.5	

274.11

	12+70		
E	-1 top bottle wall	2.0	272.1
C	N	6.4	267.7
W	cb	7.9	266.2
	1/4	9.2	264.9
W	c	10.0	264.1
C	1/4	10.9	263.2
E	cb	11.5	262.6
T	S	12.0	262.1
	+10	12.6	261.5
E	13+00		
C	-10	15.0	259.1
W	S	14.0	260.1
	cb	13.2	260.9
W	1/4	12.0	262.1
C	e	10.9	263.2
E	1/4	9.7	264.7
	cb	8.0	266.1
E	N	6.9	267.2
C	13+25		
T	N	8.4	265.7
V	cb	9.9	264.2
	1/4	11.3	262.8
	c	12.6	261.5
C	1/2	13.9	260.2
E	cb	14.8	259.3
E	S	16.0	258.1
	+10	17.0	257.1
T.P.	487	V66Y1	1277 26134

266.21

Wunderlin

22

	13+50		
	-15	11.4	54.8
	S	10.1	56.1
	cb	9.4	57.0
	1/4	8.5	57.7
	c	7.3	58.9
	1/4	6.3	59.9
	+5	5.6	60.6
	+7	5.0	61.2
	cb	4.8	61.4
	N	3.6	62.6
	13+75		
	-5	5.4	60.8
	N	5.8	60.4
	cb	6.8	59.4
	+4	7.2	59.0
	+6	7.8	58.4
	1/4	8.1	58.1
	c	9.0	57.2
	1/4	9.8	56.4
	cb	10.9	55.3
	S	11.7	54.5
	+15	13.0	53.2
	14+10 = culvert # 4		
	-15	14.1	52.1
	S	14.8	53.4
	cb	11.8	54.4
	1/4	10.5	55.4
	e	10.0	56.2

566.91

1/4	9.0	57.2
cb	7.8	58.4
N	7.0	59.2
+5 w/lot	6.5	59.7
14+30		
-5	6.5	59.7
N	7.0	59.2
cb	8.0	58.2
1/4	9.0	57.0
e	10.0	56.0
1/4	10.8	55.4
cb	11.5	54.7
S	12.1	54.1
+15	12.9	53.3
14+55		
-15	10.6	55.6
S	9.7	56.5
cb	9.0	57.2
1/4	8.0	58.0
e	8.0	58.2
1/4	7.5	58.7
cb	6.5	59.7
N	6.0	60.2
+5	5.8	60.4
14+75		
-5	4.1	62.1
N	4.4	61.8
cb	5.0	61.2
1/4	5.6	60.6

366.21

w/underhand

23

e	6.0	60.0
1/4	6.3	59.9
cb	7.0	59.2
S	7.5	58.7
+10	7.7	58.5
15+04		
-5	4.1	62.1
S	3.9	62.3
+9 Eucalyptus idiam	3.7	62.8
cb	3.4	62.8
1/4	3.0	63.0
e	3.0	63.2
1/4	2.9	63.3
cb	1.7	64.5
N	1.4	65.0
75	0.7	65.5
T.P. 1220 277.82	0.59	265.62
15+30		
-5	9.8	68.0
N	9.9	67.9
cb	10.5	67.2
1/4	11.1	66.7
c	11.4	66.4
1/4	11.7	66.1
cb	12.2	65.6
S	12.3	65.5
+5	12.5	65.3
75+50		
-5	10.5	67.3

30
31
32
33
34
35
36

277.82

S		10.1	67.4
cb		10.1	67.7
1/4		9.6	68.2
e		9.1	68.7
1/2		8.3	69.5
cb		7.7	70.1
N		7.6	70.2
	15+65		
N		6.2	71.6
+8	Eucalyptus 1'diam	6.2	71.6
cb		6.8	71.6
1/4		6.9	70.9
e		7.9	69.9
1/4		8.2	69.5
cb		8.6	69.2
+1.5	✓ ✓ ✓	8.7	69.1
S		9.4	68.6
+5		9.4	68.4
	15+95		
S		7.5	70.3
+8.5	Eucalyptus 1'diam	7.0	70.8
cb		6.2	71.5
1/4		5.8	72.0
c		5.6	72.2
1/4		5.3	72.5
cb		4.5	73.3
+2	✓ ✓ ✓	4.2	73.6
N		3.8	74.0

277.82

Wunderlin

24

	16+23		
8.5	No of sl = Eucalyptus	1'diam	
8'	Sojnl = ✓	✓ ✓	
	16+28 = BL Coxb ST	if street has been narrowed	
N		0.5	77.3
cb		1.4	76.4
1/4		2.2	75.6
c		2.8	75.0
1/4		3.5	74.3
cb		4.2	73.5
S		4.7	73.1

0
1
2
3
4
5
6
7
8
9
10
11
12
13
14
15
16
17
18
19
20
21
22
23
24
25
27
27
28
29
30
31
32
33
34
35
36

Gross Section Alley Block 24 Park Villas
 Between Hay & Grinn
 From Myrtle to Dwight

15' side

BM	2.20	334.10	331.90	NE Myrtle 20°
TP	121	332.97	5.64	328.46
		0.10		NL Myrtle
N Top Carb		4.31		328.46
Gutter Pavng		4.82		327.95
E		5.06		327.71
Gutter		4.82		327.85
E Top Carb		4.37		328.37
		4' H		
E		4.3		328.5
E		4.6		328.2
N		4.5		328.3
Top Conc Walk		4.81		328.2
		40' H		
Top Conc Walk		4.83		327.94
N		5.0		327.8
E		4.6		328.4
E		4.7		328.1
		60' H		
-5.5 Garage Conc Floor		4.65		328.12
-7 Conc Apron		4.73		328.04
E		5.1		327.7
E		5.0		327.8
N		4.7		327.9
Conc Apron		4.75		328.07
+3 Garage Conc Floor		4.54		328.73
		100' H		
N		5.3		327.5

93' N
 Garage Conc Floor
 3' H
 506 327.71
 Conc Apron 20' H
 5.18 327.29
 80' N on N
 Pole 5' 10" H
 98' N on N
 Tree 2' diam
 15' 10" H

332.77

		5.7		327.6
		5.1		327.7
		130' H		
-7 Garage Conc Floor		5.06		327.71
S Entrance		5.0		327.8
E		5.2		327.6
N		5.2		327.6
		150' H		
N		5.0		327.8
E		5.3		327.5
		5.1		327.7
		165' H		
E		4.9		327.9
E		5.0		327.5
E		4.9		327.9
		5.1		327.7
		175' H		
N		5.4		327.4
E		5.4		327.4
E		5.5		327.2
		200' H		
E		5.5		327.3
E		5.3		327.5
N		5.4		327.4
TP	5.66	333.78	4.65	328.13
		330' H		
N		6.1		327.68
E		6.0		327.8
E		5.9		328.0

417-26-
 505-33
 8134
 27.
 Barbara

183' N Pole
 00 East 100' H

185' N on N

Garage Dirt Floor

5.2 327.6

218' N on N
 Pole
 4' in Alley

- 0
- 1
- 2
- 3
- 4
- 5
- 6
- 7
- 8
- 9
- 10
- 11
- 12
- 13
- 14
- 15
- 16
- 17
- 18
- 19
- 20
- 21
- 22
- 23
- 24
- 25
- 26
- 27
- 28
- 29
- 30
- 31
- 32
- 33
- 34
- 35
- 36

533.78

255'N

-2	Garage Conc Floor	578	328.0
E	Conc Floor	589	327.79
S		62	327.6
N		59	327.9

275'N

N		59	327.9
E		61	327.7
E		61	327.7

300'N

E		59	327.9
E		59	327.9
N		59	328.1

325'N

N		52	328.6
E		54	328.4
E		55	328.3

344'N 81'N
00'N
3'10.8'N

350'N

E		45	329.3
E		47	329.1
N		48	329.0

375'N

N		45	329.3
E		45	329.3
E		45	329.3

400'N

E		45	329.3
E		40	329.8
N		41	329.7

Garage Dirt Floor
406'N
3'22.4'N
3'2' 329.6

333.78

425'N

N		41	329.7
E		37	329.1
E		37	329.1

460'N

S	Garage Dirt Floor	27	321.1
E		30	320.8
E		34	320.4
N		32	320.6

500'N

N		28	331.0
E		25	331.3
E		19	321.9

Garage Dirt Floor
508'N
25' E.E.L.
14' 322.4

525'N

E		15	332.3
E		19	321.9
N		20	321.8

550'N

N		17	332.1
E		14	332.4
E		08	333.0

528'

338.00

TP		106	332.28
----	--	-----	--------

575'N

E		50	333.0
E		52	332.8
N		54	332.6

Garage Conc Floor
558'N
19'
323.09

595'N

N		53	332.7
E		53	332.7

28

0
1
2
3
4
5
6
7
8
9
10
11
12
13
14
15
16
17
18
19
20
21
22
23
24
25
27
28
29
30
31
32
33
34
35
36

Cross Section Alley Block 27 University, Hg 60
 Between Cleveland & Campus
 From Madison to Golden Gate 30 side

4-15-51
 30

BM	6.77	351.65	349.88	NE 1/4 Madison Cleveland
		0+0 - N.L. Madison		
N	Top Pav. log	5.39	351.26	
S	"	5.47	351.16	
E	"	5.07	351.58	
		25' N		
E		5.0	51.6	
S		5.1	51.5	
N		5.1	51.5	
		50' N		
N		5.0	51.6	
S		5.1	51.5	
E		5.0	51.6	
		75' N		
E		5.0	51.6	
S		4.9	51.7	
N		4.9	51.7	Fence 0.6 10' N
		100' N		
N		5.0	51.6	Fence 35.10 Alley
S		5.0	51.6	
E		5.1	51.5	
		125' N		
E		4.9	51.7	
S		5.0	51.6	
N		5.1	51.5	Fence 35.10 Alley
		150' N		
N		5.0	51.3	
S		5.1	51.5	

E		5.0	351.6	Start 35.10 Alley
		175' N		
E		5.2	51.4	Garage 25.10 Alley Dirt Floor N Entrance 5.2
S		5.1	51.5	
N		5.2	51.4	
		200' N		
N		5.8	50.8	
S		5.7	50.9	
E		5.5	51.1	Fence 35.10 Alley
		225' N		
E		5.3	51.3	Fence 20.10 Alley
S		5.9	50.9	
N		6.0	50.6	
		250' N		
N		6.0	50.6	Dr. Garage & Garage 5.13 N on E.L.
S		6.0	50.6	5.8 / 50.8+
E		5.8	50.8	2.6' N Top Van Hole
		275' N - S.L. Golden Gate on N	5.97	
E		6.1	50.5	Fence 25.10 Alley
S		6.5	50.1	
N		6.7	49.9	
		300' N on N 290' N - S.L. Golden Gate on E		
N	Taken on Diagonal	6.7	49.9	
S		6.7	49.9	
E		6.5	50.1	
	TOP CORN	7.35	349.30	

0
1
2
3
4
5
6
7
8
9
10
11
12
13
14
15
16
17
18
19
20
21
22
23
24
25
26
27
28
29
30
31
32
33
34
35
36

Cross Section Alley Block 15 University Heights
 Between Okla & Kansas
 From Madison to Adams

200' wide

382.25

19.4
 5.3
 3.1
 Northern
31

BM	1.22	387.32	386.00	SE Madison 50'	N	22	379.5	
TP	4.17	382.68	378.11		E	24	379.9	
		040 - N.L. Madison			E	23	380.0	Fence on Alley
E		50	377.3			250'		
Top Carb		4.54	377.74	on Return	E	18	380.5	Fence on Alley
+6		49	377.4		E	19	380.4	
E		52	377.1		N	22	380.1	
N		50	377.3			275'		
Top Carb		4.51	377.77	on Return	N	20	380.3	370' N 4.5' E L Garage Dirt Floor
		50'			E	14	380.9	381.2
N		41	377.2		E	11	381.2	
E		46	377.7			300'		
E		44	377.9	58' N on X L Garage Dirt Floor 5' E on X L 2.6' - 378.6	E	10	381.3	Fence on Alley
		100'			E	12	381.1	
E		40	376.3	Fence on Alley	N	1.5	380.8	
E		42	378.1		TP	837	389.28	127
N		39	378.4			325'		380.91
		150'			N	8.9	381.3	
N		38	378.5		E	7.8	381.5	
+3		42	376.1		E	7.7	381.6	Fence on Alley
+8		3.6	378.7			350'		
E		41	378.2	Fence on Alley	E	7.4	381.9	
+6		4.4	377.9		E	7.2	382.1	
E		41	378.2		N	7.2	382.1	
		200'				400'		
E		30	379.3	Fence on Alley	N	6.3	383.0	380' N Garage Dirt Floor 1.5' N
E		33	379.0		E	6.2	383.1	
N		31	379.2		E	6.1	383.2	290' N Garage Dirt Floor 10' N 6.8' - 382.5

0
1
2
3
4
5
6
7
8
9
10
11
12
13
14
15
16
17
18
19
20
21
22
23
24
25
26
27
28
29
30
31
32
33
34
35
36

	42.5' N		Garage Conc Floor 41.0' N 1.0' W L	E	2.3	387.6	
E	5.6	383.7	623 - 383.06	Top Carb	2.40	386.88	on Return
E	5.6	383.7	Conc Floor 7' W L	Top Pav	2.50	386.78	
N	5.7	383.6	639 - 382.9	" "	2.27	386.57	
	45.0' N		42.0' N Garage Drift 11.5' W L	N	2.6	386.7	
N	5.6	383.7	55 - 383.5	" "	2.56	386.72	
E	5.6	383.7		Top Carb	2.40	386.88	on Return
E	5.2	384.0	Fence 1/4 Alley	TP 5R	392.07	386.59	52
	49.0' N			BM	1.14	391.90	Adm 1224 387.04
E	Garage Conc Floor	37.5	385.53	BM	5.94	385.96	Madison 1303
	+ 1/2 Conc Floor	42.7	385.01				
E L	4.3	385.0	507 No. 22				
E	4.4	384.7	Garage Drift Floor				
N	4.7	384.6	38 385.5				
	+ 7.5 Conc Floor	47.6	384.52				
	+ 9.5 Garage Conc Floor	45.6	384.72				
	52.5' N						
N	4.0	385.3					
E	4.0	385.3					
E	3.8	385.5	Fence 1/4 Alley				
	55.0' N						
E	3.1	386.2	Fence 1/2 to 1/4 Alley				
E	3.5	385.8					
N	3.4	385.9					
	57.5' N						
N	3.1	386.2					
E	Top Weather	3.0	386.20				
E	2.8	386.5	Fence op. n. Alley				
	60.0' N - S L Adams						

0
1
2
3
4
5
6
7
8
9
0
1
2
3
4
5
6
7
8
9
0
1
2
3
4
5
6

4.19.42
S. 1500
D. 1500
N. 1500

Cross Section Alley Black H University Hgbls
Between 4th & Kansas
From Adams to Collier 20' wide

395.48

Page 32

TP	889	395.48	386.59	
				040 = H.L. Adams Ave.
E		7.5	388.0	
	Top Curb	7.07	388.11	on Return
	" " " " " " " "	7.53	387.95	
	" " " " " " " "	7.93	387.55	
	" " " " " " " "	7.7	387.8	
	" " " " " " " "	7.83	387.65	
	Top Curb	7.67	387.81	on Return
		10' N		
	" " " " " " " "	7.2	388.3	
	" " " " " " " "	7.3	388.2	
	" " " " " " " "	7.1	388.4	
		50' N		
	" " " " " " " "	7.0	388.5	
	" " " " " " " "	6.8	388.7	
	" " " " " " " "	7.2	388.3	
		75' N		
	" " " " " " " "	7.0	388.5	
	" " " " " " " "	6.7	388.8	
	" " " " " " " "	6.9	388.6	
		100' N		
	" " " " " " " "	6.5	389.0	
	" " " " " " " "	6.6	388.9	
	" " " " " " " "	6.7	388.8	
		145' N		
	-0.5 Conc Apron	6.35	389.13	

94' N
Garage 1 Conc Floor
10' E.E.L.
659 - 389.19
Conc Apron
72' N
637 - 389.11

105' N 25' N
5' End 7 Garages
Conc Floor
663 - 388.85

		6.4	389.1	
		6.1	389.4	
		6.1	389.4	
	17 Garage Conc Floor	6.10	389.38	
		175' N		
	" " " " " " " "	5.4	390.1	
	" " " " " " " "	5.6	389.9	
	" " " " " " " "	6.1	389.4	
	21 N End 7 Garages Conc Floors	6.14	389.34	
		200' N		
	" " " " " " " "	5.4	390.1	
	" " " " " " " "	5.1	390.4	
	" " " " " " " "	5.3	390.2	
	" " " " " " " "	6.4	389.1	
		220' N		
	" " " " " " " "	5.1	390.4	
	" " " " " " " "	5.0	390.5	
	" " " " " " " "	4.6	390.9	
		240' N		
	" " " " " " " "	5.3	390.2	
	" " " " " " " "	5.7	389.9	
	" " " " " " " "	5.8	389.7	
		275' N		
	" " " " " " " "	5.3	390.2	
	" " " " " " " "	5.5	390.0	
	" " " " " " " "	5.6	389.9	
		300' N		
	" " " " " " " "	5.3	390.2	
	" " " " " " " "	5.3	390.2	

Garage apron
255' N
5.4 - 390.1

1
2
3
4
5
6
7
8
9
20
21
22
23
24
25
27
28
29
30
31
32
33
34
35
36

		51	390.4	247' N 10' W Garage 1st Floor 490 390.58
		350'N		
E	E	53	390.2	
C	E	53	390.2	
N	N	50	390.5	
		375'N		
N	N	44	391.1	
E	E	46	390.9	
		49	390.6	
		400'N		
E	E	53	390.2	
E	E	52	390.3	
N	N	52	390.3	
		450'N		
N	N	47	390.8	
E	E	50	390.5	
E	E	48	390.7	
		500'N		
E	E	49	390.6	
E	E	46	390.9	
N	N	44	391.1	
		535'N		
N	N	42	391.3	
E	E	45	391.0	
E	E	47	390.8	
+6 Garage 2nd Floor		46	390.9	
		560'N		
E	E	43	391.2	
E	E	45	391.0	

		39548	
		43	391.2
		585'N	
N	N	45	391.2
E	E	44	391.1
		42	391.3
		601'N - 52 Collar	
E	E	51	390.4
Top Curb		485	390.63
E	E	55	390.0
N	N	52	390.3
Top Curb		480	390.68

0
1
2
3
4
5
6
7
8
9
10
11
12
13
14
15
16
17
18
19
20
21
22
23
24
25
26
27
27
28
29
30
31
32
33
34
35
36

Cross Section Alley Block 14 Cleveland Hgts.
 Between Alsdross & Front
 From Walnut to Brooks 15' Wide

← should be 268.8 ✓

BM	1.24	252.16	250.90	11' N Walnut + 1'
TP	1.39	240.69	239.30	
TP	6.66	237.73	9.62	231.07
		0.40 = 11' N Walnut		255.65
E	Top Pavng	6.15	249.20	
Z	"	6.73	248.92	
N	"	6.16	249.19	
	So End Conc Wall	5.51	250.14	
		7.5' N		
N		5.6	250.0	
	N End Top Conc Wall	4.92	250.7	
Z		6.0	249.6	
E		5.4	250.2	
		5.0' N		
E		4.9	250.7	So Garage Conc Floor 9.0' N 1.5' N L 5.10
Z		5.6	250.0	
N		5.4	250.2	
		10.0' N		
N		5.2	250.4	So Garage Conc Floor 1.09' N 2.0' N L 5.09
Z		5.1	250.5	
E	Garage Dirt Floor 28' N Alley	5.1	250.5	
		12.5' N		
E		4.8	250.8	
Z		4.8	250.8	
N		4.8	250.8	
		15.0' N		
N		4.9	250.7	
Z		4.8	250.8	

			237.73	255.6	35
			5.0	250.6	1.19' N 5.05' N 3.15' N 2.0' N
			17.5' N		
			5.0	250.6	
			5.0	250.6	
			5.2	250.4	
			2.00' N	250.1	1.88' N 6.1' E 5.0 Garage Dirt Floor
			5.5	250.1	
			5.4	250.2	2.10' N 8.1' E Garage Dirt Floor
			5.2	250.4	
			5.01	250.6	4.7
			2.50' N		
			5.6	250.0	
			6.0	249.6	
			6.3	249.3	
			27.5' N		
			6.4	249.2	
			6.0	249.6	
			5.7	249.9	
			5.5	250.1	
			3.00' N		
			6.1	249.5	
			6.5	249.1	
			6.4	249.2	
			5.22	231.66	2.08' N 1.5' L Garage Dirt Floor
			3.25' N	254.6	5.3 2.09
			4.9	249.7	
			5.08	249.5	
			4.9	249.7	
			3.00' N		

0
1
2
3
4
5
6
7
8
9
10
11
12
13
14
15
16
17
18
19
20
21
22
23
24
25
26
27
28
29
30
31
32
33
34
35
36

231.6

254.6

E		50	249.6	
E		50	249.6	
C	+ 6.8 Garage Dirt Floor	50	249.6	370' N. cont. Garage Dirt Floor 28' in 1911 50
W		50	249.6	
	400' N			
W		42	250.4	375' N. cont. Garage Cont. Floor as in 1911
E		40	250.6	438
E		3.5	251.1	394' N. 45 E L.L. Garage Dirt Floor 37
	430' N			
E		3.2	251.4	438' N. cont. L.L.
E		3.7	250.9	Garage Cont. Floor
W		3.7	250.9	445' N. 40 S S L.L. Garage Dirt Floor 41
	468' N			
	-1.5 Cont. Apron & Garage	4.14	250.2	
W		4.4	250.2	
E		4.1	250.5	492' N. cont. Garage Floor as in 1911
E		3.9	250.7	385 Garage Cont. Floor Cont. Floor 375
	500' N			
E		4.3	250.3	
E		4.3	250.3	
W		4.5	250.1	572' N. 45 E L.L. Garage Cont. Floor 357
	525' N			
W		4.5	250.1	
E		4.5	250.1	
	550' N			
E		5.0	249.6	
W		4.4	250.2	

231.6

254.6

E		4.4	250.2	
E		4.1	250.0	
W		5.1	249.5	
	575' N			
W		4.8	249.8	
E		4.4	250.2	
E		4.4	250.2	
E		4.9	249.7	
	601.3 = 52.8 Brakes			
	3.50		251.1	
E	Top Walk	4.0	250.6	
E		3.8	250.8	
W		4.0	250.6	Not to Curve Returns 100
	Top Walk	3.83	250.8	
TR	442 23741	3.93	232.93	Not Brakes + Floor
B.M.		2.56	234.07	

0
1
2
3
4
5
6
7
8
9
10
11
12
13
14
15
16
17
18
19
20
21
22
23
24
25
26
27
28
29
30
31
32
33
34
35
36

Cross Section Alley Block 191 City Heights
 Between Stiff + 35th St
 From University to Hightman

20' wide

BM	1278	350.20	337.92	112 Hightman St	358.97	359.0
N		0.0 - H.L. Hightman	<u>350.2</u>	14	68	352.2
		4.0	346.2	15	88	350.2
Top Curb		4.91	345.3	16	89	350.1
+4		3.5	346.7	17	89	350.1
2		3.3	346.9	18	70	352.0
+3		3.3	346.9	19	73	351.7
+6		2.3	347.9		35' H	
F		3.0	347.2	20	64	352.6
Top Curb		4.11	346.1	21	67	352.3
TP	9.36	358.97	0.59	22	67	352.3
		2.11	349.61	23	62	352.8
F			<u>359.0</u>	24	58	353.2
+4		9.1	349.6		50' H	
+6		9.8	349.2	25	52	353.8
2		11.3	347.7	26	53	353.7
+5		12.1	346.9	27	55	353.5
N		12.0	347.0		100' H	
		11.0	348.0	28	47	354.3
		4' H		29	45	354.5
N		7.9	351.1	30	44	354.6
+2		7.8	351.2	31	40	355.0
+5		11.0	348.0	32	42	354.7
2		11.8	347.2		145' H	
+5		11.4	347.6	-7 Garage 2nd Floor	29	356.1
+7		7.9	351.1	F	34	355.6
F		7.3	351.7	2	37	355.3
		15' H		N	42	354.8
F		6.4	352.6	+75 Garage 2nd Floor	43	354.7

Shed + Fence
05' to Alley

92' H 2' MAX L
Garage 2nd Floor
47

160' H 6.5' MAX L
Garage 2nd Floor
264

3
4
5
6
7
8
9
0
1
2
3
4
5
6

35897

N		17.5'H	359.0	
E		27	356.3	
C		2.5	356.5	
W		27	356.3	
		200'H		
E		2.5	356.5	
E		2.5	356.5	
N		2.5	356.5	
		225'H		
N		2.9	356.6	
E		2.0	357.0	
		2.1	356.9	
		250'H		
E		2.0	357.0	
E		2.0	357.0	
N		2.5	356.5	
		300'H		
N		18	357.2	
E		18	357.2	
		1.8	357.2	
TP	6.54	363.86	1.25	357.32
		340'H		363.9
E	Garage Dirt Floor	67	357.2	
E		6.9	357.6	
N		6.7	357.2	
	+7.4 Garage Dirt Floor	7.0	356.9	
		370'H		
N		57	358.2	
+8		62	357.7	

Garage 15' width
Entrance
2.0Fence
into plot358'H GIFF
Garage Dirt
Floor
47

36386

38

					363.9
				6.3	357.6
				6.4	357.5
			400'H		
				5.6	358.3
				5.5	358.4
				5.7	358.2
			440'H		
				5.4	358.5
				5.2	358.7
				5.1	358.8
			14.5' Garage Dirt Floor	5.1	358.8
				465'H	
				5.1	358.8
				5.2	358.7
			W. Conc. Apron	5.25	358.6
			73.5' Garage Conc. Floors	5.25	358.6
				500'H	
			-7' Garage Dirt Floor	5.0	358.9
				5.0	358.9
				4.8	359.1
				4.6	359.3
			TP	5.94	365.29
				4.51	359.35
				525'H	365.3
				5.6	359.7
				5.8	359.5
				6.0	359.3
				550'H	
				4.8	360.5
				4.8	360.5

223'H 0.875'L
Conc. Apron
5.28

Fence 15' into plot

412'H 0.875'L
Conc. Apron
5.28Garage Dirt Floor
51.8'H
8' into plot
6.8

0
1
2
3
4
5
6
7
8
9
10
11
12
13
14
15
16
17
18
19
20
21
22
23
24
25
26
27
28
29
30
31
32
33
34
35
36

	61579	365.3
E	50	361.3
	575H	
E	42	361.0
Z	46	360.7
H	46	360.7
	590H	
H	50	360.3
Z	48	360.5
E	45	360.8
	600.8H - SL University	
E	508	360.2
Z	543	359.9
H	528	360.0
B.M.	647	358.2
		SL University 359.86

3
4
5
6
7
8
9
10
11
12
13
14
15
16

Cross Section Alley Block 246 Univ. Hgts
 Between Park St + Indiana
 From Upas to Myrtle

20' side

40

BM	433	300.12	295.70
		0.40 = H.L. Upas	300.1
N		4.8	295.3
	Top Curb	5.26	294.87
S		4.8	295.3
E		1.8	295.3
	Top Curb	5.36	294.77
		5' N	
E		0.4	299.7
+2		0.4	299.7
+3		2.5	297.6
S		4.1	296.0
+4		3.9	296.2
+7		3.3	296.8
N		3.3	296.8
		15' N	
N	Coac House Drain	2.6	297.67
S		2.7	297.4
+3		2.8	297.3
+8		0.3	299.8
E		0.3	299.8
		25' N	
E		0.1	300.0
+8		0.3	299.8
+3		1.4	298.7
+7		2.3	297.8
S		2.8	298.3
N		1.9	298.2

Plotted on Profile by Reading

300.12

TP	7.19	305.57	180	298.33
			50' N	305.5
N			6.9	298.6
S			6.3	299.2
+4			6.3	299.2
+6			6.7	298.8
E			5.7	299.8
			77' N	
E			5.6	299.9
+4			6.2	299.3
S			6.0	299.5
N			6.1	299.4
			5.88	299.64
			100' N	
-7 Conc Apron			5.88	299.64
N			6.0	299.5
S			5.7	299.8
E			5.8	299.7
			125' N	
E			5.6	299.9
S			5.4	300.1
N			6.0	299.5
			5.84	299.7
			150' N	
-7 Conc Apron			5.79	299.7
N			5.8	299.7
S			5.1	300.4
E			5.5	300.0

6.77' only L
 House Drain
 Concrete
 6.88
 298.44

2
3
4
5
6
7
8
9
20
21
22
23
24
25
27
27
28
29
30
31
32
33
34
35
36

305.58

175' N 305.5

E	54	300.1
S	50	300.5
N	58	299.7
+7	Conc. Floor	576 299.76

202' N

-7	N End 10 Garages Conc. Floor	582 299.7
N	55	300.0
S	48	300.7
E	48	300.7
	N End 4 Garages S Entrance	384 301.64

225' N

E	47	300.8
S	44	301.1
N	49	300.6

246' N

-6.4	Garage Conc Floor	529 300.23
-1	Conc. Floor	534 300.16
N	51	300.4
S	42	301.3
+5		44 301.1
E	42	301.3

262' N

F	38	301.7
+5	43	301.2
S	40	301.5
N	48	300.7

+6.5	Garage Conc Floor	540 300.1
------	----------------------	-----------

287' N

-7	Garage Conc Floor	450 301.0
----	-------------------	-----------

Conc. Floor
24' N 225' N

534 300.16

Do Garage Conc Floor
529

300.23

272' N

277' N

Conc. Floor
462

300.9

305.58

305.5

N	43	301.2
S	40	301.5
E	37	301.8

315' N

E	35	302.0
S	38	301.7
N	39	301.6
F	383 302.25	440 301.18
		<u>305.0</u>
	E Side Garage Conc Floor + S Entrance	361 301.94

328' N

-3	Conc Drive	388 301.07
N	38	301.2
S	33	301.7
E	28	302.2

338' N - S L Myrtle

E	32	301.2
	Top Curb	380 301.2
S	37	301.8
N	41	302.9
	Top Curb	409 302.86
SM	10.92	294.03

o.d. Return

o.d. Return

NX
Myrtle
300.000
294.05

0
1
2
3
4
5
6
7
8
9
10
11
12
13
14
15
16
17
18
19
20
21
22
23
24
25
26
27
28
29
30
31
32
33
34
35
36

Cross Section Alley Block 157 University Heights
Bellevue Illinois + Iowa
From Polk to Harvard

28' Wide

367.61

42
42.11 L
5.12
5.13
Harvard

B.M.	114	367.61	366.97	S.F. Polk Illinois
			367.6	
W		56	367.0	
	Tap Curb	53.4	367.3	on Retain
E		61	361.5	
	Tap Curb	58.9	361.7	on Retain
E		60	361.6	
	10' H			
E		56	362.8	
E		55	362.1	
W		52	362.4	
	45' H			
W		55	362.1	
E		55	362.1	
E		60	361.6	
7	Garage Conc Floor	6.00	361.6	
	175' H			
E		64	361.2	93' H on E.L. Garage Dirt Floor
E		62	361.4	66'
W		60	361.6	
	100' H			
W		62	361.4	
E		65	361.1	
E		66	361.0	
	125' H			112' H on E.L. Garage Conc Floor
E		68	360.8	5.85
E		68	360.8	
W		65	361.1	

	150' H	367.6			
W		66	361.0	Fence at in Alley	
E		69	360.7		
E		71	360.5		
TP	3.42	363.98	70.5	360.56	158' H on E.L. Garage Dirt Floor
	175' H			3.6	
E		39	361.1		
E		37	360.3		
W		34	360.6	172' H on E.L. Conc Porch	
	200' H			3.54	
W		32	362.8		
15		35	360.5		
E		39	360.1		
E		41	359.9		
	219' H				
E		44	359.6		
E		42	359.8		
14		41	359.9		
W	Garage Dirt Floor	38	360.2		
	241' H				
46	Garage Conc Floor	3.69	360.4		
W		38	360.2		
48	Conc Apron	3.92	360.1		
E		43	359.7		
E		45	359.5		
	273' H				
E		48	359.2		
E		50	359.0		
W		45	359.5		

363.98

		<u>364.0</u>
+5	George Dick Floor	359.8
	300'N	
W	57	358.8
E	52	358.8
E	51	358.9
	334'N	
E	55	358.5
E	56	358.4
+8	Conc Apron	358.4
W	55	358.5
+1.5	George Conc Floor	358.5
	375'N	
-1	George Dick Floor	358.1
W	61	357.9
E	60	358.0
E	58	358.2
	420'N	
E	60	358.0
E	57	358.3
W	59	358.1
	450'N	
W	53	358.7
E	56	358.4
E	56	358.4
	475'N	
E	51	358.9
E	54	358.6
W	54	358.6
	508'N	

363.98

43

		<u>364.0</u>
-4	George Dick Floor	359.2
W	48	359.1
E	46	359.4
E	49	359.1
	550'N	
E	41	359.9
E	42	359.8
W	45	359.5
	585'N	
W	39	360.1
E	36	360.4
E	39	360.1
	600' S.L. Howard	
E	41	359.9
Top Curb	477	360.2
E	40	360.0
W	40	360.0
Top Curb	362	360.4

G.

 0
1
2
3
4
5
6
7
8
9
10
11
12
13
14
15
16
17
18
19
20
21
22
23
24
25
27
27
28
29
30
31
32
33
34
35
36

6841

	300'E	68.4	
S	6.7	61.7	
E	7.8	60.6	
N	7.5	60.9	
	330'E		
N	6.0	62.4	
E	6.3	62.1	
S	Do. Garage Dirt Floor	6.4	62.0
	338'E		
S	Garage Dirt Floor	5.7	62.7
E		6.1	62.3
N	Garage Dirt Floor	5.7	62.7
	358'E		
-2	Garage Conc. Floor	4.00	64.4
N		4.5	63.9
E		5.4	63.6
S		5.1	63.3
+2	Garage	5.1	63.3
	388'N		
S	4.1	64.3	
E	4.5	63.9	
N	3.9	64.5	
+2	Do. Garage) Dirt Floor	3.9	64.5
	415'N		
N	2.9	65.5	
E	3.6	64.8	
S	3.6	64.8	
	445'N		
S	3.9	64.5	

380'E 255'N
Garage Dirt Floor
48.62.6

6841

45

		68.4	
		64.8	
		65.3	
	470'E		
N	Garage Dirt Floor	3.1	65.1
E		3.2	64.9
S	Garage Dirt Floor	3.5	64.6
	500'E		
S		3.0	65.4
E		3.3	65.1
+5		3.1	65.3
N		2.5	63.9
	510'E		
N	Garage Dirt Floor	2.1	66.3
E		3.0	65.4
S		3.2	65.2
	545'E		
S	Do. Garage Dirt Floor	2.9	65.5
E		2.6	65.8
N	Garage Dirt Floor	2.3	66.1
	570'E		
N		1.6	66.8
E		2.0	66.4
S	Do. Garage Dirt Floor	2.3	66.1
	597'E		
S	Garage Dirt Floor	1.9	66.5
E		1.6	66.8
N		1.0	67.4
	601.5-N.2. Evans		
N		0.7	67.7

	68.4		68.4	
Top Corb.		0.74	67.7	on Refers
L		1.6	66.8	
S		1.7	66.7	
Top Corb		1.32	67.0	on Refers
TP	4.88	71.68	66.80	
BM		8.62	63.86	NE to 200 ft. from 1000

Cross Section Alley Block 5 Marine View

Behner & Peterbaugh & Torrance

N. West Kite

15' H. H.

27230

47
4.22 16
5.15 16
5.15 16
5.15 16

B/M	5.45	27230	266.85	N. West Top Hall Torrance & Kite
		0.10 = N. West Kite	<u>272.3</u>	
H		10.0	262.3	
L		9.7	262.6	
S		9.5	262.8	
	15' H			
S		8.3	264.0	
L		8.3	264.0	
H		8.2	264.1	
	25' H			
H		7.6	264.7	
L		7.6	264.7	
S		7.6	264.7	
	50' H			
S		6.2	266.1	
L		6.6	265.7	
H		6.2	266.0	
	80' H			
H		4.9	267.4	
L		5.0	267.3	
S	N. Edge Garage Dist. Floor East Entrance	4.8	267.5	
	100' H			
S		4.0	268.3	Dr. Garage Conc. Floor 115' H. C. H. H. L.
L		4.2	268.0	304
H		4.1	268.2	
	130' H			
H		3.0	269.3	
L		2.9	269.4	

S	Conc. Floor	2.84	272.3	
			<u>269.5</u>	
L	1/2 Garage Conc. Floor	2.98	269.5	
	160' H			
S		2.0	270.3	
L		2.0	270.3	165' H 0.15 = L. Conc. Floor 177
H		1.9	270.4	
	1/4 Garage Conc. Floor	1.68	270.6	
TP	6.03	276.74	1.59	270.76
	200' H			180' H Conc. Floor 6.37
			<u>276.7</u>	
H		5.5	271.2	4' 5.5" L. Garage Conc. Floor
L		5.1	271.1	6.10
S		5.6	271.1	
	225' H			
S		5.3	271.4	
L		5.4	271.3	
H		5.3	271.4	
	250' H			
H		4.7	272.0	
+2		5.3	271.4	
L		5.4	271.3	
+5		5.5	271.2	
S		5.0	271.8	
	275' H			
S		5.2	271.4	
L		5.5	271.2	
+3		5.4	271.3	
H		5.0	271.7	
	300' H			
H		5.8	270.9	

276.74

276.7

+4	62	270.5
Z	62	270.4
S	69	270.5

325W

S	70	269.7
Z	69	269.8
+3	69	269.8
N	67	270.0

350W

N	66	270.1
Z	71	269.6
S	72	269.5

366W

S	75	269.2
Z	75	269.2
N	71	269.6

373W

N	73	269.4
Z	76	269.1
+2	76	269.1
+5	67	270.0
S	73	269.4

385W

S	90	267.7
Z	84	268.3
N	78	268.9

408W

N	85	268.2
---	----	-------

Cane Gutter
at Camp Garage395W
Cane Gutter
on S.H.916
Garage on Hill
1531

276.74

276.7

Z	87	268.0
+1.5 Cane Gutter	848	268.2
at Hill on Camp Garage		
S on Cane Gutter	882	267.9

East S. of
Garage
1571081109

TP 170 272.4 603

270.71

BN

266.84

N.H. 1000
Footwear Hill

Cross Section Alley Block L. Univ. Heights
 Between Ohio & Kansas
 From Collier to Copley

20' Wide

4-21-21
 Station
 3155
 No. 1-10000
49

BN	6.42	397.10	390.63	Top Curb on E side of S.L. Collier
				0.10 N.L. Collier
N		6.1	391.0	
	Top Curb	5.96	391.14	0.2 Below
E		6.6	390.5	
	Top Curb	6.05	391.05	0.2 Below
E		6.2	390.9	
	20' W			
E		5.3	391.8	
E		5.4	391.7	
N		5.5	391.6	
	15.5' W			
	Garage Dirt Floor	5.4	391.7	
N		5.4	391.7	
E		5.4	391.7	
E		5.2	391.8	
	7.5' W			
E		5.5	391.6	
E		5.3	391.8	
N		5.0	392.1	
	10.0' W			
N		5.0	392.1	10.0' W 14.0' W Garage dirt 4.3' W
E		5.2	391.9	
E		5.3	391.8	11.4' W 5.5' W 3.0' Garage Dirt Floor 5.0'
E		4.8	392.3	
E		5.3	391.8	
N		5.0	392.1	

	397.10		
	15.0' W		
N		5.0	392.1
E		5.2	391.9
E		5.2	391.9
	17.5' W		
E		5.2	391.9
E		5.3	391.8
N		4.9	392.2
	20.0' W		
N		5.1	392.0
E		5.2	391.9
E		5.1	392.0
	22.5' W		
E		5.2	391.9
E		5.0	392.1
N		5.1	392.0
	25.5' W		
	6 Garage Conc Floor	4.6	392.68
	1 Conc Floor	4.53	392.57
N		4.7	392.4
E		5.0	392.1
E		5.2	391.9
	27.5' W		
E		5.2	391.9
E		5.3	391.8
N		4.7	392.4
	29.0' W on E = S.L. Copley		
N		4.8	392.3

577.10

S	51	392.0	
E	50	392.1	
Top Curb	465	392.45	00. Petero
	290 1/2 DE a S.L. Copley		
	295' 00" W Taken on 10/10/94		
E	50	392.1	
Top Curb	465	392.45	
S	49	392.2	
W	46	392.5	
Top Curb	444	392.66	

0
1
2
3
4
5
6
7
8
9
0
1
2
3
4
5
6
7
8
9
0
1
2
3
4
5
6
7
8
9
0
1
2
3
4
5
6

Wash
Moore
Section
Flood
06/01/01

Cross Section of
Whittier ST - 70' wide 18' cb
Willow to Locust

1690'

WAP	1690'	16617	Willow Whittier	0+44	Elevations
					7.2 161.8
					7.3 161.7
					7.1 161.9
					6.5 162.5
					7.6 166.4
					5.6 163.4
					7.1 161.9
					8.0 161.0
					7.7 161.3
					7.6 161.4
					7.5 161.5
					7.1 161.9
					6.5 162.5
					5.3 163.7
					6.9 162.1
					7.5 161.5
					8.4 160.6
					8.2 160.6
					8.5 160.5
					8.8 160.2
					8.2 160.8
					6.3 162.7
					6.9 162.1
					7.0 162.0
					8.9 160.1
					9.7 159.3

0+100
Note: 4' cb radius on Whittier
3.7 165.5
3.3 165.19
4.8 164.2
5.2 163.8
5.5 163.5
5.6 163.4
5.6 163.4
4.8 164.20
4.8 164.5
1.6 167.4
1.8 167.2
5.2 163.8
5.8 163.2
5.7 163.3
5.5 163.5
2.3 166.7
2.6 166.6
6.6 162.4
6.5 162.2
7.0 162.0
6.8 162.2
6.7 162.3
6.5 162.5
5.5 163.2
6.4 164.6

0+44
0+65
0+100
0+36

1690v

1/4	9.5	159.5
c	9.5	159.5
1/4	9.1	159.9
cb	9.1	159.9
+12	8.6	160.4
+14	7.5	161.5
S	7.4	161.6
143797 - WL EDIT 4 Lane		
S	9.2	160.8
+6	9.3	159.7
cb	9.6	159.4
1/4	9.7	159.1
c	9.4	159.1
1/4	9.7	159.3
cb	10.0	159.0
N	6.9	162.1
1455		
N	7.5	161.5
cb	9.0	160.0
1/4	10.4	158.6
c	10.5	158.5
1/4	10.6	158.4
cb	10.7	158.3
+12	10.4	158.6
S	9.2	159.8
1450		
S	10.5	158.5
1/4	12.0	157.0
cb	12.1	159.9

1690v

Whittier

52

1/4	12.3	156.7
c	12.1	156.9
1/4	12.0	157.0
cb	11.8	157.2
N	8.7	160.3
2 + 0909 - EL Ed. 4 Lane		
N	10.5	158.6
+10	10.7	158.3
cb	13.4	155.6
1/4	13.9	155.1
c	13.8	155.2
1/4	13.9	155.1
cb	14.0	155.0
+16	14.4	154.6
S	13.2	155.8
TP 215 - 15.5.4 - 13.2W 155.0		
3 + 6.5 (5)		
S	4.0	152.0
cb	4.7	151.3
1/4	4.0	151.0
c	4.8	151.2
1/4	4.6	151.6
cb	4.2	151.8
+6	2.2	153.8
N	2.6	153.4
3400 - WL Evergreen 70' wide 18' cbs		
N	5.5	150.5
cb	5.0	151.0
1/4	4.7	151.3

15595

c		5.1	150.9
1/4		5.4	150.6
cb		6.0	150.0
S		6.9	149.1
	w/ cb (18' ca)		
S		7.3	148.7
cb		6.2	149.8
1/4		6.7	149.3
c		6.7	149.3
1/4		6.8	149.2
cb		7.0	149.0
N		7.4	148.6
	w/ 1/4 (26.5)		
N		8.4	147.8
cb		7.9	148.1
1/4		7.8	148.2
c		7.7	148.3
1/4		7.7	148.3
cb		7.4	148.6
S		6.7	149.3
	Center (35.0)		
S		7.1	148.2
cb		8.3	147.7
1/4		8.6	147.4
c		8.8	147.2
1/4		8.6	147.4
cb		8.5	147.3
N		9.4	146.8

15595

Whittier

53

	E 1/4 (43.5)		
N		10.1	145.9
cb		9.6	146.4
1/4		9.6	146.4
c		9.3	146.7
1/4		9.5	146.5
cb		9.1	146.9
S		8.8	147.2
	E cb (52.5)		
S		9.6	146.4
cb		9.9	146.1
1/4		10.3	145.7
c		10.3	145.7
1/4		10.4	145.6
cb		10.6	145.4
N		11.0	145.0
	E L Evergreen = 0400		
N		13.0	143.0
cb		12.5	143.5
1/4		14.5	143.5
c		12.3	143.7
1/4		12.4	143.6
cb		12.0	144.0
S		11.8	144.2
TP 0.55	144.03	12.47	143.48 ✓
	9+50		
S		5.3	138.7
cb		5.5	138.5
1/4		6.2	137.8

14/03

33

c		6.4	137.6
1/4		6.6	137.4
cb		6.9	137.1
N		7.2	136.8
	1100		
N		14.0	130.0
cb		12.7	131.3
1/2		12.3	131.7
c		12.2	131.8
1/4		12.1	131.9
cb		11.8	132.2
S		11.4	132.8
T.P.	078	131.55	132.0
	146016 = WA Edith Lane		130.77
S		6.0	125.6
cb		6.3	125.3
1/4		6.6	125.0
c		6.8	124.8
1/4		7.3	124.3
cb		7.7	123.9
N		9.0	122.6
	2101		
N		15.4	116.4
cb		13.4	118.2
- 1/4		12.8	118.8
c		12.9	118.7
- 1/4		12.4	119.4
cb		12.1	119.5
N		11.8	119.8

Whittier

54

131.55

T.P.	079	119.79	12.55	119.00
	2103			
c			0.6	119.2
- 1/4			1.7	118.1
cb			3.1	116.7
N			6.8	113.0
	2101, 6, 2 Edith Lane			
S			1.2	118.6
cb			1.7	118.1
1/4			1.7	118.1
- c			1.0	117.8
- 1/4			2.5	117.3
cb			3.3	116.5
N			6.7	113.1
	412 & double garage	6.90		112.89
	2130			
N			8.8	111.0
cb			7.8	112.0
- 1/4			6.0	113.8
- c			5.8	114.0
- 1/4			5.0	114.8
cb			5.2	114.6
S			4.7	115.1
	2150			
S			9.0	110.8
cb			10.6	109.4
1/4			10.6	109.4
c			10.2	109.6
- 1/4			10.4	109.4

119.79

cb.		11.0	108.8	
N		12.9	106.9	
T.P.	068	108.00	107.34	
	0.75			
N		6.1	101.9	
cb		4.9	103.1	
- 1/4		5.5	102.7	066
- c		5.4	102.8	107.3
- 1/4		5.7	102.3	103.4
cb		6.3	101.7	120.16
J.		5.0	103.0	0.30
	3100 = W/L LOCUST			119.56
				12.29
				107.75
				0.55
				137.50
				131.2
S		13.4	94.8	115.6
cb		12.4	93.6	0.02
- 1/4		13.8	94.2	125.60
- c		12.7	95.3	13.16
- 1/4		11.9	96.1	118.76
cb		12.2	95.8	0.67
N		12.4	95.6	158.17
				0.11
				169.49
				0.10
				166.77
				166.7

Plotted and reduced by W.M.M.C.

WHITTIER

55

Cross Section of
V.D.A.L. ST = 70' wide 18' db
Willow to Evergreen

191.74

SWDP	191.74	1871.6	Willow V.D.A.L.	N	5.3	186.4
ck Willow = 2000						
J	2.7	189.0		N	6.6	185.1
cb	3.7	188.0		cb	4.5	187.2
1/4	4.6	187.3		1/4	3.5	187.9
c	4.8	186.9		c	3.9	187.8
1/4	6.1	185.6		1/4	3.9	187.8
cb	6.5	185.2		cb	3.4	188.3
+10 com cb	6.60	185.14		+7	3.1	188.6
N	6.8	184.9		+9	1.7	190.0
				J	0.9	190.8
N	5.2	186.5				
cb	3.8	187.9		J	1.1	190.6
1/4	5.1	186.0		+11	1.8	189.9
c	4.3	187.4		+13	3.1	188.2
1/4	3.6	188.1		cb	3.8	187.9
cb	3.0	188.7		1/4	3.6	188.1
+3	2.8	188.9		c	3.7	188.0
+8	1.1	190.6		1/4	4.3	187.4
J	0.5	191.2		cb	5.2	186.5
				N	7.0	184.7
J	0.6	191.1				
+10	1.3	190.4		N	8.3	183.4
+13	2.8	188.9		cb	6.3	185.4
cb	3.1	188.6		1/4	5.4	186.3
1/4	3.9	187.8		c	5.0	186.7
c	4.1	187.6		1/4	4.7	187.0
1/4	5.1	187.6		cb	4.2	187.5
cb	4.4	187.3		+5	3.8	187.9
				1/4	1.4	190.3

1
2
3
4
5
6
7
8
9
10
11
12
13
14
15
16
17
18
19
20
21
22
23
24
25
26
27
28
29
30
31
32
33
34
35
36

19174

1725

S	2.0	189.7
+12	3.3	188.4
+14	4.5	187.2
cb	4.6	187.1
1/4	5.1	186.6
c	5.4	186.3
1/4	6.3	185.4
cb	7.5	184.2
N	9.6	182.1
1750		
-5	11.5	180.2
N	10.9	180.8
cb	9.2	182.5
1/4	8.1	183.6
c	7.4	184.3
1/4	6.6	185.1
cb	6.1	185.6
+4	5.6	186.1
+5	4.0	187.7
S	3.2	188.5
1775		
S	4.4	187.3
+10	5.2	186.5
+13	6.7	185.0
cb	7.2	184.5
1/4	7.8	183.9
c	8.5	183.2
1/4	9.1	182.6
cb	9.8	181.9

19174

Udal

57

Elev.

N	12.3	179.4
+5	13.3	178.4
2+00		
-5	15.5	176.2
N	14.8	176.9
cb	14.2	179.5
1/4	10.9	180.8
c	9.2	182.5
1/4	8.9	182.8
cb	8.7	183.0
+5	8.7	183.0
+10	6.0	185.7
S	5.1	186.6
2+25		
S	6.7	185.6
+7	6.5	185.2
+14	9.2	182.3
cb	9.8	181.9
1/4	10.3	181.4
c	11.0	180.7
1/4	14.6	179.1
cb	14.0	177.7
T.R. ud	185.59	180.95
N	10.9	174.7
+5	11.6	174.0
2+50		
-5	14.1	173.5
N	11.1	174.5
cb	7.7	177.9

26
 27
 28
 29
 30
 31
 32
 33
 34
 35
 36

185.59

Elev.

1/4	5.6	180.0
c	4.8	180.8
1/4	4.3	181.3
cb	4.1	181.5
+4	3.9	181.7
S	0.7	184.9
2775		
S	1.4	184.2
+1.5	5.4	180.2
cb	5.7	179.9
1/4	5.7	179.9
c	6.6	179.0
1/4	7.6	178.0
cb	9.0	176.6
N	10.8	174.8
1/4	12.3	173.3
3100		
-10	15.4	170.2
N	13.1	172.5
cb	10.3	175.3
1/4	8.6	177.0
c	8.1	177.5
1/4	7.5	178.1
cb	7.5	178.1
S	3.0	182.6
T.P.	9.39	181.93
	13.05	179.54

Cross Section of
Evergreen 70' wide 18' cbs
UDFL to Tennyson

181.93

		Elevations
10' No of ML UDFL		
W	11.6	170.3
cb	12.6	169.3
1/4	13.3	168.6
c	14.5	167.4
1/4	15.4	166.7
cb	15.5	166.4
E	16.6	165.3
NY UDFL		
-10	16.9	165.0
E	16.0	165.9
cb	13.6	168.3
1/4	12.1	169.5
c	11.8	170.1
1/4	11.3	170.6
cb	10.6	171.3
W	9.5	172.4
W 6.6		
W	6.6	175.3
cb	7.7	174.5
1/4	7.8	174.1
c	8.7	173.2
1/4	9.5	172.4
cb	11.1	170.8
E	13.6	168.3
+10	15.3	166.6
-10		
-10	13.9	168.0
E	12.1	169.8

18193

cb	9.5	172.4
1/4	8.6	173.3
c	7.4	174.5
1/4	6.8	175.1
cb	7.2	174.7
w/	5.0	176.9
Center		
w/	4.5	177.4
cb	6.6	175.3
1/4	6.5	175.4
c	7.2	174.7
1/4	8.2	173.7
cb	9.4	172.5
E	11.5	170.1
+10	13.8	168.1
S 1/4		
-10	13.3	168.6
E	11.3	170.6
cb	8.7	173.2
1/4	7.7	174.2
c	6.6	175.3
1/4	6.1	175.8
cb	6.3	175.6
w/	3.8	178.1
S 0.6		
w/	3.8	178.1
cb	5.9	176.0
1/4	5.6	176.3
c	5.8	176.1

18193

Evangelical

59

Elev.

1/4	7.1	174.8	
cb	8.2	173.7	
E	11.1	170.8	
+10	13.5	168.4	
S. L. VDFL - 0100			
-10	12.2	169.7	
E	10.4	171.5	
cb	7.6	174.3	
1/4	6.1	175.8	
c	4.8	177.1	
1/4	4.8	177.1	
cb	4.7	177.2	
+6	4.3	177.6	
T.P. 7.1	186.4	2.7	179.2
S	3.8	182.6	
0.25			
S	3.2	183.2	
+8	4.6	181.8	
+14	7.9	178.5	
cb	8.2	178.2	
1/4	8.2	178.2	
c	8.0	178.4	
1/4	10.0	176.4	
cb	11.8	174.6	
E	14.7	171.7	
+10	16.2	170.2	
0.50			
-10	15.4	171.0	
E	12.7	172.7	

186.43

cb		11.0	175.4	/
1/4		9.6	176.8	
+6		6.6	179.8	
C		6.6	179.8	
1/4		6.9	179.5	
cb		6.8	179.6	/
+6		6.4	180.0	
w		2.2	184.2	
	0+75			
w		0.9	185.5	
+13		5.1	181.3	
cb		5.6	180.8	/
1/4		5.7	180.7	
C		5.5	180.9	
1/4		5.5	180.9	
1/4		7.9	178.5	
cb		8.9	177.5	/
E		11.0	175.4	
+10		12.5	173.6	
	/+00			
-10		11.8	174.6	/
E		10.4	176.0	
cb		8.0	178.4	/
1/4		6.4	180.0	
+5		4.0	182.4	
C		4.2	182.2	
1/4		4.5	181.9	
cb		4.6	181.8	/
+4		4.2	182.2	

186.43

Evergreen 60

+6		2.3	184.1	
w		0.0	186.4	/
TP	7.98	191.90	2.51	183.92
	172.5			
w		4.1	187.8	
+8		5.5	186.4	
+13		8.1	183.8	
cb		8.5	183.4	/
1/4		8.7	183.2	
C		8.8	183.1	
1/4		9.6	182.3	
cb		11.4	180.5	/
E		14.4	177.7	/
+10		15.6	176.3	
	+7.50			
-10		14.6	177.3	
E		13.3	178.6	/
cb		10.7	181.2	/
+6		9.6	182.3	
1/4		8.7	183.2	
+4		7.6	184.3	
C		7.6	184.3	
1/4		7.6	184.3	
cb		7.5	184.4	/
+6		7.2	184.7	
+9		5.0	186.9	
w		3.1	188.8	
	+7.5			
w		2.3	189.6	

191.90

w +9	4.2	187.7
+12	6.3	185.6
cb	7.0	184.9
1/4	6.8	185.1
C	6.8	185.1
+5	7.1	184.8
1/4	8.8	183.1
cb	10.6	181.3
E	13.1	178.8
+10	14.2	177.7
2+00 = N1 Tennyson = Jarvis 18' ed.		
-10	13.7	178.2
E	12.0	179.9
cb	9.1	182.8
+6	7.8	184.1
1/4	7.0	184.9
+4	5.9	186.0
C	6.0	185.9
1/4	6.0	185.9
cb	5.8	186.1
+5	5.4	186.5
+14	2.5	189.4
w	1.4	190.5
Ncb		
w	4.3	187.6
cb	5.6	186.3
1/4	5.8	186.1
C	6.3	185.6
1/4	7.0	184.7

191.90

Evergreen

61

cb	8.5	183.4
E	12.8	179.9
+10	14.3	177.6
N1/4		
-10	13.5	178.4
E	11.7	180.2
cb	8.5	183.4
1/4	7.1	184.7
C	6.2	185.7
1/4	5.5	186.4
cb	5.4	186.7
w	4.3	187.6
Center		
w	3.9	188.0
cb	5.1	186.8
1/4	5.3	186.6
C	6.2	185.7
1/4	7.3	184.6
cb	5.6	183.3
E	11.8	180.1
+10	13.2	178.7
Center + av		
C	6.4	185.5
w 1/4	5.4	186.5
Ncb	4.9	187.0
w	2.1	189.8
S. 1/4		
-10	13.3	178.6
E	11.5	180.4

19190

cb	2.6	183.3
1/4	7.7	184.2
e	6.6	185.3
1/4	5.4	186.5
cb	4.2	187.7
w	1.9	190.0
S cb		
w	1.7	190.2
cb	3.8	188.1
1/4	4.8	187.1
c	6.4	185.5
1/4	7.8	184.1
cb	9.1	182.8
e	12.0	179.9
410	14.2	177.7
SL Tennyson		
-10	15.1	176.8
E	12.7	179.2
cb	9.4	182.7
1/4	8.0	183.9
e	6.7	185.2
1/4	5.4	186.5
cb	4.2	187.7
w	2.3	189.6

Reduced and plotted by W.M. McC.

Cross Section of
Tennyson 30' wide 5' deep
Evergreen to Millon

62

19190

W.E. Evergreen 0-100

S	2.3	189.6
cb	1.7	190.2
1/4	1.9	190.0
46	2.1	189.8
c	3.9	188.0
1/4	4.3	187.6
cb	4.3	187.6
N	1.4	190.5
T.P. 10.94 40.13 0.71 191.19		
87.50		
N	7.7	194.4
cb	10.3	191.8
1/4	10.3	191.8
c	9.8	192.3
4w	7.3	194.8
1/4	7.2	194.9
cb	7.2	194.9
S	7.3	194.8
1700		
S	3.8	198.3
cb	4.4	197.9
1/4	4.6	197.5
46	4.7	197.4
c	6.9	195.2
1/4	7.1	195.0
cb	7.2	194.9
N	4.8	197.3

20213

1750

N	3.6	198.5
cb	5.6	196.5
1/4	5.5	196.6
C	5.3	196.8
+J	3.0	199.1
1/4	3.0	199.1
cb	3.0	199.1
S	2.5	199.6

2100

S	1.7	200.4
cb	2.2	199.9
1/4	2.4	199.7
+6	2.4	199.7
C	4.6	197.5
1/4	4.9	197.2
cb	4.9	197.2
+5	2.6	197.5
N	2.6	199.5

2150

N	2.5	199.6
+13	5.2	196.9
cb	5.4	196.7
1/4	5.4	196.7
C	5.0	197.1
+2	2.3	199.8
1/4	2.2	199.9
cb	2.0	200.1
S	1.8	200.3

20213

TENNYSON

63

2185

S	1.8	200.3
cb	2.1	200.0
1/4	2.2	199.9
+6	3.2	198.9
C	5.7	196.4
1/4	6.2	195.7
cb	6.9	195.2
+5	6.2	195.9
N	3.0	199.1

2197

N	5.5	196.6
+3	6.7	195.4
cb	7.3	194.8
1/4	6.7	195.4
C	6.3	195.8
1/4	2.7	199.4
cb	2.2	199.9
S	1.9	200.2

3100 v. fl willow = 1/3 cb radii

S	6.0	196.1
+10.5 com cb	6.9	195.16
cb	6.0	196.1
1/4	6.2	195.9
C	6.6	195.5
1/4	7.1	195.0
cb	7.4	194.7
+7.5 com cb	6.9	195.14
N	6.9	195.2
bet w willow & Tennyson	5.2	193.89
		193.90

2/18/98
 1000
 Cross Section of
 Browning = 70' wide 18' cbs
 without to Postcrans

132.98

WGP 307.132.98 129.91 without Browning

EL without 200	43' cbs		
S	3.4	129.6	
+10 cbs	3.8	129.16	
cb	3.0	130.0	
1/4	3.3	129.7	
c	2.6	130.4	
1/4	2.6	130.4	
cb	3.1	129.9	
+8 " "	3.88	129.10	
N	3.2	129.7	
0403			
N	0.8	132.2	
+16	0.9	132.1	
cb	2.2	130.8	
1/4	2.1	130.9	
c	2.2	130.8	
1/4	2.7	130.3	
cb	2.6	130.4	
S	1.9	131.1	
0450			
S	3.4	129.6	
cb	2.9	130.1	
1/4	2.8	130.2	
c	1.7	131.3	
1/4	2.0	131.0	
cb	1.8	131.2	
N	1.9	131.1	

N	1+00	5.2	127.8
cb		4.2	128.8
1/4		4.6	128.4
c		4.4	128.6
1/4		5.2	127.8
cb		5.5	127.5
S		6.4	126.6
1750			
S		11.6	121.4
cb		10.5	122.5
1/4		10.3	122.7
c		9.7	123.3
1/4		9.8	123.2
cb		9.4	123.6
N		9.7	123.3
T.P.	140 121.70	13.18	119.80
2+00			
N		2.7	118.5
cb		2.4	118.8
1/4		2.4	118.8
c		2.5	118.7
1/4		3.4	118.0
cb		3.6	117.6
S		2.4	116.8
2+50			
S		8.3	112.9
cb		7.5	113.7
1/4		7.4	114.0

12/20

C		6.5	114.7
1/4		6.5	114.7
cb		6.5	114.7
N		6.3	114.9
3400 = WIL Evergreen 70' wide 18' db			
N		10.1	111.1
cb		9.3	111.9
1/4		9.3	111.9
C		9.0	112.2
1/4		10.0	111.2
cb		10.3	110.9
S		11.6	109.6
Wcb			
S		12.5	108.7
cb		11.0	110.2
1/4		10.6	110.6
C		9.6	111.6
1/4		9.8	111.4
cb		10.1	111.1
N		10.8	110.4
W 1/4			
N		11.4	110.0
cb		10.4	110.8
1/4		10.3	110.9
C		10.4	111.0
1/4		10.9	110.3
cb		11.4	109.8
S		12.80	108.4

12/20

Browning

CENTER			
S		13.2	108.0
cb		11.5	109.7
1/4		11.4	110.0
C		10.3	110.9
1/4		10.5	110.7
cb		10.6	110.6
N		11.4	109.8
E 1/4			
N		11.9	109.3
cb		11.0	110.2
1/4		11.4	110.0
C		10.5	110.7
1/4		11.6	109.6
cb		12.1	109.1
S		13.6	107.6
T.P.	3.77	111.94	13.00 108.17
Ecb			
S		4.6	107.3
cb		3.4	108.7
1/4		2.6	109.3
C		1.8	110.1
1/4		2.0	109.9
cb		2.1	109.8
N		2.9	109.0
E 1/4 Evergreen = 0400			
N		3.9	108.0
cb		3.0	108.9
1/4		2.9	109.0

11/94

		3.0	108.9
1/4		3.4	108.5
cb		3.9	108.0
S		5.4	106.5
	0+50		
S		8.1	103.8
cb		7.6	104.3
1/4		7.3	104.6
C		6.9	105.0
1/4		7.5	104.4
cb		7.5	104.4
N		8.5	103.4
T.P.	129	11.94	100.00
	1400		
N		4.5	96.8
cb		3.6	97.7
1/4		3.5	97.8
C		2.7	98.6
1/4		2.9	98.4
cb		2.8	98.5
S		2.6	98.7
	1450		
S		8.1	93.2
cb		8.4	92.9
1/4		9.0	92.3
2		8.5	92.8
1/4		9.1	92.2
cb		9.0	92.3
N		9.7	91.6

10/29

Browning

66

		2+00	
N		13.9	87.4
cb		13.6	87.7
1/4		13.5	87.5
C		13.6	87.7
1/4		13.9	87.4
cb		13.4	87.9
S		13.4	87.9
T.P.	074	89.81	89.09
	2+50		
S		7.4	82.4
cb		7.6	82.2
1/4		7.9	81.9
C		6.9	82.9
1/4		7.4	82.6
cb		7.0	82.8
N		7.4	82.6
	3+00 = w/ Locust = 70' wide 18' deep		
N		11.3	78.5
cb		10.9	78.9
1/4		11.3	78.5
C		11.3	78.5
1/4		12.0	77.8
cb		12.0	77.8
S		12.6	77.2
T.P.	230	79.56	79.06
	w/ cb		
S		4.2	75.4
cb		3.7	75.9

79.56

1/4		2.3	76.3
c		2.6	77.0
1/4		2.4	77.2
cb		2.3	77.3
N		2.9	76.7
	W 1/4		
N		3.8	75.8
cb		3.3	76.3
1/4		3.2	76.3
c		3.3	76.3
1/4		4.1	75.5
cb		4.4	75.2
S		4.9	74.7
	Center		
J		5.7	73.9
cb		5.3	74.3
1/4		5.2	74.4
c		4.3	75.3
1/4		4.3	75.3
cb		4.0	75.6
N		4.6	75.0
	E 1/4		
N		5.4	74.2
cb		5.1	74.5
1/4		5.0	74.6
c		5.1	74.5
1/4		5.9	73.7
cb		6.1	73.5
S		6.5	73.1

106.73

59.55
29.79

79.56

Browning

67

	E 1/4		
S		7.2	72.4
cb		7.1	72.5
1/4		6.9	72.7
c		6.4	73.2
1/4		6.4	73.4
cb		6.3	73.3
N		6.3	73.3
	EL Louist	- 0400	
N		8.3	71.3
cb		8.4	71.4
1/4		8.4	71.2
c		8.3	71.3
1/4		8.5	71.1
cb		8.9	70.7
S		9.5	70.1
T.P.	1.59	68.61	12.8
	0+40		66.74
S		2.5	66.1
cb		1.9	66.7
1/4		2.1	66.5
c		1.3	67.3
1/4		1.4	67.2
cb		1.1	67.5
N		1.0	67.6
	2+50		
N		1.7	66.9
cb		1.6	67.0
1/4		2.1	66.5

68.61

c	3.0	65.6
1/4	4.1	64.5
cb	3.9	64.7
S	3.0	65.6

0+58

S	6.8	61.8
+4	6.5	62.1
+6	5.6	63.6
cb	5.6	63.0
1/4	5.3	63.3
C	4.4	64.2
+3	4.2	64.4
1/4	3.2	65.4
+4	2.0	66.6
cb	2.2	66.2
N	2.2	66.4

1+00

N	5.3	63.3
+16	5.9	62.7
cb	6.5	62.2
+4	9.5	59.1
1/4	9.7	58.9
C	9.9	58.7
1/2	9.6	59.0
cb	9.5	59.1
S	9.2	59.4

1+49

S	11.7	56.9
TP	11.5	57.16

58.71

Browning

68

S+10	6.3	52.4
cb	6.2	52.5
1/4	6.2	52.5
C	6.2	52.5

1+50

S	7.1	51.6
cb	6.2	52.4
1/4	6.3	52.4
C	6.3	52.4
1/4	6.2	52.5
cb	6.2	52.5
+5	5.7	53.0
1/4	1.3	57.4
N	0.6	58.1

1+60 at SL

S. p. com. drive	7.70	51.01
------------------	------	-------

1+74

N	3.0	55.7
+5	3.6	55.1
+15	9.0	49.7
cb	8.7	50.0
1/4	8.6	50.1
C	8.2	50.3
1/4	8.3	50.4
cb	8.4	50.5
S	7.8	50.9

2+00

S	10.4	48.3
cb	10.9	47.8

1/4		10.8	47.9
C		11.3	47.4
1/4		12.4	46.5
cb		12.0	46.7
+5		12.0	46.7
+16		5.4	53.5
N		4.6	54.1
N	2 + 50		
N		10.5	48.2
T.P	0.48 45.78	13.7	45.50
+9		3.3	42.7
cb		3.7	42.3
1/4		4.2	41.8
C		3.6	42.4
1/4		3.5	42.5
cb		3.5	42.5
S		3.7	42.3
S	3400 = WIL Rosecrans		
S		9.3	36.7
cb		8.5	37.5
1/4		8.7	37.3
C		8.9	37.1
1/4		8.4	37.6
cb		8.0	38.0
N		7.0	39.0

Reduced and plotted by W.M.M.C.

X. Section EDITH LANE 30 wide 5' clb
 IN NESTLIFE Hdd.
 Point Loma

1067 1979
 156.20
 70

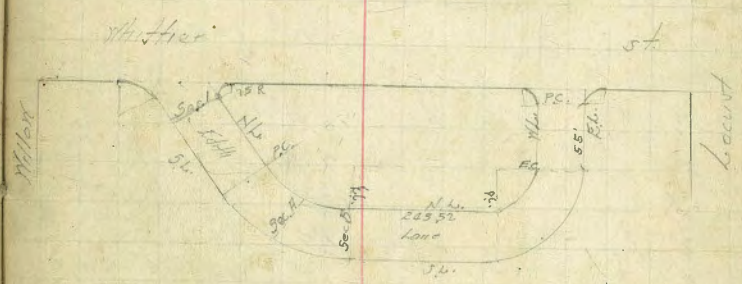
118 167.30
 Sec 1 = PC 7.5 Radius 87.1 N

N		10.6	156.7
cb		10.4	156.9
$\frac{1}{4}$		10.0	157.3
$\frac{1}{2}$		10.2	157.1
cb		10.8	157.3
S		9.4	157.9
		9.2	158.1
S		11.1	156.2
cb		11.3	156.0
$\frac{1}{4}$		11.6	155.7
$\frac{1}{2}$		12.1	155.2
$\frac{3}{4}$		12.5	154.8
cb		12.7	154.6
N		12.9	154.4
N-5	54' E	15.6	151.7
N		14.8	152.5
cb		14.5	152.8
$\frac{1}{4}$		13.8	153.5
$\frac{1}{2}$		13.4	153.9
$\frac{3}{4}$		13.0	154.3
cb		13.0	154.3
S		12.5	154.8
T.P.	177	156.20	12.27 154.03
		59.5' E = PC	
		159.20	0.00 156.2

PLOTTED
 and reduced by
 W.M. McC.

14.617 SWBP X/100 14.617

cb		1.3	154.9
$\frac{1}{4}$		2.8	153.4
$\frac{1}{2}$		1.4	153.8
$\frac{3}{4}$		2.7	153.5
cb		3.1	153.1
N		3.8	152.4
+5		4.5	151.7
T.P. 392	155.30	4.22	151.75 on Radius half
	Section H (92.05 from sec 1)		
-5		4.4	150.9
N		3.8	151.5 14.49'
cb		2.4	152.9



$\frac{1}{4}$		2.9	152.4
$\frac{1}{2}$		2.8	152.5 92.05'
$\frac{3}{4}$		3.0	152.3
cb		3.0	152.3
S		3.1	152.2 99.62'
	Sec. B = EC (from Sec 1)		
-10		7.0	146.3
S		6.8	148.5 139.96'

M.S.

cb		59	149.4	
$\frac{1}{2}$		57	149.6	
$\frac{1}{2}$		55	149.8	124.83
$\frac{1}{2}$		54	149.9	
cb		52	150.1	
N		48	150.5	109.70
	15'E			
N		55	149.8	124.7
cb		58	149.5	
$\frac{1}{2}$		59	149.4	
$\frac{1}{2}$		61	149.2	139.8 ✓
$\frac{1}{2}$		63	149.0	
cb		73	148.0	
S		83	147.0	155.0 ✓
+10		97	145.6	
	26'E			
-10		108	144.5	
S		90	146.3	166 ✓
cb		82	147.1	
$\frac{1}{2}$		79	147.4	
$\frac{1}{2}$		70	148.3	150.8
$\frac{1}{2}$		66	148.9	
cb		57	149.6	
N		54	149.9	135.7
	55'E			
N		85	146.8	164.7
cb		86	146.7	
$\frac{1}{2}$		91	146.2	
$\frac{1}{2}$		92	145.5	179.8 ✓

$\frac{1}{2}$		102	145.1	
cb		107	144.6	
S		114	143.9	195 ✓
+10		129	142.4	
	100'E			
T.P. 113		143.58	122.85	102.45
-10		61	137.5	
S		41	139.5	240 ✓
cb		52	140.2	
$\frac{1}{2}$		25	141.1	
$\frac{1}{2}$		23	141.3	2248 ✓
$\frac{1}{2}$		18	141.8	
cb		12	142.4	
N		11	142.5	209.7 ✓
	120'E			
N		31	140.5	229.7 ✓
cb		35	140.1	
$\frac{1}{2}$		41	139.5	
$\frac{1}{2}$		45	139.1	2448 ✓
$\frac{1}{2}$		51	138.5	
cb		57	137.9	
S		68	136.8	260 ✓
+10		76	136.0	
	150'E			
-10		107	132.9	
S		91	134.5	290 ✓
cb		85	135.1	
$\frac{1}{2}$		78	135.8	
$\frac{1}{2}$		72	136.4	2748 ✓

14358

1/2		6.9	136.7	✓
cb		6.6	137.0	
N		6.1	137.5	259.70 ✓
	200' E			
N		11.9	132.3	309.7 ✓
cb		11.7	131.9	
1/2		12.2	131.4	
1/2		12.4	131.2	324.4 ✓
1/2		12.8	130.8	
cb		13.4	130.2	
S		13.9	129.7	340
+10		14.1	129.5	
T.P.	0.79	131.57	12.80	130.78
		24352 E = P.C.		
-10		7.3	124.3	
S		5.7	125.9	383.52 ✓
cb		5.2	126.2	
1/2		4.9	126.7	
1/2		4.6	127.0	369.9 ✓
1/2		4.5	127.1	
cb		4.3	127.3	
N		3.9	127.7	353.52 ✓
	E.C.			
N		5.3	126.3	384.9 ✓
cb		6.3	125.3	
1/2		6.7	124.9	
1/2		7.4	124.2	424.9 ✓
1/2		8.0	123.6	
cb		8.7	122.9	

13157

72

E		9.5	122.1	462.1 ✓
+10		11.2	120.4	
	275' N			
-10		11.0	120.6	
E		9.8	121.8	489.6 ✓
cb		8.9	122.7	
1/2		8.2	123.4	
1/2		7.6	124.0	452.4 ✓
1/2		6.9	124.7	
cb		6.3	125.3	
N		5.6	126.0	412.4 ✓
	55' N = P.C.			
N		7.2	124.4	439.9 ✓
cb		7.7	123.9	
1/2		8.5	123.1	
1/2		9.2	122.4	479.9 ✓
1/2		10.0	121.6	
cb		10.6	121.0	
E		11.2	120.4	517.0 ✓
+10		12.1	118.8	
T.P.	0.42	119.03	12.96	118.61 ✓
T.P.	0.36	106.73	12.66	106.37 ✓
	chk. on SW hub least		11.95	94.78 ✓
T.P.	0.16	93.89	13.00	98.73 ✓

* This H.Z. used on next page

Reduced and plotted by W.M. McC.

9389
9-19-47

X. Section Whittier 70' wide 18' cbs.
From West cb line ^{Locust St} to ^{85' 2"} Rosetrans St.

9389 = HZ From Page 72

N	3.4	905
cb	3.8	90.7
- 1/2	4.5	89.4
- 1/2	5.3	88.6
- 1/2	5.9	88.0
cb	6.5	87.4
+11	6.9	87.6
S	4.6	89.3
S	6.6	87.3
cb	8.8	85.1
- 1/2	8.1	85.8
- 1/2	7.8	86.1
- 1/2	7.5	86.4
cb	7.0	86.9
N	6.3	87.6
N	9.4	84.5
cb	10.2	83.7
- 1/2	10.3	83.6
- 1/2	10.7	83.2
- 1/2	12.2	81.7
cb	12.0	81.9
S	9.3	84.6
S	11.9	82.0
cb	15.3	78.6
- 1/2	14.4	79.5

Plotted

Locust

E 1/2

9389

73

- 1/2	13.4	80.5
- 1/2	13.0	80.9
cb	12.9	81.0
N	12.2	81.7
E cb		
N	14.8	79.1
cb	15.3	78.6
- 1/2	15.3	78.6
- 1/2	16.0	77.9
- 1/2	16.2	77.7
cb	17.4	76.5
S	13.8	80.1
T.P. 070	81.28	12.81
		81.08
E. Locust = 0700		
S	7.3	74.0
cb	11.8	69.5
- 1/2	10.0	71.3
- 1/2	8.7	72.6
- 1/2	8.0	73.3
cb	8.4	72.9
N	8.9	72.4
18'E		
N	13.8	67.5
cb	14.2	67.1
- 1/2	14.8	66.5
- 1/2	15.3	66.0
- 1/2	17.0	64.3
cb	18.9	62.4
S	13.3	68.0

8128

T.P.	0.75	69.15	12.88	68.40
		46'E		
S			10.5	58.7
cb			14.8	54.4
- 1/2			13.5	55.7
- 1/2			13.3	55.9
- 1/2			11.9	57.3
cb			11.3	57.9
N			10.2	59.0
		60'E		
N			14.2	54.6
cb			15.2	54.0
- 1/2			16.0	53.2
- 1/2			16.7	52.5
- 1/2			17.5	51.7
cb			17.5	51.7
+12			16.4	52.8
S			15.1	54.1
T.P.	0.32	57.13	12.34	56.81
		90'E		
S			11.3	45.8
cb			12.2	44.9
- 1/2			11.7	45.4
- 1/2			11.1	46.0
- 1/2			10.6	46.5
cb			9.8	47.3
N			10.0	47.1
T.P.	0.02	44.98	12.17	44.96
		130'E		

4498

74

N			6.8	38.2
cb			7.3	37.7
- 1/2			7.8	37.2
- 1/2			8.6	36.4
- 1/2			8.6	36.4
cb			7.9	37.1
S			9.1	35.9
		160'E		
S			13.7	31.3
cb			13.7	31.3
- 1/2			13.9	31.1
- 1/2			14.2	30.8
- 1/2			14.2	30.8
cb			14.2	30.8
N			14.2	30.8
		162'E		
N			14.6	30.4
cb			14.2	30.8
- 1/2			14.9	30.1
+1			17.9	37.1
+4			17.9	37.1
+5			14.9	30.1
- 1/2			15.6	29.4
- 1/2			14.6	30.4
cb			12.2	30.8
S			14.3	30.7
T.P.	1.48	37.68	12.74	32.24
		200'E		
S			7.7	25.0

cb.		82	24.5
- 1/2		9.0	23.7
- 1/2		9.1	23.6
- 1/2		8.3	24.4
cb.		7.7	25.0
+ 9		8.2	24.3
N		7.0	25.7
250'E			
N		12.1	20.6
cb.		12.8	19.9
- 1/2		13.7	19.0
- 1/2		14.7	18.0
- 1/4		15.1	17.6
cb		15.0	17.7
+ 9		14.6	18.1
S		14.5	18.2
T.P.	2.08	21.70	13.06 19.62
303'E = H.L. Rosecrans St.			
S		7.8	13.9
cb		7.2	14.5
- 1/2		7.1	14.6
- 1/2		7.0	14.7
- 1/4		7.0	14.7
cb		7.1	14.6
N		8.2	13.5
18'E N.H.			
N		8.3	13.4
cb		8.0	13.7
- 1/2		8.1	13.6

- 1/2		7.7	14.0
- 1/2		8.1	13.6
cb		8.0	13.7
S		8.4	13.3
23'E of N.H. = West edge Paring			
S on Paring		10.21	11.49
cb " "		10.05	11.65
- 1/4 " "		9.94	11.76
- 1/2 " "		9.77	11.93
- 1/2 " "		9.65	12.05
cb " "		9.55	12.15
N top cb		9.30	12.40
T.P. 879	2655	9.54	12.16
cb. on B.M.	Rosecrans + Tolant.	3.94	17.76
		1.23	2.532
			2.529 = B.M.
			0.03 in Error.

Reduced and plotted by W.M.M.C.

Walker
3-20-27

X. Section West of 30' Mill 5' chs
From Willow St. East

18118

76

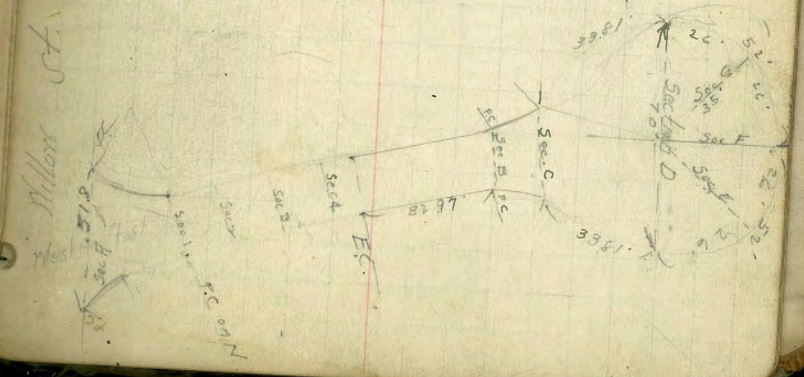
534.8 F
Willow + Udal St.

1.21	188.37		187.16
T.P.	181.18	8.87	179.50
	Sec. A.		
S = P.C.		0.7	180.5
cb		1.5	179.7
1/4		2.3	178.9
1/2		3.8	177.4
3/4		4.0	177.2
cb = P.C.		4.6	176.6
N = P.C.		5.2	176.0
	Sec. 1 = P.C.		
-5		5.4	175.8
N		5.1	176.1
cb		5.0	176.2
1/4		4.5	176.7
1/2		3.6	177.6
3/4		3.0	178.2
cb		3.2	178.0
S		2.9	178.3
	Sec. 2		
S		5.6	175.6
cb		6.3	174.9
1/4		7.2	174.0
1/2		7.0	174.2
3/4		7.9	173.3
cb		8.0	173.2
N		8.6	172.6
+10		9.7	171.5

PLOTTED
and reduced by
W.M. McC.

Section #3

N-10	12.2	169.8
N	10.1	170.4
cb	11.6	169.6
1/4	12.9	168.3
1/2	12.6	168.7
3/4	11.9	169.3
cb	10.1	170.4
S	9.9	171.3
	Sec #3 + 10' on South	
S	11.0	170.2
cb	12.4	168.8
1/4	13.0	168.2
1/2	13.5	167.7
3/4	14.4	166.8
cb	15.3	165.9
N	16.1	165.1
+10	18.3	162.9
T.P.	0.91	169.23
	12.16	165.32



Section 4

-15	10.1	159.1
N	5.4	163.8
cb	4.8	164.4
$\frac{1}{2}$	4.4	164.8
$\frac{1}{4}$	3.6	165.6
$\frac{1}{2}$	2.7	166.5
cb	1.6	167.6
S	1.0	168.2

P.C.

S	2.3	166.9
cb	3.1	166.1
$\frac{1}{2}$	4.0	165.2
$\frac{1}{4}$	5.2	164.0
$\frac{1}{2}$	6.2	163.0
cb	6.7	162.5
N	8.0	161.2
+20	13.5	155.7

40' E. of P.C.

-20	17.3	151.9
N	12.6	156.6
cb	11.6	157.6
$\frac{1}{2}$	10.5	158.7
$\frac{1}{4}$	8.9	160.3
$\frac{1}{2}$	8.0	161.2
cb	6.8	162.4
S	6.0	163.2

60' E.

S	8.0	161.2
---	-----	-------

cb	8.7	160.5	
$\frac{1}{2}$	9.7	159.5	
$\frac{1}{4}$	11.0	158.2	
$\frac{1}{2}$	12.2	157.0	
cb	13.9	155.3	
N	15.3	153.9	
+20	19.4	149.8	
T.P. 2.06	159.19	12.10	157.13
	52.97 E. = P.C.		

-20	14.9	144.3
N	9.0	150.2
cb	8.0	151.2
$\frac{1}{2}$	6.8	152.4
$\frac{1}{4}$	5.7	153.5
$\frac{1}{2}$	4.3	154.9
cb	3.1	156.1
S	2.2	157.0

E.C.

S	2.4	156.8	17.6
cb	4.4	154.8	
$\frac{1}{2}$	6.4	152.8	
$\frac{1}{4}$	8.4	151.0	15.4
$\frac{1}{2}$	10.0	149.2	
cb	11.8	147.4	
N	14.6	144.6	17.6
+20	19.6	139.6	

Sec D

-25	33.6	125.6
N	22.9	136.3

cb	19.1	140.1
$\frac{1}{4}$	16.5	142.7
$\frac{1}{2}$	11.9	147.3
$\frac{3}{4}$	8.7	150.5
cb	4.7	154.5
S	1.7	157.5

Sec E

S	5.5	153.7
cb	8.1	151.1
$\frac{1}{4}$	10.0	148.9
$\frac{1}{2}$ = Radius	11.9	147.3

Sec F

$\frac{1}{2}$ = Radius	11.9	147.3
$\frac{3}{4}$	12.9	146.3
cb	13.3	145.9
East	12.9	146.3
+10	12.9	146.3

Sec G

-20	21.6	137.6
E	18.2	141.0
cb	16.5	142.9
$\frac{1}{4}$	14.1	145.1
$\frac{1}{2}$ = Radius	11.9	147.3
chk. on Radius tab Page 70	7.18	152.01
		151.98 = 147.3 + 4.68
		0.03

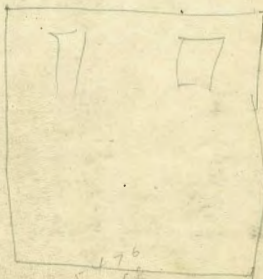
Reduced and plotted by W.M. McC.

57 53
79

Elec Pole 3047

966.1
865
967.42

252.4



169.19
151.98
72.1

55.176
12.18
44.98

106.73
12
94.73

57.55
7.77

589
565
24

DISTANCES FROM CENTER OF ROADWAY FOR CROSS-SECTIONING.

FOR SINGLE TRACK EMBANKMENT.

ROADWAY 14 FEET WIDE. SIDE SLOPES 1 1/2 TO 1.

	0	.1	.2	.3	.4	.5	.6	.7	.8	.9	
0	7.0	7.2	7.3	7.5	7.6	7.8	7.9	8.1	8.2	8.4	0
1	8.5	8.7	8.8	9.0	9.1	9.3	9.4	9.6	9.7	9.9	1
2	10.0	10.2	10.3	10.5	10.6	10.8	10.9	11.1	11.2	11.4	2
3	11.5	11.7	11.8	12.0	12.1	12.3	12.4	12.6	12.7	12.9	3
4	13.0	13.2	13.3	13.5	13.6	13.8	13.9	14.1	14.2	14.4	4
5	14.5	14.7	14.8	15.0	15.1	15.3	15.4	15.6	15.7	15.9	5
6	16.0	16.2	16.3	16.5	16.6	16.8	16.9	17.1	17.2	17.4	6
7	17.5	17.7	17.8	18.0	18.1	18.3	18.4	18.6	18.7	18.9	7
8	19.0	19.2	19.3	19.5	19.6	19.8	19.9	20.1	20.2	20.4	8
9	20.5	20.7	20.8	21.0	21.1	21.3	21.4	21.6	21.7	21.9	9
10	22.0	22.2	22.3	22.5	22.6	22.8	22.9	23.1	23.2	23.4	10
11	23.5	23.7	23.8	24.0	24.1	24.3	24.4	24.6	24.7	24.9	11
12	25.0	25.2	25.3	25.5	25.6	25.8	25.9	26.1	26.2	26.4	12
13	26.5	26.7	26.8	27.0	27.1	27.3	27.4	27.6	27.7	27.9	13
14	28.0	28.2	28.3	28.5	28.6	28.8	28.9	29.1	29.2	29.4	14
15	29.5	29.7	29.8	30.0	30.1	30.3	30.4	30.6	30.7	30.9	15
16	31.0	31.2	31.3	31.5	31.6	31.8	31.9	32.1	32.2	32.4	16
17	32.5	32.7	32.8	33.0	33.1	33.3	33.4	33.6	33.7	33.9	17
18	34.0	34.2	34.3	34.5	34.6	34.8	34.9	35.1	35.2	35.4	18
19	35.5	35.7	35.8	36.0	36.1	36.3	36.4	36.6	36.7	36.9	19
20	37.0	37.2	37.3	37.5	37.6	37.8	37.9	38.1	38.2	38.4	20
21	38.5	38.7	38.8	39.0	39.1	39.3	39.4	39.6	39.7	39.9	21
22	40.0	40.2	40.3	40.5	40.6	40.8	40.9	41.1	41.2	41.4	22
23	41.5	41.7	41.8	42.0	42.1	42.3	42.4	42.6	42.7	42.9	23
24	43.0	43.2	43.3	43.5	43.6	43.8	43.9	44.1	44.2	44.4	24
25	44.5	44.7	44.8	45.0	45.1	45.3	45.4	45.6	45.7	45.9	25
26	46.0	46.2	46.3	46.5	46.6	46.8	46.9	47.1	47.2	47.4	26
27	47.5	47.7	47.8	48.0	48.1	48.3	48.4	48.6	48.7	48.9	27
28	49.0	49.2	49.3	49.5	49.6	49.8	49.9	50.1	50.2	50.4	28
29	50.5	50.7	50.8	51.0	51.1	51.3	51.4	51.6	51.7	51.9	29
30	52.0	52.2	52.3	52.5	52.6	52.8	52.9	53.1	53.2	53.4	30
31	53.5	53.7	53.8	54.0	54.1	54.3	54.4	54.6	54.7	54.9	31
32	55.0	55.2	55.3	55.5	55.6	55.8	55.9	56.1	56.2	56.4	32
33	56.5	56.7	56.8	57.0	57.1	57.3	57.4	57.6	57.7	57.9	33
34	58.0	58.2	58.3	58.5	58.6	58.8	58.9	59.1	59.2	59.4	34
35	59.5	59.7	59.8	60.0	60.1	60.3	60.4	60.6	60.7	60.9	35
36	61.0	61.2	61.3	61.5	61.6	61.8	61.9	62.1	62.2	62.4	36

Calculated by Julien A. Hall, M. Am. Soc. C. E.