

1156

WAS

FIELD BOOK

No. 353

251 913  
176

Our Leather Bound Engineers Note Books are carried in the following rulings:

- No. 380 LEVEL BOOK. Left and Right Hand Page the same as Left Hand Page of this Book.
- No. 382 FIELD BOOK. Left Hand Page as in this Book, Right Hand Page 4 x 4 to the inch, Center Line Red.
- No. 384 MINING TRANSIT BOOK. Left Hand Page as in this Book, Right Hand Page 8x8 to the inch, Center Line Red.
- No. 385 FIELD BOOK. Left Hand Page as in this Book, Right Hand Page 8 vertical and 4 horizontal lines to the inch, Center Line Red.

We also carry the Note Books listed above, bound in extra strong Fabri-Hide (otherwise the same quality of book), which can be furnished at a somewhat lower price.

In ordering Fabri-Hide covered books, add the letter "F" to catalog number.

**THE FREDERICK POST CO.**  
*ENGINEERING and DRAFTING SUPPLIES*  
IRVING PARK STATION  
CHICAGO, ILL.

92 FIFTH ST.  
PORTLAND, ORE.

75 NEW MONTGOMERY ST.  
SAN FRANCISCO, CAL.

AGENTS FOR

"BERGER" TRANSITS and LEVELS  
"GURLEY" SURVEYING and HYDRAULIC INSTRUMENTS  
"CHICAGO" STEEL TAPES, etc.

8206  
MICROFILMED

ULC # 1964

Cross Section Coronado  
From Gougeon 230 West

80 ft wide  
10 Cb's  
10 qts

B.M.	1281	252.98	240.7	34 ft Coronado East Gougeon
TP	054	240.70	1281	240.16
			215 E.L. Gougeon - End of Curbs Balkans	
H		87	240.7	232.0
Cb Top		906	231.6	
Gutter		98	230.9	
H		90	231.7	
H		86	232.1	
L		84	232.3	
H		82	232.5	
Cb Top End		710	233.1	
S		71	233.3	
			205 E.L. Gougeon	
S		98	230.9	
H		95	231.2	
H		80	232.7	
Cb		77	233.0	

Gougeon

E.L. Gougeon

End Walk + Curbs

20' 21.5'

Coronado

Curbs

10'

20'

240.70

H	83	240.7	232.4
L	84	232.3	
H	87	232.0	
Gutter	100	230.7	
Cb Top	917	231.5	
H	88	231.9	
			E.L. Gougeon
H	100	230.7	
Cb	1040	230.3	
Gutter	110	229.7	
H	104	230.3	
L	103	230.4	
H	105	230.2	
Cb	104	230.3	
S	100	230.7	
			E.Cb
S	95	231.2	
H	106	230.1	
Cb	110	229.7	
H	109	229.8	
L	113	229.4	
H	113	229.4	
H	117	229.0	
H	128	227.9	
Cb	127	228.0	
H	130	227.7	
H	116	229.1	

Gougeon  
East Gougeon  
10 Cb's  
10 qts

Coronado

240.70

N	as Cb Ret.	10.02	240.7
			230.7
NL		10.5	230.4
TP	6.58	237.24	10.02
			230.68
			<u>237.3</u>
N		7.0	230.3
+11		7.3	230.0
+15		7.7	229.6
+16		9.8	227.5
Cb		9.1	227.9
+5		8.5	228.8
14		8.2	229.1
2		9.8	229.5
4		7.9	229.4
Cb		7.4	229.9
7.3		6.8	230.5
+10		8.0	234.3
S		8.0	235.3
	F 11		
S		8.0	235.3
+16		8.5	233.8
+12		7.1	230.2
Cb		7.0	230.3
14		7.8	229.5
2		8.1	229.2
14		8.3	229.0
Cb		7.3	228.0

237.26

N		10.1	237.3
			226.7
	L Gunzot		
N		10.1	227.2
Cb		9.5	227.8
4		8.1	229.2
2		8.1	229.2
14		7.8	229.5
Cb		6.6	230.7
12		7.2	230.1
18		8.4	233.9
S		8.6	234.7
	W 7A		
S		8.0	234.3
+6		8.2	234.1
+8		8.8	233.5
+12		8.2	233.1
+16		7.1	230.2
Cb		6.9	230.4
14		7.6	229.7
2		7.7	229.6
4		8.1	229.2
Cb		7.9	229.4
N		10.3	227.0
	X Cb		
N		7.0	230.3
9.3		7.2	230.1

7  
2

Colorado

237.26

		<u>237.3</u>
17	82	229.1
cb	81	229.2
1/4	84	228.9
+2	80	229.3
2	80	229.3
1/4	78	229.5
cb	80	229.3
+4	73	230.0
+6	63	233.0
S	63	234.0

040-146 Guisot

3	39	233.4
+4	41	233. ✓
+8	49	232.4
+15	84	228.9
cb	87	228.6
1/4	86	228.7
2	83	229.0
1/4	89	228.4
+3	90	228.3
cb	84	228.9
+12	87	228.6
+16	76	229.7
N	77	229.6

17W

N	84	228.9
1/4	80	229.3

237.26

33

		<u>237.3</u>
11	95	227.8
cb	95	227.8
1/4	93	228.0
2	93	228.0
1/4	91	228.2
cb	93	228.0
+8	91	228.2
11	52	232.1
S	51	232.1

35W

S	110	226.3
+2	107	226.6
+7	86	228.7
+10	10.4	226.9
cb	97	227.6
1/4	98	227.5
2	10.0	227.3
1/4	10.3	227.0
cb	10.3	227.0
+6	10.1	226.9
+11	91	228.1
N	93	228.0

50W

N	99	227.4
+4	100	227.3
+5	106	226.7

22726

			<u>237.3</u>
cb		11.1	226.2
74		11.0	226.3
2		10.6	226.7
114		10.4	226.9
cb		10.1	227.2
714		11.3	226.0
s		12.8	224.5
	75.77		
s		16.0	221.3
78		15.2	222.1
cb		13.0	224.3
75		12.0	225.3
74		11.8	225.5
2		11.7	225.6
74		12.4	224.9
cb		12.6	224.7
74		12.8	224.5
713		12.2	225.1
715		11.1	226.2
H		11.3	226.0
TP	114	225.64	224.48
		100.77	<u>225.6</u>
H		0.6	225.0
14		0.6	225.0
17		1.8	223.8
cb		2.3	223.3

22519

			<u>225.6</u>
74		1.9	223.7
75		1.4	224.2
2		1.7	223.9
74		2.3	223.3
cb		4.1	221.2
s		6.1	219.5
	125.77		
s		8.2	217.4
cb		7.1	218.2
73		7.3	218.3
74		5.1	220.5
2		3.7	221.9
75		2.5	223.1
74		2.5	223.1
cb		2.6	223.0
713		2.5	223.1
716		1.4	224.2
H		1.8	223.8
	150.77		
H		2.6	223.0
74		2.5	223.1
77		3.3	222.3
cb		3.2	222.4
76		3.6	222.0
74		4.5	221.1
2		6.1	219.0

22564

		<u>225.6</u>
1/4	76	218.0
cb	82	217.4
+12	95	216.1
s	98	215.8
	180'X	
s	95	216.1
+6	95	216.1
+13	11.3	214.3
cb	110	214.6
1/4	10.4	215.2
2	99	215.7
+6	96	216.0
1/4	85	217.1
cb	69	218.7
+8	48	220.8
+13	40	221.4
+16	34	222.2
H	34	222.2
	200'X	
H	44	221.2
+2	45	221.1
+7	69	218.7
cb	96	216.0
1/4	108	214.8
2	125	213.1
1/4	130	212.6

22564

		<u>225.6</u>
cb	130	212.6
+10	125	213.1
+16	111	214.5
s	110	214.6
	230'X	
s	135	212.1
+10	147	210.9
cb	157	209.9
1/4	159	209.7
2	156	210.0
1/4	143	211.3
cb	127	212.8
+5	121	213.5
+15	99	215.7
H	100	215.6

Cross Section Alley Block 191 Univ Hgts  
Between Normal Center From Lincoln to Blair No. 110

323.20

6  
6.15  
5.15  
5.15  
5.15  
5.15

BM	304	335.24	332.20	72.82 Lincolnt Park Blvd
TP	0.89	323.20	12.93	322.27
		0.10	S.L. Lincoln	323.2
E	Top Carb	4.17	318.9	
	" Pav 102 + Ground	4.60	318.6	
Z	"	5.05	318.1	
H	" + Carb	4.92	318.3	
		25.5		
H		23	315.9	
Z		27	315.5	
E		68	316.4	
		50.5		
E		68	316.4	
Z		81	314.8	
H		84	314.8	
		75.5		
H		90	314.2	
Z		91	314.1	
1.6		86	314.6	
1.8		80	315.2	
E		76	315.6	
		97.5		
E		99	313.8	
Z		96	313.6	
H		93	313.7	
1.3	Garage Conc Floor	98.5	313.9	

		112.5	323.2	
-3	Garage Conc Floor	931	313.9	
H	Conc Apron + Ground	9.58	313.6	172.5 on 11 Garage Dir Floor 11.57
Z		99	313.3	
E		99	313.3	
		1150.5		182.5 on 11 Garage Conc Floor 12.30
E		98	313.4	
Z		105	312.7	57.4 Conc Apron 12.67
H		106	312.6	
H		106	312.6	
		800.5		
H		114	311.8	
Z		113	311.9	
E		112	312.0	
		240.5		
E		109	312.3	2.50.5 on 11 Conc Apron 10.65
Z		116	311.6	
H		121	311.4	
	400 Garage Dir Floor	123	310.9	
		260.5		
-5	Do Garage Dir Floor	116	310.6	
H		116	311.6	
Z		114	311.8	
E	Garage Dir Floor	105	312.7	
TP	1.12	313.42	11.41	311.79
		300.5		280.5 on 11 Garage Dir Floor 1.4



313.43

		313.4	
E		312.0	
Z	Top M.H.	311.9	
H		311.3	
	330'S		
H		311.7	347'S on S.L. Do Garage Dirt Floor 7.5
Z		311.7	
E		311.5	
	355'S		
E	Garage Wood Floor	310.3	
Z		310.1	
H		310.4	
H		311.0	
	395'S		
H	Garage Dirt Floor	309.7	405'S on S.L. Garage Wood Floor 4.4
Z		308.6	
E	Garage Dirt Floor	308.7	
	450'S		
E		307.8	
Z		307.6	
H		307.7	
	475'S		
H		307.4	490'S on S.L. Garage Concrete Floor 6.4
Z		307.0	
E		307.1	
	500'S		
E		306.9	

7

		313.4	
Z		307.0	503'S on S.L. Garage Concrete Floor 6.1
H		306.9	
	520'S		
H	Garage Dirt Floor	306.6	
Z		306.4	
E		306.7	530'S on S.L. Garage Dirt Floor 7.5
	540'S		
E		306.0	
Z		305.8	
H	Do Garage Dirt Floor	306.4	
	575'S		
H		305.5	
Z		305.5	
E		305.5	
	600'S		
E		305.7	
Z		305.3	
H		305.4	
	675'S on S.L. Blaine		
H	Top Curb	305.7	
	Ground Gilmore Paving	305.0	
Z		304.8	
E	Ground Gilmore Paving	305.0	
	Top Curb	305.7	

Cross Section Alley Block 190 Data Points  
Between Normal Gate From Blaine to Driv. 20' wide

	33.42		
		040 = S.L. Blaine	313.4
E Top Ch + Gr	870		304.7
S	92		304.2
N Top Ch	823		304.7
	5' 5"		
N	71	125 S.E. Hwy Top plan Hole	306.3
S	75	714	306.2
E	75		305.9
	50' 5"	615 on side to Garage Wood Floor	305.9
E	69	58	306.5
S	73		306.1
N	68		306.6
	75' 5"		
N = Garage Dirt Floor	69		306.5
S	67		306.7
E	61		307.3
	100' 5"		
E FENCE 3510 Alley	51		308.3
S	58		307.6
+5	58		307.6
N	64		307.0
TP	339	311.48	573
		130' 5"	311.5
N	25		308.0
S	34		308.1

	311.48		
E	33	311.5	
		308.2	
+ 3.5 Cont. 5 Garages Dirt Floors	32	308.3	
	150' 5"		
E	33	308.2	
S	37	307.8	
N	38	307.7	
	120'		
N Garage Dirt Floor	42	307.2	
S	46	306.9	
E Cor. House 12 Alley	41	307.4	
	190' 5"		
E	41	306.7	
+5	49	306.6	
S	53	306.2	
+5	48	306.7	
N	41	307.4	
	205' 5"		
N	42	306.8	
+3	42	306.8	
+5	44	305.1	
S	62	304.8	
+4	64	305.1	
+2	52	306.3	
E	52	306.3	
	210' 5" = N.L. down on E		
E Ground Paving	71	304.4	
	298	303.5	

311.48

		<u>311.5</u>
2	25	304.0
7.5	22	304.3
1.7	49	306.0
14	49	306.6

117.5 = 112.0 + 5.5

14	Top Pav. 199.9	801	303.4
2	" " "	833	303.7
1	" " "	798	303.5

311		882	302.66	SW
				Dir. (Hobart)
				302.64

9

Grass Section Alley Block 161 Univ. Heights  
Between 10th & 32nd From Lincoln to Park 26th St

35931

10  
35931  
10/1/19

			SI 82			
					100' N	359.3
BM	112	367.04	312.92	Lincoln	43	355.0
		0.0	367.0		47	354.6
			359.4		53	354.0
N	Top Curb	9.78	356.7			
	Ground	10.3	356.4		140' N	
		10.8	355.0		45	354.8
E	Ground	12.0	356.6		41	354.7
	Top Curb	11.40	355.64		46	355.1
TP	367	359.31	359.3		147' N	
		10' N	355.7		45	354.8
		3.2	356.4		49	354.4
		2.9	356.9		53	354.0
		2.1	357.8		55	353.8
		1.5	356.8		55	353.8
		50' N	356.0		60	353.3
		2.5	355.5			
		3.3	354.8		200' N	
		3.8	354.8		60	353.3
		4.5	354.8		58	353.5
		1.5	354.8		55	353.8
		22' N	354.8			
		51	354.8		225'	
		44	354.9		54	353.9
		4.2	355.1		60	353.3
		3.5	355.8		60	353.3
		4.1	356.2		57	353.6
		250' N			58	353.5

115' N 107' E  
Garage Dirt Floor  
62 353.1

119' N 107' E  
Garage Floor  
59 355.3

Garage 30' x 10'  
Cock Pit  
55 355.1

Garage 10' x 10' Alley  
55 353.8

Garage 10' x 10' Alley  
55 353.8

Garage 10' x 10' Alley  
54

359.31

F	7.2	<u>359.3</u> 352.1
+3	7.5	351.8
Z	7.3	352.0
+4	7.2	352.1
N Fence 1.5 in Alley	6.1	353.2
	325.11	
N Fence 1.0 in Alley	6.5	352.8
Z	7.6	351.7
F	7.9	351.4
	300.11	
F	8.5	350.8
Z	8.2	350.9
+8	8.5	350.8
N Fence 0.5 in Alley	7.2	352.0
	325.11	
N Fence 0.5 in Alley	6.8	352.5
+5	7.5	351.8
Z	8.2	351.0
Z	8.2	351.1
	337.11	
F	8.9	350.4
Z	8.9	350.4
N	6.3	353.0
	317.11	
N	6.0	353.3
+5	6.5	352.8
Z	9.0	350.3

359.31

11<sup>4</sup>

F	7.0	<u>359.3</u> 350.9
	400.11	
F	8.0	351.3
+5	8.5	350.8
Z	8.3	351.0
+3	8.1	351.2
+7	6.5	352.8
N Fence 1.5 in Alley	6.0	353.3
	425.11	
N Fence 1.0 in Alley	6.8	352.5
+7	8.2	351.1
Z	8.1	350.9
F	8.2	351.1
	450.11	
F	7.6	351.7
+6	7.7	351.5
Z	7.8	351.5
N Fence 1.0 in Alley	7.1	352.2
	477.11	
N	5.9	353.4
+6	6.3	353.0
Z	6.8	352.5
F	6.6	352.7
	500.11	
F	6.3	353.0
+7	6.5	352.8

21.11.11  
Garage  
57611.5.11  
D. Garage  
57618.11.11  
D. Garage  
576

357.01

				<u>359.3</u>
Z			62	359.1
N			55	353.8
TP	669	359.70	630	353.01
		525H		<u>359.2</u>
N			55	354.2
12			56	354.1
11			64	353.3
Z			66	353.1
E			66	353.1

553H

-15	Garage 300 ft		59	353.8
E			61	353.6
Z			63	353.4
13			62	353.5
N			48	354.9

580H

N			45	355.4
15			55	354.2
Z			56	354.1
16			57	354.0
E			51	354.6

595H

E			46	355.1
15			52	354.5
Z			52	354.5
13			54	354.3

1212

				<u>359.2</u>
N			13	355.4
				600 ft S.H. Pit
N Top Carb			416	355.5
Ground			15	355.2
Z			48	354.8
E Ground			42	355.0
Top Carb			428	355.4
B.M.			670	353.00
				52 BP Pit + 350 ft 353.0

Cross Section Alley Block 130 City Hgts  
 Between 5th & 6th St From Nightman to Landis  
 20 Wido

BM	1277	350.19	337.42
		0.10 S.L. Nightman	350.7
E Top Cb		4.2	345.6
Ground		4.0	346.4
2		5.2	345.0
W Ground		5.1	345.1
Top Curb		5.87	344.3
		1.5	
W		2.0	348.2
+3		2.2	348.0
+5		4.4	345.8
2		4.7	345.5
+4		3.3	346.9
+7		1.2	349.0
E		7.0	349.2
		25.5	
E		1.7	348.5
+5		2.1	348.1
+6		2.8	347.4
2		3.3	346.9
+5		3.1	347.1
W		2.7	347.5
		50.5	
W		3.6	346.6
2		3.2	347.0

111.80  
 111.80  
 111.80

		350.19	
E		2.7	347.5
		75.0	
E		3.7	346.5
2		4.0	346.2
W		4.6	345.6
		106.5	
W Garage (enc) Floor		5.08	345.1
2		5.1	345.1
E		4.7	345.5
		120.5	
E		5.3	344.9
2		6.1	344.1
W		6.6	343.6
		160.0	
W		7.9	342.3
+7		6.7	343.5
2		6.5	343.7
E		6.6	343.6
		200.5	
E		8.5	342.0
2		8.6	341.6
W		9.2	341.0
+15 Garage Dist. Floor		9.2	340.9
		215.5	
W		9.5	340.7
2		9.1	341.1

13 13  
 111.80  
 111.80  
 111.80

350.19			<u>350.2</u>
F		9.1	<u>341.1</u>
		256.5	
F		10.9	339.3
L		11.7	338.5
H	Do. Garage Dirt Floor	12.4	337.8
TP	0.79	338.18	1230
		290.5	<u>338.2</u>
H		2.1	335.1
H		2.4	335.8
L		2.3	335.9
+5		2.5	335.7
F	Floor as in R/H	1.9	336.3
		300.5	
F		2.4	335.8
+5		2.9	335.3
L		2.9	335.3
+1		3.0	335.2
H		3.9	334.3
H	Garage Dirt Floor	4.0	334.2
		322.5	
F	Garage Dirt Floor	2.1	335.8
	H. Floor as in R/H	2.6	334.6
	Ground	4.8	333.4
H		5.4	332.8
		300.5	
H		7.7	330.5

338.18			<u>338.2</u>
L		6.8	<u>331.4</u>
		7.8	332.0
F		5.5	332.7
		370.5	
F	Garage Dirt Floor	6.7	331.5
	H Entrance	8.7	329.5
L		9.2	329.0
		400.5	
H		11.2	327.0
L		11.0	327.2
		10.3	327.9
F		9.5	328.7
		420.5	
F		11.9	326.8
+5		11.8	326.4
L		12.6	325.6
+7		12.5	325.7
H		13.0	325.2
TP	1.93	326.19	1302
		440.5	<u>326.2</u>
H	Garage Dirt Floor	1.9	324.3
L		2.1	324.1
F		1.7	324.5
		460.5	
F		3.4	322.8
		4.7	321.5



	326.19	326.2
Z	17	321.5
+3	16	321.6
H	15	321.7
	173.5	
-4 Garage Case Floor	6.6	319.6
H	6.3	319.9
Z	5.7	320.5
F	4.3	321.9
	500.5	
F	6.4	319.8
+5	2.6	318.6
Z	8.4	317.8
H	8.5	317.7
	1525.5	
H	10.1	316.1
Z	9.2	317.0
F	7.7	318.5
	550.5	
F	8.7	317.5
+5	9.7	316.5
Z	10.2	316.0
+6	10.9	315.3
H	10.7	315.5
	500.5	
H	11.6	314.6
Z	11.1	315.1

	326.19	326.2
+4	11.0	315.2
F	9.9	316.3
	580.5	
F	10.3	315.9
+1	10.7	315.5
+6	12.9	313.3
S	12.2	313.0
+8	12.5	312.7
H	14.6	311.6
	598.5	
H	16.7	309.5
+1	15.7	310.5
Z	16.6	309.6
+5	15.8	310.4
+7	13.5	312.7
F	11.9	314.3
TR	12.8	313.5
	600.8 - N.L. Landis	314.2
F Top Curb	9.39	309.8
Ground	8.8	300.4
Z	5.0	309.2
+9	6.1	308.1
Ch Top + Ground	2.89	306.9

Case Station Alley Block 186 City Hgts.

Between 51st & 35th from Landis to Dwight

20th Dec

16 16

314.23

010.54 Landis 314.2

E Taplock 556 308.6

Ground 47 309.5

L 58 308.4

W No Carb in 62 308.0

65

W 58 308.4

L 51 309.1

+5 43 309.9

E 33 310.9

75.5

L 27 311.5

+6 50 309.2

L 52 309.0

W 60 308.2

80.5

W 79 306.3

L 64 307.5

+7 54 308.8

L 22 311.3

70.5

E 44 309.8

+6 72 307.0

L 76 306.6

W 81 305.6

314.23

100.5

314.2

83 305.9

75 306.7

75 306.7

68 307.4

44 309.8

125.5

46 309.6

68 307.4

72 307.0

78 306.4

150.0

79 306.3

74 306.8

71 307.1

67 307.5

59 308.3

32 311.0

175.5

42 310.0

57 308.5

65 307.7

69 307.3

78 307.0

68 307.4

10.5 to Conc. Hall  
Steps Dist 2'

200.5

		314.23		314.2
N			77	307.0
+2			60	308.2
E	Top Wood Hole		600	308.2
+6			60	308.2
+7			53	308.9
E			46	309.6
TP	545	310.1	557	308.6
		225 S		314.1
E			41	311.0
+1			42	309.9
+5			52	308.9
E			53	308.8
+8			51	309.0
N	Top Cobble Hill		67	307.5
		250 S		
N	00 Conc House on W		40	310.4
E			46	309.5
+6			42	309.9
+7			31	311.0
E			25	311.6
		265 S		
E	Fence 10' on W		12	312.9
+4			27	310.4
E			38	310.3
+8	00 Conc Hill		29	310.7
N	House on line		36	310.5

237' 2" E W  
Top Conc Stop Down  
452'

		314.11		314.1
		280 S		
N			29	311.2
+2			25	311.6
E			27	311.4
+6			24	311.7
E	Fence 10' on W		25	313.6
		300 S		
E	Fence 05' on Alley		13	312.8
+7			15	312.5
E			21	312.0
+5			26	311.5
E			30	311.1
		330 S		
N			25	311.6
E			13	312.8
E	Fence 02' on Alley		01	314.0
		350 S		
E	" "		04	313.7
+3			10	313.1
E			15	312.6
N			22	311.9
		370 S		
N			32	310.9
+4			20	312.1
E			22	311.9
+8			16	312.5



Cross Section Alley Block 44 City Heights  
Between 42nd + Van Dyke From Chis. to Falk

19 19

BM	855	363.16	357.11	NY 88 11991 mms Van Dyke					
TP	585	363.04	597	25719		250'N			
		0.20 = 11.40m							
F			526	357.79			3.3	59.7	
L			546	357.58			3.1	59.4	
H			574	357.80			3.5	59.5	
		25'N				300'N			
H			50	358.0	45' North Top Gas Month 4.2 58.44		3.1	59.4	
L			50	358.0	4.6 58.44		3.4	59.6	
F			15	358.5			3.5	59.5	
		50'N				340'N			
F			50	358.0	66' North Conc. Dr. 1st floor		Fence 10.10 Alley	2.9	60.6
L			48	358.4	5.2 57.65			2.5	60.5
H			50	357.8				2.8	60.7
		100'N				370'N			
H			50	358.0	20' North Garage 1st floor 4.9 58.1			2.9	60.1
L			46	358.4	8' 00" 50' Gate 50' Int. 58.0		Fence 10.10 Alley	2.6	60.4
F			45	358.5				2.3	60.7
		100'N				400'N			
			15	58.89	140' 5" N Garage 1st floor			1.8	61.7
		150'N			4.2 58.3			2.1	60.9
H End			460	58.44				2.0	61.0
L			44	58.6				1.95	61.02
H			45	58.5				1.95	61.02
		200'N				135'N			
H			12	58.8				5.7	61.4
								5.3	61.5

235' North  
Conc. Dr. 1st  
3.90 59.3

21' North  
Garage 1st floor  
3.4 59.6

20' 5" North  
Garage 1st floor  
3.6 59.4

30' North  
De Garage  
1st floor  
2.3 60.7

410' 15" N  
Garage 1st floor  
5.5 61.3

36683

F		52	61.5	
+2	3 Garage Dist Floor	52	61.5	
	470' N			
F	Fence 25' to Alley	52	61.5	470' N 5' ETL Garage Dist Floor
L		52	61.6	52 61.6
H		56	61.7	
	500' N			
H		54	61.4	577' N 25' ETL Garage Dist Floor
L		51	61.7	510 61.8
F		53	61.5	
	540' N			
F		51	61.7	
L		48	61.0	
+5		50	61.8	
H		54	61.4	
	595' N			
H		53	61.5	577' N 25' ETL Meters
B		50	61.8	575 61.8
F		53	61.5	
	601' N = S. L. Walk Park St.			
F	So. Edge Con. Walk	559	61.45	
L		60	60.83	
H	So. Edge Con. Walk	573	61.10	
	606' N = S. Ch. Park			
H	Top Carpet	596	60.87	
F		582	61.01	

20<sup>20</sup>

36683

TP	113	36669	457	36721	
BY		575	36551	✓	NW 22 Orange + 140' N 3483

X Sec Alleys BIK 37 Fernish & Loomis  
7-13-26  
Miller

21

B.M. 11.93 183.92 171.99 S.N. 26<sup>th</sup> G

- N. & S. Alley 140' E. of 26<sup>th</sup> St

00 = N Line G. St.

W 2.4

+4 3.7

E 4.0

+3 4.6

E 7.0

+10 10.0

12' N

-10 11.3

E 8.0

+7 4.2

e 4.5

+7 4.0

+8 1.8

W 1.4

33' N

W 4.3

+2 4.3

+3 5.6

e 6.0

+3 6.1

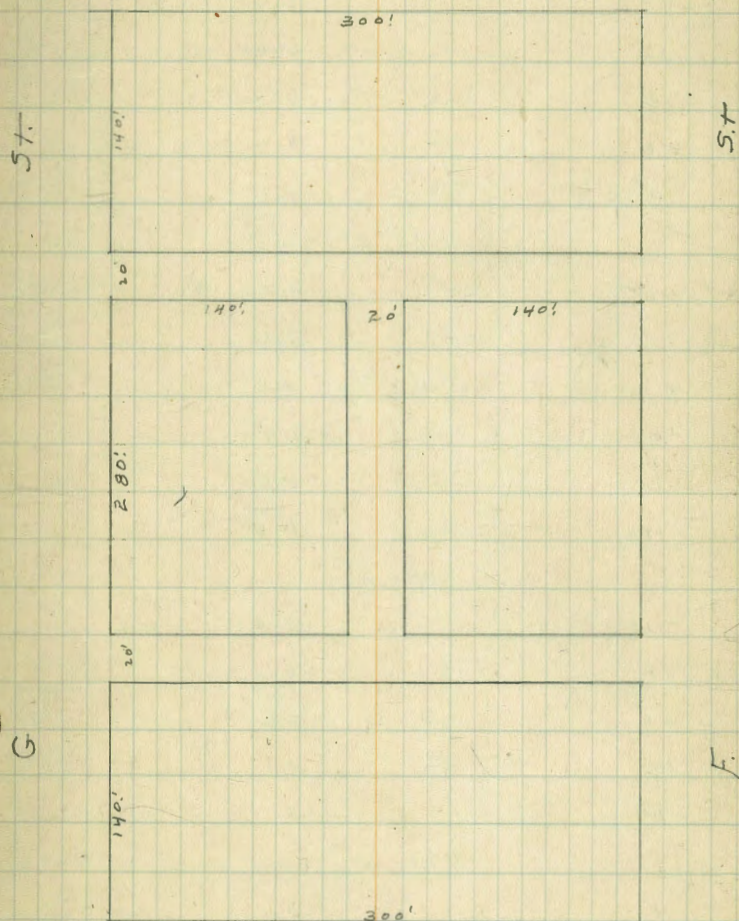
+7 8.0

E 8.4

+10 11.2

26<sup>th</sup>

St.



27<sup>th</sup>

St.

183.92

50' N

-10	11.7
E	9.0
+3	8.2
+4	6.2
C	6.2
+6	5.8
W	4.7

75' N

W	4.7
C	5.6
+2	5.6
+7	7.9
E	8.5
+10	11.4

100' N

-10	11.9
E	9.0
+7	5.4
C	5.4
W	5.1

122' N

W	5.1
E	4.6
+1	4.6
+9	8.4
E	8.4
+10	10.9

BIK37 P+L

183.92

22

140' N = S. Line E. + W. Alley

E	8.5	175.4
C	4.7	
W	4.7	

160' N = N. Line E. + W. Alley

W	3.7	
C	4.7	
E	8.9	175.0

190' N

-7 = wedge house	12.8	
-7	11.3	
-4	10.0	
E	8.5	
+6	5.1	
C	4.8	
W	4.1	

200' W garage on W. dirt floor on line

W	3.3	floor
E	4.7	
+4	5.2	
E	8.3	
+5	9.4	
+8	11.0	

210' N

E-8	11.0	
-8	7.8	
+5	5.4	

ground  
floor of  
House



183.92

210' N (cont)

C	5.6
+5	5.2
+7	3.2
W	2.8

248' N

N	2.8
+6	5.8
C	5.8
+7	4.4
E	7.8
+8	10.9

251' N

-8	10.9
E	7.5
+2	4.3
C	5.8
W	5.2

280' N

W	4.7
C	5.7
+7	5.6
E	7.2
+8	10.6

300' N =

183.92

Blk 37 P+L

23<sup>3</sup>

300' N = S. Line F. St

E-8	11.4
C	8.5
+4	6.2
E	5.6
W	5.3

East &amp; West Alley

0.0 = E. Line N+S. Alley 140' E. of 26<sup>th</sup> St.

S	8.5	175.4
C	8.2	
N	8.9	175.0

-2 = sedge House	10' E	12.0
N		11.2
E		10.8
S		10.7
+5		10.5

T.P.	0.02	170.91	13.13	170.79
------	------	--------	-------	--------

43' E

-5	5.6
S	5.8
C	6.3
N	6.6
+5	6.8

T.P.	0.37	158.16	13.02	157.79
------	------	--------	-------	--------

158.16  
75' E

-5			3.7	
N			3.9	
E			4.1	
S			3.9	
+5			3.7	
		110' E		
-5			12.4	
S			12.4	
E			12.7	
N			12.4	
+5			12.5	
T.P.	0.04	145.10	13.06	145.10
		135' E		
-5			4.7	
N			4.8	
E			4.8	
S			4.6	
+5			4.6	
T.P.	1.70	134.03	12.77	132.33
		200' E		
-10			7.3	
S			7.1	
E			6.9	
N			6.9	
+10			6.4	

134.03  
230' E

-10			10.4	
N			10.5	
E			10.6	
S			10.3	
+10			10.6	
		245' E creek bottom		
-10			12.2	
S			12.0	
E			11.8	
N			11.3	
+10			11.0	
		270' E		
-10			9.4	
N			9.6	
E			9.6	
S			9.2	
+10			9.0	
		280' E = W. line of 45' Alley 140' W of 27 <sup>th</sup> St		
S			7.9	
E			7.9	
N			7.6	
		N of S. Alley 140' W of 27 <sup>th</sup> St		
		00 = S. line F. St.		
E			4.05	134.5
E			1.1	
N			2.8	
+5			3.5	

134.03

45's of F. ST

-5	5.1
W	4.4
E	3.1
+9.5	2.7

65's

E	2.8
E	4.0
+6	4.9
+W	4.1
+5	7.1

90's

-5	6.0
W	5.1
+5	4.4
E	4.4
+5	3.0
E	1.6

120's

E	2.6
E	5.1
W	7.1
+5	8.5

140's = N Line E &amp; W. H 11 x 4

W	7.6
E	4.2
E	3.9

134.03

BIK 37 P+L

25<sup>25</sup>

160's = S Line E &amp; W. H 11 x 4

E	4.6
+2	5.6
E	6.9
W	7.9

Fence in H 11 x 4

180's

-5	9.2
W	8.7
E	7.8
+9	6.6
E	5.6

Fence in H 11 x 4

205's

E	8.3
E	10.1
W	11.0
+5	12.5

235's

-5	13.8
W	13.7
+5	12.4
E	11.9
E	9.9

creek Bottom

270's

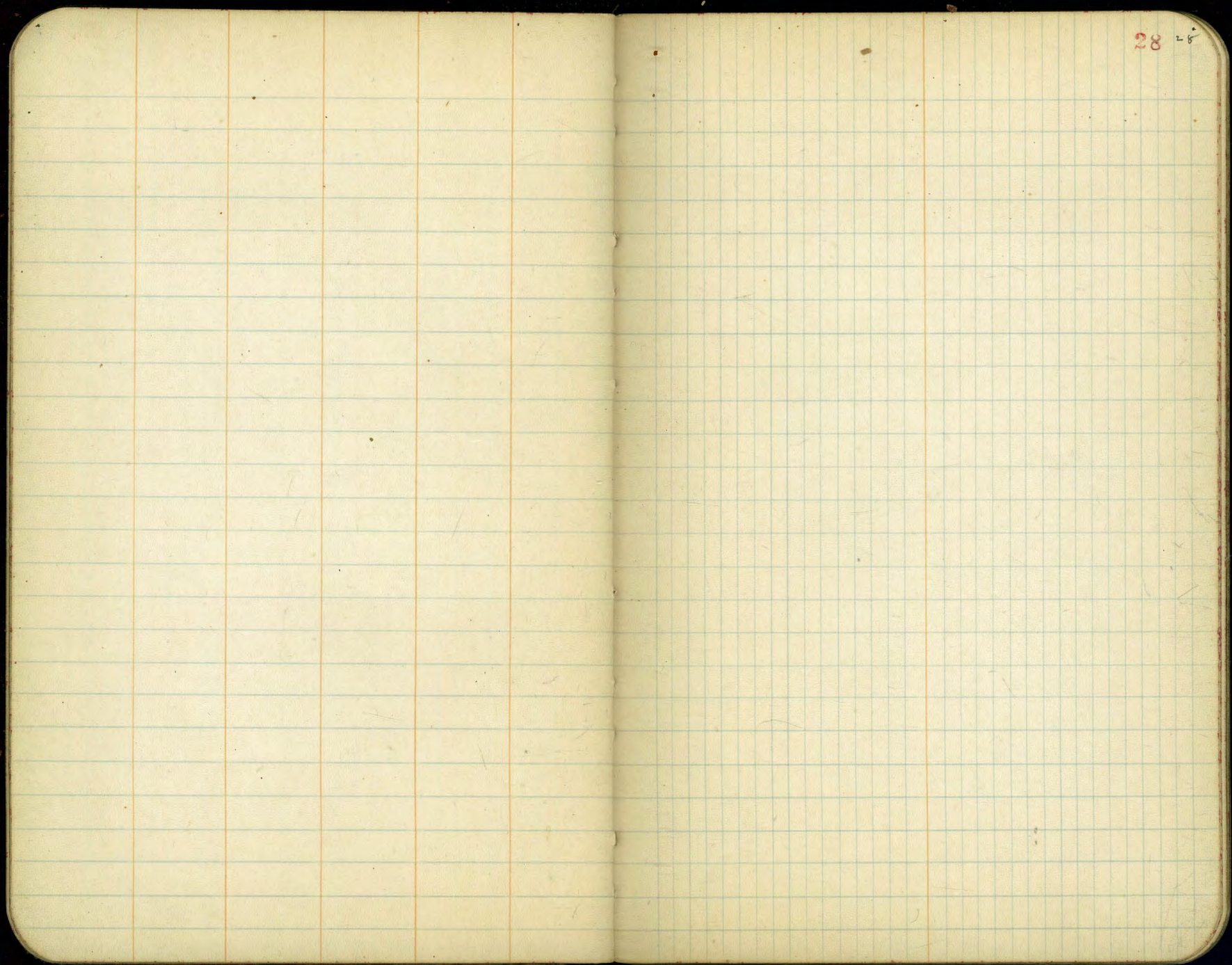
E	12.4
E	13.5
+7	14.3
W	15.3
+5	14.2

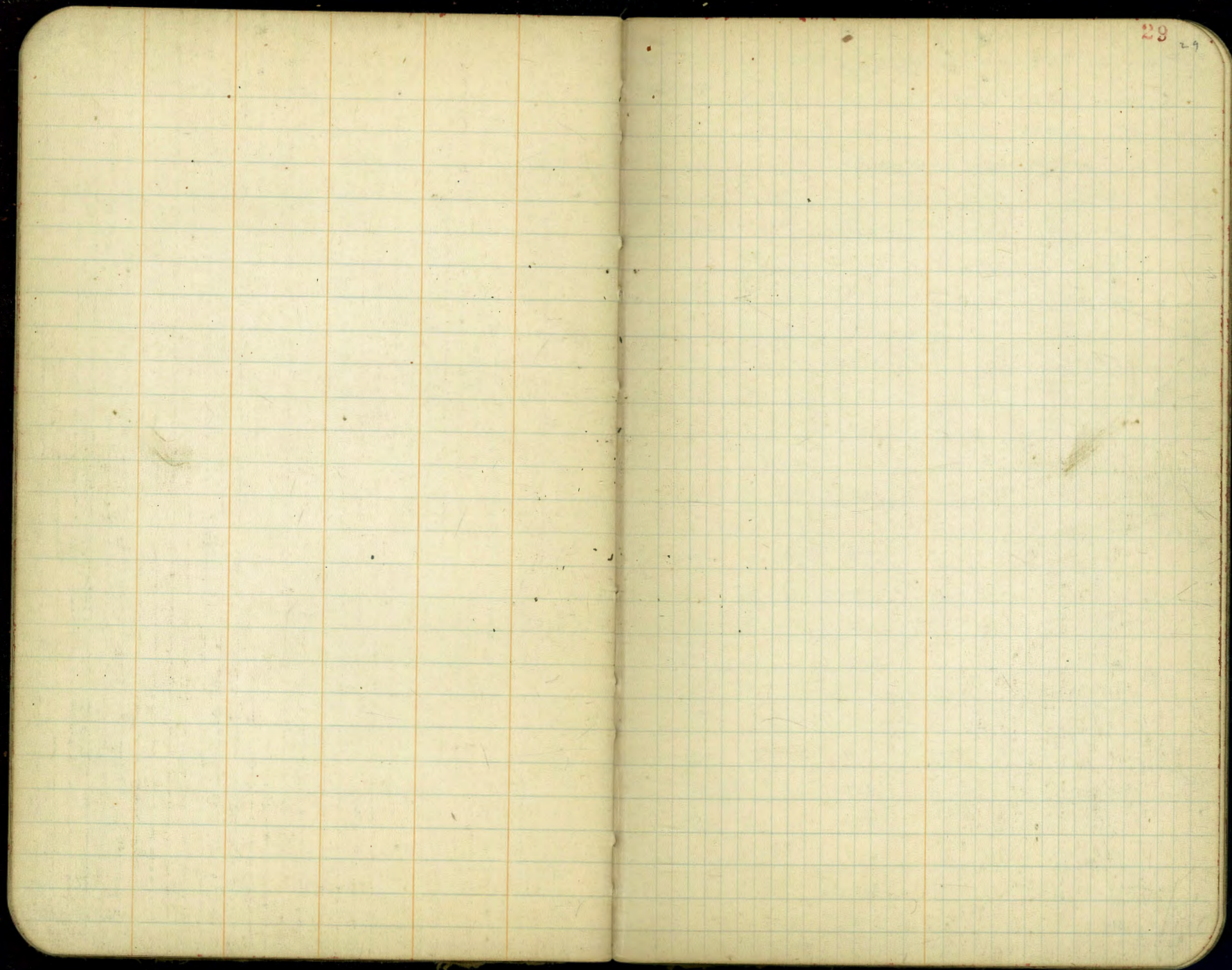
Creek Bottom

134.03  
300.5 = N. Line G. ST.

-5			14.1	
N			14.6	
+6			15.5	check Bottom
2			15.2	118.8
E			14.0	
T.P.	12.95	146.98	0.00	134.03
T.P.	13.02	159.67	0.33	146.65
T.P.	11.37	170.97	0.07	159.60
chk on R.M.			0.73	170.24 = 170.19 N.W. 27 <sup>th</sup> G







29

60' wide  
10' elev  
10' 1/4's

Olivet, X See  
Exchange to S. End

B.M.	13.25	198.24	185.01	SE. college Exchange
T.P.	9.05	206.15	116	197.10
00-5 Line Exchange Place				
W		7.0	199.2	
cl		7.11	199.04	ent cl
1/4		6.4	199.8	
E		5.4	200.8	
1/4		4.7	201.7	
cl		3.48	202.67	ent cl
+7		3.3	202.9	
E		1.9	204.3	
	3' S.			
E		1.8	204.4	
cl		3.1	203.1	
1/4		4.4	201.8	
E		5.3	200.9	
1/4		5.2	201.0	
cl		5.7	200.5	
W		5.7	200.5	
	20'S			
W		5.9	200.3	
cl		5.7	200.5	
1/4		5.0	201.2	
E		4.7	201.5	
1/4		3.8	202.4	
cl		2.5	203.7	
E		1.7	204.5	

206.15  
50' S

30  
30

E	2.5	203.7
cl	3.6	202.6
1/4	4.2	202.0
E	5.0	201.2
1/4	5.8	200.4
cl	6.2	200.0
W	6.4	199.8
	95'S	
W	7.4	198.8
cl	4.8	199.4
1/4	4.0	200.2
E	5.1	201.1
1/4	4.1	202.1
cl	2.8	203.4
E	2.3	203.9

122'S = Wedge of garage 8.5' 1/4 Street

T.P.	5.19	209.20	2.14	204.01
E			1.5	207.7
cl			4.3	204.9
1/4			4.0	203.2
E			8.0	201.2
1/4			8.4	200.4
cl			10.3	198.9
W			11.2	198.0
+5			11.5	197.7



209.20

140' S = S End garage 8.5 in street

- 5	11.4	197.8
W	10.9	198.3
cl	10.0	199.2
114	7.5	201.7
E	7.2	202.0
+4	6.8	202.4
+5	5.3	203.9
114	4.6	204.6
cl	3.5	205.7
E	1.4	207.4
165' S		
E	1.5	207.7
cl	3.5	205.7
114	4.5	204.7
+4	6.0	203.2
E	6.9	202.3
114	6.7	202.5
cl	9.7	199.5
W	11.2	198.0
+10	12.1	197.1

200' S = N. End Hedge

-10	12.7	196.5
W	11.4	197.8
+5 = E side Hedge	9.4	199.8
cl	8.4	200.8
114	6.9	202.3

N End Hedge

olivet

209.20

31

E	7.2	202.0
+3	5.5	203.7
+8	4.9	204.3
114	3.5	205.7
T.P.	10.73	210.48
cl	3.45	205.75
E	8.7	207.8
E	7.3	209.2
225' S		
E	6.5	210.0
cl	8.7	207.8
114	11.7	204.8
+7	13.0	203.5
C	14.4	202.1
114	14.7	201.8
+1	14.7	201.8
cl	14.7	199.8
W	18.0	198.5
W	16.4	200.1
+1	22.0	194.5
+20	22.5	194.0
245' S = S. end Hedge		
-15	22.4	194.1
W	19.0	197.5
+5 E. edge Hedge	17.8	198.7
cl	16.9	199.7
+5	15.6	200.9

dirt

Top eml wall

dirt

216.44  
245. (corn)

+7	14.0	202.5
114	14.0	202.5
C	13.5	203.0
+3	10.5	206.0
1/4	9.6	206.9
cl	7.8	208.7
E	4.1	210.4
265.5		
E	5.0	211.5
cl	7.7	208.8
1/4	10.2	206.3
+4	11.2	205.3
+7	13.4	203.1
C	13.7	202.8
1/4	14.2	202.3
+2	14.2	202.3
d	17.6	198.9
W	19.1	197.4
+10	21.7	194.8
+20	23.0	193.5
280.5		
-8	19.2	197.3
W	18.5	198.0
cl	17.1	199.4
+7	14.0	202.5
114	14.0	202.5

216.48

olive T

32  
32

E	14.0	202.5
+5	11.3	205.2
1/4	9.2	207.3
cl	6.3	210.2
E	4.0	212.5
310.5		
E	4.5	212.0
cl	7.1	209.4
1/4	9.0	207.5
+6	10.5	206.0
C	13.9	202.6
1/4	13.7	202.8
1/4	13.6	202.9
cl	17.6	198.9
W	19.6	196.9
+20	24.5	192.0
330.5		
-20	24.2	192.3
W	20.1	196.4
cl	17.2	199.3
+6	14.0	202.5
1/4	14.0	202.5
C	14.0	202.5
+4	11.1	205.4
1/4	9.5	207.0
cl	6.5	210.0
E	3.4	212.9

216.48  
355'S

E	3.6	212.9
cl	6.2	210.3
114	9.3	207.2
+5	10.8	206.7
+8	14.1	202.4
c	14.1	202.4
114	14.2	202.3
+4	14.2	202.3
cl	17.8	198.7
W	20.7	195.8
+20	25.5	191.0

370'S

-20	25.3	191.2
W	19.2	197.3
cl	14.7	199.8
+5	14.2	202.3
114	14.6	201.9
c	14.2	202.3
+2	14.2	202.3
+5	11.2	205.3
114	9.4	207.1
cl	6.1	210.4
E	3.3	213.2

400'S

E	4.3	212.2
cl	8.1	208.4

216.48  
400'S (con)

olive 6 33

114	11.2	205.3
+5	12.6	203.9
+8	15.6	200.9
c	15.6	200.9
114	15.6	200.9
+2	15.6	200.9
cl	19.5	197.0
W	22.1	194.4
+20	27.7	188.8

425'S

-20	28.5	188.0
W	23.1	193.4
cl	26.4	196.1
+7	14.3	200.2
114	14.3	200.2
c	14.3	200.2
+5	12.4	204.1
114	11.4	205.1
cl	8.4	208.1
E	4.9	211.6

450'S

E	4.2	210.3
cl	9.6	206.9
114	13.0	203.5
+5	14.7	201.8
c	17.7	198.8

216.48  
450' S Con

14	18.3	198.2
+5	18.2	198.3
cl	21.4	195.1
W	25.0	191.5
+20	29.7	186.8
475' S		
-20	30.3	186.2
W	24.0	190.5
cl	23.3	193.2
+5	20.2	196.3
14	20.2	196.3
6	19.6	196.9
+5	14.3	202.2
14	14.2	202.3
cl	11.9	204.6
E	8.5	208.0

500' S = N. Line Ivanhoe Ave East closed 30' N  
30' S

E	11.7	204.8
T.P.	0.29	203.95
cl	2.1	201.9
14	5.2	198.8
+5	6.4	197.6
+7	8.3	195.7
L	9.3	194.7
14	9.3	194.7
+3	9.1	194.9

203.95

olivet 344

cl	12.4	191.6
W	14.6	189.4
+20	19.5	184.5
530' S N. Line New Franklin Ave Alley 20' wide		
-20	22.4	181.6
W	18.5	185.5
cl	14.6	189.4
+6	11.7	192.3
14	11.7	192.3
L	11.3	192.7
+2	10.5	193.5
+5	8.4	195.6
14	7.6	196.4
cl	5.6	198.4
E	2.7	201.3

540' S = cl

E	4.4	199.6
cl	6.9	197.1
14	9.0	195.0
+4	9.9	194.1
+7	12.7	191.3
6	12.7	191.3
14	13.0	191.0
+3	13.1	190.9
cl	17.0	187.0
W	20.4	183.6
+20	24.4	179.6

203.95

560' S = S. side New Ivanhoe Ave

-20	24.3	179.7
W	20.5	183.5
cl	16.8	187.2
+7	14.3	189.7
14	14.3	189.7
E	14.0	190.0
+6	11.1	192.9
14	10.3	193.7
cl	8.5	195.5
E	5.7	198.3
566'S		
E	6.4	197.6
cl	9.1	194.9
14	11.2	192.8
+2	11.9	192.1
E	14.9	189.1
14	15.1	188.9
+3	15.2	188.8
cl	18.4	185.6
W	20.3	183.7
+6	25.4	178.6
+8' = E side House	25.6	178.4
+20	26.4	177.6

203.95

580' S = S. Line Original Ivanhoe Ave East

-15 = E Side House	25.8	178.2
-3	25.7	178.3
W	22.0	182.0
cl	20.8	183.2
+6	17.8	186.2
14	17.6	186.4
E	17.3	186.7
+5	14.3	189.7
14	13.6	190.5
d	11.5	192.5
E	9.3	194.7
35'S		
E	13.0	191.0
T.P. 0.04	190.98	13.01 190.94
d	2.7	188.3
14	5.5	185.5
+5	6.4	184.6
E	8.4	182.6
14	9.0	182.0
+2	9.0	182.0
cl	11.2	179.8
W	13.2	177.8
+20	16.5	174.5

Olivet

35

	190.98	70.5		
-10			16.5	174.5
W			14.6	176.4
cl			13.1	177.9
+5			11.7	179.3
114			11.7	179.3
E			12.1	178.9
+9			9.7	181.3
114			8.7	182.3
cl			7.0	184.0
E			4.9	186.1
		100.5		
E			7.8	183.2
cl			9.3	181.7
+5			10.5	180.5
+4			11.3	179.7
114			11.5	179.5
T.P.	0.78	178.84	12.92	178.06
E			2.0	176.8
114			2.5	176.3
+3			2.4	176.4
cl			4.4	174.4
W			5.9	172.9
+10			7.1	171.7
		135.5		
-10			10.2	168.6
W			9.1	169.7

	178.84	olivet	36
d		7.2	171.6
+2		6.7	172.1
114		6.0	172.8
E		5.4	173.4
114		3.4	175.4
+3		2.4	176.4
cl		1.2	177.6
E		0.0	178.8
		170.5	
E		4.4	174.4
cl		5.9	172.9
114		7.2	171.6
E		9.5	169.3
114		9.5	169.3
+5		9.6	169.2
cl		11.1	167.7
W		12.4	166.4
+10		13.9	164.9
		200.5	
-10		17.1	161.7
W		16.0	162.8
cl		14.4	164.4
+7		12.4	166.4
114		12.4	166.4
E		12.3	166.5
114		10.4	168.4

17884

el			8.4	170.0
E			8.2	170.6
		220'S		
E			10.6	168.2
el			11.6	167.2
114			12.3	166.5
T.P.	0.29	165.89	13.24	165.40
E			1.4	164.3
114			1.4	164.5
155			1.0	164.9
el			2.4	163.5
W			4.0	161.9
+10			6.0	159.9
		250'S		
-10			7.8	158.1
W			7.6	158.3
el			6.0	159.9
+8			4.8	161.1
114			4.4	161.1
E			5.0	160.9
114			3.4	162.5
el			2.0	163.9
E			1.2	164.7

165.89

011447

300'S

37

E			6.3	159.6
el			7.3	158.6
114			8.5	157.4
E			9.6	156.3
114			9.5	156.4
el			10.3	155.6
W			11.3	154.6
+10			12.4	153.5
		335'S		
-10			15.5	150.4
W			14.2	151.7
el			12.8	153.1
114			12.0	153.9
E			12.3	153.6
114			11.8	154.1
el			11.5	154.4
E			10.3	155.6
		360'S		
E			12.5	153.4
T.P.	0.54	153.58	12.89	153.00
el			1.3	152.3
114			2.0	151.6
E			2.7	150.9
114			2.6	151.0
el			2.4	151.2
W			3.7	149.9
+10			4.9	148.7

153.5K  
375'S

-10	5.8	147.8
w	5.5	148.1
cl	5.1	148.5
ny	4.5	149.1
e	4.1	149.5
cl	3.6	150.0
cl	2.8	150.8
E	2.0	151.6

400'S

E	5.1	148.5
cl	5.0	148.6
ny	5.1	148.5
e	6.4	147.2
ny	6.6	147.0
cl	7.3	146.3
w	7.5	146.1
+10	7.6	146.0

430

-5	10.9	142.7
w	10.9	142.7
cl	9.7	143.9
ny	9.1	144.5
e	9.5	144.1
ny	8.4	145.2
cl	8.0	145.6
e	7.8	145.8

153.5K

474'S PI ELIM + P.L.

338

E	12.4	141.2
cl	12.1	141.5
ny	13.3	140.3
e	13.9	139.7
T.P. 0.90	141.26	13.22 140.36
ny	1.5	139.8
cl	1.4	139.5
w	2.1	139.2
+5	2.4	138.9

500'S at 90° to W line

w	4.1	137.2
cl	4.0	137.3
ny	3.9	137.4
e	3.4	137.9
ny	3.6	137.7
P.L	3.6	137.7

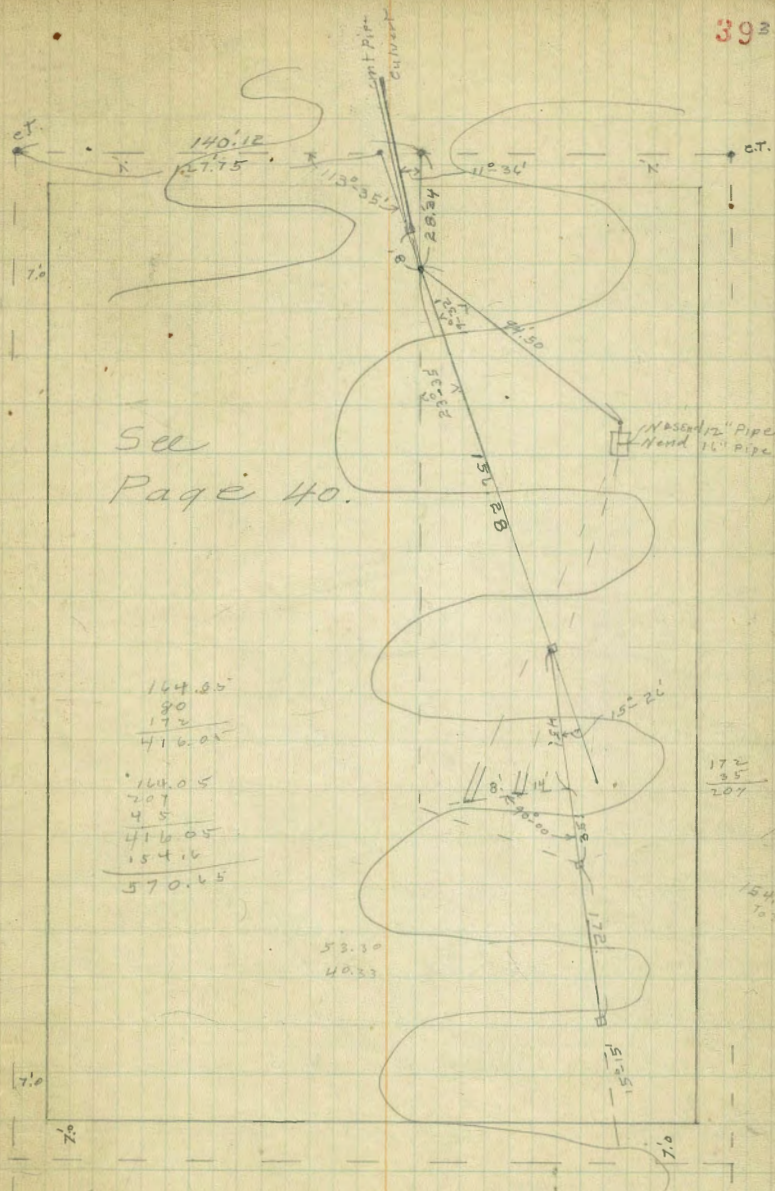
525'S

w	7.0	134.3
cl	6.6	134.7
ny	6.0	135.3
PL	5.5	135.8

567.5 on W = PI. with PL

w	10.2	131.1
T.P.	13.24	128.02 = 128.09 B.M.W. Kline + Ivanhoe





See  
Page 40.

164.85  
90  
172  
416.05

164.05  
207  
45  
416.05  
154.6  
570.65

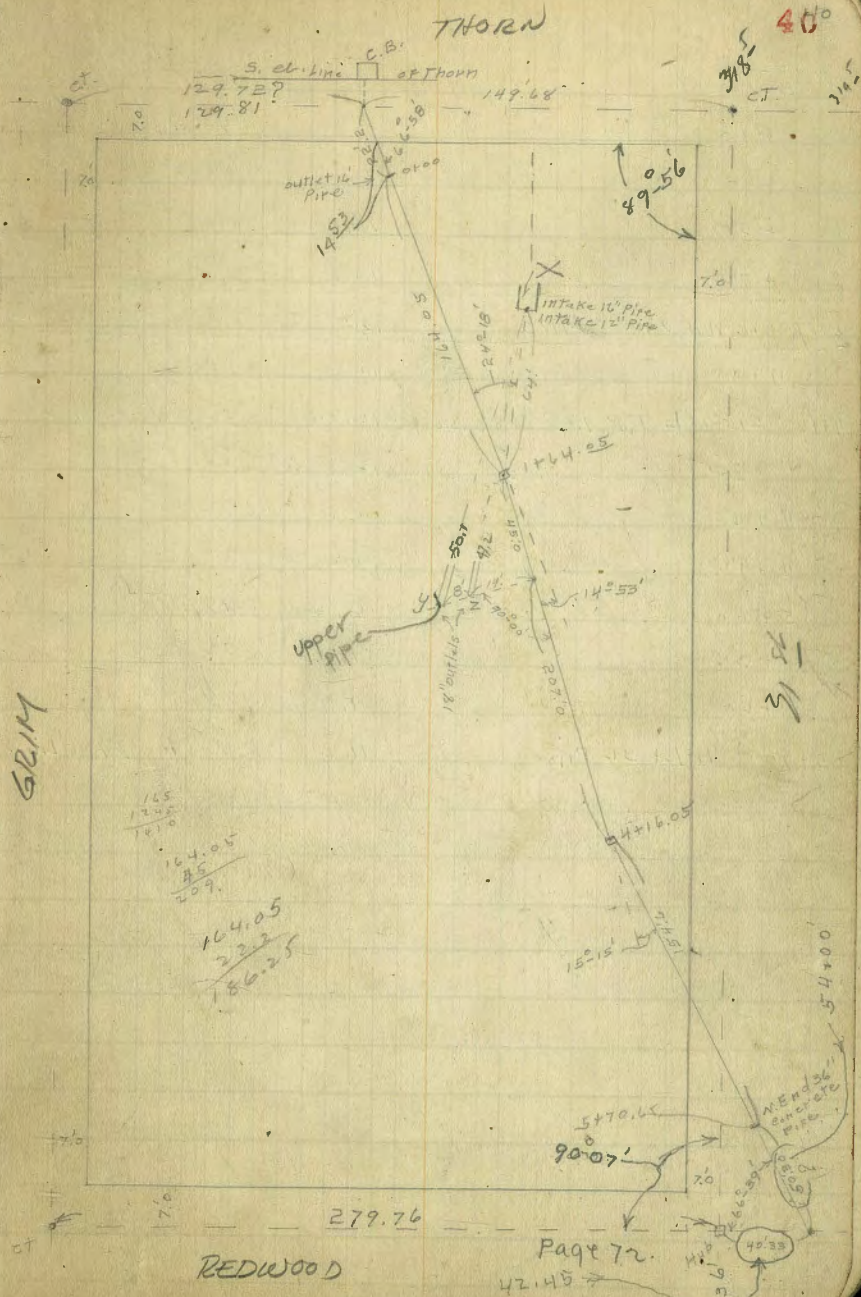
172  
35  
207

154.6  
104.1

Proposed 36" Culvert 9/21/24  
 in BIK 7 Frary Hqts. Thorn to Redwood.  
 Bet Grim. + 31st St

BM.	0.13	319.08	318.94	N.W. 31st 4 Thorn
over S.B.				
Sch. Thorn		4.63	314.45	
S.W. Thorn		4.2	314.9	
14 N of 0+00				
0+00 End Pipe 16"		12.9	306.73	
0+16 Sewer Mt. 3.5 to W of H		12.4	306.3	ground
0+16		22.1	297.0	Flow line Sewer
0+30		12.3	306.8	
0+60		13.1	306.0	
0+93		10.3	308.8	
0+95		7.8	311.3	
1+04		7.1	312.0	
1+12		5.1	314.0	
1+19		4.5	314.6	
1+50		4.2	314.8	
1+14.5 L 14° 53' R		2.7	316.4	
1+76		4.3	314.8	
Flow Line 16" intake at X on Plat		13.7	305.4	
" " 12" " " X " "		14.7	300.4	Not on Main Line
T.P.	0.17	106.44	12.81	306.27
outlet of 18" Pipe at Y on Plat		12.8	293.6	
" " " " Z " "		14.1	292.3	Non on Main Line
2+09			11.6	294.8
T.P.	0.40	294.40	12.44	297.00
+30			3.9	290.5
+50			5.6	288.8

GRIM



THORN

REDWOOD

Page 72.

	294.40			
3+00		7.2	287.2	
+20		8.5	285.9	
+30		7.9	286.5	
+55		10.1	284.3	
+70		10.1	284.3	
3+91.5 Sewer M.H. 7' W. of Line		<del>11.4</del> 16.5	2.77.9	Not on Main Line Flowline Sewer
4+00		12.1	282.3	
4+16.5 L 15' 15" L T.P. 1.00	283.38	12.02	282.38	on Hub
4+35		2.3	281.1	
4+60		4.4	279.0	
4+75		4.4	279.0	
5+00		6.2	277.2	
+35		7.4	276.0	
+60		8.9	274.5	
5+70 <sup>45</sup> 14' x 36" Pipe		11.2	272.1	Flowline

Pacific 60' wide  
 Ave 12' c/s  
 100' wide  
 12' c/s W of Mission

Pacific Ave X Sec  
 Mission Blvd West

9/24/30  
 20' c/s  
 For Hultse  
 Bayard & Pacific

B.M.	0.00	4.62	4.62
J.P.	3.84	1.93	1.93
120' E of E Line Mission Blvd			
= E. End 10' R. Curb Return			
N cl		3.44	-2.51
+1		3.8	-1.9
cl + 7 = Hedge Paving		3.50	-1.57
110' E of Mission Blvd			
= W end 10' R. curb Return			
N line Pacific		2.44	-1.51
+12 = cl		2.7	-1.8
cl + 7 = paving		3.54	-1.61
75' E. of Mission Blvd			
N		4.1	-2.2
cl		4.1	-2.2
+7 = Paving		3.74	-1.81
25' E of Mission Blvd			
N		4.9	-3.0
N cl		4.7	-2.8
+7 = Paving		3.77	-1.84
E Line Mission Blvd			
N		4.4	-2.5
N cl		4.5	-2.6
+4		3.7	-1.8
+8.5		3.68	-1.75

Mission Blvd  
 20' wide  
 10' c/s  
 15' 11/2

412

		1.93	
		E. cl.	
N		4.5	-2.6
cl		4.3	-2.4
+3		3.6	-1.7
+9.5 = Paving		3.52	-1.59
E 1/4			
N		3.5	-1.6
cl		3.3	-1.4
+14.5 = Paving		3.08	-1.15
4' W of E 1/4 = E. Rail of E Track no yardage			
N		3.04	-1.15 on Rail
E Mission Blvd			
N		3.8	-1.9
cl		3.5	-1.6
+22 = Paving		3.00	-1.1
11' W of E = N. Rail of W Track no yardage			
		3.03	-1.10
W. 1/4			
N		3.4	-1.5
cl		3.2	-1.3
+38 = Paving		3.10	-1.17

193

100.73' W. of

12' E. of

19' 11/4

original W. line of Mission Blvd

-5	51	-3.2	✓
N	51	-3.2	✓
cl	4.8	-2.9	✓
114	3.8	-1.9	✓
C	3.8	-1.9	✓
114	3.7	-1.8	✓
113	4.00	-2.07	✓ comparing
cl	4.10	-2.17	✓ " "
S	4.12	-2.19	✓ " "

original W. line of Mission Blvd

S	4.24	-2.31	✓ " "
cl	4.1	-2.2	✓
114	4.0	-2.1	✓
C	4.1	-2.2	✓
114	4.3	-2.4	✓
cl	4.7	-2.8	✓
N	4.9	-3.0	✓
15	5.0	-3.1	✓

10' W. of above section = New W. line

-5	4.2	-2.3	✓
N	4.3	-2.4	✓
cl	4.3	-2.4	✓
114	4.4	-2.5	✓
C	4.3	-2.4	✓
114	3.7	-1.8	✓

193

Pacific Ave

43  
53

cl	4.0	-2.1	✓
S	4.3	-2.4	✓
S	3.78	-1.85	ent cl
0400 = 10' W. of above = 20' W. of original W. line = New W. line of Mission Blvd			
S	3.6	-1.7	✓
14	4.2	-2.3	✓
cl	4.2	-2.3	✓
14	4.3	-2.4	✓
C	4.2	-2.3	✓
14	4.6	-2.7	✓
cl	4.4	-2.5	✓
N	4.6	-2.7	✓
15	4.5	-2.6	✓
25' W			
-5	4.4	-2.5	✓
N	4.4	-2.5	✓
cl	4.5	-2.6	✓
14	4.8	-2.9	✓
C	4.7	-2.8	✓
14	4.3	-2.4	✓
cl	4.5	-2.6	✓
18	4.0	-2.1	✓
S	3.3	-1.4	✓

1.93  
75' W

S	2.9	-1.0	✓
+6	3.7	-1.8	✓
el	3.8	-1.9	✓
114	4.0	-2.1	✓
C	4.3	-2.4	✓
114	4.1	-2.2	✓
el	3.6	-1.9	✓
N	3.8	-1.9	✓
+5	3.8	-1.9	✓

100' W

-5	2.9	-1.0	✓
N	2.9	-1.0	✓
el	2.6	-0.7	✓
114	2.6	-0.7	✓
C	3.5	-1.6	✓
114	3.8	-1.9	✓
el	3.6	-1.7	✓
+4	3.6	-1.7	✓
S	2.8	-0.9	✓

T.P. 8.45

8.81

1.97 -0.04

150' W

S	9.2	-0.4	✓
el	9.0	-0.2	✓
114	8.8	0.0	✓
C	8.5	0.3	✓
114	8.4	-0.4	✓

8.81

Pacific Ave 24

el	8.2	0.6	✓
N	8.1	0.7	✓
+5	8.1	0.7	✓
200' W			
-5	6.7	2.1	✓
N	6.4	2.2	✓
el	6.6	2.2	✓
114	7.0	1.8	✓
C	7.3	1.5	✓
114	7.3	1.5	✓
el	7.4	1.4	✓
S	7.4	1.4	✓

230' W = Elin - No 5 Alley thru BIK 389 (Paved)

S	5.77	3.04	✓ Paving
el	6.5	2.3	✓
114	6.6	2.2	✓
C	6.5	2.3	✓
114	6.3	2.5	✓
el	6.1	2.7	✓
N	5.4	3.0	✓

250' W = W. Line No 5 Paved Alley

N	5.3	3.5	✓
el	5.1	3.7	✓
114	6.1	2.7	✓
C	6.0	2.8	✓
N	5.8	3.0	✓

8.81  
250'W (con)

cl	6.0	-2.8 ✓
S	5.49	3.32 ✓ paving ✓
275'W		
S	5.1	3.7 ✓
cl	5.1	-3.7 ✓
114	5.6	3.2 ✓
e	5.5	3.3 ✓
114	5.7	3.1 ✓
+8	5.3	3.5 ✓
cl	3.9	4.9 ✓
N	4.0	4.8 ✓
300'W		
N	1.2	7.6 ✓
+8	1.5	7.3 ✓
cl	3.6	5.2 ✓
114	5.5	3.3 ✓
e	4.8	4.0 ✓
114	5.0	3.8 ✓
cl	4.6	4.2 ✓
S	4.3	4.5 ✓
310'W		
S	4.3	4.5 ✓
cl	4.5	4.2 ✓
114	4.7	4.1 ✓
e	4.7	4.1 ✓
+11	4.5	4.3 ✓

8.81

Pacific Ave

45  
45

114	5.5	3.3 ✓
+6	5.3	3.5 ✓
cl	2.5	6.3 ✓
N	2.5	6.3 ✓
325'W		
N	2.6	6.2 ✓
cl	1.2	7.6 ✓
+12	5.1	3.7 ✓
114	5.3	3.5 ✓
+8	1.4	7.4 ✓
e	4.1	4.7 ✓
114	4.2	4.6 ✓
cl	4.5	4.3 ✓
S	4.1	4.7 ✓
340'W		
S	3.9	4.9 ✓
cl	5.0	3.8 ✓
114	4.4	4.4 ✓
e	5.4	3.4 ✓
114	5.2	3.0 ✓
cl	6.3	2.5 ✓
N	6.4	2.4 ✓
350'W		
N-5	7.1	1.7 ✓
N	7.1	1.7 ✓
cl	7.0	1.8 ✓

8.81  
350 W. com

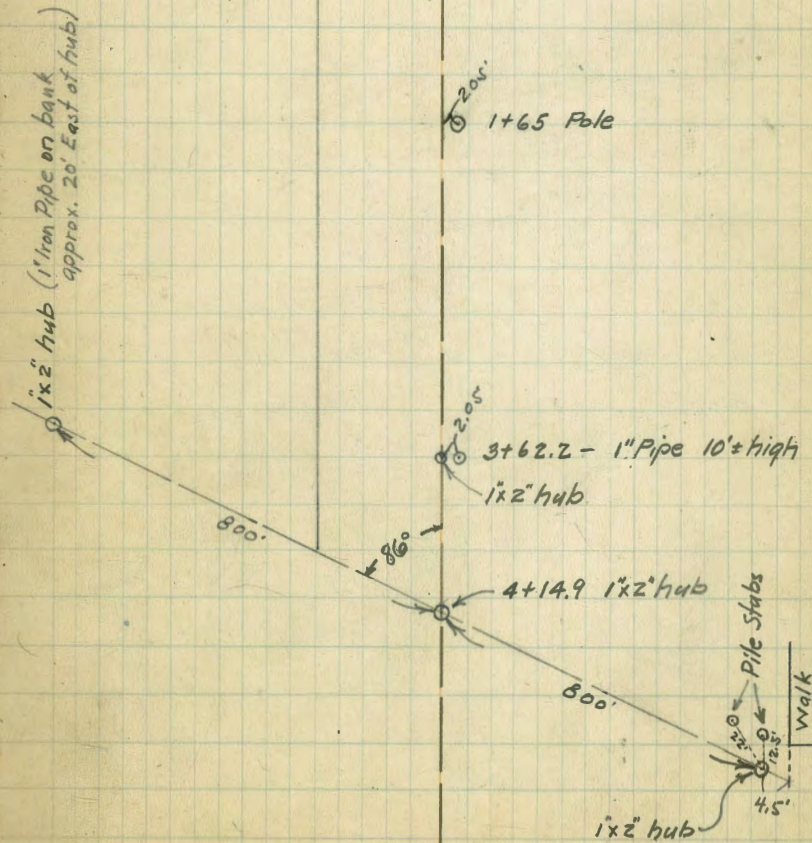
Pacific Ave

Allep } 11-4-26  
Hayler }

Survey of Base Line  
for soundings on  
Pacific Beach Outfall,  
on Pacific Ave.

14	6.7	2.1	✓
e	6.5	2.3	✓
14	6.0	2.8	✓
eb	6.0	2.8	✓
+8	4.2	4.6	✓
5	4.0	4.8	✓
365' W			
-5	7.0	1.8	✓
5	6.9	1.9	✓
eb	7.2	1.6	✓
14	7.4	1.4	✓
e	7.6	1.2	✓
14	7.7	1.1	✓
eb	7.7	1.1	✓
N	7.7	1.1	✓
+5	7.7	1.1	✓
376.82 W = W LIME Blk 389.			
-5	8.0	0.8	✓
N	8.0	0.8	✓
eb	7.9	1.0	✓
14	7.9	1.0	✓
e	7.9	1.0	✓
14	7.7	1.1	✓
eb	7.6	1.2	✓
5	7.7	1.1	✓
+5	7.6	1.2	✓

1x2" hub (1" Iron Pipe on bank  
approx. 20' East of hub)



46  
26



Levels on Pacific Ave for 11/8/26  
 Pacific Beach outfall Sewer  
 from W. of Line Mission Blvd 80' wide to ocean

47

BM.	0.00	4.62	4.62	Top Hydr. S.E. Bayard & Pacific
T.P.	7.04	6.44	5.82	-1.20
0+00 = W. of Mission Blvd.			8.3	-1.9 Sketch Page 46
0+50			9.1	-2.7
1+00			8.4	-2.4
+35			7.5	-1.1
+70			6.2	0.2
2+00			5.4	1.0
+50			4.6	1.8
3+00			3.1	3.3
+50			2.0	4.4
+67			2.3	4.1
4+00			5.2	1.2
4+14 <sup>20</sup> Hydr. T.P.	0.67	2.13	4.94	1.46
4+45			0.9	1.2
5+00			5.0	-2.9
+50			7.0	-4.9
6+00			8.6	-6.5
+50			9.4	-7.7
7+00			10.4	-8.7

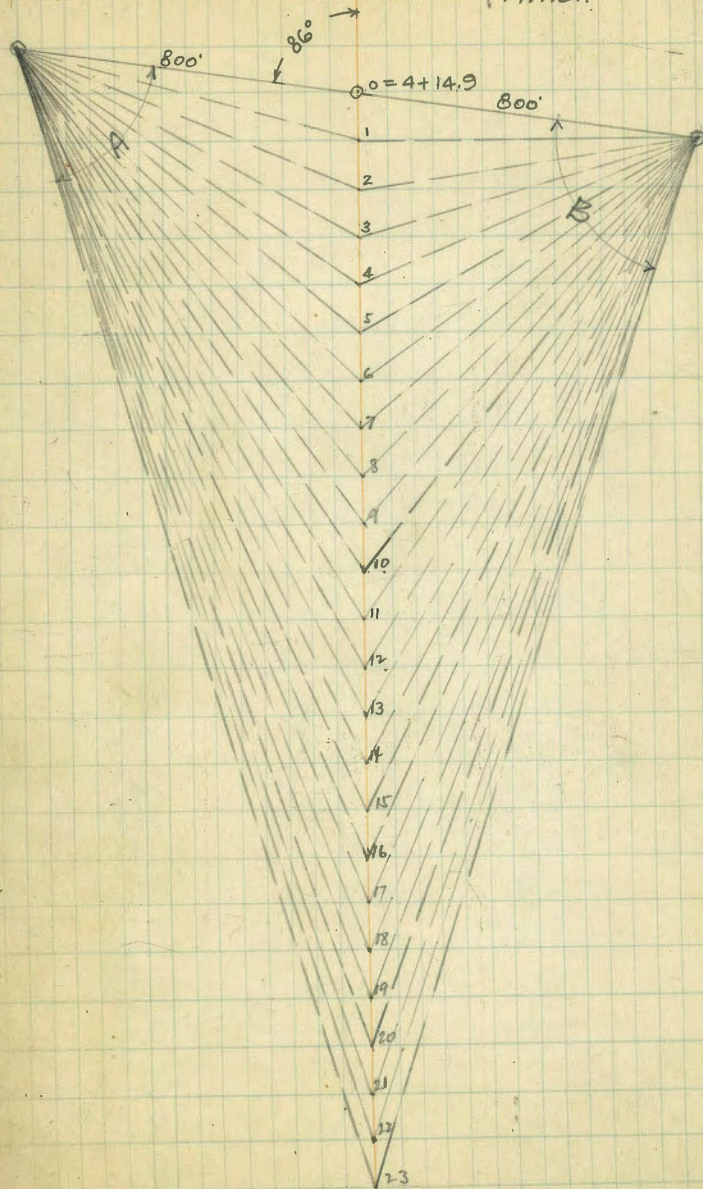
Pacific Beach Sewer Outfall on Pacific Ave

Soundings taken Nov. 8th 1926  
Tide was 6.0 at 10:00 A.M.

Allen  
Hayler  
Miller.

48  
48

Shot No	Angle "A" Allen	Angle "B" Hayler	Depth of Sounding Miller	Elevation City Datum	Station
0					4+14.9
1	9:40 AM 23°04'	24°57'	5.0'	-8.0	7+70
2	30°41'	33°37'	8.5'	-11.5	9+15
3	35°58'	39°33'	13.0'	-16.0	10+33
4	40°35'	45°07'	15.0'	-18.0	11+55
5	45°00'	50°09'	17.0'	-20.0	12+87
6	48°40'	54°22'	20.0'	-23.0	14+18
7	50°51'	57°00'	20.0	-23.0	15+08
8	53°27'	59°50'	21.0	-24.0	16+25
9	55°37'	62°04'	24.0	-27.0	17+33
10	57°45'	64°58'	26.0	-29.0	18+72
11	60°25'	67°48'	30.0	-33.0	20+56
12	61°51'	69°02'	30.5	-33.5	21+56
13	10:00 AM 63°04'	71°14'	32.0	-35.0	23+03
14	64°26'	72°14'	32.0	-35.0	24+21
15	66°17'	74°04'	35.0	-38.0	26+22
16	67°22'	75°50'	35.5	-38.5	28+05
17	68°58'	77°52'	39.0	-42.0	30+80
18	70°08'	78°41'	39.0	-42.0	32+68
19	72°08'	79°41'	41.5	-44.5	35+82
20	73°04'	80°35'	42.0	-45.0	38+00
21	73°26'	82°14'	45.0	-48.0	40+90
22	74°26'	82°52'	47.0	-50.0	43+83
23	10:30 AM 75°00'	83°26'	49.0	-52.0	45+82



Cross Section E 54  
From H.L. 31st on N Product So  
To 150' E of L.L. 005

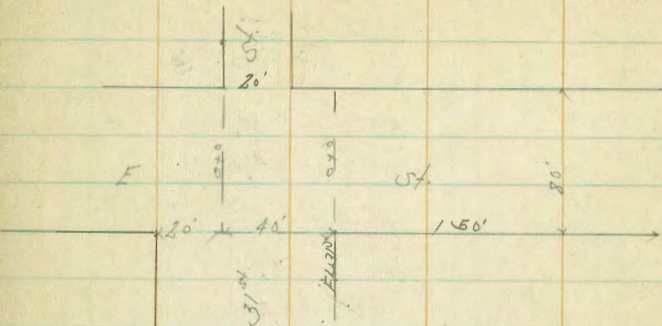
80' x 10' do  
20' Cb  
10' Gls

182.76

89 49  
55 26  
81 50  
81 50  
81 50

BM	2.51	190.14	187.63
TP	3.77	182.76	178.99

NW B.P.  
E. 30th St



	H.L. 31st on N Product So	182.76
S	42	178.6
cb	41	178.7
1/4	3.9	178.9
2	3.9	178.9
1/4	3.9	178.9
cb	3.4	179.4
Too cb	3.77	179.0
N	3.0	179.1
	10.5	
N	1.9	180.9
cb	3.5	179.3
1.5	4.0	178.8
1/4	3.8	179.0
2	3.3	179.5
1/4	3.7	179.1
cb	4.2	178.6
S	4.4	178.4

	20' E	182.8
S	4.4	178.4
cb	3.7	179.1
1/4	3.1	179.7
2	2.9	179.9
1.5	2.9	179.9
1/4	3.9	178.9
1.8	4.3	178.5
cb	2.8	180.0
1.2	2.1	180.7
N	1.5	181.3
	30' E	
N	1.6	181.2
1.5	2.1	180.7
cb	3.6	179.2
1.1	4.5	178.3
1/4	3.7	179.1
1.6	3.5	179.3
2	2.5	180.3
1/4	2.8	180.0
cb	3.5	179.3
S	5.0	177.8
on End Curb	4.70	178.1
	40' E - FL 21st St	
S	4.4	178.4
cb	2.7	180.1
1.2	2.3	180.5

18276

z	2.3	<del>182.8</del> 180.5
+5	2.5	180.3
1/4	3.5	179.3
+7	5.0	178.8
cb	9.1	178.7
+2	2.5	180.3
H	2.3	180.5

2'E of E.L. 31<sup>st</sup> St.

H	2.3	180.5
+18	2.5	180.3
cb	9.1	178.7
+3	5.0	177.8
1/4	3.5	179.3
+5	2.5	180.3
z	2.3	180.5
1/4	2.3	180.5
cb	2.7	180.1
S	3.1	179.7

29'E of E.L. 31<sup>st</sup> St.

S	3.0	179.8
cb	2.8	180.0
1/4	2.8	180.0
z	2.8	180.0
+5	2.9	179.9
1/4	4.3	178.5
cb	5.6	177.2
+7	3.3	179.5

18276

58

31 ~~182.8~~  
179.7

H	4.5	
H	6.3	176.5
+15	5.3	177.5
cb	6.3	176.5
+5	6.4	176.4
1/4	5.1	177.7

z	4.1	178.7
1/4	3.4	179.4
cb	3.3	179.5
S	3.3	179.5

6'E	6.5	176.3
S	6.9	176.1
cb	7.1	175.7
1/4	7.2	175.6
z	7.4	175.4
1/4	7.9	174.9
cb	11.3	171.5
H	12.4	170.4

+10	79'E	
-15	17.4	165.4
H	12.0	170.8
+13	12.5	169.3
cb	10.0	172.8
1/4	8.5	174.3
z	7.7	175.1

"Est" 150' EFL 31st

182.76

			<del>182.8</del>
1/4		81	174.7
Cb		8.5	174.3
+10		81	174.7
S		72	175.6
	89'E		
S		87	174.1
Cb		102	172.4
+5		114	171.4
1/4		111	171.7
Z		125	170.3
1/4		133	169.5
Cb		151	167.7
N		180	164.8
TP	3.69	125.9	170.17
			173.9
+20		115	167.4
	100'E		
-25		150	158.9
N		117	162.2
+10		97	164.2
Cb		90	164.9
1/4		72	166.7
Z		66	167.3
1/4		58	168.1
Cb		37	170.2
S		25	171.4
	120'E		
S		78	166.1

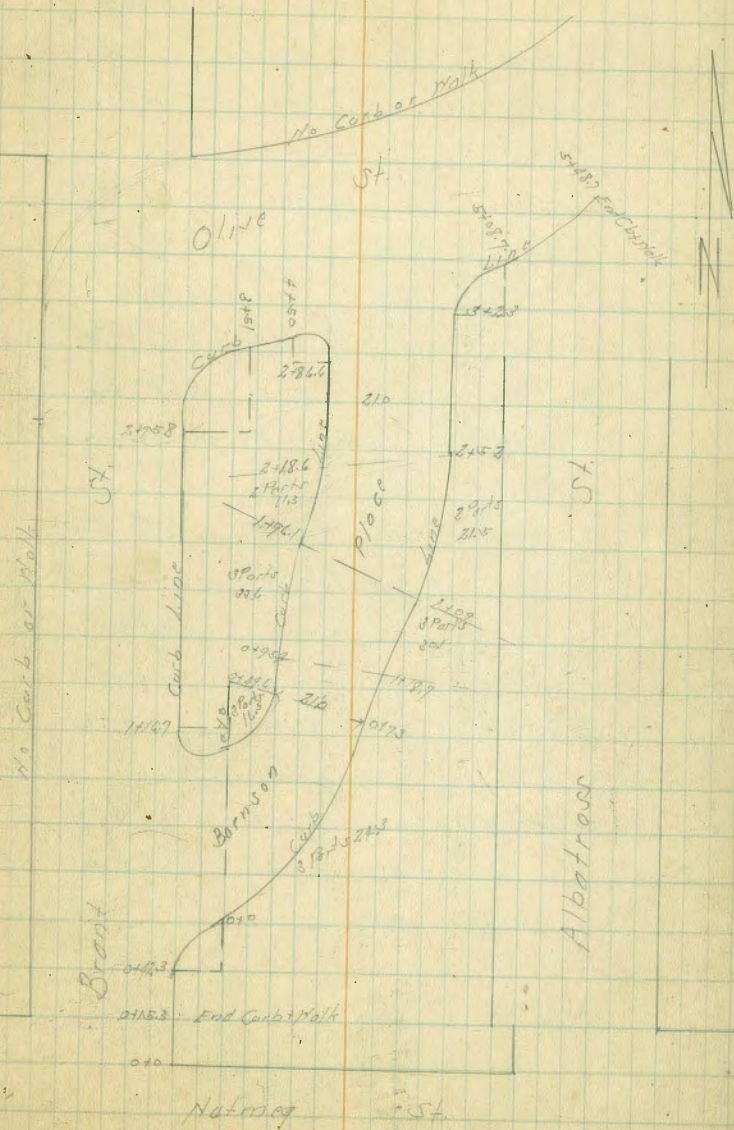
173.86

51'

Cb			9.4	173.2
1/4			10.5	164.5
Z			117	163.4
1/4			129	162.2
Cb			149	161.0
N			181	159.0
+30			22.5	155.8
				151.4
	135'E			
-35			28.2	145.7
N			32.8	151.1
TP	6.76	168.44	121.8	161.69
				168.4
Cb			12.5	155.9
1/4			12.8	155.6
Z			11.4	157.0
1/4			9.4	159.0
Cb			8.4	160.0
S			6.8	161.6
	150'E			
S			10.3	158.1
Cb			12.8	155.6
1/4			14.2	154.2
Z			15.3	153.1
1/4			16.8	151.6
Cb			18.6	149.8
N			21.7	146.7
+20			26.8	141.6

Top Curb Levels Brant & Olive St.  
Nutmeg to Albatross

BM	11.55	168.06		156.51	SE Top of wall Level of Brant
TP	12.03	179.77	0.32	167.74	
TP	11.90	191.47	0.20	179.57	
					0+15.3 = So. End Curb at Wall
E	Top Curb		5.68	185.85	
H	Ground		68	184.7	
					0+12.3 = PC S Side of Garrison Place
H	Ground		5.9	185.6	
E	Top Curb		5.25	186.22	
					1+16.7 = PC North Side of Garrison Pl.
E	Top Curb		4.69	186.78	
H	Ground		5.1	186.4	NE 3/4 Garrison Pl.
BM			4.8	186.77	
					1+5.0
H	Ground		4.7	186.8	
E	Top Curb		4.24	187.01	
					2+0
E	Top Curb		4.05	187.42	
H	Ground		4.8	187.2	
					2+5.0
H	Ground		4.0	187.5	
E	Top Curb		3.74	187.73	
					4+5.8 = P.C.
E	Top Curb		3.51	187.86	
H	Ground		3.8	187.7	



52  
53  
54  
55  
56  
57  
58  
59  
60  
61  
62  
63  
64  
65  
66  
67  
68  
69  
70  
71  
72  
73  
74  
75  
76  
77  
78  
79  
80  
81  
82  
83  
84  
85  
86  
87  
88  
89  
90  
91  
92  
93  
94  
95  
96  
97  
98  
99  
100

1947

		310		
W	Ground		27	188.8
E	Top Curb		2.68	188.79
TP	1728	20255	170	188.77
			3.251 = E.C.	
S	Top Curb		11.68	190.87
N	Ground		11.3	191.3
			1.10	
N	Ground		8.1	194.2
S	Top Curb		8.25	194.20
			4.1501 = P.C. N Side Branson Pl	
S	Top Curb		4.67	198.48
N			1.4	198.2
			5.1087 = P.H.C. E Side Branson Pl	
N	Ground		26	202.0
TP	349	20501	103	201.52
S	Top Curb		2.15	202.56
			5.1487 = End Curb on S of Olive	
S	Top Curb		1.53	203.43
N			1.4	203.6

Top Curb Levels Branson Place  
Brant to Olive

53

12526

BM		9.97	196.76	186.79	N.E. 39. Branson St
					0.20 = E.C. East of Brant
N	Top Curb			9.61	187.15
S	" "			9.90	186.86
				0.165 on N 0.213 on S	
S				9.52	187.24
N				9.38	187.38
				0.233 on N 0.286 on S	
N				9.05	187.74
S				9.26	187.70
				0.192 on N 0.223 SE E.C.	
SE				8.38	188.38
N				8.42	188.33
				0.1952 on N 1.187 on E - P.C.	
N				5.61	190.80
E				6.01	190.72
				1.120 on N 1.148 on E	
E				4.66	192.10
N				4.38	192.58
				1.4625 on N 1.479 on E	
N				2.84	193.92
E				3.32	193.44
				2.109 on E 1.796.1 on N = P.H.C.	
E				1.85	195.08
N				1.25	195.51

		196.76		
TP	815	209.07	0.53	195.93
		2107.09 N		
		2130.50 E		
N			8.00	196.07
E			8.05	196.02
		2142.07 E		
		2118.00 N - EC		
E			7.00	196.77
N			7.23	196.64
		2187.50 N		
		2158.60 N		
N			5.63	198.44
E			5.66	198.41
		3123.09 E - RCL		
		2186.60 N - RCL		South of Olive St.
E			3.60	200.47
N			4.18	199.88
				E.C. of S Olive
			1.50	202.57



Elevations + Location of Property  
 on South Side Palm St.  
 Bet. 1st St. + ALBATROSS St.  
 Locations are from E. Palm St.

227.64

N.E. B.P. Palm + 1st St.	0.56	248.85	-	248.29
T.P.	0.07	235.95	12.97	235.88
93' East of Front St. = E. Steps to House 14' wide	6.66	52' South	42.24	224.29
60' E. of Front St. = E. Garage 7' wide	50.5' South	9.7		226.2
T.P.	4.03	227.64	12.34	223.61
2' E. of Front = E. M.H. on Rim.			4.03	223.61

E. Front St. = 0+00

0+13 = E. Palm tree 27.8' South E.	5.7			221.9
0+17 = E. 1/2 mile walk 25' S. E.	6.5			221.1
+32 = E. Palm tree 28' S. E.	6.7			220.9
+50 = " " " " " "	7.6			220.0
+69 = " " " " " "	8.1			219.5
+80 = E. Garage 37.5' S of E. 13' wide	8.66			218.98 Con. Floor
+90 = E. Palm tree 29' S. E.	8.9			218.7
1+08 = E. Steps to House 45' Back	8.42			219.22
1+09 = E. Palm tree 28.5' S. E.	9.3			218.3
1+31 = E. " " " " " "	9.9			217.7
1+33 = E. Ribbon of Driveway 25' S. E.	10.30			217.34
1+38 = " " " " " "	10.30			217.34
1+42 = East edge of ble. Garage 35.8' South E.	10.00			217.64
1+58 = West " " " " " "	10.11			217.53
1+58 = E. Palm tree 29' S. E.	10.2			217.4
1+80 = " " " 30' S. E.	10.7			216.9
2+06 = " " " 30.5' S. E.	11.6			216.0
2+30 = " " " 31' S. E.	12.2			215.4

chk. on B.M. of Mon. Palm + Albatross 12.95 214.69

Location of Existing <sup>Side</sup> Walk on Front St.

Bet. Palm + Quince Sts. Location from E.  
 115' North of E. Palm St. = South end Walk on East.

20' E. of E. = cb.	8.92			218.72
23' E. of E. = West edge walk				
28' E. " " = East " "				

T.P. 0.66 216.60 11.70 215.94

26.5' North of Palm St. = North end walk on East

top cb. 8.48 207.12

chk. on B.M. of Mon. Palm + Albatross 1.90 214.70

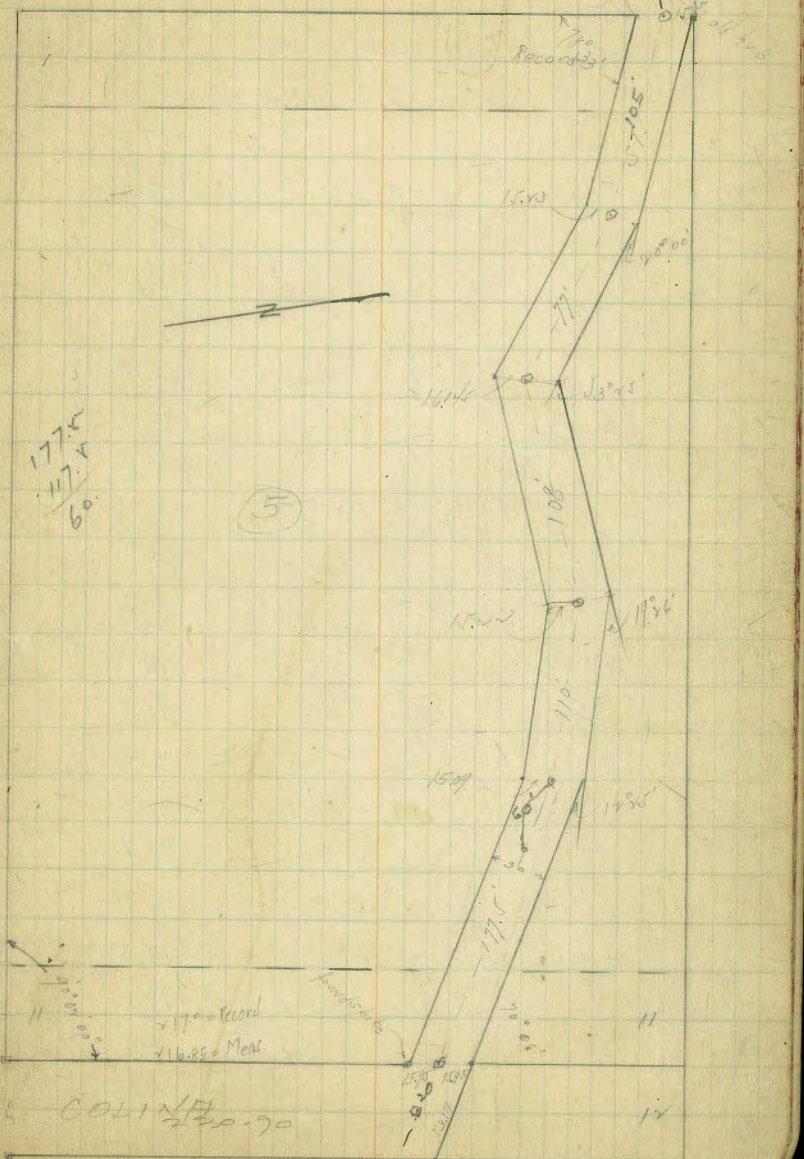
Cross Section of  
 COLINA Lt. Martinet STS=20' wide  
 Golden Park T.T. LOMIT

cap back of NE corner of plot	958	100.77	191.19
Nk of Recor	200.8		
E	9.6		191.2
cb top corner of gutter	7.6		193.13
" " " "	7.30		194.5
" " " "	7.65		193.7
" " " "	7.3		193.5
" " " "	7.16		193.6
cb " " "	7.2		193.6
st gutter " " "	7.30		193.5
top of ab	6.70		194.07
w/	5.6		195.2
0.404			
w/	4.0		196.8
cb	6.1		194.7
1/4	6.9		193.9
c	7.0		193.8
1/4	7.4		193.4
cb	8.2		194.4
E	9.6		191.2
4.15			
-1.0	12.9		197.9
E	11.3		189.5
cb	9.6		191.2
"	8.1		194.7
c	10.4		195.4

BANGOR

Direction of Plot to  
 bottom of Plot - 50° 35' LT

Rice (Harbor View)



COLINA  
 220.70

230.65 HEAD  
 220.80 MAP

12

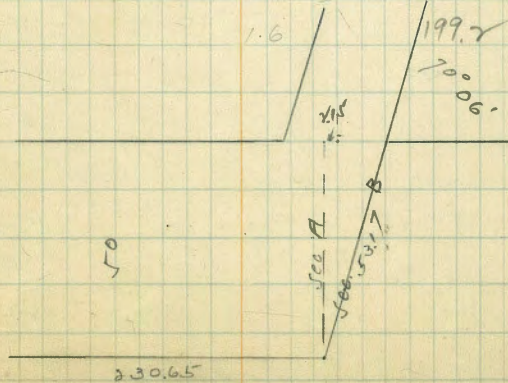
20077

		2008	
1/4		5.2	195.6
ob		4.8	196.0
w		4.2	196.6
	0+50		
w		3.2	197.6
+2		4.7	196.1
ob		4.9	195.9
1/2		5.0	195.8
c		5.3	195.5
1/5		8.0	191.9
ob		10.7	190.1
E		22.2	188.6
+10		13.9	186.9
	0+75		
-10		13.1	186.7
E		11.2	189.6
ob		9.1	191.7
1/4		7.6	193.2
c		5.4	195.2
1/4		4.9	195.9
ob		4.9	195.9
+7		5.1	195.7
w		1.6	199.2
	1+00		
w		0.6	200.2
+3		5.2	195.6

20077

Colina 577

		2008	
ob		5.3	195.5
1/4		5.0	195.8
c		5.0	195.8
+4		5.0	195.8
1/4		6.2	194.4
ob		7.7	193.1
E		9.8	191.0
+10		12.2	188.6
	1+25		
+10		12.3	188.5
E		10.7	190.1
ob		9.0	191.8
1/4		7.3	193.5
+3		6.3	194.5
c		6.1	194.7
1/4		6.0	194.8
ob		6.3	194.5
+8		5.9	194.9
w		1.6	199.2



200.77

1450

		<del>200.8</del>
w/	5.4	195.6
+7	7.4	193.4
cb	7.6	193.2
1/4	9.4	193.4
c	7.5	193.3
+3	7.8	193.0
1/4	8.9	191.9
cb	10.7	190.1
E	12.6	188.2
+10	14.5	186.3

1475

+10	16.9	183.9
E	14.9	185.9
cb	12.8	188.0
+2	12.1	188.7
1/4	9.3	191.5
c	9.0	191.8
1/4	8.9	191.9
cb	9.4	191.6
+6	9.6	191.2
w/	5.5	195.3

200

w/	6.5	194.3
+1	6.7	194.1
+4	11.1	189.7
cb	10.8	190.0

200.77

Colony

585

		<del>200.8</del>
1/4	10.2	190.5
c	10.2	190.6
1/4	10.6	190.2
cb	13.8	187.0
E	16.4	184.4
+10	18.7	182.1

2 + 16.85 = 54 of 30' Road

+2	22.3	178.5
E	18.9	181.9
cb	15.2	185.6
1/4	12.1	188.7
+3	11.1	189.7
c	11.0	189.8
1/4	11.3	189.5
cb	11.9	188.9
+6	14.5	188.3
+8	8.2	192.6
w/	8.0	192.8

2 + 1.73

w/	8.7	192.1
+1	12.2	187.6
cb	14.3	188.5
1/4	11.5	189.3
+3	11.3	189.5
c	11.3	189.5
TR	6.5	192.20
	12.7	182.05

194.20

			194.2
1/4		7.0	187.2
cb		10.2	184.0
E		13.7	180.5
+15		20.1	174.1
	2+25		
-15		21.3	172.9
E		14.3	179.9
cb		10.3	183.9
1/4		7.5	186.7
+5		4.8	189.4
C		4.9	189.3
1/4		5.0	189.2
cb		5.7	188.5
W		7.0	187.2
	2+30.65 = Sec A	See Page 57	
W		7.0	187.2
cb		5.7	188.5
1/4		5.1	189.1
C		5.2	189.0
1/4		9.5	185.0
cb		12.1	182.1
E		15.2	178.8
+15		22.1	172.1
	Sec B		
W		15.4	178.8
cb		12.6	181.6

194.20

589

			194.2
1/4		10.3	183.9
C		8.3	185.9
1/4		6.8	187.4
cb		6.1	188.1
W		6.5	187.4
	10' <sup>or more</sup> out from last section and back		
W		10.2	183.8
cb		9.9	184.3
1/4		10.3	183.9
C		11.2	183.0
1/4		12.6	181.6
cb		14.2	179.8
E		15.1	176.1
+15		23.3	170.9
	W.L. Colina to south = 200' on angle line <sup>point</sup> <sub>at 20'</sub>		
-15		12.9	181.3
W		8.5	187.4
C		7.0	187.2
+7		7.0	187.2
+8		2.0	191.2
S = +15.2'		1.2	192.8
	2+25		
S		0.1	194.1
+9		3.0	191.2
+10		8.2	186.0
C		8.4	185.8

19420

		8.5	194.2
n/		8.5	185.8
+15		18.1	176.1
	0+50		
-20		23.5	170.8
n/		12.0	184.2
+2		10.1	184.1
c		10.1	184.1
+5		10.3	183.9
s		0.2	193.9
	0+75		
s		1.3	192.9
+9		11.6	182.6
c		11.6	182.6
+12		11.5	182.7
n/		12.6	179.6
+15		22.7	169.5
	1+00		
-15		26.4	167.8
n/		11.6	178.0
+4		12.9	181.3
c		13.2	181.0
+7		12.5	180.9
s		12.4	191.8
	1+25		
s		5.7	188.5
+5		9.6	184.6

19430

Colonia 80

		183.13	13.08	181.1
7.0	2.0	183.13	13.08	181.1
5.2			4.0	179.1
3			3.0	180.1
+9			3.1	180.0
1			7.4	174.2
+15			14.6	168.5
	4.50			
-2.5			17.2	163.9
1			10.1	172.0
28			4.1	179.0
1			5.2	178.8
+12			4.9	178.2
s			44.2	187.3
	1+77.5 = 12°-5'		17	
s bottom bank			5.5	177.6
2			5.0	177.8
+5			5.1	178.0
n/			10.3	172.8
+15			15.8	167.3
	2+00			
-15			24.0	159.1
n/			6.1	167.0
+13			6.3	176.8
c			6.2	176.9
	bottom bank		6.3	176.8

183.13

		<u>183.1</u>
S bottom bank	7.0	176.1
C	6.8	176.3
+1	6.9	176.4
N	16.6	166.5
+1.5	26.1	157.0
	2+50	
-1.5	26.1	156.7
N	17.7	165.4
+1.3	7.3	175.8
C	7.3	175.8
S bottom bank	7.7	175.4
	2+70	
S bottom bank	8.2	174.9
C	7.7	175.4
+1	7.9	175.4
N	18.1	165.0
+1.5	26.1	157.0
	2+87.5 = 4 19' 26" 1.5	
-1.5	28.1	155.0
N	20.2	163.9
C	8.2	174.9
S	8.6	174.5
+3 bottom bank	8.6	174.5
	3+00	
S	8.7	174.2
C	8.4	174.7

183.13

Coring 61

		<u>183.1</u>
C +1	18.4	174.7
C +1.5 = N	18.8	164.3
+1.5	27.8	155.3
	3+25	
-1.5	28.1	155.0
N	19.2	164.9
+1.1	2.5	173.7
C	7.1	173.7
S bottom bank	7.7	173.4
	3+50	
S bottom bank	11.5	171.6
C	11.1	172.0
+1	11.3	172.8
N	20.5	162.6
+1.5	29.1	154.0
7.5 179 173.00	11.7	171.2
	3+75	
-1.5	21.1	151.9
N	13.2	159.2
+1.0	3.9	169.1
C	4.1	168.9
S bottom bank	3.5	169.5
	3+95.5 = 4 43' 25" 1.5	
S	3.8	171.2
+1	4.2	168.8
+1.5	5.7	167.3

173.00

173.0

C			5.6	167.4
+8			6.0	167.0
N			11.6	161.4
+15			20.2	151.7
	1/125			
-15			23.5	149.5
N			17.3	155.7
+12			8.0	165.0
C			7.9	165.1
+11	bottom bank		8.2	164.9
S			6.2	166.8
	1/50			
S			9.1	163.9
+3			9.8	163.2
C			9.6	163.4
N			19.6	153.4
+15			25.2	147.8
	S + 77.5 = S 20° 00' 17"			
-15			23.8	149.2
N			18.9	154.1
C			11.5	161.6
S	bottom bank		11.6	161.4
T.P.	160	161.67	12.93	160.07
	5+00			161.7
S			0.0	161.7
+2	bottom bank		3.5	158.2

161.67

columns

62

161.7

C			2.5	159.3
+3			2.6	159.1
N			9.6	154.1
+15			13.8	147.9
	5+25			
-15			15.0	146.7
N			9.6	152.1
+9			4.8	156.7
C			4.9	156.8
+13	bottom bank		5.8	155.9
S			1.0	160.7
	5+50			
S			4.8	156.9
+3			8.1	153.6
C			7.1	154.6
+8			7.0	154.7
N			11.8	149.9
+15			17.7	144.0
	S + 77.5 = A at EL Baidger 20° 35' 17" direction of flow			
-15			19.8	141.9
N			14.1	147.3
+8			9.5	152.2
C			9.4	152.3
+12			10.3	151.4
S			8.6	153.1
T.P.	320	155.40	9.59	152.28
	at hub			



Colours

155.40

4 1/2 Road  
6477.5 bottom of road

10.7 144.7

TP

~~12.26~~  
~~10.20~~  
~~0.08~~  
~~14.75~~  
~~13.00~~  
~~15.75~~ or ~~15.00~~  
~~0.11~~  
~~15.761~~ = \*  
~~12.22~~  
~~116.04~~  
~~0.04~~  
~~11.25~~  
~~11.25~~  
~~10.50~~  
~~1.05~~  
~~106.09~~  
~~13.14~~  
~~7.90~~  
~~0.72~~  
~~93.64~~  
~~11.54~~  
~~0.00~~  
~~0.00~~  
~~8.26~~  
~~1.20~~  
~~69.76~~  
~~5.05~~  
~~69.51~~  
~~12.87~~  
~~76.62~~  
~~0.53~~  
~~79.15~~  
~~12.50~~  
~~64.65~~  
~~0.70~~  
~~7.35~~  
~~11.44~~  
~~33.71~~  
~~1.81~~  
~~31.90~~  
~~7.64~~  
~~28.08~~

28.08 Nulap Restaurant + Dueseger

Location & Levels on Existing Sewer  
in Barnson Place from Brant to Olive

2-19-27

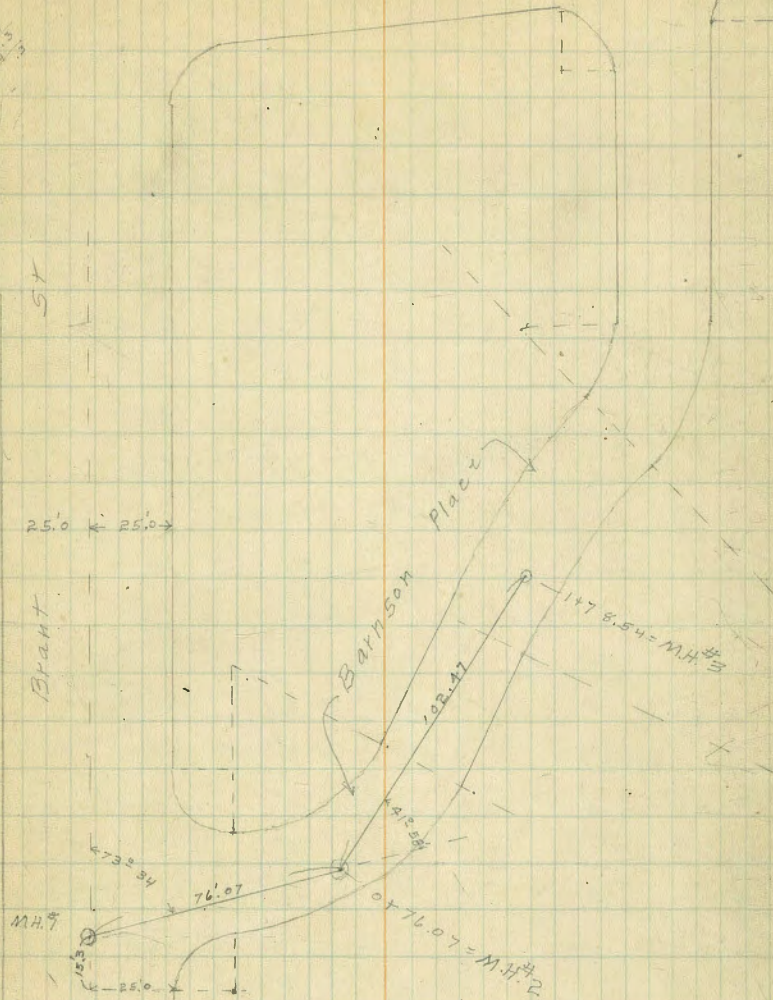
OLIVE

ST

6464

B.M.	7.01	193.80	186.79	N.E. Brant & Barnson
M.H. at Brant + 0.30				
00 = N. of Blinn Barnson = M.H. #1	7.75	186.05	186.05	Top M.H.
" " " " "	11.79	182.09	182.09	F.L. M.H.
0+76.07 = M.H. #2	6.74	187.06	187.06	Top M.H.
" " " " M.H. #2	10.44	183.36	183.36	F.L. M.H.
1+78.54 = M.H. #3	2.24	191.54	191.54	Top M.H.
" " " " = M.H. #3	5.55	188.35	188.35	F.L. M.H.

76.07  
102.47  
178.54





1/3.48 ✓

5 + 48	13.8	29.7	✓	✓
+58	11.7	32.1	✓	✓
+67	9.1	34.4	✓	✓
+74	11.0	32.5	✓	✓
+82	7.4	36.3	✓	✓
+93	7.8	35.7	✓	✓
6 + 00	14.0	29.5	✓	✓
+07	19.1	24.4	✓	✓
+33	25.0	18.5	0	✓
+40	20.1	23.4	✓	✓
+70	13.9	29.6	✓	✓
+85	12.9	30.6	✓	✓
+88	20.8	22.7	✓	✓
7 + 00	29.1	14.4	✓	✓
+07	29.1	14.4	0	✓
+11	24.1	21.4	✓	✓
+50	6.5	37.0	✓	✓
7 + 66.3 P. 150	5.28	38.70	✓	✓
8 + 00	1.7	38.0	✓	✓
+15	2.8	36.9	✓	✓
+50	8.8	30.9	✓	✓
+90	6.9	32.8	✓	✓
9 + 00	7.3	32.4	✓	✓
+19	13.0	26.7	✓	✓
+37	20.2	19.3	✓	✓
+44	29.8	9.9	✓	✓

39.70 ✓

60

9 + 50 Bottom west	31.1	8.6	0	✓
+56	30.2	9.5	✓	✓
+60	22.4	17.3	✓	✓
+60 3' E	27.4	12.1	✓	✓
+81	11.6	28.1	✓	✓
+83	16.6	23.1	✓	✓
+94	9.9	29.8	✓	✓
10 + 00	5.0	34.7	✓	✓
+18	1.0	38.7	✓	✓
7.P. <sup>10 bands</sup> 12.40	50.32	37.92	10 + 40.7	
10 + 40.7	10.0	40.3	✓	567W of curb
+50	9.3	41.0	✓	
11 + 00	6.0	44.3	✓	
+50	5.4	45.9	✓	
+50	4.8	45.5	✓	
+72	3.9	46.4	✓	
12 + 00	4.3	46.0	✓	
12 + 34	3.3	47.0	✓	
567 E Top curb = 4.67	4.38	45.94	✓	
+50	2.7	47.6	✓	
+70	1.3	49.0	✓	
12 + 88.10 on hub 2 AT	2.44	47.90	✓	
7.P. 0.41	48.31	47.90	✓	

Levels for Sabine tank site  
Loring St + Ocean Blvd

4831

367 m 2891 = 00

25 ✓	0.8	47.5 ✓
♀ on bus	0.41	47.90 ✓
25 ✓	+0.2	48.1 ✓
0+10		
25 ✓	1.1	47.2 ✓
♀	1.0	47.3 ✓
25 ✓	0.0	48.3 ✓
0+15		
25 ✓	2.2	46.1 ✓
♀	3.0	45.3 ✓
25 ✓	0.0	48.3 ✓
0+20		
25 ✓	0.0	48.3 ✓
15 ✓	4.6	43.7 ✓
♀	7.5	40.8 ✓
15 ✓	9.0	39.3 ✓
25 ✓	2.5	45.8 ✓
0+30		
25 ✓	1.6	46.7 ✓
19 ✓	2.5	45.8 ✓
16 ✓	9.2	39.1 ✓
12 ✓	13.0	35.3 ✓
♀	9.8	38.5 ✓
10 ✓	7.8	40.5 ✓

4837

67

16 ✓	4.0	44.3 ✓
25 ✓	0.4	47.9 ✓
0+35		
25 ✓	0.1	48.2 ✓
15 ✓	2.1	46.2 ✓
13 ✓	6.8	41.5 ✓
7 ✓	11.5	36.8 ✓
♀	12.0	36.3 ✓
6 ✓	12.0	36.3 ✓
11 ✓	12.2	34.1 ✓
16 ✓	10.0	38.3 ✓
18 ✓	2.0	46.3 ✓
25 ✓	1.5	46.8 ✓
0+45		
25 ✓	1.6	46.7 ✓
20 ✓	1.6	46.7 ✓
18 ✓	12.6	35.7 ✓
10 ✓	16.8	31.5 ✓
4 ✓	15.7	32.6 ✓
♀	17.2	31.1 ✓
4 ✓	19.2	29.1 ✓
12 ✓	15.0	33.3 ✓
11 ✓	3.0	45.3 ✓
25 ✓	1.7	46.6 ✓
0+50		
25 ✓	2.2	46.1 ✓

23 S		2.9	45.4 ✓
20 S		12.1	36.2 ✓
10 S		19.2	28.9 ✓
5 S		23.1	25.2 ✓
♀		22.5	25.8 ✓
4 N		25.5	22.8 ✓
5 N		20.1	28.2 ✓
7 N		17.1	31.2 ✓
13 N		18.0	30.3 ✓
25 N		13.1	35.2 ✓
T.P.	021	<35.76> 12.76	<35.55> ✓
	0255	⊕	
25 N		3.4	32.4 ✓
17 N		6.9	28.9 ✓
10 N		10.1	25.7 ✓
♀		9.0	26.8 ✓
3 S		13.9	21.9 ✓
5 S		13.6	22.2 ✓
17 S		21.5	31.3 ✓
25 S		3.0	32.8 ✓
	0260	⊕	
25 S		7.3	28.5 ✓
16 S		10.6	25.2 ✓
11 S		10.2	25.6 ✓
7 S		16.1	19.7 ✓
4 S		16.0	19.8 ✓

♀	⊕	11.2	24.4 ✓
7 N		14.1	21.7 ✓
12 N		10.3	25.5 ✓
25 N		11.2	24.4 ✓
T.P.	1.96	<4.71> 13.01	<4.75> ✓
	0265	⊕	
25 N		4.5	20.2 ✓
♀		7.2	17.5 ✓
7 S		9.6	15.1 ✓
16 S		7.2	17.3 ✓
25 S		2.3	22.4 ✓
	0275	⊕	
25 S		11.9	12.8 ✓
17 S		12.0	12.7 ✓
11 S		15.1	9.6 ✓
♀		13.1	11.6 ✓
25 N		10.7	14.0 ✓
T.P.	0.6	<13.02> 12.51	<12.40> ✓
	0285	⊕	
25 N		4.5	8.5 ✓
♀		5.2	7.8 ✓
14 S		6.9	6.1 ✓
25 S		4.6	8.4 ✓
	0293	= High water mark	⊗
25 S	15	10.6	2.4 ✓
♀		10.9	2.1 ✓
25 N		10.7	2.3 ✓

13.07

1 + 10.60 = Hub = Base line

25 N	13.0	0.04 ✓
4	14.25	- 1.23 ✓
25 S	13.6	- 0.58 ✓
Set Hub at 0+90	8.44	+ 4.60 ✓

Base line Hub = 0+00 Cobble stone beach

0+00	0.21	4.81 ✓	4.60 ✓
25	6.0 ✓	- 1.23 ✓	
45	11.0	- 6.19 ✓	
1	12.5	- 7.69 ✓	
+ 50 Cobble stone Bottom	14.2	- 9.4 ✓	

Moore, Inst  
Hayler, Rec 7-13-27

B.M. 0.64 5.24 ✓ + 4.60 Hub at Sta 0+90  
 10.9 - 5.66 Surface of water 9:45 A.M.

C. Moore Inst.  
Hayler Rec.

7/13/27

78

Loring St Outfall - Soundings

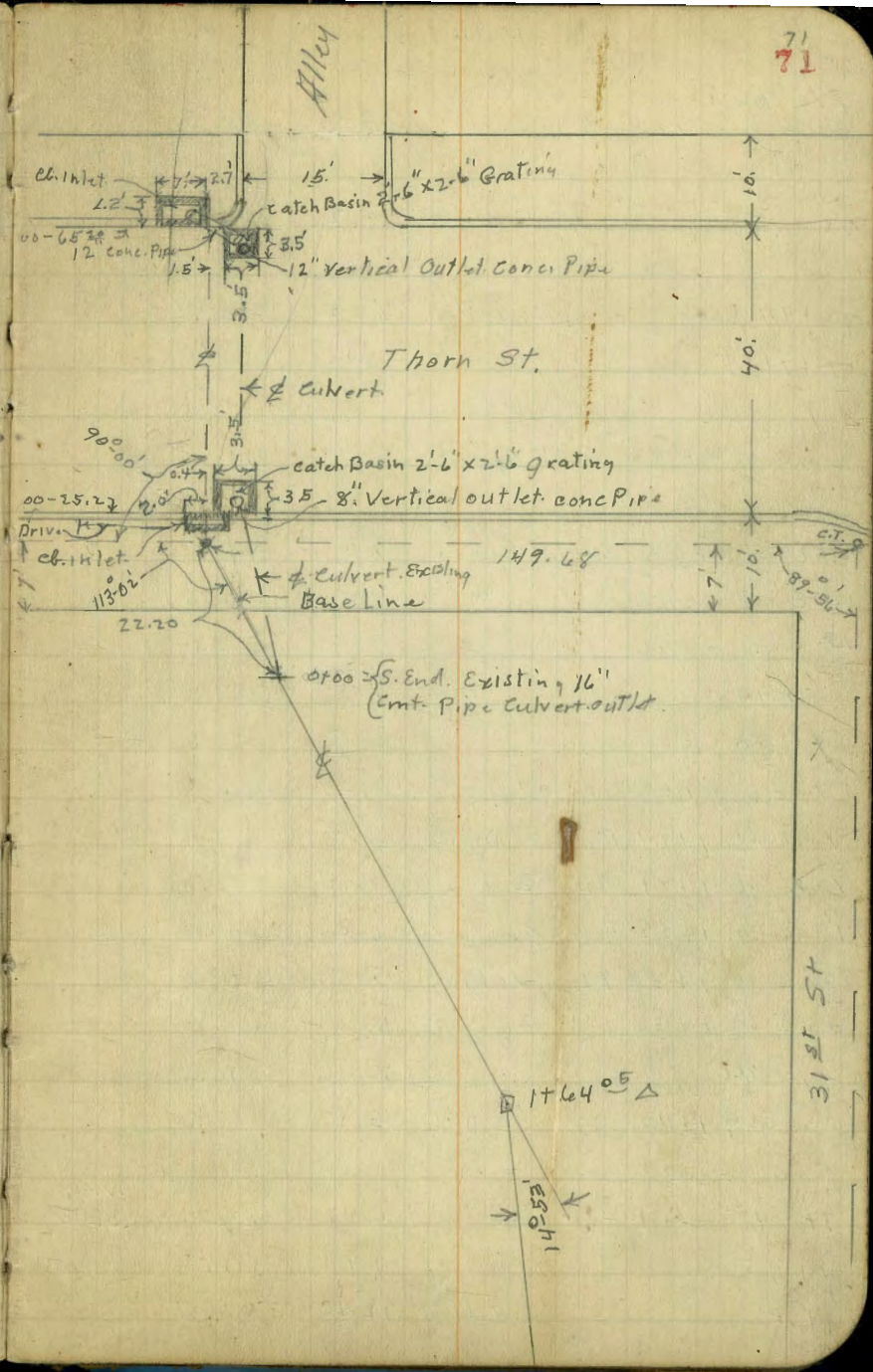
Walbrecht - Soundings

Transit at F.S. on	South Hub 0+00	Hub of Base Line 76 from 13 Base Line. 0+00	North Hub Inst #2	Rissell McCarty	Soundings	
#1	53°54'	7+14	56°07		10.0 = -15.7	9:51 A.M.
#2	59°30'	8+09	57°03		13 = -18.7	
#3	61°20'	9+17	61°27		14 = -19.7	
#4	64°15'	10+38	64°17'		15 = -20.7	
#5	66°31'	11+27	65-39		16 = -21.7	9:56 AM
#6	67°00'	11+88	67-19		17 = -22.7	
#7	68°37'	12+82	68-43		18 = -23.7	
#8	69°44'	13+62	69-54		19 = -24.7	
#9	71°20'	14+43	70-24		20 = -25.7	
#10	72°24'	15+59	71-57		21 = -26.7	10:02 A.M.
#11	73°09'	16+05	72-14		22 = -27.7	
#12	73°13'	17+10	74-10		23 = -28.7	
#13	73°40'	18+03	75-21		24 = -29.7	
#14	73°45'	18+54	76-03		25 = -30.7	10:07 AM



Mull.  
Walk  
B.L.

B.M. B.P.	0.98	319.96	318.98	N.W. 31st + Thorn
0+00 - 65.20 = N. ch Line Thorn	5.90	314.06	314.06	gutter Pav
" " " " " "	5.11	314.85	314.85	Top. cmt. ch
0.5' W of 4' outlet of ch. inlet. }	7.35	312.61		
3.2' East of 0+00-63 = Catch Basin	8.4	311.6	311.6	Bottom
" " " " " "	14.4	305.6	305.6	FL. Pipe
2.15 East of 0+00-26 = " "	8.4	311.6	311.6	Bottom
" " " " " "	13.9	306.1	306.1	FL. Pipe
0+00-25.3 gutter pav	6.42	313.54	313.54	
" " " " " "	6.54	313.42	313.42	
00-22.2 = Δ on s. 7' Line Thorn	5.43	314.53	314.53	
00-17.2 = s. edge Walk	5.38	314.58	314.58	
00-14.	5.6	314.4	314.4	
00-5'	7.5	312.5	312.5	
0+00 S. end. 16" pipe	13.4	306.2	306.2	F.L.
0+1.6	13.8	306.2	306.2	
3.5 W. of 0+16. = N.H.	22.41	307.55	307.55	Top
" " " " " "	23.0	297.0	297.0	F.L.
T.P.	4.31	319.14	314.83	
0+30 in ditch	13.1	306.0	306.0	
0+37	12.2	306.9	306.9	
0.5' West of 0+57 large Avacado Tree Trunk 8" Diam	12.0	307.1	307.1	
10.5 East of 0+61 large Avacado Tree Trunk 6" Diam	12.0	307.1	307.1	



3.19.14

9' West of 0+62 Large Avocado Tree 6" Diam	11.6	307.5
4' East of 0+67 Avocado Tree 4" Diam	12.2	306.9
0+74 Base of cobble wall	12.2	306.9
0+76 Top. " "	8.2	310.9
2' W. of 0+80 small Apricot	8.0	311.1
10.5 E. of 0+85 small Peach	8.0	311.1
2.5 E. of 0+90 " "	8.0	311.1
15' E. of 0+96 " "	8.0	311.1
0+94	7.8	311.3
1+00	6.5	312.6
1' E. of 1+04 small Fig	6.4	312.7
1' E. of 1+14 Peach 3" Diam	6.2	312.9
7' W. of 1+27 Plum 2" "	6.4	312.7
1' E. of 1+22 Peach 3" "	6.0	313.1
6' E. of 1+30 Plum 1" Diam	5.5	313.6
3.5 W. of 1+30 " 2" "	6.0	313.1
1+40	5.9	313.2
2.5' E. of 1+40 orange 2" Diam.	5.5	313.6
1+64 <sup>05</sup> Δ 14-53 Rt.	6.43	312.71
1+95	7.9	311.2
T.P. 0.16 307.17	12.13	307.01

New.  
BT46

Grim St.

c.t.  
2+70.75

Stub  
New.

Stub  
New.

279.76'

Redwood St

14-53

15-15

7'

90-07

H116

46.39  
42.45

New Inlet Ex. 36" Cent. Pipe Culvert  
31 St.

5+70.4

72

307.17

73  
73

2+26			15.5	291.7		3+01.75
T.P.	0.91	295.74	12.34	294.83		
2+50			5.2	290.5		3+25.75
2+63			6.8	288.9		3+38.75
3+00			7.9	287.8		3+75.75
3+25			9.4	286.3		4+00.75
3+50			10.6	285.1		4+25.75
3+65			11.5	284.2		4+40.75
4+00			12.6	283.1	Wash	4+75.75
4+16 <sup>TP</sup>					New	
4+16 <sup>TP</sup> ASERT	8.04	291.19	12.59	283.15	slab	4+91.80
4+32			7.9	283.3	Not Wash	5+07.75
4+46			6.1	285.1	" "	5+21.75
4+58			7.4	283.8	" "	5+33.75
7 E. of 4+58			9.1	282.1	1 h. wash	5+33.75
4+70			9.9	281.3		5+45.75
4+85			10.9	280.3	Wash	5+60.75
5+00			11.8	279.4		5+75.75
5+16			12.5	278.7		5+91.75
5+29			13.2	278.0		6+04.75
5+35			14.6	276.6		6+10.75
5+55			17.3	273.9		6+30.75
5+68			18.0	273.2		6+43.75
						6+46.35 Exp Pipe

Proposed Drain  
 BIK 7. Frary Hts (change)

5-20-36  
 Miller  
 Bliss  
 [On year! GRH]

74  
 74

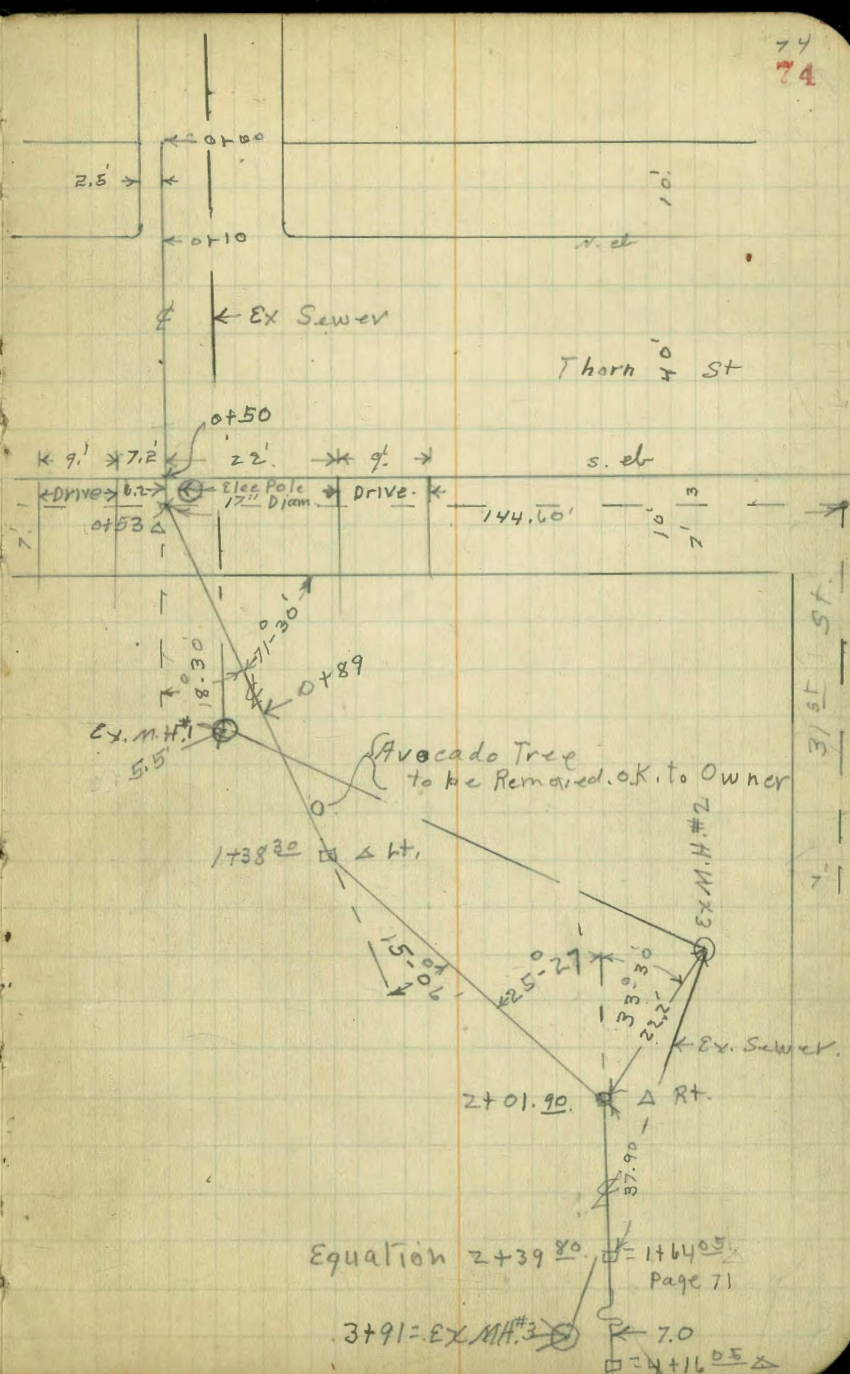
This line only Hits one Tree.

T.P. Page 71 4.28 319.61 314.83

0+00	{ 2.5 E. of W. Alley Ret. Pav. (N) Line Thorn	4.77	314.84
0+10	ch. line "	5.48	314.13
+30	E	5.00	314.61
+50	= s. of line gutter	5.93	313.68
+56	s. of "	5.24	314.37
+53	Δ 18-30 Lt	5.21	314.40
+60+	= s. Line	5.5	314.1
+71		7.8	311.8
+73		11.5	308.1
+89		13.0	306.6
5.5 Rt. of 0+89 = M.H.		12.1	307.5 ✓ Top
" " " " " "		22.6	297.0 ✓ F.L.
1+00		13.4	306.2
T.P.	4.08 318.91	4.78	314.83
1+38 <sup>30</sup>	Δ 15-06 Lt.	11.8	307.1
+47	Base cobbler wall	12.0	306.9
+50	Top " "	8.0	310.9
+70		7.6	311.3
+75		6.8	312.6
2+01 <sup>20</sup>	Δ 25-27 Rt.	4.8	314.1

2+39<sup>80</sup>  
 1+64<sup>05</sup> } Page 72

6.20 312.71 ✓ stub



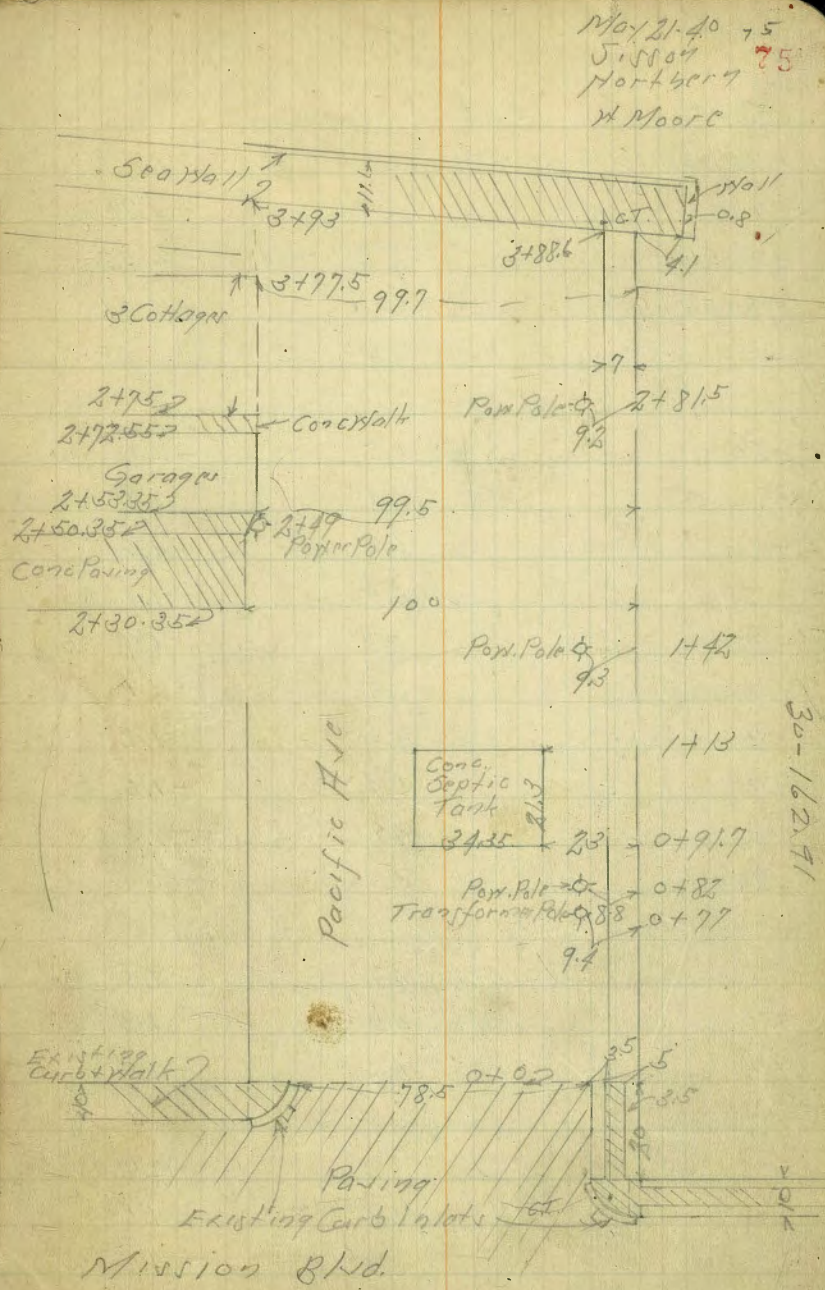
Cross Section Pacific Ave  
Mission Blvd. to Seavall

INDEXED  
E.F.B.

(PACIFIC BEACH DRIVE)

BM	6.08	4.35	-1.73	NE BP Pacific Ave
				3' from road
				0-30 = N/Cb of Mission Blvd From N
N Cb Top		5.30	-0.95	
N Gutter		6.12	-1.77	
+12 on Paving		5.90	-1.55	
+25 " "		5.34	-0.99	
+50 " "		5.39	-1.04	
+75 " "		6.00	-1.65	
+90		6.40	-2.05	
+10		6.51	-2.16	
				0-10 = N/Cb Mission Blvd From South
N		4.9	-0.5	
+12 = Cb Top		5.07	-0.72	
+12 Gutter on Paving		5.69	-1.34	
+25 " "		5.36	-1.01	
+50 " "		5.97	-1.12	
+75 " "		5.96	-1.61	
+90		6.53	-2.18	
+10 Gutter		6.81	-2.46	
+10 Cb Top		6.06	-1.71	
				0+0 = N.L. Mission Blvd
N		5.2	-0.8	
+12 = Cb Top		4.92	-0.57	
+12 Gutter on Paving		5.53	-1.18	
+25 " "		5.86	-1.01	

Notes Red. n Plot 5-22-40 CBH.  
Profile 1726



May 21-40 75  
5.5804  
North 7  
H Moore

Pacific Ave.

	4.35		
+50 on Pav 1129	5.53	-1.18	
+75 " " "	6.06	-1.71	
+90.5 Gutter " "	6.87	-2.52	
+90.5 Cb Top	6.06	-1.71	
1+0 on Wly Conc Walk	5.93	-1.58	
	0+25		
-20	6.5	-2.1	
//	6.2	-1.8	
+8	6.0	-1.6	
+12	5.5	-1.1	
+25	5.3	-0.9	
+50	5.5	-1.1	
+75	5.6	-1.2	
+90	5.4	-1.0	
1+0	4.9	-0.5	
1+20	4.8	-0.4	
	0+50		
-20	4.4	0.0	
//	4.1	0.3	
+7	5.4	-1.0	
+12	5.4	-1.0	
+25	5.3	-0.9	
+50	5.4	-1.0	
+75	5.4	-1.0	
+90	5.1	-0.7	

	4.35		
1+0			4.8
1+20			4.8
	0+91.7		
-20			5.2
//			5.5
+12			5.2
+23 - H I Cor Conc Tank			5.48
+50 on " "			5.48
+57.35 - S I Cor Conc Tank			5.51
+75			5.8
+85			6.0
+90			5.3
1+0			5.2
1+20			4.7
	1+13		
-20			4.9
//			5.3
+12			5.3
+20			5.0
+23 - H I Cor Conc Tank			5.49
+50 on " "			5.52
+57.35 - S I Cor Conc Tank			5.53
+75			5.4
+90			5.4
1+0			5.4

	4.35		
1+20	4.9	-0.5	
	1+35		
100.6 Sof H.L. - 2 Conc Drive	4.48	-0.13	
110.8 Sof H.L. - 2 Garage C.F.	4.07	0.28	
	1+42		
100.6 Sof H.L. - 2 Conc Walk	4.35	0.00	
110.8 Sof H.L. - 2 Conc Walk	3.76	0.59	
	Bottom 25 steps		
	1+50		
-20	3.2	1.2	
H	3.9	0.5	
+12	3.8	0.6	
+25	3.8	0.6	
+50	3.8	0.6	
+75	4.0	0.4	
+90	4.1	0.3	
1+0	4.1	0.3	
	1+75		
-20	2.5	1.9	
H	2.7	1.7	
+12	2.7	1.7	
+25	2.9	1.5	
+35	3.3	1.1	
+50	2.9	1.5	
+75	3.0	1.4	

	4.35		
+90	3.1	1.3	
1+0	3.3	1.1	
1+20	3.3	1.1	
	2+0		
-20	2.2	2.2	
H	1.8	2.6	
+12	1.6	2.8	
+25	2.1	2.3	
+50	2.7	1.7	
+65	2.7	1.7	
+75	2.1	2.3	
+85	2.1	2.3	
+90	2.5	1.9	
1+0	2.5	1.9	
1+20	2.0	2.4	
TP	5.47	8.22	1.60
	2+30.35	Fly Paving on South	2.75
H	5.0		3.2
+12	4.8		3.4
+25	5.3		2.9
+50	5.4		2.8
+70	5.7		2.5
+73	5.2		3.0
+90	5.0		3.2
1+0 = 1/4 Conc Paving	5.04		3.18
1+20 07 " "	5.22		3.00

8.22

	2+40.35		
100' Sof H.L. Nly Paving	5.25	2.97	
120' Sof H.L. on "	5.38	2.84	
	2+50.35 = Nly Paving on S		
N	4.3	3.9	
+12	3.6	4.6	
+25	4.3	3.9	
+50	4.9	3.3	
+75	4.9	3.3	
+90	5.3	2.9	
1+0 = Nly Conc Paving	4.81	3.41	
1+20 on " "	5.00	3.22	
	2+53.35		
99.5' Sof H.L. = Conc Floor of Garages	4.52	3.70	
	2+75		
N	3.0	5.2	
+12	2.0	6.2	
+25	2.5	5.7	
+50	4.1	4.1	
+75	4.7	3.5	
+90	4.5	3.7	
+99.5 = Nly 3' Conc Walk	4.56	3.66	
	3+10		
N	3.5	4.7	
+12	3.1	5.1	

8.22

+23	2.7	5.5
+28	3.9	4.3
+50	4.6	3.6
+75	5.3	2.9
+90	4.3	3.9
+99.5 = Nly Cottages	4.3	3.9
	3+50	
-20	6.3	1.9
N	6.4	1.8
+12	6.4	1.8
+25	6.1	2.1
+50	5.7	2.5
+75	5.2	3.0
+90	4.1	4.1
+99.5 = Nly Cottages	4.2	4.0
	3+75	
-20	7.1	1.1
N	7.3	0.9
+12	6.5	1.7
+25	6.1	2.1
+50	5.6	2.6
+75	5.8	2.4
+90	5.2	3.0
+99.5 = Nly Cottages	4.6	3.6

Cont on Last Page 80



Levels at Central Landis 7-17-27

B.M.	0.80	3527.3	351.93	NW BR. Univ + Central
T.P.	0.00	340.98	11.75	340.98
199.4 N of N Line Landis		10.80	330.14	S. End entel. on W
200.3 N of N Line Landis		10.60	330.38	S. End entel. on E
T.P.	3.24	331.91	12.31	328.67
C.B. E. ch. Central 90.0 N of N Line Landis		4.65	327.26	Top gratings
C.B. W. ch. Central 49.3 N of N Line Landis		4.66	325.25	Top gratings F.L. M.H.
M.H. 34.0 N of N Line Landis		35.40	296.51	of Central
" " " " " "		5.30		Top M.H.
N. Line		N. Line Landis		
W ch Central		6.44	325.47	entel
W gutter outlet Cor. Culvert		7.65		F.L.
E " " " " "		6.24		F.L.
E ch Central		5.14	326.77	entel
		N. ch. Landis		
E. Line Central		5.04		entel
W " " " " "		No intake showing		
		N. gutter Landis		
W Line		No intake		
E Line Central intake		6.22		F.L.
S. gu		S. gutter Landis		
E. Line Central intake Cor. Culvert		5.04		F.L.
W " " " " " "		outlet " " " "	6.35	
		S. ch. Landis		
W Line Central		5.03		entel
E " " " " " "		4.01		

331.91

799

S Line Landis

W. ch	5.05	327.0 Profile	entel
W gutter central intake 8"	6.06	326.86	
E " " " "	5.04		
E ch " " " "	3.98	328.0 Profile	entel
		327.93	

8° Pacific Ave  
Cont From Page 78

8-22

3+88.6 = Fly Conc Walk Taken on line of Walk

14	-2°	7.8	0.4
20	-4.1 Ground	7.8	0.4
	-4.1 Fly Walk & Sear Walk	3.52	4.70
	"	3.52	4.70
	" Ground	7.1	1.1
	+12 "	5.9	2.3
	+25 "	4.6	3.6
	+50 "	3.7	4.5
	+50 on Fly Conc Walk	3.53	4.69
	+75 Ground	4.0	4.2
	+90 "	4.2	4.0
	+10 "	3.9	4.3
	+10 on Fly Conc Walk	3.57	4.65
	BM	1.17	7.05

B.P.N. End  
Sear Walk  
6.99

80

8.19  
6.44  
-1.75 BM  
SPK Pole 5 E  
Mission Bluff  
Pacific Ave  
+1.0

DIRECTIONS FOR USE OF TABLES

TABLE No. 1.

Distance of slope stake from side or shoulder stake for any width roadway, slope 1% to 1%. If ground is nearly level, the cut or fill at side stake is located by the double entry method in left column and top row. The number in body of table in same row and column gives distance

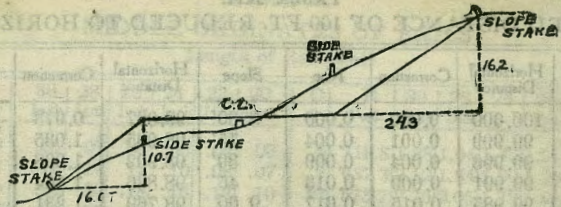
IMPROVED TABLES AND INFORMATION

If it does not make the right adjustment to cut or fill, add the amount if cut, elevate if fill. Add the amount the side stake and slope stake by the level estimate the difference in elevation between the top of the side stake and the top of the

TABLE No. 2.

To find Tangent and External for curve of any other degree, divide by degree of curve and add connection found in column of connections. Degree of curve with a given  $L$  may be found by dividing tangent (or external), opposite  $L$  by given tangent (or external).

The distance from a point on the tangent to the curve is very nearly the square of the tangent length divided by twice the radius.



**DISTANCES FROM SIDE STAKES FOR CROSS-SECTIONING:**

SLOPE 1½ TO 1. ROADWAY OF ANY WIDTH.

	0	.1	.2	.3	.4	.5	.6	.7	.8	.9	
0	0.00	0.15	0.30	0.45	0.60	0.75	0.90	1.05	1.20	1.35	0
1	1.50	1.65	1.80	1.95	2.10	2.25	2.40	2.55	2.70	2.85	1
2	3.00	3.15	3.30	3.45	3.60	3.75	3.90	4.05	4.20	4.35	2
3	4.50	4.65	4.80	4.95	5.10	5.25	5.40	5.55	5.70	5.85	3
4	6.00	6.15	6.30	6.45	6.60	6.75	6.90	7.05	7.20	7.35	4
5	7.50	7.65	7.80	7.95	8.10	8.25	8.40	8.55	8.70	8.85	5
6	9.00	9.15	9.30	9.45	9.60	9.75	9.90	10.05	10.20	10.35	6
7	10.50	10.65	10.80	10.95	11.10	11.25	11.40	11.55	11.70	11.85	7
8	12.00	12.15	12.30	12.45	12.60	12.75	12.90	13.05	13.20	13.35	8
9	13.50	13.65	13.80	13.95	14.10	14.25	14.40	14.55	14.70	14.85	9
10	15.00	15.15	15.30	15.45	15.60	15.75	15.90	16.05	16.20	16.35	10
11	16.50	16.65	16.80	16.95	17.10	17.25	17.40	17.55	17.70	17.85	11
12	18.00	18.15	18.30	18.45	18.60	18.75	18.90	19.05	19.20	19.35	12
13	19.50	19.65	19.80	19.95	20.10	20.25	20.40	20.55	20.70	20.85	13
14	21.00	21.15	21.30	21.45	21.60	21.75	21.90	22.05	22.20	22.35	14
15	22.50	22.65	22.80	22.95	23.10	23.25	23.40	23.55	23.70	23.85	15
16	24.00	24.15	24.30	24.45	24.60	24.75	24.90	25.05	25.20	25.35	16
17	25.50	25.65	25.80	25.95	26.10	26.25	26.40	26.55	26.70	26.85	17
18	27.00	27.15	27.30	27.45	27.60	27.75	27.90	28.05	28.20	28.35	18
19	28.50	28.65	28.80	28.95	29.10	29.25	29.40	29.55	29.70	29.85	19
20	30.00	30.15	30.30	30.45	30.60	30.75	30.90	31.05	31.20	31.35	20
21	31.50	31.65	31.80	31.95	32.10	32.25	32.40	32.55	32.70	32.85	21
22	33.00	33.15	33.30	33.45	33.60	33.75	33.90	34.05	34.20	34.35	22
23	34.50	34.65	34.80	34.95	35.10	35.25	35.40	35.55	35.70	35.85	23
24	36.00	36.15	36.30	36.45	36.60	36.75	36.90	37.05	37.20	37.35	24
25	37.50	37.65	37.80	37.95	38.10	38.25	38.40	38.55	38.70	38.85	25
26	39.00	39.15	39.30	39.45	39.60	39.75	39.90	40.05	40.20	40.35	26
27	40.50	40.65	40.80	40.95	41.10	41.25	41.40	41.55	41.70	41.85	27
28	42.00	42.15	42.30	42.45	42.60	42.75	42.90	43.05	43.20	43.35	28
29	43.50	43.65	43.80	43.95	44.10	44.25	44.40	44.55	44.70	44.85	29
30	45.00	45.15	45.30	45.45	45.60	45.75	45.90	46.05	46.20	46.35	30
31	46.50	46.65	46.80	46.95	47.10	47.25	47.40	47.55	47.70	47.85	31
32	48.00	48.15	48.30	48.45	48.60	48.75	48.90	49.05	49.20	49.35	32
33	49.50	49.65	49.80	49.95	50.10	50.25	50.40	50.55	50.70	50.85	33
34	51.00	51.15	51.30	51.45	51.60	51.75	51.90	52.05	52.20	52.35	34
35	52.50	52.65	52.80	52.95	53.10	53.25	53.40	53.55	53.70	53.85	35
36	54.00	54.15	54.30	54.45	54.60	54.75	54.90	55.05	55.20	55.35	36
37	55.50	55.65	55.80	55.95	56.10	56.25	56.40	56.55	56.70	56.85	37
38	57.00	57.15	57.30	57.45	57.60	57.75	57.90	58.05	58.20	58.35	38
39	58.50	58.65	58.80	58.95	59.10	59.25	59.40	59.55	59.70	59.85	39
40	60.00	60.15	60.30	60.45	60.60	60.75	60.90	61.05	61.20	61.35	40
41	61.50	61.65	61.80	61.95	62.10	62.25	62.40	62.55	62.70	62.85	41
42	63.00	63.15	63.30	63.45	63.60	63.75	63.90	64.05	64.20	64.35	42
43	64.50	64.65	64.80	64.95	65.10	65.25	65.40	65.55	65.70	65.85	43
44	66.00	66.15	66.30	66.45	66.60	66.75	66.90	67.05	67.20	67.35	44
45	67.50	67.65	67.80	67.95	68.10	68.25	68.40	68.55	68.70	68.85	45
46	69.00	69.15	69.30	69.45	69.60	69.75	69.90	70.05	70.20	70.35	46
47	70.50	70.65	70.80	70.95	71.10	71.25	71.40	71.55	71.70	71.85	47
48	72.00	72.15	72.30	72.45	72.60	72.75	72.90	73.05	73.20	73.35	48
49	73.50	73.65	73.80	73.95	74.10	74.25	74.40	74.55	74.70	74.85	49
50	75.00	75.15	75.30	75.45	75.60	75.75	75.90	76.05	76.20	76.35	50

Computed by L. Leland Locke.

45  
60  
90  
120  
1750¢  
160  
140  
205  
235  
270  
300

Law + 05 San Diego in pole

68.04  
1.96  
70.00  
2.89  
67.11  
1.00  
63.11  
6.80  
56.31  
3.60  
59.91  
6.20  
53.71  
1.38  
54.99

0.73  
54.26

54.18  
0.73  
54.91  
40.79  
14.12  
0.31  
14.43

12.76  
0.21

8.70  
11.55  
14.25

115.18.8  
115.27.8

115.20.3

San Diego 170.97  
1.98

46.33

164.65  
138.37  
25.68

36.45

590  
145  
735

481  
123  
504

604  
121  
725

21.1  
20.6

227.64  
12.95  
214.69

129.72  
149.68  
279.40

84  
265.40  
57  
12  
45

1.83  
54.3

149.44  
5.18  
144.50  
12.5