

1163

PART

FIELD BOOK

1163

334

MICROFILMED

DEC 6 1964

Our Leather Bound Engineers Note Books are carried in the following rulings:

- No. 380 LEVEL BOOK. Left and Right Hand Page the same as Left Hand Page of this Book.
- No. 382 FIELD BOOK. Left Hand Page as in this Book, Right Hand Page 4 x 4 to the inch, Center Line Red.
- No. 384 MINING TRANSIT BOOK. Left Hand Page as in this Book, Right Hand Page 8x8 to the inch, Center Line Red.
- No. 385 FIELD BOOK. Left Hand Page as in this Book, Right Hand Page 8 vertical and 4 horizontal lines to the inch, Center Line Red.

We also carry the Note Books listed above, bound in extra strong Fabri-Hide (otherwise the same quality of book), which can be furnished at a somewhat lower price.

In ordering Fabri-Hide covered books, add the letter "F" to catalog number.

**THE FREDERICK POST CO.**  
**ENGINEERING and DRAFTING SUPPLIES**  
**IRVING PARK STATION**  
**CHICAGO, ILL.**

X. Sec San Antonio	1
Survey Road Thru P.L. 1362	19
X. Sec Alley Blk 107 U.H.	20
X. Sec or Ch. Clovis Columbia Redwood to <sup>Quince</sup>	23
X. Sec Maple St Bdy - Noncourser	24
X. Sec McClarens Lane Bancroft - 33rd	32
Survey of Existing & Necessary Culverts on Sorrento Grade	34
Levels on 30 Road adjoining Santa Fe R.O.W. and 5th Sorrento	36
X. Sec Cape May Defoe - Quizot	38
" <sup>Alley</sup> Blk 63 Shermans Bet Imp. S.N.	48
" " " 3 S Gurnell Hts. E & W Alley	50
" " " 72-73-74-75 Park Villas	
Bet Univ & Myrtle - Arnold & Villa Terrace	52
Levels To est Grade <u>Mission Ave</u> Madison South	64
S.W. & Floor Els. Garnet	
Jewell to Morrell	65
Levels For Drain 33 S. S. N. of Dwight on Wilson	69
X. Sec. Alley. Blk "B" Wallace Hts.	74

50' wide  
10 cbs  
75 1/4"

San Antonio X. Sec

9-29-28  
miller

Reservation Line to Qualtrough

B.M.	7.09	11.69	4.60	SW McCall + San Antonio
T.P.	7.76	15.66	7.90	SW Kellog + San Antonio
Set B.M.		4.62	11.04	

172.5 S. of S. Line of Kellog on W }  
160 " " " " " E } Reservation Fence

W		3.2	12.5	
cb		3.6	12.1	
1/4		4.0	11.7	
C		4.0	11.7	✓
1/4		4.1	11.6	
cb		4.7	11.0	
E		5.3	10.4	

Yardage figured  
Tolman  
11-26

160' S. of Kellog

E		5.3	10.4	
cb		4.7	11.0	
1/4		4.4	11.3	
C		4.2	11.5	↓
1/4		3.9	11.8	
cb		3.6	12.1	
W		2.8	12.9	

140' S. of Kellog

W		2.5	13.2	
cb		3.7	12.0	
1/4		3.8	11.9	↓
C		4.2	11.5	
1/4		4.3	11.4	
cb		5.0	10.7	
S		5.0	10.7	

15.66  
85' S. of Kellog

S		4.4	11.3	
cb		4.1	11.6	
1/4		4.1	11.6	
C		3.7	12.0	
1/4		3.5	12.2	↓
cb		3.4	12.3	
W		2.8	12.9	

50' S. of Kellog

W		1.8	13.9	
cb		2.4	13.3	
1/4		3.0	12.7	
C		2.9	12.8	↓
1/4		2.8	12.9	
cb		3.2	12.5	
E		4.2	11.5	

12' S. of Kellog

E		3.9	11.8	
cb		3.0	12.7	
1/4		4.0	11.7	
+2		4.6	11.1	
C		4.5	11.2	
1/4		4.3	11.4	✓
cb		3.4	12.3	
+4		1.4	14.1	
W		1.3	14.4	
S				

15.66

5' S. of S Line Kellogg ✓

W	1.4	14.3	
+4	1.7	14.0	
cl	4.1	11.6	
1/4	4.4	10.9	
C ✓	5.2	10.5	
1/4	5.2	10.5	
cl	4.7	11.0	
E	4.6	11.1	
S. Line Kellogg			
E	5.5	10.2	
cl	5.67	9.99	emt. cl
1/4	5.4	9.9	
C ✓	5.4	10.3	
1/4	5.3	10.4	
cl	4.68	10.98	emt. cl
W	3.8	11.9	

Kellogg St. Paired

0+00 = N. Line Kellogg St

W	4.4	11.3	
cl	5.18	10.48	emt. cl
1/4	6.0	9.7	
C ✓	6.0	9.7	
1/4	6.2	9.5	
cl	4.19	9.47	emt. cl
E	4.1	9.6	

15.64

San Antonio

2

11' N of N Line Kellogg

E	5.7	10.0	
cl	5.7	10.0	
1/4	5.5	10.4	
C	4.7	11.0	
1/4 ✓	4.6	11.1	
cl	4.3	11.4	
W	3.1	12.6	
50' N			
W	3.1	12.6	
cl	3.4	12.3	
1/4	3.8	11.9	
C	4.6	11.1	
1/4 ✓	5.4	10.3	
cl	5.5	10.2	
E	4.0	9.7	
100' N.			
E	6.8	8.9	
cl	6.0	9.7	
1/4	5.6	10.1	
C ✓	5.2	10.5	
1/4	4.7	11.0	
cl	4.1	11.6	
W	3.8	11.9	

15.66  
140°N

W		4.3	11.4
cl		4.6	11.1
14		5.3	10.2
L		5.7	10.0
14	✓	6.7	9.0
cl		7.0	8.7
E		7.7	6.0

143°N - garage on E. side Back

floor

170°N

E		8.2	7.5
cl		7.8	7.9
14		7.6	8.1
12	✓	6.7	9.0
E		6.1	9.6
14		5.9	9.8
cl		5.6	10.1
W		5.2	10.5

200°N

N		5.7	10.0
cl		6.1	9.6
14		6.8	8.9
E	✓	7.8	7.9
14		8.4	7.3
cl		8.6	7.1
E		8.8	6.9
+5		9.3	6.4

15.66  
225°N

-5		9.8	5.9
E		9.4	5.9
cl		9.0	6.7
14		9.1	6.6
L	✓	7.8	7.9
14		7.0	8.7
cl		6.4	9.3
W		6.2	9.5

250°N

W		5.5	10.2
cl		6.8	8.9
14		7.4	7.9
L	✓	8.6	7.1
14		9.3	6.4
cl		9.3	6.4
E		9.8	5.9
+5		9.9	5.8

280°N

-5		9.8	5.9
E		9.5	6.2
cl		8.8	6.9
14	✓	8.7	7.0
E		8.2	7.5
14		6.9	8.3
cl		6.1	9.6
W		5.8	9.9

15.66

300' N = S. Line Laurence St

W		7.4	8.3	
cl		7.68	7.98	cmt cl.
1/4		8.5	7.2	
E		8.6	7.1	
1/4	✓	8.7	7.0	✓
cl		8.70	7.00	cmt cl.
E		8.5	7.2	

Laurence St Paved

00 = N. Line Laurence St

E		9.4	6.3	
cl		9.21	6.45	cmt cl.
1/4		8.8	6.9	
E		8.8	6.9	
1/4	✓	8.6	7.1	✓
cl		8.23	7.43	cmt cl.
W		7.1	8.6	
T.P.	2.67	10.10	8.23	7.43

6' N. of N. Line of Laurence

W		0.5	9.6	
cl		1.5	8.6	
1/4		2.0	8.1	
E	✓	2.2	7.9	
1/4		2.7	7.4	
cl		3.0	7.1	

10.10

San Antonio

4

E		4.0	6.1	
+		4.3	5.8	✓
40' N				
-		4.6	5.5	
E		4.3	5.8	
cl		3.6	6.5	
1/4		3.3	6.8	
E		2.7	7.4	✓
1/4		2.4	7.7	
cl		2.3	7.8	
W		1.5	8.6	
70' N				
W		3.0	7.1	
cl		3.8	6.3	
1/4		4.1	6.0	
E	✓	4.2	5.9	
1/4		4.7	5.4	✓
cl		5.1	5.0	
E		5.3	4.8	
25		5.8	4.3	
100' N				
-		7.7	2.4	
E		7.2	2.9	
cl		6.7	3.4	
1/4		6.4	3.7	
E		5.8	4.4	

		10.10 100' N. (con)			
114		5.8	4.3		
ch	✓	4.7	5.4	✓	5
W		2.8	7.3		
		120' N			
W		3.5	6.6		
d		4.5	5.6		
+5		5.2	4.9		
114		6.1	4.0		
e	✓	6.4	3.7		
114		6.9	3.4	✓	
d		7.2	4.9		
e		7.6	2.5		
+5		7.9	4.4		
		140' N			
-5		8.5	1.6		
e		8.3	1.8		
ch		7.7	4.4		
114		7.5	4.6		
e	✓	7.7	4.4	✓	
114		6.5	3.6		
ch		5.0	5.1		
W		3.0	7.1		
		175' N			
W		4.7	5.4		
+3		5.0	5.1		
ch		7.6	4.5		
114		8.6	1.5		

		10.10 175' N. (con)		San Antonio		5
e		9.4	0.7			
114		9.8	0.3			
ch		10.2	-0.1			✓
e	✓	10.6	-0.5			
+10		10.8	-0.7			
		185' N				
-10		11.1	-1.0			
e		10.8	-0.7			
ch		10.2	-0.1			
114		10.0	0.1			✓
e		9.5	0.6			
114	✓	8.5	1.6			
ch		7.5	2.6			
+3		6.9	3.4			
+6		5.4	4.7			
W		4.5	5.6			
		188' N				
W		4.6	5.5			floor of garage
ch		5.9	4.4			
114		7.0	3.1			
e	✓	9.3	0.8			
114		10.1	0.0			
ch		10.2	-0.1			✓
e		10.8	-0.7			
+10		11.1	-1.0			



10.10  
 Rod' N of Mine Lawrence

E-10	11.0	-0.9
E	10.7	-0.6
cl	10.4	-0.3
114	10.2	-0.1
E	9.3	0.8
114	6.9	3.2
cl	6.1	4.0
W	4.8	5.3

210' N

W-1	2.5	7.6
W	6.0	4.1
+3	7.6	2.5
cl	8.8	1.3
114	9.0	1.1
E	9.9	0.2
114	10.5	-0.4
cl	10.6	-0.5
E	10.9	-0.8
+10	11.0	-0.9

235' N

-10	10.9	-0.8
E	11.2	-1.1
cl	11.0	-0.9
114	11.0	-0.7
E	10.6	-0.5
114	9.9	0.2

10.10

San Antonio

6

cl	9.3	0.8
W	5.7	4.4
+1	2.7	7.4

255' N

-1	3.5	6.6
W	6.0	4.1
+3	8.3	1.8
cl	9.6	0.5
114	10.1	0.0
E	10.4	-0.3
114	11.0	-0.9
cl	11.1	-1.0
E	11.3	-1.2
+10	11.6	-1.5

275' N

-10	11.7	-1.6
E	11.2	-1.1
cl	9.8	0.3
114	9.4	0.7
E	8.2	1.7
114	7.8	2.3
cl	8.5	1.6
W	7.3	2.8
+1	3.8	6.3

	10.10	288' N		
N		6.3	3.8	
cl		6.4	3.7	
1/4		6.3	3.8	
C		7.2	2.9	
1/4	✓	7.0	3.1	
+5		7.0	3.1	
cl		8.1	2.0	↓
E		10.6	-0.5	
+10		11.5	-1.4	
300' N = S. Line Me Call				
-10		10.7	-0.6	
E		6.6	3.3	
cl		7.00	3.10	emt cl
1/4		6.9	3.2	
C		6.7	3.4	↓
1/4	✓	6.4	3.7	
cl		5.76	4.34	emt cl
W		5.40	4.70	
T.P.B.M.	2.73	7.33	5.50	4.60
Me Call ST Paved				
00 = N. Line Me Call ST				
W		2.4	4.9	
cl		3.45	3.88	emt cl
1/4		4.3	3.0	
C		4.4	2.9	
1/4		4.7	2.6	

N.W. Me Call  
San Antonio

	7.33	San Antonio	7	
cl		4.74	2.59	emt cl
E	✓	5.3	2.0	✓
+13		9.4	-2.1	
12' N				
-10		8.2	-0.9	
E		8.2	-0.9	
cl		7.7	+0.2	
1/4	✓	6.9	+0.1	✓
C		6.7	1.2	
1/4		5.3	2.0	
cl		4.7	2.6	
W		5.0	2.3	
+5		5.6	2.3	
35' N				
-5		5.9	1.1	
W		6.4	0.9	
cl		7.1	0.2	
1/4		7.6	-0.3	
C		7.6	-0.3	↓
1/4	✓	7.9	-0.6	
cl		8.1	-0.8	
E		8.2	-1.0	
+10		9.3	-2.0	

11.14 SW Owens  
San Antonio

7.33  
80'N

-15	11.8	-4.5
E	9.6	-2.3
cl	8.2	-0.9
114	8.8	-1.5
C	8.9	-1.6
114	8.5	-1.2
cl	8.0	-0.7
W	7.7	-0.2
+8	7.0	0.3

100'N

+8	6.3	1.0
W	7.0	0.3
cl	8.6	-1.3
114	9.1	-1.8
C	9.1	-1.8
114	8.5	-1.2
cl	9.2	-1.9
C	10.7	-3.2
+15	12.9	-5.6

125'N

-15	13.3	-6.0
E	11.5	-2.2
cl	10.1	-2.8
114	8.7	-1.4
C	9.2	-1.9
114	9.1	-1.8

7.33

San Antonio

cl	8.6	-1.3
W	7.8	-0.5
+5	4.4	0.7

175'N

-5	6.6	0.7
W	8.3	-1.0
cl	8.3	-1.0
114	8.6	-1.3
C	9.8	-2.5
114	10.8	-3.5
cl	12.2	-4.9
E	13.5	-6.2
+15	14.4	-7.1

200'N

-15	14.8	-7.5
E	13.6	-6.3
cl	12.6	-5.3
114	11.5	-4.2
C	10.4	-3.1
114	9.3	-2.0
cl	8.2	-0.9
W	7.9	-0.6
+5	5.4	1.9

7.33  
250' N

W-7		5.1	2.2	
-5		7.6	-0.3	
W		8.1	-0.8	
cl		9.0	-1.7	
114		10.4	-3.1	
U		11.6	-4.3	
111	✓	12.8	-5.5	
cl		13.8	-6.5	
E		14.3	-7.0	
115		15.5	-8.4	
	300 = skin Nichols			50' wide 125' obs 25' Roadway
E-15		15.5	-8.2	
E		14.3	-7.0	
cl		13.8	-6.5	
114		12.9	-5.6	
E		11.6	-4.3	
114	✓	10.3	-3.0	
cl		9.3	-2.0	
W		8.5	-1.2	
T.P.	12.87	19.88	0.32	7.01
+10		1.8	18.1	Top Bank
+15		1.3	18.6	
	S. cl			
-15		1.2	18.7	
-10		1.9	18.0	Top Bank
W		21.0	-1.1	

19.88

San Antonio 9

cl		22.1	-2.2	
114		23.1	-3.2	
E		24.3	-4.4	
114		25.6	-5.7	✓
cl	↓	26.4	-6.5	
E		26.9	-7.0	
+20		28.2	-8.3	
	♀ Nichols			
-20		28.1	-8.2	
E		26.9	-7.0	
cl		26.5	-6.6	
114		25.6	-5.7	
E	✓	24.1	-4.2	
114		23.0	-3.1	✓
cl		21.9	-2.0	
+8		21.0	-1.1	
W		13.0	6.9	
+10				111 a shack
	N. cl			111 " "
-10				
W		10.0	9.9	
+5		21.0	-1.1	
cl		22.0	-2.1	
114		23.0	-3.1	✓
E		24.2	-4.3	
114		25.5	-5.6	

19.88  
N. ch (con)

ch	26.4	- 6.5
E	27.0	- 7.1
+20	28.2	- 8.3

00 = N. Line Nichols

-20	28.0	- 8.1
E	27.0	- 7.1
ch	26.2	- 6.3
1/4	25.3	- 5.4
E	24.1	- 4.4
1/4	22.8	- 2.9

ch	22.0	- 2.1
+5	21.2	- 1.3
W	12.8	+ 7.1
+7	2.7	17.2
+10	2.4	17.5

10' N

-10	3.2	16.7
-7	3.2	16.7
W	13.4	6.5
+6	21.1	- 1.2
ch	21.7	- 1.8
1/4	22.8	- 2.9
E	24.0	- 4.1
1/4	25.0	- 5.1
ch	26.1	- 6.2
E	27.0	- 7.1
+20	27.9	- 8.0

Top Bank

Top Bank

San Antonio 10

19.88  
25' N

E-20	27.7	- 7.8
E	26.7	- 6.8
ch	25.8	- 5.9
1/4	24.7	- 4.8
E	23.5	- 3.6
1/4	22.4	- 2.5
ch	21.4	- 1.5
+4	4.6	+ 15.3
W	3.9	16.0
+5	4.0	N. 9

45' N

-10	3.4	16.5
W	10.6	9.3
+2	12.0	7.7
ch	21.3	- 1.4
1/4	22.0	- 2.1
E	23.0	- 3.1
1/4	24.1	- 4.2
ch	25.3	- 5.4
E	26.4	- 6.7
+20	27.5	- 7.6

65' N

E-20	27.5	- 7.6
E	26.3	- 6.4
ch	24.8	- 4.9
1/4	23.6	- 3.7

Top Bank

Top

19.88  
65' N. con

C	22.5	-2.6	
14	21.6	-1.7	
+3	21.2	-1.3	
cl	✓ 6.0	+13.9	
+2	4.4	15.5	Top
W	3.7	16.2	

100' N

W	2.4	17.5	
cl	3.7	16.2	Top
14	8.0	11.9	
+1	20.8	-0.9	
E	21.5	-1.6	
14	22.4	-2.5	
cl	23.5	-3.6	✓
E	25.0	-5.1	
+25	27.4	-7.5	

117' N

-25	27.0	-7.1	
E	24.2	-4.3	
cl	22.7	-2.8	
14	21.8	-1.6	
+2	✓ 21.3	-1.4	↓
E	3.4	+16.5	
14	2.8	17.1	
cl	2.4	17.5	
W	2.0	17.9	

19.88

San Antonio

11

149.5 N end cmt wall

W	17	18.7	
cl	15.7	18.2	
14	2.1	17.8	
E	2.5	17.4	
+5	2.7	17.2	✓
14	2.0	11.9	
+3	21.0	-1.1	
cl	21.5	-1.6	
E	22.7	-2.8	End cmt wall
+25	26.1	-6.2	

155' N

-25	26.0	-6.1	
-6.5	23.5	-3.4	dirt
-6.0	18.6	+1.3	Top cmt wall
-5.5	21.8	-1.9	dirt
E	21.3	-1.4	
cl	✓ 20.8	-0.9	
+2	20.5	-0.6	
+4	2.7	17.2	
14	2.7	17.2	✓
E	2.3	17.6	
14	1.9	18.0	
cl	1.4	18.5	
W	1.1	18.8	

19.84  
165' N

W	0.9	17.0	
cl	1.4	18.5	
14	1.8	18.1	
C	2.2	17.7	
14	2.6	17.3	
+5	20.2	-0.4	✓
cl	20.3	-0.4	✓
E	20.7	-0.8	
+85	20.7	-0.8	
+9.6	18.6	+1.3	Top wall
+9.5	23.1	-3.2	
+25	25.6	-5.7	
185' N			
-30	25.3	-5.0	
-15	23.7	-3.8	
-14.5	18.6	+1.3	Top wall
-14	23.0	-3.1	
E	20.8	-0.9	
+5	3.4	+16.5	
cl	2.9	17.0	✓
14	2.4	17.5	↓
C	1.9	18.0	
14	1.6	18.3	
cl	1.0	18.9	
W	0.5	19.4	

19.88  
215' N

Sab Antonio

12

W	0.3	17.6	
cl	1.2	18.7	
14	1.7	18.2	
C	2.2	17.7	
14	2.4	17.1	✓
cl	3.3	16.6	✓
E	4.1	15.8	
14	20.5	-0.6	
250' N			
E	5.4	+14.5	
cl	4.2	15.7	
14	3.6	16.3	
C	3.1	16.8	✓
14	3.2	16.7	✓
cl	3.0	16.9	
W	2.6	17.3	
T.P.	3.21	20.13	✓
265' N			
W	3.3	16.8	
cl	3.6	16.5	
14	4.0	16.1	
C	4.3	15.8	✓
14	5.0	15.1	✓
cl	5.5	14.6	
E	6.0	14.1	

20.13  
296' N

20.13  
3' N

San Antonio 13

Station	20.13	20.13	Notes	Station	20.13	20.13
E	8.9	11.2		W	1.2	18.9
cb	7.2	12.9		cb	2.2	17.9
1/4	6.4	13.7		1/4	2.5	17.6
c	5.4	14.7		e	3.0	17.1
1/4	4.3	15.8		45	4.0	16.1
cb	4.2	15.9		1/4	10.5	9.6
W	2.9	17.2		cb	10.1	10.0
				e	9.8	10.3
300' N = S. Line Owens				12' N		
W	8.5	11.6		e	9.9	10.2
cb	9.18	10.95	emt cb	cb	10.1	10.0
1/4	10.0	10.1		H	5.6	14.5
c	10.1	10.0		1/4	4.5	15.6
1/4	10.3	9.8		e	3.3	16.8
cb	10.17	9.96	emt cb	1/4	2.5	17.6
e	10.0	10.1		cb	2.4	17.7
S. BM, BP.	9.00	11.13	S.W. Owens & San Antonio	W	1.2	18.9
Owens Paved. 00 = N Line Owens				50' N		
E	10.1	10.0		W	2.5	17.6
cb	10.13	10.00	emt cb	cb	3.5	16.6
1/4	10.4	9.7		1/4	5.8	16.3
e	10.2	9.9		e	5.0	15.1
1/4	9.4	10.7		1/4	6.2	13.9
cb	9.17	10.86	emt cb	cb	7.1	13.0
W	7.8	12.3		+3	9.2	10.9
				e	9.7	10.9



20.13

115' N

E	10.0	10.1
+8	9.9	10.2
cl	7.5	12.6
1/4	7.4	12.7
e	7.0	13.1
1/4	5.8	14.3
cl	5.5	14.6
W	4.8	15.3

117' N

W	4.8	15.3
cl	5.5	14.6
1/4	5.9	14.2
+2	9.0	11.1
e	9.0	11.1
1/4	9.2	10.9
+5	9.2	10.9
cl	8.2	11.9
+2	9.7	10.4
E	10.0	10.1

150' N

E	10.7	9.4
+7	10.1	10.0
cl	8.7	11.4
1/4	8.6	11.5
e	8.3	11.8
1/4	4.7	11.4

20.13

San Antonio

14

cl	6.4	13.3
W	5.6	14.5
200' N		
W	7.2	12.9
cl	8.7	11.2
1/4	9.4	10.7
e	10.0	10.1
1/4	10.5	9.6
cl	11.4	8.7
E	13.3	6.8

223' N Hand Garage

E	13.3	6.8 foot
cl	11.9	8.5

226' N

E	12.3	7.8
cl	11.8	8.3
1/4	11.6	8.5
e	11.0	9.1
1/4	10.0	10.1
cl	9.1	11.0
W	7.6	12.5

250' N

W	9.2	10.9
cl	10.4	9.7
1/4	11.2	8.9
e	11.8	8.3

20.13

250' N. (con)

14			12.5	7.6
cl	✓		12.9	7.2
E			12.8	7.3
T.P.	0.41	9.89	10.65	9.48
		300' N = Stone Perry		
				50' wide 12.5' obs. 25' Roadway
E			5.9	4.0
cl			5.3	4.6
14			4.15	5.2
E			4.0	5.9
14			3.0	6.9
cl			2.2	7.7
W			1.1	8.8
			5 cl	
W			1.7	8.2
cl			2.9	7.0
14			3.7	6.2
E		✓	4.6	5.3
14			5.5	4.6
cl			6.3	3.6
E			7.4	2.5
110			8.4	1.5
			φ Perry	
-10			8.5	1.6
E			7.9	2.0
cl			6.8	3.1
14			5.8	4.1

9.89

San Antonio

15

E			5.0	4.9
14			4.3	5.6
cl		✓	3.6	6.3
W			2.6	7.3
			N. cl	
W			2.8	7.1
cl			4.2	5.7
14			5.2	4.7
E			6.1	3.8
14		✓	7.0	2.9
cl			7.5	2.1
E			8.3	1.6
110			9.6	0.3
			00 = N. Line Perry	
-10			9.6	0.3
E			8.7	1.2
cl			8.0	1.9
14		✓	7.0	2.9
E			6.2	3.7
14			5.6	4.3
cl			4.9	5.0
W			3.7	6.2
			25' N	
W			4.7	5.2
cl			5.7	4.2
14			6.4	3.5

9.89  
25' W (con)

c	7.2	2.7
114	8.4	1.5
cl	9.4	0.5
E	✓ 10.0	-0.1
+10	10.3	-0.2

50' N

-10	11.6	-1.7
E	10.7	-0.8
cl	10.1	-0.2
114	↓ 9.7	+0.2
c	8.4	1.5
114	7.0	2.9
cl	5.9	4.0
W	4.8	5.1

70' N

W	5.3	4.6
cl	6.3	3.6
114	7.6	2.3
E	8.8	1.1
114	9.7	0.2
cl	10.4	-0.5
E	11.3	-1.4
+10	12.5	-2.6

9.89

San Antonio

16

100' N

-10	13.6	-3.7
E	12.0	-2.1
cl	10.8	-0.9
114	10.2	-0.3
E	↓ 8.9	+1.0
114	7.0	2.9
cl	5.7	4.1
W	4.4	5.5

130' N

W	3.7	6.2
cl	5.4	4.5
114	6.9	3.0
E	↓ 10.6	-0.7
114	11.3	-1.4
cl	12.3	-2.4
S	13.2	-3.3
+10	13.7	-3.8

150' N

-10	13.9	-4.0
S	13.2	-3.3
cl	12.6	-2.7
114	11.6	-1.7
E	↓ 11.2	-1.3
114	8.9	+1.0
cl	6.9	3.0
W	4.2	5.7

(2.43)

T.P.	E.45	N.45	9.89	0.09
		200'N		
N			1.8	0.7
cl			4.4	-1.9
114			5.1	-2.6
E			4.0	-3.5
114		↓	6.4	-3.9
cl			6.9	-4.2
E			7.1	-4.6
+10			6.0	-3.5
		225'N		
-10		↓	5.0	-2.5
E			5.0	-2.5
+5			5.8	-3.3
cl			7.0	-4.5
114			7.6	-4.5
E			7.0	-4.5
114			6.5	-4.0
cl			4.9	-2.4
W			3.5	-1.0
+5			2.5	0.0
		240'N		
-10			4.6	-2.1
W			5.3	-2.8
cl			5.2	-2.7
+4			5.3	-2.8

114		7.2	-2.7
E		7.2	-4.7
114		6.1	-3.6
cl	✓	5.3	-2.8
E		5.4	-3.3
+10		6.4	-3.9
	300'N = s. line	Qualtrough	
-10		7.6	-5.1
E		7.6	-5.1
cl		7.6	-5.1
114		7.4	-4.9
E		7.2	-4.7
114		6.9	-4.4
cl		6.8	-4.3
N		6.6	-4.1
+10		6.2	-3.7
	S. cl		
-10		6.1	-3.6
W		6.6	-4.1
cl		6.8	-4.3
114		7.0	-4.5
E		7.1	-4.6
114		7.2	-4.7
cl		7.3	-4.8
E		7.5	-5.0
+10		7.6	-5.1

2.45

## E Qualtrough

-10	7.6	-5.1
E	7.6	-5.1
el	7.5	-5.0
1/4	7.4	-4.9
C	7.3	-4.8
1/4	7.2	-4.7
el	6.9	-4.4
W	6.4	-4.1
+10	6.0	-3.5

## N. el.

-10	5.8	-3.3
W	6.6	-4.1
el	6.9	-4.4
1/4	7.0	-4.5
C	7.1	-4.6
1/4	7.2	-4.7
el	7.3	-4.8
E	7.2	-4.7
+10	7.2	-4.7

## N. line Qualtrough

-10	6.0	-3.5
E	6.0	-3.5
el	7.1	-4.6
1/4	7.2	-4.7
C	7.0	-4.5
1/4	7.0	-4.5

2.45

San Antonio

19

el			7.0	-4.5
W			6.6	-4.1
+10			5.9	-3.4
T.P.	11.72	11.72	2.45	0.00
T.P.	10.00	20.28	2.04	9.68
			9.13	11.15 ✓ OK

Survey of Road Thru  
Pueblo Lot 1362

LOCATION =  $\frac{1}{2}$  of 60' Road

Moore  
Refuge  
Circuit  
12/23/66

Note!  
See FB 1498-14 C.M.

PI in Country = STA 23+14.97 /  $\Delta = 26^\circ 40' 00''$  LT.

VO + 68.33 = Intersection of Road & City Line = xxv hub

PI 16+80.00  $\Delta = 7^\circ 00' 00''$  RT. EX = 5.70' xxv hub

PI 13+71.00  $\Delta = 26^\circ 27'$  RT xxv hub = EX d' h' t'

POT xxv STA 10+16.00

opposite old RREC. xxv hub @ 8+20.55

opposite old PPPI  $\Delta = 14^\circ 02'$  RT. 5+106.24

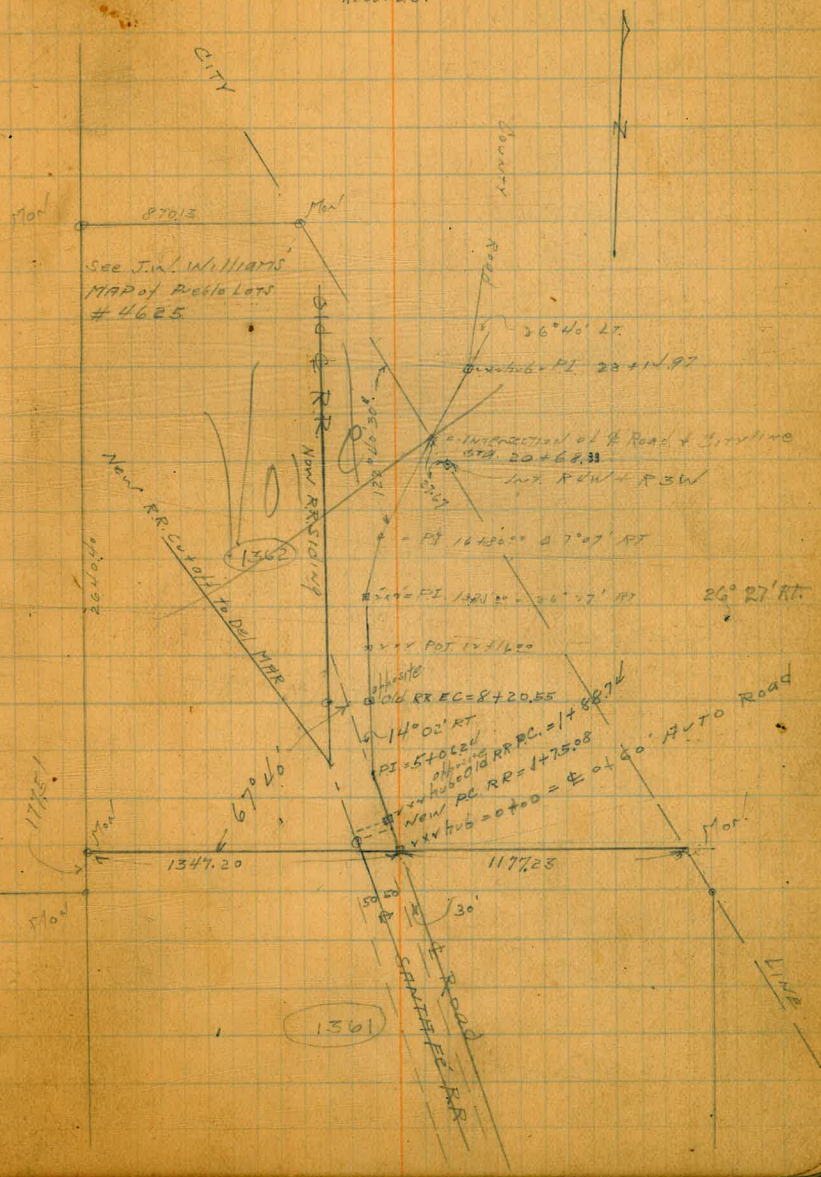
opposite old RR PC set xxv hub @ 1+88.74

New RR PC  $\Delta$  LT @ 1+75.08

SL-EL 1362  
1347.20  
1177.25

old Santa Fe Curve  $\Delta = 14^\circ 02'$   
New Siding  
Intersected RR tangents and  
meas. EX. to figure Radius.  
check  $\Delta$  + Radius to Santa Fe  
Records.

EX = 20.08  
R = 2659.60  
T = 327.34



Cross Section of Alley E & W side of = 10' wide  
N & S " " = 20' "

Moore BIK 107 Univ. Hqts.

MEAS.	J. #	380.73	375.05	EL. of Oregon
				EL Oregon = 0+00
S	4.47		375.76	
S	4.47		375.76	top of alley return
S	5.0		375.2	for ydgp
C	5.2		375.0	" "
N	5.0		375.2	" "
N	4.38		375.85	top of alley return
		30' E		
N	4.5		375.7	
C	4.7		375.5	
S	4.3		375.9	
		60' E		
S	4.6		375.8	
C	4.6		375.6	
N	4.5		375.7	
		100' E		
N	4.5		375.7	
C	4.7		375.5	
S	4.5		375.7	
		140' E = WL of N & S alley		
S	4.4		375.8	
C	4.4		376.0	
N	4.3		375.9	
		150' E = g. of N & S alley		
C	4.53		375.70	on Kim Sewer M.H.
T.P.	5.59	381.28	4.54	375.69

EL Cap to Memo Oregon to Idaho 381.28

20

160' E = EL of alley to north

N	5.3	376.0
C	5.3	376.0
S	5.4	375.9
		196.5' E
S	5.73	376.15
C	5.4	375.9
N	5.5	375.8
		249.5' E
N	5.5	375.8
C	5.4	375.9
S	5.4	376.24
		280' E
S	5.5	375.8
C	5.5	375.8
N	5.6	375.7
		300' E = no alley return built
N	4.6	376.7
C	4.80	376.48
S	4.9	376.4
		320' E = W cb line of Idaho
S	4.96	376.32
N	4.90	376.38
		N.E. of 10' E & W alley = 0+00 of N & S alley inside
E	5.3	376.0
C	5.5	375.8
N	5.3	376.0

} door Garage

38128

W	0+20	5.4	375.9
C		5.1	376.2
E		4.8	376.5
E	0+40	4.3	377.0
C		4.6	376.5
W		5.0	376.3
W	0+65	4.9	376.4
C		5.4	376.1
E	fence 15' in alley	5.1	376.2
E	0+90	5.1	376.2
+1	to <i>evcalptus</i> <sup>to diam</sup> tree	5.1	376.2
C		5.3	376.0
W		5.4	376.1
W	1+00	5.1	376.2
C		4.9	376.4
E	wedge shed <sup>42' wide</sup> 10' in alley	4.7	376.6
E	1+10	4.9	376.4
C		4.6	376.7
W		4.6	376.7
LS	to garage dirt floor	4.6	376.7

38128

21

-5	to garage dirt floor	4.6	376.7
W		4.7	376.6
C		4.2	377.0
E		4.7	376.6
E	1+40	4.8	376.5
C		4.8	376.5
W		4.4	376.9
E	1+50	4.7	376.6
E	fence 1.7' in alley	4.7	376.6
W	1+65	4.6	376.7
C		4.8	376.5
+8	to garage dirt floor	4.80	376.48
E	1+78.5	4.8	376.5
E	to 4" C.I. Sewer VENT 1.5' in alley	4.8	376.5
E	2+00	4.6	376.7
E	chicken house	4.6	376.7
C		4.7	376.6
W		4.4	376.9
W	2+28	4.3	377.0
C		4.8	376.5
+8	to garage brick floor	4.67	376.67
T.P.	234 380.93	4.69	376.59



380.93

0+75			
C fabric pipe/Sewer M.H.	4.3 ✓	376.59	
2+75			
E	4.9	376.0	
4+8 Lath fence walley	5.0	375.9	
C	4.9	376.0	
W	4.9	376.0	
3+00			
W	5.0	375.9	
C	4.9	376.0	
4+5 near lath fence	4.8	376.1	ad. walley
E	4.8	376.1	
3+45			
E	4.8	376.1	
C	4.5	376.4	
W	4.1	376.8	
3+50			
W	4.8	376.1	
C	4.5	376.4	
E	4.9	376.0	
3+75			
E	4.1	376.8	
C	3.7	377.2	
W	4.0	376.9	
3+95			
W	5.0	375.9	

380.93

22

C	4.9	376.0	
E	4.9	376.0	
4+15			
E	4.2	376.7	
C	4.2	376.7	
W	4.0	376.9	
4+30			
W	4.6	376.3	
C	4.8	376.1	
E	4.6	376.3	
4+50.30 = SL Meade Ave			Not graded
E	4.2	376.7	
C	5.0	375.9	
W	4.7	376.2	
check to DM <sup>SEOP</sup> Meade & Oregon	3.70	377.43	377.43

LEVELS ON COLUMBIA  
REDWOOD TO QUINCE ST.  
42' wide 6' walks

SEBP

Redwood + 1/2 in	12.78	111.78		99.00
T.P.	13.10	124.64	2.84	111.54
T.P.	13.00	137.58	0.06	124.58
T.P.	12.81	150.30	0.09	137.49

S.L. REDWOOD ST.

E top cb.		7.31	142.99
ℓ		8.6	141.70
W top cb.		9.29	141.01

50' S

W cb.		7.5	142.80
ℓ		8.4	143.98
E cb.		5.5	144.88

100' S

E cb.		3.6	146.78
ℓ		4.9	145.40
W cb.		5.6	144.90

150' S

W cb.		3.8	146.50
ℓ		3.0	147.30
E cb.		1.8	148.50

200' S

E cb.		0.1	150.20	
ℓ		1.1	149.20	
W cb.		2.1	148.30	
T.P.	7.83	157.66	0.47	149.83

157.66

THANK 23  
6-27

250' South

W cb.		7.5	150.16
ℓ		6.6	151.06
E cb.		5.5	152.16

300' S = N.W. Quince St.

E top cb.		3.75	153.91
Gutter onaving		4.50	153.16
ℓ		4.45	153.21
Gutter		6.30	151.36
W top cb.		5.71	151.95

T.P. 0.45	145.36	12.75	144.91
T.P. 0.72	133.45	12.83	132.53
T.P. 0.28	120.80	12.93	120.52
T.P. 1.14	109.18	12.78	108.06
T.P. 6.30	104.67	10.81	98.37
T.P.		5.70	98.97

$\frac{99.00}{0.03} = B.M.$

Cross Section Maple St.  
Boundary to Vancouver

	+	H.L.	-	Corr'd 10 Cts 10 Cts				
							389.74	
B.M.	11.55	266.53		255.85 ✓	SE Top of SE Top of SE Top of	cb	57	294.0
B.M.			569	260.84 ✓	SE Top of SE Top of	cb	58	293.9
TP	13.09	279.04	0.58	265.95	SE Top of	cb	57	294.0
B.M.			964	270.00	SE Top of	cb	54	294.3
TP	12.06	290.92	0.18	278.86	SE Top of	cb	48	294.9
TP	9.83	299.74	0.61	299.31	SE Top of	cb	45	295.2
		E. of Boundary					125.1	
S			41	295.3			60	293.7
cb			42	295.5			62	293.5
1/4			41	295.6			67	293.0
B.M.			385	295.89	Corr'd E. of Boundary Maple		71	292.6
S			39	295.8			73	292.4
1/4			37	296.0			74	292.3
cb			36	296.1			77	292.0
H			38	296.5			81	291.6
		W. of E. of Boundary					150.1	
H			27	297.0			96	290.1
cb			29	296.8			93	290.4
1/4			31	296.6			91	290.6
S			35	296.2			87	291.0
1/4			37	296.0			86	291.1
cb			37	296.0			81	291.6
S			40	295.7			76	292.1
		100' E					175.5	
			57	298.8			91	290.6
							93	290.4

Plotted 5-16-28  
C.O.H.

Yardage Figured  
V.G.H.

8-14-28

NOTE - All Elevations 0.35 ft. too High  
On account of B.M.

24  
2/24/27  
5/20/27  
9/10/27

Maple St.

299.74

299.74

2-5

11		9.5	290.2	cb		10.7	289.0
1/2		10.0	289.7	1/2		11.4	288.3
1/4		10.4	289.3	1/4		11.9	287.8
cb		10.5	289.2	1/2		12.0	287.7
5		10.7	289.0	1/2		12.1	287.6
	300.1			TP	351	291.45	287.94
5		11.7	288.0	1/4		12.5	284.0
cb		11.5	288.2	cb		12.2	279.3
1/4		11.5	288.6	1/2		12.3	274.2
1/2		10.8	288.9	1/2		12.1	276.4
11		10.9	288.8	11.0		12.5	277.0
cb		10.3	289.4				
11		10.0	289.7	-10			
	275.1			11		10.5	281.0
-5		10.6	289.1	11		15.1	275.6
11		13.6	286.1	16		18.7	272.8
+5		13.5	286.2	cb		17.8	273.7
cb		13.0	286.7	1/4		16.1	279.4
1/2		11.5	288.2	1/2		12.9	284.5
1/4		11.6	288.1	1/2		12.7	287.8
1/2		11.6	288.1	1/4		12.4	288.1
11		11.4	288.3	cb		12.3	288.2
cb		11.5	288.2	1/2		12.8	288.7
5		11.5	288.2	1/2		12.8	289.7
	275.1			1/2		12.5	290.0
5		10.4	289.8	5		12.5	288.0

Notes 0.35 High  
Seep 24

275.1

300.1

Maple St

291.45

291.45

26

+L		48	286.7	d	172	274.3
cb		47	286.8	15	185	273.0
15		46	286.9	16	222	271.3
1/4		70	284.5	1/4	221	268.4
d		128	278.7	1/4	216	266.9
1/4		172	273.3	cb	225	271.0
+7		233	268.2	1/4	145	277.0
cb		214	270.1	1/10	92	282.3
1/4		128	277.7			
+10		82	283.3	-10	105	281.0
	310' E = H. L. Cooper		Cooper	1/4	149	276.6
-10		84	283.1	cb	210	270.5
1/4		142	277.3	15	259	266.2
cb		224	269.3	1/4	244	267.2
+L		239	267.6	d	181	273.4
1/4		190	272.5	1/4	115	279.6
d		185	278.0	+7	63	285.2
1/4		74	284.1	cb	61	285.4
+L		50	286.5	5	57	285.8
cb		52	286.3			
+L		50	286.5	3	61	285.4
S		32	288.3	cb	67	284.8
	HCB			+2	68	284.7
S		53	286.2	1/4	112	280.2
cb		55	286.0	d	177	273.8
1/4		108	280.7	1/4	227	268.8

Notes 0.35 Hgt  
See P 21

Cooper

Maple St.

291.45

1/4		251	266.4
+7		255	266.0
cb		233	268.2
H		16.3	275.2
+10		11.4	280.1
	F 1/4		
-10		14.0	277.5
H		19.3	272.2
cb		21.1	267.1
+5		21.1	265.1
1/4		21.1	267.1
1/2		18.5	273.0
1/4		11.7	279.8
17		7.3	284.2
cb		7.1	284.1
5		6.9	284.6
	F cb		
5		7.8	283.7
cb		8.1	283.4
+5		8.0	283.5
1/4		10.2	281.3
1/2		11.9	274.5
+6		20.9	270.6
1/4		22.1	264.4
17		18.7	262.8
cb		28.9	262.6

27

291.45

H		22.7	269.3
+10		17.0	274.5
	F L Cooper		
		25.6	265.9
		29.0	262.2
		32.5	259.0
		36.3	260.2
		28.2	268.1
		11.5	275.0
		11.0	280.5
		8.8	282.7
		8.8	282.7
		8.7	282.8
	10' E of E.L. of Cooper		
		9.6	282.3
		9.6	281.9
		9.6	281.9
		12.0	278.6
		11.3	280.09
		9.7	274.2
		15.0	268.9
		21.8	262.1
		26.9	257.0
		18.3	265.6
		25.2	
		22.7	261.2

Notes 0.35 High  
See P. 24

Maple St

283.88

282.88

28

-7	29.3	254.6
N	24.4	259.5
+5	19.6	264.3
cb	15.8	268.1
1/4	11.0	272.9
1/2	7.0	276.9
1/4	3.3	280.6
cb	2.9	281.0
1/4	2.8	281.1
s	1.7	282.2
s	1.4	282.5
cb	3.2	280.7
1/4	2.5	280.4
1.3	3.5	280.4
1/2	5.4	278.5
1/4	8.1	275.8
cb	12.3	271.6
+8	16.3	267.6
N	20.3	263.6
+20	30.3	253.6
+17	30.5	253.4
+20	27.1	256.8
-40	30.2	253.7
-30	35.6	248.3
1/4	17.2	266.6

Notes 0.35 High Sect. 24

50.5

75.5

cb	11.3	272.6
1/4	7.4	276.5
1/2	5.3	278.6
+5	4.1	279.8
1/4	4.0	279.9
cb	3.2	280.7
1/4	2.1	281.8
s	1.4	281.5
s	3.2	280.7
cb	4.1	279.5
1/4	5.5	278.4
1.8	5.6	278.3
1/2	4.1	277.8
1/4	2.3	275.6
cb	12.1	271.5
N	18.8	265.6
+35	35.0	248.9
+15	32.8	253.1
+50	31.0	252.9
-35	37.3	246.6
N	22.8	263.1
cb	15.0	268.9
1/4	12.5	271.4
1/2	8.8	275.1

100.5

115.1

Maple St

28388

1/4		77	276.2
cb		66	277.3
NS		55	278.4
	150°F		
S		79	276.0
cb		90	274.9
NS		105	273.4
1/4		113	272.6
1/2		118	272.1
1/4		146	269.3
cb		197	264.5
N		246	259.3
135		43.6	240.3
150		37.5	246.4
	175°F		
-65		46.5	241.4
-50		47.3	236.6
-37		115	439.4
N		249	259.0
cb		206	263.3
1/4		171	266.8
1/2		146	269.3
1/4		140	269.9
cb		123	271.6
S		108	273.1
TP	158	27596	271.35

27596

276.00

29

200°F

S		49	271.1
cb		60	270.0
1/4		73	268.7
1/2		80	268.0
15		82	267.8
1/4		102	265.8
cb		104	262.6
N		116	259.4
140		130.3	245.7
	225°F		
140		237	252.8
N		156	260.4
cb		168	263.2
15		187	263.6
1/4		99	266.1
1/2		84	267.6
1/4		76	268.4
cb		65	269.5
S		53	270.7
	250°F		
S		51	270.9
cb		58	270.2
1/4		65	269.5
1/2		72	268.8
1/4		80	268.0

Notes 0.35 High  
see P 24



Maple St

275.96

276.00

275.96

276.00

30

Cb	9.0	267.0
N	10.7	265.3
+20	14.3	261.7
+40	18.3	257.7

S	3.3	272.7
1/4	3.4	272.6
Cb	3.4	272.6
S	3.2	272.8

275' F

N Cb

-40	11.3	261.7
N	7.2	268.8
Cb	6.3	269.7
1/4	6.0	270.0
S	5.3	270.7
1/4	5.0	271.0
Cb	4.5	271.5
S	4.1	271.9

S	2.5	272.5
Cb	2.5	272.5
1/4	2.5	272.5
S	2.4	272.6
1/4	2.5	272.5
Cb	2.8	272.2
N	3.0	272.1

300' F

N 1/4

S	3.5	272.5
Cb	3.1	272.4
1/4	3.2	272.1
S	4.1	271.9
1/4	4.7	271.3
Cb	4.8	271.2
N	5.4	270.6
+20	6.5	269.5

N	3.9	272.1
Cb	3.9	272.1
1/4	3.8	272.2
S	3.1	272.4
1/4	3.1	272.4
Cb	3.6	272.4
S	3.6	272.4

320' F - N Vancouver

Cordillera  
10 Cbs  
100 ft

N	4.3	271.7
Cb	4.0	272.0
1/4	3.7	272.3

1/2 Vancouver	3.8	272.2
Cb	3.8	272.2
1/4	3.8	272.2
S	3.8	272.2
1/4	3.9	272.1

Notes O.35 High  
See P. 24

Maple St.

275.96

276.00

31

cb 38 272.2

H 38 272.2

F 1/4

H 40 272.0

cb 41 271.9

1/4 42 271.8

S 42 271.8

1/4 42 271.8

cb 42 271.8

S 42 271.8

FCB

S 46 271.4

cb 45 271.5

1/4 44 271.6

S 44 271.6

1/4 43 271.7

cb 42 271.8

H 41 271.9

FL Vancouver

H 43 271.7

cb 44 271.6

1/4 46 271.4

S 46 271.4

1/4 47 271.3

cb 49 271.1

S 50 271.0

Notes 0.35 High Sec F24

S.M.

S.09

276.87

SE Trap Hole  
Maple Vancouver

Gass Section Mc Larcas Lane  
Bancroft to 33rd St.

30' wide

BM	6.31	76.73	70.42	5th Mon 1st Bancroft
				E. L. Bancroft
H		47	72.0	
+6		5.0	71.7	
±		6.5	70.2	
+7		7.3	69.4	
S		7.8	68.9	
				NE of E. L. Bancroft
S		12.8	63.9	
±		11.6	65.1	
N		11.7	65.0	
				NE
H		13.0	64.7	
+13		12.5	64.2	
±		16.8	59.9	
+4		16.1	60.6	
+6		12.7	64.0	
S		14.4	62.3	
TP	186	66.19	64.33	
				29' E
S		7.7	58.5	
+2		7.5	58.7	
+5		5.9	60.3	
+10		5.2	60.9	
±		8.6	57.6	

Plotted  
J. H. 3-4-27

66.19

		46	61.6	
		4.3	61.9	
		5.5	60.7	
		6.0	60.2	
				40' E
		10.6	55.6	
		11.8	54.4	
		11.8	51.4	
		13.9	52.3	
		12.0	54.2	
		13.0	53.2	
	0.18	53.97	53.89	
				50' E
		5.1	48.4	
		5.4	48.6	
		6.0	47.8	
		6.0	47.8	
		5.0	49.0	
		3.9	50.1	
				64' E
		9.5	44.5	
		10.3	43.4	
		11.1	42.6	
		11.5	42.5	
TP	0.75	42.00	41.25	
				79' E

S 60  
44.2  
± 42.6  
N 46.1

42.00

S	28	39.2
S	16	40.4
N	13	40.8

81'E

N	30	39.0
W	36	38.4
S	38	38.2
S	47	39.3

100'E

S	61	35.9
S	61	35.9
N	52	36.8

150'E

N	66	35.4
S	74	34.6
S	74	34.6

200'E

S	78	34.2
S	78	34.2
N	75	34.5

250'E

N	71	34.4
S	77	34.3
S	80	34.0

300'E

S	80	34.0
---	----	------

170'E  
N End of  
L.S.S. of 100'168' out  
Garage  
Pass to  
676168'E  
End of 100'  
+ Shell L.S.S.  
of 100'305' East  
Garage  
Floor  
75

42.00

S	75	34.5
N	77	34.3

350'E

N	83	33.7
S	80	34.0
S	85	33.5

400'E

S	94	32.6
S	89	33.1
N	87	33.3

450'E

N	100	32.0
S	98	32.2
S	98	32.2

500'E

S	100	31.4
S	100	31.4
N	101	31.9

500'E - N.L. 331 d. 54

N	107	31.3
S	107	31.3
S	107	31.3

561 3696

TP	105	31.35
BN	123	33.73

33

358' East  
Garage - 2nd Floor  
85Plotted  
J.T.H. 3-4-27N.W. 100'  
S 100'  
3-4-27

Survey of EXISTING and  
Necessary Culverts on  
Sorrento Grade

E of Miramar + Sorrento grade = 0+00

3/23/51  
Moore

34

Existing Culvert #1	Sta 10+60	14" Iron pipe	36' long	Should be 24"
" "	42 " 13+35	14" "	30' "	" " 24"
" "	43 " 15+78	14" "	30' "	" " 24"
" "	44 " 19+88	18" "	30' "	" " 30"
" "	45 " 26+63	16" Conc. pipe	26' "	" " 30"
" "	46 " 32+33	15" x 18" Wood Box	26' "	" " 36" <sup>Broken</sup> Replace
" "	47 " 42+93	8' of 18" Wood stave pipe		" " 40"
		running into	24" Corv. iron pipe 18' long	
" "	48 " 47+18	15" iron pipe	24' long	" " 24"
" "	49 " 53+63	14" "	25' "	" " 24"
cut road decided here	60+00		30' long	" " 24"
Existing Culvert #10	65+70	12" Conc. pipe	20' "	" " 18"

Existing Culvert No 67+58

18" iron pipe 24' long

should be 30" diam.

Road should be 71+00 shifted north approx 7' to

avoid undermining frame creek to south for a

distance of 100 each way from STA 71+00 #12

" " 18" Culvert <sup>needed</sup> here 30' long

good sized creek here 77+60 but not practical for culvert

elev. of road is below Bean field to the south

85+60 approx where old roadway

has wash out and beginning of new road across  
Baker's property

Levels on 30' Road adjoining  
 EL. of Santa Fe R of N and  
 South of 5th St. Somerville

Main Line of Santa Fe RR  
 Tol rail 12.80 42.80 30.00  
 16.15th St

	1000' S of 5th St		
W		9.6	33.2
E		10.0	32.8
E		10.0	32.8
	1100' S		
E		8.7	34.1
C		9.3	33.5
W		8.7	34.1
	1200' S		
W		8.5	34.3
C		8.2	34.4
E		8.1	34.7
	1300' S		
E		6.9	35.9
C		6.9	35.9
W		6.9	35.9
	1400' S		
W		6.0	36.8
C		6.7	36.1
E		6.3	36.5
	1500' S		
E		5.7	37.1
C		5.4	38.4
W		3.8	39.0

42.50

26

	1504' S		
W		3.9	38.9
C		4.5	38.3
	19' Sycamore tree	5.0	37.8 4" diam.
E		6.3	36.5
	1510' S		
E		8.2	34.6
C		8.3	34.5
+3		5.7	37.1
4W		5.8	37.0
W		6.0	36.8
	1515' S		
W		7.7	35.1
+3		5.7	37.1
4W		5.7	37.1
C		8.7	34.1
E		8.8	34.0
	1535' S		
E		8.5	34.3
C		8.3	34.5
+3		6.2	36.6
4W		6.2	36.6
W		7.4	35.4
	1541' S		
W		7.3	35.5
+3		5.4	37.4

W + W 37.4

C 3.2 39.6

+ v e of Sycamore double trunk

+ 8 " " " " 37.9

E 4.9 37.9

+ 7 " " " 20" diam. over root

1550 S

E 4.5 38.3

C 4.0 38.8

W 3.8 39.0

1600 S

W 3.9 38.9

C 4.0 38.8

E 4.1 38.7

1700 S

E 3.0 39.8

C 3.1 39.7

W 2.8 40.0

1750 S

W 2.1 40.7

C 2.2 40.4

E 2.1 40.7

15+12 = N end of Santa Fe RR Bridge

Top of rail 1.80 41.0

15+95 = S. end RR bridge

Top of rail 1.44 41.4

100'

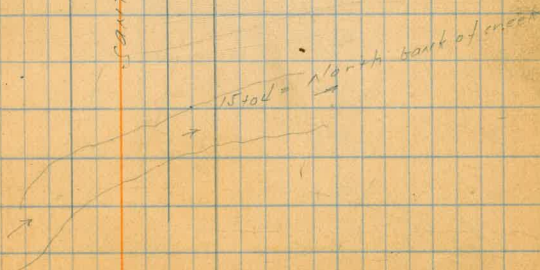
30'

St. 5 + 457 = 0200

Sorrenito Add

SANTA FE RR R of W

N







3556

1/2		6.4	29.2
e		6.3	29.3
1/4		6.8	28.8
cb		6.3	29.3
S		6.3	29.3
	3+00		
S		4.7	30.9
cb		5.0	30.6
1/4		5.5	30.1
C		5.0	30.6
1/4		5.3	30.3
cb		4.9	30.7
N		5.7	29.5
	3+50		
N		4.7	30.9
cb		4.3	31.3
1/4		4.2	31.4
C		4.2	31.4
1/4		4.5	31.1
cb		4.2	31.4
S		3.7	31.9
	4+00		
S		2.6	33.0
cb		3.1	32.5
1/4		3.4	32.2
C		3.3	32.3

3556

Cape May

39

1/2		3.3	32.3
cb		3.5	32.1
1/4		3.6	32.0
	4+50		
N		3.5	32.1
cb		3.2	32.4
1/4		3.2	32.4
C		2.7	32.9
1/4		2.6	33.0
cb		2.5	33.1
S		2.1	33.5
	5+00		<del>33.9</del>
S		1.7	33.9
cb		1.8	33.8
1/4		1.8	33.8
C		2.0	33.6
1/4		2.4	33.2
cb		2.5	33.1
N		3.1	32.5
	5+50		
N		2.1	33.5
cb		1.5	34.1
T.P.	11.68	46.23	34.55 ✓
1/4		12.1	34.1
C		11.5	34.7
1/4		11.6	34.6

4623

cb	11.3	349
S	10.9	353
6+00 = w/L Ebers under contract (P)		
S	9.9	363
cb	10.2	360
1/4	10.4	358
C	10.7	355
1/4	10.8	354
cb	10.5	357
N	11.2	350
E.L. Ebers = 00		
N	9.0	372
cb	9.4	370
1/4	8.9	373
C	8.7	375
1/4	8.6	376
cb	8.2	380
S	8.3	379
0+50		
S	6.1	391
cb	6.4	398
1/4	7.0	392
C	6.8	394
1/4	7.1	391
cb	6.8	394
N	7.2	390

4623

Cape May.

40

1+00		
N	5.0	412
cb	4.5	417
1/4	4.7	415
C	4.7	415
1/4	4.7	415
cb	4.3	419
S	3.8	424
7+50		
S	1.8	444
cb	2.1	441
1/4	2.1	441
C	2.3	439
1/4	2.2	440
cb	2.0	442
N	2.1	441
T.P.	1293 5897	0.79
2400		46.04 ✓
N	11.7	472
cb	12.1	469
1/4	12.2	468
C	12.1	469
1/4	12.5	465
cb	12.2	468
S	12.0	470
2+50		
S	9.0	50.0

5897

cb		9.2	498
1/4		8.6	504
c		8.7	503
1/4		8.7	503
cb		8.5	505
N		7.5	515
	3+00		
N		4.5	545
cb		5.3	537
1/4		5.4	538
c		5.1	539
1/4		4.9	541
cb		5.2	538
S		4.4	546
	3+35		
S		1.1	579
cb		1.4	576
1/4		2.1	569
c		1.2	578
1/4		2.0	570
cb		2.2	568
N		2.4	565
T.P.	12.79	70.91	085 58.12 ✓
	3+75		
N		11.2	59.7
cb		10.9	60.0

5

70.91

Cape May

41

1/4		10.7	60.8
c		10.4	60.5
1/4		11.0	59.9
cb		10.4	60.5
S		9.4	61.5
	4+25		
S		5.1	65.8
cb		5.8	65.1
1/4		6.3	64.6
c		6.6	64.3
1/4		7.1	638
cb		7.4	635
+1.5 = diameter tree		7.4	625 1/2" diam
N		7.6	623
	1+18 = diameter tree	15" diameter	3" "
	4+74	" " " " "	3" "
	4+75		
N		3.8	67.1
cb		2.9	680
1/4		3.5	67.4
c		2.9	680
1/4		3.1	67.8
cb		4.5	68.4
S		1.3	68.6
	4+99 diameter tree	15" diameter	6" diam
T.P.	11.94	81.53	132 69.59 ✓

5+00

8/53

S		10.3	71.2
cb		11.1	70.4
1/4		11.2	70.3
C		11.3	70.2
1/4		11.6	69.9
cb		11.2	70.3
N		11.8	69.7

5+27 Acacia tree 6" Not Waurb

5+40

N		7.7	73.8
cb		7.9	73.6
1/4		7.9	73.6
C		7.8	73.7
1/4		8.0	73.5
cb		7.5	74.1
S		6.6	74.9

5+50 Acacia tree 6" diam ex curb line

5+75

S		4.1	77.4
cb		4.7	76.8
1/4		5.0	76.5
C		4.8	76.7
1/4		4.7	76.8
cb	acacia tree	5.1	76.4
N		6.2	75.3

8/53

Cabo May 42

5+00 = 111 Frouda 60' wide

N		17.3	76.2
cb		4.4	77.3
1/4		3.6	77.9
C		3.5	78.0
1/4		2.7	78.7
cb		2.6	78.9
S		2.3	79.2

TP Mark Sub 1253 91.62 2.44 79.09 79.16

Waurb

S		11.4	80.2
cb		11.7	79.9
1/4		12.1	79.2
C		13.2	78.4
1/4		13.1	78.2
cb		14.0	77.6
N		14.9	76.7

Waurb

N		14.5	77.1
cb		13.5	78.1
1/4		13.0	78.6
C		12.7	78.9
1/4		11.8	79.8
cb		11.1	80.5
S		10.1	81.5

9/62

Center		
S	9.5	82.1
cb	10.5	81.1
1/4	11.5	80.1
C	12.0	79.6
1/4	12.5	79.1
cb	13.1	78.5
N	13.8	77.8
E 1/4		
N	12.5	79.1
cb	12.6	79.0
1/4	12.1	79.5
C	11.5	80.1
1/4	10.9	80.7
cb	10.0	81.6
S	7.7	83.9
E curb		
S	6.1	85.5
cb	9.1	82.5
1/4	10.6	81.0
C	10.9	80.7
1/4	11.7	79.9
cb	11.9	79.7
N	11.7	79.9
E. L. Froude = 00		
N	10.6	81.0

91.62

Cape May - 43

cb	11.0	80.6
1/4	10.8	80.8
C	10.2	81.4
1/4	10.0	81.6
cb	8.7	82.9
S	4.7	86.9
0+25		
S	5.0	86.6
cb	7.5	84.1
1/4	8.6	83.0
C	8.6	83.0
1/4	8.4	83.2
cb	7.5	84.1
N	7.4	84.2
0+50		
N	5.5	86.1
cb	5.0	86.6
1/4	5.4	86.2
C	6.6	85.0
1/4	6.7	84.9
cb	6.6	85.0
S	4.9	86.7
0+75		
S	4.4	87.2
cb	5.2	86.4
1/4	4.9	86.7

91.62

C		4.4	872
1/4		4.4	874
cb		4.5	871
N		5.9	857
	1+05		
-5		7.3	843
N		7.2	844
cb		6.2	854
1/4		5.4	862
C		5.0	866
1/4		4.3	873
cb		3.7	879
S		2.7	889
	1+25		
S		0.8	908
cb		3.6	890
1/4		4.1	875
C		5.0	866
1/4		5.0	866
cb		5.3	863
N		6.6	850
+5		6.8	848
	1+50		
-5		5.4	862
N		5.4	862
cb		4.9	867

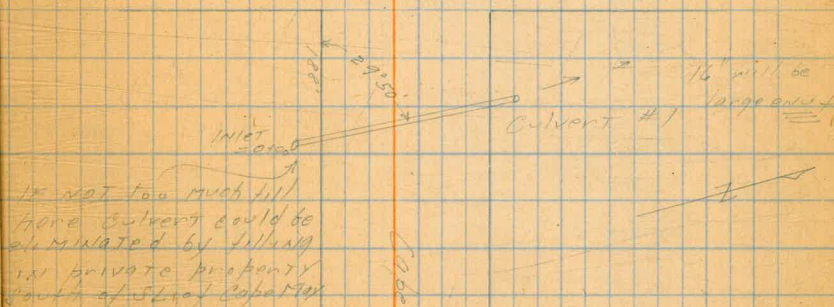
91.62

Cape May

44

1/4		4.3	873
2		11.0	876
1/4		8.6	880
cb		3.1	885
S		2.5	891
+5		2.0	896
T.P.	71.97 102.16	143	90.19
	1+25		
-5		12.6	896
S		12.7	895
cb		13.0	892
1/4		13.9	883

Fraude



102.16

C	13.8	884
1/4	13.9	893
cb	13.7	885
+15	13.8	884
N	11.4	908
+5	11.0	912
Levels for Culvert #1		
10.5 at 1st manhole = inlet	12.0	902
0+10	12.4	897
2+56.1 = 2nd manhole	14.3	879
1+02.40 = 1st manhole	16.7	855
+12.4 = outlet	17.2	850
2+00		
N	8.4	938
cb	10.4	918
1/4	11.0	912
0	11.0	912
1/4	11.9	903
cb	11.6	905
S	11.8	904
+5	11.7	905
2+25		
-5	9.7	925
S	9.6	926
cb	8.6	936
1/4	7.8	944

102.16

Cape May 45

C	8.0	942
1/4	7.8	944
cb	8.1	941
+8	8.2	940
+12	6.7	955
N	7.1	952
2+50		
N	5.8	964
cb	5.8	964
1/4	5.8	964
C	5.2	970
1/4	4.9	972
cb	4.7	975
S	5.5	967
+5	6.3	959
2+75		
S	0.9	1013
cb	2.1	1001
1/4	2.5	997
C	2.9	993
1/4	3.5	987
cb	3.8	984
N	4.7	975
+5	4.7	975
T.P. 1143	1129	0.67
		10149



112.92

3+00

-5	14.2	98.7
N	14.1	98.8
cb	12.8	100.1
1/4	12.8	100.1
C	12.3	100.6
1/4	11.8	101.2
cb	11.4	101.5
S	9.6	103.7

3+25

S	8.1	104.8
cb	10.2	102.7
1/4	10.5	102.4
C	10.8	102.1
1/4	11.5	101.4
cb	11.7	101.2
N	12.7	100.2
+5	12.9	100.0

3+75

-5	9.8	103.1
N	9.7	103.2
cb	9.0	103.9
1/4	8.9	104.0
C	8.2	104.7
1/4	7.7	105.2
cb	7.8	105.1
S	6.2	106.7

112.92

Cape May

46

4+00

S	4.3	108.6
cb	5.9	107.0
1/4	6.0	106.9
C	6.2	106.7
1/4	7.1	105.8
cb	7.2	105.7
N	7.4	105.7
+5	7.3	105.6

4+26

-5	5.9	107.0
N	5.9	107.0
cb	5.3	107.6
1/4	4.9	108.0
C	4.6	108.3
1/4	4.4	108.5
cb	3.9	109.0
+11 of Acacia trees	3.6	109.3
S	3.1	109.8

T.P. 12.99 125.06 085 112.07 ✓

4+75

S	10.1	114.9
cb	10.9	114.2
1/4	11.3	113.8
C	11.5	113.6
1/4	11.9	113.2

12.5.06

cb	11.7	1124	
+7 & Acacia tree		4" diam	
N	12.6	1125	
+5	12.6	1125	
H+77 = Acacia tree 12" diam. 10' S of scrub			
4+96 = " " 4" " 7' N of scrub			
5+00			
+5	11.0	1141	
N	10.7	1144	
cb	9.7	1154	
1/4	8.4	1167	
C	8.7	1164	
1/4	8.7	1164	
cb	8.2	1169	
S	7.0	1180	
5+26 = Acacia tree 10" diam 10' S of scrub			
5+35			
S	3.4	1217	
cb	4.8	1203	
1/4	5.0	1201	
C	5.1	1200	
1/4	3.4	1217	
cb	3.1	1220	
N	5.2	1196	
+5	5.8	1192	

12.5.06

Cape May

47

5+65				
N	0.5	1246		
+10	2.4	1227		
cb	1.8	1233		
1/4	1.4	1237		
C	2.2	1229		
1/4	2.4	1227		
cb	2.2	1229		
S	0.5	1246		
5+75 = Acacia tree 8" diam. 10' S of scrub				
T.P.	7.5	131.28	0.83	124.73 ✓
5+98.7 = W.L. Guizot				
S	3.7	1276		
cb	4.3	1265		
1/4	5.0	1263		
C	5.1	1262		
1/4	5.3	1260		
cb	5.6	1252		
N	5.5	1252		
cb	4.8	1264		1266~
cb to BM S.W. Cor. Mont. 8' to 17' W Guizot				

Walker  
5-17-27

X. Section Alley 814.63 Shermans Add.  
Bet. Imp. + N St.  
From 24th to 22nd St.

58.68

48

N.E. BP	370	58.68	54.98
N.L. 24th = 0+00			
N top cb		6.80	51.9
N Gut. on Paving		7.04	51.7
ℓ " "		7.47	51.2
S " "		7.33	51.4
S top cb		7.13	51.6
0+03			
S		57	53.0
ℓ		67	52.0
+6		67	52.0
+7		59	52.8
+8		51	53.6
N		46	54.1
0+12			
N		40	54.7
+3		41	54.6
+5		56	53.1
ℓ		57	53.0
S		48	53.9
0+25 = ℓ Board Fence on S 50' wide 13' in Alley			
S		47	54.0
ℓ		57	53.5
+5		57	53.5
N		40	54.7

Plotted  
8/30/27  
W. Caldwell

0+51 = ℓ Garage on N 85' Back		
-8.5 = Garage	42	54.5
N	43	54.4
ℓ	47	54.0
S	46	54.1
* Con. Floor		
0+55 = ℓ Garage on S on line	460	54.1
0+65 = " " " " = Dkt. Floor		
	4.5	54.2
1400		
S	46	54.1
ℓ	44	54.3
N	43	54.4
1420 = ℓ Board Fence on N 0.3' in Alley 30' wide		
1433 = ℓ California house on S 1.6' in Alley. Con. Foundation on alley side only		
N	46	54.1
ℓ	46	54.1
+84 = top Con Foundation	46	54.1
+54 = ℓ Garage on N Con. Floor	4.15	54.5
Back 1.8'		
+164 = " " " "		" 1.8'
N-18 = Garage Floor	4.10	54.6
N	43	54.4
ℓ	46	54.1
S	49	53.8
+179 = ℓ Garage on South 1.6' in Alley dirt Floor		
S+16 = Garage	47	54.0
ℓ	45	54.2
N	43	54.4

58.68

59.37

49

3+90

1+89 = 1/2 of Shed on N 10' wide 0.5' in Alley dirt Floor

1+94 = East end of 4 Garages on N Alley dirt Floors 0.5' in Alley

N +.5 = Garage

3.9 54.8

S

4.2 54.5

S

5.0 53.7

2+34 = West end of 4 Garages on N 0.5' in Alley

S

4.3 54.4

S

3.9 54.8

+ 9.5 = Garage

4.0 54.9

2+40 = 1/2 Garage on S 1.3' Back

4.3 54.4

dirt Floor

T.P.

4.21

59.37

3.52

55.16

3+00

N

3.7 55.7

S

4.6 54.8

S

4.7 54.9

3+34 = East end of Garage on North dirt Floor 1.8' wide East Entrance 1' in Alley dirt Floor

S

3.4 56.0

S

4.5 54.9

+ 9 = South edge Garage

3.8 56.6

3+57 = 1/2 of outside Water toilet 1' in Alley 4' wide

3+50 = 1/2 Board Fence on S 0.3' in Alley

3+62

N

3.9 55.5

S

4.4 55.0

+ 9.7 = Fence

4.5 54.9

3+70

S

4.5

54.9

+4

4.3

55.1

+5

4.7

54.7

S

4.5

54.9

N

4.0

55.4

3+87

N

3.9

55.5

+4

4.3

55.1

+5

4.9

54.5

S

5.0

54.4

+4

5.0

54.4

+5

4.2

55.2

S

4.6

54.8

4+06

S

4.7

54.7

+6

5.1

54.3

+7

6.6

52.8

S

6.5

52.9

+6

6.3

53.1

+7

5.1

54.3

N

4.2

55.2

4+09.7 = E.L.R.P.H.

N top cb

6.25

53.1

N Gutter on Parking

6.76

52.6

S

7.30

52.1

S

7.16

52.2

S top cb.

6.71

52.7

59.37 - 1.88 =  
57.49 - 1.1 =  
4.23 +  
61.72 - 1.675 =  
54.77  
54.9 for BT  
0.21 in 5 min

Bliss  
10/21/27  
X Section Alley Block 3  
S Gurnee Heights East-West Alley  
+ 12.33 313.33 301.00  
5.1V 30.25 + Palm

313.40  
75' East  
Elev 50

T.P. 4.83 313.40 476 308.57  
16' Alley  
East Line N. South Alley on Paving

6.1  
100' East  
5.8

\* Note there is a garage starting on the E line of alley and continuing East 18' that is 0.5 in Alley  
N 4.91  
E 4.82

5.6  
6.0

S 4.82  
5' East

125' East  
5.8

4.8  
4.9  
4.7

5.8  
5.8  
5.8

26' East ch. ca. Garage Dirt Floor

144' East ch. Single Garage Cement Floor  
4' out from South Line on floor 5.48

4' Back On floor 4.8  
N 5.0

150' East  
5.8

E 5.1  
S 5.1

5.7  
5.4

50' East  
S 5.9

5.5  
1.0' out INSIDE 160' East West end. Dbl Garage Cement Floor  
On floor 5.68

+ 4 5.1  
E 5.2

178' East East End Dbl Garage Cement Floor  
1.0' out on floor 5.69

N 5.4  
60' East Single Garage Dirt Floor

5.85  
N. cement slip

4' Back from S. Line on Floor 6.0  
75' East

+ 3 6.2  
E 6.6

N 5.7  
E 5.4

S 6.6  
+ 3 5.9

313.40 <sup>A</sup> - Elev

192' East

S 7.3

E 7.1

N 7.0

200' East

N 8.0

E 8.1

S 8.1

225' East

S 10.5

E 10.5

N 10.8

250' East

N 12.9

E 12.5

S 12.7

TP 5.37 313.00 5.77 307.63

BM 11.99 301.01 ✓

X Sections Alley Blocks 72-73-74-75  
 Park Villas Univ to Myrtle Between Arnold and  
 Bliss Villa Terrace

10/21/21 8.15 314.55 - Elev 306.40 S.E. B. Plug Arnold + Univ

		Elev	
	5 line of Univ on Paving		
E	Paving comes to top of cbs on both sides 4.64	310.0	
W	5.07	309.5	
	5.06	309.5	
	7' South		
W	4.9	309.7	
E	4.6	310.0	
W	4.5	10.1	
	20' South		
E	5.1	309.5	
E	5.3	9.3	
W	5.0	9.4	
	35' South		
W	5.30	9.3	
E	5.8	8.8	
E	5.9	8.7	
E	5.6	9.0	
	50' South		
E	6.1	8.5	
E	6.3	8.3	
W	6.5	8.1	
	75' South		
W	7.4	7.2	
E	7.3	7.3	
E	7.0	7.4	

Plotted 11-1-22  
 W. Caldwell

		Elev	
	100' South		
	7.5	309.1	
	8.0	6.4	
	8.2	6.4	
	125' South		
	8.8	5.8	
	8.5	6.1	
	8.7	5.9	
	150' South		
	9.1	5.5	
	9.0	5.6	
	9.1	5.5	
	TP 511	310.66	9.00 305.55
	155' South Floor of dwelling 9 W. of West line A4		
	on floor	4.65	306.0
	160' South DB1 Garage		
	9' East on floor	4.8	5.9
	E	5.4	5.5
	E	5.1	5.6
	W	5.2	5.5
	175' South		
	5.2	5.5	
	E	5.0	5.7
	4.9	5.8	
	E	5.4	5.3

	+	T 310.66	-	Elev
			200' South	
E			5.4	305.3
E			5.1	5.6
W.			5.3	5.4
			225' South	
W			5.5	5.2
E			5.2	5.5
E			5.2	5.5
			241' South	
E			4.6	6.1
E			4.7	6.0
+3			4.8	5.9
W			5.0	5.7
			247' South	
W			4.2	6.5
E			4.4	6.3
E			4.2	6.5
			250' South N Line Wightman	
E on Paving		343		307.23
E " "		398		306.68
W " "		390		306.76
			S. Line Wightman	
W on Prop		426		306.40
E		434		306.32
E		396		306.76

	+	T 310.66	-	Elev
			8' South	
E			3.9	306.8
+3			4.1	6.6
+4			4.4	6.3
E			4.4	6.3
+1			4.9	5.8
W			4.8	5.9
			20' South	
W			4.9	5.8
E			5.0	5.7
E			4.6	6.1
			35' South	
E			4.7	6.0
E			5.0	5.7
W			5.5	5.2
			5.5' South Single Garage Dirt Floor	
W			5.8	4.9
E			5.7	5.0
+5			5.4	5.3
E			5.1	5.6
			8.5 Back on floor	
			3.8	6.9
			75' South	
			5.1	5.6
+3			5.7	5.0
E			6.0	4.7
+4			6.4	304.3



	31066	Elev
	75' South continued	
W	6.6	304.1
	85' South	
W	7.0	3.7
6	6.6	4.1
+9	6.1	4.6
E	5.3	5.4
	100' South	
E	6.2	4.5
+9	6.7	4.0
6	6.8	3.9
	7.2	3.5
	125' South	
W	7.0	3.7
+2	6.5	4.2
6	6.5	4.2
+1	6.3	4.4
E	6.0	4.7
	135' South	
E	5.9	4.8
+5	6.2	4.5
4	6.3	4.4
+5	6.6	4.1
W	6.8	3.9
	175' South	
W	7.3	3.9
+9	6.6	304.1

	31066	Elev	54
6	6.6	304.1	
E	6.0	4.9	
	200' South		
E	6.5	4.2	
6	6.8	3.9	
W	7.1	303.6	
TP	4.78	308.85	6.60
	225' South		304.06
W	4.9	304.0	
6	4.8	4.1	
E	4.4	4.5	
	230' South Single Garage 1st Floor		
	1' Back from west line on floor		5.0
	250' South		3.9
E	3.8	5.1	
+1	4.0	4.9	
6	4.3	4.6	
W	4.4	4.5	
	262' South		
W	4.0	4.9	
6	4.0	4.9	
+4	3.7	5.2	
E	3.9	5.5	
	275'		
E	3.4	5.5	
6	4.3	4.6	

	+	308.85	-	Elev
				275' South Center and NE End 3 Car Garage. D. on floor
W-			47	304.2
E Back	on floor		5.0	3.9
				300' South
S out			5.5	3.4
W			5.2	3.7
♂			4.6	4.3
E			3.9	5.0
				303' South Dr. Mn Hole
	on rim		7.56	4.3
				313' South
E			4.4	4.5
♂			4.9	4.0
W			5.2	3.7
				325' South
W			5.9	3.0
♂			5.7	3.2
E			5.1	3.8
				340' South ch. Single Garage on West Side
E			6.0	2.9
♂			6.6	2.3
W			7.0	1.9
7' out	on floor		7.3	1.6
				345' South Single Garage on East
	9 1/2 Back on floor		4.65	304.2

	+	308.85	-	Elev
				350' South
W			6.9	302.0
♂			6.6	2.3
E			6.4	2.5
				375' South
	On floor D. Walling 3' East East Line		3.90	5.5
E			6.5	2.4
♂			6.6	2.3
W			6.9	2.0
				390' South
W			6.9	2.0
♂			6.8	2.1
E			6.5	2.4
				400's
E			5.9	3.0
+2			6.3	2.6
♂			6.4	2.5
W			6.3	2.6
				420' South
W			5.5	3.4
♂			5.7	3.2
+5			5.3	3.4
E			4.9	4.0
				450' South Single Garage on West
E			4.8	4.1
+3			5.3	3.4
♂			5.4	3.5

+

308.85

Elev

450 South Continued

+5		5.9	303.5
W		5.9	303.0
TP	4.86	308.48	5.23 303.62
on floor Garage	7	Concrete Back floor	6.17 302.7
		475 South	
W		5.5	303.0
+5		5.4	3.1
Q		5.1	3.4
+4		5.0	3.5
E		4.5	4.0
		500 South	Single Garage on West
E		4.9	3.6
+4		5.5	3.0
Q		5.3	3.2
+2.5		5.4	3.1
W		6.0	2.5
4 1/2 West		On floor Dirt	6.3 2.2
		525 South	
W		5.6	2.9
+4		6.1	2.4
Q		5.9	2.6
+4		5.9	2.6
E		5.7	2.8
		541 South	ctr Single Garage on West
E		6.0	2.5

+

308.48

Elev

56

+4		6.4	302.1
Q		6.2	2.2
+6		6.6	1.9
W		7.0	1.5
		10' Back	Dirt Floor 7.2 1.3
		555 South	
W		6.2	2.3
Q		5.9	2.4
E		5.7	2.8
		575 South	
		4.7	3.8
+5		5.0	3.5
Q		5.1	3.4
+3		5.3	3.2
W		5.0	3.5
		595 S	
W		4.6	3.9
Q		4.5	4.0
E		3.7	4.8
		603.5	South N Prop Landis
E Topcb		3.29	5.2
E tiler		3.6	4.9
Q		4.2	4.3
Topcb		4.67	303.8
TP	2.19	306.57	4.10 304.38

306.57

S. Prop Landis

E Top Ch.	2.9	304.4
Gutter	3.2	3.4
W Top Ch.	3.56	3.0

10' South

1-Back on walk	3.24	2.9
W	3.9	2.7
E	3.6	3.0
+6	3.2	3.4
E	3.3	3.3

20' South

E	3.6	3.0
E	3.9	2.7
+4	4.4	2.2
W	4.3	2.3
1-Back on walk	4.05	2.5

37' South N End Single Garage

Concrete Lip 0.5 in Alley	5.83	300.8
E	5.1	1.5
E	4.7	1.9

42' South

E	5.1	1.5
E	5.3	1.3
+2	5.7	0.9
W	5.9	0.7

306.57

Elev.

57

49 South S End Single Garage Concrete

Concrete Lip	6.00	300.6
W+1	6.5	0.1
E	6.1	0.5
E	5.3	1.3

58 South Ch. Dbl Garage. Dirt floor on West

on floor	7.1	299.5
----------	-----	-------

70' South

E	5.9	300.7
+2	6.4	300.2
E	6.5	300.1
W	6.8	299.8

100' South

W	7.0	99.6
E	7.0	99.6
+5	6.8	99.8
E	6.5	300.1

125' South

E	6.6	300.0
E	6.8	99.8
E	6.9	99.7

150' South

W	7.1	99.5
E	6.9	99.7
E	6.1	300.5

306.57 - Elev

156' South Single Garage Dirt Floor On West

3.5' Back on floor 7.2 299.4

165' South

E 6.8 99.8

E 7.1 99.5

W 7.3 99.3

193' South House on West N End

7' Back On floor 6.26 300.3

200' South

W 6.6 300.0

E 6.6 300.0

E 6.4 300.2

210' South S End of House

6.2 0.4

6.0 0.2

6.4 0.2

7' Back on floor 6.27 0.3

225' S N End 3 car Garage on West Dirt floor

On Prop floor 6.3 6.3

E 6.9 0.2

E 6.2 0.1

298' South S End 3 car Garage on West

E 6.7 299.9

E 6.9 99.7

W on floor 6.9 99.7

306.57 - Elev 58

275' South

W 8.1 298.5

+2 7.6 99.0

E 7.6 99.0

E 7.2 99.4

293' South On West Single Garage Dirt floor

3.5' Back on floor 8.3 98.3

306' South

E 7.6 99.0

E 8.0 98.6

W 8.2 98.4

T.P. 2.95 301.50 8.03 298.55

325' South

W 3.1 98.4

E 3.2 98.3

E 2.9 98.4

335' South

E 2.9 98.4

E 3.3 98.2

W 3.1 98.4

350' South

W 3.6 97.9

E 3.7 97.8

E 3.9 98.1

	+	301.50	-	Elev
		385 South		
E		3.6		297.9
+3		4.1		97.4
E		4.1		97.4
W		4.3		97.2
		393. cfr Single Garage Concrete Floor On West		
		On Lip 5' Back		
		4.59		96.9
		400' South		
W		4.8		96.7
E		4.7		96.8
+5		4.7		96.8
E		4.6		96.9
		406 Single Garage On West Dirt Floor		
E		5.0		96.5
E		5.0		96.5
W		5.2		96.3
8' Back on floor		5.2		96.3
		425 cfr Single Garage on East Dirt Floor		
W		5.4		96.1
E		5.5		96.0
E		5.4		96.1
4.5 Back on floor		5.0		96.5
		438 South		
E		5.9		95.6
E		5.9		95.6
W		5.8		95.7

	+	301.50	-	Elev	59
		456 South			
W		6.1		295.4	
+4		6.4		95.1	
E		6.3		95.2	
E		6.1		95.4	
		475 South			
E		6.9		94.6	
E		7.1		94.4	
W		7.3		94.2	
		493. cfr Single Garage on West Concrete floor			
		4' Back on floor			
		7.50		94.0	
W		8.0		93.5	
E		7.9		93.6	
E		7.7		93.8	
		525' South			
E		8.7		92.8	
E		8.6		92.9	
W		8.5		93.0	
		545' South Single Garage on West Dirt Floor			
		0.5 in Alley			
		9.1		92.4	
		9.3		92.2	
		9.2		92.3	
		560			
		9.2		92.2	
		9.3		92.2	
		9.3		92.2	

	+	T	-	Elev
		301.50		
		580 South		
W			9.5	292.0
☉			9.5	92.0
E			9.5	92.0
		591 S on West Concrete Walk		
on Prop.			9.90	92.1
		595 S		
E			9.4	92.1
☉			9.5	92.0
W on concrete walk			9.45	92.0
		601 South N line Dwight on Paring		
W Top cb			9.58	91.9
Gutter			9.67	91.8
☉			9.70	91.8
Gutter			9.51	92.0
E Top cb			9.09	92.4
TP.	3.55	295.35	9.70	291.80
		S line of Dwight on Paring		
E Top cb			3.59	91.9
Gutter			3.90	91.5
☉			4.14	91.3
Gutter			4.16	91.2
W Top cb			4.06	91.3
		5' South		
W			4.4	91.0
☉			4.1	91.3

	+	T	-	Elev	60
		295.35			
		18' South			
			4.1	291.3	
			3.5	91.9	
			3.4	92.0	
		18' South			
			3.4	92.0	
			3.8	91.6	
			4.1	91.3	
			4.4	91.0	
			4.7	90.7	
		35' South			
			4.9	90.5	
			4.6	90.8	
			4.1	91.3	
		56' South Single Garage concrete floor on West			
			4.90	90.5	
		58' South Single Garage on East Concrete floor			
			3.73	91.7	
			4.5	90.9	
			4.5	90.9	
			4.8	90.6	
		85' South			
			5.2	90.2	
			4.9	90.5	
			4.4	90.5	
			4.6	90.8	

+ T 295.35 - Elev

100' South

E	5.1	290.3
E	5.4	90.0
+ 9.5	5.3	90.1
W	5.4	90.0

130' South

W	5.8	89.6
E	5.7	89.7
+ 1	5.5	89.9
E	5.3	90.1

140' South

E	5.8	89.6
E	6.1	89.3
W	6.1	89.3

165' South

W	6.7	88.7
E	6.3	89.1
E	6.2	89.2

180' South

E	6.3	89.1
+ 2	6.6	88.8
E	6.7	88.7
W	7.0	88.4

200' South

W	7.6	87.8
E	7.4	88.0

+ T 295.35 - Elev 61

200' South Continued

+ 6	7.3	288.1
E	6.9	88.3

225' South

E	7.7	87.7
E	7.7	87.7
+ 3	7.3	88.1
W	8.0	87.4

240' South

W	8.4	87.0
+ 2	8.1	87.3
E	8.2	87.2
E	7.9	87.5

265' South

E	8.0	87.4
E	8.1	87.3
W	8.4	87.0

267' N. End 300' 60' age on East Concrete Floor

7.5 Back of floor 7.60 87.8

275' South

W	8.7	86.7
E	8.8	86.8
E	8.4	87.0

TP. 526 291.88 8.73 286.62

277.5 South S. Door of House opening on Alley

1.5 Back 3.87 288.0



	+	7	-	Elev
		291.88		
		295' South		
			4.12	287.8
E			5.3	86.6
E			5.7	86.2
W			5.9	86.5
		325' South		
W			6.0	85.9
E			5.6	86.3
E			5.5	86.4
		350' South		
E			5.4	86.5
E			5.8	86.1
W			5.7	86.2
		370' South		
W			5.6	86.3
E			5.6	86.3
E			5.3	86.6
		4.00 South		
E			5.0	86.9
E			5.2	86.7
W			5.7	86.2
		423' South		
W			4.9	87.0
E			5.1	86.8
+2			4.8	87.1
E			4.6	87.3

	+	7	-	Elev
		291.88		
		490' South		
			3.8	288.1
E			4.2	89.7
E			4.3	89.4
W			4.4	89.5
		456' South		
W			4.6	87.3
+2			4.2	87.7
E			4.0	87.9
E			3.9	88.5
		480' South		
E			3.3	88.6
E			4.0	87.9
+5			4.2	87.7
W			4.9	87.5
		500' South		
W			4.5	87.4
+3			4.1	87.8
E			4.1	87.5
E			3.5	88.4
		525' South		
E			3.8	88.1
E			4.3	87.6
W			4.5	87.4
		541' South		
W			5.0	86.9

291.88

541 South

E	4.8	87.1
+5	4.4	87.5
E	4.1	87.8

555 South Side Single Garage on West Corridor

	4.5	87.4
	5.2	86.7
12	5.2	86.7
W	6.0	85.9
0.5 Back on floor	5.99	85.9

575 South

W	6.6	85.3
12	6.4	85.5
13	5.8	85.1
E	5.5	85.4
E	4.8	87.1

589 South

E	5.5	86.4
E	6.2	85.7
11	6.4	85.5
W	6.4	85.5

599 South

W	6.7	85.2
12	7.3	84.6
E	7.1	84.8
12	6.8	85.1

291.88

599 South

16.5	6.9	285.0
E	6.2	85.7

600 South

E	7.0	84.9
E	7.5	84.4
600	7.5	84.4

W Top Corridor

TP 12.80	297.37	7.31	284.57
7.98	304.15	12.0	296.17

BM. N.W. Myrtle Villa Terrace

421	299.94
-----	--------

BM  
300.01

110-

63

Levels to establish curb grades on Mission  
Ave from the S line of Madison to 19' S of Curve P.T.

BM SEBY Texas Madison	+	x	-	Elev.
3.67		399.70		346.03
0+00 = Existing curb walk W Side of Mission				
Top cb		6.30		343.40
& existing walk		6.14		343.56
0+25		6.0		343.7
0+50		6.1		343.6
0+75		5.9		343.8
Top cb end turn E side		5.28		344.42
0+89 opposite P.C. on E		5.8		343.9
1+00		5.8		343.9
1+25		5.9		344.3
1+50		5.9		344.3
0+98.5 & curb on East		5.98		343.72
1+71 = 0+98.5		5.2		344.5
2+00 W		5.1		344.6
2+25		5.0		344.7
2+22 start of existing cb		4.94		344.76
& walk		4.75		
2+52 Top cb P.C.		4.89		344.81
& walk		4.59		
P.R.C. existing cb on E		6.62		343.08
97' N end of curve		4.62		345.08
100' N of curve P.C.		4.86		344.84
150' N of " "		5.27		344.73
188' N " " "		5.70		344.00

Bliss  
Isbell  
Morgan on Store floors Garnet Ave Pacific Beach  
1/6/68 Jewell to Morell  
O.M.S.W.B.P.  
Jewell-Garnet

Levels on Sidewalks and Elevators

3.82 72.95 - 68.63

0100 = E line of Jewell

J 7.99 67.96  
N 4.22 68.23

0123 & store

9.5 Bank to floor dr 3.03 69.42

50' E

N 4.95 68.00  
S 4.72 67.73

100' East

S 4.90 67.55  
N 4.64 67.81

150' East

N 4.83 67.62  
S 5.09 67.41

200' East

X S 5.37 67.08  
N 5.01 67.44

250' East

N 5.26 67.19  
S 5.55 66.90

300' East

S 5.71 66.74  
N 5.49 66.96

T.P. 4.80 71.41 5.84 66.61

Jewell

St

65

Grocery Store 0100 0123k

5100

Kendall

St.

0100

Group of store 4100  
Buildings for floor elevators see notes page 66 15100

Grounds of The S.D. Army & Navy Academy

	+	71.41	-	Elev
N		350' East	4.58	66.83
S		490		66.57
		400' East		
S		5.04		66.37
N		4.80		66.61
		450' East		
N		5.05		66.36
S		5.25		66.16
		500' East. W Line Kendall		
S		5.90		66.01
N		5.21		66.20
		E Line of Kendall = 00		
N		5.20		66.21
S		5.52		65.89
		50' East of the E Line of Kendall		
S		5.45		65.96
N		5.14		66.27
TP	5.00	71.17	5.24	66.17
		100' East		
N		4.78		66.39
S		5.22		65.95
		150' East		
S		5.28		65.89
N		4.70		66.47
		200' East		
N		4.64		66.53

	+	71.17	-	Elev	66
		200' East			
S		5.26		65.91	
		250' East			
S		5.26		65.91	
N		4.54		66.63	
		300' East			
N		4.93		66.74	
S		5.82		65.95	
		350' East			
S		5.20		65.97	
N		4.35		66.82	
		400' East			
N		4.22		66.95	
S		5.24		65.93	
TP	5.27	71.17	5.27	65.90	
		412 <sup>5</sup> U.S. Post office			
		2-6 Back to floor ctr	4.93	66.24	
		432 East to Small Shop			
		2-7 Back ctr	4.87	66.30	
		439 East W side of Market			
		on line floor	4.88	66.29	
		450' East			
S		5.26		65.91	
N		4.16		67.01	
		46' East E Side Market			
		on line floor	4.88	66.29	

X  
71.17

73.07

67

			965 S ctr Small shop				
			2.6 Back floor 9.87	66.30	S	6.26	66.81
			987 <sup>S</sup> E. Drug Store encorner			300' East	
			2.6 Back floor 4.88	66.29	S	6.48	66.59
			493 End of cb on North		N	5.57	67.50
N			4.13	67.04		350' East	
S			5.24	65.93	N	5.87	67.20
			500' East W Line of Lamont		S	6.55	66.52
S			5.25	65.92		400' East	
			E line of Lamont = 00		S	6.63	66.44
S			5.12	66.05	N	6.11	66.96
N			4.07	67.10		450' E	
			50' East		N	6.40	66.67
N			3.90	67.27	S	6.80	66.27
S			4.95	66.22		500' East W Line of Merrell	
T.P.	6.73	73.07	4.83	66.34	S	7.01	66.06
			100' East		N	6.57	66.50
S			6.63	66.44		BN1 N.W Merrell + Corncr	66.25
N			5.63	67.44			
			150' East				
N			5.50	67.57			
S			6.47	66.67			
			200' East				
S			6.19	66.88			
N			5.28	67.79			
			250' East				
N			5.28	67.79			

↓ Note curb return does  
not run to W line of Lamont  
on N side but to 9+93

Levels From BM on Boundary to BM on Felton

Jun 23-28 Loudon

Sta	+ Hgt	- Hgt	El.	record El.
B.M.	676	298.53		291.77
B.M.	Con. Mon. E.L. Boundary ± Maple	289	295.64	295.89
T.P.	123	288.98	10.78	287.75
T.P.	0.17	276.80	12.35	276.63
B.M.	Top Hyd Juniper & <sup>weath.</sup> <del>Juniper</del>	7.08	269.32	270.00
T.P.	2.15	267.85	11.10	265.70
B.M.	Top Hyd SE <sup>westland</sup> <del>Juniper</del>	7.29	260.56	260.84
T.P.	0.42	255.93	12.34	255.51
T.P.	2.26	243.55	12.67	243.26
T.P.	0.11	230.61	13.02	230.50
T.P.	13.02	243.62	0.01	230.60
T.P.	12.55	255.93	0.24	243.38
B.M.	SP top well SE. <sup>Juniper &amp; Felton</sup>	0.80	255.13	255.48

Near Laurel.

Levels for Drain 335 S'N of Dwight  
on Wilson Ave.

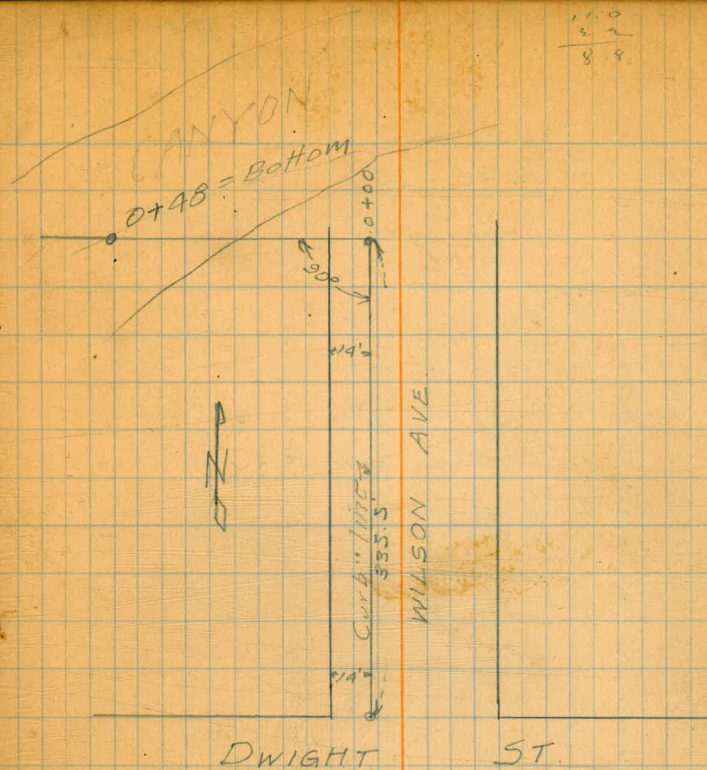
Jul 23-28

London

CR 121

BM	1.58	329.13		327.55	36' E Dwight
T.P.	0.27	325.45	3.95	325.19	
T.P.	0.30	313.57	12.18	313.27	
0+00			8.5	305.1	
T.P.	0.60	301.89	12.28	301.29	
0+17			2.1	299.8	
0+23			6.1	295.8	
0+33			11.0	290.9	
0+41			13.8	288.1	
0+47			15.1	296.8	
0+48	= Bottom	Canyon	17.0	284.9	
0+50			14.8	287.1	
0+56			14.5	287.4	
0+60			13.3	288.6	
0+70			11.6	290.3	

Plotted  
6/29/28  
B (Meaning Bumpster?)





INDEXED

Walker  
Fowler  
Shaw  
9-22-28

Location Existing Dirt Road Camino Del Rio  
Thru. Blks. 472, 471, 444, 441, 440, 420, 414, 415  
OLD SAN DIEGO

By TRAVERSE

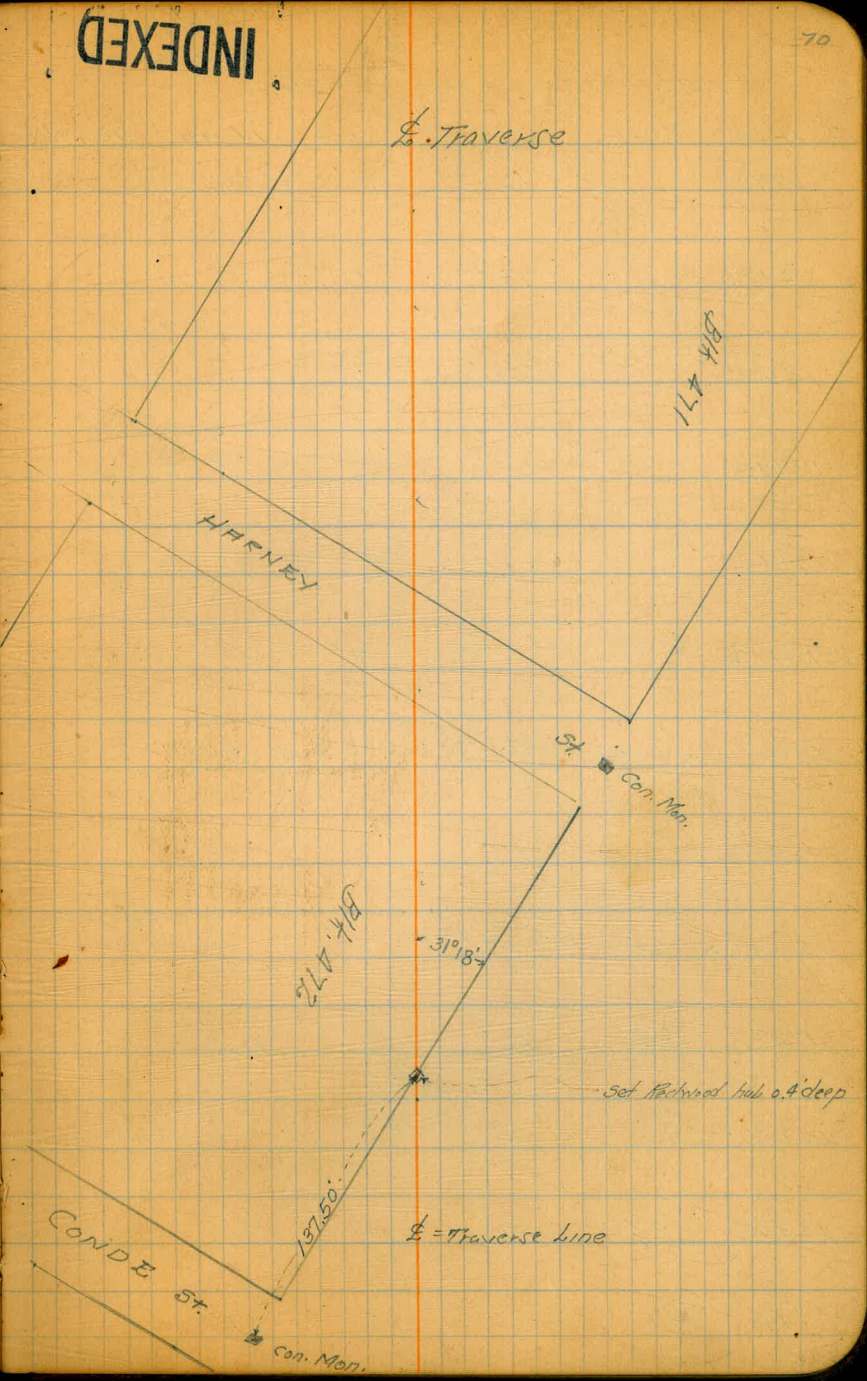
Note: All distances to Rt. or Lt. are of R.L.A. to

and are from E. Traverse Line

E. Traverse Stations	Dist. from E. to				Remarks
	Left of E. Dist. from E. to South	Left of E. Dist. from E. to South shoulder	Rt. of E. Dist. from E. to North	Rt. of E. Dist. from E. to North	

(cont. on page 71)

8+00	22'	13'	14'	32'	
7+00	21'	13'	15'	32'	
6+00	21'	13'	15'	32'	
5+00	21'	13'	15'	32'	
4+00	21'	13'	15'	32'	
3+00	21'	13'	15'	32'	
2+00	20'	13'	15'	32'	
1+00	20'	13'	15'	30'	
0+00	20.3	13.5'	13.5'	29.2	



Stations	Left of 1/2	Left of 1/2	Right of 1/2	Right of 1/2	Remarks
	Dist. from Exit Fence to 00	Dist. from Road on South to Shoulder of Road on South (cont. on page 72)	Dist. from Road on North to Shoulder	Dist. from Road on North to Fence	
15+00		16'	17'	45'	dist. to River Banks on North
14+50		20'	11'		
14+08		22'	9'	13'	End of Fence line on North
13+90		21'	6'	15'	
13+40		23.5	5'	20'	
13+19			7'	22'	
12+82 = $\Delta$ 5° Rt.		18'	12'	26'	
12+50		17'	9'	28'	
12+09.9 = $\Delta$ 24'		12'	13'	32'	End of Fence line on South
11+00 = 24'		12'	13'	32'	
10+87.7 = $\Delta$ Con. Bridge		14'	14'		Distance to Inside Guard Walls
10+00 = 24'		15'	14'	32'	
9+00 = 23'		14'	15'	32'	

← 45' →

← 28' →

Old Pumping Plant  
Con. Foundation → 26' →  
30" Palm tree → 6' →

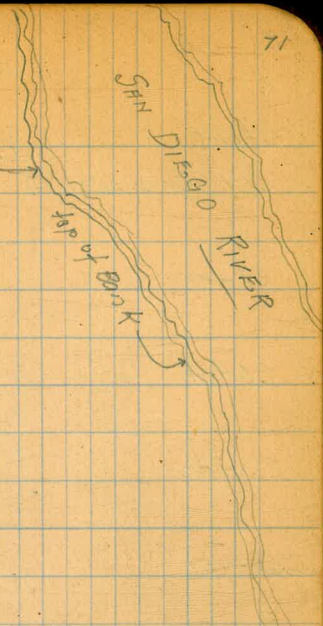
30" Palm tree → 25' → 235'

26' • = 24" Palm tree

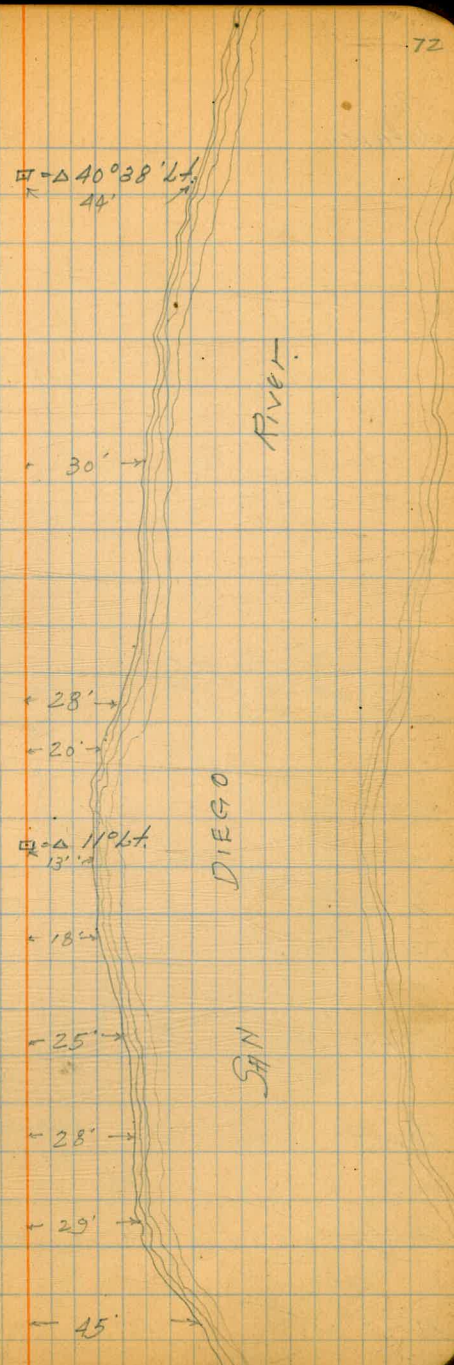
30" Palm tree → 25' □ =  $\Delta$  5° Rt.

□ Rt. 2° 0' 00"

Con. Bridge  
14' → 14'



Stations	Left of $\Delta$ Dist. from $\Delta$ to South edge of (Cont. on Page 73)	Rt. of $\Delta$ Dist. from $\Delta$ to N. edge of	Rt. of $\Delta$ Dist. from $\Delta$ to River Bank <sup>top</sup>
21+50 = $\Delta 40^{\circ}38' Lt.$	24'	13'	44'
21+00	17'	17'	
20+50	13'	20'	
20+00	12'	20'	30' = " " " " "
19+50	9'	18'	
19+00	9'	16'	28' = " " " " "
18+50	12'	12'	20' = " " " " "
18+00 = $\Delta 11^{\circ} Lt.$	19'	8'	13' = " " " " "
17+50	14'	12'	18' = " " " " "
17+00	10'	18'	25' = " " " " "
16+50	9'	20'	28' = " " " " "
16+00	8'	22'	29' = " " " " "
15+50	11'	19'	45' to River Bank



stations

23+41.9 =  $\Delta$  14°02' Lt.

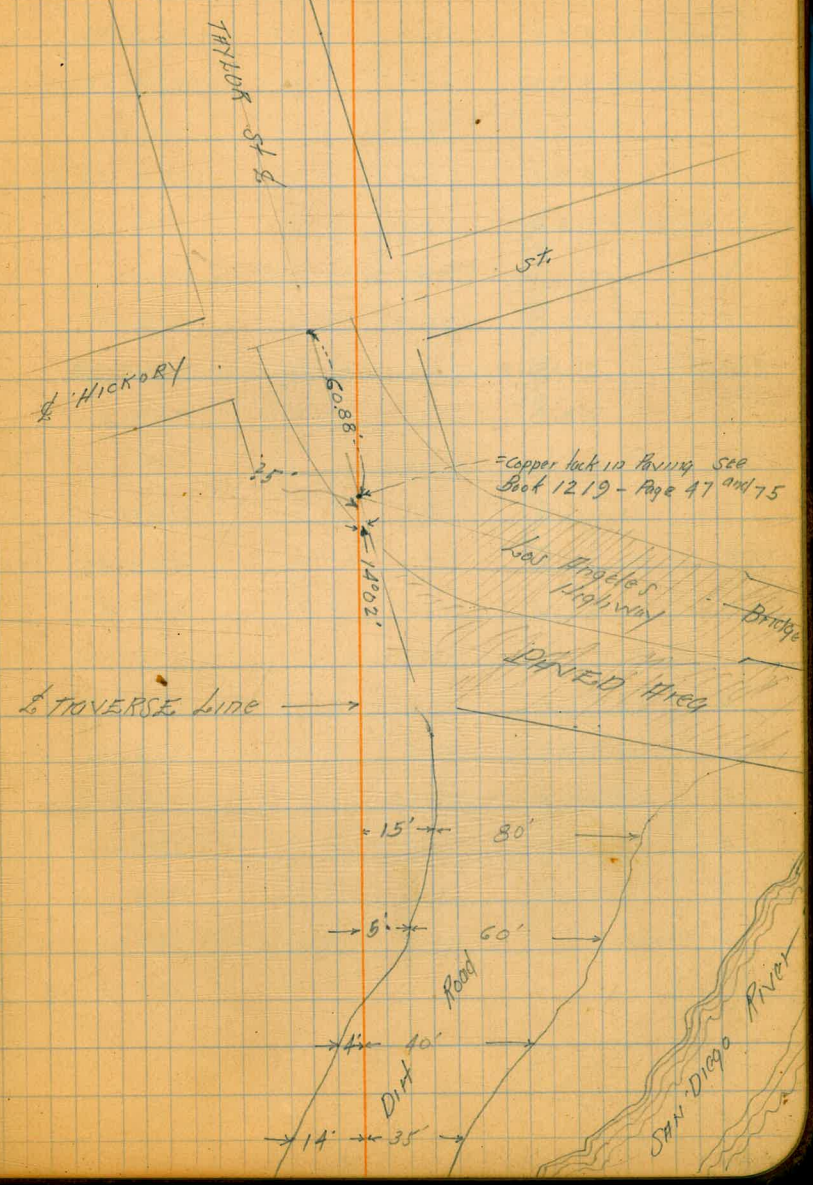
22+75

22+50

22+25

22+00      4'    50'

21+75      14'    35'



18' wide X See Alley BIK. B. Wallace Hts. 10-2-29  
mills

SM 314.29 H.W. Dale + Thom

327.65

74

RM. 7.11 327.65 320.54 5.E. Spruce + Granada

oo = E. line Granada

s ent. ch 5.29 322.36  
s. pavmt 5.41 322.24 ✓  
φ " 5.64 322.01  
N " 5.47 322.18 ✓  
N. ent. ch 5.35 322.30

20' E.

N 4.5 323.4  
E on M.H. 4.23 323.42  
S 4.3 323.3  
S 3.5 324.1  
φ 3.4 324.2  
N 3.3 324.3

73' E φ 3.5 Walk on N

N 3.25 324.40  
+ 2 = S. end 3.25 324.40 ✓

91' E. garage on S. ent. floor 5.2 Back

N 3.0 324.6  
φ 3.0 324.6  
S 2.9 324.7  
+ 5.2 floor 2.8 324.8 ✓

Plotted 10/8-29/CRH

97' E garage on N. ent. floor 4.8 Back

N-4.8 3.1 324.5 floor ✓  
100' E = W. Edge double garage on S. ent. floor 5.8 Back  
s-5.8 = floor 2.80 324.85 ✓  
s-03 = ent. Apron 2.80 324.85  
S 2.8 324.8  
φ 3.0 324.6  
N 3.1 324.5

112' E garage on N. ent. floor 1.8 Back ✓

N-1 floor 2.55 325.30

124' E = E. edge double garage on S

N 2.5 325.1  
φ 2.5 325.1  
S 2.5 325.1  
+ 0.5 = ent. Apron 2.53 325.12  
+ 6' = floor 2.58 325.07 ✓

106' E garage on S. ent. floor 3.7 Back

s-3.7 floor 2.20 325.45 ✓  
S 2.20 325.45  
s+ 2.2 = ent. Apron. 2.15 325.50  
φ 2.1 325.5  
N 2.4 325.2  
T.P. 3.10 324.25 2.30 325.35

328.45  
200'E garage on S. ent. floor 4.7 Back

N	3.3	325.1
φ	3.2	325.2
S	3.3	325.1
4.7 floor	3.2	325.2 ✓

231'E garage on N. ent. floor 6' Back

S	3.3	325.1
φ	3.3	325.1
N	3.5	324.9
N+6 floor	3.2	325.2 ✓

252'E. = garage on S. dirt floor 5.8 Back

N	3.7	324.7
φ	3.9	324.5
S	4.3	324.1
S+5.8 floor	4.5	323.9 ✓

268'E garage on N. ent. floor 5.3 Back

N-5.3 floor	3.63	324.82
-------------	------	--------

282'E garage on N. ent. floor 4.8 Back

S	4.4	324.0
φ	4.2	324.2
N	4.0	324.4
N+4.8 floor	3.5	324.9 ✓

300'E garage on S. ent. floor 5.7 Back

S-5.7 floor	4.88	323.57 ✓
-------------	------	----------

328.45

Alley BIK B/Wallace #13 75

338'E. double garage on N. ent. floor 2.3 Back

N-2.3 floor	4.7	323.7 ✓
-0.3 ent. Apron	5.04	323.37
N	5.1	323.3
φ	5.3	323.1
S	5.5	322.9

344'E garage on S. ent. floor 4.3 Back ✓

S-4.3 floor	5.5	322.9
S-2.8 ent. apron	5.5	322.9

355'E. garage on S. ent. floor 4.5 Back

S-4.5 floor	6.65	321.80 ✓
S-0.4 ent. Apron	6.7	321.7
S	6.6	321.8
φ	6.1	322.3
N	5.6	322.8

369'E. garage on N. dirt floor 1.8 Back

N-1.8 floor	6.5	321.9 ✓
-------------	-----	---------

400'E.

N	7.7	320.7
φ	7.9	320.5
S	7.8	320.6

5 garage on S. E. Entrance ent. floor on S. wing  
412'E garage on N. ent. floor 10.4 Back

N-10.4 floor	7.8	320.6 ✓
N	8.2	320.2
φ	8.3	320.1
S. floor	8.5	319.9 ✓

326.45  
434'.E garage on N. emt. floor 8' Back

N-8 floor 8.3 320.1 ✓

443'.S garage on S. emt. floor 8' Back

S-8 floor 8.7 319.7 ✓

S 9.0 319.4

⊕ 8.8 319.6

N 8.7 319.7

445'.E

N 8.9 319.5

+4 9.5 318.9

⊕ 9.2 319.2

S 9.2 319.2

492'.E garage on S. emt. floor 9.5 Back ✓

S-9.2 floor 9.0 319.4

S 9.6 318.8

+3 10.4 318.0

⊕ 10.4 318.0

N 10.3 318.1

508'.E garage on S. emt. floor 10' Back ✓

S-5 emt. Apron 9.75 318.70 ✓

S-10 " floor 9.00 319.45 ✓

530'.E.

N 11.0 317.4

+5 12.1 316.3

⊕ 12.0 316.4

+6 11.9 316.5

S 11.0 317.4

328.45

41149 BIK B. Wallace Hills  
74

545'.E garage on S. dirt floor 6'3 Back

S-03 floor 12.1 316.3 ✓

T.P. 3.29 318.55 13.19 315.26

556'.E.

S 3.1 315.4

⊕ 3.9 314.6

+8.5 3.3 315.2

N 6.3 312.2

+L 7.0 311.5

556'.5 E.

M. line on Top emt. wall 3.3 315.2 ✓

⊕ 3.9 314.6

S 3.1 315.4

579'.5 E.

S 4.5 314.0

+5 5.3 313.2

⊕ 5.4 313.1

+8.8 5.1 313.4

N. on Top emt. wall 5.4 313.1 ✓

600'.5 E = W. Line Dale St.

N. Dirt 5.6 312.9

N. emt. ch + parmt 6.25 312.30 ✓

⊕ on " 6.63 311.92 ✓

S. emt. ch + parmt + dirt 6.24 312.27 ✓

chk BM. N.W. Thorn + Dale 6.13 318.42 = 318.39

Silver St. Cross Section  
Fads Aic to Draper

8' wide  
1' cb  
13' qlr

May 19 1930  
Survey  
58155  
Port 5117

BM	0.38	104.63	104.25	SETOPIVE Pearl + Fadr
TP	0.90	92.79	12.74	91.89
TP	3.17	85.28	10.18	82.11
Set BM			2.11	83.17
		W.L. Fadr		

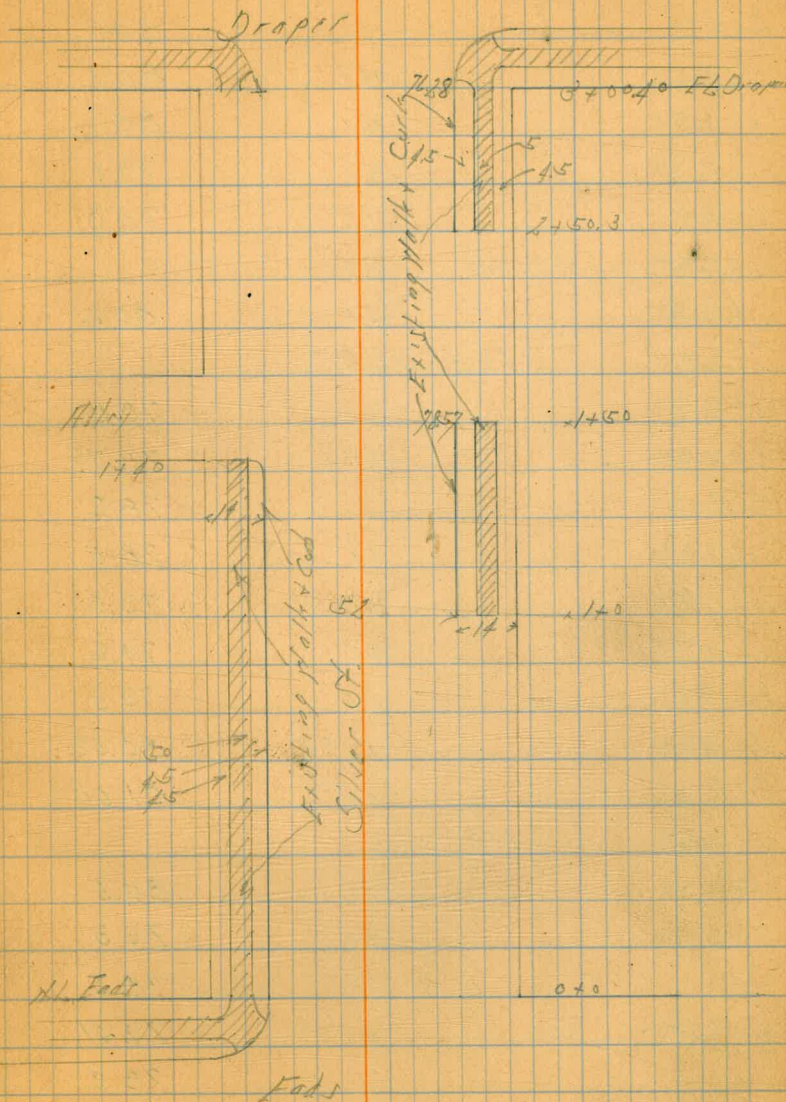
5		1.9	83.4
cb Top		2.15	83.13
Gutter		3.0	82.3
1/4		3.3	82.0
1/2		3.4	81.9
3/4		4.5	80.8
cb		4.8	80.5
1/3		4.2	81.1
1/4		4.2	81.1

Plotted 5/19/30 CBH

50' N of W.L. Fadr

1/4		4.8	80.5
cb		5.4	79.9
1/4		5.1	80.2
1/2		4.1	81.2
3/4		4.0	81.3
Gutter		3.8	81.5
cb Top		3.02	82.26
5		2.6	82.7
5		3.6	81.7

100' N





8528

cb Top	372	81.36
Gutter	41	80.7
1/4	49	80.4
1/2	51	80.2
1/4	62	79.1
Gutter	65	78.8
cb - Starting of Cb + Walk	593	79.35
H	51	80.2
140' H - E.L. of Wall on S		
H	65	78.8
cb Top	653	78.75
Gutter	71	78.2
1/4	69	78.5
1/2	57	79.6
1/4	57	79.6
Gutter	54	79.9
cb Top	470	80.58
S	420	81.08
150' H		
S	48	80.5
cb	54	79.9
1/4	58	79.5
1/2 - MH on Rim	587	79.41
1/4	70	78.3
Gutter	72	78.1
cb Top - End Cb + Walk	671	78.57

8529

78

H	66	78.7
200' H		
H	75	77.8
1/11	74	77.9
cb	84	76.9
1/4	79	77.4
1/2	69	78.4
1/4	68	78.5
cb	69	78.4
1/2	61	79.2
S	56	79.7
250' H		
S	66	78.7
1/12	71	78.2
cb	80	77.3
1/4	76	77.7
1/2	77	77.6
H	86	76.7
Gutter	89	76.4
cb Top	823	77.05
H	81	77.2
300' H - E.L. of Drop		
H	88	76.5
cb Top	900	76.28
Gutter	97	75.6
1/4	94	75.9

8588

5	88	76.5
1/4	87	76.6
Gutter	88	76.5
6 Top	76.0	77.68
5	75	77.8

79

1906 28466 TP

67° 40'

86.49

1475.08 = NP LT

1488.76

1347.20

122 10 30

206532  
24664  
431497

1778

150

67.58  
1800  
8558

27.75  
55.55  
1.11

11.1  
9.3  
19.4  
5.3  
27.7

7.827  
292.48  
105  
291.43  
12.23  
203.20  
0.13  
303.53  
549

309.02  
3.87-

305.15  
995+

315.10  
860

306.50

111  
75  
555  
277  
8325

1075  
1.75  
9100 303.66  
11.80

5937  
5644  
273 291.86  
91.71

15

303.53

5.40

308.98

9.57

309.41 ✓

5.56 308.98  
532 4.85

24 304.13

599 503  
24 41  
525 38

448  
38  
710 300.01  
1.55+

301.56

12.95-

289.21+

0.81+

290.02

5.36

284.66

309

Rogers

Rogers  
51.4

956

Quatrough

Perry - ctr Man

Owen - ctr Man

Nichols

McCall

Laurence - ctr Man

Kelley - ctr Man  
Reservation line ctr Man 172.85 S. of Kelley

20.13  
9.02  
11.11

377.13 SE Meridian Injun

279. N.E.M. ...

290.02  
10.95

279.07

11.11

291.71