

Paving Patch Adams - Hawley Blvd. - 34 th	2
X sec. La Playa S.D. Ave.	3
" " Rogers. Rosecrans San Diego	8
" " Blk 247 Univ. Hts. ^{Park Blvd to India} Myrtle to Cypress	9
" " " 50 " " ^{Mississippi - Louisiana} Monroe to Mission	12
" " " 45 Park Villas ^{Bancroft to 32} Landis to Nightman	14
" " Menlo. El Cajon N. to City Limits	16
" " Myrtle. Texas + Mississippi	22
" " " Pershing to Villa Terrace	26
cb. Levels 44 th El Cajon to N. to City Limit	30
X Sec. Polk El Cajon to Winona	32
" " 33 Market to Imperial	51
" " I Bancroft to 33 rd	64
" " J " "	71
Levels under Old Town Bridge	78
Drainage Blks 20 Fairmount Add	79

BN

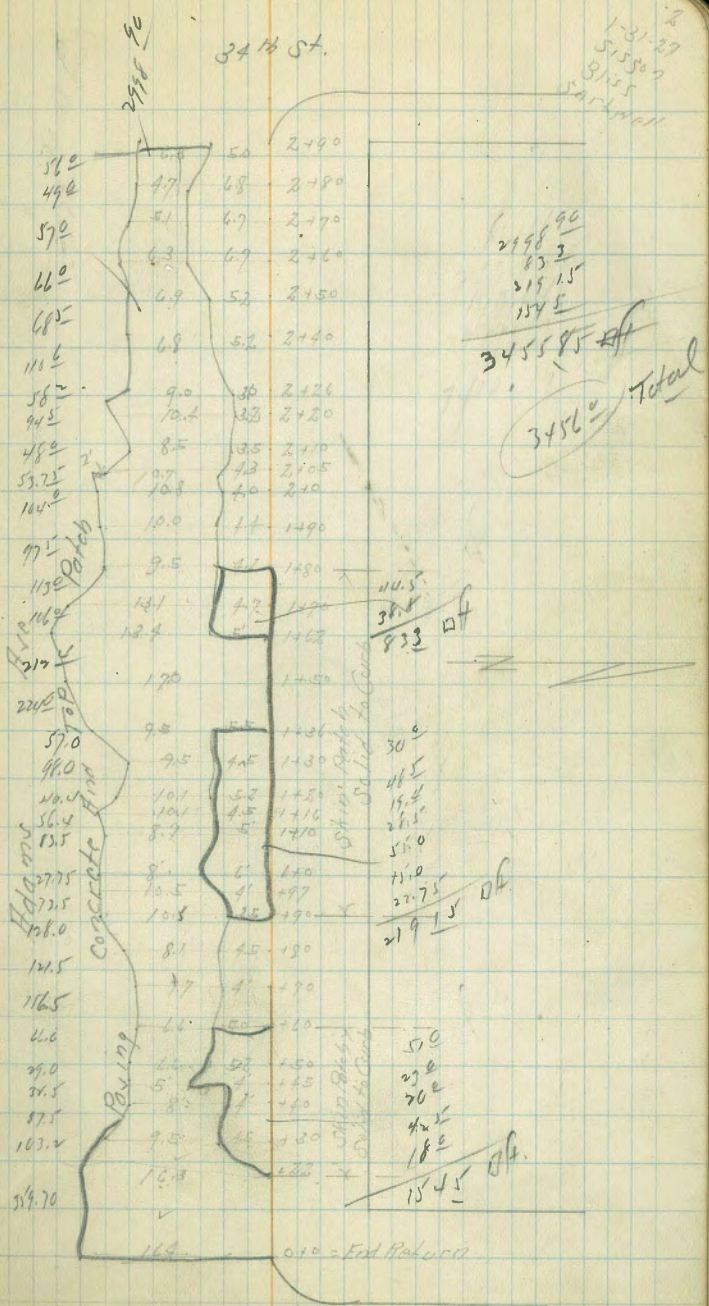
29405

N. N. G. R.
M. L. L. Y.
Ind. 1000

Paving Patals Adams Hse.
 Hawley Blvd. to 34th St.

34th St.

1-31-27
 515 90
 8155
 8155
 5155
 5155



2498 90
 833
 515 15
 1545
 3455 85 off
 3456.0 Total

110.5
 30.5
 833 off

30.0
 48.5
 19.5
 26.5
 51.0
 11.0
 27.75
 219.15 off

50.0
 29.0
 70.0
 42.5
 18.0
 154.5 off

Hawley

Cross Sections at La Playa
San Elijo Ave

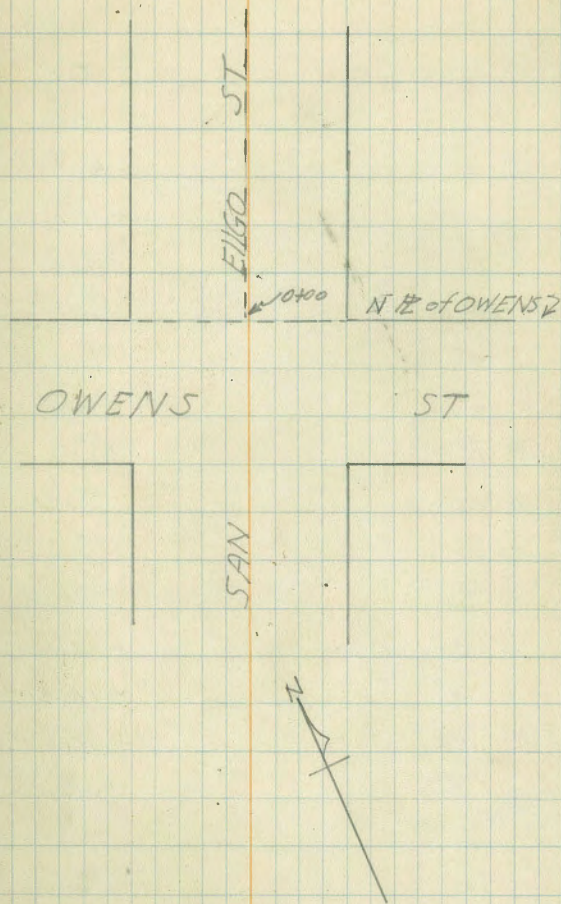
Nov 2, 1926

T.J. Allen

Sta	+	H.I.	-	Elev
B.M.				48.07
T.P.	13.02	61.09	0.0	61.09
T.P.	12.85	73.94	0.0	73.94
T.P.	12.33	86.27	0.11	86.16
	8.55	94.71		

S-E Curb BT Plug at OWENS and Reservoirs

Sta	Description	+	-	Elev
0+00	5' out		94.7	
	W TP	1.5		93.2 ✓
	(Top) C	2.0		92.7 ✓
	1/4	3.54		91.2 ✓
	1/4	3.9		90.8 ✓
	1/4	4.5		90.4 ✓
	1/4	5.2		89.5 ✓
	(Top) C	5.56		89.15 ✓ B.M.
	E TP	5.3		89.4 ✓
	5' out	5.9		88.9 ✓
0+03	20' out	+15.6		110.3 ✓
	10' out	+13.0		107.7 ✓
	W TP	+10.5		105.2 ✓
	C	+6.0		100.7 ✓
	1/4	+3.0		97.7 ✓
	1/4	+1.0		95.7 ✓
	1/4	4.3		90.2 ✓
	C	4.7		90.0 ✓
	E TP	5.5		89.4 ✓

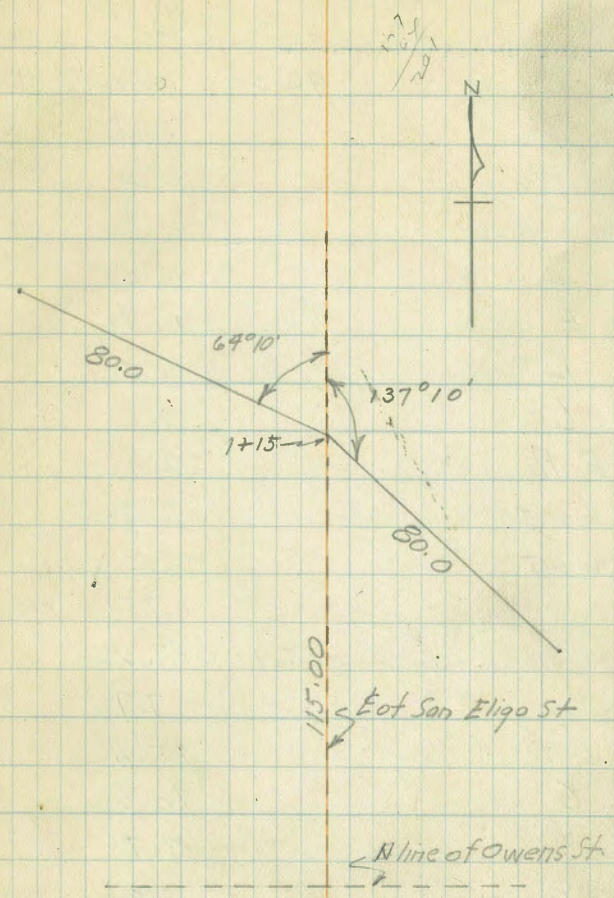


Sta.		H.I.	94.7	Elev.		H.I.	94.7	Elev.
0+03	10' out	94.71	6.2	885 ✓	0+55	20' out	94.71 + 9.5	1042 ✓
	20' out		8.3	862 ✓		10' out	+ 2.5	972 ✓
						W/P	2.2	915 ✓
0+10	20' out		+ 15.5	1102 ✓		C	2.9	918 ✓
	10' out		+ 12.0	1012 ✓		1/4	3.2	915 ✓
	W/P		+ 9.0	1037 ✓		E	2.6	912 ✓
	C		+ 4.0	987 ✓		1/4	3.5	912 ✓
	1/4		+ 1.0	957 ✓		C	5.0	897 ✓
	E		2.7	920		E/P	12.0	847 ✓
	1/4		4.0	907		10' out	17.5	772 ✓
	G		3.5	912		20' out	21.5	732 ✓
	E/P		5.9	888				
	10' out		7.3	874	0+75	20' out	+ 7.0	1012 ✓
	20' out		8.5	862		10' out	+ 1.5	962 ✓
						W/P	3.8	909 ✓
0+30	20' out		+ 15.0	1092 ✓		C	3.1	916 ✓
	10' out		+ 10.0	1042 ✓		1/4	3.0	912 ✓
	W/P		+ 3.0	947 ✓		E	3.7	910 ✓
	C		2.9	918 ✓		1/4	6.5	882 ✓
	1/4		2.9	918 ✓		C	13.5	812 ✓
	E		3.2	915 ✓		E/P	19.0	757 ✓
	1/4		2.8	919 ✓		10' out	20.0	747 ✓
	C		3.5	912 ✓		20' out	21.0	732 ✓
	E/P		4.3	902 ✓				
	10' out		6.4	883 ✓				
	20' out		9.0	857 ✓				

		H.I.	<u>94.7</u>	Elev.
1+00	20' out	94.71	3.0	912 ✓
	10' out		4.6	902 ✓
	W/ P		5.0	892 ✓
	C		4.1	906 ✓
	1/4		7.3	874 ✓
	1/2		12.5	844 ✓
	3/4		16.5	782 ✓
	C		18.0	764 ✓
	E P		16.0	782 ✓
	10' out		16.0	787 ✓
	20' out		16.5	782 ✓

Culvert.				
T.P.		94.71	11.69	83.11
1+15	W 80'	0.0	83.11	83.11 ✓
	60'		+ 2.0	851 ✓
	40'		+ 2.0	851 ✓
	20'		+ 1.5	846 ✓
	10'		4.9	762 ✓
	20'		6.1	770 ✓
	40'		8.3	748 ✓
	60'		11.5	716 ✓
	E 80'		12.7	704 ✓

B.M. 6.73 95.38 89.15



11-4-26

6

Sta		H.I.	95.4	Elev.
1+50	20' out	95.38	10.0	854 ✓
	10' out		10.6	848 ✓
	W.P.		10.9	845 ✓
	G		11.3	841 ✓
	1/4		11.0	842 ✓
	±		10.8	840 ✓
	1/4		10.3	851 ✓
	C		9.2	867 ✓
	E.P.		8.0	871 ✓
	10' out		6.3	891 ✓
	20' out		5.5	899 ✓

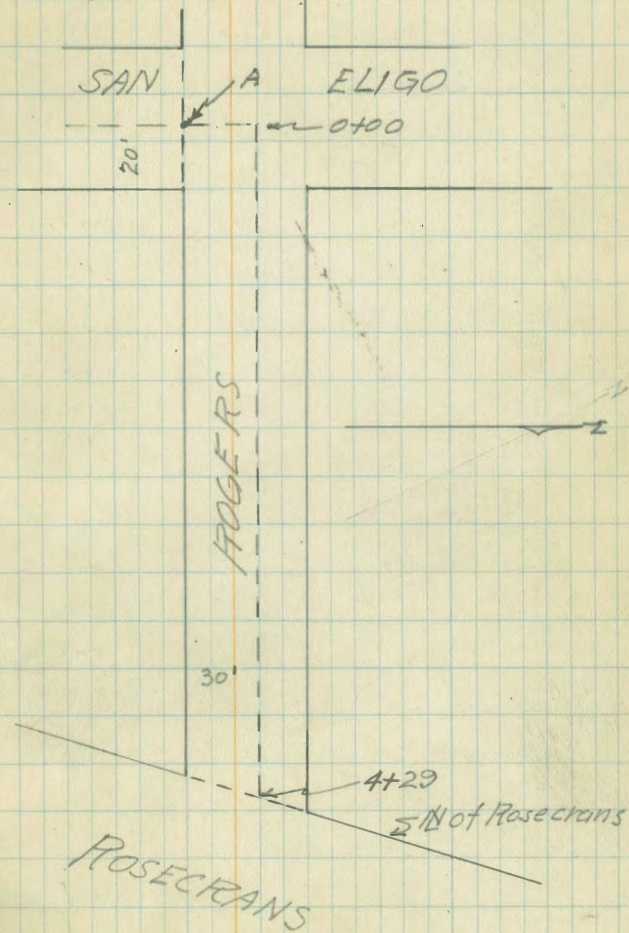
Sta.		H.I.	105.9	Elev.
2+25	20' out	105.91	12.8	951 ✓
	10' out		11.0	949 ✓
	W.P.		7.3	986 ✓
	C		2.9	1030 ✓
	1/4		+1.0	1069 ✓
	±		+4.3	1102 ✓
	1/4		+7.7	1136 ✓
	C		+10.3	1162 ✓
	E.P.		+10.0	1159 ✓
	10' out		+9.0	1129 ✓
	20' out		+10.0	1159 ✓

T.P.			0.75	Elev.
2+0	20' out	11.28	105.91	94.63 ✓
	10' out		17.7	867 ✓
	W.P.		15.4	905 ✓
	C		10.0	959 ✓
	1/4		7.7	987 ✓
	±		5.9	1000 ✓
	1/4		5.2	1007 ✓
	C		3.3	1076 ✓
	E.P.		3.4	1075 ✓
	10' out		3.6	1075 ✓
	20' out		3.0	1079 ✓

T.P.			0.59	Elev.
2+50	20' out	13.12	118.44	105.32 ✓
	10' out		14.0	1046 ✓
	W.P.		12.5	1059 ✓
	C		7.5	1109 ✓
	1/4		0.0	1184 ✓
	±		+3.0	1214 ✓
	1/4		+5.0	1232 ✓
	C		+6.0	1244 ✓
	E.P.		+6.0	1244 ✓
	10' out		+6.0	1244 ✓
	20' out		+5.0	1234 ✓

		H I	118.4	Elev.
3+0	20' out	118.44	+0.20	1186
	10' out		3.1	1153 ✓
	W P		4.9	1135 ✓
	C		0.50	1179 ✓
	1/4		+ 6.0	1226 ✓
	Φ		+ 11.0	1291 ✓
	1/4		+ 15.5	1339 ✓
	C		+ 16.7	1351 ✓
	E P		+ 17.5	1359 ✓
	10' out		+ 17.8	1362 ✓
	20' out		+ 16.0	1346 ✓

	Rogers	St		
3+	+	H.I.	-	ERV
B.M.	1.85	6392		62.074 S W Cor. Quattrou and Rosecrans St.
T.P.	8.58	59.40	13.10	50.82
4+29 =	NL of Rosecrans	13.00		46.4 ✓
4+17		5.30		54.1 ✓
4+00		1.00		58.4 ✓
T.P.	13.08	72.46	0.02	59.38
T.P.	12.26	84.38	0.34	72.12
3+50		10.3		74.1 ✓
T.P.	13.15	97.18	0.35	84.03
3+00		7.00		90.2 ✓
T.P.	12.96	110.02	0.12	97.06
2+50		4.7		105.3 ✓
T.P.	13.04	122.72	0.34	109.68
2+00		6.0		116.2 ✓
T.P.	11.64	134.52	0.24	122.48
1+50		4.6		129.9 ✓
T.P.	12.72	146.84	0.00	134.12
1+00		7.5		139.3 ✓
0+50		3.2		143.6 ✓
T.P.	9.63	154.57	1.90	144.94
0+00		9.7		144.9 ✓
A.		0.0		154.6 ✓



Cross Section Alley Block 247 Units by Height
Part Blvd + Inverse From Myrtle to Cypress

			2nd fl		TP				
BM	1199	306.01	3910.5	NW 80 Myrtle + Invasion		172	307.11	315	302.39
		NL Myrtle	306.0				102'N		307.1
E	Top Cb Alley Pavilion	493	301.11		E			40	303.1
					+5			44	302.7
S		47	301.34		S			49	302.2
N	Top Cb H	518	300.86		N			47	302.4
		N of NL Myrtle					150'N		
N		49	301.14		N			39	303.2
S		48	301.24		S			45	302.5
+5		47	301.34		E			40	303.1
+8		40	302.04				175'N		
E		35	302.54		-4 Garage Conc Floor			390	303.2
								40	303.1
E		34	302.64		S			38	303.3
+1		40	302.04		TP	515	309.00	371	303.35
S		45	301.54		N			57	309.0
+2		41	301.94				200'N		303.3
N		41	301.94		N			53	303.7
+14	S End 4 Garages Conc Floor	393	302.11		S			55	303.5
					E			58	303.2
							245'N		
-11	N End 4 Garages Conc Floor 115' S End 59 Garages	35	302.5		E			51	303.9
+1		39	302.1		S			50	304.0
S		41	301.9		N			49	304.1
-1		36	302.4				270'N		
E		35	302.5		N			47	304.3

1-2-27
S. Jordan
Bliss
S. J. H. H.

15' N 1 E of EL
S End 2 Garages
Conc Floor
419-302.9

18' N 1 E of EL
N End 2 Garages
Conc Floor
423-302.9

10' N 6' N of EL
N End 5 Garages
487-302.2

112' N 2' N of EL
S End 5 Garages
Conc Floor
413-302.8

112' N 8' N of EL
S End 5 Garages
Conc Floor
514-303.3

212' N 8' N of EL
N End of 5 Garages
Conc Floor
517-303.8

223' N of EL
No Garage
2nd Floor
53-303.7

251' N of EL
S End 4 Garages
Conc Floor
485-304.5

30900

310.59
310.6

10

S		48	304.1		-4	N End of Garage Conc Floor	590	304.7
E		49	304.1	28' N of E of Garage Conc Floor 489 = 304.1	H		58	304.8
	Garage & Dish Floor	49	304.1		S		59	304.9
	300' N				+5		55	305.1
E		46	304.4		19' W of Garage Conc Floor		505	305.6
					E		52	305.4
S		43	304.7	32' N of E of E.L. to Garage			500' N	
H		45	304.5	11' E Floor 50 = 304.0	I	Screen Patch 16' in Blk	44	306.2
	340' N				S		52	305.4
H	Face of Blk	41	304.6		+8		50	305.6
S		45	304.5		H		54	305.2
E		46	304.4				555' N	
	370' N				H		53	305.3
E	to Garage Dish Floor	41	304.6	35' N of E.L. Conc Slab 488 = 305.1	13		48	305.8
S		42	304.8		S		46	306.0
H		39	305.1		E		49	305.7
	400' N				10' W Garage Conc Floor		469	305.9
H		42	304.8				600' N	
S		40	305.0		E		49	305.7
E		41	304.9		S		46	306.0
	440' N				H		49	305.7
I		44	304.6				635' N	
S		42	304.8		H		48	305.8
H		44	304.6		+2		41	306.5
TP	525	41	304.6		S		47	305.9
	310.6 310.35	41	304.6		E		52	305.4
	470' N						650' N	

516' N of E.L.
to E of Garage
Conc Floor
500 = 305.6604' N of E.L.
N End of Garage
Conc Floor
515 = 305.5620' N of E of E.L.
Garage Conc Floor
515 = 305.5

310.59

310.6

F	52	305.4
L	50	305.6
H	51	305.5
	66N	
H	54	305.2
L	53	305.3
+7	53	305.3
F	57	304.9
	675N	
F	52	304.8
+3	57	304.9
+5	69	303.7
L	68	303.8
+2	68	303.8
+5	61	304.5
+8	55	305.1
H	55	305.1
	690N	
H	54	305.2
+3	51	305.0
+5	78	302.8
+7	83	302.3
L	88	301.8
+5	88	301.8
F	62	304.4

698N

310.6

310.59

F	47	300.9
L	98	300.8
+6	92	300.4
+7	53	305.3
H	52	305.4

700N = 52 Cypress

H	Top Ch. Palero + Ground	1078	299.8
L		104	300.2
		104	300.2
F	TOP CH. Palero	1073	299.9
BM		977	300.86

SE Top Ch.
Cypress
Palero

Cross Section Alley Block 50 Univ. Heights
 Between Mississippi & Louisiana
 From North to Mission

B.M.	Co.	343.14	337.35 ✓	SEOP Monroe Louisiana			
		N.L. Monroe				48	338.64
						46	338.84
						42	339.24
F	Top Ch. Reduced Ground	537	338.07		175 N		
E		58	337.64			40	339.04
+3		56	337.84			45	338.94
+6		48	338.64			46	338.84
N	Top Ch. Reduced Ground	537	338.07		TP 572	345.29 ✓	337.57 ✓
		9' N of N.L. of Monroe				181 N	
N		51	338.34			523	340.06
+3		47	338.74			545	339.80
+6		50	338.44			555	339.79
E		54	338.04			61	339.19
+5		49	338.54			555	339.79
F		46	338.84			200 N	
		50 N				56	339.69
E		47	338.74	75' N of N.L. Garage Dirt Floor		56	339.69
E		50	338.44	17 339.0		57	339.59
+3		47	338.74			240 N	
N		47	338.74			53	339.99
		100 N				55	339.79
N		46	338.84			56	339.69
E		48	338.64			258 N	
F		45	338.94			465	340.64
		137 N				47	340.59
+47	Garage Concrete	436	339.08			52	340.09

15
 1-28-27
 Sta 507
 31, 50
 507-15711

15678 North
 Garage Dirt Floor
 41 339.3

231 N.L. of N.L.
 S. End of Garage
 Conc. Floor
 122 341.07

253 N.E. of N.L.
 N. End of Garage
 Conc. Floor
 110 340.87

Plotted
 C.B.H.

345.89

345.29

F		51	340.19
	280'N		
F		47	340.59
S		49	340.39
N		49	340.39
	300'N		
N		48	340.49
S		46	340.69
F		43	340.99
	333'N		
-3	Care Holes	42	341.17
F		43	340.97
S		45	340.79
N		47	340.59
	370'N		
N		46	340.69
S		41	341.19
F		39	341.39
	390'N		
F		38	341.39
S		44	340.89
N		48	340.49
	355'N - S.L.M. 11119 at Road		
N	Top Carb. Return to Ground	547	339.82
-3		56	339.69
S		48	340.69

45
F
F or Carb. Return
to Ground
394' SE of FL
to End of Gorge
Care Holes
318 341.37
322' SE of FL
to End of Gorge
Care Holes
371 341.38

		43	340.99
		40	341.29
	358' N of FL 407' N of FL = S.L.M. 11119		
	14' at Top of Road		
		541	339.88
		53	339.99
		547	339.82

34931 ✓

300' N

W	67	342.7
S	67	342.7
E	66	342.8

350' N

E	58	343.6
S	61	343.3
W	58	343.6

400' N

W	52	344.2
S	53	344.1
E	Fence 0.5' to R/W	344.4

450' N

E	46	344.8
S	46	344.8
W	45	344.9

500' N

W	Fence 0.5' to R/W	345.4
S	46	345.2
E	46	345.2

550' N

E	38	345.6
S	36	345.8
W	34	346.0

570' N

W	32	346.1
---	----	-------

34932

31 346.3

34 346.0

595'

34 346.0

31 346.3

32 346.1

606' = 52' Nightman

N Top Ck Rd to Ground 347 345.89

S 41 345.3

E Top Ck Rd to Ground 363 345.73

TP 1.24 2400' 520 344.15'

8N 752 338.48' NW 8P Land 11.20'

452' N of E1
to End of Garage
Conc Floor
4.5 - 345.21

422' N of E1
N End of Garage
Conc Floor

506' N of E1
Garage Conc Floor
385 - 345.51

Made 7 small
olive trees
15' N of E1

NW 8P
Land 11.20'

Cb	41	351.9	115th & 215th	+8
11	37	52.3	27th Conc Hall	cb
110	34	52.6	10th Street	1/4
11	29	53.1	170th Road Conc Drive	8
200th				
11	32	52.5	205th Road Conc Stop	1/4
Cb	40	52.0	227 352.6	cb
1/4	40	52.0	209th St	F
8	37	52.1	209th Conc Floor	
1/4	40	52.0	357 352.46	
Cb	42	51.8		F
F	37	52.3		cb
250th				
F	37	52.1		1/4
+8	44	51.6		8
Cb	47	51.3		1/4
1/4	43	51.7		cb
8	37	52.3		11
1/4	41	51.9		+6
+5	44	51.6		cb
Cb	42	51.5		1/4
19	34	52.6		8
11	32	53.1		1/4
300th				
11	33	52.7		cb
+2	37	52.3		F

41	351.9		
45	51.5		
44	51.6		
38	52.7	291th of E.L. Conc Walk	388 352.05
46	51.4		
50	51.0		
48	51.2		
45	51.5		
49	351.03		351.03
32	50.8		
34	50.6		
31	50.9		
27	51.3		
28	51.2		
29	51.1		
26	51.8		
27	51.8	279.5th - S.L. Hardwood St.	
28	51.2	20th de to Cb	752.15
29	51.1		
30	51.0		
22	51.2		
23	50.7		
31	50.4		
33	50.7		

F	3.2	350.7
cb	3.5	350.5
1/4	3.4	50.6
2	2.9	51.1
1/2	3.1	50.9
cb	2.9	51.1
+L	2.7	51.3
H	2.3	51.7
22 Conc. Walk	1.97	352.06
	1/4	
H	2.3	51.7
+L	2.6	51.4
cb	2.9	51.1
1/4	3.1	50.9
2	2.0	51.0
1/4	3.3	50.7
cb	3.6	50.4
+L	3.3	50.7
F	3.3	50.7
	2 Norwood	
F	3.7	50.6
+L	3.4	50.6
cb	3.6	50.4
1/4	3.2	50.8
2	2.9	51.1

1/4	3.1	50.9
cb	3.0	51.0
H	2.6	51.4
	H 1/4	
H	2.6	51.4
cb	3.0	51.0
1/4	3.1	50.9
2	3.0	51.0
1/4	3.2	50.8
cb	3.6	50.4
+L	3.4	50.6
F	3.6	50.4
	H cb	
F	3.4	50.6
1/4	3.5	50.5
cb	3.8	50.2
1/4	3.3	50.7
2	3.1	50.9
1/4	3.6	50.8
cb	3.1	50.9
H	2.9	51.3
	H 1/4 Norwood 21	
H	2.7	51.3
+L	3.3	50.8
cb	3.2	50.8
1/4	3.2	50.7

1/2	31	350.9
1/4	37	50.6
1/2	38	50.2
cb	34	50.6
E	36	50.4

50' N of N.E. of herd stand

E	43	50.7
1/2	41	349.9
cb	44	49.6
1/4	47	49.8
1/2	38	50.2
1/4	40	50.0
cb	39	50.1
N	36	50.4

100' N

N	36	50.4
cb	41	49.6
1/4	40	49.8
1/2	40	50.0
1/4	44	49.6
cb	45	49.5
E	46	49.4
02 Case Milk	469	349.34

150' N

E	51	48.9
1/2	53	48.7

cb	53	48.7
1/4	49	49.1
1/2	45	49.5
1/4	48	49.2
cb	47	49.3
N	44	49.6

200' N

N	45	49.5
cb	50	49.0
1/4	51	48.9
1/2	48	49.2
1/4	54	48.6
cb	51	48.4
1/2	54	48.6
E	53	48.7

250' N

E	56	48.8
1/2	53	48.7
cb	55	48.5
1/4	53	48.7
1/2	50	49.0
1/4	51	48.9
cb	52	48.8
N	47	49.3

300' N

N	48	49.2
---	----	------

46' N of N.E. of
Case Milk
413 349.9215' N of N.E. of
415 Peppertrees
414 of N.E.219' N of N.E. of
Case Drive
515 348.68247' N of N.E. of
Case Drive
507 348.95

Mondo Ave.

35403

cb	51	48.9
1/4	51	48.6
2	50	49.0
1/4	55	48.5
cb	57	48.3
F	51	48.4

350' N

F	58	48.2
1/2	60	48.0
cb	62	47.8
1/4	58	48.2
2	55	48.5
1/4	57	48.3
cb	58	48.2
H	54	48.6

400' N

H	55	48.5
cb	58	49.2
1/2	55	48.5
1/4	57	48.3
2	55	48.5
1/4	58	48.2
cb	60	48.0
F	60	48.0

581

35403 ✓

488

349.05 ✓

150' N

35481

F	63	348.6
1/2	63	48.6
cb	66	48.3
1/4	63	48.6
2	59	49.1
1/4	61	48.8
1/2	62	48.7
cb	62	48.7
1/2	57	49.2

500' N

H Fence 370.5'	54	49.5
cb	58	49.1
1/2	55	49.4
2	53	49.6
1/4	58	49.1
cb	61	48.8
1/2	57	49.2
F	57	49.2

550' N

F 00 Gas Drive	552	349.32
cb	51	49.5
1/4	51	49.8
1/2	49	50.0
1/4	50	49.9
cb	54	49.5
H	51	49.8

190' N 20' E L
Cont Drive
551 349.30

195' N 5' E L
of 8 Remittance
75' N of E L

Coord. = Abundance of *Scop. 9/22*

N			48	350.1	
Ob			52	49.7	
1/4			52	49.7	
d			55	49.4	5257 - NEAR
1/4			56	49.3	97 Reactions 75 N of 182
1/4			54	49.5	
Ob			55	49.4	
E			55	49.4	
BM			722	347.14	6257 at End of 182 10m at 182
BM	344	355.54		352.10	6257 NW of 182 4700
TP	565	354.45	674	348.80	
End Carbonat	Sluff/mudgr Bank		613	348.32	
"	"		610	348.35	

Cross Section Myrtle Beach

Texas to Mississippi

Co. W. side
15' Cbs
10' Q's

283.42

24-27
S. 1000
9115
S. 1000

BM	Station	Elevation	Notes	Depth	Temperature
		276.50	NE BP Myrtle Beach Louisiana	1/4	279.8
				1/4	279.3
				5'	279.3 ^v
		282.1 ^v			
		281.76		5'	278.5 ^v
		281.19		1/4	278.6
		281.35		1/4	279.0
		281.41 ^v		2'	279.5 ^v
		281.21		1/4	279.7
		280.90		1/4	279.4
		281.37		1/4	279.5 ^v
		281.5 ^v			
		280.0 ^v		1/4	279.2 ^v
		280.1		1/4	279.9
		280.5		1/4	279.0
		281.1 ^v		1/4	278.6 ^v
		280.9		1/4	278.4
		280.7		1/4	278.4
		280.9		1/4	278.2 ^v
		281.5 ^v		1/4	277.4 ^v
		280.2 ^v		1/4	277.4
		280.2		1/4	277.6
		280.6		1/4	277.7 ^v
		280.4 ^v		1/4	277.7
				1/4	277.8

122' W

122' W

202' W on SL
Concrete
277.9

76' W on SL
Concrete
280.2

105' W on SL
Concrete
278.7

3.5' W of NW of Texas

78' W

223' W

46		51	278.3
N		46	278.8 ✓
	247 N		
N		54	278.0 ✓
45		59	277.5
Cb		63	277.1
4		61	277.3 ✓
S		65	276.9 ✓
4		64	277.0
Cb		64	277.0
S		65	276.9 ✓
	272 N - E of Louisiana		
S		74	276.0
Cb	End Return	754	275.88
Gutter	on Pavine	804	275.38
4		751	275.91
S		748	276.24 ✓
4		738	276.04
Gutter		756	275.86
Cb	End Return	791	276.41
N		66	276.8 ✓
	W. of Louisiana		
N		73	276.2 ✓
Cb	End Return	750	275.92
Gutter	on Pavine	821	275.21
4		768	275.74

2	of Pavine	760	275.82 ✓
4	" "	798	275.50
Gutter	" "	865	274.77
Cb	End Return	803	275.39
S		715	275.9 ✓
	25 N of W. of Louisiana		
S		78	275.6 ✓
Cb		79	275.5
4		76	275.8
S		75	275.9 ✓
4		79	275.5
4		83	275.1
Cb		85	274.9
N		79	275.5 ✓
	50 N		
N		84	275.0 ✓
Cb		85	274.9
4		87	274.7
S		82	275.2 ✓
4		80	275.4
Cb		82	275.2
S		84	275.0 ✓
	80 N		
S		88	274.6 ✓
Cb		91	274.3
4		84	275.0

283.42

S	84	275.0 ^v
1/4	85	274.9
Cb	81	275.3
N	78	275.6 ^v

100' W

N	69	276.5 ^v
15	76	276.8
Cb	80	275.4
1/4	81	275.3
S	81	275.3 ^v
1/4	82	275.2
Cb	81	275.3
17	80	275.4
S	74	276.0 ^v

150' W

S	68	276.6 ^v
Cb	69	276.5
1/4	73	276.1
S	75	275.9 ^v
1/4	78	276.2
Cb	70	276.4
N	65	276.9 ^v

150' W

N	55	277.9 ^v
Cb	61	277.3
1/4	62	277.2

283.42

S	65	276.9 ^v
1/4	70	276.4
Cb	70	276.4
S	71	276.0 ^v

180' W

S	89	275.0 ^v
Cb	81	275.3
1/4	78	275.8
S	73	276.1 ^v
1/4	70	276.4
Cb	66	276.8
N	58	277.6 ^v

200' W

N	60	277.4 ^v
1/4	68	277.1
1/4	67	276.7
Cb	68	276.5
1/4	72	276.2
S	75	275.9 ^v
1/4	72	275.7
Cb	82	275.2
S	86	274.8 ^v

250' W

S	93	274.1 ^v
Cb	89	274.5
1/4	85	274.9

7.3		8.1	275.3
8		8.1	275.3
1/1		7.8	275.6
Cb		7.5	275.9
25		6.9	276.5
N		6.9	276.5 ^v

270.14

N		7.3	276.1 ^v
Cb		7.7	275.5
1/1		8.5	274.9
2		8.8	274.6 ^v
1/4		9.5	273.9
Cb		9.1	274.3
S		9.3	274.1

273.14 - Ed. of Miss. Copper

S		11.7	271.5
Cb	on Reduco	12.28	271.14
Gutter	on Pavement	12.92	270.50
1/6	" "	12.38	271.04
2	" "	11.90	271.52 ^v
1/4	" "	11.83	271.59
Gutter	" "	12.00	271.42
Cb	End Reduco	11.40	272.02
N		11.1	272.3 ^v

17		127	309.97
Cb		154	307.27
+1		184	304.27
1/4		190	303.67
TP	5.52	315.19	302.67
8		130	302.19
1/4		129	302.29
Cb		127	302.99
+4		83	306.89
+6		16	313.59
Cb		16	313.59
		241'N	
H		25	312.69
+1		93	305.89
Cb		128	302.39
1/4		123	301.89
2 1/2		124	301.79
1/4		129	302.29
17		127	302.49
Cb		120	303.19
+4		108	304.39
+5		38	311.39
+7		61	313.09
S		20	313.19
		253'N	
S		40	311.19

+2		45	310.69
14		51	309.99
17		121	303.09
Cb		125	302.29
+5		125	301.69
1/4		123	301.89
8		121	302.09
1/4		123	301.89
14		145	300.99
Cb		125	301.69
14		121	301.59
H		116	303.59
14		42	310.99
		262'N	
H		123	301.89
+4		145	300.59
Cb		145	300.69
1/4		142	300.99
8		133	301.89
1/4		126	301.59
+5		141	300.79
Cb		122	300.99
+1		124	302.99
15		65	308.69
S		65	308.69

265'N = E of Villa Terrace

3/5/19

S		72	307.99	
+S		125	302.69	
Cb		143	300.89	
"		142	300.99	
"		144	300.79	
"		141	301.09	
Cb		146	300.59	
TP	377	301.43	12.53	302.66
	as End of Cb Return	542		301.01
N		52		301.23
	265 N - EL Villa Terrace on N			
	277 N - EL " " " "	275		62.7 on diagonal 105 Cbs 182 O's
N		52		301.23
Cb		542		301.01
Gutter	as Paving	607		300.40
"	" "	557		300.86
"	" "	546		301.01
"	" "	557		300.86
Gutter	" "	597		300.46
Cb	as End Return	536		301.07
S		51		301.33
BM		146		299.97
				NN Myrtle 1/11/17 300.01

Top of Curb Levels 44th St
 N. of El Cajon to N. line of City

Replace Curb Entire
 Distance

357.49

8.5.30
 8.5.37

B.M.	3.36	358.08	354.72	5.36 El Cajon 44th St	F	400'	1.65	
		N. L. El Cajon Ave		Walk to Good	F		1.50	415' E. N
F		472		Ch. to Good East	N		2.01	So End of Good Walk
N		555				450'		
		58'			N		2.25	457' N. of E
N		512			F		2.13	N. End of Good Walk
F		436				500'		
		100'			F		20.54	
F		396			N		3.40	
N		466				550'		
		150'			N		4.10	
N		422		115' N. S. End	F		2.83	
F		3.68		Good Walk on East		600'		
		200'			F		4.15	
F		333			N		5.80	
N		372				657'		51' of Meade on N
		250'			N		5.15	N. End of Good Walk on Walk
N	44th St	3.30			F		40.5	
F		2.80				N. L. of Meade on N		Walk to Ch No Good Port
		300'		335' N. E. N	N		3.10	
F		238		27' End of Good Walk	N		5.17	
N		295				500' of N. L.		
		350'			N		4.80	
N		260			F		1.32	
T.P.	162	357.49	227	355.81		100'		

357.49

E		3.90	
N		4.60	
	150' N		
N		4.74	
E		3.77	
	200' N		
E		3.40	
N		4.00	
	250' N = S End of Good Walk on N		
N		3.60	
E	Forest	3.12	
	300' N		
E		2.70	343' N on N = N End of Good Walk
N		3.32	
	350' N		
N		3.23	
N		2.46	
	400' N		412' N on N = S End of Good Walk
E		2.30	
N		3.23	
	450' N		
N		3.08	
E		2.17	
	500' N		527' N on N = N End of Good Walk
E		1.77	
N		2.93	

550' N

2.67

1.50

572' N = N End of City

1.25

2.57

Cross Section Polk Ave
414 St. to X10000

40' wide
65 Cbs
675 Qts

358.27

32
2527
5550
91.5
S. H. Hall

BM 225 360.74 358.19
TP 408 458.27 6.55 354.19
N.H.B.P.
Orange 44th St.

SCb 486
L 50
N.Cb 467

275' E - N.L. of Highland Ave

N.Cb Top 423
Gutter on Pavmg 418
L " " 436
Gutter " " 490
SCb Top 452

N.Cb 469
Gutter on Pavmg 528
L " " 507
Gutter " " 543
SCb 489

50' E of E.L. 44th St.

E.L. of Highland Ave

SCb Top 468
L 46
N.Cb 430

SCb 506
Gutter on Pavmg 510
L " " 521

100' E

N.Cb 438
L 46
SCb 464

Gutter " " 548
N.Cb 497

50' E of E.L. of Highland

150' E

SCb 465
L 46
N.Cb 448

N.Cb 481
L 50
SCb 483

100' E

200' E

N.Cb 461
L 47
SCb 480

SCb 464
L 49
N.Cb 475

150'

250' E

SCb 480

N.Cb 460
L 46

358.37

Scb		1.41	
	200'E		
Scb		1.11	
z		1.3	
Hcb		1.53	
	250'E		
Hcb		1.34	
z		1.3	
Scb		1.90	
	269'E = N. of 15th St		
Scb		3.25	
Gutter on Paring		4.20	
z		4.18	
Gutter		4.71	
Hcb		4.31	
	E. of 45th St		
Hcb		4.71	
Gutter on Paring		5.22	
z		4.63	
Gutter		4.72	
Scb		4.19	
TP	232	356.40	4.19 354.08
		50'E of E. of 15th St	
Scb		3.17	
z		3.5	
Hcb		3.50	

356.40

	100'E	
Hcb		4.31
z		4.1
Scb		3.93
	150'E	
Scb		4.72
z		5.0
Hcb		5.07
	200'E	
Hcb		5.75
z		5.7
Scb		5.56
	250'E	
Scb		6.43
z		6.6
Hcb		6.45
	270'E = N. of Chamouni	
Hcb		6.90
Gutter on Paring		7.27
z		6.87
Gutter		7.35
Scb		6.85
	E. of Chamouni	
Scb		7.00
Gutter on Paring		7.74
z		7.42

356.40

40' side
65' Cb
695 Q15

S on Point 7.42
 1/4 7.42
 Gutter 7.70
 Ncb 7.10

50' E of Fl. Chimney

Ncb 7.30
 Gutter 8.1
 1/4 7.6
 S 7.4
 1/4 7.8
 Gutter 8.2
 S cb 7.25

100' E

S cb 7.53
 Gutter 8.6
 1/4 8.0
 S 7.5
 1/4 7.9
 Gutter 8.1
 Ncb 7.50

128' E = E End of Cb 1/2 Wall on N + S

N 7.7
 cb Top 7.58
 Gutter 8.5
 1/4 8.4
 S 7.6

356.40

1/4 8.1
 Gutter 8.8
 Cb 7.56
 S 7.2
 TP 8.47

586

553.29

3479.2

0051
End of Curb

130' E

S 4.7
 Cb 5.5
 1/2 5.9
 1/4 5.8
 1/4 5.0
 S 4.7
 1/4 5.0
 1/4 5.9
 1/3 5.5
 Cb 5.3
 N 5.0

150' E

N 5.8
 Cb 5.4
 1/4 5.7
 S 5.8
 1/4 5.9
 1/3 6.2
 Cb 5.9
 S 5.5

353-29

200' E

s	6.3
cb	6.2
+5	6.0
+6	6.6
1/4	6.5
+2	6.0
1/2	5.9
1/4	6.0
cb	6.1
H	6.4

250' E

H	6.0
cb	6.3
1/4	6.4
1/2	6.2
1/4	6.5
cb	6.6
s	6.2

270' E = 111 1/2' St.

s	6.6
cb	6.8
1/4	6.4
1/2	6.1
1/4	6.2
cb	5.9

353-29

6.0

EL 41.75 St

H	6.0
H	5.3
cb	5.4
1/4	5.2
1/2	5.3
1/4	5.5
cb	6.0
s	5.8

50' E of EL of 41.75 St

s	5.5
cb	5.2
1/4	5.0
1/2	4.8
1/4	4.6
cb	5.0
1/2	4.5
H	4.4

100' E

H	4.2
cb	3.8
1/4	3.9
1/2	3.9
1/4	4.0
cb	4.3
s	4.3

150' E

For Interpolation See 41.75 St 4 Sections

353.19

S	3.6
Cb	3.7
1/4	3.1
1/2	3.0
1/4	3.0
Cb	3.2
N	2.5

200' E

N	1.5
Cb	2.0
1/4	2.1
1/2	2.0
1/4	2.0
Cb	2.5
1/3	2.3
S	2.3

250' E

S	2.0
Cb	2.1
1/4	2.1
1/2	2.0
1/4	2.1
Cb	2.2
N	2.1

270' E - N. of Menlo Ave

N	2.3
---	-----

353.29

Cb	2.8
1/4	2.1
1/2	2.4
1/4	2.1
Cb	2.8
1/3	2.2
S	2.2

E. of Menlo

S	4.0
1/4	4.0
Cb	4.5
1/4	4.2
1/2	4.1
1/4	4.2
Cb	4.5
N	4.4

50' E of E. of Menlo

N	5.3
1/3	5.3
Cb	5.7
1/4	5.4
1/2	5.4
1/4	5.5
Cb	5.8
1/3	5.5
S	5.3

For independent
Spec Menlo + Section

TP	1.80	349.12	597	347.32
		100' E		
S		07 Conc. Wall to Ground	1.80	
cb			2.3	
+3			2.7	
1/4			2.7	
2			2.5	
1/4			2.1	
cb			2.2	
+2			2.4	
11			2.4	
		150' E		
11			4.0	
cb			4.2	
1/4			3.9	
2			4.1	
1/4			3.9	
cb			4.1	
+1			2.8	
S			2.6	
		200' E		
S			4.0	
+2			4.6	
cb			5.8	
+3			6.0	
1/4			5.8	

2			5.6
1/4			5.7
cb			6.0
11			5.8
		07 Board Walk	5.60
		225' E	
11			6.9
cb			4.9
1/4			6.4
2			6.5
1/4			6.5
+3			7.0
cb			6.8
S			5.6
		250' E	
S			6.8
+2			7.0
+3			7.8
cb			8.0
+3			7.5
1/4			7.4
2			7.4
1/4			7.5
cb			7.7
11			7.8
		270' E = 11/16 49MCL	

349.12

N	8.3
cb	8.3
1/4	8.1
1/2	7.7
3/4	8.4
+1	8.7
cb	8.7
S	8.3

Fl. 47 1/2 St.

-10	12.5
S	12.0
cb	11.2
+3	10.1
1/4	9.1
1/2	8.4
3/4	8.7
cb	8.6
N	8.3

75 F

N	7.7
cb	8.3
1/4	8.5
1/2	8.5
3/4	9.3
cb	10.7
S	11.5

349.12

38

11.0	12.5
-1.0	12.3
S	10.8
cb	9.6
1/4	8.7
1/2	8.2
3/4	8.3
cb	8.2
N	7.6

50 F

N	7.2
cb	8.0
1/4	8.2
1/2	8.0
3/4	8.1
cb	9.1
S	9.4

75 F

op Porch Guard	7.6
S	8.1
cb	7.7
1/4	7.0
1/2	7.1
3/4	7.1
cb	7.2

39912

H	70
	100°F
H	55
Cb	62
1/4	61
1/2	61
1/4	58
Cb	66
+2	70
+3	79
S	86
+5	88
	150°F
-5	69
S	66
+3	61
Cb	17
+3	10
1/4	39
1/2	39
1/4	39
Cb	39
H	33
	200°F
H	18
Cb	23

39912

1/4	24
1/2	22
1/4	20
1/4	24
Cb	29
+2	10
S	18
+5	53
	225°F
-5	10
S	37
+2	25
+3	28
Cb	19
1/4	13
1/2	13
1/4	16
Cb	11
H	11
	250°F
H	20
Cb	10
+2	18
1/4	18
1/2	11
1/4	12

74	0.6
cb	11
S	24
+5	27
268'E	
S	1.7
cb	0.5
+2	0.6
+5	1.8
1/4	2.3
2	2.5
1/4	2.3
+3	2.3
cb	1.3
N	0.4

290'E - E.L. of Euclid Ave

N	2.4
cb on End of Rd	2.64
Gutter on Cut	4.30
1/4 on Header	4.30
2 " " "	4.35
1/4 " " "	4.11
Gutter on Cut	4.70
cb on End of Rd	4.16
S	3.9

E.L. of Euclid

N	3.3
cb on End Rd	3.57
Gutter on Cut	4.33
1/4 on Header	4.09
2 " " "	4.09
1/4 " " "	4.23
Gutter on Cut	4.65
cb on End Rd	4.11
S	3.9
TP	7.59
	3.54.56
	2.15
	346.97

2'E of E.L. of Euclid

S	4.5
cb	11
+4	4.5
+5	6.0
1/4	6.7
2	6.7
1/4	8.1
11	8.1
+2	7.3
+4	4.5
cb	4.7
+2	3.4
N	3.0
	25'E
N	3.2

354.56

11	34
cb	38
12	45
14	46
2	47
14	48
15	40
cb	40
S	39
	150' E
S	39
cb	40
14	37
2	34
14	35
cb	36
N	33
	100' E
N	45
cb	46
14	45
2	45
14	45
15	44
cb	48
S	47

87.5 E on NL
Const. Walk
172118.5 E on NL
Const. Drive
173

359.56

41

	150' E
S	68
cb	70
12	71
14	67
2	64
14	66
cb	69
13	64
11	63
	200' E
N	75
14	77
cb	83
14	82
2	81
14	85
cb	89
12	87
S	88
	250' N
S	95
14	94
cb	96
14	90
2	87

1/4		88	
Cb		88	
+2		80	
N		84	
270° E = N.L. of 187 th St.			
N		87	345.9
Cb		91	
+5		95	
1/4		94	
2		91	
1/4		92	
Cb		100	
+3		95	
S		96	450
E.L. of 187 th			
S		108	343.8
1/4		109	343.7
Cb		111	343.5
1/4		109	343.7
2		107	343.9
1/4		108	343.8
Cb		106	344.0
N		105	344.1
BN	0.60	346.79	887 346.19
50° E of E.L. of			
N		3.2	343.6

For later Section
See 7 Sections
For 48th St.

Hails Hill
Fence Post
Folk + 187th St.

+3		63	343.5
Cb		43	342.5
+2		50	341.8
1/4		16	342.2
2		45	342.3
1/4		47	342.1
Cb		49	341.9
+4		65	343.3
S		35	343.3
80° E			
S		46	342.2
+3		47	342.1
+4		62	340.6
Cb		66	340.2
1/4		80	338.8
2		78	339.0
1/4		77	339.1
+4		83	338.5
Cb		76	339.6
+4		49	341.9
N		49	341.9
100° E			
N		71	339.7
+2		73	339.5
Cb		107	336.1
+2		114	335.4

57' Top 56
C&C Drive
465

346.77

1/4	10.8	336.0
2	10.5	336.3
1/4	10.4	336.4
1.5	9.7	337.4
0.6	8.9	337.9
1.2	7.9	338.9
1.4	6.0	340.8
5	5.6	341.2

122.5

5	8.9	337.9
0.6	11.9	334.9
1.3	12.7	334.1
1/4	13.3	333.5
2	12.7	333.1
1/4	12.9	332.9
0.6	14.1	332.7
1.3	13.4	332.4
11	11.5	335.3

130.5

11	12.0	333.6
TP	146	335.43
1.1	12.2	333.7
1.1	12.4	332.0
0.6	12.8	331.6
1/4	12.6	331.8
2	12.3	332.1
1/4	12.3	332.1

335.43

7.3	32	332.2
0.5	2.1	333.3
1.2	0.6	331.8
5	0.0	335.4

133.5

5	0.6	334.8
1.4	0.7	334.7
0.6	2.3	333.1
1.4	2.7	331.7
1/4	3.6	331.8
2	3.7	331.7
1/4	3.9	331.5
0.6	4.0	331.4
11	3.5	331.9

150.5

11	4.1	331.3
1.3	6.0	329.4
0.6	6.1	329.3
1.2	5.2	330.0
1/4	5.1	329.8
2	5.9	329.5
1/4	5.4	330.0
1.2	5.7	329.7
0.6	4.5	330.9
1.3	2.5	332.9
5	2.4	333.0

33543

175E

S	63	329.1
Cb	69	328.5
1/4	79	327.5
1/2	79	327.5
1/4	81	327.3
Cb	80	327.4
+3	83	327.1
H	72	328.2

200E

H	102	325.2
Cb	108	324.6
1/4	108	324.6
1/2	108	324.6
1/4	108	324.6
+4	107	324.7
Cb	97	325.7
S	94	326.0

225E

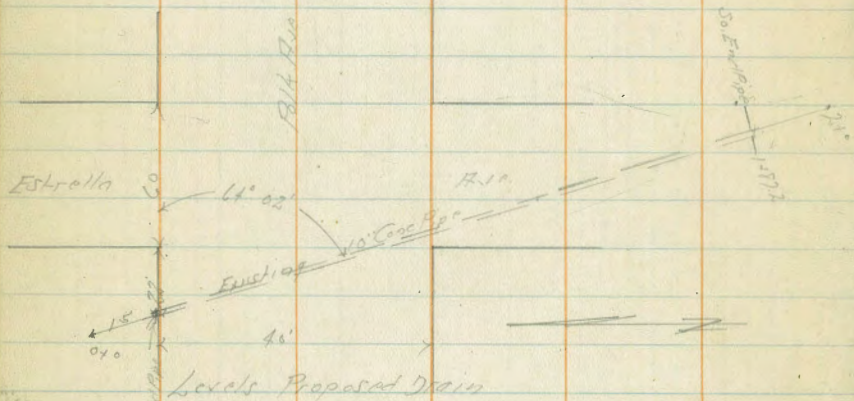
S	120	325.4
Cb	122	323.2
+2	128	322.6
1/4	129	322.5
1/2	121	322.5
+3	129	322.5
1/4	127	322.7

33543

Cb	121	322.8
H	121	322.3
H	128	328.76
	122.5	322.48
	129.5	
-15	140	314.8
H	142	314.6
Cb	97	319.1
+4	76	321.2
1/2	73	321.5
1/4	72	321.6
1/4	73	321.5
Cb	75	321.3
S	73	321.5
	260E	
S	70	321.2
Cb	70	321.2
1/4	70	321.2
1/2	70	321.4
1/4	75	321.3
+2	79	320.9
Cb	93	319.5
H	101	317.7
+10	111	317.7
	270E - H. L. Estrella	
-10	82	320.6
H	95	319.3

Estrella
Garrido
18' Cbs
9' Q10

cb	79	320.9
+2	73	321.5
1/2	73	321.5
2	74	321.4
1/4	75	321.3
cb	80	320.8
S	81	320.7



040	135	315.26
715 - N. End Polk Ave. N. End 16' Prop. Approx. Floor Line	139	314.86
+25	77	321.06
+50	79	320.86
140	116	317.16
+50	130	315.76
+65	140	317.76
+80	190	309.76
787.2 - S. End 16' Prop. Floor Line	225	306.11
210	218	307.96

N. End of Estrella

S	83	320.5
cb	83	320.5
1/4	77	321.1
2	72	321.6
1/4	70	321.8
1/4	69	322.0
cb	68	322.5
1/4	63	322.5
1/4	58	323.0
cb	63	322.5
1/4	67	322.1
2	70	321.8
1/4	74	321.4
cb	80	320.8
S	87	320.1
S. End of Estrella		
S	80	320.8
cb	80	320.8
1/4	77	321.1
2	68	322.0
1/4	63	322.5
cb	57	323.1
1/4	54	323.4

328.76

N	58	323.8
cb	63	322.5
1/4	66	322.2
2	68	322.0
1/4	70	321.8
cb	79	320.9
S	82	320.6

FCB

S	86	320.2
cb	93	321.5
1/4	66	322.2
2	60	322.8
1/4	63	322.5
cb	52	323.6
N	45	324.3

FL Est. 1/16

N	33	325.5
cb	38	325.0
1/4	48	324.0
2	57	323.1
1/4	51	323.7
1/4	54	323.4
cb	71	321.7
S	74	321.4

2'E of FL Est. 1/16

W.	58	325.0
----	----	-------

328.76

1/3	56	323.2
cb	68	322.0
1/4	53	323.5
2	50	323.8
1/4	52	323.5
cb	15	324.3
1/2	26	326.2
N	25	326.3

25'E of FL Est. 1/16

N	12	327.5
1/4	18	327.0
cb	36	325.2
1/2	42	324.6
1/4	40	324.8
2	38	325.0
1/4	41	324.7
cb	50	323.8
S	41	324.7

50'E

S	30	325.8
cb	25	325.3
1/4	32	325.6
2	30	325.8
1/4	31	325.7
1/4	34	325.4
cb	27	326.1

328.76

+2		1.3	327.5
H		0.9	327.9
TP	12.5L	339.98	1.94
	10.5F		
H		11.0	329.0
+3		12.5	327.5
Cb		12.9	327.1
1/4		12.5	327.5
8		12.4	327.6
1/4		12.1	327.4
Cb		12.9	327.1
+3		11.8	328.2
S		12.1	327.9
	15.0F		
S		11.4	328.6
+3		11.7	328.3
Cb		11.6	328.4
1/4		11.2	329.0
8		10.7	329.3
1/4		10.7	329.3
Cb		10.8	329.2
H		9.2	330.8
	20.0F		
H		8.7	331.3
Cb		9.2	330.8
+2		9.1	330.6

339.98

1/4		9.1	330.9
8		9.0	331.0
1/4		9.2	330.8
Cb		9.7	330.3
S		9.4	330.6
	2.50F		
S		8.3	331.7
Cb		8.2	331.8
1/4		7.6	332.4
8		7.5	332.5
1/4		7.2	332.8
Cb		7.3	332.7
+2		6.8	333.2
H		6.5	333.5
	3.70F - H 4.49F		
H		5.4	334.6
Cb		6.0	334.0
1/4		6.2	333.8
8		6.3	333.7
1/4		6.5	333.5
Cb		7.0	333.0
H		6.8	333.2
S		6.8	333.2
	Cb		
S		6.3	333.7
Cb		6.3	333.7

4.75L
6.00L
1.25Cb
9.94

339.98

1/4	50	334.1
1/2	56	334.4
1/4	55	334.5
Cb	54	334.6
H	45	334.5
	1/4	
H	42	335.8
Cb	47	335.3
1/4	48	335.2
1/2	50	335.0
1/4	52	334.8
Cb	55	334.5
S	56	334.4
	1/2 4916.01	
S	48	335.7
Cb	47	335.3
1/4	44	335.6
1/2	45	335.5
1/4	43	335.7
Cb	38	336.2
H	36	336.4
	1/4	
H	34	336.6
Cb	35	336.5
1/4	38	336.2
1/2	40	336.0

339.98

1/4	41	335.9
Cb	45	335.5
S	47	335.2
	FCb	
S	43	335.7
Cb	42	335.8
1/4	36	336.4
1/2	25	336.5
1/4	33	336.7
Cb	24	336.6
H	31	336.9
	EL of 4916.01	
H	21	337.9
1/4	21	337.9
Cb	22	337.2
1/4	24	337.6
1/2	28	337.2
1/4	27	337.3
1/2	24	336.6
Cb	31	336.9
H	28	337.2
S	29	337.1
	56F of EL of 4916.01	
S	00	340.0
TR	10.77	356.9
1/2	10.6	339.92
1/4	10.6	340.1

350.69

Cb	11.1	339.6
1/4	10.1	340.6
1/2	10.1	340.6
1/4	10.0	340.7
Cb	10.3	340.4
1/2	9.5	341.2
N	9.4	341.3
	100' E	
N	7.1	343.3
Cb	7.9	342.8
1/4	7.7	343.0
1/2	7.7	343.0
1/4	7.7	343.0
Cb	8.3	342.4
S	8.2	342.5
	150' E	
S	7.4	343.3
Cb	7.5	343.2
1/4	7.0	343.7
1/2	6.5	344.2
1/4	6.3	344.4
Cb	6.2	344.5
N	5.9	344.9
02 Conc Drive	5.6	345.09
	200' E	
N	5.5	345.2

350.69

49

Cb	5.7	345.0
1/4	5.7	345.0
1/2	5.8	344.9
1/4	5.9	344.8
Cb	6.5	344.2
S	6.7	344.0
	250' E	
S	5.4	345.3
Cb	5.3	345.4
1/4	4.8	345.9
1/2	4.5	346.2
1/4	4.4	346.3
Cb	4.1	346.6
N	3.6	347.1
	270' E = NW of Winoro	
N	3.0	347.7
Cb	3.5	347.2
1/4	4.0	346.7
1/2	3.8	346.9
1/4	4.2	346.5
Cb	4.5	346.2
S	4.6	346.1
	Cb	
S	4.6	346.1
Cb	4.3	346.5
1/4	4.0	346.7

Latitude
18 Cb's
9.240

2	3.1	347.1
1/4	3.1	347.1
cb	3.5	347.2
H	3.1	347.6
	1/4	
H	3.2	347.4
cb	3.4	347.3
1/4	3.1	347.3
2	3.5	347.2
1/4	3.9	346.8
cb	4.2	346.4
S	4.6	346.1
	2 Wisconsin	
S	3.7	347.0
cb	3.4	347.3
1/4	3.0	347.7
2	3.0	347.7
1/4	2.9	347.8
cb	2.8	347.9
H	2.8	347.9
	1/4	
H	2.7	348.0
cb	2.9	347.8
1/4	3.0	347.7
2	3.4	347.5
1/4	3.5	347.8

cb	3.7	347.0
S	3.9	346.6
	cb	
S	3.1	347.6
cb	3.2	347.9
1/4	3.2	347.8
2	3.2	348.0
1/4	3.1	348.1
cb	2.9	348.0
H	2.8	348.3
	2 Wisconsin	
H	2.3	348.4
cb	2.5	348.2
1/4	2.4	348.3
2	2.6	348.1
1/4	2.7	348.0
cb	2.8	347.9
S	3.2	347.5
3/4	3.7	346.80
TP	0.96	338.59
3/4	13.06	337.63
3/4	8.89	329.90

Sgt. Nails
Fossil
Pittston

SXBR
Daisy
3577

Cross Section 3rd St.
Market to Imperial

60' W. side
10' Cbs
10' Qts

41.54

2-10-77
S. J. 507
8113
2560m

BN	0.77	41.54	40.77	SEBP Market			
					N	46	36.9
					cb	47	36.8
E			39.7		"	48	36.7
cb			38.8		S	48	36.7
"			39.0		"	46	36.9
S			38.7		cb	46	36.9
"			38.9		E	45	37.0
cb			39.1				
N			39.1		E - Garage dirt floor	50	36.5
					cb	51	36.4
					"	53	36.2
cb			39.0		S	53	36.2
"			39.8		"	52	36.3
S			38.5		cb	52	36.3
"			38.6		N	48	36.7
cb			37.8				
E			38.1		N	52	36.3
					cb	52	36.3
E			37.5		"	56	35.9
cb			37.7		S	56	35.9
"			37.7	22' 0" on FL Garage Concrete Floor 418	"	51	36.1
S			37.5		cb	57	35.8
"			37.5		E	57	35.8
cb			37.5				
N			37.5		E	59	35.7

S. L. Market

S. S. of St. Market

150' S

200' S

250' S

cb	59	35.6
14	51	35.9
8	57	35.8
11	59	35.6
cb	58	35.7
11	53	36.2

2705 SNL ISV

11	53	36.2
cb	59	35.6
14	59	35.6
8	59	35.6
14	61	35.4
cb	60	35.5
F	61	35.4

cb

F	62	35.3
cb	66	34.9
11	60	35.5
8	60	35.5
14	61	35.4
cb	60	35.5
11	58	35.7

14

11	59	35.6
cb	60	35.5
14	61	35.4

8	63	35.2
14	59	35.6
cb	62	35.3
F	64	35.1

8 108

F	64	35.1
cb	62	35.3
11	61	35.4
8	62	35.3
14	60	35.5
cb	56	35.9
11	57	35.8

14

11	62	35.3
cb	60	35.5
14	61	35.4
8	61	35.4
14	61	35.4
cb	63	35.2
F	64	34.9

cb

F	61	35.4
cb	62	35.3
14	60	35.5
8	62	35.3
14	63	35.2

41.59

Cb	6.2	35.2
H	5.9	35.6
S.L. J.W.		
H	5.8	35.7
Cb	5.9	35.6
1/4	6.6	34.9
1/2	6.0	35.5
1/4	6.0	35.5
Cb	6.0	35.5
F	6.3	35.2

50'S of S.L. of J.W.

F	6.9	34.6
Cb	6.8	34.6
1/4	6.6	34.9
1/2	6.6	34.9
1/4	7.0	34.5
Cb	6.3	35.2
H	6.9	35.1

282

37.56

685

3469

100'S

H	2.8	34.8
Cb	2.9	34.7
1/4	3.2	34.4
1/2	3.0	34.6
1/4	2.8	34.8
Cb	2.6	35.0

37.56

F	3.0	34.6
150'S		
F	3.2	34.2
Cb	3.4	34.2
1/4	3.5	34.1
1/2	3.6	34.0
1/4	3.5	34.1
Cb	3.7	34.4
H	3.7	34.4

200'S

H	3.7	33.9
Cb	3.6	34.0
1/2	4.5	33.1
1/4	3.9	33.7
1/2	3.8	33.8
1/4	4.0	33.6
Cb	3.6	34.0
F	4.0	33.6

250'S

F	4.3	33.3
Cb	4.3	33.3
1/4	4.1	33.0
1/2	4.5	33.1
1/4	4.1	33.2
1/3	5.1	32.5
Cb	4.2	33.4
H	4.2	33.4

270.5 = N 6 of SW

1st
6' side
10' cbr
10' 0.15

N	4.5	33.1
cb	4.6	33.0
1/4	5.1	32.5
1/2	4.3	33.3
3/4	5.0	32.6
cb	4.7	32.9
F	4.1	33.0
	cb	
F	4.7	32.9
cb	5.1	32.5
1/4	4.8	32.8
1/2	4.8	32.8
3/4	4.8	32.7
cb	4.6	33.0
N	4.7	32.9
	1/4	
N	4.7	32.9
cb	4.9	32.7
1/4	5.1	32.5
1/2	5.0	32.6
3/4	4.9	32.7
cb	5.0	32.6
F	5.4	32.2
	1st	
F	5.1	32.5

cb	5.2	32.4
1/4	5.3	32.3
1/2	4.6	33.0
3/4	4.1	33.0
cb	4.5	33.1
N	4.5	33.1
	1/4	
N	4.9	32.7
cb	4.8	32.7
1/4	5.0	32.6
1/2	4.8	32.8
3/4	4.9	32.7
cb	4.9	32.7
F	4.7	32.9
	cb	
F	4.8	32.8
cb	4.9	32.7
1/4	4.9	32.7
1/2	4.7	32.9
3/4	4.7	32.9
cb	5.1	32.5
N	5.0	32.6
	1st of SW	
N	5.0	32.6
cb	5.1	32.5
1/4	5.1	32.5

3756

8	47	32.9
1/4	49	32.7
Cb	48	32.8
F	50	32.6

50'S of S1 of S

F	55	32.1
Cb	51	32.5
1/4	52	32.4
8	50	32.6
1/4	51	32.5
Cb	54	32.2
H	50	32.6

100'S

H	55	32.1
Cb	57	31.9
1/4	56	32.0
8	59	32.2
1/4	57	31.9
Cb	58	31.8
F	58	31.8

127'S = N.L. Mc Loren's Lane

F	60	31.6
Cb	61	31.5
1/4	59	31.7
8	57	31.9
1/4	58	31.8

Mc Loren's Lane

30' wide

Cb	62	31.4
H	60	31.6
8		
H	62	31.4
Cb	63	31.3
1/4	62	31.8
8	59	31.7
1/4	61	31.5
Cb	62	31.4
F	62	31.4

S.E. of Mc Loren's Lane

F	63	31.3
Cb	60	31.6
1/4	61	31.5
8	57	31.9
1/4	62	31.3
Cb	62	31.4
H	62	31.4

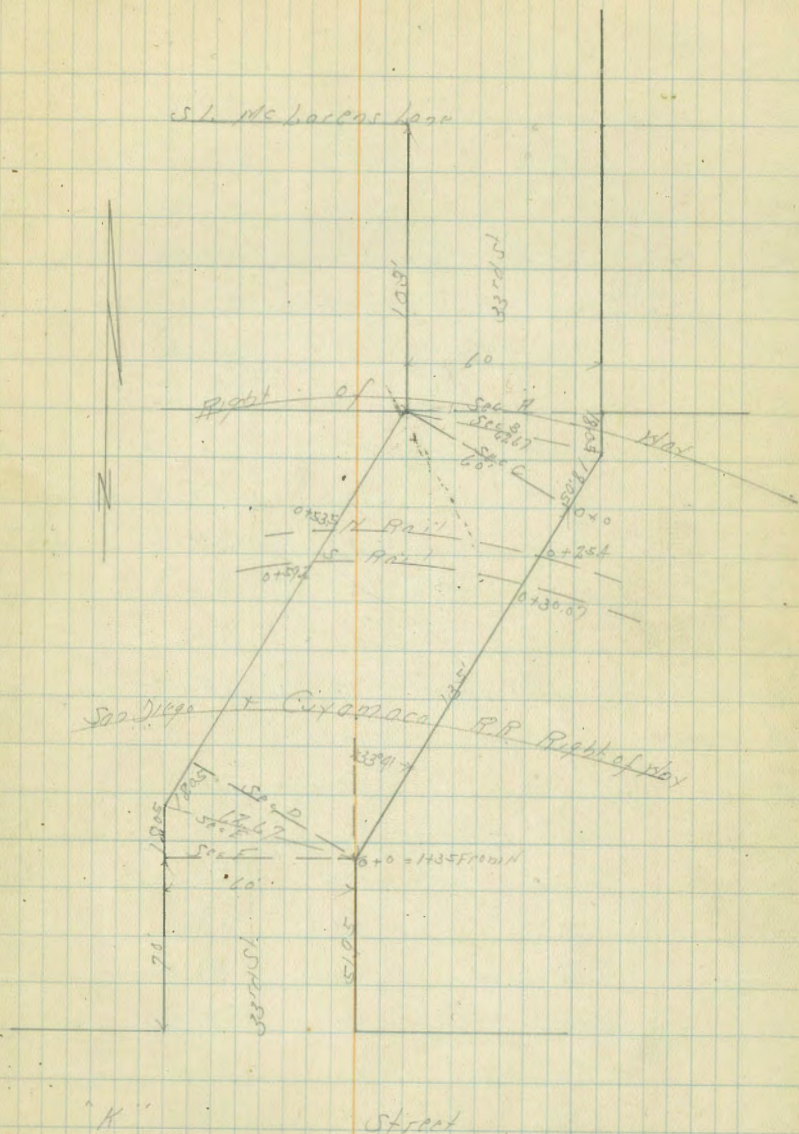
50'S of Cb of Mc Loren's Lane

H	65	31.1
Cb	63	31.3
1/4	67	30.9
8	61	30.8
1/4	67	30.9
Cb	68	30.8
F	67.5	30.85

Co. Core Walk + Ground

95 S

F	70	30.6
Cb	75	30.1
H	76	30.4
S	67	30.9
H	67	30.9
Cb	68	30.8
H	68	30.8
103 S - Sec A		
H	78	29.8
Cb	72	30.4
H	75	30.1
S	82	28.9
H	89	28.9
Cb	75	30.1
F	68	30.8
Sec B		
F	117	25.9
Cb	111	26.5
H	104	27.2
S	104	27.2
H	94	28.2
Cb	87	28.9
H	28	29.8



3756

Sec C

68

N	78	29.8
Cb	87	27.9
1/4	104	27.2
2	111	26.5
1/4	105	27.1
Cb	96	28.0
F	76	30.0

14'S of Sec C

F	02	37.4
Cb	35	39.1
1/4	54	32.2
2	65	31.1
1/4	89	28.7
Cb	103	27.3
N	108	26.8

17'S

N	105	27.1
Cb	94	28.2
1/4	66	31.0
2	49	32.7
1/4	32	34.4
Cb	14	36.2

521

4272

TP	005	4751
F	74	38.3

58'S

4272

F	52	37.5
Cb	47	38.0
1/4	37	39.0
2	34	39.3
1/4	39	38.8
Cb	59	36.8
N	84	34.3

15'S

N	37	39.0
Cb	36	39.1
1/4	24	39.3
2	40	38.7
1/4	54	36.3
Cb	77	35.0
F	103	32.4

15'S

F	199	22.8
Cb	168	25.9
1/4	155	27.2
2	144	28.3
1/4	113	30.4
Cb	68	35.9
N	40	38.7

80'S

N	124	30.3
Cb	156	27.1

N Rail on E
23'

S Rail on E
25'

N Rail on E
26'

S Rail on E
28'

42.7%

1/4	175	25.2
S	180	24.7
1/4	171	25.7
cb	160	26.7
F	180	29.7

90'S

F	181	29.6
cb	182	29.5
1/4	152	27.5
S	159	26.8
1/4	178	24.9
cb	190	23.7
H	177	25.0

100'S

H	189	23.8
cb	167	26.0
1/4	189	29.8
S	130	29.7
1/4	185	29.2
cb	187	29.0
F	136	29.1

- Garage ditto

118'S

F	185	29.2
cb	185	29.2
1/4	130	29.7
S	129	29.8

42.7%

1/4	128	29.9		
cb	125	30.2		
H	127	30.0		
TP	413	3410	1875	2997

185'S - Sec D

H	48	29.3
cb	45	29.6
1/4	45	29.6
S	46	29.5
1/4	43	29.8
cb	46	29.5
F	51	29.0

Sec E

F	51	29.0
cb	45	29.6
1/4	46	29.5
S	46	29.5
1/4	46	29.5
cb	47	29.4
H	46	29.5

Sec F

H	47	29.4
cb	49	29.2
1/4	48	29.3
S	48	29.3
1/4	45	29.6

3410

cb	45	29.6
F	51	29.0
52° S of Dec F = N.L. KST		
F	52	28.8
cb	55	28.6
1/4	45	29.6
S	50	29.1
1/4	50	29.1
cb	53	28.8
N	55	28.6
cb		
N	57	28.4
cb	56	28.5
1/4	52	28.9
S	50	29.1
1/4	48	29.3
cb	56	28.5
F	54	28.7
1/4		
F	56	28.5
cb	58	28.3
1/4	56	29.0
S	48	29.3
1/4	53	28.8
cb	55	28.6
N	57	28.4

KST
6° N. of
10° Cbr
10° O.H.

3410

50

S of KST		
N	56	28.5
cb	55	28.6
1/4	53	28.8
S	47	29.4
1/4	50	28.9
cb	56	28.5
F	56	28.5
1/4		
F	58	28.3
cb	58	28.3
1/4	51	29.0
S	50	29.1
1/4	55	28.6
cb	57	28.4
N	58	28.3
cb		
N	59	28.2
cb	60	28.1
1/4	56	28.5
S	49	29.2
1/4	53	28.8
cb	61	28.0
F	58	28.3
S of KST		
F	56	28.7

Cb	58	28.3
1/4	55	28.6
5	50	29.1
1/4	59	28.7
Cb	59	28.7
X	59	28.2
50'S of 52.0 of X		
X	61	28.0
Cb	59	28.2
1/4	55	28.6
5	56	28.5
1/4	57	28.4
Cb	58	28.3
F	56	28.5
100'S		
F	61	28.0
Cb	64	27.7
1/4	64	27.7
5	61	28.0
1/4	59	28.3
Cb	68	27.9
X	62	27.8
150'S		
X	68	27.3
Cb	70	27.1
1/4	66	27.5

5	61	27.7		
1/4	68	27.3		
Cb	70	27.1		
F	67	27.5		
200'S				
F	70	27.1		
Cb	72	26.8		
1/4	75	26.6		
5	72	26.9		
1/4	73	26.8		
Cb	77	26.9		
X	73	26.8		
TP	275	2989	699	2711
250'S				
X	38	26.0		
Cb	39	25.9		
1/4	35	26.3		
5	33	26.5		
1/4	36	26.2		
Cb	40	25.8		
F	33	26.5		
270'S = 1/2 of 1st				
F	33	26.5		
Cb	27	26.1		
1/4	35	26.3		
5	38	26.0		

190'S of 27.1
Gorge Dist
Floor
71

1st
20' x 10'
15' x 10'
10' x 10'

27.21

1/4	10	25.8
cb	39	25.9
W	39	25.9
	cb	
W	39	25.9
cb	41	25.7
1/4	39	25.9
1/2	37	26.1
1/4	38	26.0
cb	38	26.0
F	38	26.0
	1/4	
F	39	25.9
cb	39	25.9
1/4	39	25.9
1/2	37	26.1
1/4	38	26.0
cb	41	25.7
W	41	25.7
	1/2	25.7
W	41	25.7
cb	41	25.7
1/4	38	26.0
1/2	36	26.2
1/4	40	25.8
cb	40	25.8

F	40	25.8
	1/4	
W	42	25.6
cb	41	25.7
1/4	40	25.8
1/2	38	26.0
1/4	38	26.0
cb	42	25.6
W	41	25.9
	cb	
W	45	25.3
cb	46	25.2
1/4	39	25.9
1/2	38	26.0
1/4	42	25.6
cb	43	25.5
F	42	25.6
	SL of 254	
F	41	25.5
cb	41	25.4
1/4	43	25.5
1/2	40	25.8
1/4	42	25.6
cb	46	25.2
W	46	25.2
	50 S of SL of 254	

29.84

N	42	25.1
cb	50	24.8
1/4	47	25.1
1/2	46	25.2
1/1	47	25.1
cb	46	25.2
F	41	25.7

100'S

E - Garage	48	25.0
cb	49	24.9
1/1	49	24.9
1/2	48	25.0
1/4	49	24.9
cb	51	24.7
N - Conc Walk	49.5	25.8

150'S

N	55	24.3
cb	55	24.3
1/4	55	24.3
1/2	52	24.6
1/1	51	24.4
cb	52	24.6
F	46	25.2

200'S

E	45	25.3
1/1	45	25.3

29.84

cb	51	24.7
1/1	53	24.5
1/2	52	24.6
1/4	54	24.4
cb	51	24.2
N	51	24.2

240'S

N	55	24.3
cb	51	24.7
1/4	43	25.5
1/2	42	25.6
1/1	41	25.4
cb	39	25.9
F	39	25.9

260'S

F	34	26.4
cb	36	26.2
1/1	34	26.4
1/2	31	26.7
1/4	28	27.0
1/1	28	27.0
cb	40	25.8
1/4	50	24.8
N	50	24.8

270'S - 1/2 of Super!

N	20	27.8
---	----	------

2984

Cb	Top End Return	1.26	28.1
Gutter	on Paving	2.30	27.5
"	" "	2.40	27.4
"	" "	2.48	27.3
"	" "	2.80	27.0
TP	612 3230	5.66	26.8
Gutter	on Paving	5.10	26.7
Cb	Top End Return	5.19	27.1
F		5.6	26.7
BM		3.35	28.95

NET Wt Hyd
100 cc in 4 33rd
2895

S	48	45.8
1/4	56	45.0
cb	66	44.0
H	67	43.9
+15	67	43.9

100' F

-15	71	43.5
H	72	43.4
cb	74	43.2
1/4	73	43.3
S	72	43.4
1/4	75	43.1
cb	74	43.2
S	75	43.1

140' F

S	83	42.3
cb	79	42.7
1/4	81	42.5
S	80	42.6
1/4	77	42.9
cb	75	43.1
H	72	43.3

145' F

H	- Pattern Mark from North	9.5	41.1
cb		8.4	42.2
1/4		8.2	42.4

S	80	42.6
1/4	81	42.5
cb	80	42.6
S	81	42.2

152' F

S	86	42.0	
cb	82	42.3	
1/4	81	42.2	
S	80	42.6	
1/2	80	42.6	
1/4	80	41.6	
1/4	12 Mark	86	41.0
+15	86	41.0	
cb	84	42.2	
H	85	43.1	

175' F

H	66	44.0
17	70	43.6
cb	80	42.6
1/4	10.3	40.3
13	11.1	39.5
+15	82	42.4
S	82	42.4
1/4	89	41.7
cb	86	42.0
S	86	42.0

50.58

TP	1.90	43.28	9.20	41.38
		200'E		
S			1.9	41.4
Cb			1.8	41.5
1/4			2.2	41.1
1/2			2.4	40.9
+1			2.6	40.7
1/4			2.7	39.6
+3			3.5	39.8
+4			2.2	41.1
Cb			2.4	40.9
+3			1.4	41.9
N			0.5	42.8
		250'E		
N			2.2	40.1
Cb			2.4	39.9
+3			3.7	39.6
+5			4.9	38.4
+7			5.5	37.8
1/4			3.6	39.7
1/2			4.4	39.9
1/4			4.7	39.6
+6			2.7	40.6
Cb			3.0	40.3
S			3.0	40.3

48.28

300'E

S		41	38.9
Cb		42	39.1
1/4		46	38.7
1/2		45	38.8
1/4		47	38.6
1/2		51	37.7
+2		54	37.9
+5		45	38.8
Cb		42	39.1
N		42	39.1
		350'E	
N		50	38.3
on CoverWalk		47	38.6
Cb		50	38.3
1/4		51	37.7
+2		50	37.3
+6		52	37.4
S		55	37.7
+4		51	38.2
1/4		50	38.3
Cb		52	38.0
S		55	37.8
		400'E	
S		63	37.0
Cb		59	37.4
+2		57	37.9

4328

1/4	54	37.7
5	60	37.3
+6	64	36.9
+8	61	36.9
1/4	61	37.2
+2	59	37.4
cb	61	37.2
N	59	37.4

150° E

N	65	36.8
+4	69	36.4
cb	68	36.5
1/4	66	36.7
+7	68	36.5
5	74	35.9
+3	74	35.7
+5	66	36.7
1/4	66	36.7
cb	61	36.9
S	69	36.6

500° E = N L of 33rd St.

S	76	35.7
+7	75	35.8
cb	78	35.5
1/4	78	35.5
+7	79	35.9

127° E of
Coast
443

4328

5	74	35.9
1/4	76	35.7
+5	80	35.3
cb	76	35.7
1/4	74	35.9
1/4	67	36.6

E L of 23rd St.

N	78	35.5
cb	72	35.5
+8	80	35.3
+6	85	34.8
1/4	82	35.1
5	81	35.2
1/4	82	35.0
cb	79	35.4
S	80	35.3

TP BM 375 3827 816 2512

50° E of E L of 23rd St.

S	47	34.2
cb	42	34.7
+5	49	34.0
1/4	48	34.1
5	46	34.3
1/4	43	34.6
+5	50	33.9
cb	43	34.6

SE 1/4
T. 23rd St.
35.28

3887

N		43	34.6	15' E of H.H. Cone Walk 45°
	100' E			
N		45	34.4	
cb		45	34.4	
+3		52	33.7	
1/4		49	34.0	
2		52	33.7	
1/4		48	34.1	
+1		50	33.9	
+8		44	34.5	
cb		46	34.3	
S		50	33.9	
	127' E			
S		50	33.9	
on Cone Walk		50	33.85	
cb		50	33.9	
+5		45	34.4	
1/4		50	33.9	
2		50	33.6	
+2		56	33.3	
1/4		68	32.0	
+3		70	31.9	
+4		60	32.9	
+8		51	33.8	
cb		49	34.0	
N		48	34.1	

TP	212	3816	3.33	35.54
		150' E		To be graded This far
N			42	34.0
cb			42	34.0
+5			45	33.7
+8			66	31.6
1/4			65	31.7
+3			48	31.9
+1			57	32.5
2			51	33.1
+4			47	33.8
1/4			50	33.2
+1			50	33.0
+6			44	33.8
cb			43	33.9
S			41	33.8
		180' E		
S			57	32.5
cb			56	32.6
1/4			55	32.7
1/8			62	32.0
+5			75	30.7
2			73	30.9
1/8			65	31.7
+7			44	33.8
2			43	33.9

38/6

73		46	33.6
75		55	32.7
cb		41	33.8
H		41	34.1
	200' E		
H		56	32.6
cb		57	32.5
1/4		62	31.9
8		63	31.9
1/4		68	31.4
71		77	30.6
cb		74	30.8
S		73	30.9
	200' E		
8	W Edge Creek	89	29.3
cb		88	29.3
1/4		82	29.9
8		70	30.3
1/4		75	30.7
cb		73	30.9
H		71	31.1
	250' E		
H	W Edge Creek	85	29.7
cb	Sakam Creek	85	29.6
1/4		86	29.6
8		89	29.3

1/4	Sakam Creek	90	29.2
cb		91	29.1
S		92	29.0
	270' E - E Edge Creek		
S		82	30.0
cb		86	29.6
1/4		85	29.7
8		88	29.4
1/4		87	29.5
cb		88	29.4
H		81	29.1
	280' E		
H		76	30.6
cb		69	31.3
1/4		70	31.2
8		66	31.6
1/4		58	32.4
cb		55	32.7
S		65	32.7
	300' E		
S		81	36.1
70		70	35.3
cb		87	34.5
1/4		81	35.1
8		86	33.6
1/4		55	32.7

10.

38.1

Cb		52	32.4
N		63	31.9
TP	5.21	40.92	215
		25.71	
		325 F	
N		84	32.5
Cb		71	33.3
1/4		54	35.5
S		23	37.6
1/4		11	36.3
Cb		50	35.9
S		49	36.0

3250 F

S		45	36.4
Cb		46	36.3
1/4		44	36.5
S		49	36.0
1/4		49	36.0
Cb		49	36.0
N		78	33.1

375 F

N		75	33.4
Cb		50	35.9
1/4		44	36.5
S		39	37.0
1/4		50	35.9
1/4		51	35.8

40.72

Cb		45	36.4
S		44	36.5
		400 F	
S		40	36.9
Cb		41	36.8
1/4		37	37.2
S		39	37.0
1/4		41	36.8
Cb		38	37.3
S		42	36.7
N		61	34.8

403 F

N		36	37.3
Cb		35	37.4
1/4		35	37.4
S		36	37.3
1/4		36	37.3
Cb		40	36.9
S		41	36.8

61.97

8		11.2	50.8
1/4		11.4	50.6
+2		12.0	50.0
cb		12.3	48.7
+7		14.0	48.0
S	Fence 3' 17' Street	17.0	45.0
TP	219	51.24	12.92
		87'E	19.05
S		68	44.4
cb		50	46.2
+5		35	47.7
1/4		32	47.9
2		35	47.7
+5		27	49.5
+8		44	46.8
1/4		45	46.7
cb		32	47.9
+8		25	48.7
N		13	49.9
		108'E	
1		63	44.9
cb		76	43.6
+5		76	43.6
1/4		70	44.2
+5		58	45.4
8		60	45.2

51.29

1/4		61	45.1
+5		81	43.1
cb		91	42.1
+5		99	41.3
S		10.3	40.9
		125'E	
S	Fence 2' 17' St	13.6	37.6
cb		21	38.1
+5		122	38.9
1/4		107	40.5
2		102	41.0
1/4		110	40.2
cb		114	39.8
+2		121	39.1
N		128	38A
TP	212	9114	1222
		150'E	39.02
N		32	37.9
cb		67	37.4
1/4		34	37.7
8		28	38.3
1/4		30	38.1
cb		37	37.4
S	as Conc Walk + Ground Fence 2' 17' St	410	37.04
		200'E	
S		43	36.8

129' 09" N. High
Bridgeway
12.83302' 09" S L
Conc Walk
4.08

411E			411E 2		
cb	45	36.6	2	57	35.5
1/4	47	36.7	1/4	57	35.4
1/2	41	37.0	cb	56	35.5
1/4	42	36.9	S	58	35.2
cb	10	37.1			
H	26	37.5	S	62	34.9
	250'E		cb	64	34.7
H	39	37.2	1/4	69	34.8
cb	44	36.7	1/2	67	34.7
1/4	45	36.6	1/4	68	34.9
1/2	45	36.6	cb	60	35.1
1/4	47	36.7	H	56	35.5
cb	47	36.4			
S FENCE 100 S	48	36.3	H	69	34.2
	300'E		cb	73	33.8
S FENCE 100 S	52	35.8	1/4	75	33.6
cb	51	36.0	1/2	74	33.8
1/4	50	36.1	1/4	72	33.9
1/2	50	36.1	cb	72	33.8
1/4	51	36.0	S	70	34.1
cb	49	36.2			
H	44	36.7	S	80	33.1
	250'E		cb	80	33.1
H	50	36.1	1/4	79	33.2
cb	55	35.6	1/2	77	33.4
1/4	59	35.4	1/4	79	33.2

327'E - W End
of 7' Larr. Ties
105' N of S.L.

150'E - E End
of 7' Larr. Ties
105' N of S.L.

cb			78	33.3		48	37	32.2
H			75	33.6		49	50	30.9
						4	54	30.5
		500 = 1/2 of 93rd St				5	56	30.3
H			80	33.1		5	44	31.5
cb			83	32.8		4	41	32.3
1/4			80	33.1		cb	45	32.4
1/2			81	32.5		5	44	32.5
cb			86	32.5				
S			85	32.6				
BM	207	3593	788	32.6	1174 Moos	5	43	31.6
		FL 32nd St			504433 1/2	cb	46	31.3
					34 31 Plus 5000			
S			84	32.5		17	52	30.7
cb			83	32.6		18	66	29.3
1/4			81	32.8		4	66	29.3
1/2			85	32.4		15	58	30.1
1/2			86	32.3		16	52	30.6
1/2			81	31.3		18	48	31.1
1/4			80	30.9		14	41	31.5
1/2			87	31.2		cb	48	32.1
1/4			86	32.3		H	32	32.6
cb			81	32.8		20 Cass + Walk	279	33.14
H			80	32.9				
							87E	
		29'E of FL						
H			81	33.3		H	50	30.9
cb			86	32.7		cb	50	30.9
						1/4	52	30.6
						1/2	55	30.4

1/4	53	30.6
+9	54	30.5
cb	62	29.7
+4	67	29.2
+5	75	28.4
+8	76	28.3
+9	68	29.1
S	66	29.3
	96'E	
-10	86	27.3
S	80	27.9
+1	77	28.2
cb	69	29.0
+5	63	29.6
+6	53	30.6
1/4	56	30.3
8	57	30.2
1/4	58	30.1
cb	50	30.9
N	52	30.6
	106'E	
N	52	30.1
+4	58	30.1
+5	69	29.0
+9	72	28.7
1/4	74	28.5

100' E
Cove Walk
531

8	78	28.1
1/4	77	28.2
cb	83	27.6
S	96	26.3
1/4	97	26.2
	124'E	
-10	84	27.5
S	84	27.5
+5	70	26.9
cb	99	26.0
1/4	97	26.2
8	89	27.0
1/4	90	26.9
cb	98	26.1
N - Edge	98	26.1
1/4	96	26.3
	139'E	
-10	86	27.3
N	88	27.1
cb	85	27.1
1/4	82	27.7
8	75	28.4
1/4	71	28.8
cb	70	28.9
S	76	28.3
1/4	74	28.5

JST.

35.93

150° E

S	70	28.7
cb	70	28.9
1/4	69	29.0
1/2	71	28.8
1/4	70	28.9
cb	71	28.8
H	71	28.5
180° E		
H	62	29.7
cb	62	29.7
1/4	63	29.6
1/2	64	29.5
1/4	64	29.5
cb	63	29.6
S	65	29.4
200° E		
S	67	29.2
cb	67	29.5
1/4	61	29.8
1/2	58	30.1
1/4	58	30.1
cb	58	30.1
H	59	30.0
225° E		
H	59	30.0

35.93

cb	59	30.0
1/4	60	29.9
1/2	61	29.8
1/4	62	29.6
cb	61	29.3
S	60	28.9
250° E		
S	68	29.1
cb	68	29.4
1/4	65	29.4
1/2	65	29.4
1/4	68	29.1
cb	64	29.5
H	65	29.4
275° E		
H	66	29.3
cb	67	29.2
1/4	69	29.0
1/2	70	28.9
1/4	71	28.8
cb	71	28.8
S	77	28.2
295° E		
S	82	27.7
cb	82	27.7
1/4	76	28.3

3593

1/2	75	28.4
1/4	72	28.7
cb	66	29.3
N	64	29.5

308'E

N	43	31.6
cb	59	30.0
1/4	63	29.6
1/2	67	29.2
1/4	69	29.0
cb	75	28.9
S	80	27.9

308'E

S	69	29.0
cb	78	28.9
1/4	66	29.3
1/2	59	30.0
1/4	52	30.7
cb	48	31.6
N	40	31.9

315'E

N	Gas cap & Ditch floor	32.1
cb	43	31.6
1/4	43	31.6
1/2	46	31.0
1/4	45	31.4

3593

cb	45	31.4
S	45	31.4

350'E

S	39	32.0
cb	39	32.0
1/4	39	32.0
1/2	39	32.0
1/4	42	31.7
cb	42	31.7
N	42	31.6

380'E

N	40	31.9
cb	38	32.1
1/2	38	32.1
1/2	38	32.1
1/4	39	32.0
cb	39	32.0
S	39	32.0

401.5'E

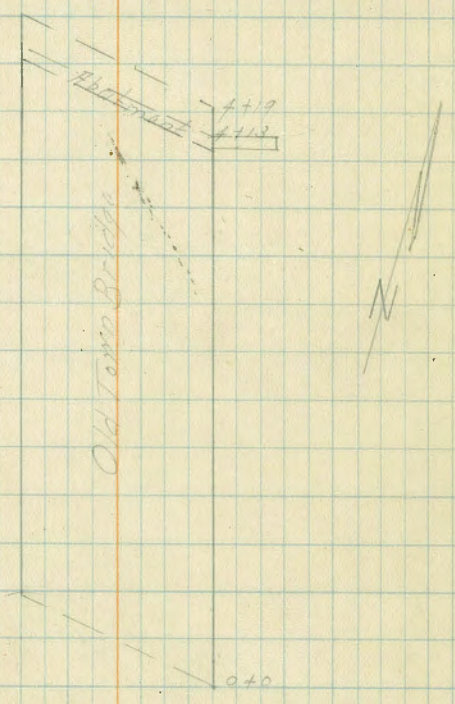
S	35	32.4
cb	34	32.5
1/4	35	32.4
1/2	34	32.5
1/4	35	32.4
cb	35	32.6
N	34	32.6

Levels Under Old Tomo Bridge

7-26-27
S. S. Sisson
S. W. Sisson

577 Top of
Maj. T. Taylor

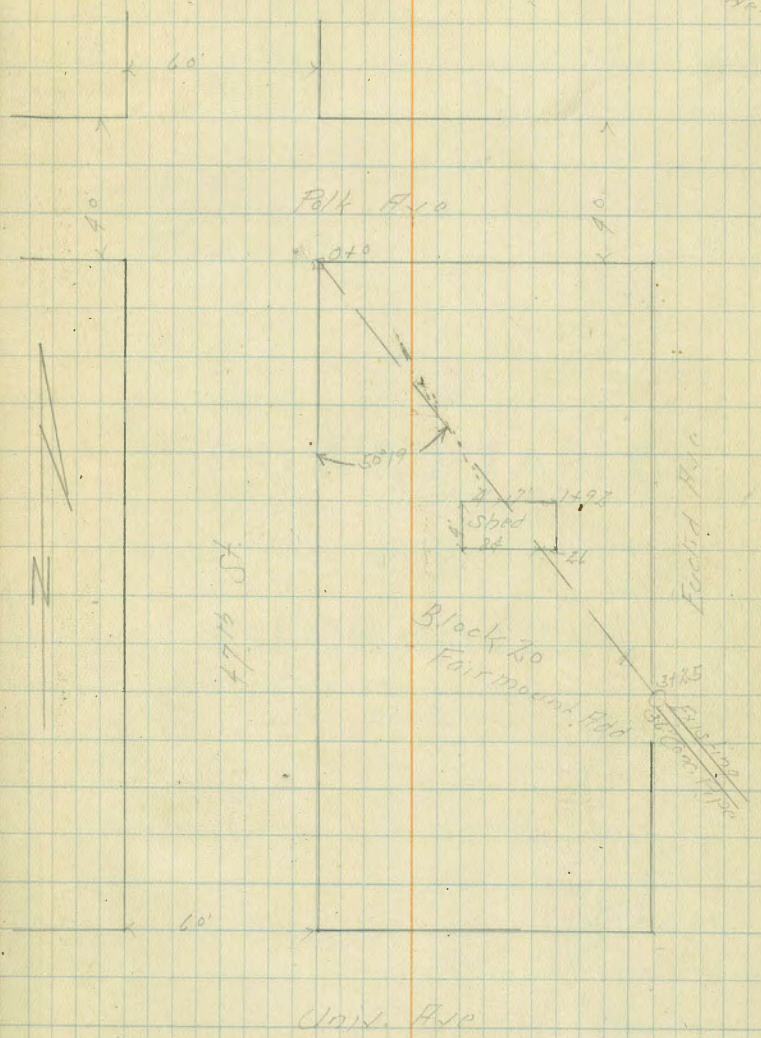
BM	328	1194		8.16
TP	1004	2119	0.79	11.5
0+0	South End of Bridge on Floor of Ground		2.74	18.95
			5.7	15.7
+5			8.2	13.0
+25			10.2	11.0
+50			12.2	9.0
+65			13.0	9.2
+74			16.4	4.8
+85	Edge of Water		18.2	+3.0
+100			21.6	-0.4
+25			22.0	-0.8
+50			20.6	+0.6
+75			19.8	+1.4
+100			19.2	+2.0
+25			19.6	+1.6
+50			19.1	+2.1
+75			19.0	+2.2
+100			19.0	+2.2
+25			19.0	+2.2
+50			19.0	+2.2
+75			23.4	-2.2
+100			26.0	-4.8
+13	North Abutment		28.5	-7.3
+28	North End of Bridge on Floor		32.8	+18.91



Proposed Drain Across Block 20 Fairmount Add.
 Polk & 47th St to Euclid Ave

8-26-27
 Sisson
 8154
 S.W.H.

BM	108	341.76	340.68
0+0	= S.E. Prop. Cor. 1712 St + Polk Ave	180	336.96 on Stub
750		61	335.7
1+0		79	333.9
150		96	332.6
2+0		110	330.8
450		143	327.6
3+0		146	327.2
4+5	= N. End of Existing 600 Pipe on Floor Line	144	327.32



62.07
 185
 53.92
 1310
 5082
 858
 59.40
 59.38
 1308
 1246
 134
 72.26
 12.38
 84.35
 84.03
 1375
 97.12
 97.06
 1296
 110.02
 34
 109.68
 1304
 122.72
 0.24
 122.48
 1464
 134.52
 1222
 14724
 190
 145.34
 963
 154.97

7.7

DIRECTIONS FOR USE OF TABLES

TABLE No. 1.

Distance of slope stake from side or shoulder stake for any width roadway, slope 1% to 1. If ground is nearly level, the cut or fill at side stake is located by the double entry method in left column and top row. The number in body of table in same row and column gives distance

from side stake to slope stake. If ground is not

IMPROVED TABLES

amount if cut, elevate if fill. Add this amount to cut or fill and find in table. Set up

rod at this point and line of sight should cut

larger.

necessary.

AND INFORMATION

TABLE No. 2.

To find Tangent and External for curve of any other degree, divide by degree of curve and add correction found in column of corrections.

Degree of curve with a given L may be found by dividing tangent (or external), opposite L by given tangent (or external).

The distance from a point on the tangent to the curve is very nearly the square of the tangent length divided by twice the radius.