

CROSS-SECTIONS - MONTE COSTA



BIRD ROCK AVE  
East from La Jolla Blvd.

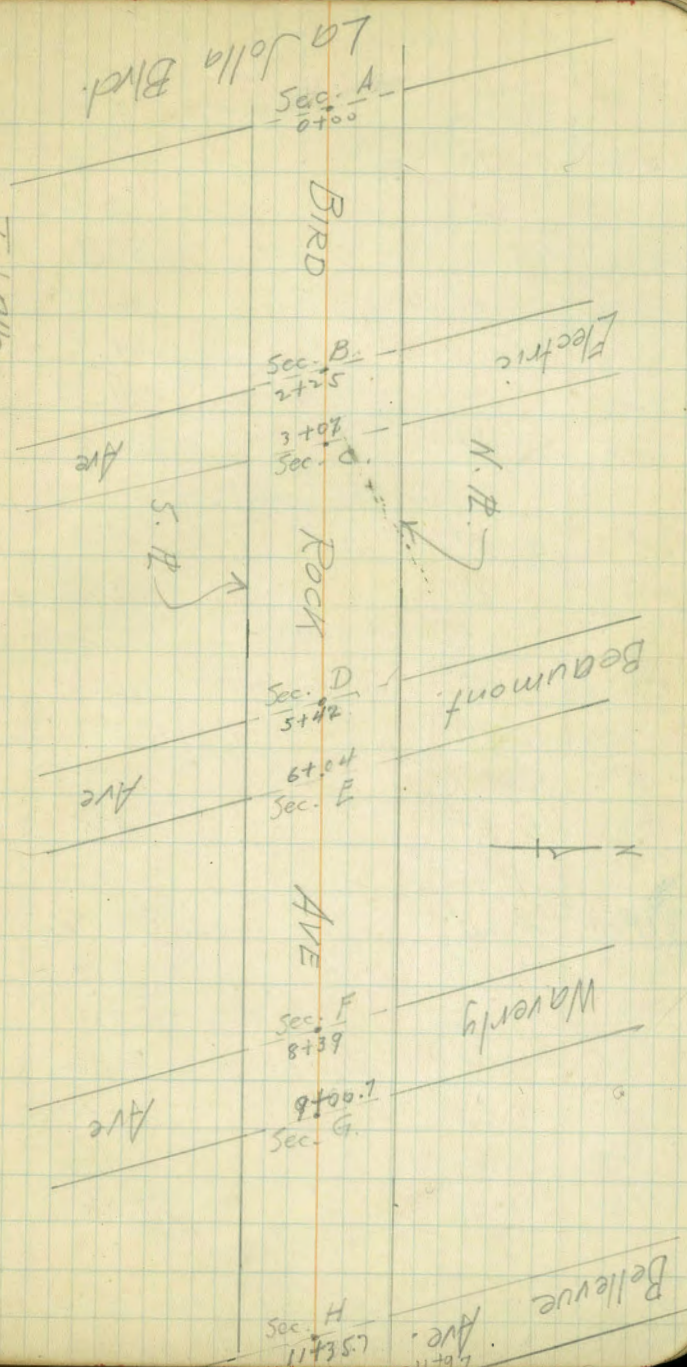
60' Street, 30' Retway, 15' Parking.

B.M. Spike in King Sign Post - Electric Ave.  
0.94 87.77 86.83

0+00	N.P.	87.8	
Sec. A	C	7.3	85 ✓
	1/4	8.3	85 ✓
	1/4	8.5	83 ✓
	1/4	8.4	84 ✓
	1/4	8.5	84 ✓
	C	8.9	84 ✓
	5 P.	8.2	84 ✓

0+50	N.P.	7.4	84 ✓
	C	7.7	80 ✓
	1/4	7.5	80 ✓
	1/4	7.5	80 ✓
	1/4	7.7	80 ✓
	C	8.2	84 ✓
	5 P.	8.0	84 ✓

T.J. Allen  
June 21, 1926





Bird Rock Ave.

82.77

87.8

82.7

1+0 N H.  
C  
1/4  
E  
1/4  
C  
S. H.

6.3 815 ✓  
6.6 812 ✓  
6.6 812 ✓  
6.5 813 ✓  
6.6 812 ✓  
6.9 809 ✓  
6.7 811 ✓

2+25  
Sec. B

N H.  
C  
1/4  
E  
1/4  
C  
S. H.

3.1 846 ✓  
3.1 848 ✓  
2.6 856 ✓  
2.6 851 ✓  
2.7 850 ✓  
3.0 843 ✓  
2.7 850 ✓

1+50 N H.  
C  
1/4  
E  
1/4  
C  
S. H.

5.0 821 ✓  
5.3 825 ✓  
5.3 825 ✓  
5.1 827 ✓  
5.4 824 ✓  
5.7 821 ✓  
5.5 823 ✓

3+07  
Sec. C

N H.  
C  
1/4  
E  
1/4  
C  
S. H.

B.M. here 98.26 HI

9.8 885 ✓  
9.5 888 ✓  
9.8 885 ✓  
9.3 890 ✓  
9.2 891 ✓  
9.1 894 ✓  
9.4 889 ✓

2+0 N H.  
C  
1/4  
E  
1/4  
C  
S. H.

3.8 840 ✓  
3.8 840 ✓  
3.8 840 ✓  
3.4 844 ✓  
3.6 842 ✓  
4.2 836 ✓  
3.9 839 ✓

3+50

N H.  
C  
1/4  
E  
1/4  
C  
S. H.

8.1 902 ✓  
7.9 902 ✓  
7.9 902 ✓  
7.6 907 ✓  
7.8 905 ✓  
7.8 905 ✓  
7.6 907 ✓

B.M.

11.43 98.26 0.94 86.83



9.8.26 983

4+0	N.P.	5.8	925 ✓
	C	6.0	923 ✓
	1/4	6.2	921 ✓
	E	5.8	925 ✓
	1/4	6.1	922 ✓
	C	5.8	925 ✓
	S.P.	5.6	927 ✓

4+50	N.P.	3.7	926 ✓
	C	3.6	927 ✓
	1/4	3.6	927 ✓
	E	3.5	928 ✓
	1/4	3.6	927 ✓
	C	3.7	926 ✓
	S.P.	3.1	925 ✓

5+00	N.P.	0.9	974 ✓
	C	0.9	974 ✓
	1/4	1.2	971 ✓
	E	0.8	975 ✓
	1/4	0.8	975 ✓
	C	0.9	974 ✓
	S.P.	0.5	978 ✓

TP 13.04 110.37 0.93 97.33

110.37

110 ↓

5+42	N.P.	10.8	996 ✓
	Sec. D.	10.8	996 ✓
		11.0	992 ✓
		10.8	996 ✓
		10.7	992 ✓
		10.9	995 ✓
	S.P. hub	10.15	100.22

6+04	N.P.	8.1	1045 ✓
	Sec. E.	8.3	1041 ✓
		8.9	1015 ✓
		8.3	1041 ✓
		8.3	1041 ✓
		8.2	1044 ✓
	S.P.	7.2	1032 ✓

6+50	N.P.	5.2	1052 ✓
	C	5.8	1046 ✓
	1/4	6.0	1044 ✓
	E	5.4	1050 ✓
	1/4	5.7	1047 ✓
	C	6.1	1043 ✓
	S.P.	5.0	1054 ✓



Bird Rock Ave.

T. J. Allen  
June 21, 1926.

110.37

110.4

7+00	N P.	2.0	1084 ✓
	C	2.9	1075 ✓
	1/4	2.5	1079 ✓
	E	2.6	1078 ✓
	1/4	2.5	1079 ✓
	C	2.9	1075 ✓
	S P.	1.3	1091 ✓

TP 12.62 121.93 1.06 109.31

7+50	N P.	<del>10.2</del>	1112 ✓
	C	11.0	1109 ✓
	1/4	11.0	1109 ✓
	E	10.6	1113 ✓
	1/4	10.7	1112 ✓
	C	11.0	1109 ✓
	S P.	10.0	1119 ✓

8+00	N P.	7.2	1142 ✓
	C	7.9	1140 ✓
	1/4	7.7	1142 ✓
	E	7.7	1142 ✓
	1/4	7.4	1145 ✓
	C	7.9	1140 ✓
	S P.	6.8	1151 ✓

121.93

121.9

8+39	N P.	5.4	1165 ✓
Sec. F.	C	5.7	1162 ✓
	1/4	5.8	1161 ✓
	E	5.4	1165 ✓
	1/4	5.6	1163 ✓
	C	4.8	1171 ✓
	S P. hub.	4.03	117.90

9+00.7	N P.	2.9	1190 ✓
Sec. G.	C	3.9	1180 ✓
	1/4	3.5	1184 ✓
	E	2.7	1192 ✓
	1/4	2.7	1192 ✓
	C	3.2	1182 ✓
	S P.	2.06	1198 ✓

TP 12.58 134.44 13.44 121.86

9+50	N <sup>5' out</sup> P.	<del>10.6</del>	1227 ✓
	C	11.7	1215 ✓
	1/4	12.9	1219 ✓
	E	12.5	1222 ✓
	1/4	12.2	1222 ✓
	C	12.5	1219 ✓
	S P.	12.9	1215 ✓
	5' out	9.6	1248 ✓
		9.6	1248 ✓



Bird Rock Ave.

	134.44	134.4		134.44
10 to	5 out N P.	7.2	1470 ✓	
	C	8.2	1462 ✓	11435.7 N P. hub
	1/4	9.3	1451 ✓	See. H. C
	E	9.1	1453 ✓	1/4
	1/4	8.8	1456 ✓	E
	C	9.0	1452 ✓	1/4
	5 P.	9.5	1449 ✓	C
	5 out	7.2	1471 ✓	5 P.
		6.9	1475 ✓	
10 to 50	5 out N P.	4.9	1495 ✓	
	C	4.6	1498 ✓	N P.
	1/4	6.3	1481 ✓	C
	E	6.0	1482 ✓	1/4
	1/4	5.5	1489 ✓	E
	C	5.8	1486 ✓	1/4
	5 P.	6.2	1487 ✓	C
	5 out	3.4	1510 ✓	P.
		3.0	1514 ✓	
11 to 00	5 out N P.	2.2	1522 ✓	
	C	2.2	1522 ✓	P.
	1/4	2.1	1523 ✓	C
	E	2.7	1517 ✓	1/4
	1/4	2.1	1525 ✓	E
	C	2.3	1521 ✓	1/4
	5 P.	2.8	1516 ✓	C
	5 out	0.0	1544 ✓	P.
		0.0	1544 ✓	

134.4	
0.58	133.86 ✓
0.9	1335 ✓
0.5	1339 ✓
0.1	1342 ✓
0.1	1343 ✓
0.4	1340 ✓
+1.5	1359 ✓



Forward Ave.

TP		11.95	86.94	74.99
0+00	N PL			10.4
Sec. A	C			10.6
	1/4			10.7
	E			10.6
	1/4			11.0
	C			10.7
	S PL			10.8
0+50	N PL			8.8
	C			8.1
	1/4			8.2
	E			8.6
	1/4			8.5
	C			8.4
	S PL			8.9
1+0	N PL			5.4
	C			5.5
	1/4			5.7
	E			6.0
	1/4			6.3
	C			5.9
	S PL			6.0

Belleve

Waverly

Beaumont

Electric

Sec. B

Sec. A  
0+50

La Jolla Blvd.

Ave.

Ave

Ave.

FORWARD

3+31.0  
Sec. C

2+48.5

2+31.6

5+39.6

6+01.3

8+76.7



86.94

1+50	N P.	2.8	841
	C	3.1	83.8
	1/4	3.3	83.6
	E	3.8	83.1
	1/4	3.7	83.2
	C	3.3	83.6
	S P.	3.3	83.6

2+0	N P.	0.2	86.7
	C	0.5	86.4
	1/4	1.0	85.9
	E	1.1	85.8
	1/4	1.1	85.8
	C	0.9	86.0
	S P.	1.0	85.9
TP		0.62	86.32

11.54 97.86

2+485	N P.	10.0	87.9
Sec. B	C	9.7	88.2
	1/4	9.8	88.1
	E	9.7	88.2
	1/4	9.6	88.3
	C	9.9	88.0
	S P.	10.2	87.7

97.85

3+31.0	N P.	4.4	93.5
Sec. C	C	5.0	92.9
	1/4	5.9	92.0
	E	6.6	91.3
	1/4	6.7	91.2
	C	5.2	92.7
	S P.	5.0	92.9

3+50	N P.	3.4	94.5
	C	4.0	93.9
	1/4	4.0	93.9
	E	4.1	93.8
	1/4	4.1	93.8
	C	4.1	93.8
	S P.	4.4	93.5

4+00	N P.	0.9	97.0
	C	0.3	97.6
	1/4	1.3	96.6
	E	1.4	96.5
	1/4	1.9	96.0
	C	2.3	95.6
	S P.	2.3	95.6



Forward Ave

1 97.86

TP		10.13	107.53	0.46	97.40
4+50	N R			8.1	99.4
	C			8.5	99.0
	1/4			9.0	98.5
	E			8.9	98.6
	1/4			9.6	97.9
	C			10.1	97.4
	S R			10.2	97.3

5+00	N R			6.1	101.4
	C			6.6	100.9
	1/4			6.8	100.7
	E			6.8	100.7
	1/4			6.9	100.6
	C			7.4	100.1
	S R			7.4	100.1

5+32	N R			4.2	103.3
Sec. D	C			4.8	102.7
	1/4			5.0	102.5
	E			5.0	102.5
	1/4			5.8	101.7
	C			6.1	101.4
	S R			5.1	102.4

S. Beaumont

5+94	N R				2.0	105.5
Sec. E	C				2.3	105.2
	1/4				2.0	105.5
	E				1.7	105.8
	1/4				2.2	105.3
	C				2.8	104.7
	S R				2.7	104.6

TP		10.54	117.84		0.23	107.30
6+50	N R				8.5	109.3
	C				8.9	108.9
	1/4				9.0	108.8
	E				9.0	108.8
	1/4				9.2	108.6
	C				9.5	108.3
	S R				9.6	108.2

7+00	N R				5.3	112.5
	C				6.3	111.5
	1/4				6.1	111.7
	E				6.2	111.6
	1/4				6.4	111.4
	C				7.3	110.5
	S R				8.7	109.1



117.84

7A					
4+	7+50	N	FL	2.3	115.5
			⊙	2.4	115.4
			1/4	3.7	114.1
			⊕	3.7	114.1
			1/4	4.1	113.7
			⊙	4.7	113.1
		S	FL	5.2	112.6

5+	8+00	N	FL	0.2	117.6
			⊙	1.6	116.2
			1/4	0.9	116.9
			⊕	0.9	116.9
			1/4	1.1	116.7
			⊙	1.7	116.1
		S	FL	2.2	115.6
	TP			11.52	<del>129.04</del>
				0.32	117.52

5+3	8+30	N	FL	9.1	119.9
Sec	Sec. F		⊙	10.8	118.2
			1/4	10.6	118.4
			⊕	10.5	118.5
			1/4	10.7	118.3
			⊙	11.0	119.0
		S	FL	11.5	117.5

5	Beamont	BN	Flke.	6.84	<del>117.20</del>
---	---------	----	-------	------	-------------------

129.04

8+91.2	N	FL	6.9	122.1
Sec. G		⊙	7.5	121.8
		1/4	7.2	121.8
		⊕	7.1	121.9
		1/6	7.7	121.3
		⊙	8.7	120.3
	S	FL	8.0	121.0

9+50	N	FL	4.6	124.4
		⊙	5.2	123.8
		1/4	5.1	123.9
		⊕	5.1	123.9
		1/4	5.3	123.7
		⊙	6.0	123.0
	S	FL	6.6	122.4

10+00	N	FL	1.1	127.9
		⊙	1.5	127.5
		1/4	2.7	126.3
		⊕	2.5	126.5
		1/4	3.1	125.9
		⊙	4.4	124.6
	S	FL	4.2	124.8



129.04

10+50	N P.	+1.4	130.4
	⊙	+0.2	129.2
	1/4	0.0	129.0
	⊕	0.2	128.8
	1/4	0.6	128.4
	⊙	1.6	127.6
	S P.	1.8	127.2
TP		0.35	128.69

9.97 138.66

11+00	N P.	6.6	132.1
	⊙	7.7	132.1
	1/4	7.9	130.8
	⊕	8.0	130.7
	1/4	8.7	130.0
	⊙	9.5	129.2
	S P.	9.9	128.8

11+26.6	N P.	5.3	133.4
Sec. H.	⊙	7.2	131.5
	1/4	7.3	131.4
	⊕	7.4	131.3
	1/4	7.3	131.4
	⊙	8.8	129.9
	S P.	8.7	130.0

Belleuve

13866

11+88.5	N P.	4.3	134.4
Sec. J.	⊙	4.8	133.9
	1/4	5.2	133.5
	⊕	5.2	133.5
	1/4	5.5	133.2
	⊙	6.3	132.4
	S P.	6.1	132.6

12+50	N P.	2.0	136.7
	⊙	3.5	135.2
	1/4	3.4	135.3
	⊕	3.3	135.4
	1/4	3.5	135.2
	⊙	4.1	134.6
	S P.	4.6	134.1

13+00	N P.	1.1	137.6
	⊙	2.1	136.6
	1/4	2.2	136.5
	⊕	2.2	136.5
	1/4	2.4	136.3
	⊙	3.4	135.3
	S P.	3.9	134.8



Forward

		8.99	138.66	2.76	135.90
TP			144.89		
13+50	N PL			6.0	138.9
	C			6.5	138.4
	1/4			7.2	137.7
	E			7.4	137.5
	1/4			7.4	137.5
	C			8.2	136.7
	S PL			9.0	135.9

14+00	N PL			5.2	139.7
	C			5.8	139.1
	1/4			5.8	139.1
	E			6.0	138.9
	1/4			6.3	138.6
	C			6.6	138.3
	S PL			6.2	138.7

14+50	N PL			3.0	141.9
	C			3.8	141.1
	1/4			4.0	140.9
	E			4.4	140.5
	1/4			4.4	140.5
	C			4.8	140.1
	S PL			5.0	139.9

					144.89
15+00	N PL			1.2	143.7
	C			1.3	143.6
	1/4			1.5	143.4
	E			1.7	143.2
	1/4			1.9	143.0
	C			1.9	143.0
	S PL			2.6	142.3

TP		17.81	157.26	0.44	144.45
15+50	N PL			11.1	146.2
	C			11.1	146.2
	1/4			11.0	146.3
	E			11.2	146.1
	1/4			11.6	145.7
	C			11.8	145.5
	S PL			12.0	145.3

B.M. First Hyd.		11.94	161.30	7.90	149.36
16+00	N PL			11.8	149.5
	C			12.5	148.8
	1/4			12.1	149.2
	E			12.0	149.3
	1/4			12.3	149.0
	C			12.8	148.5
	S PL			13.0	148.3



## Forward Ave.

161.30

16+50	N	P	8.3	153.0
		C	9.0	152.3
		1/4	9.4	151.9
		E	9.1	152.2
		1/4	9.3	152.0
		C	9.5	151.8
	S	P	9.9	151.4

17+00	N	P	5.6	155.7
		C	6.3	155.0
		1/4	6.5	154.8
		E	6.5	154.5
		1/4	6.6	154.7
		C	6.6	154.2
	S	P	7.6	153.7

17+50	N	P	3.1	158.2
		C	3.4	157.9
		1/4	3.5	157.8
		E	3.6	157.7
		1/4	4.2	157.1
		C	5.1	156.2
	S	P	5.3	156.0

161.30

TP	11.32	171.88	0.74	160.56
18+00	N	P	9.8	162.1
		C	11.6	159.3
		1/4	11.4	159.5
		E	11.9	160.0
		1/4	12.8	159.1
		C	12.7	159.2
	S	P	13.2	158.7

18+50	N	P	6.6	165.3
		C	9.2	162.7
		1/4	9.7	162.2
		E	9.2	162.7
		1/4	10.0	161.9
		C	10.1	161.8
	S	P	13.6	158.3

19+00	N	P	5.0	166.9
		C	5.9	166.0
		1/4	6.0	165.9
		E	6.0	165.9
		1/4	5.6	166.3
		C	5.7	166.2
	S	P	6.6	165.3



Forward Ave.

171.88

260.16

76+65.6

N H.

+1.6 173.5

0

0.0 171.9

1/4

+0.2 172.1

1/2

0.1 171.8

3/4

0.5 171.4

0

0.8 171.1

S H.

0.9 171.0

113.58  
16.17  
110.68  
130.68  
41.92  
105  
581.35

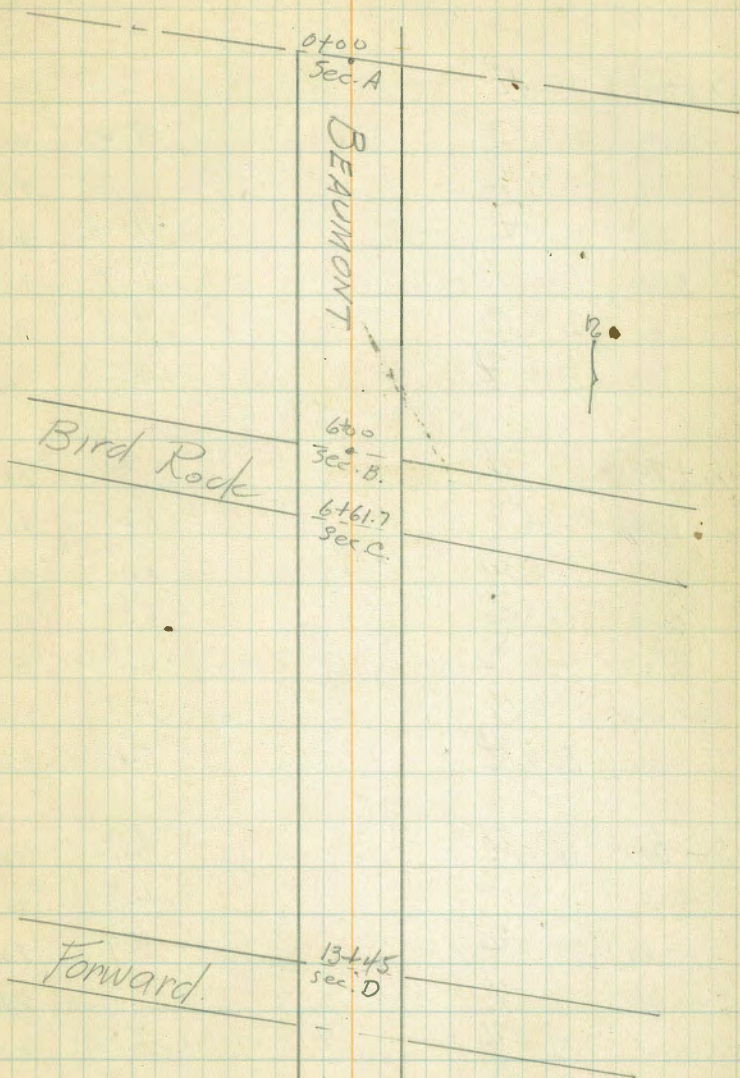
213.58 ✓  
16.17  
110.68  
24.68  
130.  
41.92  
105  
581.35  
10



Beaumont Ave.

T.J. Allen  
June 22, 1926.

TP.		2.64	102.86	100.22
0+00	W. P.			11.6
Sec. A.	⊙			91.3
	1/4			10.9
	1/4			92.0
	1/4			10.2
	1/4			92.7
	⊙			10.2
	⊙			92.7
	⊙			9.9
	⊙			93.0
	⊙			9.8
	⊙			93.1
	E P.			9.3
				93.6
0+40	W. P.			10.6
	⊙			92.3
	1/4			10.8
	1/4			92.1
	1/4			10.1
	1/4			92.8
	⊙			9.6
	⊙			93.3
	⊙			9.7
	⊙			93.2
	⊙			9.5
	⊙			93.4
	E P.			9.0
				93.9
1+20	W. P.			9.6
	⊙			93.3
	1/4			9.6
	1/4			93.3
	1/4			8.8
	1/4			94.1
	⊙			8.5
	⊙			94.4
	⊙			8.6
	⊙			94.3
	⊙			8.7
	⊙			94.2
	E P.			7.9
				95.0





102.86

2+00	W	FL	8.2	94.7
		C	8.2	94.7
		1/4	7.6	95.3
		1/4	7.4	95.5
		1/4	7.7	95.2
		C	7.6	95.3
	E	FL	6.5	96.4

2+80	W	FL	7.7	95.2
		C	7.2	95.7
		1/4	6.8	96.1
		1/4	6.4	96.5
		1/4	6.5	96.4
		C	5.9	97.0
	E	FL	5.4	97.5

3+60	W	FL	6.9	96.0
		C	6.3	96.6
		1/4	5.7	97.2
		1/4	5.3	97.6
		1/4	5.2	97.7
		C	4.8	98.1
	E	FL	4.4	98.5

102.86

4+40	W	FL	5.7	97.2
		C	5.0	97.9
		1/4	4.4	98.5
		1/4	4.0	98.9
		1/4	4.1	98.8
		C	3.6	99.3
	E	FL	2.9	100.0

5+20	W	FL	4.6	98.3
		C	4.3	98.6
		1/4	3.7	99.2
		1/4	3.3	99.6
		1/4	3.4	99.5
		C	2.9	100.0
	E	FL	1.9	101.0

6+00	W	FL	3.3	99.6
		C	2.8	100.1
		1/4	2.4	100.5
		1/4	2.1	100.8
		1/4	2.0	100.9
		C	1.5	101.4
	E	FL	0.5	102.5



Beaumont Ave

T. J. Allen  
June 22, 1926

1118

TP		11.58	111.80	100.22
6+61.7	W. P.		11.6	100.2
Sec. C.	C		11.1	100.7
	1/4		10.6	101.2
	E		10.4	101.4
	1/4		10.0	101.8
	C		9.9	101.9
	E. P.		8.9	102.9

7+00	W. P.		10.6	101.2
	C		10.0	101.8
	1/4		9.5	102.3
	E		9.3	102.5
	1/4		9.4	102.4
	C		9.5	102.3
	E. P.		7.5	104.3

7+50	W. P.		9.5	102.3
	C		8.9	102.9
	1/4		8.5	103.3
	E		8.2	103.6
	1/4		8.4	103.4
	C		8.2	103.6
	E. P.		6.4	105.8

8+00	W. P.		8.2	103.6
	C		7.8	104.0
	1/4		7.2	104.6
	E		6.8	105.0
	1/4		7.0	104.8
	C		7.0	104.8
	E. P.		5.0	106.8

8+50	W. P.		7.3	104.5
	C		6.6	105.2
	1/4		6.2	105.6
	E		5.7	106.1
	1/4		5.8	106.0
	C		5.8	106.0
	E. P.		3.8	108.0

9+00	W. P.		6.0	105.8
	C		5.9	105.9
	1/4		5.1	106.7
	E		4.9	106.9
	1/4		4.9	106.9
	C		4.8	107.0
	E. P.		3.3	108.5



111.80

9+50	W FL	6.6	105.2
	C	6.1	105.7
	1/4	5.4	106.4
	E	4.7	107.1
	1/4	4.7	107.1
	C	4.7	107.1
	E FL	1.9	109.9

10+00	W FL	6.6	105.2
	C	6.2	105.6
	1/4	5.6	106.2
	E	5.0	106.8
	1/4	4.9	106.9
	C	4.8	107.0
	E FL	2.6	109.2

10+50	W FL	6.4	105.4
	C	6.4	105.4
	1/4	5.4	106.4
	E	5.1	106.7
	1/4	5.0	106.8
	C	5.3	106.5
	E FL	3.0	108.8

111.80

11+00	W FL	6.7	105.1
	C	6.8	105.0
	1/4	6.0	105.8
	E	5.6	106.2
	1/4	5.6	106.2
	C	5.6	106.2
	E FL	2.7	109.1

11+50	W FL	7.1	104.7
	C	7.0	104.8
	1/4	6.5	105.3
	E	6.1	105.7
	1/4	5.9	105.9
	C	5.9	105.9
	E FL	4.1	107.1

12+00	W FL	7.1	104.7
	C	7.2	104.6
	1/4	6.6	105.2
	E	6.4	105.4
	1/4	6.3	105.5
	C	6.3	105.5
	E FL	4.6	107.2



# Beaumont Ave.

111-80

12+50	W. P.	7.4	104.4
Sec. P.	C	7.2	104.6
	1/4	6.9	104.9
	E	6.8	105.0
	1/4	6.7	105.1
	C	6.8	105.0
	E. P.	3.8	108.0

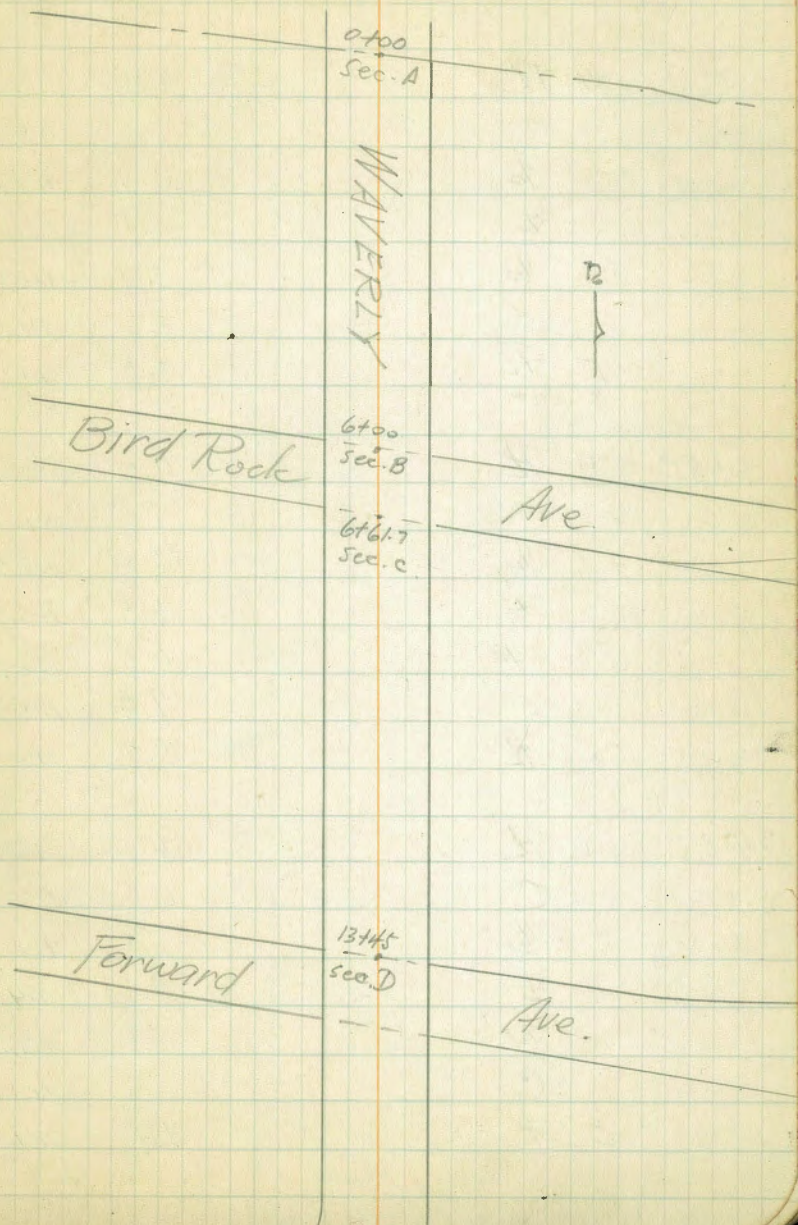
13+00	W. P.	9.0	102.8
	C	8.3	103.5
	1/4	7.6	104.2
	E	7.1	104.7
	1/4	7.0	104.8
	C	7.1	104.7
	E. P.	5.0	106.8

13+45	W. P.	8.3	103.5
Sec. D	C	8.2	103.6
	1/4	8.0	103.8
	E	7.7	104.1
	1/4	7.3	104.5
	C	6.8	105.0
	E. P.	5.8	106.0



# Waverly Ave.

TP		1.75	119.65		117.90
0+00	W TR.			10.6	109.1
Sec. A	C			11.0	109.7
	1/4			10.4	109.3
	1/2			10.0	109.7
	3/4			9.7	110.0
	C			9.2	100.5
	E TR.			8.3	111.4
	5' out (cm.)			5.5	114.2
				(2.4)	117.25
0+40	W TR.			10.1	109.6
	C			10.4	109.3
	1/4			9.9	109.8
	1/2			9.4	110.3
	3/4			9.3	110.4
	C			9.5	110.2
	E TR.			7.0	112.7
	5' out			4.3	115.4
1+20	W TR.			9.0	110.7
	C			10.3	109.4
	1/4			8.6	111.1
	1/2			8.3	111.4
	3/4			8.6	111.1
	C			8.9	110.8
	E TR.			5.9	113.8
	5' out			2.8	116.9





11965

2400	W PL	8.0	111.7
	C	8.7	117.0
	1/4	8.1	111.6
	⊕	7.6	112.1
	1/4	7.9	111.8
	C	8.0	111.7
	E PL	5.3	114.4
	5' out	2.3	117.4

2480	W PL	7.0	112.7
	C	7.5	112.2
	1/4	6.9	112.8
	⊕	6.5	113.2
	1/4	6.8	112.9
	C	7.0	112.7
	E PL	5.7	114.0

3460	W PL	6.4	113.3
	C	6.5	113.1
	1/4	6.1	113.6
	⊕	5.6	114.1
	1/4	5.9	113.8
	C	5.3	114.4
	E PL	4.9	114.8

11965

4440	W PL	5.7	114.0
	C	5.1	114.6
	1/4	4.7	115.0
	⊕	4.2	115.5
	1/4	4.3	115.4
	C	3.9	115.5
	E PL	3.5	116.2

5720	W PL	4.7	115.0
	C	3.9	115.8
	1/4	3.6	116.1
	⊕	3.1	116.6
	1/4	3.2	116.5
	C	3.2	116.5
	E PL	1.8	117.9

6400	W PL	3.2	116.5
	Sec B	2.7	117.0
	C	2.3	117.4
	1/4	2.1	117.6
	⊕	2.1	117.6
	1/4	2.1	117.6
	C	2.2	117.5
	E PL	0.6	119.5



# Waverly Ave

12823

TP		11.03	128.93	117.90
6461.7	W P.			11.0 117.9
See C	⊙			11.3 117.6
	1/4			11.2 117.7
	⊕			10.7 118.2
	1/4			10.5 118.4
	⊙			10.4 118.5
	E P.			8.7 120.2
	5' out.			5.9 123.0
7400	W P.			10.0 118.9
	⊙			10.7 118.2
	1/4			10.0 118.9
	⊕			9.8 119.1
	1/4			9.8 119.1
	⊙			9.8 119.1
	E P.			7.8 121.1
	5' out.			4.6 124.3
7450	W P.			8.9 120.0
	⊙			9.9 119.0
	1/4			8.9 120.0
	⊕			8.8 120.1
	1/4			8.5 120.4
	⊙			8.2 120.7
	E P.			6.6 122.3
	5' out			3.1 125.8

8400	W P.			7.8 121.1
	⊙			8.6 120.3
	1/4			7.9 121.0
	⊕			7.5 121.4
	1/4			7.6 121.3
	⊙			7.4 121.5
	E P.			5.5 123.4
	5' out.			2.0 126.9
8450	W P.			6.7 122.2
	⊙			7.7 121.2
	1/4			7.0 121.9
	⊕			6.8 122.1
	1/4			6.8 122.1
	⊙			6.9 122.0
	E P.			5.4 123.5
	5' out			0.1 128.8
9400	W P.			6.3 122.6
	⊙			6.6 122.3
	1/4			6.1 122.8
	⊕			5.7 123.2
	1/4			5.6 123.3
	⊙			5.9 123.0
	E P.			3.4 125.5
	5' out.			1.0 127.9



128.93

9+50	W. Fl.	5.6	123.3
	⊙	5.4	123.5
	1/4	5.2	123.7
	⊕	5.1	123.8
	1/4	4.8	124.1
	⊙	4.9	124.0
	E. Fl.	2.6	126.3
	5' out	0.6	128.3

10+00	W. Fl.	5.2	123.7
	⊙	4.9	124.0
	1/4	4.4	124.5
	⊕	4.0	124.9
	1/4	3.8	125.1
	⊙	4.0	124.9
	E. Fl.	1.9	129.0
	5' out	+0.5	129.4

10+50	W. Fl.	5.2	123.7
	⊙	5.3	123.6
	1/4	4.6	124.3
	⊕	4.4	124.8
	1/4	4.2	124.7
	⊙	4.3	124.1
	E. Fl.	3.1	125.8
	5' out	0.8	128.1

12893

11+00	W. Fl.	5.4	123.5
	⊙	5.8	123.1
	1/4	5.2	123.7
	⊕	5.0	123.9
	1/4	5.0	123.9
	⊙	5.3	123.6
	E. Fl.	3.2	128.7
	5' out	1.3	127.6

11+50	W. Fl.	5.8	123.1
	⊙	6.6	122.3
	1/4	5.9	123.0
	⊕	5.7	123.2
	1/4	5.6	123.3
	⊙	6.0	122.9
	E. Fl.	4.0	124.9
	5' out	0.8	128.1

12+00	W. Fl.	6.3	122.6
	⊙	7.6	121.3
	1/4	6.8	122.1
	⊕	6.5	122.4
	1/4	6.2	122.7
	⊙	6.5	122.4
	E. Fl.	4.0	124.9
	5' out	1.9	127.0



# Waverly Ave.

128.93

12750	W P.	7.6	121.3
	C	8.1	120.8
	1/4	7.6	121.3
	E	7.2	121.7
	1/4	6.8	122.1
	C	7.0	121.9
	E P.	6.4	122.5
	5' out	3.1	125.8
13700	W P.	8.7	120.2
	C	8.7	120.2
	1/4	8.3	120.6
	E	8.0	120.9
	1/4	7.8	121.1
	C	7.8	121.1
	E P.	5.5	123.4
	5' out	4.3	124.6
13745	W P.	9.1	119.8
Sec. D.	C	9.5	119.4
	1/4	9.1	119.8
	E	8.8	120.1
	1/4	8.8	120.1
	C	8.6	120.3
	E P.	6.6	122.3
	5' out	5.5	123.4
TP		6.74	122.20



# BELLEVEUE

T. J. Allen  
June 23, 1926

B.M.		12.98	146.84		133.86			152.22	
		5.55	152.22	0.17	146.67				
0+00	W R			8.3	143.9	2+00	W R	6.7	145.5
Sec. A	C			8.2	144.0		C	7.2	145.0
	1/4			7.6	144.6		1/4	6.6	145.6
	E			7.3	144.9		E	6.4	145.8
	1/4			6.6	145.6		1/4	6.6	145.6
	C			3.2	149.0		C	0.0	152.2
	E R			0.0	152.2		E R	+1.5	153.7
0+40	W R			6.2	146.0	2+80	W R	11.5	140.7
	C			6.6	145.6		C	11.7	140.5
	1/4			6.0	146.2		1/4	11.2	141.0
	E			5.5	146.7		E	11.0	141.2
	1/4			5.2	147.0		1/4	11.0	141.2
	C			1.0	151.2		C	6.1	146.1
	E R			+2.5	154.7		E R	3.9	148.3
	5' out			+5.0	157.2		5' out	2.8	149.4
1+20	W R			4.8	147.4	TP		9.24	143.43
	C			5.6	146.6	3+60	W R	8.0	135.4
	1/4			5.0	147.2		C	8.1	135.3
	E			4.7	147.5		1/4	7.6	135.8
	1/4			4.8	147.4		E	7.3	136.1
	C			+3.0	155.2		1/4	7.3	136.1
	E R			+5.0	157.2		C R	4.8	138.6
							E R	3.7	139.7
							5' out	1.4	142.0



143.43

4+40	W P.	11.8	131.6
	C	12.1	131.3
	1/4	11.3	132.1
	E	11.3	132.1
	1/4	11.4	132.0
	C	9.6	133.8
	P	8.3	135.1
	5' out	6.2	137.2

5720	W P.	11.6	131.8
	C	11.9	131.5
	1/4	11.5	131.9
	E	11.2	132.2
	1/4	10.6	132.8
	C	9.8	133.6
	E P.	8.7	132.7
	5' out	7.4	136.0

6400	W P.	9.58	133.85
Sec. B.	C	9.7	133.7
	1/4	9.0	134.4
	E	8.9	134.5
	1/4	8.8	134.6
	C	8.5	134.9
	E P.	7.8	135.6

TP.	12.75	146.6N	133.86
6+61.7	W P.	10.8	135.8
Sec. C	C	11.7	134.9
	1/4	11.1	135.5
	E	10.7	135.9
	1/4	10.4	136.2
	C	10.2	136.4
	E P.	7.2	139.4

7+12	W P.	8.7	137.9
	C	9.1	137.5
	1/4	8.7	137.9
	E	8.5	138.1
	1/4	8.6	138.0
	C	7.9	138.7
	E P.	4.8	141.8

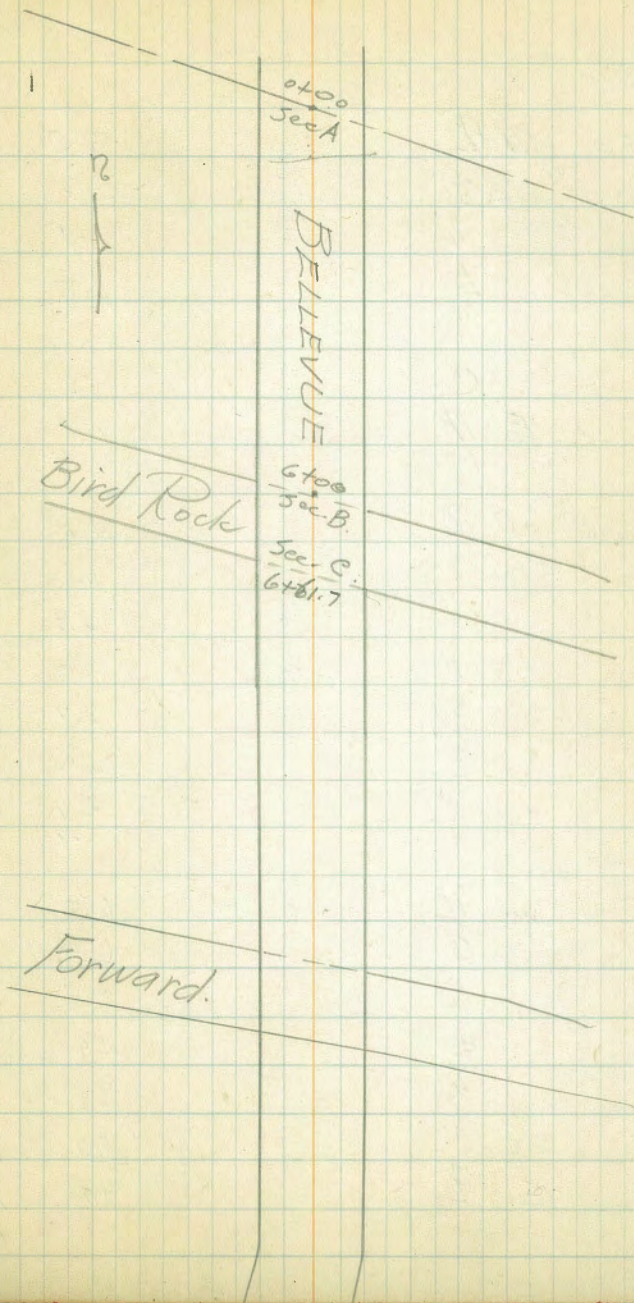
7+62	W P.	6.1	140.5
	C	6.2	140.4
	1/4	6.0	140.6
	E	5.9	140.7
	1/4	6.0	140.6
	C	6.4	140.2
	E P.	3.3	143.3
	5' out	1.8	144.8



# BELLEVUE

146.61

8+12	W P.	4.0	142.6
	C	4.2	142.4
	1/4	3.8	142.8
	1/4	3.7	142.9
	1/4	3.6	143.0
	C	3.6	143.0
	E P.	1.2	145.4
	slout	+2.3	148.9
8+62	W P.	1.8	144.8
	C	3.2	143.4
	1/4	2.3	144.3
	1/4	1.9	144.7
	1/4	2.0	144.6
	C	2.3	144.3
	E P.	0.0	146.6
	slout	+3.1	149.7
9+12	W P.	2.3	144.3
	C	2.4	144.2
	1/4	2.1	144.5
	1/4	1.9	144.7
	1/4	2.0	144.6
	C	1.8	144.8
	E P.	+0.8	142.4
	slout	+2.4	149.2





146.61

146.95

TP	2.2	146.95	1.88	144.73
9+70	WR		3.5	143.5
	C		3.7	143.3
	1/4		2.9	144.1
	E		2.5	144.5
	1/4		2.3	144.7
	C		1.9	145.1
	E R		0.5	146.5
	5' no		+0.5	147.5

10+50	WR		4.4	142.6
	C		4.4	142.6
	1/4		3.9	143.1
	E		3.7	143.3
	1/4		3.8	143.2
	C		4.0	143.0
	R		2.1	144.9
	5' no		0.7	146.3

11+30	WR		6.5	140.5
	C		6.4	140.6
	1/4		5.3	141.7
	E		4.9	142.1
	1/4		4.8	142.2
	C		5.0	142.0
	E R		4.7	142.3
	5' no		1.8	145.2

12+10	WR		8.2	138.8
	C		8.6	138.4
	1/4		7.8	139.2
	E		7.6	139.4
	1/4		7.9	139.1
	C		7.9	139.1
	E R		6.6	140.4

12+60	WR		10.2	136.8
	C		10.0	137.0
	1/4		10.2	136.8
	E		9.5	137.5
	1/4		9.5	137.5
	C		9.6	137.4
	E R		8.2	138.8

13+10	WR		13.0	134.0
	C		12.2	134.8
	1/4		11.8	135.2
	E		11.6	135.4
	1/4		11.5	135.5
	C		11.3	135.2
	E R		10.0	137.0



BELLEVUE

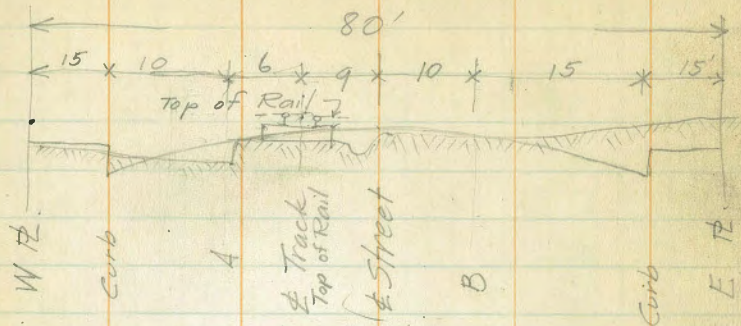
146.95

TP		5.11	138.96	13.10	133.85
13+45	W.P.			5.8	133.2
Sec D.	C			5.5	133.5
	1/4			5.9	133.1
	E			5.3	133.7
	1/4			5.3	133.7
	C			5.6	133.4
	E.P.			4.3	134.7

TP		11.36	150.36	0.010	138.95
				99	149.32



# ELECTRIC AVE

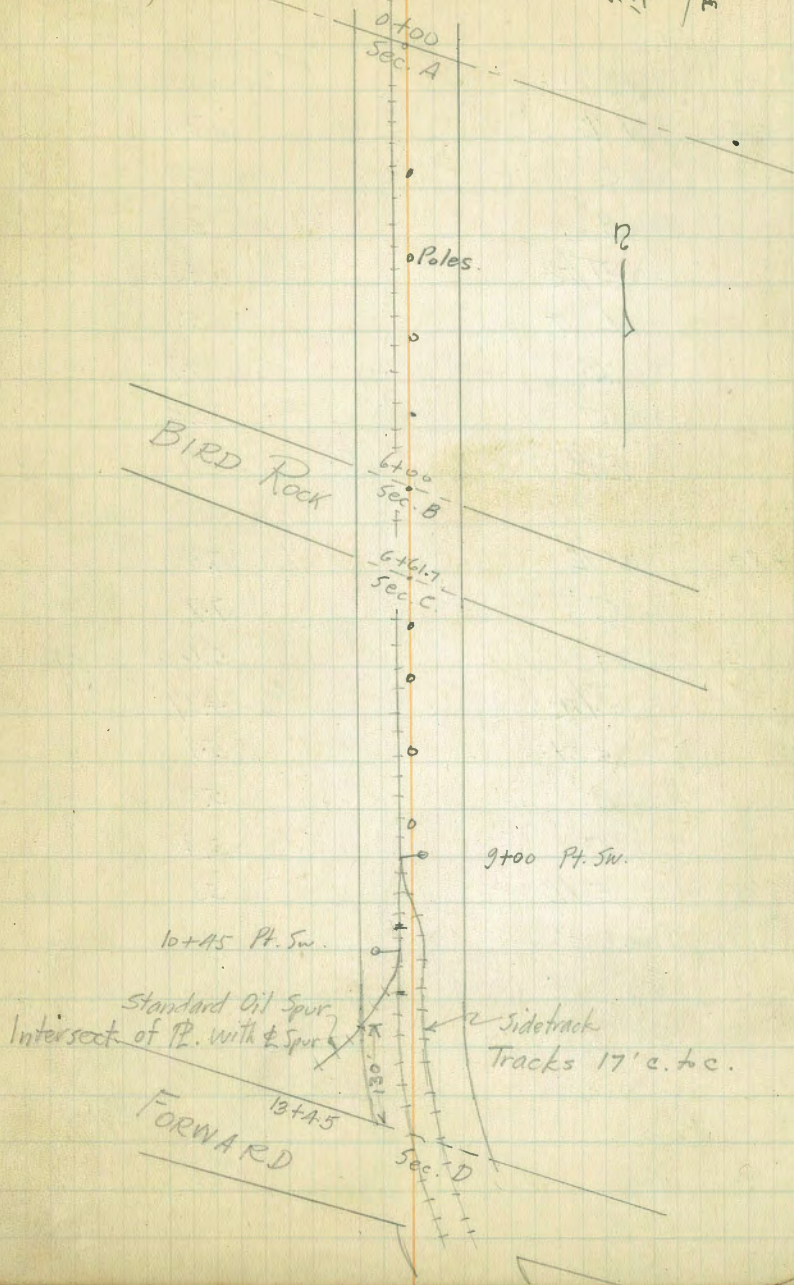


Typical Section

B.M.		4.10	90.93	90 <sup>9</sup>	86.83
0+00	W.P.			7.7	83.2 ✓
	C			8.0	83.9 ✓
	A			5.7	83.2 ✓
	T/R			4.37	86.8 ✓
	± St.			5.1	85.8 ✓
	B			4.9	86.0 ✓
	C			5.6	85.5 ✓
	E.P.			5.2	85.7 ✓

T.J. Allen  
June 24, 1926

9 20 15 / 5





		90 <sup>9</sup>	
0+40	W/R	7.6	833 ✓
	C	7.7	837 ✓
	A	5.6	853 ✓
	T/R	4.36	865 ✓
	Est	5.1	858 ✓
	B	4.7	862 ✓
	C	5.2	859 ✓
	E/R	5.1	858 ✓

0+80	W/R	7.4	835 ✓
	C	7.7	837 ✓
	A	5.6	853 ✓
	T/R	4.37	865 ✓
	Est	5.1	858 ✓
	B	5.0	859 ✓
	C	5.4	858 ✓
	E/R	5.3	856 ✓

1+20

		90 <sup>9</sup>	
	W/R	7.1	838 ✓
	C	7.3	836 ✓
	A	5.5	854 ✓
	T/R	4.33	866 ✓
	Est	5.2	857 ✓
	B	4.9	860 ✓
	C	5.9	850 ✓
	E/R	5.3	856 ✓

1+60

	W/R	7.0	839 ✓
	C	7.1	838
	A	5.4	855
	T/R	4.22	867
	Est	4.8	861
	B	4.8	861
	C	5.6	853
	E/R	5.2	857

2+00

	W/R	6.5	842
	C	6.3	846
	A	5.1	858
	T/R	4.00	869
	Est	4.8	861
	B	4.6	863
	C	5.3	856
	E/R	4.6	863



2+40	W.P.	$\frac{90}{6.3}$	826
	C	5.6	853
	A	4.8	861
	T/R	3.81	871
	E ST	4.6	863
	B	4.6	863
	C	4.6	863
	E.P.	3.7	874

2+80	W.P.	5.6	853
	C	5.2	857
	A	4.8	861
	T/R	3.65	874
	E ST	4.3	866
	B	4.0	869
	C	3.6	873
	E.P.	3.0	879

3+20	W.P.	4.6	863
	C	4.7	867
	A	4.5	864
	T/R	3.54	874
	E ST	4.0	869
	B	4.1	868
	C	2.7	862
	E.P.	2.6	883

3+60	W.P.	$\frac{90}{4.5}$	862
	C	4.4	865
	A	4.6	863
	T/R	3.47	874
	E ST	4.1	868
	B	4.1	868
	C	3.0	879
	E.P.	2.4	885

4+00	W.P.	4.4	865
	C	4.5	862
	A	4.8	861
	T/R	3.52	874
	E ST	4.4	865
	B	4.3	866
	C	3.2	877
	E.P.	2.7	882

4+40	W.P.	5.1	858
	C	4.7	862
	A	4.6	863
	T/R	3.53	874
	E ST	4.7	864
	B	4.4	865
	C	3.5	874
	E.P.	3.0	879



4480	W.P.	$\frac{90}{9}$ 5.7	852
	C	5.2	859
	A	4.5	862
	T/R	3.97	872
	E ST	3.2	877
	B	3.8	871
	C	3.5	874
	E.P.	3.0	879

5420	W.P.	5.9	850
	C	5.4	855
	A	4.5	862
	T/R	3.48	872
	E ST	4.1	868
	B	3.5	874
	C	4.0	869
	E.P.	3.5	874

5460	W.P.	6.3	846
	C	5.9	850
	A	4.5	862
	T/R	3.97	872
	E ST	3.8	871
	B	3.8	871
	C	3.7	872
	E.P.	3.1	878

6400	W.P.	
Sec. B	C	
	A	
	T/R	
	E ST	
	B	
	C	
	E.P.	

TP	4.61	91.44	387	86.83
TP	5.34	92.91		87.57

6461-2	W.P.	
Sec. C	C	
	A	
	T/R	
	E ST	
	B	
	C	
	E.P.	

$\frac{90}{9}$	6.2	857
	5.3	856
	4.4	865
	3.39	875
	3.5	874
	3.0	879
	2.9	880
	2.4	885

$\frac{91}{9}$	8.0	849
	7.3	856
	6.2	867
	5.29	876
	5.0	879
	4.9	880
	4.3	886
	4.2	887



## ELECTRIC AVE.

	92.91	$\frac{92.9}{7.7}$	
7+00 W.P.		7.7	852
C		7.3	856
A		6.3	866
T/R		5.28	876
E ST		5.2	872
B		5.0	879
C		4.6	883
E.P.		3.5	894

7+50 W.P.		8.1	848
C		7.8	851
A		6.2	867
T/R		5.10	878
E ST		5.1	878
B		4.9	880
C		4.7	884
E.P.		2.1	908

8+00 W.P.		7.9	850
C		7.4	855
A		6.3	866
T/R		4.96	879
E ST		5.2	877
B.		4.8	881
C		3.2	897
E.P.		1.7	912

	$\frac{92.9}{7.4}$	
8+50 W.P.	7.4	855
C	6.8	861
A	6.0	869
T/R	4.85	880
E ST	4.6	883
B	4.6	883
C	2.5	904
E.P.	1.9	910

9+00 W.P.		6.9	860
C		6.2	867
A		5.6	873
T/R		4.74	882
E ST		5.8	871
B		4.3	886
C		2.9	900
E.P.		2.0	905

9+50 W.P.		7.7	854
C		6.9	860
A		5.4	875
T/R		4.67	882
E ST		6.1	868
B		4.7	882
C		4.1	886
E.P.		2.1	908



92.91  $\frac{92}{9}$

10+00	W. P.	7.8	854
	C	7.0	859
	A	6.4	863
	T/R	4.70	881
	E. ST.	5.0	879
	B	5.0	879
	C	5.3	876
	E. P.	4.8	881

10+50	W. P.	7.2	857
	C	6.6	863
	A	5.0	879
	T/R	4.80	881
	E. ST.	5.2	877
	B	4.8	881
	C	4.7	882
	E. P.	2.0	909

11+00	W. P.	7.3	856
	C	6.4	863
	A	5.1	878
	T/R	4.73	882
	E. ST.	5.2	877
	B	5.2	877
	C	4.8	881
	E. P.	2.7	902

$\frac{92}{9}$

11+50	W. P.	7.5	854
	C	6.7	862
	A	5.4	875
	T/R	4.64	883
	E. ST.	5.0	879
	B	5.1	878
	C	4.6	893
	E. P.	3.9	890

12+00	W. P.	6.8	861
	C	6.0	869
	A	5.4	875
	T/R	4.62	883
	E. ST.	5.0	879
	B	4.8	881
	C	4.8	881
	E. P.	4.4	885

12+50	W. P.	6.1	868
	C	5.6	873
	A	5.3	876
	T/R	4.61	883
	E. ST.	4.6	883
	B	4.8	881
	C	5.1	878
	E. P.	5.3	876



## ELECTRIC AVE.

92-91

92<sup>9</sup>

13+00	W. Fl.	5.2	877
	C	4.4	885
	A	4.8	881
	T/R	4.52	884
	± St.	4.5	884
	B	4.7	884
	C	4.6	883
	E Fl.	4.3	886

13+45	W. Fl.	4.8	881
Sec. D.	c	4.4	885
	A	4.6	883
	T/R	4.5	884
	± St.	4.6	883
	B	4.3	886
	C	4.3	886
	E. Fl.	4.2	931



H1	+		
73.31	0.58	12.12	72.73
61.90	0.21	12.70	61.19
49.40	0.70	12.66	48.70
36.76	0.02	8.65	36.74
B.M. 33.55	5.44	12.54	28.11
21.51	0.50	11.40	21.01
10.89	0.78	10.30	10.11

Spire in pole at Birdrock and Dolphin (S.W.)

B.M. 00.59  
 B.M. 7.48, 3.41

On Jutting Rock  
 Foot of Cliff

8.23  
 $\begin{array}{r} 80.37 \\ 8.23 \\ \hline 72.14 \end{array}$   
 $\begin{array}{r} 72.73 \\ .59 \\ \hline 72.14 \end{array}$

A 1.26 29.37 28.11  
 3.4 26.0  
 4.0 25.4

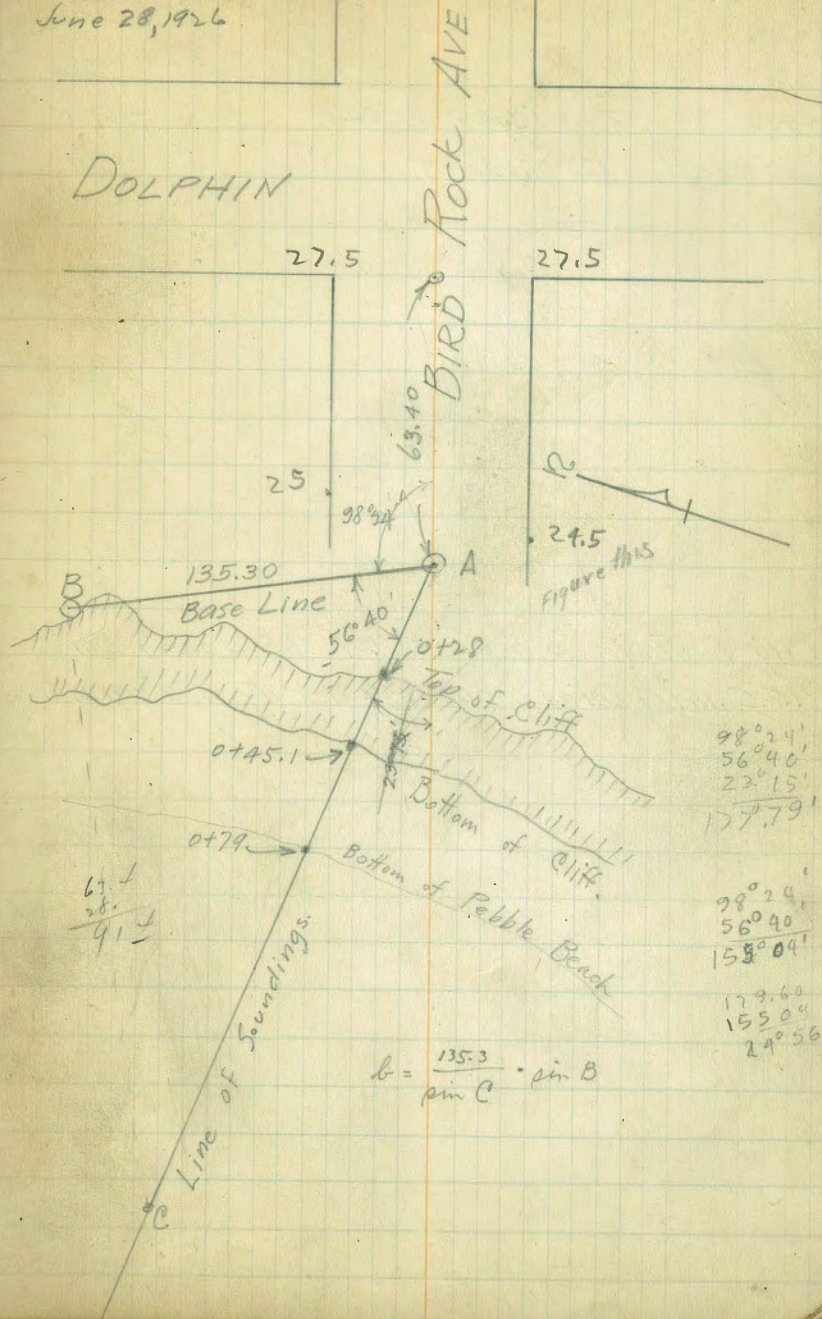
25.4  
 +  
 29.4  
 32.0  
 - 4.6



SOUNDINGS FOR OUTFALL  
FROM SEPTIC TANK.

Δ	Dist From A	Elev
A		26.0
0+28 Top Cliff		25.4
0+45 Bot. cliff		1.3
0+79 Bot Beach		-7.0
B.M.	144 4.85	3.41
IP	4.00 -3.10	-7.10
1+50		-9.0
2+00		-9.3
2+50		-10.1
3+00		-9.9
3+09		-10.6
3+19		-11.6
3+25		-9.6
3+28		-11.4
3+36		-11.1
3+44		-11.6
3+45		-9.2
3+60		-10.6
3+61		-6.9
3+74		-6.6
3+78		-12.3
3+89		-13.1
3+99		-13.7

T.J. Allen  
June 28, 1926





Time 6:28 AM

			Elev
4+30	3.10	14.00	-17.10
Surface of water at 6:28 AM	6.8		-9.9

City Datum 0.00 = -9.01 U.S.C and G Datum  
U.S.C and G Datum 0.00 = -9.01 City Datum = MLLW

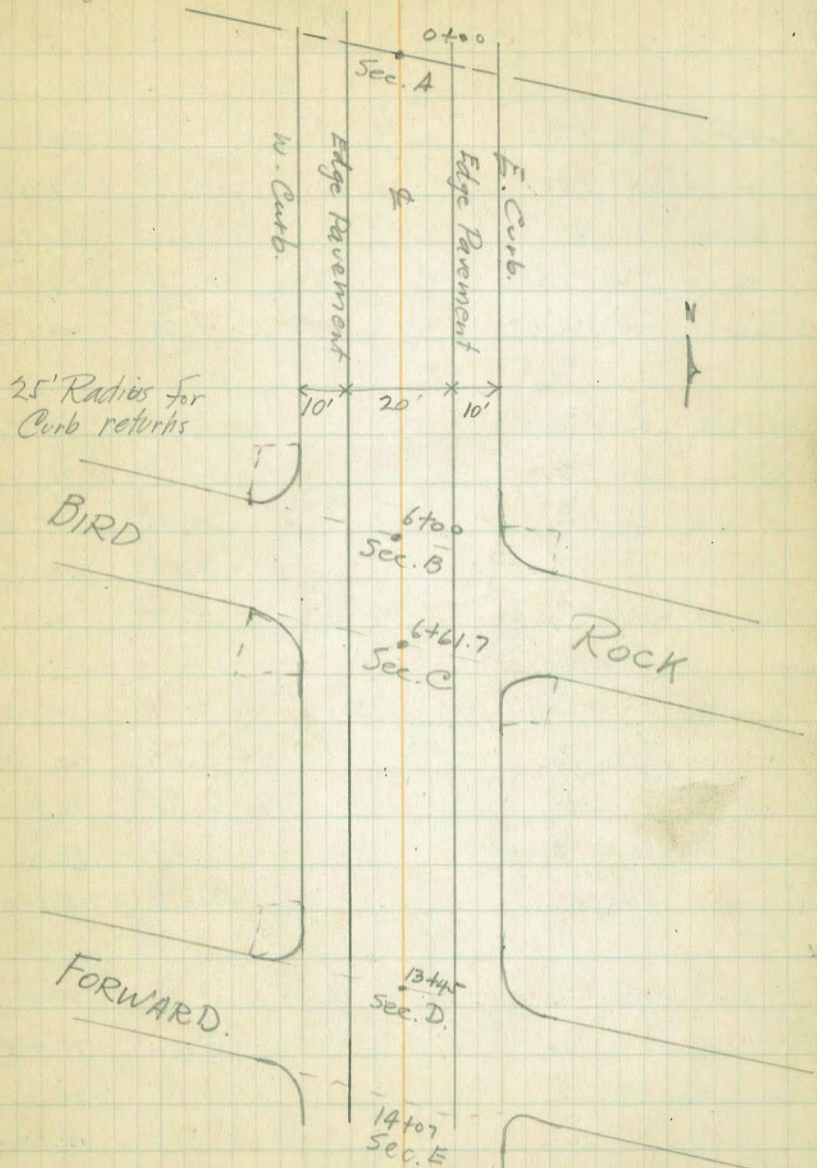


La Jolla Blvd.  
Cross Sections

W Curb (Pav & Pav) E Curb.

BM		11.01 2.20	83.74 82.30	4.14	72.73 79.60
0+00	E. Curb			6.21	76.09
	E. Gutter			6.79	75.51
Sec. A	E. Pav.			6.56	75.74
	±			6.46	75.84
	W. Pav.			6.55	75.75
	W. Gutter			7.00	
	W. Curb.			6.52	75.78
0+50	E. Curb			5.84	76.46
	Pav.			6.06	76.24
	±			5.93	76.37
	Pav.			6.05	76.25
	W. Curb			5.97	76.33
1+00	E. Curb			5.40	76.90
	Pav.			5.63	76.67
	±			5.52	76.78
	Pav.			5.64	76.66
	W. Curb			5.43	76.87
1+50	E. Curb			4.98	77.32
	Pav.			5.15	77.15
	±			5.05	77.25
	Pav.			5.18	77.12
	W. Curb			5.00	77.30

T.J. Allen  
July 23/46.





82.30  
83.74

2400	E. Curb	4.48	77.82
	Par.	4.73	77.57
	£	4.60	77.90
	Par.	4.70	77.60
	W. Curb.	4.51	77.79

2450	E. Curb.	3.96	78.34
	Par.	4.28	78.02
	£	4.13	78.17
	Par.	4.24	78.06
	W. Curb	4.05	78.25

3400	E. Curb.	3.55	78.75
	Par.	3.82	78.48
	£	3.72	78.58
	Par.	3.85	78.45
	W. Curb.	3.63	78.67

3450	E. Curb	3.06	79.24
	Par.	3.36	78.94
	£	3.27	79.03
	Par.	3.38	78.92
	W. Curb.	3.20	79.10

83.74

4400	E. Curb.	4.07	79.67
	Par.	4.36	79.38
	£	4.24	79.50
	Par.	4.35	79.39
	W. Curb.	4.14	79.60

4450	E. Curb	3.72	80.02
	Par.	3.96	79.78
	£	3.90	79.84
	Par.	4.01	79.73
	W. Curb	3.79	79.95

5400	E. Curb.	3.70	80.04
	Par.	3.91	79.83
	£	3.81	79.93
	Par.	3.90	79.84
	W. Curb.	3.74	80.00

5450	E. Curb.	3.83	79.91
	Par.	4.07	79.67
	£	3.94	79.80
	Par.	4.02	79.72
	W. Curb	3.96	79.78



83.74

6+00	E. Curb		4.10	79.64
Sec. B	Pav.		4.43	79.31
	±		4.32	79.42
	Pav.		4.43	79.31
	W. Curb		4.11	79.63

B.M. 2.33 81.36

6+61.7	E. Curb		2.44	78.92
Sec. C	Pav.		2.61	78.75
	±		2.43	78.93
	Pav.		2.50	78.86
	W. Curb		2.33	79.03

7+0	E. C.		2.85	78.51
	P		3.03	78.33
	±		2.90	78.46
	P		2.95	78.41
	W. C.		2.85	78.51

7+50	E. C.		3.45	77.91
	P		3.65	77.71
	±		3.56	77.80
	P		3.66	77.70
	W. C.		3.48	77.88

81.36

8+00	E. C.		4.08	77.28
	P		4.27	77.09
	±		4.16	77.20
	P		4.25	77.11
	W. C.		4.18	77.18

8+50	E. C.		4.63	76.73
	P		4.88	76.48
	±		4.75	76.61
	P		4.84	76.52
	W. C.		4.78	76.58

9+00	E. C.		4.79	76.57
	P		5.21	76.15
	±		5.10	76.26
	P		5.22	76.14
	W. C.		5.04	76.32

9+50	E. C.		5.02	76.34
	P		5.38	75.98
	±		5.24	76.12
	P		5.40	75.96
	W. C.		5.19	76.17



83.74

Top MK Curb return - La J. & Bird R.	4.44	79.30	10+00	E. Curb	5.22	76.14
" S.W. " " " "	5.19	78.55		P	5.47	75.89
" S.E. " " " "	4.70	79.04		♀	5.40	75.96
" N.E. " " " "	3.94	79.80		P	5.53	75.83

E. Curb

5.22 76.14

P

5.47 75.89

♀

5.40 75.96

P

5.53 75.83

W. Curb

5.37 75.99

TP

4.14

80.13

5.37 75.99

City B.M. La J. & Bird Park	4.71	79.03	10+50	E. C.	4.13	76.00
-----------------------------	------	-------	-------	-------	------	-------

E. C.

4.13 76.00

P

4.42 75.71

♀

4.36 75.77

P

4.49 75.64

W. C.

4.30 75.83

80.13

Top NE Curb return - La J. & Forward.	3.74	76.39				
NW "	6.91	73.22				
SE	3.80	76.33				
SW	6.36	73.77	11+00	E. C.	4.35	75.78

E. C.

4.35 75.78

P

4.51 75.62

♀

4.49 75.64

P

4.61 75.52

W. C.

4.47 75.66

25' Radius Returns.

11+50

E. C.

4.54 75.59

P

4.71 75.42

♀

4.66 75.47

P

4.73 75.40

W. C.

4.62 75.51



La Jolla Blvd.

80.13

12+00	E. Curb	4.69	75.44
	Pav.	4.84	75.29
	±	4.77	75.36
	Pav.	4.87	75.26
	W. Curb	4.69	75.44

12+50	E. C.	4.86	75.27
	P.	5.06	75.07
	±	4.96	75.17
	P.	5.04	75.09
	W. C.	4.88	75.25

13+00	E. C.	5.02	75.11
	P.	5.18	74.95
	±	5.11	75.02
	P.	5.20	74.93
	W. C.	5.04	75.09

13+45	E. C.	5.13	75.00
Sec. D.	P.	5.36	74.77
	±	5.24	74.89
	P.	5.32	74.81
	W. C.	5.54	74.59

80.13

14+07	E. Curb	5.02	75.11
Sec. E	Pav.	5.39	74.74
	±	5.28	74.85
	Pav.	5.37	74.76
	W. Curb	5.35	74.78

BM.		5.23	74.90
S.W. La Jolla & Forward.			



# Sewer Profiles in Alley.

E-Block 9

TP	12.35	130.25		117.90
6+00			2.8	127.45
5+60			3.6	126.65
+20			5.4	124.85
4+80			7.1	123.15
+40			8.5	121.75
4+00			9.5	120.75
3+60			9.8	120.45
3+20			7.2	123.05
2+80			4.2	126.05
2+40			1.6	128.65
TP	5.34	134.78	0.81	129.44
2+00			4.6	130.18
1+60			4.1	130.68
1+20			4.4	130.38
0+80			4.9	129.88
0+40			6.2	128.58
0+00			8.0	126.78

TP	1.00	122.83	12.95	121.83
BM.			5.52	117.31
TP	1.26	111.95	12.14	110.69

NOTE - For Sewer Profiles in Alleys,  
Sta. 0+00 is always at North end  
of each Block.



## Sewer Profile

E Alley - Block 10

111.95

0+0	13.1	98.85
+40	12.4	99.55
+80	12.0	99.95
1+20	11.6	100.35
+60	11.4	100.55
2+00	11.1	100.85
+40	9.8	102.15
+80	9.0	102.95
3+20	7.4	104.55
+60	6.6	105.35
4+00	5.9	106.05
+40	5.6	106.35
+80	5.1	106.85
5+20	4.4	107.55
+60	3.3	108.65
6+00	2.7	109.25

## Sewer Profile

7/23/6

E Alley - Block 13

BM

975

96.58

86.83

6+0	3.5	93.08
5+60	4.1	92.48
+20	4.2	92.38
4+80	4.4	92.18
+40	4.9	91.68
4+00	5.1	91.48
3+60	5.2	91.38
+20	5.3	91.28
2+80	5.4	91.18
+40	5.9	90.68
2+0	6.4	90.18
1+60	7.1	89.48
+20	7.4	89.18
0+80	8.1	88.48
+40	8.1	88.48
0+0	8.0	88.58



## Sewer Profile

E Alley Block 14

BM.	1.21	88.04		86.83
6+00			6.7	81.34
5+60			6.4	81.64
+20			5.6	82.44
4+80			4.6	83.44
+40			4.4	83.64
+00			4.5	83.54
3+60			4.6	83.44
+20			4.8	83.24
2+80			5.6	82.44
+40			6.2	81.84
2+00			6.3	81.74
1+60			6.2	81.84
+20			6.2	81.84
0+80			6.7	81.34
+40			6.7	81.34
0+00			7.8	80.24

## Sewer Profile

E Alley Block 17

BM.	5.84	81.62		75.78
0+0			11.4	70.22
+40			10.0	71.62
+80			9.1	72.52
1+20			8.2	72.42
+60			7.8	73.82
2+0			7.1	74.52
+40			6.7	74.92
+80			6.8	74.82
3+20			6.4	75.22
+60			6.8	74.82
4+00			6.7	74.92
+40			6.3	75.32
+80			5.7	75.92
5+20			4.9	76.72
+60			4.4	77.22
6+00			5.0	76.62
BM.	8.9			72.7



## Sewer Profile

± Alley Block "A"

0+00 = W. Line Chelsea

BM	092	73.65		72.73
0+00			4.4	69.25
0+40			5.9	67.75
+80			10.1	63.55
TP	1.76	62.87	12.54	61.11
1+20			8.4	54.5
TP	1.22	51.02	13.07	49.80
+60			4.2	49.82
2+22			13.2	37.82

± Alley Block 8

0+00 = S. Line Bird Rock Ave.

TP	13.15	131.05		117.90
0+0			1.7	129.35
TP	7.99	138.58	0.46	130.59
0+50			7.7	130.88
1+00			5.6	132.98
+50			3.4	135.18
2+00			2.5	136.08
+50			3.2	135.38
+80			3.4	135.18
3+20			3.5	135.08
+60			3.5	135.08
4+00			3.9	134.68
+40			4.6	133.98
+80			5.2	133.38
5+20			5.8	132.78
+60			5.4	133.18



# £ Alley 11

0+00 = 5. Line Bird Rock.

TP	3.91	121.81		117.90
0+00			11.3	120.51
+50			10.3	111.51
1+00			8.8	113.01
+50			7.5	114.31
2+00			6.1	115.71
+50			5.2	116.61
3+00			5.1	116.71
+50			5.5	116.31
4+00			5.4	116.41
+50			5.5	116.31
5+00			5.5	116.31
+20			5.6	116.21
+60			6.3	115.51

# £ Alley BK. 12

99.01

BM.	12.18	(109.01)		86.83
0+00			4.9	94.11
+50			3.6	95.41
1+00			2.3	96.71
+50	4.94	102.40	1.55	97.46
2+00			4.9	97.5
+50			4.9	97.5
3+00			4.8	97.6
+20			4.8	97.6
+60			4.9	97.5
4+00			5.2	97.2
+40			4.6	97.8
+80			4.7	97.7
5+20			4.0	97.4
+60			3.4	97.0



# Alley Bk 15

BM. 1.30 88.13 86.83

0+0	6.8	81.33
+50	7.1	81.03
1+00	7.2	80.93
+50	7.4	80.73
2+0	7.8	80.33
+50	8.2	79.93
+80	8.0	80.13
3+20	8.1	80.03
+60	7.9	80.23
4+00	8.0	80.13
+40	8.0	80.13
+80	8.0	80.13
5+20	7.9	80.23
+60	7.8	80.33

# Alley Bk 16

BM. 5.10 77.83 72.73

0+00	1.0	76.83
+50	1.2	76.63
1+00	2.1	75.73
+50	2.8	75.03
2+00	3.2	74.63
+50	4.7	73.13
3+00	6.1	71.73
+20	6.7	71.13
+60	11.5	66.33
+88	17.3	60.53
4+00	17.0	60.83
+40	12.7	65.13
+80	9.1	68.73
5+20	8.4	69.43
+60	8.4	69.43



# £ Alley Bk. B.

0+00 = W. Line of Chelsea

BM. 0.29 73.02 72.73

11.3  
61.72

0+0 0.5 72.52

0+50 0.9 72.12

1+00 3.4 69.62

1+30 6.3 66.72

1+50 11.3 61.72

TP 0.13 60.15 13.00 60.02

2+0 12.7 47.45

TP 2.11 49.39 12.87 47.28

2+40 12.6 36.79

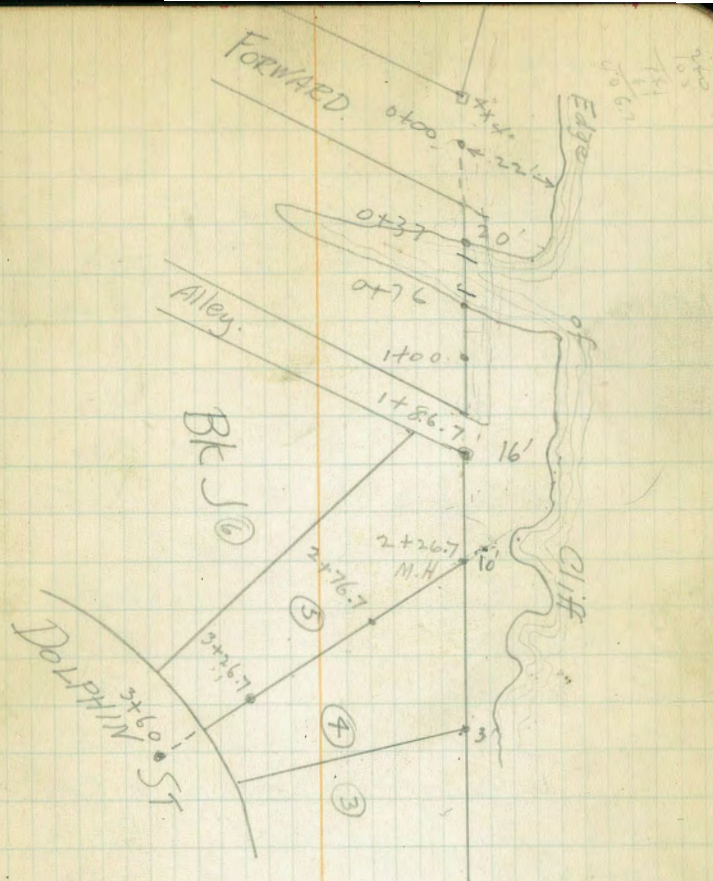


Sewer At Block J

TP 49.39  
 TP 3.57 40.82 12.14 37.25

0+0 = $\pm$ Forward		4.1	36.72
0+37		4.4	36.42
0+55	Gulch	24.0	16.82
0+76		3.9	36.92
1+00		4.0	36.82
1+86.7		7.6	33.22
2+26.7	M.H.	11.9	28.92
2+76.7		8.6	32.22
3+26.7		4.6	36.22
3+60 = $\pm$ Dolphin		3.3	37.52

Plotted.





La Jolla Blvd.  
(Contd)

T.J. Allen  
Aug. 18, 1926

78.49

14+07	S. Line Forward St.			
BM. S.W. Cor.	3.59	78.49	78 <sup>5</sup>	74.90
15+00	E. Curb		4.20	74 <sup>2</sup>
	Pav.		4.39	
	⊕		4.30	
	Pav.		4.36	
	W. Curb		4.25	74 <sup>2</sup>
16+00	E. Curb		4.86	73 <sup>6</sup>
	Pav.		5.03	
	⊕		4.96	
	Pav.		5.08	
	W. Curb		4.92	73 <sup>6</sup>
17+00	E. Curb		5.51	73 <sup>0</sup>
	Pav.		5.76	
	⊕		5.67	
	Pav.		5.75	
	W. Curb		5.62	72 <sup>9</sup>
18+00	E. Curb		6.30	72 <sup>2</sup>
	Pav.		6.49	
	⊕		6.42	
	Pav.		6.50	
	W. Curb		6.38	72 <sup>1</sup>

19+00	E. Curb.	
	Pav.	
	⊕	
	Pav.	
	W. Curb.	

BM. NE. cor  
Midway

19+76	E. Pav.	
	⊕	
	W. Pav.	

Curb Returns at La Jolla & Midway

	N.E.	8.10	70 <sup>9</sup>
	N.W.	10.45	68 <sup>3</sup>
	S.E.	5.15	71 <sup>6</sup>
	S.W.	10.72	68 <sup>3</sup>
20+00	E. Pav.	8.31	
	⊕	8.20	
	W. Pav.	8.30	
	B.M. Brass Plug Mid.	7.31	71.70

78 <sup>5</sup>	
6.95	71 <sup>6</sup>
7.20	
7.10	
7.18	
7.08	74
7.55	70.94
79 <sup>0</sup>	
8.25	
8.16	
8.24	70 <sup>8</sup>



79.01

79<sup>0</sup>

21+00	E. Curb	7.25	78
	Pav.	7.56	
	±	7.53	
	Pav.	7.65	
	W. Curb	7.31	717

22+00	E. Curb	6.16	748
	Pav.	5.93	
	±	6.29	
	Pav.	6.43	
	W. Curb	6.17	748

23+00	E. Curb	4.98	740
	Pav.	5.20	
	±	5.12	
	Pav.	5.14	
	W. Curb	5.02	740

24+00	E. Curb	3.88	751
	Pav.	4.07	
	±	3.99	
	Pav.	4.10	
	W. Curb	3.88	751

79.01

25+00	E. Curb	2.72	763
	Pav.	2.84	
	±	2.78	
	Pav.	2.89	
	W. Curb	2.64	764

B.M.	4.97	82.48	1.50	77.51
26+00	E. Curb	4.97	740	
	Pav.	5.11		
	±	5.00		
	Pav.	5.11		
	W. Curb	—		

## Curb Returns - Colima St.

N. W	5.01	77.47
S. W.	4.21	78.27
N. E.	4.49	77.99
S. E.	5.52	76.96

26+70	E. Curb	—	
± Colima	Pav.	5.19	
	±	5.11	
	Pav.	5.20	
	W. Curb	4.96	740



8.48

29+00	E. Curb	—
	Par.	5.68
	£	5.57
	Par.	5.56
	W. Curb	5.60

28+00	E. Curb	8.05
	Par.	8.46
	£	8.37
	Par.	8.50
	W. Curb	8.24

28+43	E. Curb	9.35	731
(on P.L.)	Par.	9.62	
(skew)	£	9.46	
	Par.	9.50	
	W. Curb	9.11	734



Cross Sections - Colima.

82.48

0+00 = E. Line La Jolla ~~Bud.~~

(Skew) N. P. <sup>82.5</sup> 3.41 793 ✓

C. 4.50 780

1/4 5.11 774

E 5.40 770.8

1/4 5.56 769

C 5.53 770

S. P. 5.97 765 ✓

0+50 N. P. 3.5 790 ✓

C 3.9 786

1/4 5.2 773

E 5.7 767.8

1/4 5.8 767

C 6.2 763

S. P. 6.0 765 ✓

1+00 N. P. 4.4 761 ✓

C 4.7 778

1/4 4.9 776

E 5.1 773.8

1/4 5.3 772

C 5.6

S. P. 5.8 767 ✓

1+50 N. P. 3.9 786 ✓

C 4.1

1/4 4.2

E 4.5 779.8

1/4 4.7

C 4.9

S. P. 5.1 774 ✓

2+00 N. P. 2.9 796 ✓

C 3.4

1/4 3.5

E 3.8 786.8

1/4 4.0

C 4.0

S. P. 4.3 762 ✓

2+50 N. P. 2.4 801 ✓

C 2.7

1/4 2.8

E 2.6 798.8

1/4 2.9

C 3.0

S. P. 3.1 794 ✓

B.M. 406 81.57 77.51

B.M. (Lot Stake) 12.44 93.31 80.87

82.48

82.5

3.9 786 ✓

4.1

4.2

4.5 779.8

4.7

4.9

5.1 774 ✓

2.9 796 ✓

3.4

3.5

3.8 786.8

4.0

4.0

4.3 762 ✓

2.4 801 ✓

2.7

2.8

2.6 798.8

2.9

3.0

3.1 794 ✓

406 81.57 77.51

12.44 93.31 80.87



## Colima.

		93.31	$\frac{93.3}{93}$	
2+?	N. R.		13.0	805 ✓
West Line Elec. Ave. (skew)	0		12.8	
	1/4		12.4	
	E		12.3	81.0
	1/4		12.7	
	0		12.4	
	S. R.		13.3	800 ✓
3+50	N. R.		9.8	835 ✓
	0		9.6	
	1/4		9.1	
	E		10.0	83.3
	1/4		10.0	
	0		9.3	
	S. R.		9.2	821 ✓
4+00	N. R.		8.8	845 ✓
	0		8.2	
	1/4		8.6	
	E		8.3	85.0
	1/4		8.2	
	0		9.1	
	S. R.		9.8	835 ✓

		93.31	$\frac{93.3}{93}$	
4+50	N. R.		7.7	856 ✓
	0		7.2	
	1/4		7.5	
	E		7.5	85.8
	1/4		7.5	
	0		8.0	
	S. R.		9.0	843 ✓
5+00	N. R.		5.9	874 ✓
	0		6.1	
	1/4		5.6	
	E		5.9	87.4
	1/4		6.0	
	0		6.5	
	S. R.		7.1	862 ✓
5+50	N. R.		4.1	847 ✓
	0		4.3	
	1/4		4.2	
	E		4.5	82.8
	1/4		5.0	
	0		4.4	
	S. R.		5.5	878 ✓



6+00	N. R.	93.31	93 <sup>3</sup>	2.5	90.8 ✓
	C			2.6	
	1/4			2.8	
	±			2.5	90.8
	1/4			2.8	
	C			3.0	
	S. R.			3.7	89.6 ✓

BM. (Lot Stake) Beaumont 11.66 103.57

6+50	N. R.	103.57	103 <sup>6</sup>	10.7	92.87
	C			10.9	102.67
	1/4			10.8	93.77
	±			11.0	92.57
	1/4			11.2	
	C			11.8	
	S. R.			12.0	91.6 ✓

7+0	N. R.			8.2	95.2 ✓
	C			8.9	
	1/4			9.3	
	±			9.1	94.47
	1/4			9.3	
	C			9.9	
	S. R.			9.6	94.0 ✓

7+50	N. R.	103.57	103 <sup>6</sup>	6.5	97.1 ✓
	C			6.8	
	1/4			7.3	
	±			7.2	96.37
	1/4			7.4	
	C			7.5	
	S. R.			7.4	96.2 ✓

8+00	N. R.			4.9	98.7 ✓
	C			4.9	
	1/4			5.4	
	±			5.3	98.27
	1/4			5.5	
	C			5.5	
	S. R.			5.9	97.9 ✓

8+50	N. R.			2.9	100.7 ✓
	C			3.1	
	1/4			3.8	
	±			3.7	99.87
	1/4			3.8	
	C			3.1	
	S. R.			3.4	100.2 ✓



103.57

103.6

9+00

N. P.

1.6

1020 ✓

N. P.

10+50

115.1

6.7

108.2 ✓

C

1.3

C

6.8

1/4

1.9

1/4

7.3

E

1.7

101.87

E

7.0

108.1

1/4

1.8

1/4

7.1

C

1.4

C

7.9

S. P.

1.5

1021 ✓

S. P.

7.5

1072 ✓

BM. (small rock near Waverly)

11.81

115.10

0.28

103.59

N. P.

11+00

4.1

1110 ✓

9+50

N. P.

10.6

104.5 ✓

C

4.6

C

11.3

1/4

1/4

11.5

E

4.8

E

11.5

103.6

E

4.8

110.4

1/4

11.4

1/4

5.2

C

11.0

C

4.8

S. P.

10.8

104.3 ✓

S. P.

4.4

1107 ✓

10+00

N. P.

9.5

105.6 ✓

N. P.

11+50

2.5

1126 ✓

C

9.3

C

2.2

1/4

9.4

1/4

2.7

E

9.6

105.5

E

2.6

112.5

1/4

9.7

1/4

2.5

C

9.5

C

2.3

S. P.

9.0

106.1 ✓

S. P.

2.0

1131 ✓

TP

1

12.64 126.56

1.18

113.92

Waverly



12700	N. Pz	126.56	126.6	
	C		12.5	1141 ✓
	1/4		11.9	
	E		12.2	
	1/4		11.9	119.6
	C		12.3	
	C		11.5	
	S. Pz		11.2	1154 ✓

12750	N. Pz		9.5	1171 ✓
	C		9.5	
	1/4		9.6	
	E		9.4	117.1
	1/4		9.7	
Ditch →	C		10.4	
	S. Pz		9.1	1175 ✓

13400	N. Pz		6.8	1198 ✓
	C		6.5	
	1/4		6.8	
	E		6.5	120.0
	1/4		6.4	
Ditch →	C		8.7	
	S. Pz		6.3	1203 ✓
TP (on Stake at Bellevue)			7.16	119.40

13450	N. Pz	126.56		
	C		3.5 ✓	123.6 ✓
	1/4		3.3	
	E		3.5	
	1/4		3.6	122.9
	C		4.0	
Ditch →	C		7.4	
	S. Pz		3.1	1235 ✓

14400	N. Pz		0.0	126.5 ✓
	C		0.1	
	1/4		0.2	
	E		0.3	126.2
	1/4		0.5	
Ditch →	C		5.2	
	S. Pz		0.7	1259 ✓

14450	N. Pz	12.44	138.94	00689	126.50
	C			138.4	130.5 ✓
	1/4			8.5	
	E			9.0	
	1/4			8.8	130.14
	C			8.9	
Ditch →	C			10.3	
	S. Pz			9.4	1295 ✓



138.94

~~138.9~~

15400	N. P.	4.5	134 ✓
	C	5.0	
	1/4	5.4	
	E	5.4	195.99
	1/4	6.1	
Ditch →	C	9.2	
	S. P.	6.8	137 ✓

15450	N. P.	0.3	1386 ✓
	C	0.8	
	1/4	1.4	
	E	1.5	137.49
	1/4	3.2	
Ditch →	C	7.5	
	S. P.	2.7	136 ✓

TP		12.75	150.49	12.20	137.74
16400	N. P.	<del>152.5</del>		7.5	1430 ✓
	C	7.7			
	1/4	8.5			
	E	8.9		141.5	
	1/4	9.5			
Ditch →	C	16.3			
	S. P.	9.0		141.5	
B.M. (Stake at Top)		6.00		144.49	

150.49

~~150.5~~

16450	N. P.	4.3	146 ✓
	C	4.6	
	1/4	4.6	
	E	4.8	145.69 ✓
	1/4	4.9	
Ditch →	C	8.5	
	S. P.	5.0	145.5 ✓

TP		12.37	162.04	0.82	149.67
17400	N. P.	<del>162.0</del>		11.5	150.5 ✓
	C	11.9			
	1/4	12.0			
	E	11.9		150.1	
	1/4	12.5			
Ditch →	C	18.4			
	S. P.	13.1		148.9 ✓	

17450	N. P.	8.3	153.9 ✓
	C	9.0	
	1/4	9.1	
	E	9.6	152.4
	1/4	9.8	
Ditch →	C	16.5	
	S. P.	10.7	151.3 ✓



		162.04	162 <sup>0</sup>	
18400	N. PL		6.4	1556 ✓
	C		6.7	
Ditch →	1/4		11.5	
	2		7.4	154.69
	1/4		7.8	
	C		8.6	
	S. PL		8.6	1534 ✓

18450	N. PL		3.6	1584 ✓
	C		5.0	
	1/4		5.4	
Ditch →	2		8.2 ✓	153.8
	1/4		5.6	
	C		5.8	
	S. PL		6.1	1559 ✓

19400	N. PL		1.7	1603 ✓
Ditch →	C		4.8	
	1/4		2.3	
	2		2.7	159.3
	1/4		7.8	
	C		3.2 ✓	
	S. PL		3.1	1589 ✓

TP 11.5v 172.40 1.16 16088

		172.40		
19450	N. PL		10.7	1612 ✓
	C		9.2	
	1/4		9.0	
	2		9.3	163.1
	1/4		9.2	
	C		8.7	
	S. PL		8.4	1640 ✓

2000	N. PL		3.8	1686 ✓
	C		5.0	
	1/4		5.9	
	2		5.7	166.7
	1/4		6.2	
	C		5.4	
	S. PL		5.4	1670 ✓

E. Line of Linda Rosa	N. PL		3.1	1693 ✓
	C		3.2	
	1/4		3.7	
	2		3.9	167.5
	1/4		5.0	
	C		4.6	
	S. PL		4.4	1680 ✓



Cross Sec. Midway St.

T. J. Allen  
Aug. 18, 1926

		172.40		
B.M.		3.02	170.93	4.49 167.91
TP		0.55	160.30	11.48 159.75
East Line	N. P.		166.3	166.0 ✓
Linda Rosa (skew)	C		0.9	159.4
	1/4		2.0	158.3
	E		2.0	158.3 ✓
	1/4		2.9	157.5
	C		3.5	156.8
	S. P.		4.2	156.1 ✓
20+00	N. P.		3.7	156.6 ✓
	C		4.0	156.5
	1/4		4.4	155.9
	E		4.7	155.6 ✓
	1/4		5.6	154.9
	C		6.4	153.9
	S. P.		7.1	153.2 ✓
B.M. on Stake Linda Rosa & Midway			6.76	153.54
19+50	N. P.		5.3	153.0 ✓
	C		5.9	
	1/4		6.7	
	E		6.9	153.4 ✓
	1/4		8.0	
	C		8.4	
	S. P.		8.3	152.0 ✓

160.30

Rock on Linda Rosa near Colima.

			160.3	
19+00	N. P.		8.4	151.9 ✓
	C		9.1	
	1/4		9.9	
	E		10.0	150.3 ✓
	1/4		11.4	
	C		10.7	
	S. P.		11.8	148.5 ✓
TP		0.52	147.95	148.0
18+50	N. P.		0.0	147.43
	C		0.9	148.0
	1/4		1.3	
	E		1.4	146.5
	1/4		1.9	
	C		2.5	
	S. P.		2.9	145.1 ✓
18+00	N. P.		3.2	144.8 ✓
	C		3.9	
	1/4		4.4	
	E		5.0	142.9
	1/4		5.7	
	C		6.0	
	S. P.		6.2	141.8 ✓



147.95

<sup>148</sup>

17+50 N. Pz.

C

1/4

E

1/4

C

S. Pz.

6.9

1411 ✓

7.1

8.3

8.4

139.5 ✓

8.9

9.5

9.0

139°

11.05 136.90 ✓

<sup>1450</sup> 11.2

1368

10.9

12.0

12.3

135.6

12.4

12.5

12.4

1356

12.4

12.90

1350.05 ✓

<sup>1355</sup> 3.2

1321

3.8

4.3

4.2

131.1 ✓

4.2

4.2

4.2

4.4

1309 ✓

136.33

16+00 N. Pz.

C

1/4

E

1/4

C

S. Pz.

6.2

1290 ✓

6.9

7.0

7.6

127.7 ✓

7.8

7.6

8.1

147.2 ✓

7.2

128.1 ✓

8.4

9.0

9.4

125.9

9.7

10.0

10.9

142.2 ✓

10.9

9.4

125.2 ✓

10.0

10.2

10.2

10.5

124.8 ✓

11.0

11.1

11.1

11.7

142.6 ✓

TP on Water Meter - (Taff)

17+00 N. Pz.

C

1/4

E

1/4

C

S. Pz.

TP 16+50 N. Pz.

C

1/4

E

1/4

C

S. Pz.

0.28

135.33

12.90

1350.05 ✓

<sup>1355</sup> 3.2

1321

3.8

4.3

4.2

131.1 ✓

4.2

4.2

4.2

4.4

1309 ✓

15+00 N. Pz.

C

1/4

E

1/4

C

S. Pz.

9.4

125.2 ✓

10.0

10.2

10.2

10.5

124.8 ✓

11.0

11.1

11.1

11.7

142.6 ✓



135.33

135.3

14+50	N. P.			10.6	1249 ✓
	C			11.2	
	1/4			11.3	
	⊕			11.3	1240
	1/4			12.0	
	C			12.6	
	S. P.			12.9	1244 ✓
TP		0.26	123.96	11.63	123.70
14+00	N. P.			+0.4	1242
	C			1.2	
	1/4			1.5	
	⊕			1.6	1244
	1/4			1.5	
	C			2.0	
	S. P.			2.6	1244 ✓
13+50	N. P.			0.0	1242 ✓
	C			0.8	
	1/4			1.5	
	⊕			1.7	1243 ✓
	1/4			2.6	
	C			2.6	
	S. P.			2.8	1244 ✓

Belleuve

123.96

1240

13+00	N. P.			2.0	1240 ✓
	C			2.6	
	1/4			3.2	
	⊕			3.2	1208 ✓
	1/4			3.7	
	C			4.0	
	S. P.			4.4	1196 ✓
12+50	N. P.			3.1	1209 ✓
	C			3.7	
	1/4			4.5	
	⊕			4.5	119.4
	1/4			5.2	
	C			5.9	
	S. P.			6.3	1177 ✓
12+00	N. P.			5.6	1184 ✓
	C			6.1	
	1/4			6.5	
	⊕			6.6	1172 ✓
	1/4			7.3	
	C			7.7	
	S. P.			7.9	1161 ✓



11+50	N.P.	123.96	124 <sup>0</sup>	7.4	1166 ✓
	⊙			8.4	
	1/4			8.4	
	⊕			8.6	1154 ✓
	1/4			9.3	
	⊙			10.0	
	S.P.			10.1	1139 ✓

11+00	N.P.			8.6	1154 ✓
	⊙			9.4	
	1/4			10.0	
	⊕			10.3	1137 ✓
	1/4			11.0	
	⊙			11.3	
	S.P.			11.5	1175 ✓

10+50	N.P.			10.2	1138 ✓
	⊙			11.0	
	1/4			11.8	
	⊕			11.9	1171 ✓
	1/4			12.8	
	⊙			12.9	
	S.P.			13.3	1101

TP 0.48 111.93 12.51 111.45

10+00	N.P.	111.93		11.9	
	⊙			1.6	1102 ✓
	1/4			1.8	
	⊕			1.7	
	1/4			1.8	110.1
	⊙			2.6	
	S.P.			3.1	
				3.1	1088 ✓

9+50	N.P.			2.9	1090 ✓
	⊙			3.1	
	1/4			3.5	
	⊕			3.7	1062 ✓
	1/4			4.1	
	⊙			4.7	
	S.P.			4.9	1070 ✓

9+00	N.P.			4.6	1073 ✓
	⊙			5.0	
	1/4			5.4	
	⊕			5.4	1065 ✓
	1/4			5.9	
	⊙			6.2	
	S.P.			6.4	1055 ✓



8450	N. P.	6.9	1050 ✓
	C	7.4	
	1/4	7.8	
	E	7.9	1040 ✓
	1/4	8.4	
	C	8.8	
	S. P.	8.9	1032 ✓

8400	N. P.	8.6	1032 ✓
	C	9.2	
	1/4	9.6	
	E	9.6	1043 ✓
	1/4	10.2	
	C	10.3	
	S. P.	11.1	1008 ✓

7450	N. P.	10.2	1012 ✓
	C	10.7	
	1/4	10.9	
	E	11.1	1008 ✓
	1/4	11.7	
	C	12.1	
	S. P.	12.5	994 ✓

TP 0.27 99.18 13.02 98.91

7400	N. P.	0.6	986 ✓
	C	1.2	
	1/4	0.7	
	E	0.8	98.4
	1/4	1.2	
	C	1.9	
	S. P.	2.1	971 ✓

640	N. P.	2.7	965 ✓
	C	3.5	
	1/4	3.4	
	E	3.4	95.5 ✓
	1/4	4.0	
	C	4.4	
	S. P.	4.4	948 ✓

5450	N. P.	4.6	946 ✓
	C	5.1	
	1/4	6.0	
	E	5.9	93.3
	1/4	6.5	
	C	6.9	
	S. P.	7.0	922 ✓

99.18 99.2



99.18

99<sup>v</sup>

5+00	N. R.	7.3	91 <sup>v</sup> ✓
	C	7.4	
	1/4	8.2	
	E	8.0	91.2 <sup>v</sup>
	1/4	8.6	
	C	8.8	
	S. R.	9.1	90.1 <sup>v</sup>

4+50	N. R.	9.2	900 ✓
	C	9.0	
	1/4	9.8	
	E	9.8	89.4 <sup>v</sup>
	1/4	10.7	
	C	10.9	
	S. R.	11.1	88.1 <sup>v</sup>

4+00	N. R.	10.6	88.6 <sup>v</sup>
	C	10.4	
	1/4	11.2	
	E	11.3	87.9
	1/4	11.7	
	C	12.0	
	S. R.	12.2	87.0 <sup>v</sup>

TP	0.60	87.18	12.60	86.58
----	------	-------	-------	-------

87.18

87<sup>v</sup>

3+50	N. R.	10.3	87.5 <sup>v</sup> ✓
	C	0.2	
	1/4	0.6	
	E	1.0	86.2
	1/4	1.2	
	C	1.1	
	S. R.	—	✓

3+00	N. R.	1.0	86.2 <sup>v</sup> ✓
	C	3.0	
	1/4	3.0	
	E	3.3	85.9
	1/4	3.7	
	C	3.9	
	S. R.	4.2	85.0 <sup>v</sup> ✓

2+70 - Sidewalks & Curbs on Midway begin at West Line Electric Ave. 30' between Curbs. Elev. taken on curbs, 1/4 pt. & E.

2+70	1/2 curb.	5.4	81.8 <sup>v</sup> ✓
	1/4	5.0	
	E	4.9	81.3
	1/4	5.3	
	S. Curb	5.2	81.0 <sup>v</sup> ✓



87.18

7+50		87 <sup>2</sup>	
N. Curb	4.9	843	✓
1/4	5.6		
±	5.7	815	
1/4	6.2		
S. C	6.2	810	✓
2+00	N. Curb	7.0	802 ✓
1/4	7.7		
±	7.7	795	
1/4	8.2		
S. Curb	8.0	792	✓
1+50	N. Curb	9.1	781 ✓
1/4	9.6		
±	9.8	776	
1/4	10.0		
S. Curb	9.9	773	✓
1+00	N. Curb	11.1	761 ✓
1/4	11.7		
±	11.6	756	
1/4	12.0		
S. Curb	11.7	755	✓

87.18

TP		2.11	76.93	12.36	74.82
0+50	N. Curb			<del>76.9</del> 3.0	739 ✓
	1/4			3.5	
	±			3.3	736
	1/4			3.6	
	S. Curb			3.2	737 ✓
0+00	N. Curb			5.3	716 ✓
	1/4			5.5	
	±			5.0	719
	1/4			5.0	
	S. Curb			4.5	714 ✓

0+00 = E. Line La Jolla Blvd.

Section taken on skew

~~N. Curb~~  
~~1/4~~  
~~±~~  
~~1/4~~  
~~S. Curb~~

BM. N.E. Cor. Midway &amp; La Jolla 6.07 70.86



B.M.	2.35		155.89	153.54
20			0.3	155.6
19+50			2.5	153.4
19			5.0	150.9
18+50			9.4	146.5
18	0.85		12.88	143.01
17+50			4.2	139.7
17			8.0	135.9
16+50	0.70	131.81	12.76	131.10
16			4.1	127.7
15+50			5.8	126.0
15			6.9	124.9
14+50			7.8	124.0
14			8.6	123.2
13+50			9.6	122.2
13			11.0	120.8
12+50	1.88	121.25	12.42	119.37
12			3.9	117.3
11+50			5.9	116.3
11			7.6	116.6
10+50			9.1	117.1
10			11.0	110.2
9+50	2.15	110.40	13.00	108.25
9			3.9	

		110.40	
8+50			6.3
8			8.0
7+50			102.4
7			9.5
6+50	2.38		100.9
6		100.26	11.0
5+50			99.4
5+0			12.52
			97.88
			4.4
			95.8
			7.0
			93.3
			9.0
			91.3



ALLEY Cross Section 20' wide 12' high  
 BIK 142 Unit. H 975  
 34000

34th. 63

Polk to Howard  
 Park Blvd to Georgia

75

(EBP	7.66	344.63	334.97	Polk & Georgia
NL Polk = 00				
E	to com return	4.40	338.43	
C		4.6	38.03	
W	" " "	4.19	38.44	
	0+35			
W		5.0	37.6	
C		5.0	37.6	
E		4.9	37.7	
	0+70			
E	& garage cent floor	5.08	37.55	ONLINE
+1	edge Apron 9' wide	5.75	37.48	1' melted
C		5.2	37.4	
W	fence 3' alley	5.4	37.2	
	1+05			
W		5.3	37.3	
C		5.5	37.1	
E	& Double garage dirt floor	5.5	37.1	ONLINE
	1+46			
E	& garage wood floor	5.3	37.3	ONLINE
C		5.7	36.9	
W		5.9	36.7	
	1+56			
W	-3 garage dirt floor	5.6	37.0	
	1+62			
W		5.7	36.9	

Plotted 12/21/26  
 Loamy

C		5.6	337.0	
E	& double garage dirt floor	5.0	37.6	ONLINE
	2+00			
E		5.7	36.9	
C		6.0	36.4	
W		6.0	36.6	
	2+18			
W	-5 garage dirt floor	6.1	36.5	
	2+33			
-5	garage dirt floor	6.0	36.6	
W		6.2	36.4	
C		6.2	36.4	
E		5.8	36.8	
+4	" " "	5.6	37.0	
	2+61			
E	garage " "	5.7	36.9	ONLINE
C		6.5	36.1	
W		6.2	36.4	
	2+93			
W		6.2	36.4	
C		6.8	35.8	
E	garage brick floor	5.75	36.88	" "
T.P.	340	339.05	6.95	335.65
	3+09			
E	-W garage wood floor	2.40	36.7	



339.08

3+4W		
E	J.2	334.9
C	L.2	34.9
W garage dirt floor	3.5	35.6
3+78		
W garage wood "	2.90	36.5
C	L.2	34.9
E	H.7	34.4
4+10		
E	J.0	34.1
C	L.7	34.4
W	L.3	34.8
4.5 double garage dirt floor	4.3	34.8
4+28		
W-0.3 garage cement floor	4.18	34.9
4+44		
W	L.2	34.9
C	L.6	34.5
E double garage dirt floor	L.6	34.5
4+75		
E fence in alley.5	4.7	34.4
C	L.6	34.5
W	L.2	34.9
5+12		
W	4.5	34.6
C	4.8	34.3

339.08

E garage wood floor	4.70	334.4
J-446		
E-1.5 garage cement floor	5.38	33.7
J+55		
E-1.5 garage " "	5.50	33.6
E	5.5	33.6
C	5.0	34.1
W	5.1	34.0
J+85		
W	5.9	33.7
C	5.5	33.6
E	5.3	33.8
6+00 - St Howard		
E top alley return	9.2 ✓	329.84
C	5.2	330.88
W " " "	7.75	331.33
TP 0.58	330.09	9.57
check	10.2	329.51
		319.86

N.W.B.P. Howard  
George

319.85



← 15 \* 10 \* 6 \* 9 \* 10 \* 15 \* 15 →

1392	1195
68	203
-7.1 ✓	9.9 ✓

992	10.79
4	748
1392	3.31

79.60
2.70
82.30

5.24
5.13
.11
6.24
63.6

72	73
58	
73	31
12	12
61.	19
61.	40
12	70
48.	70
49	40
12	66
36.	74
36.	76
8	65
28.	11
5	44
33.	55
12	54
21.	01
21	50

33	45
12	54
20.71	
5	
21.41	
11	40
10.01	
78	
10.79	
1030	
49	

21	5
21	51
11	40
10.78	
10.89	
1030	
.59	

10.89
748
3.41



86.83 BM  
 0 30 +  
 87.13 HI  
 10 56 -  
 76.57  
 4.26 +  
 80.83 HI  
 584 -  
 74.99

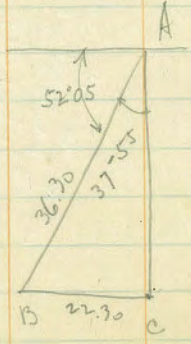
133.86  
 134.44  
 11.82  
 122.62  
 0.55  
 123.17  
 12.54  
 110.63  
 0.25  
 110.88  
 12.30  
 98.58  
 98.31  
 98.89  
 12.07  
 86.82  
 7.11  
 79.71  
 8.22  
 82.95  
 10.26  
 72.69

83.63  
 82.83  
 4 10  
 9 0.93

40  
 80  
 120  
 80  
 20  
 152.22  
 143.19  
 8898  
 36  
 53388  
 26694  
 350328

146.84  
 146.67  
 159  
 44  
 2.03

$a = c \sin A$   
 $= 9.788532$   
 $1.559907$   
 $1.348439$   
 $= 22.30$   
 $-8.0$   
 $10.30$   
 $5.15$   
 $45.15$



9.897025  
 1.559907  
 1.456932  
 28.65  
 8

# IMPROVED TABLES AND INFORMATION

TABLE No. 2  
 To find Tangent and External for curve of any other degree, divide by degree of curve and add correction found in column of corrections. Degree of curve with a given tangent may be found by dividing tangent by degree opposite I by given tangent (External). The distance from a point on the tangent to the curve is very nearly the square of the tangent length divided by twice the radius.

50	10	20	10	50
----	----	----	----	----

40  
 8.5  
 7.5  
 TABLE No. 1  
 2684  
 1345  
 1339